



Wastewater Analysis
for Illicit Drugs
Monthly Report
November 2017



15 November 2017

Prepared by:

Andrew Chappell, Ellen Ashmore, Seamus Watson

PREPARED FOR:
CLIENT REPORT No:
REVIEWED BY:

The New Zealand Police
FW17066
Dr Brent Gilpin





ACKNOWLEDGEMENTS


The authors wish to acknowledge the scientific expertise provided to the project from across the Forensic and Environmental Science business groups at ESR. We also are very grateful to samplers in Whangarei, Auckland and Christchurch for the collection of wastewater samples.

Author



Andrew Chappell
Scientist
Chemistry Group

Author



Ellen Ashmore
Scientist
Risk and Response Group

Peer reviewer



Dr Brent Gilpin
Science Leader,
Food, Water & Biowastes

Manager



Maxie Christison
Manager,
Chemistry and NCRS

DISCLAIMER

The Institute of Environmental Science and Research Limited (ESR) has used all reasonable endeavours to ensure that the information contained in this client report is accurate. However, ESR does not give any express or implied warranty as to the completeness of the information contained in this client report or that it will be suitable for any purposes other than those specifically contemplated during the Project or agreed by ESR and the Client.



CONTENTS

1. EXECUTIVE SUMMARY	1
2. Methodological approach	3
2.1 WASTEWATER-BASED EPIDEMIOLOGY APPROACH.....	3
2.2 DRUGS AND METABOLITES.....	3
2.3 SAMPLING AND ANALYSIS	4
2.4 BACK-CALCULATIONS	4
3. Results	6
3.1 DAILY DRUG USE	6
3.2 WEEKLY DRUG USE.....	7
3.3 WEEKLY TOTAL DRUG LOAD	9
APPENDIX A: NOVEMBER RESULTS BY SAMPLE	10

LIST OF TABLES

TABLE 1 WEEKLY DRUG USE (MG/WEEK/1000 PEOPLE) FOR CHRISTCHURCH, AUCKLAND (ROSEDALE) AND WHANGAREI.....	1
TABLE 2 TOTAL WEEKLY DRUG LOAD (GRAMS PER WEEK) FOR CHRISTCHURCH, AUCKLAND (ROSEDALE) AND WHANGAREI.....	2
TABLE 3: DRUGS AND METABOLITES STUDIED IN NOVEMBER 2017.....	3
TABLE 4: SAMPLES DAY 1 – WEDNESDAY 1 ST NOVEMBER 2017	10
TABLE 5: SAMPLES DAY 2 – THURSDAY 2 ND NOVEMBER 2017	11
TABLE 6: SAMPLES DAY 3 – FRIDAY 3 RD NOVEMBER 2017.....	11
TABLE 7: SAMPLES DAY 4 – SATURDAY 4 TH NOVEMBER 2017	12
TABLE 8: SAMPLES DAY 5 – SUNDAY 5 TH NOVEMBER 2017	12
TABLE 9: SAMPLES DAY 6 – MONDAY 6 TH NOVEMBER 2017	13
TABLE 10: SAMPLES DAY 7 – TUESDAY 7 TH NOVEMBER 2017	13

LIST OF FIGURES

FIGURE 1 METHAMPHETAMINE USE NORMALISED TO PER 1000 PEOPLE	6
FIGURE 2 COCAINE USE NORMALISED TO PER 1000 PEOPLE.....	6
FIGURE 3 MDMA USE NORMALISED TO PER 1000 PEOPLE	7
FIGURE 4 METHAMPHETAMINE USE FOR THE WEEKS SAMPLED IN DECEMBER 2016 TO NOVEMBER 2017	8
FIGURE 5 COCAINE USE FOR THE WEEK SAMPLED IN DECEMBER 2016 TO NOVEMBER 2017	8
FIGURE 6 MDMA USE FOR THE WEEK SAMPLED IN DECEMBER 2016 TO NOVEMBER 2017	8

1. EXECUTIVE SUMMARY

The Drugs in Wastewater project is funded by the New Zealand Police, under the Proceeds of Crime funding, and is conducted by the Institute of Environmental Science and Research (ESR) Ltd.

Monthly sampling for Christchurch and Rosedale in Auckland began in December 2016, while monthly sampling for Whangarei began in August 2017. This report presents the results of analysis of wastewater samples for the month of November 2017 taken from Christchurch, Rosedale in Auckland, and Whangarei.

Samples were taken as 24-hour composites for seven consecutive days from Wednesday 1st November to Tuesday 7th November 2017. In total, seven samples from Christchurch, seven samples from Auckland (Rosedale), and seven samples from Whangarei were collected in September. All 21 samples were extracted by solid phase extraction (SPE) and analysed by liquid chromatography tandem mass spectrometry (LC-MS/MS) at ESR, Christchurch Science Centre.

Back calculations were undertaken based on the concentrations of the drug and/or its metabolites in wastewater to estimate the amount of each drug used per thousand people. The back calculations do not take into account degradation, sorption and stability of drugs/metabolites in the wastewater system, leakage from pipes, or a number of other factors that may affect the drug estimates.

Methamphetamine, MDMA/ecstasy and cocaine were detected in wastewater from all cities. α -PVP and heroin were not detected in any of the wastewater samples. The drug use in mg/week/1000 people, during the week sampled in November is shown in Table 1.

Table 1 Weekly drug use (mg/week/1000 people) for Christchurch, Auckland (Rosedale) and Whangarei

	Weekly Drug Use (mg/week/1000 people)		
Drug	Christchurch	Auckland (Rosedale)	Whangarei
Methamphetamine	1952	2824	7665
Cocaine	109	396	39
α -PVP	Not Detected	Not Detected	Not Detected
Heroin	Not Detected	Not Detected	Not Detected
MDMA	1651	1105	104

The total load or amount of drug used in the population in Christchurch, Auckland (Rosedale) and Whangarei during the week sampled in November (g/week) is shown in Table 2. The data is the summation of the drug load for each of the seven days sampled, to give grams per week.

Table 2 Total weekly drug load (grams per week) for Christchurch, Auckland (Rosedale) and Whangarei

Drug	Weekly Total Drug Load (g/week)		
	Christchurch	Auckland (Rosedale)	Whangarei
Methamphetamine	708	678	360
Cocaine	40	95	1.8
α -PVP	Not Detected	Not Detected	Not Detected
Heroin	Not Detected	Not Detected	Not Detected
MDMA	599	265	4.9

Caution should be exercised before making comparisons of the results from this monthly report, with studies undertaken elsewhere without a thorough consideration of experimental differences, and back calculation assumptions and methodology. This type of comparison will be included in the full report at the conclusion of 12 months of sampling. We would also caution over interpreting results in this report based on a single week's data. For example while usage of cocaine and MDMA would appear higher on weekends, and methamphetamine usage more evenly spread across the week, a large amount of sampling data is required before statistically supported conclusions can be made.

2. METHODOLOGICAL APPROACH

Wastewater-based epidemiology is the study of wastewater for factors related to health in the population. In this instance, the project studies drugs and metabolites as an indication of drug use in the community.

2.1 WASTEWATER-BASED EPIDEMIOLOGY APPROACH

The estimation of the drug usage based on analysis of sewage is dependent on the interaction of a number of factors:

1. Drug consumption behaviour by the population
2. Metabolism or the chemical transformation of a drug in the body
3. Urinary excretion of the drug (if any remains unmetabolised) and metabolite(s)
4. Conditions and transit times through the wastewater system
5. The method of sample collection
6. Sample extraction by solid phase extraction (SPE) and analysed by liquid chromatography tandem mass spectrometry (LC-MS/MS) in laboratory
7. Determination of the concentration of drugs and metabolites in wastewater
8. Back calculation approach taken.

Adapted from van Nuijs *et al.* (2011).

2.2 DRUGS AND METABOLITES

When a drug is used (injected, orally, smoked, etc.) it enters the body and under goes chemical transformations to produce a metabolite or several metabolites. In November 2017 the project studied five drugs and their associated metabolites suitable for use in the project. These are shown in Table 3 below.

Table 3: Drugs and metabolites studied in November 2017

Drug	Metabolite(s)
Methamphetamine	4-hydroxy-N-methylamphetamine
Cocaine	Benzoyllecgonine Ecgonine methyl ester
α -PVP	Scientific literature has not identified any suitable metabolites
Heroin	6-acetylmorphine (6-MAM) Morphine
MDMA/ecstasy (3,4-methylenedioxymethamphetamine)	4-hydroxy-3-methoxymethamphetamine (HMMA)

2.3 SAMPLING AND ANALYSIS

Monthly sampling for Christchurch and Rosedale in Auckland began in December 2016, while monthly sampling for Whangarei began in August 2017.

Samples were taken as 24-hour composites for seven consecutive days from Wednesday 1st November to Tuesday 7th November 2017.

Samples from Whangarei were delivered 24 hours late due to problems with the courier company. The samples arrived at ESR at room temperature, but were processed immediately. A brief study before this project started demonstrated that methamphetamine is quite stable even at room temperature, while heroin is unstable and will degrade rapidly. Considering heroin has never been detected, and methamphetamine is the predominant drug and stable, we believe the samples have not been seriously compromised.

The Auckland (Rosedale) samples represent a population estimate of 240,000 people, Christchurch samples represent a population estimate of approximately 360,000 people, and Whangarei samples represent a population estimate of approximately 47,000 people.

All 21 samples were extracted by solid phase extraction (SPE) and analysed by liquid chromatography tandem mass spectrometry (LC-MS/MS) at ESR, Christchurch Science Centre.

The method employed by ESR is based on Baker and Kasprzyk-Hordern (2011).

2.4 BACK-CALCULATIONS

Back calculations were undertaken based on the concentrations of the drug and/or its metabolites in wastewater to estimate the amount of each drug used per thousand people.

Parameters included in the back calculations are population size (provided by the wastewater treatment plant staff), drug/metabolite excretion rate (from published scientific literature), and wastewater system flow rate (measured by the wastewater treatment plant). Excretion factors were taken from Baker *et al.* (2014); Tschärke *et al.* (2016); van Nuijs *et al.* (2011).

$$\text{Drug use} = \frac{\text{Concentration} \times \text{Flow rate} \times \text{Excretion factor}}{\text{Population adjustment}}$$

There are many other aspects of the system that may affect the accuracy of the calculation. The back calculations do not take into account degradation, sorption and stability of drugs/metabolites in the wastewater system, and leakage from pipes. Losses of drugs and metabolites in the laboratory have been adjusted via co-extraction of a deuterated analogue. It should also be noted that excretion rates are based on only a small number of overseas studies which tend to have small and sometimes biased sample groups.

Where the concentrations of a drug or metabolite were present in the wastewater sample at a discernible level, but the quantity was too small to be accurately measured, these have been reported as being present at Trace levels. In these situations, we have used the method limit of detection in back calculations.

In this monthly report the back calculations for cocaine are based on levels of metabolite benzoylecgonine, while back calculations for methamphetamine and MDMA/ecstasy are based on the parent drug. Morphine is a metabolite of heroin, but is also prescribed

legitimately and is widely used in the New Zealand population. In the absence of the detection of heroin, back calculations have not been conducted in this report on morphine due to the ambiguity of its origin.

After completion of 12 months of sampling, a full report will consider including biomarker data and additional biophysical factors to further refine the back calculations.

3. RESULTS

3.1 DAILY DRUG USE

In Figure 1 to Figure 3, the amount of drug used in the population (mg/day/1000 people) is shown for Christchurch, Auckland (Rosedale) and Whangarei. The data is derived from back-calculations using wastewater system flow rate, population data and drug/metabolite excretion rate data.

The load of drugs in the wastewater system each day has been normalised to per 1000 people in order to compare drug usage between Christchurch, Auckland (Rosedale) and Whangarei.

α -PVP and heroin were not detected in the wastewater samples across all days of the week for Christchurch, Auckland (Rosedale) and Whangarei, therefore they are not represented in a graph below.

Figure 1 Methamphetamine use normalised to per 1000 people

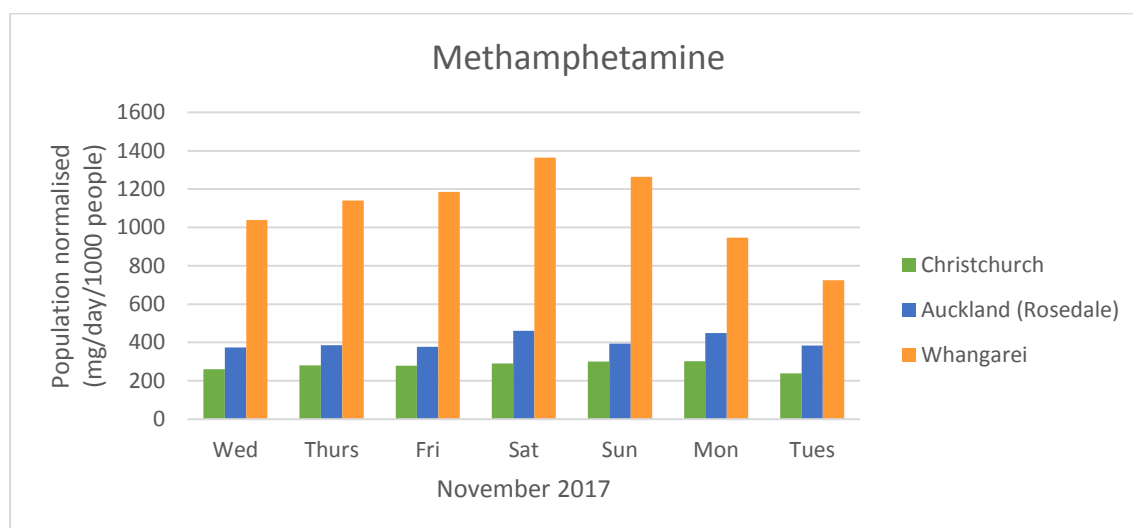


Figure 2 Cocaine use normalised to per 1000 people

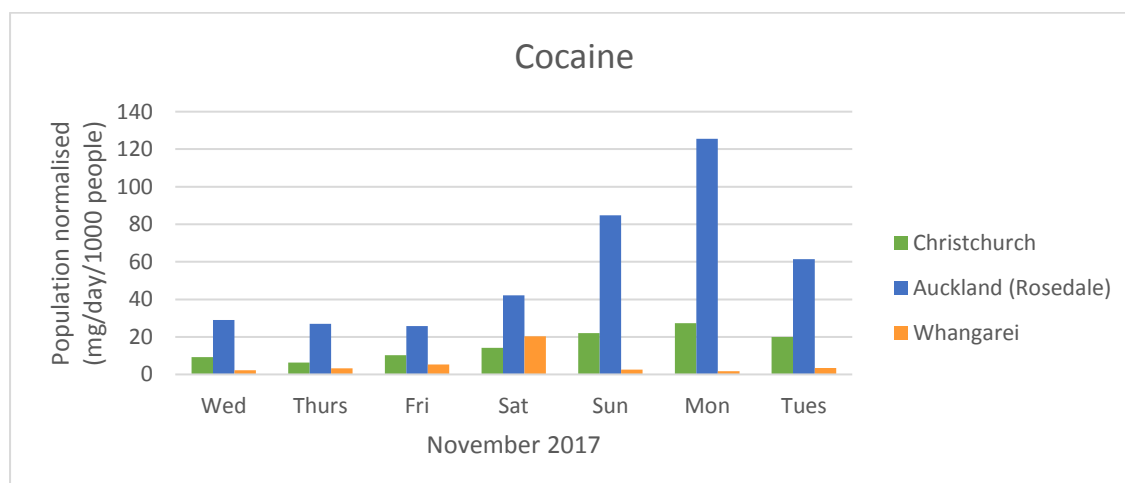
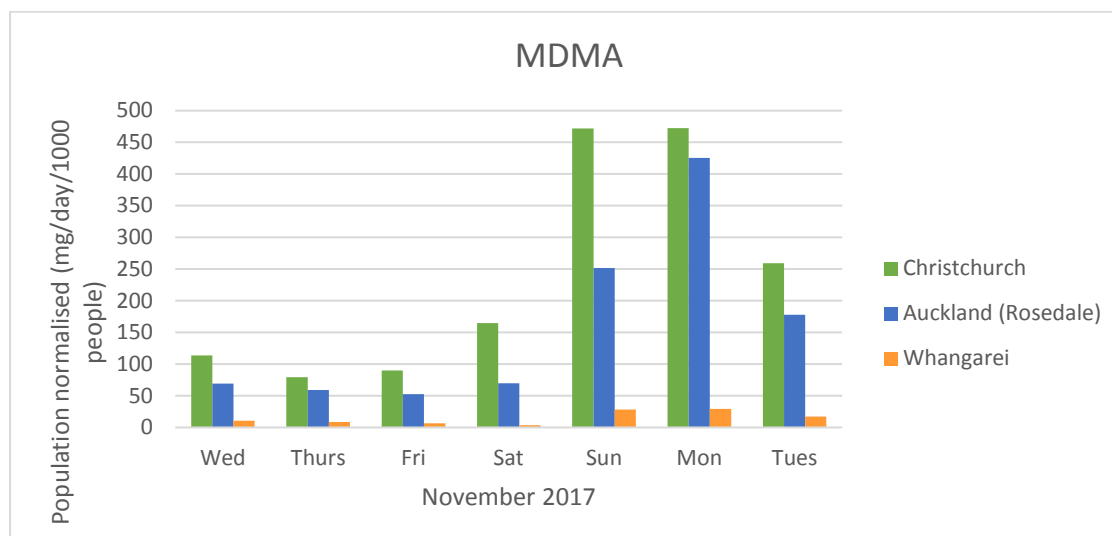


Figure 3 MDMA use normalised to per 1000 people



3.2 WEEKLY DRUG USE

The drug use in the population during the week sampled in November is shown in Table 1. The data is the summation of the drug use for each of the seven days sampled to give mg/week/1000 people.

Table 1 Weekly drug use (mg/week/1000 people) for Christchurch, Auckland (Rosedale) and Whangarei

	Weekly Drug Use (mg/week/1000 people)		
Drug	Christchurch	Auckland (Rosedale)	Whangarei
Methamphetamine	1952	2824	7665
Cocaine	109	396	39
α-PVP	Not Detected	Not Detected	Not Detected
Heroin	Not Detected	Not Detected	Not Detected
MDMA	1651	1105	104

As sampling continues, the graphs in Figure 4 to Figure 6 will be updated to monitor trends throughout the year. α-PVP and heroin were not detected in the wastewater samples across all days of the week for Christchurch, Auckland (Rosedale) and Whangarei, therefore they are not represented by a graph.

Figure 4 Methamphetamine use for the weeks sampled in December 2016 to November 2017

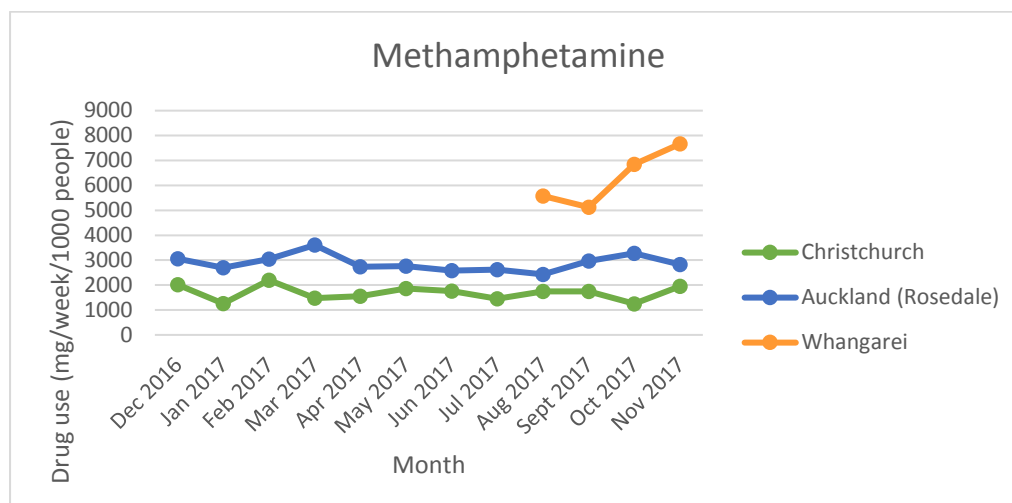


Figure 5 Cocaine use for the week sampled in December 2016 to November 2017

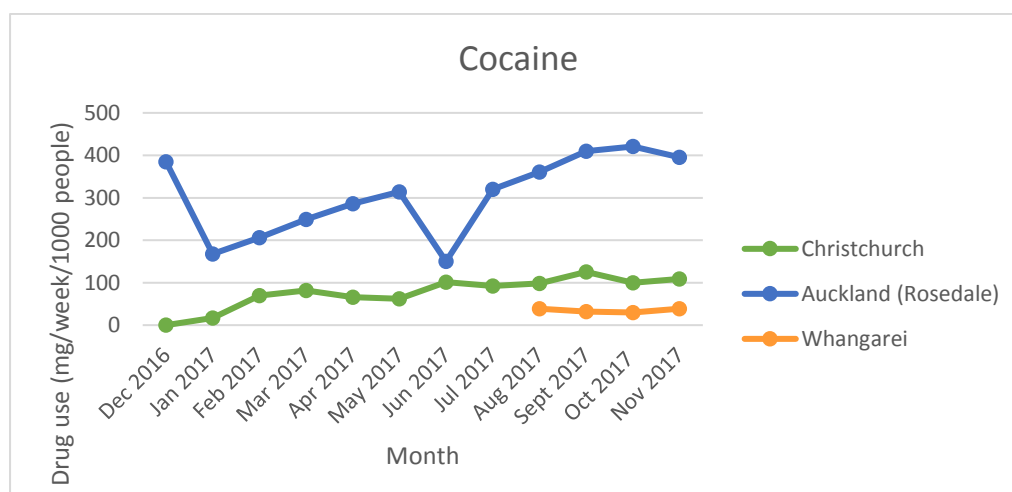
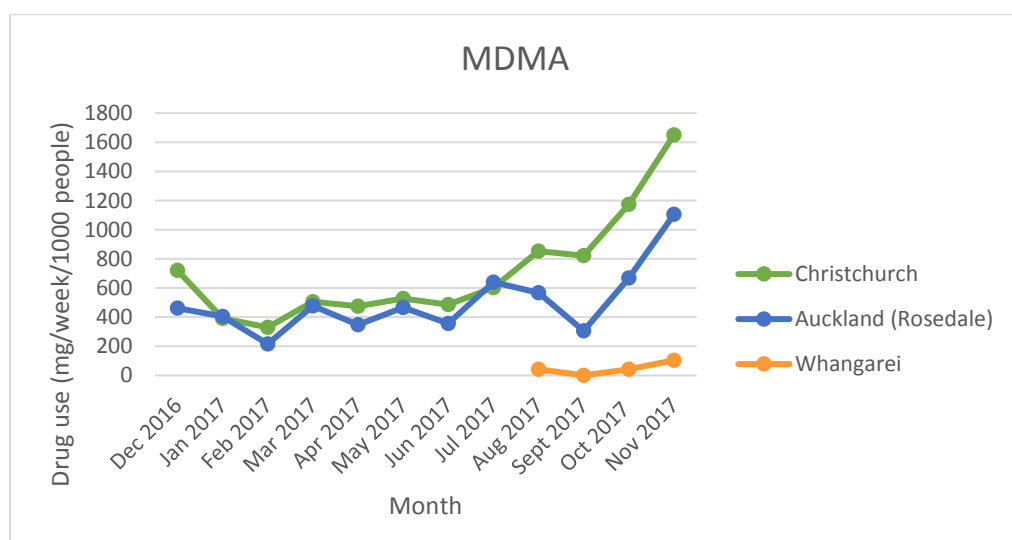


Figure 6 MDMA use for the week sampled in December 2016 to November 2017



3.3 WEEKLY TOTAL DRUG LOAD

The total load or amount of drug used in the population in Christchurch, Auckland (Rosedale) and Whangarei during the week sampled in November (g/week) is shown in Table 2. The data is the summation of the drug load for each of the seven days sampled, to give g/week.

Table 2 Total weekly drug load (grams per week) for Christchurch, Auckland (Rosedale) and Whangarei

Drug	Weekly Total Drug Load (g/week)		
	Christchurch	Auckland (Rosedale)	Whangarei
Methamphetamine	708	678	360
Cocaine	40	95	1.8
α -PVP	Not Detected	Not Detected	Not Detected
Heroin	Not Detected	Not Detected	Not Detected
MDMA	599	265	4.9

APPENDIX A: NOVEMBER RESULTS BY SAMPLE

In November 2017 the project studied five drugs and their associated metabolites suitable for use in the project.

Creatinine was analysed as a human biomarker. The creatinine data generated over the course of the project will be reviewed in the future once trends and patterns in its concentration in wastewater are established.

The concentration of drugs, metabolites and creatinine in the wastewater were determined by LC-MS/MS. The presence of a drug or metabolite above the limit of detection has been quantified and shown in Table 4 to Table 10.

Terminology used in Table 4 to Table 10:

Trace = the drug or metabolite was present in the wastewater sample at a concentration that is discernible, but the quantity was too small to be accurately measured.

Not Detected (ND) = the concentration of drug or metabolite in the wastewater sample was below the method limit of detection.

Table 4: Samples day 1 – Wednesday 1st November 2017

Drug or metabolite	Concentration in wastewater (µg/L)			Method Limit of Detection (LOD) (µg/L)
	Christchurch	Auckland (Rosedale)	Whangarei	
Methamphetamine	0.226	0.730	1.829	0.00125
4-hydroxy-N-methylamphetamine	0.210	0.201	0.119	0.00125
Cocaine	0.002	0.024	ND	0.00125
Benzoylecgonine	0.008	0.059	0.004	0.00125
Ecgonine methyl ester	ND	ND	ND	0.00125
α-PVP	ND	ND	ND	0.00125
Heroin	ND	ND	ND	0.00125
6-acetylmorphine	ND	ND	ND	0.00125
Morphine	0.357	0.201	0.471	0.00125
MDMA	0.046	0.064	0.009	0.00125
HMMA	ND	0.007	ND	0.00125
Creatinine	495	915	25	10

Table 5: Samples day 2 – Thursday 2nd November 2017

Drug or metabolite	Concentration in wastewater (µg/L)			Method Limit of Detection (LOD) (µg/L)
	Christchurch	Auckland (Rosedale)	Whangarei	
Methamphetamine	0.237	0.763	1.996	0.00125
4-hydroxy-N-methylamphetamine	0.332	0.142	0.137	0.00125
Cocaine	ND	0.022	0.002	0.00125
Benzoylecgonine	0.006	0.056	0.006	0.00125
Ecgonine methyl ester	ND	ND	ND	0.00125
α-PVP	ND	ND	ND	0.00125
Heroin	ND	ND	ND	0.00125
6-acetylmorphine	ND	ND	ND	0.00125
Morphine	0.832	0.217	0.541	0.00125
MDMA	0.032	0.055	0.007	0.00125
HMMA	ND	0.002	ND	0.00125
Creatinine	550	845	160	10

Table 6: Samples day 3 – Friday 3rd November 2017

Drug or metabolite	Concentration in wastewater (µg/L)			Method Limit of Detection (LOD) (µg/L)
	Christchurch	Auckland (Rosedale)	Whangarei	
Methamphetamine	0.240	0.755	2.122	0.00125
4-hydroxy-N-methylamphetamine	0.231	0.218	0.141	0.00125
Cocaine	0.003	0.031	0.009	0.00125
Benzoylecgonine	0.009	0.054	0.010	0.00125
Ecgonine methyl ester	ND	ND	ND	0.00125
α-PVP	ND	ND	ND	0.00125
Heroin	ND	ND	ND	0.00125
6-acetylmorphine	ND	ND	ND	0.00125
Morphine	0.830	0.223	0.575	0.00125
MDMA	0.037	0.049	0.006	0.00125
HMMA	ND	0.003	ND	0.00125
Creatinine	455	650	55	10

Table 7: Samples day 4 – Saturday 4th November 2017

Drug or metabolite	Concentration in wastewater (µg/L)			Method Limit of Detection (LOD) (µg/L)
	Christchurch	Auckland (Rosedale)	Whangarei	
Methamphetamine	0.259	0.928	2.391	0.00125
4-hydroxy-N-methylamphetamine	0.479	0.138	0.170	0.00125
Cocaine	0.004	0.032	0.004	0.00125
Benzoylecgonine	0.013	0.089	0.037	0.00125
Ecgonine methyl ester	ND	ND	ND	0.00125
α-PVP	ND	ND	ND	0.00125
Heroin	ND	ND	ND	0.00125
6-acetylmorphine	ND	ND	ND	0.00125
Morphine	0.943	0.243	0.630	0.00125
MDMA	0.069	0.067	0.003	0.00125
HMMA	0.006	0.005	ND	0.00125
Creatinine	265	975	ND	10

Table 8: Samples day 5 – Sunday 5th November 2017

Drug or metabolite	Concentration in wastewater (µg/L)			Method Limit of Detection (LOD) (µg/L)
	Christchurch	Auckland (Rosedale)	Whangarei	
Methamphetamine	0.275	0.700	1.668	0.00125
4-hydroxy-N-methylamphetamine	0.397	0.135	0.117	0.00125
Cocaine	0.005	0.049	ND	0.00125
Benzoylecgonine	0.021	0.157	0.004	0.00125
Ecgonine methyl ester	ND	ND	ND	0.00125
α-PVP	ND	ND	ND	0.00125
Heroin	ND	ND	ND	0.00125
6-acetylmorphine	ND	ND	ND	0.00125
Morphine	1.118	0.193	0.393	0.00125
MDMA	0.204	0.211	0.018	0.00125
HMMA	0.020	0.025	0.003	0.00125
Creatinine	375	625	20	10

Table 9: Samples day 6 – Monday 6th November 2017

Drug or metabolite	Concentration in wastewater (µg/L)			Method Limit of Detection (LOD) (µg/L)
	Christchurch	Auckland (Rosedale)	Whangarei	
Methamphetamine	0.283	0.821	1.259	0.00125
4-hydroxy-N-methylamphetamine	0.301	0.280	0.091	0.00125
Cocaine	0.005	0.065	ND	0.00125
Benzoylecgonine	0.027	0.241	0.002	0.00125
Ecgonine methyl ester	ND	ND	ND	0.00125
α-PVP	ND	ND	ND	0.00125
Heroin	ND	ND	ND	0.00125
6-acetylmorphine	ND	ND	ND	0.00125
Morphine	0.679	0.215	0.316	0.00125
MDMA	0.210	0.367	0.018	0.00125
HMMA	ND	0.042	0.003	0.00125
Creatinine	445	645	25	10

Table 10: Samples day 7 – Tuesday 7th November 2017

Drug or metabolite	Concentration in wastewater (µg/L)			Method Limit of Detection (LOD) (µg/L)
	Christchurch	Auckland (Rosedale)	Whangarei	
Methamphetamine	0.219	0.729	1.055	0.00125
4-hydroxy-N-methylamphetamine	0.265	0.114	0.106	0.00125
Cocaine	0.003	0.033	ND	0.00125
Benzoylecgonine	0.019	0.122	0.005	0.00125
Ecgonine methyl ester	ND	ND	ND	0.00125
α-PVP	ND	ND	ND	0.00125
Heroin	ND	ND	ND	0.00125
6-acetylmorphine	ND	ND	ND	0.00125
Morphine	0.221	0.219	0.598	0.00125
MDMA	0.112	0.160	0.012	0.00125
HMMA	0.009	0.020	ND	0.00125
Creatinine	515	825	195	10

REFERENCES

Baker DR, Kasprzyk-Hordern B. (2011) Multi-residue analysis of drugs of abuse in wastewater and surface water by solid-phase extraction and liquid chromatography-positive electrospray ionisation tandem mass spectrometry. *Journal of Chromatography A*; 1218(12): 1620-1631.

Baker DR, Barron L, Kasprzyk-Hordern B. (2014) Illicit and pharmaceutical drug consumption estimated via wastewater analysis. Part A: Chemical analysis and drug use estimates. *Science of the Total Environment*; 487: 629-641.

Tscharke BJ, Chen C, Gerber JP, White JM. (2016) Temporal trends in drug use in Adelaide, South Australia by wastewater analysis. *Science of the Total Environment*; 565: 384-391.

van Nuijs ALN, Castiglioni S, Tarcomnicu I, Postigo C, de Alda ML, Neels H, Zuccato E, Barcelo D, Covaci A. (2011) Illicit drug consumption estimations derived from wastewater analysis: A critical review. *Science of the Total Environment*; 409(19): 3564-3577.



**INSTITUTE OF ENVIRONMENTAL
SCIENCE AND RESEARCH LIMITED**

■ **Kenepuru Science Centre**
34 Kenepuru Drive, Kenepuru, Porirua 5022
PO Box 50348, Porirua 5240
New Zealand
T: +64 4 914 0700 F: +64 4 914 0770

■ **Mt Albert Science Centre**
120 Mt Albert Road, Sandringham, Auckland 1025
Private Bag 92021, Auckland 1142
New Zealand
T: +64 9 815 3670 F: +64 9 849 6046

■ **NCBID – Wallaceville**
66 Ward Street, Wallaceville, Upper Hutt 5018
PO Box 40158, Upper Hutt 5140
New Zealand
T: +64 4 529 0600 F: +64 4 529 0601

■ **Christchurch Science Centre**
27 Creyke Road, Ilam, Christchurch 8041
PO Box 29181, Christchurch 8540
New Zealand
T: +64 3 351 6019 F: +64 3 351 0010

www.esr.cri.nz