

# Static Camera Expansion Programme

*August 2016 – three new cameras breaking ground in Auckland and Northland*

## **SPEED-RELATED CRASH DATA AND SITE PHOTOS:**

*-Ngapipi Road, Orakei, Auckland*

Number of injury crashes which occurred in the vicinity of the speed camera site in the last 10 years:

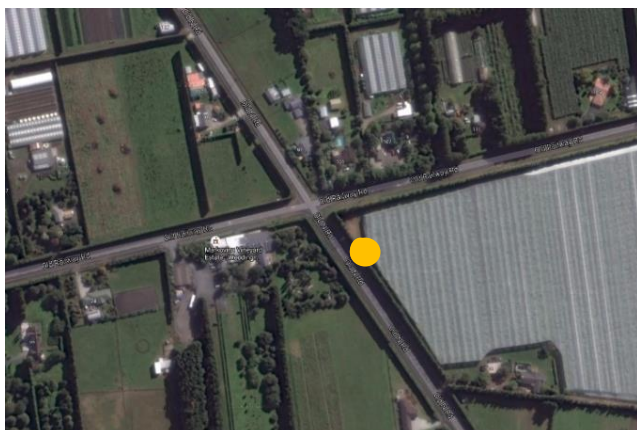
| Total     | Fatal | Serious | Minor |
|-----------|-------|---------|-------|
| <b>42</b> | 1     | 7       | 34    |



*-Old North Road, Kumeu, Auckland*

Number of injury crashes which occurred in the vicinity of the speed camera site in the last 10 years:

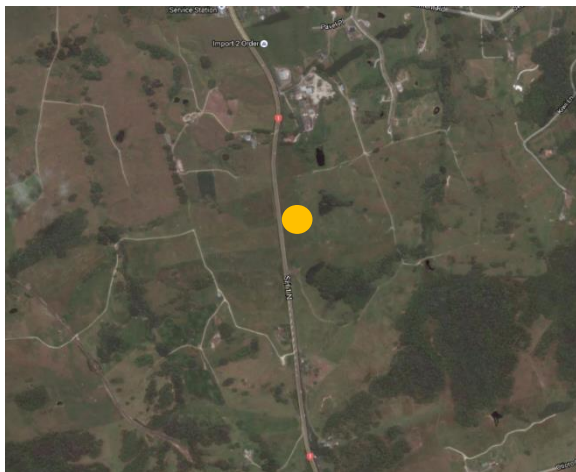
| Total     | Fatal | Serious | Minor |
|-----------|-------|---------|-------|
| <b>23</b> | 1     | 5       | 17    |



*-Twin Coast Discovery Highway, Kaiwaka, Northland*

Number of injury crashes which occurred in the vicinity of the speed camera site in the last 10 years:

| Total | Fatal | Serious | Minor |
|-------|-------|---------|-------|
| 19    | 0     | 2       | 17    |



**STATIC CAMERA GPS LOCATION COORDINATES:**

| Street                       | Locality | Police District | Start of camera zone  | End of camera zone    | Breaking ground date                |
|------------------------------|----------|-----------------|-----------------------|-----------------------|-------------------------------------|
| Ngapipi Road                 | Orakei   | Auckland City   | -36.856688,174.810312 | -36.852601,174.805502 | Under construction from 15th August |
| Old North Road               | Kumeu    | Waitemata       | -36.776609,174.576509 | -36.787316,174.576956 | Under construction from 17th August |
| Twin Coast Discovery Highway | Kaiwaka  | Northland       | -36.170245,174.447012 | -36.190333,174.450727 | Under construction from 23rd August |