



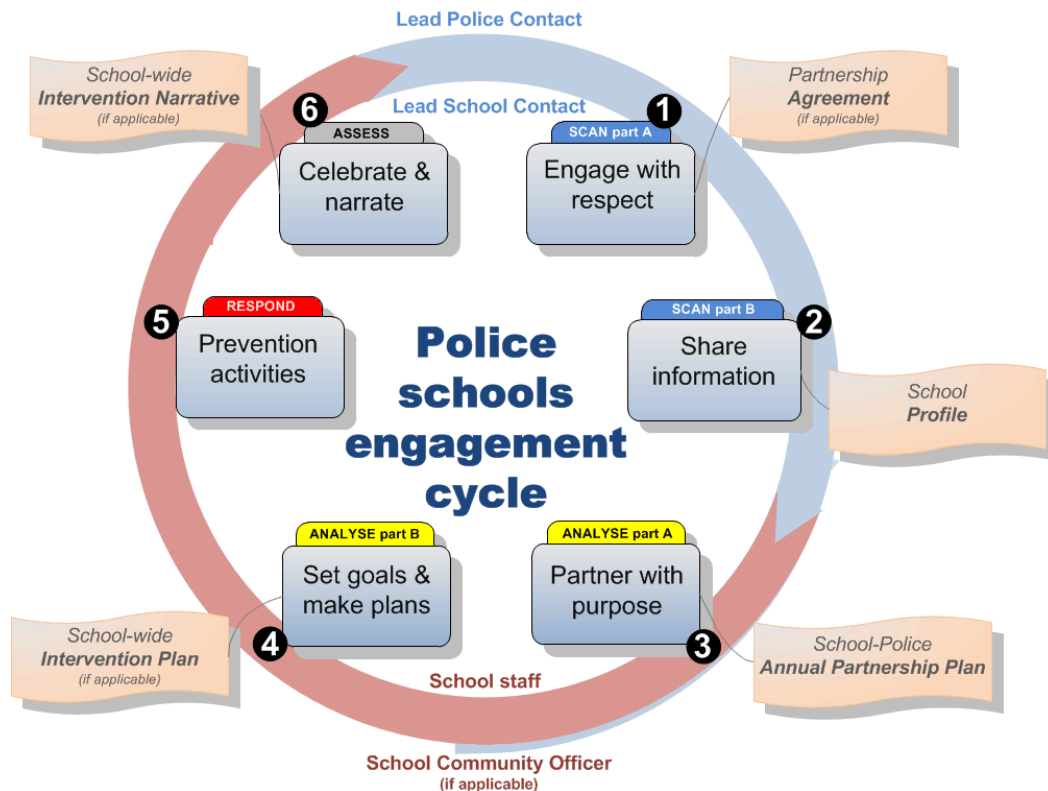
Partnerships in Practice

This document describes the specific processes by which schools and Police partner together.

Police-schools engagement cycle

The **Police schools engagement cycle** describes how Police and schools partner together. It describes:

- the steps for Police and the school to engage together
- who is responsible at each step
- the documents that are used at each step.



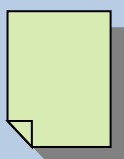
See the following pages for a more detailed explanation of each stage.

1. Engage with respect

The school and Police meet in a face-to-face introductory meeting to:

- discuss how children who are safe and feel safe are more likely to achieve the school's educational goals and Police's prevention goals
- agree on where goals overlap and how Police can help students to feel safe and be safe
- agree that each organisation can help each other to achieve their goals.

They could complete a **partnership agreement** to confirm that the Police and the school community will partner together in both prevention and response, with an emphasis on prevention.



Partnership agreement

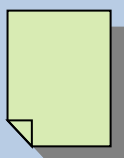
This template can be used for a partnership agreement between Police and the school community that they will partner together in prevention and response.

Template: [Partnership agreement](#) (DOCX, 168KB)

2. Share information

The school and Police share information and develop a **school profile** of issues:

- Police share information on crime and crashes occurring in the community around the school, and any trend data.
- Schools share information about safety issues that affect student learning and student behaviour, and what the school is currently doing to address each issue.



School profile

This selection of templates is used to develop the **school profile** of issues.

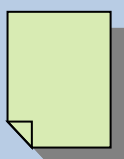
Template: [Full school profile](#) (Word, 85KB)

Template option: [Profile part A \(data\) only](#) (Word, 62KB)

Template option: [Profile part B \(issues\) only](#) (Word, 46KB)

3. Partner with purpose

The school and Police work together to develop an **annual partnership plan** to consider the issues identified in the **school profile**, and how they will be addressed during the school year.



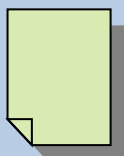
Annual partnership plan

This template is for an **annual partnership plan** for Police and the school to agree on prevention activities.

Template: [Annual partnership plan](#) (Word, 134KB)

4. Set goals and make plans

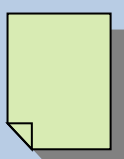
If the prevention activities from Step 3 include a school-wide intervention, it can be informed by the **intervention planning tool** and recorded on a **school-wide intervention plan**. This helps ensure the intervention is based on the whole school approach and the [SARA problem-solving](#) method (Scan, Analyse, Respond, Assess).



Intervention planning tool

This tool is used to inform the process of developing a **school-wide intervention plan**, to ensure it is based on all nine components of an explicit whole school approach, and on the SARA problem-solving method.

Tool: [Intervention planning tool](#) (PDF, 321KB)



School-wide intervention plan

This template can be used for the school-wide intervention plan.

Template: [School-wide intervention plan 1](#) (Word, 153KB)

5. Prevention activities

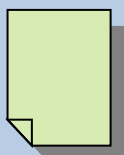
All identified contributors complete their tasks as identified in the **annual partnership plan** and/or the **school-wide intervention plan**, within the agreed timeframes.

6. Celebrate and narrate

If the prevention activities include a school-wide intervention, the school and Police assess its impact against the short-term goals set in the **school-wide intervention plan**. They agree on next steps to achieve the long term goals of the plan.

The Police and school together write up a **school-wide intervention narrative** for publishing onto the School Portal's [Narratives](#) page.

They seek opportunities to promote the work of students making a safe environment for themselves and others. They acknowledge the work of individuals and the collective who have contributed to implementing the plan.



School-wide intervention narrative

This template is used to write a narrative on completion of a school-wide intervention, to be submitted to schools@police.govt.nz.

The exemplar shows how to demonstrate effective use of the SARA process, prevention activities across all components of the whole school approach, clear measures of the impact of the intervention, and the data and goals they're measured against.

Template: [School-wide intervention narrative](#) (Word, 56KB)

Annotated exemplar: [Mock school-wide intervention narrative](#) (Word)

Sample school-wide interventions

The following sample **school-wide intervention plans** on the School Portal can be adapted to address a specific crime or crash issue in a school.

The plans are grouped into five themes. Further plans will be added as more interventions are developed.

Theme 1: Successful relationships – Bullying

- [Bullying Plan](#) (PDF, 156KB)
- [Bullying Plan](#) (Word, 241KB)

Theme 1: Successful relationships – Online safety

- [Online Safety Plan](#) (PDF, 156KB)
- [Online Safety Plan](#) (Word, 241KB)

Theme 2: Travelling safely

- [Travelling safely](#) (PDF, 187KB)
- [Travelling safely](#) (Word, 244KB)

Theme 3: Responsible citizens

- [Vandalism Plan](#) (PDF, 147KB)
- [Vandalism Plan](#) (Word, 202KB)

Theme 4: Healthy body, health mind – Alcohol

- [Alcohol Plan](#) (PDF, 190KB)
- [Alcohol Plan](#) (Word, 203KB)

Theme 4: Healthy body, health mind – Alcohol & Other Drugs

- [Alcohol & Other Drugs Plan](#) (PDF, 303KB)
- [Alcohol & Other Drugs Plan](#) (Word, 150KB)

Theme 5: Living in a safe community

To be added in the future.