

SOCIAL STORY



What to expect when visiting the New Zealand Police Museum,
te Whare Taonga o ngā Pirihimana o Aotearoa

Introduction

We are going to the New Zealand Police Museum (the Museum) where we can see displays and exhibitions. We can book in advance if we want to be taken on a guided tour or take part in educational workshops.

The Museum is inside the Royal New Zealand Police College (the College), which is a large area with many buildings. A one-way ring road takes you inside the College. When we are inside the College grounds, we may see people walking around in normal work clothes and people in police uniforms. We may also see police cars entering and leaving the College. This is because the College is where people train to become police officers, and where police officers return to continue learning to make sure people in Aotearoa are kept safe.

The College is a smokefree area.

When we arrive at the Museum we will see a brick building which has two galleries inside. Each gallery has objects on display for visitors to look at and read information about. Some displays have audio visuals with sound and film footage. We can interact with some objects on display.

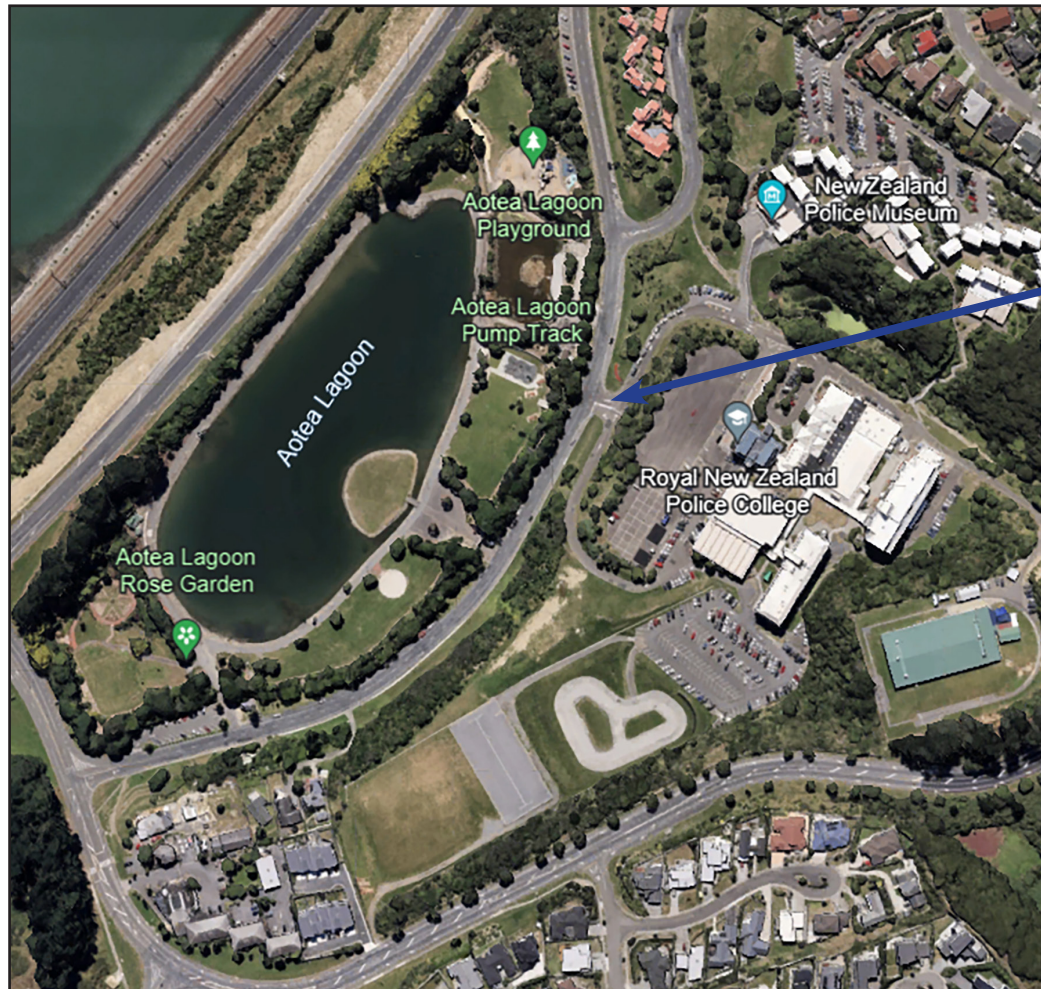


We will also see two exhibitions outside the main Museum building.



Getting to the Museum

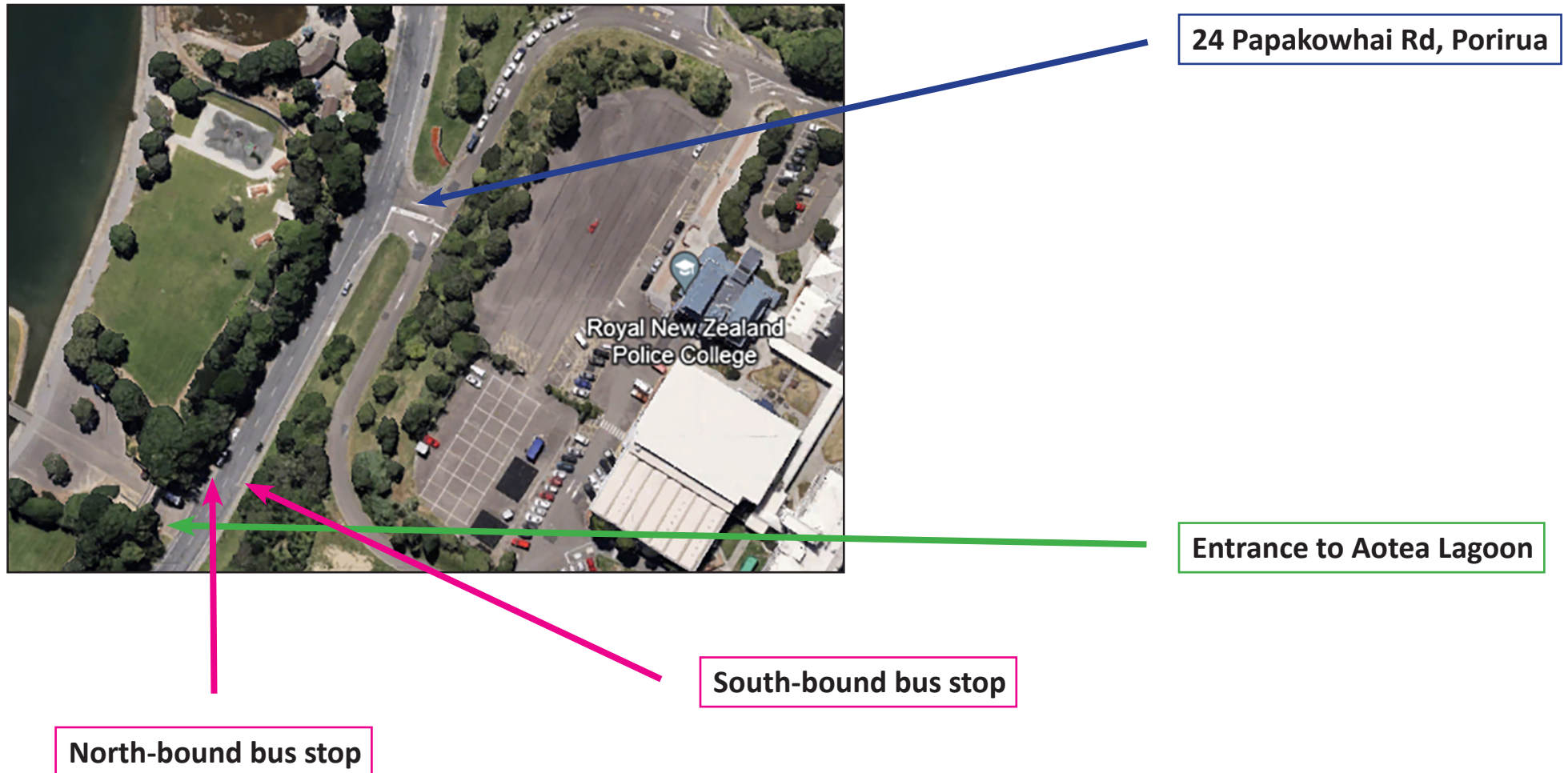
The entrance to the Museum is at 24 Papakowhai Rd, Porirua. We can walk, cycle, drive, or bus to the Museum. The Museum is open from 10am to 5pm every day, including weekends, and it only closes on Christmas Day and Good Friday.



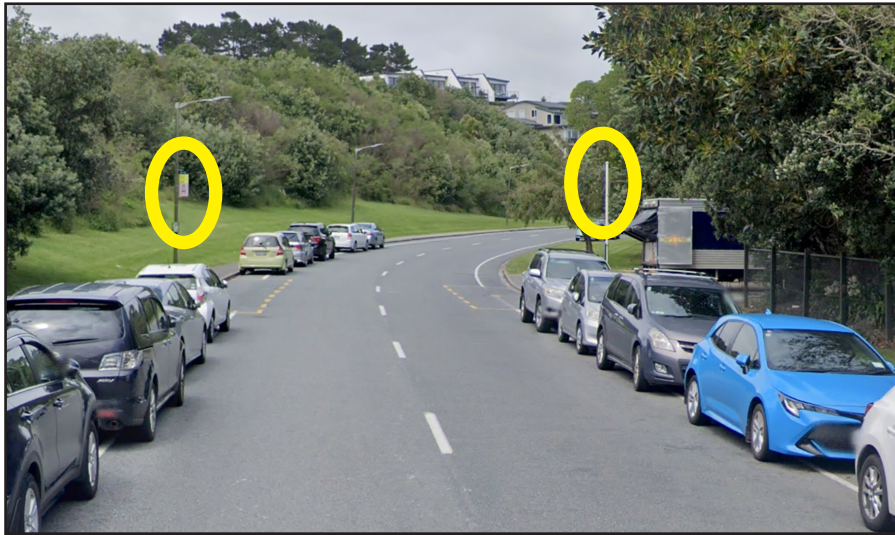
24 Papakowhai Rd, Porirua

If we drive to the Museum, we can park on Papakowhai Rd and walk up to the Museum, or we can drive into the Museum carpark where there are two disabled parks and five standard parks. There is a bicycle rack next to the car parks.

If we arrive by bus, we can get off at the entrance to Aotea Lagoon where there are two bus stops for south-bound and north-bound buses. We will then walk about 100 meters north towards the entrance to the College at 24 Papakowhai Rd.



This is a closer view of the two bus stops opposite the entrance to Aotea Lagoon, where there is often a coffee cart parked during the mornings. There is also a hub for electric scooters.



When we arrive at the entrance to the College, we take the left entryway into the one-way ring road where we will see signs pointing us to the Museum.



We walk, cycle or drive up past the first set of parallel car parks, then turn left soon after the row of angle car parks, following the signs to the Museum.



When we walk up the pathway to the Museum there is a bright orange group of panels. This is an exhibition called *Te Toa Taumata Rau*, the place of many brave deeds. It is an exhibition about very brave police, civilians and dogs and we can use the QR Code to hear or read the stories of these events in English and te reo Māori.



We will then be able to see the Museum, which is the brick building directly ahead of us.



**The New Zealand Police
Museum & on the left
*He Matapihi o Nehe Rā***

If we drive up, we can use the car parks at the entrance to the Museum.
If we cycle, there is a cycle stand to the left of the ramp entry to the Museum.



Bicycle stand & ramp

The small building on the left of the Museum is the original Hastings Police Station. *He Matapihi o Nehe Rā* is a window into our past and we will be able look through the windows to learn about policing in Aotearoa in the 19th Century. We can use the QR Code to learn more.

We can then walk up three steps to the Museum entrance or take the ramp.

There is no charge to enter the Museum to view the displays and exhibitions. There may be a cost if we take part in activities such as a guided tour or a workshop which we have booked in advance.



Entering the Museum

We walk through an automatic sliding door to enter the Museum. The sliding door will open on its own when we stand close to it, and will shut on its own once we are inside the Museum reception area.



Front Desk

When we enter the Museum reception area we will see the front desk. We will be greeted by a Museum team member. If we are at the Museum for a guided tour or a workshop, the educator will greet us and take us into the galleries.



Museum staff can tell us about what is inside the Museum, answer any questions we may have, tell us what to do with coats, jackets and umbrellas, and store our bags behind the desk. If we have food or drink, we will leave these behind the front desk as they could damage objects and displays. Gallery two is tapu, because some of the stories told there are about violence and death, so no food or drink can be taken into that space.

Our belongings will be safe behind the front desk as there is always a Museum staff member there. We can collect our belongings when we leave.



If we need a drink of cold water, we can ask Museum staff who will give us a cup from the water cooler behind the front counter. We can drink it in the reception area or outside the Museum.

The Museum has a wheelchair in case one of us needs it inside the galleries.

There is a toilet inside the gallery area, between gallery one and gallery two, that we can use if we need to. It is opposite the stairwell. Museum staff can show you where it is.



There is a small shop in the reception area with police toys, stationery, souvenirs, and clothing for children and dogs.



Entering the Museum Galleries

The entrance to the two galleries is to the left of the front counter where another sliding door will open automatically when we get close to it.



There are two different floor surfaces inside the Museum. The reception area and first gallery have wooden floors. Parts of the first gallery and the second gallery floors are polished concrete.

If we are at the Museum for a guided tour or a workshop, the educator will guide us during the time we are at the Museum.

If we are at the Museum to look around on our own, we can move through the galleries at our own pace.

A note of caution to parents and guardians: The exhibitions and displays in the galleries contain objects and stories that relate to injury, violence and/or death which may distress some of us. We can take a break from the galleries and move to another area, or leave the Museum at any time.

The displays and exhibitions are made up of:

- objects inside cases in themed exhibition areas
- information panels, video and audio displays, and QR codes that link to the Museum website to give us more information about displays, and to be able to read or listen to stories when we are away from the Museum drawers and cabinets with objects and information
- photographs, cartoons, and paintings
- interactives we can touch, use, and try on: a collection of uniforms, caps and hats, a photo booth, audio and video screens, a motorbike to sit on, a fingerprint scanner, an identikit interactive screen, the junior detective trail, and a senior detective mystery to solve

Inside some cases we can see firearms and weapons. The firearms do not work anymore and are no longer dangerous. They are on display as part of the stories being told.

We can stand back from the displays to read about them.

Inside Gallery One

When we enter the first gallery, we will see dimmed lighting for the video that is being played. There are spotlights pointing to displays and exhibitions. There is a timer switch that starts the flashing red and blue police lights above the uniform collection. The lights will only flash if we turn the timer switch on. The lights turn off automatically after a few minutes. Here we will find the uniforms to wear, the ballistic and stab proof vests are quite heavy. The fingerprint scanner and photobooth can also be touched. There are cabinets with drawers that we can pull out to see some medals for bravery and there are doors in the uniform locker that we can open to see police items from a long time ago.



We walk through the first gallery to get to the second gallery.

Some seats are available throughout the Museum if we want to take rest, or we can go outside the Museum where there is a bench near the main entrance.

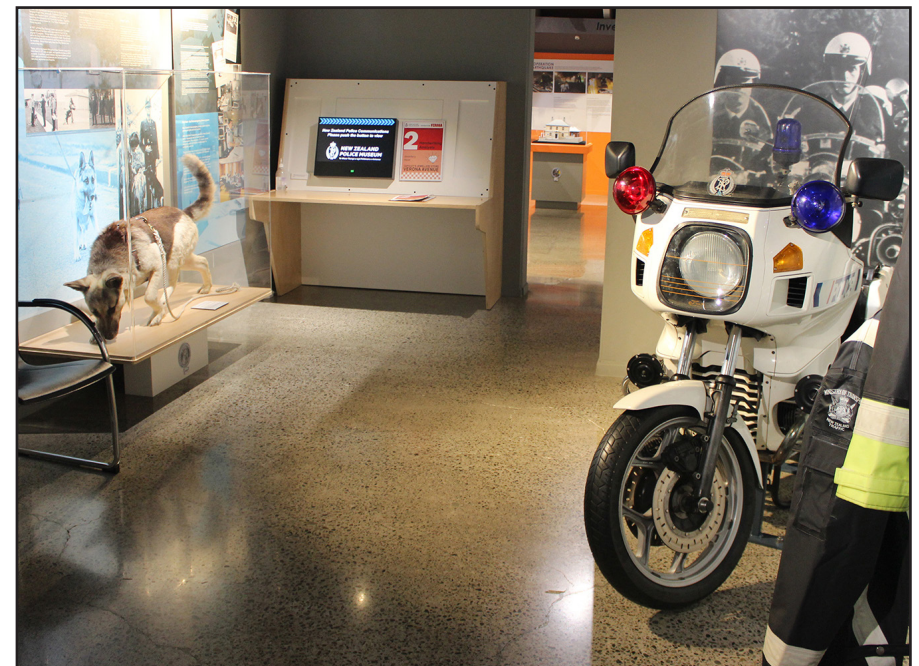
Inside Gallery Two

We can enter gallery two from the right or left side as it does a loop back to the area between gallery one and two.



We can see more displays and exhibitions in this gallery as well as interactive stations for solving a mystery, an Identikit touch screen station to reconstruct a face from memory, and a BMW motorbike that is stationary. We can sit and take photos on the motorbike wearing the Ministry of Transport jackets. There is a timer switch that enables red and blue emergency lights on the motorbike and a rotating blue light on the back of the motorbike that flashes intermittently. The lights will only flash if we turn them on.

There is a police dog called Rhys in a case. Rhys is no longer alive so is quiet and still.



Leaving the Museum

We leave the same way we arrive. If we are in gallery two, we walk through to gallery one and then through the automatic door into the Museum reception area.



We can pick up our belongings we left at the counter on our way out.

We exit the Museum through the same set of automatic sliding doors we entered through.