

01 GOVERNANCE

Multi agency governance
model sponsored by co-chairs
of Family Violence and Sexual
Violence



05 THE PEOPLE

Making a difference for
families and the community
A new perspective



02 THE MODEL

A tiered local model,
providing a shared response
and effective partnerships



Integrated Safety Response

Stepping up to be the difference for families

04 KNOWING OUR BUSINESS

Collaboration and data share.
Accountability and visibility of
plans and actions through a
shared platform

Key metrics to inform
decision makers



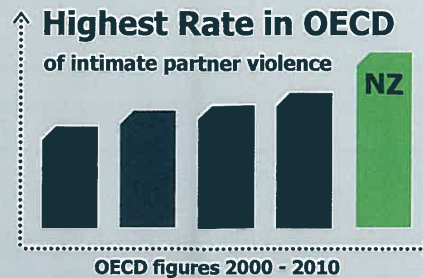
03 THE PROCESS

A family focus approach
based on risk and urgency

Process underpinned by key
roles



**Family
Violence
Investigations
2014** 101,981



**1.4
BILLION**

Government spend
on core services to address
immediate effect of Family
Violence & Sexual Violence

**High Risk Victims
and Offenders**



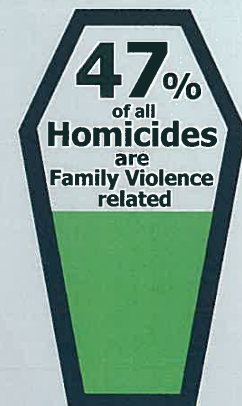
**Overdue
Tasks**

**Number of
Plans
2014 - 2015**



**Percentage of
Maori on Plans**

**Effective Safety
Outcomes
and Tactics**



"We have really had no impact, despite spending hundreds of millions of dollars on programmes, on the incidence of domestic violence in New Zealand"

- Rt. Hon. B. English, Finance Minister. Feb. 2016

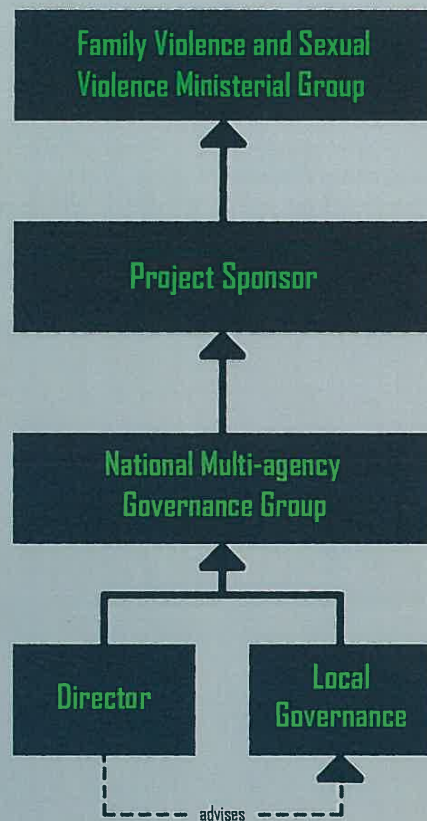


Integrated Safety Response

Stepping up to be the difference for families

01 GOVERNANCE

Multi agency governance model sponsored by co-chairs of Family Violence and Sexual Violence



OUTCOMES

The new integrated safety response to family violence aims to achieve these long term outcomes:

- ▶ Reduction in family violence (crime surveys)
- ▶ Reduction in serious harm (hospital data, police serious crime data)
- ▶ Reduced reoffending and revictimisation (NGO data, Police data, crime surveys)



OUTPUTS

To achieve these outcomes we expect to see:

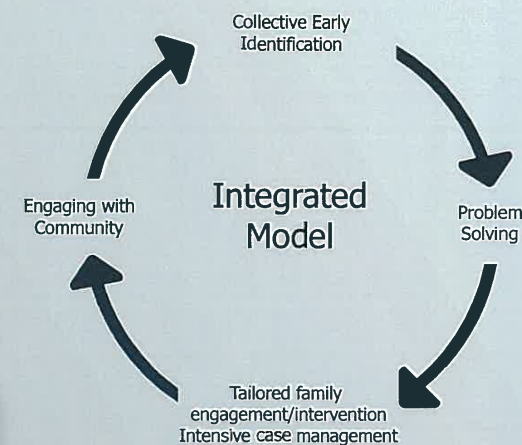
- ▶ Increased reporting rates per instance of family violence episode (crime surveys, Police data)
- ▶ Improved knowledge of family violence in an area and nationally (ISR data, Police data)
- ▶ Improved knowledge about Tiers 1, 2 and 3 cases managed (ISR data, Police data)



PRINCIPLES

The principles underpinning the integrated safety response to family violence are:

- ▶ Putting families/whanau at the centre of the system
- ▶ Addressing the risk and full range of needs of a family through early identification and collective impact using evidence-based risk assessments to inform responses
- ▶ Changing the behaviours of those using violence is the most effective way to prevent family violence
- ▶ Timely and accurate information sharing that respects the privacy and dignity of family members
- ▶ Improving the collective understanding of family violence and having the right service at the right time



02 THE MODEL

A tiered local model, providing a shared response and effective partnerships



Joint Initiatives

Identification of Vulnerable Communities

Strategic view

Build community investment

Mutual understanding of demand capability and capacity

Environmental scanning

Intelligence informed

Developing evidence base and tactics

Community education campaigns

Improved practice and efficiency

Grows specialised work programme

Understand driver of crime

Ensure integrated family/whanau plans

Ensure data share (realtime)

GUIDING PRINCIPLES



Daily - Tactical

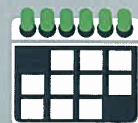


Requirements:

- ▶ Trained and Qualified Staff
- ▶ Case Management
- ▶ Risk Assessment
- ▶ Advocates at the table
- ▶ Problem Solving

Leading to Prioritisation:

- ▶ Intensive Case Management Complex Needs
- ▶ Medium Risk - Escalating
- ▶ Low Risk - Emerging



Monthly - Operational



Identify:

- ▶ Resource Requirements
- ▶ Capability Gaps
- ▶ Operational Risk
- ▶ Predicted Demand
- ▶ Overdue Tasks
- ▶ Escalation Points



Bi-Monthly - Strategic



OPTIONS STACK

Location based resources

Operational Police resources

24 hour crisis response

Child counselling and behaviour specialists

Relationship counselling

Victim advocacy

Youth support/ mentoring/advocacy

Offender support/ interventions

Mental health (adults and children)

Alcohol and Drug interventions

Parenting programmes

Male victim advocacy and counselling

Accommodation support

Employment and budgeting support

General medical health and sexual health services

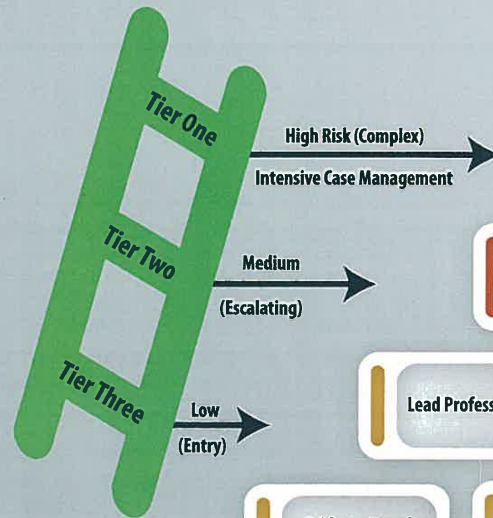


Integrated Safety Response

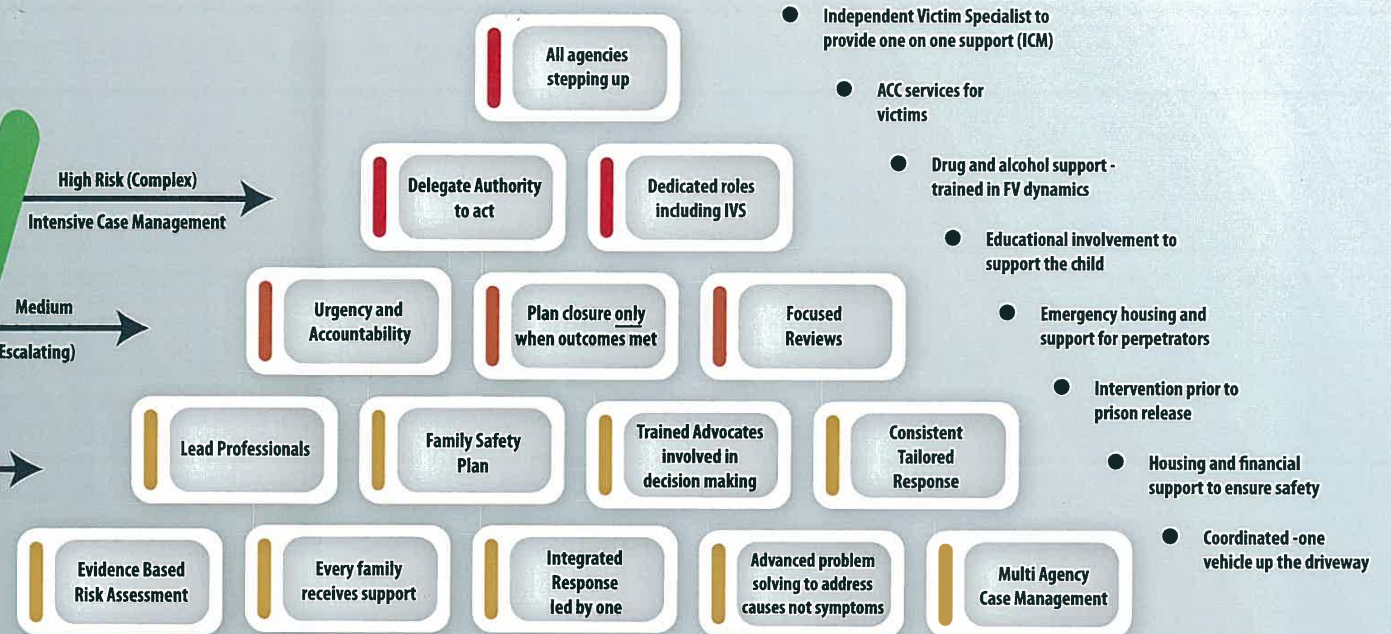
Stepping up to be the difference for families

03 THE PROCESS

A family focus approach based on risk and urgency
Process underpinned by key roles



Sustainable Safety



Director

- Provides operational and strategic management
- Responsible for the work programme which will reflect the actual demand and requirements to build secure capability through specialist agencies
- Uses the strategic oversight of the ISR data and analytics to identify improvements to local family violence systems and settings
- Represents the Integrated Safety Response to the public sector and governance
- Resolves regional sector challenges and provides feedback to regional governance board on any enhancements required
- Ensures professional training and accreditation is in place and core workforce competencies are met

Coordinator

- Implements an effective Integrated Safety Response by coordinating day to day operations, including the chairing of the safety assessment and intensive case management meetings
- Builds and maintains strong relationships with local agency professionals, including the identification of the need for additional agency inclusion
- Identifies local service needs and where appropriate escalates issues to the local Director
- Facilitates the professional decision making at safety assessment meetings relating to risk assessment.
- Monitors the assignment and outcomes of tasks recorded in the case management system
- Provides detailed reporting of data, service gaps and identified needs to the Director

Administrator

- Provides administrative support for the Integrated Safety Response including the accurate and timely entry of family harm data in the case management system
- Schedules and provides relevant information to, the daily Safety Assessment and weekly Intensive Case Management Meetings
- Monitors the progress of the Family Safety Plan taskings and follows up with the lead professionals as required
- Provides support to users of the case management system as required

Independent Victim Specialist

- Ensures that the safety of high risk victims is central to any response
- Provides specialist support to the victim immediately following a report of family harm, and continues that support through the intensive case management process
- Takes responsibility for developing and overseeing the implementation of a safe and appropriate Family Safety Plan
- Shares their expertise and knowledge of the victims situation to inform an effective intensive case management response for the victim and their family
- Ensures practical support is linked to risks identified and based on the needs of each individual to keep them safe



Integrated Safety Response

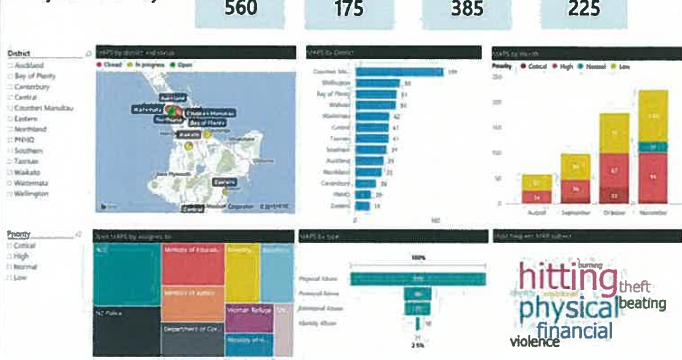
Stepping up to be the difference for families

04 KNOWING OUR BUSINESS

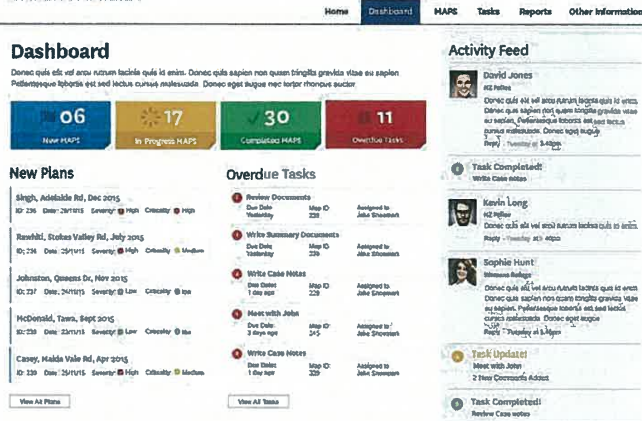
Collaboration and data share. Accountability and visibility of plans and actions through a shared platform. Key metrics to inform decision makers.



Family Violence Analysis



SAFER FAMILIES



SAFER FAMILIES



Record Map Outcome

Outcome:

Notes:

Capture plans and allocate tasks against plans

Monitor and track progress on plans and tasks

Provide a shared view of plans across agencies

Provide insight into programme performance via key metrics



Integrated Safety Response

Stepping up to be the difference for families

05 THE PEOPLE

Making a difference for families and the community. A new perspective.



Maintaining safety for victims is achieved by the collective focus on the people using violence and sustaining their behaviour change.

Mere knows that professionals are working together with her with the desire to make her and her children safe. She knows he is taking responsibility and being helped.

Mere does not disclose the violence - she never does. Mere can speak over the phone to a support person immediately after the family violence episode.

24/7 Harm centre set up. Mere does not disclose but PSO issued.

Emergency perpetrator housing is available.

Mere has a choice to leave the family home with the children or remain in the home.

Although Mere has not made a complaint, agencies consider the episode and share important information to make her safe. A risk assessment is completed by professionals - Mere is considered low/medium risk

The next day Mere is visited by an advocate.

Independent Victim Specialist assigned to Mere. Mere is moved to high risk.

Mere has never had such an early follow up before. They explain the risks to her and she discloses the history of abuse. Mere is moved to high risk.

IVS works closely with Mere to address safety needs and other issues facing the family. IVS ensures all relevant agency data is available to inform decision making. The IVS takes responsibility for ensuring Mere's safety.

The Independent Victims Specialist (IVS) gives Mere options about services to address alcohol problems and the issues the children are having at school. A burden has been shifted - from Mere to agency professionals

IVS works with Mere to make a tailored Family Safety Plan (FSP) that targets the underlying problems facing the family.

Mere starts to receive the help she and her family needs.

Mere is aware that John is receiving support through a Kaupapa Maori service. Mere is supported through the Court process.

Culturally appropriate services. Community needs are met through effective and tailored programmes.

John is arrested and charged. The IVS contacted the Victim Court Advisor.

Mere is supported through the Court process.

Problem solving to address underlying causes of violence

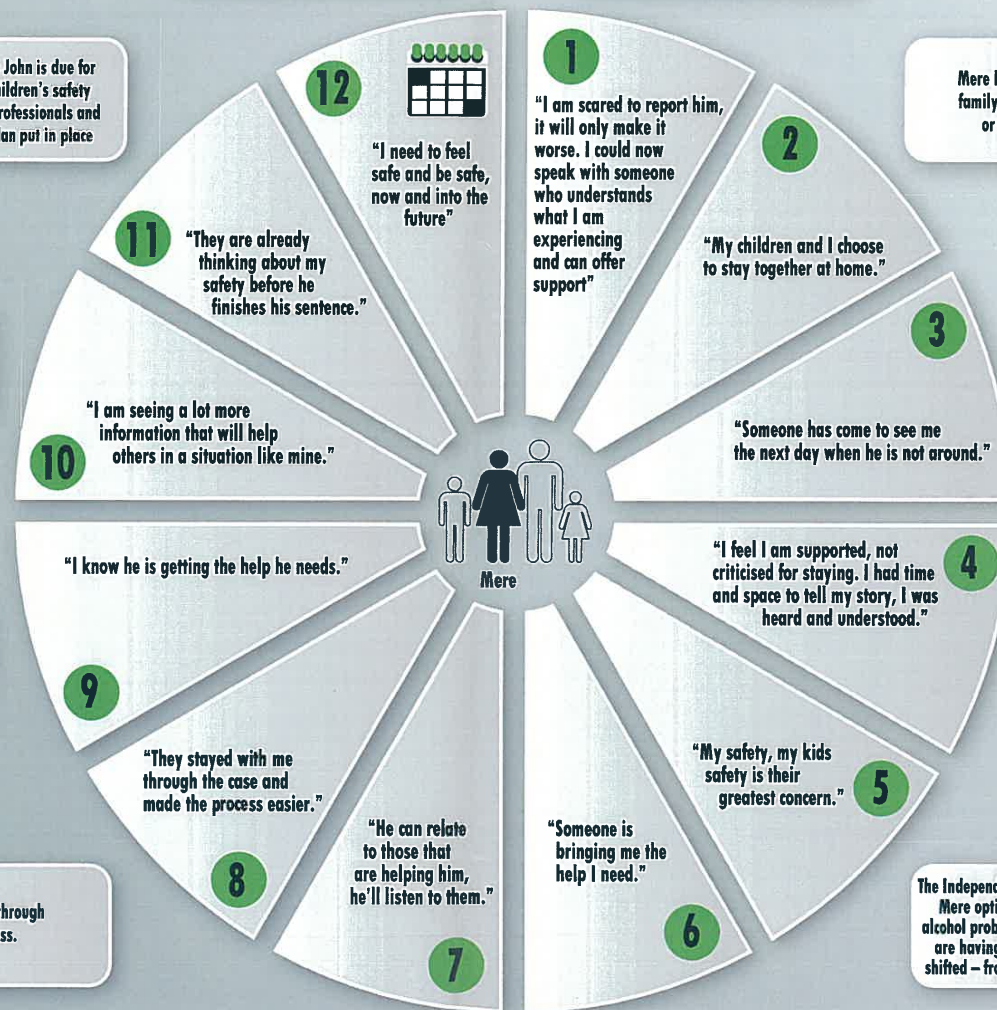
Mere knows that John is receiving specialist programmes to address his alcohol and drug problems

A local education initiative is launched on FV based on trend analysis

Mere has accessed further information through a community education campaign

Professionals prepare a new Family Safety Plan for Mere and family.

Mere knows that when John is due for release her and her children's safety will be reassessed by professionals and a new Family Focus Plan put in place



Integrated Safety Response

Stepping up to be the difference for families



MILESTONES

12 month Pilot in Christchurch complete - 30/06/2017

Report to Ministers on readiness for Pilot - 15/06/2016



31/07/2017 - Second evaluation report to Ministers

30/11/2016 - First evaluation report and advice on national roll out completed

01/07/2016 - Go-live Christchurch Pilot

30/05/2016 - New roles appointed and evaluation supplier confirmed



“

To interrupt the transmission of violence across generations, we urgently have to change our behaviours.

No longer can we hold an individual- victim, agency or programme responsible for preventing family violence; safety and prevention can only ever be the responsibility of the collective- the actions practitioners, agencies, leaders and communities talk together to protect victims.

The success of the Integrated Safety Response is reliant on:

Integrating the way services work together, and with child and adult victims, those perpetrating violence and their families and whānau

maintaining that **Safety** for victims is achieved by our collective focus on the people using violence and sustaining their behaviour change

preventing family violence by changing our collective **Response**, each disclosure is an opportunity for us to step up and take protective action.

Now is the time to act. ”

Family Violence Death Review Committee
(01/03/2016)

