

IDENTIFYING HATE-MOTIVATION

Perceptions



Does the victim, the witness, or any other person perceive (think) that the event was motivated by hate?

Racial, Ethnic, Gender and/or Cultural differences



Was the person victimised visibly identifiable as a member of a minority group?

Hate comments, written statements and/or gestures



Did the individual make hate comments, written statements, and/or gestures towards the victim's membership or perceived membership in a group?

Symbols or graffiti



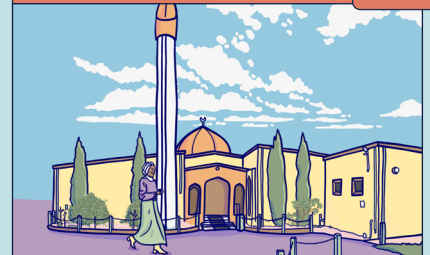
Did the individual leave drawings, markings, symbols, or graffiti at the scene that show hate towards the victim's perceived membership in a group?

Organised hate groups



Is there anything to suggest links between the individual and organised hate groups? (Online presence, clothing, gestures, tattoos, objects).

Location



Did the offence/incident take place at a location of significance to a particular group? (Marae, church, mosque, LGBTQIA+ venue, historical monument, community meeting place, etc.)

Timing



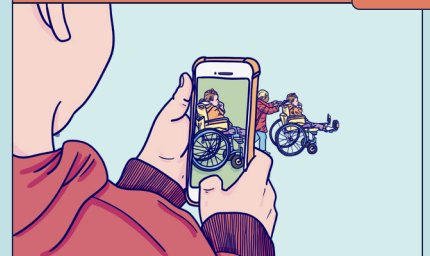
Did the offence/incident take place at a time of significance to a particular group? (Time of worship, day of worship, pride festival)

Patterns of behaviour or previous offences/incidents



Is the suspects' behaviour recurrent, escalating, or intimidatory?

Nature of the offence/incident



Did the nature of the offence/incident indicate an underlying agenda? (Unprovoked, extremely violent, degrading, or recorded for online distribution)



Race



Religion



Sexual
Orientation



Gender
Identity



Disability



Age