

WELLINGTON DISTRICT CRIME STATISTICS 2014



**A Summary of
Recorded and Resolved Offence
Statistics**

**POLICE NATIONAL HEADQUARTERS
April 2015**

ISSN 1178 - 1610

Table of Contents:

Topic	Page
Report Notes	1
District Summary of Recorded and Resolved Crime, by Division	2-4
Proportions of Recorded Crime by Division	5
Summary of District Recorded Offences, Rate per 10,000 Population and Resolved Offences, by Area	6
Summary of Area Recorded Offences, Rate per 10,000 Population and Resolved Offences, by Division	7-9
Crime Trends	10
Total Crime	11
Murder	12
Serious Assaults Resulting in Injury	13
Sexual Assaults	14
Public Place Assaults	15
Dwelling Assaults	16
Robbery	17
Burglary (Total)	18
Burglary (Dwelling)	19
Vehicles Stolen	20
Theft Ex Car	21
Population Data	22
General Definitions	23-24

REPORT NOTES:

Statistics reported in this document are derived from the Police National Intelligence Application (NIA). These Official Statistics for Recorded and Resolved Offences present a snapshot of data in NIA relating to offences that occur within a given year, as at the date 14 days following the end of that year.

Unless the matter is minor where Police attendance is sufficient, a matter that is reported to or discovered by Police where Police believe an offence is likely to have been committed is counted as a recorded offence.

A recorded offence is counted as resolved when Police apprehend an offender and decide how to deal with him/her. (E.g. warn, prosecute, etc.)

Resolution rate is the percentage of recorded offences that are resolved within 14 days of the end of the year being reported on.

If an offence is resolved 15 days or more after the end of the year it will not appear in the Official Crime Statistics for that or any other year. Resolution Rate therefore undercounts the number of cases that Police have resolved. This phenomenon has a more marked impact for some types of offences than others, such as offences that require long investigations (E.g. many serial crimes, burglaries and murders).

Several offences have been reclassified into different ANZSOC groups. This has resulted in changes to subtotals for Groups and Sub-divisions within Divisions 10, 15 and 16, compared to previously reported data. Generally, this occurred within the same Division.

Note that the Population Estimates have been revised for 2007 to 2013 as a result of the 2013 Census. In previous reports population estimates were based on the 2006 Census. Crime rates reported in this report for those years may differ from those previously reported as a result.

When comparing 2014 Statistics with previous years, the reader should also refer to "Report Notes" published in previous years' reports, as previous changes significantly affect year on year trends.

SUMMARY OF DISTRICT RECORDED AND RESOLVED CRIME, BY DIVISION

Years ending 31 December

HOMICIDE AND RELATED OFFENCES

ASOC Subdivision Description	Recorded 2012	Recorded 2013	Recorded 2014	Variance 2012-2013	Variance 2013-2014	Resolved 2012	Resolved 2013	Resolved 2014	Resolution Rate 2012	Resolution Rate 2013	Resolution Rate 2014
ATTEMPTED MURDER	0	1	1	0.0 %	0.0 %	0	1	1	0.0 %	100.0 %	100.0 %
HOMICIDE AND RELATED OFFENCES NOT FURTHER DEFINED	0	0	0	0.0 %	0.0 %	0	0	0	0.0 %	0.0 %	0.0 %
MANSLAUGHTER AND DRIVING CAUSING DEATH	3	0	0	-100.0 %	0.0 %	3	0	0	100.0 %	0.0 %	0.0 %
MURDER	6	6	3	0.0 %	-50.0 %	6	5	3	100.0 %	83.3 %	100.0 %
	9	7	4	-22.2 %	-42.9 %	9	6	4	100.0 %	85.7 %	100.0 %

ACTS INTENDED TO CAUSE INJURY

ASOC Subdivision Description	Recorded 2012	Recorded 2013	Recorded 2014	Variance 2012-2013	Variance 2013-2014	Resolved 2012	Resolved 2013	Resolved 2014	Resolution Rate 2012	Resolution Rate 2013	Resolution Rate 2014
ASSAULT	3,866	3,450	4,203	-10.8 %	21.8 %	2,958	2,270	2,565	76.5 %	65.8 %	61.0 %
OTHER ACTS INTENDED TO CAUSE INJURY	1	3	1	200.0 %	-66.7 %	1	1	0	100.0 %	33.3 %	0.0 %
	3,867	3,453	4,204	-10.7 %	21.7 %	2,959	2,271	2,565	76.5 %	65.8 %	61.0 %

SEXUAL ASSAULT AND RELATED OFFENCES

ASOC Subdivision Description	Recorded 2012	Recorded 2013	Recorded 2014	Variance 2012-2013	Variance 2013-2014	Resolved 2012	Resolved 2013	Resolved 2014	Resolution Rate 2012	Resolution Rate 2013	Resolution Rate 2014
NON-ASSAULTIVE SEXUAL OFFENCES	14	11	53	-21.4 %	381.8 %	8	8	35	57.1 %	72.7 %	66.0 %
SEXUAL ASSAULT	370	362	355	-2.2 %	-1.9 %	184	191	153	49.7 %	52.8 %	43.1 %
	384	373	408	-2.9 %	9.4 %	192	199	188	50.0 %	53.4 %	46.1 %

DANGEROUS OR NEGLIGENT ACTS ENDANGERING PERSONS

ASOC Subdivision Description	Recorded 2012	Recorded 2013	Recorded 2014	Variance 2012-2013	Variance 2013-2014	Resolved 2012	Resolved 2013	Resolved 2014	Resolution Rate 2012	Resolution Rate 2013	Resolution Rate 2014
OTHER DANGEROUS OR NEGLIGENT ACTS ENDANGERING PERSONS	62	74	54	19.4 %	-27.0 %	38	41	28	61.3 %	55.4 %	51.9 %
	62	74	54	19.4 %	-27.0 %	38	41	28	61.3 %	55.4 %	51.9 %

ABDUCTION, HARASSMENT AND OTHER RELATED OFFENCES AGAINST A PERSON

ASOC Subdivision Description	Recorded 2012	Recorded 2013	Recorded 2014	Variance 2012-2013	Variance 2013-2014	Resolved 2012	Resolved 2013	Resolved 2014	Resolution Rate 2012	Resolution Rate 2013	Resolution Rate 2014
ABDUCTION AND KIDNAPPING	22	10	15	-54.5 %	50.0 %	12	9	11	54.5 %	90.0 %	73.3 %
HARASSMENT AND THREATENING BEHAVIOUR	1,353	1,378	1,800	1.8 %	30.6 %	892	608	791	65.9 %	44.1 %	43.9 %
	1,375	1,388	1,815	0.9 %	30.8 %	904	617	802	65.7 %	44.5 %	44.2 %

ROBBERY, EXTORTION AND RELATED OFFENCES

ASOC Subdivision Description	Recorded 2012	Recorded 2013	Recorded 2014	Variance 2012-2013	Variance 2013-2014	Resolved 2012	Resolved 2013	Resolved 2014	Resolution Rate 2012	Resolution Rate 2013	Resolution Rate 2014
BLACKMAIL AND EXTORTION	6	14	8	133.3 %	-42.9 %	2	7	3	33.3 %	50.0 %	37.5 %
ROBBERY	134	136	132	1.5 %	-2.9 %	56	59	56	41.8 %	43.4 %	42.4 %
	140	150	140	7.1 %	-6.7 %	58	66	59	41.4 %	44.0 %	42.1 %

UNLAWFUL ENTRY WITH INTENT/BURGLARY, BREAK AND ENTER

ASOC Subdivision Description	Recorded 2012	Recorded 2013	Recorded 2014	Variance 2012-2013	Variance 2013-2014	Resolved 2012	Resolved 2013	Resolved 2014	Resolution Rate 2012	Resolution Rate 2013	Resolution Rate 2014
UNLAWFUL ENTRY WITH INTENT/BURGLARY, BREAK AND ENTER	4,872	4,434	4,354	-9.0 %	-1.8 %	665	552	549	13.6 %	12.4 %	12.6 %
	4,872	4,434	4,354	-9.0 %	-1.8 %	665	552	549	13.6 %	12.4 %	12.6 %

SUMMARY OF DISTRICT RECORDED AND RESOLVED CRIME, BY DIVISION

Years ending 31 December

THEFT AND RELATED OFFENCES

ASOC Subdivision Description	Recorded 2012	Recorded 2013	Recorded 2014	Variance 2012-2013	Variance 2013-2014	Resolved 2012	Resolved 2013	Resolved 2014	Resolution Rate 2012	Resolution Rate 2013	Resolution Rate 2014
ILLEGAL USE OF PROPERTY (EXCEPT MOTOR VEHICLES)	319	251	342	-21.3 %	36.3 %	12	5	10	3.8 %	2.0 %	2.9 %
MOTOR VEHICLE THEFT AND RELATED OFFENCES	5,003	5,020	5,527	0.3 %	10.1 %	429	409	499	8.6 %	8.1 %	9.0 %
RECEIVE OR HANDLE PROCEEDS OF CRIME	217	223	265	2.8 %	18.8 %	205	215	251	94.5 %	96.4 %	94.7 %
THEFT AND RELATED OFFENCES NOT FURTHER DEFINED	0	0	0	0.0 %	0.0 %	0	0	0	0.0 %	0.0 %	0.0 %
THEFT (EXCEPT MOTOR VEHICLES)	7,195	6,992	7,160	-2.8 %	2.4 %	2,152	1,693	1,773	29.9 %	24.2 %	24.8 %
	12,734	12,486	13,294	-1.9 %	6.5 %	2,798	2,322	2,533	22.0 %	18.6 %	19.1 %

FRAUD, DECEPTION AND RELATED OFFENCES

ASOC Subdivision Description	Recorded 2012	Recorded 2013	Recorded 2014	Variance 2012-2013	Variance 2013-2014	Resolved 2012	Resolved 2013	Resolved 2014	Resolution Rate 2012	Resolution Rate 2013	Resolution Rate 2014
DECEPTIVE BUSINESS/GOVERNMENT PRACTICES	5	4	9	-20.0 %	125.0 %	4	3	6	80.0 %	75.0 %	66.7 %
FORGERY AND COUNTERFEITING	29	61	55	110.3 %	-9.8 %	12	17	22	41.4 %	27.9 %	40.0 %
OBTAIN BENEFIT BY DECEPTION	610	635	853	4.1 %	34.3 %	348	298	358	57.0 %	46.9 %	42.0 %
OTHER FRAUD AND DECEPTION OFFENCES	52	60	59	15.4 %	-1.7 %	28	19	16	53.8 %	31.7 %	27.1 %
	696	760	976	9.2 %	28.4 %	392	337	402	56.3 %	44.3 %	41.2 %

ILLCIT DRUG OFFENCES

ASOC Subdivision Description	Recorded 2012	Recorded 2013	Recorded 2014	Variance 2012-2013	Variance 2013-2014	Resolved 2012	Resolved 2013	Resolved 2014	Resolution Rate 2012	Resolution Rate 2013	Resolution Rate 2014
DEAL OR TRAFFIC IN ILLICIT DRUGS	1,441	279	1,080	-80.6 %	287.1 %	1,406	245	1,052	97.6 %	87.8 %	97.4 %
IMPORT OR EXPORT ILLICIT DRUGS	15	30	54	100.0 %	80.0 %	7	16	42	46.7 %	53.3 %	77.8 %
MANUFACTURE OR CULTIVATE ILLICIT DRUGS	170	128	166	-24.7 %	29.7 %	151	98	143	88.8 %	76.6 %	86.1 %
OTHER ILLICIT DRUG OFFENCES	314	206	278	-34.4 %	35.0 %	300	196	265	95.5 %	95.1 %	95.3 %
POSSESS AND/OR USE ILLICIT DRUGS	663	514	546	-22.5 %	6.2 %	631	470	508	95.2 %	91.4 %	93.0 %
	2,603	1,157	2,124	-55.6 %	83.6 %	2,495	1,025	2,010	95.9 %	88.6 %	94.6 %

PROHIBITED AND REGULATED WEAPONS AND EXPLOSIVES OFFENCES

ASOC Subdivision Description	Recorded 2012	Recorded 2013	Recorded 2014	Variance 2012-2013	Variance 2013-2014	Resolved 2012	Resolved 2013	Resolved 2014	Resolution Rate 2012	Resolution Rate 2013	Resolution Rate 2014
REGULATED WEAPONS/EXPLOSIVES OFFENCES	476	485	495	1.9 %	2.1 %	434	414	427	91.2 %	85.4 %	86.3 %
	476	485	495	1.9 %	2.1 %	434	414	427	91.2 %	85.4 %	86.3 %

PROPERTY DAMAGE AND ENVIRONMENTAL POLLUTION

ASOC Subdivision Description	Recorded 2012	Recorded 2013	Recorded 2014	Variance 2012-2013	Variance 2013-2014	Resolved 2012	Resolved 2013	Resolved 2014	Resolution Rate 2012	Resolution Rate 2013	Resolution Rate 2014
ENVIRONMENTAL POLLUTION	11	12	16	9.1 %	33.3 %	7	3	3	63.6 %	25.0 %	18.8 %
PROPERTY DAMAGE	5,964	5,198	5,094	-12.8 %	-2.0 %	1,360	1,097	1,047	22.8 %	21.1 %	20.6 %
	5,975	5,210	5,110	-12.8 %	-1.9 %	1,367	1,100	1,050	22.9 %	21.1 %	20.5 %

SUMMARY OF DISTRICT RECORDED AND RESOLVED CRIME, BY DIVISION
Years ending 31 December

PUBLIC ORDER OFFENCES

ASOC Subdivision Description	Recorded 2012	Recorded 2013	Recorded 2014	Variance 2012-2013	Variance 2013-2014	Resolved 2012	Resolved 2013	Resolved 2014	Resolution Rate 2012	Resolution Rate 2013	Resolution Rate 2014
DISORDERLY CONDUCT	2,730	2,748	2,525	0.7 %	-8.1 %	2,300	2,118	1,667	84.2 %	77.1 %	66.0 %
OFFENSIVE CONDUCT	146	104	96	-28.8 %	-7.7 %	103	65	53	70.5 %	62.5 %	55.2 %
PUBLIC ORDER OFFENCES NOT FURTHER DEFINED	0	0	0	0.0 %	0.0 %	0	0	0	0.0 %	0.0 %	0.0 %
REGULATED PUBLIC ORDER OFFENCES	931	744	217	-20.1 %	-70.8 %	822	638	146	88.3 %	85.8 %	67.3 %
	3,807	3,596	2,838	-5.5 %	-21.1 %	3,225	2,821	1,866	84.7 %	78.4 %	65.8 %

OFFENCES AGAINST JUSTICE PROCEDURES, GOVERNMENT SECURITY AND GOVERNMENT OPERATIONS

ASOC Subdivision Description	Recorded 2012	Recorded 2013	Recorded 2014	Variance 2012-2013	Variance 2013-2014	Resolved 2012	Resolved 2013	Resolved 2014	Resolution Rate 2012	Resolution Rate 2013	Resolution Rate 2014
BREACH OF COMMUNITY-BASED ORDER	303	79	102	-73.9 %	29.1 %	215	59	86	71.0 %	74.7 %	84.3 %
BREACH OF CUSTODIAL ORDER OFFENCES	41	25	39	-39.0 %	56.0 %	38	25	38	92.7 %	100.0 %	97.4 %
BREACH OF VIOLENCE AND NON-VIOLENCE RESTRAINING ORDERS	667	538	754	-19.3 %	40.1 %	575	394	543	86.2 %	73.2 %	72.0 %
OFFENCES AGAINST GOVERNMENT OPERATIONS	22	17	34	-22.7 %	100.0 %	8	6	1	36.4 %	35.3 %	2.9 %
OFFENCES AGAINST GOVERNMENT SECURITY	1	0	2	-100.0 %	0.0 %	0	0	1	0.0 %	0.0 %	50.0 %
OFFENCES AGAINST JUSTICE PROCEDURES	425	399	364	-6.1 %	-8.8 %	413	386	355	97.2 %	96.7 %	97.5 %
OFFENCES AGAINST JUSTICE PROCEDURES, GOVERNMENT SECURITY AND GOVERNMENT OPERATIONS NOT FURTHER DEFINED	0	0	0	0.0 %	0.0 %	0	0	0	0.0 %	0.0 %	0.0 %
	1,459	1,058	1,295	-27.5 %	22.4 %	1,249	870	1,024	85.6 %	82.2 %	79.1 %

MISCELLANEOUS OFFENCES

ASOC Subdivision Description	Recorded 2012	Recorded 2013	Recorded 2014	Variance 2012-2013	Variance 2013-2014	Resolved 2012	Resolved 2013	Resolved 2014	Resolution Rate 2012	Resolution Rate 2013	Resolution Rate 2014
COMMERCIAL/INDUSTRY/FINANCIAL REGULATION	1	1	2	0.0 %	100.0 %	1	1	2	100.0 %	100.0 %	100.0 %
DEFAMATION, LIBEL AND PRIVACY OFFENCES	6	4	7	-33.3 %	75.0 %	0	1	2	0.0 %	25.0 %	28.6 %
OTHER MISCELLANEOUS OFFENCES	124	131	119	5.6 %	-9.2 %	87	54	55	70.2 %	41.2 %	46.2 %
PUBLIC HEALTH AND SAFETY OFFENCES	23	39	18	69.6 %	-53.8 %	18	31	14	78.3 %	79.5 %	77.8 %
	154	175	146	13.6 %	-16.6 %	106	87	73	68.8 %	49.7 %	50.0 %

TOTAL	38,613	34,806	37,257	-9.9 %	7.0 %	16,891	12,728	13,580	43.7 %	36.6 %	36.4 %
--------------	---------------	---------------	---------------	---------------	--------------	---------------	---------------	---------------	---------------	---------------	---------------

PROPORTIONS OF RECORDED CRIME BY DIVISION

Years ending 31 December

ASOC Division Description	Proportions Recorded 2012	Recorded 2012	Proportions Recorded 2013	Recorded 2013	Proportions Recorded 2014	Recorded 2014
HOMICIDE AND RELATED OFFENCES	0.02 %	9	0.02 %	7	0.01 %	4
ACTS INTENDED TO CAUSE INJURY	10.01 %	3,867	9.92 %	3,453	11.28 %	4,204
SEXUAL ASSAULT AND RELATED OFFENCES	0.99 %	384	1.07 %	373	1.10 %	408
DANGEROUS OR NEGLIGENT ACTS ENDANGERING PERSONS	0.16 %	62	0.21 %	74	0.14 %	54
ABDUCTION, HARASSMENT AND OTHER RELATED OFFENCES AGAINST A PERSON	3.56 %	1,375	3.99 %	1,388	4.87 %	1,815
ROBBERY, EXTORTION AND RELATED OFFENCES	0.36 %	140	0.43 %	150	0.38 %	140
UNLAWFUL ENTRY WITH INTENT/BURGLARY, BREAK AND ENTER	12.62 %	4,872	12.74 %	4,434	11.69 %	4,354
THEFT AND RELATED OFFENCES	32.98 %	12,734	35.87 %	12,486	35.68 %	13,294
FRAUD, DECEPTION AND RELATED OFFENCES	1.80 %	696	2.18 %	760	2.62 %	976
ILLICIT DRUG OFFENCES	6.74 %	2,603	3.32 %	1,157	5.70 %	2,124
PROHIBITED AND REGULATED WEAPONS AND EXPLOSIVES OFFENCES	1.23 %	476	1.39 %	485	1.33 %	495
PROPERTY DAMAGE AND ENVIRONMENTAL POLLUTION	15.47 %	5,975	14.97 %	5,210	13.72 %	5,110
PUBLIC ORDER OFFENCES	9.86 %	3,807	10.33 %	3,596	7.62 %	2,838
OFFENCES AGAINST JUSTICE PROCEDURES, GOVERNMENT SECURITY AND GOVERNMENT OPERATIONS	3.78 %	1,459	3.04 %	1,058	3.48 %	1,295
MISCELLANEOUS OFFENCES	0.40 %	154	0.50 %	175	0.39 %	146
	100.00 %	38,613	100.00 %	34,806	100.00 %	37,257

SUMMARY OF RECORDED OFFENCES, RATE PER 10,000 POPULATION AND RESOLVED OFFENCES, BY AREA
years ending 31 December

TOTAL CRIME

Area Description	Recorded 2013	Recorded 2014	Variance 2013-2014	Recorded per 10,000 pop 2013	Recorded per 10,000 pop 2014	Per 10,000 pop % Variance 2013 to 2014	Resolved 2013	Resolved 2014	Resolution Rate 2013	Resolution Rate 2014
Hutt Valley	10,386	11,273	8.5 %	729.0	785.7	7.8 %	3,470	3,530	33.4 %	31.3 %
Kapiti-Mana	7,111	8,714	22.5 %	644.4	783.6	21.6 %	3,076	3,822	43.3 %	43.9 %
Wairarapa	3,610	3,879	7.5 %	852.8	907.4	6.4 %	1,448	1,441	40.1 %	37.1 %
Wellington	13,699	13,391	-2.2 %	746.9	720.7	-3.5 %	4,734	4,787	34.6 %	35.7 %
	34,806	37,257	7.0 %	727.3	771.0	6.0 %	12,728	13,580	36.6 %	36.4 %

SUMMARY OF RECORDED OFFENCES, RATE PER 10,000 POPULATION AND RESOLVED OFFENCES, BY DIVISION

Years ending 31 December

HOMICIDE AND RELATED OFFENCES

Area Description	Recorded 2013	Recorded 2014	Variance 2013-2014	Recorded per 10,000 pop 2013	Recorded per 10,000 pop 2014	Per 10,000 pop % Variance 2013 to 2014	Resolved 2013	Resolved 2014	Resolution Rate 2013	Resolution Rate 2014
Hutt Valley	3	2	-33.3 %	0.2	0.1	-33.8 %	3	2	100.0 %	100.0 %
Kapiti-Mana	1	2	100.0 %	0.1	0.2	98.5 %	1	2	100.0 %	100.0 %
Wairarapa	1	0	-100.0 %	0.2	0.0	-100.0 %	1	0	100.0 %	0.0 %
Wellington	2	0	-100.0 %	0.1	0.0	-100.0 %	1	0	50.0 %	0.0 %
	7	4	-42.9 %	0.1	0.1	-43.4 %	6	4	85.7 %	100.0 %

ACTS INTENDED TO CAUSE INJURY

Area Description	Recorded 2013	Recorded 2014	Variance 2013-2014	Recorded per 10,000 pop 2013	Recorded per 10,000 pop 2014	Per 10,000 pop % Variance 2013 to 2014	Resolved 2013	Resolved 2014	Resolution Rate 2013	Resolution Rate 2014
Hutt Valley	1,040	1,197	15.1 %	73.0	83.4	14.3 %	638	647	61.3 %	54.1 %
Kapiti-Mana	810	1,089	34.4 %	73.4	97.9	33.4 %	593	700	73.2 %	64.3 %
Wairarapa	404	468	15.8 %	95.4	109.5	14.7 %	255	298	63.1 %	63.7 %
Wellington	1,199	1,450	20.9 %	65.4	78.0	19.4 %	785	920	65.5 %	63.4 %
	3,453	4,204	21.7 %	72.2	87.0	20.6 %	2,271	2,565	65.8 %	61.0 %

SEXUAL ASSAULT AND RELATED OFFENCES

Area Description	Recorded 2013	Recorded 2014	Variance 2013-2014	Recorded per 10,000 pop 2013	Recorded per 10,000 pop 2014	Per 10,000 pop % Variance 2013 to 2014	Resolved 2013	Resolved 2014	Resolution Rate 2013	Resolution Rate 2014
Hutt Valley	109	125	14.7 %	7.7	8.7	13.9 %	46	66	42.2 %	52.8 %
Kapiti-Mana	108	97	-10.2 %	9.8	8.7	-10.9 %	68	36	63.0 %	37.1 %
Wairarapa	56	38	-32.1 %	13.2	8.9	-32.8 %	42	17	75.0 %	44.7 %
Wellington	100	148	48.0 %	5.5	8.0	46.1 %	43	69	43.0 %	46.6 %
	373	408	9.4 %	7.8	8.4	8.3 %	199	188	53.4 %	46.1 %

DANGEROUS OR NEGLIGENT ACTS ENDANGERING PERSONS

Area Description	Recorded 2013	Recorded 2014	Variance 2013-2014	Recorded per 10,000 pop 2013	Recorded per 10,000 pop 2014	Per 10,000 pop % Variance 2013 to 2014	Resolved 2013	Resolved 2014	Resolution Rate 2013	Resolution Rate 2014
Hutt Valley	26	7	-73.1 %	1.8	0.5	-73.3 %	14	1	53.8 %	14.3 %
Kapiti-Mana	27	19	-29.6 %	2.4	1.7	-30.2 %	16	10	59.3 %	52.6 %
Wairarapa	6	13	116.7 %	1.4	3.0	114.5 %	4	6	66.7 %	46.2 %
Wellington	15	15	0.0 %	0.8	0.8	-1.3 %	7	11	46.7 %	73.3 %
	74	54	-27.0 %	1.5	1.1	-27.7 %	41	28	55.4 %	51.9 %

ABDUCTION, HARASSMENT AND OTHER RELATED OFFENCES AGAINST A PERSON

Area Description	Recorded 2013	Recorded 2014	Variance 2013-2014	Recorded per 10,000 pop 2013	Recorded per 10,000 pop 2014	Per 10,000 pop % Variance 2013 to 2014	Resolved 2013	Resolved 2014	Resolution Rate 2013	Resolution Rate 2014
Hutt Valley	406	584	43.8 %	28.5	40.7	42.8 %	159	222	39.2 %	38.0 %
Kapiti-Mana	348	502	44.3 %	31.5	45.1	43.2 %	184	253	52.9 %	50.4 %
Wairarapa	194	233	20.1 %	45.8	54.5	18.9 %	80	97	41.2 %	41.6 %
Wellington	440	496	12.7 %	24.0	26.7	11.3 %	194	230	44.1 %	46.4 %
	1,388	1,815	30.8 %	29.0	37.6	29.5 %	617	802	44.5 %	44.2 %

SUMMARY OF RECORDED OFFENCES, RATE PER 10,000 POPULATION AND RESOLVED OFFENCES, BY DIVISION

Years ending 31 December

ROBBERY, EXTORTION AND RELATED OFFENCES

Area Description	Recorded 2013	Recorded 2014	Variance 2013-2014	Recorded per 10,000 pop 2013	Recorded per 10,000 pop 2014	Per 10,000 pop % Variance 2013 to 2014	Resolved 2013	Resolved 2014	Resolution Rate 2013	Resolution Rate 2014
Hutt Valley	46	40	-13.0 %	3.2	2.8	-13.7 %	23	15	50.0 %	37.5 %
Kapiti-Mana	28	32	14.3 %	2.5	2.9	13.4 %	10	13	35.7 %	40.6 %
Wairarapa	8	10	25.0 %	1.9	2.3	23.8 %	4	5	50.0 %	50.0 %
Wellington	68	58	-14.7 %	3.7	3.1	-15.8 %	29	26	42.6 %	44.8 %
	150	140	-6.7 %	3.1	2.9	-7.6 %	66	59	44.0 %	42.1 %

UNLAWFUL ENTRY WITH INTENT/BURGLARY, BREAK AND ENTER

Area Description	Recorded 2013	Recorded 2014	Variance 2013-2014	Recorded per 10,000 pop 2013	Recorded per 10,000 pop 2014	Per 10,000 pop % Variance 2013 to 2014	Resolved 2013	Resolved 2014	Resolution Rate 2013	Resolution Rate 2014
Hutt Valley	1,367	1,370	0.2 %	96.0	95.5	-0.5 %	180	160	13.2 %	11.7 %
Kapiti-Mana	922	1,079	17.0 %	83.6	97.0	16.1 %	144	149	15.6 %	13.8 %
Wairarapa	637	711	11.6 %	150.5	166.3	10.5 %	77	86	12.1 %	12.1 %
Wellington	1,508	1,194	-20.8 %	82.2	64.3	-21.8 %	151	154	10.0 %	12.9 %
	4,434	4,354	-1.8 %	92.7	90.1	-2.8 %	552	549	12.4 %	12.6 %

THEFT AND RELATED OFFENCES

Area Description	Recorded 2013	Recorded 2014	Variance 2013-2014	Recorded per 10,000 pop 2013	Recorded per 10,000 pop 2014	Per 10,000 pop % Variance 2013 to 2014	Resolved 2013	Resolved 2014	Resolution Rate 2013	Resolution Rate 2014
Hutt Valley	3,895	4,310	10.7 %	273.4	300.4	9.9 %	818	878	21.0 %	20.4 %
Kapiti-Mana	2,273	2,573	13.2 %	206.0	231.4	12.3 %	567	580	24.9 %	22.5 %
Wairarapa	877	983	12.1 %	207.2	229.9	11.0 %	215	239	24.5 %	24.3 %
Wellington	5,441	5,428	-0.2 %	296.7	292.1	-1.5 %	722	836	13.3 %	15.4 %
	12,486	13,294	6.5 %	260.9	275.1	5.4 %	2,322	2,533	18.6 %	19.1 %

FRAUD, DECEPTION AND RELATED OFFENCES

Area Description	Recorded 2013	Recorded 2014	Variance 2013-2014	Recorded per 10,000 pop 2013	Recorded per 10,000 pop 2014	Per 10,000 pop % Variance 2013 to 2014	Resolved 2013	Resolved 2014	Resolution Rate 2013	Resolution Rate 2014
Hutt Valley	191	288	50.8 %	13.4	20.1	49.7 %	76	132	39.8 %	45.8 %
Kapiti-Mana	164	158	-3.7 %	14.9	14.2	-4.4 %	93	62	56.7 %	39.2 %
Wairarapa	70	73	4.3 %	16.5	17.1	3.3 %	43	23	61.4 %	31.5 %
Wellington	335	457	36.4 %	18.3	24.6	34.7 %	125	185	37.3 %	40.5 %
	760	976	28.4 %	15.9	20.2	27.2 %	337	402	44.3 %	41.2 %

ILLICIT DRUG OFFENCES

Area Description	Recorded 2013	Recorded 2014	Variance 2013-2014	Recorded per 10,000 pop 2013	Recorded per 10,000 pop 2014	Per 10,000 pop % Variance 2013 to 2014	Resolved 2013	Resolved 2014	Resolution Rate 2013	Resolution Rate 2014
Hutt Valley	274	246	-10.2 %	19.2	17.1	-10.9 %	249	230	90.9 %	93.5 %
Kapiti-Mana	300	1,002	234.0 %	27.2	90.1	231.4 %	277	974	92.3 %	97.2 %
Wairarapa	153	145	-5.2 %	36.1	33.9	-6.2 %	132	125	86.3 %	86.2 %
Wellington	430	731	70.0 %	23.4	39.3	67.8 %	367	681	85.3 %	93.2 %
	1,157	2,124	83.6 %	24.2	44.0	81.8 %	1,025	2,010	88.6 %	94.6 %

SUMMARY OF RECORDED OFFENCES, RATE PER 10,000 POPULATION AND RESOLVED OFFENCES, BY DIVISION

Years ending 31 December

PROHIBITED AND REGULATED WEAPONS AND EXPLOSIVES OFFENCES

Area Description	Recorded 2013	Recorded 2014	Variance 2013-2014	Recorded per 10,000 pop 2013	Recorded per 10,000 pop 2014	Per 10,000 pop % Variance 2013 to 2014	Resolved 2013	Resolved 2014	Resolution Rate 2013	Resolution Rate 2014
Hutt Valley	173	158	-8.7 %	12.1	11.0	-9.3 %	151	132	87.3 %	83.5 %
Kapiti-Mana	95	122	28.4 %	8.6	11.0	27.4 %	85	103	89.5 %	84.4 %
Wairarapa	55	53	-3.6 %	13.0	12.4	-4.6 %	41	45	74.5 %	84.9 %
Wellington	162	162	0.0 %	8.8	8.7	-1.3 %	137	147	84.6 %	90.7 %
	485	495	2.1 %	10.1	10.2	1.1 %	414	427	85.4 %	86.3 %

PROPERTY DAMAGE AND ENVIRONMENTAL POLLUTION

Area Description	Recorded 2013	Recorded 2014	Variance 2013-2014	Recorded per 10,000 pop 2013	Recorded per 10,000 pop 2014	Per 10,000 pop % Variance 2013 to 2014	Resolved 2013	Resolved 2014	Resolution Rate 2013	Resolution Rate 2014
Hutt Valley	1,659	1,682	1.4 %	116.5	117.2	0.7 %	305	295	18.4 %	17.5 %
Kapiti-Mana	1,086	1,090	0.4 %	98.4	98.0	-0.4 %	296	300	27.3 %	27.5 %
Wairarapa	586	641	9.4 %	138.4	149.9	8.3 %	151	165	25.8 %	25.7 %
Wellington	1,879	1,697	-9.7 %	102.5	91.3	-10.9 %	348	290	18.5 %	17.1 %
	5,210	5,110	-1.9 %	108.9	105.7	-2.9 %	1,100	1,050	21.1 %	20.5 %

PUBLIC ORDER OFFENCES

Area Description	Recorded 2013	Recorded 2014	Variance 2013-2014	Recorded per 10,000 pop 2013	Recorded per 10,000 pop 2014	Per 10,000 pop % Variance 2013 to 2014	Resolved 2013	Resolved 2014	Resolution Rate 2013	Resolution Rate 2014
Hutt Valley	804	762	-5.2 %	56.4	53.1	-5.9 %	513	377	63.8 %	49.5 %
Kapiti-Mana	673	568	-15.6 %	61.0	51.1	-16.2 %	517	357	76.8 %	62.9 %
Wairarapa	371	361	-2.7 %	87.6	84.4	-3.7 %	264	223	71.2 %	61.8 %
Wellington	1,748	1,147	-34.4 %	95.3	61.7	-35.2 %	1,527	909	87.4 %	79.3 %
	3,596	2,838	-21.1 %	75.1	58.7	-21.8 %	2,821	1,866	78.4 %	65.8 %

OFFENCES AGAINST JUSTICE PROCEDURES, GOVERNMENT SECURITY AND GOVERNMENT OPERATIONS

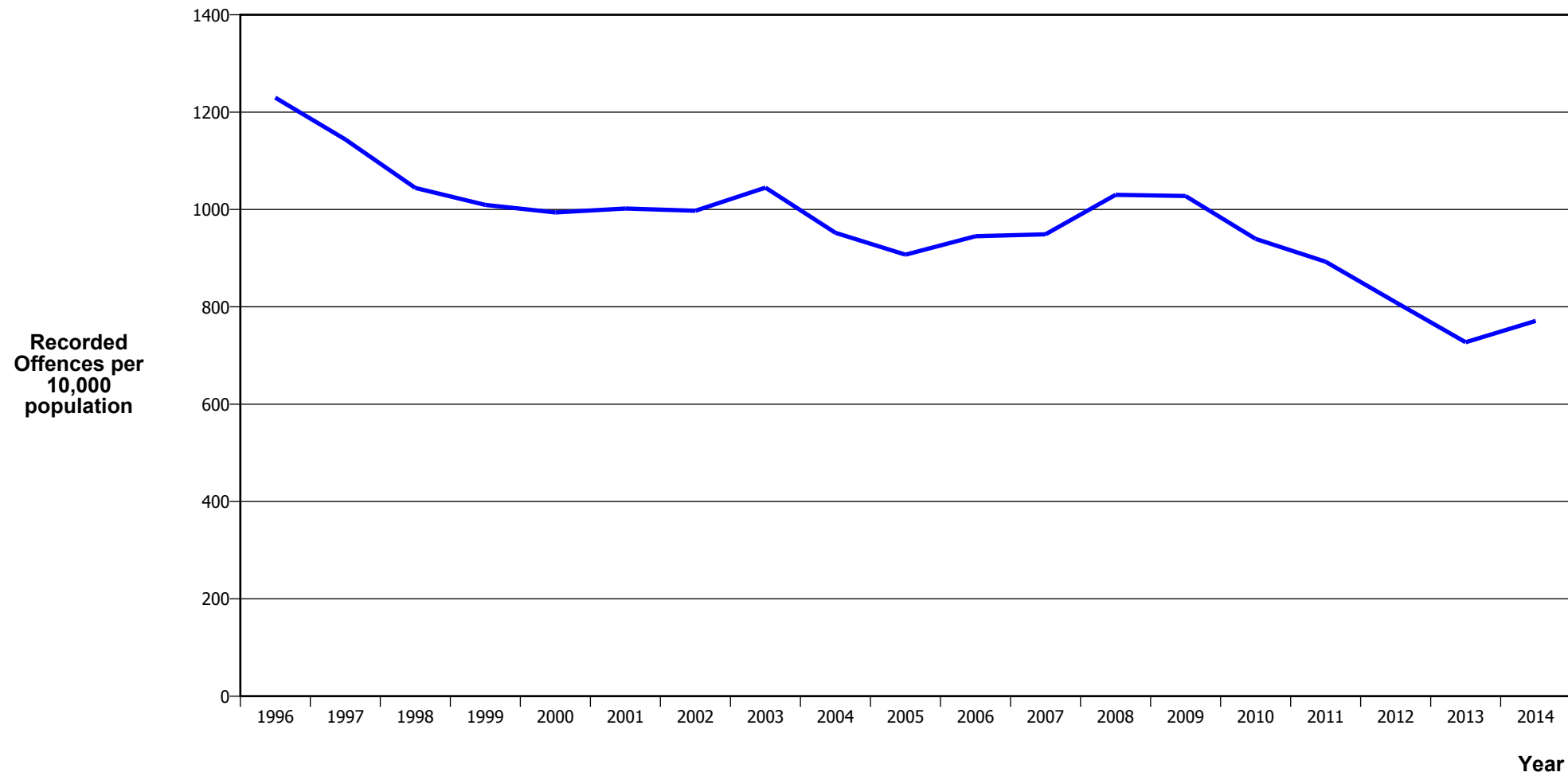
Area Description	Recorded 2013	Recorded 2014	Variance 2013-2014	Recorded per 10,000 pop 2013	Recorded per 10,000 pop 2014	Per 10,000 pop % Variance 2013 to 2014	Resolved 2013	Resolved 2014	Resolution Rate 2013	Resolution Rate 2014
Hutt Valley	350	467	33.4 %	24.6	32.6	32.5 %	281	357	80.3 %	76.4 %
Kapiti-Mana	241	345	43.2 %	21.8	31.0	42.1 %	208	266	86.3 %	77.1 %
Wairarapa	165	134	-18.8 %	39.0	31.3	-19.6 %	124	102	75.2 %	76.1 %
Wellington	302	349	15.6 %	16.5	18.8	14.1 %	257	299	85.1 %	85.7 %
	1,058	1,295	22.4 %	22.1	26.8	21.2 %	870	1,024	82.2 %	79.1 %

MISCELLANEOUS OFFENCES

Area Description	Recorded 2013	Recorded 2014	Variance 2013-2014	Recorded per 10,000 pop 2013	Recorded per 10,000 pop 2014	Per 10,000 pop % Variance 2013 to 2014	Resolved 2013	Resolved 2014	Resolution Rate 2013	Resolution Rate 2014
Hutt Valley	43	35	-18.6 %	3.0	2.4	-19.2 %	14	16	32.6 %	45.7 %
Kapiti-Mana	35	36	2.9 %	3.2	3.2	2.1 %	17	17	48.6 %	47.2 %
Wairarapa	27	16	-40.7 %	6.4	3.7	-41.3 %	15	10	55.6 %	62.5 %
Wellington	70	59	-15.7 %	3.8	3.2	-16.8 %	41	30	58.6 %	50.8 %
	175	146	-16.6 %	3.7	3.0	-17.4 %	87	73	49.7 %	50.0 %

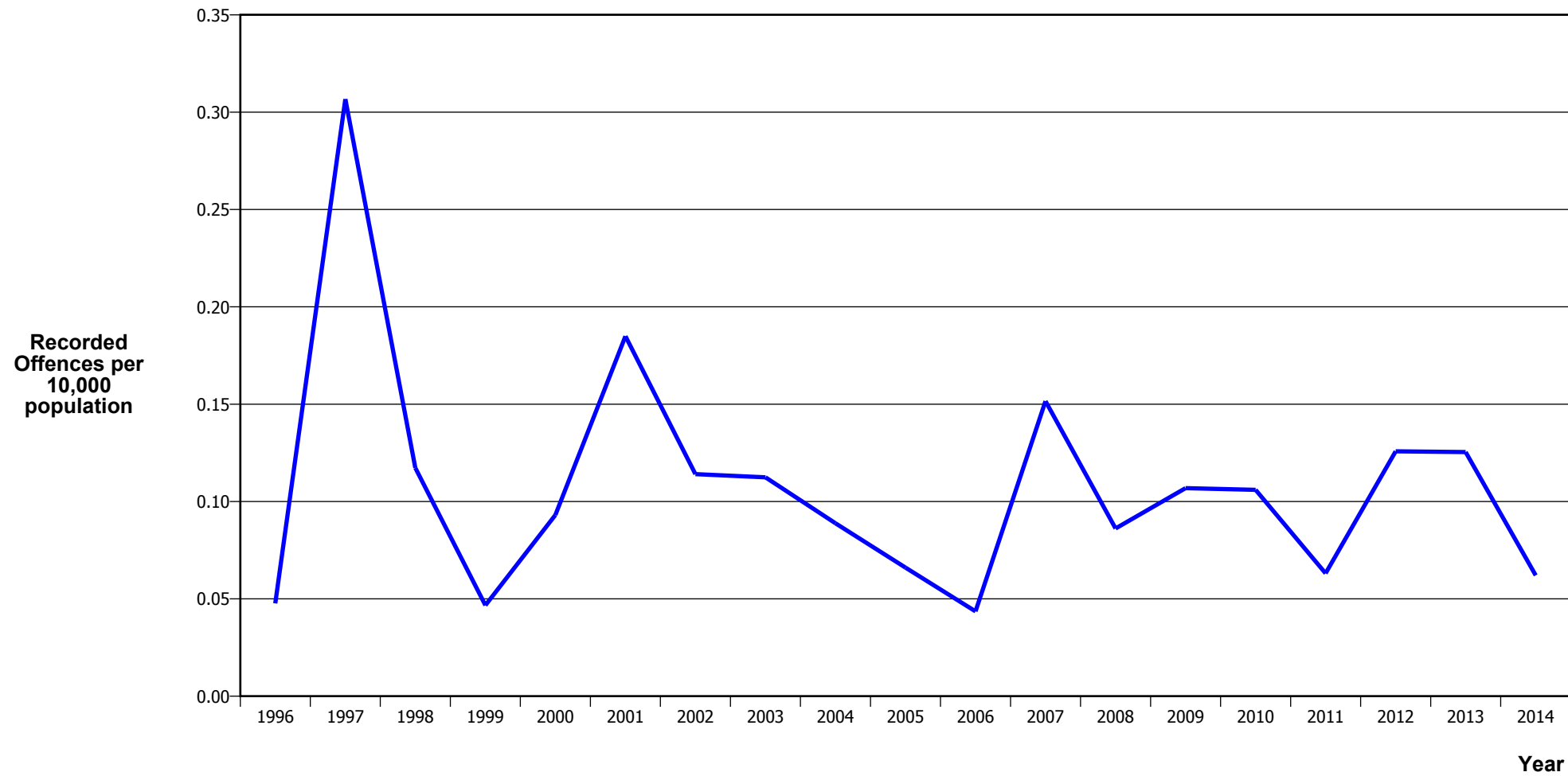
CRIME TRENDS

TOTAL CRIME



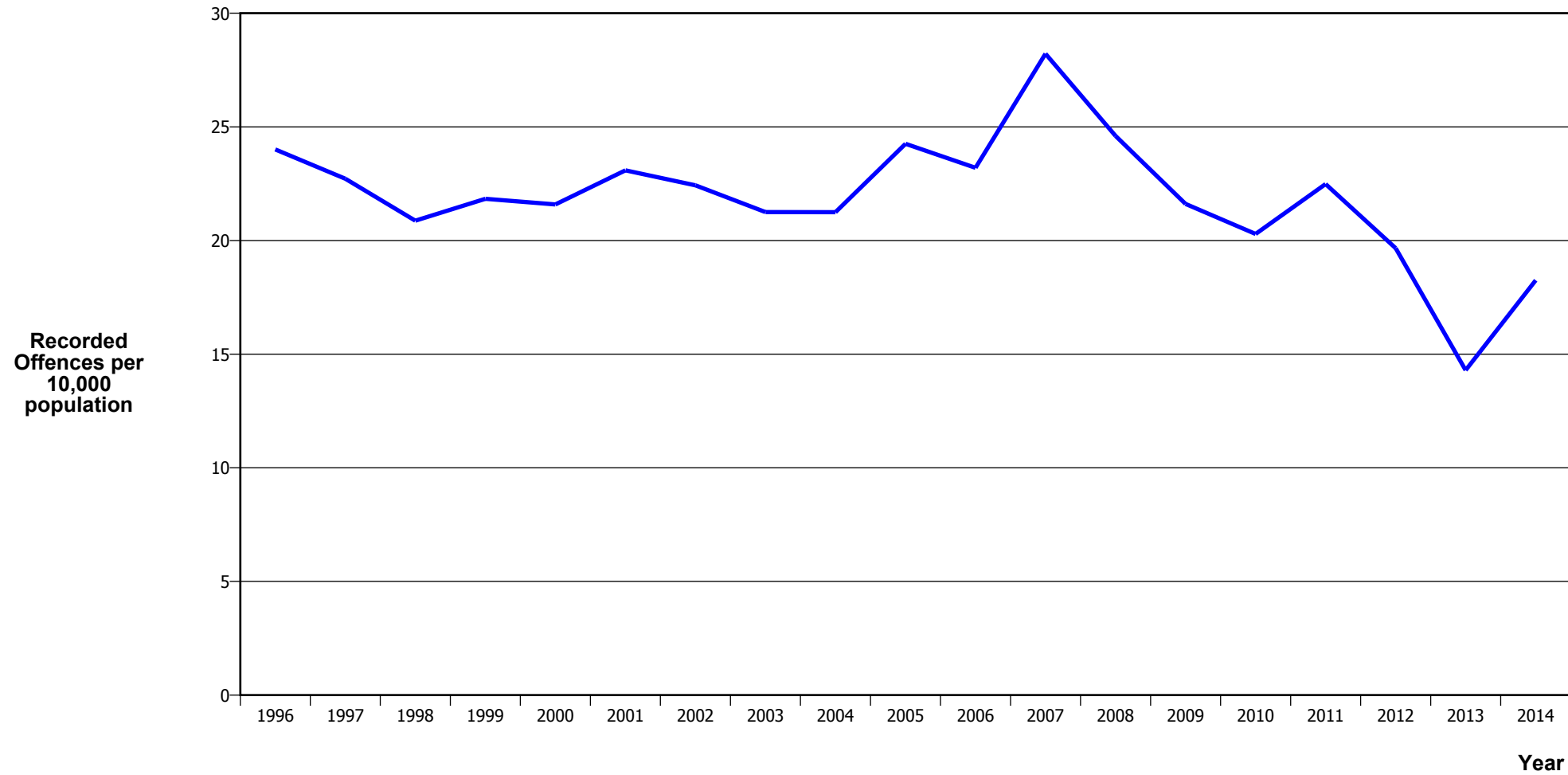
Calendar Year	1996	1997	1998	1999	2000	2001	2002	2003	2004	2005	2006	2007	2008	2009	2010	2011	2012	2013	2014
Recorded Offences	51,589	48,490	44,526	43,222	42,729	43,349	43,717	46,472	42,887	41,214	43,384	43,826	47,811	48,079	44,321	42,444	38,613	34,806	37,257
Recorded per 10,000 Population	1,229.8	1,143.9	1,044.2	1,009.4	994.0	1,001.9	997.4	1,045.0	952.2	907.2	945.1	949.0	1,030.0	1,027.7	939.7	892.8	809.4	727.3	771.0

MURDER



Calendar Year	1996	1997	1998	1999	2000	2001	2002	2003	2004	2005	2006	2007	2008	2009	2010	2011	2012	2013	2014
Recorded Offences	2	13	5	2	4	8	5	5	4	3	2	7	4	5	5	3	6	6	3
Recorded per 10,000 Population	0.05	0.31	0.12	0.05	0.09	0.18	0.11	0.11	0.09	0.07	0.04	0.15	0.09	0.11	0.11	0.06	0.13	0.13	0.06

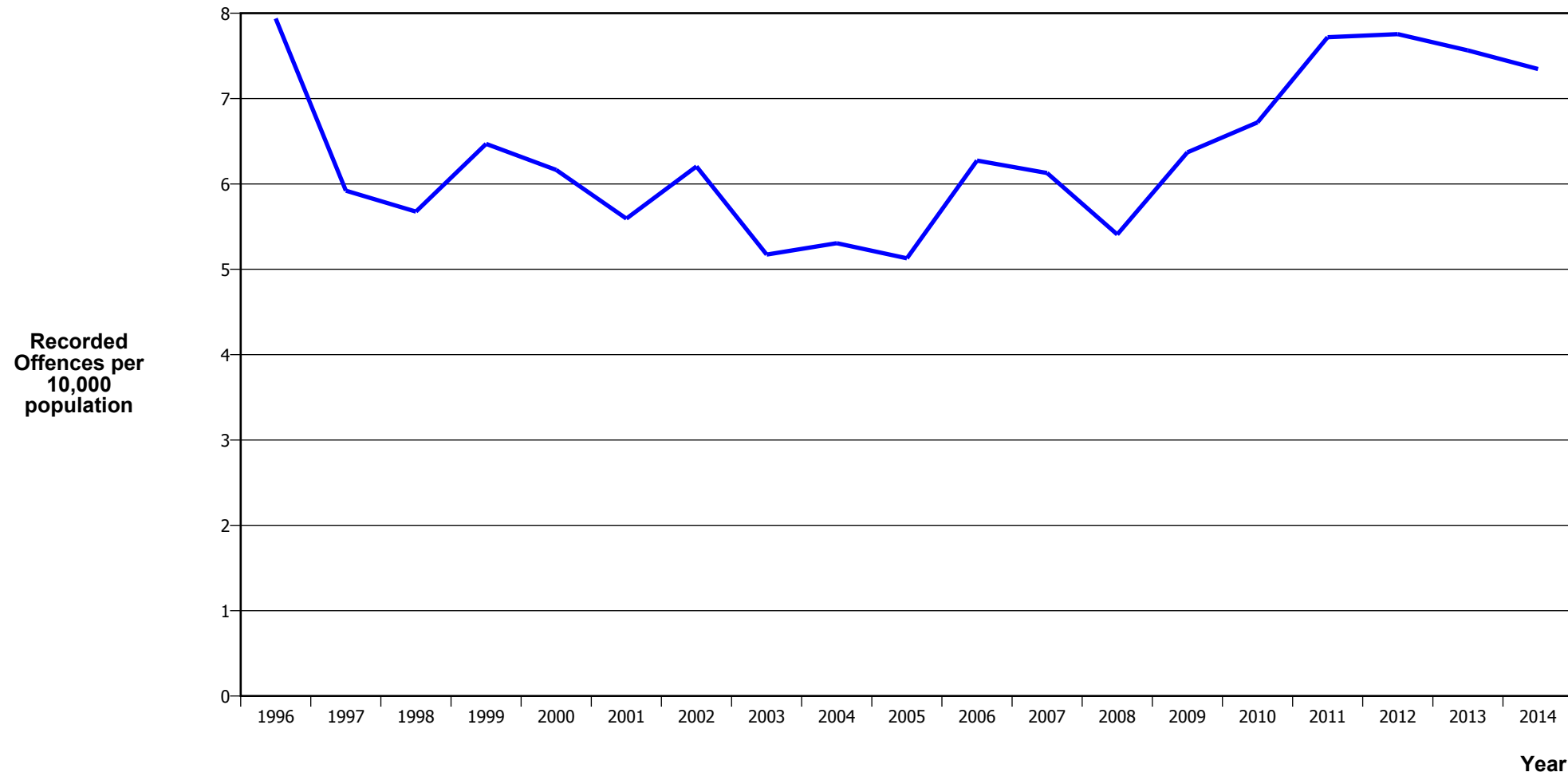
SERIOUS ASSAULTS RESULTING IN INJURY*



Calendar Year	1996	1997	1998	1999	2000	2001	2002	2003	2004	2005	2006	2007	2008	2009	2010	2011	2012	2013	2014
Recorded Offence	1,007	963	890	935	928	999	983	945	957	1,102	1,065	1,303	1,142	1,011	957	1,069	938	684	882
Offence Rate per 10K Popn	24.0	22.7	20.9	21.8	21.6	23.1	22.4	21.2	21.2	24.3	23.2	28.2	24.6	21.6	20.3	22.5	19.7	14.3	18.3

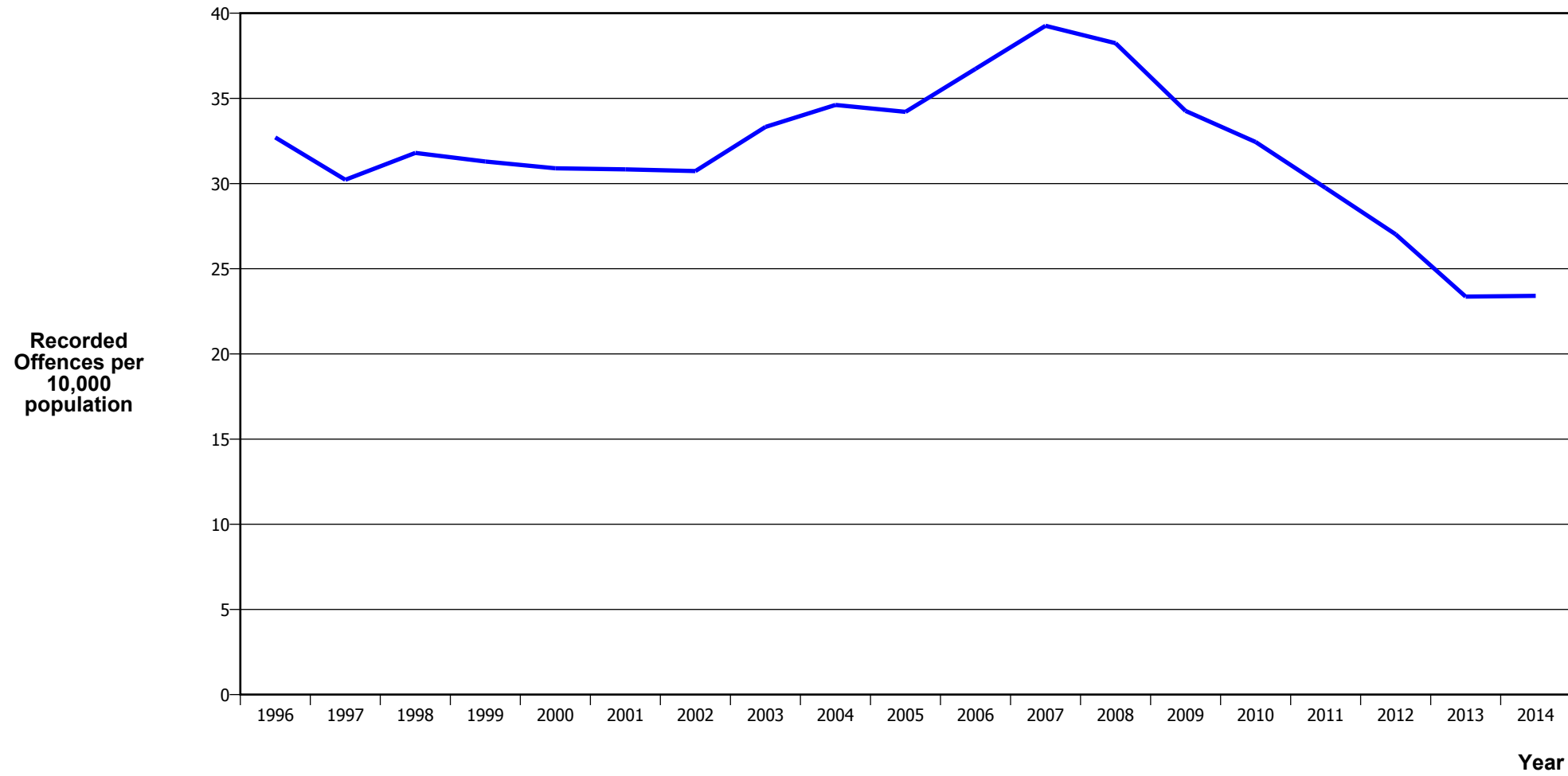
* This measure excludes common assaults

SEXUAL ASSAULTS



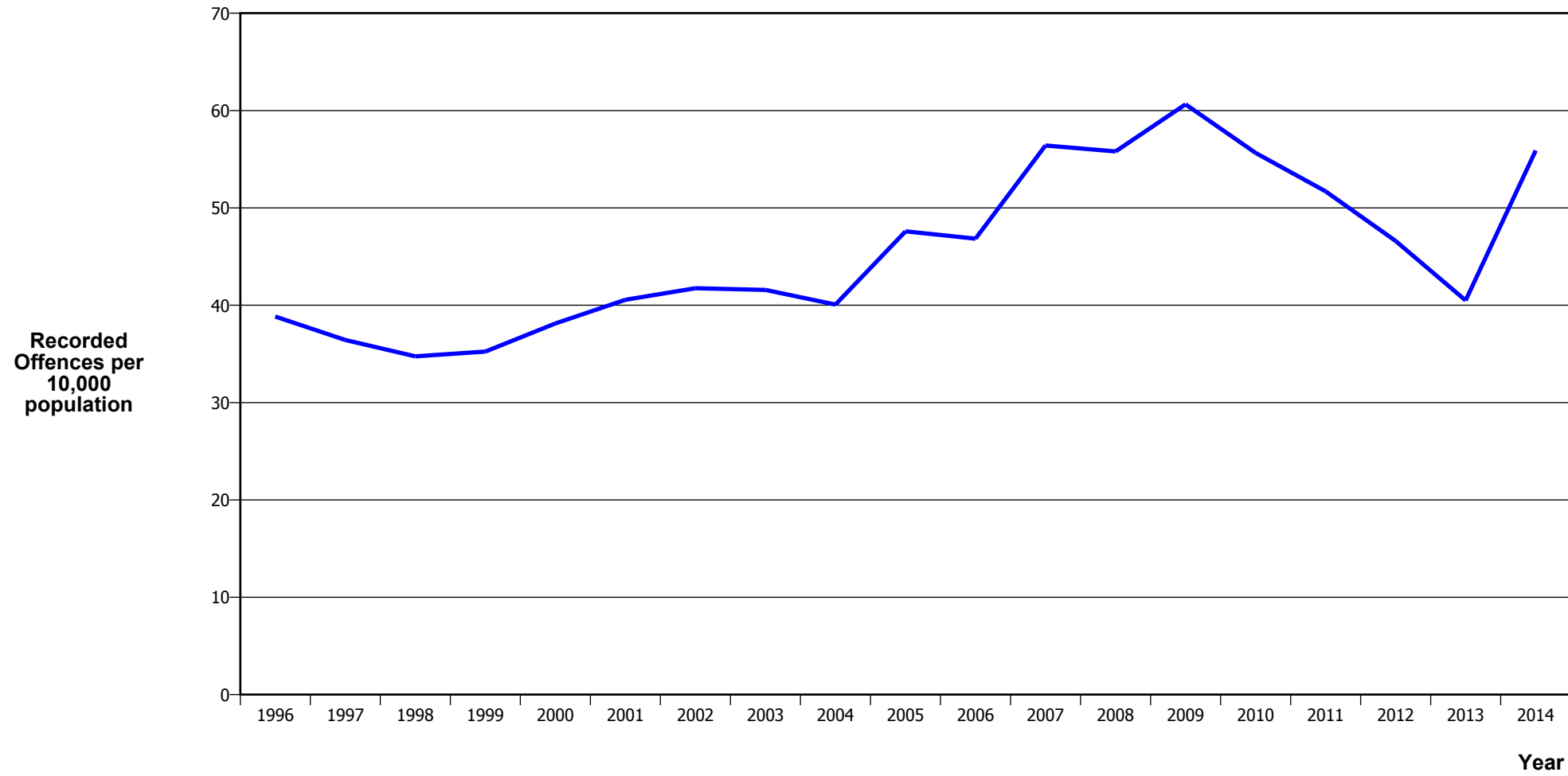
Calendar Year	1996	1997	1998	1999	2000	2001	2002	2003	2004	2005	2006	2007	2008	2009	2010	2011	2012	2013	2014
Recorded Offences	333	251	242	277	265	242	272	230	239	233	288	283	251	298	317	367	370	362	355
Recorded per 10,000 Population	7.9	5.9	5.7	6.5	6.2	5.6	6.2	5.2	5.3	5.1	6.3	6.1	5.4	6.4	6.7	7.7	7.8	7.6	7.3

PUBLIC PLACE ASSAULTS



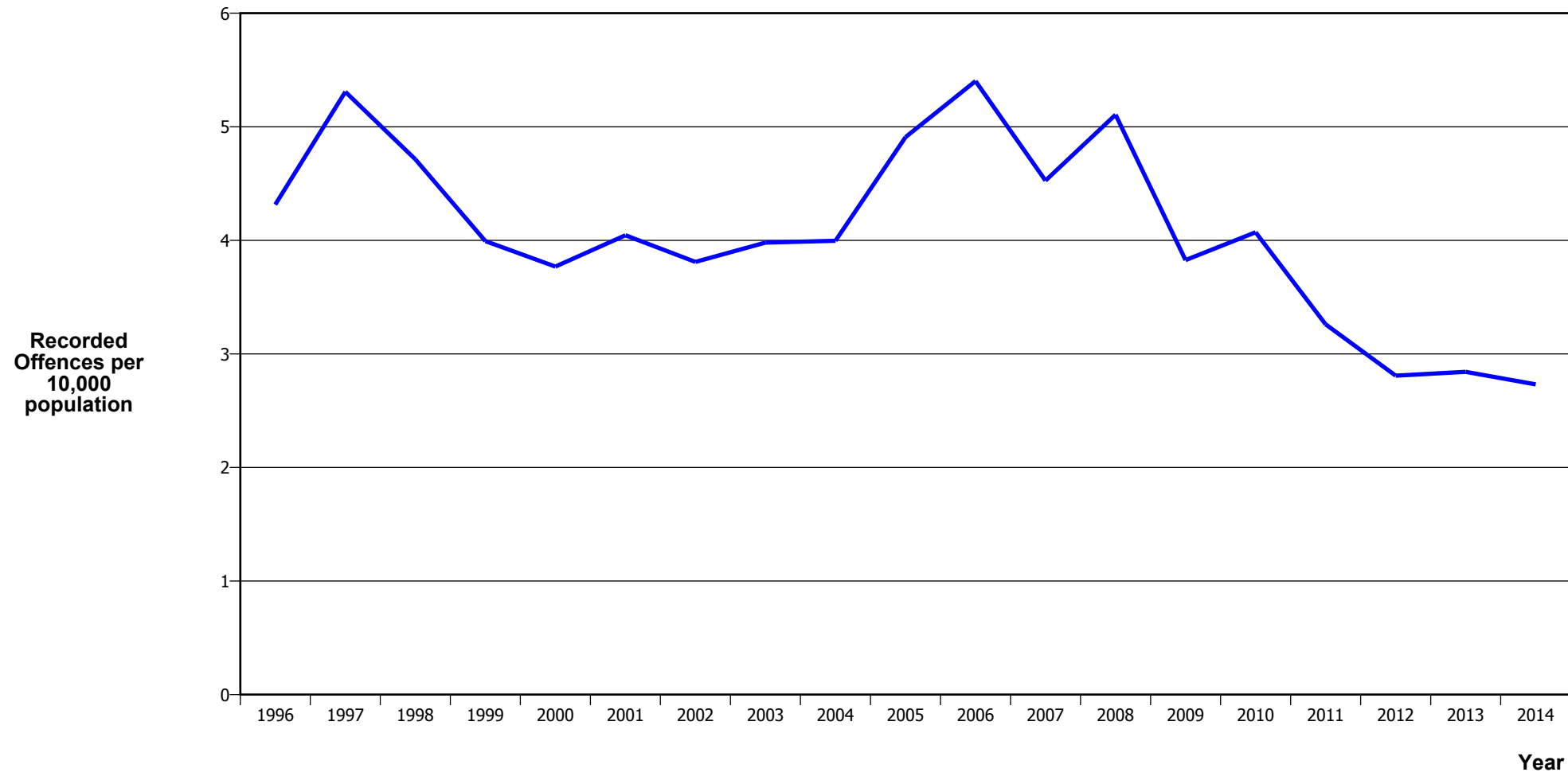
Calendar Year	1996	1997	1998	1999	2000	2001	2002	2003	2004	2005	2006	2007	2008	2009	2010	2011	2012	2013	2014
Recorded Offences	1,372	1,281	1,356	1,340	1,328	1,334	1,347	1,482	1,559	1,554	1,686	1,813	1,775	1,603	1,530	1,414	1,289	1,118	1,131
Recorded per 10,000 Population	32.7	30.2	31.8	31.3	30.9	30.8	30.7	33.3	34.6	34.2	36.7	39.3	38.2	34.3	32.4	29.7	27.0	23.4	23.4

DWELLING ASSAULTS



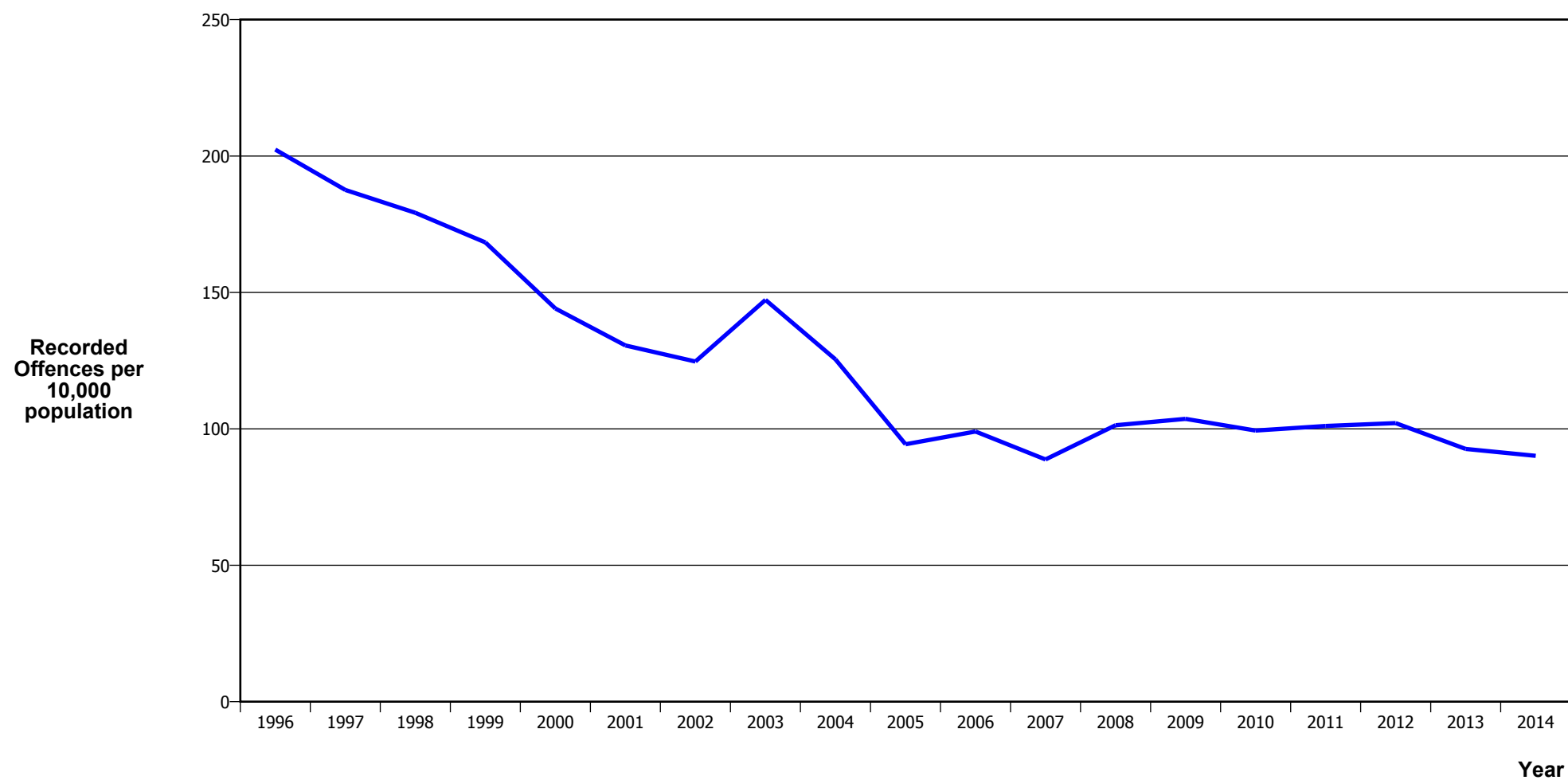
Calendar Year	1996	1997	1998	1999	2000	2001	2002	2003	2004	2005	2006	2007	2008	2009	2010	2011	2012	2013	2014
Recorded Offences	1,629	1,544	1,482	1,509	1,639	1,755	1,830	1,849	1,805	2,162	2,150	2,605	2,590	2,837	2,625	2,458	2,223	1,938	2,701
Recorded per 10,000 Population	38.8	36.4	34.8	35.2	38.1	40.6	41.8	41.6	40.1	47.6	46.8	56.4	55.8	60.6	55.7	51.7	46.6	40.5	55.9

ROBBERY



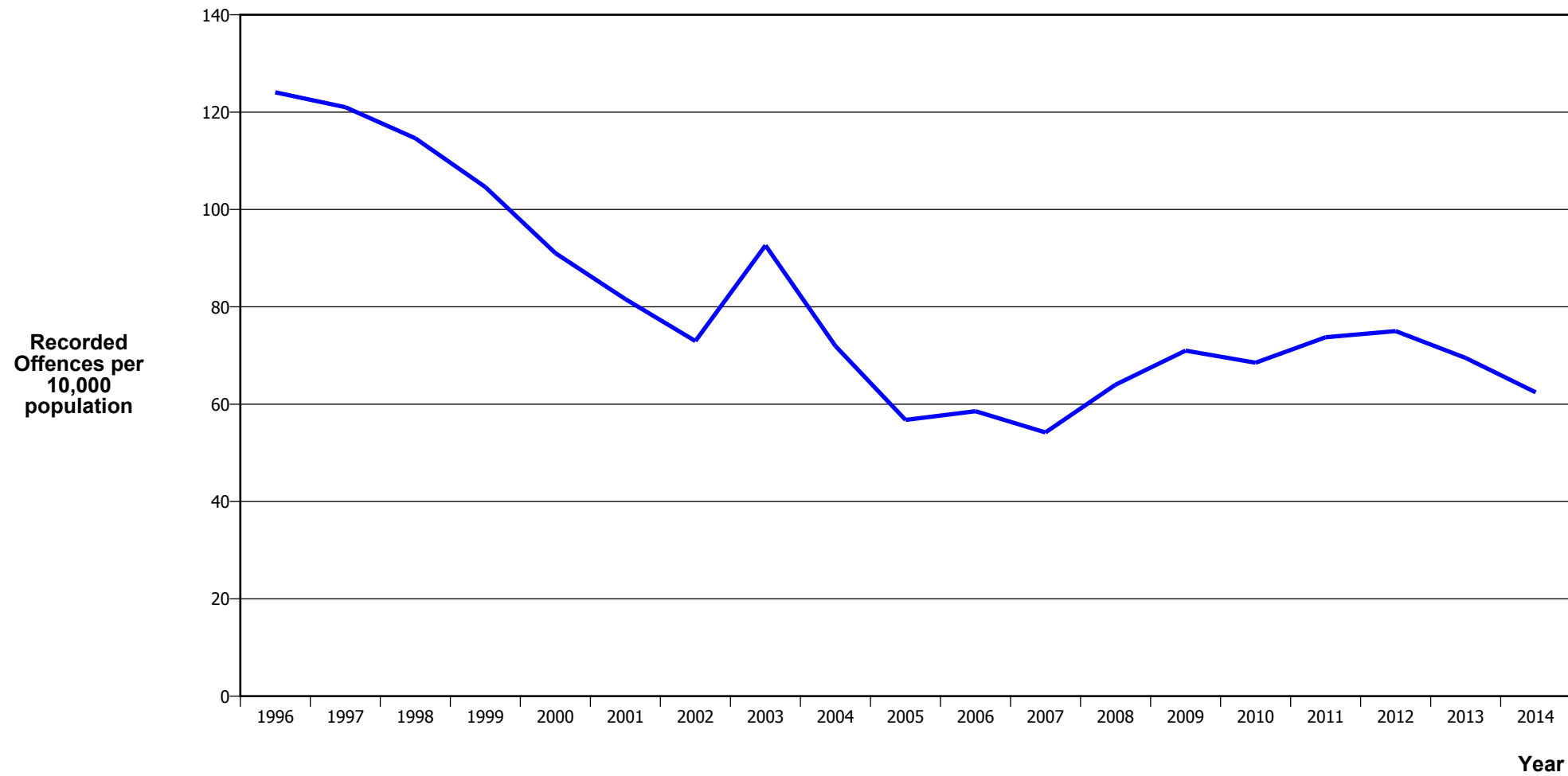
Calendar Year	1996	1997	1998	1999	2000	2001	2002	2003	2004	2005	2006	2007	2008	2009	2010	2011	2012	2013	2014
Recorded Offences	181	225	201	171	162	175	167	177	180	223	248	209	237	179	192	155	134	136	132
Recorded per 10,000 Population	4.3	5.3	4.7	4.0	3.8	4.0	3.8	4.0	4.0	4.9	5.4	4.5	5.1	3.8	4.1	3.3	2.8	2.8	2.7

BURGLARY (TOTAL)



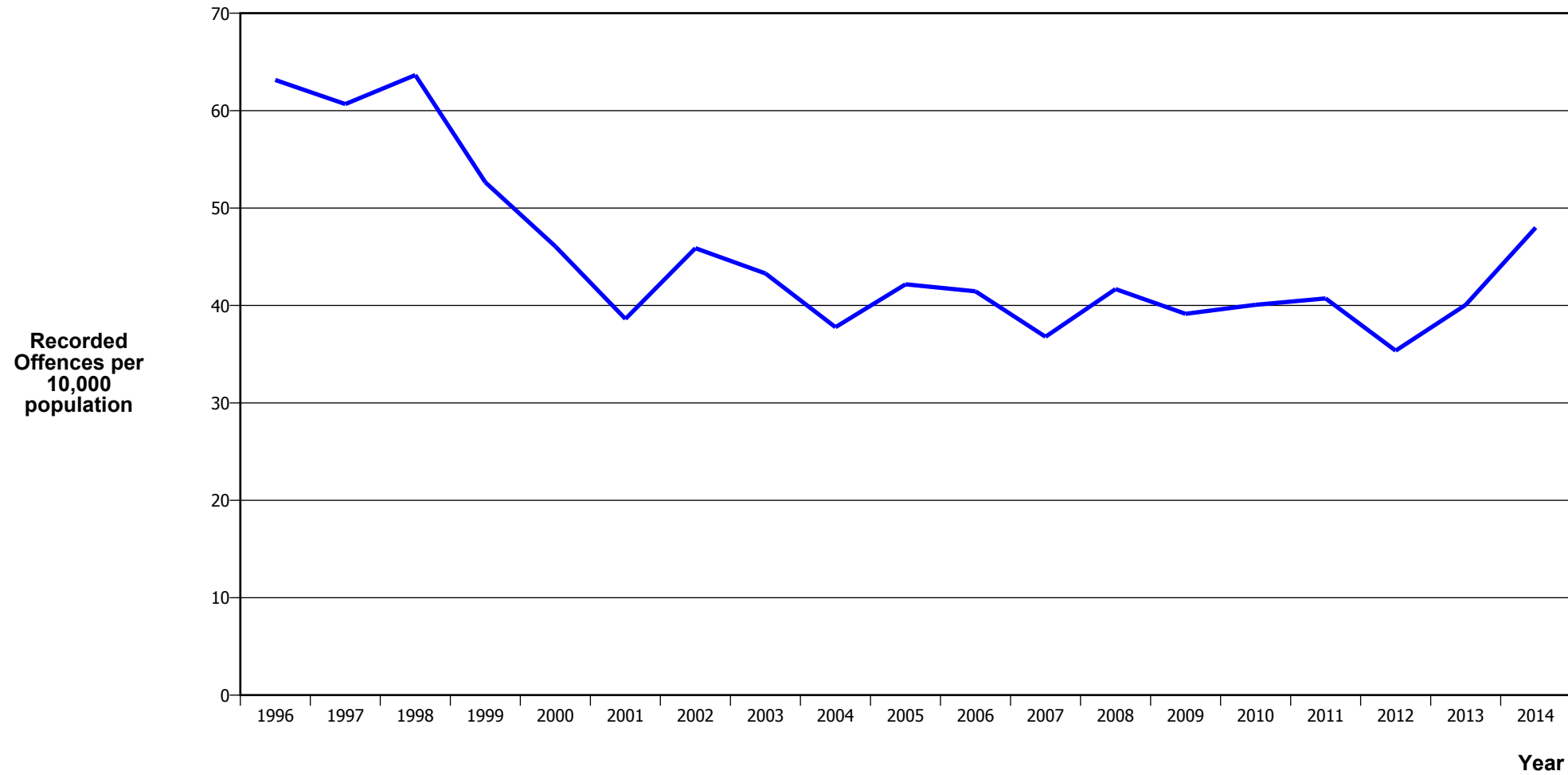
Calendar Year	1996	1997	1998	1999	2000	2001	2002	2003	2004	2005	2006	2007	2008	2009	2010	2011	2012	2013	2014
Recorded Offences	8,489	7,951	7,641	7,208	6,195	5,649	5,465	6,549	5,651	4,286	4,545	4,100	4,704	4,849	4,687	4,804	4,872	4,434	4,354
Recorded per 10,000 Population	202.4	187.6	179.2	168.3	144.1	130.6	124.7	147.3	125.5	94.3	99.0	88.8	101.3	103.7	99.4	101.0	102.1	92.7	90.1

BURGLARY (DWELLING)



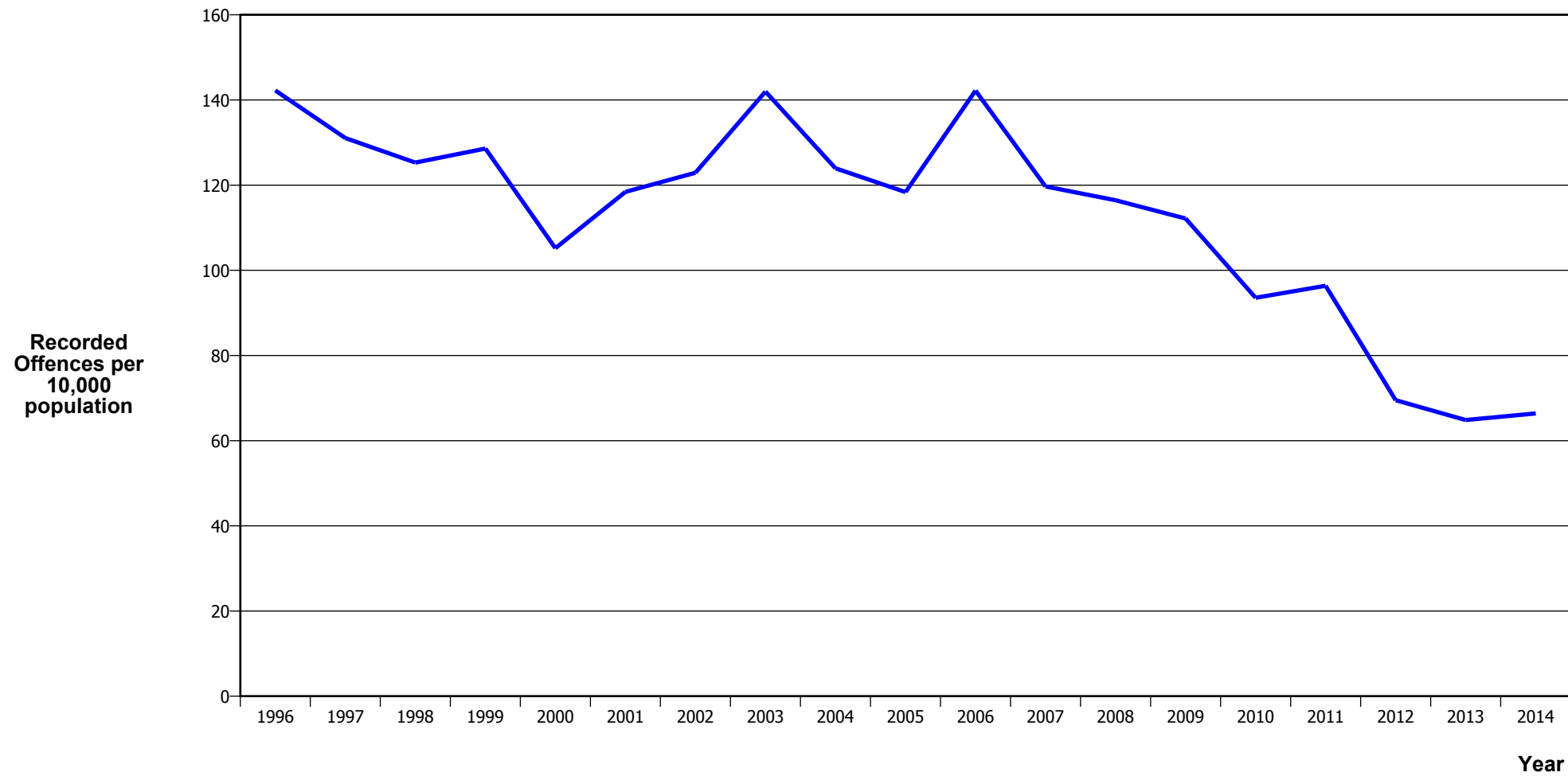
Calendar Year	1996	1997	1998	1999	2000	2001	2002	2003	2004	2005	2006	2007	2008	2009	2010	2011	2012	2013	2014
Recorded Offences	5,205	5,130	4,888	4,479	3,914	3,530	3,198	4,119	3,240	2,579	2,688	2,503	2,971	3,322	3,232	3,506	3,579	3,326	3,017
Recorded per 10,000 Population	124.1	121.0	114.6	104.6	91.1	81.6	73.0	92.6	71.9	56.8	58.6	54.2	64.0	71.0	68.5	73.7	75.0	69.5	62.4

VEHICLES STOLEN



Calendar Year	1996	1997	1998	1999	2000	2001	2002	2003	2004	2005	2006	2007	2008	2009	2010	2011	2012	2013	2014
Recorded Offences	2,649	2,572	2,714	2,254	1,980	1,671	2,011	1,925	1,701	1,916	1,903	1,699	1,935	1,831	1,890	1,936	1,687	1,917	2,319
Recorded per 10,000 Population	63.1	60.7	63.6	52.6	46.1	38.6	45.9	43.3	37.8	42.2	41.5	36.8	41.7	39.1	40.1	40.7	35.4	40.1	48.0

THEFT EX CAR



Calendar Year	1996	1997	1998	1999	2000	2001	2002	2003	2004	2005	2006	2007	2008	2009	2010	2011	2012	2013	2014
Recorded Offences	5,967	5,555	5,343	5,506	4,522	5,124	5,387	6,314	5,583	5,378	6,527	5,527	5,405	5,247	4,413	4,581	3,316	3,103	3,208
Recorded per 10,000 Population	142.2	131.0	125.3	128.6	105.2	118.4	122.9	142.0	124.0	118.4	142.2	119.7	116.4	112.2	93.6	96.4	69.5	64.8	66.4

Population Data

Population data is used in this release to calculate crime rates. They have been derived from population estimates as at 30 June each year that have been obtained from Statistics New Zealand.

The estimated resident population is based on the census usually resident population count, with adjustments for residents missed or counted more than once by the census (net census undercount), and for residents temporarily overseas on census night.

These population estimates exclude the number of international students who are studying in New Zealand for less than 12 months.

Year	Population
1996	419,480
1997	423,890
1998	426,420
1999	428,180
2000	429,870
2001	432,680
2002	438,310
2003	444,710
2004	450,420
2005	454,290
2006	459,020
2007	461,790
2008	464,170
2009	467,810
2010	471,670
2011	475,410
2012	477,080
2013	478,540
2014	483,220

General Definitions

Recorded Offences: the number of breaches of the New Zealand law recorded by Police. This includes offences specified in the Crimes Act and other legislations, such as the Summary Offences Act, Local Government Act, etc.

Resolved Offences: the number of recorded offences where an offender has been identified and dealt with (e.g. warned, cautioned, prosecuted, etc).

Resolution Rate: the proportion of recorded offences that have been resolved.

Recorded per 10,000 population: the number of recorded offences for every 10,000 people. This is also referred as the crime rate per 10,000 population.

ANZSOC: The Australian and New Zealand Standard Offence Classification. The offence classification is divided into 16 major offence divisions.

Definition of ANZSOC Divisions

1. Homicide and related offences: Unlawfully kill, attempt to unlawfully kill or conspiracy to kill another person.
2. Acts intended to cause injury: Acts, excluding attempted murder and those resulting in death, which are intended to cause non-fatal injury or harm to another person and where there is no sexual or acquisitive element.
3. Sexual assault and related offences: Acts, or intent of acts, of a sexual nature against another person, which are non-consensual or where consent is proscribed.
4. Dangerous or negligent acts endangering persons: Dangerous or negligent acts which, though not intended to cause harm, actually or potentially result in injury to oneself or another person.
5. Abduction, harassment and other offences against person: Acts intended to threaten or harass, or acts that unlawfully deprive another person of their freedom of movement, that are against that person's will or against the will of any parent, guardian or other person having lawful custody or care of that person.
6. Robbery, extortion and related offences: Acts intended to unlawfully gain money, property or other items of value from, or to cause detriment to, another person by using the threat of force or any other coercive measure.
7. Unlawful entry with intent / burglary, break and enter: The unlawful entry of a structure with the intent to commit an offence, where the entry is either forced or unforced.
8. Theft and related and offences: The unlawful taking or obtaining of money or goods, not involving the use of force or violence, coercion or deception, with intent to permanently or temporarily deprive the owner or possessor of the use of the money or goods, or the receiving or handling of money or goods obtained unlawfully.

9. Fraud, deception and related offences: Offences involving a dishonest act or omission carried out with the purpose of deceiving to obtain a benefit.

10. Illicit drug offences: The possessing, selling, dealing or trafficking, importing or exporting, manufacturing or cultivating of drugs or other substances prohibited under legislation.

11. Prohibited and regulated weapons and explosives offences: Offences involving prohibited or regulated weapons and explosives. Those offences also involving assault, sexual assault or robbery are coded to the relevant group within Assault, Sexual assaults and Robbery respectively.

12. Property damage and environmental pollution: The wilful and unlawful destruction, damage or defacement of public or private property, or the pollution of property or a definable entity held in common by the community.

13. Public order offences: Offences relating personal conduct that involves, or may lead to, a breach of public order or decency, or that is indicative of criminal intent, or that is otherwise regulated or prohibited on moral or ethical grounds. In general these offences do not involve a specific victim or victims; however some offences, such as offensive language and offensive behaviour, may be directed towards a single victim.

14. Traffic and vehicle regulatory offences: Offences relating to vehicles and most forms of traffic, including offences pertaining to the licensing, registration, roadworthiness, or use of vehicles, bicycle offences and pedestrian offences.

15. Offences against justice procedures, government security and government operations: An act or omission that is deemed to be prejudicial to the effective carrying out of justice procedures or any government operations. This includes general government operations as well as those specifically concerned with maintaining government security.

16. Miscellaneous offences: Offences involving the breach of statutory rules or regulations governing activities that are prima facie legal, where such offences are not explicitly dealt with under any other division. If an offence is specified under regulation and involves an act that would be illegal under common law or general criminal legislation, the offence is dealt with under the appropriate generic group.