

WELLINGTON DISTRICT CRIME STATISTICS 2011



**A Summary of
Recorded and Resolved Offence
Statistics**

**POLICE NATIONAL HEADQUARTERS
April 2012**

ISSN 1178 - 1610

Table of Contents:

Topic	Page
Report Notes	1
District Summary of Recorded and Resolved Crime, by Division	2-4
Proportions of Recorded Crime by Division	5
Summary of District Recorded Offences, Rate per 10,000 Population and Resolved Offences, by Area	6
Summary of Area Recorded Offences, Rate per 10,000 Population and Resolved Offences, by Division	7-9
Crime Trends	10
Total Crime	11
Murder	12
Serious Assaults Resulting in Injury	13
Public Place Assaults	14
Robbery	15
Burglary (Total)	16
Burglary (Dwelling)	17
Vehicles Stolen	18
Theft Ex Car	19
Population Data	20
General Definition	21-22

REPORT NOTES:

Statistics reported in this document are derived from the Police National Intelligence Application (NIA). These Official Statistics for Recorded and Resolved Offences present a snapshot of data in NIA relating to offences that occur within a given year, as at the date 14 days following the end of that year.

Unless the matter is minor where Police attendance is sufficient, a matter that is reported to or discovered by Police where Police believe an offence is likely to have been committed is counted as a recorded offence.

A recorded offence is counted as resolved when Police apprehend an offender and decide how to deal with him/her. (E.g. warn, prosecute, etc.)

Resolution rate is the percentage of recorded offences that are resolved within 14 days of the end of the year being reported on.

If an offence is resolved 15 days or more after the end of the year it will not appear in the Official Crime Statistics for that or any other year. Resolution Rate therefore undercounts the number of cases that Police have resolved. This phenomenon has a more marked impact for some types of offences than others, such as offences that require long investigations (E.g. many serial crimes, burglaries and murders).

When comparing 2011 Statistics with previous years, the reader should also refer to "Report Notes" published in previous years' reports, as previous changes significantly affect year on year trends.

SUMMARY OF DISTRICT RECORDED AND RESOLVED CRIME, BY DIVISION
Years ending 31 December

HOMICIDE AND RELATED OFFENCES

ASOC Subdivision Description	Recorded 2009	Recorded 2010	Recorded 2011	Variance 2009-2010	Variance 2010-2011	Resolved 2009	Resolved 2010	Resolved 2011	Resolution Rate 2009	Resolution Rate 2010	Resolution Rate 2011
ATTEMPTED MURDER	2	2	0	0.0 %	-100.0 %	1	1	0	50.0 %	50.0 %	0.0 %
HOMICIDE AND RELATED OFFENCES NOT FURTHER DEFINED	0	0	0	0.0 %	0.0 %	0	0	0	0.0 %	0.0 %	0.0 %
MANSLAUGHTER AND DRIVING CAUSING DEATH	1	3	1	200.0 %	-66.7 %	1	2	1	100.0 %	66.7 %	100.0 %
MURDER	5	5	3	0.0 %	-40.0 %	5	5	2	100.0 %	100.0 %	66.7 %
	8	10	4	25.0 %	-60.0 %	7	8	3	87.5 %	80.0 %	75.0 %

ACTS INTENDED TO CAUSE INJURY

ASOC Subdivision Description	Recorded 2009	Recorded 2010	Recorded 2011	Variance 2009-2010	Variance 2010-2011	Resolved 2009	Resolved 2010	Resolved 2011	Resolution Rate 2009	Resolution Rate 2010	Resolution Rate 2011
ASSAULT	4,887	4,586	4,271	-6.2 %	-6.9 %	4,216	3,857	3,563	86.3 %	84.1 %	83.4 %
OTHER ACTS INTENDED TO CAUSE INJURY	4	3	3	-25.0 %	0.0 %	2	0	2	50.0 %	0.0 %	66.7 %
	4,891	4,589	4,274	-6.2 %	-6.9 %	4,218	3,857	3,565	86.2 %	84.0 %	83.4 %

SEXUAL ASSAULT AND RELATED OFFENCES

ASOC Subdivision Description	Recorded 2009	Recorded 2010	Recorded 2011	Variance 2009-2010	Variance 2010-2011	Resolved 2009	Resolved 2010	Resolved 2011	Resolution Rate 2009	Resolution Rate 2010	Resolution Rate 2011
NON-ASSAULTIVE SEXUAL OFFENCES	7	10	8	42.9 %	-20.0 %	6	5	7	85.7 %	50.0 %	87.5 %
SEXUAL ASSAULT	298	317	367	6.4 %	15.8 %	194	158	188	65.1 %	49.8 %	51.2 %
	305	327	375	7.2 %	14.7 %	200	163	195	65.6 %	49.8 %	52.0 %

DANGEROUS OR NEGLIGENT ACTS ENDANGERING PERSONS

ASOC Subdivision Description	Recorded 2009	Recorded 2010	Recorded 2011	Variance 2009-2010	Variance 2010-2011	Resolved 2009	Resolved 2010	Resolved 2011	Resolution Rate 2009	Resolution Rate 2010	Resolution Rate 2011
OTHER DANGEROUS OR NEGLIGENT ACTS ENDANGERING PERSONS	58	76	81	31.0 %	6.6 %	39	50	66	67.2 %	65.8 %	81.5 %
	58	76	81	31.0 %	6.6 %	39	50	66	67.2 %	65.8 %	81.5 %

ABDUCTION, HARASSMENT AND OTHER RELATED OFFENCES AGAINST A PERSON

ASOC Subdivision Description	Recorded 2009	Recorded 2010	Recorded 2011	Variance 2009-2010	Variance 2010-2011	Resolved 2009	Resolved 2010	Resolved 2011	Resolution Rate 2009	Resolution Rate 2010	Resolution Rate 2011
ABDUCTION AND KIDNAPPING	43	30	32	-30.2 %	6.7 %	40	20	21	93.0 %	66.7 %	65.6 %
HARASSMENT AND THREATENING BEHAVIOUR	1,721	1,722	1,475	0.1 %	-14.3 %	1,182	1,103	1,018	68.7 %	64.1 %	69.0 %
	1,764	1,752	1,507	-0.7 %	-14.0 %	1,222	1,123	1,039	69.3 %	64.1 %	68.9 %

ROBBERY, EXTORTION AND RELATED OFFENCES

ASOC Subdivision Description	Recorded 2009	Recorded 2010	Recorded 2011	Variance 2009-2010	Variance 2010-2011	Resolved 2009	Resolved 2010	Resolved 2011	Resolution Rate 2009	Resolution Rate 2010	Resolution Rate 2011
BLACKMAIL AND EXTORTION	17	13	10	-23.5 %	-23.1 %	13	9	5	76.5 %	69.2 %	50.0 %
ROBBERY	179	192	155	7.3 %	-19.3 %	101	94	75	56.4 %	49.0 %	48.4 %
	196	205	165	4.6 %	-19.5 %	114	103	80	58.2 %	50.2 %	48.5 %

UNLAWFUL ENTRY WITH INTENT/BURGLARY, BREAK AND ENTER

ASOC Subdivision Description	Recorded 2009	Recorded 2010	Recorded 2011	Variance 2009-2010	Variance 2010-2011	Resolved 2009	Resolved 2010	Resolved 2011	Resolution Rate 2009	Resolution Rate 2010	Resolution Rate 2011
UNLAWFUL ENTRY WITH INTENT/BURGLARY, BREAK AND ENTER	4,849	4,687	4,804	-3.3 %	2.5 %	833	587	648	17.2 %	12.5 %	13.5 %
	4,849	4,687	4,804	-3.3 %	2.5 %	833	587	648	17.2 %	12.5 %	13.5 %

SUMMARY OF DISTRICT RECORDED AND RESOLVED CRIME, BY DIVISION

Years ending 31 December

THEFT AND RELATED OFFENCES

ASOC Subdivision Description	Recorded 2009	Recorded 2010	Recorded 2011	Variance 2009-2010	Variance 2010-2011	Resolved 2009	Resolved 2010	Resolved 2011	Resolution Rate 2009	Resolution Rate 2010	Resolution Rate 2011
ILLEGAL USE OF PROPERTY (EXCEPT MOTOR VEHICLES)	387	396	377	2.3 %	-4.8 %	35	17	23	9.0 %	4.3 %	6.1 %
MOTOR VEHICLE THEFT AND RELATED OFFENCES	7,078	6,303	6,517	-10.9 %	3.4 %	596	435	457	8.4 %	6.9 %	7.0 %
RECEIVE OR HANDLE PROCEEDS OF CRIME	282	253	234	-10.3 %	-7.5 %	267	243	225	94.7 %	96.0 %	96.2 %
THEFT AND RELATED OFFENCES NOT FURTHER DEFINED	0	0	0	0.0 %	0.0 %	0	0	0	0.0 %	0.0 %	0.0 %
THEFT (EXCEPT MOTOR VEHICLES)	8,663	8,094	8,212	-6.6 %	1.5 %	2,789	2,399	2,499	32.2 %	29.6 %	30.4 %
	16,410	15,046	15,340	-8.3 %	2.0 %	3,687	3,094	3,204	22.5 %	20.6 %	20.9 %

FRAUD, DECEPTION AND RELATED OFFENCES

ASOC Subdivision Description	Recorded 2009	Recorded 2010	Recorded 2011	Variance 2009-2010	Variance 2010-2011	Resolved 2009	Resolved 2010	Resolved 2011	Resolution Rate 2009	Resolution Rate 2010	Resolution Rate 2011
DECEPTIVE BUSINESS/GOVERNMENT PRACTICES	8	6	1	-25.0 %	-83.3 %	3	4	1	37.5 %	66.7 %	100.0 %
FORGERY AND COUNTERFEITING	49	31	29	-36.7 %	-6.5 %	27	18	12	55.1 %	58.1 %	41.4 %
OBTAIN BENEFIT BY DECEPTION	999	939	677	-6.0 %	-27.9 %	603	537	329	60.4 %	57.2 %	48.6 %
OTHER FRAUD AND DECEPTION OFFENCES	55	39	53	-29.1 %	35.9 %	19	13	22	34.5 %	33.3 %	41.5 %
	1,111	1,015	760	-8.6 %	-25.1 %	652	572	364	58.7 %	56.4 %	47.9 %

ILLCIT DRUG OFFENCES

ASOC Subdivision Description	Recorded 2009	Recorded 2010	Recorded 2011	Variance 2009-2010	Variance 2010-2011	Resolved 2009	Resolved 2010	Resolved 2011	Resolution Rate 2009	Resolution Rate 2010	Resolution Rate 2011
DEAL OR TRAFFIC IN ILLICIT DRUGS	584	316	578	-45.9 %	82.9 %	576	302	537	98.6 %	95.6 %	92.9 %
IMPORT OR EXPORT ILLICIT DRUGS	25	8	3	-68.0 %	-62.5 %	23	4	3	92.0 %	50.0 %	100.0 %
MANUFACTURE OR CULTIVATE ILLICIT DRUGS	183	219	165	19.7 %	-24.7 %	167	193	150	91.3 %	88.1 %	90.9 %
OTHER ILLICIT DRUG OFFENCES	492	454	340	-7.7 %	-25.1 %	482	443	335	98.0 %	97.6 %	98.5 %
POSSESS AND/OR USE ILLICIT DRUGS	1,083	910	724	-16.0 %	-20.4 %	1,047	875	704	96.7 %	96.2 %	97.2 %
	2,367	1,907	1,810	-19.4 %	-5.1 %	2,295	1,817	1,729	97.0 %	95.3 %	95.5 %

PROHIBITED AND REGULATED WEAPONS AND EXPLOSIVES OFFENCES

ASOC Subdivision Description	Recorded 2009	Recorded 2010	Recorded 2011	Variance 2009-2010	Variance 2010-2011	Resolved 2009	Resolved 2010	Resolved 2011	Resolution Rate 2009	Resolution Rate 2010	Resolution Rate 2011
REGULATED WEAPONS/EXPLOSIVES OFFENCES	670	570	490	-14.9 %	-14.0 %	617	515	462	92.1 %	90.4 %	94.3 %
	670	570	490	-14.9 %	-14.0 %	617	515	462	92.1 %	90.4 %	94.3 %

PROPERTY DAMAGE AND ENVIRONMENTAL POLLUTION

ASOC Subdivision Description	Recorded 2009	Recorded 2010	Recorded 2011	Variance 2009-2010	Variance 2010-2011	Resolved 2009	Resolved 2010	Resolved 2011	Resolution Rate 2009	Resolution Rate 2010	Resolution Rate 2011
ENVIRONMENTAL POLLUTION	16	13	7	-18.8 %	-46.2 %	10	9	5	62.5 %	69.2 %	71.4 %
PROPERTY DAMAGE	7,943	7,660	6,807	-3.6 %	-11.1 %	1,820	1,711	1,535	22.9 %	22.3 %	22.6 %
	7,959	7,673	6,814	-3.6 %	-11.2 %	1,830	1,720	1,540	23.0 %	22.4 %	22.6 %

SUMMARY OF DISTRICT RECORDED AND RESOLVED CRIME, BY DIVISION
Years ending 31 December

PUBLIC ORDER OFFENCES

ASOC Subdivision Description	Recorded 2009	Recorded 2010	Recorded 2011	Variance 2009-2010	Variance 2010-2011	Resolved 2009	Resolved 2010	Resolved 2011	Resolution Rate 2009	Resolution Rate 2010	Resolution Rate 2011
DISORDERLY CONDUCT	3,673	3,235	3,082	-11.9 %	-4.7 %	3,146	2,744	2,690	85.7 %	84.8 %	87.3 %
OFFENSIVE CONDUCT	230	196	159	-14.8 %	-18.9 %	165	137	134	71.7 %	69.9 %	84.3 %
PUBLIC ORDER OFFENCES NOT FURTHER DEFINED	0	1	0	0.0 %	-100.0 %	0	1	0	0.0 %	100.0 %	0.0 %
REGULATED PUBLIC ORDER OFFENCES	1,205	910	815	-24.5 %	-10.4 %	1,130	840	770	93.8 %	92.3 %	94.5 %
	5,108	4,342	4,056	-15.0 %	-6.6 %	4,441	3,722	3,594	86.9 %	85.7 %	88.6 %

OFFENCES AGAINST JUSTICE PROCEDURES, GOVERNMENT SECURITY AND GOVERNMENT OPERATIONS

ASOC Subdivision Description	Recorded 2009	Recorded 2010	Recorded 2011	Variance 2009-2010	Variance 2010-2011	Resolved 2009	Resolved 2010	Resolved 2011	Resolution Rate 2009	Resolution Rate 2010	Resolution Rate 2011
BREACH OF COMMUNITY-BASED ORDER	710	676	548	-4.8 %	-18.9 %	598	585	501	84.2 %	86.5 %	91.4 %
BREACH OF CUSTODIAL ORDER OFFENCES	61	46	38	-24.6 %	-17.4 %	61	45	35	100.0 %	97.8 %	92.1 %
BREACH OF VIOLENCE AND NON-VIOLENCE RESTRAINING ORDERS	673	633	646	-5.9 %	2.1 %	596	545	590	88.6 %	86.1 %	91.3 %
OFFENCES AGAINST GOVERNMENT OPERATIONS	30	37	36	23.3 %	-2.7 %	10	18	22	33.3 %	48.6 %	61.1 %
OFFENCES AGAINST GOVERNMENT SECURITY	0	1	3	0.0 %	200.0 %	0	1	3	0.0 %	100.0 %	100.0 %
OFFENCES AGAINST JUSTICE PROCEDURES	713	567	539	-20.5 %	-4.9 %	703	556	527	98.6 %	98.1 %	97.8 %
OFFENCES AGAINST JUSTICE PROCEDURES, GOVERNMENT SECURITY AND GOVERNMENT OPERATIONS NOT FURTHER DEFINED	3	0	0	-100.0 %	0.0 %	1	0	0	33.3 %	0.0 %	0.0 %
	2,190	1,960	1,810	-10.5 %	-7.7 %	1,969	1,750	1,678	89.9 %	89.3 %	92.7 %

MISCELLANEOUS OFFENCES

ASOC Subdivision Description	Recorded 2009	Recorded 2010	Recorded 2011	Variance 2009-2010	Variance 2010-2011	Resolved 2009	Resolved 2010	Resolved 2011	Resolution Rate 2009	Resolution Rate 2010	Resolution Rate 2011
COMMERCIAL/INDUSTRY/FINANCIAL REGULATION	5	0	5	-100.0 %	0.0 %	5	0	5	100.0 %	0.0 %	100.0 %
DEFAMATION, LIBEL AND PRIVACY OFFENCES	9	4	6	-55.6 %	50.0 %	6	0	3	66.7 %	0.0 %	50.0 %
OTHER MISCELLANEOUS OFFENCES	123	124	88	0.8 %	-29.0 %	89	97	63	72.4 %	78.2 %	71.6 %
PUBLIC HEALTH AND SAFETY OFFENCES	56	34	55	-39.3 %	61.8 %	53	29	50	94.6 %	85.3 %	90.9 %
	193	162	154	-16.1 %	-4.9 %	153	126	121	79.3 %	77.8 %	78.6 %

TOTAL	48,079	44,321	42,444	-7.8 %	-4.2 %	22,277	19,207	18,288	46.3 %	43.3 %	43.1 %
--------------	---------------	---------------	---------------	---------------	---------------	---------------	---------------	---------------	---------------	---------------	---------------

PROPORTIONS OF RECORDED CRIME BY DIVISION

Years ending 31 December

ASOC Division Description	Proportions Recorded 2009	Recorded 2009	Proportions Recorded 2010	Recorded 2010	Proportions Recorded 2011	Recorded 2011
HOMICIDE AND RELATED OFFENCES	0.02 %	8	0.02 %	10	0.01 %	4
ACTS INTENDED TO CAUSE INJURY	10.17 %	4,891	10.35 %	4,589	10.07 %	4,274
SEXUAL ASSAULT AND RELATED OFFENCES	0.63 %	305	0.74 %	327	0.88 %	375
DANGEROUS OR NEGLIGENT ACTS ENDANGERING PERSONS	0.12 %	58	0.17 %	76	0.19 %	81
ABDUCTION, HARASSMENT AND OTHER RELATED OFFENCES AGAINST A PERSON	3.67 %	1,764	3.95 %	1,752	3.55 %	1,507
ROBBERY, EXTORTION AND RELATED OFFENCES	0.41 %	196	0.46 %	205	0.39 %	165
UNLAWFUL ENTRY WITH INTENT/BURGLARY, BREAK AND ENTER	10.09 %	4,849	10.58 %	4,687	11.32 %	4,804
THEFT AND RELATED OFFENCES	34.13 %	16,410	33.95 %	15,046	36.14 %	15,340
FRAUD, DECEPTION AND RELATED OFFENCES	2.31 %	1,111	2.29 %	1,015	1.79 %	760
ILLICIT DRUG OFFENCES	4.92 %	2,367	4.30 %	1,907	4.26 %	1,810
PROHIBITED AND REGULATED WEAPONS AND EXPLOSIVES OFFENCES	1.39 %	670	1.29 %	570	1.15 %	490
PROPERTY DAMAGE AND ENVIRONMENTAL POLLUTION	16.55 %	7,959	17.31 %	7,673	16.05 %	6,814
PUBLIC ORDER OFFENCES	10.62 %	5,108	9.80 %	4,342	9.56 %	4,056
OFFENCES AGAINST JUSTICE PROCEDURES, GOVERNMENT SECURITY AND GOVERNMENT OPERATIONS	4.56 %	2,190	4.42 %	1,960	4.26 %	1,810
MISCELLANEOUS OFFENCES	0.40 %	193	0.37 %	162	0.36 %	154
	100.00 %	48,079	100.00 %	44,321	100.00 %	42,444

SUMMARY OF RECORDED OFFENCES, RATE PER 10,000 POPULATION AND RESOLVED OFFENCES, BY AREA
years ending 31 December

TOTAL CRIME

Area Description	Recorded 2010	Recorded 2011	Variance 2010-2011	Recorded per 10,000 pop 2010	Recorded per 10,000 pop 2011	Per 10,000 pop % Variance 2010 to 2011	Resolved 2010	Resolved 2011	Resolution Rate 2010	Resolution Rate 2011
Kapiti-Mana	8,801	8,483	-3.6 %	814.2	778.3	-4.4 %	4,444	4,230	50.5 %	49.9 %
Lower Hutt	10,017	9,081	-9.3 %	975.5	882.0	-9.6 %	3,898	3,631	38.9 %	40.0 %
Upper Hutt	3,826	3,814	-0.3 %	930.9	919.0	-1.3 %	1,667	1,776	43.6 %	46.6 %
Wairarapa	4,616	4,439	-3.8 %	1,146.0	1,093.3	-4.6 %	2,325	2,286	50.4 %	51.5 %
Wellington	17,061	16,627	-2.5 %	929.0	894.7	-3.7 %	6,873	6,365	40.3 %	38.3 %
	44,321	42,444	-4.2 %	931.5	884.4	-5.1 %	19,207	18,288	43.3 %	43.1 %

SUMMARY OF RECORDED OFFENCES, RATE PER 10,000 POPULATION AND RESOLVED OFFENCES, BY DIVISION

Years ending 31 December

HOMICIDE AND RELATED OFFENCES

Area Description	Recorded 2010	Recorded 2011	Variance 2010-2011	Recorded per 10,000 pop 2010	Recorded per 10,000 pop 2011	Per 10,000 pop % Variance 2010 to 2011	Resolved 2010	Resolved 2011	Resolution Rate 2010	Resolution Rate 2011
Kapiti-Mana	1	0	-100.0 %	0.1	0.0	-100.0 %	1	0	100.0 %	0.0 %
Lower Hutt	0	1	0.0 %	0.0	0.1	0.0 %	0	1	0.0 %	100.0 %
Upper Hutt	2	0	-100.0 %	0.5	0.0	-100.0 %	1	0	50.0 %	0.0 %
Wairarapa	1	0	-100.0 %	0.2	0.0	-100.0 %	1	0	100.0 %	0.0 %
Wellington	6	3	-50.0 %	0.3	0.2	-50.6 %	5	2	83.3 %	66.7 %
	10	4	-60.0 %	0.2	0.1	-60.3 %	8	3	80.0 %	75.0 %

ACTS INTENDED TO CAUSE INJURY

Area Description	Recorded 2010	Recorded 2011	Variance 2010-2011	Recorded per 10,000 pop 2010	Recorded per 10,000 pop 2011	Per 10,000 pop % Variance 2010 to 2011	Resolved 2010	Resolved 2011	Resolution Rate 2010	Resolution Rate 2011
Kapiti-Mana	1,167	992	-15.0 %	108.0	91.0	-15.7 %	1,032	910	88.4 %	91.7 %
Lower Hutt	942	842	-10.6 %	91.7	81.8	-10.9 %	767	670	81.4 %	79.6 %
Upper Hutt	399	446	11.8 %	97.1	107.5	10.7 %	333	389	83.5 %	87.2 %
Wairarapa	616	570	-7.5 %	152.9	140.4	-8.2 %	508	464	82.5 %	81.4 %
Wellington	1,465	1,424	-2.8 %	79.8	76.6	-3.9 %	1,217	1,132	83.1 %	79.5 %
	4,589	4,274	-6.9 %	96.4	89.1	-7.7 %	3,857	3,565	84.0 %	83.4 %

SEXUAL ASSAULT AND RELATED OFFENCES

Area Description	Recorded 2010	Recorded 2011	Variance 2010-2011	Recorded per 10,000 pop 2010	Recorded per 10,000 pop 2011	Per 10,000 pop % Variance 2010 to 2011	Resolved 2010	Resolved 2011	Resolution Rate 2010	Resolution Rate 2011
Kapiti-Mana	68	96	41.2 %	6.3	8.8	40.0 %	40	70	58.8 %	72.9 %
Lower Hutt	83	82	-1.2 %	8.1	8.0	-1.5 %	50	48	60.2 %	58.5 %
Upper Hutt	27	44	63.0 %	6.6	10.6	61.4 %	12	27	44.4 %	61.4 %
Wairarapa	37	48	29.7 %	9.2	11.8	28.7 %	14	13	37.8 %	27.1 %
Wellington	112	105	-6.3 %	6.1	5.7	-7.4 %	47	37	42.0 %	35.2 %
	327	375	14.7 %	6.9	7.8	13.7 %	163	195	49.8 %	52.0 %

DANGEROUS OR NEGLIGENT ACTS ENDANGERING PERSONS

Area Description	Recorded 2010	Recorded 2011	Variance 2010-2011	Recorded per 10,000 pop 2010	Recorded per 10,000 pop 2011	Per 10,000 pop % Variance 2010 to 2011	Resolved 2010	Resolved 2011	Resolution Rate 2010	Resolution Rate 2011
Kapiti-Mana	19	27	42.1 %	1.8	2.5	40.9 %	14	26	73.7 %	96.3 %
Lower Hutt	12	9	-25.0 %	1.2	0.9	-25.2 %	5	8	41.7 %	88.9 %
Upper Hutt	3	10	233.3 %	0.7	2.4	230.1 %	2	9	66.7 %	90.0 %
Wairarapa	13	14	7.7 %	3.2	3.4	6.8 %	8	12	61.5 %	85.7 %
Wellington	29	21	-27.6 %	1.6	1.1	-28.4 %	21	11	72.4 %	52.4 %
	76	81	6.6 %	1.6	1.7	5.7 %	50	66	65.8 %	81.5 %

ABDUCTION, HARASSMENT AND OTHER RELATED OFFENCES AGAINST A PERSON

Area Description	Recorded 2010	Recorded 2011	Variance 2010-2011	Recorded per 10,000 pop 2010	Recorded per 10,000 pop 2011	Per 10,000 pop % Variance 2010 to 2011	Resolved 2010	Resolved 2011	Resolution Rate 2010	Resolution Rate 2011
Kapiti-Mana	432	372	-13.9 %	40.0	34.1	-14.6 %	334	292	77.3 %	78.5 %
Lower Hutt	345	279	-19.1 %	33.6	27.1	-19.3 %	174	171	50.4 %	61.3 %
Upper Hutt	207	171	-17.4 %	50.4	41.2	-18.2 %	151	138	72.9 %	80.7 %
Wairarapa	244	222	-9.0 %	60.6	54.7	-9.7 %	177	170	72.5 %	76.6 %
Wellington	524	463	-11.6 %	28.5	24.9	-12.7 %	287	268	54.8 %	57.9 %
	1,752	1,507	-14.0 %	36.8	31.4	-14.7 %	1,123	1,039	64.1 %	68.9 %

SUMMARY OF RECORDED OFFENCES, RATE PER 10,000 POPULATION AND RESOLVED OFFENCES, BY DIVISION

Years ending 31 December

ROBBERY, EXTORTION AND RELATED OFFENCES

Area Description	Recorded 2010	Recorded 2011	Variance 2010-2011	Recorded per 10,000 pop 2010	Recorded per 10,000 pop 2011	Per 10,000 pop % Variance 2010 to 2011	Resolved 2010	Resolved 2011	Resolution Rate 2010	Resolution Rate 2011
Kapiti-Mana	46	24	-47.8 %	4.3	2.2	-48.3 %	28	13	60.9 %	54.2 %
Lower Hutt	44	49	11.4 %	4.3	4.8	11.1 %	21	28	47.7 %	57.1 %
Upper Hutt	9	10	11.1 %	2.2	2.4	10.0 %	4	3	44.4 %	30.0 %
Wairarapa	19	15	-21.1 %	4.7	3.7	-21.7 %	10	9	52.6 %	60.0 %
Wellington	87	67	-23.0 %	4.7	3.6	-23.9 %	40	27	46.0 %	40.3 %
	205	165	-19.5 %	4.3	3.4	-20.2 %	103	80	50.2 %	48.5 %

UNLAWFUL ENTRY WITH INTENT/BURGLARY, BREAK AND ENTER

Area Description	Recorded 2010	Recorded 2011	Variance 2010-2011	Recorded per 10,000 pop 2010	Recorded per 10,000 pop 2011	Per 10,000 pop % Variance 2010 to 2011	Resolved 2010	Resolved 2011	Resolution Rate 2010	Resolution Rate 2011
Kapiti-Mana	859	1,038	20.8 %	79.5	95.2	19.8 %	153	199	17.8 %	19.2 %
Lower Hutt	1,214	1,023	-15.7 %	118.2	99.4	-16.0 %	167	138	13.8 %	13.5 %
Upper Hutt	470	476	1.3 %	114.4	114.7	0.3 %	56	55	11.9 %	11.6 %
Wairarapa	678	661	-2.5 %	168.3	162.8	-3.3 %	73	84	10.8 %	12.7 %
Wellington	1,466	1,606	9.5 %	79.8	86.4	8.3 %	138	172	9.4 %	10.7 %
	4,687	4,804	2.5 %	98.5	100.1	1.6 %	587	648	12.5 %	13.5 %

THEFT AND RELATED OFFENCES

Area Description	Recorded 2010	Recorded 2011	Variance 2010-2011	Recorded per 10,000 pop 2010	Recorded per 10,000 pop 2011	Per 10,000 pop % Variance 2010 to 2011	Resolved 2010	Resolved 2011	Resolution Rate 2010	Resolution Rate 2011
Kapiti-Mana	2,621	2,872	9.6 %	242.5	263.5	8.7 %	698	846	26.6 %	29.5 %
Lower Hutt	3,646	3,653	0.2 %	355.0	354.8	-0.1 %	819	822	22.5 %	22.5 %
Upper Hutt	1,135	1,118	-1.5 %	276.2	269.4	-2.4 %	209	244	18.4 %	21.8 %
Wairarapa	992	1,037	4.5 %	246.3	255.4	3.7 %	288	302	29.0 %	29.1 %
Wellington	6,652	6,660	0.1 %	362.2	358.4	-1.1 %	1,080	990	16.2 %	14.9 %
	15,046	15,340	2.0 %	316.2	319.6	1.1 %	3,094	3,204	20.6 %	20.9 %

FRAUD, DECEPTION AND RELATED OFFENCES

Area Description	Recorded 2010	Recorded 2011	Variance 2010-2011	Recorded per 10,000 pop 2010	Recorded per 10,000 pop 2011	Per 10,000 pop % Variance 2010 to 2011	Resolved 2010	Resolved 2011	Resolution Rate 2010	Resolution Rate 2011
Kapiti-Mana	119	106	-10.9 %	11.0	9.7	-11.7 %	79	68	66.4 %	64.2 %
Lower Hutt	265	114	-57.0 %	25.8	11.1	-57.1 %	143	41	54.0 %	36.0 %
Upper Hutt	64	41	-35.9 %	15.6	9.9	-36.6 %	37	20	57.8 %	48.8 %
Wairarapa	60	82	36.7 %	14.9	20.2	35.6 %	27	53	45.0 %	64.6 %
Wellington	507	417	-17.8 %	27.6	22.4	-18.7 %	286	182	56.4 %	43.6 %
	1,015	760	-25.1 %	21.3	15.8	-25.8 %	572	364	56.4 %	47.9 %

ILLICIT DRUG OFFENCES

Area Description	Recorded 2010	Recorded 2011	Variance 2010-2011	Recorded per 10,000 pop 2010	Recorded per 10,000 pop 2011	Per 10,000 pop % Variance 2010 to 2011	Resolved 2010	Resolved 2011	Resolution Rate 2010	Resolution Rate 2011
Kapiti-Mana	376	353	-6.1 %	34.8	32.4	-6.9 %	360	343	95.7 %	97.2 %
Lower Hutt	421	258	-38.7 %	41.0	25.1	-38.9 %	407	245	96.7 %	95.0 %
Upper Hutt	198	167	-15.7 %	48.2	40.2	-16.5 %	192	161	97.0 %	96.4 %
Wairarapa	237	314	32.5 %	58.8	77.3	31.4 %	218	310	92.0 %	98.7 %
Wellington	675	718	6.4 %	36.8	38.6	5.1 %	640	670	94.8 %	93.3 %
	1,907	1,810	-5.1 %	40.1	37.7	-5.9 %	1,817	1,729	95.3 %	95.5 %

SUMMARY OF RECORDED OFFENCES, RATE PER 10,000 POPULATION AND RESOLVED OFFENCES, BY DIVISION

Years ending 31 December

PROHIBITED AND REGULATED WEAPONS AND EXPLOSIVES OFFENCES

Area Description	Recorded 2010	Recorded 2011	Variance 2010-2011	Recorded per 10,000 pop 2010	Recorded per 10,000 pop 2011	Per 10,000 pop % Variance 2010 to 2011	Resolved 2010	Resolved 2011	Resolution Rate 2010	Resolution Rate 2011
Kapiti-Mana	146	110	-24.7 %	13.5	10.1	-25.3 %	135	103	92.5 %	93.6 %
Lower Hutt	129	101	-21.7 %	12.6	9.8	-21.9 %	115	97	89.1 %	96.0 %
Upper Hutt	43	51	18.6 %	10.5	12.3	17.5 %	36	47	83.7 %	92.2 %
Wairarapa	98	62	-36.7 %	24.3	15.3	-37.2 %	86	56	87.8 %	90.3 %
Wellington	154	166	7.8 %	8.4	8.9	6.5 %	143	159	92.9 %	95.8 %
	570	490	-14.0 %	12.0	10.2	-14.8 %	515	462	90.4 %	94.3 %

PROPERTY DAMAGE AND ENVIRONMENTAL POLLUTION

Area Description	Recorded 2010	Recorded 2011	Variance 2010-2011	Recorded per 10,000 pop 2010	Recorded per 10,000 pop 2011	Per 10,000 pop % Variance 2010 to 2011	Resolved 2010	Resolved 2011	Resolution Rate 2010	Resolution Rate 2011
Kapiti-Mana	1,655	1,510	-8.8 %	153.1	138.5	-9.5 %	441	451	26.6 %	29.9 %
Lower Hutt	1,718	1,365	-20.5 %	167.3	132.6	-20.8 %	364	295	21.2 %	21.6 %
Upper Hutt	737	711	-3.5 %	179.3	171.3	-4.5 %	166	165	22.5 %	23.2 %
Wairarapa	796	683	-14.2 %	197.6	168.2	-14.9 %	202	178	25.4 %	26.1 %
Wellington	2,767	2,545	-8.0 %	150.7	136.9	-9.1 %	547	451	19.8 %	17.7 %
	7,673	6,814	-11.2 %	161.3	142.0	-12.0 %	1,720	1,540	22.4 %	22.6 %

PUBLIC ORDER OFFENCES

Area Description	Recorded 2010	Recorded 2011	Variance 2010-2011	Recorded per 10,000 pop 2010	Recorded per 10,000 pop 2011	Per 10,000 pop % Variance 2010 to 2011	Resolved 2010	Resolved 2011	Resolution Rate 2010	Resolution Rate 2011
Kapiti-Mana	927	606	-34.6 %	85.8	55.6	-35.2 %	795	544	85.8 %	89.8 %
Lower Hutt	678	724	6.8 %	66.0	70.3	6.5 %	478	561	70.5 %	77.5 %
Upper Hutt	283	332	17.3 %	68.9	80.0	16.2 %	236	293	83.4 %	88.3 %
Wairarapa	609	548	-10.0 %	151.2	135.0	-10.7 %	522	479	85.7 %	87.4 %
Wellington	1,845	1,846	0.1 %	100.5	99.3	-1.1 %	1,691	1,717	91.7 %	93.0 %
	4,342	4,056	-6.6 %	91.3	84.5	-7.4 %	3,722	3,594	85.7 %	88.6 %

OFFENCES AGAINST JUSTICE PROCEDURES, GOVERNMENT SECURITY AND GOVERNMENT OPERATIONS

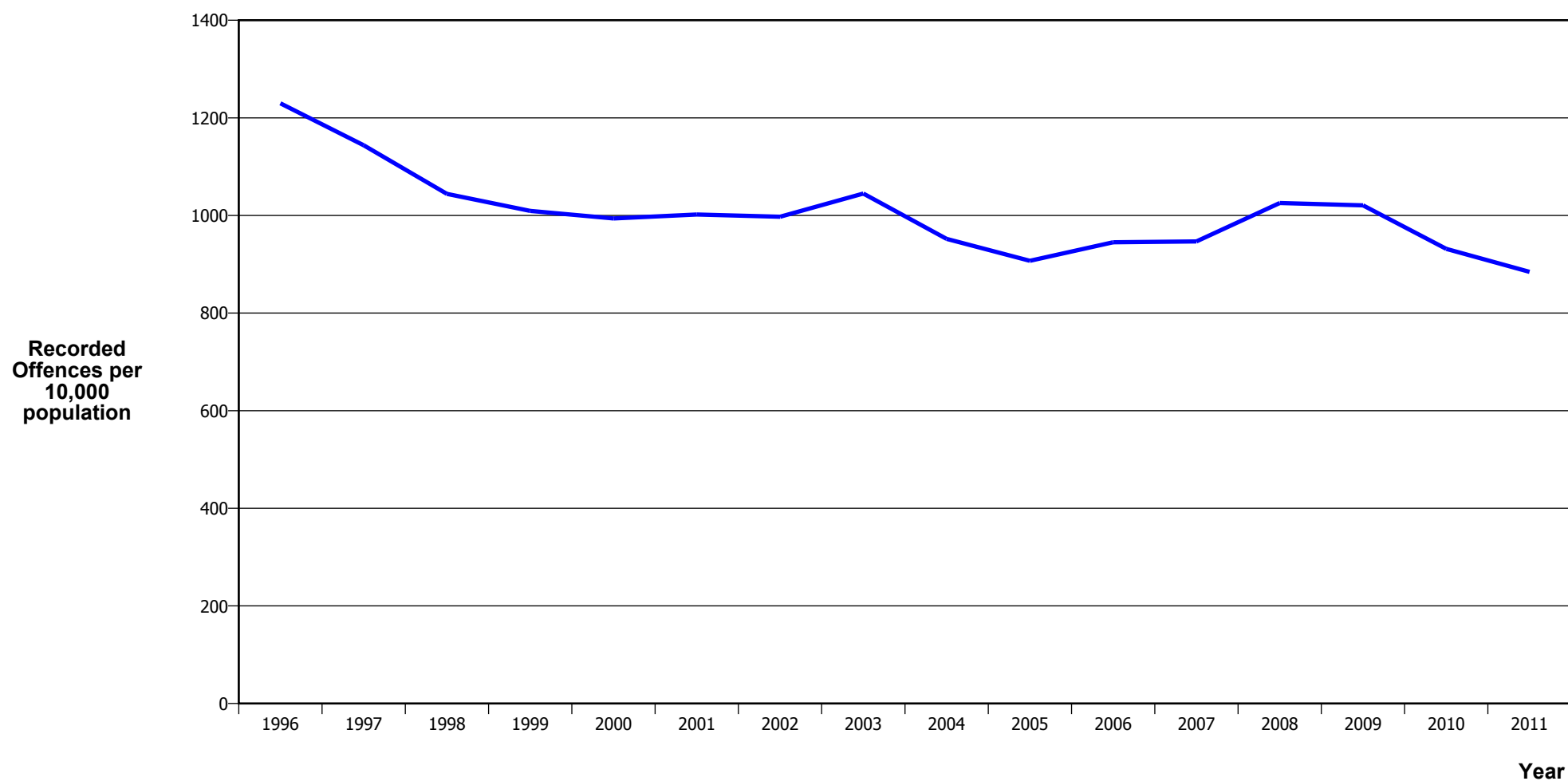
Area Description	Recorded 2010	Recorded 2011	Variance 2010-2011	Recorded per 10,000 pop 2010	Recorded per 10,000 pop 2011	Per 10,000 pop % Variance 2010 to 2011	Resolved 2010	Resolved 2011	Resolution Rate 2010	Resolution Rate 2011
Kapiti-Mana	344	359	4.4 %	31.8	32.9	3.5 %	315	350	91.6 %	97.5 %
Lower Hutt	501	558	11.4 %	48.8	54.2	11.1 %	378	491	75.4 %	88.0 %
Upper Hutt	238	230	-3.4 %	57.9	55.4	-4.3 %	224	220	94.1 %	95.7 %
Wairarapa	195	174	-10.8 %	48.4	42.9	-11.5 %	177	150	90.8 %	86.2 %
Wellington	682	489	-28.3 %	37.1	26.3	-29.1 %	656	467	96.2 %	95.5 %
	1,960	1,810	-7.7 %	41.2	37.7	-8.4 %	1,750	1,678	89.3 %	92.7 %

MISCELLANEOUS OFFENCES

Area Description	Recorded 2010	Recorded 2011	Variance 2010-2011	Recorded per 10,000 pop 2010	Recorded per 10,000 pop 2011	Per 10,000 pop % Variance 2010 to 2011	Resolved 2010	Resolved 2011	Resolution Rate 2010	Resolution Rate 2011
Kapiti-Mana	21	18	-14.3 %	1.9	1.7	-15.0 %	19	15	90.5 %	83.3 %
Lower Hutt	19	23	21.1 %	1.9	2.2	20.7 %	10	15	52.6 %	65.2 %
Upper Hutt	11	7	-36.4 %	2.7	1.7	-37.0 %	8	5	72.7 %	71.4 %
Wairarapa	21	9	-57.1 %	5.2	2.2	-57.5 %	14	6	66.7 %	66.7 %
Wellington	90	97	7.8 %	4.9	5.2	6.5 %	75	80	83.3 %	82.5 %
	162	154	-4.9 %	3.4	3.2	-5.7 %	126	121	77.8 %	78.6 %

CRIME TRENDS

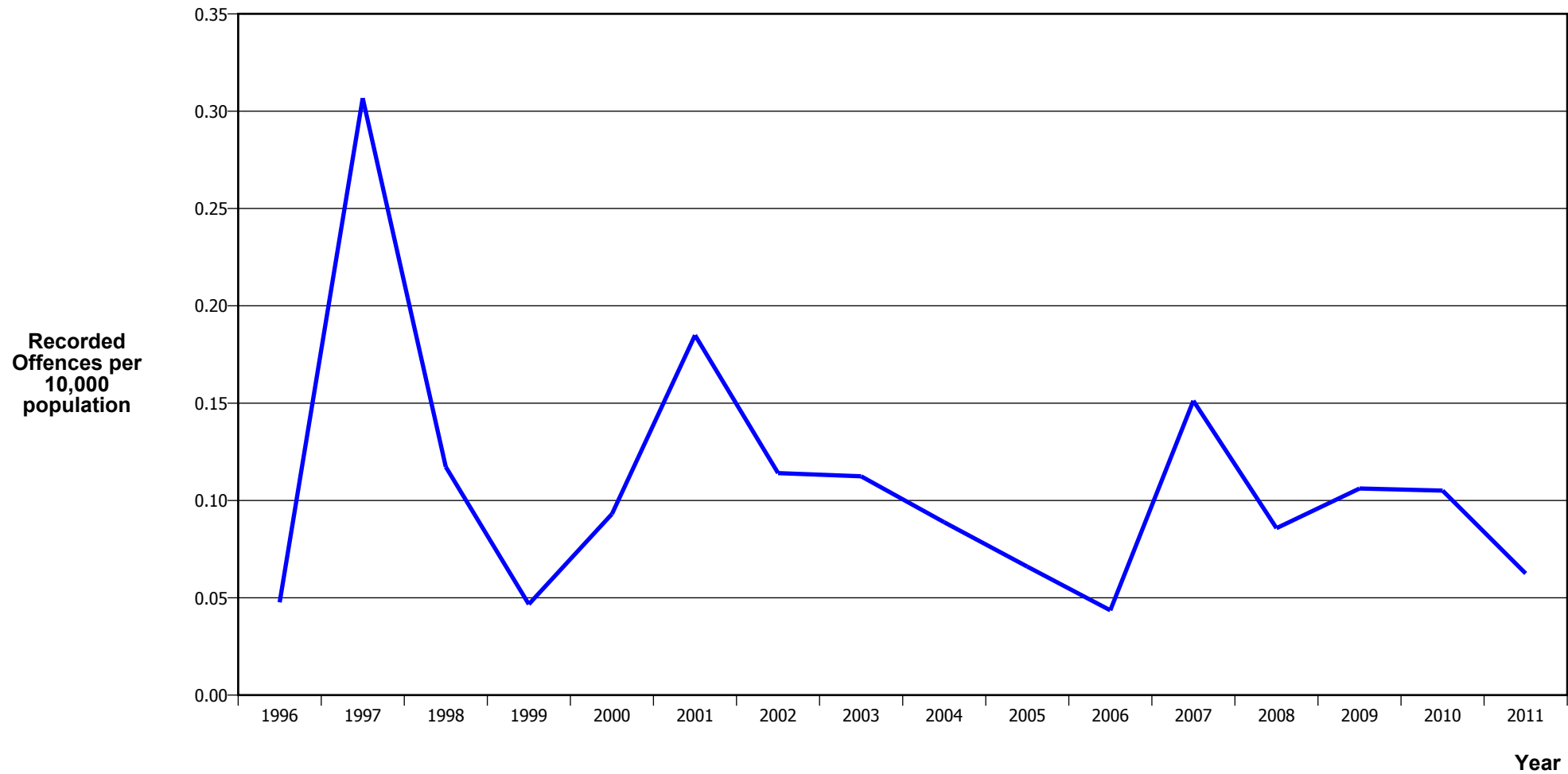
TOTAL CRIME



Calendar Year	1996	1997	1998	1999	2000	2001	2002	2003	2004	2005	2006	2007	2008	2009	2010	2011
Recorded Offences	51,589	48,490	44,526	43,222	42,729	43,349	43,717	46,472	42,887	41,214	43,384	43,826	47,811	48,079	44,321	42,444
Recorded per 10,000 Population	1,229.8	1,143.9	1,044.2	1,009.4	994.0	1,001.9	997.4	1,045.0	952.2	907.2	945.1	946.8	1,025.5	1,020.6	931.5	884.4

*In 2005/2006 there was a major IT system change (LES to NIA)

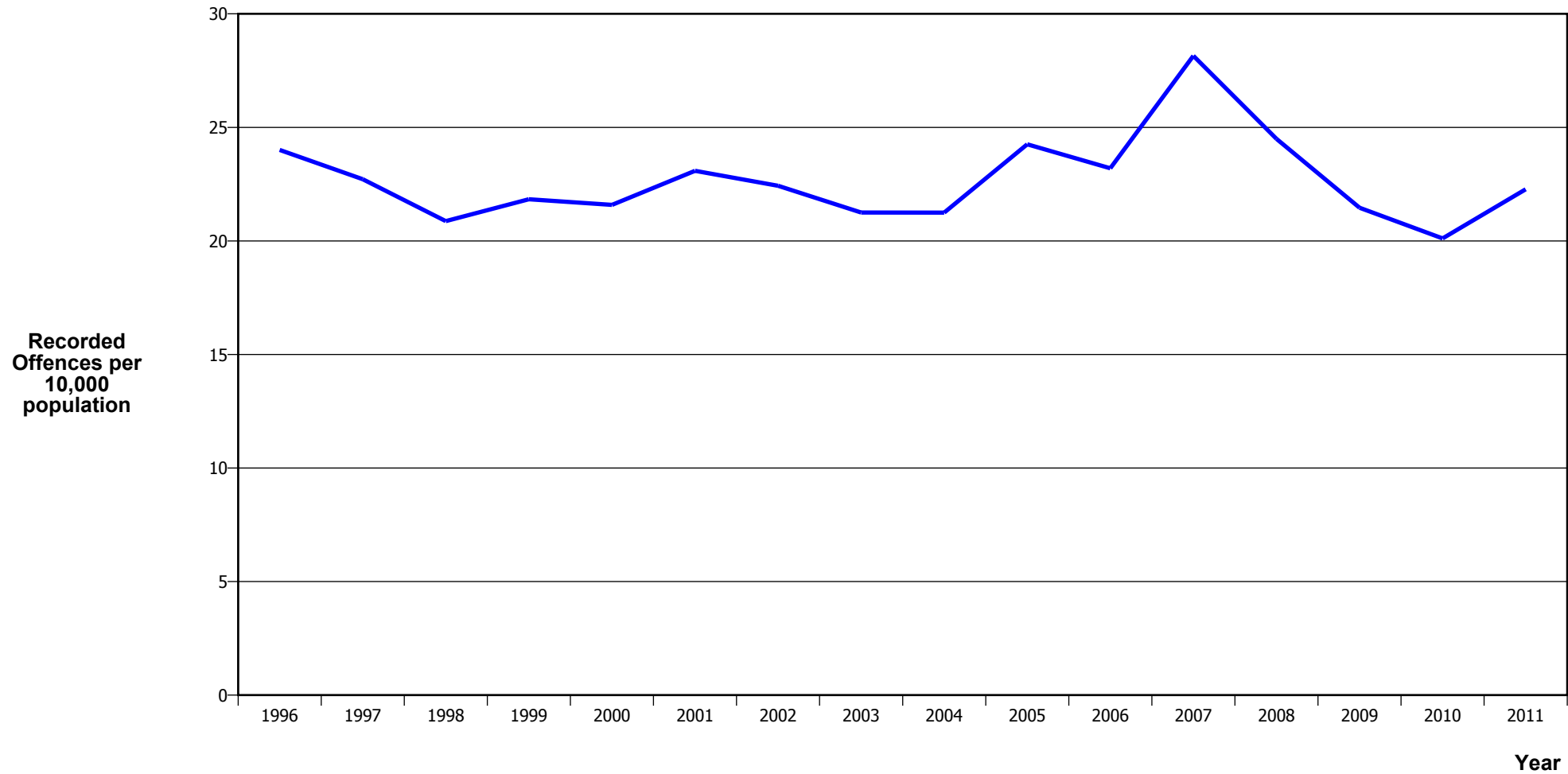
MURDER



Calendar Year	1996	1997	1998	1999	2000	2001	2002	2003	2004	2005	2006	2007	2008	2009	2010	2011
Recorded Offences	2	13	5	2	4	8	5	5	4	3	2	7	4	5	5	3
Recorded per 10,000 Population	0.05	0.31	0.12	0.05	0.09	0.18	0.11	0.11	0.09	0.07	0.04	0.15	0.09	0.11	0.11	0.06

- The 2009 result was significantly influenced by an abnormal one-off spike in August 2009, when 13 murders occurred

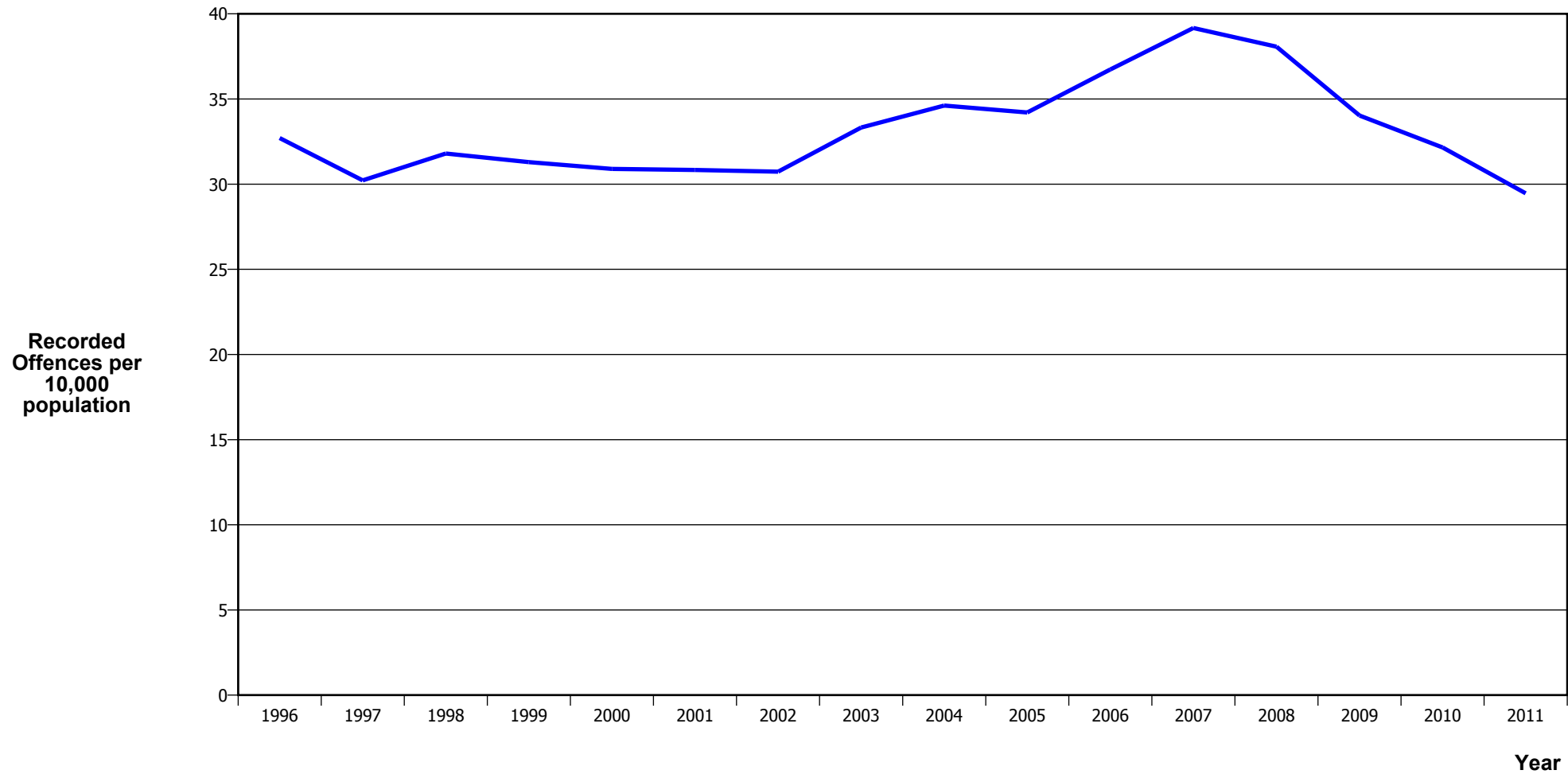
SERIOUS ASSAULTS RESULTING IN INJURY*



Calendar Year	1996	1997	1998	1999	2000	2001	2002	2003	2004	2005	2006	2007	2008	2009	2010	2011
Recorded Offence	1,007	963	890	935	928	999	983	945	957	1,102	1,065	1,303	1,142	1,011	957	1,069
Offence Rate per 10K Popn	24.0	22.7	20.9	21.8	21.6	23.1	22.4	21.2	21.2	24.3	23.2	28.1	24.5	21.5	20.1	22.3

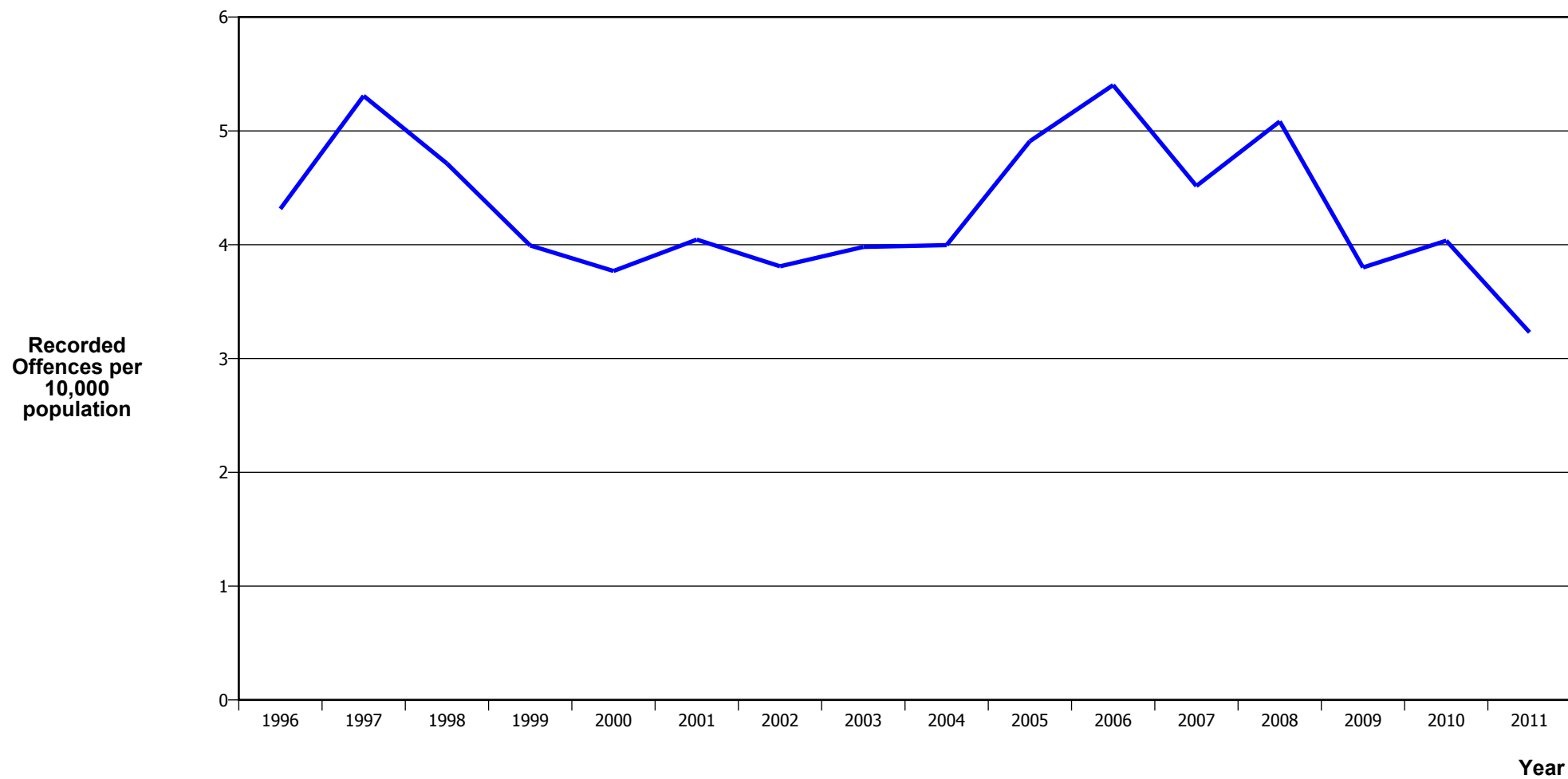
* This measure excludes common assaults

PUBLIC PLACE ASSAULTS



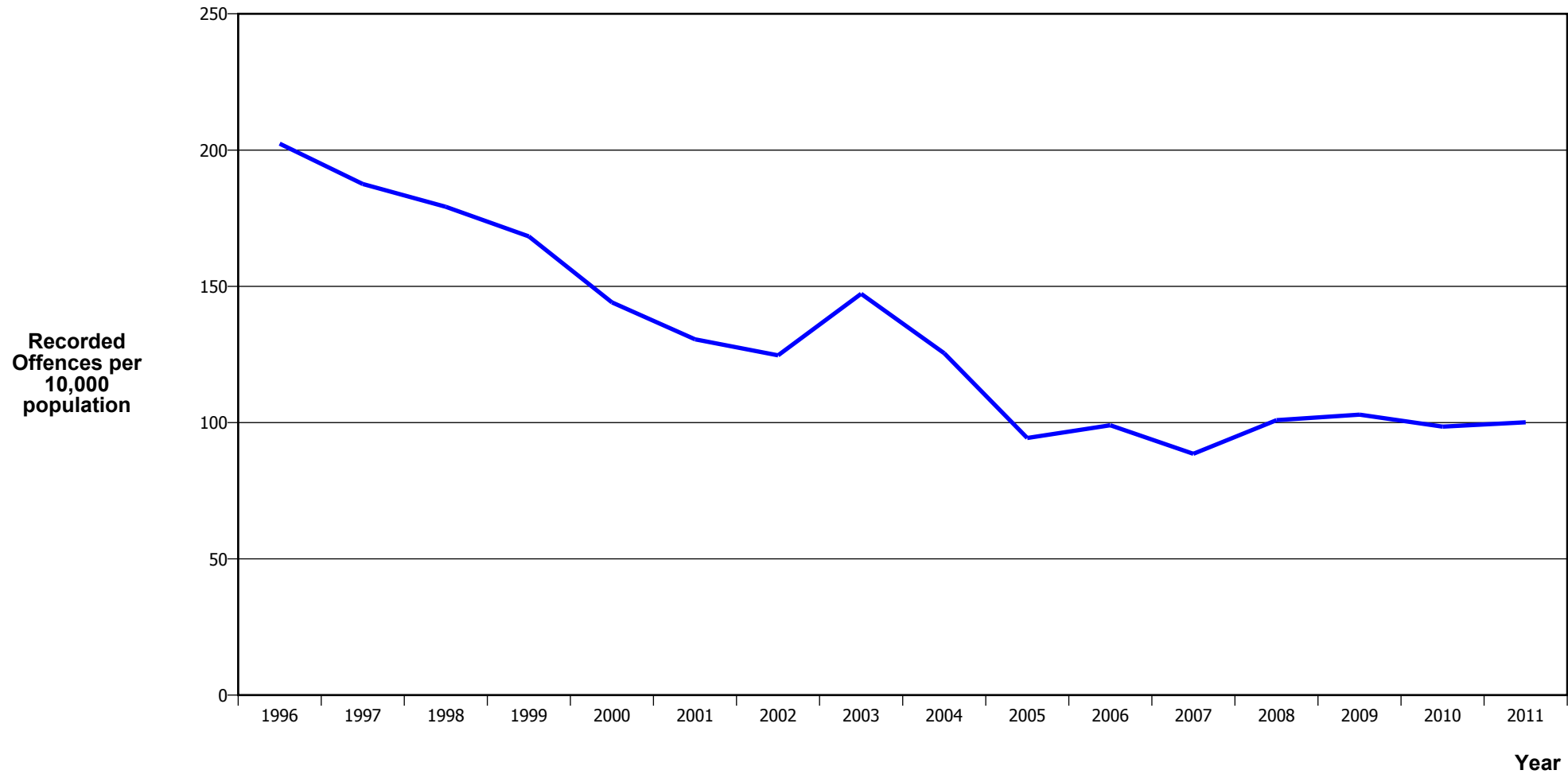
Calendar Year	1996	1997	1998	1999	2000	2001	2002	2003	2004	2005	2006	2007	2008	2009	2010	2011
Recorded Offences	1,372	1,281	1,356	1,340	1,328	1,334	1,347	1,482	1,559	1,554	1,686	1,813	1,775	1,603	1,530	1,414
Recorded per 10,000 Population	32.7	30.2	31.8	31.3	30.9	30.8	30.7	33.3	34.6	34.2	36.7	39.2	38.1	34.0	32.2	29.5

ROBBERY



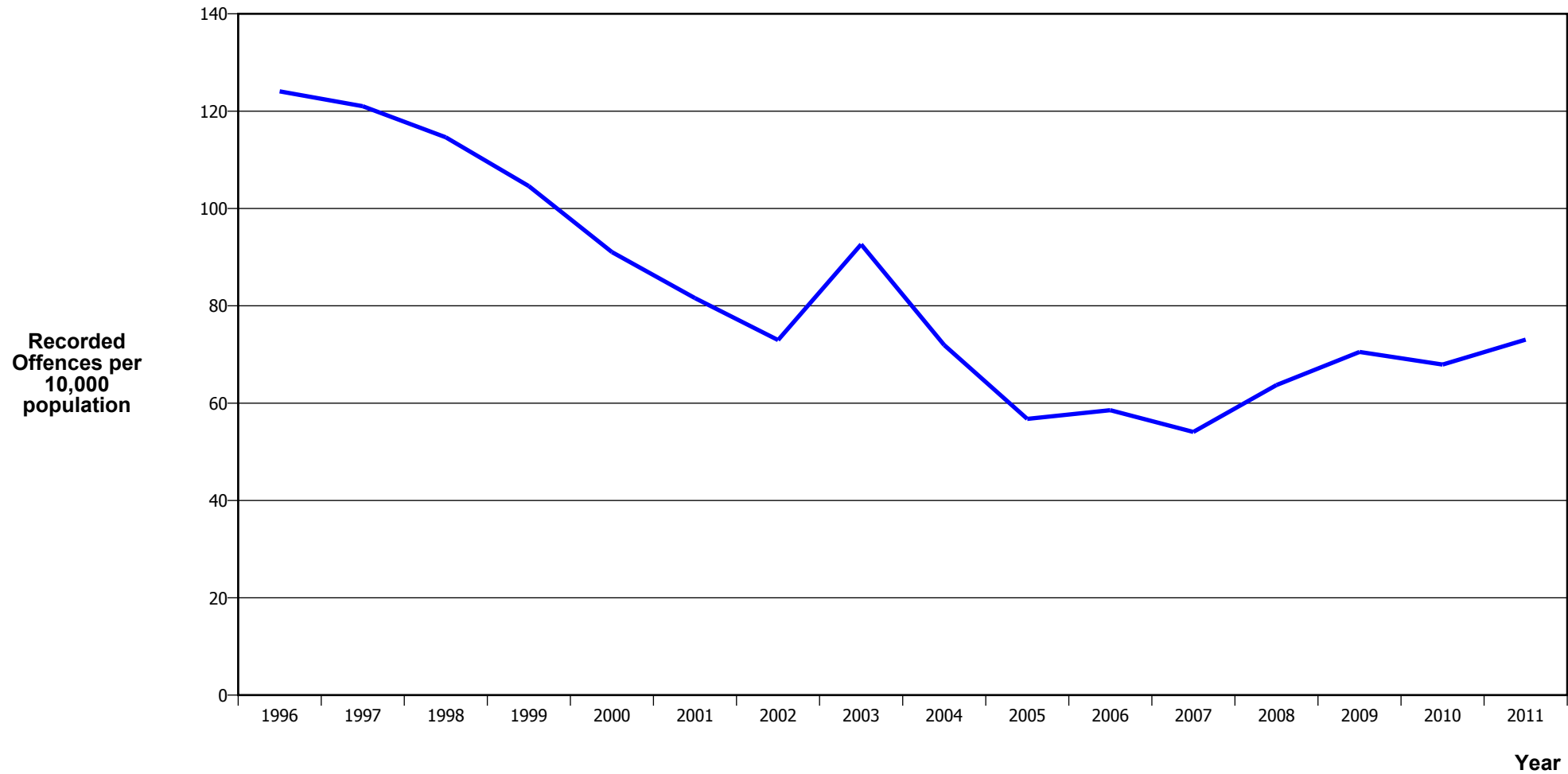
Calendar Year	1996	1997	1998	1999	2000	2001	2002	2003	2004	2005	2006	2007	2008	2009	2010	2011
Recorded Offences	181	225	201	171	162	175	167	177	180	223	248	209	237	179	192	155
Recorded per 10,000 Population	4.3	5.3	4.7	4.0	3.8	4.0	3.8	4.0	4.0	4.9	5.4	4.5	5.1	3.8	4.0	3.2

BURGLARY (TOTAL)



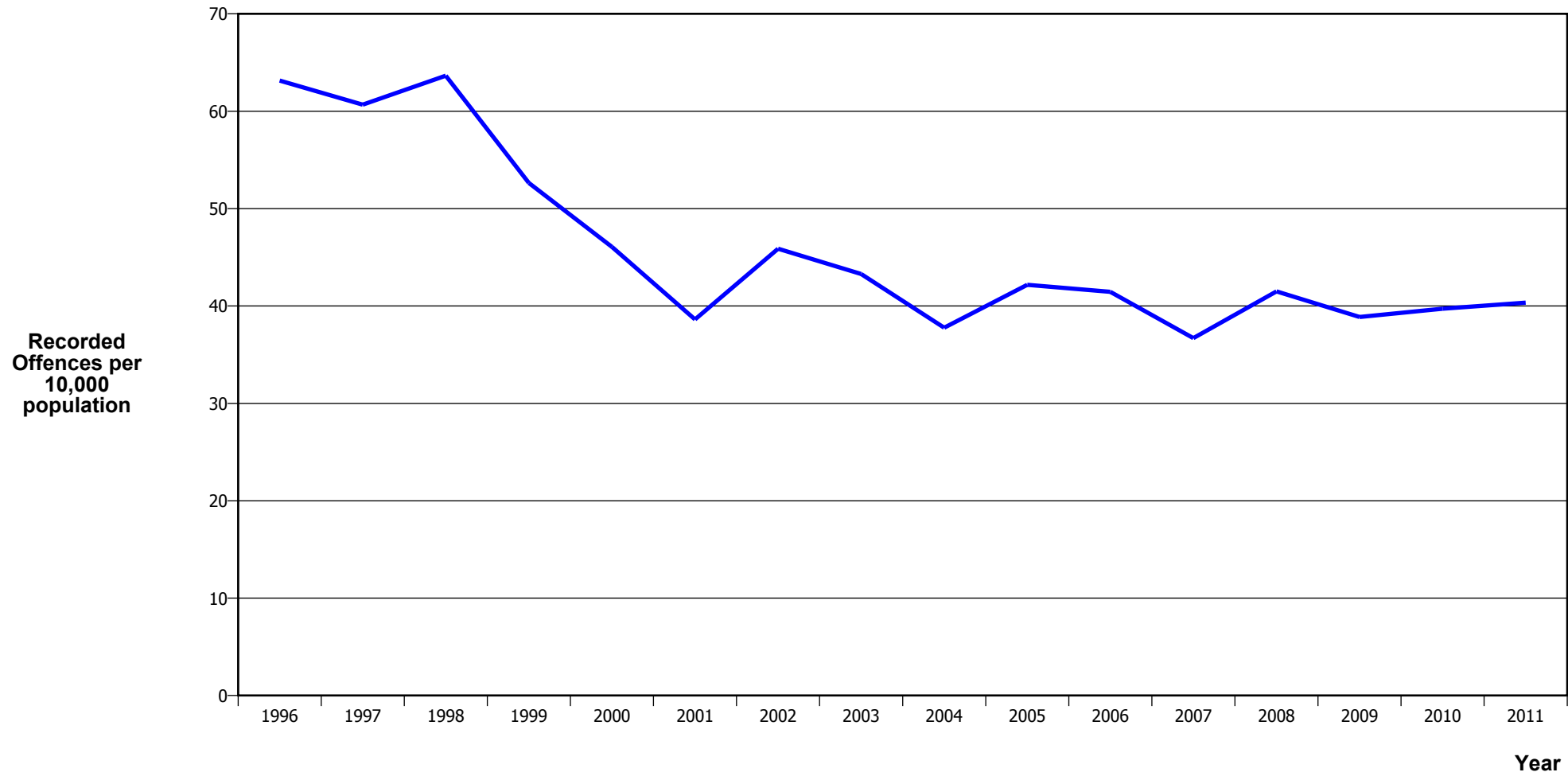
Calendar Year	1996	1997	1998	1999	2000	2001	2002	2003	2004	2005	2006	2007	2008	2009	2010	2011
Recorded Offences	8,489	7,951	7,641	7,208	6,195	5,649	5,465	6,549	5,651	4,286	4,545	4,100	4,704	4,849	4,687	4,804
Recorded per 10,000 Population	202.4	187.6	179.2	168.3	144.1	130.6	124.7	147.3	125.5	94.3	99.0	88.6	100.9	102.9	98.5	100.1

BURGLARY (DWELLING)



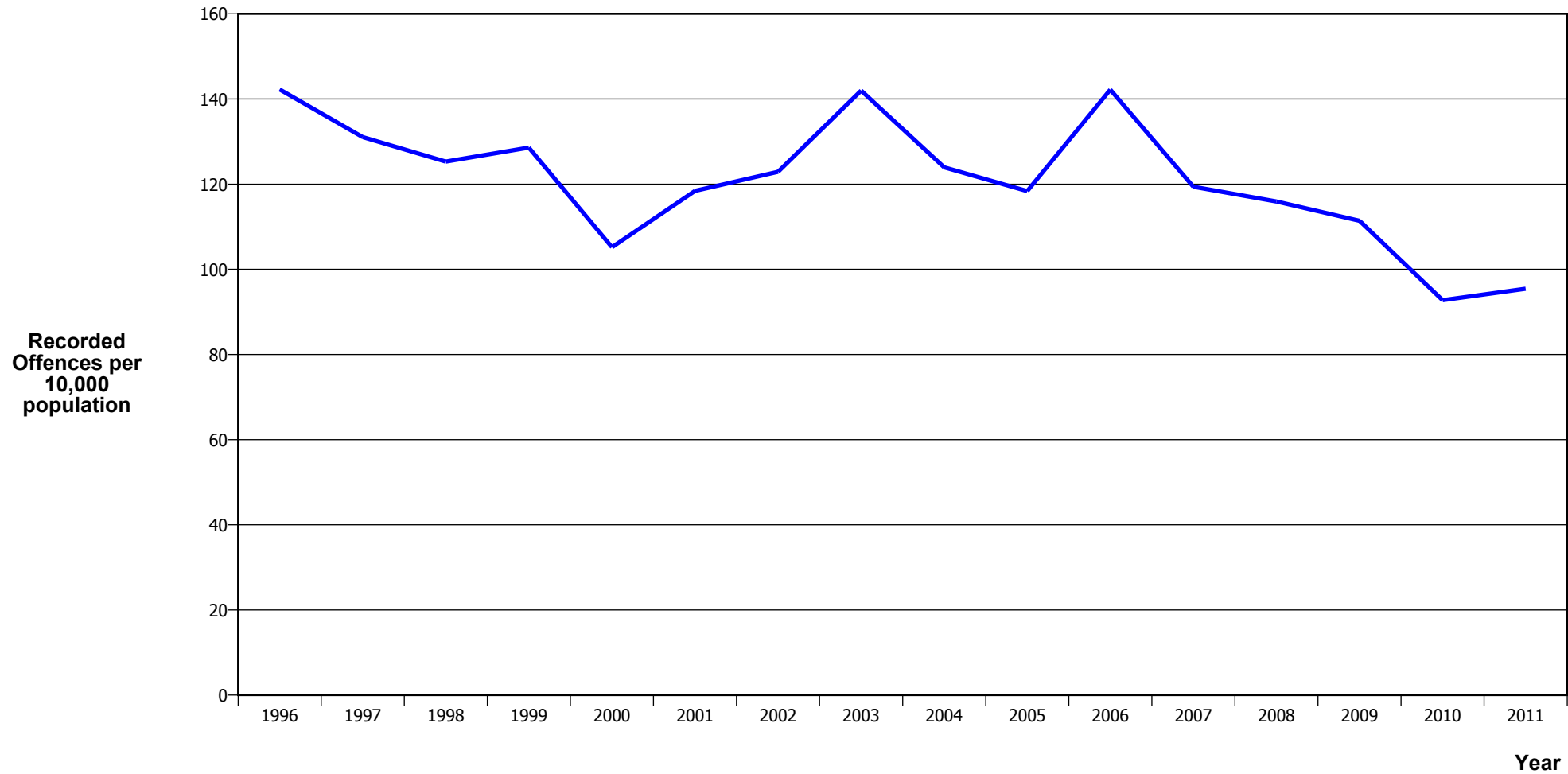
Calendar Year	1996	1997	1998	1999	2000	2001	2002	2003	2004	2005	2006	2007	2008	2009	2010	2011
Recorded Offences	5,205	5,130	4,888	4,479	3,914	3,530	3,198	4,119	3,240	2,579	2,688	2,503	2,971	3,322	3,232	3,506
Recorded per 10,000 Population	124.1	121.0	114.6	104.6	91.1	81.6	73.0	92.6	71.9	56.8	58.6	54.1	63.7	70.5	67.9	73.1

VEHICLES STOLEN



Calendar Year	1996	1997	1998	1999	2000	2001	2002	2003	2004	2005	2006	2007	2008	2009	2010	2011
Recorded Offences	2,649	2,572	2,714	2,254	1,980	1,671	2,011	1,925	1,701	1,916	1,903	1,699	1,935	1,831	1,890	1,936
Recorded per 10,000 Population	63.1	60.7	63.6	52.6	46.1	38.6	45.9	43.3	37.8	42.2	41.5	36.7	41.5	38.9	39.7	40.3

THEFT EX CAR



Calendar Year	1996	1997	1998	1999	2000	2001	2002	2003	2004	2005	2006	2007	2008	2009	2010	2011
Recorded Offences	5,967	5,555	5,343	5,506	4,522	5,124	5,387	6,314	5,583	5,378	6,527	5,527	5,405	5,247	4,413	4,581
Recorded per 10,000 Population	142.2	131.0	125.3	128.6	105.2	118.4	122.9	142.0	124.0	118.4	142.2	119.4	115.9	111.4	92.7	95.5

Population Data

Population data is used in this release to calculate crime rates. They have been derived from population estimates as at 30 June each year that have been obtained from Statistics New Zealand.

The estimated resident population is based on the census usually resident population count, with adjustments for residents missed or counted more than once by the census (net census undercount), and for residents temporarily overseas on census night.

These population estimates exclude the number of international students who are studying in New Zealand for less than 12 months.

Year	Population
1996	419,480
1997	423,890
1998	426,420
1999	428,180
2000	429,870
2001	432,680
2002	438,310
2003	444,710
2004	450,420
2005	454,290
2006	459,020
2007	462,880
2008	466,240
2009	471,070
2010	475,810
2011	479,900

General Definitions

Recorded Offences: the number of breaches of the New Zealand law recorded by Police. This includes offences specified in the Crimes Act and other legislations, such as the Summary Offences Act, Local Government Act, etc.

Resolved Offences: the number of recorded offences where an offender has been identified and dealt with (e.g. warned, cautioned, prosecuted, etc).

Resolution Rate: the proportion of recorded offences that have been resolved.

Recorded per 10,000 population: the number of recorded offences for every 10,000 people. This is also referred as the crime rate per 10,000 population.

ANZSOC: The Australian and New Zealand Standard Offence Classification. The offence classification is divided into 16 major offence divisions.

Definition of ANZSOC Divisions

1. Homicide and related offences: Unlawfully kill, attempt to unlawfully kill or conspiracy to kill another person.
2. Acts intended to cause injury: Acts, excluding attempted murder and those resulting in death, which are intended to cause non-fatal injury or harm to another person and where there is no sexual or acquisitive element.
3. Sexual assault and related offences: Acts, or intent of acts, of a sexual nature against another person, which are non-consensual or where consent is proscribed.
4. Dangerous or negligent acts endangering persons: Dangerous or negligent acts which, though not intended to cause harm, actually or potentially result in injury to oneself or another person.
5. Abduction, harassment and other offences against person: Acts intended to threaten or harass, or acts that unlawfully deprive another person of their freedom of movement, that are against that person's will or against the will of any parent, guardian or other person having lawful custody or care of that person.
6. Robbery, extortion and related offences: Acts intended to unlawfully gain money, property or other items of value from, or to cause detriment to, another person by using the threat of force or any other coercive measure.
7. Unlawful entry with intent / burglary, break and enter: The unlawful entry of a structure with the intent to commit an offence, where the entry is either forced or unforced.
8. Theft and related and offences: The unlawful taking or obtaining of money or goods, not involving the use of force or violence, coercion or deception, with intent to permanently or temporarily deprive the owner or possessor of the use of the money or goods, or the receiving or handling of money or goods obtained unlawfully.

9. Fraud, deception and related offences: Offences involving a dishonest act or omission carried out with the purpose of deceiving to obtain a benefit.

10. Illicit drug offences: The possessing, selling, dealing or trafficking, importing or exporting, manufacturing or cultivating of drugs or other substances prohibited under legislation.

11. Prohibited and regulated weapons and explosives offences: Offences involving prohibited or regulated weapons and explosives. Those offences also involving assault, sexual assault or robbery are coded to the relevant group within Assault, Sexual assaults and Robbery respectively.

12. Property damage and environmental pollution: The wilful and unlawful destruction, damage or defacement of public or private property, or the pollution of property or a definable entity held in common by the community.

13. Public order offences: Offences relating personal conduct that involves, or may lead to, a breach of public order or decency, or that is indicative of criminal intent, or that is otherwise regulated or prohibited on moral or ethical grounds. In general these offences do not involve a specific victim or victims; however some offences, such as offensive language and offensive behaviour, may be directed towards a single victim.

14. Traffic and vehicle regulatory offences: Offences relating to vehicles and most forms of traffic, including offences pertaining to the licensing, registration, roadworthiness, or use of vehicles, bicycle offences and pedestrian offences.

15. Offences against justice procedures, government security and government operations: An act or omission that is deemed to be prejudicial to the effective carrying out of justice procedures or any government operations. This includes general government operations as well as those specifically concerned with maintaining government security.

16. Miscellaneous offences: Offences involving the breach of statutory rules or regulations governing activities that are prima facie legal, where such offences are not explicitly dealt with under any other division. If an offence is specified under regulation and involves an act that would be illegal under common law or general criminal legislation, the offence is dealt with under the appropriate generic group.