

WELLINGTON DISTRICT CRIME STATISTICS 2010



**A Summary of
Recorded and Resolved Offence
Statistics**

**POLICE NATIONAL HEADQUARTERS
April 2011**

Table of Contents:

Topic	Page
Report Notes	1
District Summary of Recorded and Resolved Crime, by Division	2-4
District Summary of Recorded and Resolved Crime, by Area	5
District Recorded Crime per 10,000 population, by Division	6-8
District Recorded Crime per 10,000 population, by Area	9
Proportions of Recorded Crime by Categories	10
Crime Trends	11
Total Crime	12
Murder	13
Serious Assaults Resulting in Injury	14
Public Place Assaults	15
Robbery	16
Burglary	17
Burglary (Dwelling)	18
Vehicles Stolen	19
Theft Ex Car	20
Population Data	21
General Definition	22-23

REPORT NOTES:

This report presents official statistics for recorded and resolved offences. The format has been revised significantly from that used in previous years. In particular, offences are grouped into different categories than previously used. This aligns with direction given by the Justice Sector Information Strategy for the whole Justice sector to categorise offences according to the Australian Standard Offence Classification (ASOC). This change does not change the total number of offences reported, just how they are grouped.

In making this change, New Zealand Police has taken the first step towards reporting crime in a way that is comparable with Australia. However, at this stage, important differences still exist that mean statistics are not yet comparable between the two countries. For example, Australian statistics only count the most serious offence on each file, whereas New Zealand reports every offence. Also, Australian statistics count victims, whereas New Zealand Statistics count offences.

Another important change in this report is that pages 11 to 20, which present long-term trends, have been completely revised. The time series has been extended from 10 to 15 years to give a longer history. Also, the measures reported include a number of the statistical indicators that Police recently began publishing provisional data on every month.

As in previous reports, statistics reported in this document are derived from the Police National Intelligence Application (NIA). These Official Statistics for Recorded and Resolved Offences present a snapshot of data in NIA relating to offences that occur within a given year, as at the date 14 days following the end of that year.

Unless the matter is minor where Police attendance is sufficient, a matter that is reported to or discovered by Police where Police believe an offence is likely to have been committed is counted as a recorded offence.

A recorded offence is counted as resolved when Police apprehend an offender and decide how to deal with him/her. (E.g. warn, prosecute, etc.)

Resolution rate is the percentage of recorded offences that are resolved within 14 days of the end of the year being reported on.

If an offence is resolved 15 days or more after the end of the year it will not appear in the Official Crime Statistics for that or any other year. Resolution Rate therefore undercounts the number of cases that Police have resolved. This phenomenon has a more marked impact for some types of offences than others, such as offences that require long investigations (E.g. many serial crimes, burglaries and murders).

When comparing 2010 Statistics with previous years, the reader should also refer to "Report Notes" published in previous years' reports, as previous changes significantly affect year on year trends.

SUMMARY OF DISTRICT RECORDED AND RESOLVED CRIME, BY DIVISION
Years ending 31 December

HOMICIDE AND RELATED OFFENCES

ASOC Subdivision Description	Recorded 2008	Recorded 2009	Recorded 2010	Variance 2008- 2009	Variance 2009- 2010	Resolved 2008	Resolved 2009	Resolved 2010	Resolution Rate 2008	Resolution Rate 2009	Resolution Rate 2010
ATTEMPTED MURDER	1	2	2	100.0 %	0.0 %	1	1	1	100.0 %	50.0 %	50.0 %
HOMICIDE AND RELATED OFFENCES NOT FURTHER DEFINED	1	0	0	-100.0 %		0	0		0.0 %		
MANSLAUGHTER AND DRIVING CAUSING DEATH	1	1	3	0.0 %	200.0 %	1	1	2	100.0 %	100.0 %	66.7 %
MURDER	4	5	5	25.0 %	0.0 %	4	5	5	100.0 %	100.0 %	100.0 %
	7	8	10	14.3 %	25.0 %	6	7	8	85.7 %	87.5 %	80.0 %

ACTS INTENDED TO CAUSE INJURY

ASOC Subdivision Description	Recorded 2008	Recorded 2009	Recorded 2010	Variance 2008- 2009	Variance 2009- 2010	Resolved 2008	Resolved 2009	Resolved 2010	Resolution Rate 2008	Resolution Rate 2009	Resolution Rate 2010
ASSAULT	4,880	4,887	4,586	0.1 %	-6.2 %	4,062	4,216	3,857	83.2 %	86.3 %	84.1 %
OTHER ACTS INTENDED TO CAUSE INJURY	5	4	3	-20.0 %	-25.0 %	2	2	0	40.0 %	50.0 %	0.0 %
	4,885	4,891	4,589	0.1 %	-6.2 %	4,064	4,218	3,857	83.2 %	86.2 %	84.0 %

SEXUAL ASSAULT AND RELATED OFFENCES

ASOC Subdivision Description	Recorded 2008	Recorded 2009	Recorded 2010	Variance 2008- 2009	Variance 2009- 2010	Resolved 2008	Resolved 2009	Resolved 2010	Resolution Rate 2008	Resolution Rate 2009	Resolution Rate 2010
NON-ASSAULTIVE SEXUAL OFFENCES	8	7	10	-12.5 %	42.9 %	5	6	5	62.5 %	85.7 %	50.0 %
SEXUAL ASSAULT	251	298	317	18.7 %	6.4 %	150	194	158	59.8 %	65.1 %	49.8 %
	259	305	327	17.8 %	7.2 %	155	200	163	59.8 %	65.6 %	49.8 %

DANGEROUS OR NEGLIGENT ACTS ENDANGERING PERSONS

ASOC Subdivision Description	Recorded 2008	Recorded 2009	Recorded 2010	Variance 2008- 2009	Variance 2009- 2010	Resolved 2008	Resolved 2009	Resolved 2010	Resolution Rate 2008	Resolution Rate 2009	Resolution Rate 2010
OTHER DANGEROUS OR NEGLIGENT ACTS ENDANGERING PERSONS	74	58	76	-21.6 %	31.0 %	47	39	50	63.5 %	67.2 %	65.8 %
	74	58	76	-21.6 %	31.0 %	47	39	50	63.5 %	67.2 %	65.8 %

ABDUCTION, HARASSMENT AND OTHER RELATED OFFENCES AGAINST A PERSON

ASOC Subdivision Description	Recorded 2008	Recorded 2009	Recorded 2010	Variance 2008- 2009	Variance 2009- 2010	Resolved 2008	Resolved 2009	Resolved 2010	Resolution Rate 2008	Resolution Rate 2009	Resolution Rate 2010
ABDUCTION AND KIDNAPPING	42	43	30	2.4 %	-30.2 %	35	40	20	83.3 %	93.0 %	66.7 %
HARASSMENT AND THREATENING BEHAVIOUR	1,520	1,721	1,722	13.2 %	0.1 %	1,034	1,182	1,103	68.0 %	68.7 %	64.1 %
	1,562	1,764	1,752	12.9 %	-0.7 %	1,069	1,222	1,123	68.4 %	69.3 %	64.1 %

ROBBERY, EXTORTION AND RELATED OFFENCES

ASOC Subdivision Description	Recorded 2008	Recorded 2009	Recorded 2010	Variance 2008- 2009	Variance 2009- 2010	Resolved 2008	Resolved 2009	Resolved 2010	Resolution Rate 2008	Resolution Rate 2009	Resolution Rate 2010
BLACKMAIL AND EXTORTION	28	17	13	-39.3 %	-23.5 %	25	13	9	89.3 %	76.5 %	69.2 %
ROBBERY	237	179	192	-24.5 %	7.3 %	134	101	94	56.5 %	56.4 %	49.0 %
	265	196	205	-26.0 %	4.6 %	159	114	103	60.0 %	58.2 %	50.2 %

UNLAWFUL ENTRY WITH INTENT/BURGLARY, BREAK AND ENTER

ASOC Subdivision Description	Recorded 2008	Recorded 2009	Recorded 2010	Variance 2008- 2009	Variance 2009- 2010	Resolved 2008	Resolved 2009	Resolved 2010	Resolution Rate 2008	Resolution Rate 2009	Resolution Rate 2010
UNLAWFUL ENTRY WITH INTENT/BURGLARY, BREAK AND ENTER	4,704	4,849	4,687	3.1 %	-3.3 %	786	833	587	16.7 %	17.2 %	12.5 %
	4,704	4,849	4,687	3.1 %	-3.3 %	786	833	587	16.7 %	17.2 %	12.5 %

SUMMARY OF DISTRICT RECORDED AND RESOLVED CRIME, BY DIVISION
Years ending 31 December

THEFT AND RELATED OFFENCES

ASOC Subdivision Description	Recorded 2008	Recorded 2009	Recorded 2010	Variance 2008- 2009	Variance 2009- 2010	Resolved 2008	Resolved 2009	Resolved 2010	Resolution Rate 2008	Resolution Rate 2009	Resolution Rate 2010
ILLEGAL USE OF PROPERTY (EXCEPT MOTOR VEHICLES)	312	387	396	24.0 %	2.3 %	19	35	17	6.1 %	9.0 %	4.3 %
MOTOR VEHICLE THEFT AND RELATED OFFENCES	7,340	7,078	6,303	-3.6 %	-10.9 %	626	596	435	8.5 %	8.4 %	6.9 %
RECEIVE OR HANDLE PROCEEDS OF CRIME	240	282	253	17.5 %	-10.3 %	230	267	243	95.8 %	94.7 %	96.0 %
THEFT AND RELATED OFFENCES NOT FURTHER DEFINED	0	0	0			0	0				
THEFT (EXCEPT MOTOR VEHICLES)	9,061	8,663	8,094	-4.4 %	-6.6 %	2,654	2,789	2,399	29.3 %	32.2 %	29.6 %
	16,953	16,410	15,046	-3.2 %	-8.3 %	3,529	3,687	3,094	20.8 %	22.5 %	20.6 %

FRAUD, DECEPTION AND RELATED OFFENCES

ASOC Subdivision Description	Recorded 2008	Recorded 2009	Recorded 2010	Variance 2008- 2009	Variance 2009- 2010	Resolved 2008	Resolved 2009	Resolved 2010	Resolution Rate 2008	Resolution Rate 2009	Resolution Rate 2010
DECEPTIVE BUSINESS/GOVERNMENT PRACTICES	4	8	6	100.0 %	-25.0 %	3	3	4	75.0 %	37.5 %	66.7 %
FORGERY AND COUNTERFEITING	36	49	31	36.1 %	-36.7 %	14	27	18	38.9 %	55.1 %	58.1 %
OBTAIN BENEFIT BY DECEPTION	1,103	999	939	-9.4 %	-6.0 %	640	603	537	58.0 %	60.4 %	57.2 %
OTHER FRAUD AND DECEPTION OFFENCES	67	55	39	-17.9 %	-29.1 %	35	19	13	52.2 %	34.5 %	33.3 %
	1,210	1,111	1,015	-8.2 %	-8.6 %	692	652	572	57.2 %	58.7 %	56.4 %

ILLCIT DRUG OFFENCES

ASOC Subdivision Description	Recorded 2008	Recorded 2009	Recorded 2010	Variance 2008- 2009	Variance 2009- 2010	Resolved 2008	Resolved 2009	Resolved 2010	Resolution Rate 2008	Resolution Rate 2009	Resolution Rate 2010
DEAL OR TRAFFIC IN ILLICIT DRUGS	377	584	316	54.9 %	-45.9 %	360	576	302	95.5 %	98.6 %	95.6 %
IMPORT OR EXPORT ILLICIT DRUGS	6	25	8	316.7 %	-68.0 %	5	23	4	83.3 %	92.0 %	50.0 %
MANUFACTURE OR CULTIVATE ILLICIT DRUGS	177	183	219	3.4 %	19.7 %	161	167	193	91.0 %	91.3 %	88.1 %
OTHER ILLICIT DRUG OFFENCES	435	492	454	13.1 %	-7.7 %	430	482	443	98.9 %	98.0 %	97.6 %
POSSESS AND/OR USE ILLICIT DRUGS	902	1,083	910	20.1 %	-16.0 %	866	1,047	875	96.0 %	96.7 %	96.2 %
	1,897	2,367	1,907	24.8 %	-19.4 %	1,822	2,295	1,817	96.0 %	97.0 %	95.3 %

PROHIBITED AND REGULATED WEAPONS AND EXPLOSIVES OFFENCES

ASOC Subdivision Description	Recorded 2008	Recorded 2009	Recorded 2010	Variance 2008- 2009	Variance 2009- 2010	Resolved 2008	Resolved 2009	Resolved 2010	Resolution Rate 2008	Resolution Rate 2009	Resolution Rate 2010
REGULATED WEAPONS/EXPLOSIVES OFFENCES	722	670	570	-7.2 %	-14.9 %	665	617	515	92.1 %	92.1 %	90.4 %
	722	670	570	-7.2 %	-14.9 %	665	617	515	92.1 %	92.1 %	90.4 %

PROPERTY DAMAGE AND ENVIRONMENTAL POLLUTION

ASOC Subdivision Description	Recorded 2008	Recorded 2009	Recorded 2010	Variance 2008- 2009	Variance 2009- 2010	Resolved 2008	Resolved 2009	Resolved 2010	Resolution Rate 2008	Resolution Rate 2009	Resolution Rate 2010
ENVIRONMENTAL POLLUTION	23	16	13	-30.4 %	-18.8 %	14	10	9	60.9 %	62.5 %	69.2 %
PROPERTY DAMAGE	8,228	7,943	7,660	-3.5 %	-3.6 %	1,815	1,820	1,711	22.1 %	22.9 %	22.3 %
	8,251	7,959	7,673	-3.5 %	-3.6 %	1,829	1,830	1,720	22.2 %	23.0 %	22.4 %

SUMMARY OF DISTRICT RECORDED AND RESOLVED CRIME, BY DIVISION
Years ending 31 December

PUBLIC ORDER OFFENCES

ASOC Subdivision Description	Recorded 2008	Recorded 2009	Recorded 2010	Variance 2008- 2009	Variance 2009- 2010	Resolved 2008	Resolved 2009	Resolved 2010	Resolution Rate 2008	Resolution Rate 2009	Resolution Rate 2010
DISORDERLY CONDUCT	3,380	3,673	3,235	8.7 %	-11.9 %	2,852	3,146	2,744	84.4 %	85.7 %	84.8 %
OFFENSIVE CONDUCT	175	230	196	31.4 %	-14.8 %	123	165	137	70.3 %	71.7 %	69.9 %
PUBLIC ORDER OFFENCES NOT FURTHER DEFINED	0	0	1			0	0	1			100.0 %
REGULATED PUBLIC ORDER OFFENCES	962	1,205	910	25.3 %	-24.5 %	926	1,130	840	96.3 %	93.8 %	92.3 %
	4,517	5,108	4,342	13.1 %	-15.0 %	3,901	4,441	3,722	86.4 %	86.9 %	85.7 %

OFFENCES AGAINST JUSTICE PROCEDURES, GOVERNMENT SECURITY AND GOVERNMENT OPERATIONS

ASOC Subdivision Description	Recorded 2008	Recorded 2009	Recorded 2010	Variance 2008- 2009	Variance 2009- 2010	Resolved 2008	Resolved 2009	Resolved 2010	Resolution Rate 2008	Resolution Rate 2009	Resolution Rate 2010
BREACH OF COMMUNITY-BASED ORDER	1,072	710	676	-33.8 %	-4.8 %	961	598	585	89.6 %	84.2 %	86.5 %
BREACH OF CUSTODIAL ORDER OFFENCES	66	61	46	-7.6 %	-24.6 %	59	61	45	89.4 %	100.0 %	97.8 %
BREACH OF VIOLENCE AND NON-VIOLENCE RESTRAINING ORDERS	587	673	633	14.7 %	-5.9 %	496	596	545	84.5 %	88.6 %	86.1 %
OFFENCES AGAINST GOVERNMENT OPERATIONS	35	30	37	-14.3 %	23.3 %	14	10	18	40.0 %	33.3 %	48.6 %
OFFENCES AGAINST GOVERNMENT SECURITY	2	0	1	-100.0 %		0	0	1	0.0 %		100.0 %
OFFENCES AGAINST JUSTICE PROCEDURES	601	713	567	18.6 %	-20.5 %	585	703	556	97.3 %	98.6 %	98.1 %
OFFENCES AGAINST JUSTICE PROCEDURES, GOVERNMENT SECURITY AND GOVERNMENT OPERATIONS NOT FURTHER DEFINED	1	3	0	200.0 %	-100.0 %	0	1		0.0 %	33.3 %	
	2,364	2,190	1,960	-7.4 %	-10.5 %	2,115	1,969	1,750	89.5 %	89.9 %	89.3 %

MISCELLANEOUS OFFENCES

ASOC Subdivision Description	Recorded 2008	Recorded 2009	Recorded 2010	Variance 2008- 2009	Variance 2009- 2010	Resolved 2008	Resolved 2009	Resolved 2010	Resolution Rate 2008	Resolution Rate 2009	Resolution Rate 2010
COMMERCIAL/INDUSTRY/FINANCIAL REGULATION	4	5	0	25.0 %	-100.0 %	4	5		100.0 %	100.0 %	
DEFAMATION, LIBEL AND PRIVACY OFFENCES	3	9	4	200.0 %	-55.6 %	0	6	0	0.0 %	66.7 %	0.0 %
OTHER MISCELLANEOUS OFFENCES	101	123	124	21.8 %	0.8 %	63	89	97	62.4 %	72.4 %	78.2 %
PUBLIC HEALTH AND SAFETY OFFENCES	33	56	34	69.7 %	-39.3 %	31	53	29	93.9 %	94.6 %	85.3 %
	141	193	162	36.9 %	-16.1 %	98	153	126	69.5 %	79.3 %	77.8 %

TOTAL	47,811	48,079	44,321	0.6 %	-7.8 %	20,937	22,277	19,207	43.8 %	46.3 %	43.3 %
--------------	---------------	---------------	---------------	--------------	---------------	---------------	---------------	---------------	---------------	---------------	---------------

SUMMARY OF DISTRICT RECORDED AND RESOLVED CRIME, BY AREA
years ending 31 December

TOTAL CRIME

Area Description	Recorded 2008	Recorded 2009	Recorded 2010	Variance 2008- 2009	Variance 2009- 2010	Resolved 2008	Resolved 2009	Resolved 2010	Resolution Rate 2008	Resolution Rate 2009	Resolution Rate 2010
Kapiti-Mana	9,068	9,661	8,801	6.5 %	-8.9 %	4,386	5,048	4,444	48.4 %	52.3 %	50.5 %
Lower Hutt	11,026	10,666	10,017	-3.3 %	-6.1 %	4,292	4,441	3,898	38.9 %	41.6 %	38.9 %
Upper Hutt	4,167	4,043	3,826	-3.0 %	-5.4 %	1,964	2,108	1,667	47.1 %	52.1 %	43.6 %
Wairarapa	4,428	4,973	4,616	12.3 %	-7.2 %	2,166	2,410	2,325	48.9 %	48.5 %	50.4 %
Wellington	19,122	18,736	17,061	-2.0 %	-8.9 %	8,129	8,270	6,873	42.5 %	44.1 %	40.3 %
Total	47,811	48,079	44,321	0.6 %	-7.8 %	20,937	22,277	19,207	43.8 %	46.3 %	43.3 %

DISTRICT RECORDED CRIME PER 10,000 POPULATION, BY DIVISION
Years ending 31 December

HOMICIDE AND RELATED OFFENCES

ASOC Subdivision Description	Recorded per 10,000 pop 2008	Recorded per 10,000 pop 2009	Recorded per 10,000 pop 2010
ATTEMPTED MURDER	0.02	0.04	0.04
HOMICIDE AND RELATED OFFENCES NOT FURTHER DEFINED	0.02	0.00	0.00
MANSLAUGHTER AND DRIVING CAUSING DEATH	0.02	0.02	0.06
MURDER	0.09	0.11	0.11
	0.15	0.17	0.21

ACTS INTENDED TO CAUSE INJURY

ASOC Subdivision Description	Recorded per 10,000 pop 2008	Recorded per 10,000 pop 2009	Recorded per 10,000 pop 2010
ASSAULT	104.67	103.74	96.38
OTHER ACTS INTENDED TO CAUSE INJURY	0.11	0.08	0.06
	104.77	103.83	96.45

SEXUAL ASSAULT AND RELATED OFFENCES

ASOC Subdivision Description	Recorded per 10,000 pop 2008	Recorded per 10,000 pop 2009	Recorded per 10,000 pop 2010
NON-ASSAULTIVE SEXUAL OFFENCES	0.17	0.15	0.21
SEXUAL ASSAULT	5.38	6.33	6.66
	5.56	6.47	6.87

DANGEROUS OR NEGLIGENT ACTS ENDANGERING PERSONS

ASOC Subdivision Description	Recorded per 10,000 pop 2008	Recorded per 10,000 pop 2009	Recorded per 10,000 pop 2010
OTHER DANGEROUS OR NEGLIGENT ACTS ENDANGERING PERSONS	1.59	1.23	1.60
	1.59	1.23	1.60

ABDUCTION, HARASSMENT AND OTHER RELATED OFFENCES AGAINST A PERSON

ASOC Subdivision Description	Recorded per 10,000 pop 2008	Recorded per 10,000 pop 2009	Recorded per 10,000 pop 2010
ABDUCTION AND KIDNAPPING	0.90	0.91	0.63
HARASSMENT AND THREATENING BEHAVIOUR	32.60	36.53	36.19
	33.50	37.45	36.82

ROBBERY, EXTORTION AND RELATED OFFENCES

ASOC Subdivision Description	Recorded per 10,000 pop 2008	Recorded per 10,000 pop 2009	Recorded per 10,000 pop 2010
BLACKMAIL AND EXTORTION	0.60	0.36	0.27
ROBBERY	5.08	3.80	4.04
	5.68	4.16	4.31

DISTRICT RECORDED CRIME PER 10,000 POPULATION, BY DIVISION

Years ending 31 December

UNLAWFUL ENTRY WITH INTENT/BURGLARY, BREAK AND ENTER

ASOC Subdivision Description	Recorded per 10,000 pop 2008	Recorded per 10,000 pop 2009	Recorded per 10,000 pop 2010
UNLAWFUL ENTRY WITH INTENT/BURGLARY, BREAK AND ENTER	100.89	102.94	98.51
	100.89	102.94	98.51

THEFT AND RELATED OFFENCES

ASOC Subdivision Description	Recorded per 10,000 pop 2008	Recorded per 10,000 pop 2009	Recorded per 10,000 pop 2010
ILLEGAL USE OF PROPERTY (EXCEPT MOTOR VEHICLES)	6.69	8.22	8.32
MOTOR VEHICLE THEFT AND RELATED OFFENCES	157.43	150.25	132.47
RECEIVE OR HANDLE PROCEEDS OF CRIME	5.15	5.99	5.32
THEFT AND RELATED OFFENCES NOT FURTHER DEFINED	0.00	0.00	0.00
THEFT (EXCEPT MOTOR VEHICLES)	194.34	183.90	170.11
	363.61	348.36	316.22

FRAUD, DECEPTION AND RELATED OFFENCES

ASOC Subdivision Description	Recorded per 10,000 pop 2008	Recorded per 10,000 pop 2009	Recorded per 10,000 pop 2010
DECEPTIVE BUSINESS/GOVERNMENT PRACTICES	0.09	0.17	0.13
FORGERY AND COUNTERFEITING	0.77	1.04	0.65
OBTAIN BENEFIT BY DECEPTION	23.66	21.21	19.73
OTHER FRAUD AND DECEPTION OFFENCES	1.44	1.17	0.82
	25.95	23.58	21.33

ILLICIT DRUG OFFENCES

ASOC Subdivision Description	Recorded per 10,000 pop 2008	Recorded per 10,000 pop 2009	Recorded per 10,000 pop 2010
DEAL OR TRAFFIC IN ILLICIT DRUGS	8.09	12.40	6.64
IMPORT OR EXPORT ILLICIT DRUGS	0.13	0.53	0.17
MANUFACTURE OR CULTIVATE ILLICIT DRUGS	3.80	3.88	4.60
OTHER ILLICIT DRUG OFFENCES	9.33	10.44	9.54
POSSESS AND/OR USE ILLICIT DRUGS	19.35	22.99	19.13
	40.69	50.25	40.08

PROHIBITED AND REGULATED WEAPONS AND EXPLOSIVES OFFENCES

ASOC Subdivision Description	Recorded per 10,000 pop 2008	Recorded per 10,000 pop 2009	Recorded per 10,000 pop 2010
REGULATED WEAPONS/EXPLOSIVES OFFENCES	15.49	14.22	11.98
	15.49	14.22	11.98

DISTRICT RECORDED CRIME PER 10,000 POPULATION, BY DIVISION

Years ending 31 December

PROPERTY DAMAGE AND ENVIRONMENTAL POLLUTION

ASOC Subdivision Description	Recorded per 10,000 pop 2008	Recorded per 10,000 pop 2009	Recorded per 10,000 pop 2010
ENVIRONMENTAL POLLUTION	0.49	0.34	0.27
PROPERTY DAMAGE	176.48	168.62	160.99
	176.97	168.96	161.26

PUBLIC ORDER OFFENCES

ASOC Subdivision Description	Recorded per 10,000 pop 2008	Recorded per 10,000 pop 2009	Recorded per 10,000 pop 2010
DISORDERLY CONDUCT	72.49	77.97	67.99
OFFENSIVE CONDUCT	3.75	4.88	4.12
PUBLIC ORDER OFFENCES NOT FURTHER DEFINED	0.00	0.00	0.02
REGULATED PUBLIC ORDER OFFENCES	20.63	25.58	19.13
	96.88	108.43	91.25

OFFENCES AGAINST JUSTICE PROCEDURES, GOVERNMENT SECURITY AND GOVERNMENT OPERATIONS

ASOC Subdivision Description	Recorded per 10,000 pop 2008	Recorded per 10,000 pop 2009	Recorded per 10,000 pop 2010
BREACH OF COMMUNITY-BASED ORDER	22.99	15.07	14.21
BREACH OF CUSTODIAL ORDER OFFENCES	1.42	1.29	0.97
BREACH OF VIOLENCE AND NON-VIOLENCE RESTRAINING ORDERS	12.59	14.29	13.30
OFFENCES AGAINST GOVERNMENT OPERATIONS	0.75	0.64	0.78
OFFENCES AGAINST GOVERNMENT SECURITY	0.04	0.00	0.02
OFFENCES AGAINST JUSTICE PROCEDURES	12.89	15.14	11.92
OFFENCES AGAINST JUSTICE PROCEDURES, GOVERNMENT SECURITY AND GOVERNMENT OPERATIONS NOT FURTHER DEFINED	0.02	0.06	0.00
	50.70	46.49	41.19

MISCELLANEOUS OFFENCES

ASOC Subdivision Description	Recorded per 10,000 pop 2008	Recorded per 10,000 pop 2009	Recorded per 10,000 pop 2010
COMMERCIAL/INDUSTRY/FINANCIAL REGULATION	0.09	0.11	0.00
DEFAMATION, LIBEL AND PRIVACY OFFENCES	0.06	0.19	0.08
OTHER MISCELLANEOUS OFFENCES	2.17	2.61	2.61
PUBLIC HEALTH AND SAFETY OFFENCES	0.71	1.19	0.71
	3.02	4.10	3.40

TOTAL	1,025.5	1,020.6	931.5
--------------	----------------	----------------	--------------

DISTRICT RECORDED CRIME PER 10,000 POPULATION, BY AREA

Years ending 31 December

Area Description	Recorded per 10,000 pop 2008	Recorded per 10,000 pop 2009	Recorded per 10,000 pop 2010	Percent Variance 2008 to 2009	Percent Variance 2009 to 2010
Kapiti-Mana	856.7	903.3	814.2	5.4 %	-9.9 %
Lower Hutt	1,084.9	1,044.9	975.5	-3.7 %	-6.6 %
Upper Hutt	1,036.6	995.8	930.9	-3.9 %	-6.5 %
Wairarapa	1,114.8	1,246.4	1,146.0	11.8 %	-8.1 %
Wellington	1,069.2	1,032.1	929.0	-3.5 %	-10.0 %
TOTAL	1,025.5	1,020.6	931.5	-0.5 %	-8.7 %

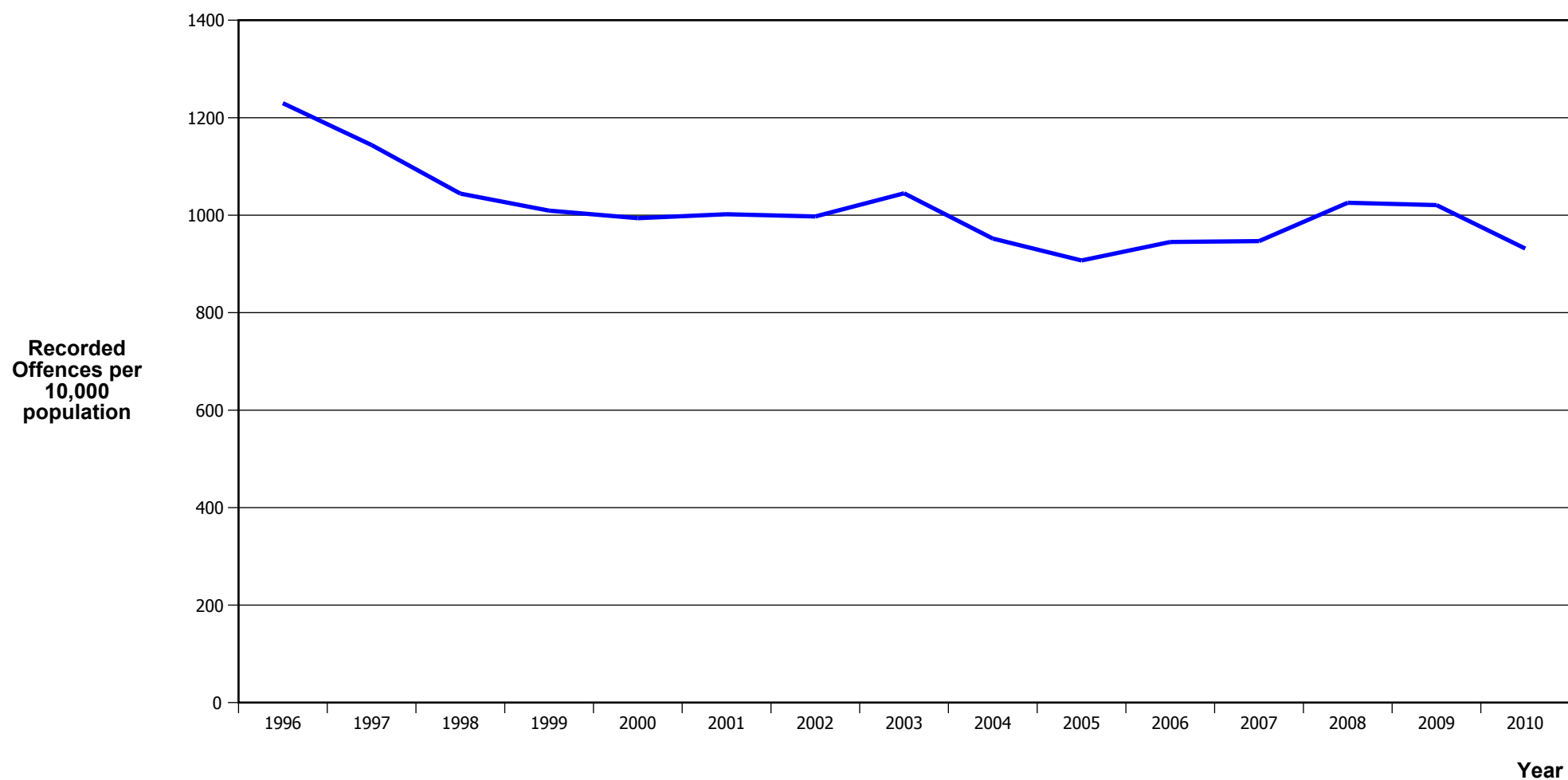
PROPORTION OF RECORDED CRIME BY DIVISION

Years ending 31 December

ASOC Division Description	Proportions Recorded 2008	Recorded 2008	Proportions Recorded 2009	Recorded 2009	Proportions Recorded 2010	Recorded 2010
HOMICIDE AND RELATED OFFENCES	0.01 %	7	0.02 %	8	0.02 %	10
ACTS INTENDED TO CAUSE INJURY	10.22 %	4,885	10.17 %	4,891	10.35 %	4,589
SEXUAL ASSAULT AND RELATED OFFENCES	0.54 %	259	0.63 %	305	0.74 %	327
DANGEROUS OR NEGLIGENT ACTS ENDANGERING PERSONS	0.15 %	74	0.12 %	58	0.17 %	76
ABDUCTION, HARASSMENT AND OTHER RELATED OFFENCES AGAINST A PERSON	3.27 %	1,562	3.67 %	1,764	3.95 %	1,752
ROBBERY, EXTORTION AND RELATED OFFENCES	0.55 %	265	0.41 %	196	0.46 %	205
UNLAWFUL ENTRY WITH INTENT/BURGLARY, BREAK AND ENTER	9.84 %	4,704	10.09 %	4,849	10.58 %	4,687
THEFT AND RELATED OFFENCES	35.46 %	16,953	34.13 %	16,410	33.95 %	15,046
FRAUD, DECEPTION AND RELATED OFFENCES	2.53 %	1,210	2.31 %	1,111	2.29 %	1,015
ILLICIT DRUG OFFENCES	3.97 %	1,897	4.92 %	2,367	4.30 %	1,907
PROHIBITED AND REGULATED WEAPONS AND EXPLOSIVES OFFENCES	1.51 %	722	1.39 %	670	1.29 %	570
PROPERTY DAMAGE AND ENVIRONMENTAL POLLUTION	17.26 %	8,251	16.55 %	7,959	17.31 %	7,673
PUBLIC ORDER OFFENCES	9.45 %	4,517	10.62 %	5,108	9.80 %	4,342
OFFENCES AGAINST JUSTICE PROCEDURES, GOVERNMENT SECURITY AND GOVERNMENT OPERATIONS	4.94 %	2,364	4.56 %	2,190	4.42 %	1,960
MISCELLANEOUS OFFENCES	0.29 %	141	0.40 %	193	0.37 %	162
	100.00 %	47,811	100.00 %	48,079	100.00 %	44,321

CRIME TRENDS

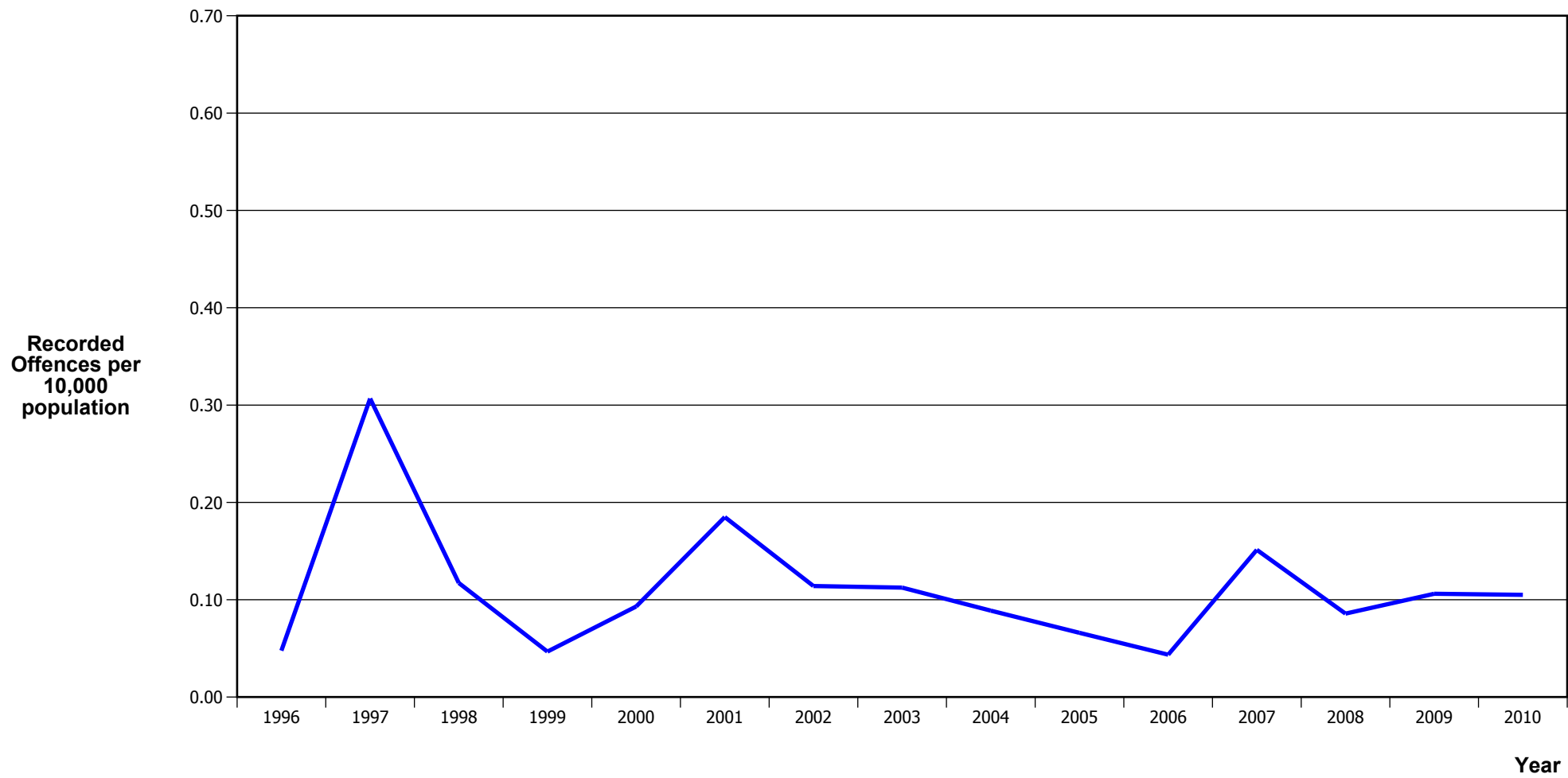
TOTAL CRIME



Calendar Year	1996	1997	1998	1999	2000	2001	2002	2003	2004	2005	2006	2007	2008	2009	2010
Recorded Offences	51,589	48,490	44,526	43,222	42,729	43,349	43,717	46,472	42,887	41,214	43,384	43,826	47,811	48,079	44,321
Recorded per 10,000 Population	1,229.8	1,143.9	1,044.2	1,009.4	994.0	1,001.9	997.4	1,045.0	952.2	907.2	945.1	946.8	1,025.5	1,020.6	931.5

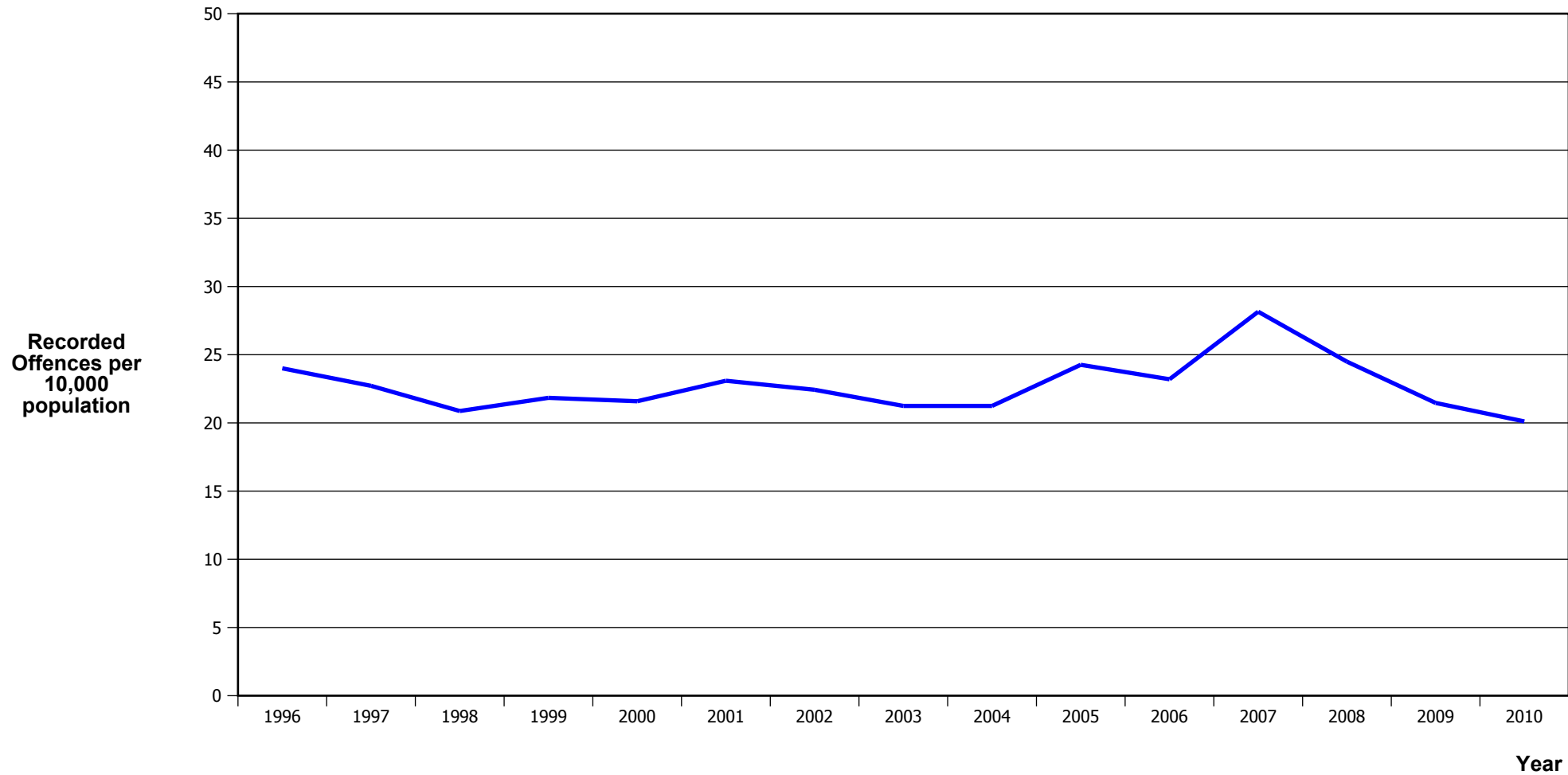
*In 2005/2006 there was a major IT system change (LES to NIA)

MURDER



Calendar Year	1996	1997	1998	1999	2000	2001	2002	2003	2004	2005	2006	2007	2008	2009	2010
Recorded Offences	2	13	5	2	4	8	5	5	4	3	2	7	4	5	5
Recorded per 10,000 Population	0.05	0.31	0.12	0.05	0.09	0.18	0.11	0.11	0.09	0.07	0.04	0.15	0.09	0.11	0.11

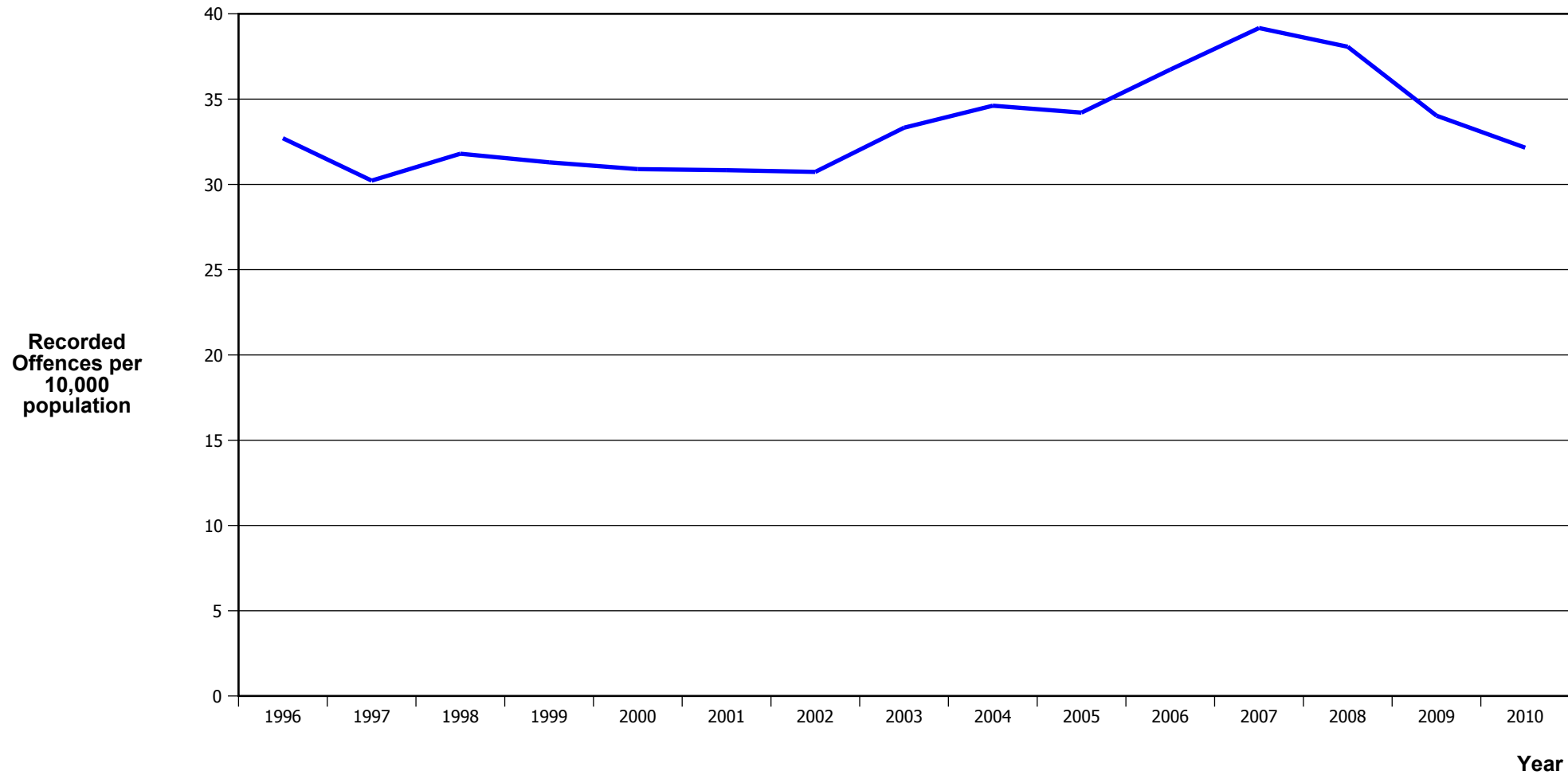
SERIOUS ASSAULTS RESULTING IN INJURY*



Calendar Year	1996	1997	1998	1999	2000	2001	2002	2003	2004	2005	2006	2007	2008	2009	2010
Recorded Physical Injury	1,007	963	890	935	928	999	983	945	957	1,102	1,065	1,303	1,142	1,011	957
Recorded per 10,000 Population	24.0	22.7	20.9	21.8	21.6	23.1	22.4	21.2	21.2	24.3	23.2	28.1	24.5	21.5	20.1

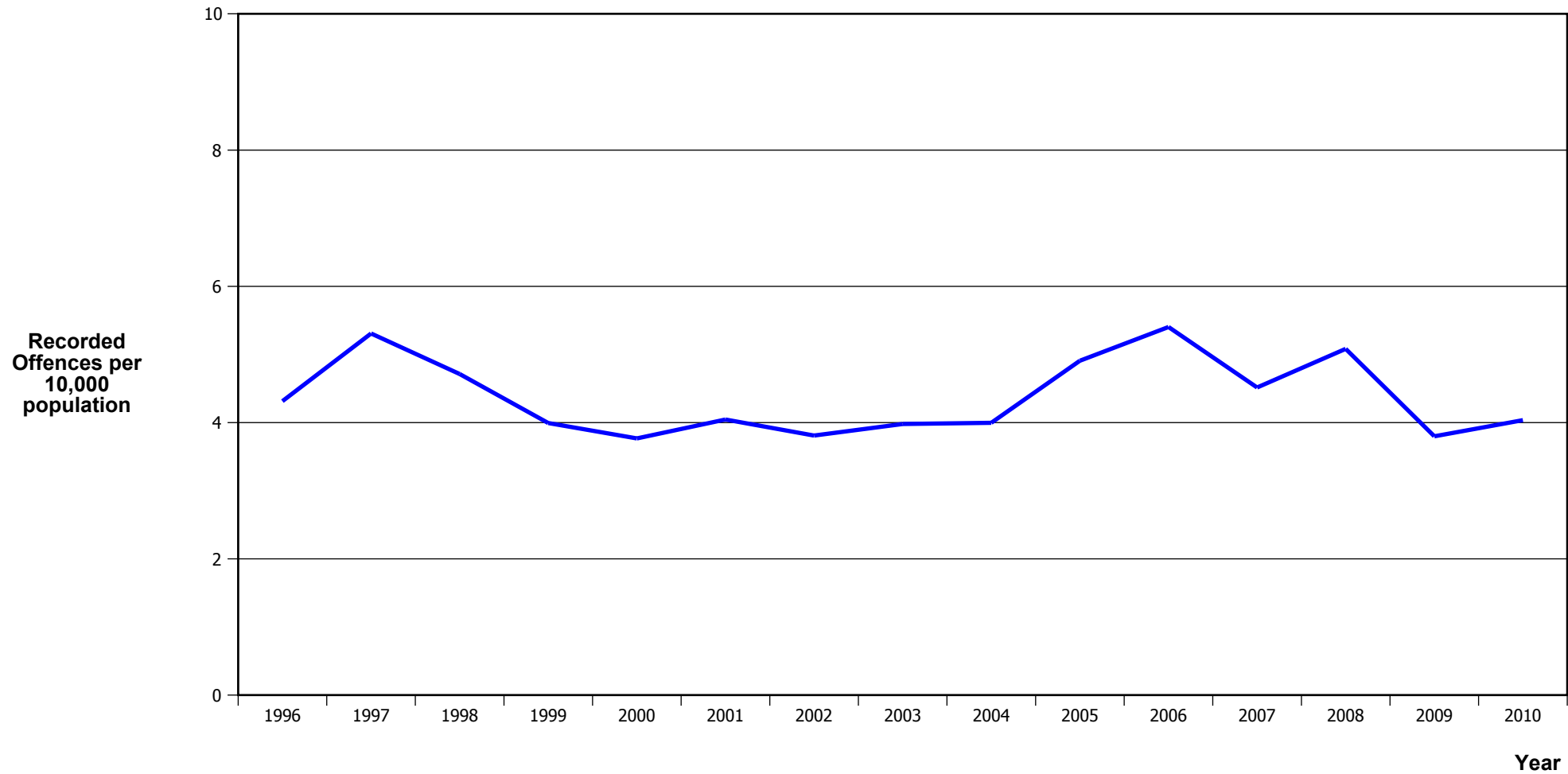
* This measure excludes common assaults

PUBLIC PLACE ASSAULTS



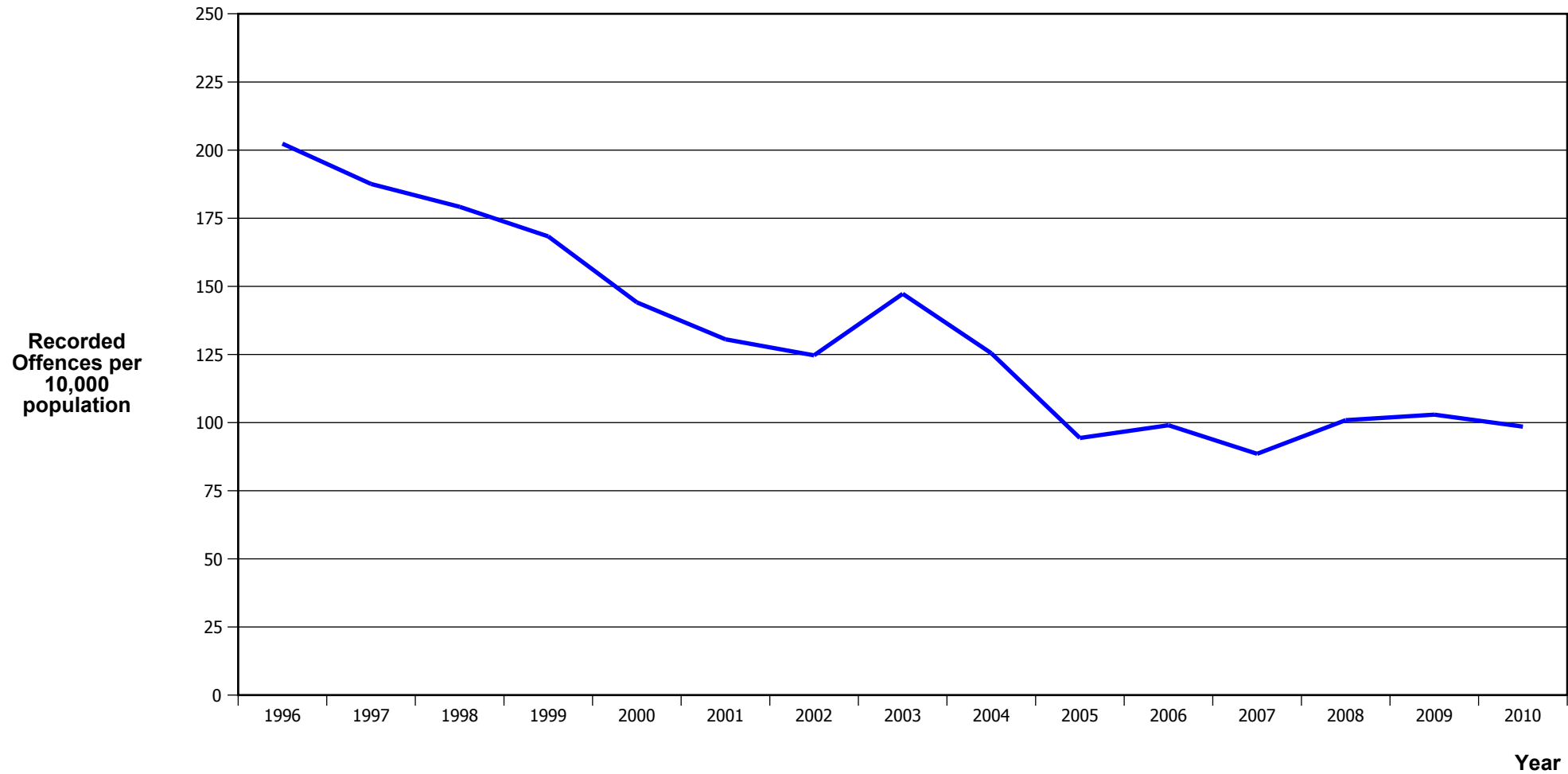
Calendar Year	1996	1997	1998	1999	2000	2001	2002	2003	2004	2005	2006	2007	2008	2009	2010
Recorded Offences	1,372	1,281	1,356	1,340	1,328	1,334	1,347	1,482	1,559	1,554	1,686	1,813	1,775	1,603	1,530
Recorded per 10,000 Population	32.7	30.2	31.8	31.3	30.9	30.8	30.7	33.3	34.6	34.2	36.7	39.2	38.1	34.0	32.2

ROBBERY



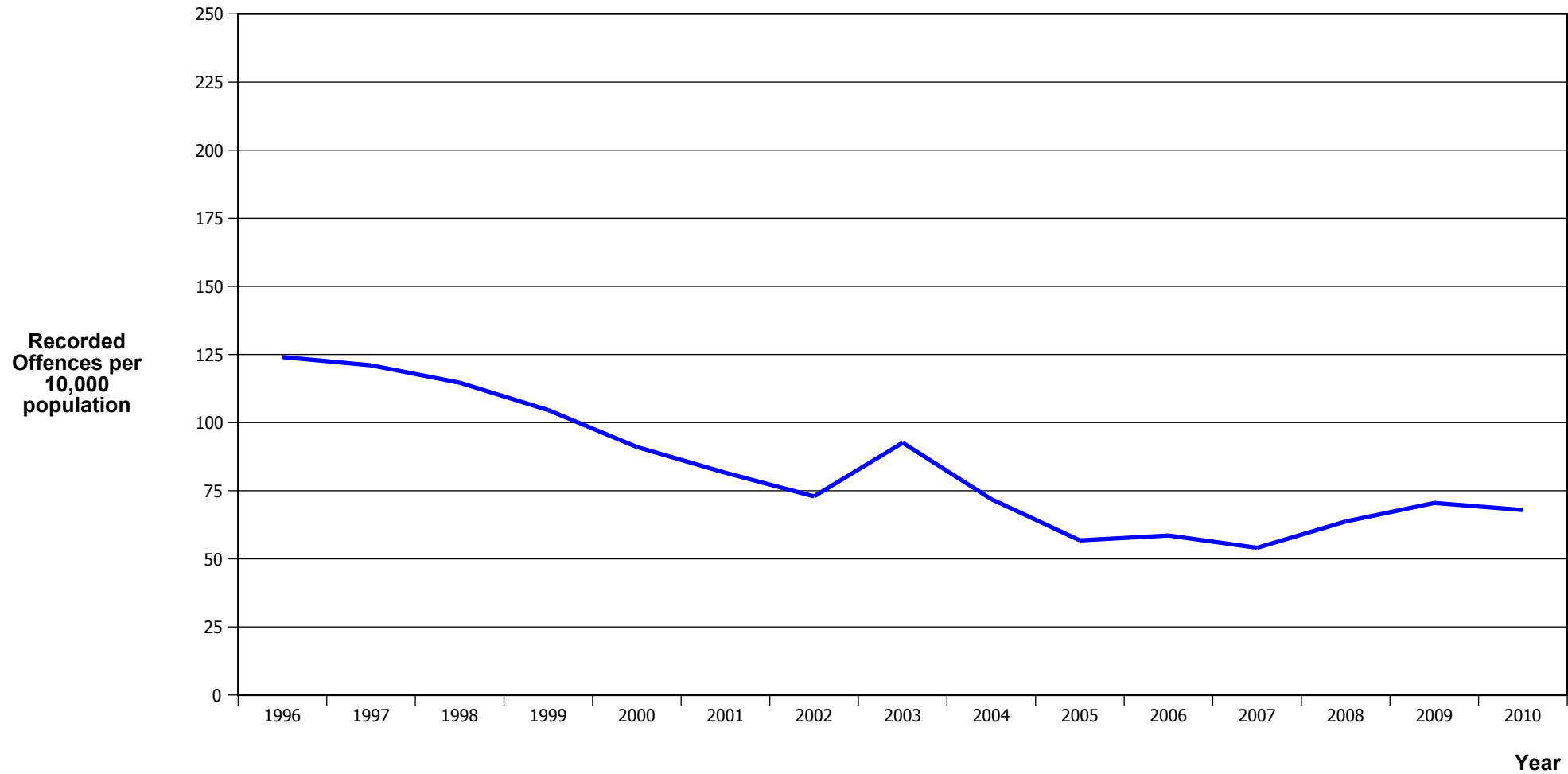
Calendar Year	1996	1997	1998	1999	2000	2001	2002	2003	2004	2005	2006	2007	2008	2009	2010
Recorded Offences	181	225	201	171	162	175	167	177	180	223	248	209	237	179	192
Recorded per 10,000 Population	4.3	5.3	4.7	4.0	3.8	4.0	3.8	4.0	4.0	4.9	5.4	4.5	5.1	3.8	4.0

BURGLARY (TOTAL)



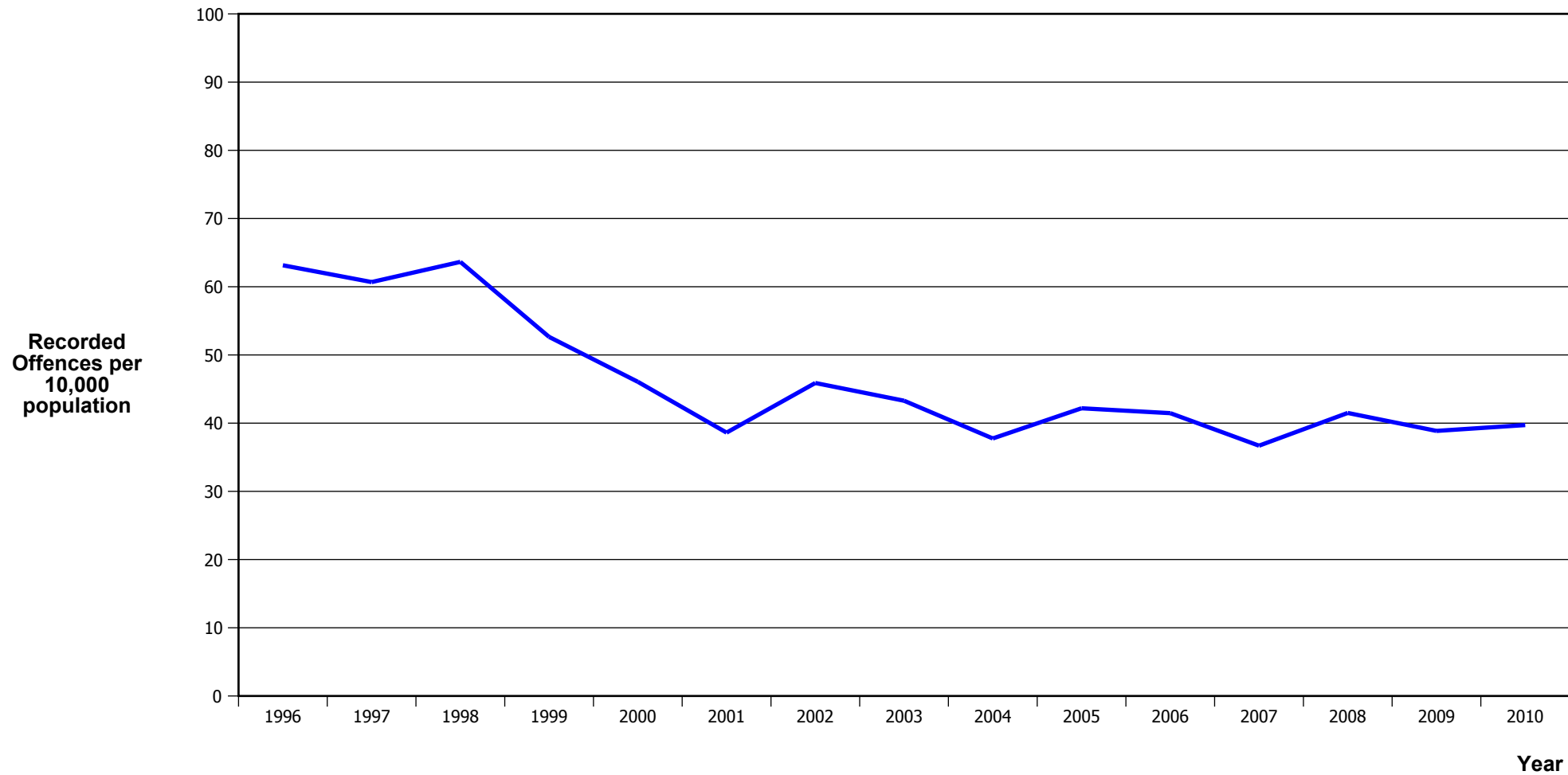
Calendar Year	1996	1997	1998	1999	2000	2001	2002	2003	2004	2005	2006	2007	2008	2009	2010
Recorded Offences	8,489	7,951	7,641	7,208	6,195	5,649	5,465	6,549	5,651	4,286	4,545	4,100	4,704	4,849	4,687
Recorded per 10,000 Population	202.4	187.6	179.2	168.3	144.1	130.6	124.7	147.3	125.5	94.3	99.0	88.6	100.9	102.9	98.5

BURGLARY (DWELLING)



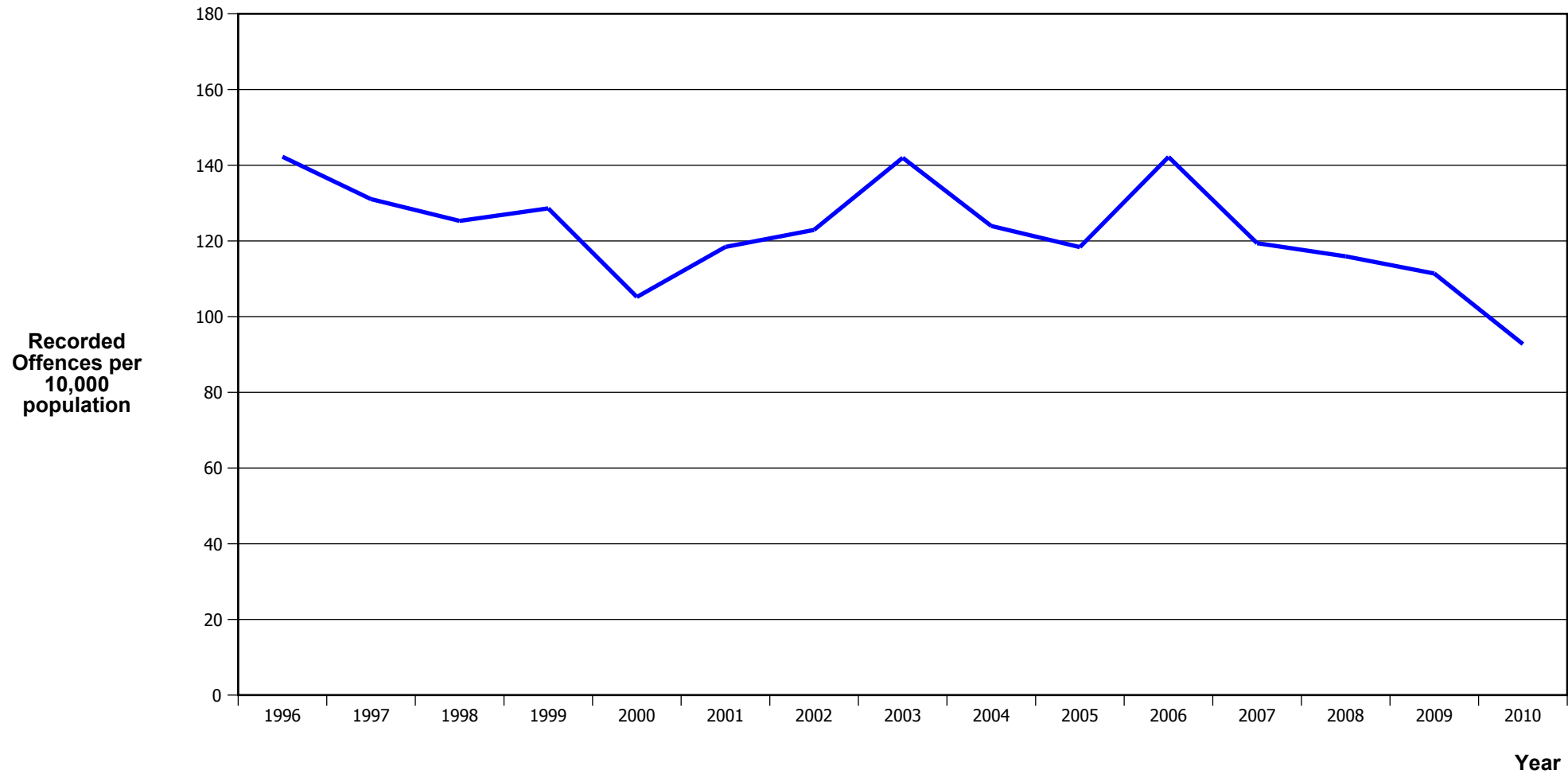
Calendar Year	1996	1997	1998	1999	2000	2001	2002	2003	2004	2005	2006	2007	2008	2009	2010
Recorded Offences	5,205	5,130	4,888	4,479	3,914	3,530	3,198	4,119	3,240	2,579	2,688	2,503	2,971	3,322	3,232
Recorded per 10,000 Population	124.1	121.0	114.6	104.6	91.1	81.6	73.0	92.6	71.9	56.8	58.6	54.1	63.7	70.5	67.9

VEHICLES STOLEN



Calendar Year	1996	1997	1998	1999	2000	2001	2002	2003	2004	2005	2006	2007	2008	2009	2010
Recorded Offences	2,649	2,572	2,714	2,254	1,980	1,671	2,011	1,925	1,701	1,916	1,903	1,699	1,935	1,831	1,890
Recorded per 10,000 Population	63.1	60.7	63.6	52.6	46.1	38.6	45.9	43.3	37.8	42.2	41.5	36.7	41.5	38.9	39.7

THEFT EX CAR



Calendar Year	1996	1997	1998	1999	2000	2001	2002	2003	2004	2005	2006	2007	2008	2009	2010
Recorded Offences	5,967	5,555	5,343	5,506	4,522	5,124	5,387	6,314	5,583	5,378	6,527	5,527	5,405	5,247	4,413
Recorded per 10,000 Population	142.2	131.0	125.3	128.6	105.2	118.4	122.9	142.0	124.0	118.4	142.2	119.4	115.9	111.4	92.7

Population Data

Population data is used in this release to calculate crime rates. They have been derived from population estimates as at 30 June each year that have been obtained from Statistics New Zealand.

The estimated resident population is based on the census usually resident population count, with adjustments for residents missed or counted more than once by the census (net census undercount), and for residents temporarily overseas on census night.

These population estimates exclude the number of international students who are studying in New Zealand for less than 12 months.

Year	Population
1996	419,480
1997	423,890
1998	426,420
1999	428,180
2000	429,870
2001	432,680
2002	438,310
2003	444,710
2004	450,420
2005	454,290
2006	459,020
2007	462,880
2008	466,240
2009	471,070
2010	475,810

General Definitions

Recorded Offences: the number of breaches of the New Zealand law recorded by Police. This includes offences specified in the Crimes Act and other legislations, such as the Summary Offences Act, Local Government Act, etc.

Resolved Offences: the number of recorded offences where an offender has been identified and dealt with (e.g. warned, cautioned, prosecuted, etc).

Resolution Rate: the proportion of recorded offences that have been resolved.

Recorded per 10,000 population: the number of recorded offences for every 10,000 people. This is also referred as the crime rate per 10,000 population.

ASOC: the Australian Standard Offence Classification. The offence classification is divided into 16 major offence divisions.

Definition of ASOC Divisions

1. Homicide and related offences: Unlawfully kill, attempt to unlawfully kill or conspiracy to kill another person.
2. Acts intended to cause injury: Acts, excluding attempted murder and those resulting in death, which are intended to cause non-fatal injury or harm to another person and where there is no sexual or acquisitive element.
3. Sexual assault and related offences: Acts, or intent of acts, of a sexual nature against another person, which are non-consensual or where consent is proscribed.
4. Dangerous or negligent acts endangering persons: Dangerous or negligent acts which, though not intended to cause harm, actually or potentially result in injury to oneself or another person.
5. Abduction, harassment and other offences against person: Acts intended to threaten or harass, or acts that unlawfully deprive another person of their freedom of movement, that are against that person's will or against the will of any parent, guardian or other person having lawful custody or care of that person.
6. Robbery, extortion and related offences: Acts intended to unlawfully gain money, property or other items of value from, or to cause detriment to, another person by using the threat of force or any other coercive measure.
7. Unlawful entry with intent / burglary, break and enter: The unlawful entry of a structure with the intent to commit an offence, where the entry is either forced or unforced.
8. Theft and related and offences: The unlawful taking or obtaining of money or goods, not involving the use of force or violence, coercion or deception, with intent to permanently or temporarily deprive the owner or possessor of the use of the money or goods, or the receiving or handling of money or goods obtained unlawfully.

9. Fraud, deception and related offences: Offences involving a dishonest act or omission carried out with the purpose of deceiving to obtain a benefit.

10. Illicit drug offences: The possessing, selling, dealing or trafficking, importing or exporting, manufacturing or cultivating of drugs or other substances prohibited under legislation.

11. Prohibited and regulated weapons and explosives offences: Offences involving prohibited or regulated weapons and explosives. Those offences also involving assault, sexual assault or robbery are coded to the relevant group within Assault, Sexual assaults and Robbery respectively.

12. Property damage and environmental pollution: The wilful and unlawful destruction, damage or defacement of public or private property, or the pollution of property or a definable entity held in common by the community.

13. Public order offences: Offences relating personal conduct that involves, or may lead to, a breach of public order or decency, or that is indicative of criminal intent, or that is otherwise regulated or prohibited on moral or ethical grounds. In general these offences do not involve a specific victim or victims; however some offences, such as offensive language and offensive behaviour, may be directed towards a single victim.

14. Traffic and vehicle regulatory offences: Offences relating to vehicles and most forms of traffic, including offences pertaining to the licensing, registration, roadworthiness, or use of vehicles, bicycle offences and pedestrian offences.

15. Offences against justice procedures, government security and government operations: An act or omission that is deemed to be prejudicial to the effective carrying out of justice procedures or any government operations. This includes general government operations as well as those specifically concerned with maintaining government security.

16. Miscellaneous offences: Offences involving the breach of statutory rules or regulations governing activities that are prima facie legal, where such offences are not explicitly dealt with under any other division. If an offence is specified under regulation and involves an act that would be illegal under common law or general criminal legislation, the offence is dealt with under the appropriate generic group.