

WAITEMATA DISTRICT CRIME STATISTICS 2014



**A Summary of
Recorded and Resolved Offence
Statistics**

**POLICE NATIONAL HEADQUARTERS
April 2015**

ISSN 1178 - 1548

Table of Contents:

Topic	Page
Report Notes	1
District Summary of Recorded and Resolved Crime, by Division	2-4
Proportions of Recorded Crime by Division	5
Summary of District Recorded Offences, Rate per 10,000 Population and Resolved Offences, by Area	6
Summary of Area Recorded Offences, Rate per 10,000 Population and Resolved Offences, by Division	7-9
Crime Trends	10
Total Crime	11
Murder	12
Serious Assaults Resulting in Injury	13
Sexual Assaults	14
Public Place Assaults	15
Dwelling Assaults	16
Robbery	17
Burglary (Total)	18
Burglary (Dwelling)	19
Vehicles Stolen	20
Theft Ex Car	21
Population Data	22
General Definitions	23-24

REPORT NOTES:

Statistics reported in this document are derived from the Police National Intelligence Application (NIA). These Official Statistics for Recorded and Resolved Offences present a snapshot of data in NIA relating to offences that occur within a given year, as at the date 14 days following the end of that year.

Unless the matter is minor where Police attendance is sufficient, a matter that is reported to or discovered by Police where Police believe an offence is likely to have been committed is counted as a recorded offence.

A recorded offence is counted as resolved when Police apprehend an offender and decide how to deal with him/her. (E.g. warn, prosecute, etc.)

Resolution rate is the percentage of recorded offences that are resolved within 14 days of the end of the year being reported on.

If an offence is resolved 15 days or more after the end of the year it will not appear in the Official Crime Statistics for that or any other year. Resolution Rate therefore undercounts the number of cases that Police have resolved. This phenomenon has a more marked impact for some types of offences than others, such as offences that require long investigations (E.g. many serial crimes, burglaries and murders).

Several offences have been reclassified into different ANZSOC groups. This has resulted in changes to subtotals for Groups and Sub-divisions within Divisions 10, 15 and 16, compared to previously reported data. Generally, this occurred within the same Division.

Note that the Population Estimates have been revised for 2007 to 2013 as a result of the 2013 Census. In previous reports population estimates were based on the 2006 Census. Crime rates reported in this report for those years may differ from those previously reported as a result.

When comparing 2014 Statistics with previous years, the reader should also refer to "Report Notes" published in previous years' reports, as previous changes significantly affect year on year trends.

SUMMARY OF DISTRICT RECORDED AND RESOLVED CRIME, BY DIVISION
Years ending 31 December

HOMICIDE AND RELATED OFFENCES

ASOC Subdivision Description	Recorded 2012	Recorded 2013	Recorded 2014	Variance 2012-2013	Variance 2013-2014	Resolved 2012	Resolved 2013	Resolved 2014	Resolution Rate 2012	Resolution Rate 2013	Resolution Rate 2014
ATTEMPTED MURDER	0	2	5	0.0 %	150.0 %	0	2	5	0.0 %	100.0 %	100.0 %
HOMICIDE AND RELATED OFFENCES NOT FURTHER DEFINED	0	0	0	0.0 %	0.0 %	0	0	0	0.0 %	0.0 %	0.0 %
MANSLAUGHTER AND DRIVING CAUSING DEATH	0	2	0	0.0 %	-100.0 %	0	2	0	0.0 %	100.0 %	0.0 %
MURDER	1	2	9	100.0 %	350.0 %	0	2	6	0.0 %	100.0 %	66.7 %
	1	6	14	500.0 %	133.3 %	0	6	11	0.0 %	100.0 %	78.6 %

ACTS INTENDED TO CAUSE INJURY

ASOC Subdivision Description	Recorded 2012	Recorded 2013	Recorded 2014	Variance 2012-2013	Variance 2013-2014	Resolved 2012	Resolved 2013	Resolved 2014	Resolution Rate 2012	Resolution Rate 2013	Resolution Rate 2014
ASSAULT	3,519	3,134	2,960	-10.9 %	-5.6 %	2,934	2,499	2,011	83.4 %	79.7 %	67.9 %
OTHER ACTS INTENDED TO CAUSE INJURY	2	0	0	-100.0 %	0.0 %	2	0	0	100.0 %	0.0 %	0.0 %
	3,521	3,134	2,960	-11.0 %	-5.6 %	2,936	2,499	2,011	83.4 %	79.7 %	67.9 %

SEXUAL ASSAULT AND RELATED OFFENCES

ASOC Subdivision Description	Recorded 2012	Recorded 2013	Recorded 2014	Variance 2012-2013	Variance 2013-2014	Resolved 2012	Resolved 2013	Resolved 2014	Resolution Rate 2012	Resolution Rate 2013	Resolution Rate 2014
NON-ASSAULTIVE SEXUAL OFFENCES	10	34	18	240.0 %	-47.1 %	7	32	8	70.0 %	94.1 %	44.4 %
SEXUAL ASSAULT	255	317	292	24.3 %	-7.9 %	146	189	132	57.3 %	59.6 %	45.2 %
	265	351	310	32.5 %	-11.7 %	153	221	140	57.7 %	63.0 %	45.2 %

DANGEROUS OR NEGLIGENT ACTS ENDANGERING PERSONS

ASOC Subdivision Description	Recorded 2012	Recorded 2013	Recorded 2014	Variance 2012-2013	Variance 2013-2014	Resolved 2012	Resolved 2013	Resolved 2014	Resolution Rate 2012	Resolution Rate 2013	Resolution Rate 2014
OTHER DANGEROUS OR NEGLIGENT ACTS ENDANGERING PERSONS	68	62	59	-8.8 %	-4.8 %	40	38	26	58.8 %	61.3 %	44.1 %
	68	62	59	-8.8 %	-4.8 %	40	38	26	58.8 %	61.3 %	44.1 %

ABDUCTION, HARASSMENT AND OTHER RELATED OFFENCES AGAINST A PERSON

ASOC Subdivision Description	Recorded 2012	Recorded 2013	Recorded 2014	Variance 2012-2013	Variance 2013-2014	Resolved 2012	Resolved 2013	Resolved 2014	Resolution Rate 2012	Resolution Rate 2013	Resolution Rate 2014
ABDUCTION AND KIDNAPPING	16	16	8	0.0 %	-50.0 %	7	9	7	43.8 %	56.3 %	87.5 %
HARASSMENT AND THREATENING BEHAVIOUR	1,193	1,228	1,362	2.9 %	10.9 %	827	649	619	69.3 %	52.9 %	45.4 %
	1,209	1,244	1,370	2.9 %	10.1 %	834	658	626	69.0 %	52.9 %	45.7 %

ROBBERY, EXTORTION AND RELATED OFFENCES

ASOC Subdivision Description	Recorded 2012	Recorded 2013	Recorded 2014	Variance 2012-2013	Variance 2013-2014	Resolved 2012	Resolved 2013	Resolved 2014	Resolution Rate 2012	Resolution Rate 2013	Resolution Rate 2014
BLACKMAIL AND EXTORTION	8	15	17	87.5 %	13.3 %	6	8	7	75.0 %	53.3 %	41.2 %
ROBBERY	202	149	178	-26.2 %	19.5 %	74	52	54	36.6 %	34.9 %	30.3 %
	210	164	195	-21.9 %	18.9 %	80	60	61	38.1 %	36.6 %	31.3 %

UNLAWFUL ENTRY WITH INTENT/BURGLARY, BREAK AND ENTER

ASOC Subdivision Description	Recorded 2012	Recorded 2013	Recorded 2014	Variance 2012-2013	Variance 2013-2014	Resolved 2012	Resolved 2013	Resolved 2014	Resolution Rate 2012	Resolution Rate 2013	Resolution Rate 2014
UNLAWFUL ENTRY WITH INTENT/BURGLARY, BREAK AND ENTER	4,436	4,126	4,581	-7.0 %	11.0 %	579	550	368	13.1 %	13.3 %	8.0 %
	4,436	4,126	4,581	-7.0 %	11.0 %	579	550	368	13.1 %	13.3 %	8.0 %

SUMMARY OF DISTRICT RECORDED AND RESOLVED CRIME, BY DIVISION

Years ending 31 December

THEFT AND RELATED OFFENCES

ASOC Subdivision Description	Recorded 2012	Recorded 2013	Recorded 2014	Variance 2012-2013	Variance 2013-2014	Resolved 2012	Resolved 2013	Resolved 2014	Resolution Rate 2012	Resolution Rate 2013	Resolution Rate 2014
ILLEGAL USE OF PROPERTY (EXCEPT MOTOR VEHICLES)	84	134	143	59.5 %	6.7 %	6	9	8	7.1 %	6.7 %	5.6 %
MOTOR VEHICLE THEFT AND RELATED OFFENCES	5,452	5,157	5,126	-5.4 %	-0.6 %	579	570	374	10.6 %	11.1 %	7.3 %
RECEIVE OR HANDLE PROCEEDS OF CRIME	286	271	298	-5.2 %	10.0 %	280	267	283	97.9 %	98.5 %	95.0 %
THEFT (EXCEPT MOTOR VEHICLES)	5,002	6,514	6,724	30.2 %	3.2 %	1,889	1,810	1,571	37.8 %	27.8 %	23.4 %
	10,824	12,076	12,291	11.6 %	1.8 %	2,754	2,656	2,236	25.4 %	22.0 %	18.2 %

FRAUD, DECEPTION AND RELATED OFFENCES

ASOC Subdivision Description	Recorded 2012	Recorded 2013	Recorded 2014	Variance 2012-2013	Variance 2013-2014	Resolved 2012	Resolved 2013	Resolved 2014	Resolution Rate 2012	Resolution Rate 2013	Resolution Rate 2014
DECEPTIVE BUSINESS/GOVERNMENT PRACTICES	2	9	4	350.0 %	-55.6 %	2	5	3	100.0 %	55.6 %	75.0 %
FORGERY AND COUNTERFEITING	32	44	31	37.5 %	-29.5 %	11	24	8	34.4 %	54.5 %	25.8 %
OBTAIN BENEFIT BY DECEPTION	789	820	831	3.9 %	1.3 %	355	428	385	45.0 %	52.2 %	46.3 %
OTHER FRAUD AND DECEPTION OFFENCES	64	56	67	-12.5 %	19.6 %	34	19	17	53.1 %	33.9 %	25.4 %
	887	929	933	4.7 %	0.4 %	402	476	413	45.3 %	51.2 %	44.3 %

ILLICIT DRUG OFFENCES

ASOC Subdivision Description	Recorded 2012	Recorded 2013	Recorded 2014	Variance 2012-2013	Variance 2013-2014	Resolved 2012	Resolved 2013	Resolved 2014	Resolution Rate 2012	Resolution Rate 2013	Resolution Rate 2014
DEAL OR TRAFFIC IN ILLICIT DRUGS	134	232	222	73.1 %	-4.3 %	122	215	204	91.0 %	92.7 %	91.9 %
IMPORT OR EXPORT ILLICIT DRUGS	1	4	2	300.0 %	-50.0 %	1	2	2	100.0 %	50.0 %	100.0 %
MANUFACTURE OR CULTIVATE ILLICIT DRUGS	179	157	150	-12.3 %	-4.5 %	148	119	111	82.7 %	75.8 %	74.0 %
OTHER ILLICIT DRUG OFFENCES	558	433	445	-22.4 %	2.8 %	544	416	435	97.5 %	96.1 %	97.8 %
POSSESS AND/OR USE ILLICIT DRUGS	900	757	704	-15.9 %	-7.0 %	872	731	662	96.9 %	96.6 %	94.0 %
	1,772	1,583	1,523	-10.7 %	-3.8 %	1,687	1,483	1,414	95.2 %	93.7 %	92.8 %

PROHIBITED AND REGULATED WEAPONS AND EXPLOSIVES OFFENCES

ASOC Subdivision Description	Recorded 2012	Recorded 2013	Recorded 2014	Variance 2012-2013	Variance 2013-2014	Resolved 2012	Resolved 2013	Resolved 2014	Resolution Rate 2012	Resolution Rate 2013	Resolution Rate 2014
REGULATED WEAPONS/EXPLOSIVES OFFENCES	568	492	425	-13.4 %	-13.6 %	520	448	371	91.5 %	91.1 %	87.3 %
	568	492	425	-13.4 %	-13.6 %	520	448	371	91.5 %	91.1 %	87.3 %

PROPERTY DAMAGE AND ENVIRONMENTAL POLLUTION

ASOC Subdivision Description	Recorded 2012	Recorded 2013	Recorded 2014	Variance 2012-2013	Variance 2013-2014	Resolved 2012	Resolved 2013	Resolved 2014	Resolution Rate 2012	Resolution Rate 2013	Resolution Rate 2014
ENVIRONMENTAL POLLUTION	13	9	21	-30.8 %	133.3 %	5	5	2	38.5 %	55.6 %	9.5 %
PROPERTY DAMAGE	3,311	3,174	3,041	-4.1 %	-4.2 %	1,187	988	724	35.9 %	31.1 %	23.8 %
	3,324	3,183	3,062	-4.2 %	-3.8 %	1,192	993	726	35.9 %	31.2 %	23.7 %

PUBLIC ORDER OFFENCES

ASOC Subdivision Description	Recorded 2012	Recorded 2013	Recorded 2014	Variance 2012-2013	Variance 2013-2014	Resolved 2012	Resolved 2013	Resolved 2014	Resolution Rate 2012	Resolution Rate 2013	Resolution Rate 2014
DISORDERLY CONDUCT	2,017	1,933	1,882	-4.2 %	-2.6 %	1,649	1,510	1,362	81.8 %	78.1 %	72.4 %
OFFENSIVE CONDUCT	107	86	57	-19.6 %	-33.7 %	67	53	30	62.6 %	61.6 %	52.6 %
PUBLIC ORDER OFFENCES NOT FURTHER DEFINED	0	1	0	0.0 %	-100.0 %	0	0	0	0.0 %	0.0 %	0.0 %
REGULATED PUBLIC ORDER OFFENCES	235	243	127	3.4 %	-47.7 %	189	191	74	80.4 %	78.6 %	58.3 %
	2,359	2,263	2,066	-4.1 %	-8.7 %	1,905	1,754	1,466	80.8 %	77.5 %	71.0 %

SUMMARY OF DISTRICT RECORDED AND RESOLVED CRIME, BY DIVISION
Years ending 31 December

OFFENCES AGAINST JUSTICE PROCEDURES, GOVERNMENT SECURITY AND GOVERNMENT OPERATIONS

ASOC Subdivision Description	Recorded 2012	Recorded 2013	Recorded 2014	Variance 2012-2013	Variance 2013-2014	Resolved 2012	Resolved 2013	Resolved 2014	Resolution Rate 2012	Resolution Rate 2013	Resolution Rate 2014
BREACH OF COMMUNITY-BASED ORDER	885	748	673	-15.5 %	-10.0 %	878	742	649	99.2 %	99.2 %	96.4 %
BREACH OF CUSTODIAL ORDER OFFENCES	50	39	62	-22.0 %	59.0 %	48	37	55	96.0 %	94.9 %	88.7 %
BREACH OF VIOLENCE AND NON-VIOLENCE RESTRAINING ORDERS	378	292	471	-22.8 %	61.3 %	346	268	360	91.5 %	91.8 %	76.4 %
OFFENCES AGAINST GOVERNMENT OPERATIONS	22	18	28	-18.2 %	55.6 %	10	5	5	45.5 %	27.8 %	17.9 %
OFFENCES AGAINST GOVERNMENT SECURITY	1	0	0	-100.0 %	0.0 %	1	0	0	100.0 %	0.0 %	0.0 %
OFFENCES AGAINST JUSTICE PROCEDURES	861	893	930	3.7 %	4.1 %	854	888	919	99.2 %	99.4 %	98.8 %
OFFENCES AGAINST JUSTICE PROCEDURES, GOVERNMENT SECURITY AND GOVERNMENT OPERATIONS NOT FURTHER DEFINED	0	0	0	0.0 %	0.0 %	0	0	0	0.0 %	0.0 %	0.0 %
	2,197	1,990	2,164	-9.4 %	8.7 %	2,137	1,940	1,988	97.3 %	97.5 %	91.9 %

MISCELLANEOUS OFFENCES

ASOC Subdivision Description	Recorded 2012	Recorded 2013	Recorded 2014	Variance 2012-2013	Variance 2013-2014	Resolved 2012	Resolved 2013	Resolved 2014	Resolution Rate 2012	Resolution Rate 2013	Resolution Rate 2014
COMMERCIAL/INDUSTRY/FINANCIAL REGULATION	1	3	6	200.0 %	100.0 %	1	3	4	100.0 %	100.0 %	66.7 %
DEFAMATION, LIBEL AND PRIVACY OFFENCES	5	5	7	0.0 %	40.0 %	1	3	0	20.0 %	60.0 %	0.0 %
OTHER MISCELLANEOUS OFFENCES	52	81	51	55.8 %	-37.0 %	36	53	23	69.2 %	65.4 %	45.1 %
PUBLIC HEALTH AND SAFETY OFFENCES	19	12	26	-36.8 %	116.7 %	17	11	17	89.5 %	91.7 %	65.4 %
	77	101	90	31.2 %	-10.9 %	55	70	44	71.4 %	69.3 %	48.9 %

TOTAL	31,718	31,704	32,043	-0.0 %	1.1 %	15,274	13,852	11,901	48.2 %	43.7 %	37.1 %
--------------	---------------	---------------	---------------	---------------	--------------	---------------	---------------	---------------	---------------	---------------	---------------

PROPORTIONS OF RECORDED CRIME BY DIVISION

Years ending 31 December

ASOC Division Description	Proportions Recorded 2012	Recorded 2012	Proportions Recorded 2013	Recorded 2013	Proportions Recorded 2014	Recorded 2014
HOMICIDE AND RELATED OFFENCES	0.00 %	1	0.02 %	6	0.04 %	14
ACTS INTENDED TO CAUSE INJURY	11.10 %	3,521	9.89 %	3,134	9.24 %	2,960
SEXUAL ASSAULT AND RELATED OFFENCES	0.84 %	265	1.11 %	351	0.97 %	310
DANGEROUS OR NEGLIGENT ACTS ENDANGERING PERSONS	0.21 %	68	0.20 %	62	0.18 %	59
ABDUCTION, HARASSMENT AND OTHER RELATED OFFENCES AGAINST A PERSON	3.81 %	1,209	3.92 %	1,244	4.28 %	1,370
ROBBERY, EXTORTION AND RELATED OFFENCES	0.66 %	210	0.52 %	164	0.61 %	195
UNLAWFUL ENTRY WITH INTENT/BURGLARY, BREAK AND ENTER	13.99 %	4,436	13.01 %	4,126	14.30 %	4,581
THEFT AND RELATED OFFENCES	34.13 %	10,824	38.09 %	12,076	38.36 %	12,291
FRAUD, DECEPTION AND RELATED OFFENCES	2.80 %	887	2.93 %	929	2.91 %	933
ILLICIT DRUG OFFENCES	5.59 %	1,772	4.99 %	1,583	4.75 %	1,523
PROHIBITED AND REGULATED WEAPONS AND EXPLOSIVES OFFENCES	1.79 %	568	1.55 %	492	1.33 %	425
PROPERTY DAMAGE AND ENVIRONMENTAL POLLUTION	10.48 %	3,324	10.04 %	3,183	9.56 %	3,062
PUBLIC ORDER OFFENCES	7.44 %	2,359	7.14 %	2,263	6.45 %	2,066
OFFENCES AGAINST JUSTICE PROCEDURES, GOVERNMENT SECURITY AND GOVERNMENT OPERATIONS	6.93 %	2,197	6.28 %	1,990	6.75 %	2,164
MISCELLANEOUS OFFENCES	0.24 %	77	0.32 %	101	0.28 %	90
	100.00 %	31,718	100.00 %	31,704	100.00 %	32,043

SUMMARY OF RECORDED OFFENCES, RATE PER 10,000 POPULATION AND RESOLVED OFFENCES, BY AREA
years ending 31 December

TOTAL CRIME

Area Description	Recorded 2013	Recorded 2014	Variance 2013-2014	Recorded per 10,000 pop 2013	Recorded per 10,000 pop 2014	Per 10,000 pop % Variance 2013 to 2014	Resolved 2013	Resolved 2014	Resolution Rate 2013	Resolution Rate 2014
Auckland Motorways	79	175	121.5 %	#DIV/0	#DIV/0	#DIV/0	67	157	84.8 %	89.7 %
North Shore	10,298	10,146	-1.5 %	435.8	422.2	-3.1 %	4,346	3,373	42.2 %	33.2 %
Rodney	5,260	5,310	1.0 %	483.9	477.9	-1.2 %	2,114	1,948	40.2 %	36.7 %
Waitakere	16,067	16,412	2.1 %	762.9	766.2	0.4 %	7,325	6,423	45.6 %	39.1 %
	31,704	32,043	1.1 %	570.6	566.5	-0.7 %	13,852	11,901	43.7 %	37.1 %

SUMMARY OF RECORDED OFFENCES, RATE PER 10,000 POPULATION AND RESOLVED OFFENCES, BY DIVISION

Years ending 31 December

HOMICIDE AND RELATED OFFENCES

Area Description	Recorded 2013	Recorded 2014	Variance 2013-2014	Recorded per 10,000 pop 2013	Recorded per 10,000 pop 2014	Per 10,000 pop % Variance 2013 to 2014	Resolved 2013	Resolved 2014	Resolution Rate 2013	Resolution Rate 2014
Auckland Motorways	0	0	0.0 %	0.0	0.0	0.0 %	0	0	0.0 %	0.0 %
North Shore	1	5	400.0 %	0.0	0.2	391.7 %	1	5	100.0 %	100.0 %
Rodney	1	1	0.0 %	0.1	0.1	-2.2 %	1	0	100.0 %	0.0 %
Waitakere	4	8	100.0 %	0.2	0.4	96.6 %	4	6	100.0 %	75.0 %
	6	14	133.3 %	0.1	0.2	129.2 %	6	11	100.0 %	78.6 %

ACTS INTENDED TO CAUSE INJURY

Area Description	Recorded 2013	Recorded 2014	Variance 2013-2014	Recorded per 10,000 pop 2013	Recorded per 10,000 pop 2014	Per 10,000 pop % Variance 2013 to 2014	Resolved 2013	Resolved 2014	Resolution Rate 2013	Resolution Rate 2014
Auckland Motorways	6	13	116.7 %	#DIV/0	#DIV/0	#DIV/0	6	11	100.0 %	84.6 %
North Shore	900	860	-4.4 %	38.1	35.8	-6.0 %	716	597	79.6 %	69.4 %
Rodney	410	405	-1.2 %	37.7	36.4	-3.4 %	312	272	76.1 %	67.2 %
Waitakere	1,818	1,682	-7.5 %	86.3	78.5	-9.0 %	1,465	1,131	80.6 %	67.2 %
	3,134	2,960	-5.6 %	56.4	52.3	-7.2 %	2,499	2,011	79.7 %	67.9 %

SEXUAL ASSAULT AND RELATED OFFENCES

Area Description	Recorded 2013	Recorded 2014	Variance 2013-2014	Recorded per 10,000 pop 2013	Recorded per 10,000 pop 2014	Per 10,000 pop % Variance 2013 to 2014	Resolved 2013	Resolved 2014	Resolution Rate 2013	Resolution Rate 2014
Auckland Motorways	0	0	0.0 %	0.0	0.0	0.0 %	0	0	0.0 %	0.0 %
North Shore	130	110	-15.4 %	5.5	4.6	-16.8 %	92	67	70.8 %	60.9 %
Rodney	31	34	9.7 %	2.9	3.1	7.3 %	20	16	64.5 %	47.1 %
Waitakere	190	166	-12.6 %	9.0	7.7	-14.1 %	109	57	57.4 %	34.3 %
	351	310	-11.7 %	6.3	5.5	-13.2 %	221	140	63.0 %	45.2 %

DANGEROUS OR NEGLIGENT ACTS ENDANGERING PERSONS

Area Description	Recorded 2013	Recorded 2014	Variance 2013-2014	Recorded per 10,000 pop 2013	Recorded per 10,000 pop 2014	Per 10,000 pop % Variance 2013 to 2014	Resolved 2013	Resolved 2014	Resolution Rate 2013	Resolution Rate 2014
Auckland Motorways	0	2	0.0 %	0.0	#DIV/0	#DIV/0	0	2	0.0 %	100.0 %
North Shore	28	20	-28.6 %	1.2	0.8	-29.8 %	18	10	64.3 %	50.0 %
Rodney	3	7	133.3 %	0.3	0.6	128.3 %	2	3	66.7 %	42.9 %
Waitakere	31	30	-3.2 %	1.5	1.4	-4.9 %	18	11	58.1 %	36.7 %
	62	59	-4.8 %	1.1	1.0	-6.5 %	38	26	61.3 %	44.1 %

ABDUCTION, HARASSMENT AND OTHER RELATED OFFENCES AGAINST A PERSON

Area Description	Recorded 2013	Recorded 2014	Variance 2013-2014	Recorded per 10,000 pop 2013	Recorded per 10,000 pop 2014	Per 10,000 pop % Variance 2013 to 2014	Resolved 2013	Resolved 2014	Resolution Rate 2013	Resolution Rate 2014
Auckland Motorways	2	2	0.0 %	#DIV/0	#DIV/0	#DIV/0	2	1	100.0 %	50.0 %
North Shore	397	425	7.1 %	16.8	17.7	5.3 %	199	201	50.1 %	47.3 %
Rodney	220	272	23.6 %	20.2	24.5	20.9 %	122	134	55.5 %	49.3 %
Waitakere	625	671	7.4 %	29.7	31.3	5.6 %	335	290	53.6 %	43.2 %
	1,244	1,370	10.1 %	22.4	24.2	8.2 %	658	626	52.9 %	45.7 %

SUMMARY OF RECORDED OFFENCES, RATE PER 10,000 POPULATION AND RESOLVED OFFENCES, BY DIVISION

Years ending 31 December

ROBBERY, EXTORTION AND RELATED OFFENCES

Area Description	Recorded 2013	Recorded 2014	Variance 2013-2014	Recorded per 10,000 pop 2013	Recorded per 10,000 pop 2014	Per 10,000 pop % Variance 2013 to 2014	Resolved 2013	Resolved 2014	Resolution Rate 2013	Resolution Rate 2014
Auckland Motorways	0	0	0.0 %	0.0	0.0	0.0 %	0	0	0.0 %	0.0 %
North Shore	46	61	32.6 %	1.9	2.5	30.4 %	12	29	26.1 %	47.5 %
Rodney	11	11	0.0 %	1.0	1.0	-2.2 %	4	6	36.4 %	54.5 %
Waitakere	107	123	15.0 %	5.1	5.7	13.0 %	44	26	41.1 %	21.1 %
	164	195	18.9 %	3.0	3.4	16.8 %	60	61	36.6 %	31.3 %

UNLAWFUL ENTRY WITH INTENT/BURGLARY, BREAK AND ENTER

Area Description	Recorded 2013	Recorded 2014	Variance 2013-2014	Recorded per 10,000 pop 2013	Recorded per 10,000 pop 2014	Per 10,000 pop % Variance 2013 to 2014	Resolved 2013	Resolved 2014	Resolution Rate 2013	Resolution Rate 2014
Auckland Motorways	1	2	100.0 %	#DIV/0	#DIV/0	#DIV/0	0	0	0.0 %	0.0 %
North Shore	1,265	1,358	7.4 %	53.5	56.5	5.6 %	163	108	12.9 %	8.0 %
Rodney	767	860	12.1 %	70.6	77.4	9.7 %	114	69	14.9 %	8.0 %
Waitakere	2,093	2,361	12.8 %	99.4	110.2	10.9 %	273	191	13.0 %	8.1 %
	4,126	4,581	11.0 %	74.3	81.0	9.1 %	550	368	13.3 %	8.0 %

THEFT AND RELATED OFFENCES

Area Description	Recorded 2013	Recorded 2014	Variance 2013-2014	Recorded per 10,000 pop 2013	Recorded per 10,000 pop 2014	Per 10,000 pop % Variance 2013 to 2014	Resolved 2013	Resolved 2014	Resolution Rate 2013	Resolution Rate 2014
Auckland Motorways	7	13	85.7 %	#DIV/0	#DIV/0	#DIV/0	5	7	71.4 %	53.8 %
North Shore	4,241	4,406	3.9 %	179.5	183.4	2.2 %	981	711	23.1 %	16.1 %
Rodney	1,996	1,947	-2.5 %	183.6	175.2	-4.6 %	416	423	20.8 %	21.7 %
Waitakere	5,832	5,925	1.6 %	276.9	276.6	-0.1 %	1,254	1,095	21.5 %	18.5 %
	12,076	12,291	1.8 %	217.4	217.3	-0.0 %	2,656	2,236	22.0 %	18.2 %

FRAUD, DECEPTION AND RELATED OFFENCES

Area Description	Recorded 2013	Recorded 2014	Variance 2013-2014	Recorded per 10,000 pop 2013	Recorded per 10,000 pop 2014	Per 10,000 pop % Variance 2013 to 2014	Resolved 2013	Resolved 2014	Resolution Rate 2013	Resolution Rate 2014
Auckland Motorways	0	1	0.0 %	0.0	#DIV/0	#DIV/0	0	1	0.0 %	100.0 %
North Shore	399	366	-8.3 %	16.9	15.2	-9.8 %	214	150	53.6 %	41.0 %
Rodney	170	183	7.6 %	15.6	16.5	5.3 %	100	98	58.8 %	53.6 %
Waitakere	360	383	6.4 %	17.1	17.9	4.6 %	162	164	45.0 %	42.8 %
	929	933	0.4 %	16.7	16.5	-1.3 %	476	413	51.2 %	44.3 %

ILLICIT DRUG OFFENCES

Area Description	Recorded 2013	Recorded 2014	Variance 2013-2014	Recorded per 10,000 pop 2013	Recorded per 10,000 pop 2014	Per 10,000 pop % Variance 2013 to 2014	Resolved 2013	Resolved 2014	Resolution Rate 2013	Resolution Rate 2014
Auckland Motorways	25	73	192.0 %	#DIV/0	#DIV/0	#DIV/0	23	73	92.0 %	100.0 %
North Shore	503	347	-31.0 %	21.3	14.4	-32.2 %	473	321	94.0 %	92.5 %
Rodney	355	342	-3.7 %	32.7	30.8	-5.8 %	317	307	89.3 %	89.8 %
Waitakere	700	761	8.7 %	33.2	35.5	6.9 %	670	713	95.7 %	93.7 %
	1,583	1,523	-3.8 %	28.5	26.9	-5.5 %	1,483	1,414	93.7 %	92.8 %

SUMMARY OF RECORDED OFFENCES, RATE PER 10,000 POPULATION AND RESOLVED OFFENCES, BY DIVISION

Years ending 31 December

PROHIBITED AND REGULATED WEAPONS AND EXPLOSIVES OFFENCES

Area Description	Recorded 2013	Recorded 2014	Variance 2013-2014	Recorded per 10,000 pop 2013	Recorded per 10,000 pop 2014	Per 10,000 pop % Variance 2013 to 2014	Resolved 2013	Resolved 2014	Resolution Rate 2013	Resolution Rate 2014
Auckland Motorways	2	10	400.0 %	#DIV/0	#DIV/0	#DIV/0	1	9	50.0 %	90.0 %
North Shore	121	92	-24.0 %	5.1	3.8	-25.2 %	109	81	90.1 %	88.0 %
Rodney	118	101	-14.4 %	10.9	9.1	-16.3 %	104	83	88.1 %	82.2 %
Waitakere	251	222	-11.6 %	11.9	10.4	-13.0 %	234	198	93.2 %	89.2 %
	492	425	-13.6 %	8.9	7.5	-15.1 %	448	371	91.1 %	87.3 %

PROPERTY DAMAGE AND ENVIRONMENTAL POLLUTION

Area Description	Recorded 2013	Recorded 2014	Variance 2013-2014	Recorded per 10,000 pop 2013	Recorded per 10,000 pop 2014	Per 10,000 pop % Variance 2013 to 2014	Resolved 2013	Resolved 2014	Resolution Rate 2013	Resolution Rate 2014
Auckland Motorways	4	4	0.0 %	#DIV/0	#DIV/0	#DIV/0	2	1	50.0 %	25.0 %
North Shore	993	957	-3.6 %	42.0	39.8	-5.2 %	270	203	27.2 %	21.2 %
Rodney	617	548	-11.2 %	56.8	49.3	-13.1 %	162	103	26.3 %	18.8 %
Waitakere	1,569	1,553	-1.0 %	74.5	72.5	-2.7 %	559	419	35.6 %	27.0 %
	3,183	3,062	-3.8 %	57.3	54.1	-5.5 %	993	726	31.2 %	23.7 %

PUBLIC ORDER OFFENCES

Area Description	Recorded 2013	Recorded 2014	Variance 2013-2014	Recorded per 10,000 pop 2013	Recorded per 10,000 pop 2014	Per 10,000 pop % Variance 2013 to 2014	Resolved 2013	Resolved 2014	Resolution Rate 2013	Resolution Rate 2014
Auckland Motorways	8	9	12.5 %	#DIV/0	#DIV/0	#DIV/0	8	9	100.0 %	100.0 %
North Shore	755	573	-24.1 %	32.0	23.8	-25.4 %	604	413	80.0 %	72.1 %
Rodney	368	332	-9.8 %	33.9	29.9	-11.7 %	264	211	71.7 %	63.6 %
Waitakere	1,132	1,152	1.8 %	53.8	53.8	0.1 %	878	833	77.6 %	72.3 %
	2,263	2,066	-8.7 %	40.7	36.5	-10.3 %	1,754	1,466	77.5 %	71.0 %

OFFENCES AGAINST JUSTICE PROCEDURES, GOVERNMENT SECURITY AND GOVERNMENT OPERATIONS

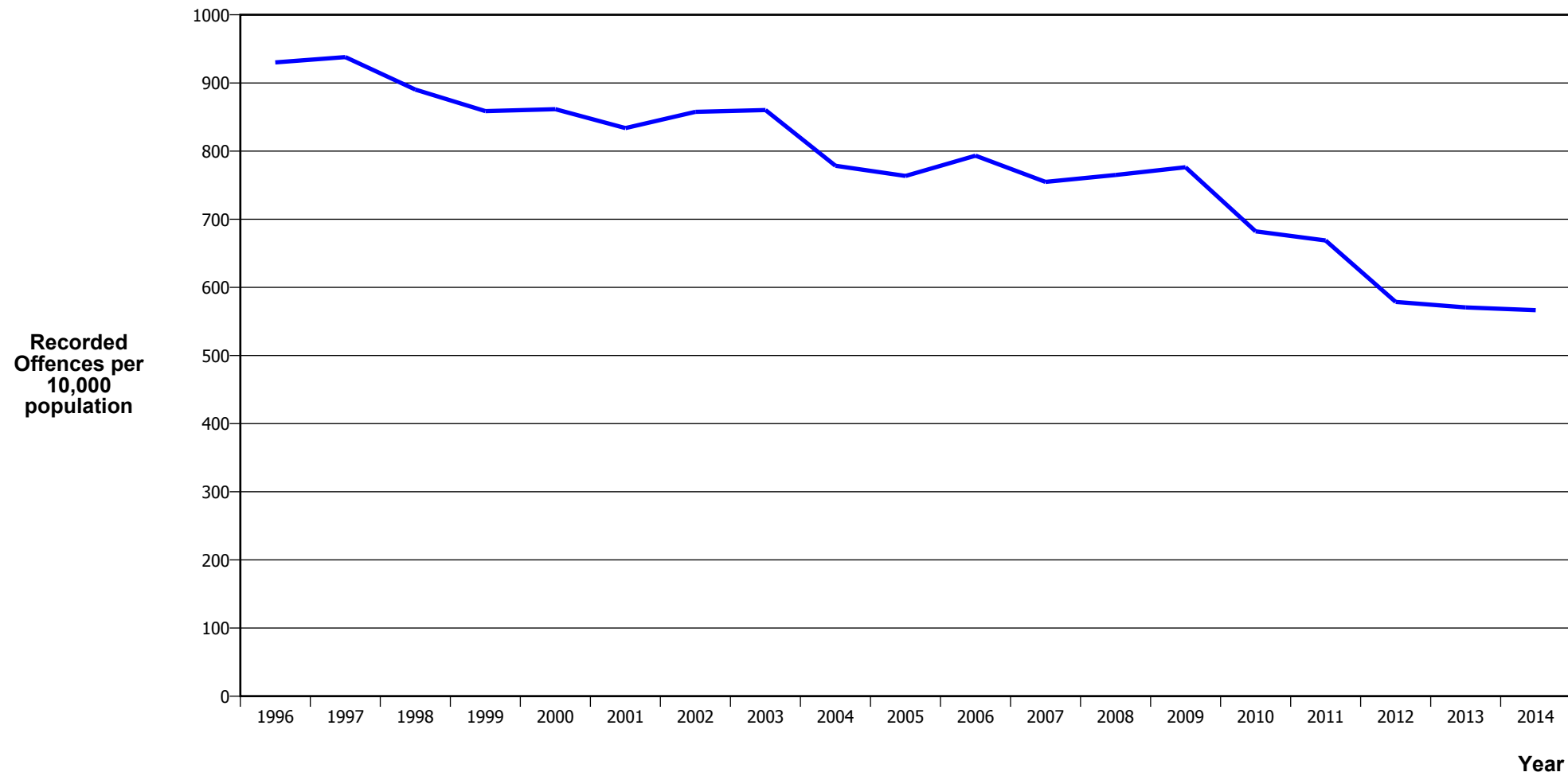
Area Description	Recorded 2013	Recorded 2014	Variance 2013-2014	Recorded per 10,000 pop 2013	Recorded per 10,000 pop 2014	Per 10,000 pop % Variance 2013 to 2014	Resolved 2013	Resolved 2014	Resolution Rate 2013	Resolution Rate 2014
Auckland Motorways	22	44	100.0 %	#DIV/0	#DIV/0	#DIV/0	18	42	81.8 %	95.5 %
North Shore	472	527	11.7 %	20.0	21.9	9.8 %	458	460	97.0 %	87.3 %
Rodney	172	248	44.2 %	15.8	22.3	41.0 %	162	211	94.2 %	85.1 %
Waitakere	1,324	1,345	1.6 %	62.9	62.8	-0.1 %	1,302	1,275	98.3 %	94.8 %
	1,990	2,164	8.7 %	35.8	38.3	6.8 %	1,940	1,988	97.5 %	91.9 %

MISCELLANEOUS OFFENCES

Area Description	Recorded 2013	Recorded 2014	Variance 2013-2014	Recorded per 10,000 pop 2013	Recorded per 10,000 pop 2014	Per 10,000 pop % Variance 2013 to 2014	Resolved 2013	Resolved 2014	Resolution Rate 2013	Resolution Rate 2014
Auckland Motorways	2	2	0.0 %	#DIV/0	#DIV/0	#DIV/0	2	1	100.0 %	50.0 %
North Shore	47	39	-17.0 %	2.0	1.6	-18.4 %	36	17	76.6 %	43.6 %
Rodney	21	19	-9.5 %	1.9	1.7	-11.5 %	14	12	66.7 %	63.2 %
Waitakere	31	30	-3.2 %	1.5	1.4	-4.9 %	18	14	58.1 %	46.7 %
	101	90	-10.9 %	1.8	1.6	-12.5 %	70	44	69.3 %	48.9 %

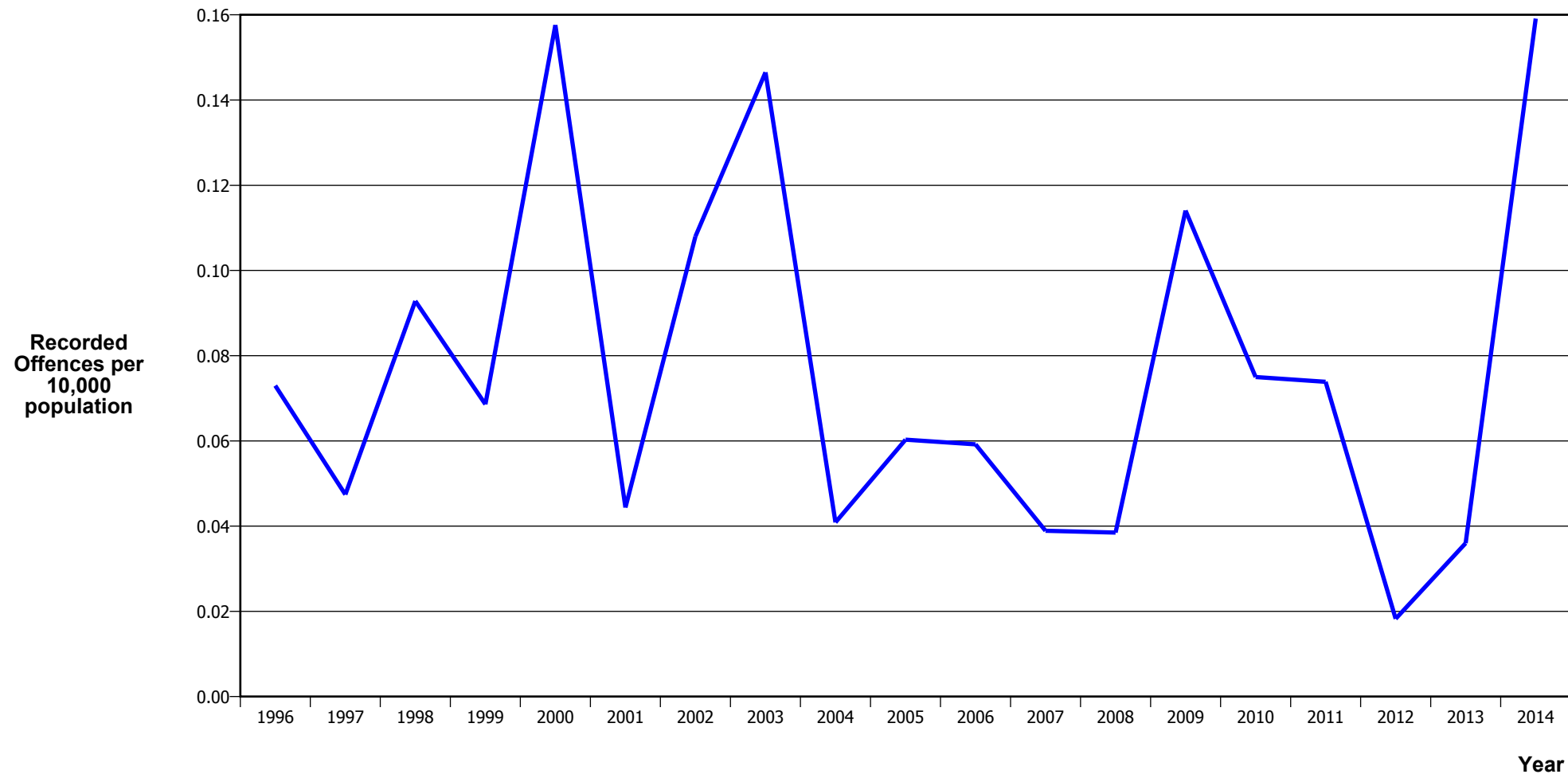
CRIME TRENDS

TOTAL CRIME



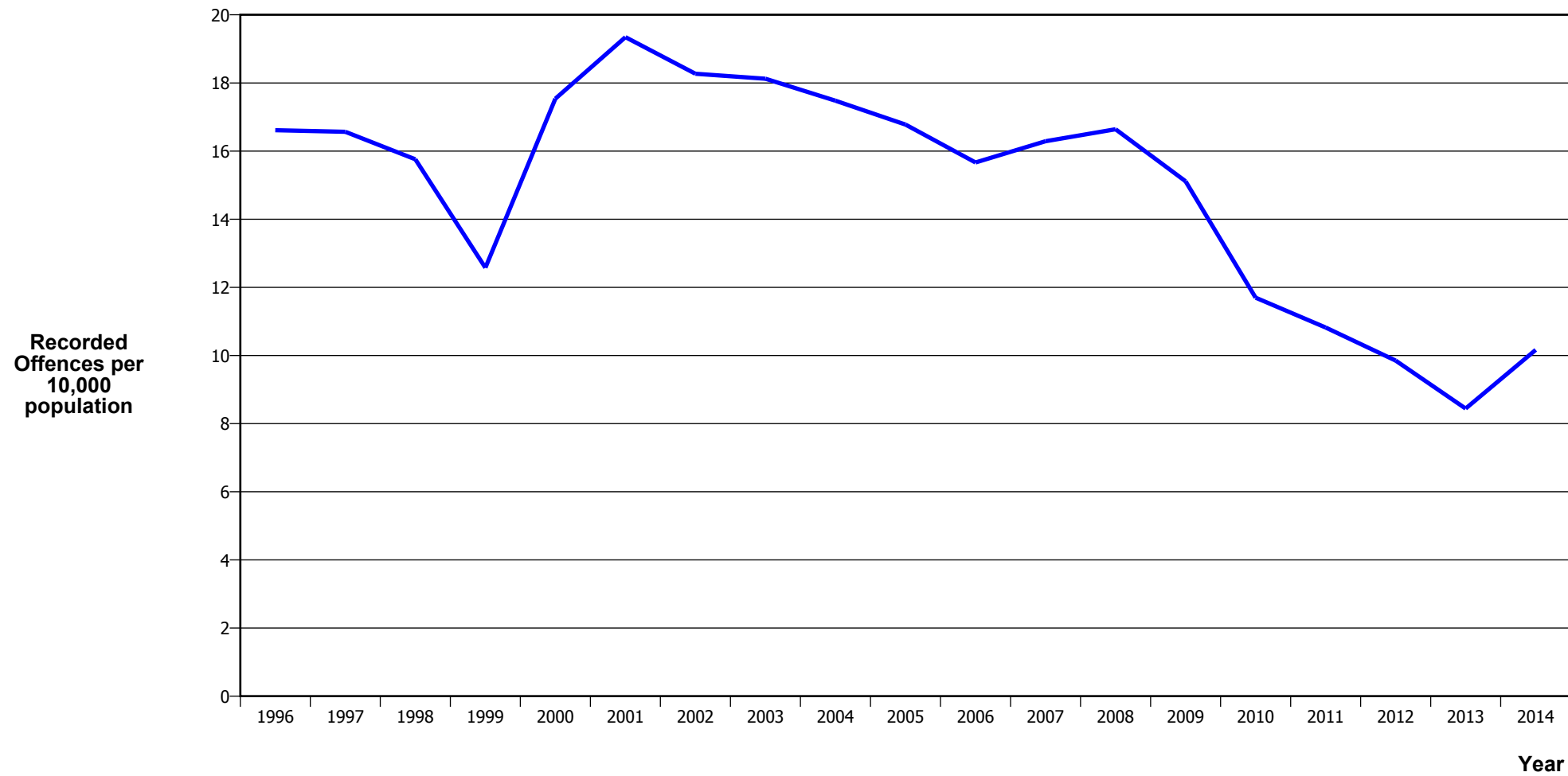
Calendar Year	1996	1997	1998	1999	2000	2001	2002	2003	2004	2005	2006	2007	2008	2009	2010	2011	2012	2013	2014
Recorded Offences	38,242	39,575	38,356	37,554	38,266	37,583	39,710	41,106	38,074	37,996	40,206	38,784	39,763	40,835	36,392	36,214	31,718	31,704	32,043
Recorded per 10,000 Population	930.2	937.9	890.3	858.7	861.5	833.7	857.6	860.3	778.4	763.5	793.2	754.7	765.0	776.3	682.3	668.9	578.6	570.6	566.5

MURDER



Calendar Year	1996	1997	1998	1999	2000	2001	2002	2003	2004	2005	2006	2007	2008	2009	2010	2011	2012	2013	2014
Recorded Offences	3	2	4	3	7	2	5	7	2	3	3	2	2	6	4	4	1	2	9
Recorded per 10,000 Population	0.07	0.05	0.09	0.07	0.16	0.04	0.11	0.15	0.04	0.06	0.06	0.04	0.04	0.11	0.07	0.07	0.02	0.04	0.16

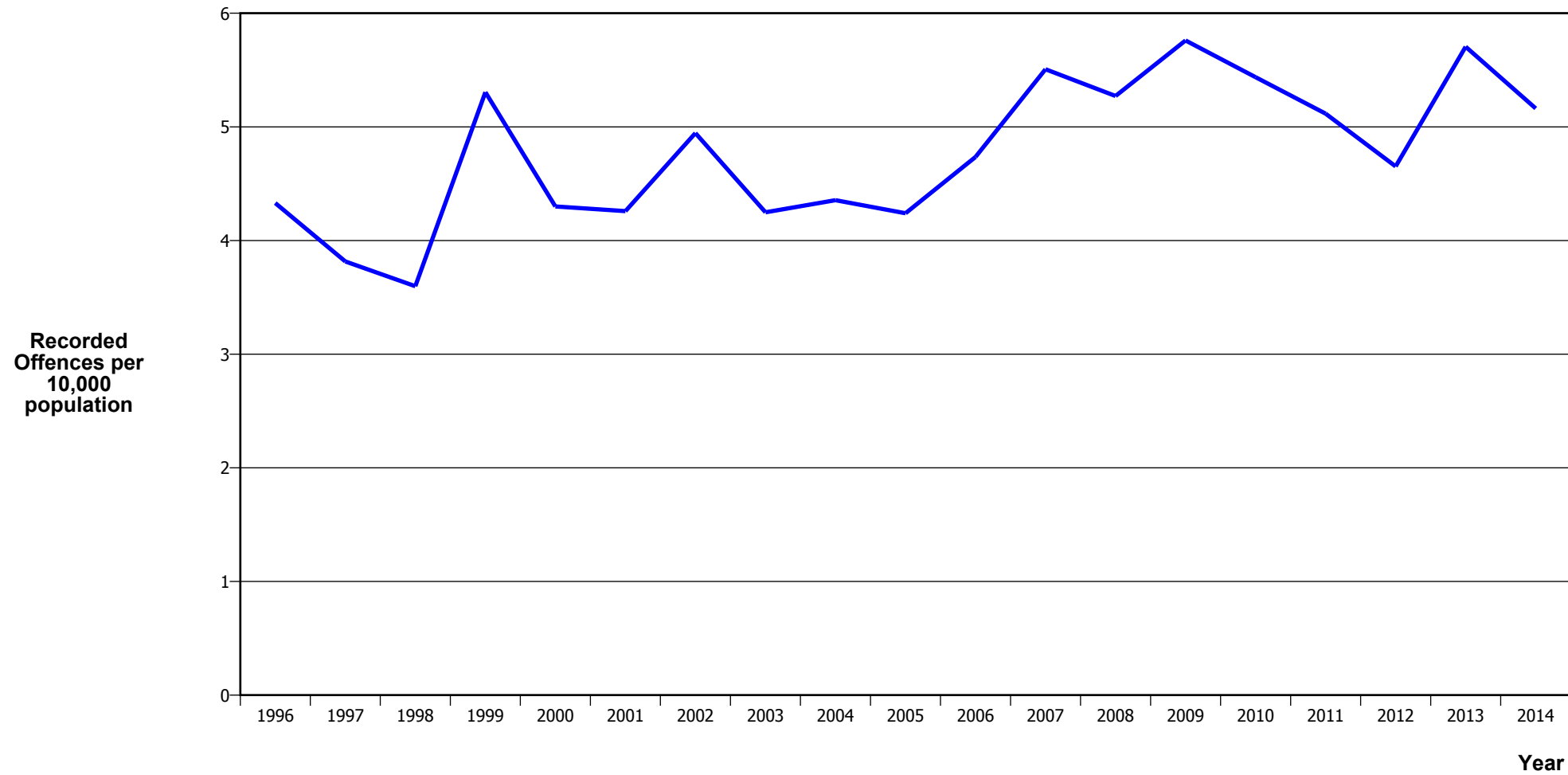
SERIOUS ASSAULTS RESULTING IN INJURY*



Calendar Year	1996	1997	1998	1999	2000	2001	2002	2003	2004	2005	2006	2007	2008	2009	2010	2011	2012	2013	2014
Recorded Offence	683	699	679	550	779	872	846	866	855	835	794	837	865	795	624	586	540	469	575
Offence Rate per 10K Popn	16.6	16.6	15.8	12.6	17.5	19.3	18.3	18.1	17.5	16.8	15.7	16.3	16.6	15.1	11.7	10.8	9.9	8.4	10.2

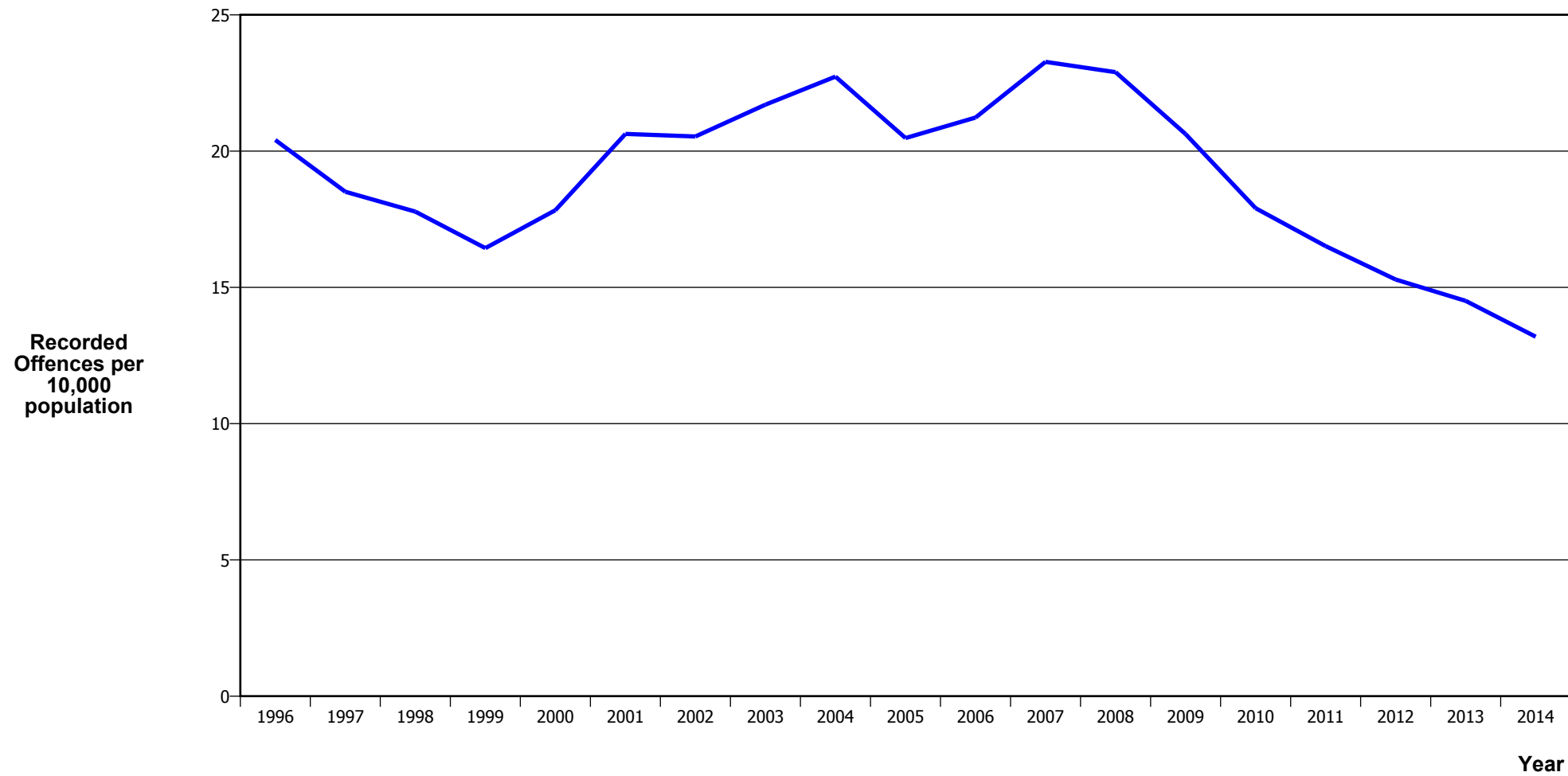
* This measure excludes common assaults

SEXUAL ASSAULTS



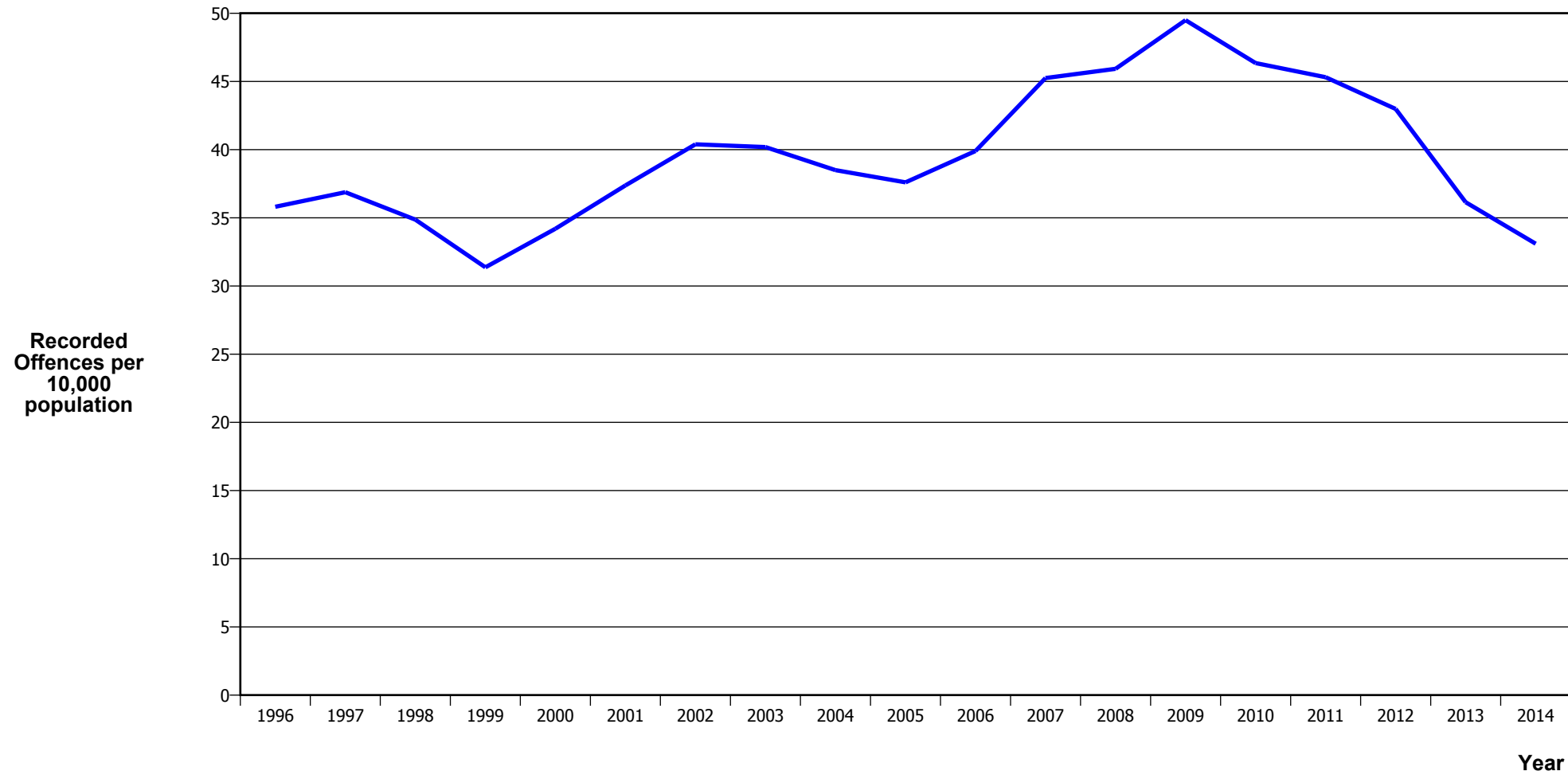
Calendar Year	1996	1997	1998	1999	2000	2001	2002	2003	2004	2005	2006	2007	2008	2009	2010	2011	2012	2013	2014
Recorded Offences	178	161	155	232	191	192	229	203	213	211	240	283	274	303	290	277	255	317	292
Recorded per 10,000 Population	4.3	3.8	3.6	5.3	4.3	4.3	4.9	4.2	4.4	4.2	4.7	5.5	5.3	5.8	5.4	5.1	4.7	5.7	5.2

PUBLIC PLACE ASSAULTS



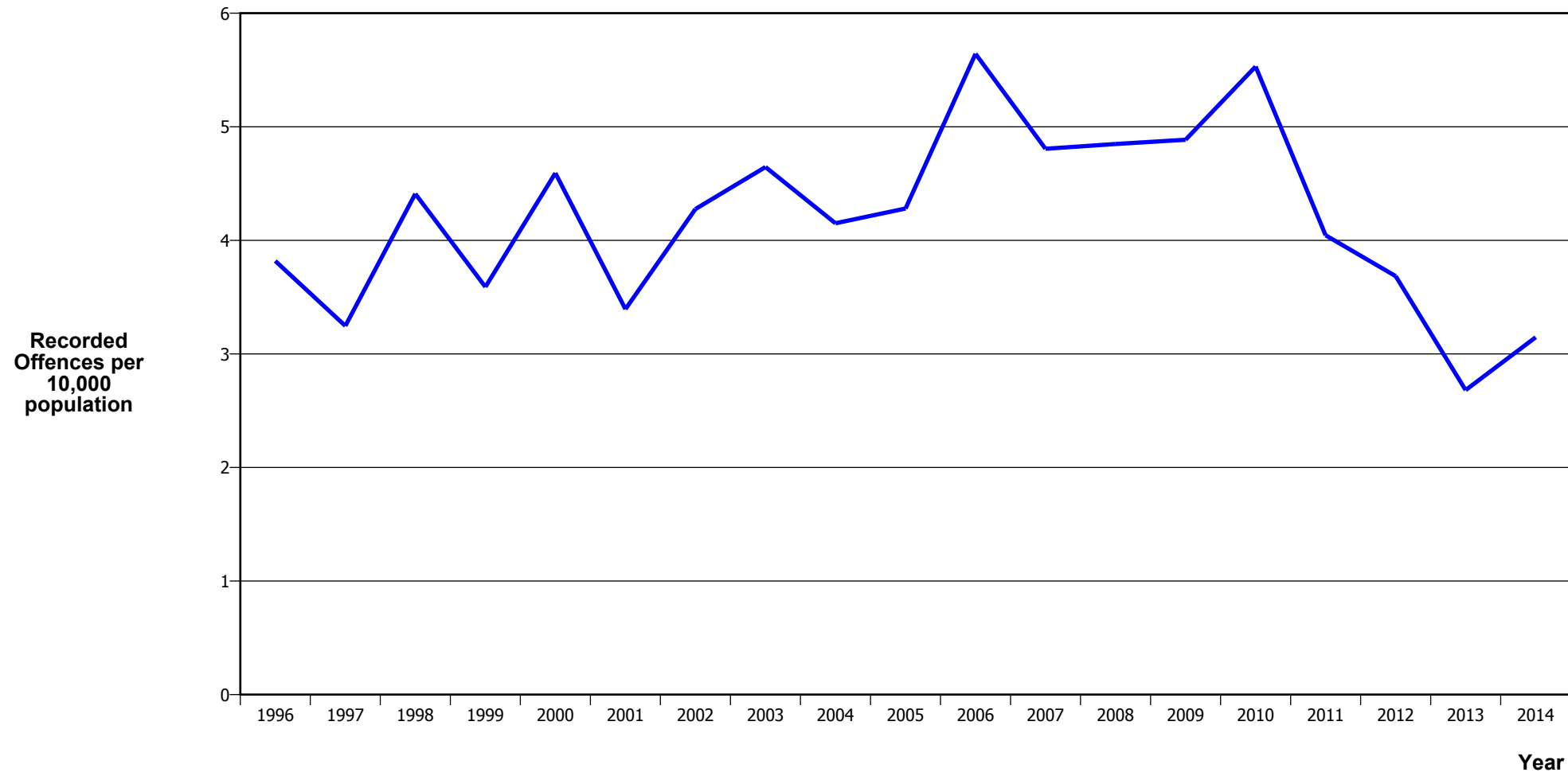
Calendar Year	1996	1997	1998	1999	2000	2001	2002	2003	2004	2005	2006	2007	2008	2009	2010	2011	2012	2013	2014
Recorded Offences	839	781	766	719	792	930	951	1,037	1,112	1,019	1,076	1,196	1,190	1,085	955	894	838	806	746
Recorded per 10,000 Population	20.4	18.5	17.8	16.4	17.8	20.6	20.5	21.7	22.7	20.5	21.2	23.3	22.9	20.6	17.9	16.5	15.3	14.5	13.2

DWELLING ASSAULTS



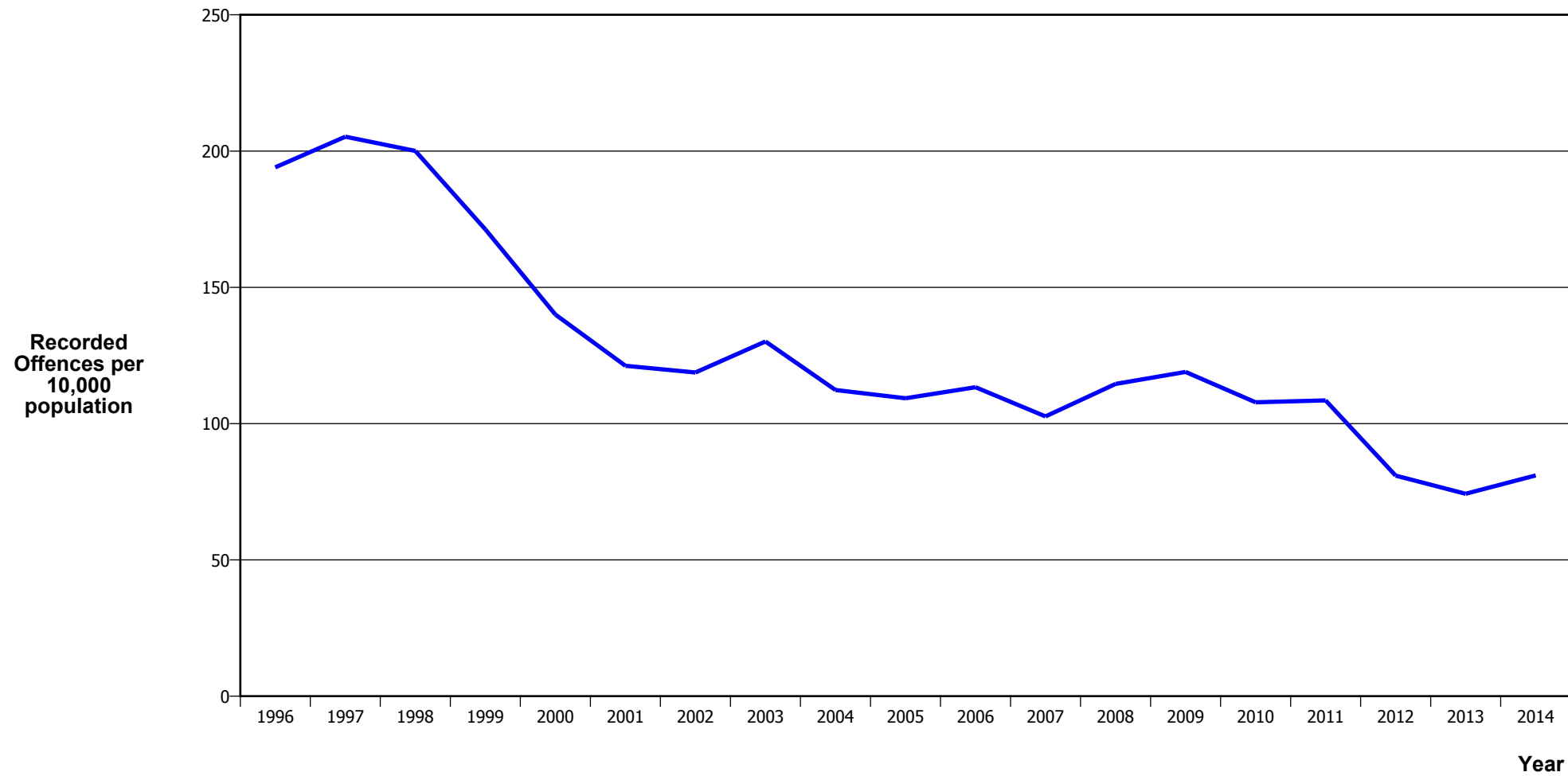
Calendar Year	1996	1997	1998	1999	2000	2001	2002	2003	2004	2005	2006	2007	2008	2009	2010	2011	2012	2013	2014
Recorded Offences	1,472	1,556	1,502	1,372	1,519	1,685	1,870	1,920	1,883	1,871	2,022	2,325	2,387	2,603	2,472	2,453	2,356	2,008	1,872
Recorded per 10,000 Population	35.8	36.9	34.9	31.4	34.2	37.4	40.4	40.2	38.5	37.6	39.9	45.2	45.9	49.5	46.3	45.3	43.0	36.1	33.1

ROBBERY



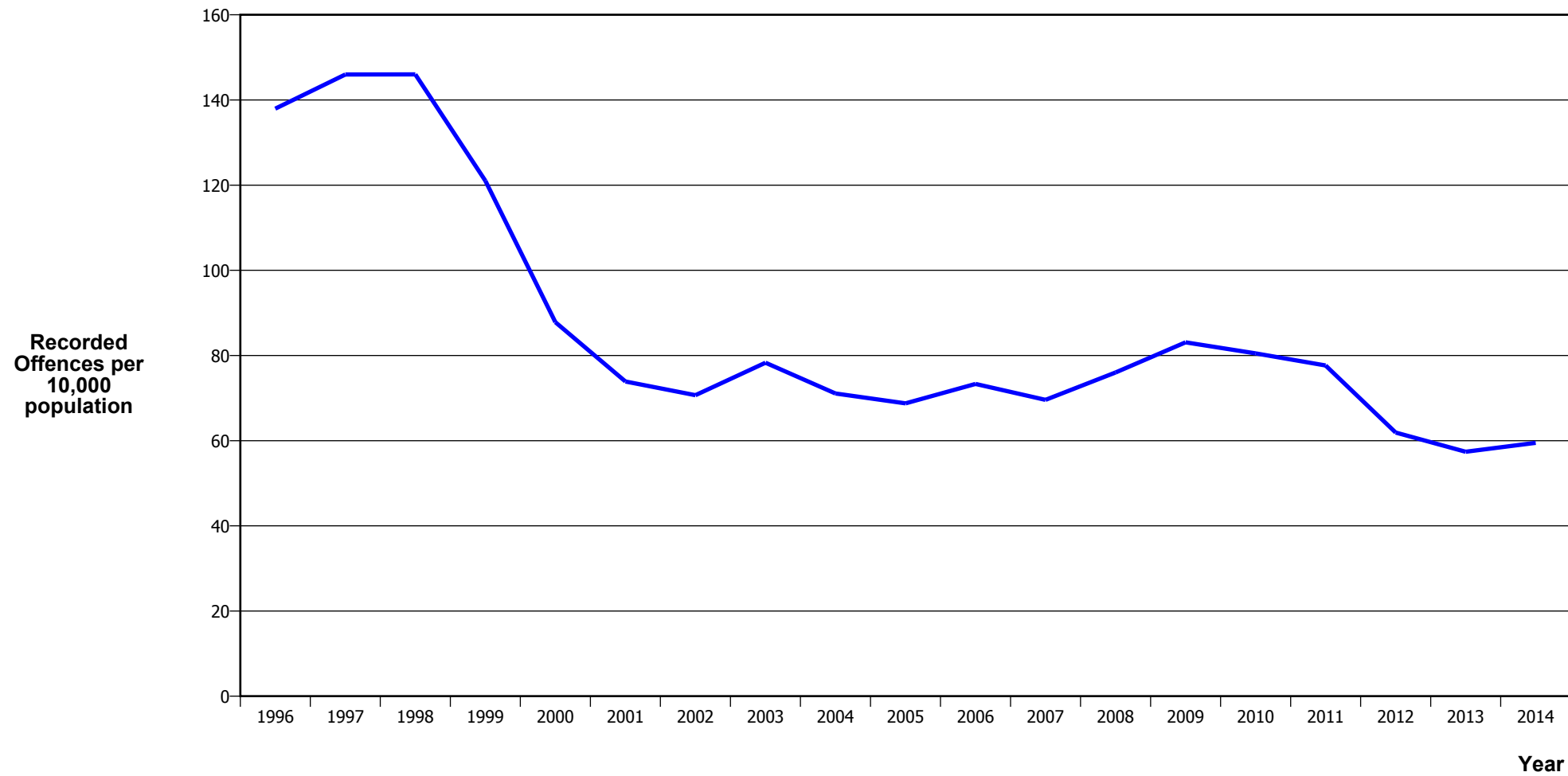
Calendar Year	1996	1997	1998	1999	2000	2001	2002	2003	2004	2005	2006	2007	2008	2009	2010	2011	2012	2013	2014
Recorded Offences	157	137	190	157	204	153	198	222	203	213	286	247	252	257	295	219	202	149	178
Recorded per 10,000 Population	3.8	3.2	4.4	3.6	4.6	3.4	4.3	4.6	4.2	4.3	5.6	4.8	4.8	4.9	5.5	4.0	3.7	2.7	3.1

BURGLARY (TOTAL)



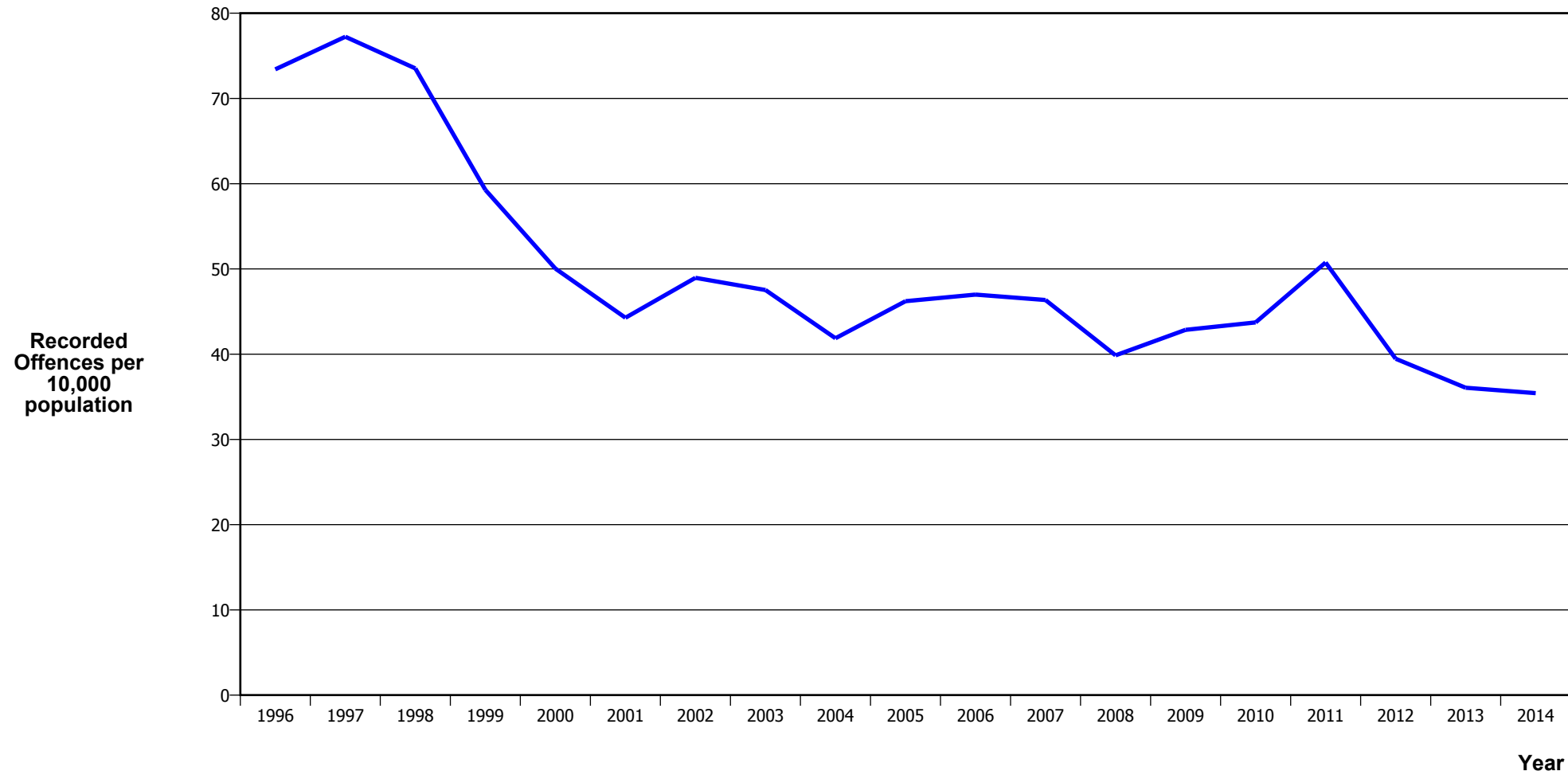
Calendar Year	1996	1997	1998	1999	2000	2001	2002	2003	2004	2005	2006	2007	2008	2009	2010	2011	2012	2013	2014
Recorded Offences	7,977	8,662	8,620	7,489	6,220	5,464	5,500	6,219	5,496	5,439	5,746	5,276	5,956	6,257	5,752	5,876	4,436	4,126	4,581
Recorded per 10,000 Population	194.0	205.3	200.1	171.2	140.0	121.2	118.8	130.2	112.4	109.3	113.4	102.7	114.6	119.0	107.8	108.5	80.9	74.3	81.0

BURGLARY (DWELLING)



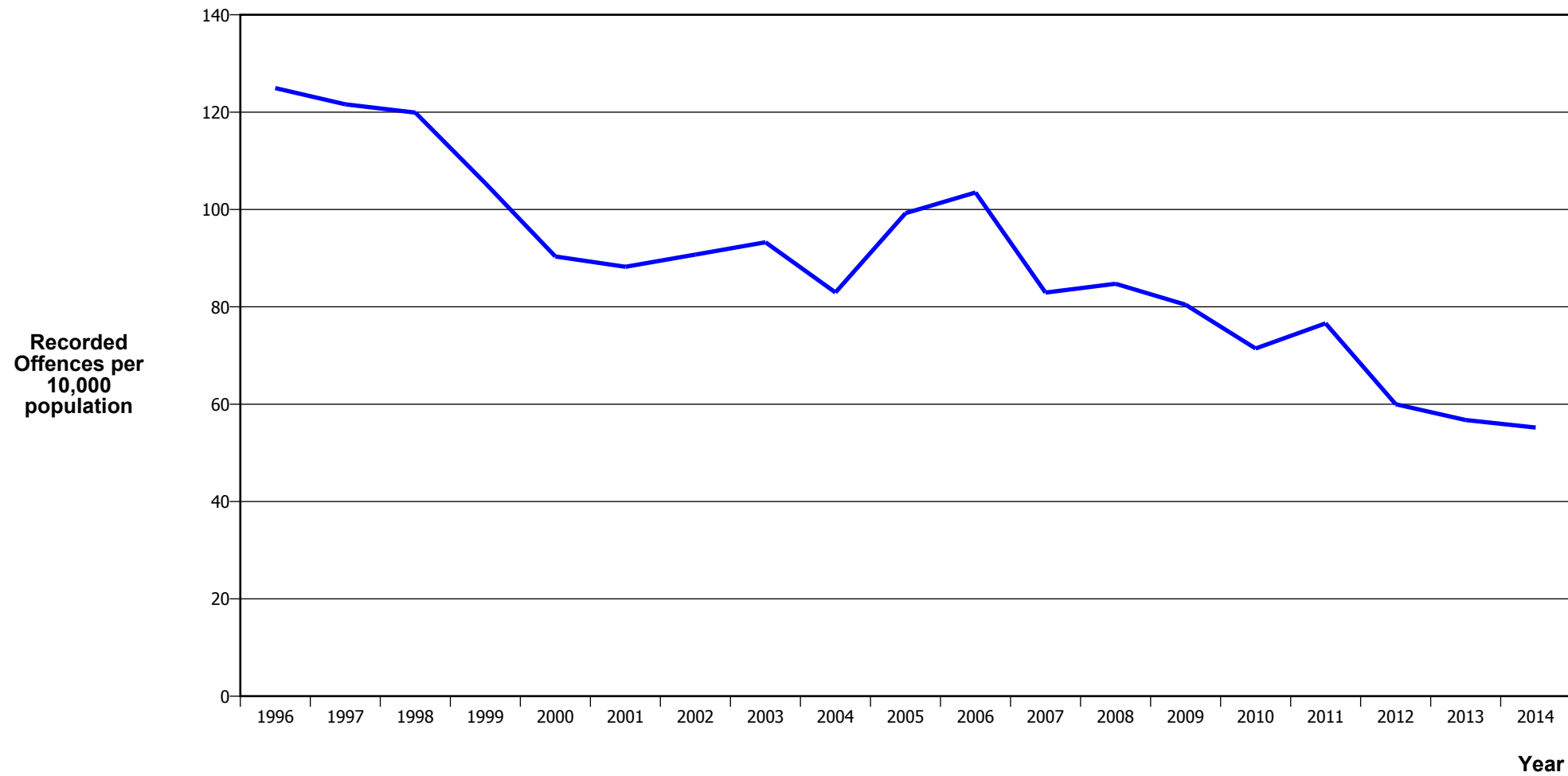
Calendar Year	1996	1997	1998	1999	2000	2001	2002	2003	2004	2005	2006	2007	2008	2009	2010	2011	2012	2013	2014
Recorded Offences	5,672	6,160	6,290	5,292	3,901	3,331	3,273	3,742	3,477	3,422	3,716	3,576	3,951	4,370	4,294	4,204	3,394	3,189	3,365
Recorded per 10,000 Population	138.0	146.0	146.0	121.0	87.8	73.9	70.7	78.3	71.1	68.8	73.3	69.6	76.0	83.1	80.5	77.6	61.9	57.4	59.5

VEHICLES STOLEN



Calendar Year	1996	1997	1998	1999	2000	2001	2002	2003	2004	2005	2006	2007	2008	2009	2010	2011	2012	2013	2014
Recorded Offences	3,018	3,259	3,168	2,592	2,223	1,996	2,267	2,271	2,048	2,300	2,382	2,382	2,072	2,254	2,332	2,748	2,163	2,004	2,004
Recorded per 10,000 Population	73.4	77.2	73.5	59.3	50.0	44.3	49.0	47.5	41.9	46.2	47.0	46.4	39.9	42.9	43.7	50.8	39.5	36.1	35.4

THEFT EX CAR



Calendar Year	1996	1997	1998	1999	2000	2001	2002	2003	2004	2005	2006	2007	2008	2009	2010	2011	2012	2013	2014
Recorded Offences	5,137	5,131	5,166	4,609	4,013	3,977	4,202	4,456	4,057	4,939	5,245	4,262	4,405	4,231	3,810	4,147	3,289	3,153	3,122
Recorded per 10,000 Population	125.0	121.6	119.9	105.4	90.3	88.2	90.7	93.3	82.9	99.2	103.5	82.9	84.7	80.4	71.4	76.6	60.0	56.7	55.2

Population Data

Population data is used in this release to calculate crime rates. They have been derived from population estimates as at 30 June each year that have been obtained from Statistics New Zealand.

The estimated resident population is based on the census usually resident population count, with adjustments for residents missed or counted more than once by the census (net census undercount), and for residents temporarily overseas on census night.

These population estimates exclude the number of international students who are studying in New Zealand for less than 12 months.

Year	Population
1996	411,110
1997	421,950
1998	430,830
1999	437,320
2000	444,180
2001	450,810
2002	463,060
2003	477,830
2004	489,140
2005	497,660
2006	506,860
2007	513,890
2008	519,790
2009	526,000
2010	533,380
2011	541,410
2012	548,160
2013	555,600
2014	565,620

General Definitions

Recorded Offences: the number of breaches of the New Zealand law recorded by Police. This includes offences specified in the Crimes Act and other legislations, such as the Summary Offences Act, Local Government Act, etc.

Resolved Offences: the number of recorded offences where an offender has been identified and dealt with (e.g. warned, cautioned, prosecuted, etc).

Resolution Rate: the proportion of recorded offences that have been resolved.

Recorded per 10,000 population: the number of recorded offences for every 10,000 people. This is also referred as the crime rate per 10,000 population.

ANZSOC: The Australian and New Zealand Standard Offence Classification. The offence classification is divided into 16 major offence divisions.

Definition of ANZSOC Divisions

1. Homicide and related offences: Unlawfully kill, attempt to unlawfully kill or conspiracy to kill another person.
2. Acts intended to cause injury: Acts, excluding attempted murder and those resulting in death, which are intended to cause non-fatal injury or harm to another person and where there is no sexual or acquisitive element.
3. Sexual assault and related offences: Acts, or intent of acts, of a sexual nature against another person, which are non-consensual or where consent is proscribed.
4. Dangerous or negligent acts endangering persons: Dangerous or negligent acts which, though not intended to cause harm, actually or potentially result in injury to oneself or another person.
5. Abduction, harassment and other offences against person: Acts intended to threaten or harass, or acts that unlawfully deprive another person of their freedom of movement, that are against that person's will or against the will of any parent, guardian or other person having lawful custody or care of that person.
6. Robbery, extortion and related offences: Acts intended to unlawfully gain money, property or other items of value from, or to cause detriment to, another person by using the threat of force or any other coercive measure.
7. Unlawful entry with intent / burglary, break and enter: The unlawful entry of a structure with the intent to commit an offence, where the entry is either forced or unforced.
8. Theft and related and offences: The unlawful taking or obtaining of money or goods, not involving the use of force or violence, coercion or deception, with intent to permanently or temporarily deprive the owner or possessor of the use of the money or goods, or the receiving or handling of money or goods obtained unlawfully.

9. Fraud, deception and related offences: Offences involving a dishonest act or omission carried out with the purpose of deceiving to obtain a benefit.

10. Illicit drug offences: The possessing, selling, dealing or trafficking, importing or exporting, manufacturing or cultivating of drugs or other substances prohibited under legislation.

11. Prohibited and regulated weapons and explosives offences: Offences involving prohibited or regulated weapons and explosives. Those offences also involving assault, sexual assault or robbery are coded to the relevant group within Assault, Sexual assaults and Robbery respectively.

12. Property damage and environmental pollution: The wilful and unlawful destruction, damage or defacement of public or private property, or the pollution of property or a definable entity held in common by the community.

13. Public order offences: Offences relating personal conduct that involves, or may lead to, a breach of public order or decency, or that is indicative of criminal intent, or that is otherwise regulated or prohibited on moral or ethical grounds. In general these offences do not involve a specific victim or victims; however some offences, such as offensive language and offensive behaviour, may be directed towards a single victim.

14. Traffic and vehicle regulatory offences: Offences relating to vehicles and most forms of traffic, including offences pertaining to the licensing, registration, roadworthiness, or use of vehicles, bicycle offences and pedestrian offences.

15. Offences against justice procedures, government security and government operations: An act or omission that is deemed to be prejudicial to the effective carrying out of justice procedures or any government operations. This includes general government operations as well as those specifically concerned with maintaining government security.

16. Miscellaneous offences: Offences involving the breach of statutory rules or regulations governing activities that are prima facie legal, where such offences are not explicitly dealt with under any other division. If an offence is specified under regulation and involves an act that would be illegal under common law or general criminal legislation, the offence is dealt with under the appropriate generic group.