

**WAITEMATA DISTRICT
CRIME STATISTICS
2012**



**A Summary of
Recorded and Resolved Offence
Statistics**

**POLICE NATIONAL HEADQUARTERS
April 2013**

ISSN 1178 - 1548

Table of Contents:

Topic	Page
Report Notes	1
District Summary of Recorded and Resolved Crime, by Division	2-4
Proportions of Recorded Crime by Division	5
Summary of District Recorded Offences, Rate per 10,000 Population and Resolved Offences, by Area	6
Summary of Area Recorded Offences, Rate per 10,000 Population and Resolved Offences, by Division	7-9
Crime Trends	10
Total Crime	11
Murder	12
Serious Assaults Resulting in Injury	13
Public Place Assaults	14
Robbery	15
Burglary (Total)	16
Burglary (Dwelling)	17
Vehicles Stolen	18
Theft Ex Car	19
Population Data	20
General Definition	21-22

REPORT NOTES:

Statistics reported in this document are derived from the Police National Intelligence Application (NIA). These Official Statistics for Recorded and Resolved Offences present a snapshot of data in NIA relating to offences that occur within a given year, as at the date 14 days following the end of that year.

Unless the matter is minor where Police attendance is sufficient, a matter that is reported to or discovered by Police where Police believe an offence is likely to have been committed is counted as a recorded offence.

A recorded offence is counted as resolved when Police apprehend an offender and decide how to deal with him/her. (E.g. warn, prosecute, etc.)

Resolution rate is the percentage of recorded offences that are resolved within 14 days of the end of the year being reported on.

If an offence is resolved 15 days or more after the end of the year it will not appear in the Official Crime Statistics for that or any other year. Resolution Rate therefore undercounts the number of cases that Police have resolved. This phenomenon has a more marked impact for some types of offences than others, such as offences that require long investigations (E.g. many serial crimes, burglaries and murders).

When comparing 2012 Statistics with previous years, the reader should also refer to "Report Notes" published in previous years' reports, as previous changes significantly affect year on year trends.

SUMMARY OF DISTRICT RECORDED AND RESOLVED CRIME, BY DIVISION
Years ending 31 December

HOMICIDE AND RELATED OFFENCES

ASOC Subdivision Description	Recorded 2010	Recorded 2011	Recorded 2012	Variance 2010-2011	Variance 2011-2012	Resolved 2010	Resolved 2011	Resolved 2012	Resolution Rate 2010	Resolution Rate 2011	Resolution Rate 2012
ATTEMPTED MURDER	1	1	0	0.0 %	-100.0 %	1	1	0	100.0 %	100.0 %	0.0 %
HOMICIDE AND RELATED OFFENCES NOT FURTHER DEFINED	1	0	0	-100.0 %	0.0 %	0	0	0	0.0 %	0.0 %	0.0 %
MANSLAUGHTER AND DRIVING CAUSING DEATH	3	2	0	-33.3 %	-100.0 %	3	1	0	100.0 %	50.0 %	0.0 %
MURDER	4	4	1	0.0 %	-75.0 %	4	2	0	100.0 %	50.0 %	0.0 %
	9	7	1	-22.2 %	-85.7 %	8	4	0	88.9 %	57.1 %	0.0 %

ACTS INTENDED TO CAUSE INJURY

ASOC Subdivision Description	Recorded 2010	Recorded 2011	Recorded 2012	Variance 2010-2011	Variance 2011-2012	Resolved 2010	Resolved 2011	Resolved 2012	Resolution Rate 2010	Resolution Rate 2011	Resolution Rate 2012
ASSAULT	3,785	3,654	3,519	-3.5 %	-3.7 %	3,279	3,268	2,934	86.6 %	89.4 %	83.4 %
OTHER ACTS INTENDED TO CAUSE INJURY	2	2	2	0.0 %	0.0 %	2	2	2	100.0 %	100.0 %	100.0 %
	3,787	3,656	3,521	-3.5 %	-3.7 %	3,281	3,270	2,936	86.6 %	89.4 %	83.4 %

SEXUAL ASSAULT AND RELATED OFFENCES

ASOC Subdivision Description	Recorded 2010	Recorded 2011	Recorded 2012	Variance 2010-2011	Variance 2011-2012	Resolved 2010	Resolved 2011	Resolved 2012	Resolution Rate 2010	Resolution Rate 2011	Resolution Rate 2012
NON-ASSAULTIVE SEXUAL OFFENCES	19	31	10	63.2 %	-67.7 %	17	28	7	89.5 %	90.3 %	70.0 %
SEXUAL ASSAULT	290	277	255	-4.5 %	-7.9 %	177	175	146	61.0 %	63.2 %	57.3 %
	309	308	265	-0.3 %	-14.0 %	194	203	153	62.8 %	65.9 %	57.7 %

DANGEROUS OR NEGLIGENT ACTS ENDANGERING PERSONS

ASOC Subdivision Description	Recorded 2010	Recorded 2011	Recorded 2012	Variance 2010-2011	Variance 2011-2012	Resolved 2010	Resolved 2011	Resolved 2012	Resolution Rate 2010	Resolution Rate 2011	Resolution Rate 2012
OTHER DANGEROUS OR NEGLIGENT ACTS ENDANGERING PERSONS	86	106	68	23.3 %	-35.8 %	60	82	40	69.8 %	77.4 %	58.8 %
	86	106	68	23.3 %	-35.8 %	60	82	40	69.8 %	77.4 %	58.8 %

ABDUCTION, HARASSMENT AND OTHER RELATED OFFENCES AGAINST A PERSON

ASOC Subdivision Description	Recorded 2010	Recorded 2011	Recorded 2012	Variance 2010-2011	Variance 2011-2012	Resolved 2010	Resolved 2011	Resolved 2012	Resolution Rate 2010	Resolution Rate 2011	Resolution Rate 2012
ABDUCTION AND KIDNAPPING	19	13	16	-31.6 %	23.1 %	16	9	7	84.2 %	69.2 %	43.8 %
HARASSMENT AND THREATENING BEHAVIOUR	1,185	1,210	1,193	2.1 %	-1.4 %	825	914	827	69.6 %	75.5 %	69.3 %
	1,204	1,223	1,209	1.6 %	-1.1 %	841	923	834	69.9 %	75.5 %	69.0 %

ROBBERY, EXTORTION AND RELATED OFFENCES

ASOC Subdivision Description	Recorded 2010	Recorded 2011	Recorded 2012	Variance 2010-2011	Variance 2011-2012	Resolved 2010	Resolved 2011	Resolved 2012	Resolution Rate 2010	Resolution Rate 2011	Resolution Rate 2012
BLACKMAIL AND EXTORTION	14	7	8	-50.0 %	14.3 %	9	5	6	64.3 %	71.4 %	75.0 %
ROBBERY	295	219	202	-25.8 %	-7.8 %	123	98	74	41.7 %	44.7 %	36.6 %
	309	226	210	-26.9 %	-7.1 %	132	103	80	42.7 %	45.6 %	38.1 %

UNLAWFUL ENTRY WITH INTENT/BURGLARY, BREAK AND ENTER

ASOC Subdivision Description	Recorded 2010	Recorded 2011	Recorded 2012	Variance 2010-2011	Variance 2011-2012	Resolved 2010	Resolved 2011	Resolved 2012	Resolution Rate 2010	Resolution Rate 2011	Resolution Rate 2012
UNLAWFUL ENTRY WITH INTENT/BURGLARY, BREAK AND ENTER	5,752	5,876	4,436	2.2 %	-24.5 %	628	665	579	10.9 %	11.3 %	13.1 %
	5,752	5,876	4,436	2.2 %	-24.5 %	628	665	579	10.9 %	11.3 %	13.1 %

SUMMARY OF DISTRICT RECORDED AND RESOLVED CRIME, BY DIVISION
Years ending 31 December

THEFT AND RELATED OFFENCES

ASOC Subdivision Description	Recorded 2010	Recorded 2011	Recorded 2012	Variance 2010-2011	Variance 2011-2012	Resolved 2010	Resolved 2011	Resolved 2012	Resolution Rate 2010	Resolution Rate 2011	Resolution Rate 2012
ILLEGAL USE OF PROPERTY (EXCEPT MOTOR VEHICLES)	84	102	84	21.4 %	-17.6 %	4	7	6	4.8 %	6.9 %	7.1 %
MOTOR VEHICLE THEFT AND RELATED OFFENCES	6,142	6,895	5,452	12.3 %	-20.9 %	712	847	579	11.6 %	12.3 %	10.6 %
RECEIVE OR HANDLE PROCEEDS OF CRIME	288	371	286	28.8 %	-22.9 %	285	365	280	99.0 %	98.4 %	97.9 %
THEFT (EXCEPT MOTOR VEHICLES)	5,356	5,635	5,002	5.2 %	-11.2 %	1,996	2,243	1,889	37.3 %	39.8 %	37.8 %
	11,870	13,003	10,824	9.5 %	-16.8 %	2,997	3,462	2,754	25.2 %	26.6 %	25.4 %

FRAUD, DECEPTION AND RELATED OFFENCES

ASOC Subdivision Description	Recorded 2010	Recorded 2011	Recorded 2012	Variance 2010-2011	Variance 2011-2012	Resolved 2010	Resolved 2011	Resolved 2012	Resolution Rate 2010	Resolution Rate 2011	Resolution Rate 2012
DECEPTIVE BUSINESS/GOVERNMENT PRACTICES	3	3	2	0.0 %	-33.3 %	2	3	2	66.7 %	100.0 %	100.0 %
FORGERY AND COUNTERFEITING	67	62	32	-7.5 %	-48.4 %	27	40	11	40.3 %	64.5 %	34.4 %
OBTAIN BENEFIT BY DECEPTION	962	706	789	-26.6 %	11.8 %	543	396	355	56.4 %	56.1 %	45.0 %
OTHER FRAUD AND DECEPTION OFFENCES	47	67	64	42.6 %	-4.5 %	22	33	34	46.8 %	49.3 %	53.1 %
	1,079	838	887	-22.3 %	5.8 %	594	472	402	55.1 %	56.3 %	45.3 %

ILLICIT DRUG OFFENCES

ASOC Subdivision Description	Recorded 2010	Recorded 2011	Recorded 2012	Variance 2010-2011	Variance 2011-2012	Resolved 2010	Resolved 2011	Resolved 2012	Resolution Rate 2010	Resolution Rate 2011	Resolution Rate 2012
DEAL OR TRAFFIC IN ILLICIT DRUGS	186	183	175	-1.6 %	-4.4 %	180	173	156	96.8 %	94.5 %	89.1 %
IMPORT OR EXPORT ILLICIT DRUGS	4	7	1	75.0 %	-85.7 %	3	4	1	75.0 %	57.1 %	100.0 %
MANUFACTURE OR CULTIVATE ILLICIT DRUGS	188	125	138	-33.5 %	10.4 %	166	118	114	88.3 %	94.4 %	82.6 %
OTHER ILLICIT DRUG OFFENCES	661	586	558	-11.3 %	-4.8 %	653	574	544	98.8 %	98.0 %	97.5 %
POSSESS AND/OR USE ILLICIT DRUGS	1,050	969	900	-7.7 %	-7.1 %	1,035	941	872	98.6 %	97.1 %	96.9 %
	2,089	1,870	1,772	-10.5 %	-5.2 %	2,037	1,810	1,687	97.5 %	96.8 %	95.2 %

PROHIBITED AND REGULATED WEAPONS AND EXPLOSIVES OFFENCES

ASOC Subdivision Description	Recorded 2010	Recorded 2011	Recorded 2012	Variance 2010-2011	Variance 2011-2012	Resolved 2010	Resolved 2011	Resolved 2012	Resolution Rate 2010	Resolution Rate 2011	Resolution Rate 2012
REGULATED WEAPONS/EXPLOSIVES OFFENCES	589	592	568	0.5 %	-4.1 %	554	556	520	94.1 %	93.9 %	91.5 %
	589	592	568	0.5 %	-4.1 %	554	556	520	94.1 %	93.9 %	91.5 %

PROPERTY DAMAGE AND ENVIRONMENTAL POLLUTION

ASOC Subdivision Description	Recorded 2010	Recorded 2011	Recorded 2012	Variance 2010-2011	Variance 2011-2012	Resolved 2010	Resolved 2011	Resolved 2012	Resolution Rate 2010	Resolution Rate 2011	Resolution Rate 2012
ENVIRONMENTAL POLLUTION	8	10	13	25.0 %	30.0 %	4	3	5	50.0 %	30.0 %	38.5 %
PROPERTY DAMAGE	3,631	3,461	3,311	-4.7 %	-4.3 %	1,380	1,370	1,187	38.0 %	39.6 %	35.9 %
	3,639	3,471	3,324	-4.6 %	-4.2 %	1,384	1,373	1,192	38.0 %	39.6 %	35.9 %

PUBLIC ORDER OFFENCES

ASOC Subdivision Description	Recorded 2010	Recorded 2011	Recorded 2012	Variance 2010-2011	Variance 2011-2012	Resolved 2010	Resolved 2011	Resolved 2012	Resolution Rate 2010	Resolution Rate 2011	Resolution Rate 2012
DISORDERLY CONDUCT	2,479	2,186	2,017	-11.8 %	-7.7 %	2,211	1,862	1,649	89.2 %	85.2 %	81.8 %
OFFENSIVE CONDUCT	104	113	107	8.7 %	-5.3 %	79	91	67	76.0 %	80.5 %	62.6 %
PUBLIC ORDER OFFENCES NOT FURTHER DEFINED	1	0	0	-100.0 %	0.0 %	1	0	0	100.0 %	0.0 %	0.0 %
REGULATED PUBLIC ORDER OFFENCES	364	255	235	-29.9 %	-7.8 %	316	228	189	86.8 %	89.4 %	80.4 %
	2,948	2,554	2,359	-13.4 %	-7.6 %	2,607	2,181	1,905	88.4 %	85.4 %	80.8 %

SUMMARY OF DISTRICT RECORDED AND RESOLVED CRIME, BY DIVISION
Years ending 31 December

OFFENCES AGAINST JUSTICE PROCEDURES, GOVERNMENT SECURITY AND GOVERNMENT OPERATIONS

ASOC Subdivision Description	Recorded 2010	Recorded 2011	Recorded 2012	Variance 2010-2011	Variance 2011-2012	Resolved 2010	Resolved 2011	Resolved 2012	Resolution Rate 2010	Resolution Rate 2011	Resolution Rate 2012
BREACH OF COMMUNITY-BASED ORDER	987	1,009	885	2.2 %	-12.3 %	984	1,004	878	99.7 %	99.5 %	99.2 %
BREACH OF CUSTODIAL ORDER OFFENCES	53	40	50	-24.5 %	25.0 %	53	40	48	100.0 %	100.0 %	96.0 %
BREACH OF VIOLENCE AND NON-VIOLENCE RESTRAINING ORDERS	410	400	378	-2.4 %	-5.5 %	387	393	346	94.4 %	98.3 %	91.5 %
OFFENCES AGAINST GOVERNMENT OPERATIONS	20	23	22	15.0 %	-4.3 %	8	20	10	40.0 %	87.0 %	45.5 %
OFFENCES AGAINST GOVERNMENT SECURITY	0	1	1	0.0 %	0.0 %	0	0	1	0.0 %	0.0 %	100.0 %
OFFENCES AGAINST JUSTICE PROCEDURES	1,144	919	861	-19.7 %	-6.3 %	1,139	915	854	99.6 %	99.6 %	99.2 %
OFFENCES AGAINST JUSTICE PROCEDURES, GOVERNMENT SECURITY AND GOVERNMENT OPERATIONS NOT FURTHER DEFINED	2	0	0	-100.0 %	0.0 %	1	0	0	50.0 %	0.0 %	0.0 %
	2,616	2,392	2,197	-8.6 %	-8.2 %	2,572	2,372	2,137	98.3 %	99.2 %	97.3 %

MISCELLANEOUS OFFENCES

ASOC Subdivision Description	Recorded 2010	Recorded 2011	Recorded 2012	Variance 2010-2011	Variance 2011-2012	Resolved 2010	Resolved 2011	Resolved 2012	Resolution Rate 2010	Resolution Rate 2011	Resolution Rate 2012
COMMERCIAL/INDUSTRY/FINANCIAL REGULATION	0	7	1	0.0 %	-85.7 %	0	6	1	0.0 %	85.7 %	100.0 %
DEFAMATION, LIBEL AND PRIVACY OFFENCES	6	9	5	50.0 %	-44.4 %	1	3	1	16.7 %	33.3 %	20.0 %
OTHER MISCELLANEOUS OFFENCES	92	72	61	-21.7 %	-15.3 %	52	55	44	56.5 %	76.4 %	72.1 %
PUBLIC HEALTH AND SAFETY OFFENCES	8	4	10	-50.0 %	150.0 %	6	3	9	75.0 %	75.0 %	90.0 %
	106	92	77	-13.2 %	-16.3 %	59	67	55	55.7 %	72.8 %	71.4 %

TOTAL	36,392	36,214	31,718	-0.5 %	-12.4 %	17,948	17,543	15,274	49.3 %	48.4 %	48.2 %
--------------	---------------	---------------	---------------	---------------	----------------	---------------	---------------	---------------	---------------	---------------	---------------

PROPORTIONS OF RECORDED CRIME BY DIVISION

Years ending 31 December

ASOC Division Description	Proportions Recorded 2010	Recorded 2010	Proportions Recorded 2011	Recorded 2011	Proportions Recorded 2012	Recorded 2012
HOMICIDE AND RELATED OFFENCES	0.02 %	9	0.02 %	7	0.00 %	1
ACTS INTENDED TO CAUSE INJURY	10.41 %	3,787	10.10 %	3,656	11.10 %	3,521
SEXUAL ASSAULT AND RELATED OFFENCES	0.85 %	309	0.85 %	308	0.84 %	265
DANGEROUS OR NEGLIGENT ACTS ENDANGERING PERSONS	0.24 %	86	0.29 %	106	0.21 %	68
ABDUCTION, HARASSMENT AND OTHER RELATED OFFENCES AGAINST A PERSON	3.31 %	1,204	3.38 %	1,223	3.81 %	1,209
ROBBERY, EXTORTION AND RELATED OFFENCES	0.85 %	309	0.62 %	226	0.66 %	210
UNLAWFUL ENTRY WITH INTENT/BURGLARY, BREAK AND ENTER	15.81 %	5,752	16.23 %	5,876	13.99 %	4,436
THEFT AND RELATED OFFENCES	32.62 %	11,870	35.91 %	13,003	34.13 %	10,824
FRAUD, DECEPTION AND RELATED OFFENCES	2.96 %	1,079	2.31 %	838	2.80 %	887
ILLICIT DRUG OFFENCES	5.74 %	2,089	5.16 %	1,870	5.59 %	1,772
PROHIBITED AND REGULATED WEAPONS AND EXPLOSIVES OFFENCES	1.62 %	589	1.63 %	592	1.79 %	568
PROPERTY DAMAGE AND ENVIRONMENTAL POLLUTION	10.00 %	3,639	9.58 %	3,471	10.48 %	3,324
PUBLIC ORDER OFFENCES	8.10 %	2,948	7.05 %	2,554	7.44 %	2,359
OFFENCES AGAINST JUSTICE PROCEDURES, GOVERNMENT SECURITY AND GOVERNMENT OPERATIONS	7.19 %	2,616	6.61 %	2,392	6.93 %	2,197
MISCELLANEOUS OFFENCES	0.29 %	106	0.25 %	92	0.24 %	77
	100.00 %	36,392	100.00 %	36,214	100.00 %	31,718

SUMMARY OF RECORDED OFFENCES, RATE PER 10,000 POPULATION AND RESOLVED OFFENCES, BY AREA
years ending 31 December

TOTAL CRIME

Area Description	Recorded 2011	Recorded 2012	Variance 2011-2012	Recorded per 10,000 pop 2011	Recorded per 10,000 pop 2012	Per 10,000 pop % Variance 2011 to 2012	Resolved 2011	Resolved 2012	Resolution Rate 2011	Resolution Rate 2012
Auckland Motorways	172	107	-37.8 %	#DIV/0	#DIV/0	#DIV/0	141	90	82.0 %	84.1 %
North Shore	10,778	10,141	-5.9 %	463.5	430.1	-7.2 %	5,494	4,828	51.0 %	47.6 %
Rodney	5,751	5,131	-10.8 %	551.7	483.8	-12.3 %	2,686	2,212	46.7 %	43.1 %
Waitakere	19,513	16,339	-16.3 %	923.0	762.1	-17.4 %	9,222	8,144	47.3 %	49.8 %
	36,214	31,718	-12.4 %	660.6	570.2	-13.7 %	17,543	15,274	48.4 %	48.2 %

SUMMARY OF RECORDED OFFENCES, RATE PER 10,000 POPULATION AND RESOLVED OFFENCES, BY DIVISION

Years ending 31 December

HOMICIDE AND RELATED OFFENCES

Area Description	Recorded 2011	Recorded 2012	Variance 2011-2012	Recorded per 10,000 pop 2011	Recorded per 10,000 pop 2012	Per 10,000 pop % Variance 2011 to 2012	Resolved 2011	Resolved 2012	Resolution Rate 2011	Resolution Rate 2012
Auckland Motorways	0	0	0.0 %	0.0	0.0	0.0 %	0	0	0.0 %	0.0 %
North Shore	2	0	-100.0 %	0.1	0.0	-100.0 %	2	0	100.0 %	0.0 %
Rodney	2	0	-100.0 %	0.2	0.0	-100.0 %	1	0	50.0 %	0.0 %
Waitakere	3	1	-66.7 %	0.1	0.0	-67.1 %	1	0	33.3 %	0.0 %
	7	1	-85.7 %	0.1	0.0	-85.9 %	4	0	57.1 %	0.0 %

ACTS INTENDED TO CAUSE INJURY

Area Description	Recorded 2011	Recorded 2012	Variance 2011-2012	Recorded per 10,000 pop 2011	Recorded per 10,000 pop 2012	Per 10,000 pop % Variance 2011 to 2012	Resolved 2011	Resolved 2012	Resolution Rate 2011	Resolution Rate 2012
Auckland Motorways	16	12	-25.0 %	#DIV/0	#DIV/0	#DIV/0	12	10	75.0 %	83.3 %
North Shore	1,069	1,065	-0.4 %	46.0	45.2	-1.7 %	971	883	90.8 %	82.9 %
Rodney	502	478	-4.8 %	48.2	45.1	-6.4 %	443	358	88.2 %	74.9 %
Waitakere	2,069	1,966	-5.0 %	97.9	91.7	-6.3 %	1,844	1,685	89.1 %	85.7 %
	3,656	3,521	-3.7 %	66.7	63.3	-5.1 %	3,270	2,936	89.4 %	83.4 %

SEXUAL ASSAULT AND RELATED OFFENCES

Area Description	Recorded 2011	Recorded 2012	Variance 2011-2012	Recorded per 10,000 pop 2011	Recorded per 10,000 pop 2012	Per 10,000 pop % Variance 2011 to 2012	Resolved 2011	Resolved 2012	Resolution Rate 2011	Resolution Rate 2012
Auckland Motorways	0	0	0.0 %	0.0	0.0	0.0 %	0	0	0.0 %	0.0 %
North Shore	94	105	11.7 %	4.0	4.5	10.2 %	69	66	73.4 %	62.9 %
Rodney	52	27	-48.1 %	5.0	2.5	-49.0 %	32	11	61.5 %	40.7 %
Waitakere	162	133	-17.9 %	7.7	6.2	-19.1 %	102	76	63.0 %	57.1 %
	308	265	-14.0 %	5.6	4.8	-15.2 %	203	153	65.9 %	57.7 %

DANGEROUS OR NEGLIGENT ACTS ENDANGERING PERSONS

Area Description	Recorded 2011	Recorded 2012	Variance 2011-2012	Recorded per 10,000 pop 2011	Recorded per 10,000 pop 2012	Per 10,000 pop % Variance 2011 to 2012	Resolved 2011	Resolved 2012	Resolution Rate 2011	Resolution Rate 2012
Auckland Motorways	5	6	20.0 %	#DIV/0	#DIV/0	#DIV/0	4	2	80.0 %	33.3 %
North Shore	36	21	-41.7 %	1.5	0.9	-42.5 %	30	12	83.3 %	57.1 %
Rodney	9	10	11.1 %	0.9	0.9	9.2 %	5	6	55.6 %	60.0 %
Waitakere	56	31	-44.6 %	2.6	1.4	-45.4 %	43	20	76.8 %	64.5 %
	106	68	-35.8 %	1.9	1.2	-36.8 %	82	40	77.4 %	58.8 %

ABDUCTION, HARASSMENT AND OTHER RELATED OFFENCES AGAINST A PERSON

Area Description	Recorded 2011	Recorded 2012	Variance 2011-2012	Recorded per 10,000 pop 2011	Recorded per 10,000 pop 2012	Per 10,000 pop % Variance 2011 to 2012	Resolved 2011	Resolved 2012	Resolution Rate 2011	Resolution Rate 2012
Auckland Motorways	3	3	0.0 %	#DIV/0	#DIV/0	#DIV/0	2	3	66.7 %	100.0 %
North Shore	354	399	12.7 %	15.2	16.9	11.2 %	268	277	75.7 %	69.4 %
Rodney	200	215	7.5 %	19.2	20.3	5.7 %	161	146	80.5 %	67.9 %
Waitakere	666	592	-11.1 %	31.5	27.6	-12.4 %	492	408	73.9 %	68.9 %
	1,223	1,209	-1.1 %	22.3	21.7	-2.6 %	923	834	75.5 %	69.0 %

SUMMARY OF RECORDED OFFENCES, RATE PER 10,000 POPULATION AND RESOLVED OFFENCES, BY DIVISION

Years ending 31 December

ROBBERY, EXTORTION AND RELATED OFFENCES

Area Description	Recorded 2011	Recorded 2012	Variance 2011-2012	Recorded per 10,000 pop 2011	Recorded per 10,000 pop 2012	Per 10,000 pop % Variance 2011 to 2012	Resolved 2011	Resolved 2012	Resolution Rate 2011	Resolution Rate 2012
Auckland Motorways	0	0	0.0 %	0.0	0.0	0.0 %	0	0	0.0 %	0.0 %
North Shore	54	62	14.8 %	2.3	2.6	13.2 %	29	25	53.7 %	40.3 %
Rodney	20	13	-35.0 %	1.9	1.2	-36.1 %	11	6	55.0 %	46.2 %
Waitakere	152	135	-11.2 %	7.2	6.3	-12.4 %	63	49	41.4 %	36.3 %
	226	210	-7.1 %	4.1	3.8	-8.4 %	103	80	45.6 %	38.1 %

UNLAWFUL ENTRY WITH INTENT/BURGLARY, BREAK AND ENTER

Area Description	Recorded 2011	Recorded 2012	Variance 2011-2012	Recorded per 10,000 pop 2011	Recorded per 10,000 pop 2012	Per 10,000 pop % Variance 2011 to 2012	Resolved 2011	Resolved 2012	Resolution Rate 2011	Resolution Rate 2012
Auckland Motorways	1	1	0.0 %	#DIV/0	#DIV/0	#DIV/0	0	0	0.0 %	0.0 %
North Shore	1,417	1,247	-12.0 %	60.9	52.9	-13.2 %	155	135	10.9 %	10.8 %
Rodney	869	697	-19.8 %	83.4	65.7	-21.2 %	149	117	17.1 %	16.8 %
Waitakere	3,589	2,491	-30.6 %	169.8	116.2	-31.6 %	361	327	10.1 %	13.1 %
	5,876	4,436	-24.5 %	107.2	79.7	-25.6 %	665	579	11.3 %	13.1 %

THEFT AND RELATED OFFENCES

Area Description	Recorded 2011	Recorded 2012	Variance 2011-2012	Recorded per 10,000 pop 2011	Recorded per 10,000 pop 2012	Per 10,000 pop % Variance 2011 to 2012	Resolved 2011	Resolved 2012	Resolution Rate 2011	Resolution Rate 2012
Auckland Motorways	25	22	-12.0 %	#DIV/0	#DIV/0	#DIV/0	12	14	48.0 %	63.6 %
North Shore	4,145	3,832	-7.6 %	178.2	162.5	-8.8 %	1,186	1,042	28.6 %	27.2 %
Rodney	2,029	1,687	-16.9 %	194.6	159.1	-18.3 %	488	359	24.1 %	21.3 %
Waitakere	6,804	5,283	-22.4 %	321.9	246.4	-23.4 %	1,776	1,339	26.1 %	25.3 %
	13,003	10,824	-16.8 %	237.2	194.6	-18.0 %	3,462	2,754	26.6 %	25.4 %

FRAUD, DECEPTION AND RELATED OFFENCES

Area Description	Recorded 2011	Recorded 2012	Variance 2011-2012	Recorded per 10,000 pop 2011	Recorded per 10,000 pop 2012	Per 10,000 pop % Variance 2011 to 2012	Resolved 2011	Resolved 2012	Resolution Rate 2011	Resolution Rate 2012
Auckland Motorways	1	0	-100.0 %	#DIV/0	0.0	#DIV/0	1	0	100.0 %	0.0 %
North Shore	382	418	9.4 %	16.4	17.7	7.9 %	210	208	55.0 %	49.8 %
Rodney	107	129	20.6 %	10.3	12.2	18.5 %	67	62	62.6 %	48.1 %
Waitakere	348	340	-2.3 %	16.5	15.9	-3.7 %	194	132	55.7 %	38.8 %
	838	887	5.8 %	15.3	15.9	4.3 %	472	402	56.3 %	45.3 %

ILLICIT DRUG OFFENCES

Area Description	Recorded 2011	Recorded 2012	Variance 2011-2012	Recorded per 10,000 pop 2011	Recorded per 10,000 pop 2012	Per 10,000 pop % Variance 2011 to 2012	Resolved 2011	Resolved 2012	Resolution Rate 2011	Resolution Rate 2012
Auckland Motorways	51	19	-62.7 %	#DIV/0	#DIV/0	#DIV/0	51	19	100.0 %	100.0 %
North Shore	642	529	-17.6 %	27.6	22.4	-18.7 %	612	504	95.3 %	95.3 %
Rodney	423	400	-5.4 %	40.6	37.7	-7.1 %	415	368	98.1 %	92.0 %
Waitakere	754	824	9.3 %	35.7	38.4	7.8 %	732	796	97.1 %	96.6 %
	1,870	1,772	-5.2 %	34.1	31.9	-6.6 %	1,810	1,687	96.8 %	95.2 %

SUMMARY OF RECORDED OFFENCES, RATE PER 10,000 POPULATION AND RESOLVED OFFENCES, BY DIVISION

Years ending 31 December

PROHIBITED AND REGULATED WEAPONS AND EXPLOSIVES OFFENCES

Area Description	Recorded 2011	Recorded 2012	Variance 2011-2012	Recorded per 10,000 pop 2011	Recorded per 10,000 pop 2012	Per 10,000 pop % Variance 2011 to 2012	Resolved 2011	Resolved 2012	Resolution Rate 2011	Resolution Rate 2012
Auckland Motorways	12	4	-66.7 %	#DIV/0	#DIV/0	#DIV/0	12	4	100.0 %	100.0 %
North Shore	161	145	-9.9 %	6.9	6.1	-11.2 %	153	131	95.0 %	90.3 %
Rodney	130	114	-12.3 %	12.5	10.7	-13.8 %	117	100	90.0 %	87.7 %
Waitakere	289	305	5.5 %	13.7	14.2	4.1 %	274	285	94.8 %	93.4 %
	592	568	-4.1 %	10.8	10.2	-5.4 %	556	520	93.9 %	91.5 %

PROPERTY DAMAGE AND ENVIRONMENTAL POLLUTION

Area Description	Recorded 2011	Recorded 2012	Variance 2011-2012	Recorded per 10,000 pop 2011	Recorded per 10,000 pop 2012	Per 10,000 pop % Variance 2011 to 2012	Resolved 2011	Resolved 2012	Resolution Rate 2011	Resolution Rate 2012
Auckland Motorways	18	9	-50.0 %	#DIV/0	#DIV/0	#DIV/0	11	8	61.1 %	88.9 %
North Shore	938	1,021	8.8 %	40.3	43.3	7.3 %	438	396	46.7 %	38.8 %
Rodney	721	701	-2.8 %	69.2	66.1	-4.4 %	218	155	30.2 %	22.1 %
Waitakere	1,794	1,593	-11.2 %	84.9	74.3	-12.4 %	706	633	39.4 %	39.7 %
	3,471	3,324	-4.2 %	63.3	59.8	-5.6 %	1,373	1,192	39.6 %	35.9 %

PUBLIC ORDER OFFENCES

Area Description	Recorded 2011	Recorded 2012	Variance 2011-2012	Recorded per 10,000 pop 2011	Recorded per 10,000 pop 2012	Per 10,000 pop % Variance 2011 to 2012	Resolved 2011	Resolved 2012	Resolution Rate 2011	Resolution Rate 2012
Auckland Motorways	16	16	0.0 %	#DIV/0	#DIV/0	#DIV/0	14	16	87.5 %	100.0 %
North Shore	806	766	-5.0 %	34.7	32.5	-6.3 %	709	647	88.0 %	84.5 %
Rodney	489	419	-14.3 %	46.9	39.5	-15.8 %	398	312	81.4 %	74.5 %
Waitakere	1,243	1,158	-6.8 %	58.8	54.0	-8.1 %	1,060	930	85.3 %	80.3 %
	2,554	2,359	-7.6 %	46.6	42.4	-9.0 %	2,181	1,905	85.4 %	80.8 %

OFFENCES AGAINST JUSTICE PROCEDURES, GOVERNMENT SECURITY AND GOVERNMENT OPERATIONS

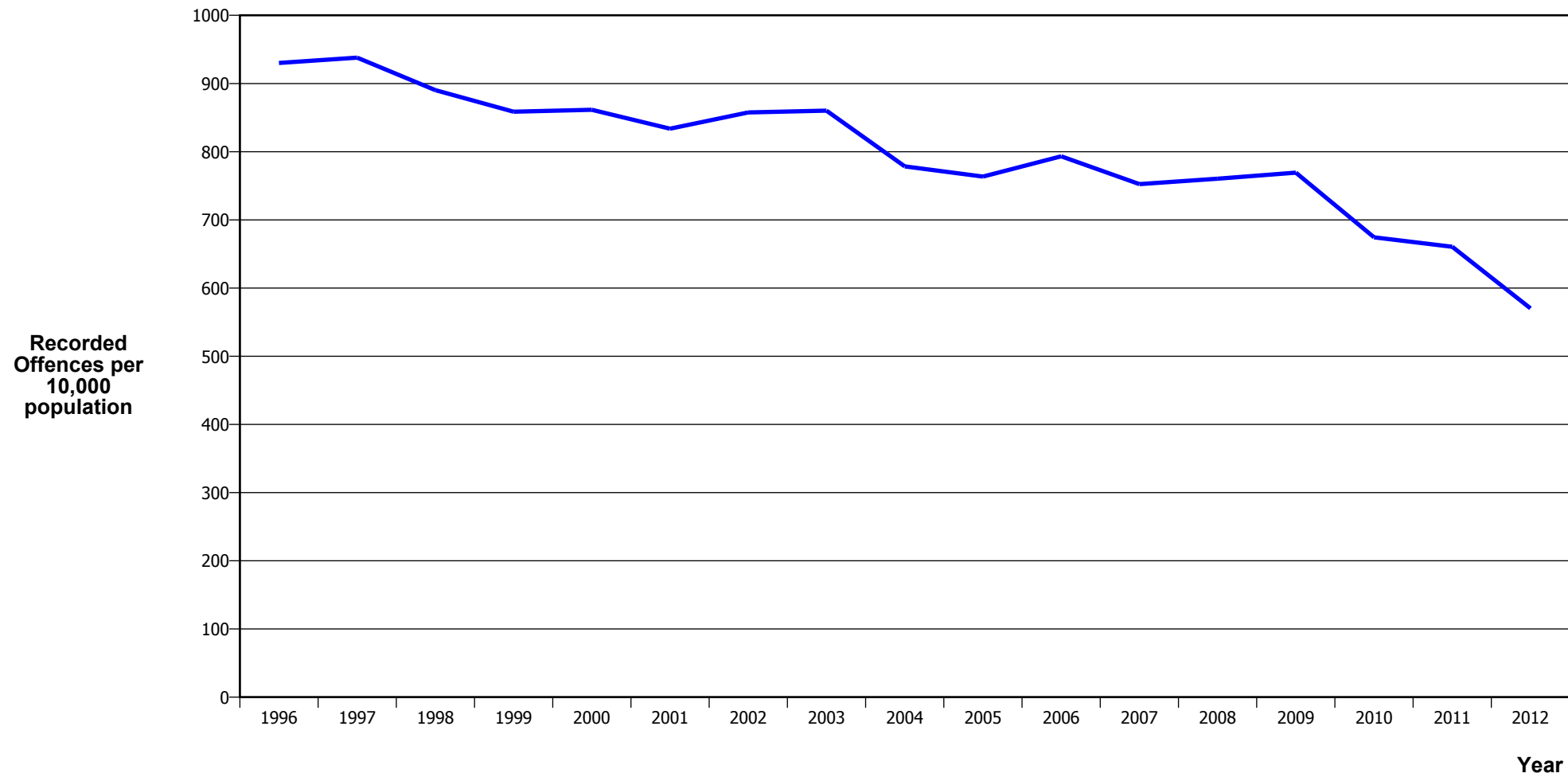
Area Description	Recorded 2011	Recorded 2012	Variance 2011-2012	Recorded per 10,000 pop 2011	Recorded per 10,000 pop 2012	Per 10,000 pop % Variance 2011 to 2012	Resolved 2011	Resolved 2012	Resolution Rate 2011	Resolution Rate 2012
Auckland Motorways	24	15	-37.5 %	#DIV/0	#DIV/0	#DIV/0	22	14	91.7 %	93.3 %
North Shore	647	506	-21.8 %	27.8	21.5	-22.9 %	642	486	99.2 %	96.0 %
Rodney	163	215	31.9 %	15.6	20.3	29.7 %	156	193	95.7 %	89.8 %
Waitakere	1,558	1,461	-6.2 %	73.7	68.1	-7.5 %	1,552	1,444	99.6 %	98.8 %
	2,392	2,197	-8.2 %	43.6	39.5	-9.5 %	2,372	2,137	99.2 %	97.3 %

MISCELLANEOUS OFFENCES

Area Description	Recorded 2011	Recorded 2012	Variance 2011-2012	Recorded per 10,000 pop 2011	Recorded per 10,000 pop 2012	Per 10,000 pop % Variance 2011 to 2012	Resolved 2011	Resolved 2012	Resolution Rate 2011	Resolution Rate 2012
Auckland Motorways	0	0	0.0 %	0.0	0.0	0.0 %	0	0	0.0 %	0.0 %
North Shore	31	25	-19.4 %	1.3	1.1	-20.5 %	20	16	64.5 %	64.0 %
Rodney	35	26	-25.7 %	3.4	2.5	-27.0 %	25	19	71.4 %	73.1 %
Waitakere	26	26	0.0 %	1.2	1.2	-1.4 %	22	20	84.6 %	76.9 %
	92	77	-16.3 %	1.7	1.4	-17.5 %	67	55	72.8 %	71.4 %

CRIME TRENDS

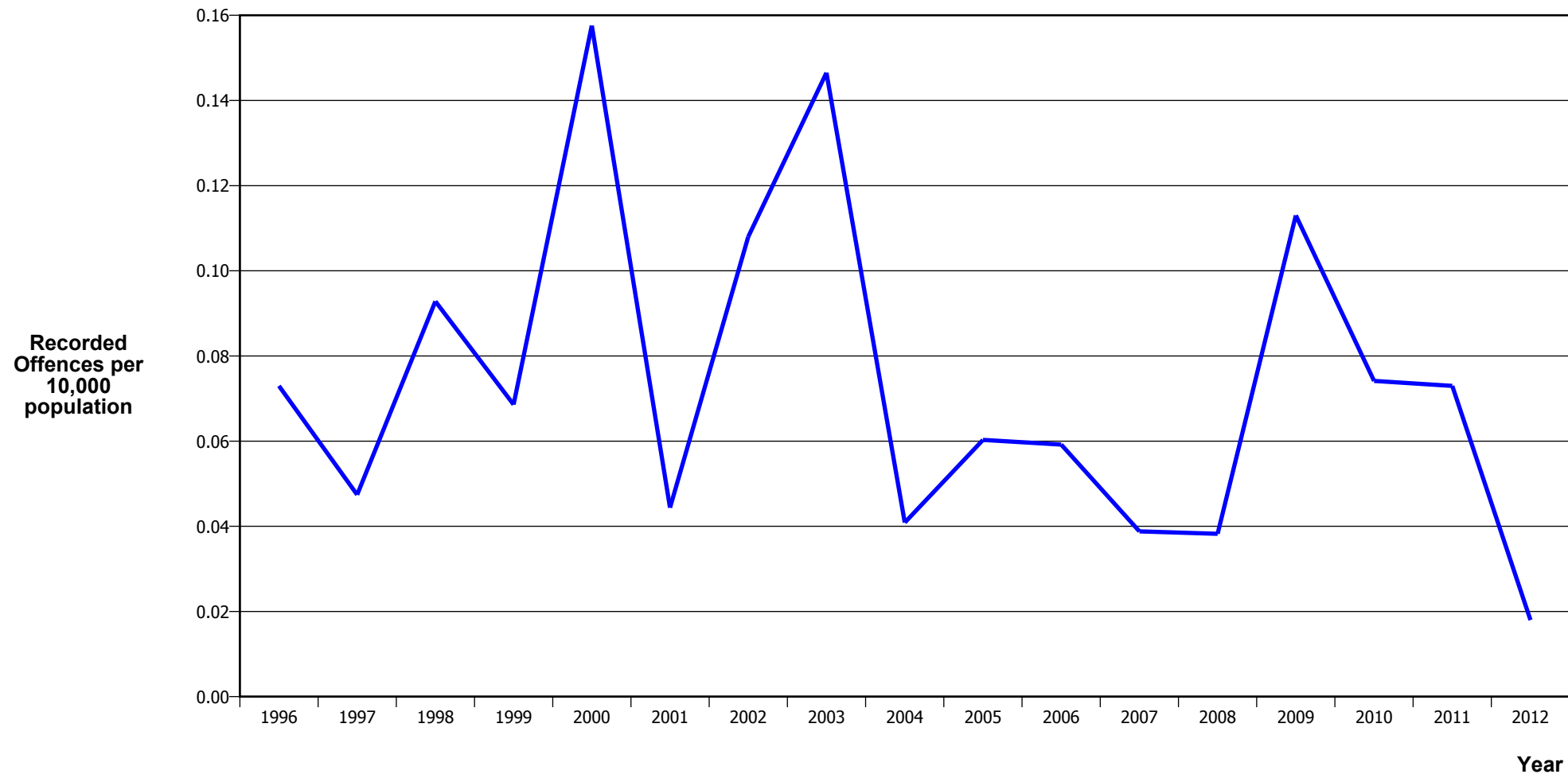
TOTAL CRIME



Calendar Year	1996	1997	1998	1999	2000	2001	2002	2003	2004	2005	2006	2007	2008	2009	2010	2011	2012
Recorded Offences	38,242	39,575	38,356	37,554	38,266	37,583	39,710	41,106	38,074	37,996	40,206	38,784	39,763	40,835	36,392	36,214	31,718
Recorded per 10,000 Population	930.2	937.9	890.3	858.7	861.5	833.7	857.6	860.3	778.4	763.5	793.2	752.4	760.3	769.3	674.5	660.6	570.2

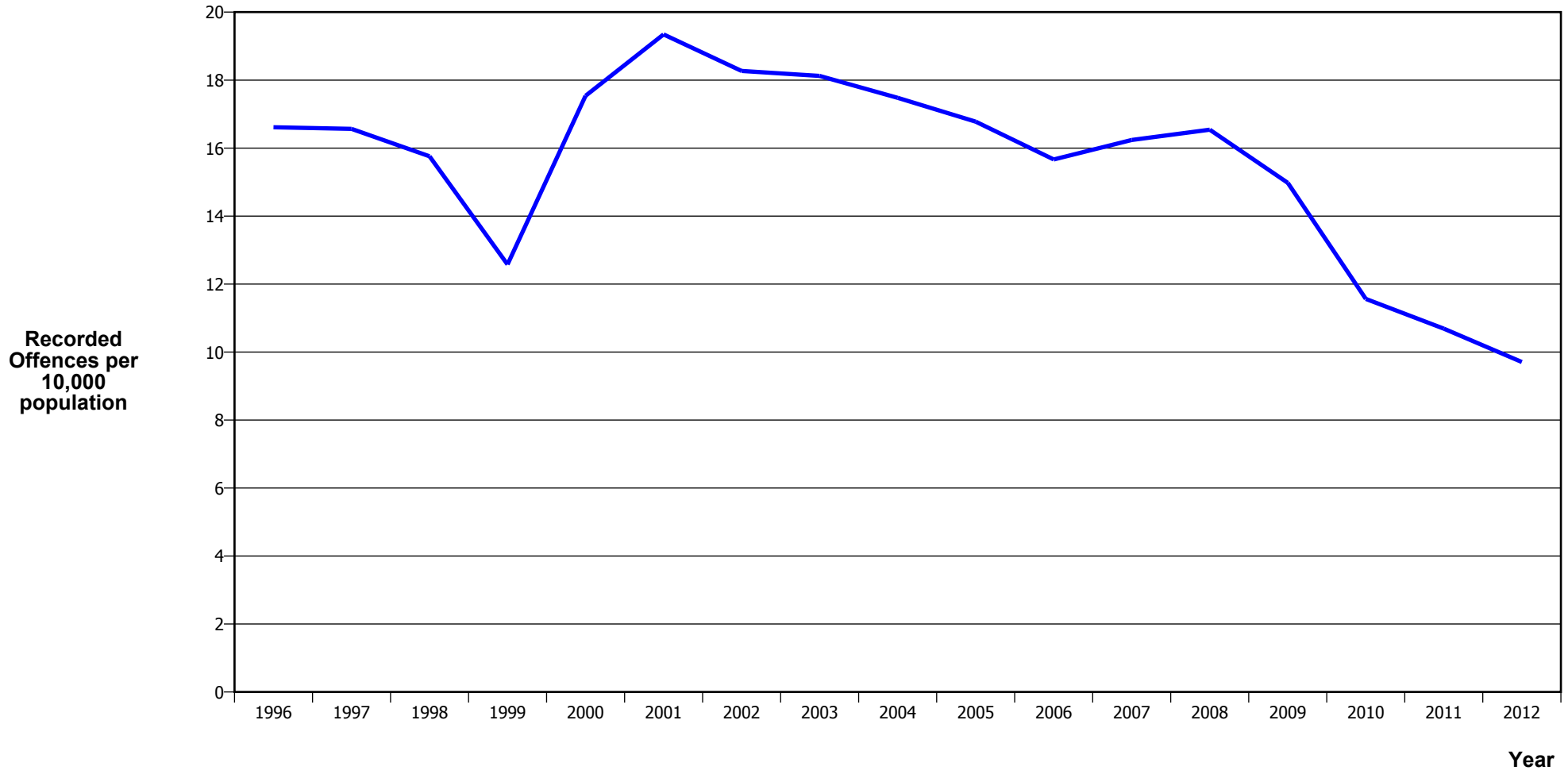
*In 2005/2006 there was a major IT system change (LES to NIA)

MURDER



Calendar Year	1996	1997	1998	1999	2000	2001	2002	2003	2004	2005	2006	2007	2008	2009	2010	2011	2012
Recorded Offences	3	2	4	3	7	2	5	7	2	3	3	2	2	6	4	4	1
Recorded per 10,000 Population	0.07	0.05	0.09	0.07	0.16	0.04	0.11	0.15	0.04	0.06	0.06	0.04	0.04	0.11	0.07	0.07	0.02

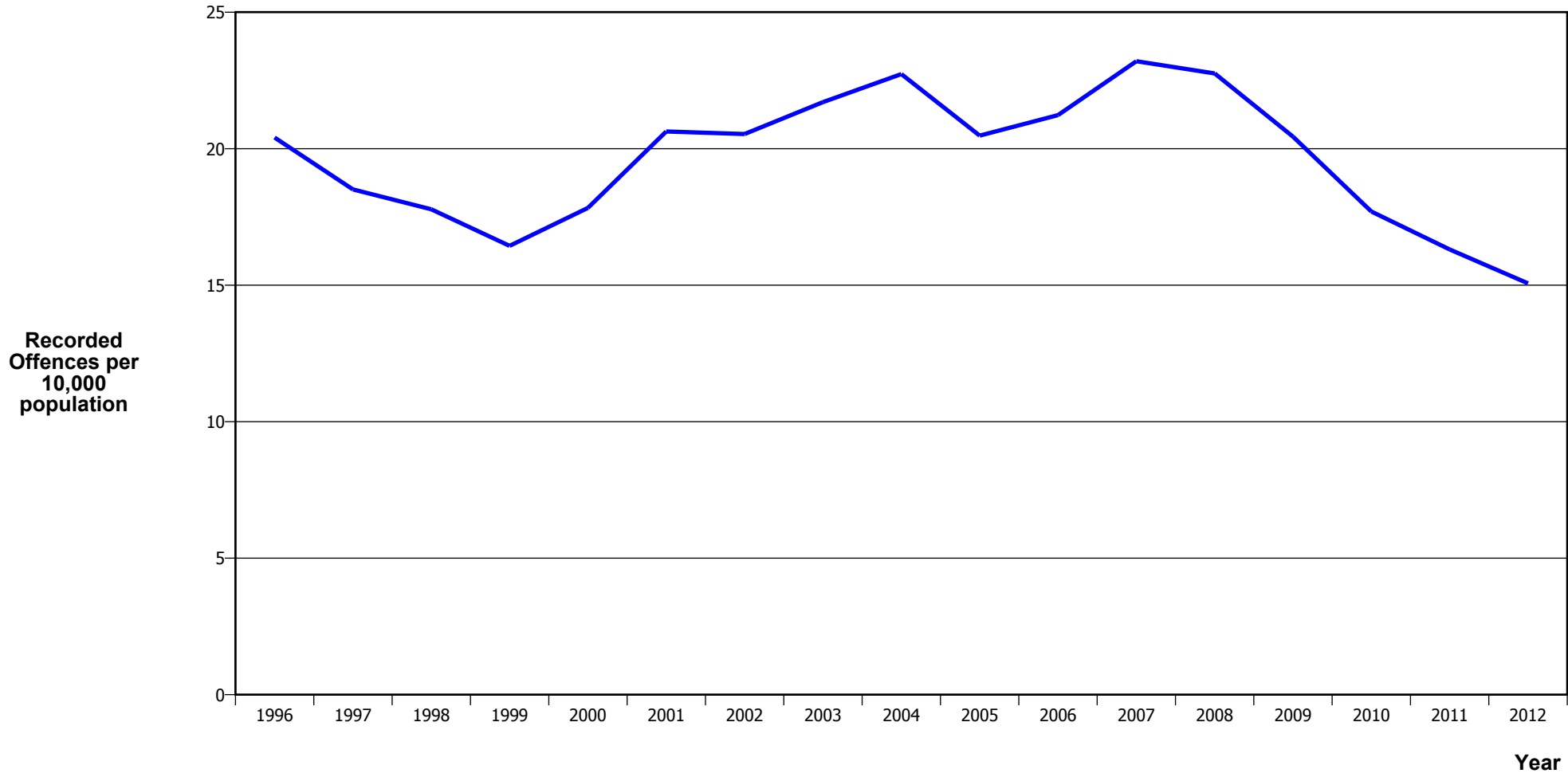
SERIOUS ASSAULTS RESULTING IN INJURY*



Calendar Year	1996	1997	1998	1999	2000	2001	2002	2003	2004	2005	2006	2007	2008	2009	2010	2011	2012
Recorded Offence	683	699	679	550	779	872	846	866	855	835	794	837	865	795	624	586	540
Offence Rate per 10K Popn	16.6	16.6	15.8	12.6	17.5	19.3	18.3	18.1	17.5	16.8	15.7	16.2	16.5	15.0	11.6	10.7	9.7

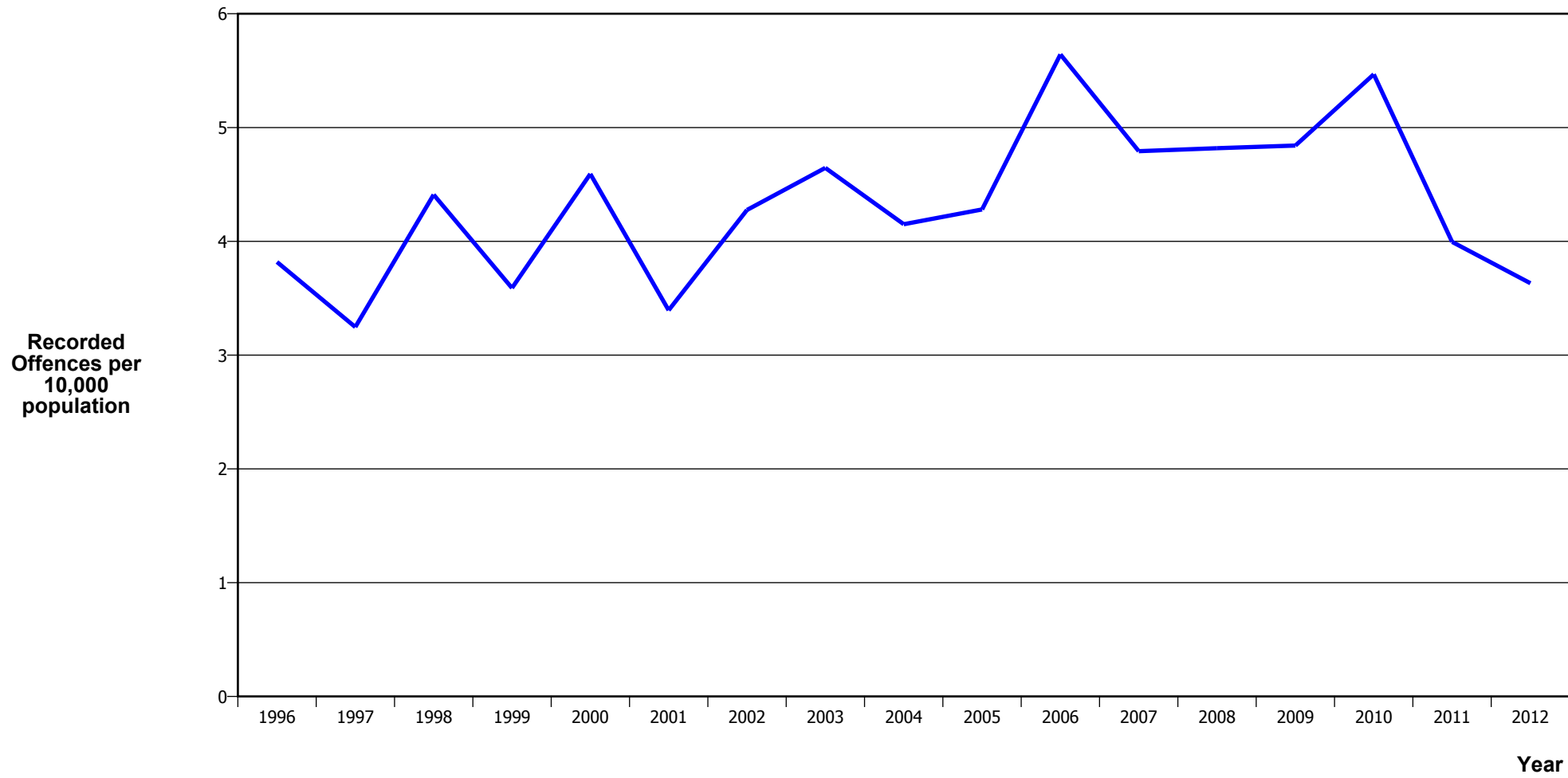
* This measure excludes common assaults

PUBLIC PLACE ASSAULTS



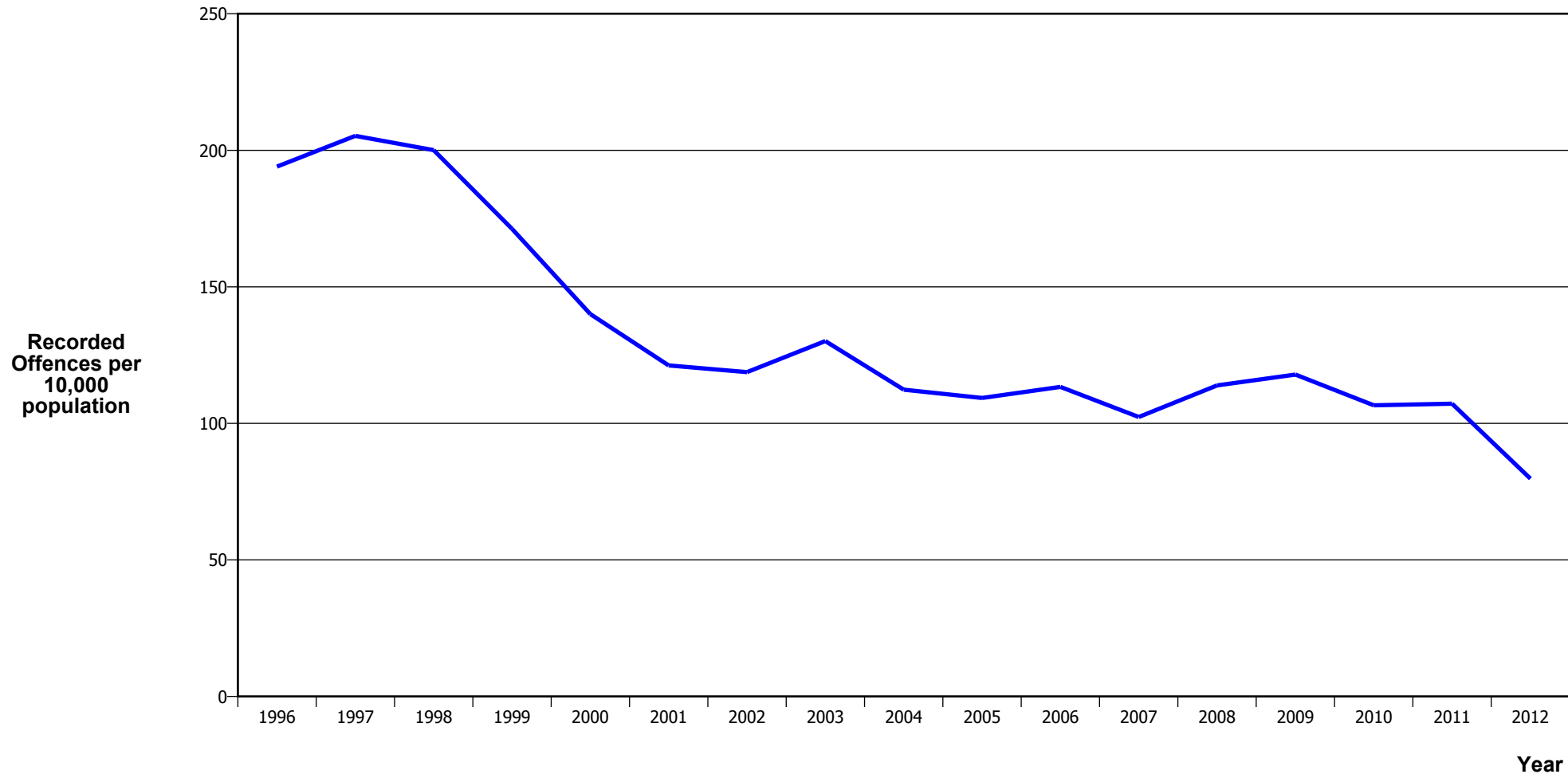
Calendar Year	1996	1997	1998	1999	2000	2001	2002	2003	2004	2005	2006	2007	2008	2009	2010	2011	2012
Recorded Offences	839	781	766	719	792	930	951	1,037	1,112	1,019	1,076	1,196	1,190	1,085	955	894	838
Recorded per 10,000 Population	20.4	18.5	17.8	16.4	17.8	20.6	20.5	21.7	22.7	20.5	21.2	23.2	22.8	20.4	17.7	16.3	15.1

ROBBERY



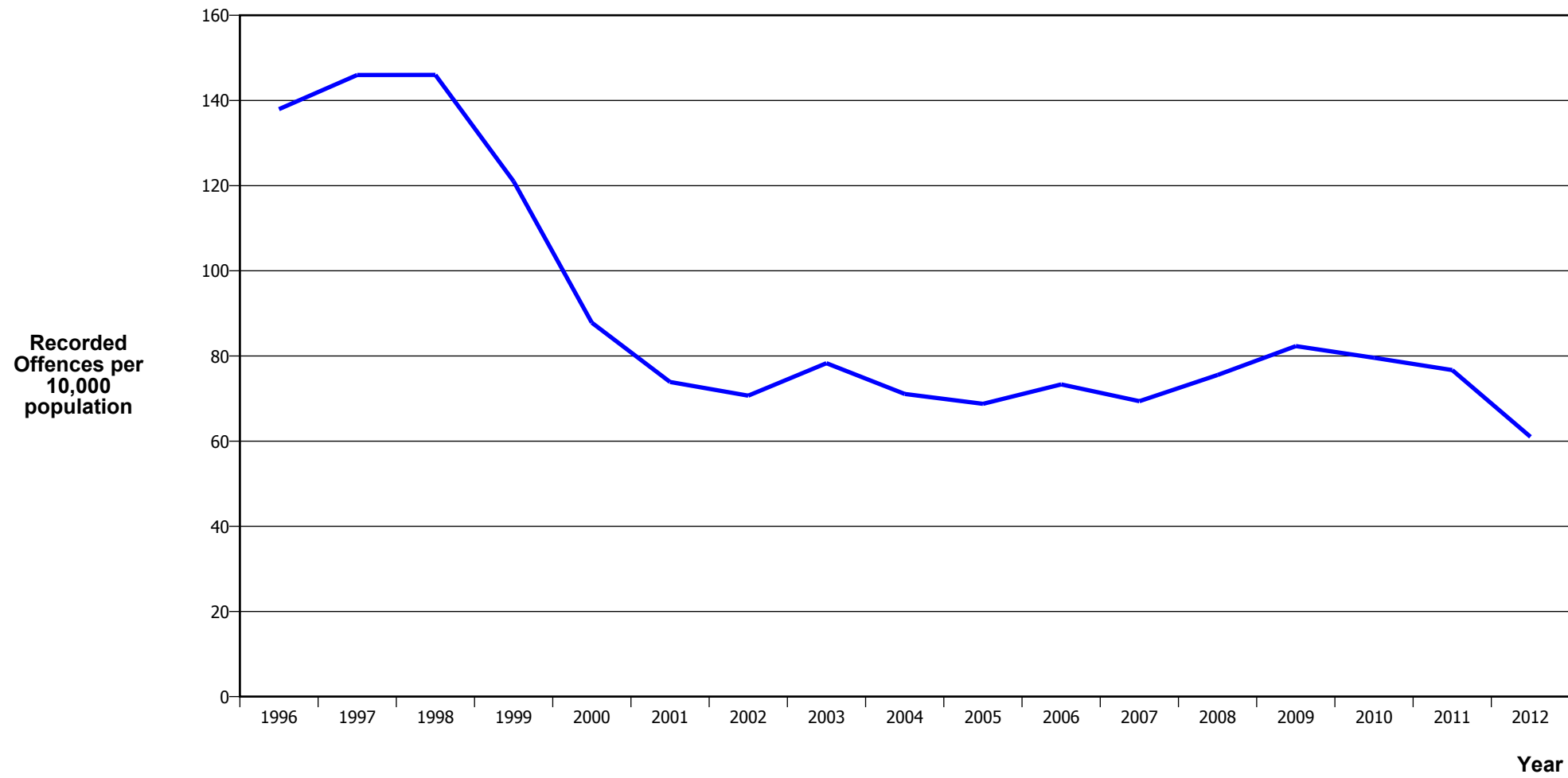
Calendar Year	1996	1997	1998	1999	2000	2001	2002	2003	2004	2005	2006	2007	2008	2009	2010	2011	2012
Recorded Offences	157	137	190	157	204	153	198	222	203	213	286	247	252	257	295	219	202
Recorded per 10,000 Population	3.8	3.2	4.4	3.6	4.6	3.4	4.3	4.6	4.2	4.3	5.6	4.8	4.8	4.8	5.5	4.0	3.6

BURGLARY (TOTAL)



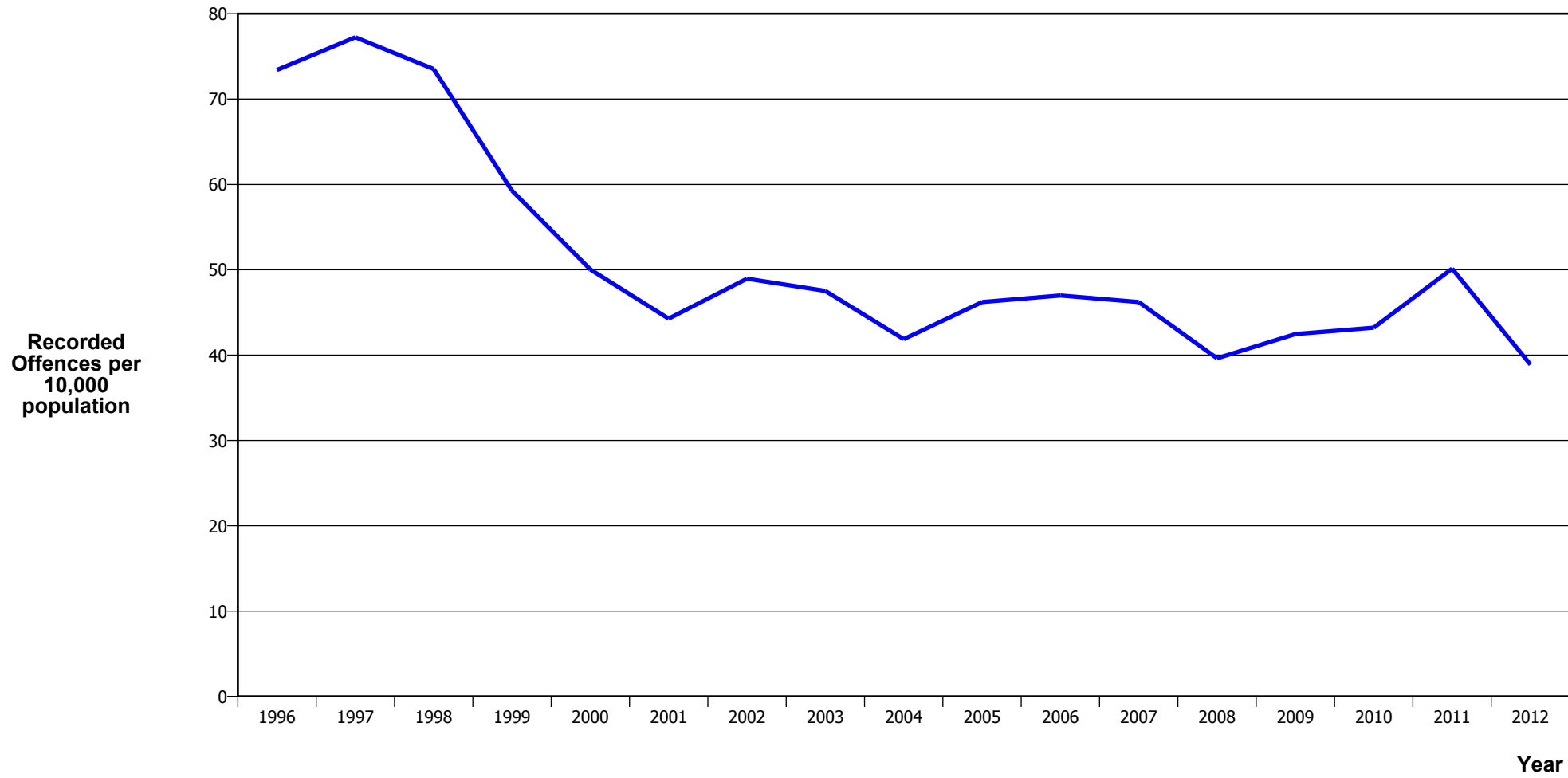
Calendar Year	1996	1997	1998	1999	2000	2001	2002	2003	2004	2005	2006	2007	2008	2009	2010	2011	2012
Recorded Offences	7,977	8,662	8,620	7,489	6,220	5,464	5,500	6,219	5,496	5,439	5,746	5,276	5,956	6,257	5,752	5,876	4,436
Recorded per 10,000 Population	194.0	205.3	200.1	171.2	140.0	121.2	118.8	130.2	112.4	109.3	113.4	102.4	113.9	117.9	106.6	107.2	79.7

BURGLARY (DWELLING)



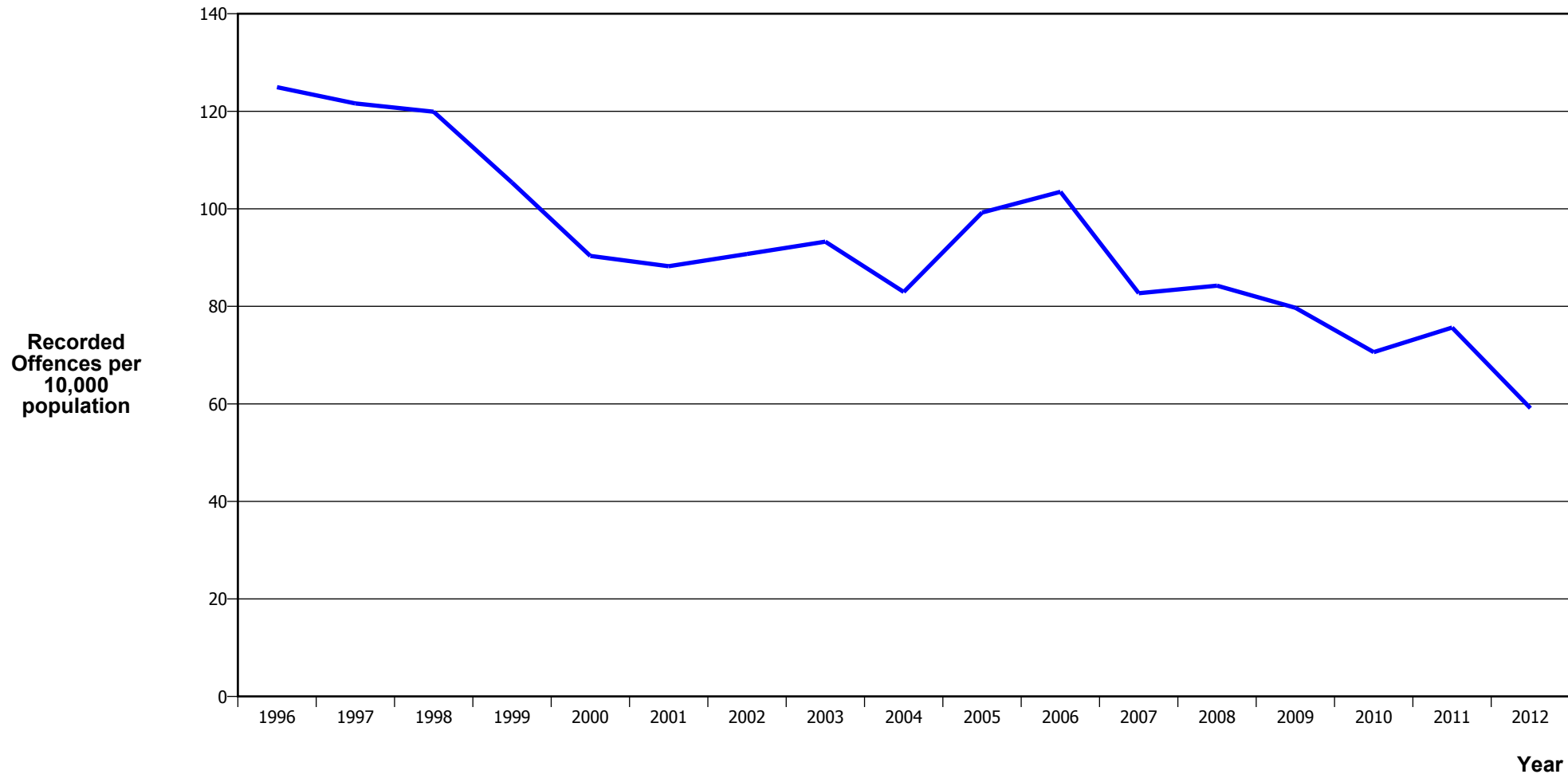
Calendar Year	1996	1997	1998	1999	2000	2001	2002	2003	2004	2005	2006	2007	2008	2009	2010	2011	2012
Recorded Offences	5,672	6,160	6,290	5,292	3,901	3,331	3,273	3,742	3,477	3,422	3,716	3,576	3,951	4,370	4,294	4,204	3,394
Recorded per 10,000 Population	138.0	146.0	146.0	121.0	87.8	73.9	70.7	78.3	71.1	68.8	73.3	69.4	75.6	82.3	79.6	76.7	61.0

VEHICLES STOLEN



Calendar Year	1996	1997	1998	1999	2000	2001	2002	2003	2004	2005	2006	2007	2008	2009	2010	2011	2012
Recorded Offences	3,018	3,259	3,168	2,592	2,223	1,996	2,267	2,271	2,048	2,300	2,382	2,382	2,072	2,254	2,332	2,748	2,163
Recorded per 10,000 Population	73.4	77.2	73.5	59.3	50.0	44.3	49.0	47.5	41.9	46.2	47.0	46.2	39.6	42.5	43.2	50.1	38.9

THEFT EX CAR



Calendar Year	1996	1997	1998	1999	2000	2001	2002	2003	2004	2005	2006	2007	2008	2009	2010	2011	2012
Recorded Offences	5,137	5,131	5,166	4,609	4,013	3,977	4,202	4,456	4,057	4,939	5,245	4,262	4,405	4,231	3,810	4,147	3,289
Recorded per 10,000 Population	125.0	121.6	119.9	105.4	90.3	88.2	90.7	93.3	82.9	99.2	103.5	82.7	84.2	79.7	70.6	75.6	59.1

Population Data

Population data is used in this release to calculate crime rates. They have been derived from population estimates as at 30 June each year that have been obtained from Statistics New Zealand.

The estimated resident population is based on the census usually resident population count, with adjustments for residents missed or counted more than once by the census (net census undercount), and for residents temporarily overseas on census night.

These population estimates exclude the number of international students who are studying in New Zealand for less than 12 months.

Year	Population
1996	411,110
1997	421,950
1998	430,830
1999	437,320
2000	444,180
2001	450,810
2002	463,060
2003	477,830
2004	489,140
2005	497,660
2006	506,860
2007	515,450
2008	522,960
2009	530,840
2010	539,560
2011	548,190
2012	556,250

General Definitions

Recorded Offences: the number of breaches of the New Zealand law recorded by Police. This includes offences specified in the Crimes Act and other legislations, such as the Summary Offences Act, Local Government Act, etc.

Resolved Offences: the number of recorded offences where an offender has been identified and dealt with (e.g. warned, cautioned, prosecuted, etc).

Resolution Rate: the proportion of recorded offences that have been resolved.

Recorded per 10,000 population: the number of recorded offences for every 10,000 people. This is also referred as the crime rate per 10,000 population.

ANZSOC: The Australian and New Zealand Standard Offence Classification. The offence classification is divided into 16 major offence divisions.

Definition of ANZSOC Divisions

1. **Homicide and related offences:** Unlawfully kill, attempt to unlawfully kill or conspiracy to kill another person.
2. **Acts intended to cause injury:** Acts, excluding attempted murder and those resulting in death, which are intended to cause non-fatal injury or harm to another person and where there is no sexual or acquisitive element.
3. **Sexual assault and related offences:** Acts, or intent of acts, of a sexual nature against another person, which are non-consensual or where consent is proscribed.
4. **Dangerous or negligent acts endangering persons:** Dangerous or negligent acts which, though not intended to cause harm, actually or potentially result in injury to oneself or another person.
5. **Abduction, harassment and other offences against person:** Acts intended to threaten or harass, or acts that unlawfully deprive another person of their freedom of movement, that are against that person's will or against the will of any parent, guardian or other person having lawful custody or care of that person.
6. **Robbery, extortion and related offences:** Acts intended to unlawfully gain money, property or other items of value from, or to cause detriment to, another person by using the threat of force or any other coercive measure.
7. **Unlawful entry with intent / burglary, break and enter:** The unlawful entry of a structure with the intent to commit an offence, where the entry is either forced or unforced.
8. **Theft and related and offences:** The unlawful taking or obtaining of money or goods, not involving the use of force or violence, coercion or deception, with intent to permanently or temporarily deprive the owner or possessor of the use of the money or goods, or the receiving or handling of money or goods obtained unlawfully.

9. Fraud, deception and related offences: Offences involving a dishonest act or omission carried out with the purpose of deceiving to obtain a benefit.

10. Illicit drug offences: The possessing, selling, dealing or trafficking, importing or exporting, manufacturing or cultivating of drugs or other substances prohibited under legislation.

11. Prohibited and regulated weapons and explosives offences: Offences involving prohibited or regulated weapons and explosives. Those offences also involving assault, sexual assault or robbery are coded to the relevant group within Assault, Sexual assaults and Robbery respectively.

12. Property damage and environmental pollution: The wilful and unlawful destruction, damage or defacement of public or private property, or the pollution of property or a definable entity held in common by the community.

13. Public order offences: Offences relating personal conduct that involves, or may lead to, a breach of public order or decency, or that is indicative of criminal intent, or that is otherwise regulated or prohibited on moral or ethical grounds. In general these offences do not involve a specific victim or victims; however some offences, such as offensive language and offensive behaviour, may be directed towards a single victim.

14. Traffic and vehicle regulatory offences: Offences relating to vehicles and most forms of traffic, including offences pertaining to the licensing, registration, roadworthiness, or use of vehicles, bicycle offences and pedestrian offences.

15. Offences against justice procedures, government security and government operations: An act or omission that is deemed to be prejudicial to the effective carrying out of justice procedures or any government operations. This includes general government operations as well as those specifically concerned with maintaining government security.

16. Miscellaneous offences: Offences involving the breach of statutory rules or regulations governing activities that are prima facie legal, where such offences are not explicitly dealt with under any other division. If an offence is specified under regulation and involves an act that would be illegal under common law or general criminal legislation, the offence is dealt with under the appropriate generic group.