

WAITEMATA DISTRICT CRIME STATISTICS 2011



**A Summary of
Recorded and Resolved Offence
Statistics**

**POLICE NATIONAL HEADQUARTERS
April 2012**

ISSN 1178 - 1548

Table of Contents:

Topic	Page
Report Notes	1
District Summary of Recorded and Resolved Crime, by Division	2-4
Proportions of Recorded Crime by Division	5
Summary of District Recorded Offences, Rate per 10,000 Population and Resolved Offences, by Area	6
Summary of Area Recorded Offences, Rate per 10,000 Population and Resolved Offences, by Division	7-9
Crime Trends	10
Total Crime	11
Murder	12
Serious Assaults Resulting in Injury	13
Public Place Assaults	14
Robbery	15
Burglary (Total)	16
Burglary (Dwelling)	17
Vehicles Stolen	18
Theft Ex Car	19
Population Data	20
General Definition	21-22

REPORT NOTES:

Statistics reported in this document are derived from the Police National Intelligence Application (NIA). These Official Statistics for Recorded and Resolved Offences present a snapshot of data in NIA relating to offences that occur within a given year, as at the date 14 days following the end of that year.

Unless the matter is minor where Police attendance is sufficient, a matter that is reported to or discovered by Police where Police believe an offence is likely to have been committed is counted as a recorded offence.

A recorded offence is counted as resolved when Police apprehend an offender and decide how to deal with him/her. (E.g. warn, prosecute, etc.)

Resolution rate is the percentage of recorded offences that are resolved within 14 days of the end of the year being reported on.

If an offence is resolved 15 days or more after the end of the year it will not appear in the Official Crime Statistics for that or any other year. Resolution Rate therefore undercounts the number of cases that Police have resolved. This phenomenon has a more marked impact for some types of offences than others, such as offences that require long investigations (E.g. many serial crimes, burglaries and murders).

When comparing 2011 Statistics with previous years, the reader should also refer to "Report Notes" published in previous years' reports, as previous changes significantly affect year on year trends.

SUMMARY OF DISTRICT RECORDED AND RESOLVED CRIME, BY DIVISION

Years ending 31 December

HOMICIDE AND RELATED OFFENCES

ASOC Subdivision Description	Recorded 2009	Recorded 2010	Recorded 2011	Variance 2009-2010	Variance 2010-2011	Resolved 2009	Resolved 2010	Resolved 2011	Resolution Rate 2009	Resolution Rate 2010	Resolution Rate 2011
ATTEMPTED MURDER	0	1	1	0.0 %	0.0 %	0	1	1	0.0 %	100.0 %	100.0 %
HOMICIDE AND RELATED OFFENCES NOT FURTHER DEFINED	0	1	0	0.0 %	-100.0 %	0	0	0	0.0 %	0.0 %	0.0 %
MANSLAUGHTER AND DRIVING CAUSING DEATH	2	3	2	50.0 %	-33.3 %	2	3	1	100.0 %	100.0 %	50.0 %
MURDER	6	4	4	-33.3 %	0.0 %	6	4	2	100.0 %	100.0 %	50.0 %
	8	9	7	12.5 %	-22.2 %	8	8	4	100.0 %	88.9 %	57.1 %

ACTS INTENDED TO CAUSE INJURY

ASOC Subdivision Description	Recorded 2009	Recorded 2010	Recorded 2011	Variance 2009-2010	Variance 2010-2011	Resolved 2009	Resolved 2010	Resolved 2011	Resolution Rate 2009	Resolution Rate 2010	Resolution Rate 2011
ASSAULT	4,013	3,785	3,654	-5.7 %	-3.5 %	3,625	3,279	3,268	90.3 %	86.6 %	89.4 %
OTHER ACTS INTENDED TO CAUSE INJURY	4	2	2	-50.0 %	0.0 %	3	2	2	75.0 %	100.0 %	100.0 %
	4,017	3,787	3,656	-5.7 %	-3.5 %	3,628	3,281	3,270	90.3 %	86.6 %	89.4 %

SEXUAL ASSAULT AND RELATED OFFENCES

ASOC Subdivision Description	Recorded 2009	Recorded 2010	Recorded 2011	Variance 2009-2010	Variance 2010-2011	Resolved 2009	Resolved 2010	Resolved 2011	Resolution Rate 2009	Resolution Rate 2010	Resolution Rate 2011
NON-ASSAULTIVE SEXUAL OFFENCES	6	19	31	216.7 %	63.2 %	5	17	28	83.3 %	89.5 %	90.3 %
SEXUAL ASSAULT	303	290	277	-4.3 %	-4.5 %	216	177	175	71.3 %	61.0 %	63.2 %
	309	309	308	0.0 %	-0.3 %	221	194	203	71.5 %	62.8 %	65.9 %

DANGEROUS OR NEGLIGENT ACTS ENDANGERING PERSONS

ASOC Subdivision Description	Recorded 2009	Recorded 2010	Recorded 2011	Variance 2009-2010	Variance 2010-2011	Resolved 2009	Resolved 2010	Resolved 2011	Resolution Rate 2009	Resolution Rate 2010	Resolution Rate 2011
OTHER DANGEROUS OR NEGLIGENT ACTS ENDANGERING PERSONS	67	86	106	28.4 %	23.3 %	53	60	82	79.1 %	69.8 %	77.4 %
	67	86	106	28.4 %	23.3 %	53	60	82	79.1 %	69.8 %	77.4 %

ABDUCTION, HARASSMENT AND OTHER RELATED OFFENCES AGAINST A PERSON

ASOC Subdivision Description	Recorded 2009	Recorded 2010	Recorded 2011	Variance 2009-2010	Variance 2010-2011	Resolved 2009	Resolved 2010	Resolved 2011	Resolution Rate 2009	Resolution Rate 2010	Resolution Rate 2011
ABDUCTION AND KIDNAPPING	28	19	13	-32.1 %	-31.6 %	20	16	9	71.4 %	84.2 %	69.2 %
HARASSMENT AND THREATENING BEHAVIOUR	1,393	1,185	1,210	-14.9 %	2.1 %	1,069	825	914	76.7 %	69.6 %	75.5 %
	1,421	1,204	1,223	-15.3 %	1.6 %	1,089	841	923	76.6 %	69.9 %	75.5 %

ROBBERY, EXTORTION AND RELATED OFFENCES

ASOC Subdivision Description	Recorded 2009	Recorded 2010	Recorded 2011	Variance 2009-2010	Variance 2010-2011	Resolved 2009	Resolved 2010	Resolved 2011	Resolution Rate 2009	Resolution Rate 2010	Resolution Rate 2011
BLACKMAIL AND EXTORTION	21	14	7	-33.3 %	-50.0 %	9	9	5	42.9 %	64.3 %	71.4 %
ROBBERY	257	295	219	14.8 %	-25.8 %	113	123	98	44.0 %	41.7 %	44.7 %
	278	309	226	11.2 %	-26.9 %	122	132	103	43.9 %	42.7 %	45.6 %

UNLAWFUL ENTRY WITH INTENT/BURGLARY, BREAK AND ENTER

ASOC Subdivision Description	Recorded 2009	Recorded 2010	Recorded 2011	Variance 2009-2010	Variance 2010-2011	Resolved 2009	Resolved 2010	Resolved 2011	Resolution Rate 2009	Resolution Rate 2010	Resolution Rate 2011
UNLAWFUL ENTRY WITH INTENT/BURGLARY, BREAK AND ENTER	6,257	5,752	5,876	-8.1 %	2.2 %	710	628	665	11.3 %	10.9 %	11.3 %
	6,257	5,752	5,876	-8.1 %	2.2 %	710	628	665	11.3 %	10.9 %	11.3 %

SUMMARY OF DISTRICT RECORDED AND RESOLVED CRIME, BY DIVISION

Years ending 31 December

THEFT AND RELATED OFFENCES

ASOC Subdivision Description	Recorded 2009	Recorded 2010	Recorded 2011	Variance 2009-2010	Variance 2010-2011	Resolved 2009	Resolved 2010	Resolved 2011	Resolution Rate 2009	Resolution Rate 2010	Resolution Rate 2011
ILLEGAL USE OF PROPERTY (EXCEPT MOTOR VEHICLES)	86	84	102	-2.3 %	21.4 %	5	4	7	5.8 %	4.8 %	6.9 %
MOTOR VEHICLE THEFT AND RELATED OFFENCES	6,485	6,142	6,895	-5.3 %	12.3 %	748	712	847	11.5 %	11.6 %	12.3 %
RECEIVE OR HANDLE PROCEEDS OF CRIME	389	288	371	-26.0 %	28.8 %	387	285	365	99.5 %	99.0 %	98.4 %
THEFT (EXCEPT MOTOR VEHICLES)	5,996	5,356	5,635	-10.7 %	5.2 %	2,616	1,996	2,243	43.6 %	37.3 %	39.8 %
	12,956	11,870	13,003	-8.4 %	9.5 %	3,756	2,997	3,462	29.0 %	25.2 %	26.6 %

FRAUD, DECEPTION AND RELATED OFFENCES

ASOC Subdivision Description	Recorded 2009	Recorded 2010	Recorded 2011	Variance 2009-2010	Variance 2010-2011	Resolved 2009	Resolved 2010	Resolved 2011	Resolution Rate 2009	Resolution Rate 2010	Resolution Rate 2011
DECEPTIVE BUSINESS/GOVERNMENT PRACTICES	1	3	3	200.0 %	0.0 %	0	2	3	0.0 %	66.7 %	100.0 %
FORGERY AND COUNTERFEITING	95	67	62	-29.5 %	-7.5 %	66	27	40	69.5 %	40.3 %	64.5 %
OBTAIN BENEFIT BY DECEPTION	1,091	962	706	-11.8 %	-26.6 %	543	543	396	49.8 %	56.4 %	56.1 %
OTHER FRAUD AND DECEPTION OFFENCES	50	47	67	-6.0 %	42.6 %	29	22	33	58.0 %	46.8 %	49.3 %
	1,237	1,079	838	-12.8 %	-22.3 %	638	594	472	51.6 %	55.1 %	56.3 %

ILLICIT DRUG OFFENCES

ASOC Subdivision Description	Recorded 2009	Recorded 2010	Recorded 2011	Variance 2009-2010	Variance 2010-2011	Resolved 2009	Resolved 2010	Resolved 2011	Resolution Rate 2009	Resolution Rate 2010	Resolution Rate 2011
DEAL OR TRAFFIC IN ILLICIT DRUGS	230	186	183	-19.1 %	-1.6 %	221	180	173	96.1 %	96.8 %	94.5 %
IMPORT OR EXPORT ILLICIT DRUGS	12	4	7	-66.7 %	75.0 %	10	3	4	83.3 %	75.0 %	57.1 %
MANUFACTURE OR CULTIVATE ILLICIT DRUGS	191	188	125	-1.6 %	-33.5 %	179	166	118	93.7 %	88.3 %	94.4 %
OTHER ILLICIT DRUG OFFENCES	911	661	586	-27.4 %	-11.3 %	903	653	574	99.1 %	98.8 %	98.0 %
POSSESS AND/OR USE ILLICIT DRUGS	1,353	1,050	969	-22.4 %	-7.7 %	1,337	1,035	941	98.8 %	98.6 %	97.1 %
	2,697	2,089	1,870	-22.5 %	-10.5 %	2,650	2,037	1,810	98.3 %	97.5 %	96.8 %

PROHIBITED AND REGULATED WEAPONS AND EXPLOSIVES OFFENCES

ASOC Subdivision Description	Recorded 2009	Recorded 2010	Recorded 2011	Variance 2009-2010	Variance 2010-2011	Resolved 2009	Resolved 2010	Resolved 2011	Resolution Rate 2009	Resolution Rate 2010	Resolution Rate 2011
REGULATED WEAPONS/EXPLOSIVES OFFENCES	814	589	592	-27.6 %	0.5 %	761	554	556	93.5 %	94.1 %	93.9 %
	814	589	592	-27.6 %	0.5 %	761	554	556	93.5 %	94.1 %	93.9 %

PROPERTY DAMAGE AND ENVIRONMENTAL POLLUTION

ASOC Subdivision Description	Recorded 2009	Recorded 2010	Recorded 2011	Variance 2009-2010	Variance 2010-2011	Resolved 2009	Resolved 2010	Resolved 2011	Resolution Rate 2009	Resolution Rate 2010	Resolution Rate 2011
ENVIRONMENTAL POLLUTION	9	8	10	-11.1 %	25.0 %	7	4	3	77.8 %	50.0 %	30.0 %
PROPERTY DAMAGE	3,863	3,631	3,461	-6.0 %	-4.7 %	1,581	1,380	1,370	40.9 %	38.0 %	39.6 %
	3,872	3,639	3,471	-6.0 %	-4.6 %	1,588	1,384	1,373	41.0 %	38.0 %	39.6 %

PUBLIC ORDER OFFENCES

ASOC Subdivision Description	Recorded 2009	Recorded 2010	Recorded 2011	Variance 2009-2010	Variance 2010-2011	Resolved 2009	Resolved 2010	Resolved 2011	Resolution Rate 2009	Resolution Rate 2010	Resolution Rate 2011
DISORDERLY CONDUCT	2,904	2,479	2,186	-14.6 %	-11.8 %	2,597	2,211	1,862	89.4 %	89.2 %	85.2 %
OFFENSIVE CONDUCT	141	104	113	-26.2 %	8.7 %	114	79	91	80.9 %	76.0 %	80.5 %
PUBLIC ORDER OFFENCES NOT FURTHER DEFINED	0	1	0	0.0 %	-100.0 %	0	1	0	0.0 %	100.0 %	0.0 %
REGULATED PUBLIC ORDER OFFENCES	374	364	255	-2.7 %	-29.9 %	320	316	228	85.6 %	86.8 %	89.4 %
	3,419	2,948	2,554	-13.8 %	-13.4 %	3,031	2,607	2,181	88.7 %	88.4 %	85.4 %

SUMMARY OF DISTRICT RECORDED AND RESOLVED CRIME, BY DIVISION
Years ending 31 December

OFFENCES AGAINST JUSTICE PROCEDURES, GOVERNMENT SECURITY AND GOVERNMENT OPERATIONS

ASOC Subdivision Description	Recorded 2009	Recorded 2010	Recorded 2011	Variance 2009-2010	Variance 2010-2011	Resolved 2009	Resolved 2010	Resolved 2011	Resolution Rate 2009	Resolution Rate 2010	Resolution Rate 2011
BREACH OF COMMUNITY-BASED ORDER	1,284	987	1,009	-23.1 %	2.2 %	1,273	984	1,004	99.1 %	99.7 %	99.5 %
BREACH OF CUSTODIAL ORDER OFFENCES	50	53	40	6.0 %	-24.5 %	50	53	40	100.0 %	100.0 %	100.0 %
BREACH OF VIOLENCE AND NON-VIOLENCE RESTRAINING ORDERS	456	410	400	-10.1 %	-2.4 %	445	387	393	97.6 %	94.4 %	98.3 %
OFFENCES AGAINST GOVERNMENT OPERATIONS	34	20	23	-41.2 %	15.0 %	16	8	20	47.1 %	40.0 %	87.0 %
OFFENCES AGAINST GOVERNMENT SECURITY	0	0	1	0.0 %	0.0 %	0	0	0	0.0 %	0.0 %	0.0 %
OFFENCES AGAINST JUSTICE PROCEDURES	1,552	1,144	919	-26.3 %	-19.7 %	1,550	1,139	915	99.9 %	99.6 %	99.6 %
OFFENCES AGAINST JUSTICE PROCEDURES, GOVERNMENT SECURITY AND GOVERNMENT OPERATIONS NOT FURTHER DEFINED	2	2	0	0.0 %	-100.0 %	2	1	0	100.0 %	50.0 %	0.0 %
	3,378	2,616	2,392	-22.6 %	-8.6 %	3,336	2,572	2,372	98.8 %	98.3 %	99.2 %

MISCELLANEOUS OFFENCES

ASOC Subdivision Description	Recorded 2009	Recorded 2010	Recorded 2011	Variance 2009-2010	Variance 2010-2011	Resolved 2009	Resolved 2010	Resolved 2011	Resolution Rate 2009	Resolution Rate 2010	Resolution Rate 2011
COMMERCIAL/INDUSTRY/FINANCIAL REGULATION	0	0	7	0.0 %	0.0 %	0	0	6	0.0 %	0.0 %	85.7 %
DEFAMATION, LIBEL AND PRIVACY OFFENCES	8	6	9	-25.0 %	50.0 %	3	1	3	37.5 %	16.7 %	33.3 %
OTHER MISCELLANEOUS OFFENCES	87	92	72	5.7 %	-21.7 %	67	52	55	77.0 %	56.5 %	76.4 %
PUBLIC HEALTH AND SAFETY OFFENCES	10	8	4	-20.0 %	-50.0 %	7	6	3	70.0 %	75.0 %	75.0 %
	105	106	92	1.0 %	-13.2 %	77	59	67	73.3 %	55.7 %	72.8 %

TOTAL	40,835	36,392	36,214	-10.9 %	-0.5 %	21,668	17,948	17,543	53.1 %	49.3 %	48.4 %
--------------	---------------	---------------	---------------	----------------	---------------	---------------	---------------	---------------	---------------	---------------	---------------

PROPORTIONS OF RECORDED CRIME BY DIVISION

Years ending 31 December

ASOC Division Description	Proportions Recorded 2009	Recorded 2009	Proportions Recorded 2010	Recorded 2010	Proportions Recorded 2011	Recorded 2011
HOMICIDE AND RELATED OFFENCES	0.02 %	8	0.02 %	9	0.02 %	7
ACTS INTENDED TO CAUSE INJURY	9.84 %	4,017	10.41 %	3,787	10.10 %	3,656
SEXUAL ASSAULT AND RELATED OFFENCES	0.76 %	309	0.85 %	309	0.85 %	308
DANGEROUS OR NEGLIGENT ACTS ENDANGERING PERSONS	0.16 %	67	0.24 %	86	0.29 %	106
ABDUCTION, HARASSMENT AND OTHER RELATED OFFENCES AGAINST A PERSON	3.48 %	1,421	3.31 %	1,204	3.38 %	1,223
ROBBERY, EXTORTION AND RELATED OFFENCES	0.68 %	278	0.85 %	309	0.62 %	226
UNLAWFUL ENTRY WITH INTENT/BURGLARY, BREAK AND ENTER	15.32 %	6,257	15.81 %	5,752	16.23 %	5,876
THEFT AND RELATED OFFENCES	31.73 %	12,956	32.62 %	11,870	35.91 %	13,003
FRAUD, DECEPTION AND RELATED OFFENCES	3.03 %	1,237	2.96 %	1,079	2.31 %	838
ILLICIT DRUG OFFENCES	6.60 %	2,697	5.74 %	2,089	5.16 %	1,870
PROHIBITED AND REGULATED WEAPONS AND EXPLOSIVES OFFENCES	1.99 %	814	1.62 %	589	1.63 %	592
PROPERTY DAMAGE AND ENVIRONMENTAL POLLUTION	9.48 %	3,872	10.00 %	3,639	9.58 %	3,471
PUBLIC ORDER OFFENCES	8.37 %	3,419	8.10 %	2,948	7.05 %	2,554
OFFENCES AGAINST JUSTICE PROCEDURES, GOVERNMENT SECURITY AND GOVERNMENT OPERATIONS	8.27 %	3,378	7.19 %	2,616	6.61 %	2,392
MISCELLANEOUS OFFENCES	0.26 %	105	0.29 %	106	0.25 %	92
	100.00 %	40,835	100.00 %	36,392	100.00 %	36,214

SUMMARY OF RECORDED OFFENCES, RATE PER 10,000 POPULATION AND RESOLVED OFFENCES, BY AREA
years ending 31 December

TOTAL CRIME

Area Description	Recorded 2010	Recorded 2011	Variance 2010-2011	Recorded per 10,000 pop 2010	Recorded per 10,000 pop 2011	Per 10,000 pop % Variance 2010 to 2011	Resolved 2010	Resolved 2011	Resolution Rate 2010	Resolution Rate 2011
Auckland Motorways	136	172	26.5 %	#DIV/0	#DIV/0	#DIV/0	111	141	81.6 %	82.0 %
North Shore	11,230	10,778	-4.0 %	490.2	463.5	-5.4 %	5,629	5,494	50.1 %	51.0 %
Rodney	5,925	5,751	-2.9 %	579.4	551.7	-4.8 %	2,682	2,686	45.3 %	46.7 %
Waitakere	19,101	19,513	2.2 %	917.4	923.0	0.6 %	9,526	9,222	49.9 %	47.3 %
	36,392	36,214	-0.5 %	674.5	660.6	-2.1 %	17,948	17,543	49.3 %	48.4 %

SUMMARY OF RECORDED OFFENCES, RATE PER 10,000 POPULATION AND RESOLVED OFFENCES, BY DIVISION

Years ending 31 December

HOMICIDE AND RELATED OFFENCES

Area Description	Recorded 2010	Recorded 2011	Variance 2010-2011	Recorded per 10,000 pop 2010	Recorded per 10,000 pop 2011	Per 10,000 pop % Variance 2010 to 2011	Resolved 2010	Resolved 2011	Resolution Rate 2010	Resolution Rate 2011
Auckland Motorways	0	0	0.0 %	0.0	0.0	0.0 %	0	0	0.0 %	0.0 %
North Shore	3	2	-33.3 %	0.1	0.1	-34.3 %	3	2	100.0 %	100.0 %
Rodney	1	2	100.0 %	0.1	0.2	96.2 %	1	1	100.0 %	50.0 %
Waitakere	5	3	-40.0 %	0.2	0.1	-40.9 %	4	1	80.0 %	33.3 %
	9	7	-22.2 %	0.2	0.1	-23.4 %	8	4	88.9 %	57.1 %

ACTS INTENDED TO CAUSE INJURY

Area Description	Recorded 2010	Recorded 2011	Variance 2010-2011	Recorded per 10,000 pop 2010	Recorded per 10,000 pop 2011	Per 10,000 pop % Variance 2010 to 2011	Resolved 2010	Resolved 2011	Resolution Rate 2010	Resolution Rate 2011
Auckland Motorways	8	16	100.0 %	#DIV/0	#DIV/0	#DIV/0	7	12	87.5 %	75.0 %
North Shore	1,013	1,069	5.5 %	44.2	46.0	4.0 %	886	971	87.5 %	90.8 %
Rodney	520	502	-3.5 %	50.9	48.2	-5.3 %	432	443	83.1 %	88.2 %
Waitakere	2,246	2,069	-7.9 %	107.9	97.9	-9.3 %	1,956	1,844	87.1 %	89.1 %
	3,787	3,656	-3.5 %	70.2	66.7	-5.0 %	3,281	3,270	86.6 %	89.4 %

SEXUAL ASSAULT AND RELATED OFFENCES

Area Description	Recorded 2010	Recorded 2011	Variance 2010-2011	Recorded per 10,000 pop 2010	Recorded per 10,000 pop 2011	Per 10,000 pop % Variance 2010 to 2011	Resolved 2010	Resolved 2011	Resolution Rate 2010	Resolution Rate 2011
Auckland Motorways	0	0	0.0 %	0.0	0.0	0.0 %	0	0	0.0 %	0.0 %
North Shore	107	94	-12.1 %	4.7	4.0	-13.5 %	82	69	76.6 %	73.4 %
Rodney	42	52	23.8 %	4.1	5.0	21.5 %	23	32	54.8 %	61.5 %
Waitakere	160	162	1.3 %	7.7	7.7	-0.3 %	89	102	55.6 %	63.0 %
	309	308	-0.3 %	5.7	5.6	-1.9 %	194	203	62.8 %	65.9 %

DANGEROUS OR NEGLIGENT ACTS ENDANGERING PERSONS

Area Description	Recorded 2010	Recorded 2011	Variance 2010-2011	Recorded per 10,000 pop 2010	Recorded per 10,000 pop 2011	Per 10,000 pop % Variance 2010 to 2011	Resolved 2010	Resolved 2011	Resolution Rate 2010	Resolution Rate 2011
Auckland Motorways	2	5	150.0 %	#DIV/0	#DIV/0	#DIV/0	1	4	50.0 %	80.0 %
North Shore	20	36	80.0 %	0.9	1.5	77.3 %	14	30	70.0 %	83.3 %
Rodney	21	9	-57.1 %	2.1	0.9	-58.0 %	12	5	57.1 %	55.6 %
Waitakere	43	56	30.2 %	2.1	2.6	28.3 %	33	43	76.7 %	76.8 %
	86	106	23.3 %	1.6	1.9	21.3 %	60	82	69.8 %	77.4 %

ABDUCTION, HARASSMENT AND OTHER RELATED OFFENCES AGAINST A PERSON

Area Description	Recorded 2010	Recorded 2011	Variance 2010-2011	Recorded per 10,000 pop 2010	Recorded per 10,000 pop 2011	Per 10,000 pop % Variance 2010 to 2011	Resolved 2010	Resolved 2011	Resolution Rate 2010	Resolution Rate 2011
Auckland Motorways	2	3	50.0 %	#DIV/0	#DIV/0	#DIV/0	1	2	50.0 %	66.7 %
North Shore	399	354	-11.3 %	17.4	15.2	-12.6 %	281	268	70.4 %	75.7 %
Rodney	210	200	-4.8 %	20.5	19.2	-6.6 %	155	161	73.8 %	80.5 %
Waitakere	593	666	12.3 %	28.5	31.5	10.6 %	404	492	68.1 %	73.9 %
	1,204	1,223	1.6 %	22.3	22.3	-0.0 %	841	923	69.9 %	75.5 %

SUMMARY OF RECORDED OFFENCES, RATE PER 10,000 POPULATION AND RESOLVED OFFENCES, BY DIVISION

Years ending 31 December

ROBBERY, EXTORTION AND RELATED OFFENCES

Area Description	Recorded 2010	Recorded 2011	Variance 2010-2011	Recorded per 10,000 pop 2010	Recorded per 10,000 pop 2011	Per 10,000 pop % Variance 2010 to 2011	Resolved 2010	Resolved 2011	Resolution Rate 2010	Resolution Rate 2011
Auckland Motorways				0.0	0.0					
North Shore	74	54	-27.0 %	3.2	2.3	-28.1 %	31	29	41.9 %	53.7 %
Rodney	18	20	11.1 %	1.8	1.9	9.0 %	8	11	44.4 %	55.0 %
Waitakere	217	152	-30.0 %	10.4	7.2	-31.0 %	93	63	42.9 %	41.4 %
	309	226	-26.9 %	5.7	4.1	-28.0 %	132	103	42.7 %	45.6 %

UNLAWFUL ENTRY WITH INTENT/BURGLARY, BREAK AND ENTER

Area Description	Recorded 2010	Recorded 2011	Variance 2010-2011	Recorded per 10,000 pop 2010	Recorded per 10,000 pop 2011	Per 10,000 pop % Variance 2010 to 2011	Resolved 2010	Resolved 2011	Resolution Rate 2010	Resolution Rate 2011
Auckland Motorways		1		0.0	#DIV/0	#DIV/0		0		0.0 %
North Shore	1,723	1,417	-17.8 %	75.2	60.9	-19.0 %	179	155	10.4 %	10.9 %
Rodney	856	869	1.5 %	83.7	83.4	-0.4 %	150	149	17.5 %	17.1 %
Waitakere	3,173	3,589	13.1 %	152.4	169.8	11.4 %	299	361	9.4 %	10.1 %
	5,752	5,876	2.2 %	106.6	107.2	0.5 %	628	665	10.9 %	11.3 %

THEFT AND RELATED OFFENCES

Area Description	Recorded 2010	Recorded 2011	Variance 2010-2011	Recorded per 10,000 pop 2010	Recorded per 10,000 pop 2011	Per 10,000 pop % Variance 2010 to 2011	Resolved 2010	Resolved 2011	Resolution Rate 2010	Resolution Rate 2011
Auckland Motorways	25	25	0.0 %	#DIV/0	#DIV/0	#DIV/0	7	12	28.0 %	48.0 %
North Shore	3,837	4,145	8.0 %	167.5	178.2	6.4 %	1,059	1,186	27.6 %	28.6 %
Rodney	1,932	2,029	5.0 %	188.9	194.6	3.0 %	398	488	20.6 %	24.1 %
Waitakere	6,076	6,804	12.0 %	291.8	321.9	10.3 %	1,533	1,776	25.2 %	26.1 %
	11,870	13,003	9.5 %	220.0	237.2	7.8 %	2,997	3,462	25.2 %	26.6 %

FRAUD, DECEPTION AND RELATED OFFENCES

Area Description	Recorded 2010	Recorded 2011	Variance 2010-2011	Recorded per 10,000 pop 2010	Recorded per 10,000 pop 2011	Per 10,000 pop % Variance 2010 to 2011	Resolved 2010	Resolved 2011	Resolution Rate 2010	Resolution Rate 2011
Auckland Motorways	1	1	0.0 %	#DIV/0	#DIV/0	#DIV/0	1	1	100.0 %	100.0 %
North Shore	514	382	-25.7 %	22.4	16.4	-26.8 %	288	210	56.0 %	55.0 %
Rodney	157	107	-31.8 %	15.4	10.3	-33.1 %	107	67	68.2 %	62.6 %
Waitakere	407	348	-14.5 %	19.5	16.5	-15.8 %	198	194	48.6 %	55.7 %
	1,079	838	-22.3 %	20.0	15.3	-23.6 %	594	472	55.1 %	56.3 %

ILLICIT DRUG OFFENCES

Area Description	Recorded 2010	Recorded 2011	Variance 2010-2011	Recorded per 10,000 pop 2010	Recorded per 10,000 pop 2011	Per 10,000 pop % Variance 2010 to 2011	Resolved 2010	Resolved 2011	Resolution Rate 2010	Resolution Rate 2011
Auckland Motorways	41	51	24.4 %	#DIV/0	#DIV/0	#DIV/0	41	51	100.0 %	100.0 %
North Shore	774	642	-17.1 %	33.8	27.6	-18.3 %	759	612	98.1 %	95.3 %
Rodney	409	423	3.4 %	40.0	40.6	1.5 %	394	415	96.3 %	98.1 %
Waitakere	865	754	-12.8 %	41.5	35.7	-14.2 %	843	732	97.5 %	97.1 %
	2,089	1,870	-10.5 %	38.7	34.1	-11.9 %	2,037	1,810	97.5 %	96.8 %

SUMMARY OF RECORDED OFFENCES, RATE PER 10,000 POPULATION AND RESOLVED OFFENCES, BY DIVISION

Years ending 31 December

PROHIBITED AND REGULATED WEAPONS AND EXPLOSIVES OFFENCES

Area Description	Recorded 2010	Recorded 2011	Variance 2010-2011	Recorded per 10,000 pop 2010	Recorded per 10,000 pop 2011	Per 10,000 pop % Variance 2010 to 2011	Resolved 2010	Resolved 2011	Resolution Rate 2010	Resolution Rate 2011
Auckland Motorways	9	12	33.3 %	#DIV/0	#DIV/0	#DIV/0	9	12	100.0 %	100.0 %
North Shore	116	161	38.8 %	5.1	6.9	36.7 %	109	153	94.0 %	95.0 %
Rodney	126	130	3.2 %	12.3	12.5	1.2 %	116	117	92.1 %	90.0 %
Waitakere	338	289	-14.5 %	16.2	13.7	-15.8 %	320	274	94.7 %	94.8 %
	589	592	0.5 %	10.9	10.8	-1.1 %	554	556	94.1 %	93.9 %

PROPERTY DAMAGE AND ENVIRONMENTAL POLLUTION

Area Description	Recorded 2010	Recorded 2011	Variance 2010-2011	Recorded per 10,000 pop 2010	Recorded per 10,000 pop 2011	Per 10,000 pop % Variance 2010 to 2011	Resolved 2010	Resolved 2011	Resolution Rate 2010	Resolution Rate 2011
Auckland Motorways	8	18	125.0 %	#DIV/0	#DIV/0	#DIV/0	4	11	50.0 %	61.1 %
North Shore	940	938	-0.2 %	41.0	40.3	-1.7 %	380	438	40.4 %	46.7 %
Rodney	868	721	-16.9 %	84.9	69.2	-18.5 %	217	218	25.0 %	30.2 %
Waitakere	1,823	1,794	-1.6 %	87.6	84.9	-3.1 %	783	706	43.0 %	39.4 %
	3,639	3,471	-4.6 %	67.4	63.3	-6.1 %	1,384	1,373	38.0 %	39.6 %

PUBLIC ORDER OFFENCES

Area Description	Recorded 2010	Recorded 2011	Variance 2010-2011	Recorded per 10,000 pop 2010	Recorded per 10,000 pop 2011	Per 10,000 pop % Variance 2010 to 2011	Resolved 2010	Resolved 2011	Resolution Rate 2010	Resolution Rate 2011
Auckland Motorways	16	16	0.0 %	#DIV/0	#DIV/0	#DIV/0	16	14	100.0 %	87.5 %
North Shore	981	806	-17.8 %	42.8	34.7	-19.1 %	861	709	87.8 %	88.0 %
Rodney	517	489	-5.4 %	50.6	46.9	-7.2 %	451	398	87.2 %	81.4 %
Waitakere	1,434	1,243	-13.3 %	68.9	58.8	-14.6 %	1,279	1,060	89.2 %	85.3 %
	2,948	2,554	-13.4 %	54.6	46.6	-14.7 %	2,607	2,181	88.4 %	85.4 %

OFFENCES AGAINST JUSTICE PROCEDURES, GOVERNMENT SECURITY AND GOVERNMENT OPERATIONS

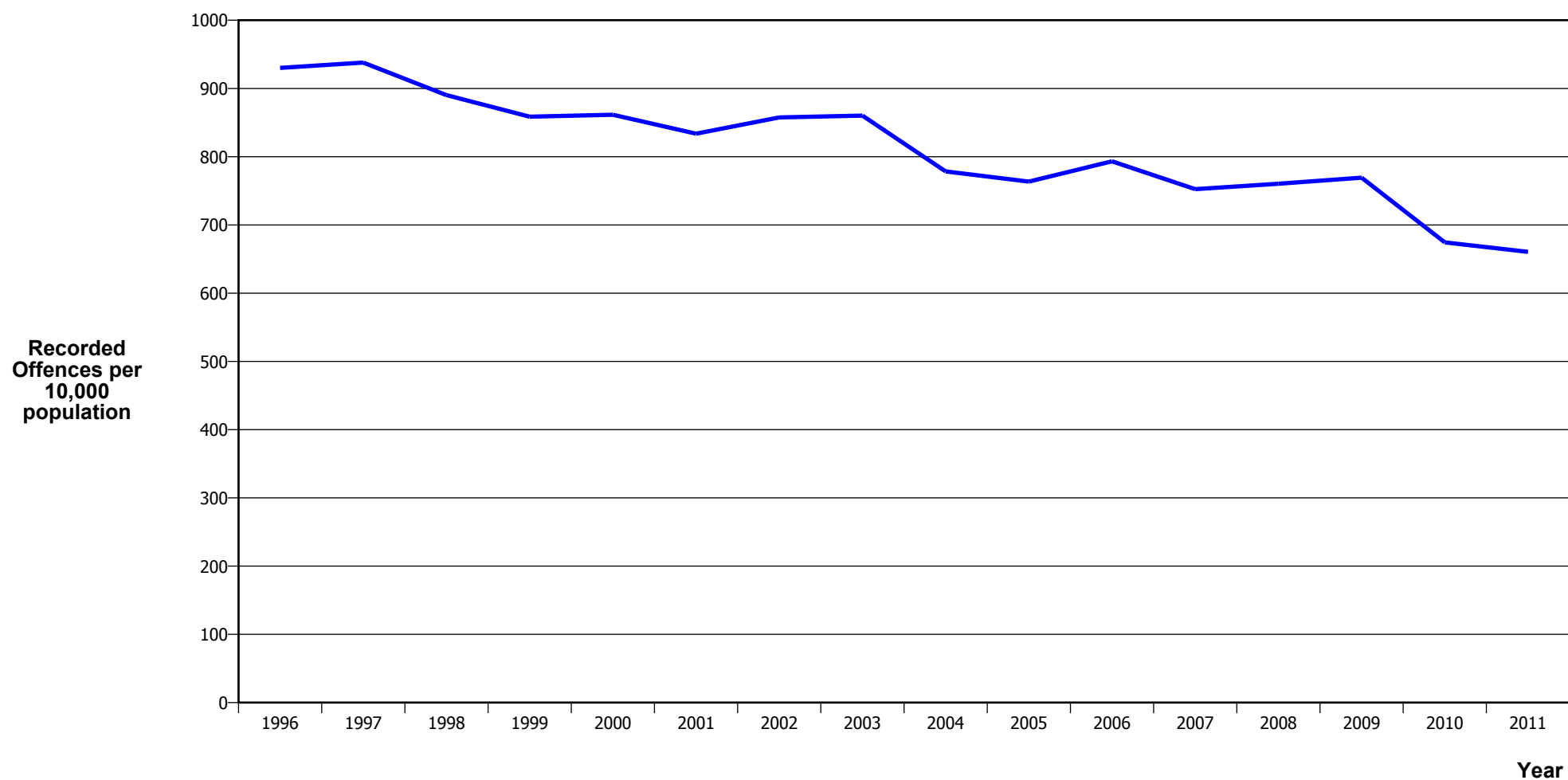
Area Description	Recorded 2010	Recorded 2011	Variance 2010-2011	Recorded per 10,000 pop 2010	Recorded per 10,000 pop 2011	Per 10,000 pop % Variance 2010 to 2011	Resolved 2010	Resolved 2011	Resolution Rate 2010	Resolution Rate 2011
Auckland Motorways	24	24	0.0 %	#DIV/0	#DIV/0	#DIV/0	24	22	100.0 %	91.7 %
North Shore	689	647	-6.1 %	30.1	27.8	-7.5 %	679	642	98.5 %	99.2 %
Rodney	210	163	-22.4 %	20.5	15.6	-23.9 %	193	156	91.9 %	95.7 %
Waitakere	1,693	1,558	-8.0 %	81.3	73.7	-9.4 %	1,676	1,552	99.0 %	99.6 %
	2,616	2,392	-8.6 %	48.5	43.6	-10.0 %	2,572	2,372	98.3 %	99.2 %

MISCELLANEOUS OFFENCES

Area Description	Recorded 2010	Recorded 2011	Variance 2010-2011	Recorded per 10,000 pop 2010	Recorded per 10,000 pop 2011	Per 10,000 pop % Variance 2010 to 2011	Resolved 2010	Resolved 2011	Resolution Rate 2010	Resolution Rate 2011
Auckland Motorways				0.0	0.0					
North Shore	40	31	-22.5 %	1.7	1.3	-23.6 %	18	20	45.0 %	64.5 %
Rodney	38	35	-7.9 %	3.7	3.4	-9.6 %	25	25	65.8 %	71.4 %
Waitakere	28	26	-7.1 %	1.3	1.2	-8.5 %	16	22	57.1 %	84.6 %
	106	92	-13.2 %	2.0	1.7	-14.6 %	59	67	55.7 %	72.8 %

CRIME TRENDS

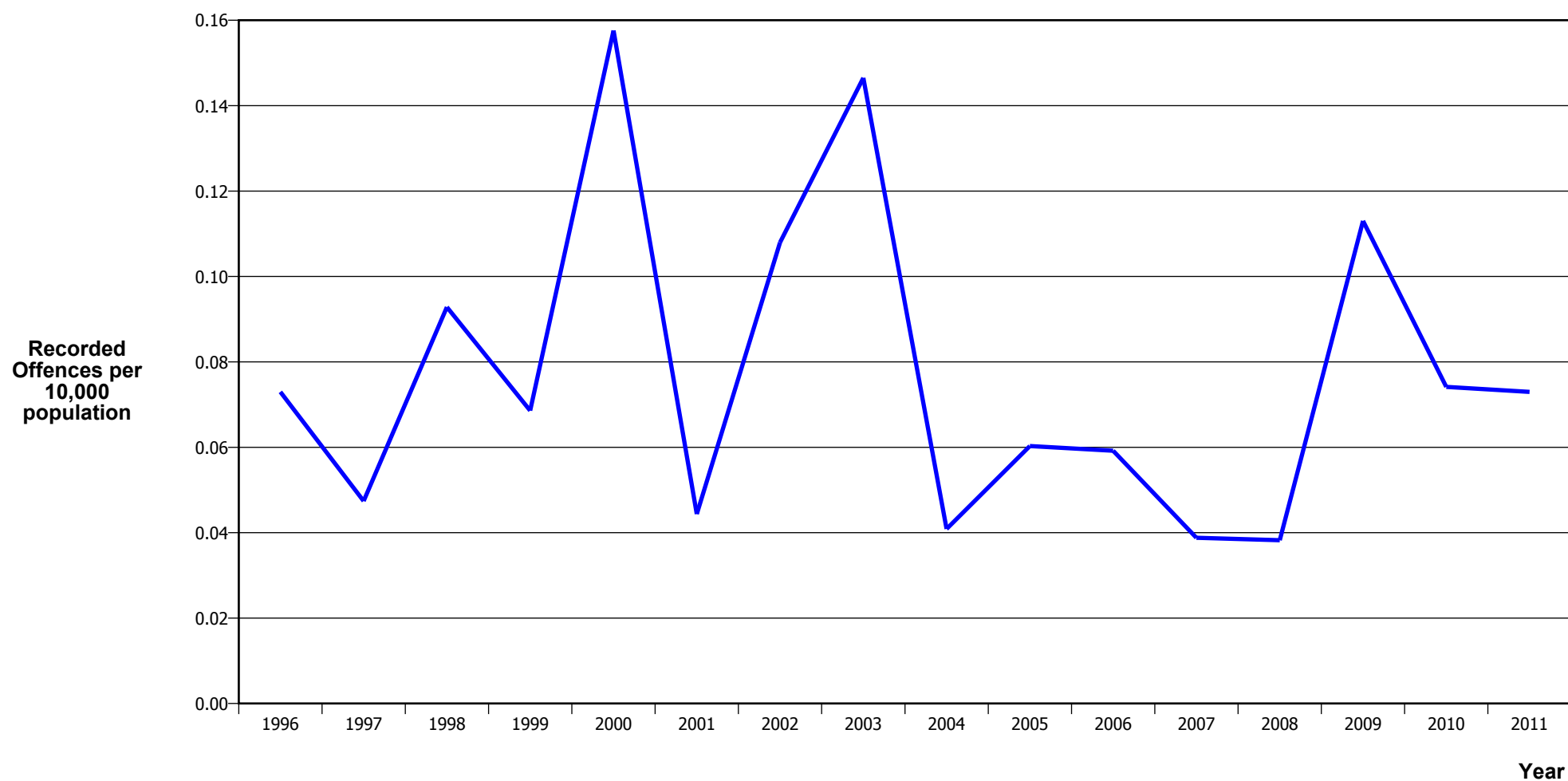
TOTAL CRIME



Calendar Year	1996	1997	1998	1999	2000	2001	2002	2003	2004	2005	2006	2007	2008	2009	2010	2011
Recorded Offences	38,242	39,575	38,356	37,554	38,266	37,583	39,710	41,106	38,074	37,996	40,206	38,784	39,763	40,835	36,392	36,214
Recorded per 10,000 Population	930.2	937.9	890.3	858.7	861.5	833.7	857.6	860.3	778.4	763.5	793.2	752.4	760.3	769.3	674.5	660.6

*In 2005/2006 there was a major IT system change (LES to NIA)

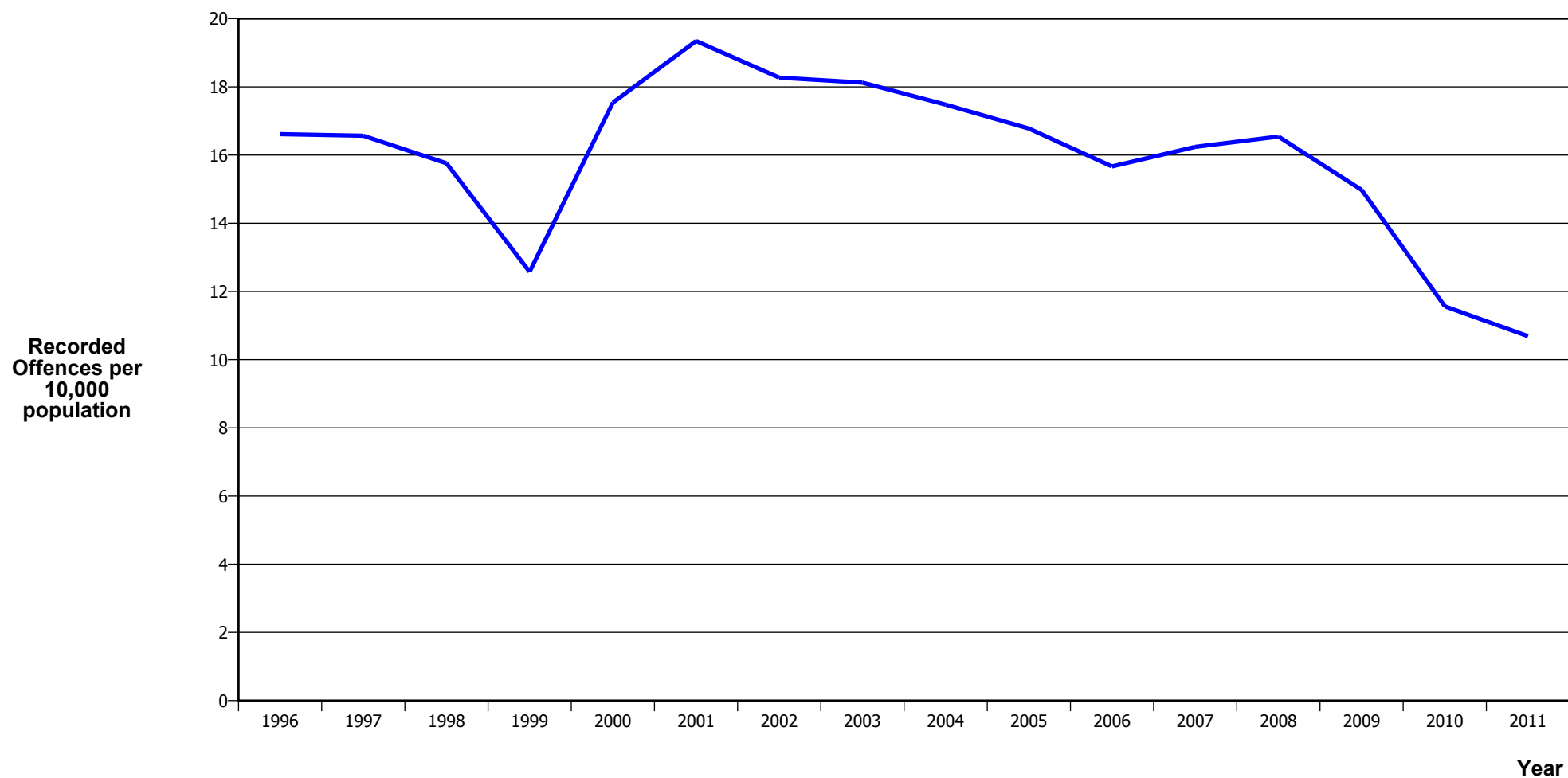
MURDER



Calendar Year	1996	1997	1998	1999	2000	2001	2002	2003	2004	2005	2006	2007	2008	2009	2010	2011
Recorded Offences	3	2	4	3	7	2	5	7	2	3	3	2	2	6	4	4
Recorded per 10,000 Population	0.07	0.05	0.09	0.07	0.16	0.04	0.11	0.15	0.04	0.06	0.06	0.04	0.04	0.11	0.07	0.07

- The 2009 result was significantly influenced by an abnormal one-off spike in August 2009, when 13 murders occurred

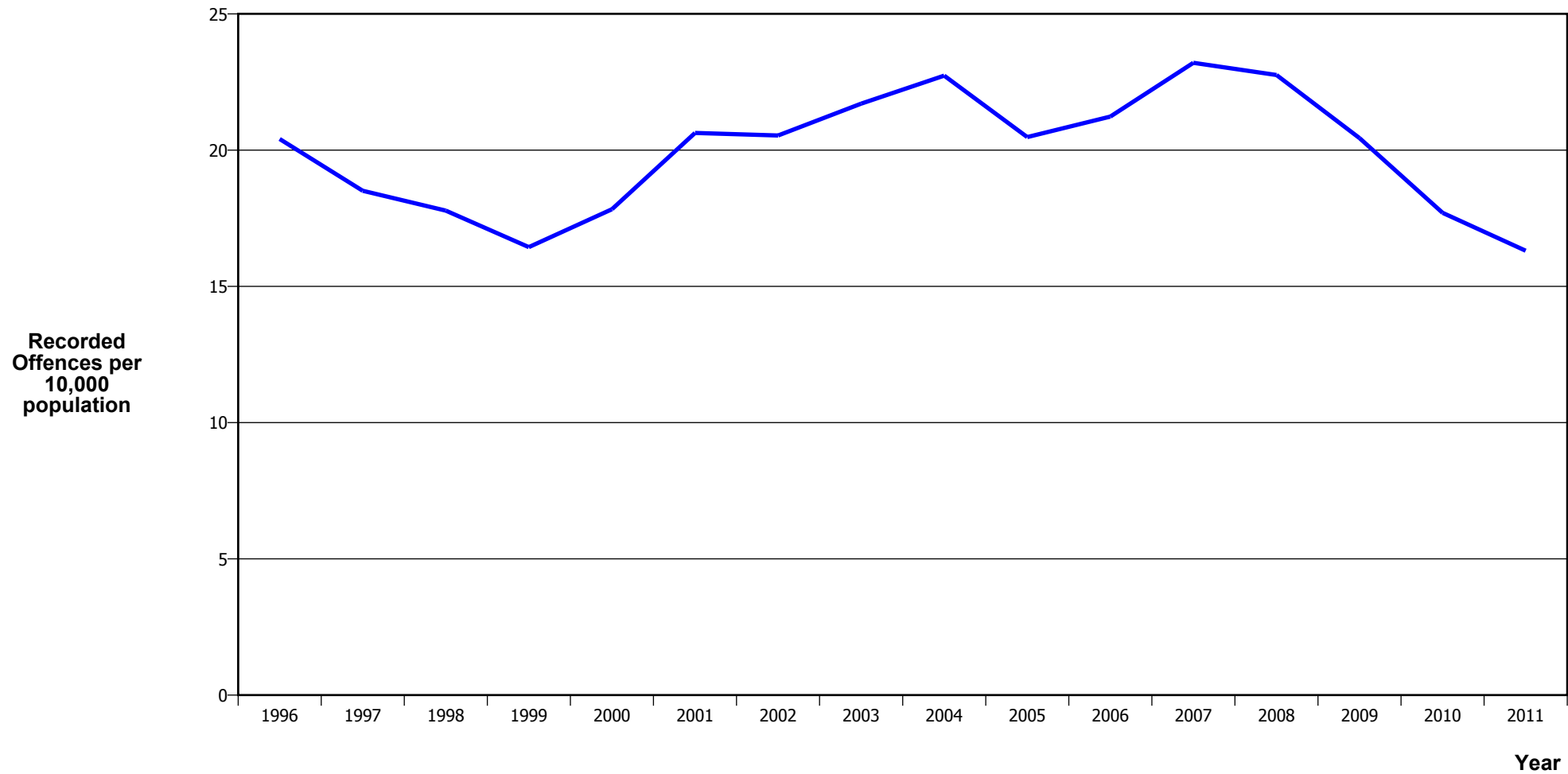
SERIOUS ASSAULTS RESULTING IN INJURY*



Calendar Year	1996	1997	1998	1999	2000	2001	2002	2003	2004	2005	2006	2007	2008	2009	2010	2011
Recorded Offence	683	699	679	550	779	872	846	866	855	835	794	837	865	795	624	586
Offence Rate per 10K Popn	16.6	16.6	15.8	12.6	17.5	19.3	18.3	18.1	17.5	16.8	15.7	16.2	16.5	15.0	11.6	10.7

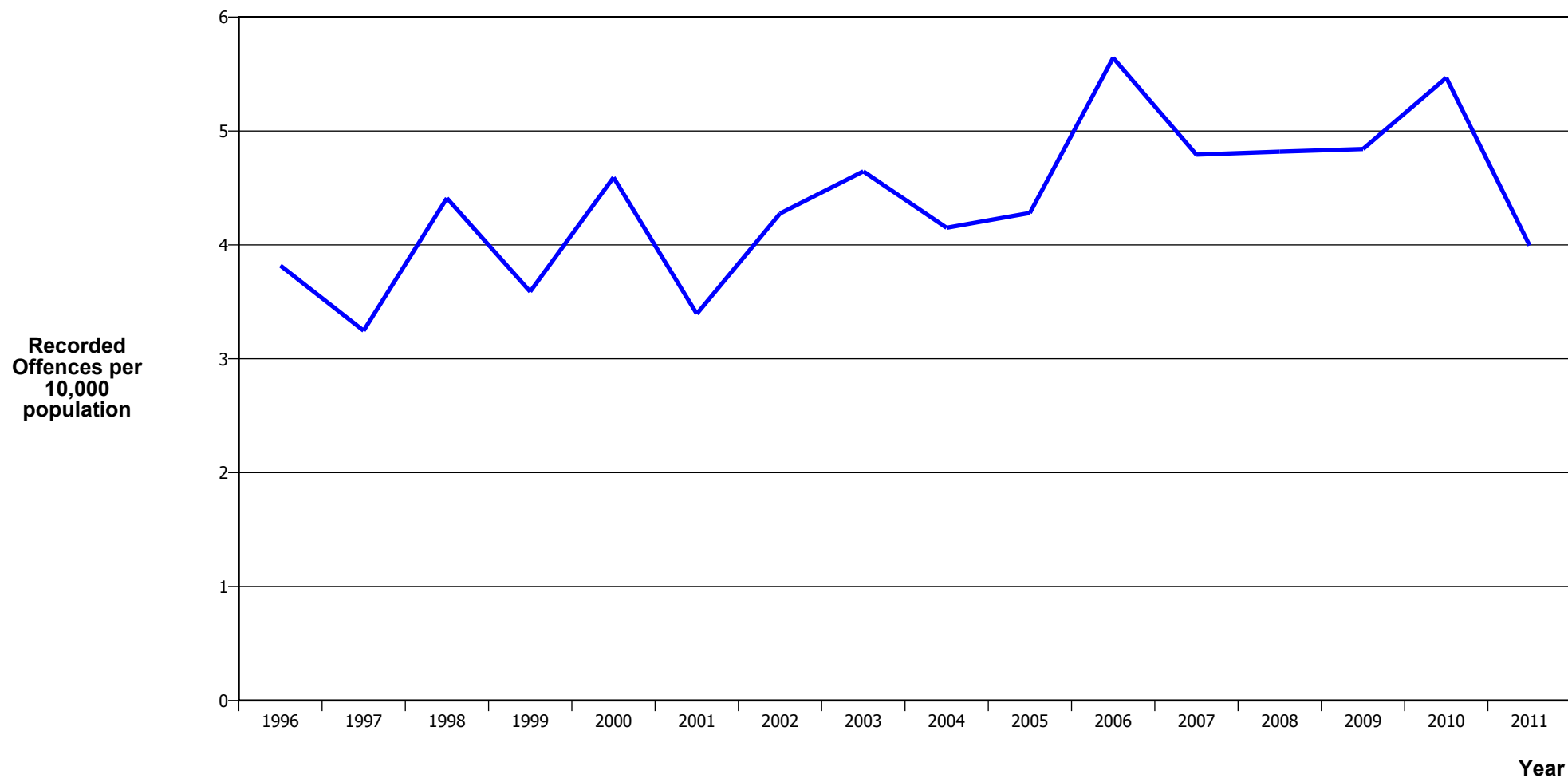
* This measure excludes common assaults

PUBLIC PLACE ASSAULTS



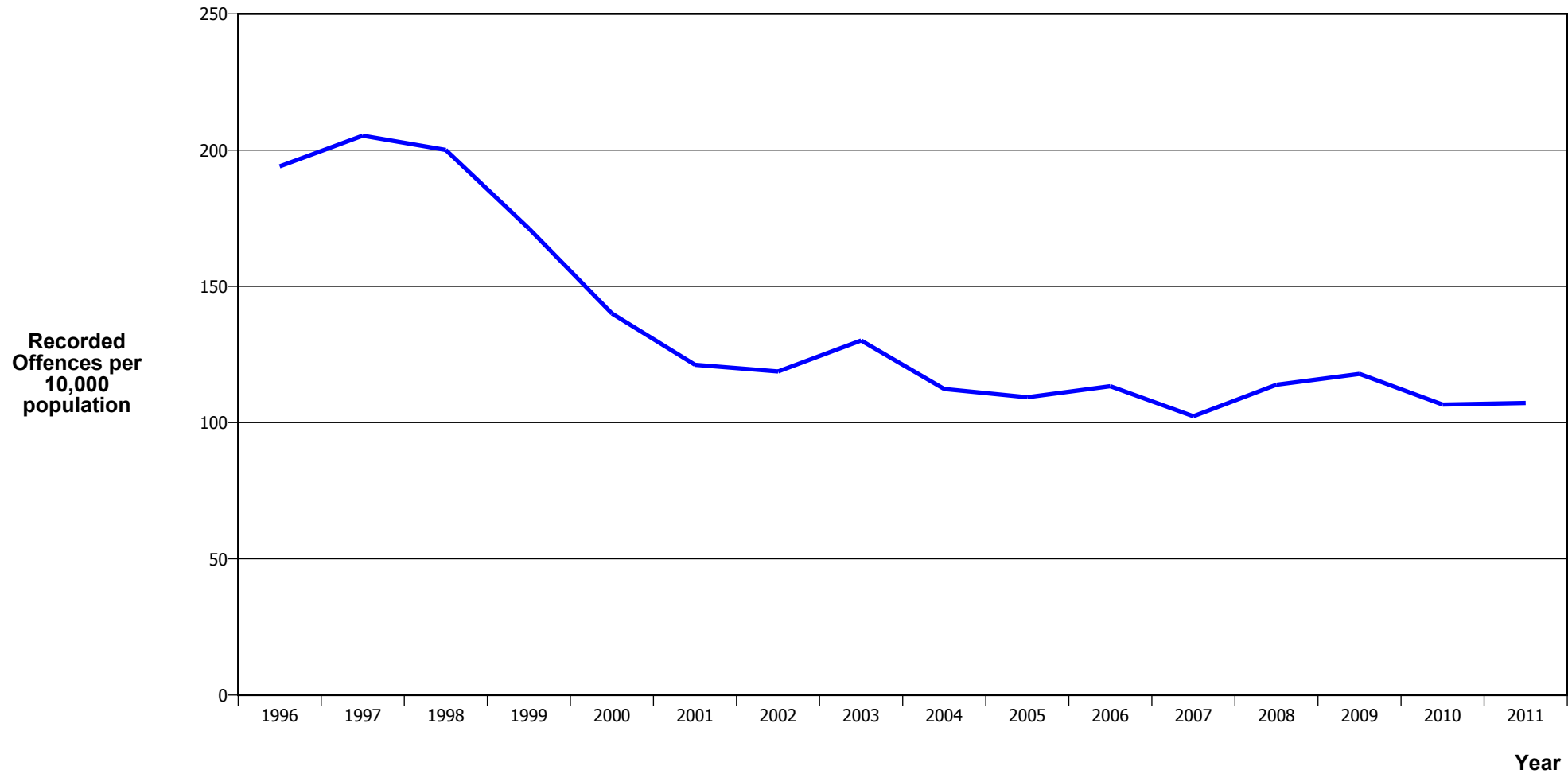
Calendar Year	1996	1997	1998	1999	2000	2001	2002	2003	2004	2005	2006	2007	2008	2009	2010	2011
Recorded Offences	839	781	766	719	792	930	951	1,037	1,112	1,019	1,076	1,196	1,190	1,085	955	894
Recorded per 10,000 Population	20.4	18.5	17.8	16.4	17.8	20.6	20.5	21.7	22.7	20.5	21.2	23.2	22.8	20.4	17.7	16.3

ROBBERY



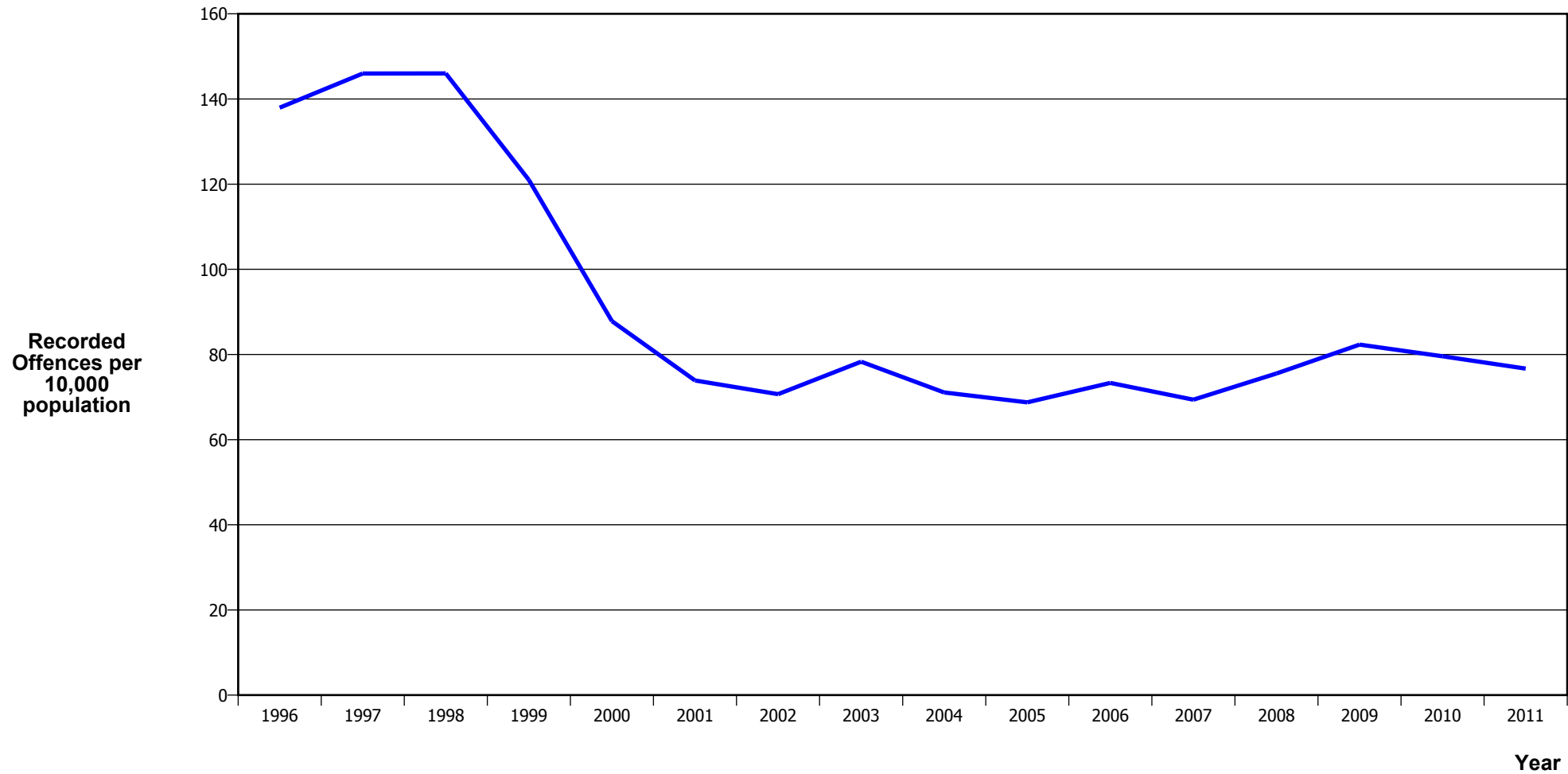
Calendar Year	1996	1997	1998	1999	2000	2001	2002	2003	2004	2005	2006	2007	2008	2009	2010	2011
Recorded Offences	157	137	190	157	204	153	198	222	203	213	286	247	252	257	295	219
Recorded per 10,000 Population	3.8	3.2	4.4	3.6	4.6	3.4	4.3	4.6	4.2	4.3	5.6	4.8	4.8	4.8	5.5	4.0

BURGLARY (TOTAL)



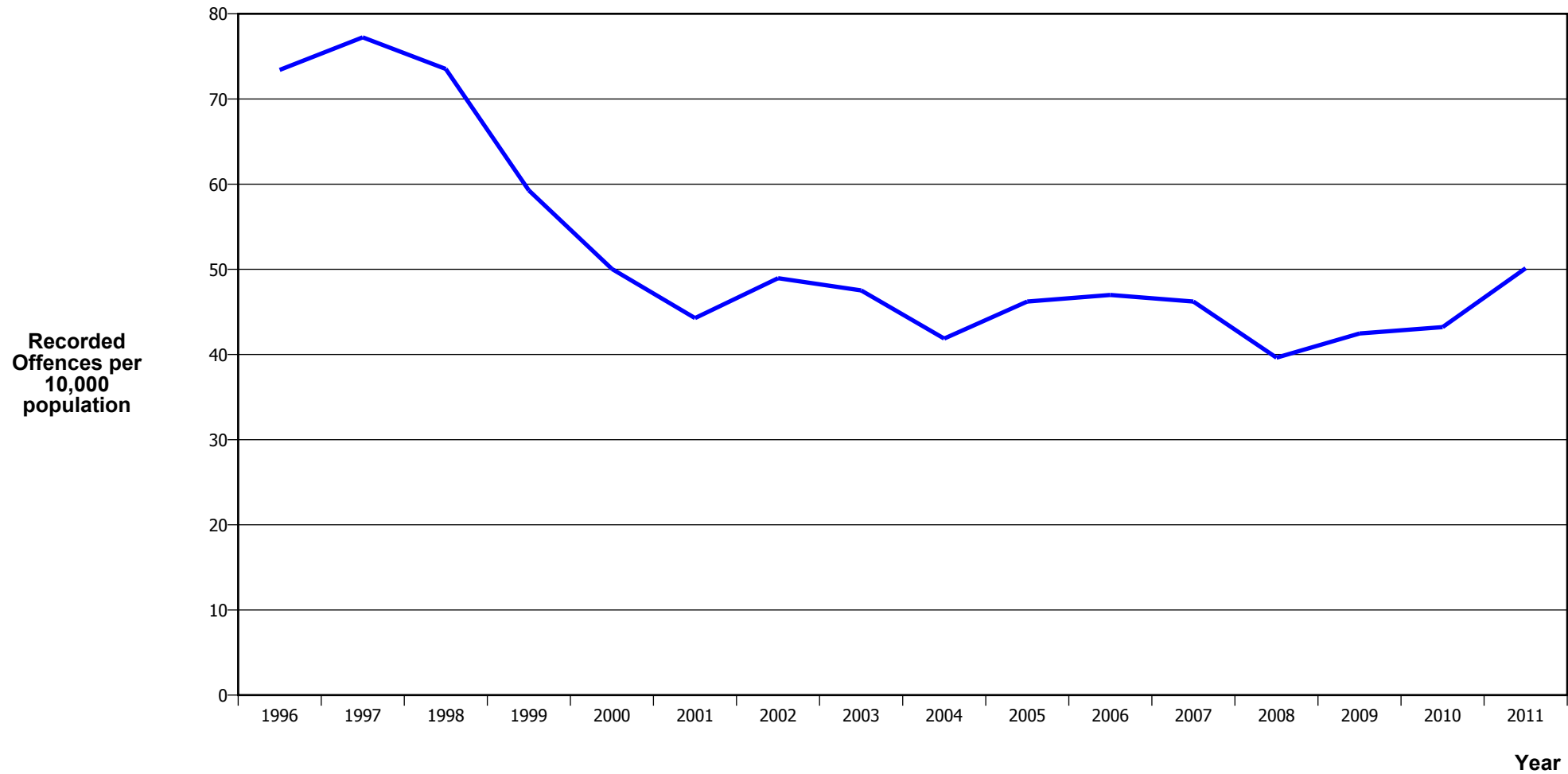
Calendar Year	1996	1997	1998	1999	2000	2001	2002	2003	2004	2005	2006	2007	2008	2009	2010	2011
Recorded Offences	7,977	8,662	8,620	7,489	6,220	5,464	5,500	6,219	5,496	5,439	5,746	5,276	5,956	6,257	5,752	5,876
Recorded per 10,000 Population	194.0	205.3	200.1	171.2	140.0	121.2	118.8	130.2	112.4	109.3	113.4	102.4	113.9	117.9	106.6	107.2

BURGLARY (DWELLING)



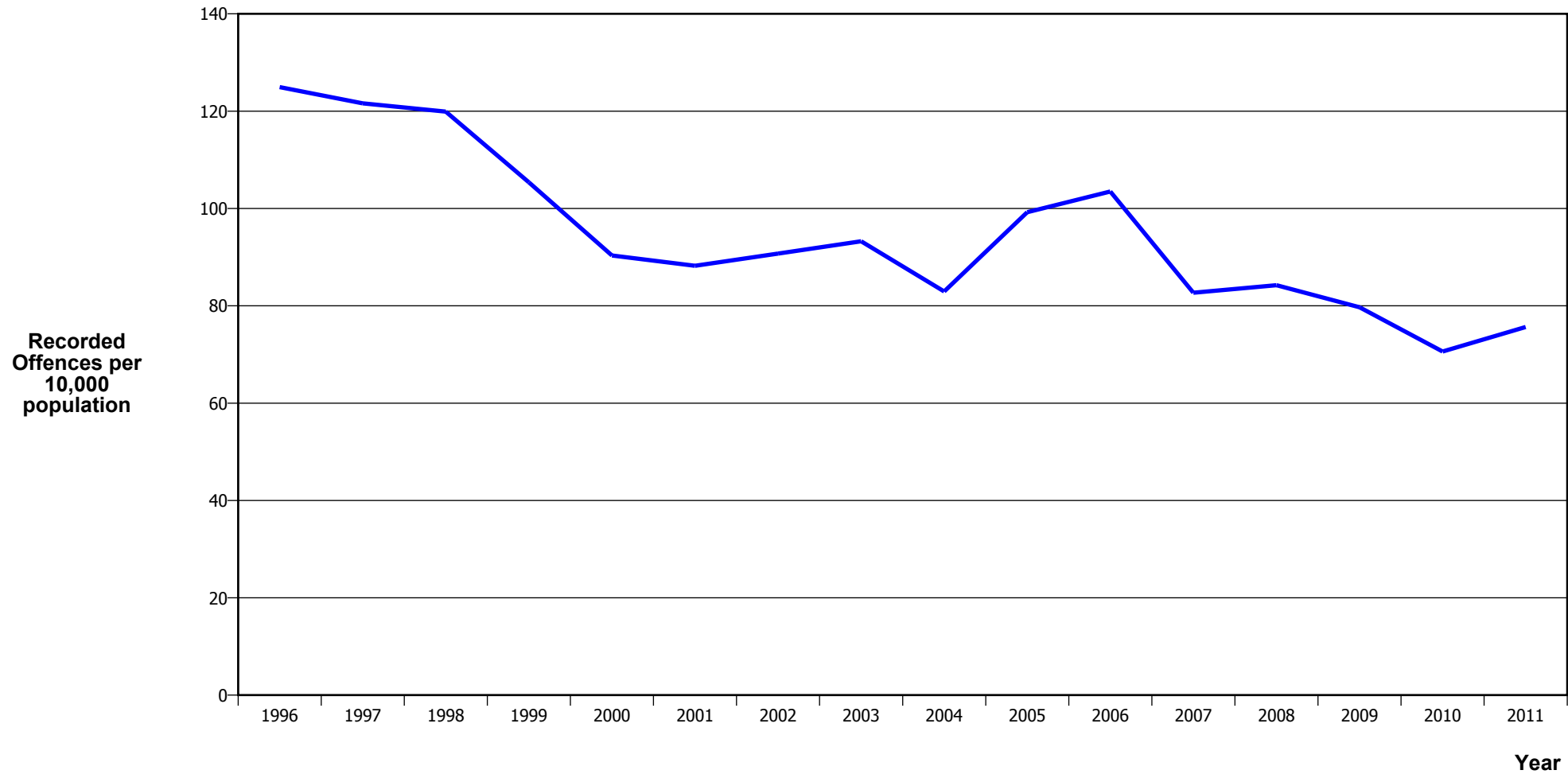
Calendar Year	1996	1997	1998	1999	2000	2001	2002	2003	2004	2005	2006	2007	2008	2009	2010	2011
Recorded Offences	5,672	6,160	6,290	5,292	3,901	3,331	3,273	3,742	3,477	3,422	3,716	3,576	3,951	4,370	4,294	4,204
Recorded per 10,000 Population	138.0	146.0	146.0	121.0	87.8	73.9	70.7	78.3	71.1	68.8	73.3	69.4	75.6	82.3	79.6	76.7

VEHICLES STOLEN



Calendar Year	1996	1997	1998	1999	2000	2001	2002	2003	2004	2005	2006	2007	2008	2009	2010	2011
Recorded Offences	3,018	3,259	3,168	2,592	2,223	1,996	2,267	2,271	2,048	2,300	2,382	2,382	2,072	2,254	2,332	2,748
Recorded per 10,000 Population	73.4	77.2	73.5	59.3	50.0	44.3	49.0	47.5	41.9	46.2	47.0	46.2	39.6	42.5	43.2	50.1

THEFT EX CAR



Calendar Year	1996	1997	1998	1999	2000	2001	2002	2003	2004	2005	2006	2007	2008	2009	2010	2011
Recorded Offences	5,137	5,131	5,166	4,609	4,013	3,977	4,202	4,456	4,057	4,939	5,245	4,262	4,405	4,231	3,810	4,147
Recorded per 10,000 Population	125.0	121.6	119.9	105.4	90.3	88.2	90.7	93.3	82.9	99.2	103.5	82.7	84.2	79.7	70.6	75.6

Population Data

Population data is used in this release to calculate crime rates. They have been derived from population estimates as at 30 June each year that have been obtained from Statistics New Zealand.

The estimated resident population is based on the census usually resident population count, with adjustments for residents missed or counted more than once by the census (net census undercount), and for residents temporarily overseas on census night.

These population estimates exclude the number of international students who are studying in New Zealand for less than 12 months.

Year	Population
1996	411,110
1997	421,950
1998	430,830
1999	437,320
2000	444,180
2001	450,810
2002	463,060
2003	477,830
2004	489,140
2005	497,660
2006	506,860
2007	515,450
2008	522,960
2009	530,840
2010	539,560
2011	548,190

General Definitions

Recorded Offences: the number of breaches of the New Zealand law recorded by Police. This includes offences specified in the Crimes Act and other legislations, such as the Summary Offences Act, Local Government Act, etc.

Resolved Offences: the number of recorded offences where an offender has been identified and dealt with (e.g. warned, cautioned, prosecuted, etc).

Resolution Rate: the proportion of recorded offences that have been resolved.

Recorded per 10,000 population: the number of recorded offences for every 10,000 people. This is also referred as the crime rate per 10,000 population.

ANZSOC: The Australian and New Zealand Standard Offence Classification. The offence classification is divided into 16 major offence divisions.

Definition of ANZSOC Divisions

1. Homicide and related offences: Unlawfully kill, attempt to unlawfully kill or conspiracy to kill another person.
2. Acts intended to cause injury: Acts, excluding attempted murder and those resulting in death, which are intended to cause non-fatal injury or harm to another person and where there is no sexual or acquisitive element.
3. Sexual assault and related offences: Acts, or intent of acts, of a sexual nature against another person, which are non-consensual or where consent is proscribed.
4. Dangerous or negligent acts endangering persons: Dangerous or negligent acts which, though not intended to cause harm, actually or potentially result in injury to oneself or another person.
5. Abduction, harassment and other offences against person: Acts intended to threaten or harass, or acts that unlawfully deprive another person of their freedom of movement, that are against that person's will or against the will of any parent, guardian or other person having lawful custody or care of that person.
6. Robbery, extortion and related offences: Acts intended to unlawfully gain money, property or other items of value from, or to cause detriment to, another person by using the threat of force or any other coercive measure.
7. Unlawful entry with intent / burglary, break and enter: The unlawful entry of a structure with the intent to commit an offence, where the entry is either forced or unforced.
8. Theft and related and offences: The unlawful taking or obtaining of money or goods, not involving the use of force or violence, coercion or deception, with intent to permanently or temporarily deprive the owner or possessor of the use of the money or goods, or the receiving or handling of money or goods obtained unlawfully.

9. Fraud, deception and related offences: Offences involving a dishonest act or omission carried out with the purpose of deceiving to obtain a benefit.

10. Illicit drug offences: The possessing, selling, dealing or trafficking, importing or exporting, manufacturing or cultivating of drugs or other substances prohibited under legislation.

11. Prohibited and regulated weapons and explosives offences: Offences involving prohibited or regulated weapons and explosives. Those offences also involving assault, sexual assault or robbery are coded to the relevant group within Assault, Sexual assaults and Robbery respectively.

12. Property damage and environmental pollution: The wilful and unlawful destruction, damage or defacement of public or private property, or the pollution of property or a definable entity held in common by the community.

13. Public order offences: Offences relating personal conduct that involves, or may lead to, a breach of public order or decency, or that is indicative of criminal intent, or that is otherwise regulated or prohibited on moral or ethical grounds. In general these offences do not involve a specific victim or victims; however some offences, such as offensive language and offensive behaviour, may be directed towards a single victim.

14. Traffic and vehicle regulatory offences: Offences relating to vehicles and most forms of traffic, including offences pertaining to the licensing, registration, roadworthiness, or use of vehicles, bicycle offences and pedestrian offences.

15. Offences against justice procedures, government security and government operations: An act or omission that is deemed to be prejudicial to the effective carrying out of justice procedures or any government operations. This includes general government operations as well as those specifically concerned with maintaining government security.

16. Miscellaneous offences: Offences involving the breach of statutory rules or regulations governing activities that are prima facie legal, where such offences are not explicitly dealt with under any other division. If an offence is specified under regulation and involves an act that would be illegal under common law or general criminal legislation, the offence is dealt with under the appropriate generic group.