

WAIKATO DISTRICT CRIME STATISTICS 2014



**A Summary of
Recorded and Resolved Offence
Statistics**

**POLICE NATIONAL HEADQUARTERS
April 2015**

ISSN 1178 - 1572

Table of Contents:

Topic	Page
Report Notes	1
District Summary of Recorded and Resolved Crime, by Division	2-4
Proportions of Recorded Crime by Division	5
Summary of District Recorded Offences, Rate per 10,000 Population and Resolved Offences, by Area	6
Summary of Area Recorded Offences, Rate per 10,000 Population and Resolved Offences, by Division	7-9
Crime Trends	10
Total Crime	11
Murder	12
Serious Assaults Resulting in Injury	13
Sexual Assaults	14
Public Place Assaults	15
Dwelling Assaults	16
Robbery	17
Burglary (Total)	18
Burglary (Dwelling)	19
Vehicles Stolen	20
Theft Ex Car	21
Population Data	22
General Definitions	23-24

REPORT NOTES:

Statistics reported in this document are derived from the Police National Intelligence Application (NIA). These Official Statistics for Recorded and Resolved Offences present a snapshot of data in NIA relating to offences that occur within a given year, as at the date 14 days following the end of that year.

Unless the matter is minor where Police attendance is sufficient, a matter that is reported to or discovered by Police where Police believe an offence is likely to have been committed is counted as a recorded offence.

A recorded offence is counted as resolved when Police apprehend an offender and decide how to deal with him/her. (E.g. warn, prosecute, etc.)

Resolution rate is the percentage of recorded offences that are resolved within 14 days of the end of the year being reported on.

If an offence is resolved 15 days or more after the end of the year it will not appear in the Official Crime Statistics for that or any other year. Resolution Rate therefore undercounts the number of cases that Police have resolved. This phenomenon has a more marked impact for some types of offences than others, such as offences that require long investigations (E.g. many serial crimes, burglaries and murders).

Several offences have been reclassified into different ANZSOC groups. This has resulted in changes to subtotals for Groups and Sub-divisions within Divisions 10, 15 and 16, compared to previously reported data. Generally, this occurred within the same Division.

Note that the Population Estimates have been revised for 2007 to 2013 as a result of the 2013 Census. In previous reports population estimates were based on the 2006 Census. Crime rates reported in this report for those years may differ from those previously reported as a result.

When comparing 2014 Statistics with previous years, the reader should also refer to "Report Notes" published in previous years' reports, as previous changes significantly affect year on year trends.

SUMMARY OF DISTRICT RECORDED AND RESOLVED CRIME, BY DIVISION
Years ending 31 December

HOMICIDE AND RELATED OFFENCES

ASOC Subdivision Description	Recorded 2012	Recorded 2013	Recorded 2014	Variance 2012-2013	Variance 2013-2014	Resolved 2012	Resolved 2013	Resolved 2014	Resolution Rate 2012	Resolution Rate 2013	Resolution Rate 2014
ATTEMPTED MURDER	4	4	1	0.0 %	-75.0 %	4	4	1	100.0 %	100.0 %	100.0 %
HOMICIDE AND RELATED OFFENCES NOT FURTHER DEFINED	0	2	0	0.0 %	-100.0 %	0	2	0	0.0 %	100.0 %	0.0 %
MANSLAUGHTER AND DRIVING CAUSING DEATH	1	1	0	0.0 %	-100.0 %	1	1	0	100.0 %	100.0 %	0.0 %
MURDER	2	1	4	-50.0 %	300.0 %	1	1	3	50.0 %	100.0 %	75.0 %
	7	8	5	14.3 %	-37.5 %	6	8	4	85.7 %	100.0 %	80.0 %

ACTS INTENDED TO CAUSE INJURY

ASOC Subdivision Description	Recorded 2012	Recorded 2013	Recorded 2014	Variance 2012-2013	Variance 2013-2014	Resolved 2012	Resolved 2013	Resolved 2014	Resolution Rate 2012	Resolution Rate 2013	Resolution Rate 2014
ASSAULT	3,431	3,388	3,889	-1.3 %	14.8 %	2,530	2,295	2,678	73.7 %	67.7 %	68.9 %
OTHER ACTS INTENDED TO CAUSE INJURY	1	2	5	100.0 %	150.0 %	1	0	4	100.0 %	0.0 %	80.0 %
	3,432	3,390	3,894	-1.2 %	14.9 %	2,531	2,295	2,682	73.7 %	67.7 %	68.9 %

SEXUAL ASSAULT AND RELATED OFFENCES

ASOC Subdivision Description	Recorded 2012	Recorded 2013	Recorded 2014	Variance 2012-2013	Variance 2013-2014	Resolved 2012	Resolved 2013	Resolved 2014	Resolution Rate 2012	Resolution Rate 2013	Resolution Rate 2014
NON-ASSAULTIVE SEXUAL OFFENCES	4	11	26	175.0 %	136.4 %	3	5	16	75.0 %	45.5 %	61.5 %
SEXUAL ASSAULT	292	350	326	19.9 %	-6.9 %	142	153	136	48.6 %	43.7 %	41.7 %
	296	361	352	22.0 %	-2.5 %	145	158	152	49.0 %	43.8 %	43.2 %

DANGEROUS OR NEGLIGENT ACTS ENDANGERING PERSONS

ASOC Subdivision Description	Recorded 2012	Recorded 2013	Recorded 2014	Variance 2012-2013	Variance 2013-2014	Resolved 2012	Resolved 2013	Resolved 2014	Resolution Rate 2012	Resolution Rate 2013	Resolution Rate 2014
OTHER DANGEROUS OR NEGLIGENT ACTS ENDANGERING PERSONS	63	46	57	-27.0 %	23.9 %	36	20	32	57.1 %	43.5 %	56.1 %
	63	46	57	-27.0 %	23.9 %	36	20	32	57.1 %	43.5 %	56.1 %

ABDUCTION, HARASSMENT AND OTHER RELATED OFFENCES AGAINST A PERSON

ASOC Subdivision Description	Recorded 2012	Recorded 2013	Recorded 2014	Variance 2012-2013	Variance 2013-2014	Resolved 2012	Resolved 2013	Resolved 2014	Resolution Rate 2012	Resolution Rate 2013	Resolution Rate 2014
ABDUCTION AND KIDNAPPING	38	26	33	-31.6 %	26.9 %	27	16	21	71.1 %	61.5 %	63.6 %
DEPRIVATION OF LIBERTY/FALSE IMPRISONMENT	0	2	0	0.0 %	-100.0 %	0	2	0	0.0 %	100.0 %	0.0 %
HARASSMENT AND THREATENING BEHAVIOUR	981	1,022	1,240	4.2 %	21.3 %	614	558	672	62.6 %	54.6 %	54.2 %
	1,019	1,050	1,273	3.0 %	21.2 %	641	576	693	62.9 %	54.9 %	54.4 %

ROBBERY, EXTORTION AND RELATED OFFENCES

ASOC Subdivision Description	Recorded 2012	Recorded 2013	Recorded 2014	Variance 2012-2013	Variance 2013-2014	Resolved 2012	Resolved 2013	Resolved 2014	Resolution Rate 2012	Resolution Rate 2013	Resolution Rate 2014
BLACKMAIL AND EXTORTION	12	10	10	-16.7 %	0.0 %	6	4	3	50.0 %	40.0 %	30.0 %
ROBBERY	154	155	159	0.6 %	2.6 %	65	67	67	42.2 %	43.2 %	42.1 %
	166	165	169	-0.6 %	2.4 %	71	71	70	42.8 %	43.0 %	41.4 %

UNLAWFUL ENTRY WITH INTENT/BURGLARY, BREAK AND ENTER

ASOC Subdivision Description	Recorded 2012	Recorded 2013	Recorded 2014	Variance 2012-2013	Variance 2013-2014	Resolved 2012	Resolved 2013	Resolved 2014	Resolution Rate 2012	Resolution Rate 2013	Resolution Rate 2014
UNLAWFUL ENTRY WITH INTENT/BURGLARY, BREAK AND ENTER	5,740	6,046	5,639	5.3 %	-6.7 %	874	680	630	15.2 %	11.2 %	11.2 %
	5,740	6,046	5,639	5.3 %	-6.7 %	874	680	630	15.2 %	11.2 %	11.2 %

SUMMARY OF DISTRICT RECORDED AND RESOLVED CRIME, BY DIVISION
Years ending 31 December

THEFT AND RELATED OFFENCES

ASOC Subdivision Description	Recorded 2012	Recorded 2013	Recorded 2014	Variance 2012-2013	Variance 2013-2014	Resolved 2012	Resolved 2013	Resolved 2014	Resolution Rate 2012	Resolution Rate 2013	Resolution Rate 2014
ILLEGAL USE OF PROPERTY (EXCEPT MOTOR VEHICLES)	259	376	314	45.2 %	-16.5 %	19	17	17	7.3 %	4.5 %	5.4 %
MOTOR VEHICLE THEFT AND RELATED OFFENCES	3,488	3,345	2,936	-4.1 %	-12.2 %	426	350	295	12.2 %	10.5 %	10.0 %
RECEIVE OR HANDLE PROCEEDS OF CRIME	289	218	219	-24.6 %	0.5 %	280	211	214	96.9 %	96.8 %	97.7 %
THEFT (EXCEPT MOTOR VEHICLES)	5,386	6,054	5,284	12.4 %	-12.7 %	1,437	1,770	1,403	26.7 %	29.2 %	26.6 %
	9,422	9,993	8,753	6.1 %	-12.4 %	2,162	2,348	1,929	22.9 %	23.5 %	22.0 %

FRAUD, DECEPTION AND RELATED OFFENCES

ASOC Subdivision Description	Recorded 2012	Recorded 2013	Recorded 2014	Variance 2012-2013	Variance 2013-2014	Resolved 2012	Resolved 2013	Resolved 2014	Resolution Rate 2012	Resolution Rate 2013	Resolution Rate 2014
DECEPTIVE BUSINESS/GOVERNMENT PRACTICES	2	7	3	250.0 %	-57.1 %	2	2	2	100.0 %	28.6 %	66.7 %
FORGERY AND COUNTERFEITING	38	22	34	-42.1 %	54.5 %	24	5	15	63.2 %	22.7 %	44.1 %
OBTAIN BENEFIT BY DECEPTION	619	533	773	-13.9 %	45.0 %	338	254	385	54.6 %	47.7 %	49.8 %
OTHER FRAUD AND DECEPTION OFFENCES	58	34	48	-41.4 %	41.2 %	32	18	18	55.2 %	52.9 %	37.5 %
	717	596	858	-16.9 %	44.0 %	396	279	420	55.2 %	46.8 %	49.0 %

ILLICIT DRUG OFFENCES

ASOC Subdivision Description	Recorded 2012	Recorded 2013	Recorded 2014	Variance 2012-2013	Variance 2013-2014	Resolved 2012	Resolved 2013	Resolved 2014	Resolution Rate 2012	Resolution Rate 2013	Resolution Rate 2014
DEAL OR TRAFFIC IN ILLICIT DRUGS	214	160	263	-25.2 %	64.4 %	197	128	229	92.1 %	80.0 %	87.1 %
IMPORT OR EXPORT ILLICIT DRUGS	3	5	2	66.7 %	-60.0 %	3	3	1	100.0 %	60.0 %	50.0 %
MANUFACTURE OR CULTIVATE ILLICIT DRUGS	474	207	209	-56.3 %	1.0 %	252	167	154	53.2 %	80.7 %	73.7 %
OTHER ILLICIT DRUG OFFENCES	495	344	373	-30.5 %	8.4 %	488	335	359	98.6 %	97.4 %	96.2 %
POSSESS AND/OR USE ILLICIT DRUGS	679	572	590	-15.8 %	3.1 %	651	547	562	95.9 %	95.6 %	95.3 %
	1,865	1,288	1,437	-30.9 %	11.6 %	1,591	1,180	1,305	85.3 %	91.6 %	90.8 %

PROHIBITED AND REGULATED WEAPONS AND EXPLOSIVES OFFENCES

ASOC Subdivision Description	Recorded 2012	Recorded 2013	Recorded 2014	Variance 2012-2013	Variance 2013-2014	Resolved 2012	Resolved 2013	Resolved 2014	Resolution Rate 2012	Resolution Rate 2013	Resolution Rate 2014
REGULATED WEAPONS/EXPLOSIVES OFFENCES	491	444	498	-9.6 %	12.2 %	442	393	445	90.0 %	88.5 %	89.4 %
	491	444	498	-9.6 %	12.2 %	442	393	445	90.0 %	88.5 %	89.4 %

PROPERTY DAMAGE AND ENVIRONMENTAL POLLUTION

ASOC Subdivision Description	Recorded 2012	Recorded 2013	Recorded 2014	Variance 2012-2013	Variance 2013-2014	Resolved 2012	Resolved 2013	Resolved 2014	Resolution Rate 2012	Resolution Rate 2013	Resolution Rate 2014
ENVIRONMENTAL POLLUTION	7	8	6	14.3 %	-25.0 %	5	4	2	71.4 %	50.0 %	33.3 %
PROPERTY DAMAGE	3,873	3,839	3,059	-0.9 %	-20.3 %	1,110	1,384	870	28.7 %	36.1 %	28.4 %
	3,880	3,847	3,065	-0.9 %	-20.3 %	1,115	1,388	872	28.7 %	36.1 %	28.5 %

PUBLIC ORDER OFFENCES

ASOC Subdivision Description	Recorded 2012	Recorded 2013	Recorded 2014	Variance 2012-2013	Variance 2013-2014	Resolved 2012	Resolved 2013	Resolved 2014	Resolution Rate 2012	Resolution Rate 2013	Resolution Rate 2014
DISORDERLY CONDUCT	1,894	1,916	1,955	1.2 %	2.0 %	1,597	1,586	1,666	84.3 %	82.8 %	85.2 %
OFFENSIVE CONDUCT	111	69	81	-37.8 %	17.4 %	72	36	53	64.9 %	52.2 %	65.4 %
PUBLIC ORDER OFFENCES NOT FURTHER DEFINED	0	0	0	0.0 %	0.0 %	0	0	0	0.0 %	0.0 %	0.0 %
REGULATED PUBLIC ORDER OFFENCES	2,098	1,686	131	-19.6 %	-92.2 %	2,047	1,630	57	97.6 %	96.7 %	43.5 %
	4,103	3,671	2,167	-10.5 %	-41.0 %	3,716	3,252	1,776	90.6 %	88.6 %	82.0 %

SUMMARY OF DISTRICT RECORDED AND RESOLVED CRIME, BY DIVISION

Years ending 31 December

OFFENCES AGAINST JUSTICE PROCEDURES, GOVERNMENT SECURITY AND GOVERNMENT OPERATIONS

ASOC Subdivision Description	Recorded 2012	Recorded 2013	Recorded 2014	Variance 2012-2013	Variance 2013-2014	Resolved 2012	Resolved 2013	Resolved 2014	Resolution Rate 2012	Resolution Rate 2013	Resolution Rate 2014
BREACH OF COMMUNITY-BASED ORDER	593	454	483	-23.4 %	6.4 %	542	364	406	91.4 %	80.2 %	84.1 %
BREACH OF CUSTODIAL ORDER OFFENCES	37	31	43	-16.2 %	38.7 %	36	30	41	97.3 %	96.8 %	95.3 %
BREACH OF VIOLENCE AND NON-VIOLENCE RESTRAINING ORDERS	361	402	454	11.4 %	12.9 %	291	320	352	80.6 %	79.6 %	77.5 %
OFFENCES AGAINST GOVERNMENT OPERATIONS	7	18	26	157.1 %	44.4 %	4	9	3	57.1 %	50.0 %	11.5 %
OFFENCES AGAINST GOVERNMENT SECURITY	1	0	1	-100.0 %	0.0 %	1	0	0	100.0 %	0.0 %	0.0 %
OFFENCES AGAINST JUSTICE PROCEDURES	420	331	383	-21.2 %	15.7 %	414	323	372	98.6 %	97.6 %	97.1 %
OFFENCES AGAINST JUSTICE PROCEDURES, GOVERNMENT SECURITY AND GOVERNMENT OPERATIONS NOT FURTHER DEFINED	2	0	1	-100.0 %	0.0 %	2	0	1	100.0 %	0.0 %	100.0 %
	1,421	1,236	1,391	-13.0 %	12.5 %	1,290	1,046	1,175	90.8 %	84.6 %	84.5 %

MISCELLANEOUS OFFENCES

ASOC Subdivision Description	Recorded 2012	Recorded 2013	Recorded 2014	Variance 2012-2013	Variance 2013-2014	Resolved 2012	Resolved 2013	Resolved 2014	Resolution Rate 2012	Resolution Rate 2013	Resolution Rate 2014
COMMERCIAL/INDUSTRY/FINANCIAL REGULATION	6	2	1	-66.7 %	-50.0 %	6	1	0	100.0 %	50.0 %	0.0 %
DEFAMATION, LIBEL AND PRIVACY OFFENCES	4	5	2	25.0 %	-60.0 %	0	0	0	0.0 %	0.0 %	0.0 %
OTHER MISCELLANEOUS OFFENCES	48	54	64	12.5 %	18.5 %	31	26	19	64.6 %	48.1 %	29.7 %
PUBLIC HEALTH AND SAFETY OFFENCES	13	16	17	23.1 %	6.3 %	12	11	13	92.3 %	68.8 %	76.5 %
	71	77	84	8.5 %	9.1 %	49	38	32	69.0 %	49.4 %	38.1 %

TOTAL	32,693	32,218	29,642	-1.5 %	-8.0 %	15,065	13,732	12,217	46.1 %	42.6 %	41.2 %
--------------	---------------	---------------	---------------	---------------	---------------	---------------	---------------	---------------	---------------	---------------	---------------

PROPORTIONS OF RECORDED CRIME BY DIVISION

Years ending 31 December

ASOC Division Description	Proportions Recorded 2012	Recorded 2012	Proportions Recorded 2013	Recorded 2013	Proportions Recorded 2014	Recorded 2014
HOMICIDE AND RELATED OFFENCES	0.02 %	7	0.02 %	8	0.02 %	5
ACTS INTENDED TO CAUSE INJURY	10.50 %	3,432	10.52 %	3,390	13.14 %	3,894
SEXUAL ASSAULT AND RELATED OFFENCES	0.91 %	296	1.12 %	361	1.19 %	352
DANGEROUS OR NEGLIGENT ACTS ENDANGERING PERSONS	0.19 %	63	0.14 %	46	0.19 %	57
ABDUCTION, HARASSMENT AND OTHER RELATED OFFENCES AGAINST A PERSON	3.12 %	1,019	3.26 %	1,050	4.29 %	1,273
ROBBERY, EXTORTION AND RELATED OFFENCES	0.51 %	166	0.51 %	165	0.57 %	169
UNLAWFUL ENTRY WITH INTENT/BURGLARY, BREAK AND ENTER	17.56 %	5,740	18.77 %	6,046	19.02 %	5,639
THEFT AND RELATED OFFENCES	28.82 %	9,422	31.02 %	9,993	29.53 %	8,753
FRAUD, DECEPTION AND RELATED OFFENCES	2.19 %	717	1.85 %	596	2.89 %	858
ILLICIT DRUG OFFENCES	5.70 %	1,865	4.00 %	1,288	4.85 %	1,437
PROHIBITED AND REGULATED WEAPONS AND EXPLOSIVES OFFENCES	1.50 %	491	1.38 %	444	1.68 %	498
PROPERTY DAMAGE AND ENVIRONMENTAL POLLUTION	11.87 %	3,880	11.94 %	3,847	10.34 %	3,065
PUBLIC ORDER OFFENCES	12.55 %	4,103	11.39 %	3,671	7.31 %	2,167
OFFENCES AGAINST JUSTICE PROCEDURES, GOVERNMENT SECURITY AND GOVERNMENT OPERATIONS	4.35 %	1,421	3.84 %	1,236	4.69 %	1,391
MISCELLANEOUS OFFENCES	0.22 %	71	0.24 %	77	0.28 %	84
	100.00 %	32,693	100.00 %	32,218	100.00 %	29,642

SUMMARY OF RECORDED OFFENCES, RATE PER 10,000 POPULATION AND RESOLVED OFFENCES, BY AREA
years ending 31 December

TOTAL CRIME

Area Description	Recorded 2013	Recorded 2014	Variance 2013-2014	Recorded per 10,000 pop 2013	Recorded per 10,000 pop 2014	Per 10,000 pop % Variance 2013 to 2014	Resolved 2013	Resolved 2014	Resolution Rate 2013	Resolution Rate 2014
Hamilton City	19,298	17,178	-11.0 %	1,137.2	994.7	-12.5 %	8,423	6,730	43.6 %	39.2 %
Waikato East	6,489	6,036	-7.0 %	797.9	735.6	-7.8 %	2,714	2,578	41.8 %	42.7 %
Waikato West	6,431	6,428	-0.0 %	652.8	642.0	-1.7 %	2,595	2,909	40.4 %	45.3 %
	32,218	29,642	-8.0 %	921.7	835.3	-9.4 %	13,732	12,217	42.6 %	41.2 %

SUMMARY OF RECORDED OFFENCES, RATE PER 10,000 POPULATION AND RESOLVED OFFENCES, BY DIVISION

Years ending 31 December

HOMICIDE AND RELATED OFFENCES

Area Description	Recorded 2013	Recorded 2014	Variance 2013-2014	Recorded per 10,000 pop 2013	Recorded per 10,000 pop 2014	Per 10,000 pop % Variance 2013 to 2014	Resolved 2013	Resolved 2014	Resolution Rate 2013	Resolution Rate 2014
Hamilton City	4	3	-25.0 %	0.2	0.2	-26.3 %	4	3	100.0 %	100.0 %
Waikato East	3	0	-100.0 %	0.4	0.0	-100.0 %	3	0	100.0 %	0.0 %
Waikato West	1	2	100.0 %	0.1	0.2	96.8 %	1	1	100.0 %	50.0 %
	8	5	-37.5 %	0.2	0.1	-38.4 %	8	4	100.0 %	80.0 %

ACTS INTENDED TO CAUSE INJURY

Area Description	Recorded 2013	Recorded 2014	Variance 2013-2014	Recorded per 10,000 pop 2013	Recorded per 10,000 pop 2014	Per 10,000 pop % Variance 2013 to 2014	Resolved 2013	Resolved 2014	Resolution Rate 2013	Resolution Rate 2014
Hamilton City	1,825	2,377	30.2 %	107.5	137.6	28.0 %	1,101	1,522	60.3 %	64.0 %
Waikato East	605	574	-5.1 %	74.4	69.9	-6.0 %	499	452	82.5 %	78.7 %
Waikato West	960	943	-1.8 %	97.5	94.2	-3.4 %	695	708	72.4 %	75.1 %
	3,390	3,894	14.9 %	97.0	109.7	13.1 %	2,295	2,682	67.7 %	68.9 %

SEXUAL ASSAULT AND RELATED OFFENCES

Area Description	Recorded 2013	Recorded 2014	Variance 2013-2014	Recorded per 10,000 pop 2013	Recorded per 10,000 pop 2014	Per 10,000 pop % Variance 2013 to 2014	Resolved 2013	Resolved 2014	Resolution Rate 2013	Resolution Rate 2014
Hamilton City	193	215	11.4 %	11.4	12.4	9.5 %	77	95	39.9 %	44.2 %
Waikato East	82	37	-54.9 %	10.1	4.5	-55.3 %	42	12	51.2 %	32.4 %
Waikato West	86	100	16.3 %	8.7	10.0	14.4 %	39	45	45.3 %	45.0 %
	361	352	-2.5 %	10.3	9.9	-4.0 %	158	152	43.8 %	43.2 %

DANGEROUS OR NEGLIGENT ACTS ENDANGERING PERSONS

Area Description	Recorded 2013	Recorded 2014	Variance 2013-2014	Recorded per 10,000 pop 2013	Recorded per 10,000 pop 2014	Per 10,000 pop % Variance 2013 to 2014	Resolved 2013	Resolved 2014	Resolution Rate 2013	Resolution Rate 2014
Hamilton City	24	28	16.7 %	1.4	1.6	14.6 %	8	15	33.3 %	53.6 %
Waikato East	10	11	10.0 %	1.2	1.3	9.0 %	6	6	60.0 %	54.5 %
Waikato West	12	18	50.0 %	1.2	1.8	47.6 %	6	11	50.0 %	61.1 %
	46	57	23.9 %	1.3	1.6	22.0 %	20	32	43.5 %	56.1 %

ABDUCTION, HARASSMENT AND OTHER RELATED OFFENCES AGAINST A PERSON

Area Description	Recorded 2013	Recorded 2014	Variance 2013-2014	Recorded per 10,000 pop 2013	Recorded per 10,000 pop 2014	Per 10,000 pop % Variance 2013 to 2014	Resolved 2013	Resolved 2014	Resolution Rate 2013	Resolution Rate 2014
Hamilton City	584	730	25.0 %	34.4	42.3	22.8 %	284	323	48.6 %	44.2 %
Waikato East	185	242	30.8 %	22.7	29.5	29.6 %	122	170	65.9 %	70.2 %
Waikato West	281	301	7.1 %	28.5	30.1	5.4 %	170	200	60.5 %	66.4 %
	1,050	1,273	21.2 %	30.0	35.9	19.4 %	576	693	54.9 %	54.4 %

ROBBERY, EXTORTION AND RELATED OFFENCES

Area Description	Recorded 2013	Recorded 2014	Variance 2013-2014	Recorded per 10,000 pop 2013	Recorded per 10,000 pop 2014	Per 10,000 pop % Variance 2013 to 2014	Resolved 2013	Resolved 2014	Resolution Rate 2013	Resolution Rate 2014
Hamilton City	131	115	-12.2 %	7.7	6.7	-13.7 %	53	40	40.5 %	34.8 %
Waikato East	21	16	-23.8 %	2.6	1.9	-24.5 %	11	8	52.4 %	50.0 %
Waikato West	13	38	192.3 %	1.3	3.8	187.6 %	7	22	53.8 %	57.9 %
	165	169	2.4 %	4.7	4.8	0.9 %	71	70	43.0 %	41.4 %

SUMMARY OF RECORDED OFFENCES, RATE PER 10,000 POPULATION AND RESOLVED OFFENCES, BY DIVISION

Years ending 31 December

UNLAWFUL ENTRY WITH INTENT/BURGLARY, BREAK AND ENTER

Area Description	Recorded 2013	Recorded 2014	Variance 2013-2014	Recorded per 10,000 pop 2013	Recorded per 10,000 pop 2014	Per 10,000 pop % Variance 2013 to 2014	Resolved 2013	Resolved 2014	Resolution Rate 2013	Resolution Rate 2014
Hamilton City	3,356	3,157	-5.9 %	197.8	182.8	-7.6 %	323	281	9.6 %	8.9 %
Waikato East	1,416	1,382	-2.4 %	174.1	168.4	-3.3 %	210	199	14.8 %	14.4 %
Waikato West	1,274	1,100	-13.7 %	129.3	109.9	-15.0 %	147	150	11.5 %	13.6 %
	6,046	5,639	-6.7 %	173.0	158.9	-8.1 %	680	630	11.2 %	11.2 %

THEFT AND RELATED OFFENCES

Area Description	Recorded 2013	Recorded 2014	Variance 2013-2014	Recorded per 10,000 pop 2013	Recorded per 10,000 pop 2014	Per 10,000 pop % Variance 2013 to 2014	Resolved 2013	Resolved 2014	Resolution Rate 2013	Resolution Rate 2014
Hamilton City	6,303	5,255	-16.6 %	371.4	304.3	-18.1 %	1,573	1,090	25.0 %	20.7 %
Waikato East	1,830	1,750	-4.4 %	225.0	213.3	-5.2 %	384	426	21.0 %	24.3 %
Waikato West	1,860	1,748	-6.0 %	188.8	174.6	-7.5 %	391	413	21.0 %	23.6 %
	9,993	8,753	-12.4 %	285.9	246.6	-13.7 %	2,348	1,929	23.5 %	22.0 %

FRAUD, DECEPTION AND RELATED OFFENCES

Area Description	Recorded 2013	Recorded 2014	Variance 2013-2014	Recorded per 10,000 pop 2013	Recorded per 10,000 pop 2014	Per 10,000 pop % Variance 2013 to 2014	Resolved 2013	Resolved 2014	Resolution Rate 2013	Resolution Rate 2014
Hamilton City	381	592	55.4 %	22.5	34.3	52.7 %	165	276	43.3 %	46.6 %
Waikato East	103	93	-9.7 %	12.7	11.3	-10.5 %	56	46	54.4 %	49.5 %
Waikato West	112	173	54.5 %	11.4	17.3	52.0 %	58	98	51.8 %	56.6 %
	596	858	44.0 %	17.1	24.2	41.8 %	279	420	46.8 %	49.0 %

ILLICIT DRUG OFFENCES

Area Description	Recorded 2013	Recorded 2014	Variance 2013-2014	Recorded per 10,000 pop 2013	Recorded per 10,000 pop 2014	Per 10,000 pop % Variance 2013 to 2014	Resolved 2013	Resolved 2014	Resolution Rate 2013	Resolution Rate 2014
Hamilton City	688	665	-3.3 %	40.5	38.5	-5.0 %	631	604	91.7 %	90.8 %
Waikato East	333	331	-0.6 %	40.9	40.3	-1.5 %	301	301	90.4 %	90.9 %
Waikato West	267	441	65.2 %	27.1	44.0	62.5 %	248	400	92.9 %	90.7 %
	1,288	1,437	11.6 %	36.8	40.5	9.9 %	1,180	1,305	91.6 %	90.8 %

PROHIBITED AND REGULATED WEAPONS AND EXPLOSIVES OFFENCES

Area Description	Recorded 2013	Recorded 2014	Variance 2013-2014	Recorded per 10,000 pop 2013	Recorded per 10,000 pop 2014	Per 10,000 pop % Variance 2013 to 2014	Resolved 2013	Resolved 2014	Resolution Rate 2013	Resolution Rate 2014
Hamilton City	241	249	3.3 %	14.2	14.4	1.5 %	215	222	89.2 %	89.2 %
Waikato East	104	132	26.9 %	12.8	16.1	25.8 %	85	120	81.7 %	90.9 %
Waikato West	99	117	18.2 %	10.0	11.7	16.3 %	93	103	93.9 %	88.0 %
	444	498	12.2 %	12.7	14.0	10.5 %	393	445	88.5 %	89.4 %

PROPERTY DAMAGE AND ENVIRONMENTAL POLLUTION

Area Description	Recorded 2013	Recorded 2014	Variance 2013-2014	Recorded per 10,000 pop 2013	Recorded per 10,000 pop 2014	Per 10,000 pop % Variance 2013 to 2014	Resolved 2013	Resolved 2014	Resolution Rate 2013	Resolution Rate 2014
Hamilton City	2,065	1,523	-26.2 %	121.7	88.2	-27.5 %	901	416	43.6 %	27.3 %
Waikato East	890	747	-16.1 %	109.4	91.0	-16.8 %	217	225	24.4 %	30.1 %
Waikato West	892	795	-10.9 %	90.5	79.4	-12.3 %	270	231	30.3 %	29.1 %
	3,847	3,065	-20.3 %	110.1	86.4	-21.5 %	1,388	872	36.1 %	28.5 %

SUMMARY OF RECORDED OFFENCES, RATE PER 10,000 POPULATION AND RESOLVED OFFENCES, BY DIVISION

Years ending 31 December

PUBLIC ORDER OFFENCES

Area Description	Recorded 2013	Recorded 2014	Variance 2013-2014	Recorded per 10,000 pop 2013	Recorded per 10,000 pop 2014	Per 10,000 pop % Variance 2013 to 2014	Resolved 2013	Resolved 2014	Resolution Rate 2013	Resolution Rate 2014
Hamilton City	2,601	1,285	-50.6 %	153.3	74.4	-51.5 %	2,355	1,053	90.5 %	81.9 %
Waikato East	713	505	-29.2 %	87.7	61.5	-29.8 %	613	428	86.0 %	84.8 %
Waikato West	357	377	5.6 %	36.2	37.7	3.9 %	284	295	79.6 %	78.2 %
	3,671	2,167	-41.0 %	105.0	61.1	-41.9 %	3,252	1,776	88.6 %	82.0 %

OFFENCES AGAINST JUSTICE PROCEDURES, GOVERNMENT SECURITY AND GOVERNMENT OPERATIONS

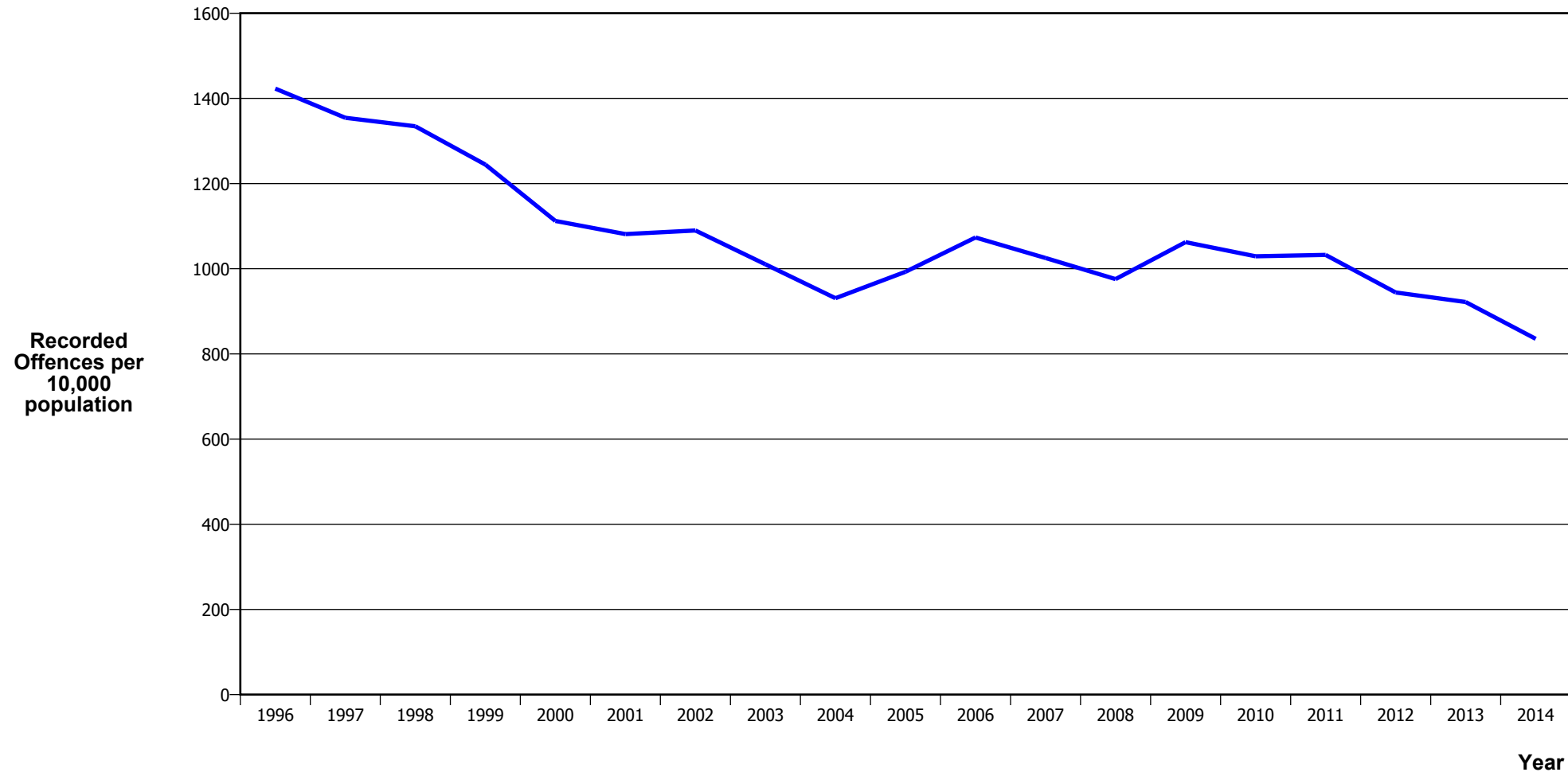
Area Description	Recorded 2013	Recorded 2014	Variance 2013-2014	Recorded per 10,000 pop 2013	Recorded per 10,000 pop 2014	Per 10,000 pop % Variance 2013 to 2014	Resolved 2013	Resolved 2014	Resolution Rate 2013	Resolution Rate 2014
Hamilton City	868	941	8.4 %	51.1	54.5	6.5 %	718	774	82.7 %	82.3 %
Waikato East	176	200	13.6 %	21.6	24.4	12.6 %	158	177	89.8 %	88.5 %
Waikato West	192	250	30.2 %	19.5	25.0	28.1 %	170	224	88.5 %	89.6 %
	1,236	1,391	12.5 %	35.4	39.2	10.8 %	1,046	1,175	84.6 %	84.5 %

MISCELLANEOUS OFFENCES

Area Description	Recorded 2013	Recorded 2014	Variance 2013-2014	Recorded per 10,000 pop 2013	Recorded per 10,000 pop 2014	Per 10,000 pop % Variance 2013 to 2014	Resolved 2013	Resolved 2014	Resolution Rate 2013	Resolution Rate 2014
Hamilton City	34	43	26.5 %	2.0	2.5	24.3 %	15	16	44.1 %	37.2 %
Waikato East	18	16	-11.1 %	2.2	1.9	-11.9 %	7	8	38.9 %	50.0 %
Waikato West	25	25	0.0 %	2.5	2.5	-1.6 %	16	8	64.0 %	32.0 %
	77	84	9.1 %	2.2	2.4	7.4 %	38	32	49.4 %	38.1 %

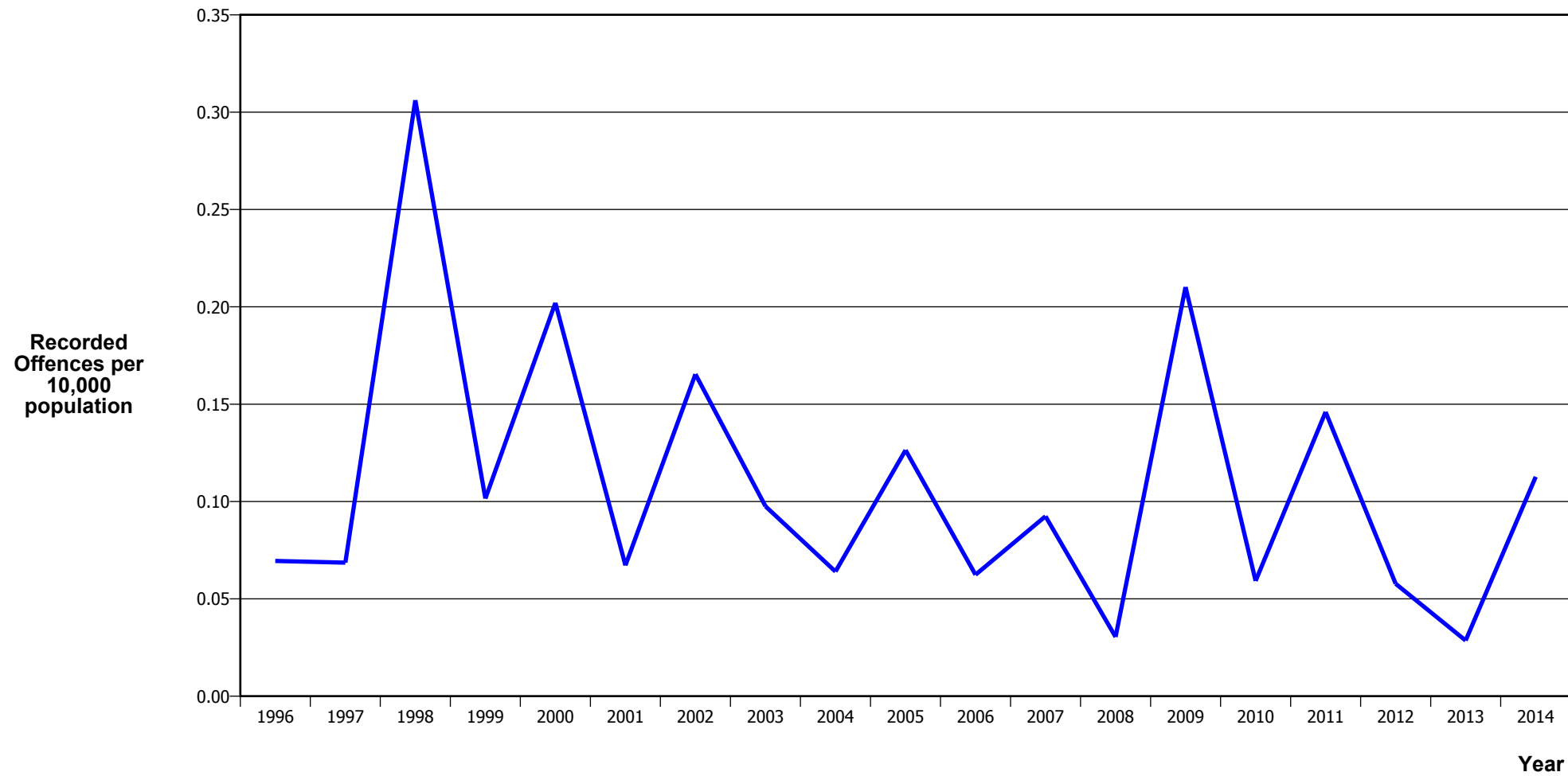
CRIME TRENDS

TOTAL CRIME



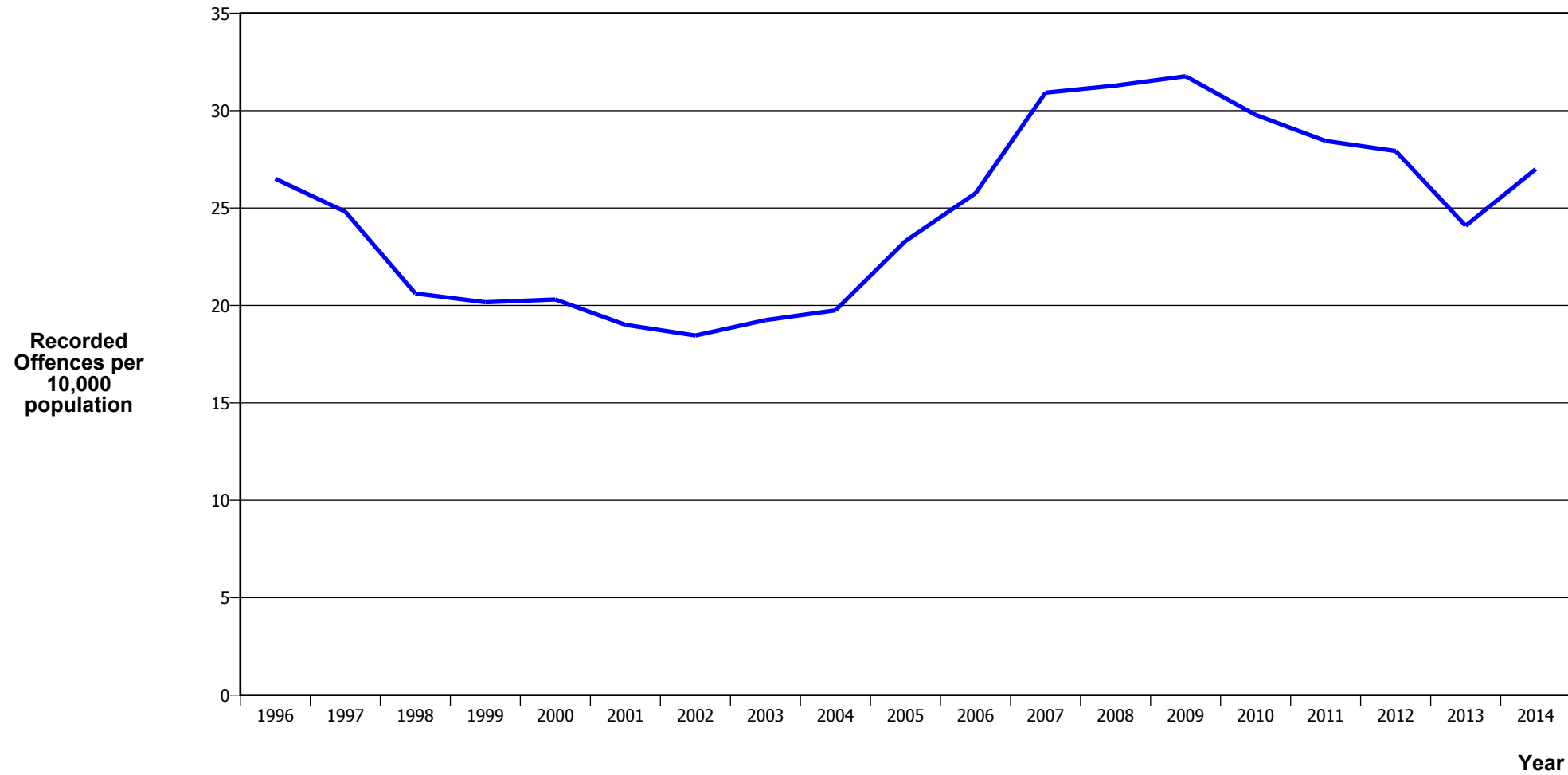
Calendar Year	1996	1997	1998	1999	2000	2001	2002	2003	2004	2005	2006	2007	2008	2009	2010	2011	2012	2013	2014
Recorded Offences	40,957	39,471	39,225	36,782	33,029	32,188	32,947	31,075	29,083	31,435	34,415	33,290	32,056	35,384	34,764	35,355	32,693	32,218	29,642
Recorded per 10,000 Population	1,422.9	1,354.3	1,334.4	1,244.5	1,112.2	1,081.2	1,089.9	1,010.4	930.9	993.0	1,073.3	1,025.3	975.6	1,062.3	1,029.2	1,032.5	944.3	921.7	835.3

MURDER



Calendar Year	1996	1997	1998	1999	2000	2001	2002	2003	2004	2005	2006	2007	2008	2009	2010	2011	2012	2013	2014
Recorded Offences	2	2	9	3	6	2	5	3	2	4	2	3	1	7	2	5	2	1	4
Recorded per 10,000 Population	0.07	0.07	0.31	0.10	0.20	0.07	0.17	0.10	0.06	0.13	0.06	0.09	0.03	0.21	0.06	0.15	0.06	0.03	0.11

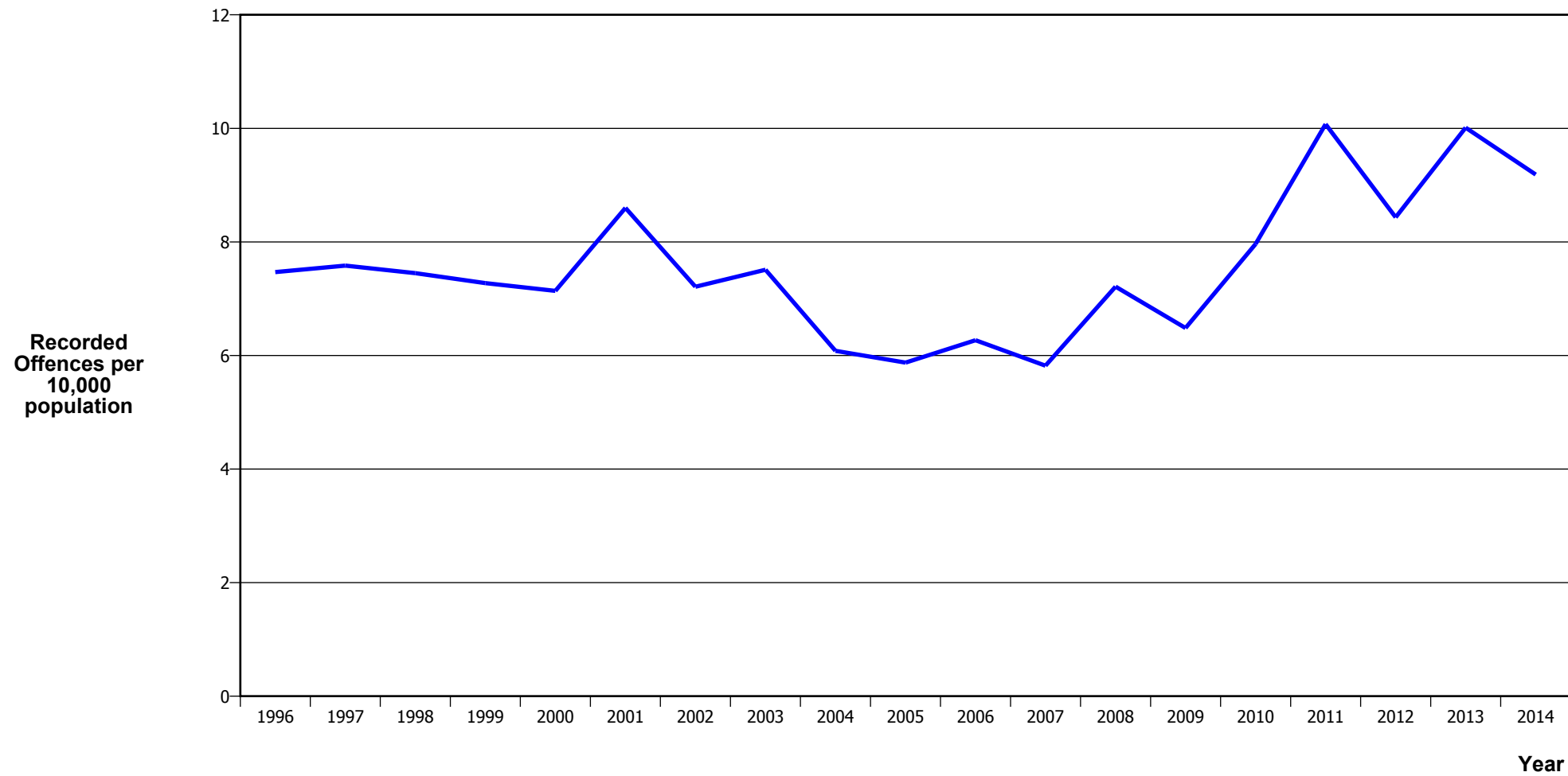
SERIOUS ASSAULTS RESULTING IN INJURY*



Calendar Year	1996	1997	1998	1999	2000	2001	2002	2003	2004	2005	2006	2007	2008	2009	2010	2011	2012	2013	2014
Recorded Offence	763	723	606	596	603	566	558	592	617	738	826	1,004	1,028	1,058	1,006	974	967	842	958
Offence Rate per 10K Popn	26.5	24.8	20.6	20.2	20.3	19.0	18.5	19.2	19.7	23.3	25.8	30.9	31.3	31.8	29.8	28.4	27.9	24.1	27.0

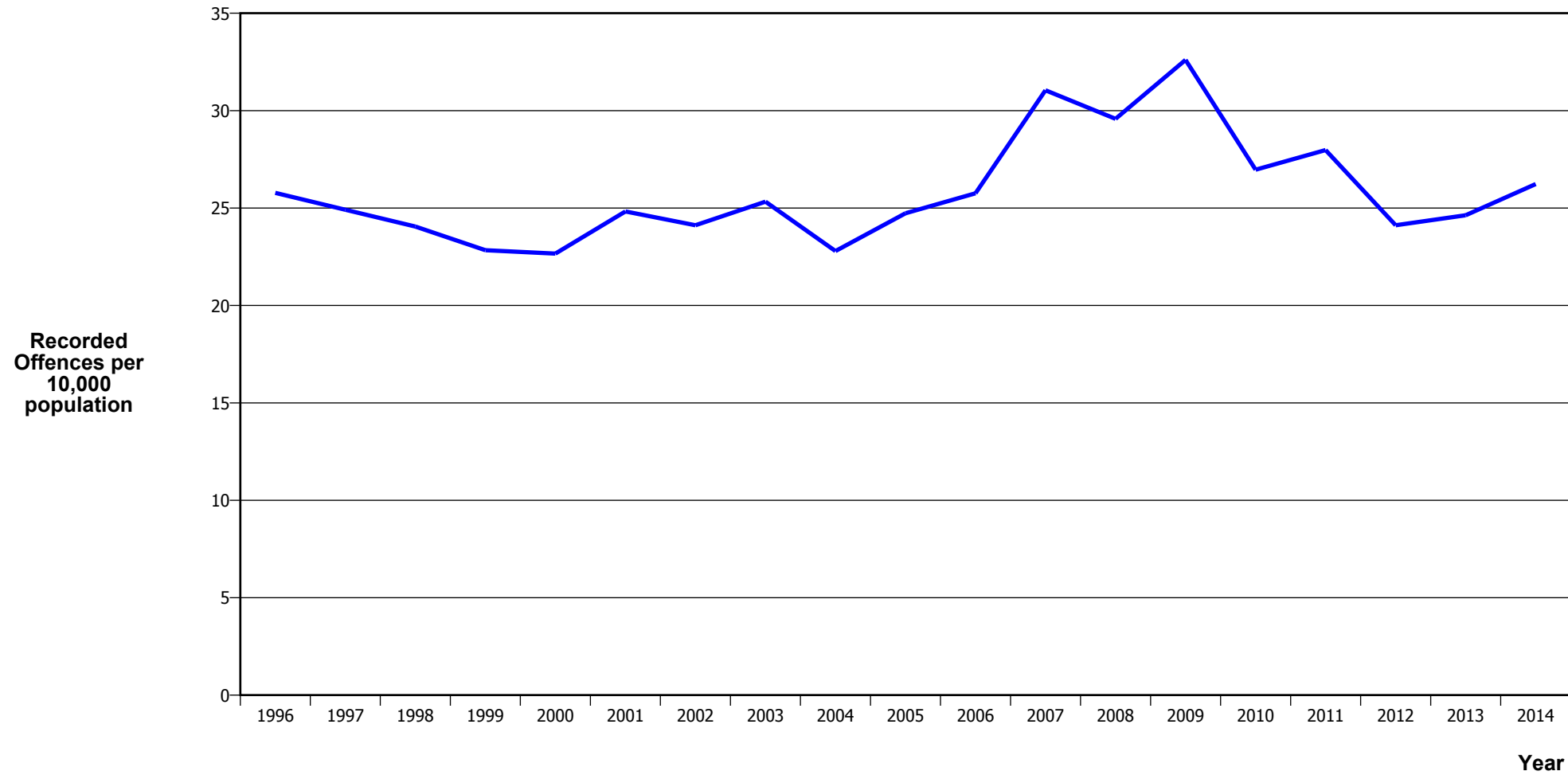
* This measure excludes common assaults

SEXUAL ASSAULTS



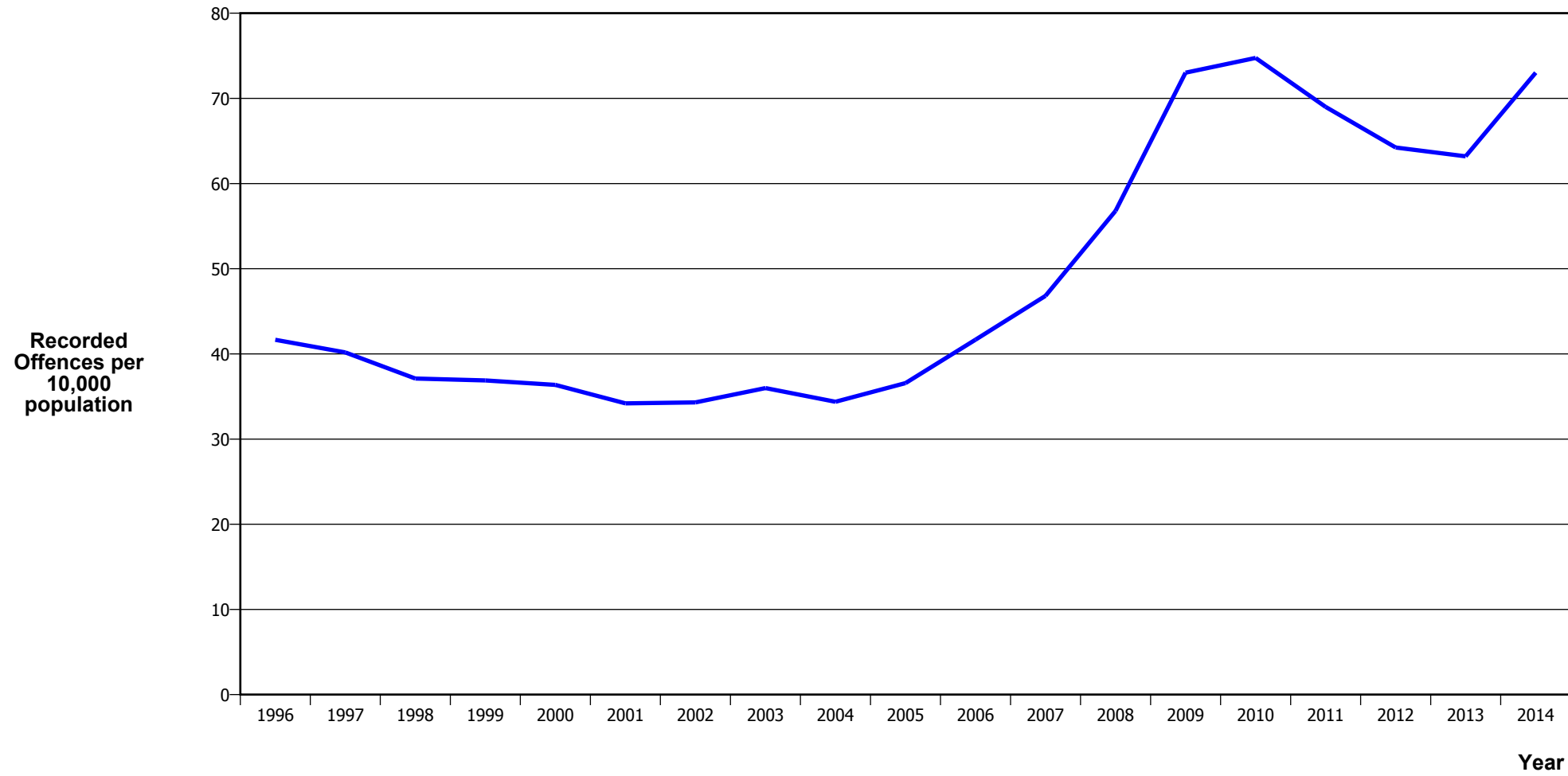
Calendar Year	1996	1997	1998	1999	2000	2001	2002	2003	2004	2005	2006	2007	2008	2009	2010	2011	2012	2013	2014
Recorded Offences	215	221	219	215	212	256	218	231	190	186	201	189	237	216	269	345	292	350	326
Recorded per 10,000 Population	7.5	7.6	7.5	7.3	7.1	8.6	7.2	7.5	6.1	5.9	6.3	5.8	7.2	6.5	8.0	10.1	8.4	10.0	9.2

PUBLIC PLACE ASSAULTS



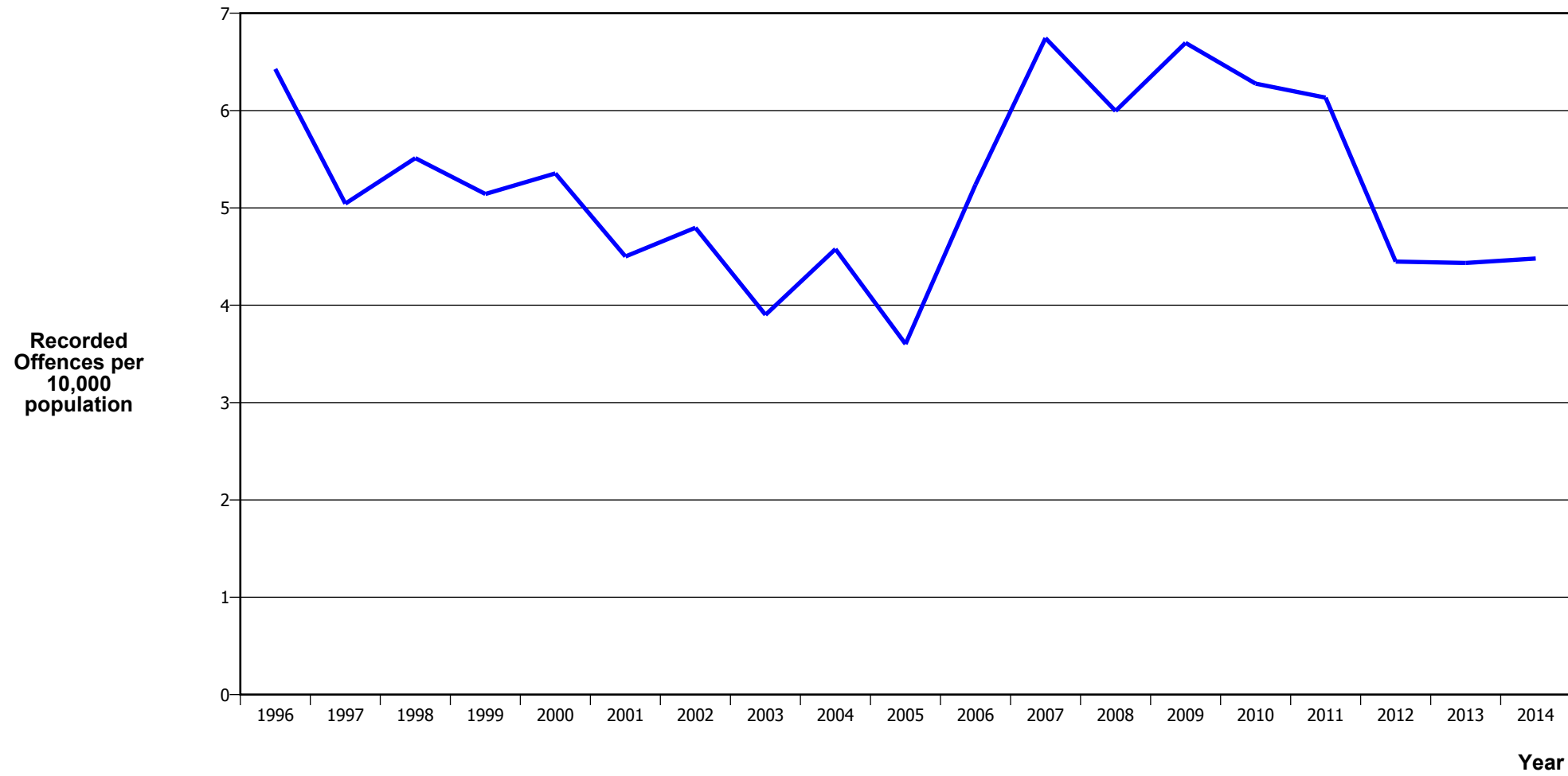
Calendar Year	1996	1997	1998	1999	2000	2001	2002	2003	2004	2005	2006	2007	2008	2009	2010	2011	2012	2013	2014
Recorded Offences	742	726	707	675	673	739	729	779	712	783	826	1,008	972	1,086	911	958	835	861	931
Recorded per 10,000 Population	25.8	24.9	24.1	22.8	22.7	24.8	24.1	25.3	22.8	24.7	25.8	31.0	29.6	32.6	27.0	28.0	24.1	24.6	26.2

DWELLING ASSAULTS



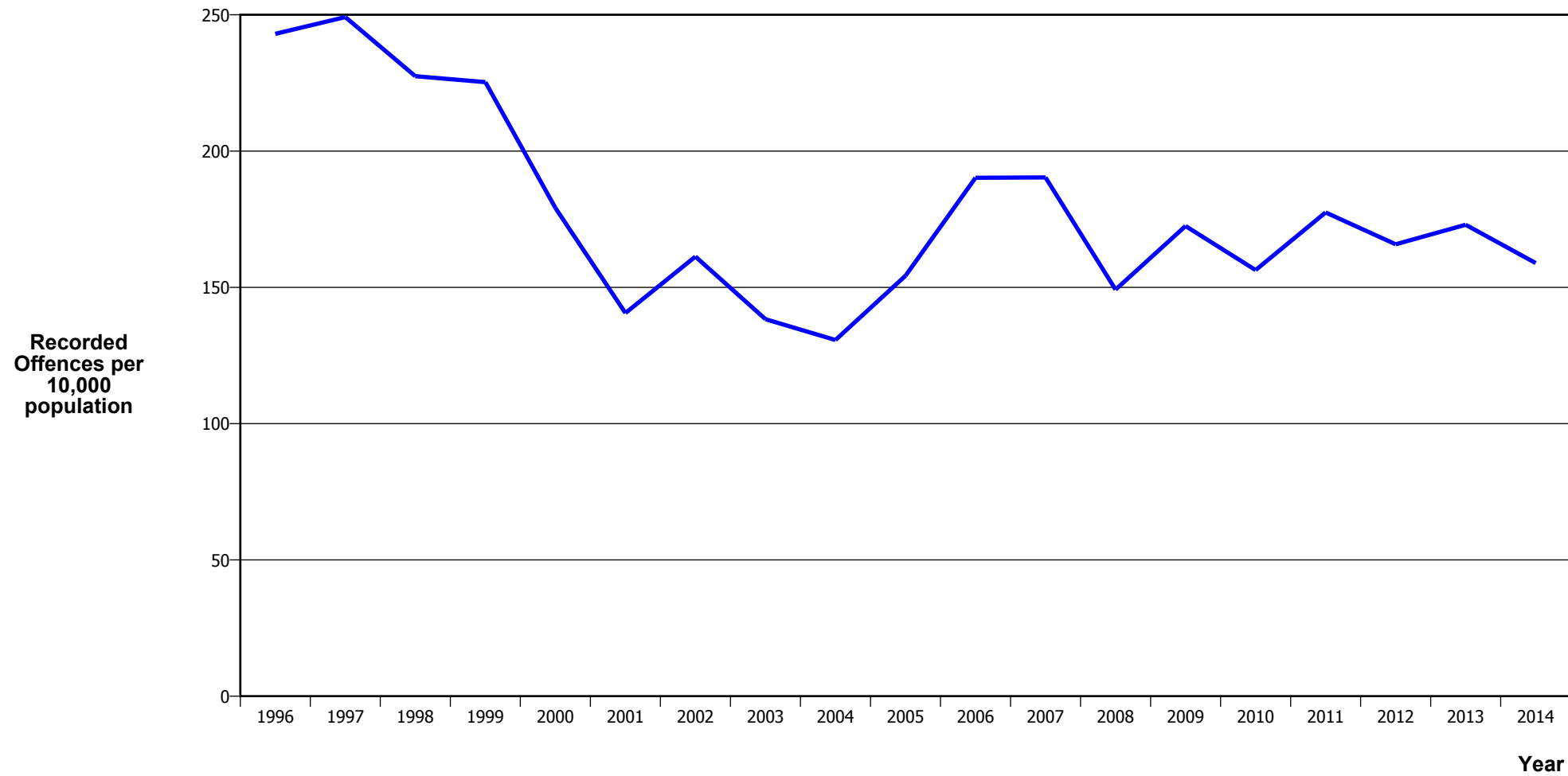
Calendar Year	1996	1997	1998	1999	2000	2001	2002	2003	2004	2005	2006	2007	2008	2009	2010	2011	2012	2013	2014
Recorded Offences	1,199	1,171	1,091	1,090	1,080	1,018	1,037	1,107	1,074	1,158	1,336	1,520	1,866	2,432	2,525	2,363	2,224	2,209	2,591
Recorded per 10,000 Population	41.7	40.2	37.1	36.9	36.4	34.2	34.3	36.0	34.4	36.6	41.7	46.8	56.8	73.0	74.8	69.0	64.2	63.2	73.0

ROBBERY



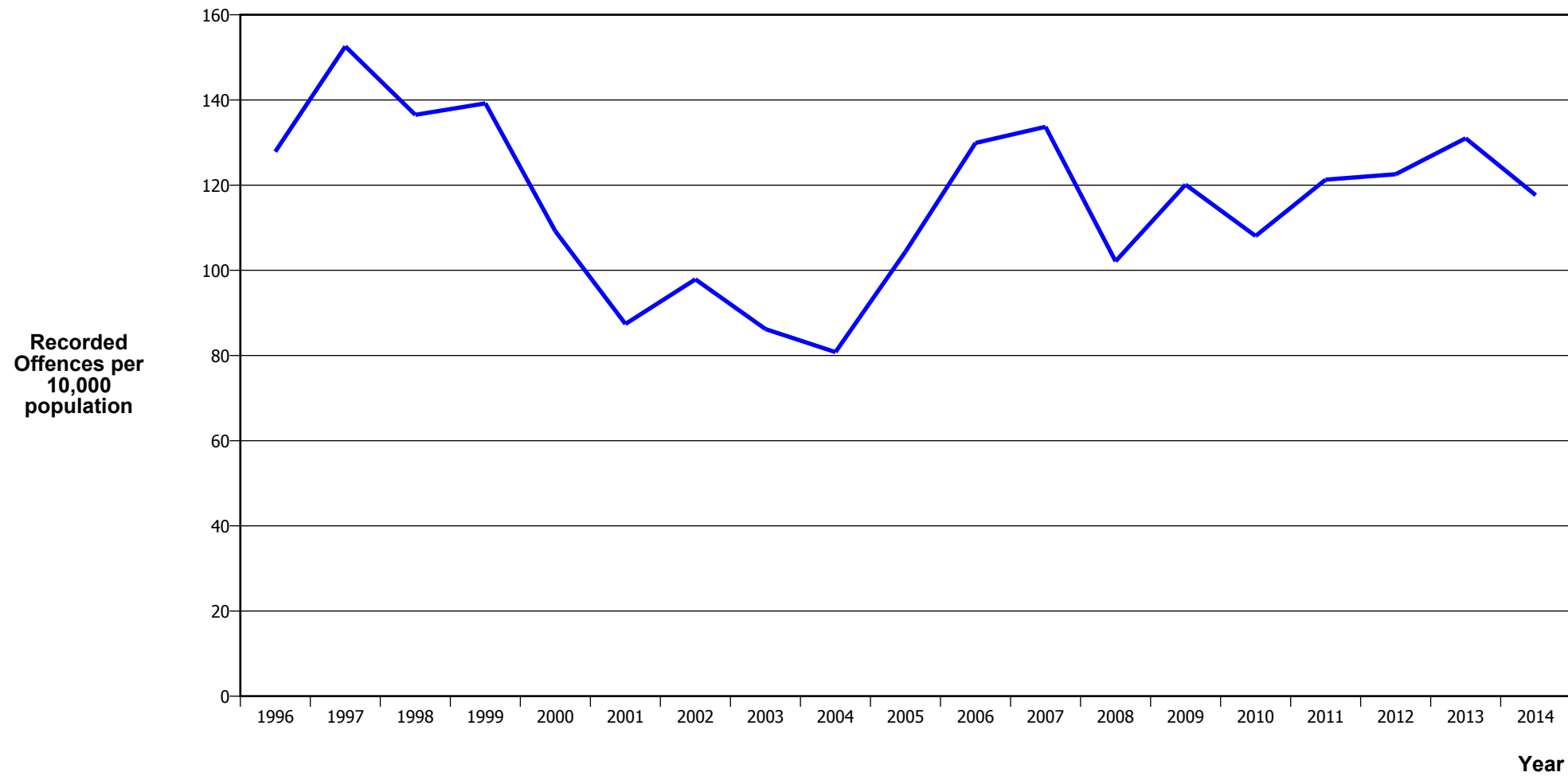
Calendar Year	1996	1997	1998	1999	2000	2001	2002	2003	2004	2005	2006	2007	2008	2009	2010	2011	2012	2013	2014
Recorded Offences	185	147	162	152	159	134	145	120	143	114	168	219	197	223	212	210	154	155	159
Recorded per 10,000 Population	6.4	5.0	5.5	5.1	5.4	4.5	4.8	3.9	4.6	3.6	5.2	6.7	6.0	6.7	6.3	6.1	4.4	4.4	4.5

BURGLARY (TOTAL)



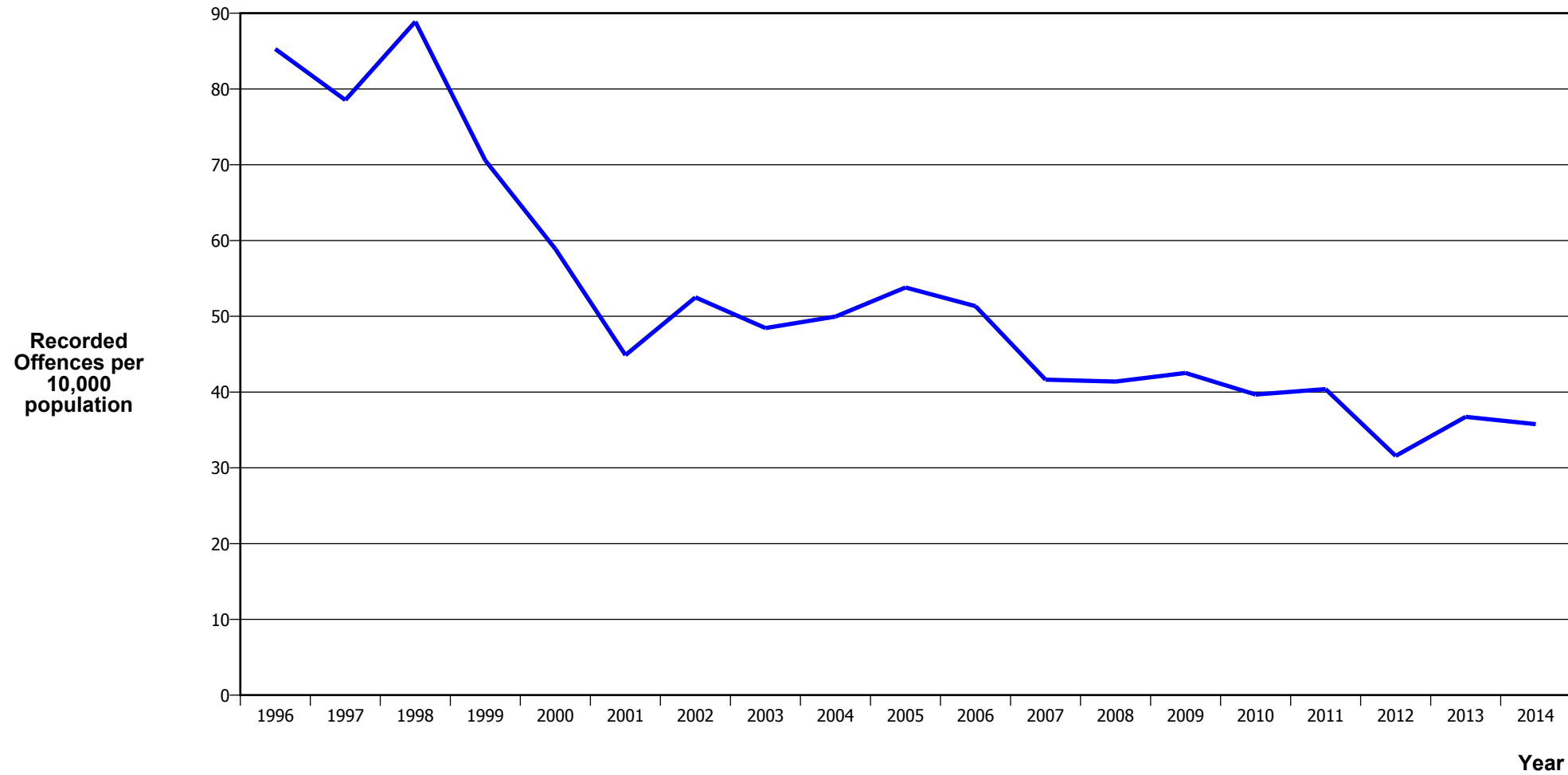
Calendar Year	1996	1997	1998	1999	2000	2001	2002	2003	2004	2005	2006	2007	2008	2009	2010	2011	2012	2013	2014
Recorded Offences	6,995	7,262	6,687	6,659	5,321	4,185	4,875	4,254	4,083	4,884	6,099	6,180	4,902	5,746	5,281	6,077	5,740	6,046	5,639
Recorded per 10,000 Population	243.0	249.2	227.5	225.3	179.2	140.6	161.3	138.3	130.7	154.3	190.2	190.3	149.2	172.5	156.3	177.5	165.8	173.0	158.9

BURGLARY (DWELLING)



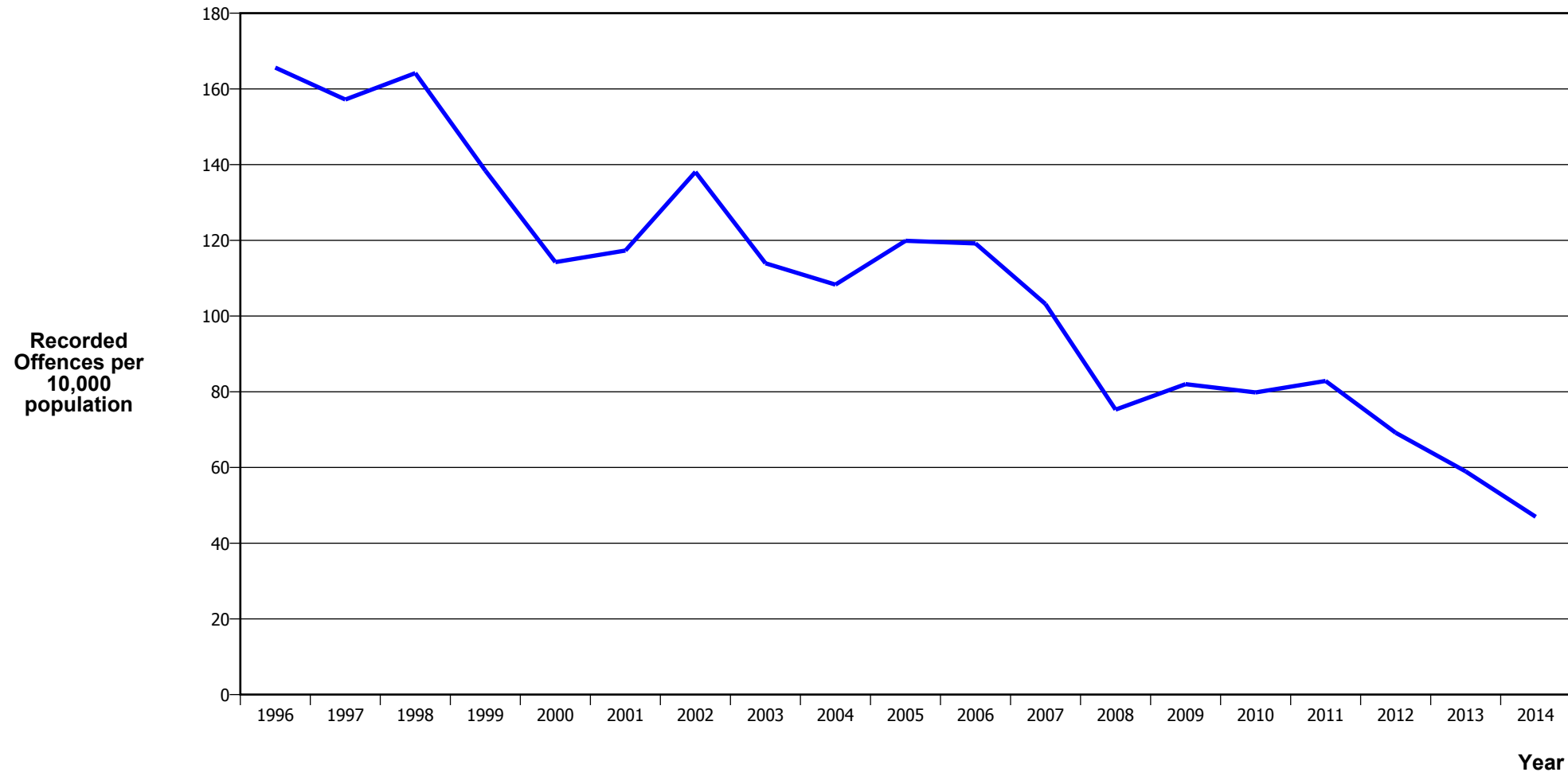
Calendar Year	1996	1997	1998	1999	2000	2001	2002	2003	2004	2005	2006	2007	2008	2009	2010	2011	2012	2013	2014
Recorded Offences	3,681	4,447	4,013	4,114	3,242	2,602	2,959	2,651	2,524	3,305	4,166	4,341	3,356	4,001	3,650	4,153	4,243	4,579	4,175
Recorded per 10,000 Population	127.9	152.6	136.5	139.2	109.2	87.4	97.9	86.2	80.8	104.4	129.9	133.7	102.1	120.1	108.1	121.3	122.6	131.0	117.6

VEHICLES STOLEN



Calendar Year	1996	1997	1998	1999	2000	2001	2002	2003	2004	2005	2006	2007	2008	2009	2010	2011	2012	2013	2014
Recorded Offences	2,455	2,289	2,613	2,085	1,749	1,336	1,587	1,490	1,561	1,703	1,646	1,352	1,360	1,416	1,340	1,383	1,093	1,284	1,269
Recorded per 10,000 Population	85.3	78.5	88.9	70.5	58.9	44.9	52.5	48.4	50.0	53.8	51.3	41.6	41.4	42.5	39.7	40.4	31.6	36.7	35.8

THEFT EX CAR



Calendar Year	1996	1997	1998	1999	2000	2001	2002	2003	2004	2005	2006	2007	2008	2009	2010	2011	2012	2013	2014
Recorded Offences	4,768	4,581	4,826	4,091	3,393	3,492	4,174	3,504	3,384	3,795	3,822	3,350	2,474	2,732	2,696	2,837	2,395	2,061	1,667
Recorded per 10,000 Population	165.6	157.2	164.2	138.4	114.3	117.3	138.1	113.9	108.3	119.9	119.2	103.2	75.3	82.0	79.8	82.8	69.2	59.0	47.0

Population Data

Population data is used in this release to calculate crime rates. They have been derived from population estimates as at 30 June each year that have been obtained from Statistics New Zealand.

The estimated resident population is based on the census usually resident population count, with adjustments for residents missed or counted more than once by the census (net census undercount), and for residents temporarily overseas on census night.

These population estimates exclude the number of international students who are studying in New Zealand for less than 12 months.

Year	Population
1996	287,850
1997	291,440
1998	293,950
1999	295,550
2000	296,970
2001	297,700
2002	302,290
2003	307,560
2004	312,410
2005	316,570
2006	320,660
2007	324,690
2008	328,580
2009	333,080
2010	337,780
2011	342,430
2012	346,220
2013	349,540
2014	354,880

General Definitions

Recorded Offences: the number of breaches of the New Zealand law recorded by Police. This includes offences specified in the Crimes Act and other legislations, such as the Summary Offences Act, Local Government Act, etc.

Resolved Offences: the number of recorded offences where an offender has been identified and dealt with (e.g. warned, cautioned, prosecuted, etc).

Resolution Rate: the proportion of recorded offences that have been resolved.

Recorded per 10,000 population: the number of recorded offences for every 10,000 people. This is also referred as the crime rate per 10,000 population.

ANZSOC: The Australian and New Zealand Standard Offence Classification. The offence classification is divided into 16 major offence divisions.

Definition of ANZSOC Divisions

1. Homicide and related offences: Unlawfully kill, attempt to unlawfully kill or conspiracy to kill another person.
2. Acts intended to cause injury: Acts, excluding attempted murder and those resulting in death, which are intended to cause non-fatal injury or harm to another person and where there is no sexual or acquisitive element.
3. Sexual assault and related offences: Acts, or intent of acts, of a sexual nature against another person, which are non-consensual or where consent is proscribed.
4. Dangerous or negligent acts endangering persons: Dangerous or negligent acts which, though not intended to cause harm, actually or potentially result in injury to oneself or another person.
5. Abduction, harassment and other offences against person: Acts intended to threaten or harass, or acts that unlawfully deprive another person of their freedom of movement, that are against that person's will or against the will of any parent, guardian or other person having lawful custody or care of that person.
6. Robbery, extortion and related offences: Acts intended to unlawfully gain money, property or other items of value from, or to cause detriment to, another person by using the threat of force or any other coercive measure.
7. Unlawful entry with intent / burglary, break and enter: The unlawful entry of a structure with the intent to commit an offence, where the entry is either forced or unforced.
8. Theft and related and offences: The unlawful taking or obtaining of money or goods, not involving the use of force or violence, coercion or deception, with intent to permanently or temporarily deprive the owner or possessor of the use of the money or goods, or the receiving or handling of money or goods obtained unlawfully.

9. Fraud, deception and related offences: Offences involving a dishonest act or omission carried out with the purpose of deceiving to obtain a benefit.

10. Illicit drug offences: The possessing, selling, dealing or trafficking, importing or exporting, manufacturing or cultivating of drugs or other substances prohibited under legislation.

11. Prohibited and regulated weapons and explosives offences: Offences involving prohibited or regulated weapons and explosives. Those offences also involving assault, sexual assault or robbery are coded to the relevant group within Assault, Sexual assaults and Robbery respectively.

12. Property damage and environmental pollution: The wilful and unlawful destruction, damage or defacement of public or private property, or the pollution of property or a definable entity held in common by the community.

13. Public order offences: Offences relating personal conduct that involves, or may lead to, a breach of public order or decency, or that is indicative of criminal intent, or that is otherwise regulated or prohibited on moral or ethical grounds. In general these offences do not involve a specific victim or victims; however some offences, such as offensive language and offensive behaviour, may be directed towards a single victim.

14. Traffic and vehicle regulatory offences: Offences relating to vehicles and most forms of traffic, including offences pertaining to the licensing, registration, roadworthiness, or use of vehicles, bicycle offences and pedestrian offences.

15. Offences against justice procedures, government security and government operations: An act or omission that is deemed to be prejudicial to the effective carrying out of justice procedures or any government operations. This includes general government operations as well as those specifically concerned with maintaining government security.

16. Miscellaneous offences: Offences involving the breach of statutory rules or regulations governing activities that are prima facie legal, where such offences are not explicitly dealt with under any other division. If an offence is specified under regulation and involves an act that would be illegal under common law or general criminal legislation, the offence is dealt with under the appropriate generic group.