

# **WAIKATO DISTRICT CRIME STATISTICS 2010**



**A Summary of  
Recorded and Resolved Offence  
Statistics**

**POLICE NATIONAL HEADQUARTERS  
April 2011**

**Table of Contents:**

<b>Topic</b>	<b>Page</b>
Report Notes	1
District Summary of Recorded and Resolved Crime, by Division	2-4
District Summary of Recorded and Resolved Crime, by Area	5
District Recorded Crime per 10,000 population, by Division	6-8
District Recorded Crime per 10,000 population, by Area	9
Proportions of Recorded Crime by Categories	10
Crime Trends	11
Total Crime	12
Murder	13
Serious Assaults Resulting in Injury	14
Public Place Assaults	15
Robbery	16
Burglary	17
Burglary (Dwelling)	18
Vehicles Stolen	19
Theft Ex Car	20
Population Data	21
General Definition	22-23

## REPORT NOTES:

This report presents official statistics for recorded and resolved offences. The format has been revised significantly from that used in previous years. In particular, offences are grouped into different categories than previously used. This aligns with direction given by the Justice Sector Information Strategy for the whole Justice sector to categorise offences according to the Australian Standard Offence Classification (ASOC). This change does not change the total number of offences reported, just how they are grouped.

In making this change, New Zealand Police has taken the first step towards reporting crime in a way that is comparable with Australia. However, at this stage, important differences still exist that mean statistics are not yet comparable between the two countries. For example, Australian statistics only count the most serious offence on each file, whereas New Zealand reports every offence. Also, Australian statistics count victims, whereas New Zealand Statistics count offences.

Another important change in this report is that pages 11 to 20, which present long-term trends, have been completely revised. The time series has been extended from 10 to 15 years to give a longer history. Also, the measures reported include a number of the statistical indicators that Police recently began publishing provisional data on every month.

As in previous reports, statistics reported in this document are derived from the Police National Intelligence Application (NIA). These Official Statistics for Recorded and Resolved Offences present a snapshot of data in NIA relating to offences that occur within a given year, as at the date 14 days following the end of that year.

Unless the matter is minor where Police attendance is sufficient, a matter that is reported to or discovered by Police where Police believe an offence is likely to have been committed is counted as a recorded offence.

A recorded offence is counted as resolved when Police apprehend an offender and decide how to deal with him/her. (E.g. warn, prosecute, etc.)

Resolution rate is the percentage of recorded offences that are resolved within 14 days of the end of the year being reported on.

If an offence is resolved 15 days or more after the end of the year it will not appear in the Official Crime Statistics for that or any other year. Resolution Rate therefore undercounts the number of cases that Police have resolved. This phenomenon has a more marked impact for some types of offences than others, such as offences that require long investigations (E.g. many serial crimes, burglaries and murders).

When comparing 2010 Statistics with previous years, the reader should also refer to "Report Notes" published in previous years' reports, as previous changes significantly affect year on year trends.

**SUMMARY OF DISTRICT RECORDED AND RESOLVED CRIME, BY DIVISION**  
**Years ending 31 December**

**HOMICIDE AND RELATED OFFENCES**

ASOC Subdivision Description	Recorded 2008	Recorded 2009	Recorded 2010	Variance 2008- 2009	Variance 2009- 2010	Resolved 2008	Resolved 2009	Resolved 2010	Resolution Rate 2008	Resolution Rate 2009	Resolution Rate 2010
ATTEMPTED MURDER	6	0	4	-100.0 %		6	0	4	100.0 %		100.0 %
HOMICIDE AND RELATED OFFENCES NOT FURTHER DEFINED	0	0	0			0	0				
MANSLAUGHTER AND DRIVING CAUSING DEATH	0	1	1		0.0 %	0	0	1		0.0 %	100.0 %
MURDER	1	7	2	600.0 %	-71.4 %	1	6	2	100.0 %	85.7 %	100.0 %
	<b>7</b>	<b>8</b>	<b>7</b>	<b>14.3 %</b>	<b>-12.5 %</b>	<b>7</b>	<b>6</b>	<b>7</b>	<b>100.0 %</b>	<b>75.0 %</b>	<b>100.0 %</b>

**ACTS INTENDED TO CAUSE INJURY**

ASOC Subdivision Description	Recorded 2008	Recorded 2009	Recorded 2010	Variance 2008- 2009	Variance 2009- 2010	Resolved 2008	Resolved 2009	Resolved 2010	Resolution Rate 2008	Resolution Rate 2009	Resolution Rate 2010
ASSAULT	3,272	3,915	3,871	19.7 %	-1.1 %	2,707	3,070	2,694	82.7 %	78.4 %	69.6 %
OTHER ACTS INTENDED TO CAUSE INJURY	11	1	1	-90.9 %	0.0 %	10	1	1	90.9 %	100.0 %	100.0 %
	<b>3,283</b>	<b>3,916</b>	<b>3,872</b>	<b>19.3 %</b>	<b>-1.1 %</b>	<b>2,717</b>	<b>3,071</b>	<b>2,695</b>	<b>82.8 %</b>	<b>78.4 %</b>	<b>69.6 %</b>

**SEXUAL ASSAULT AND RELATED OFFENCES**

ASOC Subdivision Description	Recorded 2008	Recorded 2009	Recorded 2010	Variance 2008- 2009	Variance 2009- 2010	Resolved 2008	Resolved 2009	Resolved 2010	Resolution Rate 2008	Resolution Rate 2009	Resolution Rate 2010
NON-ASSAULTIVE SEXUAL OFFENCES	2	7	6	250.0 %	-14.3 %	1	3	4	50.0 %	42.9 %	66.7 %
SEXUAL ASSAULT	237	216	269	-8.9 %	24.5 %	135	119	154	57.0 %	55.1 %	57.2 %
	<b>239</b>	<b>223</b>	<b>275</b>	<b>-6.7 %</b>	<b>23.3 %</b>	<b>136</b>	<b>122</b>	<b>158</b>	<b>56.9 %</b>	<b>54.7 %</b>	<b>57.5 %</b>

**DANGEROUS OR NEGLIGENT ACTS ENDANGERING PERSONS**

ASOC Subdivision Description	Recorded 2008	Recorded 2009	Recorded 2010	Variance 2008- 2009	Variance 2009- 2010	Resolved 2008	Resolved 2009	Resolved 2010	Resolution Rate 2008	Resolution Rate 2009	Resolution Rate 2010
OTHER DANGEROUS OR NEGLIGENT ACTS ENDANGERING PERSONS	63	41	53	-34.9 %	29.3 %	45	24	25	71.4 %	58.5 %	47.2 %
	<b>63</b>	<b>41</b>	<b>53</b>	<b>-34.9 %</b>	<b>29.3 %</b>	<b>45</b>	<b>24</b>	<b>25</b>	<b>71.4 %</b>	<b>58.5 %</b>	<b>47.2 %</b>

**ABDUCTION, HARASSMENT AND OTHER RELATED OFFENCES AGAINST A PERSON**

ASOC Subdivision Description	Recorded 2008	Recorded 2009	Recorded 2010	Variance 2008- 2009	Variance 2009- 2010	Resolved 2008	Resolved 2009	Resolved 2010	Resolution Rate 2008	Resolution Rate 2009	Resolution Rate 2010
ABDUCTION AND KIDNAPPING	38	21	16	-44.7 %	-23.8 %	32	17	12	84.2 %	81.0 %	75.0 %
HARASSMENT AND THREATENING BEHAVIOUR	721	1,083	1,117	50.2 %	3.1 %	514	737	616	71.3 %	68.1 %	55.1 %
	<b>759</b>	<b>1,104</b>	<b>1,133</b>	<b>45.5 %</b>	<b>2.6 %</b>	<b>546</b>	<b>754</b>	<b>628</b>	<b>71.9 %</b>	<b>68.3 %</b>	<b>55.4 %</b>

**ROBBERY, EXTORTION AND RELATED OFFENCES**

ASOC Subdivision Description	Recorded 2008	Recorded 2009	Recorded 2010	Variance 2008- 2009	Variance 2009- 2010	Resolved 2008	Resolved 2009	Resolved 2010	Resolution Rate 2008	Resolution Rate 2009	Resolution Rate 2010
BLACKMAIL AND EXTORTION	13	10	13	-23.1 %	30.0 %	8	3	7	61.5 %	30.0 %	53.8 %
ROBBERY	197	223	212	13.2 %	-4.9 %	108	113	81	54.8 %	50.7 %	38.2 %
	<b>210</b>	<b>233</b>	<b>225</b>	<b>11.0 %</b>	<b>-3.4 %</b>	<b>116</b>	<b>116</b>	<b>88</b>	<b>55.2 %</b>	<b>49.8 %</b>	<b>39.1 %</b>

**UNLAWFUL ENTRY WITH INTENT/BURGLARY, BREAK AND ENTER**

ASOC Subdivision Description	Recorded 2008	Recorded 2009	Recorded 2010	Variance 2008- 2009	Variance 2009- 2010	Resolved 2008	Resolved 2009	Resolved 2010	Resolution Rate 2008	Resolution Rate 2009	Resolution Rate 2010
UNLAWFUL ENTRY WITH INTENT/BURGLARY, BREAK AND ENTER	4,902	5,746	5,281	17.2 %	-8.1 %	989	891	763	20.2 %	15.5 %	14.4 %
	<b>4,902</b>	<b>5,746</b>	<b>5,281</b>	<b>17.2 %</b>	<b>-8.1 %</b>	<b>989</b>	<b>891</b>	<b>763</b>	<b>20.2 %</b>	<b>15.5 %</b>	<b>14.4 %</b>

**SUMMARY OF DISTRICT RECORDED AND RESOLVED CRIME, BY DIVISION**  
**Years ending 31 December**

**THEFT AND RELATED OFFENCES**

ASOC Subdivision Description	Recorded 2008	Recorded 2009	Recorded 2010	Variance 2008- 2009	Variance 2009- 2010	Resolved 2008	Resolved 2009	Resolved 2010	Resolution Rate 2008	Resolution Rate 2009	Resolution Rate 2010
ILLEGAL USE OF PROPERTY (EXCEPT MOTOR VEHICLES)	335	313	245	-6.6 %	-21.7 %	24	21	17	7.2 %	6.7 %	6.9 %
MOTOR VEHICLE THEFT AND RELATED OFFENCES	3,834	4,148	4,036	8.2 %	-2.7 %	505	488	504	13.2 %	11.8 %	12.5 %
RECEIVE OR HANDLE PROCEEDS OF CRIME	201	209	185	4.0 %	-11.5 %	196	199	178	97.5 %	95.2 %	96.2 %
THEFT (EXCEPT MOTOR VEHICLES)	5,571	6,443	6,536	15.7 %	1.4 %	1,775	1,763	1,598	31.9 %	27.4 %	24.4 %
	<b>9,941</b>	<b>11,113</b>	<b>11,002</b>	<b>11.8 %</b>	<b>-1.0 %</b>	<b>2,500</b>	<b>2,471</b>	<b>2,297</b>	<b>25.1 %</b>	<b>22.2 %</b>	<b>20.9 %</b>

**FRAUD, DECEPTION AND RELATED OFFENCES**

ASOC Subdivision Description	Recorded 2008	Recorded 2009	Recorded 2010	Variance 2008- 2009	Variance 2009- 2010	Resolved 2008	Resolved 2009	Resolved 2010	Resolution Rate 2008	Resolution Rate 2009	Resolution Rate 2010
DECEPTIVE BUSINESS/GOVERNMENT PRACTICES	13	5	2	-61.5 %	-60.0 %	12	4	1	92.3 %	80.0 %	50.0 %
FORGERY AND COUNTERFEITING	106	57	37	-46.2 %	-35.1 %	82	35	13	77.4 %	61.4 %	35.1 %
OBTAIN BENEFIT BY DECEPTION	884	621	472	-29.8 %	-24.0 %	580	324	214	65.6 %	52.2 %	45.3 %
OTHER FRAUD AND DECEPTION OFFENCES	38	48	31	26.3 %	-35.4 %	18	12	15	47.4 %	25.0 %	48.4 %
	<b>1,041</b>	<b>731</b>	<b>542</b>	<b>-29.8 %</b>	<b>-25.9 %</b>	<b>692</b>	<b>375</b>	<b>243</b>	<b>66.5 %</b>	<b>51.3 %</b>	<b>44.8 %</b>

**ILLICIT DRUG OFFENCES**

ASOC Subdivision Description	Recorded 2008	Recorded 2009	Recorded 2010	Variance 2008- 2009	Variance 2009- 2010	Resolved 2008	Resolved 2009	Resolved 2010	Resolution Rate 2008	Resolution Rate 2009	Resolution Rate 2010
DEAL OR TRAFFIC IN ILLICIT DRUGS	191	308	195	61.3 %	-36.7 %	173	292	172	90.6 %	94.8 %	88.2 %
IMPORT OR EXPORT ILLICIT DRUGS	4	0	4	-100.0 %		4	0	1	100.0 %		25.0 %
MANUFACTURE OR CULTIVATE ILLICIT DRUGS	242	296	487	22.3 %	64.5 %	216	262	200	89.3 %	88.5 %	41.1 %
OTHER ILLICIT DRUG OFFENCES	511	634	563	24.1 %	-11.2 %	498	624	551	97.5 %	98.4 %	97.9 %
POSSESS AND/OR USE ILLICIT DRUGS	779	945	858	21.3 %	-9.2 %	753	906	804	96.7 %	95.9 %	93.7 %
	<b>1,727</b>	<b>2,183</b>	<b>2,107</b>	<b>26.4 %</b>	<b>-3.5 %</b>	<b>1,644</b>	<b>2,084</b>	<b>1,728</b>	<b>95.2 %</b>	<b>95.5 %</b>	<b>82.0 %</b>

**PROHIBITED AND REGULATED WEAPONS AND EXPLOSIVES OFFENCES**

ASOC Subdivision Description	Recorded 2008	Recorded 2009	Recorded 2010	Variance 2008- 2009	Variance 2009- 2010	Resolved 2008	Resolved 2009	Resolved 2010	Resolution Rate 2008	Resolution Rate 2009	Resolution Rate 2010
REGULATED WEAPONS/EXPLOSIVES OFFENCES	615	656	539	6.7 %	-17.8 %	573	611	485	93.2 %	93.1 %	90.0 %
	<b>615</b>	<b>656</b>	<b>539</b>	<b>6.7 %</b>	<b>-17.8 %</b>	<b>573</b>	<b>611</b>	<b>485</b>	<b>93.2 %</b>	<b>93.1 %</b>	<b>90.0 %</b>

**PROPERTY DAMAGE AND ENVIRONMENTAL POLLUTION**

ASOC Subdivision Description	Recorded 2008	Recorded 2009	Recorded 2010	Variance 2008- 2009	Variance 2009- 2010	Resolved 2008	Resolved 2009	Resolved 2010	Resolution Rate 2008	Resolution Rate 2009	Resolution Rate 2010
ENVIRONMENTAL POLLUTION	20	9	7	-55.0 %	-22.2 %	12	7	4	60.0 %	77.8 %	57.1 %
PROPERTY DAMAGE	4,480	4,158	4,397	-7.2 %	5.7 %	1,500	1,266	1,264	33.5 %	30.4 %	28.7 %
	<b>4,500</b>	<b>4,167</b>	<b>4,404</b>	<b>-7.4 %</b>	<b>5.7 %</b>	<b>1,512</b>	<b>1,273</b>	<b>1,268</b>	<b>33.6 %</b>	<b>30.5 %</b>	<b>28.8 %</b>

**PUBLIC ORDER OFFENCES**

ASOC Subdivision Description	Recorded 2008	Recorded 2009	Recorded 2010	Variance 2008- 2009	Variance 2009- 2010	Resolved 2008	Resolved 2009	Resolved 2010	Resolution Rate 2008	Resolution Rate 2009	Resolution Rate 2010
DISORDERLY CONDUCT	1,907	1,895	2,053	-0.6 %	8.3 %	1,587	1,505	1,554	83.2 %	79.4 %	75.7 %
OFFENSIVE CONDUCT	98	122	117	24.5 %	-4.1 %	69	73	73	70.4 %	59.8 %	62.4 %
PUBLIC ORDER OFFENCES NOT FURTHER DEFINED	0	1	0		-100.0 %	0	0			0.0 %	
REGULATED PUBLIC ORDER OFFENCES	1,087	1,367	1,294	25.8 %	-5.3 %	1,033	1,324	1,249	95.0 %	96.9 %	96.5 %
	<b>3,092</b>	<b>3,385</b>	<b>3,464</b>	<b>9.5 %</b>	<b>2.3 %</b>	<b>2,689</b>	<b>2,902</b>	<b>2,876</b>	<b>87.0 %</b>	<b>85.7 %</b>	<b>83.0 %</b>

**SUMMARY OF DISTRICT RECORDED AND RESOLVED CRIME, BY DIVISION**  
**Years ending 31 December**

**OFFENCES AGAINST JUSTICE PROCEDURES, GOVERNMENT SECURITY AND GOVERNMENT OPERATIONS**

ASOC Subdivision Description	Recorded 2008	Recorded 2009	Recorded 2010	Variance 2008- 2009	Variance 2009- 2010	Resolved 2008	Resolved 2009	Resolved 2010	Resolution Rate 2008	Resolution Rate 2009	Resolution Rate 2010
BREACH OF COMMUNITY-BASED ORDER	705	809	782	14.8 %	-3.3 %	687	804	707	97.4 %	99.4 %	90.4 %
BREACH OF CUSTODIAL ORDER OFFENCES	61	61	43	0.0 %	-29.5 %	56	57	39	91.8 %	93.4 %	90.7 %
BREACH OF VIOLENCE AND NON-VIOLENCE RESTRAINING ORDERS	389	441	552	13.4 %	25.2 %	348	361	390	89.5 %	81.9 %	70.7 %
OFFENCES AGAINST GOVERNMENT OPERATIONS	11	9	12	-18.2 %	33.3 %	5	6	1	45.5 %	66.7 %	8.3 %
OFFENCES AGAINST GOVERNMENT SECURITY	0	0	1			0	0	0			0.0 %
OFFENCES AGAINST JUSTICE PROCEDURES	461	487	396	5.6 %	-18.7 %	451	479	383	97.8 %	98.4 %	96.7 %
OFFENCES AGAINST JUSTICE PROCEDURES, GOVERNMENT SECURITY AND GOVERNMENT OPERATIONS NOT FURTHER DEFINED	1	2	2	100.0 %	0.0 %	0	2	1	0.0 %	100.0 %	50.0 %
	<b>1,628</b>	<b>1,809</b>	<b>1,788</b>	<b>11.1 %</b>	<b>-1.2 %</b>	<b>1,547</b>	<b>1,709</b>	<b>1,521</b>	<b>95.0 %</b>	<b>94.5 %</b>	<b>85.1 %</b>

**MISCELLANEOUS OFFENCES**

ASOC Subdivision Description	Recorded 2008	Recorded 2009	Recorded 2010	Variance 2008- 2009	Variance 2009- 2010	Resolved 2008	Resolved 2009	Resolved 2010	Resolution Rate 2008	Resolution Rate 2009	Resolution Rate 2010
COMMERCIAL/INDUSTRY/FINANCIAL REGULATION	3	3	1	0.0 %	-66.7 %	2	3	1	66.7 %	100.0 %	100.0 %
DEFAMATION, LIBEL AND PRIVACY OFFENCES	1	4	6	300.0 %	50.0 %	0	1	4	0.0 %	25.0 %	66.7 %
OTHER MISCELLANEOUS OFFENCES	45	57	57	26.7 %	0.0 %	32	45	34	71.1 %	78.9 %	59.6 %
PUBLIC HEALTH AND SAFETY OFFENCES	0	5	8		60.0 %	0	4	1		80.0 %	12.5 %
	<b>49</b>	<b>69</b>	<b>72</b>	<b>40.8 %</b>	<b>4.3 %</b>	<b>34</b>	<b>53</b>	<b>40</b>	<b>69.4 %</b>	<b>76.8 %</b>	<b>55.6 %</b>

<b>TOTAL</b>	<b>32,056</b>	<b>35,384</b>	<b>34,764</b>	<b>10.4 %</b>	<b>-1.8 %</b>	<b>15,747</b>	<b>16,462</b>	<b>14,822</b>	<b>49.1 %</b>	<b>46.5 %</b>	<b>42.6 %</b>
--------------	---------------	---------------	---------------	---------------	---------------	---------------	---------------	---------------	---------------	---------------	---------------

**SUMMARY OF DISTRICT RECORDED AND RESOLVED CRIME, BY AREA**  
**years ending 31 December**

**TOTAL CRIME**

Area Description	Recorded 2008	Recorded 2009	Recorded 2010	Variance 2008- 2009	Variance 2009- 2010	Resolved 2008	Resolved 2009	Resolved 2010	Resolution Rate 2008	Resolution Rate 2009	Resolution Rate 2010
Hamilton City	18,593	21,572	20,971	16.0 %	-2.8 %	8,646	9,156	8,146	46.5 %	42.4 %	38.8 %
Waikato East	7,138	7,272	7,175	1.9 %	-1.3 %	3,805	3,912	3,403	53.3 %	53.8 %	47.4 %
Waikato West	6,325	6,540	6,618	3.4 %	1.2 %	3,296	3,394	3,273	52.1 %	51.9 %	49.5 %
<b>Total</b>	<b>32,056</b>	<b>35,384</b>	<b>34,764</b>	<b>10.4 %</b>	<b>-1.8 %</b>	<b>15,747</b>	<b>16,462</b>	<b>14,822</b>	<b>49.1 %</b>	<b>46.5 %</b>	<b>42.6 %</b>

**DISTRICT RECORDED CRIME PER 10,000 POPULATION, BY DIVISION**  
**Years ending 31 December**

**HOMICIDE AND RELATED OFFENCES**

ASOC Subdivision Description	Recorded per 10,000 pop 2008	Recorded per 10,000 pop 2009	Recorded per 10,000 pop 2010
ATTEMPTED MURDER	0.18	0.00	0.12
HOMICIDE AND RELATED OFFENCES NOT FURTHER DEFINED	0.00	0.00	0.00
MANSLAUGHTER AND DRIVING CAUSING DEATH	0.00	0.03	0.03
MURDER	0.03	0.21	0.06
	<b>0.21</b>	<b>0.24</b>	<b>0.21</b>

**ACTS INTENDED TO CAUSE INJURY**

ASOC Subdivision Description	Recorded per 10,000 pop 2008	Recorded per 10,000 pop 2009	Recorded per 10,000 pop 2010
ASSAULT	99.94	118.15	115.40
OTHER ACTS INTENDED TO CAUSE INJURY	0.34	0.03	0.03
	<b>100.28</b>	<b>118.18</b>	<b>115.43</b>

**SEXUAL ASSAULT AND RELATED OFFENCES**

ASOC Subdivision Description	Recorded per 10,000 pop 2008	Recorded per 10,000 pop 2009	Recorded per 10,000 pop 2010
NON-ASSAULTIVE SEXUAL OFFENCES	0.06	0.21	0.18
SEXUAL ASSAULT	7.24	6.52	8.02
	<b>7.30</b>	<b>6.73</b>	<b>8.20</b>

**DANGEROUS OR NEGLIGENT ACTS ENDANGERING PERSONS**

ASOC Subdivision Description	Recorded per 10,000 pop 2008	Recorded per 10,000 pop 2009	Recorded per 10,000 pop 2010
OTHER DANGEROUS OR NEGLIGENT ACTS ENDANGERING PERSONS	1.92	1.24	1.58
	<b>1.92</b>	<b>1.24</b>	<b>1.58</b>

**ABDUCTION, HARASSMENT AND OTHER RELATED OFFENCES AGAINST A PERSON**

ASOC Subdivision Description	Recorded per 10,000 pop 2008	Recorded per 10,000 pop 2009	Recorded per 10,000 pop 2010
ABDUCTION AND KIDNAPPING	1.16	0.63	0.48
HARASSMENT AND THREATENING BEHAVIOUR	22.02	32.68	33.30
	<b>23.18</b>	<b>33.32</b>	<b>33.78</b>

**ROBBERY, EXTORTION AND RELATED OFFENCES**

ASOC Subdivision Description	Recorded per 10,000 pop 2008	Recorded per 10,000 pop 2009	Recorded per 10,000 pop 2010
BLACKMAIL AND EXTORTION	0.40	0.30	0.39
ROBBERY	6.02	6.73	6.32
	<b>6.41</b>	<b>7.03</b>	<b>6.71</b>



## DISTRICT RECORDED CRIME PER 10,000 POPULATION, BY DIVISION

Years ending 31 December

### UNLAWFUL ENTRY WITH INTENT/BURGLARY, BREAK AND ENTER

ASOC Subdivision Description	Recorded per 10,000 pop 2008	Recorded per 10,000 pop 2009	Recorded per 10,000 pop 2010
UNLAWFUL ENTRY WITH INTENT/BURGLARY, BREAK AND ENTER	149.73	173.41	157.43
	<b>149.73</b>	<b>173.41</b>	<b>157.43</b>

### THEFT AND RELATED OFFENCES

ASOC Subdivision Description	Recorded per 10,000 pop 2008	Recorded per 10,000 pop 2009	Recorded per 10,000 pop 2010
ILLEGAL USE OF PROPERTY (EXCEPT MOTOR VEHICLES)	10.23	9.45	7.30
MOTOR VEHICLE THEFT AND RELATED OFFENCES	117.11	125.18	120.32
RECEIVE OR HANDLE PROCEEDS OF CRIME	6.14	6.31	5.51
THEFT (EXCEPT MOTOR VEHICLES)	170.16	194.45	194.84
	<b>303.64</b>	<b>335.39</b>	<b>327.98</b>

### FRAUD, DECEPTION AND RELATED OFFENCES

ASOC Subdivision Description	Recorded per 10,000 pop 2008	Recorded per 10,000 pop 2009	Recorded per 10,000 pop 2010
DECEPTIVE BUSINESS/GOVERNMENT PRACTICES	0.40	0.15	0.06
FORGERY AND COUNTERFEITING	3.24	1.72	1.10
OBTAIN BENEFIT BY DECEPTION	27.00	18.74	14.07
OTHER FRAUD AND DECEPTION OFFENCES	1.16	1.45	0.92
	<b>31.80</b>	<b>22.06</b>	<b>16.16</b>

### ILLICIT DRUG OFFENCES

ASOC Subdivision Description	Recorded per 10,000 pop 2008	Recorded per 10,000 pop 2009	Recorded per 10,000 pop 2010
DEAL OR TRAFFIC IN ILLICIT DRUGS	5.83	9.30	5.81
IMPORT OR EXPORT ILLICIT DRUGS	0.12	0.00	0.12
MANUFACTURE OR CULTIVATE ILLICIT DRUGS	7.39	8.93	14.52
OTHER ILLICIT DRUG OFFENCES	15.61	19.13	16.78
POSSESS AND/OR USE ILLICIT DRUGS	23.79	28.52	25.58
	<b>52.75</b>	<b>65.88</b>	<b>62.81</b>

### PROHIBITED AND REGULATED WEAPONS AND EXPLOSIVES OFFENCES

ASOC Subdivision Description	Recorded per 10,000 pop 2008	Recorded per 10,000 pop 2009	Recorded per 10,000 pop 2010
REGULATED WEAPONS/EXPLOSIVES OFFENCES	18.78	19.80	16.07
	<b>18.78</b>	<b>19.80</b>	<b>16.07</b>

# DISTRICT RECORDED CRIME PER 10,000 POPULATION, BY DIVISION

Years ending 31 December

## PROPERTY DAMAGE AND ENVIRONMENTAL POLLUTION

ASOC Subdivision Description	Recorded per 10,000 pop 2008	Recorded per 10,000 pop 2009	Recorded per 10,000 pop 2010
ENVIRONMENTAL POLLUTION	0.61	0.27	0.21
PROPERTY DAMAGE	136.84	125.49	131.08
	<b>137.45</b>	<b>125.76</b>	<b>131.29</b>

## PUBLIC ORDER OFFENCES

ASOC Subdivision Description	Recorded per 10,000 pop 2008	Recorded per 10,000 pop 2009	Recorded per 10,000 pop 2010
DISORDERLY CONDUCT	58.25	57.19	61.20
OFFENSIVE CONDUCT	2.99	3.68	3.49
PUBLIC ORDER OFFENCES NOT FURTHER DEFINED	0.00	0.03	0.00
REGULATED PUBLIC ORDER OFFENCES	33.20	41.26	38.58
	<b>94.44</b>	<b>102.16</b>	<b>103.26</b>

## OFFENCES AGAINST JUSTICE PROCEDURES, GOVERNMENT SECURITY AND GOVERNMENT OPERATIONS

ASOC Subdivision Description	Recorded per 10,000 pop 2008	Recorded per 10,000 pop 2009	Recorded per 10,000 pop 2010
BREACH OF COMMUNITY-BASED ORDER	21.53	24.42	23.31
BREACH OF CUSTODIAL ORDER OFFENCES	1.86	1.84	1.28
BREACH OF VIOLENCE AND NON-VIOLENCE RESTRAINING ORDERS	11.88	13.31	16.46
OFFENCES AGAINST GOVERNMENT OPERATIONS	0.34	0.27	0.36
OFFENCES AGAINST GOVERNMENT SECURITY	0.00	0.00	0.03
OFFENCES AGAINST JUSTICE PROCEDURES	14.08	14.70	11.81
OFFENCES AGAINST JUSTICE PROCEDURES, GOVERNMENT SECURITY AND GOVERNMENT OPERATIONS NOT FURTHER DEFINED	0.03	0.06	0.06
	<b>49.73</b>	<b>54.59</b>	<b>53.30</b>

## MISCELLANEOUS OFFENCES

ASOC Subdivision Description	Recorded per 10,000 pop 2008	Recorded per 10,000 pop 2009	Recorded per 10,000 pop 2010
COMMERCIAL/INDUSTRY/FINANCIAL REGULATION	0.09	0.09	0.03
DEFAMATION, LIBEL AND PRIVACY OFFENCES	0.03	0.12	0.18
OTHER MISCELLANEOUS OFFENCES	1.37	1.72	1.70
PUBLIC HEALTH AND SAFETY OFFENCES	0.00	0.15	0.24
	<b>1.50</b>	<b>2.08</b>	<b>2.15</b>

<b>TOTAL</b>	<b>979.1</b>	<b>1,067.9</b>	<b>1,036.3</b>
--------------	--------------	----------------	----------------

# **DISTRICT RECORDED CRIME PER 10,000 POPULATION, BY AREA**

**Years ending 31 December**

<b>Area Description</b>	<b>Recorded per 10,000 pop 2008</b>	<b>Recorded per 10,000 pop 2009</b>	<b>Recorded per 10,000 pop 2010</b>	<b>Percent Variance 2008 to 2009</b>	<b>Percent Variance 2009 to 2010</b>
Hamilton City	1,194.2	1,361.9	1,301.7	14.0 %	-4.4 %
Waikato East	904.1	918.2	900.1	1.6 %	-2.0 %
Waikato West	682.0	697.6	699.3	2.3 %	0.2 %
<b>TOTAL</b>	<b>979.1</b>	<b>1,067.9</b>	<b>1,036.3</b>	<b>9.1 %</b>	<b>-3.0 %</b>

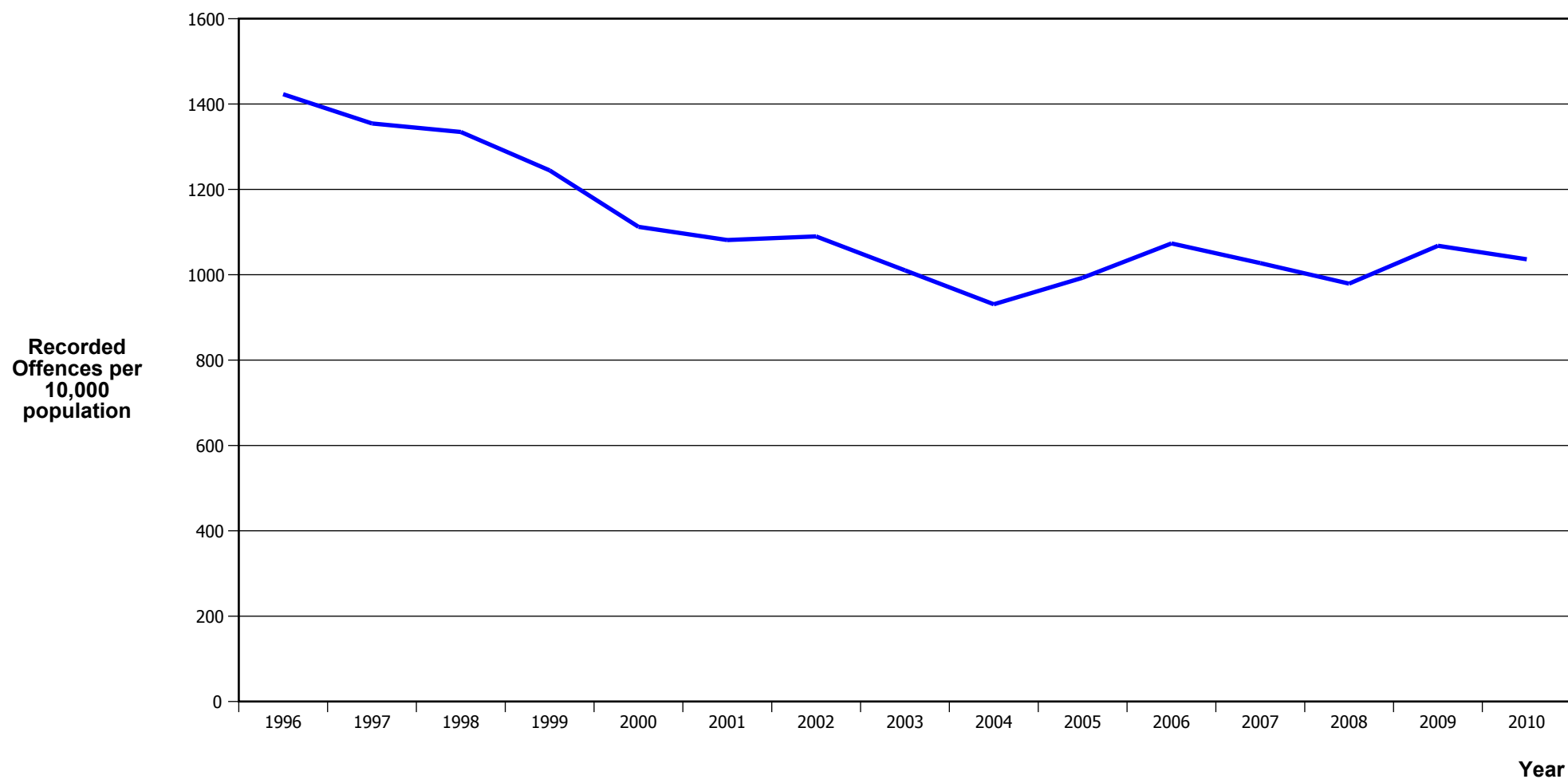
# PROPORTION OF RECORDED CRIME BY DIVISION

Years ending 31 December

ASOC Division Description	Proportions Recorded 2008	Recorded 2008	Proportions Recorded 2009	Recorded 2009	Proportions Recorded 2010	Recorded 2010
HOMICIDE AND RELATED OFFENCES	0.02 %	7	0.02 %	8	0.02 %	7
ACTS INTENDED TO CAUSE INJURY	10.24 %	3,283	11.07 %	3,916	11.14 %	3,872
SEXUAL ASSAULT AND RELATED OFFENCES	0.75 %	239	0.63 %	223	0.79 %	275
DANGEROUS OR NEGLIGENT ACTS ENDANGERING PERSONS	0.20 %	63	0.12 %	41	0.15 %	53
ABDUCTION, HARASSMENT AND OTHER RELATED OFFENCES AGAINST A PERSON	2.37 %	759	3.12 %	1,104	3.26 %	1,133
ROBBERY, EXTORTION AND RELATED OFFENCES	0.66 %	210	0.66 %	233	0.65 %	225
UNLAWFUL ENTRY WITH INTENT/BURGLARY, BREAK AND ENTER	15.29 %	4,902	16.24 %	5,746	15.19 %	5,281
THEFT AND RELATED OFFENCES	31.01 %	9,941	31.41 %	11,113	31.65 %	11,002
FRAUD, DECEPTION AND RELATED OFFENCES	3.25 %	1,041	2.07 %	731	1.56 %	542
ILLICIT DRUG OFFENCES	5.39 %	1,727	6.17 %	2,183	6.06 %	2,107
PROHIBITED AND REGULATED WEAPONS AND EXPLOSIVES OFFENCES	1.92 %	615	1.85 %	656	1.55 %	539
PROPERTY DAMAGE AND ENVIRONMENTAL POLLUTION	14.04 %	4,500	11.78 %	4,167	12.67 %	4,404
PUBLIC ORDER OFFENCES	9.65 %	3,092	9.57 %	3,385	9.96 %	3,464
OFFENCES AGAINST JUSTICE PROCEDURES, GOVERNMENT SECURITY AND GOVERNMENT OPERATIONS	5.08 %	1,628	5.11 %	1,809	5.14 %	1,788
MISCELLANEOUS OFFENCES	0.15 %	49	0.20 %	69	0.21 %	72
	<b>100.00 %</b>	<b>32,056</b>	<b>100.00 %</b>	<b>35,384</b>	<b>100.00 %</b>	<b>34,764</b>

# **CRIME TRENDS**

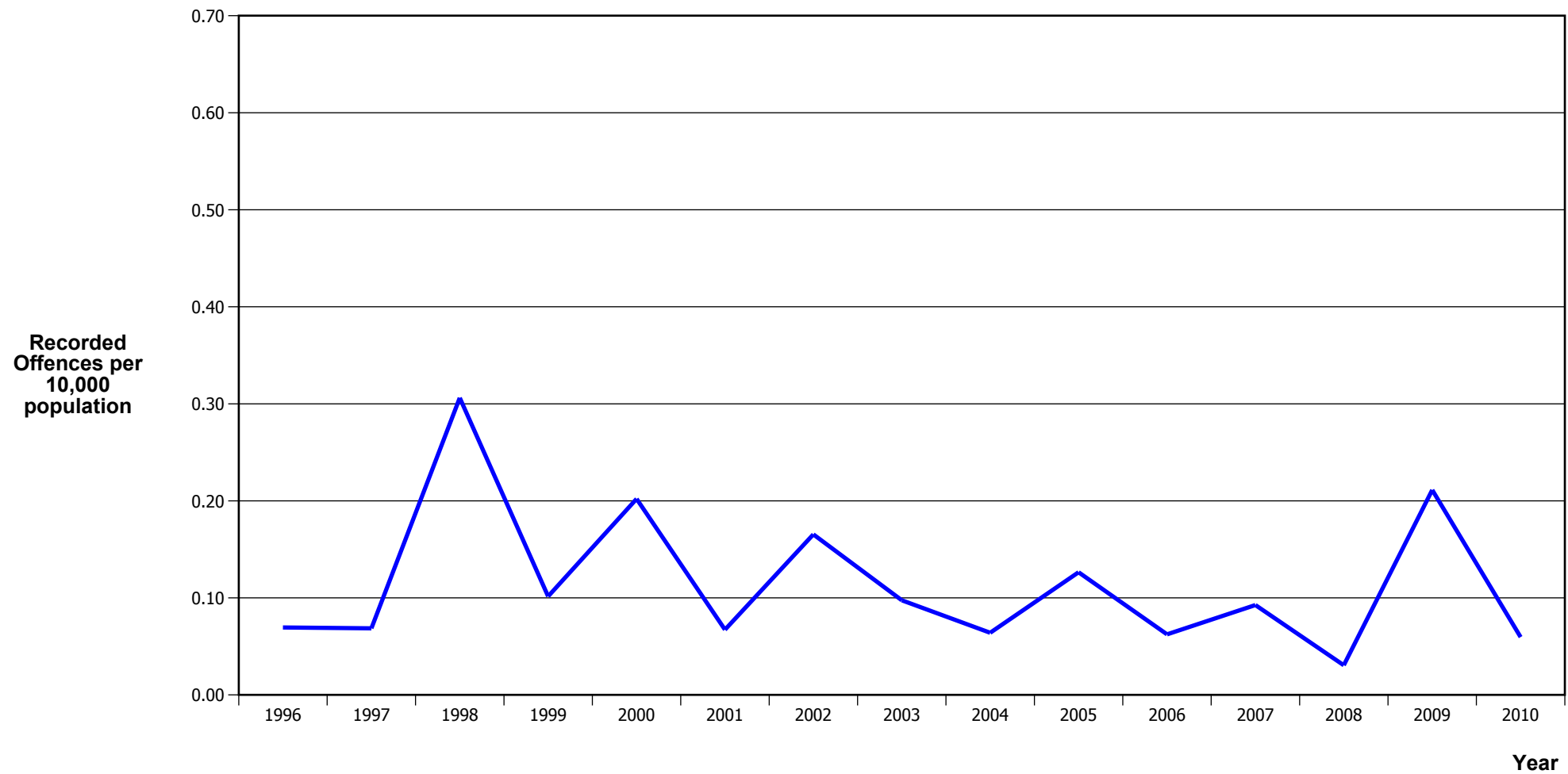
## TOTAL CRIME



Calendar Year	1996	1997	1998	1999	2000	2001	2002	2003	2004	2005	2006	2007	2008	2009	2010
Recorded Offences	40,957	39,471	39,225	36,782	33,029	32,188	32,947	31,075	29,083	31,435	34,415	33,290	32,056	35,384	34,764
Recorded per 10,000 Population	1,422.9	1,354.3	1,334.4	1,244.5	1,112.2	1,081.2	1,089.9	1,010.4	930.9	993.0	1,073.3	1,027.3	979.1	1,067.9	1,036.3

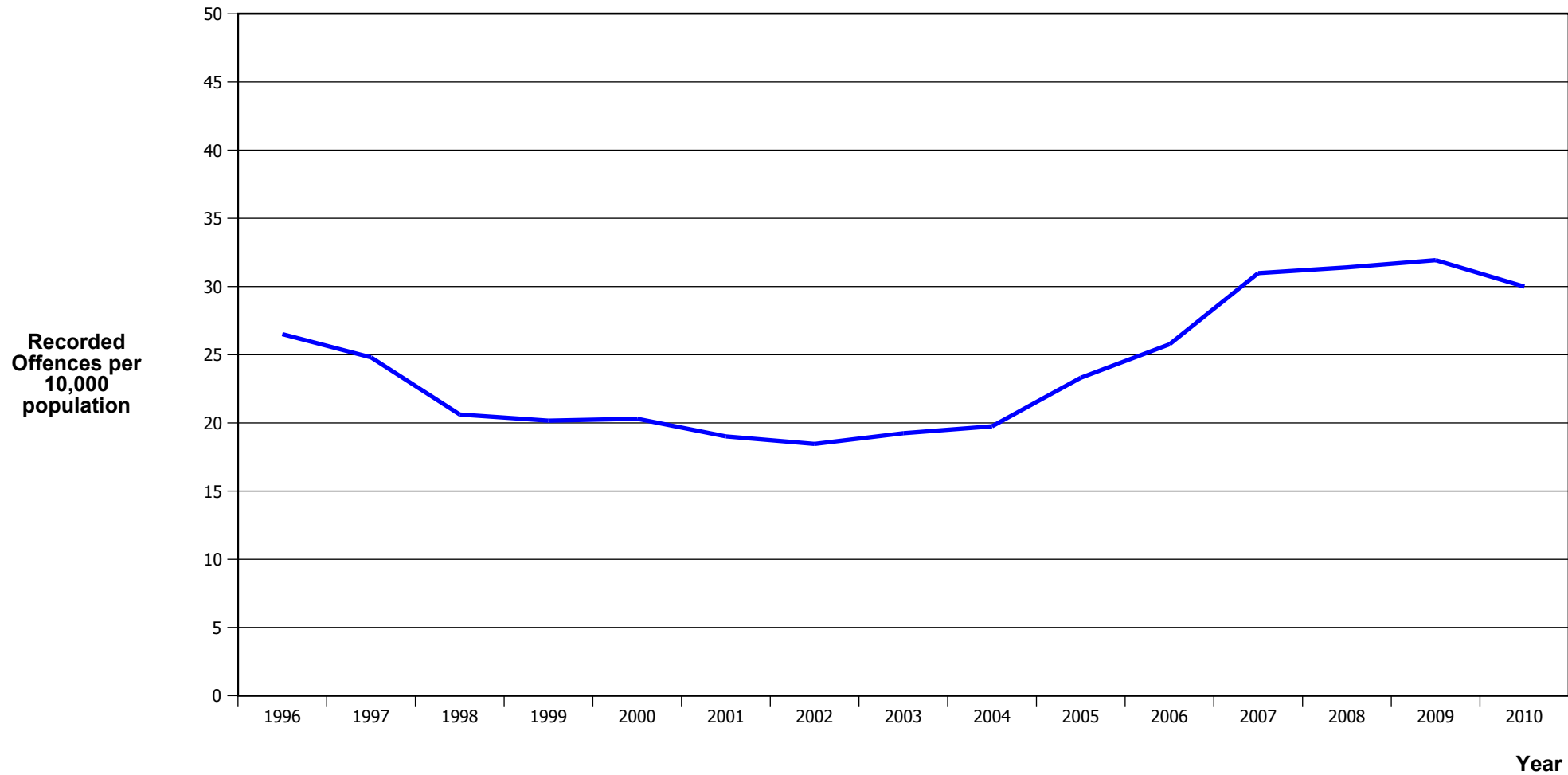
\*In 2005/2006 there was a major IT system change (LES to NIA)

# MURDER



Calendar Year	1996	1997	1998	1999	2000	2001	2002	2003	2004	2005	2006	2007	2008	2009	2010
Recorded Offences	2	2	9	3	6	2	5	3	2	4	2	3	1	7	2
Recorded per 10,000 Population	0.07	0.07	0.31	0.10	0.20	0.07	0.17	0.10	0.06	0.13	0.06	0.09	0.03	0.21	0.06

## SERIOUS ASSAULTS RESULTING IN INJURY\*

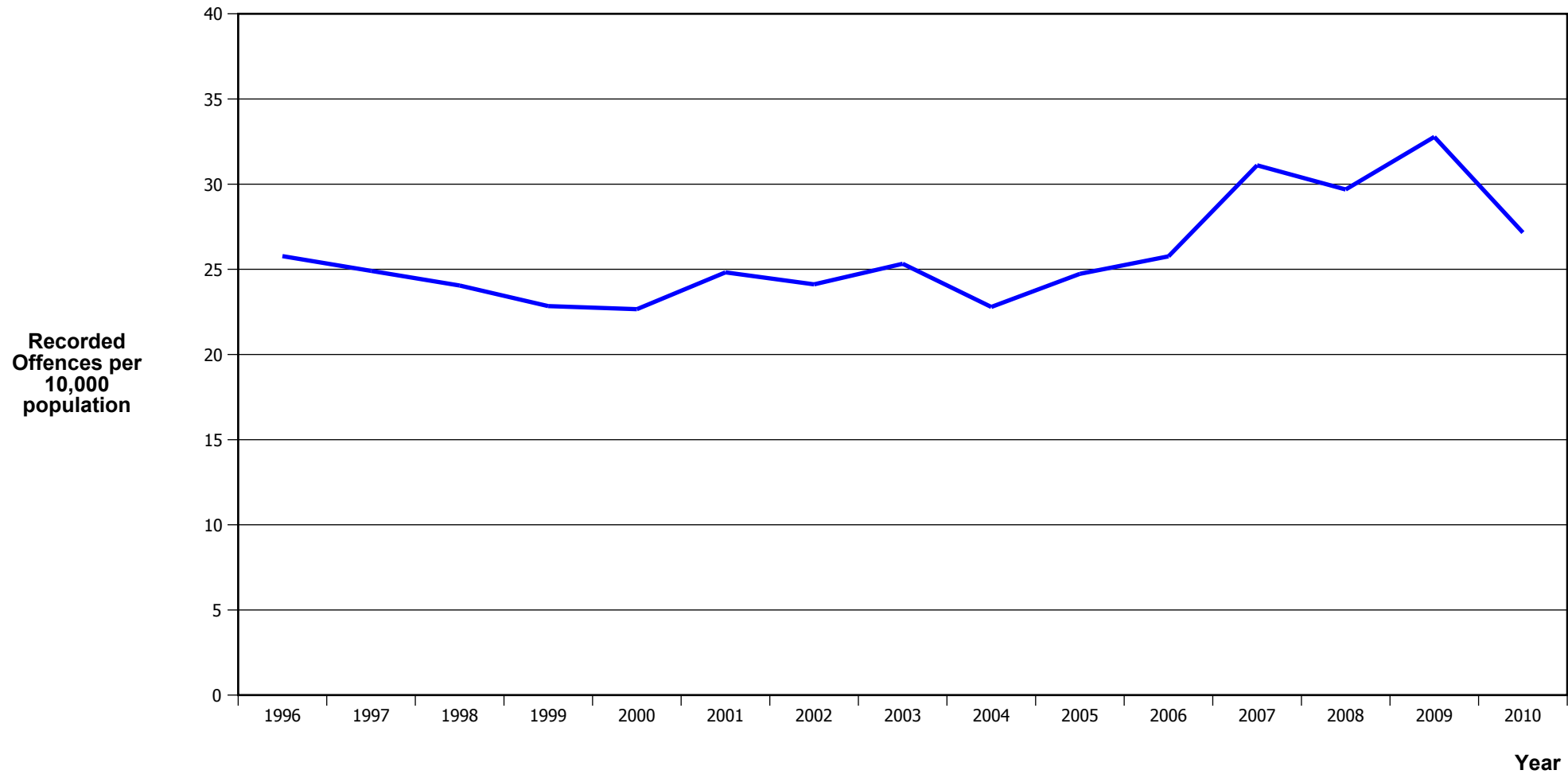


Calendar Year	1996	1997	1998	1999	2000	2001	2002	2003	2004	2005	2006	2007	2008	2009	2010
Recorded Physical Injury	763	723	606	596	603	566	558	592	617	738	826	1,004	1,028	1,058	1,006
Recorded per 10,000 Population	26.5	24.8	20.6	20.2	20.3	19.0	18.5	19.2	19.7	23.3	25.8	31.0	31.4	31.9	30.0

\* This measure excludes common assaults

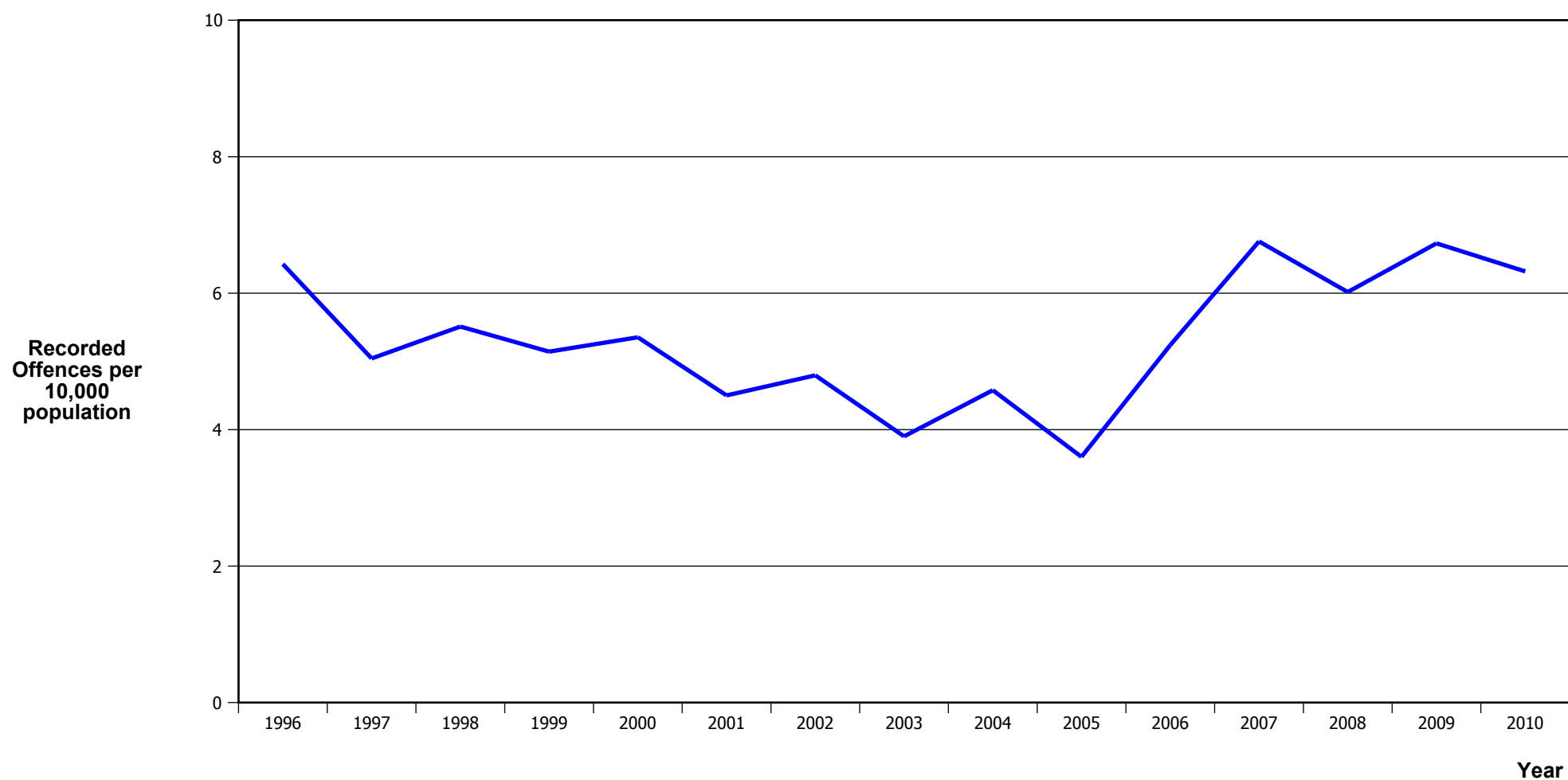


## PUBLIC PLACE ASSAULTS



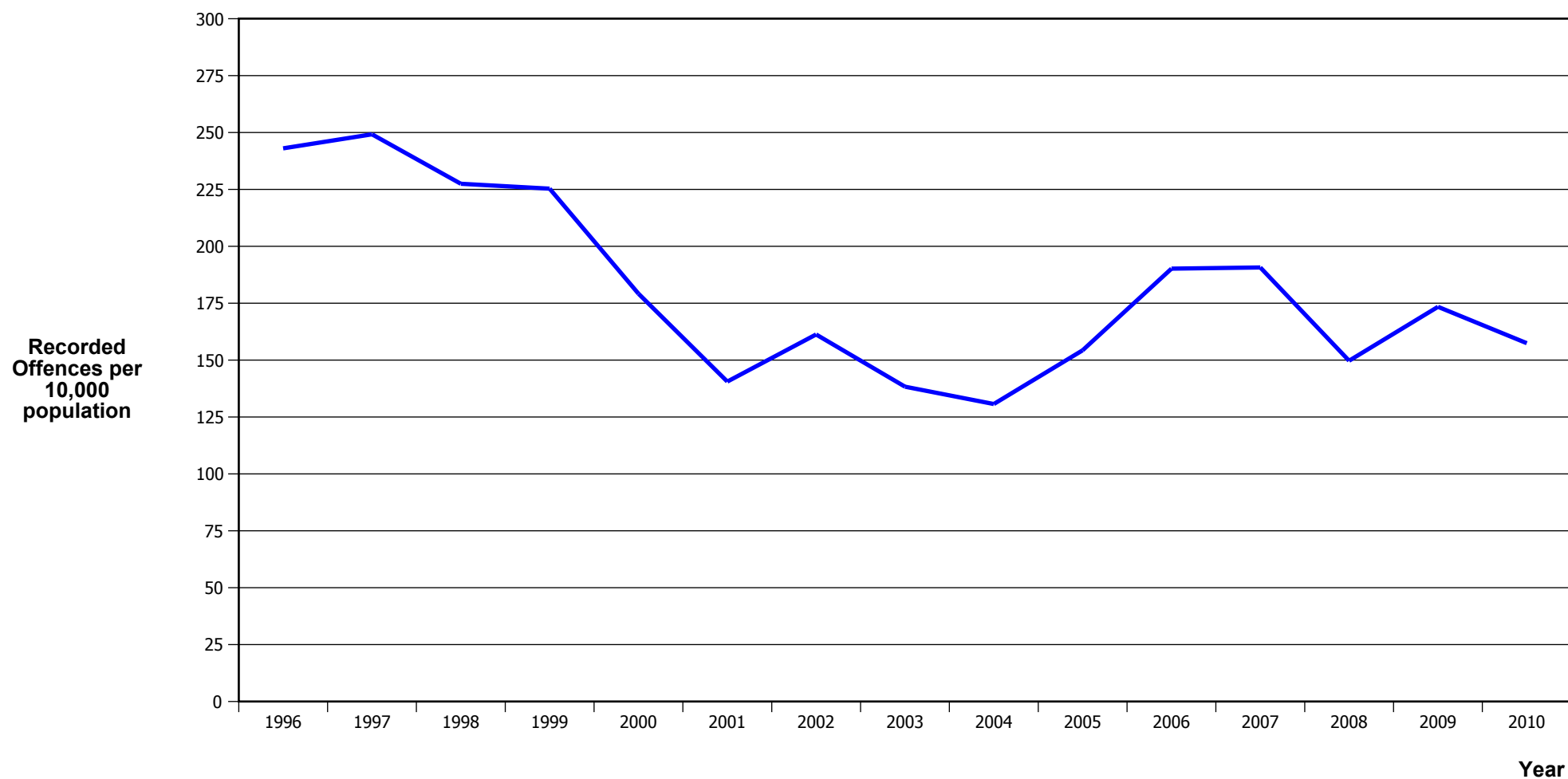
Calendar Year	1996	1997	1998	1999	2000	2001	2002	2003	2004	2005	2006	2007	2008	2009	2010
Recorded Offences	742	726	707	675	673	739	729	779	712	783	826	1,008	972	1,086	911
Recorded per 10,000 Population	25.8	24.9	24.1	22.8	22.7	24.8	24.1	25.3	22.8	24.7	25.8	31.1	29.7	32.8	27.2

## ROBBERY



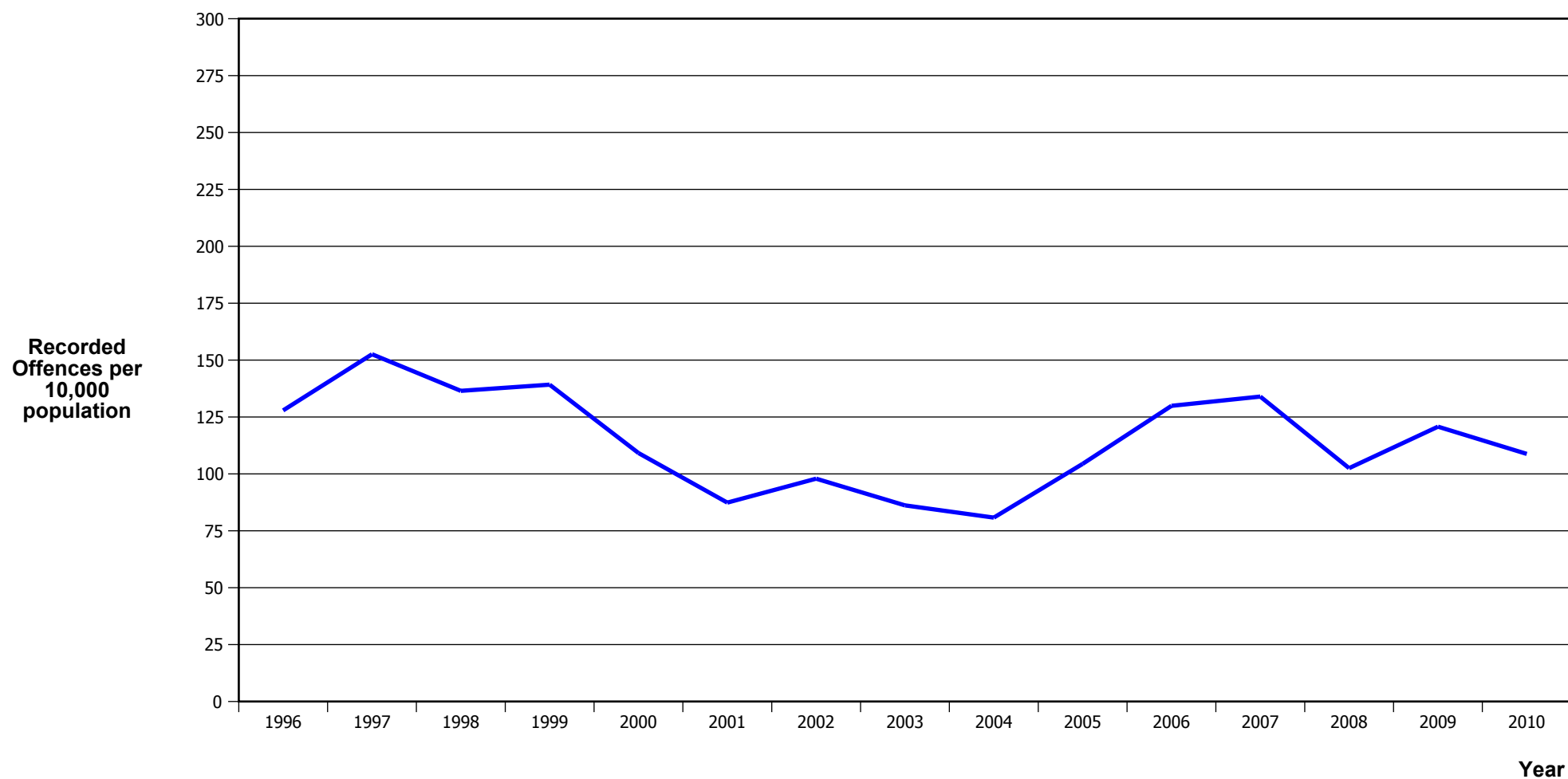
Calendar Year	1996	1997	1998	1999	2000	2001	2002	2003	2004	2005	2006	2007	2008	2009	2010
Recorded Offences	185	147	162	152	159	134	145	120	143	114	168	219	197	223	212
Recorded per 10,000 Population	6.4	5.0	5.5	5.1	5.4	4.5	4.8	3.9	4.6	3.6	5.2	6.8	6.0	6.7	6.3

## BURGLARY (TOTAL)



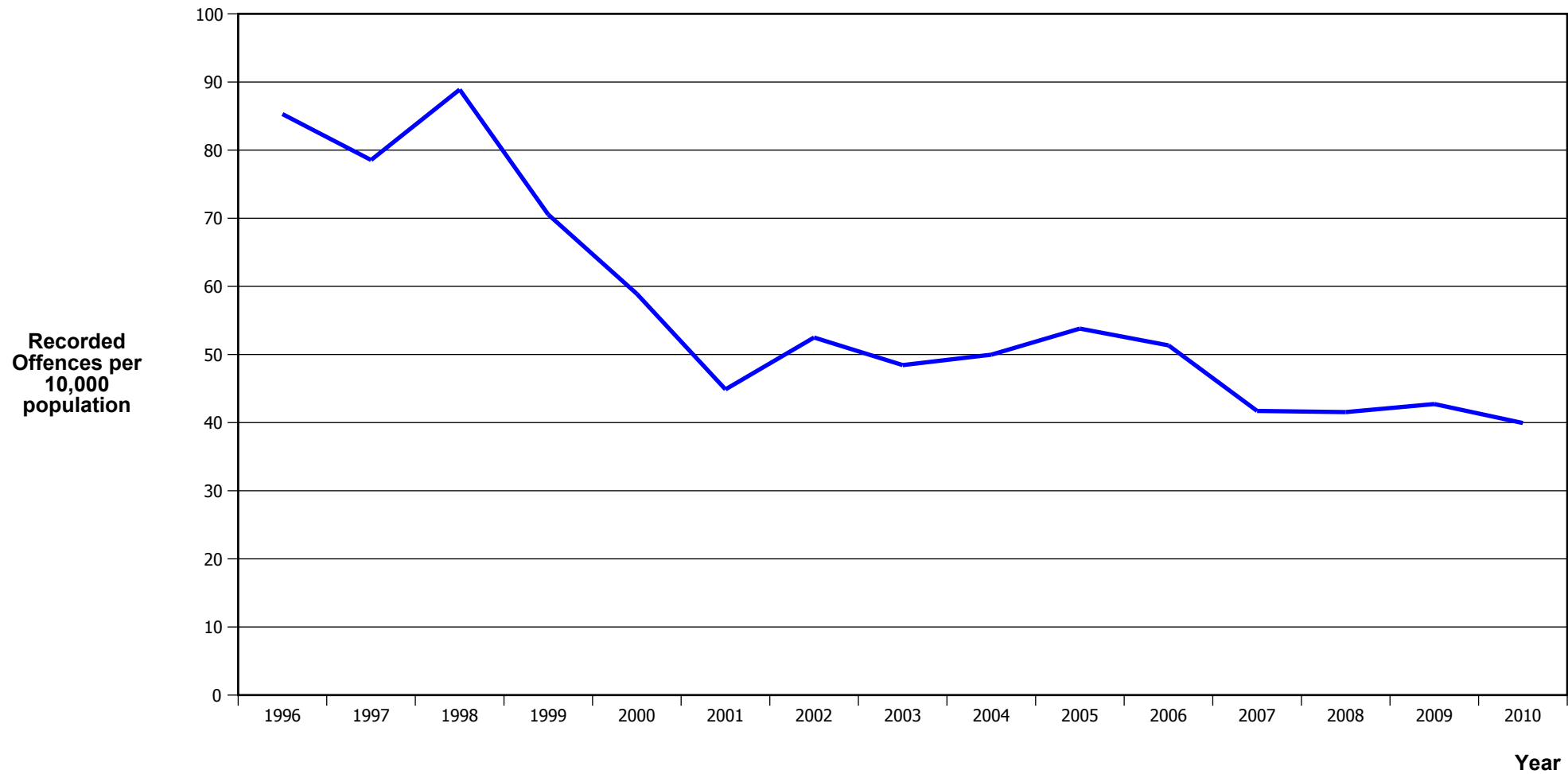
Calendar Year	1996	1997	1998	1999	2000	2001	2002	2003	2004	2005	2006	2007	2008	2009	2010
Recorded Offences	6,995	7,262	6,687	6,659	5,321	4,185	4,875	4,254	4,083	4,884	6,099	6,180	4,902	5,746	5,281
Recorded per 10,000 Population	243.0	249.2	227.5	225.3	179.2	140.6	161.3	138.3	130.7	154.3	190.2	190.7	149.7	173.4	157.4

## BURGLARY (DWELLING)



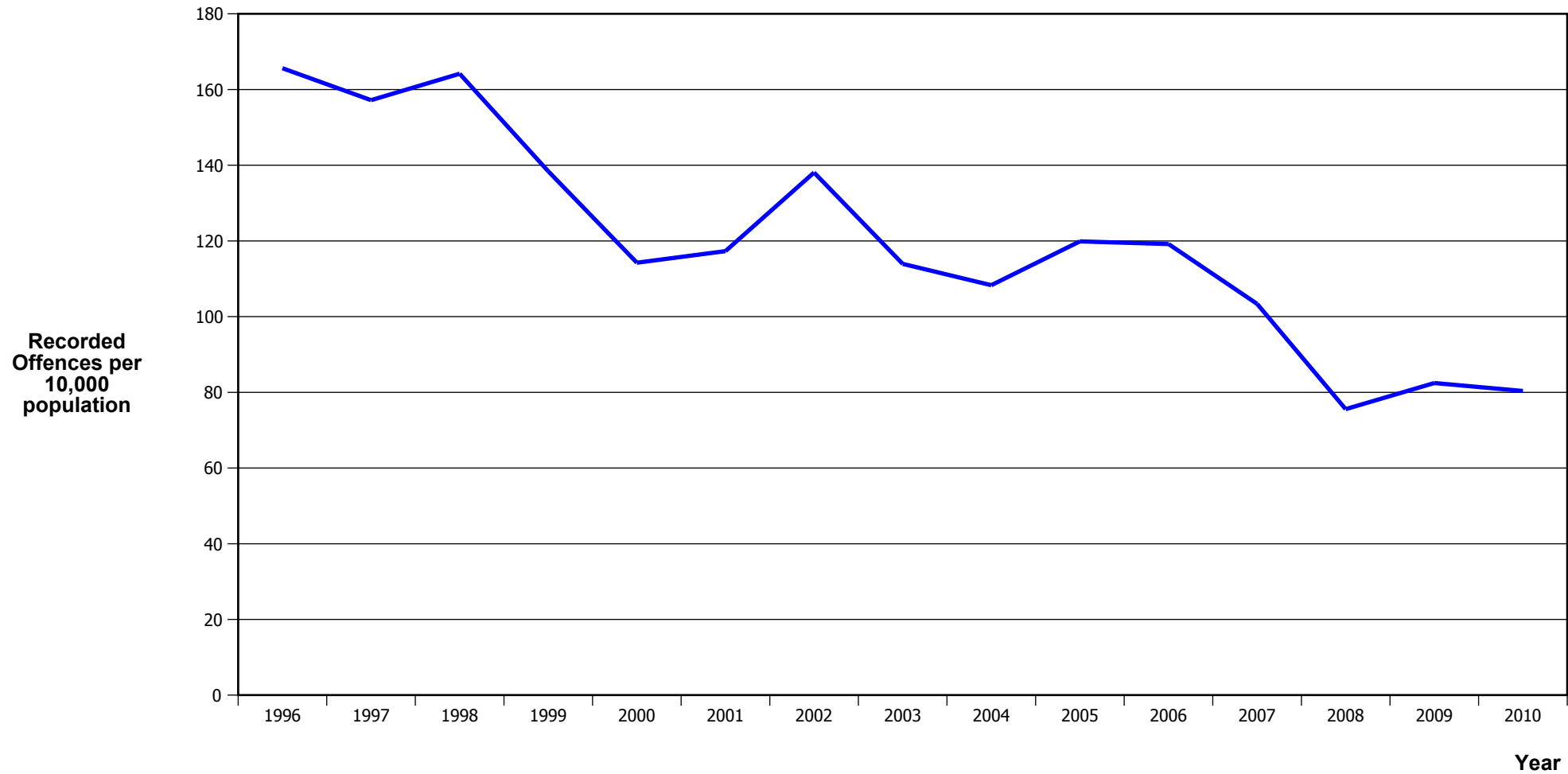
Calendar Year	1996	1997	1998	1999	2000	2001	2002	2003	2004	2005	2006	2007	2008	2009	2010
Recorded Offences	3,681	4,447	4,013	4,114	3,242	2,602	2,959	2,651	2,524	3,305	4,166	4,341	3,356	4,001	3,650
Recorded per 10,000 Population	127.9	152.6	136.5	139.2	109.2	87.4	97.9	86.2	80.8	104.4	129.9	134.0	102.5	120.7	108.8

## VEHICLES STOLEN



Calendar Year	1996	1997	1998	1999	2000	2001	2002	2003	2004	2005	2006	2007	2008	2009	2010
Recorded Offences	2,455	2,289	2,613	2,085	1,749	1,336	1,587	1,490	1,561	1,703	1,646	1,352	1,360	1,416	1,340
Recorded per 10,000 Population	85.3	78.5	88.9	70.5	58.9	44.9	52.5	48.4	50.0	53.8	51.3	41.7	41.5	42.7	39.9

## THEFT EX CAR



Calendar Year	1996	1997	1998	1999	2000	2001	2002	2003	2004	2005	2006	2007	2008	2009	2010
Recorded Offences	4,768	4,581	4,826	4,091	3,393	3,492	4,174	3,504	3,384	3,795	3,822	3,350	2,474	2,732	2,696
Recorded per 10,000 Population	165.6	157.2	164.2	138.4	114.3	117.3	138.1	113.9	108.3	119.9	119.2	103.4	75.6	82.5	80.4

## Population Data

Population data is used in this release to calculate crime rates. They have been derived from population estimates as at 30 June each year that have been obtained from Statistics New Zealand.

The estimated resident population is based on the census usually resident population count, with adjustments for residents missed or counted more than once by the census (net census undercount), and for residents temporarily overseas on census night.

These population estimates exclude the number of international students who are studying in New Zealand for less than 12 months.

Year	Population
1996	287,850
1997	291,440
1998	293,950
1999	295,550
2000	296,970
2001	297,700
2002	302,290
2003	307,560
2004	312,410
2005	316,570
2006	320,660
2007	324,050
2008	327,390
2009	331,350
2010	335,450

## General Definitions

**Recorded Offences:** the number of breaches of the New Zealand law recorded by Police. This includes offences specified in the Crimes Act and other legislations, such as the Summary Offences Act, Local Government Act, etc.

**Resolved Offences:** the number of recorded offences where an offender has been identified and dealt with (e.g. warned, cautioned, prosecuted, etc).

**Resolution Rate:** the proportion of recorded offences that have been resolved.

**Recorded per 10,000 population:** the number of recorded offences for every 10,000 people. This is also referred as the crime rate per 10,000 population.

**ASOC:** the Australian Standard Offence Classification. The offence classification is divided into 16 major offence divisions.

## Definition of ASOC Divisions

1. Homicide and related offences: Unlawfully kill, attempt to unlawfully kill or conspiracy to kill another person.
2. Acts intended to cause injury: Acts, excluding attempted murder and those resulting in death, which are intended to cause non-fatal injury or harm to another person and where there is no sexual or acquisitive element.
3. Sexual assault and related offences: Acts, or intent of acts, of a sexual nature against another person, which are non-consensual or where consent is proscribed.
4. Dangerous or negligent acts endangering persons: Dangerous or negligent acts which, though not intended to cause harm, actually or potentially result in injury to oneself or another person.
5. Abduction, harassment and other offences against person: Acts intended to threaten or harass, or acts that unlawfully deprive another person of their freedom of movement, that are against that person's will or against the will of any parent, guardian or other person having lawful custody or care of that person.
6. Robbery, extortion and related offences: Acts intended to unlawfully gain money, property or other items of value from, or to cause detriment to, another person by using the threat of force or any other coercive measure.
7. Unlawful entry with intent / burglary, break and enter: The unlawful entry of a structure with the intent to commit an offence, where the entry is either forced or unforced.
8. Theft and related and offences: The unlawful taking or obtaining of money or goods, not involving the use of force or violence, coercion or deception, with intent to permanently or temporarily deprive the owner or possessor of the use of the money or goods, or the receiving or handling of money or goods obtained unlawfully.



9. Fraud, deception and related offences: Offences involving a dishonest act or omission carried out with the purpose of deceiving to obtain a benefit.

10. Illicit drug offences: The possessing, selling, dealing or trafficking, importing or exporting, manufacturing or cultivating of drugs or other substances prohibited under legislation.

11. Prohibited and regulated weapons and explosives offences: Offences involving prohibited or regulated weapons and explosives. Those offences also involving assault, sexual assault or robbery are coded to the relevant group within Assault, Sexual assaults and Robbery respectively.

12. Property damage and environmental pollution: The wilful and unlawful destruction, damage or defacement of public or private property, or the pollution of property or a definable entity held in common by the community.

13. Public order offences: Offences relating personal conduct that involves, or may lead to, a breach of public order or decency, or that is indicative of criminal intent, or that is otherwise regulated or prohibited on moral or ethical grounds. In general these offences do not involve a specific victim or victims; however some offences, such as offensive language and offensive behaviour, may be directed towards a single victim.

14. Traffic and vehicle regulatory offences: Offences relating to vehicles and most forms of traffic, including offences pertaining to the licensing, registration, roadworthiness, or use of vehicles, bicycle offences and pedestrian offences.

15. Offences against justice procedures, government security and government operations: An act or omission that is deemed to be prejudicial to the effective carrying out of justice procedures or any government operations. This includes general government operations as well as those specifically concerned with maintaining government security.

16. Miscellaneous offences: Offences involving the breach of statutory rules or regulations governing activities that are prima facie legal, where such offences are not explicitly dealt with under any other division. If an offence is specified under regulation and involves an act that would be illegal under common law or general criminal legislation, the offence is dealt with under the appropriate generic group.