

TASMAN DISTRICT CRIME STATISTICS 2014



**A Summary of
Recorded and Resolved Offence
Statistics**

**POLICE NATIONAL HEADQUARTERS
April 2015**

ISSN 1178 - 1629

Table of Contents:

Topic	Page
Report Notes	1
District Summary of Recorded and Resolved Crime, by Division	2-4
Proportions of Recorded Crime by Division	5
Summary of District Recorded Offences, Rate per 10,000 Population and Resolved Offences, by Area	6
Summary of Area Recorded Offences, Rate per 10,000 Population and Resolved Offences, by Division	7-9
Crime Trends	10
Total Crime	11
Murder	12
Serious Assaults Resulting in Injury	13
Sexual Assaults	14
Public Place Assaults	15
Dwelling Assaults	16
Robbery	17
Burglary (Total)	18
Burglary (Dwelling)	19
Vehicles Stolen	20
Theft Ex Car	21
Population Data	22
General Definitions	23-24

REPORT NOTES:

Statistics reported in this document are derived from the Police National Intelligence Application (NIA). These Official Statistics for Recorded and Resolved Offences present a snapshot of data in NIA relating to offences that occur within a given year, as at the date 14 days following the end of that year.

Unless the matter is minor where Police attendance is sufficient, a matter that is reported to or discovered by Police where Police believe an offence is likely to have been committed is counted as a recorded offence.

A recorded offence is counted as resolved when Police apprehend an offender and decide how to deal with him/her. (E.g. warn, prosecute, etc.)

Resolution rate is the percentage of recorded offences that are resolved within 14 days of the end of the year being reported on.

If an offence is resolved 15 days or more after the end of the year it will not appear in the Official Crime Statistics for that or any other year. Resolution Rate therefore undercounts the number of cases that Police have resolved. This phenomenon has a more marked impact for some types of offences than others, such as offences that require long investigations (E.g. many serial crimes, burglaries and murders).

Several offences have been reclassified into different ANZSOC groups. This has resulted in changes to subtotals for Groups and Sub-divisions within Divisions 10, 15 and 16, compared to previously reported data. Generally, this occurred within the same Division.

Note that the Population Estimates have been revised for 2007 to 2013 as a result of the 2013 Census. In previous reports population estimates were based on the 2006 Census. Crime rates reported in this report for those years may differ from those previously reported as a result.

When comparing 2014 Statistics with previous years, the reader should also refer to "Report Notes" published in previous years' reports, as previous changes significantly affect year on year trends.

SUMMARY OF DISTRICT RECORDED AND RESOLVED CRIME, BY DIVISION

Years ending 31 December

HOMICIDE AND RELATED OFFENCES

ASOC Subdivision Description	Recorded 2012	Recorded 2013	Recorded 2014	Variance 2012-2013	Variance 2013-2014	Resolved 2012	Resolved 2013	Resolved 2014	Resolution Rate 2012	Resolution Rate 2013	Resolution Rate 2014
ATTEMPTED MURDER	1	2	0	100.0 %	-100.0 %	1	2	0	100.0 %	100.0 %	0.0 %
MANSLAUGHTER AND DRIVING CAUSING DEATH	0	0	2	0.0 %	0.0 %	0	0	1	0.0 %	0.0 %	50.0 %
MURDER	2	3	0	50.0 %	-100.0 %	2	3	0	100.0 %	100.0 %	0.0 %
	3	5	2	66.7 %	-60.0 %	3	5	1	100.0 %	100.0 %	50.0 %

ACTS INTENDED TO CAUSE INJURY

ASOC Subdivision Description	Recorded 2012	Recorded 2013	Recorded 2014	Variance 2012-2013	Variance 2013-2014	Resolved 2012	Resolved 2013	Resolved 2014	Resolution Rate 2012	Resolution Rate 2013	Resolution Rate 2014
ASSAULT	1,826	1,582	1,611	-13.4 %	1.8 %	1,565	1,257	1,321	85.7 %	79.5 %	82.0 %
OTHER ACTS INTENDED TO CAUSE INJURY	2	0	2	-100.0 %	0.0 %	1	0	0	50.0 %	0.0 %	0.0 %
	1,828	1,582	1,613	-13.5 %	2.0 %	1,566	1,257	1,321	85.7 %	79.5 %	81.9 %

SEXUAL ASSAULT AND RELATED OFFENCES

ASOC Subdivision Description	Recorded 2012	Recorded 2013	Recorded 2014	Variance 2012-2013	Variance 2013-2014	Resolved 2012	Resolved 2013	Resolved 2014	Resolution Rate 2012	Resolution Rate 2013	Resolution Rate 2014
NON-ASSAULTIVE SEXUAL OFFENCES	2	8	5	300.0 %	-37.5 %	2	5	3	100.0 %	62.5 %	60.0 %
SEXUAL ASSAULT	125	190	150	52.0 %	-21.1 %	79	114	83	63.2 %	60.0 %	55.3 %
	127	198	155	55.9 %	-21.7 %	81	119	86	63.8 %	60.1 %	55.5 %

DANGEROUS OR NEGLIGENT ACTS ENDANGERING PERSONS

ASOC Subdivision Description	Recorded 2012	Recorded 2013	Recorded 2014	Variance 2012-2013	Variance 2013-2014	Resolved 2012	Resolved 2013	Resolved 2014	Resolution Rate 2012	Resolution Rate 2013	Resolution Rate 2014
OTHER DANGEROUS OR NEGLIGENT ACTS ENDANGERING PERSONS	37	38	25	2.7 %	-34.2 %	28	17	14	75.7 %	44.7 %	56.0 %
	37	38	25	2.7 %	-34.2 %	28	17	14	75.7 %	44.7 %	56.0 %

ABDUCTION, HARASSMENT AND OTHER RELATED OFFENCES AGAINST A PERSON

ASOC Subdivision Description	Recorded 2012	Recorded 2013	Recorded 2014	Variance 2012-2013	Variance 2013-2014	Resolved 2012	Resolved 2013	Resolved 2014	Resolution Rate 2012	Resolution Rate 2013	Resolution Rate 2014
ABDUCTION AND KIDNAPPING	4	6	11	50.0 %	83.3 %	2	2	9	50.0 %	33.3 %	81.8 %
HARASSMENT AND THREATENING BEHAVIOUR	601	677	693	12.6 %	2.4 %	487	434	465	81.0 %	64.1 %	67.1 %
	605	683	704	12.9 %	3.1 %	489	436	474	80.8 %	63.8 %	67.3 %

ROBBERY, EXTORTION AND RELATED OFFENCES

ASOC Subdivision Description	Recorded 2012	Recorded 2013	Recorded 2014	Variance 2012-2013	Variance 2013-2014	Resolved 2012	Resolved 2013	Resolved 2014	Resolution Rate 2012	Resolution Rate 2013	Resolution Rate 2014
BLACKMAIL AND EXTORTION	5	8	4	60.0 %	-50.0 %	2	4	2	40.0 %	50.0 %	50.0 %
ROBBERY	36	33	32	-8.3 %	-3.0 %	20	20	20	55.6 %	60.6 %	62.5 %
	41	41	36	0.0 %	-12.2 %	22	24	22	53.7 %	58.5 %	61.1 %

UNLAWFUL ENTRY WITH INTENT/BURGLARY, BREAK AND ENTER

ASOC Subdivision Description	Recorded 2012	Recorded 2013	Recorded 2014	Variance 2012-2013	Variance 2013-2014	Resolved 2012	Resolved 2013	Resolved 2014	Resolution Rate 2012	Resolution Rate 2013	Resolution Rate 2014
UNLAWFUL ENTRY WITH INTENT/BURGLARY, BREAK AND ENTER	1,280	1,505	1,653	17.6 %	9.8 %	251	302	336	19.6 %	20.1 %	20.3 %
	1,280	1,505	1,653	17.6 %	9.8 %	251	302	336	19.6 %	20.1 %	20.3 %

SUMMARY OF DISTRICT RECORDED AND RESOLVED CRIME, BY DIVISION

Years ending 31 December

THEFT AND RELATED OFFENCES

ASOC Subdivision Description	Recorded 2012	Recorded 2013	Recorded 2014	Variance 2012-2013	Variance 2013-2014	Resolved 2012	Resolved 2013	Resolved 2014	Resolution Rate 2012	Resolution Rate 2013	Resolution Rate 2014
ILLEGAL USE OF PROPERTY (EXCEPT MOTOR VEHICLES)	320	244	258	-23.8 %	5.7 %	30	18	17	9.4 %	7.4 %	6.6 %
MOTOR VEHICLE THEFT AND RELATED OFFENCES	1,104	1,207	1,136	9.3 %	-5.9 %	233	194	214	21.1 %	16.1 %	18.8 %
RECEIVE OR HANDLE PROCEEDS OF CRIME	57	69	88	21.1 %	27.5 %	56	65	85	98.2 %	94.2 %	96.6 %
THEFT AND RELATED OFFENCES NOT FURTHER DEFINED	0	0	0	0.0 %	0.0 %	0	0	0	0.0 %	0.0 %	0.0 %
THEFT (EXCEPT MOTOR VEHICLES)	2,539	2,360	2,267	-7.1 %	-3.9 %	974	806	853	38.4 %	34.2 %	37.6 %
	4,020	3,880	3,749	-3.5 %	-3.4 %	1,293	1,083	1,169	32.2 %	27.9 %	31.2 %

FRAUD, DECEPTION AND RELATED OFFENCES

ASOC Subdivision Description	Recorded 2012	Recorded 2013	Recorded 2014	Variance 2012-2013	Variance 2013-2014	Resolved 2012	Resolved 2013	Resolved 2014	Resolution Rate 2012	Resolution Rate 2013	Resolution Rate 2014
DECEPTIVE BUSINESS/GOVERNMENT PRACTICES	0	1	0	0.0 %	-100.0 %	0	0	0	0.0 %	0.0 %	0.0 %
FORGERY AND COUNTERFEITING	11	7	8	-36.4 %	14.3 %	5	5	6	45.5 %	71.4 %	75.0 %
OBTAIN BENEFIT BY DECEPTION	268	185	301	-31.0 %	62.7 %	165	92	178	61.6 %	49.7 %	59.1 %
OTHER FRAUD AND DECEPTION OFFENCES	13	11	19	-15.4 %	72.7 %	7	5	7	53.8 %	45.5 %	36.8 %
	292	204	328	-30.1 %	60.8 %	177	102	191	60.6 %	50.0 %	58.2 %

ILLICIT DRUG OFFENCES

ASOC Subdivision Description	Recorded 2012	Recorded 2013	Recorded 2014	Variance 2012-2013	Variance 2013-2014	Resolved 2012	Resolved 2013	Resolved 2014	Resolution Rate 2012	Resolution Rate 2013	Resolution Rate 2014
DEAL OR TRAFFIC IN ILLICIT DRUGS	290	218	304	-24.8 %	39.4 %	282	208	293	97.2 %	95.4 %	96.4 %
IMPORT OR EXPORT ILLICIT DRUGS	2	12	4	500.0 %	-66.7 %	1	7	2	50.0 %	58.3 %	50.0 %
MANUFACTURE OR CULTIVATE ILLICIT DRUGS	232	258	245	11.2 %	-5.0 %	131	119	103	56.5 %	46.1 %	42.0 %
OTHER ILLICIT DRUG OFFENCES	280	254	204	-9.3 %	-19.7 %	274	244	199	97.9 %	96.1 %	97.5 %
POSSESS AND/OR USE ILLICIT DRUGS	472	409	366	-13.3 %	-10.5 %	452	390	343	95.8 %	95.4 %	93.7 %
	1,276	1,151	1,123	-9.8 %	-2.4 %	1,140	968	940	89.3 %	84.1 %	83.7 %

PROHIBITED AND REGULATED WEAPONS AND EXPLOSIVES OFFENCES

ASOC Subdivision Description	Recorded 2012	Recorded 2013	Recorded 2014	Variance 2012-2013	Variance 2013-2014	Resolved 2012	Resolved 2013	Resolved 2014	Resolution Rate 2012	Resolution Rate 2013	Resolution Rate 2014
REGULATED WEAPONS/EXPLOSIVES OFFENCES	244	266	250	9.0 %	-6.0 %	224	231	223	91.8 %	86.8 %	89.2 %
	244	266	250	9.0 %	-6.0 %	224	231	223	91.8 %	86.8 %	89.2 %

PROPERTY DAMAGE AND ENVIRONMENTAL POLLUTION

ASOC Subdivision Description	Recorded 2012	Recorded 2013	Recorded 2014	Variance 2012-2013	Variance 2013-2014	Resolved 2012	Resolved 2013	Resolved 2014	Resolution Rate 2012	Resolution Rate 2013	Resolution Rate 2014
ENVIRONMENTAL POLLUTION	12	15	12	25.0 %	-20.0 %	8	8	8	66.7 %	53.3 %	66.7 %
PROPERTY DAMAGE	2,464	2,263	2,193	-8.2 %	-3.1 %	727	603	645	29.5 %	26.6 %	29.4 %
	2,476	2,278	2,205	-8.0 %	-3.2 %	735	611	653	29.7 %	26.8 %	29.6 %

SUMMARY OF DISTRICT RECORDED AND RESOLVED CRIME, BY DIVISION
Years ending 31 December

PUBLIC ORDER OFFENCES

ASOC Subdivision Description	Recorded 2012	Recorded 2013	Recorded 2014	Variance 2012-2013	Variance 2013-2014	Resolved 2012	Resolved 2013	Resolved 2014	Resolution Rate 2012	Resolution Rate 2013	Resolution Rate 2014
DISORDERLY CONDUCT	1,884	1,514	1,324	-19.6 %	-12.5 %	1,658	1,316	1,094	88.0 %	86.9 %	82.6 %
OFFENSIVE CONDUCT	141	107	107	-24.1 %	0.0 %	104	75	79	73.8 %	70.1 %	73.8 %
PUBLIC ORDER OFFENCES NOT FURTHER DEFINED	0	0	0	0.0 %	0.0 %	0	0	0	0.0 %	0.0 %	0.0 %
REGULATED PUBLIC ORDER OFFENCES	630	504	131	-20.0 %	-74.0 %	585	457	99	92.9 %	90.7 %	75.6 %
	2,655	2,125	1,562	-20.0 %	-26.5 %	2,347	1,848	1,272	88.4 %	87.0 %	81.4 %

OFFENCES AGAINST JUSTICE PROCEDURES, GOVERNMENT SECURITY AND GOVERNMENT OPERATIONS

ASOC Subdivision Description	Recorded 2012	Recorded 2013	Recorded 2014	Variance 2012-2013	Variance 2013-2014	Resolved 2012	Resolved 2013	Resolved 2014	Resolution Rate 2012	Resolution Rate 2013	Resolution Rate 2014
BREACH OF COMMUNITY-BASED ORDER	68	59	125	-13.2 %	111.9 %	60	40	108	88.2 %	67.8 %	86.4 %
BREACH OF CUSTODIAL ORDER OFFENCES	21	14	18	-33.3 %	28.6 %	20	14	15	95.2 %	100.0 %	83.3 %
BREACH OF VIOLENCE AND NON-VIOLENCE RESTRAINING ORDERS	258	292	271	13.2 %	-7.2 %	227	238	232	88.0 %	81.5 %	85.6 %
OFFENCES AGAINST GOVERNMENT OPERATIONS	18	7	5	-61.1 %	-28.6 %	9	1	0	50.0 %	14.3 %	0.0 %
OFFENCES AGAINST GOVERNMENT SECURITY	0	0	0	0.0 %	0.0 %	0	0	0	0.0 %	0.0 %	0.0 %
OFFENCES AGAINST JUSTICE PROCEDURES	234	190	152	-18.8 %	-20.0 %	229	183	145	97.9 %	96.3 %	95.4 %
OFFENCES AGAINST JUSTICE PROCEDURES, GOVERNMENT SECURITY AND GOVERNMENT OPERATIONS NOT FURTHER DEFINED	0	0	0	0.0 %	0.0 %	0	0	0	0.0 %	0.0 %	0.0 %
	599	562	571	-6.2 %	1.6 %	545	476	500	91.0 %	84.7 %	87.6 %

MISCELLANEOUS OFFENCES

ASOC Subdivision Description	Recorded 2012	Recorded 2013	Recorded 2014	Variance 2012-2013	Variance 2013-2014	Resolved 2012	Resolved 2013	Resolved 2014	Resolution Rate 2012	Resolution Rate 2013	Resolution Rate 2014
COMMERCIAL/INDUSTRY/FINANCIAL REGULATION	0	1	0	0.0 %	-100.0 %	0	1	0	0.0 %	100.0 %	0.0 %
DEFAMATION, LIBEL AND PRIVACY OFFENCES	13	3	2	-76.9 %	-33.3 %	12	0	1	92.3 %	0.0 %	50.0 %
OTHER MISCELLANEOUS OFFENCES	89	105	94	18.0 %	-10.5 %	58	69	54	65.2 %	65.7 %	57.4 %
PUBLIC HEALTH AND SAFETY OFFENCES	19	7	6	-63.2 %	-14.3 %	18	4	6	94.7 %	57.1 %	100.0 %
	121	116	102	-4.1 %	-12.1 %	88	74	61	72.7 %	63.8 %	59.8 %

TOTAL	15,604	14,634	14,078	-6.2 %	-3.8 %	8,989	7,553	7,263	57.6 %	51.6 %	51.6 %
--------------	---------------	---------------	---------------	---------------	---------------	--------------	--------------	--------------	---------------	---------------	---------------

PROPORTIONS OF RECORDED CRIME BY DIVISION

Years ending 31 December

ASOC Division Description	Proportions Recorded 2012	Recorded 2012	Proportions Recorded 2013	Recorded 2013	Proportions Recorded 2014	Recorded 2014
HOMICIDE AND RELATED OFFENCES	0.02 %	3	0.03 %	5	0.01 %	2
ACTS INTENDED TO CAUSE INJURY	11.71 %	1,828	10.81 %	1,582	11.46 %	1,613
SEXUAL ASSAULT AND RELATED OFFENCES	0.81 %	127	1.35 %	198	1.10 %	155
DANGEROUS OR NEGLIGENT ACTS ENDANGERING PERSONS	0.24 %	37	0.26 %	38	0.18 %	25
ABDUCTION, HARASSMENT AND OTHER RELATED OFFENCES AGAINST A PERSON	3.88 %	605	4.67 %	683	5.00 %	704
ROBBERY, EXTORTION AND RELATED OFFENCES	0.26 %	41	0.28 %	41	0.26 %	36
UNLAWFUL ENTRY WITH INTENT/BURGLARY, BREAK AND ENTER	8.20 %	1,280	10.28 %	1,505	11.74 %	1,653
THEFT AND RELATED OFFENCES	25.76 %	4,020	26.51 %	3,880	26.63 %	3,749
FRAUD, DECEPTION AND RELATED OFFENCES	1.87 %	292	1.39 %	204	2.33 %	328
ILLICIT DRUG OFFENCES	8.18 %	1,276	7.87 %	1,151	7.98 %	1,123
PROHIBITED AND REGULATED WEAPONS AND EXPLOSIVES OFFENCES	1.56 %	244	1.82 %	266	1.78 %	250
PROPERTY DAMAGE AND ENVIRONMENTAL POLLUTION	15.87 %	2,476	15.57 %	2,278	15.66 %	2,205
PUBLIC ORDER OFFENCES	17.01 %	2,655	14.52 %	2,125	11.10 %	1,562
OFFENCES AGAINST JUSTICE PROCEDURES, GOVERNMENT SECURITY AND GOVERNMENT OPERATIONS	3.84 %	599	3.84 %	562	4.06 %	571
MISCELLANEOUS OFFENCES	0.78 %	121	0.79 %	116	0.72 %	102
	100.00 %	15,604	100.00 %	14,634	100.00 %	14,078

SUMMARY OF RECORDED OFFENCES, RATE PER 10,000 POPULATION AND RESOLVED OFFENCES, BY AREA
years ending 31 December

TOTAL CRIME

Area Description	Recorded 2013	Recorded 2014	Variance 2013-2014	Recorded per 10,000 pop 2013	Recorded per 10,000 pop 2014	Per 10,000 pop % Variance 2013 to 2014	Resolved 2013	Resolved 2014	Resolution Rate 2013	Resolution Rate 2014
Marlborough	4,060	3,830	-5.7 %	841.3	790.8	-6.0 %	2,198	2,155	54.1 %	56.3 %
Nelson Bays	7,909	7,683	-2.9 %	811.3	781.5	-3.7 %	3,826	3,580	48.4 %	46.6 %
West Coast	2,665	2,565	-3.8 %	809.0	782.0	-3.3 %	1,529	1,528	57.4 %	59.6 %
	14,634	14,078	-3.8 %	819.0	784.1	-4.3 %	7,553	7,263	51.6 %	51.6 %

SUMMARY OF RECORDED OFFENCES, RATE PER 10,000 POPULATION AND RESOLVED OFFENCES, BY DIVISION

Years ending 31 December

HOMICIDE AND RELATED OFFENCES

Area Description	Recorded 2013	Recorded 2014	Variance 2013-2014	Recorded per 10,000 pop 2013	Recorded per 10,000 pop 2014	Per 10,000 pop % Variance 2013 to 2014	Resolved 2013	Resolved 2014	Resolution Rate 2013	Resolution Rate 2014
Marlborough	2	0	-100.0 %	0.4	0.0	-100.0 %	2	0	100.0 %	0.0 %
Nelson Bays	3	1	-66.7 %	0.3	0.1	-66.9 %	3	0	100.0 %	0.0 %
West Coast	0	1	0.0 %	0.0	0.3	0.0 %	0	1	0.0 %	100.0 %
	5	2	-60.0 %	0.3	0.1	-60.2 %	5	1	100.0 %	50.0 %

ACTS INTENDED TO CAUSE INJURY

Area Description	Recorded 2013	Recorded 2014	Variance 2013-2014	Recorded per 10,000 pop 2013	Recorded per 10,000 pop 2014	Per 10,000 pop % Variance 2013 to 2014	Resolved 2013	Resolved 2014	Resolution Rate 2013	Resolution Rate 2014
Marlborough	426	449	5.4 %	88.3	92.7	5.0 %	349	363	81.9 %	80.8 %
Nelson Bays	851	907	6.6 %	87.3	92.3	5.7 %	653	747	76.7 %	82.4 %
West Coast	305	257	-15.7 %	92.6	78.4	-15.4 %	255	211	83.6 %	82.1 %
	1,582	1,613	2.0 %	88.5	89.8	1.5 %	1,257	1,321	79.5 %	81.9 %

SEXUAL ASSAULT AND RELATED OFFENCES

Area Description	Recorded 2013	Recorded 2014	Variance 2013-2014	Recorded per 10,000 pop 2013	Recorded per 10,000 pop 2014	Per 10,000 pop % Variance 2013 to 2014	Resolved 2013	Resolved 2014	Resolution Rate 2013	Resolution Rate 2014
Marlborough	62	43	-30.6 %	12.8	8.9	-30.9 %	39	22	62.9 %	51.2 %
Nelson Bays	97	86	-11.3 %	10.0	8.7	-12.1 %	55	47	56.7 %	54.7 %
West Coast	39	26	-33.3 %	11.8	7.9	-33.0 %	25	17	64.1 %	65.4 %
	198	155	-21.7 %	11.1	8.6	-22.1 %	119	86	60.1 %	55.5 %

DANGEROUS OR NEGLIGENT ACTS ENDANGERING PERSONS

Area Description	Recorded 2013	Recorded 2014	Variance 2013-2014	Recorded per 10,000 pop 2013	Recorded per 10,000 pop 2014	Per 10,000 pop % Variance 2013 to 2014	Resolved 2013	Resolved 2014	Resolution Rate 2013	Resolution Rate 2014
Marlborough	11	5	-54.5 %	2.3	1.0	-54.7 %	5	4	45.5 %	80.0 %
Nelson Bays	22	16	-27.3 %	2.3	1.6	-27.9 %	9	9	40.9 %	56.3 %
West Coast	5	4	-20.0 %	1.5	1.2	-19.7 %	3	1	60.0 %	25.0 %
	38	25	-34.2 %	2.1	1.4	-34.5 %	17	14	44.7 %	56.0 %

ABDUCTION, HARASSMENT AND OTHER RELATED OFFENCES AGAINST A PERSON

Area Description	Recorded 2013	Recorded 2014	Variance 2013-2014	Recorded per 10,000 pop 2013	Recorded per 10,000 pop 2014	Per 10,000 pop % Variance 2013 to 2014	Resolved 2013	Resolved 2014	Resolution Rate 2013	Resolution Rate 2014
Marlborough	186	214	15.1 %	38.5	44.2	14.6 %	121	149	65.1 %	69.6 %
Nelson Bays	313	328	4.8 %	32.1	33.4	3.9 %	194	205	62.0 %	62.5 %
West Coast	184	162	-12.0 %	55.9	49.4	-11.6 %	121	120	65.8 %	74.1 %
	683	704	3.1 %	38.2	39.2	2.6 %	436	474	63.8 %	67.3 %

ROBBERY, EXTORTION AND RELATED OFFENCES

Area Description	Recorded 2013	Recorded 2014	Variance 2013-2014	Recorded per 10,000 pop 2013	Recorded per 10,000 pop 2014	Per 10,000 pop % Variance 2013 to 2014	Resolved 2013	Resolved 2014	Resolution Rate 2013	Resolution Rate 2014
Marlborough	13	13	0.0 %	2.7	2.7	-0.4 %	6	8	46.2 %	61.5 %
Nelson Bays	20	18	-10.0 %	2.1	1.8	-10.8 %	13	11	65.0 %	61.1 %
West Coast	8	5	-37.5 %	2.4	1.5	-37.2 %	5	3	62.5 %	60.0 %
	41	36	-12.2 %	2.3	2.0	-12.6 %	24	22	58.5 %	61.1 %

SUMMARY OF RECORDED OFFENCES, RATE PER 10,000 POPULATION AND RESOLVED OFFENCES, BY DIVISION

Years ending 31 December

UNLAWFUL ENTRY WITH INTENT/BURGLARY, BREAK AND ENTER

Area Description	Recorded 2013	Recorded 2014	Variance 2013-2014	Recorded per 10,000 pop 2013	Recorded per 10,000 pop 2014	Per 10,000 pop % Variance 2013 to 2014	Resolved 2013	Resolved 2014	Resolution Rate 2013	Resolution Rate 2014
Marlborough	414	443	7.0 %	85.8	91.5	6.6 %	78	128	18.8 %	28.9 %
Nelson Bays	851	961	12.9 %	87.3	97.8	12.0 %	158	157	18.6 %	16.3 %
West Coast	240	249	3.8 %	72.9	75.9	4.2 %	66	51	27.5 %	20.5 %
	1,505	1,653	9.8 %	84.2	92.1	9.3 %	302	336	20.1 %	20.3 %

THEFT AND RELATED OFFENCES

Area Description	Recorded 2013	Recorded 2014	Variance 2013-2014	Recorded per 10,000 pop 2013	Recorded per 10,000 pop 2014	Per 10,000 pop % Variance 2013 to 2014	Resolved 2013	Resolved 2014	Resolution Rate 2013	Resolution Rate 2014
Marlborough	1,050	979	-6.8 %	217.6	202.1	-7.1 %	321	374	30.6 %	38.2 %
Nelson Bays	2,320	2,311	-0.4 %	238.0	235.1	-1.2 %	622	679	26.8 %	29.4 %
West Coast	510	459	-10.0 %	154.8	139.9	-9.6 %	140	116	27.5 %	25.3 %
	3,880	3,749	-3.4 %	217.1	208.8	-3.8 %	1,083	1,169	27.9 %	31.2 %

FRAUD, DECEPTION AND RELATED OFFENCES

Area Description	Recorded 2013	Recorded 2014	Variance 2013-2014	Recorded per 10,000 pop 2013	Recorded per 10,000 pop 2014	Per 10,000 pop % Variance 2013 to 2014	Resolved 2013	Resolved 2014	Resolution Rate 2013	Resolution Rate 2014
Marlborough	63	111	76.2 %	13.1	22.9	75.6 %	34	65	54.0 %	58.6 %
Nelson Bays	107	160	49.5 %	11.0	16.3	48.3 %	47	88	43.9 %	55.0 %
West Coast	34	57	67.6 %	10.3	17.4	68.4 %	21	38	61.8 %	66.7 %
	204	328	60.8 %	11.4	18.3	60.0 %	102	191	50.0 %	58.2 %

ILLICIT DRUG OFFENCES

Area Description	Recorded 2013	Recorded 2014	Variance 2013-2014	Recorded per 10,000 pop 2013	Recorded per 10,000 pop 2014	Per 10,000 pop % Variance 2013 to 2014	Resolved 2013	Resolved 2014	Resolution Rate 2013	Resolution Rate 2014
Marlborough	262	293	11.8 %	54.3	60.5	11.4 %	219	247	83.6 %	84.3 %
Nelson Bays	534	428	-19.9 %	54.8	43.5	-20.5 %	444	316	83.1 %	73.8 %
West Coast	355	402	13.2 %	107.8	122.6	13.7 %	305	377	85.9 %	93.8 %
	1,151	1,123	-2.4 %	64.4	62.5	-2.9 %	968	940	84.1 %	83.7 %

PROHIBITED AND REGULATED WEAPONS AND EXPLOSIVES OFFENCES

Area Description	Recorded 2013	Recorded 2014	Variance 2013-2014	Recorded per 10,000 pop 2013	Recorded per 10,000 pop 2014	Per 10,000 pop % Variance 2013 to 2014	Resolved 2013	Resolved 2014	Resolution Rate 2013	Resolution Rate 2014
Marlborough	74	63	-14.9 %	15.3	13.0	-15.2 %	67	52	90.5 %	82.5 %
Nelson Bays	126	111	-11.9 %	12.9	11.3	-12.6 %	110	104	87.3 %	93.7 %
West Coast	66	76	15.2 %	20.0	23.2	15.6 %	54	67	81.8 %	88.2 %
	266	250	-6.0 %	14.9	13.9	-6.5 %	231	223	86.8 %	89.2 %

PROPERTY DAMAGE AND ENVIRONMENTAL POLLUTION

Area Description	Recorded 2013	Recorded 2014	Variance 2013-2014	Recorded per 10,000 pop 2013	Recorded per 10,000 pop 2014	Per 10,000 pop % Variance 2013 to 2014	Resolved 2013	Resolved 2014	Resolution Rate 2013	Resolution Rate 2014
Marlborough	598	569	-4.8 %	123.9	117.5	-5.2 %	170	207	28.4 %	36.4 %
Nelson Bays	1,237	1,219	-1.5 %	126.9	124.0	-2.3 %	301	294	24.3 %	24.1 %
West Coast	443	417	-5.9 %	134.5	127.1	-5.5 %	140	152	31.6 %	36.5 %
	2,278	2,205	-3.2 %	127.5	122.8	-3.7 %	611	653	26.8 %	29.6 %

SUMMARY OF RECORDED OFFENCES, RATE PER 10,000 POPULATION AND RESOLVED OFFENCES, BY DIVISION

Years ending 31 December

PUBLIC ORDER OFFENCES

Area Description	Recorded 2013	Recorded 2014	Variance 2013-2014	Recorded per 10,000 pop 2013	Recorded per 10,000 pop 2014	Per 10,000 pop % Variance 2013 to 2014	Resolved 2013	Resolved 2014	Resolution Rate 2013	Resolution Rate 2014
Marlborough	691	491	-28.9 %	143.2	101.4	-29.2 %	608	398	88.0 %	81.1 %
Nelson Bays	1,095	746	-31.9 %	112.3	75.9	-32.4 %	954	603	87.1 %	80.8 %
West Coast	339	325	-4.1 %	102.9	99.1	-3.7 %	286	271	84.4 %	83.4 %
	2,125	1,562	-26.5 %	118.9	87.0	-26.8 %	1,848	1,272	87.0 %	81.4 %

OFFENCES AGAINST JUSTICE PROCEDURES, GOVERNMENT SECURITY AND GOVERNMENT OPERATIONS

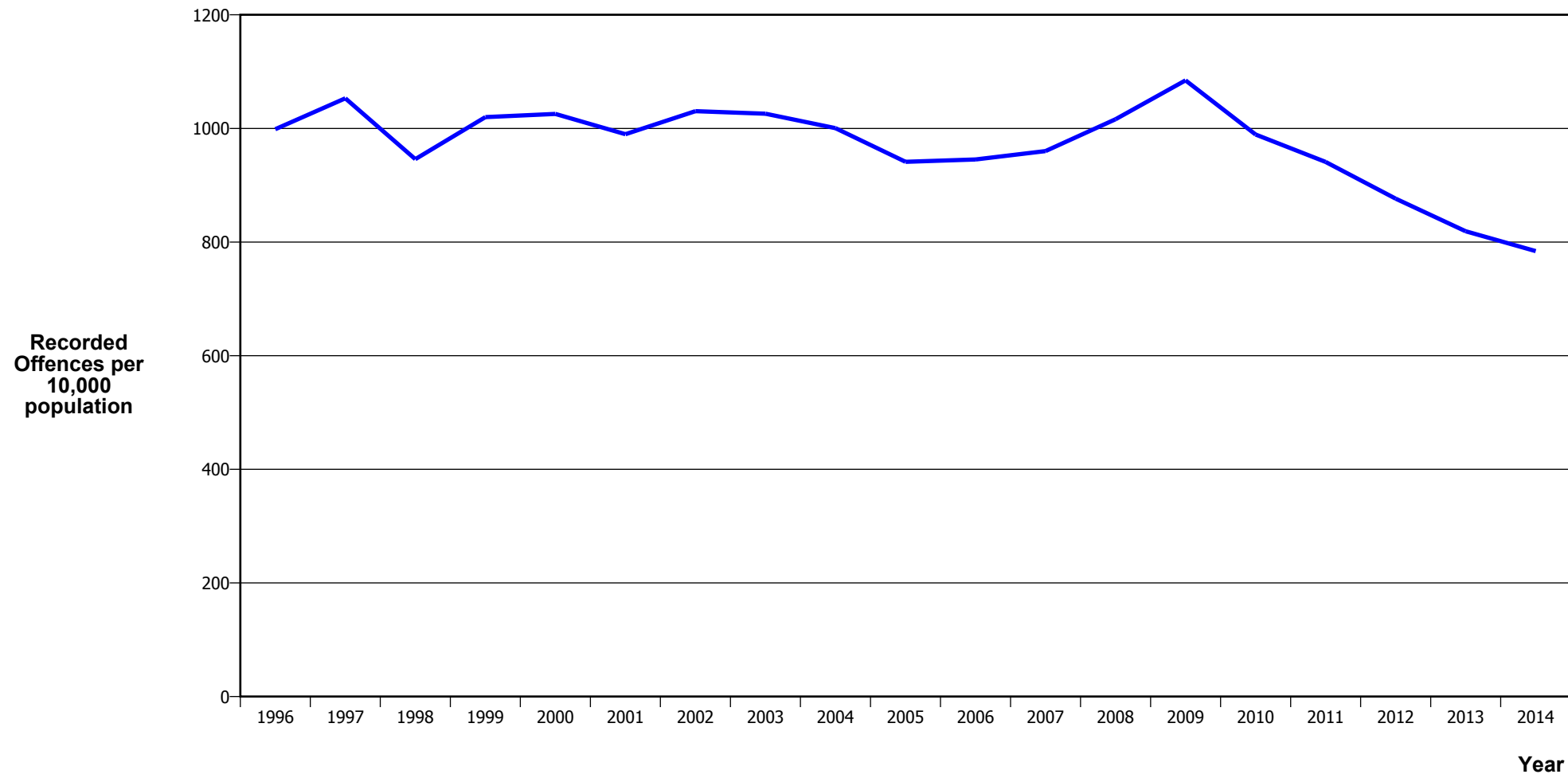
Area Description	Recorded 2013	Recorded 2014	Variance 2013-2014	Recorded per 10,000 pop 2013	Recorded per 10,000 pop 2014	Per 10,000 pop % Variance 2013 to 2014	Resolved 2013	Resolved 2014	Resolution Rate 2013	Resolution Rate 2014
Marlborough	162	121	-25.3 %	33.6	25.0	-25.6 %	145	115	89.5 %	95.0 %
Nelson Bays	282	343	21.6 %	28.9	34.9	20.6 %	233	290	82.6 %	84.5 %
West Coast	118	107	-9.3 %	35.8	32.6	-8.9 %	98	95	83.1 %	88.8 %
	562	571	1.6 %	31.5	31.8	1.1 %	476	500	84.7 %	87.6 %

MISCELLANEOUS OFFENCES

Area Description	Recorded 2013	Recorded 2014	Variance 2013-2014	Recorded per 10,000 pop 2013	Recorded per 10,000 pop 2014	Per 10,000 pop % Variance 2013 to 2014	Resolved 2013	Resolved 2014	Resolution Rate 2013	Resolution Rate 2014
Marlborough	46	36	-21.7 %	9.5	7.4	-22.0 %	34	23	73.9 %	63.9 %
Nelson Bays	51	48	-5.9 %	5.2	4.9	-6.7 %	30	30	58.8 %	62.5 %
West Coast	19	18	-5.3 %	5.8	5.5	-4.9 %	10	8	52.6 %	44.4 %
	116	102	-12.1 %	6.5	5.7	-12.5 %	74	61	63.8 %	59.8 %

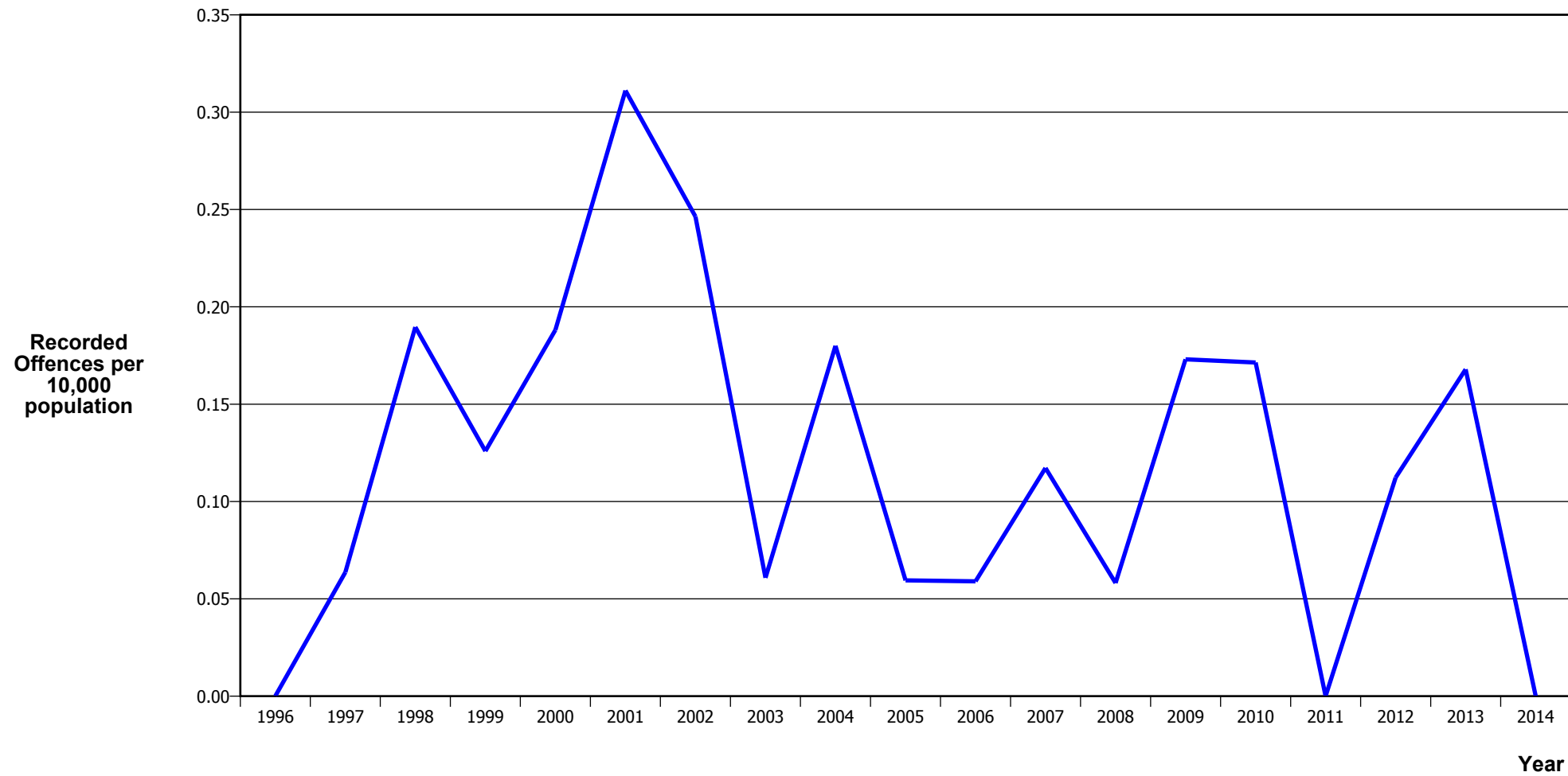
CRIME TRENDS

TOTAL CRIME



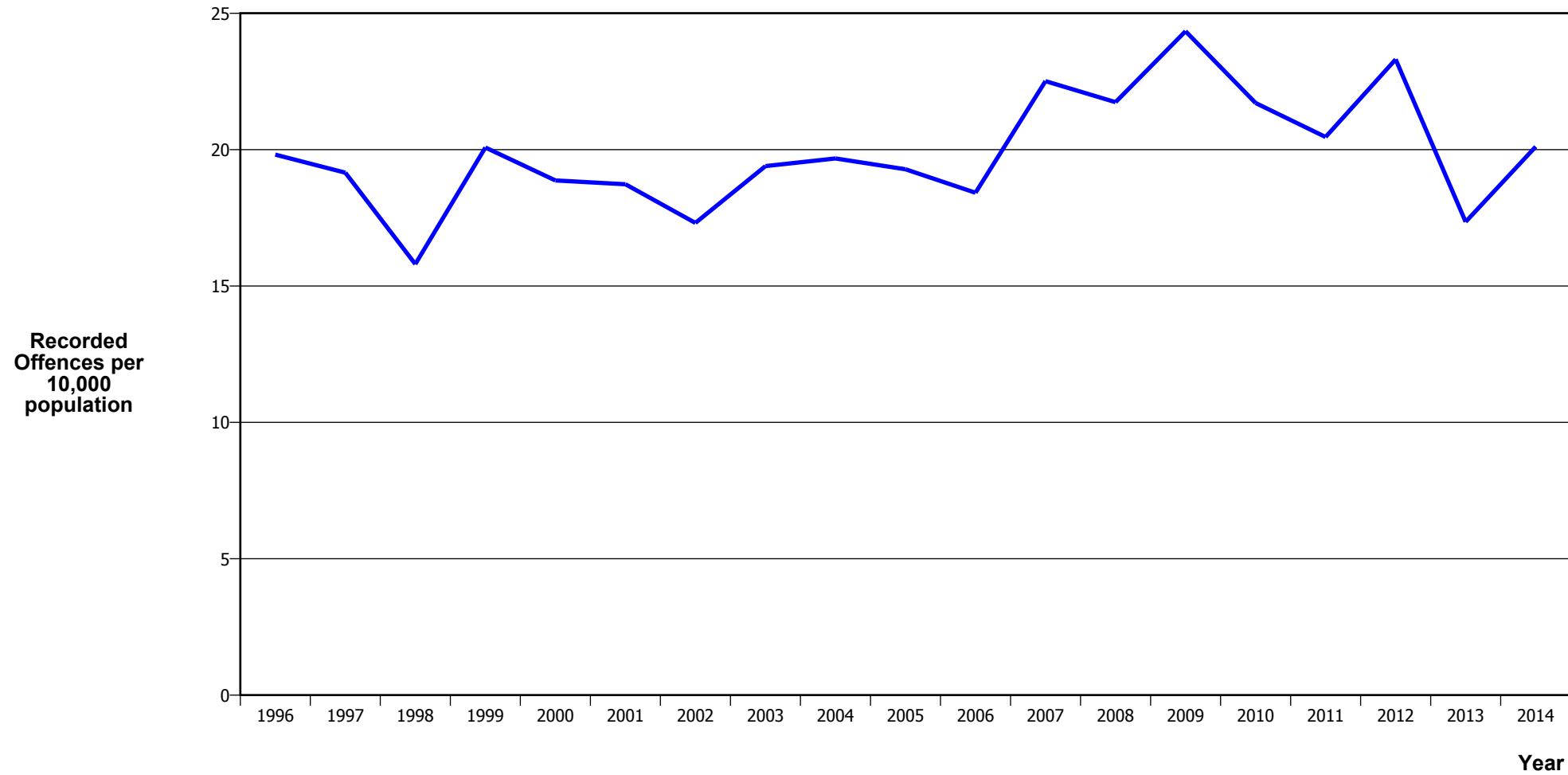
Calendar Year	1996	1997	1998	1999	2000	2001	2002	2003	2004	2005	2006	2007	2008	2009	2010	2011	2012	2013	2014
Recorded Offences	15,571	16,548	14,968	16,206	16,360	15,907	16,726	16,873	16,678	15,819	16,016	16,380	17,483	18,804	17,318	16,695	15,604	14,634	14,078
Recorded per 10,000 Population	998.6	1,052.9	946.0	1,020.0	1,025.6	989.8	1,030.4	1,025.9	1,000.5	941.2	945.5	960.1	1,016.2	1,084.6	989.3	941.1	876.3	819.0	784.1

MURDER



Calendar Year	1996	1997	1998	1999	2000	2001	2002	2003	2004	2005	2006	2007	2008	2009	2010	2011	2012	2013	2014
Recorded Offences	0	1	3	2	3	5	4	1	3	1	1	2	1	3	3	0	2	3	0
Recorded per 10,000 Population	0.00	0.06	0.19	0.13	0.19	0.31	0.25	0.06	0.18	0.06	0.06	0.12	0.06	0.17	0.17	0.00	0.11	0.17	0.00

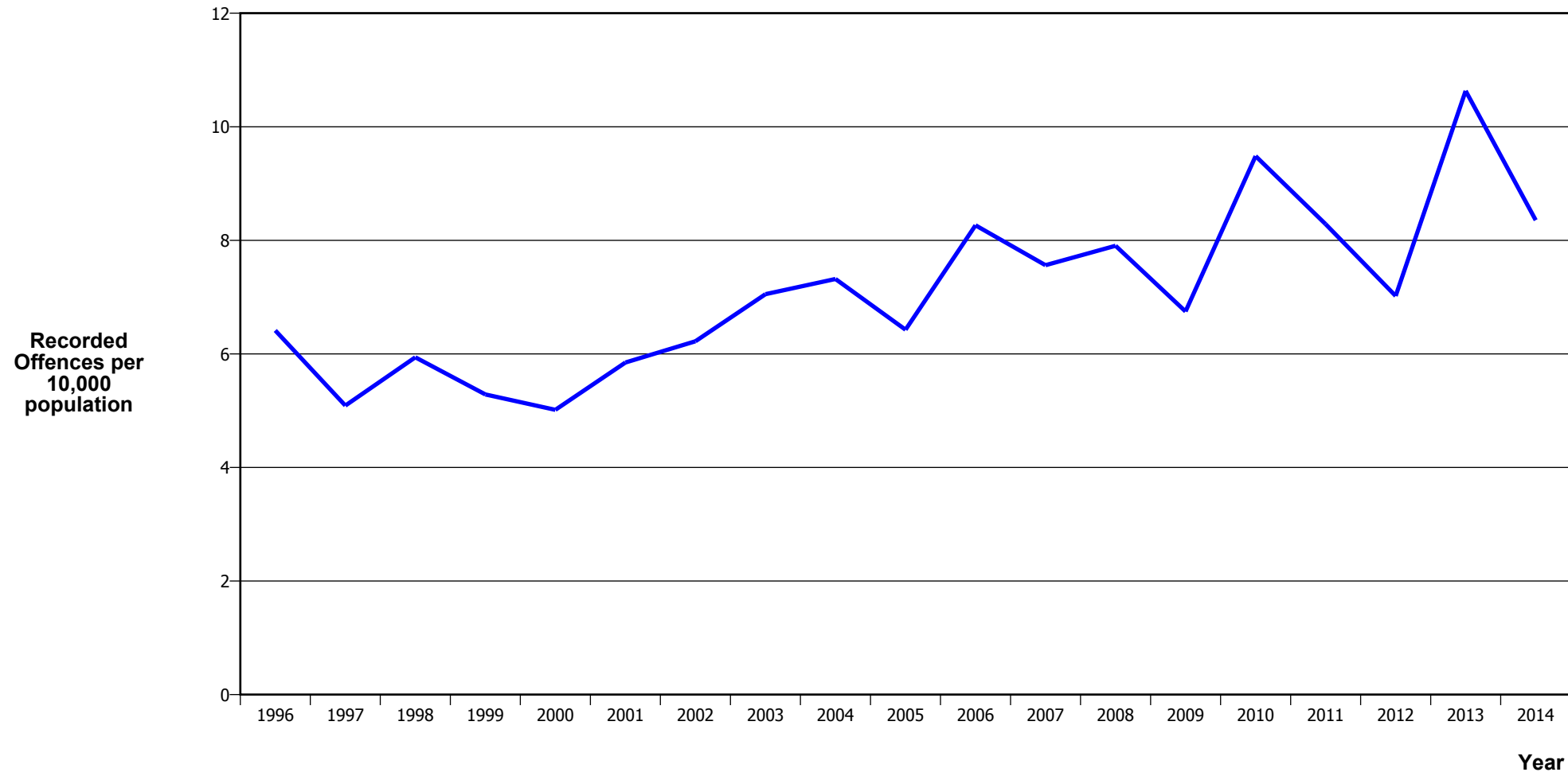
SERIOUS ASSAULTS RESULTING IN INJURY*



Calendar Year	1996	1997	1998	1999	2000	2001	2002	2003	2004	2005	2006	2007	2008	2009	2010	2011	2012	2013	2014
Recorded Offence	309	301	250	319	301	301	281	319	328	324	312	384	374	422	380	363	415	310	361
Offence Rate per 10K Popn	19.8	19.2	15.8	20.1	18.9	18.7	17.3	19.4	19.7	19.3	18.4	22.5	21.7	24.3	21.7	20.5	23.3	17.3	20.1

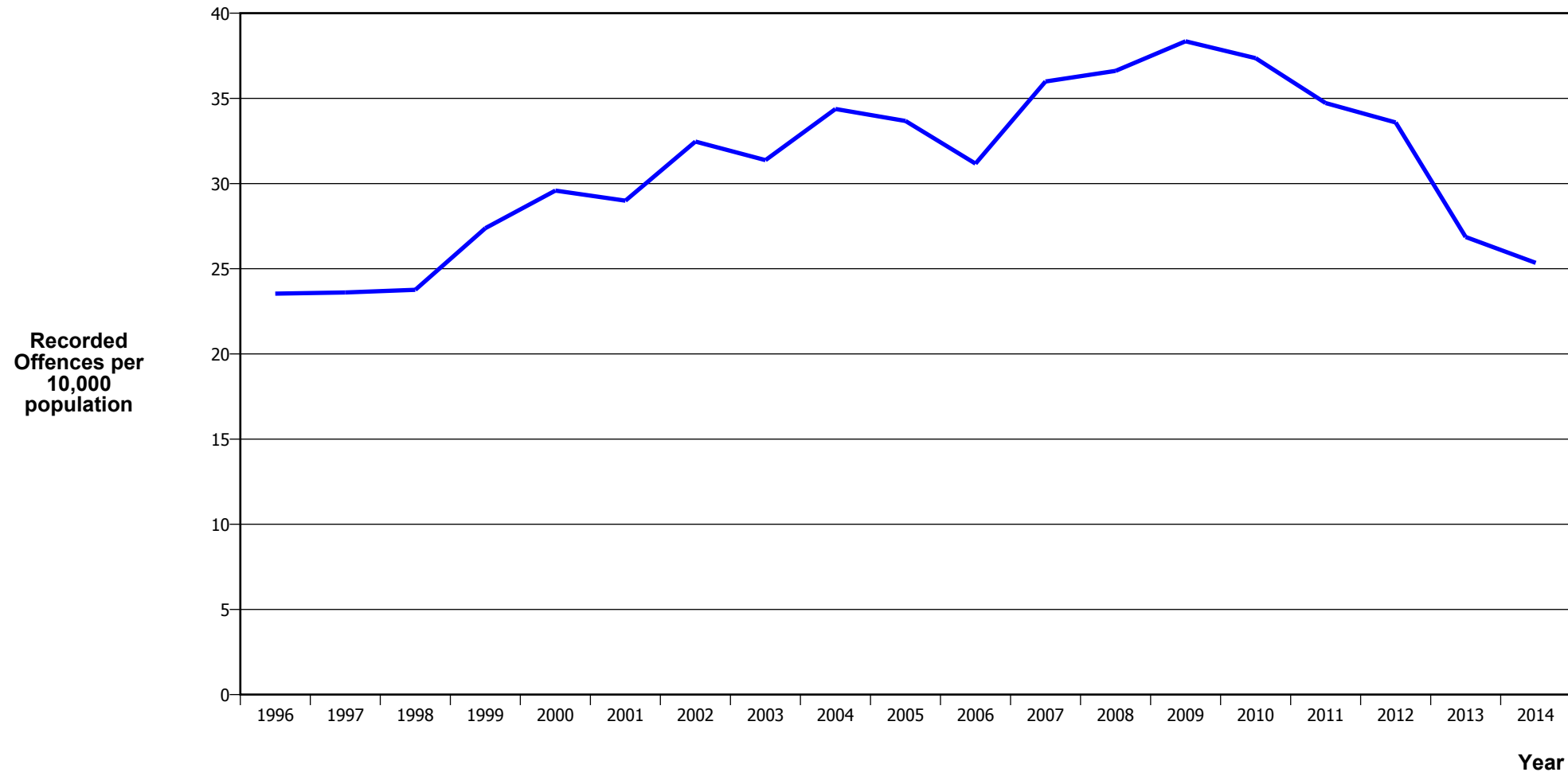
* This measure excludes common assaults

SEXUAL ASSAULTS



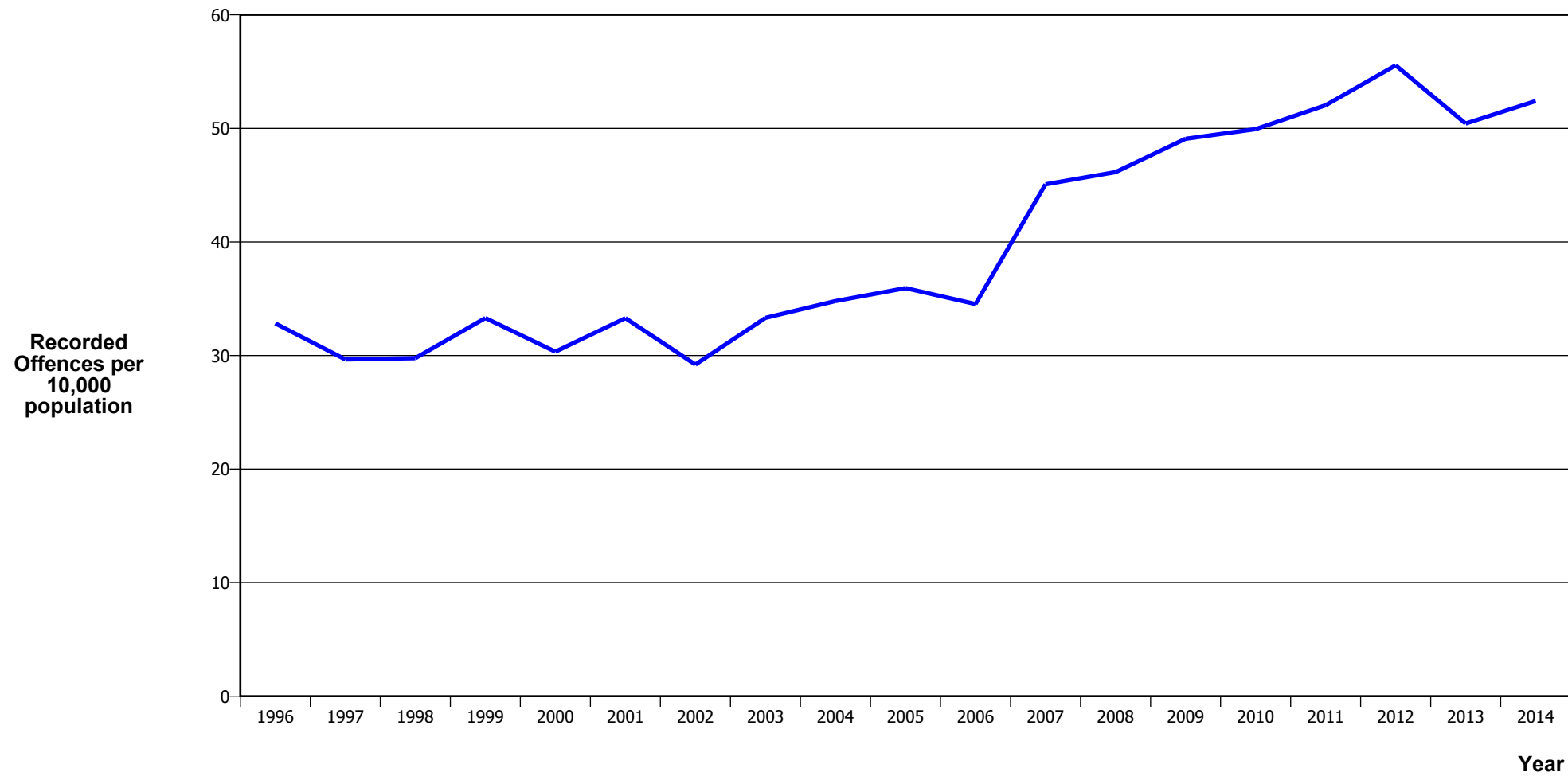
Calendar Year	1996	1997	1998	1999	2000	2001	2002	2003	2004	2005	2006	2007	2008	2009	2010	2011	2012	2013	2014
Recorded Offences	100	80	94	84	80	94	101	116	122	108	140	129	136	117	166	147	125	190	150
Recorded per 10,000 Population	6.4	5.1	5.9	5.3	5.0	5.8	6.2	7.1	7.3	6.4	8.3	7.6	7.9	6.7	9.5	8.3	7.0	10.6	8.4

PUBLIC PLACE ASSAULTS



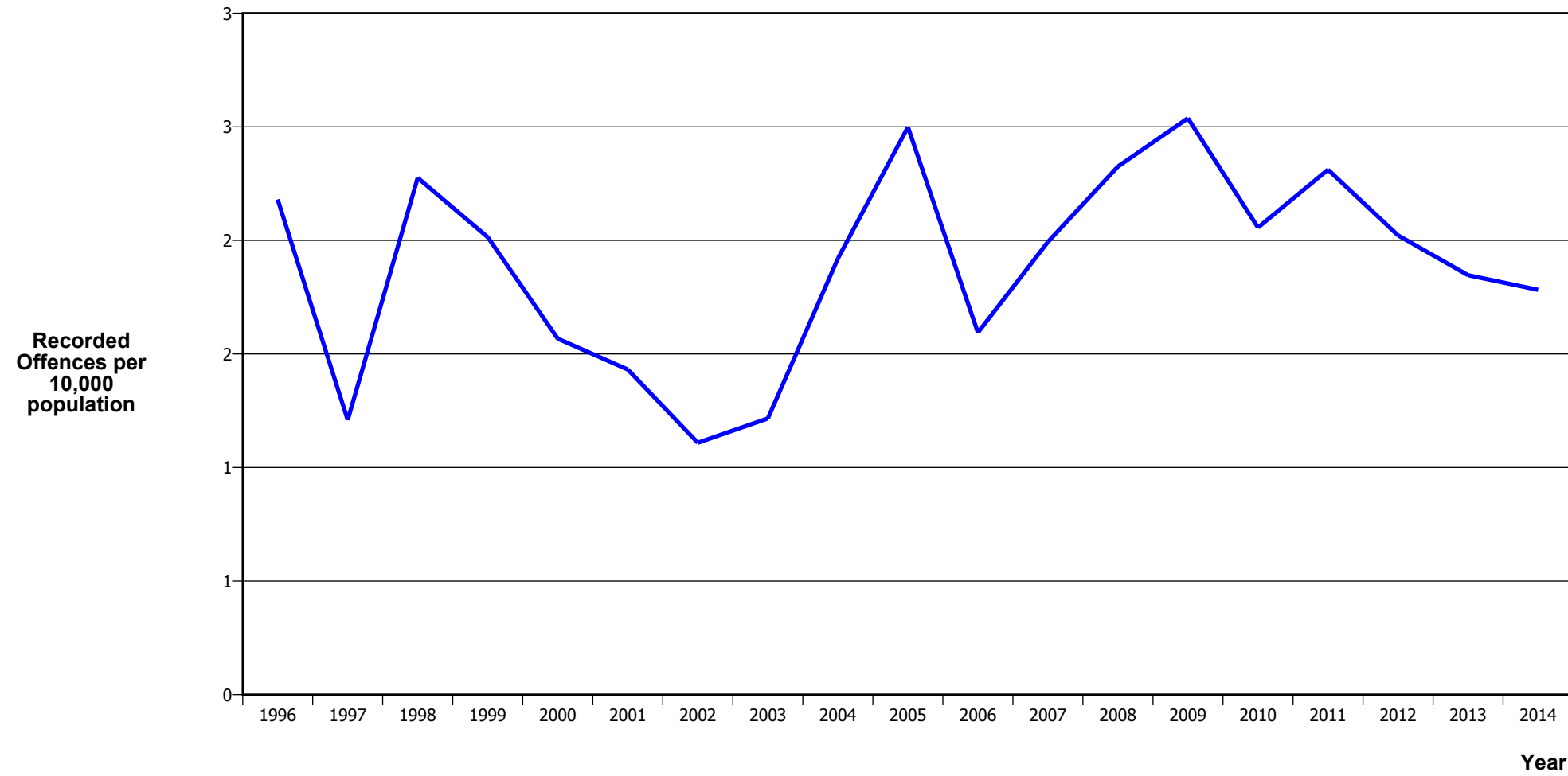
Calendar Year	1996	1997	1998	1999	2000	2001	2002	2003	2004	2005	2006	2007	2008	2009	2010	2011	2012	2013	2014
Recorded Offences	367	371	376	435	472	466	527	516	573	566	528	614	630	665	654	616	598	480	455
Recorded per 10,000 Population	23.5	23.6	23.8	27.4	29.6	29.0	32.5	31.4	34.4	33.7	31.2	36.0	36.6	38.4	37.4	34.7	33.6	26.9	25.3

DWELLING ASSAULTS



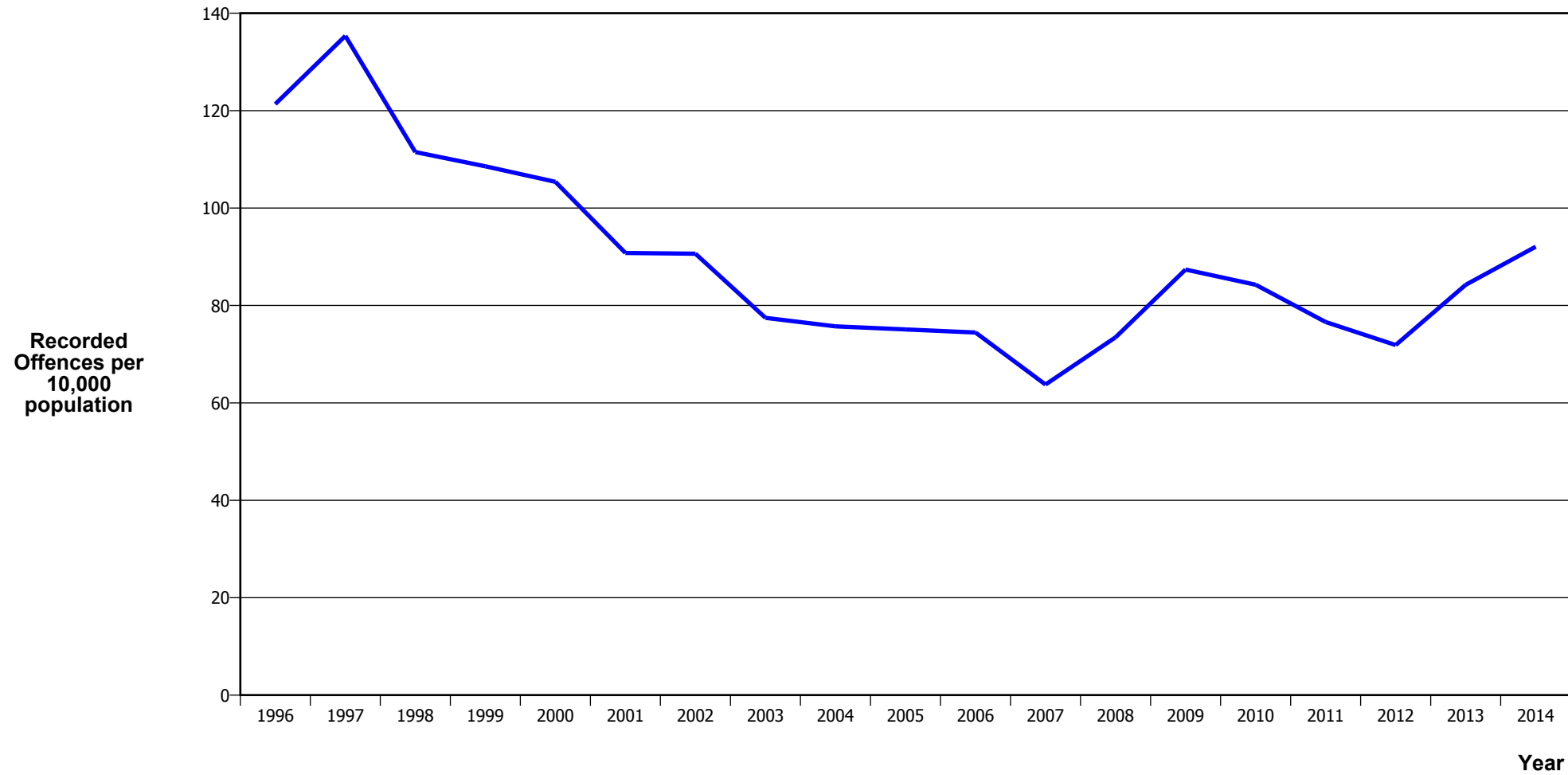
Calendar Year	1996	1997	1998	1999	2000	2001	2002	2003	2004	2005	2006	2007	2008	2009	2010	2011	2012	2013	2014
Recorded Offences	512	466	471	529	484	535	474	548	580	604	585	769	794	851	874	923	989	901	941
Recorded per 10,000 Population	32.8	29.7	29.8	33.3	30.3	33.3	29.2	33.3	34.8	35.9	34.5	45.1	46.1	49.1	49.9	52.0	55.5	50.4	52.4

ROBBERY



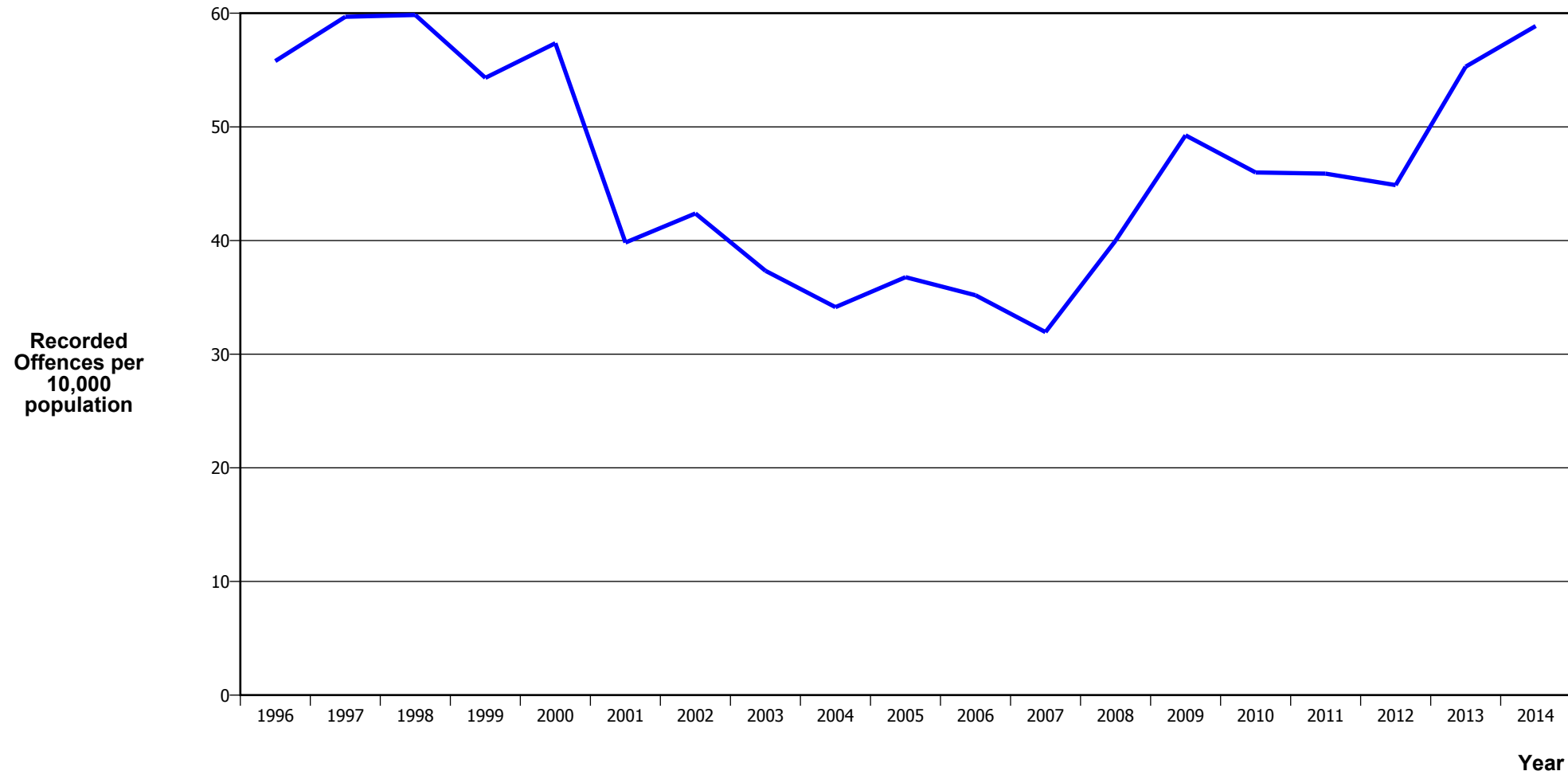
Calendar Year	1996	1997	1998	1999	2000	2001	2002	2003	2004	2005	2006	2007	2008	2009	2010	2011	2012	2013	2014
Recorded Offences	34	19	36	32	25	23	18	20	32	42	27	34	40	44	36	41	36	33	32
Recorded per 10,000 Population	2.2	1.2	2.3	2.0	1.6	1.4	1.1	1.2	1.9	2.5	1.6	2.0	2.3	2.5	2.1	2.3	2.0	1.8	1.8

BURGLARY (TOTAL)



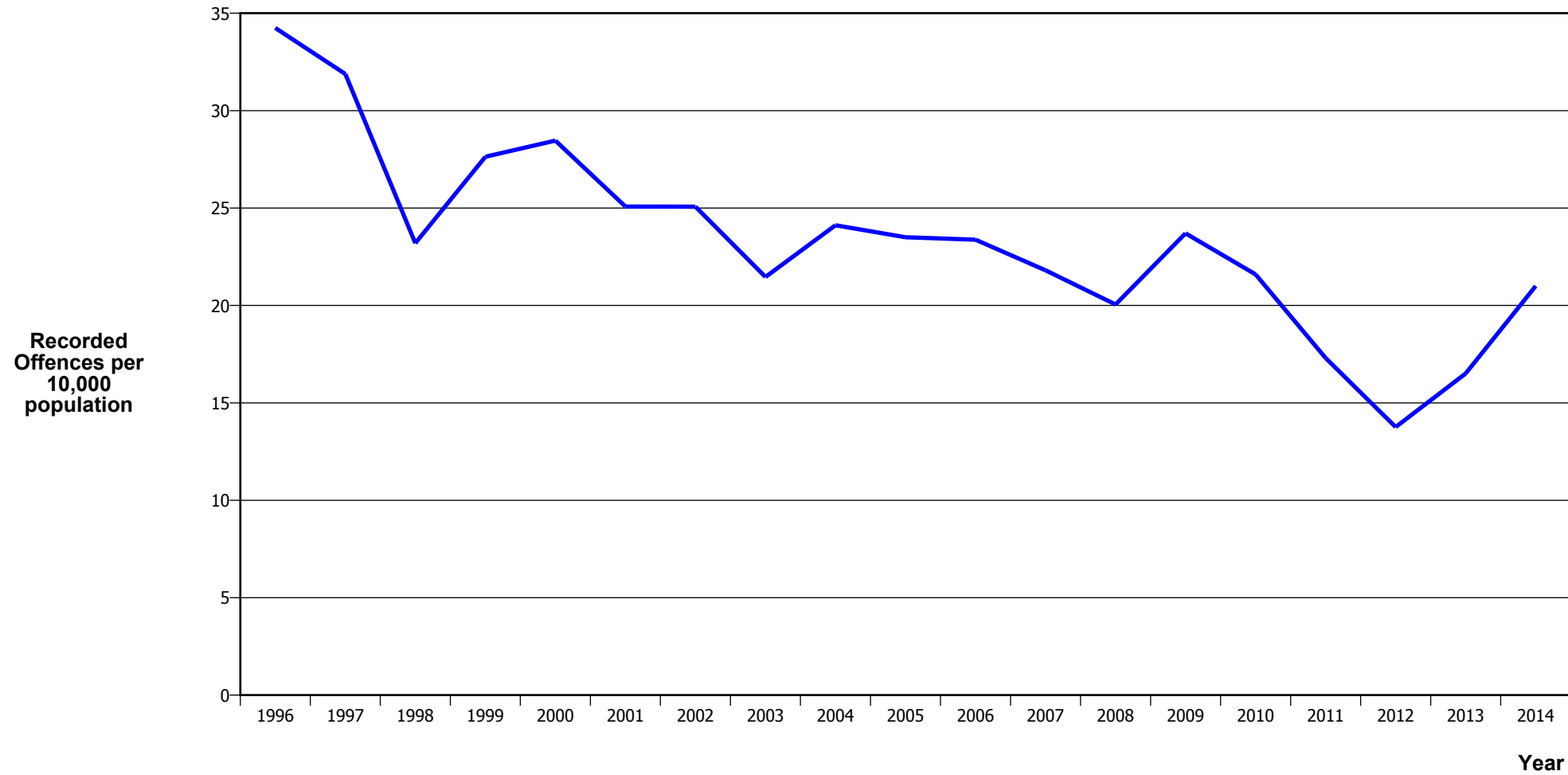
Calendar Year	1996	1997	1998	1999	2000	2001	2002	2003	2004	2005	2006	2007	2008	2009	2010	2011	2012	2013	2014
Recorded Offences	1,892	2,127	1,764	1,725	1,681	1,459	1,471	1,274	1,262	1,262	1,261	1,088	1,264	1,515	1,475	1,359	1,280	1,505	1,653
Recorded per 10,000 Population	121.3	135.3	111.5	108.6	105.4	90.8	90.6	77.5	75.7	75.1	74.4	63.8	73.5	87.4	84.3	76.6	71.9	84.2	92.1

BURGLARY (DWELLING)



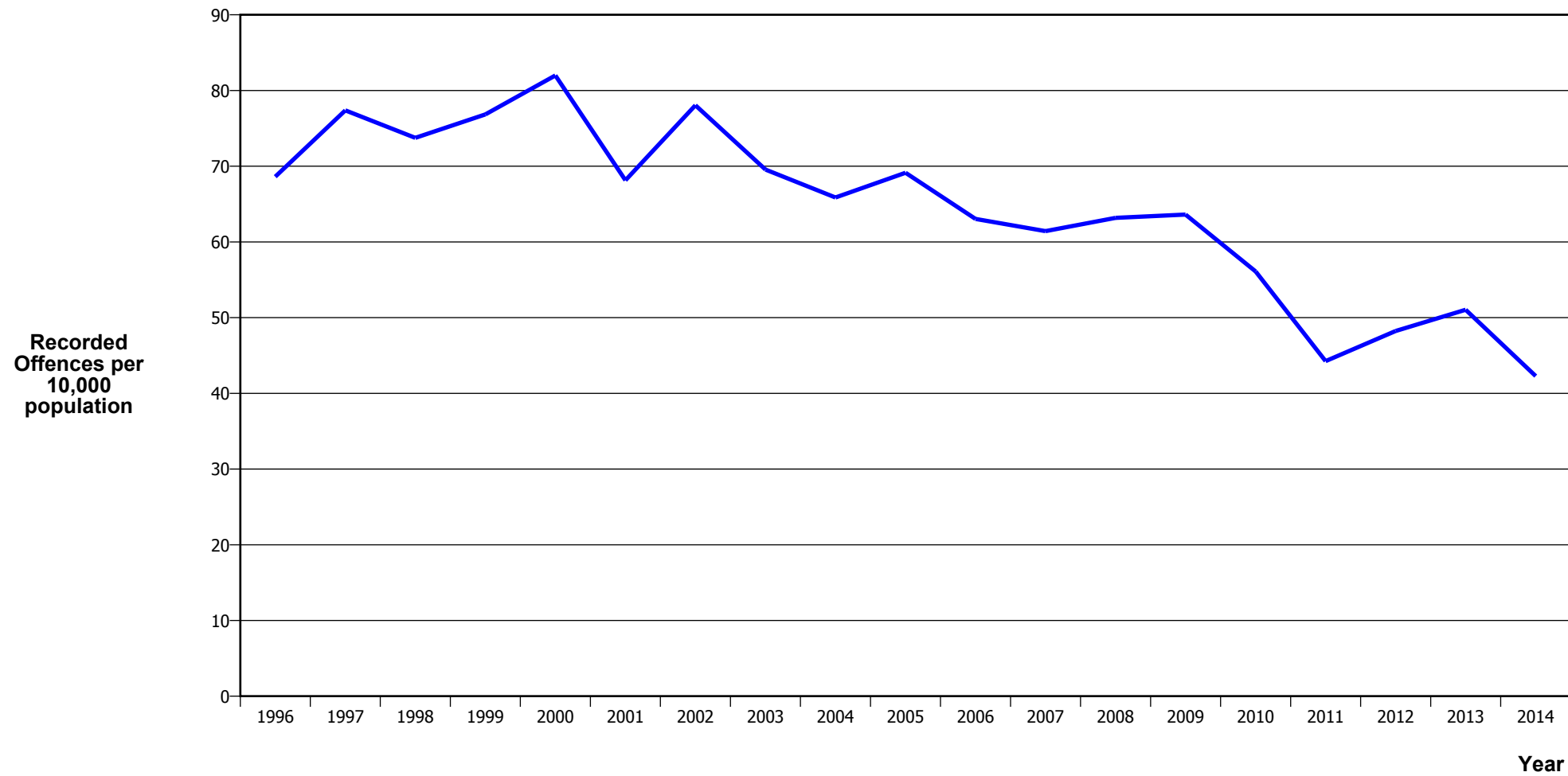
Calendar Year	1996	1997	1998	1999	2000	2001	2002	2003	2004	2005	2006	2007	2008	2009	2010	2011	2012	2013	2014
Recorded Offences	870	938	947	863	915	640	688	614	569	618	596	545	688	854	805	814	799	988	1,057
Recorded per 10,000 Population	55.8	59.7	59.8	54.3	57.4	39.8	42.4	37.3	34.1	36.8	35.2	31.9	40.0	49.3	46.0	45.9	44.9	55.3	58.9

VEHICLES STOLEN



Calendar Year	1996	1997	1998	1999	2000	2001	2002	2003	2004	2005	2006	2007	2008	2009	2010	2011	2012	2013	2014
Recorded Offences	534	501	367	439	454	403	407	353	402	395	396	372	345	411	378	307	245	295	377
Recorded per 10,000 Population	34.2	31.9	23.2	27.6	28.5	25.1	25.1	21.5	24.1	23.5	23.4	21.8	20.1	23.7	21.6	17.3	13.8	16.5	21.0

THEFT EX CAR



Calendar Year	1996	1997	1998	1999	2000	2001	2002	2003	2004	2005	2006	2007	2008	2009	2010	2011	2012	2013	2014
Recorded Offences	1,070	1,216	1,167	1,221	1,308	1,095	1,267	1,144	1,098	1,162	1,068	1,048	1,087	1,103	982	785	859	912	759
Recorded per 10,000 Population	68.6	77.4	73.8	76.9	82.0	68.1	78.1	69.6	65.9	69.1	63.0	61.4	63.2	63.6	56.1	44.3	48.2	51.0	42.3

Population Data

Population data is used in this release to calculate crime rates. They have been derived from population estimates as at 30 June each year that have been obtained from Statistics New Zealand.

The estimated resident population is based on the census usually resident population count, with adjustments for residents missed or counted more than once by the census (net census undercount), and for residents temporarily overseas on census night.

These population estimates exclude the number of international students who are studying in New Zealand for less than 12 months.

Year	Population
1996	155,930
1997	157,160
1998	158,230
1999	158,880
2000	159,520
2001	160,710
2002	162,320
2003	164,470
2004	166,690
2005	168,070
2006	169,400
2007	170,600
2008	172,050
2009	173,380
2010	175,050
2011	177,400
2012	178,060
2013	178,680
2014	179,540

General Definitions

Recorded Offences: the number of breaches of the New Zealand law recorded by Police. This includes offences specified in the Crimes Act and other legislations, such as the Summary Offences Act, Local Government Act, etc.

Resolved Offences: the number of recorded offences where an offender has been identified and dealt with (e.g. warned, cautioned, prosecuted, etc).

Resolution Rate: the proportion of recorded offences that have been resolved.

Recorded per 10,000 population: the number of recorded offences for every 10,000 people. This is also referred as the crime rate per 10,000 population.

ANZSOC: The Australian and New Zealand Standard Offence Classification. The offence classification is divided into 16 major offence divisions.

Definition of ANZSOC Divisions

1. Homicide and related offences: Unlawfully kill, attempt to unlawfully kill or conspiracy to kill another person.
2. Acts intended to cause injury: Acts, excluding attempted murder and those resulting in death, which are intended to cause non-fatal injury or harm to another person and where there is no sexual or acquisitive element.
3. Sexual assault and related offences: Acts, or intent of acts, of a sexual nature against another person, which are non-consensual or where consent is proscribed.
4. Dangerous or negligent acts endangering persons: Dangerous or negligent acts which, though not intended to cause harm, actually or potentially result in injury to oneself or another person.
5. Abduction, harassment and other offences against person: Acts intended to threaten or harass, or acts that unlawfully deprive another person of their freedom of movement, that are against that person's will or against the will of any parent, guardian or other person having lawful custody or care of that person.
6. Robbery, extortion and related offences: Acts intended to unlawfully gain money, property or other items of value from, or to cause detriment to, another person by using the threat of force or any other coercive measure.
7. Unlawful entry with intent / burglary, break and enter: The unlawful entry of a structure with the intent to commit an offence, where the entry is either forced or unforced.
8. Theft and related and offences: The unlawful taking or obtaining of money or goods, not involving the use of force or violence, coercion or deception, with intent to permanently or temporarily deprive the owner or possessor of the use of the money or goods, or the receiving or handling of money or goods obtained unlawfully.

9. Fraud, deception and related offences: Offences involving a dishonest act or omission carried out with the purpose of deceiving to obtain a benefit.

10. Illicit drug offences: The possessing, selling, dealing or trafficking, importing or exporting, manufacturing or cultivating of drugs or other substances prohibited under legislation.

11. Prohibited and regulated weapons and explosives offences: Offences involving prohibited or regulated weapons and explosives. Those offences also involving assault, sexual assault or robbery are coded to the relevant group within Assault, Sexual assaults and Robbery respectively.

12. Property damage and environmental pollution: The wilful and unlawful destruction, damage or defacement of public or private property, or the pollution of property or a definable entity held in common by the community.

13. Public order offences: Offences relating personal conduct that involves, or may lead to, a breach of public order or decency, or that is indicative of criminal intent, or that is otherwise regulated or prohibited on moral or ethical grounds. In general these offences do not involve a specific victim or victims; however some offences, such as offensive language and offensive behaviour, may be directed towards a single victim.

14. Traffic and vehicle regulatory offences: Offences relating to vehicles and most forms of traffic, including offences pertaining to the licensing, registration, roadworthiness, or use of vehicles, bicycle offences and pedestrian offences.

15. Offences against justice procedures, government security and government operations: An act or omission that is deemed to be prejudicial to the effective carrying out of justice procedures or any government operations. This includes general government operations as well as those specifically concerned with maintaining government security.

16. Miscellaneous offences: Offences involving the breach of statutory rules or regulations governing activities that are prima facie legal, where such offences are not explicitly dealt with under any other division. If an offence is specified under regulation and involves an act that would be illegal under common law or general criminal legislation, the offence is dealt with under the appropriate generic group.