

TASMAN DISTRICT CRIME STATISTICS 2012



**A Summary of
Recorded and Resolved Offence
Statistics**

**POLICE NATIONAL HEADQUARTERS
April 2013**

ISSN 1178 - 1629

Table of Contents:

Topic	Page
Report Notes	1
District Summary of Recorded and Resolved Crime, by Division	2-4
Proportions of Recorded Crime by Division	5
Summary of District Recorded Offences, Rate per 10,000 Population and Resolved Offences, by Area	6
Summary of Area Recorded Offences, Rate per 10,000 Population and Resolved Offences, by Division	7-9
Crime Trends	10
Total Crime	11
Murder	12
Serious Assaults Resulting in Injury	13
Public Place Assaults	14
Robbery	15
Burglary (Total)	16
Burglary (Dwelling)	17
Vehicles Stolen	18
Theft Ex Car	19
Population Data	20
General Definition	21-22

REPORT NOTES:

Statistics reported in this document are derived from the Police National Intelligence Application (NIA). These Official Statistics for Recorded and Resolved Offences present a snapshot of data in NIA relating to offences that occur within a given year, as at the date 14 days following the end of that year.

Unless the matter is minor where Police attendance is sufficient, a matter that is reported to or discovered by Police where Police believe an offence is likely to have been committed is counted as a recorded offence.

A recorded offence is counted as resolved when Police apprehend an offender and decide how to deal with him/her. (E.g. warn, prosecute, etc.)

Resolution rate is the percentage of recorded offences that are resolved within 14 days of the end of the year being reported on.

If an offence is resolved 15 days or more after the end of the year it will not appear in the Official Crime Statistics for that or any other year. Resolution Rate therefore undercounts the number of cases that Police have resolved. This phenomenon has a more marked impact for some types of offences than others, such as offences that require long investigations (E.g. many serial crimes, burglaries and murders).

When comparing 2012 Statistics with previous years, the reader should also refer to "Report Notes" published in previous years' reports, as previous changes significantly affect year on year trends.

SUMMARY OF DISTRICT RECORDED AND RESOLVED CRIME, BY DIVISION
Years ending 31 December

HOMICIDE AND RELATED OFFENCES

ASOC Subdivision Description	Recorded 2010	Recorded 2011	Recorded 2012	Variance 2010-2011	Variance 2011-2012	Resolved 2010	Resolved 2011	Resolved 2012	Resolution Rate 2010	Resolution Rate 2011	Resolution Rate 2012
ATTEMPTED MURDER	0	3	1	0.0 %	-66.7 %	0	3	1	0.0 %	100.0 %	100.0 %
MANSLAUGHTER AND DRIVING CAUSING DEATH	1	1	0	0.0 %	-100.0 %	1	1	0	100.0 %	100.0 %	0.0 %
MURDER	3	0	2	-100.0 %	0.0 %	3	0	2	100.0 %	0.0 %	100.0 %
	4	4	3	0.0 %	-25.0 %	4	4	3	100.0 %	100.0 %	100.0 %

ACTS INTENDED TO CAUSE INJURY

ASOC Subdivision Description	Recorded 2010	Recorded 2011	Recorded 2012	Variance 2010-2011	Variance 2011-2012	Resolved 2010	Resolved 2011	Resolved 2012	Resolution Rate 2010	Resolution Rate 2011	Resolution Rate 2012
ASSAULT	1,764	1,750	1,826	-0.8 %	4.3 %	1,562	1,549	1,565	88.5 %	88.5 %	85.7 %
OTHER ACTS INTENDED TO CAUSE INJURY	2	1	2	-50.0 %	100.0 %	2	1	1	100.0 %	100.0 %	50.0 %
	1,766	1,751	1,828	-0.8 %	4.4 %	1,564	1,550	1,566	88.6 %	88.5 %	85.7 %

SEXUAL ASSAULT AND RELATED OFFENCES

ASOC Subdivision Description	Recorded 2010	Recorded 2011	Recorded 2012	Variance 2010-2011	Variance 2011-2012	Resolved 2010	Resolved 2011	Resolved 2012	Resolution Rate 2010	Resolution Rate 2011	Resolution Rate 2012
NON-ASSAULTIVE SEXUAL OFFENCES	6	9	2	50.0 %	-77.8 %	4	6	2	66.7 %	66.7 %	100.0 %
SEXUAL ASSAULT	166	147	125	-11.4 %	-15.0 %	128	95	79	77.1 %	64.6 %	63.2 %
	172	156	127	-9.3 %	-18.6 %	132	101	81	76.7 %	64.7 %	63.8 %

DANGEROUS OR NEGLIGENT ACTS ENDANGERING PERSONS

ASOC Subdivision Description	Recorded 2010	Recorded 2011	Recorded 2012	Variance 2010-2011	Variance 2011-2012	Resolved 2010	Resolved 2011	Resolved 2012	Resolution Rate 2010	Resolution Rate 2011	Resolution Rate 2012
OTHER DANGEROUS OR NEGLIGENT ACTS ENDANGERING PERSONS	47	30	37	-36.2 %	23.3 %	35	21	28	74.5 %	70.0 %	75.7 %
	47	30	37	-36.2 %	23.3 %	35	21	28	74.5 %	70.0 %	75.7 %

ABDUCTION, HARASSMENT AND OTHER RELATED OFFENCES AGAINST A PERSON

ASOC Subdivision Description	Recorded 2010	Recorded 2011	Recorded 2012	Variance 2010-2011	Variance 2011-2012	Resolved 2010	Resolved 2011	Resolved 2012	Resolution Rate 2010	Resolution Rate 2011	Resolution Rate 2012
ABDUCTION AND KIDNAPPING	7	5	4	-28.6 %	-20.0 %	4	4	2	57.1 %	80.0 %	50.0 %
HARASSMENT AND THREATENING BEHAVIOUR	612	569	601	-7.0 %	5.6 %	518	481	487	84.6 %	84.5 %	81.0 %
	619	574	605	-7.3 %	5.4 %	522	485	489	84.3 %	84.5 %	80.8 %

ROBBERY, EXTORTION AND RELATED OFFENCES

ASOC Subdivision Description	Recorded 2010	Recorded 2011	Recorded 2012	Variance 2010-2011	Variance 2011-2012	Resolved 2010	Resolved 2011	Resolved 2012	Resolution Rate 2010	Resolution Rate 2011	Resolution Rate 2012
BLACKMAIL AND EXTORTION	6	3	5	-50.0 %	66.7 %	3	2	2	50.0 %	66.7 %	40.0 %
ROBBERY	36	41	36	13.9 %	-12.2 %	27	25	20	75.0 %	61.0 %	55.6 %
	42	44	41	4.8 %	-6.8 %	30	27	22	71.4 %	61.4 %	53.7 %

UNLAWFUL ENTRY WITH INTENT/BURGLARY, BREAK AND ENTER

ASOC Subdivision Description	Recorded 2010	Recorded 2011	Recorded 2012	Variance 2010-2011	Variance 2011-2012	Resolved 2010	Resolved 2011	Resolved 2012	Resolution Rate 2010	Resolution Rate 2011	Resolution Rate 2012
UNLAWFUL ENTRY WITH INTENT/BURGLARY, BREAK AND ENTER	1,475	1,359	1,280	-7.9 %	-5.8 %	410	367	251	27.8 %	27.0 %	19.6 %
	1,475	1,359	1,280	-7.9 %	-5.8 %	410	367	251	27.8 %	27.0 %	19.6 %

SUMMARY OF DISTRICT RECORDED AND RESOLVED CRIME, BY DIVISION
Years ending 31 December

THEFT AND RELATED OFFENCES

ASOC Subdivision Description	Recorded 2010	Recorded 2011	Recorded 2012	Variance 2010-2011	Variance 2011-2012	Resolved 2010	Resolved 2011	Resolved 2012	Resolution Rate 2010	Resolution Rate 2011	Resolution Rate 2012
ILLEGAL USE OF PROPERTY (EXCEPT MOTOR VEHICLES)	382	373	320	-2.4 %	-14.2 %	21	31	30	5.5 %	8.3 %	9.4 %
MOTOR VEHICLE THEFT AND RELATED OFFENCES	1,360	1,092	1,104	-19.7 %	1.1 %	295	338	233	21.7 %	31.0 %	21.1 %
RECEIVE OR HANDLE PROCEEDS OF CRIME	132	74	57	-43.9 %	-23.0 %	130	71	56	98.5 %	95.9 %	98.2 %
THEFT AND RELATED OFFENCES NOT FURTHER DEFINED	0	0	0	0.0 %	0.0 %	0	0	0	0.0 %	0.0 %	0.0 %
THEFT (EXCEPT MOTOR VEHICLES)	2,825	2,730	2,539	-3.4 %	-7.0 %	1,035	981	974	36.6 %	35.9 %	38.4 %
	4,699	4,269	4,020	-9.2 %	-5.8 %	1,481	1,421	1,293	31.5 %	33.3 %	32.2 %

FRAUD, DECEPTION AND RELATED OFFENCES

ASOC Subdivision Description	Recorded 2010	Recorded 2011	Recorded 2012	Variance 2010-2011	Variance 2011-2012	Resolved 2010	Resolved 2011	Resolved 2012	Resolution Rate 2010	Resolution Rate 2011	Resolution Rate 2012
DECEPTIVE BUSINESS/GOVERNMENT PRACTICES	1	1	0	0.0 %	-100.0 %	0	1	0	0.0 %	100.0 %	0.0 %
FORGERY AND COUNTERFEITING	20	14	11	-30.0 %	-21.4 %	10	8	5	50.0 %	57.1 %	45.5 %
OBTAIN BENEFIT BY DECEPTION	398	246	268	-38.2 %	8.9 %	291	160	165	73.1 %	65.0 %	61.6 %
OTHER FRAUD AND DECEPTION OFFENCES	16	20	13	25.0 %	-35.0 %	8	11	7	50.0 %	55.0 %	53.8 %
	435	281	292	-35.4 %	3.9 %	309	180	177	71.0 %	64.1 %	60.6 %

ILLICIT DRUG OFFENCES

ASOC Subdivision Description	Recorded 2010	Recorded 2011	Recorded 2012	Variance 2010-2011	Variance 2011-2012	Resolved 2010	Resolved 2011	Resolved 2012	Resolution Rate 2010	Resolution Rate 2011	Resolution Rate 2012
DEAL OR TRAFFIC IN ILLICIT DRUGS	115	632	292	449.6 %	-53.8 %	111	621	283	96.5 %	98.3 %	96.9 %
IMPORT OR EXPORT ILLICIT DRUGS	3	9	2	200.0 %	-77.8 %	3	9	1	100.0 %	100.0 %	50.0 %
MANUFACTURE OR CULTIVATE ILLICIT DRUGS	307	261	230	-15.0 %	-11.9 %	185	162	130	60.3 %	62.1 %	56.5 %
OTHER ILLICIT DRUG OFFENCES	428	364	280	-15.0 %	-23.1 %	422	355	274	98.6 %	97.5 %	97.9 %
POSSESS AND/OR USE ILLICIT DRUGS	651	560	472	-14.0 %	-15.7 %	621	539	452	95.4 %	96.3 %	95.8 %
	1,504	1,826	1,276	21.4 %	-30.1 %	1,342	1,686	1,140	89.2 %	92.3 %	89.3 %

PROHIBITED AND REGULATED WEAPONS AND EXPLOSIVES OFFENCES

ASOC Subdivision Description	Recorded 2010	Recorded 2011	Recorded 2012	Variance 2010-2011	Variance 2011-2012	Resolved 2010	Resolved 2011	Resolved 2012	Resolution Rate 2010	Resolution Rate 2011	Resolution Rate 2012
REGULATED WEAPONS/EXPLOSIVES OFFENCES	313	275	244	-12.1 %	-11.3 %	269	252	224	85.9 %	91.6 %	91.8 %
	313	275	244	-12.1 %	-11.3 %	269	252	224	85.9 %	91.6 %	91.8 %

PROPERTY DAMAGE AND ENVIRONMENTAL POLLUTION

ASOC Subdivision Description	Recorded 2010	Recorded 2011	Recorded 2012	Variance 2010-2011	Variance 2011-2012	Resolved 2010	Resolved 2011	Resolved 2012	Resolution Rate 2010	Resolution Rate 2011	Resolution Rate 2012
ENVIRONMENTAL POLLUTION	15	11	12	-26.7 %	9.1 %	12	8	8	80.0 %	72.7 %	66.7 %
PROPERTY DAMAGE	2,904	2,741	2,464	-5.6 %	-10.1 %	782	860	727	26.9 %	31.4 %	29.5 %
	2,919	2,752	2,476	-5.7 %	-10.0 %	794	868	735	27.2 %	31.5 %	29.7 %

SUMMARY OF DISTRICT RECORDED AND RESOLVED CRIME, BY DIVISION
Years ending 31 December

PUBLIC ORDER OFFENCES

ASOC Subdivision Description	Recorded 2010	Recorded 2011	Recorded 2012	Variance 2010-2011	Variance 2011-2012	Resolved 2010	Resolved 2011	Resolved 2012	Resolution Rate 2010	Resolution Rate 2011	Resolution Rate 2012
DISORDERLY CONDUCT	1,662	1,738	1,884	4.6 %	8.4 %	1,470	1,536	1,658	88.4 %	88.4 %	88.0 %
OFFENSIVE CONDUCT	130	114	141	-12.3 %	23.7 %	99	80	104	76.2 %	70.2 %	73.8 %
PUBLIC ORDER OFFENCES NOT FURTHER DEFINED	0	0	0	0.0 %	0.0 %	0	0	0	0.0 %	0.0 %	0.0 %
REGULATED PUBLIC ORDER OFFENCES	759	788	630	3.8 %	-20.1 %	685	737	585	90.3 %	93.5 %	92.9 %
	2,551	2,640	2,655	3.5 %	0.6 %	2,254	2,353	2,347	88.4 %	89.1 %	88.4 %

OFFENCES AGAINST JUSTICE PROCEDURES, GOVERNMENT SECURITY AND GOVERNMENT OPERATIONS

ASOC Subdivision Description	Recorded 2010	Recorded 2011	Recorded 2012	Variance 2010-2011	Variance 2011-2012	Resolved 2010	Resolved 2011	Resolved 2012	Resolution Rate 2010	Resolution Rate 2011	Resolution Rate 2012
BREACH OF COMMUNITY-BASED ORDER	203	110	68	-45.8 %	-38.2 %	192	99	60	94.6 %	90.0 %	88.2 %
BREACH OF CUSTODIAL ORDER OFFENCES	19	24	21	26.3 %	-12.5 %	19	23	20	100.0 %	95.8 %	95.2 %
BREACH OF VIOLENCE AND NON-VIOLENCE RESTRAINING ORDERS	176	248	258	40.9 %	4.0 %	158	216	227	89.8 %	87.1 %	88.0 %
OFFENCES AGAINST GOVERNMENT OPERATIONS	12	13	18	8.3 %	38.5 %	5	5	9	41.7 %	38.5 %	50.0 %
OFFENCES AGAINST GOVERNMENT SECURITY	1	0	0	-100.0 %	0.0 %	1	0	0	100.0 %	0.0 %	0.0 %
OFFENCES AGAINST JUSTICE PROCEDURES	263	247	234	-6.1 %	-5.3 %	257	240	229	97.7 %	97.2 %	97.9 %
OFFENCES AGAINST JUSTICE PROCEDURES, GOVERNMENT SECURITY AND GOVERNMENT OPERATIONS NOT FURTHER DEFINED	2	2	0	0.0 %	-100.0 %	1	2	0	50.0 %	100.0 %	0.0 %
	676	644	599	-4.7 %	-7.0 %	633	585	545	93.6 %	90.8 %	91.0 %

MISCELLANEOUS OFFENCES

ASOC Subdivision Description	Recorded 2010	Recorded 2011	Recorded 2012	Variance 2010-2011	Variance 2011-2012	Resolved 2010	Resolved 2011	Resolved 2012	Resolution Rate 2010	Resolution Rate 2011	Resolution Rate 2012
COMMERCIAL/INDUSTRY/FINANCIAL REGULATION	0	0	0	0.0 %	0.0 %	0	0	0	0.0 %	0.0 %	0.0 %
DEFAMATION, LIBEL AND PRIVACY OFFENCES	3	0	13	-100.0 %	0.0 %	1	0	12	33.3 %	0.0 %	92.3 %
OTHER MISCELLANEOUS OFFENCES	90	88	103	-2.2 %	17.0 %	52	66	72	57.8 %	75.0 %	69.9 %
PUBLIC HEALTH AND SAFETY OFFENCES	3	2	5	-33.3 %	150.0 %	2	1	4	66.7 %	50.0 %	80.0 %
	96	90	121	-6.3 %	34.4 %	55	67	88	57.3 %	74.4 %	72.7 %

TOTAL	17,318	16,695	15,604	-3.6 %	-6.5 %	9,834	9,967	8,989	56.8 %	59.7 %	57.6 %
--------------	---------------	---------------	---------------	---------------	---------------	--------------	--------------	--------------	---------------	---------------	---------------

PROPORTIONS OF RECORDED CRIME BY DIVISION

Years ending 31 December

ASOC Division Description	Proportions Recorded 2010	Recorded 2010	Proportions Recorded 2011	Recorded 2011	Proportions Recorded 2012	Recorded 2012
HOMICIDE AND RELATED OFFENCES	0.02 %	4	0.02 %	4	0.02 %	3
ACTS INTENDED TO CAUSE INJURY	10.20 %	1,766	10.49 %	1,751	11.71 %	1,828
SEXUAL ASSAULT AND RELATED OFFENCES	0.99 %	172	0.93 %	156	0.81 %	127
DANGEROUS OR NEGLIGENT ACTS ENDANGERING PERSONS	0.27 %	47	0.18 %	30	0.24 %	37
ABDUCTION, HARASSMENT AND OTHER RELATED OFFENCES AGAINST A PERSON	3.57 %	619	3.44 %	574	3.88 %	605
ROBBERY, EXTORTION AND RELATED OFFENCES	0.24 %	42	0.26 %	44	0.26 %	41
UNLAWFUL ENTRY WITH INTENT/BURGLARY, BREAK AND ENTER	8.52 %	1,475	8.14 %	1,359	8.20 %	1,280
THEFT AND RELATED OFFENCES	27.13 %	4,699	25.57 %	4,269	25.76 %	4,020
FRAUD, DECEPTION AND RELATED OFFENCES	2.51 %	435	1.68 %	281	1.87 %	292
ILLICIT DRUG OFFENCES	8.68 %	1,504	10.94 %	1,826	8.18 %	1,276
PROHIBITED AND REGULATED WEAPONS AND EXPLOSIVES OFFENCES	1.81 %	313	1.65 %	275	1.56 %	244
PROPERTY DAMAGE AND ENVIRONMENTAL POLLUTION	16.86 %	2,919	16.48 %	2,752	15.87 %	2,476
PUBLIC ORDER OFFENCES	14.73 %	2,551	15.81 %	2,640	17.01 %	2,655
OFFENCES AGAINST JUSTICE PROCEDURES, GOVERNMENT SECURITY AND GOVERNMENT OPERATIONS	3.90 %	676	3.86 %	644	3.84 %	599
MISCELLANEOUS OFFENCES	0.55 %	96	0.54 %	90	0.78 %	121
	100.00 %	17,318	100.00 %	16,695	100.00 %	15,604

SUMMARY OF RECORDED OFFENCES, RATE PER 10,000 POPULATION AND RESOLVED OFFENCES, BY AREA
years ending 31 December

TOTAL CRIME

Area Description	Recorded 2011	Recorded 2012	Variance 2011-2012	Recorded per 10,000 pop 2011	Recorded per 10,000 pop 2012	Per 10,000 pop % Variance 2011 to 2012	Resolved 2011	Resolved 2012	Resolution Rate 2011	Resolution Rate 2012
Marlborough	5,367	4,750	-11.5 %	1,083.4	959.8	-11.4 %	3,333	2,969	62.1 %	62.5 %
Nelson Bays	8,383	8,197	-2.2 %	888.3	862.2	-2.9 %	4,906	4,441	58.5 %	54.2 %
West Coast	2,945	2,657	-9.8 %	894.0	807.6	-9.7 %	1,728	1,579	58.7 %	59.4 %
	16,695	15,604	-6.5 %	944.0	879.3	-6.9 %	9,967	8,989	59.7 %	57.6 %

SUMMARY OF RECORDED OFFENCES, RATE PER 10,000 POPULATION AND RESOLVED OFFENCES, BY DIVISION

Years ending 31 December

HOMICIDE AND RELATED OFFENCES

Area Description	Recorded 2011	Recorded 2012	Variance 2011-2012	Recorded per 10,000 pop 2011	Recorded per 10,000 pop 2012	Per 10,000 pop % Variance 2011 to 2012	Resolved 2011	Resolved 2012	Resolution Rate 2011	Resolution Rate 2012
Marlborough	0	0	0.0 %	0.0	0.0	0.0 %	0	0	0.0 %	0.0 %
Nelson Bays	4	3	-25.0 %	0.4	0.3	-25.6 %	4	3	100.0 %	100.0 %
West Coast	0	0	0.0 %	0.0	0.0	0.0 %	0	0	0.0 %	0.0 %
	4	3	-25.0 %	0.2	0.2	-25.3 %	4	3	100.0 %	100.0 %

ACTS INTENDED TO CAUSE INJURY

Area Description	Recorded 2011	Recorded 2012	Variance 2011-2012	Recorded per 10,000 pop 2011	Recorded per 10,000 pop 2012	Per 10,000 pop % Variance 2011 to 2012	Resolved 2011	Resolved 2012	Resolution Rate 2011	Resolution Rate 2012
Marlborough	514	447	-13.0 %	103.8	90.3	-12.9 %	458	403	89.1 %	90.2 %
Nelson Bays	913	1,043	14.2 %	96.7	109.7	13.4 %	801	866	87.7 %	83.0 %
West Coast	324	338	4.3 %	98.4	102.7	4.4 %	291	297	89.8 %	87.9 %
	1,751	1,828	4.4 %	99.0	103.0	4.0 %	1,550	1,566	88.5 %	85.7 %

SEXUAL ASSAULT AND RELATED OFFENCES

Area Description	Recorded 2011	Recorded 2012	Variance 2011-2012	Recorded per 10,000 pop 2011	Recorded per 10,000 pop 2012	Per 10,000 pop % Variance 2011 to 2012	Resolved 2011	Resolved 2012	Resolution Rate 2011	Resolution Rate 2012
Marlborough	48	45	-6.3 %	9.7	9.1	-6.2 %	33	32	68.8 %	71.1 %
Nelson Bays	84	56	-33.3 %	8.9	5.9	-33.8 %	52	29	61.9 %	51.8 %
West Coast	24	26	8.3 %	7.3	7.9	8.5 %	16	20	66.7 %	76.9 %
	156	127	-18.6 %	8.8	7.2	-18.9 %	101	81	64.7 %	63.8 %

DANGEROUS OR NEGLIGENT ACTS ENDANGERING PERSONS

Area Description	Recorded 2011	Recorded 2012	Variance 2011-2012	Recorded per 10,000 pop 2011	Recorded per 10,000 pop 2012	Per 10,000 pop % Variance 2011 to 2012	Resolved 2011	Resolved 2012	Resolution Rate 2011	Resolution Rate 2012
Marlborough	9	20	122.2 %	1.8	4.0	122.4 %	7	14	77.8 %	70.0 %
Nelson Bays	12	13	8.3 %	1.3	1.4	7.5 %	8	11	66.7 %	84.6 %
West Coast	9	4	-55.6 %	2.7	1.2	-55.5 %	6	3	66.7 %	75.0 %
	30	37	23.3 %	1.7	2.1	22.9 %	21	28	70.0 %	75.7 %

ABDUCTION, HARASSMENT AND OTHER RELATED OFFENCES AGAINST A PERSON

Area Description	Recorded 2011	Recorded 2012	Variance 2011-2012	Recorded per 10,000 pop 2011	Recorded per 10,000 pop 2012	Per 10,000 pop % Variance 2011 to 2012	Resolved 2011	Resolved 2012	Resolution Rate 2011	Resolution Rate 2012
Marlborough	152	168	10.5 %	30.7	33.9	10.6 %	124	130	81.6 %	77.4 %
Nelson Bays	265	265	0.0 %	28.1	27.9	-0.7 %	230	212	86.8 %	80.0 %
West Coast	157	172	9.6 %	47.7	52.3	9.7 %	131	147	83.4 %	85.5 %
	574	605	5.4 %	32.5	34.1	5.0 %	485	489	84.5 %	80.8 %

ROBBERY, EXTORTION AND RELATED OFFENCES

Area Description	Recorded 2011	Recorded 2012	Variance 2011-2012	Recorded per 10,000 pop 2011	Recorded per 10,000 pop 2012	Per 10,000 pop % Variance 2011 to 2012	Resolved 2011	Resolved 2012	Resolution Rate 2011	Resolution Rate 2012
Marlborough	13	19	46.2 %	2.6	3.8	46.3 %	12	10	92.3 %	52.6 %
Nelson Bays	24	14	-41.7 %	2.5	1.5	-42.1 %	11	6	45.8 %	42.9 %
West Coast	7	8	14.3 %	2.1	2.4	14.4 %	4	6	57.1 %	75.0 %
	44	41	-6.8 %	2.5	2.3	-7.1 %	27	22	61.4 %	53.7 %

SUMMARY OF RECORDED OFFENCES, RATE PER 10,000 POPULATION AND RESOLVED OFFENCES, BY DIVISION

Years ending 31 December

UNLAWFUL ENTRY WITH INTENT/BURGLARY, BREAK AND ENTER

Area Description	Recorded 2011	Recorded 2012	Variance 2011-2012	Recorded per 10,000 pop 2011	Recorded per 10,000 pop 2012	Per 10,000 pop % Variance 2011 to 2012	Resolved 2011	Resolved 2012	Resolution Rate 2011	Resolution Rate 2012
Marlborough	506	384	-24.1 %	102.1	77.6	-24.0 %	139	82	27.5 %	21.4 %
Nelson Bays	662	736	11.2 %	70.1	77.4	10.4 %	151	140	22.8 %	19.0 %
West Coast	191	160	-16.2 %	58.0	48.6	-16.1 %	77	29	40.3 %	18.1 %
	1,359	1,280	-5.8 %	76.8	72.1	-6.1 %	367	251	27.0 %	19.6 %

THEFT AND RELATED OFFENCES

Area Description	Recorded 2011	Recorded 2012	Variance 2011-2012	Recorded per 10,000 pop 2011	Recorded per 10,000 pop 2012	Per 10,000 pop % Variance 2011 to 2012	Resolved 2011	Resolved 2012	Resolution Rate 2011	Resolution Rate 2012
Marlborough	1,464	1,225	-16.3 %	295.5	247.5	-16.2 %	534	473	36.5 %	38.6 %
Nelson Bays	2,206	2,287	3.7 %	233.8	240.6	2.9 %	723	684	32.8 %	29.9 %
West Coast	599	508	-15.2 %	181.8	154.4	-15.1 %	164	136	27.4 %	26.8 %
	4,269	4,020	-5.8 %	241.4	226.5	-6.2 %	1,421	1,293	33.3 %	32.2 %

FRAUD, DECEPTION AND RELATED OFFENCES

Area Description	Recorded 2011	Recorded 2012	Variance 2011-2012	Recorded per 10,000 pop 2011	Recorded per 10,000 pop 2012	Per 10,000 pop % Variance 2011 to 2012	Resolved 2011	Resolved 2012	Resolution Rate 2011	Resolution Rate 2012
Marlborough	120	97	-19.2 %	24.2	19.6	-19.1 %	87	59	72.5 %	60.8 %
Nelson Bays	120	156	30.0 %	12.7	16.4	29.0 %	64	98	53.3 %	62.8 %
West Coast	41	39	-4.9 %	12.4	11.9	-4.8 %	29	20	70.7 %	51.3 %
	281	292	3.9 %	15.9	16.5	3.6 %	180	177	64.1 %	60.6 %

ILLICIT DRUG OFFENCES

Area Description	Recorded 2011	Recorded 2012	Variance 2011-2012	Recorded per 10,000 pop 2011	Recorded per 10,000 pop 2012	Per 10,000 pop % Variance 2011 to 2012	Resolved 2011	Resolved 2012	Resolution Rate 2011	Resolution Rate 2012
Marlborough	523	507	-3.1 %	105.6	102.4	-3.0 %	497	470	95.0 %	92.7 %
Nelson Bays	984	547	-44.4 %	104.3	57.5	-44.8 %	939	485	95.4 %	88.7 %
West Coast	319	222	-30.4 %	96.8	67.5	-30.3 %	250	185	78.4 %	83.3 %
	1,826	1,276	-30.1 %	103.3	71.9	-30.4 %	1,686	1,140	92.3 %	89.3 %

PROHIBITED AND REGULATED WEAPONS AND EXPLOSIVES OFFENCES

Area Description	Recorded 2011	Recorded 2012	Variance 2011-2012	Recorded per 10,000 pop 2011	Recorded per 10,000 pop 2012	Per 10,000 pop % Variance 2011 to 2012	Resolved 2011	Resolved 2012	Resolution Rate 2011	Resolution Rate 2012
Marlborough	94	85	-9.6 %	19.0	17.2	-9.5 %	84	81	89.4 %	95.3 %
Nelson Bays	119	92	-22.7 %	12.6	9.7	-23.3 %	111	86	93.3 %	93.5 %
West Coast	62	67	8.1 %	18.8	20.4	8.2 %	57	57	91.9 %	85.1 %
	275	244	-11.3 %	15.5	13.7	-11.6 %	252	224	91.6 %	91.8 %

PROPERTY DAMAGE AND ENVIRONMENTAL POLLUTION

Area Description	Recorded 2011	Recorded 2012	Variance 2011-2012	Recorded per 10,000 pop 2011	Recorded per 10,000 pop 2012	Per 10,000 pop % Variance 2011 to 2012	Resolved 2011	Resolved 2012	Resolution Rate 2011	Resolution Rate 2012
Marlborough	744	640	-14.0 %	150.2	129.3	-13.9 %	269	218	36.2 %	34.1 %
Nelson Bays	1,377	1,298	-5.7 %	145.9	136.5	-6.4 %	406	343	29.5 %	26.4 %
West Coast	631	538	-14.7 %	191.6	163.5	-14.6 %	193	174	30.6 %	32.3 %
	2,752	2,476	-10.0 %	155.6	139.5	-10.3 %	868	735	31.5 %	29.7 %

SUMMARY OF RECORDED OFFENCES, RATE PER 10,000 POPULATION AND RESOLVED OFFENCES, BY DIVISION

Years ending 31 December

PUBLIC ORDER OFFENCES

Area Description	Recorded 2011	Recorded 2012	Variance 2011-2012	Recorded per 10,000 pop 2011	Recorded per 10,000 pop 2012	Per 10,000 pop % Variance 2011 to 2012	Resolved 2011	Resolved 2012	Resolution Rate 2011	Resolution Rate 2012
Marlborough	936	874	-6.6 %	188.9	176.6	-6.5 %	862	785	92.1 %	89.8 %
Nelson Bays	1,243	1,315	5.8 %	131.7	138.3	5.0 %	1,085	1,153	87.3 %	87.7 %
West Coast	461	466	1.1 %	140.0	141.6	1.2 %	406	409	88.1 %	87.8 %
	2,640	2,655	0.6 %	149.3	149.6	0.2 %	2,353	2,347	89.1 %	88.4 %

OFFENCES AGAINST JUSTICE PROCEDURES, GOVERNMENT SECURITY AND GOVERNMENT OPERATIONS

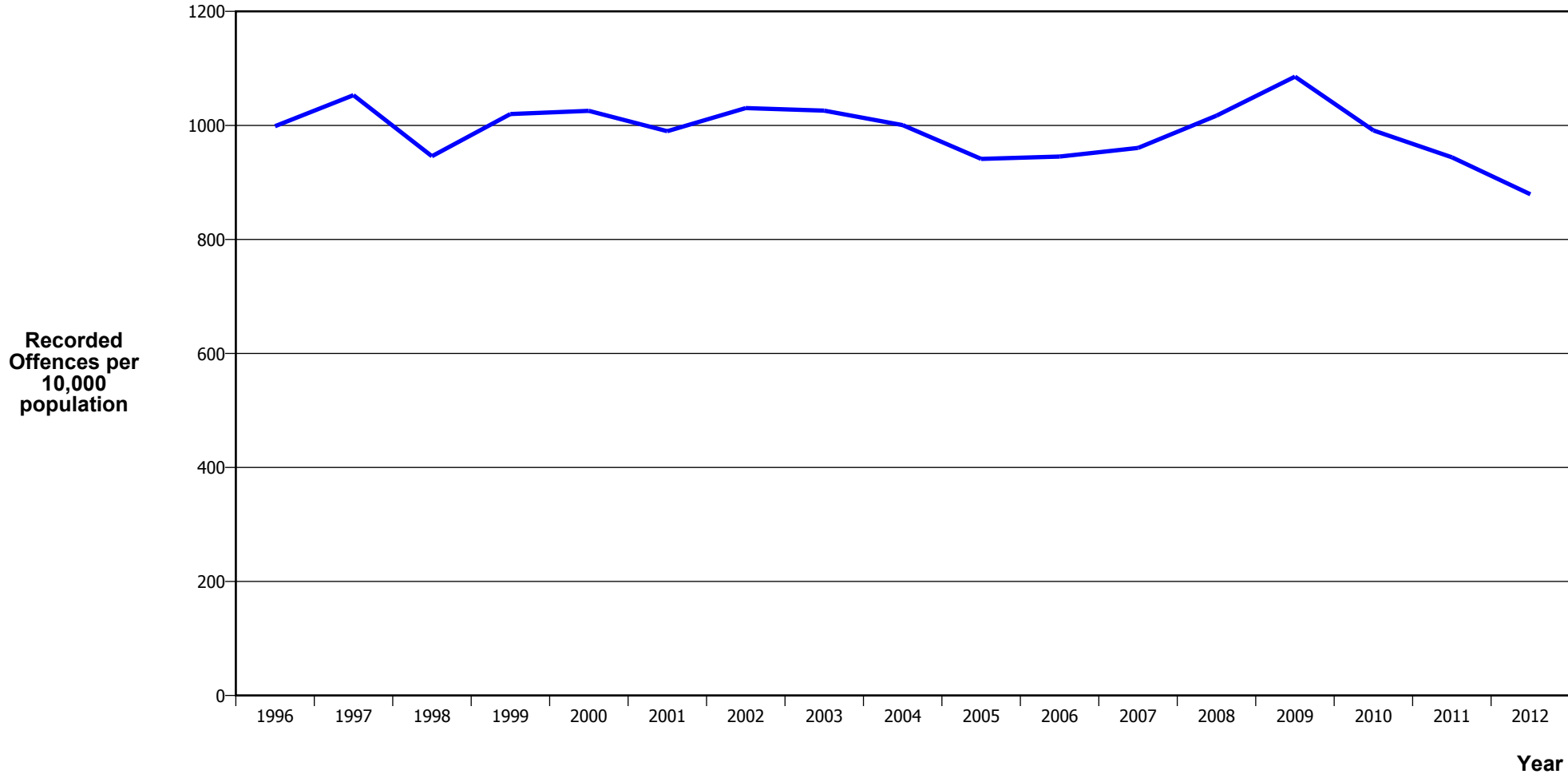
Area Description	Recorded 2011	Recorded 2012	Variance 2011-2012	Recorded per 10,000 pop 2011	Recorded per 10,000 pop 2012	Per 10,000 pop % Variance 2011 to 2012	Resolved 2011	Resolved 2012	Resolution Rate 2011	Resolution Rate 2012
Marlborough	207	192	-7.2 %	41.8	38.8	-7.2 %	198	177	95.7 %	92.2 %
Nelson Bays	336	313	-6.8 %	35.6	32.9	-7.5 %	294	283	87.5 %	90.4 %
West Coast	101	94	-6.9 %	30.7	28.6	-6.8 %	93	85	92.1 %	90.4 %
	644	599	-7.0 %	36.4	33.8	-7.3 %	585	545	90.8 %	91.0 %

MISCELLANEOUS OFFENCES

Area Description	Recorded 2011	Recorded 2012	Variance 2011-2012	Recorded per 10,000 pop 2011	Recorded per 10,000 pop 2012	Per 10,000 pop % Variance 2011 to 2012	Resolved 2011	Resolved 2012	Resolution Rate 2011	Resolution Rate 2012
Marlborough	37	47	27.0 %	7.5	9.5	27.2 %	29	35	78.4 %	74.5 %
Nelson Bays	34	59	73.5 %	3.6	6.2	72.3 %	27	42	79.4 %	71.2 %
West Coast	19	15	-21.1 %	5.8	4.6	-21.0 %	11	11	57.9 %	73.3 %
	90	121	34.4 %	5.1	6.8	34.0 %	67	88	74.4 %	72.7 %

CRIME TRENDS

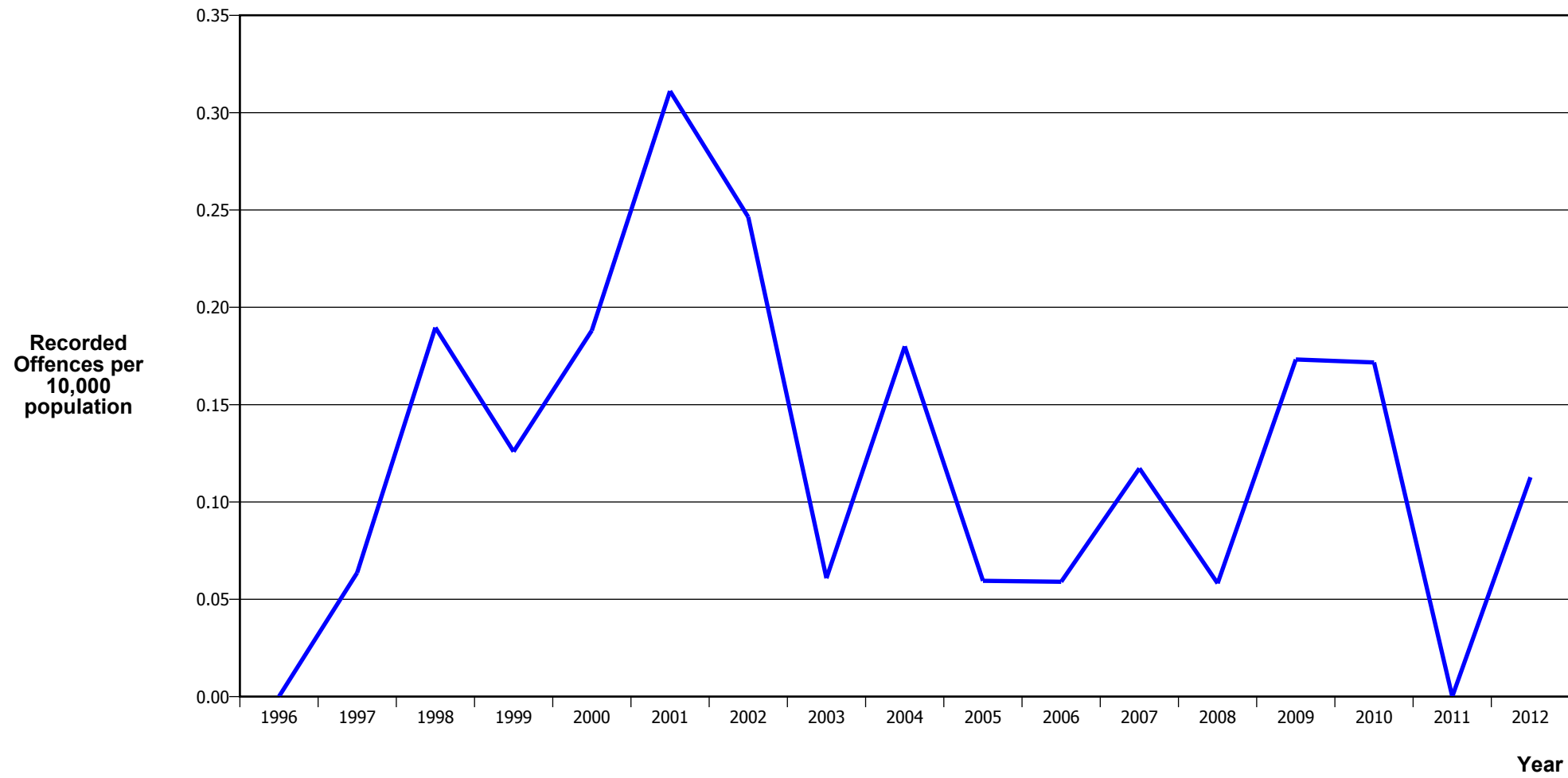
TOTAL CRIME



Calendar Year	1996	1997	1998	1999	2000	2001	2002	2003	2004	2005	2006	2007	2008	2009	2010	2011	2012
Recorded Offences	15,571	16,548	14,968	16,206	16,360	15,907	16,726	16,873	16,678	15,819	16,016	16,380	17,483	18,804	17,318	16,695	15,604
Recorded per 10,000 Population	998.6	1,052.9	946.0	1,020.0	1,025.6	989.8	1,030.4	1,025.9	1,000.5	941.2	945.5	960.5	1,017.2	1,085.6	991.1	944.0	879.3

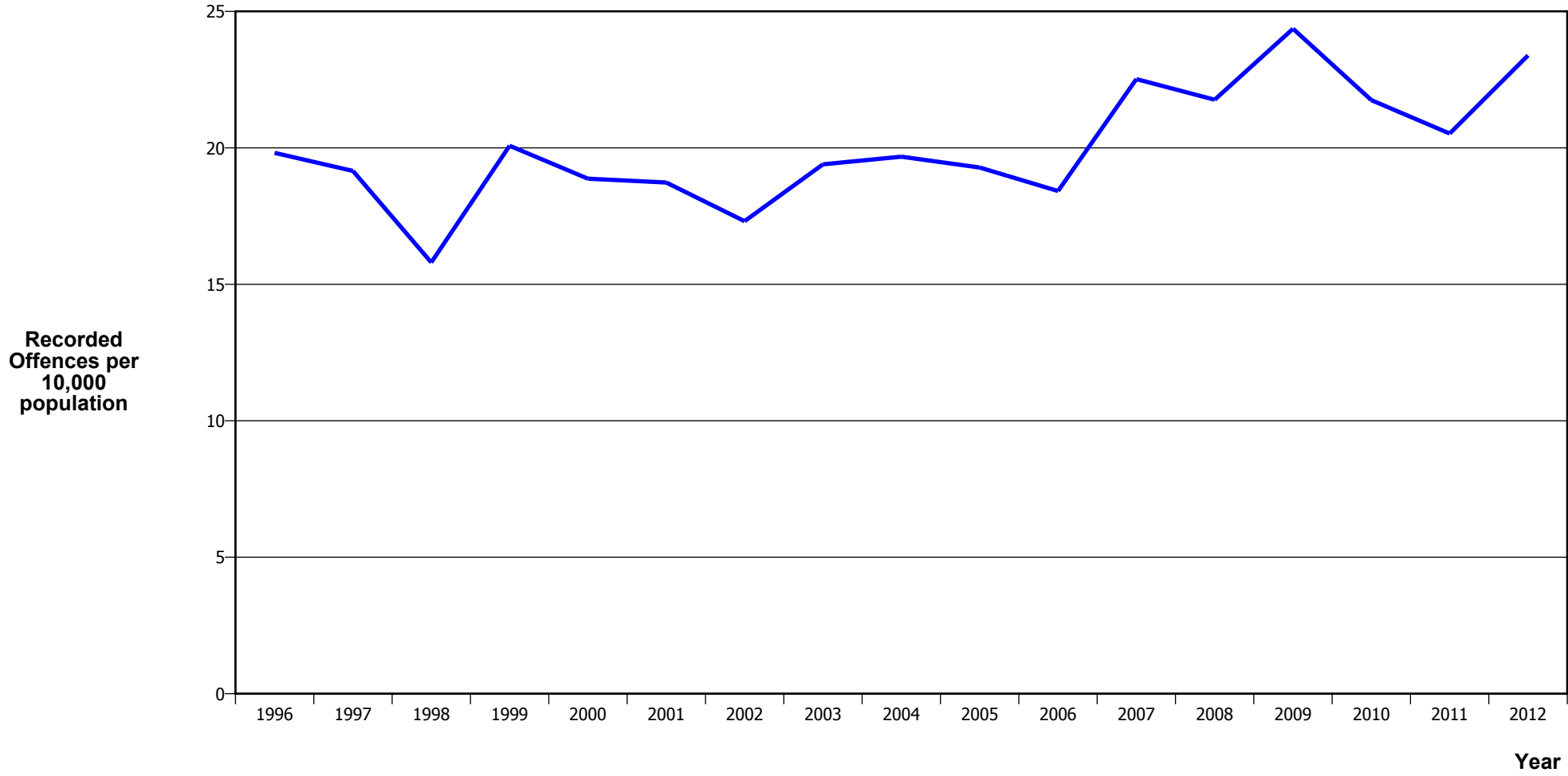
*In 2005/2006 there was a major IT system change (LES to NIA)

MURDER



Calendar Year	1996	1997	1998	1999	2000	2001	2002	2003	2004	2005	2006	2007	2008	2009	2010	2011	2012
Recorded Offences	0	1	3	2	3	5	4	1	3	1	1	2	1	3	3	0	2
Recorded per 10,000 Population	0.00	0.06	0.19	0.13	0.19	0.31	0.25	0.06	0.18	0.06	0.06	0.12	0.06	0.17	0.17	0.00	0.11

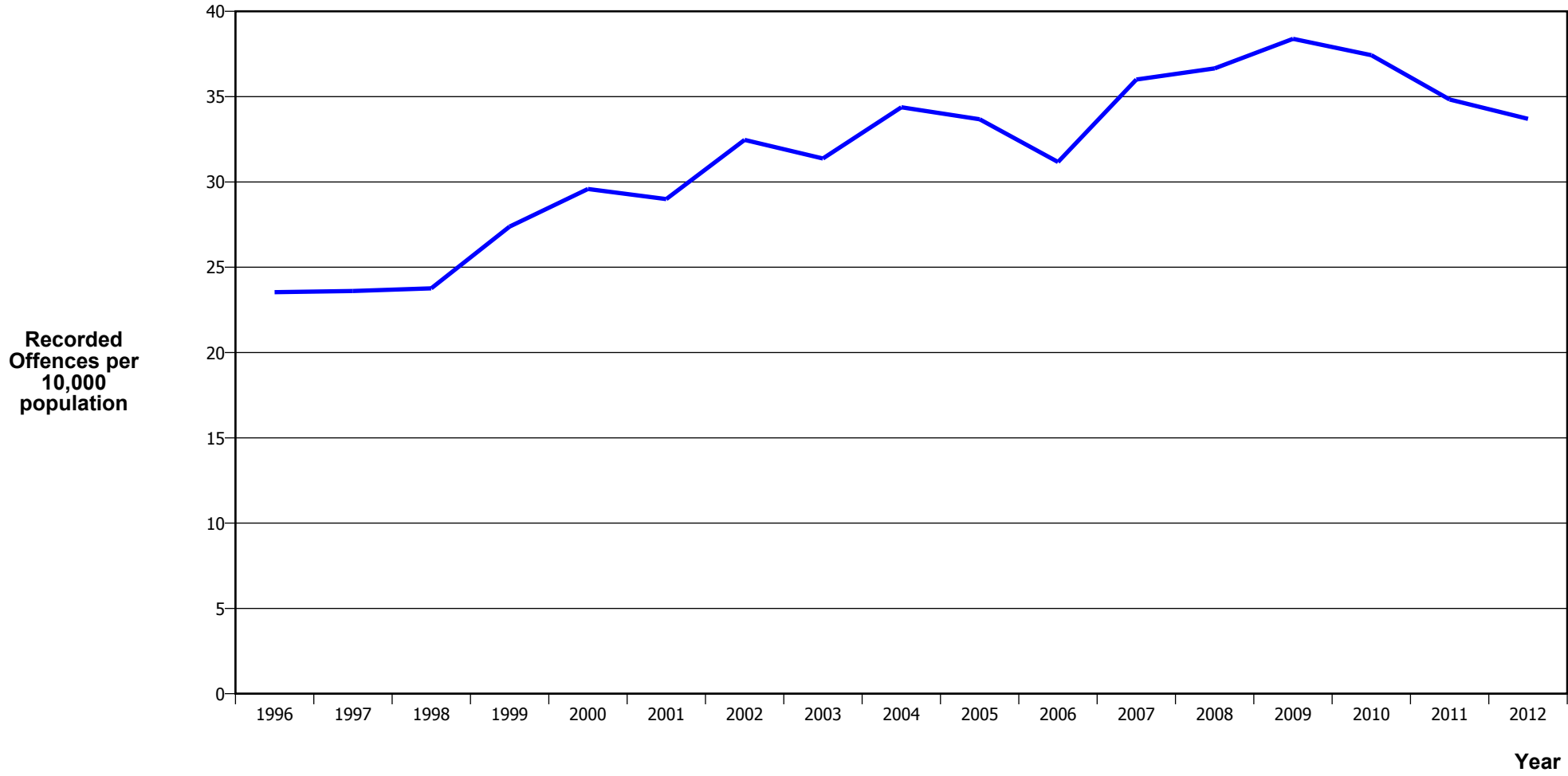
SERIOUS ASSAULTS RESULTING IN INJURY*



Calendar Year	1996	1997	1998	1999	2000	2001	2002	2003	2004	2005	2006	2007	2008	2009	2010	2011	2012
Recorded Offence	309	301	250	319	301	301	281	319	328	324	312	384	374	422	380	363	415
Offence Rate per 10K Popn	19.8	19.2	15.8	20.1	18.9	18.7	17.3	19.4	19.7	19.3	18.4	22.5	21.8	24.4	21.7	20.5	23.4

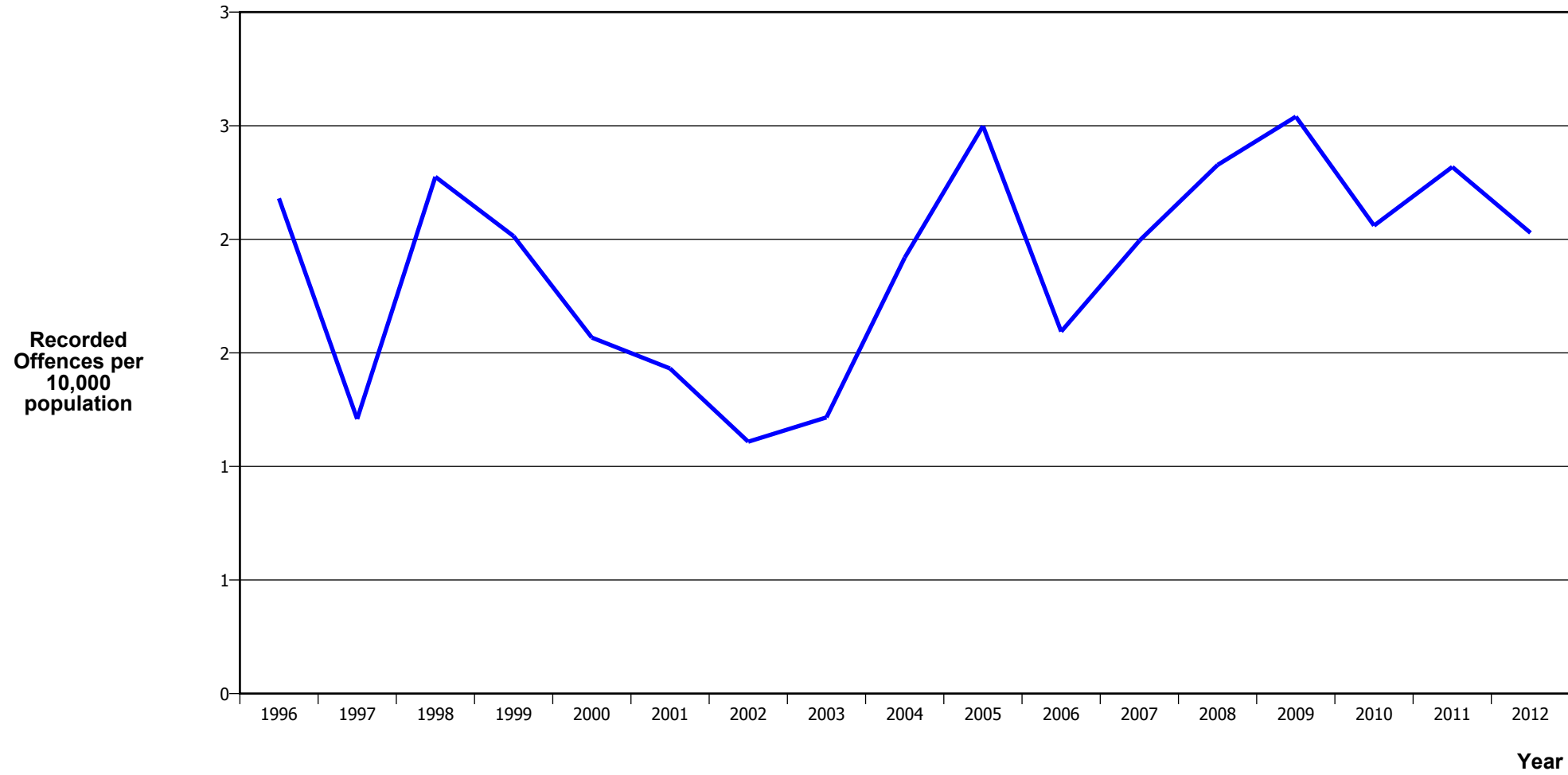
* This measure excludes common assaults

PUBLIC PLACE ASSAULTS



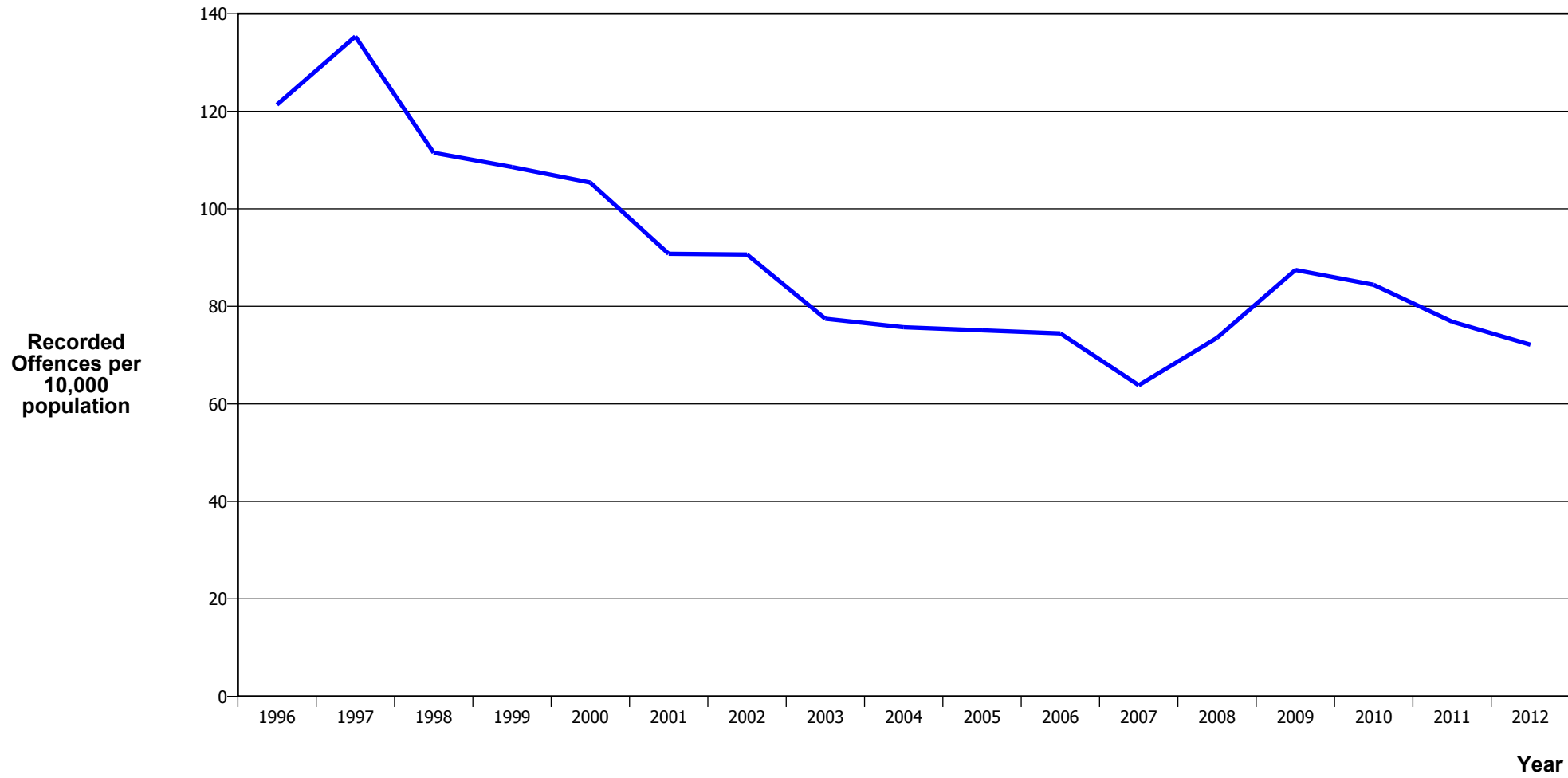
Calendar Year	1996	1997	1998	1999	2000	2001	2002	2003	2004	2005	2006	2007	2008	2009	2010	2011	2012
Recorded Offences	367	371	376	435	472	466	527	516	573	566	528	614	630	665	654	616	598
Recorded per 10,000 Population	23.5	23.6	23.8	27.4	29.6	29.0	32.5	31.4	34.4	33.7	31.2	36.0	36.7	38.4	37.4	34.8	33.7

ROBBERY



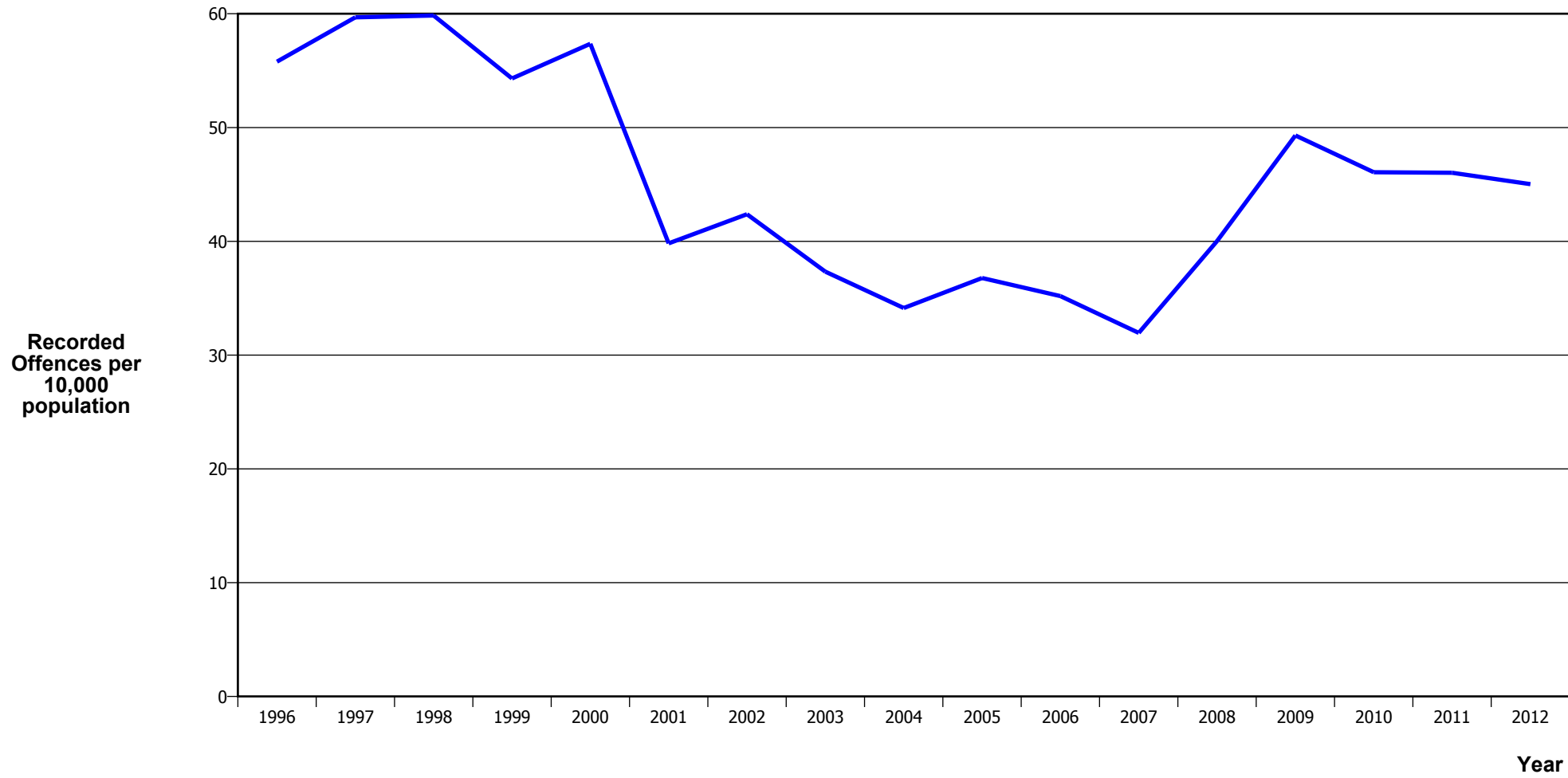
Calendar Year	1996	1997	1998	1999	2000	2001	2002	2003	2004	2005	2006	2007	2008	2009	2010	2011	2012
Recorded Offences	34	19	36	32	25	23	18	20	32	42	27	34	40	44	36	41	36
Recorded per 10,000 Population	2.2	1.2	2.3	2.0	1.6	1.4	1.1	1.2	1.9	2.5	1.6	2.0	2.3	2.5	2.1	2.3	2.0

BURGLARY (TOTAL)



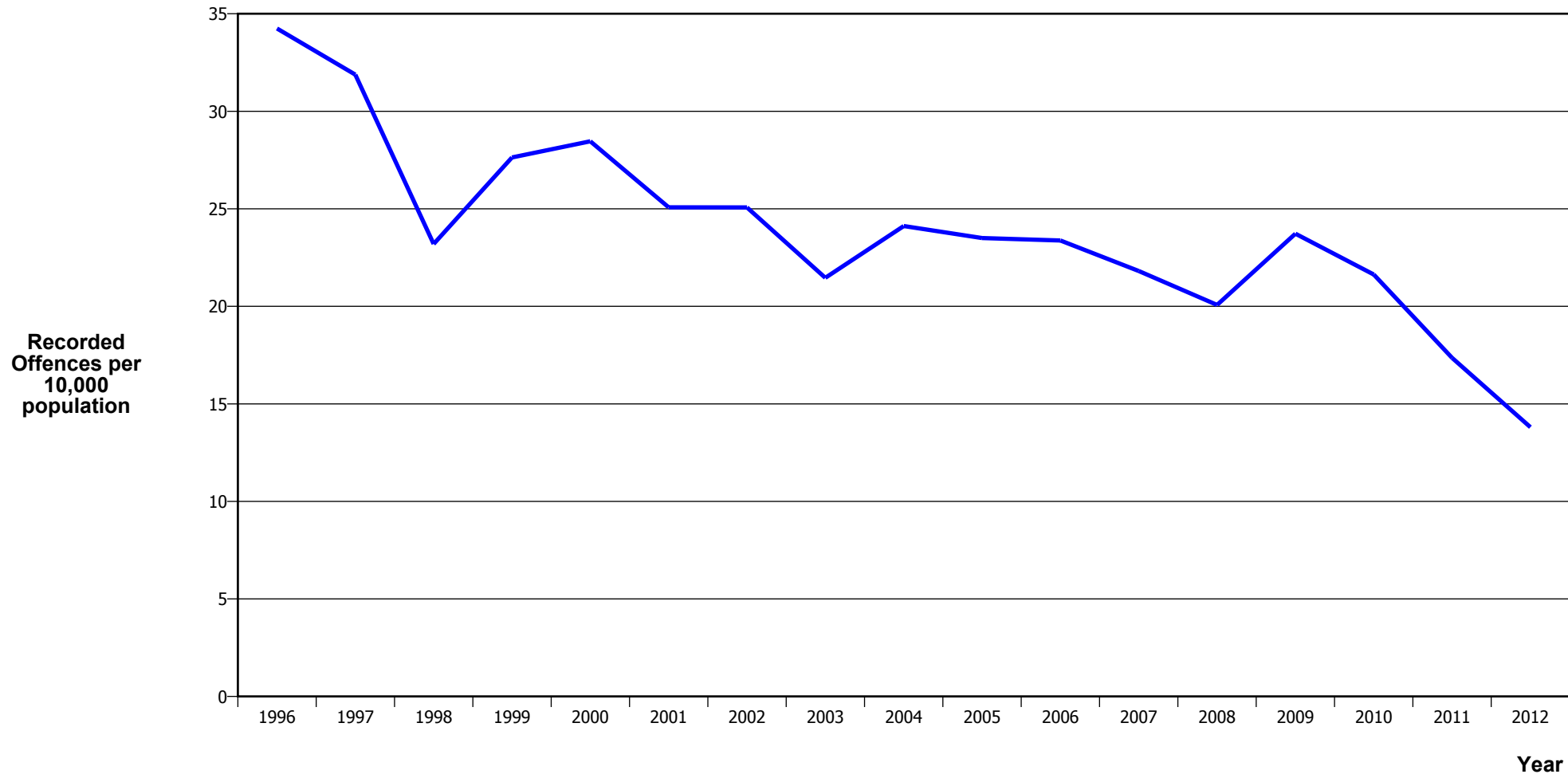
Calendar Year	1996	1997	1998	1999	2000	2001	2002	2003	2004	2005	2006	2007	2008	2009	2010	2011	2012
Recorded Offences	1,892	2,127	1,764	1,725	1,681	1,459	1,471	1,274	1,262	1,262	1,261	1,088	1,264	1,515	1,475	1,359	1,280
Recorded per 10,000 Population	121.3	135.3	111.5	108.6	105.4	90.8	90.6	77.5	75.7	75.1	74.4	63.8	73.5	87.5	84.4	76.8	72.1

BURGLARY (DWELLING)



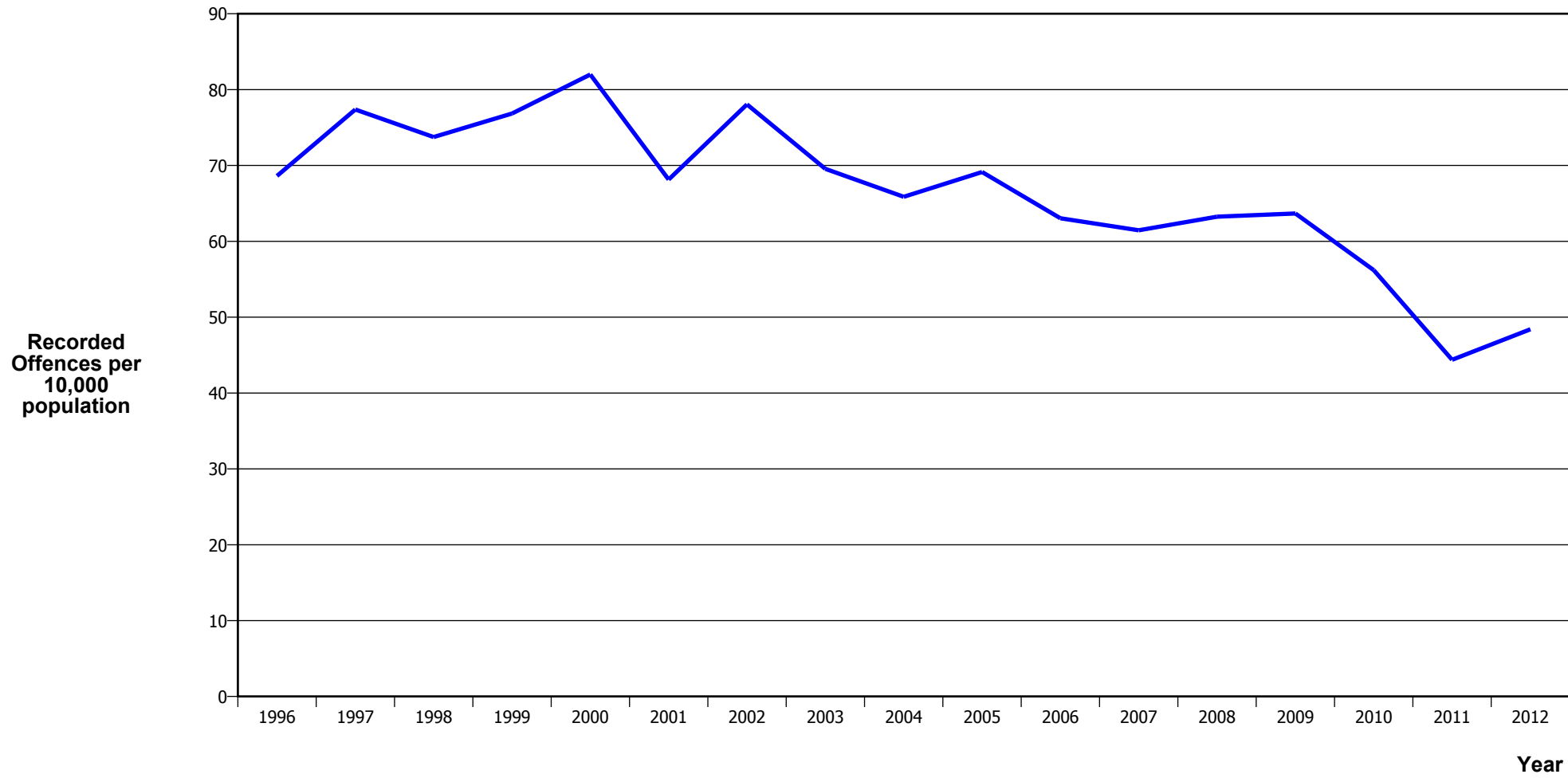
Calendar Year	1996	1997	1998	1999	2000	2001	2002	2003	2004	2005	2006	2007	2008	2009	2010	2011	2012
Recorded Offences	870	938	947	863	915	640	688	614	569	618	596	545	688	854	805	814	799
Recorded per 10,000 Population	55.8	59.7	59.8	54.3	57.4	39.8	42.4	37.3	34.1	36.8	35.2	32.0	40.0	49.3	46.1	46.0	45.0

VEHICLES STOLEN



Calendar Year	1996	1997	1998	1999	2000	2001	2002	2003	2004	2005	2006	2007	2008	2009	2010	2011	2012
Recorded Offences	534	501	367	439	454	403	407	353	402	395	396	372	345	411	378	307	245
Recorded per 10,000 Population	34.2	31.9	23.2	27.6	28.5	25.1	25.1	21.5	24.1	23.5	23.4	21.8	20.1	23.7	21.6	17.4	13.8

THEFT EX CAR



Calendar Year	1996	1997	1998	1999	2000	2001	2002	2003	2004	2005	2006	2007	2008	2009	2010	2011	2012
Recorded Offences	1,070	1,216	1,167	1,221	1,308	1,095	1,267	1,144	1,098	1,162	1,068	1,048	1,087	1,103	982	785	859
Recorded per 10,000 Population	68.6	77.4	73.8	76.9	82.0	68.1	78.1	69.6	65.9	69.1	63.0	61.5	63.2	63.7	56.2	44.4	48.4

Population Data

Population data is used in this release to calculate crime rates. They have been derived from population estimates as at 30 June each year that have been obtained from Statistics New Zealand.

The estimated resident population is based on the census usually resident population count, with adjustments for residents missed or counted more than once by the census (net census undercount), and for residents temporarily overseas on census night.

These population estimates exclude the number of international students who are studying in New Zealand for less than 12 months.

Year	Population
1996	155,930
1997	157,160
1998	158,230
1999	158,880
2000	159,520
2001	160,710
2002	162,320
2003	164,470
2004	166,690
2005	168,070
2006	169,400
2007	170,540
2008	171,870
2009	173,220
2010	174,730
2011	176,850
2012	177,460

General Definitions

Recorded Offences: the number of breaches of the New Zealand law recorded by Police. This includes offences specified in the Crimes Act and other legislations, such as the Summary Offences Act, Local Government Act, etc.

Resolved Offences: the number of recorded offences where an offender has been identified and dealt with (e.g. warned, cautioned, prosecuted, etc).

Resolution Rate: the proportion of recorded offences that have been resolved.

Recorded per 10,000 population: the number of recorded offences for every 10,000 people. This is also referred as the crime rate per 10,000 population.

ANZSOC: The Australian and New Zealand Standard Offence Classification. The offence classification is divided into 16 major offence divisions.

Definition of ANZSOC Divisions

1. **Homicide and related offences:** Unlawfully kill, attempt to unlawfully kill or conspiracy to kill another person.
2. **Acts intended to cause injury:** Acts, excluding attempted murder and those resulting in death, which are intended to cause non-fatal injury or harm to another person and where there is no sexual or acquisitive element.
3. **Sexual assault and related offences:** Acts, or intent of acts, of a sexual nature against another person, which are non-consensual or where consent is proscribed.
4. **Dangerous or negligent acts endangering persons:** Dangerous or negligent acts which, though not intended to cause harm, actually or potentially result in injury to oneself or another person.
5. **Abduction, harassment and other offences against person:** Acts intended to threaten or harass, or acts that unlawfully deprive another person of their freedom of movement, that are against that person's will or against the will of any parent, guardian or other person having lawful custody or care of that person.
6. **Robbery, extortion and related offences:** Acts intended to unlawfully gain money, property or other items of value from, or to cause detriment to, another person by using the threat of force or any other coercive measure.
7. **Unlawful entry with intent / burglary, break and enter:** The unlawful entry of a structure with the intent to commit an offence, where the entry is either forced or unforced.
8. **Theft and related and offences:** The unlawful taking or obtaining of money or goods, not involving the use of force or violence, coercion or deception, with intent to permanently or temporarily deprive the owner or possessor of the use of the money or goods, or the receiving or handling of money or goods obtained unlawfully.

9. Fraud, deception and related offences: Offences involving a dishonest act or omission carried out with the purpose of deceiving to obtain a benefit.

10. Illicit drug offences: The possessing, selling, dealing or trafficking, importing or exporting, manufacturing or cultivating of drugs or other substances prohibited under legislation.

11. Prohibited and regulated weapons and explosives offences: Offences involving prohibited or regulated weapons and explosives. Those offences also involving assault, sexual assault or robbery are coded to the relevant group within Assault, Sexual assaults and Robbery respectively.

12. Property damage and environmental pollution: The wilful and unlawful destruction, damage or defacement of public or private property, or the pollution of property or a definable entity held in common by the community.

13. Public order offences: Offences relating personal conduct that involves, or may lead to, a breach of public order or decency, or that is indicative of criminal intent, or that is otherwise regulated or prohibited on moral or ethical grounds. In general these offences do not involve a specific victim or victims; however some offences, such as offensive language and offensive behaviour, may be directed towards a single victim.

14. Traffic and vehicle regulatory offences: Offences relating to vehicles and most forms of traffic, including offences pertaining to the licensing, registration, roadworthiness, or use of vehicles, bicycle offences and pedestrian offences.

15. Offences against justice procedures, government security and government operations: An act or omission that is deemed to be prejudicial to the effective carrying out of justice procedures or any government operations. This includes general government operations as well as those specifically concerned with maintaining government security.

16. Miscellaneous offences: Offences involving the breach of statutory rules or regulations governing activities that are prima facie legal, where such offences are not explicitly dealt with under any other division. If an offence is specified under regulation and involves an act that would be illegal under common law or general criminal legislation, the offence is dealt with under the appropriate generic group.