

TASMAN DISTRICT CRIME STATISTICS 2010



**A Summary of
Recorded and Resolved Offence
Statistics**

**POLICE NATIONAL HEADQUARTERS
April 2011**

Table of Contents:

Topic	Page
Report Notes	1
District Summary of Recorded and Resolved Crime, by Division	2-4
District Summary of Recorded and Resolved Crime, by Area	5
District Recorded Crime per 10,000 population, by Division	6-8
District Recorded Crime per 10,000 population, by Area	9
Proportions of Recorded Crime by Categories	10
Crime Trends	11
Total Crime	12
Murder	13
Serious Assaults Resulting in Injury	14
Public Place Assaults	15
Robbery	16
Burglary	17
Burglary (Dwelling)	18
Vehicles Stolen	19
Theft Ex Car	20
Population Data	21
General Definition	22-23

REPORT NOTES:

This report presents official statistics for recorded and resolved offences. The format has been revised significantly from that used in previous years. In particular, offences are grouped into different categories than previously used. This aligns with direction given by the Justice Sector Information Strategy for the whole Justice sector to categorise offences according to the Australian Standard Offence Classification (ASOC). This change does not change the total number of offences reported, just how they are grouped.

In making this change, New Zealand Police has taken the first step towards reporting crime in a way that is comparable with Australia. However, at this stage, important differences still exist that mean statistics are not yet comparable between the two countries. For example, Australian statistics only count the most serious offence on each file, whereas New Zealand reports every offence. Also, Australian statistics count victims, whereas New Zealand Statistics count offences.

Another important change in this report is that pages 11 to 20, which present long-term trends, have been completely revised. The time series has been extended from 10 to 15 years to give a longer history. Also, the measures reported include a number of the statistical indicators that Police recently began publishing provisional data on every month.

As in previous reports, statistics reported in this document are derived from the Police National Intelligence Application (NIA). These Official Statistics for Recorded and Resolved Offences present a snapshot of data in NIA relating to offences that occur within a given year, as at the date 14 days following the end of that year.

Unless the matter is minor where Police attendance is sufficient, a matter that is reported to or discovered by Police where Police believe an offence is likely to have been committed is counted as a recorded offence.

A recorded offence is counted as resolved when Police apprehend an offender and decide how to deal with him/her. (E.g. warn, prosecute, etc.)

Resolution rate is the percentage of recorded offences that are resolved within 14 days of the end of the year being reported on.

If an offence is resolved 15 days or more after the end of the year it will not appear in the Official Crime Statistics for that or any other year. Resolution Rate therefore undercounts the number of cases that Police have resolved. This phenomenon has a more marked impact for some types of offences than others, such as offences that require long investigations (E.g. many serial crimes, burglaries and murders).

When comparing 2010 Statistics with previous years, the reader should also refer to "Report Notes" published in previous years' reports, as previous changes significantly affect year on year trends.

SUMMARY OF DISTRICT RECORDED AND RESOLVED CRIME, BY DIVISION
Years ending 31 December

HOMICIDE AND RELATED OFFENCES

ASOC Subdivision Description	Recorded 2008	Recorded 2009	Recorded 2010	Variance 2008- 2009	Variance 2009- 2010	Resolved 2008	Resolved 2009	Resolved 2010	Resolution Rate 2008	Resolution Rate 2009	Resolution Rate 2010
ATTEMPTED MURDER	1	1	0	0.0 %	-100.0 %	1	1		100.0 %	100.0 %	
MANSLAUGHTER AND DRIVING CAUSING DEATH	0	4	1		-75.0 %	0	4	1		100.0 %	100.0 %
MURDER	1	3	3	200.0 %	0.0 %	1	3	3	100.0 %	100.0 %	100.0 %
	2	8	4	300.0 %	-50.0 %	2	8	4	100.0 %	100.0 %	100.0 %

ACTS INTENDED TO CAUSE INJURY

ASOC Subdivision Description	Recorded 2008	Recorded 2009	Recorded 2010	Variance 2008- 2009	Variance 2009- 2010	Resolved 2008	Resolved 2009	Resolved 2010	Resolution Rate 2008	Resolution Rate 2009	Resolution Rate 2010
ASSAULT	1,651	1,785	1,764	8.1 %	-1.2 %	1,470	1,579	1,562	89.0 %	88.5 %	88.5 %
OTHER ACTS INTENDED TO CAUSE INJURY	0	3	2		-33.3 %	0	3	2		100.0 %	100.0 %
	1,651	1,788	1,766	8.3 %	-1.2 %	1,470	1,582	1,564	89.0 %	88.5 %	88.6 %

SEXUAL ASSAULT AND RELATED OFFENCES

ASOC Subdivision Description	Recorded 2008	Recorded 2009	Recorded 2010	Variance 2008- 2009	Variance 2009- 2010	Resolved 2008	Resolved 2009	Resolved 2010	Resolution Rate 2008	Resolution Rate 2009	Resolution Rate 2010
NON-ASSAULTIVE SEXUAL OFFENCES	3	1	6	-66.7 %	500.0 %	1	0	4	33.3 %	0.0 %	66.7 %
SEXUAL ASSAULT	136	117	166	-14.0 %	41.9 %	87	72	128	64.0 %	61.5 %	77.1 %
	139	118	172	-15.1 %	45.8 %	88	72	132	63.3 %	61.0 %	76.7 %

DANGEROUS OR NEGLIGENT ACTS ENDANGERING PERSONS

ASOC Subdivision Description	Recorded 2008	Recorded 2009	Recorded 2010	Variance 2008- 2009	Variance 2009- 2010	Resolved 2008	Resolved 2009	Resolved 2010	Resolution Rate 2008	Resolution Rate 2009	Resolution Rate 2010
OTHER DANGEROUS OR NEGLIGENT ACTS ENDANGERING PERSONS	44	39	47	-11.4 %	20.5 %	31	25	35	70.5 %	64.1 %	74.5 %
	44	39	47	-11.4 %	20.5 %	31	25	35	70.5 %	64.1 %	74.5 %

ABDUCTION, HARASSMENT AND OTHER RELATED OFFENCES AGAINST A PERSON

ASOC Subdivision Description	Recorded 2008	Recorded 2009	Recorded 2010	Variance 2008- 2009	Variance 2009- 2010	Resolved 2008	Resolved 2009	Resolved 2010	Resolution Rate 2008	Resolution Rate 2009	Resolution Rate 2010
ABDUCTION AND KIDNAPPING	5	7	7	40.0 %	0.0 %	5	5	4	100.0 %	71.4 %	57.1 %
HARASSMENT AND THREATENING BEHAVIOUR	612	667	612	9.0 %	-8.2 %	502	542	518	82.0 %	81.3 %	84.6 %
	617	674	619	9.2 %	-8.2 %	507	547	522	82.2 %	81.2 %	84.3 %

ROBBERY, EXTORTION AND RELATED OFFENCES

ASOC Subdivision Description	Recorded 2008	Recorded 2009	Recorded 2010	Variance 2008- 2009	Variance 2009- 2010	Resolved 2008	Resolved 2009	Resolved 2010	Resolution Rate 2008	Resolution Rate 2009	Resolution Rate 2010
BLACKMAIL AND EXTORTION	11	2	6	-81.8 %	200.0 %	9	1	3	81.8 %	50.0 %	50.0 %
ROBBERY	40	44	36	10.0 %	-18.2 %	24	26	27	60.0 %	59.1 %	75.0 %
	51	46	42	-9.8 %	-8.7 %	33	27	30	64.7 %	58.7 %	71.4 %

UNLAWFUL ENTRY WITH INTENT/BURGLARY, BREAK AND ENTER

ASOC Subdivision Description	Recorded 2008	Recorded 2009	Recorded 2010	Variance 2008- 2009	Variance 2009- 2010	Resolved 2008	Resolved 2009	Resolved 2010	Resolution Rate 2008	Resolution Rate 2009	Resolution Rate 2010
UNLAWFUL ENTRY WITH INTENT/BURGLARY, BREAK AND ENTER	1,264	1,515	1,475	19.9 %	-2.6 %	354	433	410	28.0 %	28.6 %	27.8 %
	1,264	1,515	1,475	19.9 %	-2.6 %	354	433	410	28.0 %	28.6 %	27.8 %

SUMMARY OF DISTRICT RECORDED AND RESOLVED CRIME, BY DIVISION
Years ending 31 December

THEFT AND RELATED OFFENCES

ASOC Subdivision Description	Recorded 2008	Recorded 2009	Recorded 2010	Variance 2008- 2009	Variance 2009- 2010	Resolved 2008	Resolved 2009	Resolved 2010	Resolution Rate 2008	Resolution Rate 2009	Resolution Rate 2010
ILLEGAL USE OF PROPERTY (EXCEPT MOTOR VEHICLES)	405	392	382	-3.2 %	-2.6 %	42	51	21	10.4 %	13.0 %	5.5 %
MOTOR VEHICLE THEFT AND RELATED OFFENCES	1,432	1,514	1,360	5.7 %	-10.2 %	307	372	295	21.4 %	24.6 %	21.7 %
RECEIVE OR HANDLE PROCEEDS OF CRIME	93	106	132	14.0 %	24.5 %	89	104	130	95.7 %	98.1 %	98.5 %
THEFT AND RELATED OFFENCES NOT FURTHER DEFINED	0	0	0			0	0				
THEFT (EXCEPT MOTOR VEHICLES)	3,110	3,131	2,825	0.7 %	-9.8 %	1,239	1,279	1,035	39.8 %	40.8 %	36.6 %
	5,040	5,143	4,699	2.0 %	-8.6 %	1,677	1,806	1,481	33.3 %	35.1 %	31.5 %

FRAUD, DECEPTION AND RELATED OFFENCES

ASOC Subdivision Description	Recorded 2008	Recorded 2009	Recorded 2010	Variance 2008- 2009	Variance 2009- 2010	Resolved 2008	Resolved 2009	Resolved 2010	Resolution Rate 2008	Resolution Rate 2009	Resolution Rate 2010
DECEPTIVE BUSINESS/GOVERNMENT PRACTICES	1	0	1	-100.0 %		1	0	0	100.0 %		0.0 %
FORGERY AND COUNTERFEITING	10	7	20	-30.0 %	185.7 %	4	6	10	40.0 %	85.7 %	50.0 %
OBTAIN BENEFIT BY DECEPTION	341	407	398	19.4 %	-2.2 %	244	242	291	71.6 %	59.5 %	73.1 %
OTHER FRAUD AND DECEPTION OFFENCES	14	25	16	78.6 %	-36.0 %	9	17	8	64.3 %	68.0 %	50.0 %
	366	439	435	19.9 %	-0.9 %	258	265	309	70.5 %	60.4 %	71.0 %

ILLCIT DRUG OFFENCES

ASOC Subdivision Description	Recorded 2008	Recorded 2009	Recorded 2010	Variance 2008- 2009	Variance 2009- 2010	Resolved 2008	Resolved 2009	Resolved 2010	Resolution Rate 2008	Resolution Rate 2009	Resolution Rate 2010
DEAL OR TRAFFIC IN ILLICIT DRUGS	85	88	115	3.5 %	30.7 %	79	81	111	92.9 %	92.0 %	96.5 %
IMPORT OR EXPORT ILLICIT DRUGS	3	1	3	-66.7 %	200.0 %	3	1	3	100.0 %	100.0 %	100.0 %
MANUFACTURE OR CULTIVATE ILLICIT DRUGS	195	474	307	143.1 %	-35.2 %	152	192	185	77.9 %	40.5 %	60.3 %
OTHER ILLICIT DRUG OFFENCES	385	450	428	16.9 %	-4.9 %	380	446	422	98.7 %	99.1 %	98.6 %
POSSESS AND/OR USE ILLICIT DRUGS	559	698	651	24.9 %	-6.7 %	541	680	621	96.8 %	97.4 %	95.4 %
	1,227	1,711	1,504	39.4 %	-12.1 %	1,155	1,400	1,342	94.1 %	81.8 %	89.2 %

PROHIBITED AND REGULATED WEAPONS AND EXPLOSIVES OFFENCES

ASOC Subdivision Description	Recorded 2008	Recorded 2009	Recorded 2010	Variance 2008- 2009	Variance 2009- 2010	Resolved 2008	Resolved 2009	Resolved 2010	Resolution Rate 2008	Resolution Rate 2009	Resolution Rate 2010
REGULATED WEAPONS/EXPLOSIVES OFFENCES	328	349	313	6.4 %	-10.3 %	293	325	269	89.3 %	93.1 %	85.9 %
	328	349	313	6.4 %	-10.3 %	293	325	269	89.3 %	93.1 %	85.9 %

PROPERTY DAMAGE AND ENVIRONMENTAL POLLUTION

ASOC Subdivision Description	Recorded 2008	Recorded 2009	Recorded 2010	Variance 2008- 2009	Variance 2009- 2010	Resolved 2008	Resolved 2009	Resolved 2010	Resolution Rate 2008	Resolution Rate 2009	Resolution Rate 2010
ENVIRONMENTAL POLLUTION	31	25	15	-19.4 %	-40.0 %	26	18	12	83.9 %	72.0 %	80.0 %
PROPERTY DAMAGE	3,419	3,403	2,904	-0.5 %	-14.7 %	938	1,101	782	27.4 %	32.4 %	26.9 %
	3,450	3,428	2,919	-0.6 %	-14.8 %	964	1,119	794	27.9 %	32.6 %	27.2 %

SUMMARY OF DISTRICT RECORDED AND RESOLVED CRIME, BY DIVISION
Years ending 31 December

PUBLIC ORDER OFFENCES

ASOC Subdivision Description	Recorded 2008	Recorded 2009	Recorded 2010	Variance 2008- 2009	Variance 2009- 2010	Resolved 2008	Resolved 2009	Resolved 2010	Resolution Rate 2008	Resolution Rate 2009	Resolution Rate 2010
DISORDERLY CONDUCT	1,684	1,796	1,662	6.7 %	-7.5 %	1,449	1,576	1,470	86.0 %	87.8 %	88.4 %
OFFENSIVE CONDUCT	131	121	130	-7.6 %	7.4 %	114	102	99	87.0 %	84.3 %	76.2 %
PUBLIC ORDER OFFENCES NOT FURTHER DEFINED	0	0	0			0	0				
REGULATED PUBLIC ORDER OFFENCES	623	674	759	8.2 %	12.6 %	596	615	685	95.7 %	91.2 %	90.3 %
	2,438	2,591	2,551	6.3 %	-1.5 %	2,159	2,293	2,254	88.6 %	88.5 %	88.4 %

OFFENCES AGAINST JUSTICE PROCEDURES, GOVERNMENT SECURITY AND GOVERNMENT OPERATIONS

ASOC Subdivision Description	Recorded 2008	Recorded 2009	Recorded 2010	Variance 2008- 2009	Variance 2009- 2010	Resolved 2008	Resolved 2009	Resolved 2010	Resolution Rate 2008	Resolution Rate 2009	Resolution Rate 2010
BREACH OF COMMUNITY-BASED ORDER	254	284	203	11.8 %	-28.5 %	244	279	192	96.1 %	98.2 %	94.6 %
BREACH OF CUSTODIAL ORDER OFFENCES	27	28	19	3.7 %	-32.1 %	27	28	19	100.0 %	100.0 %	100.0 %
BREACH OF VIOLENCE AND NON-VIOLENCE RESTRAINING ORDERS	147	196	176	33.3 %	-10.2 %	133	183	158	90.5 %	93.4 %	89.8 %
OFFENCES AGAINST GOVERNMENT OPERATIONS	49	25	12	-49.0 %	-52.0 %	32	14	5	65.3 %	56.0 %	41.7 %
OFFENCES AGAINST GOVERNMENT SECURITY	0	0	1			0	0	1			100.0 %
OFFENCES AGAINST JUSTICE PROCEDURES	298	334	263	12.1 %	-21.3 %	292	325	257	98.0 %	97.3 %	97.7 %
OFFENCES AGAINST JUSTICE PROCEDURES, GOVERNMENT SECURITY AND GOVERNMENT OPERATIONS NOT FURTHER DEFINED	0	0	2			0	0	1			50.0 %
	775	867	676	11.9 %	-22.0 %	728	829	633	93.9 %	95.6 %	93.6 %

MISCELLANEOUS OFFENCES

ASOC Subdivision Description	Recorded 2008	Recorded 2009	Recorded 2010	Variance 2008- 2009	Variance 2009- 2010	Resolved 2008	Resolved 2009	Resolved 2010	Resolution Rate 2008	Resolution Rate 2009	Resolution Rate 2010
COMMERCIAL/INDUSTRY/FINANCIAL REGULATION	2	0	0	-100.0 %		2	0		100.0 %		
DEFAMATION, LIBEL AND PRIVACY OFFENCES	2	4	3	100.0 %	-25.0 %	1	3	1	50.0 %	75.0 %	33.3 %
OTHER MISCELLANEOUS OFFENCES	81	78	90	-3.7 %	15.4 %	69	62	52	85.2 %	79.5 %	57.8 %
PUBLIC HEALTH AND SAFETY OFFENCES	6	6	3	0.0 %	-50.0 %	5	4	2	83.3 %	66.7 %	66.7 %
	91	88	96	-3.3 %	9.1 %	77	69	55	84.6 %	78.4 %	57.3 %

TOTAL	17,483	18,804	17,318	7.6 %	-7.9 %	9,796	10,800	9,834	56.0 %	57.4 %	56.8 %
--------------	---------------	---------------	---------------	--------------	---------------	--------------	---------------	--------------	---------------	---------------	---------------

SUMMARY OF DISTRICT RECORDED AND RESOLVED CRIME, BY AREA

years ending 31 December

TOTAL CRIME

Area Description	Recorded 2008	Recorded 2009	Recorded 2010	Variance 2008- 2009	Variance 2009- 2010	Resolved 2008	Resolved 2009	Resolved 2010	Resolution Rate 2008	Resolution Rate 2009	Resolution Rate 2010
Marlborough	5,417	5,908	5,594	9.1 %	-5.3 %	3,154	3,843	3,513	58.2 %	65.0 %	62.8 %
Nelson Bays	9,030	9,648	8,764	6.8 %	-9.2 %	4,921	5,103	4,689	54.5 %	52.9 %	53.5 %
West Coast	3,036	3,248	2,960	7.0 %	-8.9 %	1,721	1,854	1,632	56.7 %	57.1 %	55.1 %
Total	17,483	18,804	17,318	7.6 %	-7.9 %	9,796	10,800	9,834	56.0 %	57.4 %	56.8 %

DISTRICT RECORDED CRIME PER 10,000 POPULATION, BY DIVISION
Years ending 31 December

HOMICIDE AND RELATED OFFENCES

ASOC Subdivision Description	Recorded per 10,000 pop 2008	Recorded per 10,000 pop 2009	Recorded per 10,000 pop 2010
ATTEMPTED MURDER	0.06	0.06	0.00
MANSLAUGHTER AND DRIVING CAUSING DEATH	0.00	0.23	0.06
MURDER	0.06	0.17	0.17
	0.12	0.46	0.23

ACTS INTENDED TO CAUSE INJURY

ASOC Subdivision Description	Recorded per 10,000 pop 2008	Recorded per 10,000 pop 2009	Recorded per 10,000 pop 2010
ASSAULT	96.06	103.05	100.96
OTHER ACTS INTENDED TO CAUSE INJURY	0.00	0.17	0.11
	96.06	103.22	101.07

SEXUAL ASSAULT AND RELATED OFFENCES

ASOC Subdivision Description	Recorded per 10,000 pop 2008	Recorded per 10,000 pop 2009	Recorded per 10,000 pop 2010
NON-ASSAULTIVE SEXUAL OFFENCES	0.17	0.06	0.34
SEXUAL ASSAULT	7.91	6.75	9.50
	8.09	6.81	9.84

DANGEROUS OR NEGLIGENT ACTS ENDANGERING PERSONS

ASOC Subdivision Description	Recorded per 10,000 pop 2008	Recorded per 10,000 pop 2009	Recorded per 10,000 pop 2010
OTHER DANGEROUS OR NEGLIGENT ACTS ENDANGERING PERSONS	2.56	2.25	2.69
	2.56	2.25	2.69

ABDUCTION, HARASSMENT AND OTHER RELATED OFFENCES AGAINST A PERSON

ASOC Subdivision Description	Recorded per 10,000 pop 2008	Recorded per 10,000 pop 2009	Recorded per 10,000 pop 2010
ABDUCTION AND KIDNAPPING	0.29	0.40	0.40
HARASSMENT AND THREATENING BEHAVIOUR	35.61	38.51	35.03
	35.90	38.91	35.43

ROBBERY, EXTORTION AND RELATED OFFENCES

ASOC Subdivision Description	Recorded per 10,000 pop 2008	Recorded per 10,000 pop 2009	Recorded per 10,000 pop 2010
BLACKMAIL AND EXTORTION	0.64	0.12	0.34
ROBBERY	2.33	2.54	2.06
	2.97	2.66	2.40

DISTRICT RECORDED CRIME PER 10,000 POPULATION, BY DIVISION

Years ending 31 December

UNLAWFUL ENTRY WITH INTENT/BURGLARY, BREAK AND ENTER

ASOC Subdivision Description	Recorded per 10,000 pop 2008	Recorded per 10,000 pop 2009	Recorded per 10,000 pop 2010
UNLAWFUL ENTRY WITH INTENT/BURGLARY, BREAK AND ENTER	73.54	87.46	84.42
	73.54	87.46	84.42

THEFT AND RELATED OFFENCES

ASOC Subdivision Description	Recorded per 10,000 pop 2008	Recorded per 10,000 pop 2009	Recorded per 10,000 pop 2010
ILLEGAL USE OF PROPERTY (EXCEPT MOTOR VEHICLES)	23.56	22.63	21.86
MOTOR VEHICLE THEFT AND RELATED OFFENCES	83.32	87.40	77.83
RECEIVE OR HANDLE PROCEEDS OF CRIME	5.41	6.12	7.55
THEFT AND RELATED OFFENCES NOT FURTHER DEFINED	0.00	0.00	0.00
THEFT (EXCEPT MOTOR VEHICLES)	180.95	180.75	161.68
	293.24	296.91	268.93

FRAUD, DECEPTION AND RELATED OFFENCES

ASOC Subdivision Description	Recorded per 10,000 pop 2008	Recorded per 10,000 pop 2009	Recorded per 10,000 pop 2010
DECEPTIVE BUSINESS/GOVERNMENT PRACTICES	0.06	0.00	0.06
FORGERY AND COUNTERFEITING	0.58	0.40	1.14
OBTAIN BENEFIT BY DECEPTION	19.84	23.50	22.78
OTHER FRAUD AND DECEPTION OFFENCES	0.81	1.44	0.92
	21.30	25.34	24.90

ILLICIT DRUG OFFENCES

ASOC Subdivision Description	Recorded per 10,000 pop 2008	Recorded per 10,000 pop 2009	Recorded per 10,000 pop 2010
DEAL OR TRAFFIC IN ILLICIT DRUGS	4.95	5.08	6.58
IMPORT OR EXPORT ILLICIT DRUGS	0.17	0.06	0.17
MANUFACTURE OR CULTIVATE ILLICIT DRUGS	11.35	27.36	17.57
OTHER ILLICIT DRUG OFFENCES	22.40	25.98	24.49
POSSESS AND/OR USE ILLICIT DRUGS	32.52	40.30	37.26
	71.39	98.78	86.08

PROHIBITED AND REGULATED WEAPONS AND EXPLOSIVES OFFENCES

ASOC Subdivision Description	Recorded per 10,000 pop 2008	Recorded per 10,000 pop 2009	Recorded per 10,000 pop 2010
REGULATED WEAPONS/EXPLOSIVES OFFENCES	19.08	20.15	17.91
	19.08	20.15	17.91

DISTRICT RECORDED CRIME PER 10,000 POPULATION, BY DIVISION

Years ending 31 December

PROPERTY DAMAGE AND ENVIRONMENTAL POLLUTION

ASOC Subdivision Description	Recorded per 10,000 pop 2008	Recorded per 10,000 pop 2009	Recorded per 10,000 pop 2010
ENVIRONMENTAL POLLUTION	1.80	1.44	0.86
PROPERTY DAMAGE	198.93	196.46	166.20
	200.73	197.90	167.06

PUBLIC ORDER OFFENCES

ASOC Subdivision Description	Recorded per 10,000 pop 2008	Recorded per 10,000 pop 2009	Recorded per 10,000 pop 2010
DISORDERLY CONDUCT	97.98	103.68	95.12
OFFENSIVE CONDUCT	7.62	6.99	7.44
PUBLIC ORDER OFFENCES NOT FURTHER DEFINED	0.00	0.00	0.00
REGULATED PUBLIC ORDER OFFENCES	36.25	38.91	43.44
	141.85	149.58	146.00

OFFENCES AGAINST JUSTICE PROCEDURES, GOVERNMENT SECURITY AND GOVERNMENT OPERATIONS

ASOC Subdivision Description	Recorded per 10,000 pop 2008	Recorded per 10,000 pop 2009	Recorded per 10,000 pop 2010
BREACH OF COMMUNITY-BASED ORDER	14.78	16.40	11.62
BREACH OF CUSTODIAL ORDER OFFENCES	1.57	1.62	1.09
BREACH OF VIOLENCE AND NON-VIOLENCE RESTRAINING ORDERS	8.55	11.32	10.07
OFFENCES AGAINST GOVERNMENT OPERATIONS	2.85	1.44	0.69
OFFENCES AGAINST GOVERNMENT SECURITY	0.00	0.00	0.06
OFFENCES AGAINST JUSTICE PROCEDURES	17.34	19.28	15.05
OFFENCES AGAINST JUSTICE PROCEDURES, GOVERNMENT SECURITY AND GOVERNMENT OPERATIONS NOT FURTHER DEFINED	0.00	0.00	0.11
	45.09	50.05	38.69

MISCELLANEOUS OFFENCES

ASOC Subdivision Description	Recorded per 10,000 pop 2008	Recorded per 10,000 pop 2009	Recorded per 10,000 pop 2010
COMMERCIAL/INDUSTRY/FINANCIAL REGULATION	0.12	0.00	0.00
DEFAMATION, LIBEL AND PRIVACY OFFENCES	0.12	0.23	0.17
OTHER MISCELLANEOUS OFFENCES	4.71	4.50	5.15
PUBLIC HEALTH AND SAFETY OFFENCES	0.35	0.35	0.17
	5.29	5.08	5.49

TOTAL	1,017.2	1,085.6	991.1
--------------	----------------	----------------	--------------

DISTRICT RECORDED CRIME PER 10,000 POPULATION, BY AREA
Years ending 31 December

Area Description	Recorded per 10,000 pop 2008	Recorded per 10,000 pop 2009	Recorded per 10,000 pop 2010	Percent Variance 2008 to 2009	Percent Variance 2009 to 2010
Marlborough	1,120.8	1,210.9	1,138.4	8.0 %	-6.0 %
Nelson Bays	990.6	1,050.5	943.9	6.1 %	-10.2 %
West Coast	937.6	996.6	904.1	6.3 %	-9.3 %
TOTAL	1,017.2	1,085.6	991.1	6.7 %	-8.7 %

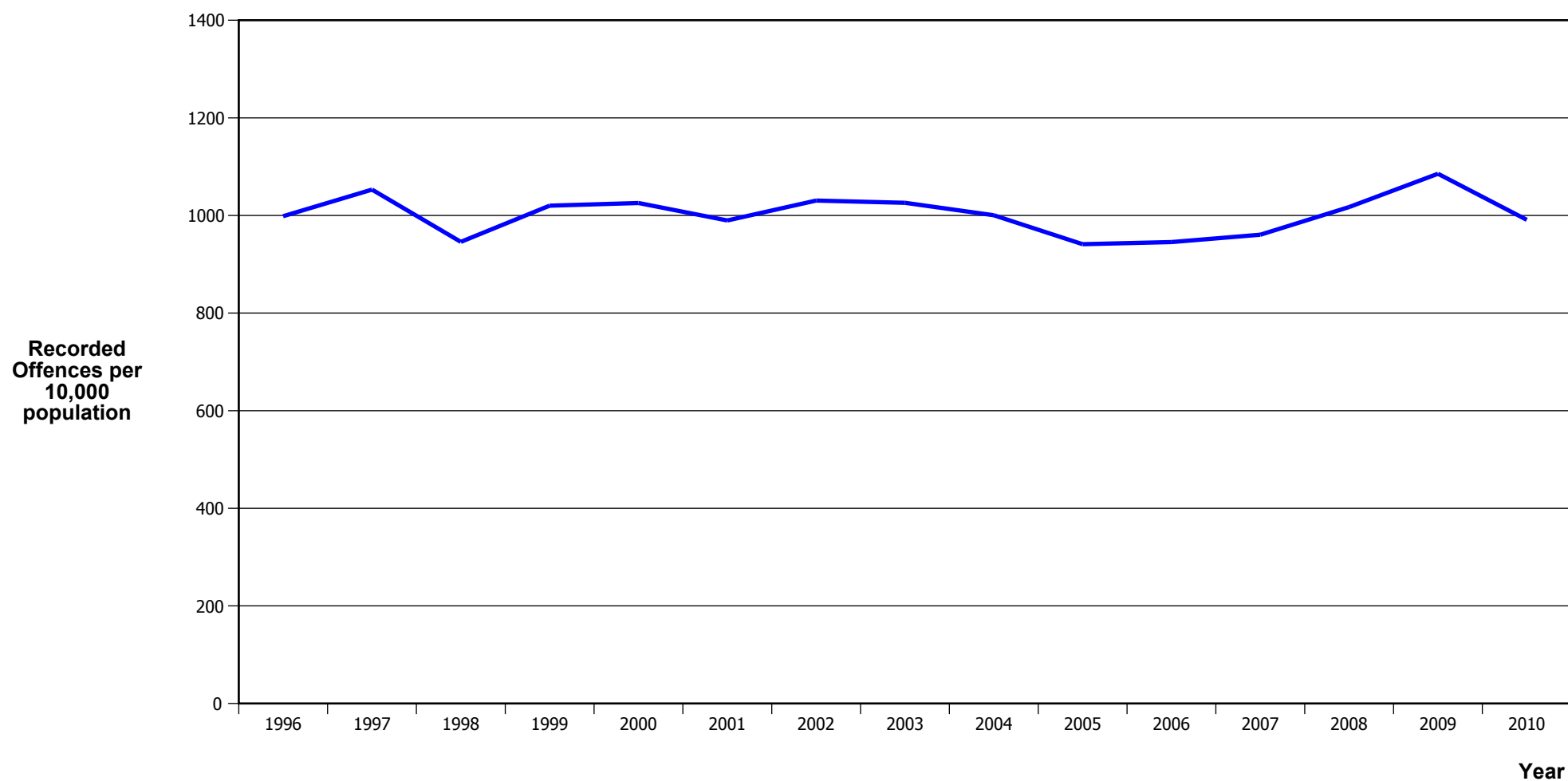
PROPORTION OF RECORDED CRIME BY DIVISION

Years ending 31 December

ASOC Division Description	Proportions Recorded 2008	Recorded 2008	Proportions Recorded 2009	Recorded 2009	Proportions Recorded 2010	Recorded 2010
HOMICIDE AND RELATED OFFENCES	0.01 %	2	0.04 %	8	0.02 %	4
ACTS INTENDED TO CAUSE INJURY	9.44 %	1,651	9.51 %	1,788	10.20 %	1,766
SEXUAL ASSAULT AND RELATED OFFENCES	0.80 %	139	0.63 %	118	0.99 %	172
DANGEROUS OR NEGLIGENT ACTS ENDANGERING PERSONS	0.25 %	44	0.21 %	39	0.27 %	47
ABDUCTION, HARASSMENT AND OTHER RELATED OFFENCES AGAINST A PERSON	3.53 %	617	3.58 %	674	3.57 %	619
ROBBERY, EXTORTION AND RELATED OFFENCES	0.29 %	51	0.24 %	46	0.24 %	42
UNLAWFUL ENTRY WITH INTENT/BURGLARY, BREAK AND ENTER	7.23 %	1,264	8.06 %	1,515	8.52 %	1,475
THEFT AND RELATED OFFENCES	28.83 %	5,040	27.35 %	5,143	27.13 %	4,699
FRAUD, DECEPTION AND RELATED OFFENCES	2.09 %	366	2.33 %	439	2.51 %	435
ILLICIT DRUG OFFENCES	7.02 %	1,227	9.10 %	1,711	8.68 %	1,504
PROHIBITED AND REGULATED WEAPONS AND EXPLOSIVES OFFENCES	1.88 %	328	1.86 %	349	1.81 %	313
PROPERTY DAMAGE AND ENVIRONMENTAL POLLUTION	19.73 %	3,450	18.23 %	3,428	16.86 %	2,919
PUBLIC ORDER OFFENCES	13.94 %	2,438	13.78 %	2,591	14.73 %	2,551
OFFENCES AGAINST JUSTICE PROCEDURES, GOVERNMENT SECURITY AND GOVERNMENT OPERATIONS	4.43 %	775	4.61 %	867	3.90 %	676
MISCELLANEOUS OFFENCES	0.52 %	91	0.47 %	88	0.55 %	96
	100.00 %	17,483	100.00 %	18,804	100.00 %	17,318

CRIME TRENDS

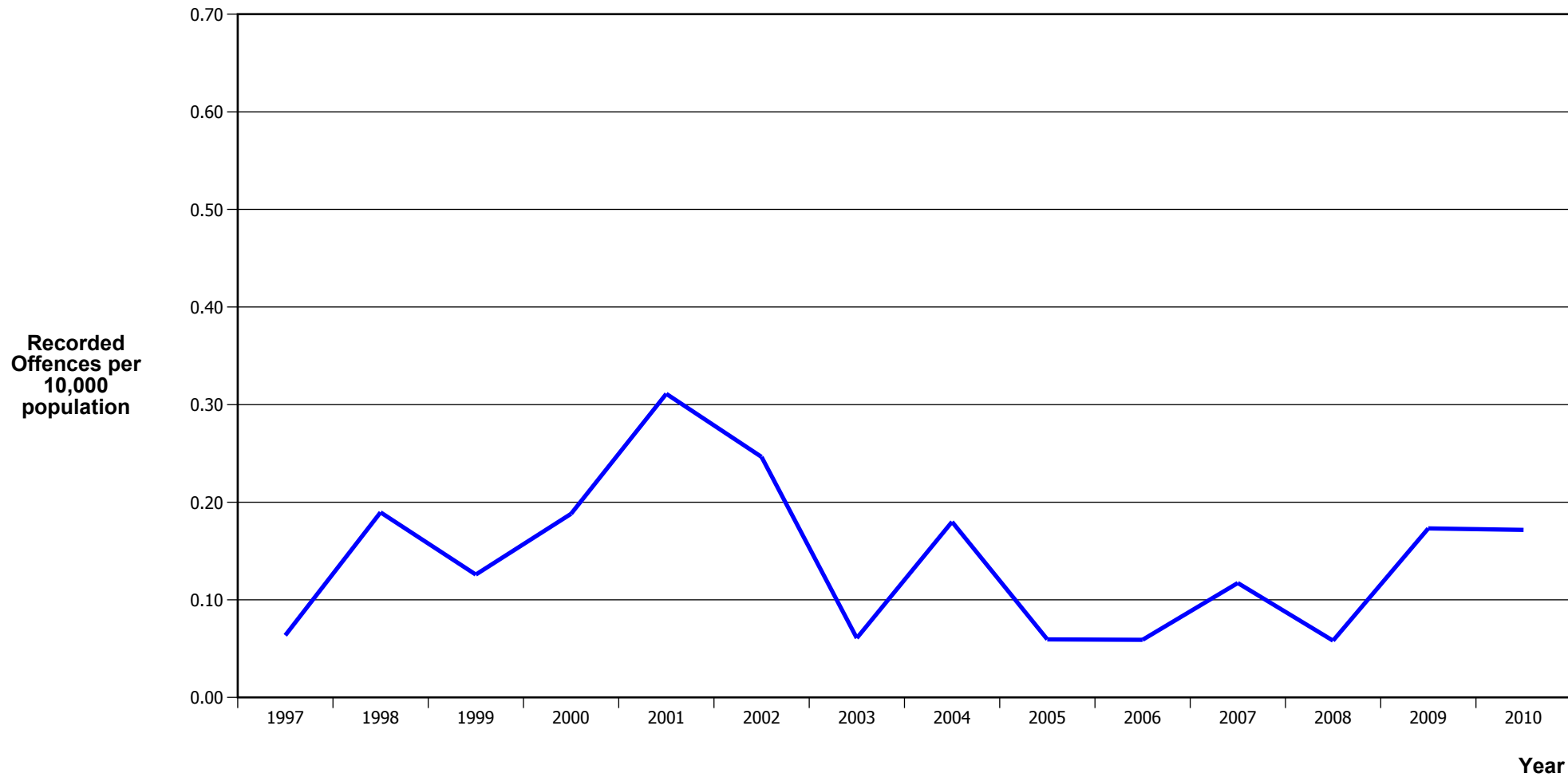
TOTAL CRIME



Calendar Year	1996	1997	1998	1999	2000	2001	2002	2003	2004	2005	2006	2007	2008	2009	2010
Recorded Offences	15,571	16,548	14,968	16,206	16,360	15,907	16,726	16,873	16,678	15,819	16,016	16,380	17,483	18,804	17,318
Recorded per 10,000 Population	998.6	1,052.9	946.0	1,020.0	1,025.6	989.8	1,030.4	1,025.9	1,000.5	941.2	945.5	960.5	1,017.2	1,085.6	991.1

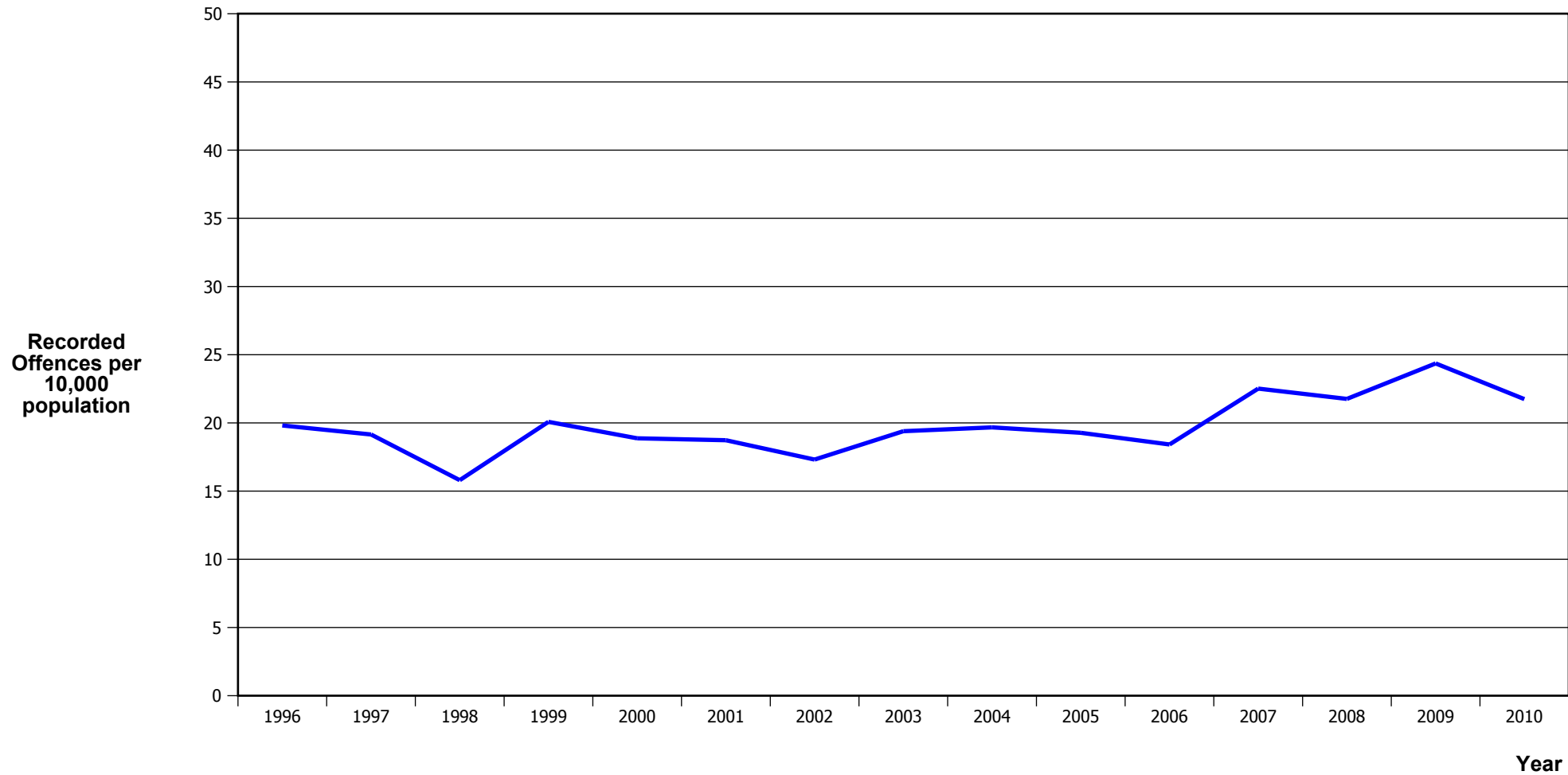
*In 2005/2006 there was a major IT system change (LES to NIA)

MURDER



Calendar Year	1997	1998	1999	2000	2001	2002	2003	2004	2005	2006	2007	2008	2009	2010
Recorded Offences	1	3	2	3	5	4	1	3	1	1	2	1	3	3
Recorded per 10,000 Population	0.06	0.19	0.13	0.19	0.31	0.25	0.06	0.18	0.06	0.06	0.12	0.06	0.17	0.17

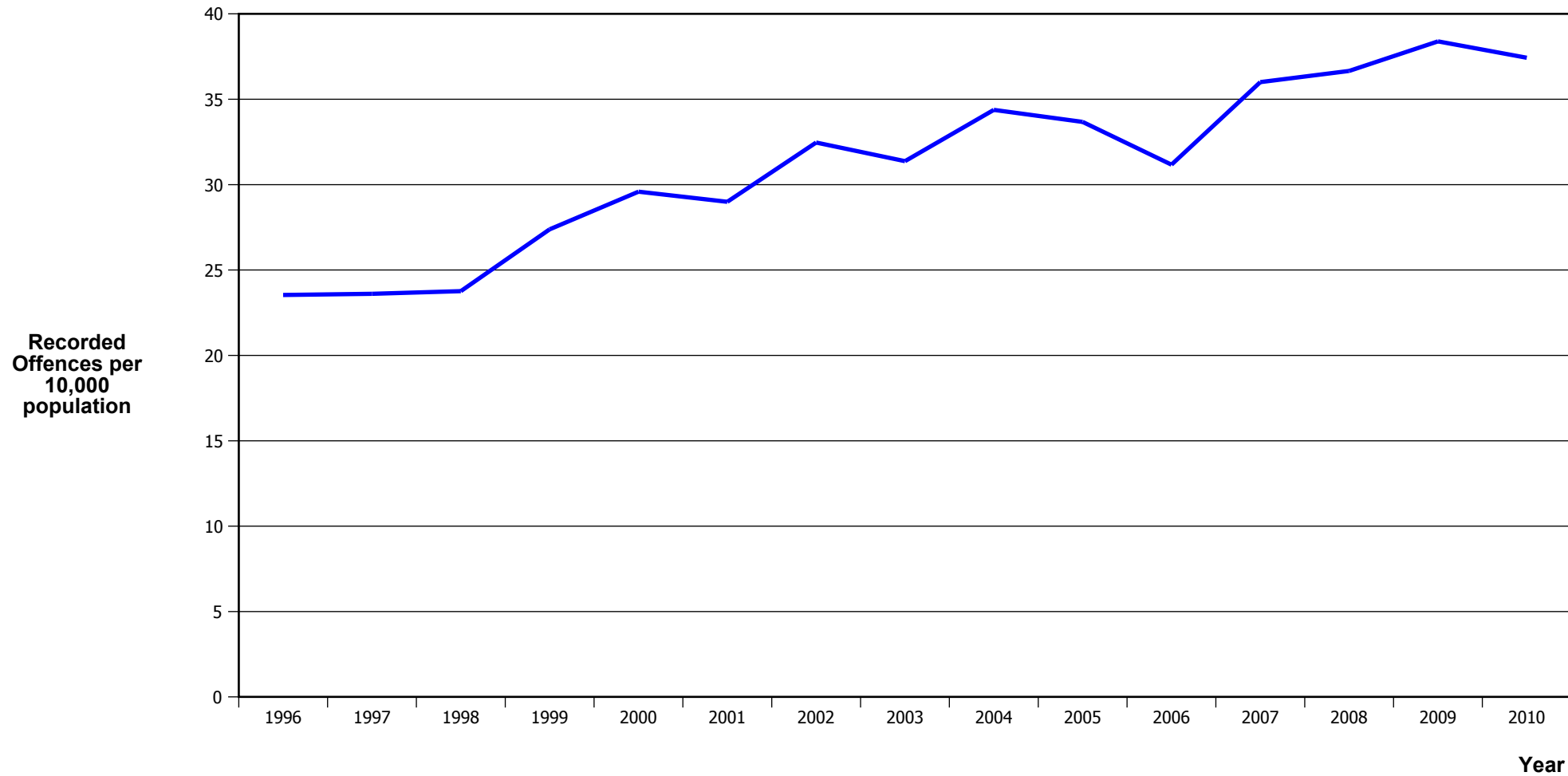
SERIOUS ASSAULTS RESULTING IN INJURY*



Calendar Year	1996	1997	1998	1999	2000	2001	2002	2003	2004	2005	2006	2007	2008	2009	2010
Recorded Physical Injury	309	301	250	319	301	301	281	319	328	324	312	384	374	422	380
Recorded per 10,000 Population	19.8	19.2	15.8	20.1	18.9	18.7	17.3	19.4	19.7	19.3	18.4	22.5	21.8	24.4	21.7

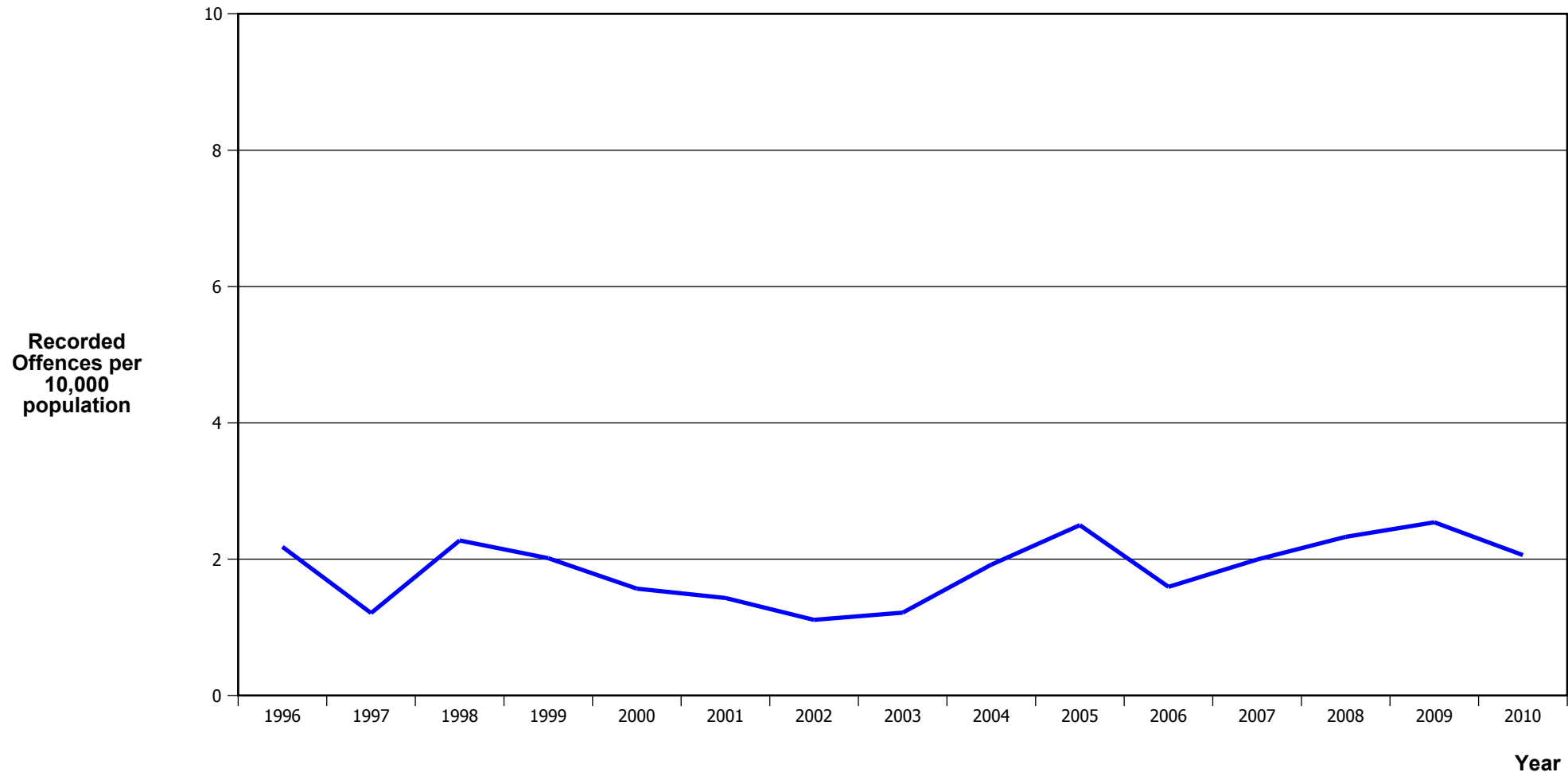
* This measure excludes common assaults

PUBLIC PLACE ASSAULTS



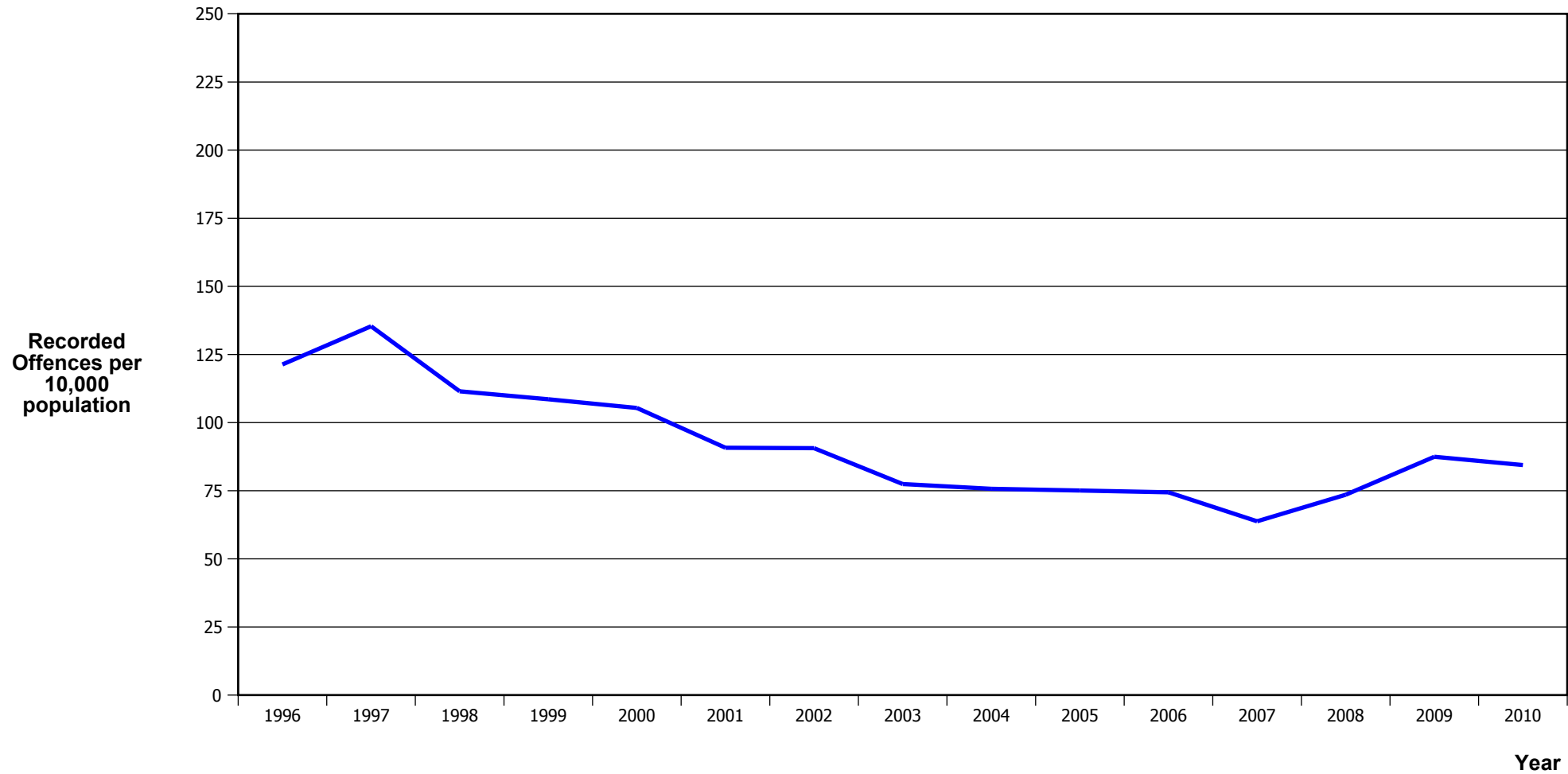
Calendar Year	1996	1997	1998	1999	2000	2001	2002	2003	2004	2005	2006	2007	2008	2009	2010
Recorded Offences	367	371	376	435	472	466	527	516	573	566	528	614	630	665	654
Recorded per 10,000 Population	23.5	23.6	23.8	27.4	29.6	29.0	32.5	31.4	34.4	33.7	31.2	36.0	36.7	38.4	37.4

ROBBERY



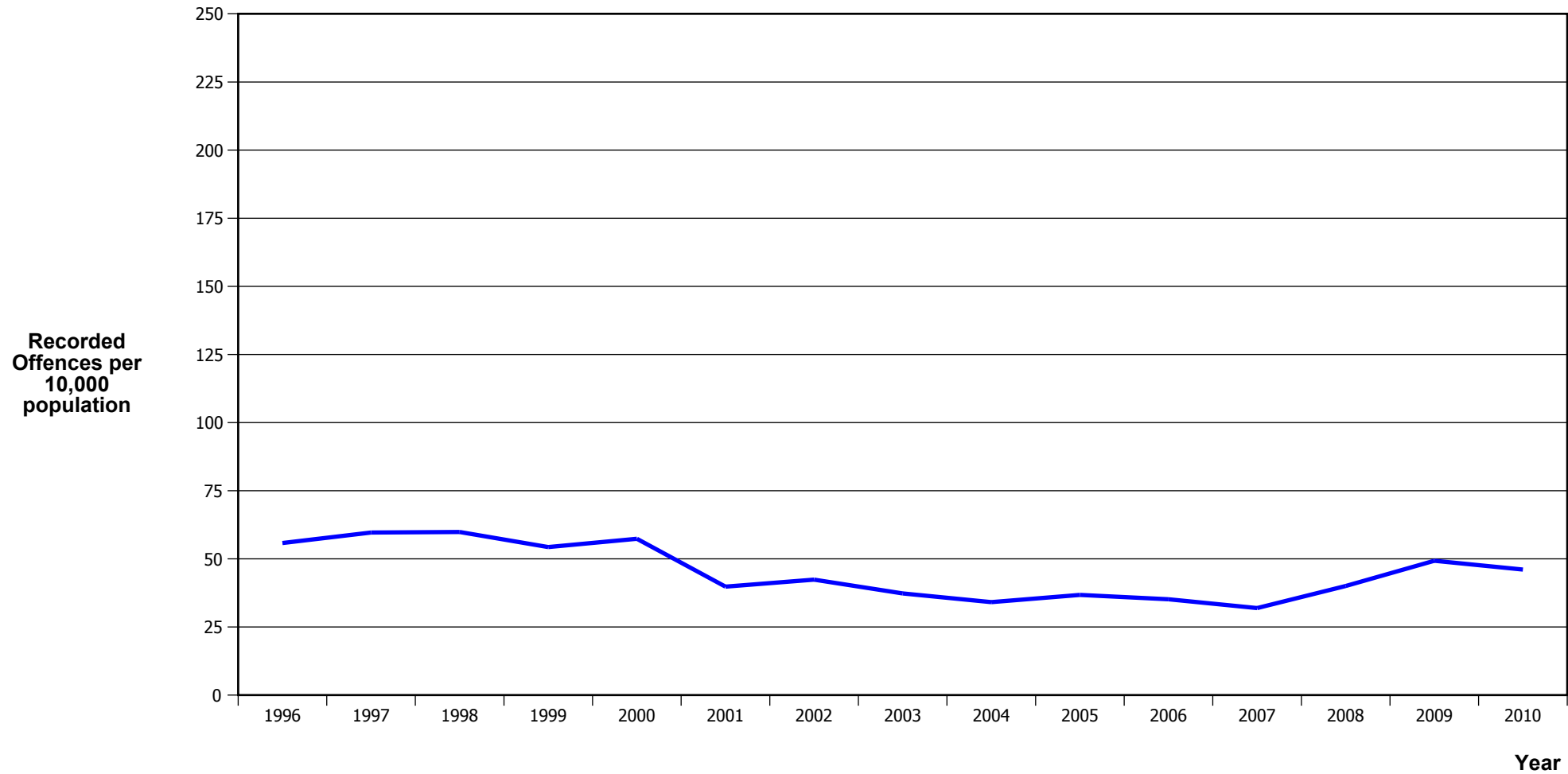
Calendar Year	1996	1997	1998	1999	2000	2001	2002	2003	2004	2005	2006	2007	2008	2009	2010
Recorded Offences	34	19	36	32	25	23	18	20	32	42	27	34	40	44	36
Recorded per 10,000 Population	2.2	1.2	2.3	2.0	1.6	1.4	1.1	1.2	1.9	2.5	1.6	2.0	2.3	2.5	2.1

BURGLARY (TOTAL)



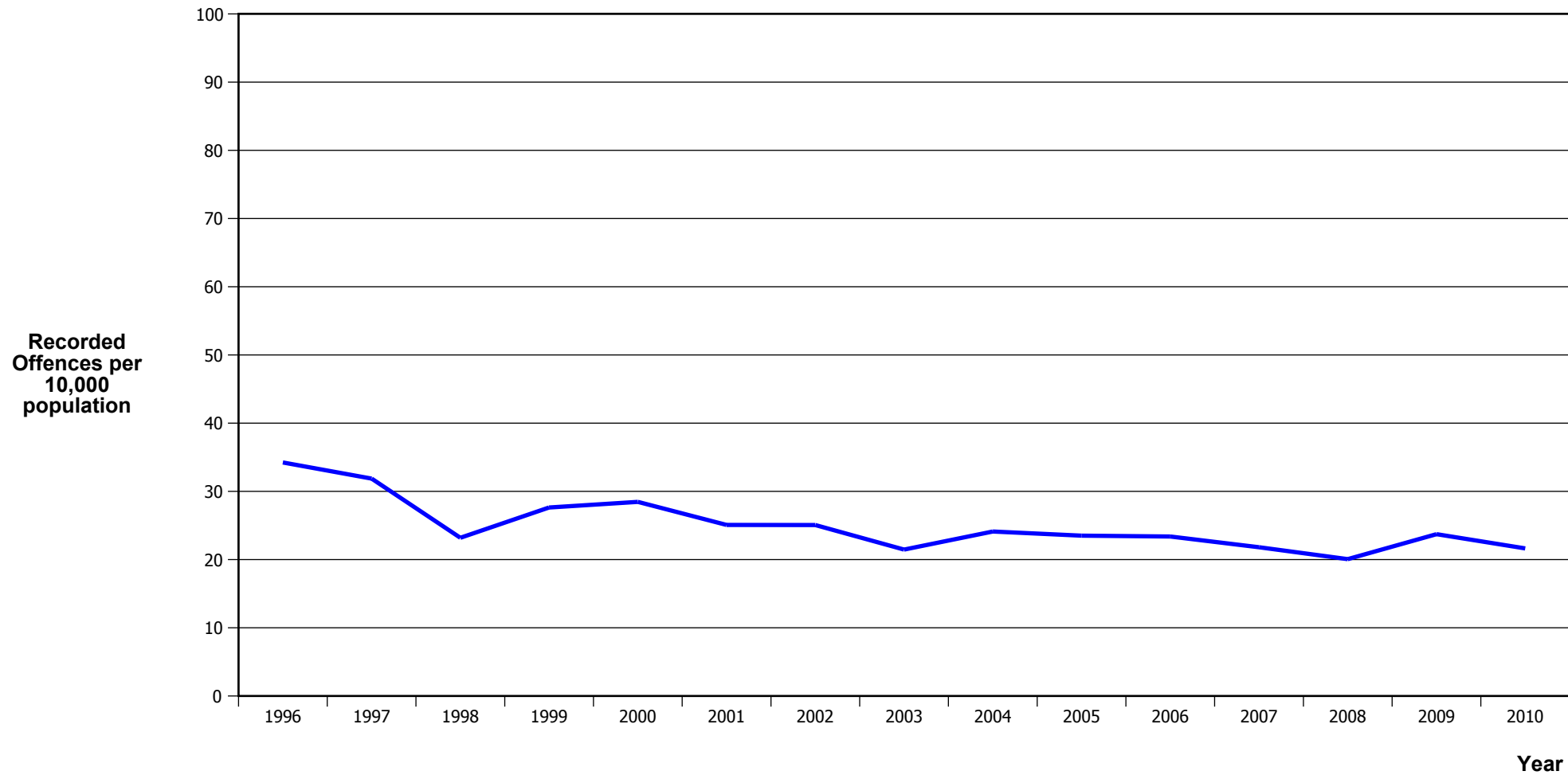
Calendar Year	1996	1997	1998	1999	2000	2001	2002	2003	2004	2005	2006	2007	2008	2009	2010
Recorded Offences	1,892	2,127	1,764	1,725	1,681	1,459	1,471	1,274	1,262	1,262	1,261	1,088	1,264	1,515	1,475
Recorded per 10,000 Population	121.3	135.3	111.5	108.6	105.4	90.8	90.6	77.5	75.7	75.1	74.4	63.8	73.5	87.5	84.4

BURGLARY (DWELLING)



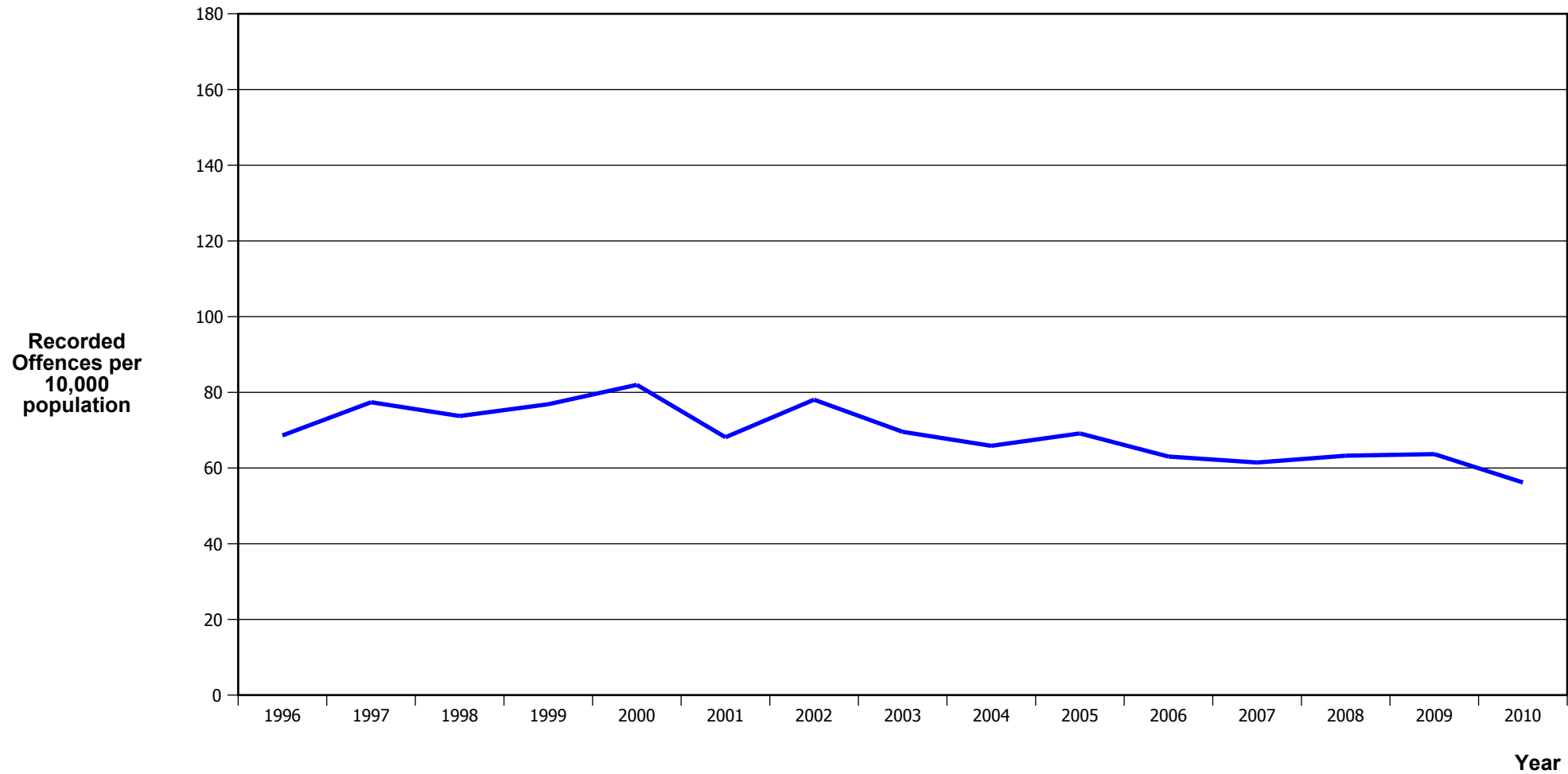
Calendar Year	1996	1997	1998	1999	2000	2001	2002	2003	2004	2005	2006	2007	2008	2009	2010
Recorded Offences	870	938	947	863	915	640	688	614	569	618	596	545	688	854	805
Recorded per 10,000 Population	55.8	59.7	59.8	54.3	57.4	39.8	42.4	37.3	34.1	36.8	35.2	32.0	40.0	49.3	46.1

VEHICLES STOLEN



Calendar Year	1996	1997	1998	1999	2000	2001	2002	2003	2004	2005	2006	2007	2008	2009	2010
Recorded Offences	534	501	367	439	454	403	407	353	402	395	396	372	345	411	378
Recorded per 10,000 Population	34.2	31.9	23.2	27.6	28.5	25.1	25.1	21.5	24.1	23.5	23.4	21.8	20.1	23.7	21.6

THEFT EX CAR



Calendar Year	1996	1997	1998	1999	2000	2001	2002	2003	2004	2005	2006	2007	2008	2009	2010
Recorded Offences	1,070	1,216	1,167	1,221	1,308	1,095	1,267	1,144	1,098	1,162	1,068	1,048	1,087	1,103	982
Recorded per 10,000 Population	68.6	77.4	73.8	76.9	82.0	68.1	78.1	69.6	65.9	69.1	63.0	61.5	63.2	63.7	56.2

Population Data

Population data is used in this release to calculate crime rates. They have been derived from population estimates as at 30 June each year that have been obtained from Statistics New Zealand.

The estimated resident population is based on the census usually resident population count, with adjustments for residents missed or counted more than once by the census (net census undercount), and for residents temporarily overseas on census night.

These population estimates exclude the number of international students who are studying in New Zealand for less than 12 months.

Year	Population
1996	155,930
1997	157,160
1998	158,230
1999	158,880
2000	159,520
2001	160,710
2002	162,320
2003	164,470
2004	166,690
2005	168,070
2006	169,400
2007	170,540
2008	171,870
2009	173,220
2010	174,730

General Definitions

Recorded Offences: the number of breaches of the New Zealand law recorded by Police. This includes offences specified in the Crimes Act and other legislations, such as the Summary Offences Act, Local Government Act, etc.

Resolved Offences: the number of recorded offences where an offender has been identified and dealt with (e.g. warned, cautioned, prosecuted, etc).

Resolution Rate: the proportion of recorded offences that have been resolved.

Recorded per 10,000 population: the number of recorded offences for every 10,000 people. This is also referred as the crime rate per 10,000 population.

ASOC: the Australian Standard Offence Classification. The offence classification is divided into 16 major offence divisions.

Definition of ASOC Divisions

1. Homicide and related offences: Unlawfully kill, attempt to unlawfully kill or conspiracy to kill another person.
2. Acts intended to cause injury: Acts, excluding attempted murder and those resulting in death, which are intended to cause non-fatal injury or harm to another person and where there is no sexual or acquisitive element.
3. Sexual assault and related offences: Acts, or intent of acts, of a sexual nature against another person, which are non-consensual or where consent is proscribed.
4. Dangerous or negligent acts endangering persons: Dangerous or negligent acts which, though not intended to cause harm, actually or potentially result in injury to oneself or another person.
5. Abduction, harassment and other offences against person: Acts intended to threaten or harass, or acts that unlawfully deprive another person of their freedom of movement, that are against that person's will or against the will of any parent, guardian or other person having lawful custody or care of that person.
6. Robbery, extortion and related offences: Acts intended to unlawfully gain money, property or other items of value from, or to cause detriment to, another person by using the threat of force or any other coercive measure.
7. Unlawful entry with intent / burglary, break and enter: The unlawful entry of a structure with the intent to commit an offence, where the entry is either forced or unforced.
8. Theft and related and offences: The unlawful taking or obtaining of money or goods, not involving the use of force or violence, coercion or deception, with intent to permanently or temporarily deprive the owner or possessor of the use of the money or goods, or the receiving or handling of money or goods obtained unlawfully.

9. Fraud, deception and related offences: Offences involving a dishonest act or omission carried out with the purpose of deceiving to obtain a benefit.

10. Illicit drug offences: The possessing, selling, dealing or trafficking, importing or exporting, manufacturing or cultivating of drugs or other substances prohibited under legislation.

11. Prohibited and regulated weapons and explosives offences: Offences involving prohibited or regulated weapons and explosives. Those offences also involving assault, sexual assault or robbery are coded to the relevant group within Assault, Sexual assaults and Robbery respectively.

12. Property damage and environmental pollution: The wilful and unlawful destruction, damage or defacement of public or private property, or the pollution of property or a definable entity held in common by the community.

13. Public order offences: Offences relating personal conduct that involves, or may lead to, a breach of public order or decency, or that is indicative of criminal intent, or that is otherwise regulated or prohibited on moral or ethical grounds. In general these offences do not involve a specific victim or victims; however some offences, such as offensive language and offensive behaviour, may be directed towards a single victim.

14. Traffic and vehicle regulatory offences: Offences relating to vehicles and most forms of traffic, including offences pertaining to the licensing, registration, roadworthiness, or use of vehicles, bicycle offences and pedestrian offences.

15. Offences against justice procedures, government security and government operations: An act or omission that is deemed to be prejudicial to the effective carrying out of justice procedures or any government operations. This includes general government operations as well as those specifically concerned with maintaining government security.

16. Miscellaneous offences: Offences involving the breach of statutory rules or regulations governing activities that are prima facie legal, where such offences are not explicitly dealt with under any other division. If an offence is specified under regulation and involves an act that would be illegal under common law or general criminal legislation, the offence is dealt with under the appropriate generic group.