

**SOUTHERN DISTRICT
CRIME STATISTICS
2009/2010**



(ASOC Grouping)

**A Summary of
Recorded and Resolved Offence
Statistics**

**POLICE NATIONAL HEADQUARTERS
October 2010**

Table of Contents:

Topic	Page
Report Notes	1
District Summary of Recorded and Resolved Crime, by Division	2-4
District Summary of Recorded and Resolved Crime, by Area	5
District Recorded Crime per 10,000 population, by Division	6-8
District Recorded Crime per 10,000 population, by Area	9
Proportions of Recorded Crime by Categories	10
Crime Trends	11
Total Crime	12
Murder	13
Serious Assaults Resulting in Injury	14
Public Place Assaults	15
Robbery	16
Burglary	17
Burglary (Dwelling)	18
Vehicles Stolen	19
Theft Ex Car	20
Population Data	21
General Definition	22-23

REPORT NOTES:

This report presents official statistics for recorded and resolved offences. The format has been revised significantly from that used in previous years. In particular, offences are grouped into different categories than previously used. This aligns with direction given by the Justice Sector Information Strategy for the whole Justice sector to categorise offences according to the Australian Standard Offence Classification (ASOC). This change does not change the total number of offences reported, just how they are grouped.

In making this change, New Zealand Police has taken the first step towards reporting crime in a way that is comparable with Australia. However, at this stage, important differences still exist that mean statistics are not yet comparable between the two countries. For example, Australian statistics only count the most serious offence on each file, whereas New Zealand reports every offence. Also, Australian statistics count victims, whereas New Zealand Statistics count offences.

Another important change in this report is that pages 11 to 20, which present long-term trends, have been completely revised. The time series has been extended from 10 to 15 years to give a longer history. Also, the measures reported include a number of the statistical indicators that Police recently began publishing provisional data on every month.

As in previous reports, statistics reported in this document are derived from the Police National Intelligence Application (NIA). These Official Statistics for Recorded and Resolved Offences present a snapshot of data in NIA relating to offences that occur within a given year, as at the date 14 days following the end of that year.

Unless the matter is minor where Police attendance is sufficient, a matter that is reported to or discovered by Police where Police believe an offence is likely to have been committed is counted as a recorded offence.

A recorded offence is counted as resolved when Police apprehend an offender and decide how to deal with him/her. (E.g. warn, prosecute, etc.)

Resolution rate is the percentage of recorded offences that are resolved within 14 days of the end of the year being reported on.

If an offence is resolved 15 days or more after the end of the year it will not appear in the Official Crime Statistics for that or any other year. Resolution Rate therefore undercounts the number of cases that Police have resolved. This phenomenon has a more marked impact for some types of offences than others, such as offences that require long investigations (E.g. many serial crimes, burglaries and murders).

When comparing 2009/2010 Statistics with previous years, the reader should also refer to "Report Notes" published in previous years' reports, as previous changes significantly affect year on year trends.

SUMMARY OF DISTRICT RECORDED AND RESOLVED CRIME, BY DIVISION
Years ending 30 June

HOMICIDE AND RELATED OFFENCES

ASOC Subdivision Description	Recorded 20072008	Recorded 20082009	Recorded 20092010	Variance 07/08- 08/09	Variance 08/09- 09/10	Resolved 20072008	Resolved 20082009	Resolved 20092010	Resolution Rate 20072008	Resolution Rate 20082009	Resolution Rate 20092010
ATTEMPTED MURDER	3	3	2	0.0 %	-33.3 %	3	3	2	100.0 %	100.0 %	100.0 %
MANSLAUGHTER AND DRIVING CAUSING DEATH	2	1	2	-50.0 %	100.0 %	2	1	2	100.0 %	100.0 %	100.0 %
MURDER	5	2	1	-60.0 %	-50.0 %	5	2	1	100.0 %	100.0 %	100.0 %
	10	6	5	-40.0 %	-16.7 %	10	6	5	100.0 %	100.0 %	100.0 %

ACTS INTENDED TO CAUSE INJURY

ASOC Subdivision Description	Recorded 20072008	Recorded 20082009	Recorded 20092010	Variance 07/08- 08/09	Variance 08/09- 09/10	Resolved 20072008	Resolved 20082009	Resolved 20092010	Resolution Rate 20072008	Resolution Rate 20082009	Resolution Rate 20092010
ASSAULT	2,897	3,062	3,159	5.7 %	3.2 %	2,349	2,581	2,664	81.1 %	84.3 %	84.3 %
OTHER ACTS INTENDED TO CAUSE INJURY	3	3	2	0.0 %	-33.3 %	2	2	0	66.7 %	66.7 %	0.0 %
	2,900	3,065	3,161	5.7 %	3.1 %	2,351	2,583	2,664	81.1 %	84.3 %	84.3 %

SEXUAL ASSAULT AND RELATED OFFENCES

ASOC Subdivision Description	Recorded 20072008	Recorded 20082009	Recorded 20092010	Variance 07/08- 08/09	Variance 08/09- 09/10	Resolved 20072008	Resolved 20082009	Resolved 20092010	Resolution Rate 20072008	Resolution Rate 20082009	Resolution Rate 20092010
NON-ASSAULTIVE SEXUAL OFFENCES	6	11	4	83.3 %	-63.6 %	3	5	3	50.0 %	45.5 %	75.0 %
SEXUAL ASSAULT	185	204	155	10.3 %	-24.0 %	115	130	86	62.2 %	63.7 %	55.5 %
	191	215	159	12.6 %	-26.0 %	118	135	89	61.8 %	62.8 %	56.0 %

DANGEROUS OR NEGLIGENT ACTS ENDANGERING PERSONS

ASOC Subdivision Description	Recorded 20072008	Recorded 20082009	Recorded 20092010	Variance 07/08- 08/09	Variance 08/09- 09/10	Resolved 20072008	Resolved 20082009	Resolved 20092010	Resolution Rate 20072008	Resolution Rate 20082009	Resolution Rate 20092010
OTHER DANGEROUS OR NEGLIGENT ACTS ENDANGERING PERSONS	96	81	87	-15.6 %	7.4 %	65	47	59	67.7 %	58.0 %	67.8 %
	96	81	87	-15.6 %	7.4 %	65	47	59	67.7 %	58.0 %	67.8 %

ABDUCTION, HARASSMENT AND OTHER RELATED OFFENCES AGAINST A PERSON

ASOC Subdivision Description	Recorded 20072008	Recorded 20082009	Recorded 20092010	Variance 07/08- 08/09	Variance 08/09- 09/10	Resolved 20072008	Resolved 20082009	Resolved 20092010	Resolution Rate 20072008	Resolution Rate 20082009	Resolution Rate 20092010
ABDUCTION AND KIDNAPPING	14	26	9	85.7 %	-65.4 %	11	20	8	78.6 %	76.9 %	88.9 %
HARASSMENT AND THREATENING BEHAVIOUR	960	949	876	-1.1 %	-7.7 %	659	733	665	68.6 %	77.2 %	75.9 %
	974	975	885	0.1 %	-9.2 %	670	753	673	68.8 %	77.2 %	76.0 %

ROBBERY, EXTORTION AND RELATED OFFENCES

ASOC Subdivision Description	Recorded 20072008	Recorded 20082009	Recorded 20092010	Variance 07/08- 08/09	Variance 08/09- 09/10	Resolved 20072008	Resolved 20082009	Resolved 20092010	Resolution Rate 20072008	Resolution Rate 20082009	Resolution Rate 20092010
BLACKMAIL AND EXTORTION	5	4	4	-20.0 %	0.0 %	3	2	2	60.0 %	50.0 %	50.0 %
ROBBERY	60	70	42	16.7 %	-40.0 %	37	33	25	61.7 %	47.1 %	59.5 %
	65	74	46	13.8 %	-37.8 %	40	35	27	61.5 %	47.3 %	58.7 %

UNLAWFUL ENTRY WITH INTENT/BURGLARY, BREAK AND ENTER

ASOC Subdivision Description	Recorded 20072008	Recorded 20082009	Recorded 20092010	Variance 07/08- 08/09	Variance 08/09- 09/10	Resolved 20072008	Resolved 20082009	Resolved 20092010	Resolution Rate 20072008	Resolution Rate 20082009	Resolution Rate 20092010
UNLAWFUL ENTRY WITH INTENT/BURGLARY, BREAK AND ENTER	2,457	2,533	2,333	3.1 %	-7.9 %	647	610	620	26.3 %	24.1 %	26.6 %
	2,457	2,533	2,333	3.1 %	-7.9 %	647	610	620	26.3 %	24.1 %	26.6 %

SUMMARY OF DISTRICT RECORDED AND RESOLVED CRIME, BY DIVISION

Years ending 30 June

THEFT AND RELATED OFFENCES

ASOC Subdivision Description	Recorded 20072008	Recorded 20082009	Recorded 20092010	Variance 07/08- 08/09	Variance 08/09- 09/10	Resolved 20072008	Resolved 20082009	Resolved 20092010	Resolution Rate 20072008	Resolution Rate 20082009	Resolution Rate 20092010
ILLEGAL USE OF PROPERTY (EXCEPT MOTOR VEHICLES)	438	379	393	-13.5 %	3.7 %	26	18	35	5.9 %	4.7 %	8.9 %
MOTOR VEHICLE THEFT AND RELATED OFFENCES	2,585	2,458	2,572	-4.9 %	4.6 %	501	510	538	19.4 %	20.7 %	20.9 %
RECEIVE OR HANDLE PROCEEDS OF CRIME	134	146	141	9.0 %	-3.4 %	133	135	130	99.3 %	92.5 %	92.2 %
THEFT (EXCEPT MOTOR VEHICLES)	4,829	4,649	4,646	-3.7 %	-0.1 %	1,710	1,605	1,710	35.4 %	34.5 %	36.8 %
	7,986	7,632	7,752	-4.4 %	1.6 %	2,370	2,268	2,413	29.7 %	29.7 %	31.1 %

FRAUD, DECEPTION AND RELATED OFFENCES

ASOC Subdivision Description	Recorded 20072008	Recorded 20082009	Recorded 20092010	Variance 07/08- 08/09	Variance 08/09- 09/10	Resolved 20072008	Resolved 20082009	Resolved 20092010	Resolution Rate 20072008	Resolution Rate 20082009	Resolution Rate 20092010
DECEPTIVE BUSINESS/GOVERNMENT PRACTICES	4	7	0	75.0 %	-100.0 %	2	5	0	50.0 %	71.4 %	
FORGERY AND COUNTERFEITING	32	24	37	-25.0 %	54.2 %	16	9	22	50.0 %	37.5 %	59.5 %
OBTAIN BENEFIT BY DECEPTION	724	806	520	11.3 %	-35.5 %	508	587	348	70.2 %	72.8 %	66.9 %
OTHER FRAUD AND DECEPTION OFFENCES	40	86	49	115.0 %	-43.0 %	17	61	35	42.5 %	70.9 %	71.4 %
	800	923	606	15.4 %	-34.3 %	543	662	405	67.9 %	71.7 %	66.8 %

ILLICIT DRUG OFFENCES

ASOC Subdivision Description	Recorded 20072008	Recorded 20082009	Recorded 20092010	Variance 07/08- 08/09	Variance 08/09- 09/10	Resolved 20072008	Resolved 20082009	Resolved 20092010	Resolution Rate 20072008	Resolution Rate 20082009	Resolution Rate 20092010
DEAL OR TRAFFIC IN ILLICIT DRUGS	334	699	326	109.3 %	-53.4 %	318	689	308	95.2 %	98.6 %	94.5 %
IMPORT OR EXPORT ILLICIT DRUGS	4	4	11	0.0 %	175.0 %	4	2	11	100.0 %	50.0 %	100.0 %
MANUFACTURE OR CULTIVATE ILLICIT DRUGS	159	181	319	13.8 %	76.2 %	132	149	208	83.0 %	82.3 %	65.2 %
OTHER ILLICIT DRUG OFFENCES	437	408	452	-6.6 %	10.8 %	419	392	439	95.9 %	96.1 %	97.1 %
POSSESS AND/OR USE ILLICIT DRUGS	634	742	785	17.0 %	5.8 %	601	707	742	94.8 %	95.3 %	94.5 %
	1,568	2,034	1,893	29.7 %	-6.9 %	1,474	1,939	1,708	94.0 %	95.3 %	90.2 %

PROHIBITED AND REGULATED WEAPONS AND EXPLOSIVES OFFENCES

ASOC Subdivision Description	Recorded 20072008	Recorded 20082009	Recorded 20092010	Variance 07/08- 08/09	Variance 08/09- 09/10	Resolved 20072008	Resolved 20082009	Resolved 20092010	Resolution Rate 20072008	Resolution Rate 20082009	Resolution Rate 20092010
REGULATED WEAPONS/EXPLOSIVES OFFENCES	509	530	533	4.1 %	0.6 %	449	468	472	88.2 %	88.3 %	88.6 %
	509	530	533	4.1 %	0.6 %	449	468	472	88.2 %	88.3 %	88.6 %

PROPERTY DAMAGE AND ENVIRONMENTAL POLLUTION

ASOC Subdivision Description	Recorded 20072008	Recorded 20082009	Recorded 20092010	Variance 07/08- 08/09	Variance 08/09- 09/10	Resolved 20072008	Resolved 20082009	Resolved 20092010	Resolution Rate 20072008	Resolution Rate 20082009	Resolution Rate 20092010
ENVIRONMENTAL POLLUTION	100	74	56	-26.0 %	-24.3 %	72	52	42	72.0 %	70.3 %	75.0 %
PROPERTY DAMAGE	6,096	6,064	5,554	-0.5 %	-8.4 %	1,488	1,464	1,497	24.4 %	24.1 %	27.0 %
	6,196	6,138	5,610	-0.9 %	-8.6 %	1,560	1,516	1,539	25.2 %	24.7 %	27.4 %

PUBLIC ORDER OFFENCES

ASOC Subdivision Description	Recorded 20072008	Recorded 20082009	Recorded 20092010	Variance 07/08- 08/09	Variance 08/09- 09/10	Resolved 20072008	Resolved 20082009	Resolved 20092010	Resolution Rate 20072008	Resolution Rate 20082009	Resolution Rate 20092010
DISORDERLY CONDUCT	2,654	2,558	2,495	-3.6 %	-2.5 %	2,241	2,186	2,151	84.4 %	85.5 %	86.2 %
OFFENSIVE CONDUCT	203	183	197	-9.9 %	7.7 %	168	151	162	82.8 %	82.5 %	82.2 %
PUBLIC ORDER OFFENCES NOT FURTHER DEFINED	1	0	0	-100.0 %		0	0	0	0.0 %		
REGULATED PUBLIC ORDER OFFENCES	773	692	765	-10.5 %	10.5 %	728	657	707	94.2 %	94.9 %	92.4 %
	3,631	3,433	3,457	-5.5 %	0.7 %	3,137	2,994	3,020	86.4 %	87.2 %	87.4 %

SUMMARY OF DISTRICT RECORDED AND RESOLVED CRIME, BY DIVISION
Years ending 30 June

OFFENCES AGAINST JUSTICE PROCEDURES, GOVERNMENT SECURITY AND GOVERNMENT OPERATIONS

ASOC Subdivision Description	Recorded 20072008	Recorded 20082009	Recorded 20092010	Variance 07/08- 08/09	Variance 08/09- 09/10	Resolved 20072008	Resolved 20082009	Resolved 20092010	Resolution Rate 20072008	Resolution Rate 20082009	Resolution Rate 20092010
BREACH OF COMMUNITY-BASED ORDER	338	80	98	-76.3 %	22.5 %	301	78	83	89.1 %	97.5 %	84.7 %
BREACH OF CUSTODIAL ORDER OFFENCES	81	66	72	-18.5 %	9.1 %	79	62	68	97.5 %	93.9 %	94.4 %
BREACH OF VIOLENCE AND NON-VIOLENCE RESTRAINING ORDERS	294	299	326	1.7 %	9.0 %	252	250	296	85.7 %	83.6 %	90.8 %
OFFENCES AGAINST GOVERNMENT OPERATIONS	24	27	28	12.5 %	3.7 %	10	10	10	41.7 %	37.0 %	35.7 %
OFFENCES AGAINST GOVERNMENT SECURITY	1	0	0	-100.0 %		0	0	0	0.0 %		
OFFENCES AGAINST JUSTICE PROCEDURES	692	607	595	-12.3 %	-2.0 %	657	592	586	94.9 %	97.5 %	98.5 %
OFFENCES AGAINST JUSTICE PROCEDURES, GOVERNMENT SECURITY AND GOVERNMENT OPERATIONS NOT FURTHER DEFINED	1	1	0	0.0 %	-100.0 %	1	0	0	100.0 %	0.0 %	
	1,431	1,080	1,119	-24.5 %	3.6 %	1,300	992	1,043	90.8 %	91.9 %	93.2 %

MISCELLANEOUS OFFENCES

ASOC Subdivision Description	Recorded 20072008	Recorded 20082009	Recorded 20092010	Variance 07/08- 08/09	Variance 08/09- 09/10	Resolved 20072008	Resolved 20082009	Resolved 20092010	Resolution Rate 20072008	Resolution Rate 20082009	Resolution Rate 20092010
COMMERCIAL/INDUSTRY/FINANCIAL REGULATION	0	2	0		-100.0 %	0	0	0		0.0 %	
DEFAMATION, LIBEL AND PRIVACY OFFENCES	9	5	14	-44.4 %	180.0 %	5	3	11	55.6 %	60.0 %	78.6 %
OTHER MISCELLANEOUS OFFENCES	105	98	110	-6.7 %	12.2 %	83	72	70	79.0 %	73.5 %	63.6 %
PUBLIC HEALTH AND SAFETY OFFENCES	10	4	12	-60.0 %	200.0 %	5	2	6	50.0 %	50.0 %	50.0 %
	124	109	136	-12.1 %	24.8 %	93	77	87	75.0 %	70.6 %	64.0 %
TOTAL	28,938	28,828	27,782	-0.4 %	-3.6 %	14,827	15,085	14,824	51.2 %	52.3 %	53.4 %

SUMMARY OF DISTRICT RECORDED AND RESOLVED CRIME, BY AREA
years ending 30 June

TOTAL CRIME

Area Description	Recorded 20072008	Recorded 20082009	Recorded 20092010	Variance 07/08- 08/09	Variance 08/09- 09/10	Resolved 20072008	Resolved 20082009	Resolved 20092010	Resolution Rate 20072008	Resolution Rate 20082009	Resolution Rate 20092010
Dunedin	13,014	12,254	12,425	-5.8 %	1.4 %	6,369	5,979	6,267	48.9 %	48.8 %	50.4 %
Otago Rural	5,978	5,786	6,024	-3.2 %	4.1 %	3,228	3,226	3,292	54.0 %	55.8 %	54.6 %
Southland	9,946	10,788	9,333	8.5 %	-13.5 %	5,230	5,880	5,265	52.6 %	54.5 %	56.4 %
Total	28,938	28,828	27,782	-0.4 %	-3.6 %	14,827	15,085	14,824	51.2 %	52.3 %	53.4 %

DISTRICT RECORDED CRIME PER 10,000 POPULATION, BY DIVISION
Years ending 30 June

HOMICIDE AND RELATED OFFENCES

ASOC Subdivision Description	Recorded per 10,000 pop 20072008	Recorded per 10,000 pop 20082009	Recorded per 10,000 pop 20092010
ATTEMPTED MURDER	0.10	0.10	0.07
MANSLAUGHTER AND DRIVING CAUSING DEATH	0.07	0.03	0.07
MURDER	0.17	0.07	0.03
	0.34	0.20	0.17

ACTS INTENDED TO CAUSE INJURY

ASOC Subdivision Description	Recorded per 10,000 pop 20072008	Recorded per 10,000 pop 20082009	Recorded per 10,000 pop 20092010
ASSAULT	97.50	102.40	104.72
OTHER ACTS INTENDED TO CAUSE INJURY	0.10	0.10	0.07
	97.60	102.50	104.78

SEXUAL ASSAULT AND RELATED OFFENCES

ASOC Subdivision Description	Recorded per 10,000 pop 20072008	Recorded per 10,000 pop 20082009	Recorded per 10,000 pop 20092010
NON-ASSAULTIVE SEXUAL OFFENCES	0.20	0.37	0.13
SEXUAL ASSAULT	6.23	6.82	5.14
	6.43	7.19	5.27

DANGEROUS OR NEGLIGENT ACTS ENDANGERING PERSONS

ASOC Subdivision Description	Recorded per 10,000 pop 20072008	Recorded per 10,000 pop 20082009	Recorded per 10,000 pop 20092010
OTHER DANGEROUS OR NEGLIGENT ACTS ENDANGERING PERSONS	3.23	2.71	2.88
	3.23	2.71	2.88

ABDUCTION, HARASSMENT AND OTHER RELATED OFFENCES AGAINST A PERSON

ASOC Subdivision Description	Recorded per 10,000 pop 20072008	Recorded per 10,000 pop 20082009	Recorded per 10,000 pop 20092010
ABDUCTION AND KIDNAPPING	0.47	0.87	0.30
HARASSMENT AND THREATENING BEHAVIOUR	32.31	31.74	29.04
	32.78	32.60	29.34

ROBBERY, EXTORTION AND RELATED OFFENCES

ASOC Subdivision Description	Recorded per 10,000 pop 20072008	Recorded per 10,000 pop 20082009	Recorded per 10,000 pop 20092010
BLACKMAIL AND EXTORTION	0.17	0.13	0.13
ROBBERY	2.02	2.34	1.39
	2.19	2.47	1.52

DISTRICT RECORDED CRIME PER 10,000 POPULATION, BY DIVISION

Years ending 30 June

UNLAWFUL ENTRY WITH INTENT/BURGLARY, BREAK AND ENTER

ASOC Subdivision Description	Recorded per 10,000 pop 20072008	Recorded per 10,000 pop 20082009	Recorded per 10,000 pop 20092010
UNLAWFUL ENTRY WITH INTENT/BURGLARY, BREAK AND ENTER	82.69	84.71	77.33
	82.69	84.71	77.33

THEFT AND RELATED OFFENCES

ASOC Subdivision Description	Recorded per 10,000 pop 20072008	Recorded per 10,000 pop 20082009	Recorded per 10,000 pop 20092010
ILLEGAL USE OF PROPERTY (EXCEPT MOTOR VEHICLES)	14.74	12.67	13.03
MOTOR VEHICLE THEFT AND RELATED OFFENCES	87.00	82.20	85.26
RECEIVE OR HANDLE PROCEEDS OF CRIME	4.51	4.88	4.67
THEFT (EXCEPT MOTOR VEHICLES)	162.52	155.47	154.01
	268.77	255.22	256.97

FRAUD, DECEPTION AND RELATED OFFENCES

ASOC Subdivision Description	Recorded per 10,000 pop 20072008	Recorded per 10,000 pop 20082009	Recorded per 10,000 pop 20092010
DECEPTIVE BUSINESS/GOVERNMENT PRACTICES	0.13	0.23	0.00
FORGERY AND COUNTERFEITING	1.08	0.80	1.23
OBTAIN BENEFIT BY DECEPTION	24.37	26.95	17.24
OTHER FRAUD AND DECEPTION OFFENCES	1.35	2.88	1.62
	26.92	30.87	20.09

ILLICIT DRUG OFFENCES

ASOC Subdivision Description	Recorded per 10,000 pop 20072008	Recorded per 10,000 pop 20082009	Recorded per 10,000 pop 20092010
DEAL OR TRAFFIC IN ILLICIT DRUGS	11.24	23.38	10.81
IMPORT OR EXPORT ILLICIT DRUGS	0.13	0.13	0.36
MANUFACTURE OR CULTIVATE ILLICIT DRUGS	5.35	6.05	10.57
OTHER ILLICIT DRUG OFFENCES	14.71	13.64	14.98
POSSESS AND/OR USE ILLICIT DRUGS	21.34	24.81	26.02
	52.77	68.02	62.75

PROHIBITED AND REGULATED WEAPONS AND EXPLOSIVES OFFENCES

ASOC Subdivision Description	Recorded per 10,000 pop 20072008	Recorded per 10,000 pop 20082009	Recorded per 10,000 pop 20092010
REGULATED WEAPONS/EXPLOSIVES OFFENCES	17.13	17.72	17.67
	17.13	17.72	17.67

DISTRICT RECORDED CRIME PER 10,000 POPULATION, BY DIVISION

Years ending 30 June

PROPERTY DAMAGE AND ENVIRONMENTAL POLLUTION

ASOC Subdivision Description	Recorded per 10,000 pop 20072008	Recorded per 10,000 pop 20082009	Recorded per 10,000 pop 20092010
ENVIRONMENTAL POLLUTION	3.37	2.47	1.86
PROPERTY DAMAGE	205.16	202.79	184.11
	208.53	205.26	185.96

PUBLIC ORDER OFFENCES

ASOC Subdivision Description	Recorded per 10,000 pop 20072008	Recorded per 10,000 pop 20082009	Recorded per 10,000 pop 20092010
DISORDERLY CONDUCT	89.32	85.54	82.70
OFFENSIVE CONDUCT	6.83	6.12	6.53
PUBLIC ORDER OFFENCES NOT FURTHER DEFINED	0.03	0.00	0.00
REGULATED PUBLIC ORDER OFFENCES	26.02	23.14	25.36
	122.20	114.80	114.59

OFFENCES AGAINST JUSTICE PROCEDURES, GOVERNMENT SECURITY AND GOVERNMENT OPERATIONS

ASOC Subdivision Description	Recorded per 10,000 pop 20072008	Recorded per 10,000 pop 20082009	Recorded per 10,000 pop 20092010
BREACH OF COMMUNITY-BASED ORDER	11.38	2.68	3.25
BREACH OF CUSTODIAL ORDER OFFENCES	2.73	2.21	2.39
BREACH OF VIOLENCE AND NON-VIOLENCE RESTRAINING ORDERS	9.89	10.00	10.81
OFFENCES AGAINST GOVERNMENT OPERATIONS	0.81	0.90	0.93
OFFENCES AGAINST GOVERNMENT SECURITY	0.03	0.00	0.00
OFFENCES AGAINST JUSTICE PROCEDURES	23.29	20.30	19.72
OFFENCES AGAINST JUSTICE PROCEDURES, GOVERNMENT SECURITY AND GOVERNMENT OPERATIONS NOT FURTHER DEFINED	0.03	0.03	0.00
	48.16	36.12	37.09

MISCELLANEOUS OFFENCES

ASOC Subdivision Description	Recorded per 10,000 pop 20072008	Recorded per 10,000 pop 20082009	Recorded per 10,000 pop 20092010
COMMERCIAL/INDUSTRY/FINANCIAL REGULATION	0.00	0.07	0.00
DEFAMATION, LIBEL AND PRIVACY OFFENCES	0.30	0.17	0.46
OTHER MISCELLANEOUS OFFENCES	3.53	3.28	3.65
PUBLIC HEALTH AND SAFETY OFFENCES	0.34	0.13	0.40
	4.17	3.65	4.51

TOTAL	973.92	964.03	920.92
--------------	---------------	---------------	---------------

DISTRICT RECORDED CRIME PER 10,000 POPULATION, BY AREA

Years ending 30 June

Area Description	Recorded per 10,000 pop 20072008	Recorded per 10,000 pop 20082009	Recorded per 10,000 pop 20092010	Percent Variance 07/08 to 08/09	Percent Variance 08/09 to 09/10
Dunedin	944.3	884.3	889.9	-6.4 %	0.6 %
Otago Rural	929.8	885.4	908.9	-4.8 %	2.7 %
Southland	1,046.8	1,134.3	974.6	8.4 %	-14.1 %
TOTAL	973.9	964.0	920.9	-1.0 %	-4.5 %

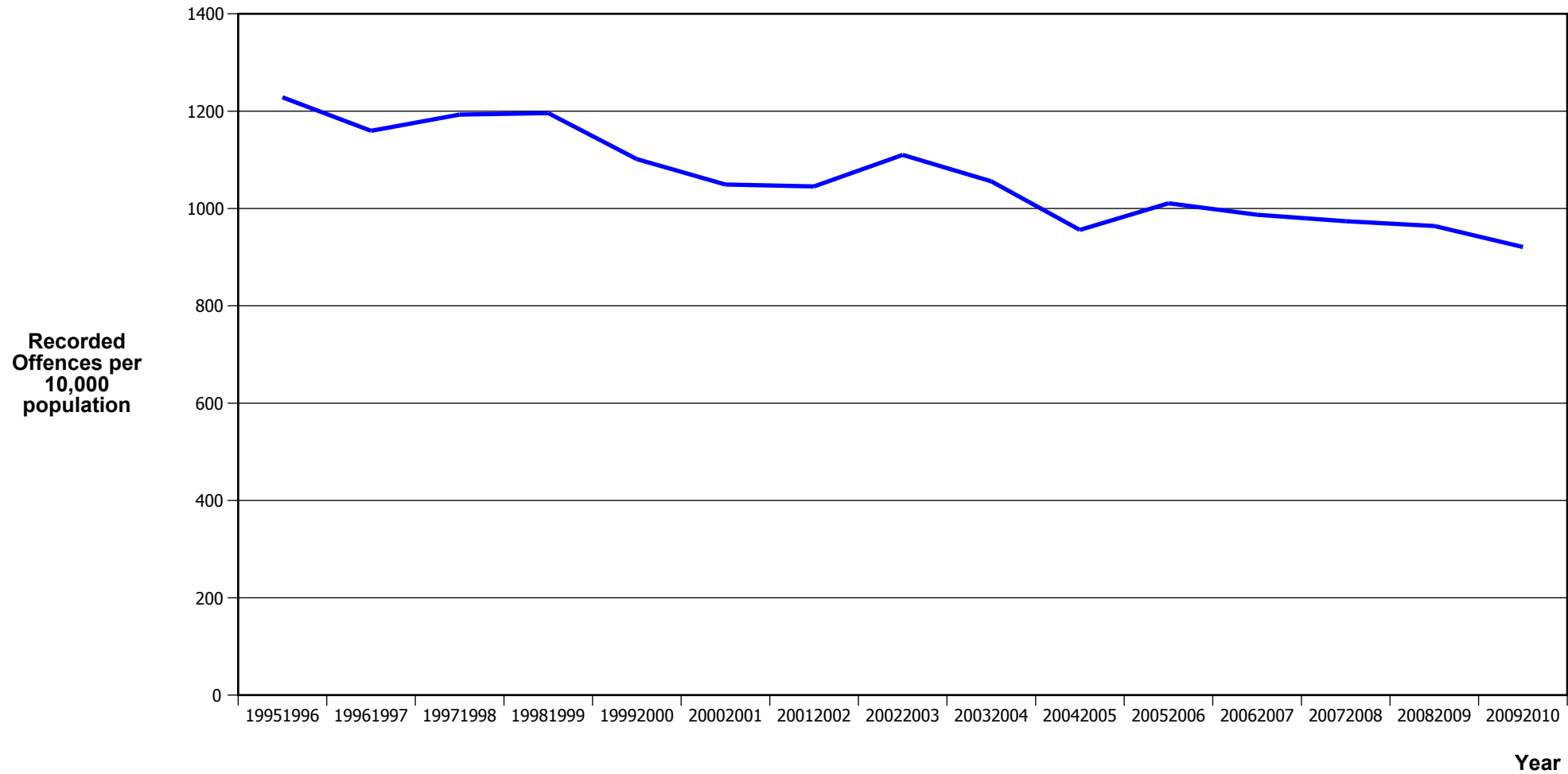
PROPORTION OF RECORDED CRIME BY DIVISION

Years ending 30 June

ASOC Division Description	Proportions Recorded 20072008	Recorded 20072008	Proportions Recorded 20082009	Recorded 20082009	Proportions Recorded 20092010	Recorded 20092010
HOMICIDE AND RELATED OFFENCES	0.0 %	10	0.0 %	6	0.0 %	5
ACTS INTENDED TO CAUSE INJURY	10.0 %	2,900	10.6 %	3,065	11.4 %	3,161
SEXUAL ASSAULT AND RELATED OFFENCES	0.7 %	191	0.7 %	215	0.6 %	159
DANGEROUS OR NEGLIGENT ACTS ENDANGERING PERSONS	0.3 %	96	0.3 %	81	0.3 %	87
ABDUCTION, HARASSMENT AND OTHER RELATED OFFENCES AGAINST A PERSON	3.4 %	974	3.4 %	975	3.2 %	885
ROBBERY, EXTORTION AND RELATED OFFENCES	0.2 %	65	0.3 %	74	0.2 %	46
UNLAWFUL ENTRY WITH INTENT/BURGLARY, BREAK AND ENTER	8.5 %	2,457	8.8 %	2,533	8.4 %	2,333
THEFT AND RELATED OFFENCES	27.6 %	7,986	26.5 %	7,632	27.9 %	7,752
FRAUD, DECEPTION AND RELATED OFFENCES	2.8 %	800	3.2 %	923	2.2 %	606
ILLICIT DRUG OFFENCES	5.4 %	1,568	7.1 %	2,034	6.8 %	1,893
PROHIBITED AND REGULATED WEAPONS AND EXPLOSIVES OFFENCES	1.8 %	509	1.8 %	530	1.9 %	533
PROPERTY DAMAGE AND ENVIRONMENTAL POLLUTION	21.4 %	6,196	21.3 %	6,138	20.2 %	5,610
PUBLIC ORDER OFFENCES	12.5 %	3,631	11.9 %	3,433	12.4 %	3,457
OFFENCES AGAINST JUSTICE PROCEDURES, GOVERNMENT SECURITY AND GOVERNMENT OPERATIONS	4.9 %	1,431	3.7 %	1,080	4.0 %	1,119
MISCELLANEOUS OFFENCES	0.4 %	124	0.4 %	109	0.5 %	136
	100.0 %	28,938	100.0 %	28,828	100.0 %	27,782

CRIME TRENDS

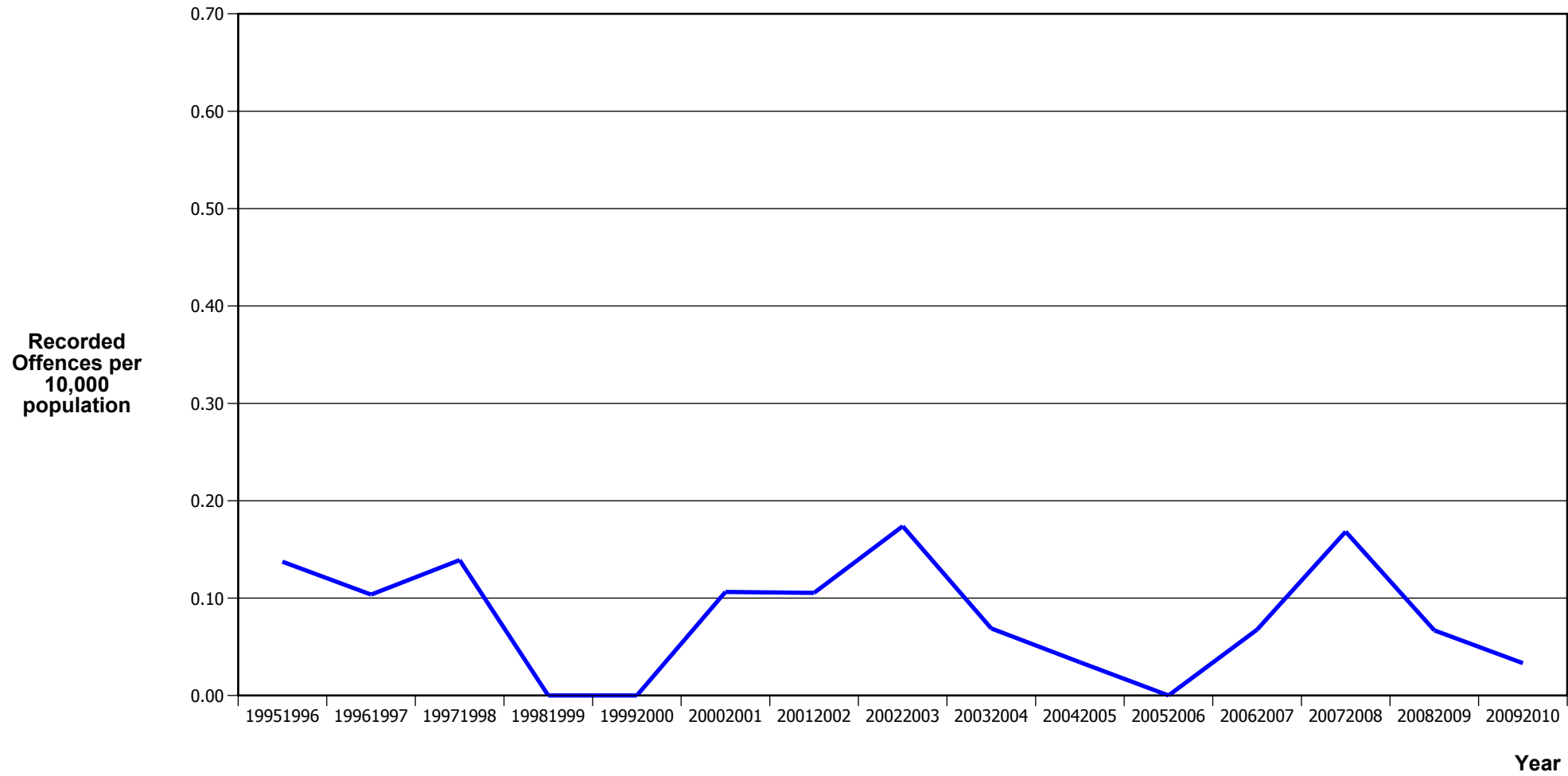
TOTAL CRIME



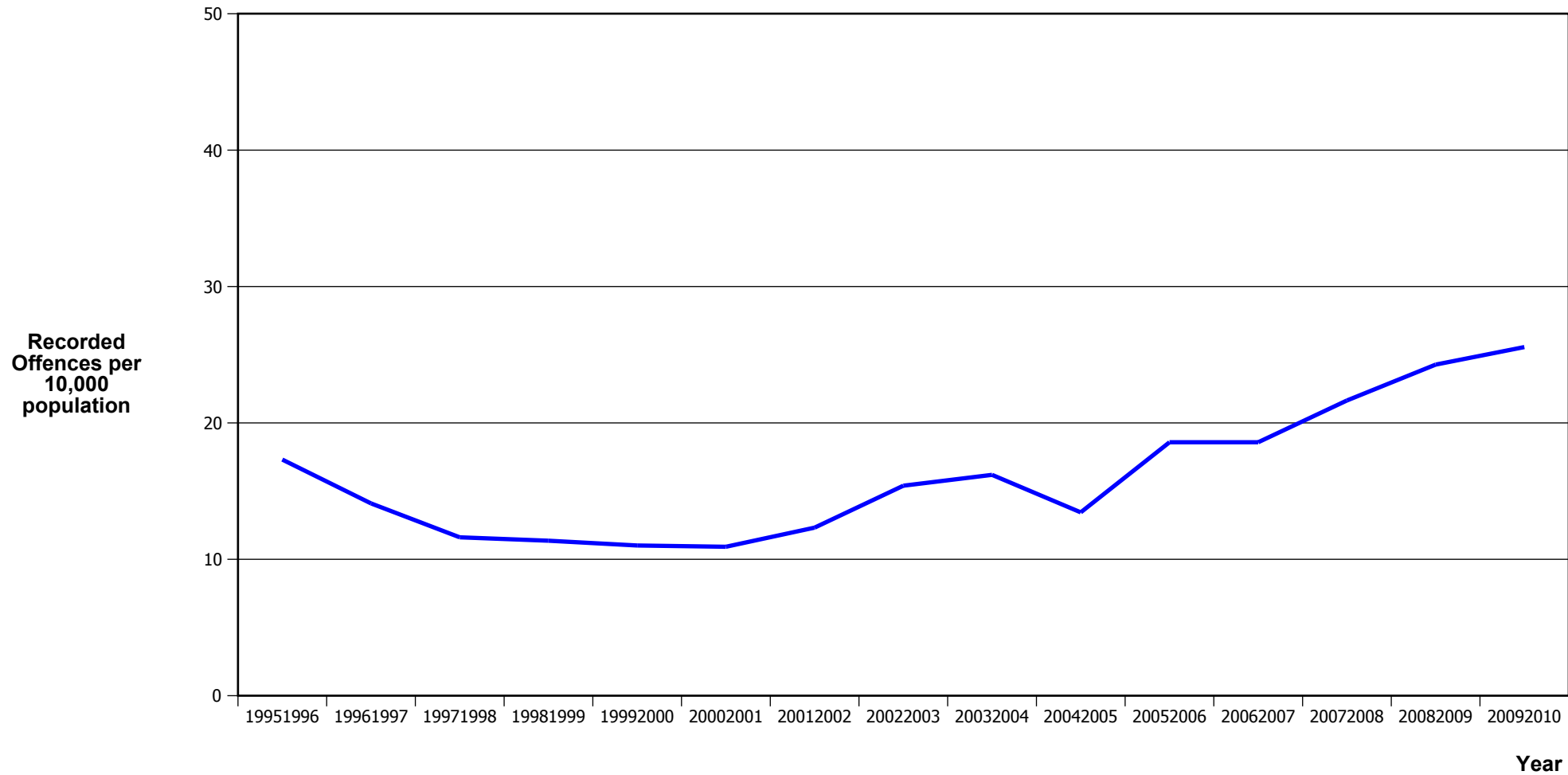
Fiscal Year	19951996	19961997	19971998	19981999	19992000	20002001	20012002	20022003	20032004	20042005	20052006	20062007	20072008	20082009	20092010
Recorded Offences	35,757	33,556	34,319	34,100	31,088	29,593	29,768	31,935	30,651	27,940	29,699	29,165	28,938	28,828	27,782
Recorded per 10,000 Population	1,228.4	1,159.6	1,193.1	1,195.9	1,101.4	1,049.3	1,045.4	1,110.1	1,055.8	955.9	1,010.7	987.1	973.9	964.0	920.9

*In 20052006 there was a major IT system change (LES to NIA)

MURDER



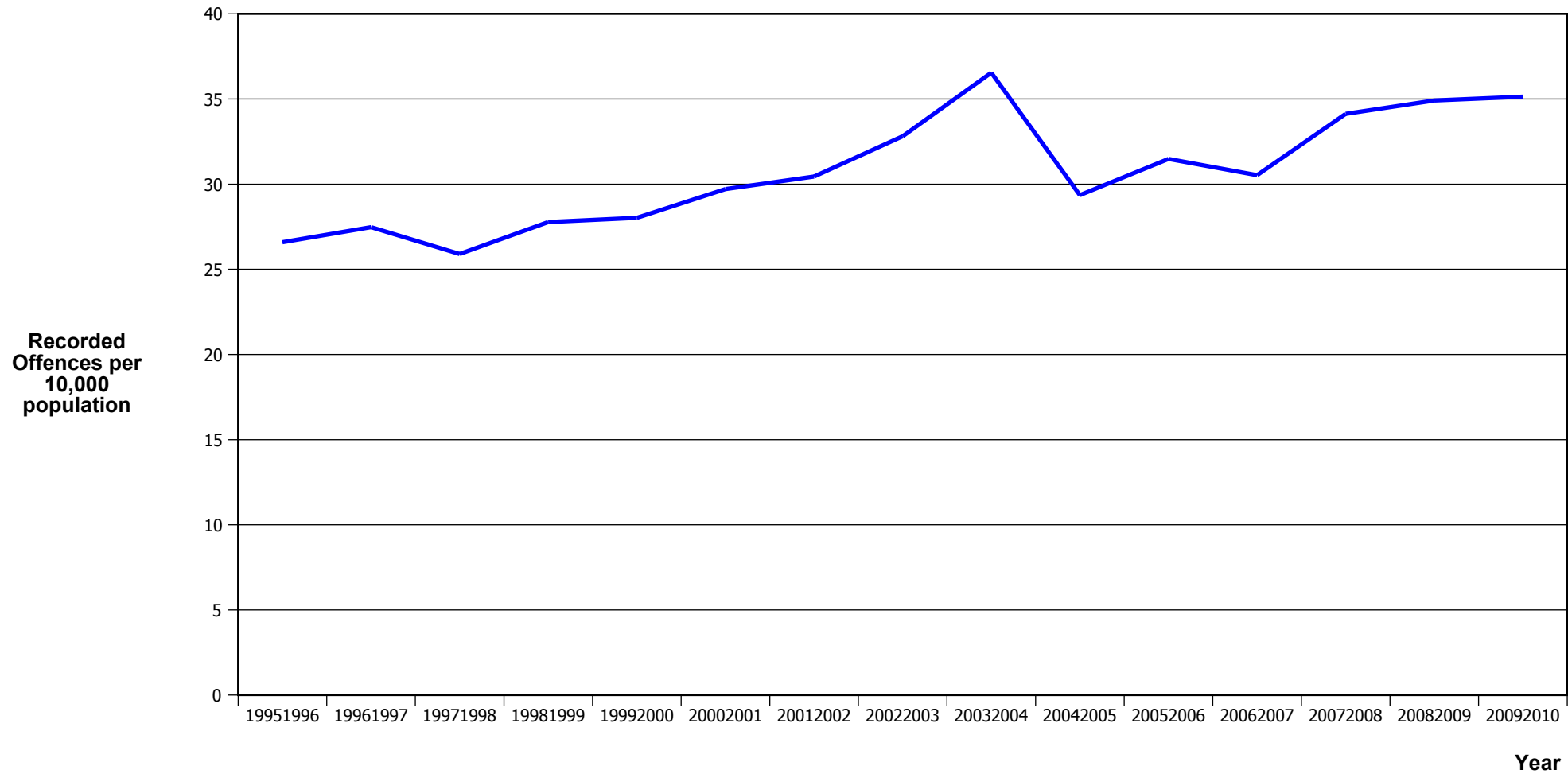
SERIOUS ASSAULTS RESULTING IN INJURY*



Fiscal Year	19951996	19961997	19971998	19981999	19992000	20002001	20012002	20022003	20032004	20042005	20052006	20062007	20072008	20082009	20092010
Recorded Physical Injury	504	408	334	324	311	308	351	443	470	393	546	549	643	726	771
Recorded per 10,000 Population	17.3	14.1	11.6	11.4	11.0	10.9	12.3	15.4	16.2	13.4	18.6	18.6	21.6	24.3	25.6

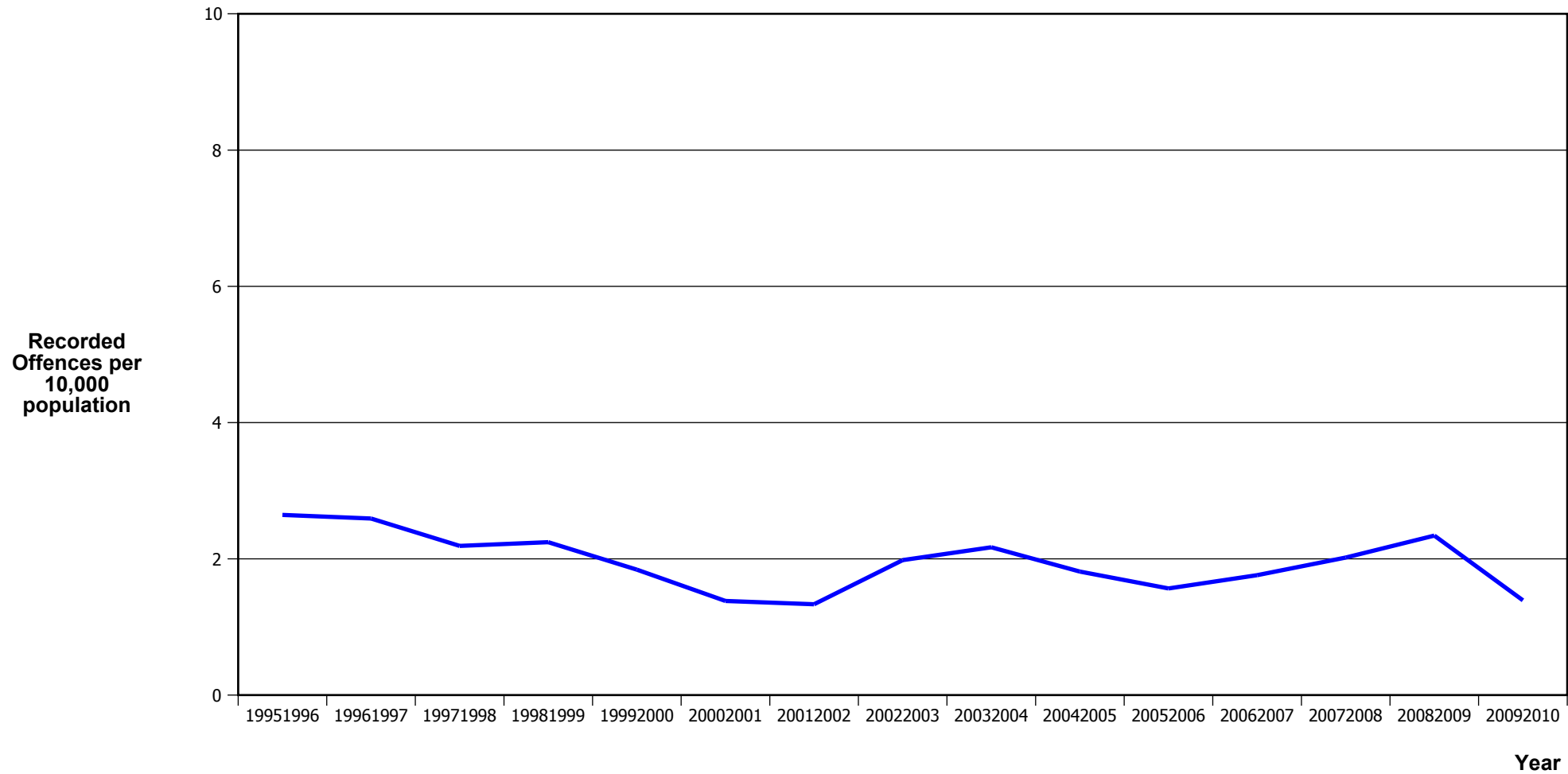
* This measure excludes common assaults

PUBLIC PLACE ASSAULTS



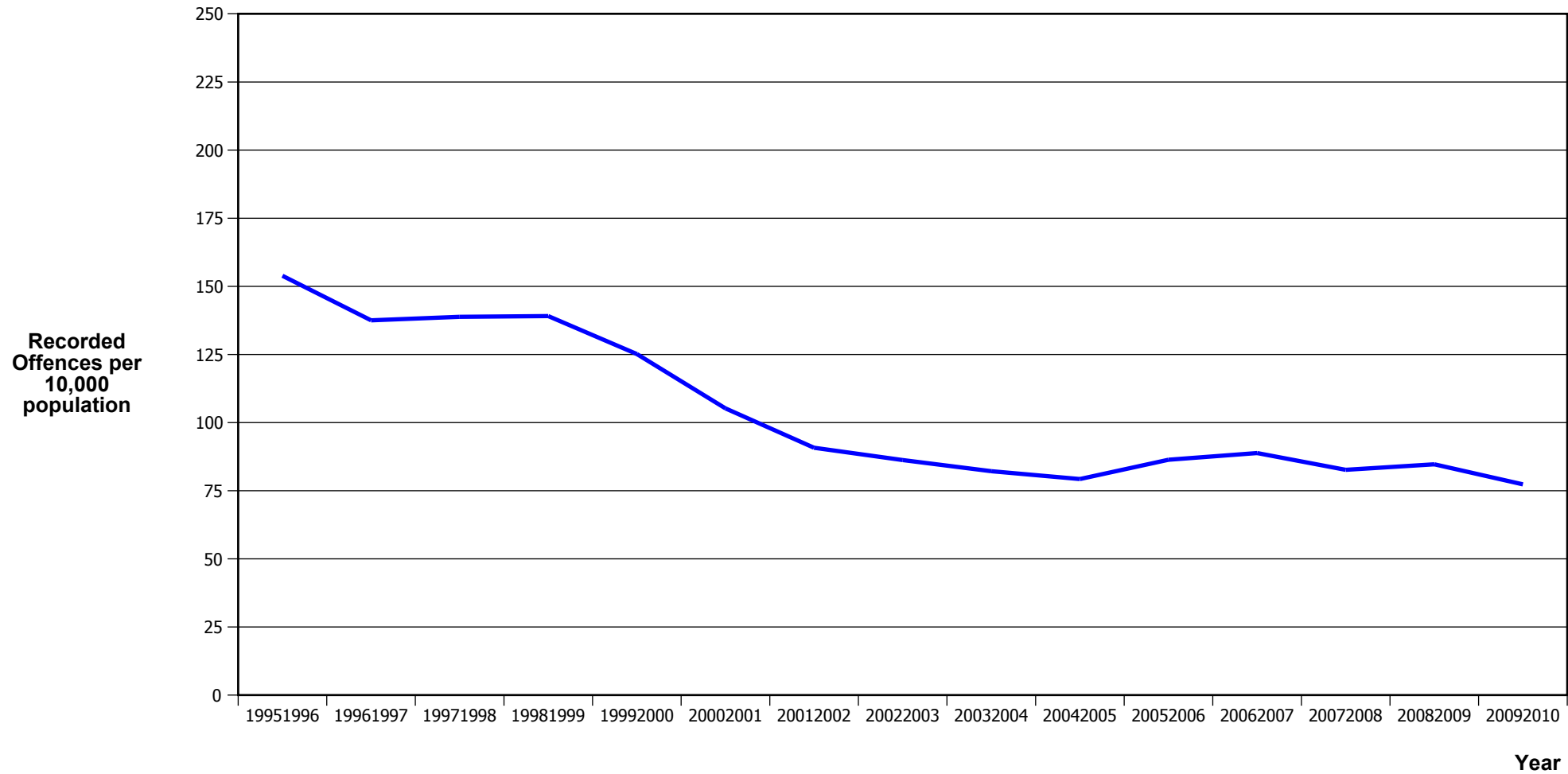
Fiscal Year	19951996	19961997	19971998	19981999	19992000	20002001	20012002	20022003	20032004	20042005	20052006	20062007	20072008	20082009	20092010
Recorded Offences	774	795	745	792	791	838	867	944	1,061	858	925	902	1,014	1,044	1,060
Recorded per 10,000 Population	26.6	27.5	25.9	27.8	28.0	29.7	30.4	32.8	36.5	29.4	31.5	30.5	34.1	34.9	35.1

ROBBERY



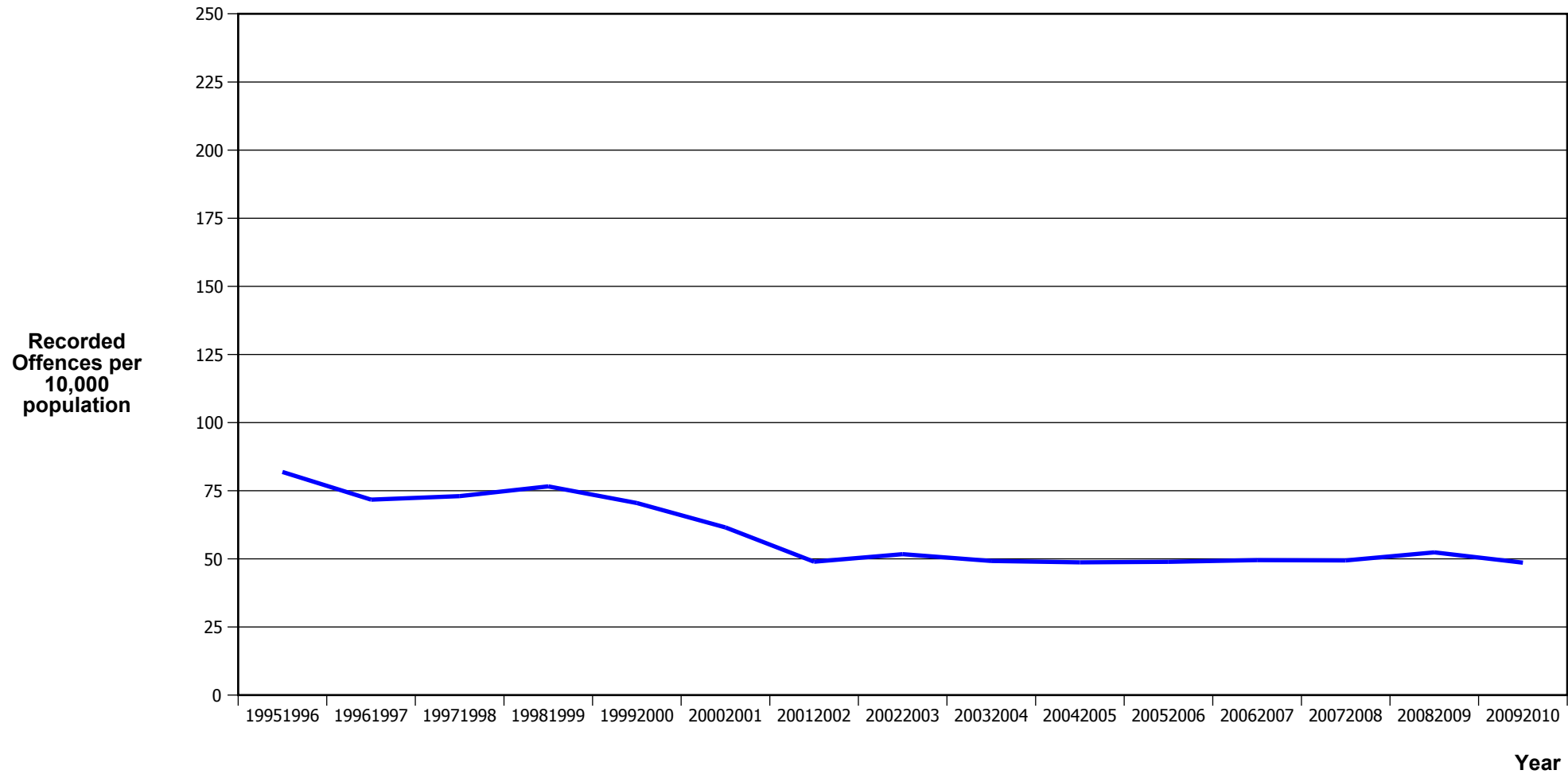
Fiscal Year	19951996	19961997	19971998	19981999	19992000	20002001	20012002	20022003	20032004	20042005	20052006	20062007	20072008	20082009	20092010
Recorded Offences	77	75	63	64	52	39	38	57	63	53	46	52	60	70	42
Recorded per 10,000 Population	2.6	2.6	2.2	2.2	1.8	1.4	1.3	2.0	2.2	1.8	1.6	1.8	2.0	2.3	1.4

BURGLARY (TOTAL)



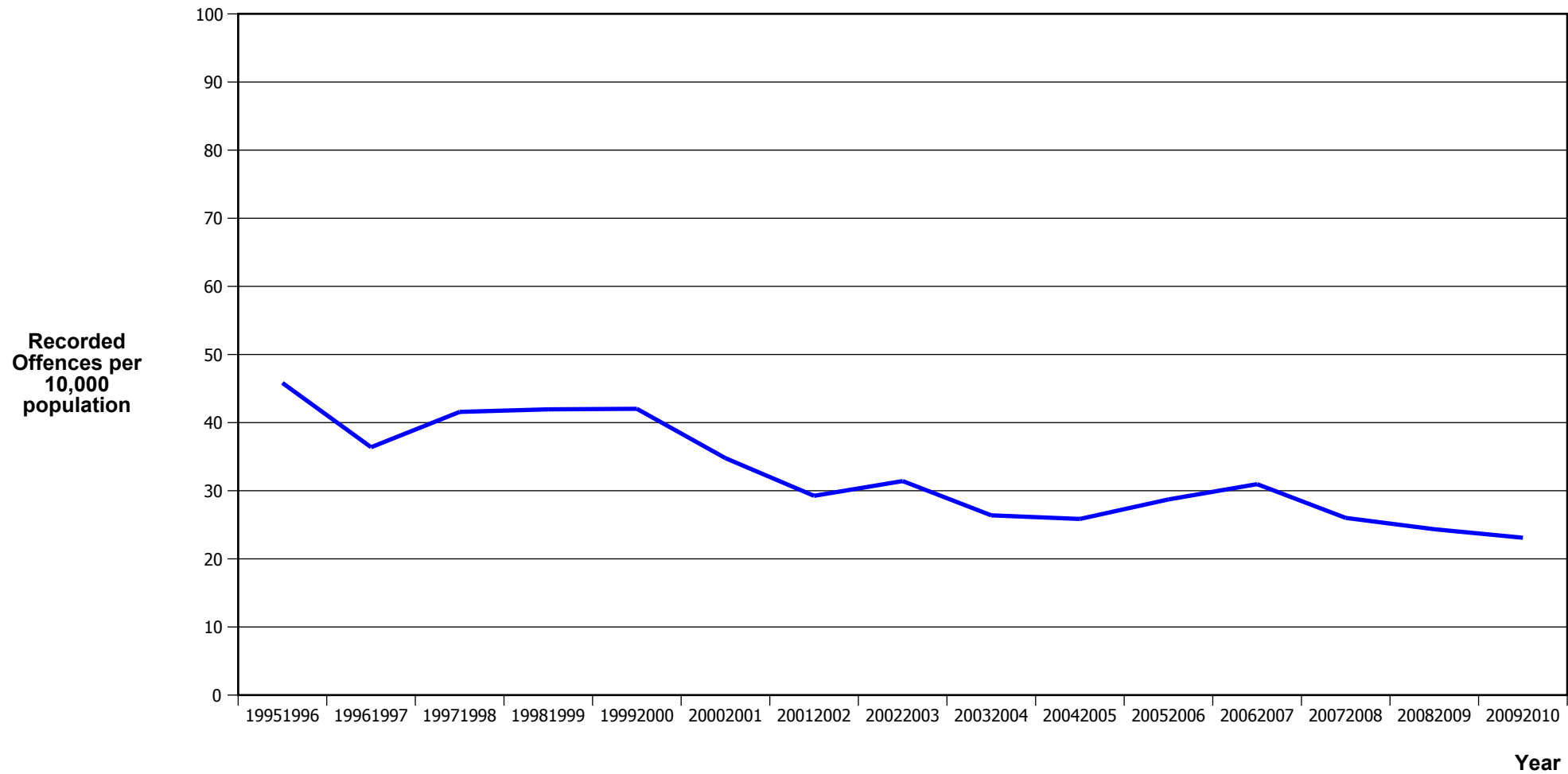
Fiscal Year	19951996	19961997	19971998	19981999	19992000	20002001	20012002	20022003	20032004	20042005	20052006	20062007	20072008	20082009	20092010
Recorded Offences	4,479	3,980	3,993	3,966	3,533	2,967	2,585	2,482	2,386	2,318	2,538	2,624	2,457	2,533	2,333
Recorded per 10,000 Population	153.9	137.5	138.8	139.1	125.2	105.2	90.8	86.3	82.2	79.3	86.4	88.8	82.7	84.7	77.3

BURGLARY (DWELLING)



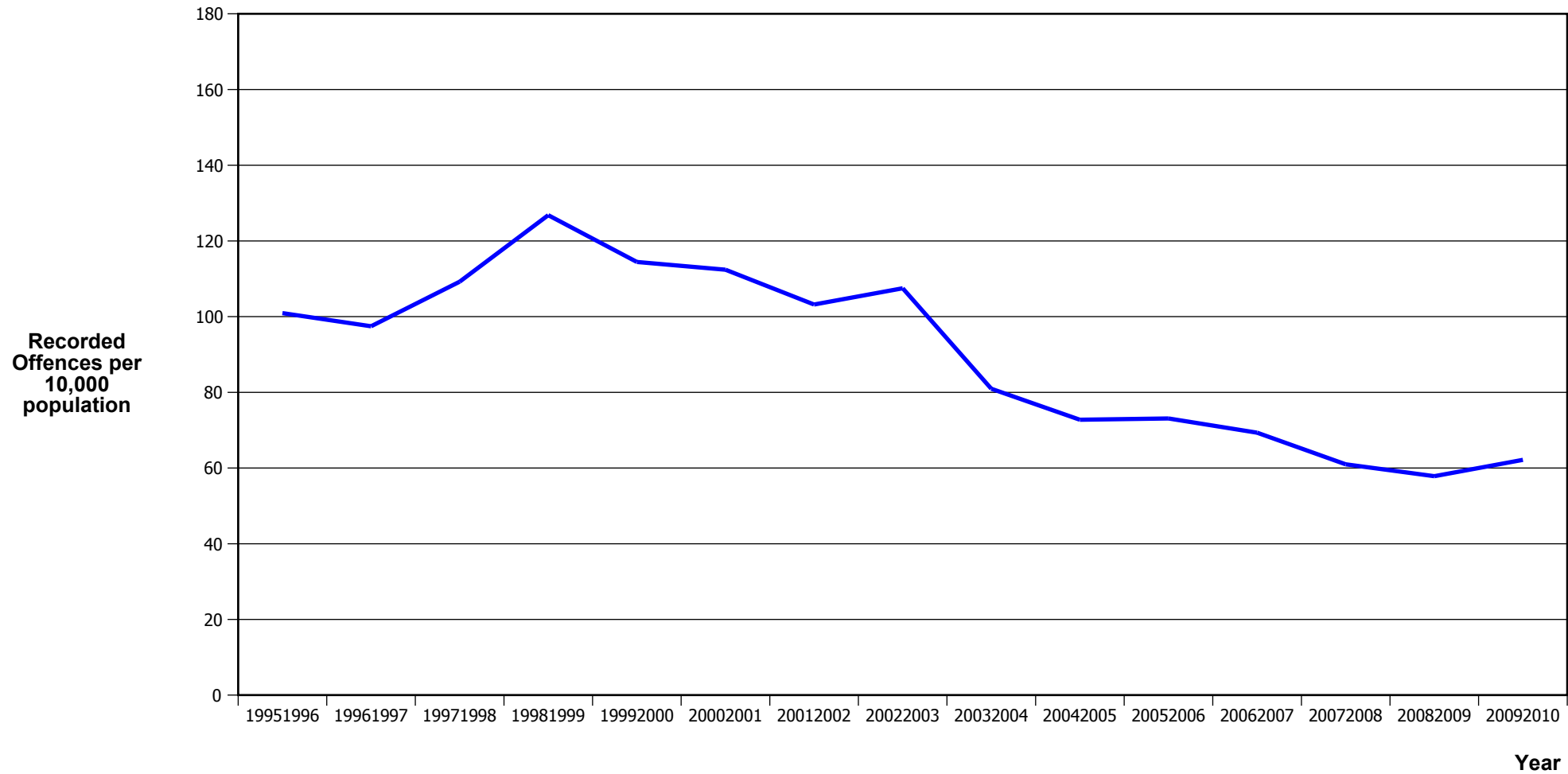
Fiscal Year	19951996	19961997	19971998	19981999	19992000	20002001	20012002	20022003	20032004	20042005	20052006	20062007	20072008	20082009	20092010
Recorded Offences	2,384	2,076	2,100	2,184	1,990	1,735	1,394	1,488	1,429	1,424	1,437	1,464	1,469	1,567	1,466
Recorded per 10,000 Population	81.9	71.7	73.0	76.6	70.5	61.5	49.0	51.7	49.2	48.7	48.9	49.6	49.4	52.4	48.6

VEHICLES STOLEN



Fiscal Year	19951996	19961997	19971998	19981999	19992000	20002001	20012002	20022003	20032004	20042005	20052006	20062007	20072008	20082009	20092010
Recorded Offences	1,334	1,053	1,196	1,196	1,186	981	833	904	766	756	844	915	773	728	697
Recorded per 10,000 Population	45.83	36.39	41.58	41.95	42.02	34.79	29.25	31.42	26.39	25.86	28.72	30.97	26.02	24.34	23.10

THEFT EX CAR



Fiscal Year	19951996	19961997	19971998	19981999	19992000	20002001	20012002	20022003	20032004	20042005	20052006	20062007	20072008	20082009	20092010
Recorded Offences	2,938	2,820	3,142	3,616	3,230	3,170	2,939	3,092	2,350	2,127	2,148	2,049	1,812	1,730	1,875
Recorded per 10,000 Population	100.94	97.45	109.23	126.82	114.44	112.41	103.21	107.48	80.95	72.77	73.10	69.35	60.98	57.85	62.15

Population Data

Population data is used in this release to calculate crime rates. These data are estimated population figures as at 31 December each year. They have been derived from population estimates as at 30 June each year that have been obtained from Statistics New Zealand.

The estimated resident population is based on the census usually resident population count, with adjustments for residents missed or counted more than once by the census (net census undercount), and for residents temporarily overseas on census night.

These population estimates exclude the number of international students who are studying in New Zealand for less than 12 months.

Year	Population
19951996	291,075
19961997	289,365
19971998	287,655
19981999	285,135
19992000	282,255
20002001	282,015
20012002	284,760
20022003	287,685
20032004	290,305
20042005	292,295
20052006	293,850
20062007	295,450
20072008	297,130
20082009	299,035
20092010	301,675

General Definitions

Recorded Offences: the number of breaches of the New Zealand law recorded by Police. This includes offences specified in the Crimes Act and other legislations, such as the Summary Offences Act, Local Government Act, etc.

Resolved Offences: the number of recorded offences where an offender has been identified and dealt with (e.g. warned, cautioned, prosecuted, etc).

Resolution Rate: the proportion of recorded offences that have been resolved.

Recorded per 10,000 population: the number of recorded offences for every 10,000 people. This is also referred as the crime rate per 10,000 population.

ASOC: the Australian Standard Offence Classification. The offence classification is divided into 16 major offence divisions.

Definition of ASOC Divisions

1. Homicide and related offences: Unlawfully kill, attempt to unlawfully kill or conspiracy to kill another person.
2. Acts intended to cause injury: Acts, excluding attempted murder and those resulting in death, which are intended to cause non-fatal injury or harm to another person and where there is no sexual or acquisitive element.
3. Sexual assault and related offences: Acts, or intent of acts, of a sexual nature against another person, which are non-consensual or where consent is proscribed.
4. Dangerous or negligent acts endangering persons: Dangerous or negligent acts which, though not intended to cause harm, actually or potentially result in injury to oneself or another person.
5. Abduction, harassment and other offences against person: Acts intended to threaten or harass, or acts that unlawfully deprive another person of their freedom of movement, that are against that person's will or against the will of any parent, guardian or other person having lawful custody or care of that person.
6. Robbery, extortion and related offences: Acts intended to unlawfully gain money, property or other items of value from, or to cause detriment to, another person by using the threat of force or any other coercive measure.
7. Unlawful entry with intent / burglary, break and enter: The unlawful entry of a structure with the intent to commit an offence, where the entry is either forced or unforced.
8. Theft and related and offences: The unlawful taking or obtaining of money or goods, not involving the use of force or violence, coercion or deception, with intent to permanently or temporarily deprive the owner or possessor of the use of the money or goods, or the receiving or handling of money or goods obtained unlawfully.

9. Fraud, deception and related offences: Offences involving a dishonest act or omission carried out with the purpose of deceiving to obtain a benefit.

10. Illicit drug offences: The possessing, selling, dealing or trafficking, importing or exporting, manufacturing or cultivating of drugs or other substances prohibited under legislation.

11. Prohibited and regulated weapons and explosives offences: Offences involving prohibited or regulated weapons and explosives. Those offences also involving assault, sexual assault or robbery are coded to the relevant group within Assault, Sexual assaults and Robbery respectively.

12. Property damage and environmental pollution: The wilful and unlawful destruction, damage or defacement of public or private property, or the pollution of property or a definable entity held in common by the community.

13. Public order offences: Offences relating personal conduct that involves, or may lead to, a breach of public order or decency, or that is indicative of criminal intent, or that is otherwise regulated or prohibited on moral or ethical grounds. In general these offences do not involve a specific victim or victims; however some offences, such as offensive language and offensive behaviour, may be directed towards a single victim.

14. Traffic and vehicle regulatory offences: Offences relating to vehicles and most forms of traffic, including offences pertaining to the licensing, registration, roadworthiness, or use of vehicles, bicycle offences and pedestrian offences.

15. Offences against justice procedures, government security and government operations: An act or omission that is deemed to be prejudicial to the effective carrying out of justice procedures or any government operations. This includes general government operations as well as those specifically concerned with maintaining government security.

16. Miscellaneous offences: Offences involving the breach of statutory rules or regulations governing activities that are prima facie legal, where such offences are not explicitly dealt with under any other division. If an offence is specified under regulation and involves an act that would be illegal under common law or general criminal legislation, the offence is dealt with under the appropriate generic group.