

SOUTHERN DISTRICT CRIME STATISTICS 2014



**A Summary of
Recorded and Resolved Offence
Statistics**

**POLICE NATIONAL HEADQUARTERS
April 2015**

ISSN 1178 - 1645

Table of Contents:

Topic	Page
Report Notes	1
District Summary of Recorded and Resolved Crime, by Division	2-4
Proportions of Recorded Crime by Division	5
Summary of District Recorded Offences, Rate per 10,000 Population and Resolved Offences, by Area	6
Summary of Area Recorded Offences, Rate per 10,000 Population and Resolved Offences, by Division	7-9
Crime Trends	10
Total Crime	11
Murder	12
Serious Assaults Resulting in Injury	13
Sexual Assaults	14
Public Place Assaults	15
Dwelling Assaults	16
Robbery	17
Burglary (Total)	18
Burglary (Dwelling)	19
Vehicles Stolen	20
Theft Ex Car	21
Population Data	22
General Definitions	23-24

REPORT NOTES:

Statistics reported in this document are derived from the Police National Intelligence Application (NIA). These Official Statistics for Recorded and Resolved Offences present a snapshot of data in NIA relating to offences that occur within a given year, as at the date 14 days following the end of that year.

Unless the matter is minor where Police attendance is sufficient, a matter that is reported to or discovered by Police where Police believe an offence is likely to have been committed is counted as a recorded offence.

A recorded offence is counted as resolved when Police apprehend an offender and decide how to deal with him/her. (E.g. warn, prosecute, etc.)

Resolution rate is the percentage of recorded offences that are resolved within 14 days of the end of the year being reported on.

If an offence is resolved 15 days or more after the end of the year it will not appear in the Official Crime Statistics for that or any other year. Resolution Rate therefore undercounts the number of cases that Police have resolved. This phenomenon has a more marked impact for some types of offences than others, such as offences that require long investigations (E.g. many serial crimes, burglaries and murders).

Several offences have been reclassified into different ANZSOC groups. This has resulted in changes to subtotals for Groups and Sub-divisions within Divisions 10, 15 and 16, compared to previously reported data. Generally, this occurred within the same Division.

Note that the Population Estimates have been revised for 2007 to 2013 as a result of the 2013 Census. In previous reports population estimates were based on the 2006 Census. Crime rates reported in this report for those years may differ from those previously reported as a result.

Some Police Areas in Southern District have changed names. Dunedin is now named Otago Coastal and Otago Rural is now named Otago Lakes Central. No boundary changes occurred.

When comparing 2014 Statistics with previous years, the reader should also refer to "Report Notes" published in previous years' reports, as previous changes significantly affect year on year trends.

SUMMARY OF DISTRICT RECORDED AND RESOLVED CRIME, BY DIVISION
Years ending 31 December

HOMICIDE AND RELATED OFFENCES

ASOC Subdivision Description	Recorded 2012	Recorded 2013	Recorded 2014	Variance 2012-2013	Variance 2013-2014	Resolved 2012	Resolved 2013	Resolved 2014	Resolution Rate 2012	Resolution Rate 2013	Resolution Rate 2014
ATTEMPTED MURDER	2	2	0	0.0 %	-100.0 %	2	2	0	100.0 %	100.0 %	0.0 %
HOMICIDE AND RELATED OFFENCES NOT FURTHER DEFINED	0	0	0	0.0 %	0.0 %	0	0	0	0.0 %	0.0 %	0.0 %
MANSLAUGHTER AND DRIVING CAUSING DEATH	1	0	2	-100.0 %	0.0 %	1	0	2	100.0 %	0.0 %	100.0 %
MURDER	1	3	3	200.0 %	0.0 %	0	2	3	0.0 %	66.7 %	100.0 %
	4	5	5	25.0 %	0.0 %	3	4	5	75.0 %	80.0 %	100.0 %

ACTS INTENDED TO CAUSE INJURY

ASOC Subdivision Description	Recorded 2012	Recorded 2013	Recorded 2014	Variance 2012-2013	Variance 2013-2014	Resolved 2012	Resolved 2013	Resolved 2014	Resolution Rate 2012	Resolution Rate 2013	Resolution Rate 2014
ASSAULT	2,655	2,468	2,632	-7.0 %	6.6 %	2,258	1,995	2,111	85.0 %	80.8 %	80.2 %
OTHER ACTS INTENDED TO CAUSE INJURY	1	1	4	0.0 %	300.0 %	0	1	1	0.0 %	100.0 %	25.0 %
	2,656	2,469	2,636	-7.0 %	6.8 %	2,258	1,996	2,112	85.0 %	80.8 %	80.1 %

SEXUAL ASSAULT AND RELATED OFFENCES

ASOC Subdivision Description	Recorded 2012	Recorded 2013	Recorded 2014	Variance 2012-2013	Variance 2013-2014	Resolved 2012	Resolved 2013	Resolved 2014	Resolution Rate 2012	Resolution Rate 2013	Resolution Rate 2014
NON-ASSAULTIVE SEXUAL OFFENCES	6	6	48	0.0 %	700.0 %	5	2	42	83.3 %	33.3 %	87.5 %
SEXUAL ASSAULT	158	240	307	51.9 %	27.9 %	82	113	160	51.9 %	47.1 %	52.1 %
	164	246	355	50.0 %	44.3 %	87	115	202	53.0 %	46.7 %	56.9 %

DANGEROUS OR NEGLIGENT ACTS ENDANGERING PERSONS

ASOC Subdivision Description	Recorded 2012	Recorded 2013	Recorded 2014	Variance 2012-2013	Variance 2013-2014	Resolved 2012	Resolved 2013	Resolved 2014	Resolution Rate 2012	Resolution Rate 2013	Resolution Rate 2014
OTHER DANGEROUS OR NEGLIGENT ACTS ENDANGERING PERSONS	84	60	34	-28.6 %	-43.3 %	49	30	22	58.3 %	50.0 %	64.7 %
	84	60	34	-28.6 %	-43.3 %	49	30	22	58.3 %	50.0 %	64.7 %

ABDUCTION, HARASSMENT AND OTHER RELATED OFFENCES AGAINST A PERSON

ASOC Subdivision Description	Recorded 2012	Recorded 2013	Recorded 2014	Variance 2012-2013	Variance 2013-2014	Resolved 2012	Resolved 2013	Resolved 2014	Resolution Rate 2012	Resolution Rate 2013	Resolution Rate 2014
ABDUCTION AND KIDNAPPING	4	7	17	75.0 %	142.9 %	3	6	16	75.0 %	85.7 %	94.1 %
HARASSMENT AND THREATENING BEHAVIOUR	761	914	1,081	20.1 %	18.3 %	628	641	764	82.5 %	70.1 %	70.7 %
	765	921	1,098	20.4 %	19.2 %	631	647	780	82.5 %	70.2 %	71.0 %

ROBBERY, EXTORTION AND RELATED OFFENCES

ASOC Subdivision Description	Recorded 2012	Recorded 2013	Recorded 2014	Variance 2012-2013	Variance 2013-2014	Resolved 2012	Resolved 2013	Resolved 2014	Resolution Rate 2012	Resolution Rate 2013	Resolution Rate 2014
BLACKMAIL AND EXTORTION	3	5	5	66.7 %	0.0 %	1	3	3	33.3 %	60.0 %	60.0 %
ROBBERY	40	53	41	32.5 %	-22.6 %	26	28	22	65.0 %	52.8 %	53.7 %
	43	58	46	34.9 %	-20.7 %	27	31	25	62.8 %	53.4 %	54.3 %

UNLAWFUL ENTRY WITH INTENT/BURGLARY, BREAK AND ENTER

ASOC Subdivision Description	Recorded 2012	Recorded 2013	Recorded 2014	Variance 2012-2013	Variance 2013-2014	Resolved 2012	Resolved 2013	Resolved 2014	Resolution Rate 2012	Resolution Rate 2013	Resolution Rate 2014
UNLAWFUL ENTRY WITH INTENT/BURGLARY, BREAK AND ENTER	1,807	2,092	2,444	15.8 %	16.8 %	426	416	380	23.6 %	19.9 %	15.5 %
	1,807	2,092	2,444	15.8 %	16.8 %	426	416	380	23.6 %	19.9 %	15.5 %

SUMMARY OF DISTRICT RECORDED AND RESOLVED CRIME, BY DIVISION
Years ending 31 December

THEFT AND RELATED OFFENCES

ASOC Subdivision Description	Recorded 2012	Recorded 2013	Recorded 2014	Variance 2012-2013	Variance 2013-2014	Resolved 2012	Resolved 2013	Resolved 2014	Resolution Rate 2012	Resolution Rate 2013	Resolution Rate 2014
ILLEGAL USE OF PROPERTY (EXCEPT MOTOR VEHICLES)	229	201	151	-12.2 %	-24.9 %	16	16	8	7.0 %	8.0 %	5.3 %
MOTOR VEHICLE THEFT AND RELATED OFFENCES	1,785	1,584	1,593	-11.3 %	0.6 %	487	314	254	27.3 %	19.8 %	15.9 %
RECEIVE OR HANDLE PROCEEDS OF CRIME	119	91	96	-23.5 %	5.5 %	117	84	91	98.3 %	92.3 %	94.8 %
THEFT (EXCEPT MOTOR VEHICLES)	3,772	3,546	2,990	-6.0 %	-15.7 %	1,595	1,347	1,062	42.3 %	38.0 %	35.5 %
	5,905	5,422	4,830	-8.2 %	-10.9 %	2,215	1,761	1,415	37.5 %	32.5 %	29.3 %

FRAUD, DECEPTION AND RELATED OFFENCES

ASOC Subdivision Description	Recorded 2012	Recorded 2013	Recorded 2014	Variance 2012-2013	Variance 2013-2014	Resolved 2012	Resolved 2013	Resolved 2014	Resolution Rate 2012	Resolution Rate 2013	Resolution Rate 2014
DECEPTIVE BUSINESS/GOVERNMENT PRACTICES	1	2	1	100.0 %	-50.0 %	1	2	1	100.0 %	100.0 %	100.0 %
FORGERY AND COUNTERFEITING	25	31	14	24.0 %	-54.8 %	18	26	2	72.0 %	83.9 %	14.3 %
OBTAIN BENEFIT BY DECEPTION	689	538	515	-21.9 %	-4.3 %	534	387	330	77.5 %	71.9 %	64.1 %
OTHER FRAUD AND DECEPTION OFFENCES	31	33	42	6.5 %	27.3 %	19	16	20	61.3 %	48.5 %	47.6 %
	746	604	572	-19.0 %	-5.3 %	572	431	353	76.7 %	71.4 %	61.7 %

ILLICIT DRUG OFFENCES

ASOC Subdivision Description	Recorded 2012	Recorded 2013	Recorded 2014	Variance 2012-2013	Variance 2013-2014	Resolved 2012	Resolved 2013	Resolved 2014	Resolution Rate 2012	Resolution Rate 2013	Resolution Rate 2014
DEAL OR TRAFFIC IN ILLICIT DRUGS	336	447	224	33.0 %	-49.9 %	320	419	191	95.2 %	93.7 %	85.3 %
IMPORT OR EXPORT ILLICIT DRUGS	14	12	11	-14.3 %	-8.3 %	8	10	7	57.1 %	83.3 %	63.6 %
MANUFACTURE OR CULTIVATE ILLICIT DRUGS	127	79	105	-37.8 %	32.9 %	94	62	83	74.0 %	78.5 %	79.0 %
OTHER ILLICIT DRUG OFFENCES	221	132	141	-40.3 %	6.8 %	208	123	131	94.1 %	93.2 %	92.9 %
POSSESS AND/OR USE ILLICIT DRUGS	446	265	341	-40.6 %	28.7 %	416	241	319	93.3 %	90.9 %	93.5 %
	1,144	935	822	-18.3 %	-12.1 %	1,046	855	731	91.4 %	91.4 %	88.9 %

PROHIBITED AND REGULATED WEAPONS AND EXPLOSIVES OFFENCES

ASOC Subdivision Description	Recorded 2012	Recorded 2013	Recorded 2014	Variance 2012-2013	Variance 2013-2014	Resolved 2012	Resolved 2013	Resolved 2014	Resolution Rate 2012	Resolution Rate 2013	Resolution Rate 2014
REGULATED WEAPONS/EXPLOSIVES OFFENCES	372	358	373	-3.8 %	4.2 %	334	310	317	89.8 %	86.6 %	85.0 %
	372	358	373	-3.8 %	4.2 %	334	310	317	89.8 %	86.6 %	85.0 %

PROPERTY DAMAGE AND ENVIRONMENTAL POLLUTION

ASOC Subdivision Description	Recorded 2012	Recorded 2013	Recorded 2014	Variance 2012-2013	Variance 2013-2014	Resolved 2012	Resolved 2013	Resolved 2014	Resolution Rate 2012	Resolution Rate 2013	Resolution Rate 2014
ENVIRONMENTAL POLLUTION	36	23	15	-36.1 %	-34.8 %	23	17	8	63.9 %	73.9 %	53.3 %
PROPERTY DAMAGE	4,292	3,760	3,180	-12.4 %	-15.4 %	1,134	939	900	26.4 %	25.0 %	28.3 %
	4,328	3,783	3,195	-12.6 %	-15.5 %	1,157	956	908	26.7 %	25.3 %	28.4 %

PUBLIC ORDER OFFENCES

ASOC Subdivision Description	Recorded 2012	Recorded 2013	Recorded 2014	Variance 2012-2013	Variance 2013-2014	Resolved 2012	Resolved 2013	Resolved 2014	Resolution Rate 2012	Resolution Rate 2013	Resolution Rate 2014
DISORDERLY CONDUCT	2,324	2,018	1,824	-13.2 %	-9.6 %	2,069	1,755	1,592	89.0 %	87.0 %	87.3 %
OFFENSIVE CONDUCT	150	109	106	-27.3 %	-2.8 %	109	83	72	72.7 %	76.1 %	67.9 %
PUBLIC ORDER OFFENCES NOT FURTHER DEFINED	0	0	0	0.0 %	0.0 %	0	0	0	0.0 %	0.0 %	0.0 %
REGULATED PUBLIC ORDER OFFENCES	404	340	189	-15.8 %	-44.4 %	352	292	128	87.1 %	85.9 %	67.7 %
	2,878	2,467	2,119	-14.3 %	-14.1 %	2,530	2,130	1,792	87.9 %	86.3 %	84.6 %

SUMMARY OF DISTRICT RECORDED AND RESOLVED CRIME, BY DIVISION

Years ending 31 December

OFFENCES AGAINST JUSTICE PROCEDURES, GOVERNMENT SECURITY AND GOVERNMENT OPERATIONS

ASOC Subdivision Description	Recorded 2012	Recorded 2013	Recorded 2014	Variance 2012-2013	Variance 2013-2014	Resolved 2012	Resolved 2013	Resolved 2014	Resolution Rate 2012	Resolution Rate 2013	Resolution Rate 2014
BREACH OF COMMUNITY-BASED ORDER	86	86	85	0.0 %	-1.2 %	69	78	78	80.2 %	90.7 %	91.8 %
BREACH OF CUSTODIAL ORDER OFFENCES	53	33	30	-37.7 %	-9.1 %	51	31	28	96.2 %	93.9 %	93.3 %
BREACH OF VIOLENCE AND NON-VIOLENCE RESTRAINING ORDERS	218	305	348	39.9 %	14.1 %	202	275	314	92.7 %	90.2 %	90.2 %
OFFENCES AGAINST GOVERNMENT OPERATIONS	15	11	18	-26.7 %	63.6 %	6	4	1	40.0 %	36.4 %	5.6 %
OFFENCES AGAINST GOVERNMENT SECURITY	1	0	1	-100.0 %	0.0 %	1	0	1	100.0 %	0.0 %	100.0 %
OFFENCES AGAINST JUSTICE PROCEDURES	380	345	313	-9.2 %	-9.3 %	371	337	303	97.6 %	97.7 %	96.8 %
OFFENCES AGAINST JUSTICE PROCEDURES, GOVERNMENT SECURITY AND GOVERNMENT OPERATIONS NOT FURTHER DEFINED	0	0	0	0.0 %	0.0 %	0	0	0	0.0 %	0.0 %	0.0 %
	753	780	795	3.6 %	1.9 %	700	725	725	93.0 %	92.9 %	91.2 %

MISCELLANEOUS OFFENCES

ASOC Subdivision Description	Recorded 2012	Recorded 2013	Recorded 2014	Variance 2012-2013	Variance 2013-2014	Resolved 2012	Resolved 2013	Resolved 2014	Resolution Rate 2012	Resolution Rate 2013	Resolution Rate 2014
COMMERCIAL/INDUSTRY/FINANCIAL REGULATION	6	4	1	-33.3 %	-75.0 %	6	3	1	100.0 %	75.0 %	100.0 %
DEFAMATION, LIBEL AND PRIVACY OFFENCES	2	1	5	-50.0 %	400.0 %	2	0	2	100.0 %	0.0 %	40.0 %
OTHER MISCELLANEOUS OFFENCES	96	115	108	19.8 %	-6.1 %	69	75	76	71.9 %	65.2 %	70.4 %
PUBLIC HEALTH AND SAFETY OFFENCES	8	6	9	-25.0 %	50.0 %	4	4	3	50.0 %	66.7 %	33.3 %
	112	126	123	12.5 %	-2.4 %	81	82	82	72.3 %	65.1 %	66.7 %

TOTAL	21,761	20,326	19,447	-6.6 %	-4.3 %	12,116	10,489	9,849	55.7 %	51.6 %	50.6 %
--------------	---------------	---------------	---------------	---------------	---------------	---------------	---------------	--------------	---------------	---------------	---------------

PROPORTIONS OF RECORDED CRIME BY DIVISION

Years ending 31 December

ASOC Division Description	Proportions Recorded 2012	Recorded 2012	Proportions Recorded 2013	Recorded 2013	Proportions Recorded 2014	Recorded 2014
HOMICIDE AND RELATED OFFENCES	0.02 %	4	0.02 %	5	0.03 %	5
ACTS INTENDED TO CAUSE INJURY	12.21 %	2,656	12.15 %	2,469	13.55 %	2,636
SEXUAL ASSAULT AND RELATED OFFENCES	0.75 %	164	1.21 %	246	1.83 %	355
DANGEROUS OR NEGLIGENT ACTS ENDANGERING PERSONS	0.39 %	84	0.30 %	60	0.17 %	34
ABDUCTION, HARASSMENT AND OTHER RELATED OFFENCES AGAINST A PERSON	3.52 %	765	4.53 %	921	5.65 %	1,098
ROBBERY, EXTORTION AND RELATED OFFENCES	0.20 %	43	0.29 %	58	0.24 %	46
UNLAWFUL ENTRY WITH INTENT/BURGLARY, BREAK AND ENTER	8.30 %	1,807	10.29 %	2,092	12.57 %	2,444
THEFT AND RELATED OFFENCES	27.14 %	5,905	26.68 %	5,422	24.84 %	4,830
FRAUD, DECEPTION AND RELATED OFFENCES	3.43 %	746	2.97 %	604	2.94 %	572
ILLICIT DRUG OFFENCES	5.26 %	1,144	4.60 %	935	4.23 %	822
PROHIBITED AND REGULATED WEAPONS AND EXPLOSIVES OFFENCES	1.71 %	372	1.76 %	358	1.92 %	373
PROPERTY DAMAGE AND ENVIRONMENTAL POLLUTION	19.89 %	4,328	18.61 %	3,783	16.43 %	3,195
PUBLIC ORDER OFFENCES	13.23 %	2,878	12.14 %	2,467	10.90 %	2,119
OFFENCES AGAINST JUSTICE PROCEDURES, GOVERNMENT SECURITY AND GOVERNMENT OPERATIONS	3.46 %	753	3.84 %	780	4.09 %	795
MISCELLANEOUS OFFENCES	0.51 %	112	0.62 %	126	0.63 %	123
	100.00 %	21,761	100.00 %	20,326	100.00 %	19,447

SUMMARY OF RECORDED OFFENCES, RATE PER 10,000 POPULATION AND RESOLVED OFFENCES, BY AREA
years ending 31 December

TOTAL CRIME

Area Description	Recorded 2013	Recorded 2014	Variance 2013-2014	Recorded per 10,000 pop 2013	Recorded per 10,000 pop 2014	Per 10,000 pop % Variance 2013 to 2014	Resolved 2013	Resolved 2014	Resolution Rate 2013	Resolution Rate 2014
Otago Coastal	10,726	9,962	-7.1 %	669.5	617.0	-7.8 %	5,152	4,598	48.0 %	46.2 %
Otago Lakes Central	3,013	2,916	-3.2 %	625.9	586.5	-6.3 %	1,732	1,664	57.5 %	57.1 %
Southland	6,587	6,569	-0.3 %	671.4	665.6	-0.9 %	3,605	3,587	54.7 %	54.6 %
	20,326	19,447	-4.3 %	663.3	627.6	-5.4 %	10,489	9,849	51.6 %	50.6 %

SUMMARY OF RECORDED OFFENCES, RATE PER 10,000 POPULATION AND RESOLVED OFFENCES, BY DIVISION

Years ending 31 December

HOMICIDE AND RELATED OFFENCES

Area Description	Recorded 2013	Recorded 2014	Variance 2013-2014	Recorded per 10,000 pop 2013	Recorded per 10,000 pop 2014	Per 10,000 pop % Variance 2013 to 2014	Resolved 2013	Resolved 2014	Resolution Rate 2013	Resolution Rate 2014
Otago Coastal	3	5	66.7 %	0.2	0.3	65.4 %	2	5	66.7 %	100.0 %
Otago Lakes Central	0	0	0.0 %	0.0	0.0	0.0 %	0	0	0.0 %	0.0 %
Southland	2	0	-100.0 %	0.2	0.0	-100.0 %	2	0	100.0 %	0.0 %
	5	5	0.0 %	0.2	0.2	-1.1 %	4	5	80.0 %	100.0 %

ACTS INTENDED TO CAUSE INJURY

Area Description	Recorded 2013	Recorded 2014	Variance 2013-2014	Recorded per 10,000 pop 2013	Recorded per 10,000 pop 2014	Per 10,000 pop % Variance 2013 to 2014	Resolved 2013	Resolved 2014	Resolution Rate 2013	Resolution Rate 2014
Otago Coastal	1,307	1,277	-2.3 %	81.6	79.1	-3.1 %	993	936	76.0 %	73.3 %
Otago Lakes Central	365	396	8.5 %	75.8	79.6	5.0 %	305	329	83.6 %	83.1 %
Southland	797	963	20.8 %	81.2	97.6	20.1 %	698	847	87.6 %	88.0 %
	2,469	2,636	6.8 %	80.6	85.1	5.6 %	1,996	2,112	80.8 %	80.1 %

SEXUAL ASSAULT AND RELATED OFFENCES

Area Description	Recorded 2013	Recorded 2014	Variance 2013-2014	Recorded per 10,000 pop 2013	Recorded per 10,000 pop 2014	Per 10,000 pop % Variance 2013 to 2014	Resolved 2013	Resolved 2014	Resolution Rate 2013	Resolution Rate 2014
Otago Coastal	136	204	50.0 %	8.5	12.6	48.8 %	54	112	39.7 %	54.9 %
Otago Lakes Central	23	47	104.3 %	4.8	9.5	97.9 %	14	31	60.9 %	66.0 %
Southland	87	104	19.5 %	8.9	10.5	18.8 %	47	59	54.0 %	56.7 %
	246	355	44.3 %	8.0	11.5	42.7 %	115	202	46.7 %	56.9 %

DANGEROUS OR NEGLIGENT ACTS ENDANGERING PERSONS

Area Description	Recorded 2013	Recorded 2014	Variance 2013-2014	Recorded per 10,000 pop 2013	Recorded per 10,000 pop 2014	Per 10,000 pop % Variance 2013 to 2014	Resolved 2013	Resolved 2014	Resolution Rate 2013	Resolution Rate 2014
Otago Coastal	25	17	-32.0 %	1.6	1.1	-32.5 %	11	11	44.0 %	64.7 %
Otago Lakes Central	8	2	-75.0 %	1.7	0.4	-75.8 %	3	2	37.5 %	100.0 %
Southland	27	15	-44.4 %	2.8	1.5	-44.8 %	16	9	59.3 %	60.0 %
	60	34	-43.3 %	2.0	1.1	-44.0 %	30	22	50.0 %	64.7 %

ABDUCTION, HARASSMENT AND OTHER RELATED OFFENCES AGAINST A PERSON

Area Description	Recorded 2013	Recorded 2014	Variance 2013-2014	Recorded per 10,000 pop 2013	Recorded per 10,000 pop 2014	Per 10,000 pop % Variance 2013 to 2014	Resolved 2013	Resolved 2014	Resolution Rate 2013	Resolution Rate 2014
Otago Coastal	525	636	21.1 %	32.8	39.4	20.2 %	324	412	61.7 %	64.8 %
Otago Lakes Central	74	82	10.8 %	15.4	16.5	7.3 %	61	51	82.4 %	62.2 %
Southland	322	380	18.0 %	32.8	38.5	17.3 %	262	317	81.4 %	83.4 %
	921	1,098	19.2 %	30.1	35.4	17.9 %	647	780	70.2 %	71.0 %

ROBBERY, EXTORTION AND RELATED OFFENCES

Area Description	Recorded 2013	Recorded 2014	Variance 2013-2014	Recorded per 10,000 pop 2013	Recorded per 10,000 pop 2014	Per 10,000 pop % Variance 2013 to 2014	Resolved 2013	Resolved 2014	Resolution Rate 2013	Resolution Rate 2014
Otago Coastal	40	28	-30.0 %	2.5	1.7	-30.5 %	22	15	55.0 %	53.6 %
Otago Lakes Central	5	3	-40.0 %	1.0	0.6	-41.9 %	3	1	60.0 %	33.3 %
Southland	13	15	15.4 %	1.3	1.5	14.7 %	6	9	46.2 %	60.0 %
	58	46	-20.7 %	1.9	1.5	-21.6 %	31	25	53.4 %	54.3 %

SUMMARY OF RECORDED OFFENCES, RATE PER 10,000 POPULATION AND RESOLVED OFFENCES, BY DIVISION

Years ending 31 December

UNLAWFUL ENTRY WITH INTENT/BURGLARY, BREAK AND ENTER

Area Description	Recorded 2013	Recorded 2014	Variance 2013-2014	Recorded per 10,000 pop 2013	Recorded per 10,000 pop 2014	Per 10,000 pop % Variance 2013 to 2014	Resolved 2013	Resolved 2014	Resolution Rate 2013	Resolution Rate 2014
Otago Coastal	1,120	1,313	17.2 %	69.9	81.3	16.3 %	210	204	18.8 %	15.5 %
Otago Lakes Central	168	186	10.7 %	34.9	37.4	7.2 %	44	30	26.2 %	16.1 %
Southland	804	945	17.5 %	81.9	95.7	16.8 %	162	146	20.1 %	15.4 %
	2,092	2,444	16.8 %	68.3	78.9	15.5 %	416	380	19.9 %	15.5 %

THEFT AND RELATED OFFENCES

Area Description	Recorded 2013	Recorded 2014	Variance 2013-2014	Recorded per 10,000 pop 2013	Recorded per 10,000 pop 2014	Per 10,000 pop % Variance 2013 to 2014	Resolved 2013	Resolved 2014	Resolution Rate 2013	Resolution Rate 2014
Otago Coastal	2,956	2,550	-13.7 %	184.5	157.9	-14.4 %	958	728	32.4 %	28.5 %
Otago Lakes Central	804	739	-8.1 %	167.0	148.6	-11.0 %	234	198	29.1 %	26.8 %
Southland	1,662	1,541	-7.3 %	169.4	156.1	-7.8 %	569	489	34.2 %	31.7 %
	5,422	4,830	-10.9 %	176.9	155.9	-11.9 %	1,761	1,415	32.5 %	29.3 %

FRAUD, DECEPTION AND RELATED OFFENCES

Area Description	Recorded 2013	Recorded 2014	Variance 2013-2014	Recorded per 10,000 pop 2013	Recorded per 10,000 pop 2014	Per 10,000 pop % Variance 2013 to 2014	Resolved 2013	Resolved 2014	Resolution Rate 2013	Resolution Rate 2014
Otago Coastal	330	277	-16.1 %	20.6	17.2	-16.7 %	252	164	76.4 %	59.2 %
Otago Lakes Central	117	125	6.8 %	24.3	25.1	3.4 %	84	80	71.8 %	64.0 %
Southland	157	170	8.3 %	16.0	17.2	7.6 %	95	109	60.5 %	64.1 %
	604	572	-5.3 %	19.7	18.5	-6.3 %	431	353	71.4 %	61.7 %

ILLICIT DRUG OFFENCES

Area Description	Recorded 2013	Recorded 2014	Variance 2013-2014	Recorded per 10,000 pop 2013	Recorded per 10,000 pop 2014	Per 10,000 pop % Variance 2013 to 2014	Resolved 2013	Resolved 2014	Resolution Rate 2013	Resolution Rate 2014
Otago Coastal	377	318	-15.6 %	23.5	19.7	-16.3 %	335	255	88.9 %	80.2 %
Otago Lakes Central	220	234	6.4 %	45.7	47.1	3.0 %	198	217	90.0 %	92.7 %
Southland	338	270	-20.1 %	34.5	27.4	-20.6 %	322	259	95.3 %	95.9 %
	935	822	-12.1 %	30.5	26.5	-13.1 %	855	731	91.4 %	88.9 %

PROHIBITED AND REGULATED WEAPONS AND EXPLOSIVES OFFENCES

Area Description	Recorded 2013	Recorded 2014	Variance 2013-2014	Recorded per 10,000 pop 2013	Recorded per 10,000 pop 2014	Per 10,000 pop % Variance 2013 to 2014	Resolved 2013	Resolved 2014	Resolution Rate 2013	Resolution Rate 2014
Otago Coastal	158	157	-0.6 %	9.9	9.7	-1.4 %	144	125	91.1 %	79.6 %
Otago Lakes Central	41	55	34.1 %	8.5	11.1	29.9 %	33	48	80.5 %	87.3 %
Southland	159	161	1.3 %	16.2	16.3	0.7 %	133	144	83.6 %	89.4 %
	358	373	4.2 %	11.7	12.0	3.0 %	310	317	86.6 %	85.0 %

PROPERTY DAMAGE AND ENVIRONMENTAL POLLUTION

Area Description	Recorded 2013	Recorded 2014	Variance 2013-2014	Recorded per 10,000 pop 2013	Recorded per 10,000 pop 2014	Per 10,000 pop % Variance 2013 to 2014	Resolved 2013	Resolved 2014	Resolution Rate 2013	Resolution Rate 2014
Otago Coastal	2,157	1,721	-20.2 %	134.6	106.6	-20.8 %	522	419	24.2 %	24.3 %
Otago Lakes Central	497	426	-14.3 %	103.2	85.7	-17.0 %	131	142	26.4 %	33.3 %
Southland	1,129	1,048	-7.2 %	115.1	106.2	-7.7 %	303	347	26.8 %	33.1 %
	3,783	3,195	-15.5 %	123.4	103.1	-16.5 %	956	908	25.3 %	28.4 %

SUMMARY OF RECORDED OFFENCES, RATE PER 10,000 POPULATION AND RESOLVED OFFENCES, BY DIVISION

Years ending 31 December

PUBLIC ORDER OFFENCES

Area Description	Recorded 2013	Recorded 2014	Variance 2013-2014	Recorded per 10,000 pop 2013	Recorded per 10,000 pop 2014	Per 10,000 pop % Variance 2013 to 2014	Resolved 2013	Resolved 2014	Resolution Rate 2013	Resolution Rate 2014
Otago Coastal	1,163	1,031	-11.3 %	72.6	63.9	-12.0 %	957	848	82.3 %	82.3 %
Otago Lakes Central	575	516	-10.3 %	119.4	103.8	-13.1 %	519	442	90.3 %	85.7 %
Southland	729	572	-21.5 %	74.3	58.0	-22.0 %	654	502	89.7 %	87.8 %
	2,467	2,119	-14.1 %	80.5	68.4	-15.1 %	2,130	1,792	86.3 %	84.6 %

OFFENCES AGAINST JUSTICE PROCEDURES, GOVERNMENT SECURITY AND GOVERNMENT OPERATIONS

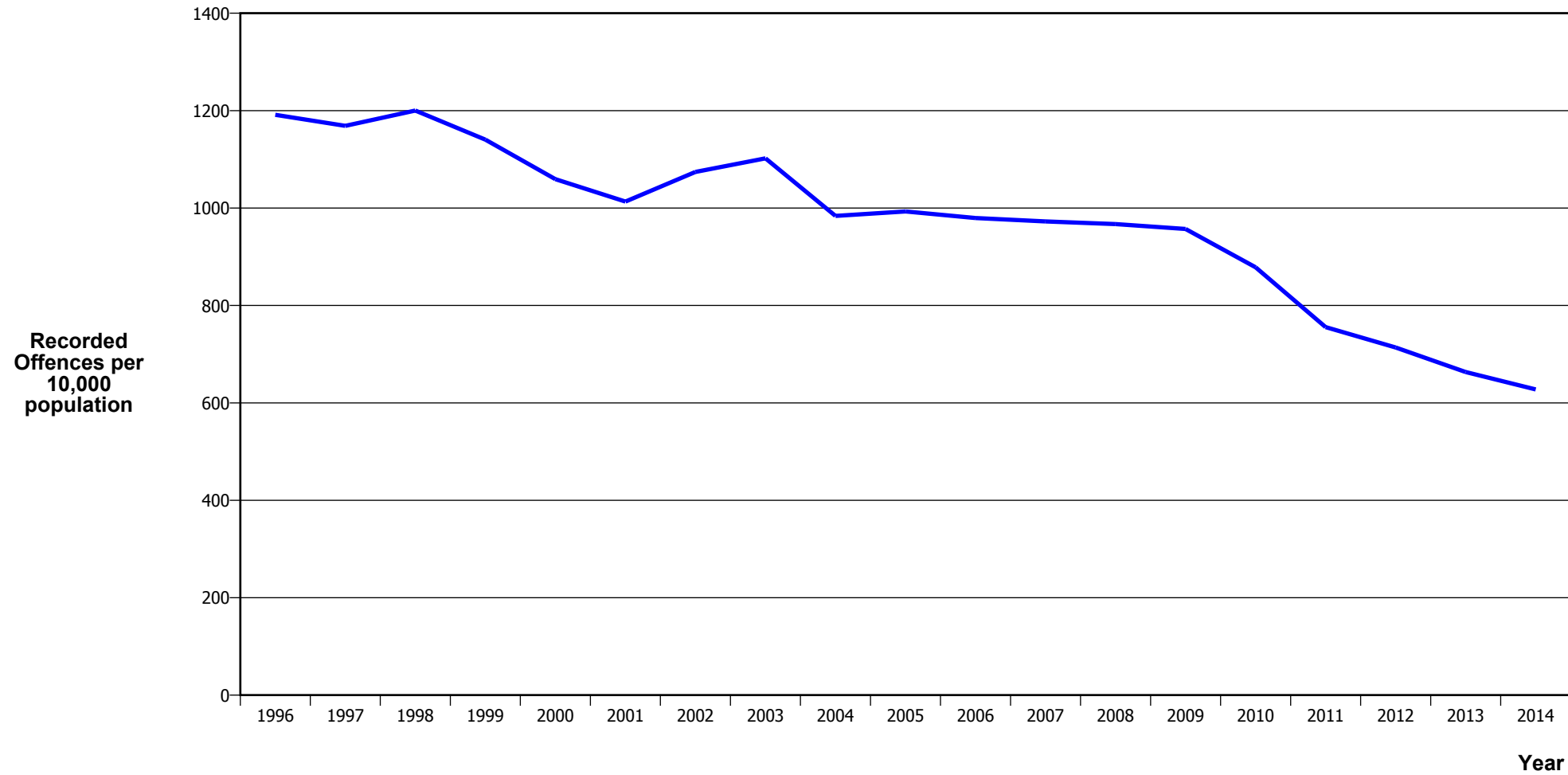
Area Description	Recorded 2013	Recorded 2014	Variance 2013-2014	Recorded per 10,000 pop 2013	Recorded per 10,000 pop 2014	Per 10,000 pop % Variance 2013 to 2014	Resolved 2013	Resolved 2014	Resolution Rate 2013	Resolution Rate 2014
Otago Coastal	368	377	2.4 %	23.0	23.4	1.7 %	330	333	89.7 %	88.3 %
Otago Lakes Central	99	90	-9.1 %	20.6	18.1	-12.0 %	94	83	94.9 %	92.2 %
Southland	313	328	4.8 %	31.9	33.2	4.2 %	301	309	96.2 %	94.2 %
	780	795	1.9 %	25.5	25.7	0.8 %	725	725	92.9 %	91.2 %

MISCELLANEOUS OFFENCES

Area Description	Recorded 2013	Recorded 2014	Variance 2013-2014	Recorded per 10,000 pop 2013	Recorded per 10,000 pop 2014	Per 10,000 pop % Variance 2013 to 2014	Resolved 2013	Resolved 2014	Resolution Rate 2013	Resolution Rate 2014
Otago Coastal	61	51	-16.4 %	3.8	3.2	-17.0 %	38	31	62.3 %	60.8 %
Otago Lakes Central	17	15	-11.8 %	3.5	3.0	-14.6 %	9	10	52.9 %	66.7 %
Southland	48	57	18.8 %	4.9	5.8	18.0 %	35	41	72.9 %	71.9 %
	126	123	-2.4 %	4.1	4.0	-3.5 %	82	82	65.1 %	66.7 %

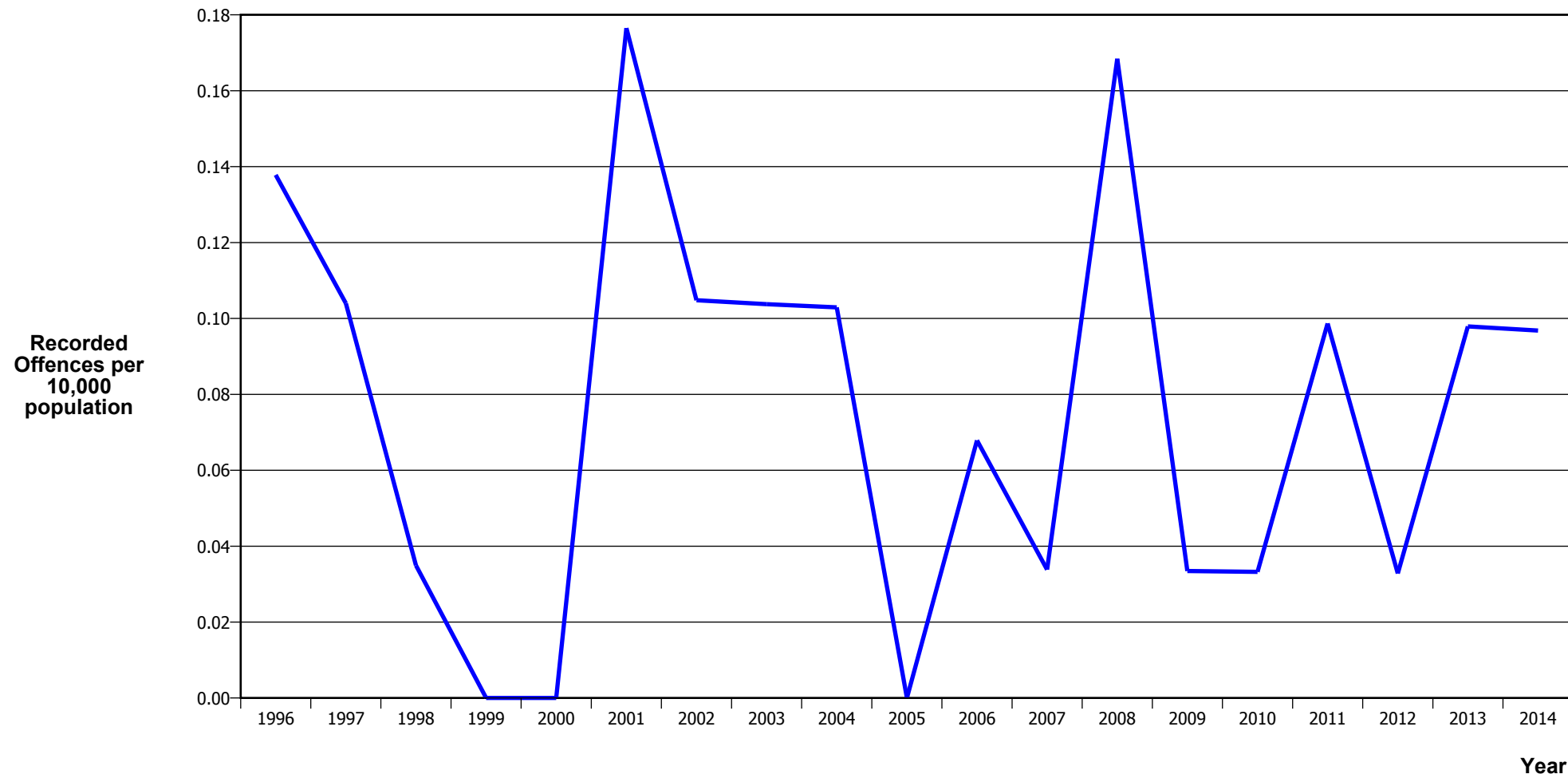
CRIME TRENDS

TOTAL CRIME



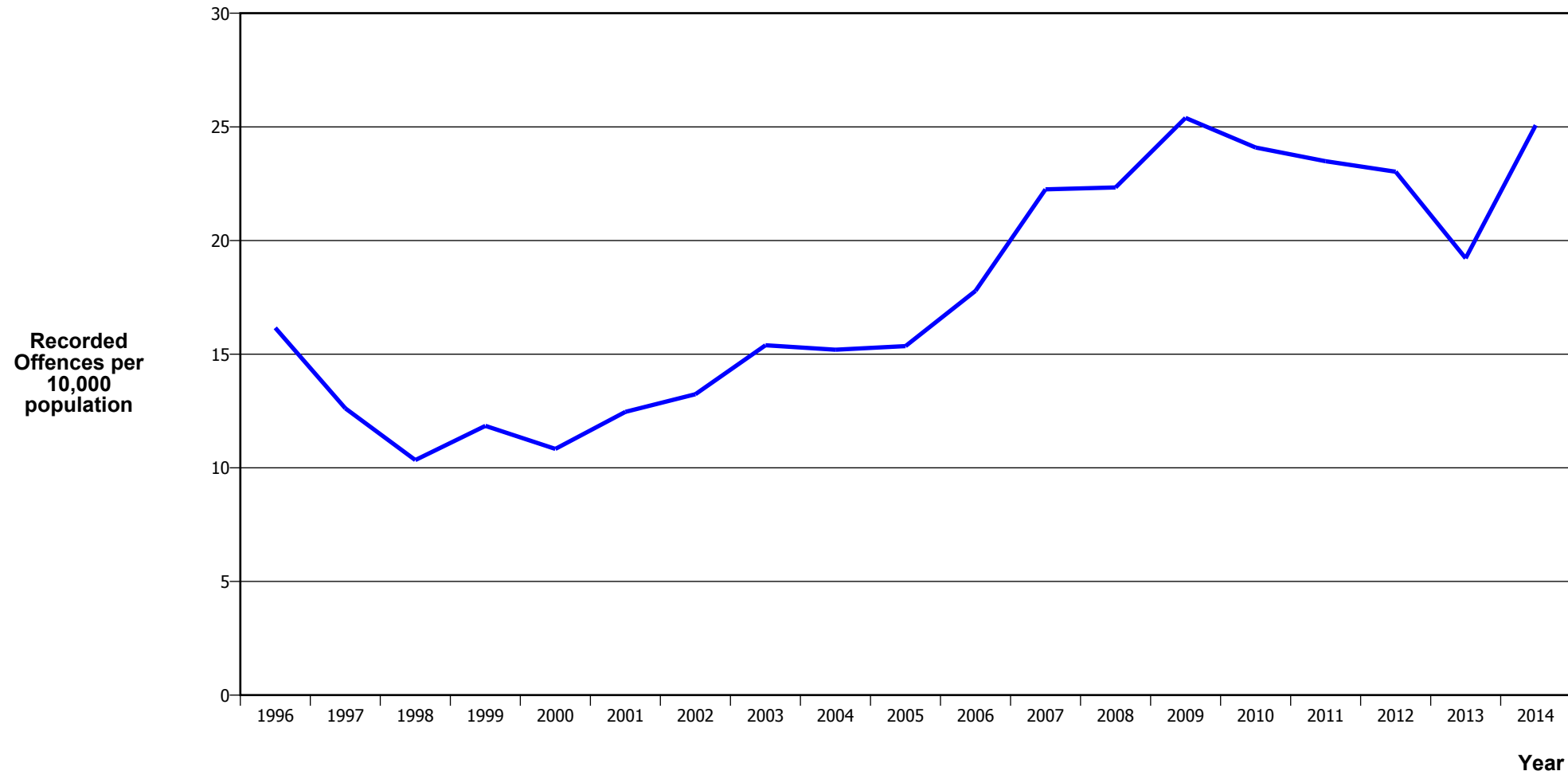
Calendar Year	1996	1997	1998	1999	2000	2001	2002	2003	2004	2005	2006	2007	2008	2009	2010	2011	2012	2013	2014
Recorded Offences	34,577	33,719	34,353	32,341	29,930	28,704	30,749	31,859	28,677	29,103	28,859	28,760	28,707	28,601	26,431	22,964	21,761	20,326	19,447
Recorded per 10,000 Population	1,191.4	1,168.7	1,200.1	1,140.4	1,059.3	1,013.3	1,074.2	1,102.0	983.8	993.0	979.6	972.6	967.1	957.0	878.3	755.5	713.7	663.3	627.6

MURDER



Calendar Year	1996	1997	1998	1999	2000	2001	2002	2003	2004	2005	2006	2007	2008	2009	2010	2011	2012	2013	2014
Recorded Offences	4	3	1	0	0	5	3	3	3	0	2	1	5	1	1	3	1	3	3
Recorded per 10,000 Population	0.14	0.10	0.03	0.00	0.00	0.18	0.10	0.10	0.10	0.00	0.07	0.03	0.17	0.03	0.03	0.10	0.03	0.10	0.10

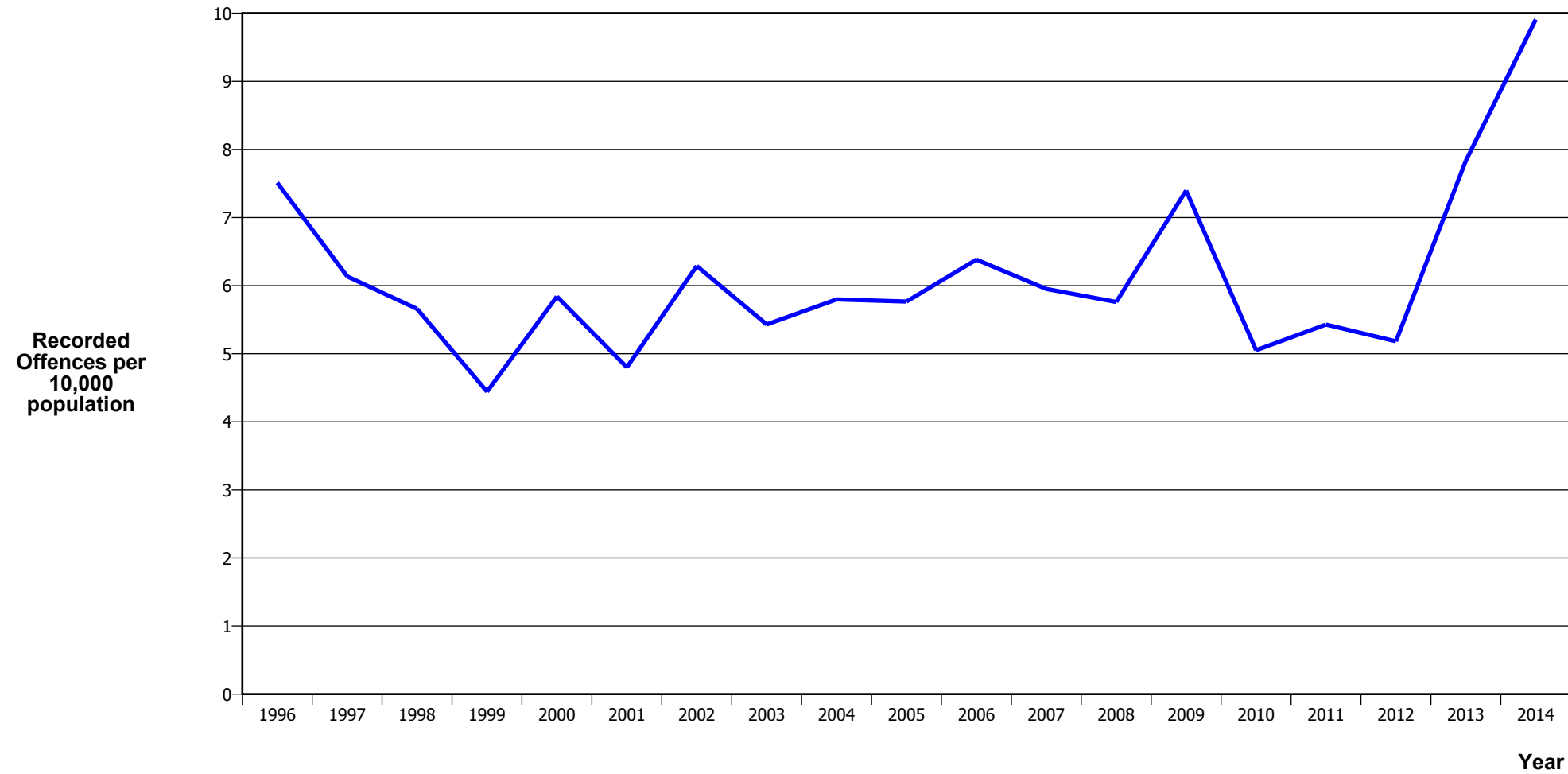
SERIOUS ASSAULTS RESULTING IN INJURY*



Calendar Year	1996	1997	1998	1999	2000	2001	2002	2003	2004	2005	2006	2007	2008	2009	2010	2011	2012	2013	2014
Recorded Offence	469	364	296	336	306	353	379	445	443	450	524	658	663	759	725	714	702	589	777
Offence Rate per 10K Popn	16.2	12.6	10.3	11.8	10.8	12.5	13.2	15.4	15.2	15.4	17.8	22.3	22.3	25.4	24.1	23.5	23.0	19.2	25.1

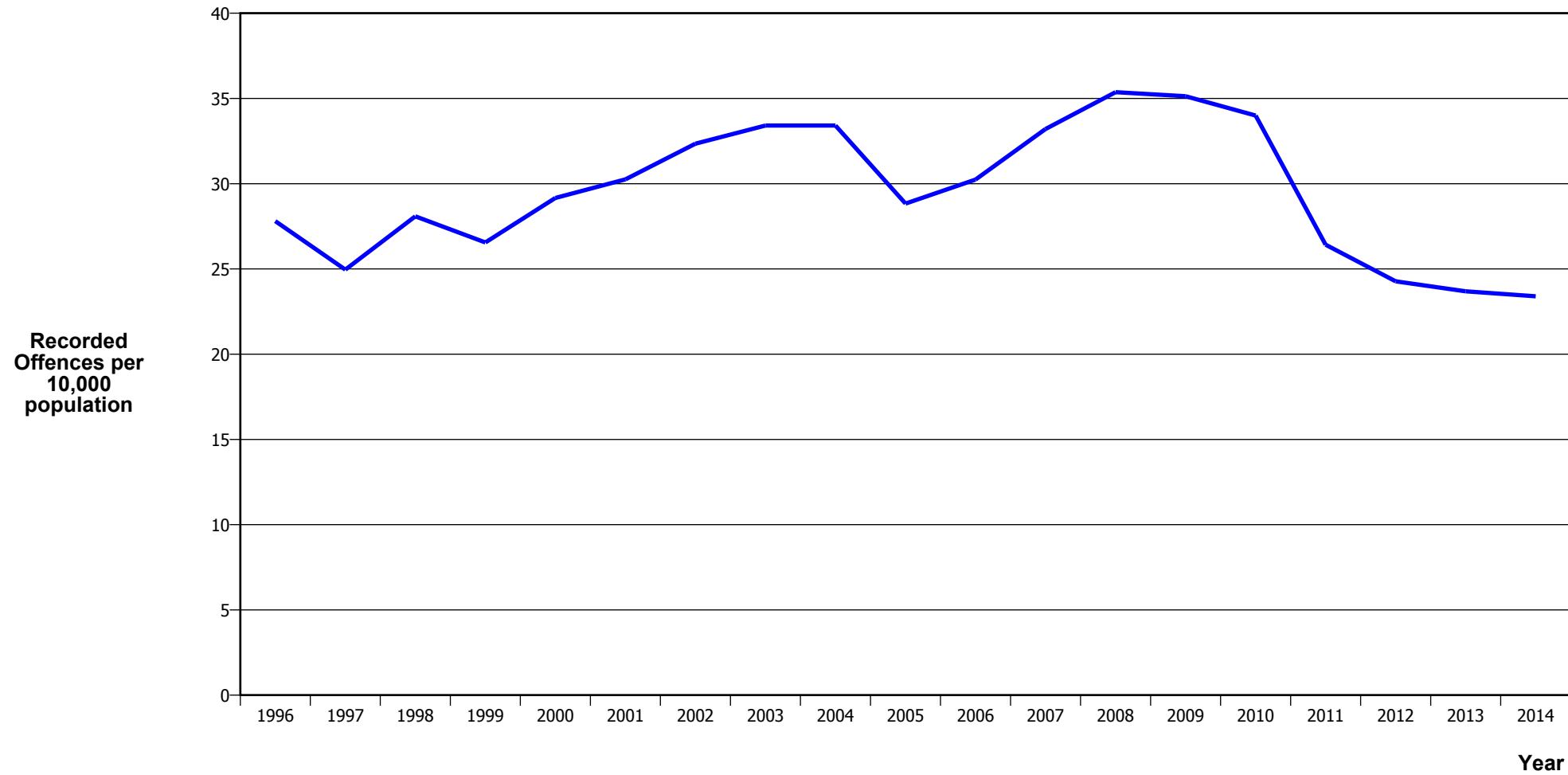
* This measure excludes common assaults

SEXUAL ASSAULTS



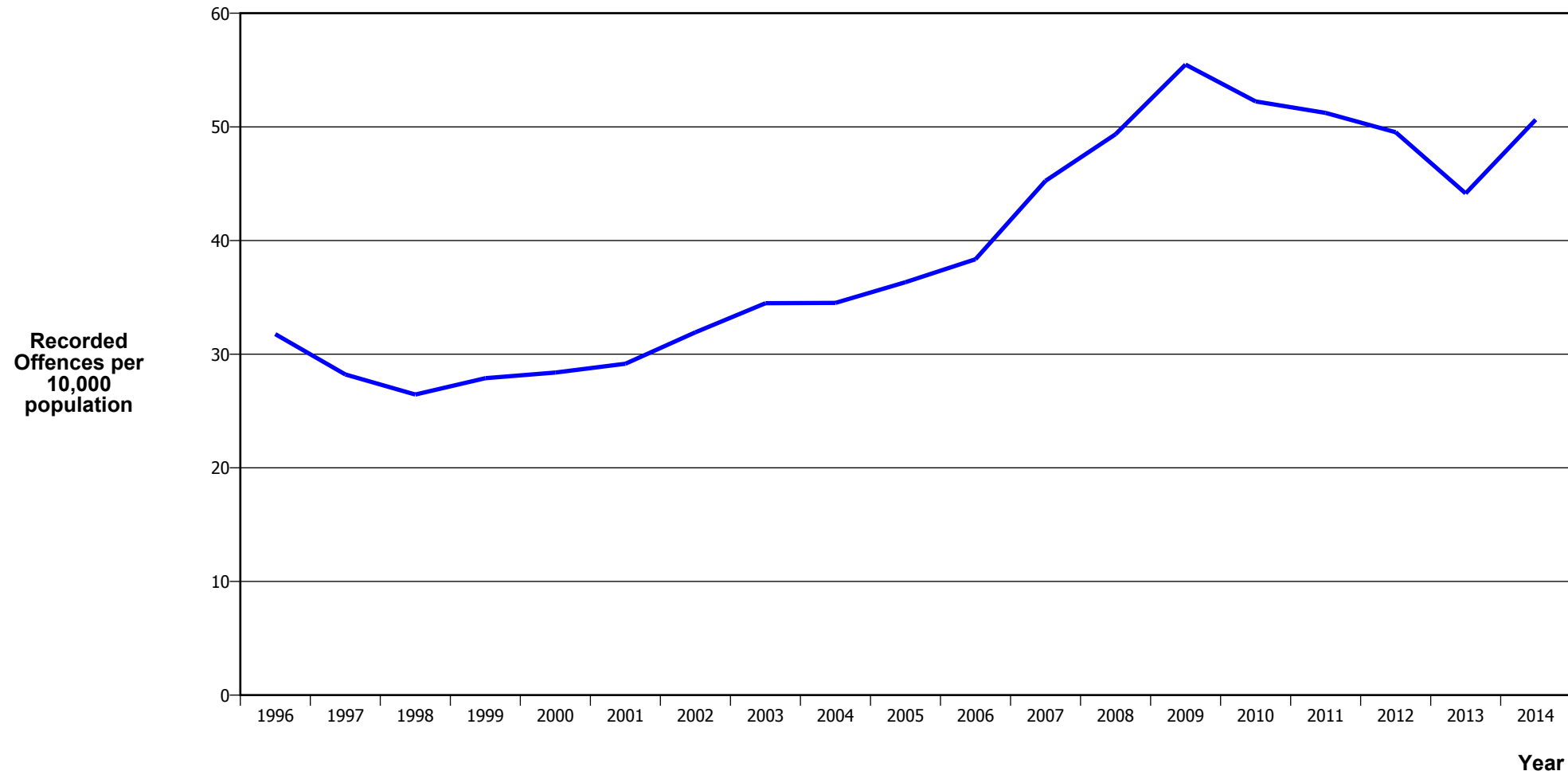
Calendar Year	1996	1997	1998	1999	2000	2001	2002	2003	2004	2005	2006	2007	2008	2009	2010	2011	2012	2013	2014
Recorded Offences	218	177	162	126	165	136	180	157	169	169	188	176	171	221	152	165	158	240	307
Recorded per 10,000 Population	7.5	6.1	5.7	4.4	5.8	4.8	6.3	5.4	5.8	5.8	6.4	6.0	5.8	7.4	5.1	5.4	5.2	7.8	9.9

PUBLIC PLACE ASSAULTS



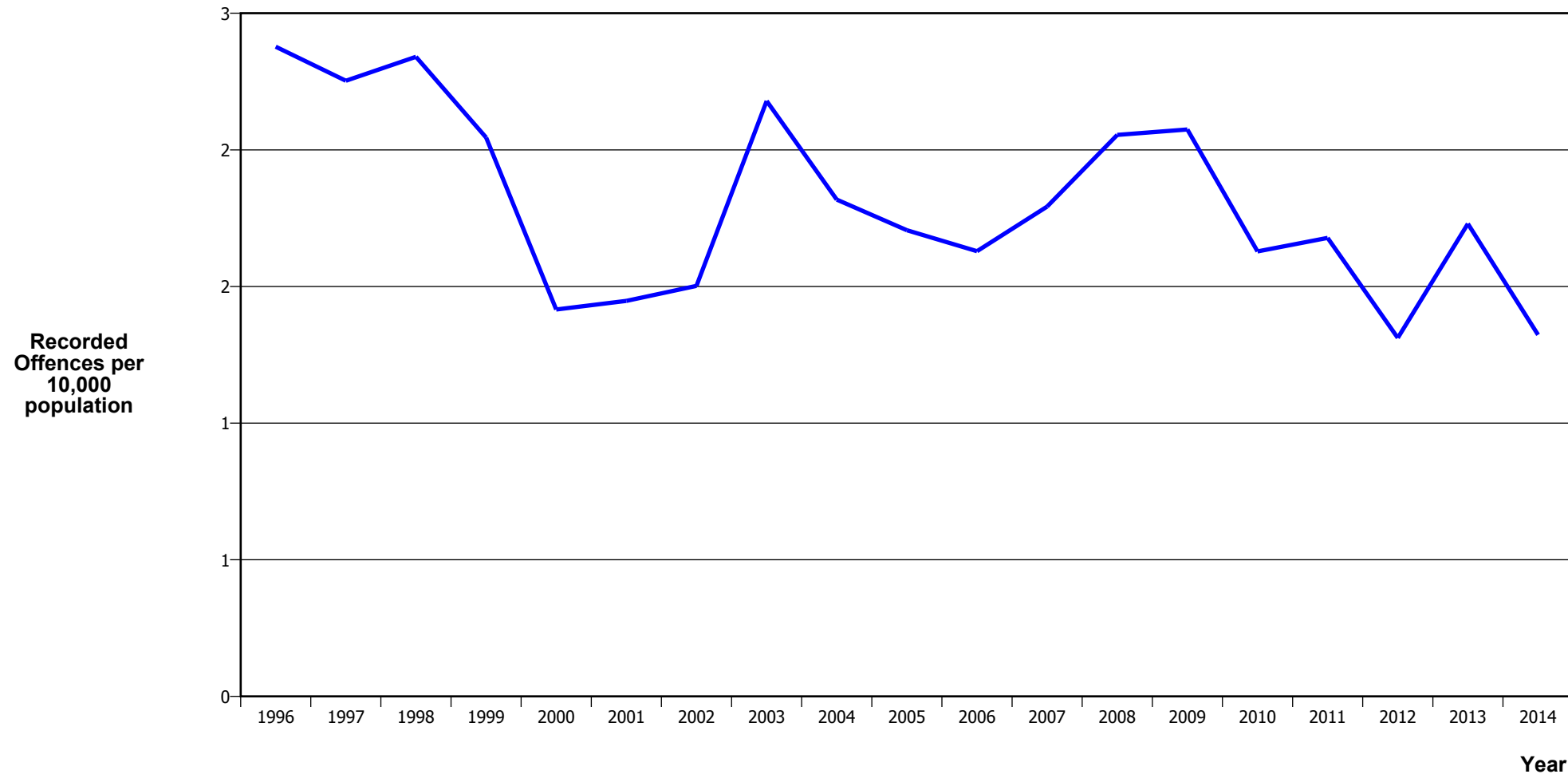
Calendar Year	1996	1997	1998	1999	2000	2001	2002	2003	2004	2005	2006	2007	2008	2009	2010	2011	2012	2013	2014
Recorded Offences	807	720	804	753	824	857	926	966	974	845	891	982	1,050	1,050	1,023	803	740	726	725
Recorded per 10,000 Population	27.8	25.0	28.1	26.6	29.2	30.3	32.3	33.4	33.4	28.8	30.2	33.2	35.4	35.1	34.0	26.4	24.3	23.7	23.4

DWELLING ASSAULTS



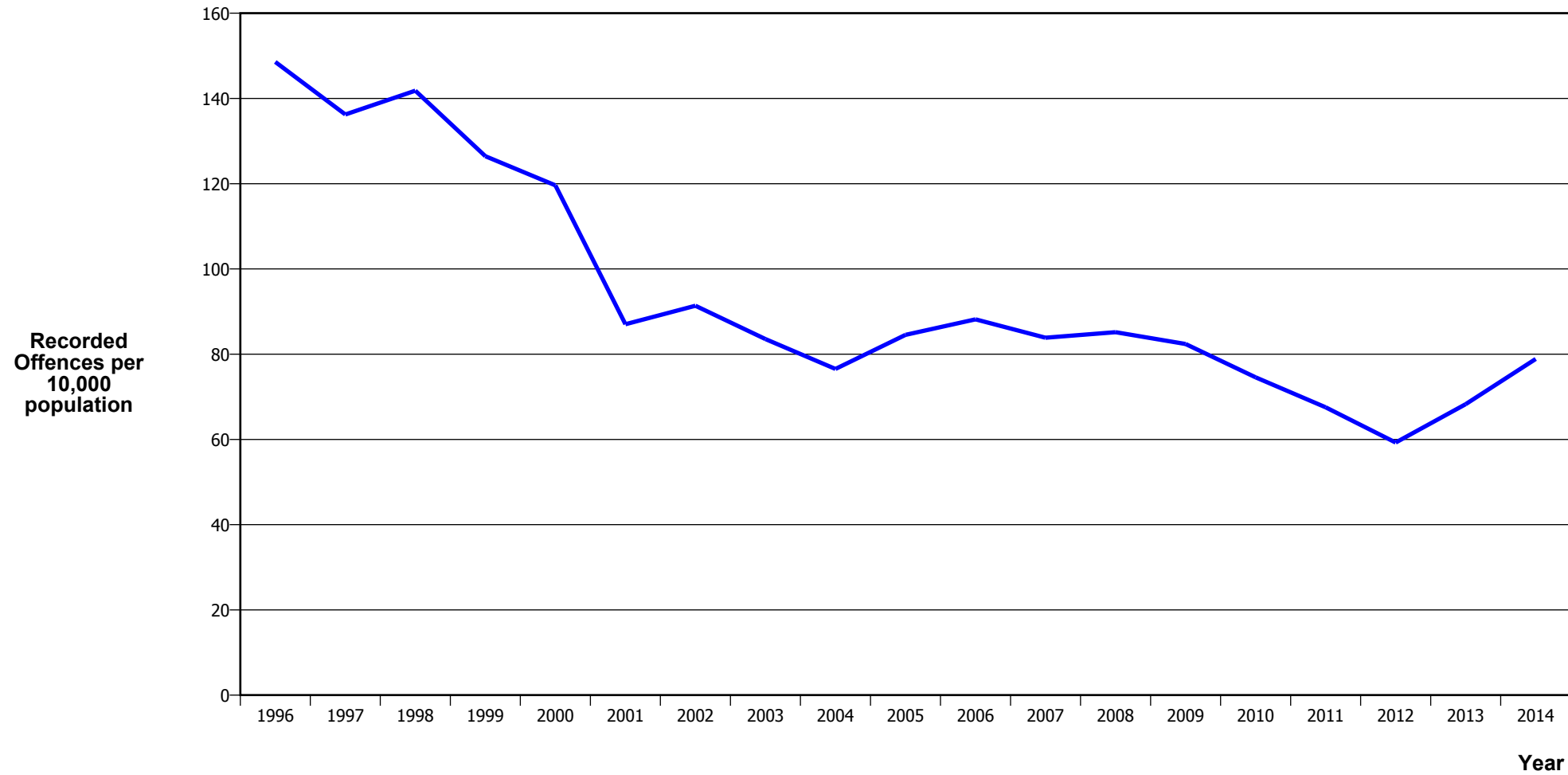
Calendar Year	1996	1997	1998	1999	2000	2001	2002	2003	2004	2005	2006	2007	2008	2009	2010	2011	2012	2013	2014
Recorded Offences	922	814	757	791	802	826	914	997	1,006	1,065	1,130	1,338	1,465	1,658	1,572	1,557	1,510	1,353	1,569
Recorded per 10,000 Population	31.8	28.2	26.4	27.9	28.4	29.2	31.9	34.5	34.5	36.3	38.4	45.2	49.4	55.5	52.2	51.2	49.5	44.2	50.6

ROBBERY



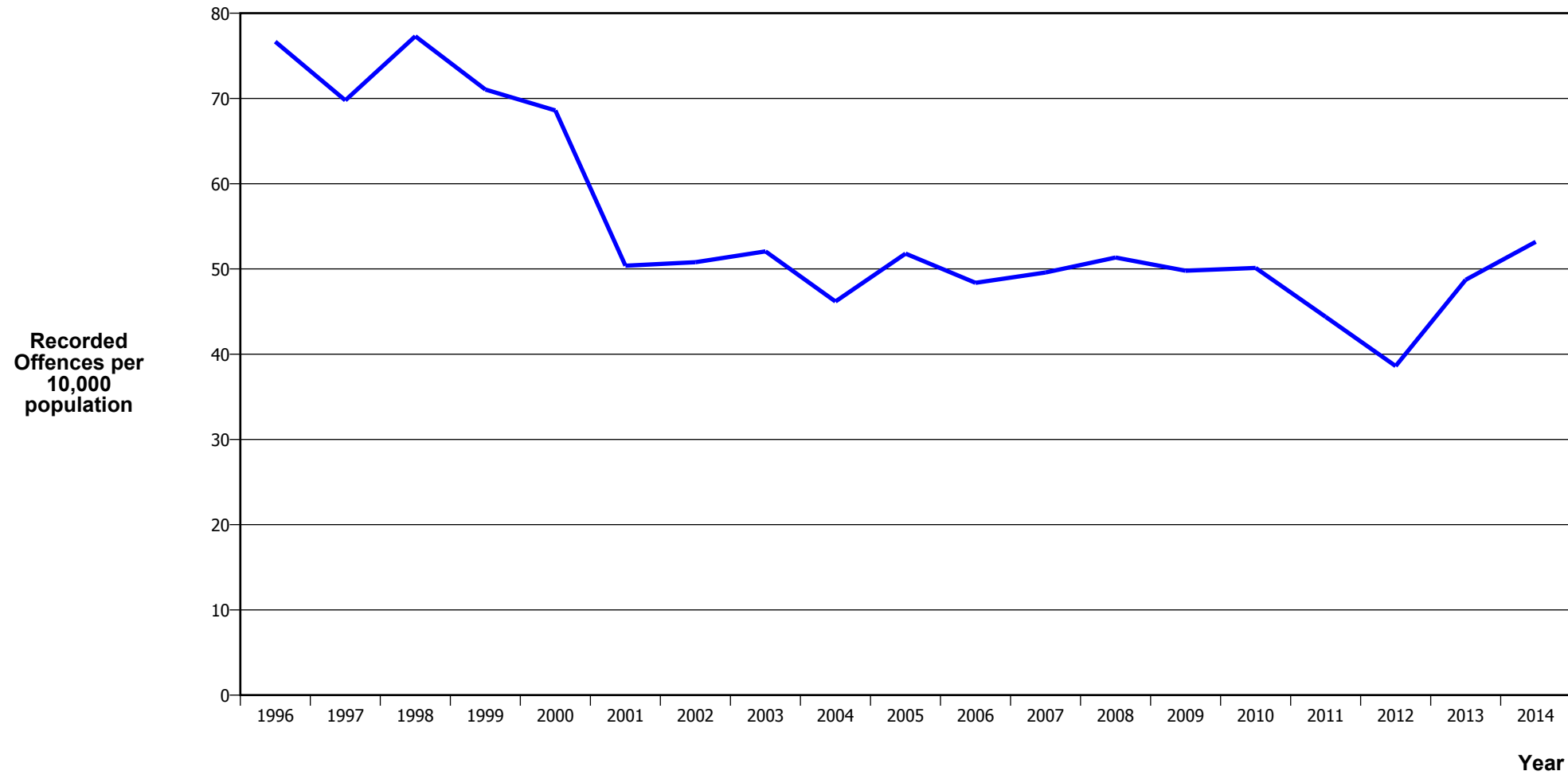
Calendar Year	1996	1997	1998	1999	2000	2001	2002	2003	2004	2005	2006	2007	2008	2009	2010	2011	2012	2013	2014
Recorded Offences	69	65	67	58	40	41	43	63	53	50	48	53	61	62	49	51	40	53	41
Recorded per 10,000 Population	2.4	2.3	2.3	2.0	1.4	1.4	1.5	2.2	1.8	1.7	1.6	1.8	2.1	2.1	1.6	1.7	1.3	1.7	1.3

BURGLARY (TOTAL)



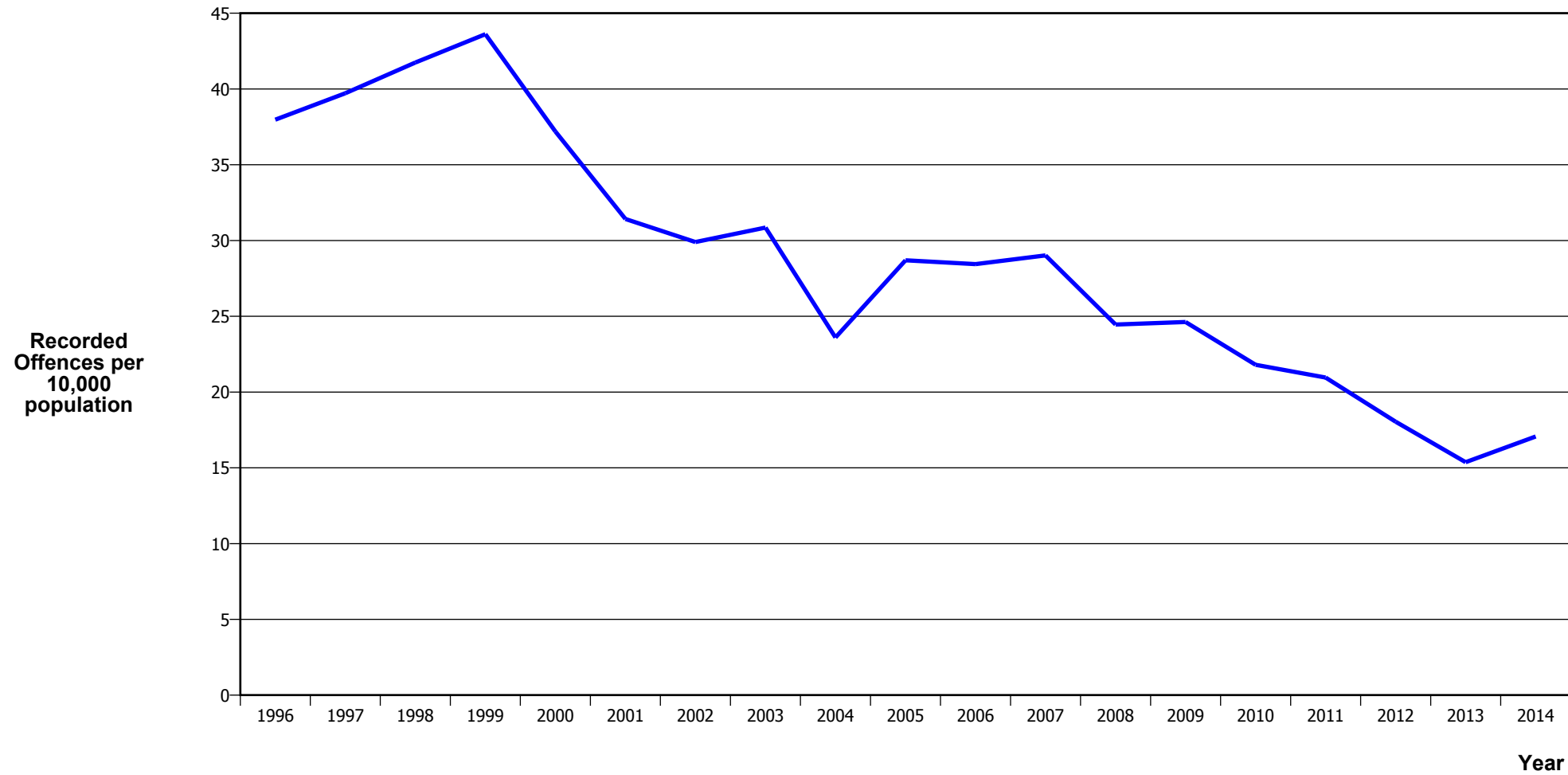
Calendar Year	1996	1997	1998	1999	2000	2001	2002	2003	2004	2005	2006	2007	2008	2009	2010	2011	2012	2013	2014
Recorded Offences	4,312	3,931	4,060	3,586	3,380	2,465	2,615	2,415	2,231	2,478	2,598	2,480	2,528	2,462	2,244	2,053	1,807	2,092	2,444
Recorded per 10,000 Population	148.6	136.3	141.8	126.5	119.6	87.0	91.4	83.5	76.5	84.5	88.2	83.9	85.2	82.4	74.6	67.5	59.3	68.3	78.9

BURGLARY (DWELLING)



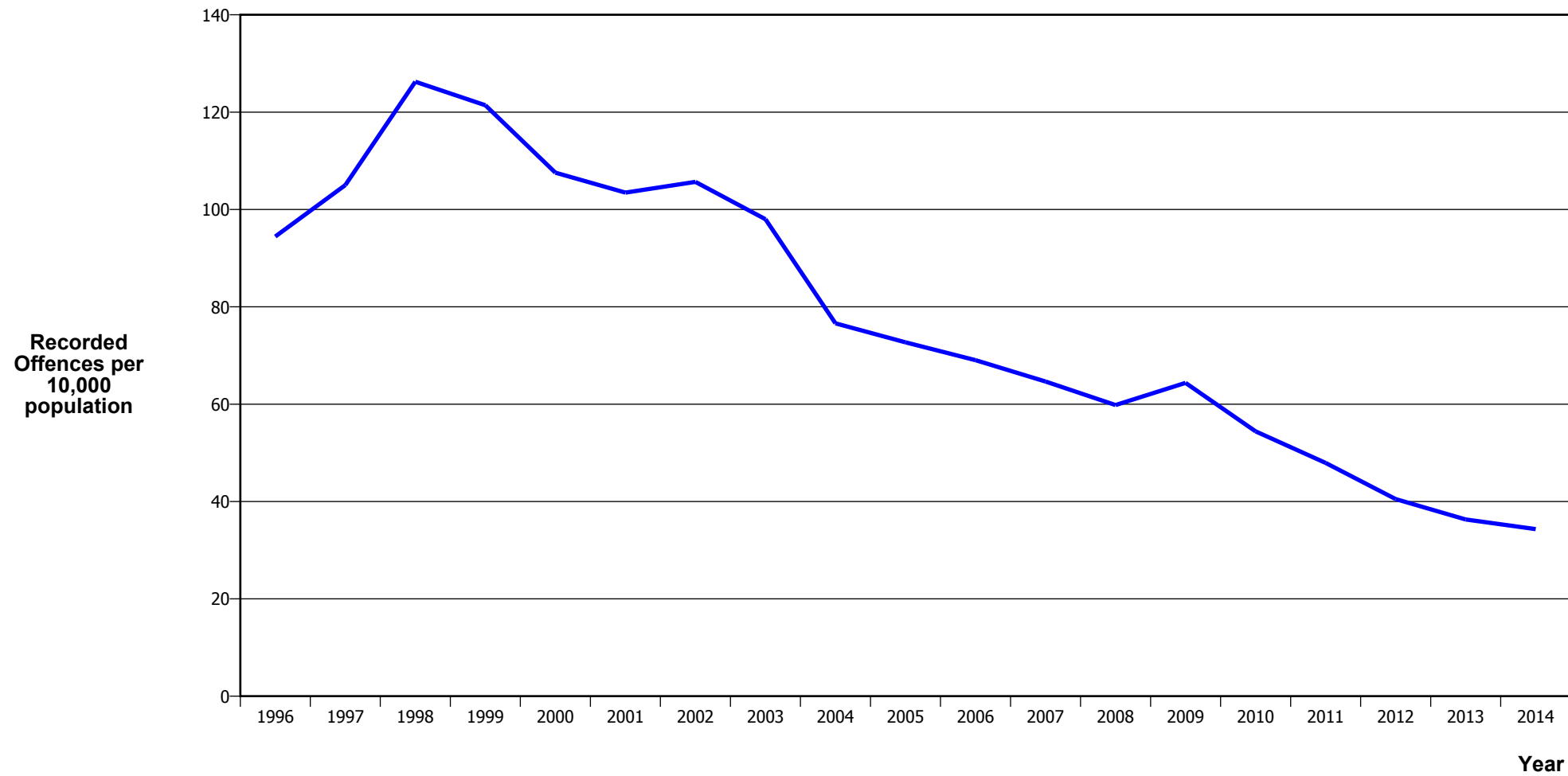
Calendar Year	1996	1997	1998	1999	2000	2001	2002	2003	2004	2005	2006	2007	2008	2009	2010	2011	2012	2013	2014
Recorded Offences	2,225	2,013	2,213	2,015	1,938	1,427	1,454	1,505	1,346	1,518	1,425	1,466	1,524	1,488	1,508	1,349	1,177	1,493	1,648
Recorded per 10,000 Population	76.7	69.8	77.3	71.1	68.6	50.4	50.8	52.1	46.2	51.8	48.4	49.6	51.3	49.8	50.1	44.4	38.6	48.7	53.2

VEHICLES STOLEN



Calendar Year	1996	1997	1998	1999	2000	2001	2002	2003	2004	2005	2006	2007	2008	2009	2010	2011	2012	2013	2014
Recorded Offences	1,102	1,146	1,195	1,237	1,051	890	856	892	688	841	838	858	726	736	656	637	550	471	529
Recorded per 10,000 Population	38.0	39.7	41.7	43.6	37.2	31.4	29.9	30.9	23.6	28.7	28.4	29.0	24.5	24.6	21.8	21.0	18.0	15.4	17.1

THEFT EX CAR



Calendar Year	1996	1997	1998	1999	2000	2001	2002	2003	2004	2005	2006	2007	2008	2009	2010	2011	2012	2013	2014
Recorded Offences	2,741	3,030	3,614	3,443	3,039	2,931	3,025	2,833	2,233	2,131	2,034	1,912	1,776	1,924	1,637	1,457	1,235	1,113	1,064
Recorded per 10,000 Population	94.4	105.0	126.2	121.4	107.6	103.5	105.7	98.0	76.6	72.7	69.0	64.7	59.8	64.4	54.4	47.9	40.5	36.3	34.3

Population Data

Population data is used in this release to calculate crime rates. They have been derived from population estimates as at 30 June each year that have been obtained from Statistics New Zealand.

The estimated resident population is based on the census usually resident population count, with adjustments for residents missed or counted more than once by the census (net census undercount), and for residents temporarily overseas on census night.

These population estimates exclude the number of international students who are studying in New Zealand for less than 12 months.

Year	Population
1996	290,220
1997	288,510
1998	286,260
1999	283,590
2000	282,540
2001	283,260
2002	286,260
2003	289,110
2004	291,500
2005	293,090
2006	294,610
2007	295,700
2008	296,850
2009	298,860
2010	300,920
2011	303,940
2012	304,890
2013	306,450
2014	309,870

General Definitions

Recorded Offences: the number of breaches of the New Zealand law recorded by Police. This includes offences specified in the Crimes Act and other legislations, such as the Summary Offences Act, Local Government Act, etc.

Resolved Offences: the number of recorded offences where an offender has been identified and dealt with (e.g. warned, cautioned, prosecuted, etc).

Resolution Rate: the proportion of recorded offences that have been resolved.

Recorded per 10,000 population: the number of recorded offences for every 10,000 people. This is also referred as the crime rate per 10,000 population.

ANZSOC: The Australian and New Zealand Standard Offence Classification. The offence classification is divided into 16 major offence divisions.

Definition of ANZSOC Divisions

1. Homicide and related offences: Unlawfully kill, attempt to unlawfully kill or conspiracy to kill another person.
2. Acts intended to cause injury: Acts, excluding attempted murder and those resulting in death, which are intended to cause non-fatal injury or harm to another person and where there is no sexual or acquisitive element.
3. Sexual assault and related offences: Acts, or intent of acts, of a sexual nature against another person, which are non-consensual or where consent is proscribed.
4. Dangerous or negligent acts endangering persons: Dangerous or negligent acts which, though not intended to cause harm, actually or potentially result in injury to oneself or another person.
5. Abduction, harassment and other offences against person: Acts intended to threaten or harass, or acts that unlawfully deprive another person of their freedom of movement, that are against that person's will or against the will of any parent, guardian or other person having lawful custody or care of that person.
6. Robbery, extortion and related offences: Acts intended to unlawfully gain money, property or other items of value from, or to cause detriment to, another person by using the threat of force or any other coercive measure.
7. Unlawful entry with intent / burglary, break and enter: The unlawful entry of a structure with the intent to commit an offence, where the entry is either forced or unforced.
8. Theft and related and offences: The unlawful taking or obtaining of money or goods, not involving the use of force or violence, coercion or deception, with intent to permanently or temporarily deprive the owner or possessor of the use of the money or goods, or the receiving or handling of money or goods obtained unlawfully.

9. Fraud, deception and related offences: Offences involving a dishonest act or omission carried out with the purpose of deceiving to obtain a benefit.

10. Illicit drug offences: The possessing, selling, dealing or trafficking, importing or exporting, manufacturing or cultivating of drugs or other substances prohibited under legislation.

11. Prohibited and regulated weapons and explosives offences: Offences involving prohibited or regulated weapons and explosives. Those offences also involving assault, sexual assault or robbery are coded to the relevant group within Assault, Sexual assaults and Robbery respectively.

12. Property damage and environmental pollution: The wilful and unlawful destruction, damage or defacement of public or private property, or the pollution of property or a definable entity held in common by the community.

13. Public order offences: Offences relating personal conduct that involves, or may lead to, a breach of public order or decency, or that is indicative of criminal intent, or that is otherwise regulated or prohibited on moral or ethical grounds. In general these offences do not involve a specific victim or victims; however some offences, such as offensive language and offensive behaviour, may be directed towards a single victim.

14. Traffic and vehicle regulatory offences: Offences relating to vehicles and most forms of traffic, including offences pertaining to the licensing, registration, roadworthiness, or use of vehicles, bicycle offences and pedestrian offences.

15. Offences against justice procedures, government security and government operations: An act or omission that is deemed to be prejudicial to the effective carrying out of justice procedures or any government operations. This includes general government operations as well as those specifically concerned with maintaining government security.

16. Miscellaneous offences: Offences involving the breach of statutory rules or regulations governing activities that are prima facie legal, where such offences are not explicitly dealt with under any other division. If an offence is specified under regulation and involves an act that would be illegal under common law or general criminal legislation, the offence is dealt with under the appropriate generic group.