

SOUTHERN DISTRICT CRIME STATISTICS 2012



**A Summary of
Recorded and Resolved Offence
Statistics**

**POLICE NATIONAL HEADQUARTERS
April 2013**

ISSN 1178 - 1645

Table of Contents:

Topic	Page
Report Notes	1
District Summary of Recorded and Resolved Crime, by Division	2-4
Proportions of Recorded Crime by Division	5
Summary of District Recorded Offences, Rate per 10,000 Population and Resolved Offences, by Area	6
Summary of Area Recorded Offences, Rate per 10,000 Population and Resolved Offences, by Division	7-9
Crime Trends	10
Total Crime	11
Murder	12
Serious Assaults Resulting in Injury	13
Public Place Assaults	14
Robbery	15
Burglary (Total)	16
Burglary (Dwelling)	17
Vehicles Stolen	18
Theft Ex Car	19
Population Data	20
General Definition	21-22

REPORT NOTES:

Statistics reported in this document are derived from the Police National Intelligence Application (NIA). These Official Statistics for Recorded and Resolved Offences present a snapshot of data in NIA relating to offences that occur within a given year, as at the date 14 days following the end of that year.

Unless the matter is minor where Police attendance is sufficient, a matter that is reported to or discovered by Police where Police believe an offence is likely to have been committed is counted as a recorded offence.

A recorded offence is counted as resolved when Police apprehend an offender and decide how to deal with him/her. (E.g. warn, prosecute, etc.)

Resolution rate is the percentage of recorded offences that are resolved within 14 days of the end of the year being reported on.

If an offence is resolved 15 days or more after the end of the year it will not appear in the Official Crime Statistics for that or any other year. Resolution Rate therefore undercounts the number of cases that Police have resolved. This phenomenon has a more marked impact for some types of offences than others, such as offences that require long investigations (E.g. many serial crimes, burglaries and murders).

When comparing 2012 Statistics with previous years, the reader should also refer to "Report Notes" published in previous years' reports, as previous changes significantly affect year on year trends.

SUMMARY OF DISTRICT RECORDED AND RESOLVED CRIME, BY DIVISION
Years ending 31 December

HOMICIDE AND RELATED OFFENCES

ASOC Subdivision Description	Recorded 2010	Recorded 2011	Recorded 2012	Variance 2010-2011	Variance 2011-2012	Resolved 2010	Resolved 2011	Resolved 2012	Resolution Rate 2010	Resolution Rate 2011	Resolution Rate 2012
ATTEMPTED MURDER	2	1	2	-50.0 %	100.0 %	2	1	2	100.0 %	100.0 %	100.0 %
HOMICIDE AND RELATED OFFENCES NOT FURTHER DEFINED	0	0	0	0.0 %	0.0 %	0	0	0	0.0 %	0.0 %	0.0 %
MANSLAUGHTER AND DRIVING CAUSING DEATH	0	2	1	0.0 %	-50.0 %	0	2	1	0.0 %	100.0 %	100.0 %
MURDER	1	3	1	200.0 %	-66.7 %	1	3	0	100.0 %	100.0 %	0.0 %
	3	6	4	100.0 %	-33.3 %	3	6	3	100.0 %	100.0 %	75.0 %

ACTS INTENDED TO CAUSE INJURY

ASOC Subdivision Description	Recorded 2010	Recorded 2011	Recorded 2012	Variance 2010-2011	Variance 2011-2012	Resolved 2010	Resolved 2011	Resolved 2012	Resolution Rate 2010	Resolution Rate 2011	Resolution Rate 2012
ASSAULT	3,029	2,732	2,655	-9.8 %	-2.8 %	2,597	2,340	2,258	85.7 %	85.7 %	85.0 %
OTHER ACTS INTENDED TO CAUSE INJURY	6	2	1	-66.7 %	-50.0 %	4	1	0	66.7 %	50.0 %	0.0 %
	3,035	2,734	2,656	-9.9 %	-2.9 %	2,601	2,341	2,258	85.7 %	85.6 %	85.0 %

SEXUAL ASSAULT AND RELATED OFFENCES

ASOC Subdivision Description	Recorded 2010	Recorded 2011	Recorded 2012	Variance 2010-2011	Variance 2011-2012	Resolved 2010	Resolved 2011	Resolved 2012	Resolution Rate 2010	Resolution Rate 2011	Resolution Rate 2012
NON-ASSAULTIVE SEXUAL OFFENCES	14	1	6	-92.9 %	500.0 %	7	1	5	50.0 %	100.0 %	83.3 %
SEXUAL ASSAULT	152	165	158	8.6 %	-4.2 %	80	80	82	52.6 %	48.5 %	51.9 %
	166	166	164	0.0 %	-1.2 %	87	81	87	52.4 %	48.8 %	53.0 %

DANGEROUS OR NEGLIGENT ACTS ENDANGERING PERSONS

ASOC Subdivision Description	Recorded 2010	Recorded 2011	Recorded 2012	Variance 2010-2011	Variance 2011-2012	Resolved 2010	Resolved 2011	Resolved 2012	Resolution Rate 2010	Resolution Rate 2011	Resolution Rate 2012
OTHER DANGEROUS OR NEGLIGENT ACTS ENDANGERING PERSONS	78	79	84	1.3 %	6.3 %	49	52	49	62.8 %	65.8 %	58.3 %
	78	79	84	1.3 %	6.3 %	49	52	49	62.8 %	65.8 %	58.3 %

ABDUCTION, HARASSMENT AND OTHER RELATED OFFENCES AGAINST A PERSON

ASOC Subdivision Description	Recorded 2010	Recorded 2011	Recorded 2012	Variance 2010-2011	Variance 2011-2012	Resolved 2010	Resolved 2011	Resolved 2012	Resolution Rate 2010	Resolution Rate 2011	Resolution Rate 2012
ABDUCTION AND KIDNAPPING	16	6	4	-62.5 %	-33.3 %	14	5	3	87.5 %	83.3 %	75.0 %
HARASSMENT AND THREATENING BEHAVIOUR	874	748	761	-14.4 %	1.7 %	677	627	628	77.5 %	83.8 %	82.5 %
	890	754	765	-15.3 %	1.5 %	691	632	631	77.6 %	83.8 %	82.5 %

ROBBERY, EXTORTION AND RELATED OFFENCES

ASOC Subdivision Description	Recorded 2010	Recorded 2011	Recorded 2012	Variance 2010-2011	Variance 2011-2012	Resolved 2010	Resolved 2011	Resolved 2012	Resolution Rate 2010	Resolution Rate 2011	Resolution Rate 2012
BLACKMAIL AND EXTORTION	11	2	3	-81.8 %	50.0 %	6	2	1	54.5 %	100.0 %	33.3 %
ROBBERY	49	51	40	4.1 %	-21.6 %	24	29	26	49.0 %	56.9 %	65.0 %
	60	53	43	-11.7 %	-18.9 %	30	31	27	50.0 %	58.5 %	62.8 %

UNLAWFUL ENTRY WITH INTENT/BURGLARY, BREAK AND ENTER

ASOC Subdivision Description	Recorded 2010	Recorded 2011	Recorded 2012	Variance 2010-2011	Variance 2011-2012	Resolved 2010	Resolved 2011	Resolved 2012	Resolution Rate 2010	Resolution Rate 2011	Resolution Rate 2012
UNLAWFUL ENTRY WITH INTENT/BURGLARY, BREAK AND ENTER	2,244	2,053	1,807	-8.5 %	-12.0 %	577	456	426	25.7 %	22.2 %	23.6 %
	2,244	2,053	1,807	-8.5 %	-12.0 %	577	456	426	25.7 %	22.2 %	23.6 %

SUMMARY OF DISTRICT RECORDED AND RESOLVED CRIME, BY DIVISION

Years ending 31 December

THEFT AND RELATED OFFENCES

ASOC Subdivision Description	Recorded 2010	Recorded 2011	Recorded 2012	Variance 2010-2011	Variance 2011-2012	Resolved 2010	Resolved 2011	Resolved 2012	Resolution Rate 2010	Resolution Rate 2011	Resolution Rate 2012
ILLEGAL USE OF PROPERTY (EXCEPT MOTOR VEHICLES)	323	233	229	-27.9 %	-1.7 %	24	23	16	7.4 %	9.9 %	7.0 %
MOTOR VEHICLE THEFT AND RELATED OFFENCES	2,293	2,094	1,785	-8.7 %	-14.8 %	524	478	487	22.9 %	22.8 %	27.3 %
RECEIVE OR HANDLE PROCEEDS OF CRIME	178	92	119	-48.3 %	29.3 %	170	85	117	95.5 %	92.4 %	98.3 %
THEFT (EXCEPT MOTOR VEHICLES)	4,475	3,941	3,772	-11.9 %	-4.3 %	1,732	1,586	1,595	38.7 %	40.2 %	42.3 %
	7,269	6,360	5,905	-12.5 %	-7.2 %	2,450	2,172	2,215	33.7 %	34.2 %	37.5 %

FRAUD, DECEPTION AND RELATED OFFENCES

ASOC Subdivision Description	Recorded 2010	Recorded 2011	Recorded 2012	Variance 2010-2011	Variance 2011-2012	Resolved 2010	Resolved 2011	Resolved 2012	Resolution Rate 2010	Resolution Rate 2011	Resolution Rate 2012
DECEPTIVE BUSINESS/GOVERNMENT PRACTICES	1	1	1	0.0 %	0.0 %	1	1	1	100.0 %	100.0 %	100.0 %
FORGERY AND COUNTERFEITING	31	20	25	-35.5 %	25.0 %	19	17	18	61.3 %	85.0 %	72.0 %
OBTAIN BENEFIT BY DECEPTION	595	544	689	-8.6 %	26.7 %	418	394	534	70.3 %	72.4 %	77.5 %
OTHER FRAUD AND DECEPTION OFFENCES	40	33	31	-17.5 %	-6.1 %	27	19	19	67.5 %	57.6 %	61.3 %
	667	598	746	-10.3 %	24.7 %	465	431	572	69.7 %	72.1 %	76.7 %

ILLICIT DRUG OFFENCES

ASOC Subdivision Description	Recorded 2010	Recorded 2011	Recorded 2012	Variance 2010-2011	Variance 2011-2012	Resolved 2010	Resolved 2011	Resolved 2012	Resolution Rate 2010	Resolution Rate 2011	Resolution Rate 2012
DEAL OR TRAFFIC IN ILLICIT DRUGS	364	207	339	-43.1 %	63.8 %	347	198	322	95.3 %	95.7 %	95.0 %
IMPORT OR EXPORT ILLICIT DRUGS	6	6	14	0.0 %	133.3 %	5	5	8	83.3 %	83.3 %	57.1 %
MANUFACTURE OR CULTIVATE ILLICIT DRUGS	315	162	124	-48.6 %	-23.5 %	217	137	92	68.9 %	84.6 %	74.2 %
OTHER ILLICIT DRUG OFFENCES	445	312	221	-29.9 %	-29.2 %	433	300	208	97.3 %	96.2 %	94.1 %
POSSESS AND/OR USE ILLICIT DRUGS	726	555	446	-23.6 %	-19.6 %	694	526	416	95.6 %	94.8 %	93.3 %
	1,856	1,242	1,144	-33.1 %	-7.9 %	1,696	1,166	1,046	91.4 %	93.9 %	91.4 %

PROHIBITED AND REGULATED WEAPONS AND EXPLOSIVES OFFENCES

ASOC Subdivision Description	Recorded 2010	Recorded 2011	Recorded 2012	Variance 2010-2011	Variance 2011-2012	Resolved 2010	Resolved 2011	Resolved 2012	Resolution Rate 2010	Resolution Rate 2011	Resolution Rate 2012
REGULATED WEAPONS/EXPLOSIVES OFFENCES	505	450	372	-10.9 %	-17.3 %	430	401	334	85.1 %	89.1 %	89.8 %
	505	450	372	-10.9 %	-17.3 %	430	401	334	85.1 %	89.1 %	89.8 %

PROPERTY DAMAGE AND ENVIRONMENTAL POLLUTION

ASOC Subdivision Description	Recorded 2010	Recorded 2011	Recorded 2012	Variance 2010-2011	Variance 2011-2012	Resolved 2010	Resolved 2011	Resolved 2012	Resolution Rate 2010	Resolution Rate 2011	Resolution Rate 2012
ENVIRONMENTAL POLLUTION	46	51	36	10.9 %	-29.4 %	35	47	23	76.1 %	92.2 %	63.9 %
PROPERTY DAMAGE	5,180	4,526	4,292	-12.6 %	-5.2 %	1,412	1,252	1,134	27.3 %	27.7 %	26.4 %
	5,226	4,577	4,328	-12.4 %	-5.4 %	1,447	1,299	1,157	27.7 %	28.4 %	26.7 %

PUBLIC ORDER OFFENCES

ASOC Subdivision Description	Recorded 2010	Recorded 2011	Recorded 2012	Variance 2010-2011	Variance 2011-2012	Resolved 2010	Resolved 2011	Resolved 2012	Resolution Rate 2010	Resolution Rate 2011	Resolution Rate 2012
DISORDERLY CONDUCT	2,376	2,277	2,324	-4.2 %	2.1 %	2,057	2,008	2,069	86.6 %	88.2 %	89.0 %
OFFENSIVE CONDUCT	229	161	150	-29.7 %	-6.8 %	193	131	109	84.3 %	81.4 %	72.7 %
PUBLIC ORDER OFFENCES NOT FURTHER DEFINED	0	0	0	0.0 %	0.0 %	0	0	0	0.0 %	0.0 %	0.0 %
REGULATED PUBLIC ORDER OFFENCES	690	512	404	-25.8 %	-21.1 %	612	443	352	88.7 %	86.5 %	87.1 %
	3,295	2,950	2,878	-10.5 %	-2.4 %	2,862	2,582	2,530	86.9 %	87.5 %	87.9 %

SUMMARY OF DISTRICT RECORDED AND RESOLVED CRIME, BY DIVISION
Years ending 31 December

OFFENCES AGAINST JUSTICE PROCEDURES, GOVERNMENT SECURITY AND GOVERNMENT OPERATIONS

ASOC Subdivision Description	Recorded 2010	Recorded 2011	Recorded 2012	Variance 2010-2011	Variance 2011-2012	Resolved 2010	Resolved 2011	Resolved 2012	Resolution Rate 2010	Resolution Rate 2011	Resolution Rate 2012
BREACH OF COMMUNITY-BASED ORDER	114	81	86	-28.9 %	6.2 %	103	68	69	90.4 %	84.0 %	80.2 %
BREACH OF CUSTODIAL ORDER OFFENCES	74	44	53	-40.5 %	20.5 %	72	40	51	97.3 %	90.9 %	96.2 %
BREACH OF VIOLENCE AND NON-VIOLENCE RESTRAINING ORDERS	262	225	218	-14.1 %	-3.1 %	241	202	202	92.0 %	89.8 %	92.7 %
OFFENCES AGAINST GOVERNMENT OPERATIONS	23	15	15	-34.8 %	0.0 %	7	6	6	30.4 %	40.0 %	40.0 %
OFFENCES AGAINST GOVERNMENT SECURITY	0	1	1	0.0 %	0.0 %	0	0	1	0.0 %	0.0 %	100.0 %
OFFENCES AGAINST JUSTICE PROCEDURES	536	449	380	-16.2 %	-15.4 %	527	441	371	98.3 %	98.2 %	97.6 %
OFFENCES AGAINST JUSTICE PROCEDURES, GOVERNMENT SECURITY AND GOVERNMENT OPERATIONS NOT FURTHER DEFINED	0	1	0	0.0 %	-100.0 %	0	1	0	0.0 %	100.0 %	0.0 %
	1,009	816	753	-19.1 %	-7.7 %	950	758	700	94.2 %	92.9 %	93.0 %

MISCELLANEOUS OFFENCES

ASOC Subdivision Description	Recorded 2010	Recorded 2011	Recorded 2012	Variance 2010-2011	Variance 2011-2012	Resolved 2010	Resolved 2011	Resolved 2012	Resolution Rate 2010	Resolution Rate 2011	Resolution Rate 2012
COMMERCIAL/INDUSTRY/FINANCIAL REGULATION	6	3	6	-50.0 %	100.0 %	5	2	6	83.3 %	66.7 %	100.0 %
DEFAMATION, LIBEL AND PRIVACY OFFENCES	9	3	2	-66.7 %	-33.3 %	6	3	2	66.7 %	100.0 %	100.0 %
OTHER MISCELLANEOUS OFFENCES	100	111	96	11.0 %	-13.5 %	71	77	69	71.0 %	69.4 %	71.9 %
PUBLIC HEALTH AND SAFETY OFFENCES	13	9	8	-30.8 %	-11.1 %	6	5	4	46.2 %	55.6 %	50.0 %
	128	126	112	-1.6 %	-11.1 %	88	87	81	68.8 %	69.0 %	72.3 %

TOTAL	26,431	22,964	21,761	-13.1 %	-5.2 %	14,426	12,495	12,116	54.6 %	54.4 %	55.7 %
--------------	---------------	---------------	---------------	----------------	---------------	---------------	---------------	---------------	---------------	---------------	---------------

PROPORTIONS OF RECORDED CRIME BY DIVISION

Years ending 31 December

ASOC Division Description	Proportions Recorded 2010	Recorded 2010	Proportions Recorded 2011	Recorded 2011	Proportions Recorded 2012	Recorded 2012
HOMICIDE AND RELATED OFFENCES	0.01 %	3	0.03 %	6	0.02 %	4
ACTS INTENDED TO CAUSE INJURY	11.48 %	3,035	11.91 %	2,734	12.21 %	2,656
SEXUAL ASSAULT AND RELATED OFFENCES	0.63 %	166	0.72 %	166	0.75 %	164
DANGEROUS OR NEGLIGENT ACTS ENDANGERING PERSONS	0.30 %	78	0.34 %	79	0.39 %	84
ABDUCTION, HARASSMENT AND OTHER RELATED OFFENCES AGAINST A PERSON	3.37 %	890	3.28 %	754	3.52 %	765
ROBBERY, EXTORTION AND RELATED OFFENCES	0.23 %	60	0.23 %	53	0.20 %	43
UNLAWFUL ENTRY WITH INTENT/BURGLARY, BREAK AND ENTER	8.49 %	2,244	8.94 %	2,053	8.30 %	1,807
THEFT AND RELATED OFFENCES	27.50 %	7,269	27.70 %	6,360	27.14 %	5,905
FRAUD, DECEPTION AND RELATED OFFENCES	2.52 %	667	2.60 %	598	3.43 %	746
ILLICIT DRUG OFFENCES	7.02 %	1,856	5.41 %	1,242	5.26 %	1,144
PROHIBITED AND REGULATED WEAPONS AND EXPLOSIVES OFFENCES	1.91 %	505	1.96 %	450	1.71 %	372
PROPERTY DAMAGE AND ENVIRONMENTAL POLLUTION	19.77 %	5,226	19.93 %	4,577	19.89 %	4,328
PUBLIC ORDER OFFENCES	12.47 %	3,295	12.85 %	2,950	13.23 %	2,878
OFFENCES AGAINST JUSTICE PROCEDURES, GOVERNMENT SECURITY AND GOVERNMENT OPERATIONS	3.82 %	1,009	3.55 %	816	3.46 %	753
MISCELLANEOUS OFFENCES	0.48 %	128	0.55 %	126	0.51 %	112
	100.00 %	26,431	100.00 %	22,964	100.00 %	21,761

SUMMARY OF RECORDED OFFENCES, RATE PER 10,000 POPULATION AND RESOLVED OFFENCES, BY AREA
years ending 31 December

TOTAL CRIME

Area Description	Recorded 2011	Recorded 2012	Variance 2011-2012	Recorded per 10,000 pop 2011	Recorded per 10,000 pop 2012	Per 10,000 pop % Variance 2011 to 2012	Resolved 2011	Resolved 2012	Resolution Rate 2011	Resolution Rate 2012
Dunedin	10,188	9,456	-7.2 %	720.1	664.7	-7.7 %	5,111	5,003	50.2 %	52.9 %
Otago Rural	4,902	4,786	-2.4 %	721.5	698.6	-3.2 %	2,769	2,661	56.5 %	55.6 %
Southland	7,874	7,519	-4.5 %	812.2	775.2	-4.6 %	4,615	4,452	58.6 %	59.2 %
	22,964	21,761	-5.2 %	749.5	707.1	-5.7 %	12,495	12,116	54.4 %	55.7 %

SUMMARY OF RECORDED OFFENCES, RATE PER 10,000 POPULATION AND RESOLVED OFFENCES, BY DIVISION

Years ending 31 December

HOMICIDE AND RELATED OFFENCES

Area Description	Recorded 2011	Recorded 2012	Variance 2011-2012	Recorded per 10,000 pop 2011	Recorded per 10,000 pop 2012	Per 10,000 pop % Variance 2011 to 2012	Resolved 2011	Resolved 2012	Resolution Rate 2011	Resolution Rate 2012
Dunedin	4	2	-50.0 %	0.3	0.1	-50.3 %	4	2	100.0 %	100.0 %
Otago Rural	1	0	-100.0 %	0.1	0.0	-100.0 %	1	0	100.0 %	0.0 %
Southland	1	2	100.0 %	0.1	0.2	99.9 %	1	1	100.0 %	50.0 %
	6	4	-33.3 %	0.2	0.1	-33.6 %	6	3	100.0 %	75.0 %

ACTS INTENDED TO CAUSE INJURY

Area Description	Recorded 2011	Recorded 2012	Variance 2011-2012	Recorded per 10,000 pop 2011	Recorded per 10,000 pop 2012	Per 10,000 pop % Variance 2011 to 2012	Resolved 2011	Resolved 2012	Resolution Rate 2011	Resolution Rate 2012
Dunedin	1,193	1,118	-6.3 %	84.3	78.6	-6.8 %	969	904	81.2 %	80.9 %
Otago Rural	551	532	-3.4 %	81.1	77.7	-4.3 %	480	454	87.1 %	85.3 %
Southland	990	1,006	1.6 %	102.1	103.7	1.6 %	892	900	90.1 %	89.5 %
	2,734	2,656	-2.9 %	89.2	86.3	-3.3 %	2,341	2,258	85.6 %	85.0 %

SEXUAL ASSAULT AND RELATED OFFENCES

Area Description	Recorded 2011	Recorded 2012	Variance 2011-2012	Recorded per 10,000 pop 2011	Recorded per 10,000 pop 2012	Per 10,000 pop % Variance 2011 to 2012	Resolved 2011	Resolved 2012	Resolution Rate 2011	Resolution Rate 2012
Dunedin	73	72	-1.4 %	5.2	5.1	-1.9 %	30	31	41.1 %	43.1 %
Otago Rural	30	21	-30.0 %	4.4	3.1	-30.6 %	15	10	50.0 %	47.6 %
Southland	63	71	12.7 %	6.5	7.3	12.6 %	36	46	57.1 %	64.8 %
	166	164	-1.2 %	5.4	5.3	-1.7 %	81	87	48.8 %	53.0 %

DANGEROUS OR NEGLIGENT ACTS ENDANGERING PERSONS

Area Description	Recorded 2011	Recorded 2012	Variance 2011-2012	Recorded per 10,000 pop 2011	Recorded per 10,000 pop 2012	Per 10,000 pop % Variance 2011 to 2012	Resolved 2011	Resolved 2012	Resolution Rate 2011	Resolution Rate 2012
Dunedin	21	30	42.9 %	1.5	2.1	42.1 %	16	17	76.2 %	56.7 %
Otago Rural	17	23	35.3 %	2.5	3.4	34.2 %	10	12	58.8 %	52.2 %
Southland	41	31	-24.4 %	4.2	3.2	-24.4 %	26	20	63.4 %	64.5 %
	79	84	6.3 %	2.6	2.7	5.8 %	52	49	65.8 %	58.3 %

ABDUCTION, HARASSMENT AND OTHER RELATED OFFENCES AGAINST A PERSON

Area Description	Recorded 2011	Recorded 2012	Variance 2011-2012	Recorded per 10,000 pop 2011	Recorded per 10,000 pop 2012	Per 10,000 pop % Variance 2011 to 2012	Resolved 2011	Resolved 2012	Resolution Rate 2011	Resolution Rate 2012
Dunedin	362	350	-3.3 %	25.6	24.6	-3.8 %	278	270	76.8 %	77.1 %
Otago Rural	110	134	21.8 %	16.2	19.6	20.8 %	98	105	89.1 %	78.4 %
Southland	282	281	-0.4 %	29.1	29.0	-0.4 %	256	256	90.8 %	91.1 %
	754	765	1.5 %	24.6	24.9	1.0 %	632	631	83.8 %	82.5 %

ROBBERY, EXTORTION AND RELATED OFFENCES

Area Description	Recorded 2011	Recorded 2012	Variance 2011-2012	Recorded per 10,000 pop 2011	Recorded per 10,000 pop 2012	Per 10,000 pop % Variance 2011 to 2012	Resolved 2011	Resolved 2012	Resolution Rate 2011	Resolution Rate 2012
Dunedin	34	23	-32.4 %	2.4	1.6	-32.7 %	14	11	41.2 %	47.8 %
Otago Rural	4	10	150.0 %	0.6	1.5	147.9 %	4	7	100.0 %	70.0 %
Southland	15	10	-33.3 %	1.5	1.0	-33.4 %	13	9	86.7 %	90.0 %
	53	43	-18.9 %	1.7	1.4	-19.2 %	31	27	58.5 %	62.8 %

SUMMARY OF RECORDED OFFENCES, RATE PER 10,000 POPULATION AND RESOLVED OFFENCES, BY DIVISION

Years ending 31 December

UNLAWFUL ENTRY WITH INTENT/BURGLARY, BREAK AND ENTER

Area Description	Recorded 2011	Recorded 2012	Variance 2011-2012	Recorded per 10,000 pop 2011	Recorded per 10,000 pop 2012	Per 10,000 pop % Variance 2011 to 2012	Resolved 2011	Resolved 2012	Resolution Rate 2011	Resolution Rate 2012
Dunedin	921	779	-15.4 %	65.1	54.8	-15.9 %	182	187	19.8 %	24.0 %
Otago Rural	345	304	-11.9 %	50.8	44.4	-12.6 %	83	63	24.1 %	20.7 %
Southland	787	724	-8.0 %	81.2	74.6	-8.1 %	191	176	24.3 %	24.3 %
	2,053	1,807	-12.0 %	67.0	58.7	-12.4 %	456	426	22.2 %	23.6 %

THEFT AND RELATED OFFENCES

Area Description	Recorded 2011	Recorded 2012	Variance 2011-2012	Recorded per 10,000 pop 2011	Recorded per 10,000 pop 2012	Per 10,000 pop % Variance 2011 to 2012	Resolved 2011	Resolved 2012	Resolution Rate 2011	Resolution Rate 2012
Dunedin	3,035	2,748	-9.5 %	214.5	193.2	-9.9 %	1,071	1,107	35.3 %	40.3 %
Otago Rural	1,299	1,276	-1.8 %	191.2	186.3	-2.6 %	390	434	30.0 %	34.0 %
Southland	2,026	1,881	-7.2 %	209.0	193.9	-7.2 %	711	674	35.1 %	35.8 %
	6,360	5,905	-7.2 %	207.6	191.9	-7.6 %	2,172	2,215	34.2 %	37.5 %

FRAUD, DECEPTION AND RELATED OFFENCES

Area Description	Recorded 2011	Recorded 2012	Variance 2011-2012	Recorded per 10,000 pop 2011	Recorded per 10,000 pop 2012	Per 10,000 pop % Variance 2011 to 2012	Resolved 2011	Resolved 2012	Resolution Rate 2011	Resolution Rate 2012
Dunedin	228	321	40.8 %	16.1	22.6	40.0 %	144	247	63.2 %	76.9 %
Otago Rural	108	132	22.2 %	15.9	19.3	21.2 %	78	88	72.2 %	66.7 %
Southland	262	293	11.8 %	27.0	30.2	11.8 %	209	237	79.8 %	80.9 %
	598	746	24.7 %	19.5	24.2	24.2 %	431	572	72.1 %	76.7 %

ILLICIT DRUG OFFENCES

Area Description	Recorded 2011	Recorded 2012	Variance 2011-2012	Recorded per 10,000 pop 2011	Recorded per 10,000 pop 2012	Per 10,000 pop % Variance 2011 to 2012	Resolved 2011	Resolved 2012	Resolution Rate 2011	Resolution Rate 2012
Dunedin	398	432	8.5 %	28.1	30.4	8.0 %	365	397	91.7 %	91.9 %
Otago Rural	357	355	-0.6 %	52.5	51.8	-1.4 %	333	306	93.3 %	86.2 %
Southland	487	357	-26.7 %	50.2	36.8	-26.7 %	468	343	96.1 %	96.1 %
	1,242	1,144	-7.9 %	40.5	37.2	-8.3 %	1,166	1,046	93.9 %	91.4 %

PROHIBITED AND REGULATED WEAPONS AND EXPLOSIVES OFFENCES

Area Description	Recorded 2011	Recorded 2012	Variance 2011-2012	Recorded per 10,000 pop 2011	Recorded per 10,000 pop 2012	Per 10,000 pop % Variance 2011 to 2012	Resolved 2011	Resolved 2012	Resolution Rate 2011	Resolution Rate 2012
Dunedin	153	141	-7.8 %	10.8	9.9	-8.3 %	129	124	84.3 %	87.9 %
Otago Rural	95	67	-29.5 %	14.0	9.8	-30.1 %	84	58	88.4 %	86.6 %
Southland	202	164	-18.8 %	20.8	16.9	-18.9 %	188	152	93.1 %	92.7 %
	450	372	-17.3 %	14.7	12.1	-17.7 %	401	334	89.1 %	89.8 %

PROPERTY DAMAGE AND ENVIRONMENTAL POLLUTION

Area Description	Recorded 2011	Recorded 2012	Variance 2011-2012	Recorded per 10,000 pop 2011	Recorded per 10,000 pop 2012	Per 10,000 pop % Variance 2011 to 2012	Resolved 2011	Resolved 2012	Resolution Rate 2011	Resolution Rate 2012
Dunedin	2,150	1,990	-7.4 %	152.0	139.9	-7.9 %	506	455	23.5 %	22.9 %
Otago Rural	959	896	-6.6 %	141.2	130.8	-7.3 %	292	219	30.4 %	24.4 %
Southland	1,468	1,442	-1.8 %	151.4	148.7	-1.8 %	501	483	34.1 %	33.5 %
	4,577	4,328	-5.4 %	149.4	140.6	-5.9 %	1,299	1,157	28.4 %	26.7 %

SUMMARY OF RECORDED OFFENCES, RATE PER 10,000 POPULATION AND RESOLVED OFFENCES, BY DIVISION

Years ending 31 December

PUBLIC ORDER OFFENCES

Area Description	Recorded 2011	Recorded 2012	Variance 2011-2012	Recorded per 10,000 pop 2011	Recorded per 10,000 pop 2012	Per 10,000 pop % Variance 2011 to 2012	Resolved 2011	Resolved 2012	Resolution Rate 2011	Resolution Rate 2012
Dunedin	1,167	1,069	-8.4 %	82.5	75.1	-8.9 %	1,003	903	85.9 %	84.5 %
Otago Rural	848	876	3.3 %	124.8	127.9	2.4 %	744	775	87.7 %	88.5 %
Southland	935	933	-0.2 %	96.4	96.2	-0.3 %	835	852	89.3 %	91.3 %
	2,950	2,878	-2.4 %	96.3	93.5	-2.9 %	2,582	2,530	87.5 %	87.9 %

OFFENCES AGAINST JUSTICE PROCEDURES, GOVERNMENT SECURITY AND GOVERNMENT OPERATIONS

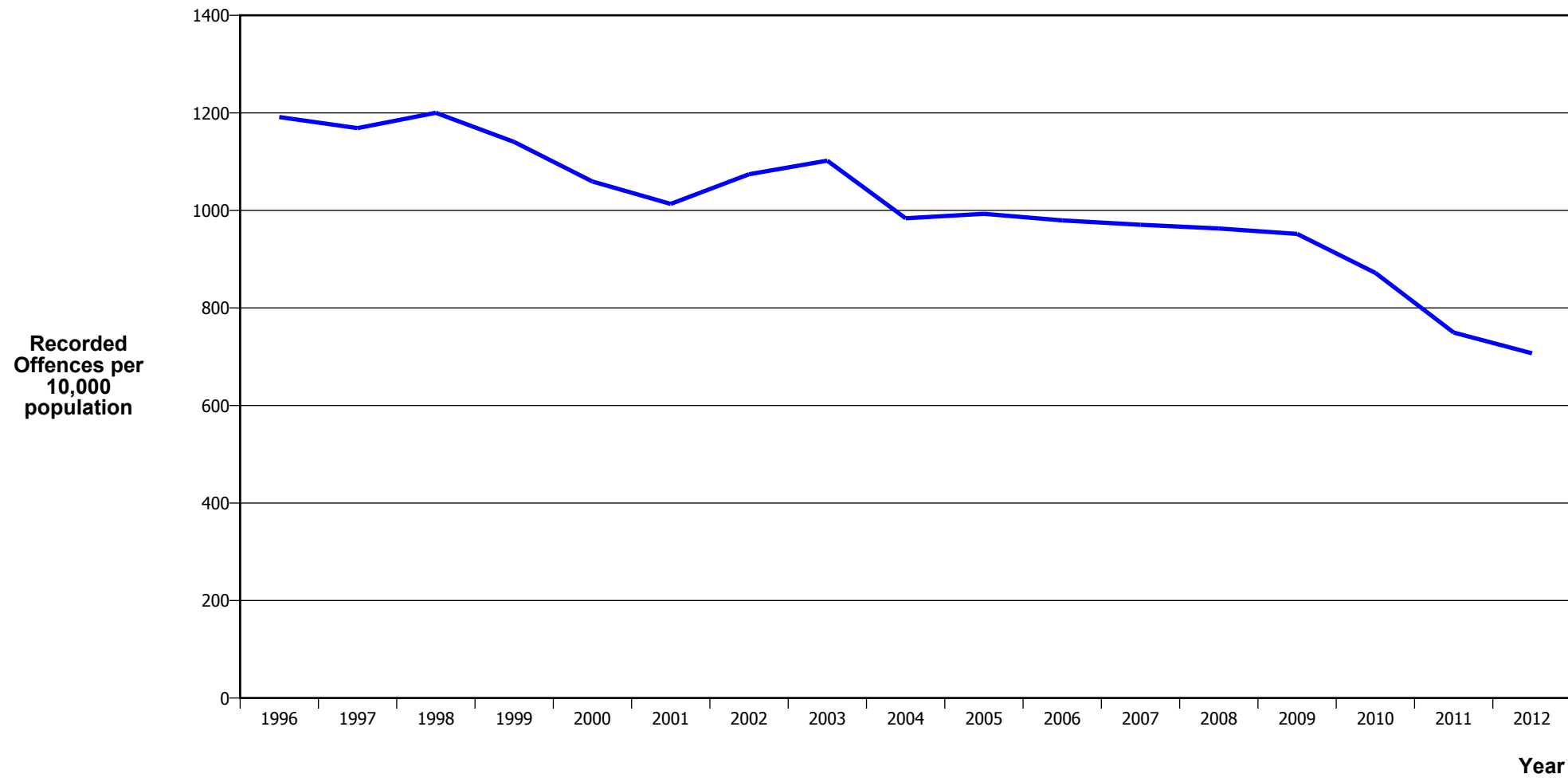
Area Description	Recorded 2011	Recorded 2012	Variance 2011-2012	Recorded per 10,000 pop 2011	Recorded per 10,000 pop 2012	Per 10,000 pop % Variance 2011 to 2012	Resolved 2011	Resolved 2012	Resolution Rate 2011	Resolution Rate 2012
Dunedin	401	352	-12.2 %	28.3	24.7	-12.7 %	364	327	90.8 %	92.9 %
Otago Rural	136	123	-9.6 %	20.0	18.0	-10.3 %	130	106	95.6 %	86.2 %
Southland	279	278	-0.4 %	28.8	28.7	-0.4 %	264	267	94.6 %	96.0 %
	816	753	-7.7 %	26.6	24.5	-8.1 %	758	700	92.9 %	93.0 %

MISCELLANEOUS OFFENCES

Area Description	Recorded 2011	Recorded 2012	Variance 2011-2012	Recorded per 10,000 pop 2011	Recorded per 10,000 pop 2012	Per 10,000 pop % Variance 2011 to 2012	Resolved 2011	Resolved 2012	Resolution Rate 2011	Resolution Rate 2012
Dunedin	48	29	-39.6 %	3.4	2.0	-39.9 %	36	21	75.0 %	72.4 %
Otago Rural	42	37	-11.9 %	6.2	5.4	-12.6 %	27	24	64.3 %	64.9 %
Southland	36	46	27.8 %	3.7	4.7	27.7 %	24	36	66.7 %	78.3 %
	126	112	-11.1 %	4.1	3.6	-11.5 %	87	81	69.0 %	72.3 %

CRIME TRENDS

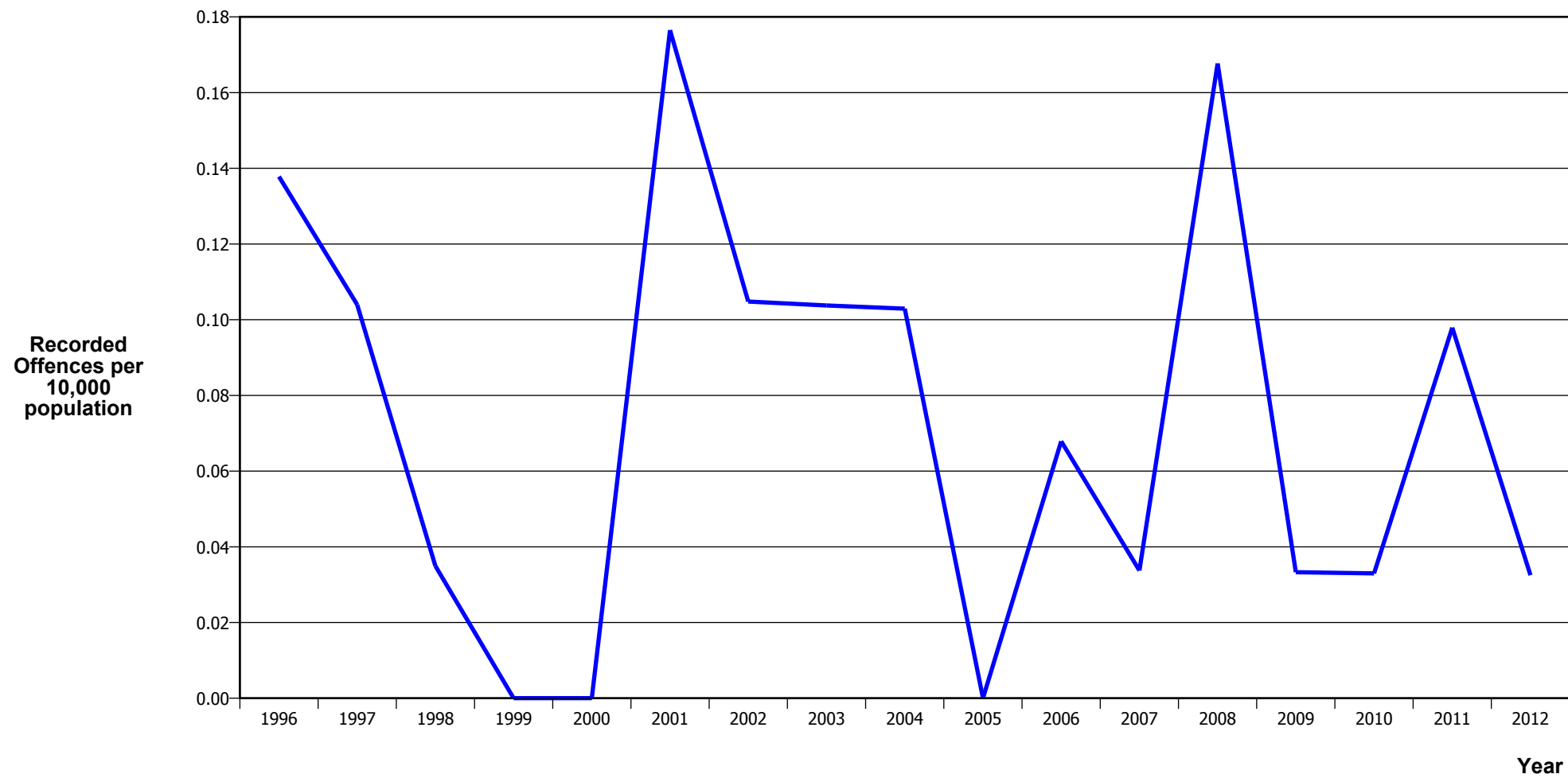
TOTAL CRIME



Calendar Year	1996	1997	1998	1999	2000	2001	2002	2003	2004	2005	2006	2007	2008	2009	2010	2011	2012
Recorded Offences	34,577	33,719	34,353	32,341	29,930	28,704	30,749	31,859	28,677	29,103	28,859	28,760	28,707	28,601	26,431	22,964	21,761
Recorded per 10,000 Population	1,191.4	1,168.7	1,200.1	1,140.4	1,059.3	1,013.3	1,074.2	1,102.0	983.8	993.0	979.6	970.7	962.9	951.8	871.8	749.5	707.1

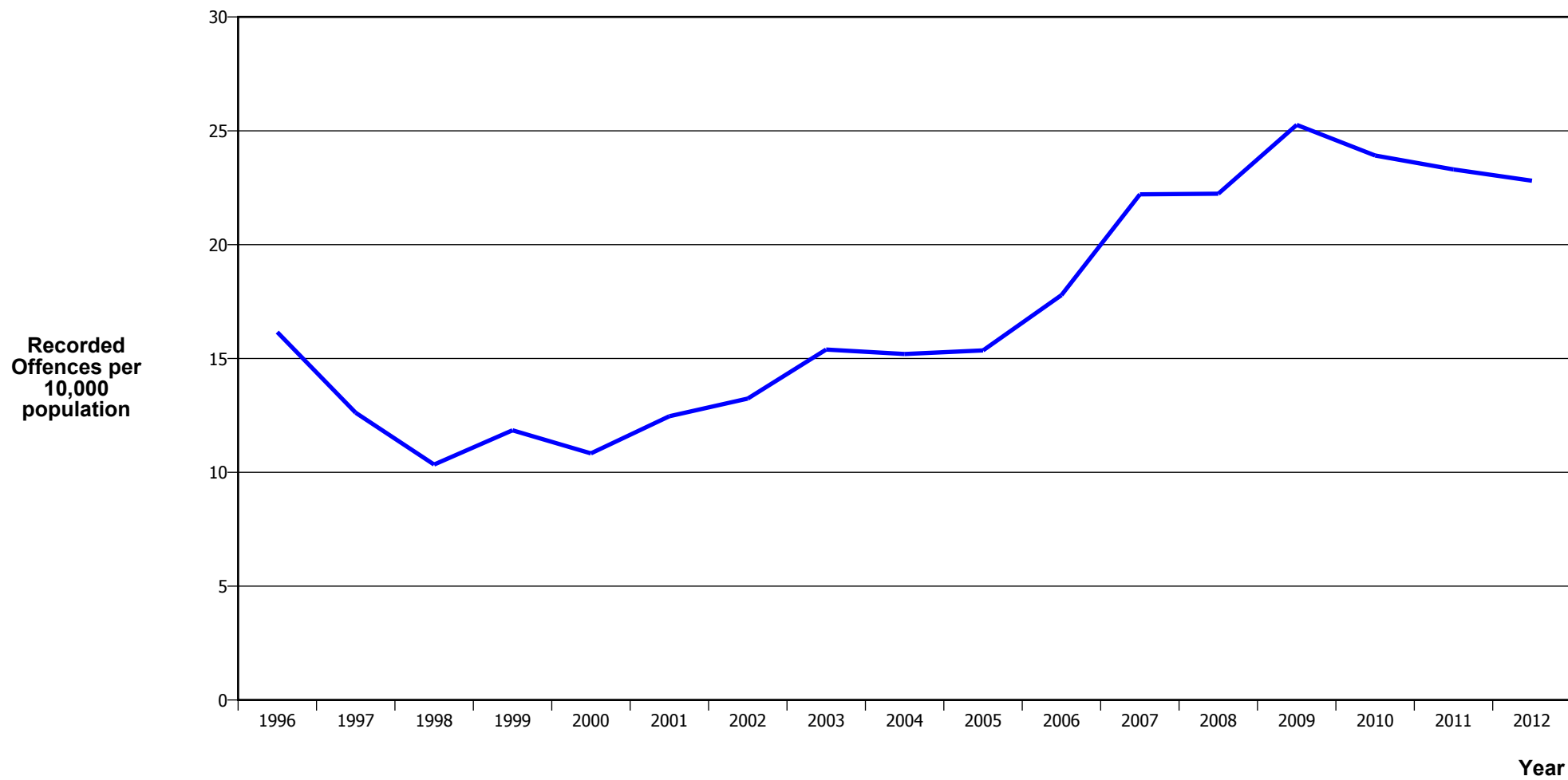
*In 2005/2006 there was a major IT system change (LES to NIA)

MURDER



Calendar Year	1996	1997	1998	1999	2000	2001	2002	2003	2004	2005	2006	2007	2008	2009	2010	2011	2012
Recorded Offences	4	3	1	0	0	5	3	3	3	0	2	1	5	1	1	3	1
Recorded per 10,000 Population	0.14	0.10	0.03	0.00	0.00	0.18	0.10	0.10	0.10	0.00	0.07	0.03	0.17	0.03	0.03	0.10	0.03

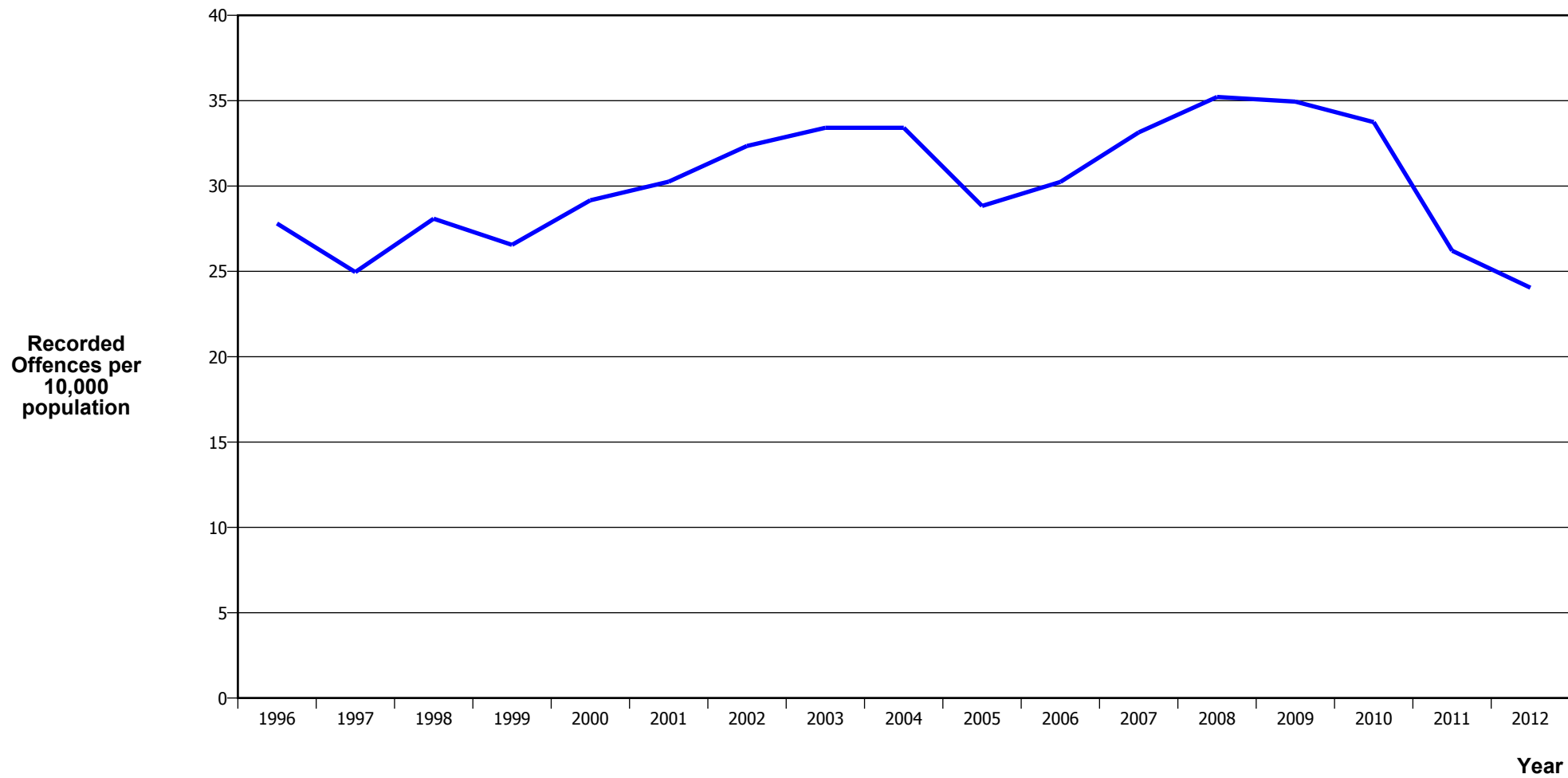
SERIOUS ASSAULTS RESULTING IN INJURY*



Calendar Year	1996	1997	1998	1999	2000	2001	2002	2003	2004	2005	2006	2007	2008	2009	2010	2011	2012
Recorded Offence	469	364	296	336	306	353	379	445	443	450	524	658	663	759	725	714	702
Offence Rate per 10K Popn	16.2	12.6	10.3	11.8	10.8	12.5	13.2	15.4	15.2	15.4	17.8	22.2	22.2	25.3	23.9	23.3	22.8

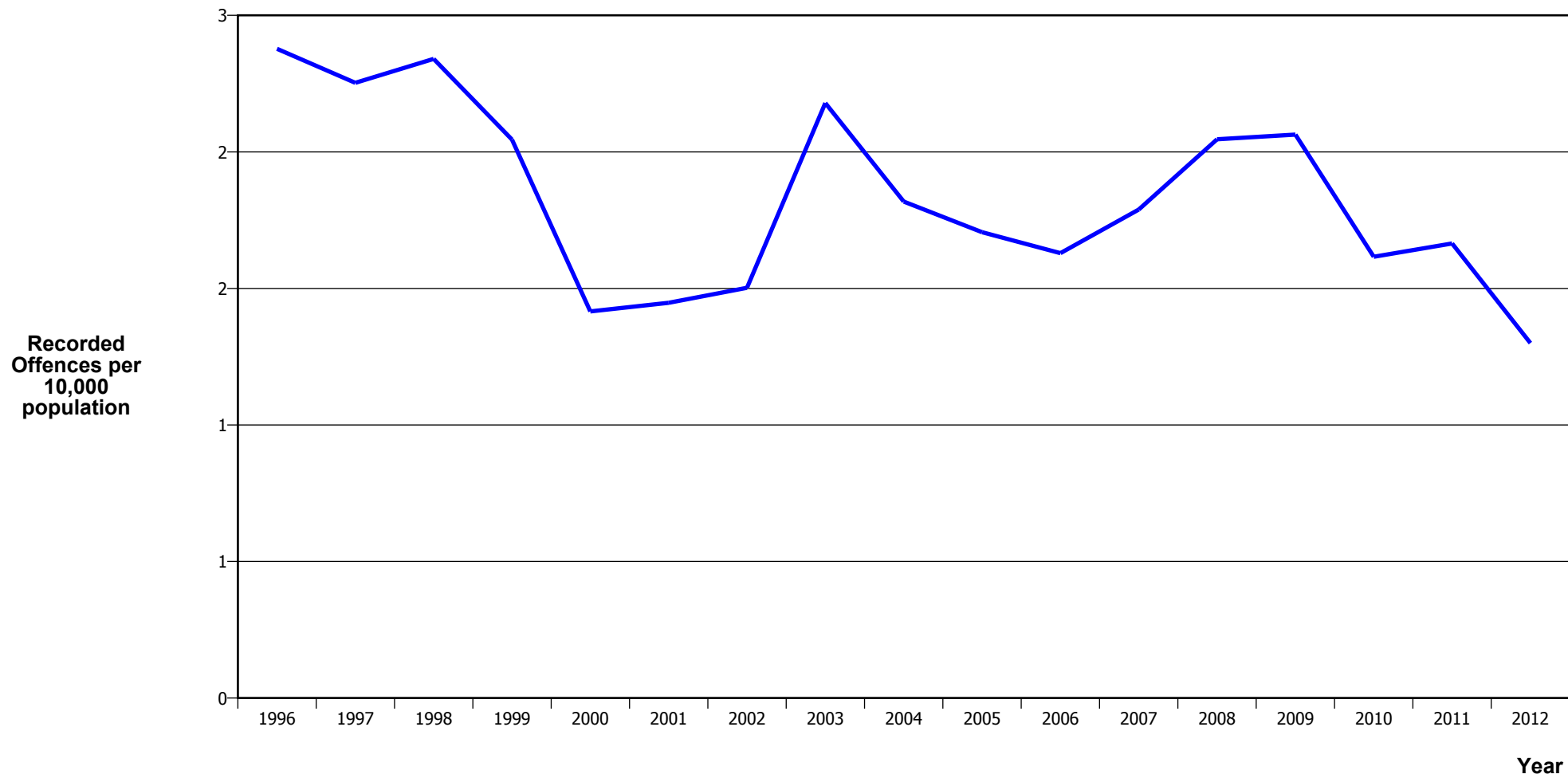
* This measure excludes common assaults

PUBLIC PLACE ASSAULTS



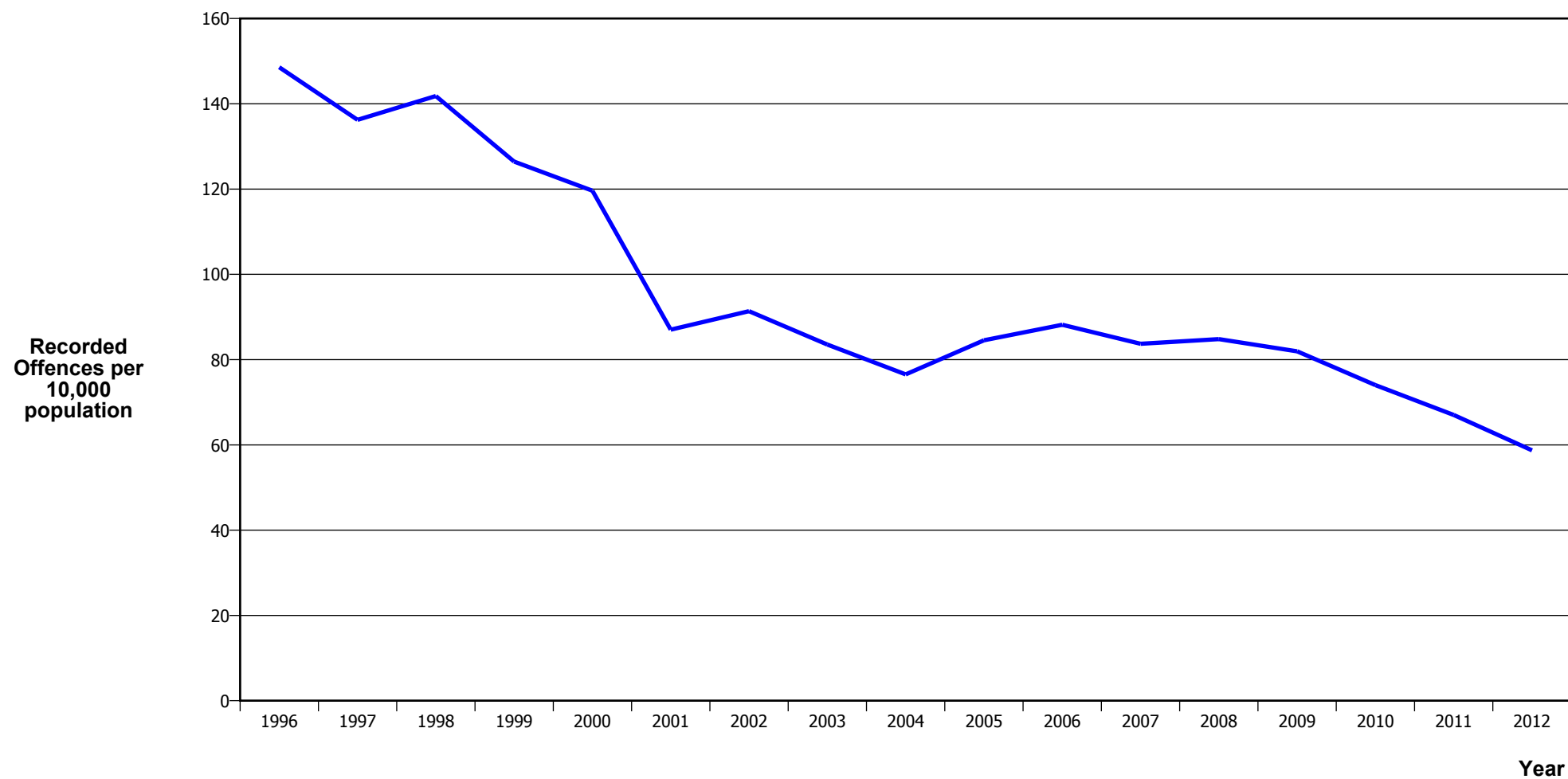
Calendar Year	1996	1997	1998	1999	2000	2001	2002	2003	2004	2005	2006	2007	2008	2009	2010	2011	2012
Recorded Offences	807	720	804	753	824	857	926	966	974	845	891	982	1,050	1,050	1,023	803	740
Recorded per 10,000 Population	27.8	25.0	28.1	26.6	29.2	30.3	32.3	33.4	33.4	28.8	30.2	33.1	35.2	34.9	33.7	26.2	24.0

ROBBERY



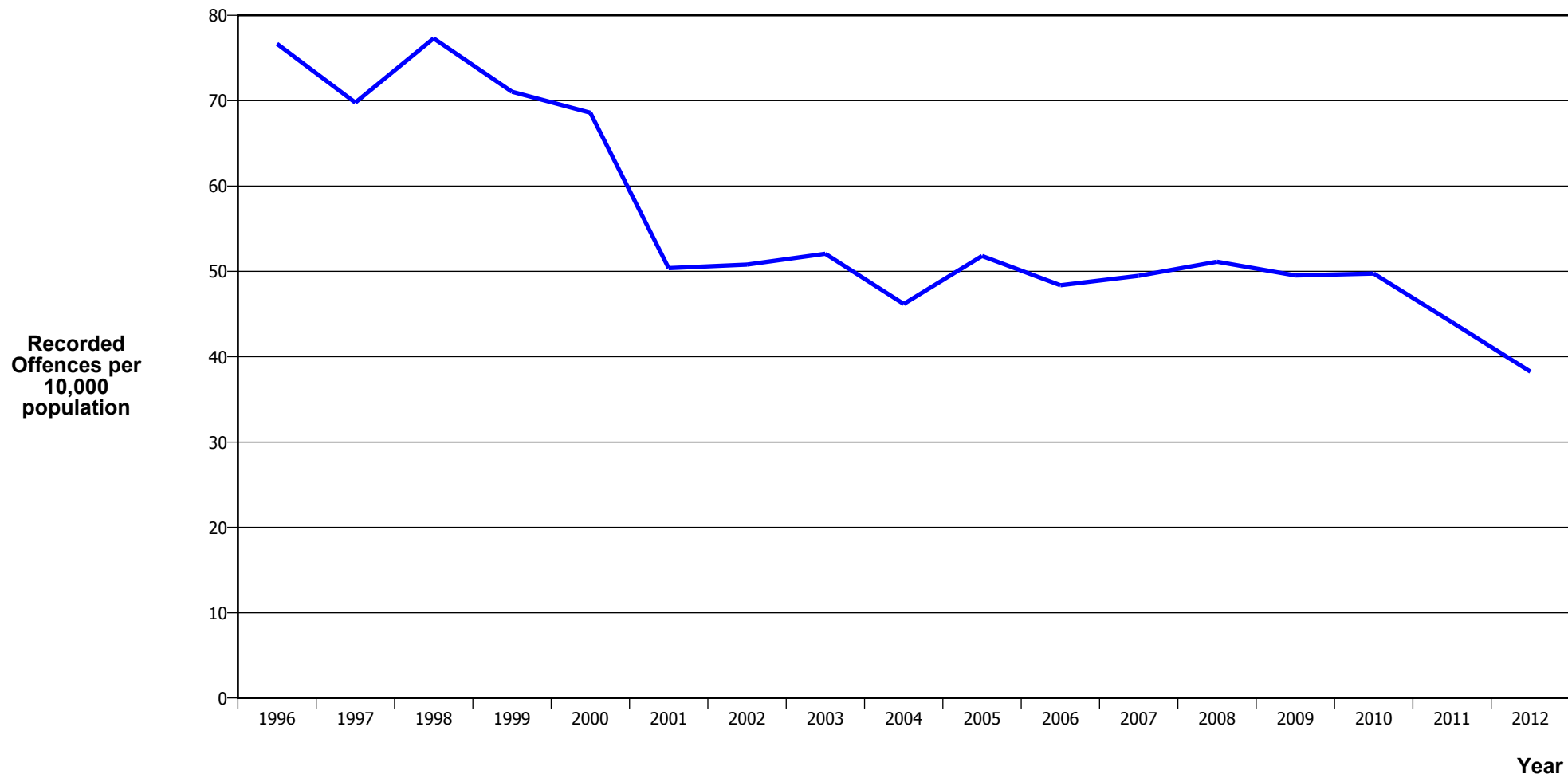
Calendar Year	1996	1997	1998	1999	2000	2001	2002	2003	2004	2005	2006	2007	2008	2009	2010	2011	2012
Recorded Offences	69	65	67	58	40	41	43	63	53	50	48	53	61	62	49	51	40
Recorded per 10,000 Population	2.4	2.3	2.3	2.0	1.4	1.4	1.5	2.2	1.8	1.7	1.6	1.8	2.0	2.1	1.6	1.7	1.3

BURGLARY (TOTAL)



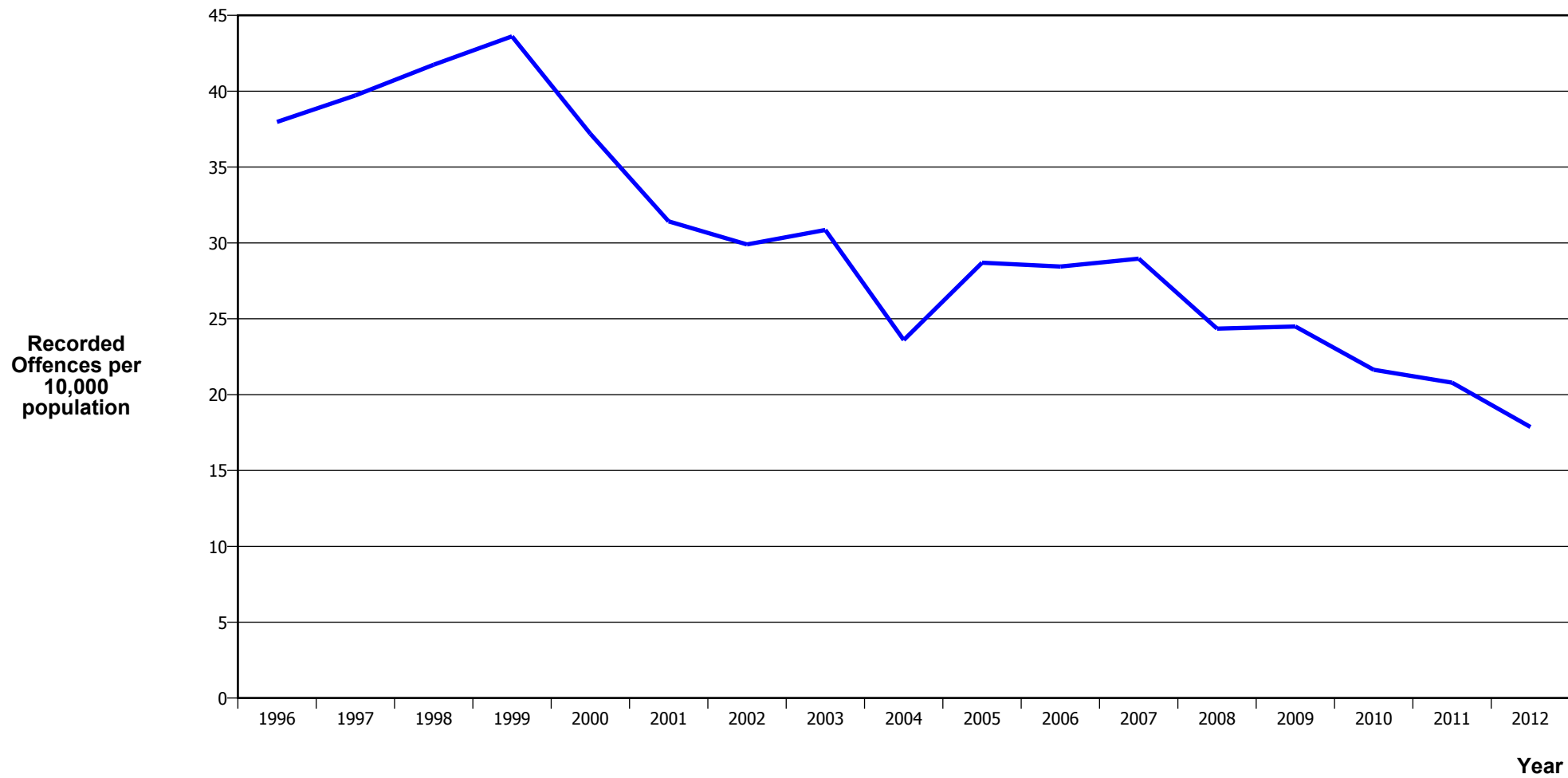
Calendar Year	1996	1997	1998	1999	2000	2001	2002	2003	2004	2005	2006	2007	2008	2009	2010	2011	2012
Recorded Offences	4,312	3,931	4,060	3,586	3,380	2,465	2,615	2,415	2,231	2,478	2,598	2,480	2,528	2,462	2,244	2,053	1,807
Recorded per 10,000 Population	148.6	136.3	141.8	126.5	119.6	87.0	91.4	83.5	76.5	84.5	88.2	83.7	84.8	81.9	74.0	67.0	58.7

BURGLARY (DWELLING)



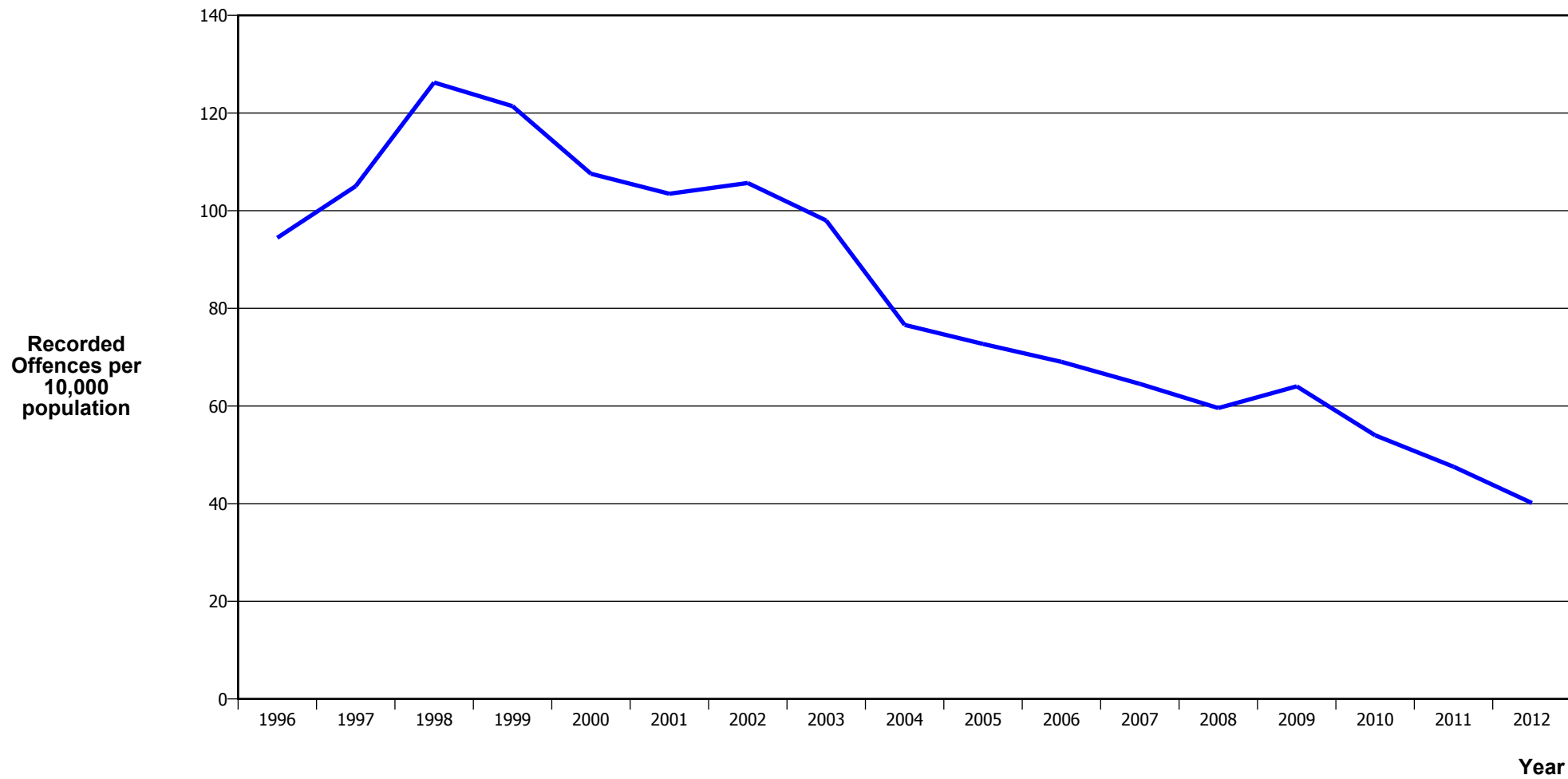
Calendar Year	1996	1997	1998	1999	2000	2001	2002	2003	2004	2005	2006	2007	2008	2009	2010	2011	2012
Recorded Offences	2,225	2,013	2,213	2,015	1,938	1,427	1,454	1,505	1,346	1,518	1,425	1,466	1,524	1,488	1,508	1,349	1,177
Recorded per 10,000 Population	76.7	69.8	77.3	71.1	68.6	50.4	50.8	52.1	46.2	51.8	48.4	49.5	51.1	49.5	49.7	44.0	38.2

VEHICLES STOLEN



Calendar Year	1996	1997	1998	1999	2000	2001	2002	2003	2004	2005	2006	2007	2008	2009	2010	2011	2012
Recorded Offences	1,102	1,146	1,195	1,237	1,051	890	856	892	688	841	838	858	726	736	656	637	550
Recorded per 10,000 Population	38.0	39.7	41.7	43.6	37.2	31.4	29.9	30.9	23.6	28.7	28.4	29.0	24.4	24.5	21.6	20.8	17.9

THEFT EX CAR



Calendar Year	1996	1997	1998	1999	2000	2001	2002	2003	2004	2005	2006	2007	2008	2009	2010	2011	2012
Recorded Offences	2,741	3,030	3,614	3,443	3,039	2,931	3,025	2,833	2,233	2,131	2,034	1,912	1,776	1,924	1,637	1,457	1,235
Recorded per 10,000 Population	94.4	105.0	126.2	121.4	107.6	103.5	105.7	98.0	76.6	72.7	69.0	64.5	59.6	64.0	54.0	47.6	40.1

Population Data

Population data is used in this release to calculate crime rates. They have been derived from population estimates as at 30 June each year that have been obtained from Statistics New Zealand.

The estimated resident population is based on the census usually resident population count, with adjustments for residents missed or counted more than once by the census (net census undercount), and for residents temporarily overseas on census night.

These population estimates exclude the number of international students who are studying in New Zealand for less than 12 months.

Year	Population
1996	290,220
1997	288,510
1998	286,260
1999	283,590
2000	282,540
2001	283,260
2002	286,260
2003	289,110
2004	291,500
2005	293,090
2006	294,610
2007	296,290
2008	298,120
2009	300,490
2010	303,190
2011	306,380
2012	307,770

General Definitions

Recorded Offences: the number of breaches of the New Zealand law recorded by Police. This includes offences specified in the Crimes Act and other legislations, such as the Summary Offences Act, Local Government Act, etc.

Resolved Offences: the number of recorded offences where an offender has been identified and dealt with (e.g. warned, cautioned, prosecuted, etc).

Resolution Rate: the proportion of recorded offences that have been resolved.

Recorded per 10,000 population: the number of recorded offences for every 10,000 people. This is also referred as the crime rate per 10,000 population.

ANZSOC: The Australian and New Zealand Standard Offence Classification. The offence classification is divided into 16 major offence divisions.

Definition of ANZSOC Divisions

1. Homicide and related offences: Unlawfully kill, attempt to unlawfully kill or conspiracy to kill another person.
2. Acts intended to cause injury: Acts, excluding attempted murder and those resulting in death, which are intended to cause non-fatal injury or harm to another person and where there is no sexual or acquisitive element.
3. Sexual assault and related offences: Acts, or intent of acts, of a sexual nature against another person, which are non-consensual or where consent is proscribed.
4. Dangerous or negligent acts endangering persons: Dangerous or negligent acts which, though not intended to cause harm, actually or potentially result in injury to oneself or another person.
5. Abduction, harassment and other offences against person: Acts intended to threaten or harass, or acts that unlawfully deprive another person of their freedom of movement, that are against that person's will or against the will of any parent, guardian or other person having lawful custody or care of that person.
6. Robbery, extortion and related offences: Acts intended to unlawfully gain money, property or other items of value from, or to cause detriment to, another person by using the threat of force or any other coercive measure.
7. Unlawful entry with intent / burglary, break and enter: The unlawful entry of a structure with the intent to commit an offence, where the entry is either forced or unforced.
8. Theft and related and offences: The unlawful taking or obtaining of money or goods, not involving the use of force or violence, coercion or deception, with intent to permanently or temporarily deprive the owner or possessor of the use of the money or goods, or the receiving or handling of money or goods obtained unlawfully.

9. Fraud, deception and related offences: Offences involving a dishonest act or omission carried out with the purpose of deceiving to obtain a benefit.

10. Illicit drug offences: The possessing, selling, dealing or trafficking, importing or exporting, manufacturing or cultivating of drugs or other substances prohibited under legislation.

11. Prohibited and regulated weapons and explosives offences: Offences involving prohibited or regulated weapons and explosives. Those offences also involving assault, sexual assault or robbery are coded to the relevant group within Assault, Sexual assaults and Robbery respectively.

12. Property damage and environmental pollution: The wilful and unlawful destruction, damage or defacement of public or private property, or the pollution of property or a definable entity held in common by the community.

13. Public order offences: Offences relating personal conduct that involves, or may lead to, a breach of public order or decency, or that is indicative of criminal intent, or that is otherwise regulated or prohibited on moral or ethical grounds. In general these offences do not involve a specific victim or victims; however some offences, such as offensive language and offensive behaviour, may be directed towards a single victim.

14. Traffic and vehicle regulatory offences: Offences relating to vehicles and most forms of traffic, including offences pertaining to the licensing, registration, roadworthiness, or use of vehicles, bicycle offences and pedestrian offences.

15. Offences against justice procedures, government security and government operations: An act or omission that is deemed to be prejudicial to the effective carrying out of justice procedures or any government operations. This includes general government operations as well as those specifically concerned with maintaining government security.

16. Miscellaneous offences: Offences involving the breach of statutory rules or regulations governing activities that are prima facie legal, where such offences are not explicitly dealt with under any other division. If an offence is specified under regulation and involves an act that would be illegal under common law or general criminal legislation, the offence is dealt with under the appropriate generic group.