

SOUTHERN DISTRICT CRIME STATISTICS 2011



**A Summary of
Recorded and Resolved Offence
Statistics**

**POLICE NATIONAL HEADQUARTERS
April 2012**

ISSN 1178 - 1645

Table of Contents:

Topic	Page
Report Notes	1
District Summary of Recorded and Resolved Crime, by Division	2-4
Proportions of Recorded Crime by Division	5
Summary of District Recorded Offences, Rate per 10,000 Population and Resolved Offences, by Area	6
Summary of Area Recorded Offences, Rate per 10,000 Population and Resolved Offences, by Division	7-9
Crime Trends	10
Total Crime	11
Murder	12
Serious Assaults Resulting in Injury	13
Public Place Assaults	14
Robbery	15
Burglary (Total)	16
Burglary (Dwelling)	17
Vehicles Stolen	18
Theft Ex Car	19
Population Data	20
General Definition	21-22

REPORT NOTES:

Statistics reported in this document are derived from the Police National Intelligence Application (NIA). These Official Statistics for Recorded and Resolved Offences present a snapshot of data in NIA relating to offences that occur within a given year, as at the date 14 days following the end of that year.

Unless the matter is minor where Police attendance is sufficient, a matter that is reported to or discovered by Police where Police believe an offence is likely to have been committed is counted as a recorded offence.

A recorded offence is counted as resolved when Police apprehend an offender and decide how to deal with him/her. (E.g. warn, prosecute, etc.)

Resolution rate is the percentage of recorded offences that are resolved within 14 days of the end of the year being reported on.

If an offence is resolved 15 days or more after the end of the year it will not appear in the Official Crime Statistics for that or any other year. Resolution Rate therefore undercounts the number of cases that Police have resolved. This phenomenon has a more marked impact for some types of offences than others, such as offences that require long investigations (E.g. many serial crimes, burglaries and murders).

When comparing 2011 Statistics with previous years, the reader should also refer to "Report Notes" published in previous years' reports, as previous changes significantly affect year on year trends.

SUMMARY OF DISTRICT RECORDED AND RESOLVED CRIME, BY DIVISION
Years ending 31 December

HOMICIDE AND RELATED OFFENCES

ASOC Subdivision Description	Recorded 2009	Recorded 2010	Recorded 2011	Variance 2009-2010	Variance 2010-2011	Resolved 2009	Resolved 2010	Resolved 2011	Resolution Rate 2009	Resolution Rate 2010	Resolution Rate 2011
ATTEMPTED MURDER	4	2	1	-50.0 %	-50.0 %	4	2	1	100.0 %	100.0 %	100.0 %
HOMICIDE AND RELATED OFFENCES NOT FURTHER DEFINED	0	0	0	0.0 %	0.0 %	0	0	0	0.0 %	0.0 %	0.0 %
MANSLAUGHTER AND DRIVING CAUSING DEATH	1	0	2	-100.0 %	0.0 %	1	0	2	100.0 %	0.0 %	100.0 %
MURDER	1	1	3	0.0 %	200.0 %	1	1	3	100.0 %	100.0 %	100.0 %
	6	3	6	-50.0 %	100.0 %	6	3	6	100.0 %	100.0 %	100.0 %

ACTS INTENDED TO CAUSE INJURY

ASOC Subdivision Description	Recorded 2009	Recorded 2010	Recorded 2011	Variance 2009-2010	Variance 2010-2011	Resolved 2009	Resolved 2010	Resolved 2011	Resolution Rate 2009	Resolution Rate 2010	Resolution Rate 2011
ASSAULT	3,139	3,029	2,732	-3.5 %	-9.8 %	2,609	2,597	2,340	83.1 %	85.7 %	85.7 %
OTHER ACTS INTENDED TO CAUSE INJURY	2	6	2	200.0 %	-66.7 %	1	4	1	50.0 %	66.7 %	50.0 %
	3,141	3,035	2,734	-3.4 %	-9.9 %	2,610	2,601	2,341	83.1 %	85.7 %	85.6 %

SEXUAL ASSAULT AND RELATED OFFENCES

ASOC Subdivision Description	Recorded 2009	Recorded 2010	Recorded 2011	Variance 2009-2010	Variance 2010-2011	Resolved 2009	Resolved 2010	Resolved 2011	Resolution Rate 2009	Resolution Rate 2010	Resolution Rate 2011
NON-ASSAULTIVE SEXUAL OFFENCES	7	14	1	100.0 %	-92.9 %	3	7	1	42.9 %	50.0 %	100.0 %
SEXUAL ASSAULT	221	152	165	-31.2 %	8.6 %	151	80	80	68.3 %	52.6 %	48.5 %
	228	166	166	-27.2 %	0.0 %	154	87	81	67.5 %	52.4 %	48.8 %

DANGEROUS OR NEGLIGENT ACTS ENDANGERING PERSONS

ASOC Subdivision Description	Recorded 2009	Recorded 2010	Recorded 2011	Variance 2009-2010	Variance 2010-2011	Resolved 2009	Resolved 2010	Resolved 2011	Resolution Rate 2009	Resolution Rate 2010	Resolution Rate 2011
OTHER DANGEROUS OR NEGLIGENT ACTS ENDANGERING PERSONS	85	78	79	-8.2 %	1.3 %	53	49	52	62.4 %	62.8 %	65.8 %
	85	78	79	-8.2 %	1.3 %	53	49	52	62.4 %	62.8 %	65.8 %

ABDUCTION, HARASSMENT AND OTHER RELATED OFFENCES AGAINST A PERSON

ASOC Subdivision Description	Recorded 2009	Recorded 2010	Recorded 2011	Variance 2009-2010	Variance 2010-2011	Resolved 2009	Resolved 2010	Resolved 2011	Resolution Rate 2009	Resolution Rate 2010	Resolution Rate 2011
ABDUCTION AND KIDNAPPING	20	16	6	-20.0 %	-62.5 %	15	14	5	75.0 %	87.5 %	83.3 %
HARASSMENT AND THREATENING BEHAVIOUR	917	874	748	-4.7 %	-14.4 %	697	677	627	76.0 %	77.5 %	83.8 %
	937	890	754	-5.0 %	-15.3 %	712	691	632	76.0 %	77.6 %	83.8 %

ROBBERY, EXTORTION AND RELATED OFFENCES

ASOC Subdivision Description	Recorded 2009	Recorded 2010	Recorded 2011	Variance 2009-2010	Variance 2010-2011	Resolved 2009	Resolved 2010	Resolved 2011	Resolution Rate 2009	Resolution Rate 2010	Resolution Rate 2011
BLACKMAIL AND EXTORTION	3	11	2	266.7 %	-81.8 %	1	6	2	33.3 %	54.5 %	100.0 %
ROBBERY	62	49	51	-21.0 %	4.1 %	31	24	29	50.0 %	49.0 %	56.9 %
	65	60	53	-7.7 %	-11.7 %	32	30	31	49.2 %	50.0 %	58.5 %

UNLAWFUL ENTRY WITH INTENT/BURGLARY, BREAK AND ENTER

ASOC Subdivision Description	Recorded 2009	Recorded 2010	Recorded 2011	Variance 2009-2010	Variance 2010-2011	Resolved 2009	Resolved 2010	Resolved 2011	Resolution Rate 2009	Resolution Rate 2010	Resolution Rate 2011
UNLAWFUL ENTRY WITH INTENT/BURGLARY, BREAK AND ENTER	2,462	2,244	2,053	-8.9 %	-8.5 %	612	577	456	24.9 %	25.7 %	22.2 %
	2,462	2,244	2,053	-8.9 %	-8.5 %	612	577	456	24.9 %	25.7 %	22.2 %

SUMMARY OF DISTRICT RECORDED AND RESOLVED CRIME, BY DIVISION
Years ending 31 December

THEFT AND RELATED OFFENCES

ASOC Subdivision Description	Recorded 2009	Recorded 2010	Recorded 2011	Variance 2009-2010	Variance 2010-2011	Resolved 2009	Resolved 2010	Resolved 2011	Resolution Rate 2009	Resolution Rate 2010	Resolution Rate 2011
ILLEGAL USE OF PROPERTY (EXCEPT MOTOR VEHICLES)	413	323	233	-21.8 %	-27.9 %	34	24	23	8.2 %	7.4 %	9.9 %
MOTOR VEHICLE THEFT AND RELATED OFFENCES	2,660	2,293	2,094	-13.8 %	-8.7 %	499	524	478	18.8 %	22.9 %	22.8 %
RECEIVE OR HANDLE PROCEEDS OF CRIME	150	178	92	18.7 %	-48.3 %	135	170	85	90.0 %	95.5 %	92.4 %
THEFT (EXCEPT MOTOR VEHICLES)	4,754	4,475	3,941	-5.9 %	-11.9 %	1,680	1,732	1,586	35.3 %	38.7 %	40.2 %
	7,977	7,269	6,360	-8.9 %	-12.5 %	2,348	2,450	2,172	29.4 %	33.7 %	34.2 %

FRAUD, DECEPTION AND RELATED OFFENCES

ASOC Subdivision Description	Recorded 2009	Recorded 2010	Recorded 2011	Variance 2009-2010	Variance 2010-2011	Resolved 2009	Resolved 2010	Resolved 2011	Resolution Rate 2009	Resolution Rate 2010	Resolution Rate 2011
DECEPTIVE BUSINESS/GOVERNMENT PRACTICES	4	1	1	-75.0 %	0.0 %	2	1	1	50.0 %	100.0 %	100.0 %
FORGERY AND COUNTERFEITING	41	31	20	-24.4 %	-35.5 %	19	19	17	46.3 %	61.3 %	85.0 %
OBTAIN BENEFIT BY DECEPTION	593	595	544	0.3 %	-8.6 %	368	418	394	62.1 %	70.3 %	72.4 %
OTHER FRAUD AND DECEPTION OFFENCES	54	40	33	-25.9 %	-17.5 %	35	27	19	64.8 %	67.5 %	57.6 %
	692	667	598	-3.6 %	-10.3 %	424	465	431	61.3 %	69.7 %	72.1 %

ILLICIT DRUG OFFENCES

ASOC Subdivision Description	Recorded 2009	Recorded 2010	Recorded 2011	Variance 2009-2010	Variance 2010-2011	Resolved 2009	Resolved 2010	Resolved 2011	Resolution Rate 2009	Resolution Rate 2010	Resolution Rate 2011
DEAL OR TRAFFIC IN ILLICIT DRUGS	341	364	207	6.7 %	-43.1 %	320	347	198	93.8 %	95.3 %	95.7 %
IMPORT OR EXPORT ILLICIT DRUGS	11	6	6	-45.5 %	0.0 %	11	5	5	100.0 %	83.3 %	83.3 %
MANUFACTURE OR CULTIVATE ILLICIT DRUGS	205	315	162	53.7 %	-48.6 %	173	217	137	84.4 %	68.9 %	84.6 %
OTHER ILLICIT DRUG OFFENCES	457	445	312	-2.6 %	-29.9 %	439	433	300	96.1 %	97.3 %	96.2 %
POSSESS AND/OR USE ILLICIT DRUGS	804	726	555	-9.7 %	-23.6 %	754	694	526	93.8 %	95.6 %	94.8 %
	1,818	1,856	1,242	2.1 %	-33.1 %	1,697	1,696	1,166	93.3 %	91.4 %	93.9 %

PROHIBITED AND REGULATED WEAPONS AND EXPLOSIVES OFFENCES

ASOC Subdivision Description	Recorded 2009	Recorded 2010	Recorded 2011	Variance 2009-2010	Variance 2010-2011	Resolved 2009	Resolved 2010	Resolved 2011	Resolution Rate 2009	Resolution Rate 2010	Resolution Rate 2011
REGULATED WEAPONS/EXPLOSIVES OFFENCES	532	505	450	-5.1 %	-10.9 %	484	430	401	91.0 %	85.1 %	89.1 %
	532	505	450	-5.1 %	-10.9 %	484	430	401	91.0 %	85.1 %	89.1 %

PROPERTY DAMAGE AND ENVIRONMENTAL POLLUTION

ASOC Subdivision Description	Recorded 2009	Recorded 2010	Recorded 2011	Variance 2009-2010	Variance 2010-2011	Resolved 2009	Resolved 2010	Resolved 2011	Resolution Rate 2009	Resolution Rate 2010	Resolution Rate 2011
ENVIRONMENTAL POLLUTION	68	46	51	-32.4 %	10.9 %	54	35	47	79.4 %	76.1 %	92.2 %
PROPERTY DAMAGE	5,874	5,180	4,526	-11.8 %	-12.6 %	1,500	1,412	1,252	25.5 %	27.3 %	27.7 %
	5,942	5,226	4,577	-12.0 %	-12.4 %	1,554	1,447	1,299	26.2 %	27.7 %	28.4 %

PUBLIC ORDER OFFENCES

ASOC Subdivision Description	Recorded 2009	Recorded 2010	Recorded 2011	Variance 2009-2010	Variance 2010-2011	Resolved 2009	Resolved 2010	Resolved 2011	Resolution Rate 2009	Resolution Rate 2010	Resolution Rate 2011
DISORDERLY CONDUCT	2,582	2,376	2,277	-8.0 %	-4.2 %	2,230	2,057	2,008	86.4 %	86.6 %	88.2 %
OFFENSIVE CONDUCT	185	229	161	23.8 %	-29.7 %	148	193	131	80.0 %	84.3 %	81.4 %
PUBLIC ORDER OFFENCES NOT FURTHER DEFINED	0	0	0	0.0 %	0.0 %	0	0	0	0.0 %	0.0 %	0.0 %
REGULATED PUBLIC ORDER OFFENCES	705	690	512	-2.1 %	-25.8 %	667	612	443	94.6 %	88.7 %	86.5 %
	3,472	3,295	2,950	-5.1 %	-10.5 %	3,045	2,862	2,582	87.7 %	86.9 %	87.5 %

SUMMARY OF DISTRICT RECORDED AND RESOLVED CRIME, BY DIVISION
Years ending 31 December

OFFENCES AGAINST JUSTICE PROCEDURES, GOVERNMENT SECURITY AND GOVERNMENT OPERATIONS

ASOC Subdivision Description	Recorded 2009	Recorded 2010	Recorded 2011	Variance 2009-2010	Variance 2010-2011	Resolved 2009	Resolved 2010	Resolved 2011	Resolution Rate 2009	Resolution Rate 2010	Resolution Rate 2011
BREACH OF COMMUNITY-BASED ORDER	82	114	81	39.0 %	-28.9 %	71	103	68	86.6 %	90.4 %	84.0 %
BREACH OF CUSTODIAL ORDER OFFENCES	65	74	44	13.8 %	-40.5 %	59	72	40	90.8 %	97.3 %	90.9 %
BREACH OF VIOLENCE AND NON-VIOLENCE RESTRAINING ORDERS	320	262	225	-18.1 %	-14.1 %	290	241	202	90.6 %	92.0 %	89.8 %
OFFENCES AGAINST GOVERNMENT OPERATIONS	19	23	15	21.1 %	-34.8 %	6	7	6	31.6 %	30.4 %	40.0 %
OFFENCES AGAINST GOVERNMENT SECURITY	0	0	1	0.0 %	0.0 %	0	0	0	0.0 %	0.0 %	0.0 %
OFFENCES AGAINST JUSTICE PROCEDURES	624	536	449	-14.1 %	-16.2 %	608	527	441	97.4 %	98.3 %	98.2 %
OFFENCES AGAINST JUSTICE PROCEDURES, GOVERNMENT SECURITY AND GOVERNMENT OPERATIONS NOT FURTHER DEFINED	1	0	1	-100.0 %	0.0 %	0	0	1	0.0 %	0.0 %	100.0 %
	1,111	1,009	816	-9.2 %	-19.1 %	1,034	950	758	93.1 %	94.2 %	92.9 %

MISCELLANEOUS OFFENCES

ASOC Subdivision Description	Recorded 2009	Recorded 2010	Recorded 2011	Variance 2009-2010	Variance 2010-2011	Resolved 2009	Resolved 2010	Resolved 2011	Resolution Rate 2009	Resolution Rate 2010	Resolution Rate 2011
COMMERCIAL/INDUSTRY/FINANCIAL REGULATION	0	6	3	0.0 %	-50.0 %	0	5	2	0.0 %	83.3 %	66.7 %
DEFAMATION, LIBEL AND PRIVACY OFFENCES	8	9	3	12.5 %	-66.7 %	7	6	3	87.5 %	66.7 %	100.0 %
OTHER MISCELLANEOUS OFFENCES	115	100	111	-13.0 %	11.0 %	78	71	77	67.8 %	71.0 %	69.4 %
PUBLIC HEALTH AND SAFETY OFFENCES	10	13	9	30.0 %	-30.8 %	5	6	5	50.0 %	46.2 %	55.6 %
	133	128	126	-3.8 %	-1.6 %	90	88	87	67.7 %	68.8 %	69.0 %

TOTAL	28,601	26,431	22,964	-7.6 %	-13.1 %	14,855	14,426	12,495	51.9 %	54.6 %	54.4 %
--------------	---------------	---------------	---------------	---------------	----------------	---------------	---------------	---------------	---------------	---------------	---------------

PROPORTIONS OF RECORDED CRIME BY DIVISION

Years ending 31 December

ASOC Division Description	Proportions Recorded 2009	Recorded 2009	Proportions Recorded 2010	Recorded 2010	Proportions Recorded 2011	Recorded 2011
HOMICIDE AND RELATED OFFENCES	0.02 %	6	0.01 %	3	0.03 %	6
ACTS INTENDED TO CAUSE INJURY	10.98 %	3,141	11.48 %	3,035	11.91 %	2,734
SEXUAL ASSAULT AND RELATED OFFENCES	0.80 %	228	0.63 %	166	0.72 %	166
DANGEROUS OR NEGLIGENT ACTS ENDANGERING PERSONS	0.30 %	85	0.30 %	78	0.34 %	79
ABDUCTION, HARASSMENT AND OTHER RELATED OFFENCES AGAINST A PERSON	3.28 %	937	3.37 %	890	3.28 %	754
ROBBERY, EXTORTION AND RELATED OFFENCES	0.23 %	65	0.23 %	60	0.23 %	53
UNLAWFUL ENTRY WITH INTENT/BURGLARY, BREAK AND ENTER	8.61 %	2,462	8.49 %	2,244	8.94 %	2,053
THEFT AND RELATED OFFENCES	27.89 %	7,977	27.50 %	7,269	27.70 %	6,360
FRAUD, DECEPTION AND RELATED OFFENCES	2.42 %	692	2.52 %	667	2.60 %	598
ILLICIT DRUG OFFENCES	6.36 %	1,818	7.02 %	1,856	5.41 %	1,242
PROHIBITED AND REGULATED WEAPONS AND EXPLOSIVES OFFENCES	1.86 %	532	1.91 %	505	1.96 %	450
PROPERTY DAMAGE AND ENVIRONMENTAL POLLUTION	20.78 %	5,942	19.77 %	5,226	19.93 %	4,577
PUBLIC ORDER OFFENCES	12.14 %	3,472	12.47 %	3,295	12.85 %	2,950
OFFENCES AGAINST JUSTICE PROCEDURES, GOVERNMENT SECURITY AND GOVERNMENT OPERATIONS	3.88 %	1,111	3.82 %	1,009	3.55 %	816
MISCELLANEOUS OFFENCES	0.47 %	133	0.48 %	128	0.55 %	126
	100.00 %	28,601	100.00 %	26,431	100.00 %	22,964

SUMMARY OF RECORDED OFFENCES, RATE PER 10,000 POPULATION AND RESOLVED OFFENCES, BY AREA
years ending 31 December

TOTAL CRIME

Area Description	Recorded 2010	Recorded 2011	Variance 2010-2011	Recorded per 10,000 pop 2010	Recorded per 10,000 pop 2011	Per 10,000 pop % Variance 2010 to 2011	Resolved 2010	Resolved 2011	Resolution Rate 2010	Resolution Rate 2011
Dunedin	11,716	10,188	-13.0 %	835.8	720.1	-13.9 %	5,956	5,111	50.8 %	50.2 %
Otago Rural	5,925	4,902	-17.3 %	888.0	721.5	-18.8 %	3,384	2,769	57.1 %	56.5 %
Southland	8,790	7,874	-10.4 %	912.8	812.2	-11.0 %	5,086	4,615	57.9 %	58.6 %
	26,431	22,964	-13.1 %	871.8	749.5	-14.0 %	14,426	12,495	54.6 %	54.4 %

SUMMARY OF RECORDED OFFENCES, RATE PER 10,000 POPULATION AND RESOLVED OFFENCES, BY DIVISION

Years ending 31 December

HOMICIDE AND RELATED OFFENCES

Area Description	Recorded 2010	Recorded 2011	Variance 2010-2011	Recorded per 10,000 pop 2010	Recorded per 10,000 pop 2011	Per 10,000 pop % Variance 2010 to 2011	Resolved 2010	Resolved 2011	Resolution Rate 2010	Resolution Rate 2011
Dunedin	1	4	300.0 %	0.1	0.3	296.3 %	1	4	100.0 %	100.0 %
Otago Rural	1	1	0.0 %	0.1	0.1	-1.8 %	1	1	100.0 %	100.0 %
Southland	1	1	0.0 %	0.1	0.1	-0.7 %	1	1	100.0 %	100.0 %
	3	6	100.0 %	0.1	0.2	97.9 %	3	6	100.0 %	100.0 %

ACTS INTENDED TO CAUSE INJURY

Area Description	Recorded 2010	Recorded 2011	Variance 2010-2011	Recorded per 10,000 pop 2010	Recorded per 10,000 pop 2011	Per 10,000 pop % Variance 2010 to 2011	Resolved 2010	Resolved 2011	Resolution Rate 2010	Resolution Rate 2011
Dunedin	1,322	1,193	-9.8 %	94.3	84.3	-10.6 %	1,080	969	81.7 %	81.2 %
Otago Rural	648	551	-15.0 %	97.1	81.1	-16.5 %	572	480	88.3 %	87.1 %
Southland	1,065	990	-7.0 %	110.6	102.1	-7.7 %	949	892	89.1 %	90.1 %
	3,035	2,734	-9.9 %	100.1	89.2	-10.9 %	2,601	2,341	85.7 %	85.6 %

SEXUAL ASSAULT AND RELATED OFFENCES

Area Description	Recorded 2010	Recorded 2011	Variance 2010-2011	Recorded per 10,000 pop 2010	Recorded per 10,000 pop 2011	Per 10,000 pop % Variance 2010 to 2011	Resolved 2010	Resolved 2011	Resolution Rate 2010	Resolution Rate 2011
Dunedin	72	73	1.4 %	5.1	5.2	0.4 %	33	30	45.8 %	41.1 %
Otago Rural	29	30	3.4 %	4.3	4.4	1.6 %	15	15	51.7 %	50.0 %
Southland	65	63	-3.1 %	6.7	6.5	-3.7 %	39	36	60.0 %	57.1 %
	166	166	0.0 %	5.5	5.4	-1.0 %	87	81	52.4 %	48.8 %

DANGEROUS OR NEGLIGENT ACTS ENDANGERING PERSONS

Area Description	Recorded 2010	Recorded 2011	Variance 2010-2011	Recorded per 10,000 pop 2010	Recorded per 10,000 pop 2011	Per 10,000 pop % Variance 2010 to 2011	Resolved 2010	Resolved 2011	Resolution Rate 2010	Resolution Rate 2011
Dunedin	19	21	10.5 %	1.4	1.5	9.5 %	11	16	57.9 %	76.2 %
Otago Rural	18	17	-5.6 %	2.7	2.5	-7.3 %	11	10	61.1 %	58.8 %
Southland	41	41	0.0 %	4.3	4.2	-0.7 %	27	26	65.9 %	63.4 %
	78	79	1.3 %	2.6	2.6	0.2 %	49	52	62.8 %	65.8 %

ABDUCTION, HARASSMENT AND OTHER RELATED OFFENCES AGAINST A PERSON

Area Description	Recorded 2010	Recorded 2011	Variance 2010-2011	Recorded per 10,000 pop 2010	Recorded per 10,000 pop 2011	Per 10,000 pop % Variance 2010 to 2011	Resolved 2010	Resolved 2011	Resolution Rate 2010	Resolution Rate 2011
Dunedin	410	362	-11.7 %	29.3	25.6	-12.5 %	290	278	70.7 %	76.8 %
Otago Rural	154	110	-28.6 %	23.1	16.2	-29.9 %	124	98	80.5 %	89.1 %
Southland	326	282	-13.5 %	33.9	29.1	-14.1 %	277	256	85.0 %	90.8 %
	890	754	-15.3 %	29.4	24.6	-16.2 %	691	632	77.6 %	83.8 %

ROBBERY, EXTORTION AND RELATED OFFENCES

Area Description	Recorded 2010	Recorded 2011	Variance 2010-2011	Recorded per 10,000 pop 2010	Recorded per 10,000 pop 2011	Per 10,000 pop % Variance 2010 to 2011	Resolved 2010	Resolved 2011	Resolution Rate 2010	Resolution Rate 2011
Dunedin	32	34	6.3 %	2.3	2.4	5.3 %	13	14	40.6 %	41.2 %
Otago Rural	7	4	-42.9 %	1.0	0.6	-43.9 %	2	4	28.6 %	100.0 %
Southland	21	15	-28.6 %	2.2	1.5	-29.1 %	15	13	71.4 %	86.7 %
	60	53	-11.7 %	2.0	1.7	-12.6 %	30	31	50.0 %	58.5 %

SUMMARY OF RECORDED OFFENCES, RATE PER 10,000 POPULATION AND RESOLVED OFFENCES, BY DIVISION

Years ending 31 December

UNLAWFUL ENTRY WITH INTENT/BURGLARY, BREAK AND ENTER

Area Description	Recorded 2010	Recorded 2011	Variance 2010-2011	Recorded per 10,000 pop 2010	Recorded per 10,000 pop 2011	Per 10,000 pop % Variance 2010 to 2011	Resolved 2010	Resolved 2011	Resolution Rate 2010	Resolution Rate 2011
Dunedin	1,002	921	-8.1 %	71.5	65.1	-8.9 %	242	182	24.2 %	19.8 %
Otago Rural	400	345	-13.8 %	60.0	50.8	-15.3 %	125	83	31.3 %	24.1 %
Southland	842	787	-6.5 %	87.4	81.2	-7.2 %	210	191	24.9 %	24.3 %
	2,244	2,053	-8.5 %	74.0	67.0	-9.5 %	577	456	25.7 %	22.2 %

THEFT AND RELATED OFFENCES

Area Description	Recorded 2010	Recorded 2011	Variance 2010-2011	Recorded per 10,000 pop 2010	Recorded per 10,000 pop 2011	Per 10,000 pop % Variance 2010 to 2011	Resolved 2010	Resolved 2011	Resolution Rate 2010	Resolution Rate 2011
Dunedin	3,452	3,035	-12.1 %	246.3	214.5	-12.9 %	1,210	1,071	35.1 %	35.3 %
Otago Rural	1,538	1,299	-15.5 %	230.5	191.2	-17.1 %	468	390	30.4 %	30.0 %
Southland	2,279	2,026	-11.1 %	236.7	209.0	-11.7 %	772	711	33.9 %	35.1 %
	7,269	6,360	-12.5 %	239.8	207.6	-13.4 %	2,450	2,172	33.7 %	34.2 %

FRAUD, DECEPTION AND RELATED OFFENCES

Area Description	Recorded 2010	Recorded 2011	Variance 2010-2011	Recorded per 10,000 pop 2010	Recorded per 10,000 pop 2011	Per 10,000 pop % Variance 2010 to 2011	Resolved 2010	Resolved 2011	Resolution Rate 2010	Resolution Rate 2011
Dunedin	283	228	-19.4 %	20.2	16.1	-20.2 %	177	144	62.5 %	63.2 %
Otago Rural	195	108	-44.6 %	29.2	15.9	-45.6 %	148	78	75.9 %	72.2 %
Southland	189	262	38.6 %	19.6	27.0	37.7 %	140	209	74.1 %	79.8 %
	667	598	-10.3 %	22.0	19.5	-11.3 %	465	431	69.7 %	72.1 %

ILLICIT DRUG OFFENCES

Area Description	Recorded 2010	Recorded 2011	Variance 2010-2011	Recorded per 10,000 pop 2010	Recorded per 10,000 pop 2011	Per 10,000 pop % Variance 2010 to 2011	Resolved 2010	Resolved 2011	Resolution Rate 2010	Resolution Rate 2011
Dunedin	685	398	-41.9 %	48.9	28.1	-42.4 %	628	365	91.7 %	91.7 %
Otago Rural	523	357	-31.7 %	78.4	52.5	-33.0 %	448	333	85.7 %	93.3 %
Southland	648	487	-24.8 %	67.3	50.2	-25.3 %	620	468	95.7 %	96.1 %
	1,856	1,242	-33.1 %	61.2	40.5	-33.8 %	1,696	1,166	91.4 %	93.9 %

PROHIBITED AND REGULATED WEAPONS AND EXPLOSIVES OFFENCES

Area Description	Recorded 2010	Recorded 2011	Variance 2010-2011	Recorded per 10,000 pop 2010	Recorded per 10,000 pop 2011	Per 10,000 pop % Variance 2010 to 2011	Resolved 2010	Resolved 2011	Resolution Rate 2010	Resolution Rate 2011
Dunedin	189	153	-19.0 %	13.5	10.8	-19.8 %	155	129	82.0 %	84.3 %
Otago Rural	118	95	-19.5 %	17.7	14.0	-20.9 %	101	84	85.6 %	88.4 %
Southland	198	202	2.0 %	20.6	20.8	1.3 %	174	188	87.9 %	93.1 %
	505	450	-10.9 %	16.7	14.7	-11.8 %	430	401	85.1 %	89.1 %

PROPERTY DAMAGE AND ENVIRONMENTAL POLLUTION

Area Description	Recorded 2010	Recorded 2011	Variance 2010-2011	Recorded per 10,000 pop 2010	Recorded per 10,000 pop 2011	Per 10,000 pop % Variance 2010 to 2011	Resolved 2010	Resolved 2011	Resolution Rate 2010	Resolution Rate 2011
Dunedin	2,453	2,150	-12.4 %	175.0	152.0	-13.2 %	564	506	23.0 %	23.5 %
Otago Rural	1,098	959	-12.7 %	164.6	141.2	-14.2 %	353	292	32.1 %	30.4 %
Southland	1,675	1,468	-12.4 %	173.9	151.4	-12.9 %	530	501	31.6 %	34.1 %
	5,226	4,577	-12.4 %	172.4	149.4	-13.3 %	1,447	1,299	27.7 %	28.4 %

SUMMARY OF RECORDED OFFENCES, RATE PER 10,000 POPULATION AND RESOLVED OFFENCES, BY DIVISION

Years ending 31 December

PUBLIC ORDER OFFENCES

Area Description	Recorded 2010	Recorded 2011	Variance 2010-2011	Recorded per 10,000 pop 2010	Recorded per 10,000 pop 2011	Per 10,000 pop % Variance 2010 to 2011	Resolved 2010	Resolved 2011	Resolution Rate 2010	Resolution Rate 2011
Dunedin	1,265	1,167	-7.7 %	90.2	82.5	-8.6 %	1,076	1,003	85.1 %	85.9 %
Otago Rural	928	848	-8.6 %	139.1	124.8	-10.3 %	778	744	83.8 %	87.7 %
Southland	1,102	935	-15.2 %	114.4	96.4	-15.7 %	1,008	835	91.5 %	89.3 %
	3,295	2,950	-10.5 %	108.7	96.3	-11.4 %	2,862	2,582	86.9 %	87.5 %

OFFENCES AGAINST JUSTICE PROCEDURES, GOVERNMENT SECURITY AND GOVERNMENT OPERATIONS

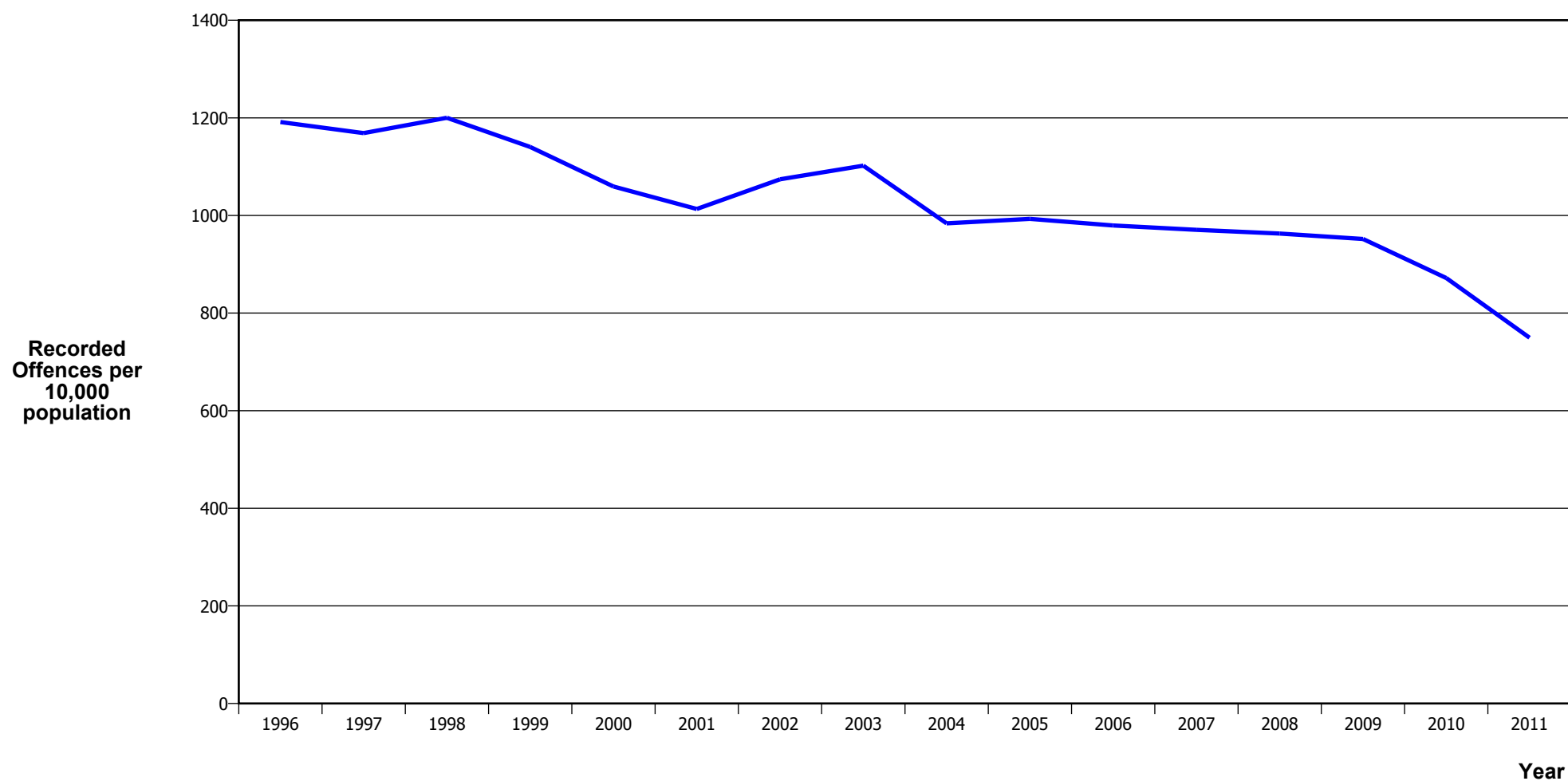
Area Description	Recorded 2010	Recorded 2011	Variance 2010-2011	Recorded per 10,000 pop 2010	Recorded per 10,000 pop 2011	Per 10,000 pop % Variance 2010 to 2011	Resolved 2010	Resolved 2011	Resolution Rate 2010	Resolution Rate 2011
Dunedin	472	401	-15.0 %	33.7	28.3	-15.8 %	433	364	91.7 %	90.8 %
Otago Rural	235	136	-42.1 %	35.2	20.0	-43.2 %	219	130	93.2 %	95.6 %
Southland	302	279	-7.6 %	31.4	28.8	-8.2 %	298	264	98.7 %	94.6 %
	1,009	816	-19.1 %	33.3	26.6	-20.0 %	950	758	94.2 %	92.9 %

MISCELLANEOUS OFFENCES

Area Description	Recorded 2010	Recorded 2011	Variance 2010-2011	Recorded per 10,000 pop 2010	Recorded per 10,000 pop 2011	Per 10,000 pop % Variance 2010 to 2011	Resolved 2010	Resolved 2011	Resolution Rate 2010	Resolution Rate 2011
Dunedin	59	48	-18.6 %	4.2	3.4	-19.4 %	43	36	72.9 %	75.0 %
Otago Rural	33	42	27.3 %	4.9	6.2	25.0 %	19	27	57.6 %	64.3 %
Southland	36	36	0.0 %	3.7	3.7	-0.7 %	26	24	72.2 %	66.7 %
	128	126	-1.6 %	4.2	4.1	-2.6 %	88	87	68.8 %	69.0 %

CRIME TRENDS

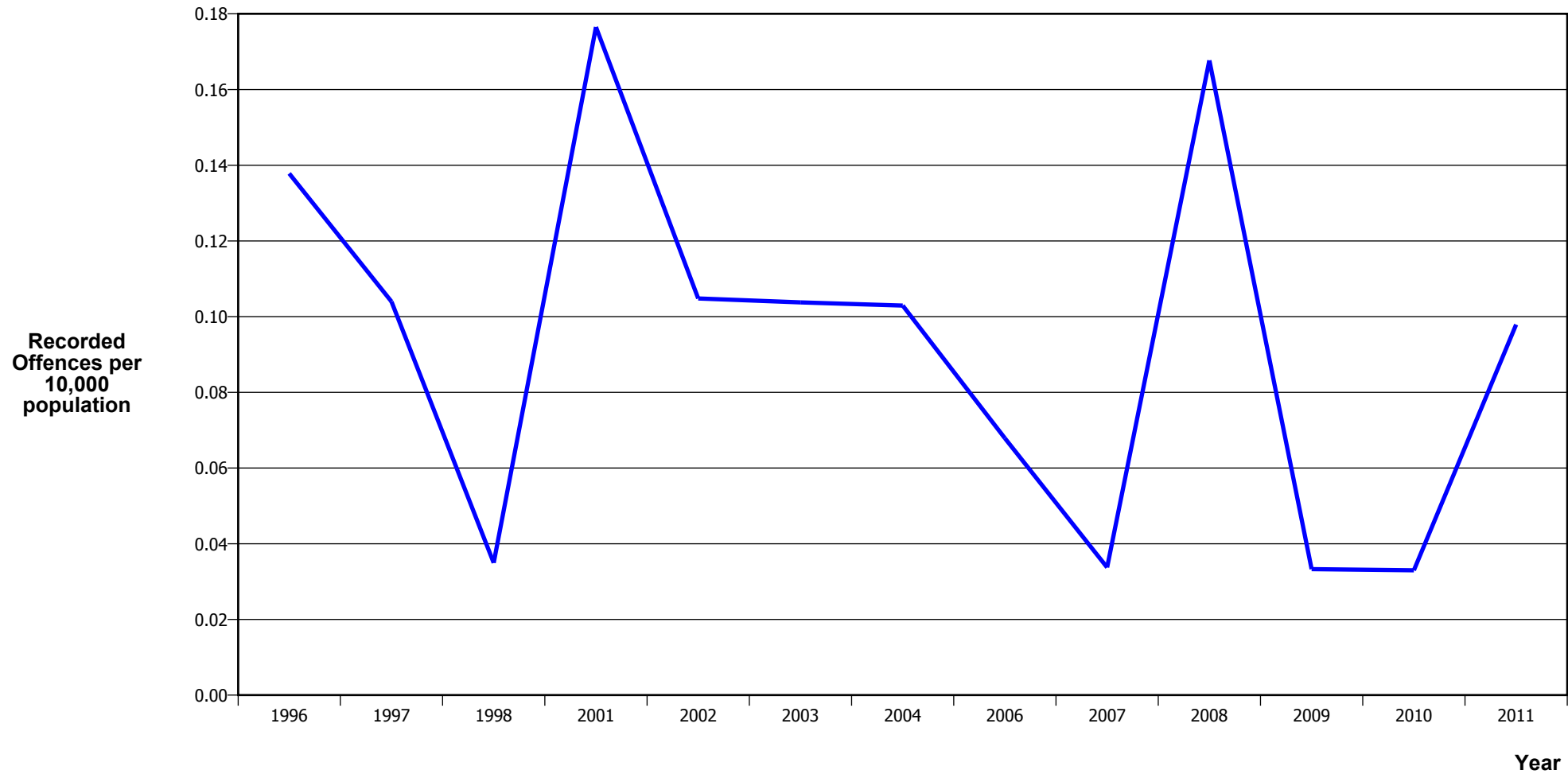
TOTAL CRIME



Calendar Year	1996	1997	1998	1999	2000	2001	2002	2003	2004	2005	2006	2007	2008	2009	2010	2011
Recorded Offences	34,577	33,719	34,353	32,341	29,930	28,704	30,749	31,859	28,677	29,103	28,859	28,760	28,707	28,601	26,431	22,964
Recorded per 10,000 Population	1,191.4	1,168.7	1,200.1	1,140.4	1,059.3	1,013.3	1,074.2	1,102.0	983.8	993.0	979.6	970.7	962.9	951.8	871.8	749.5

*In 2005/2006 there was a major IT system change (LES to NIA)

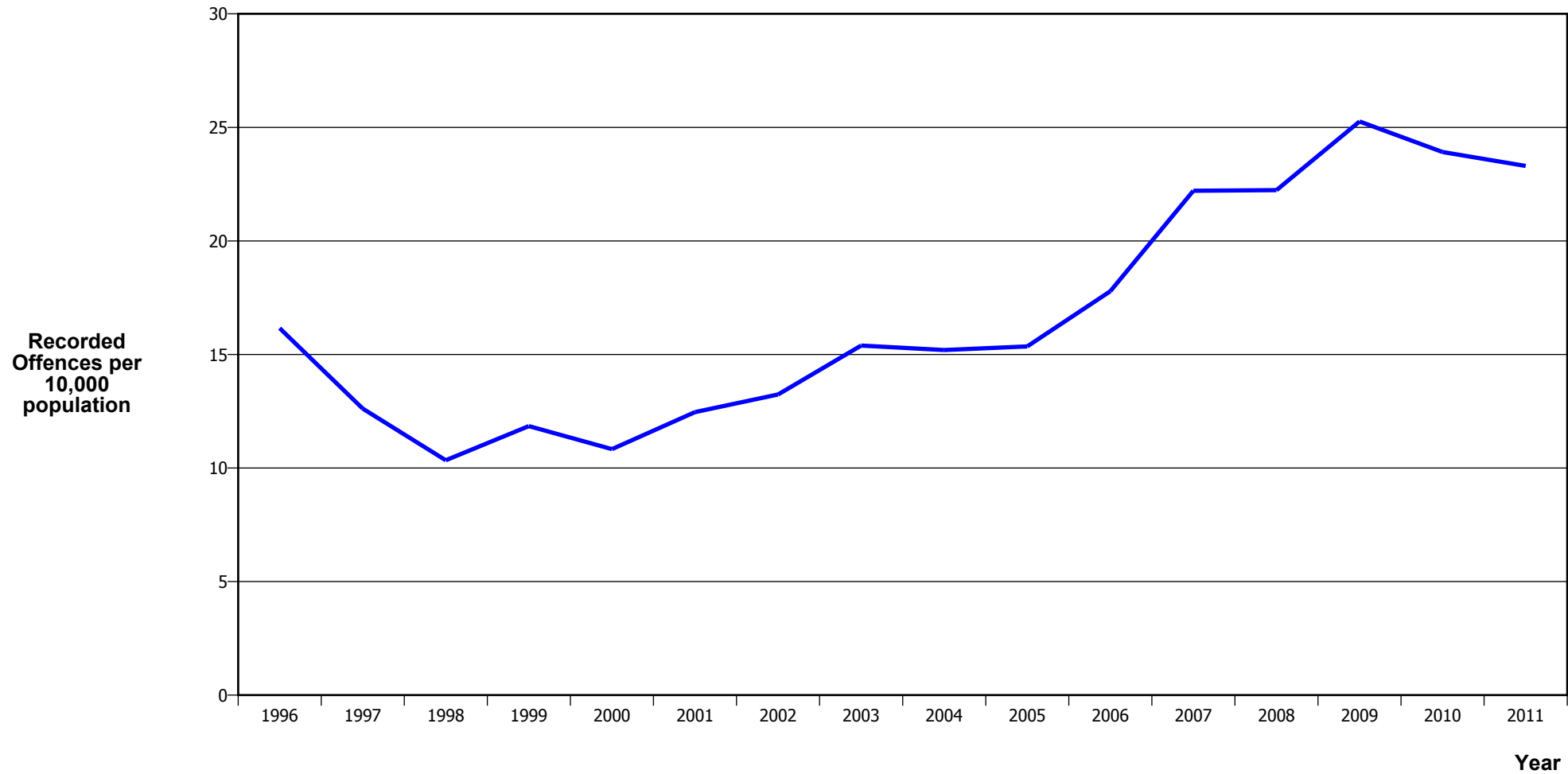
MURDER



Calendar Year	1996	1997	1998	2001	2002	2003	2004	2006	2007	2008	2009	2010	2011
Recorded Offences	4	3	1	5	3	3	3	2	1	5	1	1	3
Recorded per 10,000 Population	0.14	0.10	0.03	0.18	0.10	0.10	0.10	0.07	0.03	0.17	0.03	0.03	0.10

- The 2009 result was significantly influenced by an abnormal one-off spike in August 2009, when 13 murders occurred

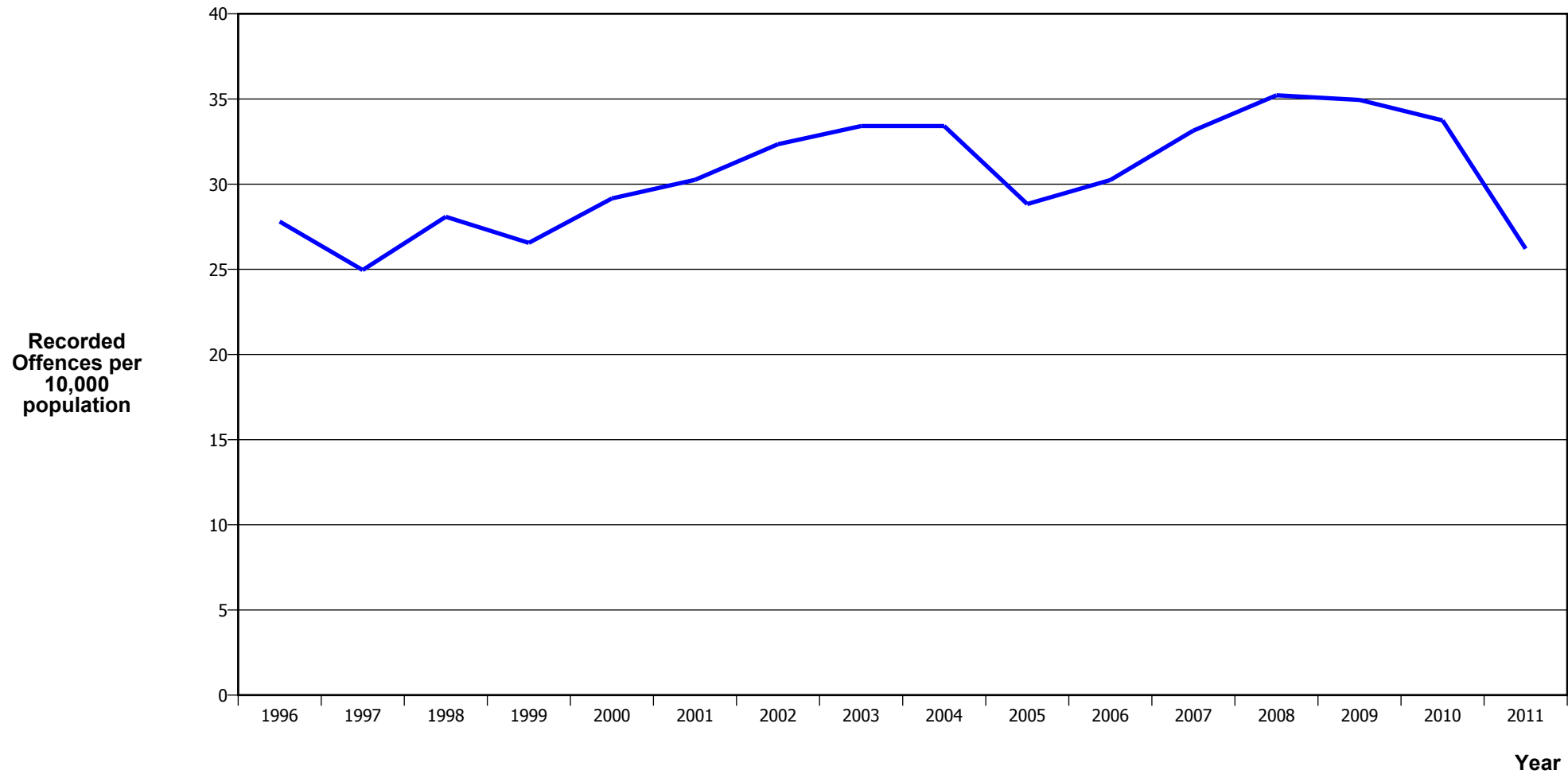
SERIOUS ASSAULTS RESULTING IN INJURY*



Calendar Year	1996	1997	1998	1999	2000	2001	2002	2003	2004	2005	2006	2007	2008	2009	2010	2011
Recorded Offence	469	364	296	336	306	353	379	445	443	450	524	658	663	759	725	714
Offence Rate per 10K Popn	16.2	12.6	10.3	11.8	10.8	12.5	13.2	15.4	15.2	15.4	17.8	22.2	22.2	25.3	23.9	23.3

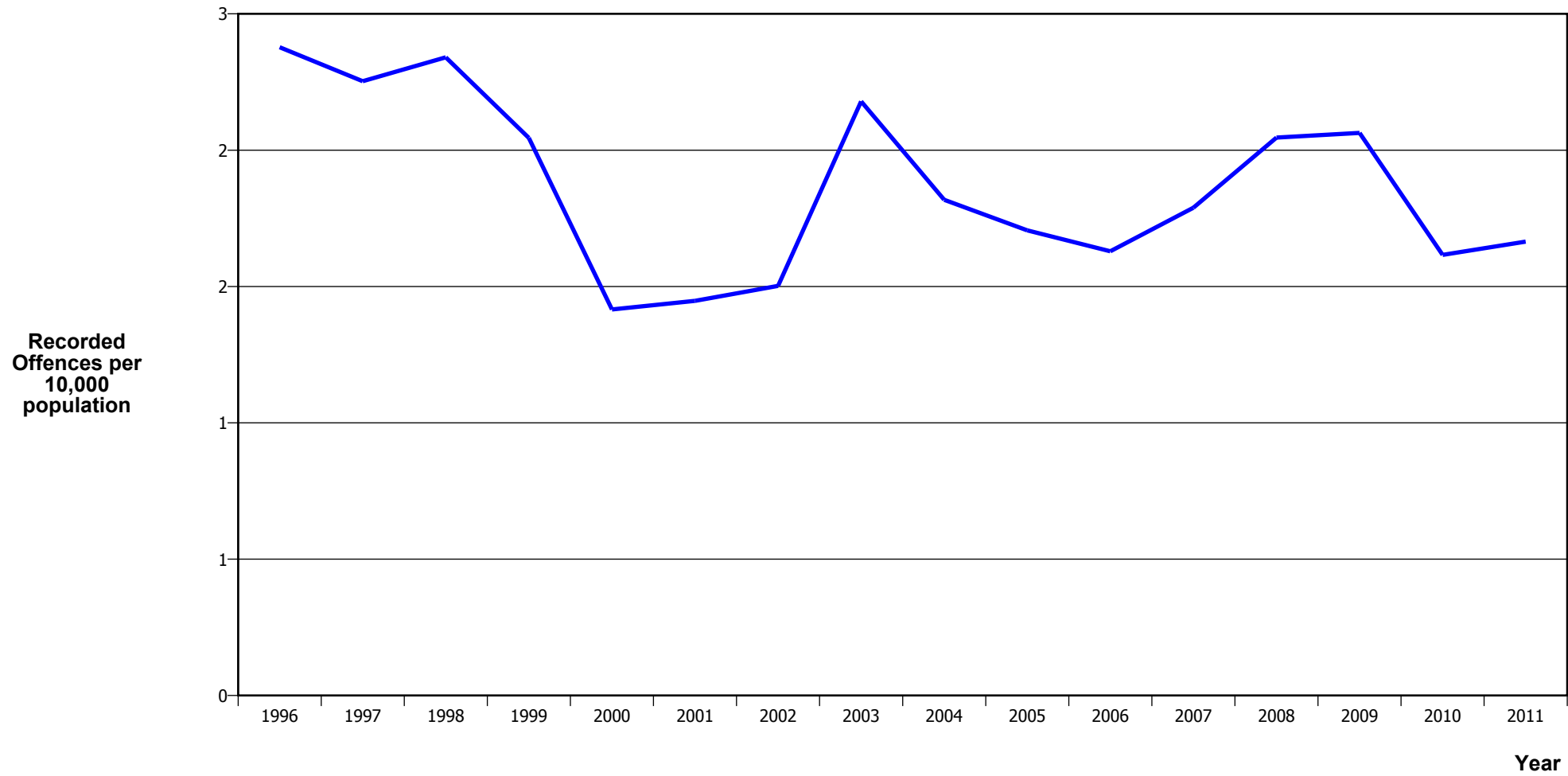
* This measure excludes common assaults

PUBLIC PLACE ASSAULTS



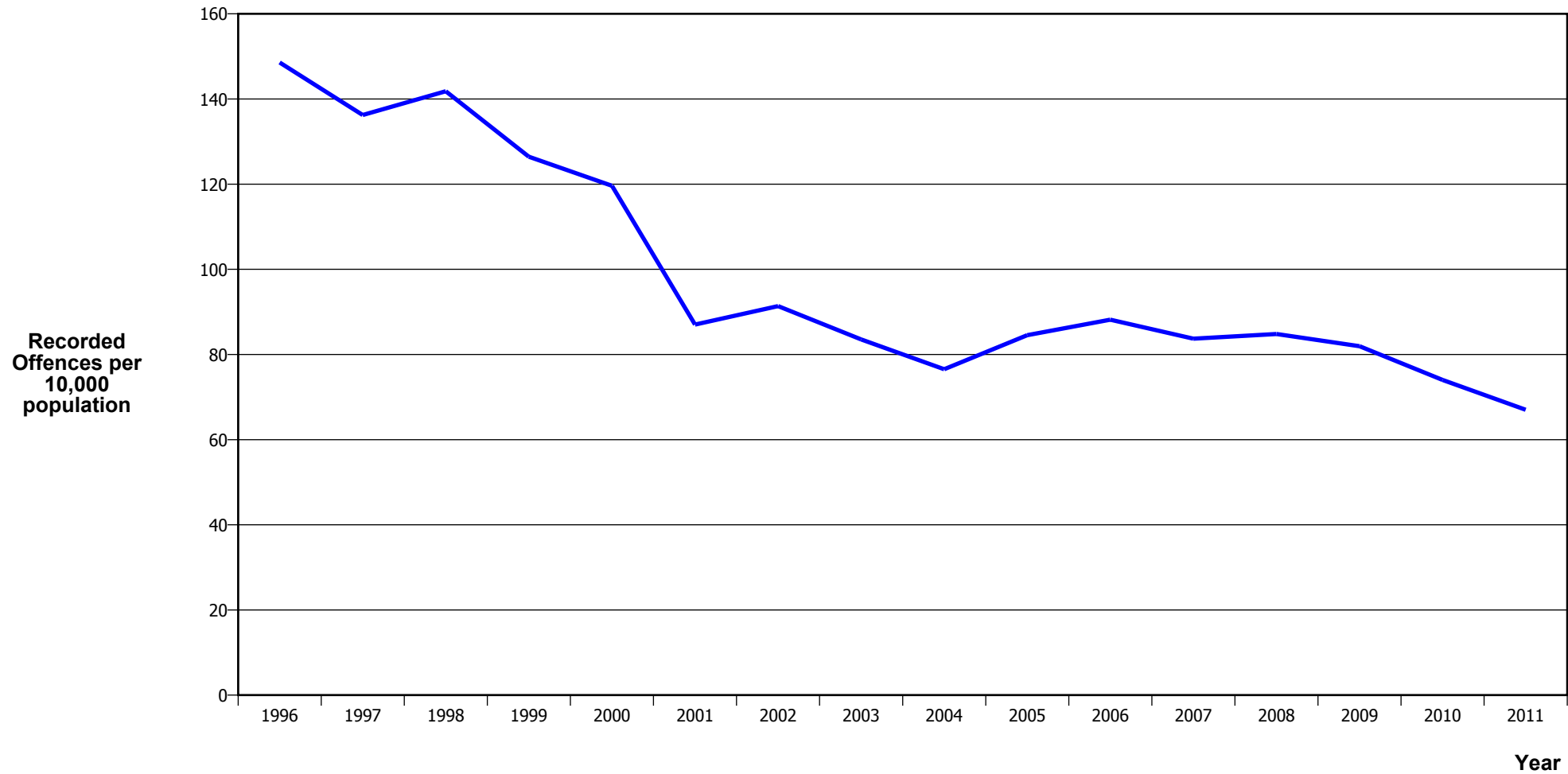
Calendar Year	1996	1997	1998	1999	2000	2001	2002	2003	2004	2005	2006	2007	2008	2009	2010	2011
Recorded Offences	807	720	804	753	824	857	926	966	974	845	891	982	1,050	1,050	1,023	803
Recorded per 10,000 Population	27.8	25.0	28.1	26.6	29.2	30.3	32.3	33.4	33.4	28.8	30.2	33.1	35.2	34.9	33.7	26.2

ROBBERY



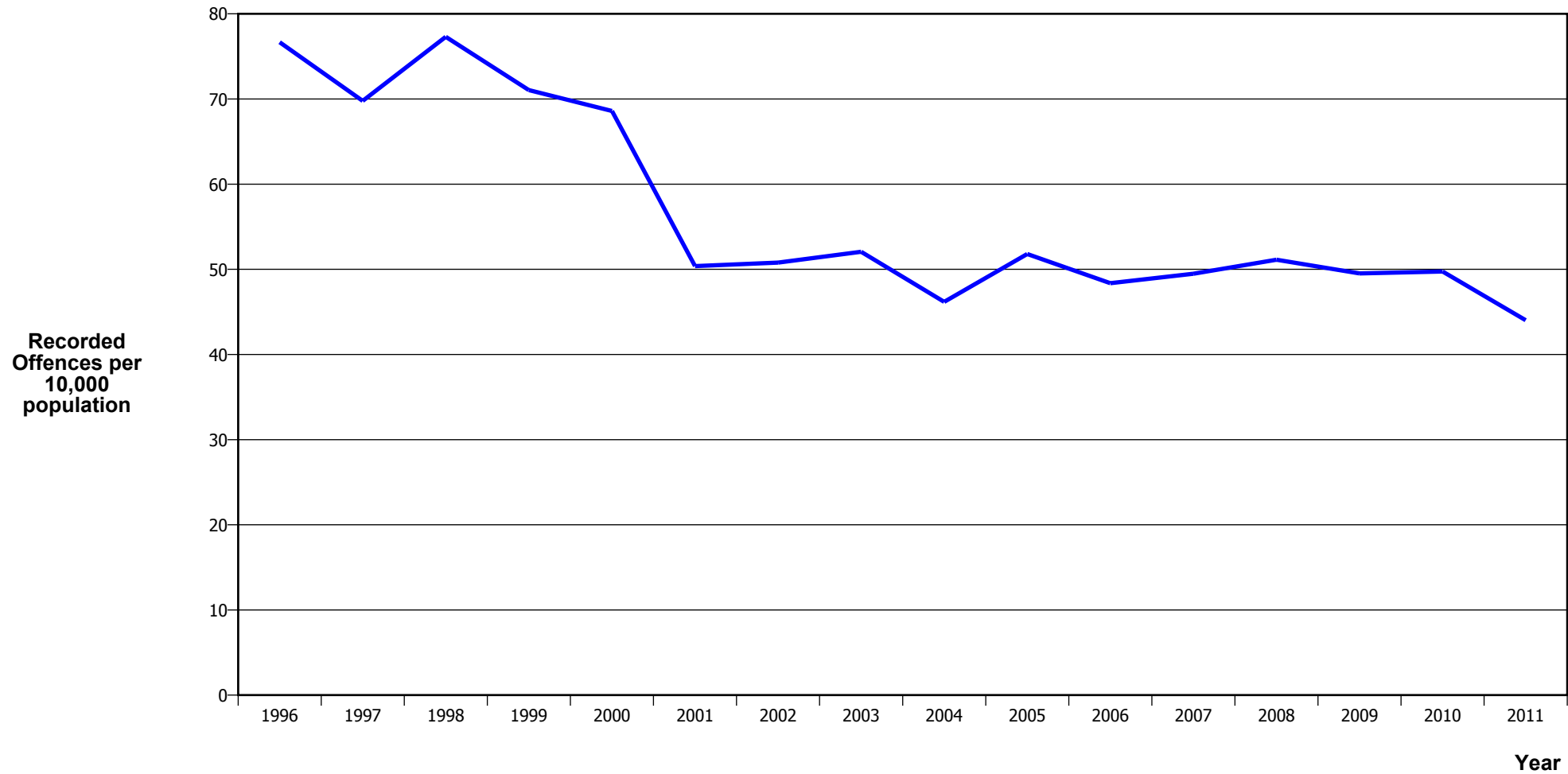
Calendar Year	1996	1997	1998	1999	2000	2001	2002	2003	2004	2005	2006	2007	2008	2009	2010	2011
Recorded Offences	69	65	67	58	40	41	43	63	53	50	48	53	61	62	49	51
Recorded per 10,000 Population	2.4	2.3	2.3	2.0	1.4	1.4	1.5	2.2	1.8	1.7	1.6	1.8	2.0	2.1	1.6	1.7

BURGLARY (TOTAL)



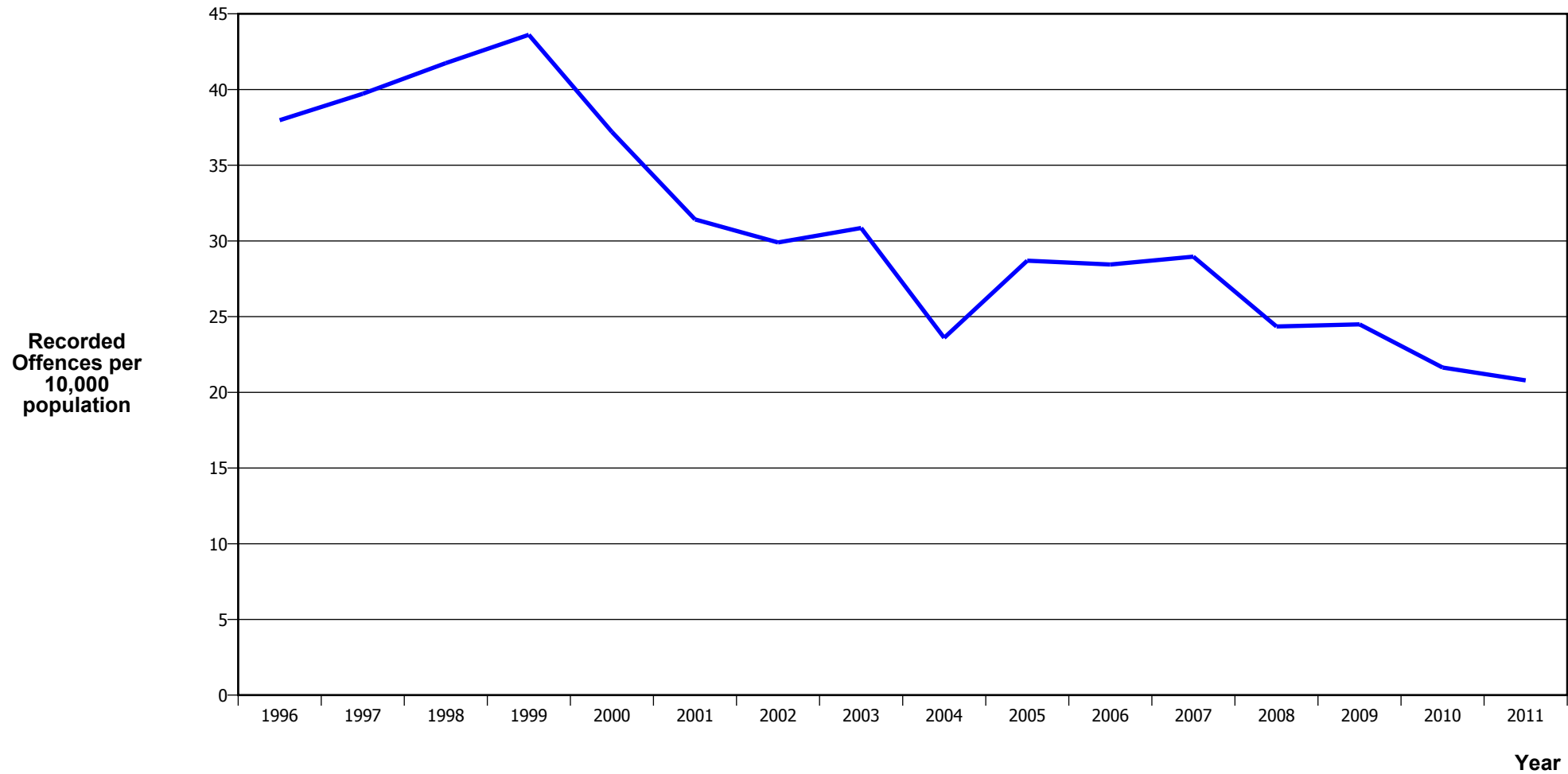
Calendar Year	1996	1997	1998	1999	2000	2001	2002	2003	2004	2005	2006	2007	2008	2009	2010	2011
Recorded Offences	4,312	3,931	4,060	3,586	3,380	2,465	2,615	2,415	2,231	2,478	2,598	2,480	2,528	2,462	2,244	2,053
Recorded per 10,000 Population	148.6	136.3	141.8	126.5	119.6	87.0	91.4	83.5	76.5	84.5	88.2	83.7	84.8	81.9	74.0	67.0

BURGLARY (DWELLING)



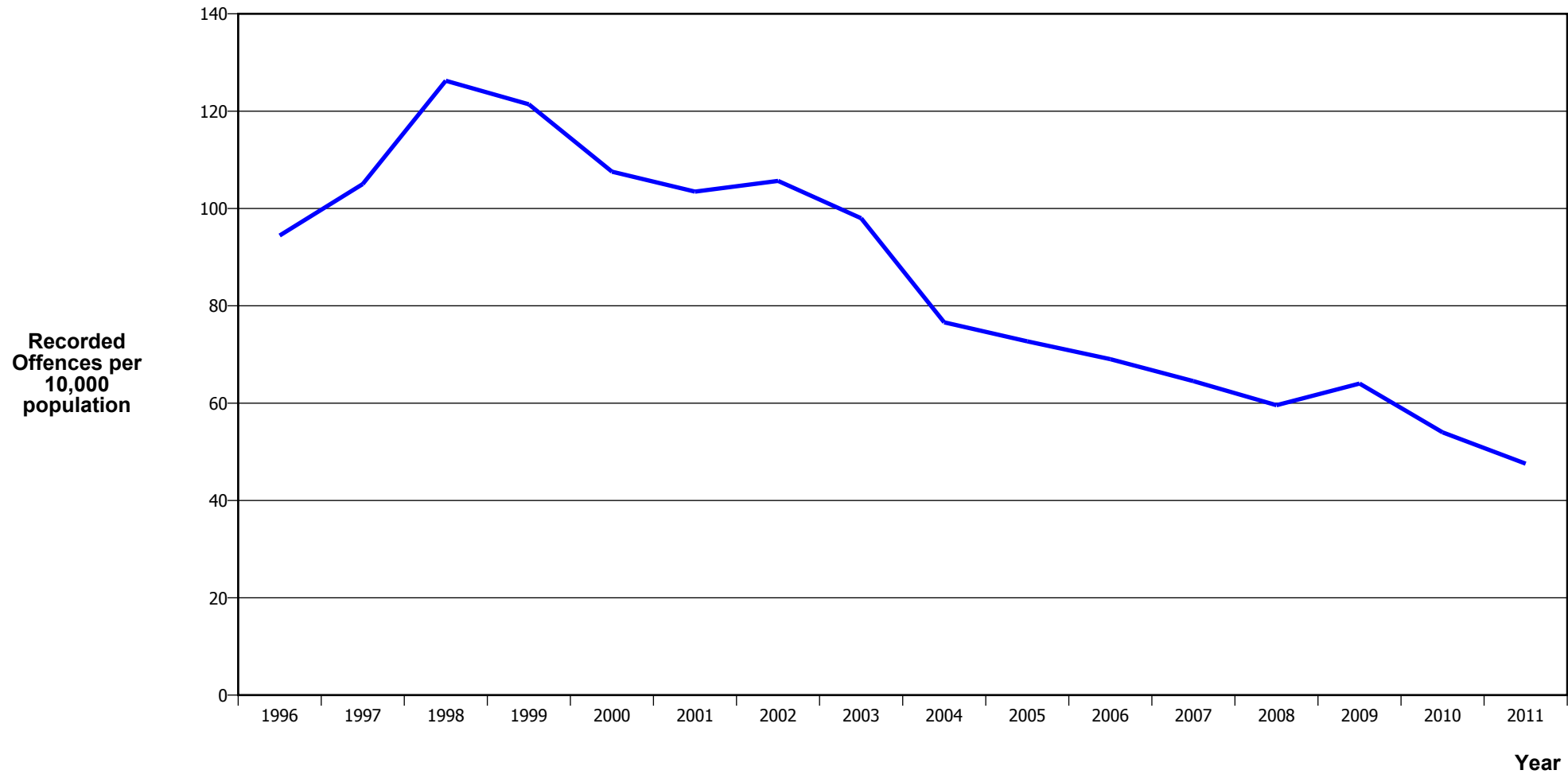
Calendar Year	1996	1997	1998	1999	2000	2001	2002	2003	2004	2005	2006	2007	2008	2009	2010	2011
Recorded Offences	2,225	2,013	2,213	2,015	1,938	1,427	1,454	1,505	1,346	1,518	1,425	1,466	1,524	1,488	1,508	1,349
Recorded per 10,000 Population	76.7	69.8	77.3	71.1	68.6	50.4	50.8	52.1	46.2	51.8	48.4	49.5	51.1	49.5	49.7	44.0

VEHICLES STOLEN



Calendar Year	1996	1997	1998	1999	2000	2001	2002	2003	2004	2005	2006	2007	2008	2009	2010	2011
Recorded Offences	1,102	1,146	1,195	1,237	1,051	890	856	892	688	841	838	858	726	736	656	637
Recorded per 10,000 Population	38.0	39.7	41.7	43.6	37.2	31.4	29.9	30.9	23.6	28.7	28.4	29.0	24.4	24.5	21.6	20.8

THEFT EX CAR



Calendar Year	1996	1997	1998	1999	2000	2001	2002	2003	2004	2005	2006	2007	2008	2009	2010	2011
Recorded Offences	2,741	3,030	3,614	3,443	3,039	2,931	3,025	2,833	2,233	2,131	2,034	1,912	1,776	1,924	1,637	1,457
Recorded per 10,000 Population	94.4	105.0	126.2	121.4	107.6	103.5	105.7	98.0	76.6	72.7	69.0	64.5	59.6	64.0	54.0	47.6

Population Data

Population data is used in this release to calculate crime rates. They have been derived from population estimates as at 30 June each year that have been obtained from Statistics New Zealand.

The estimated resident population is based on the census usually resident population count, with adjustments for residents missed or counted more than once by the census (net census undercount), and for residents temporarily overseas on census night.

These population estimates exclude the number of international students who are studying in New Zealand for less than 12 months.

Year	Population
1996	290,220
1997	288,510
1998	286,260
1999	283,590
2000	282,540
2001	283,260
2002	286,260
2003	289,110
2004	291,500
2005	293,090
2006	294,610
2007	296,290
2008	298,120
2009	300,490
2010	303,190
2011	306,380

General Definitions

Recorded Offences: the number of breaches of the New Zealand law recorded by Police. This includes offences specified in the Crimes Act and other legislations, such as the Summary Offences Act, Local Government Act, etc.

Resolved Offences: the number of recorded offences where an offender has been identified and dealt with (e.g. warned, cautioned, prosecuted, etc).

Resolution Rate: the proportion of recorded offences that have been resolved.

Recorded per 10,000 population: the number of recorded offences for every 10,000 people. This is also referred as the crime rate per 10,000 population.

ANZSOC: The Australian and New Zealand Standard Offence Classification. The offence classification is divided into 16 major offence divisions.

Definition of ANZSOC Divisions

1. Homicide and related offences: Unlawfully kill, attempt to unlawfully kill or conspiracy to kill another person.
2. Acts intended to cause injury: Acts, excluding attempted murder and those resulting in death, which are intended to cause non-fatal injury or harm to another person and where there is no sexual or acquisitive element.
3. Sexual assault and related offences: Acts, or intent of acts, of a sexual nature against another person, which are non-consensual or where consent is proscribed.
4. Dangerous or negligent acts endangering persons: Dangerous or negligent acts which, though not intended to cause harm, actually or potentially result in injury to oneself or another person.
5. Abduction, harassment and other offences against person: Acts intended to threaten or harass, or acts that unlawfully deprive another person of their freedom of movement, that are against that person's will or against the will of any parent, guardian or other person having lawful custody or care of that person.
6. Robbery, extortion and related offences: Acts intended to unlawfully gain money, property or other items of value from, or to cause detriment to, another person by using the threat of force or any other coercive measure.
7. Unlawful entry with intent / burglary, break and enter: The unlawful entry of a structure with the intent to commit an offence, where the entry is either forced or unforced.
8. Theft and related and offences: The unlawful taking or obtaining of money or goods, not involving the use of force or violence, coercion or deception, with intent to permanently or temporarily deprive the owner or possessor of the use of the money or goods, or the receiving or handling of money or goods obtained unlawfully.

9. Fraud, deception and related offences: Offences involving a dishonest act or omission carried out with the purpose of deceiving to obtain a benefit.

10. Illicit drug offences: The possessing, selling, dealing or trafficking, importing or exporting, manufacturing or cultivating of drugs or other substances prohibited under legislation.

11. Prohibited and regulated weapons and explosives offences: Offences involving prohibited or regulated weapons and explosives. Those offences also involving assault, sexual assault or robbery are coded to the relevant group within Assault, Sexual assaults and Robbery respectively.

12. Property damage and environmental pollution: The wilful and unlawful destruction, damage or defacement of public or private property, or the pollution of property or a definable entity held in common by the community.

13. Public order offences: Offences relating personal conduct that involves, or may lead to, a breach of public order or decency, or that is indicative of criminal intent, or that is otherwise regulated or prohibited on moral or ethical grounds. In general these offences do not involve a specific victim or victims; however some offences, such as offensive language and offensive behaviour, may be directed towards a single victim.

14. Traffic and vehicle regulatory offences: Offences relating to vehicles and most forms of traffic, including offences pertaining to the licensing, registration, roadworthiness, or use of vehicles, bicycle offences and pedestrian offences.

15. Offences against justice procedures, government security and government operations: An act or omission that is deemed to be prejudicial to the effective carrying out of justice procedures or any government operations. This includes general government operations as well as those specifically concerned with maintaining government security.

16. Miscellaneous offences: Offences involving the breach of statutory rules or regulations governing activities that are prima facie legal, where such offences are not explicitly dealt with under any other division. If an offence is specified under regulation and involves an act that would be illegal under common law or general criminal legislation, the offence is dealt with under the appropriate generic group.