

NORTHLAND DISTRICT CRIME STATISTICS 2014



**A Summary of
Recorded and Resolved Offence
Statistics**

**POLICE NATIONAL HEADQUARTERS
April 2015**

ISSN 1178 - 153X

Table of Contents:

Topic	Page
Report Notes	1
District Summary of Recorded and Resolved Crime, by Division	2-4
Proportions of Recorded Crime by Division	5
Summary of District Recorded Offences, Rate per 10,000 Population and Resolved Offences, by Area	6
Summary of Area Recorded Offences, Rate per 10,000 Population and Resolved Offences, by Division	7-9
Crime Trends	10
Total Crime	11
Murder	12
Serious Assaults Resulting in Injury	13
Sexual Assaults	14
Public Place Assaults	15
Dwelling Assaults	16
Robbery	17
Burglary (Total)	18
Burglary (Dwelling)	19
Vehicles Stolen	20
Theft Ex Car	21
Population Data	22
General Definitions	23-24

REPORT NOTES:

Statistics reported in this document are derived from the Police National Intelligence Application (NIA). These Official Statistics for Recorded and Resolved Offences present a snapshot of data in NIA relating to offences that occur within a given year, as at the date 14 days following the end of that year.

Unless the matter is minor where Police attendance is sufficient, a matter that is reported to or discovered by Police where Police believe an offence is likely to have been committed is counted as a recorded offence.

A recorded offence is counted as resolved when Police apprehend an offender and decide how to deal with him/her. (E.g. warn, prosecute, etc.)

Resolution rate is the percentage of recorded offences that are resolved within 14 days of the end of the year being reported on.

If an offence is resolved 15 days or more after the end of the year it will not appear in the Official Crime Statistics for that or any other year. Resolution Rate therefore undercounts the number of cases that Police have resolved. This phenomenon has a more marked impact for some types of offences than others, such as offences that require long investigations (E.g. many serial crimes, burglaries and murders).

Several offences have been reclassified into different ANZSOC groups. This has resulted in changes to subtotals for Groups and Sub-divisions within Divisions 10, 15 and 16, compared to previously reported data. Generally, this occurred within the same Division.

Note that the Population Estimates have been revised for 2007 to 2013 as a result of the 2013 Census. In previous reports population estimates were based on the 2006 Census. Crime rates reported in this report for those years may differ from those previously reported as a result.

When comparing 2014 Statistics with previous years, the reader should also refer to "Report Notes" published in previous years' reports, as previous changes significantly affect year on year trends.

SUMMARY OF DISTRICT RECORDED AND RESOLVED CRIME, BY DIVISION
Years ending 31 December

HOMICIDE AND RELATED OFFENCES

ASOC Subdivision Description	Recorded 2012	Recorded 2013	Recorded 2014	Variance 2012-2013	Variance 2013-2014	Resolved 2012	Resolved 2013	Resolved 2014	Resolution Rate 2012	Resolution Rate 2013	Resolution Rate 2014
ATTEMPTED MURDER	0	0	1	0.0 %	0.0 %	0	0	1	0.0 %	0.0 %	100.0 %
MANSLAUGHTER AND DRIVING CAUSING DEATH	2	2	0	0.0 %	-100.0 %	2	2	0	100.0 %	100.0 %	0.0 %
MURDER	2	4	2	100.0 %	-50.0 %	2	4	1	100.0 %	100.0 %	50.0 %
	4	6	3	50.0 %	-50.0 %	4	6	2	100.0 %	100.0 %	66.7 %

ACTS INTENDED TO CAUSE INJURY

ASOC Subdivision Description	Recorded 2012	Recorded 2013	Recorded 2014	Variance 2012-2013	Variance 2013-2014	Resolved 2012	Resolved 2013	Resolved 2014	Resolution Rate 2012	Resolution Rate 2013	Resolution Rate 2014
ASSAULT	2,197	2,103	1,777	-4.3 %	-15.5 %	1,715	1,605	1,274	78.1 %	76.3 %	71.7 %
OTHER ACTS INTENDED TO CAUSE INJURY	1	6	1	500.0 %	-83.3 %	1	4	0	100.0 %	66.7 %	0.0 %
	2,198	2,109	1,778	-4.0 %	-15.7 %	1,716	1,609	1,274	78.1 %	76.3 %	71.7 %

SEXUAL ASSAULT AND RELATED OFFENCES

ASOC Subdivision Description	Recorded 2012	Recorded 2013	Recorded 2014	Variance 2012-2013	Variance 2013-2014	Resolved 2012	Resolved 2013	Resolved 2014	Resolution Rate 2012	Resolution Rate 2013	Resolution Rate 2014
NON-ASSAULTIVE SEXUAL OFFENCES	3	9	39	200.0 %	333.3 %	2	9	37	66.7 %	100.0 %	94.9 %
SEXUAL ASSAULT	207	171	193	-17.4 %	12.9 %	126	100	116	60.9 %	58.5 %	60.1 %
	210	180	232	-14.3 %	28.9 %	128	109	153	61.0 %	60.6 %	65.9 %

DANGEROUS OR NEGLIGENT ACTS ENDANGERING PERSONS

ASOC Subdivision Description	Recorded 2012	Recorded 2013	Recorded 2014	Variance 2012-2013	Variance 2013-2014	Resolved 2012	Resolved 2013	Resolved 2014	Resolution Rate 2012	Resolution Rate 2013	Resolution Rate 2014
OTHER DANGEROUS OR NEGLIGENT ACTS ENDANGERING PERSONS	48	31	32	-35.4 %	3.2 %	34	13	16	70.8 %	41.9 %	50.0 %
	48	31	32	-35.4 %	3.2 %	34	13	16	70.8 %	41.9 %	50.0 %

ABDUCTION, HARASSMENT AND OTHER RELATED OFFENCES AGAINST A PERSON

ASOC Subdivision Description	Recorded 2012	Recorded 2013	Recorded 2014	Variance 2012-2013	Variance 2013-2014	Resolved 2012	Resolved 2013	Resolved 2014	Resolution Rate 2012	Resolution Rate 2013	Resolution Rate 2014
ABDUCTION AND KIDNAPPING	19	13	21	-31.6 %	61.5 %	13	11	15	68.4 %	84.6 %	71.4 %
HARASSMENT AND THREATENING BEHAVIOUR	677	730	666	7.8 %	-8.8 %	486	466	392	71.8 %	63.8 %	58.9 %
	696	743	687	6.8 %	-7.5 %	499	477	407	71.7 %	64.2 %	59.2 %

ROBBERY, EXTORTION AND RELATED OFFENCES

ASOC Subdivision Description	Recorded 2012	Recorded 2013	Recorded 2014	Variance 2012-2013	Variance 2013-2014	Resolved 2012	Resolved 2013	Resolved 2014	Resolution Rate 2012	Resolution Rate 2013	Resolution Rate 2014
BLACKMAIL AND EXTORTION	4	15	3	275.0 %	-80.0 %	1	14	1	25.0 %	93.3 %	33.3 %
ROBBERY	89	77	77	-13.5 %	0.0 %	50	42	37	56.2 %	54.5 %	48.1 %
	93	92	80	-1.1 %	-13.0 %	51	56	38	54.8 %	60.9 %	47.5 %

UNLAWFUL ENTRY WITH INTENT/BURGLARY, BREAK AND ENTER

ASOC Subdivision Description	Recorded 2012	Recorded 2013	Recorded 2014	Variance 2012-2013	Variance 2013-2014	Resolved 2012	Resolved 2013	Resolved 2014	Resolution Rate 2012	Resolution Rate 2013	Resolution Rate 2014
UNLAWFUL ENTRY WITH INTENT/BURGLARY, BREAK AND ENTER	2,339	2,688	2,962	14.9 %	10.2 %	414	383	412	17.7 %	14.2 %	13.9 %
	2,339	2,688	2,962	14.9 %	10.2 %	414	383	412	17.7 %	14.2 %	13.9 %

SUMMARY OF DISTRICT RECORDED AND RESOLVED CRIME, BY DIVISION
Years ending 31 December

THEFT AND RELATED OFFENCES

ASOC Subdivision Description	Recorded 2012	Recorded 2013	Recorded 2014	Variance 2012-2013	Variance 2013-2014	Resolved 2012	Resolved 2013	Resolved 2014	Resolution Rate 2012	Resolution Rate 2013	Resolution Rate 2014
ILLEGAL USE OF PROPERTY (EXCEPT MOTOR VEHICLES)	25	26	48	4.0 %	84.6 %	0	5	4	0.0 %	19.2 %	8.3 %
MOTOR VEHICLE THEFT AND RELATED OFFENCES	1,441	1,700	1,764	18.0 %	3.8 %	234	276	250	16.2 %	16.2 %	14.2 %
RECEIVE OR HANDLE PROCEEDS OF CRIME	104	122	136	17.3 %	11.5 %	95	120	128	91.3 %	98.4 %	94.1 %
THEFT (EXCEPT MOTOR VEHICLES)	2,223	2,489	2,522	12.0 %	1.3 %	763	803	794	34.3 %	32.3 %	31.5 %
	3,793	4,337	4,470	14.3 %	3.1 %	1,092	1,204	1,176	28.8 %	27.8 %	26.3 %

FRAUD, DECEPTION AND RELATED OFFENCES

ASOC Subdivision Description	Recorded 2012	Recorded 2013	Recorded 2014	Variance 2012-2013	Variance 2013-2014	Resolved 2012	Resolved 2013	Resolved 2014	Resolution Rate 2012	Resolution Rate 2013	Resolution Rate 2014
DECEPTIVE BUSINESS/GOVERNMENT PRACTICES	1	1	0	0.0 %	-100.0 %	1	0	0	100.0 %	0.0 %	0.0 %
FORGERY AND COUNTERFEITING	4	9	13	125.0 %	44.4 %	1	3	2	25.0 %	33.3 %	15.4 %
OBTAIN BENEFIT BY DECEPTION	200	323	202	61.5 %	-37.5 %	125	240	80	62.5 %	74.3 %	39.6 %
OTHER FRAUD AND DECEPTION OFFENCES	12	34	23	183.3 %	-32.4 %	5	8	10	41.7 %	23.5 %	43.5 %
	217	367	238	69.1 %	-35.1 %	132	251	92	60.8 %	68.4 %	38.7 %

ILLICIT DRUG OFFENCES

ASOC Subdivision Description	Recorded 2012	Recorded 2013	Recorded 2014	Variance 2012-2013	Variance 2013-2014	Resolved 2012	Resolved 2013	Resolved 2014	Resolution Rate 2012	Resolution Rate 2013	Resolution Rate 2014
DEAL OR TRAFFIC IN ILLICIT DRUGS	378	169	218	-55.3 %	29.0 %	347	141	192	91.8 %	83.4 %	88.1 %
IMPORT OR EXPORT ILLICIT DRUGS	0	14	3	0.0 %	-78.6 %	0	7	1	0.0 %	50.0 %	33.3 %
MANUFACTURE OR CULTIVATE ILLICIT DRUGS	320	222	175	-30.6 %	-21.2 %	156	177	140	48.8 %	79.7 %	80.0 %
OTHER ILLICIT DRUG OFFENCES	197	175	143	-11.2 %	-18.3 %	188	163	132	95.4 %	93.1 %	92.3 %
POSSESS AND/OR USE ILLICIT DRUGS	404	381	286	-5.7 %	-24.9 %	357	353	265	88.4 %	92.7 %	92.7 %
	1,299	961	825	-26.0 %	-14.2 %	1,048	841	730	80.7 %	87.5 %	88.5 %

PROHIBITED AND REGULATED WEAPONS AND EXPLOSIVES OFFENCES

ASOC Subdivision Description	Recorded 2012	Recorded 2013	Recorded 2014	Variance 2012-2013	Variance 2013-2014	Resolved 2012	Resolved 2013	Resolved 2014	Resolution Rate 2012	Resolution Rate 2013	Resolution Rate 2014
REGULATED WEAPONS/EXPLOSIVES OFFENCES	369	333	326	-9.8 %	-2.1 %	316	279	271	85.6 %	83.8 %	83.1 %
	369	333	326	-9.8 %	-2.1 %	316	279	271	85.6 %	83.8 %	83.1 %

PROPERTY DAMAGE AND ENVIRONMENTAL POLLUTION

ASOC Subdivision Description	Recorded 2012	Recorded 2013	Recorded 2014	Variance 2012-2013	Variance 2013-2014	Resolved 2012	Resolved 2013	Resolved 2014	Resolution Rate 2012	Resolution Rate 2013	Resolution Rate 2014
ENVIRONMENTAL POLLUTION	3	2	5	-33.3 %	150.0 %	2	1	1	66.7 %	50.0 %	20.0 %
PROPERTY DAMAGE	1,701	1,846	1,571	8.5 %	-14.9 %	643	673	509	37.8 %	36.5 %	32.4 %
	1,704	1,848	1,576	8.5 %	-14.7 %	645	674	510	37.9 %	36.5 %	32.4 %

PUBLIC ORDER OFFENCES

ASOC Subdivision Description	Recorded 2012	Recorded 2013	Recorded 2014	Variance 2012-2013	Variance 2013-2014	Resolved 2012	Resolved 2013	Resolved 2014	Resolution Rate 2012	Resolution Rate 2013	Resolution Rate 2014
DISORDERLY CONDUCT	1,207	919	767	-23.9 %	-16.5 %	1,017	754	602	84.3 %	82.0 %	78.5 %
OFFENSIVE CONDUCT	64	50	52	-21.9 %	4.0 %	39	37	33	60.9 %	74.0 %	63.5 %
PUBLIC ORDER OFFENCES NOT FURTHER DEFINED	1	0	0	-100.0 %	0.0 %	0	0	0	0.0 %	0.0 %	0.0 %
REGULATED PUBLIC ORDER OFFENCES	364	154	51	-57.7 %	-66.9 %	352	143	35	96.7 %	92.9 %	68.6 %
	1,636	1,123	870	-31.4 %	-22.5 %	1,408	934	670	86.1 %	83.2 %	77.0 %

SUMMARY OF DISTRICT RECORDED AND RESOLVED CRIME, BY DIVISION
Years ending 31 December

OFFENCES AGAINST JUSTICE PROCEDURES, GOVERNMENT SECURITY AND GOVERNMENT OPERATIONS

ASOC Subdivision Description	Recorded 2012	Recorded 2013	Recorded 2014	Variance 2012-2013	Variance 2013-2014	Resolved 2012	Resolved 2013	Resolved 2014	Resolution Rate 2012	Resolution Rate 2013	Resolution Rate 2014
BREACH OF COMMUNITY-BASED ORDER	128	160	207	25.0 %	29.4 %	123	157	197	96.1 %	98.1 %	95.2 %
BREACH OF CUSTODIAL ORDER OFFENCES	26	23	22	-11.5 %	-4.3 %	23	21	20	88.5 %	91.3 %	90.9 %
BREACH OF VIOLENCE AND NON-VIOLENCE RESTRAINING ORDERS	310	347	380	11.9 %	9.5 %	264	273	317	85.2 %	78.7 %	83.4 %
OFFENCES AGAINST GOVERNMENT OPERATIONS	8	5	15	-37.5 %	200.0 %	4	0	0	50.0 %	0.0 %	0.0 %
OFFENCES AGAINST GOVERNMENT SECURITY	0	0	3	0.0 %	0.0 %	0	0	3	0.0 %	0.0 %	100.0 %
OFFENCES AGAINST JUSTICE PROCEDURES	254	189	164	-25.6 %	-13.2 %	248	181	162	97.6 %	95.8 %	98.8 %
OFFENCES AGAINST JUSTICE PROCEDURES, GOVERNMENT SECURITY AND GOVERNMENT OPERATIONS NOT FURTHER DEFINED	1	2	0	100.0 %	-100.0 %	1	2	0	100.0 %	100.0 %	0.0 %
	727	726	791	-0.1 %	9.0 %	663	634	699	91.2 %	87.3 %	88.4 %

MISCELLANEOUS OFFENCES

ASOC Subdivision Description	Recorded 2012	Recorded 2013	Recorded 2014	Variance 2012-2013	Variance 2013-2014	Resolved 2012	Resolved 2013	Resolved 2014	Resolution Rate 2012	Resolution Rate 2013	Resolution Rate 2014
COMMERCIAL/INDUSTRY/FINANCIAL REGULATION	2	16	0	700.0 %	-100.0 %	2	16	0	100.0 %	100.0 %	0.0 %
DEFAMATION, LIBEL AND PRIVACY OFFENCES	0	3	2	0.0 %	-33.3 %	0	1	0	0.0 %	33.3 %	0.0 %
OTHER MISCELLANEOUS OFFENCES	20	19	21	-5.0 %	10.5 %	11	8	8	55.0 %	42.1 %	38.1 %
PUBLIC HEALTH AND SAFETY OFFENCES	0	6	4	0.0 %	-33.3 %	0	4	0	0.0 %	66.7 %	0.0 %
	22	44	27	100.0 %	-38.6 %	13	29	8	59.1 %	65.9 %	29.6 %

TOTAL	15,355	15,588	14,897	1.5 %	-4.4 %	8,163	7,499	6,458	53.2 %	48.1 %	43.4 %
--------------	---------------	---------------	---------------	--------------	---------------	--------------	--------------	--------------	---------------	---------------	---------------

PROPORTIONS OF RECORDED CRIME BY DIVISION

Years ending 31 December

ASOC Division Description	Proportions Recorded 2012	Recorded 2012	Proportions Recorded 2013	Recorded 2013	Proportions Recorded 2014	Recorded 2014
HOMICIDE AND RELATED OFFENCES	0.03 %	4	0.04 %	6	0.02 %	3
ACTS INTENDED TO CAUSE INJURY	14.31 %	2,198	13.53 %	2,109	11.94 %	1,778
SEXUAL ASSAULT AND RELATED OFFENCES	1.37 %	210	1.15 %	180	1.56 %	232
DANGEROUS OR NEGLIGENT ACTS ENDANGERING PERSONS	0.31 %	48	0.20 %	31	0.21 %	32
ABDUCTION, HARASSMENT AND OTHER RELATED OFFENCES AGAINST A PERSON	4.53 %	696	4.77 %	743	4.61 %	687
ROBBERY, EXTORTION AND RELATED OFFENCES	0.61 %	93	0.59 %	92	0.54 %	80
UNLAWFUL ENTRY WITH INTENT/BURGLARY, BREAK AND ENTER	15.23 %	2,339	17.24 %	2,688	19.88 %	2,962
THEFT AND RELATED OFFENCES	24.70 %	3,793	27.82 %	4,337	30.01 %	4,470
FRAUD, DECEPTION AND RELATED OFFENCES	1.41 %	217	2.35 %	367	1.60 %	238
ILLICIT DRUG OFFENCES	8.46 %	1,299	6.16 %	961	5.54 %	825
PROHIBITED AND REGULATED WEAPONS AND EXPLOSIVES OFFENCES	2.40 %	369	2.14 %	333	2.19 %	326
PROPERTY DAMAGE AND ENVIRONMENTAL POLLUTION	11.10 %	1,704	11.86 %	1,848	10.58 %	1,576
PUBLIC ORDER OFFENCES	10.65 %	1,636	7.20 %	1,123	5.84 %	870
OFFENCES AGAINST JUSTICE PROCEDURES, GOVERNMENT SECURITY AND GOVERNMENT OPERATIONS	4.73 %	727	4.66 %	726	5.31 %	791
MISCELLANEOUS OFFENCES	0.14 %	22	0.28 %	44	0.18 %	27
	100.00 %	15,355	100.00 %	15,588	100.00 %	14,897

SUMMARY OF RECORDED OFFENCES, RATE PER 10,000 POPULATION AND RESOLVED OFFENCES, BY AREA
years ending 31 December

TOTAL CRIME

Area Description	Recorded 2013	Recorded 2014	Variance 2013-2014	Recorded per 10,000 pop 2013	Recorded per 10,000 pop 2014	Per 10,000 pop % Variance 2013 to 2014	Resolved 2013	Resolved 2014	Resolution Rate 2013	Resolution Rate 2014
Far North	6,038	6,162	2.1 %	992.6	1,006.9	1.4 %	2,805	2,770	46.5 %	45.0 %
Whangarei	9,550	8,735	-8.5 %	942.8	857.3	-9.1 %	4,694	3,688	49.2 %	42.2 %
	15,588	14,897	-4.4 %	961.5	913.4	-5.0 %	7,499	6,458	48.1 %	43.4 %

SUMMARY OF RECORDED OFFENCES, RATE PER 10,000 POPULATION AND RESOLVED OFFENCES, BY DIVISION

Years ending 31 December

HOMICIDE AND RELATED OFFENCES

Area Description	Recorded 2013	Recorded 2014	Variance 2013-2014	Recorded per 10,000 pop 2013	Recorded per 10,000 pop 2014	Per 10,000 pop % Variance 2013 to 2014	Resolved 2013	Resolved 2014	Resolution Rate 2013	Resolution Rate 2014
Far North	4	0	-100.0 %	0.7	0.0	-100.0 %	4	0	100.0 %	0.0 %
Whangarei	2	3	50.0 %	0.2	0.3	49.1 %	2	2	100.0 %	66.7 %
	6	3	-50.0 %	0.4	0.2	-50.3 %	6	2	100.0 %	66.7 %

ACTS INTENDED TO CAUSE INJURY

Area Description	Recorded 2013	Recorded 2014	Variance 2013-2014	Recorded per 10,000 pop 2013	Recorded per 10,000 pop 2014	Per 10,000 pop % Variance 2013 to 2014	Resolved 2013	Resolved 2014	Resolution Rate 2013	Resolution Rate 2014
Far North	904	798	-11.7 %	148.6	130.4	-12.3 %	719	605	79.5 %	75.8 %
Whangarei	1,205	980	-18.7 %	119.0	96.2	-19.2 %	890	669	73.9 %	68.3 %
	2,109	1,778	-15.7 %	130.1	109.0	-16.2 %	1,609	1,274	76.3 %	71.7 %

SEXUAL ASSAULT AND RELATED OFFENCES

Area Description	Recorded 2013	Recorded 2014	Variance 2013-2014	Recorded per 10,000 pop 2013	Recorded per 10,000 pop 2014	Per 10,000 pop % Variance 2013 to 2014	Resolved 2013	Resolved 2014	Resolution Rate 2013	Resolution Rate 2014
Far North	61	110	80.3 %	10.0	18.0	79.2 %	42	87	68.9 %	79.1 %
Whangarei	119	122	2.5 %	11.7	12.0	1.9 %	67	66	56.3 %	54.1 %
	180	232	28.9 %	11.1	14.2	28.1 %	109	153	60.6 %	65.9 %

DANGEROUS OR NEGLIGENT ACTS ENDANGERING PERSONS

Area Description	Recorded 2013	Recorded 2014	Variance 2013-2014	Recorded per 10,000 pop 2013	Recorded per 10,000 pop 2014	Per 10,000 pop % Variance 2013 to 2014	Resolved 2013	Resolved 2014	Resolution Rate 2013	Resolution Rate 2014
Far North	9	7	-22.2 %	1.5	1.1	-22.7 %	5	5	55.6 %	71.4 %
Whangarei	22	25	13.6 %	2.2	2.5	13.0 %	8	11	36.4 %	44.0 %
	31	32	3.2 %	1.9	2.0	2.6 %	13	16	41.9 %	50.0 %

ABDUCTION, HARASSMENT AND OTHER RELATED OFFENCES AGAINST A PERSON

Area Description	Recorded 2013	Recorded 2014	Variance 2013-2014	Recorded per 10,000 pop 2013	Recorded per 10,000 pop 2014	Per 10,000 pop % Variance 2013 to 2014	Resolved 2013	Resolved 2014	Resolution Rate 2013	Resolution Rate 2014
Far North	318	296	-6.9 %	52.3	48.4	-7.5 %	219	194	68.9 %	65.5 %
Whangarei	425	391	-8.0 %	42.0	38.4	-8.5 %	258	213	60.7 %	54.5 %
	743	687	-7.5 %	45.8	42.1	-8.1 %	477	407	64.2 %	59.2 %

ROBBERY, EXTORTION AND RELATED OFFENCES

Area Description	Recorded 2013	Recorded 2014	Variance 2013-2014	Recorded per 10,000 pop 2013	Recorded per 10,000 pop 2014	Per 10,000 pop % Variance 2013 to 2014	Resolved 2013	Resolved 2014	Resolution Rate 2013	Resolution Rate 2014
Far North	36	24	-33.3 %	5.9	3.9	-33.7 %	25	14	69.4 %	58.3 %
Whangarei	56	56	0.0 %	5.5	5.5	-0.6 %	31	24	55.4 %	42.9 %
	92	80	-13.0 %	5.7	4.9	-13.6 %	56	38	60.9 %	47.5 %

UNLAWFUL ENTRY WITH INTENT/BURGLARY, BREAK AND ENTER

Area Description	Recorded 2013	Recorded 2014	Variance 2013-2014	Recorded per 10,000 pop 2013	Recorded per 10,000 pop 2014	Per 10,000 pop % Variance 2013 to 2014	Resolved 2013	Resolved 2014	Resolution Rate 2013	Resolution Rate 2014
Far North	1,182	1,260	6.6 %	194.3	205.9	6.0 %	172	182	14.6 %	14.4 %
Whangarei	1,506	1,702	13.0 %	148.7	167.0	12.3 %	211	230	14.0 %	13.5 %
	2,688	2,962	10.2 %	165.8	181.6	9.5 %	383	412	14.2 %	13.9 %

SUMMARY OF RECORDED OFFENCES, RATE PER 10,000 POPULATION AND RESOLVED OFFENCES, BY DIVISION

Years ending 31 December

THEFT AND RELATED OFFENCES

Area Description	Recorded 2013	Recorded 2014	Variance 2013-2014	Recorded per 10,000 pop 2013	Recorded per 10,000 pop 2014	Per 10,000 pop % Variance 2013 to 2014	Resolved 2013	Resolved 2014	Resolution Rate 2013	Resolution Rate 2014
Far North	1,621	1,708	5.4 %	266.5	279.1	4.7 %	360	384	22.2 %	22.5 %
Whangarei	2,716	2,762	1.7 %	268.1	271.1	1.1 %	844	792	31.1 %	28.7 %
	4,337	4,470	3.1 %	267.5	274.1	2.5 %	1,204	1,176	27.8 %	26.3 %

FRAUD, DECEPTION AND RELATED OFFENCES

Area Description	Recorded 2013	Recorded 2014	Variance 2013-2014	Recorded per 10,000 pop 2013	Recorded per 10,000 pop 2014	Per 10,000 pop % Variance 2013 to 2014	Resolved 2013	Resolved 2014	Resolution Rate 2013	Resolution Rate 2014
Far North	81	93	14.8 %	13.3	15.2	14.1 %	39	32	48.1 %	34.4 %
Whangarei	286	145	-49.3 %	28.2	14.2	-49.6 %	212	60	74.1 %	41.4 %
	367	238	-35.1 %	22.6	14.6	-35.5 %	251	92	68.4 %	38.7 %

ILLICIT DRUG OFFENCES

Area Description	Recorded 2013	Recorded 2014	Variance 2013-2014	Recorded per 10,000 pop 2013	Recorded per 10,000 pop 2014	Per 10,000 pop % Variance 2013 to 2014	Resolved 2013	Resolved 2014	Resolution Rate 2013	Resolution Rate 2014
Far North	352	416	18.2 %	57.9	68.0	17.5 %	298	355	84.7 %	85.3 %
Whangarei	609	409	-32.8 %	60.1	40.1	-33.2 %	543	375	89.2 %	91.7 %
	961	825	-14.2 %	59.3	50.6	-14.7 %	841	730	87.5 %	88.5 %

PROHIBITED AND REGULATED WEAPONS AND EXPLOSIVES OFFENCES

Area Description	Recorded 2013	Recorded 2014	Variance 2013-2014	Recorded per 10,000 pop 2013	Recorded per 10,000 pop 2014	Per 10,000 pop % Variance 2013 to 2014	Resolved 2013	Resolved 2014	Resolution Rate 2013	Resolution Rate 2014
Far North	128	157	22.7 %	21.0	25.7	21.9 %	107	131	83.6 %	83.4 %
Whangarei	205	169	-17.6 %	20.2	16.6	-18.0 %	172	140	83.9 %	82.8 %
	333	326	-2.1 %	20.5	20.0	-2.7 %	279	271	83.8 %	83.1 %

PROPERTY DAMAGE AND ENVIRONMENTAL POLLUTION

Area Description	Recorded 2013	Recorded 2014	Variance 2013-2014	Recorded per 10,000 pop 2013	Recorded per 10,000 pop 2014	Per 10,000 pop % Variance 2013 to 2014	Resolved 2013	Resolved 2014	Resolution Rate 2013	Resolution Rate 2014
Far North	620	558	-10.0 %	101.9	91.2	-10.5 %	207	185	33.4 %	33.2 %
Whangarei	1,228	1,018	-17.1 %	121.2	99.9	-17.6 %	467	325	38.0 %	31.9 %
	1,848	1,576	-14.7 %	114.0	96.6	-15.2 %	674	510	36.5 %	32.4 %

PUBLIC ORDER OFFENCES

Area Description	Recorded 2013	Recorded 2014	Variance 2013-2014	Recorded per 10,000 pop 2013	Recorded per 10,000 pop 2014	Per 10,000 pop % Variance 2013 to 2014	Resolved 2013	Resolved 2014	Resolution Rate 2013	Resolution Rate 2014
Far North	358	328	-8.4 %	58.9	53.6	-8.9 %	284	231	79.3 %	70.4 %
Whangarei	765	542	-29.2 %	75.5	53.2	-29.6 %	650	439	85.0 %	81.0 %
	1,123	870	-22.5 %	69.3	53.3	-23.0 %	934	670	83.2 %	77.0 %

OFFENCES AGAINST JUSTICE PROCEDURES, GOVERNMENT SECURITY AND GOVERNMENT OPERATIONS

Area Description	Recorded 2013	Recorded 2014	Variance 2013-2014	Recorded per 10,000 pop 2013	Recorded per 10,000 pop 2014	Per 10,000 pop % Variance 2013 to 2014	Resolved 2013	Resolved 2014	Resolution Rate 2013	Resolution Rate 2014
Far North	339	395	16.5 %	55.7	64.5	15.8 %	305	361	90.0 %	91.4 %
Whangarei	387	396	2.3 %	38.2	38.9	1.7 %	329	338	85.0 %	85.4 %
	726	791	9.0 %	44.8	48.5	8.3 %	634	699	87.3 %	88.4 %

SUMMARY OF RECORDED OFFENCES, RATE PER 10,000 POPULATION AND RESOLVED OFFENCES, BY DIVISION

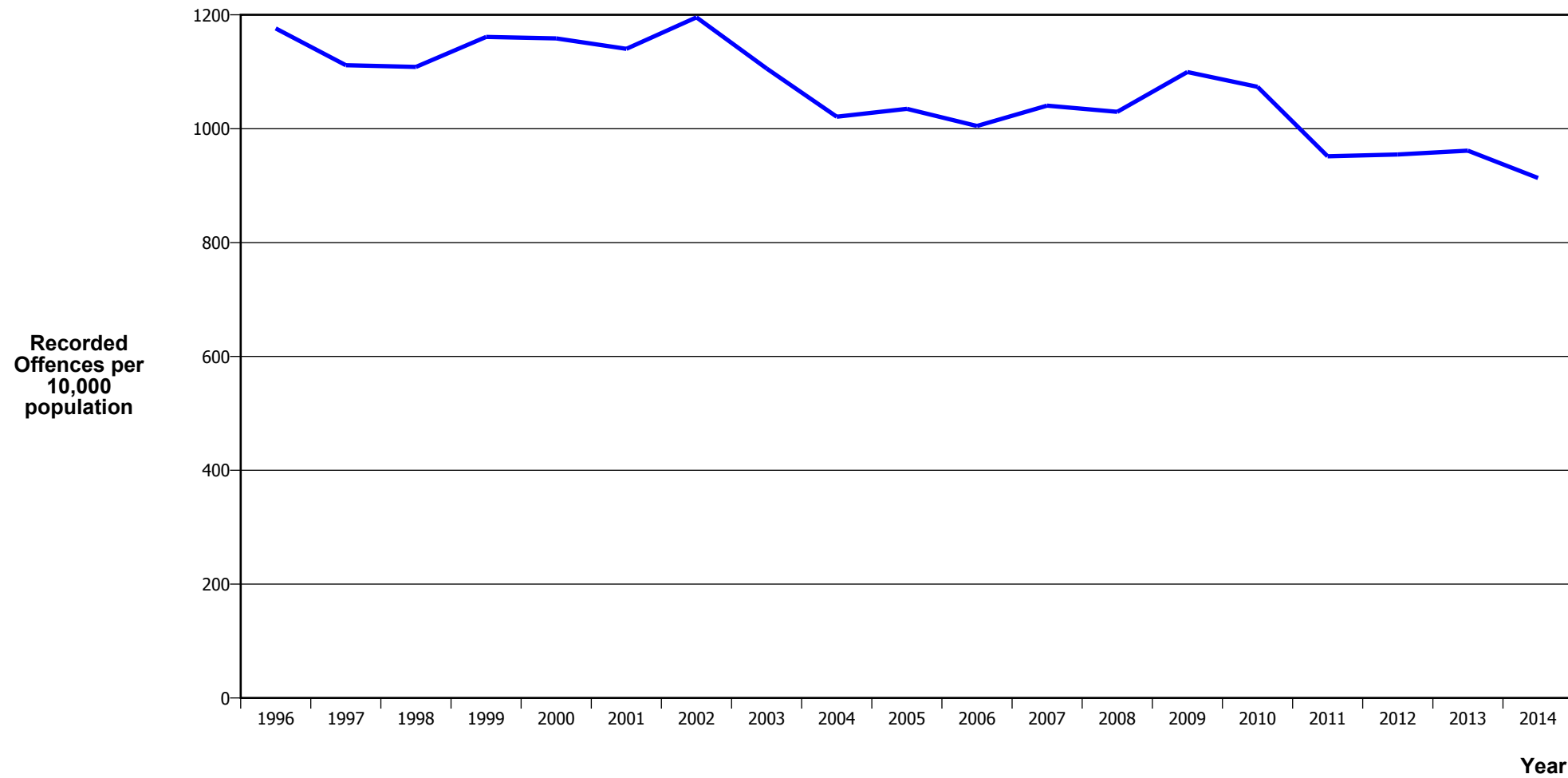
Years ending 31 December

MISCELLANEOUS OFFENCES

Area Description	Recorded 2013	Recorded 2014	Variance 2013-2014	Recorded per 10,000 pop 2013	Recorded per 10,000 pop 2014	Per 10,000 pop % Variance 2013 to 2014	Resolved 2013	Resolved 2014	Resolution Rate 2013	Resolution Rate 2014
Far North	25	12	-52.0 %	4.1	2.0	-52.3 %	19	4	76.0 %	33.3 %
Whangarei	19	15	-21.1 %	1.9	1.5	-21.5 %	10	4	52.6 %	26.7 %
	44	27	-38.6 %	2.7	1.7	-39.0 %	29	8	65.9 %	29.6 %

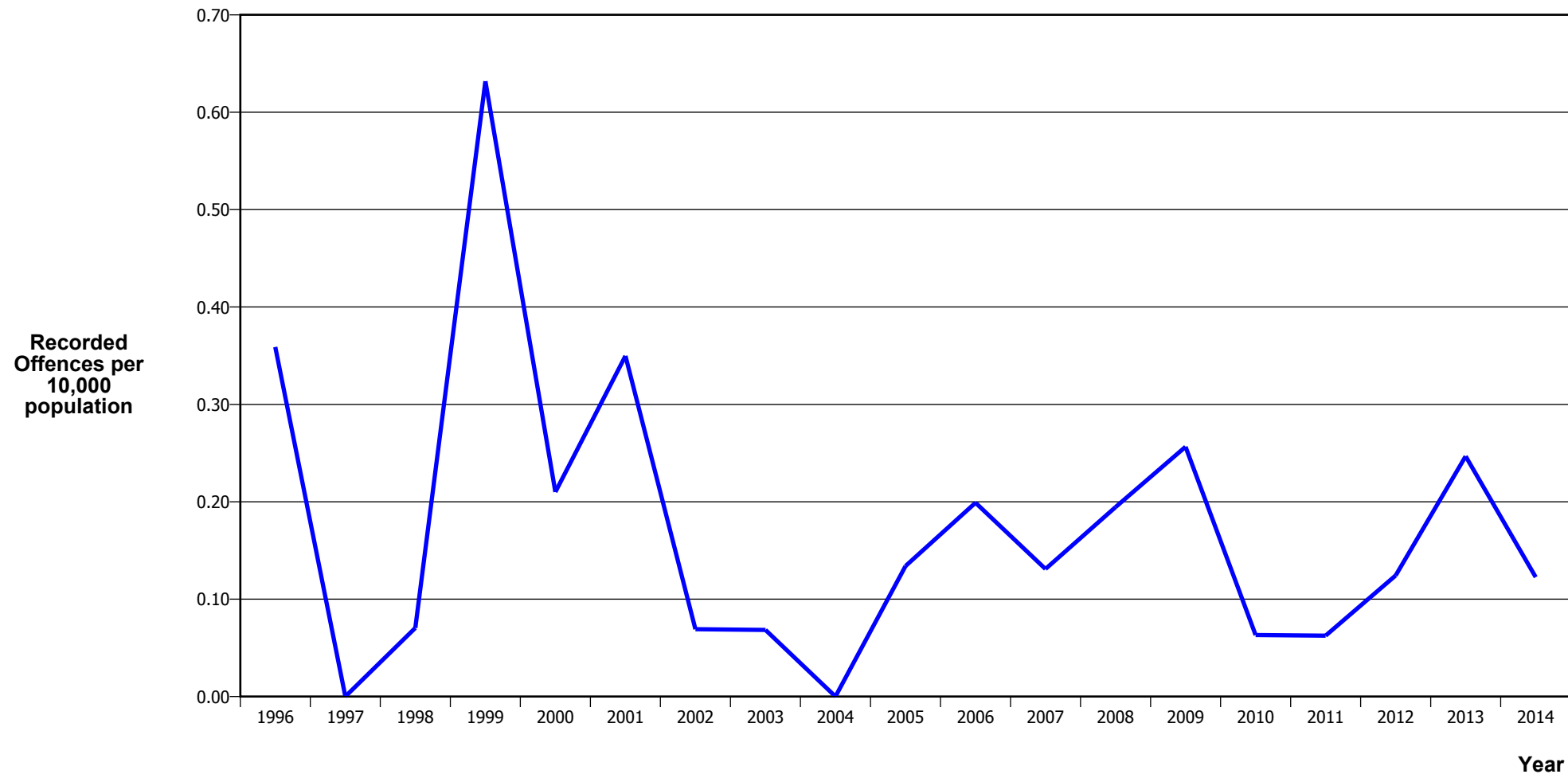
CRIME TRENDS

TOTAL CRIME



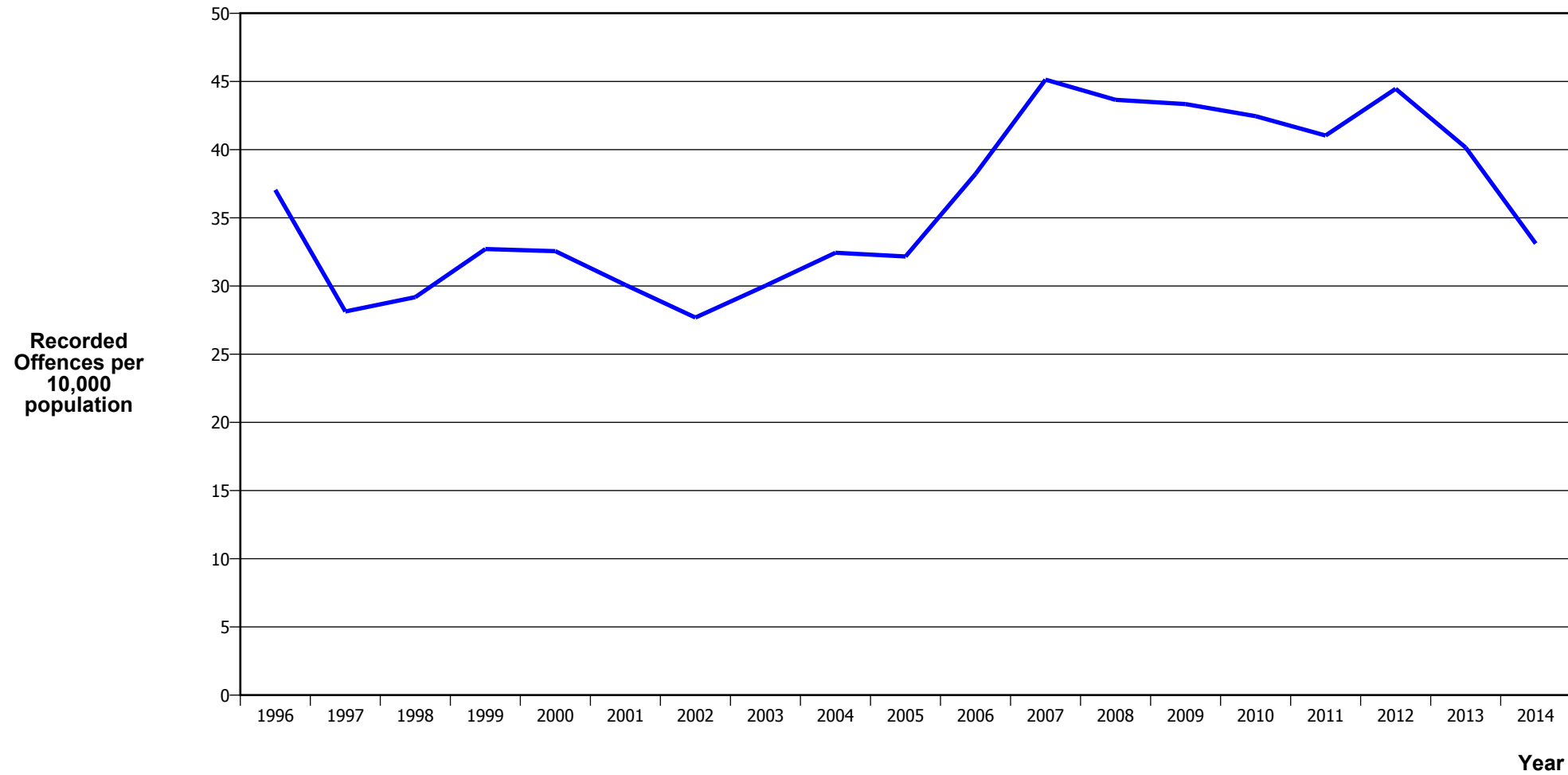
Calendar Year	1996	1997	1998	1999	2000	2001	2002	2003	2004	2005	2006	2007	2008	2009	2010	2011	2012	2013	2014
Recorded Offences	16,383	15,646	15,727	16,544	16,551	16,302	17,272	16,170	15,080	15,443	15,146	15,885	15,875	17,153	16,994	15,211	15,355	15,588	14,897
Recorded per 10,000 Population	1,176.3	1,111.5	1,108.6	1,161.3	1,158.6	1,140.3	1,195.5	1,105.8	1,021.1	1,034.8	1,004.8	1,040.5	1,029.7	1,099.6	1,073.5	951.5	954.7	961.5	913.4

MURDER



Calendar Year	1996	1997	1998	1999	2000	2001	2002	2003	2004	2005	2006	2007	2008	2009	2010	2011	2012	2013	2014
Recorded Offences	5	0	1	9	3	5	1	1	0	2	3	2	3	4	1	1	2	4	2
Recorded per 10,000 Population	0.36	0.00	0.07	0.63	0.21	0.35	0.07	0.07	0.00	0.13	0.20	0.13	0.19	0.26	0.06	0.06	0.12	0.25	0.12

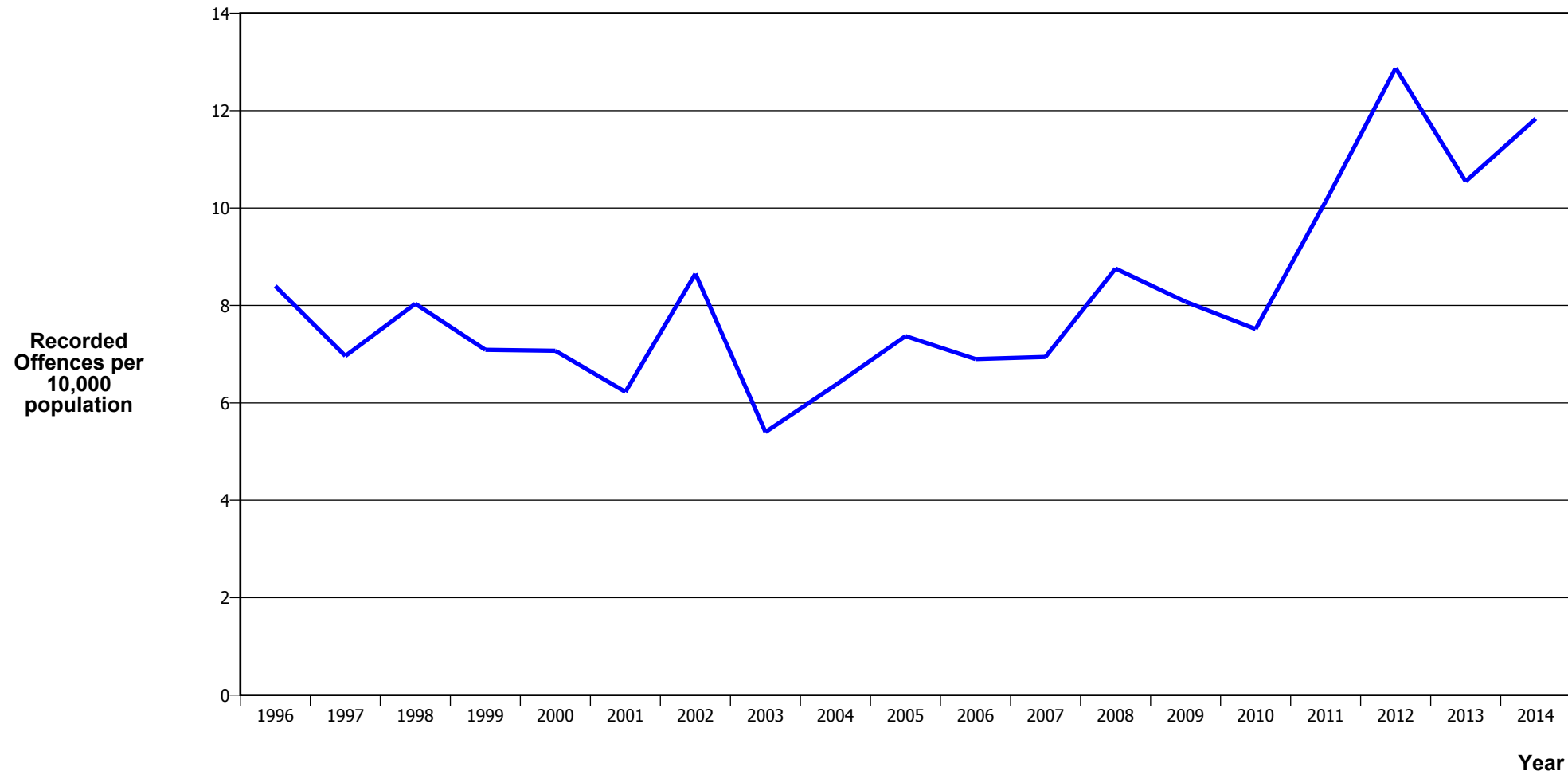
SERIOUS ASSAULTS RESULTING IN INJURY*



Calendar Year	1996	1997	1998	1999	2000	2001	2002	2003	2004	2005	2006	2007	2008	2009	2010	2011	2012	2013	2014
Recorded Offence	516	396	414	466	465	430	400	439	479	480	576	689	673	676	672	656	715	651	540
Offence Rate per 10K Popn	37.0	28.1	29.2	32.7	32.6	30.1	27.7	30.0	32.4	32.2	38.2	45.1	43.7	43.3	42.5	41.0	44.5	40.2	33.1

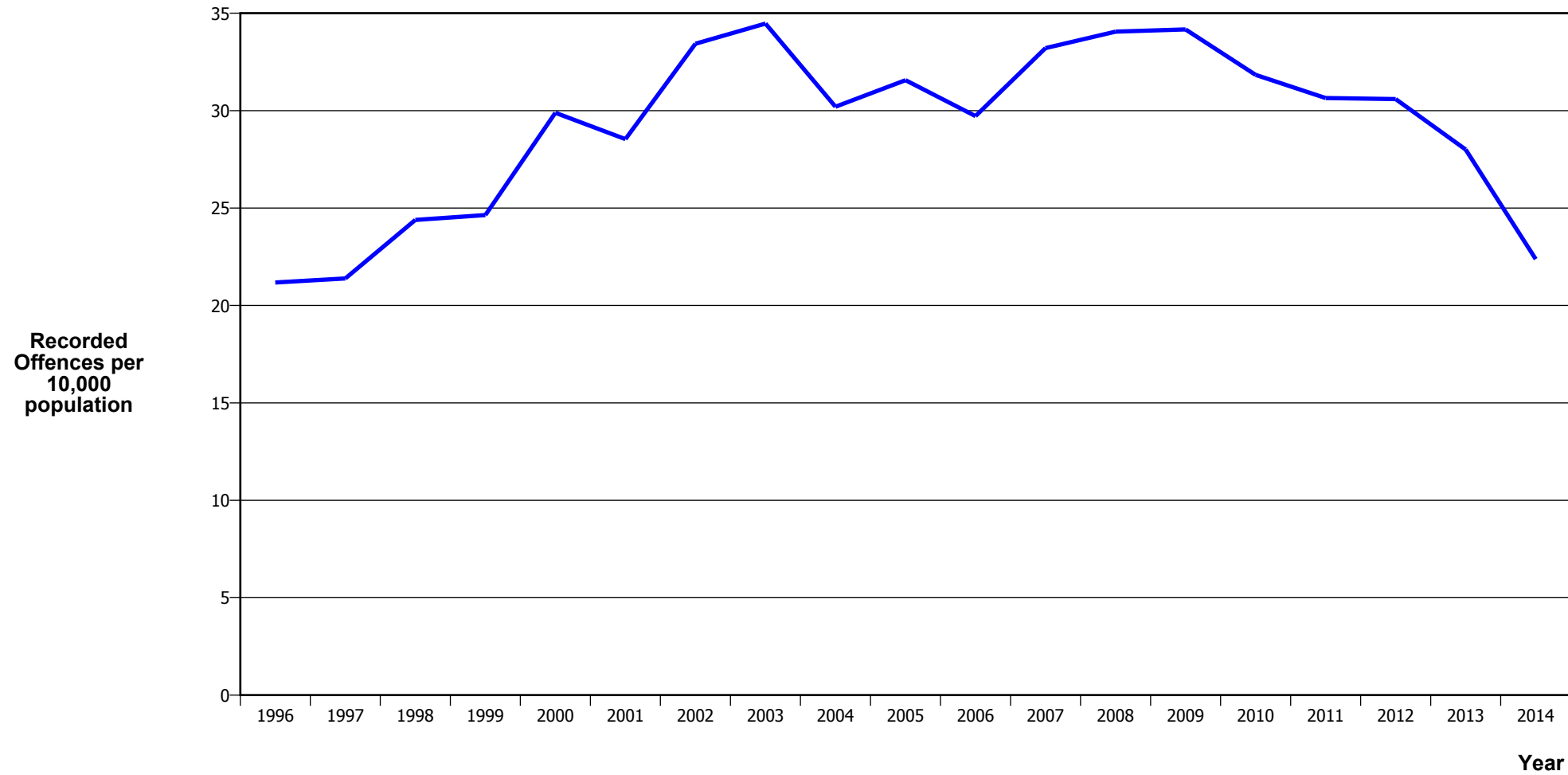
* This measure excludes common assaults

SEXUAL ASSAULTS



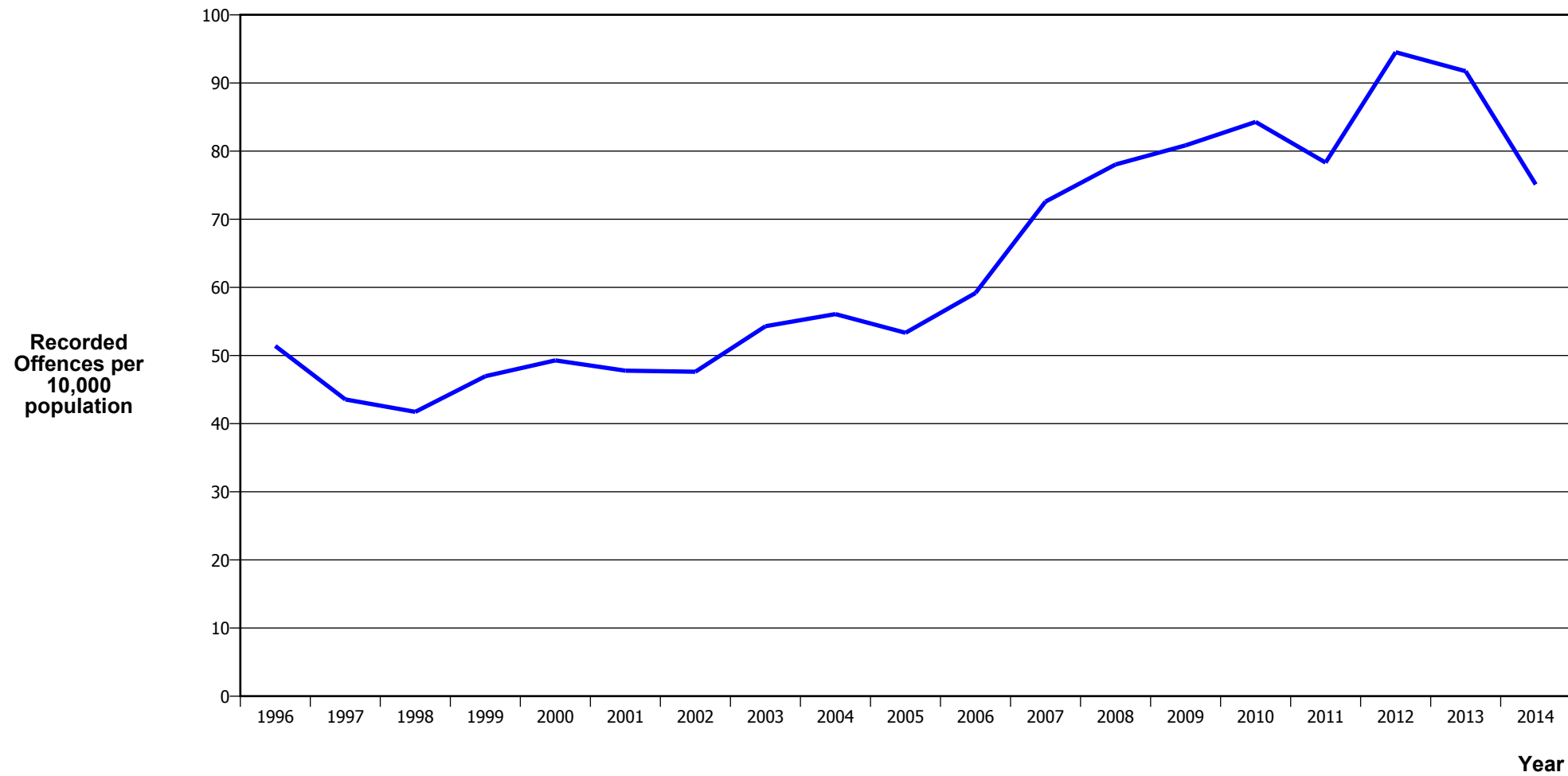
Calendar Year	1996	1997	1998	1999	2000	2001	2002	2003	2004	2005	2006	2007	2008	2009	2010	2011	2012	2013	2014
Recorded Offences	117	98	114	101	101	89	125	79	94	110	104	106	135	126	119	162	207	171	193
Recorded per 10,000 Population	8.4	7.0	8.0	7.1	7.1	6.2	8.7	5.4	6.4	7.4	6.9	6.9	8.8	8.1	7.5	10.1	12.9	10.5	11.8

PUBLIC PLACE ASSAULTS



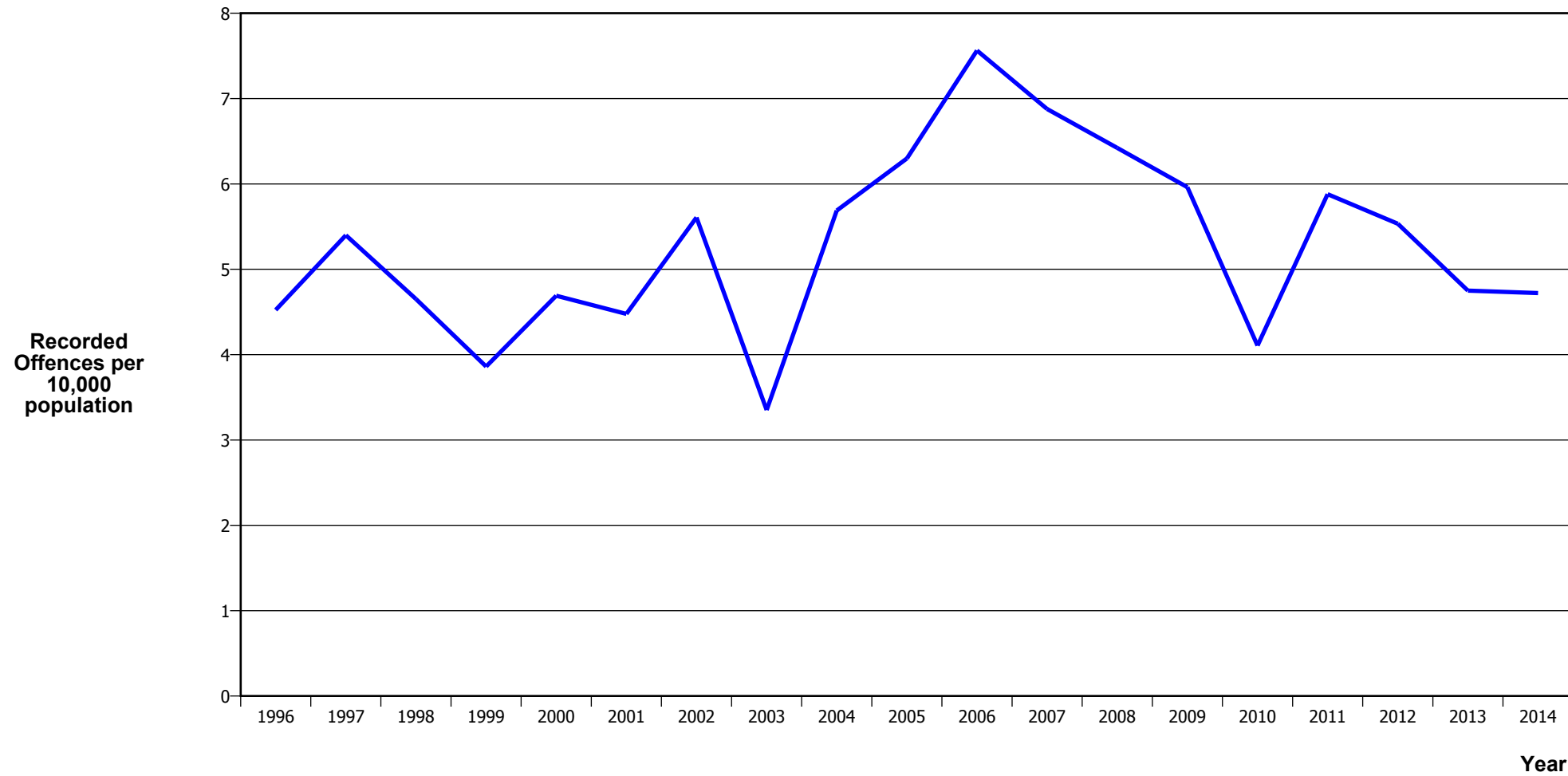
Calendar Year	1996	1997	1998	1999	2000	2001	2002	2003	2004	2005	2006	2007	2008	2009	2010	2011	2012	2013	2014
Recorded Offences	295	301	346	351	427	408	483	504	446	471	448	507	525	533	504	490	492	454	365
Recorded per 10,000 Population	21.2	21.4	24.4	24.6	29.9	28.5	33.4	34.5	30.2	31.6	29.7	33.2	34.1	34.2	31.8	30.6	30.6	28.0	22.4

DWELLING ASSAULTS



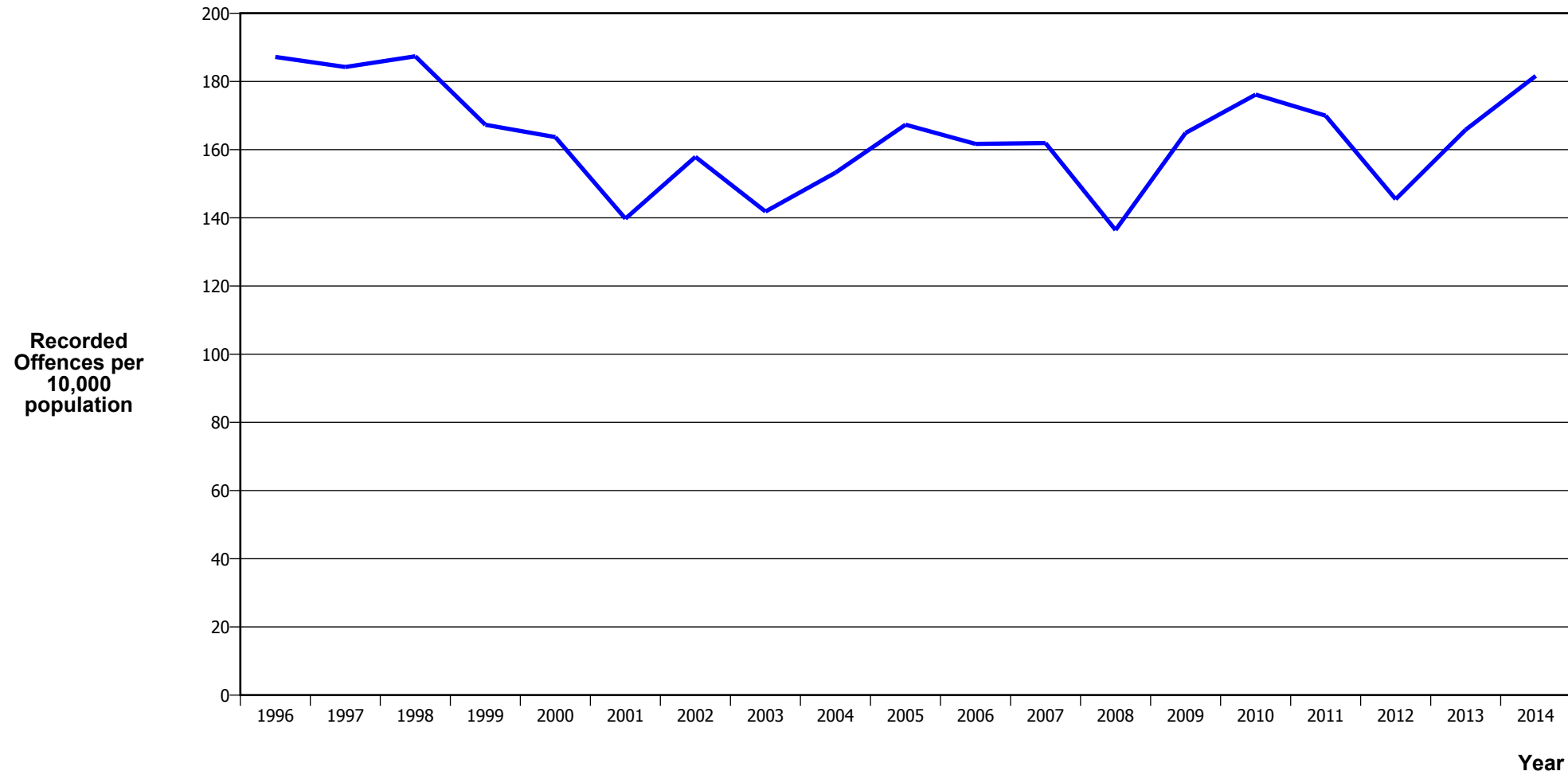
Calendar Year	1996	1997	1998	1999	2000	2001	2002	2003	2004	2005	2006	2007	2008	2009	2010	2011	2012	2013	2014
Recorded Offences	716	613	592	669	704	683	688	794	828	796	892	1,108	1,203	1,261	1,334	1,252	1,520	1,487	1,225
Recorded per 10,000 Population	51.4	43.5	41.7	47.0	49.3	47.8	47.6	54.3	56.1	53.3	59.2	72.6	78.0	80.8	84.3	78.3	94.5	91.7	75.1

ROBBERY



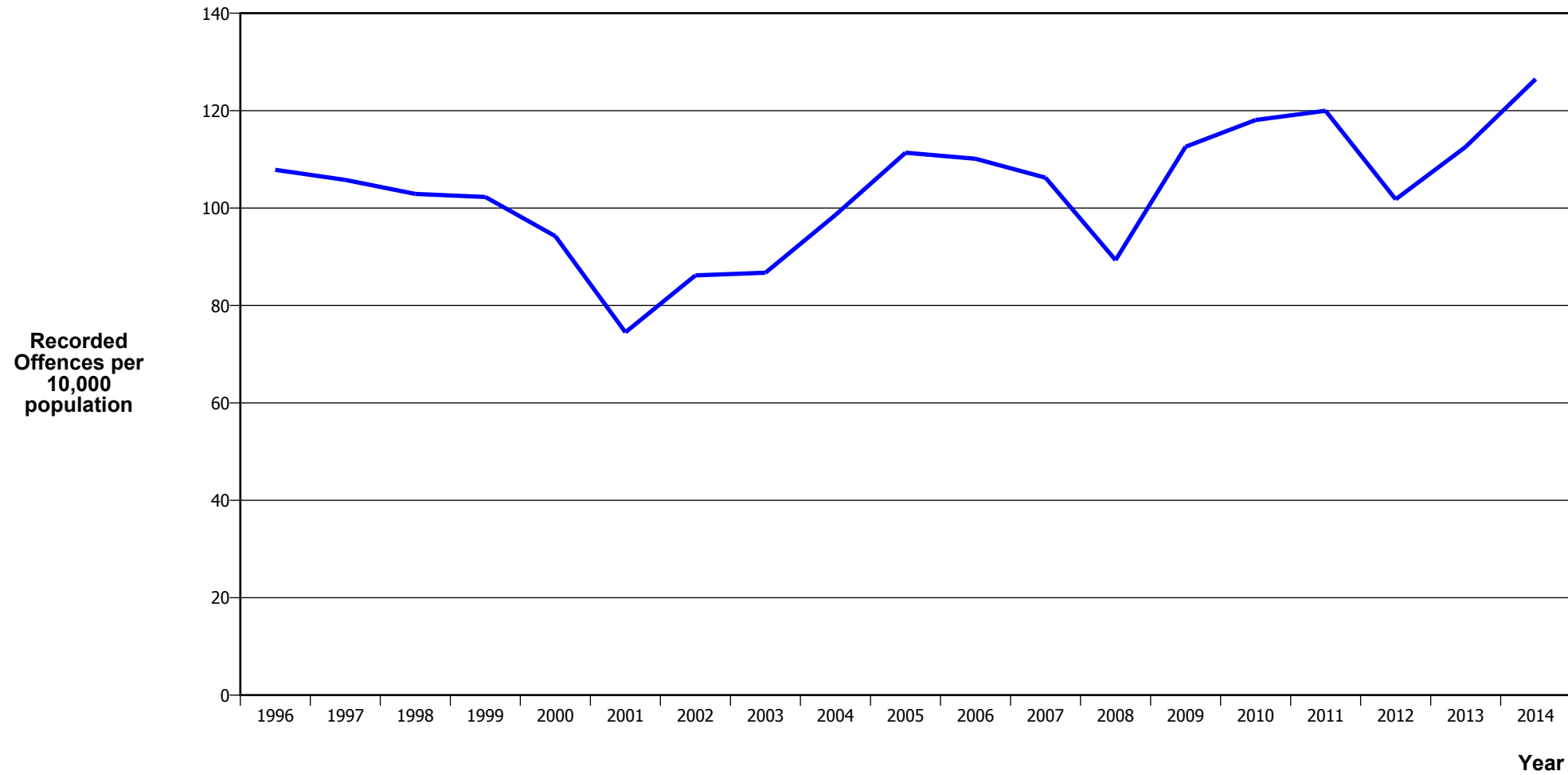
Calendar Year	1996	1997	1998	1999	2000	2001	2002	2003	2004	2005	2006	2007	2008	2009	2010	2011	2012	2013	2014
Recorded Offences	63	76	66	55	67	64	81	49	84	94	114	105	99	93	65	94	89	77	77
Recorded per 10,000 Population	4.5	5.4	4.7	3.9	4.7	4.5	5.6	3.4	5.7	6.3	7.6	6.9	6.4	6.0	4.1	5.9	5.5	4.7	4.7

BURGLARY (TOTAL)



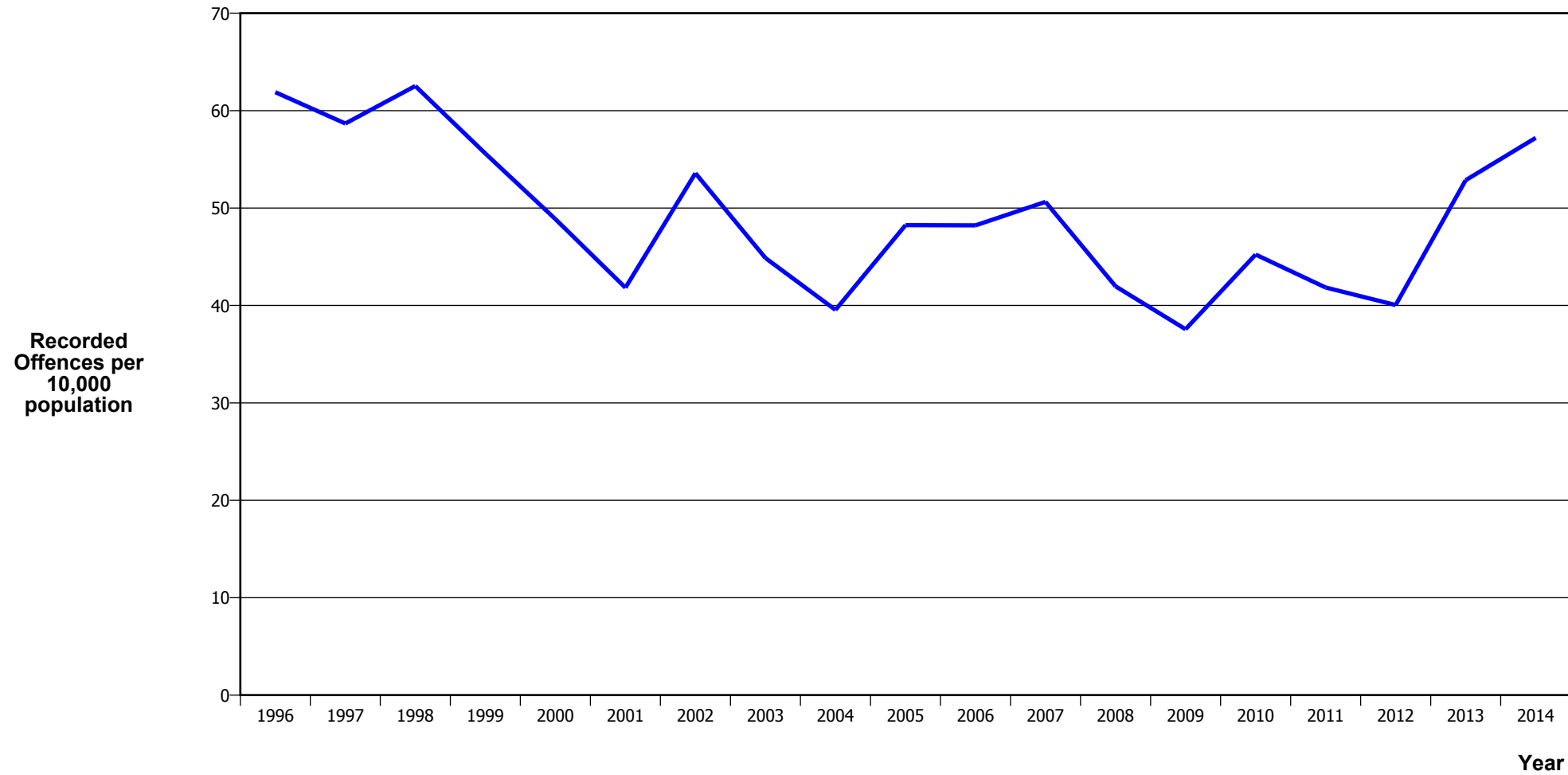
Calendar Year	1996	1997	1998	1999	2000	2001	2002	2003	2004	2005	2006	2007	2008	2009	2010	2011	2012	2013	2014
Recorded Offences	2,607	2,593	2,658	2,383	2,338	1,998	2,281	2,074	2,263	2,497	2,437	2,472	2,103	2,572	2,788	2,717	2,339	2,688	2,962
Recorded per 10,000 Population	187.2	184.2	187.4	167.3	163.7	139.8	157.9	141.8	153.2	167.3	161.7	161.9	136.4	164.9	176.1	170.0	145.4	165.8	181.6

BURGLARY (DWELLING)



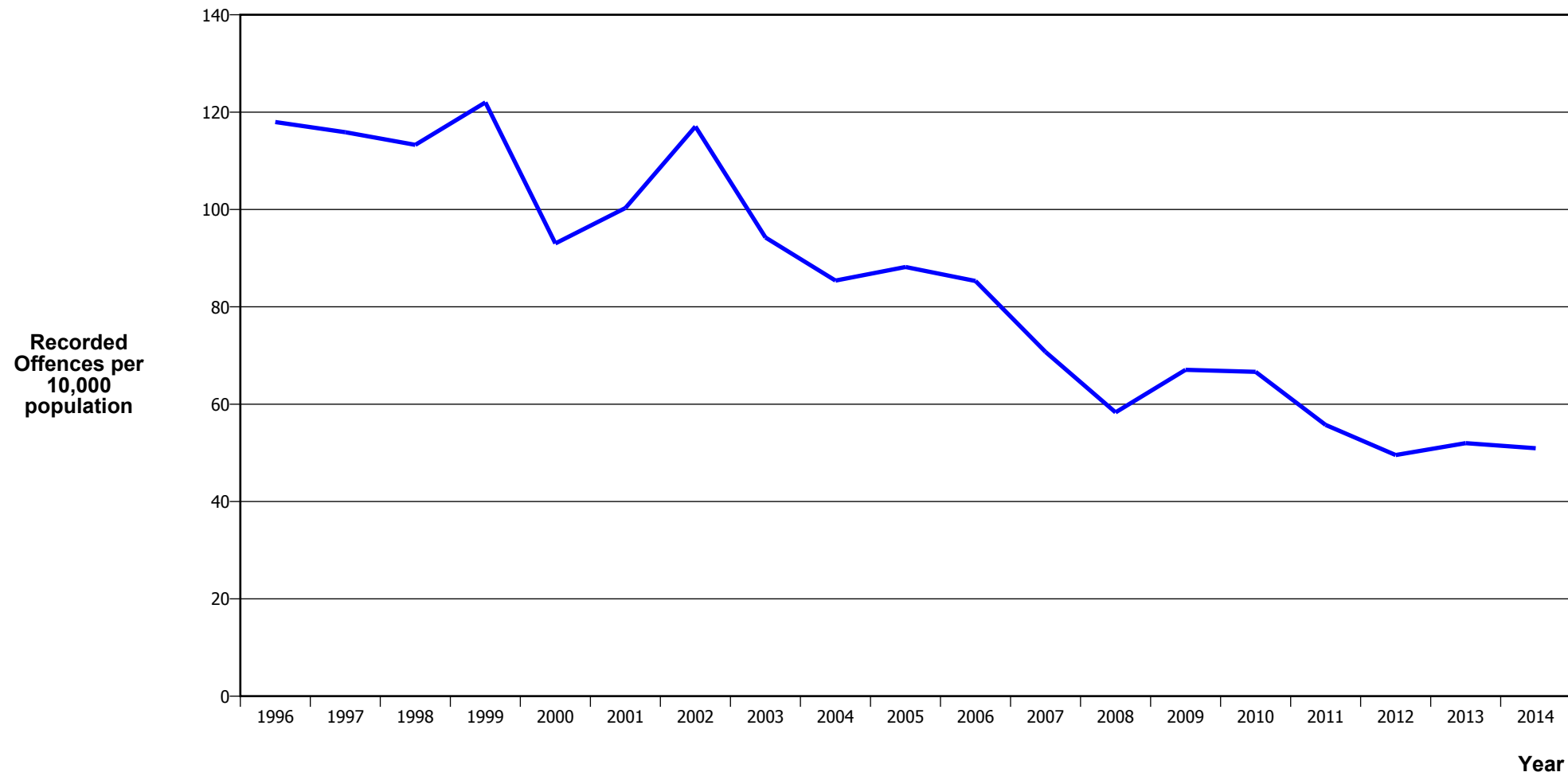
Calendar Year	1996	1997	1998	1999	2000	2001	2002	2003	2004	2005	2006	2007	2008	2009	2010	2011	2012	2013	2014
Recorded Offences	1,502	1,489	1,460	1,457	1,346	1,065	1,245	1,268	1,456	1,662	1,660	1,622	1,377	1,756	1,869	1,918	1,637	1,825	2,063
Recorded per 10,000 Population	107.8	105.8	102.9	102.3	94.2	74.5	86.2	86.7	98.6	111.4	110.1	106.2	89.3	112.6	118.1	120.0	101.8	112.6	126.5

VEHICLES STOLEN



Calendar Year	1996	1997	1998	1999	2000	2001	2002	2003	2004	2005	2006	2007	2008	2009	2010	2011	2012	2013	2014
Recorded Offences	862	826	887	792	698	598	774	656	584	720	727	773	647	586	716	669	644	857	933
Recorded per 10,000 Population	61.9	58.7	62.5	55.6	48.9	41.8	53.6	44.9	39.5	48.2	48.2	50.6	42.0	37.6	45.2	41.8	40.0	52.9	57.2

THEFT EX CAR



Calendar Year	1996	1997	1998	1999	2000	2001	2002	2003	2004	2005	2006	2007	2008	2009	2010	2011	2012	2013	2014
Recorded Offences	1,643	1,631	1,607	1,738	1,329	1,434	1,691	1,378	1,261	1,316	1,286	1,080	899	1,046	1,055	891	797	843	831
Recorded per 10,000 Population	118.0	115.9	113.3	122.0	93.0	100.3	117.0	94.2	85.4	88.2	85.3	70.7	58.3	67.1	66.6	55.7	49.6	52.0	51.0

Population Data

Population data is used in this release to calculate crime rates. They have been derived from population estimates as at 30 June each year that have been obtained from Statistics New Zealand.

The estimated resident population is based on the census usually resident population count, with adjustments for residents missed or counted more than once by the census (net census undercount), and for residents temporarily overseas on census night.

These population estimates exclude the number of international students who are studying in New Zealand for less than 12 months.

Year	Population
1996	139,280
1997	140,760
1998	141,870
1999	142,460
2000	142,850
2001	142,960
2002	144,470
2003	146,230
2004	147,680
2005	149,230
2006	150,740
2007	152,670
2008	154,170
2009	155,990
2010	158,300
2011	159,870
2012	160,830
2013	162,120
2014	163,090

General Definitions

Recorded Offences: the number of breaches of the New Zealand law recorded by Police. This includes offences specified in the Crimes Act and other legislations, such as the Summary Offences Act, Local Government Act, etc.

Resolved Offences: the number of recorded offences where an offender has been identified and dealt with (e.g. warned, cautioned, prosecuted, etc).

Resolution Rate: the proportion of recorded offences that have been resolved.

Recorded per 10,000 population: the number of recorded offences for every 10,000 people. This is also referred as the crime rate per 10,000 population.

ANZSOC: The Australian and New Zealand Standard Offence Classification. The offence classification is divided into 16 major offence divisions.

Definition of ANZSOC Divisions

1. Homicide and related offences: Unlawfully kill, attempt to unlawfully kill or conspiracy to kill another person.
2. Acts intended to cause injury: Acts, excluding attempted murder and those resulting in death, which are intended to cause non-fatal injury or harm to another person and where there is no sexual or acquisitive element.
3. Sexual assault and related offences: Acts, or intent of acts, of a sexual nature against another person, which are non-consensual or where consent is proscribed.
4. Dangerous or negligent acts endangering persons: Dangerous or negligent acts which, though not intended to cause harm, actually or potentially result in injury to oneself or another person.
5. Abduction, harassment and other offences against person: Acts intended to threaten or harass, or acts that unlawfully deprive another person of their freedom of movement, that are against that person's will or against the will of any parent, guardian or other person having lawful custody or care of that person.
6. Robbery, extortion and related offences: Acts intended to unlawfully gain money, property or other items of value from, or to cause detriment to, another person by using the threat of force or any other coercive measure.
7. Unlawful entry with intent / burglary, break and enter: The unlawful entry of a structure with the intent to commit an offence, where the entry is either forced or unforced.
8. Theft and related and offences: The unlawful taking or obtaining of money or goods, not involving the use of force or violence, coercion or deception, with intent to permanently or temporarily deprive the owner or possessor of the use of the money or goods, or the receiving or handling of money or goods obtained unlawfully.

9. Fraud, deception and related offences: Offences involving a dishonest act or omission carried out with the purpose of deceiving to obtain a benefit.

10. Illicit drug offences: The possessing, selling, dealing or trafficking, importing or exporting, manufacturing or cultivating of drugs or other substances prohibited under legislation.

11. Prohibited and regulated weapons and explosives offences: Offences involving prohibited or regulated weapons and explosives. Those offences also involving assault, sexual assault or robbery are coded to the relevant group within Assault, Sexual assaults and Robbery respectively.

12. Property damage and environmental pollution: The wilful and unlawful destruction, damage or defacement of public or private property, or the pollution of property or a definable entity held in common by the community.

13. Public order offences: Offences relating personal conduct that involves, or may lead to, a breach of public order or decency, or that is indicative of criminal intent, or that is otherwise regulated or prohibited on moral or ethical grounds. In general these offences do not involve a specific victim or victims; however some offences, such as offensive language and offensive behaviour, may be directed towards a single victim.

14. Traffic and vehicle regulatory offences: Offences relating to vehicles and most forms of traffic, including offences pertaining to the licensing, registration, roadworthiness, or use of vehicles, bicycle offences and pedestrian offences.

15. Offences against justice procedures, government security and government operations: An act or omission that is deemed to be prejudicial to the effective carrying out of justice procedures or any government operations. This includes general government operations as well as those specifically concerned with maintaining government security.

16. Miscellaneous offences: Offences involving the breach of statutory rules or regulations governing activities that are prima facie legal, where such offences are not explicitly dealt with under any other division. If an offence is specified under regulation and involves an act that would be illegal under common law or general criminal legislation, the offence is dealt with under the appropriate generic group.