

NORTHLAND DISTRICT CRIME STATISTICS 2012



**A Summary of
Recorded and Resolved Offence
Statistics**

**POLICE NATIONAL HEADQUARTERS
April 2013**

ISSN 1178 - 153X

Table of Contents:

Topic	Page
Report Notes	1
District Summary of Recorded and Resolved Crime, by Division	2-4
Proportions of Recorded Crime by Division	5
Summary of District Recorded Offences, Rate per 10,000 Population and Resolved Offences, by Area	6
Summary of Area Recorded Offences, Rate per 10,000 Population and Resolved Offences, by Division	7-9
Crime Trends	10
Total Crime	11
Murder	12
Serious Assaults Resulting in Injury	13
Public Place Assaults	14
Robbery	15
Burglary (Total)	16
Burglary (Dwelling)	17
Vehicles Stolen	18
Theft Ex Car	19
Population Data	20
General Definition	21-22

REPORT NOTES:

Statistics reported in this document are derived from the Police National Intelligence Application (NIA). These Official Statistics for Recorded and Resolved Offences present a snapshot of data in NIA relating to offences that occur within a given year, as at the date 14 days following the end of that year.

Unless the matter is minor where Police attendance is sufficient, a matter that is reported to or discovered by Police where Police believe an offence is likely to have been committed is counted as a recorded offence.

A recorded offence is counted as resolved when Police apprehend an offender and decide how to deal with him/her. (E.g. warn, prosecute, etc.)

Resolution rate is the percentage of recorded offences that are resolved within 14 days of the end of the year being reported on.

If an offence is resolved 15 days or more after the end of the year it will not appear in the Official Crime Statistics for that or any other year. Resolution Rate therefore undercounts the number of cases that Police have resolved. This phenomenon has a more marked impact for some types of offences than others, such as offences that require long investigations (E.g. many serial crimes, burglaries and murders).

When comparing 2012 Statistics with previous years, the reader should also refer to "Report Notes" published in previous years' reports, as previous changes significantly affect year on year trends.

SUMMARY OF DISTRICT RECORDED AND RESOLVED CRIME, BY DIVISION
Years ending 31 December

HOMICIDE AND RELATED OFFENCES

ASOC Subdivision Description	Recorded 2010	Recorded 2011	Recorded 2012	Variance 2010-2011	Variance 2011-2012	Resolved 2010	Resolved 2011	Resolved 2012	Resolution Rate 2010	Resolution Rate 2011	Resolution Rate 2012
ATTEMPTED MURDER	1	0	0	-100.0 %	0.0 %	1	0	0	100.0 %	0.0 %	0.0 %
MANSLAUGHTER AND DRIVING CAUSING DEATH	0	1	2	0.0 %	100.0 %	0	1	2	0.0 %	100.0 %	100.0 %
MURDER	1	1	2	0.0 %	100.0 %	1	1	2	100.0 %	100.0 %	100.0 %
	2	2	4	0.0 %	100.0 %	2	2	4	100.0 %	100.0 %	100.0 %

ACTS INTENDED TO CAUSE INJURY

ASOC Subdivision Description	Recorded 2010	Recorded 2011	Recorded 2012	Variance 2010-2011	Variance 2011-2012	Resolved 2010	Resolved 2011	Resolved 2012	Resolution Rate 2010	Resolution Rate 2011	Resolution Rate 2012
ASSAULT	1,997	1,911	2,197	-4.3 %	15.0 %	1,627	1,606	1,715	81.5 %	84.0 %	78.1 %
OTHER ACTS INTENDED TO CAUSE INJURY	2	5	1	150.0 %	-80.0 %	2	5	1	100.0 %	100.0 %	100.0 %
	1,999	1,916	2,198	-4.2 %	14.7 %	1,629	1,611	1,716	81.5 %	84.1 %	78.1 %

SEXUAL ASSAULT AND RELATED OFFENCES

ASOC Subdivision Description	Recorded 2010	Recorded 2011	Recorded 2012	Variance 2010-2011	Variance 2011-2012	Resolved 2010	Resolved 2011	Resolved 2012	Resolution Rate 2010	Resolution Rate 2011	Resolution Rate 2012
NON-ASSAULTIVE SEXUAL OFFENCES	2	0	3	-100.0 %	0.0 %	1	0	2	50.0 %	0.0 %	66.7 %
SEXUAL ASSAULT	119	162	207	36.1 %	27.8 %	68	103	126	57.1 %	63.6 %	60.9 %
	121	162	210	33.9 %	29.6 %	69	103	128	57.0 %	63.6 %	61.0 %

DANGEROUS OR NEGLIGENT ACTS ENDANGERING PERSONS

ASOC Subdivision Description	Recorded 2010	Recorded 2011	Recorded 2012	Variance 2010-2011	Variance 2011-2012	Resolved 2010	Resolved 2011	Resolved 2012	Resolution Rate 2010	Resolution Rate 2011	Resolution Rate 2012
OTHER DANGEROUS OR NEGLIGENT ACTS ENDANGERING PERSONS	39	48	48	23.1 %	0.0 %	24	27	34	61.5 %	56.3 %	70.8 %
	39	48	48	23.1 %	0.0 %	24	27	34	61.5 %	56.3 %	70.8 %

ABDUCTION, HARASSMENT AND OTHER RELATED OFFENCES AGAINST A PERSON

ASOC Subdivision Description	Recorded 2010	Recorded 2011	Recorded 2012	Variance 2010-2011	Variance 2011-2012	Resolved 2010	Resolved 2011	Resolved 2012	Resolution Rate 2010	Resolution Rate 2011	Resolution Rate 2012
ABDUCTION AND KIDNAPPING	6	13	19	116.7 %	46.2 %	3	11	13	50.0 %	84.6 %	68.4 %
HARASSMENT AND THREATENING BEHAVIOUR	540	479	677	-11.3 %	41.3 %	405	334	486	75.0 %	69.7 %	71.8 %
	546	492	696	-9.9 %	41.5 %	408	345	499	74.7 %	70.1 %	71.7 %

ROBBERY, EXTORTION AND RELATED OFFENCES

ASOC Subdivision Description	Recorded 2010	Recorded 2011	Recorded 2012	Variance 2010-2011	Variance 2011-2012	Resolved 2010	Resolved 2011	Resolved 2012	Resolution Rate 2010	Resolution Rate 2011	Resolution Rate 2012
BLACKMAIL AND EXTORTION	2	1	4	-50.0 %	300.0 %	2	0	1	100.0 %	0.0 %	25.0 %
ROBBERY	65	94	89	44.6 %	-5.3 %	36	47	50	55.4 %	50.0 %	56.2 %
	67	95	93	41.8 %	-2.1 %	38	47	51	56.7 %	49.5 %	54.8 %

UNLAWFUL ENTRY WITH INTENT/BURGLARY, BREAK AND ENTER

ASOC Subdivision Description	Recorded 2010	Recorded 2011	Recorded 2012	Variance 2010-2011	Variance 2011-2012	Resolved 2010	Resolved 2011	Resolved 2012	Resolution Rate 2010	Resolution Rate 2011	Resolution Rate 2012
UNLAWFUL ENTRY WITH INTENT/BURGLARY, BREAK AND ENTER	2,788	2,717	2,339	-2.5 %	-13.9 %	620	595	414	22.2 %	21.9 %	17.7 %
	2,788	2,717	2,339	-2.5 %	-13.9 %	620	595	414	22.2 %	21.9 %	17.7 %

SUMMARY OF DISTRICT RECORDED AND RESOLVED CRIME, BY DIVISION
Years ending 31 December

THEFT AND RELATED OFFENCES

ASOC Subdivision Description	Recorded 2010	Recorded 2011	Recorded 2012	Variance 2010-2011	Variance 2011-2012	Resolved 2010	Resolved 2011	Resolved 2012	Resolution Rate 2010	Resolution Rate 2011	Resolution Rate 2012
ILLEGAL USE OF PROPERTY (EXCEPT MOTOR VEHICLES)	64	47	25	-26.6 %	-46.8 %	6	5	0	9.4 %	10.6 %	0.0 %
MOTOR VEHICLE THEFT AND RELATED OFFENCES	1,771	1,560	1,441	-11.9 %	-7.6 %	286	308	234	16.1 %	19.7 %	16.2 %
RECEIVE OR HANDLE PROCEEDS OF CRIME	176	144	104	-18.2 %	-27.8 %	171	138	95	97.2 %	95.8 %	91.3 %
THEFT (EXCEPT MOTOR VEHICLES)	2,561	2,333	2,223	-8.9 %	-4.7 %	912	783	763	35.6 %	33.6 %	34.3 %
	4,572	4,084	3,793	-10.7 %	-7.1 %	1,375	1,234	1,092	30.1 %	30.2 %	28.8 %

FRAUD, DECEPTION AND RELATED OFFENCES

ASOC Subdivision Description	Recorded 2010	Recorded 2011	Recorded 2012	Variance 2010-2011	Variance 2011-2012	Resolved 2010	Resolved 2011	Resolved 2012	Resolution Rate 2010	Resolution Rate 2011	Resolution Rate 2012
DECEPTIVE BUSINESS/GOVERNMENT PRACTICES	3	1	1	-66.7 %	0.0 %	1	0	1	33.3 %	0.0 %	100.0 %
FORGERY AND COUNTERFEITING	37	8	4	-78.4 %	-50.0 %	29	3	1	78.4 %	37.5 %	25.0 %
OBTAIN BENEFIT BY DECEPTION	361	258	200	-28.5 %	-22.5 %	222	147	125	61.5 %	57.0 %	62.5 %
OTHER FRAUD AND DECEPTION OFFENCES	82	16	12	-80.5 %	-25.0 %	76	11	5	92.7 %	68.8 %	41.7 %
	483	283	217	-41.4 %	-23.3 %	328	161	132	67.9 %	56.9 %	60.8 %

ILLICIT DRUG OFFENCES

ASOC Subdivision Description	Recorded 2010	Recorded 2011	Recorded 2012	Variance 2010-2011	Variance 2011-2012	Resolved 2010	Resolved 2011	Resolved 2012	Resolution Rate 2010	Resolution Rate 2011	Resolution Rate 2012
DEAL OR TRAFFIC IN ILLICIT DRUGS	360	171	390	-52.5 %	128.1 %	356	164	357	98.9 %	95.9 %	91.5 %
IMPORT OR EXPORT ILLICIT DRUGS	2	1	0	-50.0 %	-100.0 %	1	1	0	50.0 %	100.0 %	0.0 %
MANUFACTURE OR CULTIVATE ILLICIT DRUGS	345	388	308	12.5 %	-20.6 %	189	144	146	54.8 %	37.1 %	47.4 %
OTHER ILLICIT DRUG OFFENCES	307	222	197	-27.7 %	-11.3 %	294	215	188	95.8 %	96.8 %	95.4 %
POSSESS AND/OR USE ILLICIT DRUGS	544	433	404	-20.4 %	-6.7 %	508	416	357	93.4 %	96.1 %	88.4 %
	1,558	1,215	1,299	-22.0 %	6.9 %	1,348	940	1,048	86.5 %	77.4 %	80.7 %

PROHIBITED AND REGULATED WEAPONS AND EXPLOSIVES OFFENCES

ASOC Subdivision Description	Recorded 2010	Recorded 2011	Recorded 2012	Variance 2010-2011	Variance 2011-2012	Resolved 2010	Resolved 2011	Resolved 2012	Resolution Rate 2010	Resolution Rate 2011	Resolution Rate 2012
REGULATED WEAPONS/EXPLOSIVES OFFENCES	398	327	369	-17.8 %	12.8 %	353	306	316	88.7 %	93.6 %	85.6 %
	398	327	369	-17.8 %	12.8 %	353	306	316	88.7 %	93.6 %	85.6 %

PROPERTY DAMAGE AND ENVIRONMENTAL POLLUTION

ASOC Subdivision Description	Recorded 2010	Recorded 2011	Recorded 2012	Variance 2010-2011	Variance 2011-2012	Resolved 2010	Resolved 2011	Resolved 2012	Resolution Rate 2010	Resolution Rate 2011	Resolution Rate 2012
ENVIRONMENTAL POLLUTION	9	4	3	-55.6 %	-25.0 %	4	3	2	44.4 %	75.0 %	66.7 %
PROPERTY DAMAGE	2,128	1,634	1,701	-23.2 %	4.1 %	880	584	643	41.4 %	35.7 %	37.8 %
	2,137	1,638	1,704	-23.4 %	4.0 %	884	587	645	41.4 %	35.8 %	37.9 %

PUBLIC ORDER OFFENCES

ASOC Subdivision Description	Recorded 2010	Recorded 2011	Recorded 2012	Variance 2010-2011	Variance 2011-2012	Resolved 2010	Resolved 2011	Resolved 2012	Resolution Rate 2010	Resolution Rate 2011	Resolution Rate 2012
DISORDERLY CONDUCT	1,098	1,037	1,207	-5.6 %	16.4 %	941	893	1,017	85.7 %	86.1 %	84.3 %
OFFENSIVE CONDUCT	71	67	64	-5.6 %	-4.5 %	45	44	39	63.4 %	65.7 %	60.9 %
PUBLIC ORDER OFFENCES NOT FURTHER DEFINED	0	0	1	0.0 %	0.0 %	0	0	0	0.0 %	0.0 %	0.0 %
REGULATED PUBLIC ORDER OFFENCES	427	451	364	5.6 %	-19.3 %	407	441	352	95.3 %	97.8 %	96.7 %
	1,596	1,555	1,636	-2.6 %	5.2 %	1,393	1,378	1,408	87.3 %	88.6 %	86.1 %

SUMMARY OF DISTRICT RECORDED AND RESOLVED CRIME, BY DIVISION
Years ending 31 December

OFFENCES AGAINST JUSTICE PROCEDURES, GOVERNMENT SECURITY AND GOVERNMENT OPERATIONS

ASOC Subdivision Description	Recorded 2010	Recorded 2011	Recorded 2012	Variance 2010-2011	Variance 2011-2012	Resolved 2010	Resolved 2011	Resolved 2012	Resolution Rate 2010	Resolution Rate 2011	Resolution Rate 2012
BREACH OF COMMUNITY-BASED ORDER	72	127	128	76.4 %	0.8 %	66	126	123	91.7 %	99.2 %	96.1 %
BREACH OF CUSTODIAL ORDER OFFENCES	47	27	26	-42.6 %	-3.7 %	38	26	23	80.9 %	96.3 %	88.5 %
BREACH OF VIOLENCE AND NON-VIOLENCE RESTRAINING ORDERS	230	219	310	-4.8 %	41.6 %	196	202	264	85.2 %	92.2 %	85.2 %
OFFENCES AGAINST GOVERNMENT OPERATIONS	4	7	8	75.0 %	14.3 %	3	4	4	75.0 %	57.1 %	50.0 %
OFFENCES AGAINST GOVERNMENT SECURITY	0	0	0	0.0 %	0.0 %	0	0	0	0.0 %	0.0 %	0.0 %
OFFENCES AGAINST JUSTICE PROCEDURES	309	262	254	-15.2 %	-3.1 %	299	255	248	96.8 %	97.3 %	97.6 %
OFFENCES AGAINST JUSTICE PROCEDURES, GOVERNMENT SECURITY AND GOVERNMENT OPERATIONS NOT FURTHER DEFINED	2	1	1	-50.0 %	0.0 %	1	1	1	50.0 %	100.0 %	100.0 %
	664	643	727	-3.2 %	13.1 %	603	614	663	90.8 %	95.5 %	91.2 %

MISCELLANEOUS OFFENCES

ASOC Subdivision Description	Recorded 2010	Recorded 2011	Recorded 2012	Variance 2010-2011	Variance 2011-2012	Resolved 2010	Resolved 2011	Resolved 2012	Resolution Rate 2010	Resolution Rate 2011	Resolution Rate 2012
COMMERCIAL/INDUSTRY/FINANCIAL REGULATION	0	7	2	0.0 %	-71.4 %	0	7	2	0.0 %	100.0 %	100.0 %
DEFAMATION, LIBEL AND PRIVACY OFFENCES	1	0	0	-100.0 %	0.0 %	1	0	0	100.0 %	0.0 %	0.0 %
OTHER MISCELLANEOUS OFFENCES	23	24	20	4.3 %	-16.7 %	17	10	11	73.9 %	41.7 %	55.0 %
PUBLIC HEALTH AND SAFETY OFFENCES	0	3	0	0.0 %	-100.0 %	0	0	0	0.0 %	0.0 %	0.0 %
	24	34	22	41.7 %	-35.3 %	18	17	13	75.0 %	50.0 %	59.1 %

TOTAL	16,994	15,211	15,355	-10.5 %	0.9 %	9,092	7,967	8,163	53.5 %	52.4 %	53.2 %
--------------	---------------	---------------	---------------	----------------	--------------	--------------	--------------	--------------	---------------	---------------	---------------

PROPORTIONS OF RECORDED CRIME BY DIVISION

Years ending 31 December

ASOC Division Description	Proportions Recorded 2010	Recorded 2010	Proportions Recorded 2011	Recorded 2011	Proportions Recorded 2012	Recorded 2012
HOMICIDE AND RELATED OFFENCES	0.01 %	2	0.01 %	2	0.03 %	4
ACTS INTENDED TO CAUSE INJURY	11.76 %	1,999	12.60 %	1,916	14.31 %	2,198
SEXUAL ASSAULT AND RELATED OFFENCES	0.71 %	121	1.07 %	162	1.37 %	210
DANGEROUS OR NEGLIGENT ACTS ENDANGERING PERSONS	0.23 %	39	0.32 %	48	0.31 %	48
ABDUCTION, HARASSMENT AND OTHER RELATED OFFENCES AGAINST A PERSON	3.21 %	546	3.23 %	492	4.53 %	696
ROBBERY, EXTORTION AND RELATED OFFENCES	0.39 %	67	0.62 %	95	0.61 %	93
UNLAWFUL ENTRY WITH INTENT/BURGLARY, BREAK AND ENTER	16.41 %	2,788	17.86 %	2,717	15.23 %	2,339
THEFT AND RELATED OFFENCES	26.90 %	4,572	26.85 %	4,084	24.70 %	3,793
FRAUD, DECEPTION AND RELATED OFFENCES	2.84 %	483	1.86 %	283	1.41 %	217
ILLICIT DRUG OFFENCES	9.17 %	1,558	7.99 %	1,215	8.46 %	1,299
PROHIBITED AND REGULATED WEAPONS AND EXPLOSIVES OFFENCES	2.34 %	398	2.15 %	327	2.40 %	369
PROPERTY DAMAGE AND ENVIRONMENTAL POLLUTION	12.58 %	2,137	10.77 %	1,638	11.10 %	1,704
PUBLIC ORDER OFFENCES	9.39 %	1,596	10.22 %	1,555	10.65 %	1,636
OFFENCES AGAINST JUSTICE PROCEDURES, GOVERNMENT SECURITY AND GOVERNMENT OPERATIONS	3.91 %	664	4.23 %	643	4.73 %	727
MISCELLANEOUS OFFENCES	0.14 %	24	0.22 %	34	0.14 %	22
	100.00 %	16,994	100.00 %	15,211	100.00 %	15,355

SUMMARY OF RECORDED OFFENCES, RATE PER 10,000 POPULATION AND RESOLVED OFFENCES, BY AREA
years ending 31 December

TOTAL CRIME

Area Description	Recorded 2011	Recorded 2012	Variance 2011-2012	Recorded per 10,000 pop 2011	Recorded per 10,000 pop 2012	Per 10,000 pop % Variance 2011 to 2012	Resolved 2011	Resolved 2012	Resolution Rate 2011	Resolution Rate 2012
Far North	5,970	6,405	7.3 %	1,016.7	1,093.8	7.6 %	2,810	3,248	47.1 %	50.7 %
Whangarei	9,241	8,950	-3.1 %	950.8	919.6	-3.3 %	5,157	4,915	55.8 %	54.9 %
	15,211	15,355	0.9 %	975.6	985.1	1.0 %	7,967	8,163	52.4 %	53.2 %

SUMMARY OF RECORDED OFFENCES, RATE PER 10,000 POPULATION AND RESOLVED OFFENCES, BY DIVISION

Years ending 31 December

HOMICIDE AND RELATED OFFENCES

Area Description	Recorded 2011	Recorded 2012	Variance 2011-2012	Recorded per 10,000 pop 2011	Recorded per 10,000 pop 2012	Per 10,000 pop % Variance 2011 to 2012	Resolved 2011	Resolved 2012	Resolution Rate 2011	Resolution Rate 2012
Far North	2	0	-100.0 %	0.3	0.0	-100.0 %	2	0	100.0 %	0.0 %
Whangarei	0	4	0.0 %	0.0	0.4	0.0 %	0	4	0.0 %	100.0 %
	2	4	100.0 %	0.1	0.3	100.0 %	2	4	100.0 %	100.0 %

ACTS INTENDED TO CAUSE INJURY

Area Description	Recorded 2011	Recorded 2012	Variance 2011-2012	Recorded per 10,000 pop 2011	Recorded per 10,000 pop 2012	Per 10,000 pop % Variance 2011 to 2012	Resolved 2011	Resolved 2012	Resolution Rate 2011	Resolution Rate 2012
Far North	721	959	33.0 %	122.8	163.8	33.4 %	600	741	83.2 %	77.3 %
Whangarei	1,195	1,239	3.7 %	123.0	127.3	3.5 %	1,011	975	84.6 %	78.7 %
	1,916	2,198	14.7 %	122.9	141.0	14.7 %	1,611	1,716	84.1 %	78.1 %

SEXUAL ASSAULT AND RELATED OFFENCES

Area Description	Recorded 2011	Recorded 2012	Variance 2011-2012	Recorded per 10,000 pop 2011	Recorded per 10,000 pop 2012	Per 10,000 pop % Variance 2011 to 2012	Resolved 2011	Resolved 2012	Resolution Rate 2011	Resolution Rate 2012
Far North	60	105	75.0 %	10.2	17.9	75.5 %	43	70	71.7 %	66.7 %
Whangarei	102	105	2.9 %	10.5	10.8	2.8 %	60	58	58.8 %	55.2 %
	162	210	29.6 %	10.4	13.5	29.7 %	103	128	63.6 %	61.0 %

DANGEROUS OR NEGLIGENT ACTS ENDANGERING PERSONS

Area Description	Recorded 2011	Recorded 2012	Variance 2011-2012	Recorded per 10,000 pop 2011	Recorded per 10,000 pop 2012	Per 10,000 pop % Variance 2011 to 2012	Resolved 2011	Resolved 2012	Resolution Rate 2011	Resolution Rate 2012
Far North	17	16	-5.9 %	2.9	2.7	-5.6 %	8	11	47.1 %	68.8 %
Whangarei	31	32	3.2 %	3.2	3.3	3.1 %	19	23	61.3 %	71.9 %
	48	48	0.0 %	3.1	3.1	0.0 %	27	34	56.3 %	70.8 %

ABDUCTION, HARASSMENT AND OTHER RELATED OFFENCES AGAINST A PERSON

Area Description	Recorded 2011	Recorded 2012	Variance 2011-2012	Recorded per 10,000 pop 2011	Recorded per 10,000 pop 2012	Per 10,000 pop % Variance 2011 to 2012	Resolved 2011	Resolved 2012	Resolution Rate 2011	Resolution Rate 2012
Far North	205	311	51.7 %	34.9	53.1	52.1 %	136	248	66.3 %	79.7 %
Whangarei	287	385	34.1 %	29.5	39.6	34.0 %	209	251	72.8 %	65.2 %
	492	696	41.5 %	31.6	44.6	41.5 %	345	499	70.1 %	71.7 %

ROBBERY, EXTORTION AND RELATED OFFENCES

Area Description	Recorded 2011	Recorded 2012	Variance 2011-2012	Recorded per 10,000 pop 2011	Recorded per 10,000 pop 2012	Per 10,000 pop % Variance 2011 to 2012	Resolved 2011	Resolved 2012	Resolution Rate 2011	Resolution Rate 2012
Far North	22	28	27.3 %	3.7	4.8	27.6 %	11	21	50.0 %	75.0 %
Whangarei	73	65	-11.0 %	7.5	6.7	-11.1 %	36	30	49.3 %	46.2 %
	95	93	-2.1 %	6.1	6.0	-2.1 %	47	51	49.5 %	54.8 %

UNLAWFUL ENTRY WITH INTENT/BURGLARY, BREAK AND ENTER

Area Description	Recorded 2011	Recorded 2012	Variance 2011-2012	Recorded per 10,000 pop 2011	Recorded per 10,000 pop 2012	Per 10,000 pop % Variance 2011 to 2012	Resolved 2011	Resolved 2012	Resolution Rate 2011	Resolution Rate 2012
Far North	1,264	1,097	-13.2 %	215.3	187.3	-13.0 %	254	159	20.1 %	14.5 %
Whangarei	1,453	1,242	-14.5 %	149.5	127.6	-14.6 %	341	255	23.5 %	20.5 %
	2,717	2,339	-13.9 %	174.3	150.1	-13.9 %	595	414	21.9 %	17.7 %

SUMMARY OF RECORDED OFFENCES, RATE PER 10,000 POPULATION AND RESOLVED OFFENCES, BY DIVISION

Years ending 31 December

THEFT AND RELATED OFFENCES

Area Description	Recorded 2011	Recorded 2012	Variance 2011-2012	Recorded per 10,000 pop 2011	Recorded per 10,000 pop 2012	Per 10,000 pop % Variance 2011 to 2012	Resolved 2011	Resolved 2012	Resolution Rate 2011	Resolution Rate 2012
Far North	1,680	1,549	-7.8 %	286.1	264.5	-7.5 %	500	394	29.8 %	25.4 %
Whangarei	2,404	2,244	-6.7 %	247.4	230.6	-6.8 %	734	698	30.5 %	31.1 %
	4,084	3,793	-7.1 %	261.9	243.3	-7.1 %	1,234	1,092	30.2 %	28.8 %

FRAUD, DECEPTION AND RELATED OFFENCES

Area Description	Recorded 2011	Recorded 2012	Variance 2011-2012	Recorded per 10,000 pop 2011	Recorded per 10,000 pop 2012	Per 10,000 pop % Variance 2011 to 2012	Resolved 2011	Resolved 2012	Resolution Rate 2011	Resolution Rate 2012
Far North	97	69	-28.9 %	16.5	11.8	-28.7 %	59	46	60.8 %	66.7 %
Whangarei	186	148	-20.4 %	19.1	15.2	-20.5 %	102	86	54.8 %	58.1 %
	283	217	-23.3 %	18.2	13.9	-23.3 %	161	132	56.9 %	60.8 %

ILLICIT DRUG OFFENCES

Area Description	Recorded 2011	Recorded 2012	Variance 2011-2012	Recorded per 10,000 pop 2011	Recorded per 10,000 pop 2012	Per 10,000 pop % Variance 2011 to 2012	Resolved 2011	Resolved 2012	Resolution Rate 2011	Resolution Rate 2012
Far North	444	578	30.2 %	75.6	98.7	30.5 %	284	449	64.0 %	77.7 %
Whangarei	771	721	-6.5 %	79.3	74.1	-6.6 %	656	599	85.1 %	83.1 %
	1,215	1,299	6.9 %	77.9	83.3	6.9 %	940	1,048	77.4 %	80.7 %

PROHIBITED AND REGULATED WEAPONS AND EXPLOSIVES OFFENCES

Area Description	Recorded 2011	Recorded 2012	Variance 2011-2012	Recorded per 10,000 pop 2011	Recorded per 10,000 pop 2012	Per 10,000 pop % Variance 2011 to 2012	Resolved 2011	Resolved 2012	Resolution Rate 2011	Resolution Rate 2012
Far North	135	149	10.4 %	23.0	25.4	10.7 %	124	129	91.9 %	86.6 %
Whangarei	192	220	14.6 %	19.8	22.6	14.4 %	182	187	94.8 %	85.0 %
	327	369	12.8 %	21.0	23.7	12.9 %	306	316	93.6 %	85.6 %

PROPERTY DAMAGE AND ENVIRONMENTAL POLLUTION

Area Description	Recorded 2011	Recorded 2012	Variance 2011-2012	Recorded per 10,000 pop 2011	Recorded per 10,000 pop 2012	Per 10,000 pop % Variance 2011 to 2012	Resolved 2011	Resolved 2012	Resolution Rate 2011	Resolution Rate 2012
Far North	643	662	3.0 %	109.5	113.0	3.2 %	211	232	32.8 %	35.0 %
Whangarei	995	1,042	4.7 %	102.4	107.1	4.6 %	376	413	37.8 %	39.6 %
	1,638	1,704	4.0 %	105.1	109.3	4.0 %	587	645	35.8 %	37.9 %

PUBLIC ORDER OFFENCES

Area Description	Recorded 2011	Recorded 2012	Variance 2011-2012	Recorded per 10,000 pop 2011	Recorded per 10,000 pop 2012	Per 10,000 pop % Variance 2011 to 2012	Resolved 2011	Resolved 2012	Resolution Rate 2011	Resolution Rate 2012
Far North	399	523	31.1 %	67.9	89.3	31.4 %	315	424	78.9 %	81.1 %
Whangarei	1,156	1,113	-3.7 %	118.9	114.4	-3.8 %	1,063	984	92.0 %	88.4 %
	1,555	1,636	5.2 %	99.7	105.0	5.2 %	1,378	1,408	88.6 %	86.1 %

OFFENCES AGAINST JUSTICE PROCEDURES, GOVERNMENT SECURITY AND GOVERNMENT OPERATIONS

Area Description	Recorded 2011	Recorded 2012	Variance 2011-2012	Recorded per 10,000 pop 2011	Recorded per 10,000 pop 2012	Per 10,000 pop % Variance 2011 to 2012	Resolved 2011	Resolved 2012	Resolution Rate 2011	Resolution Rate 2012
Far North	263	353	34.2 %	44.8	60.3	34.6 %	254	322	96.6 %	91.2 %
Whangarei	380	374	-1.6 %	39.1	38.4	-1.7 %	360	341	94.7 %	91.2 %
	643	727	13.1 %	41.2	46.6	13.1 %	614	663	95.5 %	91.2 %

SUMMARY OF RECORDED OFFENCES, RATE PER 10,000 POPULATION AND RESOLVED OFFENCES, BY DIVISION

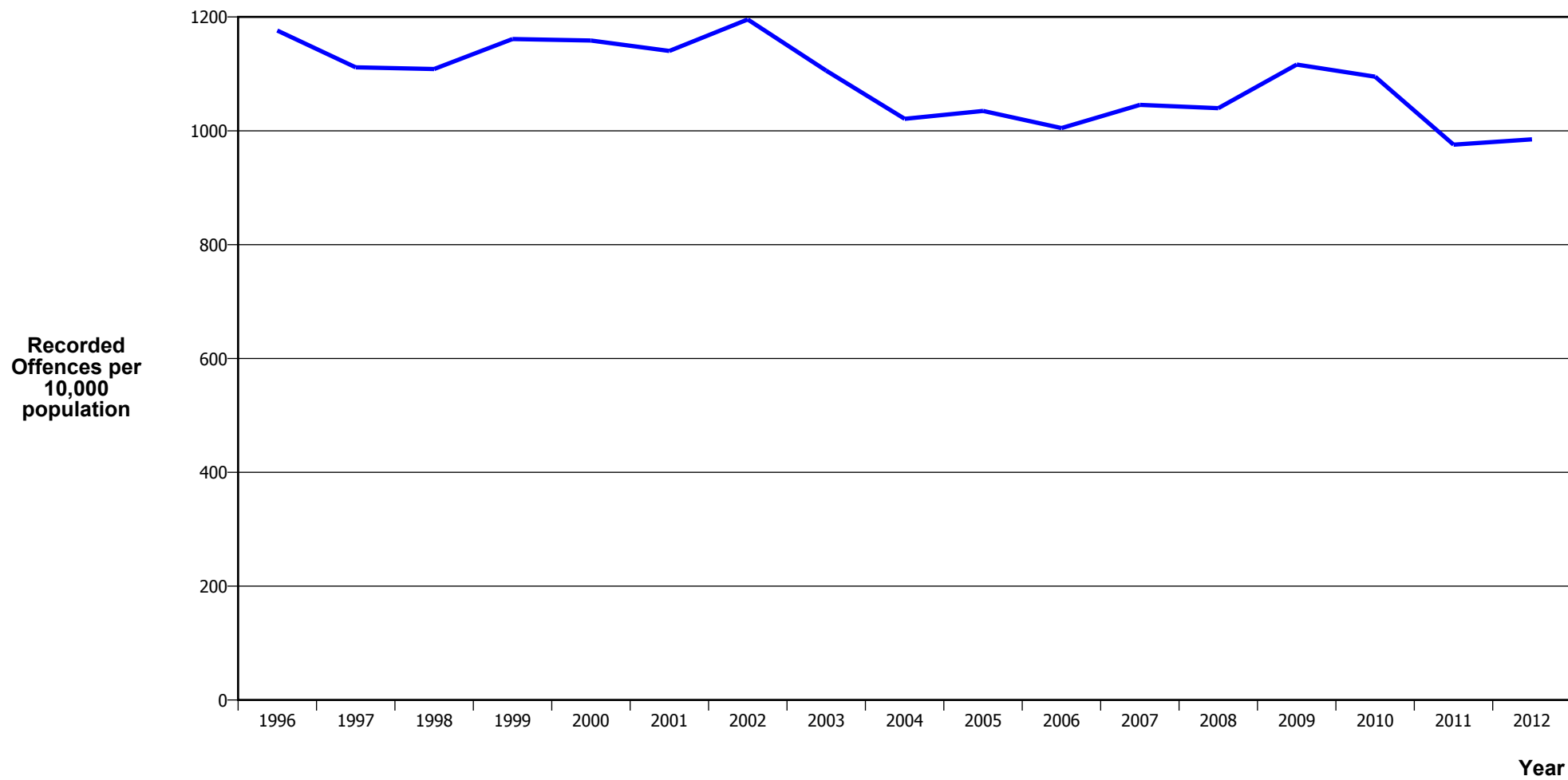
Years ending 31 December

MISCELLANEOUS OFFENCES

Area Description	Recorded 2011	Recorded 2012	Variance 2011-2012	Recorded per 10,000 pop 2011	Recorded per 10,000 pop 2012	Per 10,000 pop % Variance 2011 to 2012	Resolved 2011	Resolved 2012	Resolution Rate 2011	Resolution Rate 2012
Far North	18	6	-66.7 %	3.1	1.0	-66.6 %	9	2	50.0 %	33.3 %
Whangarei	16	16	0.0 %	1.6	1.6	-0.1 %	8	11	50.0 %	68.8 %
	34	22	-35.3 %	2.2	1.4	-35.3 %	17	13	50.0 %	59.1 %

CRIME TRENDS

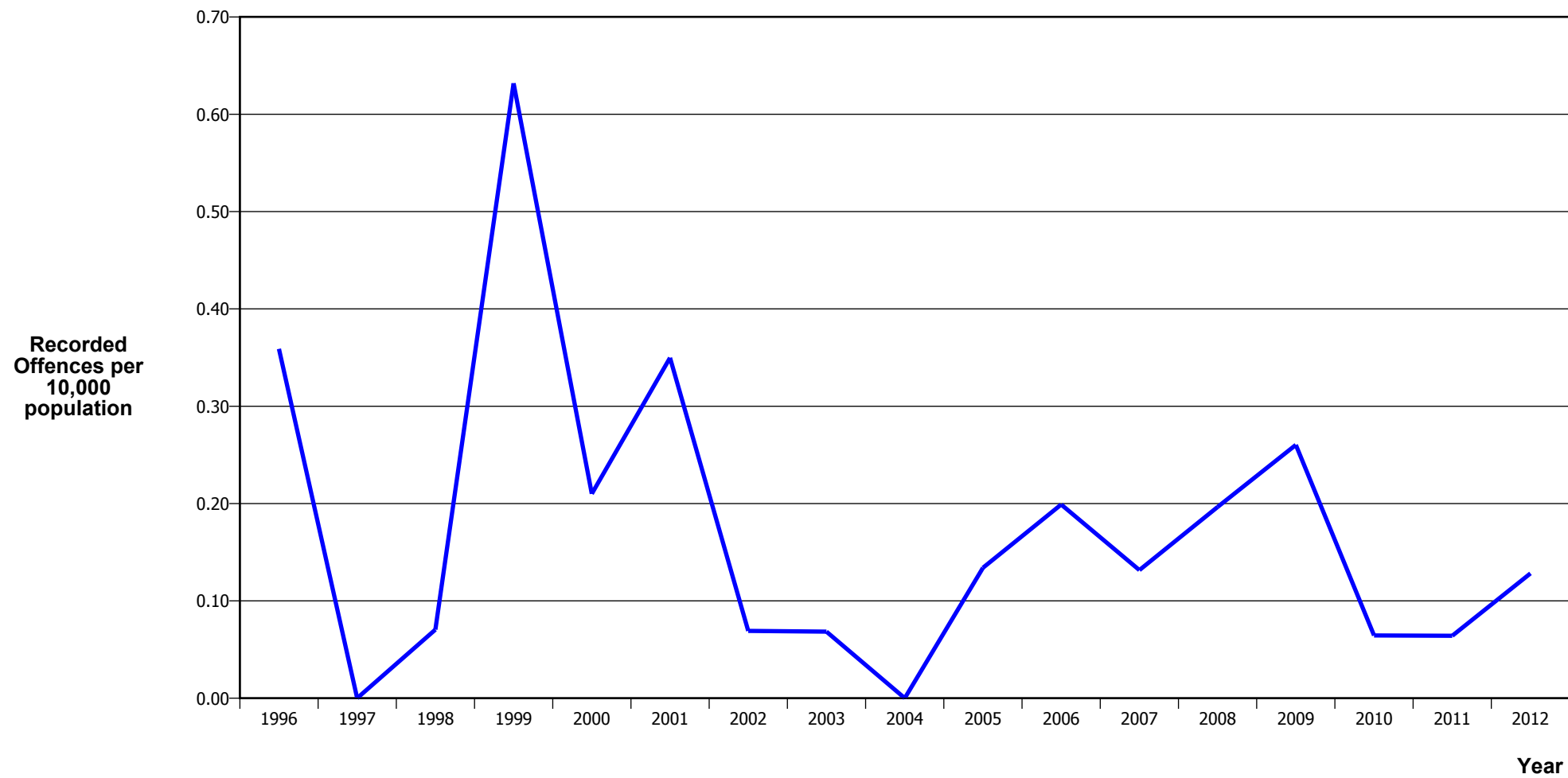
TOTAL CRIME



Calendar Year	1996	1997	1998	1999	2000	2001	2002	2003	2004	2005	2006	2007	2008	2009	2010	2011	2012
Recorded Offences	16,383	15,646	15,727	16,544	16,551	16,302	17,272	16,170	15,080	15,443	15,146	15,885	15,875	17,153	16,994	15,211	15,355
Recorded per 10,000 Population	1,176.3	1,111.5	1,108.6	1,161.3	1,158.6	1,140.3	1,195.5	1,105.8	1,021.1	1,034.8	1,004.8	1,045.6	1,039.8	1,116.3	1,095.1	975.6	985.1

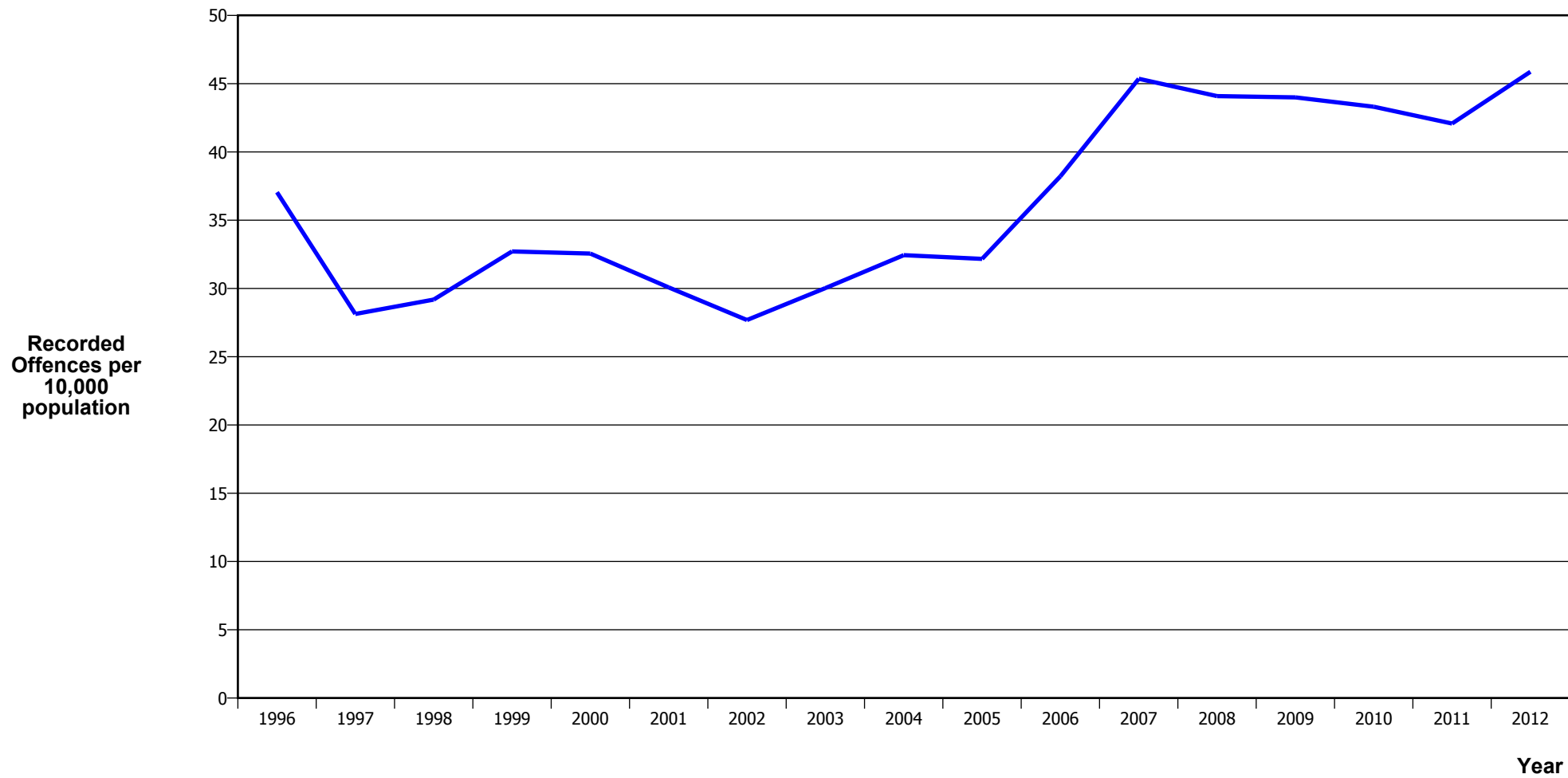
*In 2005/2006 there was a major IT system change (LES to NIA)

MURDER



Calendar Year	1996	1997	1998	1999	2000	2001	2002	2003	2004	2005	2006	2007	2008	2009	2010	2011	2012
Recorded Offences	5	0	1	9	3	5	1	1	0	2	3	2	3	4	1	1	2
Recorded per 10,000 Population	0.36	0.00	0.07	0.63	0.21	0.35	0.07	0.07	0.00	0.13	0.20	0.13	0.20	0.26	0.06	0.06	0.13

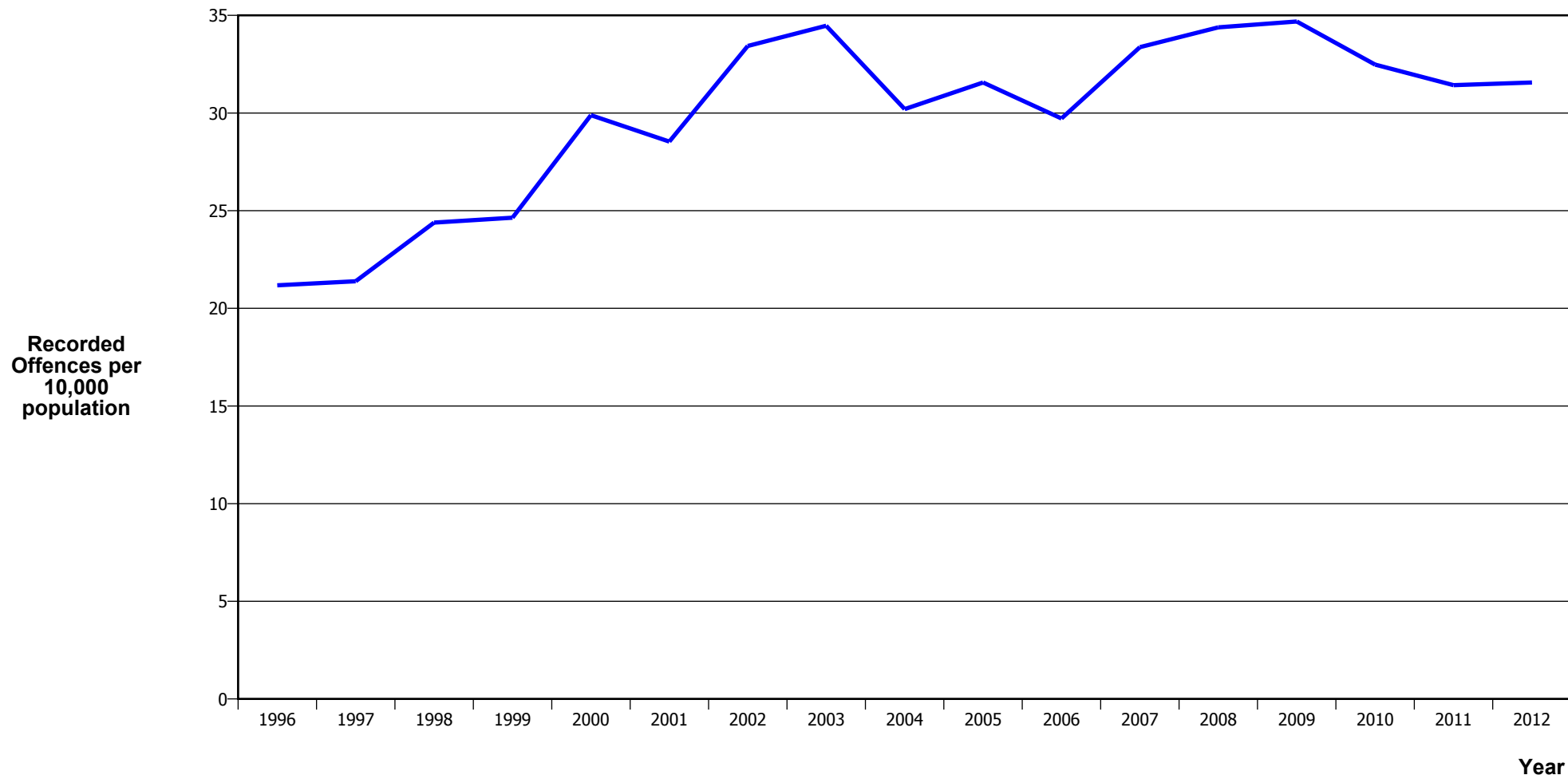
SERIOUS ASSAULTS RESULTING IN INJURY*



Calendar Year	1996	1997	1998	1999	2000	2001	2002	2003	2004	2005	2006	2007	2008	2009	2010	2011	2012
Recorded Offence	516	396	414	466	465	430	400	439	479	480	576	689	673	676	672	656	715
Offence Rate per 10K Popn	37.0	28.1	29.2	32.7	32.6	30.1	27.7	30.0	32.4	32.2	38.2	45.4	44.1	44.0	43.3	42.1	45.9

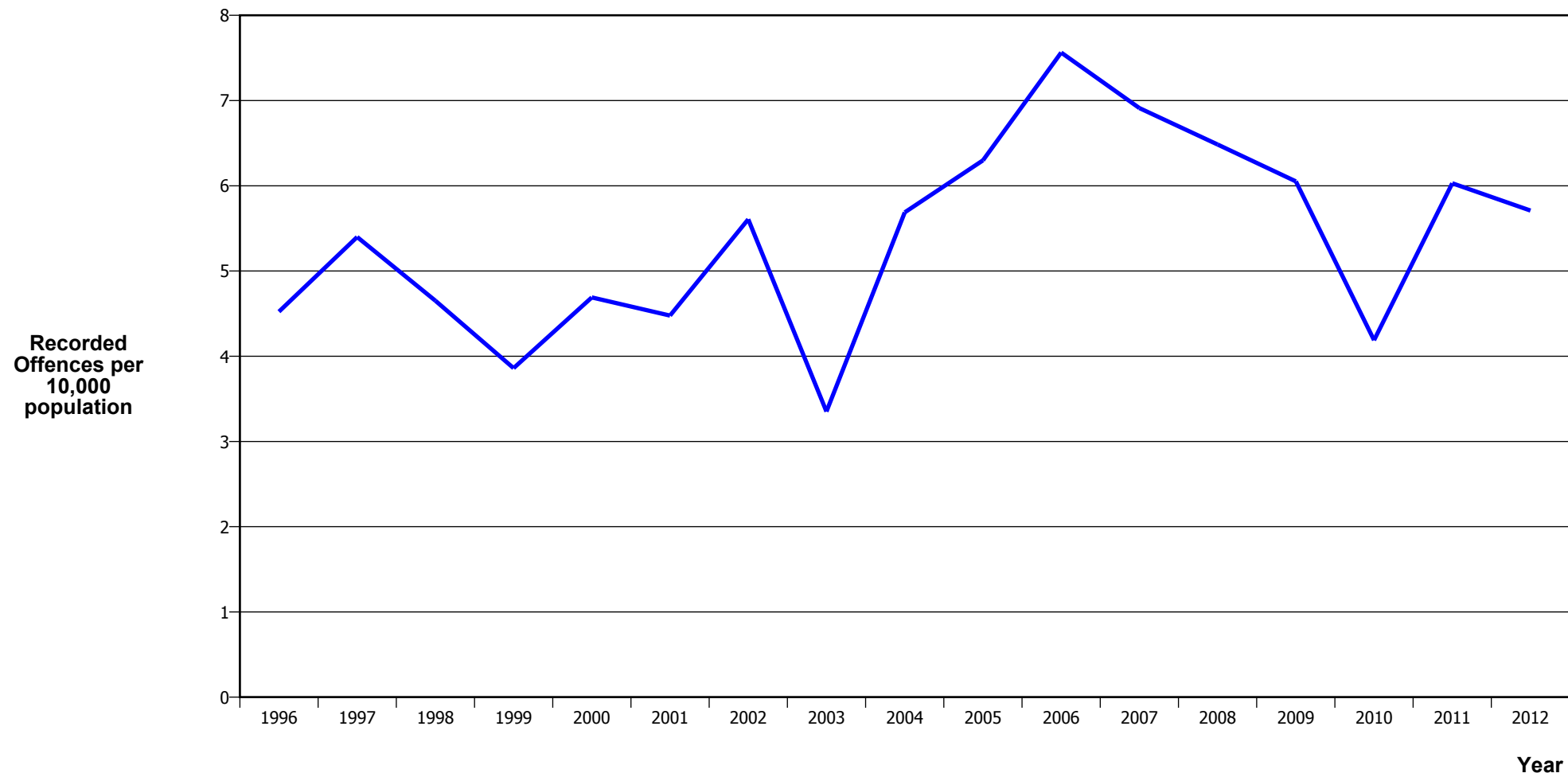
* This measure excludes common assaults

PUBLIC PLACE ASSAULTS



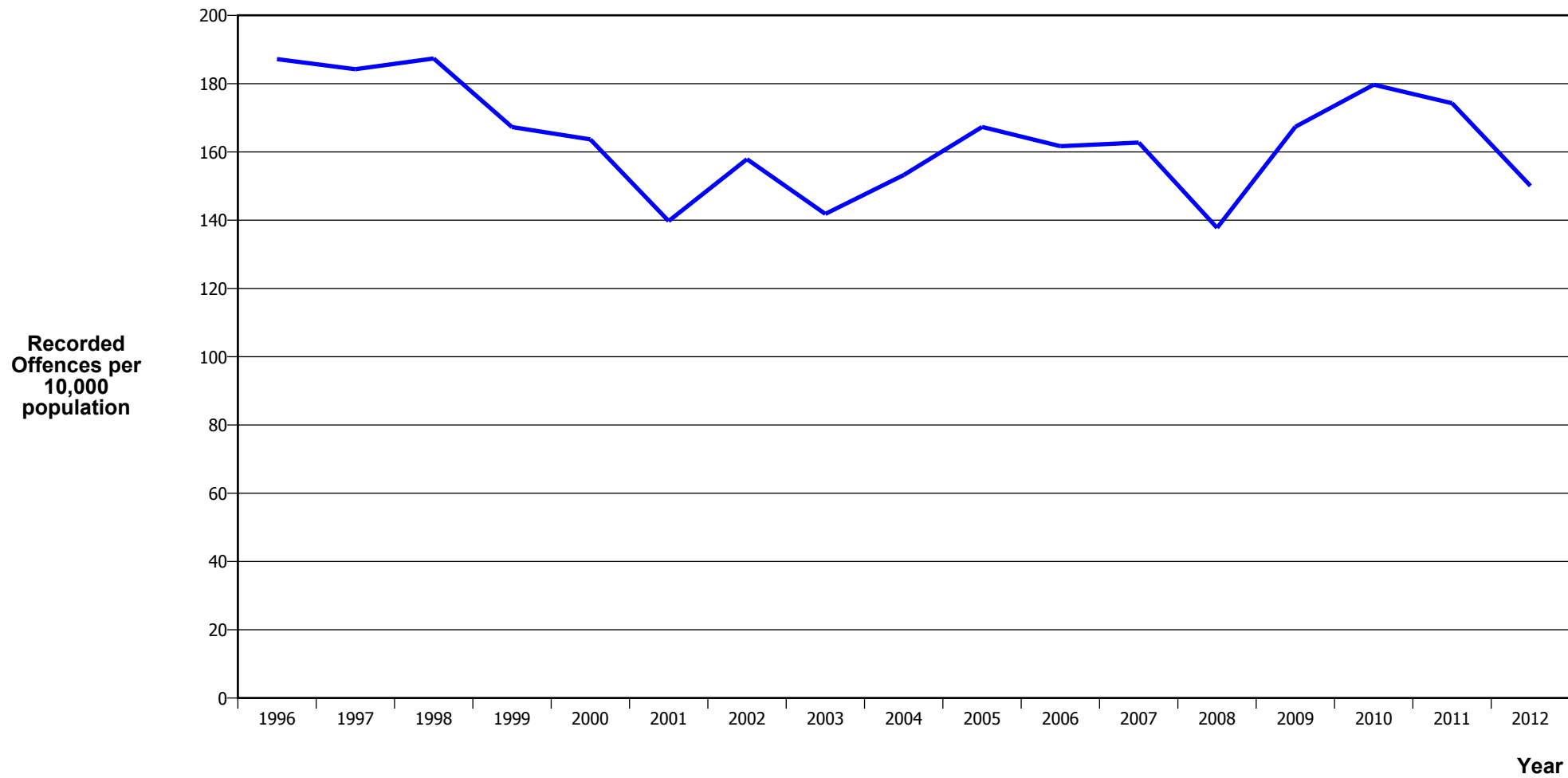
Calendar Year	1996	1997	1998	1999	2000	2001	2002	2003	2004	2005	2006	2007	2008	2009	2010	2011	2012
Recorded Offences	295	301	346	351	427	408	483	504	446	471	448	507	525	533	504	490	492
Recorded per 10,000 Population	21.2	21.4	24.4	24.6	29.9	28.5	33.4	34.5	30.2	31.6	29.7	33.4	34.4	34.7	32.5	31.4	31.6

ROBBERY



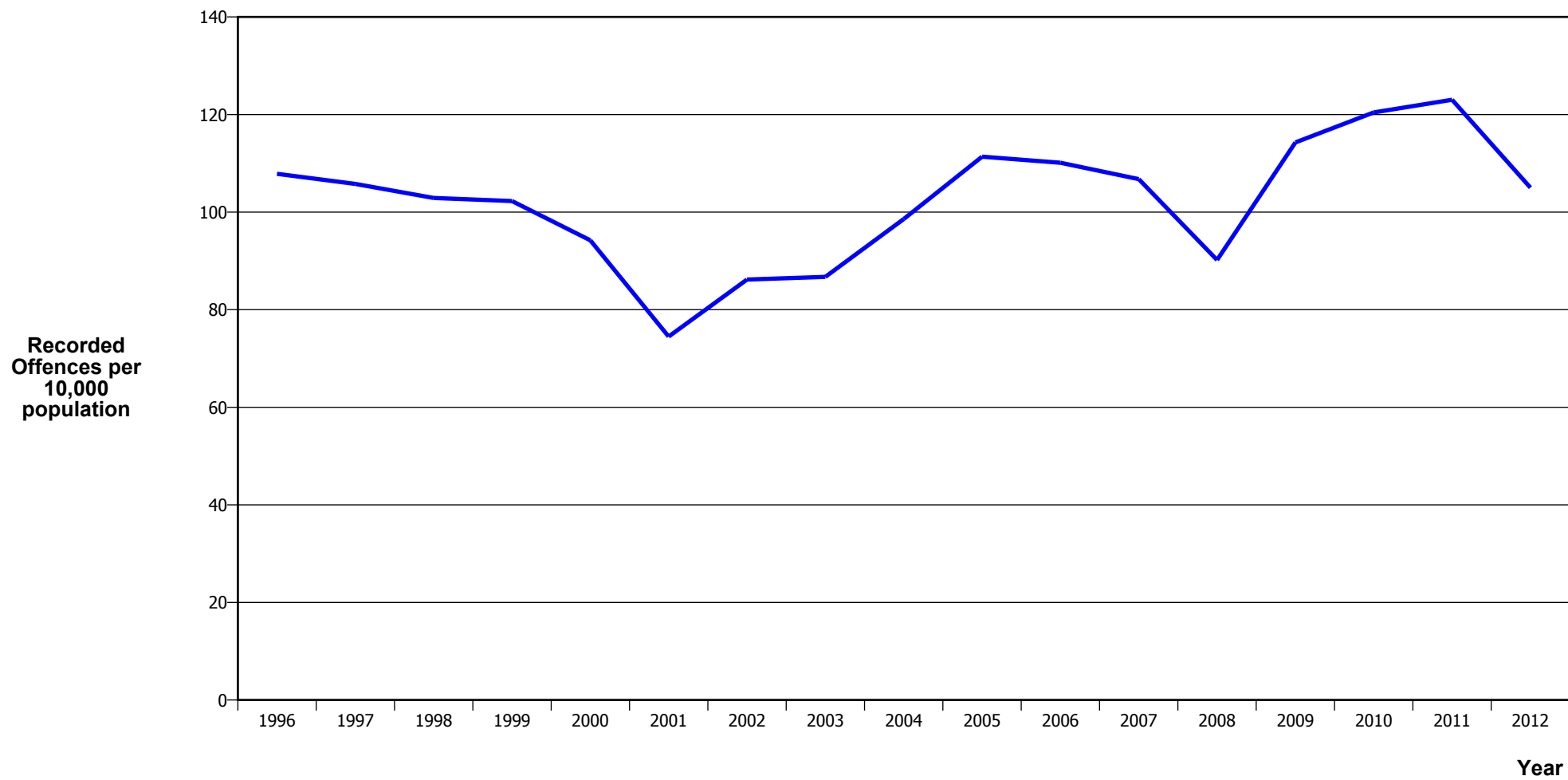
Calendar Year	1996	1997	1998	1999	2000	2001	2002	2003	2004	2005	2006	2007	2008	2009	2010	2011	2012
Recorded Offences	63	76	66	55	67	64	81	49	84	94	114	105	99	93	65	94	89
Recorded per 10,000 Population	4.5	5.4	4.7	3.9	4.7	4.5	5.6	3.4	5.7	6.3	7.6	6.9	6.5	6.1	4.2	6.0	5.7

BURGLARY (TOTAL)



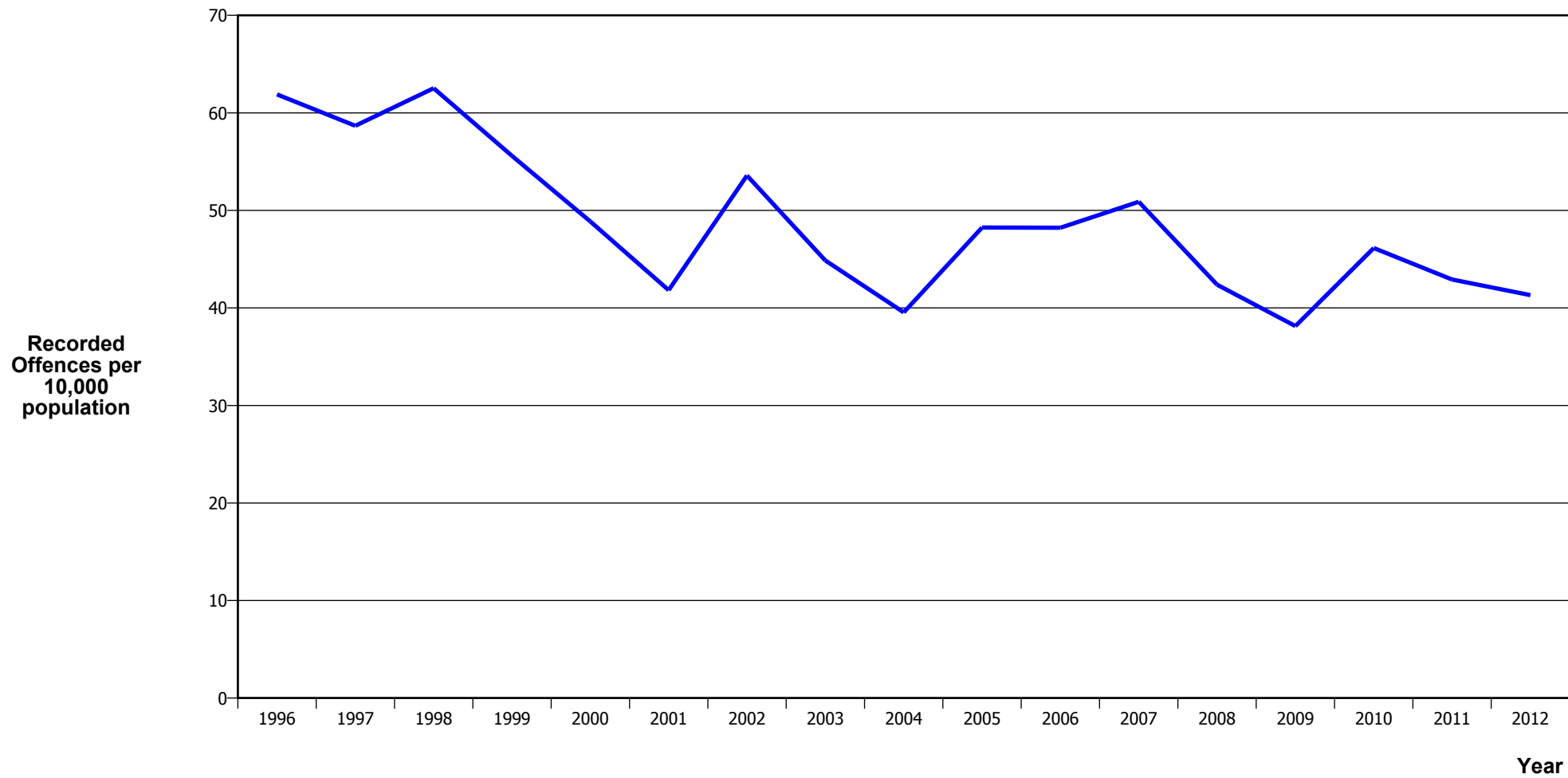
Calendar Year	1996	1997	1998	1999	2000	2001	2002	2003	2004	2005	2006	2007	2008	2009	2010	2011	2012
Recorded Offences	2,607	2,593	2,658	2,383	2,338	1,998	2,281	2,074	2,263	2,497	2,437	2,472	2,103	2,572	2,788	2,717	2,339
Recorded per 10,000 Population	187.2	184.2	187.4	167.3	163.7	139.8	157.9	141.8	153.2	167.3	161.7	162.7	137.7	167.4	179.7	174.3	150.1

BURGLARY (DWELLING)



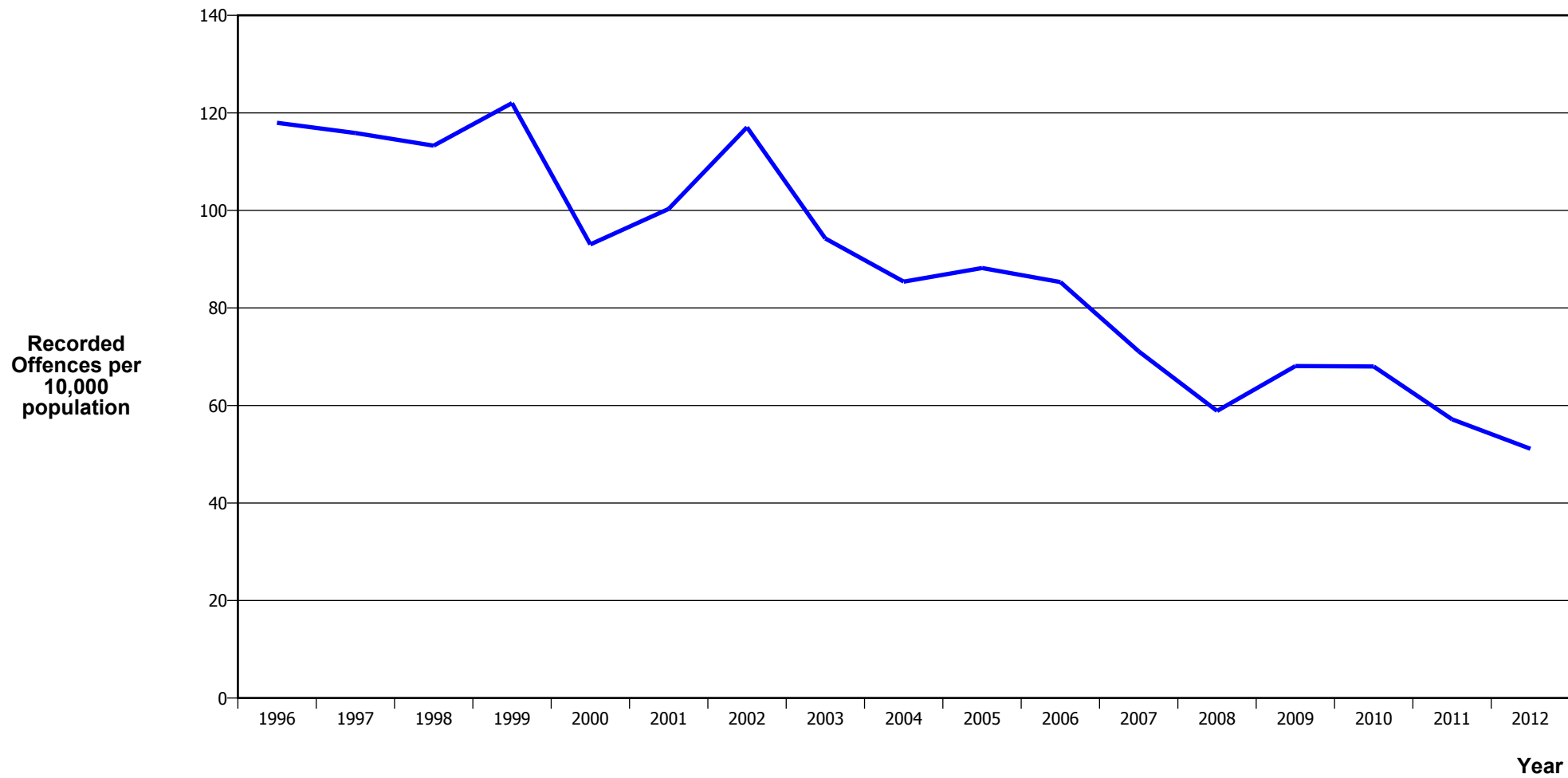
Calendar Year	1996	1997	1998	1999	2000	2001	2002	2003	2004	2005	2006	2007	2008	2009	2010	2011	2012
Recorded Offences	1,502	1,489	1,460	1,457	1,346	1,065	1,245	1,268	1,456	1,662	1,660	1,622	1,377	1,756	1,869	1,918	1,637
Recorded per 10,000 Population	107.8	105.8	102.9	102.3	94.2	74.5	86.2	86.7	98.6	111.4	110.1	106.8	90.2	114.3	120.4	123.0	105.0

VEHICLES STOLEN



Calendar Year	1996	1997	1998	1999	2000	2001	2002	2003	2004	2005	2006	2007	2008	2009	2010	2011	2012
Recorded Offences	862	826	887	792	698	598	774	656	584	720	727	773	647	586	716	669	644
Recorded per 10,000 Population	61.9	58.7	62.5	55.6	48.9	41.8	53.6	44.9	39.5	48.2	48.2	50.9	42.4	38.1	46.1	42.9	41.3

THEFT EX CAR



Calendar Year	1996	1997	1998	1999	2000	2001	2002	2003	2004	2005	2006	2007	2008	2009	2010	2011	2012
Recorded Offences	1,643	1,631	1,607	1,738	1,329	1,434	1,691	1,378	1,261	1,316	1,286	1,080	899	1,046	1,055	891	797
Recorded per 10,000 Population	118.0	115.9	113.3	122.0	93.0	100.3	117.0	94.2	85.4	88.2	85.3	71.1	58.9	68.1	68.0	57.1	51.1

Population Data

Population data is used in this release to calculate crime rates. They have been derived from population estimates as at 30 June each year that have been obtained from Statistics New Zealand.

The estimated resident population is based on the census usually resident population count, with adjustments for residents missed or counted more than once by the census (net census undercount), and for residents temporarily overseas on census night.

These population estimates exclude the number of international students who are studying in New Zealand for less than 12 months.

Year	Population
1996	139,280
1997	140,760
1998	141,870
1999	142,460
2000	142,850
2001	142,960
2002	144,470
2003	146,230
2004	147,680
2005	149,230
2006	150,740
2007	151,920
2008	152,670
2009	153,660
2010	155,180
2011	155,910
2012	155,880

General Definitions

Recorded Offences: the number of breaches of the New Zealand law recorded by Police. This includes offences specified in the Crimes Act and other legislations, such as the Summary Offences Act, Local Government Act, etc.

Resolved Offences: the number of recorded offences where an offender has been identified and dealt with (e.g. warned, cautioned, prosecuted, etc).

Resolution Rate: the proportion of recorded offences that have been resolved.

Recorded per 10,000 population: the number of recorded offences for every 10,000 people. This is also referred as the crime rate per 10,000 population.

ANZSOC: The Australian and New Zealand Standard Offence Classification. The offence classification is divided into 16 major offence divisions.

Definition of ANZSOC Divisions

1. Homicide and related offences: Unlawfully kill, attempt to unlawfully kill or conspiracy to kill another person.
2. Acts intended to cause injury: Acts, excluding attempted murder and those resulting in death, which are intended to cause non-fatal injury or harm to another person and where there is no sexual or acquisitive element.
3. Sexual assault and related offences: Acts, or intent of acts, of a sexual nature against another person, which are non-consensual or where consent is proscribed.
4. Dangerous or negligent acts endangering persons: Dangerous or negligent acts which, though not intended to cause harm, actually or potentially result in injury to oneself or another person.
5. Abduction, harassment and other offences against person: Acts intended to threaten or harass, or acts that unlawfully deprive another person of their freedom of movement, that are against that person's will or against the will of any parent, guardian or other person having lawful custody or care of that person.
6. Robbery, extortion and related offences: Acts intended to unlawfully gain money, property or other items of value from, or to cause detriment to, another person by using the threat of force or any other coercive measure.
7. Unlawful entry with intent / burglary, break and enter: The unlawful entry of a structure with the intent to commit an offence, where the entry is either forced or unforced.
8. Theft and related and offences: The unlawful taking or obtaining of money or goods, not involving the use of force or violence, coercion or deception, with intent to permanently or temporarily deprive the owner or possessor of the use of the money or goods, or the receiving or handling of money or goods obtained unlawfully.

9. Fraud, deception and related offences: Offences involving a dishonest act or omission carried out with the purpose of deceiving to obtain a benefit.

10. Illicit drug offences: The possessing, selling, dealing or trafficking, importing or exporting, manufacturing or cultivating of drugs or other substances prohibited under legislation.

11. Prohibited and regulated weapons and explosives offences: Offences involving prohibited or regulated weapons and explosives. Those offences also involving assault, sexual assault or robbery are coded to the relevant group within Assault, Sexual assaults and Robbery respectively.

12. Property damage and environmental pollution: The wilful and unlawful destruction, damage or defacement of public or private property, or the pollution of property or a definable entity held in common by the community.

13. Public order offences: Offences relating personal conduct that involves, or may lead to, a breach of public order or decency, or that is indicative of criminal intent, or that is otherwise regulated or prohibited on moral or ethical grounds. In general these offences do not involve a specific victim or victims; however some offences, such as offensive language and offensive behaviour, may be directed towards a single victim.

14. Traffic and vehicle regulatory offences: Offences relating to vehicles and most forms of traffic, including offences pertaining to the licensing, registration, roadworthiness, or use of vehicles, bicycle offences and pedestrian offences.

15. Offences against justice procedures, government security and government operations: An act or omission that is deemed to be prejudicial to the effective carrying out of justice procedures or any government operations. This includes general government operations as well as those specifically concerned with maintaining government security.

16. Miscellaneous offences: Offences involving the breach of statutory rules or regulations governing activities that are prima facie legal, where such offences are not explicitly dealt with under any other division. If an offence is specified under regulation and involves an act that would be illegal under common law or general criminal legislation, the offence is dealt with under the appropriate generic group.