

NORTHLAND DISTRICT CRIME STATISTICS 2010



**A Summary of
Recorded and Resolved Offence
Statistics**

**POLICE NATIONAL HEADQUARTERS
April 2011**

Table of Contents:

Topic	Page
Report Notes	1
District Summary of Recorded and Resolved Crime, by Division	2-4
District Summary of Recorded and Resolved Crime, by Area	5
District Recorded Crime per 10,000 population, by Division	6-8
District Recorded Crime per 10,000 population, by Area	9
Proportions of Recorded Crime by Categories	10
Crime Trends	11
Total Crime	12
Murder	13
Serious Assaults Resulting in Injury	14
Public Place Assaults	15
Robbery	16
Burglary	17
Burglary (Dwelling)	18
Vehicles Stolen	19
Theft Ex Car	20
Population Data	21
General Definition	22-23

REPORT NOTES:

This report presents official statistics for recorded and resolved offences. The format has been revised significantly from that used in previous years. In particular, offences are grouped into different categories than previously used. This aligns with direction given by the Justice Sector Information Strategy for the whole Justice sector to categorise offences according to the Australian Standard Offence Classification (ASOC). This change does not change the total number of offences reported, just how they are grouped.

In making this change, New Zealand Police has taken the first step towards reporting crime in a way that is comparable with Australia. However, at this stage, important differences still exist that mean statistics are not yet comparable between the two countries. For example, Australian statistics only count the most serious offence on each file, whereas New Zealand reports every offence. Also, Australian statistics count victims, whereas New Zealand Statistics count offences.

Another important change in this report is that pages 11 to 20, which present long-term trends, have been completely revised. The time series has been extended from 10 to 15 years to give a longer history. Also, the measures reported include a number of the statistical indicators that Police recently began publishing provisional data on every month.

As in previous reports, statistics reported in this document are derived from the Police National Intelligence Application (NIA). These Official Statistics for Recorded and Resolved Offences present a snapshot of data in NIA relating to offences that occur within a given year, as at the date 14 days following the end of that year.

Unless the matter is minor where Police attendance is sufficient, a matter that is reported to or discovered by Police where Police believe an offence is likely to have been committed is counted as a recorded offence.

A recorded offence is counted as resolved when Police apprehend an offender and decide how to deal with him/her. (E.g. warn, prosecute, etc.)

Resolution rate is the percentage of recorded offences that are resolved within 14 days of the end of the year being reported on.

If an offence is resolved 15 days or more after the end of the year it will not appear in the Official Crime Statistics for that or any other year. Resolution Rate therefore undercounts the number of cases that Police have resolved. This phenomenon has a more marked impact for some types of offences than others, such as offences that require long investigations (E.g. many serial crimes, burglaries and murders).

When comparing 2010 Statistics with previous years, the reader should also refer to "Report Notes" published in previous years' reports, as previous changes significantly affect year on year trends.

SUMMARY OF DISTRICT RECORDED AND RESOLVED CRIME, BY DIVISION
Years ending 31 December

HOMICIDE AND RELATED OFFENCES

ASOC Subdivision Description	Recorded 2008	Recorded 2009	Recorded 2010	Variance 2008- 2009	Variance 2009- 2010	Resolved 2008	Resolved 2009	Resolved 2010	Resolution Rate 2008	Resolution Rate 2009	Resolution Rate 2010
ATTEMPTED MURDER	1	0	1	-100.0 %		1	0	1	100.0 %		100.0 %
MANSLAUGHTER AND DRIVING CAUSING DEATH	0	0	0			0	0				
MURDER	3	4	1	33.3 %	-75.0 %	3	3	1	100.0 %	75.0 %	100.0 %
	4	4	2	0.0 %	-50.0 %	4	3	2	100.0 %	75.0 %	100.0 %

ACTS INTENDED TO CAUSE INJURY

ASOC Subdivision Description	Recorded 2008	Recorded 2009	Recorded 2010	Variance 2008- 2009	Variance 2009- 2010	Resolved 2008	Resolved 2009	Resolved 2010	Resolution Rate 2008	Resolution Rate 2009	Resolution Rate 2010
ASSAULT	1,914	1,992	1,997	4.1 %	0.3 %	1,608	1,683	1,627	84.0 %	84.5 %	81.5 %
OTHER ACTS INTENDED TO CAUSE INJURY	4	2	2	-50.0 %	0.0 %	2	2	2	50.0 %	100.0 %	100.0 %
	1,918	1,994	1,999	4.0 %	0.3 %	1,610	1,685	1,629	83.9 %	84.5 %	81.5 %

SEXUAL ASSAULT AND RELATED OFFENCES

ASOC Subdivision Description	Recorded 2008	Recorded 2009	Recorded 2010	Variance 2008- 2009	Variance 2009- 2010	Resolved 2008	Resolved 2009	Resolved 2010	Resolution Rate 2008	Resolution Rate 2009	Resolution Rate 2010
NON-ASSAULTIVE SEXUAL OFFENCES	4	10	2	150.0 %	-80.0 %	1	10	1	25.0 %	100.0 %	50.0 %
SEXUAL ASSAULT	135	126	119	-6.7 %	-5.6 %	82	78	68	60.7 %	61.9 %	57.1 %
	139	136	121	-2.2 %	-11.0 %	83	88	69	59.7 %	64.7 %	57.0 %

DANGEROUS OR NEGLIGENT ACTS ENDANGERING PERSONS

ASOC Subdivision Description	Recorded 2008	Recorded 2009	Recorded 2010	Variance 2008- 2009	Variance 2009- 2010	Resolved 2008	Resolved 2009	Resolved 2010	Resolution Rate 2008	Resolution Rate 2009	Resolution Rate 2010
OTHER DANGEROUS OR NEGLIGENT ACTS ENDANGERING PERSONS	32	17	39	-46.9 %	129.4 %	25	12	24	78.1 %	70.6 %	61.5 %
	32	17	39	-46.9 %	129.4 %	25	12	24	78.1 %	70.6 %	61.5 %

ABDUCTION, HARASSMENT AND OTHER RELATED OFFENCES AGAINST A PERSON

ASOC Subdivision Description	Recorded 2008	Recorded 2009	Recorded 2010	Variance 2008- 2009	Variance 2009- 2010	Resolved 2008	Resolved 2009	Resolved 2010	Resolution Rate 2008	Resolution Rate 2009	Resolution Rate 2010
ABDUCTION AND KIDNAPPING	28	8	6	-71.4 %	-25.0 %	22	8	3	78.6 %	100.0 %	50.0 %
HARASSMENT AND THREATENING BEHAVIOUR	514	522	540	1.6 %	3.4 %	385	398	405	74.9 %	76.2 %	75.0 %
	542	530	546	-2.2 %	3.0 %	407	406	408	75.1 %	76.6 %	74.7 %

ROBBERY, EXTORTION AND RELATED OFFENCES

ASOC Subdivision Description	Recorded 2008	Recorded 2009	Recorded 2010	Variance 2008- 2009	Variance 2009- 2010	Resolved 2008	Resolved 2009	Resolved 2010	Resolution Rate 2008	Resolution Rate 2009	Resolution Rate 2010
BLACKMAIL AND EXTORTION	4	4	2	0.0 %	-50.0 %	0	3	2	0.0 %	75.0 %	100.0 %
ROBBERY	99	93	65	-6.1 %	-30.1 %	52	51	36	52.5 %	54.8 %	55.4 %
	103	97	67	-5.8 %	-30.9 %	52	54	38	50.5 %	55.7 %	56.7 %

UNLAWFUL ENTRY WITH INTENT/BURGLARY, BREAK AND ENTER

ASOC Subdivision Description	Recorded 2008	Recorded 2009	Recorded 2010	Variance 2008- 2009	Variance 2009- 2010	Resolved 2008	Resolved 2009	Resolved 2010	Resolution Rate 2008	Resolution Rate 2009	Resolution Rate 2010
UNLAWFUL ENTRY WITH INTENT/BURGLARY, BREAK AND ENTER	2,103	2,572	2,788	22.3 %	8.4 %	447	578	620	21.3 %	22.5 %	22.2 %
	2,103	2,572	2,788	22.3 %	8.4 %	447	578	620	21.3 %	22.5 %	22.2 %

SUMMARY OF DISTRICT RECORDED AND RESOLVED CRIME, BY DIVISION

Years ending 31 December

THEFT AND RELATED OFFENCES

ASOC Subdivision Description	Recorded 2008	Recorded 2009	Recorded 2010	Variance 2008- 2009	Variance 2009- 2010	Resolved 2008	Resolved 2009	Resolved 2010	Resolution Rate 2008	Resolution Rate 2009	Resolution Rate 2010
ILLEGAL USE OF PROPERTY (EXCEPT MOTOR VEHICLES)	43	78	64	81.4 %	-17.9 %	1	17	6	2.3 %	21.8 %	9.4 %
MOTOR VEHICLE THEFT AND RELATED OFFENCES	1,546	1,632	1,771	5.6 %	8.5 %	275	268	286	17.8 %	16.4 %	16.1 %
RECEIVE OR HANDLE PROCEEDS OF CRIME	138	146	176	5.8 %	20.5 %	133	144	171	96.4 %	98.6 %	97.2 %
THEFT (EXCEPT MOTOR VEHICLES)	2,301	2,484	2,561	8.0 %	3.1 %	861	877	912	37.4 %	35.3 %	35.6 %
	4,028	4,340	4,572	7.7 %	5.3 %	1,270	1,306	1,375	31.5 %	30.1 %	30.1 %

FRAUD, DECEPTION AND RELATED OFFENCES

ASOC Subdivision Description	Recorded 2008	Recorded 2009	Recorded 2010	Variance 2008- 2009	Variance 2009- 2010	Resolved 2008	Resolved 2009	Resolved 2010	Resolution Rate 2008	Resolution Rate 2009	Resolution Rate 2010
DECEPTIVE BUSINESS/GOVERNMENT PRACTICES	0	2	3		50.0 %	0	2	1		100.0 %	33.3 %
FORGERY AND COUNTERFEITING	16	13	37	-18.8 %	184.6 %	12	10	29	75.0 %	76.9 %	78.4 %
OBTAIN BENEFIT BY DECEPTION	426	474	361	11.3 %	-23.8 %	318	334	222	74.6 %	70.5 %	61.5 %
OTHER FRAUD AND DECEPTION OFFENCES	34	29	82	-14.7 %	182.8 %	21	14	76	61.8 %	48.3 %	92.7 %
	476	518	483	8.8 %	-6.8 %	351	360	328	73.7 %	69.5 %	67.9 %

ILLICIT DRUG OFFENCES

ASOC Subdivision Description	Recorded 2008	Recorded 2009	Recorded 2010	Variance 2008- 2009	Variance 2009- 2010	Resolved 2008	Resolved 2009	Resolved 2010	Resolution Rate 2008	Resolution Rate 2009	Resolution Rate 2010
DEAL OR TRAFFIC IN ILLICIT DRUGS	192	606	360	215.6 %	-40.6 %	187	601	356	97.4 %	99.2 %	98.9 %
IMPORT OR EXPORT ILLICIT DRUGS	1	1	2	0.0 %	100.0 %	1	1	1	100.0 %	100.0 %	50.0 %
MANUFACTURE OR CULTIVATE ILLICIT DRUGS	356	378	345	6.2 %	-8.7 %	218	247	189	61.2 %	65.3 %	54.8 %
OTHER ILLICIT DRUG OFFENCES	300	366	307	22.0 %	-16.1 %	292	359	294	97.3 %	98.1 %	95.8 %
POSSESS AND/OR USE ILLICIT DRUGS	573	635	544	10.8 %	-14.3 %	553	622	508	96.5 %	98.0 %	93.4 %
	1,422	1,986	1,558	39.7 %	-21.6 %	1,251	1,830	1,348	88.0 %	92.1 %	86.5 %

PROHIBITED AND REGULATED WEAPONS AND EXPLOSIVES OFFENCES

ASOC Subdivision Description	Recorded 2008	Recorded 2009	Recorded 2010	Variance 2008- 2009	Variance 2009- 2010	Resolved 2008	Resolved 2009	Resolved 2010	Resolution Rate 2008	Resolution Rate 2009	Resolution Rate 2010
REGULATED WEAPONS/EXPLOSIVES OFFENCES	402	385	398	-4.2 %	3.4 %	356	356	353	88.6 %	92.5 %	88.7 %
	402	385	398	-4.2 %	3.4 %	356	356	353	88.6 %	92.5 %	88.7 %

PROPERTY DAMAGE AND ENVIRONMENTAL POLLUTION

ASOC Subdivision Description	Recorded 2008	Recorded 2009	Recorded 2010	Variance 2008- 2009	Variance 2009- 2010	Resolved 2008	Resolved 2009	Resolved 2010	Resolution Rate 2008	Resolution Rate 2009	Resolution Rate 2010
ENVIRONMENTAL POLLUTION	8	5	9	-37.5 %	80.0 %	4	4	4	50.0 %	80.0 %	44.4 %
PROPERTY DAMAGE	2,068	2,093	2,128	1.2 %	1.7 %	817	759	880	39.5 %	36.3 %	41.4 %
	2,076	2,098	2,137	1.1 %	1.9 %	821	763	884	39.5 %	36.4 %	41.4 %

PUBLIC ORDER OFFENCES

ASOC Subdivision Description	Recorded 2008	Recorded 2009	Recorded 2010	Variance 2008- 2009	Variance 2009- 2010	Resolved 2008	Resolved 2009	Resolved 2010	Resolution Rate 2008	Resolution Rate 2009	Resolution Rate 2010
DISORDERLY CONDUCT	1,158	1,142	1,098	-1.4 %	-3.9 %	979	1,037	941	84.5 %	90.8 %	85.7 %
OFFENSIVE CONDUCT	108	68	71	-37.0 %	4.4 %	76	50	45	70.4 %	73.5 %	63.4 %
PUBLIC ORDER OFFENCES NOT FURTHER DEFINED	0	0	0			0	0				
REGULATED PUBLIC ORDER OFFENCES	600	504	427	-16.0 %	-15.3 %	582	485	407	97.0 %	96.2 %	95.3 %
	1,866	1,714	1,596	-8.1 %	-6.9 %	1,637	1,572	1,393	87.7 %	91.7 %	87.3 %

SUMMARY OF DISTRICT RECORDED AND RESOLVED CRIME, BY DIVISION
Years ending 31 December

OFFENCES AGAINST JUSTICE PROCEDURES, GOVERNMENT SECURITY AND GOVERNMENT OPERATIONS

ASOC Subdivision Description	Recorded 2008	Recorded 2009	Recorded 2010	Variance 2008- 2009	Variance 2009- 2010	Resolved 2008	Resolved 2009	Resolved 2010	Resolution Rate 2008	Resolution Rate 2009	Resolution Rate 2010
BREACH OF COMMUNITY-BASED ORDER	166	76	72	-54.2 %	-5.3 %	154	67	66	92.8 %	88.2 %	91.7 %
BREACH OF CUSTODIAL ORDER OFFENCES	42	51	47	21.4 %	-7.8 %	38	48	38	90.5 %	94.1 %	80.9 %
BREACH OF VIOLENCE AND NON-VIOLENCE RESTRAINING ORDERS	247	234	230	-5.3 %	-1.7 %	219	211	196	88.7 %	90.2 %	85.2 %
OFFENCES AGAINST GOVERNMENT OPERATIONS	11	4	4	-63.6 %	0.0 %	10	2	3	90.9 %	50.0 %	75.0 %
OFFENCES AGAINST GOVERNMENT SECURITY	1	0	0	-100.0 %		1	0		100.0 %		
OFFENCES AGAINST JUSTICE PROCEDURES	259	354	309	36.7 %	-12.7 %	256	342	299	98.8 %	96.6 %	96.8 %
OFFENCES AGAINST JUSTICE PROCEDURES, GOVERNMENT SECURITY AND GOVERNMENT OPERATIONS NOT FURTHER DEFINED	1	1	2	0.0 %	100.0 %	1	1	1	100.0 %	100.0 %	50.0 %
	727	720	664	-1.0 %	-7.8 %	679	671	603	93.4 %	93.2 %	90.8 %

MISCELLANEOUS OFFENCES

ASOC Subdivision Description	Recorded 2008	Recorded 2009	Recorded 2010	Variance 2008- 2009	Variance 2009- 2010	Resolved 2008	Resolved 2009	Resolved 2010	Resolution Rate 2008	Resolution Rate 2009	Resolution Rate 2010
COMMERCIAL/INDUSTRY/FINANCIAL REGULATION	0	7	0		-100.0 %	0	7			100.0 %	
DEFAMATION, LIBEL AND PRIVACY OFFENCES	1	1	1	0.0 %	0.0 %	1	0	1	100.0 %	0.0 %	100.0 %
OTHER MISCELLANEOUS OFFENCES	34	28	23	-17.6 %	-17.9 %	27	19	17	79.4 %	67.9 %	73.9 %
PUBLIC HEALTH AND SAFETY OFFENCES	2	6	0	200.0 %	-100.0 %	1	5		50.0 %	83.3 %	
	37	42	24	13.5 %	-42.9 %	29	31	18	78.4 %	73.8 %	75.0 %

TOTAL	15,875	17,153	16,994	8.1 %	-0.9 %	9,022	9,715	9,092	56.8 %	56.6 %	53.5 %
-------	--------	--------	--------	-------	--------	-------	-------	-------	--------	--------	--------

SUMMARY OF DISTRICT RECORDED AND RESOLVED CRIME, BY AREA
years ending 31 December

TOTAL CRIME

Area Description	Recorded 2008	Recorded 2009	Recorded 2010	Variance 2008- 2009	Variance 2009- 2010	Resolved 2008	Resolved 2009	Resolved 2010	Resolution Rate 2008	Resolution Rate 2009	Resolution Rate 2010
Far North	6,100	6,525	5,939	7.0 %	-9.0 %	3,205	3,516	2,882	52.5 %	53.9 %	48.5 %
Whangarei	9,775	10,628	11,055	8.7 %	4.0 %	5,817	6,199	6,210	59.5 %	58.3 %	56.2 %
Total	15,875	17,153	16,994	8.1 %	-0.9 %	9,022	9,715	9,092	56.8 %	56.6 %	53.5 %

DISTRICT RECORDED CRIME PER 10,000 POPULATION, BY DIVISION
Years ending 31 December

HOMICIDE AND RELATED OFFENCES

ASOC Subdivision Description	Recorded per 10,000 pop 2008	Recorded per 10,000 pop 2009	Recorded per 10,000 pop 2010
ATTEMPTED MURDER	0.07	0.00	0.06
MANSLAUGHTER AND DRIVING CAUSING DEATH	0.00	0.00	0.00
MURDER	0.20	0.26	0.06
	0.26	0.26	0.13

ACTS INTENDED TO CAUSE INJURY

ASOC Subdivision Description	Recorded per 10,000 pop 2008	Recorded per 10,000 pop 2009	Recorded per 10,000 pop 2010
ASSAULT	125.37	129.64	128.69
OTHER ACTS INTENDED TO CAUSE INJURY	0.26	0.13	0.13
	125.63	129.77	128.82

SEXUAL ASSAULT AND RELATED OFFENCES

ASOC Subdivision Description	Recorded per 10,000 pop 2008	Recorded per 10,000 pop 2009	Recorded per 10,000 pop 2010
NON-ASSAULTIVE SEXUAL OFFENCES	0.26	0.65	0.13
SEXUAL ASSAULT	8.84	8.20	7.67
	9.10	8.85	7.80

DANGEROUS OR NEGLIGENT ACTS ENDANGERING PERSONS

ASOC Subdivision Description	Recorded per 10,000 pop 2008	Recorded per 10,000 pop 2009	Recorded per 10,000 pop 2010
OTHER DANGEROUS OR NEGLIGENT ACTS ENDANGERING PERSONS	2.10	1.11	2.51
	2.10	1.11	2.51

ABDUCTION, HARASSMENT AND OTHER RELATED OFFENCES AGAINST A PERSON

ASOC Subdivision Description	Recorded per 10,000 pop 2008	Recorded per 10,000 pop 2009	Recorded per 10,000 pop 2010
ABDUCTION AND KIDNAPPING	1.83	0.52	0.39
HARASSMENT AND THREATENING BEHAVIOUR	33.67	33.97	34.80
	35.50	34.49	35.18

ROBBERY, EXTORTION AND RELATED OFFENCES

ASOC Subdivision Description	Recorded per 10,000 pop 2008	Recorded per 10,000 pop 2009	Recorded per 10,000 pop 2010
BLACKMAIL AND EXTORTION	0.26	0.26	0.13
ROBBERY	6.48	6.05	4.19
	6.75	6.31	4.32

DISTRICT RECORDED CRIME PER 10,000 POPULATION, BY DIVISION

Years ending 31 December

UNLAWFUL ENTRY WITH INTENT/BURGLARY, BREAK AND ENTER

ASOC Subdivision Description	Recorded per 10,000 pop 2008	Recorded per 10,000 pop 2009	Recorded per 10,000 pop 2010
UNLAWFUL ENTRY WITH INTENT/BURGLARY, BREAK AND ENTER	137.75	167.38	179.66
	137.75	167.38	179.66

THEFT AND RELATED OFFENCES

ASOC Subdivision Description	Recorded per 10,000 pop 2008	Recorded per 10,000 pop 2009	Recorded per 10,000 pop 2010
ILLEGAL USE OF PROPERTY (EXCEPT MOTOR VEHICLES)	2.82	5.08	4.12
MOTOR VEHICLE THEFT AND RELATED OFFENCES	101.26	106.21	114.13
RECEIVE OR HANDLE PROCEEDS OF CRIME	9.04	9.50	11.34
THEFT (EXCEPT MOTOR VEHICLES)	150.72	161.66	165.03
	263.84	282.44	294.63

FRAUD, DECEPTION AND RELATED OFFENCES

ASOC Subdivision Description	Recorded per 10,000 pop 2008	Recorded per 10,000 pop 2009	Recorded per 10,000 pop 2010
DECEPTIVE BUSINESS/GOVERNMENT PRACTICES	0.00	0.13	0.19
FORGERY AND COUNTERFEITING	1.05	0.85	2.38
OBTAIN BENEFIT BY DECEPTION	27.90	30.85	23.26
OTHER FRAUD AND DECEPTION OFFENCES	2.23	1.89	5.28
	31.18	33.71	31.13

ILLICIT DRUG OFFENCES

ASOC Subdivision Description	Recorded per 10,000 pop 2008	Recorded per 10,000 pop 2009	Recorded per 10,000 pop 2010
DEAL OR TRAFFIC IN ILLICIT DRUGS	12.58	39.44	23.20
IMPORT OR EXPORT ILLICIT DRUGS	0.07	0.07	0.13
MANUFACTURE OR CULTIVATE ILLICIT DRUGS	23.32	24.60	22.23
OTHER ILLICIT DRUG OFFENCES	19.65	23.82	19.78
POSSESS AND/OR USE ILLICIT DRUGS	37.53	41.33	35.06
	93.14	129.25	100.40

PROHIBITED AND REGULATED WEAPONS AND EXPLOSIVES OFFENCES

ASOC Subdivision Description	Recorded per 10,000 pop 2008	Recorded per 10,000 pop 2009	Recorded per 10,000 pop 2010
REGULATED WEAPONS/EXPLOSIVES OFFENCES	26.33	25.06	25.65
	26.33	25.06	25.65

DISTRICT RECORDED CRIME PER 10,000 POPULATION, BY DIVISION

Years ending 31 December

PROPERTY DAMAGE AND ENVIRONMENTAL POLLUTION

ASOC Subdivision Description	Recorded per 10,000 pop 2008	Recorded per 10,000 pop 2009	Recorded per 10,000 pop 2010
ENVIRONMENTAL POLLUTION	0.52	0.33	0.58
PROPERTY DAMAGE	135.46	136.21	137.13
	135.98	136.54	137.71

PUBLIC ORDER OFFENCES

ASOC Subdivision Description	Recorded per 10,000 pop 2008	Recorded per 10,000 pop 2009	Recorded per 10,000 pop 2010
DISORDERLY CONDUCT	75.85	74.32	70.76
OFFENSIVE CONDUCT	7.07	4.43	4.58
PUBLIC ORDER OFFENCES NOT FURTHER DEFINED	0.00	0.00	0.00
REGULATED PUBLIC ORDER OFFENCES	39.30	32.80	27.52
	122.22	111.54	102.85

OFFENCES AGAINST JUSTICE PROCEDURES, GOVERNMENT SECURITY AND GOVERNMENT OPERATIONS

ASOC Subdivision Description	Recorded per 10,000 pop 2008	Recorded per 10,000 pop 2009	Recorded per 10,000 pop 2010
BREACH OF COMMUNITY-BASED ORDER	10.87	4.95	4.64
BREACH OF CUSTODIAL ORDER OFFENCES	2.75	3.32	3.03
BREACH OF VIOLENCE AND NON-VIOLENCE RESTRAINING ORDERS	16.18	15.23	14.82
OFFENCES AGAINST GOVERNMENT OPERATIONS	0.72	0.26	0.26
OFFENCES AGAINST GOVERNMENT SECURITY	0.07	0.00	0.00
OFFENCES AGAINST JUSTICE PROCEDURES	16.96	23.04	19.91
OFFENCES AGAINST JUSTICE PROCEDURES, GOVERNMENT SECURITY AND GOVERNMENT OPERATIONS NOT FURTHER DEFINED	0.07	0.07	0.13
	47.62	46.86	42.79

MISCELLANEOUS OFFENCES

ASOC Subdivision Description	Recorded per 10,000 pop 2008	Recorded per 10,000 pop 2009	Recorded per 10,000 pop 2010
COMMERCIAL/INDUSTRY/FINANCIAL REGULATION	0.00	0.46	0.00
DEFAMATION, LIBEL AND PRIVACY OFFENCES	0.07	0.07	0.06
OTHER MISCELLANEOUS OFFENCES	2.23	1.82	1.48
PUBLIC HEALTH AND SAFETY OFFENCES	0.13	0.39	0.00
	2.42	2.73	1.55

TOTAL	1,039.8	1,116.3	1,095.1
--------------	----------------	----------------	----------------

DISTRICT RECORDED CRIME PER 10,000 POPULATION, BY AREA

Years ending 31 December

Area Description	Recorded per 10,000 pop 2008	Recorded per 10,000 pop 2009	Recorded per 10,000 pop 2010	Percent Variance 2008 to 2009	Percent Variance 2009 to 2010
Far North	1,051.0	1,121.3	1,014.0	6.7 %	-9.6 %
Whangarei	1,033.0	1,113.2	1,144.3	7.8 %	2.8 %
TOTAL	1,039.8	1,116.3	1,095.1	7.4 %	-1.9 %

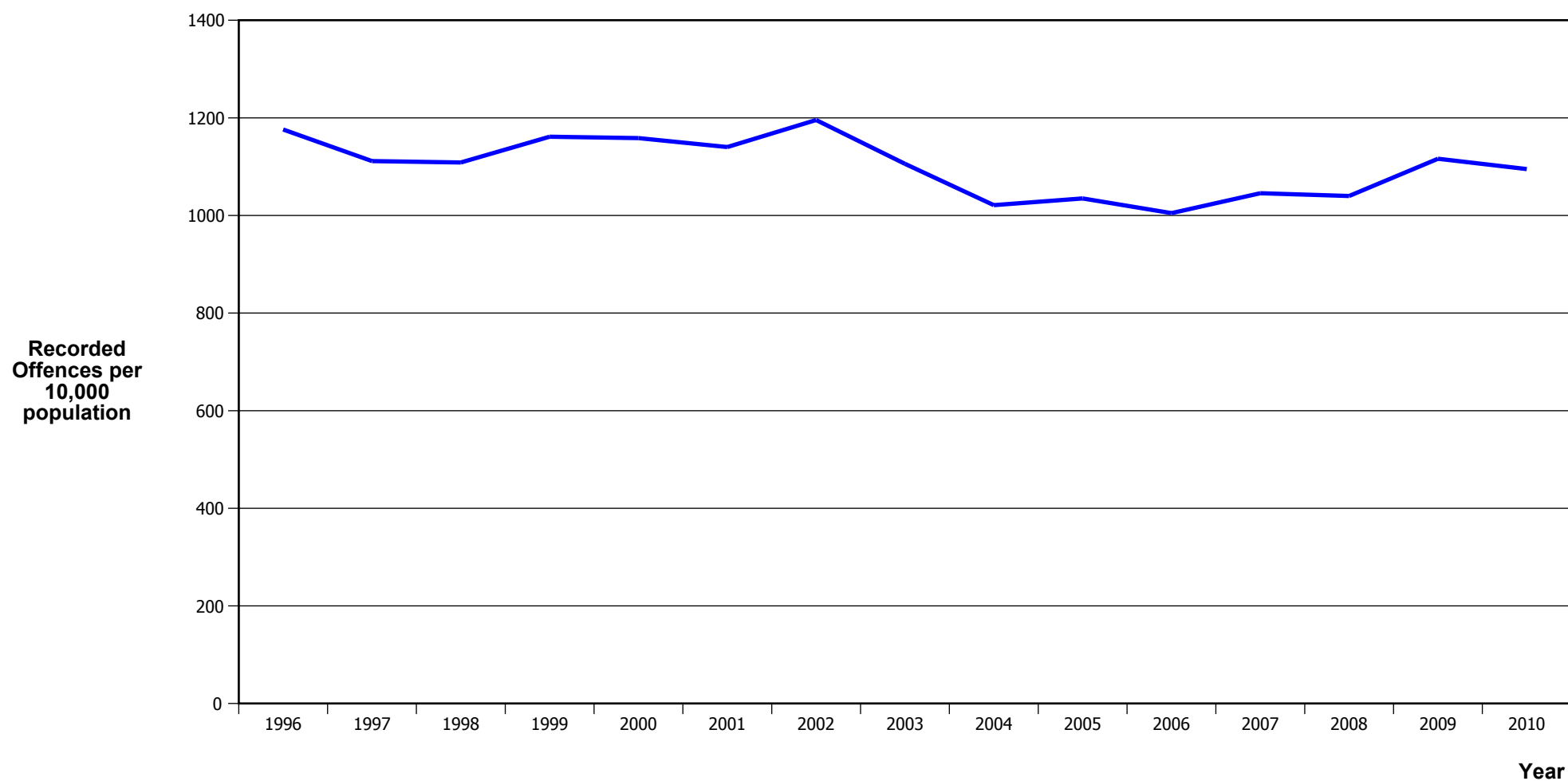
PROPORTION OF RECORDED CRIME BY DIVISION

Years ending 31 December

ASOC Division Description	Proportions Recorded 2008	Recorded 2008	Proportions Recorded 2009	Recorded 2009	Proportions Recorded 2010	Recorded 2010
HOMICIDE AND RELATED OFFENCES	0.03 %	4	0.02 %	4	0.01 %	2
ACTS INTENDED TO CAUSE INJURY	12.08 %	1,918	11.62 %	1,994	11.76 %	1,999
SEXUAL ASSAULT AND RELATED OFFENCES	0.88 %	139	0.79 %	136	0.71 %	121
DANGEROUS OR NEGLIGENT ACTS ENDANGERING PERSONS	0.20 %	32	0.10 %	17	0.23 %	39
ABDUCTION, HARASSMENT AND OTHER RELATED OFFENCES AGAINST A PERSON	3.41 %	542	3.09 %	530	3.21 %	546
ROBBERY, EXTORTION AND RELATED OFFENCES	0.65 %	103	0.57 %	97	0.39 %	67
UNLAWFUL ENTRY WITH INTENT/BURGLARY, BREAK AND ENTER	13.25 %	2,103	14.99 %	2,572	16.41 %	2,788
THEFT AND RELATED OFFENCES	25.37 %	4,028	25.30 %	4,340	26.90 %	4,572
FRAUD, DECEPTION AND RELATED OFFENCES	3.00 %	476	3.02 %	518	2.84 %	483
ILLICIT DRUG OFFENCES	8.96 %	1,422	11.58 %	1,986	9.17 %	1,558
PROHIBITED AND REGULATED WEAPONS AND EXPLOSIVES OFFENCES	2.53 %	402	2.24 %	385	2.34 %	398
PROPERTY DAMAGE AND ENVIRONMENTAL POLLUTION	13.08 %	2,076	12.23 %	2,098	12.58 %	2,137
PUBLIC ORDER OFFENCES	11.75 %	1,866	9.99 %	1,714	9.39 %	1,596
OFFENCES AGAINST JUSTICE PROCEDURES, GOVERNMENT SECURITY AND GOVERNMENT OPERATIONS	4.58 %	727	4.20 %	720	3.91 %	664
MISCELLANEOUS OFFENCES	0.23 %	37	0.24 %	42	0.14 %	24
	100.00 %	15,875	100.00 %	17,153	100.00 %	16,994

CRIME TRENDS

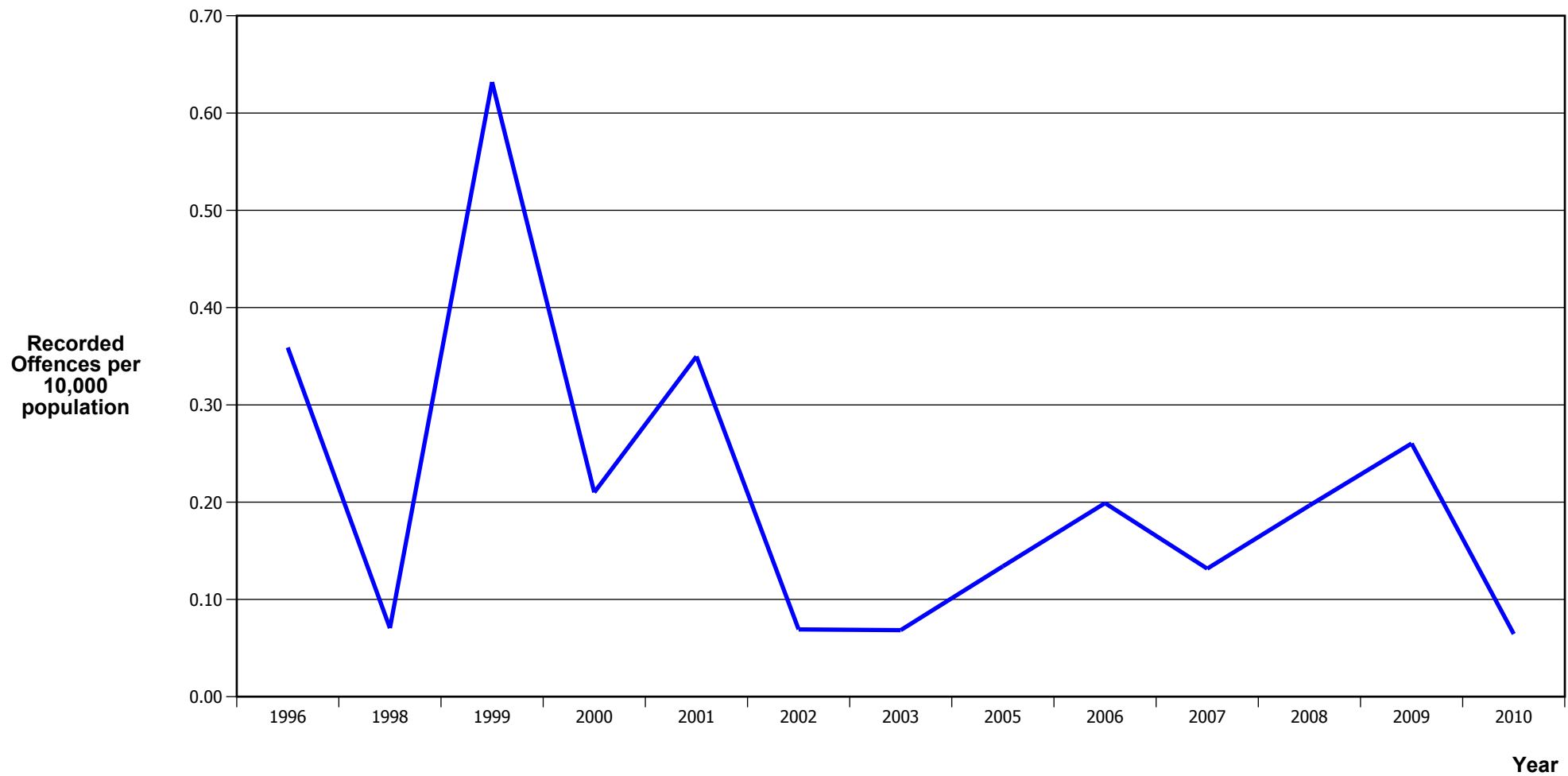
TOTAL CRIME



Calendar Year	1996	1997	1998	1999	2000	2001	2002	2003	2004	2005	2006	2007	2008	2009	2010
Recorded Offences	16,383	15,646	15,727	16,544	16,551	16,302	17,272	16,170	15,080	15,443	15,146	15,885	15,875	17,153	16,994
Recorded per 10,000 Population	1,176.3	1,111.5	1,108.6	1,161.3	1,158.6	1,140.3	1,195.5	1,105.8	1,021.1	1,034.8	1,004.8	1,045.6	1,039.8	1,116.3	1,095.1

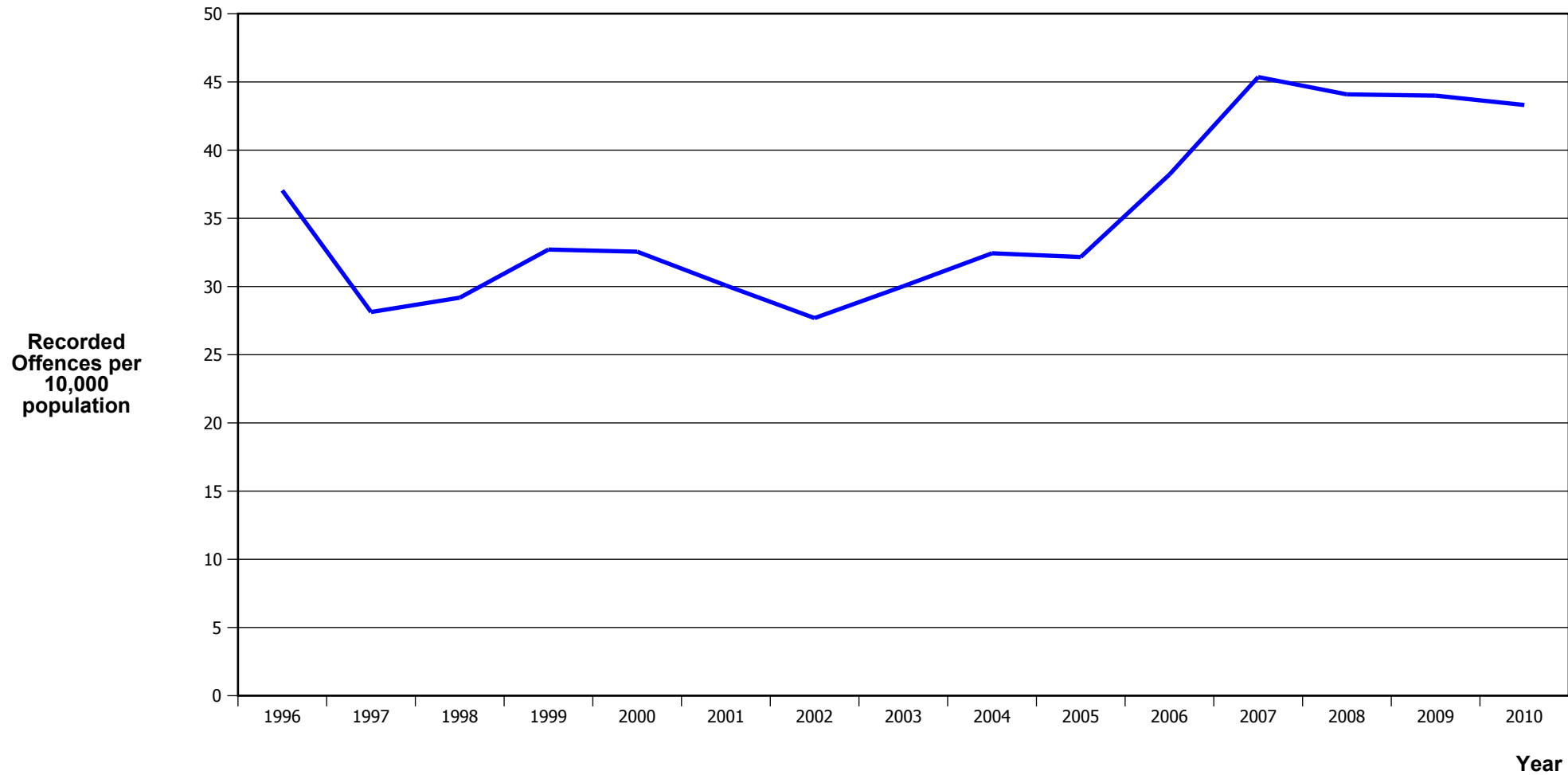
*In 2005/2006 there was a major IT system change (LES to NIA)

MURDER



Calendar Year	1996	1998	1999	2000	2001	2002	2003	2005	2006	2007	2008	2009	2010
Recorded Offences	5	1	9	3	5	1	1	2	3	2	3	4	1
Recorded per 10,000 Population	0.36	0.07	0.63	0.21	0.35	0.07	0.07	0.13	0.20	0.13	0.20	0.26	0.06

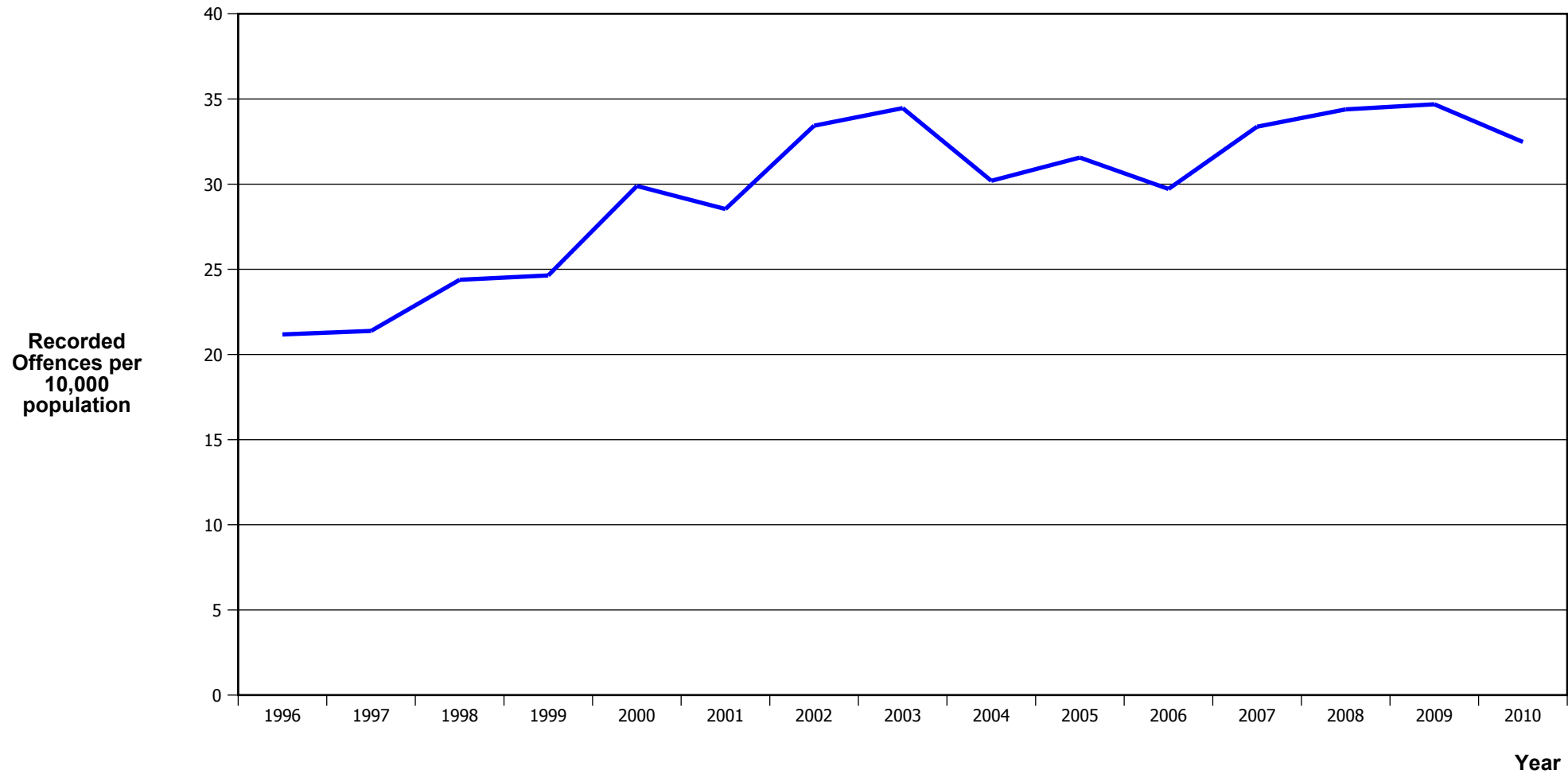
SERIOUS ASSAULTS RESULTING IN INJURY*



Calendar Year	1996	1997	1998	1999	2000	2001	2002	2003	2004	2005	2006	2007	2008	2009	2010
Recorded Physical Injury	516	396	414	466	465	430	400	439	479	480	576	689	673	676	672
Recorded per 10,000 Population	37.0	28.1	29.2	32.7	32.6	30.1	27.7	30.0	32.4	32.2	38.2	45.4	44.1	44.0	43.3

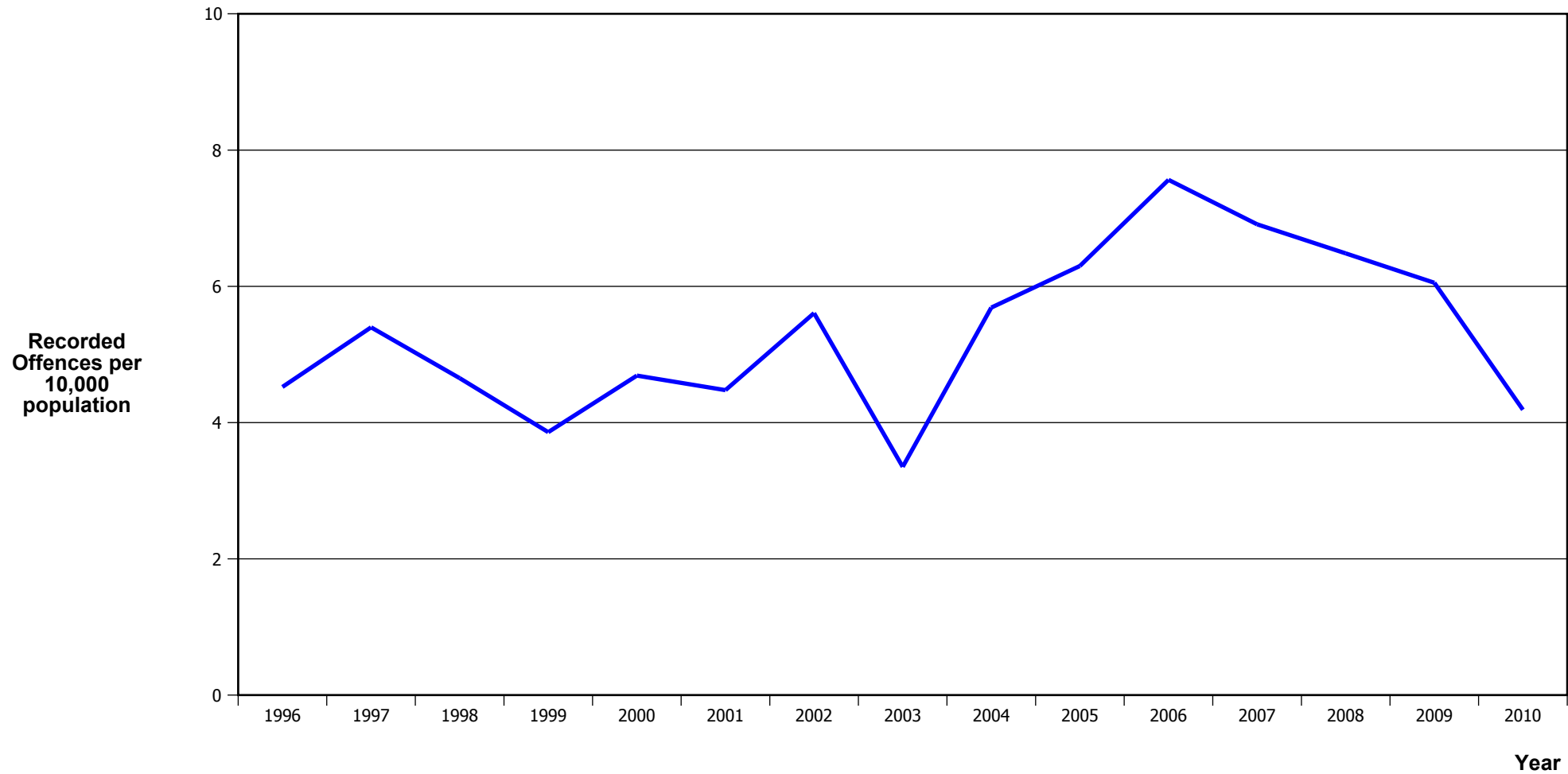
* This measure excludes common assaults

PUBLIC PLACE ASSAULTS



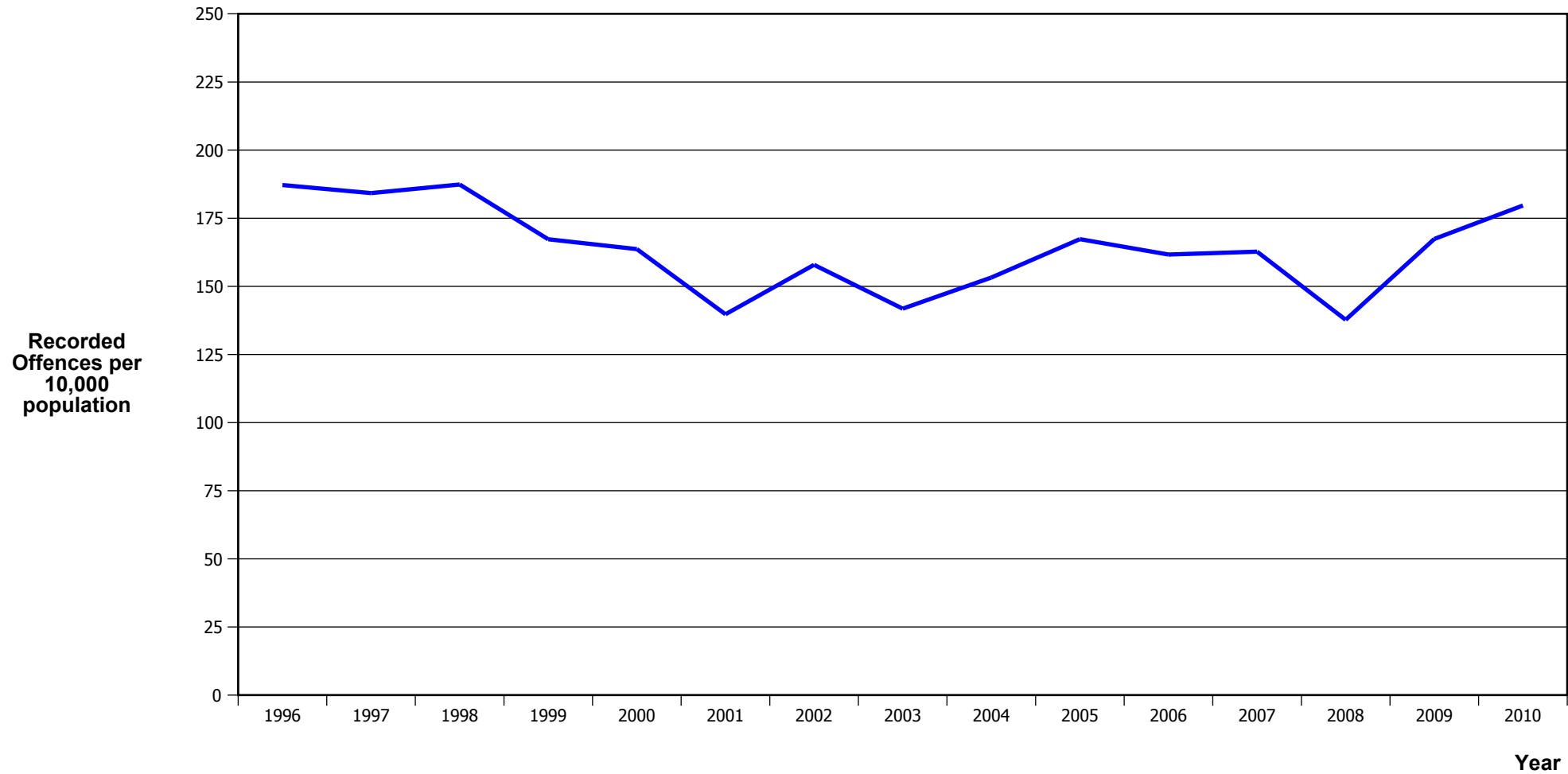
Calendar Year	1996	1997	1998	1999	2000	2001	2002	2003	2004	2005	2006	2007	2008	2009	2010
Recorded Offences	295	301	346	351	427	408	483	504	446	471	448	507	525	533	504
Recorded per 10,000 Population	21.2	21.4	24.4	24.6	29.9	28.5	33.4	34.5	30.2	31.6	29.7	33.4	34.4	34.7	32.5

ROBBERY



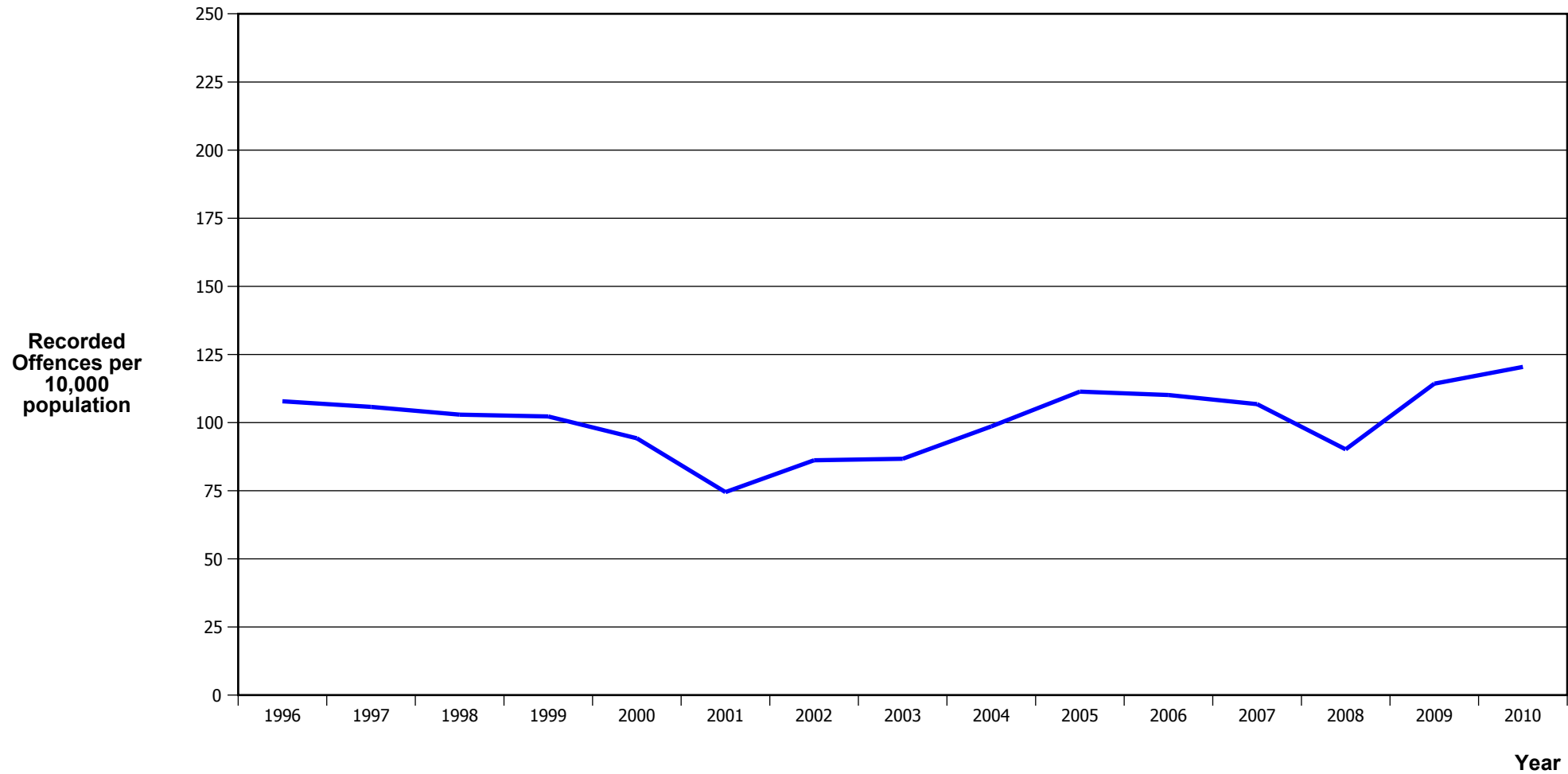
Calendar Year	1996	1997	1998	1999	2000	2001	2002	2003	2004	2005	2006	2007	2008	2009	2010
Recorded Offences	63	76	66	55	67	64	81	49	84	94	114	105	99	93	65
Recorded per 10,000 Population	4.5	5.4	4.7	3.9	4.7	4.5	5.6	3.4	5.7	6.3	7.6	6.9	6.5	6.1	4.2

BURGLARY (TOTAL)



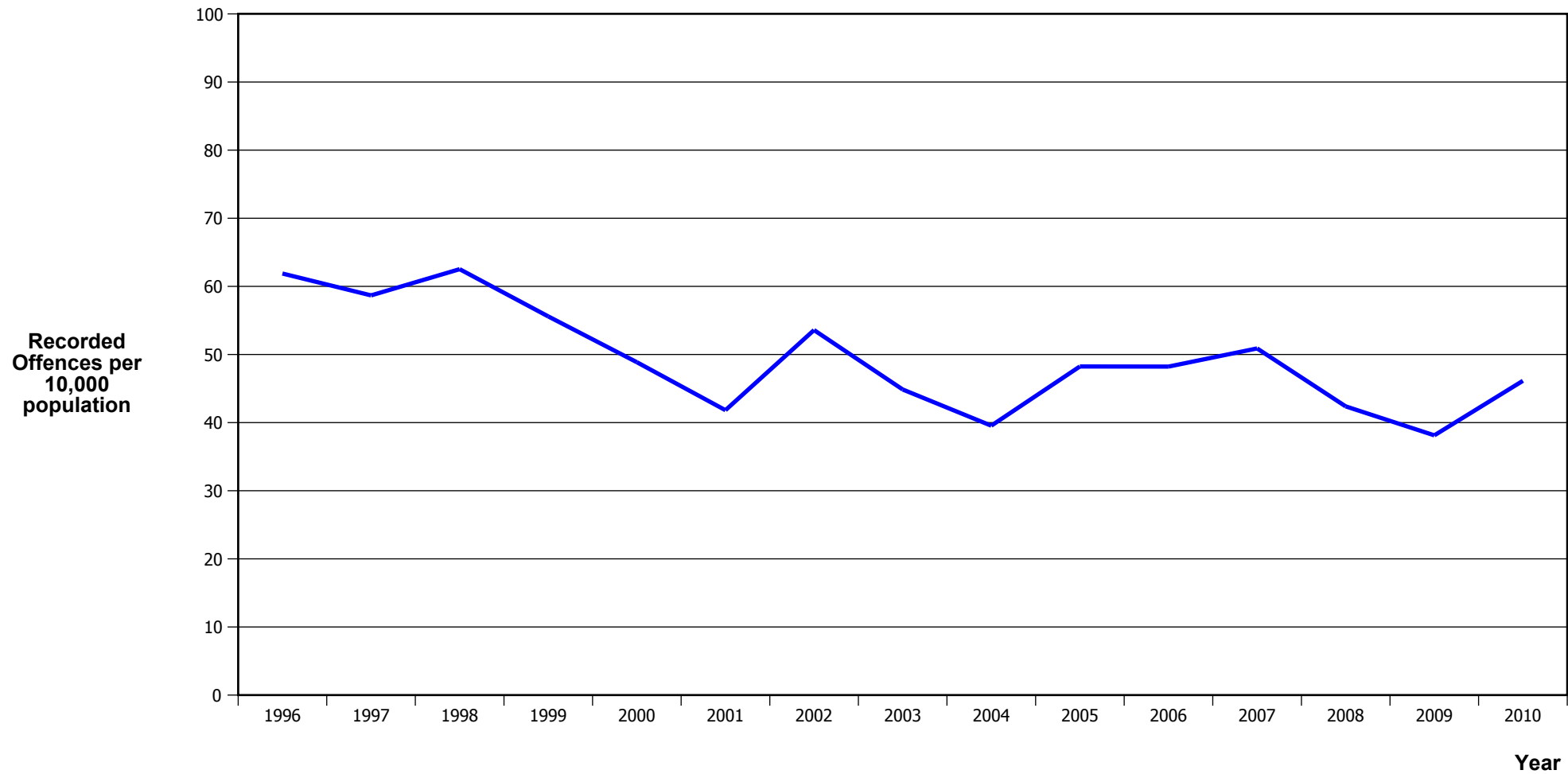
Calendar Year	1996	1997	1998	1999	2000	2001	2002	2003	2004	2005	2006	2007	2008	2009	2010
Recorded Offences	2,607	2,593	2,658	2,383	2,338	1,998	2,281	2,074	2,263	2,497	2,437	2,472	2,103	2,572	2,788
Recorded per 10,000 Population	187.2	184.2	187.4	167.3	163.7	139.8	157.9	141.8	153.2	167.3	161.7	162.7	137.7	167.4	179.7

BURGLARY (DWELLING)



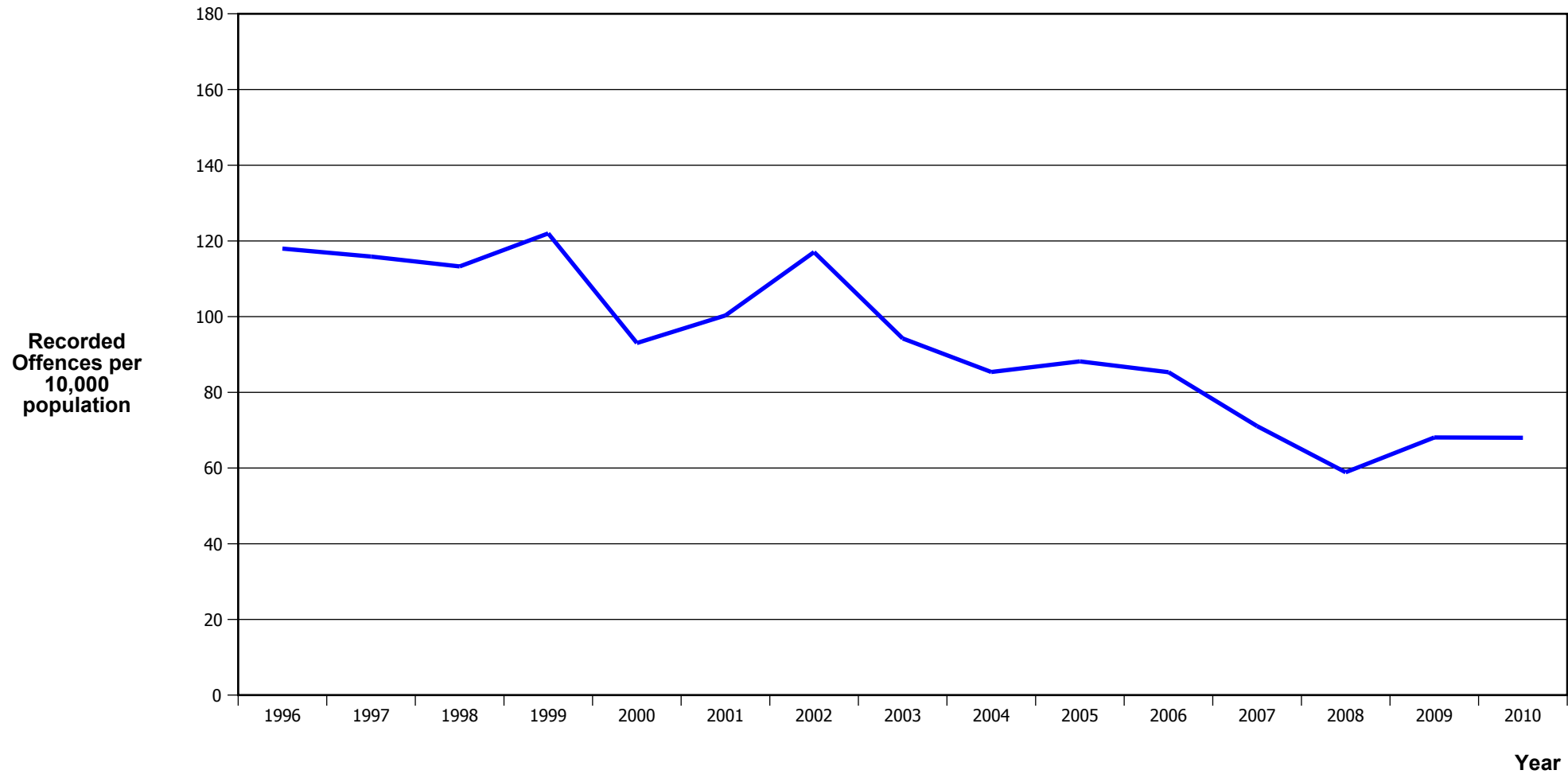
Calendar Year	1996	1997	1998	1999	2000	2001	2002	2003	2004	2005	2006	2007	2008	2009	2010
Recorded Offences	1,502	1,489	1,460	1,457	1,346	1,065	1,245	1,268	1,456	1,662	1,660	1,622	1,377	1,756	1,869
Recorded per 10,000 Population	107.8	105.8	102.9	102.3	94.2	74.5	86.2	86.7	98.6	111.4	110.1	106.8	90.2	114.3	120.4

VEHICLES STOLEN



Calendar Year	1996	1997	1998	1999	2000	2001	2002	2003	2004	2005	2006	2007	2008	2009	2010
Recorded Offences	862	826	887	792	698	598	774	656	584	720	727	773	647	586	716
Recorded per 10,000 Population	61.9	58.7	62.5	55.6	48.9	41.8	53.6	44.9	39.5	48.2	48.2	50.9	42.4	38.1	46.1

THEFT EX CAR



Calendar Year	1996	1997	1998	1999	2000	2001	2002	2003	2004	2005	2006	2007	2008	2009	2010
Recorded Offences	1,643	1,631	1,607	1,738	1,329	1,434	1,691	1,378	1,261	1,316	1,286	1,080	899	1,046	1,055
Recorded per 10,000 Population	118.0	115.9	113.3	122.0	93.0	100.3	117.0	94.2	85.4	88.2	85.3	71.1	58.9	68.1	68.0

Population Data

Population data is used in this release to calculate crime rates. They have been derived from population estimates as at 30 June each year that have been obtained from Statistics New Zealand.

The estimated resident population is based on the census usually resident population count, with adjustments for residents missed or counted more than once by the census (net census undercount), and for residents temporarily overseas on census night.

These population estimates exclude the number of international students who are studying in New Zealand for less than 12 months.

Year	Population
1996	139,280
1997	140,760
1998	141,870
1999	142,460
2000	142,850
2001	142,960
2002	144,470
2003	146,230
2004	147,680
2005	149,230
2006	150,740
2007	151,920
2008	152,670
2009	153,660
2010	155,180

General Definitions

Recorded Offences: the number of breaches of the New Zealand law recorded by Police. This includes offences specified in the Crimes Act and other legislations, such as the Summary Offences Act, Local Government Act, etc.

Resolved Offences: the number of recorded offences where an offender has been identified and dealt with (e.g. warned, cautioned, prosecuted, etc).

Resolution Rate: the proportion of recorded offences that have been resolved.

Recorded per 10,000 population: the number of recorded offences for every 10,000 people. This is also referred as the crime rate per 10,000 population.

ASOC: the Australian Standard Offence Classification. The offence classification is divided into 16 major offence divisions.

Definition of ASOC Divisions

1. Homicide and related offences: Unlawfully kill, attempt to unlawfully kill or conspiracy to kill another person.
2. Acts intended to cause injury: Acts, excluding attempted murder and those resulting in death, which are intended to cause non-fatal injury or harm to another person and where there is no sexual or acquisitive element.
3. Sexual assault and related offences: Acts, or intent of acts, of a sexual nature against another person, which are non-consensual or where consent is proscribed.
4. Dangerous or negligent acts endangering persons: Dangerous or negligent acts which, though not intended to cause harm, actually or potentially result in injury to oneself or another person.
5. Abduction, harassment and other offences against person: Acts intended to threaten or harass, or acts that unlawfully deprive another person of their freedom of movement, that are against that person's will or against the will of any parent, guardian or other person having lawful custody or care of that person.
6. Robbery, extortion and related offences: Acts intended to unlawfully gain money, property or other items of value from, or to cause detriment to, another person by using the threat of force or any other coercive measure.
7. Unlawful entry with intent / burglary, break and enter: The unlawful entry of a structure with the intent to commit an offence, where the entry is either forced or unforced.
8. Theft and related and offences: The unlawful taking or obtaining of money or goods, not involving the use of force or violence, coercion or deception, with intent to permanently or temporarily deprive the owner or possessor of the use of the money or goods, or the receiving or handling of money or goods obtained unlawfully.

9. Fraud, deception and related offences: Offences involving a dishonest act or omission carried out with the purpose of deceiving to obtain a benefit.

10. Illicit drug offences: The possessing, selling, dealing or trafficking, importing or exporting, manufacturing or cultivating of drugs or other substances prohibited under legislation.

11. Prohibited and regulated weapons and explosives offences: Offences involving prohibited or regulated weapons and explosives. Those offences also involving assault, sexual assault or robbery are coded to the relevant group within Assault, Sexual assaults and Robbery respectively.

12. Property damage and environmental pollution: The wilful and unlawful destruction, damage or defacement of public or private property, or the pollution of property or a definable entity held in common by the community.

13. Public order offences: Offences relating personal conduct that involves, or may lead to, a breach of public order or decency, or that is indicative of criminal intent, or that is otherwise regulated or prohibited on moral or ethical grounds. In general these offences do not involve a specific victim or victims; however some offences, such as offensive language and offensive behaviour, may be directed towards a single victim.

14. Traffic and vehicle regulatory offences: Offences relating to vehicles and most forms of traffic, including offences pertaining to the licensing, registration, roadworthiness, or use of vehicles, bicycle offences and pedestrian offences.

15. Offences against justice procedures, government security and government operations: An act or omission that is deemed to be prejudicial to the effective carrying out of justice procedures or any government operations. This includes general government operations as well as those specifically concerned with maintaining government security.

16. Miscellaneous offences: Offences involving the breach of statutory rules or regulations governing activities that are prima facie legal, where such offences are not explicitly dealt with under any other division. If an offence is specified under regulation and involves an act that would be illegal under common law or general criminal legislation, the offence is dealt with under the appropriate generic group.