

WELLINGTON DISTRICT CRIME STATISTICS 2013



**A Summary of
Recorded and Resolved Offence
Statistics**

**POLICE NATIONAL HEADQUARTERS
April 2014**

ISSN 1178 - 1610

Table of Contents:

Topic	Page
Report Notes	1
District Summary of Recorded and Resolved Crime, by Division	2-4
Proportions of Recorded Crime by Division	5
Summary of District Recorded Offences, Rate per 10,000 Population and Resolved Offences, by Area	6
Summary of Area Recorded Offences, Rate per 10,000 Population and Resolved Offences, by Division	7-9
Crime Trends	10
Total Crime	11
Murder	12
Serious Assaults Resulting in Injury	13
Sexual Assaults	14
Public Place Assaults	15
Dwelling Assaults	16
Robbery	17
Burglary (Total)	18
Burglary (Dwelling)	19
Vehicles Stolen	20
Theft Ex Car	21
Population Data	22
General Definitions	23-24

REPORT NOTES:

Statistics reported in this document are derived from the Police National Intelligence Application (NIA). These Official Statistics for Recorded and Resolved Offences present a snapshot of data in NIA relating to offences that occur within a given year, as at the date 14 days following the end of that year.

Unless the matter is minor where Police attendance is sufficient, a matter that is reported to or discovered by Police where Police believe an offence is likely to have been committed is counted as a recorded offence.

A recorded offence is counted as resolved when Police apprehend an offender and decide how to deal with him/her. (E.g. warn, prosecute, etc.)

Resolution rate is the percentage of recorded offences that are resolved within 14 days of the end of the year being reported on.

If an offence is resolved 15 days or more after the end of the year it will not appear in the Official Crime Statistics for that or any other year. Resolution Rate therefore undercounts the number of cases that Police have resolved. This phenomenon has a more marked impact for some types of offences than others, such as offences that require long investigations (E.g. many serial crimes, burglaries and murders).

The Sale and Supply of Alcohol Act 2012 came into effect on 18 December 2013. This had little effect on overall 2013 calendar year statistics, because the legislation only took effect two weeks before the end of the year. However, statistics for future years will be significantly affected. In particular, the offence of Breach of Liquor Ban, of which there were more than 6,500 nationally in 2013, has been made obsolete by the new legislation. Under the new legislation Police will deal with breaches of alcohol bans by issuing infringement notices, rather than by recording offences for which offenders can be charged. Such infringements are not part of this statistical collection.

When comparing 2013 Statistics with previous years, the reader should also refer to "Report Notes" published in previous years' reports, as previous changes significantly affect year on year trends.

SUMMARY OF DISTRICT RECORDED AND RESOLVED CRIME, BY DIVISION

Years ending 31 December

HOMICIDE AND RELATED OFFENCES

ASOC Subdivision Description	Recorded 2011	Recorded 2012	Recorded 2013	Variance 2011-2012	Variance 2012-2013	Resolved 2011	Resolved 2012	Resolved 2013	Resolution Rate 2011	Resolution Rate 2012	Resolution Rate 2013
ATTEMPTED MURDER	0	0	1	0.0 %	0.0 %	0	0	1	0.0 %	0.0 %	100.0 %
HOMICIDE AND RELATED OFFENCES NOT FURTHER DEFINED	0	0	0	0.0 %	0.0 %	0	0	0	0.0 %	0.0 %	0.0 %
MANSLAUGHTER AND DRIVING CAUSING DEATH	1	3	0	200.0 %	-100.0 %	1	3	0	100.0 %	100.0 %	0.0 %
MURDER	3	6	6	100.0 %	0.0 %	2	6	5	66.7 %	100.0 %	83.3 %
	4	9	7	125.0 %	-22.2 %	3	9	6	75.0 %	100.0 %	85.7 %

ACTS INTENDED TO CAUSE INJURY

ASOC Subdivision Description	Recorded 2011	Recorded 2012	Recorded 2013	Variance 2011-2012	Variance 2012-2013	Resolved 2011	Resolved 2012	Resolved 2013	Resolution Rate 2011	Resolution Rate 2012	Resolution Rate 2013
ASSAULT	4,271	3,866	3,450	-9.5 %	-10.8 %	3,563	2,958	2,270	83.4 %	76.5 %	65.8 %
OTHER ACTS INTENDED TO CAUSE INJURY	3	1	3	-66.7 %	200.0 %	2	1	1	66.7 %	100.0 %	33.3 %
	4,274	3,867	3,453	-9.5 %	-10.7 %	3,565	2,959	2,271	83.4 %	76.5 %	65.8 %

SEXUAL ASSAULT AND RELATED OFFENCES

ASOC Subdivision Description	Recorded 2011	Recorded 2012	Recorded 2013	Variance 2011-2012	Variance 2012-2013	Resolved 2011	Resolved 2012	Resolved 2013	Resolution Rate 2011	Resolution Rate 2012	Resolution Rate 2013
NON-ASSAULTIVE SEXUAL OFFENCES	8	14	11	75.0 %	-21.4 %	7	8	8	87.5 %	57.1 %	72.7 %
SEXUAL ASSAULT	367	370	362	0.8 %	-2.2 %	188	184	191	51.2 %	49.7 %	52.8 %
	375	384	373	2.4 %	-2.9 %	195	192	199	52.0 %	50.0 %	53.4 %

DANGEROUS OR NEGLIGENT ACTS ENDANGERING PERSONS

ASOC Subdivision Description	Recorded 2011	Recorded 2012	Recorded 2013	Variance 2011-2012	Variance 2012-2013	Resolved 2011	Resolved 2012	Resolved 2013	Resolution Rate 2011	Resolution Rate 2012	Resolution Rate 2013
OTHER DANGEROUS OR NEGLIGENT ACTS ENDANGERING PERSONS	81	62	74	-23.5 %	19.4 %	66	38	41	81.5 %	61.3 %	55.4 %
	81	62	74	-23.5 %	19.4 %	66	38	41	81.5 %	61.3 %	55.4 %

ABDUCTION, HARASSMENT AND OTHER RELATED OFFENCES AGAINST A PERSON

ASOC Subdivision Description	Recorded 2011	Recorded 2012	Recorded 2013	Variance 2011-2012	Variance 2012-2013	Resolved 2011	Resolved 2012	Resolved 2013	Resolution Rate 2011	Resolution Rate 2012	Resolution Rate 2013
ABDUCTION AND KIDNAPPING	32	22	10	-31.3 %	-54.5 %	21	12	9	65.6 %	54.5 %	90.0 %
HARASSMENT AND THREATENING BEHAVIOUR	1,475	1,353	1,378	-8.3 %	1.8 %	1,018	892	608	69.0 %	65.9 %	44.1 %
	1,507	1,375	1,388	-8.8 %	0.9 %	1,039	904	617	68.9 %	65.7 %	44.5 %

ROBBERY, EXTORTION AND RELATED OFFENCES

ASOC Subdivision Description	Recorded 2011	Recorded 2012	Recorded 2013	Variance 2011-2012	Variance 2012-2013	Resolved 2011	Resolved 2012	Resolved 2013	Resolution Rate 2011	Resolution Rate 2012	Resolution Rate 2013
BLACKMAIL AND EXTORTION	10	6	14	-40.0 %	133.3 %	5	2	7	50.0 %	33.3 %	50.0 %
ROBBERY	155	134	136	-13.5 %	1.5 %	75	56	59	48.4 %	41.8 %	43.4 %
	165	140	150	-15.2 %	7.1 %	80	58	66	48.5 %	41.4 %	44.0 %

UNLAWFUL ENTRY WITH INTENT/BURGLARY, BREAK AND ENTER

ASOC Subdivision Description	Recorded 2011	Recorded 2012	Recorded 2013	Variance 2011-2012	Variance 2012-2013	Resolved 2011	Resolved 2012	Resolved 2013	Resolution Rate 2011	Resolution Rate 2012	Resolution Rate 2013
UNLAWFUL ENTRY WITH INTENT/BURGLARY, BREAK AND ENTER	4,804	4,872	4,434	1.4 %	-9.0 %	648	665	552	13.5 %	13.6 %	12.4 %
	4,804	4,872	4,434	1.4 %	-9.0 %	648	665	552	13.5 %	13.6 %	12.4 %

SUMMARY OF DISTRICT RECORDED AND RESOLVED CRIME, BY DIVISION

Years ending 31 December

THEFT AND RELATED OFFENCES

ASOC Subdivision Description	Recorded 2011	Recorded 2012	Recorded 2013	Variance 2011-2012	Variance 2012-2013	Resolved 2011	Resolved 2012	Resolved 2013	Resolution Rate 2011	Resolution Rate 2012	Resolution Rate 2013
ILLEGAL USE OF PROPERTY (EXCEPT MOTOR VEHICLES)	377	319	251	-15.4 %	-21.3 %	23	12	5	6.1 %	3.8 %	2.0 %
MOTOR VEHICLE THEFT AND RELATED OFFENCES	6,517	5,003	5,020	-23.2 %	0.3 %	457	429	409	7.0 %	8.6 %	8.1 %
RECEIVE OR HANDLE PROCEEDS OF CRIME	234	217	223	-7.3 %	2.8 %	225	205	215	96.2 %	94.5 %	96.4 %
THEFT AND RELATED OFFENCES NOT FURTHER DEFINED	0	0	0	0.0 %	0.0 %	0	0	0	0.0 %	0.0 %	0.0 %
THEFT (EXCEPT MOTOR VEHICLES)	8,212	7,195	6,992	-12.4 %	-2.8 %	2,499	2,152	1,693	30.4 %	29.9 %	24.2 %
	15,340	12,734	12,486	-17.0 %	-1.9 %	3,204	2,798	2,322	20.9 %	22.0 %	18.6 %

FRAUD, DECEPTION AND RELATED OFFENCES

ASOC Subdivision Description	Recorded 2011	Recorded 2012	Recorded 2013	Variance 2011-2012	Variance 2012-2013	Resolved 2011	Resolved 2012	Resolved 2013	Resolution Rate 2011	Resolution Rate 2012	Resolution Rate 2013
DECEPTIVE BUSINESS/GOVERNMENT PRACTICES	1	5	4	400.0 %	-20.0 %	1	4	3	100.0 %	80.0 %	75.0 %
FORGERY AND COUNTERFEITING	29	29	61	0.0 %	110.3 %	12	12	17	41.4 %	41.4 %	27.9 %
OBTAIN BENEFIT BY DECEPTION	677	610	635	-9.9 %	4.1 %	329	348	298	48.6 %	57.0 %	46.9 %
OTHER FRAUD AND DECEPTION OFFENCES	53	52	60	-1.9 %	15.4 %	22	28	19	41.5 %	53.8 %	31.7 %
	760	696	760	-8.4 %	9.2 %	364	392	337	47.9 %	56.3 %	44.3 %

ILLCIT DRUG OFFENCES

ASOC Subdivision Description	Recorded 2011	Recorded 2012	Recorded 2013	Variance 2011-2012	Variance 2012-2013	Resolved 2011	Resolved 2012	Resolved 2013	Resolution Rate 2011	Resolution Rate 2012	Resolution Rate 2013
DEAL OR TRAFFIC IN ILLICIT DRUGS	578	1,454	282	151.6 %	-80.6 %	537	1,418	246	92.9 %	97.5 %	87.2 %
IMPORT OR EXPORT ILLICIT DRUGS	3	15	30	400.0 %	100.0 %	3	7	16	100.0 %	46.7 %	53.3 %
MANUFACTURE OR CULTIVATE ILLICIT DRUGS	165	156	125	-5.5 %	-19.9 %	150	138	97	90.9 %	88.5 %	77.6 %
OTHER ILLICIT DRUG OFFENCES	340	317	206	-6.8 %	-35.0 %	335	303	196	98.5 %	95.6 %	95.1 %
POSSESS AND/OR USE ILLICIT DRUGS	724	661	514	-8.7 %	-22.2 %	704	629	470	97.2 %	95.2 %	91.4 %
	1,810	2,603	1,157	43.8 %	-55.6 %	1,729	2,495	1,025	95.5 %	95.9 %	88.6 %

PROHIBITED AND REGULATED WEAPONS AND EXPLOSIVES OFFENCES

ASOC Subdivision Description	Recorded 2011	Recorded 2012	Recorded 2013	Variance 2011-2012	Variance 2012-2013	Resolved 2011	Resolved 2012	Resolved 2013	Resolution Rate 2011	Resolution Rate 2012	Resolution Rate 2013
REGULATED WEAPONS/EXPLOSIVES OFFENCES	490	476	485	-2.9 %	1.9 %	462	434	414	94.3 %	91.2 %	85.4 %
	490	476	485	-2.9 %	1.9 %	462	434	414	94.3 %	91.2 %	85.4 %

PROPERTY DAMAGE AND ENVIRONMENTAL POLLUTION

ASOC Subdivision Description	Recorded 2011	Recorded 2012	Recorded 2013	Variance 2011-2012	Variance 2012-2013	Resolved 2011	Resolved 2012	Resolved 2013	Resolution Rate 2011	Resolution Rate 2012	Resolution Rate 2013
ENVIRONMENTAL POLLUTION	7	11	12	57.1 %	9.1 %	5	7	3	71.4 %	63.6 %	25.0 %
PROPERTY DAMAGE	6,807	5,964	5,198	-12.4 %	-12.8 %	1,535	1,360	1,097	22.6 %	22.8 %	21.1 %
	6,814	5,975	5,210	-12.3 %	-12.8 %	1,540	1,367	1,100	22.6 %	22.9 %	21.1 %

SUMMARY OF DISTRICT RECORDED AND RESOLVED CRIME, BY DIVISION
Years ending 31 December

PUBLIC ORDER OFFENCES

ASOC Subdivision Description	Recorded 2011	Recorded 2012	Recorded 2013	Variance 2011-2012	Variance 2012-2013	Resolved 2011	Resolved 2012	Resolved 2013	Resolution Rate 2011	Resolution Rate 2012	Resolution Rate 2013
DISORDERLY CONDUCT	3,082	2,730	2,748	-11.4 %	0.7 %	2,690	2,300	2,118	87.3 %	84.2 %	77.1 %
OFFENSIVE CONDUCT	159	146	104	-8.2 %	-28.8 %	134	103	65	84.3 %	70.5 %	62.5 %
PUBLIC ORDER OFFENCES NOT FURTHER DEFINED	0	0	0	0.0 %	0.0 %	0	0	0	0.0 %	0.0 %	0.0 %
REGULATED PUBLIC ORDER OFFENCES	815	931	744	14.2 %	-20.1 %	770	822	638	94.5 %	88.3 %	85.8 %
	4,056	3,807	3,596	-6.1 %	-5.5 %	3,594	3,225	2,821	88.6 %	84.7 %	78.4 %

OFFENCES AGAINST JUSTICE PROCEDURES, GOVERNMENT SECURITY AND GOVERNMENT OPERATIONS

ASOC Subdivision Description	Recorded 2011	Recorded 2012	Recorded 2013	Variance 2011-2012	Variance 2012-2013	Resolved 2011	Resolved 2012	Resolved 2013	Resolution Rate 2011	Resolution Rate 2012	Resolution Rate 2013
BREACH OF COMMUNITY-BASED ORDER	548	303	79	-44.7 %	-73.9 %	501	215	59	91.4 %	71.0 %	74.7 %
BREACH OF CUSTODIAL ORDER OFFENCES	38	41	25	7.9 %	-39.0 %	35	38	25	92.1 %	92.7 %	100.0 %
BREACH OF VIOLENCE AND NON-VIOLENCE RESTRAINING ORDERS	646	667	538	3.3 %	-19.3 %	590	575	394	91.3 %	86.2 %	73.2 %
OFFENCES AGAINST GOVERNMENT OPERATIONS	36	22	17	-38.9 %	-22.7 %	22	8	6	61.1 %	36.4 %	35.3 %
OFFENCES AGAINST GOVERNMENT SECURITY	3	1	0	-66.7 %	-100.0 %	3	0	0	100.0 %	0.0 %	0.0 %
OFFENCES AGAINST JUSTICE PROCEDURES	539	425	399	-21.2 %	-6.1 %	527	413	386	97.8 %	97.2 %	96.7 %
OFFENCES AGAINST JUSTICE PROCEDURES, GOVERNMENT SECURITY AND GOVERNMENT OPERATIONS NOT FURTHER DEFINED	0	0	0	0.0 %	0.0 %	0	0	0	0.0 %	0.0 %	0.0 %
	1,810	1,459	1,058	-19.4 %	-27.5 %	1,678	1,249	870	92.7 %	85.6 %	82.2 %

MISCELLANEOUS OFFENCES

ASOC Subdivision Description	Recorded 2011	Recorded 2012	Recorded 2013	Variance 2011-2012	Variance 2012-2013	Resolved 2011	Resolved 2012	Resolved 2013	Resolution Rate 2011	Resolution Rate 2012	Resolution Rate 2013
COMMERCIAL/INDUSTRY/FINANCIAL REGULATION	5	1	1	-80.0 %	0.0 %	5	1	1	100.0 %	100.0 %	100.0 %
DEFAMATION, LIBEL AND PRIVACY OFFENCES	6	6	4	0.0 %	-33.3 %	3	0	1	50.0 %	0.0 %	25.0 %
OTHER MISCELLANEOUS OFFENCES	88	130	145	47.7 %	11.5 %	63	93	68	71.6 %	71.5 %	46.9 %
PUBLIC HEALTH AND SAFETY OFFENCES	55	17	25	-69.1 %	47.1 %	50	12	17	90.9 %	70.6 %	68.0 %
	154	154	175	0.0 %	13.6 %	121	106	87	78.6 %	68.8 %	49.7 %

TOTAL	42,444	38,613	34,806	-9.0 %	-9.9 %	18,288	16,891	12,728	43.1 %	43.7 %	36.6 %
--------------	---------------	---------------	---------------	---------------	---------------	---------------	---------------	---------------	---------------	---------------	---------------

PROPORTIONS OF RECORDED CRIME BY DIVISION

Years ending 31 December

ASOC Division Description	Proportions Recorded 2011	Recorded 2011	Proportions Recorded 2012	Recorded 2012	Proportions Recorded 2013	Recorded 2013
HOMICIDE AND RELATED OFFENCES	0.01 %	4	0.02 %	9	0.02 %	7
ACTS INTENDED TO CAUSE INJURY	10.07 %	4,274	10.01 %	3,867	9.92 %	3,453
SEXUAL ASSAULT AND RELATED OFFENCES	0.88 %	375	0.99 %	384	1.07 %	373
DANGEROUS OR NEGLIGENT ACTS ENDANGERING PERSONS	0.19 %	81	0.16 %	62	0.21 %	74
ABDUCTION, HARASSMENT AND OTHER RELATED OFFENCES AGAINST A PERSON	3.55 %	1,507	3.56 %	1,375	3.99 %	1,388
ROBBERY, EXTORTION AND RELATED OFFENCES	0.39 %	165	0.36 %	140	0.43 %	150
UNLAWFUL ENTRY WITH INTENT/BURGLARY, BREAK AND ENTER	11.32 %	4,804	12.62 %	4,872	12.74 %	4,434
THEFT AND RELATED OFFENCES	36.14 %	15,340	32.98 %	12,734	35.87 %	12,486
FRAUD, DECEPTION AND RELATED OFFENCES	1.79 %	760	1.80 %	696	2.18 %	760
ILLICIT DRUG OFFENCES	4.26 %	1,810	6.74 %	2,603	3.32 %	1,157
PROHIBITED AND REGULATED WEAPONS AND EXPLOSIVES OFFENCES	1.15 %	490	1.23 %	476	1.39 %	485
PROPERTY DAMAGE AND ENVIRONMENTAL POLLUTION	16.05 %	6,814	15.47 %	5,975	14.97 %	5,210
PUBLIC ORDER OFFENCES	9.56 %	4,056	9.86 %	3,807	10.33 %	3,596
OFFENCES AGAINST JUSTICE PROCEDURES, GOVERNMENT SECURITY AND GOVERNMENT OPERATIONS	4.26 %	1,810	3.78 %	1,459	3.04 %	1,058
MISCELLANEOUS OFFENCES	0.36 %	154	0.40 %	154	0.50 %	175
	100.00 %	42,444	100.00 %	38,613	100.00 %	34,806

SUMMARY OF RECORDED OFFENCES, RATE PER 10,000 POPULATION AND RESOLVED OFFENCES, BY AREA
years ending 31 December

TOTAL CRIME

Area Description	Recorded 2012	Recorded 2013	Variance 2012-2013	Recorded per 10,000 pop 2012	Recorded per 10,000 pop 2013	Per 10,000 pop % Variance 2012 to 2013	Resolved 2012	Resolved 2013	Resolution Rate 2012	Resolution Rate 2013
Hutt Valley	11,574	10,386	-10.3 %	801.8	718.5	-10.4 %	4,781	3,470	41.3 %	33.4 %
Kapiti-Mana	8,215	7,111	-13.4 %	749.5	645.9	-13.8 %	3,822	3,076	46.5 %	43.3 %
Wairarapa	3,977	3,610	-9.2 %	979.1	888.1	-9.3 %	1,870	1,448	47.0 %	40.1 %
Wellington	14,847	13,699	-7.7 %	791.0	723.6	-8.5 %	6,418	4,734	43.2 %	34.6 %
	38,613	34,806	-9.9 %	800.6	718.2	-10.3 %	16,891	12,728	43.7 %	36.6 %

SUMMARY OF RECORDED OFFENCES, RATE PER 10,000 POPULATION AND RESOLVED OFFENCES, BY DIVISION

Years ending 31 December

HOMICIDE AND RELATED OFFENCES

Area Description	Recorded 2012	Recorded 2013	Variance 2012-2013	Recorded per 10,000 pop 2012	Recorded per 10,000 pop 2013	Per 10,000 pop % Variance 2012 to 2013	Resolved 2012	Resolved 2013	Resolution Rate 2012	Resolution Rate 2013
Hutt Valley	5	3	-40.0 %	0.3	0.2	-40.1 %	5	3	100.0 %	100.0 %
Kapiti-Mana	4	1	-75.0 %	0.4	0.1	-75.1 %	4	1	100.0 %	100.0 %
Wairarapa	0	1	0.0 %	0.0	0.2	0.0 %	0	1	0.0 %	100.0 %
Wellington	0	2	0.0 %	0.0	0.1	0.0 %	0	1	0.0 %	50.0 %
	9	7	-22.2 %	0.2	0.1	-22.6 %	9	6	100.0 %	85.7 %

ACTS INTENDED TO CAUSE INJURY

Area Description	Recorded 2012	Recorded 2013	Variance 2012-2013	Recorded per 10,000 pop 2012	Recorded per 10,000 pop 2013	Per 10,000 pop % Variance 2012 to 2013	Resolved 2012	Resolved 2013	Resolution Rate 2012	Resolution Rate 2013
Hutt Valley	1,178	1,040	-11.7 %	81.6	71.9	-11.8 %	902	638	76.6 %	61.3 %
Kapiti-Mana	998	810	-18.8 %	91.1	73.6	-19.2 %	807	593	80.9 %	73.2 %
Wairarapa	450	404	-10.2 %	110.8	99.4	-10.3 %	331	255	73.6 %	63.1 %
Wellington	1,241	1,199	-3.4 %	66.1	63.3	-4.2 %	919	785	74.1 %	65.5 %
	3,867	3,453	-10.7 %	80.2	71.3	-11.1 %	2,959	2,271	76.5 %	65.8 %

SEXUAL ASSAULT AND RELATED OFFENCES

Area Description	Recorded 2012	Recorded 2013	Variance 2012-2013	Recorded per 10,000 pop 2012	Recorded per 10,000 pop 2013	Per 10,000 pop % Variance 2012 to 2013	Resolved 2012	Resolved 2013	Resolution Rate 2012	Resolution Rate 2013
Hutt Valley	119	109	-8.4 %	8.2	7.5	-8.5 %	54	46	45.4 %	42.2 %
Kapiti-Mana	89	108	21.3 %	8.1	9.8	20.8 %	43	68	48.3 %	63.0 %
Wairarapa	48	56	16.7 %	11.8	13.8	16.6 %	26	42	54.2 %	75.0 %
Wellington	128	100	-21.9 %	6.8	5.3	-22.5 %	69	43	53.9 %	43.0 %
	384	373	-2.9 %	8.0	7.7	-3.3 %	192	199	50.0 %	53.4 %

DANGEROUS OR NEGLIGENT ACTS ENDANGERING PERSONS

Area Description	Recorded 2012	Recorded 2013	Variance 2012-2013	Recorded per 10,000 pop 2012	Recorded per 10,000 pop 2013	Per 10,000 pop % Variance 2012 to 2013	Resolved 2012	Resolved 2013	Resolution Rate 2012	Resolution Rate 2013
Hutt Valley	12	26	116.7 %	0.8	1.8	116.4 %	6	14	50.0 %	53.8 %
Kapiti-Mana	13	27	107.7 %	1.2	2.5	106.7 %	11	16	84.6 %	59.3 %
Wairarapa	17	6	-64.7 %	4.2	1.5	-64.7 %	9	4	52.9 %	66.7 %
Wellington	20	15	-25.0 %	1.1	0.8	-25.6 %	12	7	60.0 %	46.7 %
	62	74	19.4 %	1.3	1.5	18.8 %	38	41	61.3 %	55.4 %

ABDUCTION, HARASSMENT AND OTHER RELATED OFFENCES AGAINST A PERSON

Area Description	Recorded 2012	Recorded 2013	Variance 2012-2013	Recorded per 10,000 pop 2012	Recorded per 10,000 pop 2013	Per 10,000 pop % Variance 2012 to 2013	Resolved 2012	Resolved 2013	Resolution Rate 2012	Resolution Rate 2013
Hutt Valley	415	406	-2.2 %	28.7	28.1	-2.3 %	278	159	67.0 %	39.2 %
Kapiti-Mana	398	348	-12.6 %	36.3	31.6	-13.0 %	283	184	71.1 %	52.9 %
Wairarapa	202	194	-4.0 %	49.7	47.7	-4.0 %	143	80	70.8 %	41.2 %
Wellington	360	440	22.2 %	19.2	23.2	21.2 %	200	194	55.6 %	44.1 %
	1,375	1,388	0.9 %	28.5	28.6	0.5 %	904	617	65.7 %	44.5 %

SUMMARY OF RECORDED OFFENCES, RATE PER 10,000 POPULATION AND RESOLVED OFFENCES, BY DIVISION

Years ending 31 December

ROBBERY, EXTORTION AND RELATED OFFENCES

Area Description	Recorded 2012	Recorded 2013	Variance 2012-2013	Recorded per 10,000 pop 2012	Recorded per 10,000 pop 2013	Per 10,000 pop % Variance 2012 to 2013	Resolved 2012	Resolved 2013	Resolution Rate 2012	Resolution Rate 2013
Hutt Valley	51	46	-9.8 %	3.5	3.2	-9.9 %	22	23	43.1 %	50.0 %
Kapiti-Mana	24	28	16.7 %	2.2	2.5	16.1 %	11	10	45.8 %	35.7 %
Wairarapa	8	8	0.0 %	2.0	2.0	-0.1 %	3	4	37.5 %	50.0 %
Wellington	57	68	19.3 %	3.0	3.6	18.3 %	22	29	38.6 %	42.6 %
	140	150	7.1 %	2.9	3.1	6.6 %	58	66	41.4 %	44.0 %

UNLAWFUL ENTRY WITH INTENT/BURGLARY, BREAK AND ENTER

Area Description	Recorded 2012	Recorded 2013	Variance 2012-2013	Recorded per 10,000 pop 2012	Recorded per 10,000 pop 2013	Per 10,000 pop % Variance 2012 to 2013	Resolved 2012	Resolved 2013	Resolution Rate 2012	Resolution Rate 2013
Hutt Valley	1,735	1,367	-21.2 %	120.2	94.6	-21.3 %	256	180	14.8 %	13.2 %
Kapiti-Mana	1,061	922	-13.1 %	96.8	83.7	-13.5 %	186	144	17.5 %	15.6 %
Wairarapa	665	637	-4.2 %	163.7	156.7	-4.3 %	90	77	13.5 %	12.1 %
Wellington	1,411	1,508	6.9 %	75.2	79.7	6.0 %	133	151	9.4 %	10.0 %
	4,872	4,434	-9.0 %	101.0	91.5	-9.4 %	665	552	13.6 %	12.4 %

THEFT AND RELATED OFFENCES

Area Description	Recorded 2012	Recorded 2013	Variance 2012-2013	Recorded per 10,000 pop 2012	Recorded per 10,000 pop 2013	Per 10,000 pop % Variance 2012 to 2013	Resolved 2012	Resolved 2013	Resolution Rate 2012	Resolution Rate 2013
Hutt Valley	3,813	3,895	2.2 %	264.1	269.5	2.0 %	891	818	23.4 %	21.0 %
Kapiti-Mana	2,701	2,273	-15.8 %	246.4	206.4	-16.2 %	822	567	30.4 %	24.9 %
Wairarapa	913	877	-3.9 %	224.8	215.7	-4.0 %	235	215	25.7 %	24.5 %
Wellington	5,307	5,441	2.5 %	282.7	287.4	1.7 %	850	722	16.0 %	13.3 %
	12,734	12,486	-1.9 %	264.0	257.7	-2.4 %	2,798	2,322	22.0 %	18.6 %

FRAUD, DECEPTION AND RELATED OFFENCES

Area Description	Recorded 2012	Recorded 2013	Variance 2012-2013	Recorded per 10,000 pop 2012	Recorded per 10,000 pop 2013	Per 10,000 pop % Variance 2012 to 2013	Resolved 2012	Resolved 2013	Resolution Rate 2012	Resolution Rate 2013
Hutt Valley	222	191	-14.0 %	15.4	13.2	-14.1 %	149	76	67.1 %	39.8 %
Kapiti-Mana	130	164	26.2 %	11.9	14.9	25.6 %	70	93	53.8 %	56.7 %
Wairarapa	45	70	55.6 %	11.1	17.2	55.4 %	21	43	46.7 %	61.4 %
Wellington	299	335	12.0 %	15.9	17.7	11.1 %	152	125	50.8 %	37.3 %
	696	760	9.2 %	14.4	15.7	8.7 %	392	337	56.3 %	44.3 %

ILLICIT DRUG OFFENCES

Area Description	Recorded 2012	Recorded 2013	Variance 2012-2013	Recorded per 10,000 pop 2012	Recorded per 10,000 pop 2013	Per 10,000 pop % Variance 2012 to 2013	Resolved 2012	Resolved 2013	Resolution Rate 2012	Resolution Rate 2013
Hutt Valley	374	274	-26.7 %	25.9	19.0	-26.8 %	348	249	93.0 %	90.9 %
Kapiti-Mana	321	300	-6.5 %	29.3	27.2	-7.0 %	300	277	93.5 %	92.3 %
Wairarapa	316	153	-51.6 %	77.8	37.6	-51.6 %	307	132	97.2 %	86.3 %
Wellington	1,592	430	-73.0 %	84.8	22.7	-73.2 %	1,540	367	96.7 %	85.3 %
	2,603	1,157	-55.6 %	54.0	23.9	-55.8 %	2,495	1,025	95.9 %	88.6 %

SUMMARY OF RECORDED OFFENCES, RATE PER 10,000 POPULATION AND RESOLVED OFFENCES, BY DIVISION

Years ending 31 December

PROHIBITED AND REGULATED WEAPONS AND EXPLOSIVES OFFENCES

Area Description	Recorded 2012	Recorded 2013	Variance 2012-2013	Recorded per 10,000 pop 2012	Recorded per 10,000 pop 2013	Per 10,000 pop % Variance 2012 to 2013	Resolved 2012	Resolved 2013	Resolution Rate 2012	Resolution Rate 2013
Hutt Valley	154	173	12.3 %	10.7	12.0	12.2 %	140	151	90.9 %	87.3 %
Kapiti-Mana	113	95	-15.9 %	10.3	8.6	-16.3 %	107	85	94.7 %	89.5 %
Wairarapa	64	55	-14.1 %	15.8	13.5	-14.1 %	54	41	84.4 %	74.5 %
Wellington	145	162	11.7 %	7.7	8.6	10.8 %	133	137	91.7 %	84.6 %
	476	485	1.9 %	9.9	10.0	1.4 %	434	414	91.2 %	85.4 %

PROPERTY DAMAGE AND ENVIRONMENTAL POLLUTION

Area Description	Recorded 2012	Recorded 2013	Variance 2012-2013	Recorded per 10,000 pop 2012	Recorded per 10,000 pop 2013	Per 10,000 pop % Variance 2012 to 2013	Resolved 2012	Resolved 2013	Resolution Rate 2012	Resolution Rate 2013
Hutt Valley	1,906	1,659	-13.0 %	132.0	114.8	-13.1 %	463	305	24.3 %	18.4 %
Kapiti-Mana	1,314	1,086	-17.4 %	119.9	98.6	-17.7 %	330	296	25.1 %	27.3 %
Wairarapa	653	586	-10.3 %	160.8	144.2	-10.3 %	158	151	24.2 %	25.8 %
Wellington	2,102	1,879	-10.6 %	112.0	99.3	-11.4 %	416	348	19.8 %	18.5 %
	5,975	5,210	-12.8 %	123.9	107.5	-13.2 %	1,367	1,100	22.9 %	21.1 %

PUBLIC ORDER OFFENCES

Area Description	Recorded 2012	Recorded 2013	Variance 2012-2013	Recorded per 10,000 pop 2012	Recorded per 10,000 pop 2013	Per 10,000 pop % Variance 2012 to 2013	Resolved 2012	Resolved 2013	Resolution Rate 2012	Resolution Rate 2013
Hutt Valley	858	804	-6.3 %	59.4	55.6	-6.4 %	666	513	77.6 %	63.8 %
Kapiti-Mana	711	673	-5.3 %	64.9	61.1	-5.8 %	556	517	78.2 %	76.8 %
Wairarapa	434	371	-14.5 %	106.8	91.3	-14.6 %	356	264	82.0 %	71.2 %
Wellington	1,804	1,748	-3.1 %	96.1	92.3	-3.9 %	1,647	1,527	91.3 %	87.4 %
	3,807	3,596	-5.5 %	78.9	74.2	-6.0 %	3,225	2,821	84.7 %	78.4 %

OFFENCES AGAINST JUSTICE PROCEDURES, GOVERNMENT SECURITY AND GOVERNMENT OPERATIONS

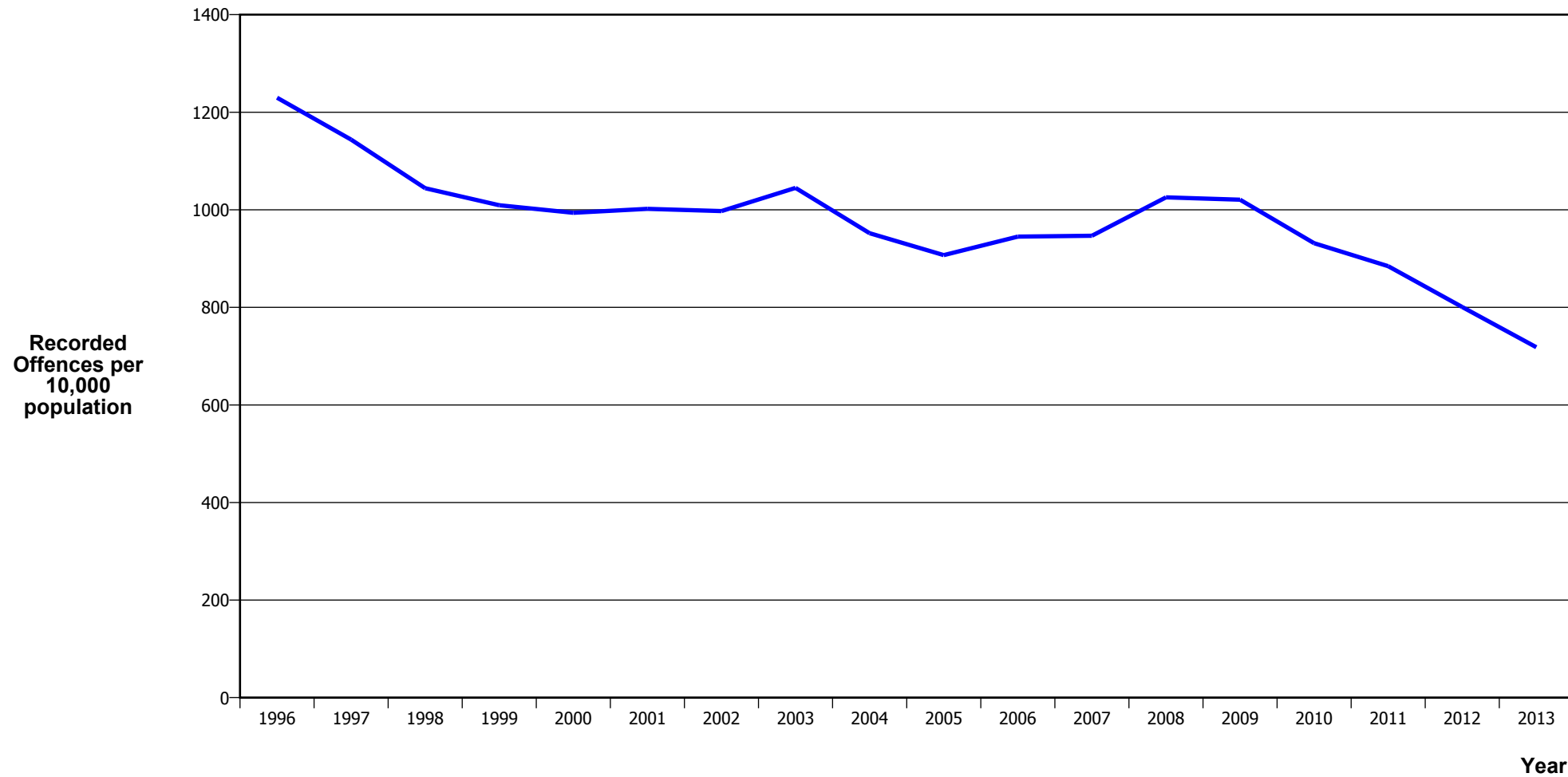
Area Description	Recorded 2012	Recorded 2013	Variance 2012-2013	Recorded per 10,000 pop 2012	Recorded per 10,000 pop 2013	Per 10,000 pop % Variance 2012 to 2013	Resolved 2012	Resolved 2013	Resolution Rate 2012	Resolution Rate 2013
Hutt Valley	705	350	-50.4 %	48.8	24.2	-50.4 %	586	281	83.1 %	80.3 %
Kapiti-Mana	308	241	-21.8 %	28.1	21.9	-22.1 %	271	208	88.0 %	86.3 %
Wairarapa	144	165	14.6 %	35.5	40.6	14.5 %	126	124	87.5 %	75.2 %
Wellington	302	302	0.0 %	16.1	16.0	-0.8 %	266	257	88.1 %	85.1 %
	1,459	1,058	-27.5 %	30.3	21.8	-27.8 %	1,249	870	85.6 %	82.2 %

MISCELLANEOUS OFFENCES

Area Description	Recorded 2012	Recorded 2013	Variance 2012-2013	Recorded per 10,000 pop 2012	Recorded per 10,000 pop 2013	Per 10,000 pop % Variance 2012 to 2013	Resolved 2012	Resolved 2013	Resolution Rate 2012	Resolution Rate 2013
Hutt Valley	27	43	59.3 %	1.9	3.0	59.0 %	15	14	55.6 %	32.6 %
Kapiti-Mana	30	35	16.7 %	2.7	3.2	16.1 %	21	17	70.0 %	48.6 %
Wairarapa	18	27	50.0 %	4.4	6.6	49.9 %	11	15	61.1 %	55.6 %
Wellington	79	70	-11.4 %	4.2	3.7	-12.1 %	59	41	74.7 %	58.6 %
	154	175	13.6 %	3.2	3.6	13.1 %	106	87	68.8 %	49.7 %

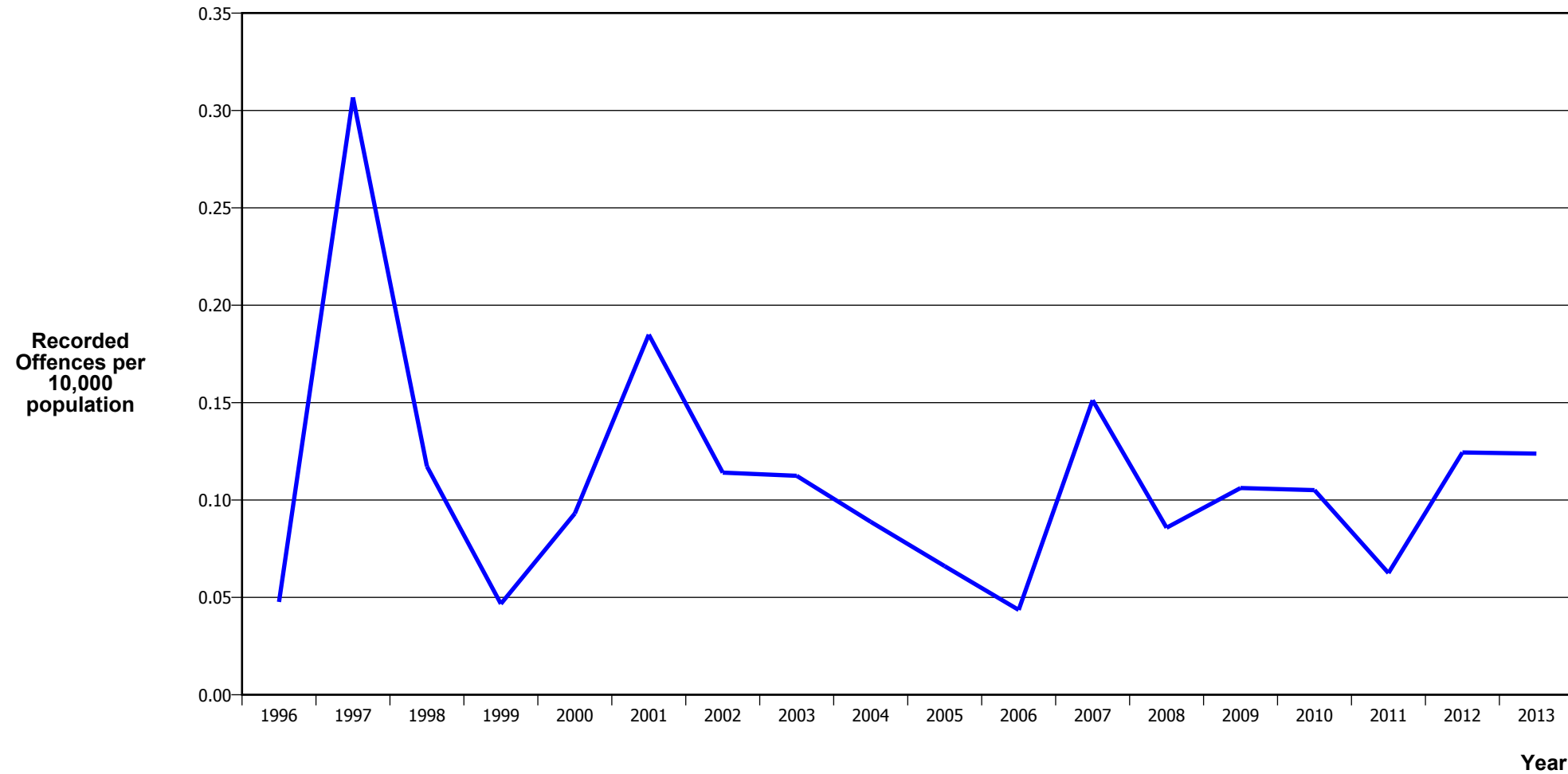
CRIME TRENDS

TOTAL CRIME



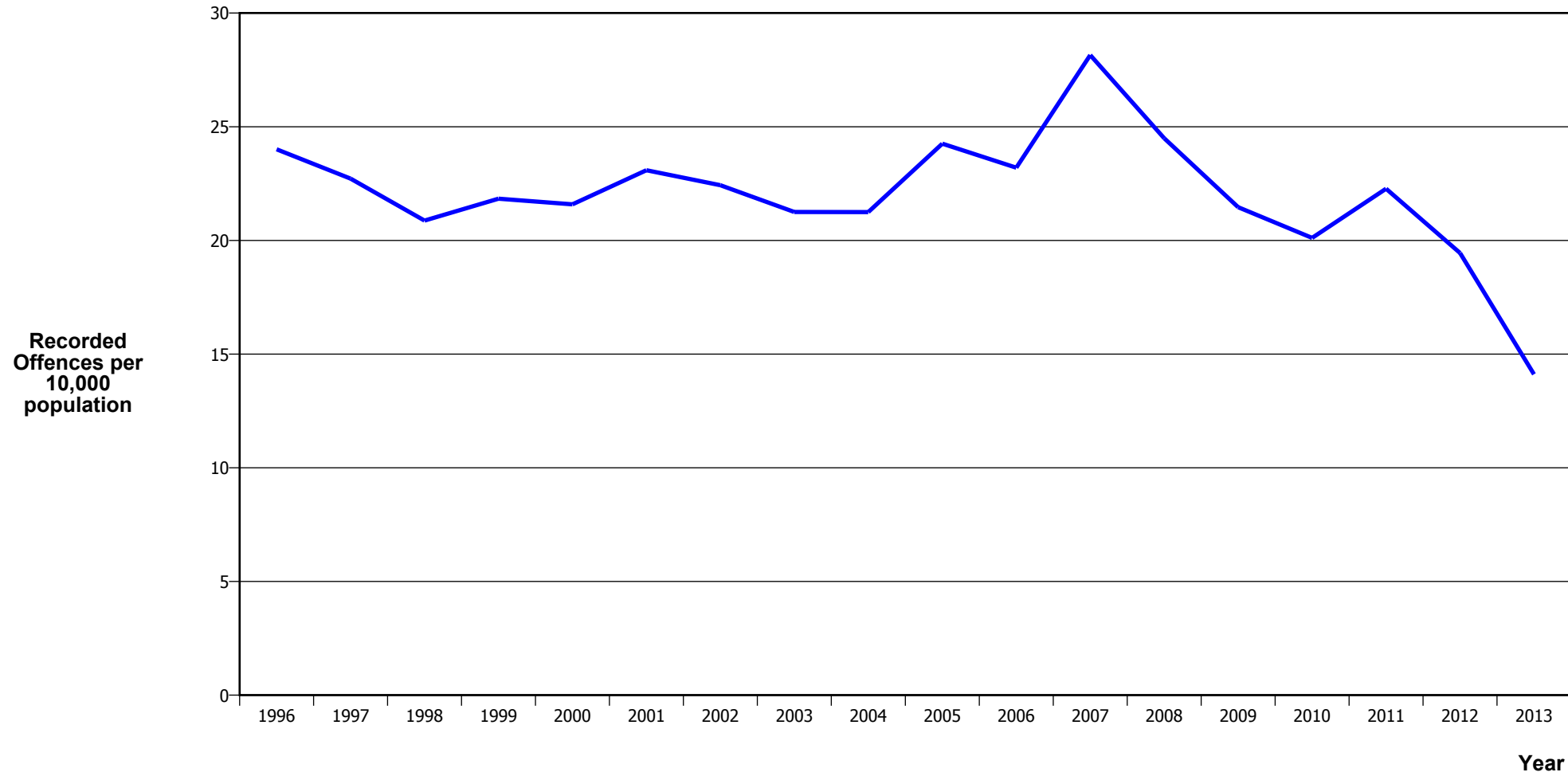
Calendar Year	1996	1997	1998	1999	2000	2001	2002	2003	2004	2005	2006	2007	2008	2009	2010	2011	2012	2013
Recorded Offences	51,589	48,490	44,526	43,222	42,729	43,349	43,717	46,472	42,887	41,214	43,384	43,826	47,811	48,079	44,321	42,444	38,613	34,806
Recorded per 10,000 Population	1,229.8	1,143.9	1,044.2	1,009.4	994.0	1,001.9	997.4	1,045.0	952.2	907.2	945.1	946.8	1,025.5	1,020.6	931.5	884.4	800.6	718.2

MURDER



Calendar Year	1996	1997	1998	1999	2000	2001	2002	2003	2004	2005	2006	2007	2008	2009	2010	2011	2012	2013
Recorded Offences	2	13	5	2	4	8	5	5	4	3	2	7	4	5	5	3	6	6
Recorded per 10,000 Population	0.05	0.31	0.12	0.05	0.09	0.18	0.11	0.11	0.09	0.07	0.04	0.15	0.09	0.11	0.11	0.06	0.12	0.12

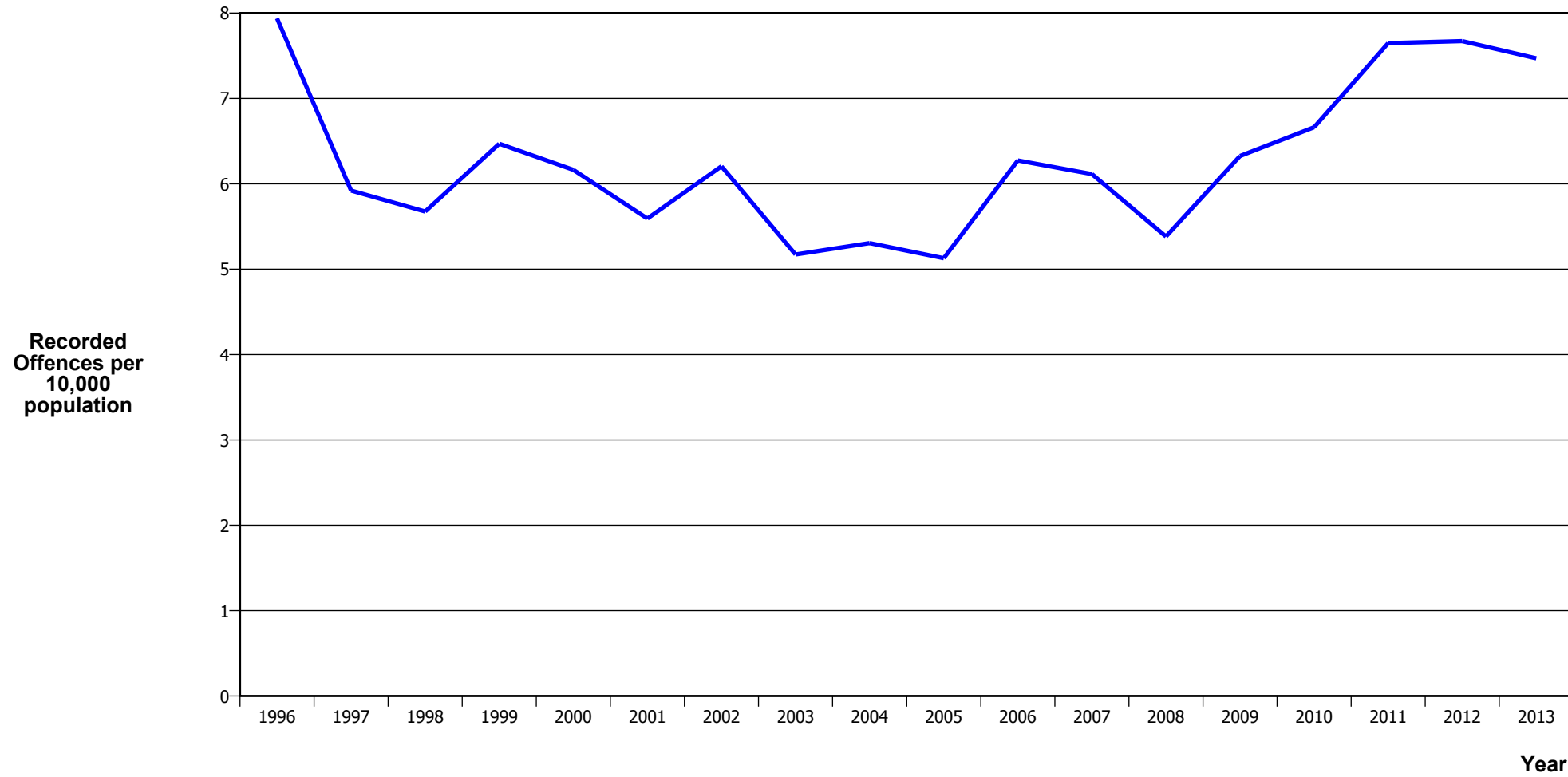
SERIOUS ASSAULTS RESULTING IN INJURY*



Calendar Year	1996	1997	1998	1999	2000	2001	2002	2003	2004	2005	2006	2007	2008	2009	2010	2011	2012	2013
Recorded Offence	1,007	963	890	935	928	999	983	945	957	1,102	1,065	1,303	1,142	1,011	957	1,069	938	684
Offence Rate per 10K Popn	24.0	22.7	20.9	21.8	21.6	23.1	22.4	21.2	21.2	24.3	23.2	28.1	24.5	21.5	20.1	22.3	19.4	14.1

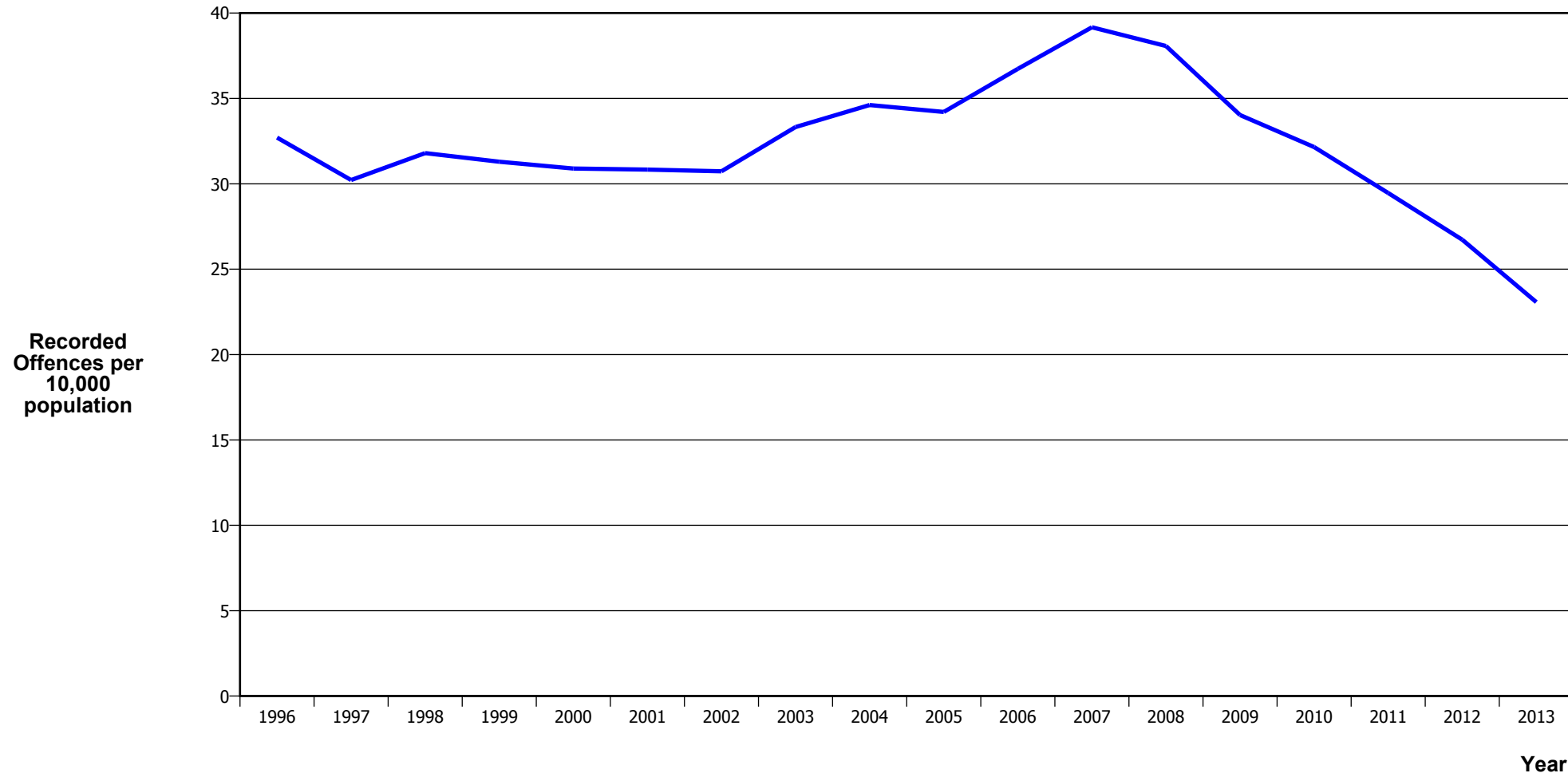
* This measure excludes common assaults

SEXUAL ASSAULTS



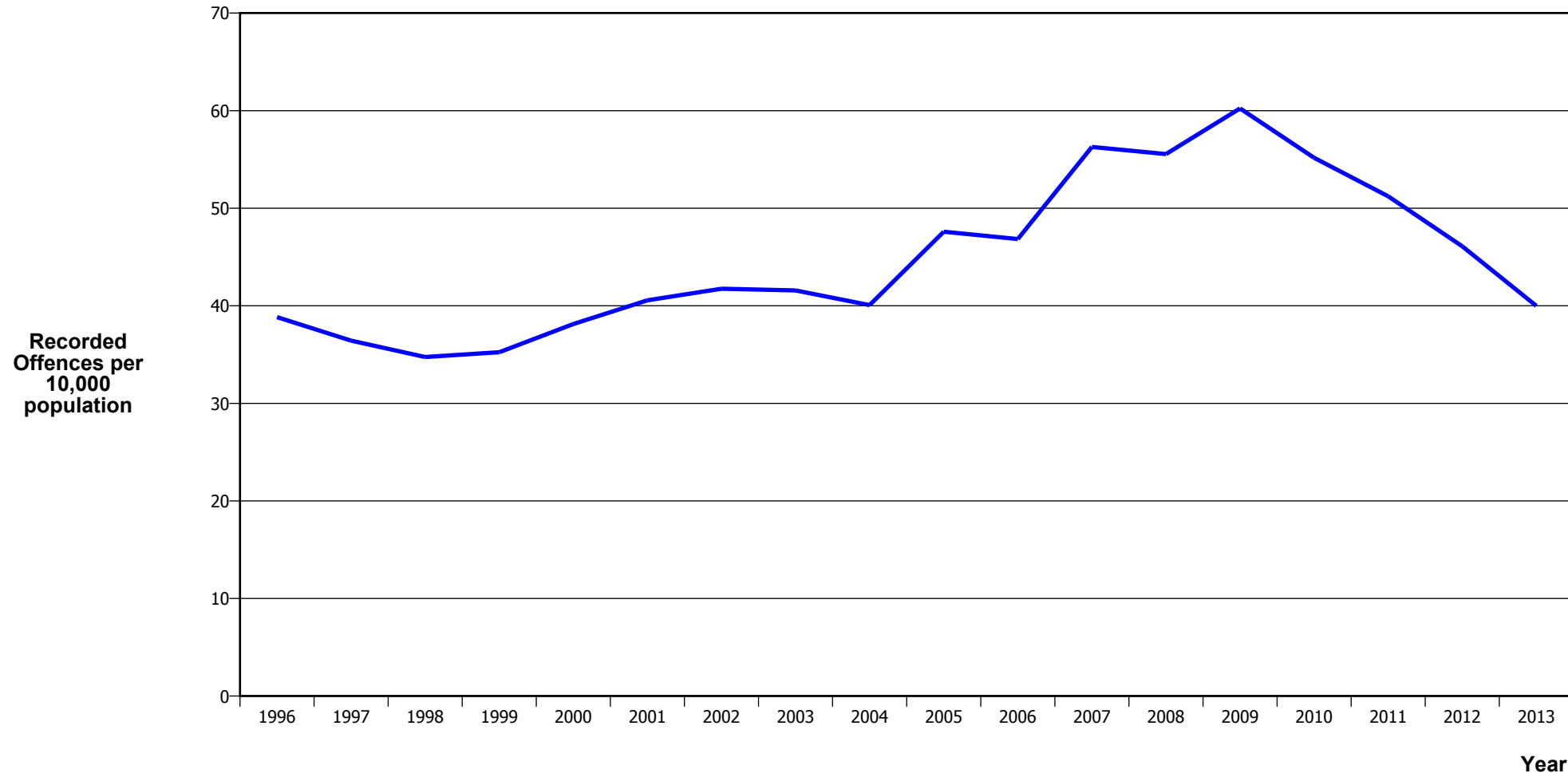
Calendar Year	1996	1997	1998	1999	2000	2001	2002	2003	2004	2005	2006	2007	2008	2009	2010	2011	2012	2013
Recorded Offences	333	251	242	277	265	242	272	230	239	233	288	283	251	298	317	367	370	362
Recorded per 10,000 Population	7.9	5.9	5.7	6.5	6.2	5.6	6.2	5.2	5.3	5.1	6.3	6.1	5.4	6.3	6.7	7.6	7.7	7.5

PUBLIC PLACE ASSAULTS



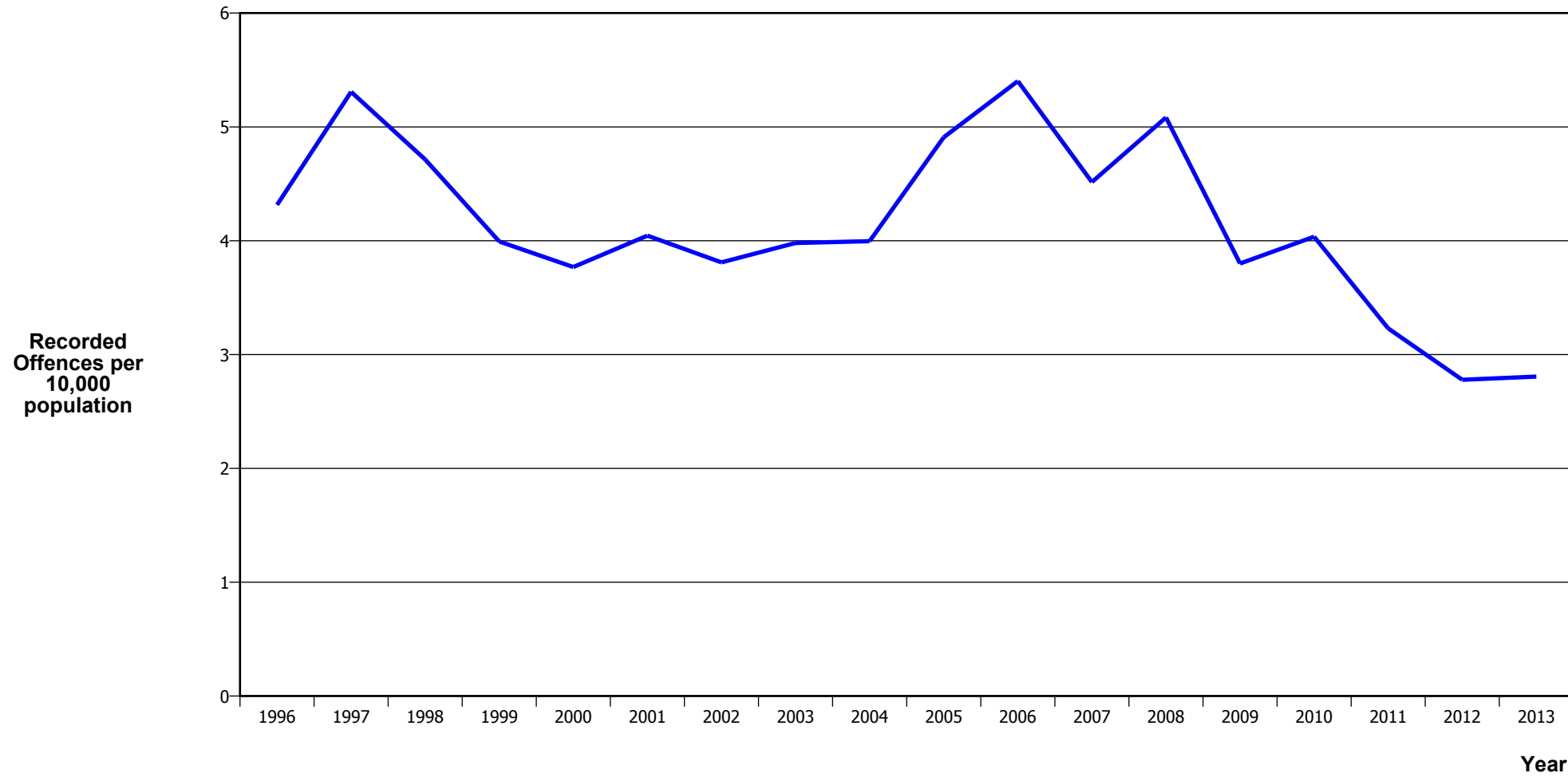
Calendar Year	1996	1997	1998	1999	2000	2001	2002	2003	2004	2005	2006	2007	2008	2009	2010	2011	2012	2013
Recorded Offences	1,372	1,281	1,356	1,340	1,328	1,334	1,347	1,482	1,559	1,554	1,686	1,813	1,775	1,603	1,530	1,414	1,289	1,118
Recorded per 10,000 Population	32.7	30.2	31.8	31.3	30.9	30.8	30.7	33.3	34.6	34.2	36.7	39.2	38.1	34.0	32.2	29.5	26.7	23.1

DWELLING ASSAULTS



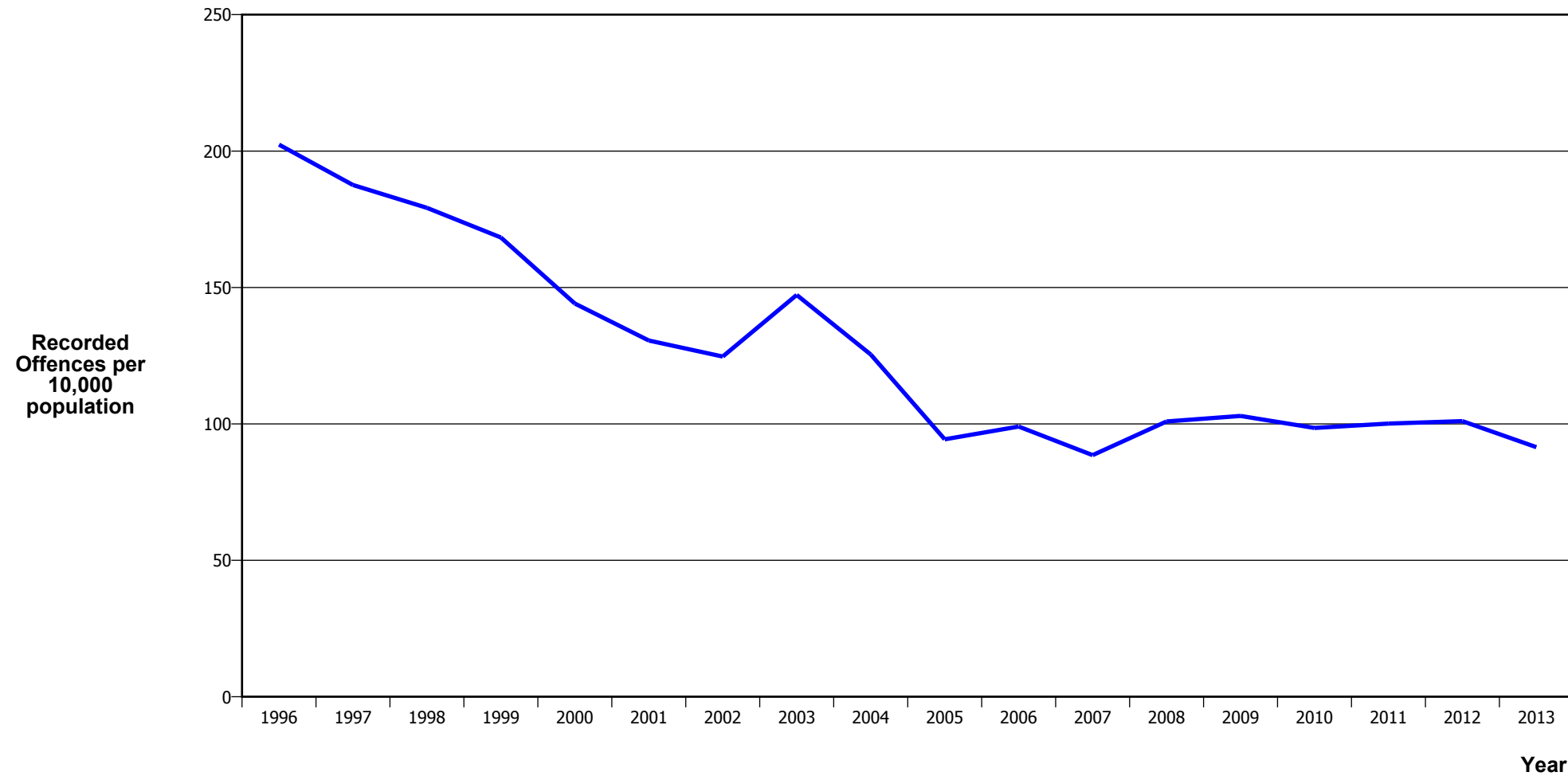
Calendar Year	1996	1997	1998	1999	2000	2001	2002	2003	2004	2005	2006	2007	2008	2009	2010	2011	2012	2013
Recorded Offences	1,629	1,544	1,482	1,509	1,639	1,755	1,830	1,849	1,805	2,162	2,150	2,605	2,590	2,837	2,625	2,458	2,223	1,938
Recorded per 10,000 Population	38.8	36.4	34.8	35.2	38.1	40.6	41.8	41.6	40.1	47.6	46.8	56.3	55.6	60.2	55.2	51.2	46.1	40.0

ROBBERY



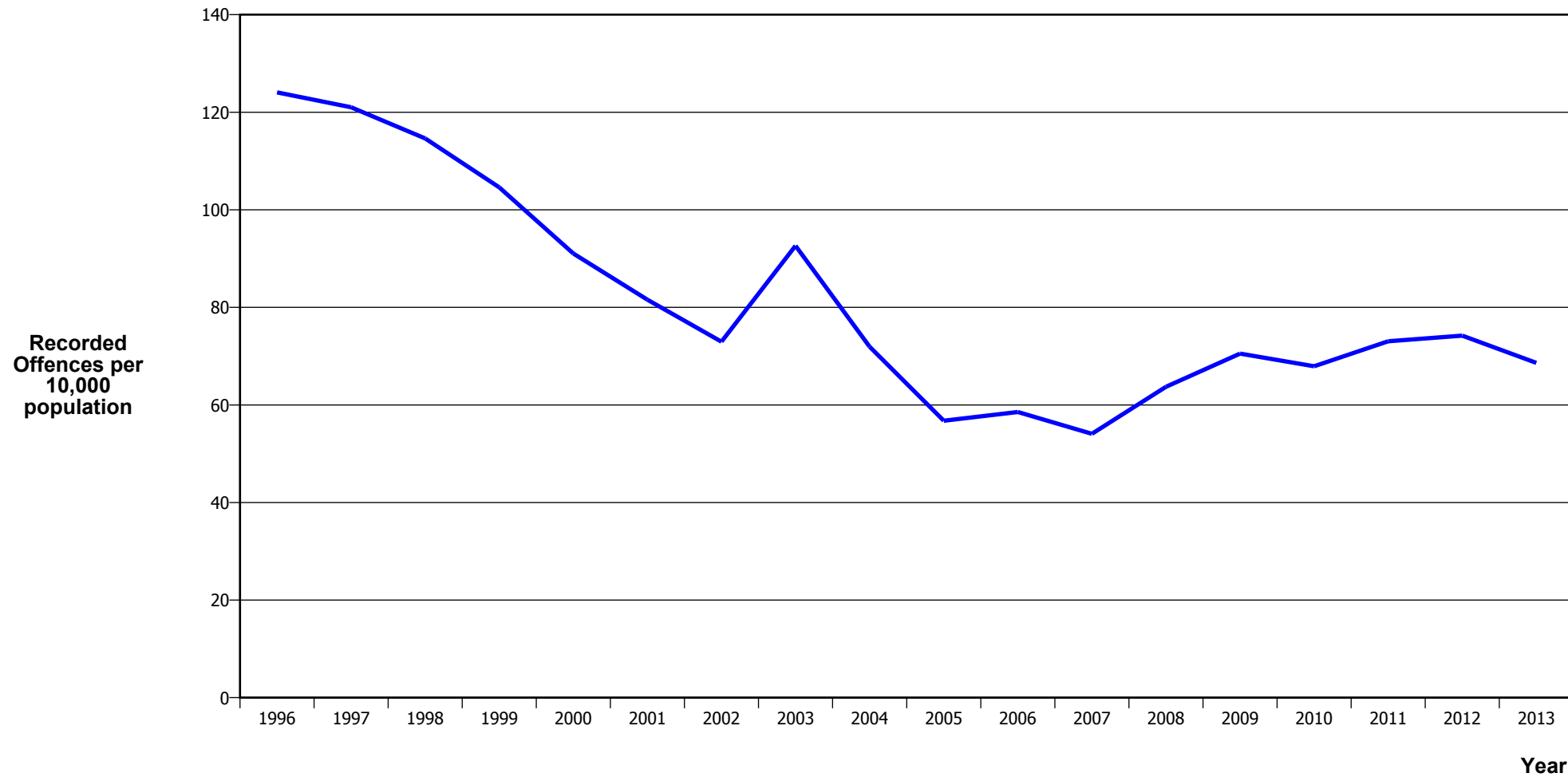
Calendar Year	1996	1997	1998	1999	2000	2001	2002	2003	2004	2005	2006	2007	2008	2009	2010	2011	2012	2013
Recorded Offences	181	225	201	171	162	175	167	177	180	223	248	209	237	179	192	155	134	136
Recorded per 10,000 Population	4.3	5.3	4.7	4.0	3.8	4.0	3.8	4.0	4.0	4.9	5.4	4.5	5.1	3.8	4.0	3.2	2.8	2.8

BURGLARY (TOTAL)



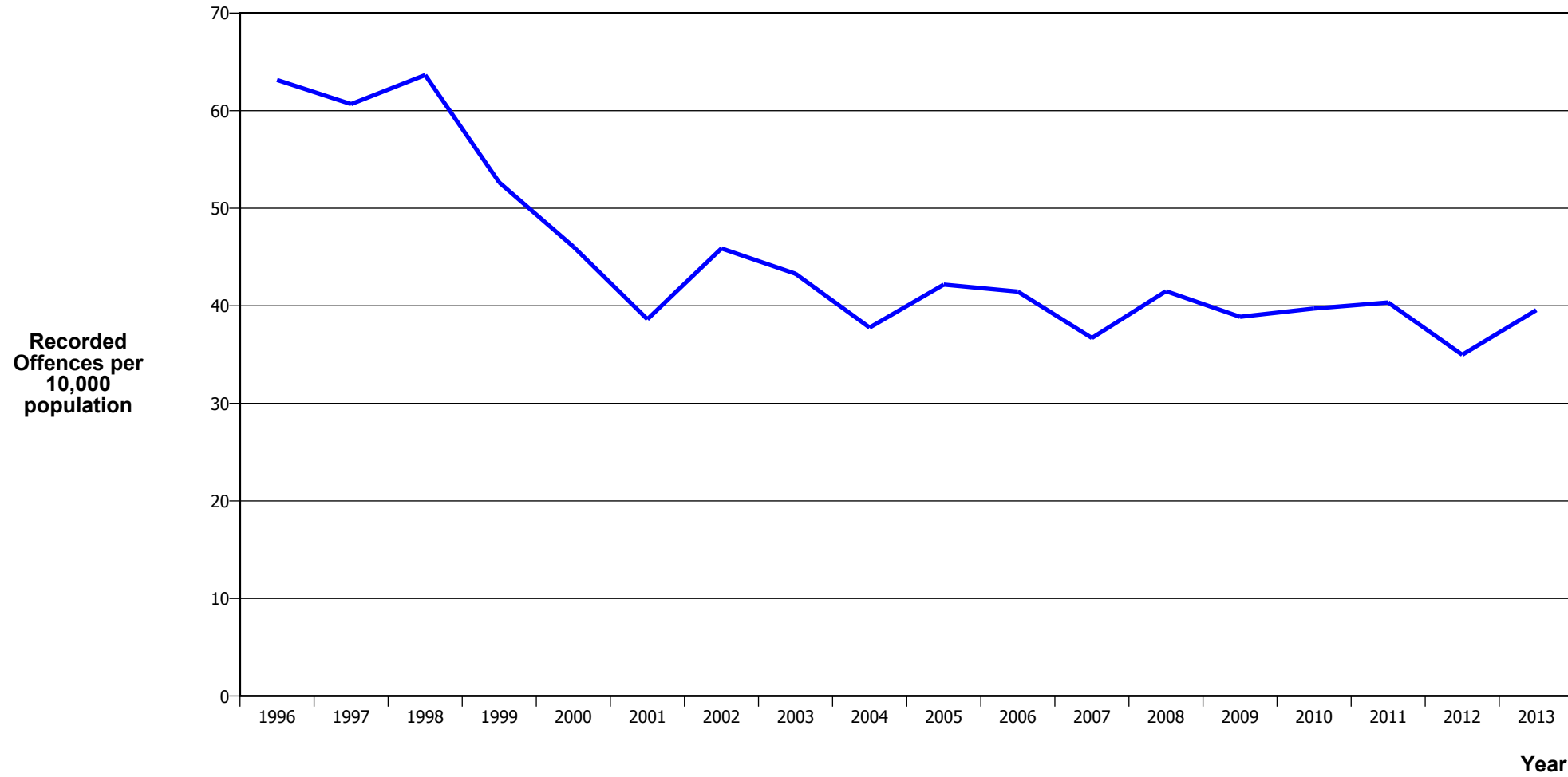
Calendar Year	1996	1997	1998	1999	2000	2001	2002	2003	2004	2005	2006	2007	2008	2009	2010	2011	2012	2013
Recorded Offences	8,489	7,951	7,641	7,208	6,195	5,649	5,465	6,549	5,651	4,286	4,545	4,100	4,704	4,849	4,687	4,804	4,872	4,434
Recorded per 10,000 Population	202.4	187.6	179.2	168.3	144.1	130.6	124.7	147.3	125.5	94.3	99.0	88.6	100.9	102.9	98.5	100.1	101.0	91.5

BURGLARY (DWELLING)



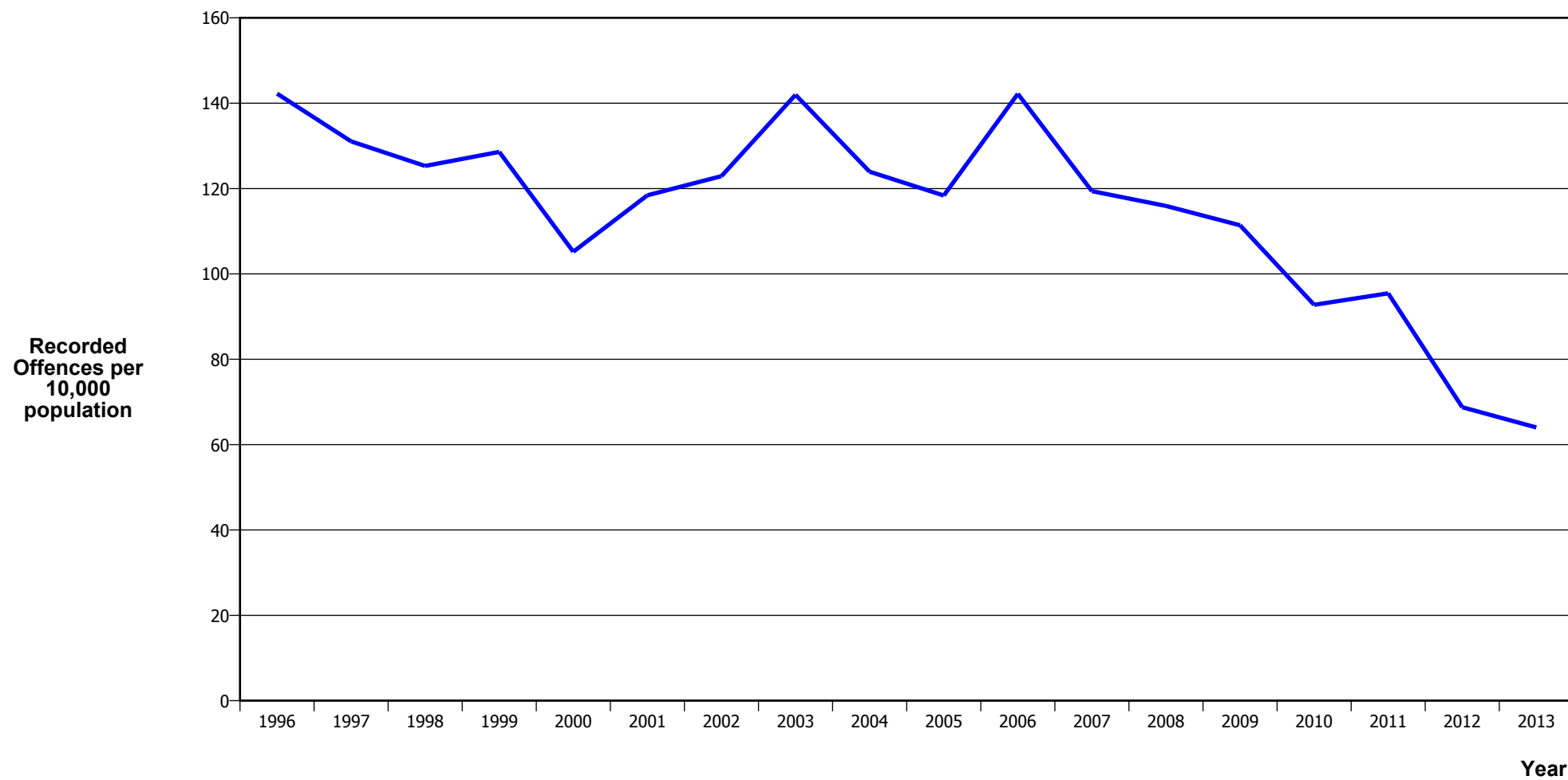
Calendar Year	1996	1997	1998	1999	2000	2001	2002	2003	2004	2005	2006	2007	2008	2009	2010	2011	2012	2013
Recorded Offences	5,205	5,130	4,888	4,479	3,914	3,530	3,198	4,119	3,240	2,579	2,688	2,503	2,971	3,322	3,232	3,506	3,579	3,326
Recorded per 10,000 Population	124.1	121.0	114.6	104.6	91.1	81.6	73.0	92.6	71.9	56.8	58.6	54.1	63.7	70.5	67.9	73.1	74.2	68.6

VEHICLES STOLEN



Calendar Year	1996	1997	1998	1999	2000	2001	2002	2003	2004	2005	2006	2007	2008	2009	2010	2011	2012	2013
Recorded Offences	2,649	2,572	2,714	2,254	1,980	1,671	2,011	1,925	1,701	1,916	1,903	1,699	1,935	1,831	1,890	1,936	1,687	1,917
Recorded per 10,000 Population	63.1	60.7	63.6	52.6	46.1	38.6	45.9	43.3	37.8	42.2	41.5	36.7	41.5	38.9	39.7	40.3	35.0	39.6

THEFT EX CAR



Calendar Year	1996	1997	1998	1999	2000	2001	2002	2003	2004	2005	2006	2007	2008	2009	2010	2011	2012	2013
Recorded Offences	5,967	5,555	5,343	5,506	4,522	5,124	5,387	6,314	5,583	5,378	6,527	5,527	5,405	5,247	4,413	4,581	3,316	3,103
Recorded per 10,000 Population	142.2	131.0	125.3	128.6	105.2	118.4	122.9	142.0	124.0	118.4	142.2	119.4	115.9	111.4	92.7	95.5	68.8	64.0

Population Data

Population data is used in this release to calculate crime rates. They have been derived from population estimates as at 30 June each year that have been obtained from Statistics New Zealand.

The estimated resident population is based on the census usually resident population count, with adjustments for residents missed or counted more than once by the census (net census undercount), and for residents temporarily overseas on census night.

These population estimates exclude the number of international students who are studying in New Zealand for less than 12 months.

Year	Population
1996	419,480
1997	423,890
1998	426,420
1999	428,180
2000	429,870
2001	432,680
2002	438,310
2003	444,710
2004	450,420
2005	454,290
2006	459,020
2007	462,880
2008	466,240
2009	471,070
2010	475,810
2011	479,900
2012	482,280
2013	484,610

General Definitions

Recorded Offences: the number of breaches of the New Zealand law recorded by Police. This includes offences specified in the Crimes Act and other legislations, such as the Summary Offences Act, Local Government Act, etc.

Resolved Offences: the number of recorded offences where an offender has been identified and dealt with (e.g. warned, cautioned, prosecuted, etc).

Resolution Rate: the proportion of recorded offences that have been resolved.

Recorded per 10,000 population: the number of recorded offences for every 10,000 people. This is also referred as the crime rate per 10,000 population.

ANZSOC: The Australian and New Zealand Standard Offence Classification. The offence classification is divided into 16 major offence divisions.

Definition of ANZSOC Divisions

1. Homicide and related offences: Unlawfully kill, attempt to unlawfully kill or conspiracy to kill another person.
2. Acts intended to cause injury: Acts, excluding attempted murder and those resulting in death, which are intended to cause non-fatal injury or harm to another person and where there is no sexual or acquisitive element.
3. Sexual assault and related offences: Acts, or intent of acts, of a sexual nature against another person, which are non-consensual or where consent is proscribed.
4. Dangerous or negligent acts endangering persons: Dangerous or negligent acts which, though not intended to cause harm, actually or potentially result in injury to oneself or another person.
5. Abduction, harassment and other offences against person: Acts intended to threaten or harass, or acts that unlawfully deprive another person of their freedom of movement, that are against that person's will or against the will of any parent, guardian or other person having lawful custody or care of that person.
6. Robbery, extortion and related offences: Acts intended to unlawfully gain money, property or other items of value from, or to cause detriment to, another person by using the threat of force or any other coercive measure.
7. Unlawful entry with intent / burglary, break and enter: The unlawful entry of a structure with the intent to commit an offence, where the entry is either forced or unforced.
8. Theft and related and offences: The unlawful taking or obtaining of money or goods, not involving the use of force or violence, coercion or deception, with intent to permanently or temporarily deprive the owner or possessor of the use of the money or goods, or the receiving or handling of money or goods obtained unlawfully.

9. Fraud, deception and related offences: Offences involving a dishonest act or omission carried out with the purpose of deceiving to obtain a benefit.

10. Illicit drug offences: The possessing, selling, dealing or trafficking, importing or exporting, manufacturing or cultivating of drugs or other substances prohibited under legislation.

11. Prohibited and regulated weapons and explosives offences: Offences involving prohibited or regulated weapons and explosives. Those offences also involving assault, sexual assault or robbery are coded to the relevant group within Assault, Sexual assaults and Robbery respectively.

12. Property damage and environmental pollution: The wilful and unlawful destruction, damage or defacement of public or private property, or the pollution of property or a definable entity held in common by the community.

13. Public order offences: Offences relating personal conduct that involves, or may lead to, a breach of public order or decency, or that is indicative of criminal intent, or that is otherwise regulated or prohibited on moral or ethical grounds. In general these offences do not involve a specific victim or victims; however some offences, such as offensive language and offensive behaviour, may be directed towards a single victim.

14. Traffic and vehicle regulatory offences: Offences relating to vehicles and most forms of traffic, including offences pertaining to the licensing, registration, roadworthiness, or use of vehicles, bicycle offences and pedestrian offences.

15. Offences against justice procedures, government security and government operations: An act or omission that is deemed to be prejudicial to the effective carrying out of justice procedures or any government operations. This includes general government operations as well as those specifically concerned with maintaining government security.

16. Miscellaneous offences: Offences involving the breach of statutory rules or regulations governing activities that are prima facie legal, where such offences are not explicitly dealt with under any other division. If an offence is specified under regulation and involves an act that would be illegal under common law or general criminal legislation, the offence is dealt with under the appropriate generic group.