

WAITEMATA DISTRICT CRIME STATISTICS 2013/2014



**A Summary of
Recorded and Resolved Offence
Statistics**

**POLICE NATIONAL HEADQUARTERS
October 2014**

ISSN 1178-1548

Table of Contents:

Topic	Page
Report Notes	1
Summary of District Recorded and Resolved Crime by Division	2 - 4
Proportions of Recorded Crime by Division	5
Summary of District Recorded Offences, Rate per 10,000 Population and Resolved Offences, by Area	6
Summary of Area Recorded Offences, Rate per 10,000 Population and Resolved Offences, by Division	7 - 11
Crime Trends:	12
Total Crime	13
Murder	14
Serious Assaults Resulting in Injury	15
Sexual Assaults	16
Public Place Assaults	17
Dwelling Assaults	18
Robbery	19
Burglary	20
Burglary (Dwelling)	21
Vehicles Stolen	22
Theft Ex Car	23
Population Data	24
General Definitions	25 - 26

REPORT NOTES:

Statistics reported in this document are derived from the Police National Intelligence Application (NIA). These Official Statistics for Recorded and Resolved Offences present a snapshot of data in NIA relating to offences that occur within a given year, as at the date 14 days following the end of that year.

Unless the matter is minor where Police attendance is sufficient, a matter that is reported to or discovered by Police where Police believe an offence is likely to have been committed is counted as a recorded offence.

A recorded offence is counted as resolved when Police apprehend an offender and decide how to deal with him/her. (E.g. warn, prosecute, etc.)

Resolution rate is the percentage of recorded offences that are resolved within 14 days of the end of the year being reported on.

If an offence is resolved 15 days or more after the end of the year it will not appear in the Official Crime Statistics for that or any other year. Resolution Rate therefore undercounts the number of cases that Police have resolved. This phenomenon has a more marked impact for some types of offences than others, such as offences that require long investigations (E.g. many serial crimes, burglaries and murders).

Several offences have been reclassified into different ANZSOC groups. This has resulted in changes to subtotals for Groups and Sub-divisions within Divisions 10, 15 and 16, compared to previously reported data. Generally, this occurred within the same Division.

When comparing 2013/2014 Statistics with previous years, the reader should also refer to "Report Notes" published in previous years' reports, as previous changes significantly affect year on year trends.

SUMMARY OF DISTRICT RECORDED AND RESOLVED CRIME, BY DIVISION
Years ending 30 June

HOMICIDE AND RELATED OFFENCES

ANZSOC Subdivision Description	Recorded 20112012	Recorded 20122013	Recorded 20132014	Variance 11/12-12/13	Variance 12/13-13/14	Resolved 20112012	Resolved 20122013	Resolved 20132014	Resolution Rate 20112012	Resolution Rate 20122013	Resolution Rate 20132014
ATTEMPTED MURDER	1	1	2	0.0 %	100.0 %	1	1	2	100.0 %	100.0 %	100.0 %
MANSLAUGHTER AND DRIVING CAUSING DEATH	1	1	1	0.0 %	0.0 %	1	1	1	100.0 %	100.0 %	100.0 %
MURDER	4	1	8	-75.0 %	700.0 %	3	1	7	75.0 %	100.0 %	87.5 %
	6	3	11	-50.0 %	266.7 %	5	3	10	83.3 %	100.0 %	90.9 %

ACTS INTENDED TO CAUSE INJURY

ANZSOC Subdivision Description	Recorded 20112012	Recorded 20122013	Recorded 20132014	Variance 11/12-12/13	Variance 12/13-13/14	Resolved 20112012	Resolved 20122013	Resolved 20132014	Resolution Rate 20112012	Resolution Rate 20122013	Resolution Rate 20132014
ASSAULT	3,639	3,310	3,013	-9.0 %	-9.0 %	3,206	2,707	2,197	88.1 %	81.8 %	72.9 %
OTHER ACTS INTENDED TO CAUSE INJURY	5	1	0	-80.0 %	-100.0 %	3	1	0	60.0 %	100.0 %	0.0 %
	3,644	3,311	3,013	-9.1 %	-9.0 %	3,209	2,708	2,197	88.1 %	81.8 %	72.9 %

SEXUAL ASSAULT AND RELATED OFFENCES

ANZSOC Subdivision Description	Recorded 20112012	Recorded 20122013	Recorded 20132014	Variance 11/12-12/13	Variance 12/13-13/14	Resolved 20112012	Resolved 20122013	Resolved 20132014	Resolution Rate 20112012	Resolution Rate 20122013	Resolution Rate 20132014
NON-ASSAULTIVE SEXUAL OFFENCES	42	29	8	-31.0 %	-72.4 %	40	22	7	95.2 %	75.9 %	87.5 %
SEXUAL ASSAULT	275	278	291	1.1 %	4.7 %	162	166	127	58.9 %	59.7 %	43.6 %
	317	307	299	-3.2 %	-2.6 %	202	188	134	63.7 %	61.2 %	44.8 %

DANGEROUS OR NEGLIGENT ACTS ENDANGERING PERSONS

ANZSOC Subdivision Description	Recorded 20112012	Recorded 20122013	Recorded 20132014	Variance 11/12-12/13	Variance 12/13-13/14	Resolved 20112012	Resolved 20122013	Resolved 20132014	Resolution Rate 20112012	Resolution Rate 20122013	Resolution Rate 20132014
OTHER DANGEROUS OR NEGLIGENT ACTS ENDANGERING PERSONS	83	73	52	-12.0 %	-28.8 %	59	33	30	71.1 %	45.2 %	57.7 %
	83	73	52	-12.0 %	-28.8 %	59	33	30	71.1 %	45.2 %	57.7 %

ABDUCTION, HARASSMENT AND OTHER RELATED OFFENCES AGAINST A PERSON

ANZSOC Subdivision Description	Recorded 20112012	Recorded 20122013	Recorded 20132014	Variance 11/12-12/13	Variance 12/13-13/14	Resolved 20112012	Resolved 20122013	Resolved 20132014	Resolution Rate 20112012	Resolution Rate 20122013	Resolution Rate 20132014
ABDUCTION AND KIDNAPPING	11	21	8	90.9 %	-61.9 %	6	13	3	54.5 %	61.9 %	37.5 %
HARASSMENT AND THREATENING BEHAVIOUR	1,243	1,136	1,301	-8.6 %	14.5 %	934	732	619	75.1 %	64.4 %	47.6 %
	1,254	1,157	1,309	-7.7 %	13.1 %	940	745	622	75.0 %	64.4 %	47.5 %

ROBBERY, EXTORTION AND RELATED OFFENCES

ANZSOC Subdivision Description	Recorded 20112012	Recorded 20122013	Recorded 20132014	Variance 11/12-12/13	Variance 12/13-13/14	Resolved 20112012	Resolved 20122013	Resolved 20132014	Resolution Rate 20112012	Resolution Rate 20122013	Resolution Rate 20132014
BLACKMAIL AND EXTORTION	10	8	17	-20.0 %	112.5 %	9	5	8	90.0 %	62.5 %	47.1 %
ROBBERY	194	171	173	-11.9 %	1.2 %	91	62	58	46.9 %	36.3 %	33.5 %
	204	179	190	-12.3 %	6.1 %	100	67	66	49.0 %	37.4 %	34.7 %

UNLAWFUL ENTRY WITH INTENT/BURGLARY, BREAK AND ENTER

ANZSOC Subdivision Description	Recorded 20112012	Recorded 20122013	Recorded 20132014	Variance 11/12-12/13	Variance 12/13-13/14	Resolved 20112012	Resolved 20122013	Resolved 20132014	Resolution Rate 20112012	Resolution Rate 20122013	Resolution Rate 20132014
UNLAWFUL ENTRY WITH INTENT/BURGLARY, BREAK AND ENTER	5,308	4,048	4,106	-23.7 %	1.4 %	662	581	392	12.5 %	14.4 %	9.5 %
	5,308	4,048	4,106	-23.7 %	1.4 %	662	581	392	12.5 %	14.4 %	9.5 %

SUMMARY OF DISTRICT RECORDED AND RESOLVED CRIME, BY DIVISION

Years ending 30 June

THEFT AND RELATED OFFENCES

ANZSOC Subdivision Description	Recorded 20112012	Recorded 20122013	Recorded 20132014	Variance 11/12-12/13	Variance 12/13-13/14	Resolved 20112012	Resolved 20122013	Resolved 20132014	Resolution Rate 20112012	Resolution Rate 20122013	Resolution Rate 20132014
ILLEGAL USE OF PROPERTY (EXCEPT MOTOR VEHICLES)	103	89	164	-13.6 %	84.3 %	7	5	9	6.8 %	5.6 %	5.5 %
MOTOR VEHICLE THEFT AND RELATED OFFENCES	6,602	5,086	5,110	-23.0 %	0.5 %	776	546	485	11.8 %	10.7 %	9.5 %
RECEIVE OR HANDLE PROCEEDS OF CRIME	395	242	291	-38.7 %	20.2 %	392	239	283	99.2 %	98.8 %	97.3 %
THEFT (EXCEPT MOTOR VEHICLES)	5,445	5,574	6,781	2.4 %	21.7 %	2,140	1,914	1,595	39.3 %	34.3 %	23.5 %
	12,545	10,991	12,346	-12.4 %	12.3 %	3,315	2,704	2,372	26.4 %	24.6 %	19.2 %

FRAUD, DECEPTION AND RELATED OFFENCES

ANZSOC Subdivision Description	Recorded 20112012	Recorded 20122013	Recorded 20132014	Variance 11/12-12/13	Variance 12/13-13/14	Resolved 20112012	Resolved 20122013	Resolved 20132014	Resolution Rate 20112012	Resolution Rate 20122013	Resolution Rate 20132014
DECEPTIVE BUSINESS/GOVERNMENT PRACTICES	4	8	4	100.0 %	-50.0 %	4	5	2	100.0 %	62.5 %	50.0 %
FORGERY AND COUNTERFEITING	35	38	24	8.6 %	-36.8 %	13	12	5	37.1 %	31.6 %	20.8 %
OBTAIN BENEFIT BY DECEPTION	833	731	776	-12.2 %	6.2 %	443	389	312	53.2 %	53.2 %	40.2 %
OTHER FRAUD AND DECEPTION OFFENCES	74	65	61	-12.2 %	-6.2 %	50	33	15	67.6 %	50.8 %	24.6 %
	946	842	865	-11.0 %	2.7 %	510	439	334	53.9 %	52.1 %	38.6 %

ILLICIT DRUG OFFENCES

ANZSOC Subdivision Description	Recorded 20112012	Recorded 20122013	Recorded 20132014	Variance 11/12-12/13	Variance 12/13-13/14	Resolved 20112012	Resolved 20122013	Resolved 20132014	Resolution Rate 20112012	Resolution Rate 20122013	Resolution Rate 20132014
DEAL OR TRAFFIC IN ILLICIT DRUGS	155	144	120	-7.1 %	-16.7 %	149	128	105	96.1 %	88.9 %	87.5 %
IMPORT OR EXPORT ILLICIT DRUGS	5	8	5	60.0 %	-37.5 %	2	6	4	40.0 %	75.0 %	80.0 %
MANUFACTURE OR CULTIVATE ILLICIT DRUGS	199	153	146	-23.1 %	-4.6 %	180	114	109	90.5 %	74.5 %	74.7 %
OTHER ILLICIT DRUG OFFENCES	631	464	441	-26.5 %	-5.0 %	624	447	424	98.9 %	96.3 %	96.1 %
POSSESS AND/OR USE ILLICIT DRUGS	991	793	762	-20.0 %	-3.9 %	967	775	726	97.6 %	97.7 %	95.3 %
	1,981	1,562	1,474	-21.2 %	-5.6 %	1,922	1,470	1,368	97.0 %	94.1 %	92.8 %

PROHIBITED AND REGULATED WEAPONS AND EXPLOSIVES OFFENCES

ANZSOC Subdivision Description	Recorded 20112012	Recorded 20122013	Recorded 20132014	Variance 11/12-12/13	Variance 12/13-13/14	Resolved 20112012	Resolved 20122013	Resolved 20132014	Resolution Rate 20112012	Resolution Rate 20122013	Resolution Rate 20132014
REGULATED WEAPONS/EXPLOSIVES OFFENCES	602	528	455	-12.3 %	-13.8 %	556	486	402	92.4 %	92.0 %	88.4 %
	602	528	455	-12.3 %	-13.8 %	556	486	402	92.4 %	92.0 %	88.4 %

PROPERTY DAMAGE AND ENVIRONMENTAL POLLUTION

ANZSOC Subdivision Description	Recorded 20112012	Recorded 20122013	Recorded 20132014	Variance 11/12-12/13	Variance 12/13-13/14	Resolved 20112012	Resolved 20122013	Resolved 20132014	Resolution Rate 20112012	Resolution Rate 20122013	Resolution Rate 20132014
ENVIRONMENTAL POLLUTION	13	11	14	-15.4 %	27.3 %	3	7	1	23.1 %	63.6 %	7.1 %
PROPERTY DAMAGE	3,438	3,115	3,169	-9.4 %	1.7 %	1,305	1,100	831	38.0 %	35.3 %	26.2 %
	3,451	3,126	3,183	-9.4 %	1.8 %	1,308	1,107	832	37.9 %	35.4 %	26.1 %

PUBLIC ORDER OFFENCES

ANZSOC Subdivision Description	Recorded 20112012	Recorded 20122013	Recorded 20132014	Variance 11/12-12/13	Variance 12/13-13/14	Resolved 20112012	Resolved 20122013	Resolved 20132014	Resolution Rate 20112012	Resolution Rate 20122013	Resolution Rate 20132014
DISORDERLY CONDUCT	2,155	2,001	1,855	-7.1 %	-7.3 %	1,827	1,577	1,389	84.8 %	78.8 %	74.9 %
OFFENSIVE CONDUCT	93	107	64	15.1 %	-40.2 %	62	72	34	66.7 %	67.3 %	53.1 %
PUBLIC ORDER OFFENCES NOT FURTHER DEFINED	0	1	0	0.0 %	-100.0 %	0	0	0	0.0 %	0.0 %	0.0 %
REGULATED PUBLIC ORDER OFFENCES	262	211	198	-19.5 %	-6.2 %	219	162	149	83.6 %	76.8 %	75.3 %
	2,510	2,320	2,117	-7.6 %	-8.8 %	2,108	1,811	1,572	84.0 %	78.1 %	74.3 %

SUMMARY OF DISTRICT RECORDED AND RESOLVED CRIME, BY DIVISION

Years ending 30 June

OFFENCES AGAINST JUSTICE PROCEDURES, GOVERNMENT SECURITY AND GOVERNMENT OPERATIONS

ANZSOC Subdivision Description	Recorded 20112012	Recorded 20122013	Recorded 20132014	Variance 11/12-12/13	Variance 12/13-13/14	Resolved 20112012	Resolved 20122013	Resolved 20132014	Resolution Rate 20112012	Resolution Rate 20122013	Resolution Rate 20132014
BREACH OF COMMUNITY-BASED ORDER	1,107	806	726	-27.2 %	-9.9 %	1,102	795	715	99.5 %	98.6 %	98.5 %
BREACH OF CUSTODIAL ORDER OFFENCES	49	51	43	4.1 %	-15.7 %	49	50	39	100.0 %	98.0 %	90.7 %
BREACH OF VIOLENCE AND NON-VIOLENCE RESTRAINING ORDERS	396	330	359	-16.7 %	8.8 %	379	299	296	95.7 %	90.6 %	82.5 %
OFFENCES AGAINST GOVERNMENT OPERATIONS	21	15	25	-28.6 %	66.7 %	14	6	11	66.7 %	40.0 %	44.0 %
OFFENCES AGAINST GOVERNMENT SECURITY	2	0	0	-100.0 %	0.0 %	1	0	0	50.0 %	0.0 %	0.0 %
OFFENCES AGAINST JUSTICE PROCEDURES	826	877	948	6.2 %	8.1 %	822	868	941	99.5 %	99.0 %	99.3 %
	2,401	2,079	2,101	-13.4 %	1.1 %	2,367	2,018	2,002	98.6 %	97.1 %	95.3 %

MISCELLANEOUS OFFENCES

ANZSOC Subdivision Description	Recorded 20112012	Recorded 20122013	Recorded 20132014	Variance 11/12-12/13	Variance 12/13-13/14	Resolved 20112012	Resolved 20122013	Resolved 20132014	Resolution Rate 20112012	Resolution Rate 20122013	Resolution Rate 20132014
COMMERCIAL/INDUSTRY/FINANCIAL REGULATION	7	2	6	-71.4 %	200.0 %	7	2	5	100.0 %	100.0 %	83.3 %
DEFAMATION, LIBEL AND PRIVACY OFFENCES	9	8	6	-11.1 %	-25.0 %	5	5	0	55.6 %	62.5 %	0.0 %
OTHER MISCELLANEOUS OFFENCES	58	71	70	22.4 %	-1.4 %	38	52	37	65.5 %	73.2 %	52.9 %
PUBLIC HEALTH AND SAFETY OFFENCES	8	22	26	175.0 %	18.2 %	7	20	17	87.5 %	90.9 %	65.4 %
	82	103	108	25.6 %	4.9 %	57	79	59	69.5 %	76.7 %	54.6 %

TOTAL	35,334	30,629	31,629	-13.3 %	3.3 %	17,320	14,439	12,392	49.0 %	47.1 %	39.2 %
--------------	---------------	---------------	---------------	----------------	--------------	---------------	---------------	---------------	---------------	---------------	---------------

PROPORTION OF RECORDED CRIME BY DIVISION

Years ending 30 June

ANZSOC Division Description	Proportions Recorded 20112012	Recorded 20112012	Proportions Recorded 20122013	Recorded 20122013	Proportions Recorded 20132014	Recorded 20132014
HOMICIDE AND RELATED OFFENCES	0.0 %	6	0.0 %	3	0.0 %	11
ACTS INTENDED TO CAUSE INJURY	10.3 %	3,644	10.8 %	3,311	9.5 %	3,013
SEXUAL ASSAULT AND RELATED OFFENCES	0.9 %	317	1.0 %	307	0.9 %	299
DANGEROUS OR NEGLIGENT ACTS ENDANGERING PERSONS	0.2 %	83	0.2 %	73	0.2 %	52
ABDUCTION, HARASSMENT AND OTHER RELATED OFFENCES AGAINST A PERSON	3.5 %	1,254	3.8 %	1,157	4.1 %	1,309
ROBBERY, EXTORTION AND RELATED OFFENCES	0.6 %	204	0.6 %	179	0.6 %	190
UNLAWFUL ENTRY WITH INTENT/BURGLARY, BREAK AND ENTER	15.0 %	5,308	13.2 %	4,048	13.0 %	4,106
THEFT AND RELATED OFFENCES	35.5 %	12,545	35.9 %	10,991	39.0 %	12,346
FRAUD, DECEPTION AND RELATED OFFENCES	2.7 %	946	2.7 %	842	2.7 %	865
ILLICIT DRUG OFFENCES	5.6 %	1,981	5.1 %	1,562	4.7 %	1,474
PROHIBITED AND REGULATED WEAPONS AND EXPLOSIVES OFFENCES	1.7 %	602	1.7 %	528	1.4 %	455
PROPERTY DAMAGE AND ENVIRONMENTAL POLLUTION	9.8 %	3,451	10.2 %	3,126	10.1 %	3,183
PUBLIC ORDER OFFENCES	7.1 %	2,510	7.6 %	2,320	6.7 %	2,117
OFFENCES AGAINST JUSTICE PROCEDURES, GOVERNMENT SECURITY AND GOVERNMENT OPERATIONS	6.8 %	2,401	6.8 %	2,079	6.6 %	2,101
MISCELLANEOUS OFFENCES	0.2 %	82	0.3 %	103	0.3 %	108
	100.0 %	35,334	100.0 %	30,629	100.0 %	31,629

SUMMARY OF DISTRICT RECORDED OFFENCES, RATE PER 10,000 POPULATION AND RESOLVED OFFENCES, BY AREA
years ending 30 June

TOTAL CRIME

Area Description	Recorded 20122013	Recorded 20132014	Variance 12/13-13/14	Recorded per 10,000 pop 20122013	Recorded per 10,000 pop 20132014	per 10,000 pop % Variance 12/13 to 13/14	Resolved 20122013	Resolved 20132014	Resolution Rate 20122013	Resolution Rate 20132014
Auckland Motorways	70	128	82.9 %	#DIV/0	#DIV/0	#DIV/0	59	110	84.3 %	85.9 %
North Shore	9,855	10,255	4.1 %	415.1	425.4	2.5 %	4,360	3,708	44.2 %	36.2 %
Rodney	5,068	5,196	2.5 %	473.8	476.8	0.6 %	2,244	1,947	44.3 %	37.5 %
Waitakere	15,636	16,050	2.6 %	724.2	732.2	1.1 %	7,776	6,627	49.7 %	41.3 %
Total	30,629	31,629	3.3 %	546.7	555.7	1.6 %	14,439	12,392	47.1 %	39.2 %

**SUMMARY OF AREA RECORDED OFFENCES, RATE PER 10,000 POPULATION AND
RESOLVED OFFENCES, BY DIVISION**

years ending 30 June

HOMICIDE AND RELATED OFFENCES

Area Description	Recorded 20122013	Recorded 20132014	Variance 12/13-13/14	Recorded per 10,000 pop 20122013	Recorded per 10,000 pop 20132014	per 10,000 pop % Variance 12/13 to 13/14	Resolved 20122013	Resolved 20132014	Resolution Rate 20122013	Resolution Rate 20132014
Auckland Motorways	0	0	0.0 %	0.0	0.0	0.0 %	0	0	0.0 %	0.0 %
North Shore	1	3	200.0 %	0.0	0.1	195.5 %	1	3	100.0 %	100.0 %
Rodney	0	1	0.0 %	0.0	0.1	0.0 %	0	1	0.0 %	100.0 %
Waitakere	2	7	250.0 %	0.1	0.3	244.7 %	2	6	100.0 %	85.7 %
Total	3	11	266.7 %	0.1	0.2	260.9 %	3	10	100.0 %	90.9 %

ACTS INTENDED TO CAUSE INJURY

Area Description	Recorded 20122013	Recorded 20132014	Variance 12/13-13/14	Recorded per 10,000 pop 20122013	Recorded per 10,000 pop 20132014	per 10,000 pop % Variance 12/13 to 13/14	Resolved 20122013	Resolved 20132014	Resolution Rate 20122013	Resolution Rate 20132014
Auckland Motorways	4	12	200.0 %	#DIV/0	#DIV/0	#DIV/0	4	11	100.0 %	91.7 %
North Shore	947	873	-7.8 %	39.9	36.2	-9.2 %	723	642	76.3 %	73.5 %
Rodney	462	395	-14.5 %	43.2	36.2	-16.1 %	377	272	81.6 %	68.9 %
Waitakere	1,898	1,733	-8.7 %	87.9	79.1	-10.1 %	1,604	1,272	84.5 %	73.4 %
Total	3,311	3,013	-9.0 %	59.1	52.9	-10.4 %	2,708	2,197	81.8 %	72.9 %

SEXUAL ASSAULT AND RELATED OFFENCES

Area Description	Recorded 20122013	Recorded 20132014	Variance 12/13-13/14	Recorded per 10,000 pop 20122013	Recorded per 10,000 pop 20132014	per 10,000 pop % Variance 12/13 to 13/14	Resolved 20122013	Resolved 20132014	Resolution Rate 20122013	Resolution Rate 20132014
Auckland Motorways	0	0	0.0 %	0.0	0.0	0.0 %	0	0	0.0 %	0.0 %
North Shore	117	103	-12.0 %	4.9	4.3	-13.3 %	75	58	64.1 %	56.3 %
Rodney	34	31	-8.8 %	3.2	2.8	-10.5 %	22	10	64.7 %	32.3 %
Waitakere	156	165	5.8 %	7.2	7.5	4.2 %	91	66	58.3 %	40.0 %
Total	307	299	-2.6 %	5.5	5.3	-4.1 %	188	134	61.2 %	44.8 %

**SUMMARY OF AREA RECORDED OFFENCES, RATE PER 10,000 POPULATION AND
RESOLVED OFFENCES, BY DIVISION**

years ending 30 June

DANGEROUS OR NEGLIGENT ACTS ENDANGERING PERSONS

Area Description	Recorded 20122013	Recorded 20132014	Variance 12/13-13/14	Recorded per 10,000 pop 20122013	Recorded per 10,000 pop 20132014	per 10,000 pop % Variance 12/13 to 13/14	Resolved 20122013	Resolved 20132014	Resolution Rate 20122013	Resolution Rate 20132014
Auckland Motorways	2	2	0.0 %	#DIV/0	#DIV/0	#DIV/0	1	2	50.0 %	100.0 %
North Shore	30	23	-23.3 %	1.3	1.0	-24.5 %	15	14	50.0 %	60.9 %
Rodney	7	5	-28.6 %	0.7	0.5	-29.9 %	4	3	57.1 %	60.0 %
Waitakere	34	22	-35.3 %	1.6	1.0	-36.3 %	13	11	38.2 %	50.0 %
Total	73	52	-28.8 %	1.3	0.9	-29.9 %	33	30	45.2 %	57.7 %

ABDUCTION, HARASSMENT AND OTHER RELATED OFFENCES AGAINST A PERSON

Area Description	Recorded 20122013	Recorded 20132014	Variance 12/13-13/14	Recorded per 10,000 pop 20122013	Recorded per 10,000 pop 20132014	per 10,000 pop % Variance 12/13 to 13/14	Resolved 20122013	Resolved 20132014	Resolution Rate 20122013	Resolution Rate 20132014
Auckland Motorways	3	3	0.0 %	#DIV/0	#DIV/0	#DIV/0	3	2	100.0 %	66.7 %
North Shore	371	438	18.1 %	15.6	18.2	16.3 %	223	214	60.1 %	48.9 %
Rodney	209	230	10.0 %	19.5	21.1	8.0 %	145	124	69.4 %	53.9 %
Waitakere	574	638	11.1 %	26.6	29.1	9.5 %	374	282	65.2 %	44.2 %
Total	1,157	1,309	13.1 %	20.7	23.0	11.4 %	745	622	64.4 %	47.5 %

ROBBERY, EXTORTION AND RELATED OFFENCES

Area Description	Recorded 20122013	Recorded 20132014	Variance 12/13-13/14	Recorded per 10,000 pop 20122013	Recorded per 10,000 pop 20132014	per 10,000 pop % Variance 12/13 to 13/14	Resolved 20122013	Resolved 20132014	Resolution Rate 20122013	Resolution Rate 20132014
Auckland Motorways	0	0	0.0 %	0.0	0.0	0.0 %	0	0	0.0 %	0.0 %
North Shore	39	73	87.2 %	1.6	3.0	84.4 %	15	29	38.5 %	39.7 %
Rodney	15	7	-53.3 %	1.4	0.6	-54.2 %	5	4	33.3 %	57.1 %
Waitakere	125	110	-12.0 %	5.8	5.0	-13.3 %	47	33	37.6 %	30.0 %
Total	179	190	6.1 %	3.2	3.3	4.5 %	67	66	37.4 %	34.7 %

**SUMMARY OF AREA RECORDED OFFENCES, RATE PER 10,000 POPULATION AND
RESOLVED OFFENCES, BY DIVISION**

years ending 30 June

UNLAWFUL ENTRY WITH INTENT/BURGLARY, BREAK AND ENTER

Area Description	Recorded 20122013	Recorded 20132014	Variance 12/13-13/14	Recorded per 10,000 pop 20122013	Recorded per 10,000 pop 20132014	per 10,000 pop % Variance 12/13 to 13/14	Resolved 20122013	Resolved 20132014	Resolution Rate 20122013	Resolution Rate 20132014
Auckland Motorways	0	3	0.0 %	0.0	#DIV/0	#DIV/0	0	0	0.0 %	0.0 %
North Shore	1,167	1,289	10.5 %	49.2	53.5	8.8 %	135	101	11.6 %	7.8 %
Rodney	676	732	8.3 %	63.2	67.2	6.3 %	113	83	16.7 %	11.3 %
Waitakere	2,205	2,082	-5.6 %	102.1	95.0	-7.0 %	333	208	15.1 %	10.0 %
Total	4,048	4,106	1.4 %	72.2	72.1	-0.2 %	581	392	14.4 %	9.5 %

THEFT AND RELATED OFFENCES

Area Description	Recorded 20122013	Recorded 20132014	Variance 12/13-13/14	Recorded per 10,000 pop 20122013	Recorded per 10,000 pop 20132014	per 10,000 pop % Variance 12/13 to 13/14	Resolved 20122013	Resolved 20132014	Resolution Rate 20122013	Resolution Rate 20132014
Auckland Motorways	13	14	7.7 %	#DIV/0	#DIV/0	#DIV/0	10	8	76.9 %	57.1 %
North Shore	3,940	4,393	11.5 %	165.9	182.2	9.8 %	992	840	25.2 %	19.1 %
Rodney	1,765	2,007	13.7 %	165.0	184.2	11.6 %	379	389	21.5 %	19.4 %
Waitakere	5,273	5,932	12.5 %	244.2	270.6	10.8 %	1,323	1,135	25.1 %	19.1 %
Total	10,991	12,346	12.3 %	196.2	216.9	10.6 %	2,704	2,372	24.6 %	19.2 %

FRAUD, DECEPTION AND RELATED OFFENCES

Area Description	Recorded 20122013	Recorded 20132014	Variance 12/13-13/14	Recorded per 10,000 pop 20122013	Recorded per 10,000 pop 20132014	per 10,000 pop % Variance 12/13 to 13/14	Resolved 20122013	Resolved 20132014	Resolution Rate 20122013	Resolution Rate 20132014
Auckland Motorways	0	1	0.0 %	0.0	#DIV/0	#DIV/0	0	1	0.0 %	100.0 %
North Shore	405	373	-7.9 %	17.1	15.5	-9.3 %	223	150	55.1 %	40.2 %
Rodney	150	141	-6.0 %	14.0	12.9	-7.7 %	94	58	62.7 %	41.1 %
Waitakere	287	350	22.0 %	13.3	16.0	20.1 %	122	125	42.5 %	35.7 %
Total	842	865	2.7 %	15.0	15.2	1.1 %	439	334	52.1 %	38.6 %

**SUMMARY OF AREA RECORDED OFFENCES, RATE PER 10,000 POPULATION AND
RESOLVED OFFENCES, BY DIVISION**

years ending 30 June

ILLCIT DRUG OFFENCES

Area Description	Recorded 20122013	Recorded 20132014	Variance 12/13-13/14	Recorded per 10,000 pop 20122013	Recorded per 10,000 pop 20132014	per 10,000 pop % Variance 12/13 to 13/14	Resolved 20122013	Resolved 20132014	Resolution Rate 20122013	Resolution Rate 20132014
Auckland Motorways	12	35	191.7 %	#DIV/0	#DIV/0	#DIV/0	11	34	91.7 %	97.1 %
North Shore	463	361	-22.0 %	19.5	15.0	-23.2 %	433	331	93.5 %	91.7 %
Rodney	333	366	9.9 %	31.1	33.6	7.9 %	300	326	90.1 %	89.1 %
Waitakere	754	712	-5.6 %	34.9	32.5	-7.0 %	726	677	96.3 %	95.1 %
Total	1,562	1,474	-5.6 %	27.9	25.9	-7.1 %	1,470	1,368	94.1 %	92.8 %

PROHIBITED AND REGULATED WEAPONS AND EXPLOSIVES OFFENCES

Area Description	Recorded 20122013	Recorded 20132014	Variance 12/13-13/14	Recorded per 10,000 pop 20122013	Recorded per 10,000 pop 20132014	per 10,000 pop % Variance 12/13 to 13/14	Resolved 20122013	Resolved 20132014	Resolution Rate 20122013	Resolution Rate 20132014
Auckland Motorways	2	5	150.0 %	#DIV/0	#DIV/0	#DIV/0	1	4	50.0 %	80.0 %
North Shore	145	88	-39.3 %	6.1	3.7	-40.2 %	129	75	89.0 %	85.2 %
Rodney	118	113	-4.2 %	11.0	10.4	-6.0 %	106	99	89.8 %	87.6 %
Waitakere	263	249	-5.3 %	12.2	11.4	-6.7 %	250	224	95.1 %	90.0 %
Total	528	455	-13.8 %	9.4	8.0	-15.2 %	486	402	92.0 %	88.4 %

PROPERTY DAMAGE AND ENVIRONMENTAL POLLUTION

Area Description	Recorded 20122013	Recorded 20132014	Variance 12/13-13/14	Recorded per 10,000 pop 20122013	Recorded per 10,000 pop 20132014	per 10,000 pop % Variance 12/13 to 13/14	Resolved 20122013	Resolved 20132014	Resolution Rate 20122013	Resolution Rate 20132014
Auckland Motorways	8	4	-50.0 %	#DIV/0	#DIV/0	#DIV/0	7	1	87.5 %	25.0 %
North Shore	940	1,004	6.8 %	39.6	41.7	5.2 %	290	241	30.9 %	24.0 %
Rodney	665	601	-9.6 %	62.2	55.2	-11.3 %	190	134	28.6 %	22.3 %
Waitakere	1,513	1,574	4.0 %	70.1	71.8	2.5 %	620	456	41.0 %	29.0 %
Total	3,126	3,183	1.8 %	55.8	55.9	0.2 %	1,107	832	35.4 %	26.1 %

**SUMMARY OF AREA RECORDED OFFENCES, RATE PER 10,000 POPULATION AND
RESOLVED OFFENCES, BY DIVISION**

years ending 30 June

PUBLIC ORDER OFFENCES

Area Description	Recorded 20122013	Recorded 20132014	Variance 12/13-13/14	Recorded per 10,000 pop 20122013	Recorded per 10,000 pop 20132014	per 10,000 pop % Variance 12/13 to 13/14	Resolved 20122013	Resolved 20132014	Resolution Rate 20122013	Resolution Rate 20132014
Auckland Motorways	9	12	33.3 %	#DIV/0	#DIV/0	#DIV/0	9	12	100.0 %	100.0 %
North Shore	761	665	-12.6 %	32.1	27.6	-13.9 %	614	505	80.7 %	75.9 %
Rodney	416	324	-22.1 %	38.9	29.7	-23.6 %	309	231	74.3 %	71.3 %
Waitakere	1,134	1,116	-1.6 %	52.5	50.9	-3.1 %	879	824	77.5 %	73.8 %
Total	2,320	2,117	-8.8 %	41.4	37.2	-10.2 %	1,811	1,572	78.1 %	74.3 %

OFFENCES AGAINST JUSTICE PROCEDURES, GOVERNMENT SECURITY AND GOVERNMENT OPERATIONS

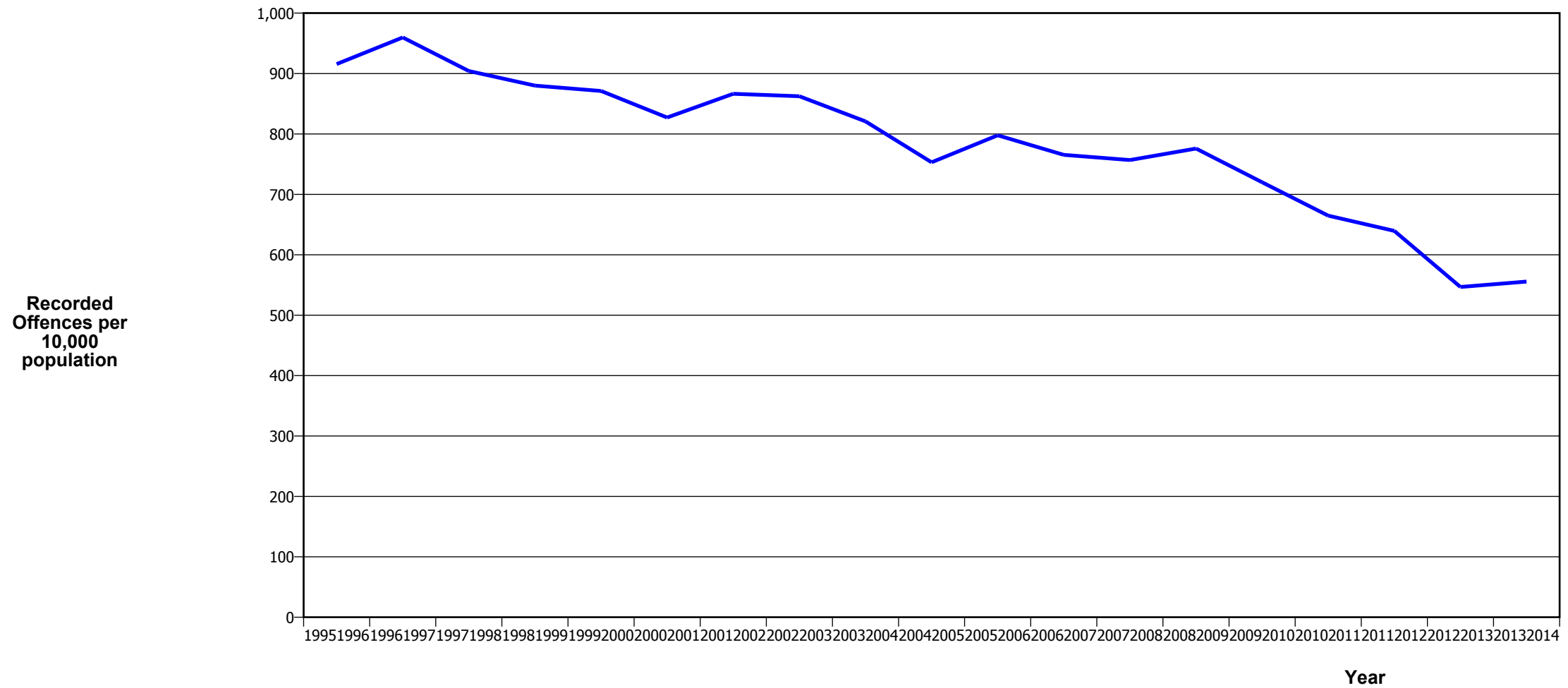
Area Description	Recorded 20122013	Recorded 20132014	Variance 12/13-13/14	Recorded per 10,000 pop 20122013	Recorded per 10,000 pop 20132014	per 10,000 pop % Variance 12/13 to 13/14	Resolved 20122013	Resolved 20132014	Resolution Rate 20122013	Resolution Rate 20132014
Auckland Motorways	17	33	94.1 %	#DIV/0	#DIV/0	#DIV/0	13	32	76.5 %	97.0 %
North Shore	479	527	10.0 %	20.2	21.9	8.4 %	453	482	94.6 %	91.5 %
Rodney	191	218	14.1 %	17.9	20.0	12.0 %	180	198	94.2 %	90.8 %
Waitakere	1,392	1,323	-5.0 %	64.5	60.4	-6.4 %	1,372	1,290	98.6 %	97.5 %
Total	2,079	2,101	1.1 %	37.1	36.9	-0.5 %	2,018	2,002	97.1 %	95.3 %

MISCELLANEOUS OFFENCES

Area Description	Recorded 20122013	Recorded 20132014	Variance 12/13-13/14	Recorded per 10,000 pop 20122013	Recorded per 10,000 pop 20132014	per 10,000 pop % Variance 12/13 to 13/14	Resolved 20122013	Resolved 20132014	Resolution Rate 20122013	Resolution Rate 20132014
Auckland Motorways	0	4	0.0 %	0.0	#DIV/0	#DIV/0	0	3	0.0 %	75.0 %
North Shore	50	42	-16.0 %	2.1	1.7	-17.3 %	39	23	78.0 %	54.8 %
Rodney	27	25	-7.4 %	2.5	2.3	-9.1 %	20	15	74.1 %	60.0 %
Waitakere	26	37	42.3 %	1.2	1.7	40.2 %	20	18	76.9 %	48.6 %
Total	103	108	4.9 %	1.8	1.9	3.2 %	79	59	76.7 %	54.6 %

CRIME TRENDS

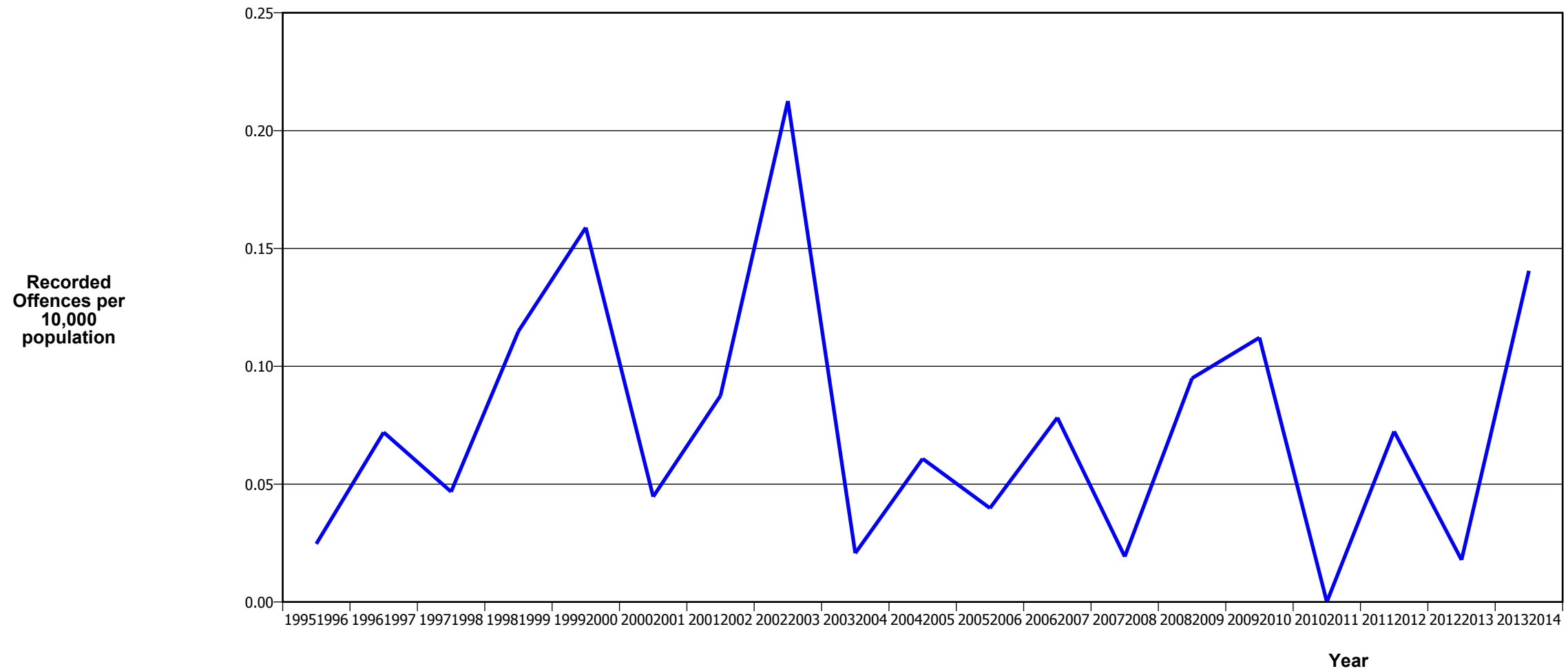
TOTAL CRIME



Fiscal Year	19951996	19961997	19971998	19981999	19992000	20002001	20012002	20022003	20032004	20042005	20052006	20062007	20072008	20082009	20092010	20102011	20112012	20122013	20132014
Recorded Offences	37,149	39,973	38,638	38,306	38,376	37,030	39,590	40,570	39,688	37,160	40,061	39,122	39,332	40,862	38,511	36,160	35,334	30,629	31,629
Recorded per 10,000 Population	915.7	959.7	904.1	880.1	871.1	827.3	866.4	862.4	820.9	753.1	797.7	765.4	756.8	775.8	720.1	664.8	639.5	546.7	555.7

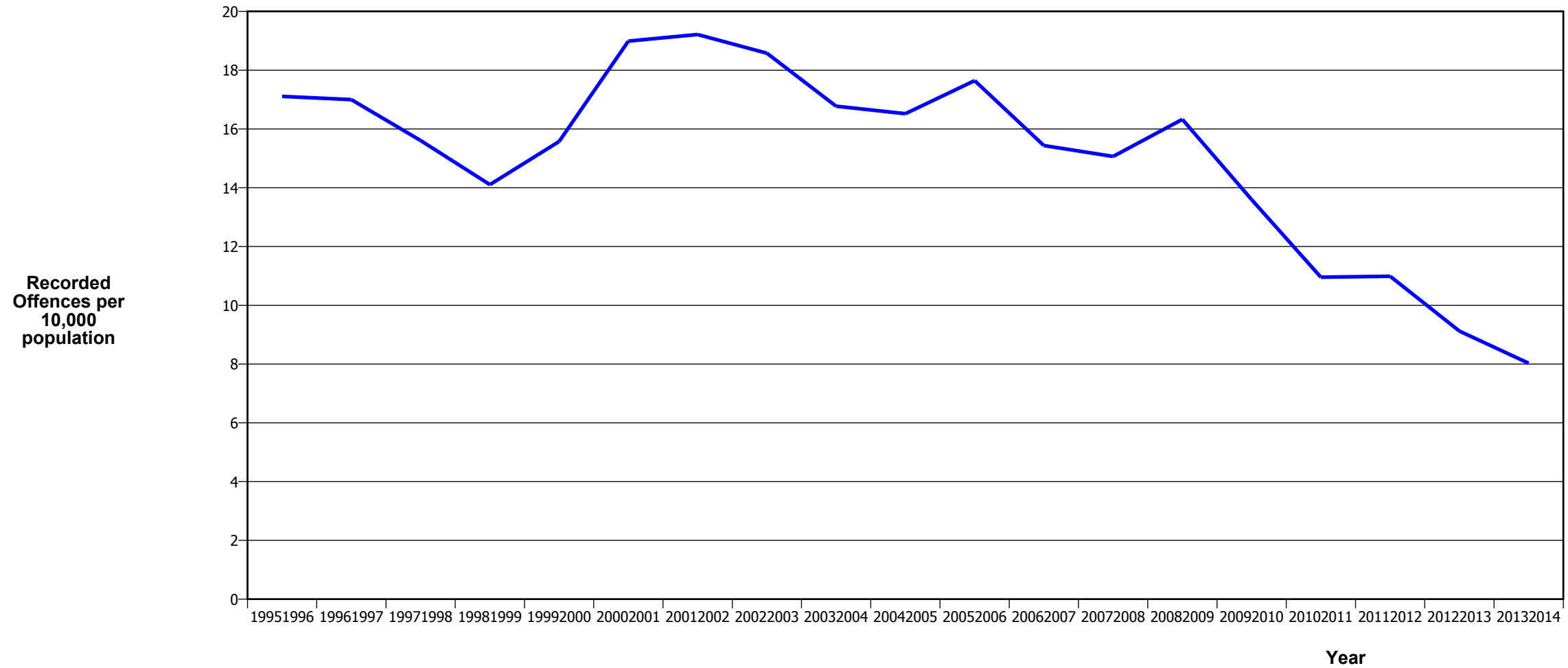
*In 20052006 there was a major IT system change (LES to NIA)

MURDER



- The 20092010 result is significantly influenced by an abnormal one-off spike in August 2009, when 12 murders occurred

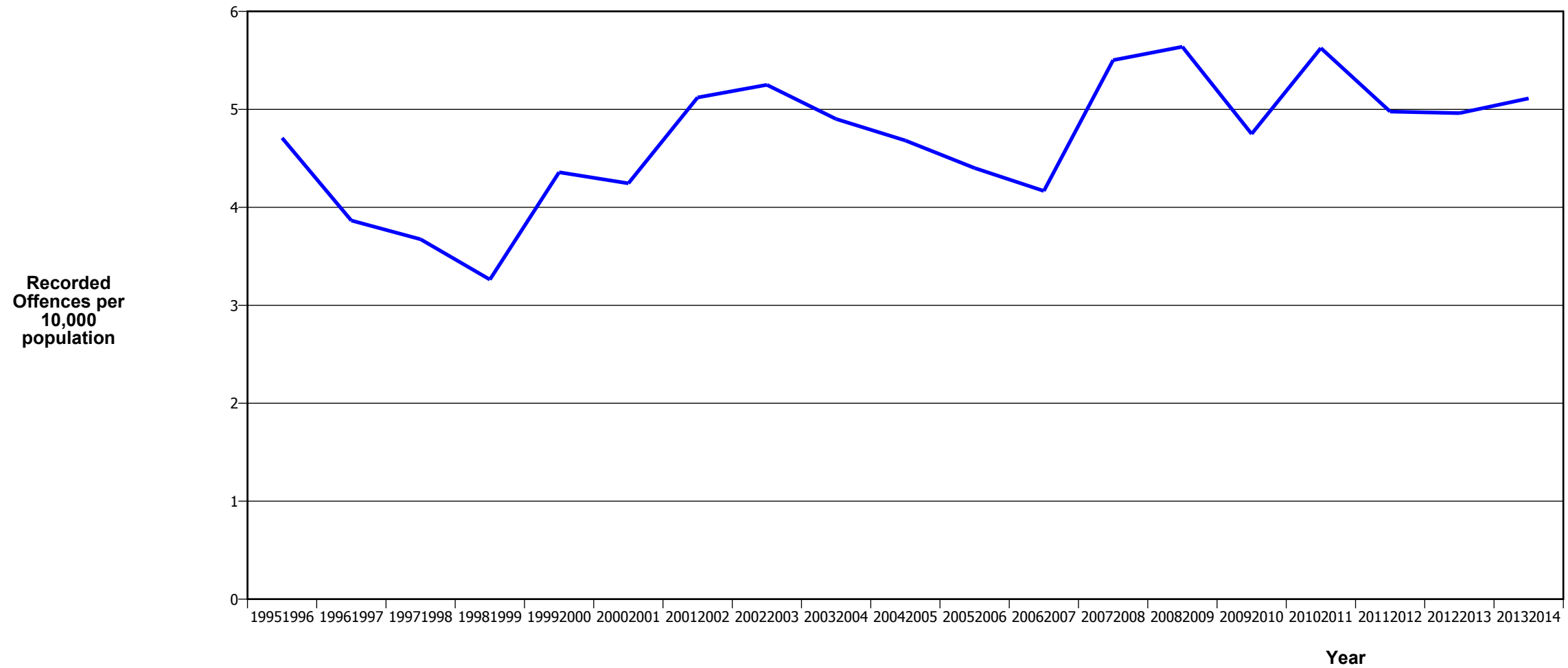
SERIOUS ASSAULTS RESULTING IN INJURY*



Fiscal Year	19951996	19961997	19971998	19981999	19992000	20002001	20012002	20022003	20032004	20042005	20052006	20062007	20072008	20082009	20092010	20102011	20112012	20122013	20132014
Recorded Offences	694	708	667	614	686	850	878	874	811	815	886	789	783	860	727	596	607	511	457
Recorded per 10,000 Population	17.1	17.0	15.6	14.1	15.6	19.0	19.2	18.6	16.8	16.5	17.6	15.4	15.1	16.3	13.6	11.0	11.0	9.1	8.0

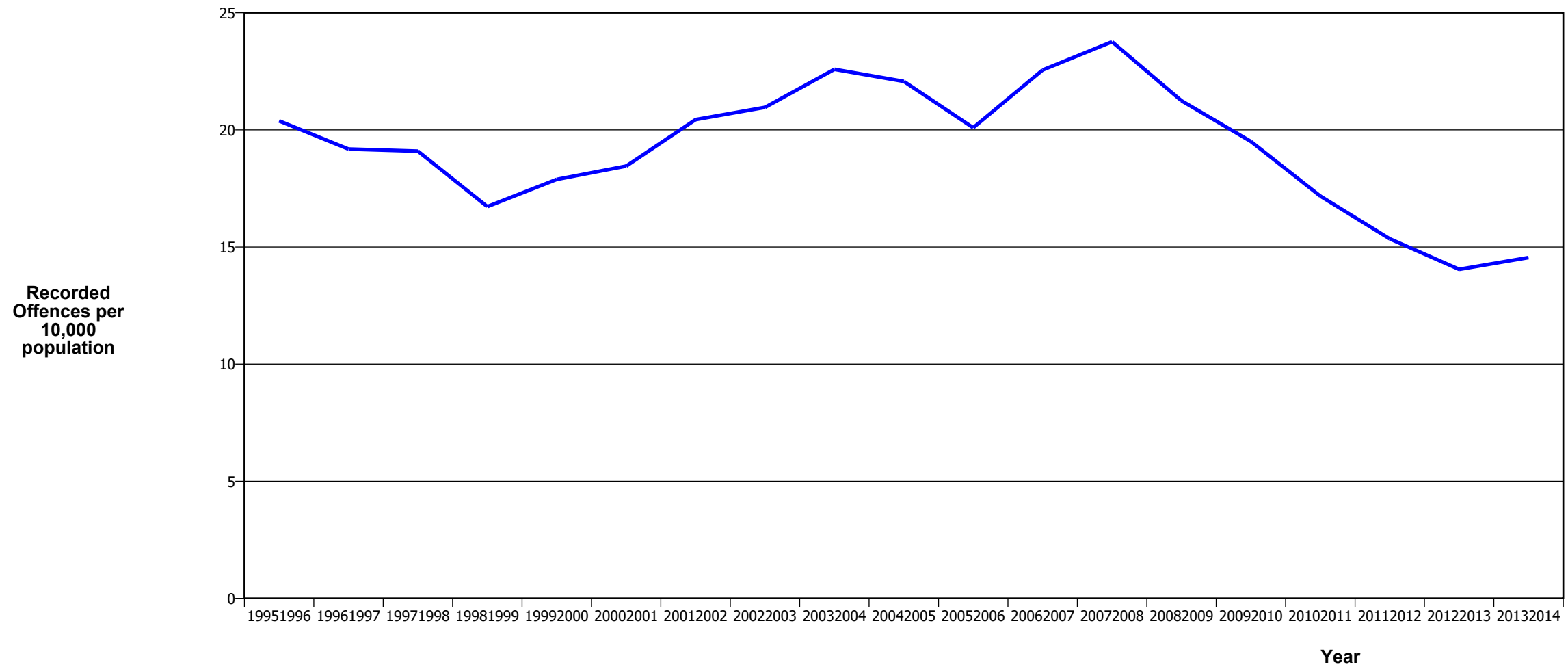
* This measure excludes common assaults

SEXUAL ASSAULTS



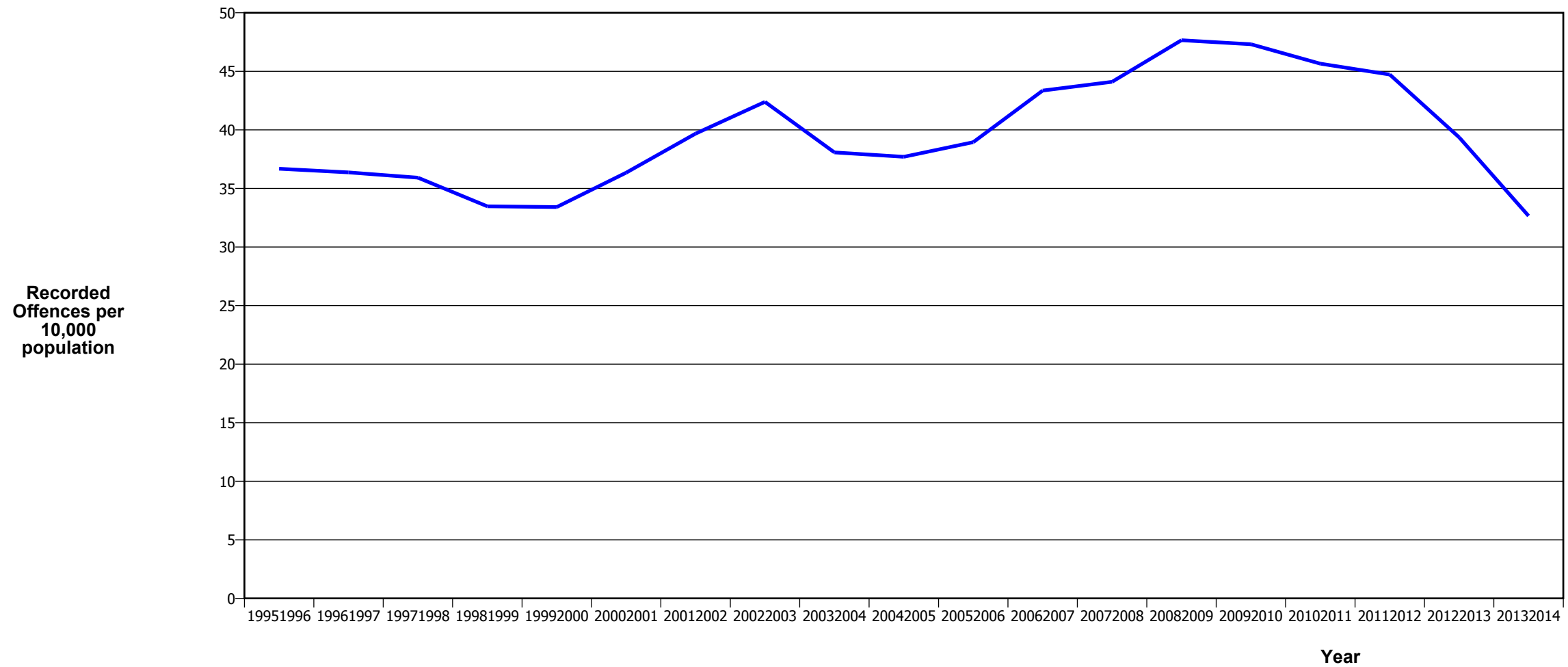
Fiscal Year	19951996	19961997	19971998	19981999	19992000	20002001	20012002	20022003	20032004	20042005	20052006	20062007	20072008	20082009	20092010	20102011	20112012	20122013	20132014
Recorded Offences	191	161	157	142	192	190	234	247	237	231	221	213	286	297	254	306	275	278	291
Recorded per 10,000 Population	4.7	3.9	3.7	3.3	4.4	4.2	5.1	5.3	4.9	4.7	4.4	4.2	5.5	5.6	4.7	5.6	5.0	5.0	5.1

PUBLIC PLACE ASSAULTS



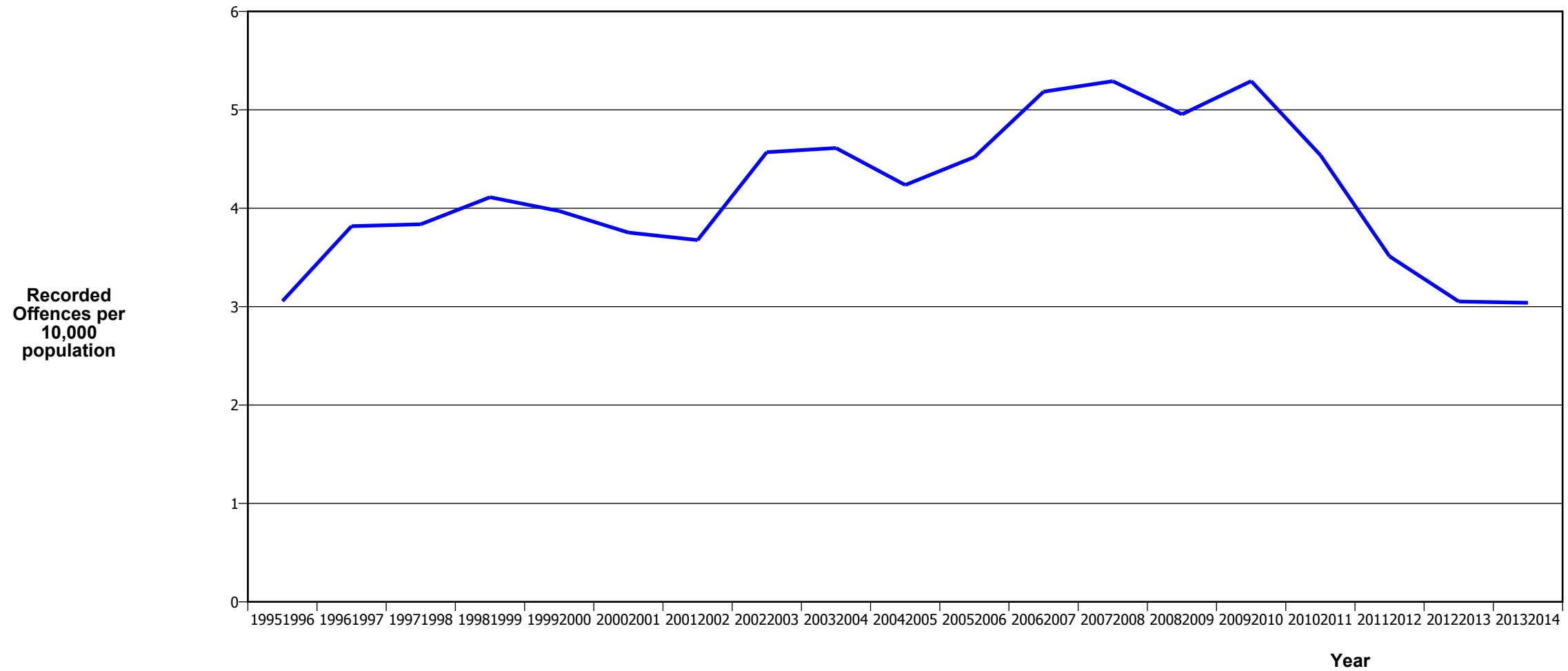
Fiscal Year	19951996	19961997	19971998	19981999	19992000	20002001	20012002	20022003	20032004	20042005	20052006	20062007	20072008	20082009	20092010	20102011	20112012	20122013	20132014
Recorded Offences	827	799	816	728	788	826	934	986	1,092	1,089	1,009	1,153	1,235	1,119	1,043	934	848	787	828
Recorded per 10,000 Population	20.4	19.2	19.1	16.7	17.9	18.5	20.4	21.0	22.6	22.1	20.1	22.6	23.8	21.2	19.5	17.2	15.3	14.0	14.5

DWELLING ASSAULTS



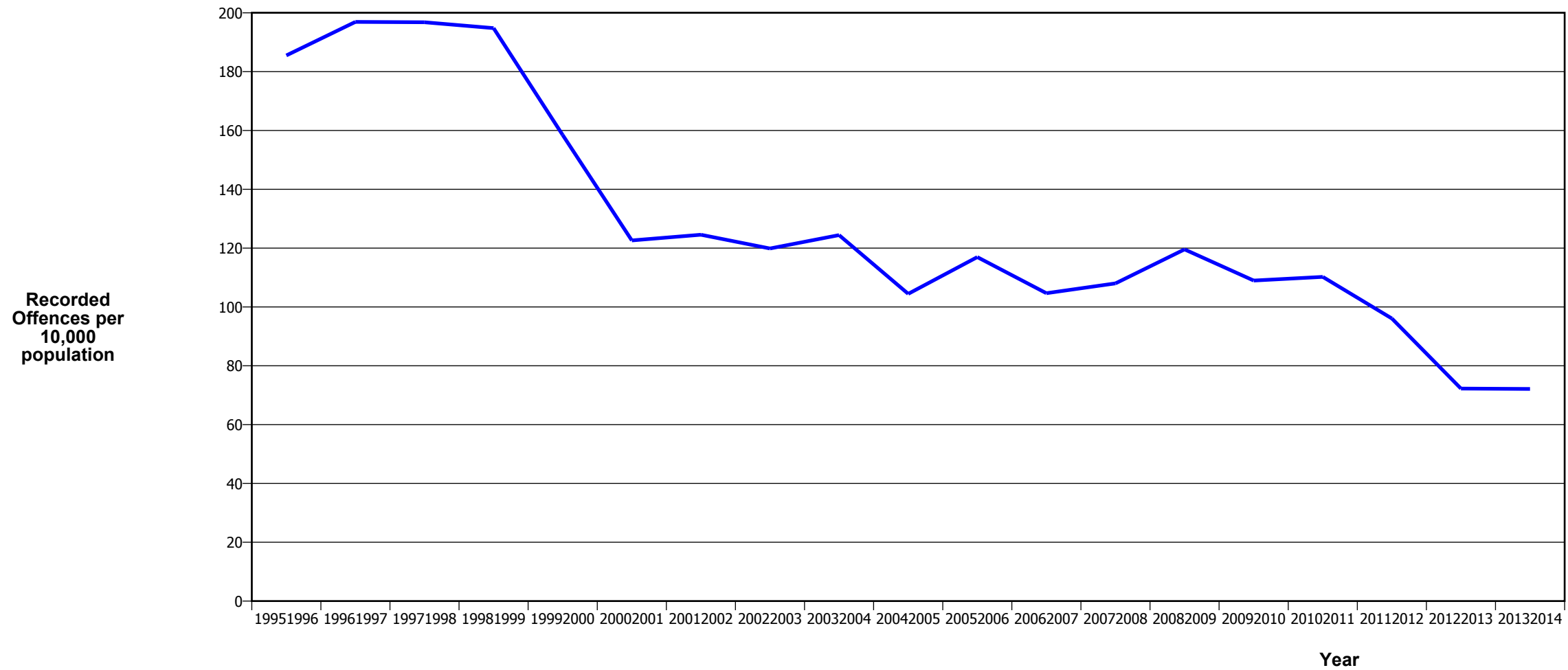
Fiscal Year	19951996	19961997	19971998	19981999	19992000	20002001	20012002	20022003	20032004	20042005	20052006	20062007	20072008	20082009	20092010	20102011	20112012	20122013	20132014
Recorded Offences	1,488	1,515	1,535	1,457	1,472	1,627	1,813	1,994	1,841	1,860	1,956	2,216	2,292	2,510	2,530	2,483	2,471	2,205	1,859
Recorded per 10,000 Population	36.7	36.4	35.9	33.5	33.4	36.3	39.7	42.4	38.1	37.7	38.9	43.4	44.1	47.7	47.3	45.7	44.7	39.4	32.7

ROBBERY



Fiscal Year	19951996	19961997	19971998	19981999	19992000	20002001	20012002	20022003	20032004	20042005	20052006	20062007	20072008	20082009	20092010	20102011	20112012	20122013	20132014
Recorded Offences	124	159	164	179	175	168	168	215	223	209	227	265	275	261	283	247	194	171	173
Recorded per 10,000 Population	3.1	3.8	3.8	4.1	4.0	3.8	3.7	4.6	4.6	4.2	4.5	5.2	5.3	5.0	5.3	4.5	3.5	3.1	3.0

BURGLARY (TOTAL)



Fiscal Year	19951996	19961997	19971998	19981999	19992000	20002001	20012002	20022003	20032004	20042005	20052006	20062007	20072008	20082009	20092010	20102011	20112012	20122013	20132014
Recorded Offences	7,526	8,202	8,409	8,478	6,981	5,488	5,691	5,640	6,016	5,154	5,873	5,351	5,614	6,297	5,828	5,995	5,308	4,048	4,106
Recorded per 10,000 Population	185.5	196.9	196.8	194.8	158.5	122.6	124.5	119.9	124.4	104.5	116.9	104.7	108.0	119.6	109.0	110.2	96.1	72.2	72.1

BURGLARY (DWELLING)



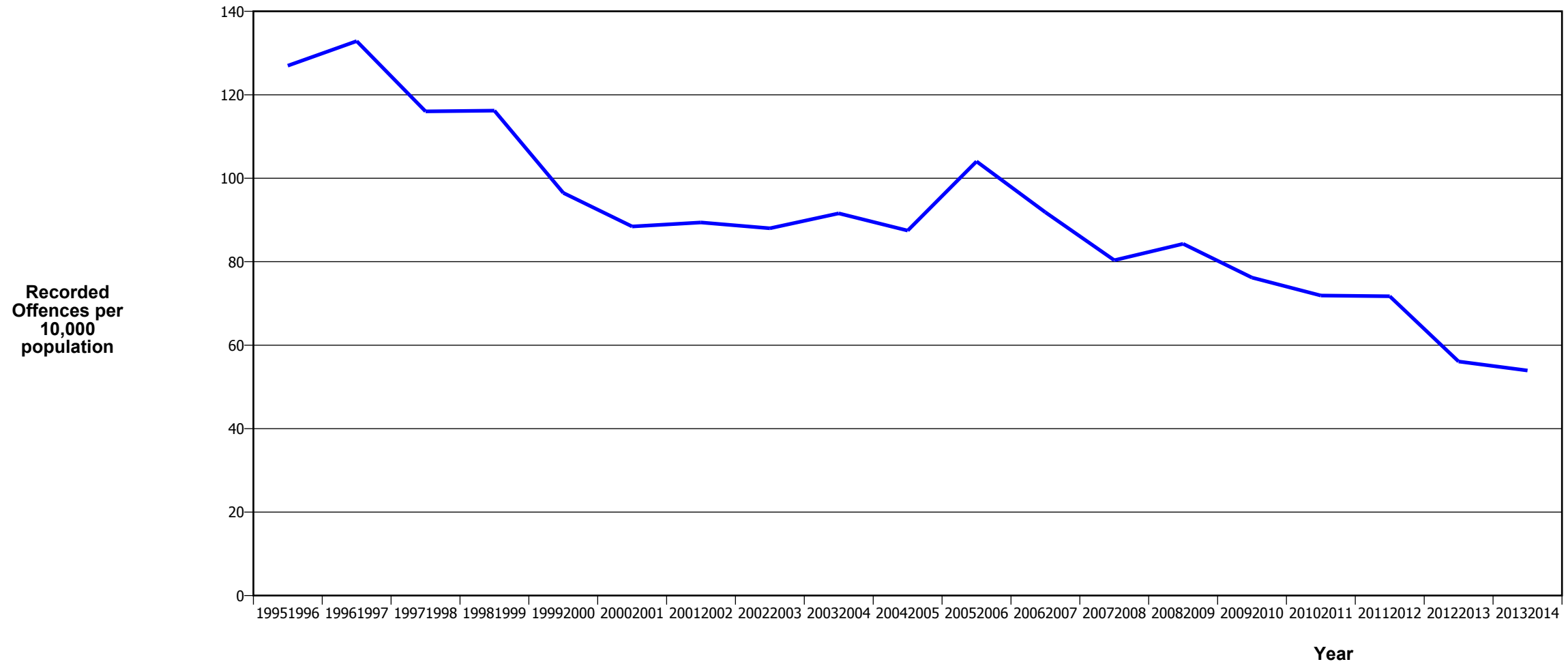
Fiscal Year	19951996	19961997	19971998	19981999	19992000	20002001	20012002	20022003	20032004	20042005	20052006	20062007	20072008	20082009	20092010	20102011	20112012	20122013	20132014
Recorded Offences	5,454	5,755	5,920	6,338	4,632	3,363	3,234	3,423	3,720	3,200	3,837	3,543	3,735	4,282	4,182	4,420	3,932	3,107	3,089
Recorded per 10,000 Population	134.4	138.2	138.5	145.6	105.1	75.1	70.8	72.8	76.9	64.9	76.4	69.3	71.9	81.3	78.2	81.3	71.2	55.5	54.3

VEHICLES STOLEN



Fiscal Year	19951996	19961997	19971998	19981999	19992000	20002001	20012002	20022003	20032004	20042005	20052006	20062007	20072008	20082009	20092010	20102011	20112012	20122013	20132014
Recorded Offences	2,725	3,273	3,291	2,859	2,462	1,940	2,259	2,265	2,071	2,117	2,461	2,294	2,188	2,190	2,146	2,595	2,639	1,943	2,040
Recorded per 10,000 Population	67.2	78.6	77.0	65.7	55.9	43.3	49.4	48.1	42.8	42.9	49.0	44.9	42.1	41.6	40.1	47.7	47.8	34.7	35.8

THEFT EX CAR



Fiscal Year	19951996	19961997	19971998	19981999	19992000	20002001	20012002	20022003	20032004	20042005	20052006	20062007	20072008	20082009	20092010	20102011	20112012	20122013	20132014
Recorded Offences	5,151	5,534	4,959	5,058	4,251	3,959	4,085	4,140	4,428	4,315	5,225	4,695	4,176	4,439	4,075	3,911	3,963	3,143	3,070
Recorded per 10,000 Population	127.0	132.9	116.0	116.2	96.5	88.4	89.4	88.0	91.6	87.5	104.0	91.9	80.3	84.3	76.2	71.9	71.7	56.1	53.9

Population Data

Population data is used in this release to calculate crime rates. These data are estimated population figures as at 31 December each year. They have been derived from population estimates as at 30 June each year that have been obtained from Statistics New Zealand.

The estimated resident population is based on the census usually resident population count, with adjustments for residents missed or counted more than once by the census (net census undercount), and for residents temporarily overseas on census night.

These population estimates exclude the number of international students who are studying in New Zealand for less than 12 months.

Year	Population
19951996	405,690
19961997	416,530
19971998	427,370
19981999	435,270
19992000	440,565
20002001	447,610
20012002	456,935
20022003	470,445
20032004	483,485
20042005	493,400
20052006	502,185
20062007	511,155
20072008	519,745
20082009	526,715
20092010	534,780
20102011	543,920
20112012	552,505
20122013	560,280
20132014	569,225

General Definitions

Recorded Offences: the number of breaches of the New Zealand law recorded by Police. This includes offences specified in the Crimes Act and other legislations, such as the Summary Offences Act, Local Government Act, etc.

Resolved Offences: the number of recorded offences where an offender has been identified and dealt with (e.g. warned, cautioned, prosecuted, etc).

Resolution Rate: the proportion of recorded offences that have been resolved.

Recorded per 10,000 population: the number of recorded offences for every 10,000 people. This is also referred as the crime rate per 10,000 population.

ANZSOC: the Australia New Zealand Standard Offence Classification. The offence classification is divided into 16 major offence divisions.

Definition of ANZSOC Divisions

1. Homicide and related offences: Unlawfully kill, attempt to unlawfully kill or conspiracy to kill another person.
2. Acts intended to cause injury: Acts, excluding attempted murder and those resulting in death, which are intended to cause non-fatal injury or harm to another person and where there is no sexual or acquisitive element.
3. Sexual assault and related offences: Acts, or intent of acts, of a sexual nature against another person, which are non-consensual or where consent is proscribed.
4. Dangerous or negligent acts endangering persons: Dangerous or negligent acts which, though not intended to cause harm, actually or potentially result in injury to oneself or another person.
5. Abduction, harassment and other offences against person: Acts intended to threaten or harass, or acts that unlawfully deprive another person of their freedom of movement, that are against that person's will or against the will of any parent, guardian or other person having lawful custody or care of that person.
6. Robbery, extortion and related offences: Acts intended to unlawfully gain money, property or other items of value from, or to cause detriment to, another person by using the threat of force or any other coercive measure.
7. Unlawful entry with intent / burglary, break and enter: The unlawful entry of a structure with the intent to commit an offence, where the entry is either forced or unforced.
8. Theft and related and offences: The unlawful taking or obtaining of money or goods, not involving the use of force or violence, coercion or deception, with intent to permanently or temporarily deprive the owner or possessor of the use of the money or goods, or the receiving or handling of money or goods obtained unlawfully.

9. Fraud, deception and related offences: Offences involving a dishonest act or omission carried out with the purpose of deceiving to obtain a benefit.

10. Illicit drug offences: The possessing, selling, dealing or trafficking, importing or exporting, manufacturing or cultivating of drugs or other substances prohibited under legislation.

11. Prohibited and regulated weapons and explosives offences: Offences involving prohibited or regulated weapons and explosives. Those offences also involving assault, sexual assault or robbery are coded to the relevant group within Assault, Sexual assaults and Robbery respectively.

12. Property damage and environmental pollution: The wilful and unlawful destruction, damage or defacement of public or private property, or the pollution of property or a definable entity held in common by the community.

13. Public order offences: Offences relating personal conduct that involves, or may lead to, a breach of public order or decency, or that is indicative of criminal intent, or that is otherwise regulated or prohibited on moral or ethical grounds. In general these offences do not involve a specific victim or victims; however some offences, such as offensive language and offensive behaviour, may be directed towards a single victim.

14. Traffic and vehicle regulatory offences: Offences relating to vehicles and most forms of traffic, including offences pertaining to the licensing, registration, roadworthiness, or use of vehicles, bicycle offences and pedestrian offences.

15. Offences against justice procedures, government security and government operations: An act or omission that is deemed to be prejudicial to the effective carrying out of justice procedures or any government operations. This includes general government operations as well as those specifically concerned with maintaining government security.

16. Miscellaneous offences: Offences involving the breach of statutory rules or regulations governing activities that are prima facie legal, where such offences are not explicitly dealt with under any other division. If an offence is specified under regulation and involves an act that would be illegal under common law or general criminal legislation, the offence is dealt with under the appropriate generic group.