

WAITEMATA DISTRICT CRIME STATISTICS 2013



**A Summary of
Recorded and Resolved Offence
Statistics**

**POLICE NATIONAL HEADQUARTERS
April 2014**

ISSN 1178 - 1548

Table of Contents:

Topic	Page
Report Notes	1
District Summary of Recorded and Resolved Crime, by Division	2-4
Proportions of Recorded Crime by Division	5
Summary of District Recorded Offences, Rate per 10,000 Population and Resolved Offences, by Area	6
Summary of Area Recorded Offences, Rate per 10,000 Population and Resolved Offences, by Division	7-9
Crime Trends	10
Total Crime	11
Murder	12
Serious Assaults Resulting in Injury	13
Sexual Assaults	14
Public Place Assaults	15
Dwelling Assaults	16
Robbery	17
Burglary (Total)	18
Burglary (Dwelling)	19
Vehicles Stolen	20
Theft Ex Car	21
Population Data	22
General Definitions	23-24

REPORT NOTES:

Statistics reported in this document are derived from the Police National Intelligence Application (NIA). These Official Statistics for Recorded and Resolved Offences present a snapshot of data in NIA relating to offences that occur within a given year, as at the date 14 days following the end of that year.

Unless the matter is minor where Police attendance is sufficient, a matter that is reported to or discovered by Police where Police believe an offence is likely to have been committed is counted as a recorded offence.

A recorded offence is counted as resolved when Police apprehend an offender and decide how to deal with him/her. (E.g. warn, prosecute, etc.)

Resolution rate is the percentage of recorded offences that are resolved within 14 days of the end of the year being reported on.

If an offence is resolved 15 days or more after the end of the year it will not appear in the Official Crime Statistics for that or any other year. Resolution Rate therefore undercounts the number of cases that Police have resolved. This phenomenon has a more marked impact for some types of offences than others, such as offences that require long investigations (E.g. many serial crimes, burglaries and murders).

The Sale and Supply of Alcohol Act 2012 came into effect on 18 December 2013. This had little effect on overall 2013 calendar year statistics, because the legislation only took effect two weeks before the end of the year. However, statistics for future years will be significantly affected. In particular, the offence of Breach of Liquor Ban, of which there were more than 6,500 nationally in 2013, has been made obsolete by the new legislation. Under the new legislation Police will deal with breaches of alcohol bans by issuing infringement notices, rather than by recording offences for which offenders can be charged. Such infringements are not part of this statistical collection.

When comparing 2013 Statistics with previous years, the reader should also refer to "Report Notes" published in previous years' reports, as previous changes significantly affect year on year trends.

SUMMARY OF DISTRICT RECORDED AND RESOLVED CRIME, BY DIVISION

Years ending 31 December

HOMICIDE AND RELATED OFFENCES

ASOC Subdivision Description	Recorded 2011	Recorded 2012	Recorded 2013	Variance 2011-2012	Variance 2012-2013	Resolved 2011	Resolved 2012	Resolved 2013	Resolution Rate 2011	Resolution Rate 2012	Resolution Rate 2013
ATTEMPTED MURDER	1	0	2	-100.0 %	0.0 %	1	0	2	100.0 %	0.0 %	100.0 %
HOMICIDE AND RELATED OFFENCES NOT FURTHER DEFINED	0	0	0	0.0 %	0.0 %	0	0	0	0.0 %	0.0 %	0.0 %
MANSLAUGHTER AND DRIVING CAUSING DEATH	2	0	2	-100.0 %	0.0 %	1	0	2	50.0 %	0.0 %	100.0 %
MURDER	4	1	2	-75.0 %	100.0 %	2	0	2	50.0 %	0.0 %	100.0 %
	7	1	6	-85.7 %	500.0 %	4	0	6	57.1 %	0.0 %	100.0 %

ACTS INTENDED TO CAUSE INJURY

ASOC Subdivision Description	Recorded 2011	Recorded 2012	Recorded 2013	Variance 2011-2012	Variance 2012-2013	Resolved 2011	Resolved 2012	Resolved 2013	Resolution Rate 2011	Resolution Rate 2012	Resolution Rate 2013
ASSAULT	3,654	3,519	3,134	-3.7 %	-10.9 %	3,268	2,934	2,499	89.4 %	83.4 %	79.7 %
OTHER ACTS INTENDED TO CAUSE INJURY	2	2	0	0.0 %	-100.0 %	2	2	0	100.0 %	100.0 %	0.0 %
	3,656	3,521	3,134	-3.7 %	-11.0 %	3,270	2,936	2,499	89.4 %	83.4 %	79.7 %

SEXUAL ASSAULT AND RELATED OFFENCES

ASOC Subdivision Description	Recorded 2011	Recorded 2012	Recorded 2013	Variance 2011-2012	Variance 2012-2013	Resolved 2011	Resolved 2012	Resolved 2013	Resolution Rate 2011	Resolution Rate 2012	Resolution Rate 2013
NON-ASSAULTIVE SEXUAL OFFENCES	31	10	34	-67.7 %	240.0 %	28	7	32	90.3 %	70.0 %	94.1 %
SEXUAL ASSAULT	277	255	317	-7.9 %	24.3 %	175	146	189	63.2 %	57.3 %	59.6 %
	308	265	351	-14.0 %	32.5 %	203	153	221	65.9 %	57.7 %	63.0 %

DANGEROUS OR NEGLIGENT ACTS ENDANGERING PERSONS

ASOC Subdivision Description	Recorded 2011	Recorded 2012	Recorded 2013	Variance 2011-2012	Variance 2012-2013	Resolved 2011	Resolved 2012	Resolved 2013	Resolution Rate 2011	Resolution Rate 2012	Resolution Rate 2013
OTHER DANGEROUS OR NEGLIGENT ACTS ENDANGERING PERSONS	106	68	62	-35.8 %	-8.8 %	82	40	38	77.4 %	58.8 %	61.3 %
	106	68	62	-35.8 %	-8.8 %	82	40	38	77.4 %	58.8 %	61.3 %

ABDUCTION, HARASSMENT AND OTHER RELATED OFFENCES AGAINST A PERSON

ASOC Subdivision Description	Recorded 2011	Recorded 2012	Recorded 2013	Variance 2011-2012	Variance 2012-2013	Resolved 2011	Resolved 2012	Resolved 2013	Resolution Rate 2011	Resolution Rate 2012	Resolution Rate 2013
ABDUCTION AND KIDNAPPING	13	16	16	23.1 %	0.0 %	9	7	9	69.2 %	43.8 %	56.3 %
HARASSMENT AND THREATENING BEHAVIOUR	1,210	1,193	1,228	-1.4 %	2.9 %	914	827	649	75.5 %	69.3 %	52.9 %
	1,223	1,209	1,244	-1.1 %	2.9 %	923	834	658	75.5 %	69.0 %	52.9 %

ROBBERY, EXTORTION AND RELATED OFFENCES

ASOC Subdivision Description	Recorded 2011	Recorded 2012	Recorded 2013	Variance 2011-2012	Variance 2012-2013	Resolved 2011	Resolved 2012	Resolved 2013	Resolution Rate 2011	Resolution Rate 2012	Resolution Rate 2013
BLACKMAIL AND EXTORTION	7	8	15	14.3 %	87.5 %	5	6	8	71.4 %	75.0 %	53.3 %
ROBBERY	219	202	149	-7.8 %	-26.2 %	98	74	52	44.7 %	36.6 %	34.9 %
	226	210	164	-7.1 %	-21.9 %	103	80	60	45.6 %	38.1 %	36.6 %

UNLAWFUL ENTRY WITH INTENT/BURGLARY, BREAK AND ENTER

ASOC Subdivision Description	Recorded 2011	Recorded 2012	Recorded 2013	Variance 2011-2012	Variance 2012-2013	Resolved 2011	Resolved 2012	Resolved 2013	Resolution Rate 2011	Resolution Rate 2012	Resolution Rate 2013
UNLAWFUL ENTRY WITH INTENT/BURGLARY, BREAK AND ENTER	5,876	4,436	4,126	-24.5 %	-7.0 %	665	579	550	11.3 %	13.1 %	13.3 %
	5,876	4,436	4,126	-24.5 %	-7.0 %	665	579	550	11.3 %	13.1 %	13.3 %

SUMMARY OF DISTRICT RECORDED AND RESOLVED CRIME, BY DIVISION
Years ending 31 December

THEFT AND RELATED OFFENCES

ASOC Subdivision Description	Recorded 2011	Recorded 2012	Recorded 2013	Variance 2011-2012	Variance 2012-2013	Resolved 2011	Resolved 2012	Resolved 2013	Resolution Rate 2011	Resolution Rate 2012	Resolution Rate 2013
ILLEGAL USE OF PROPERTY (EXCEPT MOTOR VEHICLES)	102	84	134	-17.6 %	59.5 %	7	6	9	6.9 %	7.1 %	6.7 %
MOTOR VEHICLE THEFT AND RELATED OFFENCES	6,895	5,452	5,157	-20.9 %	-5.4 %	847	579	570	12.3 %	10.6 %	11.1 %
RECEIVE OR HANDLE PROCEEDS OF CRIME	371	286	271	-22.9 %	-5.2 %	365	280	267	98.4 %	97.9 %	98.5 %
THEFT (EXCEPT MOTOR VEHICLES)	5,635	5,002	6,514	-11.2 %	30.2 %	2,243	1,889	1,810	39.8 %	37.8 %	27.8 %
	13,003	10,824	12,076	-16.8 %	11.6 %	3,462	2,754	2,656	26.6 %	25.4 %	22.0 %

FRAUD, DECEPTION AND RELATED OFFENCES

ASOC Subdivision Description	Recorded 2011	Recorded 2012	Recorded 2013	Variance 2011-2012	Variance 2012-2013	Resolved 2011	Resolved 2012	Resolved 2013	Resolution Rate 2011	Resolution Rate 2012	Resolution Rate 2013
DECEPTIVE BUSINESS/GOVERNMENT PRACTICES	3	2	9	-33.3 %	350.0 %	3	2	5	100.0 %	100.0 %	55.6 %
FORGERY AND COUNTERFEITING	62	32	44	-48.4 %	37.5 %	40	11	24	64.5 %	34.4 %	54.5 %
OBTAIN BENEFIT BY DECEPTION	706	789	820	11.8 %	3.9 %	396	355	428	56.1 %	45.0 %	52.2 %
OTHER FRAUD AND DECEPTION OFFENCES	67	64	56	-4.5 %	-12.5 %	33	34	19	49.3 %	53.1 %	33.9 %
	838	887	929	5.8 %	4.7 %	472	402	476	56.3 %	45.3 %	51.2 %

ILLICIT DRUG OFFENCES

ASOC Subdivision Description	Recorded 2011	Recorded 2012	Recorded 2013	Variance 2011-2012	Variance 2012-2013	Resolved 2011	Resolved 2012	Resolved 2013	Resolution Rate 2011	Resolution Rate 2012	Resolution Rate 2013
DEAL OR TRAFFIC IN ILLICIT DRUGS	183	175	265	-4.4 %	51.4 %	173	156	238	94.5 %	89.1 %	89.8 %
IMPORT OR EXPORT ILLICIT DRUGS	7	1	4	-85.7 %	300.0 %	4	1	2	57.1 %	100.0 %	50.0 %
MANUFACTURE OR CULTIVATE ILLICIT DRUGS	125	138	124	10.4 %	-10.1 %	118	114	96	94.4 %	82.6 %	77.4 %
OTHER ILLICIT DRUG OFFENCES	586	558	433	-4.8 %	-22.4 %	574	544	416	98.0 %	97.5 %	96.1 %
POSSESS AND/OR USE ILLICIT DRUGS	969	900	757	-7.1 %	-15.9 %	941	872	731	97.1 %	96.9 %	96.6 %
	1,870	1,772	1,583	-5.2 %	-10.7 %	1,810	1,687	1,483	96.8 %	95.2 %	93.7 %

PROHIBITED AND REGULATED WEAPONS AND EXPLOSIVES OFFENCES

ASOC Subdivision Description	Recorded 2011	Recorded 2012	Recorded 2013	Variance 2011-2012	Variance 2012-2013	Resolved 2011	Resolved 2012	Resolved 2013	Resolution Rate 2011	Resolution Rate 2012	Resolution Rate 2013
REGULATED WEAPONS/EXPLOSIVES OFFENCES	592	568	492	-4.1 %	-13.4 %	556	520	448	93.9 %	91.5 %	91.1 %
	592	568	492	-4.1 %	-13.4 %	556	520	448	93.9 %	91.5 %	91.1 %

PROPERTY DAMAGE AND ENVIRONMENTAL POLLUTION

ASOC Subdivision Description	Recorded 2011	Recorded 2012	Recorded 2013	Variance 2011-2012	Variance 2012-2013	Resolved 2011	Resolved 2012	Resolved 2013	Resolution Rate 2011	Resolution Rate 2012	Resolution Rate 2013
ENVIRONMENTAL POLLUTION	10	13	9	30.0 %	-30.8 %	3	5	5	30.0 %	38.5 %	55.6 %
PROPERTY DAMAGE	3,461	3,311	3,174	-4.3 %	-4.1 %	1,370	1,187	988	39.6 %	35.9 %	31.1 %
	3,471	3,324	3,183	-4.2 %	-4.2 %	1,373	1,192	993	39.6 %	35.9 %	31.2 %

PUBLIC ORDER OFFENCES

ASOC Subdivision Description	Recorded 2011	Recorded 2012	Recorded 2013	Variance 2011-2012	Variance 2012-2013	Resolved 2011	Resolved 2012	Resolved 2013	Resolution Rate 2011	Resolution Rate 2012	Resolution Rate 2013
DISORDERLY CONDUCT	2,186	2,017	1,933	-7.7 %	-4.2 %	1,862	1,649	1,510	85.2 %	81.8 %	78.1 %
OFFENSIVE CONDUCT	113	107	86	-5.3 %	-19.6 %	91	67	53	80.5 %	62.6 %	61.6 %
PUBLIC ORDER OFFENCES NOT FURTHER DEFINED	0	0	1	0.0 %	0.0 %	0	0	0	0.0 %	0.0 %	0.0 %
REGULATED PUBLIC ORDER OFFENCES	255	235	243	-7.8 %	3.4 %	228	189	191	89.4 %	80.4 %	78.6 %
	2,554	2,359	2,263	-7.6 %	-4.1 %	2,181	1,905	1,754	85.4 %	80.8 %	77.5 %

SUMMARY OF DISTRICT RECORDED AND RESOLVED CRIME, BY DIVISION
Years ending 31 December

OFFENCES AGAINST JUSTICE PROCEDURES, GOVERNMENT SECURITY AND GOVERNMENT OPERATIONS

ASOC Subdivision Description	Recorded 2011	Recorded 2012	Recorded 2013	Variance 2011-2012	Variance 2012-2013	Resolved 2011	Resolved 2012	Resolved 2013	Resolution Rate 2011	Resolution Rate 2012	Resolution Rate 2013
BREACH OF COMMUNITY-BASED ORDER	1,009	885	748	-12.3 %	-15.5 %	1,004	878	742	99.5 %	99.2 %	99.2 %
BREACH OF CUSTODIAL ORDER OFFENCES	40	50	39	25.0 %	-22.0 %	40	48	37	100.0 %	96.0 %	94.9 %
BREACH OF VIOLENCE AND NON-VIOLENCE RESTRAINING ORDERS	400	378	292	-5.5 %	-22.8 %	393	346	268	98.3 %	91.5 %	91.8 %
OFFENCES AGAINST GOVERNMENT OPERATIONS	23	22	18	-4.3 %	-18.2 %	20	10	5	87.0 %	45.5 %	27.8 %
OFFENCES AGAINST GOVERNMENT SECURITY	1	1	0	0.0 %	-100.0 %	0	1	0	0.0 %	100.0 %	0.0 %
OFFENCES AGAINST JUSTICE PROCEDURES	919	861	893	-6.3 %	3.7 %	915	854	888	99.6 %	99.2 %	99.4 %
OFFENCES AGAINST JUSTICE PROCEDURES, GOVERNMENT SECURITY AND GOVERNMENT OPERATIONS NOT FURTHER DEFINED	0	0	0	0.0 %	0.0 %	0	0	0	0.0 %	0.0 %	0.0 %
	2,392	2,197	1,990	-8.2 %	-9.4 %	2,372	2,137	1,940	99.2 %	97.3 %	97.5 %

MISCELLANEOUS OFFENCES

ASOC Subdivision Description	Recorded 2011	Recorded 2012	Recorded 2013	Variance 2011-2012	Variance 2012-2013	Resolved 2011	Resolved 2012	Resolved 2013	Resolution Rate 2011	Resolution Rate 2012	Resolution Rate 2013
COMMERCIAL/INDUSTRY/FINANCIAL REGULATION	7	1	3	-85.7 %	200.0 %	6	1	3	85.7 %	100.0 %	100.0 %
DEFAMATION, LIBEL AND PRIVACY OFFENCES	9	5	5	-44.4 %	0.0 %	3	1	3	33.3 %	20.0 %	60.0 %
OTHER MISCELLANEOUS OFFENCES	72	61	85	-15.3 %	39.3 %	55	44	57	76.4 %	72.1 %	67.1 %
PUBLIC HEALTH AND SAFETY OFFENCES	4	10	8	150.0 %	-20.0 %	3	9	7	75.0 %	90.0 %	87.5 %
	92	77	101	-16.3 %	31.2 %	67	55	70	72.8 %	71.4 %	69.3 %

TOTAL	36,214	31,718	31,704	-12.4 %	-0.0 %	17,543	15,274	13,852	48.4 %	48.2 %	43.7 %
--------------	---------------	---------------	---------------	----------------	---------------	---------------	---------------	---------------	---------------	---------------	---------------

PROPORTIONS OF RECORDED CRIME BY DIVISION

Years ending 31 December

ASOC Division Description	Proportions Recorded 2011	Recorded 2011	Proportions Recorded 2012	Recorded 2012	Proportions Recorded 2013	Recorded 2013
HOMICIDE AND RELATED OFFENCES	0.02 %	7	0.00 %	1	0.02 %	6
ACTS INTENDED TO CAUSE INJURY	10.10 %	3,656	11.10 %	3,521	9.89 %	3,134
SEXUAL ASSAULT AND RELATED OFFENCES	0.85 %	308	0.84 %	265	1.11 %	351
DANGEROUS OR NEGLIGENT ACTS ENDANGERING PERSONS	0.29 %	106	0.21 %	68	0.20 %	62
ABDUCTION, HARASSMENT AND OTHER RELATED OFFENCES AGAINST A PERSON	3.38 %	1,223	3.81 %	1,209	3.92 %	1,244
ROBBERY, EXTORTION AND RELATED OFFENCES	0.62 %	226	0.66 %	210	0.52 %	164
UNLAWFUL ENTRY WITH INTENT/BURGLARY, BREAK AND ENTER	16.23 %	5,876	13.99 %	4,436	13.01 %	4,126
THEFT AND RELATED OFFENCES	35.91 %	13,003	34.13 %	10,824	38.09 %	12,076
FRAUD, DECEPTION AND RELATED OFFENCES	2.31 %	838	2.80 %	887	2.93 %	929
ILLICIT DRUG OFFENCES	5.16 %	1,870	5.59 %	1,772	4.99 %	1,583
PROHIBITED AND REGULATED WEAPONS AND EXPLOSIVES OFFENCES	1.63 %	592	1.79 %	568	1.55 %	492
PROPERTY DAMAGE AND ENVIRONMENTAL POLLUTION	9.58 %	3,471	10.48 %	3,324	10.04 %	3,183
PUBLIC ORDER OFFENCES	7.05 %	2,554	7.44 %	2,359	7.14 %	2,263
OFFENCES AGAINST JUSTICE PROCEDURES, GOVERNMENT SECURITY AND GOVERNMENT OPERATIONS	6.61 %	2,392	6.93 %	2,197	6.28 %	1,990
MISCELLANEOUS OFFENCES	0.25 %	92	0.24 %	77	0.32 %	101
	100.00 %	36,214	100.00 %	31,718	100.00 %	31,704

SUMMARY OF RECORDED OFFENCES, RATE PER 10,000 POPULATION AND RESOLVED OFFENCES, BY AREA
years ending 31 December

TOTAL CRIME

Area Description	Recorded 2012	Recorded 2013	Variance 2012-2013	Recorded per 10,000 pop 2012	Recorded per 10,000 pop 2013	Per 10,000 pop % Variance 2012 to 2013	Resolved 2012	Resolved 2013	Resolution Rate 2012	Resolution Rate 2013
Auckland Motorways	107	79	-26.2 %	#DIV/0	#DIV/0	#DIV/0	90	67	84.1 %	84.8 %
North Shore	10,141	10,298	1.5 %	430.1	430.3	0.1 %	4,828	4,346	47.6 %	42.2 %
Rodney	5,131	5,260	2.5 %	483.8	487.0	0.7 %	2,212	2,114	43.1 %	40.2 %
Waitakere	16,339	16,067	-1.7 %	762.1	738.4	-3.1 %	8,144	7,325	49.8 %	45.6 %
	31,718	31,704	-0.0 %	570.2	561.2	-1.6 %	15,274	13,852	48.2 %	43.7 %

SUMMARY OF RECORDED OFFENCES, RATE PER 10,000 POPULATION AND RESOLVED OFFENCES, BY DIVISION

Years ending 31 December

HOMICIDE AND RELATED OFFENCES

Area Description	Recorded 2012	Recorded 2013	Variance 2012-2013	Recorded per 10,000 pop 2012	Recorded per 10,000 pop 2013	Per 10,000 pop % Variance 2012 to 2013	Resolved 2012	Resolved 2013	Resolution Rate 2012	Resolution Rate 2013
Auckland Motorways	0	0	0.0 %	0.0	0.0	0.0 %	0	0	0.0 %	0.0 %
North Shore	0	1	0.0 %	0.0	0.0	0.0 %	0	1	0.0 %	100.0 %
Rodney	0	1	0.0 %	0.0	0.1	0.0 %	0	1	0.0 %	100.0 %
Waitakere	1	4	300.0 %	0.0	0.2	294.1 %	0	4	0.0 %	100.0 %
	1	6	500.0 %	0.0	0.1	490.8 %	0	6	0.0 %	100.0 %

ACTS INTENDED TO CAUSE INJURY

Area Description	Recorded 2012	Recorded 2013	Variance 2012-2013	Recorded per 10,000 pop 2012	Recorded per 10,000 pop 2013	Per 10,000 pop % Variance 2012 to 2013	Resolved 2012	Resolved 2013	Resolution Rate 2012	Resolution Rate 2013
Auckland Motorways	12	6	-50.0 %	#DIV/0	#DIV/0	#DIV/0	10	6	83.3 %	100.0 %
North Shore	1,065	900	-15.5 %	45.2	37.6	-16.7 %	883	716	82.9 %	79.6 %
Rodney	478	410	-14.2 %	45.1	38.0	-15.8 %	358	312	74.9 %	76.1 %
Waitakere	1,966	1,818	-7.5 %	91.7	83.5	-8.9 %	1,685	1,465	85.7 %	80.6 %
	3,521	3,134	-11.0 %	63.3	55.5	-12.4 %	2,936	2,499	83.4 %	79.7 %

SEXUAL ASSAULT AND RELATED OFFENCES

Area Description	Recorded 2012	Recorded 2013	Variance 2012-2013	Recorded per 10,000 pop 2012	Recorded per 10,000 pop 2013	Per 10,000 pop % Variance 2012 to 2013	Resolved 2012	Resolved 2013	Resolution Rate 2012	Resolution Rate 2013
Auckland Motorways	0	0	0.0 %	0.0	0.0	0.0 %	0	0	0.0 %	0.0 %
North Shore	105	130	23.8 %	4.5	5.4	22.0 %	66	92	62.9 %	70.8 %
Rodney	27	31	14.8 %	2.5	2.9	12.7 %	11	20	40.7 %	64.5 %
Waitakere	133	190	42.9 %	6.2	8.7	40.8 %	76	109	57.1 %	57.4 %
	265	351	32.5 %	4.8	6.2	30.4 %	153	221	57.7 %	63.0 %

DANGEROUS OR NEGLIGENT ACTS ENDANGERING PERSONS

Area Description	Recorded 2012	Recorded 2013	Variance 2012-2013	Recorded per 10,000 pop 2012	Recorded per 10,000 pop 2013	Per 10,000 pop % Variance 2012 to 2013	Resolved 2012	Resolved 2013	Resolution Rate 2012	Resolution Rate 2013
Auckland Motorways	6	0	-100.0 %	#DIV/0	0.0	#DIV/0	2	0	33.3 %	0.0 %
North Shore	21	28	33.3 %	0.9	1.2	31.4 %	12	18	57.1 %	64.3 %
Rodney	10	3	-70.0 %	0.9	0.3	-70.5 %	6	2	60.0 %	66.7 %
Waitakere	31	31	0.0 %	1.4	1.4	-1.5 %	20	18	64.5 %	58.1 %
	68	62	-8.8 %	1.2	1.1	-10.2 %	40	38	58.8 %	61.3 %

ABDUCTION, HARASSMENT AND OTHER RELATED OFFENCES AGAINST A PERSON

Area Description	Recorded 2012	Recorded 2013	Variance 2012-2013	Recorded per 10,000 pop 2012	Recorded per 10,000 pop 2013	Per 10,000 pop % Variance 2012 to 2013	Resolved 2012	Resolved 2013	Resolution Rate 2012	Resolution Rate 2013
Auckland Motorways	3	2	-33.3 %	#DIV/0	#DIV/0	#DIV/0	3	2	100.0 %	100.0 %
North Shore	399	397	-0.5 %	16.9	16.6	-2.0 %	277	199	69.4 %	50.1 %
Rodney	215	220	2.3 %	20.3	20.4	0.5 %	146	122	67.9 %	55.5 %
Waitakere	592	625	5.6 %	27.6	28.7	4.0 %	408	335	68.9 %	53.6 %
	1,209	1,244	2.9 %	21.7	22.0	1.3 %	834	658	69.0 %	52.9 %

SUMMARY OF RECORDED OFFENCES, RATE PER 10,000 POPULATION AND RESOLVED OFFENCES, BY DIVISION

Years ending 31 December

ROBBERY, EXTORTION AND RELATED OFFENCES

Area Description	Recorded 2012	Recorded 2013	Variance 2012-2013	Recorded per 10,000 pop 2012	Recorded per 10,000 pop 2013	Per 10,000 pop % Variance 2012 to 2013	Resolved 2012	Resolved 2013	Resolution Rate 2012	Resolution Rate 2013
Auckland Motorways	0	0	0.0 %	0.0	0.0	0.0 %	0	0	0.0 %	0.0 %
North Shore	62	46	-25.8 %	2.6	1.9	-26.9 %	25	12	40.3 %	26.1 %
Rodney	13	11	-15.4 %	1.2	1.0	-16.9 %	6	4	46.2 %	36.4 %
Waitakere	135	107	-20.7 %	6.3	4.9	-21.9 %	49	44	36.3 %	41.1 %
	210	164	-21.9 %	3.8	2.9	-23.1 %	80	60	38.1 %	36.6 %

UNLAWFUL ENTRY WITH INTENT/BURGLARY, BREAK AND ENTER

Area Description	Recorded 2012	Recorded 2013	Variance 2012-2013	Recorded per 10,000 pop 2012	Recorded per 10,000 pop 2013	Per 10,000 pop % Variance 2012 to 2013	Resolved 2012	Resolved 2013	Resolution Rate 2012	Resolution Rate 2013
Auckland Motorways	1	1	0.0 %	#DIV/0	#DIV/0	#DIV/0	0	0	0.0 %	0.0 %
North Shore	1,247	1,265	1.4 %	52.9	52.9	-0.0 %	135	163	10.8 %	12.9 %
Rodney	697	767	10.0 %	65.7	71.0	8.1 %	117	114	16.8 %	14.9 %
Waitakere	2,491	2,093	-16.0 %	116.2	96.2	-17.2 %	327	273	13.1 %	13.0 %
	4,436	4,126	-7.0 %	79.7	73.0	-8.4 %	579	550	13.1 %	13.3 %

THEFT AND RELATED OFFENCES

Area Description	Recorded 2012	Recorded 2013	Variance 2012-2013	Recorded per 10,000 pop 2012	Recorded per 10,000 pop 2013	Per 10,000 pop % Variance 2012 to 2013	Resolved 2012	Resolved 2013	Resolution Rate 2012	Resolution Rate 2013
Auckland Motorways	22	7	-68.2 %	#DIV/0	#DIV/0	#DIV/0	14	5	63.6 %	71.4 %
North Shore	3,832	4,241	10.7 %	162.5	177.2	9.1 %	1,042	981	27.2 %	23.1 %
Rodney	1,687	1,996	18.3 %	159.1	184.8	16.2 %	359	416	21.3 %	20.8 %
Waitakere	5,283	5,832	10.4 %	246.4	268.0	8.8 %	1,339	1,254	25.3 %	21.5 %
	10,824	12,076	11.6 %	194.6	213.8	9.9 %	2,754	2,656	25.4 %	22.0 %

FRAUD, DECEPTION AND RELATED OFFENCES

Area Description	Recorded 2012	Recorded 2013	Variance 2012-2013	Recorded per 10,000 pop 2012	Recorded per 10,000 pop 2013	Per 10,000 pop % Variance 2012 to 2013	Resolved 2012	Resolved 2013	Resolution Rate 2012	Resolution Rate 2013
Auckland Motorways	0	0	0.0 %	0.0	0.0	0.0 %	0	0	0.0 %	0.0 %
North Shore	418	399	-4.5 %	17.7	16.7	-5.9 %	208	214	49.8 %	53.6 %
Rodney	129	170	31.8 %	12.2	15.7	29.4 %	62	100	48.1 %	58.8 %
Waitakere	340	360	5.9 %	15.9	16.5	4.3 %	132	162	38.8 %	45.0 %
	887	929	4.7 %	15.9	16.4	3.1 %	402	476	45.3 %	51.2 %

ILLICIT DRUG OFFENCES

Area Description	Recorded 2012	Recorded 2013	Variance 2012-2013	Recorded per 10,000 pop 2012	Recorded per 10,000 pop 2013	Per 10,000 pop % Variance 2012 to 2013	Resolved 2012	Resolved 2013	Resolution Rate 2012	Resolution Rate 2013
Auckland Motorways	19	25	31.6 %	#DIV/0	#DIV/0	#DIV/0	19	23	100.0 %	92.0 %
North Shore	529	503	-4.9 %	22.4	21.0	-6.3 %	504	473	95.3 %	94.0 %
Rodney	400	355	-11.3 %	37.7	32.9	-12.9 %	368	317	92.0 %	89.3 %
Waitakere	824	700	-15.0 %	38.4	32.2	-16.3 %	796	670	96.6 %	95.7 %
	1,772	1,583	-10.7 %	31.9	28.0	-12.0 %	1,687	1,483	95.2 %	93.7 %

SUMMARY OF RECORDED OFFENCES, RATE PER 10,000 POPULATION AND RESOLVED OFFENCES, BY DIVISION

Years ending 31 December

PROHIBITED AND REGULATED WEAPONS AND EXPLOSIVES OFFENCES

Area Description	Recorded 2012	Recorded 2013	Variance 2012-2013	Recorded per 10,000 pop 2012	Recorded per 10,000 pop 2013	Per 10,000 pop % Variance 2012 to 2013	Resolved 2012	Resolved 2013	Resolution Rate 2012	Resolution Rate 2013
Auckland Motorways	4	2	-50.0 %	#DIV/0	#DIV/0	#DIV/0	4	1	100.0 %	50.0 %
North Shore	145	121	-16.6 %	6.1	5.1	-17.8 %	131	109	90.3 %	90.1 %
Rodney	114	118	3.5 %	10.7	10.9	1.6 %	100	104	87.7 %	88.1 %
Waitakere	305	251	-17.7 %	14.2	11.5	-18.9 %	285	234	93.4 %	93.2 %
	568	492	-13.4 %	10.2	8.7	-14.7 %	520	448	91.5 %	91.1 %

PROPERTY DAMAGE AND ENVIRONMENTAL POLLUTION

Area Description	Recorded 2012	Recorded 2013	Variance 2012-2013	Recorded per 10,000 pop 2012	Recorded per 10,000 pop 2013	Per 10,000 pop % Variance 2012 to 2013	Resolved 2012	Resolved 2013	Resolution Rate 2012	Resolution Rate 2013
Auckland Motorways	9	4	-55.6 %	#DIV/0	#DIV/0	#DIV/0	8	2	88.9 %	50.0 %
North Shore	1,021	993	-2.7 %	43.3	41.5	-4.2 %	396	270	38.8 %	27.2 %
Rodney	701	617	-12.0 %	66.1	57.1	-13.6 %	155	162	22.1 %	26.3 %
Waitakere	1,593	1,569	-1.5 %	74.3	72.1	-3.0 %	633	559	39.7 %	35.6 %
	3,324	3,183	-4.2 %	59.8	56.3	-5.7 %	1,192	993	35.9 %	31.2 %

PUBLIC ORDER OFFENCES

Area Description	Recorded 2012	Recorded 2013	Variance 2012-2013	Recorded per 10,000 pop 2012	Recorded per 10,000 pop 2013	Per 10,000 pop % Variance 2012 to 2013	Resolved 2012	Resolved 2013	Resolution Rate 2012	Resolution Rate 2013
Auckland Motorways	16	8	-50.0 %	#DIV/0	#DIV/0	#DIV/0	16	8	100.0 %	100.0 %
North Shore	766	755	-1.4 %	32.5	31.6	-2.9 %	647	604	84.5 %	80.0 %
Rodney	419	368	-12.2 %	39.5	34.1	-13.8 %	312	264	74.5 %	71.7 %
Waitakere	1,158	1,132	-2.2 %	54.0	52.0	-3.7 %	930	878	80.3 %	77.6 %
	2,359	2,263	-4.1 %	42.4	40.1	-5.5 %	1,905	1,754	80.8 %	77.5 %

OFFENCES AGAINST JUSTICE PROCEDURES, GOVERNMENT SECURITY AND GOVERNMENT OPERATIONS

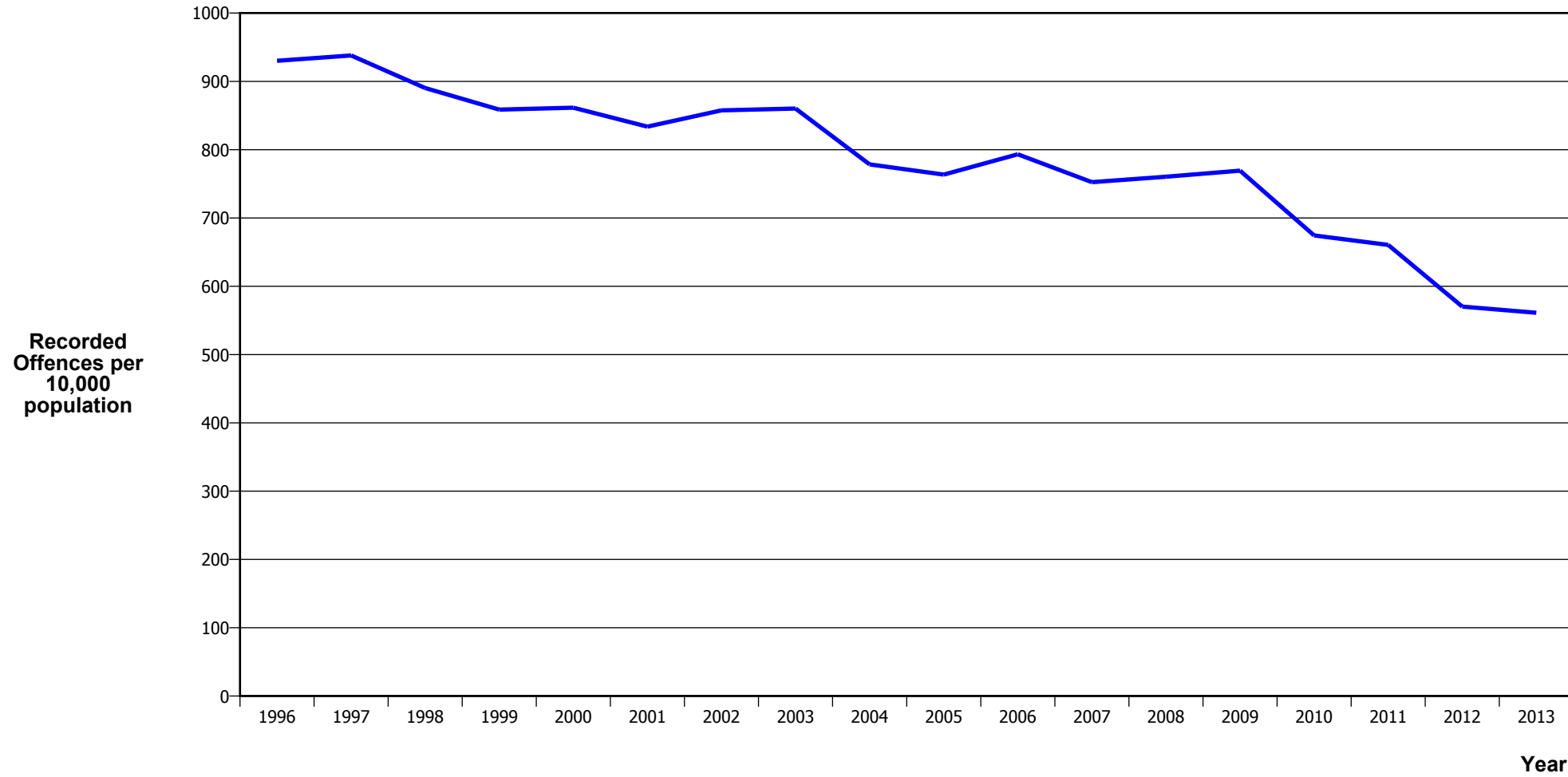
Area Description	Recorded 2012	Recorded 2013	Variance 2012-2013	Recorded per 10,000 pop 2012	Recorded per 10,000 pop 2013	Per 10,000 pop % Variance 2012 to 2013	Resolved 2012	Resolved 2013	Resolution Rate 2012	Resolution Rate 2013
Auckland Motorways	15	22	46.7 %	#DIV/0	#DIV/0	#DIV/0	14	18	93.3 %	81.8 %
North Shore	506	472	-6.7 %	21.5	19.7	-8.1 %	486	458	96.0 %	97.0 %
Rodney	215	172	-20.0 %	20.3	15.9	-21.4 %	193	162	89.8 %	94.2 %
Waitakere	1,461	1,324	-9.4 %	68.1	60.8	-10.7 %	1,444	1,302	98.8 %	98.3 %
	2,197	1,990	-9.4 %	39.5	35.2	-10.8 %	2,137	1,940	97.3 %	97.5 %

MISCELLANEOUS OFFENCES

Area Description	Recorded 2012	Recorded 2013	Variance 2012-2013	Recorded per 10,000 pop 2012	Recorded per 10,000 pop 2013	Per 10,000 pop % Variance 2012 to 2013	Resolved 2012	Resolved 2013	Resolution Rate 2012	Resolution Rate 2013
Auckland Motorways	0	2	0.0 %	0.0	#DIV/0	#DIV/0	0	2	0.0 %	100.0 %
North Shore	25	47	88.0 %	1.1	2.0	85.3 %	16	36	64.0 %	76.6 %
Rodney	26	21	-19.2 %	2.5	1.9	-20.7 %	19	14	73.1 %	66.7 %
Waitakere	26	31	19.2 %	1.2	1.4	17.5 %	20	18	76.9 %	58.1 %
	77	101	31.2 %	1.4	1.8	29.2 %	55	70	71.4 %	69.3 %

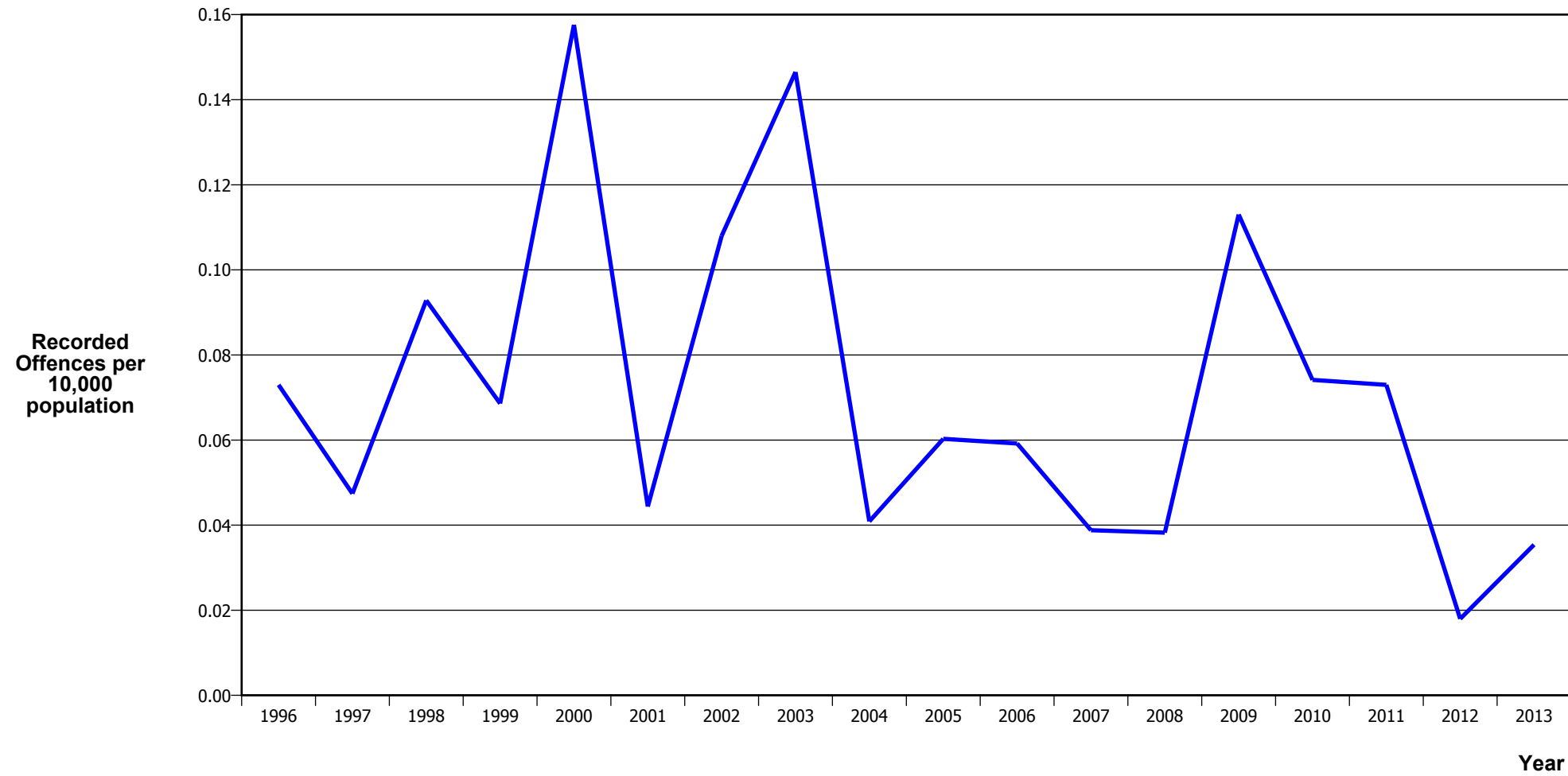
CRIME TRENDS

TOTAL CRIME



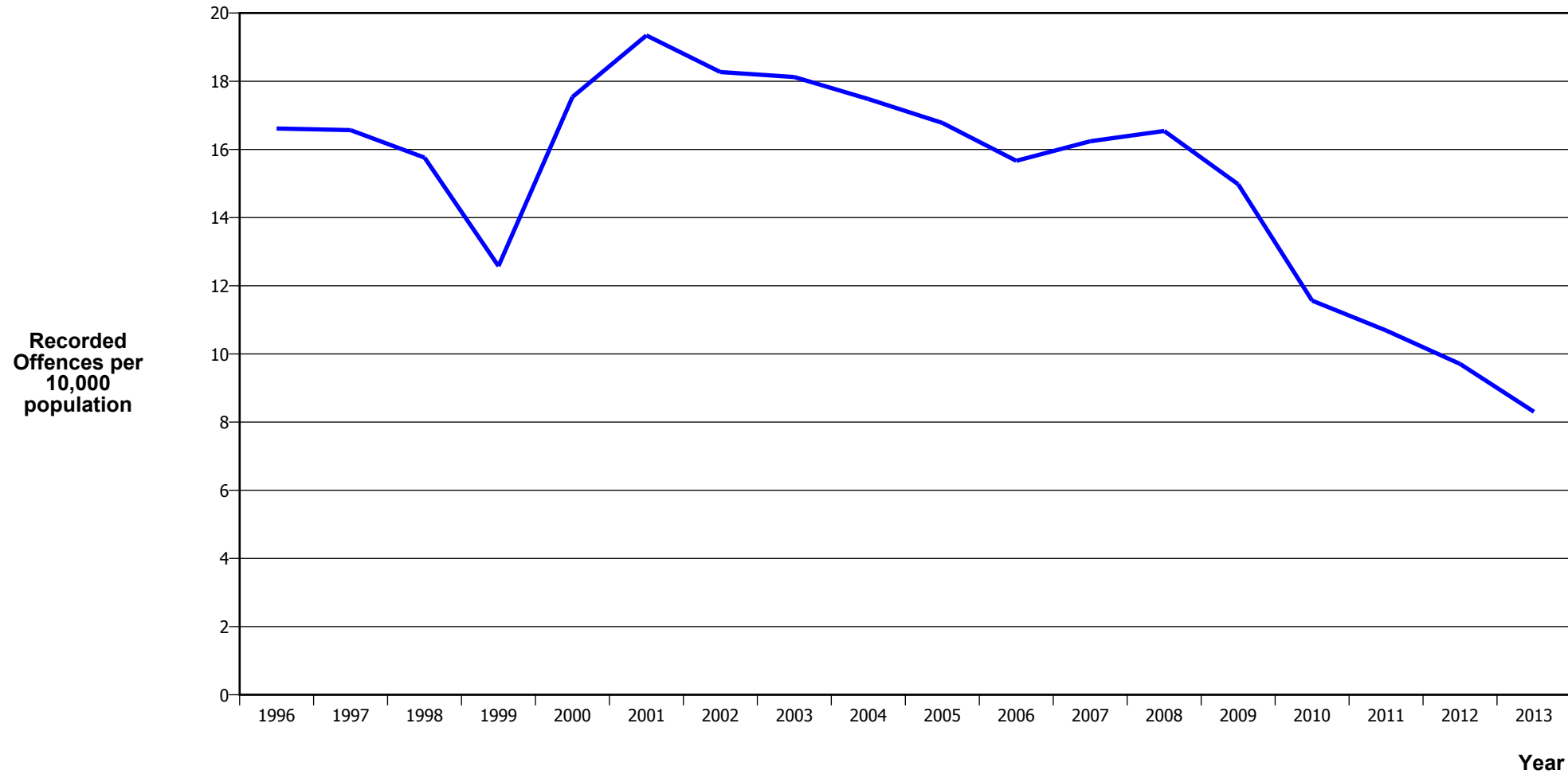
Calendar Year	1996	1997	1998	1999	2000	2001	2002	2003	2004	2005	2006	2007	2008	2009	2010	2011	2012	2013
Recorded Offences	38,242	39,575	38,356	37,554	38,266	37,583	39,710	41,106	38,074	37,996	40,206	38,784	39,763	40,835	36,392	36,214	31,718	31,704
Recorded per 10,000 Population	930.2	937.9	890.3	858.7	861.5	833.7	857.6	860.3	778.4	763.5	793.2	752.4	760.3	769.3	674.5	660.6	570.2	561.2

MURDER



Calendar Year	1996	1997	1998	1999	2000	2001	2002	2003	2004	2005	2006	2007	2008	2009	2010	2011	2012	2013
Recorded Offences	3	2	4	3	7	2	5	7	2	3	3	2	2	6	4	4	1	2
Recorded per 10,000 Population	0.07	0.05	0.09	0.07	0.16	0.04	0.11	0.15	0.04	0.06	0.06	0.04	0.04	0.11	0.07	0.07	0.02	0.04

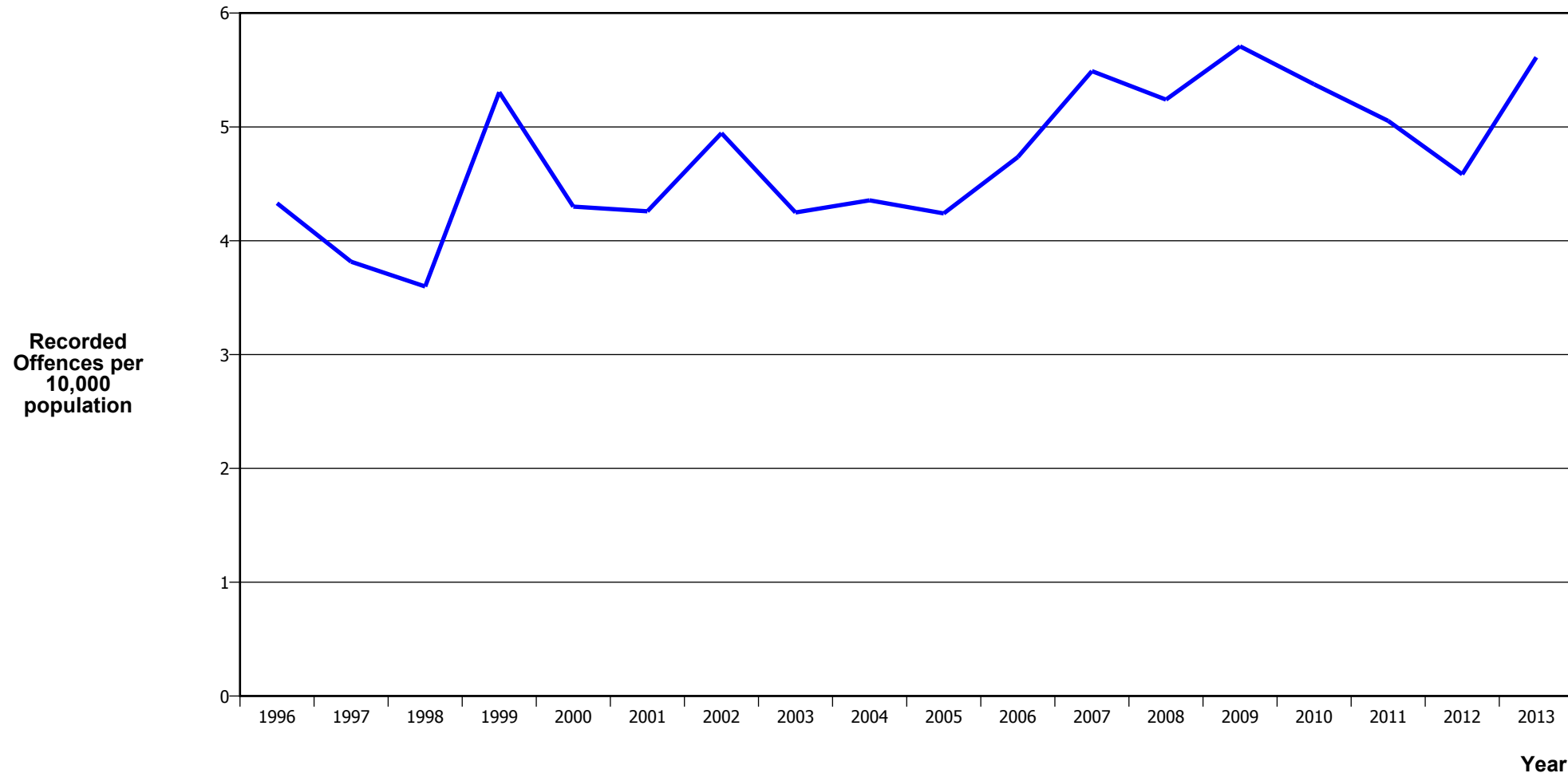
SERIOUS ASSAULTS RESULTING IN INJURY*



Calendar Year	1996	1997	1998	1999	2000	2001	2002	2003	2004	2005	2006	2007	2008	2009	2010	2011	2012	2013
Recorded Offence	683	699	679	550	779	872	846	866	855	835	794	837	865	795	624	586	540	469
Offence Rate per 10K Popn	16.6	16.6	15.8	12.6	17.5	19.3	18.3	18.1	17.5	16.8	15.7	16.2	16.5	15.0	11.6	10.7	9.7	8.3

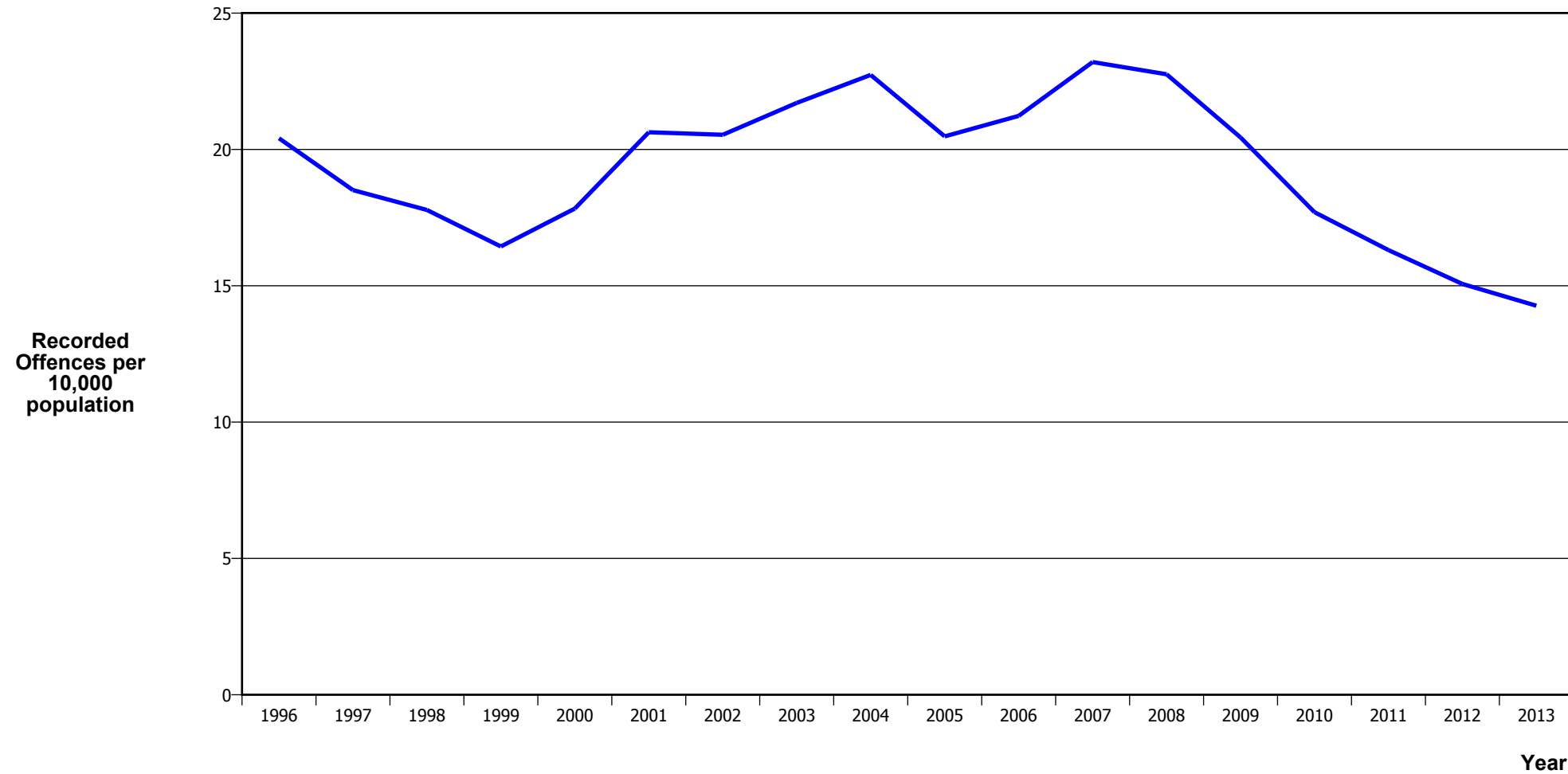
* This measure excludes common assaults

SEXUAL ASSAULTS



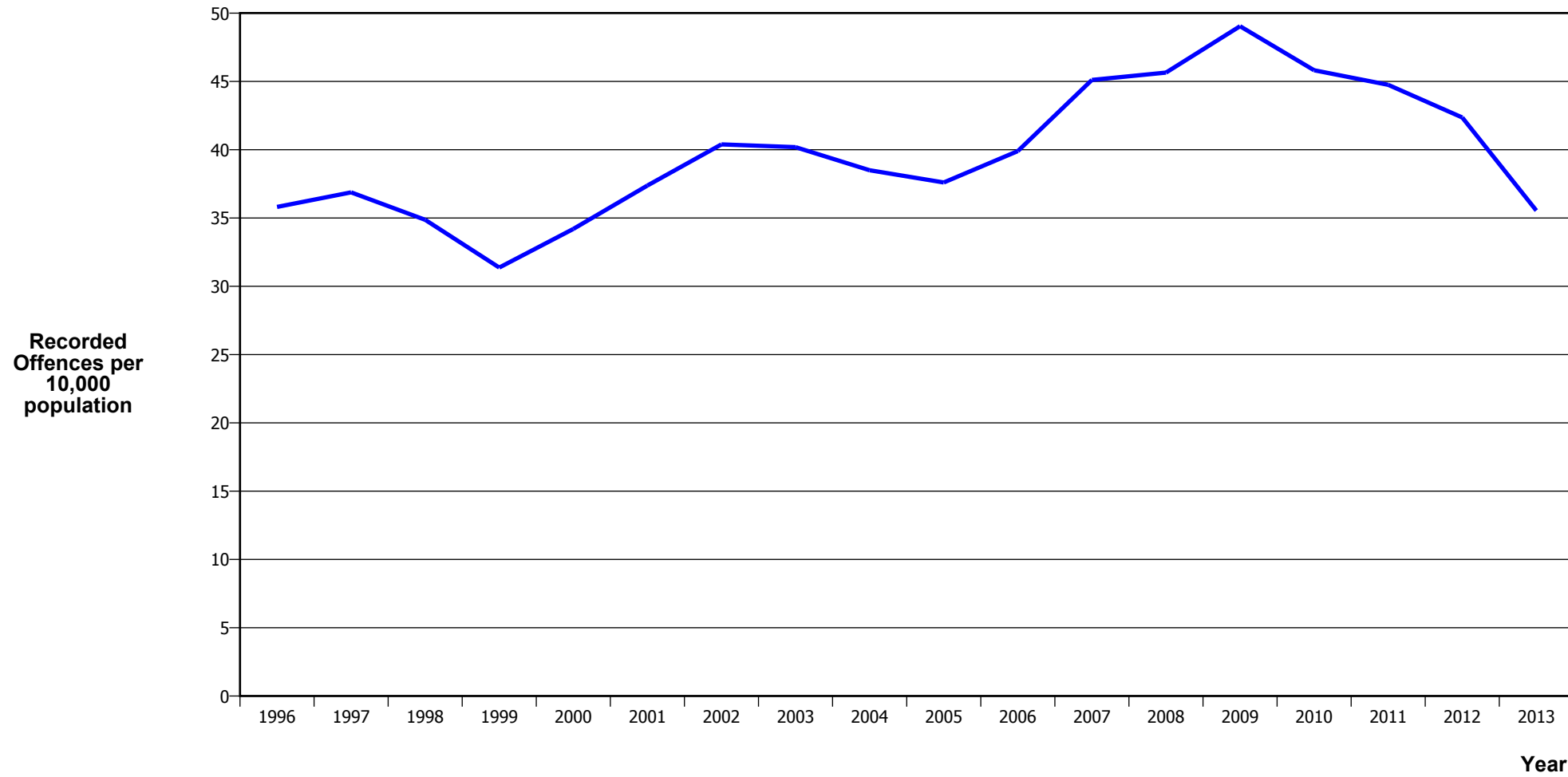
Calendar Year	1996	1997	1998	1999	2000	2001	2002	2003	2004	2005	2006	2007	2008	2009	2010	2011	2012	2013
Recorded Offences	178	161	155	232	191	192	229	203	213	211	240	283	274	303	290	277	255	317
Recorded per 10,000 Population	4.3	3.8	3.6	5.3	4.3	4.3	4.9	4.2	4.4	4.2	4.7	5.5	5.2	5.7	5.4	5.1	4.6	5.6

PUBLIC PLACE ASSAULTS



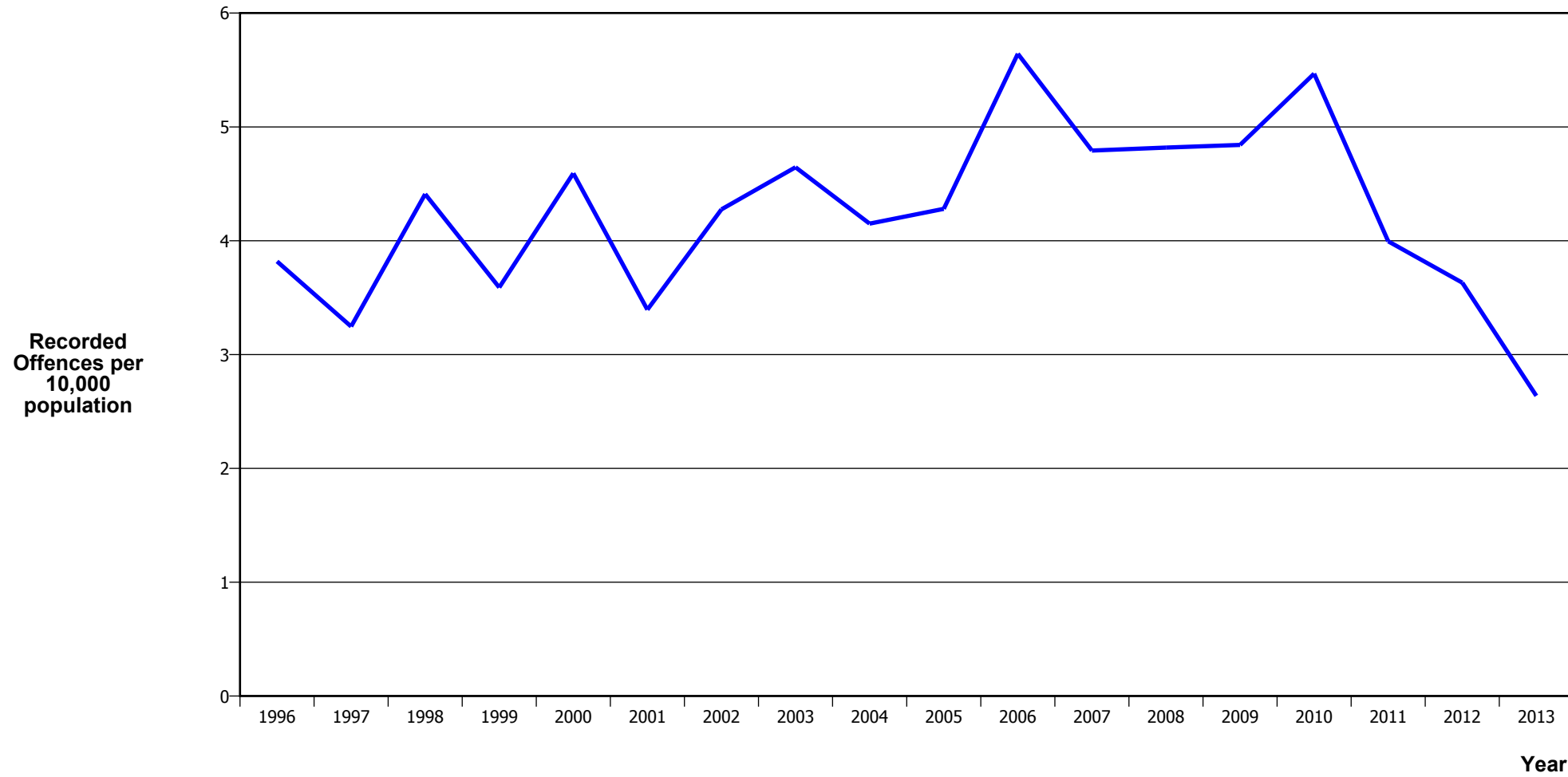
Calendar Year	1996	1997	1998	1999	2000	2001	2002	2003	2004	2005	2006	2007	2008	2009	2010	2011	2012	2013
Recorded Offences	839	781	766	719	792	930	951	1,037	1,112	1,019	1,076	1,196	1,190	1,085	955	894	838	806
Recorded per 10,000 Population	20.4	18.5	17.8	16.4	17.8	20.6	20.5	21.7	22.7	20.5	21.2	23.2	22.8	20.4	17.7	16.3	15.1	14.3

DWELLING ASSAULTS



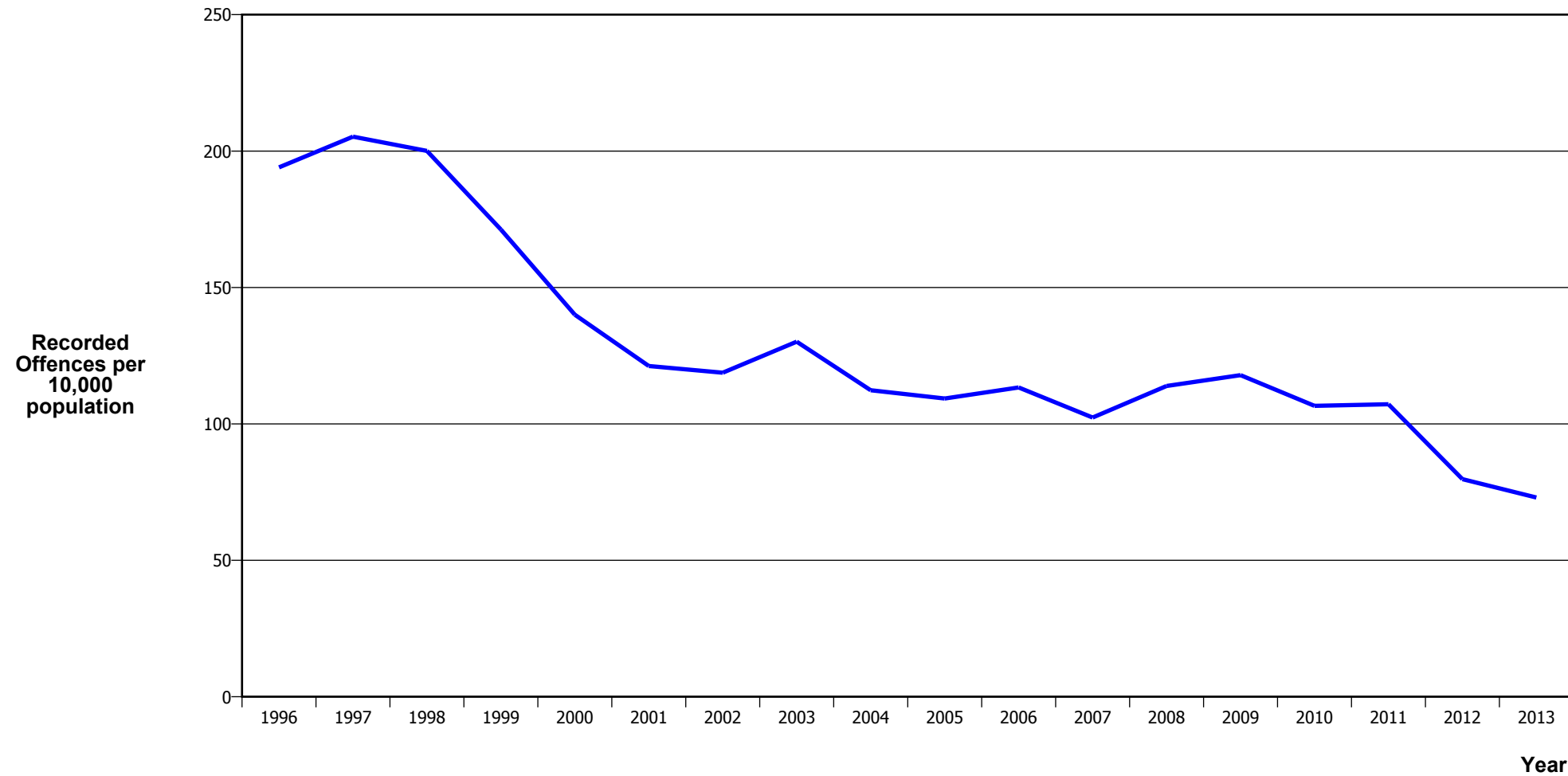
Calendar Year	1996	1997	1998	1999	2000	2001	2002	2003	2004	2005	2006	2007	2008	2009	2010	2011	2012	2013
Recorded Offences	1,472	1,556	1,502	1,372	1,519	1,685	1,870	1,920	1,883	1,871	2,022	2,325	2,387	2,603	2,472	2,453	2,356	2,008
Recorded per 10,000 Population	35.8	36.9	34.9	31.4	34.2	37.4	40.4	40.2	38.5	37.6	39.9	45.1	45.6	49.0	45.8	44.7	42.4	35.5

ROBBERY



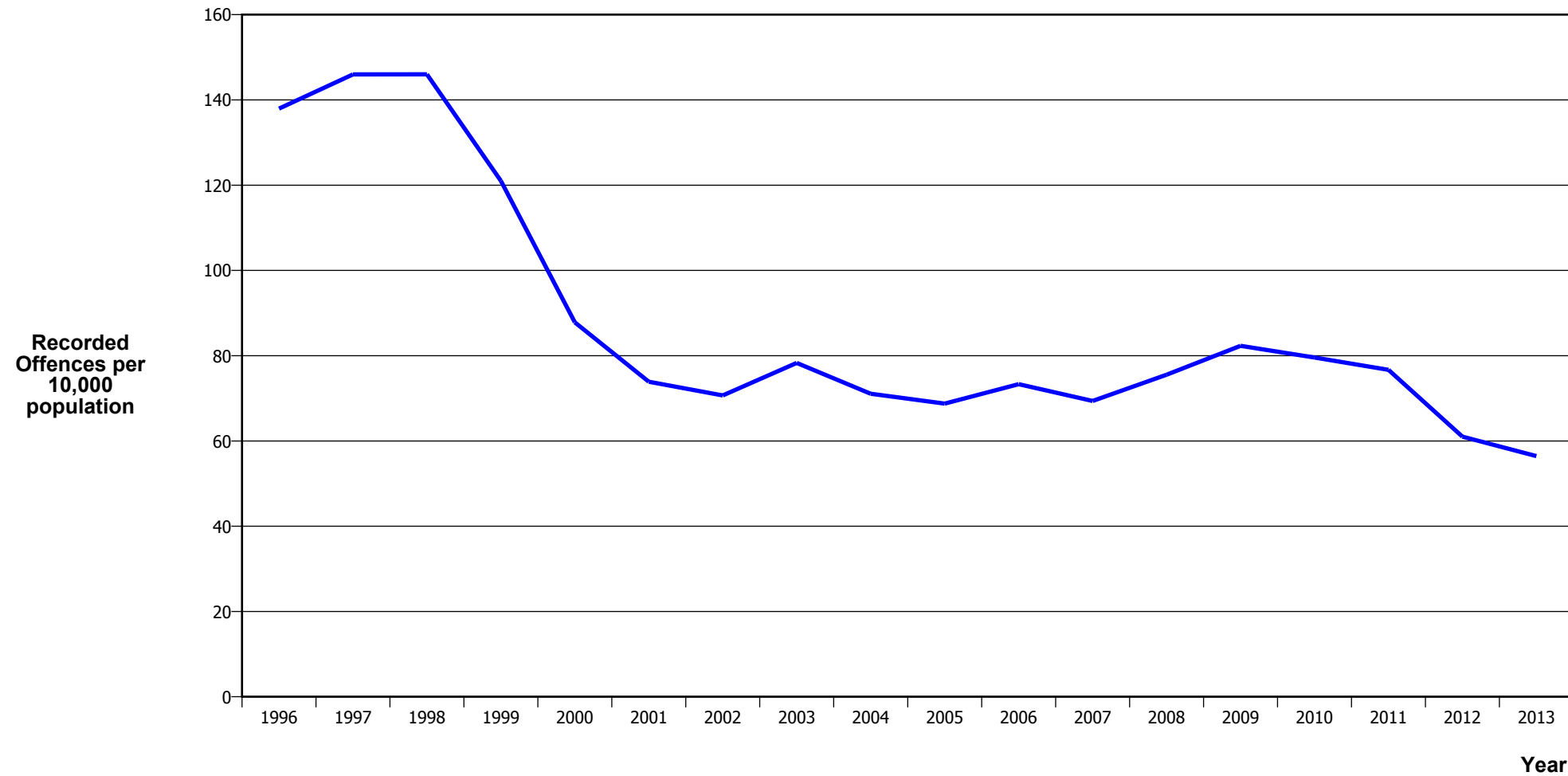
Calendar Year	1996	1997	1998	1999	2000	2001	2002	2003	2004	2005	2006	2007	2008	2009	2010	2011	2012	2013
Recorded Offences	157	137	190	157	204	153	198	222	203	213	286	247	252	257	295	219	202	149
Recorded per 10,000 Population	3.8	3.2	4.4	3.6	4.6	3.4	4.3	4.6	4.2	4.3	5.6	4.8	4.8	4.8	5.5	4.0	3.6	2.6

BURGLARY (TOTAL)



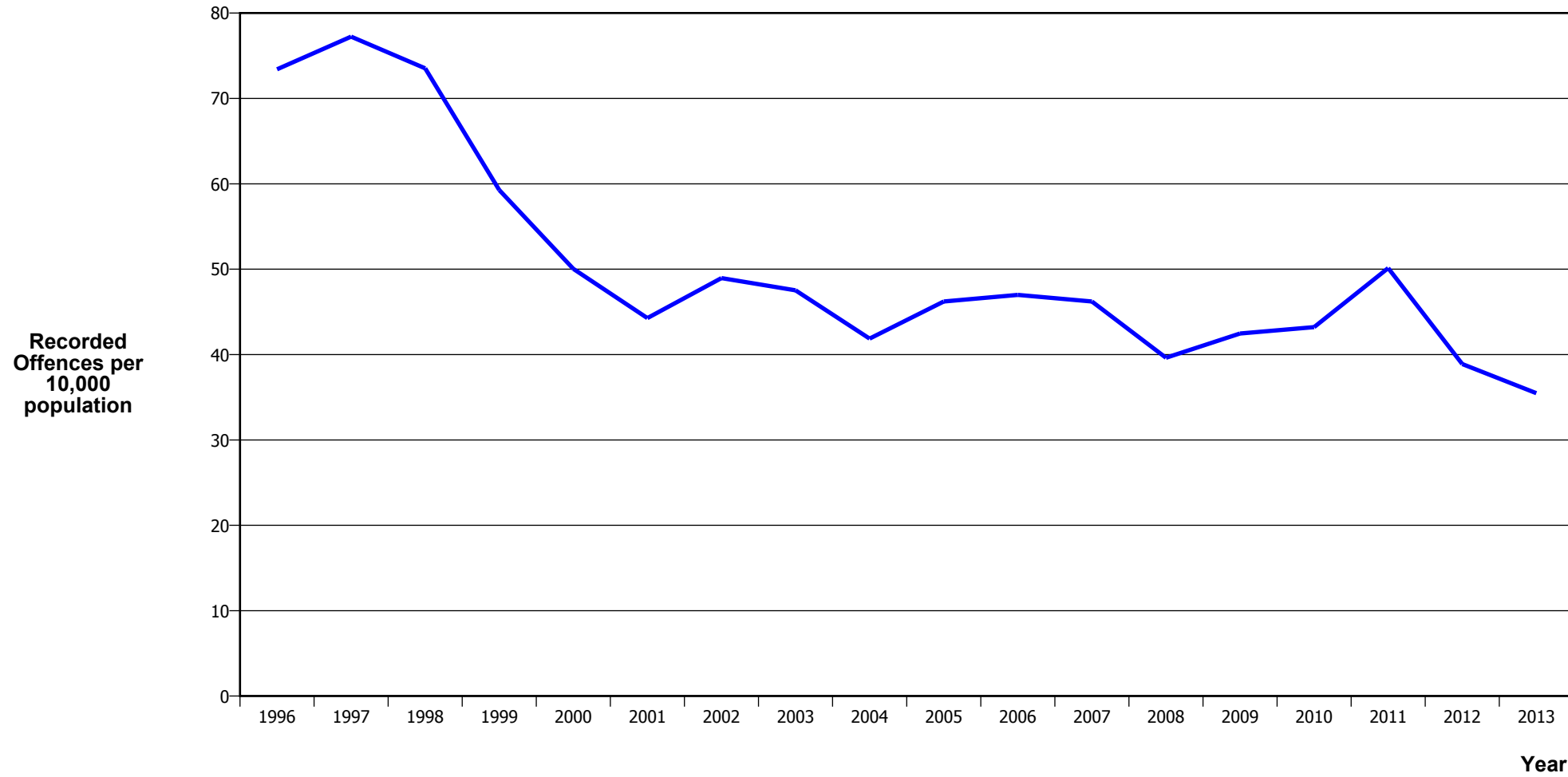
Calendar Year	1996	1997	1998	1999	2000	2001	2002	2003	2004	2005	2006	2007	2008	2009	2010	2011	2012	2013
Recorded Offences	7,977	8,662	8,620	7,489	6,220	5,464	5,500	6,219	5,496	5,439	5,746	5,276	5,956	6,257	5,752	5,876	4,436	4,126
Recorded per 10,000 Population	194.0	205.3	200.1	171.2	140.0	121.2	118.8	130.2	112.4	109.3	113.4	102.4	113.9	117.9	106.6	107.2	79.7	73.0

BURGLARY (DWELLING)



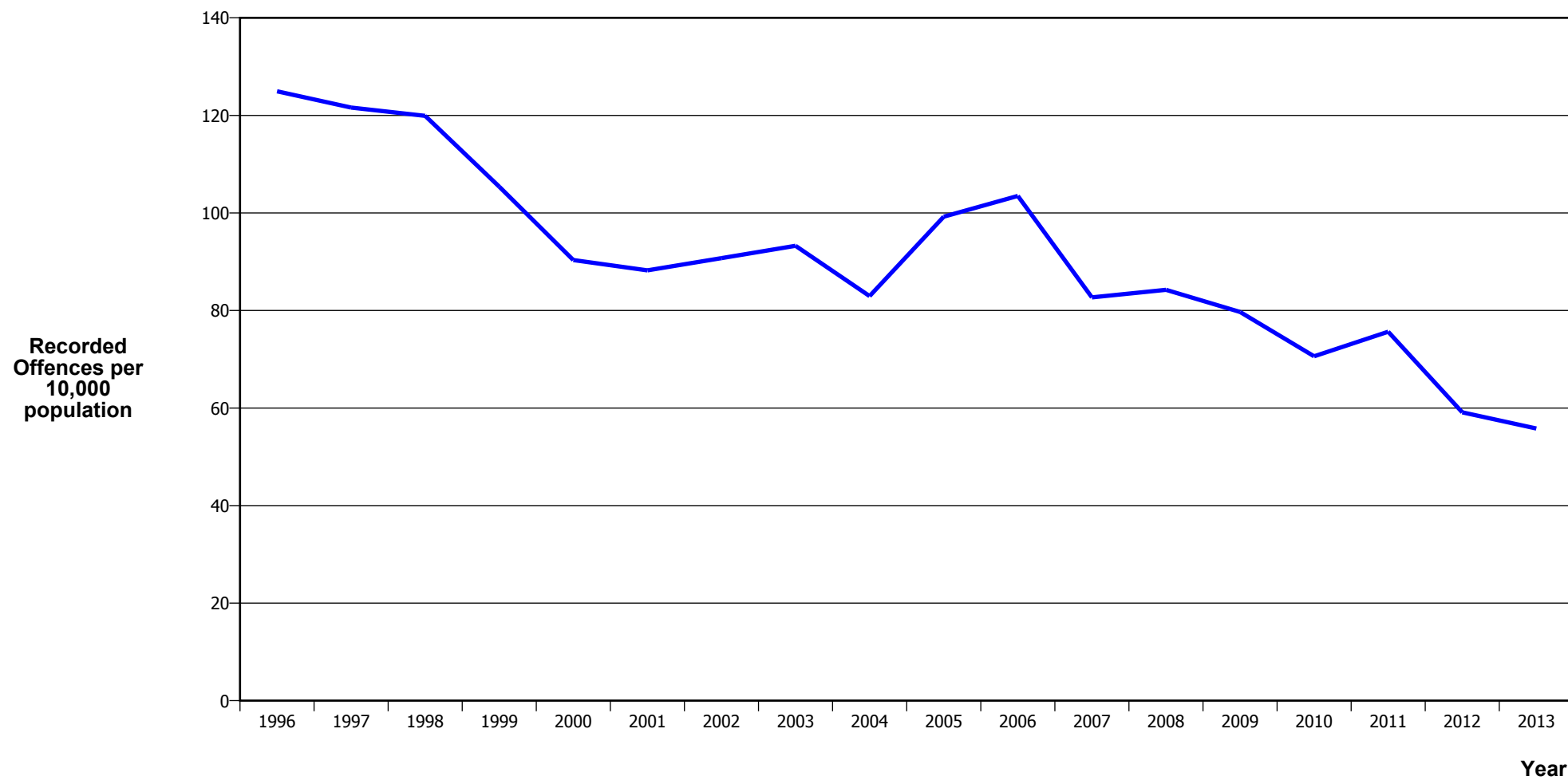
Calendar Year	1996	1997	1998	1999	2000	2001	2002	2003	2004	2005	2006	2007	2008	2009	2010	2011	2012	2013
Recorded Offences	5,672	6,160	6,290	5,292	3,901	3,331	3,273	3,742	3,477	3,422	3,716	3,576	3,951	4,370	4,294	4,204	3,394	3,189
Recorded per 10,000 Population	138.0	146.0	146.0	121.0	87.8	73.9	70.7	78.3	71.1	68.8	73.3	69.4	75.6	82.3	79.6	76.7	61.0	56.5

VEHICLES STOLEN



Calendar Year	1996	1997	1998	1999	2000	2001	2002	2003	2004	2005	2006	2007	2008	2009	2010	2011	2012	2013
Recorded Offences	3,018	3,259	3,168	2,592	2,223	1,996	2,267	2,271	2,048	2,300	2,382	2,382	2,072	2,254	2,332	2,748	2,163	2,004
Recorded per 10,000 Population	73.4	77.2	73.5	59.3	50.0	44.3	49.0	47.5	41.9	46.2	47.0	46.2	39.6	42.5	43.2	50.1	38.9	35.5

THEFT EX CAR



Calendar Year	1996	1997	1998	1999	2000	2001	2002	2003	2004	2005	2006	2007	2008	2009	2010	2011	2012	2013
Recorded Offences	5,137	5,131	5,166	4,609	4,013	3,977	4,202	4,456	4,057	4,939	5,245	4,262	4,405	4,231	3,810	4,147	3,289	3,153
Recorded per 10,000 Population	125.0	121.6	119.9	105.4	90.3	88.2	90.7	93.3	82.9	99.2	103.5	82.7	84.2	79.7	70.6	75.6	59.1	55.8

Population Data

Population data is used in this release to calculate crime rates. They have been derived from population estimates as at 30 June each year that have been obtained from Statistics New Zealand.

The estimated resident population is based on the census usually resident population count, with adjustments for residents missed or counted more than once by the census (net census undercount), and for residents temporarily overseas on census night.

These population estimates exclude the number of international students who are studying in New Zealand for less than 12 months.

Year	Population
1996	411,110
1997	421,950
1998	430,830
1999	437,320
2000	444,180
2001	450,810
2002	463,060
2003	477,830
2004	489,140
2005	497,660
2006	506,860
2007	515,450
2008	522,960
2009	530,840
2010	539,560
2011	548,190
2012	556,250
2013	564,900

General Definitions

Recorded Offences: the number of breaches of the New Zealand law recorded by Police. This includes offences specified in the Crimes Act and other legislations, such as the Summary Offences Act, Local Government Act, etc.

Resolved Offences: the number of recorded offences where an offender has been identified and dealt with (e.g. warned, cautioned, prosecuted, etc).

Resolution Rate: the proportion of recorded offences that have been resolved.

Recorded per 10,000 population: the number of recorded offences for every 10,000 people. This is also referred as the crime rate per 10,000 population.

ANZSOC: The Australian and New Zealand Standard Offence Classification. The offence classification is divided into 16 major offence divisions.

Definition of ANZSOC Divisions

1. Homicide and related offences: Unlawfully kill, attempt to unlawfully kill or conspiracy to kill another person.
2. Acts intended to cause injury: Acts, excluding attempted murder and those resulting in death, which are intended to cause non-fatal injury or harm to another person and where there is no sexual or acquisitive element.
3. Sexual assault and related offences: Acts, or intent of acts, of a sexual nature against another person, which are non-consensual or where consent is proscribed.
4. Dangerous or negligent acts endangering persons: Dangerous or negligent acts which, though not intended to cause harm, actually or potentially result in injury to oneself or another person.
5. Abduction, harassment and other offences against person: Acts intended to threaten or harass, or acts that unlawfully deprive another person of their freedom of movement, that are against that person's will or against the will of any parent, guardian or other person having lawful custody or care of that person.
6. Robbery, extortion and related offences: Acts intended to unlawfully gain money, property or other items of value from, or to cause detriment to, another person by using the threat of force or any other coercive measure.
7. Unlawful entry with intent / burglary, break and enter: The unlawful entry of a structure with the intent to commit an offence, where the entry is either forced or unforced.
8. Theft and related and offences: The unlawful taking or obtaining of money or goods, not involving the use of force or violence, coercion or deception, with intent to permanently or temporarily deprive the owner or possessor of the use of the money or goods, or the receiving or handling of money or goods obtained unlawfully.

9. Fraud, deception and related offences: Offences involving a dishonest act or omission carried out with the purpose of deceiving to obtain a benefit.

10. Illicit drug offences: The possessing, selling, dealing or trafficking, importing or exporting, manufacturing or cultivating of drugs or other substances prohibited under legislation.

11. Prohibited and regulated weapons and explosives offences: Offences involving prohibited or regulated weapons and explosives. Those offences also involving assault, sexual assault or robbery are coded to the relevant group within Assault, Sexual assaults and Robbery respectively.

12. Property damage and environmental pollution: The wilful and unlawful destruction, damage or defacement of public or private property, or the pollution of property or a definable entity held in common by the community.

13. Public order offences: Offences relating personal conduct that involves, or may lead to, a breach of public order or decency, or that is indicative of criminal intent, or that is otherwise regulated or prohibited on moral or ethical grounds. In general these offences do not involve a specific victim or victims; however some offences, such as offensive language and offensive behaviour, may be directed towards a single victim.

14. Traffic and vehicle regulatory offences: Offences relating to vehicles and most forms of traffic, including offences pertaining to the licensing, registration, roadworthiness, or use of vehicles, bicycle offences and pedestrian offences.

15. Offences against justice procedures, government security and government operations: An act or omission that is deemed to be prejudicial to the effective carrying out of justice procedures or any government operations. This includes general government operations as well as those specifically concerned with maintaining government security.

16. Miscellaneous offences: Offences involving the breach of statutory rules or regulations governing activities that are prima facie legal, where such offences are not explicitly dealt with under any other division. If an offence is specified under regulation and involves an act that would be illegal under common law or general criminal legislation, the offence is dealt with under the appropriate generic group.