

WAIKATO DISTRICT CRIME STATISTICS 2013/2014



**A Summary of
Recorded and Resolved Offence
Statistics**

**POLICE NATIONAL HEADQUARTERS
October 2014**

ISSN 1178-1572

Table of Contents:

Topic	Page
Report Notes	1
Summary of District Recorded and Resolved Crime by Division	2 - 4
Proportions of Recorded Crime by Division	5
Summary of District Recorded Offences, Rate per 10,000 Population and Resolved Offences, by Area	6
Summary of Area Recorded Offences, Rate per 10,000 Population and Resolved Offences, by Division	7 - 10
Crime Trends:	11
Total Crime	12
Murder	13
Serious Assaults Resulting in Injury	14
Sexual Assaults	15
Public Place Assaults	16
Dwelling Assaults	17
Robbery	18
Burglary	19
Burglary (Dwelling)	20
Vehicles Stolen	21
Theft Ex Car	22
Population Data	23
General Definitions	24 - 25

REPORT NOTES:

Statistics reported in this document are derived from the Police National Intelligence Application (NIA). These Official Statistics for Recorded and Resolved Offences present a snapshot of data in NIA relating to offences that occur within a given year, as at the date 14 days following the end of that year.

Unless the matter is minor where Police attendance is sufficient, a matter that is reported to or discovered by Police where Police believe an offence is likely to have been committed is counted as a recorded offence.

A recorded offence is counted as resolved when Police apprehend an offender and decide how to deal with him/her. (E.g. warn, prosecute, etc.)

Resolution rate is the percentage of recorded offences that are resolved within 14 days of the end of the year being reported on.

If an offence is resolved 15 days or more after the end of the year it will not appear in the Official Crime Statistics for that or any other year. Resolution Rate therefore undercounts the number of cases that Police have resolved. This phenomenon has a more marked impact for some types of offences than others, such as offences that require long investigations (E.g. many serial crimes, burglaries and murders).

Several offences have been reclassified into different ANZSOC groups. This has resulted in changes to subtotals for Groups and Sub-divisions within Divisions 10, 15 and 16, compared to previously reported data. Generally, this occurred within the same Division.

When comparing 2013/2014 Statistics with previous years, the reader should also refer to "Report Notes" published in previous years' reports, as previous changes significantly affect year on year trends.

SUMMARY OF DISTRICT RECORDED AND RESOLVED CRIME, BY DIVISION

Years ending 30 June

HOMICIDE AND RELATED OFFENCES

ANZSOC Subdivision Description	Recorded 20112012	Recorded 20122013	Recorded 20132014	Variance 11/12-12/13	Variance 12/13-13/14	Resolved 20112012	Resolved 20122013	Resolved 20132014	Resolution Rate 20112012	Resolution Rate 20122013	Resolution Rate 20132014
ATTEMPTED MURDER	4	3	1	-25.0 %	-66.7 %	4	3	1	100.0 %	100.0 %	100.0 %
HOMICIDE AND RELATED OFFENCES NOT FURTHER DEFINED	0	0	2	0.0 %	0.0 %	0	0	2	0.0 %	0.0 %	100.0 %
MANSLAUGHTER AND DRIVING CAUSING DEATH	1	2	0	100.0 %	-100.0 %	1	2	0	100.0 %	100.0 %	0.0 %
MURDER	3	1	2	-66.7 %	100.0 %	2	1	2	66.7 %	100.0 %	100.0 %
	8	6	5	-25.0 %	-16.7 %	7	6	5	87.5 %	100.0 %	100.0 %

ACTS INTENDED TO CAUSE INJURY

ANZSOC Subdivision Description	Recorded 20112012	Recorded 20122013	Recorded 20132014	Variance 11/12-12/13	Variance 12/13-13/14	Resolved 20112012	Resolved 20122013	Resolved 20132014	Resolution Rate 20112012	Resolution Rate 20122013	Resolution Rate 20132014
ASSAULT	3,594	3,347	3,689	-6.9 %	10.2 %	2,628	2,387	2,575	73.1 %	71.3 %	69.8 %
OTHER ACTS INTENDED TO CAUSE INJURY	4	0	2	-100.0 %	0.0 %	4	0	1	100.0 %	0.0 %	50.0 %
	3,598	3,347	3,691	-7.0 %	10.3 %	2,632	2,387	2,576	73.2 %	71.3 %	69.8 %

SEXUAL ASSAULT AND RELATED OFFENCES

ANZSOC Subdivision Description	Recorded 20112012	Recorded 20122013	Recorded 20132014	Variance 11/12-12/13	Variance 12/13-13/14	Resolved 20112012	Resolved 20122013	Resolved 20132014	Resolution Rate 20112012	Resolution Rate 20122013	Resolution Rate 20132014
NON-ASSAULTIVE SEXUAL OFFENCES	4	5	19	25.0 %	280.0 %	3	1	10	75.0 %	20.0 %	52.6 %
SEXUAL ASSAULT	358	294	376	-17.9 %	27.9 %	205	151	160	57.3 %	51.4 %	42.6 %
	362	299	395	-17.4 %	32.1 %	208	152	170	57.5 %	50.8 %	43.0 %

DANGEROUS OR NEGLIGENT ACTS ENDANGERING PERSONS

ANZSOC Subdivision Description	Recorded 20112012	Recorded 20122013	Recorded 20132014	Variance 11/12-12/13	Variance 12/13-13/14	Resolved 20112012	Resolved 20122013	Resolved 20132014	Resolution Rate 20112012	Resolution Rate 20122013	Resolution Rate 20132014
OTHER DANGEROUS OR NEGLIGENT ACTS ENDANGERING PERSONS	63	60	52	-4.8 %	-13.3 %	33	37	27	52.4 %	61.7 %	51.9 %
	63	60	52	-4.8 %	-13.3 %	33	37	27	52.4 %	61.7 %	51.9 %

ABDUCTION, HARASSMENT AND OTHER RELATED OFFENCES AGAINST A PERSON

ANZSOC Subdivision Description	Recorded 20112012	Recorded 20122013	Recorded 20132014	Variance 11/12-12/13	Variance 12/13-13/14	Resolved 20112012	Resolved 20122013	Resolved 20132014	Resolution Rate 20112012	Resolution Rate 20122013	Resolution Rate 20132014
ABDUCTION AND KIDNAPPING	33	34	31	3.0 %	-8.8 %	26	21	24	78.8 %	61.8 %	77.4 %
DEPRIVATION OF LIBERTY/FALSE IMPRISONMENT	0	0	2	0.0 %	0.0 %	0	0	2	0.0 %	0.0 %	100.0 %
HARASSMENT AND THREATENING BEHAVIOUR	1,008	912	1,167	-9.5 %	28.0 %	636	542	650	63.1 %	59.4 %	55.7 %
	1,041	946	1,200	-9.1 %	26.8 %	662	563	676	63.6 %	59.5 %	56.3 %

ROBBERY, EXTORTION AND RELATED OFFENCES

ANZSOC Subdivision Description	Recorded 20112012	Recorded 20122013	Recorded 20132014	Variance 11/12-12/13	Variance 12/13-13/14	Resolved 20112012	Resolved 20122013	Resolved 20132014	Resolution Rate 20112012	Resolution Rate 20122013	Resolution Rate 20132014
BLACKMAIL AND EXTORTION	9	12	9	33.3 %	-25.0 %	6	4	3	66.7 %	33.3 %	33.3 %
ROBBERY	197	129	163	-34.5 %	26.4 %	82	55	77	41.6 %	42.6 %	47.2 %
	206	141	172	-31.6 %	22.0 %	88	59	80	42.7 %	41.8 %	46.5 %

UNLAWFUL ENTRY WITH INTENT/BURGLARY, BREAK AND ENTER

ANZSOC Subdivision Description	Recorded 20112012	Recorded 20122013	Recorded 20132014	Variance 11/12-12/13	Variance 12/13-13/14	Resolved 20112012	Resolved 20122013	Resolved 20132014	Resolution Rate 20112012	Resolution Rate 20122013	Resolution Rate 20132014
UNLAWFUL ENTRY WITH INTENT/BURGLARY, BREAK AND ENTER	6,232	5,649	5,834	-9.4 %	3.3 %	1,012	809	692	16.2 %	14.3 %	11.9 %
	6,232	5,649	5,834	-9.4 %	3.3 %	1,012	809	692	16.2 %	14.3 %	11.9 %

SUMMARY OF DISTRICT RECORDED AND RESOLVED CRIME, BY DIVISION

Years ending 30 June

THEFT AND RELATED OFFENCES

ANZSOC Subdivision Description	Recorded 20112012	Recorded 20122013	Recorded 20132014	Variance 11/12-12/13	Variance 12/13-13/14	Resolved 20112012	Resolved 20122013	Resolved 20132014	Resolution Rate 20112012	Resolution Rate 20122013	Resolution Rate 20132014
ILLEGAL USE OF PROPERTY (EXCEPT MOTOR VEHICLES)	232	391	324	68.5 %	-17.1 %	24	18	18	10.3 %	4.6 %	5.6 %
MOTOR VEHICLE THEFT AND RELATED OFFENCES	3,851	3,117	3,307	-19.1 %	6.1 %	473	390	343	12.3 %	12.5 %	10.4 %
RECEIVE OR HANDLE PROCEEDS OF CRIME	304	225	221	-26.0 %	-1.8 %	299	219	213	98.4 %	97.3 %	96.4 %
THEFT (EXCEPT MOTOR VEHICLES)	6,070	5,137	6,151	-15.4 %	19.7 %	1,471	1,282	1,935	24.2 %	25.0 %	31.5 %
	10,457	8,870	10,003	-15.2 %	12.8 %	2,267	1,909	2,509	21.7 %	21.5 %	25.1 %

FRAUD, DECEPTION AND RELATED OFFENCES

ANZSOC Subdivision Description	Recorded 20112012	Recorded 20122013	Recorded 20132014	Variance 11/12-12/13	Variance 12/13-13/14	Resolved 20112012	Resolved 20122013	Resolved 20132014	Resolution Rate 20112012	Resolution Rate 20122013	Resolution Rate 20132014
DECEPTIVE BUSINESS/GOVERNMENT PRACTICES	1	1	8	0.0 %	700.0 %	1	1	3	100.0 %	100.0 %	37.5 %
FORGERY AND COUNTERFEITING	30	44	15	46.7 %	-65.9 %	17	20	7	56.7 %	45.5 %	46.7 %
OBTAIN BENEFIT BY DECEPTION	600	602	628	0.3 %	4.3 %	358	337	287	59.7 %	56.0 %	45.7 %
OTHER FRAUD AND DECEPTION OFFENCES	56	47	36	-16.1 %	-23.4 %	34	27	17	60.7 %	57.4 %	47.2 %
	687	694	687	1.0 %	-1.0 %	410	385	314	59.7 %	55.5 %	45.7 %

ILLICIT DRUG OFFENCES

ANZSOC Subdivision Description	Recorded 20112012	Recorded 20122013	Recorded 20132014	Variance 11/12-12/13	Variance 12/13-13/14	Resolved 20112012	Resolved 20122013	Resolved 20132014	Resolution Rate 20112012	Resolution Rate 20122013	Resolution Rate 20132014
DEAL OR TRAFFIC IN ILLICIT DRUGS	246	182	247	-26.0 %	35.7 %	233	160	207	94.7 %	87.9 %	83.8 %
IMPORT OR EXPORT ILLICIT DRUGS	6	3	2	-50.0 %	-33.3 %	6	3	0	100.0 %	100.0 %	0.0 %
MANUFACTURE OR CULTIVATE ILLICIT DRUGS	535	193	256	-63.9 %	32.6 %	317	156	199	59.3 %	80.8 %	77.7 %
OTHER ILLICIT DRUG OFFENCES	586	373	351	-36.3 %	-5.9 %	579	367	336	98.8 %	98.4 %	95.7 %
POSSESS AND/OR USE ILLICIT DRUGS	796	542	616	-31.9 %	13.7 %	775	519	584	97.4 %	95.8 %	94.8 %
	2,169	1,293	1,472	-40.4 %	13.8 %	1,910	1,205	1,326	88.1 %	93.2 %	90.1 %

PROHIBITED AND REGULATED WEAPONS AND EXPLOSIVES OFFENCES

ANZSOC Subdivision Description	Recorded 20112012	Recorded 20122013	Recorded 20132014	Variance 11/12-12/13	Variance 12/13-13/14	Resolved 20112012	Resolved 20122013	Resolved 20132014	Resolution Rate 20112012	Resolution Rate 20122013	Resolution Rate 20132014
REGULATED WEAPONS/EXPLOSIVES OFFENCES	523	441	502	-15.7 %	13.8 %	480	402	446	91.8 %	91.2 %	88.8 %
	523	441	502	-15.7 %	13.8 %	480	402	446	91.8 %	91.2 %	88.8 %

PROPERTY DAMAGE AND ENVIRONMENTAL POLLUTION

ANZSOC Subdivision Description	Recorded 20112012	Recorded 20122013	Recorded 20132014	Variance 11/12-12/13	Variance 12/13-13/14	Resolved 20112012	Resolved 20122013	Resolved 20132014	Resolution Rate 20112012	Resolution Rate 20122013	Resolution Rate 20132014
ENVIRONMENTAL POLLUTION	10	7	6	-30.0 %	-14.3 %	8	4	3	80.0 %	57.1 %	50.0 %
PROPERTY DAMAGE	4,236	3,444	3,329	-18.7 %	-3.3 %	1,249	1,018	945	29.5 %	29.6 %	28.4 %
	4,246	3,451	3,335	-18.7 %	-3.4 %	1,257	1,022	948	29.6 %	29.6 %	28.4 %

PUBLIC ORDER OFFENCES

ANZSOC Subdivision Description	Recorded 20112012	Recorded 20122013	Recorded 20132014	Variance 11/12-12/13	Variance 12/13-13/14	Resolved 20112012	Resolved 20122013	Resolved 20132014	Resolution Rate 20112012	Resolution Rate 20122013	Resolution Rate 20132014
DISORDERLY CONDUCT	1,943	1,918	1,961	-1.3 %	2.2 %	1,624	1,669	1,670	83.6 %	87.0 %	85.2 %
OFFENSIVE CONDUCT	102	83	51	-18.6 %	-38.6 %	55	56	30	53.9 %	67.5 %	58.8 %
REGULATED PUBLIC ORDER OFFENCES	1,811	2,151	728	18.8 %	-66.2 %	1,782	2,100	677	98.4 %	97.6 %	93.0 %
	3,856	4,152	2,740	7.7 %	-34.0 %	3,461	3,825	2,377	89.8 %	92.1 %	86.8 %

SUMMARY OF DISTRICT RECORDED AND RESOLVED CRIME, BY DIVISION
Years ending 30 June

OFFENCES AGAINST JUSTICE PROCEDURES, GOVERNMENT SECURITY AND GOVERNMENT OPERATIONS

ANZSOC Subdivision Description	Recorded 20112012	Recorded 20122013	Recorded 20132014	Variance 11/12-12/13	Variance 12/13-13/14	Resolved 20112012	Resolved 20122013	Resolved 20132014	Resolution Rate 20112012	Resolution Rate 20122013	Resolution Rate 20132014
BREACH OF COMMUNITY-BASED ORDER	604	554	398	-8.3 %	-28.2 %	585	528	343	96.9 %	95.3 %	86.2 %
BREACH OF CUSTODIAL ORDER OFFENCES	39	35	38	-10.3 %	8.6 %	38	33	38	97.4 %	94.3 %	100.0 %
BREACH OF VIOLENCE AND NON-VIOLENCE RESTRAINING ORDERS	441	402	376	-8.8 %	-6.5 %	371	339	293	84.1 %	84.3 %	77.9 %
OFFENCES AGAINST GOVERNMENT OPERATIONS	11	12	13	9.1 %	8.3 %	7	6	5	63.6 %	50.0 %	38.5 %
OFFENCES AGAINST GOVERNMENT SECURITY	3	0	0	-100.0 %	0.0 %	2	0	0	66.7 %	0.0 %	0.0 %
OFFENCES AGAINST JUSTICE PROCEDURES	377	385	374	2.1 %	-2.9 %	371	372	367	98.4 %	96.6 %	98.1 %
OFFENCES AGAINST JUSTICE PROCEDURES, GOVERNMENT SECURITY AND GOVERNMENT OPERATIONS NOT FURTHER DEFINED	3	0	1	-100.0 %	0.0 %	3	0	1	100.0 %	0.0 %	100.0 %
	1,478	1,388	1,200	-6.1 %	-13.5 %	1,377	1,278	1,047	93.2 %	92.1 %	87.3 %

MISCELLANEOUS OFFENCES

ANZSOC Subdivision Description	Recorded 20112012	Recorded 20122013	Recorded 20132014	Variance 11/12-12/13	Variance 12/13-13/14	Resolved 20112012	Resolved 20122013	Resolved 20132014	Resolution Rate 20112012	Resolution Rate 20122013	Resolution Rate 20132014
COMMERCIAL/INDUSTRY/FINANCIAL REGULATION	6	3	2	-50.0 %	-33.3 %	6	2	1	100.0 %	66.7 %	50.0 %
DEFAMATION, LIBEL AND PRIVACY OFFENCES	3	4	5	33.3 %	25.0 %	0	0	1	0.0 %	0.0 %	20.0 %
OTHER MISCELLANEOUS OFFENCES	53	44	64	-17.0 %	45.5 %	33	30	24	62.3 %	68.2 %	37.5 %
PUBLIC HEALTH AND SAFETY OFFENCES	11	8	26	-27.3 %	225.0 %	9	6	21	81.8 %	75.0 %	80.8 %
	73	59	97	-19.2 %	64.4 %	48	38	47	65.8 %	64.4 %	48.5 %

TOTAL	34,999	30,796	31,385	-12.0 %	1.9 %	15,852	14,077	13,240	45.3 %	45.7 %	42.2 %
-------	--------	--------	--------	---------	-------	--------	--------	--------	--------	--------	--------

PROPORTION OF RECORDED CRIME BY DIVISION

Years ending 30 June

ANZSOC Division Description	Proportions Recorded 20112012	Recorded 20112012	Proportions Recorded 20122013	Recorded 20122013	Proportions Recorded 20132014	Recorded 20132014
HOMICIDE AND RELATED OFFENCES	0.0 %	8	0.0 %	6	0.0 %	5
ACTS INTENDED TO CAUSE INJURY	10.3 %	3,598	10.9 %	3,347	11.8 %	3,691
SEXUAL ASSAULT AND RELATED OFFENCES	1.0 %	362	1.0 %	299	1.3 %	395
DANGEROUS OR NEGLIGENT ACTS ENDANGERING PERSONS	0.2 %	63	0.2 %	60	0.2 %	52
ABDUCTION, HARASSMENT AND OTHER RELATED OFFENCES AGAINST A PERSON	3.0 %	1,041	3.1 %	946	3.8 %	1,200
ROBBERY, EXTORTION AND RELATED OFFENCES	0.6 %	206	0.5 %	141	0.5 %	172
UNLAWFUL ENTRY WITH INTENT/BURGLARY, BREAK AND ENTER	17.8 %	6,232	18.3 %	5,649	18.6 %	5,834
THEFT AND RELATED OFFENCES	29.9 %	10,457	28.8 %	8,870	31.9 %	10,003
FRAUD, DECEPTION AND RELATED OFFENCES	2.0 %	687	2.3 %	694	2.2 %	687
ILLICIT DRUG OFFENCES	6.2 %	2,169	4.2 %	1,293	4.7 %	1,472
PROHIBITED AND REGULATED WEAPONS AND EXPLOSIVES OFFENCES	1.5 %	523	1.4 %	441	1.6 %	502
PROPERTY DAMAGE AND ENVIRONMENTAL POLLUTION	12.1 %	4,246	11.2 %	3,451	10.6 %	3,335
PUBLIC ORDER OFFENCES	11.0 %	3,856	13.5 %	4,152	8.7 %	2,740
OFFENCES AGAINST JUSTICE PROCEDURES, GOVERNMENT SECURITY AND GOVERNMENT OPERATIONS	4.2 %	1,478	4.5 %	1,388	3.8 %	1,200
MISCELLANEOUS OFFENCES	0.2 %	73	0.2 %	59	0.3 %	97
	100.0 %	34,999	100.0 %	30,796	100.0 %	31,385

SUMMARY OF DISTRICT RECORDED OFFENCES, RATE PER 10,000 POPULATION AND RESOLVED OFFENCES, BY AREA
years ending 30 June

TOTAL CRIME

Area Description	Recorded 20122013	Recorded 20132014	Variance 12/13-13/14	Recorded per 10,000 pop 20122013	Recorded per 10,000 pop 20132014	per 10,000 pop % Variance 12/13 to 13/14	Resolved 20122013	Resolved 20132014	Resolution Rate 20122013	Resolution Rate 20132014
Hamilton City	18,025	18,236	1.2 %	1,076.1	1,077.8	0.2 %	7,907	7,552	43.9 %	41.4 %
Waikato East	6,743	6,537	-3.1 %	840.4	811.9	-3.4 %	3,416	2,799	50.7 %	42.8 %
Waikato West	6,028	6,612	9.7 %	630.8	687.9	9.0 %	2,754	2,889	45.7 %	43.7 %
Total	30,796	31,385	1.9 %	897.1	907.5	1.2 %	14,077	13,240	45.7 %	42.2 %

**SUMMARY OF AREA RECORDED OFFENCES, RATE PER 10,000 POPULATION AND
RESOLVED OFFENCES, BY DIVISION**

years ending 30 June

HOMICIDE AND RELATED OFFENCES

Area Description	Recorded 20122013	Recorded 20132014	Variance 12/13-13/14	Recorded per 10,000 pop 20122013	Recorded per 10,000 pop 20132014	per 10,000 pop % Variance 12/13 to 13/14	Resolved 20122013	Resolved 20132014	Resolution Rate 20122013	Resolution Rate 20132014
Hamilton City	2	5	150.0 %	0.1	0.3	147.5 %	2	5	100.0 %	100.0 %
Waikato East	3	0	-100.0 %	0.4	0.0	-100.0 %	3	0	100.0 %	0.0 %
Waikato West	1	0	-100.0 %	0.1	0.0	-100.0 %	1	0	100.0 %	0.0 %
Total	6	5	-16.7 %	0.2	0.1	-17.3 %	6	5	100.0 %	100.0 %

ACTS INTENDED TO CAUSE INJURY

Area Description	Recorded 20122013	Recorded 20132014	Variance 12/13-13/14	Recorded per 10,000 pop 20122013	Recorded per 10,000 pop 20132014	per 10,000 pop % Variance 12/13 to 13/14	Resolved 20122013	Resolved 20132014	Resolution Rate 20122013	Resolution Rate 20132014
Hamilton City	1,783	2,096	17.6 %	106.4	123.9	16.4 %	1,164	1,336	65.3 %	63.7 %
Waikato East	601	618	2.8 %	74.9	76.8	2.5 %	493	516	82.0 %	83.5 %
Waikato West	963	977	1.5 %	100.8	101.6	0.9 %	730	724	75.8 %	74.1 %
Total	3,347	3,691	10.3 %	97.5	106.7	9.5 %	2,387	2,576	71.3 %	69.8 %

SEXUAL ASSAULT AND RELATED OFFENCES

Area Description	Recorded 20122013	Recorded 20132014	Variance 12/13-13/14	Recorded per 10,000 pop 20122013	Recorded per 10,000 pop 20132014	per 10,000 pop % Variance 12/13 to 13/14	Resolved 20122013	Resolved 20132014	Resolution Rate 20122013	Resolution Rate 20132014
Hamilton City	154	216	40.3 %	9.2	12.8	38.9 %	70	87	45.5 %	40.3 %
Waikato East	82	81	-1.2 %	10.2	10.1	-1.6 %	48	40	58.5 %	49.4 %
Waikato West	63	98	55.6 %	6.6	10.2	54.6 %	34	43	54.0 %	43.9 %
Total	299	395	32.1 %	8.7	11.4	31.1 %	152	170	50.8 %	43.0 %

DANGEROUS OR NEGLIGENT ACTS ENDANGERING PERSONS

Area Description	Recorded 20122013	Recorded 20132014	Variance 12/13-13/14	Recorded per 10,000 pop 20122013	Recorded per 10,000 pop 20132014	per 10,000 pop % Variance 12/13 to 13/14	Resolved 20122013	Resolved 20132014	Resolution Rate 20122013	Resolution Rate 20132014
Hamilton City	35	22	-37.1 %	2.1	1.3	-37.8 %	19	10	54.3 %	45.5 %
Waikato East	14	10	-28.6 %	1.7	1.2	-28.8 %	10	7	71.4 %	70.0 %
Waikato West	11	20	81.8 %	1.2	2.1	80.8 %	8	10	72.7 %	50.0 %
Total	60	52	-13.3 %	1.7	1.5	-14.0 %	37	27	61.7 %	51.9 %

**SUMMARY OF AREA RECORDED OFFENCES, RATE PER 10,000 POPULATION AND
RESOLVED OFFENCES, BY DIVISION**

years ending 30 June

ABDUCTION, HARASSMENT AND OTHER RELATED OFFENCES AGAINST A PERSON

Area Description	Recorded 20122013	Recorded 20132014	Variance 12/13-13/14	Recorded per 10,000 pop 20122013	Recorded per 10,000 pop 20132014	per 10,000 pop % Variance 12/13 to 13/14	Resolved 20122013	Resolved 20132014	Resolution Rate 20122013	Resolution Rate 20132014
Hamilton City	520	670	28.8 %	31.0	39.6	27.6 %	264	318	50.8 %	47.5 %
Waikato East	188	227	20.7 %	23.4	28.2	20.3 %	142	161	75.5 %	70.9 %
Waikato West	238	303	27.3 %	24.9	31.5	26.6 %	157	197	66.0 %	65.0 %
Total	946	1,200	26.8 %	27.6	34.7	25.9 %	563	676	59.5 %	56.3 %

ROBBERY, EXTORTION AND RELATED OFFENCES

Area Description	Recorded 20122013	Recorded 20132014	Variance 12/13-13/14	Recorded per 10,000 pop 20122013	Recorded per 10,000 pop 20132014	per 10,000 pop % Variance 12/13 to 13/14	Resolved 20122013	Resolved 20132014	Resolution Rate 20122013	Resolution Rate 20132014
Hamilton City	113	125	10.6 %	6.7	7.4	9.5 %	48	55	42.5 %	44.0 %
Waikato East	13	27	107.7 %	1.6	3.4	107.0 %	5	16	38.5 %	59.3 %
Waikato West	15	20	33.3 %	1.6	2.1	32.6 %	6	9	40.0 %	45.0 %
Total	141	172	22.0 %	4.1	5.0	21.1 %	59	80	41.8 %	46.5 %

UNLAWFUL ENTRY WITH INTENT/BURGLARY, BREAK AND ENTER

Area Description	Recorded 20122013	Recorded 20132014	Variance 12/13-13/14	Recorded per 10,000 pop 20122013	Recorded per 10,000 pop 20132014	per 10,000 pop % Variance 12/13 to 13/14	Resolved 20122013	Resolved 20132014	Resolution Rate 20122013	Resolution Rate 20132014
Hamilton City	3,320	3,197	-3.7 %	198.2	188.9	-4.7 %	414	290	12.5 %	9.1 %
Waikato East	1,192	1,458	22.3 %	148.6	181.1	21.9 %	216	239	18.1 %	16.4 %
Waikato West	1,137	1,179	3.7 %	119.0	122.7	3.1 %	179	163	15.7 %	13.8 %
Total	5,649	5,834	3.3 %	164.6	168.7	2.5 %	809	692	14.3 %	11.9 %

THEFT AND RELATED OFFENCES

Area Description	Recorded 20122013	Recorded 20132014	Variance 12/13-13/14	Recorded per 10,000 pop 20122013	Recorded per 10,000 pop 20132014	per 10,000 pop % Variance 12/13 to 13/14	Resolved 20122013	Resolved 20132014	Resolution Rate 20122013	Resolution Rate 20132014
Hamilton City	5,441	6,231	14.5 %	324.8	368.3	13.4 %	1,097	1,611	20.2 %	25.9 %
Waikato East	1,834	1,833	-0.1 %	228.6	227.7	-0.4 %	448	416	24.4 %	22.7 %
Waikato West	1,595	1,939	21.6 %	166.9	201.7	20.9 %	364	482	22.8 %	24.9 %
Total	8,870	10,003	12.8 %	258.4	289.2	11.9 %	1,909	2,509	21.5 %	25.1 %

**SUMMARY OF AREA RECORDED OFFENCES, RATE PER 10,000 POPULATION AND
RESOLVED OFFENCES, BY DIVISION**

years ending 30 June

FRAUD, DECEPTION AND RELATED OFFENCES

Area Description	Recorded 20122013	Recorded 20132014	Variance 12/13-13/14	Recorded per 10,000 pop 20122013	Recorded per 10,000 pop 20132014	per 10,000 pop % Variance 12/13 to 13/14	Resolved 20122013	Resolved 20132014	Resolution Rate 20122013	Resolution Rate 20132014
Hamilton City	414	445	7.5 %	24.7	26.3	6.4 %	212	187	51.2 %	42.0 %
Waikato East	121	114	-5.8 %	15.1	14.2	-6.1 %	75	72	62.0 %	63.2 %
Waikato West	159	128	-19.5 %	16.6	13.3	-20.0 %	98	55	61.6 %	43.0 %
Total	694	687	-1.0 %	20.2	19.9	-1.7 %	385	314	55.5 %	45.7 %

ILLICIT DRUG OFFENCES

Area Description	Recorded 20122013	Recorded 20132014	Variance 12/13-13/14	Recorded per 10,000 pop 20122013	Recorded per 10,000 pop 20132014	per 10,000 pop % Variance 12/13 to 13/14	Resolved 20122013	Resolved 20132014	Resolution Rate 20122013	Resolution Rate 20132014
Hamilton City	734	659	-10.2 %	43.8	38.9	-11.1 %	685	589	93.3 %	89.4 %
Waikato East	311	421	35.4 %	38.8	52.3	34.9 %	287	385	92.3 %	91.4 %
Waikato West	248	392	58.1 %	26.0	40.8	57.1 %	233	352	94.0 %	89.8 %
Total	1,293	1,472	13.8 %	37.7	42.6	13.0 %	1,205	1,326	93.2 %	90.1 %

PROHIBITED AND REGULATED WEAPONS AND EXPLOSIVES OFFENCES

Area Description	Recorded 20122013	Recorded 20132014	Variance 12/13-13/14	Recorded per 10,000 pop 20122013	Recorded per 10,000 pop 20132014	per 10,000 pop % Variance 12/13 to 13/14	Resolved 20122013	Resolved 20132014	Resolution Rate 20122013	Resolution Rate 20132014
Hamilton City	233	251	7.7 %	13.9	14.8	6.6 %	210	221	90.1 %	88.0 %
Waikato East	105	129	22.9 %	13.1	16.0	22.4 %	93	114	88.6 %	88.4 %
Waikato West	103	122	18.4 %	10.8	12.7	17.8 %	99	111	96.1 %	91.0 %
Total	441	502	13.8 %	12.8	14.5	13.0 %	402	446	91.2 %	88.8 %

PROPERTY DAMAGE AND ENVIRONMENTAL POLLUTION

Area Description	Recorded 20122013	Recorded 20132014	Variance 12/13-13/14	Recorded per 10,000 pop 20122013	Recorded per 10,000 pop 20132014	per 10,000 pop % Variance 12/13 to 13/14	Resolved 20122013	Resolved 20132014	Resolution Rate 20122013	Resolution Rate 20132014
Hamilton City	1,762	1,606	-8.9 %	105.2	94.9	-9.8 %	491	474	27.9 %	29.5 %
Waikato East	844	909	7.7 %	105.2	112.9	7.3 %	262	238	31.0 %	26.2 %
Waikato West	845	820	-3.0 %	88.4	85.3	-3.5 %	269	236	31.8 %	28.8 %
Total	3,451	3,335	-3.4 %	100.5	96.4	-4.1 %	1,022	948	29.6 %	28.4 %

**SUMMARY OF AREA RECORDED OFFENCES, RATE PER 10,000 POPULATION AND
RESOLVED OFFENCES, BY DIVISION**

years ending 30 June

PUBLIC ORDER OFFENCES

Area Description	Recorded 20122013	Recorded 20132014	Variance 12/13-13/14	Recorded per 10,000 pop 20122013	Recorded per 10,000 pop 20132014	per 10,000 pop % Variance 12/13 to 13/14	Resolved 20122013	Resolved 20132014	Resolution Rate 20122013	Resolution Rate 20132014
Hamilton City	2,531	1,845	-27.1 %	151.1	109.0	-27.8 %	2,326	1,646	91.9 %	89.2 %
Waikato East	1,233	520	-57.8 %	153.7	64.6	-58.0 %	1,156	430	93.8 %	82.7 %
Waikato West	388	375	-3.4 %	40.6	39.0	-3.9 %	343	301	88.4 %	80.3 %
Total	4,152	2,740	-34.0 %	120.9	79.2	-34.5 %	3,825	2,377	92.1 %	86.8 %

OFFENCES AGAINST JUSTICE PROCEDURES, GOVERNMENT SECURITY AND GOVERNMENT OPERATIONS

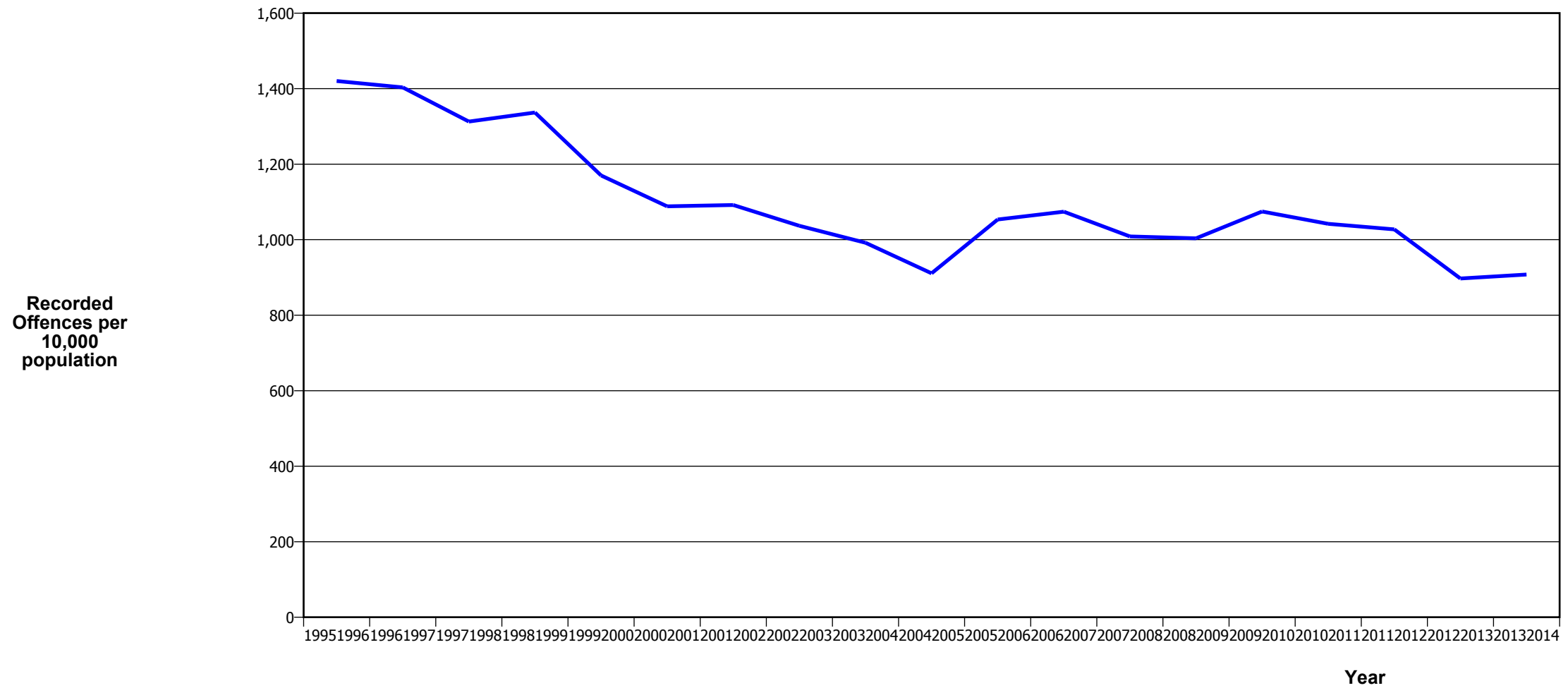
Area Description	Recorded 20122013	Recorded 20132014	Variance 12/13-13/14	Recorded per 10,000 pop 20122013	Recorded per 10,000 pop 20132014	per 10,000 pop % Variance 12/13 to 13/14	Resolved 20122013	Resolved 20132014	Resolution Rate 20122013	Resolution Rate 20132014
Hamilton City	958	816	-14.8 %	57.2	48.2	-15.7 %	888	699	92.7 %	85.7 %
Waikato East	188	174	-7.4 %	23.4	21.6	-7.8 %	172	158	91.5 %	90.8 %
Waikato West	242	210	-13.2 %	25.3	21.8	-13.7 %	218	190	90.1 %	90.5 %
Total	1,388	1,200	-13.5 %	40.4	34.7	-14.2 %	1,278	1,047	92.1 %	87.3 %

MISCELLANEOUS OFFENCES

Area Description	Recorded 20122013	Recorded 20132014	Variance 12/13-13/14	Recorded per 10,000 pop 20122013	Recorded per 10,000 pop 20132014	per 10,000 pop % Variance 12/13 to 13/14	Resolved 20122013	Resolved 20132014	Resolution Rate 20122013	Resolution Rate 20132014
Hamilton City	25	52	108.0 %	1.5	3.1	105.9 %	17	24	68.0 %	46.2 %
Waikato East	14	16	14.3 %	1.7	2.0	13.9 %	6	7	42.9 %	43.8 %
Waikato West	20	29	45.0 %	2.1	3.0	44.2 %	15	16	75.0 %	55.2 %
Total	59	97	64.4 %	1.7	2.8	63.2 %	38	47	64.4 %	48.5 %

CRIME TRENDS

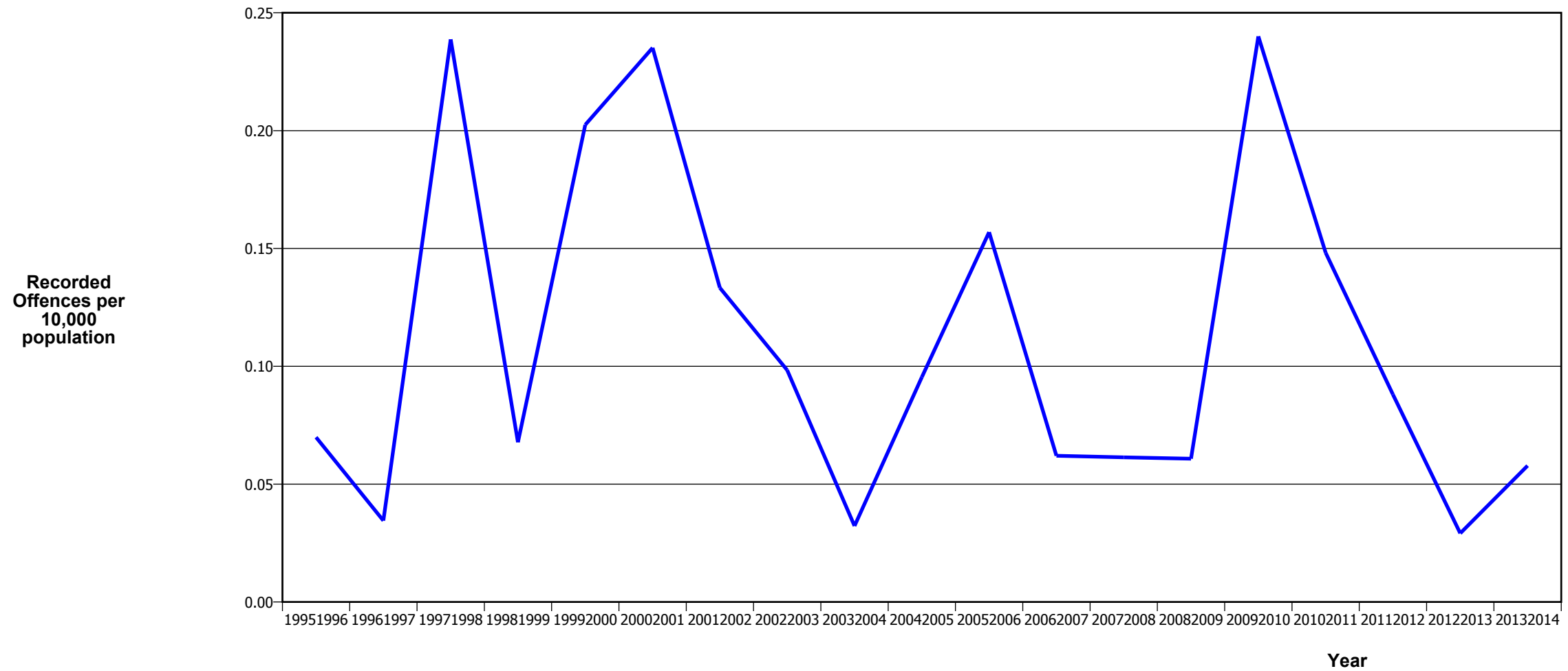
TOTAL CRIME



Fiscal Year	19951996	19961997	19971998	19981999	19992000	20002001	20012002	20022003	20032004	20042005	20052006	20062007	20072008	20082009	20092010	20102011	20112012	20122013	20132014
Recorded Offences	40,627	40,642	38,493	39,462	34,677	32,395	32,751	31,615	30,748	28,643	33,565	34,628	32,852	33,024	35,818	35,162	34,999	30,796	31,385
Recorded per 10,000 Population	1,420.3	1,403.2	1,312.7	1,336.8	1,170.1	1,088.2	1,091.7	1,036.8	991.9	910.8	1,053.5	1,074.2	1,008.5	1,003.6	1,074.6	1,041.8	1,027.4	897.1	907.5

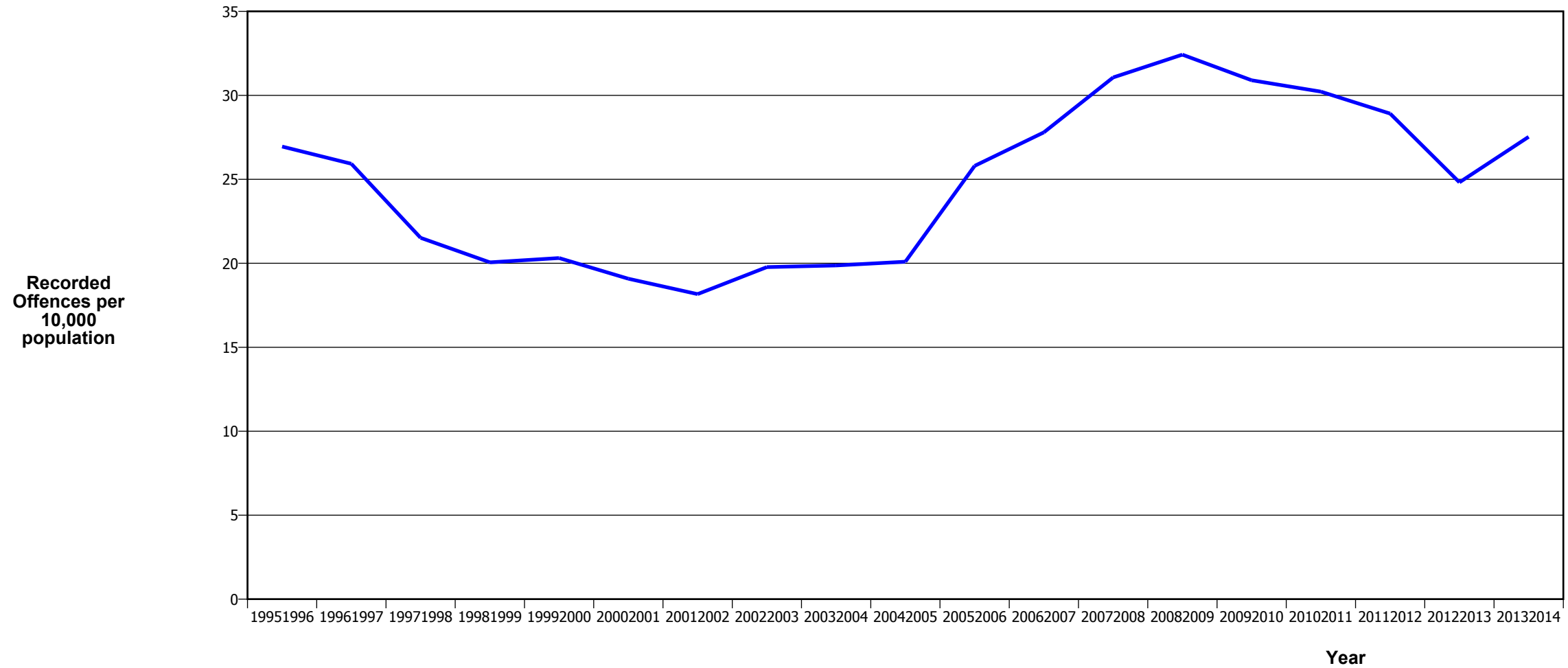
*In 20052006 there was a major IT system change (LES to NIA)

MURDER



- The 2009/2010 result is significantly influenced by an abnormal one-off spike in August 2009, when 12 murders occurred

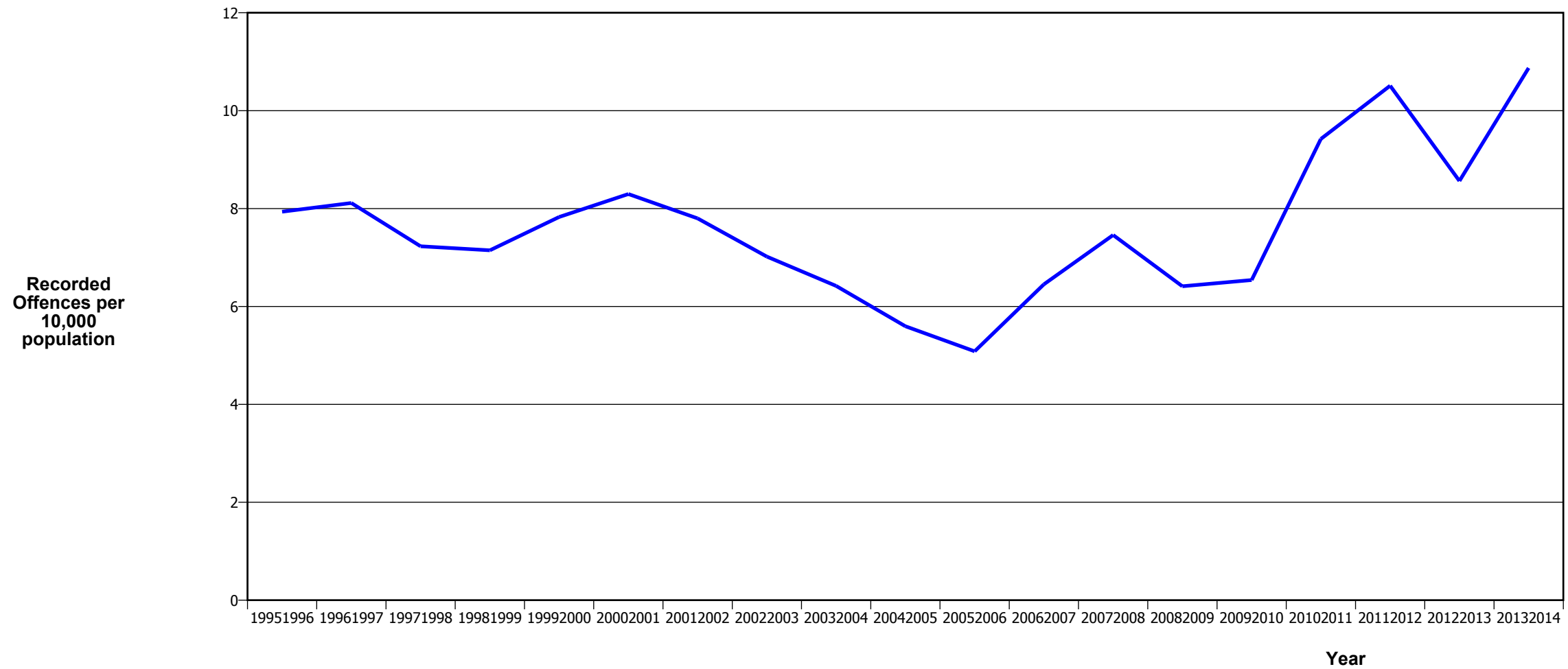
SERIOUS ASSAULTS RESULTING IN INJURY*



Fiscal Year	1995/1996	1996/1997	1997/1998	1998/1999	1999/2000	2000/2001	2001/2002	2002/2003	2003/2004	2004/2005	2005/2006	2006/2007	2007/2008	2008/2009	2009/2010	2010/2011	2011/2012	2012/2013	2013/2014
Recorded Offences	771	751	631	592	602	568	545	603	616	632	822	896	1012	1067	1030	1020	985	852	952
Recorded per 10,000 Population	27.0	25.9	21.5	20.1	20.3	19.1	18.2	19.8	19.9	20.1	25.8	27.8	31.1	32.4	30.9	30.2	28.9	24.8	27.5

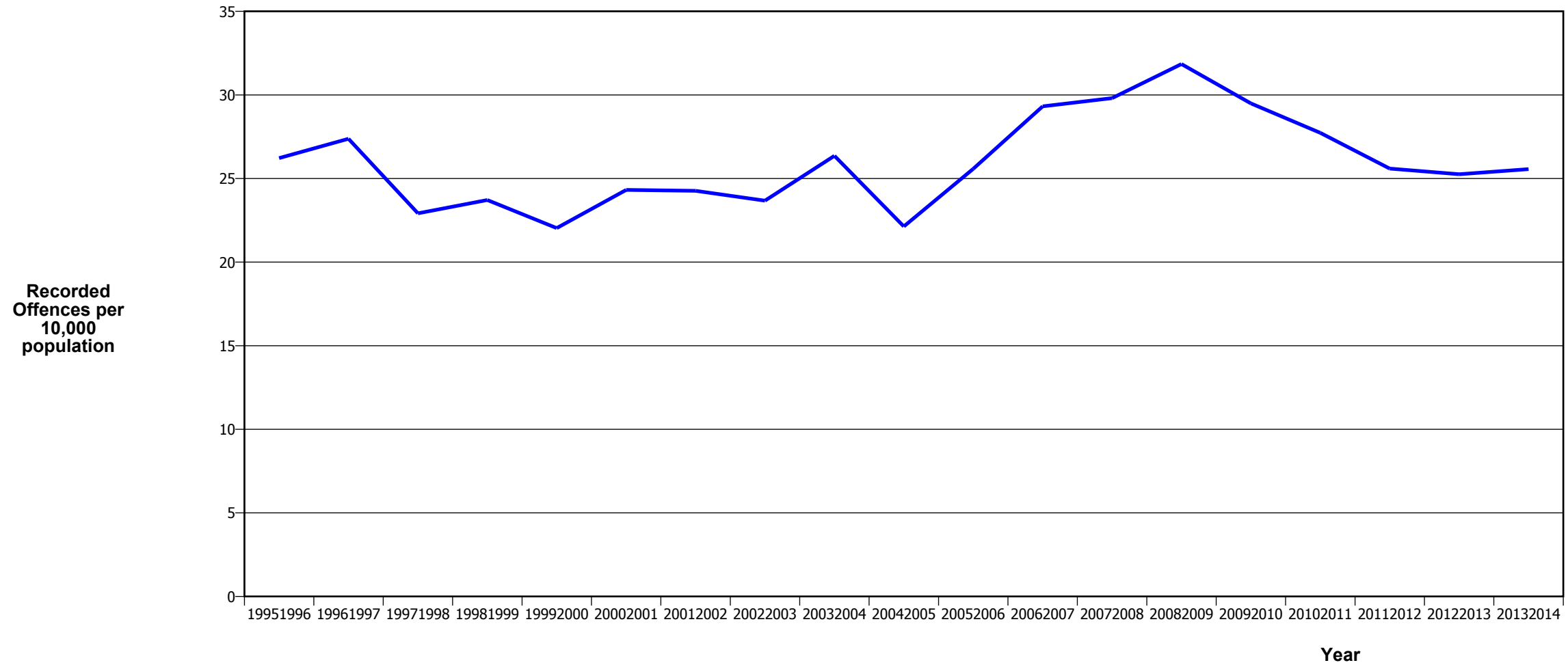
* This measure excludes common assaults

SEXUAL ASSAULTS



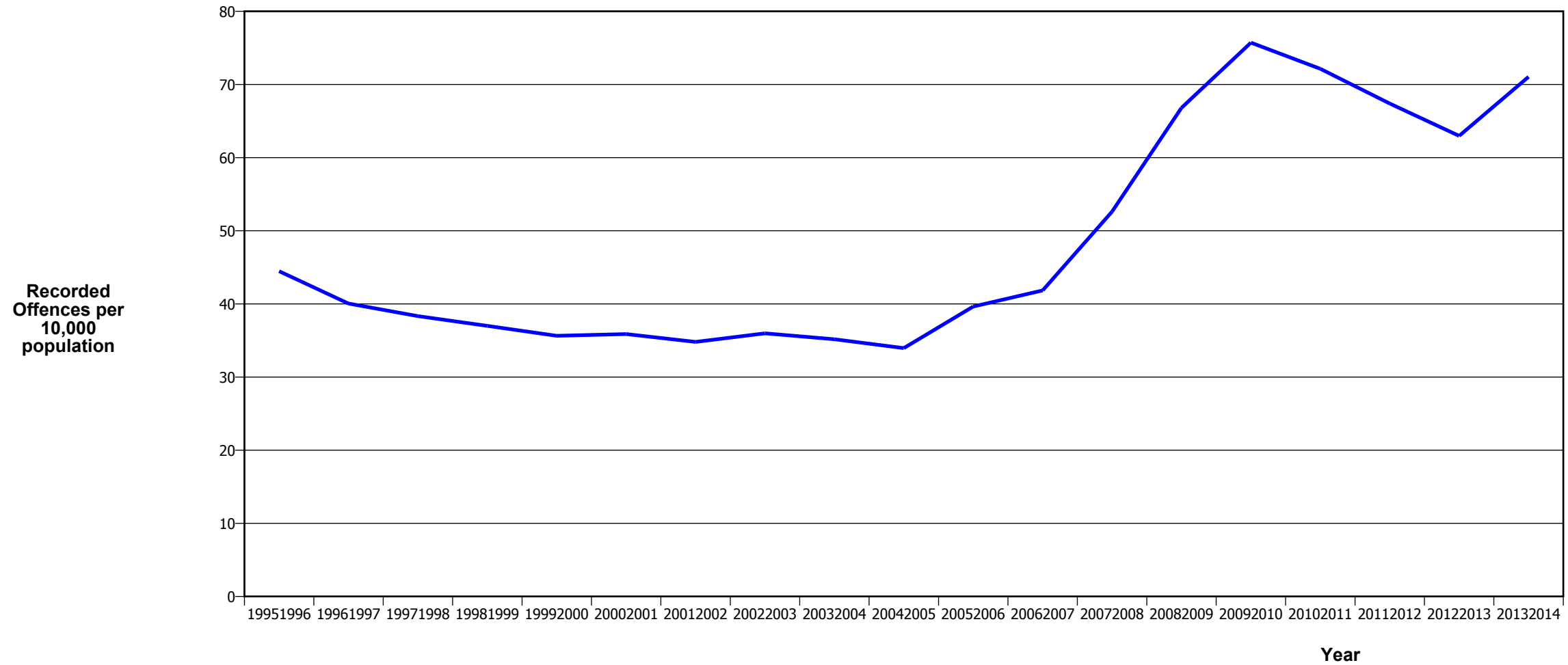
Fiscal Year	19951996	19961997	19971998	19981999	19992000	20002001	20012002	20022003	20032004	20042005	20052006	20062007	20072008	20082009	20092010	20102011	20112012	20122013	20132014
Recorded Offences	227	235	212	211	232	247	234	214	199	176	162	208	243	211	218	318	358	294	376
Recorded per 10,000 Population	7.9	8.1	7.2	7.1	7.8	8.3	7.8	7.0	6.4	5.6	5.1	6.5	7.5	6.4	6.5	9.4	10.5	8.6	10.9

PUBLIC PLACE ASSAULTS



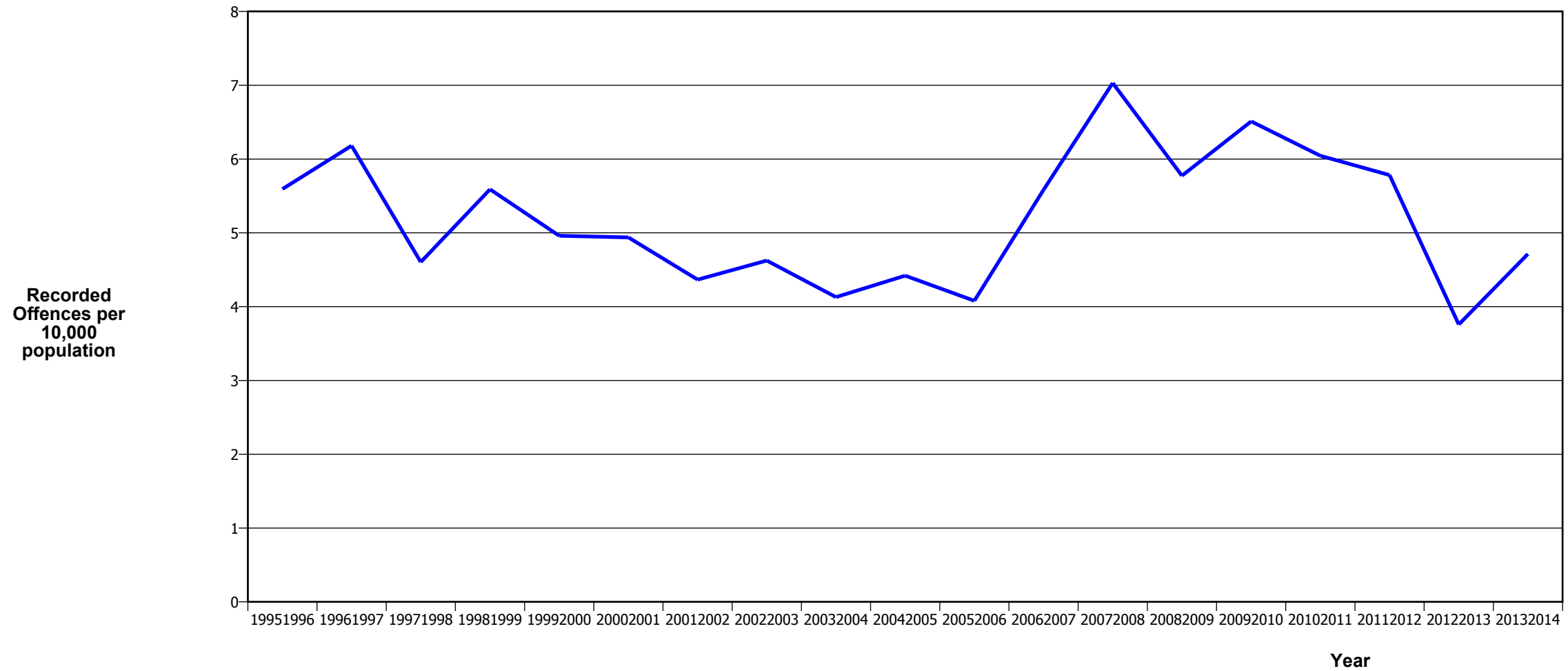
Fiscal Year	19951996	19961997	19971998	19981999	19992000	20002001	20012002	20022003	20032004	20042005	20052006	20062007	20072008	20082009	20092010	20102011	20112012	20122013	20132014
Recorded Offences	750	793	672	700	653	724	728	722	817	696	815	945	971	1,048	983	936	872	867	884
Recorded per 10,000 Population	26.2	27.4	22.9	23.7	22.0	24.3	24.3	23.7	26.4	22.1	25.6	29.3	29.8	31.8	29.5	27.7	25.6	25.3	25.6

DWELLING ASSAULTS



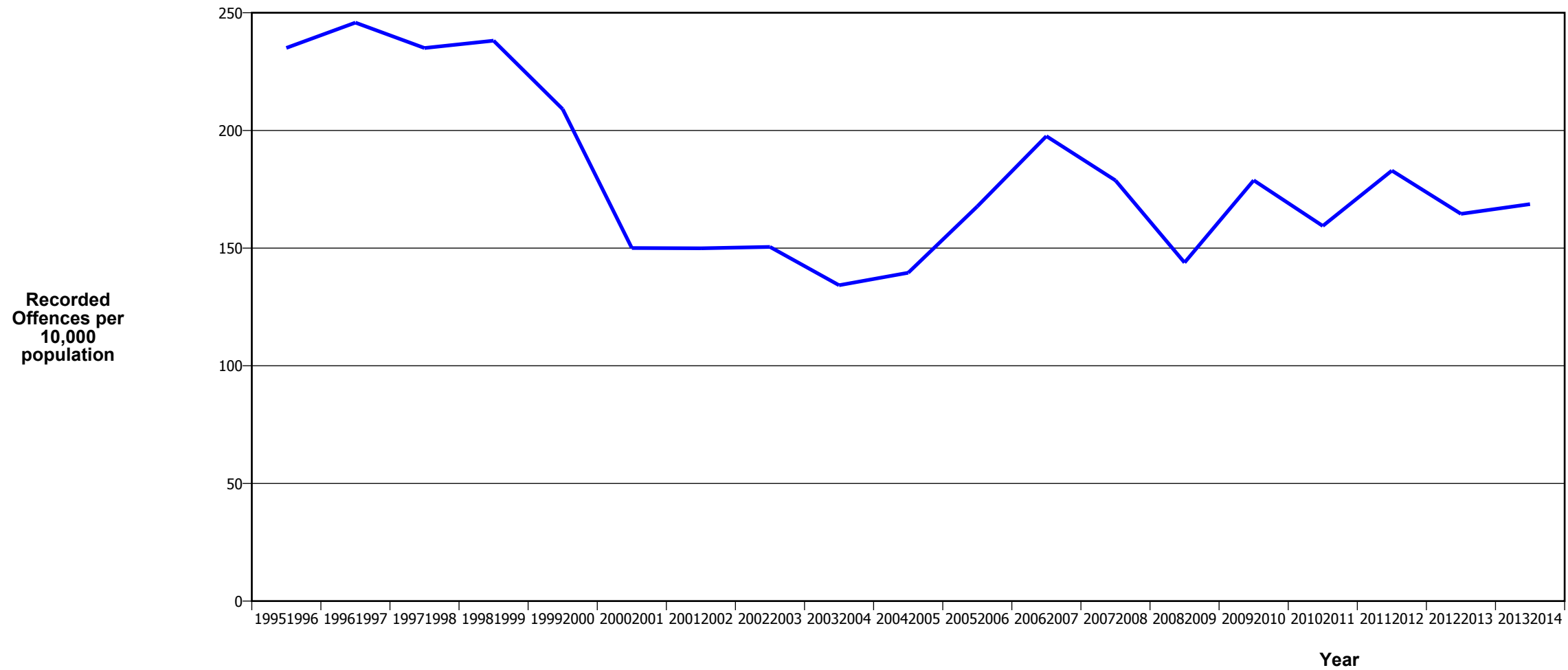
Fiscal Year	19951996	19961997	19971998	19981999	19992000	20002001	20012002	20022003	20032004	20042005	20052006	20062007	20072008	20082009	20092010	20102011	20112012	20122013	20132014
Recorded Offences	1,272	1,160	1,124	1,092	1,056	1,068	1,044	1,097	1,090	1,068	1,263	1,349	1,714	2,198	2,524	2,435	2,296	2,162	2,457
Recorded per 10,000 Population	44.5	40.0	38.3	37.0	35.6	35.9	34.8	36.0	35.2	34.0	39.6	41.8	52.6	66.8	75.7	72.1	67.4	63.0	71.0

ROBBERY



Fiscal Year	19951996	19961997	19971998	19981999	19992000	20002001	20012002	20022003	20032004	20042005	20052006	20062007	20072008	20082009	20092010	20102011	20112012	20122013	20132014
Recorded Offences	160	179	135	165	147	147	131	141	128	139	130	180	229	190	217	204	197	129	163
Recorded per 10,000 Population	5.6	6.2	4.6	5.6	5.0	4.9	4.4	4.6	4.1	4.4	4.1	5.6	7.0	5.8	6.5	6.0	5.8	3.8	4.7

BURGLARY (TOTAL)



Fiscal Year	19951996	19961997	19971998	19981999	19992000	20002001	20012002	20022003	20032004	20042005	20052006	20062007	20072008	20082009	20092010	20102011	20112012	20122013	20132014
Recorded Offences	6,724	7,120	6,892	7,030	6,195	4,466	4,497	4,589	4,161	4,388	5,343	6,369	5,823	4,733	5,960	5,380	6,232	5,649	5,834
Recorded per 10,000 Population	235.1	245.8	235.0	238.1	209.0	150.0	149.9	150.5	134.2	139.5	167.7	197.6	178.8	143.8	178.8	159.4	182.9	164.6	168.7

BURGLARY (DWELLING)



Fiscal Year	19951996	19961997	19971998	19981999	19992000	20002001	20012002	20022003	20032004	20042005	20052006	20062007	20072008	20082009	20092010	20102011	20112012	20122013	20132014
Recorded Offences	3,675	4,073	4,077	4,379	3,739	2,768	2,825	2,797	2,516	2,832	3,628	4,383	4,183	3,183	4,165	3,668	4,407	4,287	4,344
Recorded per 10,000 Population	128.5	140.6	139.0	148.3	126.2	93.0	94.2	91.7	81.2	90.1	113.9	136.0	128.4	96.7	125.0	108.7	129.4	124.9	125.6

VEHICLES STOLEN



Fiscal Year	19951996	19961997	19971998	19981999	19992000	20002001	20012002	20022003	20032004	20042005	20052006	20062007	20072008	20082009	20092010	20102011	20112012	20122013	20132014
Recorded Offences	2,738	2,441	2,263	2,512	1,945	1,455	1,501	1,470	1,675	1,387	1,840	1,455	1,347	1,319	1,313	1,531	1,236	1,109	1,299
Recorded per 10,000 Population	95.7	84.3	77.2	85.1	65.6	48.9	50.0	48.2	54.0	44.1	57.7	45.1	41.4	40.1	39.4	45.4	36.3	32.3	37.6

THEFT EX CAR



Fiscal Year	19951996	19961997	19971998	19981999	19992000	20002001	20012002	20022003	20032004	20042005	20052006	20062007	20072008	20082009	20092010	20102011	20112012	20122013	20132014
Recorded Offences	5,077	4,829	4,488	4,731	3,549	3,365	3,914	3,831	3,420	3,355	4,005	3,581	2,959	2,479	2,785	2,930	2,615	2,008	2,008
Recorded per 10,000 Population	177.5	166.7	153.1	160.3	119.8	113.0	130.5	125.6	110.3	106.7	125.7	111.1	90.8	75.3	83.6	86.8	76.8	58.5	58.1

Population Data

Population data is used in this release to calculate crime rates. These data are estimated population figures as at 31 December each year. They have been derived from population estimates as at 30 June each year that have been obtained from Statistics New Zealand.

The estimated resident population is based on the census usually resident population count, with adjustments for residents missed or counted more than once by the census (net census undercount), and for residents temporarily overseas on census night.

These population estimates exclude the number of international students who are studying in New Zealand for less than 12 months.

Year	Population
19951996	286,055
19961997	289,645
19971998	293,235
19981999	295,205
19992000	296,350
20002001	297,680
20012002	299,995
20022003	304,925
20032004	309,985
20042005	314,490
20052006	318,615
20062007	322,355
20072008	325,745
20082009	329,060
20092010	333,330
20102011	337,500
20112012	340,670
20122013	343,295
20132014	345,830

General Definitions

Recorded Offences: the number of breaches of the New Zealand law recorded by Police. This includes offences specified in the Crimes Act and other legislations, such as the Summary Offences Act, Local Government Act, etc.

Resolved Offences: the number of recorded offences where an offender has been identified and dealt with (e.g. warned, cautioned, prosecuted, etc).

Resolution Rate: the proportion of recorded offences that have been resolved.

Recorded per 10,000 population: the number of recorded offences for every 10,000 people. This is also referred as the crime rate per 10,000 population.

ANZSOC: the Australia New Zealand Standard Offence Classification. The offence classification is divided into 16 major offence divisions.

Definition of ANZSOC Divisions

1. Homicide and related offences: Unlawfully kill, attempt to unlawfully kill or conspiracy to kill another person.
2. Acts intended to cause injury: Acts, excluding attempted murder and those resulting in death, which are intended to cause non-fatal injury or harm to another person and where there is no sexual or acquisitive element.
3. Sexual assault and related offences: Acts, or intent of acts, of a sexual nature against another person, which are non-consensual or where consent is proscribed.
4. Dangerous or negligent acts endangering persons: Dangerous or negligent acts which, though not intended to cause harm, actually or potentially result in injury to oneself or another person.
5. Abduction, harassment and other offences against person: Acts intended to threaten or harass, or acts that unlawfully deprive another person of their freedom of movement, that are against that person's will or against the will of any parent, guardian or other person having lawful custody or care of that person.
6. Robbery, extortion and related offences: Acts intended to unlawfully gain money, property or other items of value from, or to cause detriment to, another person by using the threat of force or any other coercive measure.
7. Unlawful entry with intent / burglary, break and enter: The unlawful entry of a structure with the intent to commit an offence, where the entry is either forced or unforced.
8. Theft and related and offences: The unlawful taking or obtaining of money or goods, not involving the use of force or violence, coercion or deception, with intent to permanently or temporarily deprive the owner or possessor of the use of the money or goods, or the receiving or handling of money or goods obtained unlawfully.

9. Fraud, deception and related offences: Offences involving a dishonest act or omission carried out with the purpose of deceiving to obtain a benefit.

10. Illicit drug offences: The possessing, selling, dealing or trafficking, importing or exporting, manufacturing or cultivating of drugs or other substances prohibited under legislation.

11. Prohibited and regulated weapons and explosives offences: Offences involving prohibited or regulated weapons and explosives. Those offences also involving assault, sexual assault or robbery are coded to the relevant group within Assault, Sexual assaults and Robbery respectively.

12. Property damage and environmental pollution: The wilful and unlawful destruction, damage or defacement of public or private property, or the pollution of property or a definable entity held in common by the community.

13. Public order offences: Offences relating personal conduct that involves, or may lead to, a breach of public order or decency, or that is indicative of criminal intent, or that is otherwise regulated or prohibited on moral or ethical grounds. In general these offences do not involve a specific victim or victims; however some offences, such as offensive language and offensive behaviour, may be directed towards a single victim.

14. Traffic and vehicle regulatory offences: Offences relating to vehicles and most forms of traffic, including offences pertaining to the licensing, registration, roadworthiness, or use of vehicles, bicycle offences and pedestrian offences.

15. Offences against justice procedures, government security and government operations: An act or omission that is deemed to be prejudicial to the effective carrying out of justice procedures or any government operations. This includes general government operations as well as those specifically concerned with maintaining government security.

16. Miscellaneous offences: Offences involving the breach of statutory rules or regulations governing activities that are prima facie legal, where such offences are not explicitly dealt with under any other division. If an offence is specified under regulation and involves an act that would be illegal under common law or general criminal legislation, the offence is dealt with under the appropriate generic group.