

SOUTHERN DISTRICT CRIME STATISTICS 2013/2014



**A Summary of
Recorded and Resolved Offence
Statistics**

**POLICE NATIONAL HEADQUARTERS
October 2014**

ISSN 1178-1645

Table of Contents:

Topic	Page
Report Notes	1
Summary of District Recorded and Resolved Crime by Division	2 - 4
Proportions of Recorded Crime by Division	5
Summary of District Recorded Offences, Rate per 10,000 Population and Resolved Offences, by Area	6
Summary of Area Recorded Offences, Rate per 10,000 Population and Resolved Offences, by Division	7 - 10
Crime Trends:	11
Total Crime	12
Murder	13
Serious Assaults Resulting in Injury	14
Sexual Assaults	15
Public Place Assaults	16
Dwelling Assaults	17
Robbery	18
Burglary	19
Burglary (Dwelling)	20
Vehicles Stolen	21
Theft Ex Car	22
Population Data	23
General Definitions	24 - 25

REPORT NOTES:

Statistics reported in this document are derived from the Police National Intelligence Application (NIA). These Official Statistics for Recorded and Resolved Offences present a snapshot of data in NIA relating to offences that occur within a given year, as at the date 14 days following the end of that year.

Unless the matter is minor where Police attendance is sufficient, a matter that is reported to or discovered by Police where Police believe an offence is likely to have been committed is counted as a recorded offence.

A recorded offence is counted as resolved when Police apprehend an offender and decide how to deal with him/her. (E.g. warn, prosecute, etc.)

Resolution rate is the percentage of recorded offences that are resolved within 14 days of the end of the year being reported on.

If an offence is resolved 15 days or more after the end of the year it will not appear in the Official Crime Statistics for that or any other year. Resolution Rate therefore undercounts the number of cases that Police have resolved. This phenomenon has a more marked impact for some types of offences than others, such as offences that require long investigations (E.g. many serial crimes, burglaries and murders).

Several offences have been reclassified into different ANZSOC groups. This has resulted in changes to subtotals for Groups and Sub-divisions within Divisions 10, 15 and 16, compared to previously reported data. Generally, this occurred within the same Division.

When comparing 2013/2014 Statistics with previous years, the reader should also refer to "Report Notes" published in previous years' reports, as previous changes significantly affect year on year trends.

SUMMARY OF DISTRICT RECORDED AND RESOLVED CRIME, BY DIVISION
Years ending 30 June

HOMICIDE AND RELATED OFFENCES

ANZSOC Subdivision Description	Recorded 20112012	Recorded 20122013	Recorded 20132014	Variance 11/12-12/13	Variance 12/13-13/14	Resolved 20112012	Resolved 20122013	Resolved 20132014	Resolution Rate 20112012	Resolution Rate 20122013	Resolution Rate 20132014
ATTEMPTED MURDER	1	3	1	200.0 %	-66.7 %	1	3	1	100.0 %	100.0 %	100.0 %
MURDER	2	1	5	-50.0 %	400.0 %	1	1	4	50.0 %	100.0 %	80.0 %
	3	4	6	33.3 %	50.0 %	2	4	5	66.7 %	100.0 %	83.3 %

ACTS INTENDED TO CAUSE INJURY

ANZSOC Subdivision Description	Recorded 20112012	Recorded 20122013	Recorded 20132014	Variance 11/12-12/13	Variance 12/13-13/14	Resolved 20112012	Resolved 20122013	Resolved 20132014	Resolution Rate 20112012	Resolution Rate 20122013	Resolution Rate 20132014
ASSAULT	2,638	2,653	2,574	0.6 %	-3.0 %	2,308	2,215	2,063	87.5 %	83.5 %	80.1 %
OTHER ACTS INTENDED TO CAUSE INJURY	2	1	2	-50.0 %	100.0 %	1	0	1	50.0 %	0.0 %	50.0 %
	2,640	2,654	2,576	0.5 %	-2.9 %	2,309	2,215	2,064	87.5 %	83.5 %	80.1 %

SEXUAL ASSAULT AND RELATED OFFENCES

ANZSOC Subdivision Description	Recorded 20112012	Recorded 20122013	Recorded 20132014	Variance 11/12-12/13	Variance 12/13-13/14	Resolved 20112012	Resolved 20122013	Resolved 20132014	Resolution Rate 20112012	Resolution Rate 20122013	Resolution Rate 20132014
NON-ASSAULTIVE SEXUAL OFFENCES	4	5	14	25.0 %	180.0 %	3	2	9	75.0 %	40.0 %	64.3 %
SEXUAL ASSAULT	183	214	209	16.9 %	-2.3 %	99	99	77	54.1 %	46.3 %	36.8 %
	187	219	223	17.1 %	1.8 %	102	101	86	54.5 %	46.1 %	38.6 %

DANGEROUS OR NEGLIGENT ACTS ENDANGERING PERSONS

ANZSOC Subdivision Description	Recorded 20112012	Recorded 20122013	Recorded 20132014	Variance 11/12-12/13	Variance 12/13-13/14	Resolved 20112012	Resolved 20122013	Resolved 20132014	Resolution Rate 20112012	Resolution Rate 20122013	Resolution Rate 20132014
OTHER DANGEROUS OR NEGLIGENT ACTS ENDANGERING PERSONS	75	87	45	16.0 %	-48.3 %	39	50	25	52.0 %	57.5 %	55.6 %
	75	87	45	16.0 %	-48.3 %	39	50	25	52.0 %	57.5 %	55.6 %

ABDUCTION, HARASSMENT AND OTHER RELATED OFFENCES AGAINST A PERSON

ANZSOC Subdivision Description	Recorded 20112012	Recorded 20122013	Recorded 20132014	Variance 11/12-12/13	Variance 12/13-13/14	Resolved 20112012	Resolved 20122013	Resolved 20132014	Resolution Rate 20112012	Resolution Rate 20122013	Resolution Rate 20132014
ABDUCTION AND KIDNAPPING	6	4	10	-33.3 %	150.0 %	5	4	8	83.3 %	100.0 %	80.0 %
HARASSMENT AND THREATENING BEHAVIOUR	689	809	1,048	17.4 %	29.5 %	581	668	687	84.3 %	82.6 %	65.6 %
	695	813	1,058	17.0 %	30.1 %	586	672	695	84.3 %	82.7 %	65.7 %

ROBBERY, EXTORTION AND RELATED OFFENCES

ANZSOC Subdivision Description	Recorded 20112012	Recorded 20122013	Recorded 20132014	Variance 11/12-12/13	Variance 12/13-13/14	Resolved 20112012	Resolved 20122013	Resolved 20132014	Resolution Rate 20112012	Resolution Rate 20122013	Resolution Rate 20132014
BLACKMAIL AND EXTORTION	2	3	8	50.0 %	166.7 %	2	1	4	100.0 %	33.3 %	50.0 %
ROBBERY	39	48	44	23.1 %	-8.3 %	23	29	23	59.0 %	60.4 %	52.3 %
	41	51	52	24.4 %	2.0 %	25	30	27	61.0 %	58.8 %	51.9 %

UNLAWFUL ENTRY WITH INTENT/BURGLARY, BREAK AND ENTER

ANZSOC Subdivision Description	Recorded 20112012	Recorded 20122013	Recorded 20132014	Variance 11/12-12/13	Variance 12/13-13/14	Resolved 20112012	Resolved 20122013	Resolved 20132014	Resolution Rate 20112012	Resolution Rate 20122013	Resolution Rate 20132014
UNLAWFUL ENTRY WITH INTENT/BURGLARY, BREAK AND ENTER	1,929	1,783	2,433	-7.6 %	36.5 %	431	442	465	22.3 %	24.8 %	19.1 %
	1,929	1,783	2,433	-7.6 %	36.5 %	431	442	465	22.3 %	24.8 %	19.1 %

SUMMARY OF DISTRICT RECORDED AND RESOLVED CRIME, BY DIVISION

Years ending 30 June

THEFT AND RELATED OFFENCES

ANZSOC Subdivision Description	Recorded 20112012	Recorded 20122013	Recorded 20132014	Variance 11/12-12/13	Variance 12/13-13/14	Resolved 20112012	Resolved 20122013	Resolved 20132014	Resolution Rate 20112012	Resolution Rate 20122013	Resolution Rate 20132014
ILLEGAL USE OF PROPERTY (EXCEPT MOTOR VEHICLES)	248	215	153	-13.3 %	-28.8 %	20	15	9	8.1 %	7.0 %	5.9 %
MOTOR VEHICLE THEFT AND RELATED OFFENCES	1,972	1,600	1,642	-18.9 %	2.6 %	575	407	303	29.2 %	25.4 %	18.5 %
RECEIVE OR HANDLE PROCEEDS OF CRIME	113	102	103	-9.7 %	1.0 %	107	95	96	94.7 %	93.1 %	93.2 %
THEFT (EXCEPT MOTOR VEHICLES)	4,032	3,553	3,266	-11.9 %	-8.1 %	1,726	1,431	1,164	42.8 %	40.3 %	35.6 %
	6,365	5,470	5,164	-14.1 %	-5.6 %	2,428	1,948	1,572	38.1 %	35.6 %	30.4 %

FRAUD, DECEPTION AND RELATED OFFENCES

ANZSOC Subdivision Description	Recorded 20112012	Recorded 20122013	Recorded 20132014	Variance 11/12-12/13	Variance 12/13-13/14	Resolved 20112012	Resolved 20122013	Resolved 20132014	Resolution Rate 20112012	Resolution Rate 20122013	Resolution Rate 20132014
DECEPTIVE BUSINESS/GOVERNMENT PRACTICES	0	1	1	0.0 %	0.0 %	0	1	1	0.0 %	100.0 %	100.0 %
FORGERY AND COUNTERFEITING	24	24	29	0.0 %	20.8 %	21	15	21	87.5 %	62.5 %	72.4 %
OBTAIN BENEFIT BY DECEPTION	628	625	570	-0.5 %	-8.8 %	482	468	378	76.8 %	74.9 %	66.3 %
OTHER FRAUD AND DECEPTION OFFENCES	37	30	60	-18.9 %	100.0 %	28	17	40	75.7 %	56.7 %	66.7 %
	689	680	660	-1.3 %	-2.9 %	531	501	440	77.1 %	73.7 %	66.7 %

ILLICIT DRUG OFFENCES

ANZSOC Subdivision Description	Recorded 20112012	Recorded 20122013	Recorded 20132014	Variance 11/12-12/13	Variance 12/13-13/14	Resolved 20112012	Resolved 20122013	Resolved 20132014	Resolution Rate 20112012	Resolution Rate 20122013	Resolution Rate 20132014
DEAL OR TRAFFIC IN ILLICIT DRUGS	269	484	235	79.9 %	-51.4 %	257	464	210	95.5 %	95.9 %	89.4 %
IMPORT OR EXPORT ILLICIT DRUGS	12	8	14	-33.3 %	75.0 %	10	3	11	83.3 %	37.5 %	78.6 %
MANUFACTURE OR CULTIVATE ILLICIT DRUGS	135	97	85	-28.1 %	-12.4 %	100	77	65	74.1 %	79.4 %	76.5 %
OTHER ILLICIT DRUG OFFENCES	264	180	117	-31.8 %	-35.0 %	256	170	110	97.0 %	94.4 %	94.0 %
POSSESS AND/OR USE ILLICIT DRUGS	476	380	274	-20.2 %	-27.9 %	451	353	245	94.7 %	92.9 %	89.4 %
	1,156	1,149	725	-0.6 %	-36.9 %	1,074	1,067	641	92.9 %	92.9 %	88.4 %

PROHIBITED AND REGULATED WEAPONS AND EXPLOSIVES OFFENCES

ANZSOC Subdivision Description	Recorded 20112012	Recorded 20122013	Recorded 20132014	Variance 11/12-12/13	Variance 12/13-13/14	Resolved 20112012	Resolved 20122013	Resolved 20132014	Resolution Rate 20112012	Resolution Rate 20122013	Resolution Rate 20132014
REGULATED WEAPONS/EXPLOSIVES OFFENCES	402	372	352	-7.5 %	-5.4 %	359	327	302	89.3 %	87.9 %	85.8 %
	402	372	352	-7.5 %	-5.4 %	359	327	302	89.3 %	87.9 %	85.8 %

PROPERTY DAMAGE AND ENVIRONMENTAL POLLUTION

ANZSOC Subdivision Description	Recorded 20112012	Recorded 20122013	Recorded 20132014	Variance 11/12-12/13	Variance 12/13-13/14	Resolved 20112012	Resolved 20122013	Resolved 20132014	Resolution Rate 20112012	Resolution Rate 20122013	Resolution Rate 20132014
ENVIRONMENTAL POLLUTION	42	32	17	-23.8 %	-46.9 %	36	19	13	85.7 %	59.4 %	76.5 %
PROPERTY DAMAGE	4,205	4,014	3,421	-4.5 %	-14.8 %	1,151	1,098	884	27.4 %	27.4 %	25.8 %
	4,247	4,046	3,438	-4.7 %	-15.0 %	1,187	1,117	897	27.9 %	27.6 %	26.1 %

PUBLIC ORDER OFFENCES

ANZSOC Subdivision Description	Recorded 20112012	Recorded 20122013	Recorded 20132014	Variance 11/12-12/13	Variance 12/13-13/14	Resolved 20112012	Resolved 20122013	Resolved 20132014	Resolution Rate 20112012	Resolution Rate 20122013	Resolution Rate 20132014
DISORDERLY CONDUCT	2,188	2,262	1,959	3.4 %	-13.4 %	1,993	2,003	1,708	91.1 %	88.5 %	87.2 %
OFFENSIVE CONDUCT	161	128	83	-20.5 %	-35.2 %	122	97	61	75.8 %	75.8 %	73.5 %
REGULATED PUBLIC ORDER OFFENCES	466	405	253	-13.1 %	-37.5 %	413	351	195	88.6 %	86.7 %	77.1 %
	2,815	2,795	2,295	-0.7 %	-17.9 %	2,528	2,451	1,964	89.8 %	87.7 %	85.6 %

SUMMARY OF DISTRICT RECORDED AND RESOLVED CRIME, BY DIVISION

Years ending 30 June

OFFENCES AGAINST JUSTICE PROCEDURES, GOVERNMENT SECURITY AND GOVERNMENT OPERATIONS

ANZSOC Subdivision Description	Recorded 20112012	Recorded 20122013	Recorded 20132014	Variance 11/12-12/13	Variance 12/13-13/14	Resolved 20112012	Resolved 20122013	Resolved 20132014	Resolution Rate 20112012	Resolution Rate 20122013	Resolution Rate 20132014
BREACH OF COMMUNITY-BASED ORDER	102	60	91	-41.2 %	51.7 %	80	58	79	78.4 %	96.7 %	86.8 %
BREACH OF CUSTODIAL ORDER OFFENCES	40	53	29	32.5 %	-45.3 %	40	49	25	100.0 %	92.5 %	86.2 %
BREACH OF VIOLENCE AND NON-VIOLENCE RESTRAINING ORDERS	205	241	352	17.6 %	46.1 %	190	223	311	92.7 %	92.5 %	88.4 %
OFFENCES AGAINST GOVERNMENT OPERATIONS	17	14	9	-17.6 %	-35.7 %	10	4	3	58.8 %	28.6 %	33.3 %
OFFENCES AGAINST GOVERNMENT SECURITY	0	1	0	0.0 %	-100.0 %	0	1	0	0.0 %	100.0 %	0.0 %
OFFENCES AGAINST JUSTICE PROCEDURES	408	380	324	-6.9 %	-14.7 %	393	372	317	96.3 %	97.9 %	97.8 %
	772	749	805	-3.0 %	7.5 %	713	707	735	92.4 %	94.4 %	91.3 %

MISCELLANEOUS OFFENCES

ANZSOC Subdivision Description	Recorded 20112012	Recorded 20122013	Recorded 20132014	Variance 11/12-12/13	Variance 12/13-13/14	Resolved 20112012	Resolved 20122013	Resolved 20132014	Resolution Rate 20112012	Resolution Rate 20122013	Resolution Rate 20132014
COMMERCIAL/INDUSTRY/FINANCIAL REGULATION	2	7	3	250.0 %	-57.1 %	2	6	3	100.0 %	85.7 %	100.0 %
DEFAMATION, LIBEL AND PRIVACY OFFENCES	4	3	2	-25.0 %	-33.3 %	4	1	0	100.0 %	33.3 %	0.0 %
OTHER MISCELLANEOUS OFFENCES	101	114	114	12.9 %	0.0 %	71	88	70	70.3 %	77.2 %	61.4 %
PUBLIC HEALTH AND SAFETY OFFENCES	10	4	8	-60.0 %	100.0 %	4	3	4	40.0 %	75.0 %	50.0 %
	117	128	127	9.4 %	-0.8 %	81	98	77	69.2 %	76.6 %	60.6 %

TOTAL	22,133	21,000	19,959	-5.1 %	-5.0 %	12,395	11,730	9,995	56.0 %	55.9 %	50.1 %
--------------	---------------	---------------	---------------	---------------	---------------	---------------	---------------	--------------	---------------	---------------	---------------

PROPORTION OF RECORDED CRIME BY DIVISION

Years ending 30 June

ANZSOC Division Description	Proportions Recorded 20112012	Recorded 20112012	Proportions Recorded 20122013	Recorded 20122013	Proportions Recorded 20132014	Recorded 20132014
HOMICIDE AND RELATED OFFENCES	0.0 %	3	0.0 %	4	0.0 %	6
ACTS INTENDED TO CAUSE INJURY	11.9 %	2,640	12.6 %	2,654	12.9 %	2,576
SEXUAL ASSAULT AND RELATED OFFENCES	0.8 %	187	1.0 %	219	1.1 %	223
DANGEROUS OR NEGLIGENT ACTS ENDANGERING PERSONS	0.3 %	75	0.4 %	87	0.2 %	45
ABDUCTION, HARASSMENT AND OTHER RELATED OFFENCES AGAINST A PERSON	3.1 %	695	3.9 %	813	5.3 %	1,058
ROBBERY, EXTORTION AND RELATED OFFENCES	0.2 %	41	0.2 %	51	0.3 %	52
UNLAWFUL ENTRY WITH INTENT/BURGLARY, BREAK AND ENTER	8.7 %	1,929	8.5 %	1,783	12.2 %	2,433
THEFT AND RELATED OFFENCES	28.8 %	6,365	26.0 %	5,470	25.9 %	5,164
FRAUD, DECEPTION AND RELATED OFFENCES	3.1 %	689	3.2 %	680	3.3 %	660
ILLICIT DRUG OFFENCES	5.2 %	1,156	5.5 %	1,149	3.6 %	725
PROHIBITED AND REGULATED WEAPONS AND EXPLOSIVES OFFENCES	1.8 %	402	1.8 %	372	1.8 %	352
PROPERTY DAMAGE AND ENVIRONMENTAL POLLUTION	19.2 %	4,247	19.3 %	4,046	17.2 %	3,438
PUBLIC ORDER OFFENCES	12.7 %	2,815	13.3 %	2,795	11.5 %	2,295
OFFENCES AGAINST JUSTICE PROCEDURES, GOVERNMENT SECURITY AND GOVERNMENT OPERATIONS	3.5 %	772	3.6 %	749	4.0 %	805
MISCELLANEOUS OFFENCES	0.5 %	117	0.6 %	128	0.6 %	127
	100.0 %	22,133	100.0 %	21,000	100.0 %	19,959

SUMMARY OF DISTRICT RECORDED OFFENCES, RATE PER 10,000 POPULATION AND RESOLVED OFFENCES, BY AREA
years ending 30 June

TOTAL CRIME

Area Description	Recorded 20122013	Recorded 20132014	Variance 12/13-13/14	Recorded per 10,000 pop 20122013	Recorded per 10,000 pop 20132014	per 10,000 pop % Variance 12/13 to 13/14	Resolved 20122013	Resolved 20132014	Resolution Rate 20122013	Resolution Rate 20132014
Dunedin	10,836	10,295	-5.0 %	662.7	626.8	-5.4 %	5,616	4,727	51.8 %	45.9 %
Otago Rural	3,126	2,980	-4.7 %	652.1	601.5	-7.8 %	1,859	1,668	59.5 %	56.0 %
Southland	7,038	6,684	-5.0 %	725.4	690.0	-4.9 %	4,255	3,600	60.5 %	53.9 %
Total	21,000	19,959	-5.0 %	680.8	642.5	-5.6 %	11,730	9,995	55.9 %	50.1 %

**SUMMARY OF AREA RECORDED OFFENCES, RATE PER 10,000 POPULATION AND
RESOLVED OFFENCES, BY DIVISION**

years ending 30 June

HOMICIDE AND RELATED OFFENCES

Area Description	Recorded 20122013	Recorded 20132014	Variance 12/13-13/14	Recorded per 10,000 pop 20122013	Recorded per 10,000 pop 20132014	per 10,000 pop % Variance 12/13 to 13/14	Resolved 20122013	Resolved 20132014	Resolution Rate 20122013	Resolution Rate 20132014
Dunedin	3	5	66.7 %	0.2	0.3	65.9 %	3	4	100.0 %	80.0 %
Otago Rural	0	0	0.0 %	0.0	0.0	0.0 %	0	0	0.0 %	0.0 %
Southland	1	1	0.0 %	0.1	0.1	0.2 %	1	1	100.0 %	100.0 %
Total	4	6	50.0 %	0.1	0.2	48.9 %	4	5	100.0 %	83.3 %

ACTS INTENDED TO CAUSE INJURY

Area Description	Recorded 20122013	Recorded 20132014	Variance 12/13-13/14	Recorded per 10,000 pop 20122013	Recorded per 10,000 pop 20132014	per 10,000 pop % Variance 12/13 to 13/14	Resolved 20122013	Resolved 20132014	Resolution Rate 20122013	Resolution Rate 20132014
Dunedin	1,298	1,322	1.8 %	79.4	80.5	1.4 %	1,027	976	79.1 %	73.8 %
Otago Rural	403	383	-5.0 %	84.1	77.3	-8.0 %	335	323	83.1 %	84.3 %
Southland	953	871	-8.6 %	98.2	89.9	-8.5 %	853	765	89.5 %	87.8 %
Total	2,654	2,576	-2.9 %	86.0	82.9	-3.6 %	2,215	2,064	83.5 %	80.1 %

SEXUAL ASSAULT AND RELATED OFFENCES

Area Description	Recorded 20122013	Recorded 20132014	Variance 12/13-13/14	Recorded per 10,000 pop 20122013	Recorded per 10,000 pop 20132014	per 10,000 pop % Variance 12/13 to 13/14	Resolved 20122013	Resolved 20132014	Resolution Rate 20122013	Resolution Rate 20132014
Dunedin	120	120	0.0 %	7.3	7.3	-0.5 %	47	42	39.2 %	35.0 %
Otago Rural	20	25	25.0 %	4.2	5.0	21.0 %	13	15	65.0 %	60.0 %
Southland	79	78	-1.3 %	8.1	8.1	-1.1 %	41	29	51.9 %	37.2 %
Total	219	223	1.8 %	7.1	7.2	1.1 %	101	86	46.1 %	38.6 %

DANGEROUS OR NEGLIGENT ACTS ENDANGERING PERSONS

Area Description	Recorded 20122013	Recorded 20132014	Variance 12/13-13/14	Recorded per 10,000 pop 20122013	Recorded per 10,000 pop 20132014	per 10,000 pop % Variance 12/13 to 13/14	Resolved 20122013	Resolved 20132014	Resolution Rate 20122013	Resolution Rate 20132014
Dunedin	36	21	-41.7 %	2.2	1.3	-41.9 %	17	11	47.2 %	52.4 %
Otago Rural	22	4	-81.8 %	4.6	0.8	-82.4 %	12	1	54.5 %	25.0 %
Southland	29	20	-31.0 %	3.0	2.1	-30.9 %	21	13	72.4 %	65.0 %
Total	87	45	-48.3 %	2.8	1.4	-48.6 %	50	25	57.5 %	55.6 %

**SUMMARY OF AREA RECORDED OFFENCES, RATE PER 10,000 POPULATION AND
RESOLVED OFFENCES, BY DIVISION**

years ending 30 June

ABDUCTION, HARASSMENT AND OTHER RELATED OFFENCES AGAINST A PERSON

Area Description	Recorded 20122013	Recorded 20132014	Variance 12/13-13/14	Recorded per 10,000 pop 20122013	Recorded per 10,000 pop 20132014	per 10,000 pop % Variance 12/13 to 13/14	Resolved 20122013	Resolved 20132014	Resolution Rate 20122013	Resolution Rate 20132014
Dunedin	433	623	43.9 %	26.5	37.9	43.2 %	333	362	76.9 %	58.1 %
Otago Rural	75	75	0.0 %	15.6	15.1	-3.2 %	63	49	84.0 %	65.3 %
Southland	305	360	18.0 %	31.4	37.2	18.2 %	276	284	90.5 %	78.9 %
Total	813	1,058	30.1 %	26.4	34.1	29.2 %	672	695	82.7 %	65.7 %

ROBBERY, EXTORTION AND RELATED OFFENCES

Area Description	Recorded 20122013	Recorded 20132014	Variance 12/13-13/14	Recorded per 10,000 pop 20122013	Recorded per 10,000 pop 20132014	per 10,000 pop % Variance 12/13 to 13/14	Resolved 20122013	Resolved 20132014	Resolution Rate 20122013	Resolution Rate 20132014
Dunedin	42	32	-23.8 %	2.6	1.9	-24.2 %	24	16	57.1 %	50.0 %
Otago Rural	2	7	250.0 %	0.4	1.4	238.7 %	1	5	50.0 %	71.4 %
Southland	7	13	85.7 %	0.7	1.3	86.0 %	5	6	71.4 %	46.2 %
Total	51	52	2.0 %	1.7	1.7	1.2 %	30	27	58.8 %	51.9 %

UNLAWFUL ENTRY WITH INTENT/BURGLARY, BREAK AND ENTER

Area Description	Recorded 20122013	Recorded 20132014	Variance 12/13-13/14	Recorded per 10,000 pop 20122013	Recorded per 10,000 pop 20132014	per 10,000 pop % Variance 12/13 to 13/14	Resolved 20122013	Resolved 20132014	Resolution Rate 20122013	Resolution Rate 20132014
Dunedin	920	1,328	44.3 %	56.3	80.9	43.7 %	215	261	23.4 %	19.7 %
Otago Rural	139	198	42.4 %	29.0	40.0	37.8 %	38	40	27.3 %	20.2 %
Southland	724	907	25.3 %	74.6	93.6	25.5 %	189	164	26.1 %	18.1 %
Total	1,783	2,433	36.5 %	57.8	78.3	35.5 %	442	465	24.8 %	19.1 %

THEFT AND RELATED OFFENCES

Area Description	Recorded 20122013	Recorded 20132014	Variance 12/13-13/14	Recorded per 10,000 pop 20122013	Recorded per 10,000 pop 20132014	per 10,000 pop % Variance 12/13 to 13/14	Resolved 20122013	Resolved 20132014	Resolution Rate 20122013	Resolution Rate 20132014
Dunedin	3,018	2,713	-10.1 %	184.6	165.2	-10.5 %	1,120	791	37.1 %	29.2 %
Otago Rural	781	791	1.3 %	162.9	159.7	-2.0 %	234	221	30.0 %	27.9 %
Southland	1,671	1,660	-0.7 %	172.2	171.4	-0.5 %	594	560	35.5 %	33.7 %
Total	5,470	5,164	-5.6 %	177.3	166.2	-6.3 %	1,948	1,572	35.6 %	30.4 %

**SUMMARY OF AREA RECORDED OFFENCES, RATE PER 10,000 POPULATION AND
RESOLVED OFFENCES, BY DIVISION**

years ending 30 June

FRAUD, DECEPTION AND RELATED OFFENCES

Area Description	Recorded 2012/2013	Recorded 2013/2014	Variance 12/13-13/14	Recorded per 10,000 pop 2012/2013	Recorded per 10,000 pop 2013/2014	per 10,000 pop % Variance 12/13 to 13/14	Resolved 2012/2013	Resolved 2013/2014	Resolution Rate 2012/2013	Resolution Rate 2013/2014
Dunedin	284	292	2.8 %	17.4	17.8	2.4 %	200	195	70.4 %	66.8 %
Otago Rural	100	112	12.0 %	20.9	22.6	8.4 %	64	68	64.0 %	60.7 %
Southland	296	256	-13.5 %	30.5	26.4	-13.4 %	237	177	80.1 %	69.1 %
Total	680	660	-2.9 %	22.0	21.2	-3.6 %	501	440	73.7 %	66.7 %

ILLICIT DRUG OFFENCES

Area Description	Recorded 2012/2013	Recorded 2013/2014	Variance 12/13-13/14	Recorded per 10,000 pop 2012/2013	Recorded per 10,000 pop 2013/2014	per 10,000 pop % Variance 12/13 to 13/14	Resolved 2012/2013	Resolved 2013/2014	Resolution Rate 2012/2013	Resolution Rate 2013/2014
Dunedin	556	254	-54.3 %	34.0	15.5	-54.5 %	508	207	91.4 %	81.5 %
Otago Rural	187	251	34.2 %	39.0	50.7	29.9 %	166	229	88.8 %	91.2 %
Southland	406	220	-45.8 %	41.8	22.7	-45.7 %	393	205	96.8 %	93.2 %
Total	1,149	725	-36.9 %	37.2	23.3	-37.3 %	1,067	641	92.9 %	88.4 %

PROHIBITED AND REGULATED WEAPONS AND EXPLOSIVES OFFENCES

Area Description	Recorded 2012/2013	Recorded 2013/2014	Variance 12/13-13/14	Recorded per 10,000 pop 2012/2013	Recorded per 10,000 pop 2013/2014	per 10,000 pop % Variance 12/13 to 13/14	Resolved 2012/2013	Resolved 2013/2014	Resolution Rate 2012/2013	Resolution Rate 2013/2014
Dunedin	151	168	11.3 %	9.2	10.2	10.8 %	133	144	88.1 %	85.7 %
Otago Rural	45	46	2.2 %	9.4	9.3	-1.1 %	36	35	80.0 %	76.1 %
Southland	176	138	-21.6 %	18.1	14.2	-21.5 %	158	123	89.8 %	89.1 %
Total	372	352	-5.4 %	12.1	11.3	-6.0 %	327	302	87.9 %	85.8 %

PROPERTY DAMAGE AND ENVIRONMENTAL POLLUTION

Area Description	Recorded 2012/2013	Recorded 2013/2014	Variance 12/13-13/14	Recorded per 10,000 pop 2012/2013	Recorded per 10,000 pop 2013/2014	per 10,000 pop % Variance 12/13 to 13/14	Resolved 2012/2013	Resolved 2013/2014	Resolution Rate 2012/2013	Resolution Rate 2013/2014
Dunedin	2,303	1,860	-19.2 %	140.9	113.2	-19.6 %	543	444	23.6 %	23.9 %
Otago Rural	540	455	-15.7 %	112.7	91.8	-18.5 %	166	118	30.7 %	25.9 %
Southland	1,203	1,123	-6.7 %	124.0	115.9	-6.5 %	408	335	33.9 %	29.8 %
Total	4,046	3,438	-15.0 %	131.2	110.7	-15.6 %	1,117	897	27.6 %	26.1 %

**SUMMARY OF AREA RECORDED OFFENCES, RATE PER 10,000 POPULATION AND
RESOLVED OFFENCES, BY DIVISION**

years ending 30 June

PUBLIC ORDER OFFENCES

Area Description	Recorded 20122013	Recorded 20132014	Variance 12/13-13/14	Recorded per 10,000 pop 20122013	Recorded per 10,000 pop 20132014	per 10,000 pop % Variance 12/13 to 13/14	Resolved 20122013	Resolved 20132014	Resolution Rate 20122013	Resolution Rate 20132014
Dunedin	1,273	1,092	-14.2 %	77.9	66.5	-14.6 %	1,083	889	85.1 %	81.4 %
Otago Rural	688	540	-21.5 %	143.5	109.0	-24.1 %	622	483	90.4 %	89.4 %
Southland	834	663	-20.5 %	86.0	68.4	-20.4 %	746	592	89.4 %	89.3 %
Total	2,795	2,295	-17.9 %	90.6	73.9	-18.5 %	2,451	1,964	87.7 %	85.6 %

OFFENCES AGAINST JUSTICE PROCEDURES, GOVERNMENT SECURITY AND GOVERNMENT OPERATIONS

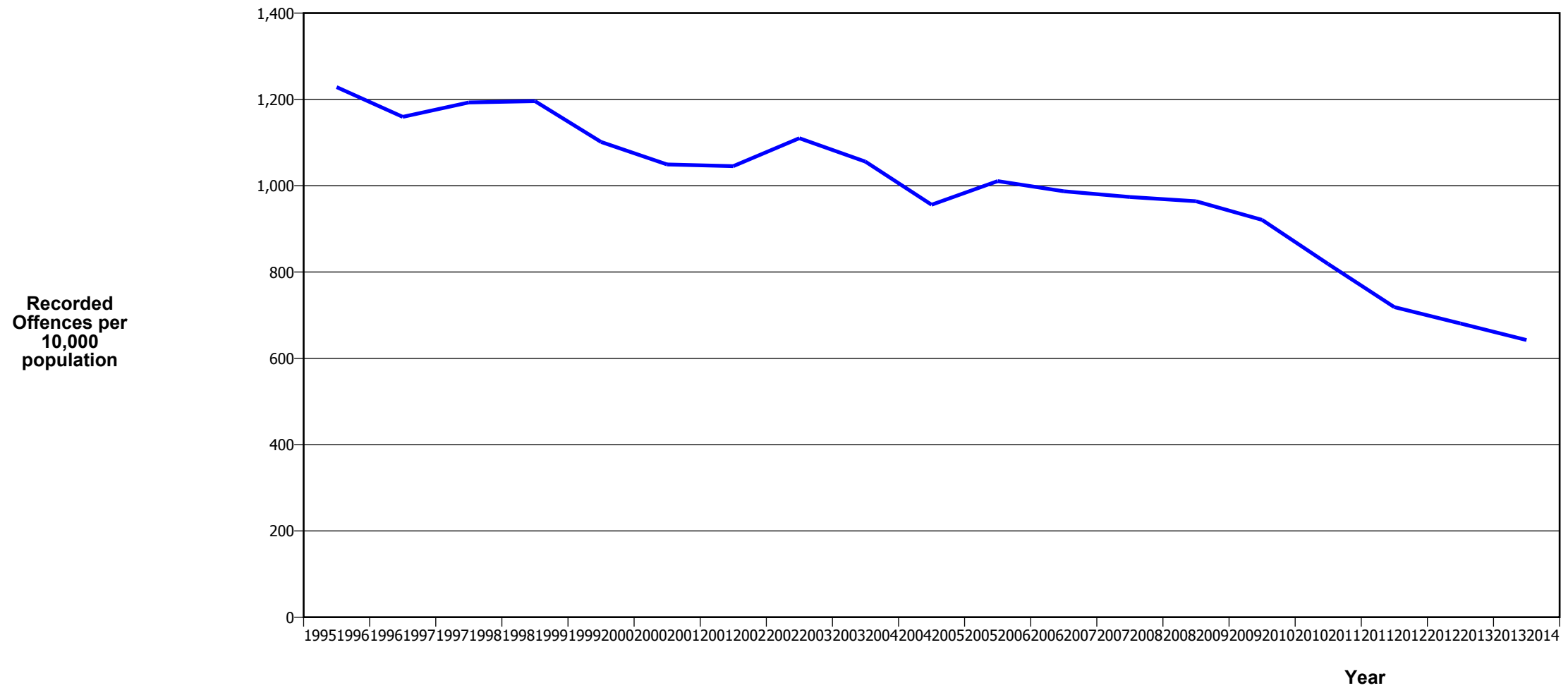
Area Description	Recorded 20122013	Recorded 20132014	Variance 12/13-13/14	Recorded per 10,000 pop 20122013	Recorded per 10,000 pop 20132014	per 10,000 pop % Variance 12/13 to 13/14	Resolved 20122013	Resolved 20132014	Resolution Rate 20122013	Resolution Rate 20132014
Dunedin	346	404	16.8 %	21.2	24.6	16.2 %	322	351	93.1 %	86.9 %
Otago Rural	101	80	-20.8 %	21.1	16.1	-23.4 %	95	74	94.1 %	92.5 %
Southland	302	321	6.3 %	31.1	33.1	6.5 %	290	310	96.0 %	96.6 %
Total	749	805	7.5 %	24.3	25.9	6.7 %	707	735	94.4 %	91.3 %

MISCELLANEOUS OFFENCES

Area Description	Recorded 20122013	Recorded 20132014	Variance 12/13-13/14	Recorded per 10,000 pop 20122013	Recorded per 10,000 pop 20132014	per 10,000 pop % Variance 12/13 to 13/14	Resolved 20122013	Resolved 20132014	Resolution Rate 20122013	Resolution Rate 20132014
Dunedin	53	61	15.1 %	3.2	3.7	14.6 %	41	34	77.4 %	55.7 %
Otago Rural	23	13	-43.5 %	4.8	2.6	-45.3 %	14	7	60.9 %	53.8 %
Southland	52	53	1.9 %	5.4	5.5	2.1 %	43	36	82.7 %	67.9 %
Total	128	127	-0.8 %	4.1	4.1	-1.5 %	98	77	76.6 %	60.6 %

CRIME TRENDS

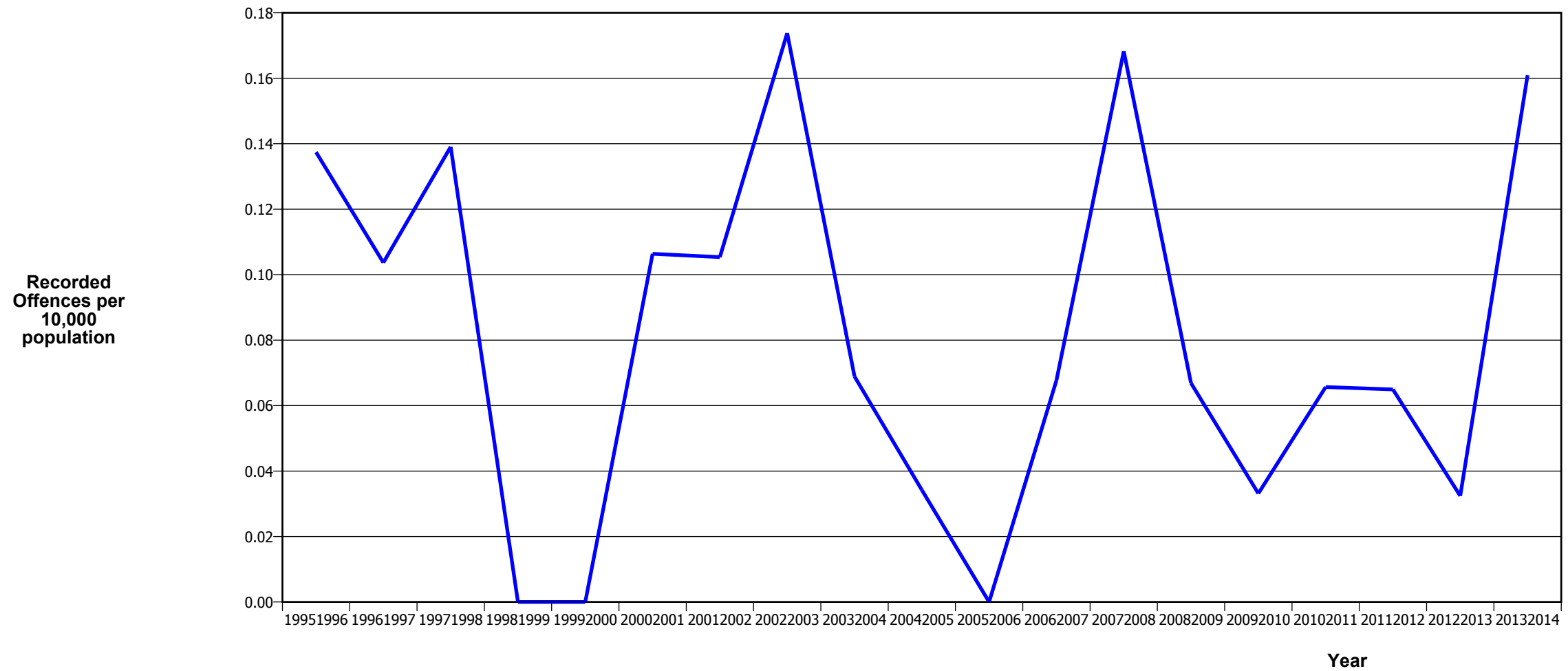
TOTAL CRIME



Fiscal Year	19951996	19961997	19971998	19981999	19992000	20002001	20012002	20022003	20032004	20042005	20052006	20062007	20072008	20082009	20092010	20102011	20112012	20122013	20132014
Recorded Offences	35,757	33,556	34,319	34,100	31,088	29,593	29,768	31,935	30,651	27,940	29,699	29,165	28,938	28,828	27,782	24,933	22,133	21,000	19,959
Recorded per 10,000 Population	1,228.4	1,159.6	1,193.1	1,195.9	1,101.4	1,049.3	1,045.4	1,110.1	1,055.8	955.9	1,010.7	987.1	973.9	964.0	920.9	818.7	718.7	680.8	642.5

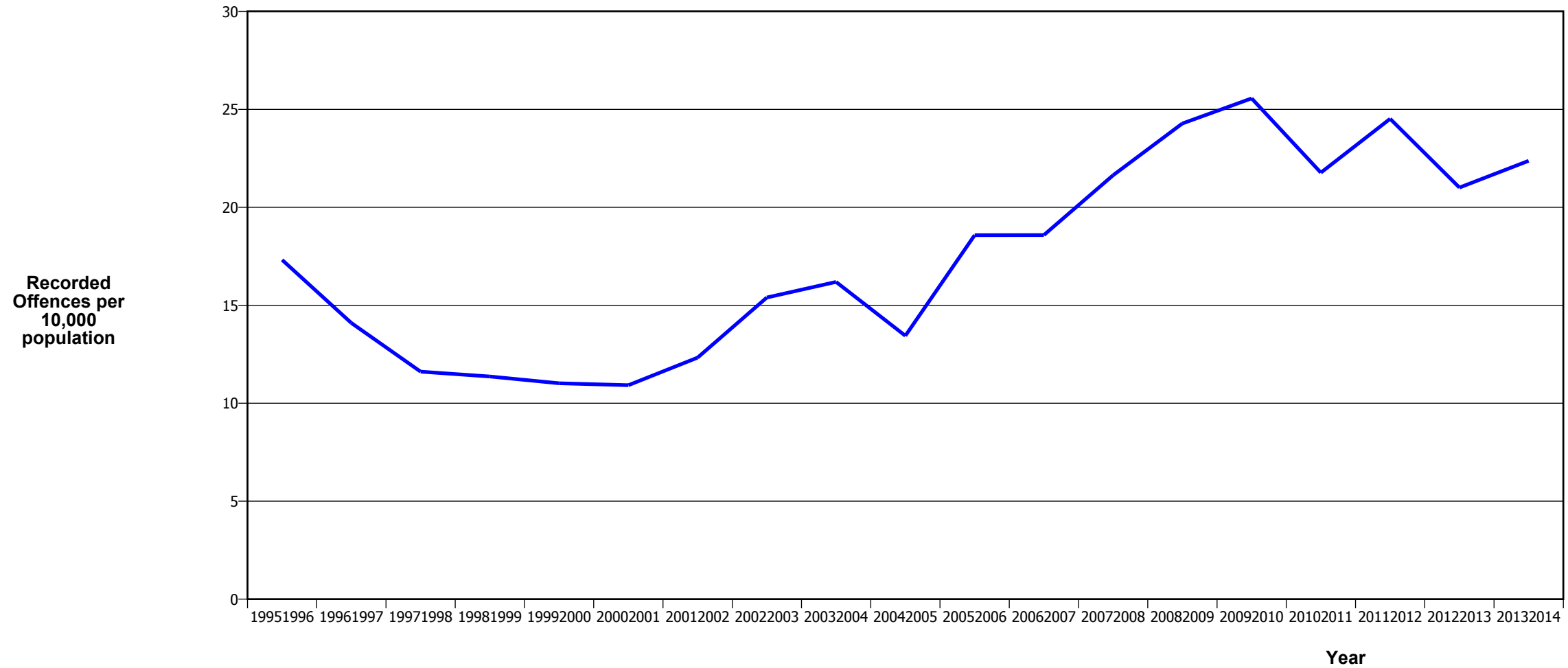
*In 20052006 there was a major IT system change (LES to NIA)

MURDER



- The 2009/2010 result is significantly influenced by an abnormal one-off spike in August 2009, when 12 murders occurred

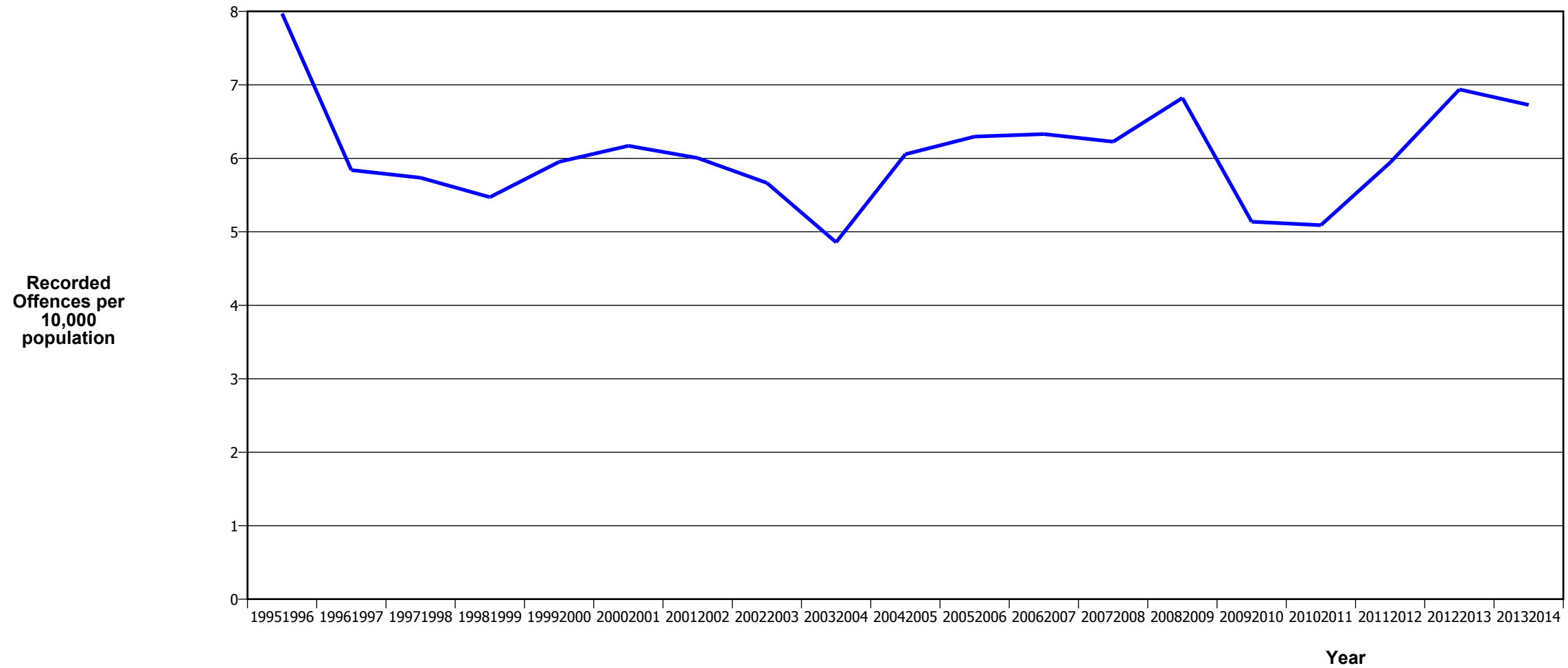
SERIOUS ASSAULTS RESULTING IN INJURY*



Fiscal Year	1995/1996	1996/1997	1997/1998	1998/1999	1999/2000	2000/2001	2001/2002	2002/2003	2003/2004	2004/2005	2005/2006	2006/2007	2007/2008	2008/2009	2009/2010	2010/2011	2011/2012	2012/2013	2013/2014
Recorded Offences	504	408	334	324	311	308	351	443	470	393	546	549	643	726	771	663	755	648	695
Recorded per 10,000 Population	17.3	14.1	11.6	11.4	11.0	10.9	12.3	15.4	16.2	13.4	18.6	18.6	21.6	24.3	25.6	21.8	24.5	21.0	22.4

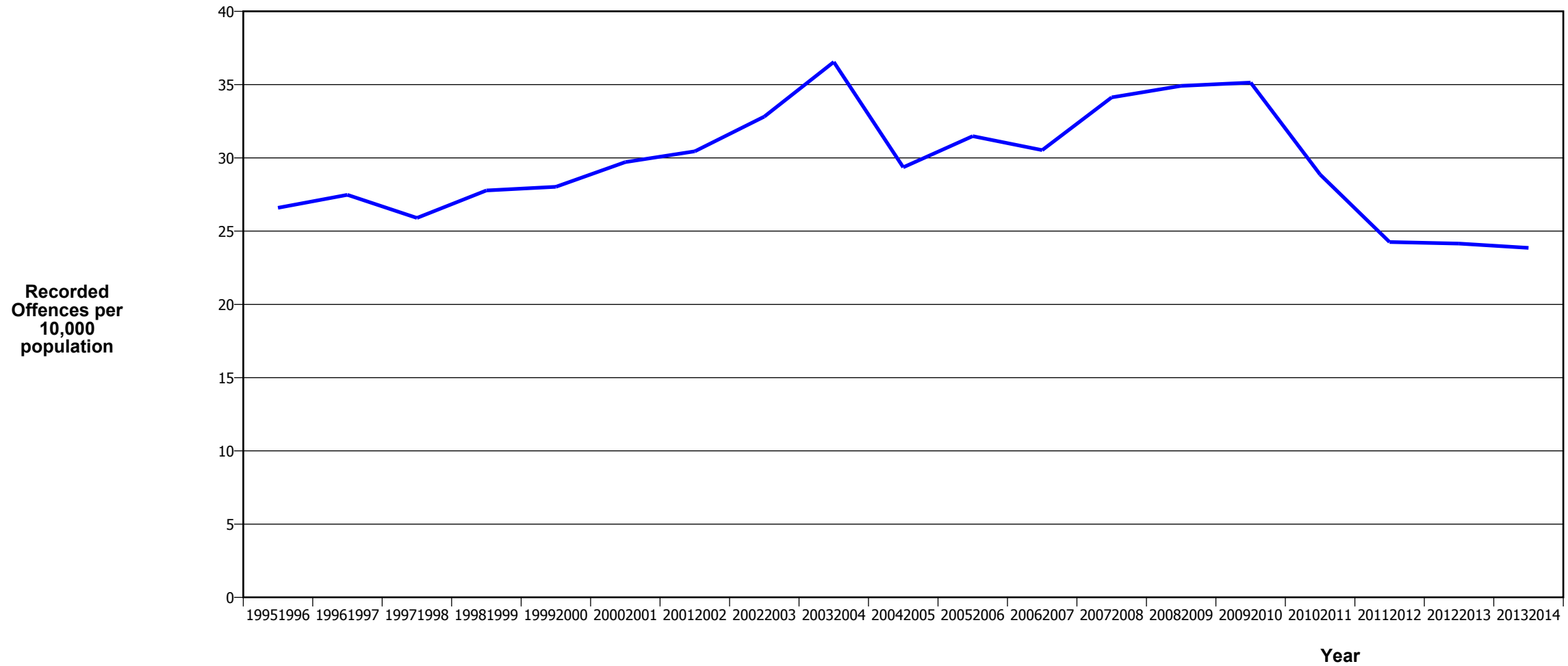
* This measure excludes common assaults

SEXUAL ASSAULTS



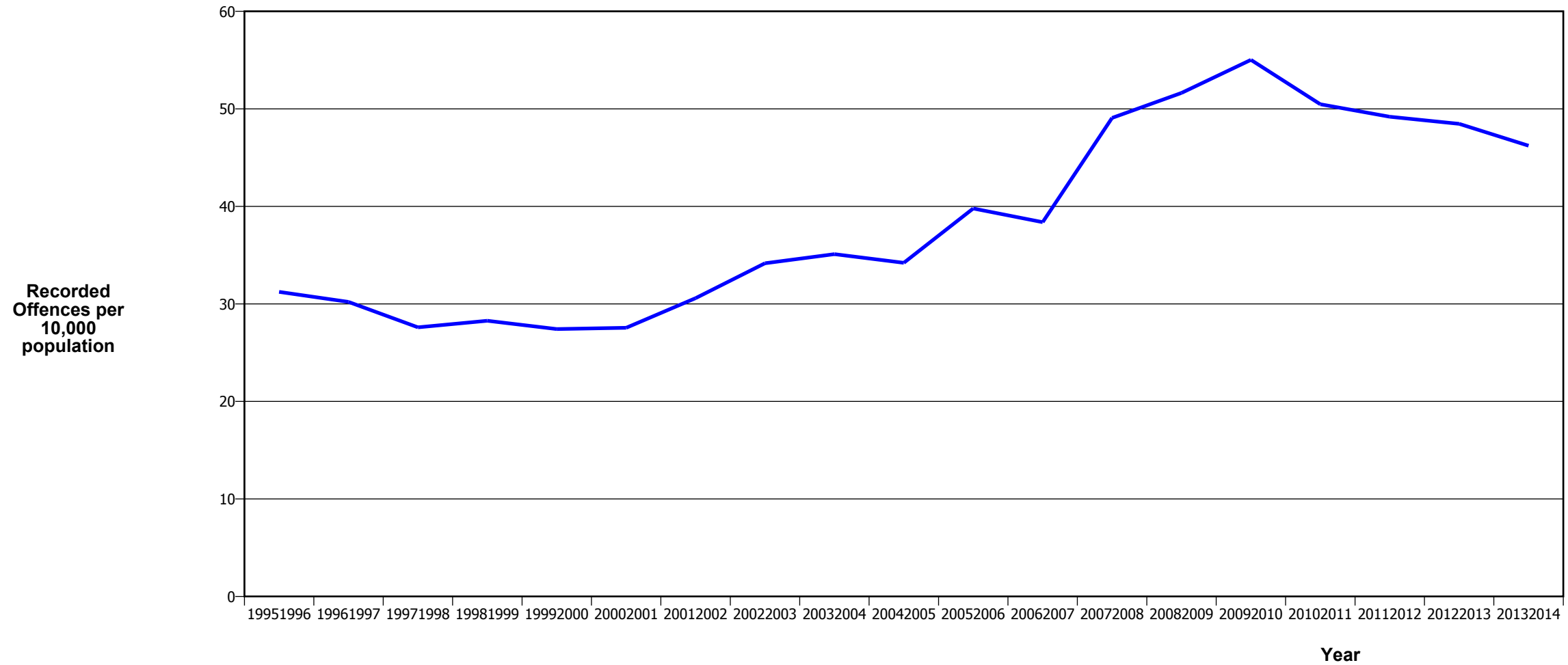
Fiscal Year	19951996	19961997	19971998	19981999	19992000	20002001	20012002	20022003	20032004	20042005	20052006	20062007	20072008	20082009	20092010	20102011	20112012	20122013	20132014
Recorded Offences	232	169	165	156	168	174	171	163	141	177	185	187	185	204	155	155	183	214	209
Recorded per 10,000 Population	8.0	5.8	5.7	5.5	6.0	6.2	6.0	5.7	4.9	6.1	6.3	6.3	6.2	6.8	5.1	5.1	5.9	6.9	6.7

PUBLIC PLACE ASSAULTS



Fiscal Year	19951996	19961997	19971998	19981999	19992000	20002001	20012002	20022003	20032004	20042005	20052006	20062007	20072008	20082009	20092010	20102011	20112012	20122013	20132014
Recorded Offences	774	795	745	792	791	838	867	944	1,061	858	925	902	1,014	1,044	1,060	879	747	745	741
Recorded per 10,000 Population	26.6	27.5	25.9	27.8	28.0	29.7	30.4	32.8	36.5	29.4	31.5	30.5	34.1	34.9	35.1	28.9	24.3	24.2	23.9

DWELLING ASSAULTS



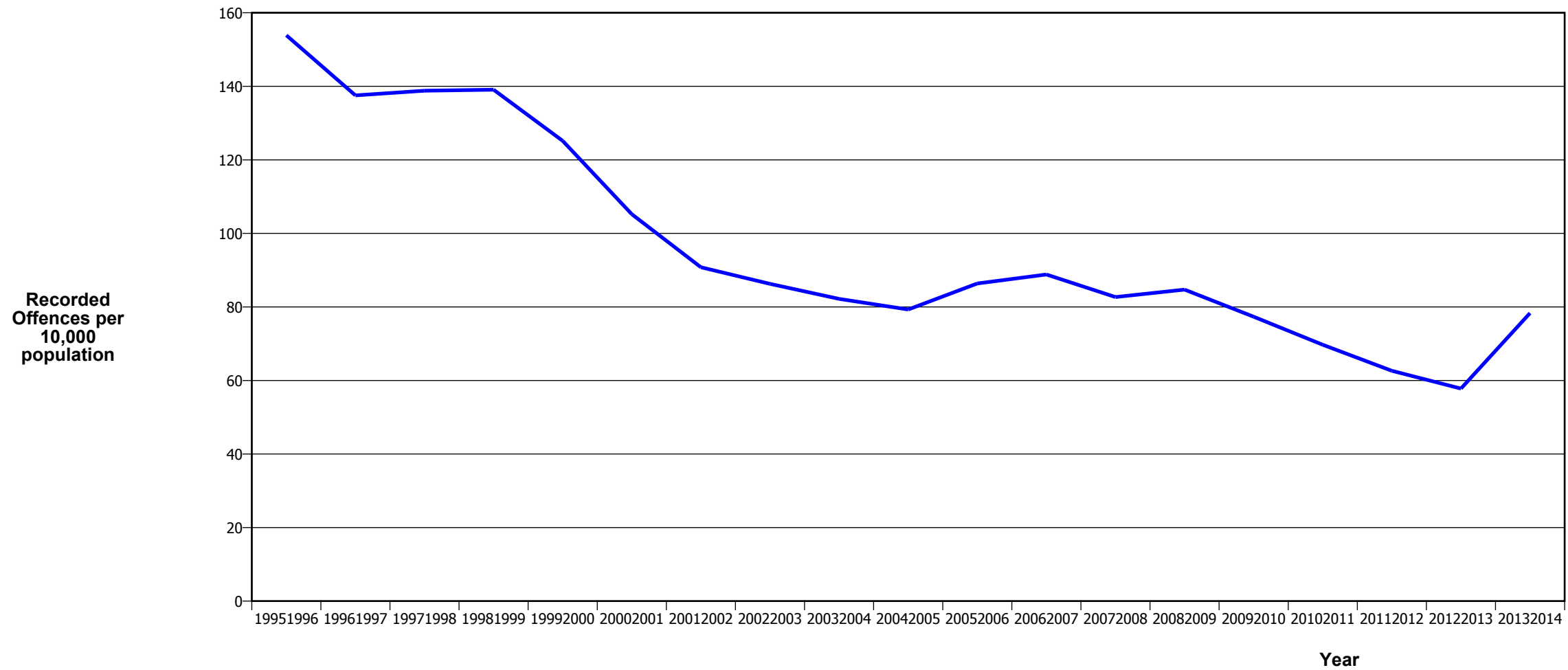
Fiscal Year	19951996	19961997	19971998	19981999	19992000	20002001	20012002	20022003	20032004	20042005	20052006	20062007	20072008	20082009	20092010	20102011	20112012	20122013	20132014
Recorded Offences	909	874	794	806	774	777	871	983	1,019	1,000	1,169	1,134	1,458	1,544	1,660	1,537	1,515	1,495	1,436
Recorded per 10,000 Population	31.2	30.2	27.6	28.3	27.4	27.6	30.6	34.2	35.1	34.2	39.8	38.4	49.1	51.6	55.0	50.5	49.2	48.5	46.2

ROBBERY



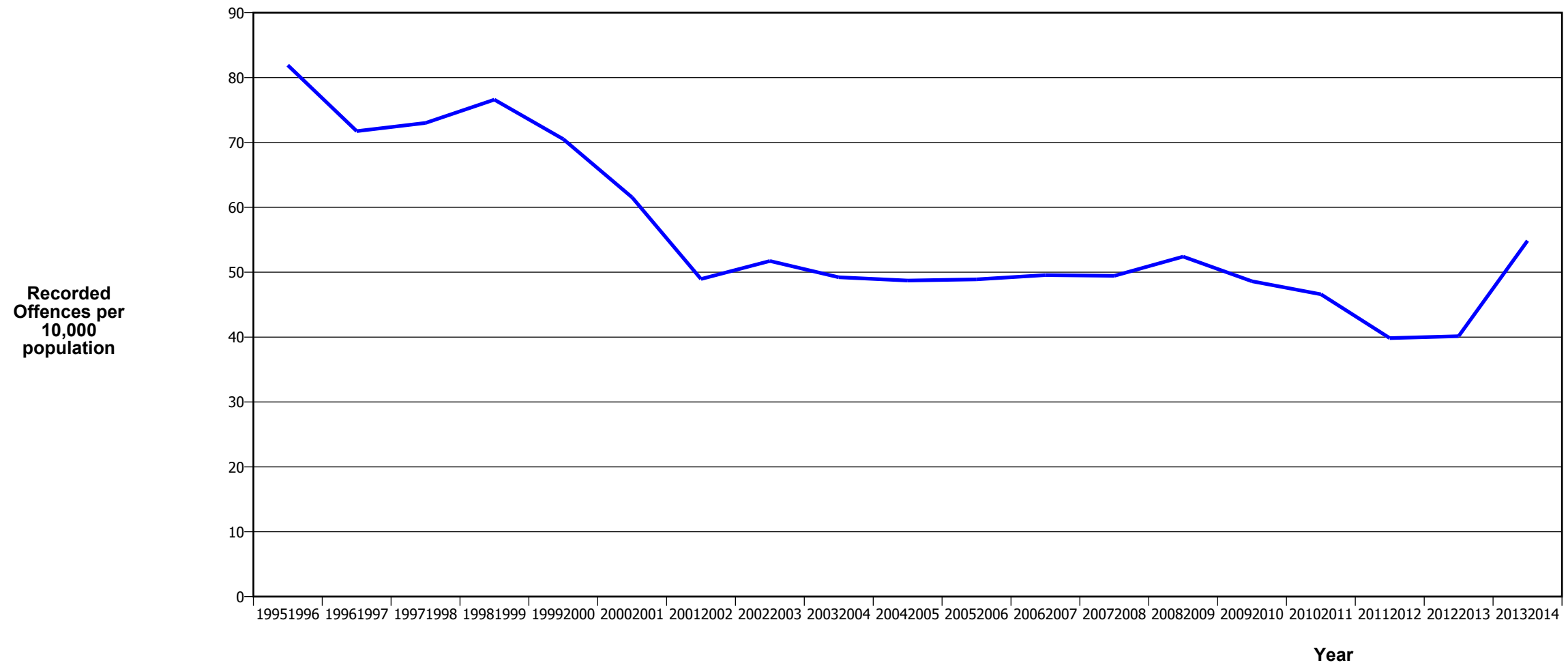
Fiscal Year	19951996	19961997	19971998	19981999	19992000	20002001	20012002	20022003	20032004	20042005	20052006	20062007	20072008	20082009	20092010	20102011	20112012	20122013	20132014
Recorded Offences	77	75	63	64	52	39	38	57	63	53	46	52	60	70	42	59	39	48	44
Recorded per 10,000 Population	2.6	2.6	2.2	2.2	1.8	1.4	1.3	2.0	2.2	1.8	1.6	1.8	2.0	2.3	1.4	1.9	1.3	1.6	1.4

BURGLARY (TOTAL)



Fiscal Year	19951996	19961997	19971998	19981999	19992000	20002001	20012002	20022003	20032004	20042005	20052006	20062007	20072008	20082009	20092010	20102011	20112012	20122013	20132014
Recorded Offences	4,479	3,980	3,993	3,966	3,533	2,967	2,585	2,482	2,386	2,318	2,538	2,624	2,457	2,533	2,333	2,123	1,929	1,783	2,433
Recorded per 10,000 Population	153.9	137.5	138.8	139.1	125.2	105.2	90.8	86.3	82.2	79.3	86.4	88.8	82.7	84.7	77.3	69.7	62.6	57.8	78.3

BURGLARY (DWELLING)



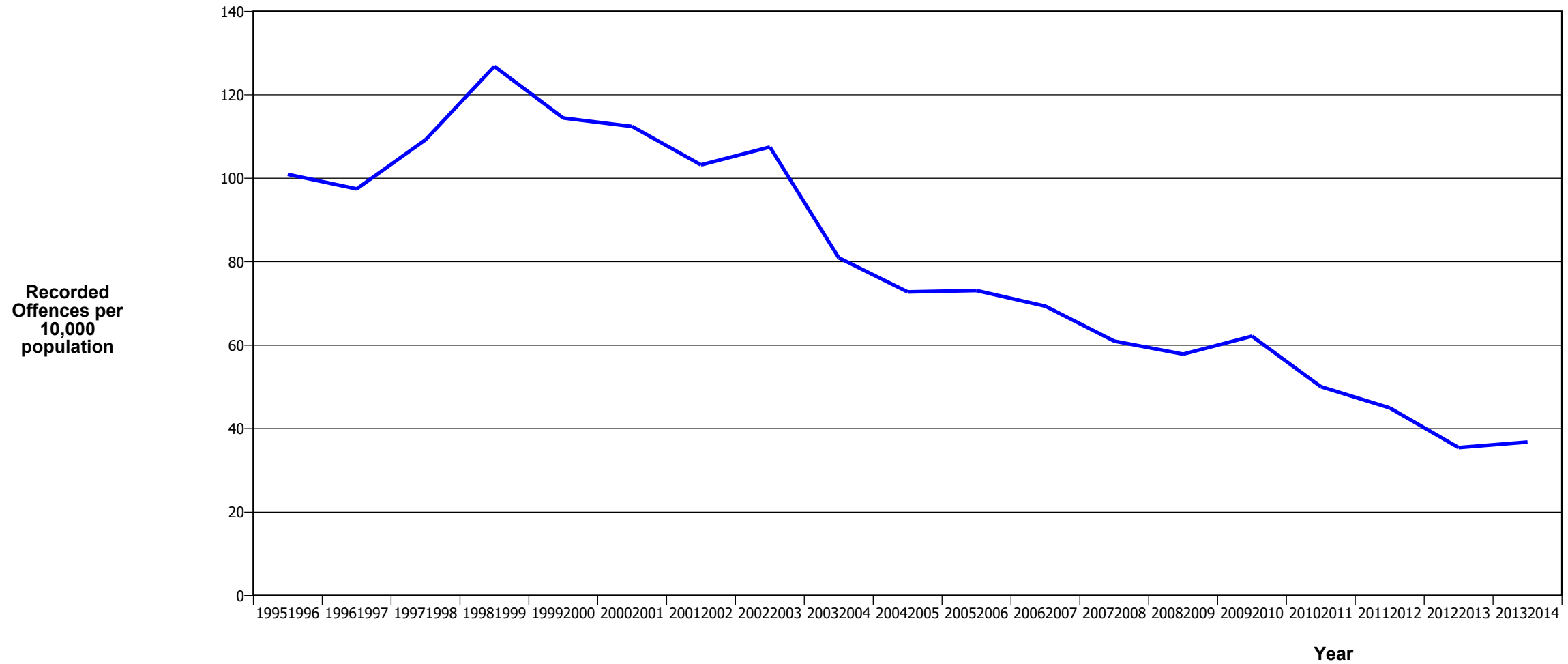
Fiscal Year	19951996	19961997	19971998	19981999	19992000	20002001	20012002	20022003	20032004	20042005	20052006	20062007	20072008	20082009	20092010	20102011	20112012	20122013	20132014
Recorded Offences	2,384	2,076	2,100	2,184	1,990	1,735	1,394	1,488	1,429	1,424	1,437	1,464	1,469	1,567	1,466	1,419	1,227	1,238	1,704
Recorded per 10,000 Population	81.9	71.7	73.0	76.6	70.5	61.5	49.0	51.7	49.2	48.7	48.9	49.6	49.4	52.4	48.6	46.6	39.8	40.1	54.9

VEHICLES STOLEN



Fiscal Year	19951996	19961997	19971998	19981999	19992000	20002001	20012002	20022003	20032004	20042005	20052006	20062007	20072008	20082009	20092010	20102011	20112012	20122013	20132014
Recorded Offences	1,334	1,053	1,196	1,196	1,186	981	833	904	766	756	844	915	773	728	697	645	587	506	499
Recorded per 10,000 Population	45.8	36.4	41.6	41.9	42.0	34.8	29.3	31.4	26.4	25.9	28.7	31.0	26.0	24.3	23.1	21.2	19.1	16.4	16.1

THEFT EX CAR



Fiscal Year	19951996	19961997	19971998	19981999	19992000	20002001	20012002	20022003	20032004	20042005	20052006	20062007	20072008	20082009	20092010	20102011	20112012	20122013	20132014
Recorded Offences	2,938	2,820	3,142	3,616	3,230	3,170	2,939	3,092	2,350	2,127	2,148	2,049	1,812	1,730	1,875	1,524	1,385	1,094	1,143
Recorded per 10,000 Population	100.9	97.5	109.2	126.8	114.4	112.4	103.2	107.5	80.9	72.8	73.1	69.4	61.0	57.9	62.2	50.0	45.0	35.5	36.8

Population Data

Population data is used in this release to calculate crime rates. These data are estimated population figures as at 31 December each year. They have been derived from population estimates as at 30 June each year that have been obtained from Statistics New Zealand.

The estimated resident population is based on the census usually resident population count, with adjustments for residents missed or counted more than once by the census (net census undercount), and for residents temporarily overseas on census night.

These population estimates exclude the number of international students who are studying in New Zealand for less than 12 months.

Year	Population
19951996	291,075
19961997	289,365
19971998	287,655
19981999	285,135
19992000	282,255
20002001	282,015
20012002	284,760
20022003	287,685
20032004	290,305
20042005	292,295
20052006	293,850
20062007	295,450
20072008	297,130
20082009	299,035
20092010	301,675
20102011	304,540
20112012	307,975
20122013	308,465
20132014	310,650

General Definitions

Recorded Offences: the number of breaches of the New Zealand law recorded by Police. This includes offences specified in the Crimes Act and other legislations, such as the Summary Offences Act, Local Government Act, etc.

Resolved Offences: the number of recorded offences where an offender has been identified and dealt with (e.g. warned, cautioned, prosecuted, etc).

Resolution Rate: the proportion of recorded offences that have been resolved.

Recorded per 10,000 population: the number of recorded offences for every 10,000 people. This is also referred as the crime rate per 10,000 population.

ANZSOC: the Australia New Zealand Standard Offence Classification. The offence classification is divided into 16 major offence divisions.

Definition of ANZSOC Divisions

1. Homicide and related offences: Unlawfully kill, attempt to unlawfully kill or conspiracy to kill another person.
2. Acts intended to cause injury: Acts, excluding attempted murder and those resulting in death, which are intended to cause non-fatal injury or harm to another person and where there is no sexual or acquisitive element.
3. Sexual assault and related offences: Acts, or intent of acts, of a sexual nature against another person, which are non-consensual or where consent is proscribed.
4. Dangerous or negligent acts endangering persons: Dangerous or negligent acts which, though not intended to cause harm, actually or potentially result in injury to oneself or another person.
5. Abduction, harassment and other offences against person: Acts intended to threaten or harass, or acts that unlawfully deprive another person of their freedom of movement, that are against that person's will or against the will of any parent, guardian or other person having lawful custody or care of that person.
6. Robbery, extortion and related offences: Acts intended to unlawfully gain money, property or other items of value from, or to cause detriment to, another person by using the threat of force or any other coercive measure.
7. Unlawful entry with intent / burglary, break and enter: The unlawful entry of a structure with the intent to commit an offence, where the entry is either forced or unforced.
8. Theft and related and offences: The unlawful taking or obtaining of money or goods, not involving the use of force or violence, coercion or deception, with intent to permanently or temporarily deprive the owner or possessor of the use of the money or goods, or the receiving or handling of money or goods obtained unlawfully.

9. Fraud, deception and related offences: Offences involving a dishonest act or omission carried out with the purpose of deceiving to obtain a benefit.

10. Illicit drug offences: The possessing, selling, dealing or trafficking, importing or exporting, manufacturing or cultivating of drugs or other substances prohibited under legislation.

11. Prohibited and regulated weapons and explosives offences: Offences involving prohibited or regulated weapons and explosives. Those offences also involving assault, sexual assault or robbery are coded to the relevant group within Assault, Sexual assaults and Robbery respectively.

12. Property damage and environmental pollution: The wilful and unlawful destruction, damage or defacement of public or private property, or the pollution of property or a definable entity held in common by the community.

13. Public order offences: Offences relating personal conduct that involves, or may lead to, a breach of public order or decency, or that is indicative of criminal intent, or that is otherwise regulated or prohibited on moral or ethical grounds. In general these offences do not involve a specific victim or victims; however some offences, such as offensive language and offensive behaviour, may be directed towards a single victim.

14. Traffic and vehicle regulatory offences: Offences relating to vehicles and most forms of traffic, including offences pertaining to the licensing, registration, roadworthiness, or use of vehicles, bicycle offences and pedestrian offences.

15. Offences against justice procedures, government security and government operations: An act or omission that is deemed to be prejudicial to the effective carrying out of justice procedures or any government operations. This includes general government operations as well as those specifically concerned with maintaining government security.

16. Miscellaneous offences: Offences involving the breach of statutory rules or regulations governing activities that are prima facie legal, where such offences are not explicitly dealt with under any other division. If an offence is specified under regulation and involves an act that would be illegal under common law or general criminal legislation, the offence is dealt with under the appropriate generic group.