

SOUTHERN DISTRICT CRIME STATISTICS 2013



**A Summary of
Recorded and Resolved Offence
Statistics**

**POLICE NATIONAL HEADQUARTERS
April 2014**

ISSN 1178 - 1645

Table of Contents:

| Topic | Page |
|---|-------------|
| Report Notes | 1 |
| District Summary of Recorded and Resolved Crime, by Division | 2-4 |
| Proportions of Recorded Crime by Division | 5 |
| Summary of District Recorded Offences, Rate per 10,000 Population and Resolved Offences, by Area | 6 |
| Summary of Area Recorded Offences, Rate per 10,000 Population and Resolved Offences, by Division | 7-9 |
| Crime Trends | 10 |
| Total Crime | 11 |
| Murder | 12 |
| Serious Assaults Resulting in Injury | 13 |
| Sexual Assaults | 14 |
| Public Place Assaults | 15 |
| Dwelling Assaults | 16 |
| Robbery | 17 |
| Burglary (Total) | 18 |
| Burglary (Dwelling) | 19 |
| Vehicles Stolen | 20 |
| Theft Ex Car | 21 |
| Population Data | 22 |
| General Definitions | 23-24 |

REPORT NOTES:

Statistics reported in this document are derived from the Police National Intelligence Application (NIA). These Official Statistics for Recorded and Resolved Offences present a snapshot of data in NIA relating to offences that occur within a given year, as at the date 14 days following the end of that year.

Unless the matter is minor where Police attendance is sufficient, a matter that is reported to or discovered by Police where Police believe an offence is likely to have been committed is counted as a recorded offence.

A recorded offence is counted as resolved when Police apprehend an offender and decide how to deal with him/her. (E.g. warn, prosecute, etc.)

Resolution rate is the percentage of recorded offences that are resolved within 14 days of the end of the year being reported on.

If an offence is resolved 15 days or more after the end of the year it will not appear in the Official Crime Statistics for that or any other year. Resolution Rate therefore undercounts the number of cases that Police have resolved. This phenomenon has a more marked impact for some types of offences than others, such as offences that require long investigations (E.g. many serial crimes, burglaries and murders).

The Sale and Supply of Alcohol Act 2012 came into effect on 18 December 2013. This had little effect on overall 2013 calendar year statistics, because the legislation only took effect two weeks before the end of the year. However, statistics for future years will be significantly affected. In particular, the offence of Breach of Liquor Ban, of which there were more than 6,500 nationally in 2013, has been made obsolete by the new legislation. Under the new legislation Police will deal with breaches of alcohol bans by issuing infringement notices, rather than by recording offences for which offenders can be charged. Such infringements are not part of this statistical collection.

When comparing 2013 Statistics with previous years, the reader should also refer to "Report Notes" published in previous years' reports, as previous changes significantly affect year on year trends.

SUMMARY OF DISTRICT RECORDED AND RESOLVED CRIME, BY DIVISION
Years ending 31 December

HOMICIDE AND RELATED OFFENCES

| ASOC Subdivision Description | Recorded 2011 | Recorded 2012 | Recorded 2013 | Variance 2011-2012 | Variance 2012-2013 | Resolved 2011 | Resolved 2012 | Resolved 2013 | Resolution Rate 2011 | Resolution Rate 2012 | Resolution Rate 2013 |
|---|---------------|---------------|---------------|--------------------|--------------------|---------------|---------------|---------------|----------------------|----------------------|----------------------|
| ATTEMPTED MURDER | 1 | 2 | 2 | 100.0 % | 0.0 % | 1 | 2 | 2 | 100.0 % | 100.0 % | 100.0 % |
| HOMICIDE AND RELATED OFFENCES NOT FURTHER DEFINED | 0 | 0 | 0 | 0.0 % | 0.0 % | 0 | 0 | 0 | 0.0 % | 0.0 % | 0.0 % |
| MANSLAUGHTER AND DRIVING CAUSING DEATH | 2 | 1 | 0 | -50.0 % | -100.0 % | 2 | 1 | 0 | 100.0 % | 100.0 % | 0.0 % |
| MURDER | 3 | 1 | 3 | -66.7 % | 200.0 % | 3 | 0 | 2 | 100.0 % | 0.0 % | 66.7 % |
| | 6 | 4 | 5 | -33.3 % | 25.0 % | 6 | 3 | 4 | 100.0 % | 75.0 % | 80.0 % |

ACTS INTENDED TO CAUSE INJURY

| ASOC Subdivision Description | Recorded 2011 | Recorded 2012 | Recorded 2013 | Variance 2011-2012 | Variance 2012-2013 | Resolved 2011 | Resolved 2012 | Resolved 2013 | Resolution Rate 2011 | Resolution Rate 2012 | Resolution Rate 2013 |
|-------------------------------------|---------------|---------------|---------------|--------------------|--------------------|---------------|---------------|---------------|----------------------|----------------------|----------------------|
| ASSAULT | 2,732 | 2,655 | 2,468 | -2.8 % | -7.0 % | 2,340 | 2,258 | 1,995 | 85.7 % | 85.0 % | 80.8 % |
| OTHER ACTS INTENDED TO CAUSE INJURY | 2 | 1 | 1 | -50.0 % | 0.0 % | 1 | 0 | 1 | 50.0 % | 0.0 % | 100.0 % |
| | 2,734 | 2,656 | 2,469 | -2.9 % | -7.0 % | 2,341 | 2,258 | 1,996 | 85.6 % | 85.0 % | 80.8 % |

SEXUAL ASSAULT AND RELATED OFFENCES

| ASOC Subdivision Description | Recorded 2011 | Recorded 2012 | Recorded 2013 | Variance 2011-2012 | Variance 2012-2013 | Resolved 2011 | Resolved 2012 | Resolved 2013 | Resolution Rate 2011 | Resolution Rate 2012 | Resolution Rate 2013 |
|--------------------------------|---------------|---------------|---------------|--------------------|--------------------|---------------|---------------|---------------|----------------------|----------------------|----------------------|
| NON-ASSAULTIVE SEXUAL OFFENCES | 1 | 6 | 6 | 500.0 % | 0.0 % | 1 | 5 | 2 | 100.0 % | 83.3 % | 33.3 % |
| SEXUAL ASSAULT | 165 | 158 | 240 | -4.2 % | 51.9 % | 80 | 82 | 113 | 48.5 % | 51.9 % | 47.1 % |
| | 166 | 164 | 246 | -1.2 % | 50.0 % | 81 | 87 | 115 | 48.8 % | 53.0 % | 46.7 % |

DANGEROUS OR NEGLIGENT ACTS ENDANGERING PERSONS

| ASOC Subdivision Description | Recorded 2011 | Recorded 2012 | Recorded 2013 | Variance 2011-2012 | Variance 2012-2013 | Resolved 2011 | Resolved 2012 | Resolved 2013 | Resolution Rate 2011 | Resolution Rate 2012 | Resolution Rate 2013 |
|---|---------------|---------------|---------------|--------------------|--------------------|---------------|---------------|---------------|----------------------|----------------------|----------------------|
| OTHER DANGEROUS OR NEGLIGENT ACTS ENDANGERING PERSONS | 79 | 84 | 60 | 6.3 % | -28.6 % | 52 | 49 | 30 | 65.8 % | 58.3 % | 50.0 % |
| | 79 | 84 | 60 | 6.3 % | -28.6 % | 52 | 49 | 30 | 65.8 % | 58.3 % | 50.0 % |

ABDUCTION, HARASSMENT AND OTHER RELATED OFFENCES AGAINST A PERSON

| ASOC Subdivision Description | Recorded 2011 | Recorded 2012 | Recorded 2013 | Variance 2011-2012 | Variance 2012-2013 | Resolved 2011 | Resolved 2012 | Resolved 2013 | Resolution Rate 2011 | Resolution Rate 2012 | Resolution Rate 2013 |
|--------------------------------------|---------------|---------------|---------------|--------------------|--------------------|---------------|---------------|---------------|----------------------|----------------------|----------------------|
| ABDUCTION AND KIDNAPPING | 6 | 4 | 7 | -33.3 % | 75.0 % | 5 | 3 | 6 | 83.3 % | 75.0 % | 85.7 % |
| HARASSMENT AND THREATENING BEHAVIOUR | 748 | 761 | 914 | 1.7 % | 20.1 % | 627 | 628 | 641 | 83.8 % | 82.5 % | 70.1 % |
| | 754 | 765 | 921 | 1.5 % | 20.4 % | 632 | 631 | 647 | 83.8 % | 82.5 % | 70.2 % |

ROBBERY, EXTORTION AND RELATED OFFENCES

| ASOC Subdivision Description | Recorded 2011 | Recorded 2012 | Recorded 2013 | Variance 2011-2012 | Variance 2012-2013 | Resolved 2011 | Resolved 2012 | Resolved 2013 | Resolution Rate 2011 | Resolution Rate 2012 | Resolution Rate 2013 |
|------------------------------|---------------|---------------|---------------|--------------------|--------------------|---------------|---------------|---------------|----------------------|----------------------|----------------------|
| BLACKMAIL AND EXTORTION | 2 | 3 | 5 | 50.0 % | 66.7 % | 2 | 1 | 3 | 100.0 % | 33.3 % | 60.0 % |
| ROBBERY | 51 | 40 | 53 | -21.6 % | 32.5 % | 29 | 26 | 28 | 56.9 % | 65.0 % | 52.8 % |
| | 53 | 43 | 58 | -18.9 % | 34.9 % | 31 | 27 | 31 | 58.5 % | 62.8 % | 53.4 % |

UNLAWFUL ENTRY WITH INTENT/BURGLARY, BREAK AND ENTER

| ASOC Subdivision Description | Recorded 2011 | Recorded 2012 | Recorded 2013 | Variance 2011-2012 | Variance 2012-2013 | Resolved 2011 | Resolved 2012 | Resolved 2013 | Resolution Rate 2011 | Resolution Rate 2012 | Resolution Rate 2013 |
|--|---------------|---------------|---------------|--------------------|--------------------|---------------|---------------|---------------|----------------------|----------------------|----------------------|
| UNLAWFUL ENTRY WITH INTENT/BURGLARY, BREAK AND ENTER | 2,053 | 1,807 | 2,092 | -12.0 % | 15.8 % | 456 | 426 | 416 | 22.2 % | 23.6 % | 19.9 % |
| | 2,053 | 1,807 | 2,092 | -12.0 % | 15.8 % | 456 | 426 | 416 | 22.2 % | 23.6 % | 19.9 % |

SUMMARY OF DISTRICT RECORDED AND RESOLVED CRIME, BY DIVISION
Years ending 31 December

THEFT AND RELATED OFFENCES

| ASOC Subdivision Description | Recorded 2011 | Recorded 2012 | Recorded 2013 | Variance 2011-2012 | Variance 2012-2013 | Resolved 2011 | Resolved 2012 | Resolved 2013 | Resolution Rate 2011 | Resolution Rate 2012 | Resolution Rate 2013 |
|---|---------------|---------------|---------------|--------------------|--------------------|---------------|---------------|---------------|----------------------|----------------------|----------------------|
| ILLEGAL USE OF PROPERTY (EXCEPT MOTOR VEHICLES) | 233 | 229 | 201 | -1.7 % | -12.2 % | 23 | 16 | 16 | 9.9 % | 7.0 % | 8.0 % |
| MOTOR VEHICLE THEFT AND RELATED OFFENCES | 2,094 | 1,785 | 1,584 | -14.8 % | -11.3 % | 478 | 487 | 314 | 22.8 % | 27.3 % | 19.8 % |
| RECEIVE OR HANDLE PROCEEDS OF CRIME | 92 | 119 | 91 | 29.3 % | -23.5 % | 85 | 117 | 84 | 92.4 % | 98.3 % | 92.3 % |
| THEFT (EXCEPT MOTOR VEHICLES) | 3,941 | 3,772 | 3,546 | -4.3 % | -6.0 % | 1,586 | 1,595 | 1,347 | 40.2 % | 42.3 % | 38.0 % |
| | 6,360 | 5,905 | 5,422 | -7.2 % | -8.2 % | 2,172 | 2,215 | 1,761 | 34.2 % | 37.5 % | 32.5 % |

FRAUD, DECEPTION AND RELATED OFFENCES

| ASOC Subdivision Description | Recorded 2011 | Recorded 2012 | Recorded 2013 | Variance 2011-2012 | Variance 2012-2013 | Resolved 2011 | Resolved 2012 | Resolved 2013 | Resolution Rate 2011 | Resolution Rate 2012 | Resolution Rate 2013 |
|---|---------------|---------------|---------------|--------------------|--------------------|---------------|---------------|---------------|----------------------|----------------------|----------------------|
| DECEPTIVE BUSINESS/GOVERNMENT PRACTICES | 1 | 1 | 2 | 0.0 % | 100.0 % | 1 | 1 | 2 | 100.0 % | 100.0 % | 100.0 % |
| FORGERY AND COUNTERFEITING | 20 | 25 | 31 | 25.0 % | 24.0 % | 17 | 18 | 26 | 85.0 % | 72.0 % | 83.9 % |
| OBTAIN BENEFIT BY DECEPTION | 544 | 689 | 538 | 26.7 % | -21.9 % | 394 | 534 | 387 | 72.4 % | 77.5 % | 71.9 % |
| OTHER FRAUD AND DECEPTION OFFENCES | 33 | 31 | 33 | -6.1 % | 6.5 % | 19 | 19 | 16 | 57.6 % | 61.3 % | 48.5 % |
| | 598 | 746 | 604 | 24.7 % | -19.0 % | 431 | 572 | 431 | 72.1 % | 76.7 % | 71.4 % |

ILLICIT DRUG OFFENCES

| ASOC Subdivision Description | Recorded 2011 | Recorded 2012 | Recorded 2013 | Variance 2011-2012 | Variance 2012-2013 | Resolved 2011 | Resolved 2012 | Resolved 2013 | Resolution Rate 2011 | Resolution Rate 2012 | Resolution Rate 2013 |
|--|---------------|---------------|---------------|--------------------|--------------------|---------------|---------------|---------------|----------------------|----------------------|----------------------|
| DEAL OR TRAFFIC IN ILLICIT DRUGS | 207 | 339 | 448 | 63.8 % | 32.2 % | 198 | 322 | 420 | 95.7 % | 95.0 % | 93.8 % |
| IMPORT OR EXPORT ILLICIT DRUGS | 6 | 14 | 12 | 133.3 % | -14.3 % | 5 | 8 | 10 | 83.3 % | 57.1 % | 83.3 % |
| MANUFACTURE OR CULTIVATE ILLICIT DRUGS | 162 | 124 | 78 | -23.5 % | -37.1 % | 137 | 92 | 61 | 84.6 % | 74.2 % | 78.2 % |
| OTHER ILLICIT DRUG OFFENCES | 312 | 221 | 132 | -29.2 % | -40.3 % | 300 | 208 | 123 | 96.2 % | 94.1 % | 93.2 % |
| POSSESS AND/OR USE ILLICIT DRUGS | 555 | 446 | 265 | -19.6 % | -40.6 % | 526 | 416 | 241 | 94.8 % | 93.3 % | 90.9 % |
| | 1,242 | 1,144 | 935 | -7.9 % | -18.3 % | 1,166 | 1,046 | 855 | 93.9 % | 91.4 % | 91.4 % |

PROHIBITED AND REGULATED WEAPONS AND EXPLOSIVES OFFENCES

| ASOC Subdivision Description | Recorded 2011 | Recorded 2012 | Recorded 2013 | Variance 2011-2012 | Variance 2012-2013 | Resolved 2011 | Resolved 2012 | Resolved 2013 | Resolution Rate 2011 | Resolution Rate 2012 | Resolution Rate 2013 |
|---------------------------------------|---------------|---------------|---------------|--------------------|--------------------|---------------|---------------|---------------|----------------------|----------------------|----------------------|
| REGULATED WEAPONS/EXPLOSIVES OFFENCES | 450 | 372 | 358 | -17.3 % | -3.8 % | 401 | 334 | 310 | 89.1 % | 89.8 % | 86.6 % |
| | 450 | 372 | 358 | -17.3 % | -3.8 % | 401 | 334 | 310 | 89.1 % | 89.8 % | 86.6 % |

PROPERTY DAMAGE AND ENVIRONMENTAL POLLUTION

| ASOC Subdivision Description | Recorded 2011 | Recorded 2012 | Recorded 2013 | Variance 2011-2012 | Variance 2012-2013 | Resolved 2011 | Resolved 2012 | Resolved 2013 | Resolution Rate 2011 | Resolution Rate 2012 | Resolution Rate 2013 |
|------------------------------|---------------|---------------|---------------|--------------------|--------------------|---------------|---------------|---------------|----------------------|----------------------|----------------------|
| ENVIRONMENTAL POLLUTION | 51 | 36 | 23 | -29.4 % | -36.1 % | 47 | 23 | 17 | 92.2 % | 63.9 % | 73.9 % |
| PROPERTY DAMAGE | 4,526 | 4,292 | 3,760 | -5.2 % | -12.4 % | 1,252 | 1,134 | 939 | 27.7 % | 26.4 % | 25.0 % |
| | 4,577 | 4,328 | 3,783 | -5.4 % | -12.6 % | 1,299 | 1,157 | 956 | 28.4 % | 26.7 % | 25.3 % |

PUBLIC ORDER OFFENCES

| ASOC Subdivision Description | Recorded 2011 | Recorded 2012 | Recorded 2013 | Variance 2011-2012 | Variance 2012-2013 | Resolved 2011 | Resolved 2012 | Resolved 2013 | Resolution Rate 2011 | Resolution Rate 2012 | Resolution Rate 2013 |
|---|---------------|---------------|---------------|--------------------|--------------------|---------------|---------------|---------------|----------------------|----------------------|----------------------|
| DISORDERLY CONDUCT | 2,277 | 2,324 | 2,018 | 2.1 % | -13.2 % | 2,008 | 2,069 | 1,755 | 88.2 % | 89.0 % | 87.0 % |
| OFFENSIVE CONDUCT | 161 | 150 | 109 | -6.8 % | -27.3 % | 131 | 109 | 83 | 81.4 % | 72.7 % | 76.1 % |
| PUBLIC ORDER OFFENCES NOT FURTHER DEFINED | 0 | 0 | 0 | 0.0 % | 0.0 % | 0 | 0 | 0 | 0.0 % | 0.0 % | 0.0 % |
| REGULATED PUBLIC ORDER OFFENCES | 512 | 404 | 340 | -21.1 % | -15.8 % | 443 | 352 | 292 | 86.5 % | 87.1 % | 85.9 % |
| | 2,950 | 2,878 | 2,467 | -2.4 % | -14.3 % | 2,582 | 2,530 | 2,130 | 87.5 % | 87.9 % | 86.3 % |

SUMMARY OF DISTRICT RECORDED AND RESOLVED CRIME, BY DIVISION
Years ending 31 December

OFFENCES AGAINST JUSTICE PROCEDURES, GOVERNMENT SECURITY AND GOVERNMENT OPERATIONS

| ASOC Subdivision Description | Recorded 2011 | Recorded 2012 | Recorded 2013 | Variance 2011-2012 | Variance 2012-2013 | Resolved 2011 | Resolved 2012 | Resolved 2013 | Resolution Rate 2011 | Resolution Rate 2012 | Resolution Rate 2013 |
|---|------------------|------------------|------------------|-----------------------|-----------------------|------------------|------------------|------------------|-------------------------|-------------------------|-------------------------|
| BREACH OF COMMUNITY-BASED ORDER | 81 | 86 | 86 | 6.2 % | 0.0 % | 68 | 69 | 78 | 84.0 % | 80.2 % | 90.7 % |
| BREACH OF CUSTODIAL ORDER OFFENCES | 44 | 53 | 33 | 20.5 % | -37.7 % | 40 | 51 | 31 | 90.9 % | 96.2 % | 93.9 % |
| BREACH OF VIOLENCE AND NON-VIOLENCE RESTRAINING ORDERS | 225 | 218 | 305 | -3.1 % | 39.9 % | 202 | 202 | 275 | 89.8 % | 92.7 % | 90.2 % |
| OFFENCES AGAINST GOVERNMENT OPERATIONS | 15 | 15 | 11 | 0.0 % | -26.7 % | 6 | 6 | 4 | 40.0 % | 40.0 % | 36.4 % |
| OFFENCES AGAINST GOVERNMENT SECURITY | 1 | 1 | 0 | 0.0 % | -100.0 % | 0 | 1 | 0 | 0.0 % | 100.0 % | 0.0 % |
| OFFENCES AGAINST JUSTICE PROCEDURES | 449 | 380 | 345 | -15.4 % | -9.2 % | 441 | 371 | 337 | 98.2 % | 97.6 % | 97.7 % |
| OFFENCES AGAINST JUSTICE PROCEDURES, GOVERNMENT SECURITY AND GOVERNMENT OPERATIONS NOT FURTHER DEFINED | 1 | 0 | 0 | -100.0 % | 0.0 % | 1 | 0 | 0 | 100.0 % | 0.0 % | 0.0 % |
| | 816 | 753 | 780 | -7.7 % | 3.6 % | 758 | 700 | 725 | 92.9 % | 93.0 % | 92.9 % |

MISCELLANEOUS OFFENCES

| ASOC Subdivision Description | Recorded 2011 | Recorded 2012 | Recorded 2013 | Variance 2011-2012 | Variance 2012-2013 | Resolved 2011 | Resolved 2012 | Resolved 2013 | Resolution Rate 2011 | Resolution Rate 2012 | Resolution Rate 2013 |
|--|------------------|------------------|------------------|-----------------------|-----------------------|------------------|------------------|------------------|-------------------------|-------------------------|-------------------------|
| COMMERCIAL/INDUSTRY/FINANCIAL REGULATION | 3 | 6 | 4 | 100.0 % | -33.3 % | 2 | 6 | 3 | 66.7 % | 100.0 % | 75.0 % |
| DEFAMATION, LIBEL AND PRIVACY OFFENCES | 3 | 2 | 1 | -33.3 % | -50.0 % | 3 | 2 | 0 | 100.0 % | 100.0 % | 0.0 % |
| OTHER MISCELLANEOUS OFFENCES | 111 | 96 | 115 | -13.5 % | 19.8 % | 77 | 69 | 75 | 69.4 % | 71.9 % | 65.2 % |
| PUBLIC HEALTH AND SAFETY OFFENCES | 9 | 8 | 6 | -11.1 % | -25.0 % | 5 | 4 | 4 | 55.6 % | 50.0 % | 66.7 % |
| | 126 | 112 | 126 | -11.1 % | 12.5 % | 87 | 81 | 82 | 69.0 % | 72.3 % | 65.1 % |

| | | | | | | | | | | | |
|--------------|---------------|---------------|---------------|---------------|---------------|---------------|---------------|---------------|---------------|---------------|---------------|
| TOTAL | 22,964 | 21,761 | 20,326 | -5.2 % | -6.6 % | 12,495 | 12,116 | 10,489 | 54.4 % | 55.7 % | 51.6 % |
|--------------|---------------|---------------|---------------|---------------|---------------|---------------|---------------|---------------|---------------|---------------|---------------|

PROPORTIONS OF RECORDED CRIME BY DIVISION

Years ending 31 December

| ASOC Division Description | Proportions Recorded 2011 | Recorded 2011 | Proportions Recorded 2012 | Recorded 2012 | Proportions Recorded 2013 | Recorded 2013 |
|--|---------------------------------|------------------|---------------------------------|------------------|---------------------------------|------------------|
| HOMICIDE AND RELATED OFFENCES | 0.03 % | 6 | 0.02 % | 4 | 0.02 % | 5 |
| ACTS INTENDED TO CAUSE INJURY | 11.91 % | 2,734 | 12.21 % | 2,656 | 12.15 % | 2,469 |
| SEXUAL ASSAULT AND RELATED OFFENCES | 0.72 % | 166 | 0.75 % | 164 | 1.21 % | 246 |
| DANGEROUS OR NEGLIGENT ACTS ENDANGERING PERSONS | 0.34 % | 79 | 0.39 % | 84 | 0.30 % | 60 |
| ABDUCTION, HARASSMENT AND OTHER RELATED OFFENCES AGAINST A PERSON | 3.28 % | 754 | 3.52 % | 765 | 4.53 % | 921 |
| ROBBERY, EXTORTION AND RELATED OFFENCES | 0.23 % | 53 | 0.20 % | 43 | 0.29 % | 58 |
| UNLAWFUL ENTRY WITH INTENT/BURGLARY, BREAK AND ENTER | 8.94 % | 2,053 | 8.30 % | 1,807 | 10.29 % | 2,092 |
| THEFT AND RELATED OFFENCES | 27.70 % | 6,360 | 27.14 % | 5,905 | 26.68 % | 5,422 |
| FRAUD, DECEPTION AND RELATED OFFENCES | 2.60 % | 598 | 3.43 % | 746 | 2.97 % | 604 |
| ILLICIT DRUG OFFENCES | 5.41 % | 1,242 | 5.26 % | 1,144 | 4.60 % | 935 |
| PROHIBITED AND REGULATED WEAPONS AND EXPLOSIVES OFFENCES | 1.96 % | 450 | 1.71 % | 372 | 1.76 % | 358 |
| PROPERTY DAMAGE AND ENVIRONMENTAL POLLUTION | 19.93 % | 4,577 | 19.89 % | 4,328 | 18.61 % | 3,783 |
| PUBLIC ORDER OFFENCES | 12.85 % | 2,950 | 13.23 % | 2,878 | 12.14 % | 2,467 |
| OFFENCES AGAINST JUSTICE PROCEDURES, GOVERNMENT SECURITY AND GOVERNMENT OPERATIONS | 3.55 % | 816 | 3.46 % | 753 | 3.84 % | 780 |
| MISCELLANEOUS OFFENCES | 0.55 % | 126 | 0.51 % | 112 | 0.62 % | 126 |
| | 100.00 % | 22,964 | 100.00 % | 21,761 | 100.00 % | 20,326 |

SUMMARY OF RECORDED OFFENCES, RATE PER 10,000 POPULATION AND RESOLVED OFFENCES, BY AREA
years ending 31 December

TOTAL CRIME

| Area Description | Recorded 2012 | Recorded 2013 | Variance 2012-2013 | Recorded per 10,000 pop 2012 | Recorded per 10,000 pop 2013 | Per 10,000 pop % Variance 2012 to 2013 | Resolved 2012 | Resolved 2013 | Resolution Rate 2012 | Resolution Rate 2013 |
|-------------------------|--------------------------|--------------------------|-------------------------------|---|---|---|--------------------------|--------------------------|---------------------------------|---------------------------------|
| Dunedin | 11,032 | 10,726 | -2.8 % | 676.3 | 654.5 | -3.2 % | 5,793 | 5,152 | 52.5 % | 48.0 % |
| Otago Rural | 3,210 | 3,013 | -6.1 % | 673.7 | 616.0 | -8.6 % | 1,871 | 1,732 | 58.3 % | 57.5 % |
| Southland | 7,519 | 6,587 | -12.4 % | 775.2 | 679.7 | -12.3 % | 4,452 | 3,605 | 59.2 % | 54.7 % |
| | 21,761 | 20,326 | -6.6 % | 707.1 | 656.3 | -7.2 % | 12,116 | 10,489 | 55.7 % | 51.6 % |

SUMMARY OF RECORDED OFFENCES, RATE PER 10,000 POPULATION AND RESOLVED OFFENCES, BY DIVISION

Years ending 31 December

HOMICIDE AND RELATED OFFENCES

| Area Description | Recorded 2012 | Recorded 2013 | Variance 2012-2013 | Recorded per 10,000 pop 2012 | Recorded per 10,000 pop 2013 | Per 10,000 pop % Variance 2012 to 2013 | Resolved 2012 | Resolved 2013 | Resolution Rate 2012 | Resolution Rate 2013 |
|------------------|---------------|---------------|--------------------|------------------------------|------------------------------|--|---------------|---------------|----------------------|----------------------|
| Dunedin | 2 | 3 | 50.0 % | 0.1 | 0.2 | 49.3 % | 2 | 2 | 100.0 % | 66.7 % |
| Otago Rural | 0 | 0 | 0.0 % | 0.0 | 0.0 | 0.0 % | 0 | 0 | 0.0 % | 0.0 % |
| Southland | 2 | 2 | 0.0 % | 0.2 | 0.2 | 0.1 % | 1 | 2 | 50.0 % | 100.0 % |
| | 4 | 5 | 25.0 % | 0.1 | 0.2 | 24.2 % | 3 | 4 | 75.0 % | 80.0 % |

ACTS INTENDED TO CAUSE INJURY

| Area Description | Recorded 2012 | Recorded 2013 | Variance 2012-2013 | Recorded per 10,000 pop 2012 | Recorded per 10,000 pop 2013 | Per 10,000 pop % Variance 2012 to 2013 | Resolved 2012 | Resolved 2013 | Resolution Rate 2012 | Resolution Rate 2013 |
|------------------|---------------|---------------|--------------------|------------------------------|------------------------------|--|---------------|---------------|----------------------|----------------------|
| Dunedin | 1,261 | 1,307 | 3.6 % | 77.3 | 79.8 | 3.2 % | 1,022 | 993 | 81.0 % | 76.0 % |
| Otago Rural | 389 | 365 | -6.2 % | 81.6 | 74.6 | -8.6 % | 336 | 305 | 86.4 % | 83.6 % |
| Southland | 1,006 | 797 | -20.8 % | 103.7 | 82.2 | -20.7 % | 900 | 698 | 89.5 % | 87.6 % |
| | 2,656 | 2,469 | -7.0 % | 86.3 | 79.7 | -7.6 % | 2,258 | 1,996 | 85.0 % | 80.8 % |

SEXUAL ASSAULT AND RELATED OFFENCES

| Area Description | Recorded 2012 | Recorded 2013 | Variance 2012-2013 | Recorded per 10,000 pop 2012 | Recorded per 10,000 pop 2013 | Per 10,000 pop % Variance 2012 to 2013 | Resolved 2012 | Resolved 2013 | Resolution Rate 2012 | Resolution Rate 2013 |
|------------------|---------------|---------------|--------------------|------------------------------|------------------------------|--|---------------|---------------|----------------------|----------------------|
| Dunedin | 79 | 136 | 72.2 % | 4.8 | 8.3 | 71.4 % | 32 | 54 | 40.5 % | 39.7 % |
| Otago Rural | 14 | 23 | 64.3 % | 2.9 | 4.7 | 60.1 % | 9 | 14 | 64.3 % | 60.9 % |
| Southland | 71 | 87 | 22.5 % | 7.3 | 9.0 | 22.6 % | 46 | 47 | 64.8 % | 54.0 % |
| | 164 | 246 | 50.0 % | 5.3 | 7.9 | 49.1 % | 87 | 115 | 53.0 % | 46.7 % |

DANGEROUS OR NEGLIGENT ACTS ENDANGERING PERSONS

| Area Description | Recorded 2012 | Recorded 2013 | Variance 2012-2013 | Recorded per 10,000 pop 2012 | Recorded per 10,000 pop 2013 | Per 10,000 pop % Variance 2012 to 2013 | Resolved 2012 | Resolved 2013 | Resolution Rate 2012 | Resolution Rate 2013 |
|------------------|---------------|---------------|--------------------|------------------------------|------------------------------|--|---------------|---------------|----------------------|----------------------|
| Dunedin | 34 | 25 | -26.5 % | 2.1 | 1.5 | -26.8 % | 19 | 11 | 55.9 % | 44.0 % |
| Otago Rural | 19 | 8 | -57.9 % | 4.0 | 1.6 | -59.0 % | 10 | 3 | 52.6 % | 37.5 % |
| Southland | 31 | 27 | -12.9 % | 3.2 | 2.8 | -12.8 % | 20 | 16 | 64.5 % | 59.3 % |
| | 84 | 60 | -28.6 % | 2.7 | 1.9 | -29.0 % | 49 | 30 | 58.3 % | 50.0 % |

ABDUCTION, HARASSMENT AND OTHER RELATED OFFENCES AGAINST A PERSON

| Area Description | Recorded 2012 | Recorded 2013 | Variance 2012-2013 | Recorded per 10,000 pop 2012 | Recorded per 10,000 pop 2013 | Per 10,000 pop % Variance 2012 to 2013 | Resolved 2012 | Resolved 2013 | Resolution Rate 2012 | Resolution Rate 2013 |
|------------------|---------------|---------------|--------------------|------------------------------|------------------------------|--|---------------|---------------|----------------------|----------------------|
| Dunedin | 408 | 525 | 28.7 % | 25.0 | 32.0 | 28.1 % | 312 | 324 | 76.5 % | 61.7 % |
| Otago Rural | 76 | 74 | -2.6 % | 15.9 | 15.1 | -5.1 % | 63 | 61 | 82.9 % | 82.4 % |
| Southland | 281 | 322 | 14.6 % | 29.0 | 33.2 | 14.7 % | 256 | 262 | 91.1 % | 81.4 % |
| | 765 | 921 | 20.4 % | 24.9 | 29.7 | 19.6 % | 631 | 647 | 82.5 % | 70.2 % |

ROBBERY, EXTORTION AND RELATED OFFENCES

| Area Description | Recorded 2012 | Recorded 2013 | Variance 2012-2013 | Recorded per 10,000 pop 2012 | Recorded per 10,000 pop 2013 | Per 10,000 pop % Variance 2012 to 2013 | Resolved 2012 | Resolved 2013 | Resolution Rate 2012 | Resolution Rate 2013 |
|------------------|---------------|---------------|--------------------|------------------------------|------------------------------|--|---------------|---------------|----------------------|----------------------|
| Dunedin | 30 | 40 | 33.3 % | 1.8 | 2.4 | 32.7 % | 17 | 22 | 56.7 % | 55.0 % |
| Otago Rural | 3 | 5 | 66.7 % | 0.6 | 1.0 | 62.4 % | 1 | 3 | 33.3 % | 60.0 % |
| Southland | 10 | 13 | 30.0 % | 1.0 | 1.3 | 30.1 % | 9 | 6 | 90.0 % | 46.2 % |
| | 43 | 58 | 34.9 % | 1.4 | 1.9 | 34.0 % | 27 | 31 | 62.8 % | 53.4 % |

SUMMARY OF RECORDED OFFENCES, RATE PER 10,000 POPULATION AND RESOLVED OFFENCES, BY DIVISION

Years ending 31 December

UNLAWFUL ENTRY WITH INTENT/BURGLARY, BREAK AND ENTER

| Area Description | Recorded 2012 | Recorded 2013 | Variance 2012-2013 | Recorded per 10,000 pop 2012 | Recorded per 10,000 pop 2013 | Per 10,000 pop % Variance 2012 to 2013 | Resolved 2012 | Resolved 2013 | Resolution Rate 2012 | Resolution Rate 2013 |
|------------------|---------------|---------------|--------------------|------------------------------|------------------------------|--|---------------|---------------|----------------------|----------------------|
| Dunedin | 910 | 1,120 | 23.1 % | 55.8 | 68.3 | 22.5 % | 208 | 210 | 22.9 % | 18.8 % |
| Otago Rural | 173 | 168 | -2.9 % | 36.3 | 34.3 | -5.4 % | 42 | 44 | 24.3 % | 26.2 % |
| Southland | 724 | 804 | 11.0 % | 74.6 | 83.0 | 11.2 % | 176 | 162 | 24.3 % | 20.1 % |
| | 1,807 | 2,092 | 15.8 % | 58.7 | 67.6 | 15.1 % | 426 | 416 | 23.6 % | 19.9 % |

THEFT AND RELATED OFFENCES

| Area Description | Recorded 2012 | Recorded 2013 | Variance 2012-2013 | Recorded per 10,000 pop 2012 | Recorded per 10,000 pop 2013 | Per 10,000 pop % Variance 2012 to 2013 | Resolved 2012 | Resolved 2013 | Resolution Rate 2012 | Resolution Rate 2013 |
|------------------|---------------|---------------|--------------------|------------------------------|------------------------------|--|---------------|---------------|----------------------|----------------------|
| Dunedin | 3,177 | 2,956 | -7.0 % | 194.8 | 180.4 | -7.4 % | 1,261 | 958 | 39.7 % | 32.4 % |
| Otago Rural | 847 | 804 | -5.1 % | 177.8 | 164.4 | -7.5 % | 280 | 234 | 33.1 % | 29.1 % |
| Southland | 1,881 | 1,662 | -11.6 % | 193.9 | 171.5 | -11.6 % | 674 | 569 | 35.8 % | 34.2 % |
| | 5,905 | 5,422 | -8.2 % | 191.9 | 175.1 | -8.7 % | 2,215 | 1,761 | 37.5 % | 32.5 % |

FRAUD, DECEPTION AND RELATED OFFENCES

| Area Description | Recorded 2012 | Recorded 2013 | Variance 2012-2013 | Recorded per 10,000 pop 2012 | Recorded per 10,000 pop 2013 | Per 10,000 pop % Variance 2012 to 2013 | Resolved 2012 | Resolved 2013 | Resolution Rate 2012 | Resolution Rate 2013 |
|------------------|---------------|---------------|--------------------|------------------------------|------------------------------|--|---------------|---------------|----------------------|----------------------|
| Dunedin | 356 | 330 | -7.3 % | 21.8 | 20.1 | -7.7 % | 274 | 252 | 77.0 % | 76.4 % |
| Otago Rural | 97 | 117 | 20.6 % | 20.4 | 23.9 | 17.5 % | 61 | 84 | 62.9 % | 71.8 % |
| Southland | 293 | 157 | -46.4 % | 30.2 | 16.2 | -46.4 % | 237 | 95 | 80.9 % | 60.5 % |
| | 746 | 604 | -19.0 % | 24.2 | 19.5 | -19.5 % | 572 | 431 | 76.7 % | 71.4 % |

ILLICIT DRUG OFFENCES

| Area Description | Recorded 2012 | Recorded 2013 | Variance 2012-2013 | Recorded per 10,000 pop 2012 | Recorded per 10,000 pop 2013 | Per 10,000 pop % Variance 2012 to 2013 | Resolved 2012 | Resolved 2013 | Resolution Rate 2012 | Resolution Rate 2013 |
|------------------|---------------|---------------|--------------------|------------------------------|------------------------------|--|---------------|---------------|----------------------|----------------------|
| Dunedin | 574 | 377 | -34.3 % | 35.2 | 23.0 | -34.6 % | 517 | 335 | 90.1 % | 88.9 % |
| Otago Rural | 213 | 220 | 3.3 % | 44.7 | 45.0 | 0.6 % | 186 | 198 | 87.3 % | 90.0 % |
| Southland | 357 | 338 | -5.3 % | 36.8 | 34.9 | -5.2 % | 343 | 322 | 96.1 % | 95.3 % |
| | 1,144 | 935 | -18.3 % | 37.2 | 30.2 | -18.8 % | 1,046 | 855 | 91.4 % | 91.4 % |

PROHIBITED AND REGULATED WEAPONS AND EXPLOSIVES OFFENCES

| Area Description | Recorded 2012 | Recorded 2013 | Variance 2012-2013 | Recorded per 10,000 pop 2012 | Recorded per 10,000 pop 2013 | Per 10,000 pop % Variance 2012 to 2013 | Resolved 2012 | Resolved 2013 | Resolution Rate 2012 | Resolution Rate 2013 |
|------------------|---------------|---------------|--------------------|------------------------------|------------------------------|--|---------------|---------------|----------------------|----------------------|
| Dunedin | 164 | 158 | -3.7 % | 10.1 | 9.6 | -4.1 % | 144 | 144 | 87.8 % | 91.1 % |
| Otago Rural | 44 | 41 | -6.8 % | 9.2 | 8.4 | -9.2 % | 38 | 33 | 86.4 % | 80.5 % |
| Southland | 164 | 159 | -3.0 % | 16.9 | 16.4 | -3.0 % | 152 | 133 | 92.7 % | 83.6 % |
| | 372 | 358 | -3.8 % | 12.1 | 11.6 | -4.4 % | 334 | 310 | 89.8 % | 86.6 % |

PROPERTY DAMAGE AND ENVIRONMENTAL POLLUTION

| Area Description | Recorded 2012 | Recorded 2013 | Variance 2012-2013 | Recorded per 10,000 pop 2012 | Recorded per 10,000 pop 2013 | Per 10,000 pop % Variance 2012 to 2013 | Resolved 2012 | Resolved 2013 | Resolution Rate 2012 | Resolution Rate 2013 |
|------------------|---------------|---------------|--------------------|------------------------------|------------------------------|--|---------------|---------------|----------------------|----------------------|
| Dunedin | 2,347 | 2,157 | -8.1 % | 143.9 | 131.6 | -8.5 % | 533 | 522 | 22.7 % | 24.2 % |
| Otago Rural | 539 | 497 | -7.8 % | 113.1 | 101.6 | -10.2 % | 141 | 131 | 26.2 % | 26.4 % |
| Southland | 1,442 | 1,129 | -21.7 % | 148.7 | 116.5 | -21.6 % | 483 | 303 | 33.5 % | 26.8 % |
| | 4,328 | 3,783 | -12.6 % | 140.6 | 122.2 | -13.1 % | 1,157 | 956 | 26.7 % | 25.3 % |

SUMMARY OF RECORDED OFFENCES, RATE PER 10,000 POPULATION AND RESOLVED OFFENCES, BY DIVISION

Years ending 31 December

PUBLIC ORDER OFFENCES

| Area Description | Recorded 2012 | Recorded 2013 | Variance 2012-2013 | Recorded per 10,000 pop 2012 | Recorded per 10,000 pop 2013 | Per 10,000 pop % Variance 2012 to 2013 | Resolved 2012 | Resolved 2013 | Resolution Rate 2012 | Resolution Rate 2013 |
|------------------|---------------|---------------|--------------------|------------------------------|------------------------------|--|---------------|---------------|----------------------|----------------------|
| Dunedin | 1,252 | 1,163 | -7.1 % | 76.8 | 71.0 | -7.5 % | 1,058 | 957 | 84.5 % | 82.3 % |
| Otago Rural | 693 | 575 | -17.0 % | 145.4 | 117.6 | -19.2 % | 620 | 519 | 89.5 % | 90.3 % |
| Southland | 933 | 729 | -21.9 % | 96.2 | 75.2 | -21.8 % | 852 | 654 | 91.3 % | 89.7 % |
| | 2,878 | 2,467 | -14.3 % | 93.5 | 79.7 | -14.8 % | 2,530 | 2,130 | 87.9 % | 86.3 % |

OFFENCES AGAINST JUSTICE PROCEDURES, GOVERNMENT SECURITY AND GOVERNMENT OPERATIONS

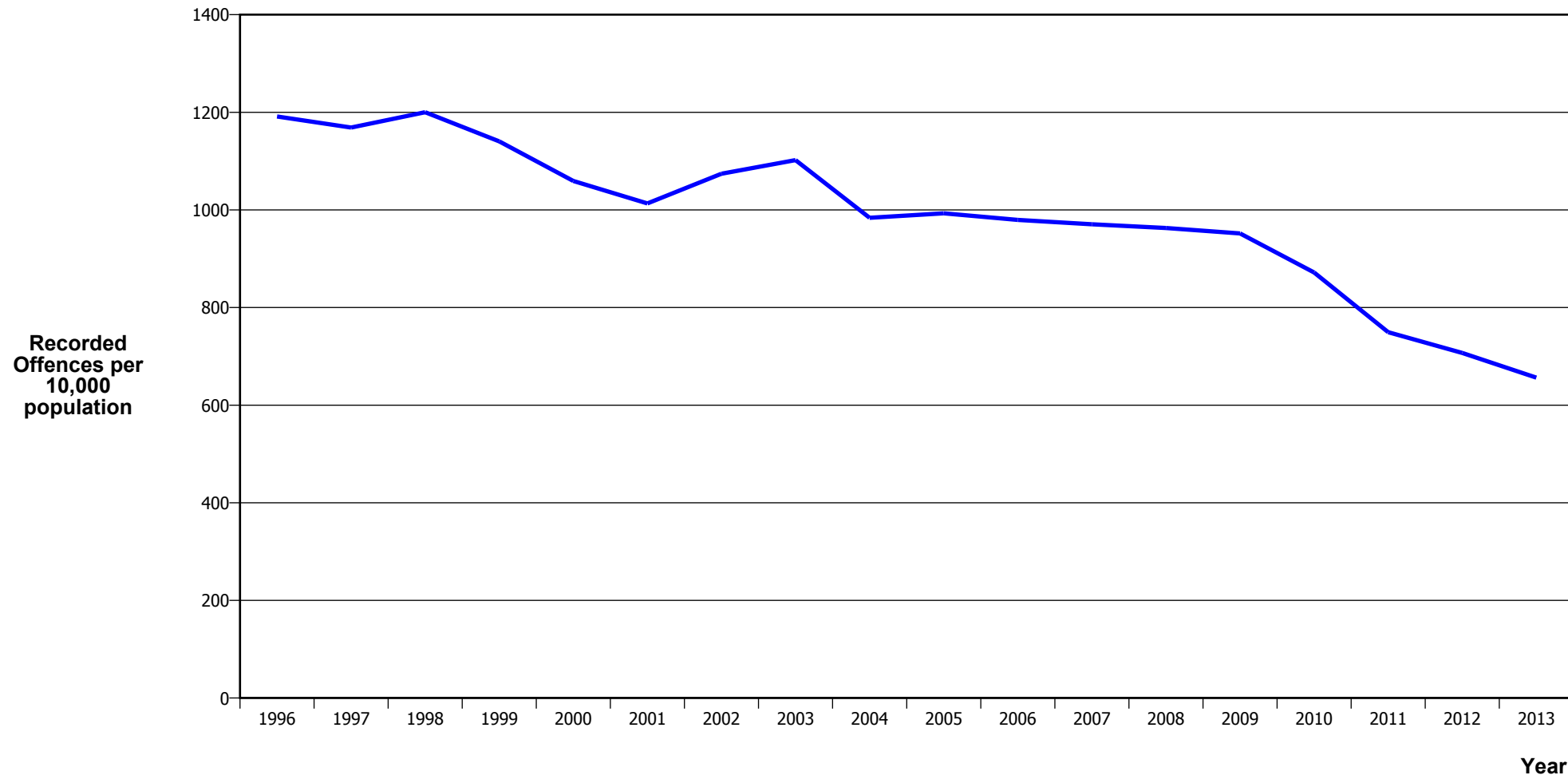
| Area Description | Recorded 2012 | Recorded 2013 | Variance 2012-2013 | Recorded per 10,000 pop 2012 | Recorded per 10,000 pop 2013 | Per 10,000 pop % Variance 2012 to 2013 | Resolved 2012 | Resolved 2013 | Resolution Rate 2012 | Resolution Rate 2013 |
|------------------|---------------|---------------|--------------------|------------------------------|------------------------------|--|---------------|---------------|----------------------|----------------------|
| Dunedin | 393 | 368 | -6.4 % | 24.1 | 22.5 | -6.8 % | 362 | 330 | 92.1 % | 89.7 % |
| Otago Rural | 82 | 99 | 20.7 % | 17.2 | 20.2 | 17.6 % | 71 | 94 | 86.6 % | 94.9 % |
| Southland | 278 | 313 | 12.6 % | 28.7 | 32.3 | 12.7 % | 267 | 301 | 96.0 % | 96.2 % |
| | 753 | 780 | 3.6 % | 24.5 | 25.2 | 2.9 % | 700 | 725 | 93.0 % | 92.9 % |

MISCELLANEOUS OFFENCES

| Area Description | Recorded 2012 | Recorded 2013 | Variance 2012-2013 | Recorded per 10,000 pop 2012 | Recorded per 10,000 pop 2013 | Per 10,000 pop % Variance 2012 to 2013 | Resolved 2012 | Resolved 2013 | Resolution Rate 2012 | Resolution Rate 2013 |
|------------------|---------------|---------------|--------------------|------------------------------|------------------------------|--|---------------|---------------|----------------------|----------------------|
| Dunedin | 45 | 61 | 35.6 % | 2.8 | 3.7 | 34.9 % | 32 | 38 | 71.1 % | 62.3 % |
| Otago Rural | 21 | 17 | -19.0 % | 4.4 | 3.5 | -21.1 % | 13 | 9 | 61.9 % | 52.9 % |
| Southland | 46 | 48 | 4.3 % | 4.7 | 5.0 | 4.4 % | 36 | 35 | 78.3 % | 72.9 % |
| | 112 | 126 | 12.5 % | 3.6 | 4.1 | 11.8 % | 81 | 82 | 72.3 % | 65.1 % |

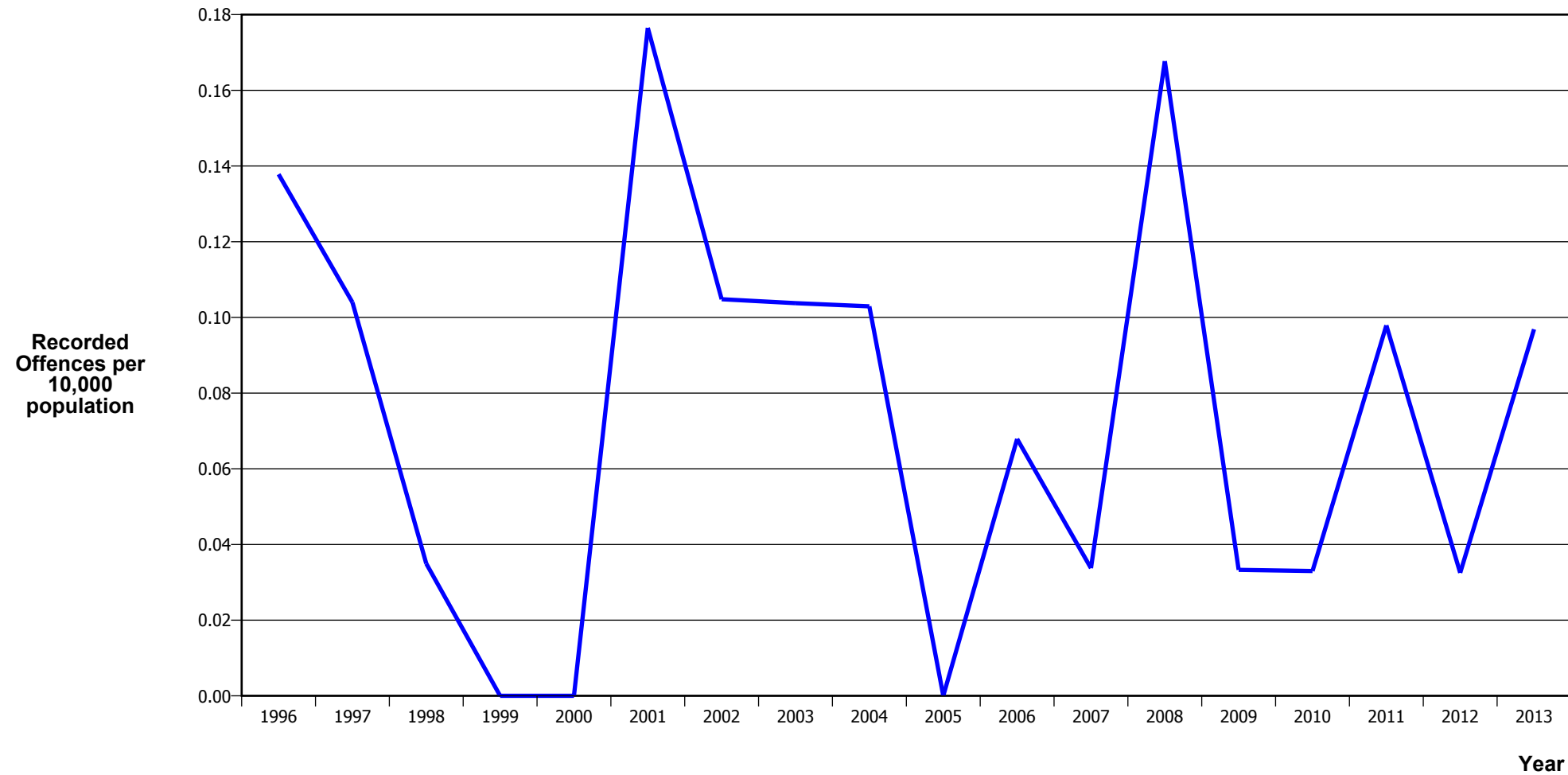
CRIME TRENDS

TOTAL CRIME



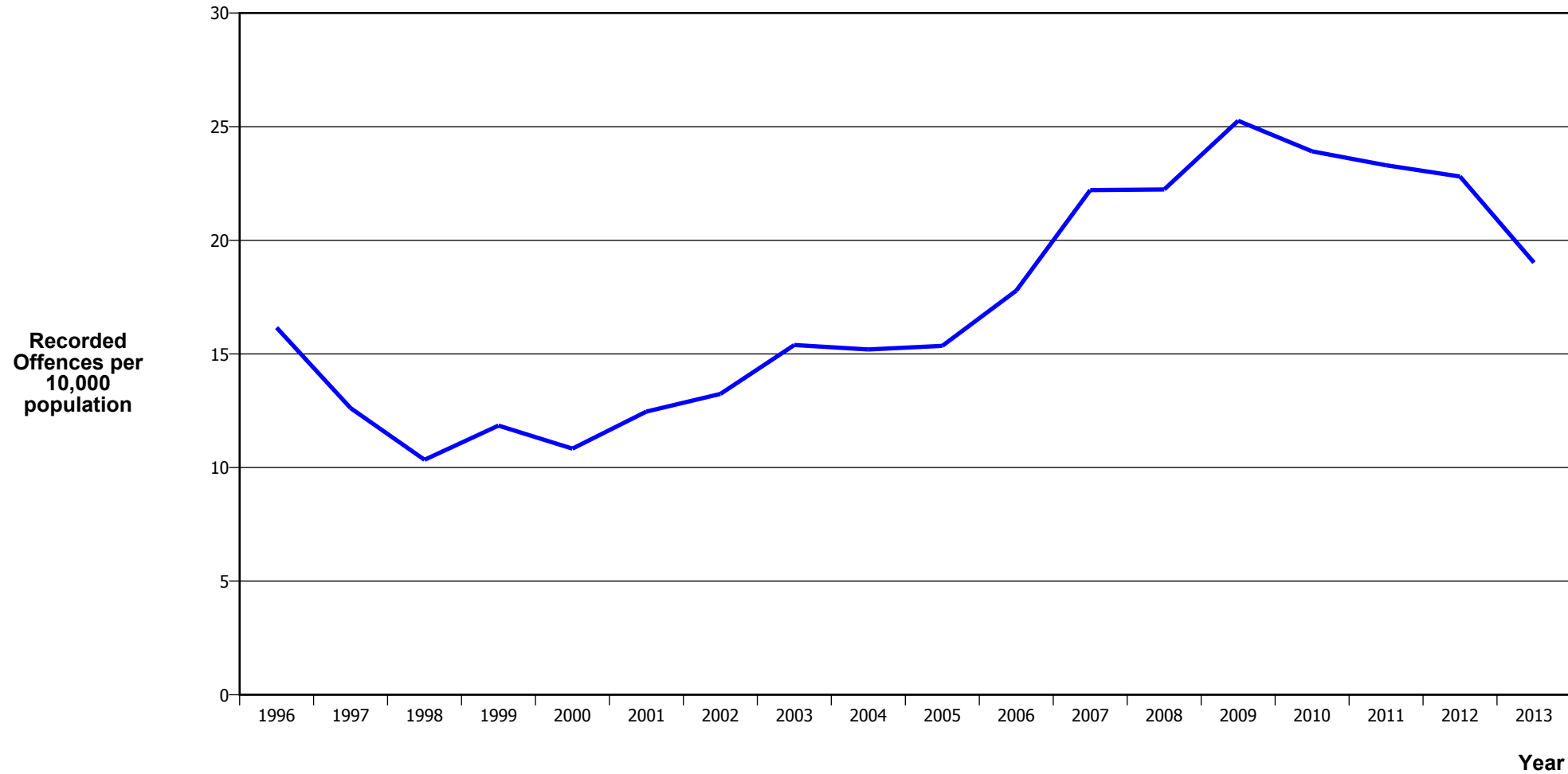
| Calendar Year | 1996 | 1997 | 1998 | 1999 | 2000 | 2001 | 2002 | 2003 | 2004 | 2005 | 2006 | 2007 | 2008 | 2009 | 2010 | 2011 | 2012 | 2013 |
|--------------------------------|---------|---------|---------|---------|---------|---------|---------|---------|--------|--------|--------|--------|--------|--------|--------|--------|--------|--------|
| Recorded Offences | 34,577 | 33,719 | 34,353 | 32,341 | 29,930 | 28,704 | 30,749 | 31,859 | 28,677 | 29,103 | 28,859 | 28,760 | 28,707 | 28,601 | 26,431 | 22,964 | 21,761 | 20,326 |
| Recorded per 10,000 Population | 1,191.4 | 1,168.7 | 1,200.1 | 1,140.4 | 1,059.3 | 1,013.3 | 1,074.2 | 1,102.0 | 983.8 | 993.0 | 979.6 | 970.7 | 962.9 | 951.8 | 871.8 | 749.5 | 707.1 | 656.3 |

MURDER



| Calendar Year | 1996 | 1997 | 1998 | 1999 | 2000 | 2001 | 2002 | 2003 | 2004 | 2005 | 2006 | 2007 | 2008 | 2009 | 2010 | 2011 | 2012 | 2013 |
|--------------------------------|------|------|------|------|------|------|------|------|------|------|------|------|------|------|------|------|------|------|
| Recorded Offences | 4 | 3 | 1 | 0 | 0 | 5 | 3 | 3 | 3 | 0 | 2 | 1 | 5 | 1 | 1 | 3 | 1 | 3 |
| Recorded per 10,000 Population | 0.14 | 0.10 | 0.03 | 0.00 | 0.00 | 0.18 | 0.10 | 0.10 | 0.10 | 0.00 | 0.07 | 0.03 | 0.17 | 0.03 | 0.03 | 0.10 | 0.03 | 0.10 |

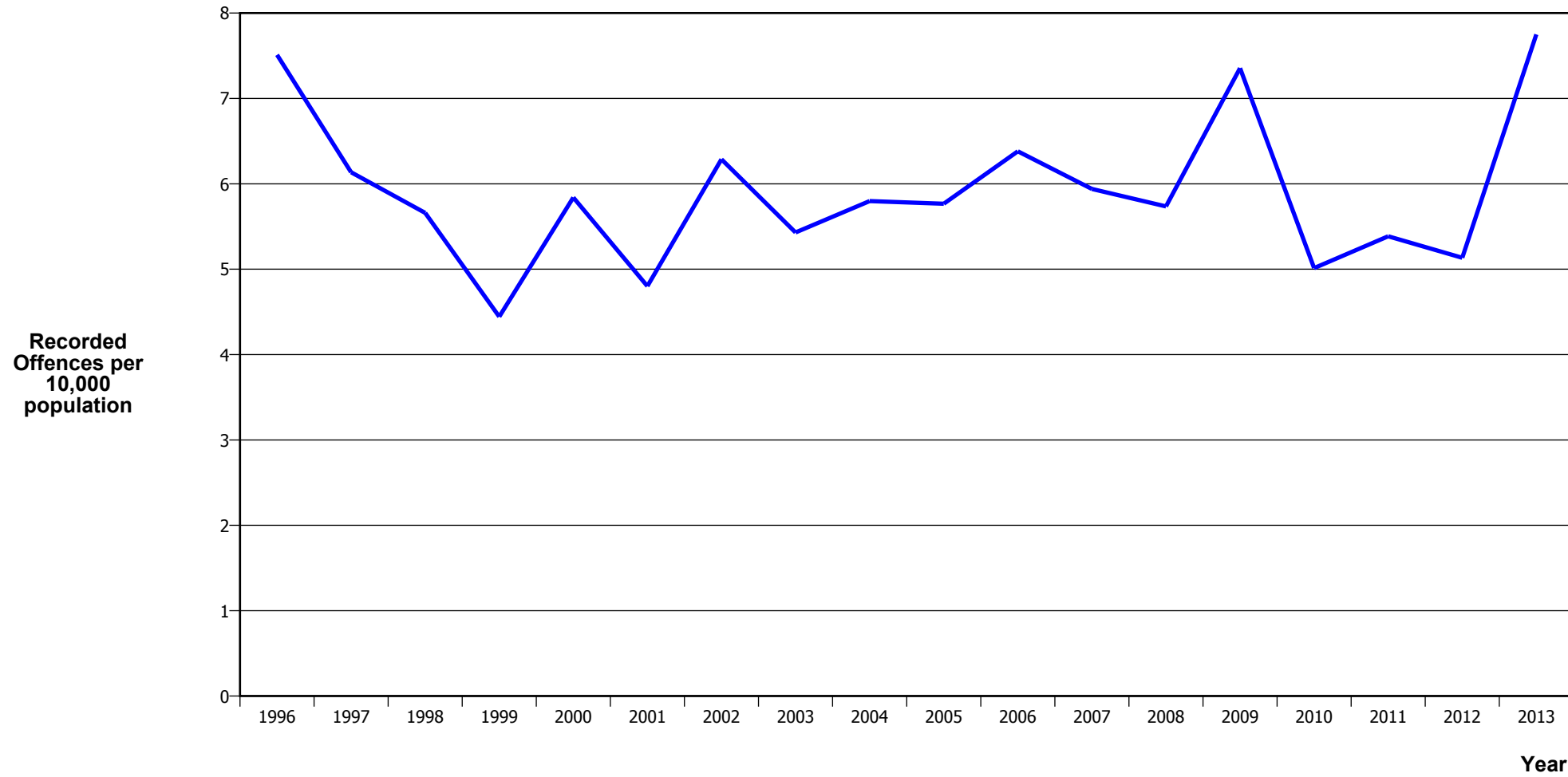
SERIOUS ASSAULTS RESULTING IN INJURY*



| Calendar Year | 1996 | 1997 | 1998 | 1999 | 2000 | 2001 | 2002 | 2003 | 2004 | 2005 | 2006 | 2007 | 2008 | 2009 | 2010 | 2011 | 2012 | 2013 |
|---------------------------|------|------|------|------|------|------|------|------|------|------|------|------|------|------|------|------|------|------|
| Recorded Offence | 469 | 364 | 296 | 336 | 306 | 353 | 379 | 445 | 443 | 450 | 524 | 658 | 663 | 759 | 725 | 714 | 702 | 589 |
| Offence Rate per 10K Popn | 16.2 | 12.6 | 10.3 | 11.8 | 10.8 | 12.5 | 13.2 | 15.4 | 15.2 | 15.4 | 17.8 | 22.2 | 22.2 | 25.3 | 23.9 | 23.3 | 22.8 | 19.0 |

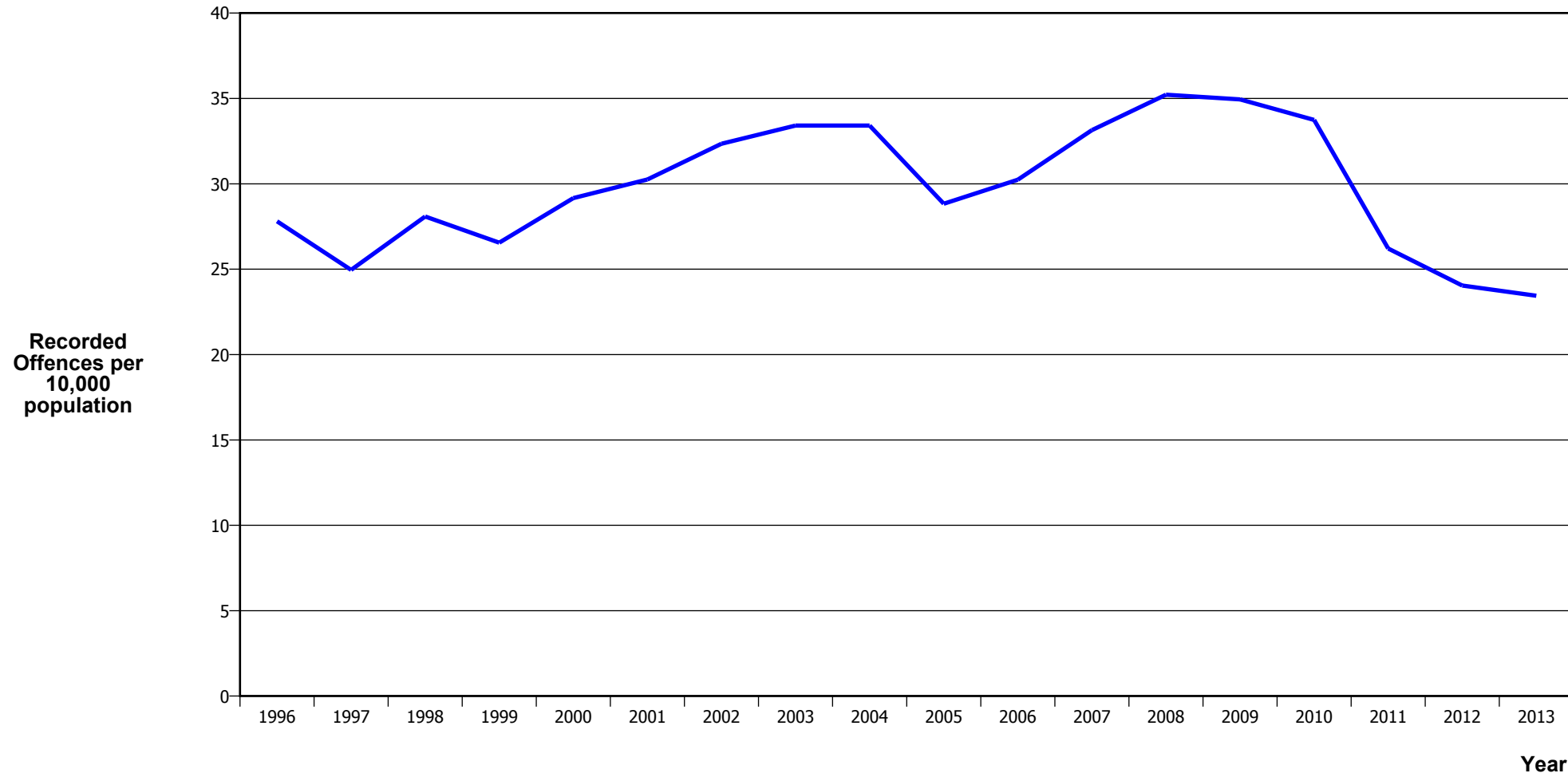
* This measure excludes common assaults

SEXUAL ASSAULTS



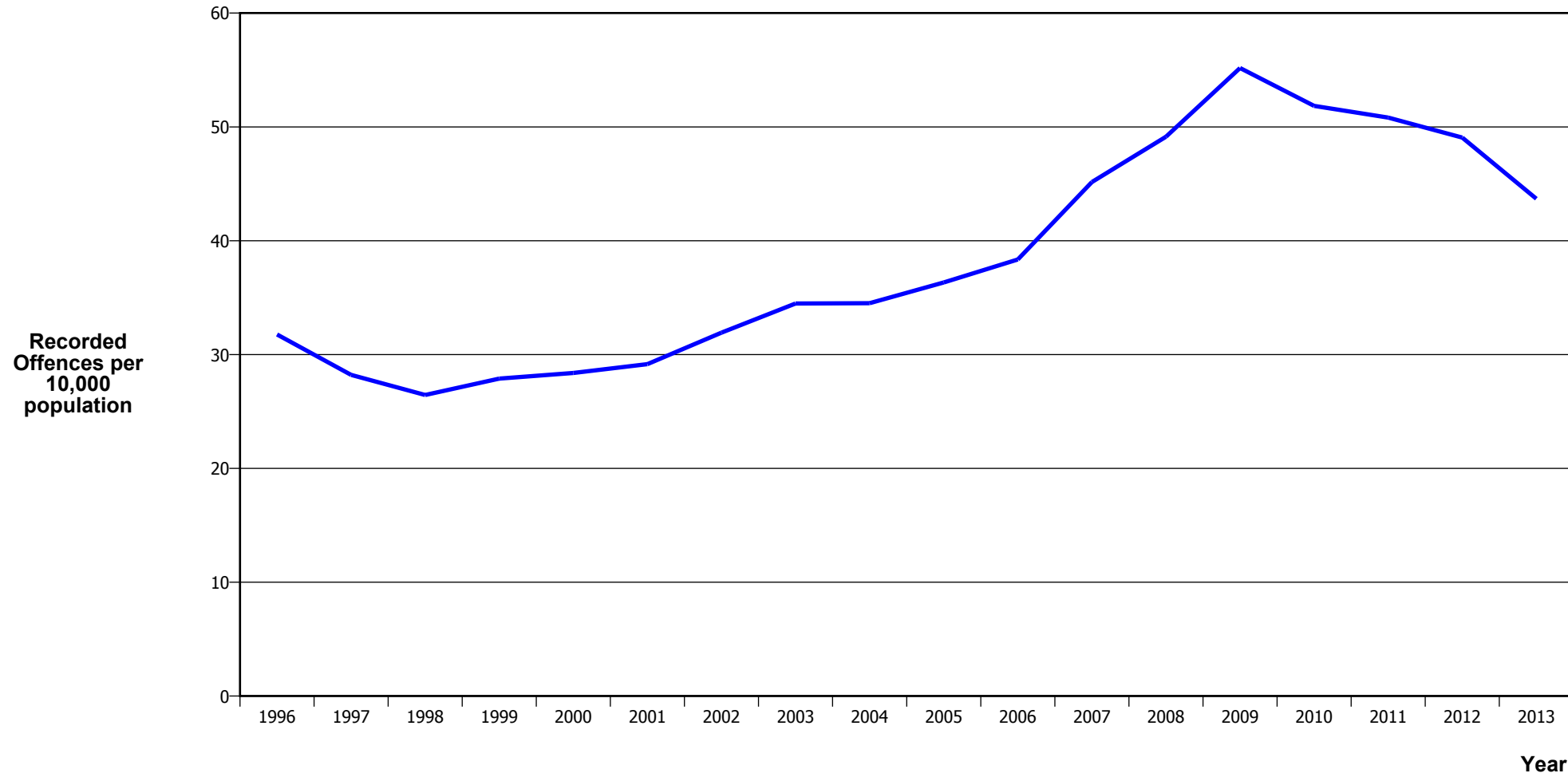
| Calendar Year | 1996 | 1997 | 1998 | 1999 | 2000 | 2001 | 2002 | 2003 | 2004 | 2005 | 2006 | 2007 | 2008 | 2009 | 2010 | 2011 | 2012 | 2013 |
|--------------------------------|------|------|------|------|------|------|------|------|------|------|------|------|------|------|------|------|------|------|
| Recorded Offences | 218 | 177 | 162 | 126 | 165 | 136 | 180 | 157 | 169 | 169 | 188 | 176 | 171 | 221 | 152 | 165 | 158 | 240 |
| Recorded per 10,000 Population | 7.5 | 6.1 | 5.7 | 4.4 | 5.8 | 4.8 | 6.3 | 5.4 | 5.8 | 5.8 | 6.4 | 5.9 | 5.7 | 7.4 | 5.0 | 5.4 | 5.1 | 7.7 |

PUBLIC PLACE ASSAULTS



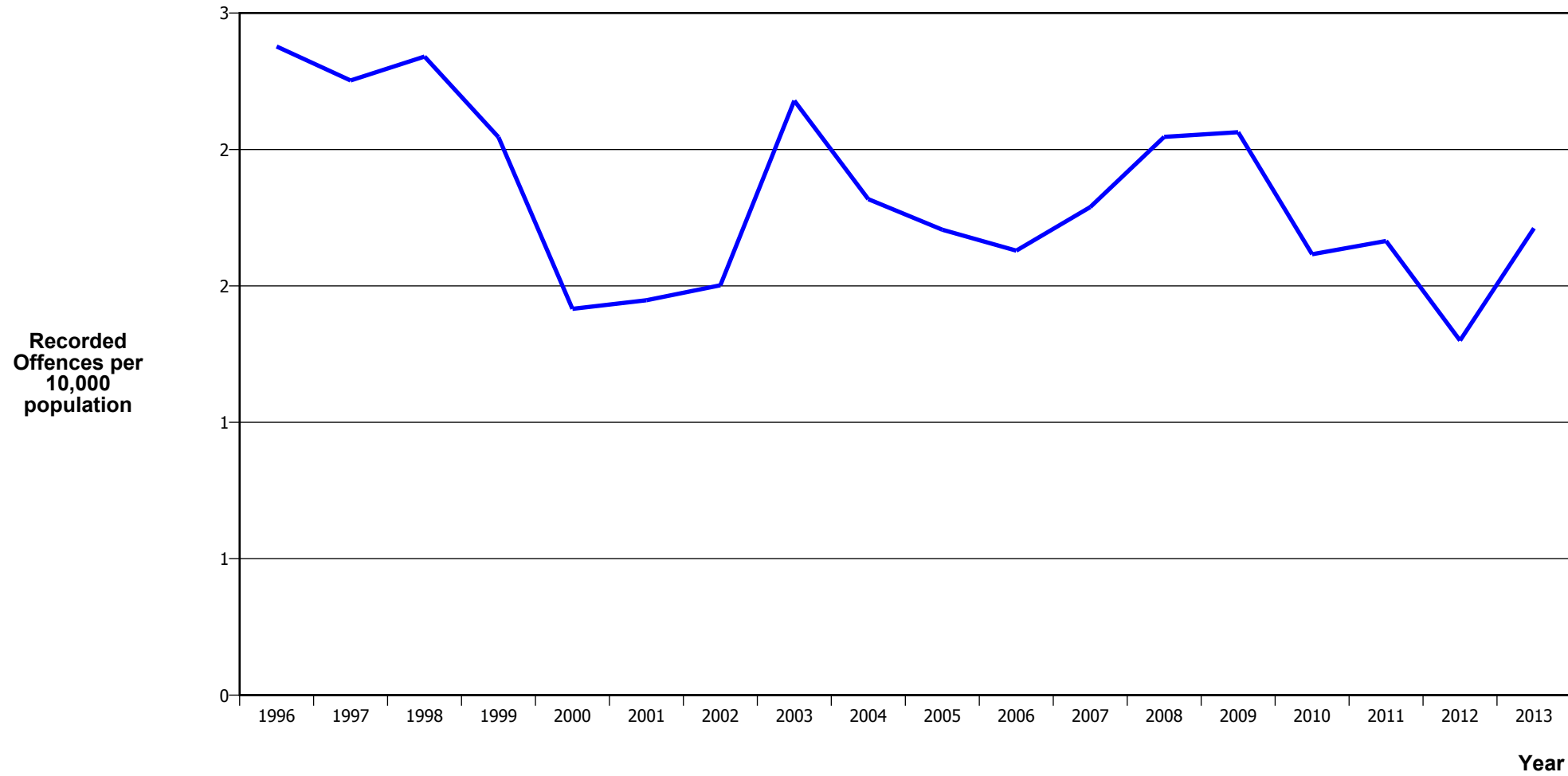
| Calendar Year | 1996 | 1997 | 1998 | 1999 | 2000 | 2001 | 2002 | 2003 | 2004 | 2005 | 2006 | 2007 | 2008 | 2009 | 2010 | 2011 | 2012 | 2013 |
|--------------------------------|------|------|------|------|------|------|------|------|------|------|------|------|-------|-------|-------|------|------|------|
| Recorded Offences | 807 | 720 | 804 | 753 | 824 | 857 | 926 | 966 | 974 | 845 | 891 | 982 | 1,050 | 1,050 | 1,023 | 803 | 740 | 726 |
| Recorded per 10,000 Population | 27.8 | 25.0 | 28.1 | 26.6 | 29.2 | 30.3 | 32.3 | 33.4 | 33.4 | 28.8 | 30.2 | 33.1 | 35.2 | 34.9 | 33.7 | 26.2 | 24.0 | 23.4 |

DWELLING ASSAULTS



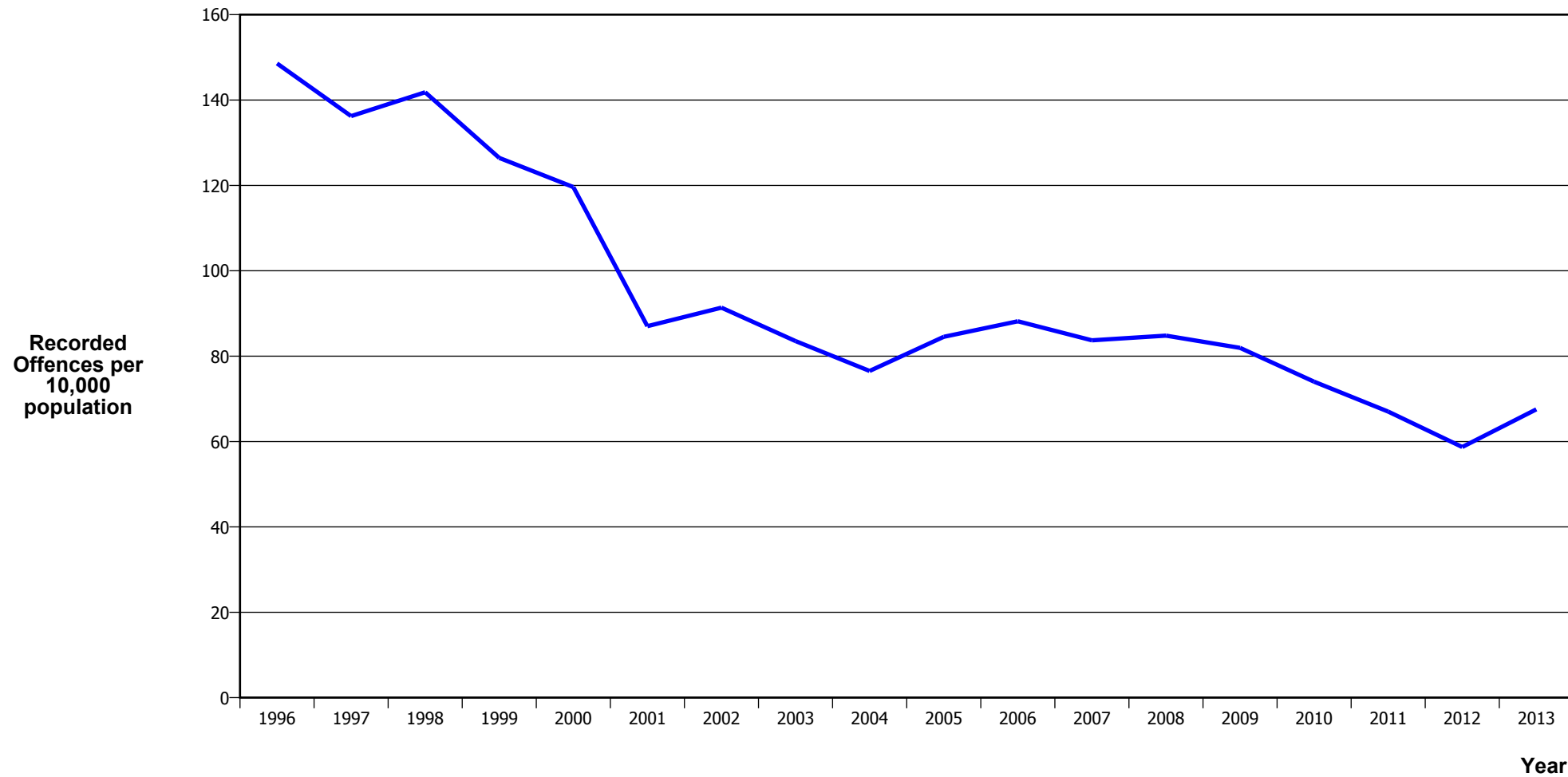
| Calendar Year | 1996 | 1997 | 1998 | 1999 | 2000 | 2001 | 2002 | 2003 | 2004 | 2005 | 2006 | 2007 | 2008 | 2009 | 2010 | 2011 | 2012 | 2013 |
|--------------------------------|------|------|------|------|------|------|------|------|-------|-------|-------|-------|-------|-------|-------|-------|-------|-------|
| Recorded Offences | 922 | 814 | 757 | 791 | 802 | 826 | 914 | 997 | 1,006 | 1,065 | 1,130 | 1,338 | 1,465 | 1,658 | 1,572 | 1,557 | 1,510 | 1,353 |
| Recorded per 10,000 Population | 31.8 | 28.2 | 26.4 | 27.9 | 28.4 | 29.2 | 31.9 | 34.5 | 34.5 | 36.3 | 38.4 | 45.2 | 49.1 | 55.2 | 51.8 | 50.8 | 49.1 | 43.7 |

ROBBERY



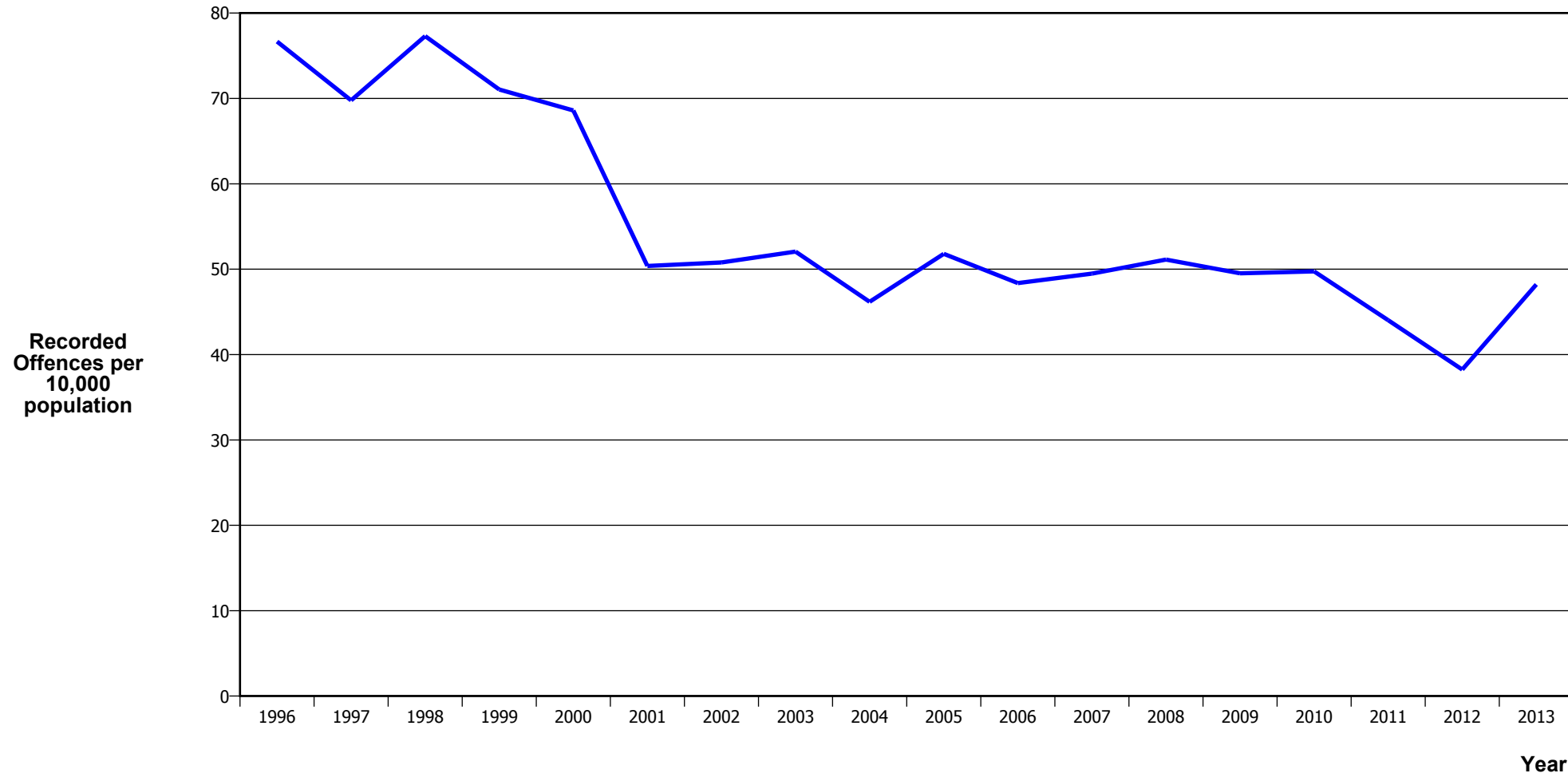
| Calendar Year | 1996 | 1997 | 1998 | 1999 | 2000 | 2001 | 2002 | 2003 | 2004 | 2005 | 2006 | 2007 | 2008 | 2009 | 2010 | 2011 | 2012 | 2013 |
|--------------------------------|------|------|------|------|------|------|------|------|------|------|------|------|------|------|------|------|------|------|
| Recorded Offences | 69 | 65 | 67 | 58 | 40 | 41 | 43 | 63 | 53 | 50 | 48 | 53 | 61 | 62 | 49 | 51 | 40 | 53 |
| Recorded per 10,000 Population | 2.4 | 2.3 | 2.3 | 2.0 | 1.4 | 1.4 | 1.5 | 2.2 | 1.8 | 1.7 | 1.6 | 1.8 | 2.0 | 2.1 | 1.6 | 1.7 | 1.3 | 1.7 |

BURGLARY (TOTAL)



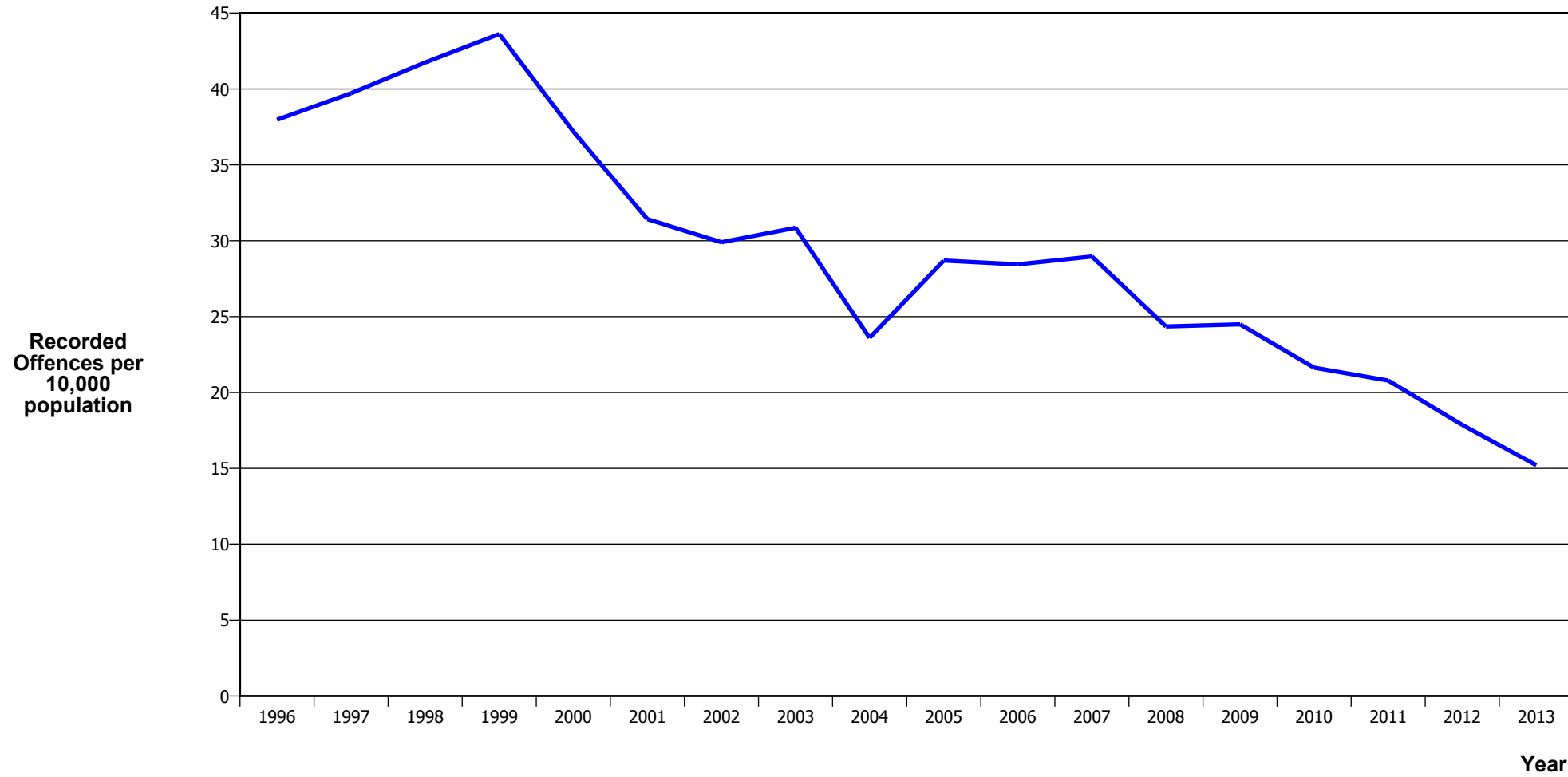
| Calendar Year | 1996 | 1997 | 1998 | 1999 | 2000 | 2001 | 2002 | 2003 | 2004 | 2005 | 2006 | 2007 | 2008 | 2009 | 2010 | 2011 | 2012 | 2013 |
|--------------------------------|-------|-------|-------|-------|-------|-------|-------|-------|-------|-------|-------|-------|-------|-------|-------|-------|-------|-------|
| Recorded Offences | 4,312 | 3,931 | 4,060 | 3,586 | 3,380 | 2,465 | 2,615 | 2,415 | 2,231 | 2,478 | 2,598 | 2,480 | 2,528 | 2,462 | 2,244 | 2,053 | 1,807 | 2,092 |
| Recorded per 10,000 Population | 148.6 | 136.3 | 141.8 | 126.5 | 119.6 | 87.0 | 91.4 | 83.5 | 76.5 | 84.5 | 88.2 | 83.7 | 84.8 | 81.9 | 74.0 | 67.0 | 58.7 | 67.6 |

BURGLARY (DWELLING)



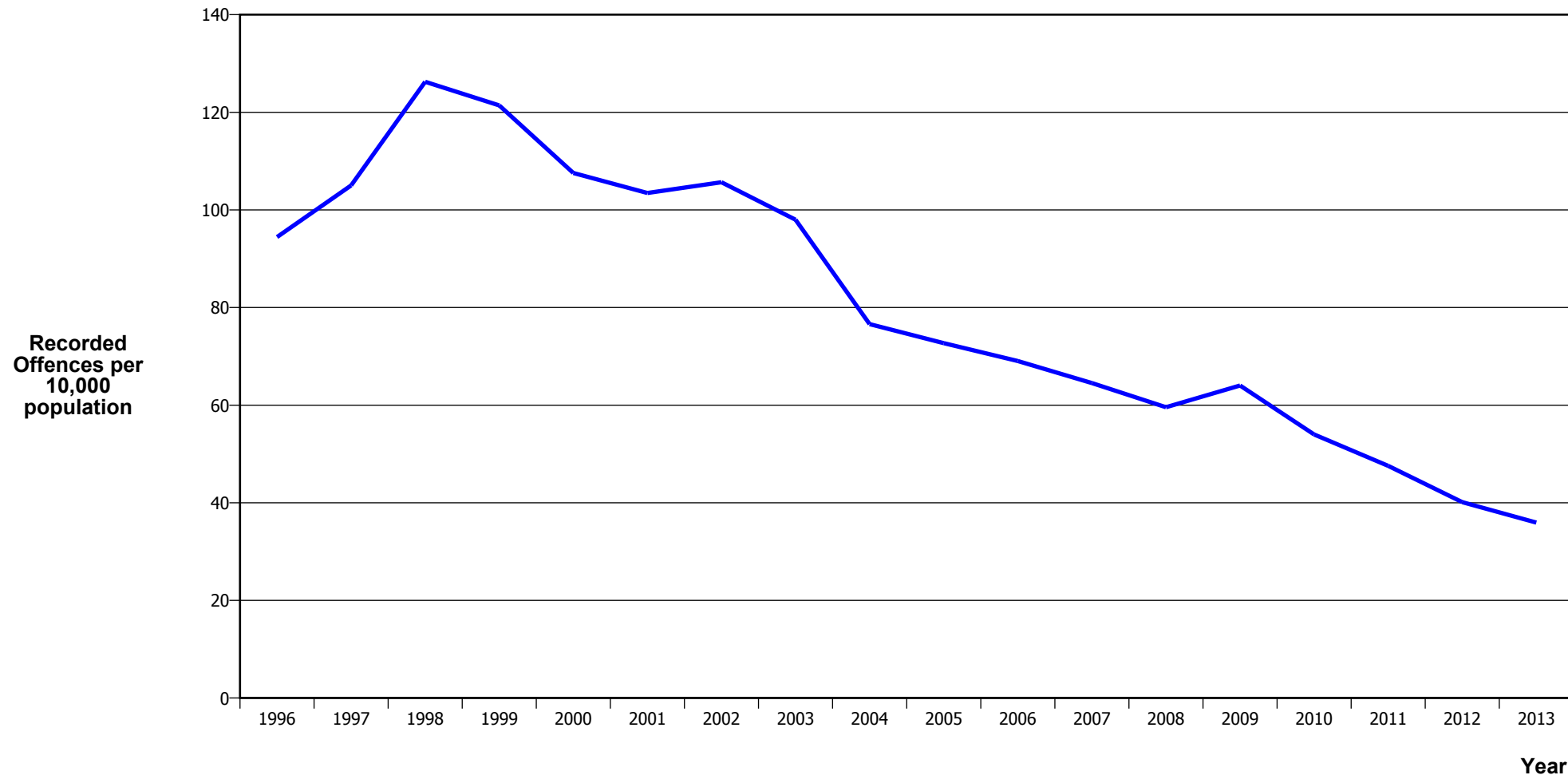
| Calendar Year | 1996 | 1997 | 1998 | 1999 | 2000 | 2001 | 2002 | 2003 | 2004 | 2005 | 2006 | 2007 | 2008 | 2009 | 2010 | 2011 | 2012 | 2013 |
|--------------------------------|-------|-------|-------|-------|-------|-------|-------|-------|-------|-------|-------|-------|-------|-------|-------|-------|-------|-------|
| Recorded Offences | 2,225 | 2,013 | 2,213 | 2,015 | 1,938 | 1,427 | 1,454 | 1,505 | 1,346 | 1,518 | 1,425 | 1,466 | 1,524 | 1,488 | 1,508 | 1,349 | 1,177 | 1,493 |
| Recorded per 10,000 Population | 76.7 | 69.8 | 77.3 | 71.1 | 68.6 | 50.4 | 50.8 | 52.1 | 46.2 | 51.8 | 48.4 | 49.5 | 51.1 | 49.5 | 49.7 | 44.0 | 38.2 | 48.2 |

VEHICLES STOLEN



| Calendar Year | 1996 | 1997 | 1998 | 1999 | 2000 | 2001 | 2002 | 2003 | 2004 | 2005 | 2006 | 2007 | 2008 | 2009 | 2010 | 2011 | 2012 | 2013 |
|--------------------------------|-------|-------|-------|-------|-------|------|------|------|------|------|------|------|------|------|------|------|------|------|
| Recorded Offences | 1,102 | 1,146 | 1,195 | 1,237 | 1,051 | 890 | 856 | 892 | 688 | 841 | 838 | 858 | 726 | 736 | 656 | 637 | 550 | 471 |
| Recorded per 10,000 Population | 38.0 | 39.7 | 41.7 | 43.6 | 37.2 | 31.4 | 29.9 | 30.9 | 23.6 | 28.7 | 28.4 | 29.0 | 24.4 | 24.5 | 21.6 | 20.8 | 17.9 | 15.2 |

THEFT EX CAR



| Calendar Year | 1996 | 1997 | 1998 | 1999 | 2000 | 2001 | 2002 | 2003 | 2004 | 2005 | 2006 | 2007 | 2008 | 2009 | 2010 | 2011 | 2012 | 2013 |
|--------------------------------|-------|-------|-------|-------|-------|-------|-------|-------|-------|-------|-------|-------|-------|-------|-------|-------|-------|-------|
| Recorded Offences | 2,741 | 3,030 | 3,614 | 3,443 | 3,039 | 2,931 | 3,025 | 2,833 | 2,233 | 2,131 | 2,034 | 1,912 | 1,776 | 1,924 | 1,637 | 1,457 | 1,235 | 1,113 |
| Recorded per 10,000 Population | 94.4 | 105.0 | 126.2 | 121.4 | 107.6 | 103.5 | 105.7 | 98.0 | 76.6 | 72.7 | 69.0 | 64.5 | 59.6 | 64.0 | 54.0 | 47.6 | 40.1 | 35.9 |

Population Data

Population data is used in this release to calculate crime rates. They have been derived from population estimates as at 30 June each year that have been obtained from Statistics New Zealand.

The estimated resident population is based on the census usually resident population count, with adjustments for residents missed or counted more than once by the census (net census undercount), and for residents temporarily overseas on census night.

These population estimates exclude the number of international students who are studying in New Zealand for less than 12 months.

| Year | Population |
|------|------------|
| 1996 | 290,220 |
| 1997 | 288,510 |
| 1998 | 286,260 |
| 1999 | 283,590 |
| 2000 | 282,540 |
| 2001 | 283,260 |
| 2002 | 286,260 |
| 2003 | 289,110 |
| 2004 | 291,500 |
| 2005 | 293,090 |
| 2006 | 294,610 |
| 2007 | 296,290 |
| 2008 | 298,120 |
| 2009 | 300,490 |
| 2010 | 303,190 |
| 2011 | 306,380 |
| 2012 | 307,770 |
| 2013 | 309,690 |

General Definitions

Recorded Offences: the number of breaches of the New Zealand law recorded by Police. This includes offences specified in the Crimes Act and other legislations, such as the Summary Offences Act, Local Government Act, etc.

Resolved Offences: the number of recorded offences where an offender has been identified and dealt with (e.g. warned, cautioned, prosecuted, etc).

Resolution Rate: the proportion of recorded offences that have been resolved.

Recorded per 10,000 population: the number of recorded offences for every 10,000 people. This is also referred as the crime rate per 10,000 population.

ANZSOC: The Australian and New Zealand Standard Offence Classification. The offence classification is divided into 16 major offence divisions.

Definition of ANZSOC Divisions

1. Homicide and related offences: Unlawfully kill, attempt to unlawfully kill or conspiracy to kill another person.
2. Acts intended to cause injury: Acts, excluding attempted murder and those resulting in death, which are intended to cause non-fatal injury or harm to another person and where there is no sexual or acquisitive element.
3. Sexual assault and related offences: Acts, or intent of acts, of a sexual nature against another person, which are non-consensual or where consent is proscribed.
4. Dangerous or negligent acts endangering persons: Dangerous or negligent acts which, though not intended to cause harm, actually or potentially result in injury to oneself or another person.
5. Abduction, harassment and other offences against person: Acts intended to threaten or harass, or acts that unlawfully deprive another person of their freedom of movement, that are against that person's will or against the will of any parent, guardian or other person having lawful custody or care of that person.
6. Robbery, extortion and related offences: Acts intended to unlawfully gain money, property or other items of value from, or to cause detriment to, another person by using the threat of force or any other coercive measure.
7. Unlawful entry with intent / burglary, break and enter: The unlawful entry of a structure with the intent to commit an offence, where the entry is either forced or unforced.
8. Theft and related and offences: The unlawful taking or obtaining of money or goods, not involving the use of force or violence, coercion or deception, with intent to permanently or temporarily deprive the owner or possessor of the use of the money or goods, or the receiving or handling of money or goods obtained unlawfully.

9. Fraud, deception and related offences: Offences involving a dishonest act or omission carried out with the purpose of deceiving to obtain a benefit.

10. Illicit drug offences: The possessing, selling, dealing or trafficking, importing or exporting, manufacturing or cultivating of drugs or other substances prohibited under legislation.

11. Prohibited and regulated weapons and explosives offences: Offences involving prohibited or regulated weapons and explosives. Those offences also involving assault, sexual assault or robbery are coded to the relevant group within Assault, Sexual assaults and Robbery respectively.

12. Property damage and environmental pollution: The wilful and unlawful destruction, damage or defacement of public or private property, or the pollution of property or a definable entity held in common by the community.

13. Public order offences: Offences relating personal conduct that involves, or may lead to, a breach of public order or decency, or that is indicative of criminal intent, or that is otherwise regulated or prohibited on moral or ethical grounds. In general these offences do not involve a specific victim or victims; however some offences, such as offensive language and offensive behaviour, may be directed towards a single victim.

14. Traffic and vehicle regulatory offences: Offences relating to vehicles and most forms of traffic, including offences pertaining to the licensing, registration, roadworthiness, or use of vehicles, bicycle offences and pedestrian offences.

15. Offences against justice procedures, government security and government operations: An act or omission that is deemed to be prejudicial to the effective carrying out of justice procedures or any government operations. This includes general government operations as well as those specifically concerned with maintaining government security.

16. Miscellaneous offences: Offences involving the breach of statutory rules or regulations governing activities that are prima facie legal, where such offences are not explicitly dealt with under any other division. If an offence is specified under regulation and involves an act that would be illegal under common law or general criminal legislation, the offence is dealt with under the appropriate generic group.