

NEW ZEALAND CRIME STATISTICS 2013



**A Summary of
Recorded and Resolved Offence
Statistics**

**POLICE NATIONAL HEADQUARTERS
April 2014**

ISSN 1178 - 1521

Table of Contents:

Topic	Page
Report Notes	1
National Summary of Recorded and Resolved Crime, by Division	2-4
Proportions of Recorded Crime by Division	5
Summary of National Recorded Offences, Rate per 10,000 Population and Resolved Offences, by District	6
Summary of District Recorded Offences, Rate per 10,000 Population and Resolved Offences, by Division	7-11
Crime Trends	12
Total Crime	13
Murder	14
Serious Assaults Resulting in Injury	15
Sexual Assaults	16
Public Place Assaults	17
Dwelling Assaults	18
Robbery	19
Burglary (Total)	20
Burglary (Dwelling)	21
Vehicles Stolen	22
Theft Ex Car	23
Population Data	24
General Definitions	25-26

REPORT NOTES:

Statistics reported in this document are derived from the Police National Intelligence Application (NIA). These Official Statistics for Recorded and Resolved Offences present a snapshot of data in NIA relating to offences that occur within a given year, as at the date 14 days following the end of that year.

Unless the matter is minor where Police attendance is sufficient, a matter that is reported to or discovered by Police where Police believe an offence is likely to have been committed is counted as a recorded offence.

A recorded offence is counted as resolved when Police apprehend an offender and decide how to deal with him/her. (E.g. warn, prosecute, etc.)

Resolution rate is the percentage of recorded offences that are resolved within 14 days of the end of the year being reported on.

If an offence is resolved 15 days or more after the end of the year it will not appear in the Official Crime Statistics for that or any other year. Resolution Rate therefore undercounts the number of cases that Police have resolved. This phenomenon has a more marked impact for some types of offences than others, such as offences that require long investigations (E.g. many serial crimes, burglaries and murders).

The Sale and Supply of Alcohol Act 2012 came into effect on 18 December 2013. This had little effect on overall 2013 calendar year statistics, because the legislation only took effect two weeks before the end of the year. However, statistics for future years will be significantly affected. In particular, the offence of Breach of Liquor Ban, of which there were more than 6,500 nationally in 2013, has been made obsolete by the new legislation. Under the new legislation Police will deal with breaches of alcohol bans by issuing infringement notices, rather than by recording offences for which offenders can be charged. Such infringements are not part of this statistical collection.

When comparing 2013 Statistics with previous years, the reader should also refer to "Report Notes" published in previous years' reports, as previous changes significantly affect year on year trends.

SUMMARY OF NATIONAL RECORDED AND RESOLVED CRIME, BY DIVISION
Years ending 31 December

HOMICIDE AND RELATED OFFENCES

ASOC Subdivision Description	Recorded 2011	Recorded 2012	Recorded 2013	Variance 2011-2012	Variance 2012-2013	Resolved 2011	Resolved 2012	Resolved 2013	Resolution Rate 2011	Resolution Rate 2012	Resolution Rate 2013
ATTEMPTED MURDER	17	12	17	-29.4 %	41.7 %	17	12	15	100.0 %	100.0 %	88.2 %
HOMICIDE AND RELATED OFFENCES NOT FURTHER DEFINED	1	0	4	-100.0 %	0.0 %	0	0	2	0.0 %	0.0 %	50.0 %
MANSLAUGHTER AND DRIVING CAUSING DEATH	26	14	15	-46.2 %	7.1 %	24	13	13	92.3 %	92.9 %	86.7 %
MURDER	39	42	47	7.7 %	11.9 %	32	38	40	82.1 %	90.5 %	85.1 %
	83	68	83	-18.1 %	22.1 %	73	63	70	88.0 %	92.6 %	84.3 %

ACTS INTENDED TO CAUSE INJURY

ASOC Subdivision Description	Recorded 2011	Recorded 2012	Recorded 2013	Variance 2011-2012	Variance 2012-2013	Resolved 2011	Resolved 2012	Resolved 2013	Resolution Rate 2011	Resolution Rate 2012	Resolution Rate 2013
ASSAULT	42,237	40,822	39,418	-3.4 %	-3.4 %	35,256	32,339	29,836	83.5 %	79.2 %	75.7 %
OTHER ACTS INTENDED TO CAUSE INJURY	41	29	29	-29.3 %	0.0 %	30	22	16	73.2 %	75.9 %	55.2 %
	42,278	40,851	39,447	-3.4 %	-3.4 %	35,286	32,361	29,852	83.5 %	79.2 %	75.7 %

SEXUAL ASSAULT AND RELATED OFFENCES

ASOC Subdivision Description	Recorded 2011	Recorded 2012	Recorded 2013	Variance 2011-2012	Variance 2012-2013	Resolved 2011	Resolved 2012	Resolved 2013	Resolution Rate 2011	Resolution Rate 2012	Resolution Rate 2013
NON-ASSAULTIVE SEXUAL OFFENCES	119	123	180	3.4 %	46.3 %	91	96	135	76.5 %	78.0 %	75.0 %
SEXUAL ASSAULT	3,347	3,389	3,739	1.3 %	10.3 %	1,872	1,793	1,895	55.9 %	52.9 %	50.7 %
	3,466	3,512	3,919	1.3 %	11.6 %	1,963	1,889	2,030	56.6 %	53.8 %	51.8 %

DANGEROUS OR NEGLIGENT ACTS ENDANGERING PERSONS

ASOC Subdivision Description	Recorded 2011	Recorded 2012	Recorded 2013	Variance 2011-2012	Variance 2012-2013	Resolved 2011	Resolved 2012	Resolved 2013	Resolution Rate 2011	Resolution Rate 2012	Resolution Rate 2013
OTHER DANGEROUS OR NEGLIGENT ACTS ENDANGERING PERSONS	979	1,022	787	4.4 %	-23.0 %	673	655	456	68.7 %	64.1 %	57.9 %
	979	1,022	787	4.4 %	-23.0 %	673	655	456	68.7 %	64.1 %	57.9 %

ABDUCTION, HARASSMENT AND OTHER RELATED OFFENCES AGAINST A PERSON

ASOC Subdivision Description	Recorded 2011	Recorded 2012	Recorded 2013	Variance 2011-2012	Variance 2012-2013	Resolved 2011	Resolved 2012	Resolved 2013	Resolution Rate 2011	Resolution Rate 2012	Resolution Rate 2013
ABDUCTION AND KIDNAPPING	278	235	198	-15.5 %	-15.7 %	191	142	133	68.7 %	60.4 %	67.2 %
DEPRIVATION OF LIBERTY/FALSE IMPRISONMENT	5	8	4	60.0 %	-50.0 %	4	8	4	80.0 %	100.0 %	100.0 %
HARASSMENT AND THREATENING BEHAVIOUR	12,664	12,233	13,561	-3.4 %	10.9 %	9,199	8,477	7,955	72.6 %	69.3 %	58.7 %
	12,947	12,476	13,763	-3.6 %	10.3 %	9,394	8,627	8,092	72.6 %	69.1 %	58.8 %

ROBBERY, EXTORTION AND RELATED OFFENCES

ASOC Subdivision Description	Recorded 2011	Recorded 2012	Recorded 2013	Variance 2011-2012	Variance 2012-2013	Resolved 2011	Resolved 2012	Resolved 2013	Resolution Rate 2011	Resolution Rate 2012	Resolution Rate 2013
BLACKMAIL AND EXTORTION	107	113	146	5.6 %	29.2 %	68	52	76	63.6 %	46.0 %	52.1 %
ROBBERY	2,340	2,086	2,032	-10.9 %	-2.6 %	989	810	773	42.3 %	38.8 %	38.0 %
	2,447	2,199	2,178	-10.1 %	-1.0 %	1,057	862	849	43.2 %	39.2 %	39.0 %

UNLAWFUL ENTRY WITH INTENT/BURGLARY, BREAK AND ENTER

ASOC Subdivision Description	Recorded 2011	Recorded 2012	Recorded 2013	Variance 2011-2012	Variance 2012-2013	Resolved 2011	Resolved 2012	Resolved 2013	Resolution Rate 2011	Resolution Rate 2012	Resolution Rate 2013
UNLAWFUL ENTRY WITH INTENT/BURGLARY, BREAK AND ENTER	59,518	52,937	52,247	-11.1 %	-1.3 %	9,232	7,425	7,235	15.5 %	14.0 %	13.8 %
	59,518	52,937	52,247	-11.1 %	-1.3 %	9,232	7,425	7,235	15.5 %	14.0 %	13.8 %

SUMMARY OF NATIONAL RECORDED AND RESOLVED CRIME, BY DIVISION

Years ending 31 December

THEFT AND RELATED OFFENCES

ASOC Subdivision Description	Recorded 2011	Recorded 2012	Recorded 2013	Variance 2011-2012	Variance 2012-2013	Resolved 2011	Resolved 2012	Resolved 2013	Resolution Rate 2011	Resolution Rate 2012	Resolution Rate 2013
ILLEGAL USE OF PROPERTY (EXCEPT MOTOR VEHICLES)	3,680	2,815	3,187	-23.5 %	13.2 %	259	176	184	7.0 %	6.3 %	5.8 %
MOTOR VEHICLE THEFT AND RELATED OFFENCES	58,898	49,935	48,375	-15.2 %	-3.1 %	6,926	5,743	5,493	11.8 %	11.5 %	11.4 %
RECEIVE OR HANDLE PROCEEDS OF CRIME	2,993	2,648	2,566	-11.5 %	-3.1 %	2,923	2,564	2,479	97.7 %	96.8 %	96.6 %
THEFT (EXCEPT MOTOR VEHICLES)	69,871	64,078	66,907	-8.3 %	4.4 %	21,451	19,827	19,454	30.7 %	30.9 %	29.1 %
	135,442	119,476	121,035	-11.8 %	1.3 %	31,559	28,310	27,610	23.3 %	23.7 %	22.8 %

FRAUD, DECEPTION AND RELATED OFFENCES

ASOC Subdivision Description	Recorded 2011	Recorded 2012	Recorded 2013	Variance 2011-2012	Variance 2012-2013	Resolved 2011	Resolved 2012	Resolved 2013	Resolution Rate 2011	Resolution Rate 2012	Resolution Rate 2013
DECEPTIVE BUSINESS/GOVERNMENT PRACTICES	34	26	42	-23.5 %	61.5 %	27	18	24	79.4 %	69.2 %	57.1 %
FORGERY AND COUNTERFEITING	393	357	448	-9.2 %	25.5 %	172	153	200	43.8 %	42.9 %	44.6 %
OBTAIN BENEFIT BY DECEPTION	6,966	7,091	6,885	1.8 %	-2.9 %	4,043	4,031	3,644	58.0 %	56.8 %	52.9 %
OTHER FRAUD AND DECEPTION OFFENCES	617	539	622	-12.6 %	15.4 %	281	263	241	45.5 %	48.8 %	38.7 %
	8,010	8,013	7,997	0.0 %	-0.2 %	4,523	4,465	4,109	56.5 %	55.7 %	51.4 %

ILLICIT DRUG OFFENCES

ASOC Subdivision Description	Recorded 2011	Recorded 2012	Recorded 2013	Variance 2011-2012	Variance 2012-2013	Resolved 2011	Resolved 2012	Resolved 2013	Resolution Rate 2011	Resolution Rate 2012	Resolution Rate 2013
DEAL OR TRAFFIC IN ILLICIT DRUGS	3,255	4,552	3,569	39.8 %	-21.6 %	3,105	4,302	3,255	95.4 %	94.5 %	91.2 %
IMPORT OR EXPORT ILLICIT DRUGS	104	108	172	3.8 %	59.3 %	84	82	112	80.8 %	75.9 %	65.1 %
MANUFACTURE OR CULTIVATE ILLICIT DRUGS	2,948	3,041	2,214	3.2 %	-27.2 %	2,003	2,041	1,556	67.9 %	67.1 %	70.3 %
OTHER ILLICIT DRUG OFFENCES	5,408	4,835	3,518	-10.6 %	-27.2 %	5,296	4,714	3,401	97.9 %	97.5 %	96.7 %
POSSESS AND/OR USE ILLICIT DRUGS	9,024	8,256	6,597	-8.5 %	-20.1 %	8,732	7,919	6,261	96.8 %	95.9 %	94.9 %
	20,739	20,792	16,070	0.3 %	-22.7 %	19,220	19,058	14,585	92.7 %	91.7 %	90.8 %

PROHIBITED AND REGULATED WEAPONS AND EXPLOSIVES OFFENCES

ASOC Subdivision Description	Recorded 2011	Recorded 2012	Recorded 2013	Variance 2011-2012	Variance 2012-2013	Resolved 2011	Resolved 2012	Resolved 2013	Resolution Rate 2011	Resolution Rate 2012	Resolution Rate 2013
REGULATED WEAPONS/EXPLOSIVES OFFENCES	6,362	6,063	5,675	-4.7 %	-6.4 %	5,903	5,534	5,092	92.8 %	91.3 %	89.7 %
	6,362	6,063	5,675	-4.7 %	-6.4 %	5,903	5,534	5,092	92.8 %	91.3 %	89.7 %

PROPERTY DAMAGE AND ENVIRONMENTAL POLLUTION

ASOC Subdivision Description	Recorded 2011	Recorded 2012	Recorded 2013	Variance 2011-2012	Variance 2012-2013	Resolved 2011	Resolved 2012	Resolved 2013	Resolution Rate 2011	Resolution Rate 2012	Resolution Rate 2013
ENVIRONMENTAL POLLUTION	173	144	134	-16.8 %	-6.9 %	126	85	71	72.8 %	59.0 %	53.0 %
PROPERTY DAMAGE	51,811	48,757	45,443	-5.9 %	-6.8 %	15,807	14,493	13,379	30.5 %	29.7 %	29.4 %
	51,984	48,901	45,577	-5.9 %	-6.8 %	15,933	14,578	13,450	30.6 %	29.8 %	29.5 %

PUBLIC ORDER OFFENCES

ASOC Subdivision Description	Recorded 2011	Recorded 2012	Recorded 2013	Variance 2011-2012	Variance 2012-2013	Resolved 2011	Resolved 2012	Resolved 2013	Resolution Rate 2011	Resolution Rate 2012	Resolution Rate 2013
DISORDERLY CONDUCT	29,431	28,994	26,127	-1.5 %	-9.9 %	25,697	25,027	22,039	87.3 %	86.3 %	84.4 %
OFFENSIVE CONDUCT	1,492	1,497	1,313	0.3 %	-12.3 %	1,130	1,060	875	75.7 %	70.8 %	66.6 %
PUBLIC ORDER OFFENCES NOT FURTHER DEFINED	1	3	4	200.0 %	33.3 %	1	1	1	100.0 %	33.3 %	25.0 %
REGULATED PUBLIC ORDER OFFENCES	12,045	12,028	8,406	-0.1 %	-30.1 %	11,574	11,331	7,772	96.1 %	94.2 %	92.5 %
	42,969	42,522	35,850	-1.0 %	-15.7 %	38,402	37,419	30,687	89.4 %	88.0 %	85.6 %

SUMMARY OF NATIONAL RECORDED AND RESOLVED CRIME, BY DIVISION
Years ending 31 December

OFFENCES AGAINST JUSTICE PROCEDURES, GOVERNMENT SECURITY AND GOVERNMENT OPERATIONS

ASOC Subdivision Description	Recorded 2011	Recorded 2012	Recorded 2013	Variance 2011-2012	Variance 2012-2013	Resolved 2011	Resolved 2012	Resolved 2013	Resolution Rate 2011	Resolution Rate 2012	Resolution Rate 2013
BREACH OF COMMUNITY-BASED ORDER	5,409	4,659	3,959	-13.9 %	-15.0 %	5,236	4,376	3,649	96.8 %	93.9 %	92.2 %
BREACH OF CUSTODIAL ORDER OFFENCES	602	541	436	-10.1 %	-19.4 %	549	498	407	91.2 %	92.1 %	93.3 %
BREACH OF VIOLENCE AND NON-VIOLENCE RESTRAINING ORDERS	5,260	4,886	5,076	-7.1 %	3.9 %	4,778	4,244	4,319	90.8 %	86.9 %	85.1 %
OFFENCES AGAINST GOVERNMENT OPERATIONS	282	212	158	-24.8 %	-25.5 %	199	125	58	70.6 %	59.0 %	36.7 %
OFFENCES AGAINST GOVERNMENT SECURITY	6	5	1	-16.7 %	-80.0 %	3	3	0	50.0 %	60.0 %	0.0 %
OFFENCES AGAINST JUSTICE PROCEDURES	5,833	5,487	4,790	-5.9 %	-12.7 %	5,733	5,393	4,697	98.3 %	98.3 %	98.1 %
OFFENCES AGAINST JUSTICE PROCEDURES, GOVERNMENT SECURITY AND GOVERNMENT OPERATIONS NOT FURTHER DEFINED	11	7	4	-36.4 %	-42.9 %	11	7	2	100.0 %	100.0 %	50.0 %
	17,403	15,797	14,424	-9.2 %	-8.7 %	16,509	14,646	13,132	94.9 %	92.7 %	91.0 %

MISCELLANEOUS OFFENCES

ASOC Subdivision Description	Recorded 2011	Recorded 2012	Recorded 2013	Variance 2011-2012	Variance 2012-2013	Resolved 2011	Resolved 2012	Resolved 2013	Resolution Rate 2011	Resolution Rate 2012	Resolution Rate 2013
COMMERCIAL/INDUSTRY/FINANCIAL REGULATION	75	35	60	-53.3 %	71.4 %	68	32	51	90.7 %	91.4 %	85.0 %
DEFAMATION, LIBEL AND PRIVACY OFFENCES	50	69	46	38.0 %	-33.3 %	22	28	12	44.0 %	40.6 %	26.1 %
MISCELLANEOUS OFFENCES NOT FURTHER DEFINED	0	3	3	0.0 %	0.0 %	0	3	2	0.0 %	100.0 %	66.7 %
OTHER MISCELLANEOUS OFFENCES	1,122	1,154	1,111	2.9 %	-3.7 %	853	809	630	76.0 %	70.1 %	56.7 %
PUBLIC HEALTH AND SAFETY OFFENCES	182	123	139	-32.4 %	13.0 %	150	89	98	82.4 %	72.4 %	70.5 %
	1,429	1,384	1,359	-3.1 %	-1.8 %	1,093	961	793	76.5 %	69.4 %	58.4 %

TOTAL	406,056	376,013	360,411	-7.4 %	-4.1 %	190,820	176,853	158,042	47.0 %	47.0 %	43.9 %
--------------	----------------	----------------	----------------	---------------	---------------	----------------	----------------	----------------	---------------	---------------	---------------

PROPORTIONS OF RECORDED CRIME BY DIVISION

Years ending 31 December

ASOC Division Description	Proportions Recorded 2011	Recorded 2011	Proportions Recorded 2012	Recorded 2012	Proportions Recorded 2013	Recorded 2013
HOMICIDE AND RELATED OFFENCES	0.02 %	83	0.02 %	68	0.02 %	83
ACTS INTENDED TO CAUSE INJURY	10.41 %	42,278	10.86 %	40,851	10.95 %	39,447
SEXUAL ASSAULT AND RELATED OFFENCES	0.85 %	3,466	0.93 %	3,512	1.09 %	3,919
DANGEROUS OR NEGLIGENT ACTS ENDANGERING PERSONS	0.24 %	979	0.27 %	1,022	0.22 %	787
ABDUCTION, HARASSMENT AND OTHER RELATED OFFENCES AGAINST A PERSON	3.19 %	12,947	3.32 %	12,476	3.82 %	13,763
ROBBERY, EXTORTION AND RELATED OFFENCES	0.60 %	2,447	0.58 %	2,199	0.60 %	2,178
UNLAWFUL ENTRY WITH INTENT/BURGLARY, BREAK AND ENTER	14.66 %	59,518	14.08 %	52,937	14.50 %	52,247
THEFT AND RELATED OFFENCES	33.36 %	135,442	31.77 %	119,476	33.58 %	121,035
FRAUD, DECEPTION AND RELATED OFFENCES	1.97 %	8,010	2.13 %	8,013	2.22 %	7,997
ILLICIT DRUG OFFENCES	5.11 %	20,739	5.53 %	20,792	4.46 %	16,070
PROHIBITED AND REGULATED WEAPONS AND EXPLOSIVES OFFENCES	1.57 %	6,362	1.61 %	6,063	1.57 %	5,675
PROPERTY DAMAGE AND ENVIRONMENTAL POLLUTION	12.80 %	51,984	13.01 %	48,901	12.65 %	45,577
PUBLIC ORDER OFFENCES	10.58 %	42,969	11.31 %	42,522	9.95 %	35,850
OFFENCES AGAINST JUSTICE PROCEDURES, GOVERNMENT SECURITY AND GOVERNMENT OPERATIONS	4.29 %	17,403	4.20 %	15,797	4.00 %	14,424
MISCELLANEOUS OFFENCES	0.35 %	1,429	0.37 %	1,384	0.38 %	1,359
	100.00 %	406,056	100.00 %	376,013	100.00 %	360,411

SUMMARY OF RECORDED OFFENCES, RATE PER 10,000 POPULATION AND RESOLVED OFFENCES, BY DISTRICT
years ending 31 December

TOTAL CRIME

District Description	Recorded 2012	Recorded 2013	Variance 2012-2013	Recorded per 10,000 pop 2012	Recorded per 10,000 pop 2013	Per 10,000 pop % Variance 2012 to 2013	Resolved 2012	Resolved 2013	Resolution Rate 2012	Resolution Rate 2013
Northland	15,355	15,588	1.5 %	985.1	997.9	1.3 %	8,163	7,499	53.2 %	48.1 %
Waitemata	31,718	31,704	-0.0 %	570.2	561.2	-1.6 %	15,274	13,852	48.2 %	43.7 %
Auckland	48,522	43,734	-9.9 %	1,098.5	977.9	-11.0 %	16,711	13,995	34.4 %	32.0 %
Counties/Manukau	44,699	44,046	-1.5 %	845.5	821.2	-2.9 %	21,211	19,939	47.5 %	45.3 %
Waikato	32,693	32,218	-1.5 %	956.4	935.2	-2.2 %	15,065	13,732	46.1 %	42.6 %
Bay Of Plenty	33,935	31,433	-7.4 %	1,013.3	937.6	-7.5 %	17,992	16,474	53.0 %	52.4 %
Eastern	22,742	23,523	3.4 %	1,128.1	1,166.7	3.4 %	11,391	11,254	50.1 %	47.8 %
Central	27,575	28,006	1.6 %	785.0	795.9	1.4 %	13,813	13,617	50.1 %	48.6 %
Wellington	38,613	34,806	-9.9 %	800.6	718.2	-10.3 %	16,891	12,728	43.7 %	36.6 %
Tasman	15,604	14,634	-6.2 %	879.3	823.1	-6.4 %	8,989	7,553	57.6 %	51.6 %
Canterbury	42,796	40,393	-5.6 %	773.5	720.5	-6.8 %	19,237	16,910	45.0 %	41.9 %
Southern	21,761	20,326	-6.6 %	707.1	656.3	-7.2 %	12,116	10,489	55.7 %	51.6 %
Total	376,013	360,411	-4.1 %	848.2	806.2	-5.0 %	176,853	158,042	47.0 %	43.9 %

SUMMARY OF RECORDED OFFENCES, RATE PER 10,000 POPULATION AND RESOLVED OFFENCES, BY DIVISION

Years ending 31 December

HOMICIDE AND RELATED OFFENCES

District Description	Recorded 2012	Recorded 2013	Variance 2012-2013	Recorded per 10,000 pop 2012	Recorded per 10,000 pop 2013	Per 10,000 pop % Variance 2012 to 2013	Resolved 2012	Resolved 2013	Resolution Rate 2012	Resolution Rate 2013
Northland	4	6	50.0 %	0.3	0.4	49.7 %	4	6	100.0 %	100.0 %
Waitemata	1	6	500.0 %	0.0	0.1	490.8 %	0	6	0.0 %	100.0 %
Auckland	4	6	50.0 %	0.1	0.1	48.2 %	4	6	100.0 %	100.0 %
Counties/Manukau	9	9	0.0 %	0.2	0.2	-1.4 %	9	7	100.0 %	77.8 %
Waikato	7	8	14.3 %	0.2	0.2	13.4 %	6	8	85.7 %	100.0 %
Bay Of Plenty	6	6	0.0 %	0.2	0.2	-0.1 %	6	3	100.0 %	50.0 %
Eastern	3	10	233.3 %	0.1	0.5	233.3 %	3	5	100.0 %	50.0 %
Central	6	7	16.7 %	0.2	0.2	16.5 %	5	7	83.3 %	100.0 %
Wellington	9	7	-22.2 %	0.2	0.1	-22.6 %	9	6	100.0 %	85.7 %
Tasman	3	5	66.7 %	0.2	0.3	66.3 %	3	5	100.0 %	100.0 %
Canterbury	12	8	-33.3 %	0.2	0.1	-34.2 %	11	7	91.7 %	87.5 %
Southern	4	5	25.0 %	0.1	0.2	24.2 %	3	4	75.0 %	80.0 %
	68	83	22.1 %	0.2	0.2	21.0 %	63	70	92.6 %	84.3 %

ACTS INTENDED TO CAUSE INJURY

District Description	Recorded 2012	Recorded 2013	Variance 2012-2013	Recorded per 10,000 pop 2012	Recorded per 10,000 pop 2013	Per 10,000 pop % Variance 2012 to 2013	Resolved 2012	Resolved 2013	Resolution Rate 2012	Resolution Rate 2013
Northland	2,198	2,109	-4.0 %	141.0	135.0	-4.3 %	1,716	1,609	78.1 %	76.3 %
Waitemata	3,521	3,134	-11.0 %	63.3	55.5	-12.4 %	2,936	2,499	83.4 %	79.7 %
Auckland	3,476	3,294	-5.2 %	78.7	73.7	-6.4 %	2,468	2,285	71.0 %	69.4 %
Counties/Manukau	5,803	6,328	9.0 %	109.8	118.0	7.5 %	4,802	5,103	82.8 %	80.6 %
Waikato	3,432	3,390	-1.2 %	100.4	98.4	-2.0 %	2,531	2,295	73.7 %	67.7 %
Bay Of Plenty	3,808	3,517	-7.6 %	113.7	104.9	-7.7 %	3,260	2,959	85.6 %	84.1 %
Eastern	3,141	3,387	7.8 %	155.8	168.0	7.8 %	2,298	2,399	73.2 %	70.8 %
Central	3,346	3,165	-5.4 %	95.3	89.9	-5.6 %	2,776	2,627	83.0 %	83.0 %
Wellington	3,867	3,453	-10.7 %	80.2	71.3	-11.1 %	2,959	2,271	76.5 %	65.8 %
Tasman	1,828	1,582	-13.5 %	103.0	89.0	-13.6 %	1,566	1,257	85.7 %	79.5 %
Canterbury	3,775	3,619	-4.1 %	68.2	64.6	-5.4 %	2,791	2,552	73.9 %	70.5 %
Southern	2,656	2,469	-7.0 %	86.3	79.7	-7.6 %	2,258	1,996	85.0 %	80.8 %
	40,851	39,447	-3.4 %	92.2	88.2	-4.3 %	32,361	29,852	79.2 %	75.7 %

SEXUAL ASSAULT AND RELATED OFFENCES

District Description	Recorded 2012	Recorded 2013	Variance 2012-2013	Recorded per 10,000 pop 2012	Recorded per 10,000 pop 2013	Per 10,000 pop % Variance 2012 to 2013	Resolved 2012	Resolved 2013	Resolution Rate 2012	Resolution Rate 2013
Northland	210	180	-14.3 %	13.5	11.5	-14.5 %	128	109	61.0 %	60.6 %
Waitemata	265	351	32.5 %	4.8	6.2	30.4 %	153	221	57.7 %	63.0 %
Auckland	290	372	28.3 %	6.6	8.3	26.7 %	162	194	55.9 %	52.2 %
Counties/Manukau	463	507	9.5 %	8.8	9.5	7.9 %	194	222	41.9 %	43.8 %
Waikato	296	361	22.0 %	8.7	10.5	21.0 %	145	158	49.0 %	43.8 %
Bay Of Plenty	317	244	-23.0 %	9.5	7.3	-23.1 %	202	144	63.7 %	59.0 %
Eastern	289	265	-8.3 %	14.3	13.1	-8.3 %	165	117	57.1 %	44.2 %
Central	265	380	43.4 %	7.5	10.8	43.1 %	170	218	64.2 %	57.4 %
Wellington	384	373	-2.9 %	8.0	7.7	-3.3 %	192	199	50.0 %	53.4 %
Tasman	127	198	55.9 %	7.2	11.1	55.6 %	81	119	63.8 %	60.1 %
Canterbury	442	442	0.0 %	8.0	7.9	-1.3 %	210	214	47.5 %	48.4 %
Southern	164	246	50.0 %	5.3	7.9	49.1 %	87	115	53.0 %	46.7 %
	3,512	3,919	11.6 %	7.9	8.8	10.6 %	1,889	2,030	53.8 %	51.8 %

SUMMARY OF RECORDED OFFENCES, RATE PER 10,000 POPULATION AND RESOLVED OFFENCES, BY DIVISION

Years ending 31 December

DANGEROUS OR NEGLIGENT ACTS ENDANGERING PERSONS

District Description	Recorded 2012	Recorded 2013	Variance 2012-2013	Recorded per 10,000 pop 2012	Recorded per 10,000 pop 2013	Per 10,000 pop % Variance 2012 to 2013	Resolved 2012	Resolved 2013	Resolution Rate 2012	Resolution Rate 2013
Northland	48	31	-35.4 %	3.1	2.0	-35.6 %	34	13	70.8 %	41.9 %
Waitemata	68	62	-8.8 %	1.2	1.1	-10.2 %	40	38	58.8 %	61.3 %
Auckland	123	65	-47.2 %	2.8	1.5	-47.8 %	84	38	68.3 %	58.5 %
Counties/Manukau	191	134	-29.8 %	3.6	2.5	-30.9 %	145	98	75.9 %	73.1 %
Waikato	63	46	-27.0 %	1.8	1.3	-27.5 %	36	20	57.1 %	43.5 %
Bay Of Plenty	96	62	-35.4 %	2.9	1.8	-35.5 %	78	49	81.3 %	79.0 %
Eastern	112	102	-8.9 %	5.6	5.1	-8.9 %	43	44	38.4 %	43.1 %
Central	62	51	-17.7 %	1.8	1.4	-17.9 %	44	34	71.0 %	66.7 %
Wellington	62	74	19.4 %	1.3	1.5	18.8 %	38	41	61.3 %	55.4 %
Tasman	37	38	2.7 %	2.1	2.1	2.5 %	28	17	75.7 %	44.7 %
Canterbury	76	62	-18.4 %	1.4	1.1	-19.5 %	36	34	47.4 %	54.8 %
Southern	84	60	-28.6 %	2.7	1.9	-29.0 %	49	30	58.3 %	50.0 %
	1,022	787	-23.0 %	2.3	1.8	-23.6 %	655	456	64.1 %	57.9 %

ABDUCTION, HARASSMENT AND OTHER RELATED OFFENCES AGAINST A PERSON

District Description	Recorded 2012	Recorded 2013	Variance 2012-2013	Recorded per 10,000 pop 2012	Recorded per 10,000 pop 2013	Per 10,000 pop % Variance 2012 to 2013	Resolved 2012	Resolved 2013	Resolution Rate 2012	Resolution Rate 2013
Northland	696	743	6.8 %	44.6	47.6	6.5 %	499	477	71.7 %	64.2 %
Waitemata	1,209	1,244	2.9 %	21.7	22.0	1.3 %	834	658	69.0 %	52.9 %
Auckland	1,111	1,191	7.2 %	25.2	26.6	5.9 %	639	603	57.5 %	50.6 %
Counties/Manukau	1,809	1,709	-5.5 %	34.2	31.9	-6.9 %	1,381	1,158	76.3 %	67.8 %
Waikato	1,019	1,050	3.0 %	29.8	30.5	2.2 %	641	576	62.9 %	54.9 %
Bay Of Plenty	880	1,058	20.2 %	26.3	31.6	20.1 %	683	807	77.6 %	76.3 %
Eastern	853	1,017	19.2 %	42.3	50.4	19.2 %	585	620	68.6 %	61.0 %
Central	855	1,075	25.7 %	24.3	30.6	25.5 %	658	730	77.0 %	67.9 %
Wellington	1,375	1,388	0.9 %	28.5	28.6	0.5 %	904	617	65.7 %	44.5 %
Tasman	605	683	12.9 %	34.1	38.4	12.7 %	489	436	80.8 %	63.8 %
Canterbury	1,299	1,684	29.6 %	23.5	30.0	27.9 %	683	763	52.6 %	45.3 %
Southern	765	921	20.4 %	24.9	29.7	19.6 %	631	647	82.5 %	70.2 %
	12,476	13,763	10.3 %	28.1	30.8	9.4 %	8,627	8,092	69.1 %	58.8 %

ROBBERY, EXTORTION AND RELATED OFFENCES

District Description	Recorded 2012	Recorded 2013	Variance 2012-2013	Recorded per 10,000 pop 2012	Recorded per 10,000 pop 2013	Per 10,000 pop % Variance 2012 to 2013	Resolved 2012	Resolved 2013	Resolution Rate 2012	Resolution Rate 2013
Northland	93	92	-1.1 %	6.0	5.9	-1.3 %	51	56	54.8 %	60.9 %
Waitemata	210	164	-21.9 %	3.8	2.9	-23.1 %	80	60	38.1 %	36.6 %
Auckland	476	466	-2.1 %	10.8	10.4	-3.3 %	127	116	26.7 %	24.9 %
Counties/Manukau	467	468	0.2 %	8.8	8.7	-1.2 %	150	161	32.1 %	34.4 %
Waikato	166	165	-0.6 %	4.9	4.8	-1.4 %	71	71	42.8 %	43.0 %
Bay Of Plenty	151	156	3.3 %	4.5	4.7	3.2 %	89	82	58.9 %	52.6 %
Eastern	121	130	7.4 %	6.0	6.4	7.4 %	52	60	43.0 %	46.2 %
Central	110	102	-7.3 %	3.1	2.9	-7.4 %	59	49	53.6 %	48.0 %
Wellington	140	150	7.1 %	2.9	3.1	6.6 %	58	66	41.4 %	44.0 %
Tasman	41	41	0.0 %	2.3	2.3	-0.2 %	22	24	53.7 %	58.5 %
Canterbury	181	186	2.8 %	3.3	3.3	1.4 %	76	73	42.0 %	39.2 %
Southern	43	58	34.9 %	1.4	1.9	34.0 %	27	31	62.8 %	53.4 %
	2,199	2,178	-1.0 %	5.0	4.9	-1.8 %	862	849	39.2 %	39.0 %

SUMMARY OF RECORDED OFFENCES, RATE PER 10,000 POPULATION AND RESOLVED OFFENCES, BY DIVISION

Years ending 31 December

UNLAWFUL ENTRY WITH INTENT/BURGLARY, BREAK AND ENTER

District Description	Recorded 2012	Recorded 2013	Variance 2012-2013	Recorded per 10,000 pop 2012	Recorded per 10,000 pop 2013	Per 10,000 pop % Variance 2012 to 2013	Resolved 2012	Resolved 2013	Resolution Rate 2012	Resolution Rate 2013
Northland	2,339	2,688	14.9 %	150.1	172.1	14.7 %	414	383	17.7 %	14.2 %
Waitemata	4,436	4,126	-7.0 %	79.7	73.0	-8.4 %	579	550	13.1 %	13.3 %
Auckland	7,334	6,316	-13.9 %	166.0	141.2	-14.9 %	575	478	7.8 %	7.6 %
Counties/Manukau	7,082	6,723	-5.1 %	134.0	125.3	-6.4 %	907	832	12.8 %	12.4 %
Waikato	5,740	6,046	5.3 %	167.9	175.5	4.5 %	874	680	15.2 %	11.2 %
Bay Of Plenty	4,865	4,602	-5.4 %	145.3	137.3	-5.5 %	921	936	18.9 %	20.3 %
Eastern	3,165	3,536	11.7 %	157.0	175.4	11.7 %	499	574	15.8 %	16.2 %
Central	4,356	4,472	2.7 %	124.0	127.1	2.5 %	644	745	14.8 %	16.7 %
Wellington	4,872	4,434	-9.0 %	101.0	91.5	-9.4 %	665	552	13.6 %	12.4 %
Tasman	1,280	1,505	17.6 %	72.1	84.6	17.4 %	251	302	19.6 %	20.1 %
Canterbury	5,661	5,707	0.8 %	102.3	101.8	-0.5 %	670	787	11.8 %	13.8 %
Southern	1,807	2,092	15.8 %	58.7	67.6	15.1 %	426	416	23.6 %	19.9 %
	52,937	52,247	-1.3 %	119.4	116.9	-2.1 %	7,425	7,235	14.0 %	13.8 %

THEFT AND RELATED OFFENCES

District Description	Recorded 2012	Recorded 2013	Variance 2012-2013	Recorded per 10,000 pop 2012	Recorded per 10,000 pop 2013	Per 10,000 pop % Variance 2012 to 2013	Resolved 2012	Resolved 2013	Resolution Rate 2012	Resolution Rate 2013
Northland	3,793	4,337	14.3 %	243.3	277.6	14.1 %	1,092	1,204	28.8 %	27.8 %
Waitemata	10,824	12,076	11.6 %	194.6	213.8	9.9 %	2,754	2,656	25.4 %	22.0 %
Auckland	21,393	19,957	-6.7 %	484.3	446.2	-7.9 %	2,727	2,712	12.7 %	13.6 %
Counties/Manukau	13,366	14,229	6.5 %	252.8	265.3	4.9 %	2,625	2,777	19.6 %	19.5 %
Waikato	9,422	9,993	6.1 %	275.6	290.1	5.2 %	2,162	2,348	22.9 %	23.5 %
Bay Of Plenty	10,430	10,039	-3.7 %	311.4	299.5	-3.8 %	3,113	2,959	29.8 %	29.5 %
Eastern	6,081	6,561	7.9 %	301.7	325.4	7.9 %	1,818	1,882	29.9 %	28.7 %
Central	8,170	8,689	6.4 %	232.6	246.9	6.2 %	2,498	2,691	30.6 %	31.0 %
Wellington	12,734	12,486	-1.9 %	264.0	257.7	-2.4 %	2,798	2,322	22.0 %	18.6 %
Tasman	4,020	3,880	-3.5 %	226.5	218.2	-3.7 %	1,293	1,083	32.2 %	27.9 %
Canterbury	13,338	13,366	0.2 %	241.1	238.4	-1.1 %	3,215	3,215	24.1 %	24.1 %
Southern	5,905	5,422	-8.2 %	191.9	175.1	-8.7 %	2,215	1,761	37.5 %	32.5 %
	119,476	121,035	1.3 %	269.5	270.7	0.4 %	28,310	27,610	23.7 %	22.8 %

FRAUD, DECEPTION AND RELATED OFFENCES

District Description	Recorded 2012	Recorded 2013	Variance 2012-2013	Recorded per 10,000 pop 2012	Recorded per 10,000 pop 2013	Per 10,000 pop % Variance 2012 to 2013	Resolved 2012	Resolved 2013	Resolution Rate 2012	Resolution Rate 2013
Northland	217	367	69.1 %	13.9	23.5	68.8 %	132	251	60.8 %	68.4 %
Waitemata	887	929	4.7 %	15.9	16.4	3.1 %	402	476	45.3 %	51.2 %
Auckland	993	1,044	5.1 %	22.5	23.3	3.8 %	362	377	36.5 %	36.1 %
Counties/Manukau	791	897	13.4 %	15.0	16.7	11.8 %	391	426	49.4 %	47.5 %
Waikato	717	596	-16.9 %	21.0	17.3	-17.5 %	396	279	55.2 %	46.8 %
Bay Of Plenty	692	530	-23.4 %	20.7	15.8	-23.5 %	465	304	67.2 %	57.4 %
Eastern	383	465	21.4 %	19.0	23.1	21.4 %	230	257	60.1 %	55.3 %
Central	520	583	12.1 %	14.8	16.6	11.9 %	328	363	63.1 %	62.3 %
Wellington	696	760	9.2 %	14.4	15.7	8.7 %	392	337	56.3 %	44.3 %
Tasman	292	204	-30.1 %	16.5	11.5	-30.3 %	177	102	60.6 %	50.0 %
Canterbury	1,079	1,018	-5.7 %	19.5	18.2	-6.9 %	618	506	57.3 %	49.7 %
Southern	746	604	-19.0 %	24.2	19.5	-19.5 %	572	431	76.7 %	71.4 %
	8,013	7,997	-0.2 %	18.1	17.9	-1.0 %	4,465	4,109	55.7 %	51.4 %

SUMMARY OF RECORDED OFFENCES, RATE PER 10,000 POPULATION AND RESOLVED OFFENCES, BY DIVISION

Years ending 31 December

ILLICIT DRUG OFFENCES

District Description	Recorded 2012	Recorded 2013	Variance 2012-2013	Recorded per 10,000 pop 2012	Recorded per 10,000 pop 2013	Per 10,000 pop % Variance 2012 to 2013	Resolved 2012	Resolved 2013	Resolution Rate 2012	Resolution Rate 2013
Northland	1,299	961	-26.0 %	83.3	61.5	-26.2 %	1,048	841	80.7 %	87.5 %
Waitemata	1,772	1,583	-10.7 %	31.9	28.0	-12.0 %	1,687	1,483	95.2 %	93.7 %
Auckland	1,607	1,463	-9.0 %	36.4	32.7	-10.1 %	1,548	1,376	96.3 %	94.1 %
Counties/Manukau	2,317	2,035	-12.2 %	43.8	37.9	-13.4 %	2,222	1,941	95.9 %	95.4 %
Waikato	1,865	1,288	-30.9 %	54.6	37.4	-31.5 %	1,591	1,180	85.3 %	91.6 %
Bay Of Plenty	2,194	1,799	-18.0 %	65.5	53.7	-18.1 %	2,132	1,727	97.2 %	96.0 %
Eastern	1,329	1,028	-22.6 %	65.9	51.0	-22.7 %	1,005	755	75.6 %	73.4 %
Central	1,549	1,297	-16.3 %	44.1	36.9	-16.4 %	1,373	1,157	88.6 %	89.2 %
Wellington	2,603	1,157	-55.6 %	54.0	23.9	-55.8 %	2,495	1,025	95.9 %	88.6 %
Tasman	1,276	1,151	-9.8 %	71.9	64.7	-10.0 %	1,140	968	89.3 %	84.1 %
Canterbury	1,837	1,373	-25.3 %	33.2	24.5	-26.2 %	1,771	1,277	96.4 %	93.0 %
Southern	1,144	935	-18.3 %	37.2	30.2	-18.8 %	1,046	855	91.4 %	91.4 %
	20,792	16,070	-22.7 %	46.9	35.9	-23.4 %	19,058	14,585	91.7 %	90.8 %

PROHIBITED AND REGULATED WEAPONS AND EXPLOSIVES OFFENCES

District Description	Recorded 2012	Recorded 2013	Variance 2012-2013	Recorded per 10,000 pop 2012	Recorded per 10,000 pop 2013	Per 10,000 pop % Variance 2012 to 2013	Resolved 2012	Resolved 2013	Resolution Rate 2012	Resolution Rate 2013
Northland	369	333	-9.8 %	23.7	21.3	-9.9 %	316	279	85.6 %	83.8 %
Waitemata	568	492	-13.4 %	10.2	8.7	-14.7 %	520	448	91.5 %	91.1 %
Auckland	463	421	-9.1 %	10.5	9.4	-10.2 %	429	384	92.7 %	91.2 %
Counties/Manukau	811	737	-9.1 %	15.3	13.7	-10.4 %	763	689	94.1 %	93.5 %
Waikato	491	444	-9.6 %	14.4	12.9	-10.3 %	442	393	90.0 %	88.5 %
Bay Of Plenty	596	574	-3.7 %	17.8	17.1	-3.8 %	548	548	91.9 %	95.5 %
Eastern	453	478	5.5 %	22.5	23.7	5.5 %	408	421	90.1 %	88.1 %
Central	613	522	-14.8 %	17.5	14.8	-15.0 %	564	479	92.0 %	91.8 %
Wellington	476	485	1.9 %	9.9	10.0	1.4 %	434	414	91.2 %	85.4 %
Tasman	244	266	9.0 %	13.7	15.0	8.8 %	224	231	91.8 %	86.8 %
Canterbury	607	565	-6.9 %	11.0	10.1	-8.1 %	552	496	90.9 %	87.8 %
Southern	372	358	-3.8 %	12.1	11.6	-4.4 %	334	310	89.8 %	86.6 %
	6,063	5,675	-6.4 %	13.7	12.7	-7.2 %	5,534	5,092	91.3 %	89.7 %

PROPERTY DAMAGE AND ENVIRONMENTAL POLLUTION

District Description	Recorded 2012	Recorded 2013	Variance 2012-2013	Recorded per 10,000 pop 2012	Recorded per 10,000 pop 2013	Per 10,000 pop % Variance 2012 to 2013	Resolved 2012	Resolved 2013	Resolution Rate 2012	Resolution Rate 2013
Northland	1,704	1,848	8.5 %	109.3	118.3	8.2 %	645	674	37.9 %	36.5 %
Waitemata	3,324	3,183	-4.2 %	59.8	56.3	-5.7 %	1,192	993	35.9 %	31.2 %
Auckland	4,255	4,157	-2.3 %	96.3	93.0	-3.5 %	1,120	996	26.3 %	24.0 %
Counties/Manukau	4,897	4,473	-8.7 %	92.6	83.4	-10.0 %	1,692	1,496	34.6 %	33.4 %
Waikato	3,880	3,847	-0.9 %	113.5	111.7	-1.6 %	1,115	1,388	28.7 %	36.1 %
Bay Of Plenty	4,559	4,088	-10.3 %	136.1	121.9	-10.4 %	1,534	1,534	33.6 %	37.5 %
Eastern	2,759	2,755	-0.1 %	136.9	136.6	-0.2 %	878	956	31.8 %	34.7 %
Central	3,958	3,984	0.7 %	112.7	113.2	0.5 %	1,312	1,254	33.1 %	31.5 %
Wellington	5,975	5,210	-12.8 %	123.9	107.5	-13.2 %	1,367	1,100	22.9 %	21.1 %
Tasman	2,476	2,278	-8.0 %	139.5	128.1	-8.2 %	735	611	29.7 %	26.8 %
Canterbury	6,786	5,971	-12.0 %	122.6	106.5	-13.2 %	1,831	1,492	27.0 %	25.0 %
Southern	4,328	3,783	-12.6 %	140.6	122.2	-13.1 %	1,157	956	26.7 %	25.3 %
	48,901	45,577	-6.8 %	110.3	101.9	-7.6 %	14,578	13,450	29.8 %	29.5 %

SUMMARY OF RECORDED OFFENCES, RATE PER 10,000 POPULATION AND RESOLVED OFFENCES, BY DIVISION

Years ending 31 December

PUBLIC ORDER OFFENCES

District Description	Recorded 2012	Recorded 2013	Variance 2012-2013	Recorded per 10,000 pop 2012	Recorded per 10,000 pop 2013	Per 10,000 pop % Variance 2012 to 2013	Resolved 2012	Resolved 2013	Resolution Rate 2012	Resolution Rate 2013
Northland	1,636	1,123	-31.4 %	105.0	71.9	-31.5 %	1,408	934	86.1 %	83.2 %
Waitemata	2,359	2,263	-4.1 %	42.4	40.1	-5.5 %	1,905	1,754	80.8 %	77.5 %
Auckland	5,641	3,723	-34.0 %	127.7	83.2	-34.8 %	5,206	3,285	92.3 %	88.2 %
Counties/Manukau	4,515	3,700	-18.1 %	85.4	69.0	-19.2 %	3,914	3,143	86.7 %	84.9 %
Waikato	4,103	3,671	-10.5 %	120.0	106.6	-11.2 %	3,716	3,252	90.6 %	88.6 %
Bay Of Plenty	3,723	3,342	-10.2 %	111.2	99.7	-10.3 %	3,430	3,117	92.1 %	93.3 %
Eastern	2,959	2,634	-11.0 %	146.8	130.6	-11.0 %	2,511	2,190	84.9 %	83.1 %
Central	2,598	2,613	0.6 %	74.0	74.3	0.4 %	2,306	2,290	88.8 %	87.6 %
Wellington	3,807	3,596	-5.5 %	78.9	74.2	-6.0 %	3,225	2,821	84.7 %	78.4 %
Tasman	2,655	2,125	-20.0 %	149.6	119.5	-20.1 %	2,347	1,848	88.4 %	87.0 %
Canterbury	5,648	4,593	-18.7 %	102.1	81.9	-19.7 %	4,921	3,923	87.1 %	85.4 %
Southern	2,878	2,467	-14.3 %	93.5	79.7	-14.8 %	2,530	2,130	87.9 %	86.3 %
	42,522	35,850	-15.7 %	95.9	80.2	-16.4 %	37,419	30,687	88.0 %	85.6 %

OFFENCES AGAINST JUSTICE PROCEDURES, GOVERNMENT SECURITY AND GOVERNMENT OPERATIONS

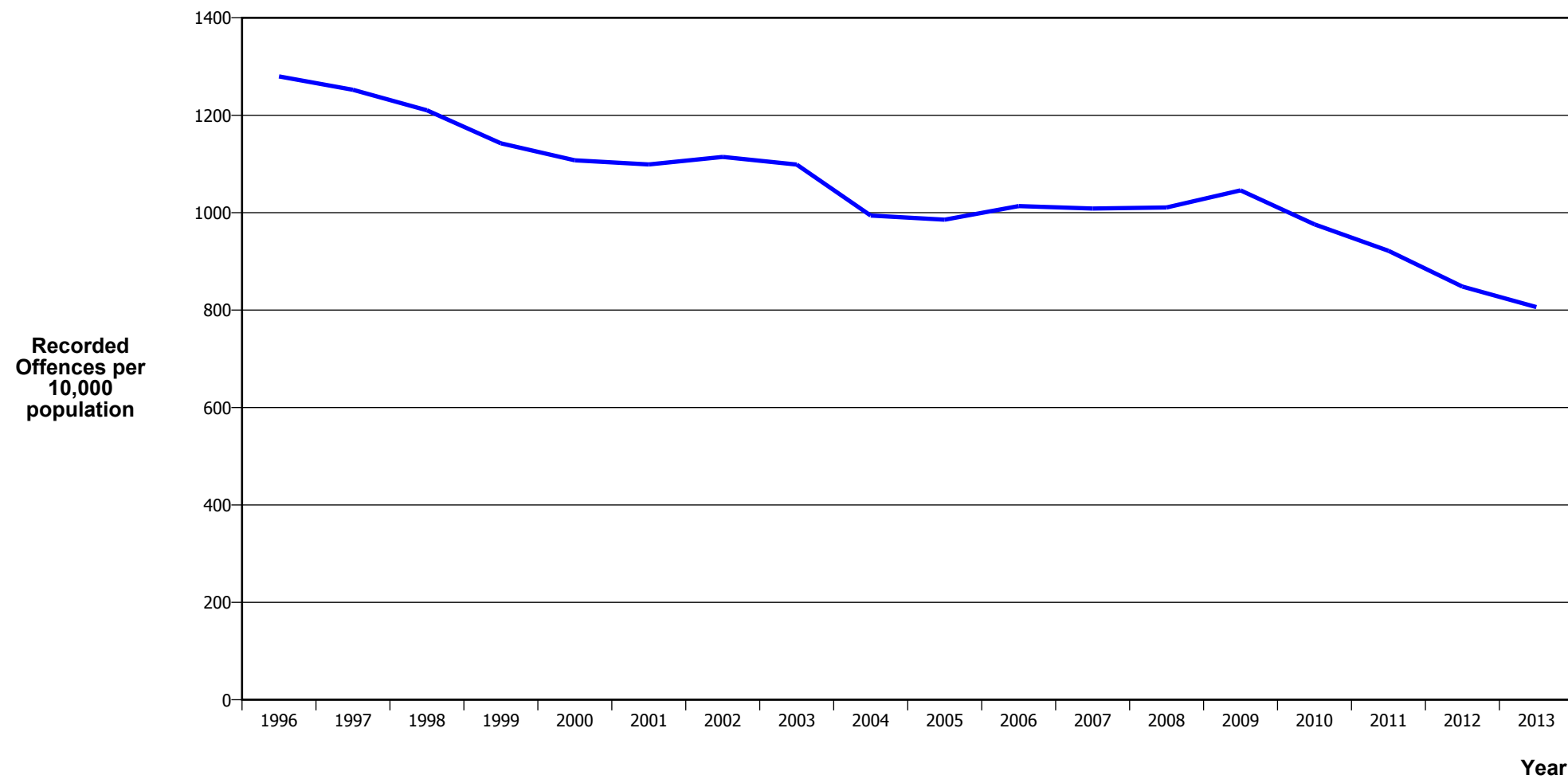
District Description	Recorded 2012	Recorded 2013	Variance 2012-2013	Recorded per 10,000 pop 2012	Recorded per 10,000 pop 2013	Per 10,000 pop % Variance 2012 to 2013	Resolved 2012	Resolved 2013	Resolution Rate 2012	Resolution Rate 2013
Northland	727	726	-0.1 %	46.6	46.5	-0.3 %	663	634	91.2 %	87.3 %
Waitemata	2,197	1,990	-9.4 %	39.5	35.2	-10.8 %	2,137	1,940	97.3 %	97.5 %
Auckland	1,246	1,164	-6.6 %	28.2	26.0	-7.7 %	1,184	1,088	95.0 %	93.5 %
Counties/Manukau	2,052	1,968	-4.1 %	38.8	36.7	-5.5 %	1,919	1,804	93.5 %	91.7 %
Waikato	1,421	1,236	-13.0 %	41.6	35.9	-13.7 %	1,290	1,046	90.8 %	84.6 %
Bay Of Plenty	1,504	1,298	-13.7 %	44.9	38.7	-13.8 %	1,445	1,226	96.1 %	94.5 %
Eastern	975	1,033	5.9 %	48.4	51.2	5.9 %	844	914	86.6 %	88.5 %
Central	1,078	970	-10.0 %	30.7	27.6	-10.2 %	1,011	916	93.8 %	94.4 %
Wellington	1,459	1,058	-27.5 %	30.3	21.8	-27.8 %	1,249	870	85.6 %	82.2 %
Tasman	599	562	-6.2 %	33.8	31.6	-6.4 %	545	476	91.0 %	84.7 %
Canterbury	1,786	1,639	-8.2 %	32.3	29.2	-9.4 %	1,659	1,493	92.9 %	91.1 %
Southern	753	780	3.6 %	24.5	25.2	2.9 %	700	725	93.0 %	92.9 %
	15,797	14,424	-8.7 %	35.6	32.3	-9.5 %	14,646	13,132	92.7 %	91.0 %

MISCELLANEOUS OFFENCES

District Description	Recorded 2012	Recorded 2013	Variance 2012-2013	Recorded per 10,000 pop 2012	Recorded per 10,000 pop 2013	Per 10,000 pop % Variance 2012 to 2013	Resolved 2012	Resolved 2013	Resolution Rate 2012	Resolution Rate 2013
Northland	22	44	100.0 %	1.4	2.8	99.6 %	13	29	59.1 %	65.9 %
Waitemata	77	101	31.2 %	1.4	1.8	29.2 %	55	70	71.4 %	69.3 %
Auckland	110	95	-13.6 %	2.5	2.1	-14.7 %	76	57	69.1 %	60.0 %
Counties/Manukau	126	129	2.4 %	2.4	2.4	0.9 %	97	82	77.0 %	63.6 %
Waikato	71	77	8.5 %	2.1	2.2	7.6 %	49	38	69.0 %	49.4 %
Bay Of Plenty	114	118	3.5 %	3.4	3.5	3.4 %	86	79	75.4 %	66.9 %
Eastern	119	122	2.5 %	5.9	6.1	2.5 %	52	60	43.7 %	49.2 %
Central	89	96	7.9 %	2.5	2.7	7.7 %	65	57	73.0 %	59.4 %
Wellington	154	175	13.6 %	3.2	3.6	13.1 %	106	87	68.8 %	49.7 %
Tasman	121	116	-4.1 %	6.8	6.5	-4.3 %	88	74	72.7 %	63.8 %
Canterbury	269	160	-40.5 %	4.9	2.9	-41.3 %	193	78	71.7 %	48.8 %
Southern	112	126	12.5 %	3.6	4.1	11.8 %	81	82	72.3 %	65.1 %
	1,384	1,359	-1.8 %	3.1	3.0	-2.6 %	961	793	69.4 %	58.4 %

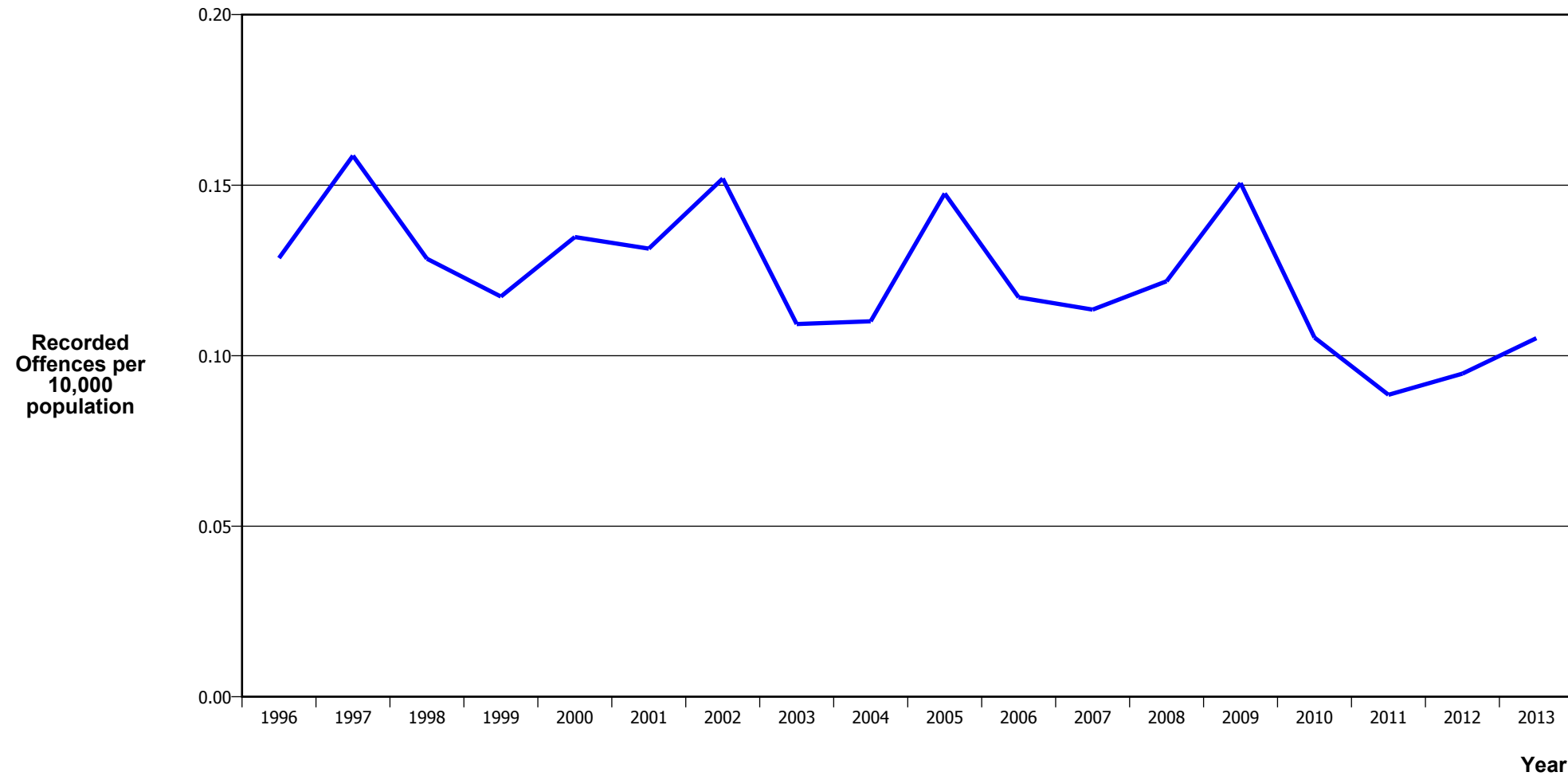
CRIME TRENDS

TOTAL CRIME



Calendar Year	1996	1997	1998	1999	2000	2001	2002	2003	2004	2005	2006	2007	2008	2009	2010	2011	2012	2013
Recorded Offences	477,596	473,547	461,677	438,074	427,230	426,526	440,129	442,489	406,363	407,496	424,137	426,384	431,383	451,405	426,345	406,056	376,013	360,411
Recorded per 10,000 Population	1,279.7	1,252.3	1,210.3	1,142.3	1,107.6	1,099.0	1,114.6	1,098.9	994.2	985.7	1,013.6	1,008.4	1,010.6	1,045.9	976.1	921.8	848.2	806.2

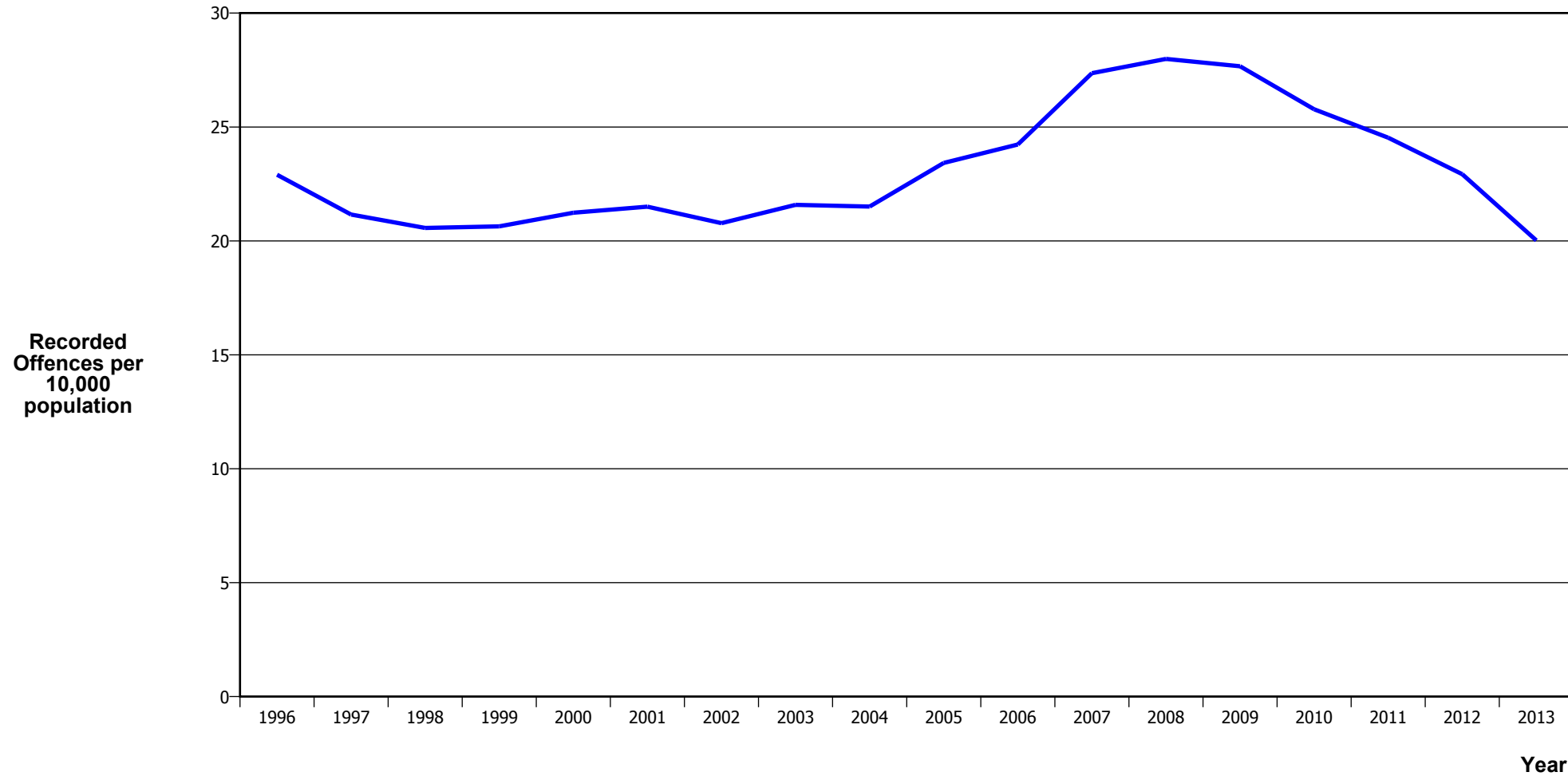
MURDER



Calendar Year	1996	1997	1998	1999	2000	2001	2002	2003	2004	2005	2006	2007	2008	2009	2010	2011	2012	2013
Recorded Offences	48	60	49	45	52	51	60	44	45	61	49	48	52	65	46	39	42	47
Recorded per 10,000 Population	0.13	0.16	0.13	0.12	0.13	0.13	0.15	0.11	0.11	0.15	0.12	0.11	0.12	0.15	0.11	0.09	0.09	0.11

- The 2009 result was significantly influenced by an abnormal one-off spike in August 2009, when 13 murders occurred

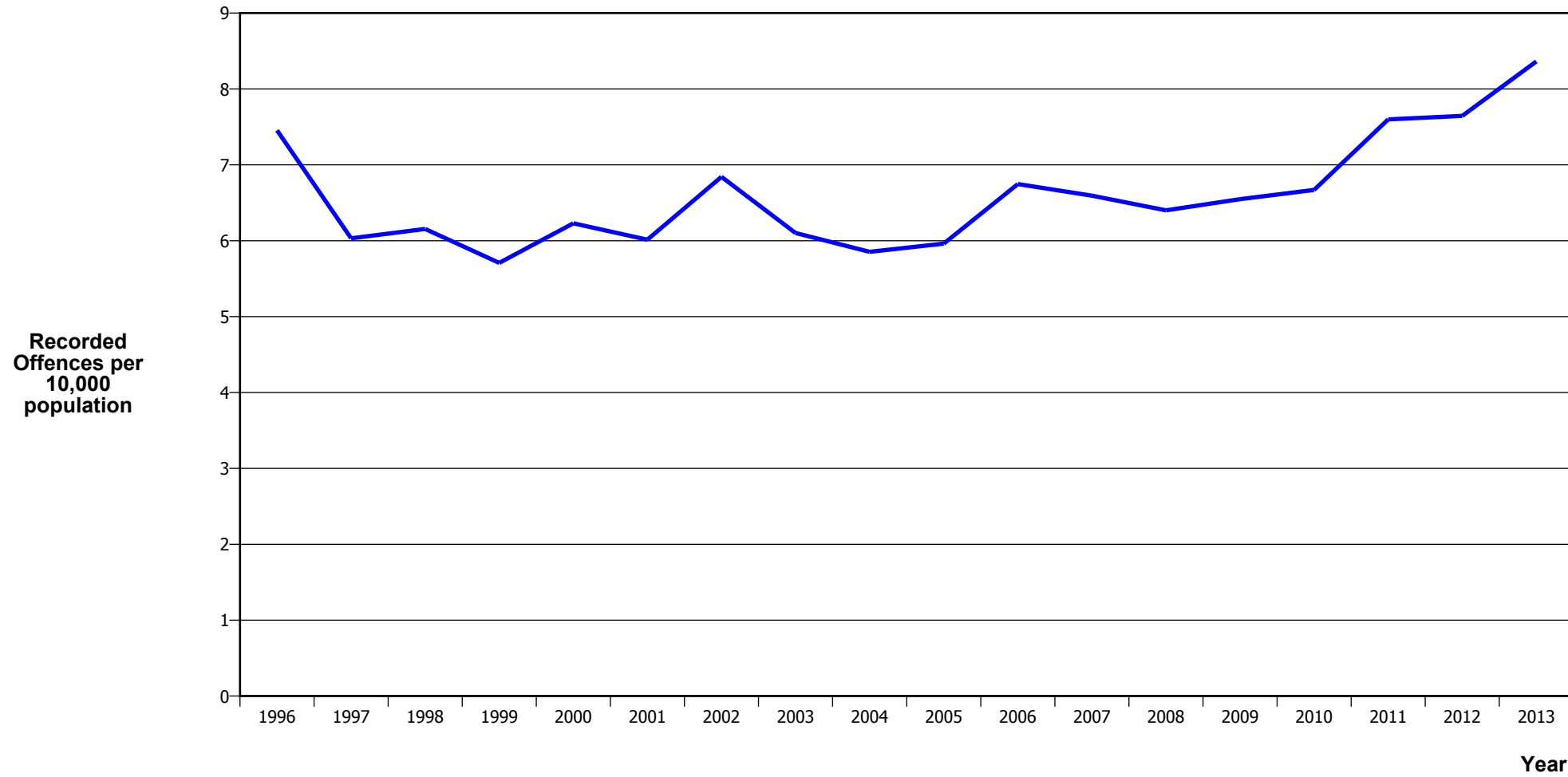
SERIOUS ASSAULTS RESULTING IN INJURY*



Calendar Year	1996	1997	1998	1999	2000	2001	2002	2003	2004	2005	2006	2007	2008	2009	2010	2011	2012	2013
Recorded Offence	8,549	8,001	7,847	7,915	8,192	8,346	8,205	8,692	8,791	9,683	10,140	11,569	11,948	11,941	11,260	10,806	10,165	8,951
Offence Rate per 10K Popn	22.9	21.2	20.6	20.6	21.2	21.5	20.8	21.6	21.5	23.4	24.2	27.4	28.0	27.7	25.8	24.5	22.9	20.0

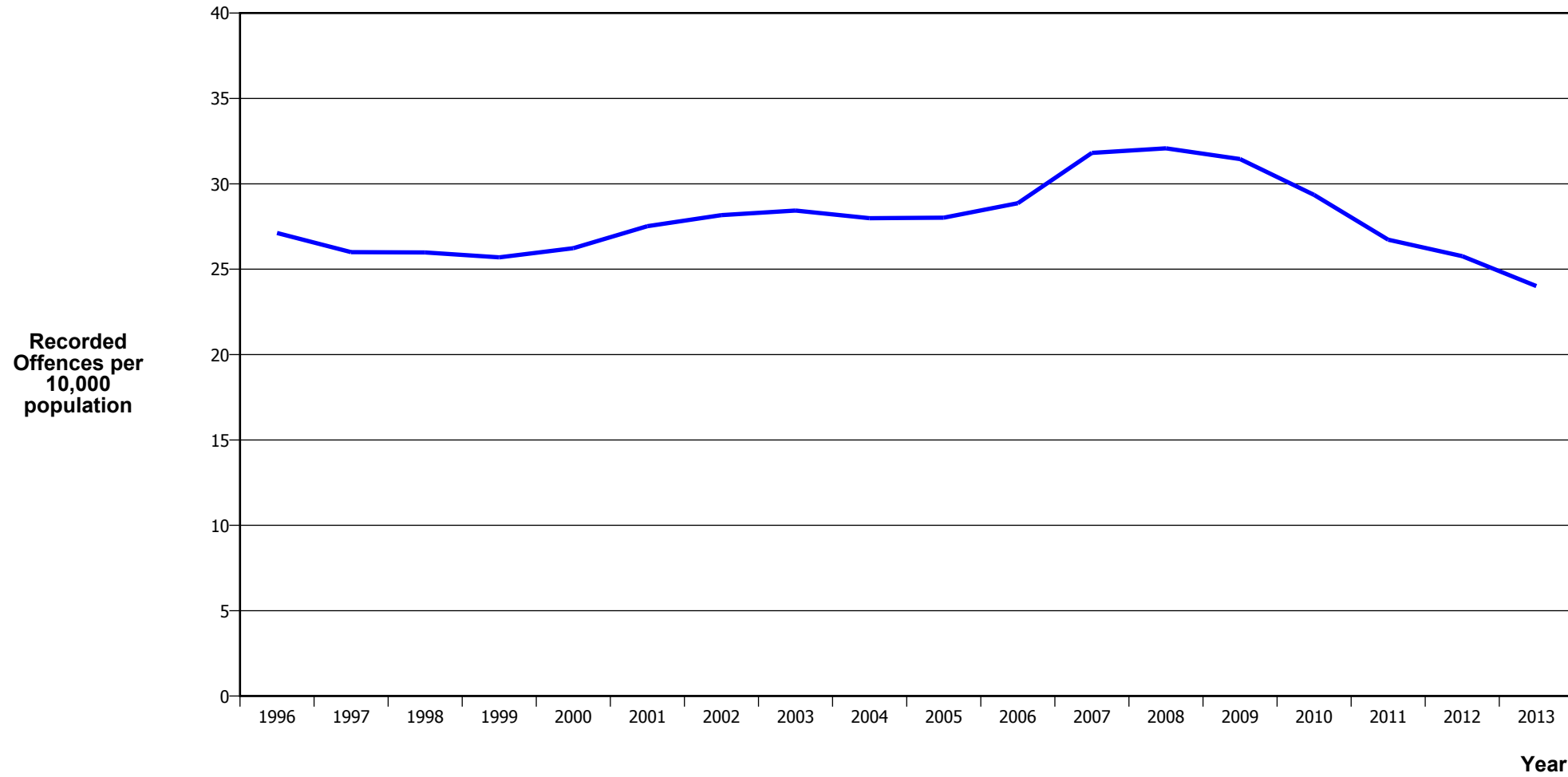
* This measure excludes common assaults

SEXUAL ASSAULTS



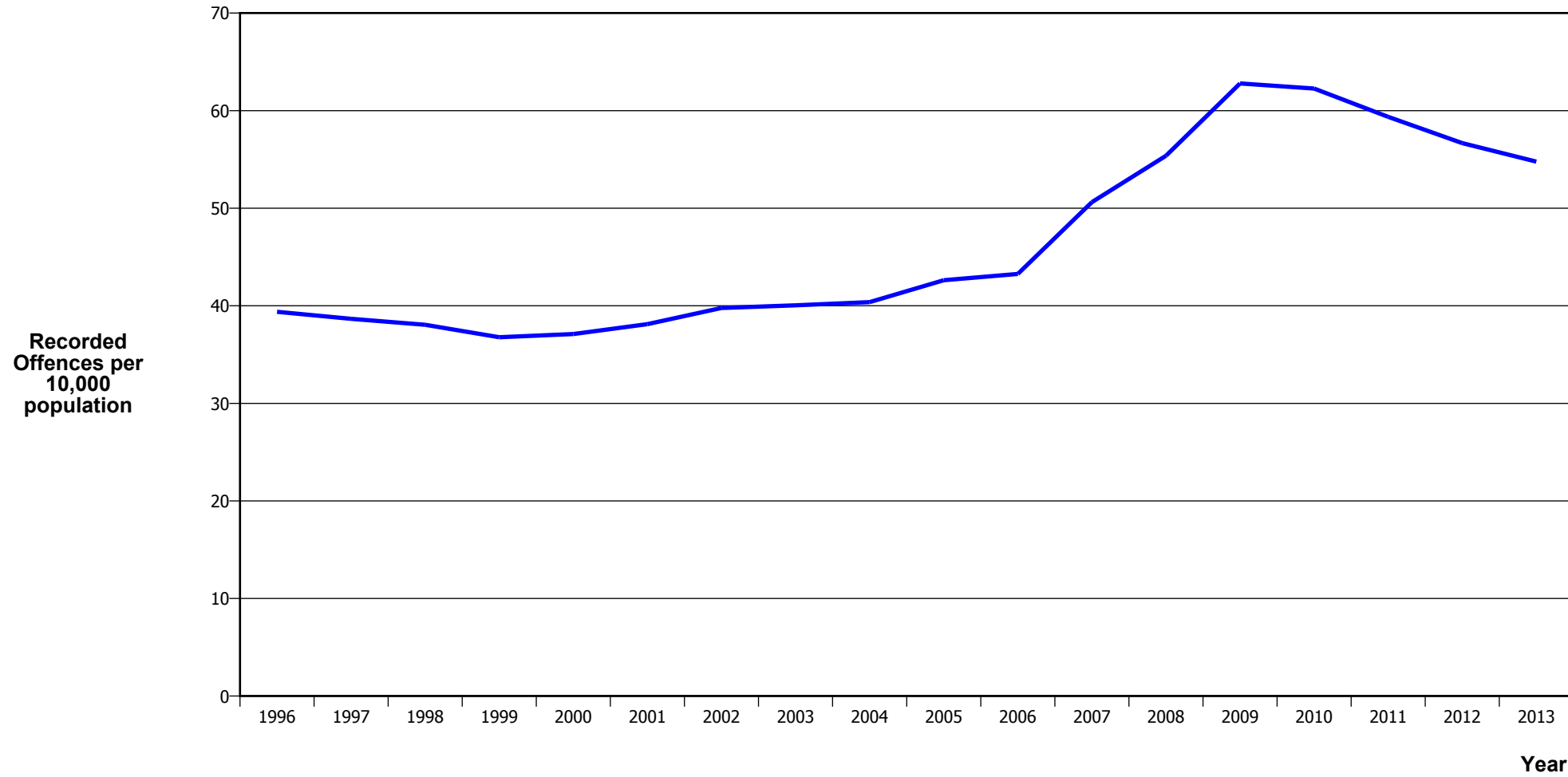
Calendar Year	1996	1997	1998	1999	2000	2001	2002	2003	2004	2005	2006	2007	2008	2009	2010	2011	2012	2013
Recorded Offences	2,782	2,281	2,348	2,189	2,403	2,334	2,702	2,457	2,393	2,465	2,823	2,788	2,732	2,826	2,913	3,347	3,389	3,739
Recorded per 10,000 Population	7.5	6.0	6.2	5.7	6.2	6.0	6.8	6.1	5.9	6.0	6.7	6.6	6.4	6.5	6.7	7.6	7.6	8.4

PUBLIC PLACE ASSAULTS



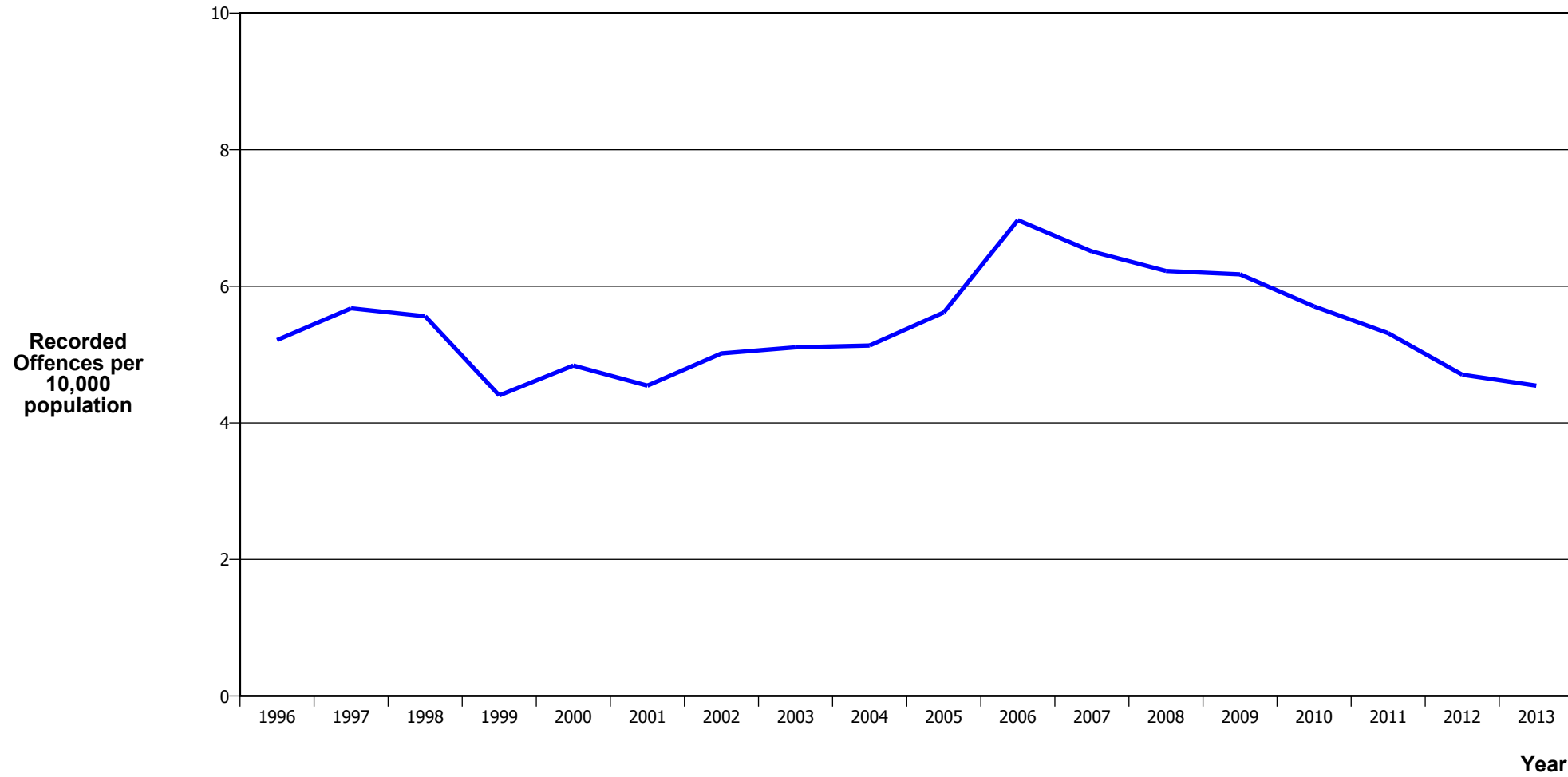
Calendar Year	1996	1997	1998	1999	2000	2001	2002	2003	2004	2005	2006	2007	2008	2009	2010	2011	2012	2013
Recorded Offences	10,122	9,832	9,910	9,853	10,118	10,681	11,123	11,451	11,440	11,582	12,078	13,450	13,693	13,574	12,819	11,774	11,421	10,735
Recorded per 10,000 Population	27.1	26.0	26.0	25.7	26.2	27.5	28.2	28.4	28.0	28.0	28.9	31.8	32.1	31.5	29.3	26.7	25.8	24.0

DWELLING ASSAULTS



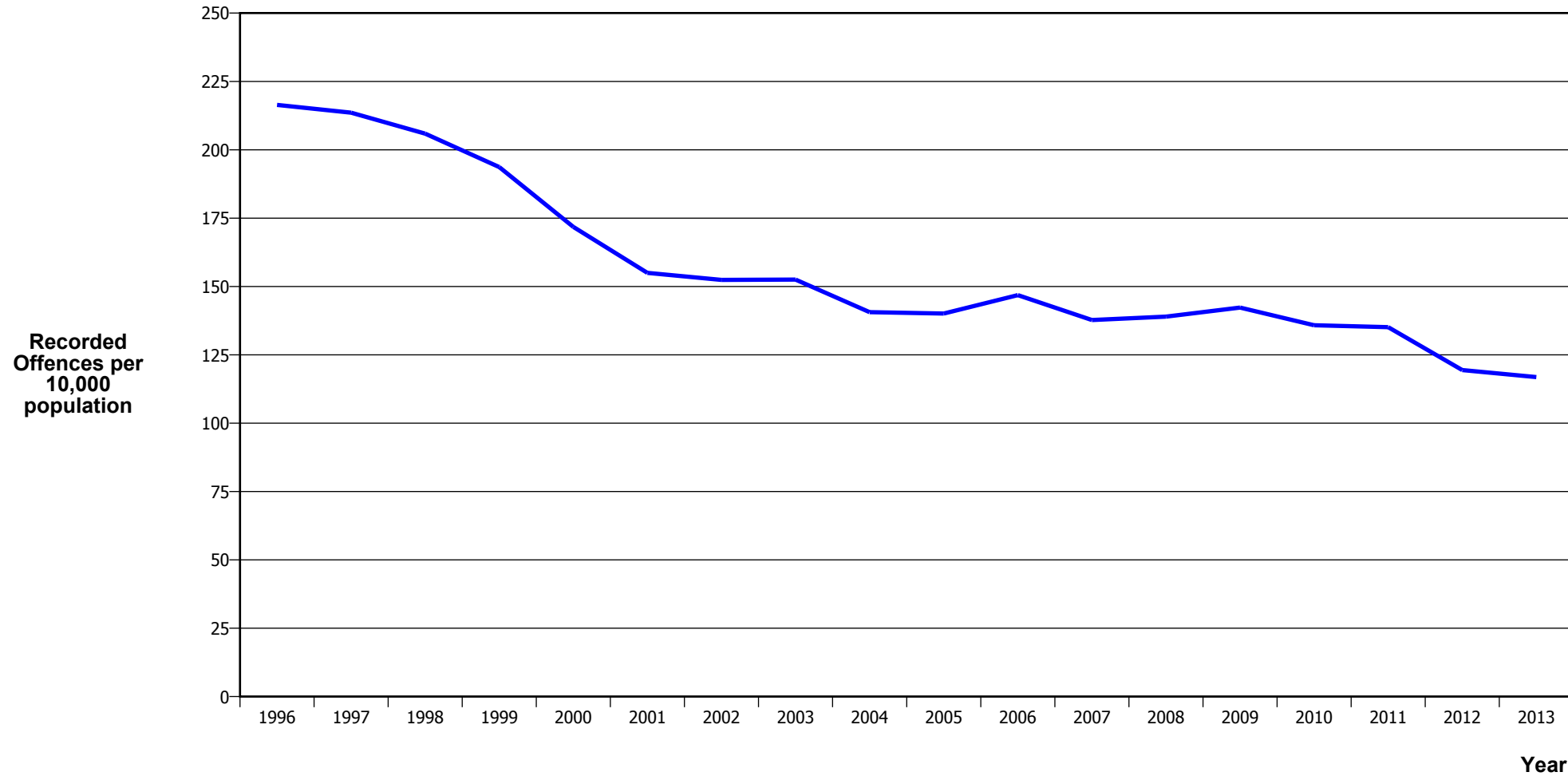
Calendar Year	1996	1997	1998	1999	2000	2001	2002	2003	2004	2005	2006	2007	2008	2009	2010	2011	2012	2013
Recorded Offences	14,696	14,620	14,515	14,103	14,314	14,793	15,707	16,126	16,503	17,620	18,104	21,402	23,637	27,100	27,196	26,147	25,121	24,488
Recorded per 10,000 Population	39.4	38.7	38.1	36.8	37.1	38.1	39.8	40.0	40.4	42.6	43.3	50.6	55.4	62.8	62.3	59.4	56.7	54.8

ROBBERY



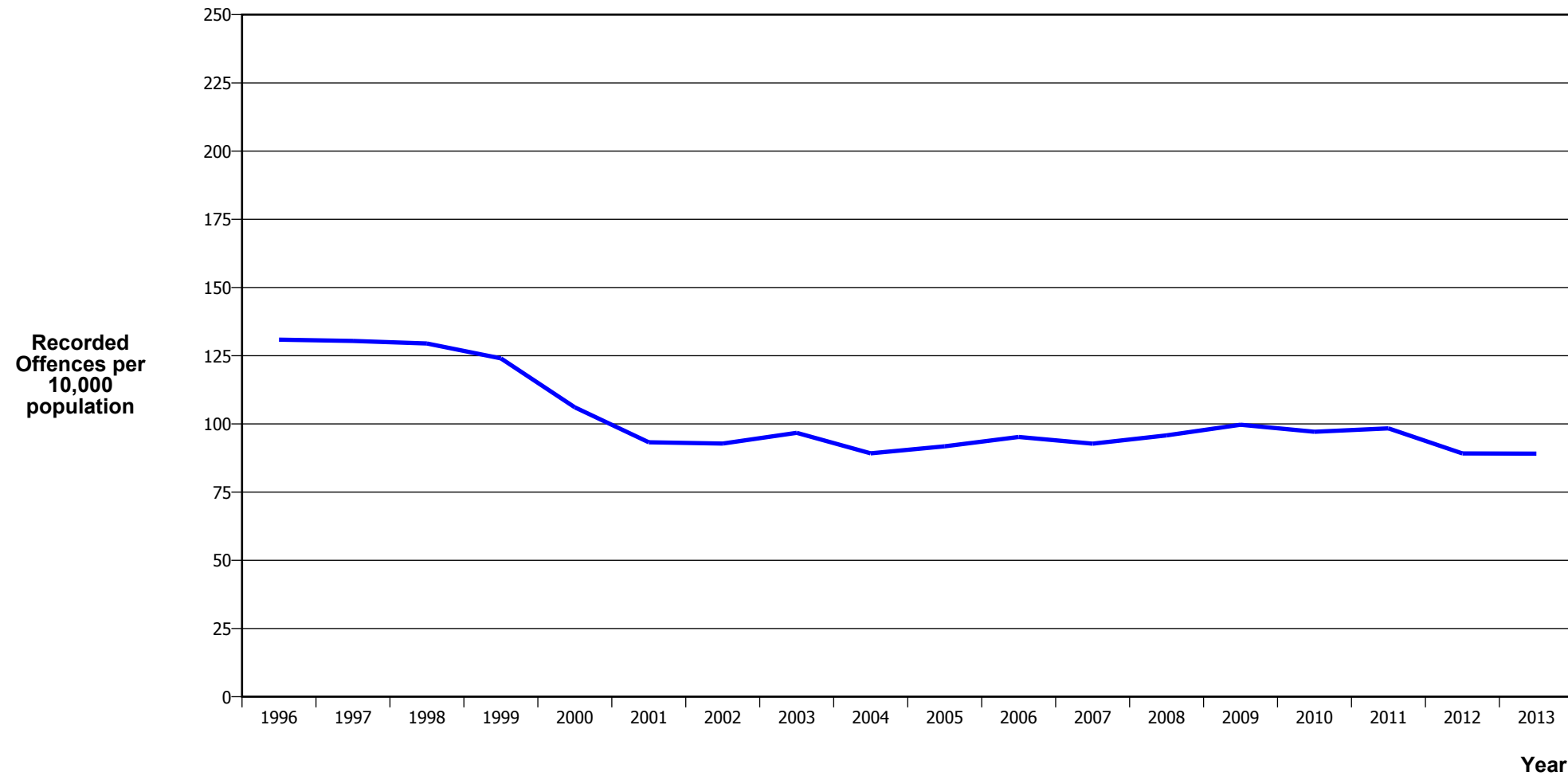
Calendar Year	1996	1997	1998	1999	2000	2001	2002	2003	2004	2005	2006	2007	2008	2009	2010	2011	2012	2013
Recorded Offences	1,945	2,147	2,121	1,688	1,867	1,764	1,981	2,056	2,098	2,322	2,916	2,752	2,657	2,665	2,492	2,340	2,086	2,032
Recorded per 10,000 Population	5.2	5.7	5.6	4.4	4.8	4.5	5.0	5.1	5.1	5.6	7.0	6.5	6.2	6.2	5.7	5.3	4.7	4.5

BURGLARY (TOTAL)



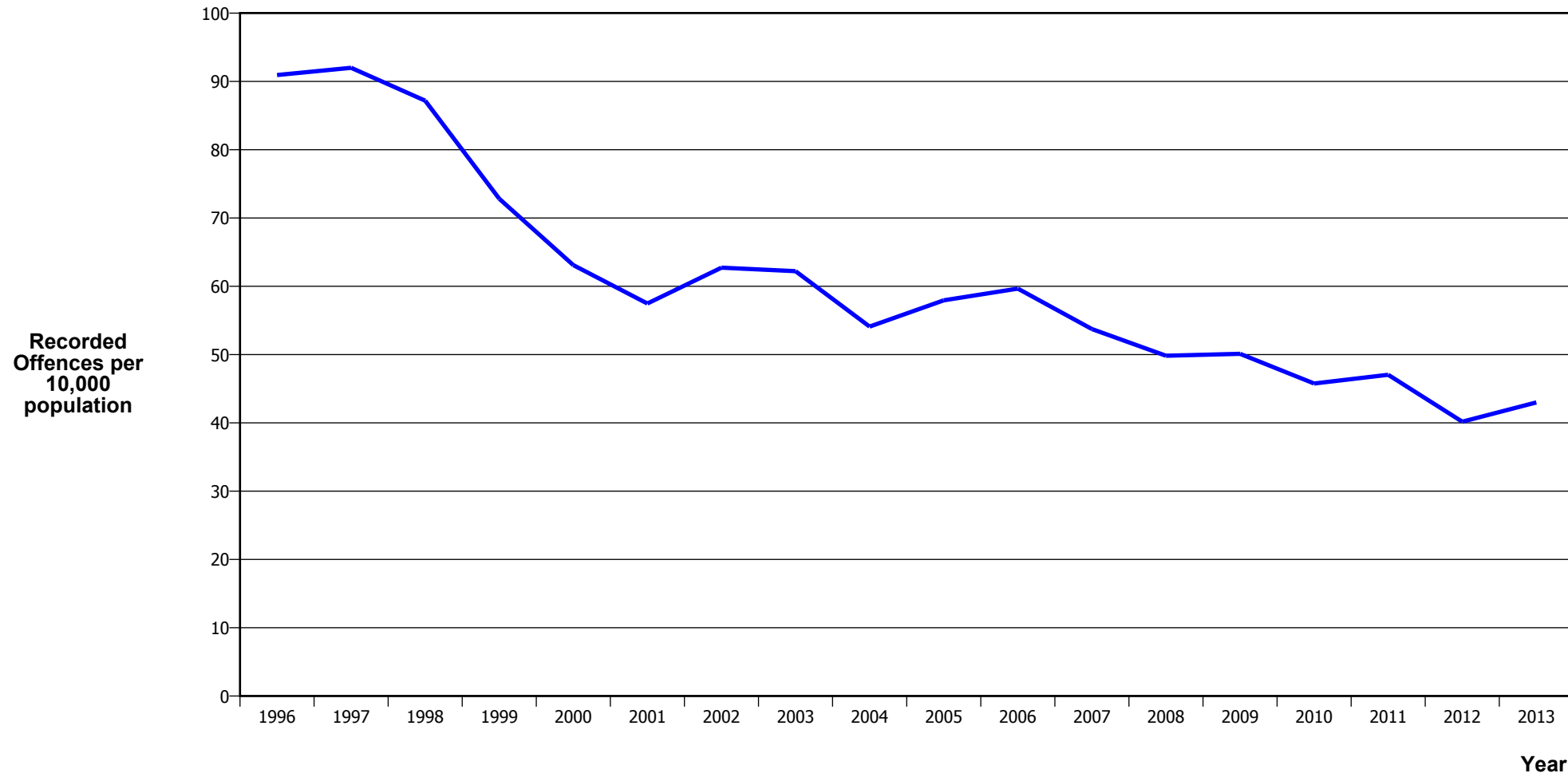
Calendar Year	1996	1997	1998	1999	2000	2001	2002	2003	2004	2005	2006	2007	2008	2009	2010	2011	2012	2013
Recorded Offences	80,773	80,769	78,550	74,274	66,267	60,148	60,184	61,423	57,476	57,923	61,437	58,230	59,326	61,405	59,323	59,518	52,937	52,247
Recorded per 10,000 Population	216.4	213.6	205.9	193.7	171.8	155.0	152.4	152.5	140.6	140.1	146.8	137.7	139.0	142.3	135.8	135.1	119.4	116.9

BURGLARY (DWELLING)



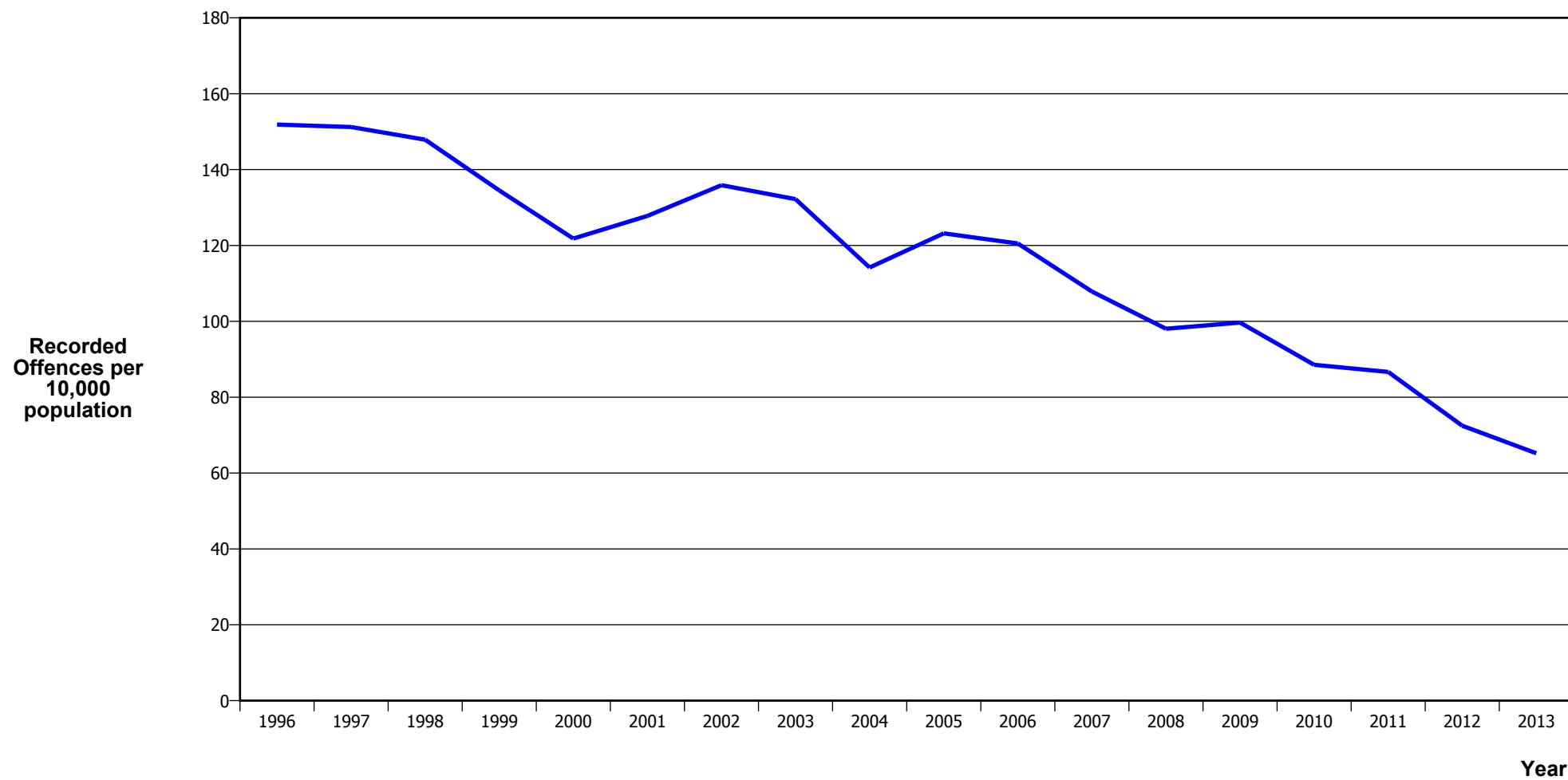
Calendar Year	1996	1997	1998	1999	2000	2001	2002	2003	2004	2005	2006	2007	2008	2009	2010	2011	2012	2013
Recorded Offences	48,846	49,313	49,395	47,569	40,918	36,198	36,643	38,951	36,461	37,946	39,847	39,214	40,888	43,024	42,424	43,338	39,532	39,831
Recorded per 10,000 Population	130.9	130.4	129.5	124.0	106.1	93.3	92.8	96.7	89.2	91.8	95.2	92.7	95.8	99.7	97.1	98.4	89.2	89.1

VEHICLES STOLEN



Calendar Year	1996	1997	1998	1999	2000	2001	2002	2003	2004	2005	2006	2007	2008	2009	2010	2011	2012	2013
Recorded Offences	33,934	34,786	33,254	27,927	24,337	22,307	24,771	25,048	22,109	23,952	24,960	22,722	21,271	21,629	19,991	20,724	17,807	19,221
Recorded per 10,000 Population	90.9	92.0	87.2	72.8	63.1	57.5	62.7	62.2	54.1	57.9	59.7	53.7	49.8	50.1	45.8	47.0	40.2	43.0

THEFT EX CAR



Calendar Year	1996	1997	1998	1999	2000	2001	2002	2003	2004	2005	2006	2007	2008	2009	2010	2011	2012	2013
Recorded Offences	56,677	57,186	56,411	51,583	46,989	49,597	53,662	53,242	46,676	50,927	50,432	45,598	41,846	43,015	38,669	38,174	32,128	29,154
Recorded per 10,000 Population	151.9	151.2	147.9	134.5	121.8	127.8	135.9	132.2	114.2	123.2	120.5	107.8	98.0	99.7	88.5	86.7	72.5	65.2

Population Data

Population data is used in this release to calculate crime rates. They have been derived from population estimates as at 30 June each year that have been obtained from Statistics New Zealand.

The estimated resident population is based on the census usually resident population count, with adjustments for residents missed or counted more than once by the census (net census undercount), and for residents temporarily overseas on census night.

These population estimates exclude the number of international students who are studying in New Zealand for less than 12 months.

Year	Population
1996	3,732,060
1997	3,781,540
1998	3,814,670
1999	3,834,980
2000	3,857,410
2001	3,881,010
2002	3,948,830
2003	4,026,810
2004	4,087,350
2005	4,134,210
2006	4,184,380
2007	4,228,170
2008	4,268,550
2009	4,315,960
2010	4,367,790
2011	4,404,820
2012	4,432,950
2013	4,470,680

General Definitions

Recorded Offences: the number of breaches of the New Zealand law recorded by Police. This includes offences specified in the Crimes Act and other legislations, such as the Summary Offences Act, Local Government Act, etc.

Resolved Offences: the number of recorded offences where an offender has been identified and dealt with (e.g. warned, cautioned, prosecuted, etc).

Resolution Rate: the proportion of recorded offences that have been resolved.

Recorded per 10,000 population: the number of recorded offences for every 10,000 people. This is also referred as the crime rate per 10,000 population.

ANZSOC: The Australian and New Zealand Standard Offence Classification. The offence classification is divided into 16 major offence divisions.

Definition of ANZSOC Divisions

1. Homicide and related offences: Unlawfully kill, attempt to unlawfully kill or conspiracy to kill another person.
2. Acts intended to cause injury: Acts, excluding attempted murder and those resulting in death, which are intended to cause non-fatal injury or harm to another person and where there is no sexual or acquisitive element.
3. Sexual assault and related offences: Acts, or intent of acts, of a sexual nature against another person, which are non-consensual or where consent is proscribed.
4. Dangerous or negligent acts endangering persons: Dangerous or negligent acts which, though not intended to cause harm, actually or potentially result in injury to oneself or another person.
5. Abduction, harassment and other offences against person: Acts intended to threaten or harass, or acts that unlawfully deprive another person of their freedom of movement, that are against that person's will or against the will of any parent, guardian or other person having lawful custody or care of that person.
6. Robbery, extortion and related offences: Acts intended to unlawfully gain money, property or other items of value from, or to cause detriment to, another person by using the threat of force or any other coercive measure.
7. Unlawful entry with intent / burglary, break and enter: The unlawful entry of a structure with the intent to commit an offence, where the entry is either forced or unforced.
8. Theft and related and offences: The unlawful taking or obtaining of money or goods, not involving the use of force or violence, coercion or deception, with intent to permanently or temporarily deprive the owner or possessor of the use of the money or goods, or the receiving or handling of money or goods obtained unlawfully.

9. Fraud, deception and related offences: Offences involving a dishonest act or omission carried out with the purpose of deceiving to obtain a benefit.

10. Illicit drug offences: The possessing, selling, dealing or trafficking, importing or exporting, manufacturing or cultivating of drugs or other substances prohibited under legislation.

11. Prohibited and regulated weapons and explosives offences: Offences involving prohibited or regulated weapons and explosives. Those offences also involving assault, sexual assault or robbery are coded to the relevant group within Assault, Sexual assaults and Robbery respectively.

12. Property damage and environmental pollution: The wilful and unlawful destruction, damage or defacement of public or private property, or the pollution of property or a definable entity held in common by the community.

13. Public order offences: Offences relating personal conduct that involves, or may lead to, a breach of public order or decency, or that is indicative of criminal intent, or that is otherwise regulated or prohibited on moral or ethical grounds. In general these offences do not involve a specific victim or victims; however some offences, such as offensive language and offensive behaviour, may be directed towards a single victim.

14. Traffic and vehicle regulatory offences: Offences relating to vehicles and most forms of traffic, including offences pertaining to the licensing, registration, roadworthiness, or use of vehicles, bicycle offences and pedestrian offences.

15. Offences against justice procedures, government security and government operations: An act or omission that is deemed to be prejudicial to the effective carrying out of justice procedures or any government operations. This includes general government operations as well as those specifically concerned with maintaining government security.

16. Miscellaneous offences: Offences involving the breach of statutory rules or regulations governing activities that are prima facie legal, where such offences are not explicitly dealt with under any other division. If an offence is specified under regulation and involves an act that would be illegal under common law or general criminal legislation, the offence is dealt with under the appropriate generic group.