

# **EASTERN DISTRICT CRIME STATISTICS 2013/2014**



**A Summary of  
Recorded and Resolved Offence  
Statistics**

**POLICE NATIONAL HEADQUARTERS  
October 2014**

ISSN 1178-1599

**Table of Contents:**

<b>Topic</b>	<b>Page</b>
Report Notes	1
Summary of District Recorded and Resolved Crime by Division	2 - 4
Proportions of Recorded Crime by Division	5
Summary of District Recorded Offences, Rate per 10,000 Population and Resolved Offences, by Area	6
Summary of Area Recorded Offences, Rate per 10,000 Population and Resolved Offences, by Division	7 - 10
Crime Trends:	11
Total Crime	12
Murder	13
Serious Assaults Resulting in Injury	14
Sexual Assaults	15
Public Place Assaults	16
Dwelling Assaults	17
Robbery	18
Burglary	19
Burglary (Dwelling)	20
Vehicles Stolen	21
Theft Ex Car	22
Population Data	23
General Definitions	24 - 25

## **REPORT NOTES:**

Statistics reported in this document are derived from the Police National Intelligence Application (NIA). These Official Statistics for Recorded and Resolved Offences present a snapshot of data in NIA relating to offences that occur within a given year, as at the date 14 days following the end of that year.

Unless the matter is minor where Police attendance is sufficient, a matter that is reported to or discovered by Police where Police believe an offence is likely to have been committed is counted as a recorded offence.

A recorded offence is counted as resolved when Police apprehend an offender and decide how to deal with him/her. (E.g. warn, prosecute, etc.)

Resolution rate is the percentage of recorded offences that are resolved within 14 days of the end of the year being reported on.

If an offence is resolved 15 days or more after the end of the year it will not appear in the Official Crime Statistics for that or any other year. Resolution Rate therefore undercounts the number of cases that Police have resolved. This phenomenon has a more marked impact for some types of offences than others, such as offences that require long investigations (E.g. many serial crimes, burglaries and murders).

Several offences have been reclassified into different ANZSOC groups. This has resulted in changes to subtotals for Groups and Sub-divisions within Divisions 10, 15 and 16, compared to previously reported data. Generally, this occurred within the same Division.

When comparing 2013/2014 Statistics with previous years, the reader should also refer to "Report Notes" published in previous years' reports, as previous changes significantly affect year on year trends.

# SUMMARY OF DISTRICT RECORDED AND RESOLVED CRIME, BY DIVISION

## Years ending 30 June

### HOMICIDE AND RELATED OFFENCES

ANZSOC Subdivision Description	Recorded 20112012	Recorded 20122013	Recorded 20132014	Variance 11/12-12/13	Variance 12/13-13/14	Resolved 20112012	Resolved 20122013	Resolved 20132014	Resolution Rate 20112012	Resolution Rate 20122013	Resolution Rate 20132014
ATTEMPTED MURDER	0	1	1	0.0 %	0.0 %	0	1	1	0.0 %	100.0 %	100.0 %
MANSLAUGHTER AND DRIVING CAUSING DEATH	1	0	3	-100.0 %	0.0 %	0	0	0	0.0 %	0.0 %	0.0 %
MURDER	3	9	2	200.0 %	-77.8 %	3	6	2	100.0 %	66.7 %	100.0 %
	<b>4</b>	<b>10</b>	<b>6</b>	<b>150.0 %</b>	<b>-40.0 %</b>	<b>3</b>	<b>7</b>	<b>3</b>	<b>75.0 %</b>	<b>70.0 %</b>	<b>50.0 %</b>

### ACTS INTENDED TO CAUSE INJURY

ANZSOC Subdivision Description	Recorded 20112012	Recorded 20122013	Recorded 20132014	Variance 11/12-12/13	Variance 12/13-13/14	Resolved 20112012	Resolved 20122013	Resolved 20132014	Resolution Rate 20112012	Resolution Rate 20122013	Resolution Rate 20132014
ASSAULT	3,143	3,337	3,385	6.2 %	1.4 %	2,526	2,436	2,318	80.4 %	73.0 %	68.5 %
OTHER ACTS INTENDED TO CAUSE INJURY	7	5	5	-28.6 %	0.0 %	3	3	1	42.9 %	60.0 %	20.0 %
	<b>3,150</b>	<b>3,342</b>	<b>3,390</b>	<b>6.1 %</b>	<b>1.4 %</b>	<b>2,529</b>	<b>2,439</b>	<b>2,319</b>	<b>80.3 %</b>	<b>73.0 %</b>	<b>68.4 %</b>

### SEXUAL ASSAULT AND RELATED OFFENCES

ANZSOC Subdivision Description	Recorded 20112012	Recorded 20122013	Recorded 20132014	Variance 11/12-12/13	Variance 12/13-13/14	Resolved 20112012	Resolved 20122013	Resolved 20132014	Resolution Rate 20112012	Resolution Rate 20122013	Resolution Rate 20132014
NON-ASSAULTIVE SEXUAL OFFENCES	10	11	39	10.0 %	254.5 %	5	9	37	50.0 %	81.8 %	94.9 %
SEXUAL ASSAULT	189	277	254	46.6 %	-8.3 %	107	140	119	56.6 %	50.5 %	46.9 %
	<b>199</b>	<b>288</b>	<b>293</b>	<b>44.7 %</b>	<b>1.7 %</b>	<b>112</b>	<b>149</b>	<b>156</b>	<b>56.3 %</b>	<b>51.7 %</b>	<b>53.2 %</b>

### DANGEROUS OR NEGLIGENT ACTS ENDANGERING PERSONS

ANZSOC Subdivision Description	Recorded 20112012	Recorded 20122013	Recorded 20132014	Variance 11/12-12/13	Variance 12/13-13/14	Resolved 20112012	Resolved 20122013	Resolved 20132014	Resolution Rate 20112012	Resolution Rate 20122013	Resolution Rate 20132014
OTHER DANGEROUS OR NEGLIGENT ACTS ENDANGERING PERSONS	95	100	115	5.3 %	15.0 %	42	41	45	44.2 %	41.0 %	39.1 %
	<b>95</b>	<b>100</b>	<b>115</b>	<b>5.3 %</b>	<b>15.0 %</b>	<b>42</b>	<b>41</b>	<b>45</b>	<b>44.2 %</b>	<b>41.0 %</b>	<b>39.1 %</b>

### ABDUCTION, HARASSMENT AND OTHER RELATED OFFENCES AGAINST A PERSON

ANZSOC Subdivision Description	Recorded 20112012	Recorded 20122013	Recorded 20132014	Variance 11/12-12/13	Variance 12/13-13/14	Resolved 20112012	Resolved 20122013	Resolved 20132014	Resolution Rate 20112012	Resolution Rate 20122013	Resolution Rate 20132014
ABDUCTION AND KIDNAPPING	28	8	21	-71.4 %	162.5 %	18	7	16	64.3 %	87.5 %	76.2 %
DEPRIVATION OF LIBERTY/FALSE IMPRISONMENT	0	1	0	0.0 %	-100.0 %	0	1	0	0.0 %	100.0 %	0.0 %
HARASSMENT AND THREATENING BEHAVIOUR	921	914	1,009	-0.8 %	10.4 %	675	605	614	73.3 %	66.2 %	60.9 %
	<b>949</b>	<b>923</b>	<b>1,030</b>	<b>-2.7 %</b>	<b>11.6 %</b>	<b>693</b>	<b>613</b>	<b>630</b>	<b>73.0 %</b>	<b>66.4 %</b>	<b>61.2 %</b>

### ROBBERY, EXTORTION AND RELATED OFFENCES

ANZSOC Subdivision Description	Recorded 20112012	Recorded 20122013	Recorded 20132014	Variance 11/12-12/13	Variance 12/13-13/14	Resolved 20112012	Resolved 20122013	Resolved 20132014	Resolution Rate 20112012	Resolution Rate 20122013	Resolution Rate 20132014
BLACKMAIL AND EXTORTION	12	10	6	-16.7 %	-40.0 %	9	4	2	75.0 %	40.0 %	33.3 %
ROBBERY	118	108	123	-8.5 %	13.9 %	56	45	66	47.5 %	41.7 %	53.7 %
	<b>130</b>	<b>118</b>	<b>129</b>	<b>-9.2 %</b>	<b>9.3 %</b>	<b>65</b>	<b>49</b>	<b>68</b>	<b>50.0 %</b>	<b>41.5 %</b>	<b>52.7 %</b>

### UNLAWFUL ENTRY WITH INTENT/BURGLARY, BREAK AND ENTER

ANZSOC Subdivision Description	Recorded 20112012	Recorded 20122013	Recorded 20132014	Variance 11/12-12/13	Variance 12/13-13/14	Resolved 20112012	Resolved 20122013	Resolved 20132014	Resolution Rate 20112012	Resolution Rate 20122013	Resolution Rate 20132014
UNLAWFUL ENTRY WITH INTENT/BURGLARY, BREAK AND ENTER	3,656	3,307	3,483	-9.5 %	5.3 %	676	558	577	18.5 %	16.9 %	16.6 %
	<b>3,656</b>	<b>3,307</b>	<b>3,483</b>	<b>-9.5 %</b>	<b>5.3 %</b>	<b>676</b>	<b>558</b>	<b>577</b>	<b>18.5 %</b>	<b>16.9 %</b>	<b>16.6 %</b>

# SUMMARY OF DISTRICT RECORDED AND RESOLVED CRIME, BY DIVISION

## Years ending 30 June

### THEFT AND RELATED OFFENCES

ANZSOC Subdivision Description	Recorded 20112012	Recorded 20122013	Recorded 20132014	Variance 11/12-12/13	Variance 12/13-13/14	Resolved 20112012	Resolved 20122013	Resolved 20132014	Resolution Rate 20112012	Resolution Rate 20122013	Resolution Rate 20132014
ILLEGAL USE OF PROPERTY (EXCEPT MOTOR VEHICLES)	300	215	300	-28.3 %	39.5 %	23	20	18	7.7 %	9.3 %	6.0 %
MOTOR VEHICLE THEFT AND RELATED OFFENCES	2,045	1,957	1,842	-4.3 %	-5.9 %	326	241	256	15.9 %	12.3 %	13.9 %
RECEIVE OR HANDLE PROCEEDS OF CRIME	184	150	166	-18.5 %	10.7 %	177	144	159	96.2 %	96.0 %	95.8 %
THEFT (EXCEPT MOTOR VEHICLES)	3,805	3,974	4,040	4.4 %	1.7 %	1,493	1,452	1,368	39.2 %	36.5 %	33.9 %
	<b>6,334</b>	<b>6,296</b>	<b>6,348</b>	<b>-0.6 %</b>	<b>0.8 %</b>	<b>2,019</b>	<b>1,857</b>	<b>1,801</b>	<b>31.9 %</b>	<b>29.5 %</b>	<b>28.4 %</b>

### FRAUD, DECEPTION AND RELATED OFFENCES

ANZSOC Subdivision Description	Recorded 20112012	Recorded 20122013	Recorded 20132014	Variance 11/12-12/13	Variance 12/13-13/14	Resolved 20112012	Resolved 20122013	Resolved 20132014	Resolution Rate 20112012	Resolution Rate 20122013	Resolution Rate 20132014
DECEPTIVE BUSINESS/GOVERNMENT PRACTICES	1	0	2	-100.0 %	0.0 %	0	0	2	0.0 %	0.0 %	100.0 %
FORGERY AND COUNTERFEITING	31	35	34	12.9 %	-2.9 %	18	23	11	58.1 %	65.7 %	32.4 %
OBTAIN BENEFIT BY DECEPTION	408	367	436	-10.0 %	18.8 %	273	223	261	66.9 %	60.8 %	59.9 %
OTHER FRAUD AND DECEPTION OFFENCES	26	33	31	26.9 %	-6.1 %	13	17	15	50.0 %	51.5 %	48.4 %
	<b>466</b>	<b>435</b>	<b>503</b>	<b>-6.7 %</b>	<b>15.6 %</b>	<b>304</b>	<b>263</b>	<b>289</b>	<b>65.2 %</b>	<b>60.5 %</b>	<b>57.5 %</b>

### ILLICIT DRUG OFFENCES

ANZSOC Subdivision Description	Recorded 20112012	Recorded 20122013	Recorded 20132014	Variance 11/12-12/13	Variance 12/13-13/14	Resolved 20112012	Resolved 20122013	Resolved 20132014	Resolution Rate 20112012	Resolution Rate 20122013	Resolution Rate 20132014
DEAL OR TRAFFIC IN ILLICIT DRUGS	152	210	129	38.2 %	-38.6 %	142	191	110	93.4 %	91.0 %	85.3 %
IMPORT OR EXPORT ILLICIT DRUGS	1	2	3	100.0 %	50.0 %	0	1	0	0.0 %	50.0 %	0.0 %
MANUFACTURE OR CULTIVATE ILLICIT DRUGS	492	370	403	-24.8 %	8.9 %	227	161	166	46.1 %	43.5 %	41.2 %
OTHER ILLICIT DRUG OFFENCES	284	225	180	-20.8 %	-20.0 %	280	220	170	98.6 %	97.8 %	94.4 %
POSSESS AND/OR USE ILLICIT DRUGS	478	425	372	-11.1 %	-12.5 %	443	396	349	92.7 %	93.2 %	93.8 %
	<b>1,407</b>	<b>1,232</b>	<b>1,087</b>	<b>-12.4 %</b>	<b>-11.8 %</b>	<b>1,092</b>	<b>969</b>	<b>795</b>	<b>77.6 %</b>	<b>78.7 %</b>	<b>73.1 %</b>

### PROHIBITED AND REGULATED WEAPONS AND EXPLOSIVES OFFENCES

ANZSOC Subdivision Description	Recorded 20112012	Recorded 20122013	Recorded 20132014	Variance 11/12-12/13	Variance 12/13-13/14	Resolved 20112012	Resolved 20122013	Resolved 20132014	Resolution Rate 20112012	Resolution Rate 20122013	Resolution Rate 20132014
REGULATED WEAPONS/EXPLOSIVES OFFENCES	518	472	412	-8.9 %	-12.7 %	469	419	367	90.5 %	88.8 %	89.1 %
	<b>518</b>	<b>472</b>	<b>412</b>	<b>-8.9 %</b>	<b>-12.7 %</b>	<b>469</b>	<b>419</b>	<b>367</b>	<b>90.5 %</b>	<b>88.8 %</b>	<b>89.1 %</b>

### PROPERTY DAMAGE AND ENVIRONMENTAL POLLUTION

ANZSOC Subdivision Description	Recorded 20112012	Recorded 20122013	Recorded 20132014	Variance 11/12-12/13	Variance 12/13-13/14	Resolved 20112012	Resolved 20122013	Resolved 20132014	Resolution Rate 20112012	Resolution Rate 20122013	Resolution Rate 20132014
ENVIRONMENTAL POLLUTION	7	6	9	-14.3 %	50.0 %	1	4	3	14.3 %	66.7 %	33.3 %
PROPERTY DAMAGE	2,821	2,749	2,581	-2.6 %	-6.1 %	1,041	892	903	36.9 %	32.4 %	35.0 %
	<b>2,828</b>	<b>2,755</b>	<b>2,590</b>	<b>-2.6 %</b>	<b>-6.0 %</b>	<b>1,042</b>	<b>896</b>	<b>906</b>	<b>36.8 %</b>	<b>32.5 %</b>	<b>35.0 %</b>

### PUBLIC ORDER OFFENCES

ANZSOC Subdivision Description	Recorded 20112012	Recorded 20122013	Recorded 20132014	Variance 11/12-12/13	Variance 12/13-13/14	Resolved 20112012	Resolved 20122013	Resolved 20132014	Resolution Rate 20112012	Resolution Rate 20122013	Resolution Rate 20132014
DISORDERLY CONDUCT	2,220	2,262	1,968	1.9 %	-13.0 %	1,871	1,906	1,643	84.3 %	84.3 %	83.5 %
OFFENSIVE CONDUCT	104	93	82	-10.6 %	-11.8 %	67	54	53	64.4 %	58.1 %	64.6 %
REGULATED PUBLIC ORDER OFFENCES	685	526	240	-23.2 %	-54.4 %	640	506	212	93.4 %	96.2 %	88.3 %
	<b>3,009</b>	<b>2,881</b>	<b>2,290</b>	<b>-4.3 %</b>	<b>-20.5 %</b>	<b>2,578</b>	<b>2,466</b>	<b>1,908</b>	<b>85.7 %</b>	<b>85.6 %</b>	<b>83.3 %</b>

**SUMMARY OF DISTRICT RECORDED AND RESOLVED CRIME, BY DIVISION**  
**Years ending 30 June**

**OFFENCES AGAINST JUSTICE PROCEDURES, GOVERNMENT SECURITY AND GOVERNMENT OPERATIONS**

ANZSOC Subdivision Description	Recorded 2011/2012	Recorded 2012/2013	Recorded 2013/2014	Variance 11/12-12/13	Variance 12/13-13/14	Resolved 2011/2012	Resolved 2012/2013	Resolved 2013/2014	Resolution Rate 2011/2012	Resolution Rate 2012/2013	Resolution Rate 2013/2014
BREACH OF COMMUNITY-BASED ORDER	138	67	105	-51.4 %	56.7 %	127	56	95	92.0 %	83.6 %	90.5 %
BREACH OF CUSTODIAL ORDER OFFENCES	28	25	31	-10.7 %	24.0 %	27	25	31	96.4 %	100.0 %	100.0 %
BREACH OF VIOLENCE AND NON-VIOLENCE RESTRAINING ORDERS	549	568	652	3.5 %	14.8 %	494	501	533	90.0 %	88.2 %	81.7 %
OFFENCES AGAINST GOVERNMENT OPERATIONS	13	13	8	0.0 %	-38.5 %	7	6	1	53.8 %	46.2 %	12.5 %
OFFENCES AGAINST JUSTICE PROCEDURES	336	351	323	4.5 %	-8.0 %	333	346	313	99.1 %	98.6 %	96.9 %
	<b>1,064</b>	<b>1,024</b>	<b>1,119</b>	<b>-3.8 %</b>	<b>9.3 %</b>	<b>988</b>	<b>934</b>	<b>973</b>	<b>92.9 %</b>	<b>91.2 %</b>	<b>87.0 %</b>

**MISCELLANEOUS OFFENCES**

ANZSOC Subdivision Description	Recorded 2011/2012	Recorded 2012/2013	Recorded 2013/2014	Variance 11/12-12/13	Variance 12/13-13/14	Resolved 2011/2012	Resolved 2012/2013	Resolved 2013/2014	Resolution Rate 2011/2012	Resolution Rate 2012/2013	Resolution Rate 2013/2014
COMMERCIAL/INDUSTRY/FINANCIAL REGULATION	6	4	2	-33.3 %	-50.0 %	4	3	0	66.7 %	75.0 %	0.0 %
DEFAMATION, LIBEL AND PRIVACY OFFENCES	2	4	2	100.0 %	-50.0 %	0	1	1	0.0 %	25.0 %	50.0 %
OTHER MISCELLANEOUS OFFENCES	89	112	97	25.8 %	-13.4 %	46	58	54	51.7 %	51.8 %	55.7 %
PUBLIC HEALTH AND SAFETY OFFENCES	3	5	23	66.7 %	360.0 %	2	2	17	66.7 %	40.0 %	73.9 %
	<b>100</b>	<b>125</b>	<b>124</b>	<b>25.0 %</b>	<b>-0.8 %</b>	<b>52</b>	<b>64</b>	<b>72</b>	<b>52.0 %</b>	<b>51.2 %</b>	<b>58.1 %</b>
<b>TOTAL</b>	<b>23,909</b>	<b>23,308</b>	<b>22,919</b>	<b>-2.5 %</b>	<b>-1.7 %</b>	<b>12,664</b>	<b>11,724</b>	<b>10,909</b>	<b>53.0 %</b>	<b>50.3 %</b>	<b>47.6 %</b>

# PROPORTION OF RECORDED CRIME BY DIVISION

Years ending 30 June

ANZSOC Division Description	Proportions Recorded 20112012	Recorded 20112012	Proportions Recorded 20122013	Recorded 20122013	Proportions Recorded 20132014	Recorded 20132014
HOMICIDE AND RELATED OFFENCES	0.0 %	4	0.0 %	10	0.0 %	6
ACTS INTENDED TO CAUSE INJURY	13.2 %	3,150	14.3 %	3,342	14.8 %	3,390
SEXUAL ASSAULT AND RELATED OFFENCES	0.8 %	199	1.2 %	288	1.3 %	293
DANGEROUS OR NEGLIGENT ACTS ENDANGERING PERSONS	0.4 %	95	0.4 %	100	0.5 %	115
ABDUCTION, HARASSMENT AND OTHER RELATED OFFENCES AGAINST A PERSON	4.0 %	949	4.0 %	923	4.5 %	1,030
ROBBERY, EXTORTION AND RELATED OFFENCES	0.5 %	130	0.5 %	118	0.6 %	129
UNLAWFUL ENTRY WITH INTENT/BURGLARY, BREAK AND ENTER	15.3 %	3,656	14.2 %	3,307	15.2 %	3,483
THEFT AND RELATED OFFENCES	26.5 %	6,334	27.0 %	6,296	27.7 %	6,348
FRAUD, DECEPTION AND RELATED OFFENCES	1.9 %	466	1.9 %	435	2.2 %	503
ILLICIT DRUG OFFENCES	5.9 %	1,407	5.3 %	1,232	4.7 %	1,087
PROHIBITED AND REGULATED WEAPONS AND EXPLOSIVES OFFENCES	2.2 %	518	2.0 %	472	1.8 %	412
PROPERTY DAMAGE AND ENVIRONMENTAL POLLUTION	11.8 %	2,828	11.8 %	2,755	11.3 %	2,590
PUBLIC ORDER OFFENCES	12.6 %	3,009	12.4 %	2,881	10.0 %	2,290
OFFENCES AGAINST JUSTICE PROCEDURES, GOVERNMENT SECURITY AND GOVERNMENT OPERATIONS	4.5 %	1,064	4.4 %	1,024	4.9 %	1,119
MISCELLANEOUS OFFENCES	0.4 %	100	0.5 %	125	0.5 %	124
	<b>100.0 %</b>	<b>23,909</b>	<b>100.0 %</b>	<b>23,308</b>	<b>100.0 %</b>	<b>22,919</b>

**SUMMARY OF DISTRICT RECORDED OFFENCES, RATE PER 10,000 POPULATION AND RESOLVED OFFENCES, BY AREA**  
**years ending 30 June**

**TOTAL CRIME**

<b>Area Description</b>	<b>Recorded 20122013</b>	<b>Recorded 20132014</b>	<b>Variance 12/13-13/14</b>	<b>Recorded per 10,000 pop 20122013</b>	<b>Recorded per 10,000 pop 20132014</b>	<b>per 10,000 pop % Variance 12/13 to 13/14</b>	<b>Resolved 20122013</b>	<b>Resolved 20132014</b>	<b>Resolution Rate 20122013</b>	<b>Resolution Rate 20132014</b>
Hawkes Bay	15,171	15,418	1.6 %	1,035.2	1,049.4	1.4 %	7,365	7,043	48.5 %	45.7 %
Tairāwhiti	8,137	7,501	-7.8 %	1,480.8	1,371.0	-7.4 %	4,359	3,866	53.6 %	51.5 %
<b>Total</b>	<b>23,308</b>	<b>22,919</b>	<b>-1.7 %</b>	<b>1,156.7</b>	<b>1,136.7</b>	<b>-1.7 %</b>	<b>11,724</b>	<b>10,909</b>	<b>50.3 %</b>	<b>47.6 %</b>



**SUMMARY OF AREA RECORDED OFFENCES, RATE PER 10,000 POPULATION AND  
RESOLVED OFFENCES, BY DIVISION**

years ending 30 June

**HOMICIDE AND RELATED OFFENCES**

Area Description	Recorded 20122013	Recorded 20132014	Variance 12/13-13/14	Recorded per 10,000 pop 20122013	Recorded per 10,000 pop 20132014	per 10,000 pop % Variance 12/13 to 13/14	Resolved 20122013	Resolved 20132014	Resolution Rate 20122013	Resolution Rate 20132014
Hawkes Bay	5	3	-40.0 %	0.3	0.2	-40.2 %	4	0	80.0 %	0.0 %
Tairāwhiti	5	3	-40.0 %	0.9	0.5	-39.7 %	3	3	60.0 %	100.0 %
<b>Total</b>	<b>10</b>	<b>6</b>	<b>-40.0 %</b>	<b>0.5</b>	<b>0.3</b>	<b>-40.0 %</b>	<b>7</b>	<b>3</b>	<b>70.0 %</b>	<b>50.0 %</b>

**ACTS INTENDED TO CAUSE INJURY**

Area Description	Recorded 20122013	Recorded 20132014	Variance 12/13-13/14	Recorded per 10,000 pop 20122013	Recorded per 10,000 pop 20132014	per 10,000 pop % Variance 12/13 to 13/14	Resolved 20122013	Resolved 20132014	Resolution Rate 20122013	Resolution Rate 20132014
Hawkes Bay	1,967	1,904	-3.2 %	134.2	129.6	-3.4 %	1,472	1,394	74.8 %	73.2 %
Tairāwhiti	1,375	1,486	8.1 %	250.2	271.6	8.5 %	967	925	70.3 %	62.2 %
<b>Total</b>	<b>3,342</b>	<b>3,390</b>	<b>1.4 %</b>	<b>165.9</b>	<b>168.1</b>	<b>1.4 %</b>	<b>2,439</b>	<b>2,319</b>	<b>73.0 %</b>	<b>68.4 %</b>

**SEXUAL ASSAULT AND RELATED OFFENCES**

Area Description	Recorded 20122013	Recorded 20132014	Variance 12/13-13/14	Recorded per 10,000 pop 20122013	Recorded per 10,000 pop 20132014	per 10,000 pop % Variance 12/13 to 13/14	Resolved 20122013	Resolved 20132014	Resolution Rate 20122013	Resolution Rate 20132014
Hawkes Bay	201	192	-4.5 %	13.7	13.1	-4.7 %	109	107	54.2 %	55.7 %
Tairāwhiti	87	101	16.1 %	15.8	18.5	16.6 %	40	49	46.0 %	48.5 %
<b>Total</b>	<b>288</b>	<b>293</b>	<b>1.7 %</b>	<b>14.3</b>	<b>14.5</b>	<b>1.7 %</b>	<b>149</b>	<b>156</b>	<b>51.7 %</b>	<b>53.2 %</b>

**DANGEROUS OR NEGLIGENT ACTS ENDANGERING PERSONS**

Area Description	Recorded 20122013	Recorded 20132014	Variance 12/13-13/14	Recorded per 10,000 pop 20122013	Recorded per 10,000 pop 20132014	per 10,000 pop % Variance 12/13 to 13/14	Resolved 20122013	Resolved 20132014	Resolution Rate 20122013	Resolution Rate 20132014
Hawkes Bay	69	87	26.1 %	4.7	5.9	25.8 %	29	35	42.0 %	40.2 %
Tairāwhiti	31	28	-9.7 %	5.6	5.1	-9.3 %	12	10	38.7 %	35.7 %
<b>Total</b>	<b>100</b>	<b>115</b>	<b>15.0 %</b>	<b>5.0</b>	<b>5.7</b>	<b>14.9 %</b>	<b>41</b>	<b>45</b>	<b>41.0 %</b>	<b>39.1 %</b>

**SUMMARY OF AREA RECORDED OFFENCES, RATE PER 10,000 POPULATION AND  
RESOLVED OFFENCES, BY DIVISION**

years ending 30 June

**ABDUCTION, HARASSMENT AND OTHER RELATED OFFENCES AGAINST A PERSON**

Area Description	Recorded 20122013	Recorded 20132014	Variance 12/13-13/14	Recorded per 10,000 pop 20122013	Recorded per 10,000 pop 20132014	per 10,000 pop % Variance 12/13 to 13/14	Resolved 20122013	Resolved 20132014	Resolution Rate 20122013	Resolution Rate 20132014
Hawkes Bay	522	623	19.3 %	35.6	42.4	19.0 %	334	389	64.0 %	62.4 %
Tairāwhiti	401	407	1.5 %	73.0	74.4	1.9 %	279	241	69.6 %	59.2 %
<b>Total</b>	<b>923</b>	<b>1,030</b>	<b>11.6 %</b>	<b>45.8</b>	<b>51.1</b>	<b>11.5 %</b>	<b>613</b>	<b>630</b>	<b>66.4 %</b>	<b>61.2 %</b>

**ROBBERY, EXTORTION AND RELATED OFFENCES**

Area Description	Recorded 20122013	Recorded 20132014	Variance 12/13-13/14	Recorded per 10,000 pop 20122013	Recorded per 10,000 pop 20132014	per 10,000 pop % Variance 12/13 to 13/14	Resolved 20122013	Resolved 20132014	Resolution Rate 20122013	Resolution Rate 20132014
Hawkes Bay	85	97	14.1 %	5.8	6.6	13.8 %	28	51	32.9 %	52.6 %
Tairāwhiti	33	32	-3.0 %	6.0	5.8	-2.6 %	21	17	63.6 %	53.1 %
<b>Total</b>	<b>118</b>	<b>129</b>	<b>9.3 %</b>	<b>5.9</b>	<b>6.4</b>	<b>9.3 %</b>	<b>49</b>	<b>68</b>	<b>41.5 %</b>	<b>52.7 %</b>

**UNLAWFUL ENTRY WITH INTENT/BURGLARY, BREAK AND ENTER**

Area Description	Recorded 20122013	Recorded 20132014	Variance 12/13-13/14	Recorded per 10,000 pop 20122013	Recorded per 10,000 pop 20132014	per 10,000 pop % Variance 12/13 to 13/14	Resolved 20122013	Resolved 20132014	Resolution Rate 20122013	Resolution Rate 20132014
Hawkes Bay	2,271	2,672	17.7 %	155.0	181.9	17.4 %	358	388	15.8 %	14.5 %
Tairāwhiti	1,036	811	-21.7 %	188.5	148.2	-21.4 %	200	189	19.3 %	23.3 %
<b>Total</b>	<b>3,307</b>	<b>3,483</b>	<b>5.3 %</b>	<b>164.1</b>	<b>172.7</b>	<b>5.3 %</b>	<b>558</b>	<b>577</b>	<b>16.9 %</b>	<b>16.6 %</b>

**THEFT AND RELATED OFFENCES**

Area Description	Recorded 20122013	Recorded 20132014	Variance 12/13-13/14	Recorded per 10,000 pop 20122013	Recorded per 10,000 pop 20132014	per 10,000 pop % Variance 12/13 to 13/14	Resolved 20122013	Resolved 20132014	Resolution Rate 20122013	Resolution Rate 20132014
Hawkes Bay	4,520	4,700	4.0 %	308.4	319.9	3.7 %	1,350	1,349	29.9 %	28.7 %
Tairāwhiti	1,776	1,648	-7.2 %	323.2	301.2	-6.8 %	507	452	28.5 %	27.4 %
<b>Total</b>	<b>6,296</b>	<b>6,348</b>	<b>0.8 %</b>	<b>312.4</b>	<b>314.8</b>	<b>0.8 %</b>	<b>1,857</b>	<b>1,801</b>	<b>29.5 %</b>	<b>28.4 %</b>

**SUMMARY OF AREA RECORDED OFFENCES, RATE PER 10,000 POPULATION AND  
RESOLVED OFFENCES, BY DIVISION**

years ending 30 June

**FRAUD, DECEPTION AND RELATED OFFENCES**

Area Description	Recorded 20122013	Recorded 20132014	Variance 12/13-13/14	Recorded per 10,000 pop 20122013	Recorded per 10,000 pop 20132014	per 10,000 pop % Variance 12/13 to 13/14	Resolved 20122013	Resolved 20132014	Resolution Rate 20122013	Resolution Rate 20132014
Hawkes Bay	319	348	9.1 %	21.8	23.7	8.8 %	189	210	59.2 %	60.3 %
Tairāwhiti	116	155	33.6 %	21.1	28.3	34.2 %	74	79	63.8 %	51.0 %
<b>Total</b>	<b>435</b>	<b>503</b>	<b>15.6 %</b>	<b>21.6</b>	<b>24.9</b>	<b>15.6 %</b>	<b>263</b>	<b>289</b>	<b>60.5 %</b>	<b>57.5 %</b>

**ILLICIT DRUG OFFENCES**

Area Description	Recorded 20122013	Recorded 20132014	Variance 12/13-13/14	Recorded per 10,000 pop 20122013	Recorded per 10,000 pop 20132014	per 10,000 pop % Variance 12/13 to 13/14	Resolved 20122013	Resolved 20132014	Resolution Rate 20122013	Resolution Rate 20132014
Hawkes Bay	538	517	-3.9 %	36.7	35.2	-4.1 %	464	408	86.2 %	78.9 %
Tairāwhiti	694	570	-17.9 %	126.3	104.2	-17.5 %	505	387	72.8 %	67.9 %
<b>Total</b>	<b>1,232</b>	<b>1,087</b>	<b>-11.8 %</b>	<b>61.1</b>	<b>53.9</b>	<b>-11.8 %</b>	<b>969</b>	<b>795</b>	<b>78.7 %</b>	<b>73.1 %</b>

**PROHIBITED AND REGULATED WEAPONS AND EXPLOSIVES OFFENCES**

Area Description	Recorded 20122013	Recorded 20132014	Variance 12/13-13/14	Recorded per 10,000 pop 20122013	Recorded per 10,000 pop 20132014	per 10,000 pop % Variance 12/13 to 13/14	Resolved 20122013	Resolved 20132014	Resolution Rate 20122013	Resolution Rate 20132014
Hawkes Bay	288	237	-17.7 %	19.7	16.1	-17.9 %	254	205	88.2 %	86.5 %
Tairāwhiti	184	175	-4.9 %	33.5	32.0	-4.5 %	165	162	89.7 %	92.6 %
<b>Total</b>	<b>472</b>	<b>412</b>	<b>-12.7 %</b>	<b>23.4</b>	<b>20.4</b>	<b>-12.8 %</b>	<b>419</b>	<b>367</b>	<b>88.8 %</b>	<b>89.1 %</b>

**PROPERTY DAMAGE AND ENVIRONMENTAL POLLUTION**

Area Description	Recorded 20122013	Recorded 20132014	Variance 12/13-13/14	Recorded per 10,000 pop 20122013	Recorded per 10,000 pop 20132014	per 10,000 pop % Variance 12/13 to 13/14	Resolved 20122013	Resolved 20132014	Resolution Rate 20122013	Resolution Rate 20132014
Hawkes Bay	1,796	1,644	-8.5 %	122.5	111.9	-8.7 %	519	530	28.9 %	32.2 %
Tairāwhiti	959	946	-1.4 %	174.5	172.9	-0.9 %	377	376	39.3 %	39.7 %
<b>Total</b>	<b>2,755</b>	<b>2,590</b>	<b>-6.0 %</b>	<b>136.7</b>	<b>128.4</b>	<b>-6.0 %</b>	<b>896</b>	<b>906</b>	<b>32.5 %</b>	<b>35.0 %</b>

**SUMMARY OF AREA RECORDED OFFENCES, RATE PER 10,000 POPULATION AND  
RESOLVED OFFENCES, BY DIVISION**

years ending 30 June

**PUBLIC ORDER OFFENCES**

Area Description	Recorded 20122013	Recorded 20132014	Variance 12/13-13/14	Recorded per 10,000 pop 20122013	Recorded per 10,000 pop 20132014	per 10,000 pop % Variance 12/13 to 13/14	Resolved 20122013	Resolved 20132014	Resolution Rate 20122013	Resolution Rate 20132014
Hawkes Bay	1,826	1,527	-16.4 %	124.6	103.9	-16.6 %	1,591	1,251	87.1 %	81.9 %
Tairāwhiti	1,055	763	-27.7 %	192.0	139.5	-27.4 %	875	657	82.9 %	86.1 %
<b>Total</b>	<b>2,881</b>	<b>2,290</b>	<b>-20.5 %</b>	<b>143.0</b>	<b>113.6</b>	<b>-20.6 %</b>	<b>2,466</b>	<b>1,908</b>	<b>85.6 %</b>	<b>83.3 %</b>

**OFFENCES AGAINST JUSTICE PROCEDURES, GOVERNMENT SECURITY AND GOVERNMENT OPERATIONS**

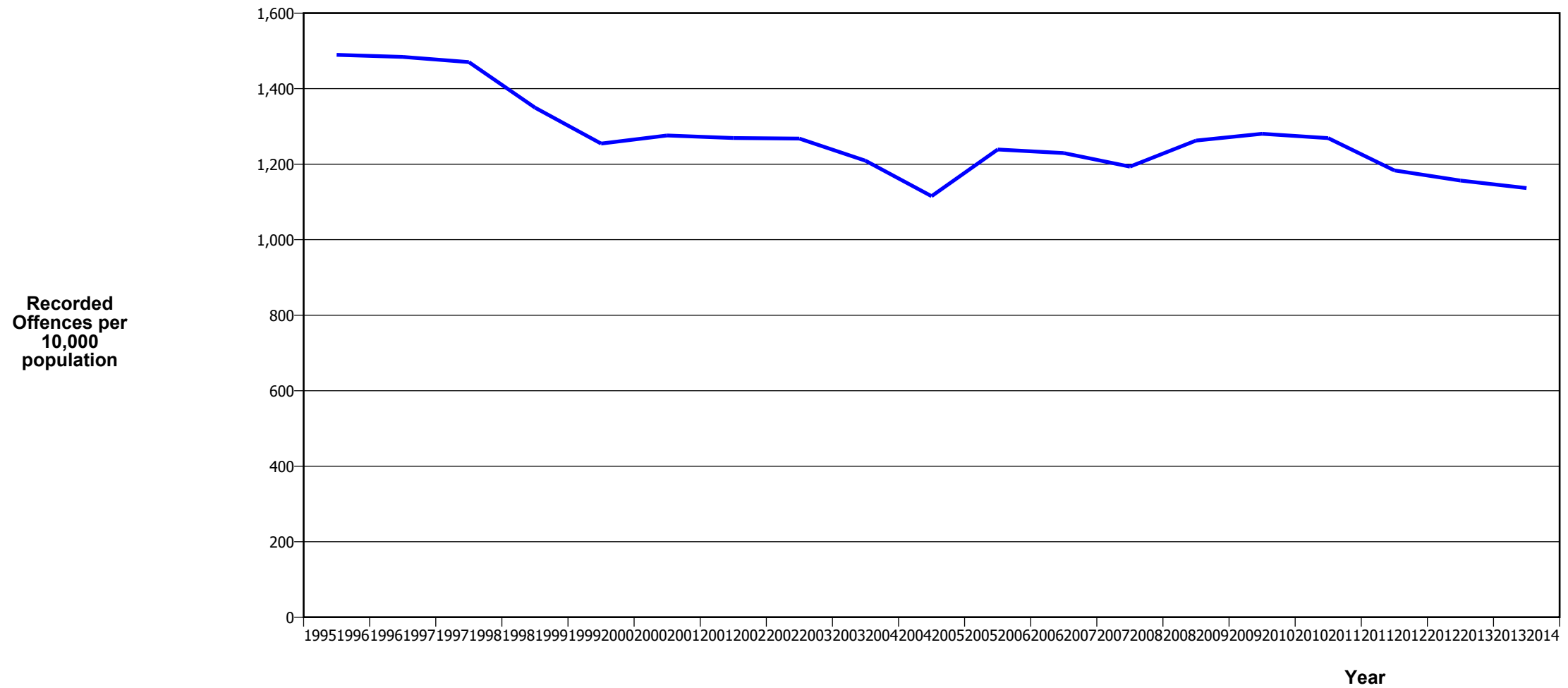
Area Description	Recorded 20122013	Recorded 20132014	Variance 12/13-13/14	Recorded per 10,000 pop 20122013	Recorded per 10,000 pop 20132014	per 10,000 pop % Variance 12/13 to 13/14	Resolved 20122013	Resolved 20132014	Resolution Rate 20122013	Resolution Rate 20132014
Hawkes Bay	687	790	15.0 %	46.9	53.8	14.7 %	627	684	91.3 %	86.6 %
Tairāwhiti	337	329	-2.4 %	61.3	60.1	-1.9 %	307	289	91.1 %	87.8 %
<b>Total</b>	<b>1,024</b>	<b>1,119</b>	<b>9.3 %</b>	<b>50.8</b>	<b>55.5</b>	<b>9.2 %</b>	<b>934</b>	<b>973</b>	<b>91.2 %</b>	<b>87.0 %</b>

**MISCELLANEOUS OFFENCES**

Area Description	Recorded 20122013	Recorded 20132014	Variance 12/13-13/14	Recorded per 10,000 pop 20122013	Recorded per 10,000 pop 20132014	per 10,000 pop % Variance 12/13 to 13/14	Resolved 20122013	Resolved 20132014	Resolution Rate 20122013	Resolution Rate 20132014
Hawkes Bay	77	77	0.0 %	5.3	5.2	-0.3 %	37	42	48.1 %	54.5 %
Tairāwhiti	48	47	-2.1 %	8.7	8.6	-1.7 %	27	30	56.3 %	63.8 %
<b>Total</b>	<b>125</b>	<b>124</b>	<b>-0.8 %</b>	<b>6.2</b>	<b>6.1</b>	<b>-0.9 %</b>	<b>64</b>	<b>72</b>	<b>51.2 %</b>	<b>58.1 %</b>

# **CRIME TRENDS**

## TOTAL CRIME



Fiscal Year	19951996	19961997	19971998	19981999	19992000	20002001	20012002	20022003	20032004	20042005	20052006	20062007	20072008	20082009	20092010	20102011	20112012	20122013	20132014
Recorded Offences	28,834	28,780	28,569	26,189	24,259	24,647	24,546	24,657	23,647	21,912	24,462	24,367	23,705	25,065	25,609	25,644	23,909	23,308	22,919
Recorded per 10,000 Population	1,489.5	1,484.0	1,470.4	1,349.7	1,254.5	1,276.0	1,269.3	1,267.8	1,209.2	1,115.1	1,238.9	1,229.4	1,193.6	1,262.6	1,280.4	1,269.0	1,183.4	1,156.7	1,136.7

\*In 20052006 there was a major IT system change (LES to NIA)

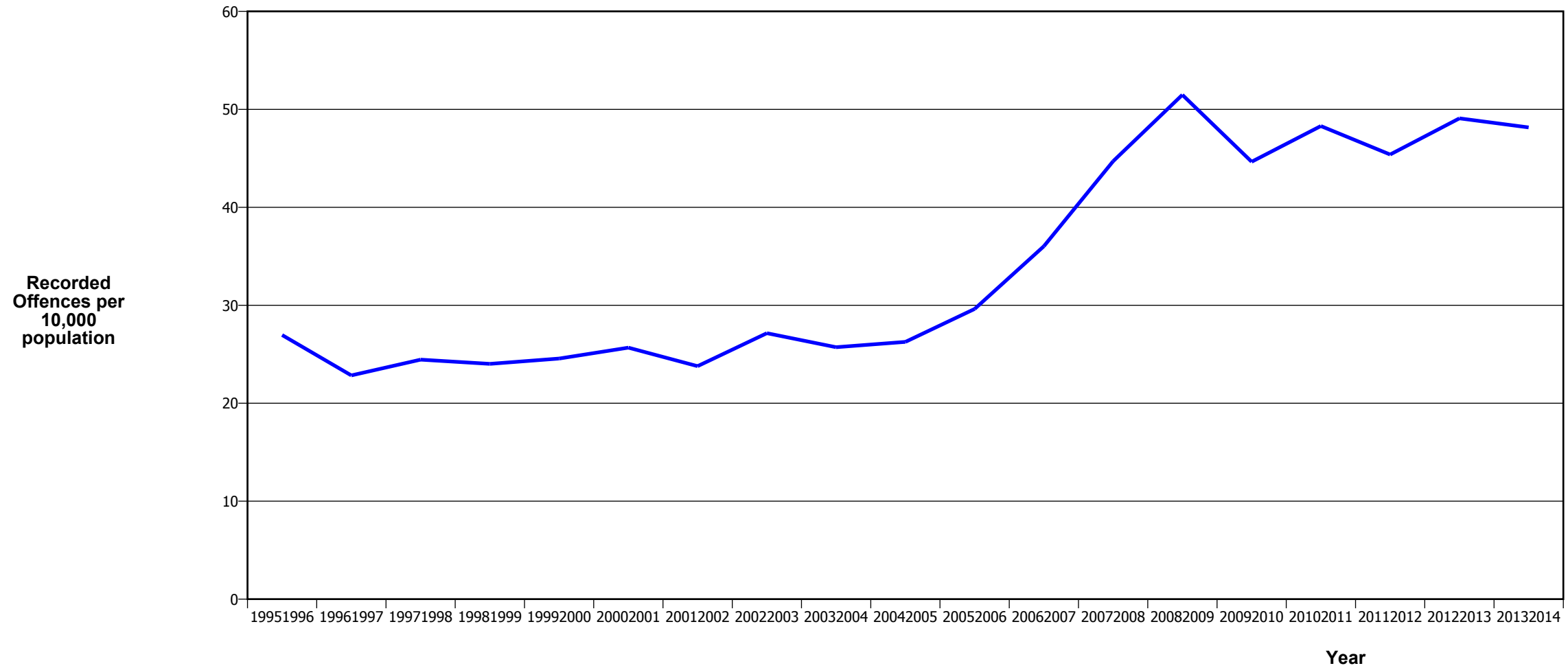
## MURDER



Fiscal Year	19951996	19961997	19971998	19981999	19992000	20002001	20012002	20022003	20032004	20042005	20052006	20062007	20072008	20082009	20092010	20102011	20112012	20122013	20132014
Recorded Offences	9	5	6	5	3	5	5	3	8	5	3	3	1	6	6	1	3	9	2
Recorded per 10,000 Population	0.46	0.26	0.31	0.26	0.16	0.26	0.26	0.15	0.41	0.25	0.15	0.15	0.05	0.30	0.30	0.05	0.15	0.45	0.10

- The 20092010 result is significantly influenced by an abnormal one-off spike in August 2009, when 12 murders occurred

## SERIOUS ASSAULTS RESULTING IN INJURY\*

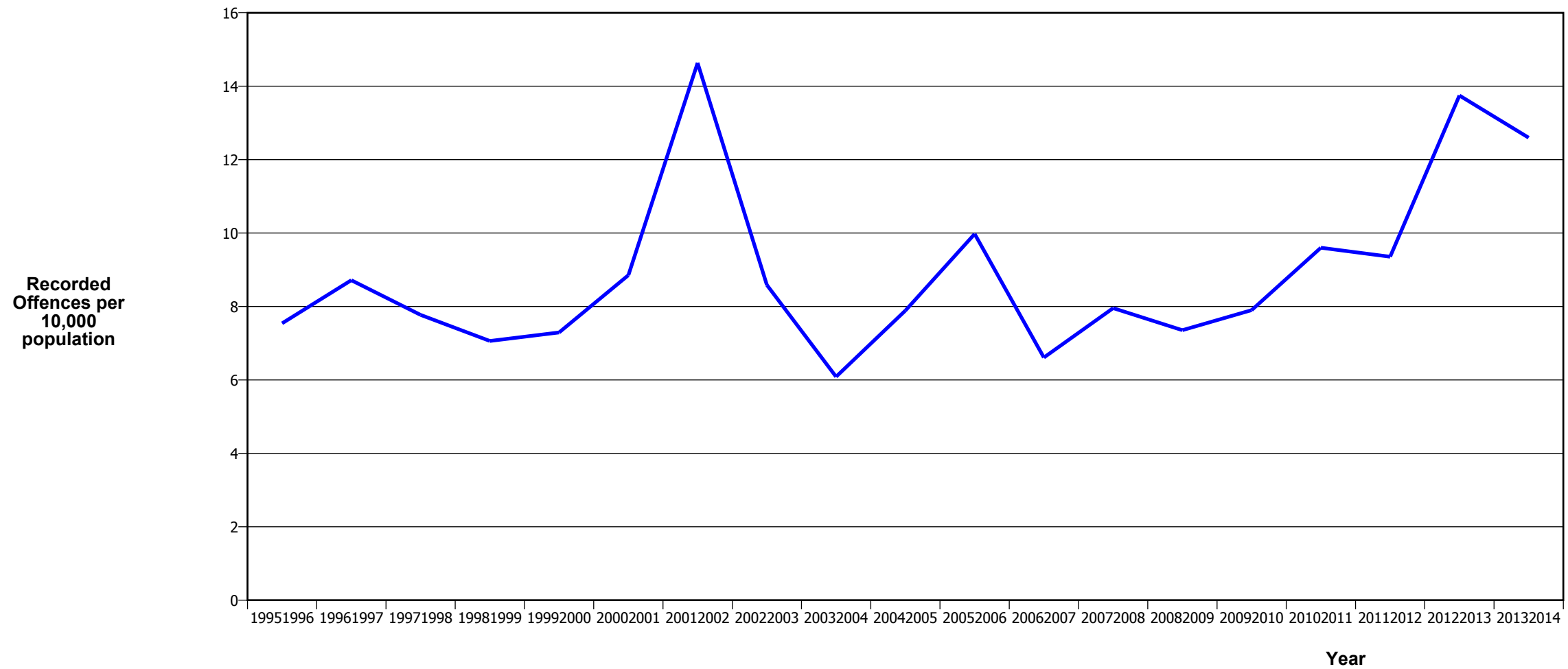


Fiscal Year	1995/1996	1996/1997	1997/1998	1998/1999	1999/2000	2000/2001	2001/2002	2002/2003	2003/2004	2004/2005	2005/2006	2006/2007	2007/2008	2008/2009	2009/2010	2010/2011	2011/2012	2012/2013	2013/2014
Recorded Offences	522	443	475	466	475	496	460	528	503	516	585	714	888	1022	893	976	917	989	971
Recorded per 10,000 Population	27.0	22.8	24.4	24.0	24.6	25.7	23.8	27.1	25.7	26.3	29.6	36.0	44.7	51.5	44.6	48.3	45.4	49.1	48.2

\* This measure excludes common assaults

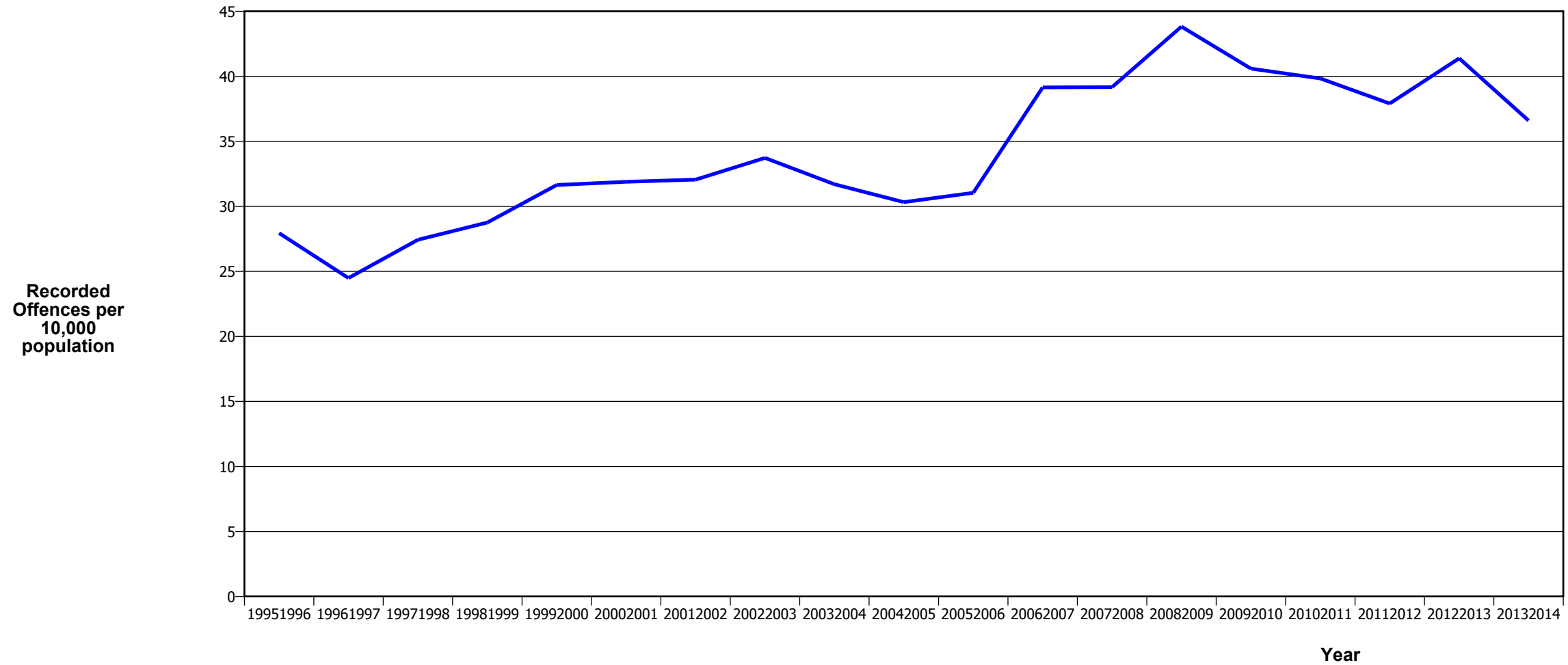


## SEXUAL ASSAULTS



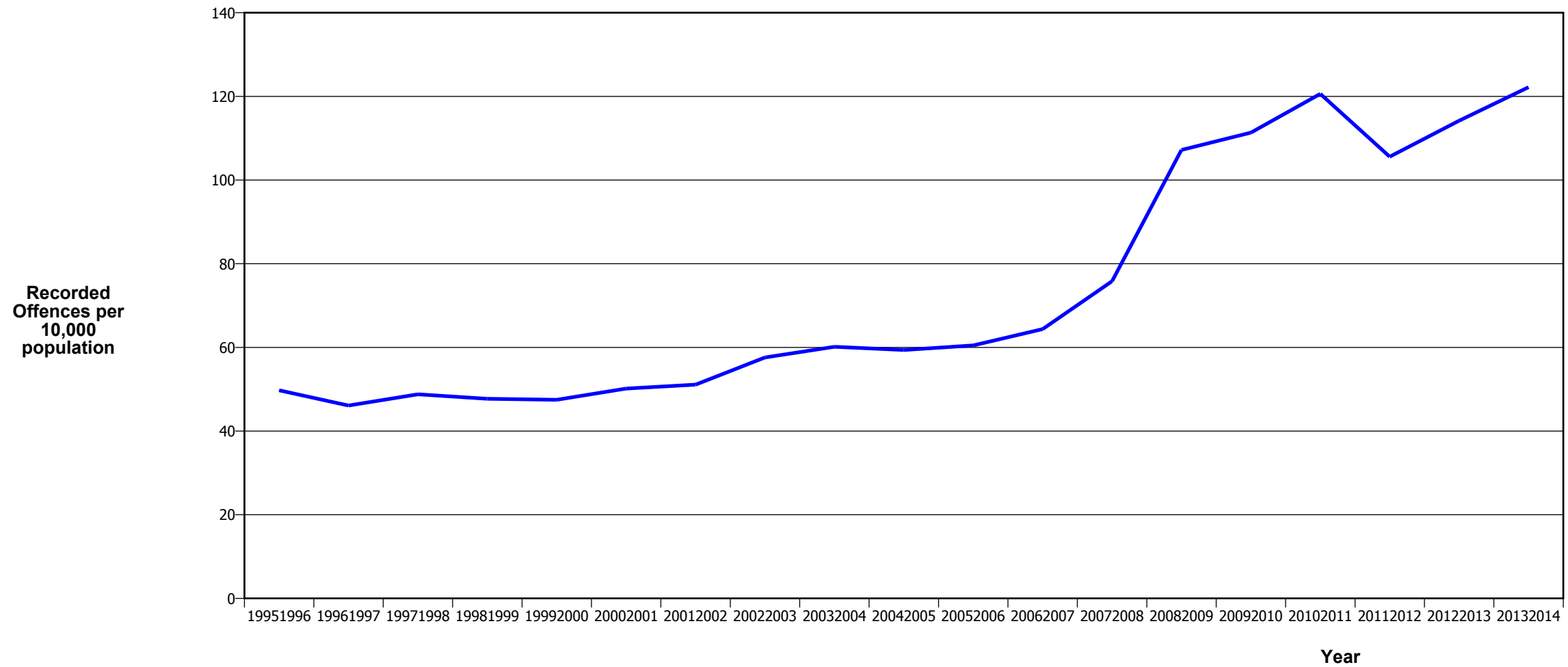
Fiscal Year	19951996	19961997	19971998	19981999	19992000	20002001	20012002	20022003	20032004	20042005	20052006	20062007	20072008	20082009	20092010	20102011	20112012	20122013	20132014
Recorded Offences	146	169	151	137	141	171	283	167	119	155	197	131	158	146	158	194	189	277	254
Recorded per 10,000 Population	7.5	8.7	7.8	7.1	7.3	8.9	14.6	8.6	6.1	7.9	10.0	6.6	8.0	7.4	7.9	9.6	9.4	13.7	12.6

## PUBLIC PLACE ASSAULTS



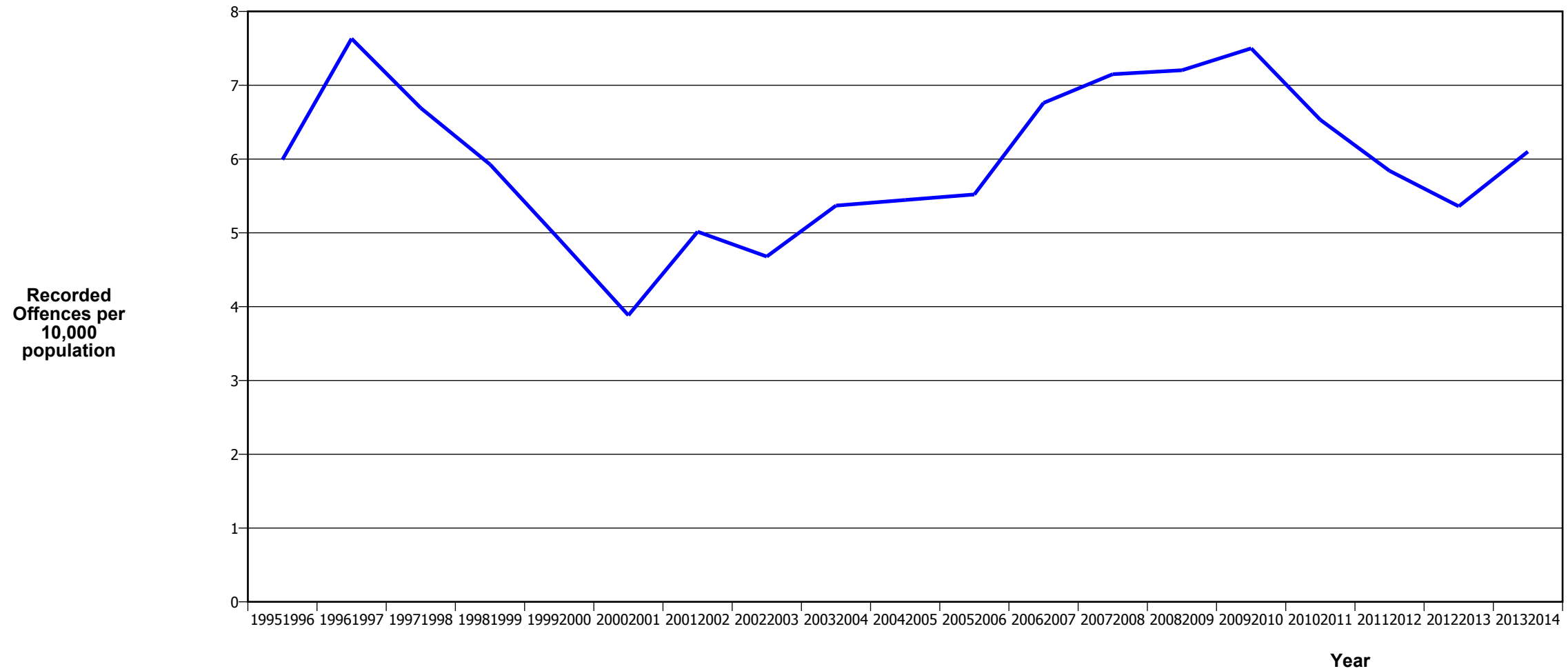
Fiscal Year	19951996	19961997	19971998	19981999	19992000	20002001	20012002	20022003	20032004	20042005	20052006	20062007	20072008	20082009	20092010	20102011	20112012	20122013	20132014
Recorded Offences	541	475	533	558	612	616	620	656	620	596	613	776	778	870	812	805	766	834	738
Recorded per 10,000 Population	27.9	24.5	27.4	28.8	31.6	31.9	32.1	33.7	31.7	30.3	31.0	39.2	39.2	43.8	40.6	39.8	37.9	41.4	36.6

## DWELLING ASSAULTS



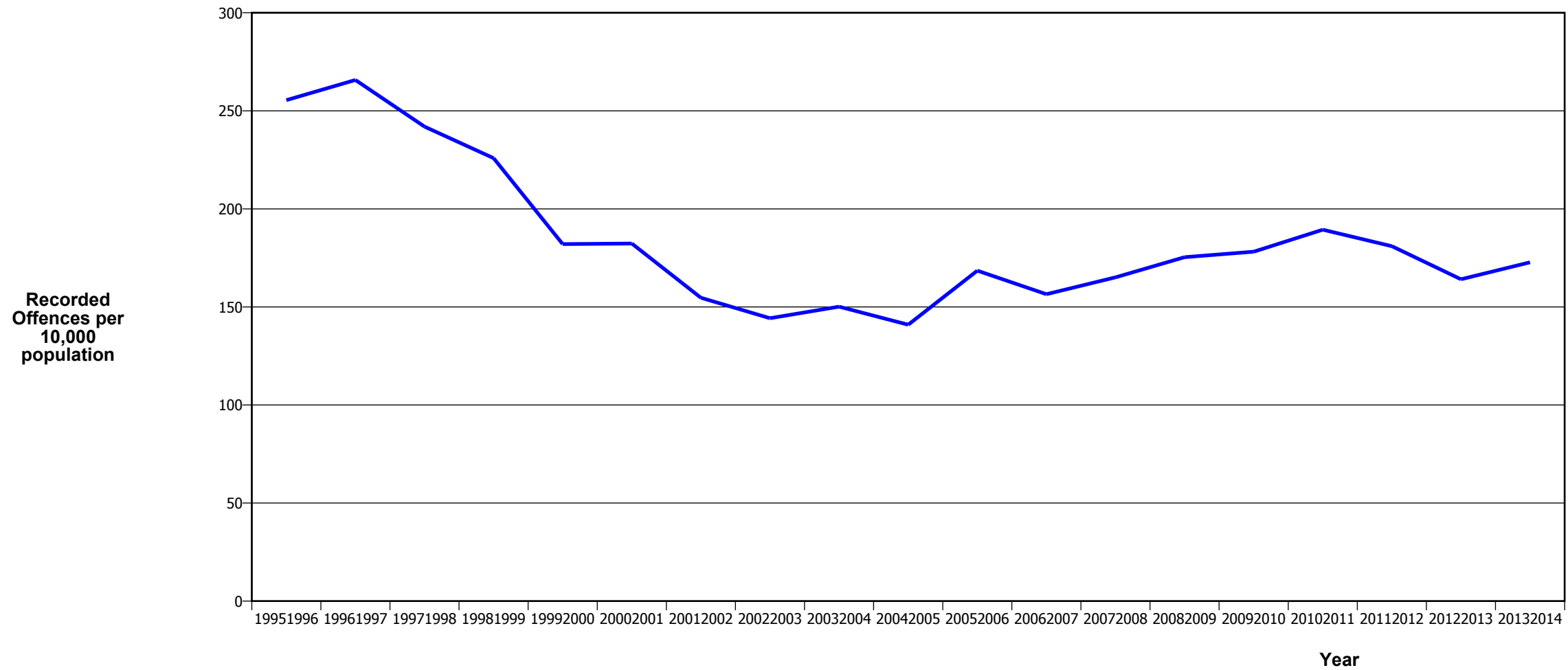
Fiscal Year	19951996	19961997	19971998	19981999	19992000	20002001	20012002	20022003	20032004	20042005	20052006	20062007	20072008	20082009	20092010	20102011	20112012	20122013	20132014
Recorded Offences	963	894	948	926	918	969	988	1,120	1,176	1,167	1,194	1,276	1,506	2,128	2,227	2,437	2,133	2,301	2,464
Recorded per 10,000 Population	49.7	46.1	48.8	47.7	47.5	50.2	51.1	57.6	60.1	59.4	60.5	64.4	75.8	107.2	111.3	120.6	105.6	114.2	122.2

## ROBBERY



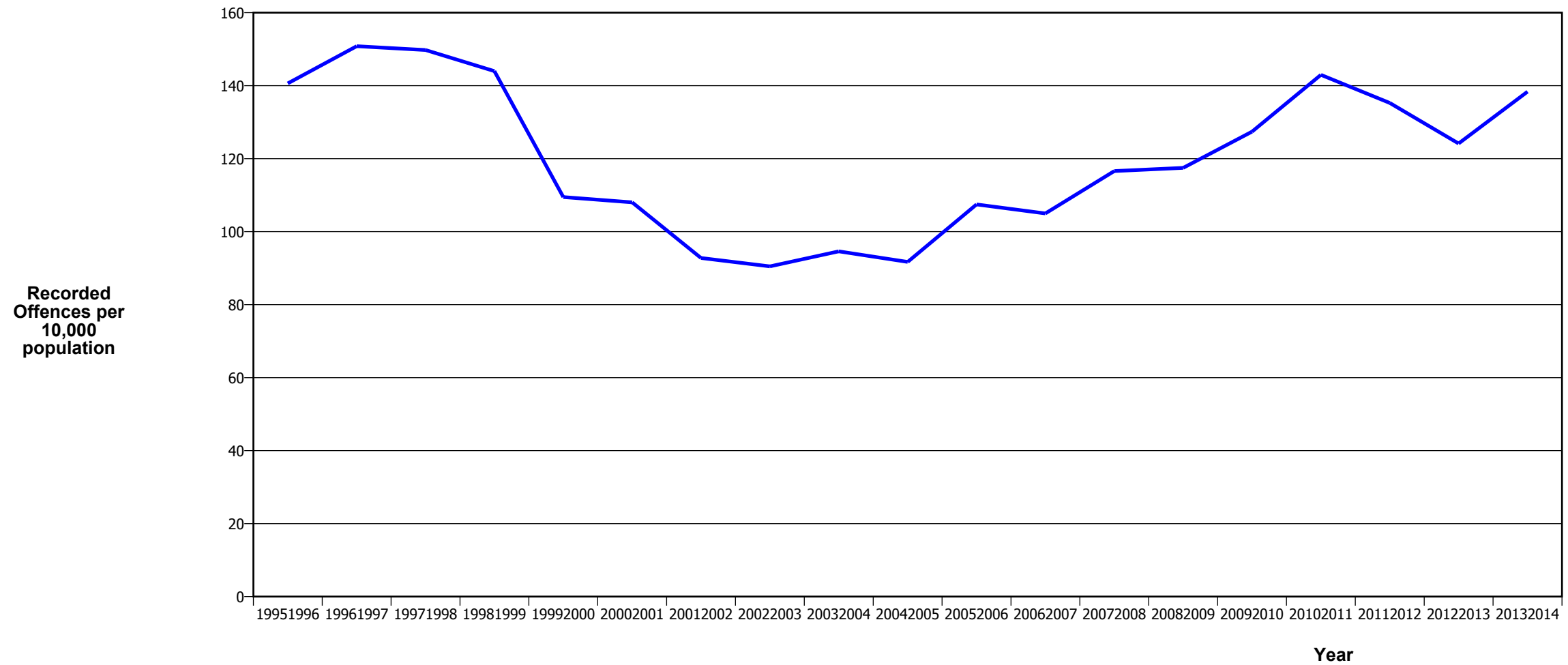
Fiscal Year	19951996	19961997	19971998	19981999	19992000	20002001	20012002	20022003	20032004	20042005	20052006	20062007	20072008	20082009	20092010	20102011	20112012	20122013	20132014
Recorded Offences	116	148	130	115	95	75	97	91	105	107	109	134	142	143	150	132	118	108	123
Recorded per 10,000 Population	6.0	7.6	6.7	5.9	4.9	3.9	5.0	4.7	5.4	5.4	5.5	6.8	7.1	7.2	7.5	6.5	5.8	5.4	6.1

## BURGLARY (TOTAL)



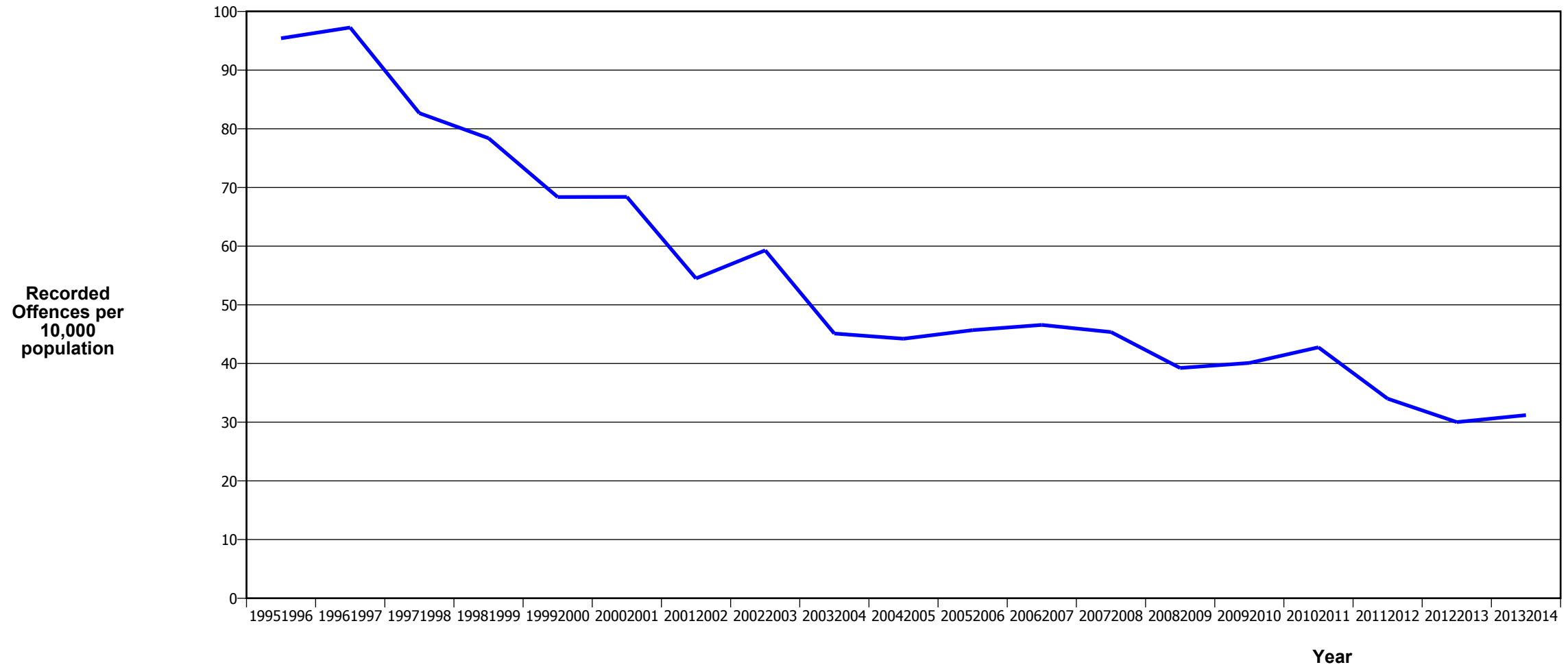
Fiscal Year	19951996	19961997	19971998	19981999	19992000	20002001	20012002	20022003	20032004	20042005	20052006	20062007	20072008	20082009	20092010	20102011	20112012	20122013	20132014
Recorded Offences	4,945	5,154	4,701	4,383	3,520	3,522	2,991	2,806	2,936	2,769	3,327	3,102	3,279	3,481	3,564	3,827	3,656	3,307	3,483
Recorded per 10,000 Population	255.4	265.8	241.9	225.9	182.0	182.3	154.7	144.3	150.1	140.9	168.5	156.5	165.1	175.3	178.2	189.4	181.0	164.1	172.7

## BURGLARY (DWELLING)



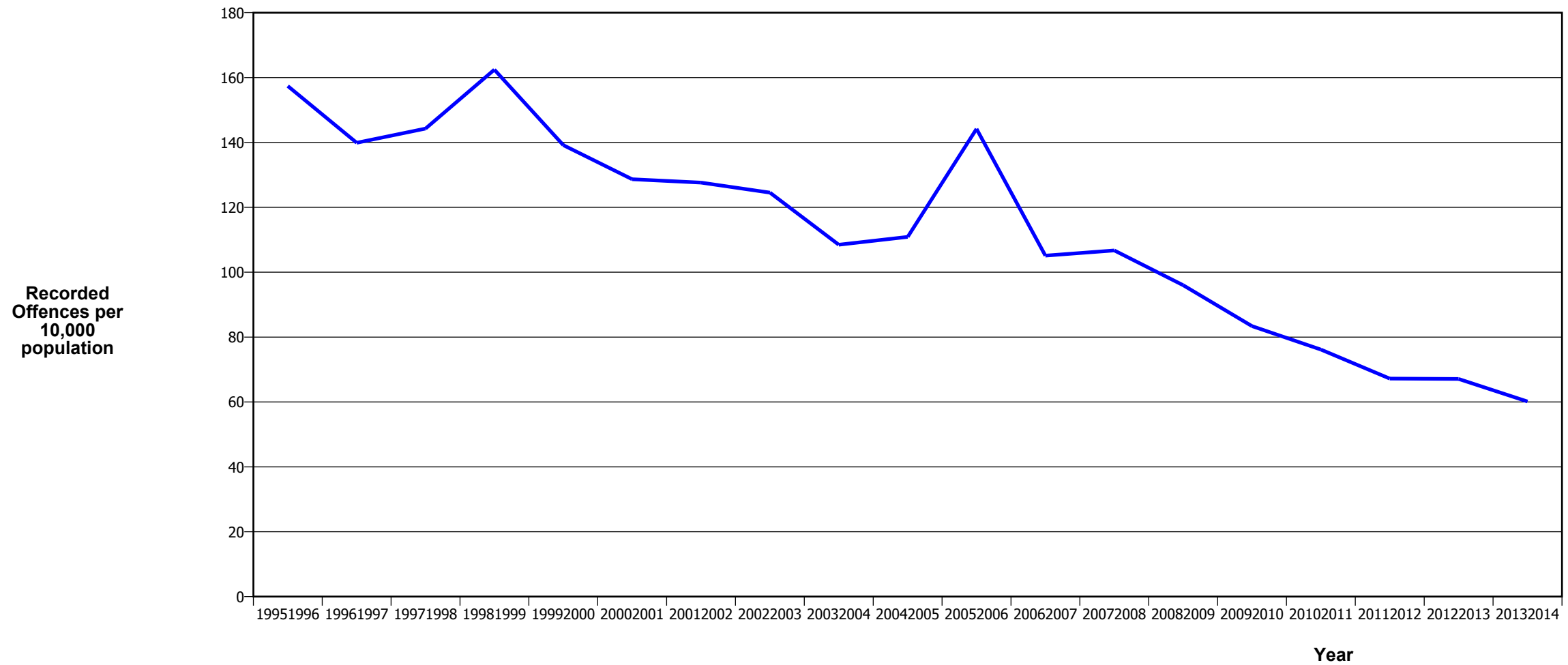
Fiscal Year	19951996	19961997	19971998	19981999	19992000	20002001	20012002	20022003	20032004	20042005	20052006	20062007	20072008	20082009	20092010	20102011	20112012	20122013	20132014
Recorded Offences	2,722	2,925	2,910	2,794	2,117	2,087	1,794	1,760	1,850	1,802	2,122	2,081	2,316	2,332	2,548	2,889	2,733	2,502	2,790
Recorded per 10,000 Population	140.6	150.8	149.8	144.0	109.5	108.0	92.8	90.5	94.6	91.7	107.5	105.0	116.6	117.5	127.4	143.0	135.3	124.2	138.4

## VEHICLES STOLEN



Fiscal Year	19951996	19961997	19971998	19981999	19992000	20002001	20012002	20022003	20032004	20042005	20052006	20062007	20072008	20082009	20092010	20102011	20112012	20122013	20132014
Recorded Offences	1,847	1,886	1,606	1,521	1,322	1,321	1,054	1,153	882	869	902	923	901	779	802	864	687	605	629
Recorded per 10,000 Population	95.4	97.2	82.7	78.4	68.4	68.4	54.5	59.3	45.1	44.2	45.7	46.6	45.4	39.2	40.1	42.8	34.0	30.0	31.2

## THEFT EX CAR



Fiscal Year	19951996	19961997	19971998	19981999	19992000	20002001	20012002	20022003	20032004	20042005	20052006	20062007	20072008	20082009	20092010	20102011	20112012	20122013	20132014
Recorded Offences	3,047	2,713	2,803	3,152	2,691	2,485	2,468	2,422	2,121	2,179	2,847	2,083	2,119	1,906	1,668	1,539	1,358	1,352	1,213
Recorded per 10,000 Population	157.4	139.9	144.3	162.4	139.2	128.6	127.6	124.5	108.5	110.9	144.2	105.1	106.7	96.0	83.4	76.2	67.2	67.1	60.2



## Population Data

Population data is used in this release to calculate crime rates. These data are estimated population figures as at 31 December each year. They have been derived from population estimates as at 30 June each year that have been obtained from Statistics New Zealand.

The estimated resident population is based on the census usually resident population count, with adjustments for residents missed or counted more than once by the census (net census undercount), and for residents temporarily overseas on census night.

These population estimates exclude the number of international students who are studying in New Zealand for less than 12 months.

Year	Population
19951996	193,580
19961997	193,940
19971998	194,300
19981999	194,030
19992000	193,370
20002001	193,165
20012002	193,380
20022003	194,490
20032004	195,555
20042005	196,500
20052006	197,450
20062007	198,195
20072008	198,605
20082009	198,520
20092010	200,010
20102011	202,080
20112012	202,040
20122013	201,505
20132014	201,635

## General Definitions

**Recorded Offences:** the number of breaches of the New Zealand law recorded by Police. This includes offences specified in the Crimes Act and other legislations, such as the Summary Offences Act, Local Government Act, etc.

**Resolved Offences:** the number of recorded offences where an offender has been identified and dealt with (e.g. warned, cautioned, prosecuted, etc).

**Resolution Rate:** the proportion of recorded offences that have been resolved.

**Recorded per 10,000 population:** the number of recorded offences for every 10,000 people. This is also referred as the crime rate per 10,000 population.

**ANZSOC:** the Australia New Zealand Standard Offence Classification. The offence classification is divided into 16 major offence divisions.

## Definition of ANZSOC Divisions

1. Homicide and related offences: Unlawfully kill, attempt to unlawfully kill or conspiracy to kill another person.
2. Acts intended to cause injury: Acts, excluding attempted murder and those resulting in death, which are intended to cause non-fatal injury or harm to another person and where there is no sexual or acquisitive element.
3. Sexual assault and related offences: Acts, or intent of acts, of a sexual nature against another person, which are non-consensual or where consent is proscribed.
4. Dangerous or negligent acts endangering persons: Dangerous or negligent acts which, though not intended to cause harm, actually or potentially result in injury to oneself or another person.
5. Abduction, harassment and other offences against person: Acts intended to threaten or harass, or acts that unlawfully deprive another person of their freedom of movement, that are against that person's will or against the will of any parent, guardian or other person having lawful custody or care of that person.
6. Robbery, extortion and related offences: Acts intended to unlawfully gain money, property or other items of value from, or to cause detriment to, another person by using the threat of force or any other coercive measure.
7. Unlawful entry with intent / burglary, break and enter: The unlawful entry of a structure with the intent to commit an offence, where the entry is either forced or unforced.
8. Theft and related and offences: The unlawful taking or obtaining of money or goods, not involving the use of force or violence, coercion or deception, with intent to permanently or temporarily deprive the owner or possessor of the use of the money or goods, or the receiving or handling of money or goods obtained unlawfully.

9. Fraud, deception and related offences: Offences involving a dishonest act or omission carried out with the purpose of deceiving to obtain a benefit.

10. Illicit drug offences: The possessing, selling, dealing or trafficking, importing or exporting, manufacturing or cultivating of drugs or other substances prohibited under legislation.

11. Prohibited and regulated weapons and explosives offences: Offences involving prohibited or regulated weapons and explosives. Those offences also involving assault, sexual assault or robbery are coded to the relevant group within Assault, Sexual assaults and Robbery respectively.

12. Property damage and environmental pollution: The wilful and unlawful destruction, damage or defacement of public or private property, or the pollution of property or a definable entity held in common by the community.

13. Public order offences: Offences relating personal conduct that involves, or may lead to, a breach of public order or decency, or that is indicative of criminal intent, or that is otherwise regulated or prohibited on moral or ethical grounds. In general these offences do not involve a specific victim or victims; however some offences, such as offensive language and offensive behaviour, may be directed towards a single victim.

14. Traffic and vehicle regulatory offences: Offences relating to vehicles and most forms of traffic, including offences pertaining to the licensing, registration, roadworthiness, or use of vehicles, bicycle offences and pedestrian offences.

15. Offences against justice procedures, government security and government operations: An act or omission that is deemed to be prejudicial to the effective carrying out of justice procedures or any government operations. This includes general government operations as well as those specifically concerned with maintaining government security.

16. Miscellaneous offences: Offences involving the breach of statutory rules or regulations governing activities that are prima facie legal, where such offences are not explicitly dealt with under any other division. If an offence is specified under regulation and involves an act that would be illegal under common law or general criminal legislation, the offence is dealt with under the appropriate generic group.