

CENTRAL DISTRICT CRIME STATISTICS 2013/2014



**A Summary of
Recorded and Resolved Offence
Statistics**

**POLICE NATIONAL HEADQUARTERS
October 2014**

ISSN 1178-1602

Table of Contents:

Topic	Page
Report Notes	1
Summary of District Recorded and Resolved Crime by Division	2 - 4
Proportions of Recorded Crime by Division	5
Summary of District Recorded Offences, Rate per 10,000 Population and Resolved Offences, by Area	6
Summary of Area Recorded Offences, Rate per 10,000 Population and Resolved Offences, by Division	7 - 11
Crime Trends:	12
Total Crime	13
Murder	14
Serious Assaults Resulting in Injury	15
Sexual Assaults	16
Public Place Assaults	17
Dwelling Assaults	18
Robbery	19
Burglary	20
Burglary (Dwelling)	21
Vehicles Stolen	22
Theft Ex Car	23
Population Data	24
General Definitions	25 - 26

REPORT NOTES:

Statistics reported in this document are derived from the Police National Intelligence Application (NIA). These Official Statistics for Recorded and Resolved Offences present a snapshot of data in NIA relating to offences that occur within a given year, as at the date 14 days following the end of that year.

Unless the matter is minor where Police attendance is sufficient, a matter that is reported to or discovered by Police where Police believe an offence is likely to have been committed is counted as a recorded offence.

A recorded offence is counted as resolved when Police apprehend an offender and decide how to deal with him/her. (E.g. warn, prosecute, etc.)

Resolution rate is the percentage of recorded offences that are resolved within 14 days of the end of the year being reported on.

If an offence is resolved 15 days or more after the end of the year it will not appear in the Official Crime Statistics for that or any other year. Resolution Rate therefore undercounts the number of cases that Police have resolved. This phenomenon has a more marked impact for some types of offences than others, such as offences that require long investigations (E.g. many serial crimes, burglaries and murders).

Several offences have been reclassified into different ANZSOC groups. This has resulted in changes to subtotals for Groups and Sub-divisions within Divisions 10, 15 and 16, compared to previously reported data. Generally, this occurred within the same Division.

When comparing 2013/2014 Statistics with previous years, the reader should also refer to "Report Notes" published in previous years' reports, as previous changes significantly affect year on year trends.

SUMMARY OF DISTRICT RECORDED AND RESOLVED CRIME, BY DIVISION

Years ending 30 June

HOMICIDE AND RELATED OFFENCES

ANZSOC Subdivision Description	Recorded 20112012	Recorded 20122013	Recorded 20132014	Variance 11/12-12/13	Variance 12/13-13/14	Resolved 20112012	Resolved 20122013	Resolved 20132014	Resolution Rate 20112012	Resolution Rate 20122013	Resolution Rate 20132014
ATTEMPTED MURDER	1	2	1	100.0 %	-50.0 %	1	2	1	100.0 %	100.0 %	100.0 %
MANSLAUGHTER AND DRIVING CAUSING DEATH	1	3	1	200.0 %	-66.7 %	0	2	1	0.0 %	66.7 %	100.0 %
MURDER	3	2	4	-33.3 %	100.0 %	2	2	4	66.7 %	100.0 %	100.0 %
	5	7	6	40.0 %	-14.3 %	3	6	6	60.0 %	85.7 %	100.0 %

ACTS INTENDED TO CAUSE INJURY

ANZSOC Subdivision Description	Recorded 20112012	Recorded 20122013	Recorded 20132014	Variance 11/12-12/13	Variance 12/13-13/14	Resolved 20112012	Resolved 20122013	Resolved 20132014	Resolution Rate 20112012	Resolution Rate 20122013	Resolution Rate 20132014
ASSAULT	3,456	3,300	3,162	-4.5 %	-4.2 %	3,025	2,868	2,647	87.5 %	86.9 %	83.7 %
OTHER ACTS INTENDED TO CAUSE INJURY	8	4	3	-50.0 %	-25.0 %	5	3	2	62.5 %	75.0 %	66.7 %
	3,464	3,304	3,165	-4.6 %	-4.2 %	3,030	2,871	2,649	87.5 %	86.9 %	83.7 %

SEXUAL ASSAULT AND RELATED OFFENCES

ANZSOC Subdivision Description	Recorded 20112012	Recorded 20122013	Recorded 20132014	Variance 11/12-12/13	Variance 12/13-13/14	Resolved 20112012	Resolved 20122013	Resolved 20132014	Resolution Rate 20112012	Resolution Rate 20122013	Resolution Rate 20132014
NON-ASSAULTIVE SEXUAL OFFENCES	4	18	7	350.0 %	-61.1 %	2	13	6	50.0 %	72.2 %	85.7 %
SEXUAL ASSAULT	275	296	320	7.6 %	8.1 %	183	172	169	66.5 %	58.1 %	52.8 %
	279	314	327	12.5 %	4.1 %	185	185	175	66.3 %	58.9 %	53.5 %

DANGEROUS OR NEGLIGENT ACTS ENDANGERING PERSONS

ANZSOC Subdivision Description	Recorded 20112012	Recorded 20122013	Recorded 20132014	Variance 11/12-12/13	Variance 12/13-13/14	Resolved 20112012	Resolved 20122013	Resolved 20132014	Resolution Rate 20112012	Resolution Rate 20122013	Resolution Rate 20132014
OTHER DANGEROUS OR NEGLIGENT ACTS ENDANGERING PERSONS	55	64	53	16.4 %	-17.2 %	46	45	38	83.6 %	70.3 %	71.7 %
	55	64	53	16.4 %	-17.2 %	46	45	38	83.6 %	70.3 %	71.7 %

ABDUCTION, HARASSMENT AND OTHER RELATED OFFENCES AGAINST A PERSON

ANZSOC Subdivision Description	Recorded 20112012	Recorded 20122013	Recorded 20132014	Variance 11/12-12/13	Variance 12/13-13/14	Resolved 20112012	Resolved 20122013	Resolved 20132014	Resolution Rate 20112012	Resolution Rate 20122013	Resolution Rate 20132014
ABDUCTION AND KIDNAPPING	16	16	9	0.0 %	-43.8 %	10	13	9	62.5 %	81.3 %	100.0 %
HARASSMENT AND THREATENING BEHAVIOUR	782	936	1,046	19.7 %	11.8 %	668	706	711	85.4 %	75.4 %	68.0 %
	798	952	1,055	19.3 %	10.8 %	678	719	720	85.0 %	75.5 %	68.2 %

ROBBERY, EXTORTION AND RELATED OFFENCES

ANZSOC Subdivision Description	Recorded 20112012	Recorded 20122013	Recorded 20132014	Variance 11/12-12/13	Variance 12/13-13/14	Resolved 20112012	Resolved 20122013	Resolved 20132014	Resolution Rate 20112012	Resolution Rate 20122013	Resolution Rate 20132014
BLACKMAIL AND EXTORTION	18	5	8	-72.2 %	60.0 %	8	2	5	44.4 %	40.0 %	62.5 %
ROBBERY	101	96	81	-5.0 %	-15.6 %	59	56	45	58.4 %	58.3 %	55.6 %
	119	101	89	-15.1 %	-11.9 %	67	58	50	56.3 %	57.4 %	56.2 %

UNLAWFUL ENTRY WITH INTENT/BURGLARY, BREAK AND ENTER

ANZSOC Subdivision Description	Recorded 20112012	Recorded 20122013	Recorded 20132014	Variance 11/12-12/13	Variance 12/13-13/14	Resolved 20112012	Resolved 20122013	Resolved 20132014	Resolution Rate 20112012	Resolution Rate 20122013	Resolution Rate 20132014
UNLAWFUL ENTRY WITH INTENT/BURGLARY, BREAK AND ENTER	4,674	4,365	4,298	-6.6 %	-1.5 %	740	764	604	15.8 %	17.5 %	14.1 %
	4,674	4,365	4,298	-6.6 %	-1.5 %	740	764	604	15.8 %	17.5 %	14.1 %

SUMMARY OF DISTRICT RECORDED AND RESOLVED CRIME, BY DIVISION

Years ending 30 June

THEFT AND RELATED OFFENCES

ANZSOC Subdivision Description	Recorded 20112012	Recorded 20122013	Recorded 20132014	Variance 11/12-12/13	Variance 12/13-13/14	Resolved 20112012	Resolved 20122013	Resolved 20132014	Resolution Rate 20112012	Resolution Rate 20122013	Resolution Rate 20132014
ILLEGAL USE OF PROPERTY (EXCEPT MOTOR VEHICLES)	408	350	426	-14.2 %	21.7 %	26	20	31	6.4 %	5.7 %	7.3 %
MOTOR VEHICLE THEFT AND RELATED OFFENCES	2,819	2,891	2,944	2.6 %	1.8 %	407	405	426	14.4 %	14.0 %	14.5 %
RECEIVE OR HANDLE PROCEEDS OF CRIME	247	249	224	0.8 %	-10.0 %	241	236	219	97.6 %	94.8 %	97.8 %
THEFT (EXCEPT MOTOR VEHICLES)	4,820	4,970	5,508	3.1 %	10.8 %	2,090	1,936	2,061	43.4 %	39.0 %	37.4 %
	8,294	8,460	9,102	2.0 %	7.6 %	2,764	2,597	2,737	33.3 %	30.7 %	30.1 %

FRAUD, DECEPTION AND RELATED OFFENCES

ANZSOC Subdivision Description	Recorded 20112012	Recorded 20122013	Recorded 20132014	Variance 11/12-12/13	Variance 12/13-13/14	Resolved 20112012	Resolved 20122013	Resolved 20132014	Resolution Rate 20112012	Resolution Rate 20122013	Resolution Rate 20132014
DECEPTIVE BUSINESS/GOVERNMENT PRACTICES	1	1	3	0.0 %	200.0 %	0	1	3	0.0 %	100.0 %	100.0 %
FORGERY AND COUNTERFEITING	10	32	21	220.0 %	-34.4 %	3	16	12	30.0 %	50.0 %	57.1 %
OBTAIN BENEFIT BY DECEPTION	480	464	580	-3.3 %	25.0 %	310	295	364	64.6 %	63.6 %	62.8 %
OTHER FRAUD AND DECEPTION OFFENCES	45	38	46	-15.6 %	21.1 %	26	27	18	57.8 %	71.1 %	39.1 %
	536	535	650	-0.2 %	21.5 %	339	339	397	63.2 %	63.4 %	61.1 %

ILLICIT DRUG OFFENCES

ANZSOC Subdivision Description	Recorded 20112012	Recorded 20122013	Recorded 20132014	Variance 11/12-12/13	Variance 12/13-13/14	Resolved 20112012	Resolved 20122013	Resolved 20132014	Resolution Rate 20112012	Resolution Rate 20122013	Resolution Rate 20132014
DEAL OR TRAFFIC IN ILLICIT DRUGS	197	198	205	0.5 %	3.5 %	189	181	181	95.9 %	91.4 %	88.3 %
IMPORT OR EXPORT ILLICIT DRUGS	3	9	3	200.0 %	-66.7 %	3	5	3	100.0 %	55.6 %	100.0 %
MANUFACTURE OR CULTIVATE ILLICIT DRUGS	349	355	323	1.7 %	-9.0 %	297	274	187	85.1 %	77.2 %	57.9 %
OTHER ILLICIT DRUG OFFENCES	374	269	190	-28.1 %	-29.4 %	371	258	186	99.2 %	95.9 %	97.9 %
POSSESS AND/OR USE ILLICIT DRUGS	712	572	483	-19.7 %	-15.6 %	695	546	443	97.6 %	95.5 %	91.7 %
	1,635	1,403	1,204	-14.2 %	-14.2 %	1,555	1,264	1,000	95.1 %	90.1 %	83.1 %

PROHIBITED AND REGULATED WEAPONS AND EXPLOSIVES OFFENCES

ANZSOC Subdivision Description	Recorded 20112012	Recorded 20122013	Recorded 20132014	Variance 11/12-12/13	Variance 12/13-13/14	Resolved 20112012	Resolved 20122013	Resolved 20132014	Resolution Rate 20112012	Resolution Rate 20122013	Resolution Rate 20132014
REGULATED WEAPONS/EXPLOSIVES OFFENCES	578	560	511	-3.1 %	-8.8 %	542	519	464	93.8 %	92.7 %	90.8 %
	578	560	511	-3.1 %	-8.8 %	542	519	464	93.8 %	92.7 %	90.8 %

PROPERTY DAMAGE AND ENVIRONMENTAL POLLUTION

ANZSOC Subdivision Description	Recorded 20112012	Recorded 20122013	Recorded 20132014	Variance 11/12-12/13	Variance 12/13-13/14	Resolved 20112012	Resolved 20122013	Resolved 20132014	Resolution Rate 20112012	Resolution Rate 20122013	Resolution Rate 20132014
ENVIRONMENTAL POLLUTION	7	13	6	85.7 %	-53.8 %	5	6	2	71.4 %	46.2 %	33.3 %
PROPERTY DAMAGE	3,979	3,996	3,879	0.4 %	-2.9 %	1,388	1,321	1,290	34.9 %	33.1 %	33.3 %
	3,986	4,009	3,885	0.6 %	-3.1 %	1,393	1,327	1,292	34.9 %	33.1 %	33.3 %

PUBLIC ORDER OFFENCES

ANZSOC Subdivision Description	Recorded 20112012	Recorded 20122013	Recorded 20132014	Variance 11/12-12/13	Variance 12/13-13/14	Resolved 20112012	Resolved 20122013	Resolved 20132014	Resolution Rate 20112012	Resolution Rate 20122013	Resolution Rate 20132014
DISORDERLY CONDUCT	2,027	1,875	1,770	-7.5 %	-5.6 %	1,876	1,664	1,596	92.6 %	88.7 %	90.2 %
OFFENSIVE CONDUCT	149	121	117	-18.8 %	-3.3 %	116	87	74	77.9 %	71.9 %	63.2 %
REGULATED PUBLIC ORDER OFFENCES	635	635	275	0.0 %	-56.7 %	612	578	243	96.4 %	91.0 %	88.4 %
	2,811	2,631	2,162	-6.4 %	-17.8 %	2,604	2,329	1,913	92.6 %	88.5 %	88.5 %

SUMMARY OF DISTRICT RECORDED AND RESOLVED CRIME, BY DIVISION
Years ending 30 June

OFFENCES AGAINST JUSTICE PROCEDURES, GOVERNMENT SECURITY AND GOVERNMENT OPERATIONS

ANZSOC Subdivision Description	Recorded 20112012	Recorded 20122013	Recorded 20132014	Variance 11/12-12/13	Variance 12/13-13/14	Resolved 20112012	Resolved 20122013	Resolved 20132014	Resolution Rate 20112012	Resolution Rate 20122013	Resolution Rate 20132014
BREACH OF COMMUNITY-BASED ORDER	305	225	142	-26.2 %	-36.9 %	301	222	134	98.7 %	98.7 %	94.4 %
BREACH OF CUSTODIAL ORDER OFFENCES	46	25	31	-45.7 %	24.0 %	42	25	30	91.3 %	100.0 %	96.8 %
BREACH OF VIOLENCE AND NON-VIOLENCE RESTRAINING ORDERS	464	469	540	1.1 %	15.1 %	430	436	502	92.7 %	93.0 %	93.0 %
OFFENCES AGAINST GOVERNMENT OPERATIONS	10	8	5	-20.0 %	-37.5 %	7	5	1	70.0 %	62.5 %	20.0 %
OFFENCES AGAINST JUSTICE PROCEDURES	354	294	297	-16.9 %	1.0 %	344	285	293	97.2 %	96.9 %	98.7 %
OFFENCES AGAINST JUSTICE PROCEDURES, GOVERNMENT SECURITY AND GOVERNMENT OPERATIONS NOT FURTHER DEFINED	1	1	0	0.0 %	-100.0 %	1	0	0	100.0 %	0.0 %	0.0 %
	1,180	1,022	1,015	-13.4 %	-0.7 %	1,125	973	960	95.3 %	95.2 %	94.6 %

MISCELLANEOUS OFFENCES

ANZSOC Subdivision Description	Recorded 20112012	Recorded 20122013	Recorded 20132014	Variance 11/12-12/13	Variance 12/13-13/14	Resolved 20112012	Resolved 20122013	Resolved 20132014	Resolution Rate 20112012	Resolution Rate 20122013	Resolution Rate 20132014
COMMERCIAL/INDUSTRY/FINANCIAL REGULATION	10	3	5	-70.0 %	66.7 %	9	3	5	90.0 %	100.0 %	100.0 %
DEFAMATION, LIBEL AND PRIVACY OFFENCES	1	5	4	400.0 %	-20.0 %	0	3	3	0.0 %	60.0 %	75.0 %
OTHER MISCELLANEOUS OFFENCES	74	68	67	-8.1 %	-1.5 %	55	45	31	74.3 %	66.2 %	46.3 %
PUBLIC HEALTH AND SAFETY OFFENCES	9	9	28	0.0 %	211.1 %	7	8	25	77.8 %	88.9 %	89.3 %
	94	85	104	-9.6 %	22.4 %	71	59	64	75.5 %	69.4 %	61.5 %
TOTAL	28,508	27,812	27,626	-2.4 %	-0.7 %	15,142	14,055	13,069	53.1 %	50.5 %	47.3 %

PROPORTION OF RECORDED CRIME BY DIVISION

Years ending 30 June

ANZSOC Division Description	Proportions Recorded 20112012	Recorded 20112012	Proportions Recorded 20122013	Recorded 20122013	Proportions Recorded 20132014	Recorded 20132014
HOMICIDE AND RELATED OFFENCES	0.0 %	5	0.0 %	7	0.0 %	6
ACTS INTENDED TO CAUSE INJURY	12.2 %	3,464	11.9 %	3,304	11.5 %	3,165
SEXUAL ASSAULT AND RELATED OFFENCES	1.0 %	279	1.1 %	314	1.2 %	327
DANGEROUS OR NEGLIGENT ACTS ENDANGERING PERSONS	0.2 %	55	0.2 %	64	0.2 %	53
ABDUCTION, HARASSMENT AND OTHER RELATED OFFENCES AGAINST A PERSON	2.8 %	798	3.4 %	952	3.8 %	1,055
ROBBERY, EXTORTION AND RELATED OFFENCES	0.4 %	119	0.4 %	101	0.3 %	89
UNLAWFUL ENTRY WITH INTENT/BURGLARY, BREAK AND ENTER	16.4 %	4,674	15.7 %	4,365	15.6 %	4,298
THEFT AND RELATED OFFENCES	29.1 %	8,294	30.4 %	8,460	32.9 %	9,102
FRAUD, DECEPTION AND RELATED OFFENCES	1.9 %	536	1.9 %	535	2.4 %	650
ILLICIT DRUG OFFENCES	5.7 %	1,635	5.0 %	1,403	4.4 %	1,204
PROHIBITED AND REGULATED WEAPONS AND EXPLOSIVES OFFENCES	2.0 %	578	2.0 %	560	1.8 %	511
PROPERTY DAMAGE AND ENVIRONMENTAL POLLUTION	14.0 %	3,986	14.4 %	4,009	14.1 %	3,885
PUBLIC ORDER OFFENCES	9.9 %	2,811	9.5 %	2,631	7.8 %	2,162
OFFENCES AGAINST JUSTICE PROCEDURES, GOVERNMENT SECURITY AND GOVERNMENT OPERATIONS	4.1 %	1,180	3.7 %	1,022	3.7 %	1,015
MISCELLANEOUS OFFENCES	0.3 %	94	0.3 %	85	0.4 %	104
	100.0 %	28,508	100.0 %	27,812	100.0 %	27,626

SUMMARY OF DISTRICT RECORDED OFFENCES, RATE PER 10,000 POPULATION AND RESOLVED OFFENCES, BY AREA
years ending 30 June

TOTAL CRIME

Area Description	Recorded 20122013	Recorded 20132014	Variance 12/13-13/14	Recorded per 10,000 pop 20122013	Recorded per 10,000 pop 20132014	per 10,000 pop % Variance 12/13 to 13/14	Resolved 20122013	Resolved 20132014	Resolution Rate 20122013	Resolution Rate 20132014
Manawatu	14,380	14,814	3.0 %	834.0	857.9	2.9 %	6,615	6,305	46.0 %	42.6 %
Taranaki	7,278	6,919	-4.9 %	667.3	631.6	-5.4 %	4,379	3,824	60.2 %	55.3 %
Whanganui	6,154	5,893	-4.2 %	878.1	842.3	-4.1 %	3,061	2,940	49.7 %	49.9 %
Total	27,812	27,626	-0.7 %	791.1	784.4	-0.8 %	14,055	13,069	50.5 %	47.3 %

**SUMMARY OF AREA RECORDED OFFENCES, RATE PER 10,000 POPULATION AND
RESOLVED OFFENCES, BY DIVISION**

years ending 30 June

HOMICIDE AND RELATED OFFENCES

Area Description	Recorded 20122013	Recorded 20132014	Variance 12/13-13/14	Recorded per 10,000 pop 20122013	Recorded per 10,000 pop 20132014	per 10,000 pop % Variance 12/13 to 13/14	Resolved 20122013	Resolved 20132014	Resolution Rate 20122013	Resolution Rate 20132014
Manawatu	4	3	-25.0 %	0.2	0.2	-25.1 %	3	3	75.0 %	100.0 %
Taranaki	1	2	100.0 %	0.1	0.2	99.1 %	1	2	100.0 %	100.0 %
Whanganui	2	1	-50.0 %	0.3	0.1	-49.9 %	2	1	100.0 %	100.0 %
Total	7	6	-14.3 %	0.2	0.2	-14.4 %	6	6	85.7 %	100.0 %

ACTS INTENDED TO CAUSE INJURY

Area Description	Recorded 20122013	Recorded 20132014	Variance 12/13-13/14	Recorded per 10,000 pop 20122013	Recorded per 10,000 pop 20132014	per 10,000 pop % Variance 12/13 to 13/14	Resolved 20122013	Resolved 20132014	Resolution Rate 20122013	Resolution Rate 20132014
Manawatu	1,593	1,551	-2.6 %	92.4	89.8	-2.8 %	1,367	1,309	85.8 %	84.4 %
Taranaki	937	849	-9.4 %	85.9	77.5	-9.8 %	831	709	88.7 %	83.5 %
Whanganui	774	765	-1.2 %	110.4	109.3	-1.0 %	673	631	87.0 %	82.5 %
Total	3,304	3,165	-4.2 %	94.0	89.9	-4.4 %	2,871	2,649	86.9 %	83.7 %

SEXUAL ASSAULT AND RELATED OFFENCES

Area Description	Recorded 20122013	Recorded 20132014	Variance 12/13-13/14	Recorded per 10,000 pop 20122013	Recorded per 10,000 pop 20132014	per 10,000 pop % Variance 12/13 to 13/14	Resolved 20122013	Resolved 20132014	Resolution Rate 20122013	Resolution Rate 20132014
Manawatu	124	107	-13.7 %	7.2	6.2	-13.8 %	74	44	59.7 %	41.1 %
Taranaki	104	95	-8.7 %	9.5	8.7	-9.1 %	71	66	68.3 %	69.5 %
Whanganui	86	125	45.3 %	12.3	17.9	45.6 %	40	65	46.5 %	52.0 %
Total	314	327	4.1 %	8.9	9.3	4.0 %	185	175	58.9 %	53.5 %

DANGEROUS OR NEGLIGENT ACTS ENDANGERING PERSONS

Area Description	Recorded 20122013	Recorded 20132014	Variance 12/13-13/14	Recorded per 10,000 pop 20122013	Recorded per 10,000 pop 20132014	per 10,000 pop % Variance 12/13 to 13/14	Resolved 20122013	Resolved 20132014	Resolution Rate 20122013	Resolution Rate 20132014
Manawatu	37	20	-45.9 %	2.1	1.2	-46.0 %	27	17	73.0 %	85.0 %
Taranaki	19	17	-10.5 %	1.7	1.6	-10.9 %	13	13	68.4 %	76.5 %
Whanganui	8	16	100.0 %	1.1	2.3	100.3 %	5	8	62.5 %	50.0 %
Total	64	53	-17.2 %	1.8	1.5	-17.3 %	45	38	70.3 %	71.7 %

**SUMMARY OF AREA RECORDED OFFENCES, RATE PER 10,000 POPULATION AND
RESOLVED OFFENCES, BY DIVISION**

years ending 30 June

ABDUCTION, HARASSMENT AND OTHER RELATED OFFENCES AGAINST A PERSON

Area Description	Recorded 20122013	Recorded 20132014	Variance 12/13-13/14	Recorded per 10,000 pop 20122013	Recorded per 10,000 pop 20132014	per 10,000 pop % Variance 12/13 to 13/14	Resolved 20122013	Resolved 20132014	Resolution Rate 20122013	Resolution Rate 20132014
Manawatu	495	532	7.5 %	28.7	30.8	7.3 %	372	364	75.2 %	68.4 %
Taranaki	274	309	12.8 %	25.1	28.2	12.3 %	201	196	73.4 %	63.4 %
Whanganui	183	214	16.9 %	26.1	30.6	17.1 %	146	160	79.8 %	74.8 %
Total	952	1,055	10.8 %	27.1	30.0	10.6 %	719	720	75.5 %	68.2 %

ROBBERY, EXTORTION AND RELATED OFFENCES

Area Description	Recorded 20122013	Recorded 20132014	Variance 12/13-13/14	Recorded per 10,000 pop 20122013	Recorded per 10,000 pop 20132014	per 10,000 pop % Variance 12/13 to 13/14	Resolved 20122013	Resolved 20132014	Resolution Rate 20122013	Resolution Rate 20132014
Manawatu	57	44	-22.8 %	3.3	2.5	-22.9 %	30	18	52.6 %	40.9 %
Taranaki	13	25	92.3 %	1.2	2.3	91.5 %	12	20	92.3 %	80.0 %
Whanganui	31	20	-35.5 %	4.4	2.9	-35.4 %	16	12	51.6 %	60.0 %
Total	101	89	-11.9 %	2.9	2.5	-12.0 %	58	50	57.4 %	56.2 %

UNLAWFUL ENTRY WITH INTENT/BURGLARY, BREAK AND ENTER

Area Description	Recorded 20122013	Recorded 20132014	Variance 12/13-13/14	Recorded per 10,000 pop 20122013	Recorded per 10,000 pop 20132014	per 10,000 pop % Variance 12/13 to 13/14	Resolved 20122013	Resolved 20132014	Resolution Rate 20122013	Resolution Rate 20132014
Manawatu	2,500	2,563	2.5 %	145.0	148.4	2.4 %	313	263	12.5 %	10.3 %
Taranaki	756	795	5.2 %	69.3	72.6	4.7 %	202	161	26.7 %	20.3 %
Whanganui	1,109	940	-15.2 %	158.2	134.4	-15.1 %	249	180	22.5 %	19.1 %
Total	4,365	4,298	-1.5 %	124.2	122.0	-1.7 %	764	604	17.5 %	14.1 %

THEFT AND RELATED OFFENCES

Area Description	Recorded 20122013	Recorded 20132014	Variance 12/13-13/14	Recorded per 10,000 pop 20122013	Recorded per 10,000 pop 20132014	per 10,000 pop % Variance 12/13 to 13/14	Resolved 20122013	Resolved 20132014	Resolution Rate 20122013	Resolution Rate 20132014
Manawatu	4,808	5,511	14.6 %	278.8	319.2	14.5 %	1,329	1,476	27.6 %	26.8 %
Taranaki	1,944	1,897	-2.4 %	178.3	173.2	-2.8 %	788	750	40.5 %	39.5 %
Whanganui	1,708	1,694	-0.8 %	243.7	242.1	-0.6 %	480	511	28.1 %	30.2 %
Total	8,460	9,102	7.6 %	240.6	258.4	7.4 %	2,597	2,737	30.7 %	30.1 %

**SUMMARY OF AREA RECORDED OFFENCES, RATE PER 10,000 POPULATION AND
RESOLVED OFFENCES, BY DIVISION**

years ending 30 June

FRAUD, DECEPTION AND RELATED OFFENCES

Area Description	Recorded 20122013	Recorded 20132014	Variance 12/13-13/14	Recorded per 10,000 pop 20122013	Recorded per 10,000 pop 20132014	per 10,000 pop % Variance 12/13 to 13/14	Resolved 20122013	Resolved 20132014	Resolution Rate 20122013	Resolution Rate 20132014
Manawatu	239	319	33.5 %	13.9	18.5	33.3 %	133	185	55.6 %	58.0 %
Taranaki	200	196	-2.0 %	18.3	17.9	-2.4 %	139	139	69.5 %	70.9 %
Whanganui	96	135	40.6 %	13.7	19.3	40.9 %	67	73	69.8 %	54.1 %
Total	535	650	21.5 %	15.2	18.5	21.3 %	339	397	63.4 %	61.1 %

ILLICIT DRUG OFFENCES

Area Description	Recorded 20122013	Recorded 20132014	Variance 12/13-13/14	Recorded per 10,000 pop 20122013	Recorded per 10,000 pop 20132014	per 10,000 pop % Variance 12/13 to 13/14	Resolved 20122013	Resolved 20132014	Resolution Rate 20122013	Resolution Rate 20132014
Manawatu	570	433	-24.0 %	33.1	25.1	-24.1 %	528	371	92.6 %	85.7 %
Taranaki	458	386	-15.7 %	42.0	35.2	-16.1 %	430	324	93.9 %	83.9 %
Whanganui	375	385	2.7 %	53.5	55.0	2.8 %	306	305	81.6 %	79.2 %
Total	1,403	1,204	-14.2 %	39.9	34.2	-14.3 %	1,264	1,000	90.1 %	83.1 %

PROHIBITED AND REGULATED WEAPONS AND EXPLOSIVES OFFENCES

Area Description	Recorded 20122013	Recorded 20132014	Variance 12/13-13/14	Recorded per 10,000 pop 20122013	Recorded per 10,000 pop 20132014	per 10,000 pop % Variance 12/13 to 13/14	Resolved 20122013	Resolved 20132014	Resolution Rate 20122013	Resolution Rate 20132014
Manawatu	250	260	4.0 %	14.5	15.1	3.8 %	228	238	91.2 %	91.5 %
Taranaki	147	129	-12.2 %	13.5	11.8	-12.6 %	136	118	92.5 %	91.5 %
Whanganui	163	122	-25.2 %	23.3	17.4	-25.0 %	155	108	95.1 %	88.5 %
Total	560	511	-8.8 %	15.9	14.5	-8.9 %	519	464	92.7 %	90.8 %

PROPERTY DAMAGE AND ENVIRONMENTAL POLLUTION

Area Description	Recorded 20122013	Recorded 20132014	Variance 12/13-13/14	Recorded per 10,000 pop 20122013	Recorded per 10,000 pop 20132014	per 10,000 pop % Variance 12/13 to 13/14	Resolved 20122013	Resolved 20132014	Resolution Rate 20122013	Resolution Rate 20132014
Manawatu	1,898	1,957	3.1 %	110.1	113.3	3.0 %	618	662	32.6 %	33.8 %
Taranaki	1,124	1,111	-1.2 %	103.1	101.4	-1.6 %	374	344	33.3 %	31.0 %
Whanganui	987	817	-17.2 %	140.8	116.8	-17.1 %	335	286	33.9 %	35.0 %
Total	4,009	3,885	-3.1 %	114.0	110.3	-3.3 %	1,327	1,292	33.1 %	33.3 %

**SUMMARY OF AREA RECORDED OFFENCES, RATE PER 10,000 POPULATION AND
RESOLVED OFFENCES, BY DIVISION**

years ending 30 June

PUBLIC ORDER OFFENCES

Area Description	Recorded 20122013	Recorded 20132014	Variance 12/13-13/14	Recorded per 10,000 pop 20122013	Recorded per 10,000 pop 20132014	per 10,000 pop % Variance 12/13 to 13/14	Resolved 20122013	Resolved 20132014	Resolution Rate 20122013	Resolution Rate 20132014
Manawatu	1,241	969	-21.9 %	72.0	56.1	-22.0 %	1,080	855	87.0 %	88.2 %
Taranaki	1,005	821	-18.3 %	92.2	74.9	-18.7 %	899	726	89.5 %	88.4 %
Whanganui	385	372	-3.4 %	54.9	53.2	-3.2 %	350	332	90.9 %	89.2 %
Total	2,631	2,162	-17.8 %	74.8	61.4	-18.0 %	2,329	1,913	88.5 %	88.5 %

OFFENCES AGAINST JUSTICE PROCEDURES, GOVERNMENT SECURITY AND GOVERNMENT OPERATIONS

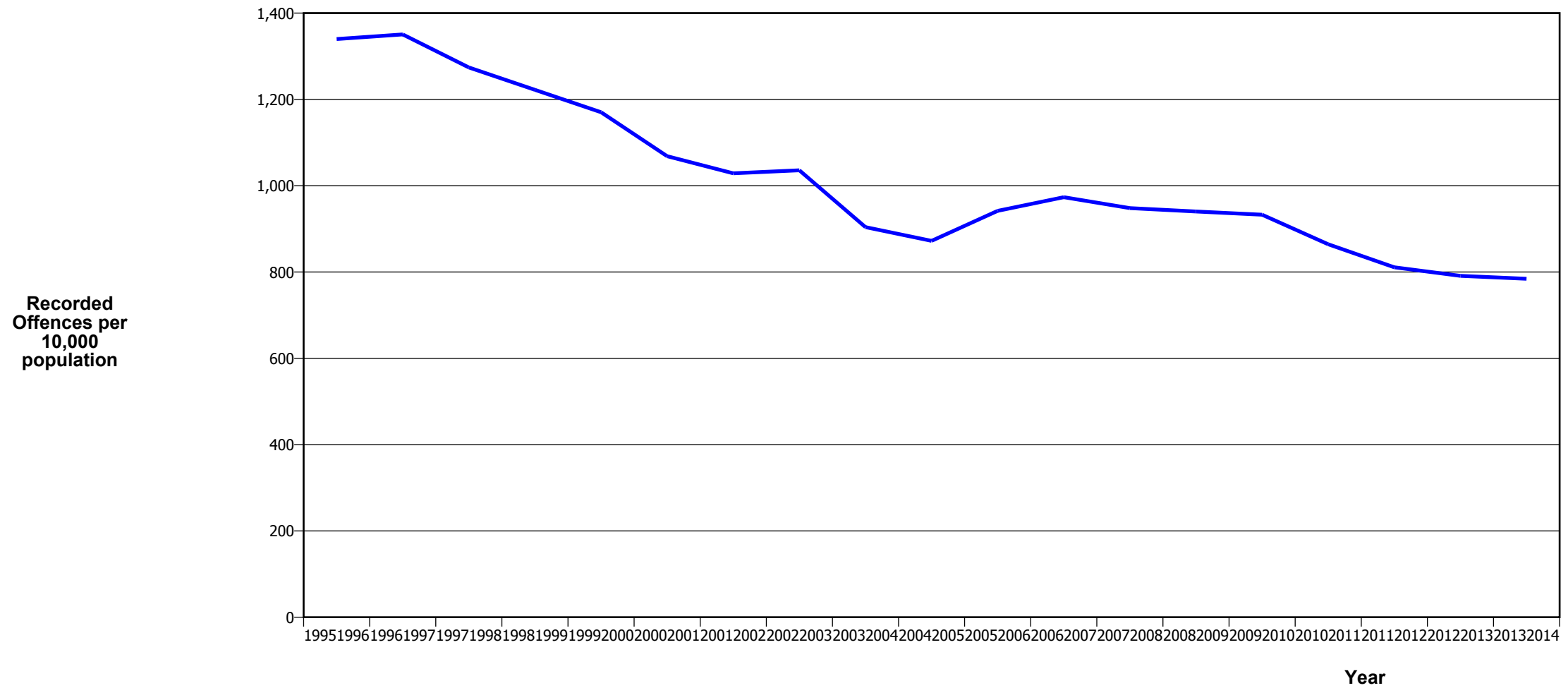
Area Description	Recorded 20122013	Recorded 20132014	Variance 12/13-13/14	Recorded per 10,000 pop 20122013	Recorded per 10,000 pop 20132014	per 10,000 pop % Variance 12/13 to 13/14	Resolved 20122013	Resolved 20132014	Resolution Rate 20122013	Resolution Rate 20132014
Manawatu	520	499	-4.0 %	30.2	28.9	-4.2 %	485	479	93.3 %	96.0 %
Taranaki	269	246	-8.6 %	24.7	22.5	-9.0 %	261	222	97.0 %	90.2 %
Whanganui	233	270	15.9 %	33.2	38.6	16.1 %	227	259	97.4 %	95.9 %
Total	1,022	1,015	-0.7 %	29.1	28.8	-0.9 %	973	960	95.2 %	94.6 %

MISCELLANEOUS OFFENCES

Area Description	Recorded 20122013	Recorded 20132014	Variance 12/13-13/14	Recorded per 10,000 pop 20122013	Recorded per 10,000 pop 20132014	per 10,000 pop % Variance 12/13 to 13/14	Resolved 20122013	Resolved 20132014	Resolution Rate 20122013	Resolution Rate 20132014
Manawatu	44	46	4.5 %	2.6	2.7	4.4 %	28	21	63.6 %	45.7 %
Taranaki	27	41	51.9 %	2.5	3.7	51.2 %	21	34	77.8 %	82.9 %
Whanganui	14	17	21.4 %	2.0	2.4	21.6 %	10	9	71.4 %	52.9 %
Total	85	104	22.4 %	2.4	3.0	22.1 %	59	64	69.4 %	61.5 %

CRIME TRENDS

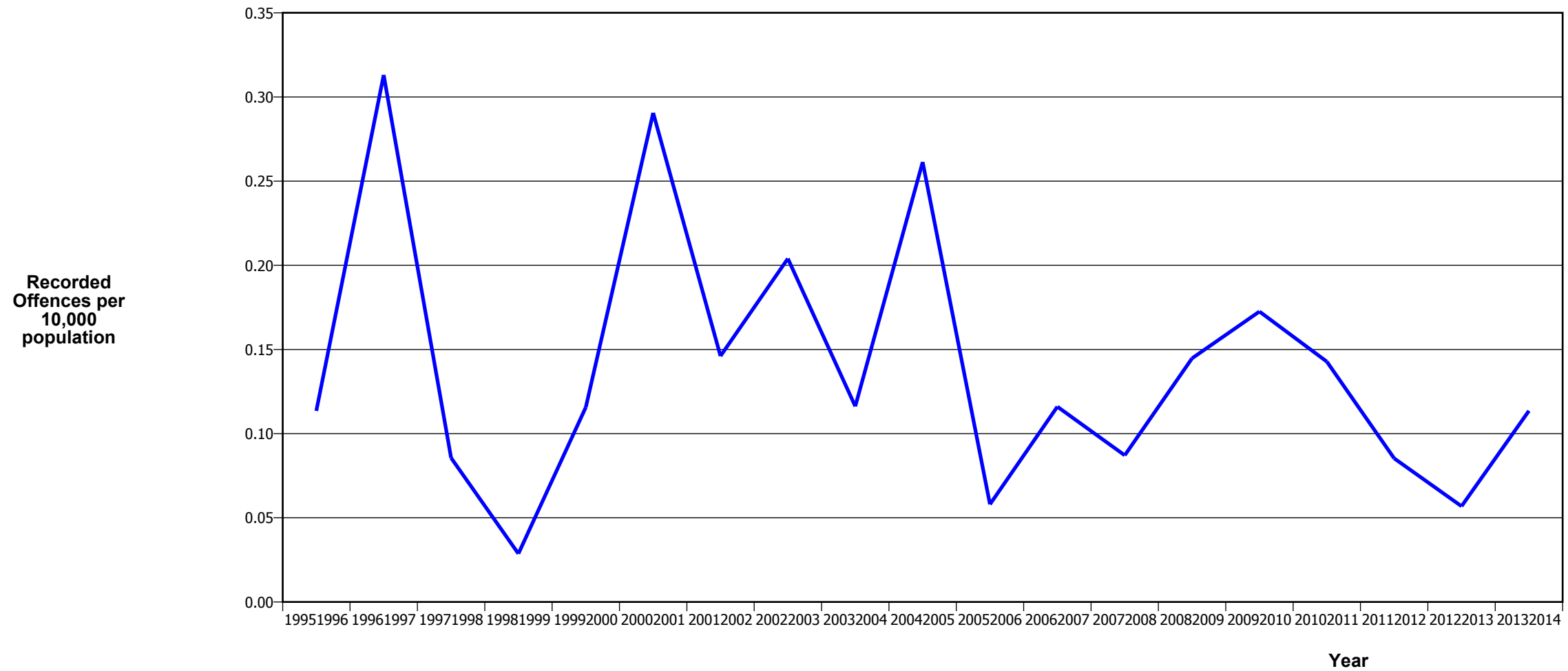
TOTAL CRIME



Fiscal Year	19951996	19961997	19971998	19981999	19992000	20002001	20012002	20022003	20032004	20042005	20052006	20062007	20072008	20082009	20092010	20102011	20112012	20122013	20132014
Recorded Offences	47,212	47,459	44,637	42,558	40,485	36,772	35,199	35,539	31,114	30,040	32,460	33,565	32,651	32,479	32,430	30,266	28,508	27,812	27,626
Recorded per 10,000 Population	1,339.8	1,350.7	1,274.1	1,222.2	1,170.3	1,068.5	1,028.7	1,035.8	904.1	872.3	941.8	973.4	948.1	940.3	932.8	864.4	811.1	791.1	784.4

*In 20052006 there was a major IT system change (LES to NIA)

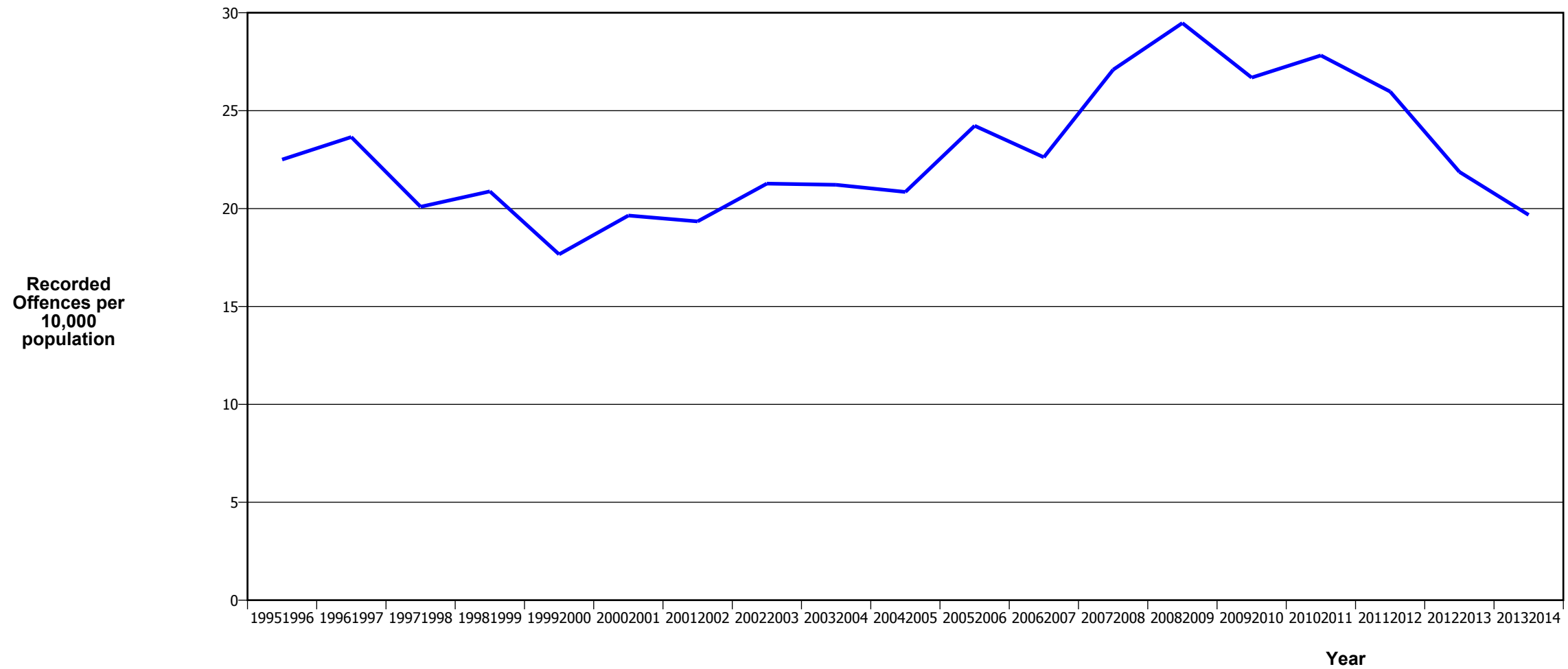
MURDER



Fiscal Year	19951996	19961997	19971998	19981999	19992000	20002001	20012002	20022003	20032004	20042005	20052006	20062007	20072008	20082009	20092010	20102011	20112012	20122013	20132014
Recorded Offences	4	11	3	1	4	10	5	7	4	9	2	4	3	5	6	5	3	2	4
Recorded per 10,000 Population	0.11	0.31	0.09	0.03	0.12	0.29	0.15	0.20	0.12	0.26	0.06	0.12	0.09	0.14	0.17	0.14	0.09	0.06	0.11

- The 20092010 result is significantly influenced by an abnormal one-off spike in August 2009, when 12 murders occurred

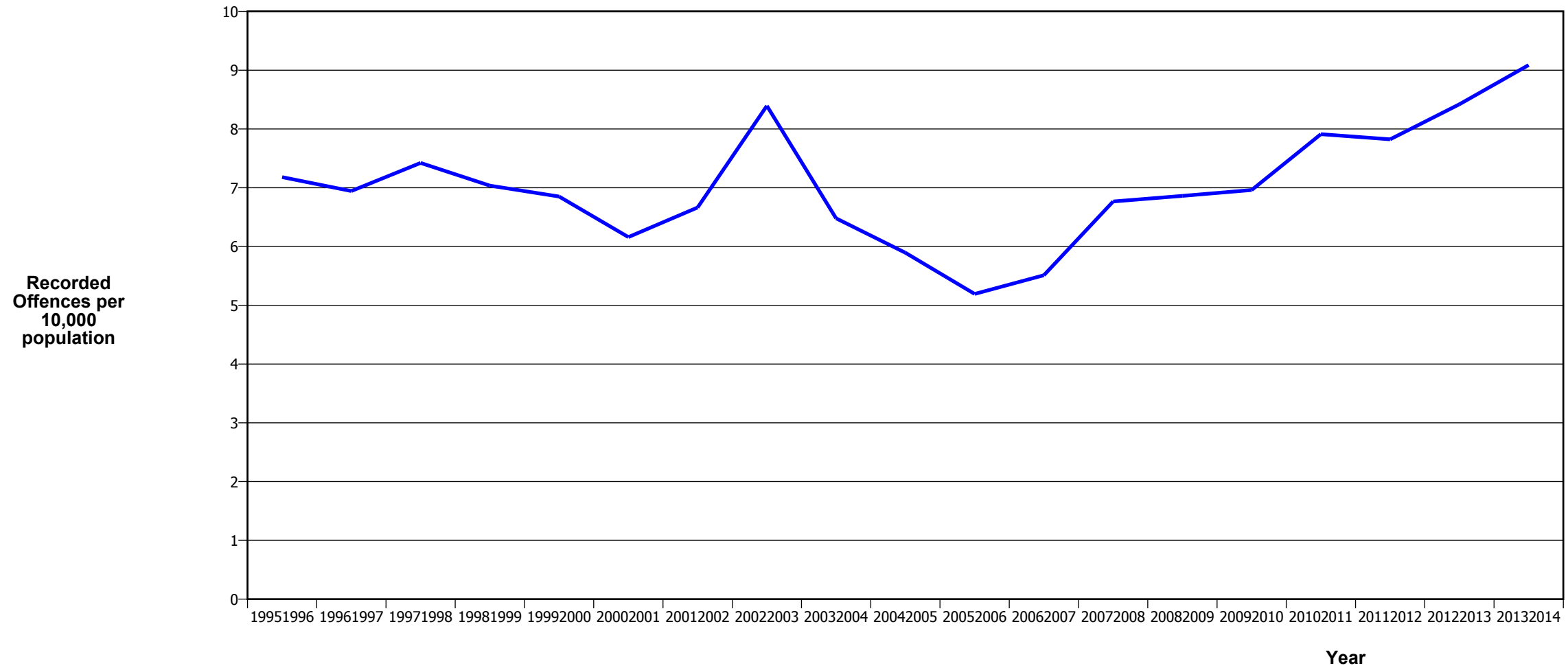
SERIOUS ASSAULTS RESULTING IN INJURY*



Fiscal Year	19951996	19961997	19971998	19981999	19992000	20002001	20012002	20022003	20032004	20042005	20052006	20062007	20072008	20082009	20092010	20102011	20112012	20122013	20132014
Recorded Offences	793	831	704	727	611	676	662	730	730	718	835	780	933	1018	928	974	913	769	693
Recorded per 10,000 Population	22.5	23.7	20.1	20.9	17.7	19.6	19.3	21.3	21.2	20.8	24.2	22.6	27.1	29.5	26.7	27.8	26.0	21.9	19.7

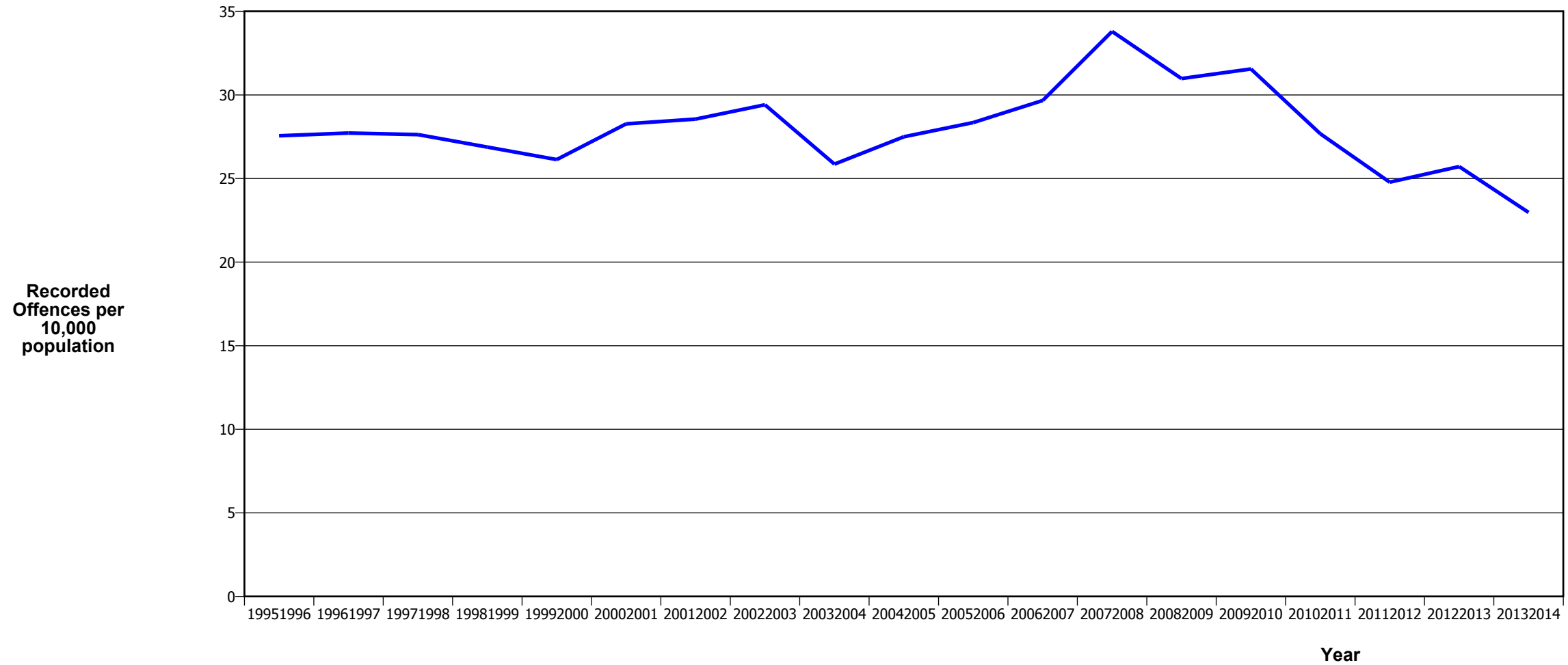
* This measure excludes common assaults

SEXUAL ASSAULTS



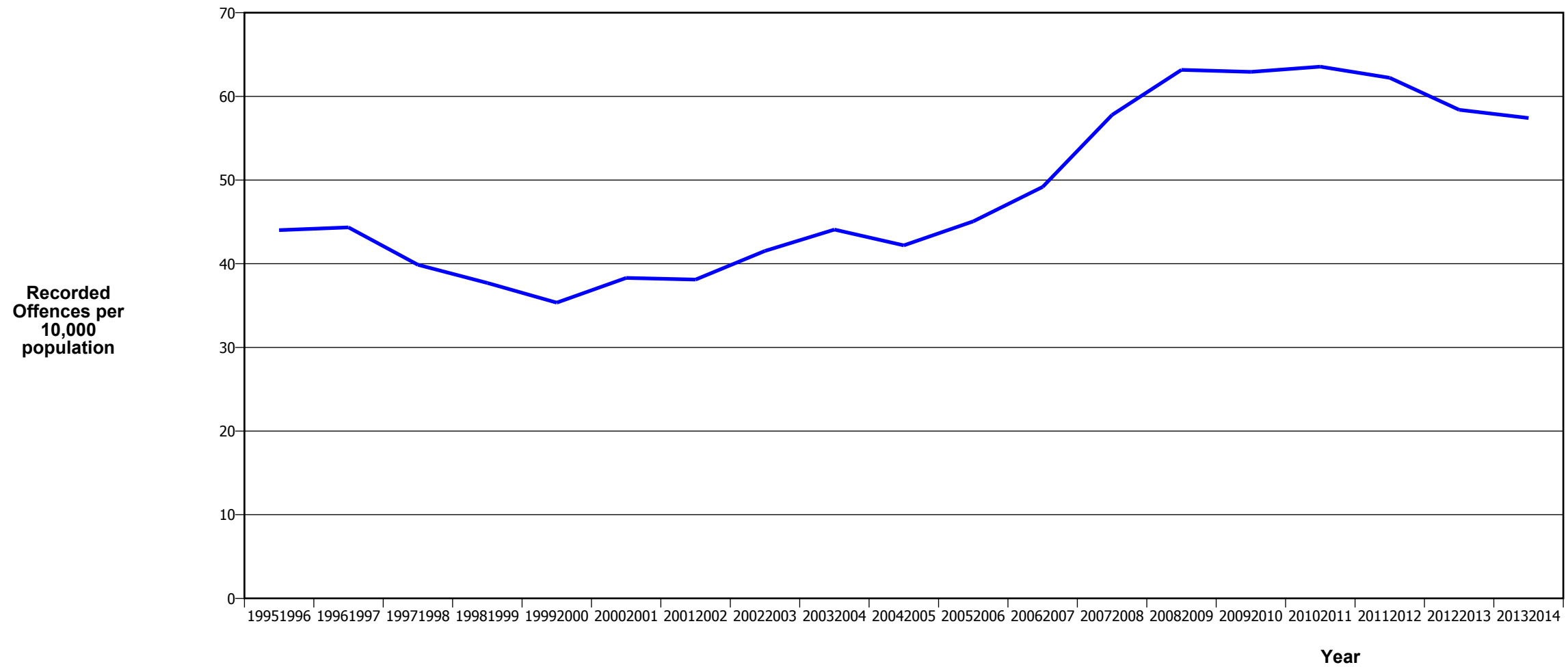
Fiscal Year	19951996	19961997	19971998	19981999	19992000	20002001	20012002	20022003	20032004	20042005	20052006	20062007	20072008	20082009	20092010	20102011	20112012	20122013	20132014
Recorded Offences	253	244	260	245	237	212	228	288	223	203	179	190	233	237	242	277	275	296	320
Recorded per 10,000 Population	7.2	6.9	7.4	7.0	6.9	6.2	6.7	8.4	6.5	5.9	5.2	5.5	6.8	6.9	7.0	7.9	7.8	8.4	9.1

PUBLIC PLACE ASSAULTS



Fiscal Year	19951996	19961997	19971998	19981999	19992000	20002001	20012002	20022003	20032004	20042005	20052006	20062007	20072008	20082009	20092010	20102011	20112012	20122013	20132014
Recorded Offences	971	974	968	936	904	973	977	1,009	890	947	977	1,023	1,164	1,070	1,097	969	871	904	809
Recorded per 10,000 Population	27.6	27.7	27.6	26.9	26.1	28.3	28.6	29.4	25.9	27.5	28.3	29.7	33.8	31.0	31.6	27.7	24.8	25.7	23.0

DWELLING ASSAULTS



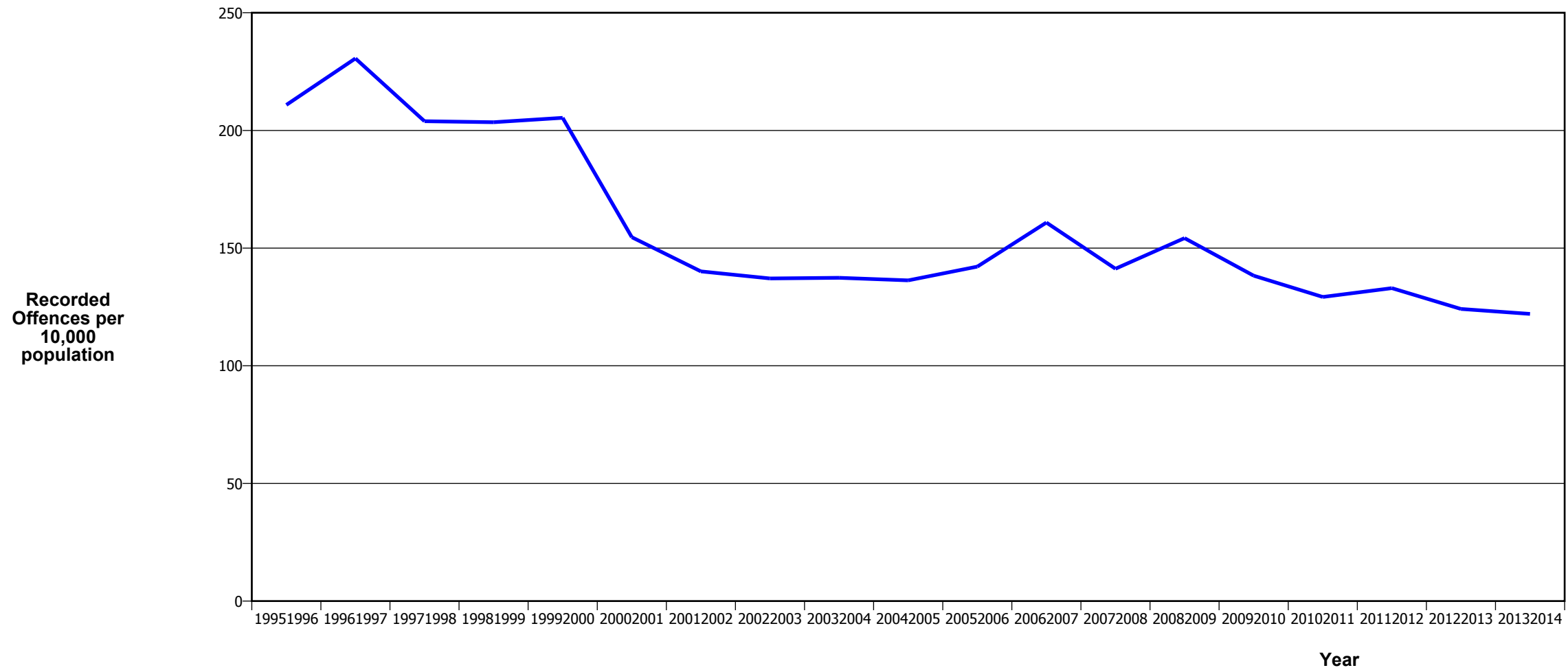
Fiscal Year	19951996	19961997	19971998	19981999	19992000	20002001	20012002	20022003	20032004	20042005	20052006	20062007	20072008	20082009	20092010	20102011	20112012	20122013	20132014
Recorded Offences	1,551	1,558	1,397	1,313	1,223	1,318	1,304	1,425	1,517	1,453	1,553	1,696	1,990	2,182	2,188	2,225	2,187	2,053	2,022
Recorded per 10,000 Population	44.0	44.3	39.9	37.7	35.4	38.3	38.1	41.5	44.1	42.2	45.1	49.2	57.8	63.2	62.9	63.5	62.2	58.4	57.4

ROBBERY



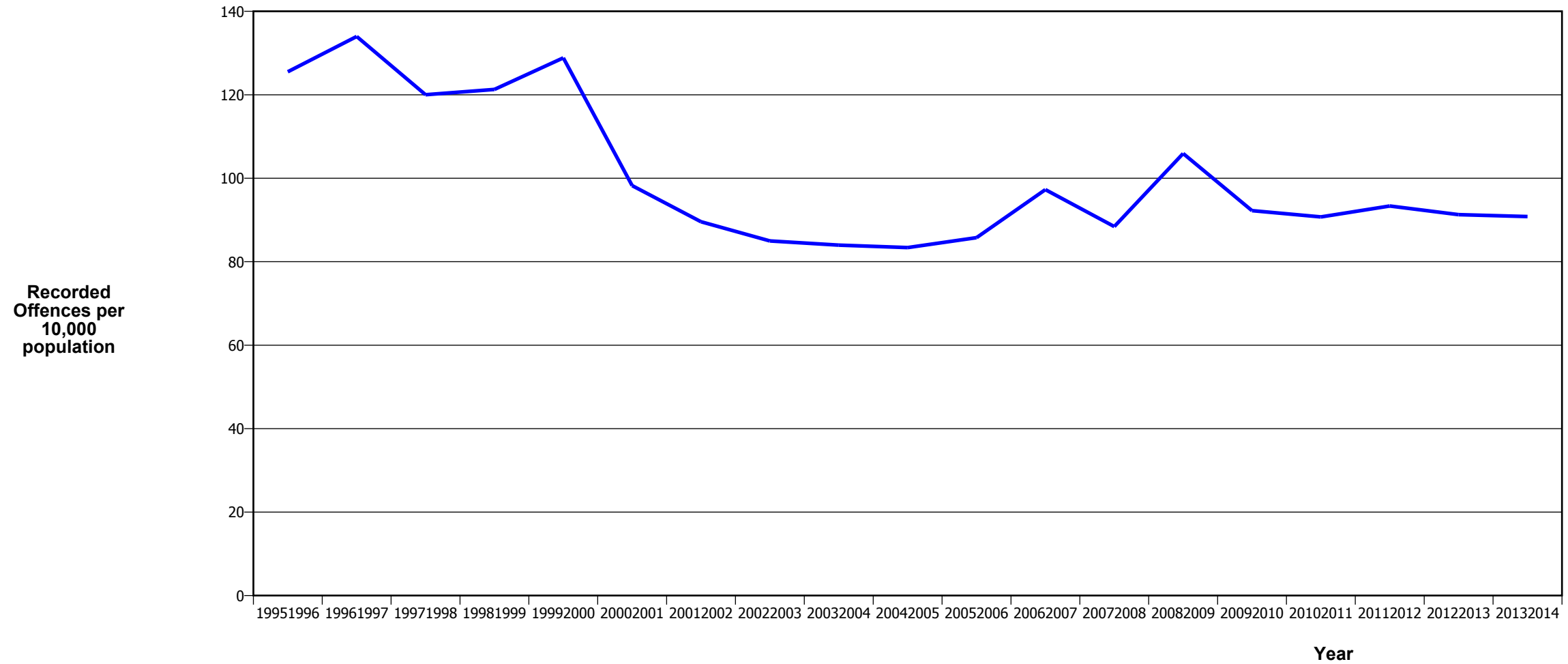
Fiscal Year	19951996	19961997	19971998	19981999	19992000	20002001	20012002	20022003	20032004	20042005	20052006	20062007	20072008	20082009	20092010	20102011	20112012	20122013	20132014
Recorded Offences	140	177	134	150	95	104	125	99	90	101	157	140	133	130	142	120	101	96	81
Recorded per 10,000 Population	4.0	5.0	3.8	4.3	2.7	3.0	3.7	2.9	2.6	2.9	4.6	4.1	3.9	3.8	4.1	3.4	2.9	2.7	2.3

BURGLARY (TOTAL)



Fiscal Year	19951996	19961997	19971998	19981999	19992000	20002001	20012002	20022003	20032004	20042005	20052006	20062007	20072008	20082009	20092010	20102011	20112012	20122013	20132014
Recorded Offences	7,430	8,102	7,145	7,086	7,104	5,321	4,794	4,704	4,728	4,693	4,899	5,547	4,864	5,327	4,807	4,525	4,674	4,365	4,298
Recorded per 10,000 Population	210.9	230.6	203.9	203.5	205.4	154.6	140.1	137.1	137.4	136.3	142.1	160.9	141.2	154.2	138.3	129.2	133.0	124.2	122.0

BURGLARY (DWELLING)



Fiscal Year	19951996	19961997	19971998	19981999	19992000	20002001	20012002	20022003	20032004	20042005	20052006	20062007	20072008	20082009	20092010	20102011	20112012	20122013	20132014
Recorded Offences	4,423	4,707	4,205	4,223	4,457	3,381	3,065	2,916	2,890	2,872	2,956	3,354	3,045	3,659	3,207	3,177	3,281	3,209	3,199
Recorded per 10,000 Population	125.5	134.0	120.0	121.3	128.8	98.2	89.6	85.0	84.0	83.4	85.8	97.3	88.4	105.9	92.2	90.7	93.3	91.3	90.8

VEHICLES STOLEN



Fiscal Year	19951996	19961997	19971998	19981999	19992000	20002001	20012002	20022003	20032004	20042005	20052006	20062007	20072008	20082009	20092010	20102011	20112012	20122013	20132014
Recorded Offences	2,315	2,258	2,108	1,905	1,466	1,371	1,495	1,367	1,152	1,121	1,437	1,469	1,140	1,158	1,051	1,046	1,027	922	1,003
Recorded per 10,000 Population	65.7	64.3	60.2	54.7	42.4	39.8	43.7	39.8	33.5	32.6	41.7	42.6	33.1	33.5	30.2	29.9	29.2	26.2	28.5

THEFT EX CAR



Fiscal Year	19951996	19961997	19971998	19981999	19992000	20002001	20012002	20022003	20032004	20042005	20052006	20062007	20072008	20082009	20092010	20102011	20112012	20122013	20132014
Recorded Offences	4,312	4,674	4,090	3,960	3,456	3,334	3,589	4,002	3,138	3,287	3,474	3,325	2,832	2,307	2,277	2,083	1,792	1,969	1,941
Recorded per 10,000 Population	122.4	133.0	116.7	113.7	99.9	96.9	104.9	116.6	91.2	95.4	100.8	96.4	82.2	66.8	65.5	59.5	51.0	56.0	55.1

Population Data

Population data is used in this release to calculate crime rates. These data are estimated population figures as at 31 December each year. They have been derived from population estimates as at 30 June each year that have been obtained from Statistics New Zealand.

The estimated resident population is based on the census usually resident population count, with adjustments for residents missed or counted more than once by the census (net census undercount), and for residents temporarily overseas on census night.

These population estimates exclude the number of international students who are studying in New Zealand for less than 12 months.

Year	Population
19951996	352,375
19961997	351,365
19971998	350,355
19981999	348,205
19992000	345,940
20002001	344,140
20012002	342,165
20022003	343,110
20032004	344,130
20042005	344,385
20052006	344,655
20062007	344,810
20072008	344,390
20082009	345,395
20092010	347,680
20102011	350,130
20112012	351,490
20122013	351,570
20132014	352,185

General Definitions

Recorded Offences: the number of breaches of the New Zealand law recorded by Police. This includes offences specified in the Crimes Act and other legislations, such as the Summary Offences Act, Local Government Act, etc.

Resolved Offences: the number of recorded offences where an offender has been identified and dealt with (e.g. warned, cautioned, prosecuted, etc).

Resolution Rate: the proportion of recorded offences that have been resolved.

Recorded per 10,000 population: the number of recorded offences for every 10,000 people. This is also referred as the crime rate per 10,000 population.

ANZSOC: the Australia New Zealand Standard Offence Classification. The offence classification is divided into 16 major offence divisions.

Definition of ANZSOC Divisions

1. Homicide and related offences: Unlawfully kill, attempt to unlawfully kill or conspiracy to kill another person.
2. Acts intended to cause injury: Acts, excluding attempted murder and those resulting in death, which are intended to cause non-fatal injury or harm to another person and where there is no sexual or acquisitive element.
3. Sexual assault and related offences: Acts, or intent of acts, of a sexual nature against another person, which are non-consensual or where consent is proscribed.
4. Dangerous or negligent acts endangering persons: Dangerous or negligent acts which, though not intended to cause harm, actually or potentially result in injury to oneself or another person.
5. Abduction, harassment and other offences against person: Acts intended to threaten or harass, or acts that unlawfully deprive another person of their freedom of movement, that are against that person's will or against the will of any parent, guardian or other person having lawful custody or care of that person.
6. Robbery, extortion and related offences: Acts intended to unlawfully gain money, property or other items of value from, or to cause detriment to, another person by using the threat of force or any other coercive measure.
7. Unlawful entry with intent / burglary, break and enter: The unlawful entry of a structure with the intent to commit an offence, where the entry is either forced or unforced.
8. Theft and related and offences: The unlawful taking or obtaining of money or goods, not involving the use of force or violence, coercion or deception, with intent to permanently or temporarily deprive the owner or possessor of the use of the money or goods, or the receiving or handling of money or goods obtained unlawfully.

9. Fraud, deception and related offences: Offences involving a dishonest act or omission carried out with the purpose of deceiving to obtain a benefit.

10. Illicit drug offences: The possessing, selling, dealing or trafficking, importing or exporting, manufacturing or cultivating of drugs or other substances prohibited under legislation.

11. Prohibited and regulated weapons and explosives offences: Offences involving prohibited or regulated weapons and explosives. Those offences also involving assault, sexual assault or robbery are coded to the relevant group within Assault, Sexual assaults and Robbery respectively.

12. Property damage and environmental pollution: The wilful and unlawful destruction, damage or defacement of public or private property, or the pollution of property or a definable entity held in common by the community.

13. Public order offences: Offences relating personal conduct that involves, or may lead to, a breach of public order or decency, or that is indicative of criminal intent, or that is otherwise regulated or prohibited on moral or ethical grounds. In general these offences do not involve a specific victim or victims; however some offences, such as offensive language and offensive behaviour, may be directed towards a single victim.

14. Traffic and vehicle regulatory offences: Offences relating to vehicles and most forms of traffic, including offences pertaining to the licensing, registration, roadworthiness, or use of vehicles, bicycle offences and pedestrian offences.

15. Offences against justice procedures, government security and government operations: An act or omission that is deemed to be prejudicial to the effective carrying out of justice procedures or any government operations. This includes general government operations as well as those specifically concerned with maintaining government security.

16. Miscellaneous offences: Offences involving the breach of statutory rules or regulations governing activities that are prima facie legal, where such offences are not explicitly dealt with under any other division. If an offence is specified under regulation and involves an act that would be illegal under common law or general criminal legislation, the offence is dealt with under the appropriate generic group.