

CENTRAL DISTRICT CRIME STATISTICS 2013



**A Summary of
Recorded and Resolved Offence
Statistics**

**POLICE NATIONAL HEADQUARTERS
April 2014**

ISSN 1178 - 1602

Table of Contents:

Topic	Page
Report Notes	1
District Summary of Recorded and Resolved Crime, by Division	2-4
Proportions of Recorded Crime by Division	5
Summary of District Recorded Offences, Rate per 10,000 Population and Resolved Offences, by Area	6
Summary of Area Recorded Offences, Rate per 10,000 Population and Resolved Offences, by Division	7-9
Crime Trends	10
Total Crime	11
Murder	12
Serious Assaults Resulting in Injury	13
Sexual Assaults	14
Public Place Assaults	15
Dwelling Assaults	16
Robbery	17
Burglary (Total)	18
Burglary (Dwelling)	19
Vehicles Stolen	20
Theft Ex Car	21
Population Data	22
General Definitions	23-24

REPORT NOTES:

Statistics reported in this document are derived from the Police National Intelligence Application (NIA). These Official Statistics for Recorded and Resolved Offences present a snapshot of data in NIA relating to offences that occur within a given year, as at the date 14 days following the end of that year.

Unless the matter is minor where Police attendance is sufficient, a matter that is reported to or discovered by Police where Police believe an offence is likely to have been committed is counted as a recorded offence.

A recorded offence is counted as resolved when Police apprehend an offender and decide how to deal with him/her. (E.g. warn, prosecute, etc.)

Resolution rate is the percentage of recorded offences that are resolved within 14 days of the end of the year being reported on.

If an offence is resolved 15 days or more after the end of the year it will not appear in the Official Crime Statistics for that or any other year. Resolution Rate therefore undercounts the number of cases that Police have resolved. This phenomenon has a more marked impact for some types of offences than others, such as offences that require long investigations (E.g. many serial crimes, burglaries and murders).

The Sale and Supply of Alcohol Act 2012 came into effect on 18 December 2013. This had little effect on overall 2013 calendar year statistics, because the legislation only took effect two weeks before the end of the year. However, statistics for future years will be significantly affected. In particular, the offence of Breach of Liquor Ban, of which there were more than 6,500 nationally in 2013, has been made obsolete by the new legislation. Under the new legislation Police will deal with breaches of alcohol bans by issuing infringement notices, rather than by recording offences for which offenders can be charged. Such infringements are not part of this statistical collection.

When comparing 2013 Statistics with previous years, the reader should also refer to "Report Notes" published in previous years' reports, as previous changes significantly affect year on year trends.

SUMMARY OF DISTRICT RECORDED AND RESOLVED CRIME, BY DIVISION

Years ending 31 December

HOMICIDE AND RELATED OFFENCES

ASOC Subdivision Description	Recorded 2011	Recorded 2012	Recorded 2013	Variance 2011-2012	Variance 2012-2013	Resolved 2011	Resolved 2012	Resolved 2013	Resolution Rate 2011	Resolution Rate 2012	Resolution Rate 2013
ATTEMPTED MURDER	2	1	1	-50.0 %	0.0 %	2	1	1	100.0 %	100.0 %	100.0 %
HOMICIDE AND RELATED OFFENCES NOT FURTHER DEFINED	0	0	0	0.0 %	0.0 %	0	0	0	0.0 %	0.0 %	0.0 %
MANSLAUGHTER AND DRIVING CAUSING DEATH	5	1	2	-80.0 %	100.0 %	5	0	2	100.0 %	0.0 %	100.0 %
MURDER	2	4	4	100.0 %	0.0 %	1	4	4	50.0 %	100.0 %	100.0 %
	9	6	7	-33.3 %	16.7 %	8	5	7	88.9 %	83.3 %	100.0 %

ACTS INTENDED TO CAUSE INJURY

ASOC Subdivision Description	Recorded 2011	Recorded 2012	Recorded 2013	Variance 2011-2012	Variance 2012-2013	Resolved 2011	Resolved 2012	Resolved 2013	Resolution Rate 2011	Resolution Rate 2012	Resolution Rate 2013
ASSAULT	3,619	3,341	3,162	-7.7 %	-5.4 %	3,262	2,772	2,625	90.1 %	83.0 %	83.0 %
OTHER ACTS INTENDED TO CAUSE INJURY	8	5	3	-37.5 %	-40.0 %	5	4	2	62.5 %	80.0 %	66.7 %
	3,627	3,346	3,165	-7.7 %	-5.4 %	3,267	2,776	2,627	90.1 %	83.0 %	83.0 %

SEXUAL ASSAULT AND RELATED OFFENCES

ASOC Subdivision Description	Recorded 2011	Recorded 2012	Recorded 2013	Variance 2011-2012	Variance 2012-2013	Resolved 2011	Resolved 2012	Resolved 2013	Resolution Rate 2011	Resolution Rate 2012	Resolution Rate 2013
NON-ASSAULTIVE SEXUAL OFFENCES	0	6	18	0.0 %	200.0 %	0	6	13	0.0 %	100.0 %	72.2 %
SEXUAL ASSAULT	275	259	362	-5.8 %	39.8 %	173	164	205	62.9 %	63.3 %	56.6 %
	275	265	380	-3.6 %	43.4 %	173	170	218	62.9 %	64.2 %	57.4 %

DANGEROUS OR NEGLIGENT ACTS ENDANGERING PERSONS

ASOC Subdivision Description	Recorded 2011	Recorded 2012	Recorded 2013	Variance 2011-2012	Variance 2012-2013	Resolved 2011	Resolved 2012	Resolved 2013	Resolution Rate 2011	Resolution Rate 2012	Resolution Rate 2013
OTHER DANGEROUS OR NEGLIGENT ACTS ENDANGERING PERSONS	56	62	51	10.7 %	-17.7 %	47	44	34	83.9 %	71.0 %	66.7 %
	56	62	51	10.7 %	-17.7 %	47	44	34	83.9 %	71.0 %	66.7 %

ABDUCTION, HARASSMENT AND OTHER RELATED OFFENCES AGAINST A PERSON

ASOC Subdivision Description	Recorded 2011	Recorded 2012	Recorded 2013	Variance 2011-2012	Variance 2012-2013	Resolved 2011	Resolved 2012	Resolved 2013	Resolution Rate 2011	Resolution Rate 2012	Resolution Rate 2013
ABDUCTION AND KIDNAPPING	21	19	10	-9.5 %	-47.4 %	16	11	9	76.2 %	57.9 %	90.0 %
HARASSMENT AND THREATENING BEHAVIOUR	882	836	1,065	-5.2 %	27.4 %	728	647	721	82.5 %	77.4 %	67.7 %
	903	855	1,075	-5.3 %	25.7 %	744	658	730	82.4 %	77.0 %	67.9 %

ROBBERY, EXTORTION AND RELATED OFFENCES

ASOC Subdivision Description	Recorded 2011	Recorded 2012	Recorded 2013	Variance 2011-2012	Variance 2012-2013	Resolved 2011	Resolved 2012	Resolved 2013	Resolution Rate 2011	Resolution Rate 2012	Resolution Rate 2013
BLACKMAIL AND EXTORTION	12	13	12	8.3 %	-7.7 %	9	9	6	75.0 %	69.2 %	50.0 %
ROBBERY	115	97	90	-15.7 %	-7.2 %	67	50	43	58.3 %	51.5 %	47.8 %
	127	110	102	-13.4 %	-7.3 %	76	59	49	59.8 %	53.6 %	48.0 %

UNLAWFUL ENTRY WITH INTENT/BURGLARY, BREAK AND ENTER

ASOC Subdivision Description	Recorded 2011	Recorded 2012	Recorded 2013	Variance 2011-2012	Variance 2012-2013	Resolved 2011	Resolved 2012	Resolved 2013	Resolution Rate 2011	Resolution Rate 2012	Resolution Rate 2013
UNLAWFUL ENTRY WITH INTENT/BURGLARY, BREAK AND ENTER	4,603	4,356	4,472	-5.4 %	2.7 %	917	644	745	19.9 %	14.8 %	16.7 %
	4,603	4,356	4,472	-5.4 %	2.7 %	917	644	745	19.9 %	14.8 %	16.7 %

SUMMARY OF DISTRICT RECORDED AND RESOLVED CRIME, BY DIVISION
Years ending 31 December

THEFT AND RELATED OFFENCES

ASOC Subdivision Description	Recorded 2011	Recorded 2012	Recorded 2013	Variance 2011-2012	Variance 2012-2013	Resolved 2011	Resolved 2012	Resolved 2013	Resolution Rate 2011	Resolution Rate 2012	Resolution Rate 2013
ILLEGAL USE OF PROPERTY (EXCEPT MOTOR VEHICLES)	392	404	380	3.1 %	-5.9 %	29	27	25	7.4 %	6.7 %	6.6 %
MOTOR VEHICLE THEFT AND RELATED OFFENCES	2,997	2,780	2,769	-7.2 %	-0.4 %	456	340	420	15.2 %	12.2 %	15.2 %
RECEIVE OR HANDLE PROCEEDS OF CRIME	221	227	242	2.7 %	6.6 %	217	216	231	98.2 %	95.2 %	95.5 %
THEFT (EXCEPT MOTOR VEHICLES)	4,996	4,759	5,298	-4.7 %	11.3 %	2,231	1,915	2,015	44.7 %	40.2 %	38.0 %
	8,606	8,170	8,689	-5.1 %	6.4 %	2,933	2,498	2,691	34.1 %	30.6 %	31.0 %

FRAUD, DECEPTION AND RELATED OFFENCES

ASOC Subdivision Description	Recorded 2011	Recorded 2012	Recorded 2013	Variance 2011-2012	Variance 2012-2013	Resolved 2011	Resolved 2012	Resolved 2013	Resolution Rate 2011	Resolution Rate 2012	Resolution Rate 2013
DECEPTIVE BUSINESS/GOVERNMENT PRACTICES	2	2	1	0.0 %	-50.0 %	2	1	1	100.0 %	50.0 %	100.0 %
FORGERY AND COUNTERFEITING	17	11	29	-35.3 %	163.6 %	11	5	18	64.7 %	45.5 %	62.1 %
OBTAIN BENEFIT BY DECEPTION	552	449	506	-18.7 %	12.7 %	398	279	315	72.1 %	62.1 %	62.3 %
OTHER FRAUD AND DECEPTION OFFENCES	34	58	47	70.6 %	-19.0 %	17	43	29	50.0 %	74.1 %	61.7 %
	605	520	583	-14.0 %	12.1 %	428	328	363	70.7 %	63.1 %	62.3 %

ILLICIT DRUG OFFENCES

ASOC Subdivision Description	Recorded 2011	Recorded 2012	Recorded 2013	Variance 2011-2012	Variance 2012-2013	Resolved 2011	Resolved 2012	Resolved 2013	Resolution Rate 2011	Resolution Rate 2012	Resolution Rate 2013
DEAL OR TRAFFIC IN ILLICIT DRUGS	148	224	297	51.4 %	32.6 %	143	198	277	96.6 %	88.4 %	93.3 %
IMPORT OR EXPORT ILLICIT DRUGS	2	4	8	100.0 %	100.0 %	2	2	5	100.0 %	50.0 %	62.5 %
MANUFACTURE OR CULTIVATE ILLICIT DRUGS	340	360	292	5.9 %	-18.9 %	299	257	211	87.9 %	71.4 %	72.3 %
OTHER ILLICIT DRUG OFFENCES	422	318	204	-24.6 %	-35.8 %	418	306	199	99.1 %	96.2 %	97.5 %
POSSESS AND/OR USE ILLICIT DRUGS	771	643	496	-16.6 %	-22.9 %	760	610	465	98.6 %	94.9 %	93.8 %
	1,683	1,549	1,297	-8.0 %	-16.3 %	1,622	1,373	1,157	96.4 %	88.6 %	89.2 %

PROHIBITED AND REGULATED WEAPONS AND EXPLOSIVES OFFENCES

ASOC Subdivision Description	Recorded 2011	Recorded 2012	Recorded 2013	Variance 2011-2012	Variance 2012-2013	Resolved 2011	Resolved 2012	Resolved 2013	Resolution Rate 2011	Resolution Rate 2012	Resolution Rate 2013
REGULATED WEAPONS/EXPLOSIVES OFFENCES	528	613	522	16.1 %	-14.8 %	492	564	479	93.2 %	92.0 %	91.8 %
	528	613	522	16.1 %	-14.8 %	492	564	479	93.2 %	92.0 %	91.8 %

PROPERTY DAMAGE AND ENVIRONMENTAL POLLUTION

ASOC Subdivision Description	Recorded 2011	Recorded 2012	Recorded 2013	Variance 2011-2012	Variance 2012-2013	Resolved 2011	Resolved 2012	Resolved 2013	Resolution Rate 2011	Resolution Rate 2012	Resolution Rate 2013
ENVIRONMENTAL POLLUTION	11	10	11	-9.1 %	10.0 %	8	6	4	72.7 %	60.0 %	36.4 %
PROPERTY DAMAGE	4,236	3,948	3,973	-6.8 %	0.6 %	1,482	1,306	1,250	35.0 %	33.1 %	31.5 %
	4,247	3,958	3,984	-6.8 %	0.7 %	1,490	1,312	1,254	35.1 %	33.1 %	31.5 %

PUBLIC ORDER OFFENCES

ASOC Subdivision Description	Recorded 2011	Recorded 2012	Recorded 2013	Variance 2011-2012	Variance 2012-2013	Resolved 2011	Resolved 2012	Resolved 2013	Resolution Rate 2011	Resolution Rate 2012	Resolution Rate 2013
DISORDERLY CONDUCT	2,114	1,912	1,913	-9.6 %	0.1 %	1,967	1,699	1,692	93.0 %	88.9 %	88.4 %
OFFENSIVE CONDUCT	135	132	137	-2.2 %	3.8 %	108	96	85	80.0 %	72.7 %	62.0 %
PUBLIC ORDER OFFENCES NOT FURTHER DEFINED	0	0	0	0.0 %	0.0 %	0	0	0	0.0 %	0.0 %	0.0 %
REGULATED PUBLIC ORDER OFFENCES	754	554	563	-26.5 %	1.6 %	729	511	513	96.7 %	92.2 %	91.1 %
	3,003	2,598	2,613	-13.5 %	0.6 %	2,804	2,306	2,290	93.4 %	88.8 %	87.6 %

SUMMARY OF DISTRICT RECORDED AND RESOLVED CRIME, BY DIVISION
Years ending 31 December

OFFENCES AGAINST JUSTICE PROCEDURES, GOVERNMENT SECURITY AND GOVERNMENT OPERATIONS

ASOC Subdivision Description	Recorded 2011	Recorded 2012	Recorded 2013	Variance 2011-2012	Variance 2012-2013	Resolved 2011	Resolved 2012	Resolved 2013	Resolution Rate 2011	Resolution Rate 2012	Resolution Rate 2013
BREACH OF COMMUNITY-BASED ORDER	316	252	176	-20.3 %	-30.2 %	314	247	166	99.4 %	98.0 %	94.3 %
BREACH OF CUSTODIAL ORDER OFFENCES	45	34	29	-24.4 %	-14.7 %	45	33	28	100.0 %	97.1 %	96.6 %
BREACH OF VIOLENCE AND NON-VIOLENCE RESTRAINING ORDERS	488	458	477	-6.1 %	4.1 %	466	410	442	95.5 %	89.5 %	92.7 %
OFFENCES AGAINST GOVERNMENT OPERATIONS	5	14	4	180.0 %	-71.4 %	4	10	2	80.0 %	71.4 %	50.0 %
OFFENCES AGAINST GOVERNMENT SECURITY	0	0	0	0.0 %	0.0 %	0	0	0	0.0 %	0.0 %	0.0 %
OFFENCES AGAINST JUSTICE PROCEDURES	362	319	283	-11.9 %	-11.3 %	351	310	278	97.0 %	97.2 %	98.2 %
OFFENCES AGAINST JUSTICE PROCEDURES, GOVERNMENT SECURITY AND GOVERNMENT OPERATIONS NOT FURTHER DEFINED	0	1	1	0.0 %	0.0 %	0	1	0	0.0 %	100.0 %	0.0 %
	1,216	1,078	970	-11.3 %	-10.0 %	1,180	1,011	916	97.0 %	93.8 %	94.4 %

MISCELLANEOUS OFFENCES

ASOC Subdivision Description	Recorded 2011	Recorded 2012	Recorded 2013	Variance 2011-2012	Variance 2012-2013	Resolved 2011	Resolved 2012	Resolved 2013	Resolution Rate 2011	Resolution Rate 2012	Resolution Rate 2013
COMMERCIAL/INDUSTRY/FINANCIAL REGULATION	13	7	2	-46.2 %	-71.4 %	12	6	2	92.3 %	85.7 %	100.0 %
DEFAMATION, LIBEL AND PRIVACY OFFENCES	1	4	2	300.0 %	-50.0 %	1	2	2	100.0 %	50.0 %	100.0 %
MISCELLANEOUS OFFENCES NOT FURTHER DEFINED	0	2	2	0.0 %	0.0 %	0	2	2	0.0 %	100.0 %	100.0 %
OTHER MISCELLANEOUS OFFENCES	83	72	83	-13.3 %	15.3 %	70	52	46	84.3 %	72.2 %	55.4 %
PUBLIC HEALTH AND SAFETY OFFENCES	8	4	7	-50.0 %	75.0 %	7	3	5	87.5 %	75.0 %	71.4 %
	105	89	96	-15.2 %	7.9 %	90	65	57	85.7 %	73.0 %	59.4 %

TOTAL	29,593	27,575	28,006	-6.8 %	1.6 %	16,271	13,813	13,617	55.0 %	50.1 %	48.6 %
--------------	---------------	---------------	---------------	---------------	--------------	---------------	---------------	---------------	---------------	---------------	---------------

PROPORTIONS OF RECORDED CRIME BY DIVISION

Years ending 31 December

ASOC Division Description	Proportions Recorded 2011	Recorded 2011	Proportions Recorded 2012	Recorded 2012	Proportions Recorded 2013	Recorded 2013
HOMICIDE AND RELATED OFFENCES	0.03 %	9	0.02 %	6	0.02 %	7
ACTS INTENDED TO CAUSE INJURY	12.26 %	3,627	12.13 %	3,346	11.30 %	3,165
SEXUAL ASSAULT AND RELATED OFFENCES	0.93 %	275	0.96 %	265	1.36 %	380
DANGEROUS OR NEGLIGENT ACTS ENDANGERING PERSONS	0.19 %	56	0.22 %	62	0.18 %	51
ABDUCTION, HARASSMENT AND OTHER RELATED OFFENCES AGAINST A PERSON	3.05 %	903	3.10 %	855	3.84 %	1,075
ROBBERY, EXTORTION AND RELATED OFFENCES	0.43 %	127	0.40 %	110	0.36 %	102
UNLAWFUL ENTRY WITH INTENT/BURGLARY, BREAK AND ENTER	15.55 %	4,603	15.80 %	4,356	15.97 %	4,472
THEFT AND RELATED OFFENCES	29.08 %	8,606	29.63 %	8,170	31.03 %	8,689
FRAUD, DECEPTION AND RELATED OFFENCES	2.04 %	605	1.89 %	520	2.08 %	583
ILLICIT DRUG OFFENCES	5.69 %	1,683	5.62 %	1,549	4.63 %	1,297
PROHIBITED AND REGULATED WEAPONS AND EXPLOSIVES OFFENCES	1.78 %	528	2.22 %	613	1.86 %	522
PROPERTY DAMAGE AND ENVIRONMENTAL POLLUTION	14.35 %	4,247	14.35 %	3,958	14.23 %	3,984
PUBLIC ORDER OFFENCES	10.15 %	3,003	9.42 %	2,598	9.33 %	2,613
OFFENCES AGAINST JUSTICE PROCEDURES, GOVERNMENT SECURITY AND GOVERNMENT OPERATIONS	4.11 %	1,216	3.91 %	1,078	3.46 %	970
MISCELLANEOUS OFFENCES	0.35 %	105	0.32 %	89	0.34 %	96
	100.00 %	29,593	100.00 %	27,575	100.00 %	28,006

SUMMARY OF RECORDED OFFENCES, RATE PER 10,000 POPULATION AND RESOLVED OFFENCES, BY AREA
years ending 31 December

TOTAL CRIME

Area Description	Recorded 2012	Recorded 2013	Variance 2012-2013	Recorded per 10,000 pop 2012	Recorded per 10,000 pop 2013	Per 10,000 pop % Variance 2012 to 2013	Resolved 2012	Resolved 2013	Resolution Rate 2012	Resolution Rate 2013
Manawatu	14,425	14,907	3.3 %	838.5	864.4	3.1 %	6,683	6,522	46.3 %	43.8 %
Taranaki	7,036	7,221	2.6 %	646.5	660.6	2.2 %	4,266	4,132	60.6 %	57.2 %
Whanganui	6,114	5,878	-3.9 %	868.5	838.4	-3.5 %	2,864	2,963	46.8 %	50.4 %
	27,575	28,006	1.6 %	785.0	795.9	1.4 %	13,813	13,617	50.1 %	48.6 %

SUMMARY OF RECORDED OFFENCES, RATE PER 10,000 POPULATION AND RESOLVED OFFENCES, BY DIVISION

Years ending 31 December

HOMICIDE AND RELATED OFFENCES

Area Description	Recorded 2012	Recorded 2013	Variance 2012-2013	Recorded per 10,000 pop 2012	Recorded per 10,000 pop 2013	Per 10,000 pop % Variance 2012 to 2013	Resolved 2012	Resolved 2013	Resolution Rate 2012	Resolution Rate 2013
Manawatu	1	3	200.0 %	0.1	0.2	199.3 %	1	3	100.0 %	100.0 %
Taranaki	2	1	-50.0 %	0.2	0.1	-50.2 %	2	1	100.0 %	100.0 %
Whanganui	3	3	0.0 %	0.4	0.4	0.4 %	2	3	66.7 %	100.0 %
	6	7	16.7 %	0.2	0.2	16.5 %	5	7	83.3 %	100.0 %

ACTS INTENDED TO CAUSE INJURY

Area Description	Recorded 2012	Recorded 2013	Variance 2012-2013	Recorded per 10,000 pop 2012	Recorded per 10,000 pop 2013	Per 10,000 pop % Variance 2012 to 2013	Resolved 2012	Resolved 2013	Resolution Rate 2012	Resolution Rate 2013
Manawatu	1,614	1,534	-5.0 %	93.8	88.9	-5.2 %	1,318	1,273	81.7 %	83.0 %
Taranaki	957	905	-5.4 %	87.9	82.8	-5.8 %	817	780	85.4 %	86.2 %
Whanganui	775	726	-6.3 %	110.1	103.6	-5.9 %	641	574	82.7 %	79.1 %
	3,346	3,165	-5.4 %	95.3	89.9	-5.6 %	2,776	2,627	83.0 %	83.0 %

SEXUAL ASSAULT AND RELATED OFFENCES

Area Description	Recorded 2012	Recorded 2013	Variance 2012-2013	Recorded per 10,000 pop 2012	Recorded per 10,000 pop 2013	Per 10,000 pop % Variance 2012 to 2013	Resolved 2012	Resolved 2013	Resolution Rate 2012	Resolution Rate 2013
Manawatu	104	146	40.4 %	6.0	8.5	40.0 %	59	82	56.7 %	56.2 %
Taranaki	87	123	41.4 %	8.0	11.3	40.8 %	70	90	80.5 %	73.2 %
Whanganui	74	111	50.0 %	10.5	15.8	50.6 %	41	46	55.4 %	41.4 %
	265	380	43.4 %	7.5	10.8	43.1 %	170	218	64.2 %	57.4 %

DANGEROUS OR NEGLIGENT ACTS ENDANGERING PERSONS

Area Description	Recorded 2012	Recorded 2013	Variance 2012-2013	Recorded per 10,000 pop 2012	Recorded per 10,000 pop 2013	Per 10,000 pop % Variance 2012 to 2013	Resolved 2012	Resolved 2013	Resolution Rate 2012	Resolution Rate 2013
Manawatu	35	19	-45.7 %	2.0	1.1	-45.8 %	23	14	65.7 %	73.7 %
Taranaki	21	19	-9.5 %	1.9	1.7	-9.9 %	17	13	81.0 %	68.4 %
Whanganui	6	13	116.7 %	0.9	1.9	117.6 %	4	7	66.7 %	53.8 %
	62	51	-17.7 %	1.8	1.4	-17.9 %	44	34	71.0 %	66.7 %

ABDUCTION, HARASSMENT AND OTHER RELATED OFFENCES AGAINST A PERSON

Area Description	Recorded 2012	Recorded 2013	Variance 2012-2013	Recorded per 10,000 pop 2012	Recorded per 10,000 pop 2013	Per 10,000 pop % Variance 2012 to 2013	Resolved 2012	Resolved 2013	Resolution Rate 2012	Resolution Rate 2013
Manawatu	431	570	32.3 %	25.1	33.1	31.9 %	327	383	75.9 %	67.2 %
Taranaki	263	304	15.6 %	24.2	27.8	15.1 %	194	196	73.8 %	64.5 %
Whanganui	161	201	24.8 %	22.9	28.7	25.4 %	137	151	85.1 %	75.1 %
	855	1,075	25.7 %	24.3	30.6	25.5 %	658	730	77.0 %	67.9 %

ROBBERY, EXTORTION AND RELATED OFFENCES

Area Description	Recorded 2012	Recorded 2013	Variance 2012-2013	Recorded per 10,000 pop 2012	Recorded per 10,000 pop 2013	Per 10,000 pop % Variance 2012 to 2013	Resolved 2012	Resolved 2013	Resolution Rate 2012	Resolution Rate 2013
Manawatu	49	58	18.4 %	2.8	3.4	18.1 %	27	21	55.1 %	36.2 %
Taranaki	28	19	-32.1 %	2.6	1.7	-32.4 %	21	14	75.0 %	73.7 %
Whanganui	33	25	-24.2 %	4.7	3.6	-23.9 %	11	14	33.3 %	56.0 %
	110	102	-7.3 %	3.1	2.9	-7.4 %	59	49	53.6 %	48.0 %

SUMMARY OF RECORDED OFFENCES, RATE PER 10,000 POPULATION AND RESOLVED OFFENCES, BY DIVISION

Years ending 31 December

UNLAWFUL ENTRY WITH INTENT/BURGLARY, BREAK AND ENTER

Area Description	Recorded 2012	Recorded 2013	Variance 2012-2013	Recorded per 10,000 pop 2012	Recorded per 10,000 pop 2013	Per 10,000 pop % Variance 2012 to 2013	Resolved 2012	Resolved 2013	Resolution Rate 2012	Resolution Rate 2013
Manawatu	2,601	2,686	3.3 %	151.2	155.7	3.0 %	313	304	12.0 %	11.3 %
Taranaki	668	804	20.4 %	61.4	73.6	19.8 %	149	203	22.3 %	25.2 %
Whanganui	1,087	982	-9.7 %	154.4	140.1	-9.3 %	182	238	16.7 %	24.2 %
	4,356	4,472	2.7 %	124.0	127.1	2.5 %	644	745	14.8 %	16.7 %

THEFT AND RELATED OFFENCES

Area Description	Recorded 2012	Recorded 2013	Variance 2012-2013	Recorded per 10,000 pop 2012	Recorded per 10,000 pop 2013	Per 10,000 pop % Variance 2012 to 2013	Resolved 2012	Resolved 2013	Resolution Rate 2012	Resolution Rate 2013
Manawatu	4,710	5,091	8.1 %	273.8	295.2	7.8 %	1,380	1,420	29.3 %	27.9 %
Taranaki	1,695	2,000	18.0 %	155.7	183.0	17.5 %	654	787	38.6 %	39.4 %
Whanganui	1,765	1,598	-9.5 %	250.7	227.9	-9.1 %	464	484	26.3 %	30.3 %
	8,170	8,689	6.4 %	232.6	246.9	6.2 %	2,498	2,691	30.6 %	31.0 %

FRAUD, DECEPTION AND RELATED OFFENCES

Area Description	Recorded 2012	Recorded 2013	Variance 2012-2013	Recorded per 10,000 pop 2012	Recorded per 10,000 pop 2013	Per 10,000 pop % Variance 2012 to 2013	Resolved 2012	Resolved 2013	Resolution Rate 2012	Resolution Rate 2013
Manawatu	265	265	0.0 %	15.4	15.4	-0.2 %	161	146	60.8 %	55.1 %
Taranaki	185	216	16.8 %	17.0	19.8	16.3 %	118	159	63.8 %	73.6 %
Whanganui	70	102	45.7 %	9.9	14.5	46.3 %	49	58	70.0 %	56.9 %
	520	583	12.1 %	14.8	16.6	11.9 %	328	363	63.1 %	62.3 %

ILLICIT DRUG OFFENCES

Area Description	Recorded 2012	Recorded 2013	Variance 2012-2013	Recorded per 10,000 pop 2012	Recorded per 10,000 pop 2013	Per 10,000 pop % Variance 2012 to 2013	Resolved 2012	Resolved 2013	Resolution Rate 2012	Resolution Rate 2013
Manawatu	605	492	-18.7 %	35.2	28.5	-18.9 %	552	446	91.2 %	90.7 %
Taranaki	565	353	-37.5 %	51.9	32.3	-37.8 %	511	331	90.4 %	93.8 %
Whanganui	379	452	19.3 %	53.8	64.5	19.8 %	310	380	81.8 %	84.1 %
	1,549	1,297	-16.3 %	44.1	36.9	-16.4 %	1,373	1,157	88.6 %	89.2 %

PROHIBITED AND REGULATED WEAPONS AND EXPLOSIVES OFFENCES

Area Description	Recorded 2012	Recorded 2013	Variance 2012-2013	Recorded per 10,000 pop 2012	Recorded per 10,000 pop 2013	Per 10,000 pop % Variance 2012 to 2013	Resolved 2012	Resolved 2013	Resolution Rate 2012	Resolution Rate 2013
Manawatu	309	243	-21.4 %	18.0	14.1	-21.6 %	284	223	91.9 %	91.8 %
Taranaki	174	138	-20.7 %	16.0	12.6	-21.0 %	160	128	92.0 %	92.8 %
Whanganui	130	141	8.5 %	18.5	20.1	8.9 %	120	128	92.3 %	90.8 %
	613	522	-14.8 %	17.5	14.8	-15.0 %	564	479	92.0 %	91.8 %

PROPERTY DAMAGE AND ENVIRONMENTAL POLLUTION

Area Description	Recorded 2012	Recorded 2013	Variance 2012-2013	Recorded per 10,000 pop 2012	Recorded per 10,000 pop 2013	Per 10,000 pop % Variance 2012 to 2013	Resolved 2012	Resolved 2013	Resolution Rate 2012	Resolution Rate 2013
Manawatu	1,864	1,999	7.2 %	108.4	115.9	7.0 %	606	634	32.5 %	31.7 %
Taranaki	1,129	1,119	-0.9 %	103.7	102.4	-1.3 %	407	335	36.0 %	29.9 %
Whanganui	965	866	-10.3 %	137.1	123.5	-9.9 %	299	285	31.0 %	32.9 %
	3,958	3,984	0.7 %	112.7	113.2	0.5 %	1,312	1,254	33.1 %	31.5 %

SUMMARY OF RECORDED OFFENCES, RATE PER 10,000 POPULATION AND RESOLVED OFFENCES, BY DIVISION

Years ending 31 December

PUBLIC ORDER OFFENCES

Area Description	Recorded 2012	Recorded 2013	Variance 2012-2013	Recorded per 10,000 pop 2012	Recorded per 10,000 pop 2013	Per 10,000 pop % Variance 2012 to 2013	Resolved 2012	Resolved 2013	Resolution Rate 2012	Resolution Rate 2013
Manawatu	1,219	1,265	3.8 %	70.9	73.4	3.5 %	1,066	1,085	87.4 %	85.8 %
Taranaki	984	947	-3.8 %	90.4	86.6	-4.2 %	889	850	90.3 %	89.8 %
Whanganui	395	401	1.5 %	56.1	57.2	1.9 %	351	355	88.9 %	88.5 %
	2,598	2,613	0.6 %	74.0	74.3	0.4 %	2,306	2,290	88.8 %	87.6 %

OFFENCES AGAINST JUSTICE PROCEDURES, GOVERNMENT SECURITY AND GOVERNMENT OPERATIONS

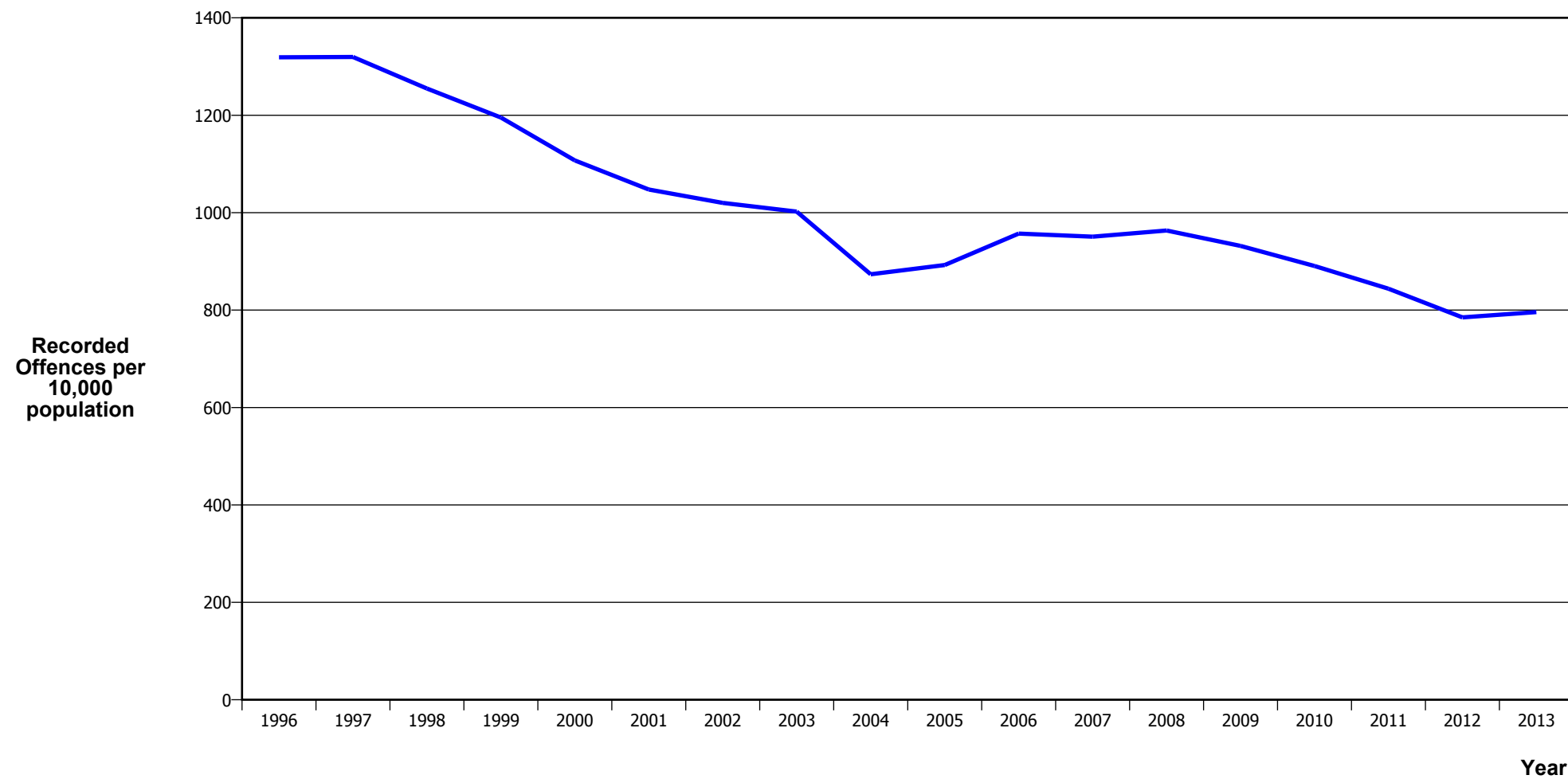
Area Description	Recorded 2012	Recorded 2013	Variance 2012-2013	Recorded per 10,000 pop 2012	Recorded per 10,000 pop 2013	Per 10,000 pop % Variance 2012 to 2013	Resolved 2012	Resolved 2013	Resolution Rate 2012	Resolution Rate 2013
Manawatu	572	489	-14.5 %	33.3	28.4	-14.7 %	532	463	93.0 %	94.7 %
Taranaki	250	243	-2.8 %	23.0	22.2	-3.2 %	234	224	93.6 %	92.2 %
Whanganui	256	238	-7.0 %	36.4	33.9	-6.6 %	245	229	95.7 %	96.2 %
	1,078	970	-10.0 %	30.7	27.6	-10.2 %	1,011	916	93.8 %	94.4 %

MISCELLANEOUS OFFENCES

Area Description	Recorded 2012	Recorded 2013	Variance 2012-2013	Recorded per 10,000 pop 2012	Recorded per 10,000 pop 2013	Per 10,000 pop % Variance 2012 to 2013	Resolved 2012	Resolved 2013	Resolution Rate 2012	Resolution Rate 2013
Manawatu	46	47	2.2 %	2.7	2.7	1.9 %	34	25	73.9 %	53.2 %
Taranaki	28	30	7.1 %	2.6	2.7	6.7 %	23	21	82.1 %	70.0 %
Whanganui	15	19	26.7 %	2.1	2.7	27.2 %	8	11	53.3 %	57.9 %
	89	96	7.9 %	2.5	2.7	7.7 %	65	57	73.0 %	59.4 %

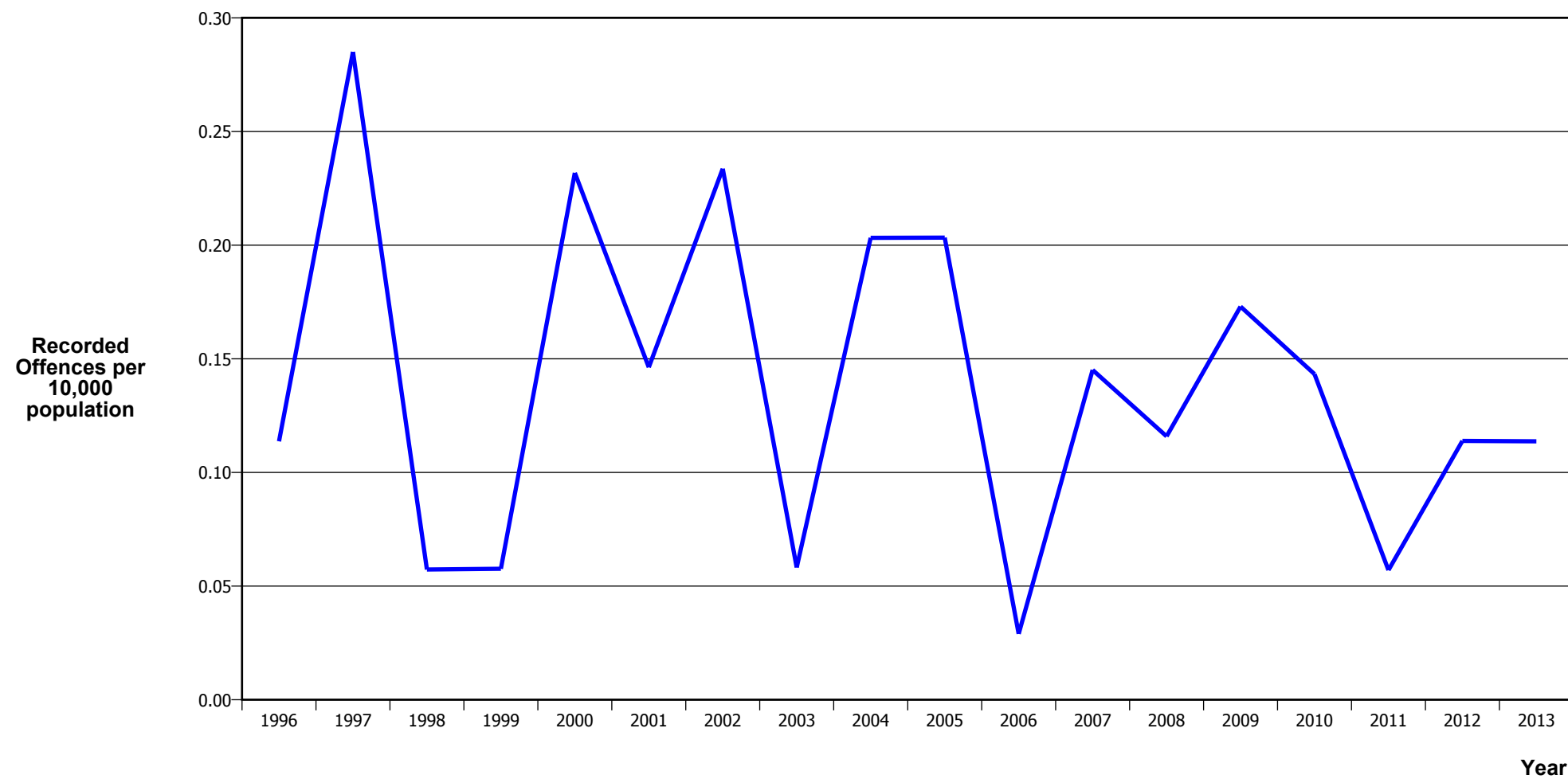
CRIME TRENDS

TOTAL CRIME



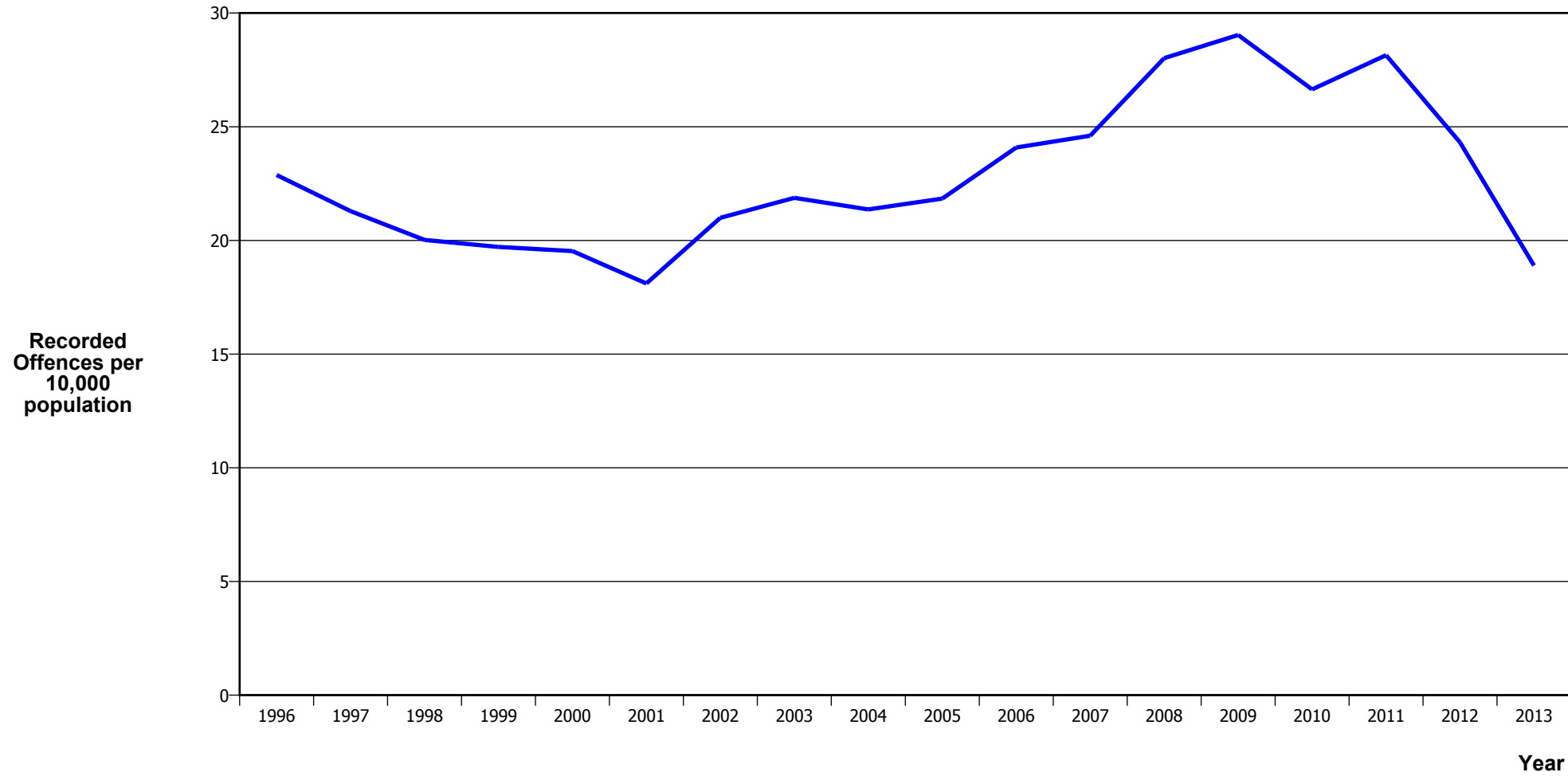
Calendar Year	1996	1997	1998	1999	2000	2001	2002	2003	2004	2005	2006	2007	2008	2009	2010	2011	2012	2013
Recorded Offences	46,415	46,300	43,804	41,479	38,210	35,812	34,934	34,452	30,094	30,731	33,019	32,762	33,246	32,314	31,084	29,593	27,575	28,006
Recorded per 10,000 Population	1,319.1	1,319.6	1,254.8	1,195.4	1,107.2	1,047.5	1,020.1	1,002.2	873.6	892.6	957.0	950.7	963.3	931.7	890.6	843.9	785.0	795.9

MURDER



Calendar Year	1996	1997	1998	1999	2000	2001	2002	2003	2004	2005	2006	2007	2008	2009	2010	2011	2012	2013
Recorded Offences	4	10	2	2	8	5	8	2	7	7	1	5	4	6	5	2	4	4
Recorded per 10,000 Population	0.11	0.29	0.06	0.06	0.23	0.15	0.23	0.06	0.20	0.20	0.03	0.15	0.12	0.17	0.14	0.06	0.11	0.11

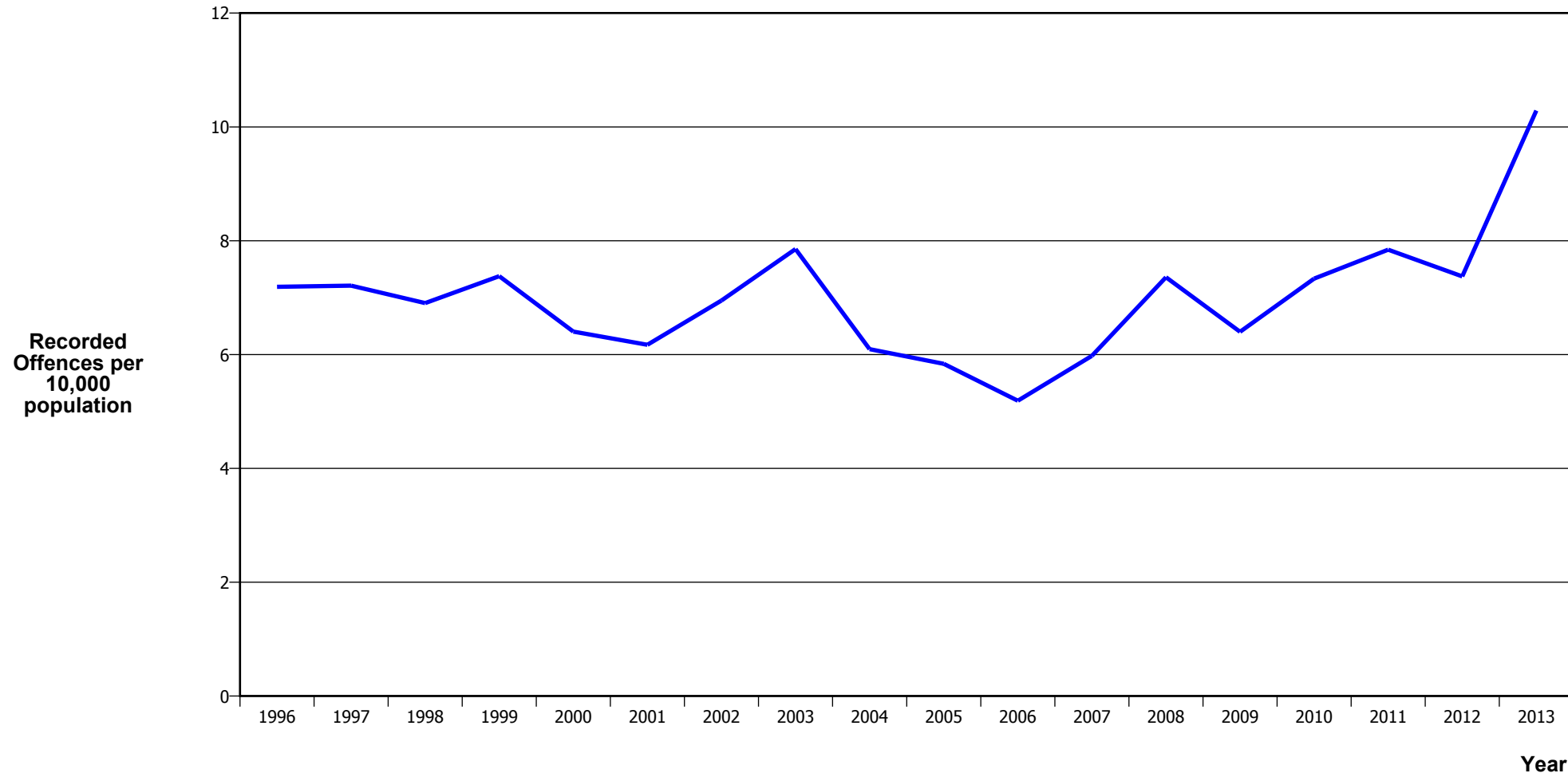
SERIOUS ASSAULTS RESULTING IN INJURY*



Calendar Year	1996	1997	1998	1999	2000	2001	2002	2003	2004	2005	2006	2007	2008	2009	2010	2011	2012	2013
Recorded Offence	805	747	699	684	674	619	719	752	736	752	831	848	967	1,007	930	987	854	665
Offence Rate per 10K Popn	22.9	21.3	20.0	19.7	19.5	18.1	21.0	21.9	21.4	21.8	24.1	24.6	28.0	29.0	26.6	28.1	24.3	18.9

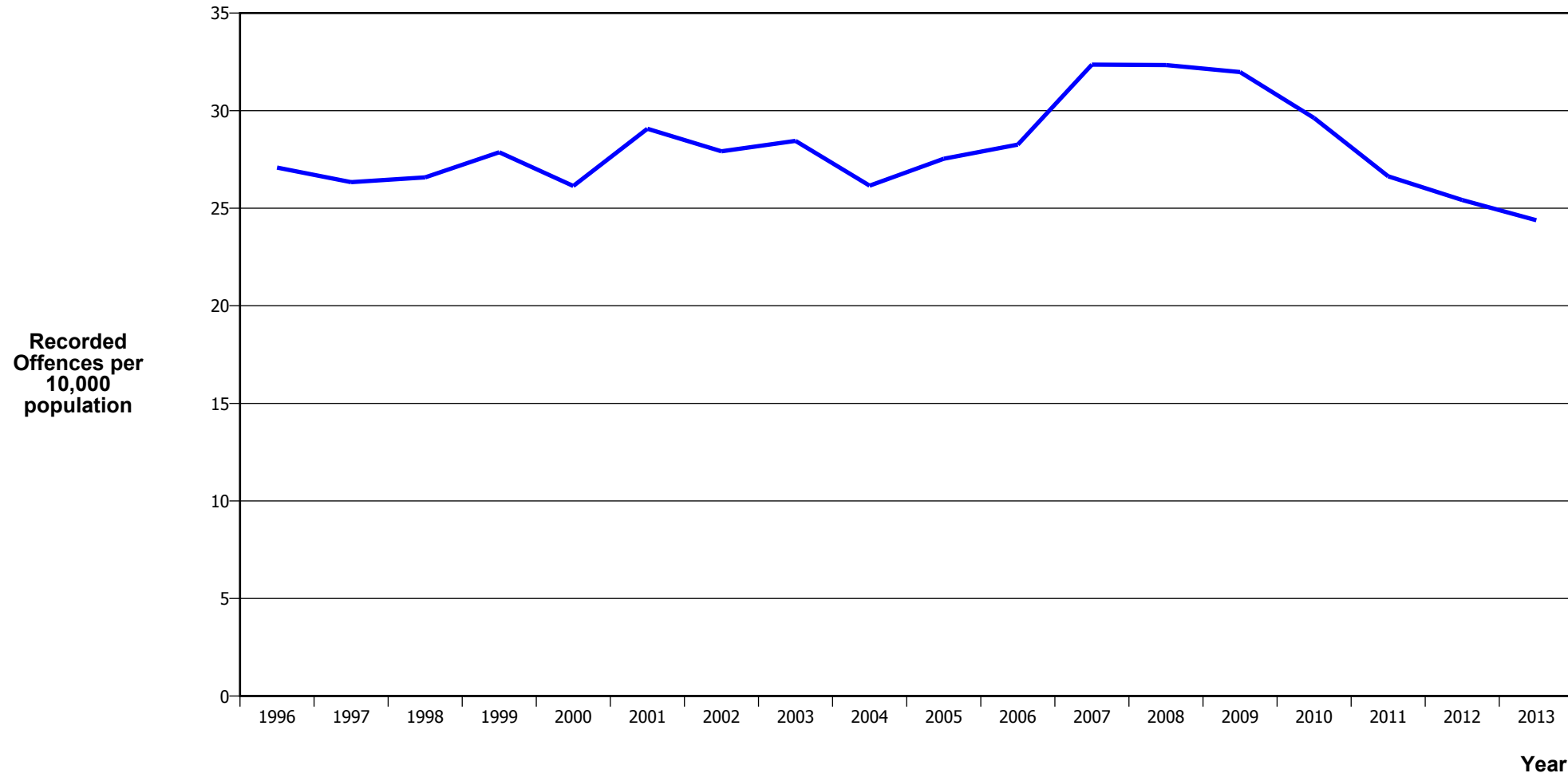
* This measure excludes common assaults

SEXUAL ASSAULTS



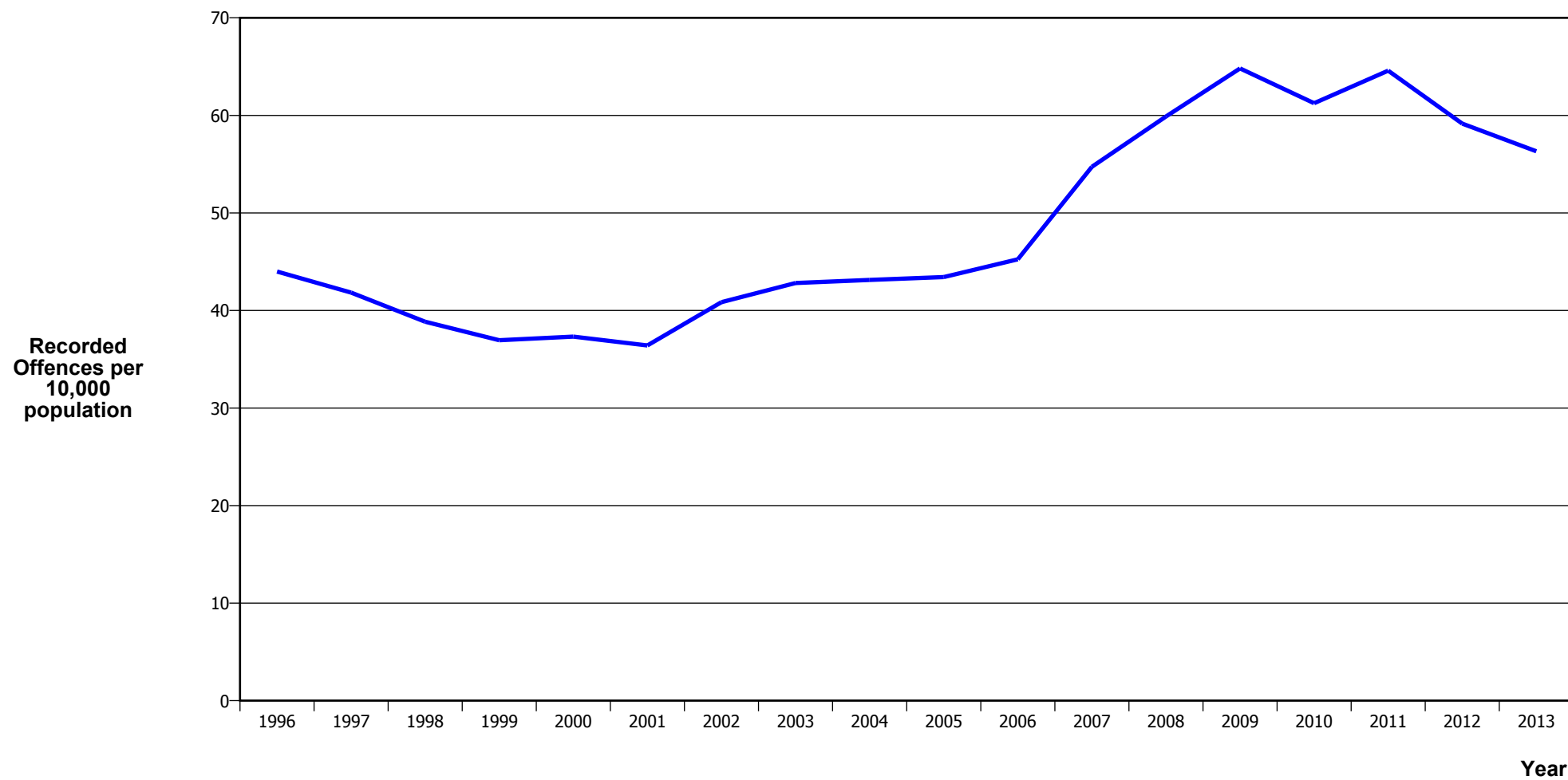
Calendar Year	1996	1997	1998	1999	2000	2001	2002	2003	2004	2005	2006	2007	2008	2009	2010	2011	2012	2013
Recorded Offences	253	253	241	256	221	211	238	270	210	201	179	206	254	222	256	275	259	362
Recorded per 10,000 Population	7.2	7.2	6.9	7.4	6.4	6.2	7.0	7.9	6.1	5.8	5.2	6.0	7.4	6.4	7.3	7.8	7.4	10.3

PUBLIC PLACE ASSAULTS



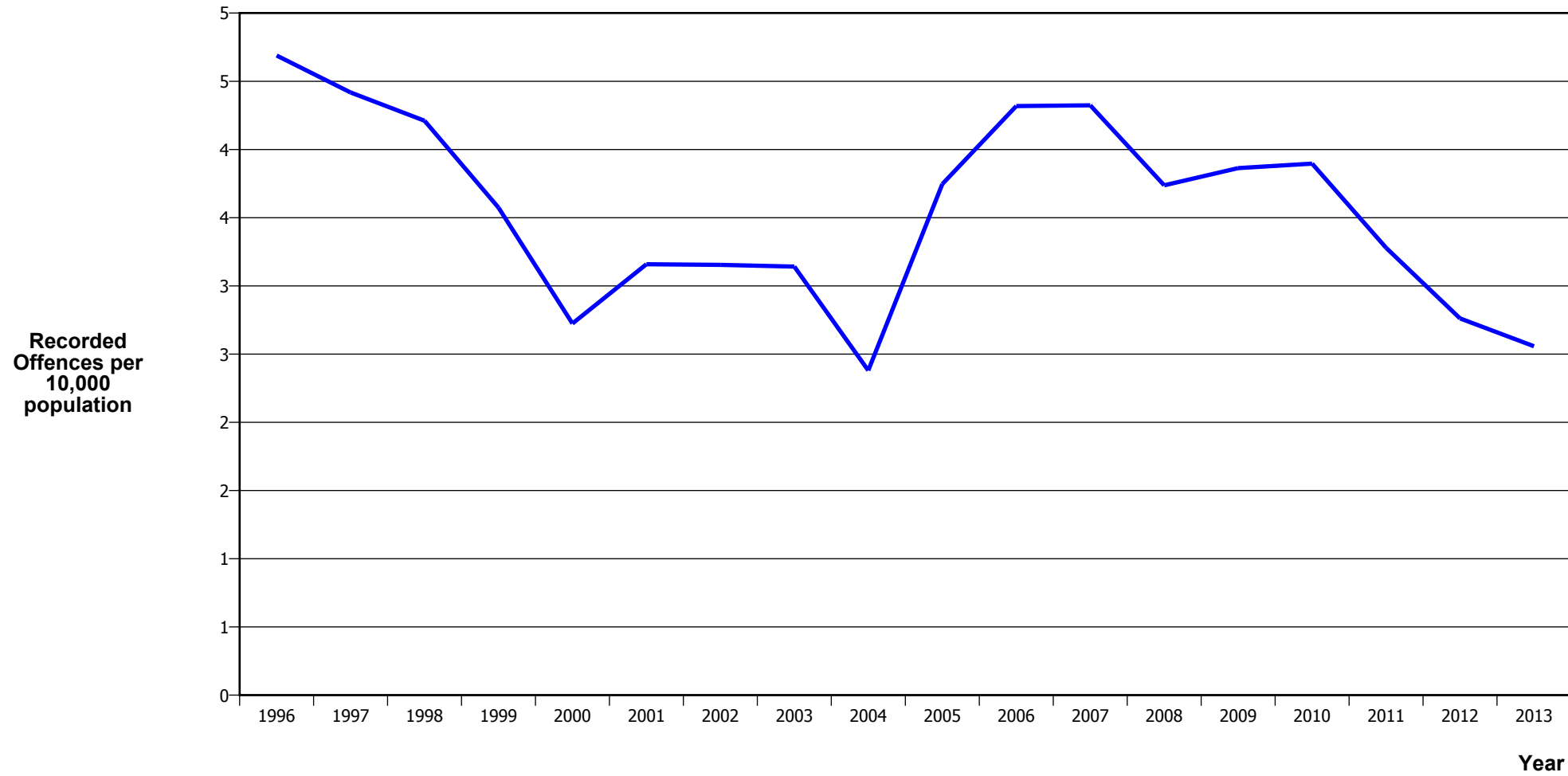
Calendar Year	1996	1997	1998	1999	2000	2001	2002	2003	2004	2005	2006	2007	2008	2009	2010	2011	2012	2013
Recorded Offences	953	924	928	967	902	994	956	978	901	948	975	1,115	1,116	1,109	1,034	934	893	858
Recorded per 10,000 Population	27.1	26.3	26.6	27.9	26.1	29.1	27.9	28.4	26.2	27.5	28.3	32.4	32.3	32.0	29.6	26.6	25.4	24.4

DWELLING ASSAULTS



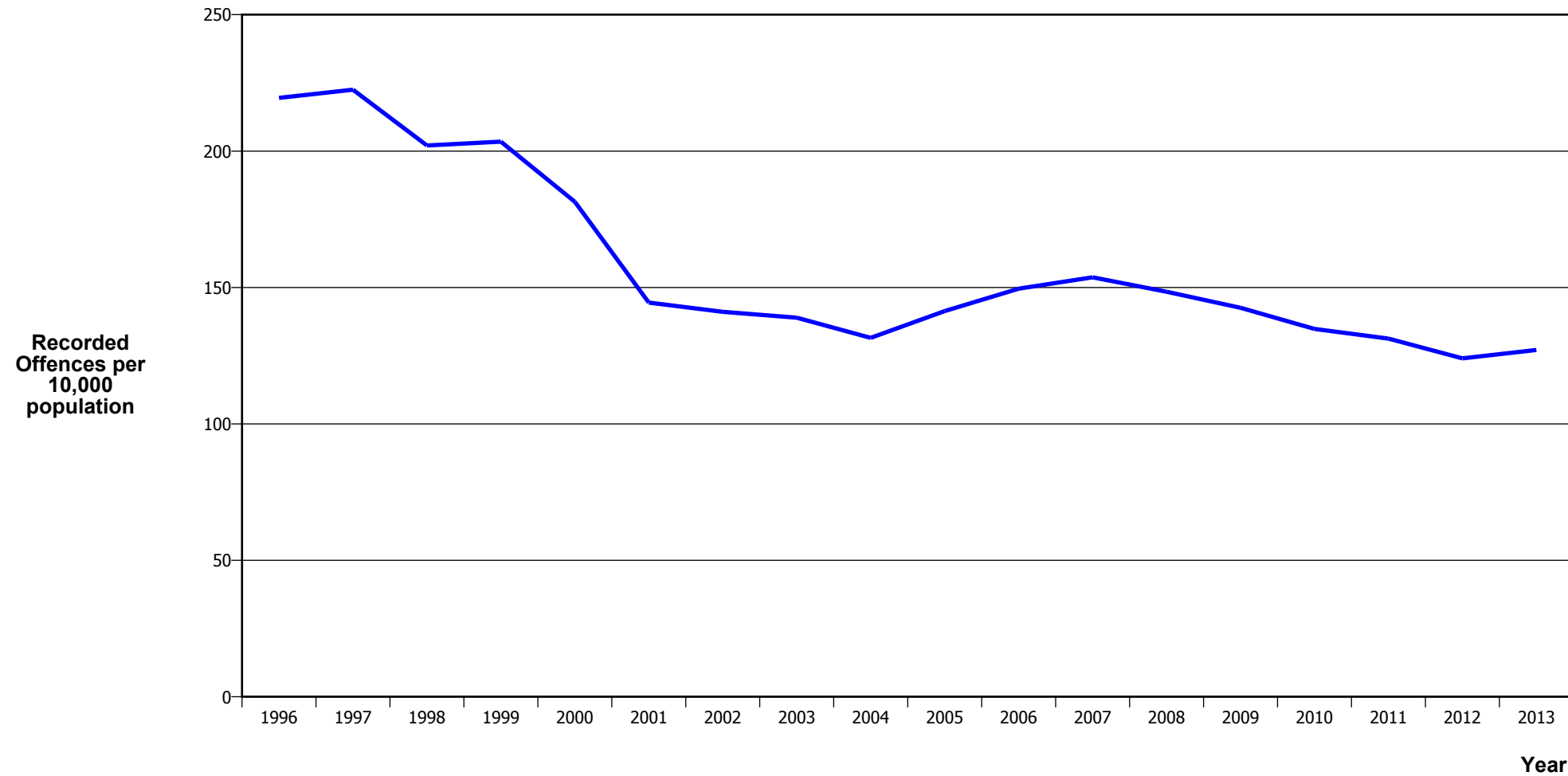
Calendar Year	1996	1997	1998	1999	2000	2001	2002	2003	2004	2005	2006	2007	2008	2009	2010	2011	2012	2013
Recorded Offences	1,548	1,468	1,356	1,282	1,288	1,245	1,399	1,472	1,486	1,495	1,561	1,886	2,067	2,248	2,138	2,265	2,078	1,982
Recorded per 10,000 Population	44.0	41.8	38.8	36.9	37.3	36.4	40.9	42.8	43.1	43.4	45.2	54.7	59.9	64.8	61.3	64.6	59.2	56.3

ROBBERY



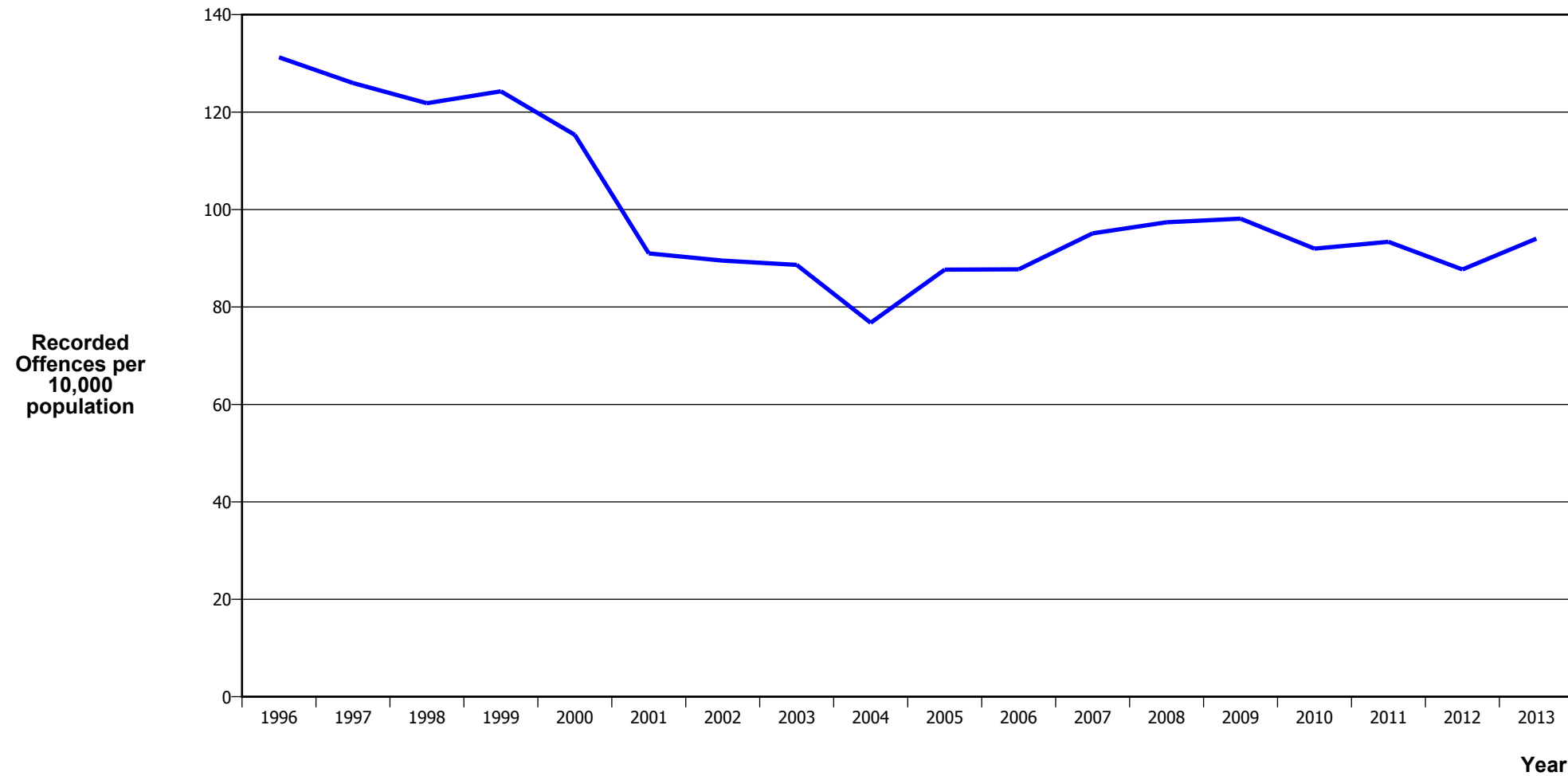
Calendar Year	1996	1997	1998	1999	2000	2001	2002	2003	2004	2005	2006	2007	2008	2009	2010	2011	2012	2013
Recorded Offences	165	155	147	124	94	108	108	108	82	129	149	149	129	134	136	115	97	90
Recorded per 10,000 Population	4.7	4.4	4.2	3.6	2.7	3.2	3.2	3.1	2.4	3.7	4.3	4.3	3.7	3.9	3.9	3.3	2.8	2.6

BURGLARY (TOTAL)



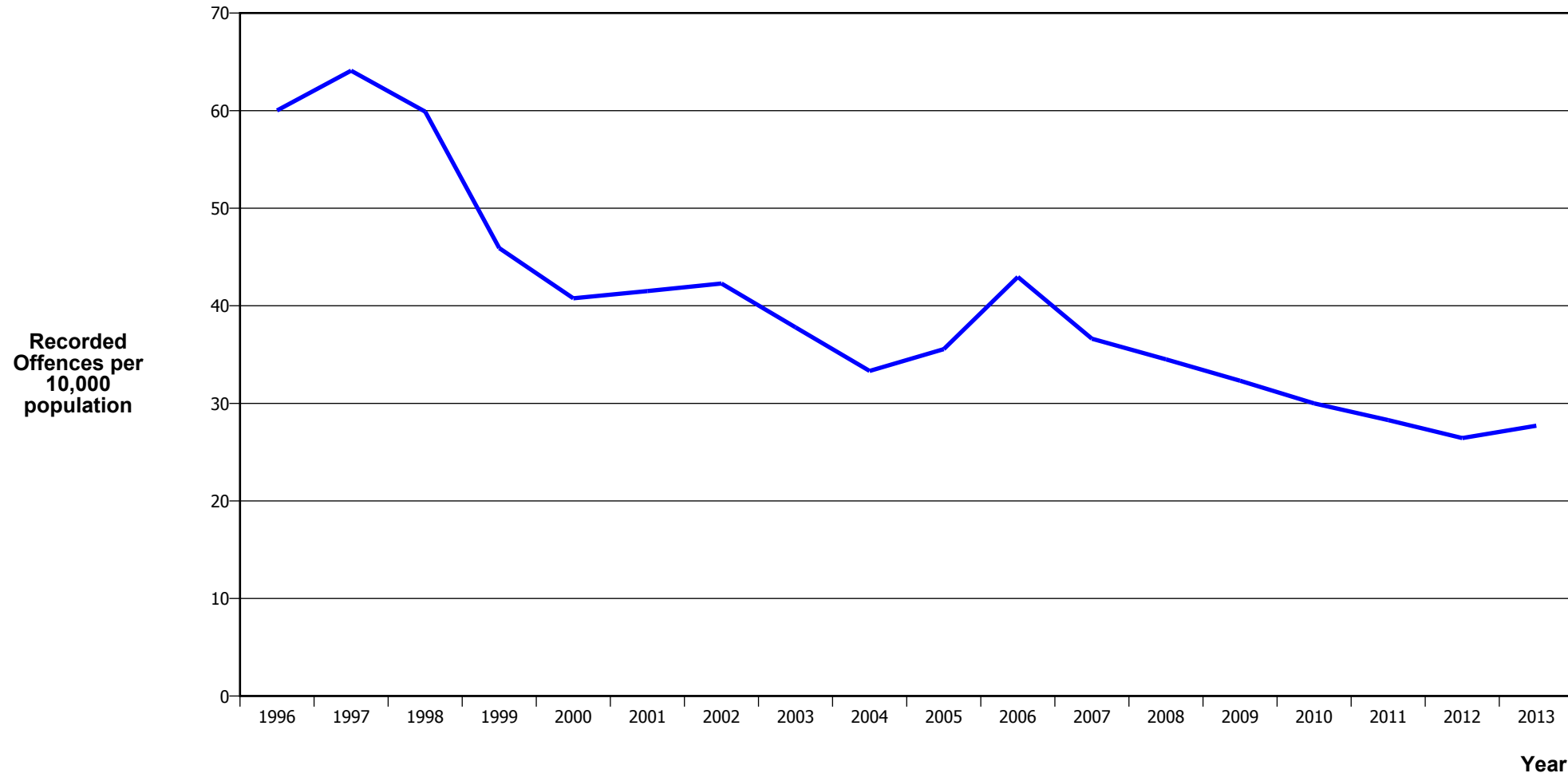
Calendar Year	1996	1997	1998	1999	2000	2001	2002	2003	2004	2005	2006	2007	2008	2009	2010	2011	2012	2013
Recorded Offences	7,723	7,806	7,053	7,060	6,260	4,939	4,831	4,777	4,531	4,867	5,160	5,297	5,123	4,944	4,705	4,603	4,356	4,472
Recorded per 10,000 Population	219.5	222.5	202.0	203.5	181.4	144.5	141.1	139.0	131.5	141.4	149.6	153.7	148.4	142.5	134.8	131.3	124.0	127.1

BURGLARY (DWELLING)



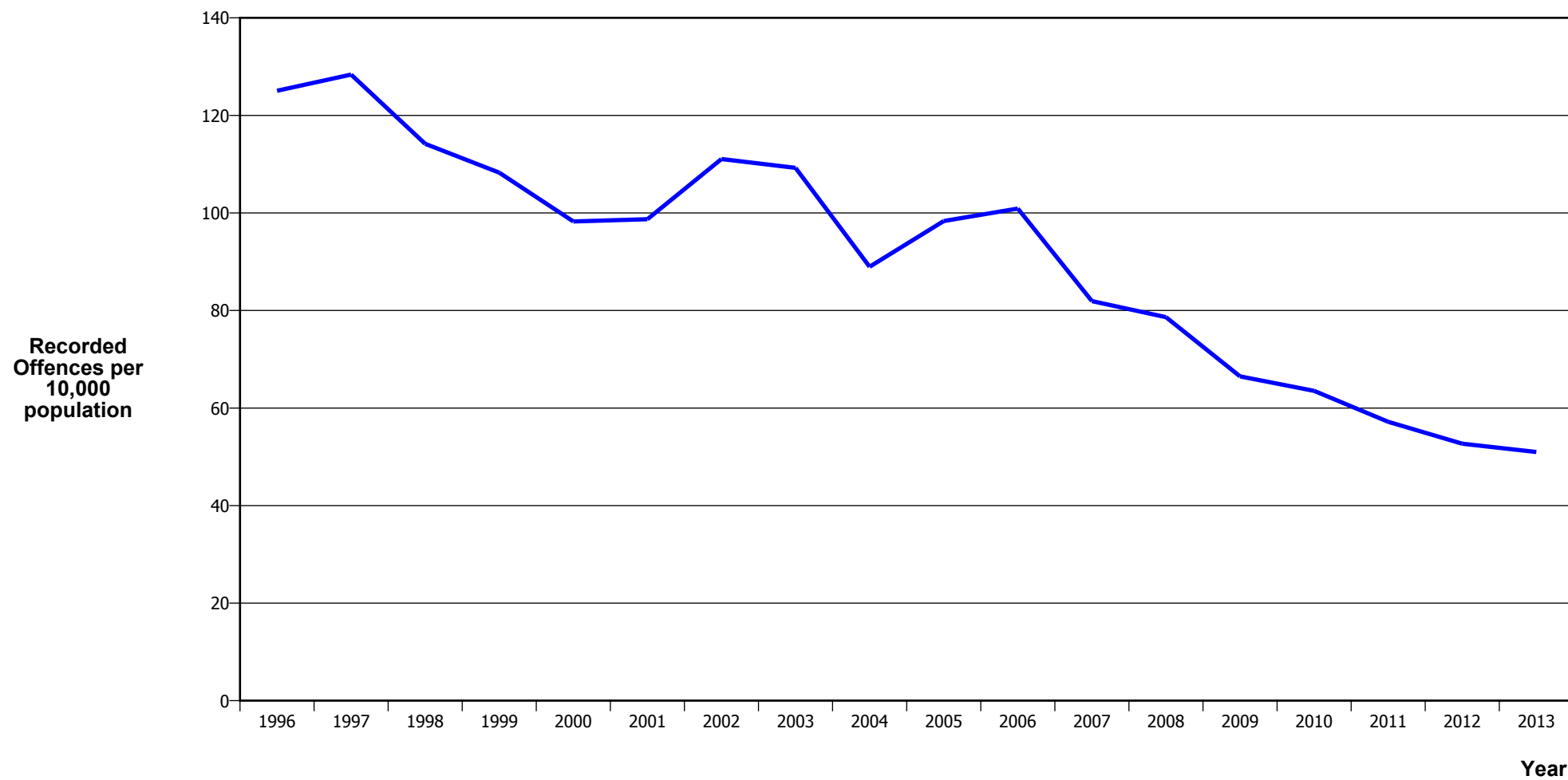
Calendar Year	1996	1997	1998	1999	2000	2001	2002	2003	2004	2005	2006	2007	2008	2009	2010	2011	2012	2013
Recorded Offences	4,618	4,420	4,253	4,312	3,980	3,111	3,065	3,047	2,644	3,018	3,027	3,278	3,361	3,403	3,210	3,274	3,081	3,309
Recorded per 10,000 Population	131.2	126.0	121.8	124.3	115.3	91.0	89.5	88.6	76.8	87.7	87.7	95.1	97.4	98.1	92.0	93.4	87.7	94.0

VEHICLES STOLEN



Calendar Year	1996	1997	1998	1999	2000	2001	2002	2003	2004	2005	2006	2007	2008	2009	2010	2011	2012	2013
Recorded Offences	2,112	2,249	2,091	1,593	1,407	1,419	1,448	1,299	1,148	1,224	1,482	1,262	1,191	1,121	1,047	992	929	975
Recorded per 10,000 Population	60.0	64.1	59.9	45.9	40.8	41.5	42.3	37.8	33.3	35.6	43.0	36.6	34.5	32.3	30.0	28.3	26.4	27.7

THEFT EX CAR



Calendar Year	1996	1997	1998	1999	2000	2001	2002	2003	2004	2005	2006	2007	2008	2009	2010	2011	2012	2013
Recorded Offences	4,400	4,504	3,986	3,757	3,391	3,375	3,803	3,756	3,065	3,386	3,481	2,823	2,714	2,306	2,217	2,005	1,851	1,794
Recorded per 10,000 Population	125.0	128.4	114.2	108.3	98.3	98.7	111.1	109.3	89.0	98.3	100.9	81.9	78.6	66.5	63.5	57.2	52.7	51.0

Population Data

Population data is used in this release to calculate crime rates. They have been derived from population estimates as at 30 June each year that have been obtained from Statistics New Zealand.

The estimated resident population is based on the census usually resident population count, with adjustments for residents missed or counted more than once by the census (net census undercount), and for residents temporarily overseas on census night.

These population estimates exclude the number of international students who are studying in New Zealand for less than 12 months.

Year	Population
1996	351,870
1997	350,860
1998	349,090
1999	346,990
2000	345,090
2001	341,890
2002	342,440
2003	343,780
2004	344,480
2005	344,290
2006	345,020
2007	344,600
2008	345,130
2009	346,830
2010	349,030
2011	350,670
2012	351,270
2013	351,880

General Definitions

Recorded Offences: the number of breaches of the New Zealand law recorded by Police. This includes offences specified in the Crimes Act and other legislations, such as the Summary Offences Act, Local Government Act, etc.

Resolved Offences: the number of recorded offences where an offender has been identified and dealt with (e.g. warned, cautioned, prosecuted, etc).

Resolution Rate: the proportion of recorded offences that have been resolved.

Recorded per 10,000 population: the number of recorded offences for every 10,000 people. This is also referred as the crime rate per 10,000 population.

ANZSOC: The Australian and New Zealand Standard Offence Classification. The offence classification is divided into 16 major offence divisions.

Definition of ANZSOC Divisions

1. Homicide and related offences: Unlawfully kill, attempt to unlawfully kill or conspiracy to kill another person.
2. Acts intended to cause injury: Acts, excluding attempted murder and those resulting in death, which are intended to cause non-fatal injury or harm to another person and where there is no sexual or acquisitive element.
3. Sexual assault and related offences: Acts, or intent of acts, of a sexual nature against another person, which are non-consensual or where consent is proscribed.
4. Dangerous or negligent acts endangering persons: Dangerous or negligent acts which, though not intended to cause harm, actually or potentially result in injury to oneself or another person.
5. Abduction, harassment and other offences against person: Acts intended to threaten or harass, or acts that unlawfully deprive another person of their freedom of movement, that are against that person's will or against the will of any parent, guardian or other person having lawful custody or care of that person.
6. Robbery, extortion and related offences: Acts intended to unlawfully gain money, property or other items of value from, or to cause detriment to, another person by using the threat of force or any other coercive measure.
7. Unlawful entry with intent / burglary, break and enter: The unlawful entry of a structure with the intent to commit an offence, where the entry is either forced or unforced.
8. Theft and related and offences: The unlawful taking or obtaining of money or goods, not involving the use of force or violence, coercion or deception, with intent to permanently or temporarily deprive the owner or possessor of the use of the money or goods, or the receiving or handling of money or goods obtained unlawfully.

9. Fraud, deception and related offences: Offences involving a dishonest act or omission carried out with the purpose of deceiving to obtain a benefit.

10. Illicit drug offences: The possessing, selling, dealing or trafficking, importing or exporting, manufacturing or cultivating of drugs or other substances prohibited under legislation.

11. Prohibited and regulated weapons and explosives offences: Offences involving prohibited or regulated weapons and explosives. Those offences also involving assault, sexual assault or robbery are coded to the relevant group within Assault, Sexual assaults and Robbery respectively.

12. Property damage and environmental pollution: The wilful and unlawful destruction, damage or defacement of public or private property, or the pollution of property or a definable entity held in common by the community.

13. Public order offences: Offences relating personal conduct that involves, or may lead to, a breach of public order or decency, or that is indicative of criminal intent, or that is otherwise regulated or prohibited on moral or ethical grounds. In general these offences do not involve a specific victim or victims; however some offences, such as offensive language and offensive behaviour, may be directed towards a single victim.

14. Traffic and vehicle regulatory offences: Offences relating to vehicles and most forms of traffic, including offences pertaining to the licensing, registration, roadworthiness, or use of vehicles, bicycle offences and pedestrian offences.

15. Offences against justice procedures, government security and government operations: An act or omission that is deemed to be prejudicial to the effective carrying out of justice procedures or any government operations. This includes general government operations as well as those specifically concerned with maintaining government security.

16. Miscellaneous offences: Offences involving the breach of statutory rules or regulations governing activities that are prima facie legal, where such offences are not explicitly dealt with under any other division. If an offence is specified under regulation and involves an act that would be illegal under common law or general criminal legislation, the offence is dealt with under the appropriate generic group.