

CANTERBURY DISTRICT CRIME STATISTICS 2013/2014



**A Summary of
Recorded and Resolved Offence
Statistics**

**POLICE NATIONAL HEADQUARTERS
October 2014**

ISSN 1178-1637

Table of Contents:

Topic	Page
Report Notes	1
Summary of District Recorded and Resolved Crime by Division	2 - 4
Proportions of Recorded Crime by Division	5
Summary of District Recorded Offences, Rate per 10,000 Population and Resolved Offences, by Area	6
Summary of Area Recorded Offences, Rate per 10,000 Population and Resolved Offences, by Division	7 - 11
Crime Trends:	12
Total Crime	13
Murder	14
Serious Assaults Resulting in Injury	15
Sexual Assaults	16
Public Place Assaults	17
Dwelling Assaults	18
Robbery	19
Burglary	20
Burglary (Dwelling)	21
Vehicles Stolen	22
Theft Ex Car	23
Population Data	24
General Definitions	25 - 26

REPORT NOTES:

Statistics reported in this document are derived from the Police National Intelligence Application (NIA). These Official Statistics for Recorded and Resolved Offences present a snapshot of data in NIA relating to offences that occur within a given year, as at the date 14 days following the end of that year.

Unless the matter is minor where Police attendance is sufficient, a matter that is reported to or discovered by Police where Police believe an offence is likely to have been committed is counted as a recorded offence.

A recorded offence is counted as resolved when Police apprehend an offender and decide how to deal with him/her. (E.g. warn, prosecute, etc.)

Resolution rate is the percentage of recorded offences that are resolved within 14 days of the end of the year being reported on.

If an offence is resolved 15 days or more after the end of the year it will not appear in the Official Crime Statistics for that or any other year. Resolution Rate therefore undercounts the number of cases that Police have resolved. This phenomenon has a more marked impact for some types of offences than others, such as offences that require long investigations (E.g. many serial crimes, burglaries and murders).

Several offences have been reclassified into different ANZSOC groups. This has resulted in changes to subtotals for Groups and Sub-divisions within Divisions 10, 15 and 16, compared to previously reported data. Generally, this occurred within the same Division.

When comparing 2013/2014 Statistics with previous years, the reader should also refer to "Report Notes" published in previous years' reports, as previous changes significantly affect year on year trends.

SUMMARY OF DISTRICT RECORDED AND RESOLVED CRIME, BY DIVISION
Years ending 30 June

HOMICIDE AND RELATED OFFENCES

ANZSOC Subdivision Description	Recorded 20112012	Recorded 20122013	Recorded 20132014	Variance 10/11-11/12	Variance 12/13-13/14	Resolved 20112012	Resolved 20122013	Resolved 20132014	Resolution Rate 20112012	Resolution Rate 20122013	Resolution Rate 20132014
ATTEMPTED MURDER	4	1	0	-75.0 %	-100.0 %	4	1	0	100.0 %	100.0 %	0.0 %
HOMICIDE AND RELATED OFFENCES NOT FURTHER DEFINED	0	0	1	0.0 %	0.0 %	0	0	0	0.0 %	0.0 %	0.0 %
MANSLAUGHTER AND DRIVING CAUSING DEATH	1	1	1	0.0 %	0.0 %	1	1	1	100.0 %	100.0 %	100.0 %
MURDER	10	4	5	-60.0 %	25.0 %	10	4	5	100.0 %	100.0 %	100.0 %
	15	6	7	-60.0 %	16.7 %	15	6	6	100.0 %	100.0 %	85.7 %

ACTS INTENDED TO CAUSE INJURY

ANZSOC Subdivision Description	Recorded 20112012	Recorded 20122013	Recorded 20132014	Variance 10/11-11/12	Variance 12/13-13/14	Resolved 20112012	Resolved 20122013	Resolved 20132014	Resolution Rate 20112012	Resolution Rate 20122013	Resolution Rate 20132014
ASSAULT	3,517	3,711	3,659	5.5 %	-1.4 %	2,686	2,751	2,510	76.4 %	74.1 %	68.6 %
OTHER ACTS INTENDED TO CAUSE INJURY	3	2	4	-33.3 %	100.0 %	2	1	3	66.7 %	50.0 %	75.0 %
	3,520	3,713	3,663	5.5 %	-1.3 %	2,688	2,752	2,513	76.4 %	74.1 %	68.6 %

SEXUAL ASSAULT AND RELATED OFFENCES

ANZSOC Subdivision Description	Recorded 20112012	Recorded 20122013	Recorded 20132014	Variance 10/11-11/12	Variance 12/13-13/14	Resolved 20112012	Resolved 20122013	Resolved 20132014	Resolution Rate 20112012	Resolution Rate 20122013	Resolution Rate 20132014
NON-ASSAULTIVE SEXUAL OFFENCES	13	27	12	107.7 %	-55.6 %	5	21	5	38.5 %	77.8 %	41.7 %
SEXUAL ASSAULT	368	459	411	24.7 %	-10.5 %	188	243	172	51.1 %	52.9 %	41.8 %
	381	486	423	27.6 %	-13.0 %	193	264	177	50.7 %	54.3 %	41.8 %

DANGEROUS OR NEGLIGENT ACTS ENDANGERING PERSONS

ANZSOC Subdivision Description	Recorded 20112012	Recorded 20122013	Recorded 20132014	Variance 10/11-11/12	Variance 12/13-13/14	Resolved 20112012	Resolved 20122013	Resolved 20132014	Resolution Rate 20112012	Resolution Rate 20122013	Resolution Rate 20132014
OTHER DANGEROUS OR NEGLIGENT ACTS ENDANGERING PERSONS	78	76	56	-2.6 %	-26.3 %	40	44	19	51.3 %	57.9 %	33.9 %
	78	76	56	-2.6 %	-26.3 %	40	44	19	51.3 %	57.9 %	33.9 %

ABDUCTION, HARASSMENT AND OTHER RELATED OFFENCES AGAINST A PERSON

ANZSOC Subdivision Description	Recorded 20112012	Recorded 20122013	Recorded 20132014	Variance 10/11-11/12	Variance 12/13-13/14	Resolved 20112012	Resolved 20122013	Resolved 20132014	Resolution Rate 20112012	Resolution Rate 20122013	Resolution Rate 20132014
ABDUCTION AND KIDNAPPING	14	17	20	21.4 %	17.6 %	11	7	10	78.6 %	41.2 %	50.0 %
DEPRIVATION OF LIBERTY/FALSE IMPRISONMENT	7	2	0	-71.4 %	-100.0 %	7	2	0	100.0 %	100.0 %	0.0 %
HARASSMENT AND THREATENING BEHAVIOUR	1,198	1,418	1,739	18.4 %	22.6 %	711	721	709	59.3 %	50.8 %	40.8 %
	1,219	1,437	1,759	17.9 %	22.4 %	729	730	719	59.8 %	50.8 %	40.9 %

ROBBERY, EXTORTION AND RELATED OFFENCES

ANZSOC Subdivision Description	Recorded 20112012	Recorded 20122013	Recorded 20132014	Variance 10/11-11/12	Variance 12/13-13/14	Resolved 20112012	Resolved 20122013	Resolved 20132014	Resolution Rate 20112012	Resolution Rate 20122013	Resolution Rate 20132014
BLACKMAIL AND EXTORTION	12	18	10	50.0 %	-44.4 %	8	13	2	66.7 %	72.2 %	20.0 %
ROBBERY	160	174	206	8.8 %	18.4 %	59	75	77	36.9 %	43.1 %	37.4 %
	172	192	216	11.6 %	12.5 %	67	88	79	39.0 %	45.8 %	36.6 %

UNLAWFUL ENTRY WITH INTENT/BURGLARY, BREAK AND ENTER

ANZSOC Subdivision Description	Recorded 20112012	Recorded 20122013	Recorded 20132014	Variance 10/11-11/12	Variance 12/13-13/14	Resolved 20112012	Resolved 20122013	Resolved 20132014	Resolution Rate 20112012	Resolution Rate 20122013	Resolution Rate 20132014
UNLAWFUL ENTRY WITH INTENT/BURGLARY, BREAK AND ENTER	5,538	5,694	5,412	2.8 %	-5.0 %	727	727	742	13.1 %	12.8 %	13.7 %
	5,538	5,694	5,412	2.8 %	-5.0 %	727	727	742	13.1 %	12.8 %	13.7 %

SUMMARY OF DISTRICT RECORDED AND RESOLVED CRIME, BY DIVISION

Years ending 30 June

THEFT AND RELATED OFFENCES

ANZSOC Subdivision Description	Recorded 20112012	Recorded 20122013	Recorded 20132014	Variance 10/11-11/12	Variance 12/13-13/14	Resolved 20112012	Resolved 20122013	Resolved 20132014	Resolution Rate 20112012	Resolution Rate 20122013	Resolution Rate 20132014
ILLEGAL USE OF PROPERTY (EXCEPT MOTOR VEHICLES)	567	405	659	-28.6 %	62.7 %	20	13	22	3.5 %	3.2 %	3.3 %
MOTOR VEHICLE THEFT AND RELATED OFFENCES	5,670	6,140	5,712	8.3 %	-7.0 %	613	688	531	10.8 %	11.2 %	9.3 %
RECEIVE OR HANDLE PROCEEDS OF CRIME	319	286	341	-10.3 %	19.2 %	311	277	332	97.5 %	96.9 %	97.4 %
THEFT (EXCEPT MOTOR VEHICLES)	6,575	6,851	6,889	4.2 %	0.6 %	2,280	2,435	2,224	34.7 %	35.5 %	32.3 %
	13,131	13,682	13,601	4.2 %	-0.6 %	3,224	3,413	3,109	24.6 %	24.9 %	22.9 %

FRAUD, DECEPTION AND RELATED OFFENCES

ANZSOC Subdivision Description	Recorded 20112012	Recorded 20122013	Recorded 20132014	Variance 10/11-11/12	Variance 12/13-13/14	Resolved 20112012	Resolved 20122013	Resolved 20132014	Resolution Rate 20112012	Resolution Rate 20122013	Resolution Rate 20132014
DECEPTIVE BUSINESS/GOVERNMENT PRACTICES	7	1	2	-85.7 %	100.0 %	2	1	1	28.6 %	100.0 %	50.0 %
FORGERY AND COUNTERFEITING	32	53	45	65.6 %	-15.1 %	10	22	23	31.3 %	41.5 %	51.1 %
OBTAIN BENEFIT BY DECEPTION	932	838	958	-10.1 %	14.3 %	598	441	543	64.2 %	52.6 %	56.7 %
OTHER FRAUD AND DECEPTION OFFENCES	161	144	92	-10.6 %	-36.1 %	101	91	30	62.7 %	63.2 %	32.6 %
	1,132	1,036	1,097	-8.5 %	5.9 %	711	555	597	62.8 %	53.6 %	54.4 %

ILLICIT DRUG OFFENCES

ANZSOC Subdivision Description	Recorded 20112012	Recorded 20122013	Recorded 20132014	Variance 10/11-11/12	Variance 12/13-13/14	Resolved 20112012	Resolved 20122013	Resolved 20132014	Resolution Rate 20112012	Resolution Rate 20122013	Resolution Rate 20132014
DEAL OR TRAFFIC IN ILLICIT DRUGS	167	141	169	-15.6 %	19.9 %	161	128	153	96.4 %	90.8 %	90.5 %
IMPORT OR EXPORT ILLICIT DRUGS	5	5	12	0.0 %	140.0 %	2	3	5	40.0 %	60.0 %	41.7 %
MANUFACTURE OR CULTIVATE ILLICIT DRUGS	231	178	147	-22.9 %	-17.4 %	217	162	129	93.9 %	91.0 %	87.8 %
OTHER ILLICIT DRUG OFFENCES	538	465	335	-13.6 %	-28.0 %	528	453	320	98.1 %	97.4 %	95.5 %
POSSESS AND/OR USE ILLICIT DRUGS	949	800	612	-15.7 %	-23.5 %	923	777	573	97.3 %	97.1 %	93.6 %
	1,890	1,589	1,275	-15.9 %	-19.8 %	1,831	1,523	1,180	96.9 %	95.8 %	92.5 %

PROHIBITED AND REGULATED WEAPONS AND EXPLOSIVES OFFENCES

ANZSOC Subdivision Description	Recorded 20112012	Recorded 20122013	Recorded 20132014	Variance 10/11-11/12	Variance 12/13-13/14	Resolved 20112012	Resolved 20122013	Resolved 20132014	Resolution Rate 20112012	Resolution Rate 20122013	Resolution Rate 20132014
REGULATED WEAPONS/EXPLOSIVES OFFENCES	584	611	549	4.6 %	-10.1 %	521	559	486	89.2 %	91.5 %	88.5 %
	584	611	549	4.6 %	-10.1 %	521	559	486	89.2 %	91.5 %	88.5 %

PROPERTY DAMAGE AND ENVIRONMENTAL POLLUTION

ANZSOC Subdivision Description	Recorded 20112012	Recorded 20122013	Recorded 20132014	Variance 10/11-11/12	Variance 12/13-13/14	Resolved 20112012	Resolved 20122013	Resolved 20132014	Resolution Rate 20112012	Resolution Rate 20122013	Resolution Rate 20132014
ENVIRONMENTAL POLLUTION	17	17	14	0.0 %	-17.6 %	10	10	6	58.8 %	58.8 %	42.9 %
PROPERTY DAMAGE	6,254	6,654	5,324	6.4 %	-20.0 %	1,694	1,805	1,296	27.1 %	27.1 %	24.3 %
	6,271	6,671	5,338	6.4 %	-20.0 %	1,704	1,815	1,302	27.2 %	27.2 %	24.4 %

PUBLIC ORDER OFFENCES

ANZSOC Subdivision Description	Recorded 20112012	Recorded 20122013	Recorded 20132014	Variance 10/11-11/12	Variance 12/13-13/14	Resolved 20112012	Resolved 20122013	Resolved 20132014	Resolution Rate 20112012	Resolution Rate 20122013	Resolution Rate 20132014
DISORDERLY CONDUCT	3,307	3,494	2,953	5.7 %	-15.5 %	2,807	3,016	2,452	84.9 %	86.3 %	83.0 %
OFFENSIVE CONDUCT	230	281	201	22.2 %	-28.5 %	171	194	125	74.3 %	69.0 %	62.2 %
PUBLIC ORDER OFFENCES NOT FURTHER DEFINED	0	1	3	0.0 %	200.0 %	0	1	1	0.0 %	100.0 %	33.3 %
REGULATED PUBLIC ORDER OFFENCES	975	1,814	617	86.1 %	-66.0 %	875	1,690	532	89.7 %	93.2 %	86.2 %
	4,512	5,590	3,774	23.9 %	-32.5 %	3,853	4,901	3,110	85.4 %	87.7 %	82.4 %

SUMMARY OF DISTRICT RECORDED AND RESOLVED CRIME, BY DIVISION

Years ending 30 June

OFFENCES AGAINST JUSTICE PROCEDURES, GOVERNMENT SECURITY AND GOVERNMENT OPERATIONS

ANZSOC Subdivision Description	Recorded 20112012	Recorded 20122013	Recorded 20132014	Variance 10/11-11/12	Variance 12/13-13/14	Resolved 20112012	Resolved 20122013	Resolved 20132014	Resolution Rate 20112012	Resolution Rate 20122013	Resolution Rate 20132014
BREACH OF COMMUNITY-BASED ORDER	845	682	688	-19.3 %	0.9 %	833	679	680	98.6 %	99.6 %	98.8 %
BREACH OF CUSTODIAL ORDER OFFENCES	48	39	36	-18.8 %	-7.7 %	46	37	33	95.8 %	94.9 %	91.7 %
BREACH OF VIOLENCE AND NON-VIOLENCE RESTRAINING ORDERS	424	473	593	11.6 %	25.4 %	348	402	475	82.1 %	85.0 %	80.1 %
OFFENCES AGAINST GOVERNMENT OPERATIONS	22	40	23	81.8 %	-42.5 %	16	23	9	72.7 %	57.5 %	39.1 %
OFFENCES AGAINST GOVERNMENT SECURITY	1	0	0	-100.0 %	0.0 %	0	0	0	0.0 %	0.0 %	0.0 %
OFFENCES AGAINST JUSTICE PROCEDURES	453	501	389	10.6 %	-22.4 %	444	484	375	98.0 %	96.6 %	96.4 %
OFFENCES AGAINST JUSTICE PROCEDURES, GOVERNMENT SECURITY AND GOVERNMENT OPERATIONS NOT FURTHER DEFINED	0	0	1	0.0 %	0.0 %	0	0	0	0.0 %	0.0 %	0.0 %
	1,793	1,735	1,730	-3.2 %	-0.3 %	1,687	1,625	1,572	94.1 %	93.7 %	90.9 %

MISCELLANEOUS OFFENCES

ANZSOC Subdivision Description	Recorded 20112012	Recorded 20122013	Recorded 20132014	Variance 10/11-11/12	Variance 12/13-13/14	Resolved 20112012	Resolved 20122013	Resolved 20132014	Resolution Rate 20112012	Resolution Rate 20122013	Resolution Rate 20132014
COMMERCIAL/INDUSTRY/FINANCIAL REGULATION	4	1	1	-75.0 %	0.0 %	2	1	0	50.0 %	100.0 %	0.0 %
DEFAMATION, LIBEL AND PRIVACY OFFENCES	10	7	7	-30.0 %	0.0 %	6	2	0	60.0 %	28.6 %	0.0 %
OTHER MISCELLANEOUS OFFENCES	230	148	129	-35.7 %	-12.8 %	187	77	54	81.3 %	52.0 %	41.9 %
PUBLIC HEALTH AND SAFETY OFFENCES	42	48	27	14.3 %	-43.8 %	39	42	19	92.9 %	87.5 %	70.4 %
	286	204	164	-28.7 %	-19.6 %	234	122	73	81.8 %	59.8 %	44.5 %
TOTAL	40,522	42,722	39,064	5.4 %	-8.6 %	18,224	19,124	15,684	45.0 %	44.8 %	40.1 %

PROPORTION OF RECORDED CRIME BY DIVISION

Years ending 30 June

ANZSOC Division Description	Proportions Recorded 20112012	Recorded 20112012	Proportions Recorded 20122013	Recorded 20122013	Proportions Recorded 20132014	Recorded 20132014
HOMICIDE AND RELATED OFFENCES	0.0 %	15	0.0 %	6	0.0 %	7
ACTS INTENDED TO CAUSE INJURY	8.7 %	3,520	8.7 %	3,713	9.4 %	3,663
SEXUAL ASSAULT AND RELATED OFFENCES	0.9 %	381	1.1 %	486	1.1 %	423
DANGEROUS OR NEGLIGENT ACTS ENDANGERING PERSONS	0.2 %	78	0.2 %	76	0.1 %	56
ABDUCTION, HARASSMENT AND OTHER RELATED OFFENCES AGAINST A PERSON	3.0 %	1,219	3.4 %	1,437	4.5 %	1,759
ROBBERY, EXTORTION AND RELATED OFFENCES	0.4 %	172	0.4 %	192	0.6 %	216
UNLAWFUL ENTRY WITH INTENT/BURGLARY, BREAK AND ENTER	13.7 %	5,538	13.3 %	5,694	13.9 %	5,412
THEFT AND RELATED OFFENCES	32.4 %	13,131	32.0 %	13,682	34.8 %	13,601
FRAUD, DECEPTION AND RELATED OFFENCES	2.8 %	1,132	2.4 %	1,036	2.8 %	1,097
ILLICIT DRUG OFFENCES	4.7 %	1,890	3.7 %	1,589	3.3 %	1,275
PROHIBITED AND REGULATED WEAPONS AND EXPLOSIVES OFFENCES	1.4 %	584	1.4 %	611	1.4 %	549
PROPERTY DAMAGE AND ENVIRONMENTAL POLLUTION	15.5 %	6,271	15.6 %	6,671	13.7 %	5,338
PUBLIC ORDER OFFENCES	11.1 %	4,512	13.1 %	5,590	9.7 %	3,774
OFFENCES AGAINST JUSTICE PROCEDURES, GOVERNMENT SECURITY AND GOVERNMENT OPERATIONS	4.4 %	1,793	4.1 %	1,735	4.4 %	1,730
MISCELLANEOUS OFFENCES	0.7 %	286	0.5 %	204	0.4 %	164
	100.0 %	40,522	100.0 %	42,722	100.0 %	39,064

SUMMARY OF DISTRICT RECORDED OFFENCES, RATE PER 10,000 POPULATION AND RESOLVED OFFENCES, BY AREA
years ending 30 June

TOTAL CRIME

Area Description	Recorded 20122013	Recorded 20132014	Variance 12/13-13/14	Recorded per 10,000 pop 20122013	Recorded per 10,000 pop 20132014	per 10,000 pop % Variance 12/13 to 13/14	Resolved 20122013	Resolved 20132014	Resolution Rate 20122013	Resolution Rate 20132014
Canterbury Metro	37,571	34,305	-8.7 %	808.1	720.9	-10.8 %	16,418	13,360	43.7 %	38.9 %
Mid South Canterbury	5,151	4,759	-7.6 %	588.7	538.1	-8.6 %	2,706	2,324	52.5 %	48.8 %
Total	42,722	39,064	-8.6 %	773.3	692.2	-10.5 %	19,124	15,684	44.8 %	40.1 %

**SUMMARY OF AREA RECORDED OFFENCES, RATE PER 10,000 POPULATION AND
RESOLVED OFFENCES, BY DIVISION**

years ending 30 June

HOMICIDE AND RELATED OFFENCES

Area Description	Recorded 20122013	Recorded 20132014	Variance 12/13-13/14	Recorded per 10,000 pop 20122013	Recorded per 10,000 pop 20132014	per 10,000 pop % Variance 12/13 to 13/14	Resolved 20122013	Resolved 20132014	Resolution Rate 20122013	Resolution Rate 20132014
Canterbury Metro	4	7	75.0 %	0.1	0.1	71.0 %	4	6	100.0 %	85.7 %
Mid South Canterbury	2	0	-100.0 %	0.2	0.0	-100.0 %	2	0	100.0 %	0.0 %
Total	6	7	16.7 %	0.1	0.1	14.2 %	6	6	100.0 %	85.7 %

ACTS INTENDED TO CAUSE INJURY

Area Description	Recorded 20122013	Recorded 20132014	Variance 12/13-13/14	Recorded per 10,000 pop 20122013	Recorded per 10,000 pop 20132014	per 10,000 pop % Variance 12/13 to 13/14	Resolved 20122013	Resolved 20132014	Resolution Rate 20122013	Resolution Rate 20132014
Canterbury Metro	3,181	3,084	-3.0 %	68.4	64.8	-5.3 %	2,270	2,037	71.4 %	66.1 %
Mid South Canterbury	532	579	8.8 %	60.8	65.5	7.7 %	482	476	90.6 %	82.2 %
Total	3,713	3,663	-1.3 %	67.2	64.9	-3.4 %	2,752	2,513	74.1 %	68.6 %

SEXUAL ASSAULT AND RELATED OFFENCES

Area Description	Recorded 20122013	Recorded 20132014	Variance 12/13-13/14	Recorded per 10,000 pop 20122013	Recorded per 10,000 pop 20132014	per 10,000 pop % Variance 12/13 to 13/14	Resolved 20122013	Resolved 20132014	Resolution Rate 20122013	Resolution Rate 20132014
Canterbury Metro	424	362	-14.6 %	9.1	7.6	-16.6 %	222	148	52.4 %	40.9 %
Mid South Canterbury	62	61	-1.6 %	7.1	6.9	-2.7 %	42	29	67.7 %	47.5 %
Total	486	423	-13.0 %	8.8	7.5	-14.8 %	264	177	54.3 %	41.8 %

DANGEROUS OR NEGLIGENT ACTS ENDANGERING PERSONS

Area Description	Recorded 20122013	Recorded 20132014	Variance 12/13-13/14	Recorded per 10,000 pop 20122013	Recorded per 10,000 pop 20132014	per 10,000 pop % Variance 12/13 to 13/14	Resolved 20122013	Resolved 20132014	Resolution Rate 20122013	Resolution Rate 20132014
Canterbury Metro	60	53	-11.7 %	1.3	1.1	-13.7 %	29	16	48.3 %	30.2 %
Mid South Canterbury	16	3	-81.3 %	1.8	0.3	-81.4 %	15	3	93.8 %	100.0 %
Total	76	56	-26.3 %	1.4	1.0	-27.9 %	44	19	57.9 %	33.9 %

**SUMMARY OF AREA RECORDED OFFENCES, RATE PER 10,000 POPULATION AND
RESOLVED OFFENCES, BY DIVISION**

years ending 30 June

ABDUCTION, HARASSMENT AND OTHER RELATED OFFENCES AGAINST A PERSON

Area Description	Recorded 20122013	Recorded 20132014	Variance 12/13-13/14	Recorded per 10,000 pop 20122013	Recorded per 10,000 pop 20132014	per 10,000 pop % Variance 12/13 to 13/14	Resolved 20122013	Resolved 20132014	Resolution Rate 20122013	Resolution Rate 20132014
Canterbury Metro	1,285	1,560	21.4 %	27.6	32.8	18.6 %	602	580	46.8 %	37.2 %
Mid South Canterbury	152	199	30.9 %	17.4	22.5	29.5 %	128	139	84.2 %	69.8 %
Total	1,437	1,759	22.4 %	26.0	31.2	19.8 %	730	719	50.8 %	40.9 %

ROBBERY, EXTORTION AND RELATED OFFENCES

Area Description	Recorded 20122013	Recorded 20132014	Variance 12/13-13/14	Recorded per 10,000 pop 20122013	Recorded per 10,000 pop 20132014	per 10,000 pop % Variance 12/13 to 13/14	Resolved 20122013	Resolved 20132014	Resolution Rate 20122013	Resolution Rate 20132014
Canterbury Metro	184	200	8.7 %	4.0	4.2	6.2 %	82	68	44.6 %	34.0 %
Mid South Canterbury	8	16	100.0 %	0.9	1.8	97.9 %	6	11	75.0 %	68.8 %
Total	192	216	12.5 %	3.5	3.8	10.1 %	88	79	45.8 %	36.6 %

UNLAWFUL ENTRY WITH INTENT/BURGLARY, BREAK AND ENTER

Area Description	Recorded 20122013	Recorded 20132014	Variance 12/13-13/14	Recorded per 10,000 pop 20122013	Recorded per 10,000 pop 20132014	per 10,000 pop % Variance 12/13 to 13/14	Resolved 20122013	Resolved 20132014	Resolution Rate 20122013	Resolution Rate 20132014
Canterbury Metro	5,196	4,833	-7.0 %	111.8	101.6	-9.1 %	633	621	12.2 %	12.8 %
Mid South Canterbury	498	579	16.3 %	56.9	65.5	15.0 %	94	121	18.9 %	20.9 %
Total	5,694	5,412	-5.0 %	103.1	95.9	-7.0 %	727	742	12.8 %	13.7 %

THEFT AND RELATED OFFENCES

Area Description	Recorded 20122013	Recorded 20132014	Variance 12/13-13/14	Recorded per 10,000 pop 20122013	Recorded per 10,000 pop 20132014	per 10,000 pop % Variance 12/13 to 13/14	Resolved 20122013	Resolved 20132014	Resolution Rate 20122013	Resolution Rate 20132014
Canterbury Metro	12,322	12,420	0.8 %	265.0	261.0	-1.5 %	2,995	2,821	24.3 %	22.7 %
Mid South Canterbury	1,360	1,181	-13.2 %	155.4	133.5	-14.1 %	418	288	30.7 %	24.4 %
Total	13,682	13,601	-0.6 %	247.7	241.0	-2.7 %	3,413	3,109	24.9 %	22.9 %

**SUMMARY OF AREA RECORDED OFFENCES, RATE PER 10,000 POPULATION AND
RESOLVED OFFENCES, BY DIVISION**

years ending 30 June

FRAUD, DECEPTION AND RELATED OFFENCES

Area Description	Recorded 2012/2013	Recorded 2013/2014	Variance 12/13-13/14	Recorded per 10,000 pop 2012/2013	Recorded per 10,000 pop 2013/2014	per 10,000 pop % Variance 12/13 to 13/14	Resolved 2012/2013	Resolved 2013/2014	Resolution Rate 2012/2013	Resolution Rate 2013/2014
Canterbury Metro	897	987	10.0 %	19.3	20.7	7.5 %	456	515	50.8 %	52.2 %
Mid South Canterbury	139	110	-20.9 %	15.9	12.4	-21.7 %	99	82	71.2 %	74.5 %
Total	1,036	1,097	5.9 %	18.8	19.4	3.7 %	555	597	53.6 %	54.4 %

ILLICIT DRUG OFFENCES

Area Description	Recorded 2012/2013	Recorded 2013/2014	Variance 12/13-13/14	Recorded per 10,000 pop 2012/2013	Recorded per 10,000 pop 2013/2014	per 10,000 pop % Variance 12/13 to 13/14	Resolved 2012/2013	Resolved 2013/2014	Resolution Rate 2012/2013	Resolution Rate 2013/2014
Canterbury Metro	1,331	1,011	-24.0 %	28.6	21.2	-25.8 %	1,272	931	95.6 %	92.1 %
Mid South Canterbury	258	264	2.3 %	29.5	29.9	1.2 %	251	249	97.3 %	94.3 %
Total	1,589	1,275	-19.8 %	28.8	22.6	-21.4 %	1,523	1,180	95.8 %	92.5 %

PROHIBITED AND REGULATED WEAPONS AND EXPLOSIVES OFFENCES

Area Description	Recorded 2012/2013	Recorded 2013/2014	Variance 12/13-13/14	Recorded per 10,000 pop 2012/2013	Recorded per 10,000 pop 2013/2014	per 10,000 pop % Variance 12/13 to 13/14	Resolved 2012/2013	Resolved 2013/2014	Resolution Rate 2012/2013	Resolution Rate 2013/2014
Canterbury Metro	528	469	-11.2 %	11.4	9.9	-13.2 %	483	413	91.5 %	88.1 %
Mid South Canterbury	83	80	-3.6 %	9.5	9.0	-4.6 %	76	73	91.6 %	91.3 %
Total	611	549	-10.1 %	11.1	9.7	-12.0 %	559	486	91.5 %	88.5 %

PROPERTY DAMAGE AND ENVIRONMENTAL POLLUTION

Area Description	Recorded 2012/2013	Recorded 2013/2014	Variance 12/13-13/14	Recorded per 10,000 pop 2012/2013	Recorded per 10,000 pop 2013/2014	per 10,000 pop % Variance 12/13 to 13/14	Resolved 2012/2013	Resolved 2013/2014	Resolution Rate 2012/2013	Resolution Rate 2013/2014
Canterbury Metro	5,459	4,354	-20.2 %	117.4	91.5	-22.1 %	1,473	1,066	27.0 %	24.5 %
Mid South Canterbury	1,212	984	-18.8 %	138.5	111.3	-19.7 %	342	236	28.2 %	24.0 %
Total	6,671	5,338	-20.0 %	120.8	94.6	-21.7 %	1,815	1,302	27.2 %	24.4 %

**SUMMARY OF AREA RECORDED OFFENCES, RATE PER 10,000 POPULATION AND
RESOLVED OFFENCES, BY DIVISION**

years ending 30 June

PUBLIC ORDER OFFENCES

Area Description	Recorded 20122013	Recorded 20132014	Variance 12/13-13/14	Recorded per 10,000 pop 20122013	Recorded per 10,000 pop 20132014	per 10,000 pop % Variance 12/13 to 13/14	Resolved 20122013	Resolved 20132014	Resolution Rate 20122013	Resolution Rate 20132014
Canterbury Metro	4,921	3,256	-33.8 %	105.8	68.4	-35.4 %	4,300	2,662	87.4 %	81.8 %
Mid South Canterbury	669	518	-22.6 %	76.5	58.6	-23.4 %	601	448	89.8 %	86.5 %
Total	5,590	3,774	-32.5 %	101.2	66.9	-33.9 %	4,901	3,110	87.7 %	82.4 %

OFFENCES AGAINST JUSTICE PROCEDURES, GOVERNMENT SECURITY AND GOVERNMENT OPERATIONS

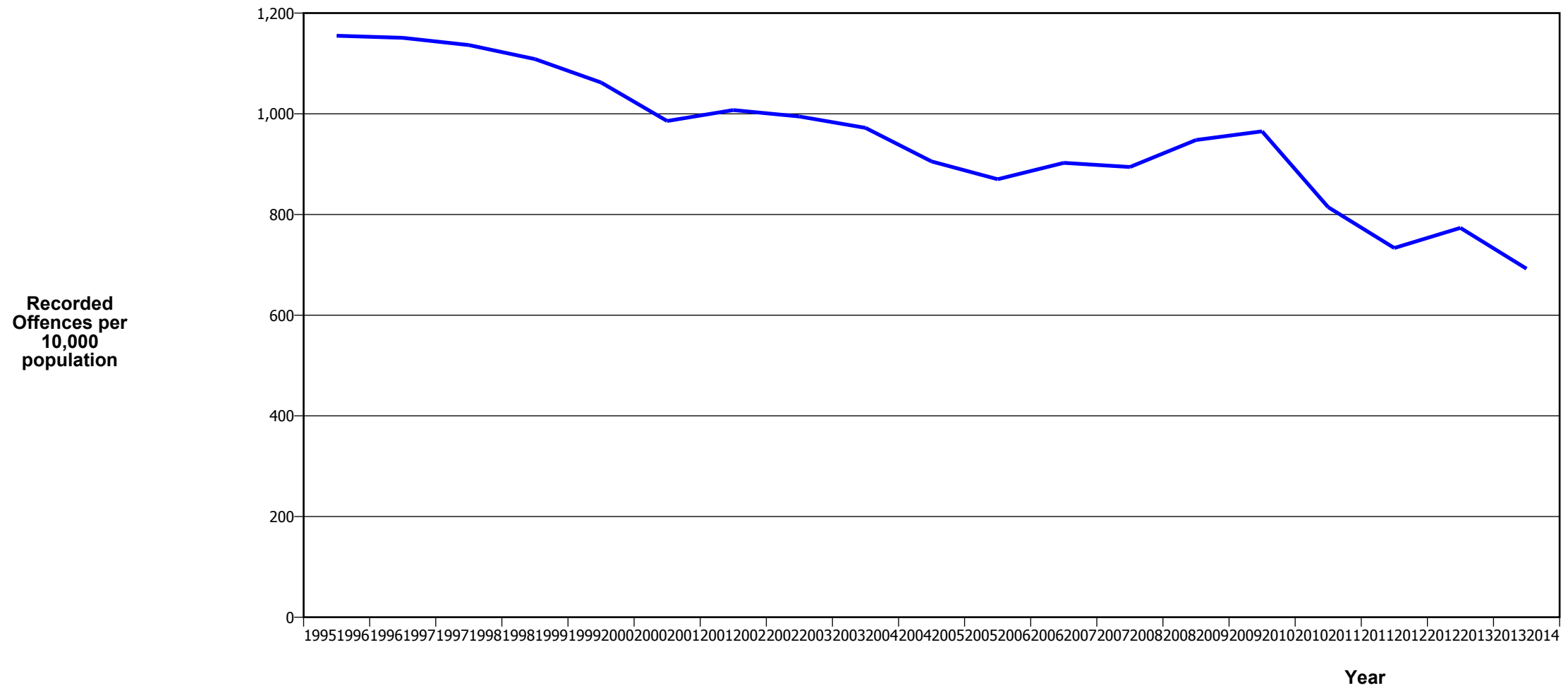
Area Description	Recorded 20122013	Recorded 20132014	Variance 12/13-13/14	Recorded per 10,000 pop 20122013	Recorded per 10,000 pop 20132014	per 10,000 pop % Variance 12/13 to 13/14	Resolved 20122013	Resolved 20132014	Resolution Rate 20122013	Resolution Rate 20132014
Canterbury Metro	1,595	1,570	-1.6 %	34.3	33.0	-3.8 %	1,493	1,421	93.6 %	90.5 %
Mid South Canterbury	140	160	14.3 %	16.0	18.1	13.1 %	132	151	94.3 %	94.4 %
Total	1,735	1,730	-0.3 %	31.4	30.7	-2.4 %	1,625	1,572	93.7 %	90.9 %

MISCELLANEOUS OFFENCES

Area Description	Recorded 20122013	Recorded 20132014	Variance 12/13-13/14	Recorded per 10,000 pop 20122013	Recorded per 10,000 pop 20132014	per 10,000 pop % Variance 12/13 to 13/14	Resolved 20122013	Resolved 20132014	Resolution Rate 20122013	Resolution Rate 20132014
Canterbury Metro	184	139	-24.5 %	4.0	2.9	-26.2 %	104	55	56.5 %	39.6 %
Mid South Canterbury	20	25	25.0 %	2.3	2.8	23.7 %	18	18	90.0 %	72.0 %
Total	204	164	-19.6 %	3.7	2.9	-21.3 %	122	73	59.8 %	44.5 %

CRIME TRENDS

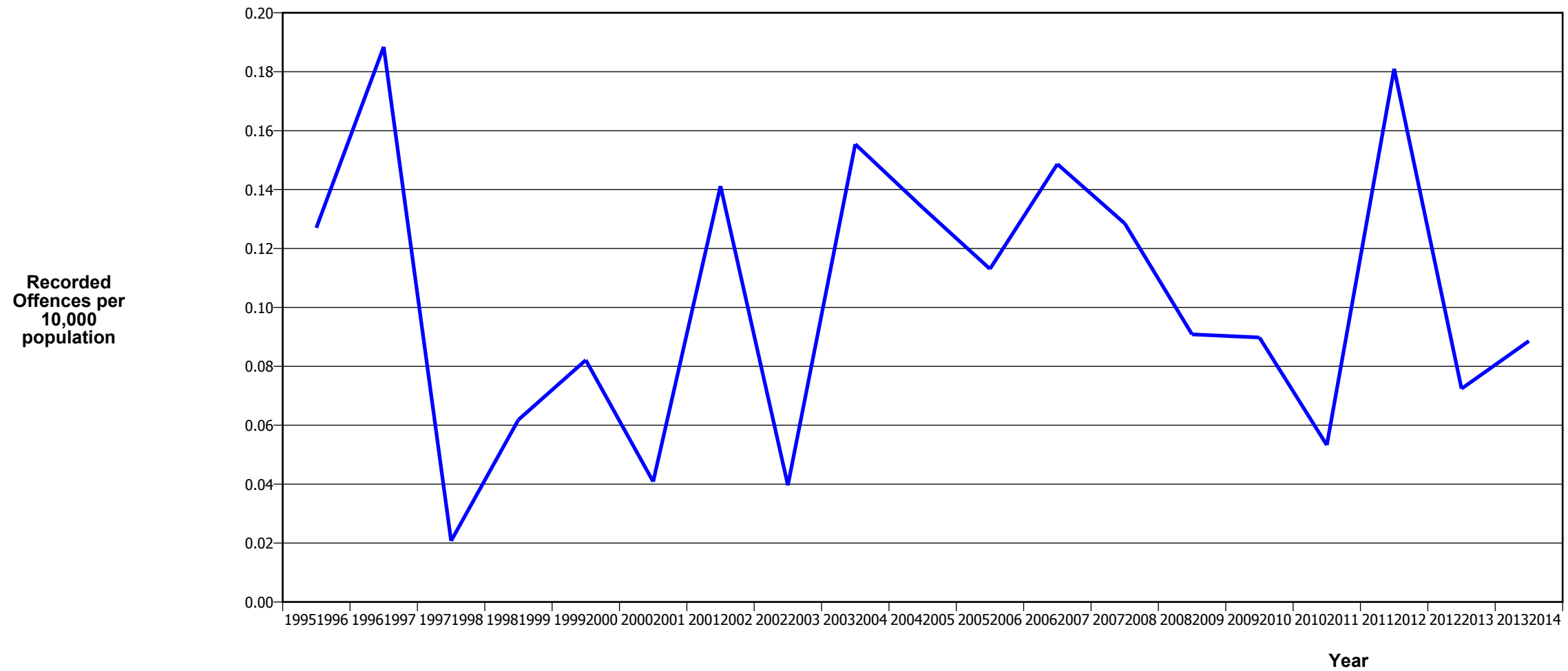
TOTAL CRIME



Fiscal Year	19951996	19961997	19971998	19981999	19992000	20002001	20012002	20022003	20032004	20042005	20052006	20062007	20072008	20082009	20092010	20102011	20112012	20122013	20132014
Recorded Offences	54,566	54,965	54,863	53,789	51,734	48,271	49,937	50,242	50,042	47,351	46,173	48,569	48,722	52,173	53,755	45,904	40,522	42,722	39,064
Recorded per 10,000 Population	1,155.0	1,150.9	1,136.5	1,108.7	1,062.2	985.7	1,007.3	994.7	972.1	905.4	870.0	902.5	894.4	947.9	965.1	814.5	733.5	773.3	692.2

*In 20052006 there was a major IT system change (LES to NIA)

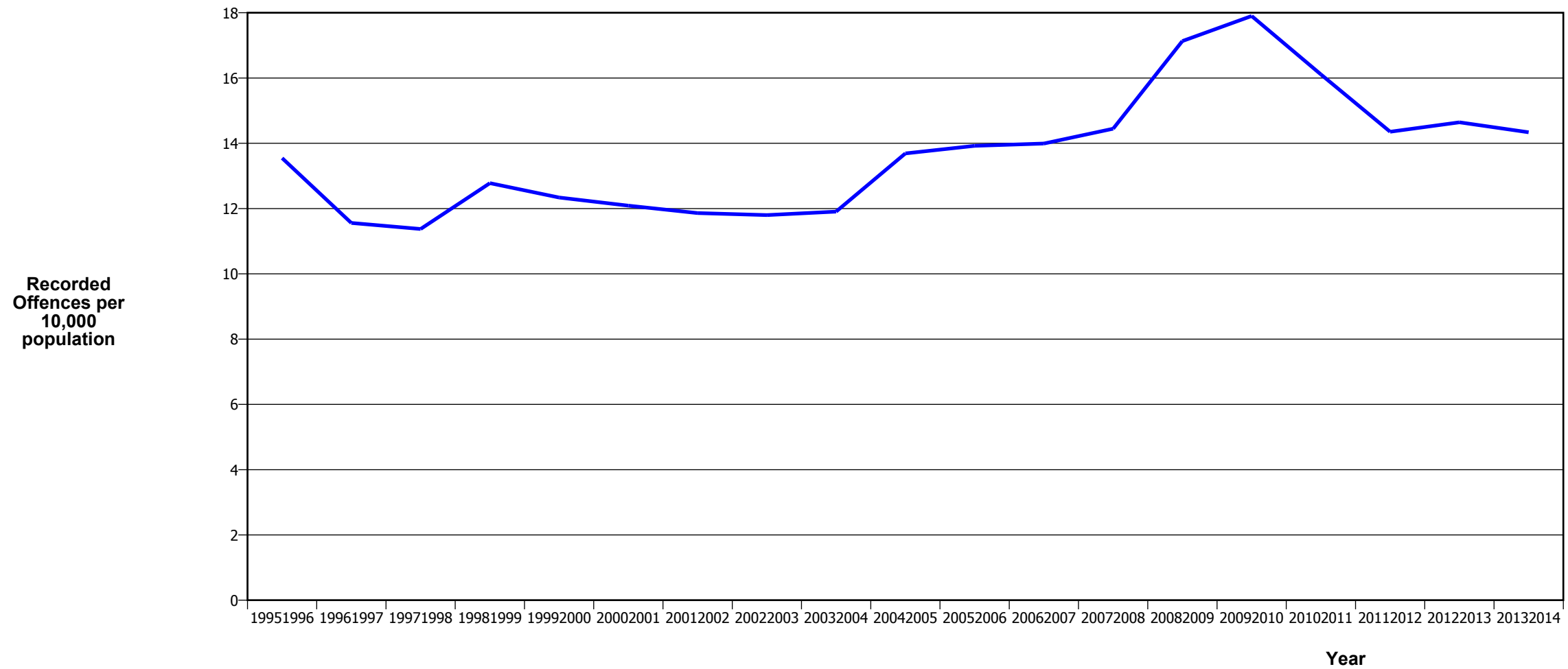
MURDER



Fiscal Year	19951996	19961997	19971998	19981999	19992000	20002001	20012002	20022003	20032004	20042005	20052006	20062007	20072008	20082009	20092010	20102011	20112012	20122013	20132014
Recorded Offences	6	9	1	3	4	2	7	2	8	7	6	8	7	5	5	3	10	4	5
Recorded per 10,000 Population	0.13	0.19	0.02	0.06	0.08	0.04	0.14	0.04	0.16	0.13	0.11	0.15	0.13	0.09	0.09	0.05	0.18	0.07	0.09

- The 20092010 result is significantly influenced by an abnormal one-off spike in August 2009, when 12 murders occurred

SERIOUS ASSAULTS RESULTING IN INJURY*



Fiscal Year	19951996	19961997	19971998	19981999	19992000	20002001	20012002	20022003	20032004	20042005	20052006	20062007	20072008	20082009	20092010	20102011	20112012	20122013	20132014
Recorded Offences	640	552	549	620	601	592	588	596	613	716	739	753	787	943	997	908	793	809	809
Recorded per 10,000 Population	13.5	11.6	11.4	12.8	12.3	12.1	11.9	11.8	11.9	13.7	13.9	14.0	14.4	17.1	17.9	16.1	14.4	14.6	14.3

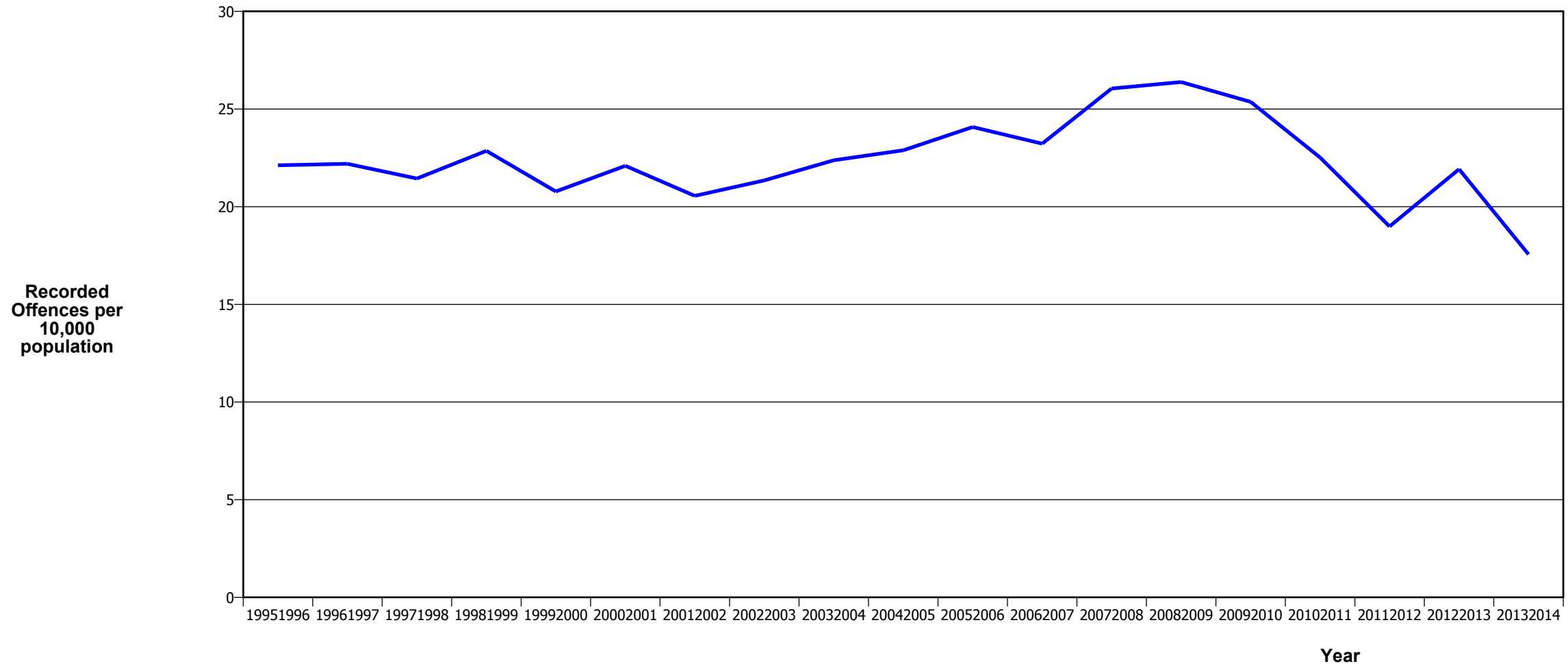
* This measure excludes common assaults

SEXUAL ASSAULTS



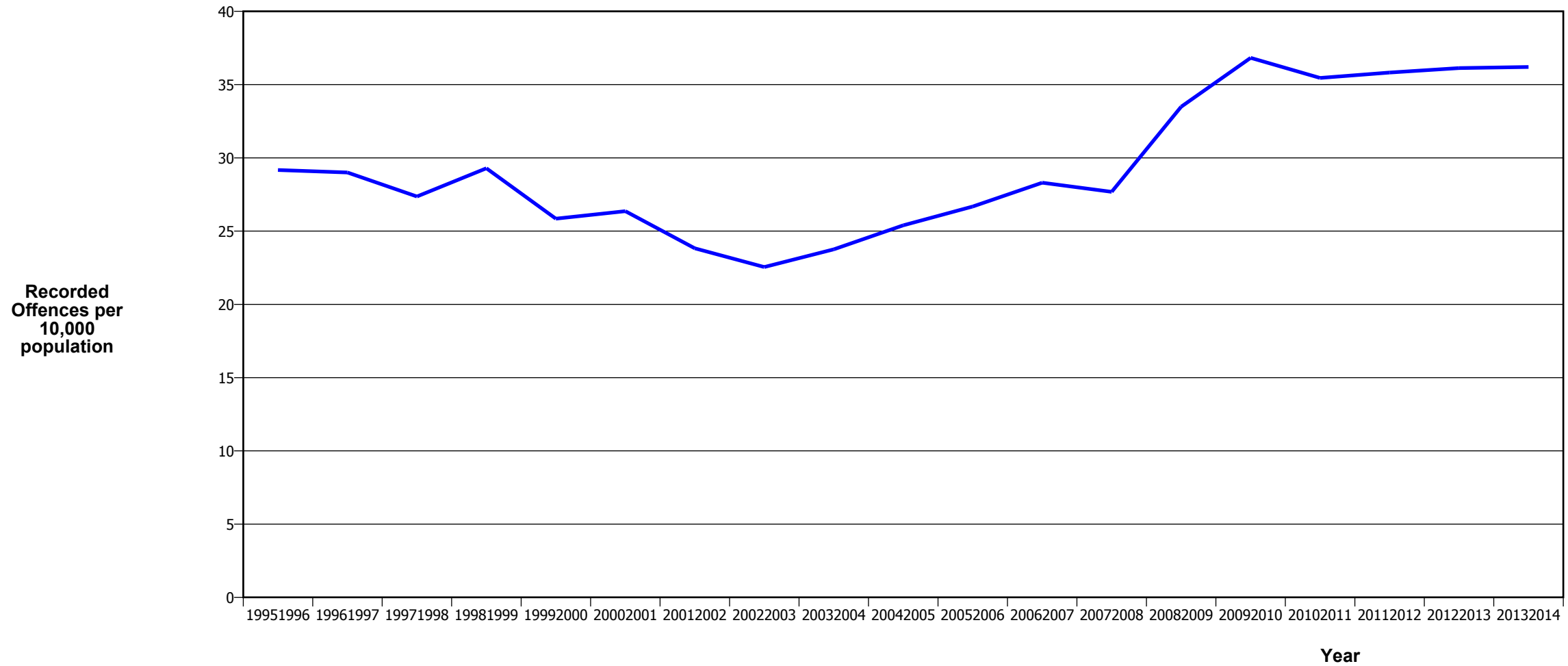
Fiscal Year	19951996	19961997	19971998	19981999	19992000	20002001	20012002	20022003	20032004	20042005	20052006	20062007	20072008	20082009	20092010	20102011	20112012	20122013	20132014
Recorded Offences	305	265	240	277	253	232	318	317	294	296	318	354	303	292	301	368	368	459	411
Recorded per 10,000 Population	6.5	5.5	5.0	5.7	5.2	4.7	6.4	6.3	5.7	5.7	6.0	6.6	5.6	5.3	5.4	6.5	6.7	8.3	7.3

PUBLIC PLACE ASSAULTS



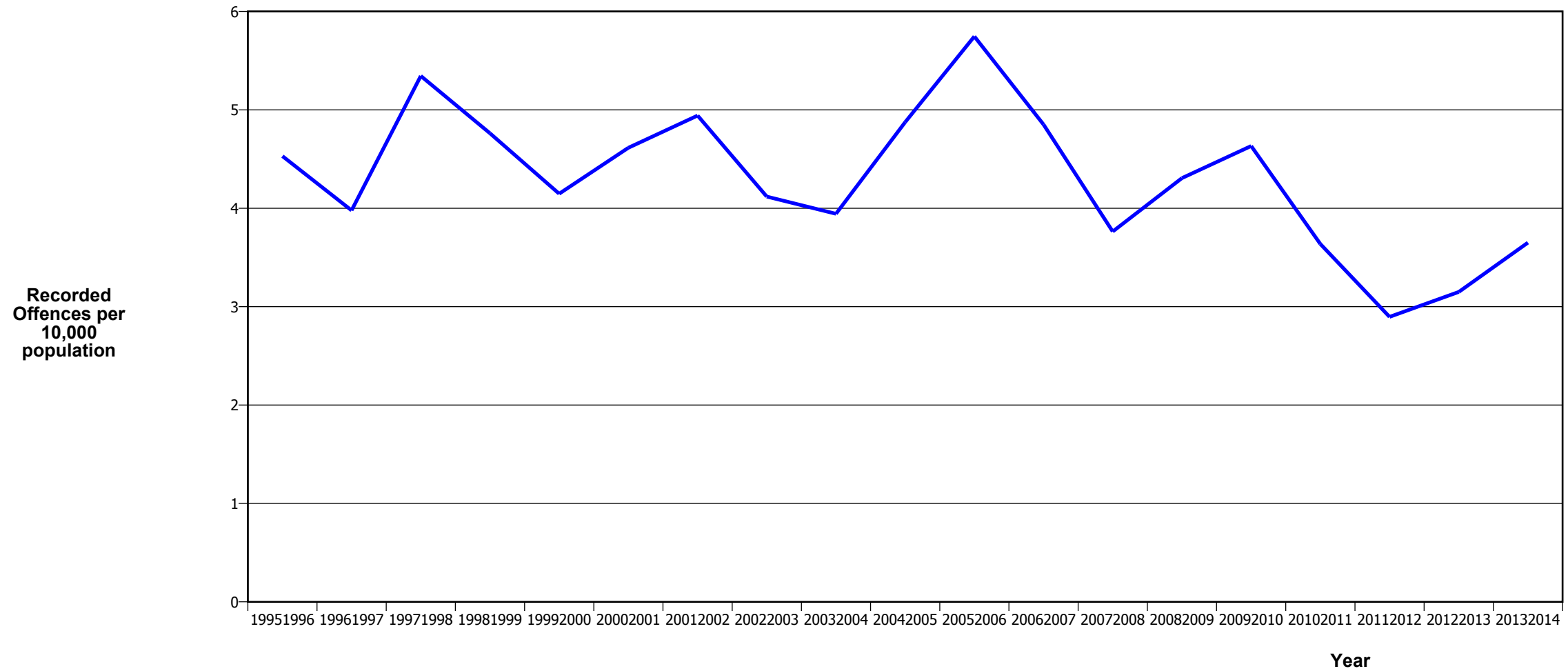
Fiscal Year	19951996	19961997	19971998	19981999	19992000	20002001	20012002	20022003	20032004	20042005	20052006	20062007	20072008	20082009	20092010	20102011	20112012	20122013	20132014
Recorded Offences	1,045	1,060	1,035	1,109	1,012	1,082	1,019	1,078	1,152	1,197	1,278	1,250	1,419	1,452	1,413	1,269	1,049	1,211	991
Recorded per 10,000 Population	22.1	22.2	21.4	22.9	20.8	22.1	20.6	21.3	22.4	22.9	24.1	23.2	26.0	26.4	25.4	22.5	19.0	21.9	17.6

DWELLING ASSAULTS



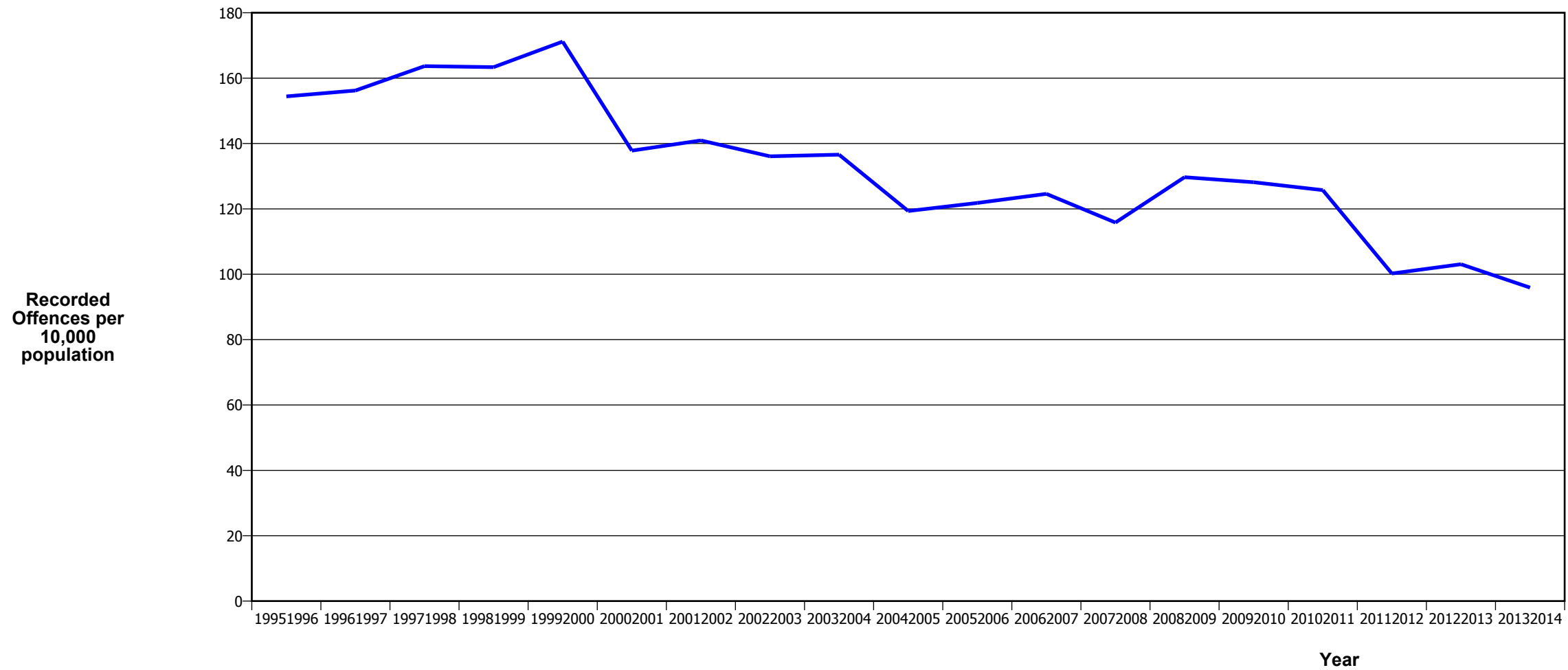
Fiscal Year	19951996	19961997	19971998	19981999	19992000	20002001	20012002	20022003	20032004	20042005	20052006	20062007	20072008	20082009	20092010	20102011	20112012	20122013	20132014
Recorded Offences	1,378	1,385	1,321	1,421	1,259	1,291	1,181	1,139	1,223	1,328	1,416	1,523	1,508	1,843	2,051	1,998	1,979	1,996	2,043
Recorded per 10,000 Population	29.2	29.0	27.4	29.3	25.9	26.4	23.8	22.6	23.8	25.4	26.7	28.3	27.7	33.5	36.8	35.5	35.8	36.1	36.2

ROBBERY



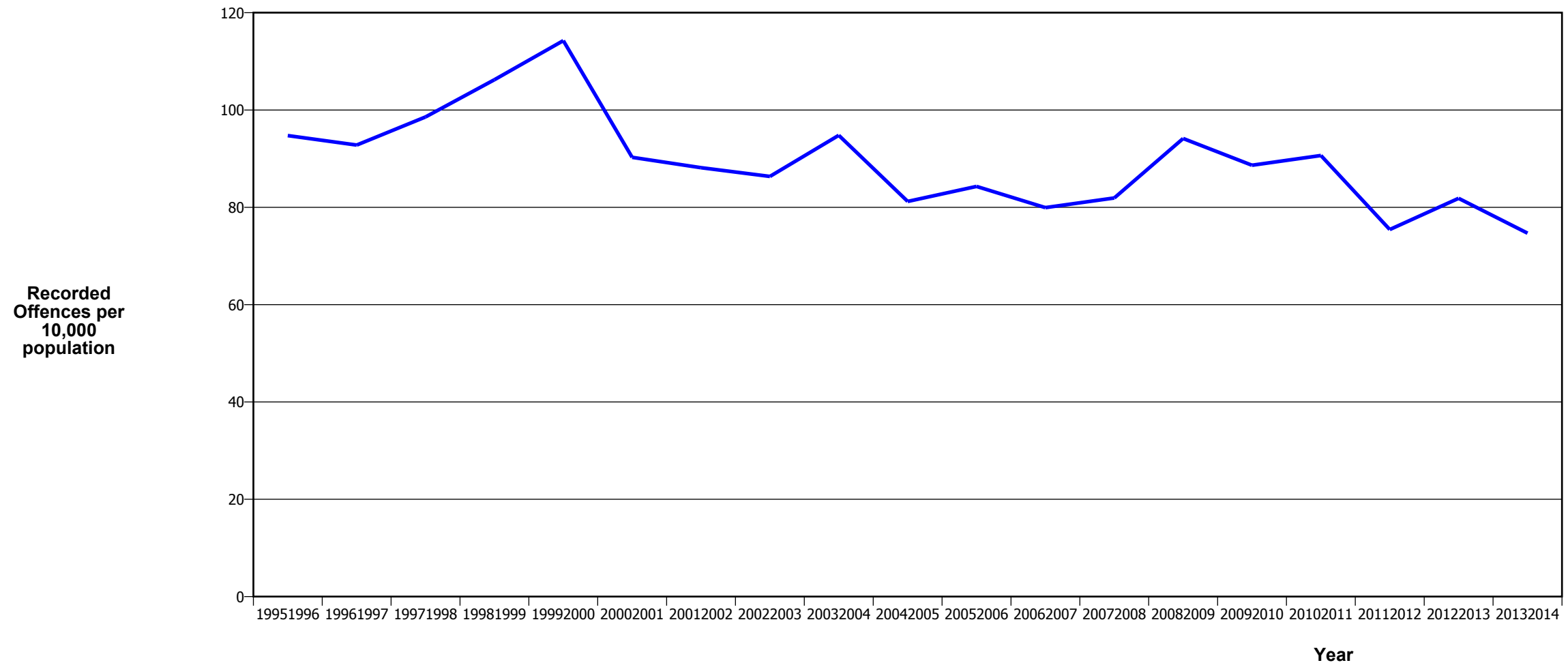
Fiscal Year	19951996	19961997	19971998	19981999	19992000	20002001	20012002	20022003	20032004	20042005	20052006	20062007	20072008	20082009	20092010	20102011	20112012	20122013	20132014
Recorded Offences	214	190	258	231	202	226	245	208	203	255	305	261	205	237	258	205	160	174	206
Recorded per 10,000 Population	4.5	4.0	5.3	4.8	4.1	4.6	4.9	4.1	3.9	4.9	5.7	4.9	3.8	4.3	4.6	3.6	2.9	3.1	3.7

BURGLARY (TOTAL)



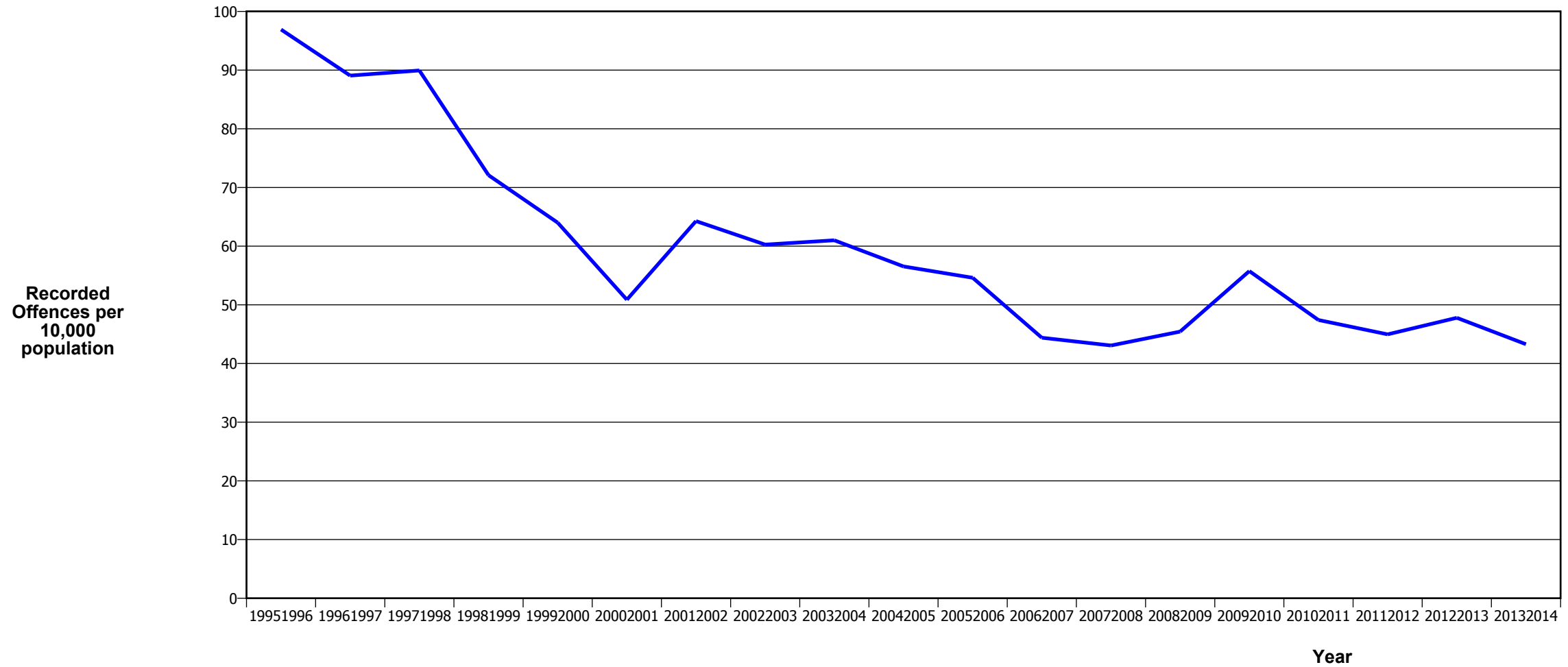
Fiscal Year	19951996	19961997	19971998	19981999	19992000	20002001	20012002	20022003	20032004	20042005	20052006	20062007	20072008	20082009	20092010	20102011	20112012	20122013	20132014
Recorded Offences	7,295	7,461	7,901	7,926	8,338	6,749	6,987	6,874	7,032	6,242	6,466	6,705	6,309	7,138	7,138	7,087	5,538	5,694	5,412
Recorded per 10,000 Population	154.4	156.2	163.7	163.4	171.2	137.8	140.9	136.1	136.6	119.3	121.8	124.6	115.8	129.7	128.2	125.8	100.2	103.1	95.9

BURGLARY (DWELLING)



Fiscal Year	19951996	19961997	19971998	19981999	19992000	20002001	20012002	20022003	20032004	20042005	20052006	20062007	20072008	20082009	20092010	20102011	20112012	20122013	20132014
Recorded Offences	4,476	4,432	4,758	5,153	5,565	4,421	4,370	4,361	4,880	4,247	4,474	4,302	4,462	5,182	4,938	5,109	4,168	4,521	4,215
Recorded per 10,000 Population	94.7	92.8	98.6	106.2	114.3	90.3	88.2	86.3	94.8	81.2	84.3	79.9	81.9	94.2	88.7	90.7	75.4	81.8	74.7

VEHICLES STOLEN



Fiscal Year	19951996	19961997	19971998	19981999	19992000	20002001	20012002	20022003	20032004	20042005	20052006	20062007	20072008	20082009	20092010	20102011	20112012	20122013	20132014
Recorded Offences	4,578	4,253	4,341	3,497	3,117	2,491	3,186	3,044	3,140	2,957	2,898	2,389	2,346	2,501	3,105	2,672	2,484	2,640	2,443
Recorded per 10,000 Population	96.9	89.1	89.9	72.1	64.0	50.9	64.3	60.3	61.0	56.5	54.6	44.4	43.1	45.4	55.7	47.4	45.0	47.8	43.3

THEFT EX CAR



Fiscal Year	19951996	19961997	19971998	19981999	19992000	20002001	20012002	20022003	20032004	20042005	20052006	20062007	20072008	20082009	20092010	20102011	20112012	20122013	20132014
Recorded Offences	6,877	8,259	7,687	7,808	6,453	5,880	6,914	7,672	7,325	6,444	5,705	5,952	4,981	5,453	5,585	3,841	3,186	3,500	3,269
Recorded per 10,000 Population	145.6	172.9	159.2	160.9	132.5	120.1	139.5	151.9	142.3	123.2	107.5	110.6	91.4	99.1	100.3	68.2	57.7	63.4	57.9

Population Data

Population data is used in this release to calculate crime rates. These data are estimated population figures as at 31 December each year. They have been derived from population estimates as at 30 June each year that have been obtained from Statistics New Zealand.

The estimated resident population is based on the census usually resident population count, with adjustments for residents missed or counted more than once by the census (net census undercount), and for residents temporarily overseas on census night.

These population estimates exclude the number of international students who are studying in New Zealand for less than 12 months.

Year	Population
19951996	472,440
19961997	477,580
19971998	482,720
19981999	485,175
19992000	487,040
20002001	489,730
20012002	495,735
20022003	505,080
20032004	514,785
20042005	523,000
20052006	530,740
20062007	538,135
20072008	544,725
20082009	550,385
20092010	556,970
20102011	563,560
20112012	552,455
20122013	552,430
20132014	564,305

General Definitions

Recorded Offences: the number of breaches of the New Zealand law recorded by Police. This includes offences specified in the Crimes Act and other legislations, such as the Summary Offences Act, Local Government Act, etc.

Resolved Offences: the number of recorded offences where an offender has been identified and dealt with (e.g. warned, cautioned, prosecuted, etc).

Resolution Rate: the proportion of recorded offences that have been resolved.

Recorded per 10,000 population: the number of recorded offences for every 10,000 people. This is also referred as the crime rate per 10,000 population.

ANZSOC: the Australia New Zealand Standard Offence Classification. The offence classification is divided into 16 major offence divisions.

Definition of ANZSOC Divisions

1. Homicide and related offences: Unlawfully kill, attempt to unlawfully kill or conspiracy to kill another person.
2. Acts intended to cause injury: Acts, excluding attempted murder and those resulting in death, which are intended to cause non-fatal injury or harm to another person and where there is no sexual or acquisitive element.
3. Sexual assault and related offences: Acts, or intent of acts, of a sexual nature against another person, which are non-consensual or where consent is proscribed.
4. Dangerous or negligent acts endangering persons: Dangerous or negligent acts which, though not intended to cause harm, actually or potentially result in injury to oneself or another person.
5. Abduction, harassment and other offences against person: Acts intended to threaten or harass, or acts that unlawfully deprive another person of their freedom of movement, that are against that person's will or against the will of any parent, guardian or other person having lawful custody or care of that person.
6. Robbery, extortion and related offences: Acts intended to unlawfully gain money, property or other items of value from, or to cause detriment to, another person by using the threat of force or any other coercive measure.
7. Unlawful entry with intent / burglary, break and enter: The unlawful entry of a structure with the intent to commit an offence, where the entry is either forced or unforced.
8. Theft and related and offences: The unlawful taking or obtaining of money or goods, not involving the use of force or violence, coercion or deception, with intent to permanently or temporarily deprive the owner or possessor of the use of the money or goods, or the receiving or handling of money or goods obtained unlawfully.

9. Fraud, deception and related offences: Offences involving a dishonest act or omission carried out with the purpose of deceiving to obtain a benefit.

10. Illicit drug offences: The possessing, selling, dealing or trafficking, importing or exporting, manufacturing or cultivating of drugs or other substances prohibited under legislation.

11. Prohibited and regulated weapons and explosives offences: Offences involving prohibited or regulated weapons and explosives. Those offences also involving assault, sexual assault or robbery are coded to the relevant group within Assault, Sexual assaults and Robbery respectively.

12. Property damage and environmental pollution: The wilful and unlawful destruction, damage or defacement of public or private property, or the pollution of property or a definable entity held in common by the community.

13. Public order offences: Offences relating personal conduct that involves, or may lead to, a breach of public order or decency, or that is indicative of criminal intent, or that is otherwise regulated or prohibited on moral or ethical grounds. In general these offences do not involve a specific victim or victims; however some offences, such as offensive language and offensive behaviour, may be directed towards a single victim.

14. Traffic and vehicle regulatory offences: Offences relating to vehicles and most forms of traffic, including offences pertaining to the licensing, registration, roadworthiness, or use of vehicles, bicycle offences and pedestrian offences.

15. Offences against justice procedures, government security and government operations: An act or omission that is deemed to be prejudicial to the effective carrying out of justice procedures or any government operations. This includes general government operations as well as those specifically concerned with maintaining government security.

16. Miscellaneous offences: Offences involving the breach of statutory rules or regulations governing activities that are prima facie legal, where such offences are not explicitly dealt with under any other division. If an offence is specified under regulation and involves an act that would be illegal under common law or general criminal legislation, the offence is dealt with under the appropriate generic group.