

CANTERBURY DISTRICT CRIME STATISTICS 2013



**A Summary of
Recorded and Resolved Offence
Statistics**

**POLICE NATIONAL HEADQUARTERS
April 2014**

ISSN 1178 - 1637

Table of Contents:

Topic	Page
Report Notes	1
District Summary of Recorded and Resolved Crime, by Division	2-4
Proportions of Recorded Crime by Division	5
Summary of District Recorded Offences, Rate per 10,000 Population and Resolved Offences, by Area	6
Summary of Area Recorded Offences, Rate per 10,000 Population and Resolved Offences, by Division	7-9
Crime Trends	10
Total Crime	11
Murder	12
Serious Assaults Resulting in Injury	13
Sexual Assaults	14
Public Place Assaults	15
Dwelling Assaults	16
Robbery	17
Burglary (Total)	18
Burglary (Dwelling)	19
Vehicles Stolen	20
Theft Ex Car	21
Population Data	22
General Definitions	23-24

REPORT NOTES:

Statistics reported in this document are derived from the Police National Intelligence Application (NIA). These Official Statistics for Recorded and Resolved Offences present a snapshot of data in NIA relating to offences that occur within a given year, as at the date 14 days following the end of that year.

Unless the matter is minor where Police attendance is sufficient, a matter that is reported to or discovered by Police where Police believe an offence is likely to have been committed is counted as a recorded offence.

A recorded offence is counted as resolved when Police apprehend an offender and decide how to deal with him/her. (E.g. warn, prosecute, etc.)

Resolution rate is the percentage of recorded offences that are resolved within 14 days of the end of the year being reported on.

If an offence is resolved 15 days or more after the end of the year it will not appear in the Official Crime Statistics for that or any other year. Resolution Rate therefore undercounts the number of cases that Police have resolved. This phenomenon has a more marked impact for some types of offences than others, such as offences that require long investigations (E.g. many serial crimes, burglaries and murders).

The Sale and Supply of Alcohol Act 2012 came into effect on 18 December 2013. This had little effect on overall 2013 calendar year statistics, because the legislation only took effect two weeks before the end of the year. However, statistics for future years will be significantly affected. In particular, the offence of Breach of Liquor Ban, of which there were more than 6,500 nationally in 2013, has been made obsolete by the new legislation. Under the new legislation Police will deal with breaches of alcohol bans by issuing infringement notices, rather than by recording offences for which offenders can be charged. Such infringements are not part of this statistical collection.

When comparing 2013 Statistics with previous years, the reader should also refer to "Report Notes" published in previous years' reports, as previous changes significantly affect year on year trends.

SUMMARY OF DISTRICT RECORDED AND RESOLVED CRIME, BY DIVISION
Years ending 31 December

HOMICIDE AND RELATED OFFENCES

ASOC Subdivision Description	Recorded 2011	Recorded 2012	Recorded 2013	Variance 2011-2012	Variance 2012-2013	Resolved 2011	Resolved 2012	Resolved 2013	Resolution Rate 2011	Resolution Rate 2012	Resolution Rate 2013
ATTEMPTED MURDER	4	3	1	-25.0 %	-66.7 %	4	3	1	100.0 %	100.0 %	100.0 %
HOMICIDE AND RELATED OFFENCES NOT FURTHER DEFINED	0	0	1	0.0 %	0.0 %	0	0	0	0.0 %	0.0 %	0.0 %
MANSLAUGHTER AND DRIVING CAUSING DEATH	2	0	1	-100.0 %	0.0 %	2	0	1	100.0 %	0.0 %	100.0 %
MURDER	4	9	5	125.0 %	-44.4 %	4	8	5	100.0 %	88.9 %	100.0 %
	10	12	8	20.0 %	-33.3 %	10	11	7	100.0 %	91.7 %	87.5 %

ACTS INTENDED TO CAUSE INJURY

ASOC Subdivision Description	Recorded 2011	Recorded 2012	Recorded 2013	Variance 2011-2012	Variance 2012-2013	Resolved 2011	Resolved 2012	Resolved 2013	Resolution Rate 2011	Resolution Rate 2012	Resolution Rate 2013
ASSAULT	3,408	3,773	3,616	10.7 %	-4.2 %	2,682	2,789	2,550	78.7 %	73.9 %	70.5 %
OTHER ACTS INTENDED TO CAUSE INJURY	4	2	3	-50.0 %	50.0 %	3	2	2	75.0 %	100.0 %	66.7 %
	3,412	3,775	3,619	10.6 %	-4.1 %	2,685	2,791	2,552	78.7 %	73.9 %	70.5 %

SEXUAL ASSAULT AND RELATED OFFENCES

ASOC Subdivision Description	Recorded 2011	Recorded 2012	Recorded 2013	Variance 2011-2012	Variance 2012-2013	Resolved 2011	Resolved 2012	Resolved 2013	Resolution Rate 2011	Resolution Rate 2012	Resolution Rate 2013
NON-ASSAULTIVE SEXUAL OFFENCES	19	37	17	94.7 %	-54.1 %	14	32	10	73.7 %	86.5 %	58.8 %
SEXUAL ASSAULT	351	405	425	15.4 %	4.9 %	167	178	204	47.6 %	44.0 %	48.0 %
	370	442	442	19.5 %	0.0 %	181	210	214	48.9 %	47.5 %	48.4 %

DANGEROUS OR NEGLIGENT ACTS ENDANGERING PERSONS

ASOC Subdivision Description	Recorded 2011	Recorded 2012	Recorded 2013	Variance 2011-2012	Variance 2012-2013	Resolved 2011	Resolved 2012	Resolved 2013	Resolution Rate 2011	Resolution Rate 2012	Resolution Rate 2013
OTHER DANGEROUS OR NEGLIGENT ACTS ENDANGERING PERSONS	76	76	62	0.0 %	-18.4 %	43	36	34	56.6 %	47.4 %	54.8 %
	76	76	62	0.0 %	-18.4 %	43	36	34	56.6 %	47.4 %	54.8 %

ABDUCTION, HARASSMENT AND OTHER RELATED OFFENCES AGAINST A PERSON

ASOC Subdivision Description	Recorded 2011	Recorded 2012	Recorded 2013	Variance 2011-2012	Variance 2012-2013	Resolved 2011	Resolved 2012	Resolved 2013	Resolution Rate 2011	Resolution Rate 2012	Resolution Rate 2013
ABDUCTION AND KIDNAPPING	19	15	21	-21.1 %	40.0 %	14	9	13	73.7 %	60.0 %	61.9 %
DEPRIVATION OF LIBERTY/FALSE IMPRISONMENT	0	7	2	0.0 %	-71.4 %	0	7	2	0.0 %	100.0 %	100.0 %
HARASSMENT AND THREATENING BEHAVIOUR	1,192	1,277	1,661	7.1 %	30.1 %	801	667	748	67.2 %	52.2 %	45.0 %
	1,211	1,299	1,684	7.3 %	29.6 %	815	683	763	67.3 %	52.6 %	45.3 %

ROBBERY, EXTORTION AND RELATED OFFENCES

ASOC Subdivision Description	Recorded 2011	Recorded 2012	Recorded 2013	Variance 2011-2012	Variance 2012-2013	Resolved 2011	Resolved 2012	Resolved 2013	Resolution Rate 2011	Resolution Rate 2012	Resolution Rate 2013
BLACKMAIL AND EXTORTION	17	12	8	-29.4 %	-33.3 %	13	8	5	76.5 %	66.7 %	62.5 %
ROBBERY	176	169	178	-4.0 %	5.3 %	64	68	68	36.4 %	40.2 %	38.2 %
	193	181	186	-6.2 %	2.8 %	77	76	73	39.9 %	42.0 %	39.2 %

UNLAWFUL ENTRY WITH INTENT/BURGLARY, BREAK AND ENTER

ASOC Subdivision Description	Recorded 2011	Recorded 2012	Recorded 2013	Variance 2011-2012	Variance 2012-2013	Resolved 2011	Resolved 2012	Resolved 2013	Resolution Rate 2011	Resolution Rate 2012	Resolution Rate 2013
UNLAWFUL ENTRY WITH INTENT/BURGLARY, BREAK AND ENTER	6,061	5,661	5,707	-6.6 %	0.8 %	842	670	787	13.9 %	11.8 %	13.8 %
	6,061	5,661	5,707	-6.6 %	0.8 %	842	670	787	13.9 %	11.8 %	13.8 %

SUMMARY OF DISTRICT RECORDED AND RESOLVED CRIME, BY DIVISION

Years ending 31 December

THEFT AND RELATED OFFENCES

ASOC Subdivision Description	Recorded 2011	Recorded 2012	Recorded 2013	Variance 2011-2012	Variance 2012-2013	Resolved 2011	Resolved 2012	Resolved 2013	Resolution Rate 2011	Resolution Rate 2012	Resolution Rate 2013
ILLEGAL USE OF PROPERTY (EXCEPT MOTOR VEHICLES)	790	437	525	-44.7 %	20.1 %	27	15	20	3.4 %	3.4 %	3.8 %
MOTOR VEHICLE THEFT AND RELATED OFFENCES	5,816	5,875	5,600	1.0 %	-4.7 %	621	610	574	10.7 %	10.4 %	10.3 %
RECEIVE OR HANDLE PROCEEDS OF CRIME	314	242	304	-22.9 %	25.6 %	305	233	298	97.1 %	96.3 %	98.0 %
THEFT (EXCEPT MOTOR VEHICLES)	6,542	6,784	6,937	3.7 %	2.3 %	2,202	2,357	2,323	33.7 %	34.7 %	33.5 %
	13,462	13,338	13,366	-0.9 %	0.2 %	3,155	3,215	3,215	23.4 %	24.1 %	24.1 %

FRAUD, DECEPTION AND RELATED OFFENCES

ASOC Subdivision Description	Recorded 2011	Recorded 2012	Recorded 2013	Variance 2011-2012	Variance 2012-2013	Resolved 2011	Resolved 2012	Resolved 2013	Resolution Rate 2011	Resolution Rate 2012	Resolution Rate 2013
DECEPTIVE BUSINESS/GOVERNMENT PRACTICES	8	5	3	-37.5 %	-40.0 %	7	1	2	87.5 %	20.0 %	66.7 %
FORGERY AND COUNTERFEITING	27	43	51	59.3 %	18.6 %	10	14	19	37.0 %	32.6 %	37.3 %
OBTAIN BENEFIT BY DECEPTION	681	930	846	36.6 %	-9.0 %	337	560	420	49.5 %	60.2 %	49.6 %
OTHER FRAUD AND DECEPTION OFFENCES	132	101	118	-23.5 %	16.8 %	55	43	65	41.7 %	42.6 %	55.1 %
	848	1,079	1,018	27.2 %	-5.7 %	409	618	506	48.2 %	57.3 %	49.7 %

ILLICIT DRUG OFFENCES

ASOC Subdivision Description	Recorded 2011	Recorded 2012	Recorded 2013	Variance 2011-2012	Variance 2012-2013	Resolved 2011	Resolved 2012	Resolved 2013	Resolution Rate 2011	Resolution Rate 2012	Resolution Rate 2013
DEAL OR TRAFFIC IN ILLICIT DRUGS	133	196	212	47.4 %	8.2 %	129	186	188	97.0 %	94.9 %	88.7 %
IMPORT OR EXPORT ILLICIT DRUGS	2	7	7	250.0 %	0.0 %	1	5	3	50.0 %	71.4 %	42.9 %
MANUFACTURE OR CULTIVATE ILLICIT DRUGS	171	206	140	20.5 %	-32.0 %	156	189	122	91.2 %	91.7 %	87.1 %
OTHER ILLICIT DRUG OFFENCES	564	548	335	-2.8 %	-38.9 %	558	535	322	98.9 %	97.6 %	96.1 %
POSSESS AND/OR USE ILLICIT DRUGS	944	880	679	-6.8 %	-22.8 %	908	856	642	96.2 %	97.3 %	94.6 %
	1,814	1,837	1,373	1.3 %	-25.3 %	1,752	1,771	1,277	96.6 %	96.4 %	93.0 %

PROHIBITED AND REGULATED WEAPONS AND EXPLOSIVES OFFENCES

ASOC Subdivision Description	Recorded 2011	Recorded 2012	Recorded 2013	Variance 2011-2012	Variance 2012-2013	Resolved 2011	Resolved 2012	Resolved 2013	Resolution Rate 2011	Resolution Rate 2012	Resolution Rate 2013
REGULATED WEAPONS/EXPLOSIVES OFFENCES	571	607	565	6.3 %	-6.9 %	509	552	496	89.1 %	90.9 %	87.8 %
	571	607	565	6.3 %	-6.9 %	509	552	496	89.1 %	90.9 %	87.8 %

PROPERTY DAMAGE AND ENVIRONMENTAL POLLUTION

ASOC Subdivision Description	Recorded 2011	Recorded 2012	Recorded 2013	Variance 2011-2012	Variance 2012-2013	Resolved 2011	Resolved 2012	Resolved 2013	Resolution Rate 2011	Resolution Rate 2012	Resolution Rate 2013
ENVIRONMENTAL POLLUTION	21	14	18	-33.3 %	28.6 %	15	7	9	71.4 %	50.0 %	50.0 %
PROPERTY DAMAGE	6,039	6,772	5,953	12.1 %	-12.1 %	1,519	1,824	1,483	25.2 %	26.9 %	24.9 %
	6,060	6,786	5,971	12.0 %	-12.0 %	1,534	1,831	1,492	25.3 %	27.0 %	25.0 %

PUBLIC ORDER OFFENCES

ASOC Subdivision Description	Recorded 2011	Recorded 2012	Recorded 2013	Variance 2011-2012	Variance 2012-2013	Resolved 2011	Resolved 2012	Resolved 2013	Resolution Rate 2011	Resolution Rate 2012	Resolution Rate 2013
DISORDERLY CONDUCT	3,177	3,676	3,160	15.7 %	-14.0 %	2,634	3,139	2,681	82.9 %	85.4 %	84.8 %
OFFENSIVE CONDUCT	239	242	259	1.3 %	7.0 %	171	182	165	71.5 %	75.2 %	63.7 %
PUBLIC ORDER OFFENCES NOT FURTHER DEFINED	0	2	3	0.0 %	50.0 %	0	1	1	0.0 %	50.0 %	33.3 %
REGULATED PUBLIC ORDER OFFENCES	1,063	1,728	1,171	62.6 %	-32.2 %	968	1,599	1,076	91.1 %	92.5 %	91.9 %
	4,479	5,648	4,593	26.1 %	-18.7 %	3,773	4,921	3,923	84.2 %	87.1 %	85.4 %

SUMMARY OF DISTRICT RECORDED AND RESOLVED CRIME, BY DIVISION
Years ending 31 December

OFFENCES AGAINST JUSTICE PROCEDURES, GOVERNMENT SECURITY AND GOVERNMENT OPERATIONS

ASOC Subdivision Description	Recorded 2011	Recorded 2012	Recorded 2013	Variance 2011-2012	Variance 2012-2013	Resolved 2011	Resolved 2012	Resolved 2013	Resolution Rate 2011	Resolution Rate 2012	Resolution Rate 2013
BREACH OF COMMUNITY-BASED ORDER	667	761	623	14.1 %	-18.1 %	658	751	619	98.7 %	98.7 %	99.4 %
BREACH OF CUSTODIAL ORDER OFFENCES	48	43	35	-10.4 %	-18.6 %	47	40	33	97.9 %	93.0 %	94.3 %
BREACH OF VIOLENCE AND NON-VIOLENCE RESTRAINING ORDERS	428	408	567	-4.7 %	39.0 %	376	314	457	87.9 %	77.0 %	80.6 %
OFFENCES AGAINST GOVERNMENT OPERATIONS	103	40	21	-61.2 %	-47.5 %	88	32	8	85.4 %	80.0 %	38.1 %
OFFENCES AGAINST GOVERNMENT SECURITY	0	0	0	0.0 %	0.0 %	0	0	0	0.0 %	0.0 %	0.0 %
OFFENCES AGAINST JUSTICE PROCEDURES	438	533	392	21.7 %	-26.5 %	424	521	376	96.8 %	97.7 %	95.9 %
OFFENCES AGAINST JUSTICE PROCEDURES, GOVERNMENT SECURITY AND GOVERNMENT OPERATIONS NOT FURTHER DEFINED	0	1	1	0.0 %	0.0 %	0	1	0	0.0 %	100.0 %	0.0 %
	1,684	1,786	1,639	6.1 %	-8.2 %	1,593	1,659	1,493	94.6 %	92.9 %	91.1 %

MISCELLANEOUS OFFENCES

ASOC Subdivision Description	Recorded 2011	Recorded 2012	Recorded 2013	Variance 2011-2012	Variance 2012-2013	Resolved 2011	Resolved 2012	Resolved 2013	Resolution Rate 2011	Resolution Rate 2012	Resolution Rate 2013
COMMERCIAL/INDUSTRY/FINANCIAL REGULATION	6	1	2	-83.3 %	100.0 %	2	1	2	33.3 %	100.0 %	100.0 %
DEFAMATION, LIBEL AND PRIVACY OFFENCES	7	9	5	28.6 %	-44.4 %	5	3	0	71.4 %	33.3 %	0.0 %
OTHER MISCELLANEOUS OFFENCES	257	248	145	-3.5 %	-41.5 %	222	183	71	86.4 %	73.8 %	49.0 %
PUBLIC HEALTH AND SAFETY OFFENCES	19	11	8	-42.1 %	-27.3 %	17	6	5	89.5 %	54.5 %	62.5 %
	289	269	160	-6.9 %	-40.5 %	246	193	78	85.1 %	71.7 %	48.8 %

TOTAL	40,540	42,796	40,393	5.6 %	-5.6 %	17,624	19,237	16,910	43.5 %	45.0 %	41.9 %
--------------	---------------	---------------	---------------	--------------	---------------	---------------	---------------	---------------	---------------	---------------	---------------

PROPORTIONS OF RECORDED CRIME BY DIVISION

Years ending 31 December

ASOC Division Description	Proportions Recorded 2011	Recorded 2011	Proportions Recorded 2012	Recorded 2012	Proportions Recorded 2013	Recorded 2013
HOMICIDE AND RELATED OFFENCES	0.02 %	10	0.03 %	12	0.02 %	8
ACTS INTENDED TO CAUSE INJURY	8.42 %	3,412	8.82 %	3,775	8.96 %	3,619
SEXUAL ASSAULT AND RELATED OFFENCES	0.91 %	370	1.03 %	442	1.09 %	442
DANGEROUS OR NEGLIGENT ACTS ENDANGERING PERSONS	0.19 %	76	0.18 %	76	0.15 %	62
ABDUCTION, HARASSMENT AND OTHER RELATED OFFENCES AGAINST A PERSON	2.99 %	1,211	3.04 %	1,299	4.17 %	1,684
ROBBERY, EXTORTION AND RELATED OFFENCES	0.48 %	193	0.42 %	181	0.46 %	186
UNLAWFUL ENTRY WITH INTENT/BURGLARY, BREAK AND ENTER	14.95 %	6,061	13.23 %	5,661	14.13 %	5,707
THEFT AND RELATED OFFENCES	33.21 %	13,462	31.17 %	13,338	33.09 %	13,366
FRAUD, DECEPTION AND RELATED OFFENCES	2.09 %	848	2.52 %	1,079	2.52 %	1,018
ILLICIT DRUG OFFENCES	4.47 %	1,814	4.29 %	1,837	3.40 %	1,373
PROHIBITED AND REGULATED WEAPONS AND EXPLOSIVES OFFENCES	1.41 %	571	1.42 %	607	1.40 %	565
PROPERTY DAMAGE AND ENVIRONMENTAL POLLUTION	14.95 %	6,060	15.86 %	6,786	14.78 %	5,971
PUBLIC ORDER OFFENCES	11.05 %	4,479	13.20 %	5,648	11.37 %	4,593
OFFENCES AGAINST JUSTICE PROCEDURES, GOVERNMENT SECURITY AND GOVERNMENT OPERATIONS	4.15 %	1,684	4.17 %	1,786	4.06 %	1,639
MISCELLANEOUS OFFENCES	0.71 %	289	0.63 %	269	0.40 %	160
	100.00 %	40,540	100.00 %	42,796	100.00 %	40,393

SUMMARY OF RECORDED OFFENCES, RATE PER 10,000 POPULATION AND RESOLVED OFFENCES, BY AREA
years ending 31 December

TOTAL CRIME

Area Description	Recorded 2012	Recorded 2013	Variance 2012-2013	Recorded per 10,000 pop 2012	Recorded per 10,000 pop 2013	Per 10,000 pop % Variance 2012 to 2013	Resolved 2012	Resolved 2013	Resolution Rate 2012	Resolution Rate 2013
Christchurch Central	9,745	10,384	6.6 %	2,371.0	2,622.2	10.6 %	5,184	4,871	53.2 %	46.9 %
Mid South Canterbury	5,370	5,170	-3.7 %	616.2	587.4	-4.7 %	2,797	2,575	52.1 %	49.8 %
Northern Canterbury	15,069	13,384	-11.2 %	640.7	560.8	-12.5 %	6,009	5,282	39.9 %	39.5 %
Southern Canterbury	12,612	11,455	-9.2 %	664.2	589.3	-11.3 %	5,247	4,182	41.6 %	36.5 %
	42,796	40,393	-5.6 %	773.5	720.5	-6.8 %	19,237	16,910	45.0 %	41.9 %

SUMMARY OF RECORDED OFFENCES, RATE PER 10,000 POPULATION AND RESOLVED OFFENCES, BY DIVISION

Years ending 31 December

HOMICIDE AND RELATED OFFENCES

Area Description	Recorded 2012	Recorded 2013	Variance 2012-2013	Recorded per 10,000 pop 2012	Recorded per 10,000 pop 2013	Per 10,000 pop % Variance 2012 to 2013	Resolved 2012	Resolved 2013	Resolution Rate 2012	Resolution Rate 2013
Christchurch Central	1	4	300.0 %	0.2	1.0	315.2 %	1	3	100.0 %	75.0 %
Mid South Canterbury	4	1	-75.0 %	0.5	0.1	-75.2 %	3	1	75.0 %	100.0 %
Northern Canterbury	3	3	0.0 %	0.1	0.1	-1.5 %	3	3	100.0 %	100.0 %
Southern Canterbury	4	0	-100.0 %	0.2	0.0	-100.0 %	4	0	100.0 %	0.0 %
	12	8	-33.3 %	0.2	0.1	-34.2 %	11	7	91.7 %	87.5 %

ACTS INTENDED TO CAUSE INJURY

Area Description	Recorded 2012	Recorded 2013	Variance 2012-2013	Recorded per 10,000 pop 2012	Recorded per 10,000 pop 2013	Per 10,000 pop % Variance 2012 to 2013	Resolved 2012	Resolved 2013	Resolution Rate 2012	Resolution Rate 2013
Christchurch Central	833	977	17.3 %	202.7	246.7	21.7 %	587	592	70.5 %	60.6 %
Mid South Canterbury	603	558	-7.5 %	69.2	63.4	-8.4 %	521	474	86.4 %	84.9 %
Northern Canterbury	1,319	1,149	-12.9 %	56.1	48.1	-14.2 %	960	827	72.8 %	72.0 %
Southern Canterbury	1,020	935	-8.3 %	53.7	48.1	-10.5 %	723	659	70.9 %	70.5 %
	3,775	3,619	-4.1 %	68.2	64.6	-5.4 %	2,791	2,552	73.9 %	70.5 %

SEXUAL ASSAULT AND RELATED OFFENCES

Area Description	Recorded 2012	Recorded 2013	Variance 2012-2013	Recorded per 10,000 pop 2012	Recorded per 10,000 pop 2013	Per 10,000 pop % Variance 2012 to 2013	Resolved 2012	Resolved 2013	Resolution Rate 2012	Resolution Rate 2013
Christchurch Central	112	138	23.2 %	27.3	34.8	27.9 %	54	51	48.2 %	37.0 %
Mid South Canterbury	81	57	-29.6 %	9.3	6.5	-30.3 %	56	30	69.1 %	52.6 %
Northern Canterbury	138	150	8.7 %	5.9	6.3	7.1 %	45	89	32.6 %	59.3 %
Southern Canterbury	111	97	-12.6 %	5.8	5.0	-14.6 %	55	44	49.5 %	45.4 %
	442	442	0.0 %	8.0	7.9	-1.3 %	210	214	47.5 %	48.4 %

DANGEROUS OR NEGLIGENT ACTS ENDANGERING PERSONS

Area Description	Recorded 2012	Recorded 2013	Variance 2012-2013	Recorded per 10,000 pop 2012	Recorded per 10,000 pop 2013	Per 10,000 pop % Variance 2012 to 2013	Resolved 2012	Resolved 2013	Resolution Rate 2012	Resolution Rate 2013
Christchurch Central	15	11	-26.7 %	3.6	2.8	-23.9 %	5	6	33.3 %	54.5 %
Mid South Canterbury	16	12	-25.0 %	1.8	1.4	-25.7 %	12	11	75.0 %	91.7 %
Northern Canterbury	27	24	-11.1 %	1.1	1.0	-12.4 %	11	9	40.7 %	37.5 %
Southern Canterbury	18	15	-16.7 %	0.9	0.8	-18.6 %	8	8	44.4 %	53.3 %
	76	62	-18.4 %	1.4	1.1	-19.5 %	36	34	47.4 %	54.8 %

ABDUCTION, HARASSMENT AND OTHER RELATED OFFENCES AGAINST A PERSON

Area Description	Recorded 2012	Recorded 2013	Variance 2012-2013	Recorded per 10,000 pop 2012	Recorded per 10,000 pop 2013	Per 10,000 pop % Variance 2012 to 2013	Resolved 2012	Resolved 2013	Resolution Rate 2012	Resolution Rate 2013
Christchurch Central	261	478	83.1 %	63.5	120.7	90.1 %	126	187	48.3 %	39.1 %
Mid South Canterbury	167	180	7.8 %	19.2	20.5	6.7 %	139	136	83.2 %	75.6 %
Northern Canterbury	516	584	13.2 %	21.9	24.5	11.5 %	235	269	45.5 %	46.1 %
Southern Canterbury	355	442	24.5 %	18.7	22.7	21.6 %	183	171	51.5 %	38.7 %
	1,299	1,684	29.6 %	23.5	30.0	27.9 %	683	763	52.6 %	45.3 %

SUMMARY OF RECORDED OFFENCES, RATE PER 10,000 POPULATION AND RESOLVED OFFENCES, BY DIVISION

Years ending 31 December

ROBBERY, EXTORTION AND RELATED OFFENCES

Area Description	Recorded 2012	Recorded 2013	Variance 2012-2013	Recorded per 10,000 pop 2012	Recorded per 10,000 pop 2013	Per 10,000 pop % Variance 2012 to 2013	Resolved 2012	Resolved 2013	Resolution Rate 2012	Resolution Rate 2013
Christchurch Central	55	66	20.0 %	13.4	16.7	24.5 %	24	26	43.6 %	39.4 %
Mid South Canterbury	11	13	18.2 %	1.3	1.5	17.0 %	5	8	45.5 %	61.5 %
Northern Canterbury	51	54	5.9 %	2.2	2.3	4.3 %	20	22	39.2 %	40.7 %
Southern Canterbury	64	53	-17.2 %	3.4	2.7	-19.1 %	27	17	42.2 %	32.1 %
	181	186	2.8 %	3.3	3.3	1.4 %	76	73	42.0 %	39.2 %

UNLAWFUL ENTRY WITH INTENT/BURGLARY, BREAK AND ENTER

Area Description	Recorded 2012	Recorded 2013	Variance 2012-2013	Recorded per 10,000 pop 2012	Recorded per 10,000 pop 2013	Per 10,000 pop % Variance 2012 to 2013	Resolved 2012	Resolved 2013	Resolution Rate 2012	Resolution Rate 2013
Christchurch Central	1,102	1,156	4.9 %	268.1	291.9	8.9 %	137	170	12.4 %	14.7 %
Mid South Canterbury	560	619	10.5 %	64.3	70.3	9.5 %	104	134	18.6 %	21.6 %
Northern Canterbury	2,235	2,160	-3.4 %	95.0	90.5	-4.8 %	231	295	10.3 %	13.7 %
Southern Canterbury	1,764	1,772	0.5 %	92.9	91.2	-1.9 %	198	188	11.2 %	10.6 %
	5,661	5,707	0.8 %	102.3	101.8	-0.5 %	670	787	11.8 %	13.8 %

THEFT AND RELATED OFFENCES

Area Description	Recorded 2012	Recorded 2013	Variance 2012-2013	Recorded per 10,000 pop 2012	Recorded per 10,000 pop 2013	Per 10,000 pop % Variance 2012 to 2013	Resolved 2012	Resolved 2013	Resolution Rate 2012	Resolution Rate 2013
Christchurch Central	2,633	3,242	23.1 %	640.6	818.7	27.8 %	700	838	26.6 %	25.8 %
Mid South Canterbury	1,324	1,314	-0.8 %	151.9	149.3	-1.7 %	407	379	30.7 %	28.8 %
Northern Canterbury	5,033	4,511	-10.4 %	214.0	189.0	-11.7 %	1,176	1,075	23.4 %	23.8 %
Southern Canterbury	4,348	4,299	-1.1 %	229.0	221.2	-3.4 %	932	923	21.4 %	21.5 %
	13,338	13,366	0.2 %	241.1	238.4	-1.1 %	3,215	3,215	24.1 %	24.1 %

FRAUD, DECEPTION AND RELATED OFFENCES

Area Description	Recorded 2012	Recorded 2013	Variance 2012-2013	Recorded per 10,000 pop 2012	Recorded per 10,000 pop 2013	Per 10,000 pop % Variance 2012 to 2013	Resolved 2012	Resolved 2013	Resolution Rate 2012	Resolution Rate 2013
Christchurch Central	308	445	44.5 %	74.9	112.4	50.0 %	172	213	55.8 %	47.9 %
Mid South Canterbury	142	97	-31.7 %	16.3	11.0	-32.4 %	104	58	73.2 %	59.8 %
Northern Canterbury	346	262	-24.3 %	14.7	11.0	-25.4 %	197	124	56.9 %	47.3 %
Southern Canterbury	283	214	-24.4 %	14.9	11.0	-26.1 %	145	111	51.2 %	51.9 %
	1,079	1,018	-5.7 %	19.5	18.2	-6.9 %	618	506	57.3 %	49.7 %

ILLICIT DRUG OFFENCES

Area Description	Recorded 2012	Recorded 2013	Variance 2012-2013	Recorded per 10,000 pop 2012	Recorded per 10,000 pop 2013	Per 10,000 pop % Variance 2012 to 2013	Resolved 2012	Resolved 2013	Resolution Rate 2012	Resolution Rate 2013
Christchurch Central	555	346	-37.7 %	135.0	87.4	-35.3 %	539	320	97.1 %	92.5 %
Mid South Canterbury	339	271	-20.1 %	38.9	30.8	-20.8 %	327	260	96.5 %	95.9 %
Northern Canterbury	569	463	-18.6 %	24.2	19.4	-19.8 %	540	428	94.9 %	92.4 %
Southern Canterbury	374	293	-21.7 %	19.7	15.1	-23.5 %	365	269	97.6 %	91.8 %
	1,837	1,373	-25.3 %	33.2	24.5	-26.2 %	1,771	1,277	96.4 %	93.0 %

SUMMARY OF RECORDED OFFENCES, RATE PER 10,000 POPULATION AND RESOLVED OFFENCES, BY DIVISION

Years ending 31 December

PROHIBITED AND REGULATED WEAPONS AND EXPLOSIVES OFFENCES

Area Description	Recorded 2012	Recorded 2013	Variance 2012-2013	Recorded per 10,000 pop 2012	Recorded per 10,000 pop 2013	Per 10,000 pop % Variance 2012 to 2013	Resolved 2012	Resolved 2013	Resolution Rate 2012	Resolution Rate 2013
Christchurch Central	181	156	-13.8 %	44.0	39.4	-10.5 %	171	141	94.5 %	90.4 %
Mid South Canterbury	83	85	2.4 %	9.5	9.7	1.4 %	76	76	91.6 %	89.4 %
Northern Canterbury	203	195	-3.9 %	8.6	8.2	-5.3 %	175	163	86.2 %	83.6 %
Southern Canterbury	140	129	-7.9 %	7.4	6.6	-10.0 %	130	116	92.9 %	89.9 %
	607	565	-6.9 %	11.0	10.1	-8.1 %	552	496	90.9 %	87.8 %

PROPERTY DAMAGE AND ENVIRONMENTAL POLLUTION

Area Description	Recorded 2012	Recorded 2013	Variance 2012-2013	Recorded per 10,000 pop 2012	Recorded per 10,000 pop 2013	Per 10,000 pop % Variance 2012 to 2013	Resolved 2012	Resolved 2013	Resolution Rate 2012	Resolution Rate 2013
Christchurch Central	1,151	1,096	-4.8 %	280.0	276.8	-1.2 %	362	325	31.5 %	29.7 %
Mid South Canterbury	1,179	1,162	-1.4 %	135.3	132.0	-2.4 %	278	294	23.6 %	25.3 %
Northern Canterbury	2,553	2,058	-19.4 %	108.6	86.2	-20.6 %	701	508	27.5 %	24.7 %
Southern Canterbury	1,903	1,655	-13.0 %	100.2	85.1	-15.0 %	490	365	25.7 %	22.1 %
	6,786	5,971	-12.0 %	122.6	106.5	-13.2 %	1,831	1,492	27.0 %	25.0 %

PUBLIC ORDER OFFENCES

Area Description	Recorded 2012	Recorded 2013	Variance 2012-2013	Recorded per 10,000 pop 2012	Recorded per 10,000 pop 2013	Per 10,000 pop % Variance 2012 to 2013	Resolved 2012	Resolved 2013	Resolution Rate 2012	Resolution Rate 2013
Christchurch Central	1,634	1,439	-11.9 %	397.6	363.4	-8.6 %	1,468	1,251	89.8 %	86.9 %
Mid South Canterbury	722	638	-11.6 %	82.8	72.5	-12.5 %	635	565	88.0 %	88.6 %
Northern Canterbury	1,490	1,309	-12.1 %	63.4	54.8	-13.4 %	1,201	1,075	80.6 %	82.1 %
Southern Canterbury	1,802	1,207	-33.0 %	94.9	62.1	-34.6 %	1,617	1,032	89.7 %	85.5 %
	5,648	4,593	-18.7 %	102.1	81.9	-19.7 %	4,921	3,923	87.1 %	85.4 %

OFFENCES AGAINST JUSTICE PROCEDURES, GOVERNMENT SECURITY AND GOVERNMENT OPERATIONS

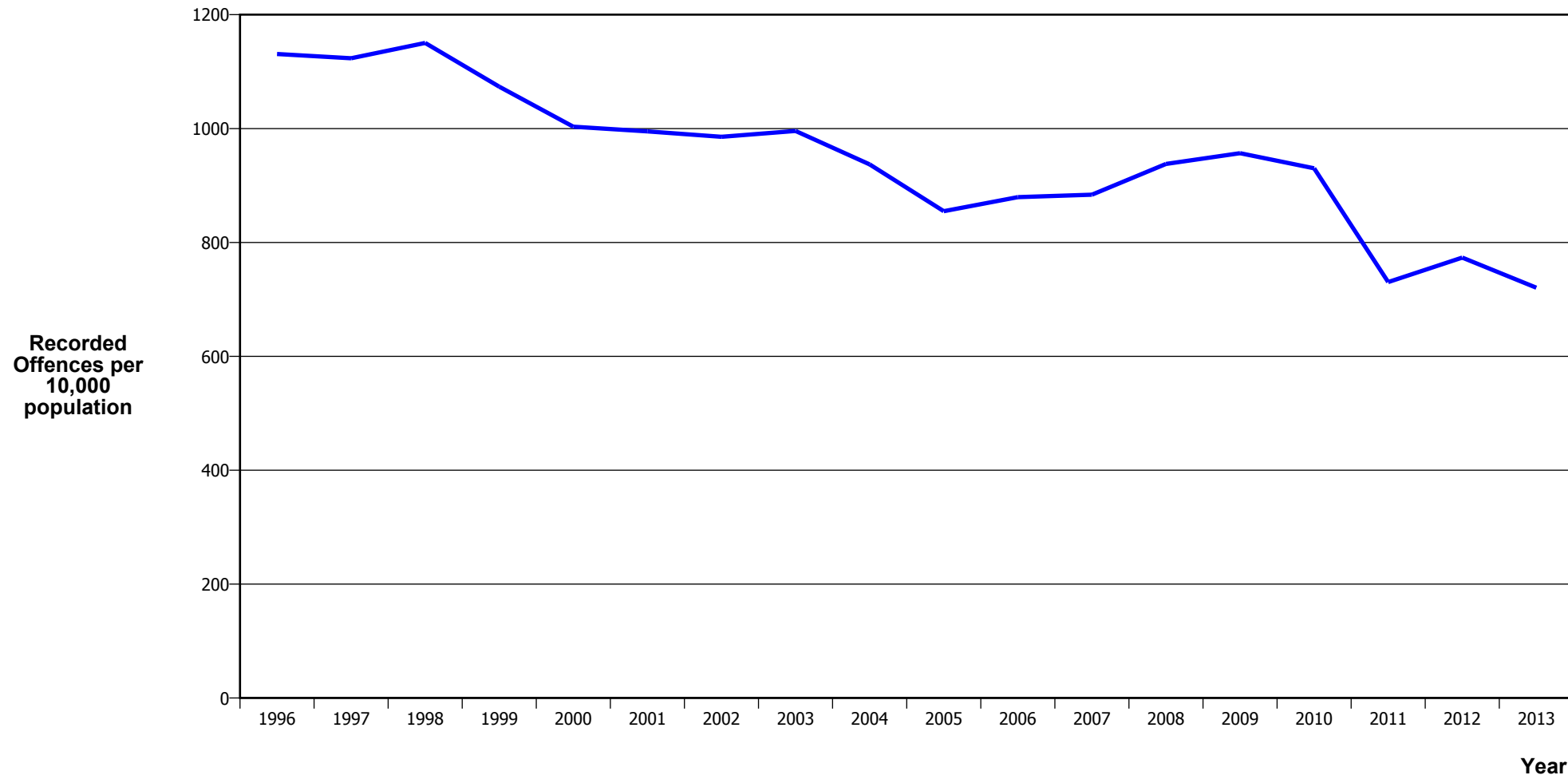
Area Description	Recorded 2012	Recorded 2013	Variance 2012-2013	Recorded per 10,000 pop 2012	Recorded per 10,000 pop 2013	Per 10,000 pop % Variance 2012 to 2013	Resolved 2012	Resolved 2013	Resolution Rate 2012	Resolution Rate 2013
Christchurch Central	768	782	1.8 %	186.9	197.5	5.7 %	720	727	93.8 %	93.0 %
Mid South Canterbury	121	149	23.1 %	13.9	16.9	21.9 %	114	138	94.2 %	92.6 %
Northern Canterbury	526	424	-19.4 %	22.4	17.8	-20.6 %	486	381	92.4 %	89.9 %
Southern Canterbury	371	284	-23.5 %	19.5	14.6	-25.2 %	339	247	91.4 %	87.0 %
	1,786	1,639	-8.2 %	32.3	29.2	-9.4 %	1,659	1,493	92.9 %	91.1 %

MISCELLANEOUS OFFENCES

Area Description	Recorded 2012	Recorded 2013	Variance 2012-2013	Recorded per 10,000 pop 2012	Recorded per 10,000 pop 2013	Per 10,000 pop % Variance 2012 to 2013	Resolved 2012	Resolved 2013	Resolution Rate 2012	Resolution Rate 2013
Christchurch Central	136	48	-64.7 %	33.1	12.1	-63.4 %	118	21	86.8 %	43.8 %
Mid South Canterbury	18	14	-22.2 %	2.1	1.6	-23.0 %	16	11	88.9 %	78.6 %
Northern Canterbury	60	38	-36.7 %	2.6	1.6	-37.6 %	28	14	46.7 %	36.8 %
Southern Canterbury	55	60	9.1 %	2.9	3.1	6.6 %	31	32	56.4 %	53.3 %
	269	160	-40.5 %	4.9	2.9	-41.3 %	193	78	71.7 %	48.8 %

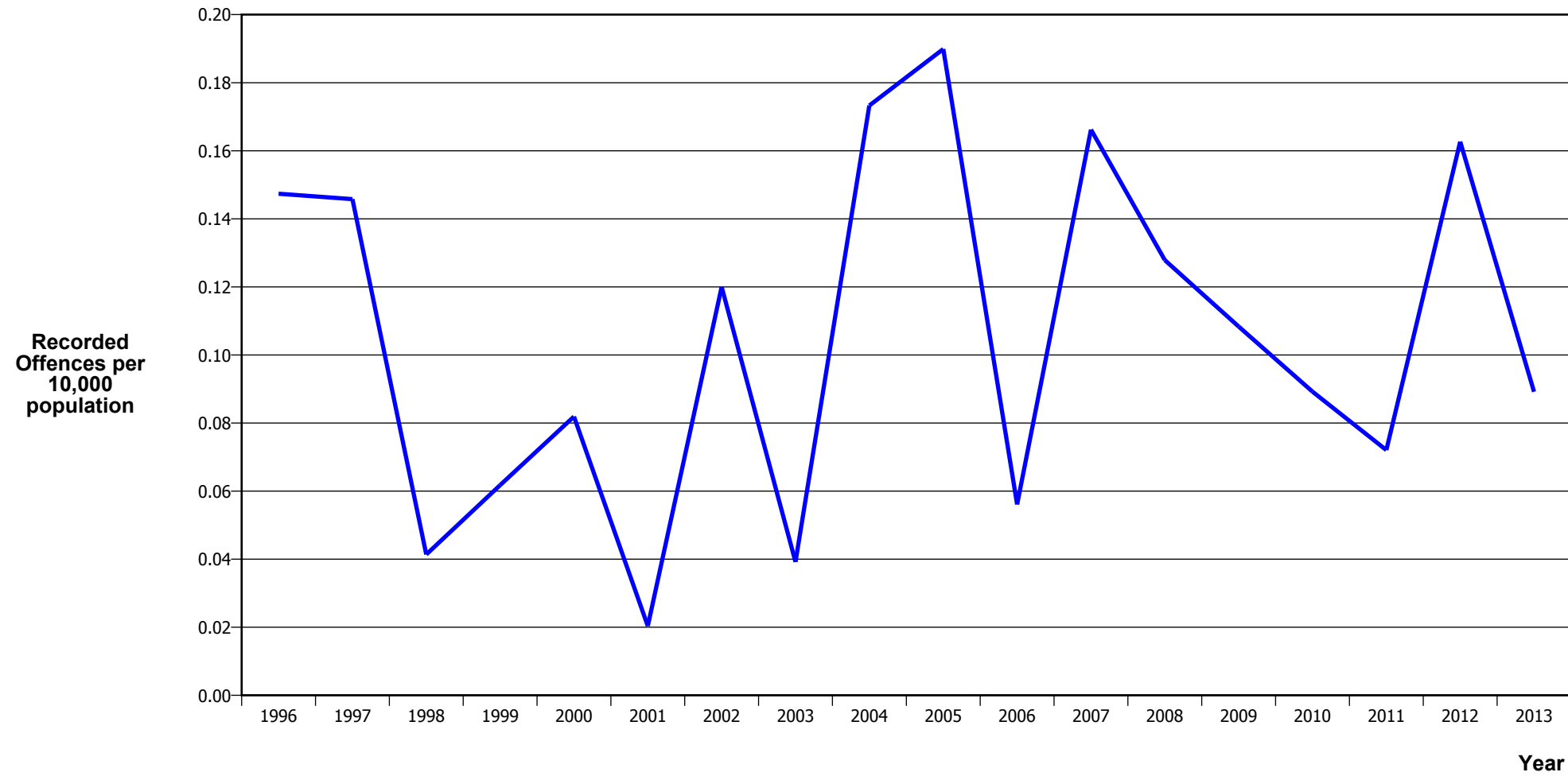
CRIME TRENDS

TOTAL CRIME



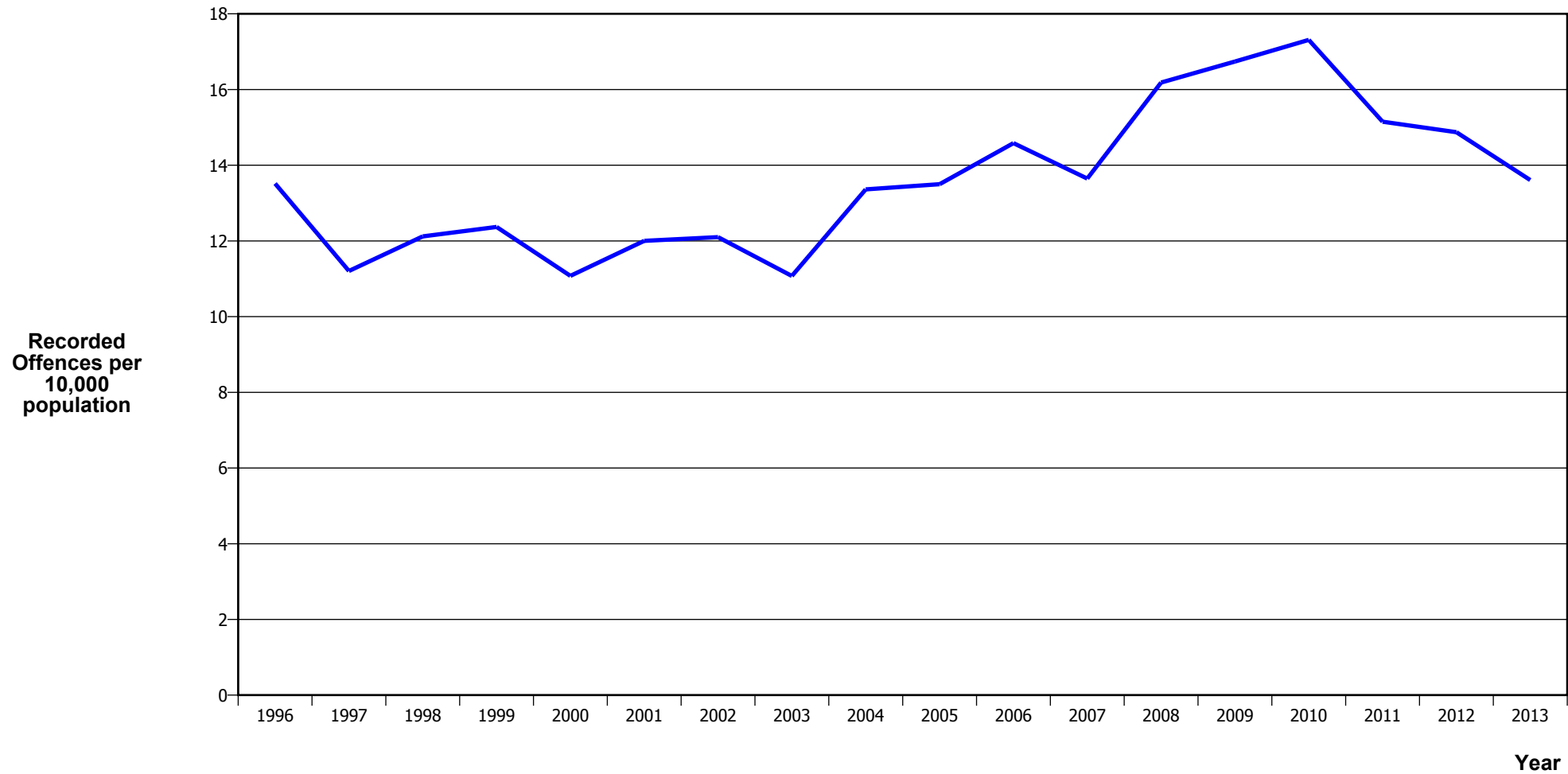
Calendar Year	1996	1997	1998	1999	2000	2001	2002	2003	2004	2005	2006	2007	2008	2009	2010	2011	2012	2013
Recorded Offences	53,717	53,946	55,624	52,159	49,001	48,909	49,270	50,807	48,675	45,026	47,048	47,856	51,341	52,981	52,119	40,540	42,796	40,393
Recorded per 10,000 Population	1,130.9	1,123.5	1,150.4	1,073.5	1,003.2	995.1	985.5	995.8	937.2	855.0	879.7	883.9	937.9	956.7	930.2	730.4	773.5	720.5

MURDER



Calendar Year	1996	1997	1998	1999	2000	2001	2002	2003	2004	2005	2006	2007	2008	2009	2010	2011	2012	2013
Recorded Offences	7	7	2	3	4	1	6	2	9	10	3	9	7	6	5	4	9	5
Recorded per 10,000 Population	0.15	0.15	0.04	0.06	0.08	0.02	0.12	0.04	0.17	0.19	0.06	0.17	0.13	0.11	0.09	0.07	0.16	0.09

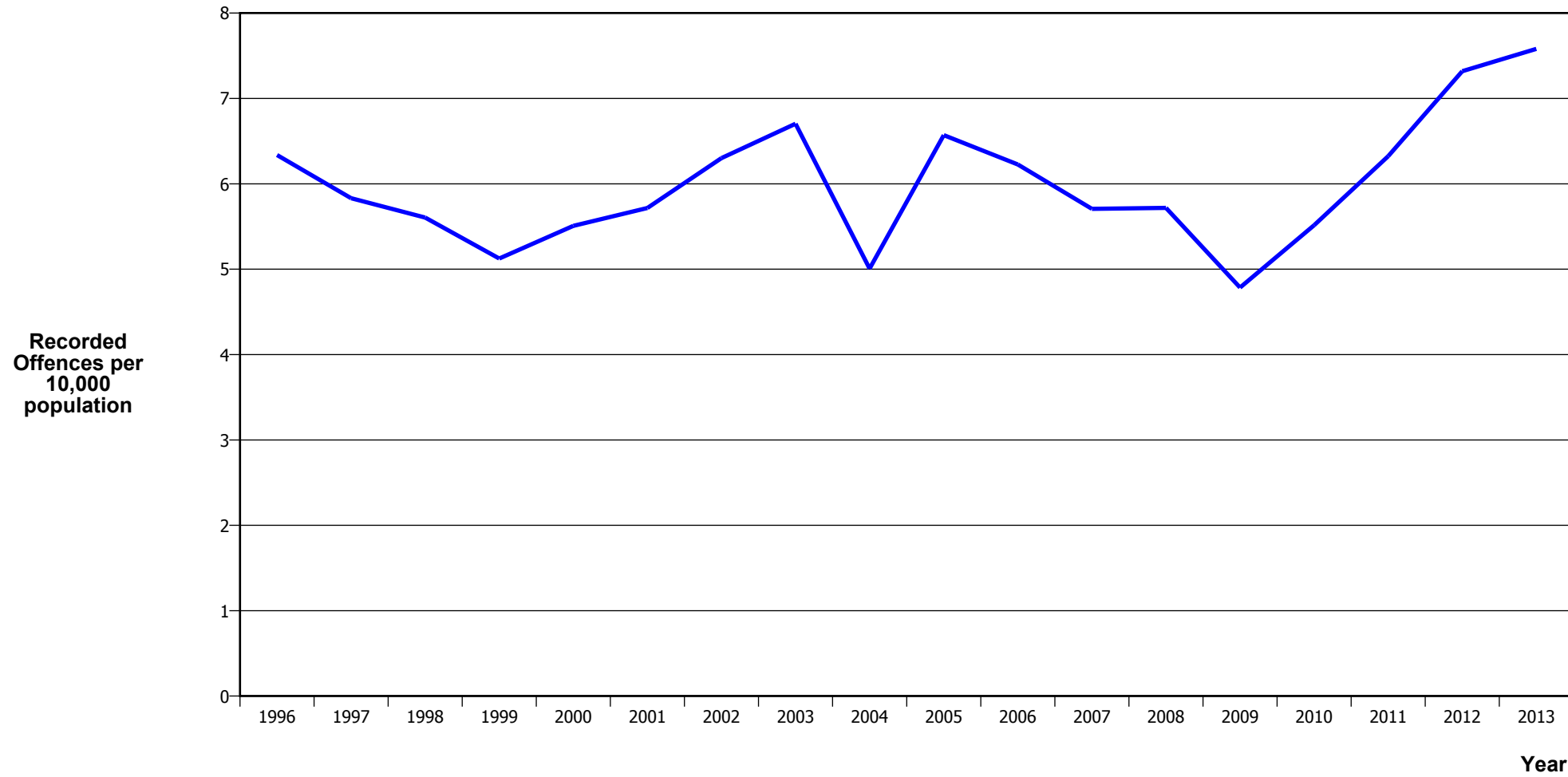
SERIOUS ASSAULTS RESULTING IN INJURY*



Calendar Year	1996	1997	1998	1999	2000	2001	2002	2003	2004	2005	2006	2007	2008	2009	2010	2011	2012	2013
Recorded Offence	642	538	586	601	541	590	605	565	694	711	780	739	886	927	970	841	823	763
Offence Rate per 10K Popn	13.5	11.2	12.1	12.4	11.1	12.0	12.1	11.1	13.4	13.5	14.6	13.6	16.2	16.7	17.3	15.2	14.9	13.6

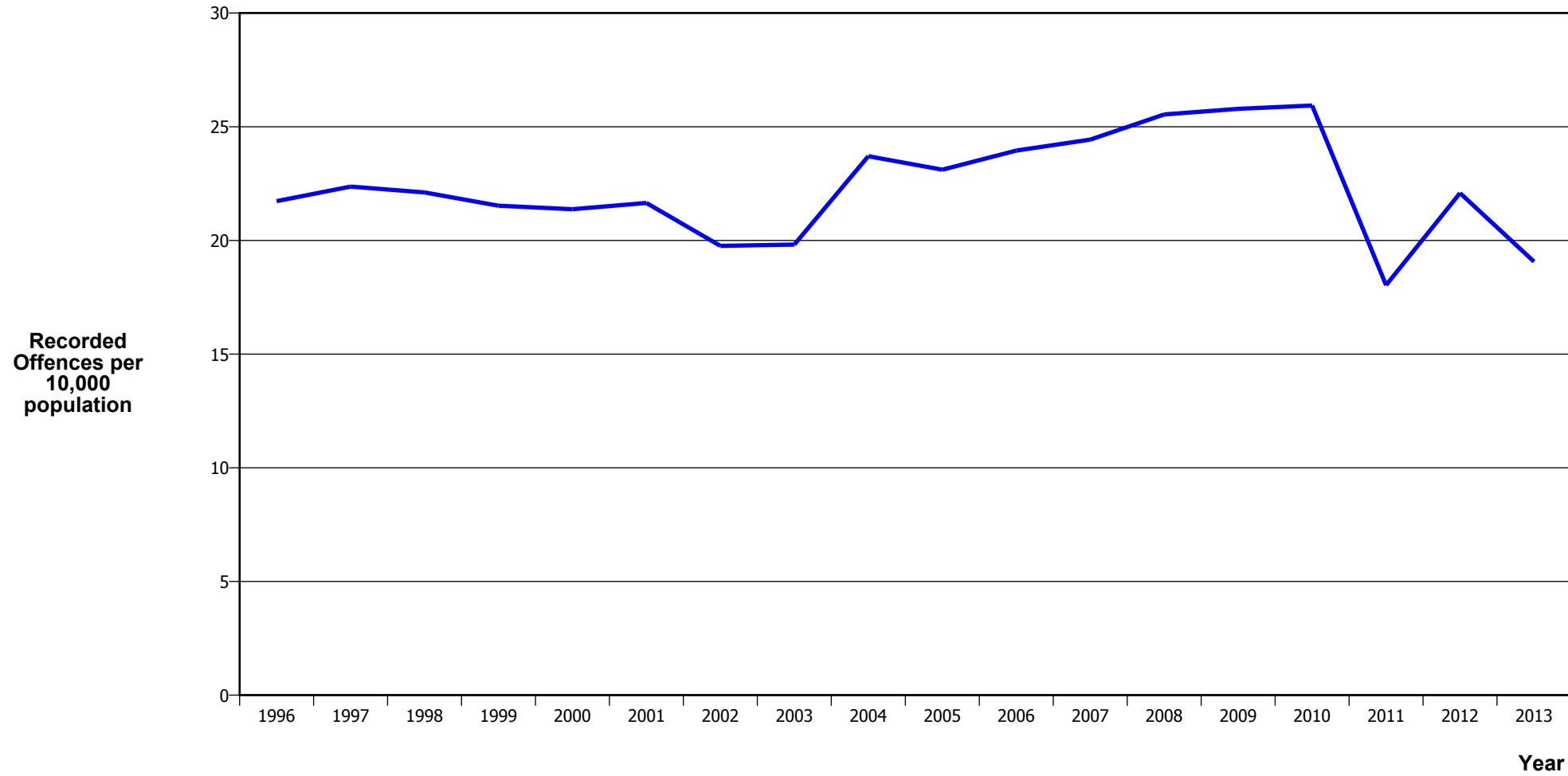
* This measure excludes common assaults

SEXUAL ASSAULTS



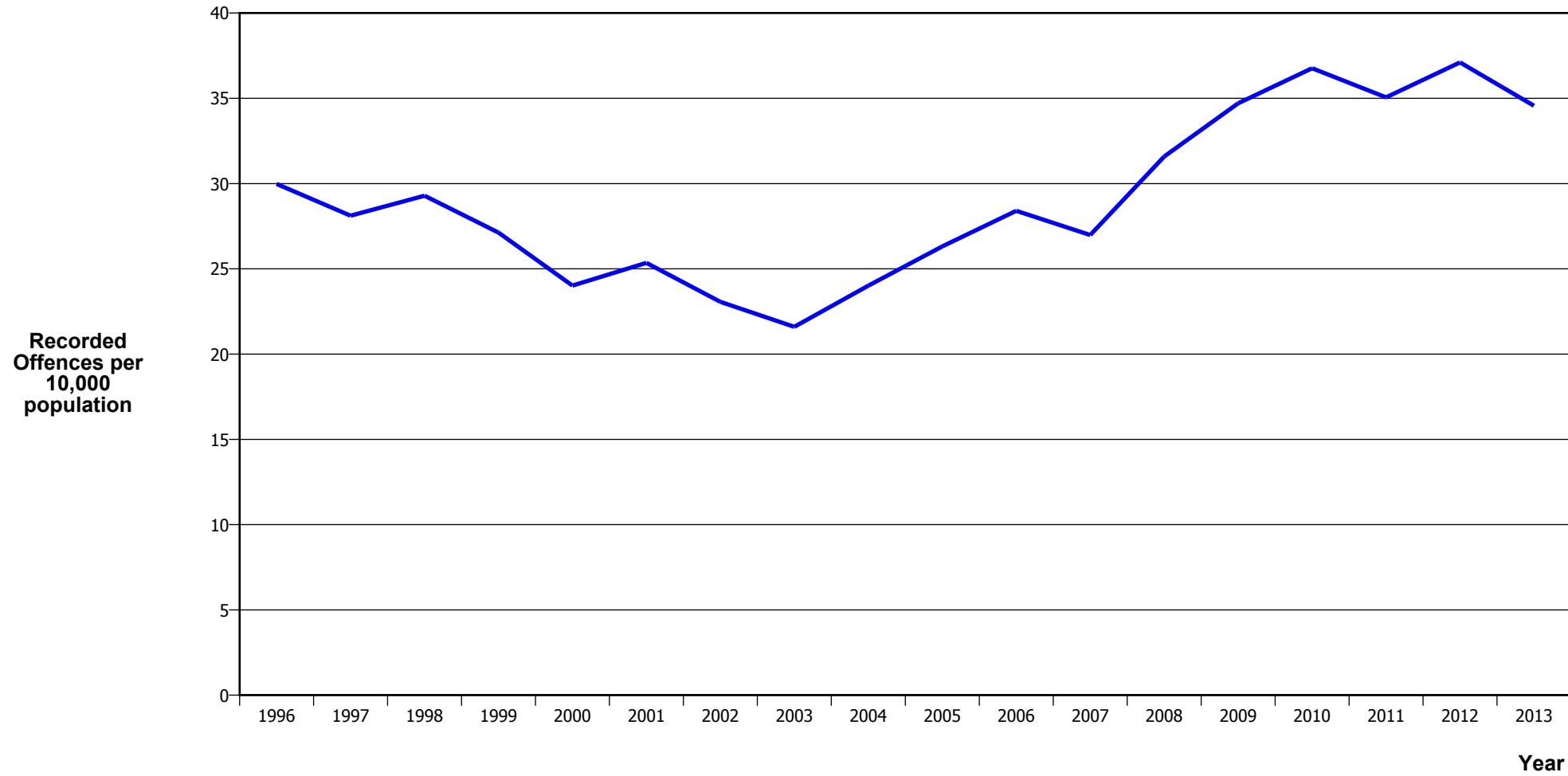
Calendar Year	1996	1997	1998	1999	2000	2001	2002	2003	2004	2005	2006	2007	2008	2009	2010	2011	2012	2013
Recorded Offences	301	280	271	249	269	281	315	342	260	346	333	309	313	265	309	351	405	425
Recorded per 10,000 Population	6.3	5.8	5.6	5.1	5.5	5.7	6.3	6.7	5.0	6.6	6.2	5.7	5.7	4.8	5.5	6.3	7.3	7.6

PUBLIC PLACE ASSAULTS



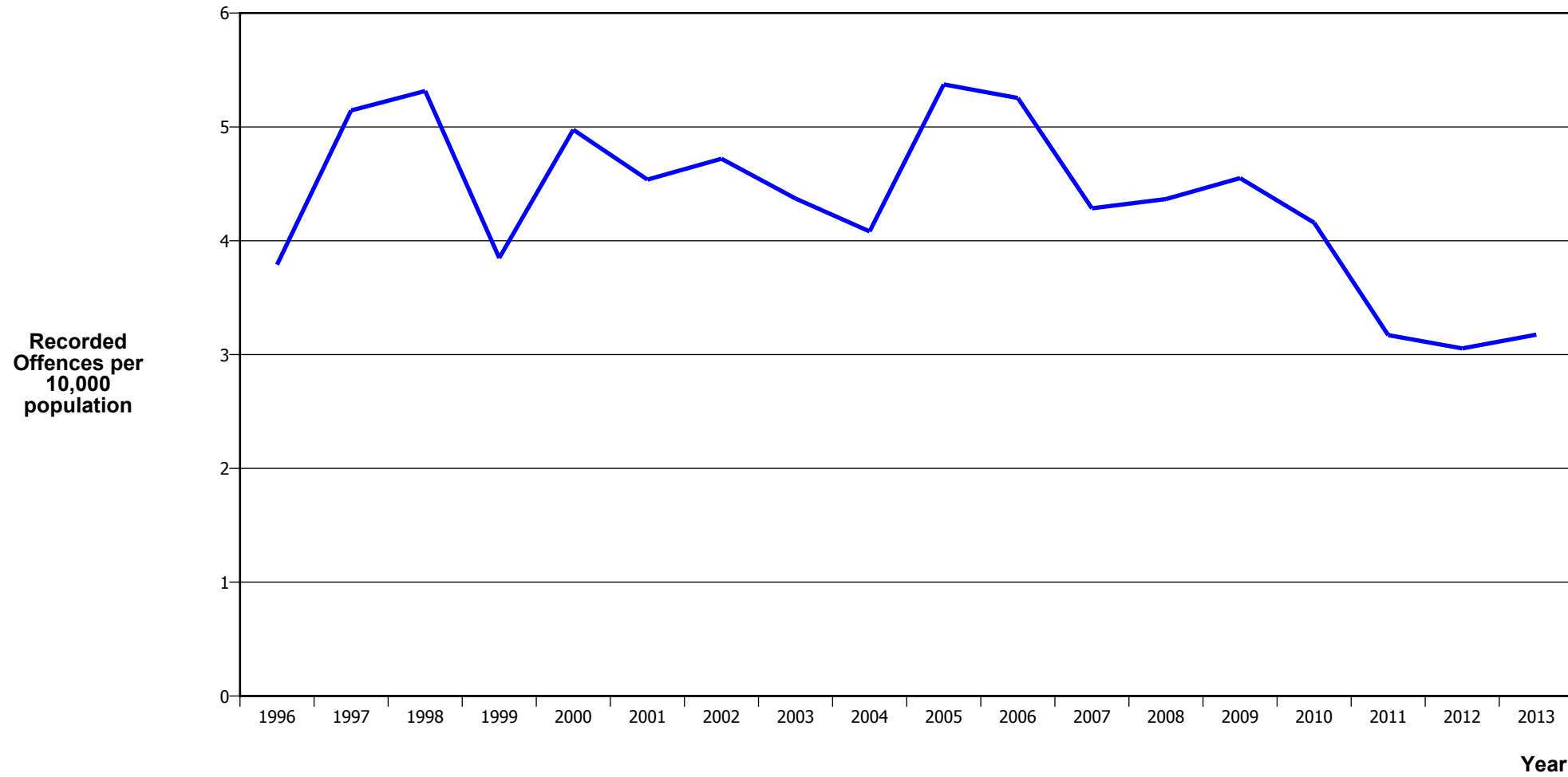
Calendar Year	1996	1997	1998	1999	2000	2001	2002	2003	2004	2005	2006	2007	2008	2009	2010	2011	2012	2013
Recorded Offences	1,032	1,074	1,069	1,046	1,044	1,064	988	1,011	1,231	1,217	1,281	1,323	1,398	1,428	1,453	1,001	1,222	1,069
Recorded per 10,000 Population	21.7	22.4	22.1	21.5	21.4	21.6	19.8	19.8	23.7	23.1	24.0	24.4	25.5	25.8	25.9	18.0	22.1	19.1

DWELLING ASSAULTS



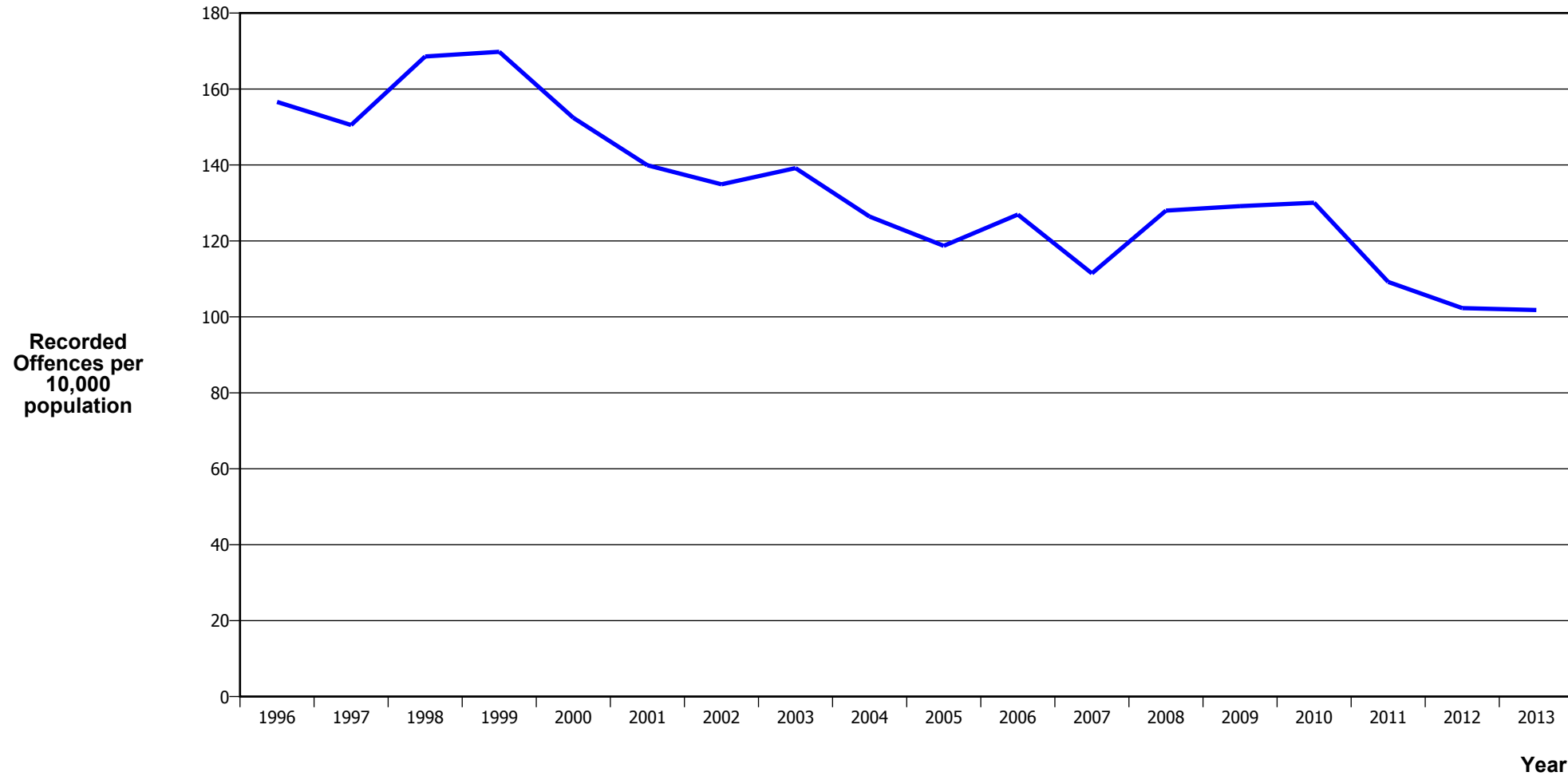
Calendar Year	1996	1997	1998	1999	2000	2001	2002	2003	2004	2005	2006	2007	2008	2009	2010	2011	2012	2013
Recorded Offences	1,424	1,350	1,416	1,318	1,173	1,246	1,153	1,102	1,247	1,386	1,519	1,461	1,729	1,922	2,060	1,946	2,053	1,938
Recorded per 10,000 Population	30.0	28.1	29.3	27.1	24.0	25.3	23.1	21.6	24.0	26.3	28.4	27.0	31.6	34.7	36.8	35.1	37.1	34.6

ROBBERY



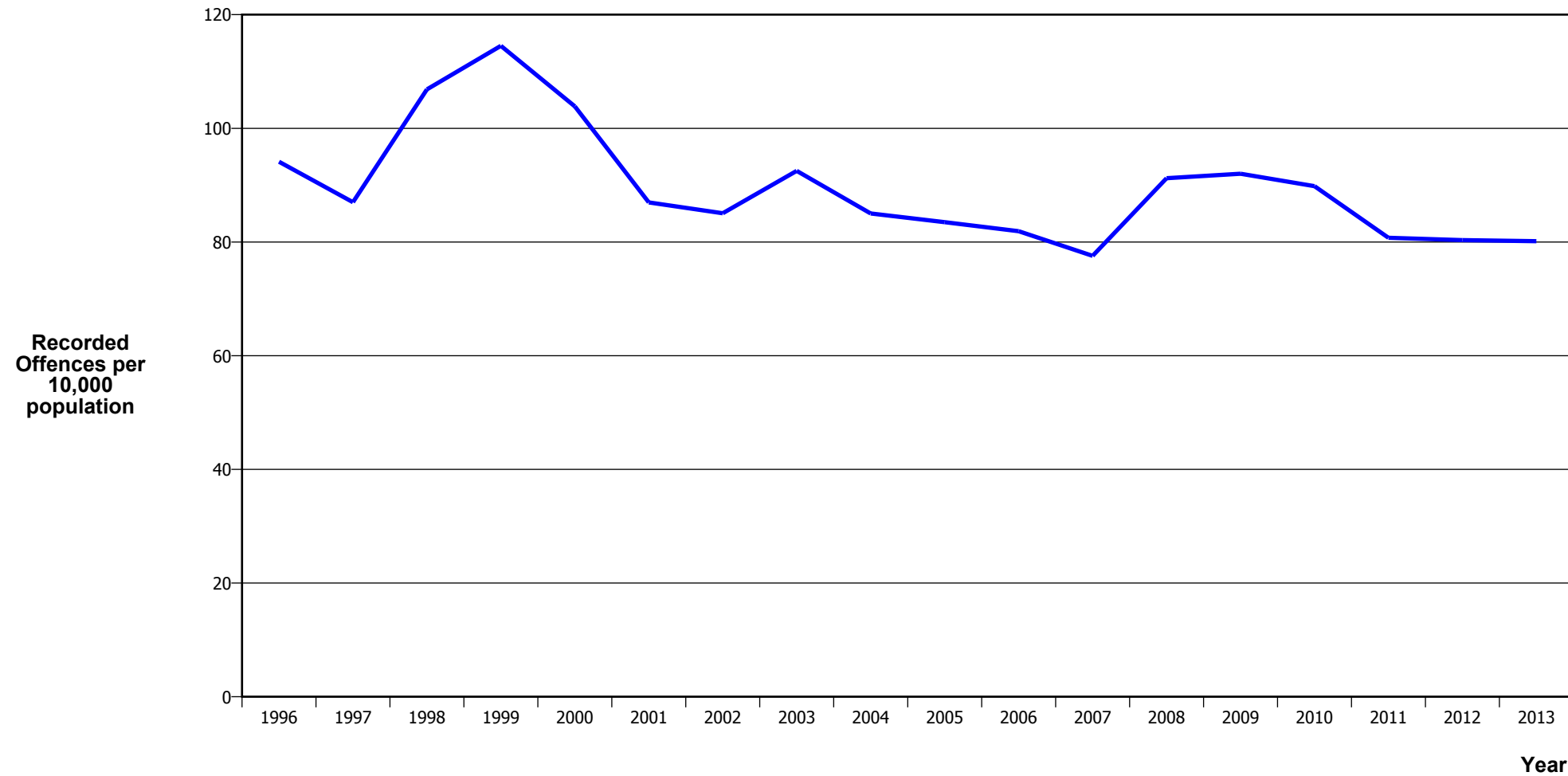
Calendar Year	1996	1997	1998	1999	2000	2001	2002	2003	2004	2005	2006	2007	2008	2009	2010	2011	2012	2013
Recorded Offences	180	247	257	187	243	223	236	223	212	283	281	232	239	252	233	176	169	178
Recorded per 10,000 Population	3.8	5.1	5.3	3.8	5.0	4.5	4.7	4.4	4.1	5.4	5.3	4.3	4.4	4.6	4.2	3.2	3.1	3.2

BURGLARY (TOTAL)



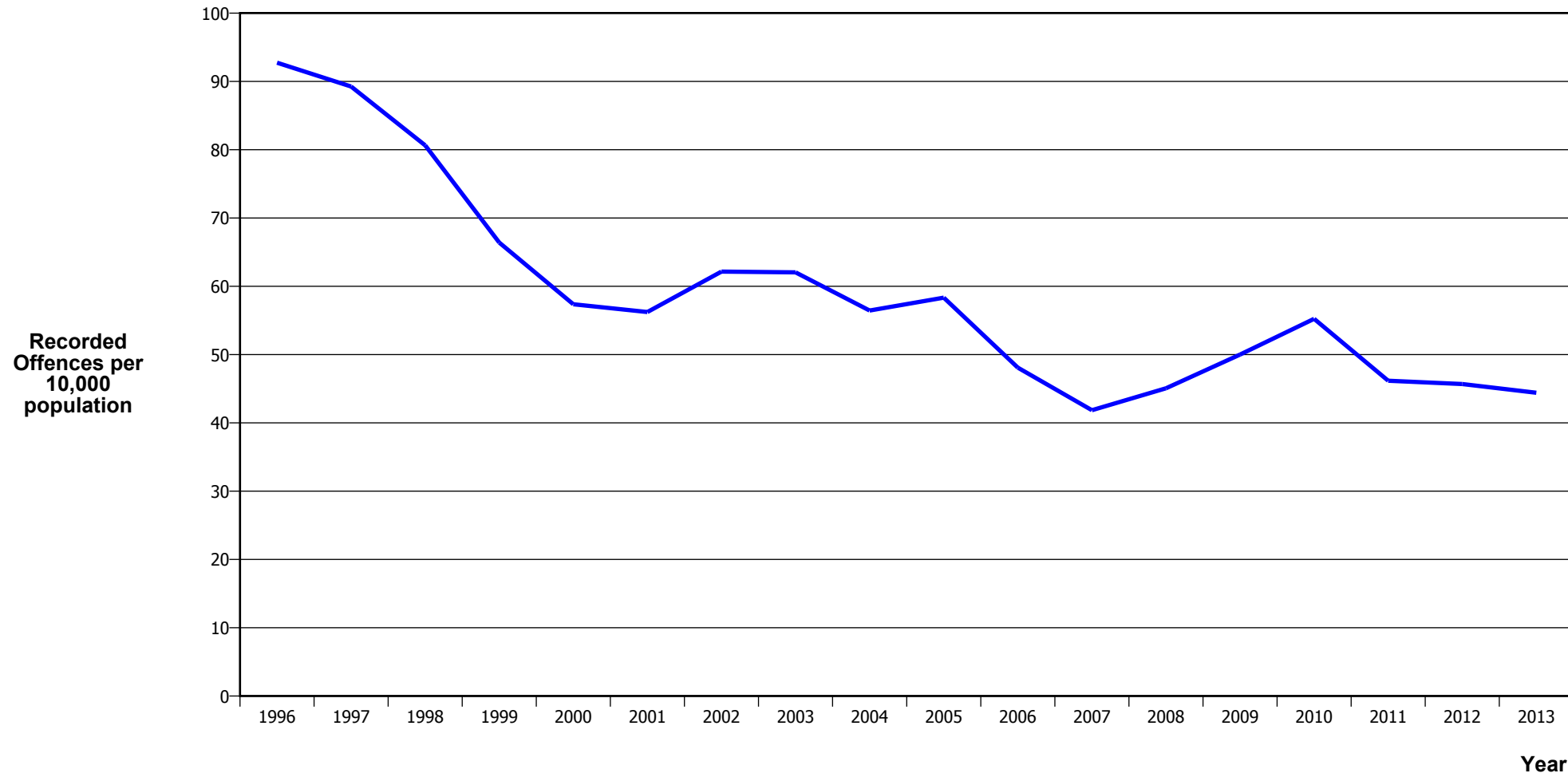
Calendar Year	1996	1997	1998	1999	2000	2001	2002	2003	2004	2005	2006	2007	2008	2009	2010	2011	2012	2013
Recorded Offences	7,439	7,227	8,151	8,250	7,445	6,877	6,745	7,100	6,565	6,251	6,789	6,034	7,006	7,153	7,287	6,061	5,661	5,707
Recorded per 10,000 Population	156.6	150.5	168.6	169.8	152.4	139.9	134.9	139.2	126.4	118.7	126.9	111.4	128.0	129.2	130.1	109.2	102.3	101.8

BURGLARY (DWELLING)



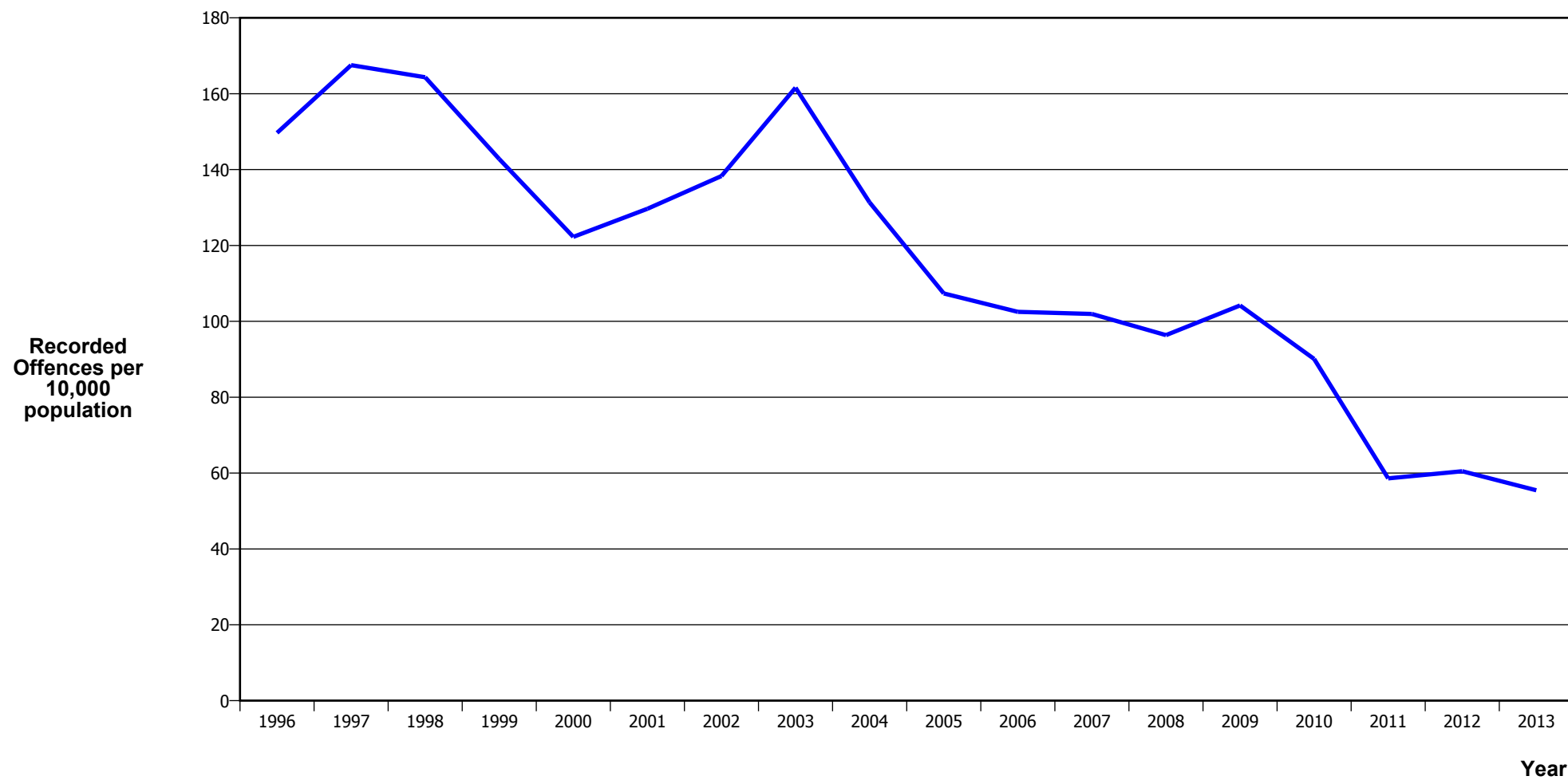
Calendar Year	1996	1997	1998	1999	2000	2001	2002	2003	2004	2005	2006	2007	2008	2009	2010	2011	2012	2013
Recorded Offences	4,471	4,178	5,166	5,564	5,073	4,275	4,253	4,720	4,416	4,397	4,381	4,200	4,994	5,096	5,033	4,482	4,445	4,493
Recorded per 10,000 Population	94.1	87.0	106.8	114.5	103.9	87.0	85.1	92.5	85.0	83.5	81.9	77.6	91.2	92.0	89.8	80.7	80.3	80.1

VEHICLES STOLEN



Calendar Year	1996	1997	1998	1999	2000	2001	2002	2003	2004	2005	2006	2007	2008	2009	2010	2011	2012	2013
Recorded Offences	4,405	4,285	3,899	3,226	2,802	2,764	3,107	3,165	2,932	3,072	2,572	2,266	2,467	2,769	3,095	2,563	2,528	2,490
Recorded per 10,000 Population	92.7	89.2	80.6	66.4	57.4	56.2	62.1	62.0	56.5	58.3	48.1	41.9	45.1	50.0	55.2	46.2	45.7	44.4

THEFT EX CAR



Calendar Year	1996	1997	1998	1999	2000	2001	2002	2003	2004	2005	2006	2007	2008	2009	2010	2011	2012	2013
Recorded Offences	7,110	8,044	7,946	6,937	5,972	6,373	6,915	8,245	6,821	5,653	5,482	5,520	5,275	5,770	5,047	3,253	3,347	3,110
Recorded per 10,000 Population	149.7	167.5	164.3	142.8	122.3	129.7	138.3	161.6	131.3	107.3	102.5	102.0	96.4	104.2	90.1	58.6	60.5	55.5

Population Data

Population data is used in this release to calculate crime rates. They have been derived from population estimates as at 30 June each year that have been obtained from Statistics New Zealand.

The estimated resident population is based on the census usually resident population count, with adjustments for residents missed or counted more than once by the census (net census undercount), and for residents temporarily overseas on census night.

These population estimates exclude the number of international students who are studying in New Zealand for less than 12 months.

Year	Population
1996	475,010
1997	480,150
1998	483,500
1999	485,860
2000	488,440
2001	491,520
2002	499,950
2003	510,210
2004	519,360
2005	526,640
2006	534,840
2007	541,430
2008	547,400
2009	553,780
2010	560,300
2011	555,070
2012	553,310
2013	560,640

General Definitions

Recorded Offences: the number of breaches of the New Zealand law recorded by Police. This includes offences specified in the Crimes Act and other legislations, such as the Summary Offences Act, Local Government Act, etc.

Resolved Offences: the number of recorded offences where an offender has been identified and dealt with (e.g. warned, cautioned, prosecuted, etc).

Resolution Rate: the proportion of recorded offences that have been resolved.

Recorded per 10,000 population: the number of recorded offences for every 10,000 people. This is also referred as the crime rate per 10,000 population.

ANZSOC: The Australian and New Zealand Standard Offence Classification. The offence classification is divided into 16 major offence divisions.

Definition of ANZSOC Divisions

1. Homicide and related offences: Unlawfully kill, attempt to unlawfully kill or conspiracy to kill another person.
2. Acts intended to cause injury: Acts, excluding attempted murder and those resulting in death, which are intended to cause non-fatal injury or harm to another person and where there is no sexual or acquisitive element.
3. Sexual assault and related offences: Acts, or intent of acts, of a sexual nature against another person, which are non-consensual or where consent is proscribed.
4. Dangerous or negligent acts endangering persons: Dangerous or negligent acts which, though not intended to cause harm, actually or potentially result in injury to oneself or another person.
5. Abduction, harassment and other offences against person: Acts intended to threaten or harass, or acts that unlawfully deprive another person of their freedom of movement, that are against that person's will or against the will of any parent, guardian or other person having lawful custody or care of that person.
6. Robbery, extortion and related offences: Acts intended to unlawfully gain money, property or other items of value from, or to cause detriment to, another person by using the threat of force or any other coercive measure.
7. Unlawful entry with intent / burglary, break and enter: The unlawful entry of a structure with the intent to commit an offence, where the entry is either forced or unforced.
8. Theft and related and offences: The unlawful taking or obtaining of money or goods, not involving the use of force or violence, coercion or deception, with intent to permanently or temporarily deprive the owner or possessor of the use of the money or goods, or the receiving or handling of money or goods obtained unlawfully.

9. Fraud, deception and related offences: Offences involving a dishonest act or omission carried out with the purpose of deceiving to obtain a benefit.

10. Illicit drug offences: The possessing, selling, dealing or trafficking, importing or exporting, manufacturing or cultivating of drugs or other substances prohibited under legislation.

11. Prohibited and regulated weapons and explosives offences: Offences involving prohibited or regulated weapons and explosives. Those offences also involving assault, sexual assault or robbery are coded to the relevant group within Assault, Sexual assaults and Robbery respectively.

12. Property damage and environmental pollution: The wilful and unlawful destruction, damage or defacement of public or private property, or the pollution of property or a definable entity held in common by the community.

13. Public order offences: Offences relating personal conduct that involves, or may lead to, a breach of public order or decency, or that is indicative of criminal intent, or that is otherwise regulated or prohibited on moral or ethical grounds. In general these offences do not involve a specific victim or victims; however some offences, such as offensive language and offensive behaviour, may be directed towards a single victim.

14. Traffic and vehicle regulatory offences: Offences relating to vehicles and most forms of traffic, including offences pertaining to the licensing, registration, roadworthiness, or use of vehicles, bicycle offences and pedestrian offences.

15. Offences against justice procedures, government security and government operations: An act or omission that is deemed to be prejudicial to the effective carrying out of justice procedures or any government operations. This includes general government operations as well as those specifically concerned with maintaining government security.

16. Miscellaneous offences: Offences involving the breach of statutory rules or regulations governing activities that are prima facie legal, where such offences are not explicitly dealt with under any other division. If an offence is specified under regulation and involves an act that would be illegal under common law or general criminal legislation, the offence is dealt with under the appropriate generic group.