

**BAY OF PLENTY DISTRICT
CRIME STATISTICS
2013/2014**



**A Summary of
Recorded and Resolved Offence
Statistics**

**POLICE NATIONAL HEADQUARTERS
October 2014**

ISSN 1178-1580

Table of Contents:

Topic	Page
Report Notes	1
Summary of District Recorded and Resolved Crime by Division	2 - 4
Proportions of Recorded Crime by Division	5
Summary of District Recorded Offences, Rate per 10,000 Population and Resolved Offences, by Area	6
Summary of Area Recorded Offences, Rate per 10,000 Population and Resolved Offences, by Division	7 - 11
Crime Trends:	12
Total Crime	13
Murder	14
Serious Assaults Resulting in Injury	15
Sexual Assaults	16
Public Place Assaults	17
Dwelling Assaults	18
Robbery	19
Burglary	20
Burglary (Dwelling)	21
Vehicles Stolen	22
Theft Ex Car	23
Population Data	24
General Definitions	25 - 26

REPORT NOTES:

Statistics reported in this document are derived from the Police National Intelligence Application (NIA). These Official Statistics for Recorded and Resolved Offences present a snapshot of data in NIA relating to offences that occur within a given year, as at the date 14 days following the end of that year.

Unless the matter is minor where Police attendance is sufficient, a matter that is reported to or discovered by Police where Police believe an offence is likely to have been committed is counted as a recorded offence.

A recorded offence is counted as resolved when Police apprehend an offender and decide how to deal with him/her. (E.g. warn, prosecute, etc.)

Resolution rate is the percentage of recorded offences that are resolved within 14 days of the end of the year being reported on.

If an offence is resolved 15 days or more after the end of the year it will not appear in the Official Crime Statistics for that or any other year. Resolution Rate therefore undercounts the number of cases that Police have resolved. This phenomenon has a more marked impact for some types of offences than others, such as offences that require long investigations (E.g. many serial crimes, burglaries and murders).

Several offences have been reclassified into different ANZSOC groups. This has resulted in changes to subtotals for Groups and Sub-divisions within Divisions 10, 15 and 16, compared to previously reported data. Generally, this occurred within the same Division.

When comparing 2013/2014 Statistics with previous years, the reader should also refer to "Report Notes" published in previous years' reports, as previous changes significantly affect year on year trends.

SUMMARY OF DISTRICT RECORDED AND RESOLVED CRIME, BY DIVISION

Years ending 30 June

HOMICIDE AND RELATED OFFENCES

ANZSOC Subdivision Description	Recorded 20112012	Recorded 20122013	Recorded 20132014	Variance 11/12-12/13	Variance 12/13-13/14	Resolved 20112012	Resolved 20122013	Resolved 20132014	Resolution Rate 20112012	Resolution Rate 20122013	Resolution Rate 20132014
ATTEMPTED MURDER	1	1	1	0.0 %	0.0 %	1	0	1	100.0 %	0.0 %	100.0 %
HOMICIDE AND RELATED OFFENCES NOT FURTHER DEFINED	0	0	1	0.0 %	0.0 %	0	0	1	0.0 %	0.0 %	100.0 %
MANSLAUGHTER AND DRIVING CAUSING DEATH	4	0	2	-100.0 %	0.0 %	4	0	2	100.0 %	0.0 %	100.0 %
MURDER	5	4	2	-20.0 %	-50.0 %	5	3	2	100.0 %	75.0 %	100.0 %
	10	5	6	-50.0 %	20.0 %	10	3	6	100.0 %	60.0 %	100.0 %

ACTS INTENDED TO CAUSE INJURY

ANZSOC Subdivision Description	Recorded 20112012	Recorded 20122013	Recorded 20132014	Variance 11/12-12/13	Variance 12/13-13/14	Resolved 20112012	Resolved 20122013	Resolved 20132014	Resolution Rate 20112012	Resolution Rate 20122013	Resolution Rate 20132014
ASSAULT	3,854	3,655	3,566	-5.2 %	-2.4 %	3,417	3,172	2,919	88.7 %	86.8 %	81.9 %
OTHER ACTS INTENDED TO CAUSE INJURY	3	1	3	-66.7 %	200.0 %	3	0	1	100.0 %	0.0 %	33.3 %
	3,857	3,656	3,569	-5.2 %	-2.4 %	3,420	3,172	2,920	88.7 %	86.8 %	81.8 %

SEXUAL ASSAULT AND RELATED OFFENCES

ANZSOC Subdivision Description	Recorded 20112012	Recorded 20122013	Recorded 20132014	Variance 11/12-12/13	Variance 12/13-13/14	Resolved 20112012	Resolved 20122013	Resolved 20132014	Resolution Rate 20112012	Resolution Rate 20122013	Resolution Rate 20132014
NON-ASSAULTIVE SEXUAL OFFENCES	25	13	8	-48.0 %	-38.5 %	23	11	2	92.0 %	84.6 %	25.0 %
SEXUAL ASSAULT	292	288	279	-1.4 %	-3.1 %	186	198	154	63.7 %	68.8 %	55.2 %
	317	301	287	-5.0 %	-4.7 %	209	209	156	65.9 %	69.4 %	54.4 %

DANGEROUS OR NEGLIGENT ACTS ENDANGERING PERSONS

ANZSOC Subdivision Description	Recorded 20112012	Recorded 20122013	Recorded 20132014	Variance 11/12-12/13	Variance 12/13-13/14	Resolved 20112012	Resolved 20122013	Resolved 20132014	Resolution Rate 20112012	Resolution Rate 20122013	Resolution Rate 20132014
OTHER DANGEROUS OR NEGLIGENT ACTS ENDANGERING PERSONS	80	82	56	2.5 %	-31.7 %	61	69	43	76.3 %	84.1 %	76.8 %
	80	82	56	2.5 %	-31.7 %	61	69	43	76.3 %	84.1 %	76.8 %

ABDUCTION, HARASSMENT AND OTHER RELATED OFFENCES AGAINST A PERSON

ANZSOC Subdivision Description	Recorded 20112012	Recorded 20122013	Recorded 20132014	Variance 11/12-12/13	Variance 12/13-13/14	Resolved 20112012	Resolved 20122013	Resolved 20132014	Resolution Rate 20112012	Resolution Rate 20122013	Resolution Rate 20132014
ABDUCTION AND KIDNAPPING	19	19	12	0.0 %	-36.8 %	16	16	12	84.2 %	84.2 %	100.0 %
DEPRIVATION OF LIBERTY/FALSE IMPRISONMENT	0	0	1	0.0 %	0.0 %	0	0	0	0.0 %	0.0 %	0.0 %
HARASSMENT AND THREATENING BEHAVIOUR	960	958	1,075	-0.2 %	12.2 %	749	758	796	78.0 %	79.1 %	74.0 %
	979	977	1,088	-0.2 %	11.4 %	765	774	808	78.1 %	79.2 %	74.3 %

ROBBERY, EXTORTION AND RELATED OFFENCES

ANZSOC Subdivision Description	Recorded 20112012	Recorded 20122013	Recorded 20132014	Variance 11/12-12/13	Variance 12/13-13/14	Resolved 20112012	Resolved 20122013	Resolved 20132014	Resolution Rate 20112012	Resolution Rate 20122013	Resolution Rate 20132014
BLACKMAIL AND EXTORTION	8	8	14	0.0 %	75.0 %	3	3	10	37.5 %	37.5 %	71.4 %
ROBBERY	126	132	127	4.8 %	-3.8 %	75	75	68	59.5 %	56.8 %	53.5 %
	134	140	141	4.5 %	0.7 %	78	78	78	58.2 %	55.7 %	55.3 %

UNLAWFUL ENTRY WITH INTENT/BURGLARY, BREAK AND ENTER

ANZSOC Subdivision Description	Recorded 20112012	Recorded 20122013	Recorded 20132014	Variance 11/12-12/13	Variance 12/13-13/14	Resolved 20112012	Resolved 20122013	Resolved 20132014	Resolution Rate 20112012	Resolution Rate 20122013	Resolution Rate 20132014
UNLAWFUL ENTRY WITH INTENT/BURGLARY, BREAK AND ENTER	5,139	4,928	4,198	-4.1 %	-14.8 %	1,007	897	848	19.6 %	18.2 %	20.2 %
	5,139	4,928	4,198	-4.1 %	-14.8 %	1,007	897	848	19.6 %	18.2 %	20.2 %

SUMMARY OF DISTRICT RECORDED AND RESOLVED CRIME, BY DIVISION

Years ending 30 June

THEFT AND RELATED OFFENCES

ANZSOC Subdivision Description	Recorded 20112012	Recorded 20122013	Recorded 20132014	Variance 11/12-12/13	Variance 12/13-13/14	Resolved 20112012	Resolved 20122013	Resolved 20132014	Resolution Rate 20112012	Resolution Rate 20122013	Resolution Rate 20132014
ILLEGAL USE OF PROPERTY (EXCEPT MOTOR VEHICLES)	240	209	234	-12.9 %	12.0 %	31	21	21	12.9 %	10.0 %	9.0 %
MOTOR VEHICLE THEFT AND RELATED OFFENCES	3,575	3,480	2,746	-2.7 %	-21.1 %	626	591	470	17.5 %	17.0 %	17.1 %
RECEIVE OR HANDLE PROCEEDS OF CRIME	256	241	207	-5.9 %	-14.1 %	251	237	201	98.0 %	98.3 %	97.1 %
THEFT (EXCEPT MOTOR VEHICLES)	6,522	6,620	6,235	1.5 %	-5.8 %	2,273	2,290	2,226	34.9 %	34.6 %	35.7 %
	10,593	10,550	9,422	-0.4 %	-10.7 %	3,181	3,139	2,918	30.0 %	29.8 %	31.0 %

FRAUD, DECEPTION AND RELATED OFFENCES

ANZSOC Subdivision Description	Recorded 20112012	Recorded 20122013	Recorded 20132014	Variance 11/12-12/13	Variance 12/13-13/14	Resolved 20112012	Resolved 20122013	Resolved 20132014	Resolution Rate 20112012	Resolution Rate 20122013	Resolution Rate 20132014
DECEPTIVE BUSINESS/GOVERNMENT PRACTICES	2	4	4	100.0 %	0.0 %	0	3	3	0.0 %	75.0 %	75.0 %
FORGERY AND COUNTERFEITING	21	27	19	28.6 %	-29.6 %	11	13	9	52.4 %	48.1 %	47.4 %
OBTAIN BENEFIT BY DECEPTION	519	702	502	35.3 %	-28.5 %	354	492	285	68.2 %	70.1 %	56.8 %
OTHER FRAUD AND DECEPTION OFFENCES	47	48	26	2.1 %	-45.8 %	35	27	12	74.5 %	56.3 %	46.2 %
	589	781	551	32.6 %	-29.4 %	400	535	309	67.9 %	68.5 %	56.1 %

ILLICIT DRUG OFFENCES

ANZSOC Subdivision Description	Recorded 20112012	Recorded 20122013	Recorded 20132014	Variance 11/12-12/13	Variance 12/13-13/14	Resolved 20112012	Resolved 20122013	Resolved 20132014	Resolution Rate 20112012	Resolution Rate 20122013	Resolution Rate 20132014
DEAL OR TRAFFIC IN ILLICIT DRUGS	446	462	406	3.6 %	-12.1 %	443	449	394	99.3 %	97.2 %	97.0 %
IMPORT OR EXPORT ILLICIT DRUGS	14	7	6	-50.0 %	-14.3 %	13	6	3	92.9 %	85.7 %	50.0 %
MANUFACTURE OR CULTIVATE ILLICIT DRUGS	319	348	273	9.1 %	-21.6 %	293	315	238	91.8 %	90.5 %	87.2 %
OTHER ILLICIT DRUG OFFENCES	547	420	275	-23.2 %	-34.5 %	545	416	273	99.6 %	99.0 %	99.3 %
POSSESS AND/OR USE ILLICIT DRUGS	983	824	676	-16.2 %	-18.0 %	971	805	655	98.8 %	97.7 %	96.9 %
	2,309	2,061	1,636	-10.7 %	-20.6 %	2,265	1,991	1,563	98.1 %	96.6 %	95.5 %

PROHIBITED AND REGULATED WEAPONS AND EXPLOSIVES OFFENCES

ANZSOC Subdivision Description	Recorded 20112012	Recorded 20122013	Recorded 20132014	Variance 11/12-12/13	Variance 12/13-13/14	Resolved 20112012	Resolved 20122013	Resolved 20132014	Resolution Rate 20112012	Resolution Rate 20122013	Resolution Rate 20132014
REGULATED WEAPONS/EXPLOSIVES OFFENCES	602	603	598	0.2 %	-0.8 %	561	576	560	93.2 %	95.5 %	93.6 %
	602	603	598	0.2 %	-0.8 %	561	576	560	93.2 %	95.5 %	93.6 %

PROPERTY DAMAGE AND ENVIRONMENTAL POLLUTION

ANZSOC Subdivision Description	Recorded 20112012	Recorded 20122013	Recorded 20132014	Variance 11/12-12/13	Variance 12/13-13/14	Resolved 20112012	Resolved 20122013	Resolved 20132014	Resolution Rate 20112012	Resolution Rate 20122013	Resolution Rate 20132014
ENVIRONMENTAL POLLUTION	14	8	11	-42.9 %	37.5 %	10	4	8	71.4 %	50.0 %	72.7 %
PROPERTY DAMAGE	4,658	4,500	3,546	-3.4 %	-21.2 %	1,605	1,594	1,315	34.5 %	35.4 %	37.1 %
	4,672	4,508	3,557	-3.5 %	-21.1 %	1,615	1,598	1,323	34.6 %	35.4 %	37.2 %

PUBLIC ORDER OFFENCES

ANZSOC Subdivision Description	Recorded 20112012	Recorded 20122013	Recorded 20132014	Variance 11/12-12/13	Variance 12/13-13/14	Resolved 20112012	Resolved 20122013	Resolved 20132014	Resolution Rate 20112012	Resolution Rate 20122013	Resolution Rate 20132014
DISORDERLY CONDUCT	3,165	2,982	2,810	-5.8 %	-5.8 %	2,961	2,760	2,580	93.6 %	92.6 %	91.8 %
OFFENSIVE CONDUCT	100	100	79	0.0 %	-21.0 %	85	77	57	85.0 %	77.0 %	72.2 %
PUBLIC ORDER OFFENCES NOT FURTHER DEFINED	1	0	0	-100.0 %	0.0 %	1	0	0	100.0 %	0.0 %	0.0 %
REGULATED PUBLIC ORDER OFFENCES	584	495	244	-15.2 %	-50.7 %	570	478	228	97.6 %	96.6 %	93.4 %
	3,850	3,577	3,133	-7.1 %	-12.4 %	3,617	3,315	2,865	93.9 %	92.7 %	91.4 %

SUMMARY OF DISTRICT RECORDED AND RESOLVED CRIME, BY DIVISION

Years ending 30 June

OFFENCES AGAINST JUSTICE PROCEDURES, GOVERNMENT SECURITY AND GOVERNMENT OPERATIONS

ANZSOC Subdivision Description	Recorded 2011/2012	Recorded 2012/2013	Recorded 2013/2014	Variance 11/12-12/13	Variance 12/13-13/14	Resolved 2011/2012	Resolved 2012/2013	Resolved 2013/2014	Resolution Rate 2011/2012	Resolution Rate 2012/2013	Resolution Rate 2013/2014
BREACH OF COMMUNITY-BASED ORDER	407	224	263	-45.0 %	17.4 %	402	218	241	98.8 %	97.3 %	91.6 %
BREACH OF CUSTODIAL ORDER OFFENCES	56	63	61	12.5 %	-3.2 %	55	61	57	98.2 %	96.8 %	93.4 %
BREACH OF VIOLENCE AND NON-VIOLENCE RESTRAINING ORDERS	634	607	584	-4.3 %	-3.8 %	605	567	530	95.4 %	93.4 %	90.8 %
OFFENCES AGAINST GOVERNMENT OPERATIONS	18	13	16	-27.8 %	23.1 %	9	8	7	50.0 %	61.5 %	43.8 %
OFFENCES AGAINST GOVERNMENT SECURITY	0	0	1	0.0 %	0.0 %	0	0	0	0.0 %	0.0 %	0.0 %
OFFENCES AGAINST JUSTICE PROCEDURES	526	471	432	-10.5 %	-8.3 %	521	466	424	99.0 %	98.9 %	98.1 %
OFFENCES AGAINST JUSTICE PROCEDURES, GOVERNMENT SECURITY AND GOVERNMENT OPERATIONS NOT FURTHER DEFINED	1	1	1	0.0 %	0.0 %	1	1	1	100.0 %	100.0 %	100.0 %
	1,642	1,379	1,358	-16.0 %	-1.5 %	1,593	1,321	1,260	97.0 %	95.8 %	92.8 %

MISCELLANEOUS OFFENCES

ANZSOC Subdivision Description	Recorded 2011/2012	Recorded 2012/2013	Recorded 2013/2014	Variance 11/12-12/13	Variance 12/13-13/14	Resolved 2011/2012	Resolved 2012/2013	Resolved 2013/2014	Resolution Rate 2011/2012	Resolution Rate 2012/2013	Resolution Rate 2013/2014
COMMERCIAL/INDUSTRY/FINANCIAL REGULATION	0	2	1	0.0 %	-50.0 %	0	2	1	0.0 %	100.0 %	100.0 %
DEFAMATION, LIBEL AND PRIVACY OFFENCES	1	2	1	100.0 %	-50.0 %	0	1	1	0.0 %	50.0 %	100.0 %
OTHER MISCELLANEOUS OFFENCES	95	97	112	2.1 %	15.5 %	72	71	80	75.8 %	73.2 %	71.4 %
PUBLIC HEALTH AND SAFETY OFFENCES	17	9	20	-47.1 %	122.2 %	15	6	16	88.2 %	66.7 %	80.0 %
	113	110	134	-2.7 %	21.8 %	87	80	98	77.0 %	72.7 %	73.1 %
TOTAL	34,886	33,658	29,734	-3.5 %	-11.7 %	18,869	17,757	15,755	54.1 %	52.8 %	53.0 %

PROPORTION OF RECORDED CRIME BY DIVISION

Years ending 30 June

ANZSOC Division Description	Proportions Recorded 20112012	Recorded 20112012	Proportions Recorded 20122013	Recorded 20122013	Proportions Recorded 20132014	Recorded 20132014
HOMICIDE AND RELATED OFFENCES	0.0 %	10	0.0 %	5	0.0 %	6
ACTS INTENDED TO CAUSE INJURY	11.1 %	3,857	10.9 %	3,656	12.0 %	3,569
SEXUAL ASSAULT AND RELATED OFFENCES	0.9 %	317	0.9 %	301	1.0 %	287
DANGEROUS OR NEGLIGENT ACTS ENDANGERING PERSONS	0.2 %	80	0.2 %	82	0.2 %	56
ABDUCTION, HARASSMENT AND OTHER RELATED OFFENCES AGAINST A PERSON	2.8 %	979	2.9 %	977	3.7 %	1,088
ROBBERY, EXTORTION AND RELATED OFFENCES	0.4 %	134	0.4 %	140	0.5 %	141
UNLAWFUL ENTRY WITH INTENT/BURGLARY, BREAK AND ENTER	14.7 %	5,139	14.6 %	4,928	14.1 %	4,198
THEFT AND RELATED OFFENCES	30.4 %	10,593	31.3 %	10,550	31.7 %	9,422
FRAUD, DECEPTION AND RELATED OFFENCES	1.7 %	589	2.3 %	781	1.9 %	551
ILLICIT DRUG OFFENCES	6.6 %	2,309	6.1 %	2,061	5.5 %	1,636
PROHIBITED AND REGULATED WEAPONS AND EXPLOSIVES OFFENCES	1.7 %	602	1.8 %	603	2.0 %	598
PROPERTY DAMAGE AND ENVIRONMENTAL POLLUTION	13.4 %	4,672	13.4 %	4,508	12.0 %	3,557
PUBLIC ORDER OFFENCES	11.0 %	3,850	10.6 %	3,577	10.5 %	3,133
OFFENCES AGAINST JUSTICE PROCEDURES, GOVERNMENT SECURITY AND GOVERNMENT OPERATIONS	4.7 %	1,642	4.1 %	1,379	4.6 %	1,358
MISCELLANEOUS OFFENCES	0.3 %	113	0.3 %	110	0.5 %	134
	100.0 %	34,886	100.0 %	33,658	100.0 %	29,734

SUMMARY OF DISTRICT RECORDED OFFENCES, RATE PER 10,000 POPULATION AND RESOLVED OFFENCES, BY AREA
years ending 30 June

TOTAL CRIME

Area Description	Recorded 20122013	Recorded 20132014	Variance 12/13-13/14	Recorded per 10,000 pop 20122013	Recorded per 10,000 pop 20132014	per 10,000 pop % Variance 12/13 to 13/14	Resolved 20122013	Resolved 20132014	Resolution Rate 20122013	Resolution Rate 20132014
Eastern Bay of Plenty	5,933	5,239	-11.7 %	1,263.3	1,127.5	-10.7 %	3,035	2,761	51.2 %	52.7 %
Rotorua	9,567	8,379	-12.4 %	1,335.5	1,175.1	-12.0 %	4,914	4,112	51.4 %	49.1 %
Taupo	6,097	5,368	-12.0 %	1,069.3	944.9	-11.6 %	3,153	2,820	51.7 %	52.5 %
Western Bay of Plenty	12,061	10,748	-10.9 %	756.4	668.3	-11.6 %	6,655	6,062	55.2 %	56.4 %
Total	33,658	29,734	-11.7 %	1,004.5	886.5	-11.7 %	17,757	15,755	52.8 %	53.0 %

**SUMMARY OF AREA RECORDED OFFENCES, RATE PER 10,000 POPULATION AND
RESOLVED OFFENCES, BY DIVISION**

years ending 30 June

HOMICIDE AND RELATED OFFENCES

Area Description	Recorded 20122013	Recorded 20132014	Variance 12/13-13/14	Recorded per 10,000 pop 20122013	Recorded per 10,000 pop 20132014	per 10,000 pop % Variance 12/13 to 13/14	Resolved 20122013	Resolved 20132014	Resolution Rate 20122013	Resolution Rate 20132014
Eastern Bay of Plenty	0	1	0.0 %	0.0	0.2	0.0 %	0	1	0.0 %	100.0 %
Rotorua	2	0	-100.0 %	0.3	0.0	-100.0 %	1	0	50.0 %	0.0 %
Taupo	2	2	0.0 %	0.4	0.4	0.4 %	1	2	50.0 %	100.0 %
Western Bay of Plenty	1	3	200.0 %	0.1	0.2	197.4 %	1	3	100.0 %	100.0 %
Total	5	6	20.0 %	0.1	0.2	19.9 %	3	6	60.0 %	100.0 %

ACTS INTENDED TO CAUSE INJURY

Area Description	Recorded 20122013	Recorded 20132014	Variance 12/13-13/14	Recorded per 10,000 pop 20122013	Recorded per 10,000 pop 20132014	per 10,000 pop % Variance 12/13 to 13/14	Resolved 20122013	Resolved 20132014	Resolution Rate 20122013	Resolution Rate 20132014
Eastern Bay of Plenty	677	720	6.4 %	144.1	155.0	7.5 %	607	634	89.7 %	88.1 %
Rotorua	1,138	1,034	-9.1 %	158.9	145.0	-8.7 %	915	742	80.4 %	71.8 %
Taupo	709	666	-6.1 %	124.3	117.2	-5.7 %	643	557	90.7 %	83.6 %
Western Bay of Plenty	1,132	1,149	1.5 %	71.0	71.4	0.6 %	1,007	987	89.0 %	85.9 %
Total	3,656	3,569	-2.4 %	109.1	106.4	-2.5 %	3,172	2,920	86.8 %	81.8 %

SEXUAL ASSAULT AND RELATED OFFENCES

Area Description	Recorded 20122013	Recorded 20132014	Variance 12/13-13/14	Recorded per 10,000 pop 20122013	Recorded per 10,000 pop 20132014	per 10,000 pop % Variance 12/13 to 13/14	Resolved 20122013	Resolved 20132014	Resolution Rate 20122013	Resolution Rate 20132014
Eastern Bay of Plenty	65	69	6.2 %	13.8	14.8	7.3 %	46	42	70.8 %	60.9 %
Rotorua	79	47	-40.5 %	11.0	6.6	-40.2 %	56	15	70.9 %	31.9 %
Taupo	52	73	40.4 %	9.1	12.8	40.9 %	33	39	63.5 %	53.4 %
Western Bay of Plenty	105	98	-6.7 %	6.6	6.1	-7.5 %	74	60	70.5 %	61.2 %
Total	301	287	-4.7 %	9.0	8.6	-4.7 %	209	156	69.4 %	54.4 %

**SUMMARY OF AREA RECORDED OFFENCES, RATE PER 10,000 POPULATION AND
RESOLVED OFFENCES, BY DIVISION**

years ending 30 June

DANGEROUS OR NEGLIGENT ACTS ENDANGERING PERSONS

Area Description	Recorded 20122013	Recorded 20132014	Variance 12/13-13/14	Recorded per 10,000 pop 20122013	Recorded per 10,000 pop 20132014	per 10,000 pop % Variance 12/13 to 13/14	Resolved 20122013	Resolved 20132014	Resolution Rate 20122013	Resolution Rate 20132014
Eastern Bay of Plenty	9	9	0.0 %	1.9	1.9	1.1 %	9	7	100.0 %	77.8 %
Rotorua	19	13	-31.6 %	2.7	1.8	-31.3 %	15	8	78.9 %	61.5 %
Taupo	13	5	-61.5 %	2.3	0.9	-61.4 %	9	4	69.2 %	80.0 %
Western Bay of Plenty	41	29	-29.3 %	2.6	1.8	-29.9 %	36	24	87.8 %	82.8 %
Total	82	56	-31.7 %	2.4	1.7	-31.8 %	69	43	84.1 %	76.8 %

ABDUCTION, HARASSMENT AND OTHER RELATED OFFENCES AGAINST A PERSON

Area Description	Recorded 20122013	Recorded 20132014	Variance 12/13-13/14	Recorded per 10,000 pop 20122013	Recorded per 10,000 pop 20132014	per 10,000 pop % Variance 12/13 to 13/14	Resolved 20122013	Resolved 20132014	Resolution Rate 20122013	Resolution Rate 20132014
Eastern Bay of Plenty	153	171	11.8 %	32.6	36.8	13.0 %	130	126	85.0 %	73.7 %
Rotorua	300	286	-4.7 %	41.9	40.1	-4.2 %	207	178	69.0 %	62.2 %
Taupo	161	201	24.8 %	28.2	35.4	25.3 %	134	160	83.2 %	79.6 %
Western Bay of Plenty	363	430	18.5 %	22.8	26.7	17.4 %	303	344	83.5 %	80.0 %
Total	977	1,088	11.4 %	29.2	32.4	11.3 %	774	808	79.2 %	74.3 %

ROBBERY, EXTORTION AND RELATED OFFENCES

Area Description	Recorded 20122013	Recorded 20132014	Variance 12/13-13/14	Recorded per 10,000 pop 20122013	Recorded per 10,000 pop 20132014	per 10,000 pop % Variance 12/13 to 13/14	Resolved 20122013	Resolved 20132014	Resolution Rate 20122013	Resolution Rate 20132014
Eastern Bay of Plenty	21	25	19.0 %	4.5	5.4	20.3 %	10	14	47.6 %	56.0 %
Rotorua	40	48	20.0 %	5.6	6.7	20.6 %	20	23	50.0 %	47.9 %
Taupo	20	22	10.0 %	3.5	3.9	10.4 %	10	14	50.0 %	63.6 %
Western Bay of Plenty	59	46	-22.0 %	3.7	2.9	-22.7 %	38	27	64.4 %	58.7 %
Total	140	141	0.7 %	4.2	4.2	0.6 %	78	78	55.7 %	55.3 %

**SUMMARY OF AREA RECORDED OFFENCES, RATE PER 10,000 POPULATION AND
RESOLVED OFFENCES, BY DIVISION**

years ending 30 June

UNLAWFUL ENTRY WITH INTENT/BURGLARY, BREAK AND ENTER

Area Description	Recorded 20122013	Recorded 20132014	Variance 12/13-13/14	Recorded per 10,000 pop 20122013	Recorded per 10,000 pop 20132014	per 10,000 pop % Variance 12/13 to 13/14	Resolved 20122013	Resolved 20132014	Resolution Rate 20122013	Resolution Rate 20132014
Eastern Bay of Plenty	1,009	885	-12.3 %	214.8	190.5	-11.3 %	145	160	14.4 %	18.1 %
Rotorua	1,426	1,309	-8.2 %	199.1	183.6	-7.8 %	230	226	16.1 %	17.3 %
Taupo	873	812	-7.0 %	153.1	142.9	-6.6 %	185	204	21.2 %	25.1 %
Western Bay of Plenty	1,620	1,192	-26.4 %	101.6	74.1	-27.0 %	337	258	20.8 %	21.6 %
Total	4,928	4,198	-14.8 %	147.1	125.2	-14.9 %	897	848	18.2 %	20.2 %

THEFT AND RELATED OFFENCES

Area Description	Recorded 20122013	Recorded 20132014	Variance 12/13-13/14	Recorded per 10,000 pop 20122013	Recorded per 10,000 pop 20132014	per 10,000 pop % Variance 12/13 to 13/14	Resolved 20122013	Resolved 20132014	Resolution Rate 20122013	Resolution Rate 20132014
Eastern Bay of Plenty	1,683	1,456	-13.5 %	358.4	313.4	-12.6 %	446	396	26.5 %	27.2 %
Rotorua	3,038	2,691	-11.4 %	424.1	377.4	-11.0 %	842	795	27.7 %	29.5 %
Taupo	1,819	1,697	-6.7 %	319.0	298.7	-6.4 %	493	504	27.1 %	29.7 %
Western Bay of Plenty	4,010	3,578	-10.8 %	251.5	222.5	-11.5 %	1,358	1,223	33.9 %	34.2 %
Total	10,550	9,422	-10.7 %	314.9	280.9	-10.8 %	3,139	2,918	29.8 %	31.0 %

FRAUD, DECEPTION AND RELATED OFFENCES

Area Description	Recorded 20122013	Recorded 20132014	Variance 12/13-13/14	Recorded per 10,000 pop 20122013	Recorded per 10,000 pop 20132014	per 10,000 pop % Variance 12/13 to 13/14	Resolved 20122013	Resolved 20132014	Resolution Rate 20122013	Resolution Rate 20132014
Eastern Bay of Plenty	54	76	40.7 %	11.5	16.4	42.3 %	32	48	59.3 %	63.2 %
Rotorua	295	114	-61.4 %	41.2	16.0	-61.2 %	198	48	67.1 %	42.1 %
Taupo	78	73	-6.4 %	13.7	12.8	-6.1 %	42	38	53.8 %	52.1 %
Western Bay of Plenty	354	288	-18.6 %	22.2	17.9	-19.3 %	263	175	74.3 %	60.8 %
Total	781	551	-29.4 %	23.3	16.4	-29.5 %	535	309	68.5 %	56.1 %

**SUMMARY OF AREA RECORDED OFFENCES, RATE PER 10,000 POPULATION AND
RESOLVED OFFENCES, BY DIVISION**

years ending 30 June

ILLCIT DRUG OFFENCES

Area Description	Recorded 20122013	Recorded 20132014	Variance 12/13-13/14	Recorded per 10,000 pop 20122013	Recorded per 10,000 pop 20132014	per 10,000 pop % Variance 12/13 to 13/14	Resolved 20122013	Resolved 20132014	Resolution Rate 20122013	Resolution Rate 20132014
Eastern Bay of Plenty	365	310	-15.1 %	77.7	66.7	-14.2 %	355	300	97.3 %	96.8 %
Rotorua	446	482	8.1 %	62.3	67.6	8.6 %	432	464	96.9 %	96.3 %
Taupo	340	257	-24.4 %	59.6	45.2	-24.1 %	329	244	96.8 %	94.9 %
Western Bay of Plenty	910	587	-35.5 %	57.1	36.5	-36.0 %	875	555	96.2 %	94.5 %
Total	2,061	1,636	-20.6 %	61.5	48.8	-20.7 %	1,991	1,563	96.6 %	95.5 %

PROHIBITED AND REGULATED WEAPONS AND EXPLOSIVES OFFENCES

Area Description	Recorded 20122013	Recorded 20132014	Variance 12/13-13/14	Recorded per 10,000 pop 20122013	Recorded per 10,000 pop 20132014	per 10,000 pop % Variance 12/13 to 13/14	Resolved 20122013	Resolved 20132014	Resolution Rate 20122013	Resolution Rate 20132014
Eastern Bay of Plenty	120	111	-7.5 %	25.6	23.9	-6.5 %	114	107	95.0 %	96.4 %
Rotorua	165	148	-10.3 %	23.0	20.8	-9.9 %	161	137	97.6 %	92.6 %
Taupo	146	152	4.1 %	25.6	26.8	4.5 %	140	139	95.9 %	91.4 %
Western Bay of Plenty	172	187	8.7 %	10.8	11.6	7.8 %	161	177	93.6 %	94.7 %
Total	603	598	-0.8 %	18.0	17.8	-0.9 %	576	560	95.5 %	93.6 %

PROPERTY DAMAGE AND ENVIRONMENTAL POLLUTION

Area Description	Recorded 20122013	Recorded 20132014	Variance 12/13-13/14	Recorded per 10,000 pop 20122013	Recorded per 10,000 pop 20132014	per 10,000 pop % Variance 12/13 to 13/14	Resolved 20122013	Resolved 20132014	Resolution Rate 20122013	Resolution Rate 20132014
Eastern Bay of Plenty	836	665	-20.5 %	178.0	143.1	-19.6 %	273	244	32.7 %	36.7 %
Rotorua	1,055	874	-17.2 %	147.3	122.6	-16.8 %	356	274	33.7 %	31.4 %
Taupo	997	680	-31.8 %	174.9	119.7	-31.5 %	329	254	33.0 %	37.4 %
Western Bay of Plenty	1,620	1,338	-17.4 %	101.6	83.2	-18.1 %	640	551	39.5 %	41.2 %
Total	4,508	3,557	-21.1 %	134.5	106.1	-21.2 %	1,598	1,323	35.4 %	37.2 %

**SUMMARY OF AREA RECORDED OFFENCES, RATE PER 10,000 POPULATION AND
RESOLVED OFFENCES, BY DIVISION**

years ending 30 June

PUBLIC ORDER OFFENCES

Area Description	Recorded 20122013	Recorded 20132014	Variance 12/13-13/14	Recorded per 10,000 pop 20122013	Recorded per 10,000 pop 20132014	per 10,000 pop % Variance 12/13 to 13/14	Resolved 20122013	Resolved 20132014	Resolution Rate 20122013	Resolution Rate 20132014
Eastern Bay of Plenty	633	427	-32.5 %	134.8	91.9	-31.8 %	577	386	91.2 %	90.4 %
Rotorua	1,113	867	-22.1 %	155.4	121.6	-21.7 %	1,059	792	95.1 %	91.3 %
Taupo	626	448	-28.4 %	109.8	78.9	-28.2 %	565	409	90.3 %	91.3 %
Western Bay of Plenty	1,205	1,391	15.4 %	75.6	86.5	14.4 %	1,114	1,278	92.4 %	91.9 %
Total	3,577	3,133	-12.4 %	106.8	93.4	-12.5 %	3,315	2,865	92.7 %	91.4 %

OFFENCES AGAINST JUSTICE PROCEDURES, GOVERNMENT SECURITY AND GOVERNMENT OPERATIONS

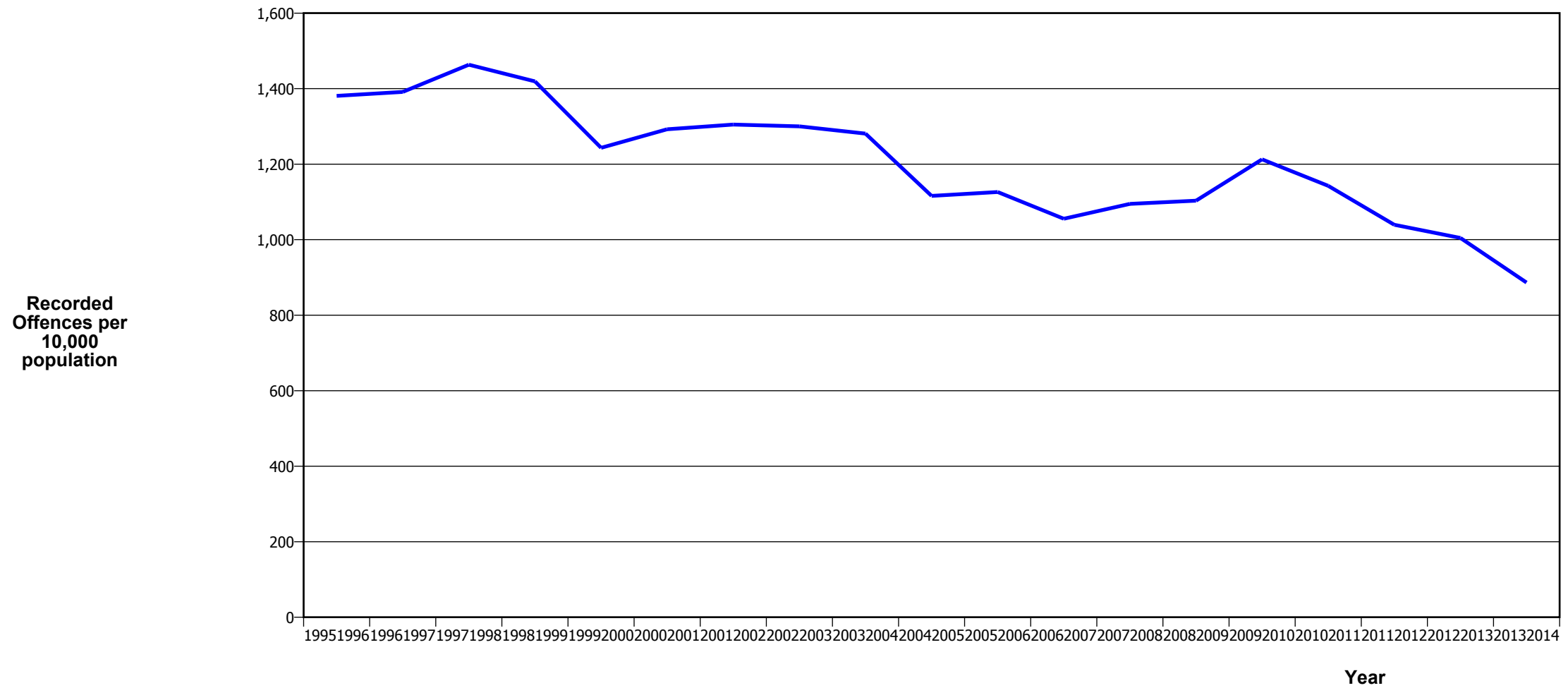
Area Description	Recorded 20122013	Recorded 20132014	Variance 12/13-13/14	Recorded per 10,000 pop 20122013	Recorded per 10,000 pop 20132014	per 10,000 pop % Variance 12/13 to 13/14	Resolved 20122013	Resolved 20132014	Resolution Rate 20122013	Resolution Rate 20132014
Eastern Bay of Plenty	284	300	5.6 %	60.5	64.6	6.8 %	278	289	97.9 %	96.3 %
Rotorua	425	428	0.7 %	59.3	60.0	1.2 %	402	386	94.6 %	90.2 %
Taupo	228	227	-0.4 %	40.0	40.0	-0.1 %	214	202	93.9 %	89.0 %
Western Bay of Plenty	442	403	-8.8 %	27.7	25.1	-9.6 %	427	383	96.6 %	95.0 %
Total	1,379	1,358	-1.5 %	41.2	40.5	-1.6 %	1,321	1,260	95.8 %	92.8 %

MISCELLANEOUS OFFENCES

Area Description	Recorded 20122013	Recorded 20132014	Variance 12/13-13/14	Recorded per 10,000 pop 20122013	Recorded per 10,000 pop 20132014	per 10,000 pop % Variance 12/13 to 13/14	Resolved 20122013	Resolved 20132014	Resolution Rate 20122013	Resolution Rate 20132014
Eastern Bay of Plenty	24	14	-41.7 %	5.1	3.0	-41.0 %	13	7	54.2 %	50.0 %
Rotorua	26	38	46.2 %	3.6	5.3	46.8 %	20	24	76.9 %	63.2 %
Taupo	33	53	60.6 %	5.8	9.3	61.2 %	26	50	78.8 %	94.3 %
Western Bay of Plenty	27	29	7.4 %	1.7	1.8	6.5 %	21	17	77.8 %	58.6 %
Total	110	134	21.8 %	3.3	4.0	21.7 %	80	98	72.7 %	73.1 %

CRIME TRENDS

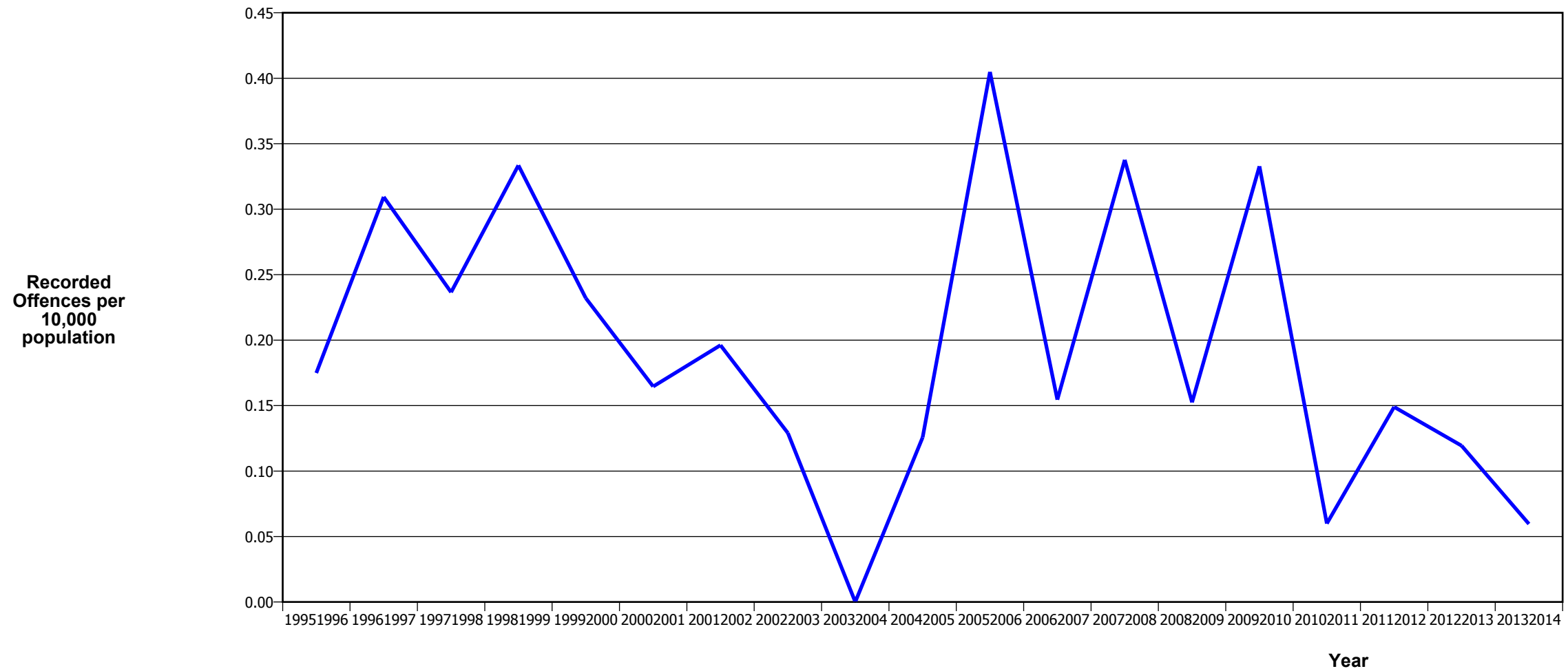
TOTAL CRIME



Fiscal Year	19951996	19961997	19971998	19981999	19992000	20002001	20012002	20022003	20032004	20042005	20052006	20062007	20072008	20082009	20092010	20102011	20112012	20122013	20132014
Recorded Offences	39,480	40,472	43,304	42,562	37,503	39,255	39,915	40,300	40,263	35,499	36,159	34,150	35,662	36,185	40,079	38,175	34,886	33,658	29,734
Recorded per 10,000 Population	1,380.9	1,391.2	1,463.4	1,419.3	1,243.2	1,292.5	1,304.9	1,300.0	1,280.8	1,116.0	1,126.1	1,055.4	1,094.8	1,103.2	1,212.5	1,142.5	1,039.4	1,004.5	886.5

*In 20052006 there was a major IT system change (LES to NIA)

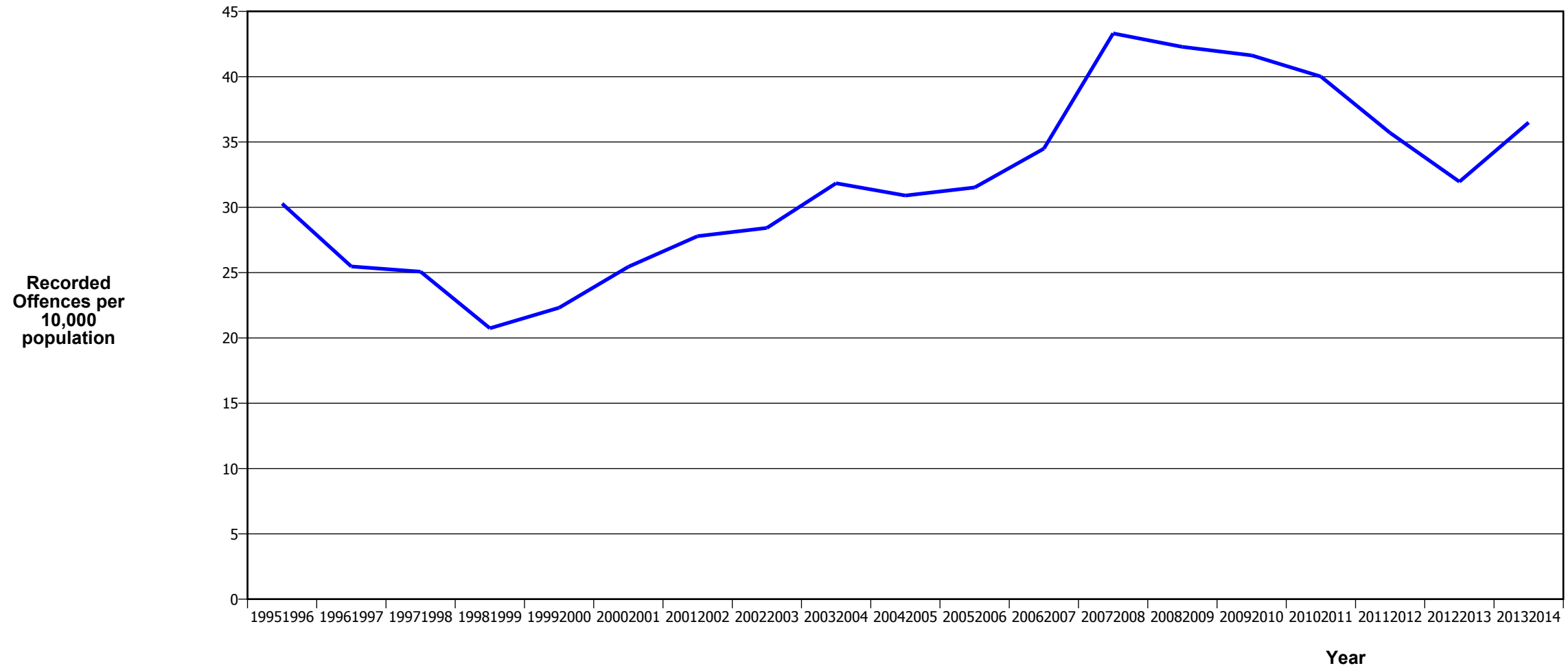
MURDER



Fiscal Year	19951996	19961997	19971998	19981999	19992000	20002001	20012002	20022003	20032004	20042005	20052006	20062007	20072008	20082009	20092010	20102011	20112012	20122013	20132014
Recorded Offences	5	9	7	10	7	5	6	4	0	4	13	5	11	5	11	2	5	4	2
Recorded per 10,000 Population	0.17	0.31	0.24	0.33	0.23	0.16	0.20	0.13	0.00	0.13	0.40	0.15	0.34	0.15	0.33	0.06	0.15	0.12	0.06

- The 20092010 result is significantly influenced by an abnormal one-off spike in August 2009, when 12 murders occurred

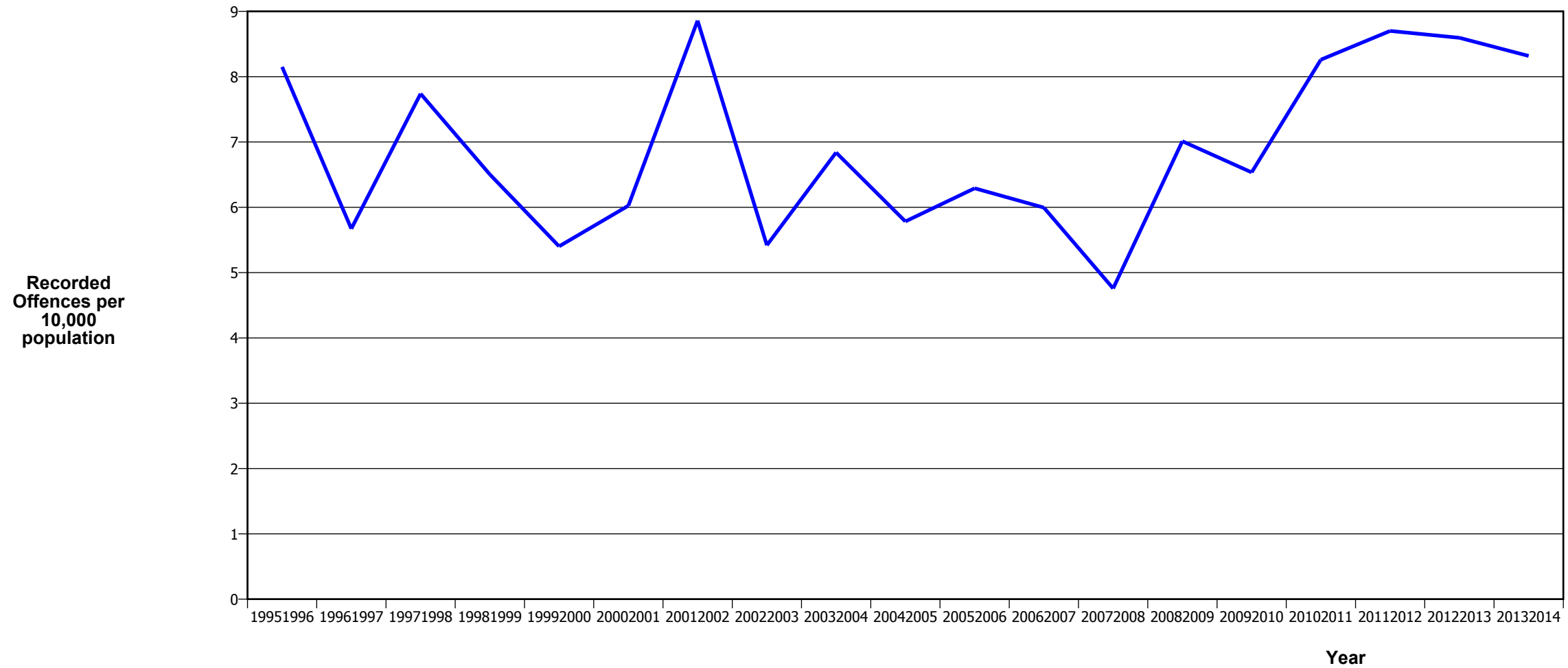
SERIOUS ASSAULTS RESULTING IN INJURY*



Fiscal Year	19951996	19961997	19971998	19981999	19992000	20002001	20012002	20022003	20032004	20042005	20052006	20062007	20072008	20082009	20092010	20102011	20112012	20122013	20132014
Recorded Offences	866	741	742	622	673	773	850	881	1001	983	1012	1116	1411	1387	1376	1337	1198	1071	1224
Recorded per 10,000 Population	30.3	25.5	25.1	20.7	22.3	25.5	27.8	28.4	31.8	30.9	31.5	34.5	43.3	42.3	41.6	40.0	35.7	32.0	36.5

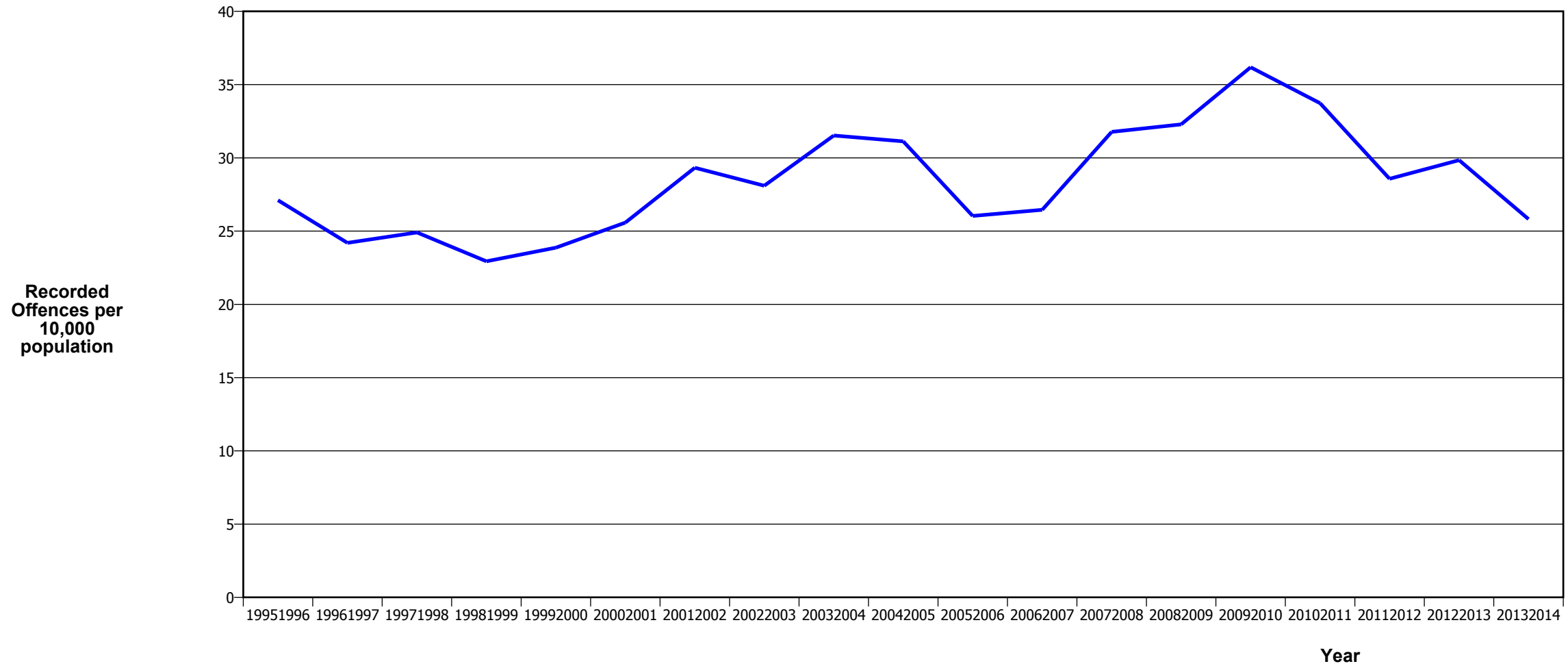
* This measure excludes common assaults

SEXUAL ASSAULTS

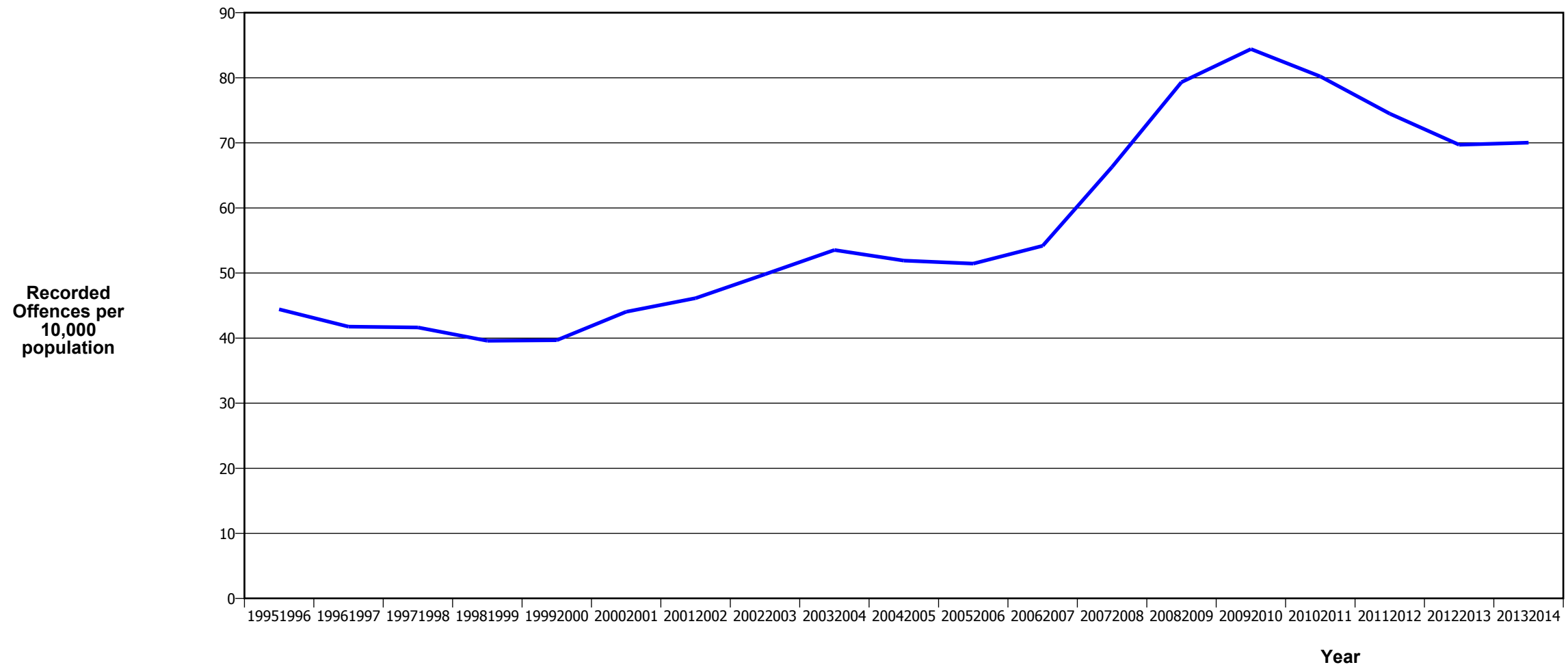


Fiscal Year	19951996	19961997	19971998	19981999	19992000	20002001	20012002	20022003	20032004	20042005	20052006	20062007	20072008	20082009	20092010	20102011	20112012	20122013	20132014
Recorded Offences	233	165	229	195	163	183	271	168	215	184	202	194	155	230	216	276	292	288	279
Recorded per 10,000 Population	8.1	5.7	7.7	6.5	5.4	6.0	8.9	5.4	6.8	5.8	6.3	6.0	4.8	7.0	6.5	8.3	8.7	8.6	8.3

PUBLIC PLACE ASSAULTS

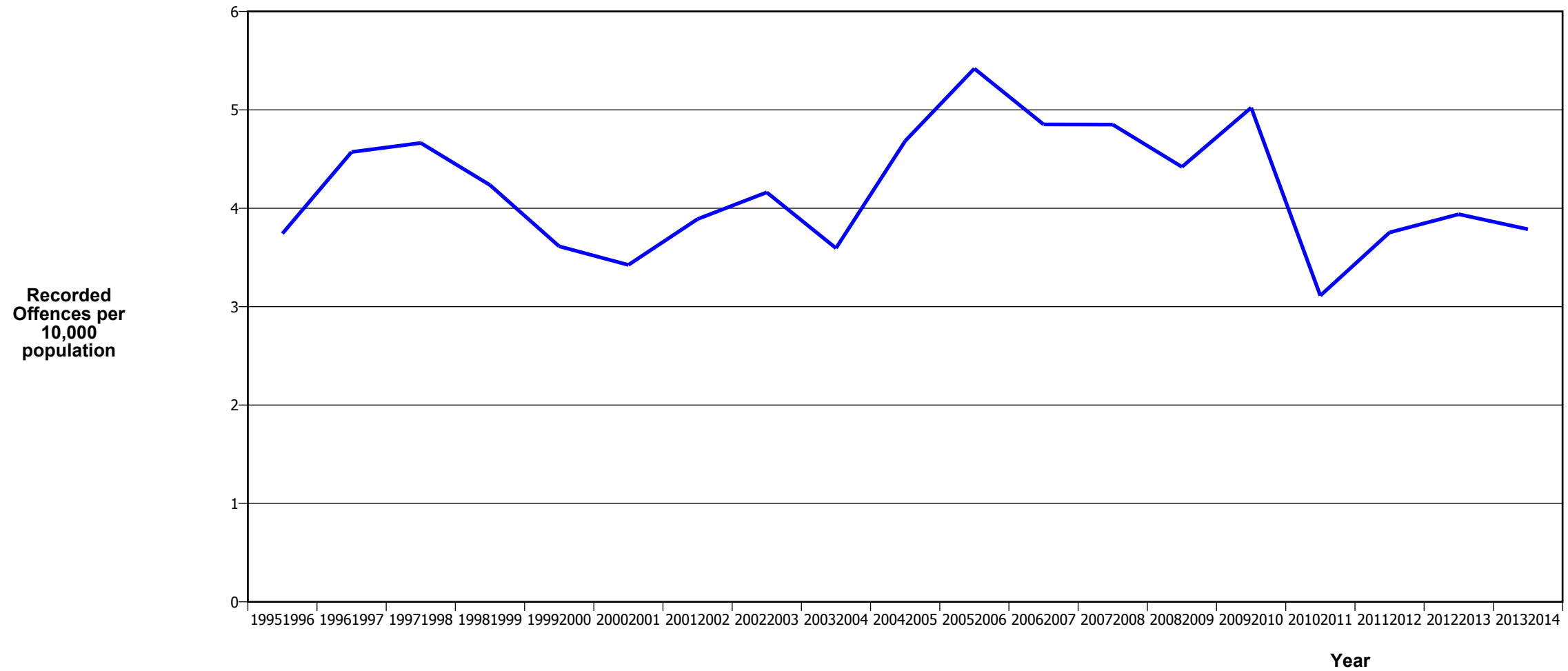


DWELLING ASSAULTS



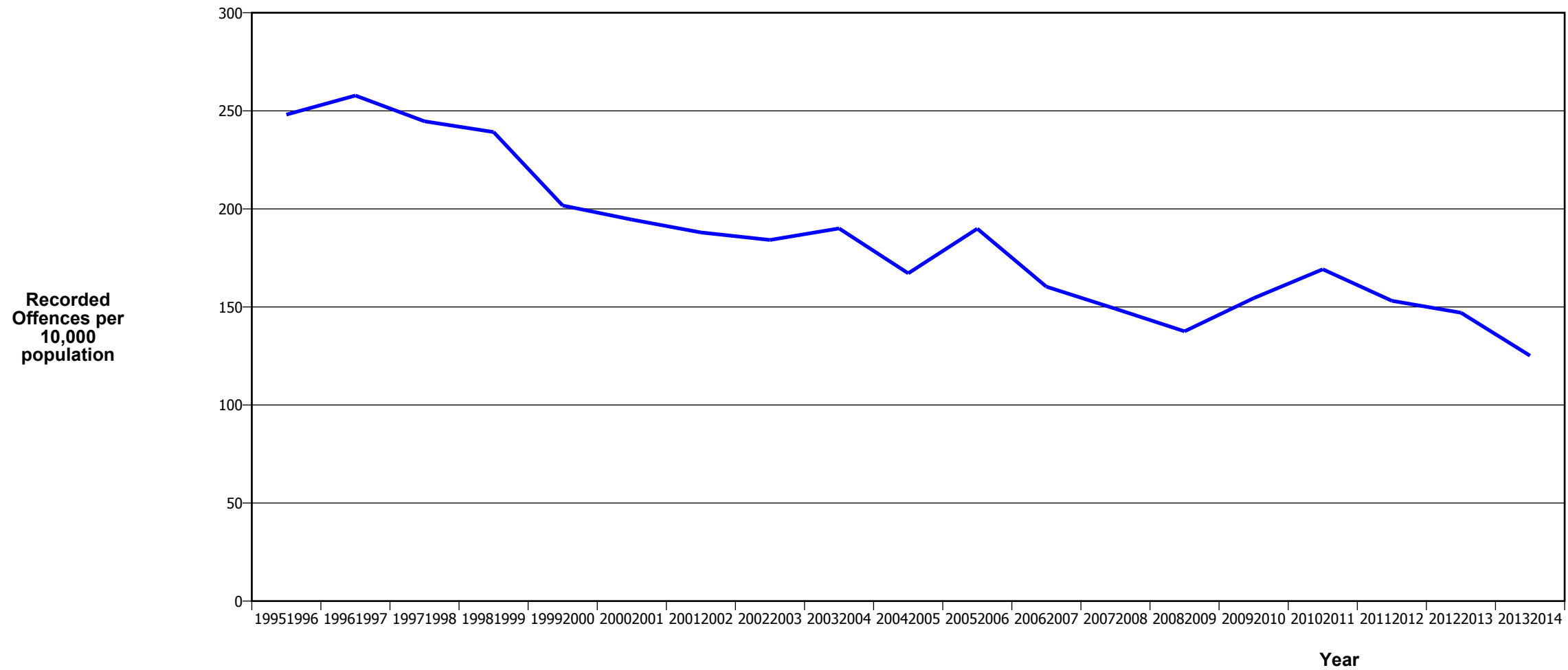
Fiscal Year	19951996	19961997	19971998	19981999	19992000	20002001	20012002	20022003	20032004	20042005	20052006	20062007	20072008	20082009	20092010	20102011	20112012	20122013	20132014
Recorded Offences	1,270	1,215	1,232	1,187	1,197	1,338	1,411	1,544	1,683	1,651	1,652	1,753	2,160	2,602	2,790	2,680	2,500	2,336	2,349
Recorded per 10,000 Population	44.4	41.8	41.6	39.6	39.7	44.1	46.1	49.8	53.5	51.9	51.4	54.2	66.3	79.3	84.4	80.2	74.5	69.7	70.0

ROBBERY



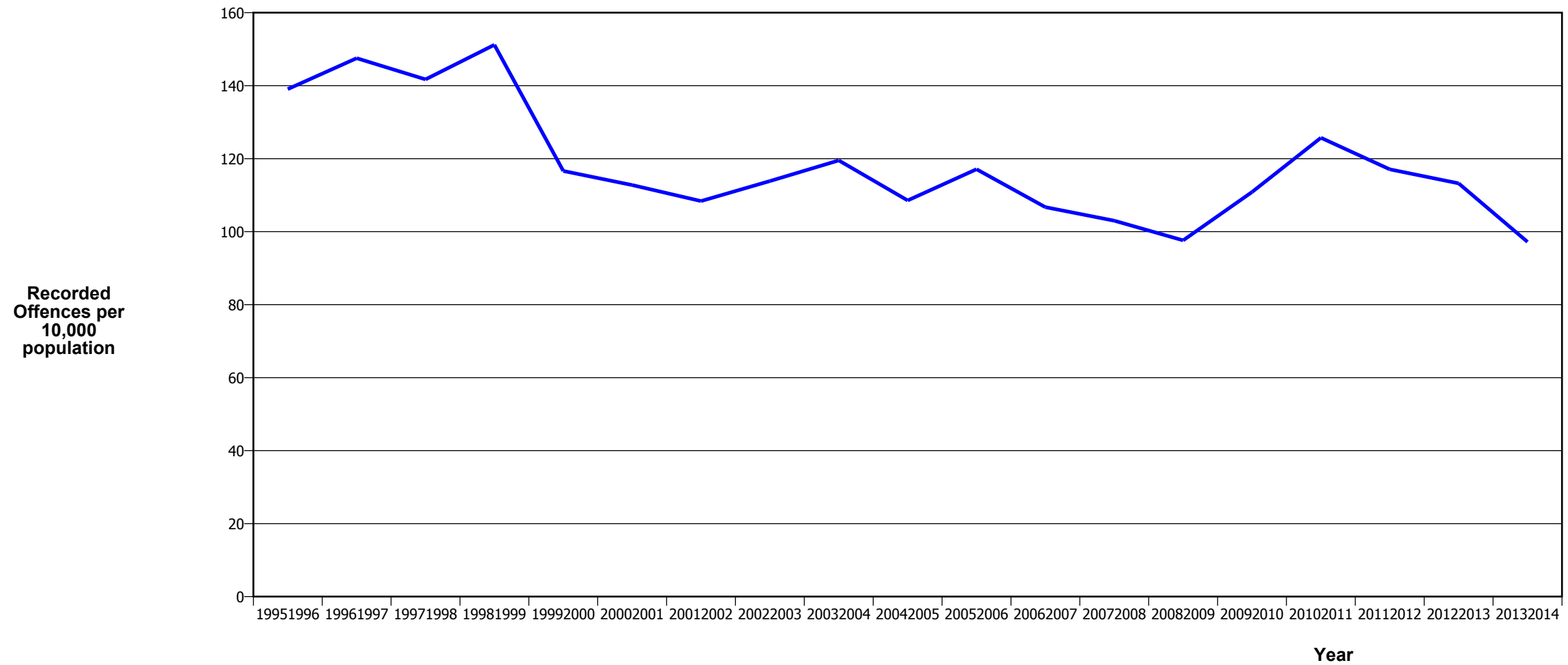
Fiscal Year	19951996	19961997	19971998	19981999	19992000	20002001	20012002	20022003	20032004	20042005	20052006	20062007	20072008	20082009	20092010	20102011	20112012	20122013	20132014
Recorded Offences	107	133	138	127	109	104	119	129	113	149	174	157	158	145	166	104	126	132	127
Recorded per 10,000 Population	3.7	4.6	4.7	4.2	3.6	3.4	3.9	4.2	3.6	4.7	5.4	4.9	4.9	4.4	5.0	3.1	3.8	3.9	3.8

BURGLARY (TOTAL)



Fiscal Year	19951996	19961997	19971998	19981999	19992000	20002001	20012002	20022003	20032004	20042005	20052006	20062007	20072008	20082009	20092010	20102011	20112012	20122013	20132014
Recorded Offences	7,093	7,499	7,240	7,173	6,085	5,908	5,750	5,709	5,974	5,317	6,098	5,188	4,855	4,512	5,107	5,653	5,139	4,928	4,198
Recorded per 10,000 Population	248.1	257.8	244.7	239.2	201.7	194.5	188.0	184.2	190.0	167.2	189.9	160.3	149.0	137.6	154.5	169.2	153.1	147.1	125.2

BURGLARY (DWELLING)



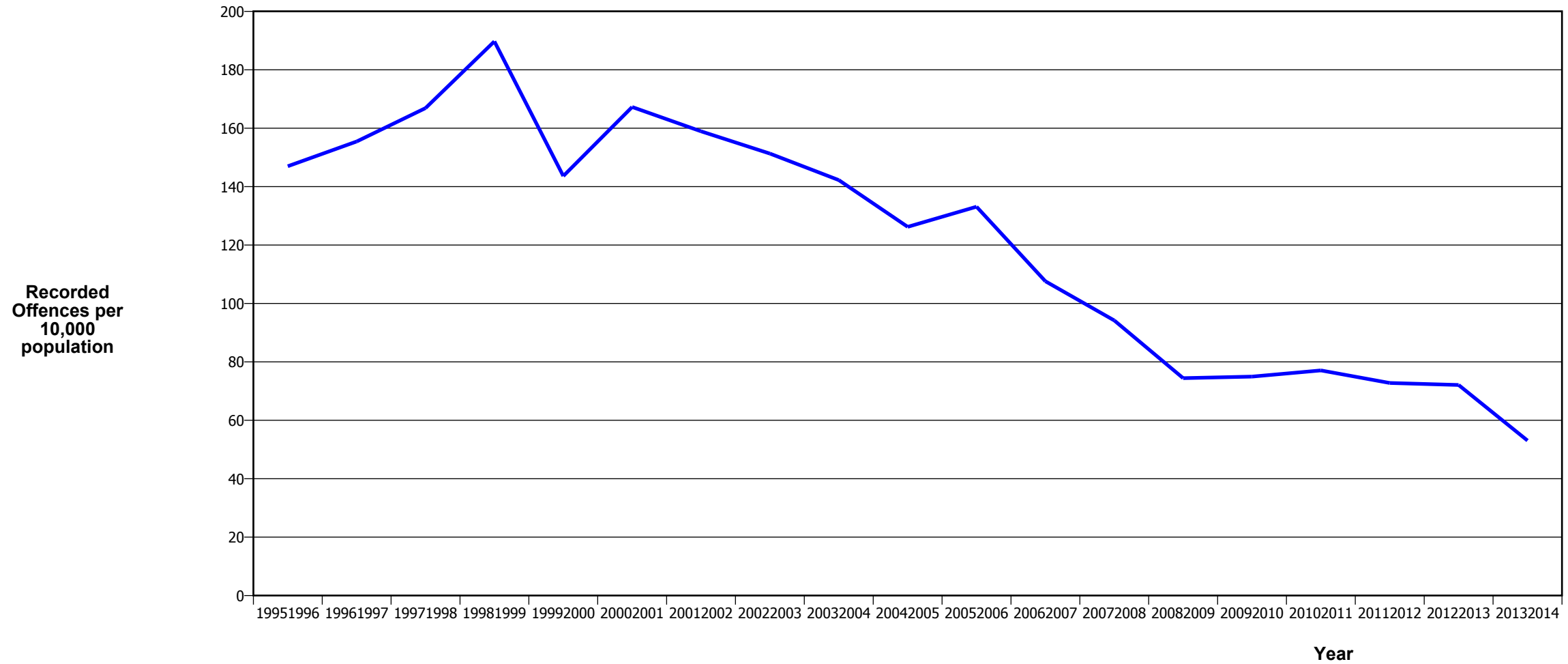
Fiscal Year	19951996	19961997	19971998	19981999	19992000	20002001	20012002	20022003	20032004	20042005	20052006	20062007	20072008	20082009	20092010	20102011	20112012	20122013	20132014
Recorded Offences	3,976	4,292	4,194	4,534	3,518	3,425	3,315	3,530	3,757	3,453	3,760	3,453	3,355	3,202	3,664	4,201	3,929	3,794	3,260
Recorded per 10,000 Population	139.1	147.5	141.7	151.2	116.6	112.8	108.4	113.9	119.5	108.6	117.1	106.7	103.0	97.6	110.9	125.7	117.1	113.2	97.2

VEHICLES STOLEN



Fiscal Year	19951996	19961997	19971998	19981999	19992000	20002001	20012002	20022003	20032004	20042005	20052006	20062007	20072008	20082009	20092010	20102011	20112012	20122013	20132014
Recorded Offences	1,987	2,358	2,330	2,309	1,849	1,823	1,800	1,883	1,955	1,766	1,711	1,303	1,258	1,157	989	1,081	1,132	1,064	966
Recorded per 10,000 Population	69.5	81.1	78.7	77.0	61.3	60.0	58.8	60.7	62.2	55.5	53.3	40.3	38.6	35.3	29.9	32.4	33.7	31.8	28.8

THEFT EX CAR



Fiscal Year	19951996	19961997	19971998	19981999	19992000	20002001	20012002	20022003	20032004	20042005	20052006	20062007	20072008	20082009	20092010	20102011	20112012	20122013	20132014
Recorded Offences	4,202	4,522	4,938	5,689	4,332	5,080	4,861	4,690	4,471	4,015	4,274	3,482	3,068	2,441	2,478	2,575	2,443	2,416	1,780
Recorded per 10,000 Population	147.0	155.4	166.9	189.7	143.6	167.3	158.9	151.3	142.2	126.2	133.1	107.6	94.2	74.4	75.0	77.1	72.8	72.1	53.1

Population Data

Population data is used in this release to calculate crime rates. These data are estimated population figures as at 31 December each year. They have been derived from population estimates as at 30 June each year that have been obtained from Statistics New Zealand.

The estimated resident population is based on the census usually resident population count, with adjustments for residents missed or counted more than once by the census (net census undercount), and for residents temporarily overseas on census night.

These population estimates exclude the number of international students who are studying in New Zealand for less than 12 months.

Year	Population
19951996	285,910
19961997	290,910
19971998	295,910
19981999	299,875
19992000	301,665
20002001	303,725
20012002	305,880
20022003	309,990
20032004	314,350
20042005	318,090
20052006	321,095
20062007	323,575
20072008	325,745
20082009	328,005
20092010	330,535
20102011	334,135
20112012	335,620
20122013	335,070
20132014	335,405

General Definitions

Recorded Offences: the number of breaches of the New Zealand law recorded by Police. This includes offences specified in the Crimes Act and other legislations, such as the Summary Offences Act, Local Government Act, etc.

Resolved Offences: the number of recorded offences where an offender has been identified and dealt with (e.g. warned, cautioned, prosecuted, etc).

Resolution Rate: the proportion of recorded offences that have been resolved.

Recorded per 10,000 population: the number of recorded offences for every 10,000 people. This is also referred as the crime rate per 10,000 population.

ANZSOC: the Australia New Zealand Standard Offence Classification. The offence classification is divided into 16 major offence divisions.

Definition of ANZSOC Divisions

1. Homicide and related offences: Unlawfully kill, attempt to unlawfully kill or conspiracy to kill another person.
2. Acts intended to cause injury: Acts, excluding attempted murder and those resulting in death, which are intended to cause non-fatal injury or harm to another person and where there is no sexual or acquisitive element.
3. Sexual assault and related offences: Acts, or intent of acts, of a sexual nature against another person, which are non-consensual or where consent is proscribed.
4. Dangerous or negligent acts endangering persons: Dangerous or negligent acts which, though not intended to cause harm, actually or potentially result in injury to oneself or another person.
5. Abduction, harassment and other offences against person: Acts intended to threaten or harass, or acts that unlawfully deprive another person of their freedom of movement, that are against that person's will or against the will of any parent, guardian or other person having lawful custody or care of that person.
6. Robbery, extortion and related offences: Acts intended to unlawfully gain money, property or other items of value from, or to cause detriment to, another person by using the threat of force or any other coercive measure.
7. Unlawful entry with intent / burglary, break and enter: The unlawful entry of a structure with the intent to commit an offence, where the entry is either forced or unforced.
8. Theft and related and offences: The unlawful taking or obtaining of money or goods, not involving the use of force or violence, coercion or deception, with intent to permanently or temporarily deprive the owner or possessor of the use of the money or goods, or the receiving or handling of money or goods obtained unlawfully.

9. Fraud, deception and related offences: Offences involving a dishonest act or omission carried out with the purpose of deceiving to obtain a benefit.

10. Illicit drug offences: The possessing, selling, dealing or trafficking, importing or exporting, manufacturing or cultivating of drugs or other substances prohibited under legislation.

11. Prohibited and regulated weapons and explosives offences: Offences involving prohibited or regulated weapons and explosives. Those offences also involving assault, sexual assault or robbery are coded to the relevant group within Assault, Sexual assaults and Robbery respectively.

12. Property damage and environmental pollution: The wilful and unlawful destruction, damage or defacement of public or private property, or the pollution of property or a definable entity held in common by the community.

13. Public order offences: Offences relating personal conduct that involves, or may lead to, a breach of public order or decency, or that is indicative of criminal intent, or that is otherwise regulated or prohibited on moral or ethical grounds. In general these offences do not involve a specific victim or victims; however some offences, such as offensive language and offensive behaviour, may be directed towards a single victim.

14. Traffic and vehicle regulatory offences: Offences relating to vehicles and most forms of traffic, including offences pertaining to the licensing, registration, roadworthiness, or use of vehicles, bicycle offences and pedestrian offences.

15. Offences against justice procedures, government security and government operations: An act or omission that is deemed to be prejudicial to the effective carrying out of justice procedures or any government operations. This includes general government operations as well as those specifically concerned with maintaining government security.

16. Miscellaneous offences: Offences involving the breach of statutory rules or regulations governing activities that are prima facie legal, where such offences are not explicitly dealt with under any other division. If an offence is specified under regulation and involves an act that would be illegal under common law or general criminal legislation, the offence is dealt with under the appropriate generic group.