

AUCKLAND CITY DISTRICT CRIME STATISTICS 2013



**A Summary of
Recorded and Resolved Offence
Statistics**

**POLICE NATIONAL HEADQUARTERS
April 2014**

ISSN 1178 - 1556

Table of Contents:

Topic	Page
Report Notes	1
District Summary of Recorded and Resolved Crime, by Division	2-4
Proportions of Recorded Crime by Division	5
Summary of District Recorded Offences, Rate per 10,000 Population and Resolved Offences, by Area	6
Summary of Area Recorded Offences, Rate per 10,000 Population and Resolved Offences, by Division	7-9
Crime Trends	10
Total Crime	11
Murder	12
Serious Assaults Resulting in Injury	13
Sexual Assaults	14
Public Place Assaults	15
Dwelling Assaults	16
Robbery	17
Burglary (Total)	18
Burglary (Dwelling)	19
Vehicles Stolen	20
Theft Ex Car	21
Population Data	22
General Definitions	23-24

REPORT NOTES:

Statistics reported in this document are derived from the Police National Intelligence Application (NIA). These Official Statistics for Recorded and Resolved Offences present a snapshot of data in NIA relating to offences that occur within a given year, as at the date 14 days following the end of that year.

Unless the matter is minor where Police attendance is sufficient, a matter that is reported to or discovered by Police where Police believe an offence is likely to have been committed is counted as a recorded offence.

A recorded offence is counted as resolved when Police apprehend an offender and decide how to deal with him/her. (E.g. warn, prosecute, etc.)

Resolution rate is the percentage of recorded offences that are resolved within 14 days of the end of the year being reported on.

If an offence is resolved 15 days or more after the end of the year it will not appear in the Official Crime Statistics for that or any other year. Resolution Rate therefore undercounts the number of cases that Police have resolved. This phenomenon has a more marked impact for some types of offences than others, such as offences that require long investigations (E.g. many serial crimes, burglaries and murders).

The Sale and Supply of Alcohol Act 2012 came into effect on 18 December 2013. This had little effect on overall 2013 calendar year statistics, because the legislation only took effect two weeks before the end of the year. However, statistics for future years will be significantly affected. In particular, the offence of Breach of Liquor Ban, of which there were more than 6,500 nationally in 2013, has been made obsolete by the new legislation. Under the new legislation Police will deal with breaches of alcohol bans by issuing infringement notices, rather than by recording offences for which offenders can be charged. Such infringements are not part of this statistical collection.

When comparing 2013 Statistics with previous years, the reader should also refer to "Report Notes" published in previous years' reports, as previous changes significantly affect year on year trends.

SUMMARY OF DISTRICT RECORDED AND RESOLVED CRIME, BY DIVISION

Years ending 31 December

HOMICIDE AND RELATED OFFENCES

ASOC Subdivision Description	Recorded 2011	Recorded 2012	Recorded 2013	Variance 2011-2012	Variance 2012-2013	Resolved 2011	Resolved 2012	Resolved 2013	Resolution Rate 2011	Resolution Rate 2012	Resolution Rate 2013
ATTEMPTED MURDER	0	0	0	0.0 %	0.0 %	0	0	0	0.0 %	0.0 %	0.0 %
HOMICIDE AND RELATED OFFENCES NOT FURTHER DEFINED	0	0	0	0.0 %	0.0 %	0	0	0	0.0 %	0.0 %	0.0 %
MANSLAUGHTER AND DRIVING CAUSING DEATH	2	2	2	0.0 %	0.0 %	2	2	2	100.0 %	100.0 %	100.0 %
MURDER	5	2	4	-60.0 %	100.0 %	5	2	4	100.0 %	100.0 %	100.0 %
	7	4	6	-42.9 %	50.0 %	7	4	6	100.0 %	100.0 %	100.0 %

ACTS INTENDED TO CAUSE INJURY

ASOC Subdivision Description	Recorded 2011	Recorded 2012	Recorded 2013	Variance 2011-2012	Variance 2012-2013	Resolved 2011	Resolved 2012	Resolved 2013	Resolution Rate 2011	Resolution Rate 2012	Resolution Rate 2013
ASSAULT	3,530	3,475	3,289	-1.6 %	-5.4 %	2,746	2,467	2,280	77.8 %	71.0 %	69.3 %
OTHER ACTS INTENDED TO CAUSE INJURY	1	1	5	0.0 %	400.0 %	0	1	5	0.0 %	100.0 %	100.0 %
	3,531	3,476	3,294	-1.6 %	-5.2 %	2,746	2,468	2,285	77.8 %	71.0 %	69.4 %

SEXUAL ASSAULT AND RELATED OFFENCES

ASOC Subdivision Description	Recorded 2011	Recorded 2012	Recorded 2013	Variance 2011-2012	Variance 2012-2013	Resolved 2011	Resolved 2012	Resolved 2013	Resolution Rate 2011	Resolution Rate 2012	Resolution Rate 2013
NON-ASSAULTIVE SEXUAL OFFENCES	7	12	32	71.4 %	166.7 %	4	6	27	57.1 %	50.0 %	84.4 %
SEXUAL ASSAULT	265	278	340	4.9 %	22.3 %	169	156	167	63.8 %	56.1 %	49.1 %
	272	290	372	6.6 %	28.3 %	173	162	194	63.6 %	55.9 %	52.2 %

DANGEROUS OR NEGLIGENT ACTS ENDANGERING PERSONS

ASOC Subdivision Description	Recorded 2011	Recorded 2012	Recorded 2013	Variance 2011-2012	Variance 2012-2013	Resolved 2011	Resolved 2012	Resolved 2013	Resolution Rate 2011	Resolution Rate 2012	Resolution Rate 2013
OTHER DANGEROUS OR NEGLIGENT ACTS ENDANGERING PERSONS	104	123	65	18.3 %	-47.2 %	70	84	38	67.3 %	68.3 %	58.5 %
	104	123	65	18.3 %	-47.2 %	70	84	38	67.3 %	68.3 %	58.5 %

ABDUCTION, HARASSMENT AND OTHER RELATED OFFENCES AGAINST A PERSON

ASOC Subdivision Description	Recorded 2011	Recorded 2012	Recorded 2013	Variance 2011-2012	Variance 2012-2013	Resolved 2011	Resolved 2012	Resolved 2013	Resolution Rate 2011	Resolution Rate 2012	Resolution Rate 2013
ABDUCTION AND KIDNAPPING	32	17	24	-46.9 %	41.2 %	23	7	10	71.9 %	41.2 %	41.7 %
DEPRIVATION OF LIBERTY/FALSE IMPRISONMENT	4	0	0	-100.0 %	0.0 %	4	0	0	100.0 %	0.0 %	0.0 %
HARASSMENT AND THREATENING BEHAVIOUR	1,052	1,094	1,167	4.0 %	6.7 %	638	632	593	60.6 %	57.8 %	50.8 %
	1,088	1,111	1,191	2.1 %	7.2 %	665	639	603	61.1 %	57.5 %	50.6 %

ROBBERY, EXTORTION AND RELATED OFFENCES

ASOC Subdivision Description	Recorded 2011	Recorded 2012	Recorded 2013	Variance 2011-2012	Variance 2012-2013	Resolved 2011	Resolved 2012	Resolved 2013	Resolution Rate 2011	Resolution Rate 2012	Resolution Rate 2013
BLACKMAIL AND EXTORTION	12	19	21	58.3 %	10.5 %	4	6	7	33.3 %	31.6 %	33.3 %
ROBBERY	480	457	445	-4.8 %	-2.6 %	164	121	109	34.2 %	26.5 %	24.5 %
	492	476	466	-3.3 %	-2.1 %	168	127	116	34.1 %	26.7 %	24.9 %

UNLAWFUL ENTRY WITH INTENT/BURGLARY, BREAK AND ENTER

ASOC Subdivision Description	Recorded 2011	Recorded 2012	Recorded 2013	Variance 2011-2012	Variance 2012-2013	Resolved 2011	Resolved 2012	Resolved 2013	Resolution Rate 2011	Resolution Rate 2012	Resolution Rate 2013
UNLAWFUL ENTRY WITH INTENT/BURGLARY, BREAK AND ENTER	9,037	7,334	6,316	-18.8 %	-13.9 %	721	575	478	8.0 %	7.8 %	7.6 %
	9,037	7,334	6,316	-18.8 %	-13.9 %	721	575	478	8.0 %	7.8 %	7.6 %

SUMMARY OF DISTRICT RECORDED AND RESOLVED CRIME, BY DIVISION
Years ending 31 December

THEFT AND RELATED OFFENCES

ASOC Subdivision Description	Recorded 2011	Recorded 2012	Recorded 2013	Variance 2011-2012	Variance 2012-2013	Resolved 2011	Resolved 2012	Resolved 2013	Resolution Rate 2011	Resolution Rate 2012	Resolution Rate 2013
ILLEGAL USE OF PROPERTY (EXCEPT MOTOR VEHICLES)	302	263	455	-12.9 %	73.0 %	9	6	19	3.0 %	2.3 %	4.2 %
MOTOR VEHICLE THEFT AND RELATED OFFENCES	14,305	11,274	9,985	-21.2 %	-11.4 %	1,095	824	799	7.7 %	7.3 %	8.0 %
RECEIVE OR HANDLE PROCEEDS OF CRIME	433	397	347	-8.3 %	-12.6 %	429	390	331	99.1 %	98.2 %	95.4 %
THEFT (EXCEPT MOTOR VEHICLES)	10,570	9,459	9,170	-10.5 %	-3.1 %	1,586	1,507	1,563	15.0 %	15.9 %	17.0 %
	25,610	21,393	19,957	-16.5 %	-6.7 %	3,119	2,727	2,712	12.2 %	12.7 %	13.6 %

FRAUD, DECEPTION AND RELATED OFFENCES

ASOC Subdivision Description	Recorded 2011	Recorded 2012	Recorded 2013	Variance 2011-2012	Variance 2012-2013	Resolved 2011	Resolved 2012	Resolved 2013	Resolution Rate 2011	Resolution Rate 2012	Resolution Rate 2013
DECEPTIVE BUSINESS/GOVERNMENT PRACTICES	7	4	4	-42.9 %	0.0 %	5	4	2	71.4 %	100.0 %	50.0 %
FORGERY AND COUNTERFEITING	90	61	88	-32.2 %	44.3 %	31	19	55	34.4 %	31.1 %	62.5 %
OBTAIN BENEFIT BY DECEPTION	888	878	831	-1.1 %	-5.4 %	346	328	300	39.0 %	37.4 %	36.1 %
OTHER FRAUD AND DECEPTION OFFENCES	57	50	121	-12.3 %	142.0 %	16	11	20	28.1 %	22.0 %	16.5 %
	1,042	993	1,044	-4.7 %	5.1 %	398	362	377	38.2 %	36.5 %	36.1 %

ILLICIT DRUG OFFENCES

ASOC Subdivision Description	Recorded 2011	Recorded 2012	Recorded 2013	Variance 2011-2012	Variance 2012-2013	Resolved 2011	Resolved 2012	Resolved 2013	Resolution Rate 2011	Resolution Rate 2012	Resolution Rate 2013
DEAL OR TRAFFIC IN ILLICIT DRUGS	257	210	424	-18.3 %	101.9 %	248	192	393	96.5 %	91.4 %	92.7 %
IMPORT OR EXPORT ILLICIT DRUGS	17	14	10	-17.6 %	-28.6 %	14	11	6	82.4 %	78.6 %	60.0 %
MANUFACTURE OR CULTIVATE ILLICIT DRUGS	61	62	40	1.6 %	-35.5 %	54	51	29	88.5 %	82.3 %	72.5 %
OTHER ILLICIT DRUG OFFENCES	551	516	385	-6.4 %	-25.4 %	540	506	375	98.0 %	98.1 %	97.4 %
POSSESS AND/OR USE ILLICIT DRUGS	810	805	604	-0.6 %	-25.0 %	801	788	573	98.9 %	97.9 %	94.9 %
	1,696	1,607	1,463	-5.2 %	-9.0 %	1,657	1,548	1,376	97.7 %	96.3 %	94.1 %

PROHIBITED AND REGULATED WEAPONS AND EXPLOSIVES OFFENCES

ASOC Subdivision Description	Recorded 2011	Recorded 2012	Recorded 2013	Variance 2011-2012	Variance 2012-2013	Resolved 2011	Resolved 2012	Resolved 2013	Resolution Rate 2011	Resolution Rate 2012	Resolution Rate 2013
REGULATED WEAPONS/EXPLOSIVES OFFENCES	518	463	421	-10.6 %	-9.1 %	494	429	384	95.4 %	92.7 %	91.2 %
	518	463	421	-10.6 %	-9.1 %	494	429	384	95.4 %	92.7 %	91.2 %

PROPERTY DAMAGE AND ENVIRONMENTAL POLLUTION

ASOC Subdivision Description	Recorded 2011	Recorded 2012	Recorded 2013	Variance 2011-2012	Variance 2012-2013	Resolved 2011	Resolved 2012	Resolved 2013	Resolution Rate 2011	Resolution Rate 2012	Resolution Rate 2013
ENVIRONMENTAL POLLUTION	12	9	5	-25.0 %	-44.4 %	10	3	4	83.3 %	33.3 %	80.0 %
PROPERTY DAMAGE	4,923	4,246	4,152	-13.8 %	-2.2 %	1,159	1,117	992	23.5 %	26.3 %	23.9 %
	4,935	4,255	4,157	-13.8 %	-2.3 %	1,169	1,120	996	23.7 %	26.3 %	24.0 %

PUBLIC ORDER OFFENCES

ASOC Subdivision Description	Recorded 2011	Recorded 2012	Recorded 2013	Variance 2011-2012	Variance 2012-2013	Resolved 2011	Resolved 2012	Resolved 2013	Resolution Rate 2011	Resolution Rate 2012	Resolution Rate 2013
DISORDERLY CONDUCT	2,393	2,630	2,284	9.9 %	-13.2 %	2,156	2,332	1,950	90.1 %	88.7 %	85.4 %
OFFENSIVE CONDUCT	77	85	90	10.4 %	5.9 %	58	58	65	75.3 %	68.2 %	72.2 %
PUBLIC ORDER OFFENCES NOT FURTHER DEFINED	0	0	0	0.0 %	0.0 %	0	0	0	0.0 %	0.0 %	0.0 %
REGULATED PUBLIC ORDER OFFENCES	3,027	2,926	1,349	-3.3 %	-53.9 %	2,981	2,816	1,270	98.5 %	96.2 %	94.1 %
	5,497	5,641	3,723	2.6 %	-34.0 %	5,195	5,206	3,285	94.5 %	92.3 %	88.2 %

SUMMARY OF DISTRICT RECORDED AND RESOLVED CRIME, BY DIVISION
Years ending 31 December

OFFENCES AGAINST JUSTICE PROCEDURES, GOVERNMENT SECURITY AND GOVERNMENT OPERATIONS

ASOC Subdivision Description	Recorded 2011	Recorded 2012	Recorded 2013	Variance 2011-2012	Variance 2012-2013	Resolved 2011	Resolved 2012	Resolved 2013	Resolution Rate 2011	Resolution Rate 2012	Resolution Rate 2013
BREACH OF COMMUNITY-BASED ORDER	230	202	312	-12.2 %	54.5 %	217	197	289	94.3 %	97.5 %	92.6 %
BREACH OF CUSTODIAL ORDER OFFENCES	61	53	36	-13.1 %	-32.1 %	50	49	32	82.0 %	92.5 %	88.9 %
BREACH OF VIOLENCE AND NON-VIOLENCE RESTRAINING ORDERS	287	254	291	-11.5 %	14.6 %	281	220	254	97.9 %	86.6 %	87.3 %
OFFENCES AGAINST GOVERNMENT OPERATIONS	21	23	7	9.5 %	-69.6 %	12	13	2	57.1 %	56.5 %	28.6 %
OFFENCES AGAINST GOVERNMENT SECURITY	0	0	1	0.0 %	0.0 %	0	0	0	0.0 %	0.0 %	0.0 %
OFFENCES AGAINST JUSTICE PROCEDURES	670	713	517	6.4 %	-27.5 %	661	704	511	98.7 %	98.7 %	98.8 %
OFFENCES AGAINST JUSTICE PROCEDURES, GOVERNMENT SECURITY AND GOVERNMENT OPERATIONS NOT FURTHER DEFINED	0	1	0	0.0 %	-100.0 %	0	1	0	0.0 %	100.0 %	0.0 %
	1,269	1,246	1,164	-1.8 %	-6.6 %	1,221	1,184	1,088	96.2 %	95.0 %	93.5 %

MISCELLANEOUS OFFENCES

ASOC Subdivision Description	Recorded 2011	Recorded 2012	Recorded 2013	Variance 2011-2012	Variance 2012-2013	Resolved 2011	Resolved 2012	Resolved 2013	Resolution Rate 2011	Resolution Rate 2012	Resolution Rate 2013
COMMERCIAL/INDUSTRY/FINANCIAL REGULATION	7	0	2	-100.0 %	0.0 %	7	0	2	100.0 %	0.0 %	100.0 %
DEFAMATION, LIBEL AND PRIVACY OFFENCES	9	10	7	11.1 %	-30.0 %	3	3	2	33.3 %	30.0 %	28.6 %
OTHER MISCELLANEOUS OFFENCES	92	76	62	-17.4 %	-18.4 %	72	61	32	78.3 %	80.3 %	51.6 %
PUBLIC HEALTH AND SAFETY OFFENCES	14	24	24	71.4 %	0.0 %	8	12	21	57.1 %	50.0 %	87.5 %
	122	110	95	-9.8 %	-13.6 %	90	76	57	73.8 %	69.1 %	60.0 %

TOTAL	55,220	48,522	43,734	-12.1 %	-9.9 %	17,893	16,711	13,995	32.4 %	34.4 %	32.0 %
--------------	---------------	---------------	---------------	----------------	---------------	---------------	---------------	---------------	---------------	---------------	---------------

PROPORTIONS OF RECORDED CRIME BY DIVISION

Years ending 31 December

ASOC Division Description	Proportions Recorded 2011	Recorded 2011	Proportions Recorded 2012	Recorded 2012	Proportions Recorded 2013	Recorded 2013
HOMICIDE AND RELATED OFFENCES	0.01 %	7	0.01 %	4	0.01 %	6
ACTS INTENDED TO CAUSE INJURY	6.39 %	3,531	7.16 %	3,476	7.53 %	3,294
SEXUAL ASSAULT AND RELATED OFFENCES	0.49 %	272	0.60 %	290	0.85 %	372
DANGEROUS OR NEGLIGENT ACTS ENDANGERING PERSONS	0.19 %	104	0.25 %	123	0.15 %	65
ABDUCTION, HARASSMENT AND OTHER RELATED OFFENCES AGAINST A PERSON	1.97 %	1,088	2.29 %	1,111	2.72 %	1,191
ROBBERY, EXTORTION AND RELATED OFFENCES	0.89 %	492	0.98 %	476	1.07 %	466
UNLAWFUL ENTRY WITH INTENT/BURGLARY, BREAK AND ENTER	16.37 %	9,037	15.11 %	7,334	14.44 %	6,316
THEFT AND RELATED OFFENCES	46.38 %	25,610	44.09 %	21,393	45.63 %	19,957
FRAUD, DECEPTION AND RELATED OFFENCES	1.89 %	1,042	2.05 %	993	2.39 %	1,044
ILLICIT DRUG OFFENCES	3.07 %	1,696	3.31 %	1,607	3.35 %	1,463
PROHIBITED AND REGULATED WEAPONS AND EXPLOSIVES OFFENCES	0.94 %	518	0.95 %	463	0.96 %	421
PROPERTY DAMAGE AND ENVIRONMENTAL POLLUTION	8.94 %	4,935	8.77 %	4,255	9.51 %	4,157
PUBLIC ORDER OFFENCES	9.95 %	5,497	11.63 %	5,641	8.51 %	3,723
OFFENCES AGAINST JUSTICE PROCEDURES, GOVERNMENT SECURITY AND GOVERNMENT OPERATIONS	2.30 %	1,269	2.57 %	1,246	2.66 %	1,164
MISCELLANEOUS OFFENCES	0.22 %	122	0.23 %	110	0.22 %	95
	100.00 %	55,220	100.00 %	48,522	100.00 %	43,734

SUMMARY OF RECORDED OFFENCES, RATE PER 10,000 POPULATION AND RESOLVED OFFENCES, BY AREA
years ending 31 December

TOTAL CRIME

Area Description	Recorded 2012	Recorded 2013	Variance 2012-2013	Recorded per 10,000 pop 2012	Recorded per 10,000 pop 2013	Per 10,000 pop % Variance 2012 to 2013	Resolved 2012	Resolved 2013	Resolution Rate 2012	Resolution Rate 2013
Auckland Central Area	18,697	14,777	-21.0 %	3,573.6	2,766.2	-22.6 %	8,374	5,939	44.8 %	40.2 %
Auckland East Area	14,995	14,362	-4.2 %	804.0	759.9	-5.5 %	4,235	3,834	28.2 %	26.7 %
Auckland West Area	14,830	14,595	-1.6 %	730.9	712.6	-2.5 %	4,102	4,222	27.7 %	28.9 %
	48,522	43,734	-9.9 %	1,098.5	977.9	-11.0 %	16,711	13,995	34.4 %	32.0 %

SUMMARY OF RECORDED OFFENCES, RATE PER 10,000 POPULATION AND RESOLVED OFFENCES, BY DIVISION

Years ending 31 December

HOMICIDE AND RELATED OFFENCES

Area Description	Recorded 2012	Recorded 2013	Variance 2012-2013	Recorded per 10,000 pop 2012	Recorded per 10,000 pop 2013	Per 10,000 pop % Variance 2012 to 2013	Resolved 2012	Resolved 2013	Resolution Rate 2012	Resolution Rate 2013
Auckland Central Area	0	3	0.0 %	0.0	0.6	0.0 %	0	3	0.0 %	100.0 %
Auckland East Area	0	1	0.0 %	0.0	0.1	0.0 %	0	1	0.0 %	100.0 %
Auckland West Area	4	2	-50.0 %	0.2	0.1	-50.5 %	4	2	100.0 %	100.0 %
	4	6	50.0 %	0.1	0.1	48.2 %	4	6	100.0 %	100.0 %

ACTS INTENDED TO CAUSE INJURY

Area Description	Recorded 2012	Recorded 2013	Variance 2012-2013	Recorded per 10,000 pop 2012	Recorded per 10,000 pop 2013	Per 10,000 pop % Variance 2012 to 2013	Resolved 2012	Resolved 2013	Resolution Rate 2012	Resolution Rate 2013
Auckland Central Area	1,311	1,207	-7.9 %	250.6	225.9	-9.8 %	760	699	58.0 %	57.9 %
Auckland East Area	1,127	1,022	-9.3 %	60.4	54.1	-10.5 %	874	748	77.6 %	73.2 %
Auckland West Area	1,038	1,065	2.6 %	51.2	52.0	1.6 %	834	838	80.3 %	78.7 %
	3,476	3,294	-5.2 %	78.7	73.7	-6.4 %	2,468	2,285	71.0 %	69.4 %

SEXUAL ASSAULT AND RELATED OFFENCES

Area Description	Recorded 2012	Recorded 2013	Variance 2012-2013	Recorded per 10,000 pop 2012	Recorded per 10,000 pop 2013	Per 10,000 pop % Variance 2012 to 2013	Resolved 2012	Resolved 2013	Resolution Rate 2012	Resolution Rate 2013
Auckland Central Area	105	126	20.0 %	20.1	23.6	17.5 %	53	62	50.5 %	49.2 %
Auckland East Area	97	95	-2.1 %	5.2	5.0	-3.4 %	62	49	63.9 %	51.6 %
Auckland West Area	88	151	71.6 %	4.3	7.4	70.0 %	47	83	53.4 %	55.0 %
	290	372	28.3 %	6.6	8.3	26.7 %	162	194	55.9 %	52.2 %

DANGEROUS OR NEGLIGENT ACTS ENDANGERING PERSONS

Area Description	Recorded 2012	Recorded 2013	Variance 2012-2013	Recorded per 10,000 pop 2012	Recorded per 10,000 pop 2013	Per 10,000 pop % Variance 2012 to 2013	Resolved 2012	Resolved 2013	Resolution Rate 2012	Resolution Rate 2013
Auckland Central Area	37	21	-43.2 %	7.1	3.9	-44.4 %	21	11	56.8 %	52.4 %
Auckland East Area	63	29	-54.0 %	3.4	1.5	-54.6 %	45	18	71.4 %	62.1 %
Auckland West Area	23	15	-34.8 %	1.1	0.7	-35.4 %	18	9	78.3 %	60.0 %
	123	65	-47.2 %	2.8	1.5	-47.8 %	84	38	68.3 %	58.5 %

ABDUCTION, HARASSMENT AND OTHER RELATED OFFENCES AGAINST A PERSON

Area Description	Recorded 2012	Recorded 2013	Variance 2012-2013	Recorded per 10,000 pop 2012	Recorded per 10,000 pop 2013	Per 10,000 pop % Variance 2012 to 2013	Resolved 2012	Resolved 2013	Resolution Rate 2012	Resolution Rate 2013
Auckland Central Area	301	335	11.3 %	57.5	62.7	9.0 %	137	154	45.5 %	46.0 %
Auckland East Area	397	406	2.3 %	21.3	21.5	0.9 %	230	171	57.9 %	42.1 %
Auckland West Area	413	450	9.0 %	20.4	22.0	7.9 %	272	278	65.9 %	61.8 %
	1,111	1,191	7.2 %	25.2	26.6	5.9 %	639	603	57.5 %	50.6 %

ROBBERY, EXTORTION AND RELATED OFFENCES

Area Description	Recorded 2012	Recorded 2013	Variance 2012-2013	Recorded per 10,000 pop 2012	Recorded per 10,000 pop 2013	Per 10,000 pop % Variance 2012 to 2013	Resolved 2012	Resolved 2013	Resolution Rate 2012	Resolution Rate 2013
Auckland Central Area	182	172	-5.5 %	34.8	32.2	-7.4 %	36	44	19.8 %	25.6 %
Auckland East Area	144	139	-3.5 %	7.7	7.4	-4.7 %	52	27	36.1 %	19.4 %
Auckland West Area	150	155	3.3 %	7.4	7.6	2.4 %	39	45	26.0 %	29.0 %
	476	466	-2.1 %	10.8	10.4	-3.3 %	127	116	26.7 %	24.9 %

SUMMARY OF RECORDED OFFENCES, RATE PER 10,000 POPULATION AND RESOLVED OFFENCES, BY DIVISION

Years ending 31 December

UNLAWFUL ENTRY WITH INTENT/BURGLARY, BREAK AND ENTER

Area Description	Recorded 2012	Recorded 2013	Variance 2012-2013	Recorded per 10,000 pop 2012	Recorded per 10,000 pop 2013	Per 10,000 pop % Variance 2012 to 2013	Resolved 2012	Resolved 2013	Resolution Rate 2012	Resolution Rate 2013
Auckland Central Area	1,059	815	-23.0 %	202.4	152.6	-24.6 %	144	97	13.6 %	11.9 %
Auckland East Area	3,003	2,642	-12.0 %	161.0	139.8	-13.2 %	199	188	6.6 %	7.1 %
Auckland West Area	3,272	2,859	-12.6 %	161.3	139.6	-13.4 %	232	193	7.1 %	6.8 %
	7,334	6,316	-13.9 %	166.0	141.2	-14.9 %	575	478	7.8 %	7.6 %

THEFT AND RELATED OFFENCES

Area Description	Recorded 2012	Recorded 2013	Variance 2012-2013	Recorded per 10,000 pop 2012	Recorded per 10,000 pop 2013	Per 10,000 pop % Variance 2012 to 2013	Resolved 2012	Resolved 2013	Resolution Rate 2012	Resolution Rate 2013
Auckland Central Area	8,223	6,953	-15.4 %	1,571.7	1,301.6	-17.2 %	993	966	12.1 %	13.9 %
Auckland East Area	6,778	6,735	-0.6 %	363.4	356.3	-1.9 %	947	970	14.0 %	14.4 %
Auckland West Area	6,392	6,269	-1.9 %	315.0	306.1	-2.8 %	787	776	12.3 %	12.4 %
	21,393	19,957	-6.7 %	484.3	446.2	-7.9 %	2,727	2,712	12.7 %	13.6 %

FRAUD, DECEPTION AND RELATED OFFENCES

Area Description	Recorded 2012	Recorded 2013	Variance 2012-2013	Recorded per 10,000 pop 2012	Recorded per 10,000 pop 2013	Per 10,000 pop % Variance 2012 to 2013	Resolved 2012	Resolved 2013	Resolution Rate 2012	Resolution Rate 2013
Auckland Central Area	431	441	2.3 %	82.4	82.6	0.2 %	163	158	37.8 %	35.8 %
Auckland East Area	351	339	-3.4 %	18.8	17.9	-4.7 %	140	125	39.9 %	36.9 %
Auckland West Area	211	264	25.1 %	10.4	12.9	24.0 %	59	94	28.0 %	35.6 %
	993	1,044	5.1 %	22.5	23.3	3.8 %	362	377	36.5 %	36.1 %

ILLICIT DRUG OFFENCES

Area Description	Recorded 2012	Recorded 2013	Variance 2012-2013	Recorded per 10,000 pop 2012	Recorded per 10,000 pop 2013	Per 10,000 pop % Variance 2012 to 2013	Resolved 2012	Resolved 2013	Resolution Rate 2012	Resolution Rate 2013
Auckland Central Area	827	590	-28.7 %	158.1	110.4	-30.1 %	791	555	95.6 %	94.1 %
Auckland East Area	392	309	-21.2 %	21.0	16.3	-22.2 %	382	279	97.4 %	90.3 %
Auckland West Area	388	564	45.4 %	19.1	27.5	44.0 %	375	542	96.6 %	96.1 %
	1,607	1,463	-9.0 %	36.4	32.7	-10.1 %	1,548	1,376	96.3 %	94.1 %

PROHIBITED AND REGULATED WEAPONS AND EXPLOSIVES OFFENCES

Area Description	Recorded 2012	Recorded 2013	Variance 2012-2013	Recorded per 10,000 pop 2012	Recorded per 10,000 pop 2013	Per 10,000 pop % Variance 2012 to 2013	Resolved 2012	Resolved 2013	Resolution Rate 2012	Resolution Rate 2013
Auckland Central Area	178	143	-19.7 %	34.0	26.8	-21.3 %	172	133	96.6 %	93.0 %
Auckland East Area	134	125	-6.7 %	7.2	6.6	-8.0 %	119	111	88.8 %	88.8 %
Auckland West Area	151	153	1.3 %	7.4	7.5	0.4 %	138	140	91.4 %	91.5 %
	463	421	-9.1 %	10.5	9.4	-10.2 %	429	384	92.7 %	91.2 %

PROPERTY DAMAGE AND ENVIRONMENTAL POLLUTION

Area Description	Recorded 2012	Recorded 2013	Variance 2012-2013	Recorded per 10,000 pop 2012	Recorded per 10,000 pop 2013	Per 10,000 pop % Variance 2012 to 2013	Resolved 2012	Resolved 2013	Resolution Rate 2012	Resolution Rate 2013
Auckland Central Area	1,089	987	-9.4 %	208.1	184.8	-11.2 %	339	263	31.1 %	26.6 %
Auckland East Area	1,508	1,582	4.9 %	80.9	83.7	3.5 %	374	395	24.8 %	25.0 %
Auckland West Area	1,658	1,588	-4.2 %	81.7	77.5	-5.1 %	407	338	24.5 %	21.3 %
	4,255	4,157	-2.3 %	96.3	93.0	-3.5 %	1,120	996	26.3 %	24.0 %

SUMMARY OF RECORDED OFFENCES, RATE PER 10,000 POPULATION AND RESOLVED OFFENCES, BY DIVISION

Years ending 31 December

PUBLIC ORDER OFFENCES

Area Description	Recorded 2012	Recorded 2013	Variance 2012-2013	Recorded per 10,000 pop 2012	Recorded per 10,000 pop 2013	Per 10,000 pop % Variance 2012 to 2013	Resolved 2012	Resolved 2013	Resolution Rate 2012	Resolution Rate 2013
Auckland Central Area	4,254	2,439	-42.7 %	813.1	456.6	-43.8 %	4,097	2,289	96.3 %	93.8 %
Auckland East Area	699	572	-18.2 %	37.5	30.3	-19.3 %	549	434	78.5 %	75.9 %
Auckland West Area	688	712	3.5 %	33.9	34.8	2.5 %	560	562	81.4 %	78.9 %
	5,641	3,723	-34.0 %	127.7	83.2	-34.8 %	5,206	3,285	92.3 %	88.2 %

OFFENCES AGAINST JUSTICE PROCEDURES, GOVERNMENT SECURITY AND GOVERNMENT OPERATIONS

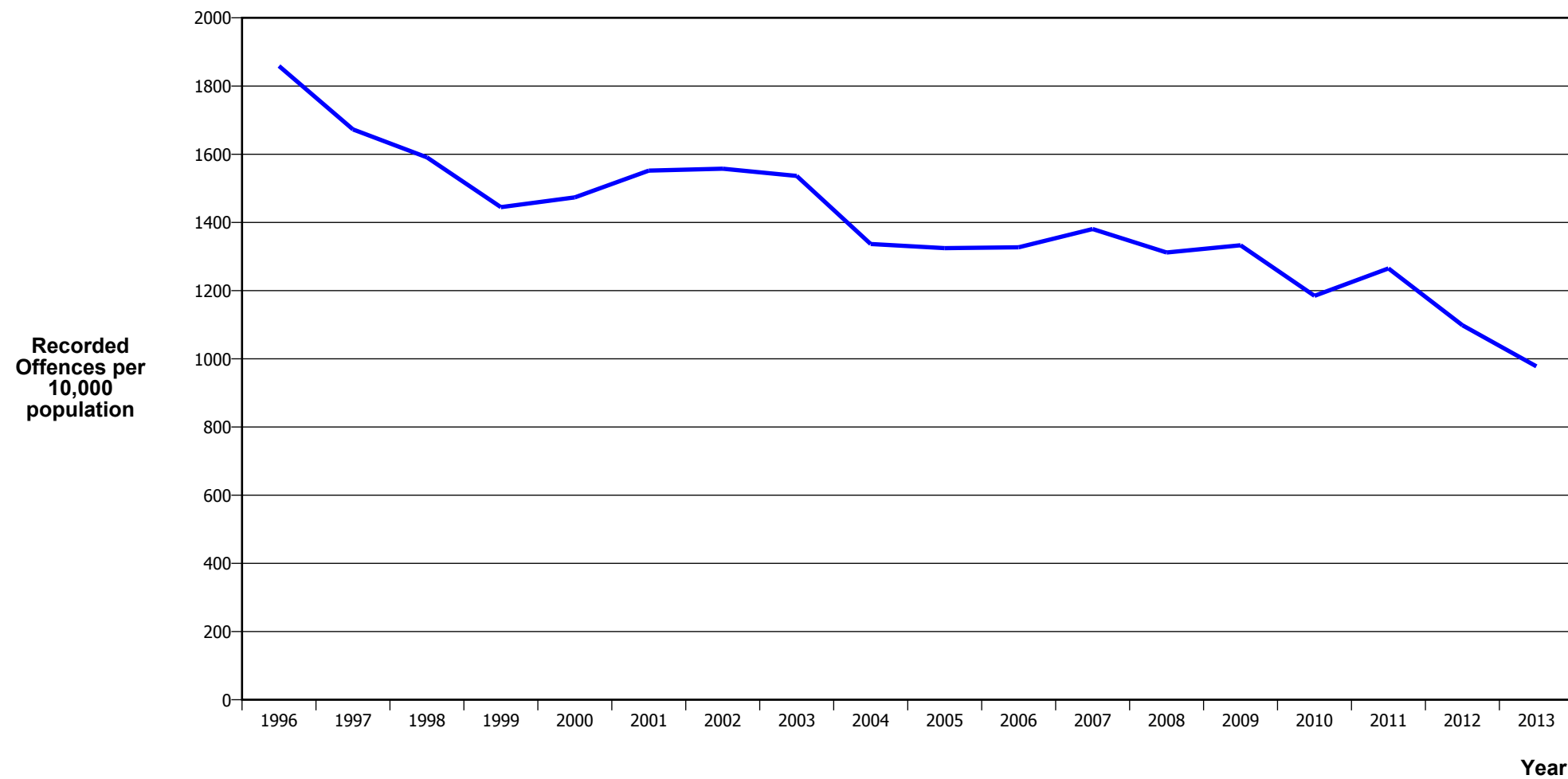
Area Description	Recorded 2012	Recorded 2013	Variance 2012-2013	Recorded per 10,000 pop 2012	Recorded per 10,000 pop 2013	Per 10,000 pop % Variance 2012 to 2013	Resolved 2012	Resolved 2013	Resolution Rate 2012	Resolution Rate 2013
Auckland Central Area	638	495	-22.4 %	121.9	92.7	-24.0 %	624	470	97.8 %	94.9 %
Auckland East Area	279	344	23.3 %	15.0	18.2	21.7 %	250	308	89.6 %	89.5 %
Auckland West Area	329	325	-1.2 %	16.2	15.9	-2.1 %	310	310	94.2 %	95.4 %
	1,246	1,164	-6.6 %	28.2	26.0	-7.7 %	1,184	1,088	95.0 %	93.5 %

MISCELLANEOUS OFFENCES

Area Description	Recorded 2012	Recorded 2013	Variance 2012-2013	Recorded per 10,000 pop 2012	Recorded per 10,000 pop 2013	Per 10,000 pop % Variance 2012 to 2013	Resolved 2012	Resolved 2013	Resolution Rate 2012	Resolution Rate 2013
Auckland Central Area	62	50	-19.4 %	11.9	9.4	-21.0 %	44	35	71.0 %	70.0 %
Auckland East Area	23	22	-4.3 %	1.2	1.2	-5.6 %	12	10	52.2 %	45.5 %
Auckland West Area	25	23	-8.0 %	1.2	1.1	-8.9 %	20	12	80.0 %	52.2 %
	110	95	-13.6 %	2.5	2.1	-14.7 %	76	57	69.1 %	60.0 %

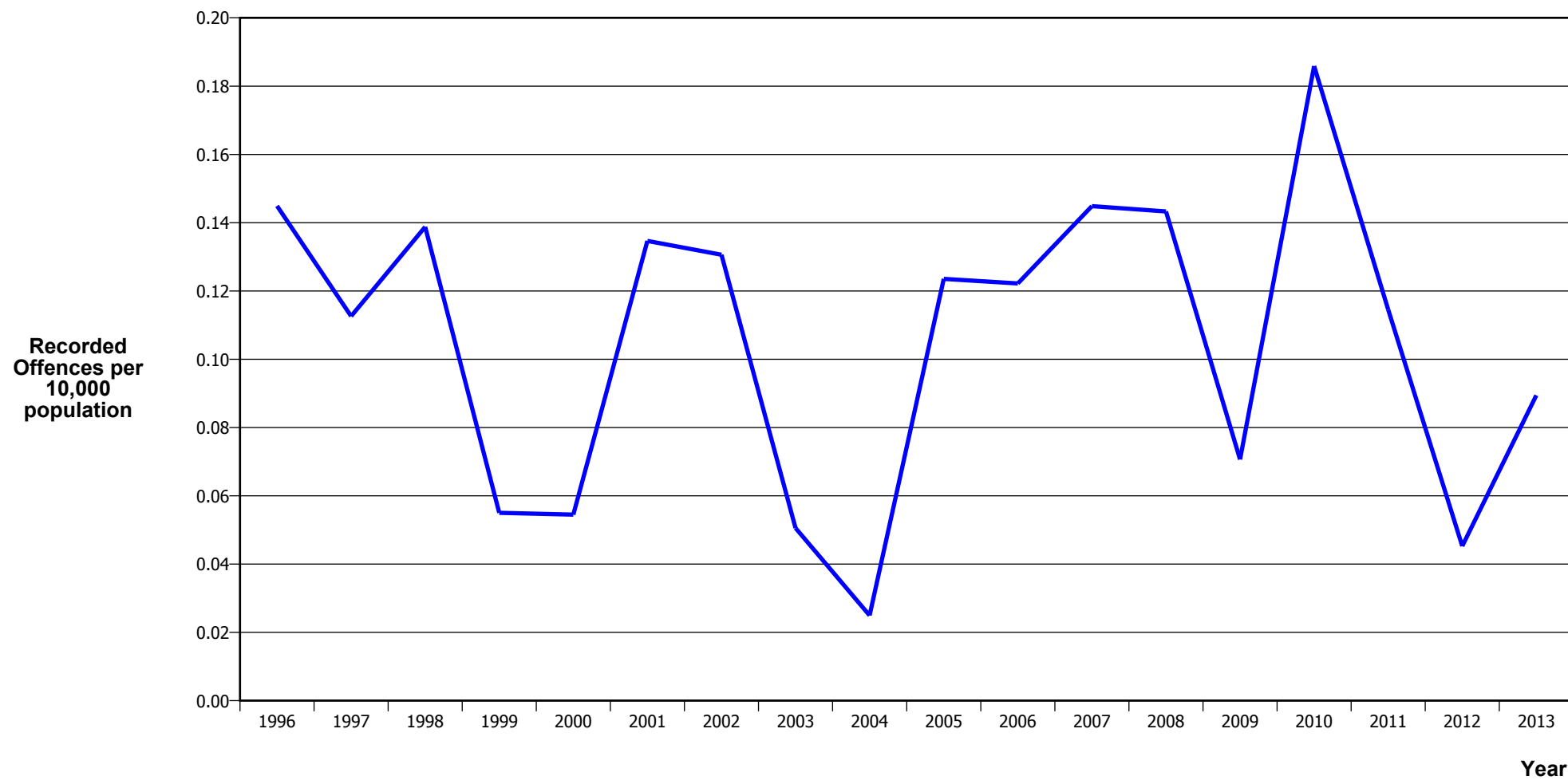
CRIME TRENDS

TOTAL CRIME



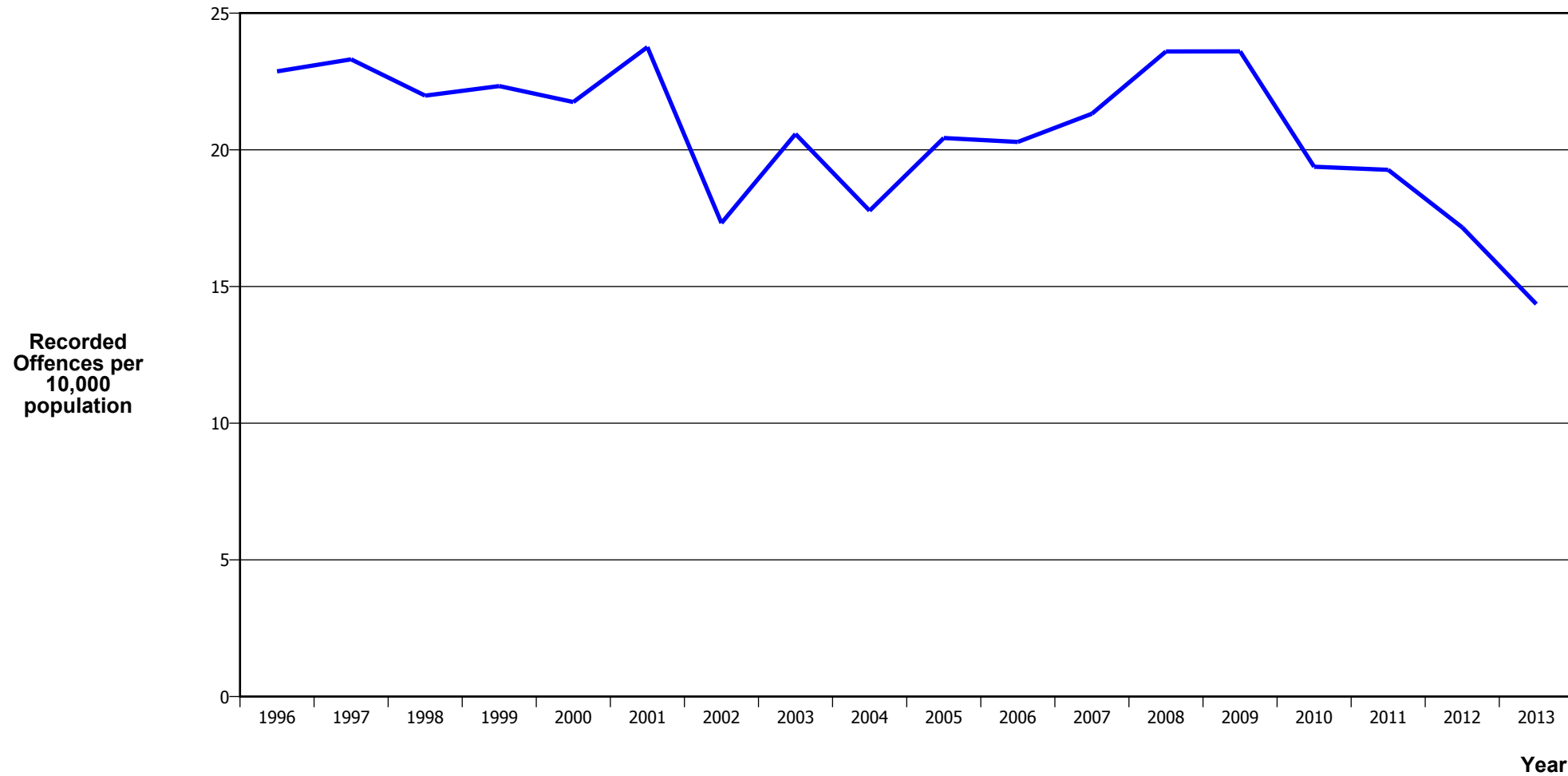
Calendar Year	1996	1997	1998	1999	2000	2001	2002	2003	2004	2005	2006	2007	2008	2009	2010	2011	2012	2013
Recorded Offences	64,124	59,423	57,320	52,532	54,062	57,622	59,621	60,769	53,555	53,615	54,294	57,187	54,928	56,596	50,991	55,220	48,522	43,734
Recorded per 10,000 Population	1,858.7	1,672.8	1,590.9	1,444.8	1,473.4	1,552.1	1,557.5	1,536.3	1,336.8	1,324.7	1,327.0	1,380.8	1,311.9	1,333.1	1,184.8	1,265.0	1,098.5	977.9

MURDER



Calendar Year	1996	1997	1998	1999	2000	2001	2002	2003	2004	2005	2006	2007	2008	2009	2010	2011	2012	2013
Recorded Offences	5	4	5	2	2	5	5	2	1	5	5	6	6	3	8	5	2	4
Recorded per 10,000 Population	0.14	0.11	0.14	0.06	0.05	0.13	0.13	0.05	0.02	0.12	0.12	0.14	0.14	0.07	0.19	0.11	0.05	0.09

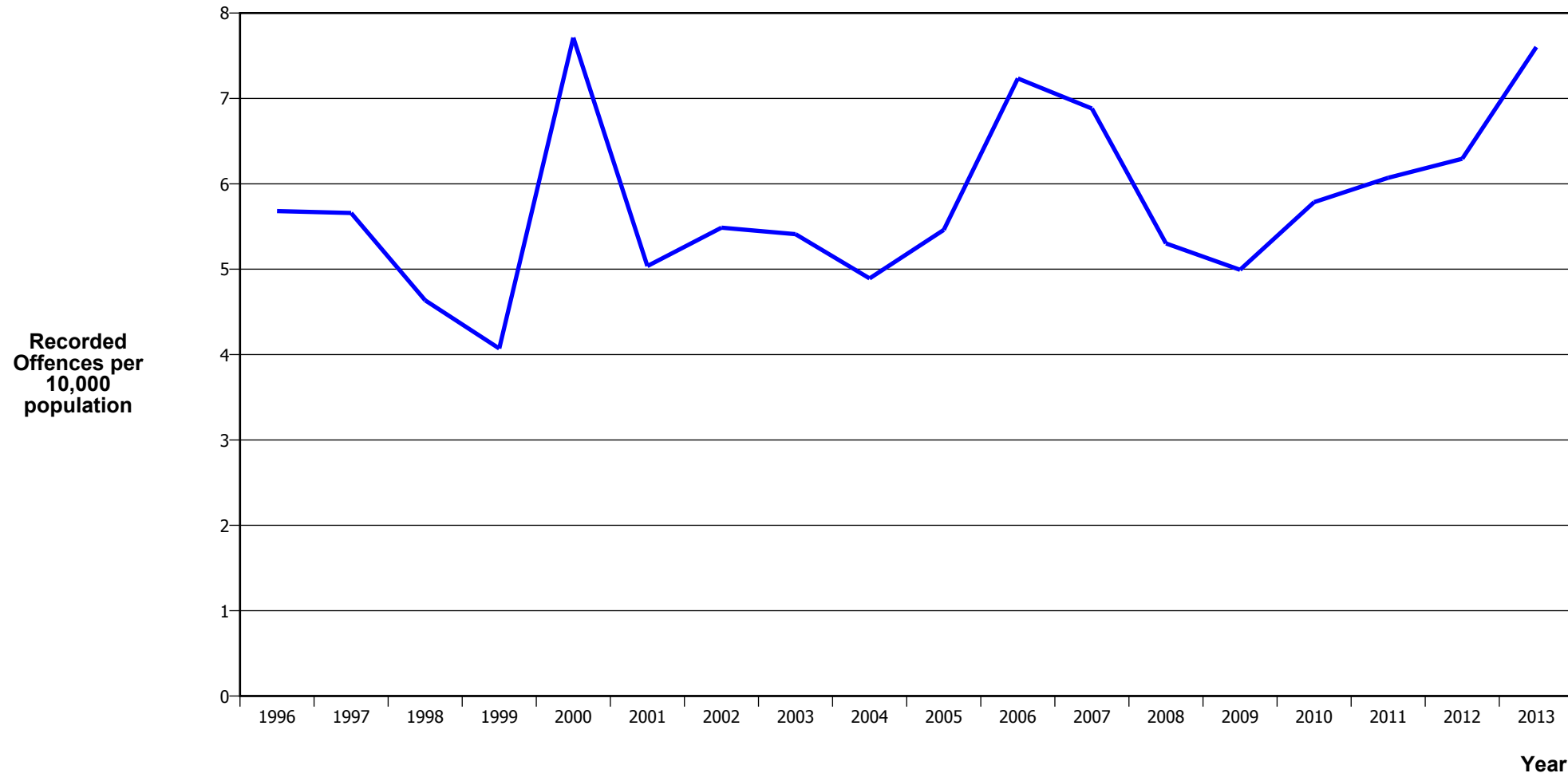
SERIOUS ASSAULTS RESULTING IN INJURY*



Calendar Year	1996	1997	1998	1999	2000	2001	2002	2003	2004	2005	2006	2007	2008	2009	2010	2011	2012	2013
Recorded Offence	789	828	792	812	798	882	663	814	712	827	830	883	988	1,002	834	841	758	642
Offence Rate per 10K Popn	22.9	23.3	22.0	22.3	21.7	23.8	17.3	20.6	17.8	20.4	20.3	21.3	23.6	23.6	19.4	19.3	17.2	14.4

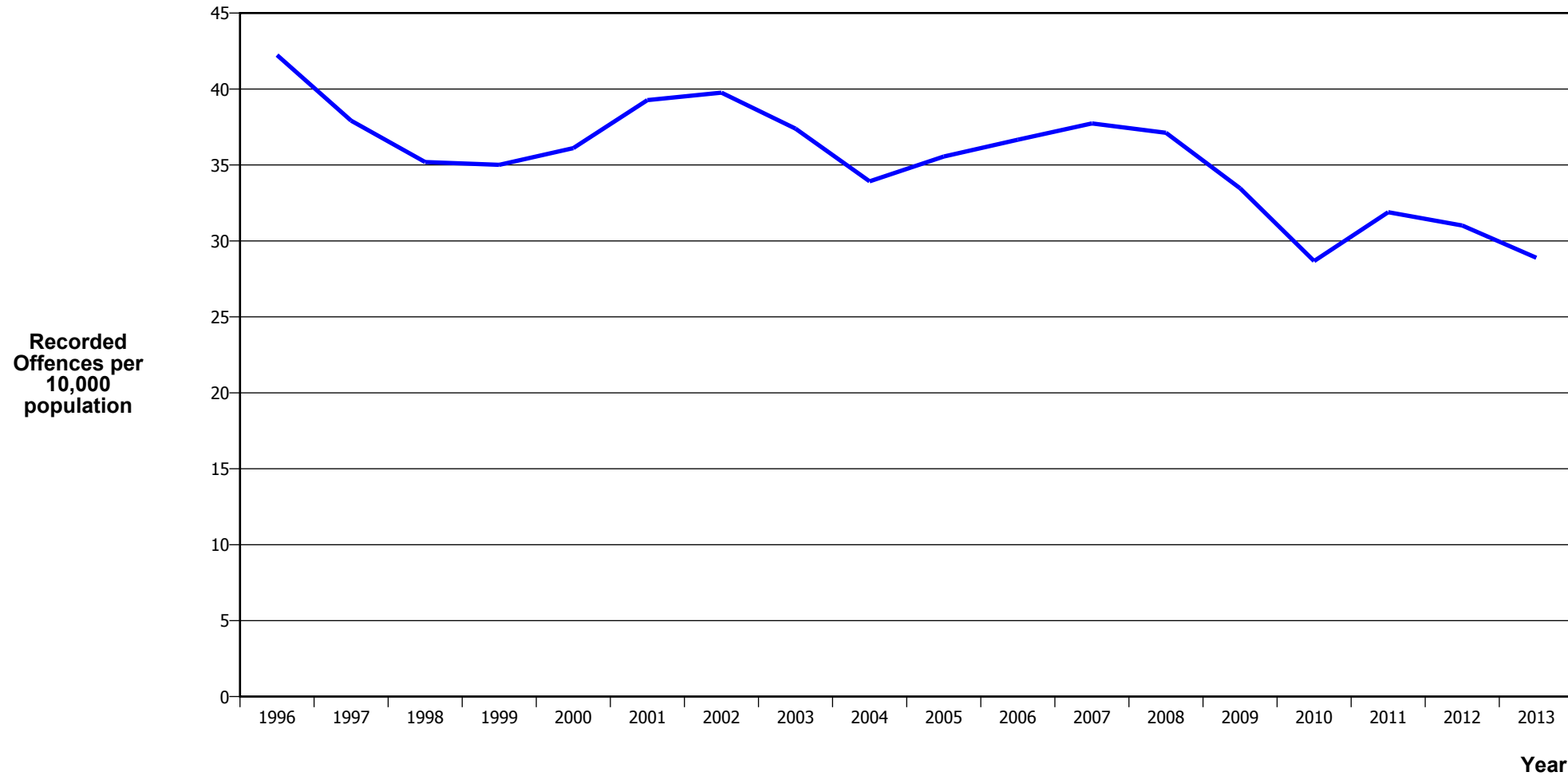
* This measure excludes common assaults

SEXUAL ASSAULTS



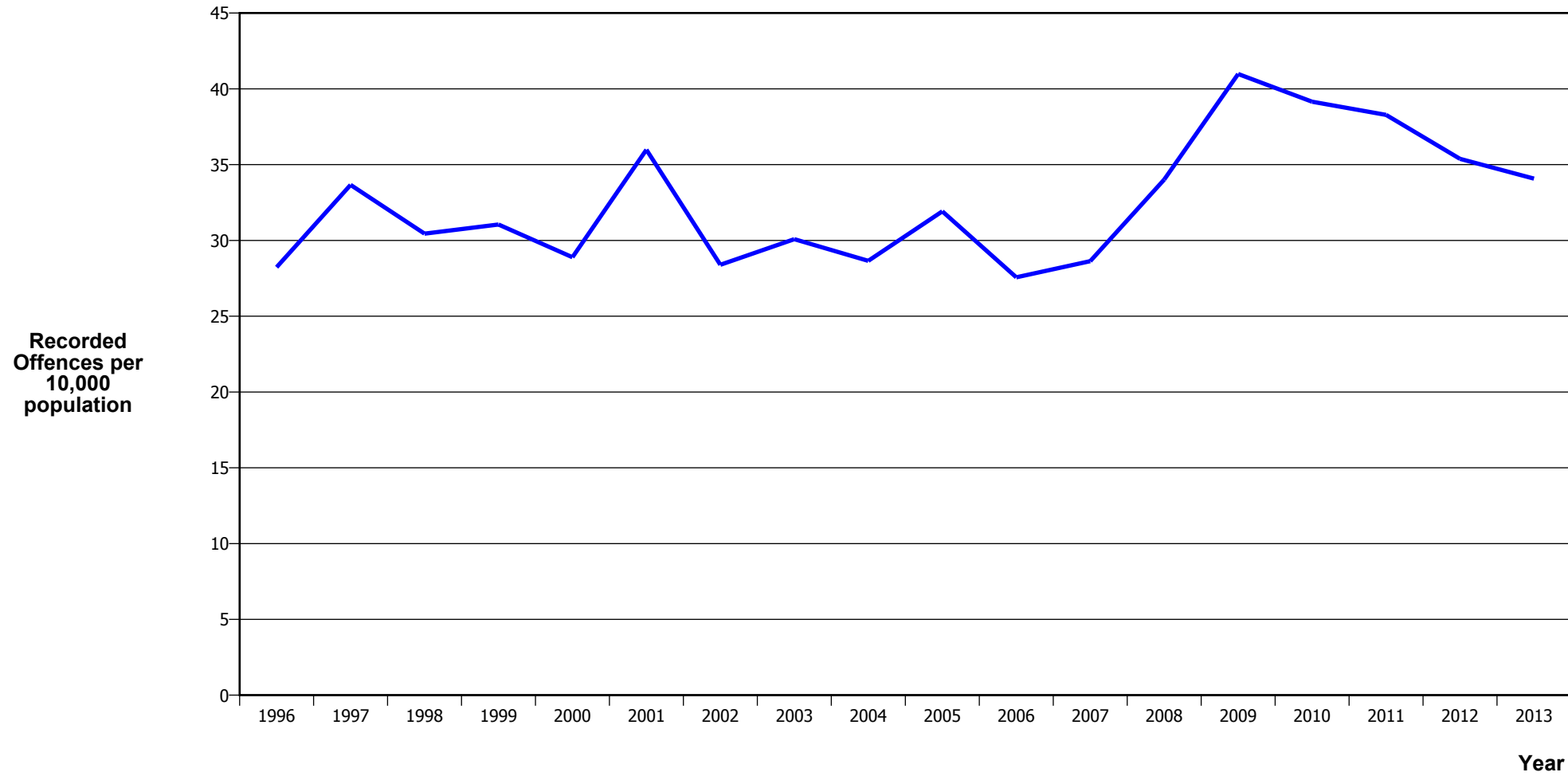
Calendar Year	1996	1997	1998	1999	2000	2001	2002	2003	2004	2005	2006	2007	2008	2009	2010	2011	2012	2013
Recorded Offences	196	201	167	148	283	187	210	214	196	221	296	285	222	212	249	265	278	340
Recorded per 10,000 Population	5.7	5.7	4.6	4.1	7.7	5.0	5.5	5.4	4.9	5.5	7.2	6.9	5.3	5.0	5.8	6.1	6.3	7.6

PUBLIC PLACE ASSAULTS



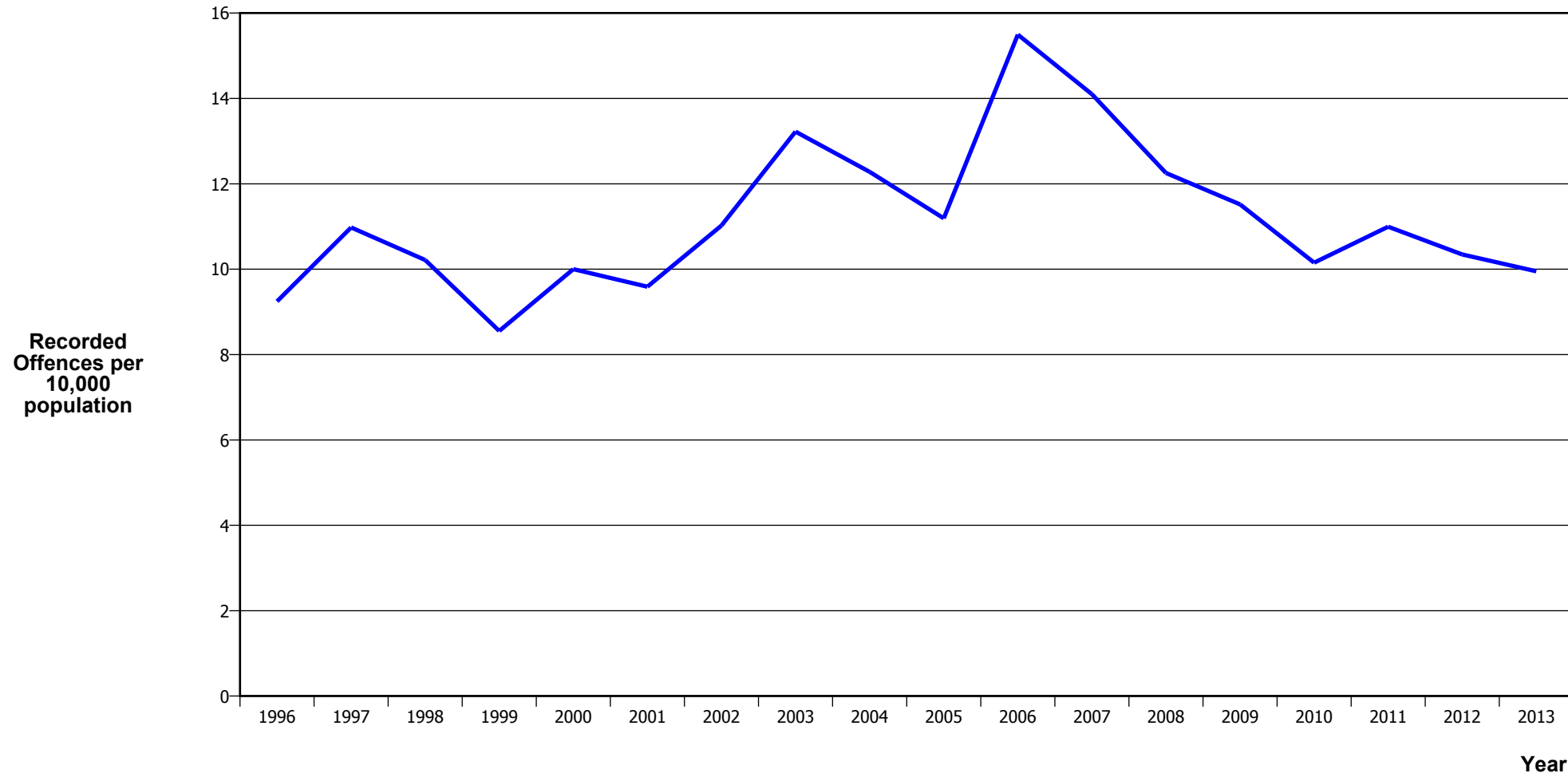
Calendar Year	1996	1997	1998	1999	2000	2001	2002	2003	2004	2005	2006	2007	2008	2009	2010	2011	2012	2013
Recorded Offences	1,457	1,347	1,268	1,273	1,325	1,458	1,522	1,479	1,359	1,439	1,500	1,563	1,554	1,421	1,234	1,392	1,370	1,292
Recorded per 10,000 Population	42.2	37.9	35.2	35.0	36.1	39.3	39.8	37.4	33.9	35.6	36.7	37.7	37.1	33.5	28.7	31.9	31.0	28.9

DWELLING ASSAULTS



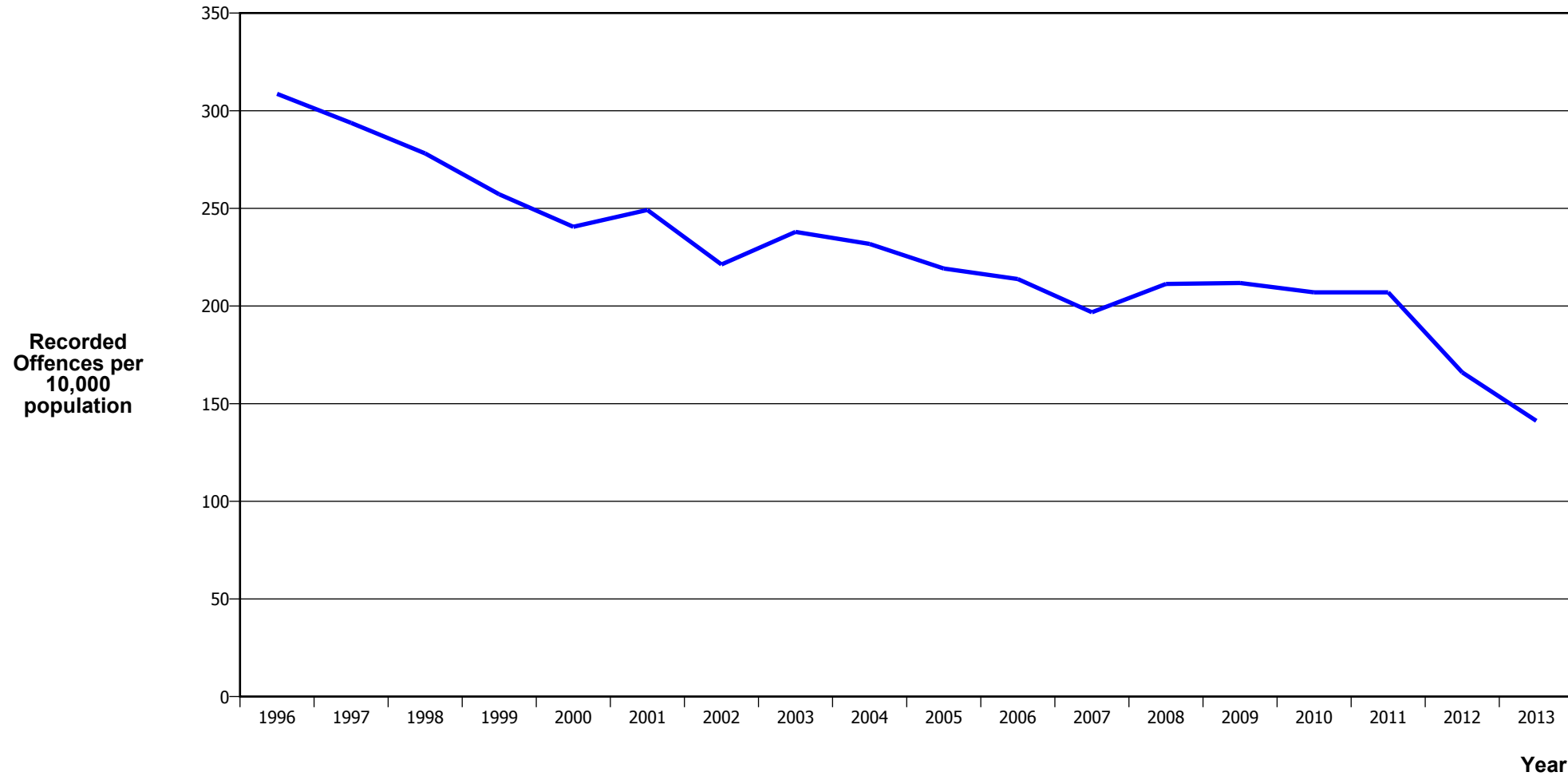
Calendar Year	1996	1997	1998	1999	2000	2001	2002	2003	2004	2005	2006	2007	2008	2009	2010	2011	2012	2013
Recorded Offences	974	1,196	1,097	1,129	1,060	1,336	1,087	1,190	1,148	1,292	1,128	1,186	1,424	1,740	1,685	1,671	1,563	1,524
Recorded per 10,000 Population	28.2	33.7	30.4	31.1	28.9	36.0	28.4	30.1	28.7	31.9	27.6	28.6	34.0	41.0	39.2	38.3	35.4	34.1

ROBBERY



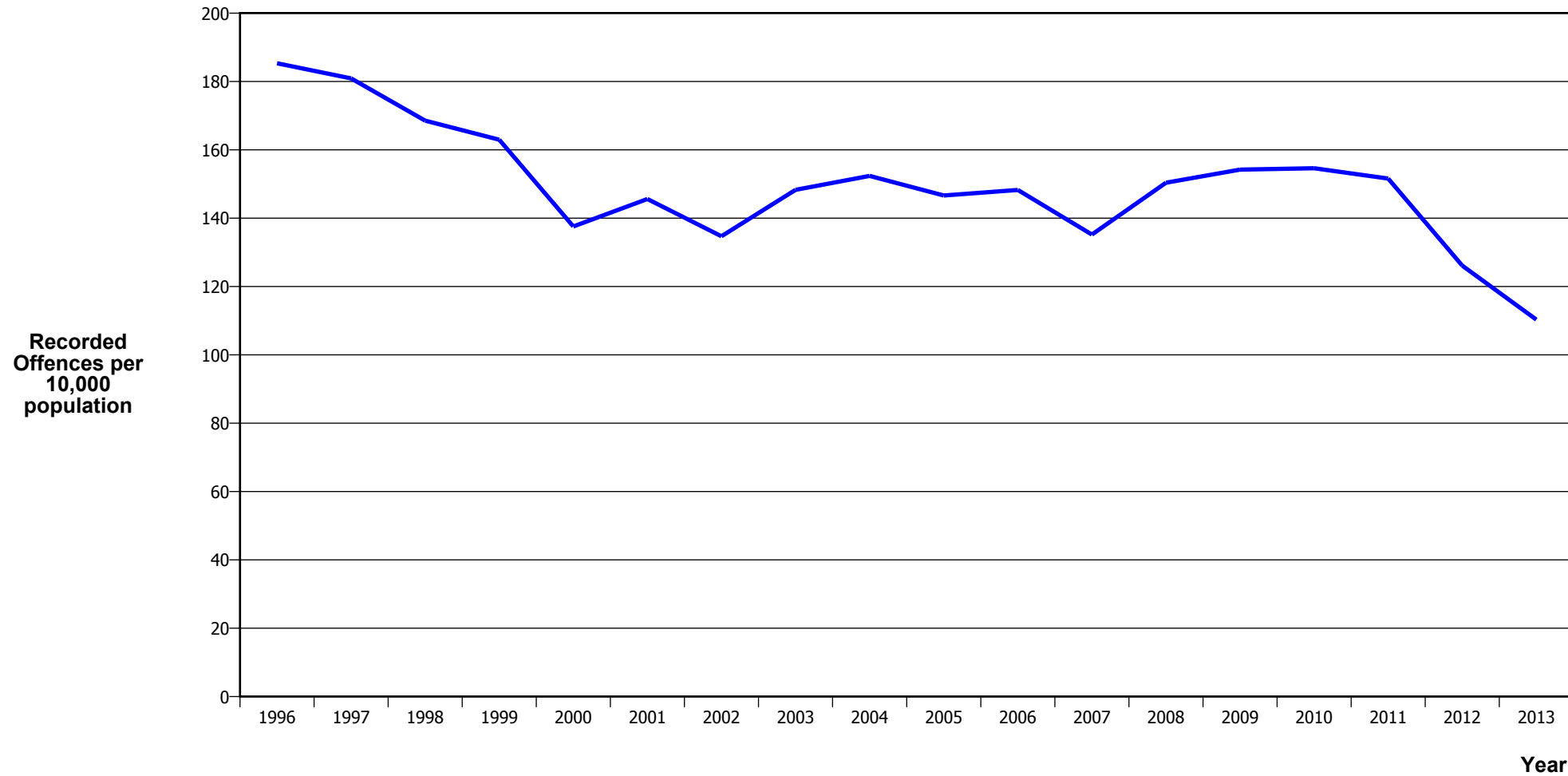
Calendar Year	1996	1997	1998	1999	2000	2001	2002	2003	2004	2005	2006	2007	2008	2009	2010	2011	2012	2013
Recorded Offences	319	390	368	311	367	356	422	523	492	453	634	584	513	489	437	480	457	445
Recorded per 10,000 Population	9.2	11.0	10.2	8.6	10.0	9.6	11.0	13.2	12.3	11.2	15.5	14.1	12.3	11.5	10.2	11.0	10.3	10.0

BURGLARY (TOTAL)



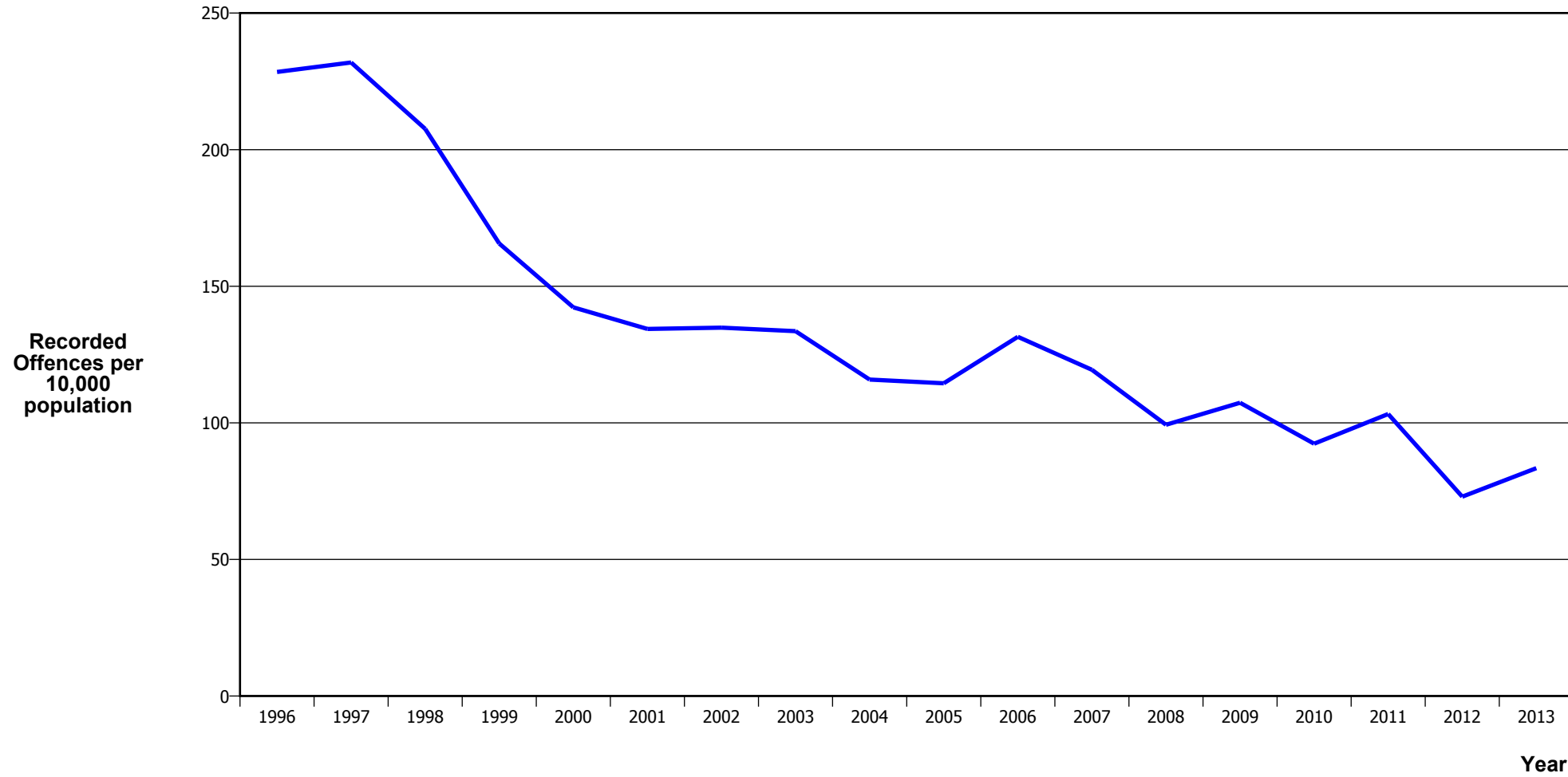
Calendar Year	1996	1997	1998	1999	2000	2001	2002	2003	2004	2005	2006	2007	2008	2009	2010	2011	2012	2013
Recorded Offences	10,649	10,437	10,021	9,351	8,827	9,252	8,470	9,412	9,286	8,872	8,748	8,151	8,847	8,991	8,909	9,037	7,334	6,316
Recorded per 10,000 Population	308.7	293.8	278.1	257.2	240.6	249.2	221.3	237.9	231.8	219.2	213.8	196.8	211.3	211.8	207.0	207.0	166.0	141.2

BURGLARY (DWELLING)



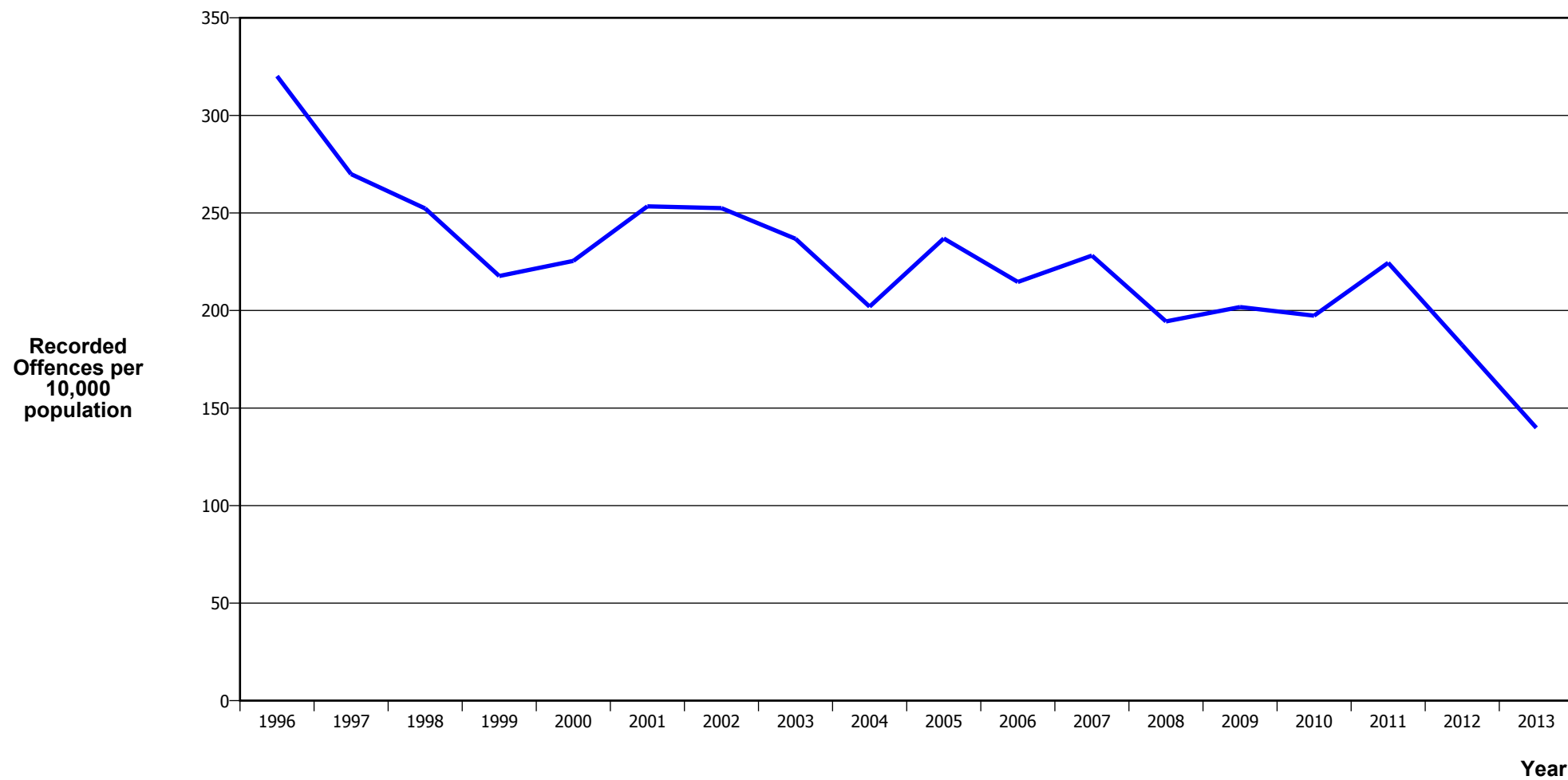
Calendar Year	1996	1997	1998	1999	2000	2001	2002	2003	2004	2005	2006	2007	2008	2009	2010	2011	2012	2013
Recorded Offences	6,393	6,426	6,072	5,925	5,047	5,405	5,156	5,865	6,104	5,935	6,066	5,599	6,295	6,547	6,654	6,617	5,570	4,933
Recorded per 10,000 Population	185.3	180.9	168.5	163.0	137.6	145.6	134.7	148.3	152.4	146.6	148.3	135.2	150.4	154.2	154.6	151.6	126.1	110.3

VEHICLES STOLEN



Calendar Year	1996	1997	1998	1999	2000	2001	2002	2003	2004	2005	2006	2007	2008	2009	2010	2011	2012	2013
Recorded Offences	7,881	8,239	7,481	6,023	5,221	4,989	5,162	5,283	4,641	4,633	5,380	4,946	4,157	4,558	3,976	4,507	3,224	3,731
Recorded per 10,000 Population	228.4	231.9	207.6	165.7	142.3	134.4	134.8	133.6	115.8	114.5	131.5	119.4	99.3	107.4	92.4	103.2	73.0	83.4

THEFT EX CAR



Calendar Year	1996	1997	1998	1999	2000	2001	2002	2003	2004	2005	2006	2007	2008	2009	2010	2011	2012	2013
Recorded Offences	11,045	9,587	9,089	7,914	8,272	9,407	9,664	9,366	8,092	9,589	8,782	9,450	8,139	8,565	8,493	9,798	8,050	6,254
Recorded per 10,000 Population	320.1	269.9	252.3	217.7	225.4	253.4	252.4	236.8	202.0	236.9	214.6	228.2	194.4	201.7	197.3	224.5	182.2	139.8

Population Data

Population data is used in this release to calculate crime rates. They have been derived from population estimates as at 30 June each year that have been obtained from Statistics New Zealand.

The estimated resident population is based on the census usually resident population count, with adjustments for residents missed or counted more than once by the census (net census undercount), and for residents temporarily overseas on census night.

These population estimates exclude the number of international students who are studying in New Zealand for less than 12 months.

Year	Population
1996	345,000
1997	355,240
1998	360,290
1999	363,590
2000	366,920
2001	371,260
2002	382,810
2003	395,550
2004	400,620
2005	404,740
2006	409,160
2007	414,170
2008	418,680
2009	424,560
2010	430,370
2011	436,530
2012	441,720
2013	447,220

General Definitions

Recorded Offences: the number of breaches of the New Zealand law recorded by Police. This includes offences specified in the Crimes Act and other legislations, such as the Summary Offences Act, Local Government Act, etc.

Resolved Offences: the number of recorded offences where an offender has been identified and dealt with (e.g. warned, cautioned, prosecuted, etc).

Resolution Rate: the proportion of recorded offences that have been resolved.

Recorded per 10,000 population: the number of recorded offences for every 10,000 people. This is also referred as the crime rate per 10,000 population.

ANZSOC: The Australian and New Zealand Standard Offence Classification. The offence classification is divided into 16 major offence divisions.

Definition of ANZSOC Divisions

1. Homicide and related offences: Unlawfully kill, attempt to unlawfully kill or conspiracy to kill another person.
2. Acts intended to cause injury: Acts, excluding attempted murder and those resulting in death, which are intended to cause non-fatal injury or harm to another person and where there is no sexual or acquisitive element.
3. Sexual assault and related offences: Acts, or intent of acts, of a sexual nature against another person, which are non-consensual or where consent is proscribed.
4. Dangerous or negligent acts endangering persons: Dangerous or negligent acts which, though not intended to cause harm, actually or potentially result in injury to oneself or another person.
5. Abduction, harassment and other offences against person: Acts intended to threaten or harass, or acts that unlawfully deprive another person of their freedom of movement, that are against that person's will or against the will of any parent, guardian or other person having lawful custody or care of that person.
6. Robbery, extortion and related offences: Acts intended to unlawfully gain money, property or other items of value from, or to cause detriment to, another person by using the threat of force or any other coercive measure.
7. Unlawful entry with intent / burglary, break and enter: The unlawful entry of a structure with the intent to commit an offence, where the entry is either forced or unforced.
8. Theft and related and offences: The unlawful taking or obtaining of money or goods, not involving the use of force or violence, coercion or deception, with intent to permanently or temporarily deprive the owner or possessor of the use of the money or goods, or the receiving or handling of money or goods obtained unlawfully.

9. Fraud, deception and related offences: Offences involving a dishonest act or omission carried out with the purpose of deceiving to obtain a benefit.

10. Illicit drug offences: The possessing, selling, dealing or trafficking, importing or exporting, manufacturing or cultivating of drugs or other substances prohibited under legislation.

11. Prohibited and regulated weapons and explosives offences: Offences involving prohibited or regulated weapons and explosives. Those offences also involving assault, sexual assault or robbery are coded to the relevant group within Assault, Sexual assaults and Robbery respectively.

12. Property damage and environmental pollution: The wilful and unlawful destruction, damage or defacement of public or private property, or the pollution of property or a definable entity held in common by the community.

13. Public order offences: Offences relating personal conduct that involves, or may lead to, a breach of public order or decency, or that is indicative of criminal intent, or that is otherwise regulated or prohibited on moral or ethical grounds. In general these offences do not involve a specific victim or victims; however some offences, such as offensive language and offensive behaviour, may be directed towards a single victim.

14. Traffic and vehicle regulatory offences: Offences relating to vehicles and most forms of traffic, including offences pertaining to the licensing, registration, roadworthiness, or use of vehicles, bicycle offences and pedestrian offences.

15. Offences against justice procedures, government security and government operations: An act or omission that is deemed to be prejudicial to the effective carrying out of justice procedures or any government operations. This includes general government operations as well as those specifically concerned with maintaining government security.

16. Miscellaneous offences: Offences involving the breach of statutory rules or regulations governing activities that are prima facie legal, where such offences are not explicitly dealt with under any other division. If an offence is specified under regulation and involves an act that would be illegal under common law or general criminal legislation, the offence is dealt with under the appropriate generic group.