

**EASTERN DISTRICT
CRIME STATISTICS
2009/2010**



(ASOC Grouping)

**A Summary of
Recorded and Resolved Offence
Statistics**

**POLICE NATIONAL HEADQUARTERS
October 2010**

Table of Contents:

Topic	Page
Report Notes	1
District Summary of Recorded and Resolved Crime, by Division	2-4
District Summary of Recorded and Resolved Crime, by Area	5
District Recorded Crime per 10,000 population, by Division	6-8
District Recorded Crime per 10,000 population, by Area	9
Proportions of Recorded Crime by Categories	10
Crime Trends	11
Total Crime	12
Murder	13
Serious Assaults Resulting in Injury	14
Public Place Assaults	15
Robbery	16
Burglary	17
Burglary (Dwelling)	18
Vehicles Stolen	19
Theft Ex Car	20
Population Data	21
General Definition	22-23

REPORT NOTES:

This report presents official statistics for recorded and resolved offences. The format has been revised significantly from that used in previous years. In particular, offences are grouped into different categories than previously used. This aligns with direction given by the Justice Sector Information Strategy for the whole Justice sector to categorise offences according to the Australian Standard Offence Classification (ASOC). This change does not change the total number of offences reported, just how they are grouped.

In making this change, New Zealand Police has taken the first step towards reporting crime in a way that is comparable with Australia. However, at this stage, important differences still exist that mean statistics are not yet comparable between the two countries. For example, Australian statistics only count the most serious offence on each file, whereas New Zealand reports every offence. Also, Australian statistics count victims, whereas New Zealand Statistics count offences.

Another important change in this report is that pages 11 to 20, which present long-term trends, have been completely revised. The time series has been extended from 10 to 15 years to give a longer history. Also, the measures reported include a number of the statistical indicators that Police recently began publishing provisional data on every month.

As in previous reports, statistics reported in this document are derived from the Police National Intelligence Application (NIA). These Official Statistics for Recorded and Resolved Offences present a snapshot of data in NIA relating to offences that occur within a given year, as at the date 14 days following the end of that year.

Unless the matter is minor where Police attendance is sufficient, a matter that is reported to or discovered by Police where Police believe an offence is likely to have been committed is counted as a recorded offence.

A recorded offence is counted as resolved when Police apprehend an offender and decide how to deal with him/her. (E.g. warn, prosecute, etc.)

Resolution rate is the percentage of recorded offences that are resolved within 14 days of the end of the year being reported on.

If an offence is resolved 15 days or more after the end of the year it will not appear in the Official Crime Statistics for that or any other year. Resolution Rate therefore undercounts the number of cases that Police have resolved. This phenomenon has a more marked impact for some types of offences than others, such as offences that require long investigations (E.g. many serial crimes, burglaries and murders).

When comparing 2009/2010 Statistics with previous years, the reader should also refer to "Report Notes" published in previous years' reports, as previous changes significantly affect year on year trends.

SUMMARY OF DISTRICT RECORDED AND RESOLVED CRIME, BY DIVISION
Years ending 30 June

HOMICIDE AND RELATED OFFENCES

ASOC Subdivision Description	Recorded 20072008	Recorded 20082009	Recorded 20092010	Variance 07/08- 08/09	Variance 08/09- 09/10	Resolved 20072008	Resolved 20082009	Resolved 20092010	Resolution Rate 20072008	Resolution Rate 20082009	Resolution Rate 20092010
ATTEMPTED MURDER	1	0	3	-100.0 %		1	0	2	100.0 %		66.7 %
MANSLAUGHTER AND DRIVING CAUSING DEATH	0	1	6		500.0 %	0	1	6		100.0 %	100.0 %
MURDER	1	6	6	500.0 %	0.0 %	1	6	6	100.0 %	100.0 %	100.0 %
	2	7	15	250.0 %	114.3 %	2	7	14	100.0 %	100.0 %	93.3 %

ACTS INTENDED TO CAUSE INJURY

ASOC Subdivision Description	Recorded 20072008	Recorded 20082009	Recorded 20092010	Variance 07/08- 08/09	Variance 08/09- 09/10	Resolved 20072008	Resolved 20082009	Resolved 20092010	Resolution Rate 20072008	Resolution Rate 20082009	Resolution Rate 20092010
ASSAULT	2,552	3,302	3,352	29.4 %	1.5 %	2,070	2,641	2,662	81.1 %	80.0 %	79.4 %
OTHER ACTS INTENDED TO CAUSE INJURY	1	1	0	0.0 %	-100.0 %	0	1	0	0.0 %	100.0 %	
	2,553	3,303	3,352	29.4 %	1.5 %	2,070	2,642	2,662	81.1 %	80.0 %	79.4 %

SEXUAL ASSAULT AND RELATED OFFENCES

ASOC Subdivision Description	Recorded 20072008	Recorded 20082009	Recorded 20092010	Variance 07/08- 08/09	Variance 08/09- 09/10	Resolved 20072008	Resolved 20082009	Resolved 20092010	Resolution Rate 20072008	Resolution Rate 20082009	Resolution Rate 20092010
NON-ASSAULTIVE SEXUAL OFFENCES	4	6	3	50.0 %	-50.0 %	2	5	1	50.0 %	83.3 %	33.3 %
SEXUAL ASSAULT	158	146	158	-7.6 %	8.2 %	90	77	82	57.0 %	52.7 %	51.9 %
	162	152	161	-6.2 %	5.9 %	92	82	83	56.8 %	53.9 %	51.6 %

DANGEROUS OR NEGLIGENT ACTS ENDANGERING PERSONS

ASOC Subdivision Description	Recorded 20072008	Recorded 20082009	Recorded 20092010	Variance 07/08- 08/09	Variance 08/09- 09/10	Resolved 20072008	Resolved 20082009	Resolved 20092010	Resolution Rate 20072008	Resolution Rate 20082009	Resolution Rate 20092010
OTHER DANGEROUS OR NEGLIGENT ACTS ENDANGERING PERSONS	55	61	68	10.9 %	11.5 %	35	37	40	63.6 %	60.7 %	58.8 %
	55	61	68	10.9 %	11.5 %	35	37	40	63.6 %	60.7 %	58.8 %

ABDUCTION, HARASSMENT AND OTHER RELATED OFFENCES AGAINST A PERSON

ASOC Subdivision Description	Recorded 20072008	Recorded 20082009	Recorded 20092010	Variance 07/08- 08/09	Variance 08/09- 09/10	Resolved 20072008	Resolved 20082009	Resolved 20092010	Resolution Rate 20072008	Resolution Rate 20082009	Resolution Rate 20092010
ABDUCTION AND KIDNAPPING	17	15	13	-11.8 %	-13.3 %	16	11	6	94.1 %	73.3 %	46.2 %
HARASSMENT AND THREATENING BEHAVIOUR	576	684	848	18.8 %	24.0 %	396	453	582	68.8 %	66.2 %	68.6 %
	593	699	861	17.9 %	23.2 %	412	464	588	69.5 %	66.4 %	68.3 %

ROBBERY, EXTORTION AND RELATED OFFENCES

ASOC Subdivision Description	Recorded 20072008	Recorded 20082009	Recorded 20092010	Variance 07/08- 08/09	Variance 08/09- 09/10	Resolved 20072008	Resolved 20082009	Resolved 20092010	Resolution Rate 20072008	Resolution Rate 20082009	Resolution Rate 20092010
BLACKMAIL AND EXTORTION	6	5	5	-16.7 %	0.0 %	3	3	1	50.0 %	60.0 %	20.0 %
ROBBERY	142	143	150	0.7 %	4.9 %	83	64	65	58.5 %	44.8 %	43.3 %
	148	148	155	0.0 %	4.7 %	86	67	66	58.1 %	45.3 %	42.6 %

UNLAWFUL ENTRY WITH INTENT/BURGLARY, BREAK AND ENTER

ASOC Subdivision Description	Recorded 20072008	Recorded 20082009	Recorded 20092010	Variance 07/08- 08/09	Variance 08/09- 09/10	Resolved 20072008	Resolved 20082009	Resolved 20092010	Resolution Rate 20072008	Resolution Rate 20082009	Resolution Rate 20092010
UNLAWFUL ENTRY WITH INTENT/BURGLARY, BREAK AND ENTER	3,279	3,481	3,564	6.2 %	2.4 %	620	723	678	18.9 %	20.8 %	19.0 %
	3,279	3,481	3,564	6.2 %	2.4 %	620	723	678	18.9 %	20.8 %	19.0 %

SUMMARY OF DISTRICT RECORDED AND RESOLVED CRIME, BY DIVISION

Years ending 30 June

THEFT AND RELATED OFFENCES

ASOC Subdivision Description	Recorded 20072008	Recorded 20082009	Recorded 20092010	Variance 07/08- 08/09	Variance 08/09- 09/10	Resolved 20072008	Resolved 20082009	Resolved 20092010	Resolution Rate 20072008	Resolution Rate 20082009	Resolution Rate 20092010
ILLEGAL USE OF PROPERTY (EXCEPT MOTOR VEHICLES)	364	384	377	5.5 %	-1.8 %	32	20	20	8.8 %	5.2 %	5.3 %
MOTOR VEHICLE THEFT AND RELATED OFFENCES	3,020	2,685	2,470	-11.1 %	-8.0 %	494	455	394	16.4 %	16.9 %	16.0 %
RECEIVE OR HANDLE PROCEEDS OF CRIME	160	164	129	2.5 %	-21.3 %	152	155	125	95.0 %	94.5 %	96.9 %
THEFT (EXCEPT MOTOR VEHICLES)	3,920	3,773	4,145	-3.8 %	9.9 %	1,354	1,487	1,665	34.5 %	39.4 %	40.2 %
	7,464	7,006	7,121	-6.1 %	1.6 %	2,032	2,117	2,204	27.2 %	30.2 %	31.0 %

FRAUD, DECEPTION AND RELATED OFFENCES

ASOC Subdivision Description	Recorded 20072008	Recorded 20082009	Recorded 20092010	Variance 07/08- 08/09	Variance 08/09- 09/10	Resolved 20072008	Resolved 20082009	Resolved 20092010	Resolution Rate 20072008	Resolution Rate 20082009	Resolution Rate 20092010
DECEPTIVE BUSINESS/GOVERNMENT PRACTICES	0	5	2		-60.0 %	0	3	2		60.0 %	100.0 %
FORGERY AND COUNTERFEITING	22	32	46	45.5 %	43.8 %	11	20	20	50.0 %	62.5 %	43.5 %
OBTAIN BENEFIT BY DECEPTION	390	540	383	38.5 %	-29.1 %	227	335	234	58.2 %	62.0 %	61.1 %
OTHER FRAUD AND DECEPTION OFFENCES	10	18	23	80.0 %	27.8 %	7	7	14	70.0 %	38.9 %	60.9 %
	422	595	454	41.0 %	-23.7 %	245	365	270	58.1 %	61.3 %	59.5 %

ILLICIT DRUG OFFENCES

ASOC Subdivision Description	Recorded 20072008	Recorded 20082009	Recorded 20092010	Variance 07/08- 08/09	Variance 08/09- 09/10	Resolved 20072008	Resolved 20082009	Resolved 20092010	Resolution Rate 20072008	Resolution Rate 20082009	Resolution Rate 20092010
DEAL OR TRAFFIC IN ILLICIT DRUGS	127	118	177	-7.1 %	50.0 %	120	109	168	94.5 %	92.4 %	94.9 %
IMPORT OR EXPORT ILLICIT DRUGS	3	0	17	-100.0 %		3	0	17	100.0 %		100.0 %
MANUFACTURE OR CULTIVATE ILLICIT DRUGS	202	425	375	110.4 %	-11.8 %	160	209	211	79.2 %	49.2 %	56.3 %
OTHER ILLICIT DRUG OFFENCES	271	296	235	9.2 %	-20.6 %	262	283	230	96.7 %	95.6 %	97.9 %
POSSESS AND/OR USE ILLICIT DRUGS	544	630	594	15.8 %	-5.7 %	506	577	551	93.0 %	91.6 %	92.8 %
	1,147	1,469	1,398	28.1 %	-4.8 %	1,051	1,178	1,177	91.6 %	80.2 %	84.2 %

PROHIBITED AND REGULATED WEAPONS AND EXPLOSIVES OFFENCES

ASOC Subdivision Description	Recorded 20072008	Recorded 20082009	Recorded 20092010	Variance 07/08- 08/09	Variance 08/09- 09/10	Resolved 20072008	Resolved 20082009	Resolved 20092010	Resolution Rate 20072008	Resolution Rate 20082009	Resolution Rate 20092010
REGULATED WEAPONS/EXPLOSIVES OFFENCES	422	486	557	15.2 %	14.6 %	369	430	491	87.4 %	88.5 %	88.2 %
	422	486	557	15.2 %	14.6 %	369	430	491	87.4 %	88.5 %	88.2 %

PROPERTY DAMAGE AND ENVIRONMENTAL POLLUTION

ASOC Subdivision Description	Recorded 20072008	Recorded 20082009	Recorded 20092010	Variance 07/08- 08/09	Variance 08/09- 09/10	Resolved 20072008	Resolved 20082009	Resolved 20092010	Resolution Rate 20072008	Resolution Rate 20082009	Resolution Rate 20092010
ENVIRONMENTAL POLLUTION	31	16	19	-48.4 %	18.8 %	15	9	6	48.4 %	56.3 %	31.6 %
PROPERTY DAMAGE	3,660	3,339	3,490	-8.8 %	4.5 %	1,134	1,057	1,121	31.0 %	31.7 %	32.1 %
	3,691	3,355	3,509	-9.1 %	4.6 %	1,149	1,066	1,127	31.1 %	31.8 %	32.1 %

PUBLIC ORDER OFFENCES

ASOC Subdivision Description	Recorded 20072008	Recorded 20082009	Recorded 20092010	Variance 07/08- 08/09	Variance 08/09- 09/10	Resolved 20072008	Resolved 20082009	Resolved 20092010	Resolution Rate 20072008	Resolution Rate 20082009	Resolution Rate 20092010
DISORDERLY CONDUCT	1,741	1,935	2,246	11.1 %	16.1 %	1,501	1,623	1,860	86.2 %	83.9 %	82.8 %
OFFENSIVE CONDUCT	104	136	175	30.8 %	28.7 %	73	95	118	70.2 %	69.9 %	67.4 %
PUBLIC ORDER OFFENCES NOT FURTHER DEFINED	2	0	0	-100.0 %		1	0	0	50.0 %		
REGULATED PUBLIC ORDER OFFENCES	952	1,063	872	11.7 %	-18.0 %	939	1,033	810	98.6 %	97.2 %	92.9 %
	2,799	3,134	3,293	12.0 %	5.1 %	2,514	2,751	2,788	89.8 %	87.8 %	84.7 %

SUMMARY OF DISTRICT RECORDED AND RESOLVED CRIME, BY DIVISION
Years ending 30 June

OFFENCES AGAINST JUSTICE PROCEDURES, GOVERNMENT SECURITY AND GOVERNMENT OPERATIONS

ASOC Subdivision Description	Recorded 20072008	Recorded 20082009	Recorded 20092010	Variance 07/08- 08/09	Variance 08/09- 09/10	Resolved 20072008	Resolved 20082009	Resolved 20092010	Resolution Rate 20072008	Resolution Rate 20082009	Resolution Rate 20092010
BREACH OF COMMUNITY-BASED ORDER	143	148	125	3.5 %	-15.5 %	137	143	124	95.8 %	96.6 %	99.2 %
BREACH OF CUSTODIAL ORDER OFFENCES	27	37	39	37.0 %	5.4 %	25	34	35	92.6 %	91.9 %	89.7 %
BREACH OF VIOLENCE AND NON-VIOLENCE RESTRAINING ORDERS	349	456	484	30.7 %	6.1 %	302	395	412	86.5 %	86.6 %	85.1 %
OFFENCES AGAINST GOVERNMENT OPERATIONS	9	17	16	88.9 %	-5.9 %	6	7	9	66.7 %	41.2 %	56.3 %
OFFENCES AGAINST GOVERNMENT SECURITY	1	0	0	-100.0 %		0	0	0	0.0 %		
OFFENCES AGAINST JUSTICE PROCEDURES	357	420	353	17.6 %	-16.0 %	338	407	342	94.7 %	96.9 %	96.9 %
OFFENCES AGAINST JUSTICE PROCEDURES, GOVERNMENT SECURITY AND GOVERNMENT OPERATIONS NOT FURTHER DEFINED	3	0	2	-100.0 %		2	0	1	66.7 %		50.0 %
	889	1,078	1,019	21.3 %	-5.5 %	810	986	923	91.1 %	91.5 %	90.6 %

MISCELLANEOUS OFFENCES

ASOC Subdivision Description	Recorded 20072008	Recorded 20082009	Recorded 20092010	Variance 07/08- 08/09	Variance 08/09- 09/10	Resolved 20072008	Resolved 20082009	Resolved 20092010	Resolution Rate 20072008	Resolution Rate 20082009	Resolution Rate 20092010
COMMERCIAL/INDUSTRY/FINANCIAL REGULATION	1	8	1	700.0 %	-87.5 %	1	8	0	100.0 %	100.0 %	0.0 %
DEFAMATION, LIBEL AND PRIVACY OFFENCES	0	9	9		0.0 %	0	6	4		66.7 %	44.4 %
OTHER MISCELLANEOUS OFFENCES	78	72	67	-7.7 %	-6.9 %	54	49	41	69.2 %	68.1 %	61.2 %
PUBLIC HEALTH AND SAFETY OFFENCES	0	2	5		150.0 %	0	0	3		0.0 %	60.0 %
	79	91	82	15.2 %	-9.9 %	55	63	48	69.6 %	69.2 %	58.5 %
TOTAL	23,705	25,065	25,609	5.7 %	2.2 %	11,542	12,978	13,159	48.7 %	51.8 %	51.4 %

SUMMARY OF DISTRICT RECORDED AND RESOLVED CRIME, BY AREA
years ending 30 June

TOTAL CRIME

Area Description	Recorded 20072008	Recorded 20082009	Recorded 20092010	Variance 07/08- 08/09	Variance 08/09- 09/10	Resolved 20072008	Resolved 20082009	Resolved 20092010	Resolution Rate 20072008	Resolution Rate 20082009	Resolution Rate 20092010
Gisborne	6,975	7,567	7,968	8.5 %	5.3 %	3,423	4,023	4,277	49.1 %	53.2 %	53.7 %
Hastings	8,894	9,178	9,461	3.2 %	3.1 %	4,347	4,936	4,958	48.9 %	53.8 %	52.4 %
Napier	7,836	8,320	8,180	6.2 %	-1.7 %	3,772	4,019	3,924	48.1 %	48.3 %	48.0 %
Total	23,705	25,065	25,609	5.7 %	2.2 %	11,542	12,978	13,159	48.7 %	51.8 %	51.4 %

DISTRICT RECORDED CRIME PER 10,000 POPULATION, BY DIVISION
Years ending 30 June

HOMICIDE AND RELATED OFFENCES

ASOC Subdivision Description	Recorded per 10,000 pop 20072008	Recorded per 10,000 pop 20082009	Recorded per 10,000 pop 20092010
ATTEMPTED MURDER	0.05	0.00	0.15
MANSLAUGHTER AND DRIVING CAUSING DEATH	0.00	0.05	0.30
MURDER	0.05	0.30	0.30
	0.10	0.35	0.75

ACTS INTENDED TO CAUSE INJURY

ASOC Subdivision Description	Recorded per 10,000 pop 20072008	Recorded per 10,000 pop 20082009	Recorded per 10,000 pop 20092010
ASSAULT	128.50	166.33	167.59
OTHER ACTS INTENDED TO CAUSE INJURY	0.05	0.05	0.00
	128.55	166.38	167.59

SEXUAL ASSAULT AND RELATED OFFENCES

ASOC Subdivision Description	Recorded per 10,000 pop 20072008	Recorded per 10,000 pop 20082009	Recorded per 10,000 pop 20092010
NON-ASSAULTIVE SEXUAL OFFENCES	0.20	0.30	0.15
SEXUAL ASSAULT	7.96	7.35	7.90
	8.16	7.66	8.05

DANGEROUS OR NEGLIGENT ACTS ENDANGERING PERSONS

ASOC Subdivision Description	Recorded per 10,000 pop 20072008	Recorded per 10,000 pop 20082009	Recorded per 10,000 pop 20092010
OTHER DANGEROUS OR NEGLIGENT ACTS ENDANGERING PERSONS	2.77	3.07	3.40
	2.77	3.07	3.40

ABDUCTION, HARASSMENT AND OTHER RELATED OFFENCES AGAINST A PERSON

ASOC Subdivision Description	Recorded per 10,000 pop 20072008	Recorded per 10,000 pop 20082009	Recorded per 10,000 pop 20092010
ABDUCTION AND KIDNAPPING	0.86	0.76	0.65
HARASSMENT AND THREATENING BEHAVIOUR	29.00	34.45	42.40
	29.86	35.21	43.05

ROBBERY, EXTORTION AND RELATED OFFENCES

ASOC Subdivision Description	Recorded per 10,000 pop 20072008	Recorded per 10,000 pop 20082009	Recorded per 10,000 pop 20092010
BLACKMAIL AND EXTORTION	0.30	0.25	0.25
ROBBERY	7.15	7.20	7.50
	7.45	7.46	7.75

DISTRICT RECORDED CRIME PER 10,000 POPULATION, BY DIVISION

Years ending 30 June

UNLAWFUL ENTRY WITH INTENT/BURGLARY, BREAK AND ENTER

ASOC Subdivision Description	Recorded per 10,000 pop 20072008	Recorded per 10,000 pop 20082009	Recorded per 10,000 pop 20092010
UNLAWFUL ENTRY WITH INTENT/BURGLARY, BREAK AND ENTER	165.10	175.35	178.19
	165.10	175.35	178.19

THEFT AND RELATED OFFENCES

ASOC Subdivision Description	Recorded per 10,000 pop 20072008	Recorded per 10,000 pop 20082009	Recorded per 10,000 pop 20092010
ILLEGAL USE OF PROPERTY (EXCEPT MOTOR VEHICLES)	18.33	19.34	18.85
MOTOR VEHICLE THEFT AND RELATED OFFENCES	152.06	135.25	123.49
RECEIVE OR HANDLE PROCEEDS OF CRIME	8.06	8.26	6.45
THEFT (EXCEPT MOTOR VEHICLES)	197.38	190.06	207.24
	375.82	352.91	356.03

FRAUD, DECEPTION AND RELATED OFFENCES

ASOC Subdivision Description	Recorded per 10,000 pop 20072008	Recorded per 10,000 pop 20082009	Recorded per 10,000 pop 20092010
DECEPTIVE BUSINESS/GOVERNMENT PRACTICES	0.00	0.25	0.10
FORGERY AND COUNTERFEITING	1.11	1.61	2.30
OBTAIN BENEFIT BY DECEPTION	19.64	27.20	19.15
OTHER FRAUD AND DECEPTION OFFENCES	0.50	0.91	1.15
	21.25	29.97	22.70

ILLICIT DRUG OFFENCES

ASOC Subdivision Description	Recorded per 10,000 pop 20072008	Recorded per 10,000 pop 20082009	Recorded per 10,000 pop 20092010
DEAL OR TRAFFIC IN ILLICIT DRUGS	6.39	5.94	8.85
IMPORT OR EXPORT ILLICIT DRUGS	0.15	0.00	0.85
MANUFACTURE OR CULTIVATE ILLICIT DRUGS	10.17	21.41	18.75
OTHER ILLICIT DRUG OFFENCES	13.65	14.91	11.75
POSSESS AND/OR USE ILLICIT DRUGS	27.39	31.73	29.70
	57.75	74.00	69.90

PROHIBITED AND REGULATED WEAPONS AND EXPLOSIVES OFFENCES

ASOC Subdivision Description	Recorded per 10,000 pop 20072008	Recorded per 10,000 pop 20082009	Recorded per 10,000 pop 20092010
REGULATED WEAPONS/EXPLOSIVES OFFENCES	21.25	24.48	27.85
	21.25	24.48	27.85

DISTRICT RECORDED CRIME PER 10,000 POPULATION, BY DIVISION

Years ending 30 June

PROPERTY DAMAGE AND ENVIRONMENTAL POLLUTION

ASOC Subdivision Description	Recorded per 10,000 pop 20072008	Recorded per 10,000 pop 20082009	Recorded per 10,000 pop 20092010
ENVIRONMENTAL POLLUTION	1.56	0.81	0.95
PROPERTY DAMAGE	184.29	168.19	174.49
	185.85	169.00	175.44

PUBLIC ORDER OFFENCES

ASOC Subdivision Description	Recorded per 10,000 pop 20072008	Recorded per 10,000 pop 20082009	Recorded per 10,000 pop 20092010
DISORDERLY CONDUCT	87.66	97.47	112.29
OFFENSIVE CONDUCT	5.24	6.85	8.75
PUBLIC ORDER OFFENCES NOT FURTHER DEFINED	0.10	0.00	0.00
REGULATED PUBLIC ORDER OFFENCES	47.93	53.55	43.60
	140.93	157.87	164.64

OFFENCES AGAINST JUSTICE PROCEDURES, GOVERNMENT SECURITY AND GOVERNMENT OPERATIONS

ASOC Subdivision Description	Recorded per 10,000 pop 20072008	Recorded per 10,000 pop 20082009	Recorded per 10,000 pop 20092010
BREACH OF COMMUNITY-BASED ORDER	7.20	7.46	6.25
BREACH OF CUSTODIAL ORDER OFFENCES	1.36	1.86	1.95
BREACH OF VIOLENCE AND NON-VIOLENCE RESTRAINING ORDERS	17.57	22.97	24.20
OFFENCES AGAINST GOVERNMENT OPERATIONS	0.45	0.86	0.80
OFFENCES AGAINST GOVERNMENT SECURITY	0.05	0.00	0.00
OFFENCES AGAINST JUSTICE PROCEDURES	17.98	21.16	17.65
OFFENCES AGAINST JUSTICE PROCEDURES, GOVERNMENT SECURITY AND GOVERNMENT OPERATIONS NOT FURTHER DEFINED	0.15	0.00	0.10
	44.76	54.30	50.95

MISCELLANEOUS OFFENCES

ASOC Subdivision Description	Recorded per 10,000 pop 20072008	Recorded per 10,000 pop 20082009	Recorded per 10,000 pop 20092010
COMMERCIAL/INDUSTRY/FINANCIAL REGULATION	0.05	0.40	0.05
DEFAMATION, LIBEL AND PRIVACY OFFENCES	0.00	0.45	0.45
OTHER MISCELLANEOUS OFFENCES	3.93	3.63	3.35
PUBLIC HEALTH AND SAFETY OFFENCES	0.00	0.10	0.25
	3.98	4.58	4.10

TOTAL	1,193.58	1,262.59	1,280.39
--------------	-----------------	-----------------	-----------------

DISTRICT RECORDED CRIME PER 10,000 POPULATION, BY AREA

Years ending 30 June

Area Description	Recorded per 10,000 pop 20072008	Recorded per 10,000 pop 20082009	Recorded per 10,000 pop 20092010	Percent Variance 07/08 to 08/09	Percent Variance 08/09 to 09/10
Gisborne	1,280.6	1,392.3	1,453.2	8.7 %	4.4 %
Hastings	1,096.8	1,130.7	1,156.1	3.1 %	2.2 %
Napier	1,242.8	1,320.6	1,291.3	6.3 %	-2.2 %
TOTAL	1,193.6	1,262.6	1,280.4	5.8 %	1.4 %

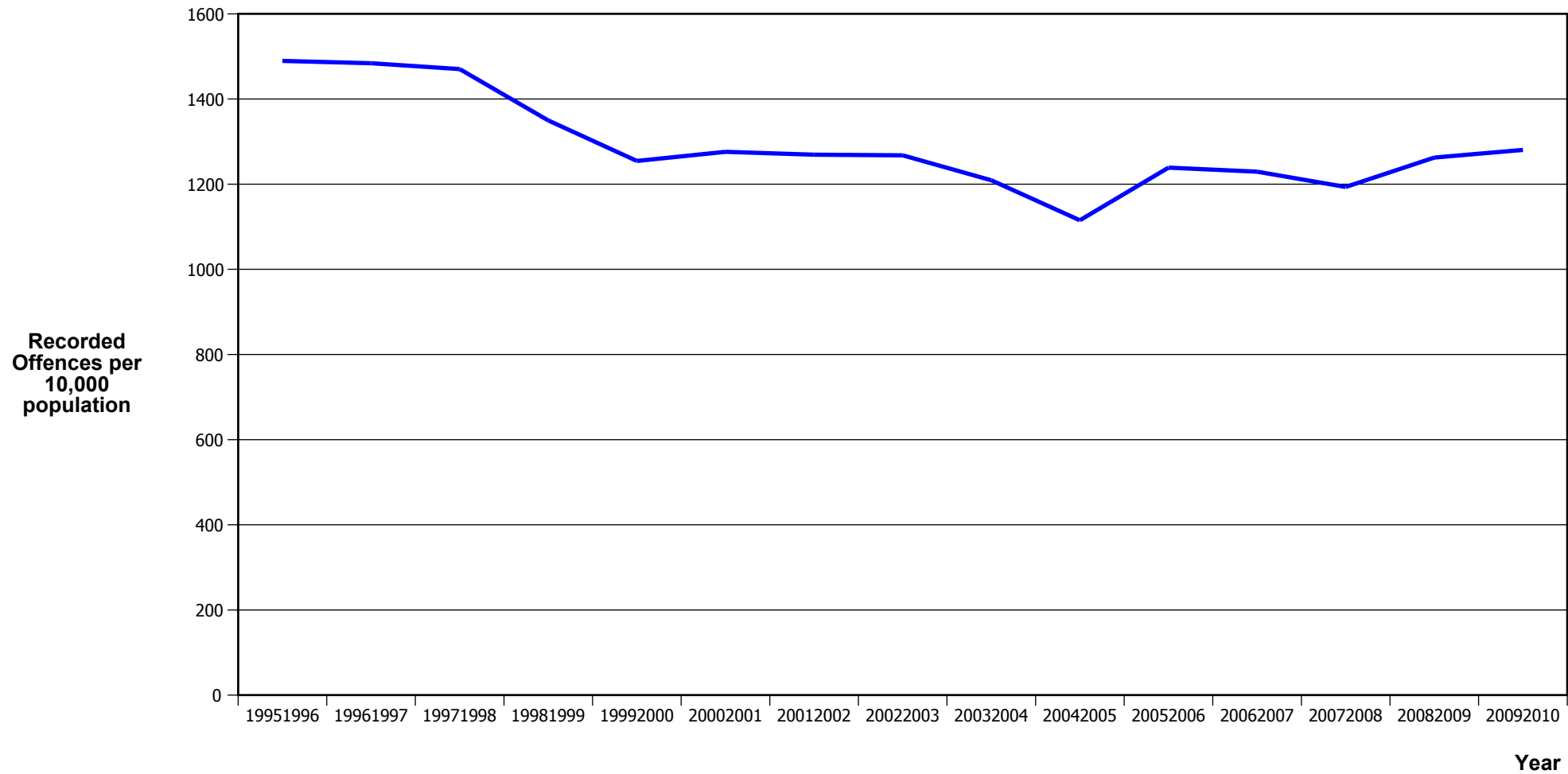
PROPORTION OF RECORDED CRIME BY DIVISION

Years ending 30 June

ASOC Division Description	Proportions Recorded 20072008	Recorded 20072008	Proportions Recorded 20082009	Recorded 20082009	Proportions Recorded 20092010	Recorded 20092010
HOMICIDE AND RELATED OFFENCES	0.0 %	2	0.0 %	7	0.1 %	15
ACTS INTENDED TO CAUSE INJURY	10.8 %	2,553	13.2 %	3,303	13.1 %	3,352
SEXUAL ASSAULT AND RELATED OFFENCES	0.7 %	162	0.6 %	152	0.6 %	161
DANGEROUS OR NEGLIGENT ACTS ENDANGERING PERSONS	0.2 %	55	0.2 %	61	0.3 %	68
ABDUCTION, HARASSMENT AND OTHER RELATED OFFENCES AGAINST A PERSON	2.5 %	593	2.8 %	699	3.4 %	861
ROBBERY, EXTORTION AND RELATED OFFENCES	0.6 %	148	0.6 %	148	0.6 %	155
UNLAWFUL ENTRY WITH INTENT/BURGLARY, BREAK AND ENTER	13.8 %	3,279	13.9 %	3,481	13.9 %	3,564
THEFT AND RELATED OFFENCES	31.5 %	7,464	28.0 %	7,006	27.8 %	7,121
FRAUD, DECEPTION AND RELATED OFFENCES	1.8 %	422	2.4 %	595	1.8 %	454
ILLICIT DRUG OFFENCES	4.8 %	1,147	5.9 %	1,469	5.5 %	1,398
PROHIBITED AND REGULATED WEAPONS AND EXPLOSIVES OFFENCES	1.8 %	422	1.9 %	486	2.2 %	557
PROPERTY DAMAGE AND ENVIRONMENTAL POLLUTION	15.6 %	3,691	13.4 %	3,355	13.7 %	3,509
PUBLIC ORDER OFFENCES	11.8 %	2,799	12.5 %	3,134	12.9 %	3,293
OFFENCES AGAINST JUSTICE PROCEDURES, GOVERNMENT SECURITY AND GOVERNMENT OPERATIONS	3.8 %	889	4.3 %	1,078	4.0 %	1,019
MISCELLANEOUS OFFENCES	0.3 %	79	0.4 %	91	0.3 %	82
	100.0 %	23,705	100.0 %	25,065	100.0 %	25,609

CRIME TRENDS

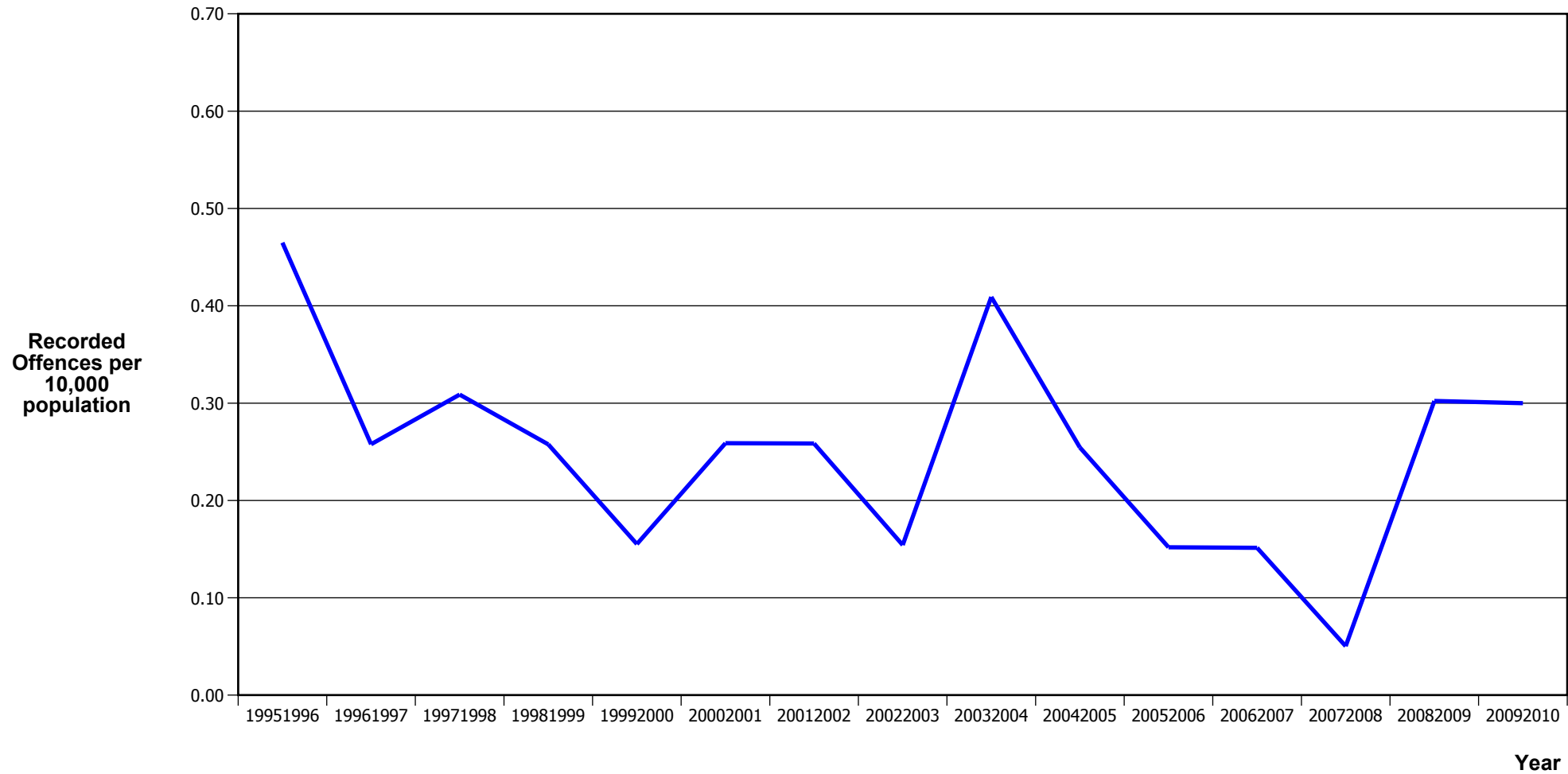
TOTAL CRIME



Fiscal Year	19951996	19961997	19971998	19981999	19992000	20002001	20012002	20022003	20032004	20042005	20052006	20062007	20072008	20082009	20092010
Recorded Offences	28,834	28,780	28,569	26,189	24,259	24,647	24,546	24,657	23,647	21,912	24,462	24,367	23,705	25,065	25,609
Recorded per 10,000 Population	1,489.5	1,484.0	1,470.4	1,349.7	1,254.5	1,276.0	1,269.3	1,267.8	1,209.2	1,115.1	1,238.9	1,229.4	1,193.6	1,262.6	1,280.4

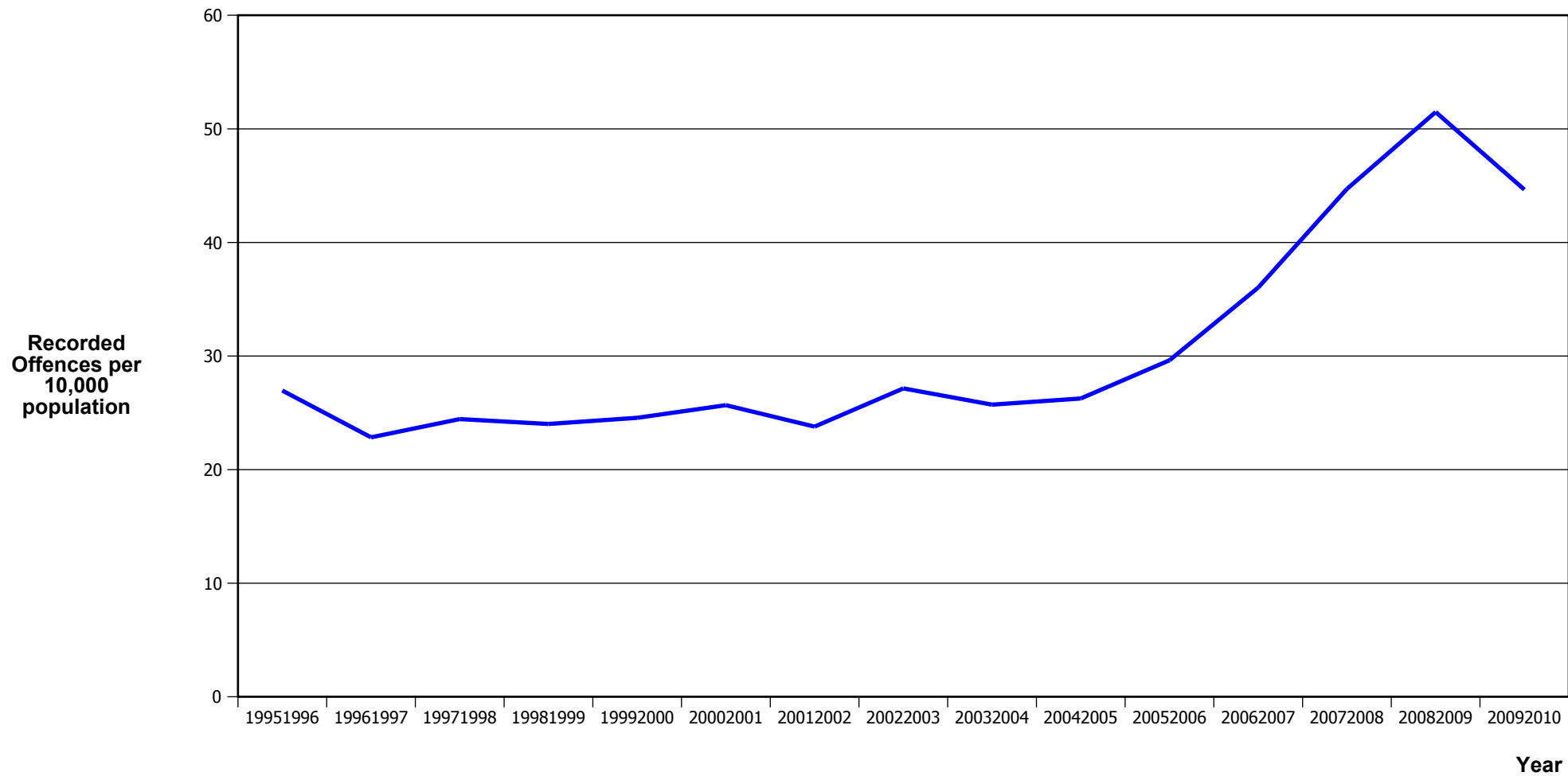
*In 20052006 there was a major IT system change (LES to NIA)

MURDER



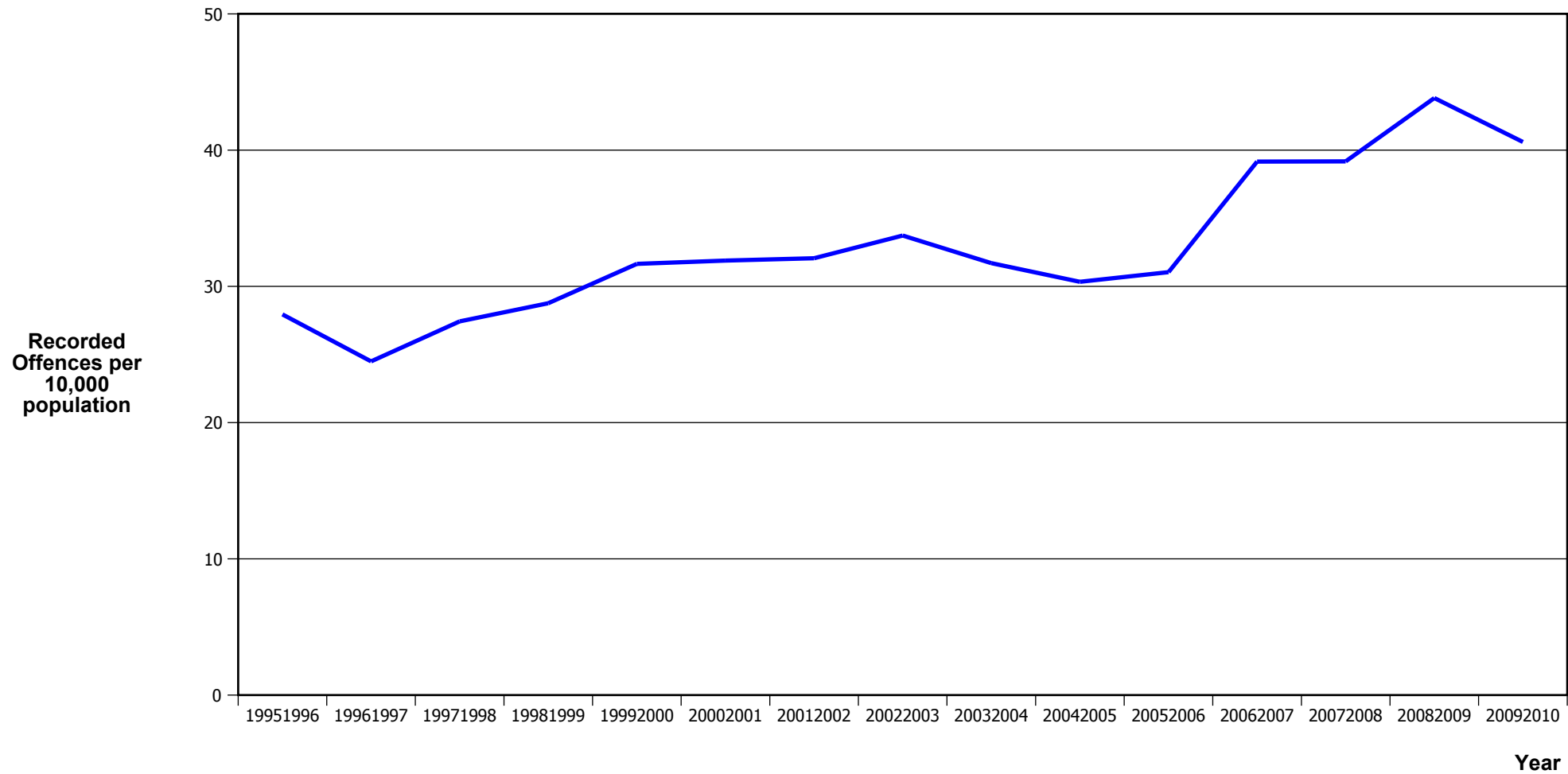
Fiscal Year	19951996	19961997	19971998	19981999	19992000	20002001	20012002	20022003	20032004	20042005	20052006	20062007	20072008	20082009	20092010
Recorded Offences	9	5	6	5	3	5	5	3	8	5	3	3	1	6	6
Recorded per 10,000 Population	0.46	0.26	0.31	0.26	0.16	0.26	0.26	0.15	0.41	0.25	0.15	0.15	0.05	0.30	0.30

SERIOUS ASSAULTS RESULTING IN INJURY*



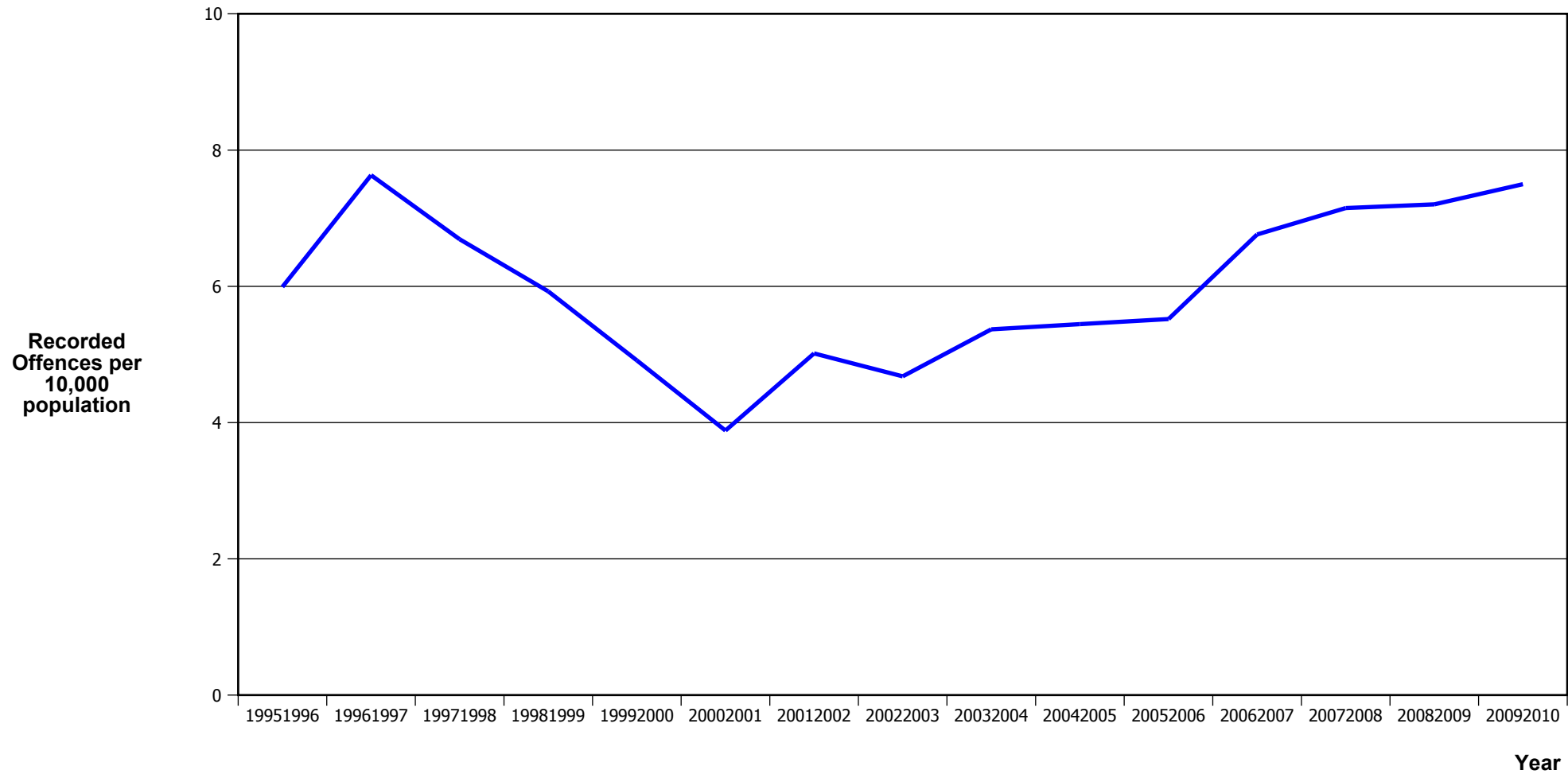
* This measure excludes common assaults

PUBLIC PLACE ASSAULTS



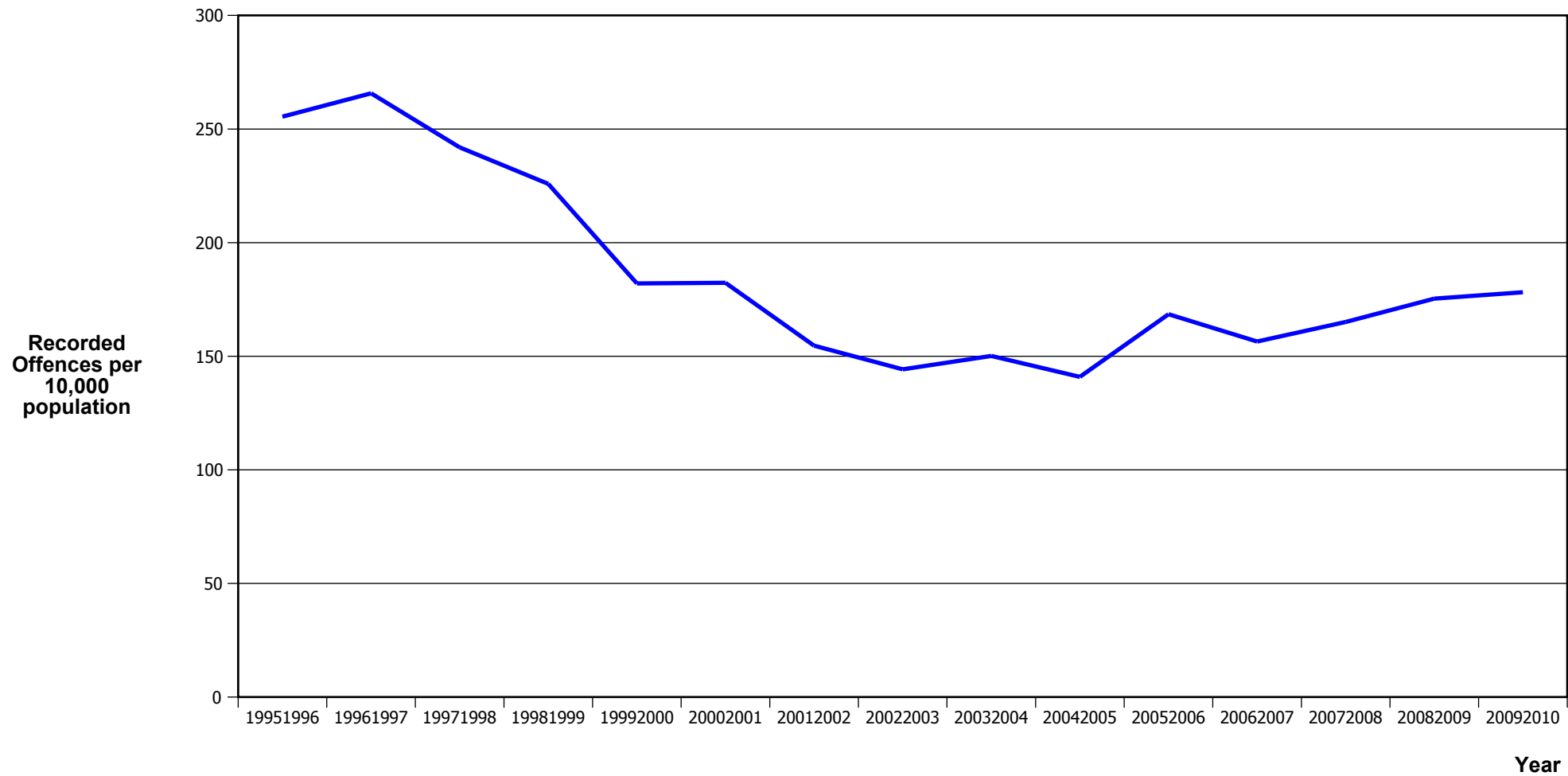
Fiscal Year	19951996	19961997	19971998	19981999	19992000	20002001	20012002	20022003	20032004	20042005	20052006	20062007	20072008	20082009	20092010
Recorded Offences	541	475	533	558	612	616	620	656	620	596	613	776	778	870	812
Recorded per 10,000 Population	27.9	24.5	27.4	28.8	31.6	31.9	32.1	33.7	31.7	30.3	31.0	39.2	39.2	43.8	40.6

ROBBERY



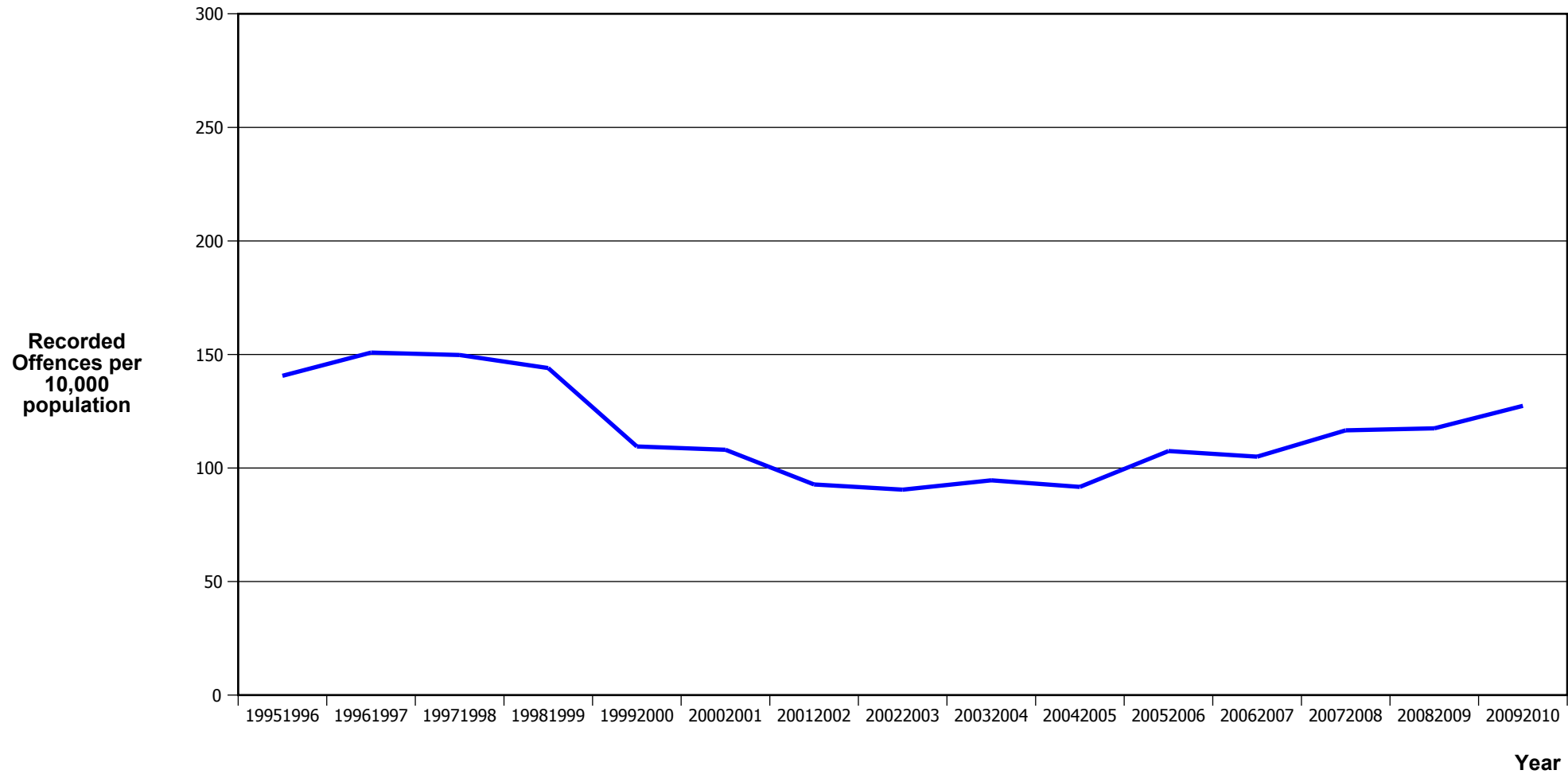
Fiscal Year	19951996	19961997	19971998	19981999	19992000	20002001	20012002	20022003	20032004	20042005	20052006	20062007	20072008	20082009	20092010
Recorded Offences	116	148	130	115	95	75	97	91	105	107	109	134	142	143	150
Recorded per 10,000 Population	6.0	7.6	6.7	5.9	4.9	3.9	5.0	4.7	5.4	5.4	5.5	6.8	7.1	7.2	7.5

BURGLARY (TOTAL)



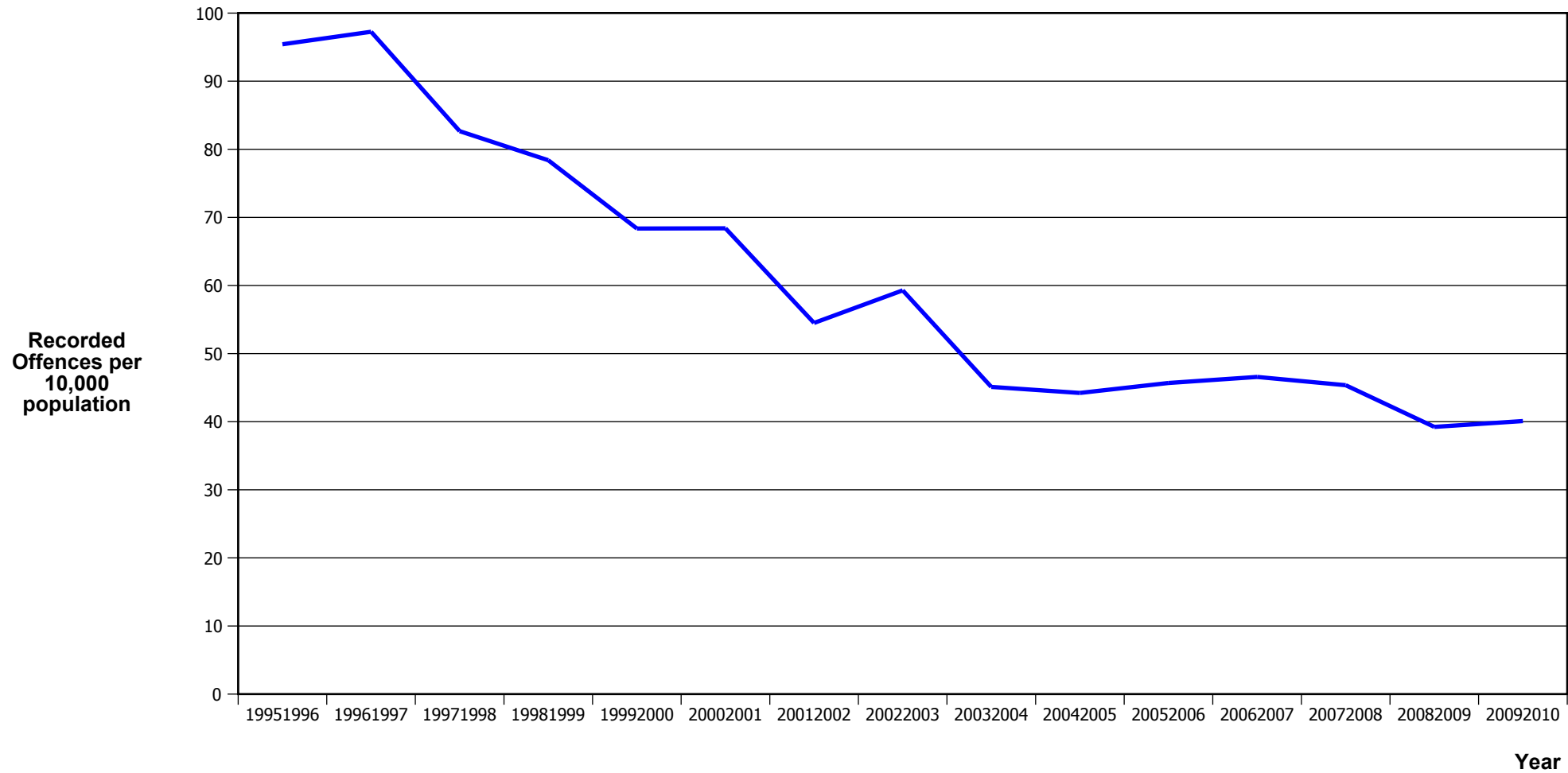
Fiscal Year	19951996	19961997	19971998	19981999	19992000	20002001	20012002	20022003	20032004	20042005	20052006	20062007	20072008	20082009	20092010
Recorded Offences	4,945	5,154	4,701	4,383	3,520	3,522	2,991	2,806	2,936	2,769	3,327	3,102	3,279	3,481	3,564
Recorded per 10,000 Population	255.4	265.8	241.9	225.9	182.0	182.3	154.7	144.3	150.1	140.9	168.5	156.5	165.1	175.3	178.2

BURGLARY (DWELLING)



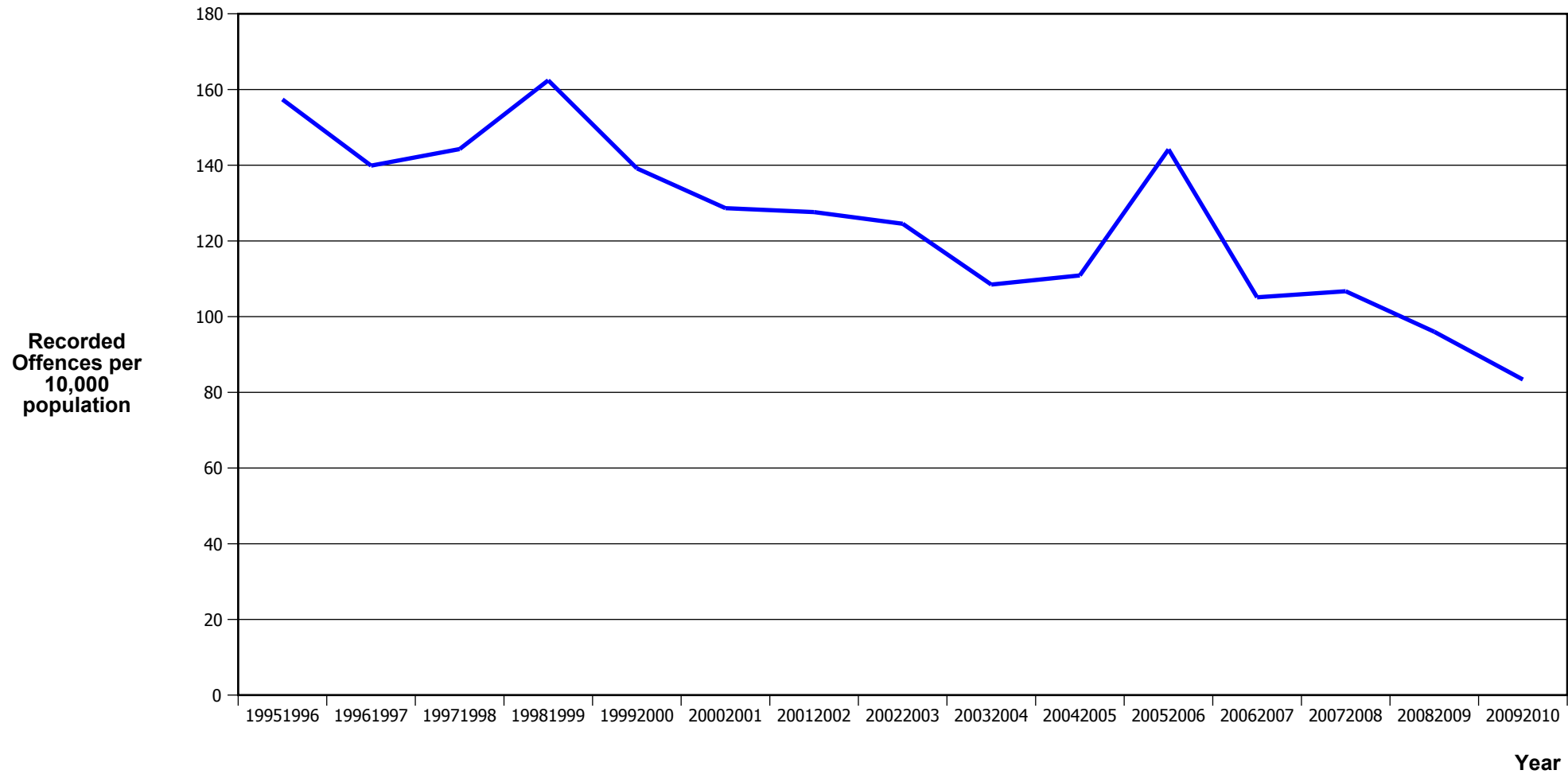
Fiscal Year	19951996	19961997	19971998	19981999	19992000	20002001	20012002	20022003	20032004	20042005	20052006	20062007	20072008	20082009	20092010
Recorded Offences	2,722	2,925	2,910	2,794	2,117	2,087	1,794	1,760	1,850	1,802	2,122	2,081	2,316	2,332	2,548
Recorded per 10,000 Population	140.6	150.8	149.8	144.0	109.5	108.0	92.8	90.5	94.6	91.7	107.5	105.0	116.6	117.5	127.4

VEHICLES STOLEN



Fiscal Year	19951996	19961997	19971998	19981999	19992000	20002001	20012002	20022003	20032004	20042005	20052006	20062007	20072008	20082009	20092010
Recorded Offences	1,847	1,886	1,606	1,521	1,322	1,321	1,054	1,153	882	869	902	923	901	779	802
Recorded per 10,000 Population	95.41	97.25	82.66	78.39	68.37	68.39	54.50	59.28	45.10	44.22	45.68	46.57	45.37	39.24	40.10

THEFT EX CAR



Fiscal Year	19951996	19961997	19971998	19981999	19992000	20002001	20012002	20022003	20032004	20042005	20052006	20062007	20072008	20082009	20092010
Recorded Offences	3,047	2,713	2,803	3,152	2,691	2,485	2,468	2,422	2,121	2,179	2,847	2,083	2,119	1,906	1,668
Recorded per 10,000 Population	157.40	139.89	144.26	162.45	139.16	128.65	127.62	124.53	108.46	110.89	144.19	105.10	106.69	96.01	83.40

Population Data

Population data is used in this release to calculate crime rates. These data are estimated population figures as at 31 December each year. They have been derived from population estimates as at 30 June each year that have been obtained from Statistics New Zealand.

The estimated resident population is based on the census usually resident population count, with adjustments for residents missed or counted more than once by the census (net census undercount), and for residents temporarily overseas on census night.

These population estimates exclude the number of international students who are studying in New Zealand for less than 12 months.

Year	Population
19951996	193,580
19961997	193,940
19971998	194,300
19981999	194,030
19992000	193,370
20002001	193,165
20012002	193,380
20022003	194,490
20032004	195,555
20042005	196,500
20052006	197,450
20062007	198,195
20072008	198,605
20082009	198,520
20092010	200,010

General Definitions

Recorded Offences: the number of breaches of the New Zealand law recorded by Police. This includes offences specified in the Crimes Act and other legislations, such as the Summary Offences Act, Local Government Act, etc.

Resolved Offences: the number of recorded offences where an offender has been identified and dealt with (e.g. warned, cautioned, prosecuted, etc).

Resolution Rate: the proportion of recorded offences that have been resolved.

Recorded per 10,000 population: the number of recorded offences for every 10,000 people. This is also referred as the crime rate per 10,000 population.

ASOC: the Australian Standard Offence Classification. The offence classification is divided into 16 major offence divisions.

Definition of ASOC Divisions

1. Homicide and related offences: Unlawfully kill, attempt to unlawfully kill or conspiracy to kill another person.
2. Acts intended to cause injury: Acts, excluding attempted murder and those resulting in death, which are intended to cause non-fatal injury or harm to another person and where there is no sexual or acquisitive element.
3. Sexual assault and related offences: Acts, or intent of acts, of a sexual nature against another person, which are non-consensual or where consent is proscribed.
4. Dangerous or negligent acts endangering persons: Dangerous or negligent acts which, though not intended to cause harm, actually or potentially result in injury to oneself or another person.
5. Abduction, harassment and other offences against person: Acts intended to threaten or harass, or acts that unlawfully deprive another person of their freedom of movement, that are against that person's will or against the will of any parent, guardian or other person having lawful custody or care of that person.
6. Robbery, extortion and related offences: Acts intended to unlawfully gain money, property or other items of value from, or to cause detriment to, another person by using the threat of force or any other coercive measure.
7. Unlawful entry with intent / burglary, break and enter: The unlawful entry of a structure with the intent to commit an offence, where the entry is either forced or unforced.
8. Theft and related and offences: The unlawful taking or obtaining of money or goods, not involving the use of force or violence, coercion or deception, with intent to permanently or temporarily deprive the owner or possessor of the use of the money or goods, or the receiving or handling of money or goods obtained unlawfully.

9. Fraud, deception and related offences: Offences involving a dishonest act or omission carried out with the purpose of deceiving to obtain a benefit.

10. Illicit drug offences: The possessing, selling, dealing or trafficking, importing or exporting, manufacturing or cultivating of drugs or other substances prohibited under legislation.

11. Prohibited and regulated weapons and explosives offences: Offences involving prohibited or regulated weapons and explosives. Those offences also involving assault, sexual assault or robbery are coded to the relevant group within Assault, Sexual assaults and Robbery respectively.

12. Property damage and environmental pollution: The wilful and unlawful destruction, damage or defacement of public or private property, or the pollution of property or a definable entity held in common by the community.

13. Public order offences: Offences relating personal conduct that involves, or may lead to, a breach of public order or decency, or that is indicative of criminal intent, or that is otherwise regulated or prohibited on moral or ethical grounds. In general these offences do not involve a specific victim or victims; however some offences, such as offensive language and offensive behaviour, may be directed towards a single victim.

14. Traffic and vehicle regulatory offences: Offences relating to vehicles and most forms of traffic, including offences pertaining to the licensing, registration, roadworthiness, or use of vehicles, bicycle offences and pedestrian offences.

15. Offences against justice procedures, government security and government operations: An act or omission that is deemed to be prejudicial to the effective carrying out of justice procedures or any government operations. This includes general government operations as well as those specifically concerned with maintaining government security.

16. Miscellaneous offences: Offences involving the breach of statutory rules or regulations governing activities that are prima facie legal, where such offences are not explicitly dealt with under any other division. If an offence is specified under regulation and involves an act that would be illegal under common law or general criminal legislation, the offence is dealt with under the appropriate generic group.