

# **EASTERN DISTRICT CRIME STATISTICS 2014**



**A Summary of  
Recorded and Resolved Offence  
Statistics**

**POLICE NATIONAL HEADQUARTERS  
April 2015**

ISSN 1178 - 1599

**Table of Contents:**

<b>Topic</b>	<b>Page</b>
Report Notes	1
District Summary of Recorded and Resolved Crime, by Division	2-4
Proportions of Recorded Crime by Division	5
Summary of District Recorded Offences, Rate per 10,000 Population and Resolved Offences, by Area	6
Summary of Area Recorded Offences, Rate per 10,000 Population and Resolved Offences, by Division	7-9
Crime Trends	10
Total Crime	11
Murder	12
Serious Assaults Resulting in Injury	13
Sexual Assaults	14
Public Place Assaults	15
Dwelling Assaults	16
Robbery	17
Burglary (Total)	18
Burglary (Dwelling)	19
Vehicles Stolen	20
Theft Ex Car	21
Population Data	22
General Definitions	23-24

## **REPORT NOTES:**

Statistics reported in this document are derived from the Police National Intelligence Application (NIA). These Official Statistics for Recorded and Resolved Offences present a snapshot of data in NIA relating to offences that occur within a given year, as at the date 14 days following the end of that year.

Unless the matter is minor where Police attendance is sufficient, a matter that is reported to or discovered by Police where Police believe an offence is likely to have been committed is counted as a recorded offence.

A recorded offence is counted as resolved when Police apprehend an offender and decide how to deal with him/her. (E.g. warn, prosecute, etc.)

Resolution rate is the percentage of recorded offences that are resolved within 14 days of the end of the year being reported on.

If an offence is resolved 15 days or more after the end of the year it will not appear in the Official Crime Statistics for that or any other year. Resolution Rate therefore undercounts the number of cases that Police have resolved. This phenomenon has a more marked impact for some types of offences than others, such as offences that require long investigations (E.g. many serial crimes, burglaries and murders).

Several offences have been reclassified into different ANZSOC groups. This has resulted in changes to subtotals for Groups and Sub-divisions within Divisions 10, 15 and 16, compared to previously reported data. Generally, this occurred within the same Division.

Note that the Population Estimates have been revised for 2007 to 2013 as a result of the 2013 Census. In previous reports population estimates were based on the 2006 Census. Crime rates reported in this report for those years may differ from those previously reported as a result.

When comparing 2014 Statistics with previous years, the reader should also refer to "Report Notes" published in previous years' reports, as previous changes significantly affect year on year trends.

**SUMMARY OF DISTRICT RECORDED AND RESOLVED CRIME, BY DIVISION**  
**Years ending 31 December**

**HOMICIDE AND RELATED OFFENCES**

ASOC Subdivision Description	Recorded 2012	Recorded 2013	Recorded 2014	Variance 2012-2013	Variance 2013-2014	Resolved 2012	Resolved 2013	Resolved 2014	Resolution Rate 2012	Resolution Rate 2013	Resolution Rate 2014
ATTEMPTED MURDER	1	1	0	0.0 %	-100.0 %	1	0	0	100.0 %	0.0 %	0.0 %
HOMICIDE AND RELATED OFFENCES NOT FURTHER DEFINED	0	0	0	0.0 %	0.0 %	0	0	0	0.0 %	0.0 %	0.0 %
MANSLAUGHTER AND DRIVING CAUSING DEATH	0	2	1	0.0 %	-50.0 %	0	0	1	0.0 %	0.0 %	100.0 %
MURDER	2	7	1	250.0 %	-85.7 %	2	5	1	100.0 %	71.4 %	100.0 %
	<b>3</b>	<b>10</b>	<b>2</b>	<b>233.3 %</b>	<b>-80.0 %</b>	<b>3</b>	<b>5</b>	<b>2</b>	<b>100.0 %</b>	<b>50.0 %</b>	<b>100.0 %</b>

**ACTS INTENDED TO CAUSE INJURY**

ASOC Subdivision Description	Recorded 2012	Recorded 2013	Recorded 2014	Variance 2012-2013	Variance 2013-2014	Resolved 2012	Resolved 2013	Resolved 2014	Resolution Rate 2012	Resolution Rate 2013	Resolution Rate 2014
ASSAULT	3,134	3,384	3,440	8.0 %	1.7 %	2,293	2,398	2,310	73.2 %	70.9 %	67.2 %
OTHER ACTS INTENDED TO CAUSE INJURY	7	3	6	-57.1 %	100.0 %	5	1	2	71.4 %	33.3 %	33.3 %
	<b>3,141</b>	<b>3,387</b>	<b>3,446</b>	<b>7.8 %</b>	<b>1.7 %</b>	<b>2,298</b>	<b>2,399</b>	<b>2,312</b>	<b>73.2 %</b>	<b>70.8 %</b>	<b>67.1 %</b>

**SEXUAL ASSAULT AND RELATED OFFENCES**

ASOC Subdivision Description	Recorded 2012	Recorded 2013	Recorded 2014	Variance 2012-2013	Variance 2013-2014	Resolved 2012	Resolved 2013	Resolved 2014	Resolution Rate 2012	Resolution Rate 2013	Resolution Rate 2014
NON-ASSAULTIVE SEXUAL OFFENCES	9	11	8	22.2 %	-27.3 %	7	7	4	77.8 %	63.6 %	50.0 %
SEXUAL ASSAULT	280	254	245	-9.3 %	-3.5 %	158	110	110	56.4 %	43.3 %	44.9 %
	<b>289</b>	<b>265</b>	<b>253</b>	<b>-8.3 %</b>	<b>-4.5 %</b>	<b>165</b>	<b>117</b>	<b>114</b>	<b>57.1 %</b>	<b>44.2 %</b>	<b>45.1 %</b>

**DANGEROUS OR NEGLIGENT ACTS ENDANGERING PERSONS**

ASOC Subdivision Description	Recorded 2012	Recorded 2013	Recorded 2014	Variance 2012-2013	Variance 2013-2014	Resolved 2012	Resolved 2013	Resolved 2014	Resolution Rate 2012	Resolution Rate 2013	Resolution Rate 2014
OTHER DANGEROUS OR NEGLIGENT ACTS ENDANGERING PERSONS	112	102	92	-8.9 %	-9.8 %	43	44	42	38.4 %	43.1 %	45.7 %
	<b>112</b>	<b>102</b>	<b>92</b>	<b>-8.9 %</b>	<b>-9.8 %</b>	<b>43</b>	<b>44</b>	<b>42</b>	<b>38.4 %</b>	<b>43.1 %</b>	<b>45.7 %</b>

**ABDUCTION, HARASSMENT AND OTHER RELATED OFFENCES AGAINST A PERSON**

ASOC Subdivision Description	Recorded 2012	Recorded 2013	Recorded 2014	Variance 2012-2013	Variance 2013-2014	Resolved 2012	Resolved 2013	Resolved 2014	Resolution Rate 2012	Resolution Rate 2013	Resolution Rate 2014
ABDUCTION AND KIDNAPPING	7	19	19	171.4 %	0.0 %	2	16	12	28.6 %	84.2 %	63.2 %
DEPRIVATION OF LIBERTY/FALSE IMPRISONMENT	1	0	0	-100.0 %	0.0 %	1	0	0	100.0 %	0.0 %	0.0 %
HARASSMENT AND THREATENING BEHAVIOUR	845	998	1,091	18.1 %	9.3 %	582	604	690	68.9 %	60.5 %	63.2 %
	<b>853</b>	<b>1,017</b>	<b>1,110</b>	<b>19.2 %</b>	<b>9.1 %</b>	<b>585</b>	<b>620</b>	<b>702</b>	<b>68.6 %</b>	<b>61.0 %</b>	<b>63.2 %</b>

**ROBBERY, EXTORTION AND RELATED OFFENCES**

ASOC Subdivision Description	Recorded 2012	Recorded 2013	Recorded 2014	Variance 2012-2013	Variance 2013-2014	Resolved 2012	Resolved 2013	Resolved 2014	Resolution Rate 2012	Resolution Rate 2013	Resolution Rate 2014
BLACKMAIL AND EXTORTION	11	12	7	9.1 %	-41.7 %	5	5	2	45.5 %	41.7 %	28.6 %
ROBBERY	110	118	103	7.3 %	-12.7 %	47	55	59	42.7 %	46.6 %	57.3 %
	<b>121</b>	<b>130</b>	<b>110</b>	<b>7.4 %</b>	<b>-15.4 %</b>	<b>52</b>	<b>60</b>	<b>61</b>	<b>43.0 %</b>	<b>46.2 %</b>	<b>55.5 %</b>

**UNLAWFUL ENTRY WITH INTENT/BURGLARY, BREAK AND ENTER**

ASOC Subdivision Description	Recorded 2012	Recorded 2013	Recorded 2014	Variance 2012-2013	Variance 2013-2014	Resolved 2012	Resolved 2013	Resolved 2014	Resolution Rate 2012	Resolution Rate 2013	Resolution Rate 2014
UNLAWFUL ENTRY WITH INTENT/BURGLARY, BREAK AND ENTER	3,165	3,536	3,292	11.7 %	-6.9 %	499	574	527	15.8 %	16.2 %	16.0 %
	<b>3,165</b>	<b>3,536</b>	<b>3,292</b>	<b>11.7 %</b>	<b>-6.9 %</b>	<b>499</b>	<b>574</b>	<b>527</b>	<b>15.8 %</b>	<b>16.2 %</b>	<b>16.0 %</b>

# SUMMARY OF DISTRICT RECORDED AND RESOLVED CRIME, BY DIVISION

## Years ending 31 December

### THEFT AND RELATED OFFENCES

ASOC Subdivision Description	Recorded 2012	Recorded 2013	Recorded 2014	Variance 2012-2013	Variance 2013-2014	Resolved 2012	Resolved 2013	Resolved 2014	Resolution Rate 2012	Resolution Rate 2013	Resolution Rate 2014
ILLEGAL USE OF PROPERTY (EXCEPT MOTOR VEHICLES)	209	276	263	32.1 %	-4.7 %	17	27	14	8.1 %	9.8 %	5.3 %
MOTOR VEHICLE THEFT AND RELATED OFFENCES	1,843	2,039	1,699	10.6 %	-16.7 %	250	274	243	13.6 %	13.4 %	14.3 %
RECEIVE OR HANDLE PROCEEDS OF CRIME	162	168	164	3.7 %	-2.4 %	156	162	157	96.3 %	96.4 %	95.7 %
THEFT AND RELATED OFFENCES NOT FURTHER DEFINED	0	0	1	0.0 %	0.0 %	0	0	1	0.0 %	0.0 %	100.0 %
THEFT (EXCEPT MOTOR VEHICLES)	3,867	4,078	3,809	5.5 %	-6.6 %	1,395	1,419	1,336	36.1 %	34.8 %	35.1 %
	<b>6,081</b>	<b>6,561</b>	<b>5,936</b>	<b>7.9 %</b>	<b>-9.5 %</b>	<b>1,818</b>	<b>1,882</b>	<b>1,751</b>	<b>29.9 %</b>	<b>28.7 %</b>	<b>29.5 %</b>

### FRAUD, DECEPTION AND RELATED OFFENCES

ASOC Subdivision Description	Recorded 2012	Recorded 2013	Recorded 2014	Variance 2012-2013	Variance 2013-2014	Resolved 2012	Resolved 2013	Resolved 2014	Resolution Rate 2012	Resolution Rate 2013	Resolution Rate 2014
DECEPTIVE BUSINESS/GOVERNMENT PRACTICES	0	1	2	0.0 %	100.0 %	0	1	0	0.0 %	100.0 %	0.0 %
FORGERY AND COUNTERFEITING	22	42	18	90.9 %	-57.1 %	14	8	2	63.6 %	19.0 %	11.1 %
OBTAIN BENEFIT BY DECEPTION	336	400	480	19.0 %	20.0 %	205	235	285	61.0 %	58.8 %	59.4 %
OTHER FRAUD AND DECEPTION OFFENCES	25	22	35	-12.0 %	59.1 %	11	13	24	44.0 %	59.1 %	68.6 %
	<b>383</b>	<b>465</b>	<b>535</b>	<b>21.4 %</b>	<b>15.1 %</b>	<b>230</b>	<b>257</b>	<b>311</b>	<b>60.1 %</b>	<b>55.3 %</b>	<b>58.1 %</b>

### ILLICIT DRUG OFFENCES

ASOC Subdivision Description	Recorded 2012	Recorded 2013	Recorded 2014	Variance 2012-2013	Variance 2013-2014	Resolved 2012	Resolved 2013	Resolved 2014	Resolution Rate 2012	Resolution Rate 2013	Resolution Rate 2014
DEAL OR TRAFFIC IN ILLICIT DRUGS	125	113	201	-9.6 %	77.9 %	108	91	183	86.4 %	80.5 %	91.0 %
IMPORT OR EXPORT ILLICIT DRUGS	2	2	4	0.0 %	100.0 %	1	0	0	50.0 %	0.0 %	0.0 %
MANUFACTURE OR CULTIVATE ILLICIT DRUGS	483	358	383	-25.9 %	7.0 %	218	147	150	45.1 %	41.1 %	39.2 %
OTHER ILLICIT DRUG OFFENCES	257	181	179	-29.6 %	-1.1 %	252	174	173	98.1 %	96.1 %	96.6 %
POSSESS AND/OR USE ILLICIT DRUGS	462	374	381	-19.0 %	1.9 %	426	343	363	92.2 %	91.7 %	95.3 %
	<b>1,329</b>	<b>1,028</b>	<b>1,148</b>	<b>-22.6 %</b>	<b>11.7 %</b>	<b>1,005</b>	<b>755</b>	<b>869</b>	<b>75.6 %</b>	<b>73.4 %</b>	<b>75.7 %</b>

### PROHIBITED AND REGULATED WEAPONS AND EXPLOSIVES OFFENCES

ASOC Subdivision Description	Recorded 2012	Recorded 2013	Recorded 2014	Variance 2012-2013	Variance 2013-2014	Resolved 2012	Resolved 2013	Resolved 2014	Resolution Rate 2012	Resolution Rate 2013	Resolution Rate 2014
REGULATED WEAPONS/EXPLOSIVES OFFENCES	453	478	455	5.5 %	-4.8 %	408	421	408	90.1 %	88.1 %	89.7 %
	<b>453</b>	<b>478</b>	<b>455</b>	<b>5.5 %</b>	<b>-4.8 %</b>	<b>408</b>	<b>421</b>	<b>408</b>	<b>90.1 %</b>	<b>88.1 %</b>	<b>89.7 %</b>

### PROPERTY DAMAGE AND ENVIRONMENTAL POLLUTION

ASOC Subdivision Description	Recorded 2012	Recorded 2013	Recorded 2014	Variance 2012-2013	Variance 2013-2014	Resolved 2012	Resolved 2013	Resolved 2014	Resolution Rate 2012	Resolution Rate 2013	Resolution Rate 2014
ENVIRONMENTAL POLLUTION	5	8	8	60.0 %	0.0 %	4	2	2	80.0 %	25.0 %	25.0 %
PROPERTY DAMAGE	2,754	2,747	2,430	-0.3 %	-11.5 %	874	954	837	31.7 %	34.7 %	34.4 %
	<b>2,759</b>	<b>2,755</b>	<b>2,438</b>	<b>-0.1 %</b>	<b>-11.5 %</b>	<b>878</b>	<b>956</b>	<b>839</b>	<b>31.8 %</b>	<b>34.7 %</b>	<b>34.4 %</b>

**SUMMARY OF DISTRICT RECORDED AND RESOLVED CRIME, BY DIVISION**  
**Years ending 31 December**

**PUBLIC ORDER OFFENCES**

ASOC Subdivision Description	Recorded 2012	Recorded 2013	Recorded 2014	Variance 2012-2013	Variance 2013-2014	Resolved 2012	Resolved 2013	Resolved 2014	Resolution Rate 2012	Resolution Rate 2013	Resolution Rate 2014
DISORDERLY CONDUCT	2,257	2,142	1,964	-5.1 %	-8.3 %	1,889	1,758	1,662	83.7 %	82.1 %	84.6 %
OFFENSIVE CONDUCT	88	82	85	-6.8 %	3.7 %	51	50	61	58.0 %	61.0 %	71.8 %
PUBLIC ORDER OFFENCES NOT FURTHER DEFINED	0	0	1	0.0 %	0.0 %	0	0	0	0.0 %	0.0 %	0.0 %
REGULATED PUBLIC ORDER OFFENCES	614	410	69	-33.2 %	-83.2 %	571	382	48	93.0 %	93.2 %	69.6 %
	<b>2,959</b>	<b>2,634</b>	<b>2,119</b>	<b>-11.0 %</b>	<b>-19.6 %</b>	<b>2,511</b>	<b>2,190</b>	<b>1,771</b>	<b>84.9 %</b>	<b>83.1 %</b>	<b>83.6 %</b>

**OFFENCES AGAINST JUSTICE PROCEDURES, GOVERNMENT SECURITY AND GOVERNMENT OPERATIONS**

ASOC Subdivision Description	Recorded 2012	Recorded 2013	Recorded 2014	Variance 2012-2013	Variance 2013-2014	Resolved 2012	Resolved 2013	Resolved 2014	Resolution Rate 2012	Resolution Rate 2013	Resolution Rate 2014
BREACH OF COMMUNITY-BASED ORDER	65	87	139	33.8 %	59.8 %	52	71	125	80.0 %	81.6 %	89.9 %
BREACH OF CUSTODIAL ORDER OFFENCES	16	22	29	37.5 %	31.8 %	15	22	29	93.8 %	100.0 %	100.0 %
BREACH OF VIOLENCE AND NON-VIOLENCE RESTRAINING ORDERS	524	583	730	11.3 %	25.2 %	418	494	591	79.8 %	84.7 %	81.0 %
OFFENCES AGAINST GOVERNMENT OPERATIONS	11	12	32	9.1 %	166.7 %	7	3	3	63.6 %	25.0 %	9.4 %
OFFENCES AGAINST GOVERNMENT SECURITY	0	0	0	0.0 %	0.0 %	0	0	0	0.0 %	0.0 %	0.0 %
OFFENCES AGAINST JUSTICE PROCEDURES	359	329	375	-8.4 %	14.0 %	352	324	366	98.1 %	98.5 %	97.6 %
OFFENCES AGAINST JUSTICE PROCEDURES, GOVERNMENT SECURITY AND GOVERNMENT OPERATIONS NOT FURTHER DEFINED	0	0	0	0.0 %	0.0 %	0	0	0	0.0 %	0.0 %	0.0 %
	<b>975</b>	<b>1,033</b>	<b>1,305</b>	<b>5.9 %</b>	<b>26.3 %</b>	<b>844</b>	<b>914</b>	<b>1,114</b>	<b>86.6 %</b>	<b>88.5 %</b>	<b>85.4 %</b>

**MISCELLANEOUS OFFENCES**

ASOC Subdivision Description	Recorded 2012	Recorded 2013	Recorded 2014	Variance 2012-2013	Variance 2013-2014	Resolved 2012	Resolved 2013	Resolved 2014	Resolution Rate 2012	Resolution Rate 2013	Resolution Rate 2014
COMMERCIAL/INDUSTRY/FINANCIAL REGULATION	6	4	0	-33.3 %	-100.0 %	4	2	0	66.7 %	50.0 %	0.0 %
DEFAMATION, LIBEL AND PRIVACY OFFENCES	5	3	0	-40.0 %	-100.0 %	1	1	0	20.0 %	33.3 %	0.0 %
OTHER MISCELLANEOUS OFFENCES	105	103	89	-1.9 %	-13.6 %	45	50	54	42.9 %	48.5 %	60.7 %
PUBLIC HEALTH AND SAFETY OFFENCES	3	12	14	300.0 %	16.7 %	2	7	10	66.7 %	58.3 %	71.4 %
	<b>119</b>	<b>122</b>	<b>103</b>	<b>2.5 %</b>	<b>-15.6 %</b>	<b>52</b>	<b>60</b>	<b>64</b>	<b>43.7 %</b>	<b>49.2 %</b>	<b>62.1 %</b>

<b>TOTAL</b>	<b>22,742</b>	<b>23,523</b>	<b>22,344</b>	<b>3.4 %</b>	<b>-5.0 %</b>	<b>11,391</b>	<b>11,254</b>	<b>10,887</b>	<b>50.1 %</b>	<b>47.8 %</b>	<b>48.7 %</b>
--------------	---------------	---------------	---------------	--------------	---------------	---------------	---------------	---------------	---------------	---------------	---------------

# PROPORTIONS OF RECORDED CRIME BY DIVISION

Years ending 31 December

ASOC Division Description	Proportions Recorded 2012	Recorded 2012	Proportions Recorded 2013	Recorded 2013	Proportions Recorded 2014	Recorded 2014
HOMICIDE AND RELATED OFFENCES	0.01 %	3	0.04 %	10	0.01 %	2
ACTS INTENDED TO CAUSE INJURY	13.81 %	3,141	14.40 %	3,387	15.42 %	3,446
SEXUAL ASSAULT AND RELATED OFFENCES	1.27 %	289	1.13 %	265	1.13 %	253
DANGEROUS OR NEGLIGENT ACTS ENDANGERING PERSONS	0.49 %	112	0.43 %	102	0.41 %	92
ABDUCTION, HARASSMENT AND OTHER RELATED OFFENCES AGAINST A PERSON	3.75 %	853	4.32 %	1,017	4.97 %	1,110
ROBBERY, EXTORTION AND RELATED OFFENCES	0.53 %	121	0.55 %	130	0.49 %	110
UNLAWFUL ENTRY WITH INTENT/BURGLARY, BREAK AND ENTER	13.92 %	3,165	15.03 %	3,536	14.73 %	3,292
THEFT AND RELATED OFFENCES	26.74 %	6,081	27.89 %	6,561	26.57 %	5,936
FRAUD, DECEPTION AND RELATED OFFENCES	1.68 %	383	1.98 %	465	2.39 %	535
ILLICIT DRUG OFFENCES	5.84 %	1,329	4.37 %	1,028	5.14 %	1,148
PROHIBITED AND REGULATED WEAPONS AND EXPLOSIVES OFFENCES	1.99 %	453	2.03 %	478	2.04 %	455
PROPERTY DAMAGE AND ENVIRONMENTAL POLLUTION	12.13 %	2,759	11.71 %	2,755	10.91 %	2,438
PUBLIC ORDER OFFENCES	13.01 %	2,959	11.20 %	2,634	9.48 %	2,119
OFFENCES AGAINST JUSTICE PROCEDURES, GOVERNMENT SECURITY AND GOVERNMENT OPERATIONS	4.29 %	975	4.39 %	1,033	5.84 %	1,305
MISCELLANEOUS OFFENCES	0.52 %	119	0.52 %	122	0.46 %	103
	<b>100.00 %</b>	<b>22,742</b>	<b>100.00 %</b>	<b>23,523</b>	<b>100.00 %</b>	<b>22,344</b>

**SUMMARY OF RECORDED OFFENCES, RATE PER 10,000 POPULATION AND RESOLVED OFFENCES, BY AREA**  
**years ending 31 December**

**TOTAL CRIME**

Area Description	Recorded 2013	Recorded 2014	Variance 2013-2014	Recorded per 10,000 pop 2013	Recorded per 10,000 pop 2014	Per 10,000 pop % Variance 2013 to 2014	Resolved 2013	Resolved 2014	Resolution Rate 2013	Resolution Rate 2014
Hawkes Bay	15,487	14,781	-4.6 %	1,036.3	981.4	-5.3 %	7,056	7,049	45.6 %	47.7 %
Tairāwhiti	8,036	7,563	-5.9 %	1,452.4	1,368.6	-5.8 %	4,198	3,838	52.2 %	50.7 %
	<b>23,523</b>	<b>22,344</b>	<b>-5.0 %</b>	<b>1,148.7</b>	<b>1,085.3</b>	<b>-5.5 %</b>	<b>11,254</b>	<b>10,887</b>	<b>47.8 %</b>	<b>48.7 %</b>



# SUMMARY OF RECORDED OFFENCES, RATE PER 10,000 POPULATION AND RESOLVED OFFENCES, BY DIVISION

Years ending 31 December

## HOMICIDE AND RELATED OFFENCES

Area Description	Recorded 2013	Recorded 2014	Variance 2013-2014	Recorded per 10,000 pop 2013	Recorded per 10,000 pop 2014	Per 10,000 pop % Variance 2013 to 2014	Resolved 2013	Resolved 2014	Resolution Rate 2013	Resolution Rate 2014
Hawkes Bay	4	1	-75.0 %	0.3	0.1	-75.2 %	2	1	50.0 %	100.0 %
Tairāwhiti	6	1	-83.3 %	1.1	0.2	-83.3 %	3	1	50.0 %	100.0 %
	10	2	-80.0 %	0.5	0.1	-80.1 %	5	2	50.0 %	100.0 %

## ACTS INTENDED TO CAUSE INJURY

Area Description	Recorded 2013	Recorded 2014	Variance 2013-2014	Recorded per 10,000 pop 2013	Recorded per 10,000 pop 2014	Per 10,000 pop % Variance 2013 to 2014	Resolved 2013	Resolved 2014	Resolution Rate 2013	Resolution Rate 2014
Hawkes Bay	1,939	1,824	-5.9 %	129.7	121.1	-6.7 %	1,411	1,381	72.8 %	75.7 %
Tairāwhiti	1,448	1,622	12.0 %	261.7	293.5	12.2 %	988	931	68.2 %	57.4 %
	3,387	3,446	1.7 %	165.4	167.4	1.2 %	2,399	2,312	70.8 %	67.1 %

## SEXUAL ASSAULT AND RELATED OFFENCES

Area Description	Recorded 2013	Recorded 2014	Variance 2013-2014	Recorded per 10,000 pop 2013	Recorded per 10,000 pop 2014	Per 10,000 pop % Variance 2013 to 2014	Resolved 2013	Resolved 2014	Resolution Rate 2013	Resolution Rate 2014
Hawkes Bay	179	169	-5.6 %	12.0	11.2	-6.3 %	78	76	43.6 %	45.0 %
Tairāwhiti	86	84	-2.3 %	15.5	15.2	-2.2 %	39	38	45.3 %	45.2 %
	265	253	-4.5 %	12.9	12.3	-5.0 %	117	114	44.2 %	45.1 %

## DANGEROUS OR NEGLIGENT ACTS ENDANGERING PERSONS

Area Description	Recorded 2013	Recorded 2014	Variance 2013-2014	Recorded per 10,000 pop 2013	Recorded per 10,000 pop 2014	Per 10,000 pop % Variance 2013 to 2014	Resolved 2013	Resolved 2014	Resolution Rate 2013	Resolution Rate 2014
Hawkes Bay	86	60	-30.2 %	5.8	4.0	-30.8 %	38	23	44.2 %	38.3 %
Tairāwhiti	16	32	100.0 %	2.9	5.8	100.3 %	6	19	37.5 %	59.4 %
	102	92	-9.8 %	5.0	4.5	-10.3 %	44	42	43.1 %	45.7 %

## ABDUCTION, HARASSMENT AND OTHER RELATED OFFENCES AGAINST A PERSON

Area Description	Recorded 2013	Recorded 2014	Variance 2013-2014	Recorded per 10,000 pop 2013	Recorded per 10,000 pop 2014	Per 10,000 pop % Variance 2013 to 2014	Resolved 2013	Resolved 2014	Resolution Rate 2013	Resolution Rate 2014
Hawkes Bay	568	640	12.7 %	38.0	42.5	11.8 %	340	416	59.9 %	65.0 %
Tairāwhiti	449	470	4.7 %	81.1	85.1	4.8 %	280	286	62.4 %	60.9 %
	1,017	1,110	9.1 %	49.7	53.9	8.6 %	620	702	61.0 %	63.2 %

## ROBBERY, EXTORTION AND RELATED OFFENCES

Area Description	Recorded 2013	Recorded 2014	Variance 2013-2014	Recorded per 10,000 pop 2013	Recorded per 10,000 pop 2014	Per 10,000 pop % Variance 2013 to 2014	Resolved 2013	Resolved 2014	Resolution Rate 2013	Resolution Rate 2014
Hawkes Bay	85	86	1.2 %	5.7	5.7	0.4 %	37	48	43.5 %	55.8 %
Tairāwhiti	45	24	-46.7 %	8.1	4.3	-46.6 %	23	13	51.1 %	54.2 %
	130	110	-15.4 %	6.3	5.3	-15.8 %	60	61	46.2 %	55.5 %

# SUMMARY OF RECORDED OFFENCES, RATE PER 10,000 POPULATION AND RESOLVED OFFENCES, BY DIVISION

Years ending 31 December

## UNLAWFUL ENTRY WITH INTENT/BURGLARY, BREAK AND ENTER

Area Description	Recorded 2013	Recorded 2014	Variance 2013-2014	Recorded per 10,000 pop 2013	Recorded per 10,000 pop 2014	Per 10,000 pop % Variance 2013 to 2014	Resolved 2013	Resolved 2014	Resolution Rate 2013	Resolution Rate 2014
Hawkes Bay	2,579	2,513	-2.6 %	172.6	166.9	-3.3 %	381	360	14.8 %	14.3 %
Tairāwhiti	957	779	-18.6 %	173.0	141.0	-18.5 %	193	167	20.2 %	21.4 %
	<b>3,536</b>	<b>3,292</b>	<b>-6.9 %</b>	<b>172.7</b>	<b>159.9</b>	<b>-7.4 %</b>	<b>574</b>	<b>527</b>	<b>16.2 %</b>	<b>16.0 %</b>

## THEFT AND RELATED OFFENCES

Area Description	Recorded 2013	Recorded 2014	Variance 2013-2014	Recorded per 10,000 pop 2013	Recorded per 10,000 pop 2014	Per 10,000 pop % Variance 2013 to 2014	Resolved 2013	Resolved 2014	Resolution Rate 2013	Resolution Rate 2014
Hawkes Bay	4,806	4,380	-8.9 %	321.6	290.8	-9.6 %	1,389	1,312	28.9 %	30.0 %
Tairāwhiti	1,755	1,556	-11.3 %	317.2	281.6	-11.2 %	493	439	28.1 %	28.2 %
	<b>6,561</b>	<b>5,936</b>	<b>-9.5 %</b>	<b>320.4</b>	<b>288.3</b>	<b>-10.0 %</b>	<b>1,882</b>	<b>1,751</b>	<b>28.7 %</b>	<b>29.5 %</b>

## FRAUD, DECEPTION AND RELATED OFFENCES

Area Description	Recorded 2013	Recorded 2014	Variance 2013-2014	Recorded per 10,000 pop 2013	Recorded per 10,000 pop 2014	Per 10,000 pop % Variance 2013 to 2014	Resolved 2013	Resolved 2014	Resolution Rate 2013	Resolution Rate 2014
Hawkes Bay	303	425	40.3 %	20.3	28.2	39.2 %	173	268	57.1 %	63.1 %
Tairāwhiti	162	110	-32.1 %	29.3	19.9	-32.0 %	84	43	51.9 %	39.1 %
	<b>465</b>	<b>535</b>	<b>15.1 %</b>	<b>22.7</b>	<b>26.0</b>	<b>14.4 %</b>	<b>257</b>	<b>311</b>	<b>55.3 %</b>	<b>58.1 %</b>

## ILLICIT DRUG OFFENCES

Area Description	Recorded 2013	Recorded 2014	Variance 2013-2014	Recorded per 10,000 pop 2013	Recorded per 10,000 pop 2014	Per 10,000 pop % Variance 2013 to 2014	Resolved 2013	Resolved 2014	Resolution Rate 2013	Resolution Rate 2014
Hawkes Bay	468	502	7.3 %	31.3	33.3	6.4 %	384	410	82.1 %	81.7 %
Tairāwhiti	560	646	15.4 %	101.2	116.9	15.5 %	371	459	66.3 %	71.1 %
	<b>1,028</b>	<b>1,148</b>	<b>11.7 %</b>	<b>50.2</b>	<b>55.8</b>	<b>11.1 %</b>	<b>755</b>	<b>869</b>	<b>73.4 %</b>	<b>75.7 %</b>

## PROHIBITED AND REGULATED WEAPONS AND EXPLOSIVES OFFENCES

Area Description	Recorded 2013	Recorded 2014	Variance 2013-2014	Recorded per 10,000 pop 2013	Recorded per 10,000 pop 2014	Per 10,000 pop % Variance 2013 to 2014	Resolved 2013	Resolved 2014	Resolution Rate 2013	Resolution Rate 2014
Hawkes Bay	281	266	-5.3 %	18.8	17.7	-6.1 %	245	235	87.2 %	88.3 %
Tairāwhiti	197	189	-4.1 %	35.6	34.2	-3.9 %	176	173	89.3 %	91.5 %
	<b>478</b>	<b>455</b>	<b>-4.8 %</b>	<b>23.3</b>	<b>22.1</b>	<b>-5.3 %</b>	<b>421</b>	<b>408</b>	<b>88.1 %</b>	<b>89.7 %</b>

## PROPERTY DAMAGE AND ENVIRONMENTAL POLLUTION

Area Description	Recorded 2013	Recorded 2014	Variance 2013-2014	Recorded per 10,000 pop 2013	Recorded per 10,000 pop 2014	Per 10,000 pop % Variance 2013 to 2014	Resolved 2013	Resolved 2014	Resolution Rate 2013	Resolution Rate 2014
Hawkes Bay	1,761	1,516	-13.9 %	117.8	100.7	-14.6 %	547	494	31.1 %	32.6 %
Tairāwhiti	994	922	-7.2 %	179.6	166.8	-7.1 %	409	345	41.1 %	37.4 %
	<b>2,755</b>	<b>2,438</b>	<b>-11.5 %</b>	<b>134.5</b>	<b>118.4</b>	<b>-12.0 %</b>	<b>956</b>	<b>839</b>	<b>34.7 %</b>	<b>34.4 %</b>

# SUMMARY OF RECORDED OFFENCES, RATE PER 10,000 POPULATION AND RESOLVED OFFENCES, BY DIVISION

Years ending 31 December

## PUBLIC ORDER OFFENCES

Area Description	Recorded 2013	Recorded 2014	Variance 2013-2014	Recorded per 10,000 pop 2013	Recorded per 10,000 pop 2014	Per 10,000 pop % Variance 2013 to 2014	Resolved 2013	Resolved 2014	Resolution Rate 2013	Resolution Rate 2014
Hawkes Bay	1,659	1,418	-14.5 %	111.0	94.2	-15.2 %	1,384	1,201	83.4 %	84.7 %
Tairāwhiti	975	701	-28.1 %	176.2	126.9	-28.0 %	806	570	82.7 %	81.3 %
	<b>2,634</b>	<b>2,119</b>	<b>-19.6 %</b>	<b>128.6</b>	<b>102.9</b>	<b>-20.0 %</b>	<b>2,190</b>	<b>1,771</b>	<b>83.1 %</b>	<b>83.6 %</b>

## OFFENCES AGAINST JUSTICE PROCEDURES, GOVERNMENT SECURITY AND GOVERNMENT OPERATIONS

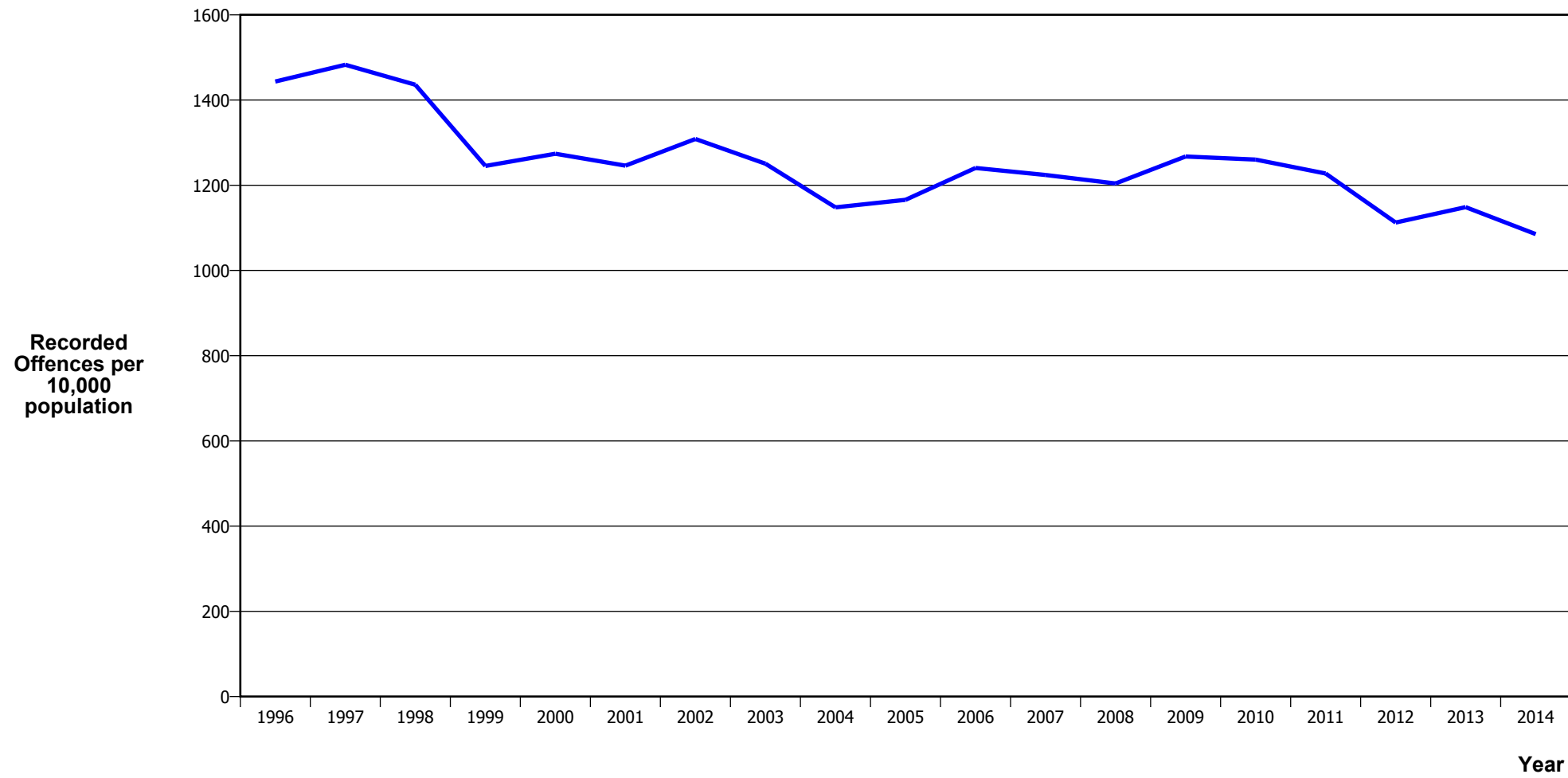
Area Description	Recorded 2013	Recorded 2014	Variance 2013-2014	Recorded per 10,000 pop 2013	Recorded per 10,000 pop 2014	Per 10,000 pop % Variance 2013 to 2014	Resolved 2013	Resolved 2014	Resolution Rate 2013	Resolution Rate 2014
Hawkes Bay	694	919	32.4 %	46.4	61.0	31.4 %	613	787	88.3 %	85.6 %
Tairāwhiti	339	386	13.9 %	61.3	69.9	14.0 %	301	327	88.8 %	84.7 %
	<b>1,033</b>	<b>1,305</b>	<b>26.3 %</b>	<b>50.4</b>	<b>63.4</b>	<b>25.7 %</b>	<b>914</b>	<b>1,114</b>	<b>88.5 %</b>	<b>85.4 %</b>

## MISCELLANEOUS OFFENCES

Area Description	Recorded 2013	Recorded 2014	Variance 2013-2014	Recorded per 10,000 pop 2013	Recorded per 10,000 pop 2014	Per 10,000 pop % Variance 2013 to 2014	Resolved 2013	Resolved 2014	Resolution Rate 2013	Resolution Rate 2014
Hawkes Bay	75	62	-17.3 %	5.0	4.1	-18.0 %	34	37	45.3 %	59.7 %
Tairāwhiti	47	41	-12.8 %	8.5	7.4	-12.7 %	26	27	55.3 %	65.9 %
	<b>122</b>	<b>103</b>	<b>-15.6 %</b>	<b>6.0</b>	<b>5.0</b>	<b>-16.0 %</b>	<b>60</b>	<b>64</b>	<b>49.2 %</b>	<b>62.1 %</b>

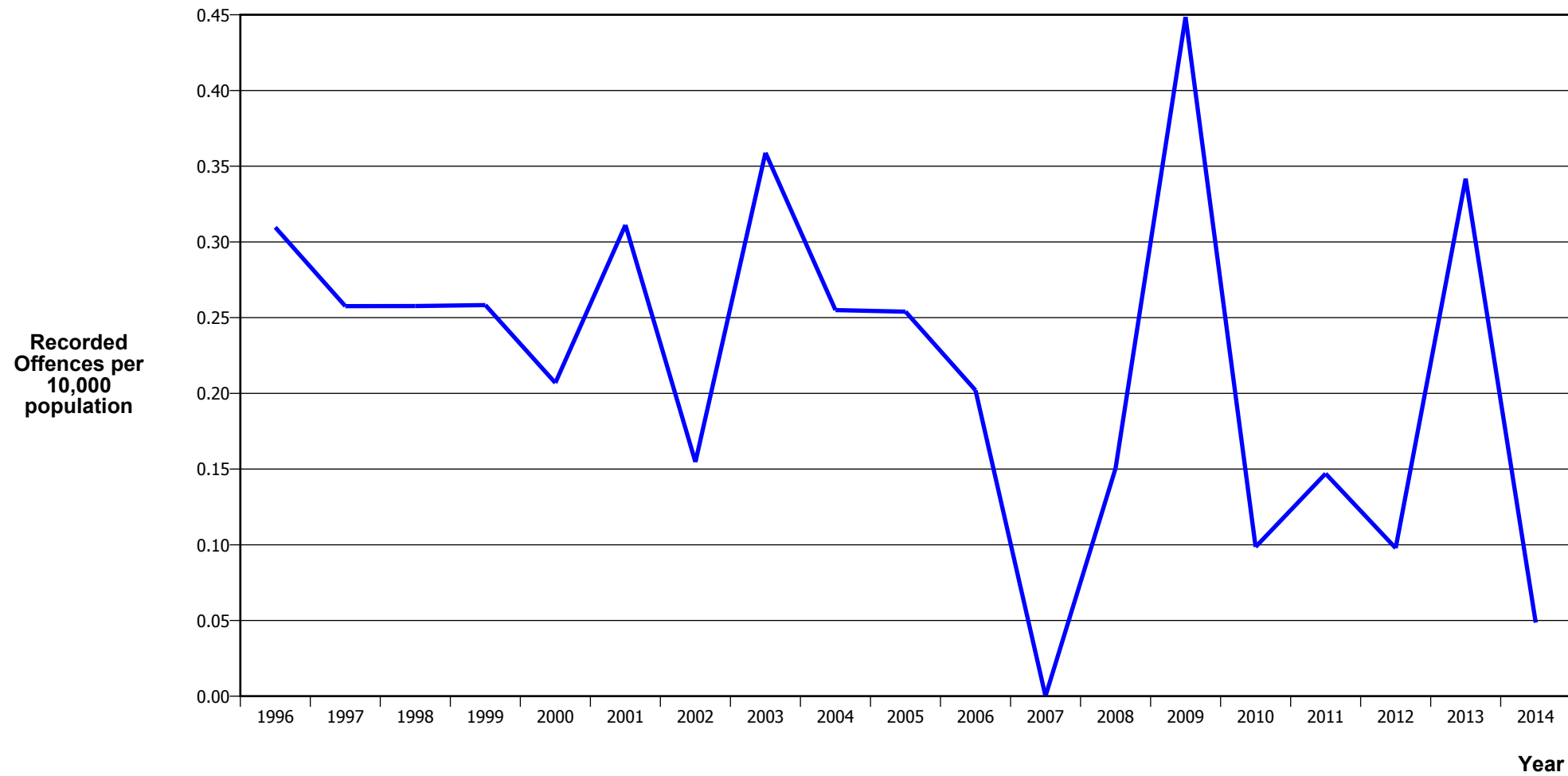
# **CRIME TRENDS**

## TOTAL CRIME



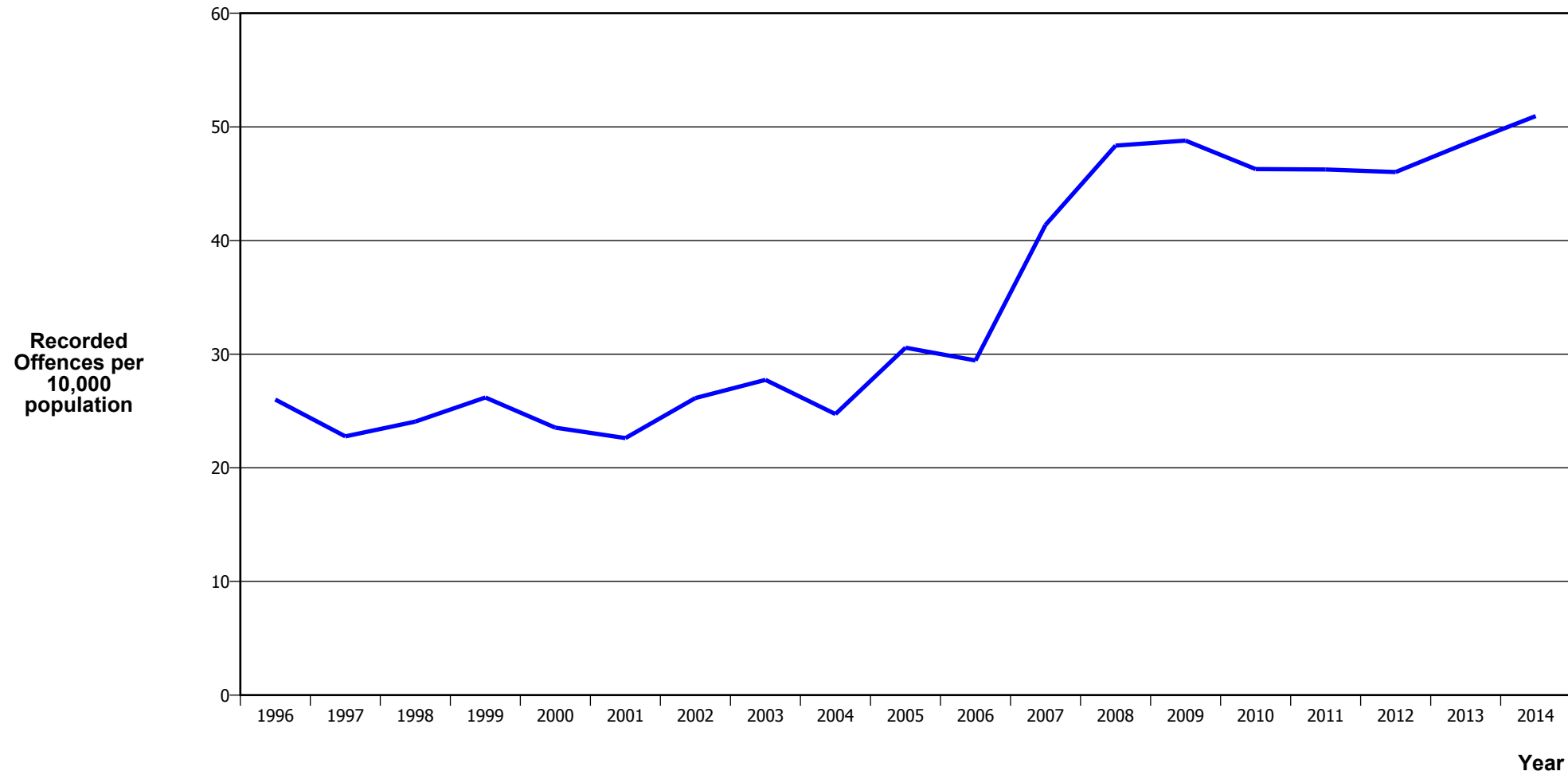
Calendar Year	1996	1997	1998	1999	2000	2001	2002	2003	2004	2005	2006	2007	2008	2009	2010	2011	2012	2013	2014
Recorded Offences	27,966	28,785	27,863	24,107	24,627	24,022	25,382	24,387	22,511	22,957	24,562	24,324	24,007	25,429	25,566	25,058	22,742	23,523	22,344
Recorded per 10,000 Population	1,443.3	1,482.8	1,435.8	1,245.2	1,274.0	1,246.0	1,308.6	1,250.5	1,148.0	1,165.9	1,240.6	1,224.2	1,204.1	1,267.4	1,260.3	1,227.6	1,112.4	1,148.7	1,085.3

## MURDER



Calendar Year	1996	1997	1998	1999	2000	2001	2002	2003	2004	2005	2006	2007	2008	2009	2010	2011	2012	2013	2014
Recorded Offences	6	5	5	5	4	6	3	7	5	5	4	0	3	9	2	3	2	7	1
Recorded per 10,000 Population	0.31	0.26	0.26	0.26	0.21	0.31	0.15	0.36	0.25	0.25	0.20	0.00	0.15	0.45	0.10	0.15	0.10	0.34	0.05

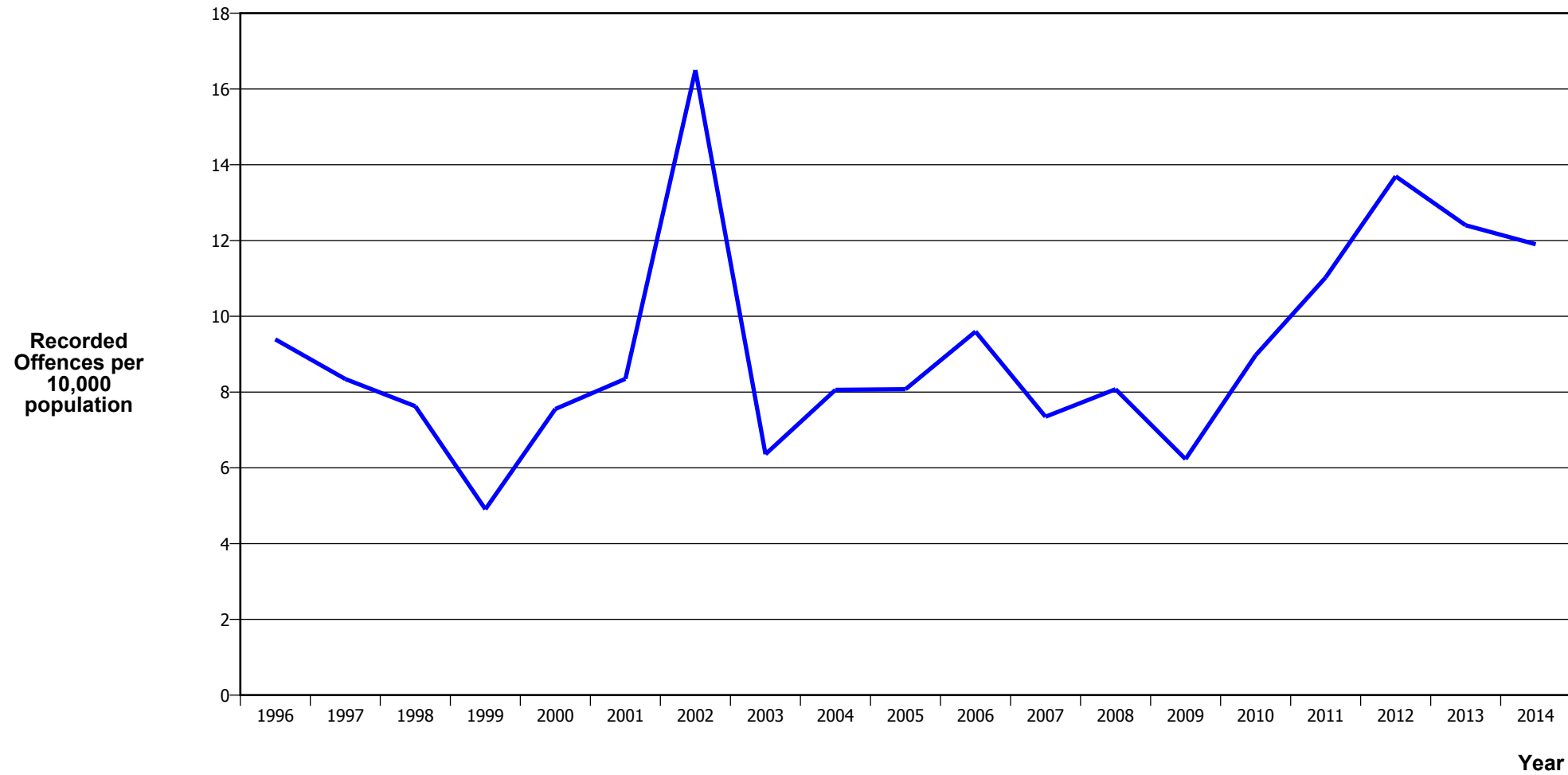
## SERIOUS ASSAULTS RESULTING IN INJURY\*



Calendar Year	1996	1997	1998	1999	2000	2001	2002	2003	2004	2005	2006	2007	2008	2009	2010	2011	2012	2013	2014
Recorded Offence	504	442	467	507	455	436	507	541	485	602	583	822	964	979	939	944	941	994	1,049
Offence Rate per 10K Popn	26.0	22.8	24.1	26.2	23.5	22.6	26.1	27.7	24.7	30.6	29.4	41.4	48.4	48.8	46.3	46.2	46.0	48.5	51.0

\* This measure excludes common assaults

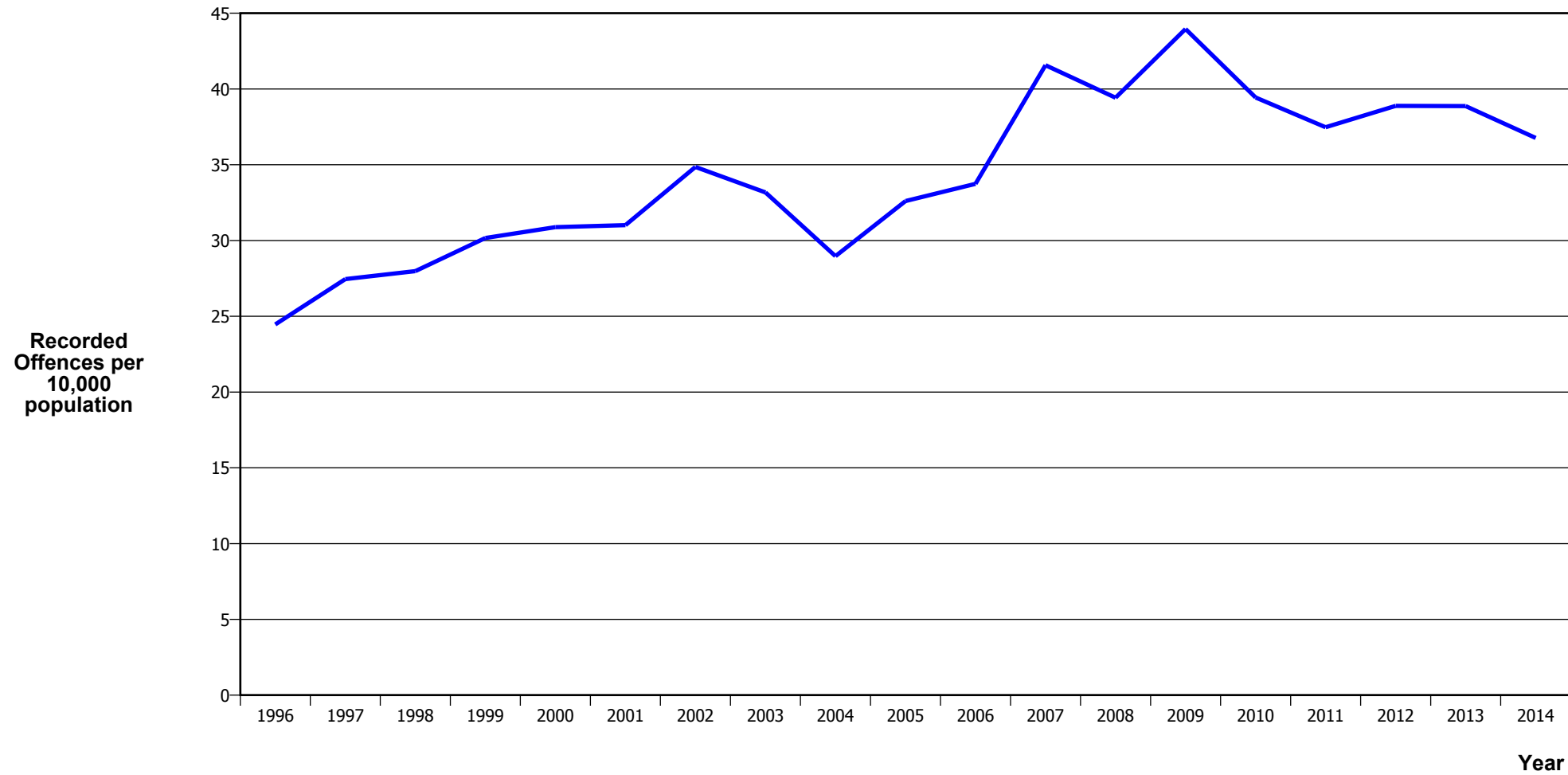
## SEXUAL ASSAULTS



Calendar Year	1996	1997	1998	1999	2000	2001	2002	2003	2004	2005	2006	2007	2008	2009	2010	2011	2012	2013	2014
Recorded Offences	182	162	148	95	146	161	320	124	158	159	190	146	161	125	182	225	280	254	245
Recorded per 10,000 Population	9.4	8.3	7.6	4.9	7.6	8.4	16.5	6.4	8.1	8.1	9.6	7.3	8.1	6.2	9.0	11.0	13.7	12.4	11.9

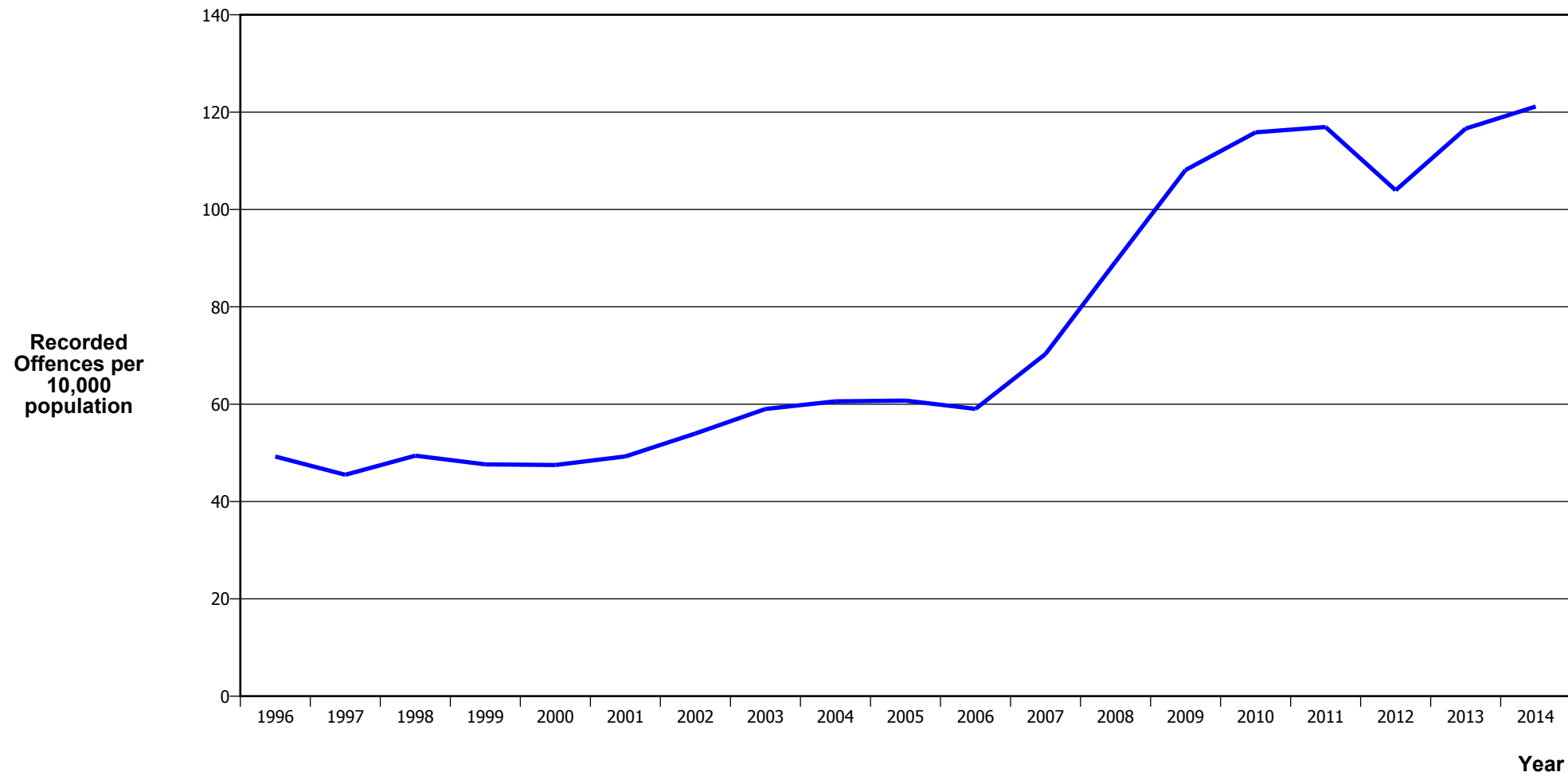


## PUBLIC PLACE ASSAULTS



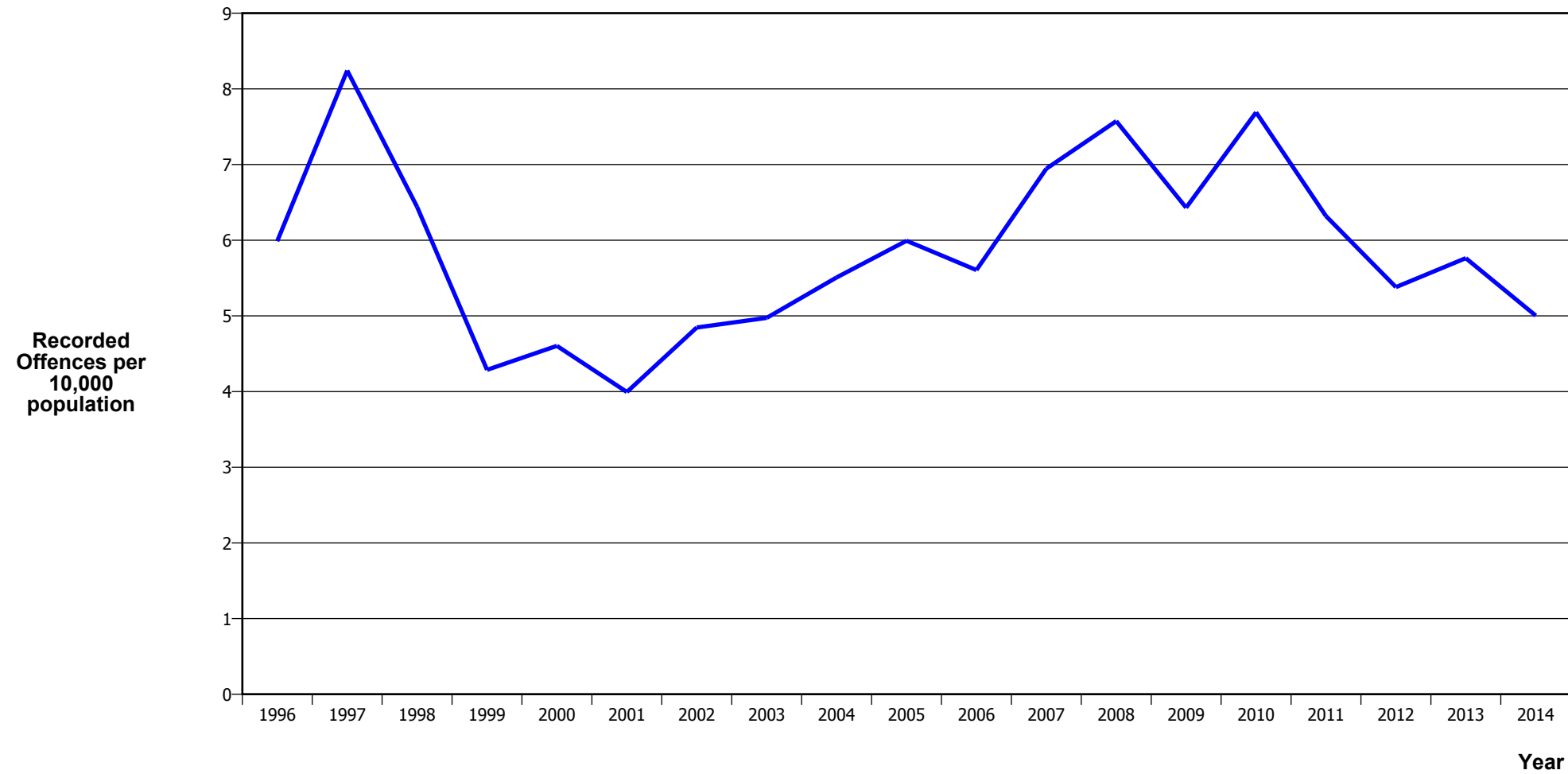
Calendar Year	1996	1997	1998	1999	2000	2001	2002	2003	2004	2005	2006	2007	2008	2009	2010	2011	2012	2013	2014
Recorded Offences	474	533	543	584	597	598	676	647	568	642	668	826	786	882	800	765	795	796	757
Recorded per 10,000 Population	24.5	27.5	28.0	30.2	30.9	31.0	34.9	33.2	29.0	32.6	33.7	41.6	39.4	44.0	39.4	37.5	38.9	38.9	36.8

## DWELLING ASSAULTS



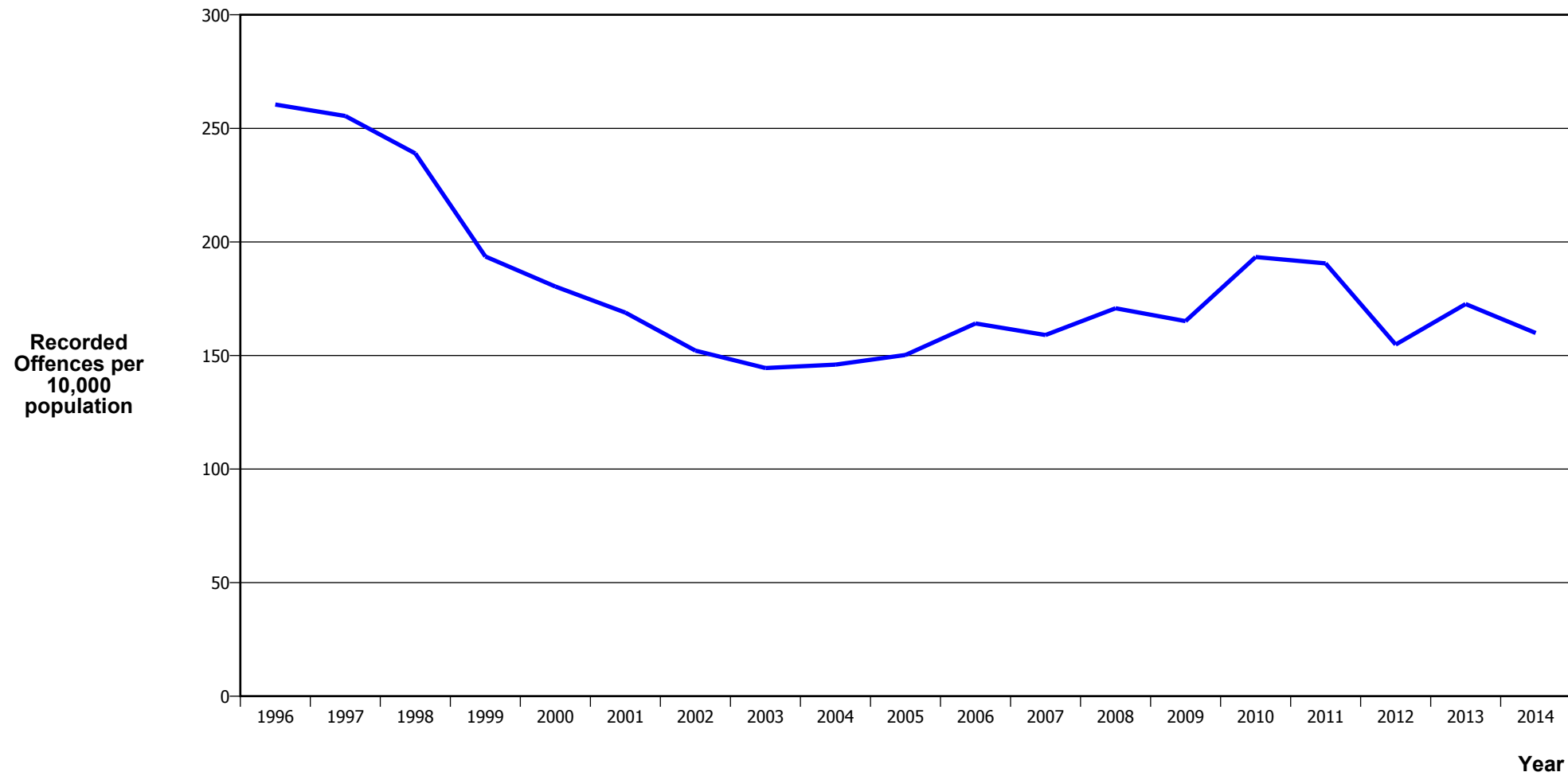
Calendar Year	1996	1997	1998	1999	2000	2001	2002	2003	2004	2005	2006	2007	2008	2009	2010	2011	2012	2013	2014
Recorded Offences	954	883	959	922	918	950	1,047	1,151	1,188	1,196	1,169	1,397	1,780	2,169	2,350	2,387	2,125	2,388	2,494
Recorded per 10,000 Population	49.2	45.5	49.4	47.6	47.5	49.3	54.0	59.0	60.6	60.7	59.0	70.3	89.3	108.1	115.8	116.9	103.9	116.6	121.1

## ROBBERY



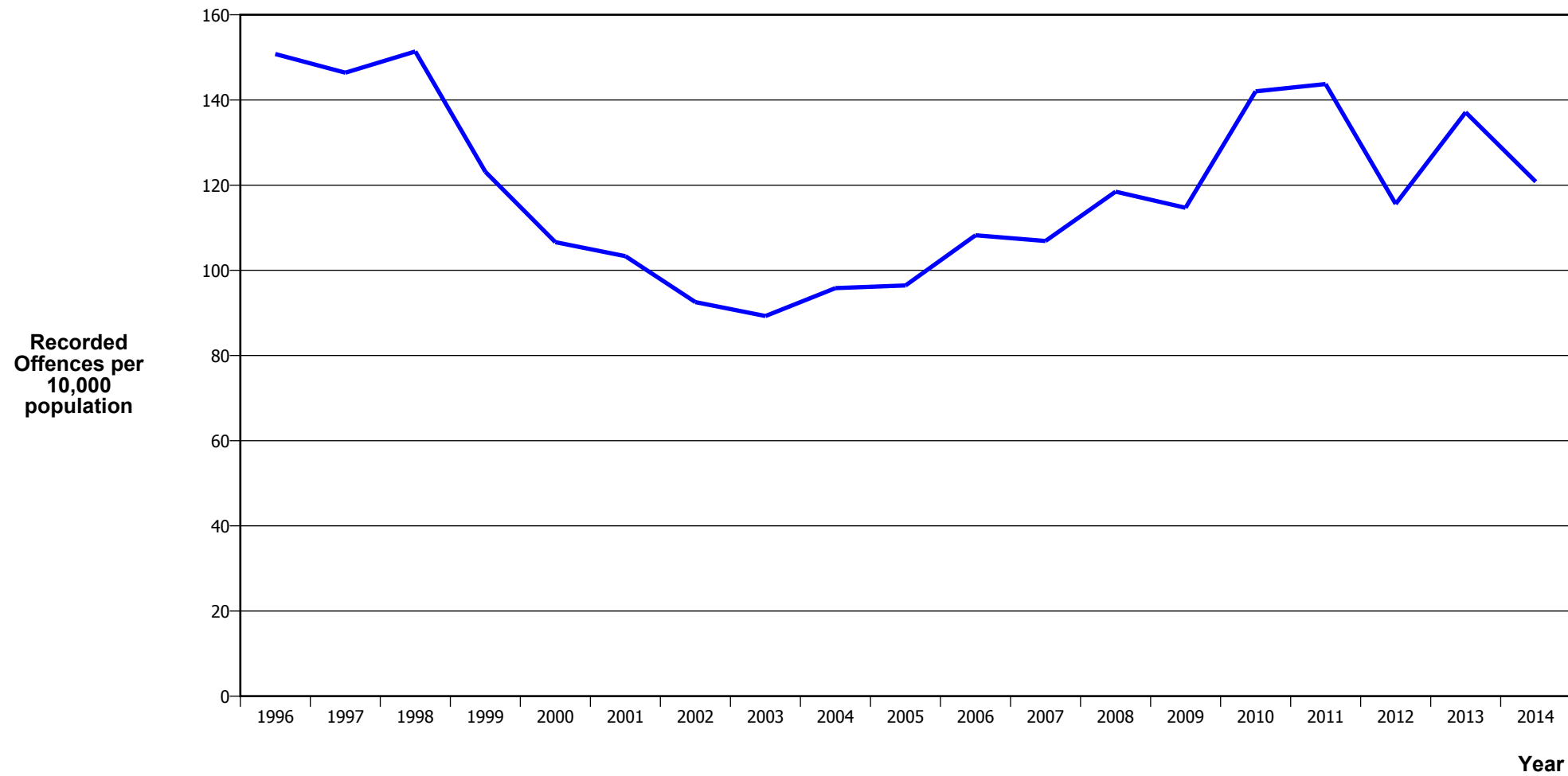
Calendar Year	1996	1997	1998	1999	2000	2001	2002	2003	2004	2005	2006	2007	2008	2009	2010	2011	2012	2013	2014
Recorded Offences	116	160	125	83	89	77	94	97	108	118	111	138	151	129	156	129	110	118	103
Recorded per 10,000 Population	6.0	8.2	6.4	4.3	4.6	4.0	4.8	5.0	5.5	6.0	5.6	6.9	7.6	6.4	7.7	6.3	5.4	5.8	5.0

## BURGLARY (TOTAL)



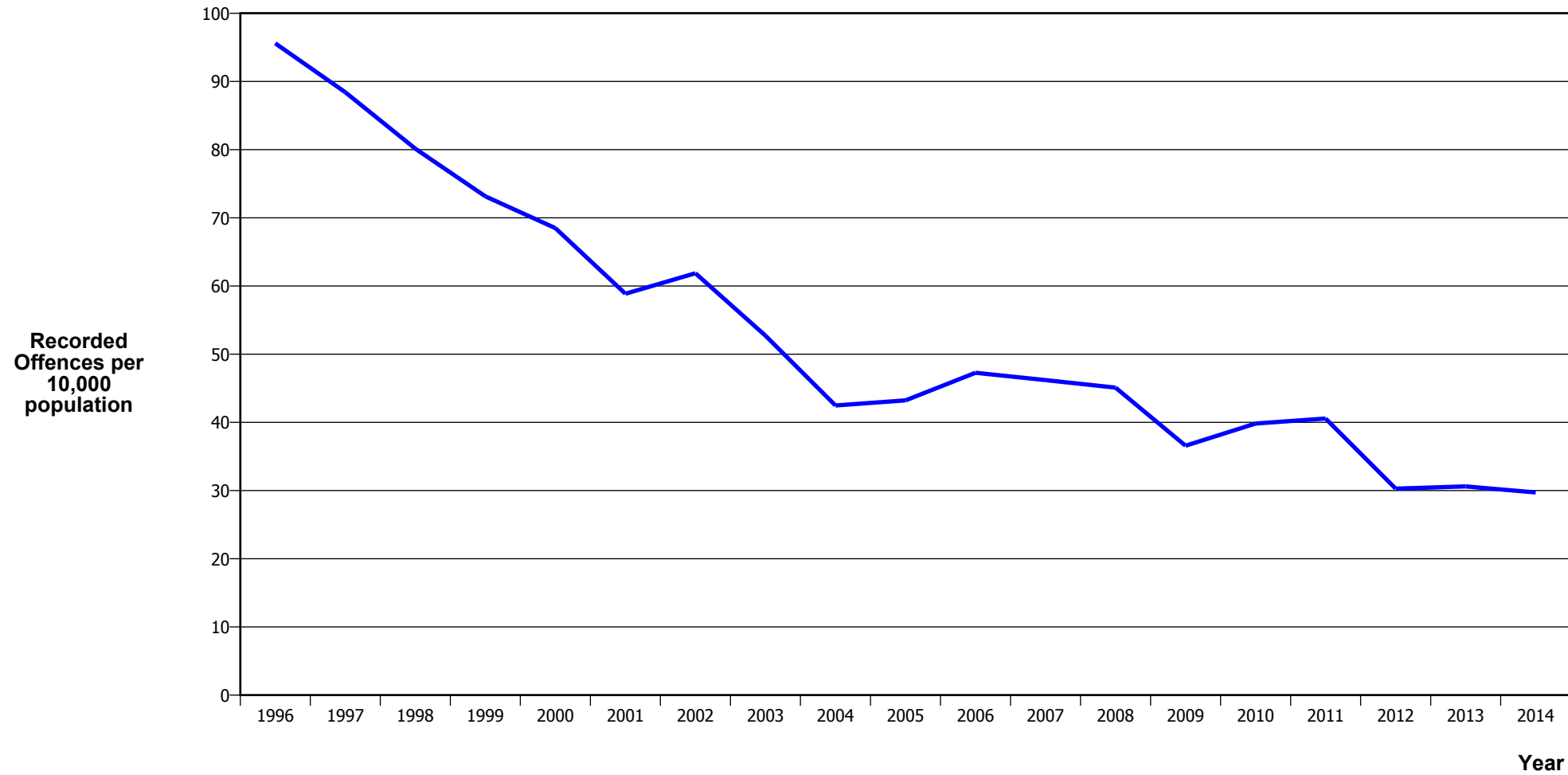
Calendar Year	1996	1997	1998	1999	2000	2001	2002	2003	2004	2005	2006	2007	2008	2009	2010	2011	2012	2013	2014
Recorded Offences	5,047	4,959	4,637	3,748	3,487	3,256	2,951	2,818	2,863	2,958	3,249	3,160	3,405	3,313	3,922	3,890	3,165	3,536	3,292
Recorded per 10,000 Population	260.5	255.5	238.9	193.6	180.4	168.9	152.1	144.5	146.0	150.2	164.1	159.0	170.8	165.1	193.3	190.6	154.8	172.7	159.9

## BURGLARY (DWELLING)



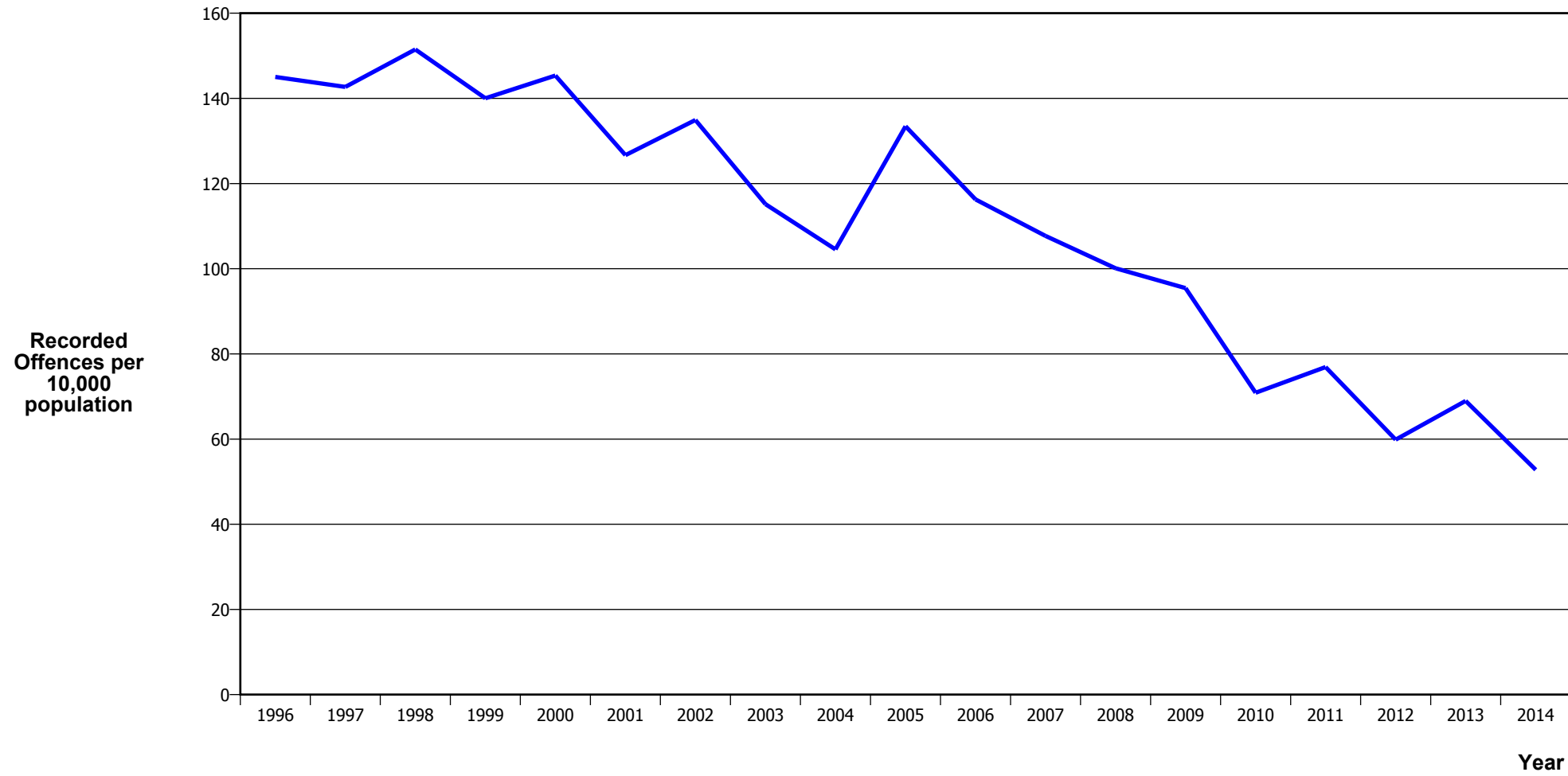
Calendar Year	1996	1997	1998	1999	2000	2001	2002	2003	2004	2005	2006	2007	2008	2009	2010	2011	2012	2013	2014
Recorded Offences	2,922	2,842	2,938	2,384	2,061	1,992	1,795	1,741	1,879	1,899	2,143	2,124	2,362	2,301	2,881	2,934	2,363	2,808	2,487
Recorded per 10,000 Population	150.8	146.4	151.4	123.1	106.6	103.3	92.5	89.3	95.8	96.4	108.2	106.9	118.5	114.7	142.0	143.7	115.6	137.1	120.8

## VEHICLES STOLEN



Calendar Year	1996	1997	1998	1999	2000	2001	2002	2003	2004	2005	2006	2007	2008	2009	2010	2011	2012	2013	2014
Recorded Offences	1,852	1,716	1,555	1,416	1,324	1,135	1,200	1,028	833	851	936	918	899	734	808	828	619	627	612
Recorded per 10,000 Population	95.6	88.4	80.1	73.1	68.5	58.9	61.9	52.7	42.5	43.2	47.3	46.2	45.1	36.6	39.8	40.6	30.3	30.6	29.7

## THEFT EX CAR



Calendar Year	1996	1997	1998	1999	2000	2001	2002	2003	2004	2005	2006	2007	2008	2009	2010	2011	2012	2013	2014
Recorded Offences	2,810	2,770	2,940	2,711	2,810	2,442	2,617	2,246	2,050	2,628	2,302	2,140	1,996	1,915	1,438	1,570	1,224	1,412	1,087
Recorded per 10,000 Population	145.0	142.7	151.5	140.0	145.4	126.7	134.9	115.2	104.5	133.5	116.3	107.7	100.1	95.4	70.9	76.9	59.9	69.0	52.8

## Population Data

Population data is used in this release to calculate crime rates. They have been derived from population estimates as at 30 June each year that have been obtained from Statistics New Zealand.

The estimated resident population is based on the census usually resident population count, with adjustments for residents missed or counted more than once by the census (net census undercount), and for residents temporarily overseas on census night.

These population estimates exclude the number of international students who are studying in New Zealand for less than 12 months.

Year	Population
1996	193,760
1997	194,120
1998	194,060
1999	193,600
2000	193,310
2001	192,800
2002	193,960
2003	195,020
2004	196,090
2005	196,910
2006	197,990
2007	198,700
2008	199,370
2009	200,640
2010	202,850
2011	204,120
2012	204,450
2013	204,780
2014	205,870



## General Definitions

**Recorded Offences:** the number of breaches of the New Zealand law recorded by Police. This includes offences specified in the Crimes Act and other legislations, such as the Summary Offences Act, Local Government Act, etc.

**Resolved Offences:** the number of recorded offences where an offender has been identified and dealt with (e.g. warned, cautioned, prosecuted, etc).

**Resolution Rate:** the proportion of recorded offences that have been resolved.

**Recorded per 10,000 population:** the number of recorded offences for every 10,000 people. This is also referred as the crime rate per 10,000 population.

**ANZSOC:** The Australian and New Zealand Standard Offence Classification. The offence classification is divided into 16 major offence divisions.

## Definition of ANZSOC Divisions

1. Homicide and related offences: Unlawfully kill, attempt to unlawfully kill or conspiracy to kill another person.
2. Acts intended to cause injury: Acts, excluding attempted murder and those resulting in death, which are intended to cause non-fatal injury or harm to another person and where there is no sexual or acquisitive element.
3. Sexual assault and related offences: Acts, or intent of acts, of a sexual nature against another person, which are non-consensual or where consent is proscribed.
4. Dangerous or negligent acts endangering persons: Dangerous or negligent acts which, though not intended to cause harm, actually or potentially result in injury to oneself or another person.
5. Abduction, harassment and other offences against person: Acts intended to threaten or harass, or acts that unlawfully deprive another person of their freedom of movement, that are against that person's will or against the will of any parent, guardian or other person having lawful custody or care of that person.
6. Robbery, extortion and related offences: Acts intended to unlawfully gain money, property or other items of value from, or to cause detriment to, another person by using the threat of force or any other coercive measure.
7. Unlawful entry with intent / burglary, break and enter: The unlawful entry of a structure with the intent to commit an offence, where the entry is either forced or unforced.
8. Theft and related and offences: The unlawful taking or obtaining of money or goods, not involving the use of force or violence, coercion or deception, with intent to permanently or temporarily deprive the owner or possessor of the use of the money or goods, or the receiving or handling of money or goods obtained unlawfully.

9. Fraud, deception and related offences: Offences involving a dishonest act or omission carried out with the purpose of deceiving to obtain a benefit.

10. Illicit drug offences: The possessing, selling, dealing or trafficking, importing or exporting, manufacturing or cultivating of drugs or other substances prohibited under legislation.

11. Prohibited and regulated weapons and explosives offences: Offences involving prohibited or regulated weapons and explosives. Those offences also involving assault, sexual assault or robbery are coded to the relevant group within Assault, Sexual assaults and Robbery respectively.

12. Property damage and environmental pollution: The wilful and unlawful destruction, damage or defacement of public or private property, or the pollution of property or a definable entity held in common by the community.

13. Public order offences: Offences relating personal conduct that involves, or may lead to, a breach of public order or decency, or that is indicative of criminal intent, or that is otherwise regulated or prohibited on moral or ethical grounds. In general these offences do not involve a specific victim or victims; however some offences, such as offensive language and offensive behaviour, may be directed towards a single victim.

14. Traffic and vehicle regulatory offences: Offences relating to vehicles and most forms of traffic, including offences pertaining to the licensing, registration, roadworthiness, or use of vehicles, bicycle offences and pedestrian offences.

15. Offences against justice procedures, government security and government operations: An act or omission that is deemed to be prejudicial to the effective carrying out of justice procedures or any government operations. This includes general government operations as well as those specifically concerned with maintaining government security.

16. Miscellaneous offences: Offences involving the breach of statutory rules or regulations governing activities that are prima facie legal, where such offences are not explicitly dealt with under any other division. If an offence is specified under regulation and involves an act that would be illegal under common law or general criminal legislation, the offence is dealt with under the appropriate generic group.