

# **EASTERN DISTRICT CRIME STATISTICS 2010/2011**



**A Summary of  
Recorded and Resolved Offence  
Statistics**

**POLICE NATIONAL HEADQUARTERS  
October 2011**

ISSN 1178-1599

## **Table of Contents:**

<b>Topic</b>	<b>Page</b>
Report Notes	1
Summary of District Recorded and Resolved Crime by Division	2 - 4
Proportions of Recorded Crime by Division	5
Summary of District Recorded Offences and Rate per 10,000 Population, by Area	6
Summary of Area Recorded Offences and Rate per 10,000 Population, by Division	7 - 10
Crime Trends:	11
Total Crime	12
Murder	13
Serious Assaults Resulting in Injury	14
Public Place Assaults	15
Robbery	16
Burglary	17
Burglary (Dwelling)	18
Vehicles Stolen	19
Theft Ex Car	20
Population Data	21
General Definitions	22 - 23

## **REPORT NOTES:**

Statistics reported in this document are derived from the Police National Intelligence Application (NIA). These Official Statistics for Recorded and Resolved Offences present a snapshot of data in NIA relating to offences that occur within a given year, as at the date 14 days following the end of that year.

Unless the matter is minor where Police attendance is sufficient, a matter that is reported to or discovered by Police where Police believe an offence is likely to have been committed is counted as a recorded offence.

A recorded offence is counted as resolved when Police apprehend an offender and decide how to deal with him/her. (E.g. warn, prosecute, etc.)

Resolution rate is the percentage of recorded offences that are resolved within 14 days of the end of the year being reported on.

If an offence is resolved 15 days or more after the end of the year it will not appear in the Official Crime Statistics for that or any other year. Resolution Rate therefore undercounts the number of cases that Police have resolved. This phenomenon has a more marked impact for some types of offences than others, such as offences that require long investigations (E.g. many serial crimes, burglaries and murders).

When comparing 2010/2011 Statistics with previous years, the reader should also refer to "Report Notes" published in previous years' reports, as previous changes significantly affect year on year trends.

# SUMMARY OF DISTRICT RECORDED AND RESOLVED CRIME, BY DIVISION

## Years ending 30 June

### HOMICIDE AND RELATED OFFENCES

ANZSOC Subdivision Description	Recorded 20082009	Recorded 20092010	Recorded 20102011	Variance 08/09- 09/10	Variance 09/10- 10/11	Resolved 20082009	Resolved 20092010	Resolved 20102011	Resolution Rate 20082009	Resolution Rate 20092010	Resolution Rate 20102011
ATTEMPTED MURDER	0	3	2	0.0 %	-33.3 %	0	2	2	0.0 %	66.7 %	100.0 %
MANSLAUGHTER AND DRIVING CAUSING DEATH	1	6	2	500.0 %	-66.7 %	1	6	2	100.0 %	100.0 %	100.0 %
MURDER	6	6	1	0.0 %	-83.3 %	6	6	1	100.0 %	100.0 %	100.0 %
	<b>7</b>	<b>15</b>	<b>5</b>	<b>114.3 %</b>	<b>-66.7 %</b>	<b>7</b>	<b>14</b>	<b>5</b>	<b>100.0 %</b>	<b>93.3 %</b>	<b>100.0 %</b>

### ACTS INTENDED TO CAUSE INJURY

ANZSOC Subdivision Description	Recorded 20082009	Recorded 20092010	Recorded 20102011	Variance 08/09- 09/10	Variance 09/10- 10/11	Resolved 20082009	Resolved 20092010	Resolved 20102011	Resolution Rate 20082009	Resolution Rate 20092010	Resolution Rate 20102011
ASSAULT	3,302	3,352	3,505	1.5 %	4.6 %	2,641	2,662	2,937	80.0 %	79.4 %	83.8 %
OTHER ACTS INTENDED TO CAUSE INJURY	1	0	3	-100.0 %	0.0 %	1	0	2	100.0 %	0.0 %	66.7 %
	<b>3,303</b>	<b>3,352</b>	<b>3,508</b>	<b>1.5 %</b>	<b>4.7 %</b>	<b>2,642</b>	<b>2,662</b>	<b>2,939</b>	<b>80.0 %</b>	<b>79.4 %</b>	<b>83.8 %</b>

### SEXUAL ASSAULT AND RELATED OFFENCES

ANZSOC Subdivision Description	Recorded 20082009	Recorded 20092010	Recorded 20102011	Variance 08/09- 09/10	Variance 09/10- 10/11	Resolved 20082009	Resolved 20092010	Resolved 20102011	Resolution Rate 20082009	Resolution Rate 20092010	Resolution Rate 20102011
NON-ASSAULTIVE SEXUAL OFFENCES	6	3	5	-50.0 %	66.7 %	5	1	4	83.3 %	33.3 %	80.0 %
SEXUAL ASSAULT	146	158	194	8.2 %	22.8 %	77	82	103	52.7 %	51.9 %	53.1 %
	<b>152</b>	<b>161</b>	<b>199</b>	<b>5.9 %</b>	<b>23.6 %</b>	<b>82</b>	<b>83</b>	<b>107</b>	<b>53.9 %</b>	<b>51.6 %</b>	<b>53.8 %</b>

### DANGEROUS OR NEGLIGENT ACTS ENDANGERING PERSONS

ANZSOC Subdivision Description	Recorded 20082009	Recorded 20092010	Recorded 20102011	Variance 08/09- 09/10	Variance 09/10- 10/11	Resolved 20082009	Resolved 20092010	Resolved 20102011	Resolution Rate 20082009	Resolution Rate 20092010	Resolution Rate 20102011
OTHER DANGEROUS OR NEGLIGENT ACTS ENDANGERING PERSONS	61	68	58	11.5 %	-14.7 %	37	40	36	60.7 %	58.8 %	62.1 %
	<b>61</b>	<b>68</b>	<b>58</b>	<b>11.5 %</b>	<b>-14.7 %</b>	<b>37</b>	<b>40</b>	<b>36</b>	<b>60.7 %</b>	<b>58.8 %</b>	<b>62.1 %</b>

### ABDUCTION, HARASSMENT AND OTHER RELATED OFFENCES AGAINST A PERSON

ANZSOC Subdivision Description	Recorded 20082009	Recorded 20092010	Recorded 20102011	Variance 08/09- 09/10	Variance 09/10- 10/11	Resolved 20082009	Resolved 20092010	Resolved 20102011	Resolution Rate 20082009	Resolution Rate 20092010	Resolution Rate 20102011
ABDUCTION AND KIDNAPPING	15	13	22	-13.3 %	69.2 %	11	6	11	73.3 %	46.2 %	50.0 %
HARASSMENT AND THREATENING BEHAVIOUR	684	848	975	24.0 %	15.0 %	453	582	757	66.2 %	68.6 %	77.6 %
	<b>699</b>	<b>861</b>	<b>997</b>	<b>23.2 %</b>	<b>15.8 %</b>	<b>464</b>	<b>588</b>	<b>768</b>	<b>66.4 %</b>	<b>68.3 %</b>	<b>77.0 %</b>

### ROBBERY, EXTORTION AND RELATED OFFENCES

ANZSOC Subdivision Description	Recorded 20082009	Recorded 20092010	Recorded 20102011	Variance 08/09- 09/10	Variance 09/10- 10/11	Resolved 20082009	Resolved 20092010	Resolved 20102011	Resolution Rate 20082009	Resolution Rate 20092010	Resolution Rate 20102011
BLACKMAIL AND EXTORTION	5	5	12	0.0 %	140.0 %	3	1	7	60.0 %	20.0 %	58.3 %
ROBBERY	143	150	132	4.9 %	-12.0 %	64	65	61	44.8 %	43.3 %	46.2 %
	<b>148</b>	<b>155</b>	<b>144</b>	<b>4.7 %</b>	<b>-7.1 %</b>	<b>67</b>	<b>66</b>	<b>68</b>	<b>45.3 %</b>	<b>42.6 %</b>	<b>47.2 %</b>

### UNLAWFUL ENTRY WITH INTENT/BURGLARY, BREAK AND ENTER

ANZSOC Subdivision Description	Recorded 20082009	Recorded 20092010	Recorded 20102011	Variance 08/09- 09/10	Variance 09/10- 10/11	Resolved 20082009	Resolved 20092010	Resolved 20102011	Resolution Rate 20082009	Resolution Rate 20092010	Resolution Rate 20102011
UNLAWFUL ENTRY WITH INTENT/BURGLARY, BREAK AND ENTER	3,481	3,564	3,827	2.4 %	7.4 %	723	678	677	20.8 %	19.0 %	17.7 %
	<b>3,481</b>	<b>3,564</b>	<b>3,827</b>	<b>2.4 %</b>	<b>7.4 %</b>	<b>723</b>	<b>678</b>	<b>677</b>	<b>20.8 %</b>	<b>19.0 %</b>	<b>17.7 %</b>

# SUMMARY OF DISTRICT RECORDED AND RESOLVED CRIME, BY DIVISION

## Years ending 30 June

### THEFT AND RELATED OFFENCES

ANZSOC Subdivision Description	Recorded 20082009	Recorded 20092010	Recorded 20102011	Variance 08/09- 09/10	Variance 09/10- 10/11	Resolved 20082009	Resolved 20092010	Resolved 20102011	Resolution Rate 20082009	Resolution Rate 20092010	Resolution Rate 20102011
ILLEGAL USE OF PROPERTY (EXCEPT MOTOR VEHICLES)	384	377	350	-1.8 %	-7.2 %	20	20	28	5.2 %	5.3 %	8.0 %
MOTOR VEHICLE THEFT AND RELATED OFFENCES	2,685	2,470	2,403	-8.0 %	-2.7 %	455	394	392	16.9 %	16.0 %	16.3 %
RECEIVE OR HANDLE PROCEEDS OF CRIME	164	129	151	-21.3 %	17.1 %	155	125	147	94.5 %	96.9 %	97.4 %
THEFT (EXCEPT MOTOR VEHICLES)	3,773	4,145	3,974	9.9 %	-4.1 %	1,487	1,665	1,626	39.4 %	40.2 %	40.9 %
	<b>7,006</b>	<b>7,121</b>	<b>6,878</b>	<b>1.6 %</b>	<b>-3.4 %</b>	<b>2,117</b>	<b>2,204</b>	<b>2,193</b>	<b>30.2 %</b>	<b>31.0 %</b>	<b>31.9 %</b>

### FRAUD, DECEPTION AND RELATED OFFENCES

ANZSOC Subdivision Description	Recorded 20082009	Recorded 20092010	Recorded 20102011	Variance 08/09- 09/10	Variance 09/10- 10/11	Resolved 20082009	Resolved 20092010	Resolved 20102011	Resolution Rate 20082009	Resolution Rate 20092010	Resolution Rate 20102011
DECEPTIVE BUSINESS/GOVERNMENT PRACTICES	5	2	1	-60.0 %	-50.0 %	3	2	0	60.0 %	100.0 %	0.0 %
FORGERY AND COUNTERFEITING	32	46	16	43.8 %	-65.2 %	20	20	11	62.5 %	43.5 %	68.8 %
OBTAIN BENEFIT BY DECEPTION	540	383	470	-29.1 %	22.7 %	335	234	336	62.0 %	61.1 %	71.5 %
OTHER FRAUD AND DECEPTION OFFENCES	18	23	40	27.8 %	73.9 %	7	14	25	38.9 %	60.9 %	62.5 %
	<b>595</b>	<b>454</b>	<b>527</b>	<b>-23.7 %</b>	<b>16.1 %</b>	<b>365</b>	<b>270</b>	<b>372</b>	<b>61.3 %</b>	<b>59.5 %</b>	<b>70.6 %</b>

### ILLICIT DRUG OFFENCES

ANZSOC Subdivision Description	Recorded 20082009	Recorded 20092010	Recorded 20102011	Variance 08/09- 09/10	Variance 09/10- 10/11	Resolved 20082009	Resolved 20092010	Resolved 20102011	Resolution Rate 20082009	Resolution Rate 20092010	Resolution Rate 20102011
DEAL OR TRAFFIC IN ILLICIT DRUGS	118	177	115	50.0 %	-35.0 %	109	168	100	92.4 %	94.9 %	87.0 %
IMPORT OR EXPORT ILLICIT DRUGS	0	17	1	0.0 %	-94.1 %	0	17	0	0.0 %	100.0 %	0.0 %
MANUFACTURE OR CULTIVATE ILLICIT DRUGS	425	375	405	-11.8 %	8.0 %	209	211	186	49.2 %	56.3 %	45.9 %
OTHER ILLICIT DRUG OFFENCES	296	235	224	-20.6 %	-4.7 %	283	230	207	95.6 %	97.9 %	92.4 %
POSSESS AND/OR USE ILLICIT DRUGS	630	594	461	-5.7 %	-22.4 %	577	551	416	91.6 %	92.8 %	90.2 %
	<b>1,469</b>	<b>1,398</b>	<b>1,206</b>	<b>-4.8 %</b>	<b>-13.7 %</b>	<b>1,178</b>	<b>1,177</b>	<b>909</b>	<b>80.2 %</b>	<b>84.2 %</b>	<b>75.4 %</b>

### PROHIBITED AND REGULATED WEAPONS AND EXPLOSIVES OFFENCES

ANZSOC Subdivision Description	Recorded 20082009	Recorded 20092010	Recorded 20102011	Variance 08/09- 09/10	Variance 09/10- 10/11	Resolved 20082009	Resolved 20092010	Resolved 20102011	Resolution Rate 20082009	Resolution Rate 20092010	Resolution Rate 20102011
REGULATED WEAPONS/EXPLOSIVES OFFENCES	486	557	509	14.6 %	-8.6 %	430	491	449	88.5 %	88.2 %	88.2 %
	<b>486</b>	<b>557</b>	<b>509</b>	<b>14.6 %</b>	<b>-8.6 %</b>	<b>430</b>	<b>491</b>	<b>449</b>	<b>88.5 %</b>	<b>88.2 %</b>	<b>88.2 %</b>

### PROPERTY DAMAGE AND ENVIRONMENTAL POLLUTION

ANZSOC Subdivision Description	Recorded 20082009	Recorded 20092010	Recorded 20102011	Variance 08/09- 09/10	Variance 09/10- 10/11	Resolved 20082009	Resolved 20092010	Resolved 20102011	Resolution Rate 20082009	Resolution Rate 20092010	Resolution Rate 20102011
ENVIRONMENTAL POLLUTION	16	19	9	18.8 %	-52.6 %	9	6	7	56.3 %	31.6 %	77.8 %
PROPERTY DAMAGE	3,339	3,490	3,423	4.5 %	-1.9 %	1,057	1,121	1,265	31.7 %	32.1 %	37.0 %
	<b>3,355</b>	<b>3,509</b>	<b>3,432</b>	<b>4.6 %</b>	<b>-2.2 %</b>	<b>1,066</b>	<b>1,127</b>	<b>1,272</b>	<b>31.8 %</b>	<b>32.1 %</b>	<b>37.1 %</b>

### PUBLIC ORDER OFFENCES

ANZSOC Subdivision Description	Recorded 20082009	Recorded 20092010	Recorded 20102011	Variance 08/09- 09/10	Variance 09/10- 10/11	Resolved 20082009	Resolved 20092010	Resolved 20102011	Resolution Rate 20082009	Resolution Rate 20092010	Resolution Rate 20102011
DISORDERLY CONDUCT	1,935	2,246	2,295	16.1 %	2.2 %	1,623	1,860	1,976	83.9 %	82.8 %	86.1 %
OFFENSIVE CONDUCT	136	175	127	28.7 %	-27.4 %	95	118	85	69.9 %	67.4 %	66.9 %
REGULATED PUBLIC ORDER OFFENCES	1,063	872	606	-18.0 %	-30.5 %	1,033	810	577	97.2 %	92.9 %	95.2 %
	<b>3,134</b>	<b>3,293</b>	<b>3,028</b>	<b>5.1 %</b>	<b>-8.0 %</b>	<b>2,751</b>	<b>2,788</b>	<b>2,638</b>	<b>87.8 %</b>	<b>84.7 %</b>	<b>87.1 %</b>

**SUMMARY OF DISTRICT RECORDED AND RESOLVED CRIME, BY DIVISION**  
**Years ending 30 June**

**OFFENCES AGAINST JUSTICE PROCEDURES, GOVERNMENT SECURITY AND GOVERNMENT OPERATIONS**

ANZSOC Subdivision Description	Recorded 20082009	Recorded 20092010	Recorded 20102011	Variance 08/09- 09/10	Variance 09/10- 10/11	Resolved 20082009	Resolved 20092010	Resolved 20102011	Resolution Rate 20082009	Resolution Rate 20092010	Resolution Rate 20102011
BREACH OF COMMUNITY-BASED ORDER	148	125	177	-15.5 %	41.6 %	143	124	172	96.6 %	99.2 %	97.2 %
BREACH OF CUSTODIAL ORDER OFFENCES	37	39	37	5.4 %	-5.1 %	34	35	37	91.9 %	89.7 %	100.0 %
BREACH OF VIOLENCE AND NON-VIOLENCE RESTRAINING ORDERS	456	484	636	6.1 %	31.4 %	395	412	541	86.6 %	85.1 %	85.1 %
OFFENCES AGAINST GOVERNMENT OPERATIONS	17	16	12	-5.9 %	-25.0 %	7	9	7	41.2 %	56.3 %	58.3 %
OFFENCES AGAINST JUSTICE PROCEDURES	420	353	372	-16.0 %	5.4 %	407	342	360	96.9 %	96.9 %	96.8 %
OFFENCES AGAINST JUSTICE PROCEDURES, GOVERNMENT SECURITY AND GOVERNMENT OPERATIONS NOT FURTHER DEFINED	0	2	2	0.0 %	0.0 %	0	1	2	0.0 %	50.0 %	100.0 %
	<b>1,078</b>	<b>1,019</b>	<b>1,236</b>	<b>-5.5 %</b>	<b>21.3 %</b>	<b>986</b>	<b>923</b>	<b>1,119</b>	<b>91.5 %</b>	<b>90.6 %</b>	<b>90.5 %</b>

**MISCELLANEOUS OFFENCES**

ANZSOC Subdivision Description	Recorded 20082009	Recorded 20092010	Recorded 20102011	Variance 08/09- 09/10	Variance 09/10- 10/11	Resolved 20082009	Resolved 20092010	Resolved 20102011	Resolution Rate 20082009	Resolution Rate 20092010	Resolution Rate 20102011
COMMERCIAL/INDUSTRY/FINANCIAL REGULATION	8	1	3	-87.5 %	200.0 %	8	0	3	100.0 %	0.0 %	100.0 %
DEFAMATION, LIBEL AND PRIVACY OFFENCES	9	9	5	0.0 %	-44.4 %	6	4	2	66.7 %	44.4 %	40.0 %
OTHER MISCELLANEOUS OFFENCES	72	67	79	-6.9 %	17.9 %	49	41	51	68.1 %	61.2 %	64.6 %
PUBLIC HEALTH AND SAFETY OFFENCES	2	5	3	150.0 %	-40.0 %	0	3	2	0.0 %	60.0 %	66.7 %
	<b>91</b>	<b>82</b>	<b>90</b>	<b>-9.9 %</b>	<b>9.8 %</b>	<b>63</b>	<b>48</b>	<b>58</b>	<b>69.2 %</b>	<b>58.5 %</b>	<b>64.4 %</b>

<b>TOTAL</b>	<b>25,065</b>	<b>25,609</b>	<b>25,644</b>	<b>2.2 %</b>	<b>0.1 %</b>	<b>12,978</b>	<b>13,159</b>	<b>13,610</b>	<b>51.8 %</b>	<b>51.4 %</b>	<b>53.1 %</b>
--------------	---------------	---------------	---------------	--------------	--------------	---------------	---------------	---------------	---------------	---------------	---------------

# PROPORTION OF RECORDED CRIME BY DIVISION

Years ending 30 June

ANZSOC Division Description	Proportions Recorded 20082009	Recorded 20082009	Proportions Recorded 20092010	Recorded 20092010	Proportions Recorded 20102011	Recorded 20102011
HOMICIDE AND RELATED OFFENCES	0.0 %	7	0.1 %	15	0.0 %	5
ACTS INTENDED TO CAUSE INJURY	13.2 %	3,303	13.1 %	3,352	13.7 %	3,508
SEXUAL ASSAULT AND RELATED OFFENCES	0.6 %	152	0.6 %	161	0.8 %	199
DANGEROUS OR NEGLIGENT ACTS ENDANGERING PERSONS	0.2 %	61	0.3 %	68	0.2 %	58
ABDUCTION, HARASSMENT AND OTHER RELATED OFFENCES AGAINST A PERSON	2.8 %	699	3.4 %	861	3.9 %	997
ROBBERY, EXTORTION AND RELATED OFFENCES	0.6 %	148	0.6 %	155	0.6 %	144
UNLAWFUL ENTRY WITH INTENT/BURGLARY, BREAK AND ENTER	13.9 %	3,481	13.9 %	3,564	14.9 %	3,827
THEFT AND RELATED OFFENCES	28.0 %	7,006	27.8 %	7,121	26.8 %	6,878
FRAUD, DECEPTION AND RELATED OFFENCES	2.4 %	595	1.8 %	454	2.1 %	527
ILLICIT DRUG OFFENCES	5.9 %	1,469	5.5 %	1,398	4.7 %	1,206
PROHIBITED AND REGULATED WEAPONS AND EXPLOSIVES OFFENCES	1.9 %	486	2.2 %	557	2.0 %	509
PROPERTY DAMAGE AND ENVIRONMENTAL POLLUTION	13.4 %	3,355	13.7 %	3,509	13.4 %	3,432
PUBLIC ORDER OFFENCES	12.5 %	3,134	12.9 %	3,293	11.8 %	3,028
OFFENCES AGAINST JUSTICE PROCEDURES, GOVERNMENT SECURITY AND GOVERNMENT OPERATIONS	4.3 %	1,078	4.0 %	1,019	4.8 %	1,236
MISCELLANEOUS OFFENCES	0.4 %	91	0.3 %	82	0.4 %	90
	<b>100.0 %</b>	<b>25,065</b>	<b>100.0 %</b>	<b>25,609</b>	<b>100.0 %</b>	<b>25,644</b>

**SUMMARY OF DISTRICT RECORDED OFFENCES AND RATE PER 10,000 POPULATION, BY AREA**  
**years ending 30 June**

**TOTAL CRIME**

<b>Area Description</b>	<b>Recorded 20092010</b>	<b>Recorded 20102011</b>	<b>Variance 09/10- 10/11</b>	<b>Recorded per 10,000 pop 20092010</b>	<b>Recorded per 10,000 pop 20102011</b>	<b>per 10,000 pop % Variance 09/10 to 10/11</b>
Gisborne	7,968	8,677	8.9 %	1,453.2	1,571.1	8.1 %
Hastings	9,461	9,170	-3.1 %	1,156.1	1,107.4	-4.2 %
Napier	8,180	7,797	-4.7 %	1,291.3	1,217.5	-5.7 %
<b>Total</b>	<b>25,609</b>	<b>25,644</b>	<b>0.1 %</b>	<b>1,280.4</b>	<b>1,269.0</b>	<b>-0.9 %</b>



**SUMMARY OF AREA RECORDED OFFENCES AND RATE PER 10,000 POPULATION, BY DIVISION**  
**years ending 30 June**

**HOMICIDE AND RELATED OFFENCES**

Area Description	Recorded 20092010	Recorded 20102011	Variance 09/10- 10/11	Recorded per 10,000 pop 20092010	Recorded per 10,000 pop 20102011	per 10,000 pop % Variance 09/10 to 10/11
Gisborne	5	1	-80.0 %	0.9	0.2	-80.1 %
Hastings	5	3	-40.0 %	0.6	0.4	-40.7 %
Napier	5	1	-80.0 %	0.8	0.2	-80.2 %
<b>Total</b>	<b>15</b>	<b>5</b>	<b>-66.7 %</b>	<b>0.7</b>	<b>0.2</b>	<b>-67.0 %</b>

**ACTS INTENDED TO CAUSE INJURY**

Area Description	Recorded 20092010	Recorded 20102011	Variance 09/10- 10/11	Recorded per 10,000 pop 20092010	Recorded per 10,000 pop 20102011	per 10,000 pop % Variance 09/10 to 10/11
Gisborne	1,120	1,423	27.1 %	204.3	257.6	26.1 %
Hastings	1,084	1,077	-0.6 %	132.5	130.1	-1.8 %
Napier	1,148	1,008	-12.2 %	181.2	157.4	-13.1 %
<b>Total</b>	<b>3,352</b>	<b>3,508</b>	<b>4.7 %</b>	<b>167.6</b>	<b>173.6</b>	<b>3.6 %</b>

**SEXUAL ASSAULT AND RELATED OFFENCES**

Area Description	Recorded 20092010	Recorded 20102011	Variance 09/10- 10/11	Recorded per 10,000 pop 20092010	Recorded per 10,000 pop 20102011	per 10,000 pop % Variance 09/10 to 10/11
Gisborne	28	55	96.4 %	5.1	10.0	95.0 %
Hastings	82	82	0.0 %	10.0	9.9	-1.2 %
Napier	51	62	21.6 %	8.1	9.7	20.2 %
<b>Total</b>	<b>161</b>	<b>199</b>	<b>23.6 %</b>	<b>8.0</b>	<b>9.8</b>	<b>22.3 %</b>

**DANGEROUS OR NEGLIGENT ACTS ENDANGERING  
PERSONS**

Area Description	Recorded 20092010	Recorded 20102011	Variance 09/10- 10/11	Recorded per 10,000 pop 20092010	Recorded per 10,000 pop 20102011	per 10,000 pop % Variance 09/10 to 10/11
Gisborne	12	14	16.7 %	2.2	2.5	15.8 %
Hastings	25	22	-12.0 %	3.1	2.7	-13.0 %
Napier	31	22	-29.0 %	4.9	3.4	-29.8 %
<b>Total</b>	<b>68</b>	<b>58</b>	<b>-14.7 %</b>	<b>3.4</b>	<b>2.9</b>	<b>-15.6 %</b>

**SUMMARY OF AREA RECORDED OFFENCES AND RATE PER 10,000 POPULATION, BY DIVISION**  
**years ending 30 June**

**ABDUCTION, HARASSMENT AND OTHER RELATED OFFENCES AGAINST A PERSON**

Area Description	Recorded 20092010	Recorded 20102011	Variance 09/10- 10/11	Recorded per 10,000 pop 20092010	Recorded per 10,000 pop 20102011	per 10,000 pop % Variance 09/10 to 10/11
Gisborne	271	431	59.0 %	49.4	78.0	57.9 %
Hastings	261	282	8.0 %	31.9	34.1	6.8 %
Napier	329	284	-13.7 %	51.9	44.3	-14.6 %
<b>Total</b>	<b>861</b>	<b>997</b>	<b>15.8 %</b>	<b>43.0</b>	<b>49.3</b>	<b>14.6 %</b>

**ROBBERY, EXTORTION AND RELATED OFFENCES**

Area Description	Recorded 20092010	Recorded 20102011	Variance 09/10- 10/11	Recorded per 10,000 pop 20092010	Recorded per 10,000 pop 20102011	per 10,000 pop % Variance 09/10 to 10/11
Gisborne	38	47	23.7 %	6.9	8.5	22.8 %
Hastings	47	61	29.8 %	5.7	7.4	28.3 %
Napier	70	36	-48.6 %	11.1	5.6	-49.1 %
<b>Total</b>	<b>155</b>	<b>144</b>	<b>-7.1 %</b>	<b>7.7</b>	<b>7.1</b>	<b>-8.0 %</b>

**UNLAWFUL ENTRY WITH INTENT/BURGLARY, BREAK AND ENTER**

Area Description	Recorded 20092010	Recorded 20102011	Variance 09/10- 10/11	Recorded per 10,000 pop 20092010	Recorded per 10,000 pop 20102011	per 10,000 pop % Variance 09/10 to 10/11
Gisborne	1,020	1,237	21.3 %	186.0	224.0	20.4 %
Hastings	1,439	1,433	-0.4 %	175.8	173.0	-1.6 %
Napier	1,105	1,157	4.7 %	174.4	180.7	3.6 %
<b>Total</b>	<b>3,564</b>	<b>3,827</b>	<b>7.4 %</b>	<b>178.2</b>	<b>189.4</b>	<b>6.3 %</b>

**THEFT AND RELATED OFFENCES**

Area Description	Recorded 20092010	Recorded 20102011	Variance 09/10- 10/11	Recorded per 10,000 pop 20092010	Recorded per 10,000 pop 20102011	per 10,000 pop % Variance 09/10 to 10/11
Gisborne	2,053	2,076	1.1 %	374.4	375.9	0.4 %
Hastings	2,749	2,429	-11.6 %	335.9	293.3	-12.7 %
Napier	2,319	2,373	2.3 %	366.1	370.5	1.2 %
<b>Total</b>	<b>7,121</b>	<b>6,878</b>	<b>-3.4 %</b>	<b>356.0</b>	<b>340.4</b>	<b>-4.4 %</b>

**SUMMARY OF AREA RECORDED OFFENCES AND RATE PER 10,000 POPULATION, BY DIVISION**  
**years ending 30 June**

**FRAUD, DECEPTION AND RELATED OFFENCES**

Area Description	Recorded 20092010	Recorded 20102011	Variance 09/10- 10/11	Recorded per 10,000 pop 20092010	Recorded per 10,000 pop 20102011	per 10,000 pop % Variance 09/10 to 10/11
Gisborne	110	206	87.3 %	20.1	37.3	85.9 %
Hastings	206	188	-8.7 %	25.2	22.7	-9.8 %
Napier	138	133	-3.6 %	21.8	20.8	-4.7 %
<b>Total</b>	<b>454</b>	<b>527</b>	<b>16.1 %</b>	<b>22.7</b>	<b>26.1</b>	<b>14.9 %</b>

**ILLICIT DRUG OFFENCES**

Area Description	Recorded 20092010	Recorded 20102011	Variance 09/10- 10/11	Recorded per 10,000 pop 20092010	Recorded per 10,000 pop 20102011	per 10,000 pop % Variance 09/10 to 10/11
Gisborne	614	535	-12.9 %	112.0	96.9	-13.5 %
Hastings	406	379	-6.7 %	49.6	45.8	-7.7 %
Napier	378	292	-22.8 %	59.7	45.6	-23.6 %
<b>Total</b>	<b>1,398</b>	<b>1,206</b>	<b>-13.7 %</b>	<b>69.9</b>	<b>59.7</b>	<b>-14.6 %</b>

**PROHIBITED AND REGULATED WEAPONS AND EXPLOSIVES  
OFFENCES**

Area Description	Recorded 20092010	Recorded 20102011	Variance 09/10- 10/11	Recorded per 10,000 pop 20092010	Recorded per 10,000 pop 20102011	per 10,000 pop % Variance 09/10 to 10/11
Gisborne	227	196	-13.7 %	41.4	35.5	-14.3 %
Hastings	174	197	13.2 %	21.3	23.8	11.9 %
Napier	156	116	-25.6 %	24.6	18.1	-26.4 %
<b>Total</b>	<b>557</b>	<b>509</b>	<b>-8.6 %</b>	<b>27.8</b>	<b>25.2</b>	<b>-9.6 %</b>

**PROPERTY DAMAGE AND ENVIRONMENTAL POLLUTION**

Area Description	Recorded 20092010	Recorded 20102011	Variance 09/10- 10/11	Recorded per 10,000 pop 20092010	Recorded per 10,000 pop 20102011	per 10,000 pop % Variance 09/10 to 10/11
Gisborne	1,210	1,100	-9.1 %	220.7	199.2	-9.7 %
Hastings	1,124	1,268	12.8 %	137.3	153.1	11.5 %
Napier	1,175	1,064	-9.4 %	185.5	166.1	-10.4 %
<b>Total</b>	<b>3,509</b>	<b>3,432</b>	<b>-2.2 %</b>	<b>175.4</b>	<b>169.8</b>	<b>-3.2 %</b>

**SUMMARY OF AREA RECORDED OFFENCES AND RATE PER 10,000 POPULATION, BY DIVISION**  
**years ending 30 June**

**PUBLIC ORDER OFFENCES**

Area Description	Recorded 20092010	Recorded 20102011	Variance 09/10- 10/11	Recorded per 10,000 pop 20092010	Recorded per 10,000 pop 20102011	per 10,000 pop % Variance 09/10 to 10/11
Gisborne	897	923	2.9 %	163.6	167.1	2.2 %
Hastings	1,365	1,182	-13.4 %	166.8	142.7	-14.4 %
Napier	1,031	923	-10.5 %	162.8	144.1	-11.4 %
<b>Total</b>	<b>3,293</b>	<b>3,028</b>	<b>-8.0 %</b>	<b>164.6</b>	<b>149.8</b>	<b>-9.0 %</b>

**OFFENCES AGAINST JUSTICE PROCEDURES, GOVERNMENT  
SECURITY AND GOVERNMENT OPERATIONS**

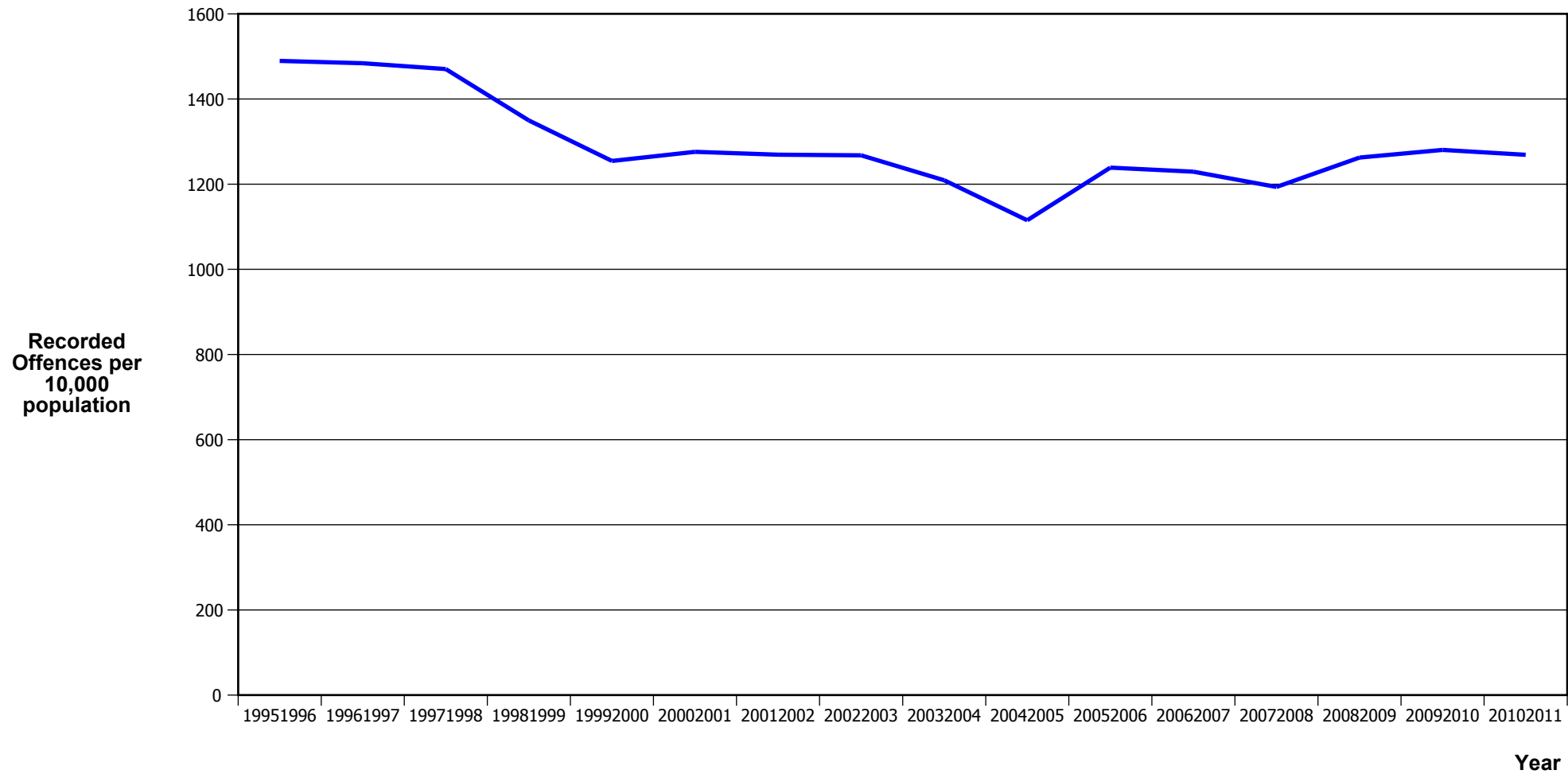
Area Description	Recorded 20092010	Recorded 20102011	Variance 09/10- 10/11	Recorded per 10,000 pop 20092010	Recorded per 10,000 pop 20102011	per 10,000 pop % Variance 09/10 to 10/11
Gisborne	339	410	20.9 %	61.8	74.2	20.1 %
Hastings	471	534	13.4 %	57.6	64.5	12.0 %
Napier	209	292	39.7 %	33.0	45.6	38.2 %
<b>Total</b>	<b>1,019</b>	<b>1,236</b>	<b>21.3 %</b>	<b>50.9</b>	<b>61.2</b>	<b>20.1 %</b>

**MISCELLANEOUS OFFENCES**

Area Description	Recorded 20092010	Recorded 20102011	Variance 09/10- 10/11	Recorded per 10,000 pop 20092010	Recorded per 10,000 pop 20102011	per 10,000 pop % Variance 09/10 to 10/11
Gisborne	24	23	-4.2 %	4.4	4.2	-4.9 %
Hastings	23	33	43.5 %	2.8	4.0	41.8 %
Napier	35	34	-2.9 %	5.5	5.3	-3.9 %
<b>Total</b>	<b>82</b>	<b>90</b>	<b>9.8 %</b>	<b>4.1</b>	<b>4.5</b>	<b>8.6 %</b>

# **CRIME TRENDS**

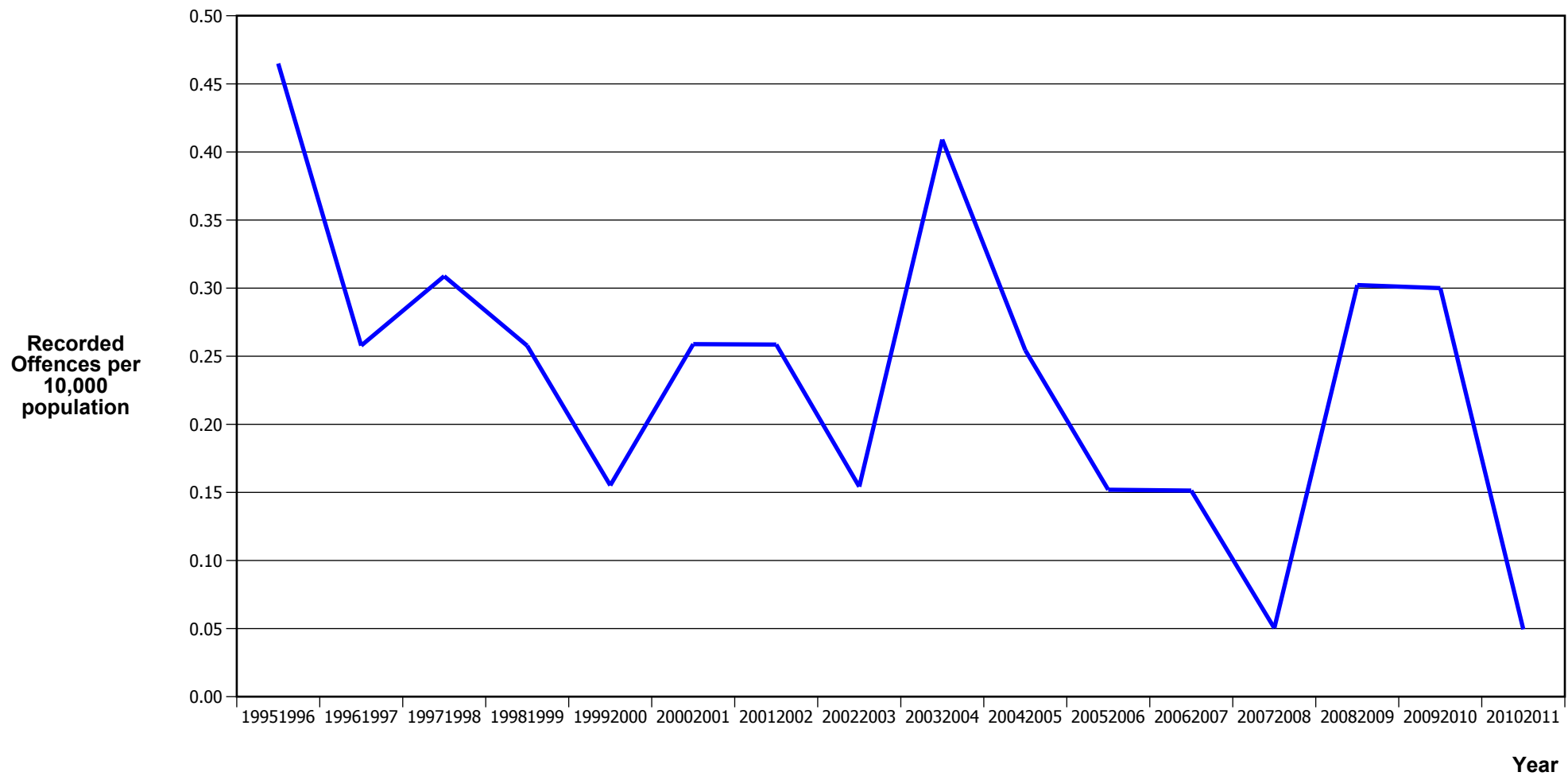
## TOTAL CRIME



Fiscal Year	19951996	19961997	19971998	19981999	19992000	20002001	20012002	20022003	20032004	20042005	20052006	20062007	20072008	20082009	20092010	20102011
Recorded Offences	28,834	28,780	28,569	26,189	24,259	24,647	24,546	24,657	23,647	21,912	24,462	24,367	23,705	25,065	25,609	25,644
Recorded per 10,000 Population	1,489.5	1,484.0	1,470.4	1,349.7	1,254.5	1,276.0	1,269.3	1,267.8	1,209.2	1,115.1	1,238.9	1,229.4	1,193.6	1,262.6	1,280.4	1,269.0

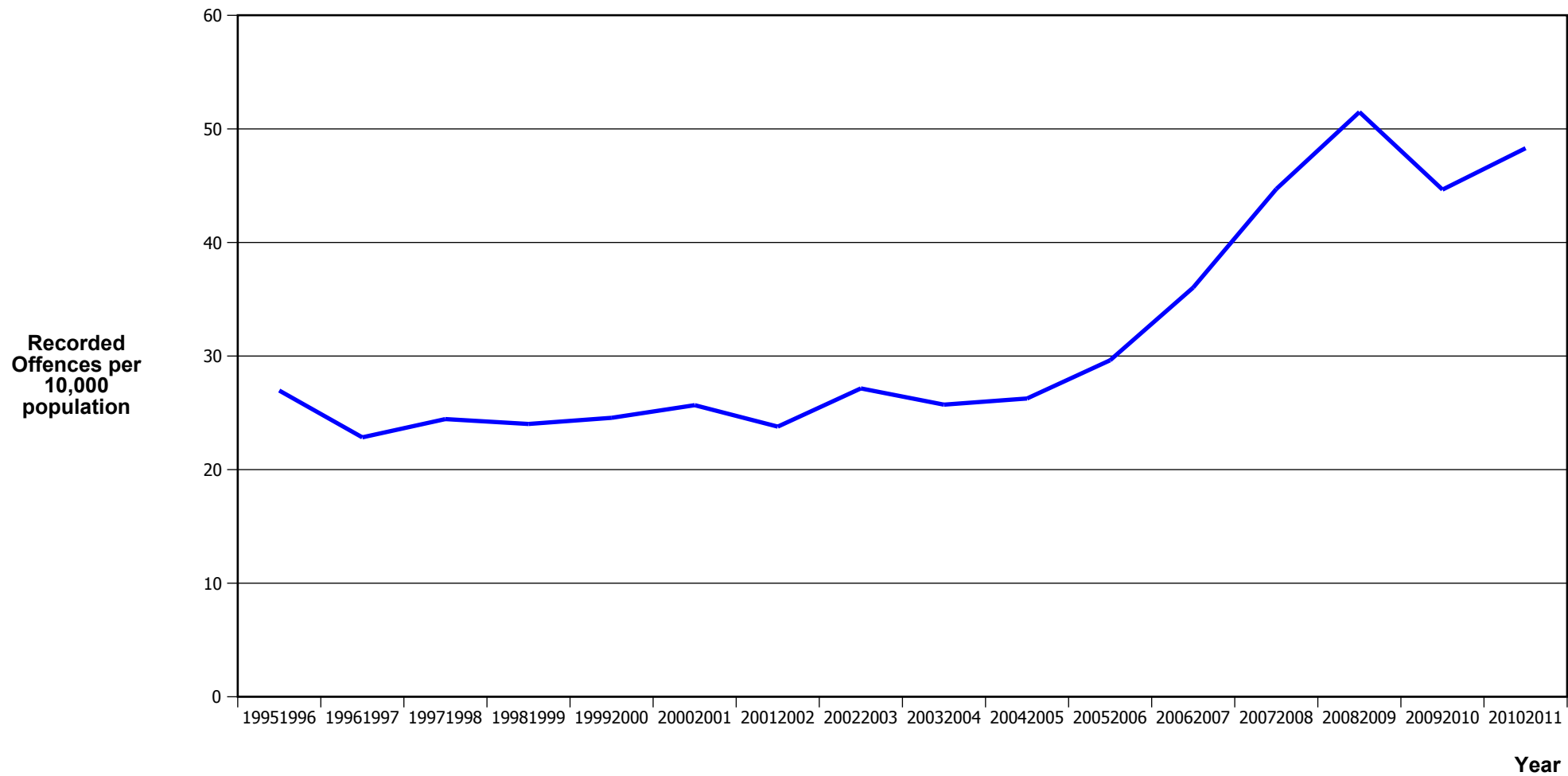
\*In 20052006 there was a major IT system change (LES to NIA)

# MURDER



Fiscal Year	1995/1996	1996/1997	1997/1998	1998/1999	1999/2000	2000/2001	2001/2002	2002/2003	2003/2004	2004/2005	2005/2006	2006/2007	2007/2008	2008/2009	2009/2010	2010/2011
Recorded Offences	9	5	6	5	3	5	5	3	8	5	3	3	1	6	6	1
Recorded per 10,000 Population	0.46	0.26	0.31	0.26	0.16	0.26	0.26	0.15	0.41	0.25	0.15	0.15	0.05	0.30	0.30	0.05

## SERIOUS ASSAULTS RESULTING IN INJURY\*

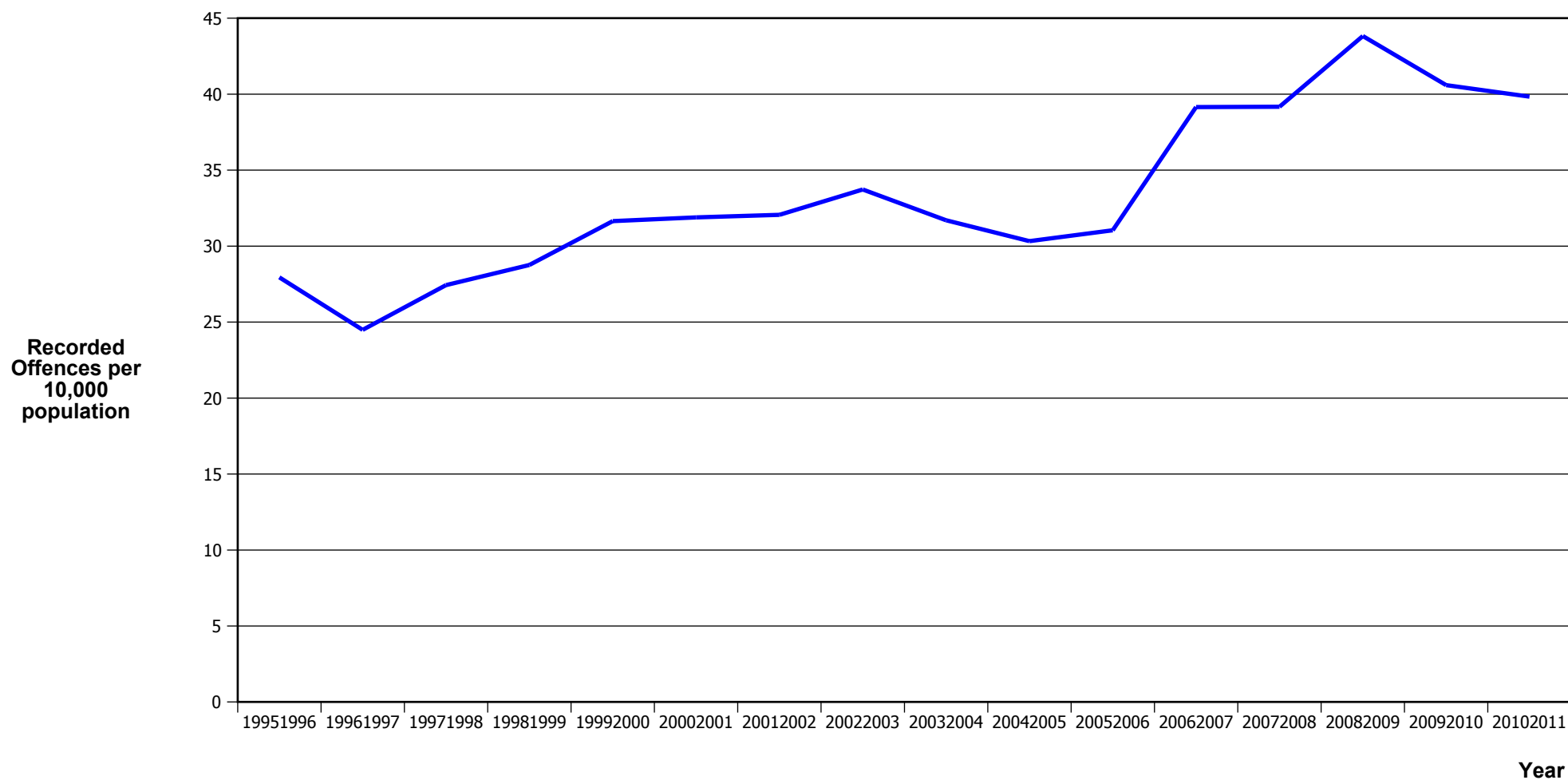


Fiscal Year	19951996	19961997	19971998	19981999	19992000	20002001	20012002	20022003	20032004	20042005	20052006	20062007	20072008	20082009	20092010	20102011
Recorded Offences	522	443	475	466	475	496	460	528	503	516	585	714	888	1022	893	976
Recorded per 10,000 Population	27.0	22.8	24.4	24.0	24.6	25.7	23.8	27.1	25.7	26.3	29.6	36.0	44.7	51.5	44.6	48.3

\* This measure excludes common assaults

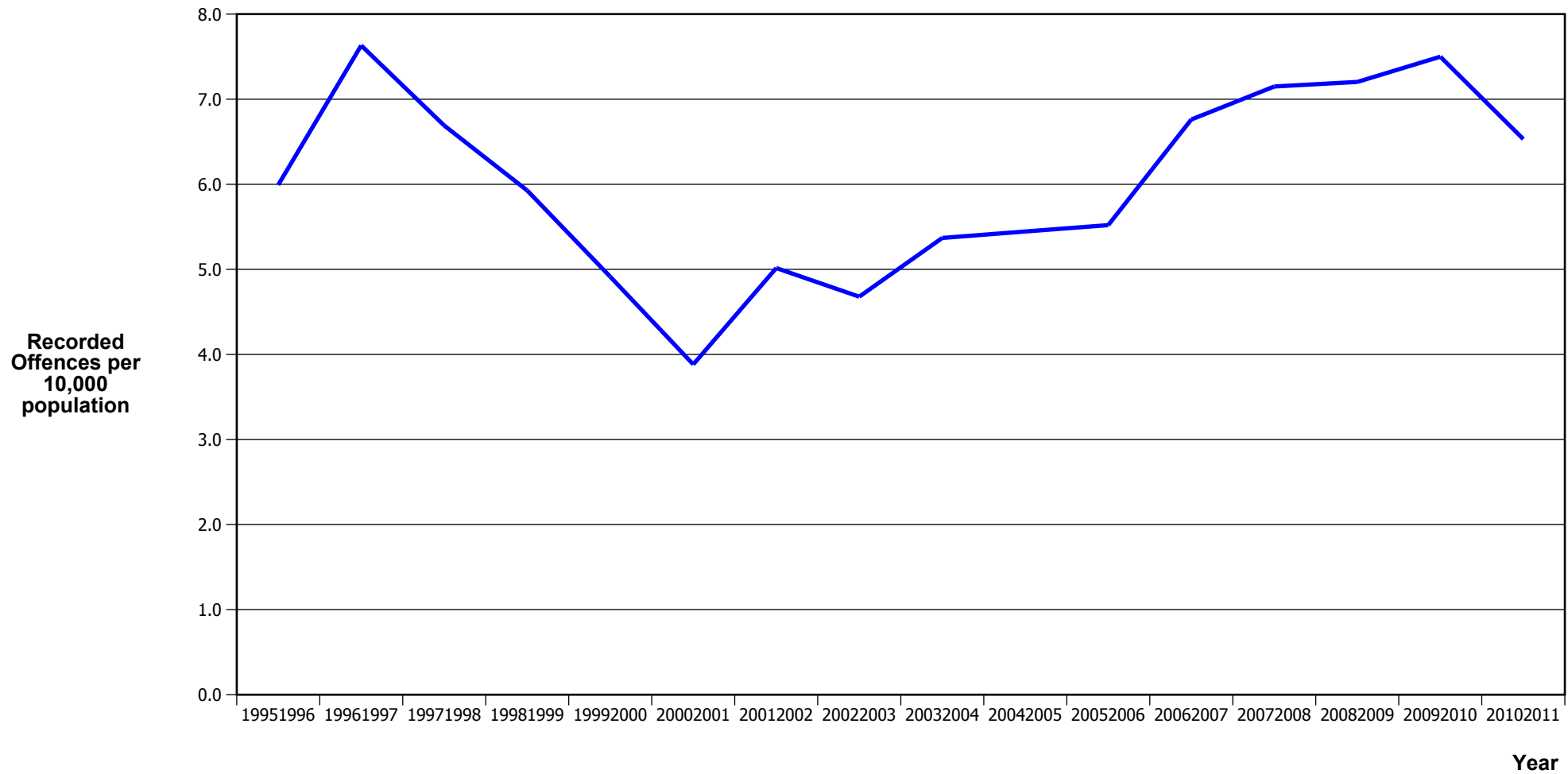


## PUBLIC PLACE ASSAULTS



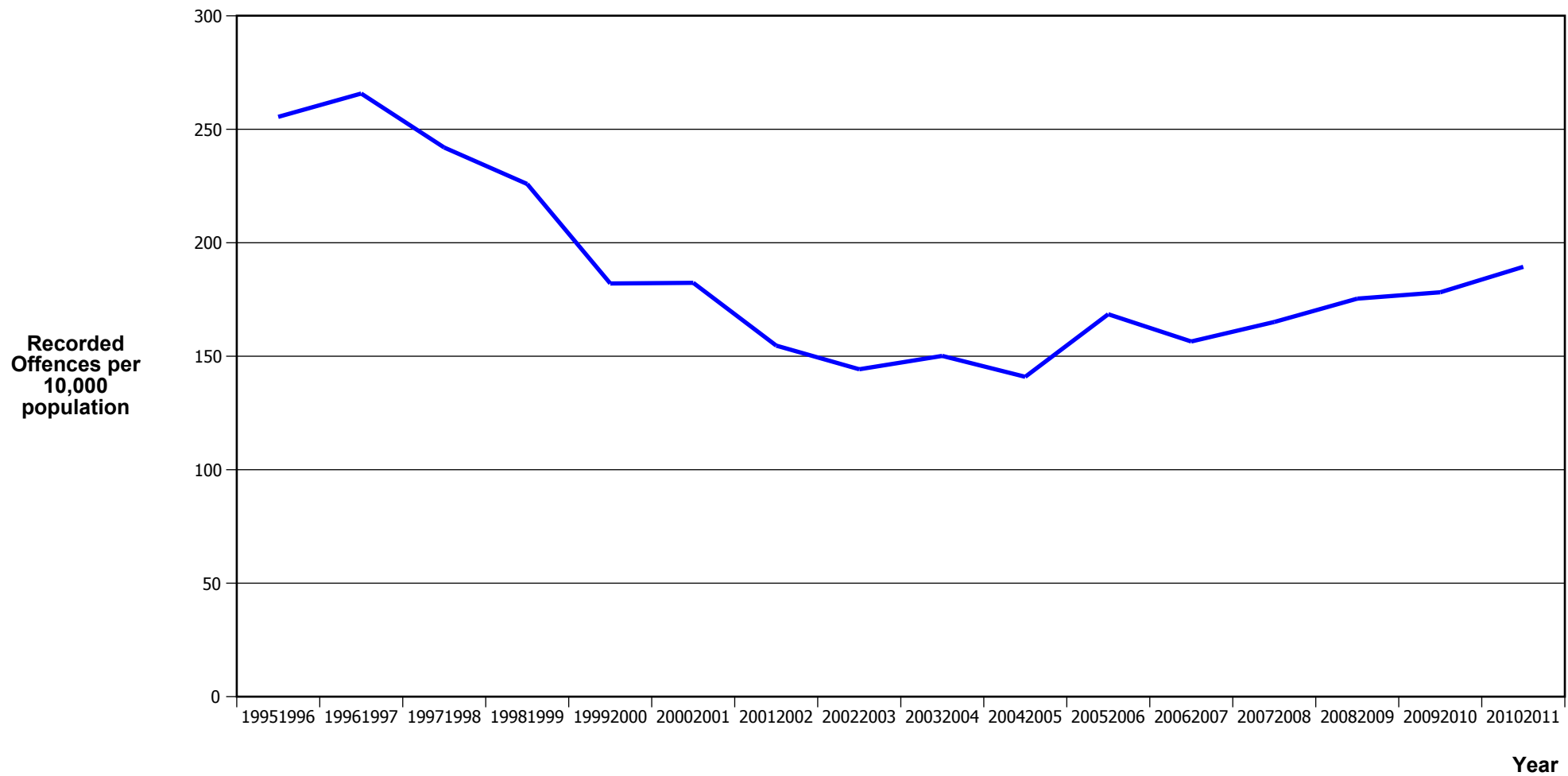
Fiscal Year	1995/1996	1996/1997	1997/1998	1998/1999	1999/2000	2000/2001	2001/2002	2002/2003	2003/2004	2004/2005	2005/2006	2006/2007	2007/2008	2008/2009	2009/2010	2010/2011
Recorded Offences	541	475	533	558	612	616	620	656	620	596	613	776	778	870	812	805
Recorded per 10,000 Population	27.9	24.5	27.4	28.8	31.6	31.9	32.1	33.7	31.7	30.3	31.0	39.2	39.2	43.8	40.6	39.8

## ROBBERY



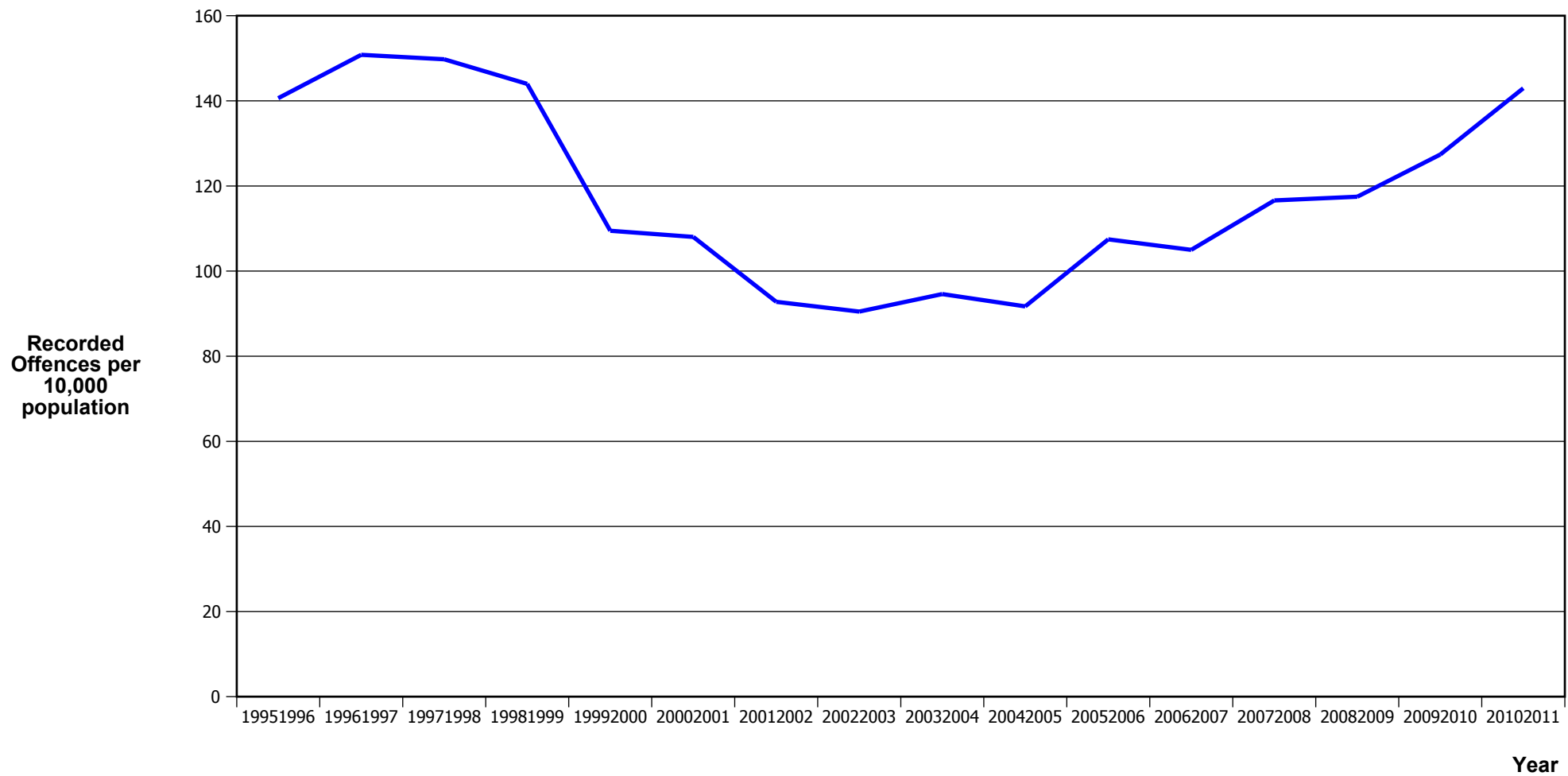
Fiscal Year	1995/1996	1996/1997	1997/1998	1998/1999	1999/2000	2000/2001	2001/2002	2002/2003	2003/2004	2004/2005	2005/2006	2006/2007	2007/2008	2008/2009	2009/2010	2010/2011
Recorded Offences	116	148	130	115	95	75	97	91	105	107	109	134	142	143	150	132
Recorded per 10,000 Population	6.0	7.6	6.7	5.9	4.9	3.9	5.0	4.7	5.4	5.4	5.5	6.8	7.1	7.2	7.5	6.5

## BURGLARY (TOTAL)



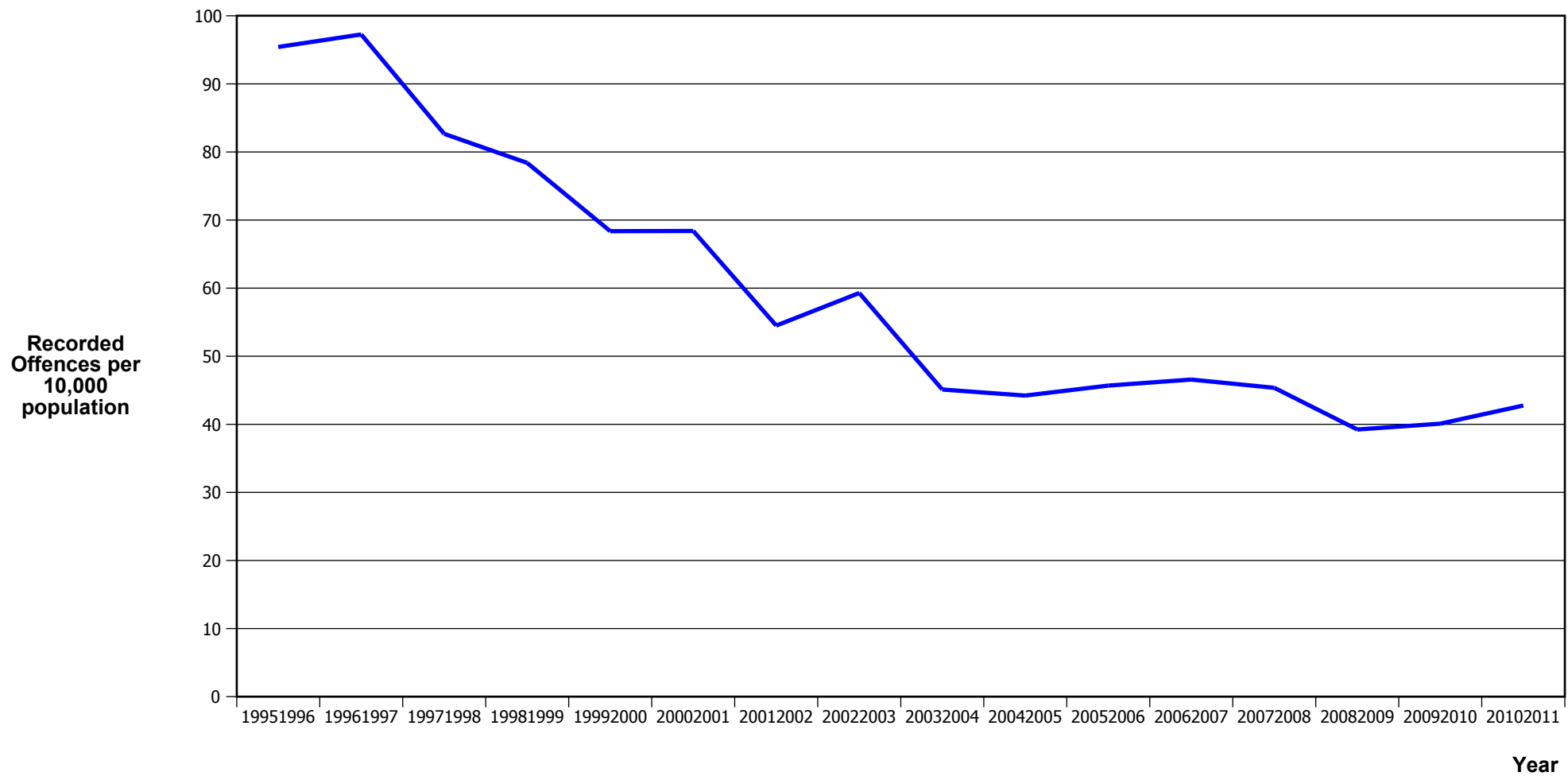
Fiscal Year	19951996	19961997	19971998	19981999	19992000	20002001	20012002	20022003	20032004	20042005	20052006	20062007	20072008	20082009	20092010	20102011
Recorded Offences	4,945	5,154	4,701	4,383	3,520	3,522	2,991	2,806	2,936	2,769	3,327	3,102	3,279	3,481	3,564	3,827
Recorded per 10,000 Population	255.4	265.8	241.9	225.9	182.0	182.3	154.7	144.3	150.1	140.9	168.5	156.5	165.1	175.3	178.2	189.4

## BURGLARY (DWELLING)



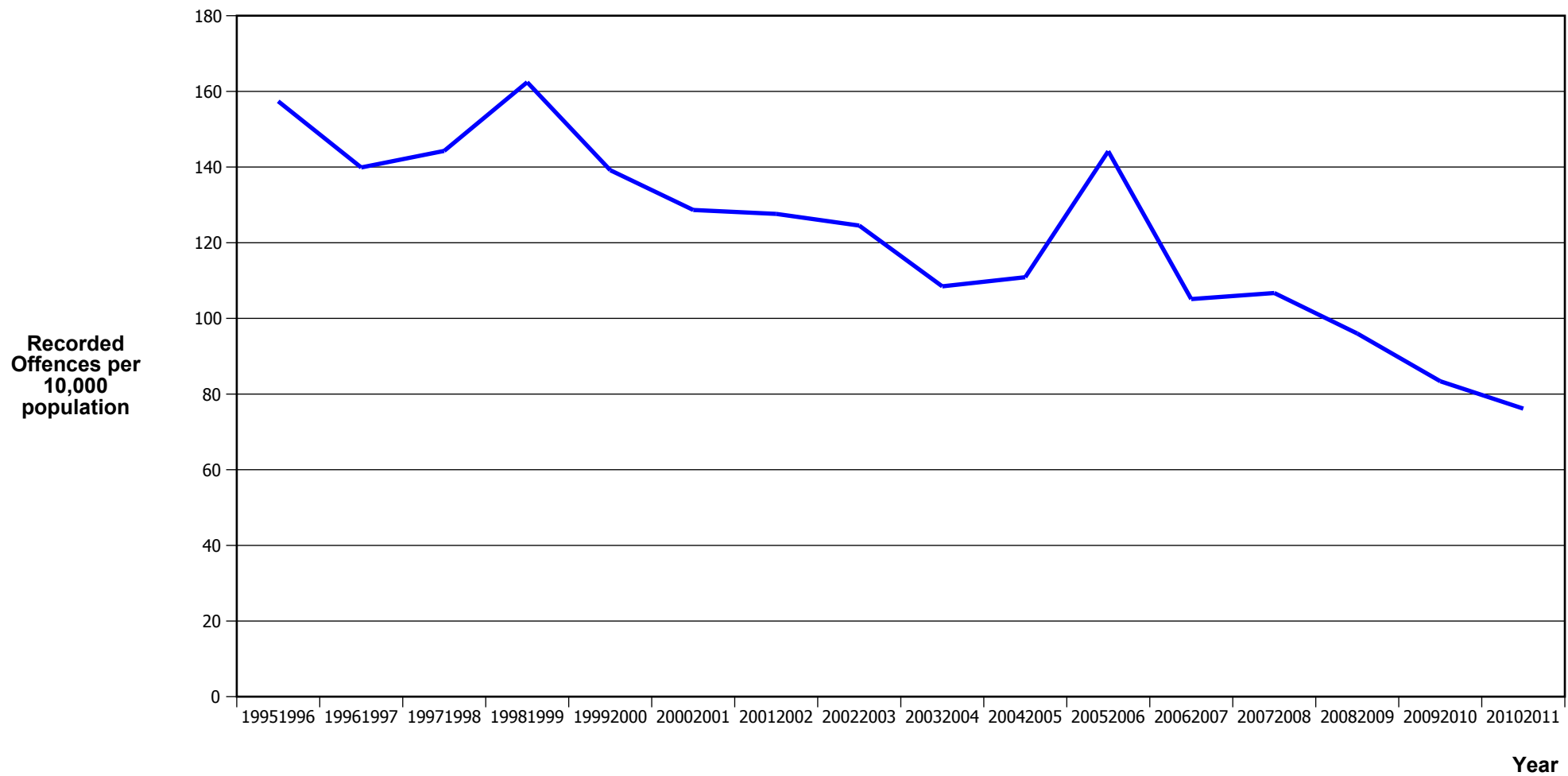
Fiscal Year	1995/1996	1996/1997	1997/1998	1998/1999	1999/2000	2000/2001	2001/2002	2002/2003	2003/2004	2004/2005	2005/2006	2006/2007	2007/2008	2008/2009	2009/2010	2010/2011
Recorded Offences	2,722	2,925	2,910	2,794	2,117	2,087	1,794	1,760	1,850	1,802	2,122	2,081	2,316	2,332	2,548	2,889
Recorded per 10,000 Population	140.6	150.8	149.8	144.0	109.5	108.0	92.8	90.5	94.6	91.7	107.5	105.0	116.6	117.5	127.4	143.0

## VEHICLES STOLEN



Fiscal Year	1995/1996	1996/1997	1997/1998	1998/1999	1999/2000	2000/2001	2001/2002	2002/2003	2003/2004	2004/2005	2005/2006	2006/2007	2007/2008	2008/2009	2009/2010	2010/2011
Recorded Offences	1,847	1,886	1,606	1,521	1,322	1,321	1,054	1,153	882	869	902	923	901	779	802	864
Recorded per 10,000 Population	95.41	97.25	82.66	78.39	68.37	68.39	54.50	59.28	45.10	44.22	45.68	46.57	45.37	39.24	40.10	42.76

## THEFT EX CAR



Fiscal Year	19951996	19961997	19971998	19981999	19992000	20002001	20012002	20022003	20032004	20042005	20052006	20062007	20072008	20082009	20092010	20102011
Recorded Offences	3,047	2,713	2,803	3,152	2,691	2,485	2,468	2,422	2,121	2,179	2,847	2,083	2,119	1,906	1,668	1,539
Recorded per 10,000 Population	157.40	139.89	144.26	162.45	139.16	128.65	127.62	124.53	108.46	110.89	144.19	105.10	106.69	96.01	83.40	76.16

## Population Data

Population data is used in this release to calculate crime rates. These data are estimated population figures as at 31 December each year. They have been derived from population estimates as at 30 June each year that have been obtained from Statistics New Zealand.

The estimated resident population is based on the census usually resident population count, with adjustments for residents missed or counted more than once by the census (net census undercount), and for residents temporarily overseas on census night.

These population estimates exclude the number of international students who are studying in New Zealand for less than 12 months.

Year	Population
19951996	193,580
19961997	193,940
19971998	194,300
19981999	194,030
19992000	193,370
20002001	193,165
20012002	193,380
20022003	194,490
20032004	195,555
20042005	196,500
20052006	197,450
20062007	198,195
20072008	198,605
20082009	198,520
20092010	200,010
20102011	202,080

## General Definitions

**Recorded Offences:** the number of breaches of the New Zealand law recorded by Police. This includes offences specified in the Crimes Act and other legislations, such as the Summary Offences Act, Local Government Act, etc.

**Resolved Offences:** the number of recorded offences where an offender has been identified and dealt with (e.g. warned, cautioned, prosecuted, etc).

**Resolution Rate:** the proportion of recorded offences that have been resolved.

**Recorded per 10,000 population:** the number of recorded offences for every 10,000 people. This is also referred as the crime rate per 10,000 population.

**ASOC:** the Australian Standard Offence Classification. The offence classification is divided into 16 major offence divisions.

## Definition of ASOC Divisions

1. Homicide and related offences: Unlawfully kill, attempt to unlawfully kill or conspiracy to kill another person.
2. Acts intended to cause injury: Acts, excluding attempted murder and those resulting in death, which are intended to cause non-fatal injury or harm to another person and where there is no sexual or acquisitive element.
3. Sexual assault and related offences: Acts, or intent of acts, of a sexual nature against another person, which are non-consensual or where consent is proscribed.
4. Dangerous or negligent acts endangering persons: Dangerous or negligent acts which, though not intended to cause harm, actually or potentially result in injury to oneself or another person.
5. Abduction, harassment and other offences against person: Acts intended to threaten or harass, or acts that unlawfully deprive another person of their freedom of movement, that are against that person's will or against the will of any parent, guardian or other person having lawful custody or care of that person.
6. Robbery, extortion and related offences: Acts intended to unlawfully gain money, property or other items of value from, or to cause detriment to, another person by using the threat of force or any other coercive measure.
7. Unlawful entry with intent / burglary, break and enter: The unlawful entry of a structure with the intent to commit an offence, where the entry is either forced or unforced.
8. Theft and related and offences: The unlawful taking or obtaining of money or goods, not involving the use of force or violence, coercion or deception, with intent to permanently or temporarily deprive the owner or possessor of the use of the money or goods, or the receiving or handling of money or goods obtained unlawfully.



9. Fraud, deception and related offences: Offences involving a dishonest act or omission carried out with the purpose of deceiving to obtain a benefit.

10. Illicit drug offences: The possessing, selling, dealing or trafficking, importing or exporting, manufacturing or cultivating of drugs or other substances prohibited under legislation.

11. Prohibited and regulated weapons and explosives offences: Offences involving prohibited or regulated weapons and explosives. Those offences also involving assault, sexual assault or robbery are coded to the relevant group within Assault, Sexual assaults and Robbery respectively.

12. Property damage and environmental pollution: The wilful and unlawful destruction, damage or defacement of public or private property, or the pollution of property or a definable entity held in common by the community.

13. Public order offences: Offences relating personal conduct that involves, or may lead to, a breach of public order or decency, or that is indicative of criminal intent, or that is otherwise regulated or prohibited on moral or ethical grounds. In general these offences do not involve a specific victim or victims; however some offences, such as offensive language and offensive behaviour, may be directed towards a single victim.

14. Traffic and vehicle regulatory offences: Offences relating to vehicles and most forms of traffic, including offences pertaining to the licensing, registration, roadworthiness, or use of vehicles, bicycle offences and pedestrian offences.

15. Offences against justice procedures, government security and government operations: An act or omission that is deemed to be prejudicial to the effective carrying out of justice procedures or any government operations. This includes general government operations as well as those specifically concerned with maintaining government security.

16. Miscellaneous offences: Offences involving the breach of statutory rules or regulations governing activities that are prima facie legal, where such offences are not explicitly dealt with under any other division. If an offence is specified under regulation and involves an act that would be illegal under common law or general criminal legislation, the offence is dealt with under the appropriate generic group.