

COUNTIES MANUKAU DISTRICT CRIME STATISTICS 2011



**A Summary of
Recorded and Resolved Offence
Statistics**

**POLICE NATIONAL HEADQUARTERS
April 2012**

ISSN 1178 - 1564

Table of Contents:

Topic	Page
Report Notes	1
District Summary of Recorded and Resolved Crime, by Division	2-4
Proportions of Recorded Crime by Division	5
Summary of District Recorded Offences, Rate per 10,000 Population and Resolved Offences, by Area	6
Summary of Area Recorded Offences, Rate per 10,000 Population and Resolved Offences, by Division	7-9
Crime Trends	10
Total Crime	11
Murder	12
Serious Assaults Resulting in Injury	13
Public Place Assaults	14
Robbery	15
Burglary (Total)	16
Burglary (Dwelling)	17
Vehicles Stolen	18
Theft Ex Car	19
Population Data	20
General Definition	21-22

REPORT NOTES:

Statistics reported in this document are derived from the Police National Intelligence Application (NIA). These Official Statistics for Recorded and Resolved Offences present a snapshot of data in NIA relating to offences that occur within a given year, as at the date 14 days following the end of that year.

Unless the matter is minor where Police attendance is sufficient, a matter that is reported to or discovered by Police where Police believe an offence is likely to have been committed is counted as a recorded offence.

A recorded offence is counted as resolved when Police apprehend an offender and decide how to deal with him/her. (E.g. warn, prosecute, etc.)

Resolution rate is the percentage of recorded offences that are resolved within 14 days of the end of the year being reported on.

If an offence is resolved 15 days or more after the end of the year it will not appear in the Official Crime Statistics for that or any other year. Resolution Rate therefore undercounts the number of cases that Police have resolved. This phenomenon has a more marked impact for some types of offences than others, such as offences that require long investigations (E.g. many serial crimes, burglaries and murders).

When comparing 2011 Statistics with previous years, the reader should also refer to "Report Notes" published in previous years' reports, as previous changes significantly affect year on year trends.

SUMMARY OF DISTRICT RECORDED AND RESOLVED CRIME, BY DIVISION
Years ending 31 December

HOMICIDE AND RELATED OFFENCES

ASOC Subdivision Description	Recorded 2009	Recorded 2010	Recorded 2011	Variance 2009-2010	Variance 2010-2011	Resolved 2009	Resolved 2010	Resolved 2011	Resolution Rate 2009	Resolution Rate 2010	Resolution Rate 2011
ATTEMPTED MURDER	5	0	0	-100.0 %	0.0 %	5	0	0	100.0 %	0.0 %	0.0 %
HOMICIDE AND RELATED OFFENCES NOT FURTHER DEFINED	1	0	0	-100.0 %	0.0 %	0	0	0	0.0 %	0.0 %	0.0 %
MANSLAUGHTER AND DRIVING CAUSING DEATH	3	6	2	100.0 %	-66.7 %	3	6	2	100.0 %	100.0 %	100.0 %
MURDER	5	6	5	20.0 %	-16.7 %	5	6	5	100.0 %	100.0 %	100.0 %
	14	12	7	-14.3 %	-41.7 %	13	12	7	92.9 %	100.0 %	100.0 %

ACTS INTENDED TO CAUSE INJURY

ASOC Subdivision Description	Recorded 2009	Recorded 2010	Recorded 2011	Variance 2009-2010	Variance 2010-2011	Resolved 2009	Resolved 2010	Resolved 2011	Resolution Rate 2009	Resolution Rate 2010	Resolution Rate 2011
ASSAULT	6,573	6,850	6,150	4.2 %	-10.2 %	5,508	6,051	5,201	83.8 %	88.3 %	84.6 %
OTHER ACTS INTENDED TO CAUSE INJURY	6	14	2	133.3 %	-85.7 %	5	13	2	83.3 %	92.9 %	100.0 %
	6,579	6,864	6,152	4.3 %	-10.4 %	5,513	6,064	5,203	83.8 %	88.3 %	84.6 %

SEXUAL ASSAULT AND RELATED OFFENCES

ASOC Subdivision Description	Recorded 2009	Recorded 2010	Recorded 2011	Variance 2009-2010	Variance 2010-2011	Resolved 2009	Resolved 2010	Resolved 2011	Resolution Rate 2009	Resolution Rate 2010	Resolution Rate 2011
NON-ASSAULTIVE SEXUAL OFFENCES	6	5	5	-16.7 %	0.0 %	5	3	4	83.3 %	60.0 %	80.0 %
SEXUAL ASSAULT	473	398	441	-15.9 %	10.8 %	316	185	194	66.8 %	46.5 %	44.0 %
	479	403	446	-15.9 %	10.7 %	321	188	198	67.0 %	46.7 %	44.4 %

DANGEROUS OR NEGLIGENT ACTS ENDANGERING PERSONS

ASOC Subdivision Description	Recorded 2009	Recorded 2010	Recorded 2011	Variance 2009-2010	Variance 2010-2011	Resolved 2009	Resolved 2010	Resolved 2011	Resolution Rate 2009	Resolution Rate 2010	Resolution Rate 2011
OTHER DANGEROUS OR NEGLIGENT ACTS ENDANGERING PERSONS	157	167	194	6.4 %	16.2 %	130	135	148	82.8 %	80.8 %	76.3 %
	157	167	194	6.4 %	16.2 %	130	135	148	82.8 %	80.8 %	76.3 %

ABDUCTION, HARASSMENT AND OTHER RELATED OFFENCES AGAINST A PERSON

ASOC Subdivision Description	Recorded 2009	Recorded 2010	Recorded 2011	Variance 2009-2010	Variance 2010-2011	Resolved 2009	Resolved 2010	Resolved 2011	Resolution Rate 2009	Resolution Rate 2010	Resolution Rate 2011
ABDUCTION AND KIDNAPPING	63	51	51	-19.0 %	0.0 %	43	30	32	68.3 %	58.8 %	62.7 %
DEPRIVATION OF LIBERTY/FALSE IMPRISONMENT	0	0	1	0.0 %	0.0 %	0	0	0	0.0 %	0.0 %	0.0 %
HARASSMENT AND THREATENING BEHAVIOUR	2,610	2,369	1,920	-9.2 %	-19.0 %	1,758	1,779	1,490	67.4 %	75.1 %	77.6 %
	2,673	2,420	1,972	-9.5 %	-18.5 %	1,801	1,809	1,522	67.4 %	74.8 %	77.2 %

ROBBERY, EXTORTION AND RELATED OFFENCES

ASOC Subdivision Description	Recorded 2009	Recorded 2010	Recorded 2011	Variance 2009-2010	Variance 2010-2011	Resolved 2009	Resolved 2010	Resolved 2011	Resolution Rate 2009	Resolution Rate 2010	Resolution Rate 2011
BLACKMAIL AND EXTORTION	36	16	15	-55.6 %	-6.3 %	11	5	10	30.6 %	31.3 %	66.7 %
ROBBERY	634	539	571	-15.0 %	5.9 %	221	185	207	34.9 %	34.3 %	36.3 %
	670	555	586	-17.2 %	5.6 %	232	190	217	34.6 %	34.2 %	37.0 %

UNLAWFUL ENTRY WITH INTENT/BURGLARY, BREAK AND ENTER

ASOC Subdivision Description	Recorded 2009	Recorded 2010	Recorded 2011	Variance 2009-2010	Variance 2010-2011	Resolved 2009	Resolved 2010	Resolved 2011	Resolution Rate 2009	Resolution Rate 2010	Resolution Rate 2011
UNLAWFUL ENTRY WITH INTENT/BURGLARY, BREAK AND ENTER	8,697	7,010	7,418	-19.4 %	5.8 %	859	916	1,169	9.9 %	13.1 %	15.8 %
	8,697	7,010	7,418	-19.4 %	5.8 %	859	916	1,169	9.9 %	13.1 %	15.8 %

SUMMARY OF DISTRICT RECORDED AND RESOLVED CRIME, BY DIVISION
Years ending 31 December

THEFT AND RELATED OFFENCES

ASOC Subdivision Description	Recorded 2009	Recorded 2010	Recorded 2011	Variance 2009-2010	Variance 2010-2011	Resolved 2009	Resolved 2010	Resolved 2011	Resolution Rate 2009	Resolution Rate 2010	Resolution Rate 2011
ILLEGAL USE OF PROPERTY (EXCEPT MOTOR VEHICLES)	99	91	113	-8.1 %	24.2 %	11	8	8	11.1 %	8.8 %	7.1 %
MOTOR VEHICLE THEFT AND RELATED OFFENCES	9,864	7,128	7,274	-27.7 %	2.0 %	896	762	782	9.1 %	10.7 %	10.8 %
RECEIVE OR HANDLE PROCEEDS OF CRIME	336	357	387	6.3 %	8.4 %	330	355	381	98.2 %	99.4 %	98.4 %
THEFT (EXCEPT MOTOR VEHICLES)	6,913	7,242	8,066	4.8 %	11.4 %	1,768	2,055	1,903	25.6 %	28.4 %	23.6 %
	17,212	14,818	15,840	-13.9 %	6.9 %	3,005	3,180	3,074	17.5 %	21.5 %	19.4 %

FRAUD, DECEPTION AND RELATED OFFENCES

ASOC Subdivision Description	Recorded 2009	Recorded 2010	Recorded 2011	Variance 2009-2010	Variance 2010-2011	Resolved 2009	Resolved 2010	Resolved 2011	Resolution Rate 2009	Resolution Rate 2010	Resolution Rate 2011
DECEPTIVE BUSINESS/GOVERNMENT PRACTICES	1	5	6	400.0 %	20.0 %	1	4	6	100.0 %	80.0 %	100.0 %
FORGERY AND COUNTERFEITING	74	78	53	5.4 %	-32.1 %	56	24	12	75.7 %	30.8 %	22.6 %
OBTAIN BENEFIT BY DECEPTION	1,638	858	737	-47.6 %	-14.1 %	541	435	382	33.0 %	50.7 %	51.8 %
OTHER FRAUD AND DECEPTION OFFENCES	89	56	69	-37.1 %	23.2 %	32	21	27	36.0 %	37.5 %	39.1 %
	1,802	997	865	-44.7 %	-13.2 %	630	484	427	35.0 %	48.5 %	49.4 %

ILLICIT DRUG OFFENCES

ASOC Subdivision Description	Recorded 2009	Recorded 2010	Recorded 2011	Variance 2009-2010	Variance 2010-2011	Resolved 2009	Resolved 2010	Resolved 2011	Resolution Rate 2009	Resolution Rate 2010	Resolution Rate 2011
DEAL OR TRAFFIC IN ILLICIT DRUGS	346	443	329	28.0 %	-25.7 %	330	431	311	95.4 %	97.3 %	94.5 %
IMPORT OR EXPORT ILLICIT DRUGS	64	58	37	-9.4 %	-36.2 %	62	53	28	96.9 %	91.4 %	75.7 %
MANUFACTURE OR CULTIVATE ILLICIT DRUGS	137	188	156	37.2 %	-17.0 %	124	173	141	90.5 %	92.0 %	90.4 %
OTHER ILLICIT DRUG OFFENCES	497	697	666	40.2 %	-4.4 %	482	678	646	97.0 %	97.3 %	97.0 %
POSSESS AND/OR USE ILLICIT DRUGS	862	1,053	893	22.2 %	-15.2 %	819	1,020	856	95.0 %	96.9 %	95.9 %
	1,906	2,439	2,081	28.0 %	-14.7 %	1,817	2,355	1,982	95.3 %	96.6 %	95.2 %

PROHIBITED AND REGULATED WEAPONS AND EXPLOSIVES OFFENCES

ASOC Subdivision Description	Recorded 2009	Recorded 2010	Recorded 2011	Variance 2009-2010	Variance 2010-2011	Resolved 2009	Resolved 2010	Resolved 2011	Resolution Rate 2009	Resolution Rate 2010	Resolution Rate 2011
REGULATED WEAPONS/EXPLOSIVES OFFENCES	1,008	1,053	935	4.5 %	-11.2 %	935	997	887	92.8 %	94.7 %	94.9 %
	1,008	1,053	935	4.5 %	-11.2 %	935	997	887	92.8 %	94.7 %	94.9 %

PROPERTY DAMAGE AND ENVIRONMENTAL POLLUTION

ASOC Subdivision Description	Recorded 2009	Recorded 2010	Recorded 2011	Variance 2009-2010	Variance 2010-2011	Resolved 2009	Resolved 2010	Resolved 2011	Resolution Rate 2009	Resolution Rate 2010	Resolution Rate 2011
ENVIRONMENTAL POLLUTION	17	8	5	-52.9 %	-37.5 %	6	4	3	35.3 %	50.0 %	60.0 %
PROPERTY DAMAGE	6,623	5,938	5,433	-10.3 %	-8.5 %	1,947	2,077	1,925	29.4 %	35.0 %	35.4 %
	6,640	5,946	5,438	-10.5 %	-8.5 %	1,953	2,081	1,928	29.4 %	35.0 %	35.5 %

PUBLIC ORDER OFFENCES

ASOC Subdivision Description	Recorded 2009	Recorded 2010	Recorded 2011	Variance 2009-2010	Variance 2010-2011	Resolved 2009	Resolved 2010	Resolved 2011	Resolution Rate 2009	Resolution Rate 2010	Resolution Rate 2011
DISORDERLY CONDUCT	3,981	4,485	3,999	12.7 %	-10.8 %	3,026	4,036	3,435	76.0 %	90.0 %	85.9 %
OFFENSIVE CONDUCT	140	172	116	22.9 %	-32.6 %	89	135	84	63.6 %	78.5 %	72.4 %
PUBLIC ORDER OFFENCES NOT FURTHER DEFINED	0	3	0	0.0 %	-100.0 %	0	3	0	0.0 %	100.0 %	0.0 %
REGULATED PUBLIC ORDER OFFENCES	1,221	1,767	1,570	44.7 %	-11.1 %	1,188	1,737	1,541	97.3 %	98.3 %	98.2 %
	5,342	6,427	5,685	20.3 %	-11.5 %	4,303	5,911	5,060	80.6 %	92.0 %	89.0 %

SUMMARY OF DISTRICT RECORDED AND RESOLVED CRIME, BY DIVISION
Years ending 31 December

OFFENCES AGAINST JUSTICE PROCEDURES, GOVERNMENT SECURITY AND GOVERNMENT OPERATIONS

ASOC Subdivision Description	Recorded 2009	Recorded 2010	Recorded 2011	Variance 2009-2010	Variance 2010-2011	Resolved 2009	Resolved 2010	Resolved 2011	Resolution Rate 2009	Resolution Rate 2010	Resolution Rate 2011
BREACH OF COMMUNITY-BASED ORDER	1,320	1,014	1,127	-23.2 %	11.1 %	1,228	971	1,091	93.0 %	95.8 %	96.8 %
BREACH OF CUSTODIAL ORDER OFFENCES	99	125	140	26.3 %	12.0 %	72	98	111	72.7 %	78.4 %	79.3 %
BREACH OF VIOLENCE AND NON-VIOLENCE RESTRAINING ORDERS	571	466	502	-18.4 %	7.7 %	510	446	466	89.3 %	95.7 %	92.8 %
OFFENCES AGAINST GOVERNMENT OPERATIONS	77	45	20	-41.6 %	-55.6 %	67	34	15	87.0 %	75.6 %	75.0 %
OFFENCES AGAINST GOVERNMENT SECURITY	1	2	0	100.0 %	-100.0 %	0	1	0	0.0 %	50.0 %	0.0 %
OFFENCES AGAINST JUSTICE PROCEDURES	630	748	654	18.7 %	-12.6 %	611	742	646	97.0 %	99.2 %	98.8 %
OFFENCES AGAINST JUSTICE PROCEDURES, GOVERNMENT SECURITY AND GOVERNMENT OPERATIONS NOT FURTHER DEFINED	3	0	0	-100.0 %	0.0 %	3	0	0	100.0 %	0.0 %	0.0 %
	2,701	2,400	2,443	-11.1 %	1.8 %	2,491	2,292	2,329	92.2 %	95.5 %	95.3 %

MISCELLANEOUS OFFENCES

ASOC Subdivision Description	Recorded 2009	Recorded 2010	Recorded 2011	Variance 2009-2010	Variance 2010-2011	Resolved 2009	Resolved 2010	Resolved 2011	Resolution Rate 2009	Resolution Rate 2010	Resolution Rate 2011
COMMERCIAL/INDUSTRY/FINANCIAL REGULATION	0	0	19	0.0 %	0.0 %	0	0	19	0.0 %	0.0 %	100.0 %
DEFAMATION, LIBEL AND PRIVACY OFFENCES	5	5	4	0.0 %	-20.0 %	1	3	2	20.0 %	60.0 %	50.0 %
OTHER MISCELLANEOUS OFFENCES	130	117	90	-10.0 %	-23.1 %	77	95	77	59.2 %	81.2 %	85.6 %
PUBLIC HEALTH AND SAFETY OFFENCES	26	31	53	19.2 %	71.0 %	25	22	48	96.2 %	71.0 %	90.6 %
	161	153	166	-5.0 %	8.5 %	103	120	146	64.0 %	78.4 %	88.0 %

TOTAL	56,041	51,664	50,228	-7.8 %	-2.8 %	24,106	26,734	24,297	43.0 %	51.7 %	48.4 %
--------------	---------------	---------------	---------------	---------------	---------------	---------------	---------------	---------------	---------------	---------------	---------------

PROPORTIONS OF RECORDED CRIME BY DIVISION

Years ending 31 December

ASOC Division Description	Proportions Recorded 2009	Recorded 2009	Proportions Recorded 2010	Recorded 2010	Proportions Recorded 2011	Recorded 2011
HOMICIDE AND RELATED OFFENCES	0.02 %	14	0.02 %	12	0.01 %	7
ACTS INTENDED TO CAUSE INJURY	11.74 %	6,579	13.29 %	6,864	12.25 %	6,152
SEXUAL ASSAULT AND RELATED OFFENCES	0.85 %	479	0.78 %	403	0.89 %	446
DANGEROUS OR NEGLIGENT ACTS ENDANGERING PERSONS	0.28 %	157	0.32 %	167	0.39 %	194
ABDUCTION, HARASSMENT AND OTHER RELATED OFFENCES AGAINST A PERSON	4.77 %	2,673	4.68 %	2,420	3.93 %	1,972
ROBBERY, EXTORTION AND RELATED OFFENCES	1.20 %	670	1.07 %	555	1.17 %	586
UNLAWFUL ENTRY WITH INTENT/BURGLARY, BREAK AND ENTER	15.52 %	8,697	13.57 %	7,010	14.77 %	7,418
THEFT AND RELATED OFFENCES	30.71 %	17,212	28.68 %	14,818	31.54 %	15,840
FRAUD, DECEPTION AND RELATED OFFENCES	3.22 %	1,802	1.93 %	997	1.72 %	865
ILLICIT DRUG OFFENCES	3.40 %	1,906	4.72 %	2,439	4.14 %	2,081
PROHIBITED AND REGULATED WEAPONS AND EXPLOSIVES OFFENCES	1.80 %	1,008	2.04 %	1,053	1.86 %	935
PROPERTY DAMAGE AND ENVIRONMENTAL POLLUTION	11.85 %	6,640	11.51 %	5,946	10.83 %	5,438
PUBLIC ORDER OFFENCES	9.53 %	5,342	12.44 %	6,427	11.32 %	5,685
OFFENCES AGAINST JUSTICE PROCEDURES, GOVERNMENT SECURITY AND GOVERNMENT OPERATIONS	4.82 %	2,701	4.65 %	2,400	4.86 %	2,443
MISCELLANEOUS OFFENCES	0.29 %	161	0.30 %	153	0.33 %	166
	100.00 %	56,041	100.00 %	51,664	100.00 %	50,228

SUMMARY OF RECORDED OFFENCES, RATE PER 10,000 POPULATION AND RESOLVED OFFENCES, BY AREA
years ending 31 December

TOTAL CRIME

Area Description	Recorded 2010	Recorded 2011	Variance 2010-2011	Recorded per 10,000 pop 2010	Recorded per 10,000 pop 2011	Per 10,000 pop % Variance 2010 to 2011	Resolved 2010	Resolved 2011	Resolution Rate 2010	Resolution Rate 2011
CM Central	11,494	11,364	-1.1 %	1,292.9	1,252.9	-3.1 %	5,985	5,174	52.1 %	45.5 %
CM East	12,376	11,702	-5.4 %	712.8	662.0	-7.1 %	6,349	5,360	51.3 %	45.8 %
CM South	12,563	11,029	-12.2 %	1,058.8	914.1	-13.7 %	6,381	6,193	50.8 %	56.2 %
CM West	15,231	16,133	5.9 %	1,178.5	1,222.8	3.8 %	8,019	7,570	52.6 %	46.9 %
	51,664	50,228	-2.8 %	1,012.2	965.8	-4.6 %	26,734	24,297	51.7 %	48.4 %

SUMMARY OF RECORDED OFFENCES, RATE PER 10,000 POPULATION AND RESOLVED OFFENCES, BY DIVISION

Years ending 31 December

HOMICIDE AND RELATED OFFENCES

Area Description	Recorded 2010	Recorded 2011	Variance 2010-2011	Recorded per 10,000 pop 2010	Recorded per 10,000 pop 2011	Per 10,000 pop % Variance 2010 to 2011	Resolved 2010	Resolved 2011	Resolution Rate 2010	Resolution Rate 2011
CM Central	1	0	-100.0 %	0.1	0.0	-100.0 %	1	0	100.0 %	0.0 %
CM East	4	3	-25.0 %	0.2	0.2	-26.3 %	4	3	100.0 %	100.0 %
CM South	1	1	0.0 %	0.1	0.1	-1.7 %	1	1	100.0 %	100.0 %
CM West	6	3	-50.0 %	0.5	0.2	-51.0 %	6	3	100.0 %	100.0 %
	12	7	-41.7 %	0.2	0.1	-42.7 %	12	7	100.0 %	100.0 %

ACTS INTENDED TO CAUSE INJURY

Area Description	Recorded 2010	Recorded 2011	Variance 2010-2011	Recorded per 10,000 pop 2010	Recorded per 10,000 pop 2011	Per 10,000 pop % Variance 2010 to 2011	Resolved 2010	Resolved 2011	Resolution Rate 2010	Resolution Rate 2011
CM Central	1,720	1,508	-12.3 %	193.5	166.3	-14.1 %	1,537	1,222	89.4 %	81.0 %
CM East	1,469	1,198	-18.4 %	84.6	67.8	-19.9 %	1,323	1,037	90.1 %	86.6 %
CM South	1,392	1,296	-6.9 %	117.3	107.4	-8.4 %	1,232	1,139	88.5 %	87.9 %
CM West	2,283	2,150	-5.8 %	176.6	163.0	-7.7 %	1,972	1,805	86.4 %	84.0 %
	6,864	6,152	-10.4 %	134.5	118.3	-12.0 %	6,064	5,203	88.3 %	84.6 %

SEXUAL ASSAULT AND RELATED OFFENCES

Area Description	Recorded 2010	Recorded 2011	Variance 2010-2011	Recorded per 10,000 pop 2010	Recorded per 10,000 pop 2011	Per 10,000 pop % Variance 2010 to 2011	Resolved 2010	Resolved 2011	Resolution Rate 2010	Resolution Rate 2011
CM Central	115	111	-3.5 %	12.9	12.2	-5.4 %	57	45	49.6 %	40.5 %
CM East	68	96	41.2 %	3.9	5.4	38.7 %	28	42	41.2 %	43.8 %
CM South	76	104	36.8 %	6.4	8.6	34.6 %	25	60	32.9 %	57.7 %
CM West	144	135	-6.3 %	11.1	10.2	-8.2 %	78	51	54.2 %	37.8 %
	403	446	10.7 %	7.9	8.6	8.6 %	188	198	46.7 %	44.4 %

DANGEROUS OR NEGLIGENT ACTS ENDANGERING PERSONS

Area Description	Recorded 2010	Recorded 2011	Variance 2010-2011	Recorded per 10,000 pop 2010	Recorded per 10,000 pop 2011	Per 10,000 pop % Variance 2010 to 2011	Resolved 2010	Resolved 2011	Resolution Rate 2010	Resolution Rate 2011
CM Central	40	63	57.5 %	4.5	6.9	54.4 %	35	52	87.5 %	82.5 %
CM East	29	36	24.1 %	1.7	2.0	21.9 %	21	23	72.4 %	63.9 %
CM South	42	34	-19.0 %	3.5	2.8	-20.4 %	34	27	81.0 %	79.4 %
CM West	56	61	8.9 %	4.3	4.6	6.7 %	45	46	80.4 %	75.4 %
	167	194	16.2 %	3.3	3.7	14.0 %	135	148	80.8 %	76.3 %

ABDUCTION, HARASSMENT AND OTHER RELATED OFFENCES AGAINST A PERSON

Area Description	Recorded 2010	Recorded 2011	Variance 2010-2011	Recorded per 10,000 pop 2010	Recorded per 10,000 pop 2011	Per 10,000 pop % Variance 2010 to 2011	Resolved 2010	Resolved 2011	Resolution Rate 2010	Resolution Rate 2011
CM Central	479	358	-25.3 %	53.9	39.5	-26.7 %	345	263	72.0 %	73.5 %
CM East	500	398	-20.4 %	28.8	22.5	-21.8 %	357	300	71.4 %	75.4 %
CM South	556	425	-23.6 %	46.9	35.2	-24.8 %	430	357	77.3 %	84.0 %
CM West	885	791	-10.6 %	68.5	60.0	-12.4 %	677	602	76.5 %	76.1 %
	2,420	1,972	-18.5 %	47.4	37.9	-20.0 %	1,809	1,522	74.8 %	77.2 %

SUMMARY OF RECORDED OFFENCES, RATE PER 10,000 POPULATION AND RESOLVED OFFENCES, BY DIVISION

Years ending 31 December

ROBBERY, EXTORTION AND RELATED OFFENCES

Area Description	Recorded 2010	Recorded 2011	Variance 2010-2011	Recorded per 10,000 pop 2010	Recorded per 10,000 pop 2011	Per 10,000 pop % Variance 2010 to 2011	Resolved 2010	Resolved 2011	Resolution Rate 2010	Resolution Rate 2011
CM Central	145	133	-8.3 %	16.3	14.7	-10.1 %	34	43	23.4 %	32.3 %
CM East	123	155	26.0 %	7.1	8.8	23.8 %	41	62	33.3 %	40.0 %
CM South	124	92	-25.8 %	10.5	7.6	-27.0 %	53	43	42.7 %	46.7 %
CM West	163	206	26.4 %	12.6	15.6	23.8 %	62	69	38.0 %	33.5 %
	555	586	5.6 %	10.9	11.3	3.6 %	190	217	34.2 %	37.0 %

UNLAWFUL ENTRY WITH INTENT/BURGLARY, BREAK AND ENTER

Area Description	Recorded 2010	Recorded 2011	Variance 2010-2011	Recorded per 10,000 pop 2010	Recorded per 10,000 pop 2011	Per 10,000 pop % Variance 2010 to 2011	Resolved 2010	Resolved 2011	Resolution Rate 2010	Resolution Rate 2011
CM Central	1,617	1,712	5.9 %	181.9	188.8	3.8 %	201	236	12.4 %	13.8 %
CM East	1,739	1,768	1.7 %	100.2	100.0	-0.1 %	147	179	8.5 %	10.1 %
CM South	1,984	1,539	-22.4 %	167.2	127.6	-23.7 %	344	466	17.3 %	30.3 %
CM West	1,670	2,399	43.7 %	129.2	181.8	40.7 %	224	288	13.4 %	12.0 %
	7,010	7,418	5.8 %	137.3	142.6	3.9 %	916	1,169	13.1 %	15.8 %

THEFT AND RELATED OFFENCES

Area Description	Recorded 2010	Recorded 2011	Variance 2010-2011	Recorded per 10,000 pop 2010	Recorded per 10,000 pop 2011	Per 10,000 pop % Variance 2010 to 2011	Resolved 2010	Resolved 2011	Resolution Rate 2010	Resolution Rate 2011
CM Central	3,424	3,681	7.5 %	385.2	405.8	5.4 %	928	733	27.1 %	19.9 %
CM East	3,599	3,730	3.6 %	207.3	211.0	1.8 %	671	537	18.6 %	14.4 %
CM South	3,590	3,474	-3.2 %	302.6	287.9	-4.8 %	879	1,059	24.5 %	30.5 %
CM West	4,205	4,955	17.8 %	325.4	375.6	15.4 %	702	745	16.7 %	15.0 %
	14,818	15,840	6.9 %	290.3	304.6	4.9 %	3,180	3,074	21.5 %	19.4 %

FRAUD, DECEPTION AND RELATED OFFENCES

Area Description	Recorded 2010	Recorded 2011	Variance 2010-2011	Recorded per 10,000 pop 2010	Recorded per 10,000 pop 2011	Per 10,000 pop % Variance 2010 to 2011	Resolved 2010	Resolved 2011	Resolution Rate 2010	Resolution Rate 2011
CM Central	218	141	-35.3 %	24.5	15.5	-36.6 %	95	45	43.6 %	31.9 %
CM East	298	252	-15.4 %	17.2	14.3	-16.9 %	155	116	52.0 %	46.0 %
CM South	230	142	-38.3 %	19.4	11.8	-39.3 %	141	72	61.3 %	50.7 %
CM West	251	330	31.5 %	19.4	25.0	28.8 %	93	194	37.1 %	58.8 %
	997	865	-13.2 %	19.5	16.6	-14.8 %	484	427	48.5 %	49.4 %

ILLICIT DRUG OFFENCES

Area Description	Recorded 2010	Recorded 2011	Variance 2010-2011	Recorded per 10,000 pop 2010	Recorded per 10,000 pop 2011	Per 10,000 pop % Variance 2010 to 2011	Resolved 2010	Resolved 2011	Resolution Rate 2010	Resolution Rate 2011
CM Central	513	384	-25.1 %	57.7	42.3	-26.6 %	490	362	95.5 %	94.3 %
CM East	558	530	-5.0 %	32.1	30.0	-6.7 %	540	502	96.8 %	94.7 %
CM South	642	549	-14.5 %	54.1	45.5	-15.9 %	623	540	97.0 %	98.4 %
CM West	726	618	-14.9 %	56.2	46.8	-16.6 %	702	578	96.7 %	93.5 %
	2,439	2,081	-14.7 %	47.8	40.0	-16.3 %	2,355	1,982	96.6 %	95.2 %

SUMMARY OF RECORDED OFFENCES, RATE PER 10,000 POPULATION AND RESOLVED OFFENCES, BY DIVISION

Years ending 31 December

PROHIBITED AND REGULATED WEAPONS AND EXPLOSIVES OFFENCES

Area Description	Recorded 2010	Recorded 2011	Variance 2010-2011	Recorded per 10,000 pop 2010	Recorded per 10,000 pop 2011	Per 10,000 pop % Variance 2010 to 2011	Resolved 2010	Resolved 2011	Resolution Rate 2010	Resolution Rate 2011
CM Central	183	211	15.3 %	20.6	23.3	13.0 %	174	201	95.1 %	95.3 %
CM East	185	169	-8.6 %	10.7	9.6	-10.3 %	180	158	97.3 %	93.5 %
CM South	239	203	-15.1 %	20.1	16.8	-16.5 %	223	194	93.3 %	95.6 %
CM West	446	352	-21.1 %	34.5	26.7	-22.7 %	420	334	94.2 %	94.9 %
	1,053	935	-11.2 %	20.6	18.0	-12.8 %	997	887	94.7 %	94.9 %

PROPERTY DAMAGE AND ENVIRONMENTAL POLLUTION

Area Description	Recorded 2010	Recorded 2011	Variance 2010-2011	Recorded per 10,000 pop 2010	Recorded per 10,000 pop 2011	Per 10,000 pop % Variance 2010 to 2011	Resolved 2010	Resolved 2011	Resolution Rate 2010	Resolution Rate 2011
CM Central	1,341	1,388	3.5 %	150.8	153.0	1.5 %	520	448	38.8 %	32.3 %
CM East	1,240	1,229	-0.9 %	71.4	69.5	-2.6 %	457	435	36.9 %	35.4 %
CM South	1,644	1,288	-21.7 %	138.6	106.8	-23.0 %	521	488	31.7 %	37.9 %
CM West	1,721	1,533	-10.9 %	133.2	116.2	-12.7 %	583	557	33.9 %	36.3 %
	5,946	5,438	-8.5 %	116.5	104.6	-10.2 %	2,081	1,928	35.0 %	35.5 %

PUBLIC ORDER OFFENCES

Area Description	Recorded 2010	Recorded 2011	Variance 2010-2011	Recorded per 10,000 pop 2010	Recorded per 10,000 pop 2011	Per 10,000 pop % Variance 2010 to 2011	Resolved 2010	Resolved 2011	Resolution Rate 2010	Resolution Rate 2011
CM Central	1,032	1,003	-2.8 %	116.1	110.6	-4.7 %	934	894	90.5 %	89.1 %
CM East	2,062	1,596	-22.6 %	118.8	90.3	-24.0 %	1,955	1,459	94.8 %	91.4 %
CM South	1,465	1,320	-9.9 %	123.5	109.4	-11.4 %	1,335	1,201	91.1 %	91.0 %
CM West	1,868	1,766	-5.5 %	144.5	133.9	-7.4 %	1,687	1,506	90.3 %	85.3 %
	6,427	5,685	-11.5 %	125.9	109.3	-13.2 %	5,911	5,060	92.0 %	89.0 %

OFFENCES AGAINST JUSTICE PROCEDURES, GOVERNMENT SECURITY AND GOVERNMENT OPERATIONS

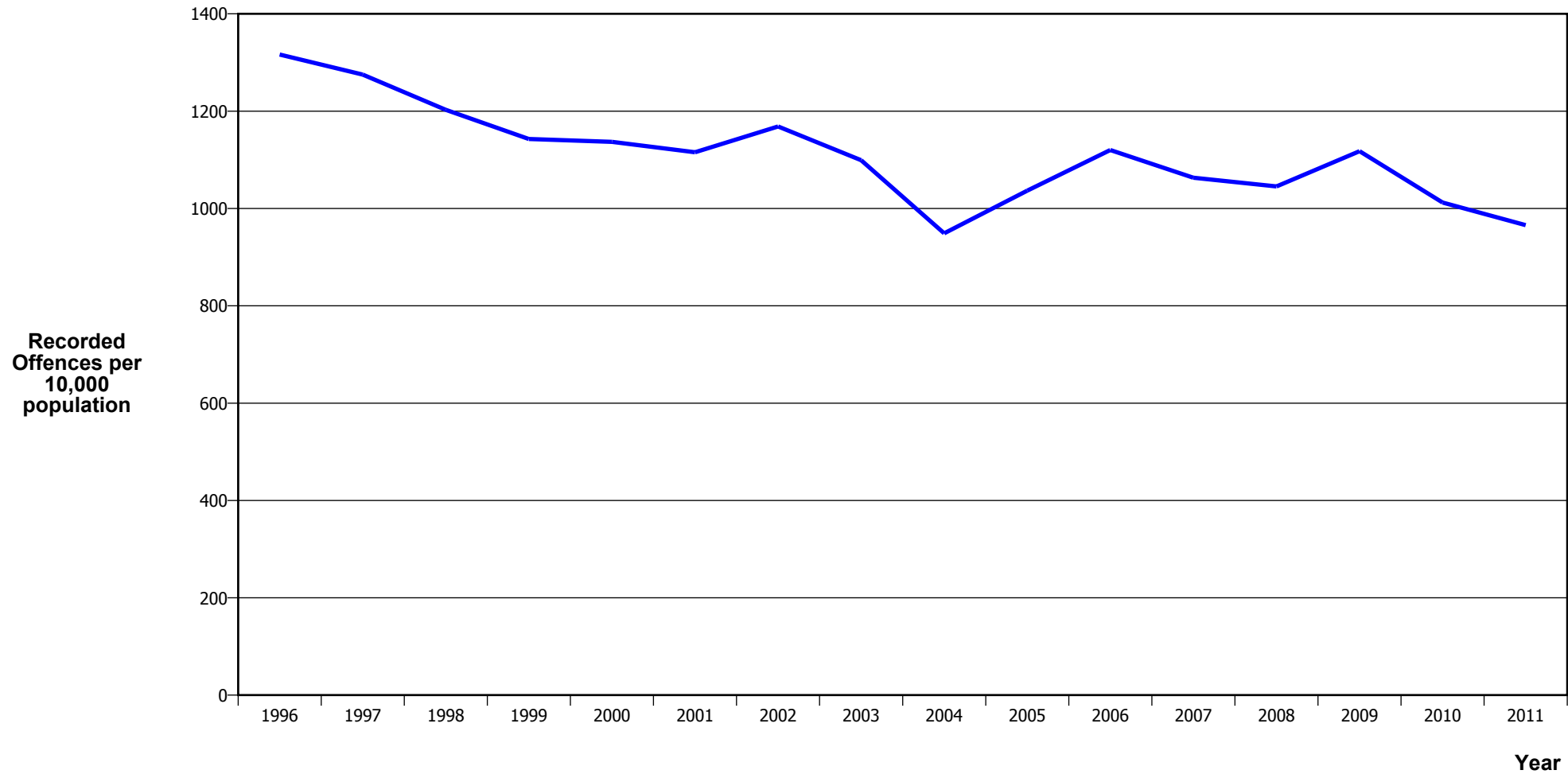
Area Description	Recorded 2010	Recorded 2011	Variance 2010-2011	Recorded per 10,000 pop 2010	Recorded per 10,000 pop 2011	Per 10,000 pop % Variance 2010 to 2011	Resolved 2010	Resolved 2011	Resolution Rate 2010	Resolution Rate 2011
CM Central	655	662	1.1 %	73.7	73.0	-0.9 %	627	623	95.7 %	94.1 %
CM East	484	527	8.9 %	27.9	29.8	7.0 %	460	496	95.0 %	94.1 %
CM South	546	540	-1.1 %	46.0	44.8	-2.7 %	515	528	94.3 %	97.8 %
CM West	715	714	-0.1 %	55.3	54.1	-2.2 %	690	682	96.5 %	95.5 %
	2,400	2,443	1.8 %	47.0	47.0	-0.1 %	2,292	2,329	95.5 %	95.3 %

MISCELLANEOUS OFFENCES

Area Description	Recorded 2010	Recorded 2011	Variance 2010-2011	Recorded per 10,000 pop 2010	Recorded per 10,000 pop 2011	Per 10,000 pop % Variance 2010 to 2011	Resolved 2010	Resolved 2011	Resolution Rate 2010	Resolution Rate 2011
CM Central	11	9	-18.2 %	1.2	1.0	-19.8 %	7	7	63.6 %	77.8 %
CM East	18	15	-16.7 %	1.0	0.8	-18.1 %	10	11	55.6 %	73.3 %
CM South	32	22	-31.3 %	2.7	1.8	-32.4 %	25	18	78.1 %	81.8 %
CM West	92	120	30.4 %	7.1	9.1	27.8 %	78	110	84.8 %	91.7 %
	153	166	8.5 %	3.0	3.2	6.5 %	120	146	78.4 %	88.0 %

CRIME TRENDS

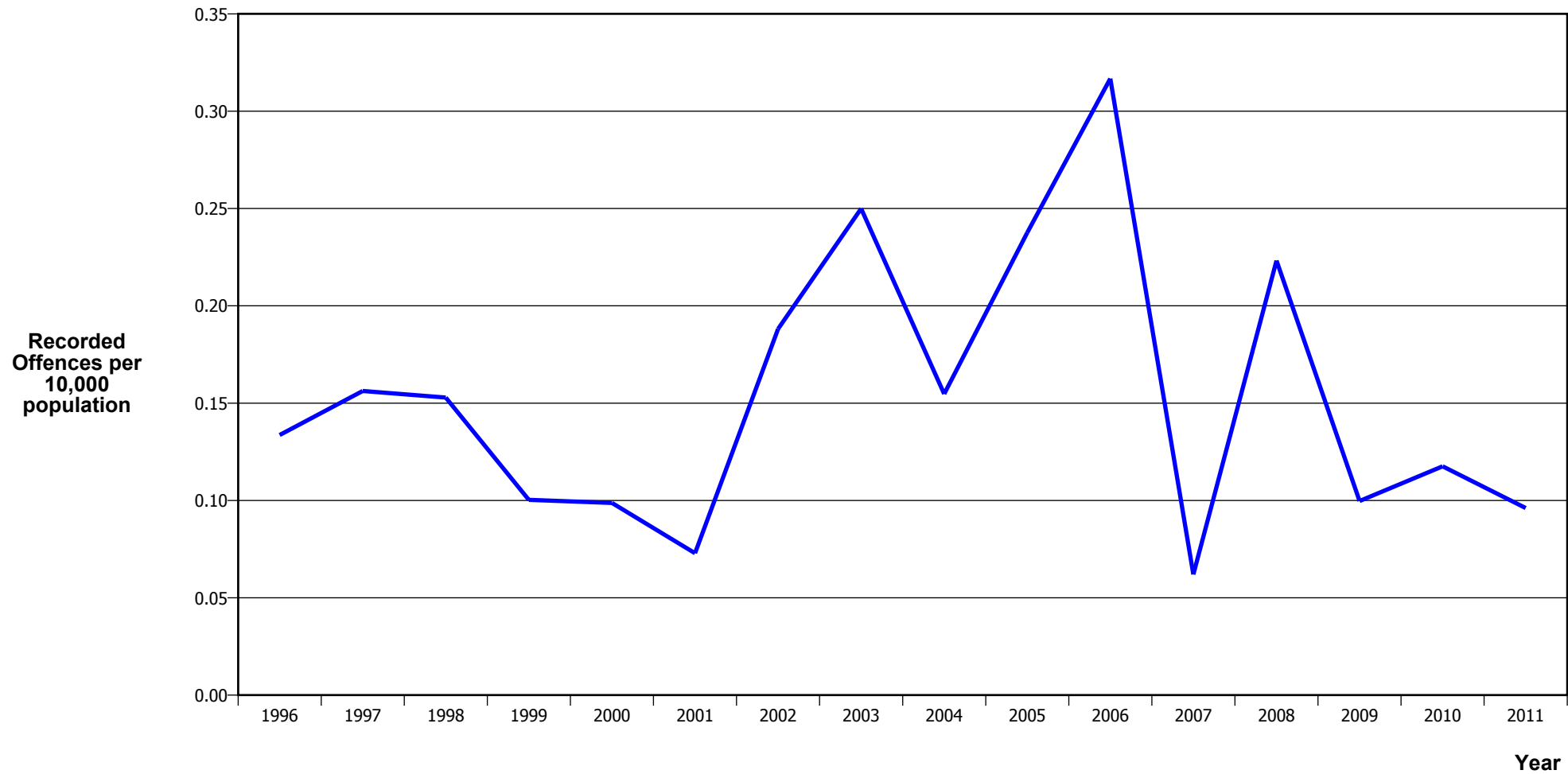
TOTAL CRIME



Calendar Year	1996	1997	1998	1999	2000	2001	2002	2003	2004	2005	2006	2007	2008	2009	2010	2011
Recorded Offences	49,253	48,974	47,202	45,551	46,060	45,901	49,690	48,381	42,937	48,003	53,049	51,440	51,511	56,041	51,664	50,228
Recorded per 10,000 Population	1,316.4	1,275.2	1,202.8	1,142.7	1,136.9	1,115.7	1,168.6	1,099.3	948.9	1,036.7	1,120.1	1,063.3	1,045.4	1,117.8	1,012.2	965.8

*In 2005/2006 there was a major IT system change (LES to NIA)

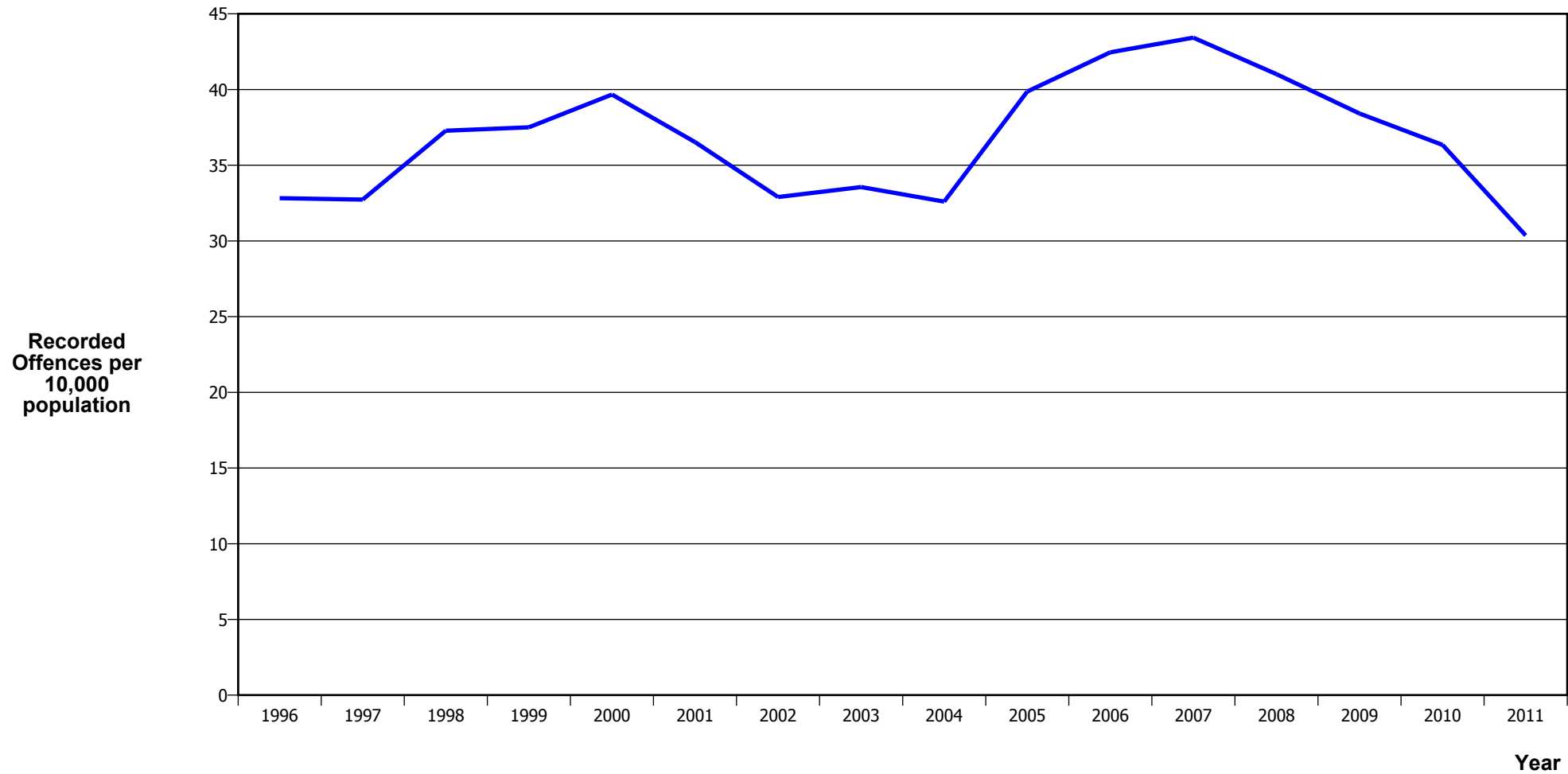
MURDER



Calendar Year	1996	1997	1998	1999	2000	2001	2002	2003	2004	2005	2006	2007	2008	2009	2010	2011
Recorded Offences	5	6	6	4	4	3	8	11	7	11	15	3	11	5	6	5
Recorded per 10,000 Population	0.13	0.16	0.15	0.10	0.10	0.07	0.19	0.25	0.15	0.24	0.32	0.06	0.22	0.10	0.12	0.10

- The 2009 result was significantly influenced by an abnormal one-off spike in August 2009, when 13 murders occurred

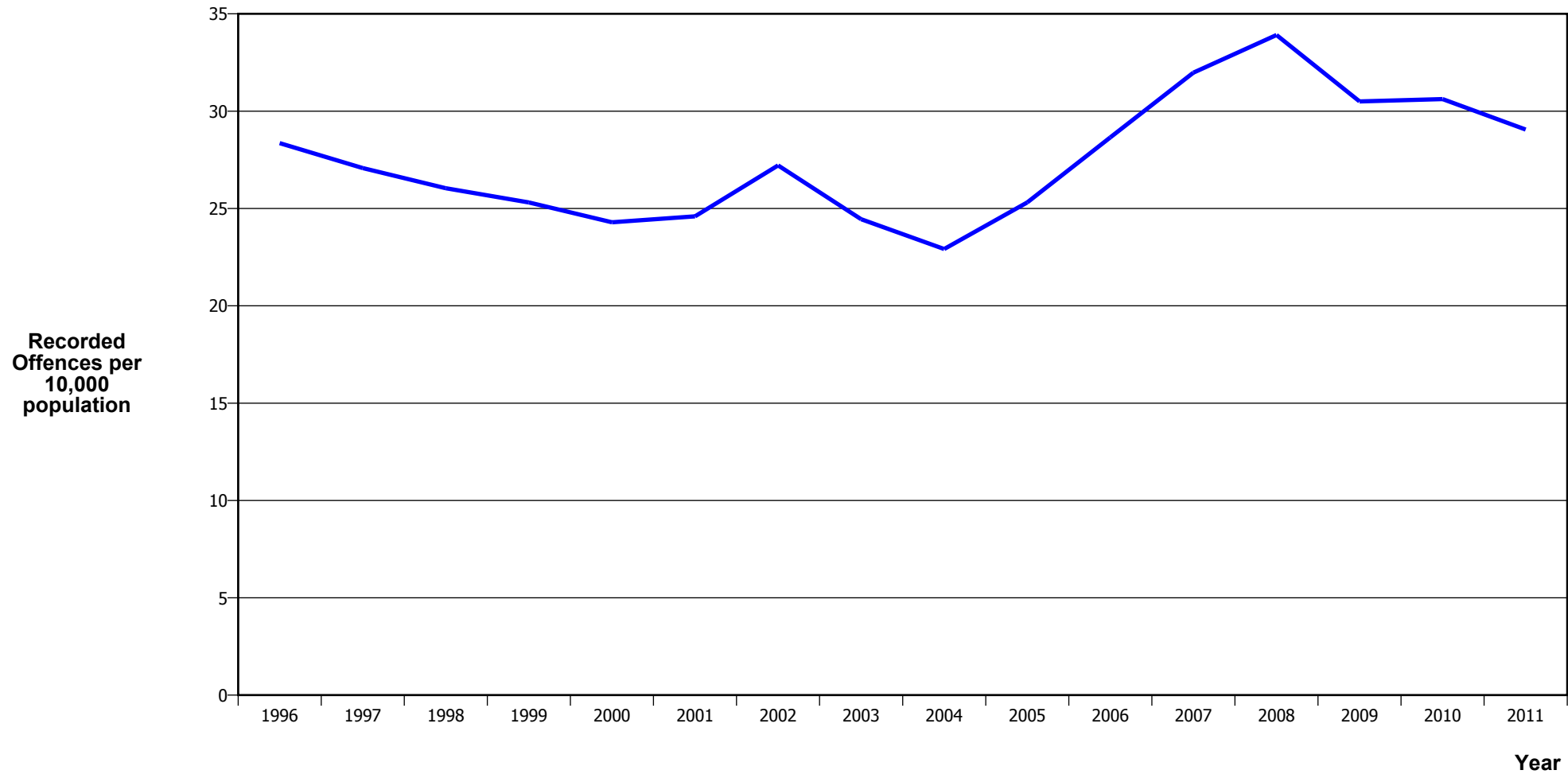
SERIOUS ASSAULTS RESULTING IN INJURY*



Calendar Year	1996	1997	1998	1999	2000	2001	2002	2003	2004	2005	2006	2007	2008	2009	2010	2011
Recorded Offence	1,228	1,257	1,463	1,495	1,607	1,503	1,399	1,477	1,475	1,846	2,011	2,101	2,021	1,926	1,855	1,579
Offence Rate per 10K Popn	32.8	32.7	37.3	37.5	39.7	36.5	32.9	33.6	32.6	39.9	42.5	43.4	41.0	38.4	36.3	30.4

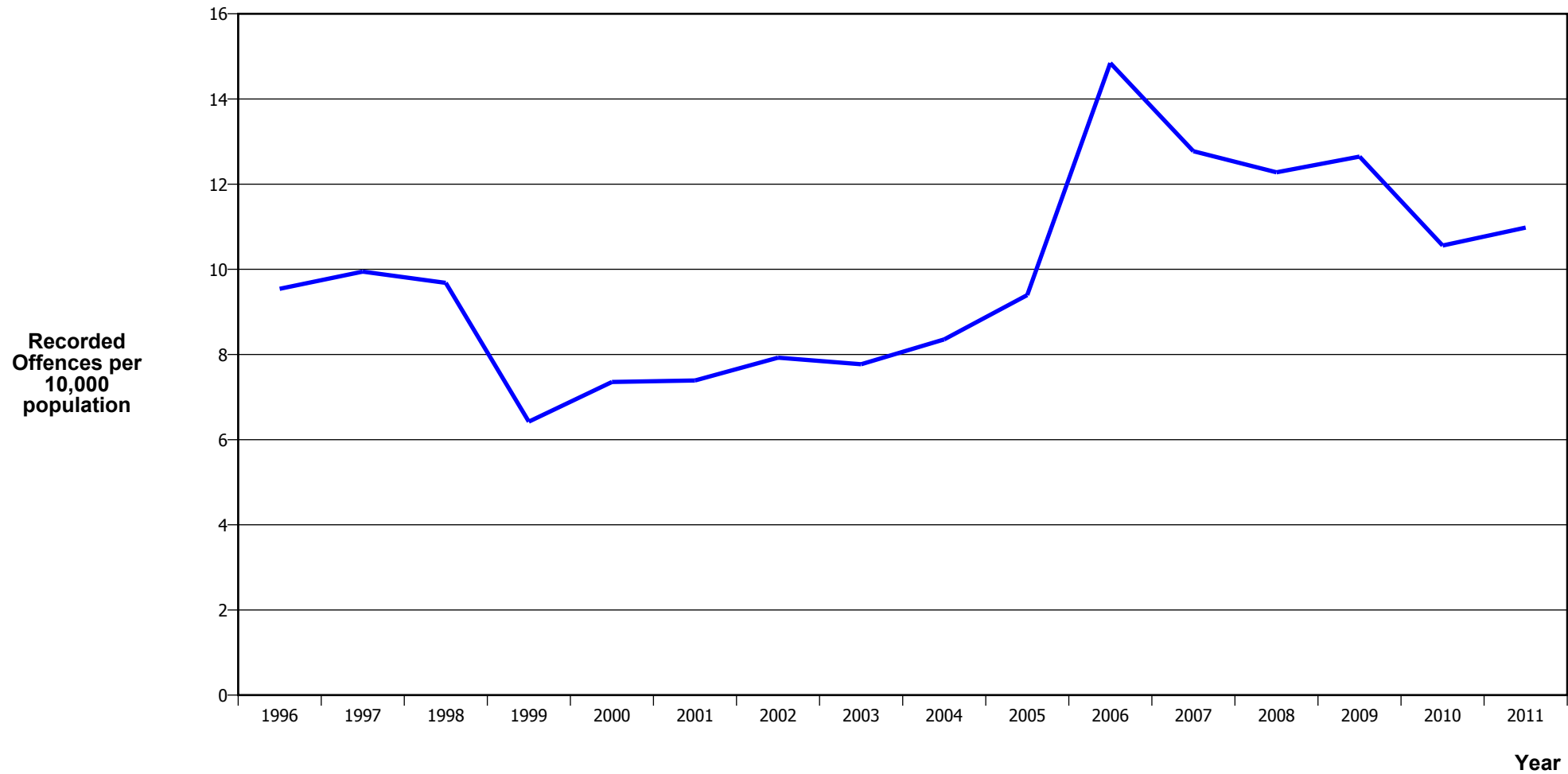
* This measure excludes common assaults

PUBLIC PLACE ASSAULTS



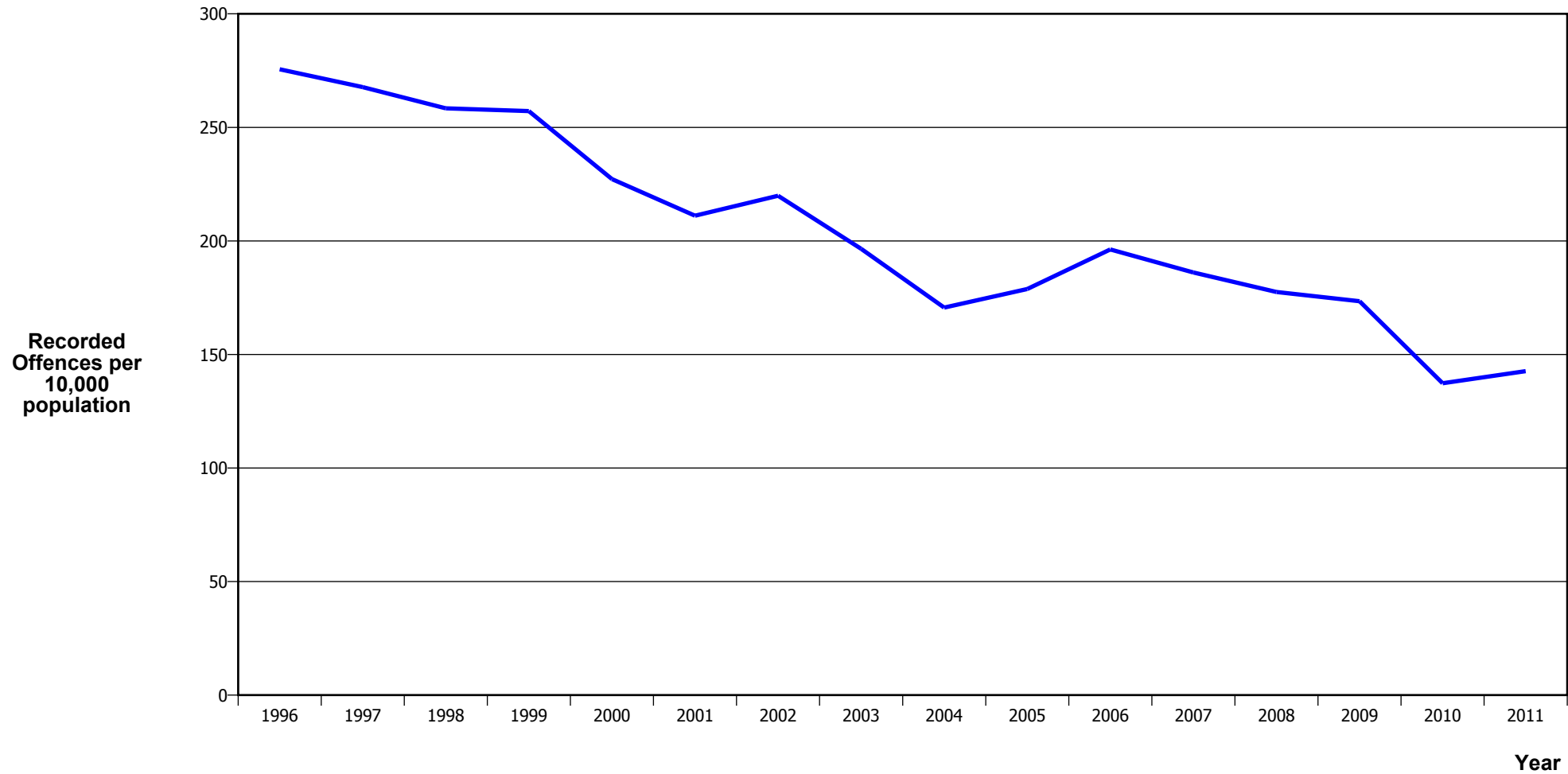
Calendar Year	1996	1997	1998	1999	2000	2001	2002	2003	2004	2005	2006	2007	2008	2009	2010	2011
Recorded Offences	1,061	1,040	1,022	1,009	984	1,012	1,157	1,076	1,037	1,172	1,357	1,547	1,671	1,529	1,563	1,511
Recorded per 10,000 Population	28.4	27.1	26.0	25.3	24.3	24.6	27.2	24.4	22.9	25.3	28.7	32.0	33.9	30.5	30.6	29.1

ROBBERY



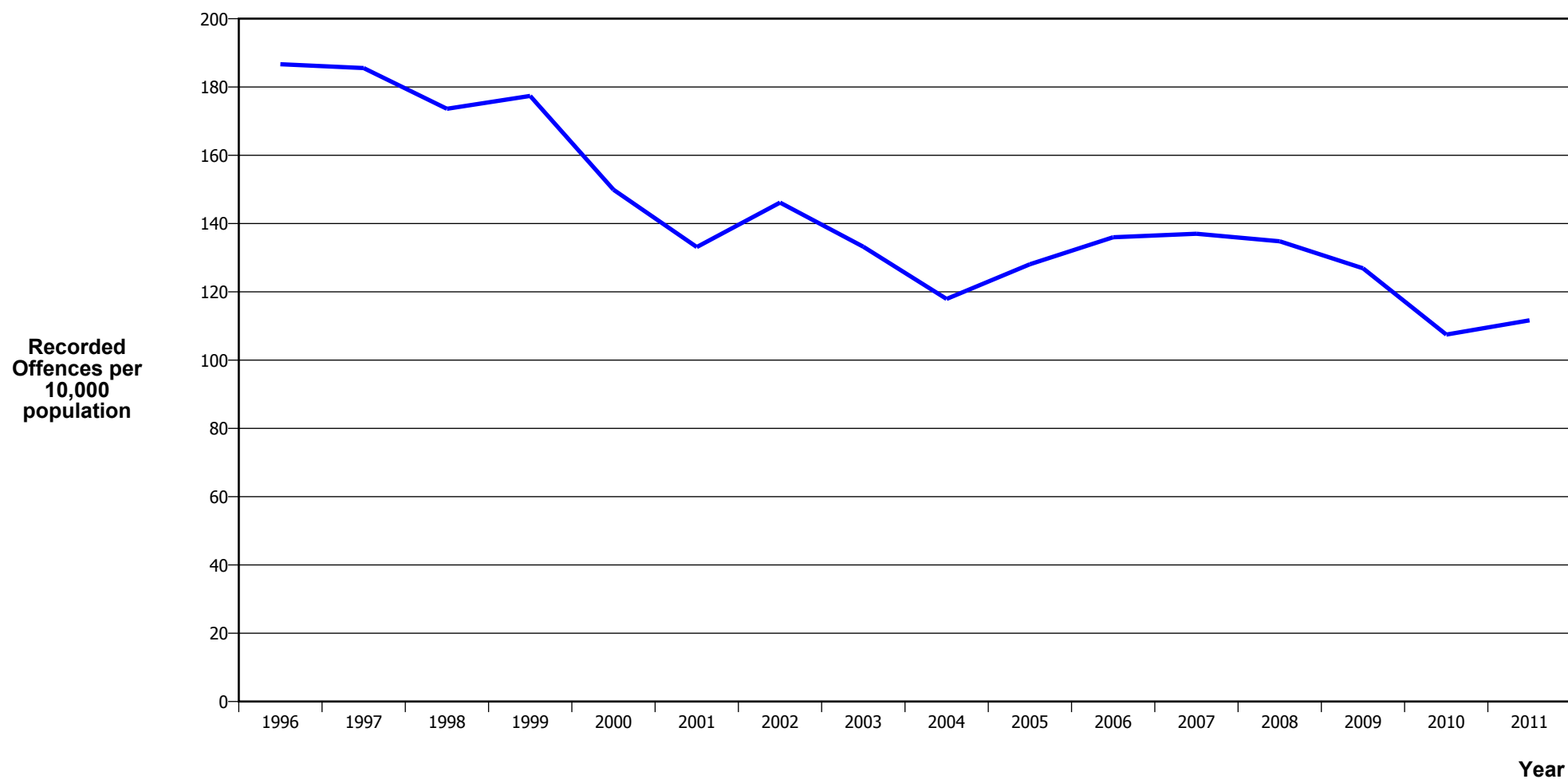
Calendar Year	1996	1997	1998	1999	2000	2001	2002	2003	2004	2005	2006	2007	2008	2009	2010	2011
Recorded Offences	357	382	380	256	298	304	337	342	378	435	703	618	605	634	539	571
Recorded per 10,000 Population	9.5	9.9	9.7	6.4	7.4	7.4	7.9	7.8	8.4	9.4	14.8	12.8	12.3	12.6	10.6	11.0

BURGLARY (TOTAL)



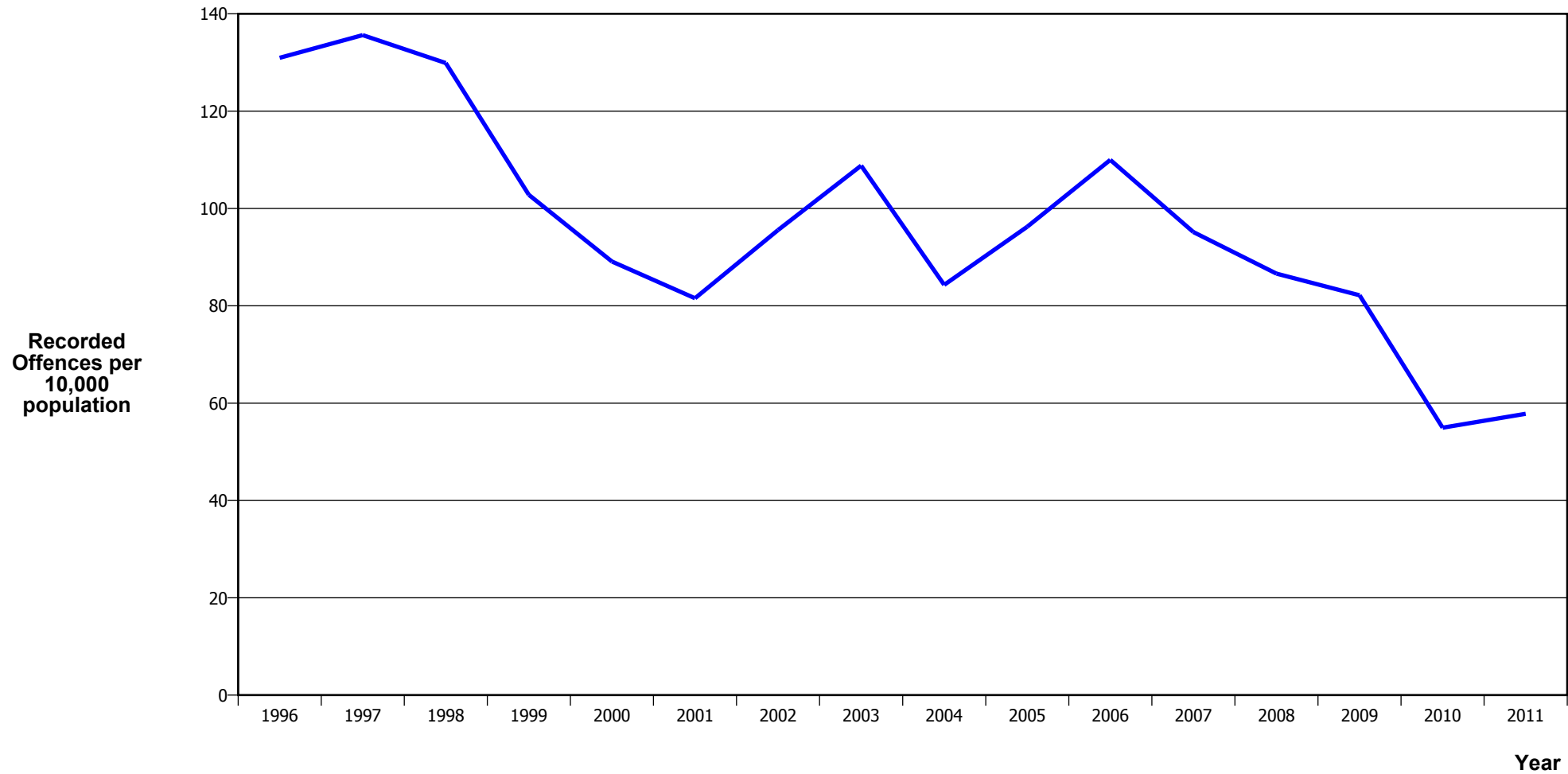
Calendar Year	1996	1997	1998	1999	2000	2001	2002	2003	2004	2005	2006	2007	2008	2009	2010	2011
Recorded Offences	10,311	10,283	10,141	10,251	9,205	8,685	9,350	8,650	7,722	8,281	9,295	9,004	8,746	8,697	7,010	7,418
Recorded per 10,000 Population	275.6	267.8	258.4	257.2	227.2	211.1	219.9	196.5	170.7	178.8	196.3	186.1	177.5	173.5	137.3	142.6

BURGLARY (DWELLING)



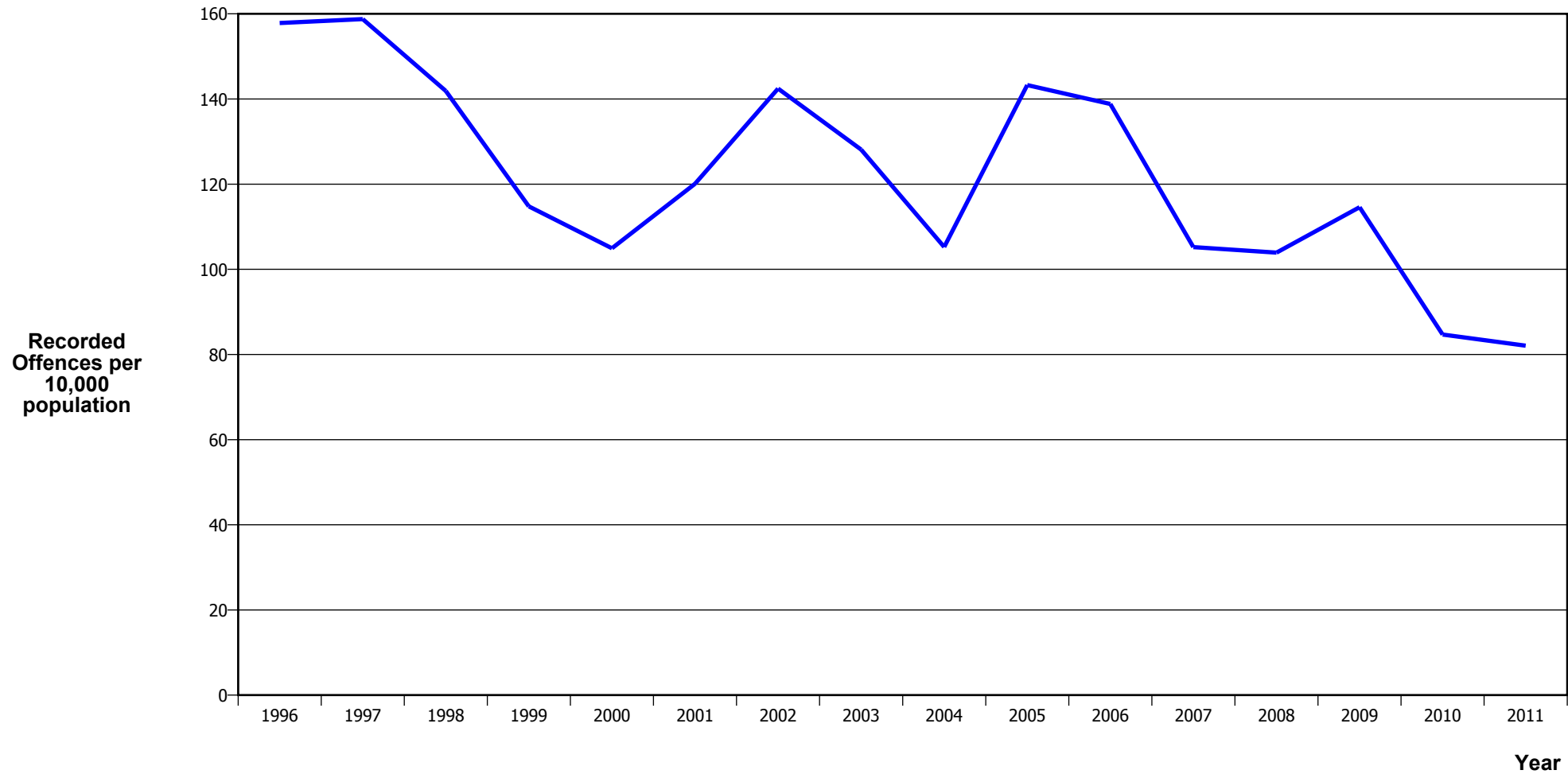
Calendar Year	1996	1997	1998	1999	2000	2001	2002	2003	2004	2005	2006	2007	2008	2009	2010	2011
Recorded Offences	6,983	7,125	6,813	7,070	6,073	5,477	6,214	5,863	5,335	5,930	6,440	6,628	6,641	6,361	5,485	5,807
Recorded per 10,000 Population	186.6	185.5	173.6	177.4	149.9	133.1	146.1	133.2	117.9	128.1	136.0	137.0	134.8	126.9	107.5	111.7

VEHICLES STOLEN



Calendar Year	1996	1997	1998	1999	2000	2001	2002	2003	2004	2005	2006	2007	2008	2009	2010	2011
Recorded Offences	4,900	5,209	5,098	4,098	3,610	3,355	4,064	4,789	3,815	4,457	5,209	4,604	4,268	4,119	2,805	3,006
Recorded per 10,000 Population	131.0	135.6	129.9	102.8	89.1	81.5	95.6	108.8	84.3	96.3	110.0	95.2	86.6	82.2	55.0	57.8

THEFT EX CAR



Calendar Year	1996	1997	1998	1999	2000	2001	2002	2003	2004	2005	2006	2007	2008	2009	2010	2011
Recorded Offences	5,906	6,097	5,569	4,575	4,251	4,941	6,057	5,639	4,762	6,633	6,575	5,090	5,120	5,745	4,323	4,268
Recorded per 10,000 Population	157.9	158.8	141.9	114.8	104.9	120.1	142.5	128.1	105.2	143.3	138.8	105.2	103.9	114.6	84.7	82.1

Population Data

Population data is used in this release to calculate crime rates. They have been derived from population estimates as at 30 June each year that have been obtained from Statistics New Zealand.

The estimated resident population is based on the census usually resident population count, with adjustments for residents missed or counted more than once by the census (net census undercount), and for residents temporarily overseas on census night.

These population estimates exclude the number of international students who are studying in New Zealand for less than 12 months.

Year	Population
1996	374,140
1997	384,050
1998	392,450
1999	398,610
2000	405,120
2001	411,420
2002	425,200
2003	440,120
2004	452,480
2005	463,020
2006	473,590
2007	483,780
2008	492,720
2009	501,340
2010	510,420
2011	520,040

General Definitions

Recorded Offences: the number of breaches of the New Zealand law recorded by Police. This includes offences specified in the Crimes Act and other legislations, such as the Summary Offences Act, Local Government Act, etc.

Resolved Offences: the number of recorded offences where an offender has been identified and dealt with (e.g. warned, cautioned, prosecuted, etc).

Resolution Rate: the proportion of recorded offences that have been resolved.

Recorded per 10,000 population: the number of recorded offences for every 10,000 people. This is also referred as the crime rate per 10,000 population.

ANZSOC: The Australian and New Zealand Standard Offence Classification. The offence classification is divided into 16 major offence divisions.

Definition of ANZSOC Divisions

1. Homicide and related offences: Unlawfully kill, attempt to unlawfully kill or conspiracy to kill another person.
2. Acts intended to cause injury: Acts, excluding attempted murder and those resulting in death, which are intended to cause non-fatal injury or harm to another person and where there is no sexual or acquisitive element.
3. Sexual assault and related offences: Acts, or intent of acts, of a sexual nature against another person, which are non-consensual or where consent is proscribed.
4. Dangerous or negligent acts endangering persons: Dangerous or negligent acts which, though not intended to cause harm, actually or potentially result in injury to oneself or another person.
5. Abduction, harassment and other offences against person: Acts intended to threaten or harass, or acts that unlawfully deprive another person of their freedom of movement, that are against that person's will or against the will of any parent, guardian or other person having lawful custody or care of that person.
6. Robbery, extortion and related offences: Acts intended to unlawfully gain money, property or other items of value from, or to cause detriment to, another person by using the threat of force or any other coercive measure.
7. Unlawful entry with intent / burglary, break and enter: The unlawful entry of a structure with the intent to commit an offence, where the entry is either forced or unforced.
8. Theft and related and offences: The unlawful taking or obtaining of money or goods, not involving the use of force or violence, coercion or deception, with intent to permanently or temporarily deprive the owner or possessor of the use of the money or goods, or the receiving or handling of money or goods obtained unlawfully.

9. Fraud, deception and related offences: Offences involving a dishonest act or omission carried out with the purpose of deceiving to obtain a benefit.

10. Illicit drug offences: The possessing, selling, dealing or trafficking, importing or exporting, manufacturing or cultivating of drugs or other substances prohibited under legislation.

11. Prohibited and regulated weapons and explosives offences: Offences involving prohibited or regulated weapons and explosives. Those offences also involving assault, sexual assault or robbery are coded to the relevant group within Assault, Sexual assaults and Robbery respectively.

12. Property damage and environmental pollution: The wilful and unlawful destruction, damage or defacement of public or private property, or the pollution of property or a definable entity held in common by the community.

13. Public order offences: Offences relating personal conduct that involves, or may lead to, a breach of public order or decency, or that is indicative of criminal intent, or that is otherwise regulated or prohibited on moral or ethical grounds. In general these offences do not involve a specific victim or victims; however some offences, such as offensive language and offensive behaviour, may be directed towards a single victim.

14. Traffic and vehicle regulatory offences: Offences relating to vehicles and most forms of traffic, including offences pertaining to the licensing, registration, roadworthiness, or use of vehicles, bicycle offences and pedestrian offences.

15. Offences against justice procedures, government security and government operations: An act or omission that is deemed to be prejudicial to the effective carrying out of justice procedures or any government operations. This includes general government operations as well as those specifically concerned with maintaining government security.

16. Miscellaneous offences: Offences involving the breach of statutory rules or regulations governing activities that are prima facie legal, where such offences are not explicitly dealt with under any other division. If an offence is specified under regulation and involves an act that would be illegal under common law or general criminal legislation, the offence is dealt with under the appropriate generic group.