

# **CENTRAL DISTRICT CRIME STATISTICS 2014**



**A Summary of  
Recorded and Resolved Offence  
Statistics**

**POLICE NATIONAL HEADQUARTERS  
April 2015**

ISSN 1178 - 1602

**Table of Contents:**

<b>Topic</b>	<b>Page</b>
Report Notes	1
District Summary of Recorded and Resolved Crime, by Division	2-4
Proportions of Recorded Crime by Division	5
Summary of District Recorded Offences, Rate per 10,000 Population and Resolved Offences, by Area	6
Summary of Area Recorded Offences, Rate per 10,000 Population and Resolved Offences, by Division	7-9
Crime Trends	10
Total Crime	11
Murder	12
Serious Assaults Resulting in Injury	13
Sexual Assaults	14
Public Place Assaults	15
Dwelling Assaults	16
Robbery	17
Burglary (Total)	18
Burglary (Dwelling)	19
Vehicles Stolen	20
Theft Ex Car	21
Population Data	22
General Definitions	23-24

## **REPORT NOTES:**

Statistics reported in this document are derived from the Police National Intelligence Application (NIA). These Official Statistics for Recorded and Resolved Offences present a snapshot of data in NIA relating to offences that occur within a given year, as at the date 14 days following the end of that year.

Unless the matter is minor where Police attendance is sufficient, a matter that is reported to or discovered by Police where Police believe an offence is likely to have been committed is counted as a recorded offence.

A recorded offence is counted as resolved when Police apprehend an offender and decide how to deal with him/her. (E.g. warn, prosecute, etc.)

Resolution rate is the percentage of recorded offences that are resolved within 14 days of the end of the year being reported on.

If an offence is resolved 15 days or more after the end of the year it will not appear in the Official Crime Statistics for that or any other year. Resolution Rate therefore undercounts the number of cases that Police have resolved. This phenomenon has a more marked impact for some types of offences than others, such as offences that require long investigations (E.g. many serial crimes, burglaries and murders).

Several offences have been reclassified into different ANZSOC groups. This has resulted in changes to subtotals for Groups and Sub-divisions within Divisions 10, 15 and 16, compared to previously reported data. Generally, this occurred within the same Division.

Note that the Population Estimates have been revised for 2007 to 2013 as a result of the 2013 Census. In previous reports population estimates were based on the 2006 Census. Crime rates reported in this report for those years may differ from those previously reported as a result.

When comparing 2014 Statistics with previous years, the reader should also refer to "Report Notes" published in previous years' reports, as previous changes significantly affect year on year trends.

**SUMMARY OF DISTRICT RECORDED AND RESOLVED CRIME, BY DIVISION**  
**Years ending 31 December**

**HOMICIDE AND RELATED OFFENCES**

ASOC Subdivision Description	Recorded 2012	Recorded 2013	Recorded 2014	Variance 2012-2013	Variance 2013-2014	Resolved 2012	Resolved 2013	Resolved 2014	Resolution Rate 2012	Resolution Rate 2013	Resolution Rate 2014
ATTEMPTED MURDER	1	1	1	0.0 %	0.0 %	1	1	1	100.0 %	100.0 %	100.0 %
HOMICIDE AND RELATED OFFENCES NOT FURTHER DEFINED	0	0	1	0.0 %	0.0 %	0	0	1	0.0 %	0.0 %	100.0 %
MANSLAUGHTER AND DRIVING CAUSING DEATH	1	2	1	100.0 %	-50.0 %	0	2	1	0.0 %	100.0 %	100.0 %
MURDER	4	4	1	0.0 %	-75.0 %	4	4	1	100.0 %	100.0 %	100.0 %
	<b>6</b>	<b>7</b>	<b>4</b>	<b>16.7 %</b>	<b>-42.9 %</b>	<b>5</b>	<b>7</b>	<b>4</b>	<b>83.3 %</b>	<b>100.0 %</b>	<b>100.0 %</b>

**ACTS INTENDED TO CAUSE INJURY**

ASOC Subdivision Description	Recorded 2012	Recorded 2013	Recorded 2014	Variance 2012-2013	Variance 2013-2014	Resolved 2012	Resolved 2013	Resolved 2014	Resolution Rate 2012	Resolution Rate 2013	Resolution Rate 2014
ASSAULT	3,341	3,162	3,188	-5.4 %	0.8 %	2,772	2,625	2,606	83.0 %	83.0 %	81.7 %
OTHER ACTS INTENDED TO CAUSE INJURY	5	3	4	-40.0 %	33.3 %	4	2	3	80.0 %	66.7 %	75.0 %
	<b>3,346</b>	<b>3,165</b>	<b>3,192</b>	<b>-5.4 %</b>	<b>0.9 %</b>	<b>2,776</b>	<b>2,627</b>	<b>2,609</b>	<b>83.0 %</b>	<b>83.0 %</b>	<b>81.7 %</b>

**SEXUAL ASSAULT AND RELATED OFFENCES**

ASOC Subdivision Description	Recorded 2012	Recorded 2013	Recorded 2014	Variance 2012-2013	Variance 2013-2014	Resolved 2012	Resolved 2013	Resolved 2014	Resolution Rate 2012	Resolution Rate 2013	Resolution Rate 2014
NON-ASSAULTIVE SEXUAL OFFENCES	6	18	9	200.0 %	-50.0 %	6	13	3	100.0 %	72.2 %	33.3 %
SEXUAL ASSAULT	259	362	297	39.8 %	-18.0 %	164	205	136	63.3 %	56.6 %	45.8 %
	<b>265</b>	<b>380</b>	<b>306</b>	<b>43.4 %</b>	<b>-19.5 %</b>	<b>170</b>	<b>218</b>	<b>139</b>	<b>64.2 %</b>	<b>57.4 %</b>	<b>45.4 %</b>

**DANGEROUS OR NEGLIGENT ACTS ENDANGERING PERSONS**

ASOC Subdivision Description	Recorded 2012	Recorded 2013	Recorded 2014	Variance 2012-2013	Variance 2013-2014	Resolved 2012	Resolved 2013	Resolved 2014	Resolution Rate 2012	Resolution Rate 2013	Resolution Rate 2014
OTHER DANGEROUS OR NEGLIGENT ACTS ENDANGERING PERSONS	62	51	61	-17.7 %	19.6 %	44	34	39	71.0 %	66.7 %	63.9 %
	<b>62</b>	<b>51</b>	<b>61</b>	<b>-17.7 %</b>	<b>19.6 %</b>	<b>44</b>	<b>34</b>	<b>39</b>	<b>71.0 %</b>	<b>66.7 %</b>	<b>63.9 %</b>

**ABDUCTION, HARASSMENT AND OTHER RELATED OFFENCES AGAINST A PERSON**

ASOC Subdivision Description	Recorded 2012	Recorded 2013	Recorded 2014	Variance 2012-2013	Variance 2013-2014	Resolved 2012	Resolved 2013	Resolved 2014	Resolution Rate 2012	Resolution Rate 2013	Resolution Rate 2014
ABDUCTION AND KIDNAPPING	19	10	13	-47.4 %	30.0 %	11	9	9	57.9 %	90.0 %	69.2 %
HARASSMENT AND THREATENING BEHAVIOUR	836	1,065	1,110	27.4 %	4.2 %	647	721	730	77.4 %	67.7 %	65.8 %
	<b>855</b>	<b>1,075</b>	<b>1,123</b>	<b>25.7 %</b>	<b>4.5 %</b>	<b>658</b>	<b>730</b>	<b>739</b>	<b>77.0 %</b>	<b>67.9 %</b>	<b>65.8 %</b>

**ROBBERY, EXTORTION AND RELATED OFFENCES**

ASOC Subdivision Description	Recorded 2012	Recorded 2013	Recorded 2014	Variance 2012-2013	Variance 2013-2014	Resolved 2012	Resolved 2013	Resolved 2014	Resolution Rate 2012	Resolution Rate 2013	Resolution Rate 2014
BLACKMAIL AND EXTORTION	13	12	6	-7.7 %	-50.0 %	9	6	4	69.2 %	50.0 %	66.7 %
ROBBERY	97	90	93	-7.2 %	3.3 %	50	43	47	51.5 %	47.8 %	50.5 %
	<b>110</b>	<b>102</b>	<b>99</b>	<b>-7.3 %</b>	<b>-2.9 %</b>	<b>59</b>	<b>49</b>	<b>51</b>	<b>53.6 %</b>	<b>48.0 %</b>	<b>51.5 %</b>

**UNLAWFUL ENTRY WITH INTENT/BURGLARY, BREAK AND ENTER**

ASOC Subdivision Description	Recorded 2012	Recorded 2013	Recorded 2014	Variance 2012-2013	Variance 2013-2014	Resolved 2012	Resolved 2013	Resolved 2014	Resolution Rate 2012	Resolution Rate 2013	Resolution Rate 2014
UNLAWFUL ENTRY WITH INTENT/BURGLARY, BREAK AND ENTER	4,356	4,472	4,540	2.7 %	1.5 %	644	745	613	14.8 %	16.7 %	13.5 %
	<b>4,356</b>	<b>4,472</b>	<b>4,540</b>	<b>2.7 %</b>	<b>1.5 %</b>	<b>644</b>	<b>745</b>	<b>613</b>	<b>14.8 %</b>	<b>16.7 %</b>	<b>13.5 %</b>

**SUMMARY OF DISTRICT RECORDED AND RESOLVED CRIME, BY DIVISION**  
**Years ending 31 December**

**THEFT AND RELATED OFFENCES**

ASOC Subdivision Description	Recorded 2012	Recorded 2013	Recorded 2014	Variance 2012-2013	Variance 2013-2014	Resolved 2012	Resolved 2013	Resolved 2014	Resolution Rate 2012	Resolution Rate 2013	Resolution Rate 2014
ILLEGAL USE OF PROPERTY (EXCEPT MOTOR VEHICLES)	404	380	320	-5.9 %	-15.8 %	27	25	27	6.7 %	6.6 %	8.4 %
MOTOR VEHICLE THEFT AND RELATED OFFENCES	2,780	2,769	3,028	-0.4 %	9.4 %	340	420	425	12.2 %	15.2 %	14.0 %
RECEIVE OR HANDLE PROCEEDS OF CRIME	227	242	238	6.6 %	-1.7 %	216	231	227	95.2 %	95.5 %	95.4 %
THEFT (EXCEPT MOTOR VEHICLES)	4,759	5,298	5,253	11.3 %	-0.8 %	1,915	2,015	1,947	40.2 %	38.0 %	37.1 %
	<b>8,170</b>	<b>8,689</b>	<b>8,839</b>	<b>6.4 %</b>	<b>1.7 %</b>	<b>2,498</b>	<b>2,691</b>	<b>2,626</b>	<b>30.6 %</b>	<b>31.0 %</b>	<b>29.7 %</b>

**FRAUD, DECEPTION AND RELATED OFFENCES**

ASOC Subdivision Description	Recorded 2012	Recorded 2013	Recorded 2014	Variance 2012-2013	Variance 2013-2014	Resolved 2012	Resolved 2013	Resolved 2014	Resolution Rate 2012	Resolution Rate 2013	Resolution Rate 2014
DECEPTIVE BUSINESS/GOVERNMENT PRACTICES	2	1	3	-50.0 %	200.0 %	1	1	3	50.0 %	100.0 %	100.0 %
FORGERY AND COUNTERFEITING	11	29	27	163.6 %	-6.9 %	5	18	9	45.5 %	62.1 %	33.3 %
OBTAIN BENEFIT BY DECEPTION	449	506	639	12.7 %	26.3 %	279	315	438	62.1 %	62.3 %	68.5 %
OTHER FRAUD AND DECEPTION OFFENCES	58	47	46	-19.0 %	-2.1 %	43	29	19	74.1 %	61.7 %	41.3 %
	<b>520</b>	<b>583</b>	<b>715</b>	<b>12.1 %</b>	<b>22.6 %</b>	<b>328</b>	<b>363</b>	<b>469</b>	<b>63.1 %</b>	<b>62.3 %</b>	<b>65.6 %</b>

**ILLICIT DRUG OFFENCES**

ASOC Subdivision Description	Recorded 2012	Recorded 2013	Recorded 2014	Variance 2012-2013	Variance 2013-2014	Resolved 2012	Resolved 2013	Resolved 2014	Resolution Rate 2012	Resolution Rate 2013	Resolution Rate 2014
DEAL OR TRAFFIC IN ILLICIT DRUGS	216	295	172	36.6 %	-41.7 %	191	277	148	88.4 %	93.9 %	86.0 %
IMPORT OR EXPORT ILLICIT DRUGS	4	8	7	100.0 %	-12.5 %	2	5	5	50.0 %	62.5 %	71.4 %
MANUFACTURE OR CULTIVATE ILLICIT DRUGS	368	294	329	-20.1 %	11.9 %	264	211	200	71.7 %	71.8 %	60.8 %
OTHER ILLICIT DRUG OFFENCES	318	204	227	-35.8 %	11.3 %	306	199	220	96.2 %	97.5 %	96.9 %
POSSESS AND/OR USE ILLICIT DRUGS	643	496	529	-22.9 %	6.7 %	610	465	493	94.9 %	93.8 %	93.2 %
	<b>1,549</b>	<b>1,297</b>	<b>1,264</b>	<b>-16.3 %</b>	<b>-2.5 %</b>	<b>1,373</b>	<b>1,157</b>	<b>1,066</b>	<b>88.6 %</b>	<b>89.2 %</b>	<b>84.3 %</b>

**PROHIBITED AND REGULATED WEAPONS AND EXPLOSIVES OFFENCES**

ASOC Subdivision Description	Recorded 2012	Recorded 2013	Recorded 2014	Variance 2012-2013	Variance 2013-2014	Resolved 2012	Resolved 2013	Resolved 2014	Resolution Rate 2012	Resolution Rate 2013	Resolution Rate 2014
REGULATED WEAPONS/EXPLOSIVES OFFENCES	613	522	532	-14.8 %	1.9 %	564	479	486	92.0 %	91.8 %	91.4 %
	<b>613</b>	<b>522</b>	<b>532</b>	<b>-14.8 %</b>	<b>1.9 %</b>	<b>564</b>	<b>479</b>	<b>486</b>	<b>92.0 %</b>	<b>91.8 %</b>	<b>91.4 %</b>

**PROPERTY DAMAGE AND ENVIRONMENTAL POLLUTION**

ASOC Subdivision Description	Recorded 2012	Recorded 2013	Recorded 2014	Variance 2012-2013	Variance 2013-2014	Resolved 2012	Resolved 2013	Resolved 2014	Resolution Rate 2012	Resolution Rate 2013	Resolution Rate 2014
ENVIRONMENTAL POLLUTION	10	11	4	10.0 %	-63.6 %	6	4	2	60.0 %	36.4 %	50.0 %
PROPERTY DAMAGE	3,948	3,973	3,773	0.6 %	-5.0 %	1,306	1,250	1,218	33.1 %	31.5 %	32.3 %
	<b>3,958</b>	<b>3,984</b>	<b>3,777</b>	<b>0.7 %</b>	<b>-5.2 %</b>	<b>1,312</b>	<b>1,254</b>	<b>1,220</b>	<b>33.1 %</b>	<b>31.5 %</b>	<b>32.3 %</b>

**PUBLIC ORDER OFFENCES**

ASOC Subdivision Description	Recorded 2012	Recorded 2013	Recorded 2014	Variance 2012-2013	Variance 2013-2014	Resolved 2012	Resolved 2013	Resolved 2014	Resolution Rate 2012	Resolution Rate 2013	Resolution Rate 2014
DISORDERLY CONDUCT	1,912	1,913	1,613	0.1 %	-15.7 %	1,699	1,692	1,381	88.9 %	88.4 %	85.6 %
OFFENSIVE CONDUCT	132	137	86	3.8 %	-37.2 %	96	85	55	72.7 %	62.0 %	64.0 %
PUBLIC ORDER OFFENCES NOT FURTHER DEFINED	0	0	0	0.0 %	0.0 %	0	0	0	0.0 %	0.0 %	0.0 %
REGULATED PUBLIC ORDER OFFENCES	554	563	112	1.6 %	-80.1 %	511	513	79	92.2 %	91.1 %	70.5 %
	<b>2,598</b>	<b>2,613</b>	<b>1,811</b>	<b>0.6 %</b>	<b>-30.7 %</b>	<b>2,306</b>	<b>2,290</b>	<b>1,515</b>	<b>88.8 %</b>	<b>87.6 %</b>	<b>83.7 %</b>

**SUMMARY OF DISTRICT RECORDED AND RESOLVED CRIME, BY DIVISION**  
**Years ending 31 December**

**OFFENCES AGAINST JUSTICE PROCEDURES, GOVERNMENT SECURITY AND GOVERNMENT OPERATIONS**

ASOC Subdivision Description	Recorded 2012	Recorded 2013	Recorded 2014	Variance 2012-2013	Variance 2013-2014	Resolved 2012	Resolved 2013	Resolved 2014	Resolution Rate 2012	Resolution Rate 2013	Resolution Rate 2014
BREACH OF COMMUNITY-BASED ORDER	252	176	203	-30.2 %	15.3 %	247	166	186	98.0 %	94.3 %	91.6 %
BREACH OF CUSTODIAL ORDER OFFENCES	34	29	41	-14.7 %	41.4 %	33	28	39	97.1 %	96.6 %	95.1 %
BREACH OF VIOLENCE AND NON-VIOLENCE RESTRAINING ORDERS	458	477	639	4.1 %	34.0 %	410	442	567	89.5 %	92.7 %	88.7 %
OFFENCES AGAINST GOVERNMENT OPERATIONS	14	4	20	-71.4 %	400.0 %	10	2	2	71.4 %	50.0 %	10.0 %
OFFENCES AGAINST GOVERNMENT SECURITY	0	0	1	0.0 %	0.0 %	0	0	1	0.0 %	0.0 %	100.0 %
OFFENCES AGAINST JUSTICE PROCEDURES	319	283	345	-11.3 %	21.9 %	310	278	339	97.2 %	98.2 %	98.3 %
OFFENCES AGAINST JUSTICE PROCEDURES, GOVERNMENT SECURITY AND GOVERNMENT OPERATIONS NOT FURTHER DEFINED	1	1	1	0.0 %	0.0 %	1	0	0	100.0 %	0.0 %	0.0 %
	<b>1,078</b>	<b>970</b>	<b>1,250</b>	<b>-10.0 %</b>	<b>28.9 %</b>	<b>1,011</b>	<b>916</b>	<b>1,134</b>	<b>93.8 %</b>	<b>94.4 %</b>	<b>90.7 %</b>

**MISCELLANEOUS OFFENCES**

ASOC Subdivision Description	Recorded 2012	Recorded 2013	Recorded 2014	Variance 2012-2013	Variance 2013-2014	Resolved 2012	Resolved 2013	Resolved 2014	Resolution Rate 2012	Resolution Rate 2013	Resolution Rate 2014
COMMERCIAL/INDUSTRY/FINANCIAL REGULATION	7	2	3	-71.4 %	50.0 %	6	2	3	85.7 %	100.0 %	100.0 %
DEFAMATION, LIBEL AND PRIVACY OFFENCES	4	2	4	-50.0 %	100.0 %	2	2	2	50.0 %	100.0 %	50.0 %
OTHER MISCELLANEOUS OFFENCES	68	78	50	14.7 %	-35.9 %	48	41	26	70.6 %	52.6 %	52.0 %
PUBLIC HEALTH AND SAFETY OFFENCES	10	14	22	40.0 %	57.1 %	9	12	19	90.0 %	85.7 %	86.4 %
	<b>89</b>	<b>96</b>	<b>79</b>	<b>7.9 %</b>	<b>-17.7 %</b>	<b>65</b>	<b>57</b>	<b>50</b>	<b>73.0 %</b>	<b>59.4 %</b>	<b>63.3 %</b>

<b>TOTAL</b>	<b>27,575</b>	<b>28,006</b>	<b>27,592</b>	<b>1.6 %</b>	<b>-1.5 %</b>	<b>13,813</b>	<b>13,617</b>	<b>12,760</b>	<b>50.1 %</b>	<b>48.6 %</b>	<b>46.2 %</b>
--------------	---------------	---------------	---------------	--------------	---------------	---------------	---------------	---------------	---------------	---------------	---------------

# PROPORTIONS OF RECORDED CRIME BY DIVISION

Years ending 31 December

ASOC Division Description	Proportions Recorded 2012	Recorded 2012	Proportions Recorded 2013	Recorded 2013	Proportions Recorded 2014	Recorded 2014
HOMICIDE AND RELATED OFFENCES	0.02 %	6	0.02 %	7	0.01 %	4
ACTS INTENDED TO CAUSE INJURY	12.13 %	3,346	11.30 %	3,165	11.57 %	3,192
SEXUAL ASSAULT AND RELATED OFFENCES	0.96 %	265	1.36 %	380	1.11 %	306
DANGEROUS OR NEGLIGENT ACTS ENDANGERING PERSONS	0.22 %	62	0.18 %	51	0.22 %	61
ABDUCTION, HARASSMENT AND OTHER RELATED OFFENCES AGAINST A PERSON	3.10 %	855	3.84 %	1,075	4.07 %	1,123
ROBBERY, EXTORTION AND RELATED OFFENCES	0.40 %	110	0.36 %	102	0.36 %	99
UNLAWFUL ENTRY WITH INTENT/BURGLARY, BREAK AND ENTER	15.80 %	4,356	15.97 %	4,472	16.45 %	4,540
THEFT AND RELATED OFFENCES	29.63 %	8,170	31.03 %	8,689	32.03 %	8,839
FRAUD, DECEPTION AND RELATED OFFENCES	1.89 %	520	2.08 %	583	2.59 %	715
ILLICIT DRUG OFFENCES	5.62 %	1,549	4.63 %	1,297	4.58 %	1,264
PROHIBITED AND REGULATED WEAPONS AND EXPLOSIVES OFFENCES	2.22 %	613	1.86 %	522	1.93 %	532
PROPERTY DAMAGE AND ENVIRONMENTAL POLLUTION	14.35 %	3,958	14.23 %	3,984	13.69 %	3,777
PUBLIC ORDER OFFENCES	9.42 %	2,598	9.33 %	2,613	6.56 %	1,811
OFFENCES AGAINST JUSTICE PROCEDURES, GOVERNMENT SECURITY AND GOVERNMENT OPERATIONS	3.91 %	1,078	3.46 %	970	4.53 %	1,250
MISCELLANEOUS OFFENCES	0.32 %	89	0.34 %	96	0.29 %	79
	<b>100.00 %</b>	<b>27,575</b>	<b>100.00 %</b>	<b>28,006</b>	<b>100.00 %</b>	<b>27,592</b>

**SUMMARY OF RECORDED OFFENCES, RATE PER 10,000 POPULATION AND RESOLVED OFFENCES, BY AREA**  
**years ending 31 December**

**TOTAL CRIME**

<b>Area Description</b>	<b>Recorded 2013</b>	<b>Recorded 2014</b>	<b>Variance 2013-2014</b>	<b>Recorded per 10,000 pop 2013</b>	<b>Recorded per 10,000 pop 2014</b>	<b>Per 10,000 pop % Variance 2013 to 2014</b>	<b>Resolved 2013</b>	<b>Resolved 2014</b>	<b>Resolution Rate 2013</b>	<b>Resolution Rate 2014</b>
Manawatu	14,907	14,734	-1.2 %	868.7	851.4	-2.0 %	6,522	6,269	43.8 %	42.5 %
Taranaki	7,221	6,816	-5.6 %	643.3	600.4	-6.7 %	4,132	3,641	57.2 %	53.4 %
Whanganui	5,878	6,042	2.8 %	840.9	866.0	3.0 %	2,963	2,850	50.4 %	47.2 %
	<b>28,006</b>	<b>27,592</b>	<b>-1.5 %</b>	<b>791.7</b>	<b>774.3</b>	<b>-2.2 %</b>	<b>13,617</b>	<b>12,760</b>	<b>48.6 %</b>	<b>46.2 %</b>



# SUMMARY OF RECORDED OFFENCES, RATE PER 10,000 POPULATION AND RESOLVED OFFENCES, BY DIVISION

Years ending 31 December

## HOMICIDE AND RELATED OFFENCES

Area Description	Recorded 2013	Recorded 2014	Variance 2013-2014	Recorded per 10,000 pop 2013	Recorded per 10,000 pop 2014	Per 10,000 pop % Variance 2013 to 2014	Resolved 2013	Resolved 2014	Resolution Rate 2013	Resolution Rate 2014
Manawatu	3	1	-66.7 %	0.2	0.1	-66.9 %	3	1	100.0 %	100.0 %
Taranaki	1	2	100.0 %	0.1	0.2	97.8 %	1	2	100.0 %	100.0 %
Whanganui	3	1	-66.7 %	0.4	0.1	-66.6 %	3	1	100.0 %	100.0 %
	7	4	-42.9 %	0.2	0.1	-43.3 %	7	4	100.0 %	100.0 %

## ACTS INTENDED TO CAUSE INJURY

Area Description	Recorded 2013	Recorded 2014	Variance 2013-2014	Recorded per 10,000 pop 2013	Recorded per 10,000 pop 2014	Per 10,000 pop % Variance 2013 to 2014	Resolved 2013	Resolved 2014	Resolution Rate 2013	Resolution Rate 2014
Manawatu	1,534	1,622	5.7 %	89.4	93.7	4.9 %	1,273	1,328	83.0 %	81.9 %
Taranaki	905	824	-9.0 %	80.6	72.6	-10.0 %	780	688	86.2 %	83.5 %
Whanganui	726	746	2.8 %	103.9	106.9	2.9 %	574	593	79.1 %	79.5 %
	3,165	3,192	0.9 %	89.5	89.6	0.1 %	2,627	2,609	83.0 %	81.7 %

## SEXUAL ASSAULT AND RELATED OFFENCES

Area Description	Recorded 2013	Recorded 2014	Variance 2013-2014	Recorded per 10,000 pop 2013	Recorded per 10,000 pop 2014	Per 10,000 pop % Variance 2013 to 2014	Resolved 2013	Resolved 2014	Resolution Rate 2013	Resolution Rate 2014
Manawatu	146	106	-27.4 %	8.5	6.1	-28.0 %	82	38	56.2 %	35.8 %
Taranaki	123	78	-36.6 %	11.0	6.9	-37.3 %	90	41	73.2 %	52.6 %
Whanganui	111	122	9.9 %	15.9	17.5	10.1 %	46	60	41.4 %	49.2 %
	380	306	-19.5 %	10.7	8.6	-20.1 %	218	139	57.4 %	45.4 %

## DANGEROUS OR NEGLIGENT ACTS ENDANGERING PERSONS

Area Description	Recorded 2013	Recorded 2014	Variance 2013-2014	Recorded per 10,000 pop 2013	Recorded per 10,000 pop 2014	Per 10,000 pop % Variance 2013 to 2014	Resolved 2013	Resolved 2014	Resolution Rate 2013	Resolution Rate 2014
Manawatu	19	26	36.8 %	1.1	1.5	35.7 %	14	20	73.7 %	76.9 %
Taranaki	19	18	-5.3 %	1.7	1.6	-6.3 %	13	11	68.4 %	61.1 %
Whanganui	13	17	30.8 %	1.9	2.4	31.0 %	7	8	53.8 %	47.1 %
	51	61	19.6 %	1.4	1.7	18.7 %	34	39	66.7 %	63.9 %

## ABDUCTION, HARASSMENT AND OTHER RELATED OFFENCES AGAINST A PERSON

Area Description	Recorded 2013	Recorded 2014	Variance 2013-2014	Recorded per 10,000 pop 2013	Recorded per 10,000 pop 2014	Per 10,000 pop % Variance 2013 to 2014	Resolved 2013	Resolved 2014	Resolution Rate 2013	Resolution Rate 2014
Manawatu	570	562	-1.4 %	33.2	32.5	-2.2 %	383	361	67.2 %	64.2 %
Taranaki	304	309	1.6 %	27.1	27.2	0.5 %	196	205	64.5 %	66.3 %
Whanganui	201	252	25.4 %	28.8	36.1	25.6 %	151	173	75.1 %	68.7 %
	1,075	1,123	4.5 %	30.4	31.5	3.7 %	730	739	67.9 %	65.8 %

## ROBBERY, EXTORTION AND RELATED OFFENCES

Area Description	Recorded 2013	Recorded 2014	Variance 2013-2014	Recorded per 10,000 pop 2013	Recorded per 10,000 pop 2014	Per 10,000 pop % Variance 2013 to 2014	Resolved 2013	Resolved 2014	Resolution Rate 2013	Resolution Rate 2014
Manawatu	58	56	-3.4 %	3.4	3.2	-4.3 %	21	25	36.2 %	44.6 %
Taranaki	19	21	10.5 %	1.7	1.8	9.3 %	14	15	73.7 %	71.4 %
Whanganui	25	22	-12.0 %	3.6	3.2	-11.8 %	14	11	56.0 %	50.0 %
	102	99	-2.9 %	2.9	2.8	-3.6 %	49	51	48.0 %	51.5 %

# SUMMARY OF RECORDED OFFENCES, RATE PER 10,000 POPULATION AND RESOLVED OFFENCES, BY DIVISION

Years ending 31 December

## UNLAWFUL ENTRY WITH INTENT/BURGLARY, BREAK AND ENTER

Area Description	Recorded 2013	Recorded 2014	Variance 2013-2014	Recorded per 10,000 pop 2013	Recorded per 10,000 pop 2014	Per 10,000 pop % Variance 2013 to 2014	Resolved 2013	Resolved 2014	Resolution Rate 2013	Resolution Rate 2014
Manawatu	2,686	2,642	-1.6 %	156.5	152.7	-2.5 %	304	269	11.3 %	10.2 %
Taranaki	804	873	8.6 %	71.6	76.9	7.4 %	203	158	25.2 %	18.1 %
Whanganui	982	1,025	4.4 %	140.5	146.9	4.6 %	238	186	24.2 %	18.1 %
	<b>4,472</b>	<b>4,540</b>	<b>1.5 %</b>	<b>126.4</b>	<b>127.4</b>	<b>0.8 %</b>	<b>745</b>	<b>613</b>	<b>16.7 %</b>	<b>13.5 %</b>

## THEFT AND RELATED OFFENCES

Area Description	Recorded 2013	Recorded 2014	Variance 2013-2014	Recorded per 10,000 pop 2013	Recorded per 10,000 pop 2014	Per 10,000 pop % Variance 2013 to 2014	Resolved 2013	Resolved 2014	Resolution Rate 2013	Resolution Rate 2014
Manawatu	5,091	5,202	2.2 %	296.7	300.6	1.3 %	1,420	1,445	27.9 %	27.8 %
Taranaki	2,000	1,860	-7.0 %	178.2	163.8	-8.0 %	787	691	39.4 %	37.2 %
Whanganui	1,598	1,777	11.2 %	228.6	254.7	11.4 %	484	490	30.3 %	27.6 %
	<b>8,689</b>	<b>8,839</b>	<b>1.7 %</b>	<b>245.6</b>	<b>248.0</b>	<b>1.0 %</b>	<b>2,691</b>	<b>2,626</b>	<b>31.0 %</b>	<b>29.7 %</b>

## FRAUD, DECEPTION AND RELATED OFFENCES

Area Description	Recorded 2013	Recorded 2014	Variance 2013-2014	Recorded per 10,000 pop 2013	Recorded per 10,000 pop 2014	Per 10,000 pop % Variance 2013 to 2014	Resolved 2013	Resolved 2014	Resolution Rate 2013	Resolution Rate 2014
Manawatu	265	404	52.5 %	15.4	23.3	51.2 %	146	263	55.1 %	65.1 %
Taranaki	216	178	-17.6 %	19.2	15.7	-18.5 %	159	129	73.6 %	72.5 %
Whanganui	102	133	30.4 %	14.6	19.1	30.6 %	58	77	56.9 %	57.9 %
	<b>583</b>	<b>715</b>	<b>22.6 %</b>	<b>16.5</b>	<b>20.1</b>	<b>21.8 %</b>	<b>363</b>	<b>469</b>	<b>62.3 %</b>	<b>65.6 %</b>

## ILLICIT DRUG OFFENCES

Area Description	Recorded 2013	Recorded 2014	Variance 2013-2014	Recorded per 10,000 pop 2013	Recorded per 10,000 pop 2014	Per 10,000 pop % Variance 2013 to 2014	Resolved 2013	Resolved 2014	Resolution Rate 2013	Resolution Rate 2014
Manawatu	492	485	-1.4 %	28.7	28.0	-2.2 %	446	421	90.7 %	86.8 %
Taranaki	353	459	30.0 %	31.4	40.4	28.6 %	331	399	93.8 %	86.9 %
Whanganui	452	320	-29.2 %	64.7	45.9	-29.1 %	380	246	84.1 %	76.9 %
	<b>1,297</b>	<b>1,264</b>	<b>-2.5 %</b>	<b>36.7</b>	<b>35.5</b>	<b>-3.3 %</b>	<b>1,157</b>	<b>1,066</b>	<b>89.2 %</b>	<b>84.3 %</b>

## PROHIBITED AND REGULATED WEAPONS AND EXPLOSIVES OFFENCES

Area Description	Recorded 2013	Recorded 2014	Variance 2013-2014	Recorded per 10,000 pop 2013	Recorded per 10,000 pop 2014	Per 10,000 pop % Variance 2013 to 2014	Resolved 2013	Resolved 2014	Resolution Rate 2013	Resolution Rate 2014
Manawatu	243	252	3.7 %	14.2	14.6	2.8 %	223	232	91.8 %	92.1 %
Taranaki	138	147	6.5 %	12.3	12.9	5.3 %	128	129	92.8 %	87.8 %
Whanganui	141	133	-5.7 %	20.2	19.1	-5.5 %	128	125	90.8 %	94.0 %
	<b>522</b>	<b>532</b>	<b>1.9 %</b>	<b>14.8</b>	<b>14.9</b>	<b>1.2 %</b>	<b>479</b>	<b>486</b>	<b>91.8 %</b>	<b>91.4 %</b>

## PROPERTY DAMAGE AND ENVIRONMENTAL POLLUTION

Area Description	Recorded 2013	Recorded 2014	Variance 2013-2014	Recorded per 10,000 pop 2013	Recorded per 10,000 pop 2014	Per 10,000 pop % Variance 2013 to 2014	Resolved 2013	Resolved 2014	Resolution Rate 2013	Resolution Rate 2014
Manawatu	1,999	1,923	-3.8 %	116.5	111.1	-4.6 %	634	615	31.7 %	32.0 %
Taranaki	1,119	1,036	-7.4 %	99.7	91.3	-8.5 %	335	326	29.9 %	31.5 %
Whanganui	866	818	-5.5 %	123.9	117.2	-5.4 %	285	279	32.9 %	34.1 %
	<b>3,984</b>	<b>3,777</b>	<b>-5.2 %</b>	<b>112.6</b>	<b>106.0</b>	<b>-5.9 %</b>	<b>1,254</b>	<b>1,220</b>	<b>31.5 %</b>	<b>32.3 %</b>

# SUMMARY OF RECORDED OFFENCES, RATE PER 10,000 POPULATION AND RESOLVED OFFENCES, BY DIVISION

Years ending 31 December

## PUBLIC ORDER OFFENCES

Area Description	Recorded 2013	Recorded 2014	Variance 2013-2014	Recorded per 10,000 pop 2013	Recorded per 10,000 pop 2014	Per 10,000 pop % Variance 2013 to 2014	Resolved 2013	Resolved 2014	Resolution Rate 2013	Resolution Rate 2014
Manawatu	1,265	800	-36.8 %	73.7	46.2	-37.3 %	1,085	665	85.8 %	83.1 %
Taranaki	947	688	-27.3 %	84.4	60.6	-28.2 %	850	566	89.8 %	82.3 %
Whanganui	401	323	-19.5 %	57.4	46.3	-19.3 %	355	284	88.5 %	87.9 %
	<b>2,613</b>	<b>1,811</b>	<b>-30.7 %</b>	<b>73.9</b>	<b>50.8</b>	<b>-31.2 %</b>	<b>2,290</b>	<b>1,515</b>	<b>87.6 %</b>	<b>83.7 %</b>

## OFFENCES AGAINST JUSTICE PROCEDURES, GOVERNMENT SECURITY AND GOVERNMENT OPERATIONS

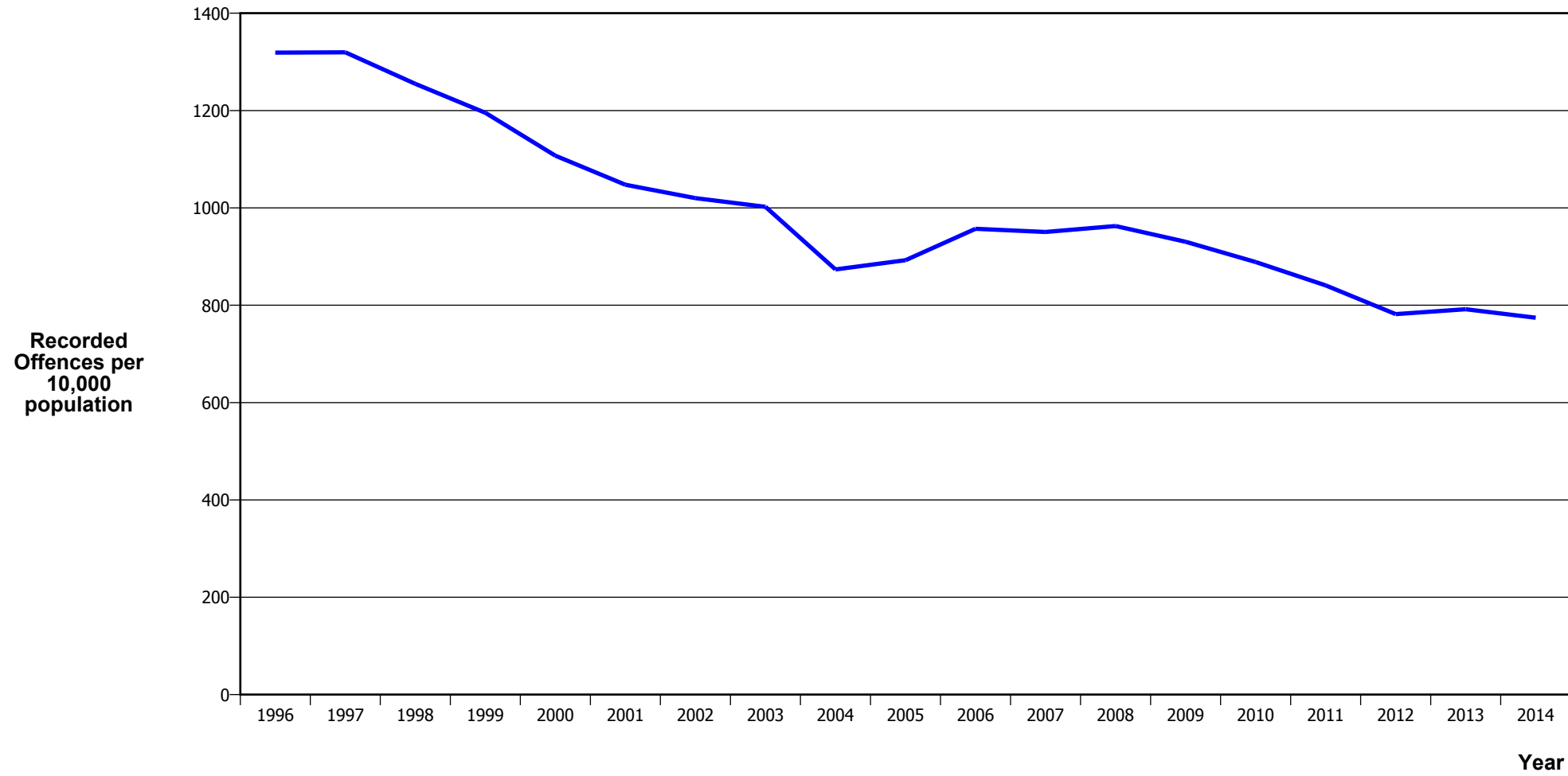
Area Description	Recorded 2013	Recorded 2014	Variance 2013-2014	Recorded per 10,000 pop 2013	Recorded per 10,000 pop 2014	Per 10,000 pop % Variance 2013 to 2014	Resolved 2013	Resolved 2014	Resolution Rate 2013	Resolution Rate 2014
Manawatu	489	624	27.6 %	28.5	36.1	26.5 %	463	573	94.7 %	91.8 %
Taranaki	243	292	20.2 %	21.6	25.7	18.8 %	224	256	92.2 %	87.7 %
Whanganui	238	334	40.3 %	34.0	47.9	40.6 %	229	305	96.2 %	91.3 %
	<b>970</b>	<b>1,250</b>	<b>28.9 %</b>	<b>27.4</b>	<b>35.1</b>	<b>27.9 %</b>	<b>916</b>	<b>1,134</b>	<b>94.4 %</b>	<b>90.7 %</b>

## MISCELLANEOUS OFFENCES

Area Description	Recorded 2013	Recorded 2014	Variance 2013-2014	Recorded per 10,000 pop 2013	Recorded per 10,000 pop 2014	Per 10,000 pop % Variance 2013 to 2014	Resolved 2013	Resolved 2014	Resolution Rate 2013	Resolution Rate 2014
Manawatu	47	29	-38.3 %	2.7	1.7	-38.8 %	25	13	53.2 %	44.8 %
Taranaki	30	31	3.3 %	2.7	2.7	2.2 %	21	25	70.0 %	80.6 %
Whanganui	19	19	0.0 %	2.7	2.7	0.2 %	11	12	57.9 %	63.2 %
	<b>96</b>	<b>79</b>	<b>-17.7 %</b>	<b>2.7</b>	<b>2.2</b>	<b>-18.3 %</b>	<b>57</b>	<b>50</b>	<b>59.4 %</b>	<b>63.3 %</b>

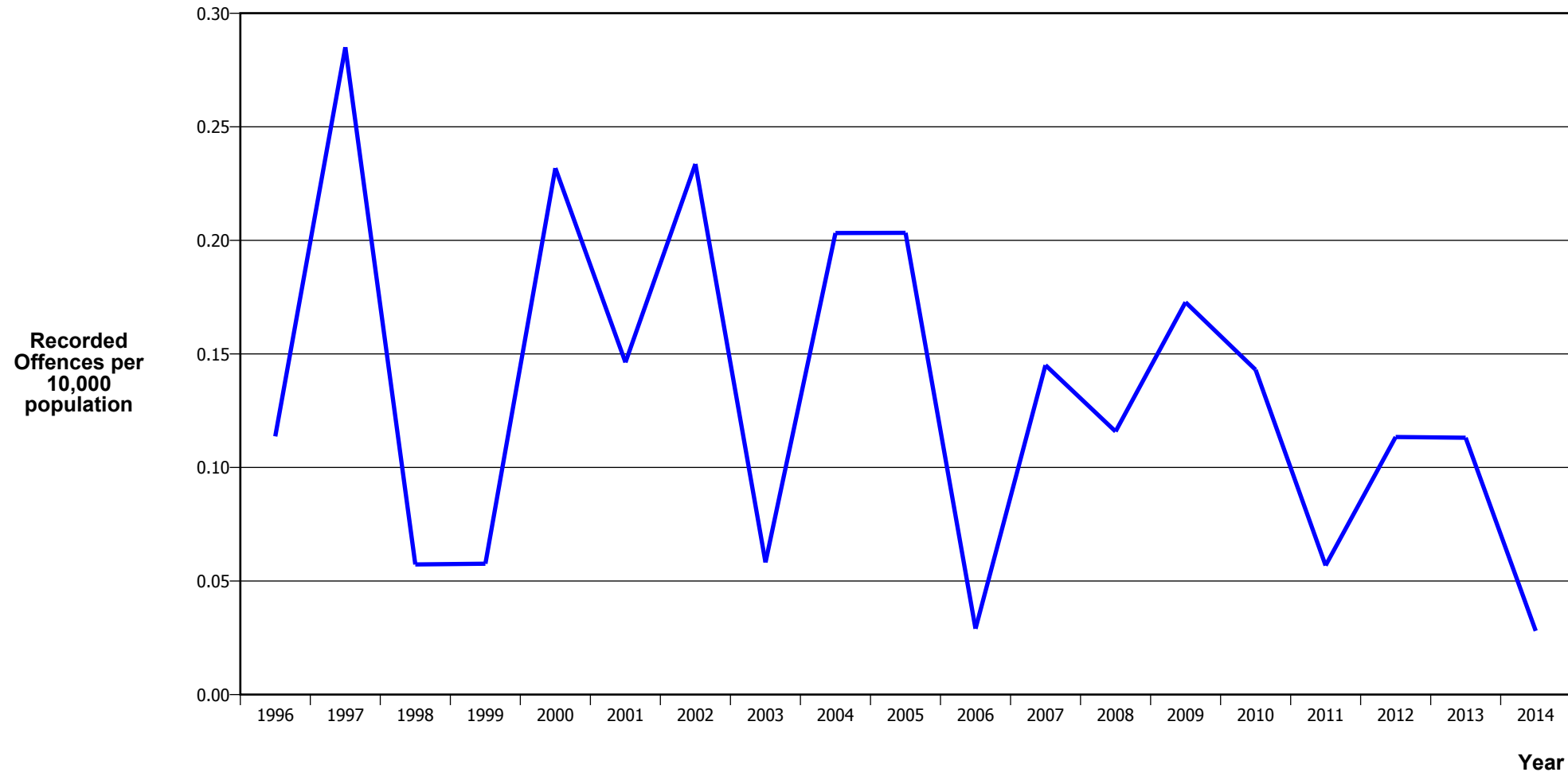
# **CRIME TRENDS**

## TOTAL CRIME



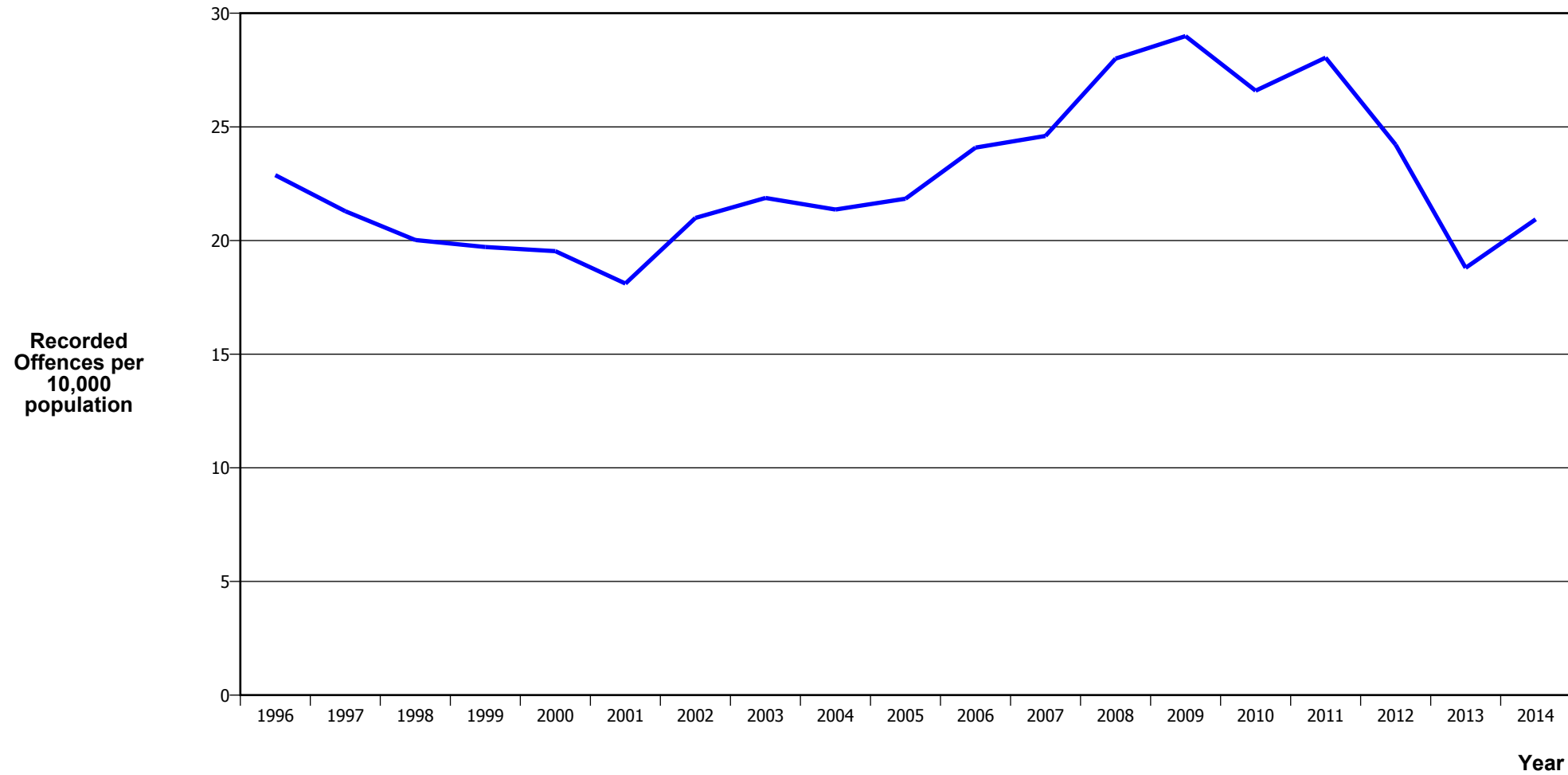
Calendar Year	1996	1997	1998	1999	2000	2001	2002	2003	2004	2005	2006	2007	2008	2009	2010	2011	2012	2013	2014
Recorded Offences	46,415	46,300	43,804	41,479	38,210	35,812	34,934	34,452	30,094	30,731	33,019	32,762	33,246	32,314	31,084	29,593	27,575	28,006	27,592
Recorded per 10,000 Population	1,319.1	1,319.6	1,254.8	1,195.4	1,107.2	1,047.5	1,020.1	1,002.2	873.6	892.6	957.0	950.5	962.7	930.4	888.9	840.9	781.9	791.7	774.3

# MURDER



Calendar Year	1996	1997	1998	1999	2000	2001	2002	2003	2004	2005	2006	2007	2008	2009	2010	2011	2012	2013	2014
Recorded Offences	4	10	2	2	8	5	8	2	7	7	1	5	4	6	5	2	4	4	1
Recorded per 10,000 Population	0.11	0.29	0.06	0.06	0.23	0.15	0.23	0.06	0.20	0.20	0.03	0.15	0.12	0.17	0.14	0.06	0.11	0.11	0.03

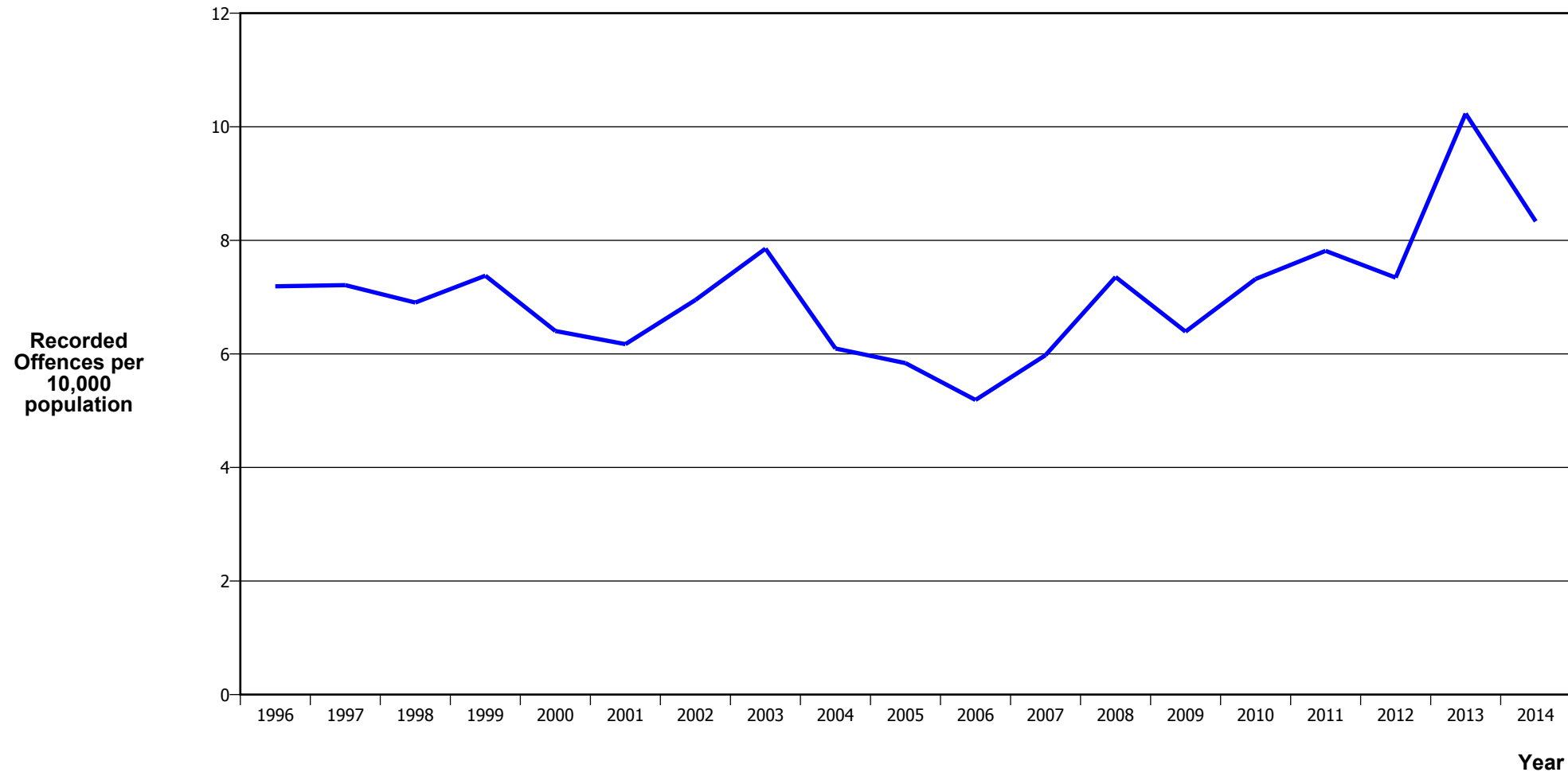
## SERIOUS ASSAULTS RESULTING IN INJURY\*



Calendar Year	1996	1997	1998	1999	2000	2001	2002	2003	2004	2005	2006	2007	2008	2009	2010	2011	2012	2013	2014
Recorded Offence	805	747	699	684	674	619	719	752	736	752	831	848	967	1,007	930	987	854	665	746
Offence Rate per 10K Popn	22.9	21.3	20.0	19.7	19.5	18.1	21.0	21.9	21.4	21.8	24.1	24.6	28.0	29.0	26.6	28.0	24.2	18.8	20.9

\* This measure excludes common assaults

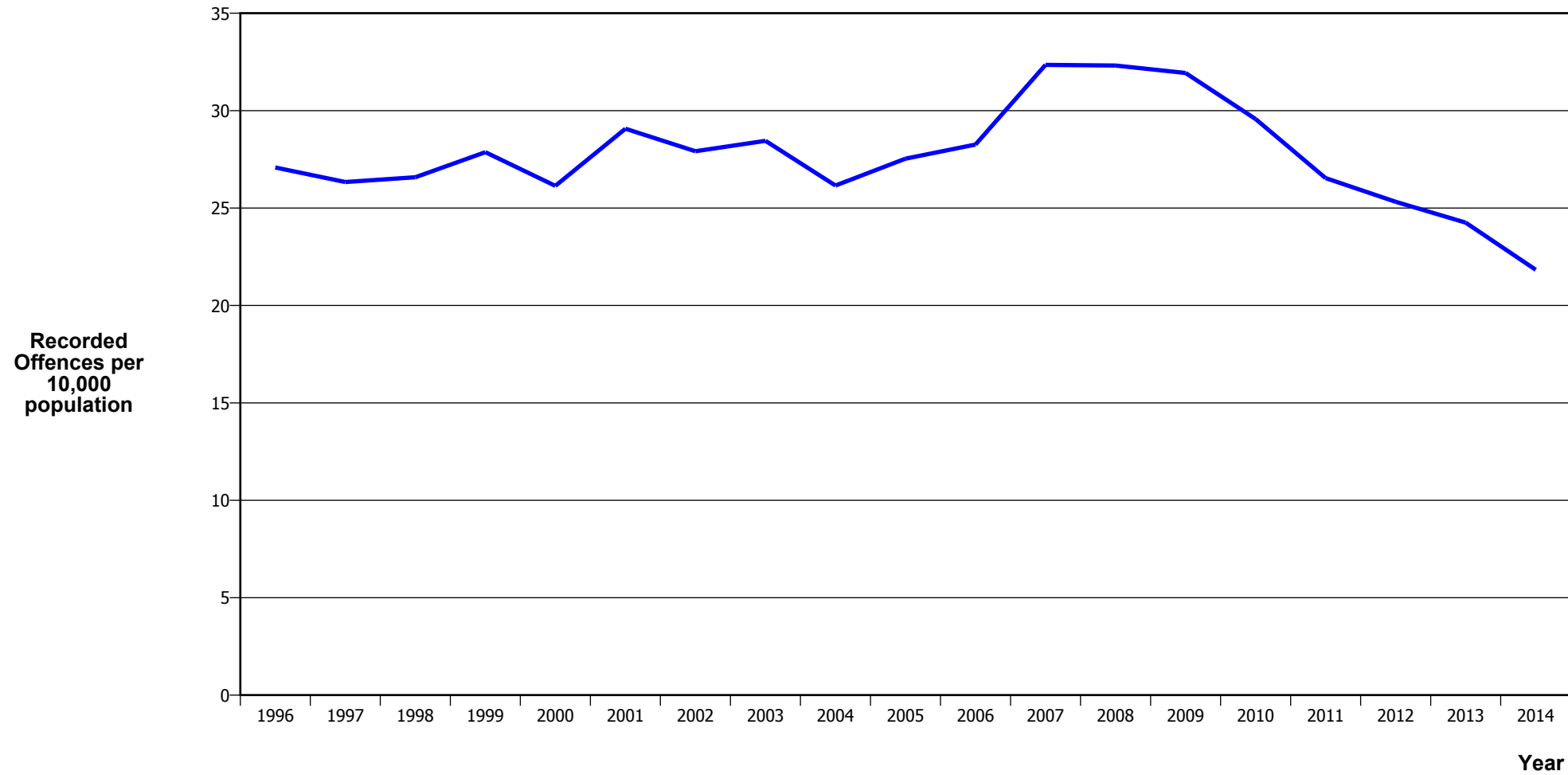
## SEXUAL ASSAULTS



Calendar Year	1996	1997	1998	1999	2000	2001	2002	2003	2004	2005	2006	2007	2008	2009	2010	2011	2012	2013	2014
Recorded Offences	253	253	241	256	221	211	238	270	210	201	179	206	254	222	256	275	259	362	297
Recorded per 10,000 Population	7.2	7.2	6.9	7.4	6.4	6.2	7.0	7.9	6.1	5.8	5.2	6.0	7.4	6.4	7.3	7.8	7.3	10.2	8.3

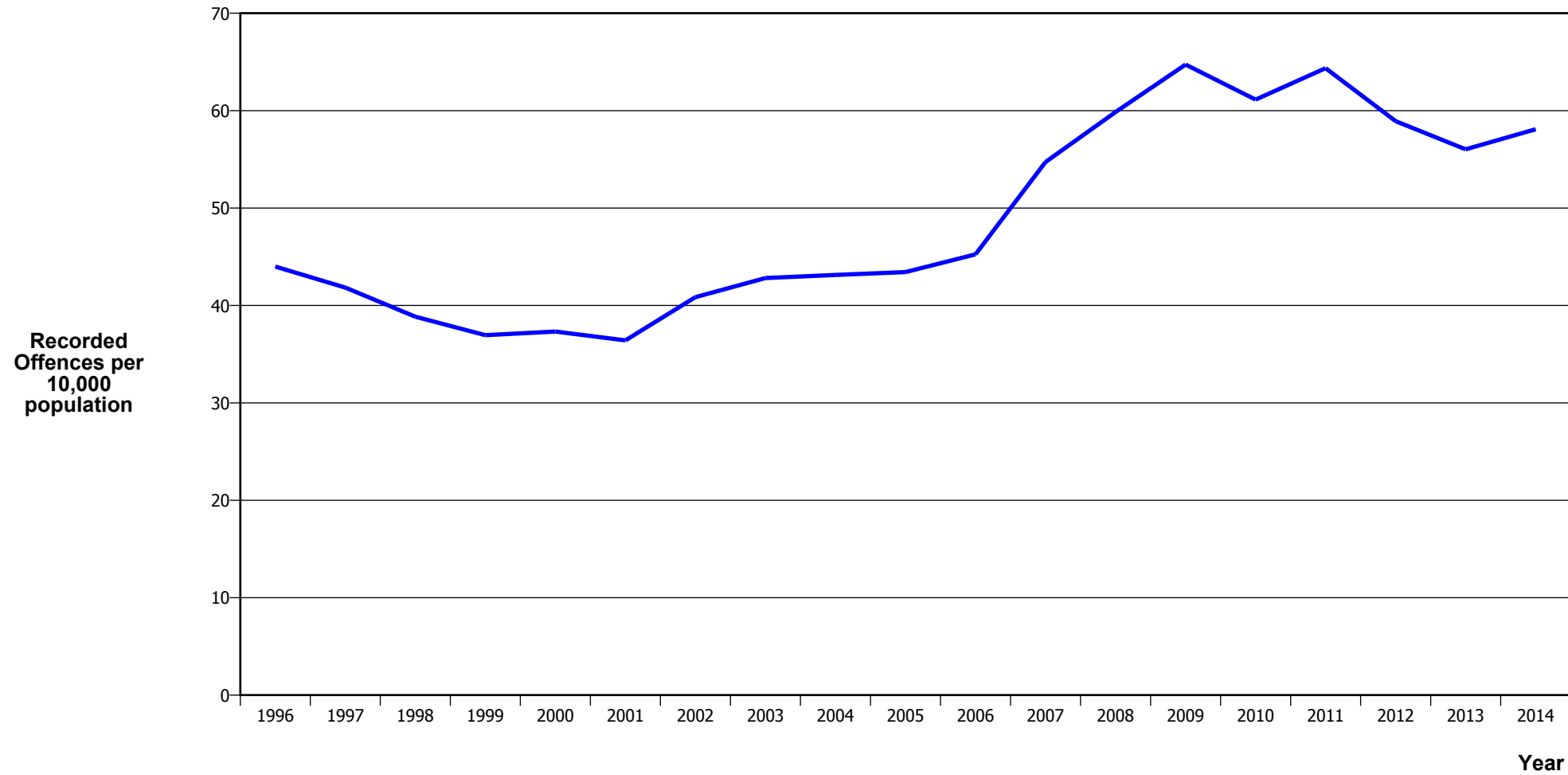


## PUBLIC PLACE ASSAULTS



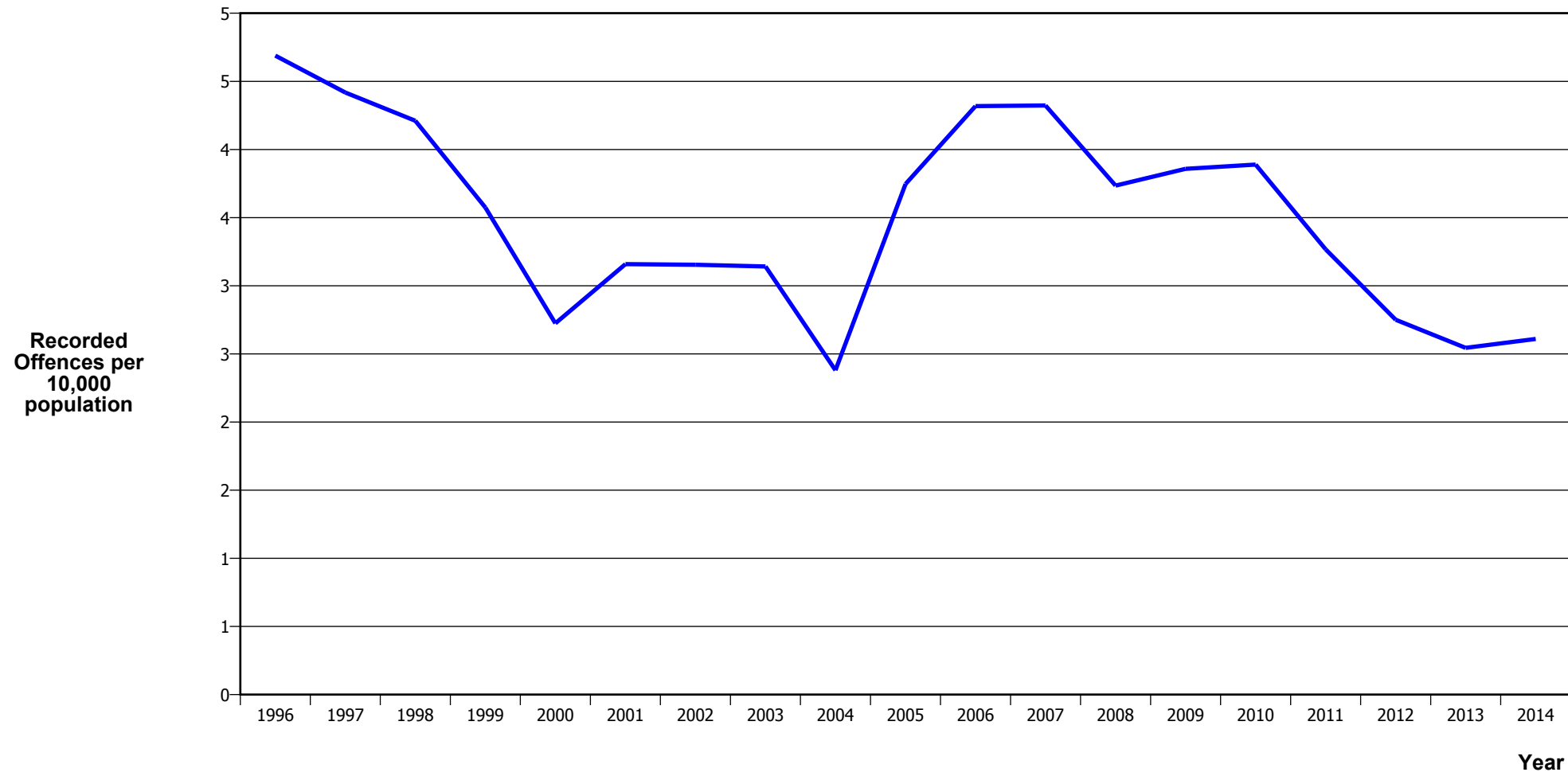
Calendar Year	1996	1997	1998	1999	2000	2001	2002	2003	2004	2005	2006	2007	2008	2009	2010	2011	2012	2013	2014
Recorded Offences	953	924	928	967	902	994	956	978	901	948	975	1,115	1,116	1,109	1,034	934	893	858	778
Recorded per 10,000 Population	27.1	26.3	26.6	27.9	26.1	29.1	27.9	28.4	26.2	27.5	28.3	32.3	32.3	31.9	29.6	26.5	25.3	24.3	21.8

## DWELLING ASSAULTS



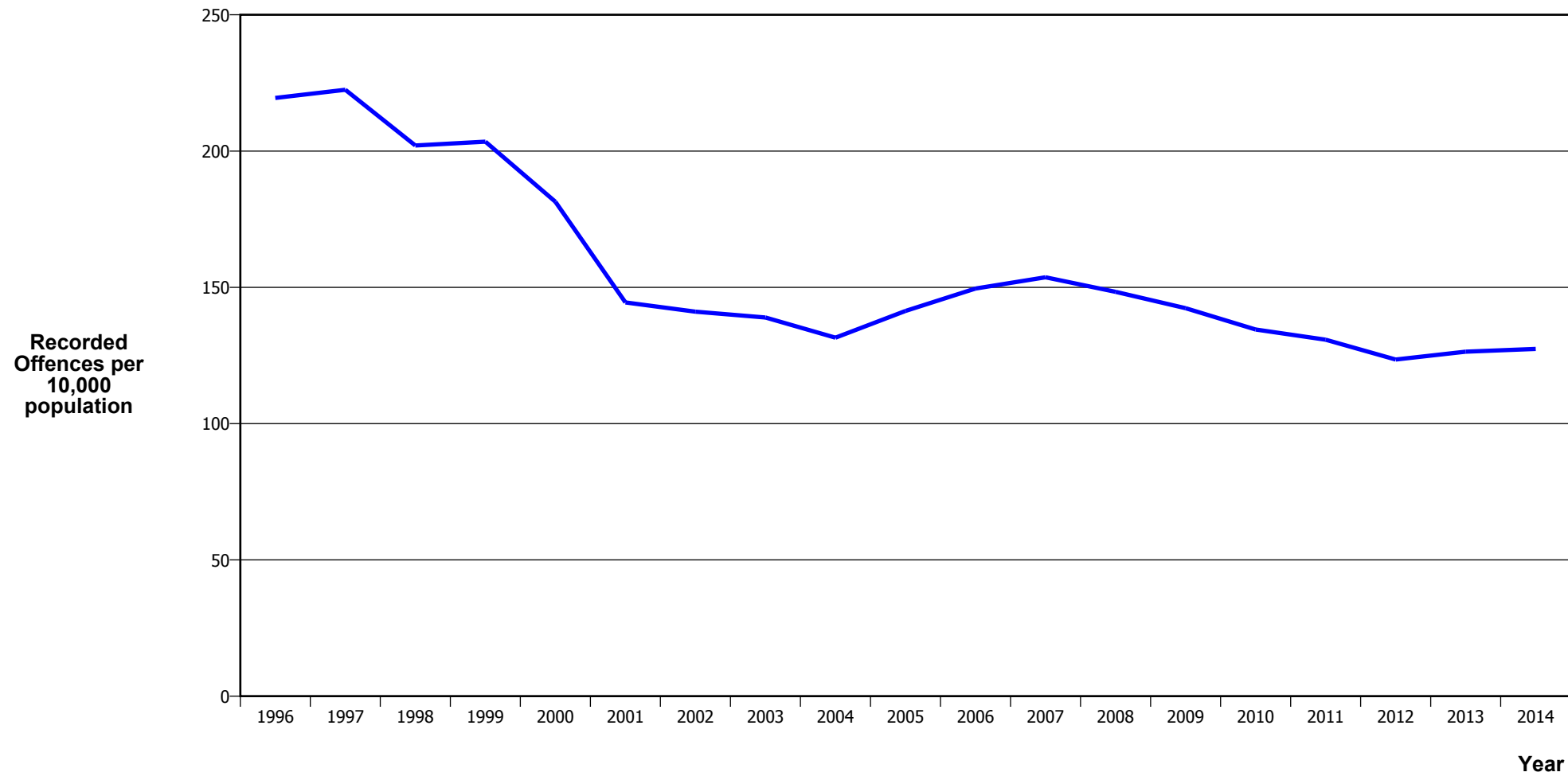
Calendar Year	1996	1997	1998	1999	2000	2001	2002	2003	2004	2005	2006	2007	2008	2009	2010	2011	2012	2013	2014
Recorded Offences	1,548	1,468	1,356	1,282	1,288	1,245	1,399	1,472	1,486	1,495	1,561	1,886	2,067	2,248	2,138	2,265	2,078	1,982	2,070
Recorded per 10,000 Population	44.0	41.8	38.8	36.9	37.3	36.4	40.9	42.8	43.1	43.4	45.2	54.7	59.9	64.7	61.1	64.4	58.9	56.0	58.1

## ROBBERY



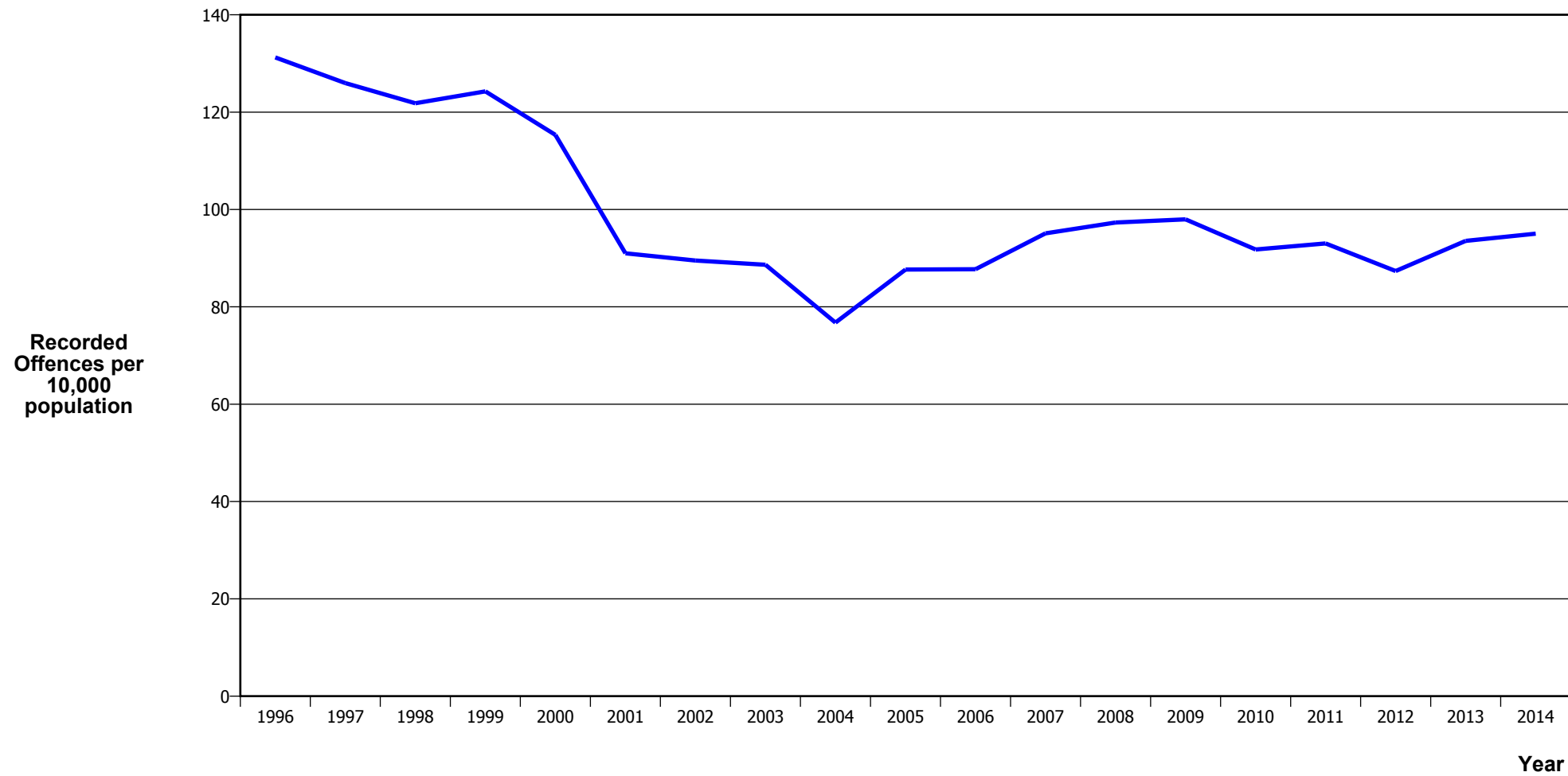
Calendar Year	1996	1997	1998	1999	2000	2001	2002	2003	2004	2005	2006	2007	2008	2009	2010	2011	2012	2013	2014
Recorded Offences	165	155	147	124	94	108	108	108	82	129	149	149	129	134	136	115	97	90	93
Recorded per 10,000 Population	4.7	4.4	4.2	3.6	2.7	3.2	3.2	3.1	2.4	3.7	4.3	4.3	3.7	3.9	3.9	3.3	2.8	2.5	2.6

## BURGLARY (TOTAL)



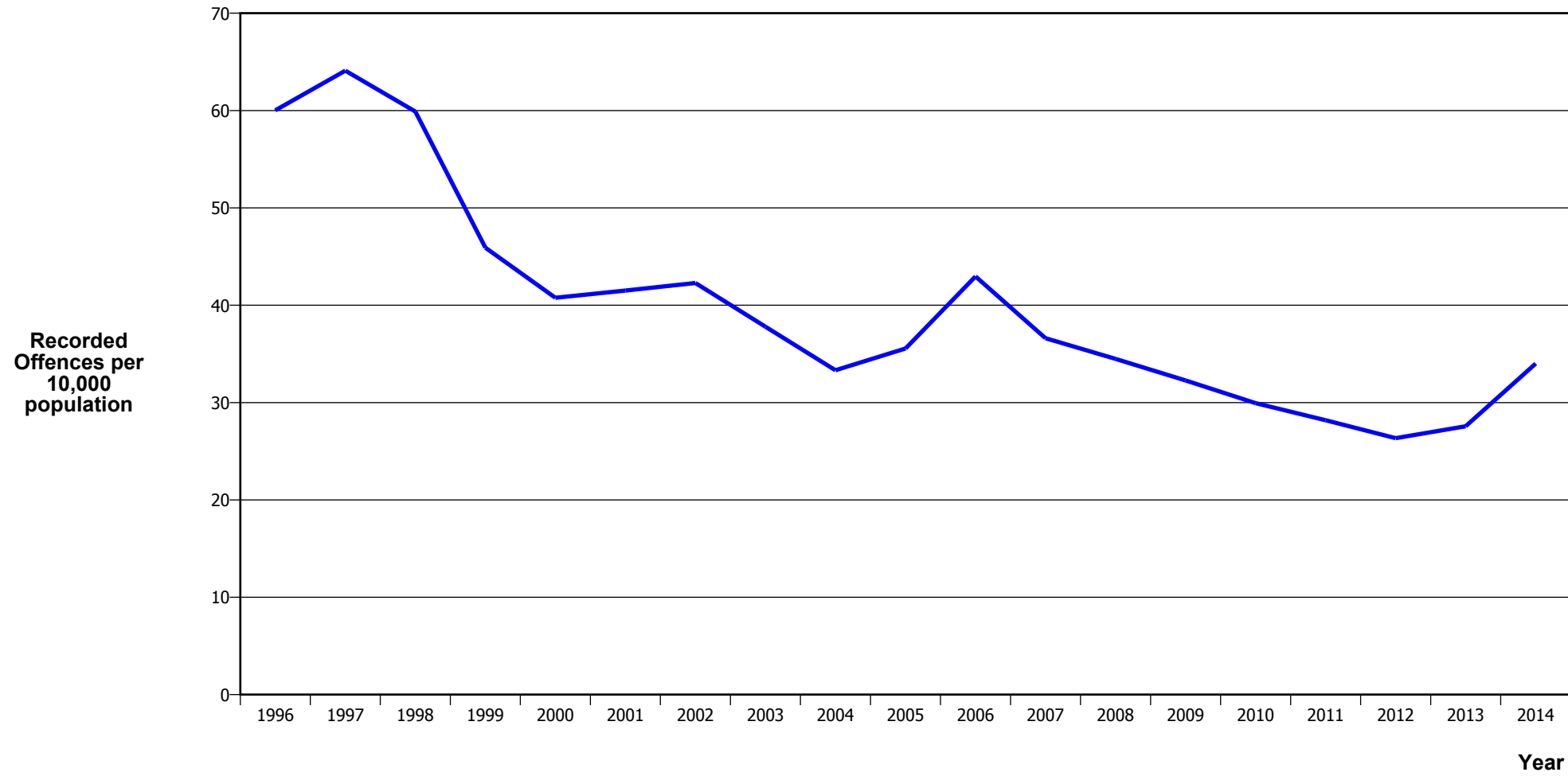
Calendar Year	1996	1997	1998	1999	2000	2001	2002	2003	2004	2005	2006	2007	2008	2009	2010	2011	2012	2013	2014
Recorded Offences	7,723	7,806	7,053	7,060	6,260	4,939	4,831	4,777	4,531	4,867	5,160	5,297	5,123	4,944	4,705	4,603	4,356	4,472	4,540
Recorded per 10,000 Population	219.5	222.5	202.0	203.5	181.4	144.5	141.1	139.0	131.5	141.4	149.6	153.7	148.3	142.4	134.5	130.8	123.5	126.4	127.4

## BURGLARY (DWELLING)



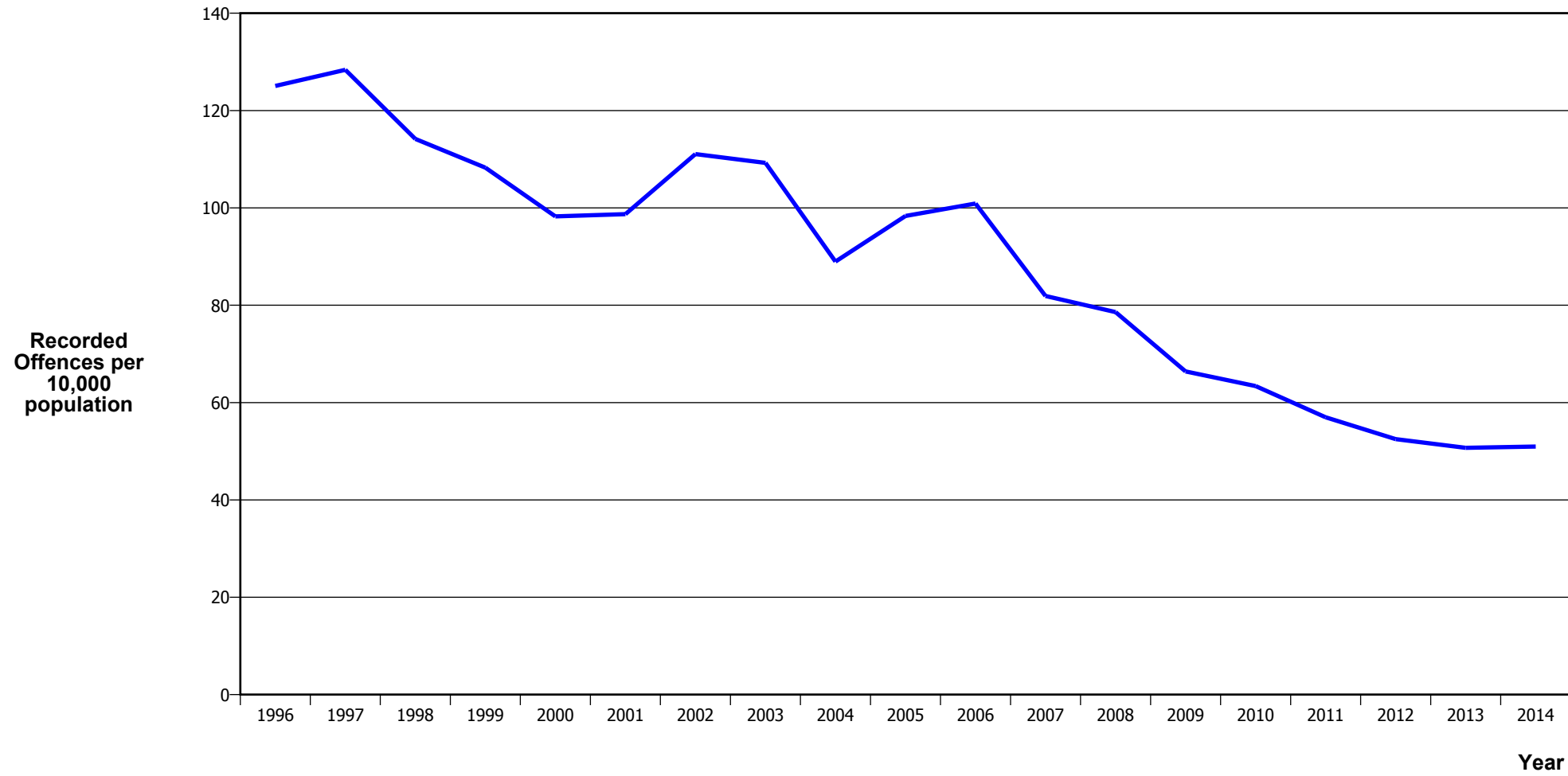
Calendar Year	1996	1997	1998	1999	2000	2001	2002	2003	2004	2005	2006	2007	2008	2009	2010	2011	2012	2013	2014
Recorded Offences	4,618	4,420	4,253	4,312	3,980	3,111	3,065	3,047	2,644	3,018	3,027	3,278	3,361	3,403	3,210	3,274	3,081	3,309	3,386
Recorded per 10,000 Population	131.2	126.0	121.8	124.3	115.3	91.0	89.5	88.6	76.8	87.7	87.7	95.1	97.3	98.0	91.8	93.0	87.4	93.5	95.0

## VEHICLES STOLEN



Calendar Year	1996	1997	1998	1999	2000	2001	2002	2003	2004	2005	2006	2007	2008	2009	2010	2011	2012	2013	2014
Recorded Offences	2,112	2,249	2,091	1,593	1,407	1,419	1,448	1,299	1,148	1,224	1,482	1,262	1,191	1,121	1,047	992	929	975	1,212
Recorded per 10,000 Population	60.0	64.1	59.9	45.9	40.8	41.5	42.3	37.8	33.3	35.6	43.0	36.6	34.5	32.3	29.9	28.2	26.3	27.6	34.0

## THEFT EX CAR



Calendar Year	1996	1997	1998	1999	2000	2001	2002	2003	2004	2005	2006	2007	2008	2009	2010	2011	2012	2013	2014
Recorded Offences	4,400	4,504	3,986	3,757	3,391	3,375	3,803	3,756	3,065	3,386	3,481	2,823	2,714	2,306	2,217	2,005	1,851	1,794	1,816
Recorded per 10,000 Population	125.0	128.4	114.2	108.3	98.3	98.7	111.1	109.3	89.0	98.3	100.9	81.9	78.6	66.4	63.4	57.0	52.5	50.7	51.0

## Population Data

Population data is used in this release to calculate crime rates. They have been derived from population estimates as at 30 June each year that have been obtained from Statistics New Zealand.

The estimated resident population is based on the census usually resident population count, with adjustments for residents missed or counted more than once by the census (net census undercount), and for residents temporarily overseas on census night.

These population estimates exclude the number of international students who are studying in New Zealand for less than 12 months.

Year	Population
1996	351,870
1997	350,860
1998	349,090
1999	346,990
2000	345,090
2001	341,890
2002	342,440
2003	343,780
2004	344,480
2005	344,290
2006	345,020
2007	344,670
2008	345,350
2009	347,300
2010	349,710
2011	351,920
2012	352,680
2013	353,750
2014	356,340



## General Definitions

**Recorded Offences:** the number of breaches of the New Zealand law recorded by Police. This includes offences specified in the Crimes Act and other legislations, such as the Summary Offences Act, Local Government Act, etc.

**Resolved Offences:** the number of recorded offences where an offender has been identified and dealt with (e.g. warned, cautioned, prosecuted, etc).

**Resolution Rate:** the proportion of recorded offences that have been resolved.

**Recorded per 10,000 population:** the number of recorded offences for every 10,000 people. This is also referred as the crime rate per 10,000 population.

**ANZSOC:** The Australian and New Zealand Standard Offence Classification. The offence classification is divided into 16 major offence divisions.

## Definition of ANZSOC Divisions

1. Homicide and related offences: Unlawfully kill, attempt to unlawfully kill or conspiracy to kill another person.
2. Acts intended to cause injury: Acts, excluding attempted murder and those resulting in death, which are intended to cause non-fatal injury or harm to another person and where there is no sexual or acquisitive element.
3. Sexual assault and related offences: Acts, or intent of acts, of a sexual nature against another person, which are non-consensual or where consent is proscribed.
4. Dangerous or negligent acts endangering persons: Dangerous or negligent acts which, though not intended to cause harm, actually or potentially result in injury to oneself or another person.
5. Abduction, harassment and other offences against person: Acts intended to threaten or harass, or acts that unlawfully deprive another person of their freedom of movement, that are against that person's will or against the will of any parent, guardian or other person having lawful custody or care of that person.
6. Robbery, extortion and related offences: Acts intended to unlawfully gain money, property or other items of value from, or to cause detriment to, another person by using the threat of force or any other coercive measure.
7. Unlawful entry with intent / burglary, break and enter: The unlawful entry of a structure with the intent to commit an offence, where the entry is either forced or unforced.
8. Theft and related and offences: The unlawful taking or obtaining of money or goods, not involving the use of force or violence, coercion or deception, with intent to permanently or temporarily deprive the owner or possessor of the use of the money or goods, or the receiving or handling of money or goods obtained unlawfully.

9. Fraud, deception and related offences: Offences involving a dishonest act or omission carried out with the purpose of deceiving to obtain a benefit.

10. Illicit drug offences: The possessing, selling, dealing or trafficking, importing or exporting, manufacturing or cultivating of drugs or other substances prohibited under legislation.

11. Prohibited and regulated weapons and explosives offences: Offences involving prohibited or regulated weapons and explosives. Those offences also involving assault, sexual assault or robbery are coded to the relevant group within Assault, Sexual assaults and Robbery respectively.

12. Property damage and environmental pollution: The wilful and unlawful destruction, damage or defacement of public or private property, or the pollution of property or a definable entity held in common by the community.

13. Public order offences: Offences relating personal conduct that involves, or may lead to, a breach of public order or decency, or that is indicative of criminal intent, or that is otherwise regulated or prohibited on moral or ethical grounds. In general these offences do not involve a specific victim or victims; however some offences, such as offensive language and offensive behaviour, may be directed towards a single victim.

14. Traffic and vehicle regulatory offences: Offences relating to vehicles and most forms of traffic, including offences pertaining to the licensing, registration, roadworthiness, or use of vehicles, bicycle offences and pedestrian offences.

15. Offences against justice procedures, government security and government operations: An act or omission that is deemed to be prejudicial to the effective carrying out of justice procedures or any government operations. This includes general government operations as well as those specifically concerned with maintaining government security.

16. Miscellaneous offences: Offences involving the breach of statutory rules or regulations governing activities that are prima facie legal, where such offences are not explicitly dealt with under any other division. If an offence is specified under regulation and involves an act that would be illegal under common law or general criminal legislation, the offence is dealt with under the appropriate generic group.