

CENTRAL DISTRICT CRIME STATISTICS 2010



**A Summary of
Recorded and Resolved Offence
Statistics**

**POLICE NATIONAL HEADQUARTERS
April 2011**

Table of Contents:

Topic	Page
Report Notes	1
District Summary of Recorded and Resolved Crime, by Division	2-4
District Summary of Recorded and Resolved Crime, by Area	5
District Recorded Crime per 10,000 population, by Division	6-8
District Recorded Crime per 10,000 population, by Area	9
Proportions of Recorded Crime by Categories	10
Crime Trends	11
Total Crime	12
Murder	13
Serious Assaults Resulting in Injury	14
Public Place Assaults	15
Robbery	16
Burglary	17
Burglary (Dwelling)	18
Vehicles Stolen	19
Theft Ex Car	20
Population Data	21
General Definition	22-23

REPORT NOTES:

This report presents official statistics for recorded and resolved offences. The format has been revised significantly from that used in previous years. In particular, offences are grouped into different categories than previously used. This aligns with direction given by the Justice Sector Information Strategy for the whole Justice sector to categorise offences according to the Australian Standard Offence Classification (ASOC). This change does not change the total number of offences reported, just how they are grouped.

In making this change, New Zealand Police has taken the first step towards reporting crime in a way that is comparable with Australia. However, at this stage, important differences still exist that mean statistics are not yet comparable between the two countries. For example, Australian statistics only count the most serious offence on each file, whereas New Zealand reports every offence. Also, Australian statistics count victims, whereas New Zealand Statistics count offences.

Another important change in this report is that pages 11 to 20, which present long-term trends, have been completely revised. The time series has been extended from 10 to 15 years to give a longer history. Also, the measures reported include a number of the statistical indicators that Police recently began publishing provisional data on every month.

As in previous reports, statistics reported in this document are derived from the Police National Intelligence Application (NIA). These Official Statistics for Recorded and Resolved Offences present a snapshot of data in NIA relating to offences that occur within a given year, as at the date 14 days following the end of that year.

Unless the matter is minor where Police attendance is sufficient, a matter that is reported to or discovered by Police where Police believe an offence is likely to have been committed is counted as a recorded offence.

A recorded offence is counted as resolved when Police apprehend an offender and decide how to deal with him/her. (E.g. warn, prosecute, etc.)

Resolution rate is the percentage of recorded offences that are resolved within 14 days of the end of the year being reported on.

If an offence is resolved 15 days or more after the end of the year it will not appear in the Official Crime Statistics for that or any other year. Resolution Rate therefore undercounts the number of cases that Police have resolved. This phenomenon has a more marked impact for some types of offences than others, such as offences that require long investigations (E.g. many serial crimes, burglaries and murders).

When comparing 2010 Statistics with previous years, the reader should also refer to "Report Notes" published in previous years' reports, as previous changes significantly affect year on year trends.

SUMMARY OF DISTRICT RECORDED AND RESOLVED CRIME, BY DIVISION

Years ending 31 December

HOMICIDE AND RELATED OFFENCES

ASOC Subdivision Description	Recorded 2008	Recorded 2009	Recorded 2010	Variance 2008- 2009	Variance 2009- 2010	Resolved 2008	Resolved 2009	Resolved 2010	Resolution Rate 2008	Resolution Rate 2009	Resolution Rate 2010
ATTEMPTED MURDER	8	3	2	-62.5 %	-33.3 %	8	3	2	100.0 %	100.0 %	100.0 %
HOMICIDE AND RELATED OFFENCES NOT FURTHER DEFINED	0	0	0			0	0				
MANSLAUGHTER AND DRIVING CAUSING DEATH	1	6	4	500.0 %	-33.3 %	1	6	4	100.0 %	100.0 %	100.0 %
MURDER	4	6	5	50.0 %	-16.7 %	4	6	4	100.0 %	100.0 %	80.0 %
	13	15	11	15.4 %	-26.7 %	13	15	10	100.0 %	100.0 %	90.9 %

ACTS INTENDED TO CAUSE INJURY

ASOC Subdivision Description	Recorded 2008	Recorded 2009	Recorded 2010	Variance 2008- 2009	Variance 2009- 2010	Resolved 2008	Resolved 2009	Resolved 2010	Resolution Rate 2008	Resolution Rate 2009	Resolution Rate 2010
ASSAULT	3,631	3,788	3,581	4.3 %	-5.5 %	3,132	3,253	3,021	86.3 %	85.9 %	84.4 %
OTHER ACTS INTENDED TO CAUSE INJURY	6	4	2	-33.3 %	-50.0 %	5	2	1	83.3 %	50.0 %	50.0 %
	3,637	3,792	3,583	4.3 %	-5.5 %	3,137	3,255	3,022	86.3 %	85.8 %	84.3 %

SEXUAL ASSAULT AND RELATED OFFENCES

ASOC Subdivision Description	Recorded 2008	Recorded 2009	Recorded 2010	Variance 2008- 2009	Variance 2009- 2010	Resolved 2008	Resolved 2009	Resolved 2010	Resolution Rate 2008	Resolution Rate 2009	Resolution Rate 2010
NON-ASSAULTIVE SEXUAL OFFENCES	9	7	8	-22.2 %	14.3 %	5	4	5	55.6 %	57.1 %	62.5 %
SEXUAL ASSAULT	254	222	256	-12.6 %	15.3 %	168	138	153	66.1 %	62.2 %	59.8 %
	263	229	264	-12.9 %	15.3 %	173	142	158	65.8 %	62.0 %	59.8 %

DANGEROUS OR NEGLIGENT ACTS ENDANGERING PERSONS

ASOC Subdivision Description	Recorded 2008	Recorded 2009	Recorded 2010	Variance 2008- 2009	Variance 2009- 2010	Resolved 2008	Resolved 2009	Resolved 2010	Resolution Rate 2008	Resolution Rate 2009	Resolution Rate 2010
OTHER DANGEROUS OR NEGLIGENT ACTS ENDANGERING PERSONS	45	56	54	24.4 %	-3.6 %	35	44	40	77.8 %	78.6 %	74.1 %
	45	56	54	24.4 %	-3.6 %	35	44	40	77.8 %	78.6 %	74.1 %

ABDUCTION, HARASSMENT AND OTHER RELATED OFFENCES AGAINST A PERSON

ASOC Subdivision Description	Recorded 2008	Recorded 2009	Recorded 2010	Variance 2008- 2009	Variance 2009- 2010	Resolved 2008	Resolved 2009	Resolved 2010	Resolution Rate 2008	Resolution Rate 2009	Resolution Rate 2010
ABDUCTION AND KIDNAPPING	19	20	13	5.3 %	-35.0 %	15	17	8	78.9 %	85.0 %	61.5 %
HARASSMENT AND THREATENING BEHAVIOUR	912	924	915	1.3 %	-1.0 %	731	746	715	80.2 %	80.7 %	78.1 %
	931	944	928	1.4 %	-1.7 %	746	763	723	80.1 %	80.8 %	77.9 %

ROBBERY, EXTORTION AND RELATED OFFENCES

ASOC Subdivision Description	Recorded 2008	Recorded 2009	Recorded 2010	Variance 2008- 2009	Variance 2009- 2010	Resolved 2008	Resolved 2009	Resolved 2010	Resolution Rate 2008	Resolution Rate 2009	Resolution Rate 2010
BLACKMAIL AND EXTORTION	16	14	17	-12.5 %	21.4 %	8	9	8	50.0 %	64.3 %	47.1 %
ROBBERY	129	134	136	3.9 %	1.5 %	72	71	67	55.8 %	53.0 %	49.3 %
	145	148	153	2.1 %	3.4 %	80	80	75	55.2 %	54.1 %	49.0 %

UNLAWFUL ENTRY WITH INTENT/BURGLARY, BREAK AND ENTER

ASOC Subdivision Description	Recorded 2008	Recorded 2009	Recorded 2010	Variance 2008- 2009	Variance 2009- 2010	Resolved 2008	Resolved 2009	Resolved 2010	Resolution Rate 2008	Resolution Rate 2009	Resolution Rate 2010
UNLAWFUL ENTRY WITH INTENT/BURGLARY, BREAK AND ENTER	5,123	4,944	4,705	-3.5 %	-4.8 %	930	871	802	18.2 %	17.6 %	17.0 %
	5,123	4,944	4,705	-3.5 %	-4.8 %	930	871	802	18.2 %	17.6 %	17.0 %

SUMMARY OF DISTRICT RECORDED AND RESOLVED CRIME, BY DIVISION
Years ending 31 December

THEFT AND RELATED OFFENCES

ASOC Subdivision Description	Recorded 2008	Recorded 2009	Recorded 2010	Variance 2008- 2009	Variance 2009- 2010	Resolved 2008	Resolved 2009	Resolved 2010	Resolution Rate 2008	Resolution Rate 2009	Resolution Rate 2010
ILLEGAL USE OF PROPERTY (EXCEPT MOTOR VEHICLES)	564	473	467	-16.1 %	-1.3 %	53	38	29	9.4 %	8.0 %	6.2 %
MOTOR VEHICLE THEFT AND RELATED OFFENCES	3,905	3,427	3,264	-12.2 %	-4.8 %	578	466	444	14.8 %	13.6 %	13.6 %
RECEIVE OR HANDLE PROCEEDS OF CRIME	216	196	211	-9.3 %	7.7 %	211	192	205	97.7 %	98.0 %	97.2 %
THEFT (EXCEPT MOTOR VEHICLES)	5,304	5,174	5,190	-2.5 %	0.3 %	1,949	1,930	2,216	36.7 %	37.3 %	42.7 %
	9,989	9,270	9,132	-7.2 %	-1.5 %	2,791	2,626	2,894	27.9 %	28.3 %	31.7 %

FRAUD, DECEPTION AND RELATED OFFENCES

ASOC Subdivision Description	Recorded 2008	Recorded 2009	Recorded 2010	Variance 2008- 2009	Variance 2009- 2010	Resolved 2008	Resolved 2009	Resolved 2010	Resolution Rate 2008	Resolution Rate 2009	Resolution Rate 2010
DECEPTIVE BUSINESS/GOVERNMENT PRACTICES	7	0	3	-100.0 %		6	0	3	85.7 %		100.0 %
FORGERY AND COUNTERFEITING	72	56	21	-22.2 %	-62.5 %	51	39	15	70.8 %	69.6 %	71.4 %
OBTAIN BENEFIT BY DECEPTION	754	705	577	-6.5 %	-18.2 %	563	506	370	74.7 %	71.8 %	64.1 %
OTHER FRAUD AND DECEPTION OFFENCES	40	36	42	-10.0 %	16.7 %	28	21	25	70.0 %	58.3 %	59.5 %
	873	797	643	-8.7 %	-19.3 %	648	566	413	74.2 %	71.0 %	64.2 %

ILLICIT DRUG OFFENCES

ASOC Subdivision Description	Recorded 2008	Recorded 2009	Recorded 2010	Variance 2008- 2009	Variance 2009- 2010	Resolved 2008	Resolved 2009	Resolved 2010	Resolution Rate 2008	Resolution Rate 2009	Resolution Rate 2010
DEAL OR TRAFFIC IN ILLICIT DRUGS	227	143	221	-37.0 %	54.5 %	223	131	209	98.2 %	91.6 %	94.6 %
IMPORT OR EXPORT ILLICIT DRUGS	3	3	0	0.0 %	-100.0 %	3	3		100.0 %	100.0 %	
MANUFACTURE OR CULTIVATE ILLICIT DRUGS	261	397	411	52.1 %	3.5 %	233	231	275	89.3 %	58.2 %	66.9 %
OTHER ILLICIT DRUG OFFENCES	325	384	415	18.2 %	8.1 %	321	381	405	98.8 %	99.2 %	97.6 %
POSSESS AND/OR USE ILLICIT DRUGS	685	742	791	8.3 %	6.6 %	663	717	761	96.8 %	96.6 %	96.2 %
	1,501	1,669	1,838	11.2 %	10.1 %	1,443	1,463	1,650	96.1 %	87.7 %	89.8 %

PROHIBITED AND REGULATED WEAPONS AND EXPLOSIVES OFFENCES

ASOC Subdivision Description	Recorded 2008	Recorded 2009	Recorded 2010	Variance 2008- 2009	Variance 2009- 2010	Resolved 2008	Resolved 2009	Resolved 2010	Resolution Rate 2008	Resolution Rate 2009	Resolution Rate 2010
REGULATED WEAPONS/EXPLOSIVES OFFENCES	593	609	548	2.7 %	-10.0 %	543	555	514	91.6 %	91.1 %	93.8 %
	593	609	548	2.7 %	-10.0 %	543	555	514	91.6 %	91.1 %	93.8 %

PROPERTY DAMAGE AND ENVIRONMENTAL POLLUTION

ASOC Subdivision Description	Recorded 2008	Recorded 2009	Recorded 2010	Variance 2008- 2009	Variance 2009- 2010	Resolved 2008	Resolved 2009	Resolved 2010	Resolution Rate 2008	Resolution Rate 2009	Resolution Rate 2010
ENVIRONMENTAL POLLUTION	34	23	11	-32.4 %	-52.2 %	27	15	8	79.4 %	65.2 %	72.7 %
PROPERTY DAMAGE	5,698	5,361	4,822	-5.9 %	-10.1 %	1,671	1,571	1,484	29.3 %	29.3 %	30.8 %
	5,732	5,384	4,833	-6.1 %	-10.2 %	1,698	1,586	1,492	29.6 %	29.5 %	30.9 %

PUBLIC ORDER OFFENCES

ASOC Subdivision Description	Recorded 2008	Recorded 2009	Recorded 2010	Variance 2008- 2009	Variance 2009- 2010	Resolved 2008	Resolved 2009	Resolved 2010	Resolution Rate 2008	Resolution Rate 2009	Resolution Rate 2010
DISORDERLY CONDUCT	1,953	2,043	2,066	4.6 %	1.1 %	1,747	1,843	1,828	89.5 %	90.2 %	88.5 %
OFFENSIVE CONDUCT	145	156	121	7.6 %	-22.4 %	115	112	89	79.3 %	71.8 %	73.6 %
PUBLIC ORDER OFFENCES NOT FURTHER DEFINED	0	1	0		-100.0 %	0	1			100.0 %	
REGULATED PUBLIC ORDER OFFENCES	420	718	752	71.0 %	4.7 %	400	679	689	95.2 %	94.6 %	91.6 %
	2,518	2,918	2,939	15.9 %	0.7 %	2,262	2,635	2,606	89.8 %	90.3 %	88.7 %

SUMMARY OF DISTRICT RECORDED AND RESOLVED CRIME, BY DIVISION
Years ending 31 December

OFFENCES AGAINST JUSTICE PROCEDURES, GOVERNMENT SECURITY AND GOVERNMENT OPERATIONS

ASOC Subdivision Description	Recorded 2008	Recorded 2009	Recorded 2010	Variance 2008- 2009	Variance 2009- 2010	Resolved 2008	Resolved 2009	Resolved 2010	Resolution Rate 2008	Resolution Rate 2009	Resolution Rate 2010
BREACH OF COMMUNITY-BASED ORDER	609	364	333	-40.2 %	-8.5 %	594	359	322	97.5 %	98.6 %	96.7 %
BREACH OF CUSTODIAL ORDER OFFENCES	50	41	38	-18.0 %	-7.3 %	48	39	36	96.0 %	95.1 %	94.7 %
BREACH OF VIOLENCE AND NON-VIOLENCE RESTRAINING ORDERS	465	501	518	7.7 %	3.4 %	429	444	457	92.3 %	88.6 %	88.2 %
OFFENCES AGAINST GOVERNMENT OPERATIONS	10	17	6	70.0 %	-64.7 %	7	6	2	70.0 %	35.3 %	33.3 %
OFFENCES AGAINST GOVERNMENT SECURITY	0	0	0			0	0				
OFFENCES AGAINST JUSTICE PROCEDURES	454	475	417	4.6 %	-12.2 %	445	457	404	98.0 %	96.2 %	96.9 %
OFFENCES AGAINST JUSTICE PROCEDURES, GOVERNMENT SECURITY AND GOVERNMENT OPERATIONS NOT FURTHER DEFINED	2	0	0	-100.0 %		2	0		100.0 %		
	1,590	1,398	1,312	-12.1 %	-6.2 %	1,525	1,305	1,221	95.9 %	93.3 %	93.1 %

MISCELLANEOUS OFFENCES

ASOC Subdivision Description	Recorded 2008	Recorded 2009	Recorded 2010	Variance 2008- 2009	Variance 2009- 2010	Resolved 2008	Resolved 2009	Resolved 2010	Resolution Rate 2008	Resolution Rate 2009	Resolution Rate 2010
COMMERCIAL/INDUSTRY/FINANCIAL REGULATION	1	8	15	700.0 %	87.5 %	1	8	15	100.0 %	100.0 %	100.0 %
DEFAMATION, LIBEL AND PRIVACY OFFENCES	6	4	0	-33.3 %	-100.0 %	1	3		16.7 %	75.0 %	
MISCELLANEOUS OFFENCES NOT FURTHER DEFINED	0	0	4			0	0	3			75.0 %
OTHER MISCELLANEOUS OFFENCES	282	125	119	-55.7 %	-4.8 %	272	112	91	96.5 %	89.6 %	76.5 %
PUBLIC HEALTH AND SAFETY OFFENCES	4	4	3	0.0 %	-25.0 %	3	2	0	75.0 %	50.0 %	0.0 %
	293	141	141	-51.9 %	0.0 %	277	125	109	94.5 %	88.7 %	77.3 %

TOTAL	33,246	32,314	31,084	-2.8 %	-3.8 %	16,301	16,031	15,729	49.0 %	49.6 %	50.6 %
--------------	---------------	---------------	---------------	---------------	---------------	---------------	---------------	---------------	---------------	---------------	---------------

SUMMARY OF DISTRICT RECORDED AND RESOLVED CRIME, BY AREA

years ending 31 December

TOTAL CRIME

Area Description	Recorded 2008	Recorded 2009	Recorded 2010	Variance 2008- 2009	Variance 2009- 2010	Resolved 2008	Resolved 2009	Resolved 2010	Resolution Rate 2008	Resolution Rate 2009	Resolution Rate 2010
New Plymouth	7,173	6,745	5,817	-6.0 %	-13.8 %	3,864	3,589	3,562	53.9 %	53.2 %	61.2 %
Palmerston North City	9,297	8,917	8,622	-4.1 %	-3.3 %	3,727	3,746	3,376	40.1 %	42.0 %	39.2 %
Palmerston North Rural	7,120	7,114	7,024	-0.1 %	-1.3 %	3,467	3,656	3,544	48.7 %	51.4 %	50.5 %
Ruapehu	1,662	1,714	1,826	3.1 %	6.5 %	961	869	1,002	57.8 %	50.7 %	54.9 %
Taranaki Rural	2,677	2,514	2,499	-6.1 %	-0.6 %	1,561	1,475	1,556	58.3 %	58.7 %	62.3 %
Wanganui	5,317	5,310	5,296	-0.1 %	-0.3 %	2,721	2,696	2,689	51.2 %	50.8 %	50.8 %
Total	33,246	32,314	31,084	-2.8 %	-3.8 %	16,301	16,031	15,729	49.0 %	49.6 %	50.6 %

DISTRICT RECORDED CRIME PER 10,000 POPULATION, BY DIVISION
Years ending 31 December

HOMICIDE AND RELATED OFFENCES

ASOC Subdivision Description	Recorded per 10,000 pop 2008	Recorded per 10,000 pop 2009	Recorded per 10,000 pop 2010
ATTEMPTED MURDER	0.23	0.09	0.06
HOMICIDE AND RELATED OFFENCES NOT FURTHER DEFINED	0.00	0.00	0.00
MANSLAUGHTER AND DRIVING CAUSING DEATH	0.03	0.17	0.11
MURDER	0.12	0.17	0.14
	0.38	0.43	0.32

ACTS INTENDED TO CAUSE INJURY

ASOC Subdivision Description	Recorded per 10,000 pop 2008	Recorded per 10,000 pop 2009	Recorded per 10,000 pop 2010
ASSAULT	105.21	109.22	102.60
OTHER ACTS INTENDED TO CAUSE INJURY	0.17	0.12	0.06
	105.38	109.33	102.66

SEXUAL ASSAULT AND RELATED OFFENCES

ASOC Subdivision Description	Recorded per 10,000 pop 2008	Recorded per 10,000 pop 2009	Recorded per 10,000 pop 2010
NON-ASSAULTIVE SEXUAL OFFENCES	0.26	0.20	0.23
SEXUAL ASSAULT	7.36	6.40	7.33
	7.62	6.60	7.56

DANGEROUS OR NEGLIGENT ACTS ENDANGERING PERSONS

ASOC Subdivision Description	Recorded per 10,000 pop 2008	Recorded per 10,000 pop 2009	Recorded per 10,000 pop 2010
OTHER DANGEROUS OR NEGLIGENT ACTS ENDANGERING PERSONS	1.30	1.61	1.55
	1.30	1.61	1.55

ABDUCTION, HARASSMENT AND OTHER RELATED OFFENCES AGAINST A PERSON

ASOC Subdivision Description	Recorded per 10,000 pop 2008	Recorded per 10,000 pop 2009	Recorded per 10,000 pop 2010
ABDUCTION AND KIDNAPPING	0.55	0.58	0.37
HARASSMENT AND THREATENING BEHAVIOUR	26.42	26.64	26.22
	26.98	27.22	26.59

ROBBERY, EXTORTION AND RELATED OFFENCES

ASOC Subdivision Description	Recorded per 10,000 pop 2008	Recorded per 10,000 pop 2009	Recorded per 10,000 pop 2010
BLACKMAIL AND EXTORTION	0.46	0.40	0.49
ROBBERY	3.74	3.86	3.90
	4.20	4.27	4.38

DISTRICT RECORDED CRIME PER 10,000 POPULATION, BY DIVISION

Years ending 31 December

UNLAWFUL ENTRY WITH INTENT/BURGLARY, BREAK AND ENTER

ASOC Subdivision Description	Recorded per 10,000 pop 2008	Recorded per 10,000 pop 2009	Recorded per 10,000 pop 2010
UNLAWFUL ENTRY WITH INTENT/BURGLARY, BREAK AND ENTER	148.44	142.55	134.80
	148.44	142.55	134.80

THEFT AND RELATED OFFENCES

ASOC Subdivision Description	Recorded per 10,000 pop 2008	Recorded per 10,000 pop 2009	Recorded per 10,000 pop 2010
ILLEGAL USE OF PROPERTY (EXCEPT MOTOR VEHICLES)	16.34	13.64	13.38
MOTOR VEHICLE THEFT AND RELATED OFFENCES	113.15	98.81	93.52
RECEIVE OR HANDLE PROCEEDS OF CRIME	6.26	5.65	6.05
THEFT (EXCEPT MOTOR VEHICLES)	153.68	149.18	148.70
	289.43	267.28	261.64

FRAUD, DECEPTION AND RELATED OFFENCES

ASOC Subdivision Description	Recorded per 10,000 pop 2008	Recorded per 10,000 pop 2009	Recorded per 10,000 pop 2010
DECEPTIVE BUSINESS/GOVERNMENT PRACTICES	0.20	0.00	0.09
FORGERY AND COUNTERFEITING	2.09	1.61	0.60
OBTAIN BENEFIT BY DECEPTION	21.85	20.33	16.53
OTHER FRAUD AND DECEPTION OFFENCES	1.16	1.04	1.20
	25.29	22.98	18.42

ILLICIT DRUG OFFENCES

ASOC Subdivision Description	Recorded per 10,000 pop 2008	Recorded per 10,000 pop 2009	Recorded per 10,000 pop 2010
DEAL OR TRAFFIC IN ILLICIT DRUGS	6.58	4.12	6.33
IMPORT OR EXPORT ILLICIT DRUGS	0.09	0.09	0.00
MANUFACTURE OR CULTIVATE ILLICIT DRUGS	7.56	11.45	11.78
OTHER ILLICIT DRUG OFFENCES	9.42	11.07	11.89
POSSESS AND/OR USE ILLICIT DRUGS	19.85	21.39	22.66
	43.49	48.12	52.66

PROHIBITED AND REGULATED WEAPONS AND EXPLOSIVES OFFENCES

ASOC Subdivision Description	Recorded per 10,000 pop 2008	Recorded per 10,000 pop 2009	Recorded per 10,000 pop 2010
REGULATED WEAPONS/EXPLOSIVES OFFENCES	17.18	17.56	15.70
	17.18	17.56	15.70

DISTRICT RECORDED CRIME PER 10,000 POPULATION, BY DIVISION

Years ending 31 December

PROPERTY DAMAGE AND ENVIRONMENTAL POLLUTION

ASOC Subdivision Description	Recorded per 10,000 pop 2008	Recorded per 10,000 pop 2009	Recorded per 10,000 pop 2010
ENVIRONMENTAL POLLUTION	0.99	0.66	0.32
PROPERTY DAMAGE	165.10	154.57	138.15
	166.08	155.23	138.47

PUBLIC ORDER OFFENCES

ASOC Subdivision Description	Recorded per 10,000 pop 2008	Recorded per 10,000 pop 2009	Recorded per 10,000 pop 2010
DISORDERLY CONDUCT	56.59	58.90	59.19
OFFENSIVE CONDUCT	4.20	4.50	3.47
PUBLIC ORDER OFFENCES NOT FURTHER DEFINED	0.00	0.03	0.00
REGULATED PUBLIC ORDER OFFENCES	12.17	20.70	21.55
	72.96	84.13	84.20

OFFENCES AGAINST JUSTICE PROCEDURES, GOVERNMENT SECURITY AND GOVERNMENT OPERATIONS

ASOC Subdivision Description	Recorded per 10,000 pop 2008	Recorded per 10,000 pop 2009	Recorded per 10,000 pop 2010
BREACH OF COMMUNITY-BASED ORDER	17.65	10.50	9.54
BREACH OF CUSTODIAL ORDER OFFENCES	1.45	1.18	1.09
BREACH OF VIOLENCE AND NON-VIOLENCE RESTRAINING ORDERS	13.47	14.45	14.84
OFFENCES AGAINST GOVERNMENT OPERATIONS	0.29	0.49	0.17
OFFENCES AGAINST GOVERNMENT SECURITY	0.00	0.00	0.00
OFFENCES AGAINST JUSTICE PROCEDURES	13.15	13.70	11.95
OFFENCES AGAINST JUSTICE PROCEDURES, GOVERNMENT SECURITY AND GOVERNMENT OPERATIONS NOT FURTHER DEFINED	0.06	0.00	0.00
	46.07	40.31	37.59

MISCELLANEOUS OFFENCES

ASOC Subdivision Description	Recorded per 10,000 pop 2008	Recorded per 10,000 pop 2009	Recorded per 10,000 pop 2010
COMMERCIAL/INDUSTRY/FINANCIAL REGULATION	0.03	0.23	0.43
DEFAMATION, LIBEL AND PRIVACY OFFENCES	0.17	0.12	0.00
MISCELLANEOUS OFFENCES NOT FURTHER DEFINED	0.00	0.00	0.11
OTHER MISCELLANEOUS OFFENCES	8.17	3.60	3.41
PUBLIC HEALTH AND SAFETY OFFENCES	0.12	0.12	0.09
	8.49	4.07	4.04

TOTAL	963.3	931.7	890.6
--------------	--------------	--------------	--------------

DISTRICT RECORDED CRIME PER 10,000 POPULATION, BY AREA

Years ending 31 December

Area Description	Recorded per 10,000 pop 2008	Recorded per 10,000 pop 2009	Recorded per 10,000 pop 2010	Percent Variance 2008 to 2009	Percent Variance 2009 to 2010
New Plymouth	991.6	926.5	789.6	-6.6 %	-14.8 %
Palmerston North City	1,106.9	1,049.2	1,003.1	-5.2 %	-4.4 %
Palmerston North Rural	852.5	849.4	836.1	-0.4 %	-1.6 %
Ruapehu	959.6	992.5	1,061.0	3.4 %	6.9 %
Taranaki Rural	788.0	738.1	731.8	-6.3 %	-0.9 %
Wanganui	984.8	984.1	980.0	-0.1 %	-0.4 %
TOTAL	963.3	931.7	890.6	-3.3 %	-4.4 %

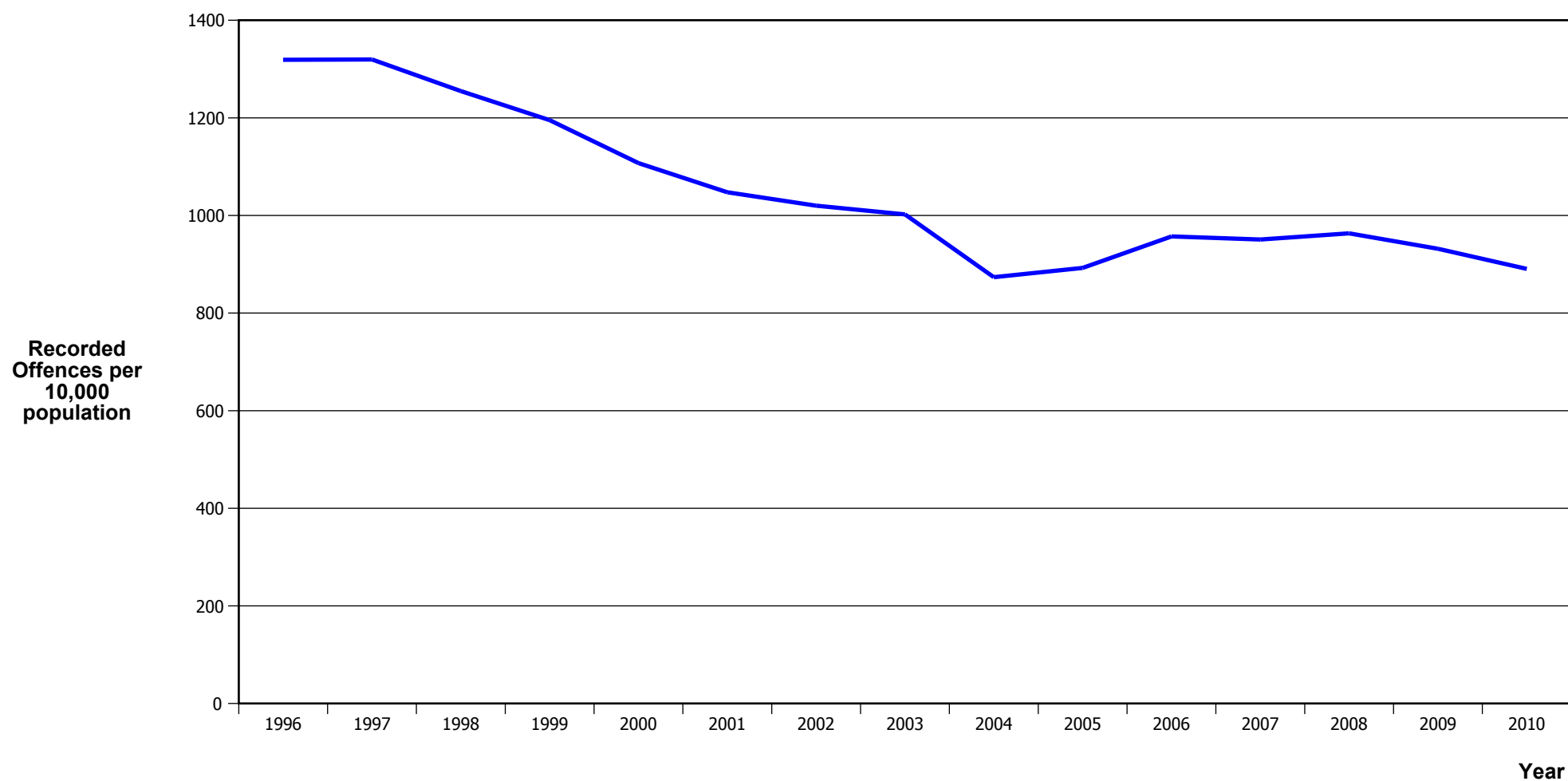
PROPORTION OF RECORDED CRIME BY DIVISION

Years ending 31 December

ASOC Division Description	Proportions Recorded 2008	Recorded 2008	Proportions Recorded 2009	Recorded 2009	Proportions Recorded 2010	Recorded 2010
HOMICIDE AND RELATED OFFENCES	0.04 %	13	0.05 %	15	0.04 %	11
ACTS INTENDED TO CAUSE INJURY	10.94 %	3,637	11.73 %	3,792	11.53 %	3,583
SEXUAL ASSAULT AND RELATED OFFENCES	0.79 %	263	0.71 %	229	0.85 %	264
DANGEROUS OR NEGLIGENT ACTS ENDANGERING PERSONS	0.14 %	45	0.17 %	56	0.17 %	54
ABDUCTION, HARASSMENT AND OTHER RELATED OFFENCES AGAINST A PERSON	2.80 %	931	2.92 %	944	2.99 %	928
ROBBERY, EXTORTION AND RELATED OFFENCES	0.44 %	145	0.46 %	148	0.49 %	153
UNLAWFUL ENTRY WITH INTENT/BURGLARY, BREAK AND ENTER	15.41 %	5,123	15.30 %	4,944	15.14 %	4,705
THEFT AND RELATED OFFENCES	30.05 %	9,989	28.69 %	9,270	29.38 %	9,132
FRAUD, DECEPTION AND RELATED OFFENCES	2.63 %	873	2.47 %	797	2.07 %	643
ILLICIT DRUG OFFENCES	4.51 %	1,501	5.16 %	1,669	5.91 %	1,838
PROHIBITED AND REGULATED WEAPONS AND EXPLOSIVES OFFENCES	1.78 %	593	1.88 %	609	1.76 %	548
PROPERTY DAMAGE AND ENVIRONMENTAL POLLUTION	17.24 %	5,732	16.66 %	5,384	15.55 %	4,833
PUBLIC ORDER OFFENCES	7.57 %	2,518	9.03 %	2,918	9.46 %	2,939
OFFENCES AGAINST JUSTICE PROCEDURES, GOVERNMENT SECURITY AND GOVERNMENT OPERATIONS	4.78 %	1,590	4.33 %	1,398	4.22 %	1,312
MISCELLANEOUS OFFENCES	0.88 %	293	0.44 %	141	0.45 %	141
	100.00 %	33,246	100.00 %	32,314	100.00 %	31,084

CRIME TRENDS

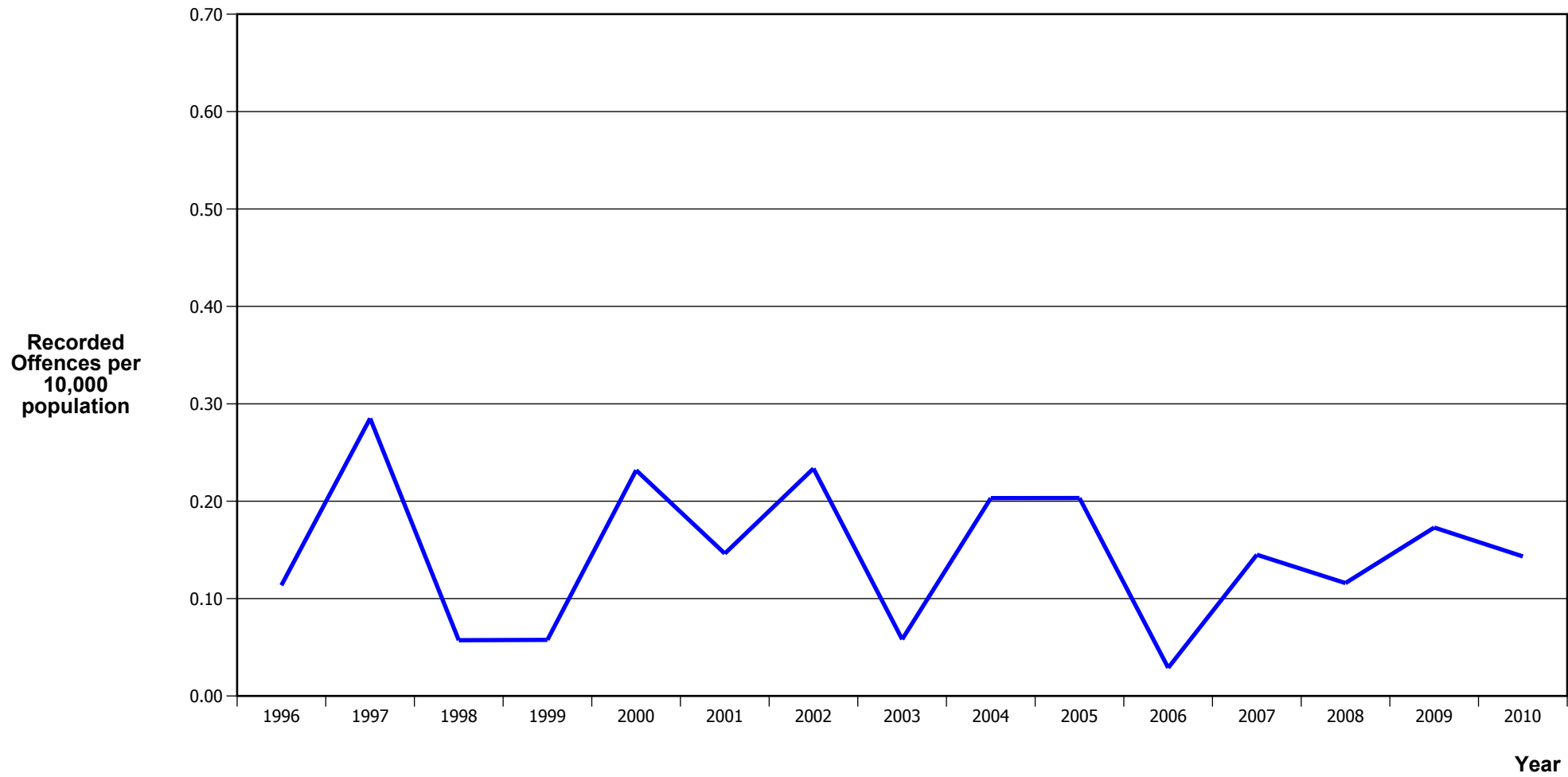
TOTAL CRIME



Calendar Year	1996	1997	1998	1999	2000	2001	2002	2003	2004	2005	2006	2007	2008	2009	2010
Recorded Offences	46,415	46,300	43,804	41,479	38,210	35,812	34,934	34,452	30,094	30,731	33,019	32,762	33,246	32,314	31,084
Recorded per 10,000 Population	1,319.1	1,319.6	1,254.8	1,195.4	1,107.2	1,047.5	1,020.1	1,002.2	873.6	892.6	957.0	950.7	963.3	931.7	890.6

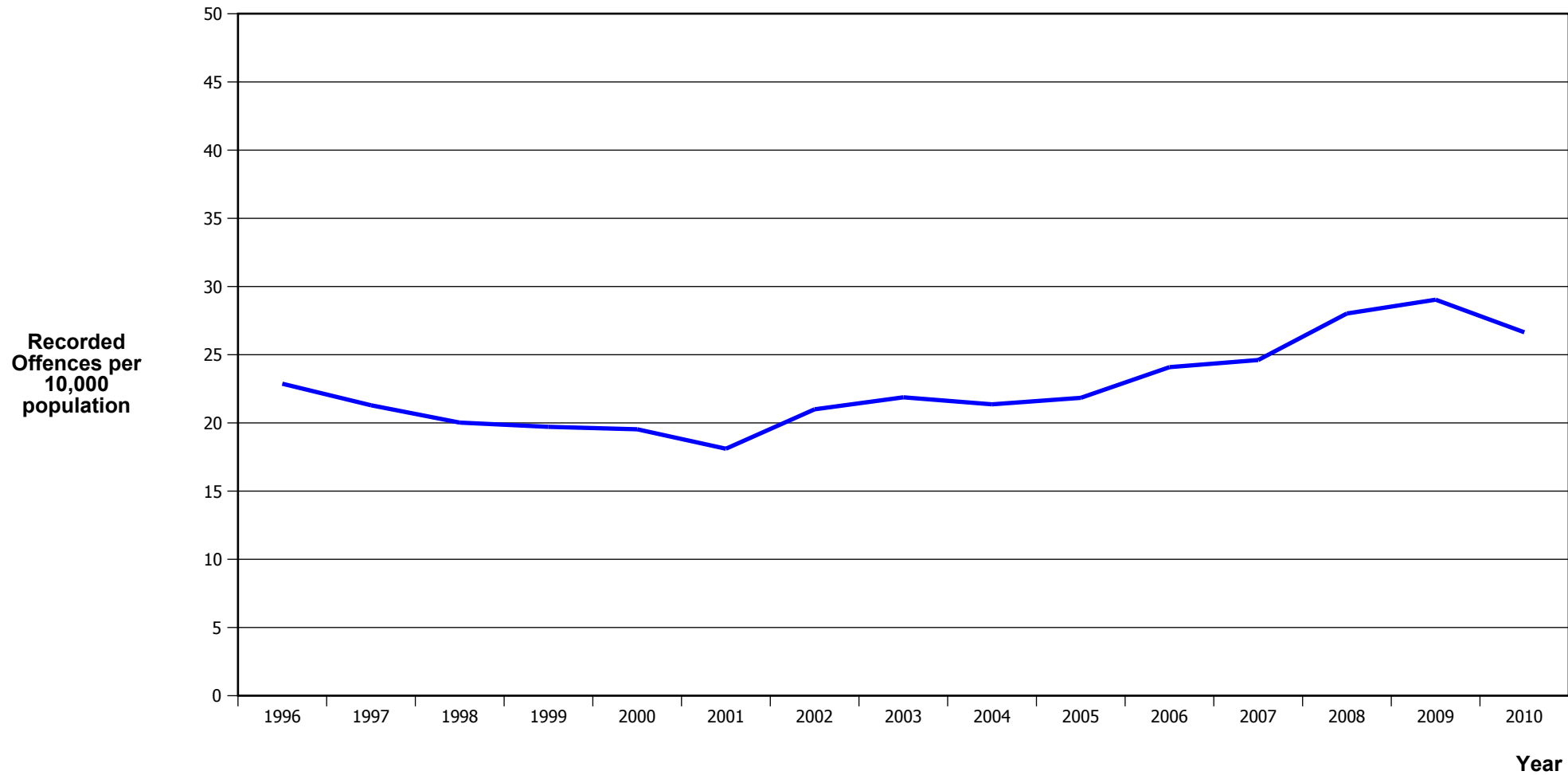
*In 2005/2006 there was a major IT system change (LES to NIA)

MURDER



Calendar Year	1996	1997	1998	1999	2000	2001	2002	2003	2004	2005	2006	2007	2008	2009	2010
Recorded Offences	4	10	2	2	8	5	8	2	7	7	1	5	4	6	5
Recorded per 10,000 Population	0.11	0.29	0.06	0.06	0.23	0.15	0.23	0.06	0.20	0.20	0.03	0.15	0.12	0.17	0.14

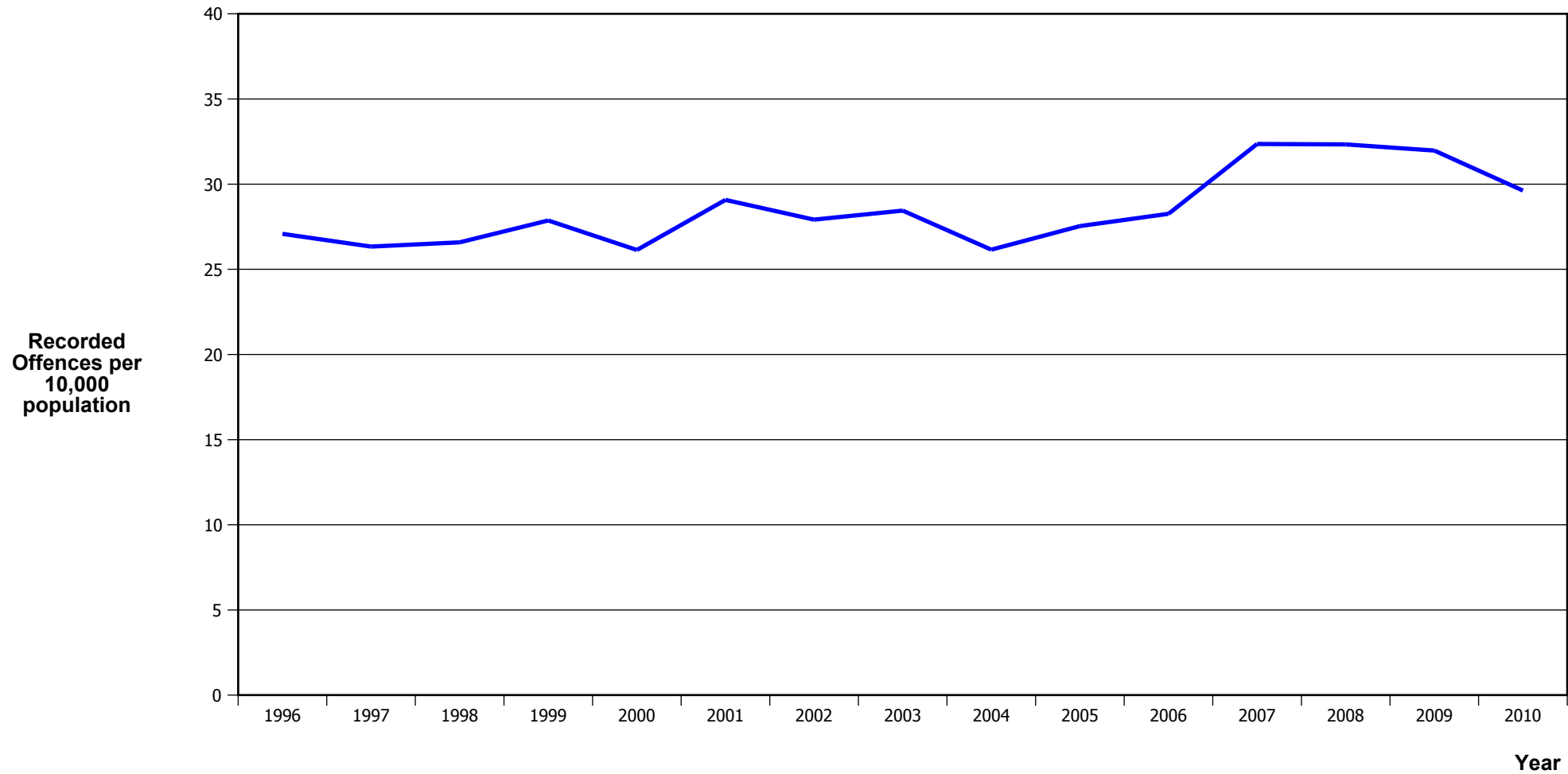
SERIOUS ASSAULTS RESULTING IN INJURY*



Calendar Year	1996	1997	1998	1999	2000	2001	2002	2003	2004	2005	2006	2007	2008	2009	2010
Recorded Physical Injury	805	747	699	684	674	619	719	752	736	752	831	848	967	1,007	930
Recorded per 10,000 Population	22.9	21.3	20.0	19.7	19.5	18.1	21.0	21.9	21.4	21.8	24.1	24.6	28.0	29.0	26.6

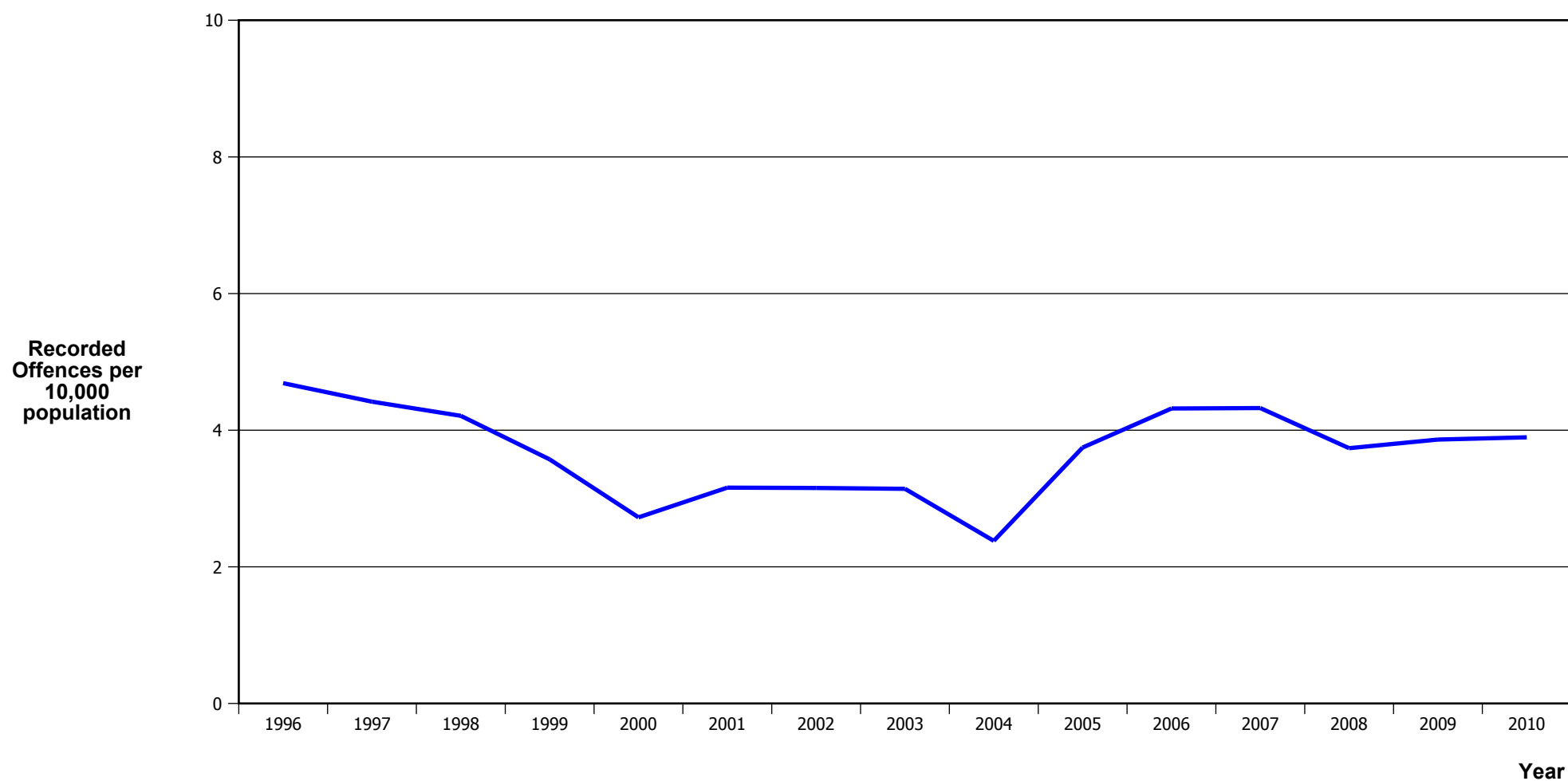
* This measure excludes common assaults

PUBLIC PLACE ASSAULTS



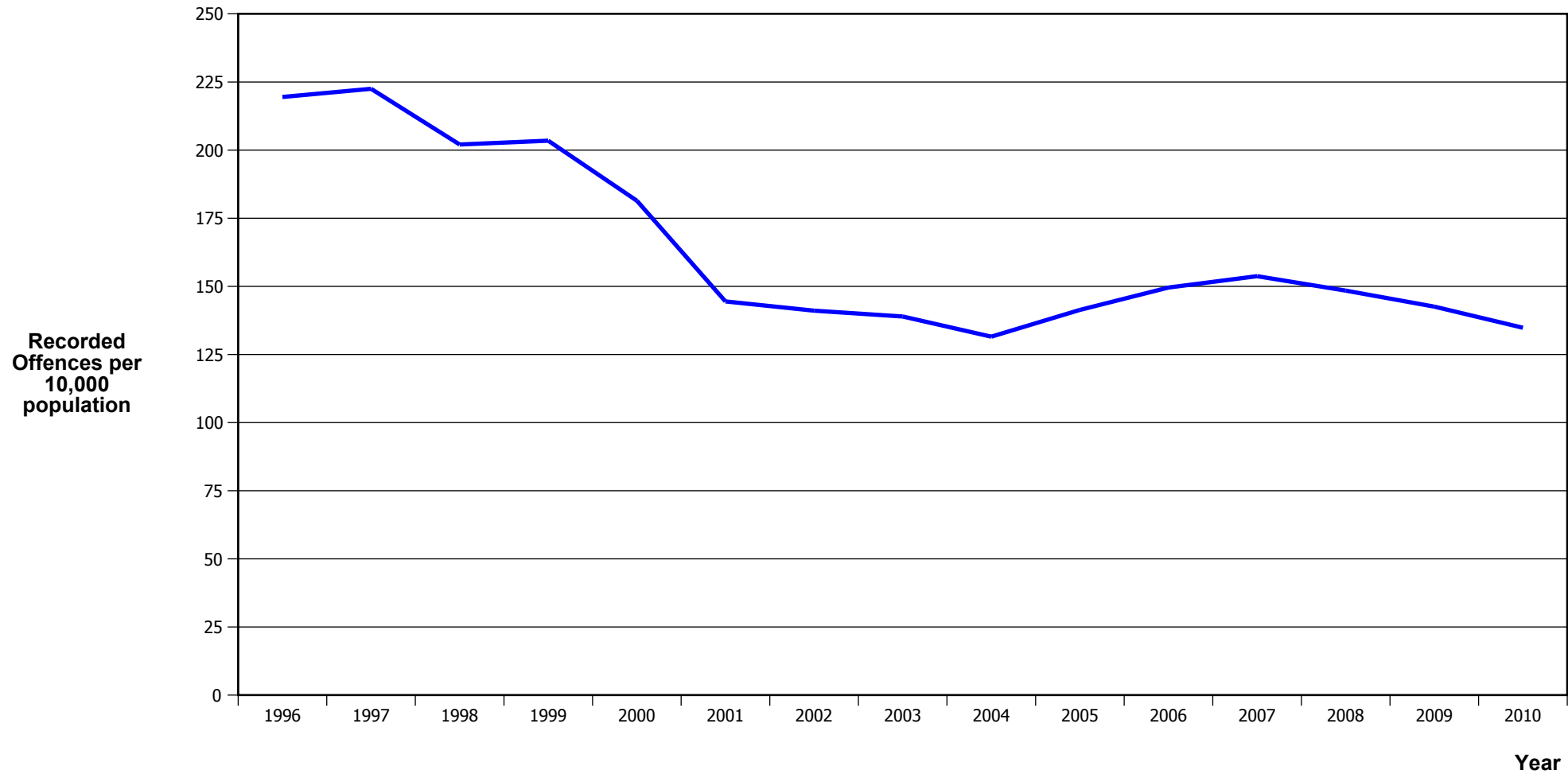
Calendar Year	1996	1997	1998	1999	2000	2001	2002	2003	2004	2005	2006	2007	2008	2009	2010
Recorded Offences	953	924	928	967	902	994	956	978	901	948	975	1,115	1,116	1,109	1,034
Recorded per 10,000 Population	27.1	26.3	26.6	27.9	26.1	29.1	27.9	28.4	26.2	27.5	28.3	32.4	32.3	32.0	29.6

ROBBERY



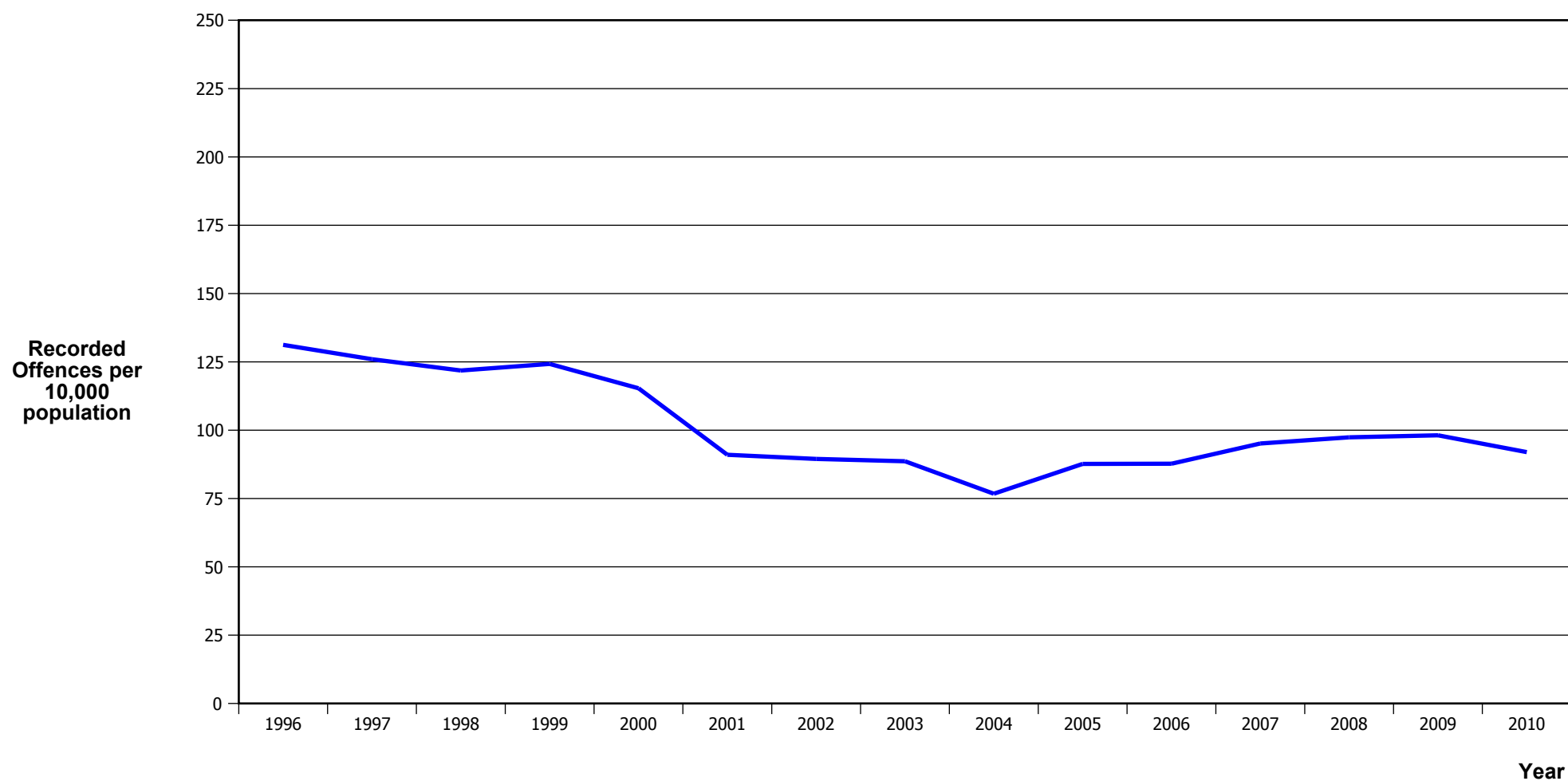
Calendar Year	1996	1997	1998	1999	2000	2001	2002	2003	2004	2005	2006	2007	2008	2009	2010
Recorded Offences	165	155	147	124	94	108	108	108	82	129	149	149	129	134	136
Recorded per 10,000 Population	4.7	4.4	4.2	3.6	2.7	3.2	3.2	3.1	2.4	3.7	4.3	4.3	3.7	3.9	3.9

BURGLARY (TOTAL)



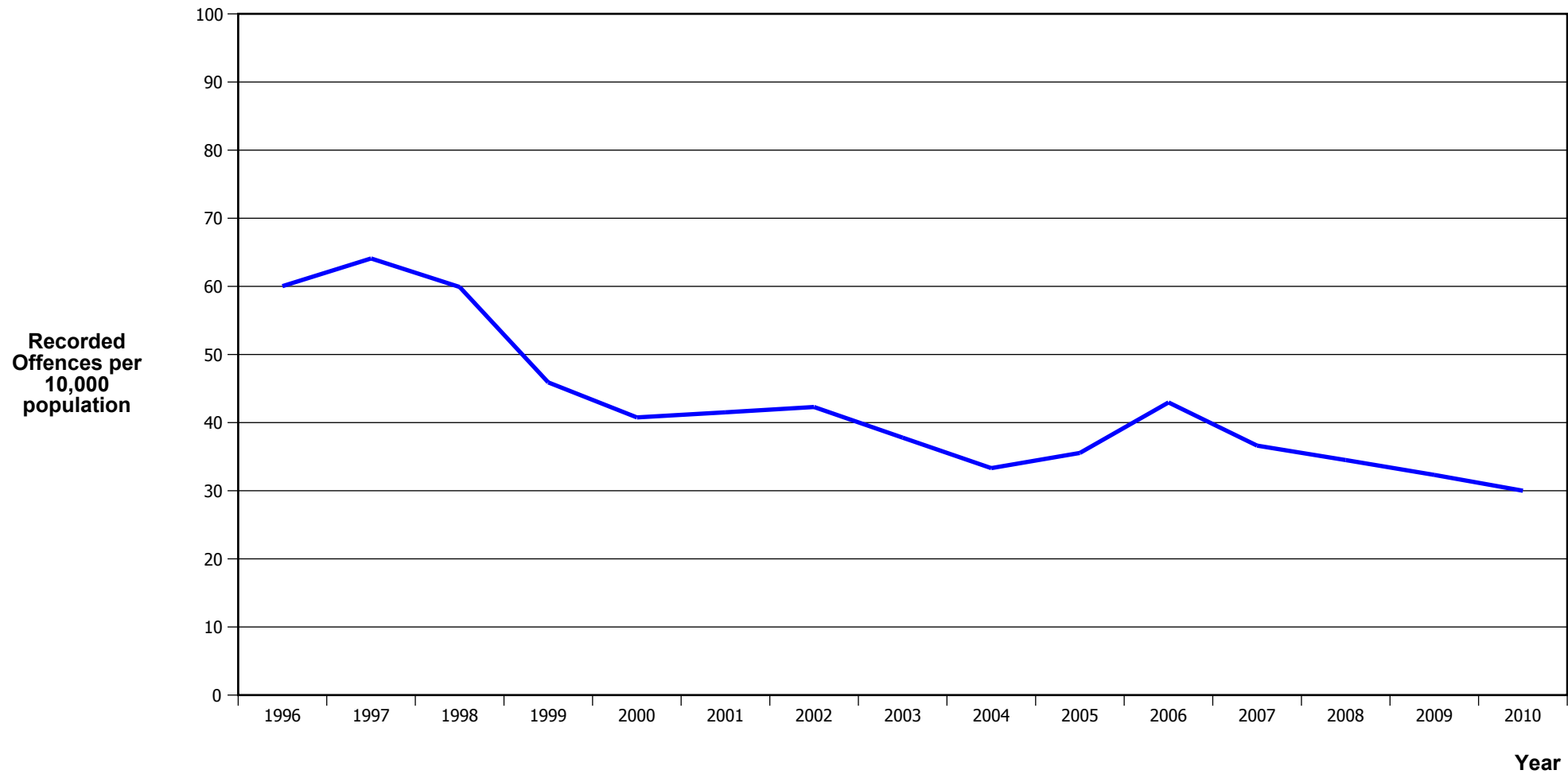
Calendar Year	1996	1997	1998	1999	2000	2001	2002	2003	2004	2005	2006	2007	2008	2009	2010
Recorded Offences	7,723	7,806	7,053	7,060	6,260	4,939	4,831	4,777	4,531	4,867	5,160	5,297	5,123	4,944	4,705
Recorded per 10,000 Population	219.5	222.5	202.0	203.5	181.4	144.5	141.1	139.0	131.5	141.4	149.6	153.7	148.4	142.5	134.8

BURGLARY (DWELLING)



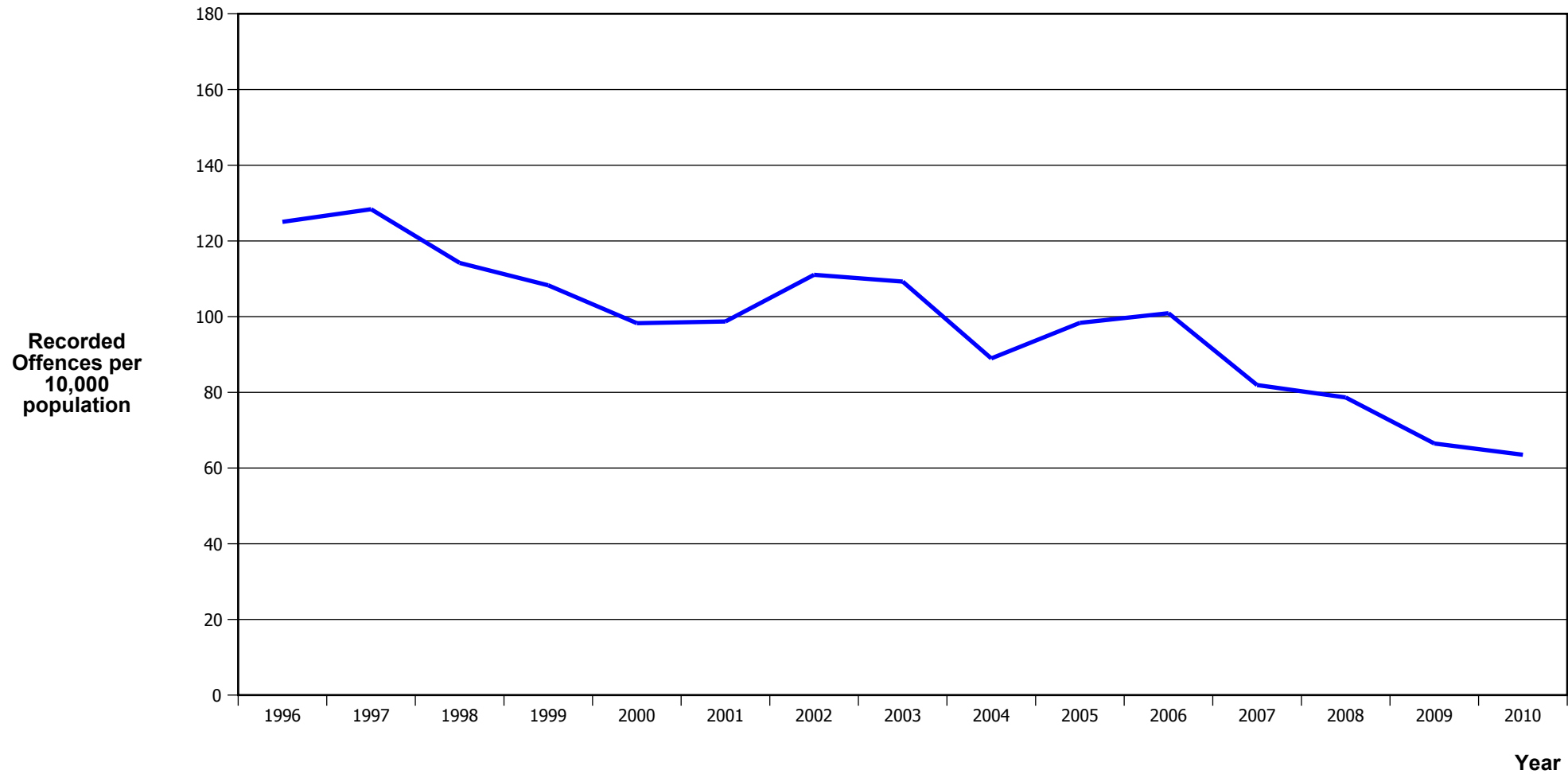
Calendar Year	1996	1997	1998	1999	2000	2001	2002	2003	2004	2005	2006	2007	2008	2009	2010
Recorded Offences	4,618	4,420	4,253	4,312	3,980	3,111	3,065	3,047	2,644	3,018	3,027	3,278	3,361	3,403	3,210
Recorded per 10,000 Population	131.2	126.0	121.8	124.3	115.3	91.0	89.5	88.6	76.8	87.7	87.7	95.1	97.4	98.1	92.0

VEHICLES STOLEN



Calendar Year	1996	1997	1998	1999	2000	2001	2002	2003	2004	2005	2006	2007	2008	2009	2010
Recorded Offences	2,112	2,249	2,091	1,593	1,407	1,419	1,448	1,299	1,148	1,224	1,482	1,262	1,191	1,121	1,047
Recorded per 10,000 Population	60.0	64.1	59.9	45.9	40.8	41.5	42.3	37.8	33.3	35.6	43.0	36.6	34.5	32.3	30.0

THEFT EX CAR



Calendar Year	1996	1997	1998	1999	2000	2001	2002	2003	2004	2005	2006	2007	2008	2009	2010
Recorded Offences	4,400	4,504	3,986	3,757	3,391	3,375	3,803	3,756	3,065	3,386	3,481	2,823	2,714	2,306	2,217
Recorded per 10,000 Population	125.0	128.4	114.2	108.3	98.3	98.7	111.1	109.3	89.0	98.3	100.9	81.9	78.6	66.5	63.5

Population Data

Population data is used in this release to calculate crime rates. They have been derived from population estimates as at 30 June each year that have been obtained from Statistics New Zealand.

The estimated resident population is based on the census usually resident population count, with adjustments for residents missed or counted more than once by the census (net census undercount), and for residents temporarily overseas on census night.

These population estimates exclude the number of international students who are studying in New Zealand for less than 12 months.

Year	Population
1996	351,870
1997	350,860
1998	349,090
1999	346,990
2000	345,090
2001	341,890
2002	342,440
2003	343,780
2004	344,480
2005	344,290
2006	345,020
2007	344,600
2008	345,130
2009	346,830
2010	349,030

General Definitions

Recorded Offences: the number of breaches of the New Zealand law recorded by Police. This includes offences specified in the Crimes Act and other legislations, such as the Summary Offences Act, Local Government Act, etc.

Resolved Offences: the number of recorded offences where an offender has been identified and dealt with (e.g. warned, cautioned, prosecuted, etc).

Resolution Rate: the proportion of recorded offences that have been resolved.

Recorded per 10,000 population: the number of recorded offences for every 10,000 people. This is also referred as the crime rate per 10,000 population.

ASOC: the Australian Standard Offence Classification. The offence classification is divided into 16 major offence divisions.

Definition of ASOC Divisions

1. Homicide and related offences: Unlawfully kill, attempt to unlawfully kill or conspiracy to kill another person.
2. Acts intended to cause injury: Acts, excluding attempted murder and those resulting in death, which are intended to cause non-fatal injury or harm to another person and where there is no sexual or acquisitive element.
3. Sexual assault and related offences: Acts, or intent of acts, of a sexual nature against another person, which are non-consensual or where consent is proscribed.
4. Dangerous or negligent acts endangering persons: Dangerous or negligent acts which, though not intended to cause harm, actually or potentially result in injury to oneself or another person.
5. Abduction, harassment and other offences against person: Acts intended to threaten or harass, or acts that unlawfully deprive another person of their freedom of movement, that are against that person's will or against the will of any parent, guardian or other person having lawful custody or care of that person.
6. Robbery, extortion and related offences: Acts intended to unlawfully gain money, property or other items of value from, or to cause detriment to, another person by using the threat of force or any other coercive measure.
7. Unlawful entry with intent / burglary, break and enter: The unlawful entry of a structure with the intent to commit an offence, where the entry is either forced or unforced.
8. Theft and related and offences: The unlawful taking or obtaining of money or goods, not involving the use of force or violence, coercion or deception, with intent to permanently or temporarily deprive the owner or possessor of the use of the money or goods, or the receiving or handling of money or goods obtained unlawfully.

9. Fraud, deception and related offences: Offences involving a dishonest act or omission carried out with the purpose of deceiving to obtain a benefit.

10. Illicit drug offences: The possessing, selling, dealing or trafficking, importing or exporting, manufacturing or cultivating of drugs or other substances prohibited under legislation.

11. Prohibited and regulated weapons and explosives offences: Offences involving prohibited or regulated weapons and explosives. Those offences also involving assault, sexual assault or robbery are coded to the relevant group within Assault, Sexual assaults and Robbery respectively.

12. Property damage and environmental pollution: The wilful and unlawful destruction, damage or defacement of public or private property, or the pollution of property or a definable entity held in common by the community.

13. Public order offences: Offences relating personal conduct that involves, or may lead to, a breach of public order or decency, or that is indicative of criminal intent, or that is otherwise regulated or prohibited on moral or ethical grounds. In general these offences do not involve a specific victim or victims; however some offences, such as offensive language and offensive behaviour, may be directed towards a single victim.

14. Traffic and vehicle regulatory offences: Offences relating to vehicles and most forms of traffic, including offences pertaining to the licensing, registration, roadworthiness, or use of vehicles, bicycle offences and pedestrian offences.

15. Offences against justice procedures, government security and government operations: An act or omission that is deemed to be prejudicial to the effective carrying out of justice procedures or any government operations. This includes general government operations as well as those specifically concerned with maintaining government security.

16. Miscellaneous offences: Offences involving the breach of statutory rules or regulations governing activities that are prima facie legal, where such offences are not explicitly dealt with under any other division. If an offence is specified under regulation and involves an act that would be illegal under common law or general criminal legislation, the offence is dealt with under the appropriate generic group.