

# **CANTERBURY DISTRICT CRIME STATISTICS 2014**



**A Summary of  
Recorded and Resolved Offence  
Statistics**

**POLICE NATIONAL HEADQUARTERS  
April 2015**

ISSN 1178 - 1637

**Table of Contents:**

<b>Topic</b>	<b>Page</b>
Report Notes	1
District Summary of Recorded and Resolved Crime, by Division	2-4
Proportions of Recorded Crime by Division	5
Summary of District Recorded Offences, Rate per 10,000 Population and Resolved Offences, by Area	6
Summary of Area Recorded Offences, Rate per 10,000 Population and Resolved Offences, by Division	7-9
Crime Trends	10
Total Crime	11
Murder	12
Serious Assaults Resulting in Injury	13
Sexual Assaults	14
Public Place Assaults	15
Dwelling Assaults	16
Robbery	17
Burglary (Total)	18
Burglary (Dwelling)	19
Vehicles Stolen	20
Theft Ex Car	21
Population Data	22
General Definitions	23-24

## **REPORT NOTES:**

Statistics reported in this document are derived from the Police National Intelligence Application (NIA). These Official Statistics for Recorded and Resolved Offences present a snapshot of data in NIA relating to offences that occur within a given year, as at the date 14 days following the end of that year.

Unless the matter is minor where Police attendance is sufficient, a matter that is reported to or discovered by Police where Police believe an offence is likely to have been committed is counted as a recorded offence.

A recorded offence is counted as resolved when Police apprehend an offender and decide how to deal with him/her. (E.g. warn, prosecute, etc.)

Resolution rate is the percentage of recorded offences that are resolved within 14 days of the end of the year being reported on.

If an offence is resolved 15 days or more after the end of the year it will not appear in the Official Crime Statistics for that or any other year. Resolution Rate therefore undercounts the number of cases that Police have resolved. This phenomenon has a more marked impact for some types of offences than others, such as offences that require long investigations (E.g. many serial crimes, burglaries and murders).

Several offences have been reclassified into different ANZSOC groups. This has resulted in changes to subtotals for Groups and Sub-divisions within Divisions 10, 15 and 16, compared to previously reported data. Generally, this occurred within the same Division.

Note that the Population Estimates have been revised for 2007 to 2013 as a result of the 2013 Census. In previous reports population estimates were based on the 2006 Census. Crime rates reported in this report for those years may differ from those previously reported as a result.

When comparing 2014 Statistics with previous years, the reader should also refer to "Report Notes" published in previous years' reports, as previous changes significantly affect year on year trends.

**SUMMARY OF DISTRICT RECORDED AND RESOLVED CRIME, BY DIVISION**  
**Years ending 31 December**

**HOMICIDE AND RELATED OFFENCES**

ASOC Subdivision Description	Recorded 2012	Recorded 2013	Recorded 2014	Variance 2012-2013	Variance 2013-2014	Resolved 2012	Resolved 2013	Resolved 2014	Resolution Rate 2012	Resolution Rate 2013	Resolution Rate 2014
ATTEMPTED MURDER	3	1	1	-66.7 %	0.0 %	3	1	1	100.0 %	100.0 %	100.0 %
HOMICIDE AND RELATED OFFENCES NOT FURTHER DEFINED	0	1	0	0.0 %	-100.0 %	0	0	0	0.0 %	0.0 %	0.0 %
MANSLAUGHTER AND DRIVING CAUSING DEATH	0	1	2	0.0 %	100.0 %	0	1	2	0.0 %	100.0 %	100.0 %
MURDER	9	5	5	-44.4 %	0.0 %	8	5	4	88.9 %	100.0 %	80.0 %
	<b>12</b>	<b>8</b>	<b>8</b>	<b>-33.3 %</b>	<b>0.0 %</b>	<b>11</b>	<b>7</b>	<b>7</b>	<b>91.7 %</b>	<b>87.5 %</b>	<b>87.5 %</b>

**ACTS INTENDED TO CAUSE INJURY**

ASOC Subdivision Description	Recorded 2012	Recorded 2013	Recorded 2014	Variance 2012-2013	Variance 2013-2014	Resolved 2012	Resolved 2013	Resolved 2014	Resolution Rate 2012	Resolution Rate 2013	Resolution Rate 2014
ASSAULT	3,773	3,616	3,721	-4.2 %	2.9 %	2,789	2,550	2,496	73.9 %	70.5 %	67.1 %
OTHER ACTS INTENDED TO CAUSE INJURY	2	3	5	50.0 %	66.7 %	2	2	3	100.0 %	66.7 %	60.0 %
	<b>3,775</b>	<b>3,619</b>	<b>3,726</b>	<b>-4.1 %</b>	<b>3.0 %</b>	<b>2,791</b>	<b>2,552</b>	<b>2,499</b>	<b>73.9 %</b>	<b>70.5 %</b>	<b>67.1 %</b>

**SEXUAL ASSAULT AND RELATED OFFENCES**

ASOC Subdivision Description	Recorded 2012	Recorded 2013	Recorded 2014	Variance 2012-2013	Variance 2013-2014	Resolved 2012	Resolved 2013	Resolved 2014	Resolution Rate 2012	Resolution Rate 2013	Resolution Rate 2014
NON-ASSAULTIVE SEXUAL OFFENCES	37	17	21	-54.1 %	23.5 %	32	10	14	86.5 %	58.8 %	66.7 %
SEXUAL ASSAULT	405	425	390	4.9 %	-8.2 %	178	204	131	44.0 %	48.0 %	33.6 %
	<b>442</b>	<b>442</b>	<b>411</b>	<b>0.0 %</b>	<b>-7.0 %</b>	<b>210</b>	<b>214</b>	<b>145</b>	<b>47.5 %</b>	<b>48.4 %</b>	<b>35.3 %</b>

**DANGEROUS OR NEGLIGENT ACTS ENDANGERING PERSONS**

ASOC Subdivision Description	Recorded 2012	Recorded 2013	Recorded 2014	Variance 2012-2013	Variance 2013-2014	Resolved 2012	Resolved 2013	Resolved 2014	Resolution Rate 2012	Resolution Rate 2013	Resolution Rate 2014
OTHER DANGEROUS OR NEGLIGENT ACTS ENDANGERING PERSONS	76	62	55	-18.4 %	-11.3 %	36	34	24	47.4 %	54.8 %	43.6 %
	<b>76</b>	<b>62</b>	<b>55</b>	<b>-18.4 %</b>	<b>-11.3 %</b>	<b>36</b>	<b>34</b>	<b>24</b>	<b>47.4 %</b>	<b>54.8 %</b>	<b>43.6 %</b>

**ABDUCTION, HARASSMENT AND OTHER RELATED OFFENCES AGAINST A PERSON**

ASOC Subdivision Description	Recorded 2012	Recorded 2013	Recorded 2014	Variance 2012-2013	Variance 2013-2014	Resolved 2012	Resolved 2013	Resolved 2014	Resolution Rate 2012	Resolution Rate 2013	Resolution Rate 2014
ABDUCTION AND KIDNAPPING	15	21	21	40.0 %	0.0 %	9	13	10	60.0 %	61.9 %	47.6 %
DEPRIVATION OF LIBERTY/FALSE IMPRISONMENT	7	2	0	-71.4 %	-100.0 %	7	2	0	100.0 %	100.0 %	0.0 %
HARASSMENT AND THREATENING BEHAVIOUR	1,277	1,661	1,790	30.1 %	7.8 %	667	748	743	52.2 %	45.0 %	41.5 %
	<b>1,299</b>	<b>1,684</b>	<b>1,811</b>	<b>29.6 %</b>	<b>7.5 %</b>	<b>683</b>	<b>763</b>	<b>753</b>	<b>52.6 %</b>	<b>45.3 %</b>	<b>41.6 %</b>

**ROBBERY, EXTORTION AND RELATED OFFENCES**

ASOC Subdivision Description	Recorded 2012	Recorded 2013	Recorded 2014	Variance 2012-2013	Variance 2013-2014	Resolved 2012	Resolved 2013	Resolved 2014	Resolution Rate 2012	Resolution Rate 2013	Resolution Rate 2014
BLACKMAIL AND EXTORTION	12	8	11	-33.3 %	37.5 %	8	5	3	66.7 %	62.5 %	27.3 %
ROBBERY	169	178	191	5.3 %	7.3 %	68	68	82	40.2 %	38.2 %	42.9 %
	<b>181</b>	<b>186</b>	<b>202</b>	<b>2.8 %</b>	<b>8.6 %</b>	<b>76</b>	<b>73</b>	<b>85</b>	<b>42.0 %</b>	<b>39.2 %</b>	<b>42.1 %</b>

**UNLAWFUL ENTRY WITH INTENT/BURGLARY, BREAK AND ENTER**

ASOC Subdivision Description	Recorded 2012	Recorded 2013	Recorded 2014	Variance 2012-2013	Variance 2013-2014	Resolved 2012	Resolved 2013	Resolved 2014	Resolution Rate 2012	Resolution Rate 2013	Resolution Rate 2014
UNLAWFUL ENTRY WITH INTENT/BURGLARY, BREAK AND ENTER	5,661	5,707	5,500	0.8 %	-3.6 %	670	787	712	11.8 %	13.8 %	12.9 %
	<b>5,661</b>	<b>5,707</b>	<b>5,500</b>	<b>0.8 %</b>	<b>-3.6 %</b>	<b>670</b>	<b>787</b>	<b>712</b>	<b>11.8 %</b>	<b>13.8 %</b>	<b>12.9 %</b>

# SUMMARY OF DISTRICT RECORDED AND RESOLVED CRIME, BY DIVISION

## Years ending 31 December

### THEFT AND RELATED OFFENCES

ASOC Subdivision Description	Recorded 2012	Recorded 2013	Recorded 2014	Variance 2012-2013	Variance 2013-2014	Resolved 2012	Resolved 2013	Resolved 2014	Resolution Rate 2012	Resolution Rate 2013	Resolution Rate 2014
ILLEGAL USE OF PROPERTY (EXCEPT MOTOR VEHICLES)	437	525	613	20.1 %	16.8 %	15	20	19	3.4 %	3.8 %	3.1 %
MOTOR VEHICLE THEFT AND RELATED OFFENCES	5,875	5,600	5,626	-4.7 %	0.5 %	610	574	489	10.4 %	10.3 %	8.7 %
RECEIVE OR HANDLE PROCEEDS OF CRIME	242	304	363	25.6 %	19.4 %	233	298	352	96.3 %	98.0 %	97.0 %
THEFT (EXCEPT MOTOR VEHICLES)	6,784	6,937	6,633	2.3 %	-4.4 %	2,357	2,323	2,110	34.7 %	33.5 %	31.8 %
	<b>13,338</b>	<b>13,366</b>	<b>13,235</b>	<b>0.2 %</b>	<b>-1.0 %</b>	<b>3,215</b>	<b>3,215</b>	<b>2,970</b>	<b>24.1 %</b>	<b>24.1 %</b>	<b>22.4 %</b>

### FRAUD, DECEPTION AND RELATED OFFENCES

ASOC Subdivision Description	Recorded 2012	Recorded 2013	Recorded 2014	Variance 2012-2013	Variance 2013-2014	Resolved 2012	Resolved 2013	Resolved 2014	Resolution Rate 2012	Resolution Rate 2013	Resolution Rate 2014
DECEPTIVE BUSINESS/GOVERNMENT PRACTICES	5	3	3	-40.0 %	0.0 %	1	2	2	20.0 %	66.7 %	66.7 %
FORGERY AND COUNTERFEITING	43	51	44	18.6 %	-13.7 %	14	19	9	32.6 %	37.3 %	20.5 %
OBTAIN BENEFIT BY DECEPTION	930	846	893	-9.0 %	5.6 %	560	420	450	60.2 %	49.6 %	50.4 %
OTHER FRAUD AND DECEPTION OFFENCES	101	118	99	16.8 %	-16.1 %	43	65	49	42.6 %	55.1 %	49.5 %
	<b>1,079</b>	<b>1,018</b>	<b>1,039</b>	<b>-5.7 %</b>	<b>2.1 %</b>	<b>618</b>	<b>506</b>	<b>510</b>	<b>57.3 %</b>	<b>49.7 %</b>	<b>49.1 %</b>

### ILLICIT DRUG OFFENCES

ASOC Subdivision Description	Recorded 2012	Recorded 2013	Recorded 2014	Variance 2012-2013	Variance 2013-2014	Resolved 2012	Resolved 2013	Resolved 2014	Resolution Rate 2012	Resolution Rate 2013	Resolution Rate 2014
DEAL OR TRAFFIC IN ILLICIT DRUGS	175	197	164	12.6 %	-16.8 %	165	173	152	94.3 %	87.8 %	92.7 %
IMPORT OR EXPORT ILLICIT DRUGS	7	7	8	0.0 %	14.3 %	5	3	4	71.4 %	42.9 %	50.0 %
MANUFACTURE OR CULTIVATE ILLICIT DRUGS	227	155	140	-31.7 %	-9.7 %	210	137	115	92.5 %	88.4 %	82.1 %
OTHER ILLICIT DRUG OFFENCES	547	334	382	-38.9 %	14.4 %	534	321	368	97.6 %	96.1 %	96.3 %
POSSESS AND/OR USE ILLICIT DRUGS	881	680	632	-22.8 %	-7.1 %	857	643	604	97.3 %	94.6 %	95.6 %
	<b>1,837</b>	<b>1,373</b>	<b>1,326</b>	<b>-25.3 %</b>	<b>-3.4 %</b>	<b>1,771</b>	<b>1,277</b>	<b>1,243</b>	<b>96.4 %</b>	<b>93.0 %</b>	<b>93.7 %</b>

### PROHIBITED AND REGULATED WEAPONS AND EXPLOSIVES OFFENCES

ASOC Subdivision Description	Recorded 2012	Recorded 2013	Recorded 2014	Variance 2012-2013	Variance 2013-2014	Resolved 2012	Resolved 2013	Resolved 2014	Resolution Rate 2012	Resolution Rate 2013	Resolution Rate 2014
REGULATED WEAPONS/EXPLOSIVES OFFENCES	607	565	590	-6.9 %	4.4 %	552	496	531	90.9 %	87.8 %	90.0 %
	<b>607</b>	<b>565</b>	<b>590</b>	<b>-6.9 %</b>	<b>4.4 %</b>	<b>552</b>	<b>496</b>	<b>531</b>	<b>90.9 %</b>	<b>87.8 %</b>	<b>90.0 %</b>

### PROPERTY DAMAGE AND ENVIRONMENTAL POLLUTION

ASOC Subdivision Description	Recorded 2012	Recorded 2013	Recorded 2014	Variance 2012-2013	Variance 2013-2014	Resolved 2012	Resolved 2013	Resolved 2014	Resolution Rate 2012	Resolution Rate 2013	Resolution Rate 2014
ENVIRONMENTAL POLLUTION	14	18	14	28.6 %	-22.2 %	7	9	8	50.0 %	50.0 %	57.1 %
PROPERTY DAMAGE	6,772	5,953	4,889	-12.1 %	-17.9 %	1,824	1,483	1,291	26.9 %	24.9 %	26.4 %
	<b>6,786</b>	<b>5,971</b>	<b>4,903</b>	<b>-12.0 %</b>	<b>-17.9 %</b>	<b>1,831</b>	<b>1,492</b>	<b>1,299</b>	<b>27.0 %</b>	<b>25.0 %</b>	<b>26.5 %</b>

### PUBLIC ORDER OFFENCES

ASOC Subdivision Description	Recorded 2012	Recorded 2013	Recorded 2014	Variance 2012-2013	Variance 2013-2014	Resolved 2012	Resolved 2013	Resolved 2014	Resolution Rate 2012	Resolution Rate 2013	Resolution Rate 2014
DISORDERLY CONDUCT	3,676	3,160	2,818	-14.0 %	-10.8 %	3,139	2,681	2,262	85.4 %	84.8 %	80.3 %
OFFENSIVE CONDUCT	242	259	201	7.0 %	-22.4 %	182	165	115	75.2 %	63.7 %	57.2 %
PUBLIC ORDER OFFENCES NOT FURTHER DEFINED	2	3	0	50.0 %	-100.0 %	1	1	0	50.0 %	33.3 %	0.0 %
REGULATED PUBLIC ORDER OFFENCES	1,728	1,171	212	-32.2 %	-81.9 %	1,599	1,076	142	92.5 %	91.9 %	67.0 %
	<b>5,648</b>	<b>4,593</b>	<b>3,231</b>	<b>-18.7 %</b>	<b>-29.7 %</b>	<b>4,921</b>	<b>3,923</b>	<b>2,519</b>	<b>87.1 %</b>	<b>85.4 %</b>	<b>78.0 %</b>

**SUMMARY OF DISTRICT RECORDED AND RESOLVED CRIME, BY DIVISION**  
**Years ending 31 December**

**OFFENCES AGAINST JUSTICE PROCEDURES, GOVERNMENT SECURITY AND GOVERNMENT OPERATIONS**

ASOC Subdivision Description	Recorded 2012	Recorded 2013	Recorded 2014	Variance 2012-2013	Variance 2013-2014	Resolved 2012	Resolved 2013	Resolved 2014	Resolution Rate 2012	Resolution Rate 2013	Resolution Rate 2014
BREACH OF COMMUNITY-BASED ORDER	761	623	721	-18.1 %	15.7 %	751	619	703	98.7 %	99.4 %	97.5 %
BREACH OF CUSTODIAL ORDER OFFENCES	43	35	34	-18.6 %	-2.9 %	40	33	30	93.0 %	94.3 %	88.2 %
BREACH OF VIOLENCE AND NON-VIOLENCE RESTRAINING ORDERS	408	567	597	39.0 %	5.3 %	314	457	465	77.0 %	80.6 %	77.9 %
OFFENCES AGAINST GOVERNMENT OPERATIONS	40	21	45	-47.5 %	114.3 %	32	8	9	80.0 %	38.1 %	20.0 %
OFFENCES AGAINST GOVERNMENT SECURITY	0	0	0	0.0 %	0.0 %	0	0	0	0.0 %	0.0 %	0.0 %
OFFENCES AGAINST JUSTICE PROCEDURES	533	392	401	-26.5 %	2.3 %	521	376	386	97.7 %	95.9 %	96.3 %
OFFENCES AGAINST JUSTICE PROCEDURES, GOVERNMENT SECURITY AND GOVERNMENT OPERATIONS NOT FURTHER DEFINED	1	1	4	0.0 %	300.0 %	1	0	2	100.0 %	0.0 %	50.0 %
	<b>1,786</b>	<b>1,639</b>	<b>1,802</b>	<b>-8.2 %</b>	<b>9.9 %</b>	<b>1,659</b>	<b>1,493</b>	<b>1,595</b>	<b>92.9 %</b>	<b>91.1 %</b>	<b>88.5 %</b>

**MISCELLANEOUS OFFENCES**

ASOC Subdivision Description	Recorded 2012	Recorded 2013	Recorded 2014	Variance 2012-2013	Variance 2013-2014	Resolved 2012	Resolved 2013	Resolved 2014	Resolution Rate 2012	Resolution Rate 2013	Resolution Rate 2014
COMMERCIAL/INDUSTRY/FINANCIAL REGULATION	1	2	2	100.0 %	0.0 %	1	2	1	100.0 %	100.0 %	50.0 %
DEFAMATION, LIBEL AND PRIVACY OFFENCES	9	5	7	-44.4 %	40.0 %	3	0	3	33.3 %	0.0 %	42.9 %
OTHER MISCELLANEOUS OFFENCES	210	127	118	-39.5 %	-7.1 %	146	54	60	69.5 %	42.5 %	50.8 %
PUBLIC HEALTH AND SAFETY OFFENCES	49	26	44	-46.9 %	69.2 %	43	22	37	87.8 %	84.6 %	84.1 %
	<b>269</b>	<b>160</b>	<b>171</b>	<b>-40.5 %</b>	<b>6.9 %</b>	<b>193</b>	<b>78</b>	<b>101</b>	<b>71.7 %</b>	<b>48.8 %</b>	<b>59.1 %</b>

<b>TOTAL</b>	<b>42,796</b>	<b>40,393</b>	<b>38,010</b>	<b>-5.6 %</b>	<b>-5.9 %</b>	<b>19,237</b>	<b>16,910</b>	<b>14,993</b>	<b>45.0 %</b>	<b>41.9 %</b>	<b>39.4 %</b>
--------------	---------------	---------------	---------------	---------------	---------------	---------------	---------------	---------------	---------------	---------------	---------------

# PROPORTIONS OF RECORDED CRIME BY DIVISION

Years ending 31 December

ASOC Division Description	Proportions Recorded 2012	Recorded 2012	Proportions Recorded 2013	Recorded 2013	Proportions Recorded 2014	Recorded 2014
HOMICIDE AND RELATED OFFENCES	0.03 %	12	0.02 %	8	0.02 %	8
ACTS INTENDED TO CAUSE INJURY	8.82 %	3,775	8.96 %	3,619	9.80 %	3,726
SEXUAL ASSAULT AND RELATED OFFENCES	1.03 %	442	1.09 %	442	1.08 %	411
DANGEROUS OR NEGLIGENT ACTS ENDANGERING PERSONS	0.18 %	76	0.15 %	62	0.14 %	55
ABDUCTION, HARASSMENT AND OTHER RELATED OFFENCES AGAINST A PERSON	3.04 %	1,299	4.17 %	1,684	4.76 %	1,811
ROBBERY, EXTORTION AND RELATED OFFENCES	0.42 %	181	0.46 %	186	0.53 %	202
UNLAWFUL ENTRY WITH INTENT/BURGLARY, BREAK AND ENTER	13.23 %	5,661	14.13 %	5,707	14.47 %	5,500
THEFT AND RELATED OFFENCES	31.17 %	13,338	33.09 %	13,366	34.82 %	13,235
FRAUD, DECEPTION AND RELATED OFFENCES	2.52 %	1,079	2.52 %	1,018	2.73 %	1,039
ILLICIT DRUG OFFENCES	4.29 %	1,837	3.40 %	1,373	3.49 %	1,326
PROHIBITED AND REGULATED WEAPONS AND EXPLOSIVES OFFENCES	1.42 %	607	1.40 %	565	1.55 %	590
PROPERTY DAMAGE AND ENVIRONMENTAL POLLUTION	15.86 %	6,786	14.78 %	5,971	12.90 %	4,903
PUBLIC ORDER OFFENCES	13.20 %	5,648	11.37 %	4,593	8.50 %	3,231
OFFENCES AGAINST JUSTICE PROCEDURES, GOVERNMENT SECURITY AND GOVERNMENT OPERATIONS	4.17 %	1,786	4.06 %	1,639	4.74 %	1,802
MISCELLANEOUS OFFENCES	0.63 %	269	0.40 %	160	0.45 %	171
	<b>100.00 %</b>	<b>42,796</b>	<b>100.00 %</b>	<b>40,393</b>	<b>100.00 %</b>	<b>38,010</b>

**SUMMARY OF RECORDED OFFENCES, RATE PER 10,000 POPULATION AND RESOLVED OFFENCES, BY AREA**  
**years ending 31 December**

**TOTAL CRIME**

Area Description	Recorded 2013	Recorded 2014	Variance 2013-2014	Recorded per 10,000 pop 2013	Recorded per 10,000 pop 2014	Per 10,000 pop % Variance 2013 to 2014	Resolved 2013	Resolved 2014	Resolution Rate 2013	Resolution Rate 2014
Canterbury Metro	35,223	33,425	-5.1 %	753.1	699.2	-7.2 %	14,335	12,735	40.7 %	38.1 %
Mid South Canterbury	5,170	4,585	-11.3 %	575.5	504.2	-12.4 %	2,575	2,258	49.8 %	49.2 %
	<b>40,393</b>	<b>38,010</b>	<b>-5.9 %</b>	<b>724.5</b>	<b>668.0</b>	<b>-7.8 %</b>	<b>16,910</b>	<b>14,993</b>	<b>41.9 %</b>	<b>39.4 %</b>



# SUMMARY OF RECORDED OFFENCES, RATE PER 10,000 POPULATION AND RESOLVED OFFENCES, BY DIVISION

Years ending 31 December

## HOMICIDE AND RELATED OFFENCES

Area Description	Recorded 2013	Recorded 2014	Variance 2013-2014	Recorded per 10,000 pop 2013	Recorded per 10,000 pop 2014	Per 10,000 pop % Variance 2013 to 2014	Resolved 2013	Resolved 2014	Resolution Rate 2013	Resolution Rate 2014
Canterbury Metro	7	4	-42.9 %	0.1	0.1	-44.1 %	6	3	85.7 %	75.0 %
Mid South Canterbury	1	4	300.0 %	0.1	0.4	295.1 %	1	4	100.0 %	100.0 %
	8	8	0.0 %	0.1	0.1	-2.0 %	7	7	87.5 %	87.5 %

## ACTS INTENDED TO CAUSE INJURY

Area Description	Recorded 2013	Recorded 2014	Variance 2013-2014	Recorded per 10,000 pop 2013	Recorded per 10,000 pop 2014	Per 10,000 pop % Variance 2013 to 2014	Resolved 2013	Resolved 2014	Resolution Rate 2013	Resolution Rate 2014
Canterbury Metro	3,061	3,125	2.1 %	65.4	65.4	-0.1 %	2,078	2,026	67.9 %	64.8 %
Mid South Canterbury	558	601	7.7 %	62.1	66.1	6.4 %	474	473	84.9 %	78.7 %
	3,619	3,726	3.0 %	64.9	65.5	0.9 %	2,552	2,499	70.5 %	67.1 %

## SEXUAL ASSAULT AND RELATED OFFENCES

Area Description	Recorded 2013	Recorded 2014	Variance 2013-2014	Recorded per 10,000 pop 2013	Recorded per 10,000 pop 2014	Per 10,000 pop % Variance 2013 to 2014	Resolved 2013	Resolved 2014	Resolution Rate 2013	Resolution Rate 2014
Canterbury Metro	385	348	-9.6 %	8.2	7.3	-11.6 %	184	119	47.8 %	34.2 %
Mid South Canterbury	57	63	10.5 %	6.3	6.9	9.2 %	30	26	52.6 %	41.3 %
	442	411	-7.0 %	7.9	7.2	-8.9 %	214	145	48.4 %	35.3 %

## DANGEROUS OR NEGLIGENT ACTS ENDANGERING PERSONS

Area Description	Recorded 2013	Recorded 2014	Variance 2013-2014	Recorded per 10,000 pop 2013	Recorded per 10,000 pop 2014	Per 10,000 pop % Variance 2013 to 2014	Resolved 2013	Resolved 2014	Resolution Rate 2013	Resolution Rate 2014
Canterbury Metro	50	50	0.0 %	1.1	1.0	-2.2 %	23	19	46.0 %	38.0 %
Mid South Canterbury	12	5	-58.3 %	1.3	0.5	-58.8 %	11	5	91.7 %	100.0 %
	62	55	-11.3 %	1.1	1.0	-13.1 %	34	24	54.8 %	43.6 %

## ABDUCTION, HARASSMENT AND OTHER RELATED OFFENCES AGAINST A PERSON

Area Description	Recorded 2013	Recorded 2014	Variance 2013-2014	Recorded per 10,000 pop 2013	Recorded per 10,000 pop 2014	Per 10,000 pop % Variance 2013 to 2014	Resolved 2013	Resolved 2014	Resolution Rate 2013	Resolution Rate 2014
Canterbury Metro	1,504	1,596	6.1 %	32.2	33.4	3.8 %	627	594	41.7 %	37.2 %
Mid South Canterbury	180	215	19.4 %	20.0	23.6	18.0 %	136	159	75.6 %	74.0 %
	1,684	1,811	7.5 %	30.2	31.8	5.4 %	763	753	45.3 %	41.6 %

## ROBBERY, EXTORTION AND RELATED OFFENCES

Area Description	Recorded 2013	Recorded 2014	Variance 2013-2014	Recorded per 10,000 pop 2013	Recorded per 10,000 pop 2014	Per 10,000 pop % Variance 2013 to 2014	Resolved 2013	Resolved 2014	Resolution Rate 2013	Resolution Rate 2014
Canterbury Metro	173	184	6.4 %	3.7	3.8	4.1 %	65	73	37.6 %	39.7 %
Mid South Canterbury	13	18	38.5 %	1.4	2.0	36.8 %	8	12	61.5 %	66.7 %
	186	202	8.6 %	3.3	3.6	6.4 %	73	85	39.2 %	42.1 %

# SUMMARY OF RECORDED OFFENCES, RATE PER 10,000 POPULATION AND RESOLVED OFFENCES, BY DIVISION

Years ending 31 December

## UNLAWFUL ENTRY WITH INTENT/BURGLARY, BREAK AND ENTER

Area Description	Recorded 2013	Recorded 2014	Variance 2013-2014	Recorded per 10,000 pop 2013	Recorded per 10,000 pop 2014	Per 10,000 pop % Variance 2013 to 2014	Resolved 2013	Resolved 2014	Resolution Rate 2013	Resolution Rate 2014
Canterbury Metro	5,088	4,996	-1.8 %	108.8	104.5	-3.9 %	653	635	12.8 %	12.7 %
Mid South Canterbury	619	504	-18.6 %	68.9	55.4	-19.6 %	134	77	21.6 %	15.3 %
	<b>5,707</b>	<b>5,500</b>	<b>-3.6 %</b>	<b>102.4</b>	<b>96.7</b>	<b>-5.6 %</b>	<b>787</b>	<b>712</b>	<b>13.8 %</b>	<b>12.9 %</b>

## THEFT AND RELATED OFFENCES

Area Description	Recorded 2013	Recorded 2014	Variance 2013-2014	Recorded per 10,000 pop 2013	Recorded per 10,000 pop 2014	Per 10,000 pop % Variance 2013 to 2014	Resolved 2013	Resolved 2014	Resolution Rate 2013	Resolution Rate 2014
Canterbury Metro	12,052	12,043	-0.1 %	257.7	251.9	-2.2 %	2,836	2,679	23.5 %	22.2 %
Mid South Canterbury	1,314	1,192	-9.3 %	146.3	131.1	-10.4 %	379	291	28.8 %	24.4 %
	<b>13,366</b>	<b>13,235</b>	<b>-1.0 %</b>	<b>239.7</b>	<b>232.6</b>	<b>-3.0 %</b>	<b>3,215</b>	<b>2,970</b>	<b>24.1 %</b>	<b>22.4 %</b>

## FRAUD, DECEPTION AND RELATED OFFENCES

Area Description	Recorded 2013	Recorded 2014	Variance 2013-2014	Recorded per 10,000 pop 2013	Recorded per 10,000 pop 2014	Per 10,000 pop % Variance 2013 to 2014	Resolved 2013	Resolved 2014	Resolution Rate 2013	Resolution Rate 2014
Canterbury Metro	921	918	-0.3 %	19.7	19.2	-2.5 %	448	418	48.6 %	45.5 %
Mid South Canterbury	97	121	24.7 %	10.8	13.3	23.2 %	58	92	59.8 %	76.0 %
	<b>1,018</b>	<b>1,039</b>	<b>2.1 %</b>	<b>18.3</b>	<b>18.3</b>	<b>0.0 %</b>	<b>506</b>	<b>510</b>	<b>49.7 %</b>	<b>49.1 %</b>

## ILLICIT DRUG OFFENCES

Area Description	Recorded 2013	Recorded 2014	Variance 2013-2014	Recorded per 10,000 pop 2013	Recorded per 10,000 pop 2014	Per 10,000 pop % Variance 2013 to 2014	Resolved 2013	Resolved 2014	Resolution Rate 2013	Resolution Rate 2014
Canterbury Metro	1,102	1,077	-2.3 %	23.6	22.5	-4.4 %	1,017	1,005	92.3 %	93.3 %
Mid South Canterbury	271	249	-8.1 %	30.2	27.4	-9.2 %	260	238	95.9 %	95.6 %
	<b>1,373</b>	<b>1,326</b>	<b>-3.4 %</b>	<b>24.6</b>	<b>23.3</b>	<b>-5.4 %</b>	<b>1,277</b>	<b>1,243</b>	<b>93.0 %</b>	<b>93.7 %</b>

## PROHIBITED AND REGULATED WEAPONS AND EXPLOSIVES OFFENCES

Area Description	Recorded 2013	Recorded 2014	Variance 2013-2014	Recorded per 10,000 pop 2013	Recorded per 10,000 pop 2014	Per 10,000 pop % Variance 2013 to 2014	Resolved 2013	Resolved 2014	Resolution Rate 2013	Resolution Rate 2014
Canterbury Metro	480	498	3.8 %	10.3	10.4	1.5 %	420	450	87.5 %	90.4 %
Mid South Canterbury	85	92	8.2 %	9.5	10.1	6.9 %	76	81	89.4 %	88.0 %
	<b>565</b>	<b>590</b>	<b>4.4 %</b>	<b>10.1</b>	<b>10.4</b>	<b>2.3 %</b>	<b>496</b>	<b>531</b>	<b>87.8 %</b>	<b>90.0 %</b>

## PROPERTY DAMAGE AND ENVIRONMENTAL POLLUTION

Area Description	Recorded 2013	Recorded 2014	Variance 2013-2014	Recorded per 10,000 pop 2013	Recorded per 10,000 pop 2014	Per 10,000 pop % Variance 2013 to 2014	Resolved 2013	Resolved 2014	Resolution Rate 2013	Resolution Rate 2014
Canterbury Metro	4,809	4,056	-15.7 %	102.8	84.8	-17.5 %	1,198	1,077	24.9 %	26.6 %
Mid South Canterbury	1,162	847	-27.1 %	129.4	93.1	-28.0 %	294	222	25.3 %	26.2 %
	<b>5,971</b>	<b>4,903</b>	<b>-17.9 %</b>	<b>107.1</b>	<b>86.2</b>	<b>-19.5 %</b>	<b>1,492</b>	<b>1,299</b>	<b>25.0 %</b>	<b>26.5 %</b>

# SUMMARY OF RECORDED OFFENCES, RATE PER 10,000 POPULATION AND RESOLVED OFFENCES, BY DIVISION

Years ending 31 December

## PUBLIC ORDER OFFENCES

Area Description	Recorded 2013	Recorded 2014	Variance 2013-2014	Recorded per 10,000 pop 2013	Recorded per 10,000 pop 2014	Per 10,000 pop % Variance 2013 to 2014	Resolved 2013	Resolved 2014	Resolution Rate 2013	Resolution Rate 2014
Canterbury Metro	3,955	2,764	-30.1 %	84.6	57.8	-31.6 %	3,358	2,121	84.9 %	76.7 %
Mid South Canterbury	638	467	-26.8 %	71.0	51.4	-27.7 %	565	398	88.6 %	85.2 %
	<b>4,593</b>	<b>3,231</b>	<b>-29.7 %</b>	<b>82.4</b>	<b>56.8</b>	<b>-31.1 %</b>	<b>3,923</b>	<b>2,519</b>	<b>85.4 %</b>	<b>78.0 %</b>

## OFFENCES AGAINST JUSTICE PROCEDURES, GOVERNMENT SECURITY AND GOVERNMENT OPERATIONS

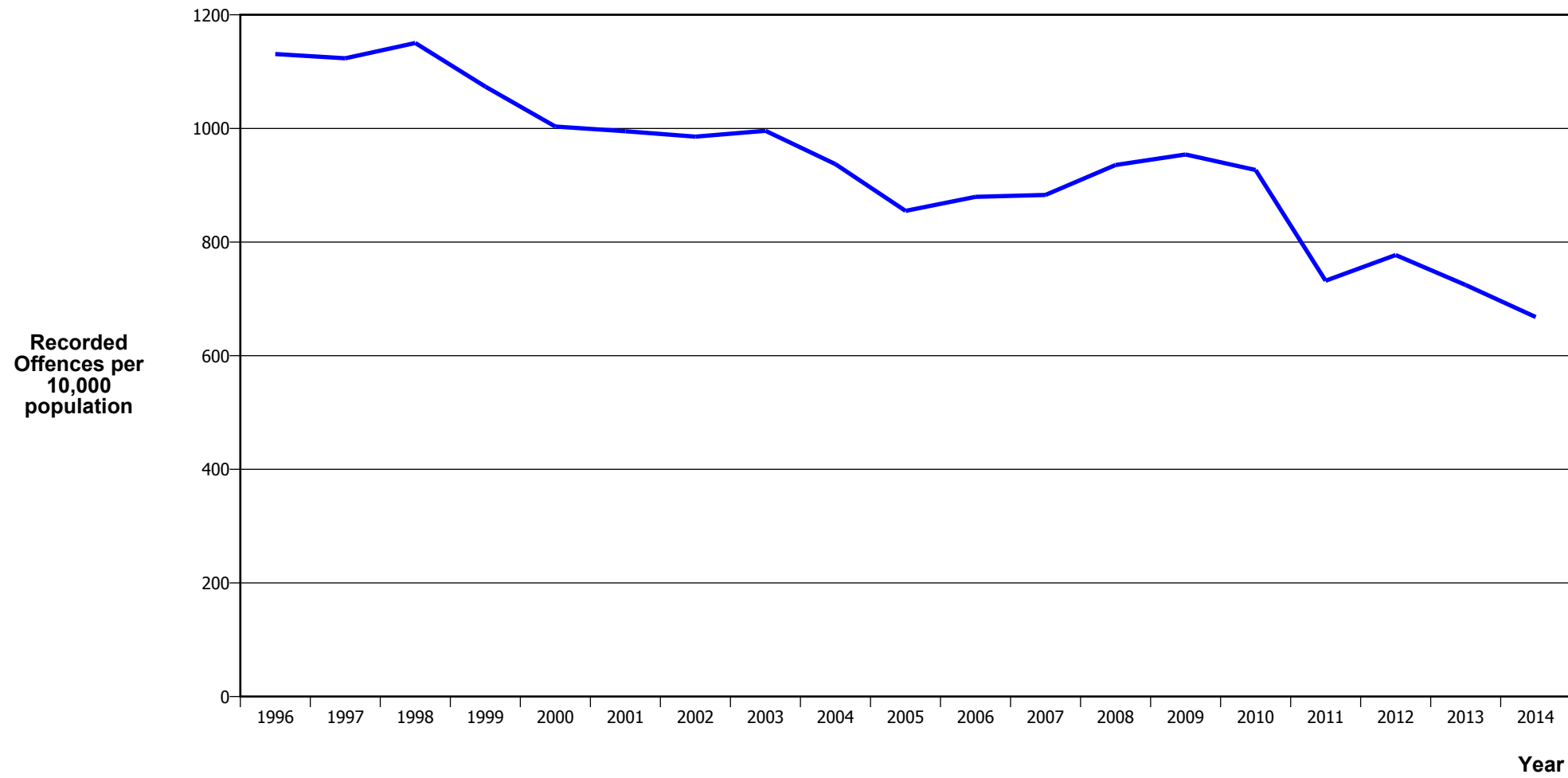
Area Description	Recorded 2013	Recorded 2014	Variance 2013-2014	Recorded per 10,000 pop 2013	Recorded per 10,000 pop 2014	Per 10,000 pop % Variance 2013 to 2014	Resolved 2013	Resolved 2014	Resolution Rate 2013	Resolution Rate 2014
Canterbury Metro	1,490	1,627	9.2 %	31.9	34.0	6.8 %	1,355	1,439	90.9 %	88.4 %
Mid South Canterbury	149	175	17.4 %	16.6	19.2	16.0 %	138	156	92.6 %	89.1 %
	<b>1,639</b>	<b>1,802</b>	<b>9.9 %</b>	<b>29.4</b>	<b>31.7</b>	<b>7.7 %</b>	<b>1,493</b>	<b>1,595</b>	<b>91.1 %</b>	<b>88.5 %</b>

## MISCELLANEOUS OFFENCES

Area Description	Recorded 2013	Recorded 2014	Variance 2013-2014	Recorded per 10,000 pop 2013	Recorded per 10,000 pop 2014	Per 10,000 pop % Variance 2013 to 2014	Resolved 2013	Resolved 2014	Resolution Rate 2013	Resolution Rate 2014
Canterbury Metro	146	139	-4.8 %	3.1	2.9	-6.9 %	67	77	45.9 %	55.4 %
Mid South Canterbury	14	32	128.6 %	1.6	3.5	125.8 %	11	24	78.6 %	75.0 %
	<b>160</b>	<b>171</b>	<b>6.9 %</b>	<b>2.9</b>	<b>3.0</b>	<b>4.7 %</b>	<b>78</b>	<b>101</b>	<b>48.8 %</b>	<b>59.1 %</b>

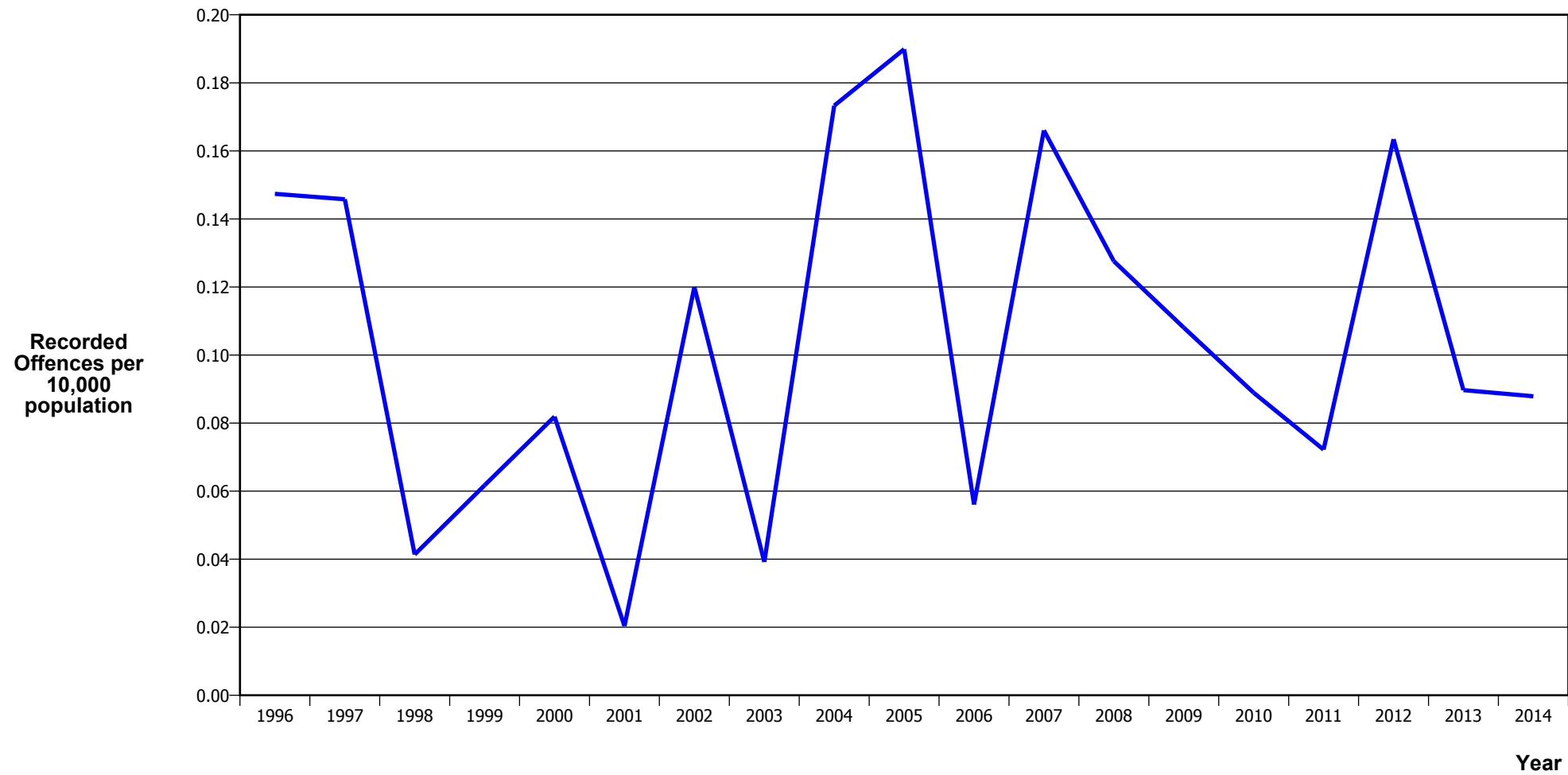
# **CRIME TRENDS**

## TOTAL CRIME



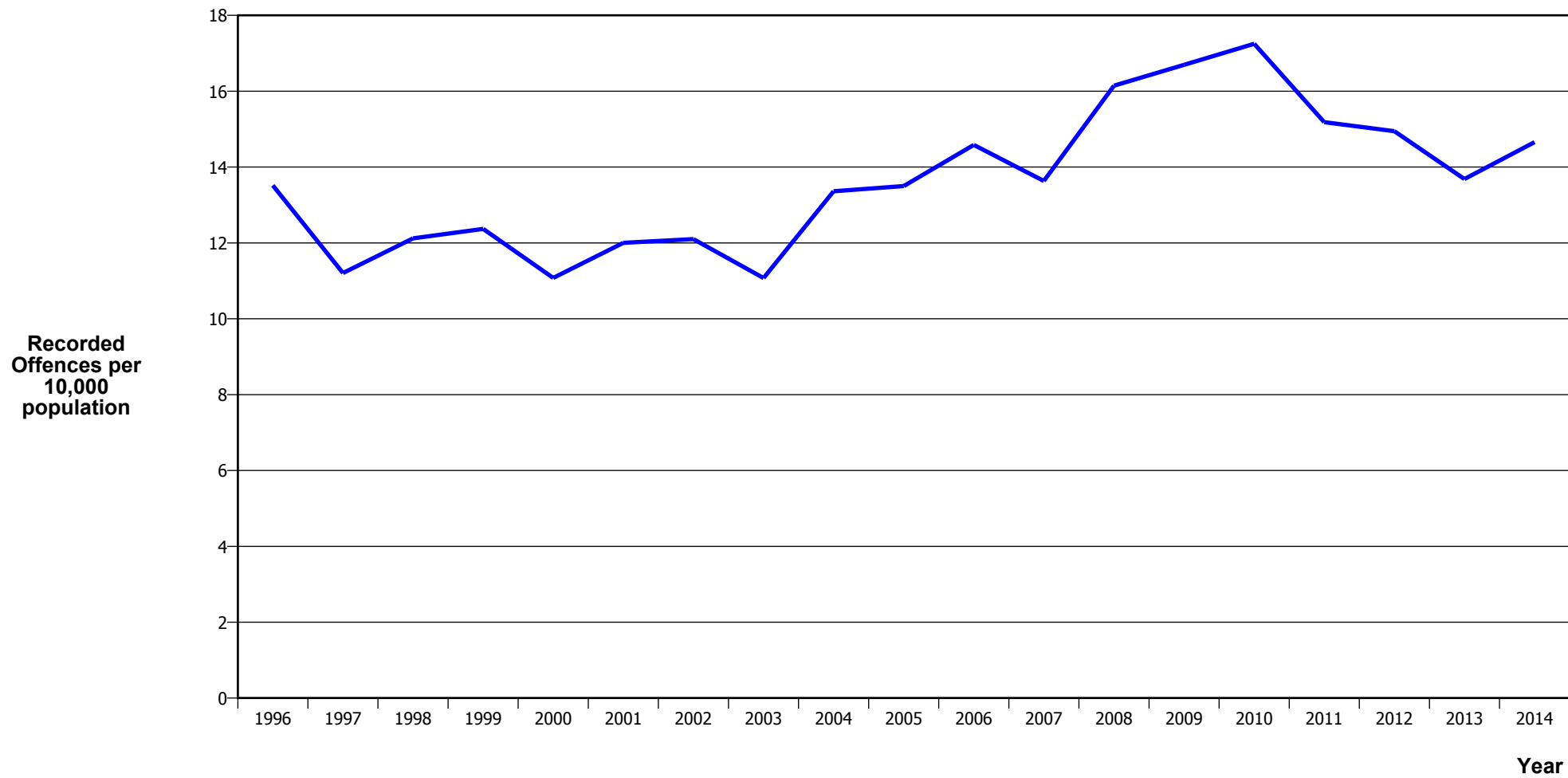
Calendar Year	1996	1997	1998	1999	2000	2001	2002	2003	2004	2005	2006	2007	2008	2009	2010	2011	2012	2013	2014
Recorded Offences	53,717	53,946	55,624	52,159	49,001	48,909	49,270	50,807	48,675	45,026	47,048	47,856	51,341	52,981	52,119	40,540	42,796	40,393	38,010
Recorded per 10,000 Population	1,130.9	1,123.5	1,150.4	1,073.5	1,003.2	995.1	985.5	995.8	937.2	855.0	879.7	882.9	935.7	954.2	926.8	732.0	777.2	724.5	668.0

# MURDER



Calendar Year	1996	1997	1998	1999	2000	2001	2002	2003	2004	2005	2006	2007	2008	2009	2010	2011	2012	2013	2014
Recorded Offences	7	7	2	3	4	1	6	2	9	10	3	9	7	6	5	4	9	5	5
Recorded per 10,000 Population	0.15	0.15	0.04	0.06	0.08	0.02	0.12	0.04	0.17	0.19	0.06	0.17	0.13	0.11	0.09	0.07	0.16	0.09	0.09

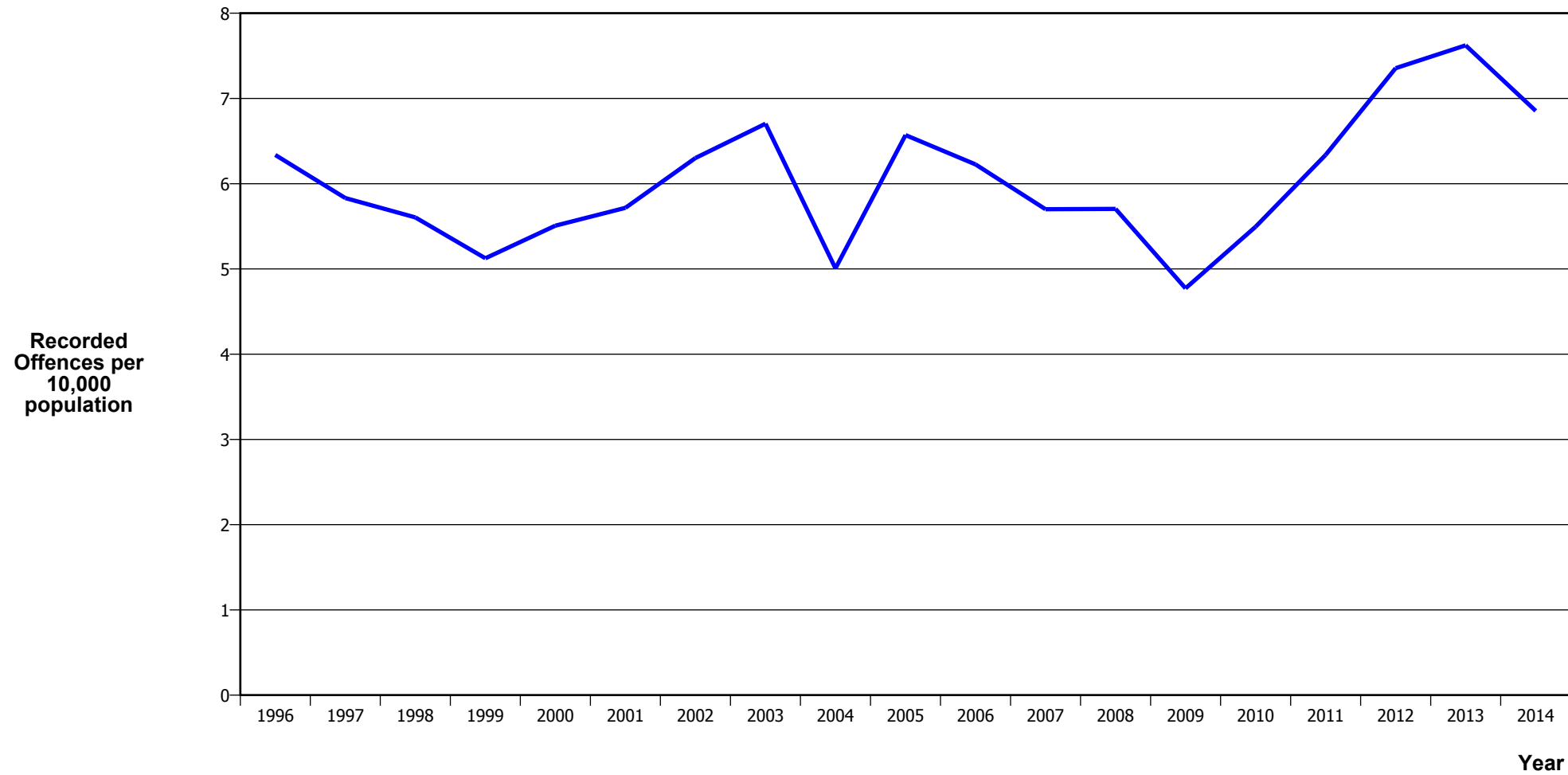
## SERIOUS ASSAULTS RESULTING IN INJURY\*



Calendar Year	1996	1997	1998	1999	2000	2001	2002	2003	2004	2005	2006	2007	2008	2009	2010	2011	2012	2013	2014
Recorded Offence	642	538	586	601	541	590	605	565	694	711	780	739	886	927	970	841	823	763	834
Offence Rate per 10K Popn	13.5	11.2	12.1	12.4	11.1	12.0	12.1	11.1	13.4	13.5	14.6	13.6	16.1	16.7	17.2	15.2	14.9	13.7	14.7

\* This measure excludes common assaults

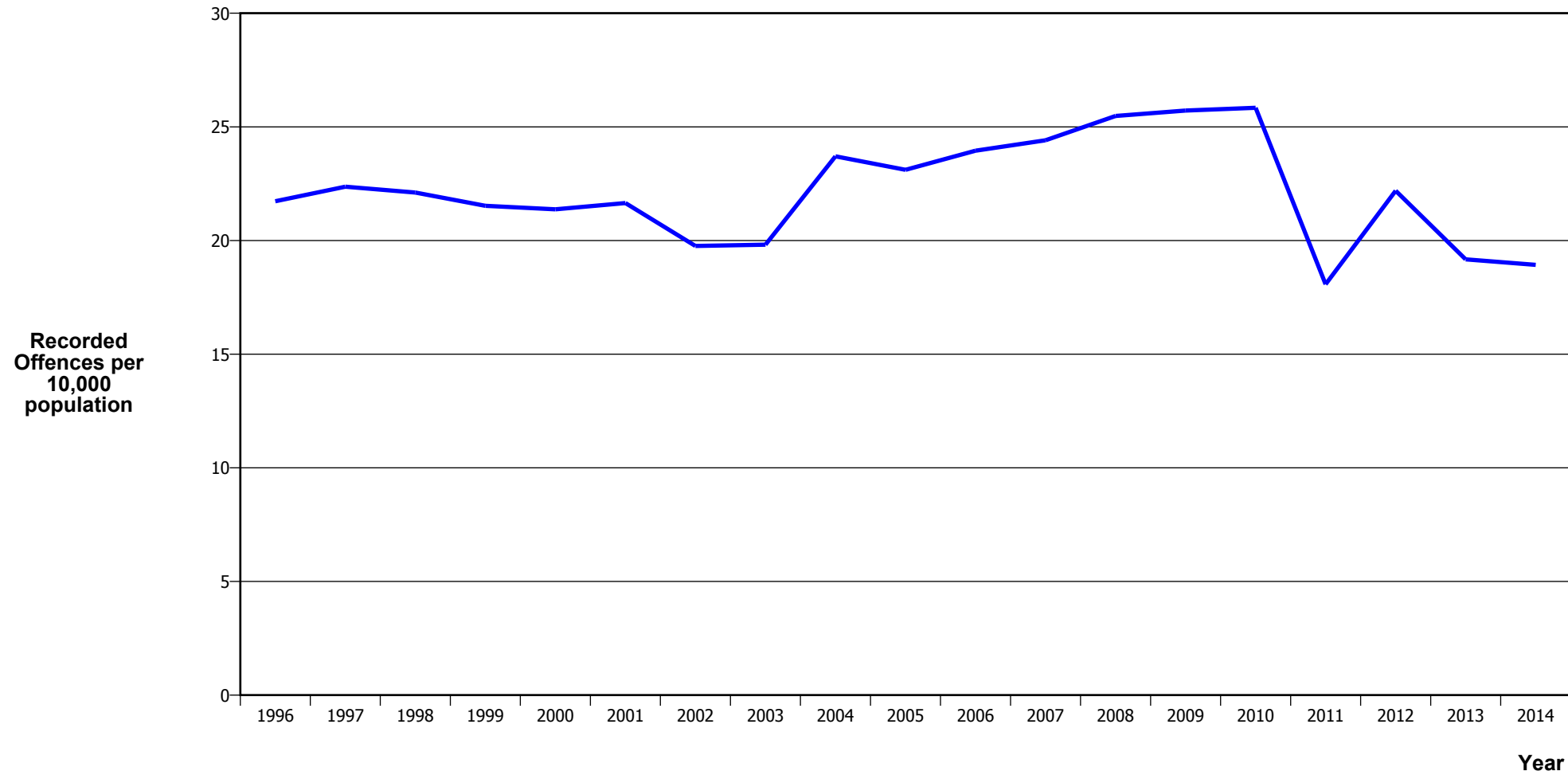
## SEXUAL ASSAULTS



Calendar Year	1996	1997	1998	1999	2000	2001	2002	2003	2004	2005	2006	2007	2008	2009	2010	2011	2012	2013	2014
Recorded Offences	301	280	271	249	269	281	315	342	260	346	333	309	313	265	309	351	405	425	390
Recorded per 10,000 Population	6.3	5.8	5.6	5.1	5.5	5.7	6.3	6.7	5.0	6.6	6.2	5.7	5.7	4.8	5.5	6.3	7.4	7.6	6.9

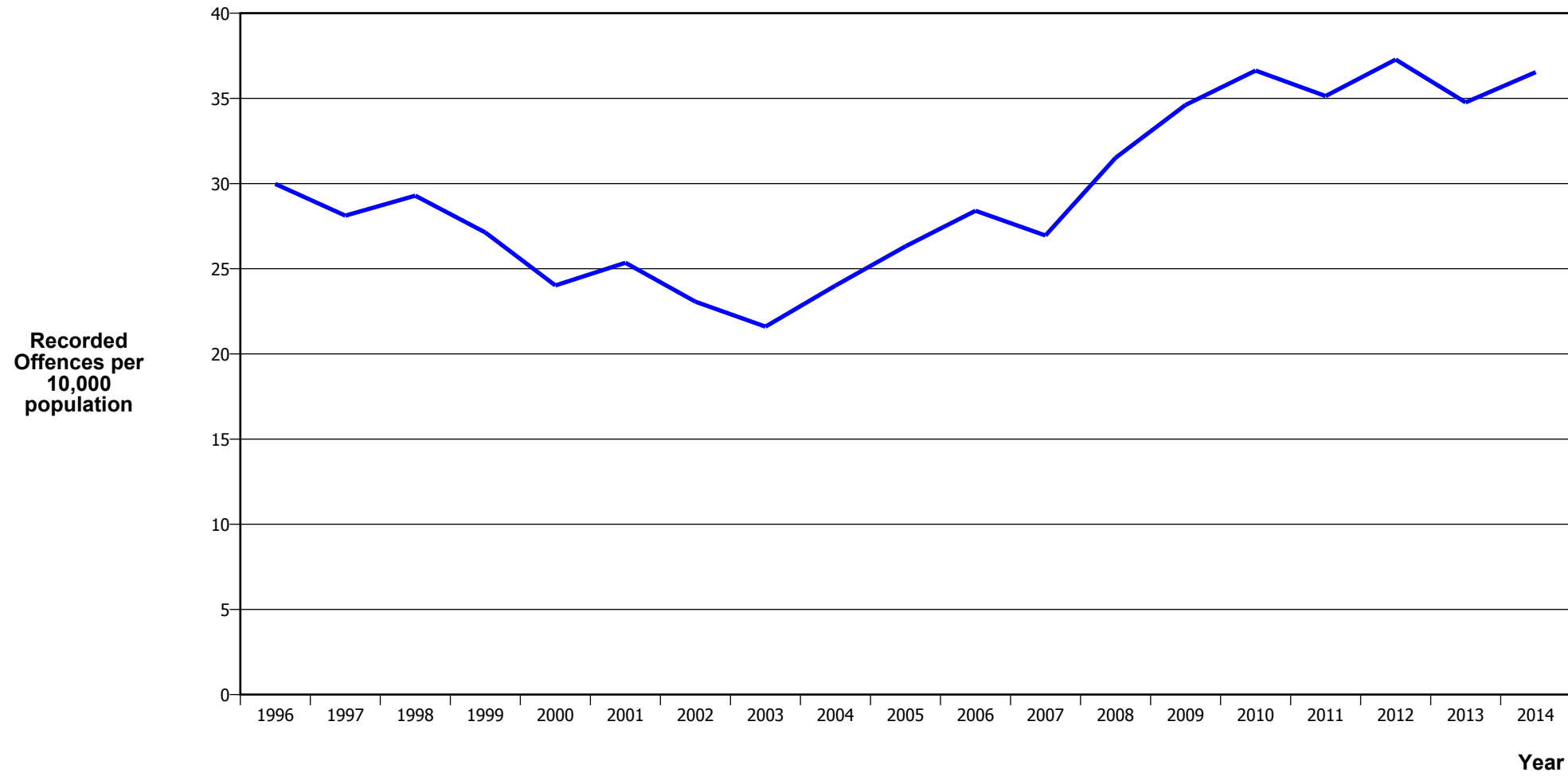


## PUBLIC PLACE ASSAULTS



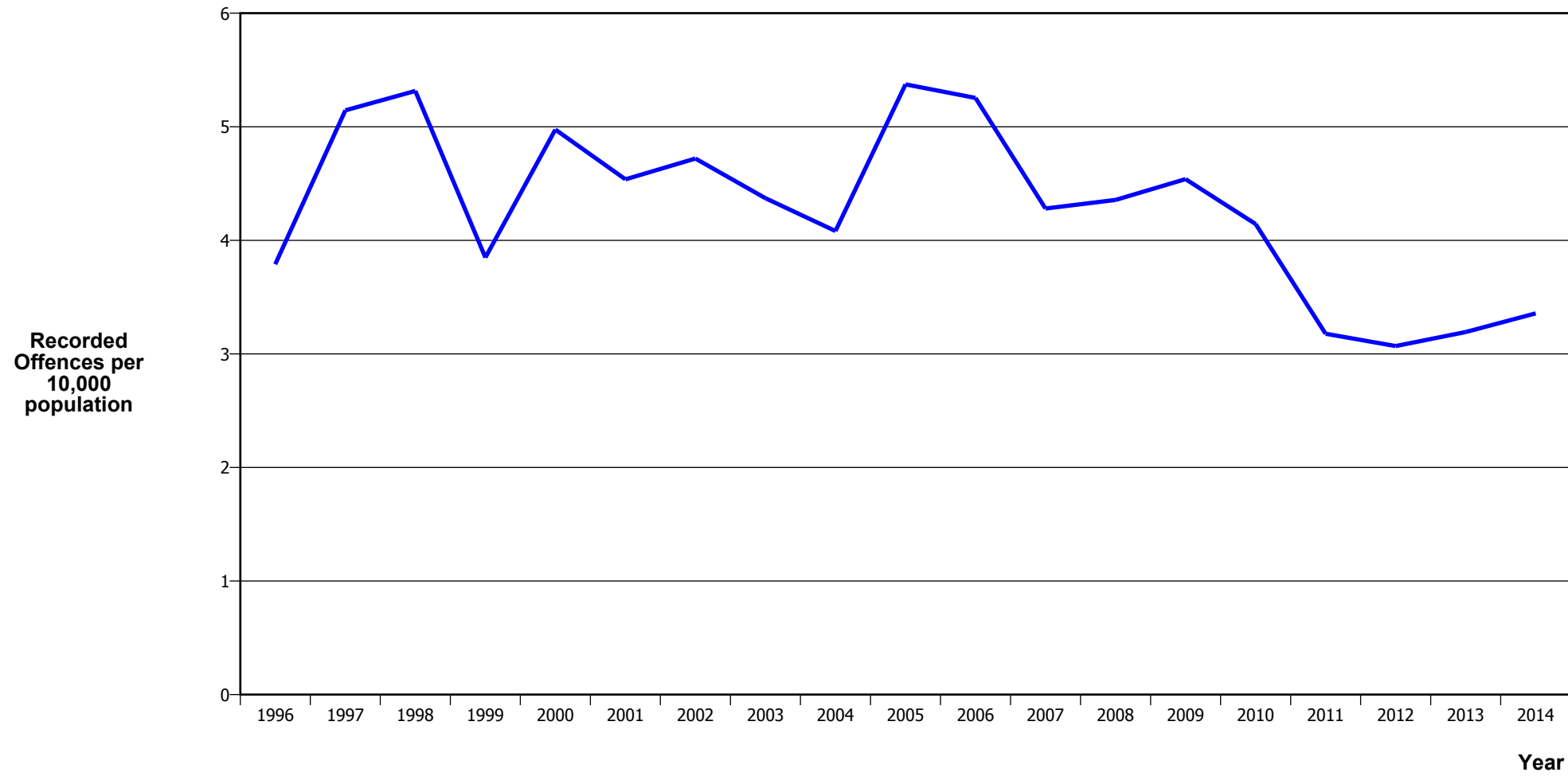
Calendar Year	1996	1997	1998	1999	2000	2001	2002	2003	2004	2005	2006	2007	2008	2009	2010	2011	2012	2013	2014
Recorded Offences	1,032	1,074	1,069	1,046	1,044	1,064	988	1,011	1,231	1,217	1,281	1,323	1,398	1,428	1,453	1,001	1,222	1,069	1,077
Recorded per 10,000 Population	21.7	22.4	22.1	21.5	21.4	21.6	19.8	19.8	23.7	23.1	24.0	24.4	25.5	25.7	25.8	18.1	22.2	19.2	18.9

## DWELLING ASSAULTS



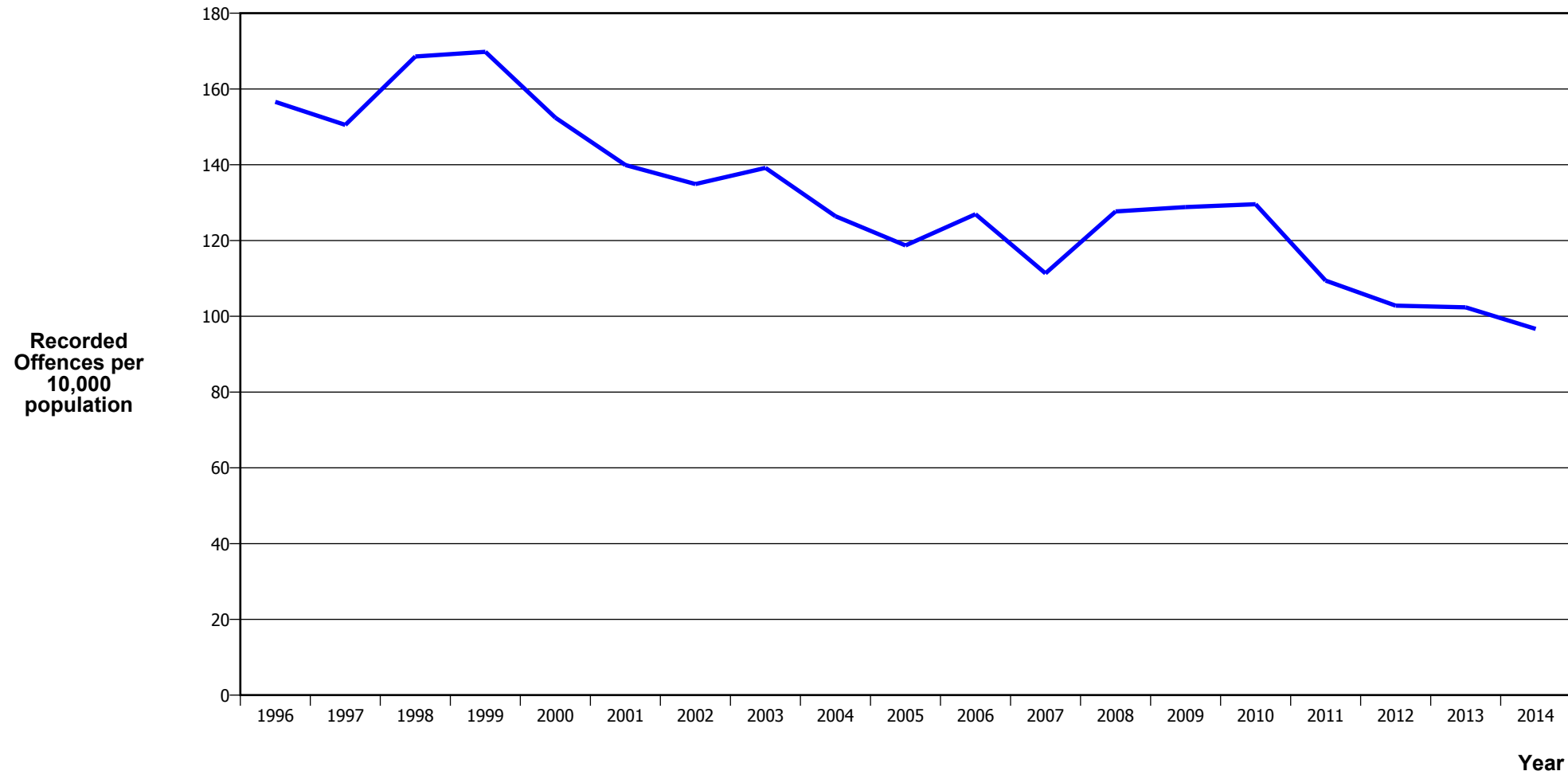
Calendar Year	1996	1997	1998	1999	2000	2001	2002	2003	2004	2005	2006	2007	2008	2009	2010	2011	2012	2013	2014
Recorded Offences	1,424	1,350	1,416	1,318	1,173	1,246	1,153	1,102	1,247	1,386	1,519	1,461	1,729	1,922	2,060	1,946	2,053	1,938	2,079
Recorded per 10,000 Population	30.0	28.1	29.3	27.1	24.0	25.3	23.1	21.6	24.0	26.3	28.4	27.0	31.5	34.6	36.6	35.1	37.3	34.8	36.5

## ROBBERY



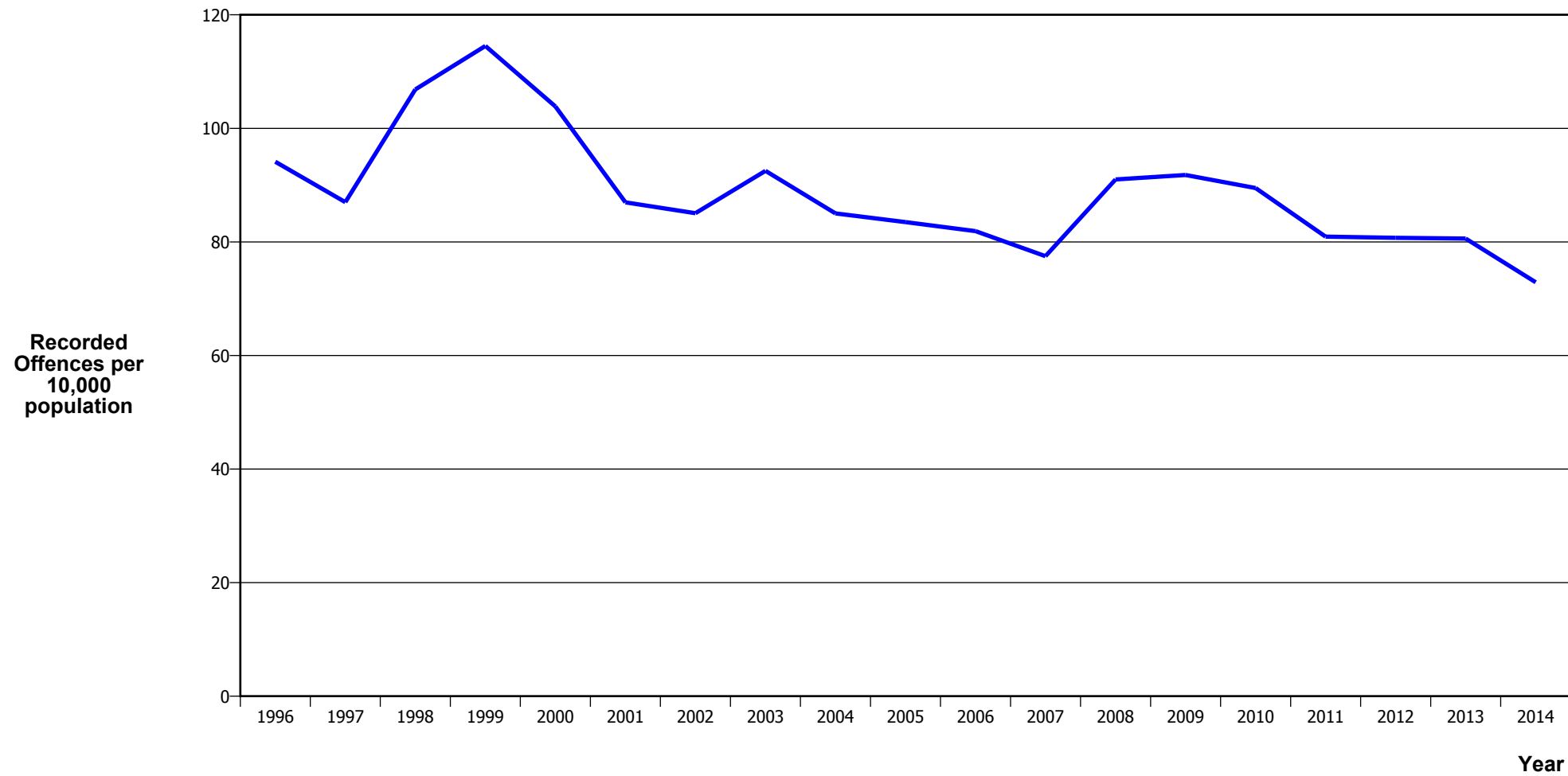
Calendar Year	1996	1997	1998	1999	2000	2001	2002	2003	2004	2005	2006	2007	2008	2009	2010	2011	2012	2013	2014
Recorded Offences	180	247	257	187	243	223	236	223	212	283	281	232	239	252	233	176	169	178	191
Recorded per 10,000 Population	3.8	5.1	5.3	3.8	5.0	4.5	4.7	4.4	4.1	5.4	5.3	4.3	4.4	4.5	4.1	3.2	3.1	3.2	3.4

## BURGLARY (TOTAL)



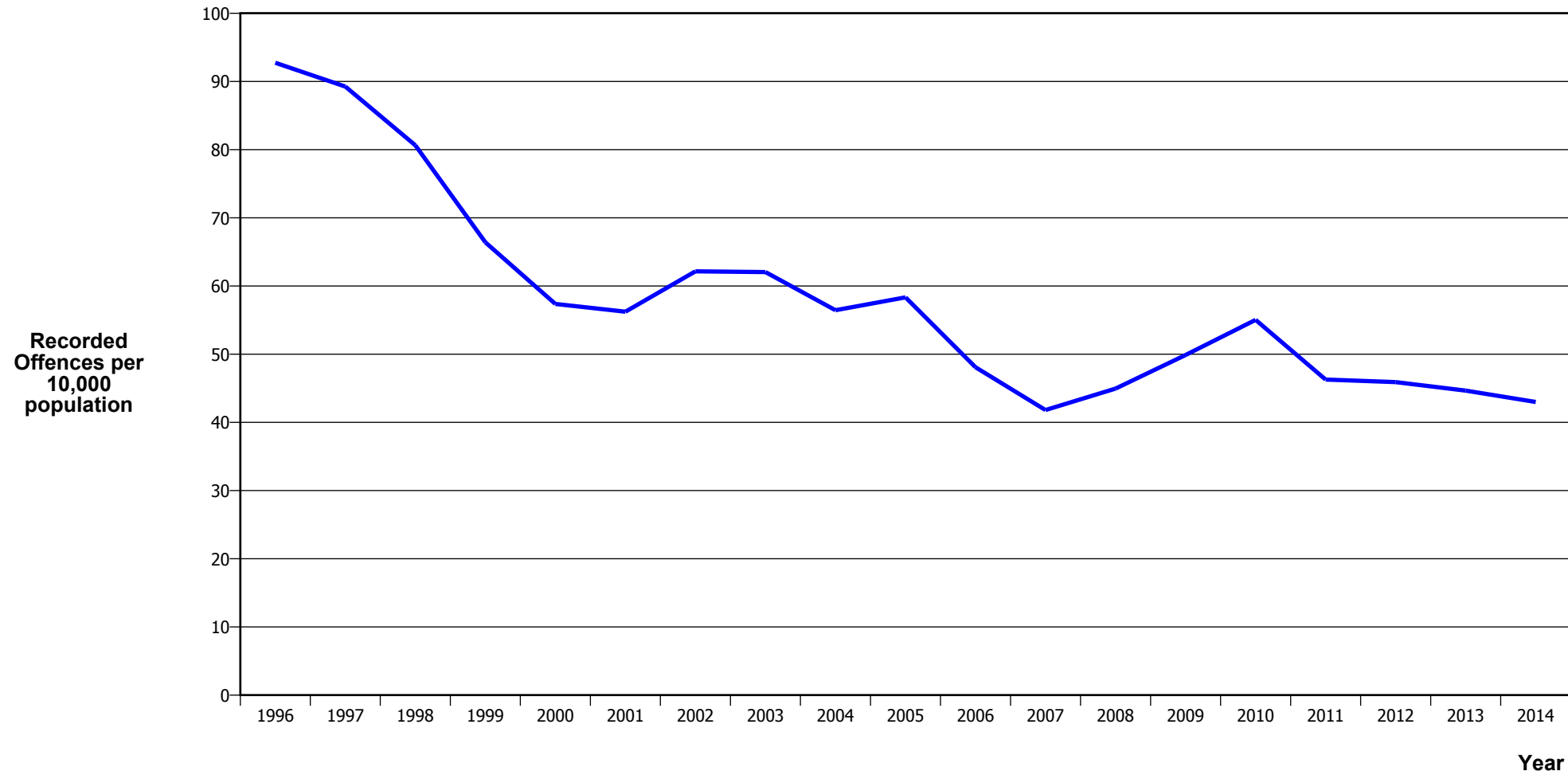
Calendar Year	1996	1997	1998	1999	2000	2001	2002	2003	2004	2005	2006	2007	2008	2009	2010	2011	2012	2013	2014
Recorded Offences	7,439	7,227	8,151	8,250	7,445	6,877	6,745	7,100	6,565	6,251	6,789	6,034	7,006	7,153	7,287	6,061	5,661	5,707	5,500
Recorded per 10,000 Population	156.6	150.5	168.6	169.8	152.4	139.9	134.9	139.2	126.4	118.7	126.9	111.3	127.7	128.8	129.6	109.4	102.8	102.4	96.7

## BURGLARY (DWELLING)



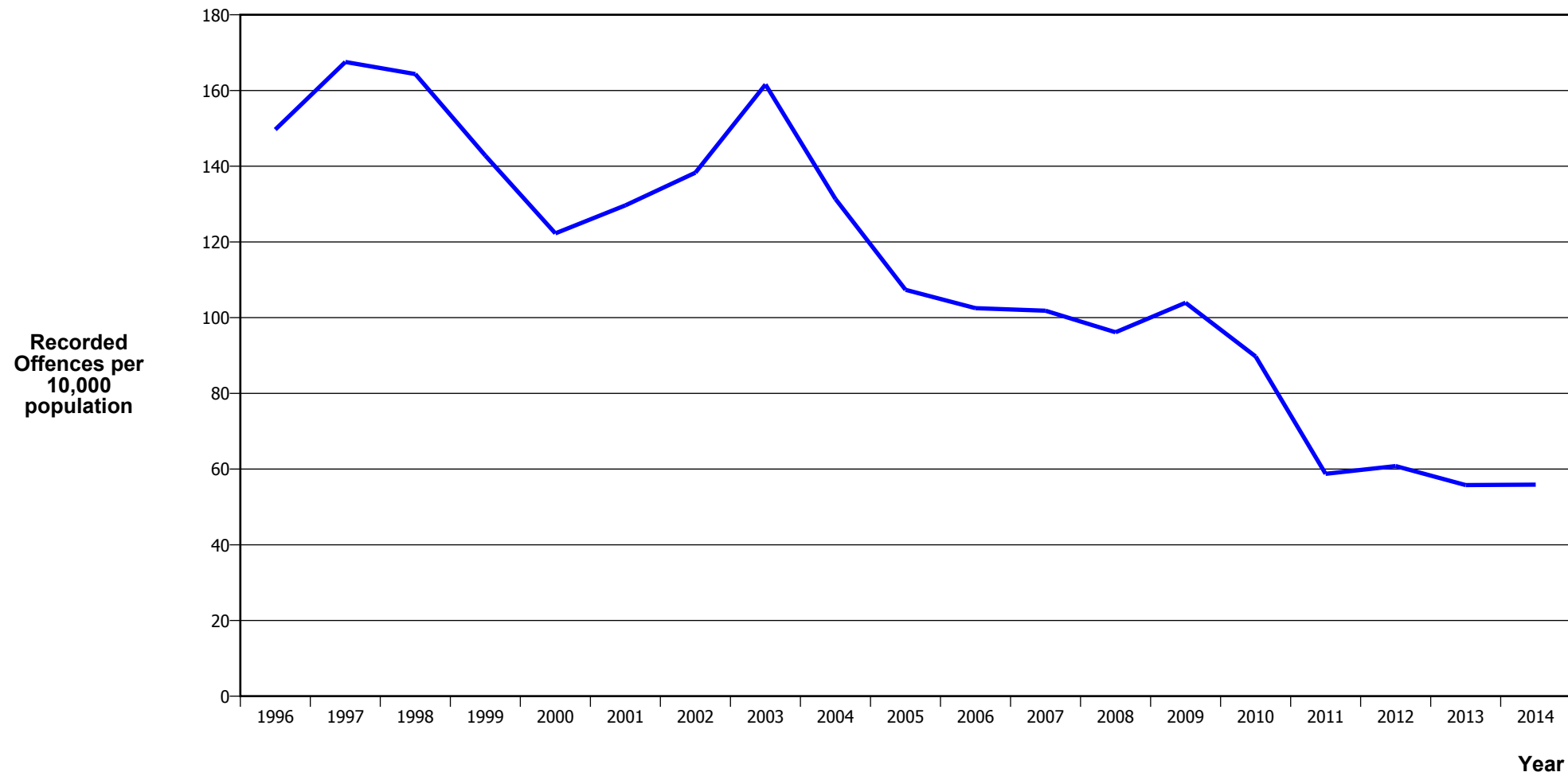
Calendar Year	1996	1997	1998	1999	2000	2001	2002	2003	2004	2005	2006	2007	2008	2009	2010	2011	2012	2013	2014
Recorded Offences	4,471	4,178	5,166	5,564	5,073	4,275	4,253	4,720	4,416	4,397	4,381	4,200	4,994	5,096	5,033	4,482	4,445	4,493	4,148
Recorded per 10,000 Population	94.1	87.0	106.8	114.5	103.9	87.0	85.1	92.5	85.0	83.5	81.9	77.5	91.0	91.8	89.5	80.9	80.7	80.6	72.9

## VEHICLES STOLEN



Calendar Year	1996	1997	1998	1999	2000	2001	2002	2003	2004	2005	2006	2007	2008	2009	2010	2011	2012	2013	2014
Recorded Offences	4,405	4,285	3,899	3,226	2,802	2,764	3,107	3,165	2,932	3,072	2,572	2,266	2,467	2,769	3,095	2,563	2,528	2,490	2,446
Recorded per 10,000 Population	92.7	89.2	80.6	66.4	57.4	56.2	62.1	62.0	56.5	58.3	48.1	41.8	45.0	49.9	55.0	46.3	45.9	44.7	43.0

## THEFT EX CAR



Calendar Year	1996	1997	1998	1999	2000	2001	2002	2003	2004	2005	2006	2007	2008	2009	2010	2011	2012	2013	2014
Recorded Offences	7,110	8,044	7,946	6,937	5,972	6,373	6,915	8,245	6,821	5,653	5,482	5,520	5,275	5,770	5,047	3,253	3,347	3,110	3,180
Recorded per 10,000 Population	149.7	167.5	164.3	142.8	122.3	129.7	138.3	161.6	131.3	107.3	102.5	101.8	96.1	103.9	89.7	58.7	60.8	55.8	55.9

## Population Data

Population data is used in this release to calculate crime rates. They have been derived from population estimates as at 30 June each year that have been obtained from Statistics New Zealand.

The estimated resident population is based on the census usually resident population count, with adjustments for residents missed or counted more than once by the census (net census undercount), and for residents temporarily overseas on census night.

These population estimates exclude the number of international students who are studying in New Zealand for less than 12 months.

Year	Population
1996	475,010
1997	480,150
1998	483,500
1999	485,860
2000	488,440
2001	491,520
2002	499,950
2003	510,210
2004	519,360
2005	526,640
2006	534,840
2007	542,010
2008	548,720
2009	555,240
2010	562,350
2011	553,830
2012	550,660
2013	557,520
2014	569,000



## General Definitions

**Recorded Offences:** the number of breaches of the New Zealand law recorded by Police. This includes offences specified in the Crimes Act and other legislations, such as the Summary Offences Act, Local Government Act, etc.

**Resolved Offences:** the number of recorded offences where an offender has been identified and dealt with (e.g. warned, cautioned, prosecuted, etc).

**Resolution Rate:** the proportion of recorded offences that have been resolved.

**Recorded per 10,000 population:** the number of recorded offences for every 10,000 people. This is also referred as the crime rate per 10,000 population.

**ANZSOC:** The Australian and New Zealand Standard Offence Classification. The offence classification is divided into 16 major offence divisions.

## Definition of ANZSOC Divisions

1. Homicide and related offences: Unlawfully kill, attempt to unlawfully kill or conspiracy to kill another person.
2. Acts intended to cause injury: Acts, excluding attempted murder and those resulting in death, which are intended to cause non-fatal injury or harm to another person and where there is no sexual or acquisitive element.
3. Sexual assault and related offences: Acts, or intent of acts, of a sexual nature against another person, which are non-consensual or where consent is proscribed.
4. Dangerous or negligent acts endangering persons: Dangerous or negligent acts which, though not intended to cause harm, actually or potentially result in injury to oneself or another person.
5. Abduction, harassment and other offences against person: Acts intended to threaten or harass, or acts that unlawfully deprive another person of their freedom of movement, that are against that person's will or against the will of any parent, guardian or other person having lawful custody or care of that person.
6. Robbery, extortion and related offences: Acts intended to unlawfully gain money, property or other items of value from, or to cause detriment to, another person by using the threat of force or any other coercive measure.
7. Unlawful entry with intent / burglary, break and enter: The unlawful entry of a structure with the intent to commit an offence, where the entry is either forced or unforced.
8. Theft and related and offences: The unlawful taking or obtaining of money or goods, not involving the use of force or violence, coercion or deception, with intent to permanently or temporarily deprive the owner or possessor of the use of the money or goods, or the receiving or handling of money or goods obtained unlawfully.

9. Fraud, deception and related offences: Offences involving a dishonest act or omission carried out with the purpose of deceiving to obtain a benefit.

10. Illicit drug offences: The possessing, selling, dealing or trafficking, importing or exporting, manufacturing or cultivating of drugs or other substances prohibited under legislation.

11. Prohibited and regulated weapons and explosives offences: Offences involving prohibited or regulated weapons and explosives. Those offences also involving assault, sexual assault or robbery are coded to the relevant group within Assault, Sexual assaults and Robbery respectively.

12. Property damage and environmental pollution: The wilful and unlawful destruction, damage or defacement of public or private property, or the pollution of property or a definable entity held in common by the community.

13. Public order offences: Offences relating personal conduct that involves, or may lead to, a breach of public order or decency, or that is indicative of criminal intent, or that is otherwise regulated or prohibited on moral or ethical grounds. In general these offences do not involve a specific victim or victims; however some offences, such as offensive language and offensive behaviour, may be directed towards a single victim.

14. Traffic and vehicle regulatory offences: Offences relating to vehicles and most forms of traffic, including offences pertaining to the licensing, registration, roadworthiness, or use of vehicles, bicycle offences and pedestrian offences.

15. Offences against justice procedures, government security and government operations: An act or omission that is deemed to be prejudicial to the effective carrying out of justice procedures or any government operations. This includes general government operations as well as those specifically concerned with maintaining government security.

16. Miscellaneous offences: Offences involving the breach of statutory rules or regulations governing activities that are prima facie legal, where such offences are not explicitly dealt with under any other division. If an offence is specified under regulation and involves an act that would be illegal under common law or general criminal legislation, the offence is dealt with under the appropriate generic group.