

CANTERBURY DISTRICT CRIME STATISTICS 2010



**A Summary of
Recorded and Resolved Offence
Statistics**

**POLICE NATIONAL HEADQUARTERS
April 2011**

Table of Contents:

Topic	Page
Report Notes	1
District Summary of Recorded and Resolved Crime, by Division	2-4
District Summary of Recorded and Resolved Crime, by Area	5
District Recorded Crime per 10,000 population, by Division	6-8
District Recorded Crime per 10,000 population, by Area	9
Proportions of Recorded Crime by Categories	10
Crime Trends	11
Total Crime	12
Murder	13
Serious Assaults Resulting in Injury	14
Public Place Assaults	15
Robbery	16
Burglary	17
Burglary (Dwelling)	18
Vehicles Stolen	19
Theft Ex Car	20
Population Data	21
General Definition	22-23

REPORT NOTES:

This report presents official statistics for recorded and resolved offences. The format has been revised significantly from that used in previous years. In particular, offences are grouped into different categories than previously used. This aligns with direction given by the Justice Sector Information Strategy for the whole Justice sector to categorise offences according to the Australian Standard Offence Classification (ASOC). This change does not change the total number of offences reported, just how they are grouped.

In making this change, New Zealand Police has taken the first step towards reporting crime in a way that is comparable with Australia. However, at this stage, important differences still exist that mean statistics are not yet comparable between the two countries. For example, Australian statistics only count the most serious offence on each file, whereas New Zealand reports every offence. Also, Australian statistics count victims, whereas New Zealand Statistics count offences.

Another important change in this report is that pages 11 to 20, which present long-term trends, have been completely revised. The time series has been extended from 10 to 15 years to give a longer history. Also, the measures reported include a number of the statistical indicators that Police recently began publishing provisional data on every month.

As in previous reports, statistics reported in this document are derived from the Police National Intelligence Application (NIA). These Official Statistics for Recorded and Resolved Offences present a snapshot of data in NIA relating to offences that occur within a given year, as at the date 14 days following the end of that year.

Unless the matter is minor where Police attendance is sufficient, a matter that is reported to or discovered by Police where Police believe an offence is likely to have been committed is counted as a recorded offence.

A recorded offence is counted as resolved when Police apprehend an offender and decide how to deal with him/her. (E.g. warn, prosecute, etc.)

Resolution rate is the percentage of recorded offences that are resolved within 14 days of the end of the year being reported on.

If an offence is resolved 15 days or more after the end of the year it will not appear in the Official Crime Statistics for that or any other year. Resolution Rate therefore undercounts the number of cases that Police have resolved. This phenomenon has a more marked impact for some types of offences than others, such as offences that require long investigations (E.g. many serial crimes, burglaries and murders).

When comparing 2010 Statistics with previous years, the reader should also refer to "Report Notes" published in previous years' reports, as previous changes significantly affect year on year trends.

SUMMARY OF DISTRICT RECORDED AND RESOLVED CRIME, BY DIVISION
Years ending 31 December

HOMICIDE AND RELATED OFFENCES

ASOC Subdivision Description	Recorded 2008	Recorded 2009	Recorded 2010	Variance 2008- 2009	Variance 2009- 2010	Resolved 2008	Resolved 2009	Resolved 2010	Resolution Rate 2008	Resolution Rate 2009	Resolution Rate 2010
ATTEMPTED MURDER	2	4	3	100.0 %	-25.0 %	2	4	3	100.0 %	100.0 %	100.0 %
HOMICIDE AND RELATED OFFENCES NOT FURTHER DEFINED	0	0	0			0	0				
MANSLAUGHTER AND DRIVING CAUSING DEATH	4	2	6	-50.0 %	200.0 %	4	2	6	100.0 %	100.0 %	100.0 %
MURDER	7	6	5	-14.3 %	-16.7 %	6	6	4	85.7 %	100.0 %	80.0 %
	13	12	14	-7.7 %	16.7 %	12	12	13	92.3 %	100.0 %	92.9 %

ACTS INTENDED TO CAUSE INJURY

ASOC Subdivision Description	Recorded 2008	Recorded 2009	Recorded 2010	Variance 2008- 2009	Variance 2009- 2010	Resolved 2008	Resolved 2009	Resolved 2010	Resolution Rate 2008	Resolution Rate 2009	Resolution Rate 2010
ASSAULT	3,673	3,948	4,064	7.5 %	2.9 %	2,945	3,219	3,276	80.2 %	81.5 %	80.6 %
OTHER ACTS INTENDED TO CAUSE INJURY	5	1	7	-80.0 %	600.0 %	5	1	3	100.0 %	100.0 %	42.9 %
	3,678	3,949	4,071	7.4 %	3.1 %	2,950	3,220	3,279	80.2 %	81.5 %	80.5 %

SEXUAL ASSAULT AND RELATED OFFENCES

ASOC Subdivision Description	Recorded 2008	Recorded 2009	Recorded 2010	Variance 2008- 2009	Variance 2009- 2010	Resolved 2008	Resolved 2009	Resolved 2010	Resolution Rate 2008	Resolution Rate 2009	Resolution Rate 2010
NON-ASSAULTIVE SEXUAL OFFENCES	3	13	9	333.3 %	-30.8 %	2	8	5	66.7 %	61.5 %	55.6 %
SEXUAL ASSAULT	313	265	309	-15.3 %	16.6 %	222	133	153	70.9 %	50.2 %	49.5 %
	316	278	318	-12.0 %	14.4 %	224	141	158	70.9 %	50.7 %	49.7 %

DANGEROUS OR NEGLIGENT ACTS ENDANGERING PERSONS

ASOC Subdivision Description	Recorded 2008	Recorded 2009	Recorded 2010	Variance 2008- 2009	Variance 2009- 2010	Resolved 2008	Resolved 2009	Resolved 2010	Resolution Rate 2008	Resolution Rate 2009	Resolution Rate 2010
OTHER DANGEROUS OR NEGLIGENT ACTS ENDANGERING PERSONS	63	53	46	-15.9 %	-13.2 %	35	39	30	55.6 %	73.6 %	65.2 %
	63	53	46	-15.9 %	-13.2 %	35	39	30	55.6 %	73.6 %	65.2 %

ABDUCTION, HARASSMENT AND OTHER RELATED OFFENCES AGAINST A PERSON

ASOC Subdivision Description	Recorded 2008	Recorded 2009	Recorded 2010	Variance 2008- 2009	Variance 2009- 2010	Resolved 2008	Resolved 2009	Resolved 2010	Resolution Rate 2008	Resolution Rate 2009	Resolution Rate 2010
ABDUCTION AND KIDNAPPING	26	29	15	11.5 %	-48.3 %	23	19	11	88.5 %	65.5 %	73.3 %
HARASSMENT AND THREATENING BEHAVIOUR	1,163	1,100	1,335	-5.4 %	21.4 %	749	768	927	64.4 %	69.8 %	69.4 %
	1,189	1,129	1,350	-5.0 %	19.6 %	772	787	938	64.9 %	69.7 %	69.5 %

ROBBERY, EXTORTION AND RELATED OFFENCES

ASOC Subdivision Description	Recorded 2008	Recorded 2009	Recorded 2010	Variance 2008- 2009	Variance 2009- 2010	Resolved 2008	Resolved 2009	Resolved 2010	Resolution Rate 2008	Resolution Rate 2009	Resolution Rate 2010
BLACKMAIL AND EXTORTION	21	12	22	-42.9 %	83.3 %	10	9	15	47.6 %	75.0 %	68.2 %
ROBBERY	239	252	233	5.4 %	-7.5 %	120	104	100	50.2 %	41.3 %	42.9 %
	260	264	255	1.5 %	-3.4 %	130	113	115	50.0 %	42.8 %	45.1 %

UNLAWFUL ENTRY WITH INTENT/BURGLARY, BREAK AND ENTER

ASOC Subdivision Description	Recorded 2008	Recorded 2009	Recorded 2010	Variance 2008- 2009	Variance 2009- 2010	Resolved 2008	Resolved 2009	Resolved 2010	Resolution Rate 2008	Resolution Rate 2009	Resolution Rate 2010
UNLAWFUL ENTRY WITH INTENT/BURGLARY, BREAK AND ENTER	7,006	7,153	7,287	2.1 %	1.9 %	1,067	1,070	821	15.2 %	15.0 %	11.3 %
	7,006	7,153	7,287	2.1 %	1.9 %	1,067	1,070	821	15.2 %	15.0 %	11.3 %

SUMMARY OF DISTRICT RECORDED AND RESOLVED CRIME, BY DIVISION
Years ending 31 December

THEFT AND RELATED OFFENCES

ASOC Subdivision Description	Recorded 2008	Recorded 2009	Recorded 2010	Variance 2008- 2009	Variance 2009- 2010	Resolved 2008	Resolved 2009	Resolved 2010	Resolution Rate 2008	Resolution Rate 2009	Resolution Rate 2010
ILLEGAL USE OF PROPERTY (EXCEPT MOTOR VEHICLES)	1,294	1,322	1,111	2.2 %	-16.0 %	52	33	43	4.0 %	2.5 %	3.9 %
MOTOR VEHICLE THEFT AND RELATED OFFENCES	7,742	8,539	8,142	10.3 %	-4.6 %	998	819	810	12.9 %	9.6 %	9.9 %
RECEIVE OR HANDLE PROCEEDS OF CRIME	575	445	375	-22.6 %	-15.7 %	566	440	370	98.4 %	98.9 %	98.7 %
THEFT (EXCEPT MOTOR VEHICLES)	8,779	8,738	8,626	-0.5 %	-1.3 %	3,058	3,023	3,025	34.8 %	34.6 %	35.1 %
	18,390	19,044	18,254	3.6 %	-4.1 %	4,674	4,315	4,248	25.4 %	22.7 %	23.3 %

FRAUD, DECEPTION AND RELATED OFFENCES

ASOC Subdivision Description	Recorded 2008	Recorded 2009	Recorded 2010	Variance 2008- 2009	Variance 2009- 2010	Resolved 2008	Resolved 2009	Resolved 2010	Resolution Rate 2008	Resolution Rate 2009	Resolution Rate 2010
DECEPTIVE BUSINESS/GOVERNMENT PRACTICES	6	6	6	0.0 %	0.0 %	4	5	4	66.7 %	83.3 %	66.7 %
FORGERY AND COUNTERFEITING	41	64	64	56.1 %	0.0 %	20	39	42	48.8 %	60.9 %	65.6 %
OBTAIN BENEFIT BY DECEPTION	1,049	1,274	1,067	21.4 %	-16.2 %	611	788	664	58.2 %	61.9 %	62.2 %
OTHER FRAUD AND DECEPTION OFFENCES	195	130	134	-33.3 %	3.1 %	118	66	75	60.5 %	50.8 %	56.0 %
	1,291	1,474	1,271	14.2 %	-13.8 %	753	898	785	58.3 %	60.9 %	61.8 %

ILLICIT DRUG OFFENCES

ASOC Subdivision Description	Recorded 2008	Recorded 2009	Recorded 2010	Variance 2008- 2009	Variance 2009- 2010	Resolved 2008	Resolved 2009	Resolved 2010	Resolution Rate 2008	Resolution Rate 2009	Resolution Rate 2010
DEAL OR TRAFFIC IN ILLICIT DRUGS	260	231	202	-11.2 %	-12.6 %	250	223	194	96.2 %	96.5 %	96.0 %
IMPORT OR EXPORT ILLICIT DRUGS	5	6	2	20.0 %	-66.7 %	5	5	2	100.0 %	83.3 %	100.0 %
MANUFACTURE OR CULTIVATE ILLICIT DRUGS	189	276	252	46.0 %	-8.7 %	175	231	231	92.6 %	83.7 %	91.7 %
OTHER ILLICIT DRUG OFFENCES	569	633	654	11.2 %	3.3 %	557	618	645	97.9 %	97.6 %	98.6 %
POSSESS AND/OR USE ILLICIT DRUGS	801	930	1,059	16.1 %	13.9 %	769	905	1,037	96.0 %	97.3 %	97.9 %
	1,824	2,076	2,169	13.8 %	4.5 %	1,756	1,982	2,109	96.3 %	95.5 %	97.2 %

PROHIBITED AND REGULATED WEAPONS AND EXPLOSIVES OFFENCES

ASOC Subdivision Description	Recorded 2008	Recorded 2009	Recorded 2010	Variance 2008- 2009	Variance 2009- 2010	Resolved 2008	Resolved 2009	Resolved 2010	Resolution Rate 2008	Resolution Rate 2009	Resolution Rate 2010
REGULATED WEAPONS/EXPLOSIVES OFFENCES	758	789	744	4.1 %	-5.7 %	663	719	686	87.5 %	91.1 %	92.2 %
	758	789	744	4.1 %	-5.7 %	663	719	686	87.5 %	91.1 %	92.2 %

PROPERTY DAMAGE AND ENVIRONMENTAL POLLUTION

ASOC Subdivision Description	Recorded 2008	Recorded 2009	Recorded 2010	Variance 2008- 2009	Variance 2009- 2010	Resolved 2008	Resolved 2009	Resolved 2010	Resolution Rate 2008	Resolution Rate 2009	Resolution Rate 2010
ENVIRONMENTAL POLLUTION	44	36	27	-18.2 %	-25.0 %	32	27	14	72.7 %	75.0 %	51.9 %
PROPERTY DAMAGE	9,139	9,120	8,258	-0.2 %	-9.5 %	2,053	1,930	1,985	22.5 %	21.2 %	24.0 %
	9,183	9,156	8,285	-0.3 %	-9.5 %	2,085	1,957	1,999	22.7 %	21.4 %	24.1 %

PUBLIC ORDER OFFENCES

ASOC Subdivision Description	Recorded 2008	Recorded 2009	Recorded 2010	Variance 2008- 2009	Variance 2009- 2010	Resolved 2008	Resolved 2009	Resolved 2010	Resolution Rate 2008	Resolution Rate 2009	Resolution Rate 2010
DISORDERLY CONDUCT	3,296	3,168	3,504	-3.9 %	10.6 %	2,747	2,728	3,005	83.3 %	86.1 %	85.8 %
OFFENSIVE CONDUCT	238	245	302	2.9 %	23.3 %	171	191	243	71.8 %	78.0 %	80.5 %
REGULATED PUBLIC ORDER OFFENCES	1,489	1,821	1,882	22.3 %	3.3 %	1,411	1,729	1,775	94.8 %	94.9 %	94.3 %
	5,023	5,234	5,688	4.2 %	8.7 %	4,329	4,648	5,023	86.2 %	88.8 %	88.3 %

SUMMARY OF DISTRICT RECORDED AND RESOLVED CRIME, BY DIVISION
Years ending 31 December

OFFENCES AGAINST JUSTICE PROCEDURES, GOVERNMENT SECURITY AND GOVERNMENT OPERATIONS

ASOC Subdivision Description	Recorded 2008	Recorded 2009	Recorded 2010	Variance 2008- 2009	Variance 2009- 2010	Resolved 2008	Resolved 2009	Resolved 2010	Resolution Rate 2008	Resolution Rate 2009	Resolution Rate 2010
BREACH OF COMMUNITY-BASED ORDER	903	1,021	938	13.1 %	-8.1 %	898	1,014	930	99.4 %	99.3 %	99.1 %
BREACH OF CUSTODIAL ORDER OFFENCES	102	67	40	-34.3 %	-40.3 %	86	63	35	84.3 %	94.0 %	87.5 %
BREACH OF VIOLENCE AND NON-VIOLENCE RESTRAINING ORDERS	571	530	572	-7.2 %	7.9 %	489	442	491	85.6 %	83.4 %	85.8 %
OFFENCES AGAINST GOVERNMENT OPERATIONS	45	35	107	-22.2 %	205.7 %	20	20	81	44.4 %	57.1 %	75.7 %
OFFENCES AGAINST GOVERNMENT SECURITY	1	1	1	0.0 %	0.0 %	0	0	1	0.0 %	0.0 %	100.0 %
OFFENCES AGAINST JUSTICE PROCEDURES	521	608	561	16.7 %	-7.7 %	507	597	546	97.3 %	98.2 %	97.3 %
OFFENCES AGAINST JUSTICE PROCEDURES, GOVERNMENT SECURITY AND GOVERNMENT OPERATIONS NOT FURTHER DEFINED	2	1	1	-50.0 %	0.0 %	1	1	0	50.0 %	100.0 %	0.0 %
	2,145	2,263	2,220	5.5 %	-1.9 %	2,001	2,137	2,084	93.3 %	94.4 %	93.9 %

MISCELLANEOUS OFFENCES

ASOC Subdivision Description	Recorded 2008	Recorded 2009	Recorded 2010	Variance 2008- 2009	Variance 2009- 2010	Resolved 2008	Resolved 2009	Resolved 2010	Resolution Rate 2008	Resolution Rate 2009	Resolution Rate 2010
COMMERCIAL/INDUSTRY/FINANCIAL REGULATION	2	2	10	0.0 %	400.0 %	2	2	9	100.0 %	100.0 %	90.0 %
DEFAMATION, LIBEL AND PRIVACY OFFENCES	8	4	6	-50.0 %	50.0 %	2	1	2	25.0 %	25.0 %	33.3 %
OTHER MISCELLANEOUS OFFENCES	176	88	117	-50.0 %	33.0 %	153	79	83	86.9 %	89.8 %	70.9 %
PUBLIC HEALTH AND SAFETY OFFENCES	16	13	14	-18.8 %	7.7 %	12	7	11	75.0 %	53.8 %	78.6 %
	202	107	147	-47.0 %	37.4 %	169	89	105	83.7 %	83.2 %	71.4 %

TOTAL	51,341	52,981	52,119	3.2 %	-1.6 %	21,620	22,127	22,393	42.1 %	41.8 %	43.0 %
--------------	---------------	---------------	---------------	--------------	---------------	---------------	---------------	---------------	---------------	---------------	---------------

SUMMARY OF DISTRICT RECORDED AND RESOLVED CRIME, BY AREA

years ending 31 December

TOTAL CRIME

Area Description	Recorded 2008	Recorded 2009	Recorded 2010	Variance 2008- 2009	Variance 2009- 2010	Resolved 2008	Resolved 2009	Resolved 2010	Resolution Rate 2008	Resolution Rate 2009	Resolution Rate 2010
Christchurch Central	14,532	15,591	15,107	7.3 %	-3.1 %	7,751	8,038	8,062	53.3 %	51.6 %	53.4 %
Mid South Canterbury	6,661	7,116	7,165	6.8 %	0.7 %	3,379	3,791	3,770	50.7 %	53.3 %	52.6 %
Northern Canterbury	16,748	16,343	16,383	-2.4 %	0.2 %	6,291	5,868	5,995	37.6 %	35.9 %	36.6 %
Southern Canterbury	13,400	13,931	13,464	4.0 %	-3.4 %	4,199	4,430	4,566	31.3 %	31.8 %	33.9 %
Total	51,341	52,981	52,119	3.2 %	-1.6 %	21,620	22,127	22,393	42.1 %	41.8 %	43.0 %

DISTRICT RECORDED CRIME PER 10,000 POPULATION, BY DIVISION
Years ending 31 December

HOMICIDE AND RELATED OFFENCES

ASOC Subdivision Description	Recorded per 10,000 pop 2008	Recorded per 10,000 pop 2009	Recorded per 10,000 pop 2010
ATTEMPTED MURDER	0.04	0.07	0.05
HOMICIDE AND RELATED OFFENCES NOT FURTHER DEFINED	0.00	0.00	0.00
MANSLAUGHTER AND DRIVING CAUSING DEATH	0.07	0.04	0.11
MURDER	0.13	0.11	0.09
	0.24	0.22	0.25

ACTS INTENDED TO CAUSE INJURY

ASOC Subdivision Description	Recorded per 10,000 pop 2008	Recorded per 10,000 pop 2009	Recorded per 10,000 pop 2010
ASSAULT	67.10	71.29	72.53
OTHER ACTS INTENDED TO CAUSE INJURY	0.09	0.02	0.12
	67.19	71.31	72.66

SEXUAL ASSAULT AND RELATED OFFENCES

ASOC Subdivision Description	Recorded per 10,000 pop 2008	Recorded per 10,000 pop 2009	Recorded per 10,000 pop 2010
NON-ASSAULTIVE SEXUAL OFFENCES	0.05	0.23	0.16
SEXUAL ASSAULT	5.72	4.79	5.51
	5.77	5.02	5.68

DANGEROUS OR NEGLIGENT ACTS ENDANGERING PERSONS

ASOC Subdivision Description	Recorded per 10,000 pop 2008	Recorded per 10,000 pop 2009	Recorded per 10,000 pop 2010
OTHER DANGEROUS OR NEGLIGENT ACTS ENDANGERING PERSONS	1.15	0.96	0.82
	1.15	0.96	0.82

ABDUCTION, HARASSMENT AND OTHER RELATED OFFENCES AGAINST A PERSON

ASOC Subdivision Description	Recorded per 10,000 pop 2008	Recorded per 10,000 pop 2009	Recorded per 10,000 pop 2010
ABDUCTION AND KIDNAPPING	0.47	0.52	0.27
HARASSMENT AND THREATENING BEHAVIOUR	21.25	19.86	23.83
	21.72	20.39	24.09

ROBBERY, EXTORTION AND RELATED OFFENCES

ASOC Subdivision Description	Recorded per 10,000 pop 2008	Recorded per 10,000 pop 2009	Recorded per 10,000 pop 2010
BLACKMAIL AND EXTORTION	0.38	0.22	0.39
ROBBERY	4.37	4.55	4.16
	4.75	4.77	4.55

DISTRICT RECORDED CRIME PER 10,000 POPULATION, BY DIVISION

Years ending 31 December

UNLAWFUL ENTRY WITH INTENT/BURGLARY, BREAK AND ENTER

ASOC Subdivision Description	Recorded per 10,000 pop 2008	Recorded per 10,000 pop 2009	Recorded per 10,000 pop 2010
UNLAWFUL ENTRY WITH INTENT/BURGLARY, BREAK AND ENTER	127.99	129.17	130.06
	127.99	129.17	130.06

THEFT AND RELATED OFFENCES

ASOC Subdivision Description	Recorded per 10,000 pop 2008	Recorded per 10,000 pop 2009	Recorded per 10,000 pop 2010
ILLEGAL USE OF PROPERTY (EXCEPT MOTOR VEHICLES)	23.64	23.87	19.83
MOTOR VEHICLE THEFT AND RELATED OFFENCES	141.43	154.19	145.32
RECEIVE OR HANDLE PROCEEDS OF CRIME	10.50	8.04	6.69
THEFT (EXCEPT MOTOR VEHICLES)	160.38	157.79	153.95
	335.95	343.89	325.79

FRAUD, DECEPTION AND RELATED OFFENCES

ASOC Subdivision Description	Recorded per 10,000 pop 2008	Recorded per 10,000 pop 2009	Recorded per 10,000 pop 2010
DECEPTIVE BUSINESS/GOVERNMENT PRACTICES	0.11	0.11	0.11
FORGERY AND COUNTERFEITING	0.75	1.16	1.14
OBTAIN BENEFIT BY DECEPTION	19.16	23.01	19.04
OTHER FRAUD AND DECEPTION OFFENCES	3.56	2.35	2.39
	23.58	26.62	22.68

ILLCIT DRUG OFFENCES

ASOC Subdivision Description	Recorded per 10,000 pop 2008	Recorded per 10,000 pop 2009	Recorded per 10,000 pop 2010
DEAL OR TRAFFIC IN ILLICIT DRUGS	4.75	4.17	3.61
IMPORT OR EXPORT ILLICIT DRUGS	0.09	0.11	0.04
MANUFACTURE OR CULTIVATE ILLICIT DRUGS	3.45	4.98	4.50
OTHER ILLICIT DRUG OFFENCES	10.39	11.43	11.67
POSSESS AND/OR USE ILLICIT DRUGS	14.63	16.79	18.90
	33.32	37.49	38.71

PROHIBITED AND REGULATED WEAPONS AND EXPLOSIVES OFFENCES

ASOC Subdivision Description	Recorded per 10,000 pop 2008	Recorded per 10,000 pop 2009	Recorded per 10,000 pop 2010
REGULATED WEAPONS/EXPLOSIVES OFFENCES	13.85	14.25	13.28
	13.85	14.25	13.28

DISTRICT RECORDED CRIME PER 10,000 POPULATION, BY DIVISION

Years ending 31 December

PROPERTY DAMAGE AND ENVIRONMENTAL POLLUTION

ASOC Subdivision Description	Recorded per 10,000 pop 2008	Recorded per 10,000 pop 2009	Recorded per 10,000 pop 2010
ENVIRONMENTAL POLLUTION	0.80	0.65	0.48
PROPERTY DAMAGE	166.95	164.69	147.39
	167.76	165.34	147.87

PUBLIC ORDER OFFENCES

ASOC Subdivision Description	Recorded per 10,000 pop 2008	Recorded per 10,000 pop 2009	Recorded per 10,000 pop 2010
DISORDERLY CONDUCT	60.21	57.21	62.54
OFFENSIVE CONDUCT	4.35	4.42	5.39
REGULATED PUBLIC ORDER OFFENCES	27.20	32.88	33.59
	91.76	94.51	101.52

OFFENCES AGAINST JUSTICE PROCEDURES, GOVERNMENT SECURITY AND GOVERNMENT OPERATIONS

ASOC Subdivision Description	Recorded per 10,000 pop 2008	Recorded per 10,000 pop 2009	Recorded per 10,000 pop 2010
BREACH OF COMMUNITY-BASED ORDER	16.50	18.44	16.74
BREACH OF CUSTODIAL ORDER OFFENCES	1.86	1.21	0.71
BREACH OF VIOLENCE AND NON-VIOLENCE RESTRAINING ORDERS	10.43	9.57	10.21
OFFENCES AGAINST GOVERNMENT OPERATIONS	0.82	0.63	1.91
OFFENCES AGAINST GOVERNMENT SECURITY	0.02	0.02	0.02
OFFENCES AGAINST JUSTICE PROCEDURES	9.52	10.98	10.01
OFFENCES AGAINST JUSTICE PROCEDURES, GOVERNMENT SECURITY AND GOVERNMENT OPERATIONS NOT FURTHER DEFINED	0.04	0.02	0.02
	39.19	40.86	39.62

MISCELLANEOUS OFFENCES

ASOC Subdivision Description	Recorded per 10,000 pop 2008	Recorded per 10,000 pop 2009	Recorded per 10,000 pop 2010
COMMERCIAL/INDUSTRY/FINANCIAL REGULATION	0.04	0.04	0.18
DEFAMATION, LIBEL AND PRIVACY OFFENCES	0.15	0.07	0.11
OTHER MISCELLANEOUS OFFENCES	3.22	1.59	2.09
PUBLIC HEALTH AND SAFETY OFFENCES	0.29	0.23	0.25
	3.69	1.93	2.62

TOTAL	937.9	956.7	930.2
--------------	--------------	--------------	--------------

DISTRICT RECORDED CRIME PER 10,000 POPULATION, BY AREA

Years ending 31 December

Area Description	Recorded per 10,000 pop 2008	Recorded per 10,000 pop 2009	Recorded per 10,000 pop 2010	Percent Variance 2008 to 2009	Percent Variance 2009 to 2010
Christchurch Central	3,295.2	3,487.9	3,334.9	5.8 %	-4.4 %
Mid South Canterbury	792.2	840.8	840.0	6.1 %	-0.1 %
Northern Canterbury	706.4	681.9	677.1	-3.5 %	-0.7 %
Southern Canterbury	735.8	754.0	717.1	2.5 %	-4.9 %
TOTAL	937.9	956.7	930.2	2.0 %	-2.8 %

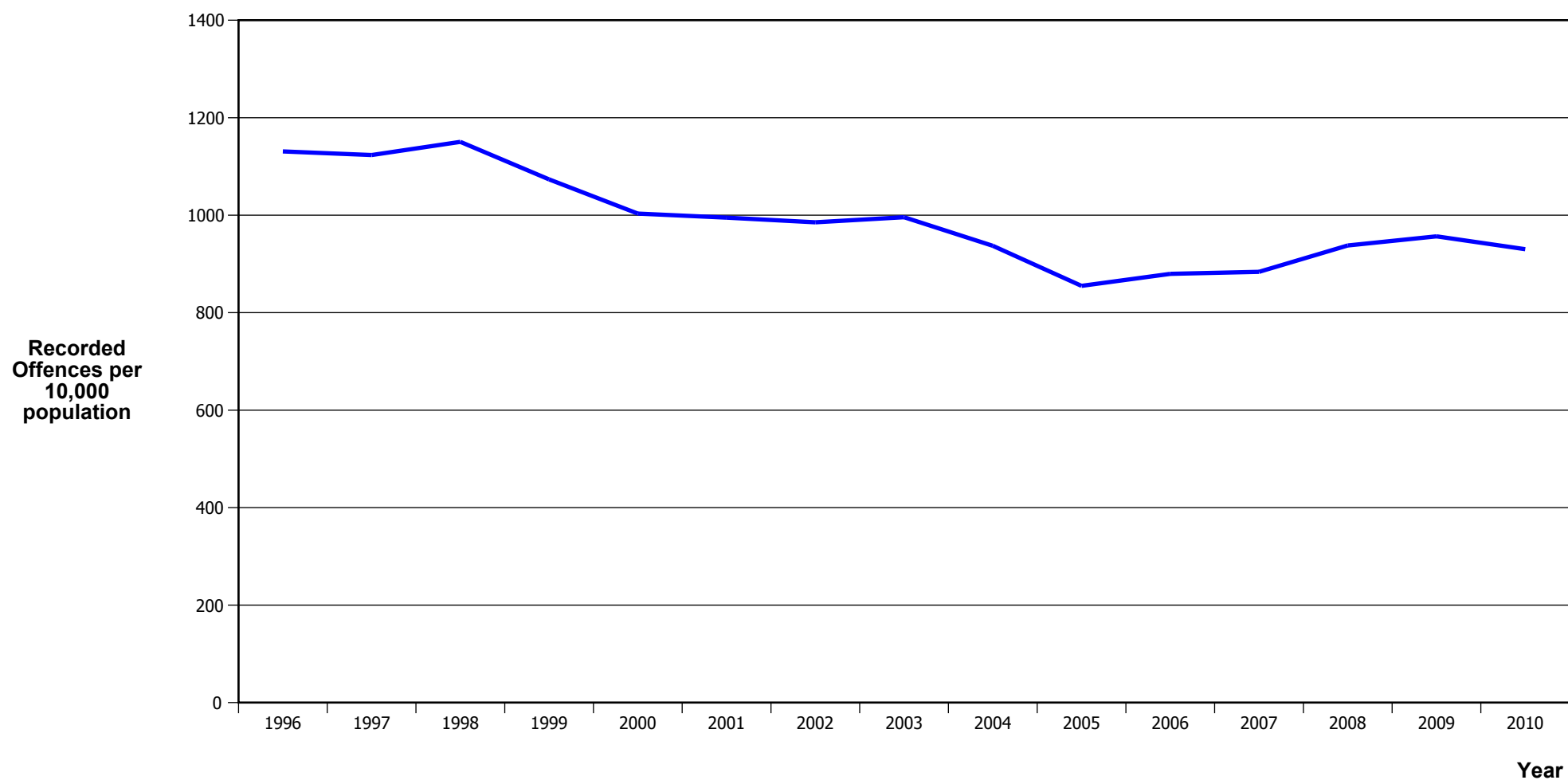
PROPORTION OF RECORDED CRIME BY DIVISION

Years ending 31 December

ASOC Division Description	Proportions Recorded 2008	Recorded 2008	Proportions Recorded 2009	Recorded 2009	Proportions Recorded 2010	Recorded 2010
HOMICIDE AND RELATED OFFENCES	0.03 %	13	0.02 %	12	0.03 %	14
ACTS INTENDED TO CAUSE INJURY	7.16 %	3,678	7.45 %	3,949	7.81 %	4,071
SEXUAL ASSAULT AND RELATED OFFENCES	0.62 %	316	0.52 %	278	0.61 %	318
DANGEROUS OR NEGLIGENT ACTS ENDANGERING PERSONS	0.12 %	63	0.10 %	53	0.09 %	46
ABDUCTION, HARASSMENT AND OTHER RELATED OFFENCES AGAINST A PERSON	2.32 %	1,189	2.13 %	1,129	2.59 %	1,350
ROBBERY, EXTORTION AND RELATED OFFENCES	0.51 %	260	0.50 %	264	0.49 %	255
UNLAWFUL ENTRY WITH INTENT/BURGLARY, BREAK AND ENTER	13.65 %	7,006	13.50 %	7,153	13.98 %	7,287
THEFT AND RELATED OFFENCES	35.82 %	18,390	35.94 %	19,044	35.02 %	18,254
FRAUD, DECEPTION AND RELATED OFFENCES	2.51 %	1,291	2.78 %	1,474	2.44 %	1,271
ILLICIT DRUG OFFENCES	3.55 %	1,824	3.92 %	2,076	4.16 %	2,169
PROHIBITED AND REGULATED WEAPONS AND EXPLOSIVES OFFENCES	1.48 %	758	1.49 %	789	1.43 %	744
PROPERTY DAMAGE AND ENVIRONMENTAL POLLUTION	17.89 %	9,183	17.28 %	9,156	15.90 %	8,285
PUBLIC ORDER OFFENCES	9.78 %	5,023	9.88 %	5,234	10.91 %	5,688
OFFENCES AGAINST JUSTICE PROCEDURES, GOVERNMENT SECURITY AND GOVERNMENT OPERATIONS	4.18 %	2,145	4.27 %	2,263	4.26 %	2,220
MISCELLANEOUS OFFENCES	0.39 %	202	0.20 %	107	0.28 %	147
	100.00 %	51,341	100.00 %	52,981	100.00 %	52,119

CRIME TRENDS

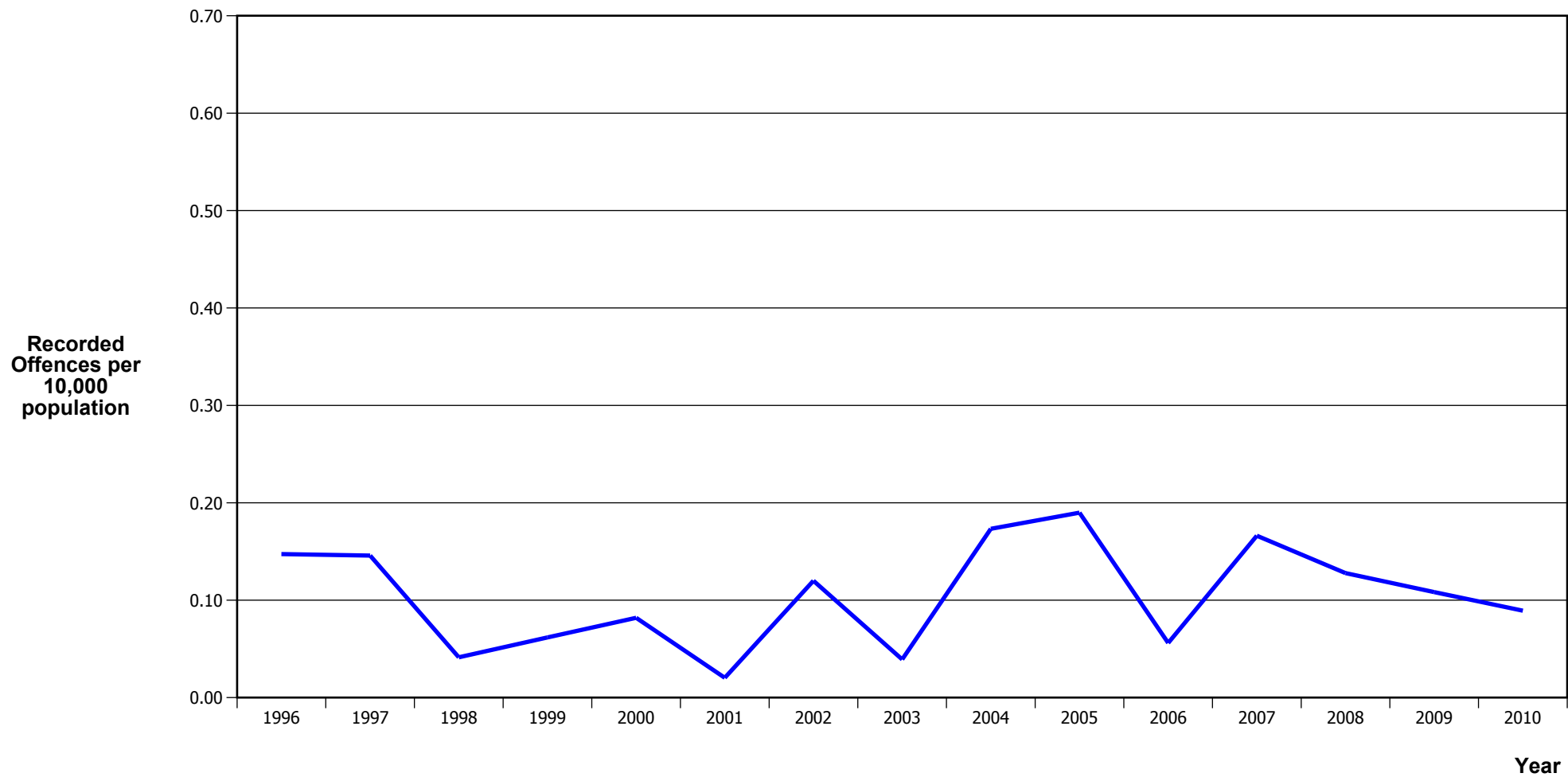
TOTAL CRIME



Calendar Year	1996	1997	1998	1999	2000	2001	2002	2003	2004	2005	2006	2007	2008	2009	2010
Recorded Offences	53,717	53,946	55,624	52,159	49,001	48,909	49,270	50,807	48,675	45,026	47,048	47,856	51,341	52,981	52,119
Recorded per 10,000 Population	1,130.9	1,123.5	1,150.4	1,073.5	1,003.2	995.1	985.5	995.8	937.2	855.0	879.7	883.9	937.9	956.7	930.2

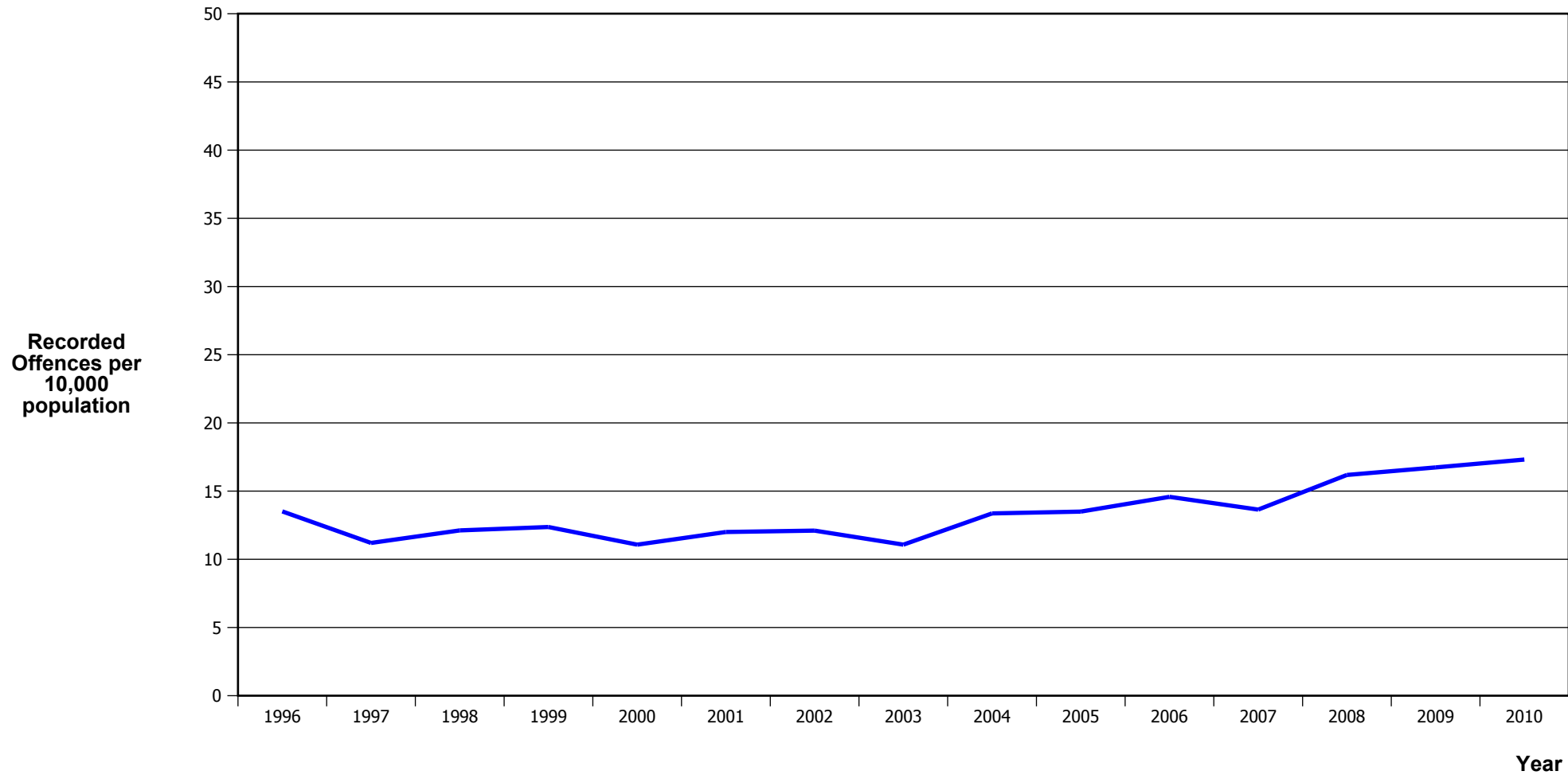
*In 2005/2006 there was a major IT system change (LES to NIA)

MURDER



Calendar Year	1996	1997	1998	1999	2000	2001	2002	2003	2004	2005	2006	2007	2008	2009	2010
Recorded Offences	7	7	2	3	4	1	6	2	9	10	3	9	7	6	5
Recorded per 10,000 Population	0.15	0.15	0.04	0.06	0.08	0.02	0.12	0.04	0.17	0.19	0.06	0.17	0.13	0.11	0.09

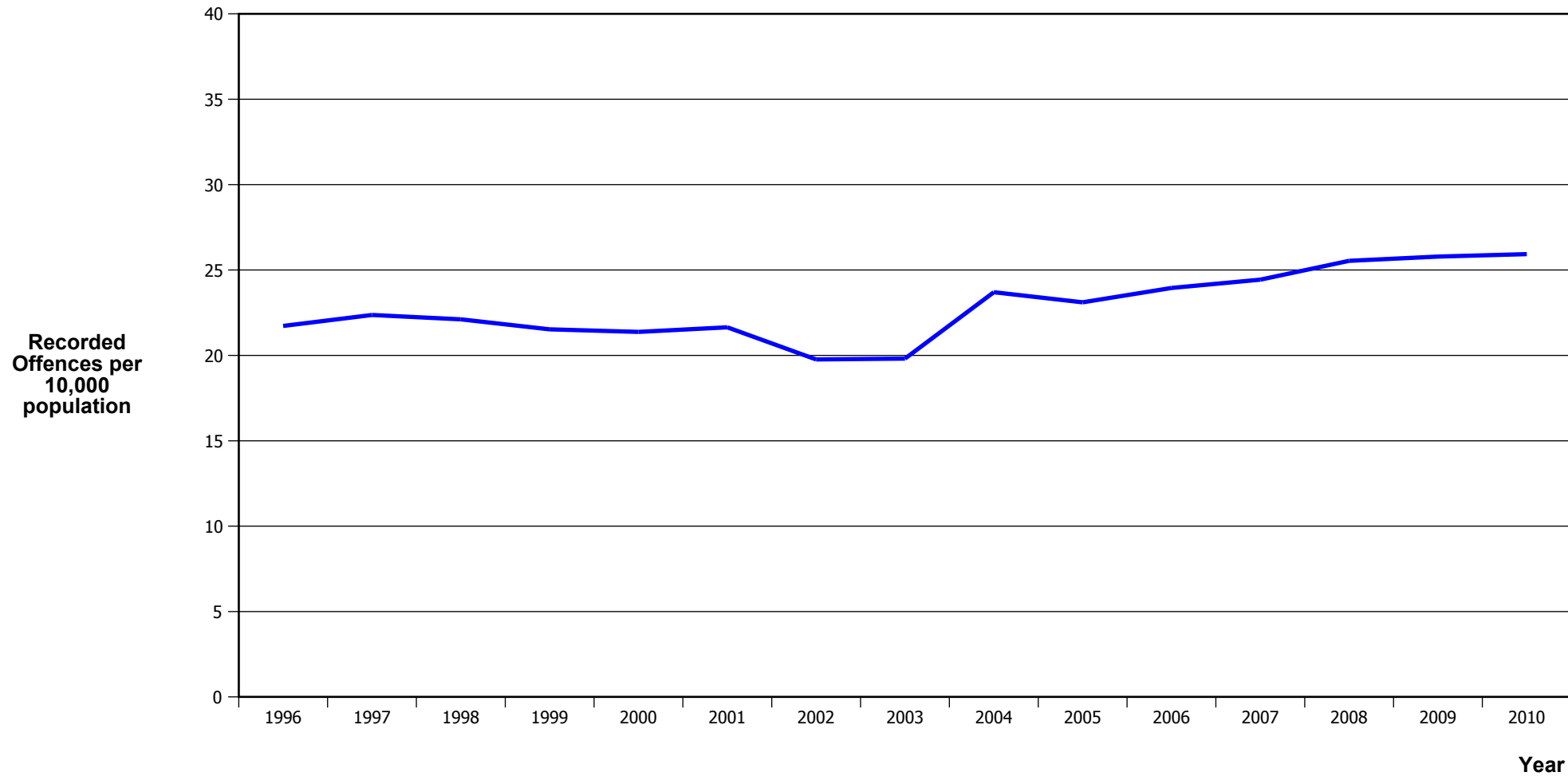
SERIOUS ASSAULTS RESULTING IN INJURY*



Calendar Year	1996	1997	1998	1999	2000	2001	2002	2003	2004	2005	2006	2007	2008	2009	2010
Recorded Physical Injury	642	538	586	601	541	590	605	565	694	711	780	739	886	927	970
Recorded per 10,000 Population	13.5	11.2	12.1	12.4	11.1	12.0	12.1	11.1	13.4	13.5	14.6	13.6	16.2	16.7	17.3

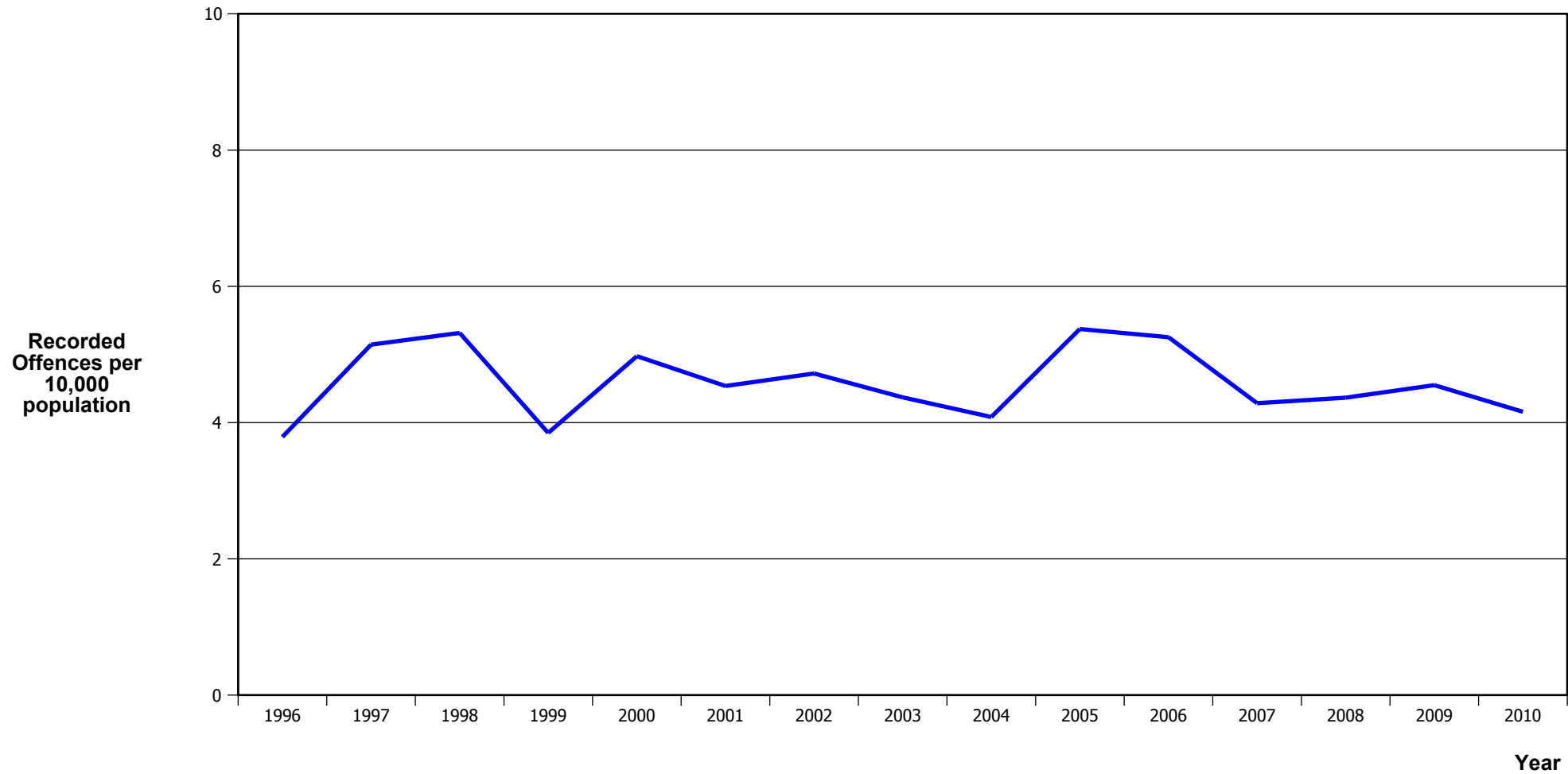
* This measure excludes common assaults

PUBLIC PLACE ASSAULTS



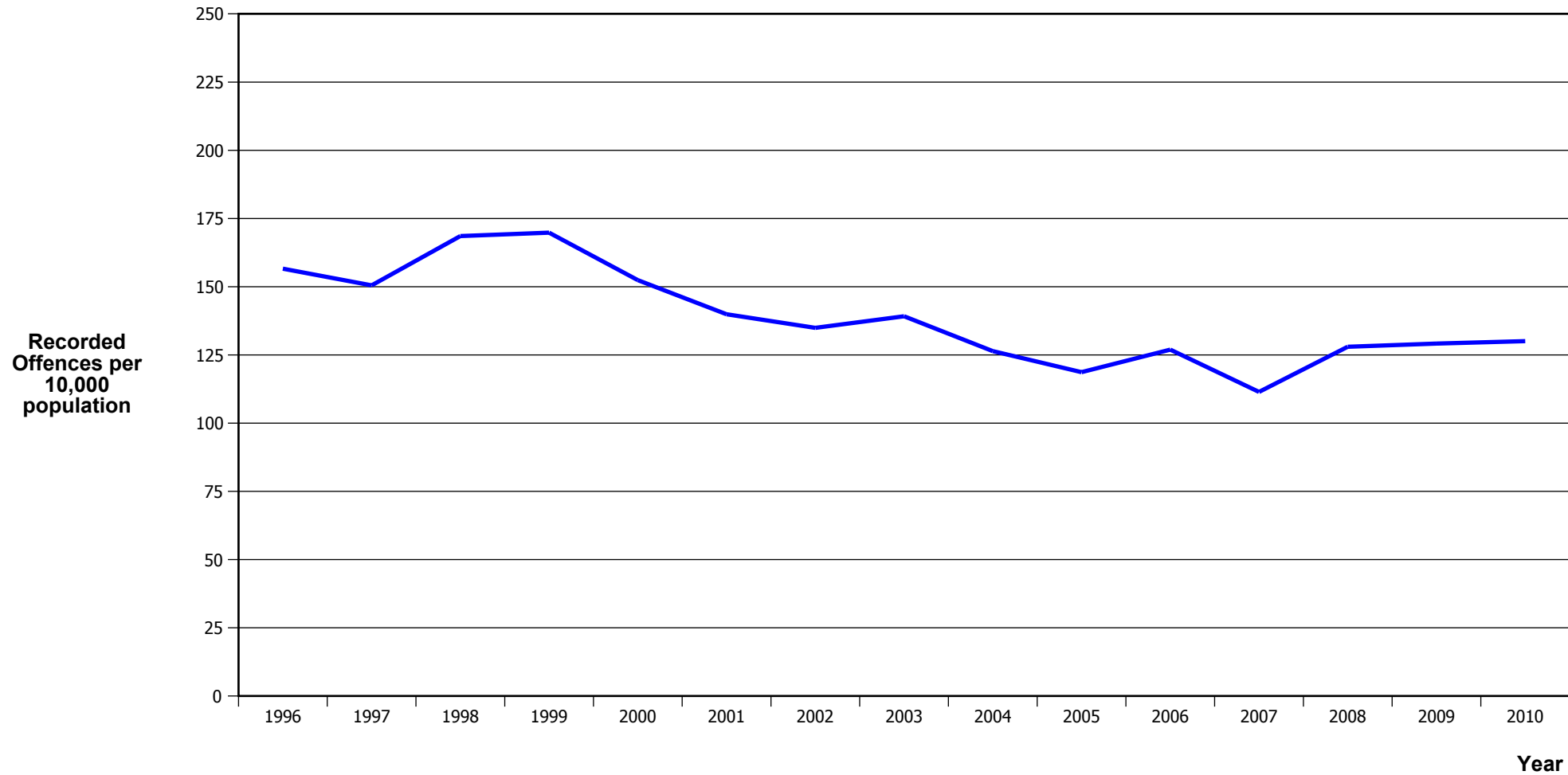
Calendar Year	1996	1997	1998	1999	2000	2001	2002	2003	2004	2005	2006	2007	2008	2009	2010
Recorded Offences	1,032	1,074	1,069	1,046	1,044	1,064	988	1,011	1,231	1,217	1,281	1,323	1,398	1,428	1,453
Recorded per 10,000 Population	21.7	22.4	22.1	21.5	21.4	21.6	19.8	19.8	23.7	23.1	24.0	24.4	25.5	25.8	25.9

ROBBERY



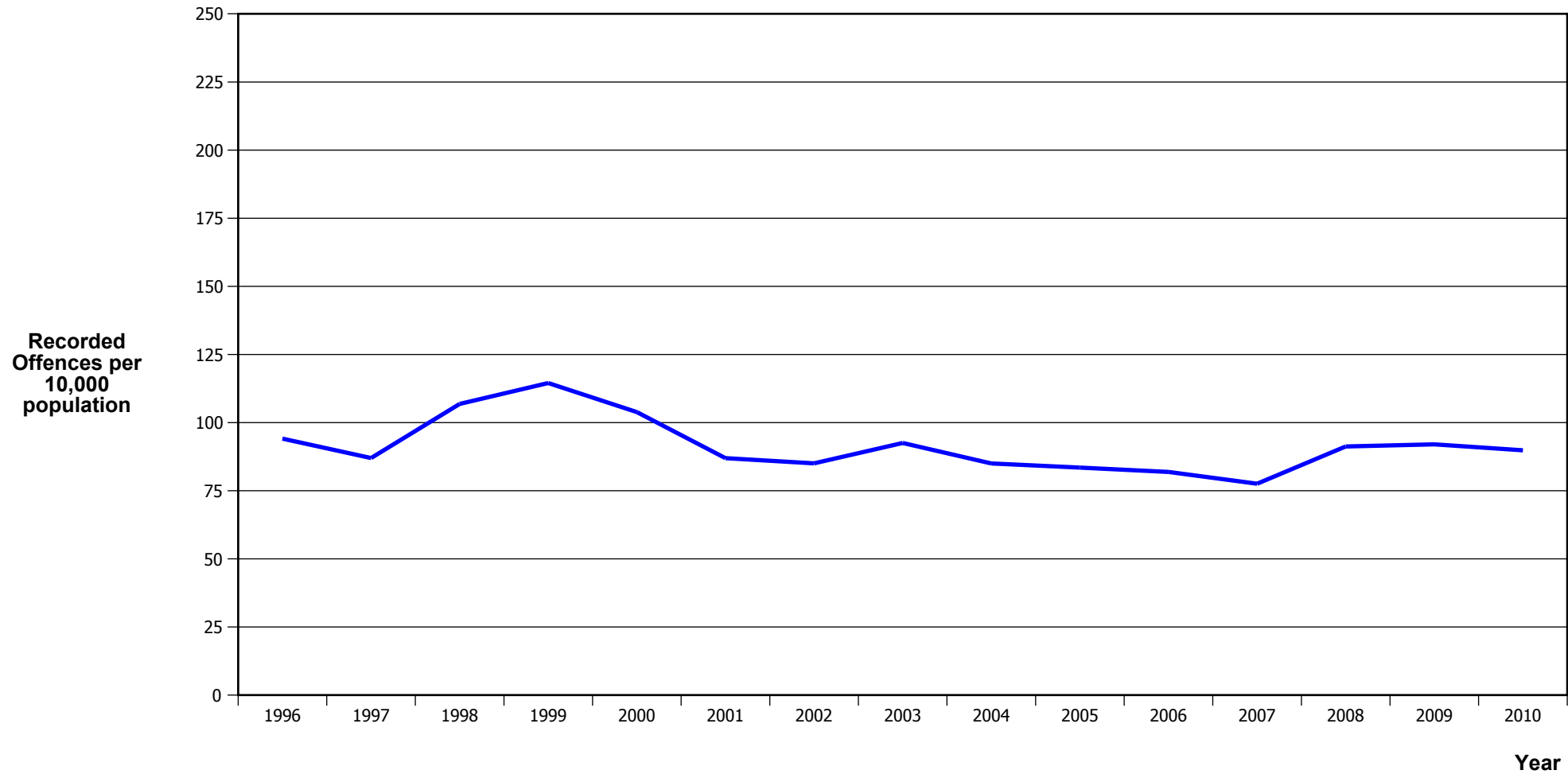
Calendar Year	1996	1997	1998	1999	2000	2001	2002	2003	2004	2005	2006	2007	2008	2009	2010
Recorded Offences	180	247	257	187	243	223	236	223	212	283	281	232	239	252	233
Recorded per 10,000 Population	3.8	5.1	5.3	3.8	5.0	4.5	4.7	4.4	4.1	5.4	5.3	4.3	4.4	4.6	4.2

BURGLARY (TOTAL)



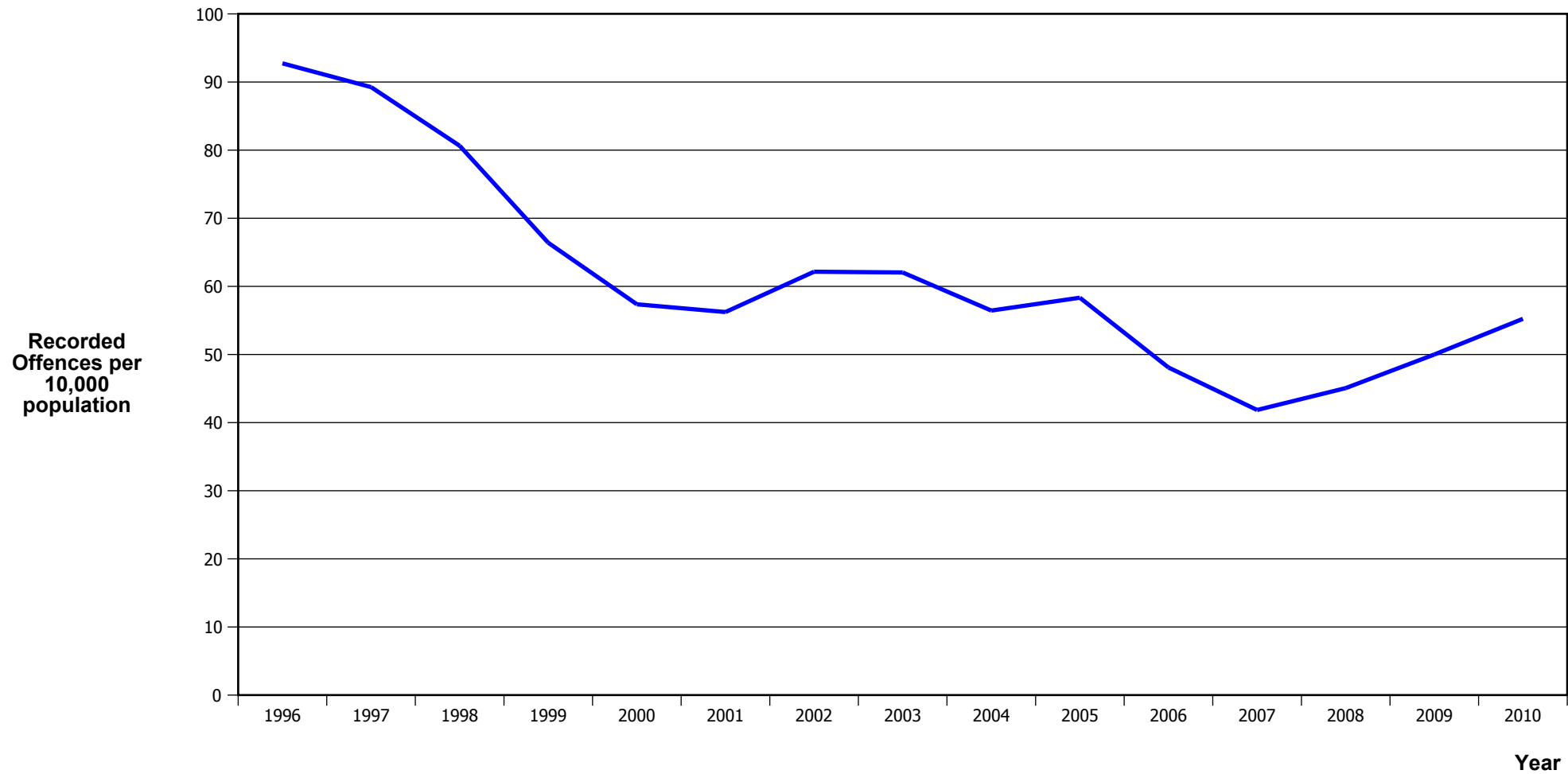
Calendar Year	1996	1997	1998	1999	2000	2001	2002	2003	2004	2005	2006	2007	2008	2009	2010
Recorded Offences	7,439	7,227	8,151	8,250	7,445	6,877	6,745	7,100	6,565	6,251	6,789	6,034	7,006	7,153	7,287
Recorded per 10,000 Population	156.6	150.5	168.6	169.8	152.4	139.9	134.9	139.2	126.4	118.7	126.9	111.4	128.0	129.2	130.1

BURGLARY (DWELLING)



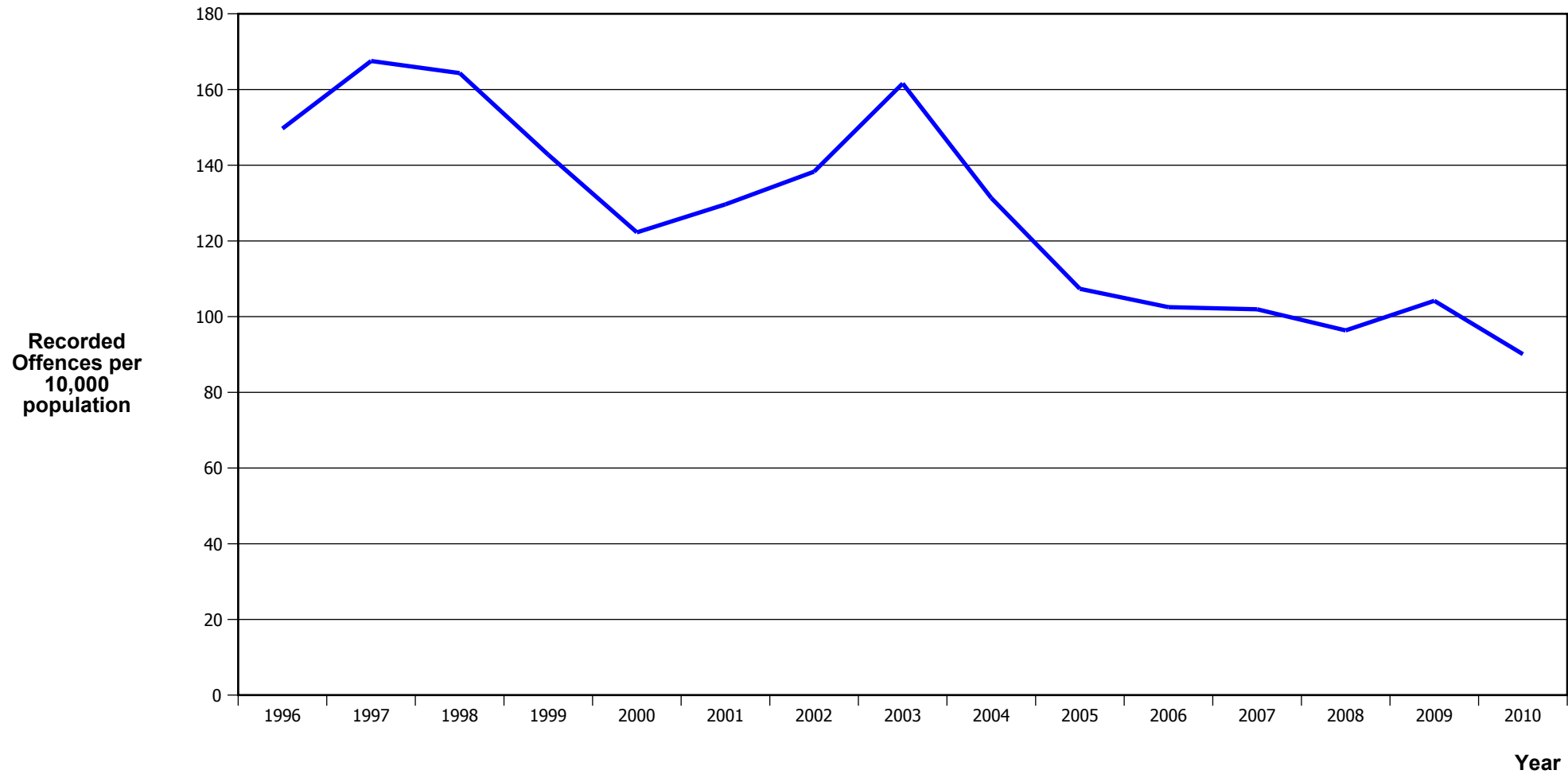
Calendar Year	1996	1997	1998	1999	2000	2001	2002	2003	2004	2005	2006	2007	2008	2009	2010
Recorded Offences	4,471	4,178	5,166	5,564	5,073	4,275	4,253	4,720	4,416	4,397	4,381	4,200	4,994	5,096	5,033
Recorded per 10,000 Population	94.1	87.0	106.8	114.5	103.9	87.0	85.1	92.5	85.0	83.5	81.9	77.6	91.2	92.0	89.8

VEHICLES STOLEN



Calendar Year	1996	1997	1998	1999	2000	2001	2002	2003	2004	2005	2006	2007	2008	2009	2010
Recorded Offences	4,405	4,285	3,899	3,226	2,802	2,764	3,107	3,165	2,932	3,072	2,572	2,266	2,467	2,769	3,095
Recorded per 10,000 Population	92.7	89.2	80.6	66.4	57.4	56.2	62.1	62.0	56.5	58.3	48.1	41.9	45.1	50.0	55.2

THEFT EX CAR



Calendar Year	1996	1997	1998	1999	2000	2001	2002	2003	2004	2005	2006	2007	2008	2009	2010
Recorded Offences	7,110	8,044	7,946	6,937	5,972	6,373	6,915	8,245	6,821	5,653	5,482	5,520	5,275	5,770	5,047
Recorded per 10,000 Population	149.7	167.5	164.3	142.8	122.3	129.7	138.3	161.6	131.3	107.3	102.5	102.0	96.4	104.2	90.1

Population Data

Population data is used in this release to calculate crime rates. They have been derived from population estimates as at 30 June each year that have been obtained from Statistics New Zealand.

The estimated resident population is based on the census usually resident population count, with adjustments for residents missed or counted more than once by the census (net census undercount), and for residents temporarily overseas on census night.

These population estimates exclude the number of international students who are studying in New Zealand for less than 12 months.

Year	Population
1996	475,010
1997	480,150
1998	483,500
1999	485,860
2000	488,440
2001	491,520
2002	499,950
2003	510,210
2004	519,360
2005	526,640
2006	534,840
2007	541,430
2008	547,400
2009	553,780
2010	560,300

General Definitions

Recorded Offences: the number of breaches of the New Zealand law recorded by Police. This includes offences specified in the Crimes Act and other legislations, such as the Summary Offences Act, Local Government Act, etc.

Resolved Offences: the number of recorded offences where an offender has been identified and dealt with (e.g. warned, cautioned, prosecuted, etc).

Resolution Rate: the proportion of recorded offences that have been resolved.

Recorded per 10,000 population: the number of recorded offences for every 10,000 people. This is also referred as the crime rate per 10,000 population.

ASOC: the Australian Standard Offence Classification. The offence classification is divided into 16 major offence divisions.

Definition of ASOC Divisions

1. Homicide and related offences: Unlawfully kill, attempt to unlawfully kill or conspiracy to kill another person.
2. Acts intended to cause injury: Acts, excluding attempted murder and those resulting in death, which are intended to cause non-fatal injury or harm to another person and where there is no sexual or acquisitive element.
3. Sexual assault and related offences: Acts, or intent of acts, of a sexual nature against another person, which are non-consensual or where consent is proscribed.
4. Dangerous or negligent acts endangering persons: Dangerous or negligent acts which, though not intended to cause harm, actually or potentially result in injury to oneself or another person.
5. Abduction, harassment and other offences against person: Acts intended to threaten or harass, or acts that unlawfully deprive another person of their freedom of movement, that are against that person's will or against the will of any parent, guardian or other person having lawful custody or care of that person.
6. Robbery, extortion and related offences: Acts intended to unlawfully gain money, property or other items of value from, or to cause detriment to, another person by using the threat of force or any other coercive measure.
7. Unlawful entry with intent / burglary, break and enter: The unlawful entry of a structure with the intent to commit an offence, where the entry is either forced or unforced.
8. Theft and related and offences: The unlawful taking or obtaining of money or goods, not involving the use of force or violence, coercion or deception, with intent to permanently or temporarily deprive the owner or possessor of the use of the money or goods, or the receiving or handling of money or goods obtained unlawfully.

9. Fraud, deception and related offences: Offences involving a dishonest act or omission carried out with the purpose of deceiving to obtain a benefit.

10. Illicit drug offences: The possessing, selling, dealing or trafficking, importing or exporting, manufacturing or cultivating of drugs or other substances prohibited under legislation.

11. Prohibited and regulated weapons and explosives offences: Offences involving prohibited or regulated weapons and explosives. Those offences also involving assault, sexual assault or robbery are coded to the relevant group within Assault, Sexual assaults and Robbery respectively.

12. Property damage and environmental pollution: The wilful and unlawful destruction, damage or defacement of public or private property, or the pollution of property or a definable entity held in common by the community.

13. Public order offences: Offences relating personal conduct that involves, or may lead to, a breach of public order or decency, or that is indicative of criminal intent, or that is otherwise regulated or prohibited on moral or ethical grounds. In general these offences do not involve a specific victim or victims; however some offences, such as offensive language and offensive behaviour, may be directed towards a single victim.

14. Traffic and vehicle regulatory offences: Offences relating to vehicles and most forms of traffic, including offences pertaining to the licensing, registration, roadworthiness, or use of vehicles, bicycle offences and pedestrian offences.

15. Offences against justice procedures, government security and government operations: An act or omission that is deemed to be prejudicial to the effective carrying out of justice procedures or any government operations. This includes general government operations as well as those specifically concerned with maintaining government security.

16. Miscellaneous offences: Offences involving the breach of statutory rules or regulations governing activities that are prima facie legal, where such offences are not explicitly dealt with under any other division. If an offence is specified under regulation and involves an act that would be illegal under common law or general criminal legislation, the offence is dealt with under the appropriate generic group.