

# **AUCKLAND CITY DISTRICT CRIME STATISTICS 2014**



**A Summary of  
Recorded and Resolved Offence  
Statistics**

**POLICE NATIONAL HEADQUARTERS  
April 2015**

ISSN 1178 - 1556

**Table of Contents:**

<b>Topic</b>	<b>Page</b>
Report Notes	1
District Summary of Recorded and Resolved Crime, by Division	2-4
Proportions of Recorded Crime by Division	5
Summary of District Recorded Offences, Rate per 10,000 Population and Resolved Offences, by Area	6
Summary of Area Recorded Offences, Rate per 10,000 Population and Resolved Offences, by Division	7-9
Crime Trends	10
Total Crime	11
Murder	12
Serious Assaults Resulting in Injury	13
Sexual Assaults	14
Public Place Assaults	15
Dwelling Assaults	16
Robbery	17
Burglary (Total)	18
Burglary (Dwelling)	19
Vehicles Stolen	20
Theft Ex Car	21
Population Data	22
General Definitions	23-24

## **REPORT NOTES:**

Statistics reported in this document are derived from the Police National Intelligence Application (NIA). These Official Statistics for Recorded and Resolved Offences present a snapshot of data in NIA relating to offences that occur within a given year, as at the date 14 days following the end of that year.

Unless the matter is minor where Police attendance is sufficient, a matter that is reported to or discovered by Police where Police believe an offence is likely to have been committed is counted as a recorded offence.

A recorded offence is counted as resolved when Police apprehend an offender and decide how to deal with him/her. (E.g. warn, prosecute, etc.)

Resolution rate is the percentage of recorded offences that are resolved within 14 days of the end of the year being reported on.

If an offence is resolved 15 days or more after the end of the year it will not appear in the Official Crime Statistics for that or any other year. Resolution Rate therefore undercounts the number of cases that Police have resolved. This phenomenon has a more marked impact for some types of offences than others, such as offences that require long investigations (E.g. many serial crimes, burglaries and murders).

Several offences have been reclassified into different ANZSOC groups. This has resulted in changes to subtotals for Groups and Sub-divisions within Divisions 10, 15 and 16, compared to previously reported data. Generally, this occurred within the same Division.

Note that the Population Estimates have been revised for 2007 to 2013 as a result of the 2013 Census. In previous reports population estimates were based on the 2006 Census. Crime rates reported in this report for those years may differ from those previously reported as a result.

When comparing 2014 Statistics with previous years, the reader should also refer to "Report Notes" published in previous years' reports, as previous changes significantly affect year on year trends.

# SUMMARY OF DISTRICT RECORDED AND RESOLVED CRIME, BY DIVISION

## Years ending 31 December

### HOMICIDE AND RELATED OFFENCES

ASOC Subdivision Description	Recorded 2012	Recorded 2013	Recorded 2014	Variance 2012-2013	Variance 2013-2014	Resolved 2012	Resolved 2013	Resolved 2014	Resolution Rate 2012	Resolution Rate 2013	Resolution Rate 2014
ATTEMPTED MURDER	0	0	1	0.0 %	0.0 %	0	0	1	0.0 %	0.0 %	100.0 %
HOMICIDE AND RELATED OFFENCES NOT FURTHER DEFINED	0	0	1	0.0 %	0.0 %	0	0	0	0.0 %	0.0 %	0.0 %
MANSLAUGHTER AND DRIVING CAUSING DEATH	2	2	0	0.0 %	-100.0 %	2	2	0	100.0 %	100.0 %	0.0 %
MURDER	2	4	5	100.0 %	25.0 %	2	4	5	100.0 %	100.0 %	100.0 %
	4	6	7	50.0 %	16.7 %	4	6	6	100.0 %	100.0 %	85.7 %

### ACTS INTENDED TO CAUSE INJURY

ASOC Subdivision Description	Recorded 2012	Recorded 2013	Recorded 2014	Variance 2012-2013	Variance 2013-2014	Resolved 2012	Resolved 2013	Resolved 2014	Resolution Rate 2012	Resolution Rate 2013	Resolution Rate 2014
ASSAULT	3,475	3,289	3,131	-5.4 %	-4.8 %	2,467	2,280	2,024	71.0 %	69.3 %	64.6 %
OTHER ACTS INTENDED TO CAUSE INJURY	1	5	4	400.0 %	-20.0 %	1	5	1	100.0 %	100.0 %	25.0 %
	3,476	3,294	3,135	-5.2 %	-4.8 %	2,468	2,285	2,025	71.0 %	69.4 %	64.6 %

### SEXUAL ASSAULT AND RELATED OFFENCES

ASOC Subdivision Description	Recorded 2012	Recorded 2013	Recorded 2014	Variance 2012-2013	Variance 2013-2014	Resolved 2012	Resolved 2013	Resolved 2014	Resolution Rate 2012	Resolution Rate 2013	Resolution Rate 2014
NON-ASSAULTIVE SEXUAL OFFENCES	12	32	40	166.7 %	25.0 %	6	27	25	50.0 %	84.4 %	62.5 %
SEXUAL ASSAULT	278	340	339	22.3 %	-0.3 %	156	167	141	56.1 %	49.1 %	41.6 %
	290	372	379	28.3 %	1.9 %	162	194	166	55.9 %	52.2 %	43.8 %

### DANGEROUS OR NEGLIGENT ACTS ENDANGERING PERSONS

ASOC Subdivision Description	Recorded 2012	Recorded 2013	Recorded 2014	Variance 2012-2013	Variance 2013-2014	Resolved 2012	Resolved 2013	Resolved 2014	Resolution Rate 2012	Resolution Rate 2013	Resolution Rate 2014
OTHER DANGEROUS OR NEGLIGENT ACTS ENDANGERING PERSONS	123	65	63	-47.2 %	-3.1 %	84	38	43	68.3 %	58.5 %	68.3 %
	123	65	63	-47.2 %	-3.1 %	84	38	43	68.3 %	58.5 %	68.3 %

### ABDUCTION, HARASSMENT AND OTHER RELATED OFFENCES AGAINST A PERSON

ASOC Subdivision Description	Recorded 2012	Recorded 2013	Recorded 2014	Variance 2012-2013	Variance 2013-2014	Resolved 2012	Resolved 2013	Resolved 2014	Resolution Rate 2012	Resolution Rate 2013	Resolution Rate 2014
ABDUCTION AND KIDNAPPING	17	24	23	41.2 %	-4.2 %	7	10	16	41.2 %	41.7 %	69.6 %
DEPRIVATION OF LIBERTY/FALSE IMPRISONMENT	0	0	0	0.0 %	0.0 %	0	0	0	0.0 %	0.0 %	0.0 %
HARASSMENT AND THREATENING BEHAVIOUR	1,094	1,167	1,212	6.7 %	3.9 %	632	593	575	57.8 %	50.8 %	47.4 %
	1,111	1,191	1,235	7.2 %	3.7 %	639	603	591	57.5 %	50.6 %	47.9 %

### ROBBERY, EXTORTION AND RELATED OFFENCES

ASOC Subdivision Description	Recorded 2012	Recorded 2013	Recorded 2014	Variance 2012-2013	Variance 2013-2014	Resolved 2012	Resolved 2013	Resolved 2014	Resolution Rate 2012	Resolution Rate 2013	Resolution Rate 2014
BLACKMAIL AND EXTORTION	19	21	24	10.5 %	14.3 %	6	7	4	31.6 %	33.3 %	16.7 %
ROBBERY	457	445	403	-2.6 %	-9.4 %	121	109	152	26.5 %	24.5 %	37.7 %
	476	466	427	-2.1 %	-8.4 %	127	116	156	26.7 %	24.9 %	36.5 %

### UNLAWFUL ENTRY WITH INTENT/BURGLARY, BREAK AND ENTER

ASOC Subdivision Description	Recorded 2012	Recorded 2013	Recorded 2014	Variance 2012-2013	Variance 2013-2014	Resolved 2012	Resolved 2013	Resolved 2014	Resolution Rate 2012	Resolution Rate 2013	Resolution Rate 2014
UNLAWFUL ENTRY WITH INTENT/BURGLARY, BREAK AND ENTER	7,334	6,316	7,269	-13.9 %	15.1 %	575	478	447	7.8 %	7.6 %	6.1 %
	7,334	6,316	7,269	-13.9 %	15.1 %	575	478	447	7.8 %	7.6 %	6.1 %

**SUMMARY OF DISTRICT RECORDED AND RESOLVED CRIME, BY DIVISION**  
**Years ending 31 December**

**THEFT AND RELATED OFFENCES**

ASOC Subdivision Description	Recorded 2012	Recorded 2013	Recorded 2014	Variance 2012-2013	Variance 2013-2014	Resolved 2012	Resolved 2013	Resolved 2014	Resolution Rate 2012	Resolution Rate 2013	Resolution Rate 2014
ILLEGAL USE OF PROPERTY (EXCEPT MOTOR VEHICLES)	263	455	470	73.0 %	3.3 %	6	19	14	2.3 %	4.2 %	3.0 %
MOTOR VEHICLE THEFT AND RELATED OFFENCES	11,274	9,985	10,323	-11.4 %	3.4 %	824	799	613	7.3 %	8.0 %	5.9 %
RECEIVE OR HANDLE PROCEEDS OF CRIME	397	347	344	-12.6 %	-0.9 %	390	331	332	98.2 %	95.4 %	96.5 %
THEFT (EXCEPT MOTOR VEHICLES)	9,459	9,170	8,166	-3.1 %	-10.9 %	1,507	1,563	1,489	15.9 %	17.0 %	18.2 %
	<b>21,393</b>	<b>19,957</b>	<b>19,303</b>	<b>-6.7 %</b>	<b>-3.3 %</b>	<b>2,727</b>	<b>2,712</b>	<b>2,448</b>	<b>12.7 %</b>	<b>13.6 %</b>	<b>12.7 %</b>

**FRAUD, DECEPTION AND RELATED OFFENCES**

ASOC Subdivision Description	Recorded 2012	Recorded 2013	Recorded 2014	Variance 2012-2013	Variance 2013-2014	Resolved 2012	Resolved 2013	Resolved 2014	Resolution Rate 2012	Resolution Rate 2013	Resolution Rate 2014
DECEPTIVE BUSINESS/GOVERNMENT PRACTICES	4	4	3	0.0 %	-25.0 %	4	2	0	100.0 %	50.0 %	0.0 %
FORGERY AND COUNTERFEITING	61	88	88	44.3 %	0.0 %	19	55	44	31.1 %	62.5 %	50.0 %
OBTAIN BENEFIT BY DECEPTION	878	831	996	-5.4 %	19.9 %	328	300	410	37.4 %	36.1 %	41.2 %
OTHER FRAUD AND DECEPTION OFFENCES	50	121	118	142.0 %	-2.5 %	11	20	16	22.0 %	16.5 %	13.6 %
	<b>993</b>	<b>1,044</b>	<b>1,205</b>	<b>5.1 %</b>	<b>15.4 %</b>	<b>362</b>	<b>377</b>	<b>470</b>	<b>36.5 %</b>	<b>36.1 %</b>	<b>39.0 %</b>

**ILLICIT DRUG OFFENCES**

ASOC Subdivision Description	Recorded 2012	Recorded 2013	Recorded 2014	Variance 2012-2013	Variance 2013-2014	Resolved 2012	Resolved 2013	Resolved 2014	Resolution Rate 2012	Resolution Rate 2013	Resolution Rate 2014
DEAL OR TRAFFIC IN ILLICIT DRUGS	173	403	193	132.9 %	-52.1 %	158	376	182	91.3 %	93.3 %	94.3 %
IMPORT OR EXPORT ILLICIT DRUGS	14	10	12	-28.6 %	20.0 %	11	6	9	78.6 %	60.0 %	75.0 %
MANUFACTURE OR CULTIVATE ILLICIT DRUGS	100	61	68	-39.0 %	11.5 %	86	46	58	86.0 %	75.4 %	85.3 %
OTHER ILLICIT DRUG OFFENCES	510	384	443	-24.7 %	15.4 %	500	374	432	98.0 %	97.4 %	97.5 %
POSSESS AND/OR USE ILLICIT DRUGS	810	605	722	-25.3 %	19.3 %	793	574	684	97.9 %	94.9 %	94.7 %
	<b>1,607</b>	<b>1,463</b>	<b>1,438</b>	<b>-9.0 %</b>	<b>-1.7 %</b>	<b>1,548</b>	<b>1,376</b>	<b>1,365</b>	<b>96.3 %</b>	<b>94.1 %</b>	<b>94.9 %</b>

**PROHIBITED AND REGULATED WEAPONS AND EXPLOSIVES OFFENCES**

ASOC Subdivision Description	Recorded 2012	Recorded 2013	Recorded 2014	Variance 2012-2013	Variance 2013-2014	Resolved 2012	Resolved 2013	Resolved 2014	Resolution Rate 2012	Resolution Rate 2013	Resolution Rate 2014
REGULATED WEAPONS/EXPLOSIVES OFFENCES	463	421	463	-9.1 %	10.0 %	429	384	418	92.7 %	91.2 %	90.3 %
	<b>463</b>	<b>421</b>	<b>463</b>	<b>-9.1 %</b>	<b>10.0 %</b>	<b>429</b>	<b>384</b>	<b>418</b>	<b>92.7 %</b>	<b>91.2 %</b>	<b>90.3 %</b>

**PROPERTY DAMAGE AND ENVIRONMENTAL POLLUTION**

ASOC Subdivision Description	Recorded 2012	Recorded 2013	Recorded 2014	Variance 2012-2013	Variance 2013-2014	Resolved 2012	Resolved 2013	Resolved 2014	Resolution Rate 2012	Resolution Rate 2013	Resolution Rate 2014
ENVIRONMENTAL POLLUTION	9	5	7	-44.4 %	40.0 %	3	4	3	33.3 %	80.0 %	42.9 %
PROPERTY DAMAGE	4,246	4,152	3,287	-2.2 %	-20.8 %	1,117	992	700	26.3 %	23.9 %	21.3 %
	<b>4,255</b>	<b>4,157</b>	<b>3,294</b>	<b>-2.3 %</b>	<b>-20.8 %</b>	<b>1,120</b>	<b>996</b>	<b>703</b>	<b>26.3 %</b>	<b>24.0 %</b>	<b>21.3 %</b>

**PUBLIC ORDER OFFENCES**

ASOC Subdivision Description	Recorded 2012	Recorded 2013	Recorded 2014	Variance 2012-2013	Variance 2013-2014	Resolved 2012	Resolved 2013	Resolved 2014	Resolution Rate 2012	Resolution Rate 2013	Resolution Rate 2014
DISORDERLY CONDUCT	2,630	2,284	2,227	-13.2 %	-2.5 %	2,332	1,950	1,867	88.7 %	85.4 %	83.8 %
OFFENSIVE CONDUCT	85	90	71	5.9 %	-21.1 %	58	65	42	68.2 %	72.2 %	59.2 %
PUBLIC ORDER OFFENCES NOT FURTHER DEFINED	0	0	0	0.0 %	0.0 %	0	0	0	0.0 %	0.0 %	0.0 %
REGULATED PUBLIC ORDER OFFENCES	2,926	1,349	242	-53.9 %	-82.1 %	2,816	1,270	153	96.2 %	94.1 %	63.2 %
	<b>5,641</b>	<b>3,723</b>	<b>2,540</b>	<b>-34.0 %</b>	<b>-31.8 %</b>	<b>5,206</b>	<b>3,285</b>	<b>2,062</b>	<b>92.3 %</b>	<b>88.2 %</b>	<b>81.2 %</b>

**SUMMARY OF DISTRICT RECORDED AND RESOLVED CRIME, BY DIVISION**  
**Years ending 31 December**

**OFFENCES AGAINST JUSTICE PROCEDURES, GOVERNMENT SECURITY AND GOVERNMENT OPERATIONS**

ASOC Subdivision Description	Recorded 2012	Recorded 2013	Recorded 2014	Variance 2012-2013	Variance 2013-2014	Resolved 2012	Resolved 2013	Resolved 2014	Resolution Rate 2012	Resolution Rate 2013	Resolution Rate 2014
BREACH OF COMMUNITY-BASED ORDER	202	312	678	54.5 %	117.3 %	197	289	670	97.5 %	92.6 %	98.8 %
BREACH OF CUSTODIAL ORDER OFFENCES	53	36	52	-32.1 %	44.4 %	49	32	46	92.5 %	88.9 %	88.5 %
BREACH OF VIOLENCE AND NON-VIOLENCE RESTRAINING ORDERS	254	291	247	14.6 %	-15.1 %	220	254	207	86.6 %	87.3 %	83.8 %
OFFENCES AGAINST GOVERNMENT OPERATIONS	23	7	29	-69.6 %	314.3 %	13	2	4	56.5 %	28.6 %	13.8 %
OFFENCES AGAINST GOVERNMENT SECURITY	0	1	0	0.0 %	-100.0 %	0	0	0	0.0 %	0.0 %	0.0 %
OFFENCES AGAINST JUSTICE PROCEDURES	713	517	428	-27.5 %	-17.2 %	704	511	416	98.7 %	98.8 %	97.2 %
OFFENCES AGAINST JUSTICE PROCEDURES, GOVERNMENT SECURITY AND GOVERNMENT OPERATIONS NOT FURTHER DEFINED	1	0	0	-100.0 %	0.0 %	1	0	0	100.0 %	0.0 %	0.0 %
	<b>1,246</b>	<b>1,164</b>	<b>1,434</b>	<b>-6.6 %</b>	<b>23.2 %</b>	<b>1,184</b>	<b>1,088</b>	<b>1,343</b>	<b>95.0 %</b>	<b>93.5 %</b>	<b>93.7 %</b>

**MISCELLANEOUS OFFENCES**

ASOC Subdivision Description	Recorded 2012	Recorded 2013	Recorded 2014	Variance 2012-2013	Variance 2013-2014	Resolved 2012	Resolved 2013	Resolved 2014	Resolution Rate 2012	Resolution Rate 2013	Resolution Rate 2014
COMMERCIAL/INDUSTRY/FINANCIAL REGULATION	0	2	3	0.0 %	50.0 %	0	2	2	0.0 %	100.0 %	66.7 %
DEFAMATION, LIBEL AND PRIVACY OFFENCES	10	7	5	-30.0 %	-28.6 %	3	2	1	30.0 %	28.6 %	20.0 %
OTHER MISCELLANEOUS OFFENCES	62	57	61	-8.1 %	7.0 %	48	27	31	77.4 %	47.4 %	50.8 %
PUBLIC HEALTH AND SAFETY OFFENCES	38	29	36	-23.7 %	24.1 %	25	26	29	65.8 %	89.7 %	80.6 %
	<b>110</b>	<b>95</b>	<b>105</b>	<b>-13.6 %</b>	<b>10.5 %</b>	<b>76</b>	<b>57</b>	<b>63</b>	<b>69.1 %</b>	<b>60.0 %</b>	<b>60.0 %</b>

<b>TOTAL</b>	<b>48,522</b>	<b>43,734</b>	<b>42,297</b>	<b>-9.9 %</b>	<b>-3.3 %</b>	<b>16,711</b>	<b>13,995</b>	<b>12,306</b>	<b>34.4 %</b>	<b>32.0 %</b>	<b>29.1 %</b>
--------------	---------------	---------------	---------------	---------------	---------------	---------------	---------------	---------------	---------------	---------------	---------------

# PROPORTIONS OF RECORDED CRIME BY DIVISION

Years ending 31 December

ASOC Division Description	Proportions Recorded 2012	Recorded 2012	Proportions Recorded 2013	Recorded 2013	Proportions Recorded 2014	Recorded 2014
HOMICIDE AND RELATED OFFENCES	0.01 %	4	0.01 %	6	0.02 %	7
ACTS INTENDED TO CAUSE INJURY	7.16 %	3,476	7.53 %	3,294	7.41 %	3,135
SEXUAL ASSAULT AND RELATED OFFENCES	0.60 %	290	0.85 %	372	0.90 %	379
DANGEROUS OR NEGLIGENT ACTS ENDANGERING PERSONS	0.25 %	123	0.15 %	65	0.15 %	63
ABDUCTION, HARASSMENT AND OTHER RELATED OFFENCES AGAINST A PERSON	2.29 %	1,111	2.72 %	1,191	2.92 %	1,235
ROBBERY, EXTORTION AND RELATED OFFENCES	0.98 %	476	1.07 %	466	1.01 %	427
UNLAWFUL ENTRY WITH INTENT/BURGLARY, BREAK AND ENTER	15.11 %	7,334	14.44 %	6,316	17.19 %	7,269
THEFT AND RELATED OFFENCES	44.09 %	21,393	45.63 %	19,957	45.64 %	19,303
FRAUD, DECEPTION AND RELATED OFFENCES	2.05 %	993	2.39 %	1,044	2.85 %	1,205
ILLICIT DRUG OFFENCES	3.31 %	1,607	3.35 %	1,463	3.40 %	1,438
PROHIBITED AND REGULATED WEAPONS AND EXPLOSIVES OFFENCES	0.95 %	463	0.96 %	421	1.09 %	463
PROPERTY DAMAGE AND ENVIRONMENTAL POLLUTION	8.77 %	4,255	9.51 %	4,157	7.79 %	3,294
PUBLIC ORDER OFFENCES	11.63 %	5,641	8.51 %	3,723	6.01 %	2,540
OFFENCES AGAINST JUSTICE PROCEDURES, GOVERNMENT SECURITY AND GOVERNMENT OPERATIONS	2.57 %	1,246	2.66 %	1,164	3.39 %	1,434
MISCELLANEOUS OFFENCES	0.23 %	110	0.22 %	95	0.25 %	105
	<b>100.00 %</b>	<b>48,522</b>	<b>100.00 %</b>	<b>43,734</b>	<b>100.00 %</b>	<b>42,297</b>

**SUMMARY OF RECORDED OFFENCES, RATE PER 10,000 POPULATION AND RESOLVED OFFENCES, BY AREA**  
**years ending 31 December**

**TOTAL CRIME**

<b>Area Description</b>	<b>Recorded 2013</b>	<b>Recorded 2014</b>	<b>Variance 2013-2014</b>	<b>Recorded per 10,000 pop 2013</b>	<b>Recorded per 10,000 pop 2014</b>	<b>Per 10,000 pop % Variance 2013 to 2014</b>	<b>Resolved 2013</b>	<b>Resolved 2014</b>	<b>Resolution Rate 2013</b>	<b>Resolution Rate 2014</b>
Auckland Central Area	14,777	12,384	-16.2 %	2,492.3	1,975.7	-20.7 %	5,939	4,766	40.2 %	38.5 %
Auckland East Area	14,362	15,236	6.1 %	781.4	816.5	4.5 %	3,834	4,127	26.7 %	27.1 %
Auckland West Area	14,595	14,677	0.6 %	737.1	723.0	-1.9 %	4,222	3,413	28.9 %	23.3 %
	<b>43,734</b>	<b>42,297</b>	<b>-3.3 %</b>	<b>991.5</b>	<b>935.2</b>	<b>-5.7 %</b>	<b>13,995</b>	<b>12,306</b>	<b>32.0 %</b>	<b>29.1 %</b>



# SUMMARY OF RECORDED OFFENCES, RATE PER 10,000 POPULATION AND RESOLVED OFFENCES, BY DIVISION

Years ending 31 December

## HOMICIDE AND RELATED OFFENCES

Area Description	Recorded 2013	Recorded 2014	Variance 2013-2014	Recorded per 10,000 pop 2013	Recorded per 10,000 pop 2014	Per 10,000 pop % Variance 2013 to 2014	Resolved 2013	Resolved 2014	Resolution Rate 2013	Resolution Rate 2014
Auckland Central Area	3	1	-66.7 %	0.5	0.2	-68.5 %	3	0	100.0 %	0.0 %
Auckland East Area	1	3	200.0 %	0.1	0.2	195.5 %	1	3	100.0 %	100.0 %
Auckland West Area	2	3	50.0 %	0.1	0.1	46.3 %	2	3	100.0 %	100.0 %
	<b>6</b>	<b>7</b>	<b>16.7 %</b>	<b>0.1</b>	<b>0.2</b>	<b>13.8 %</b>	<b>6</b>	<b>6</b>	<b>100.0 %</b>	<b>85.7 %</b>

## ACTS INTENDED TO CAUSE INJURY

Area Description	Recorded 2013	Recorded 2014	Variance 2013-2014	Recorded per 10,000 pop 2013	Recorded per 10,000 pop 2014	Per 10,000 pop % Variance 2013 to 2014	Resolved 2013	Resolved 2014	Resolution Rate 2013	Resolution Rate 2014
Auckland Central Area	1,207	1,136	-5.9 %	203.6	181.2	-11.0 %	699	627	57.9 %	55.2 %
Auckland East Area	1,022	1,012	-1.0 %	55.6	54.2	-2.5 %	748	704	73.2 %	69.6 %
Auckland West Area	1,065	987	-7.3 %	53.8	48.6	-9.6 %	838	694	78.7 %	70.3 %
	<b>3,294</b>	<b>3,135</b>	<b>-4.8 %</b>	<b>74.7</b>	<b>69.3</b>	<b>-7.2 %</b>	<b>2,285</b>	<b>2,025</b>	<b>69.4 %</b>	<b>64.6 %</b>

## SEXUAL ASSAULT AND RELATED OFFENCES

Area Description	Recorded 2013	Recorded 2014	Variance 2013-2014	Recorded per 10,000 pop 2013	Recorded per 10,000 pop 2014	Per 10,000 pop % Variance 2013 to 2014	Resolved 2013	Resolved 2014	Resolution Rate 2013	Resolution Rate 2014
Auckland Central Area	126	145	15.1 %	21.3	23.1	8.9 %	62	65	49.2 %	44.8 %
Auckland East Area	95	104	9.5 %	5.2	5.6	7.8 %	49	42	51.6 %	40.4 %
Auckland West Area	151	130	-13.9 %	7.6	6.4	-16.0 %	83	59	55.0 %	45.4 %
	<b>372</b>	<b>379</b>	<b>1.9 %</b>	<b>8.4</b>	<b>8.4</b>	<b>-0.6 %</b>	<b>194</b>	<b>166</b>	<b>52.2 %</b>	<b>43.8 %</b>

## DANGEROUS OR NEGLIGENT ACTS ENDANGERING PERSONS

Area Description	Recorded 2013	Recorded 2014	Variance 2013-2014	Recorded per 10,000 pop 2013	Recorded per 10,000 pop 2014	Per 10,000 pop % Variance 2013 to 2014	Resolved 2013	Resolved 2014	Resolution Rate 2013	Resolution Rate 2014
Auckland Central Area	21	14	-33.3 %	3.5	2.2	-36.9 %	11	8	52.4 %	57.1 %
Auckland East Area	29	30	3.4 %	1.6	1.6	1.9 %	18	24	62.1 %	80.0 %
Auckland West Area	15	19	26.7 %	0.8	0.9	23.5 %	9	11	60.0 %	57.9 %
	<b>65</b>	<b>63</b>	<b>-3.1 %</b>	<b>1.5</b>	<b>1.4</b>	<b>-5.5 %</b>	<b>38</b>	<b>43</b>	<b>58.5 %</b>	<b>68.3 %</b>

## ABDUCTION, HARASSMENT AND OTHER RELATED OFFENCES AGAINST A PERSON

Area Description	Recorded 2013	Recorded 2014	Variance 2013-2014	Recorded per 10,000 pop 2013	Recorded per 10,000 pop 2014	Per 10,000 pop % Variance 2013 to 2014	Resolved 2013	Resolved 2014	Resolution Rate 2013	Resolution Rate 2014
Auckland Central Area	335	388	15.8 %	56.5	61.9	9.6 %	154	155	46.0 %	39.9 %
Auckland East Area	406	420	3.4 %	22.1	22.5	1.9 %	171	197	42.1 %	46.9 %
Auckland West Area	450	427	-5.1 %	22.7	21.0	-7.4 %	278	239	61.8 %	56.0 %
	<b>1,191</b>	<b>1,235</b>	<b>3.7 %</b>	<b>27.0</b>	<b>27.3</b>	<b>1.1 %</b>	<b>603</b>	<b>591</b>	<b>50.6 %</b>	<b>47.9 %</b>

## ROBBERY, EXTORTION AND RELATED OFFENCES

Area Description	Recorded 2013	Recorded 2014	Variance 2013-2014	Recorded per 10,000 pop 2013	Recorded per 10,000 pop 2014	Per 10,000 pop % Variance 2013 to 2014	Resolved 2013	Resolved 2014	Resolution Rate 2013	Resolution Rate 2014
Auckland Central Area	172	124	-27.9 %	29.0	19.8	-31.8 %	44	44	25.6 %	35.5 %
Auckland East Area	139	168	20.9 %	7.6	9.0	19.0 %	27	71	19.4 %	42.3 %
Auckland West Area	155	135	-12.9 %	7.8	6.7	-15.0 %	45	41	29.0 %	30.4 %
	<b>466</b>	<b>427</b>	<b>-8.4 %</b>	<b>10.6</b>	<b>9.4</b>	<b>-10.6 %</b>	<b>116</b>	<b>156</b>	<b>24.9 %</b>	<b>36.5 %</b>

# SUMMARY OF RECORDED OFFENCES, RATE PER 10,000 POPULATION AND RESOLVED OFFENCES, BY DIVISION

Years ending 31 December

## UNLAWFUL ENTRY WITH INTENT/BURGLARY, BREAK AND ENTER

Area Description	Recorded 2013	Recorded 2014	Variance 2013-2014	Recorded per 10,000 pop 2013	Recorded per 10,000 pop 2014	Per 10,000 pop % Variance 2013 to 2014	Resolved 2013	Resolved 2014	Resolution Rate 2013	Resolution Rate 2014
Auckland Central Area	815	903	10.8 %	137.5	144.1	4.8 %	97	100	11.9 %	11.1 %
Auckland East Area	2,642	3,199	21.1 %	143.7	171.4	19.3 %	188	195	7.1 %	6.1 %
Auckland West Area	2,859	3,167	10.8 %	144.4	156.0	8.0 %	193	152	6.8 %	4.8 %
	<b>6,316</b>	<b>7,269</b>	<b>15.1 %</b>	<b>143.2</b>	<b>160.7</b>	<b>12.2 %</b>	<b>478</b>	<b>447</b>	<b>7.6 %</b>	<b>6.1 %</b>

## THEFT AND RELATED OFFENCES

Area Description	Recorded 2013	Recorded 2014	Variance 2013-2014	Recorded per 10,000 pop 2013	Recorded per 10,000 pop 2014	Per 10,000 pop % Variance 2013 to 2014	Resolved 2013	Resolved 2014	Resolution Rate 2013	Resolution Rate 2014
Auckland Central Area	6,953	5,515	-20.7 %	1,172.7	879.9	-25.0 %	966	744	13.9 %	13.5 %
Auckland East Area	6,735	6,987	3.7 %	366.4	374.4	2.2 %	970	1,072	14.4 %	15.3 %
Auckland West Area	6,269	6,801	8.5 %	316.6	335.0	5.8 %	776	632	12.4 %	9.3 %
	<b>19,957</b>	<b>19,303</b>	<b>-3.3 %</b>	<b>452.4</b>	<b>426.8</b>	<b>-5.7 %</b>	<b>2,712</b>	<b>2,448</b>	<b>13.6 %</b>	<b>12.7 %</b>

## FRAUD, DECEPTION AND RELATED OFFENCES

Area Description	Recorded 2013	Recorded 2014	Variance 2013-2014	Recorded per 10,000 pop 2013	Recorded per 10,000 pop 2014	Per 10,000 pop % Variance 2013 to 2014	Resolved 2013	Resolved 2014	Resolution Rate 2013	Resolution Rate 2014
Auckland Central Area	441	439	-0.5 %	74.4	70.0	-5.8 %	158	164	35.8 %	37.4 %
Auckland East Area	339	453	33.6 %	18.4	24.3	31.6 %	125	195	36.9 %	43.0 %
Auckland West Area	264	313	18.6 %	13.3	15.4	15.6 %	94	111	35.6 %	35.5 %
	<b>1,044</b>	<b>1,205</b>	<b>15.4 %</b>	<b>23.7</b>	<b>26.6</b>	<b>12.6 %</b>	<b>377</b>	<b>470</b>	<b>36.1 %</b>	<b>39.0 %</b>

## ILLICIT DRUG OFFENCES

Area Description	Recorded 2013	Recorded 2014	Variance 2013-2014	Recorded per 10,000 pop 2013	Recorded per 10,000 pop 2014	Per 10,000 pop % Variance 2013 to 2014	Resolved 2013	Resolved 2014	Resolution Rate 2013	Resolution Rate 2014
Auckland Central Area	590	704	19.3 %	99.5	112.3	12.9 %	555	654	94.1 %	92.9 %
Auckland East Area	309	447	44.7 %	16.8	24.0	42.5 %	279	432	90.3 %	96.6 %
Auckland West Area	564	287	-49.1 %	28.5	14.1	-50.4 %	542	279	96.1 %	97.2 %
	<b>1,463</b>	<b>1,438</b>	<b>-1.7 %</b>	<b>33.2</b>	<b>31.8</b>	<b>-4.1 %</b>	<b>1,376</b>	<b>1,365</b>	<b>94.1 %</b>	<b>94.9 %</b>

## PROHIBITED AND REGULATED WEAPONS AND EXPLOSIVES OFFENCES

Area Description	Recorded 2013	Recorded 2014	Variance 2013-2014	Recorded per 10,000 pop 2013	Recorded per 10,000 pop 2014	Per 10,000 pop % Variance 2013 to 2014	Resolved 2013	Resolved 2014	Resolution Rate 2013	Resolution Rate 2014
Auckland Central Area	143	191	33.6 %	24.1	30.5	26.3 %	133	181	93.0 %	94.8 %
Auckland East Area	125	155	24.0 %	6.8	8.3	22.1 %	111	130	88.8 %	83.9 %
Auckland West Area	153	117	-23.5 %	7.7	5.8	-25.4 %	140	107	91.5 %	91.5 %
	<b>421</b>	<b>463</b>	<b>10.0 %</b>	<b>9.5</b>	<b>10.2</b>	<b>7.3 %</b>	<b>384</b>	<b>418</b>	<b>91.2 %</b>	<b>90.3 %</b>

## PROPERTY DAMAGE AND ENVIRONMENTAL POLLUTION

Area Description	Recorded 2013	Recorded 2014	Variance 2013-2014	Recorded per 10,000 pop 2013	Recorded per 10,000 pop 2014	Per 10,000 pop % Variance 2013 to 2014	Resolved 2013	Resolved 2014	Resolution Rate 2013	Resolution Rate 2014
Auckland Central Area	987	770	-22.0 %	166.5	122.8	-26.2 %	263	195	26.6 %	25.3 %
Auckland East Area	1,582	1,253	-20.8 %	86.1	67.1	-22.0 %	395	246	25.0 %	19.6 %
Auckland West Area	1,588	1,271	-20.0 %	80.2	62.6	-21.9 %	338	262	21.3 %	20.6 %
	<b>4,157</b>	<b>3,294</b>	<b>-20.8 %</b>	<b>94.2</b>	<b>72.8</b>	<b>-22.7 %</b>	<b>996</b>	<b>703</b>	<b>24.0 %</b>	<b>21.3 %</b>

# SUMMARY OF RECORDED OFFENCES, RATE PER 10,000 POPULATION AND RESOLVED OFFENCES, BY DIVISION

Years ending 31 December

## PUBLIC ORDER OFFENCES

Area Description	Recorded 2013	Recorded 2014	Variance 2013-2014	Recorded per 10,000 pop 2013	Recorded per 10,000 pop 2014	Per 10,000 pop % Variance 2013 to 2014	Resolved 2013	Resolved 2014	Resolution Rate 2013	Resolution Rate 2014
Auckland Central Area	2,439	1,367	-44.0 %	411.4	218.1	-47.0 %	2,289	1,190	93.8 %	87.1 %
Auckland East Area	572	600	4.9 %	31.1	32.2	3.3 %	434	452	75.9 %	75.3 %
Auckland West Area	712	573	-19.5 %	36.0	28.2	-21.5 %	562	420	78.9 %	73.3 %
	<b>3,723</b>	<b>2,540</b>	<b>-31.8 %</b>	<b>84.4</b>	<b>56.2</b>	<b>-33.5 %</b>	<b>3,285</b>	<b>2,062</b>	<b>88.2 %</b>	<b>81.2 %</b>

## OFFENCES AGAINST JUSTICE PROCEDURES, GOVERNMENT SECURITY AND GOVERNMENT OPERATIONS

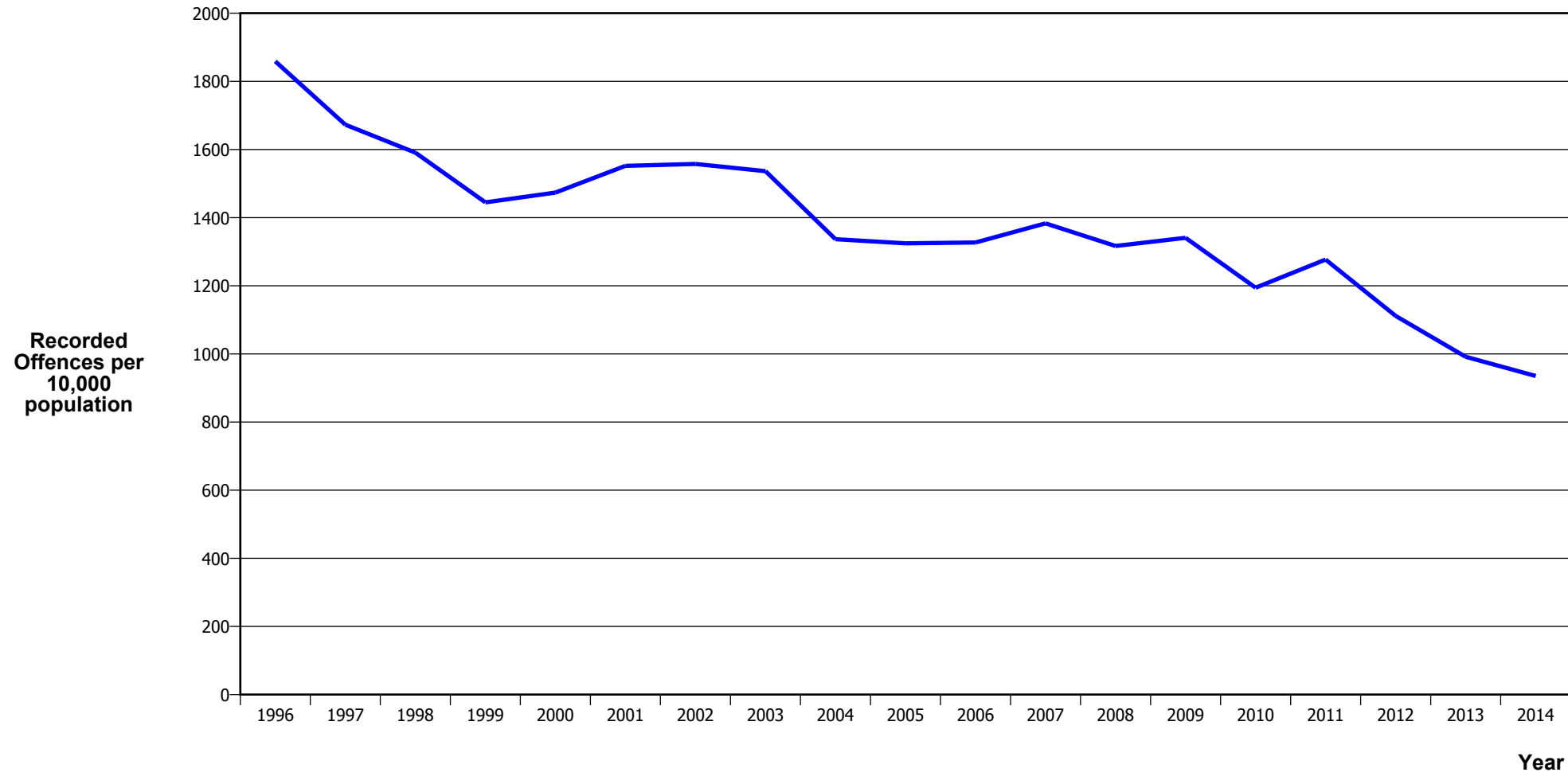
Area Description	Recorded 2013	Recorded 2014	Variance 2013-2014	Recorded per 10,000 pop 2013	Recorded per 10,000 pop 2014	Per 10,000 pop % Variance 2013 to 2014	Resolved 2013	Resolved 2014	Resolution Rate 2013	Resolution Rate 2014
Auckland Central Area	495	621	25.5 %	83.5	99.1	18.7 %	470	597	94.9 %	96.1 %
Auckland East Area	344	390	13.4 %	18.7	20.9	11.7 %	308	357	89.5 %	91.5 %
Auckland West Area	325	423	30.2 %	16.4	20.8	26.9 %	310	389	95.4 %	92.0 %
	<b>1,164</b>	<b>1,434</b>	<b>23.2 %</b>	<b>26.4</b>	<b>31.7</b>	<b>20.1 %</b>	<b>1,088</b>	<b>1,343</b>	<b>93.5 %</b>	<b>93.7 %</b>

## MISCELLANEOUS OFFENCES

Area Description	Recorded 2013	Recorded 2014	Variance 2013-2014	Recorded per 10,000 pop 2013	Recorded per 10,000 pop 2014	Per 10,000 pop % Variance 2013 to 2014	Resolved 2013	Resolved 2014	Resolution Rate 2013	Resolution Rate 2014
Auckland Central Area	50	66	32.0 %	8.4	10.5	24.9 %	35	42	70.0 %	63.6 %
Auckland East Area	22	15	-31.8 %	1.2	0.8	-32.8 %	10	7	45.5 %	46.7 %
Auckland West Area	23	24	4.3 %	1.2	1.2	1.8 %	12	14	52.2 %	58.3 %
	<b>95</b>	<b>105</b>	<b>10.5 %</b>	<b>2.2</b>	<b>2.3</b>	<b>7.8 %</b>	<b>57</b>	<b>63</b>	<b>60.0 %</b>	<b>60.0 %</b>

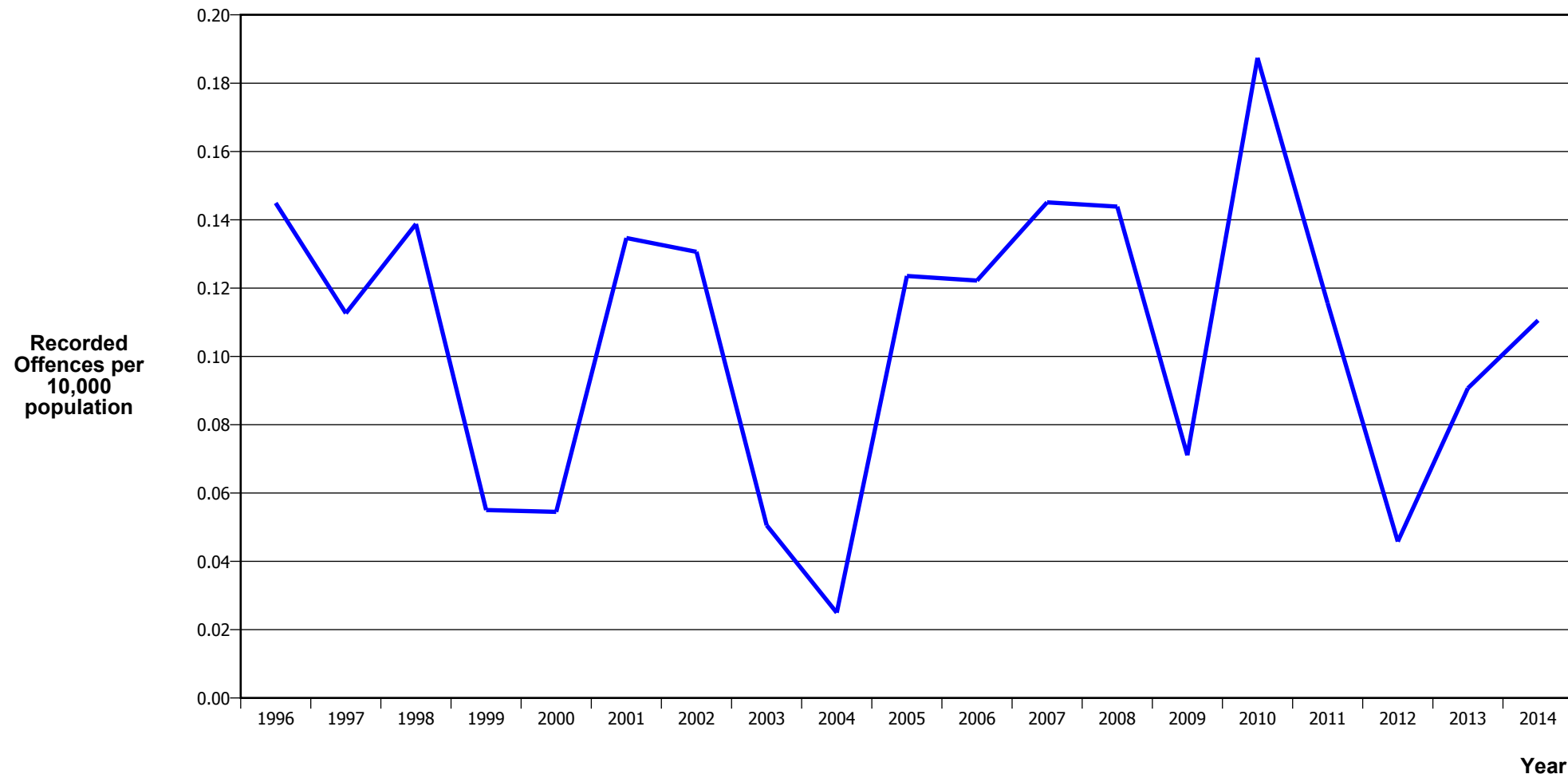
# **CRIME TRENDS**

## TOTAL CRIME



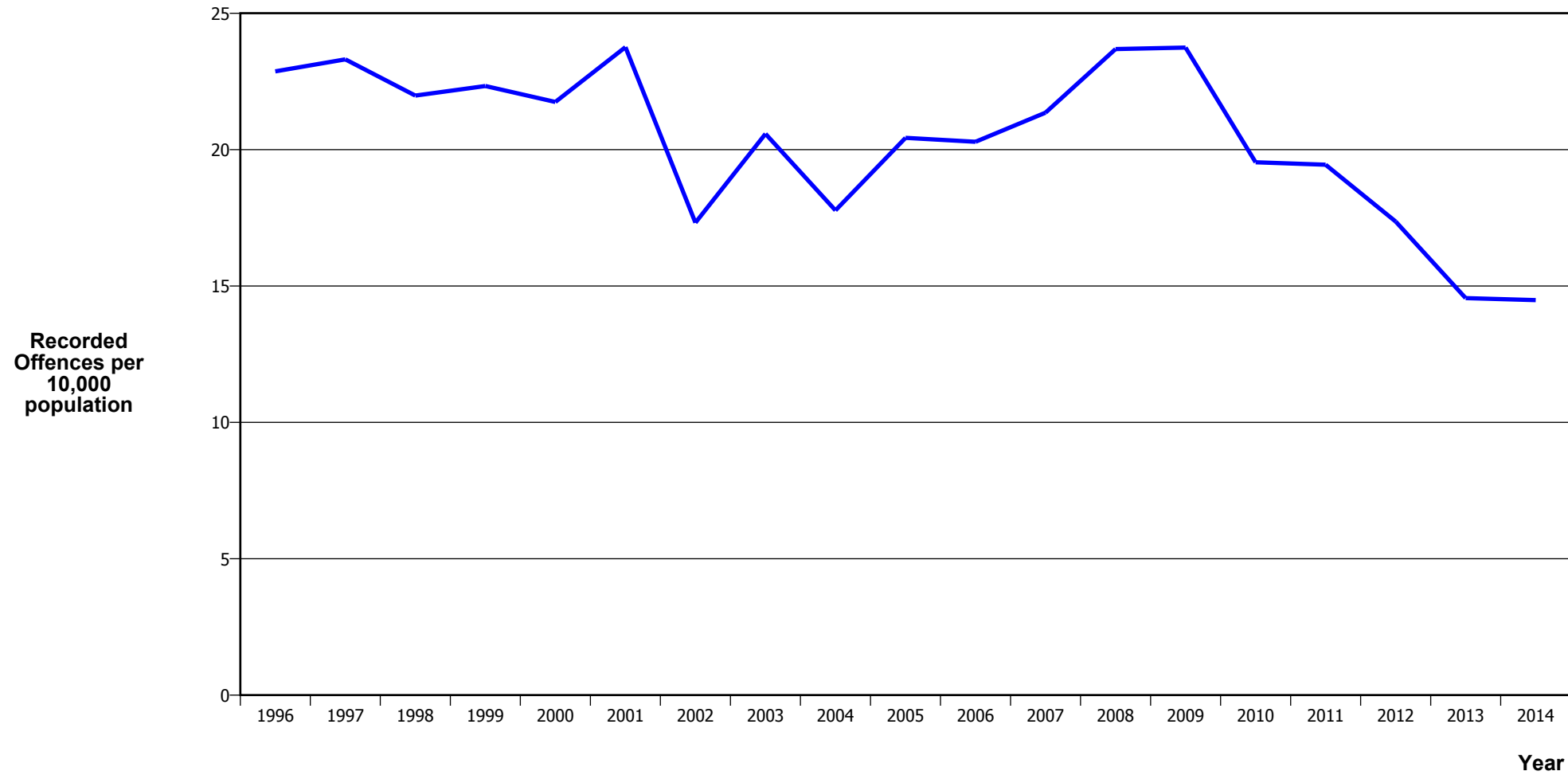
Calendar Year	1996	1997	1998	1999	2000	2001	2002	2003	2004	2005	2006	2007	2008	2009	2010	2011	2012	2013	2014
Recorded Offences	64,124	59,423	57,320	52,532	54,062	57,622	59,621	60,769	53,555	53,615	54,294	57,187	54,928	56,596	50,991	55,220	48,522	43,734	42,297
Recorded per 10,000 Population	1,858.7	1,672.8	1,590.9	1,444.8	1,473.4	1,552.1	1,557.5	1,536.3	1,336.8	1,324.7	1,327.0	1,383.0	1,316.8	1,340.9	1,194.4	1,276.9	1,111.6	991.5	935.2

## MURDER



Calendar Year	1996	1997	1998	1999	2000	2001	2002	2003	2004	2005	2006	2007	2008	2009	2010	2011	2012	2013	2014
Recorded Offences	5	4	5	2	2	5	5	2	1	5	5	6	6	3	8	5	2	4	5
Recorded per 10,000 Population	0.14	0.11	0.14	0.06	0.05	0.13	0.13	0.05	0.02	0.12	0.12	0.15	0.14	0.07	0.19	0.12	0.05	0.09	0.11

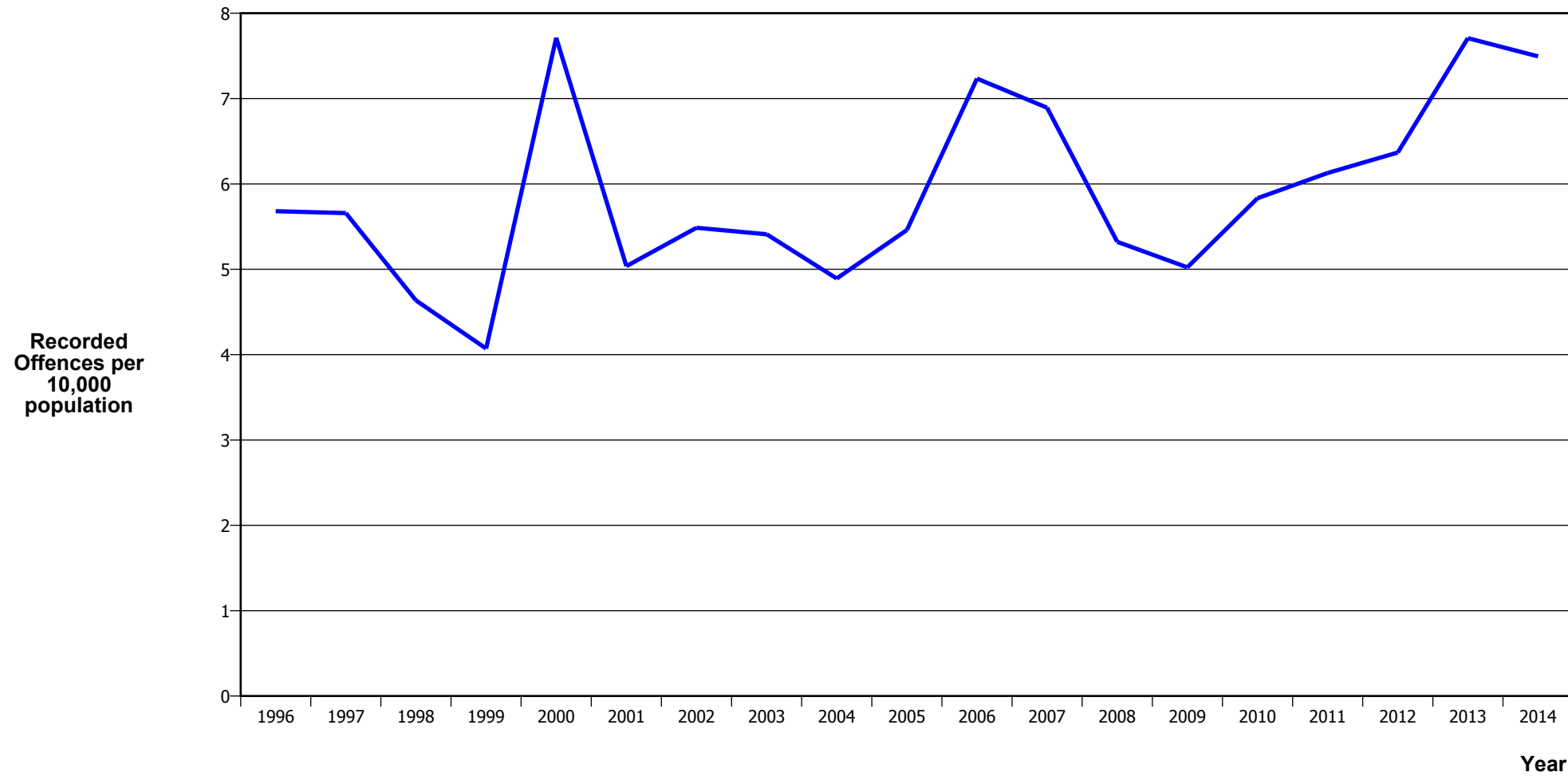
## SERIOUS ASSAULTS RESULTING IN INJURY\*



Calendar Year	1996	1997	1998	1999	2000	2001	2002	2003	2004	2005	2006	2007	2008	2009	2010	2011	2012	2013	2014
Recorded Offence	789	828	792	812	798	882	663	814	712	827	830	883	988	1,002	834	841	758	642	655
Offence Rate per 10K Popn	22.9	23.3	22.0	22.3	21.7	23.8	17.3	20.6	17.8	20.4	20.3	21.4	23.7	23.7	19.5	19.4	17.4	14.6	14.5

\* This measure excludes common assaults

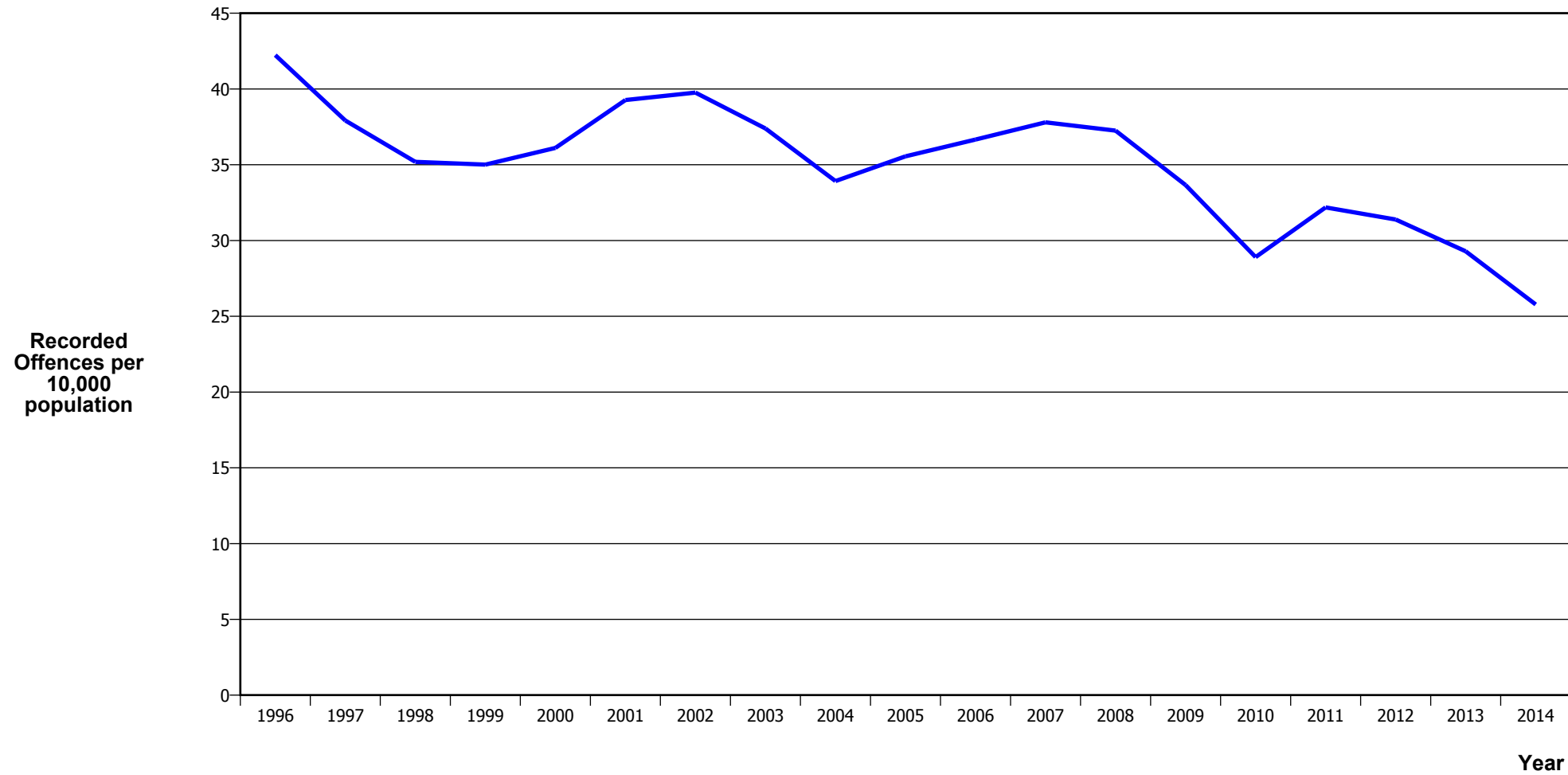
## SEXUAL ASSAULTS



Calendar Year	1996	1997	1998	1999	2000	2001	2002	2003	2004	2005	2006	2007	2008	2009	2010	2011	2012	2013	2014
Recorded Offences	196	201	167	148	283	187	210	214	196	221	296	285	222	212	249	265	278	340	339
Recorded per 10,000 Population	5.7	5.7	4.6	4.1	7.7	5.0	5.5	5.4	4.9	5.5	7.2	6.9	5.3	5.0	5.8	6.1	6.4	7.7	7.5

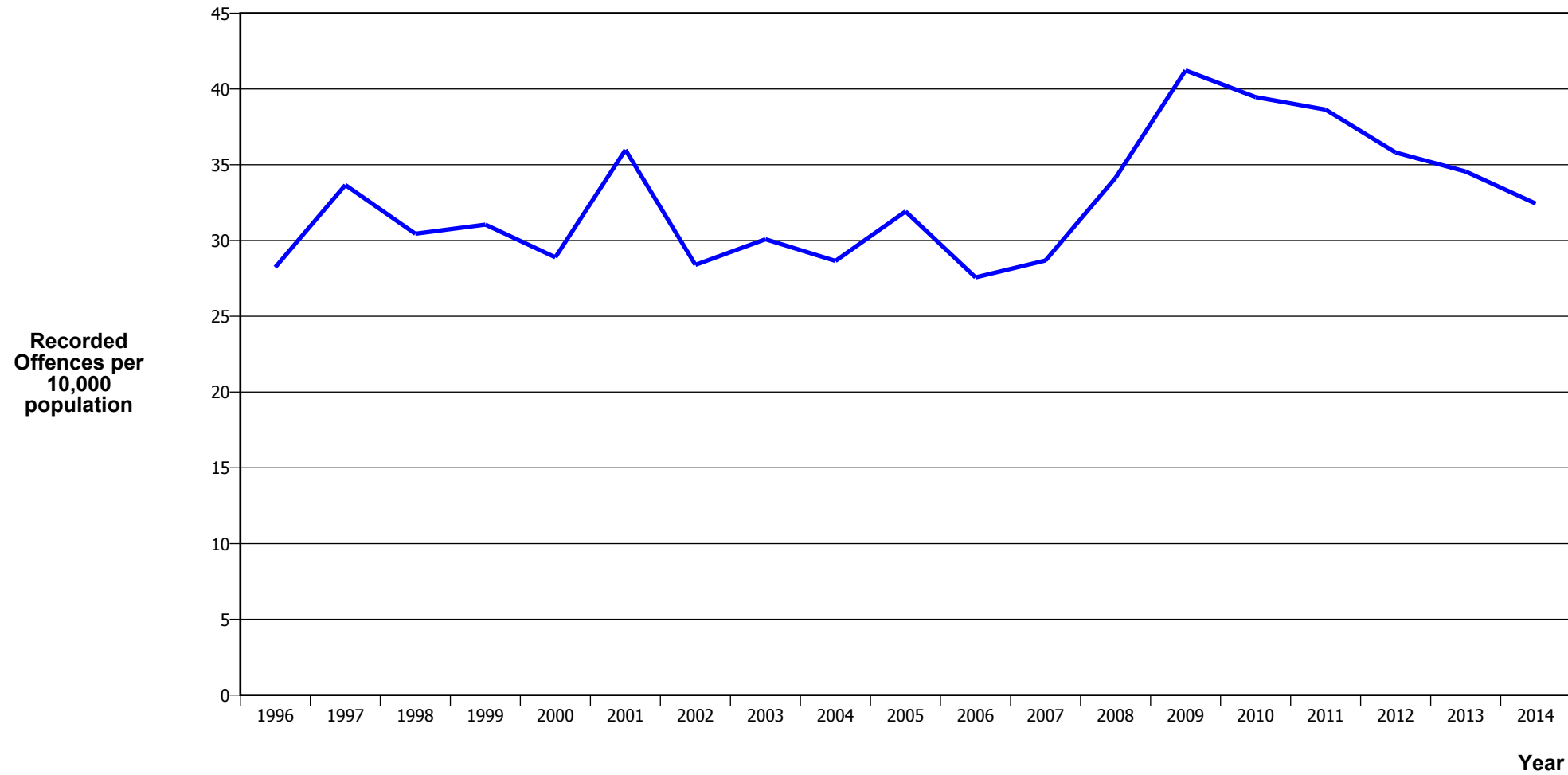


## PUBLIC PLACE ASSAULTS



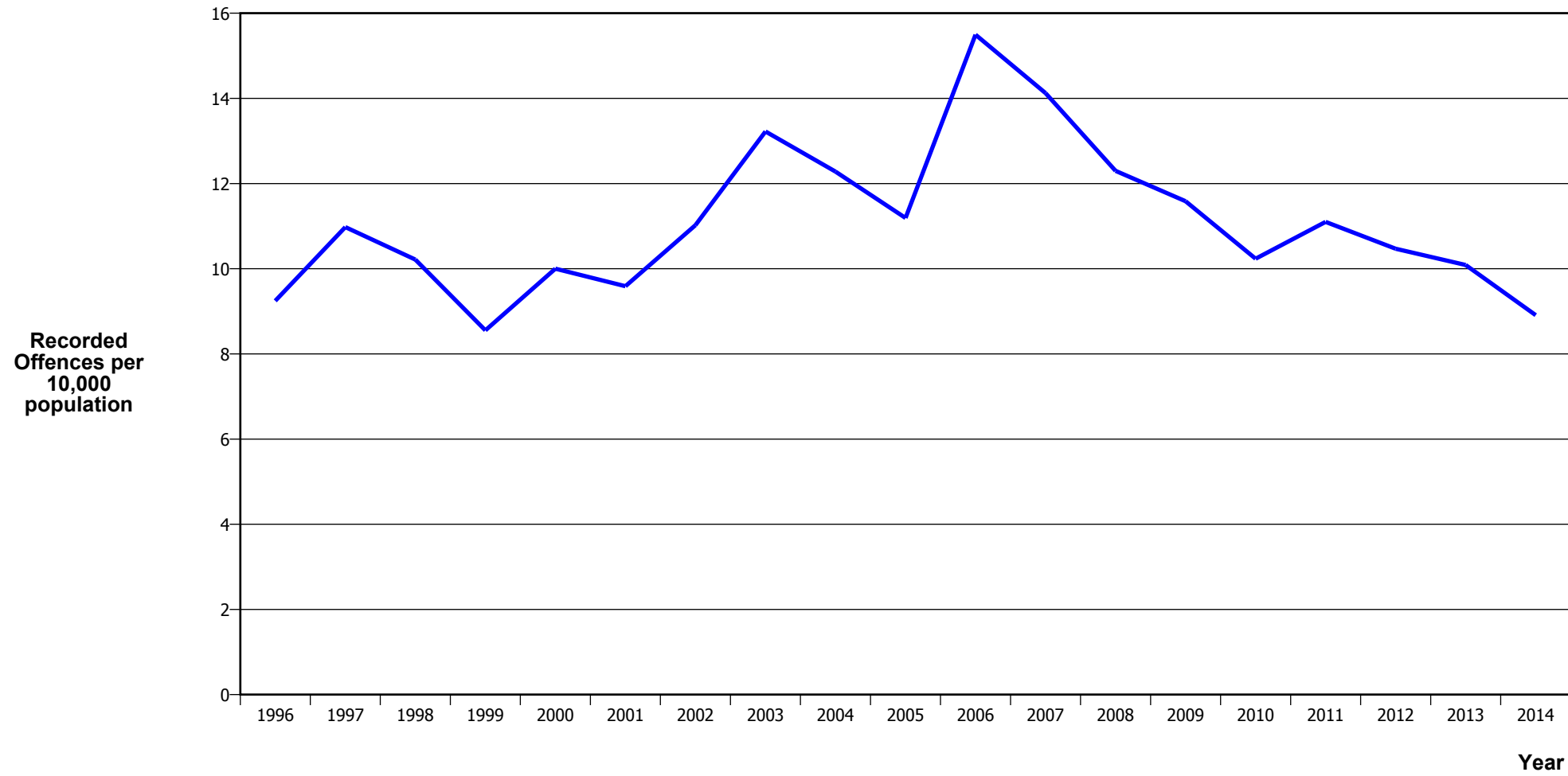
Calendar Year	1996	1997	1998	1999	2000	2001	2002	2003	2004	2005	2006	2007	2008	2009	2010	2011	2012	2013	2014
Recorded Offences	1,457	1,347	1,268	1,273	1,325	1,458	1,522	1,479	1,359	1,439	1,500	1,563	1,554	1,421	1,234	1,392	1,370	1,292	1,166
Recorded per 10,000 Population	42.2	37.9	35.2	35.0	36.1	39.3	39.8	37.4	33.9	35.6	36.7	37.8	37.3	33.7	28.9	32.2	31.4	29.3	25.8

## DWELLING ASSAULTS



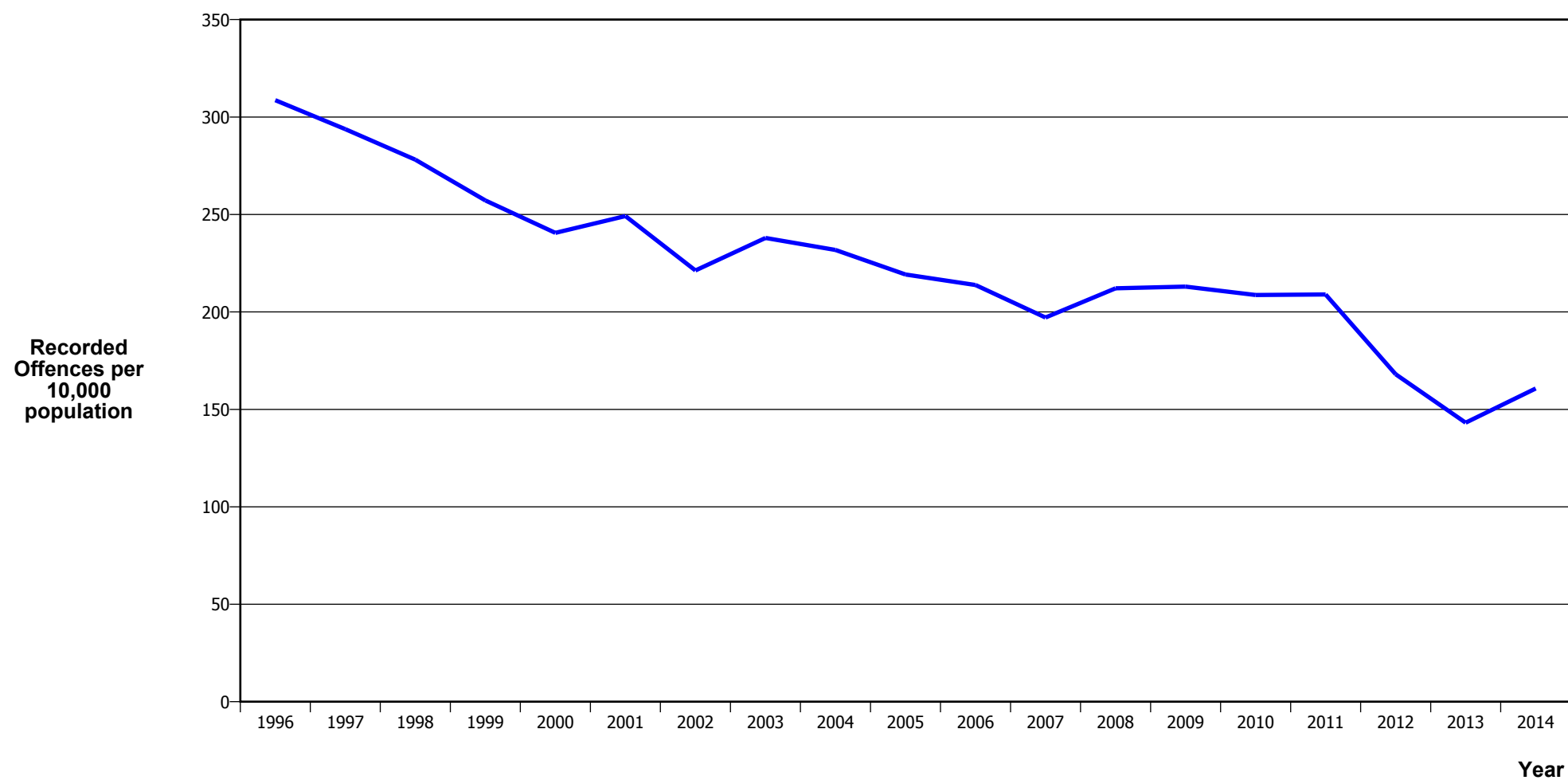
Calendar Year	1996	1997	1998	1999	2000	2001	2002	2003	2004	2005	2006	2007	2008	2009	2010	2011	2012	2013	2014
Recorded Offences	974	1,196	1,097	1,129	1,060	1,336	1,087	1,190	1,148	1,292	1,128	1,186	1,424	1,740	1,685	1,671	1,563	1,524	1,467
Recorded per 10,000 Population	28.2	33.7	30.4	31.1	28.9	36.0	28.4	30.1	28.7	31.9	27.6	28.7	34.1	41.2	39.5	38.6	35.8	34.6	32.4

## ROBBERY



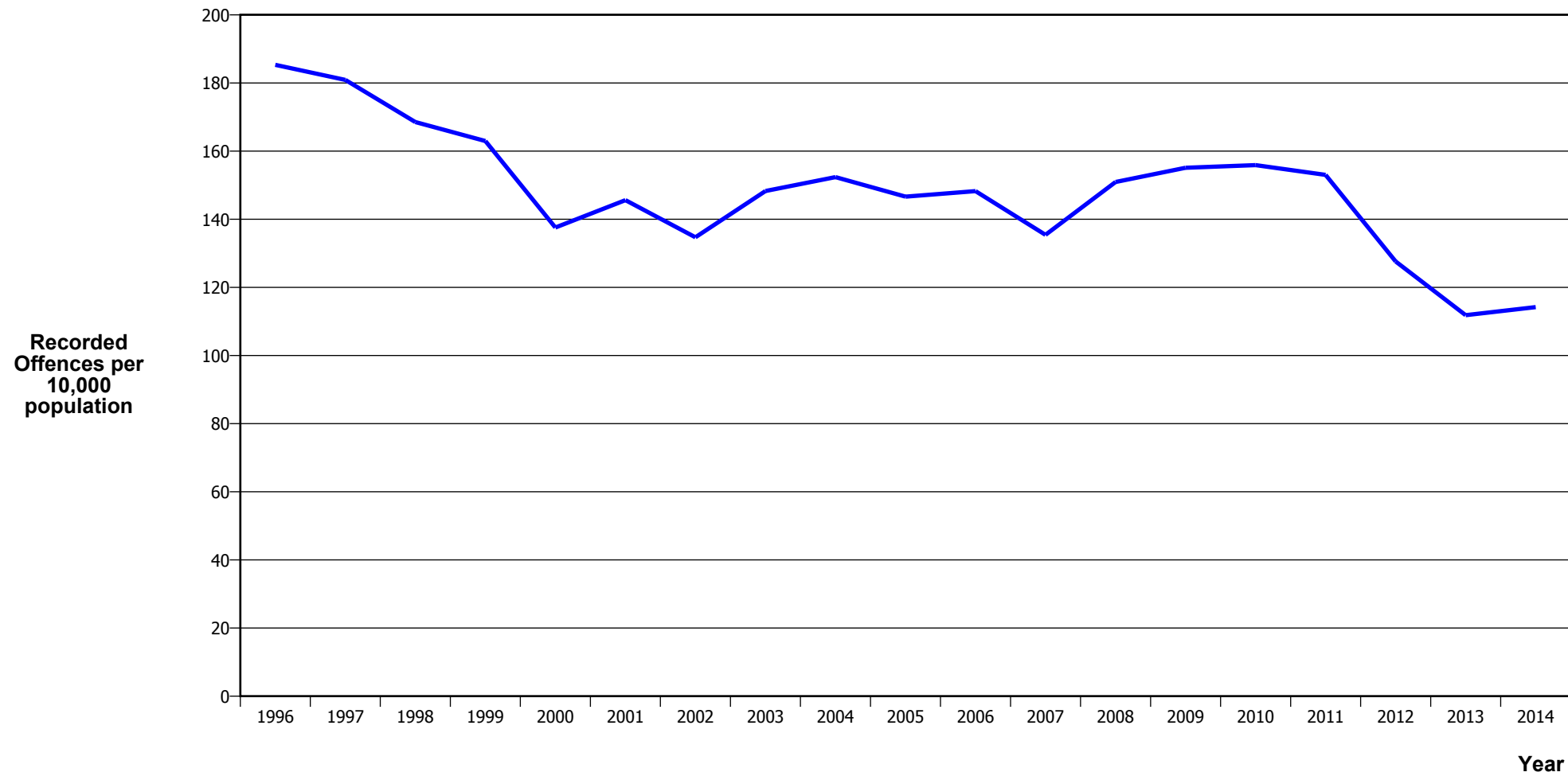
Calendar Year	1996	1997	1998	1999	2000	2001	2002	2003	2004	2005	2006	2007	2008	2009	2010	2011	2012	2013	2014
Recorded Offences	319	390	368	311	367	356	422	523	492	453	634	584	513	489	437	480	457	445	403
Recorded per 10,000 Population	9.2	11.0	10.2	8.6	10.0	9.6	11.0	13.2	12.3	11.2	15.5	14.1	12.3	11.6	10.2	11.1	10.5	10.1	8.9

## BURGLARY (TOTAL)



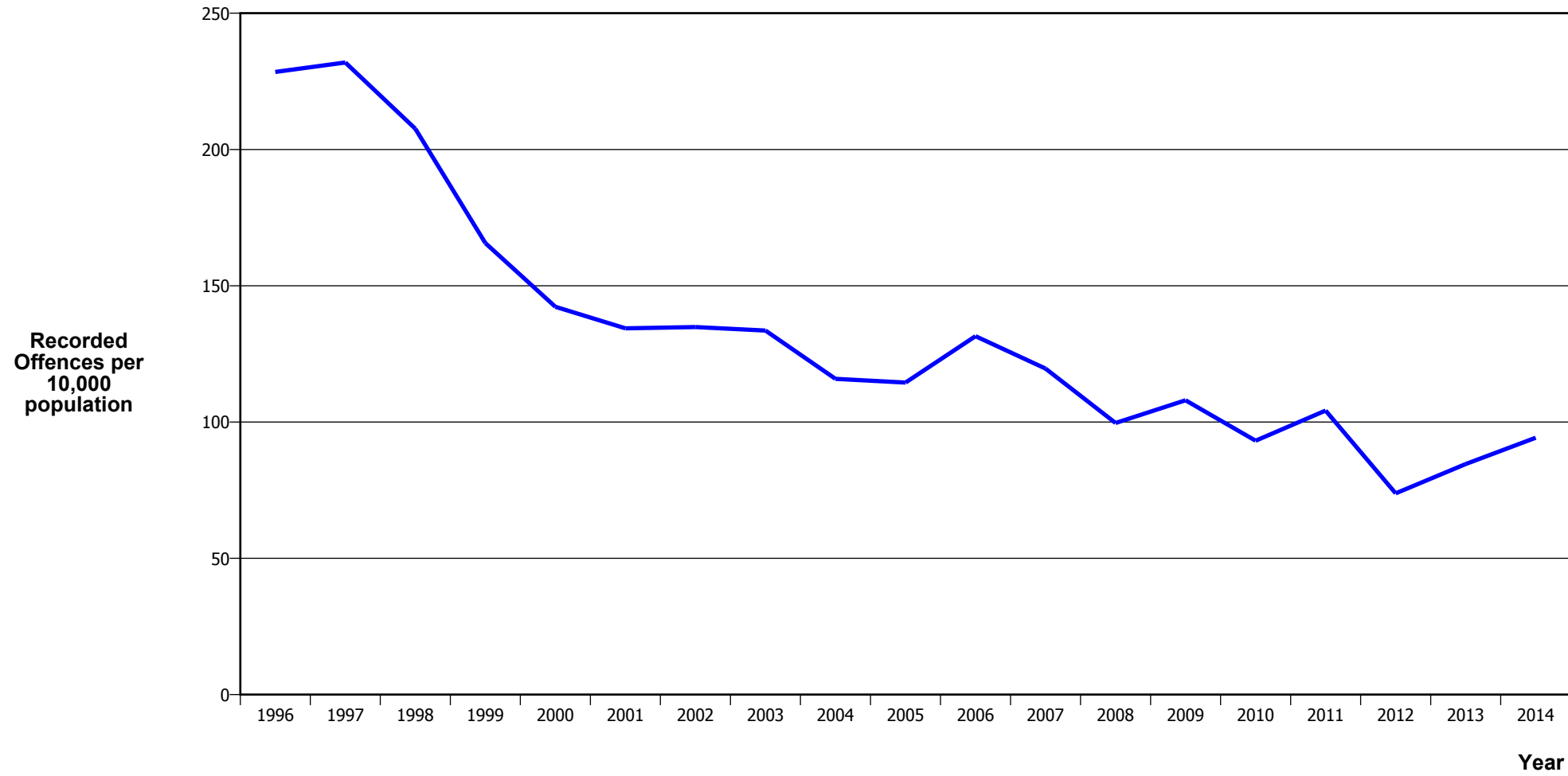
Calendar Year	1996	1997	1998	1999	2000	2001	2002	2003	2004	2005	2006	2007	2008	2009	2010	2011	2012	2013	2014
Recorded Offences	10,649	10,437	10,021	9,351	8,827	9,252	8,470	9,412	9,286	8,872	8,748	8,151	8,847	8,991	8,909	9,037	7,334	6,316	7,269
Recorded per 10,000 Population	308.7	293.8	278.1	257.2	240.6	249.2	221.3	237.9	231.8	219.2	213.8	197.1	212.1	213.0	208.7	209.0	168.0	143.2	160.7

## BURGLARY (DWELLING)



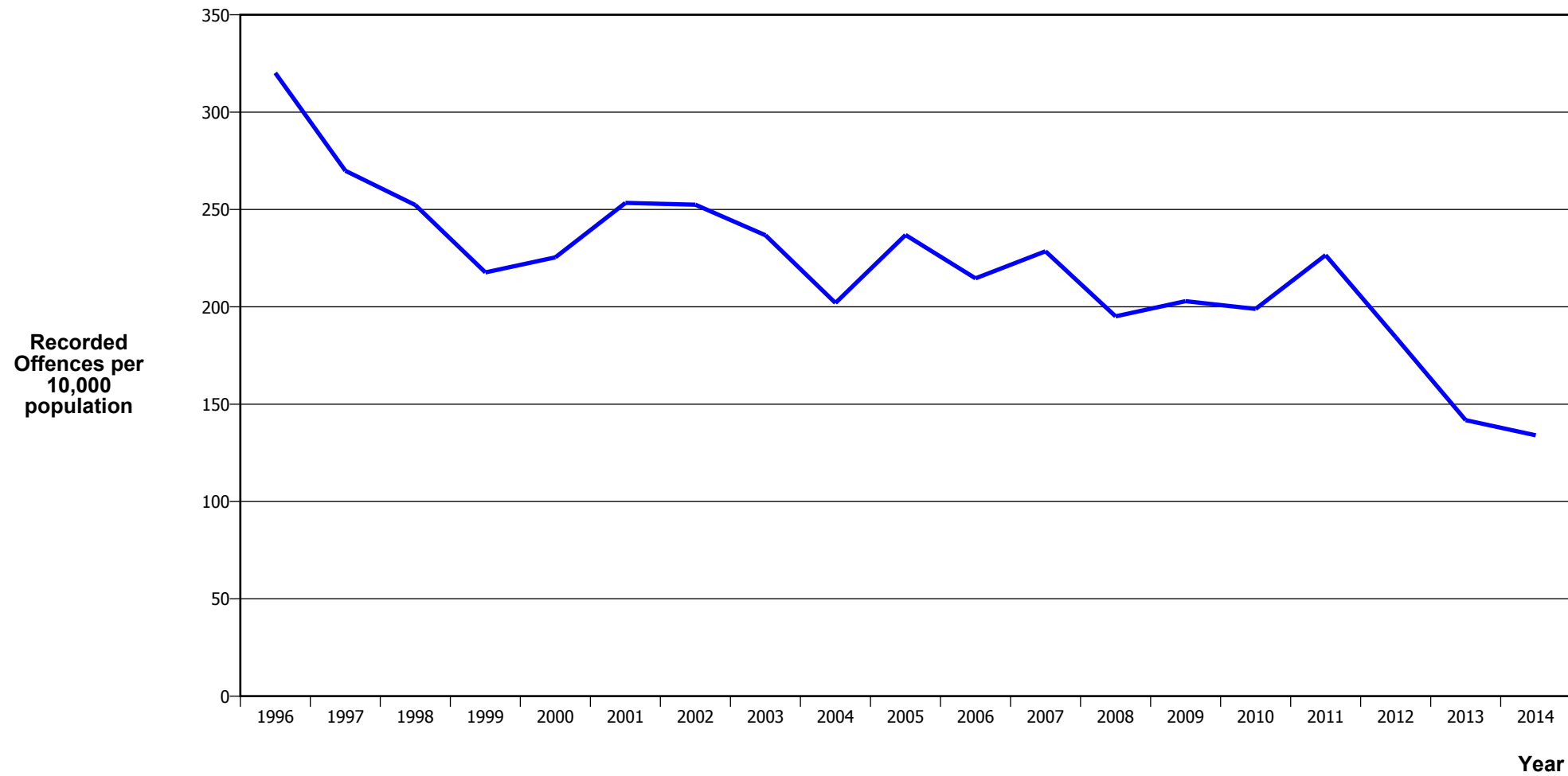
Calendar Year	1996	1997	1998	1999	2000	2001	2002	2003	2004	2005	2006	2007	2008	2009	2010	2011	2012	2013	2014
Recorded Offences	6,393	6,426	6,072	5,925	5,047	5,405	5,156	5,865	6,104	5,935	6,066	5,599	6,295	6,547	6,654	6,617	5,570	4,933	5,165
Recorded per 10,000 Population	185.3	180.9	168.5	163.0	137.6	145.6	134.7	148.3	152.4	146.6	148.3	135.4	150.9	155.1	155.9	153.0	127.6	111.8	114.2

## VEHICLES STOLEN



Calendar Year	1996	1997	1998	1999	2000	2001	2002	2003	2004	2005	2006	2007	2008	2009	2010	2011	2012	2013	2014
Recorded Offences	7,881	8,239	7,481	6,023	5,221	4,989	5,162	5,283	4,641	4,633	5,380	4,946	4,157	4,558	3,976	4,507	3,224	3,731	4,262
Recorded per 10,000 Population	228.4	231.9	207.6	165.7	142.3	134.4	134.8	133.6	115.8	114.5	131.5	119.6	99.7	108.0	93.1	104.2	73.9	84.6	94.2

## THEFT EX CAR



Calendar Year	1996	1997	1998	1999	2000	2001	2002	2003	2004	2005	2006	2007	2008	2009	2010	2011	2012	2013	2014
Recorded Offences	11,045	9,587	9,089	7,914	8,272	9,407	9,664	9,366	8,092	9,589	8,782	9,450	8,139	8,565	8,493	9,798	8,050	6,254	6,061
Recorded per 10,000 Population	320.1	269.9	252.3	217.7	225.4	253.4	252.4	236.8	202.0	236.9	214.6	228.5	195.1	202.9	198.9	226.6	184.4	141.8	134.0

## Population Data

Population data is used in this release to calculate crime rates. They have been derived from population estimates as at 30 June each year that have been obtained from Statistics New Zealand.

The estimated resident population is based on the census usually resident population count, with adjustments for residents missed or counted more than once by the census (net census undercount), and for residents temporarily overseas on census night.

These population estimates exclude the number of international students who are studying in New Zealand for less than 12 months.

Year	Population
1996	345,000
1997	355,240
1998	360,290
1999	363,590
2000	366,920
2001	371,260
2002	382,810
2003	395,550
2004	400,620
2005	404,740
2006	409,160
2007	413,490
2008	417,120
2009	422,090
2010	426,910
2011	432,450
2012	436,520
2013	441,090
2014	452,280



## General Definitions

**Recorded Offences:** the number of breaches of the New Zealand law recorded by Police. This includes offences specified in the Crimes Act and other legislations, such as the Summary Offences Act, Local Government Act, etc.

**Resolved Offences:** the number of recorded offences where an offender has been identified and dealt with (e.g. warned, cautioned, prosecuted, etc).

**Resolution Rate:** the proportion of recorded offences that have been resolved.

**Recorded per 10,000 population:** the number of recorded offences for every 10,000 people. This is also referred as the crime rate per 10,000 population.

**ANZSOC:** The Australian and New Zealand Standard Offence Classification. The offence classification is divided into 16 major offence divisions.

## Definition of ANZSOC Divisions

1. Homicide and related offences: Unlawfully kill, attempt to unlawfully kill or conspiracy to kill another person.
2. Acts intended to cause injury: Acts, excluding attempted murder and those resulting in death, which are intended to cause non-fatal injury or harm to another person and where there is no sexual or acquisitive element.
3. Sexual assault and related offences: Acts, or intent of acts, of a sexual nature against another person, which are non-consensual or where consent is proscribed.
4. Dangerous or negligent acts endangering persons: Dangerous or negligent acts which, though not intended to cause harm, actually or potentially result in injury to oneself or another person.
5. Abduction, harassment and other offences against person: Acts intended to threaten or harass, or acts that unlawfully deprive another person of their freedom of movement, that are against that person's will or against the will of any parent, guardian or other person having lawful custody or care of that person.
6. Robbery, extortion and related offences: Acts intended to unlawfully gain money, property or other items of value from, or to cause detriment to, another person by using the threat of force or any other coercive measure.
7. Unlawful entry with intent / burglary, break and enter: The unlawful entry of a structure with the intent to commit an offence, where the entry is either forced or unforced.
8. Theft and related and offences: The unlawful taking or obtaining of money or goods, not involving the use of force or violence, coercion or deception, with intent to permanently or temporarily deprive the owner or possessor of the use of the money or goods, or the receiving or handling of money or goods obtained unlawfully.

9. Fraud, deception and related offences: Offences involving a dishonest act or omission carried out with the purpose of deceiving to obtain a benefit.

10. Illicit drug offences: The possessing, selling, dealing or trafficking, importing or exporting, manufacturing or cultivating of drugs or other substances prohibited under legislation.

11. Prohibited and regulated weapons and explosives offences: Offences involving prohibited or regulated weapons and explosives. Those offences also involving assault, sexual assault or robbery are coded to the relevant group within Assault, Sexual assaults and Robbery respectively.

12. Property damage and environmental pollution: The wilful and unlawful destruction, damage or defacement of public or private property, or the pollution of property or a definable entity held in common by the community.

13. Public order offences: Offences relating personal conduct that involves, or may lead to, a breach of public order or decency, or that is indicative of criminal intent, or that is otherwise regulated or prohibited on moral or ethical grounds. In general these offences do not involve a specific victim or victims; however some offences, such as offensive language and offensive behaviour, may be directed towards a single victim.

14. Traffic and vehicle regulatory offences: Offences relating to vehicles and most forms of traffic, including offences pertaining to the licensing, registration, roadworthiness, or use of vehicles, bicycle offences and pedestrian offences.

15. Offences against justice procedures, government security and government operations: An act or omission that is deemed to be prejudicial to the effective carrying out of justice procedures or any government operations. This includes general government operations as well as those specifically concerned with maintaining government security.

16. Miscellaneous offences: Offences involving the breach of statutory rules or regulations governing activities that are prima facie legal, where such offences are not explicitly dealt with under any other division. If an offence is specified under regulation and involves an act that would be illegal under common law or general criminal legislation, the offence is dealt with under the appropriate generic group.