

# **AUCKLAND DISTRICT CRIME STATISTICS 2010**



**A Summary of  
Recorded and Resolved Offence  
Statistics**

**POLICE NATIONAL HEADQUARTERS  
April 2011**

**Table of Contents:**

<b>Topic</b>	<b>Page</b>
Report Notes	1
District Summary of Recorded and Resolved Crime, by Division	2-4
District Summary of Recorded and Resolved Crime, by Area	5
District Recorded Crime per 10,000 population, by Division	6-8
District Recorded Crime per 10,000 population, by Area	9
Proportions of Recorded Crime by Categories	10
Crime Trends	11
Total Crime	12
Murder	13
Serious Assaults Resulting in Injury	14
Public Place Assaults	15
Robbery	16
Burglary	17
Burglary (Dwelling)	18
Vehicles Stolen	19
Theft Ex Car	20
Population Data	21
General Definition	22-23

## REPORT NOTES:

This report presents official statistics for recorded and resolved offences. The format has been revised significantly from that used in previous years. In particular, offences are grouped into different categories than previously used. This aligns with direction given by the Justice Sector Information Strategy for the whole Justice sector to categorise offences according to the Australian Standard Offence Classification (ASOC). This change does not change the total number of offences reported, just how they are grouped.

In making this change, New Zealand Police has taken the first step towards reporting crime in a way that is comparable with Australia. However, at this stage, important differences still exist that mean statistics are not yet comparable between the two countries. For example, Australian statistics only count the most serious offence on each file, whereas New Zealand reports every offence. Also, Australian statistics count victims, whereas New Zealand Statistics count offences.

Another important change in this report is that pages 11 to 20, which present long-term trends, have been completely revised. The time series has been extended from 10 to 15 years to give a longer history. Also, the measures reported include a number of the statistical indicators that Police recently began publishing provisional data on every month.

As in previous reports, statistics reported in this document are derived from the Police National Intelligence Application (NIA). These Official Statistics for Recorded and Resolved Offences present a snapshot of data in NIA relating to offences that occur within a given year, as at the date 14 days following the end of that year.

Unless the matter is minor where Police attendance is sufficient, a matter that is reported to or discovered by Police where Police believe an offence is likely to have been committed is counted as a recorded offence.

A recorded offence is counted as resolved when Police apprehend an offender and decide how to deal with him/her. (E.g. warn, prosecute, etc.)

Resolution rate is the percentage of recorded offences that are resolved within 14 days of the end of the year being reported on.

If an offence is resolved 15 days or more after the end of the year it will not appear in the Official Crime Statistics for that or any other year. Resolution Rate therefore undercounts the number of cases that Police have resolved. This phenomenon has a more marked impact for some types of offences than others, such as offences that require long investigations (E.g. many serial crimes, burglaries and murders).

When comparing 2010 Statistics with previous years, the reader should also refer to "Report Notes" published in previous years' reports, as previous changes significantly affect year on year trends.

**SUMMARY OF DISTRICT RECORDED AND RESOLVED CRIME, BY DIVISION**  
**Years ending 31 December**

**HOMICIDE AND RELATED OFFENCES**

ASOC Subdivision Description	Recorded 2008	Recorded 2009	Recorded 2010	Variance 2008- 2009	Variance 2009- 2010	Resolved 2008	Resolved 2009	Resolved 2010	Resolution Rate 2008	Resolution Rate 2009	Resolution Rate 2010
ATTEMPTED MURDER	0	0	0			0	0				
HOMICIDE AND RELATED OFFENCES NOT FURTHER DEFINED	0	0	0			0	0				
MANSLAUGHTER AND DRIVING CAUSING DEATH	2	3	3	50.0 %	0.0 %	2	2	3	100.0 %	66.7 %	100.0 %
MURDER	6	3	8	-50.0 %	166.7 %	6	2	7	100.0 %	66.7 %	87.5 %
	<b>8</b>	<b>6</b>	<b>11</b>	<b>-25.0 %</b>	<b>83.3 %</b>	<b>8</b>	<b>4</b>	<b>10</b>	<b>100.0 %</b>	<b>66.7 %</b>	<b>90.9 %</b>

**ACTS INTENDED TO CAUSE INJURY**

ASOC Subdivision Description	Recorded 2008	Recorded 2009	Recorded 2010	Variance 2008- 2009	Variance 2009- 2010	Resolved 2008	Resolved 2009	Resolved 2010	Resolution Rate 2008	Resolution Rate 2009	Resolution Rate 2010
ASSAULT	3,374	3,582	3,316	6.2 %	-7.4 %	2,717	2,911	2,558	80.5 %	81.3 %	77.1 %
OTHER ACTS INTENDED TO CAUSE INJURY	6	9	6	50.0 %	-33.3 %	5	7	5	83.3 %	77.8 %	83.3 %
	<b>3,380</b>	<b>3,591</b>	<b>3,322</b>	<b>6.2 %</b>	<b>-7.5 %</b>	<b>2,722</b>	<b>2,918</b>	<b>2,563</b>	<b>80.5 %</b>	<b>81.3 %</b>	<b>77.2 %</b>

**SEXUAL ASSAULT AND RELATED OFFENCES**

ASOC Subdivision Description	Recorded 2008	Recorded 2009	Recorded 2010	Variance 2008- 2009	Variance 2009- 2010	Resolved 2008	Resolved 2009	Resolved 2010	Resolution Rate 2008	Resolution Rate 2009	Resolution Rate 2010
NON-ASSAULTIVE SEXUAL OFFENCES	2	7	7	250.0 %	0.0 %	2	4	5	100.0 %	57.1 %	71.4 %
SEXUAL ASSAULT	222	212	249	-4.5 %	17.5 %	134	123	117	60.4 %	58.0 %	47.0 %
	<b>224</b>	<b>219</b>	<b>256</b>	<b>-2.2 %</b>	<b>16.9 %</b>	<b>136</b>	<b>127</b>	<b>122</b>	<b>60.7 %</b>	<b>58.0 %</b>	<b>47.7 %</b>

**DANGEROUS OR NEGLIGENT ACTS ENDANGERING PERSONS**

ASOC Subdivision Description	Recorded 2008	Recorded 2009	Recorded 2010	Variance 2008- 2009	Variance 2009- 2010	Resolved 2008	Resolved 2009	Resolved 2010	Resolution Rate 2008	Resolution Rate 2009	Resolution Rate 2010
OTHER DANGEROUS OR NEGLIGENT ACTS ENDANGERING PERSONS	42	56	83	33.3 %	48.2 %	35	44	66	83.3 %	78.6 %	79.5 %
	<b>42</b>	<b>56</b>	<b>83</b>	<b>33.3 %</b>	<b>48.2 %</b>	<b>35</b>	<b>44</b>	<b>66</b>	<b>83.3 %</b>	<b>78.6 %</b>	<b>79.5 %</b>

**ABDUCTION, HARASSMENT AND OTHER RELATED OFFENCES AGAINST A PERSON**

ASOC Subdivision Description	Recorded 2008	Recorded 2009	Recorded 2010	Variance 2008- 2009	Variance 2009- 2010	Resolved 2008	Resolved 2009	Resolved 2010	Resolution Rate 2008	Resolution Rate 2009	Resolution Rate 2010
ABDUCTION AND KIDNAPPING	26	24	33	-7.7 %	37.5 %	16	20	17	61.5 %	83.3 %	51.5 %
HARASSMENT AND THREATENING BEHAVIOUR	1,020	1,317	1,167	29.1 %	-11.4 %	559	793	675	54.8 %	60.2 %	57.8 %
	<b>1,046</b>	<b>1,341</b>	<b>1,200</b>	<b>28.2 %</b>	<b>-10.5 %</b>	<b>575</b>	<b>813</b>	<b>692</b>	<b>55.0 %</b>	<b>60.6 %</b>	<b>57.7 %</b>

**ROBBERY, EXTORTION AND RELATED OFFENCES**

ASOC Subdivision Description	Recorded 2008	Recorded 2009	Recorded 2010	Variance 2008- 2009	Variance 2009- 2010	Resolved 2008	Resolved 2009	Resolved 2010	Resolution Rate 2008	Resolution Rate 2009	Resolution Rate 2010
BLACKMAIL AND EXTORTION	24	24	19	0.0 %	-20.8 %	13	10	14	54.2 %	41.7 %	73.7 %
ROBBERY	513	489	437	-4.7 %	-10.6 %	194	160	116	37.8 %	32.7 %	26.5 %
	<b>537</b>	<b>513</b>	<b>456</b>	<b>-4.5 %</b>	<b>-11.1 %</b>	<b>207</b>	<b>170</b>	<b>130</b>	<b>38.5 %</b>	<b>33.1 %</b>	<b>28.5 %</b>

**UNLAWFUL ENTRY WITH INTENT/BURGLARY, BREAK AND ENTER**

ASOC Subdivision Description	Recorded 2008	Recorded 2009	Recorded 2010	Variance 2008- 2009	Variance 2009- 2010	Resolved 2008	Resolved 2009	Resolved 2010	Resolution Rate 2008	Resolution Rate 2009	Resolution Rate 2010
UNLAWFUL ENTRY WITH INTENT/BURGLARY, BREAK AND ENTER	8,847	8,991	8,909	1.6 %	-0.9 %	1,052	794	707	11.9 %	8.8 %	7.9 %
	<b>8,847</b>	<b>8,991</b>	<b>8,909</b>	<b>1.6 %</b>	<b>-0.9 %</b>	<b>1,052</b>	<b>794</b>	<b>707</b>	<b>11.9 %</b>	<b>8.8 %</b>	<b>7.9 %</b>

**SUMMARY OF DISTRICT RECORDED AND RESOLVED CRIME, BY DIVISION**  
**Years ending 31 December**

**THEFT AND RELATED OFFENCES**

ASOC Subdivision Description	Recorded 2008	Recorded 2009	Recorded 2010	Variance 2008- 2009	Variance 2009- 2010	Resolved 2008	Resolved 2009	Resolved 2010	Resolution Rate 2008	Resolution Rate 2009	Resolution Rate 2010
ILLEGAL USE OF PROPERTY (EXCEPT MOTOR VEHICLES)	293	311	296	6.1 %	-4.8 %	1	8	10	0.3 %	2.6 %	3.4 %
MOTOR VEHICLE THEFT AND RELATED OFFENCES	12,296	13,123	12,469	6.7 %	-5.0 %	1,085	1,161	1,069	8.8 %	8.8 %	8.6 %
RECEIVE OR HANDLE PROCEEDS OF CRIME	469	592	400	26.2 %	-32.4 %	461	585	398	98.3 %	98.8 %	99.5 %
THEFT (EXCEPT MOTOR VEHICLES)	8,277	8,698	9,048	5.1 %	4.0 %	1,774	1,927	1,701	21.4 %	22.2 %	18.8 %
	<b>21,335</b>	<b>22,724</b>	<b>22,213</b>	<b>6.5 %</b>	<b>-2.2 %</b>	<b>3,321</b>	<b>3,681</b>	<b>3,178</b>	<b>15.6 %</b>	<b>16.2 %</b>	<b>14.3 %</b>

**FRAUD, DECEPTION AND RELATED OFFENCES**

ASOC Subdivision Description	Recorded 2008	Recorded 2009	Recorded 2010	Variance 2008- 2009	Variance 2009- 2010	Resolved 2008	Resolved 2009	Resolved 2010	Resolution Rate 2008	Resolution Rate 2009	Resolution Rate 2010
DECEPTIVE BUSINESS/GOVERNMENT PRACTICES	10	3	5	-70.0 %	66.7 %	6	1	3	60.0 %	33.3 %	60.0 %
FORGERY AND COUNTERFEITING	106	93	109	-12.3 %	17.2 %	49	40	41	46.2 %	43.0 %	37.6 %
OBTAIN BENEFIT BY DECEPTION	3,484	2,959	1,242	-15.1 %	-58.0 %	1,076	934	515	30.9 %	31.6 %	41.5 %
OTHER FRAUD AND DECEPTION OFFENCES	113	101	81	-10.6 %	-19.8 %	47	34	26	41.6 %	33.7 %	32.1 %
	<b>3,713</b>	<b>3,156</b>	<b>1,437</b>	<b>-15.0 %</b>	<b>-54.5 %</b>	<b>1,178</b>	<b>1,009</b>	<b>585</b>	<b>31.7 %</b>	<b>32.0 %</b>	<b>40.7 %</b>

**ILLICIT DRUG OFFENCES**

ASOC Subdivision Description	Recorded 2008	Recorded 2009	Recorded 2010	Variance 2008- 2009	Variance 2009- 2010	Resolved 2008	Resolved 2009	Resolved 2010	Resolution Rate 2008	Resolution Rate 2009	Resolution Rate 2010
DEAL OR TRAFFIC IN ILLICIT DRUGS	311	264	290	-15.1 %	9.8 %	306	261	284	98.4 %	98.9 %	97.9 %
IMPORT OR EXPORT ILLICIT DRUGS	37	32	30	-13.5 %	-6.3 %	35	30	27	94.6 %	93.8 %	90.0 %
MANUFACTURE OR CULTIVATE ILLICIT DRUGS	52	68	53	30.8 %	-22.1 %	49	63	47	94.2 %	92.6 %	88.7 %
OTHER ILLICIT DRUG OFFENCES	821	814	543	-0.9 %	-33.3 %	809	811	541	98.5 %	99.6 %	99.6 %
POSSESS AND/OR USE ILLICIT DRUGS	1,167	1,161	796	-0.5 %	-31.4 %	1,142	1,153	786	97.9 %	99.3 %	98.7 %
	<b>2,388</b>	<b>2,339</b>	<b>1,712</b>	<b>-2.1 %</b>	<b>-26.8 %</b>	<b>2,341</b>	<b>2,318</b>	<b>1,685</b>	<b>98.0 %</b>	<b>99.1 %</b>	<b>98.4 %</b>

**PROHIBITED AND REGULATED WEAPONS AND EXPLOSIVES OFFENCES**

ASOC Subdivision Description	Recorded 2008	Recorded 2009	Recorded 2010	Variance 2008- 2009	Variance 2009- 2010	Resolved 2008	Resolved 2009	Resolved 2010	Resolution Rate 2008	Resolution Rate 2009	Resolution Rate 2010
REGULATED WEAPONS/EXPLOSIVES OFFENCES	635	664	492	4.6 %	-25.9 %	600	637	448	94.5 %	95.9 %	91.1 %
	<b>635</b>	<b>664</b>	<b>492</b>	<b>4.6 %</b>	<b>-25.9 %</b>	<b>600</b>	<b>637</b>	<b>448</b>	<b>94.5 %</b>	<b>95.9 %</b>	<b>91.1 %</b>

**PROPERTY DAMAGE AND ENVIRONMENTAL POLLUTION**

ASOC Subdivision Description	Recorded 2008	Recorded 2009	Recorded 2010	Variance 2008- 2009	Variance 2009- 2010	Resolved 2008	Resolved 2009	Resolved 2010	Resolution Rate 2008	Resolution Rate 2009	Resolution Rate 2010
ENVIRONMENTAL POLLUTION	22	18	9	-18.2 %	-50.0 %	18	13	8	81.8 %	72.2 %	88.9 %
PROPERTY DAMAGE	4,552	5,090	4,614	11.8 %	-9.4 %	1,194	1,379	1,065	26.2 %	27.1 %	23.1 %
	<b>4,574</b>	<b>5,108</b>	<b>4,623</b>	<b>11.7 %</b>	<b>-9.5 %</b>	<b>1,212</b>	<b>1,392</b>	<b>1,073</b>	<b>26.5 %</b>	<b>27.3 %</b>	<b>23.2 %</b>

**PUBLIC ORDER OFFENCES**

ASOC Subdivision Description	Recorded 2008	Recorded 2009	Recorded 2010	Variance 2008- 2009	Variance 2009- 2010	Resolved 2008	Resolved 2009	Resolved 2010	Resolution Rate 2008	Resolution Rate 2009	Resolution Rate 2010
DISORDERLY CONDUCT	3,136	2,903	2,531	-7.4 %	-12.8 %	2,910	2,698	2,303	92.8 %	92.9 %	91.0 %
OFFENSIVE CONDUCT	111	149	135	34.2 %	-9.4 %	90	134	97	81.1 %	89.9 %	71.9 %
PUBLIC ORDER OFFENCES NOT FURTHER DEFINED	0	1	0		-100.0 %	0	1			100.0 %	
REGULATED PUBLIC ORDER OFFENCES	1,992	2,246	2,100	12.8 %	-6.5 %	1,912	2,205	2,050	96.0 %	98.2 %	97.6 %
	<b>5,239</b>	<b>5,299</b>	<b>4,766</b>	<b>1.1 %</b>	<b>-10.1 %</b>	<b>4,912</b>	<b>5,038</b>	<b>4,450</b>	<b>93.8 %</b>	<b>95.1 %</b>	<b>93.4 %</b>

**SUMMARY OF DISTRICT RECORDED AND RESOLVED CRIME, BY DIVISION**  
**Years ending 31 December**

**OFFENCES AGAINST JUSTICE PROCEDURES, GOVERNMENT SECURITY AND GOVERNMENT OPERATIONS**

ASOC Subdivision Description	Recorded 2008	Recorded 2009	Recorded 2010	Variance 2008- 2009	Variance 2009- 2010	Resolved 2008	Resolved 2009	Resolved 2010	Resolution Rate 2008	Resolution Rate 2009	Resolution Rate 2010
BREACH OF COMMUNITY-BASED ORDER	1,223	984	220	-19.5 %	-77.6 %	1,191	982	215	97.4 %	99.8 %	97.7 %
BREACH OF CUSTODIAL ORDER OFFENCES	29	61	44	110.3 %	-27.9 %	29	58	40	100.0 %	95.1 %	90.9 %
BREACH OF VIOLENCE AND NON-VIOLENCE RESTRAINING ORDERS	304	301	317	-1.0 %	5.3 %	297	290	300	97.7 %	96.3 %	94.6 %
OFFENCES AGAINST GOVERNMENT OPERATIONS	162	84	70	-48.1 %	-16.7 %	152	74	61	93.8 %	88.1 %	87.1 %
OFFENCES AGAINST GOVERNMENT SECURITY	0	1	0		-100.0 %	0	1			100.0 %	
OFFENCES AGAINST JUSTICE PROCEDURES	1,028	1,007	741	-2.0 %	-26.4 %	1,017	996	732	98.9 %	98.9 %	98.8 %
OFFENCES AGAINST JUSTICE PROCEDURES, GOVERNMENT SECURITY AND GOVERNMENT OPERATIONS NOT FURTHER DEFINED	1	0	1	-100.0 %		1	0	1	100.0 %		100.0 %
	<b>2,747</b>	<b>2,438</b>	<b>1,393</b>	<b>-11.2 %</b>	<b>-42.9 %</b>	<b>2,687</b>	<b>2,401</b>	<b>1,349</b>	<b>97.8 %</b>	<b>98.5 %</b>	<b>96.8 %</b>

**MISCELLANEOUS OFFENCES**

ASOC Subdivision Description	Recorded 2008	Recorded 2009	Recorded 2010	Variance 2008- 2009	Variance 2009- 2010	Resolved 2008	Resolved 2009	Resolved 2010	Resolution Rate 2008	Resolution Rate 2009	Resolution Rate 2010
COMMERCIAL/INDUSTRY/FINANCIAL REGULATION	0	4	13		225.0 %	0	1	13		25.0 %	100.0 %
DEFAMATION, LIBEL AND PRIVACY OFFENCES	5	7	7	40.0 %	0.0 %	2	1	2	40.0 %	14.3 %	28.6 %
OTHER MISCELLANEOUS OFFENCES	200	126	89	-37.0 %	-29.4 %	174	99	64	87.0 %	78.6 %	71.9 %
PUBLIC HEALTH AND SAFETY OFFENCES	8	14	9	75.0 %	-35.7 %	7	8	0	87.5 %	57.1 %	0.0 %
	<b>213</b>	<b>151</b>	<b>118</b>	<b>-29.1 %</b>	<b>-21.9 %</b>	<b>183</b>	<b>109</b>	<b>79</b>	<b>85.9 %</b>	<b>72.2 %</b>	<b>66.9 %</b>

<b>TOTAL</b>	<b>54,928</b>	<b>56,596</b>	<b>50,991</b>	<b>3.0 %</b>	<b>-9.9 %</b>	<b>21,169</b>	<b>21,455</b>	<b>17,137</b>	<b>38.5 %</b>	<b>37.9 %</b>	<b>33.6 %</b>
--------------	---------------	---------------	---------------	--------------	---------------	---------------	---------------	---------------	---------------	---------------	---------------

**SUMMARY OF DISTRICT RECORDED AND RESOLVED CRIME, BY AREA**  
**years ending 31 December**

**TOTAL CRIME**

<b>Area Description</b>	<b>Recorded 2008</b>	<b>Recorded 2009</b>	<b>Recorded 2010</b>	<b>Variance 2008- 2009</b>	<b>Variance 2009- 2010</b>	<b>Resolved 2008</b>	<b>Resolved 2009</b>	<b>Resolved 2010</b>	<b>Resolution Rate 2008</b>	<b>Resolution Rate 2009</b>	<b>Resolution Rate 2010</b>
Auckland Central Area	20,393	20,788	17,396	1.9 %	-16.3 %	10,633	10,704	8,094	52.1 %	51.5 %	46.5 %
Auckland East Area	18,323	18,691	17,431	2.0 %	-6.7 %	5,653	5,876	4,821	30.9 %	31.4 %	27.7 %
Auckland West Area	16,212	17,117	16,164	5.6 %	-5.6 %	4,883	4,875	4,222	30.1 %	28.5 %	26.1 %
<b>Total</b>	<b>54,928</b>	<b>56,596</b>	<b>50,991</b>	<b>3.0 %</b>	<b>-9.9 %</b>	<b>21,169</b>	<b>21,455</b>	<b>17,137</b>	<b>38.5 %</b>	<b>37.9 %</b>	<b>33.6 %</b>

**DISTRICT RECORDED CRIME PER 10,000 POPULATION, BY DIVISION**  
**Years ending 31 December**

**HOMICIDE AND RELATED OFFENCES**

ASOC Subdivision Description	Recorded per 10,000 pop 2008	Recorded per 10,000 pop 2009	Recorded per 10,000 pop 2010
ATTEMPTED MURDER	0.00	0.00	0.00
HOMICIDE AND RELATED OFFENCES NOT FURTHER DEFINED	0.00	0.00	0.00
MANSLAUGHTER AND DRIVING CAUSING DEATH	0.05	0.07	0.07
MURDER	0.14	0.07	0.19
	<b>0.19</b>	<b>0.14</b>	<b>0.26</b>

**ACTS INTENDED TO CAUSE INJURY**

ASOC Subdivision Description	Recorded per 10,000 pop 2008	Recorded per 10,000 pop 2009	Recorded per 10,000 pop 2010
ASSAULT	80.59	84.37	77.05
OTHER ACTS INTENDED TO CAUSE INJURY	0.14	0.21	0.14
	<b>80.73</b>	<b>84.58</b>	<b>77.19</b>

**SEXUAL ASSAULT AND RELATED OFFENCES**

ASOC Subdivision Description	Recorded per 10,000 pop 2008	Recorded per 10,000 pop 2009	Recorded per 10,000 pop 2010
NON-ASSAULTIVE SEXUAL OFFENCES	0.05	0.16	0.16
SEXUAL ASSAULT	5.30	4.99	5.79
	<b>5.35</b>	<b>5.16</b>	<b>5.95</b>

**DANGEROUS OR NEGLIGENT ACTS ENDANGERING PERSONS**

ASOC Subdivision Description	Recorded per 10,000 pop 2008	Recorded per 10,000 pop 2009	Recorded per 10,000 pop 2010
OTHER DANGEROUS OR NEGLIGENT ACTS ENDANGERING PERSONS	1.00	1.32	1.93
	<b>1.00</b>	<b>1.32</b>	<b>1.93</b>

**ABDUCTION, HARASSMENT AND OTHER RELATED OFFENCES AGAINST A PERSON**

ASOC Subdivision Description	Recorded per 10,000 pop 2008	Recorded per 10,000 pop 2009	Recorded per 10,000 pop 2010
ABDUCTION AND KIDNAPPING	0.62	0.57	0.77
HARASSMENT AND THREATENING BEHAVIOUR	24.36	31.02	27.12
	<b>24.98</b>	<b>31.59</b>	<b>27.88</b>

**ROBBERY, EXTORTION AND RELATED OFFENCES**

ASOC Subdivision Description	Recorded per 10,000 pop 2008	Recorded per 10,000 pop 2009	Recorded per 10,000 pop 2010
BLACKMAIL AND EXTORTION	0.57	0.57	0.44
ROBBERY	12.25	11.52	10.15
	<b>12.83</b>	<b>12.08</b>	<b>10.60</b>



## DISTRICT RECORDED CRIME PER 10,000 POPULATION, BY DIVISION

Years ending 31 December

### UNLAWFUL ENTRY WITH INTENT/BURGLARY, BREAK AND ENTER

ASOC Subdivision Description	Recorded per 10,000 pop 2008	Recorded per 10,000 pop 2009	Recorded per 10,000 pop 2010
UNLAWFUL ENTRY WITH INTENT/BURGLARY, BREAK AND ENTER	211.31	211.77	207.01
	<b>211.31</b>	<b>211.77</b>	<b>207.01</b>

### THEFT AND RELATED OFFENCES

ASOC Subdivision Description	Recorded per 10,000 pop 2008	Recorded per 10,000 pop 2009	Recorded per 10,000 pop 2010
ILLEGAL USE OF PROPERTY (EXCEPT MOTOR VEHICLES)	7.00	7.33	6.88
MOTOR VEHICLE THEFT AND RELATED OFFENCES	293.68	309.10	289.73
RECEIVE OR HANDLE PROCEEDS OF CRIME	11.20	13.94	9.29
THEFT (EXCEPT MOTOR VEHICLES)	197.69	204.87	210.24
	<b>509.58</b>	<b>535.24</b>	<b>516.14</b>

### FRAUD, DECEPTION AND RELATED OFFENCES

ASOC Subdivision Description	Recorded per 10,000 pop 2008	Recorded per 10,000 pop 2009	Recorded per 10,000 pop 2010
DECEPTIVE BUSINESS/GOVERNMENT PRACTICES	0.24	0.07	0.12
FORGERY AND COUNTERFEITING	2.53	2.19	2.53
OBTAIN BENEFIT BY DECEPTION	83.21	69.70	28.86
OTHER FRAUD AND DECEPTION OFFENCES	2.70	2.38	1.88
	<b>88.68</b>	<b>74.34</b>	<b>33.39</b>

### ILLICIT DRUG OFFENCES

ASOC Subdivision Description	Recorded per 10,000 pop 2008	Recorded per 10,000 pop 2009	Recorded per 10,000 pop 2010
DEAL OR TRAFFIC IN ILLICIT DRUGS	7.43	6.22	6.74
IMPORT OR EXPORT ILLICIT DRUGS	0.88	0.75	0.70
MANUFACTURE OR CULTIVATE ILLICIT DRUGS	1.24	1.60	1.23
OTHER ILLICIT DRUG OFFENCES	19.61	19.17	12.62
POSSESS AND/OR USE ILLICIT DRUGS	27.87	27.35	18.50
	<b>57.04</b>	<b>55.09</b>	<b>39.78</b>

### PROHIBITED AND REGULATED WEAPONS AND EXPLOSIVES OFFENCES

ASOC Subdivision Description	Recorded per 10,000 pop 2008	Recorded per 10,000 pop 2009	Recorded per 10,000 pop 2010
REGULATED WEAPONS/EXPLOSIVES OFFENCES	15.17	15.64	11.43
	<b>15.17</b>	<b>15.64</b>	<b>11.43</b>

**DISTRICT RECORDED CRIME PER 10,000 POPULATION, BY DIVISION****Years ending 31 December****PROPERTY DAMAGE AND ENVIRONMENTAL POLLUTION**

<b>ASOC Subdivision Description</b>	<b>Recorded per 10,000 pop 2008</b>	<b>Recorded per 10,000 pop 2009</b>	<b>Recorded per 10,000 pop 2010</b>
ENVIRONMENTAL POLLUTION	0.53	0.42	0.21
PROPERTY DAMAGE	108.72	119.89	107.21
	<b>109.25</b>	<b>120.31</b>	<b>107.42</b>

**PUBLIC ORDER OFFENCES**

<b>ASOC Subdivision Description</b>	<b>Recorded per 10,000 pop 2008</b>	<b>Recorded per 10,000 pop 2009</b>	<b>Recorded per 10,000 pop 2010</b>
DISORDERLY CONDUCT	74.90	68.38	58.81
OFFENSIVE CONDUCT	2.65	3.51	3.14
PUBLIC ORDER OFFENCES NOT FURTHER DEFINED	0.00	0.02	0.00
REGULATED PUBLIC ORDER OFFENCES	47.58	52.90	48.80
	<b>125.13</b>	<b>124.81</b>	<b>110.74</b>

**OFFENCES AGAINST JUSTICE PROCEDURES, GOVERNMENT SECURITY AND GOVERNMENT OPERATIONS**

<b>ASOC Subdivision Description</b>	<b>Recorded per 10,000 pop 2008</b>	<b>Recorded per 10,000 pop 2009</b>	<b>Recorded per 10,000 pop 2010</b>
BREACH OF COMMUNITY-BASED ORDER	29.21	23.18	5.11
BREACH OF CUSTODIAL ORDER OFFENCES	0.69	1.44	1.02
BREACH OF VIOLENCE AND NON-VIOLENCE RESTRAINING ORDERS	7.26	7.09	7.37
OFFENCES AGAINST GOVERNMENT OPERATIONS	3.87	1.98	1.63
OFFENCES AGAINST GOVERNMENT SECURITY	0.00	0.02	0.00
OFFENCES AGAINST JUSTICE PROCEDURES	24.55	23.72	17.22
OFFENCES AGAINST JUSTICE PROCEDURES, GOVERNMENT SECURITY AND GOVERNMENT OPERATIONS NOT FURTHER DEFINED	0.02	0.00	0.02
	<b>65.61</b>	<b>57.42</b>	<b>32.37</b>

**MISCELLANEOUS OFFENCES**

<b>ASOC Subdivision Description</b>	<b>Recorded per 10,000 pop 2008</b>	<b>Recorded per 10,000 pop 2009</b>	<b>Recorded per 10,000 pop 2010</b>
COMMERCIAL/INDUSTRY/FINANCIAL REGULATION	0.00	0.09	0.30
DEFAMATION, LIBEL AND PRIVACY OFFENCES	0.12	0.16	0.16
OTHER MISCELLANEOUS OFFENCES	4.78	2.97	2.07
PUBLIC HEALTH AND SAFETY OFFENCES	0.19	0.33	0.21
	<b>5.09</b>	<b>3.56</b>	<b>2.74</b>

<b>TOTAL</b>	<b>1,311.9</b>	<b>1,333.1</b>	<b>1,184.8</b>
--------------	----------------	----------------	----------------

# **DISTRICT RECORDED CRIME PER 10,000 POPULATION, BY AREA**

**Years ending 31 December**

<b>Area Description</b>	<b>Recorded per 10,000 pop 2008</b>	<b>Recorded per 10,000 pop 2009</b>	<b>Recorded per 10,000 pop 2010</b>	<b>Percent Variance 2008 to 2009</b>	<b>Percent Variance 2009 to 2010</b>
Auckland Central Area	4,080.2	4,063.3	3,334.5	-0.4 %	-17.9 %
Auckland East Area	1,044.0	1,050.1	965.7	0.6 %	-8.0 %
Auckland West Area	839.1	876.0	817.6	4.4 %	-6.7 %
<b>TOTAL</b>	<b>1,311.9</b>	<b>1,333.1</b>	<b>1,184.8</b>	<b>1.6 %</b>	<b>-11.1 %</b>

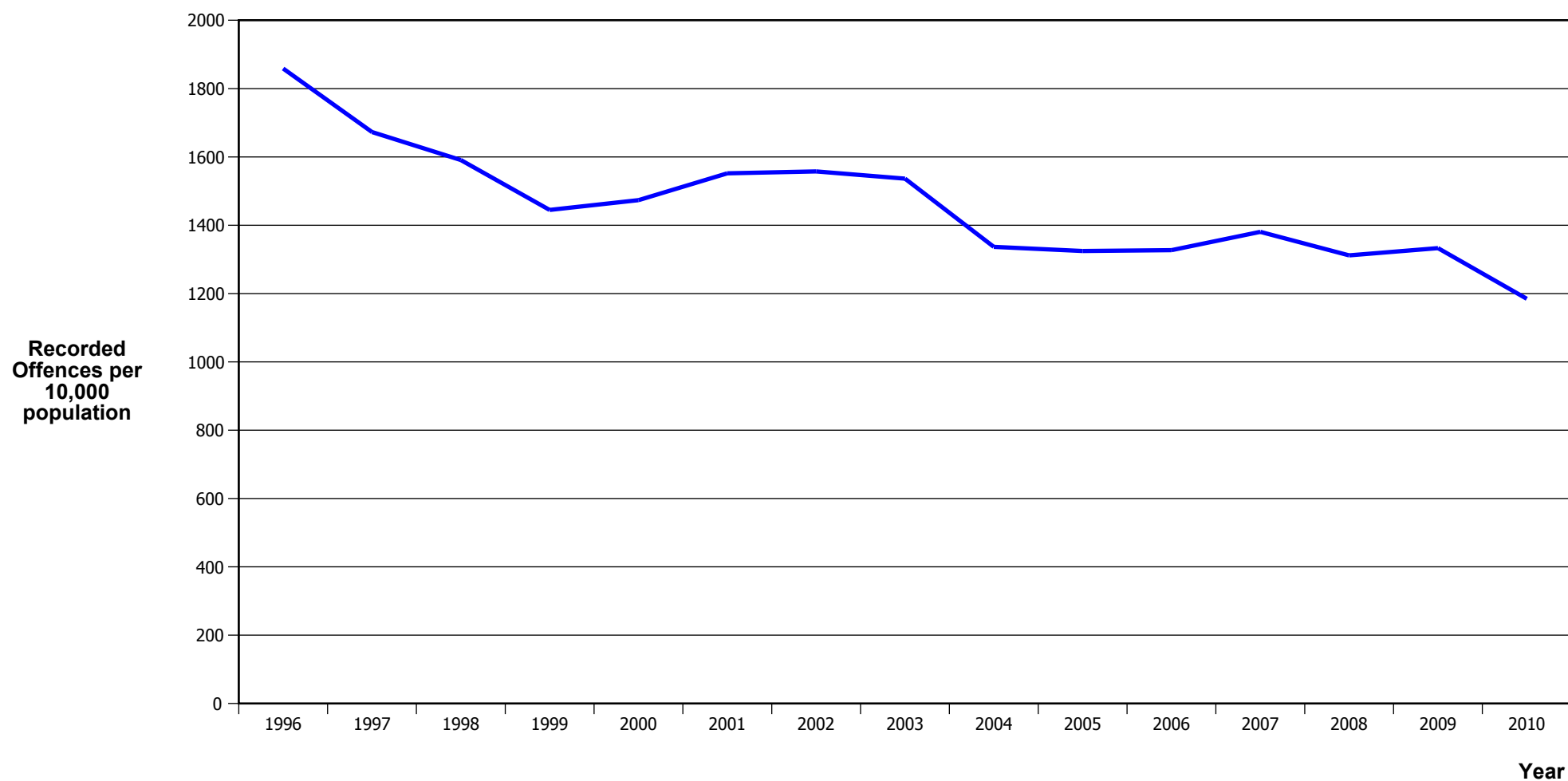
## PROPORTION OF RECORDED CRIME BY DIVISION

Years ending 31 December

ASOC Division Description	Proportions Recorded 2008	Recorded 2008	Proportions Recorded 2009	Recorded 2009	Proportions Recorded 2010	Recorded 2010
HOMICIDE AND RELATED OFFENCES	0.01 %	8	0.01 %	6	0.02 %	11
ACTS INTENDED TO CAUSE INJURY	6.15 %	3,380	6.34 %	3,591	6.51 %	3,322
SEXUAL ASSAULT AND RELATED OFFENCES	0.41 %	224	0.39 %	219	0.50 %	256
DANGEROUS OR NEGLIGENT ACTS ENDANGERING PERSONS	0.08 %	42	0.10 %	56	0.16 %	83
ABDUCTION, HARASSMENT AND OTHER RELATED OFFENCES AGAINST A PERSON	1.90 %	1,046	2.37 %	1,341	2.35 %	1,200
ROBBERY, EXTORTION AND RELATED OFFENCES	0.98 %	537	0.91 %	513	0.89 %	456
UNLAWFUL ENTRY WITH INTENT/BURGLARY, BREAK AND ENTER	16.11 %	8,847	15.89 %	8,991	17.47 %	8,909
THEFT AND RELATED OFFENCES	38.84 %	21,335	40.15 %	22,724	43.56 %	22,213
FRAUD, DECEPTION AND RELATED OFFENCES	6.76 %	3,713	5.58 %	3,156	2.82 %	1,437
ILLICIT DRUG OFFENCES	4.35 %	2,388	4.13 %	2,339	3.36 %	1,712
PROHIBITED AND REGULATED WEAPONS AND EXPLOSIVES OFFENCES	1.16 %	635	1.17 %	664	0.96 %	492
PROPERTY DAMAGE AND ENVIRONMENTAL POLLUTION	8.33 %	4,574	9.03 %	5,108	9.07 %	4,623
PUBLIC ORDER OFFENCES	9.54 %	5,239	9.36 %	5,299	9.35 %	4,766
OFFENCES AGAINST JUSTICE PROCEDURES, GOVERNMENT SECURITY AND GOVERNMENT OPERATIONS	5.00 %	2,747	4.31 %	2,438	2.73 %	1,393
MISCELLANEOUS OFFENCES	0.39 %	213	0.27 %	151	0.23 %	118
	<b>100.00 %</b>	<b>54,928</b>	<b>100.00 %</b>	<b>56,596</b>	<b>100.00 %</b>	<b>50,991</b>

# **CRIME TRENDS**

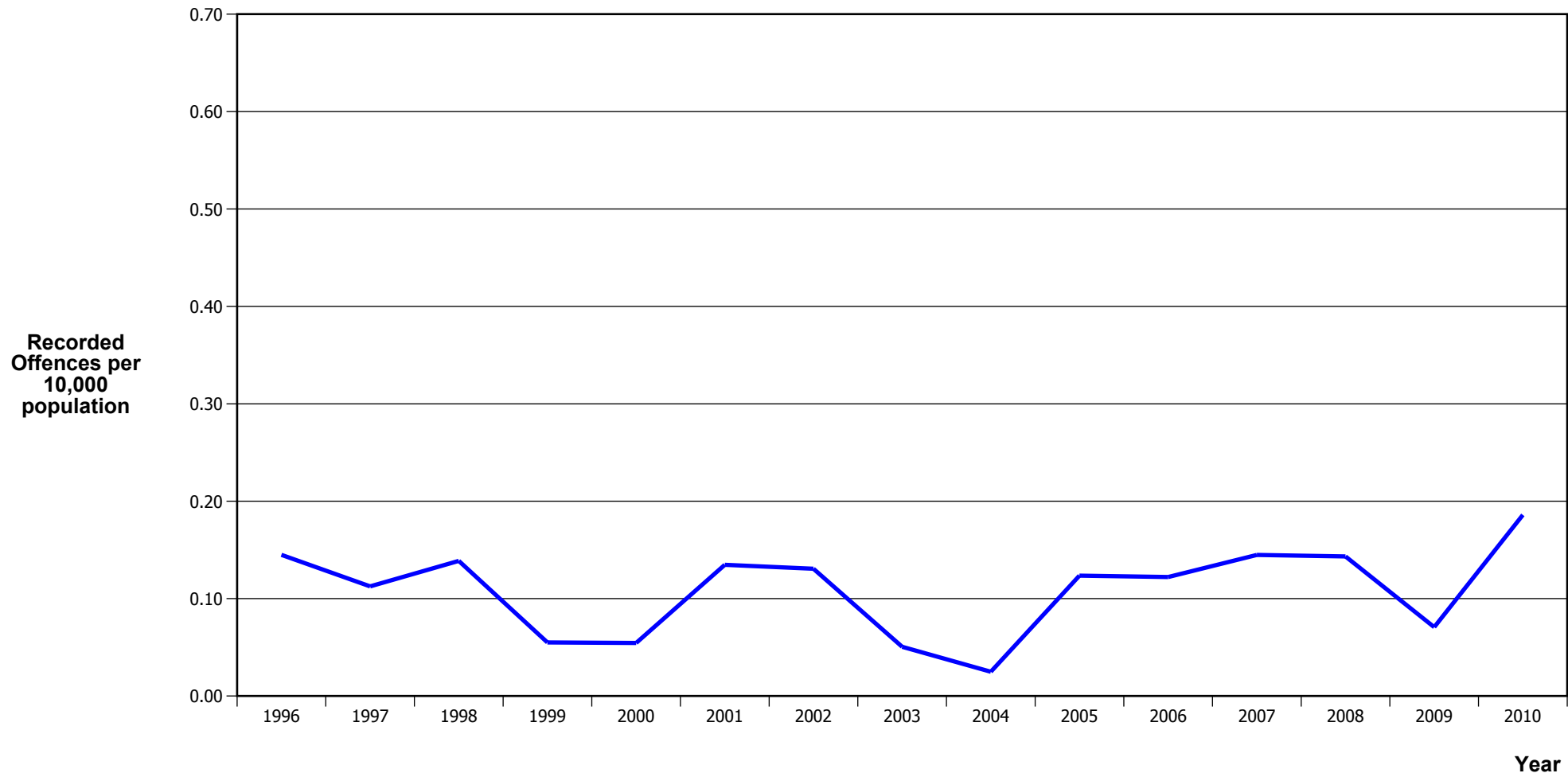
## TOTAL CRIME



Calendar Year	1996	1997	1998	1999	2000	2001	2002	2003	2004	2005	2006	2007	2008	2009	2010
Recorded Offences	64,124	59,423	57,320	52,532	54,062	57,622	59,621	60,769	53,555	53,615	54,294	57,187	54,928	56,596	50,991
Recorded per 10,000 Population	1,858.7	1,672.8	1,590.9	1,444.8	1,473.4	1,552.1	1,557.5	1,536.3	1,336.8	1,324.7	1,327.0	1,380.8	1,311.9	1,333.1	1,184.8

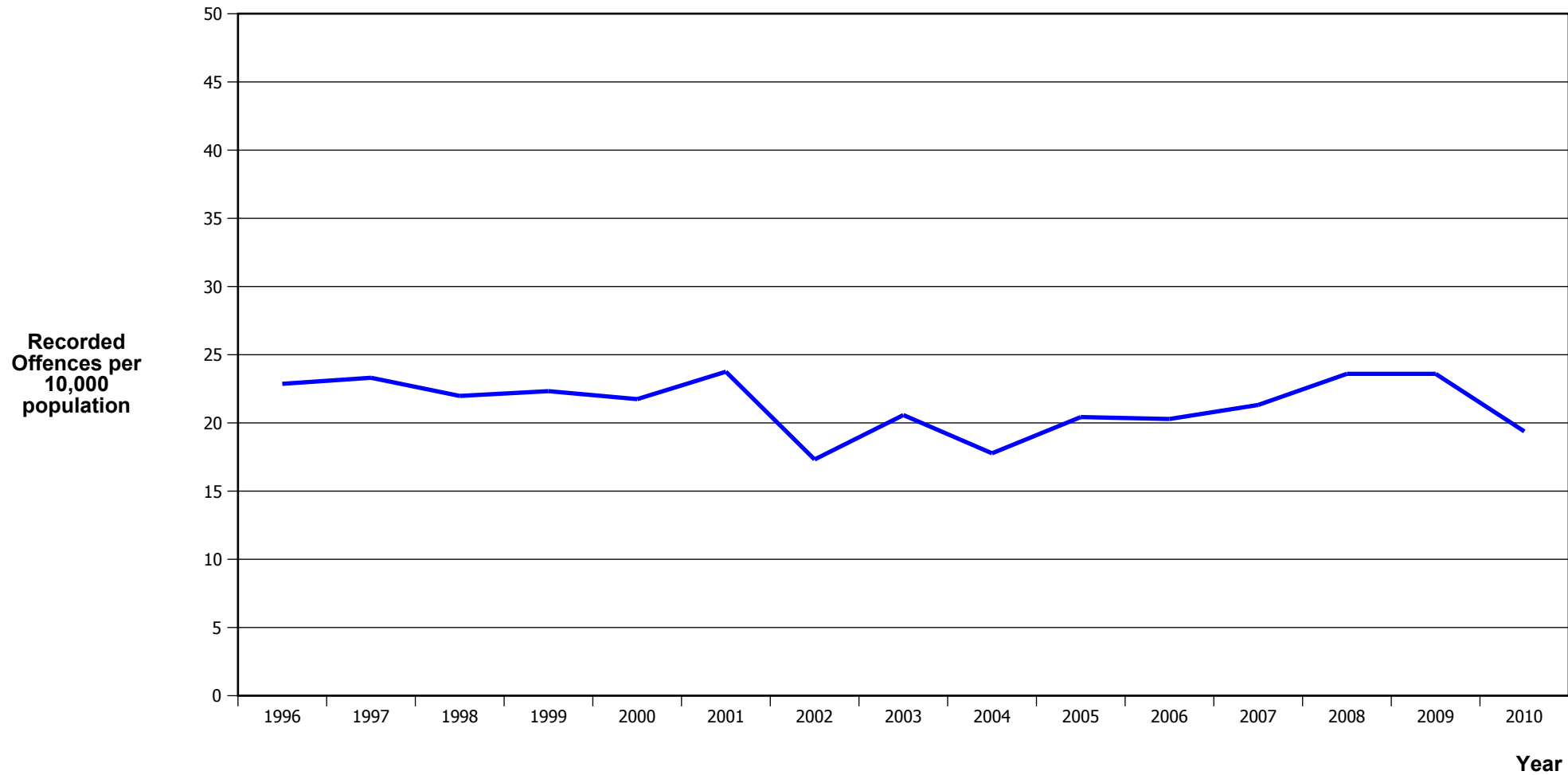
\*In 2005/2006 there was a major IT system change (LES to NIA)

# MURDER



Calendar Year	1996	1997	1998	1999	2000	2001	2002	2003	2004	2005	2006	2007	2008	2009	2010
Recorded Offences	5	4	5	2	2	5	5	2	1	5	5	6	6	3	8
Recorded per 10,000 Population	0.14	0.11	0.14	0.06	0.05	0.13	0.13	0.05	0.02	0.12	0.12	0.14	0.14	0.07	0.19

## SERIOUS ASSAULTS RESULTING IN INJURY\*

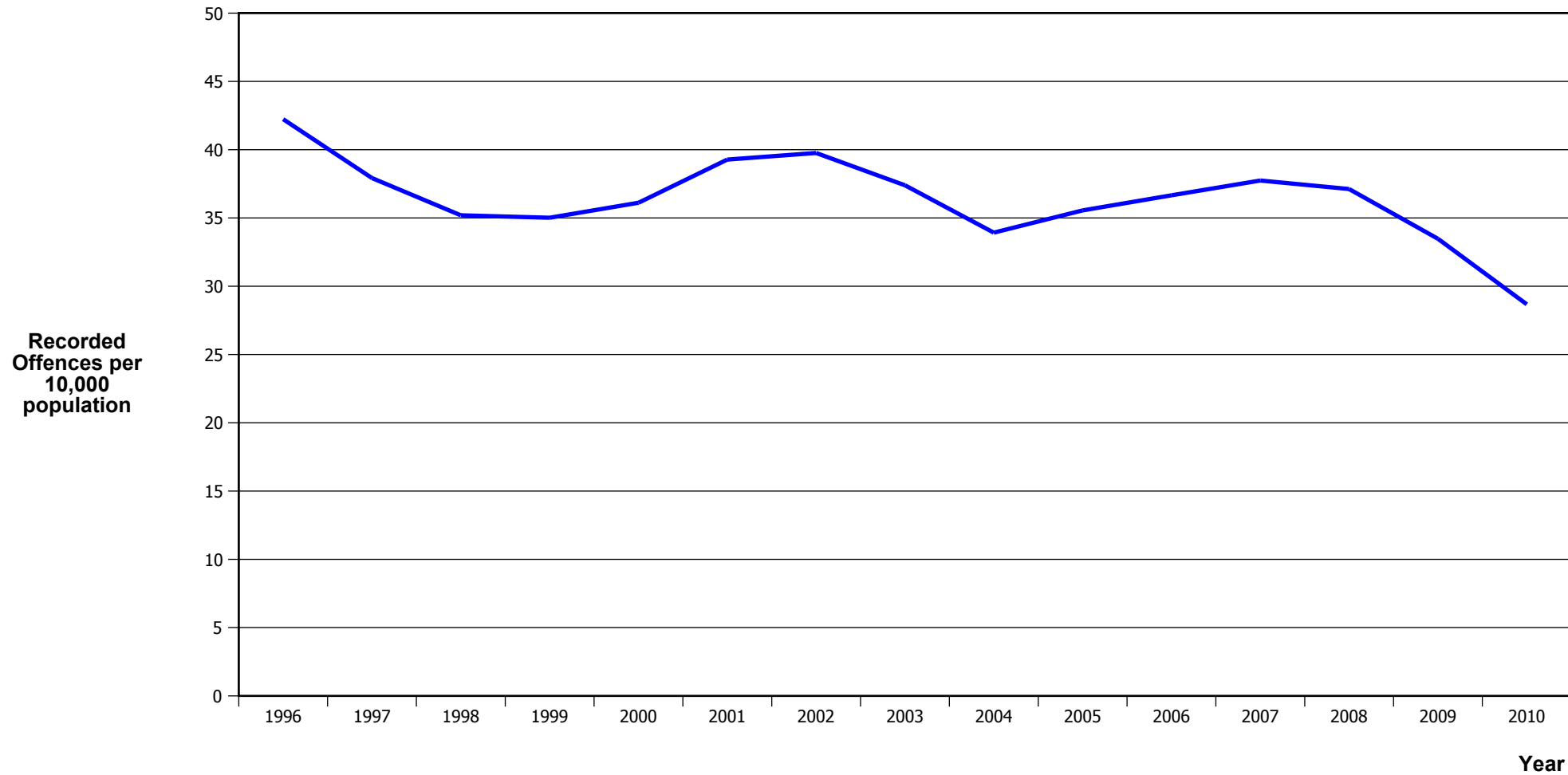


Calendar Year	1996	1997	1998	1999	2000	2001	2002	2003	2004	2005	2006	2007	2008	2009	2010
Recorded Physical Injury	789	828	792	812	798	882	663	814	712	827	830	883	988	1,002	834
Recorded per 10,000 Population	22.9	23.3	22.0	22.3	21.7	23.8	17.3	20.6	17.8	20.4	20.3	21.3	23.6	23.6	19.4

\* This measure excludes common assaults

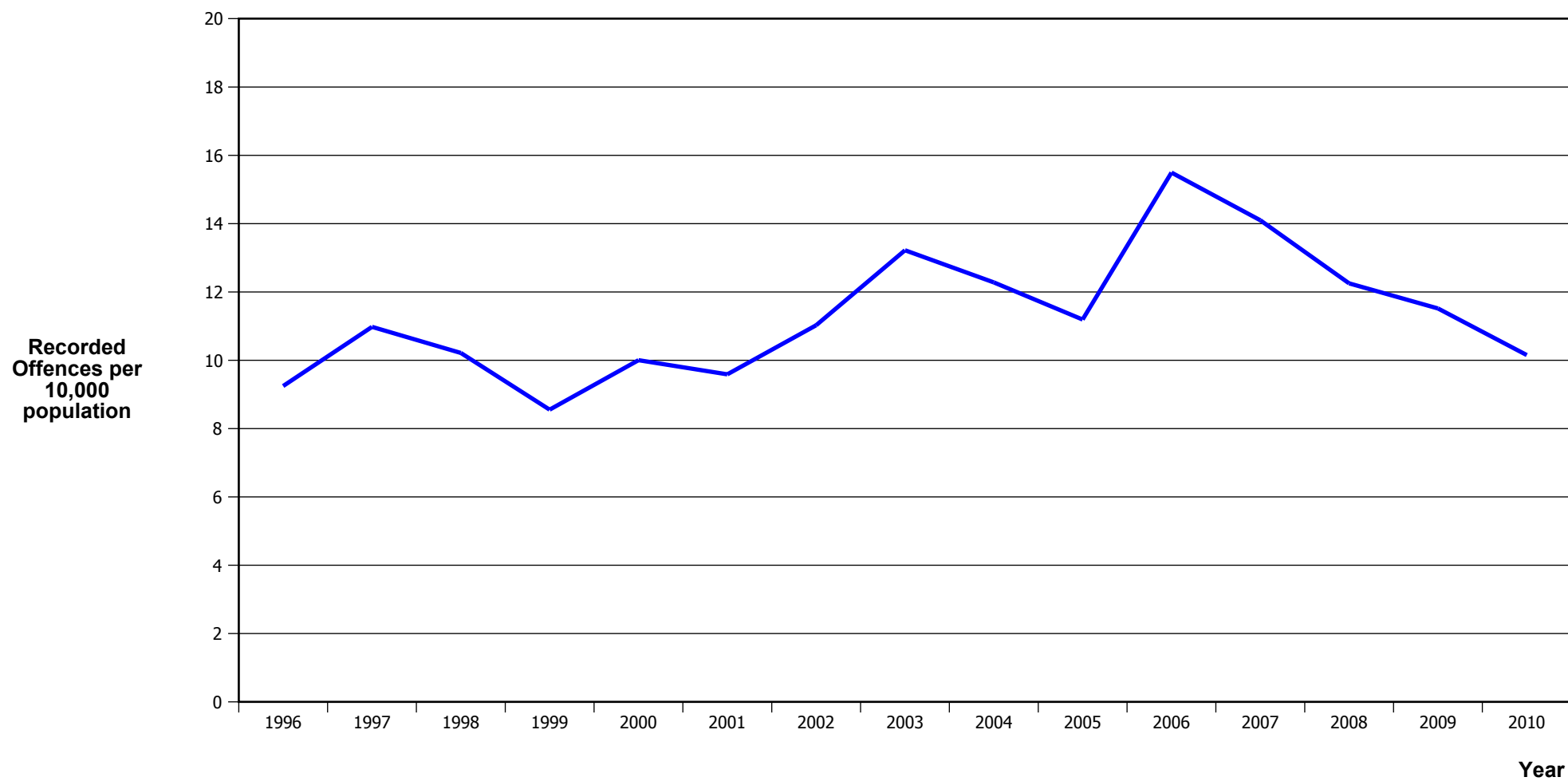


## PUBLIC PLACE ASSAULTS



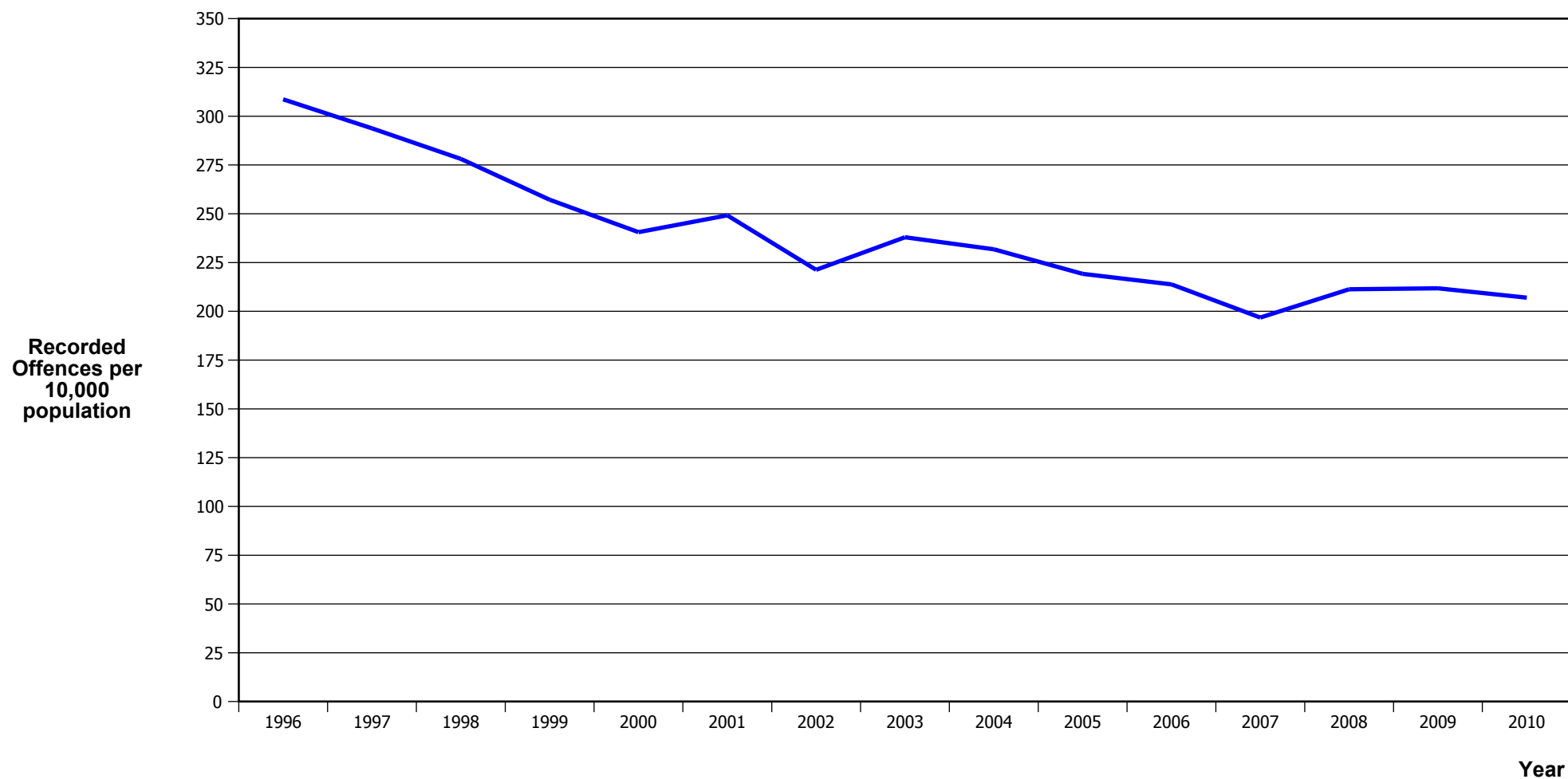
Calendar Year	1996	1997	1998	1999	2000	2001	2002	2003	2004	2005	2006	2007	2008	2009	2010
Recorded Offences	1,457	1,347	1,268	1,273	1,325	1,458	1,522	1,479	1,359	1,439	1,500	1,563	1,554	1,421	1,234
Recorded per 10,000 Population	42.2	37.9	35.2	35.0	36.1	39.3	39.8	37.4	33.9	35.6	36.7	37.7	37.1	33.5	28.7

## ROBBERY



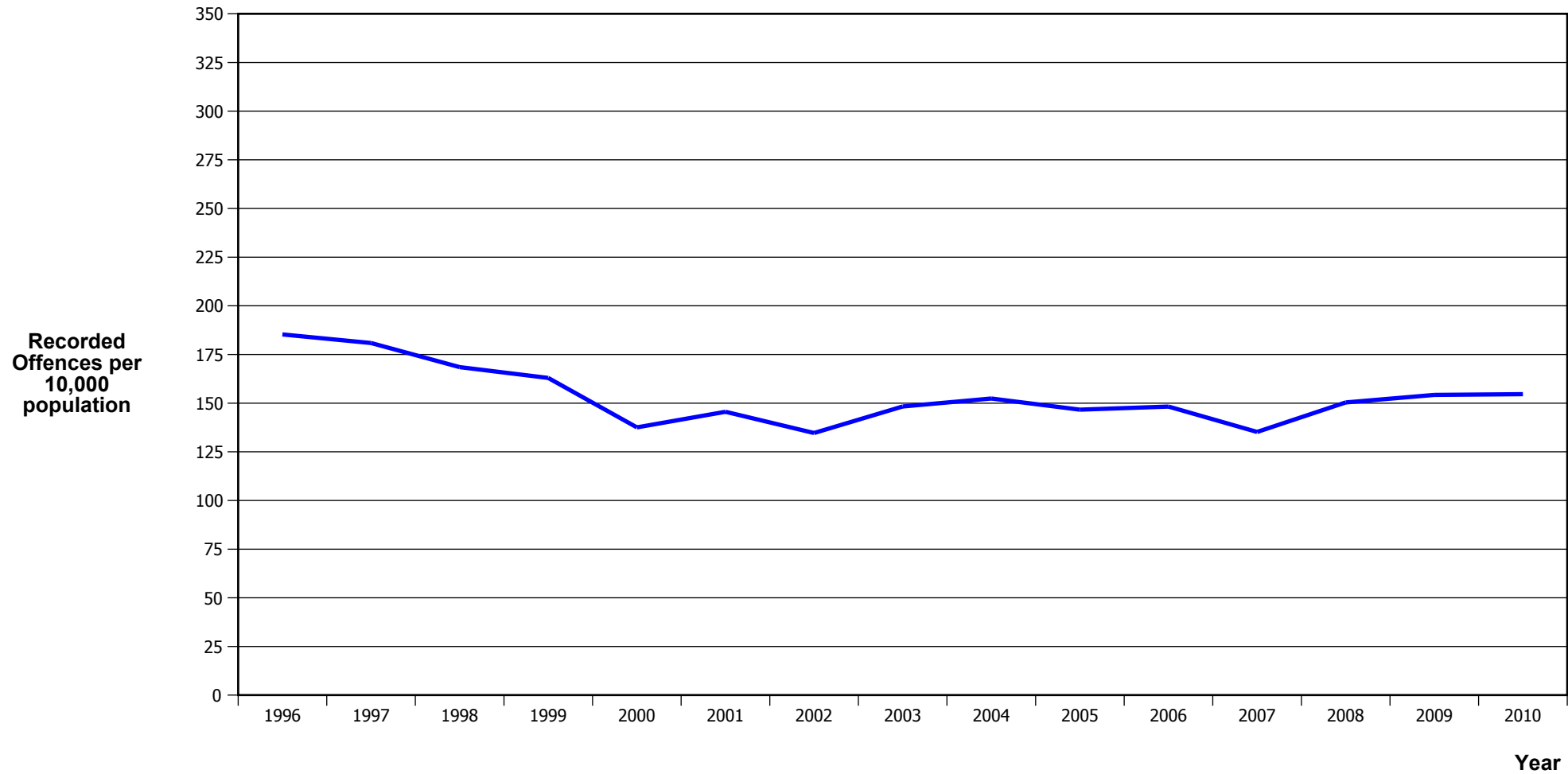
Calendar Year	1996	1997	1998	1999	2000	2001	2002	2003	2004	2005	2006	2007	2008	2009	2010
Recorded Offences	319	390	368	311	367	356	422	523	492	453	634	584	513	489	437
Recorded per 10,000 Population	9.2	11.0	10.2	8.6	10.0	9.6	11.0	13.2	12.3	11.2	15.5	14.1	12.3	11.5	10.2

## BURGLARY (TOTAL)



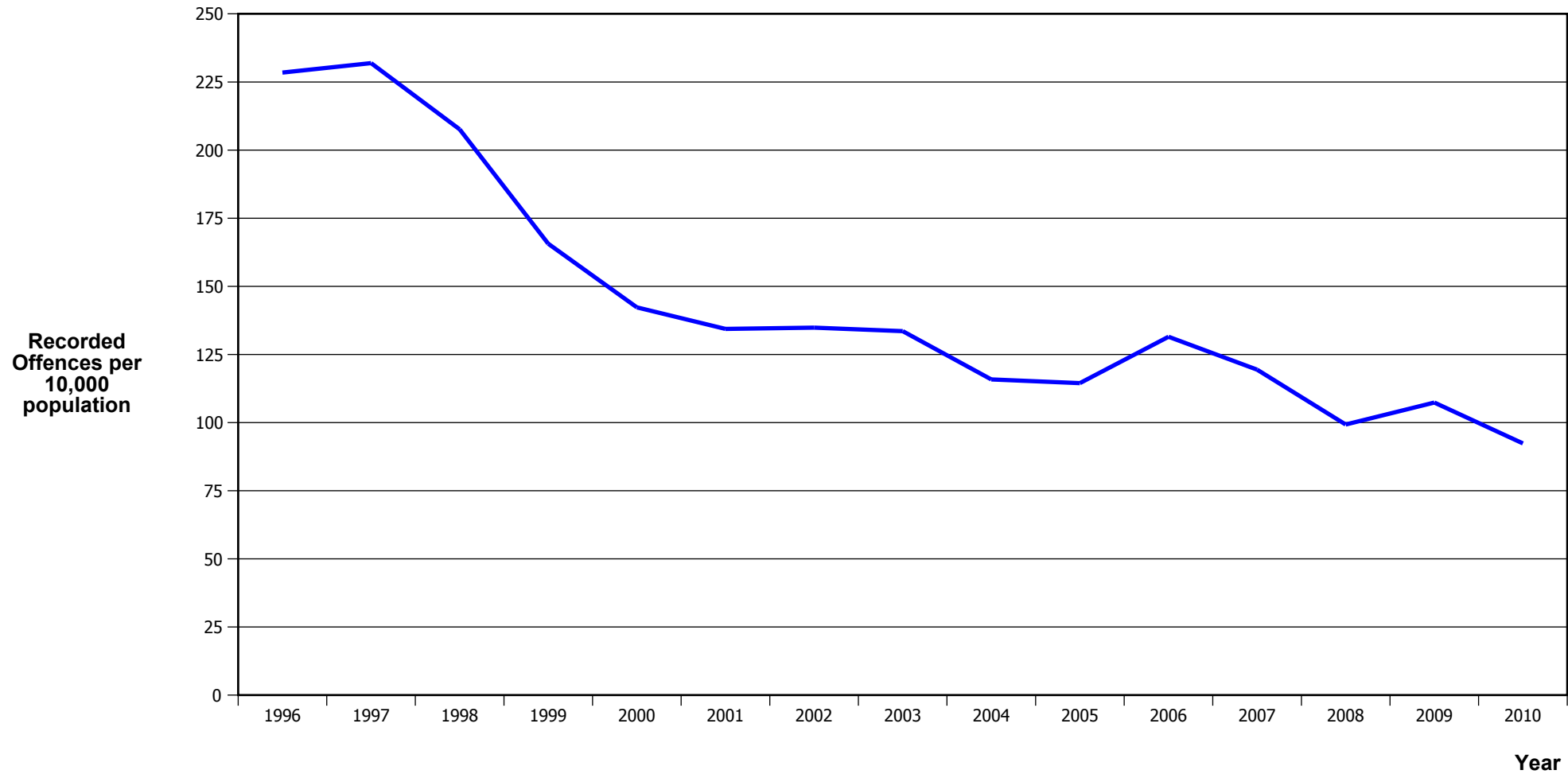
Calendar Year	1996	1997	1998	1999	2000	2001	2002	2003	2004	2005	2006	2007	2008	2009	2010
Recorded Offences	10,649	10,437	10,021	9,351	8,827	9,252	8,470	9,412	9,286	8,872	8,748	8,151	8,847	8,991	8,909
Recorded per 10,000 Population	308.7	293.8	278.1	257.2	240.6	249.2	221.3	237.9	231.8	219.2	213.8	196.8	211.3	211.8	207.0

## BURGLARY (DWELLING)



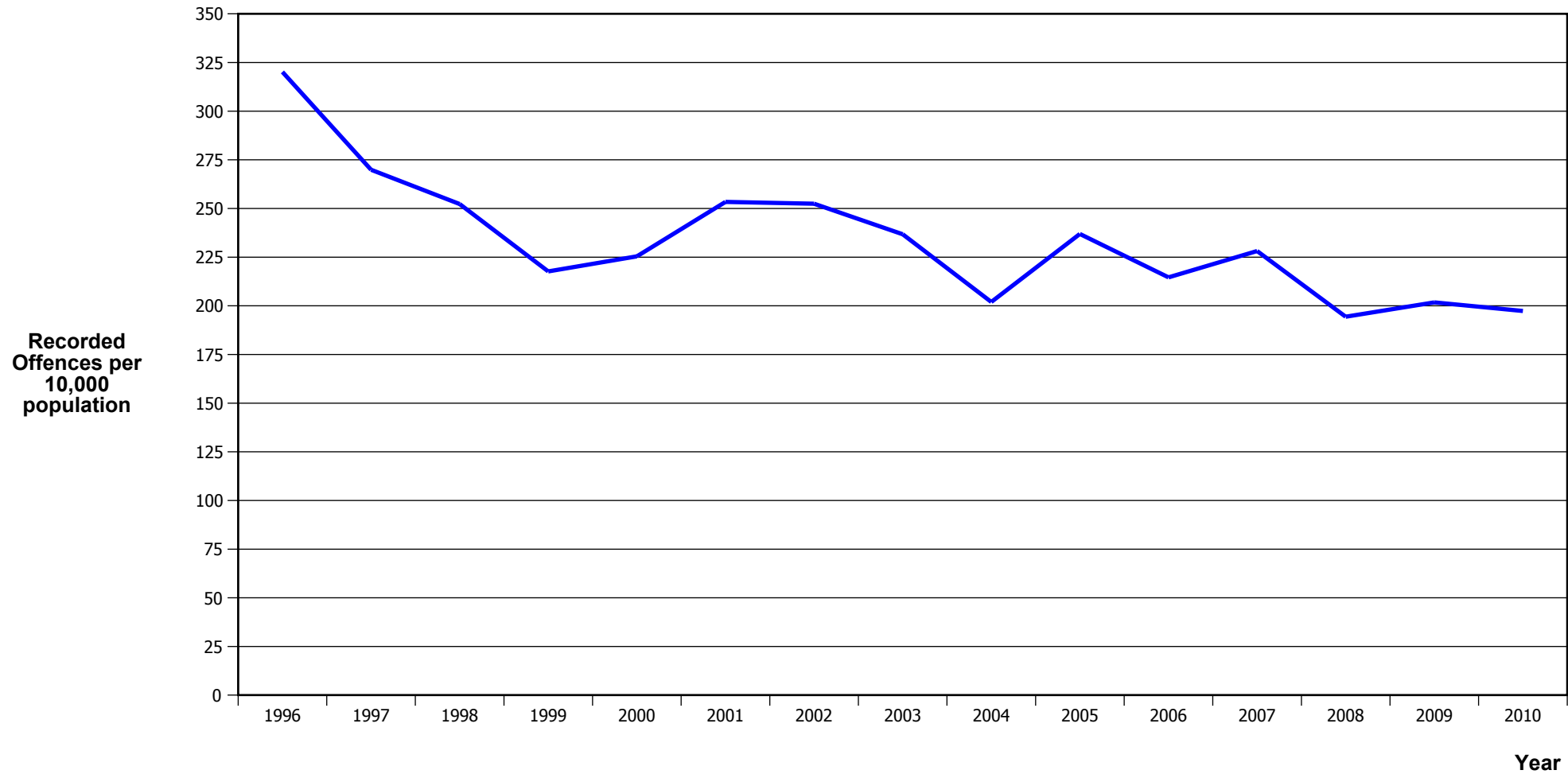
Calendar Year	1996	1997	1998	1999	2000	2001	2002	2003	2004	2005	2006	2007	2008	2009	2010
Recorded Offences	6,393	6,426	6,072	5,925	5,047	5,405	5,156	5,865	6,104	5,935	6,066	5,599	6,295	6,547	6,654
Recorded per 10,000 Population	185.3	180.9	168.5	163.0	137.6	145.6	134.7	148.3	152.4	146.6	148.3	135.2	150.4	154.2	154.6

## VEHICLES STOLEN



Calendar Year	1996	1997	1998	1999	2000	2001	2002	2003	2004	2005	2006	2007	2008	2009	2010
Recorded Offences	7,881	8,239	7,481	6,023	5,221	4,989	5,162	5,283	4,641	4,633	5,380	4,946	4,157	4,558	3,976
Recorded per 10,000 Population	228.4	231.9	207.6	165.7	142.3	134.4	134.8	133.6	115.8	114.5	131.5	119.4	99.3	107.4	92.4

## THEFT EX CAR



Calendar Year	1996	1997	1998	1999	2000	2001	2002	2003	2004	2005	2006	2007	2008	2009	2010
Recorded Offences	11,045	9,587	9,089	7,914	8,272	9,407	9,664	9,366	8,092	9,589	8,782	9,450	8,139	8,565	8,493
Recorded per 10,000 Population	320.1	269.9	252.3	217.7	225.4	253.4	252.4	236.8	202.0	236.9	214.6	228.2	194.4	201.7	197.3

## Population Data

Population data is used in this release to calculate crime rates. They have been derived from population estimates as at 30 June each year that have been obtained from Statistics New Zealand.

The estimated resident population is based on the census usually resident population count, with adjustments for residents missed or counted more than once by the census (net census undercount), and for residents temporarily overseas on census night.

These population estimates exclude the number of international students who are studying in New Zealand for less than 12 months.

Year	Population
1996	345,000
1997	355,240
1998	360,290
1999	363,590
2000	366,920
2001	371,260
2002	382,810
2003	395,550
2004	400,620
2005	404,740
2006	409,160
2007	414,170
2008	418,680
2009	424,560
2010	430,370

## General Definitions

**Recorded Offences:** the number of breaches of the New Zealand law recorded by Police. This includes offences specified in the Crimes Act and other legislations, such as the Summary Offences Act, Local Government Act, etc.

**Resolved Offences:** the number of recorded offences where an offender has been identified and dealt with (e.g. warned, cautioned, prosecuted, etc).

**Resolution Rate:** the proportion of recorded offences that have been resolved.

**Recorded per 10,000 population:** the number of recorded offences for every 10,000 people. This is also referred as the crime rate per 10,000 population.

**ASOC:** the Australian Standard Offence Classification. The offence classification is divided into 16 major offence divisions.

## Definition of ASOC Divisions

1. Homicide and related offences: Unlawfully kill, attempt to unlawfully kill or conspiracy to kill another person.
2. Acts intended to cause injury: Acts, excluding attempted murder and those resulting in death, which are intended to cause non-fatal injury or harm to another person and where there is no sexual or acquisitive element.
3. Sexual assault and related offences: Acts, or intent of acts, of a sexual nature against another person, which are non-consensual or where consent is proscribed.
4. Dangerous or negligent acts endangering persons: Dangerous or negligent acts which, though not intended to cause harm, actually or potentially result in injury to oneself or another person.
5. Abduction, harassment and other offences against person: Acts intended to threaten or harass, or acts that unlawfully deprive another person of their freedom of movement, that are against that person's will or against the will of any parent, guardian or other person having lawful custody or care of that person.
6. Robbery, extortion and related offences: Acts intended to unlawfully gain money, property or other items of value from, or to cause detriment to, another person by using the threat of force or any other coercive measure.
7. Unlawful entry with intent / burglary, break and enter: The unlawful entry of a structure with the intent to commit an offence, where the entry is either forced or unforced.
8. Theft and related and offences: The unlawful taking or obtaining of money or goods, not involving the use of force or violence, coercion or deception, with intent to permanently or temporarily deprive the owner or possessor of the use of the money or goods, or the receiving or handling of money or goods obtained unlawfully.



9. Fraud, deception and related offences: Offences involving a dishonest act or omission carried out with the purpose of deceiving to obtain a benefit.

10. Illicit drug offences: The possessing, selling, dealing or trafficking, importing or exporting, manufacturing or cultivating of drugs or other substances prohibited under legislation.

11. Prohibited and regulated weapons and explosives offences: Offences involving prohibited or regulated weapons and explosives. Those offences also involving assault, sexual assault or robbery are coded to the relevant group within Assault, Sexual assaults and Robbery respectively.

12. Property damage and environmental pollution: The wilful and unlawful destruction, damage or defacement of public or private property, or the pollution of property or a definable entity held in common by the community.

13. Public order offences: Offences relating personal conduct that involves, or may lead to, a breach of public order or decency, or that is indicative of criminal intent, or that is otherwise regulated or prohibited on moral or ethical grounds. In general these offences do not involve a specific victim or victims; however some offences, such as offensive language and offensive behaviour, may be directed towards a single victim.

14. Traffic and vehicle regulatory offences: Offences relating to vehicles and most forms of traffic, including offences pertaining to the licensing, registration, roadworthiness, or use of vehicles, bicycle offences and pedestrian offences.

15. Offences against justice procedures, government security and government operations: An act or omission that is deemed to be prejudicial to the effective carrying out of justice procedures or any government operations. This includes general government operations as well as those specifically concerned with maintaining government security.

16. Miscellaneous offences: Offences involving the breach of statutory rules or regulations governing activities that are prima facie legal, where such offences are not explicitly dealt with under any other division. If an offence is specified under regulation and involves an act that would be illegal under common law or general criminal legislation, the offence is dealt with under the appropriate generic group.