

Place-based interventions for combatting organised crime harm

WHERE DO WE TARGET INVESTMENT?

Targeting

place-based initiatives

in areas impacted by organised crime:



WAIROA: AN EXAMPLE

Organised crime

is harming wellbeing in Wairoa, causing and compounding serious:



Social issues



Health issues



Economic issues – a **significant disruptor** to employers gaining permanent and reliable employees



Identifying a location

Police and agency intelligence and analysis

Wairoa has:

- the highest per capita consumption of methamphetamine in the country
- high impact from organised crime activity

Wairoa has high levels of –

- unemployment
- burglaries
- family harm incidents
- gambling issues
- mental health and suicide call outs

Identifying the key people and groups, including NGOs and iwi that can:

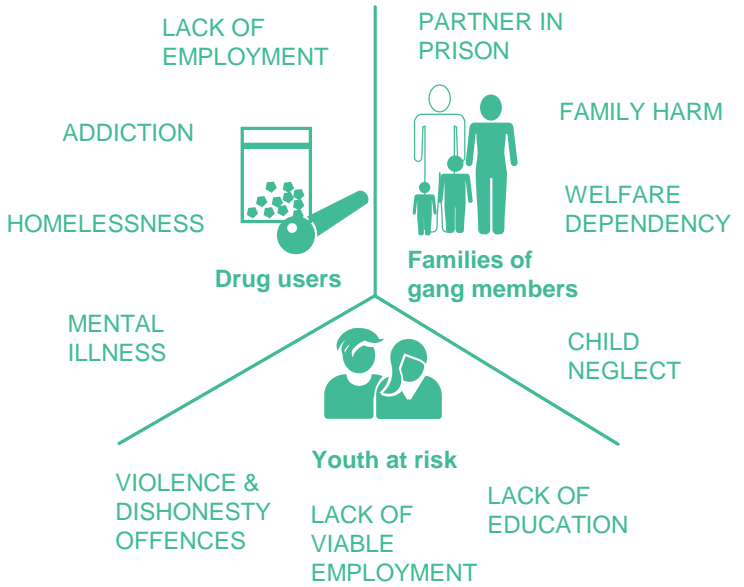
- design and lead an approach
- deliver initiatives

Identifying initiatives and existing governance to:

- build on what the community is doing
- avoid duplication

WHAT ARE THE LOCAL ISSUES?

Identify the at-risk groups and issues they face in local communities.



WHO DO WE TALK TO?

Engaging with the local community to promote **co-design** between national agencies, iwi, whānau, and local groups, and local decision-making.

Ensuring the issue is owned by the local community.



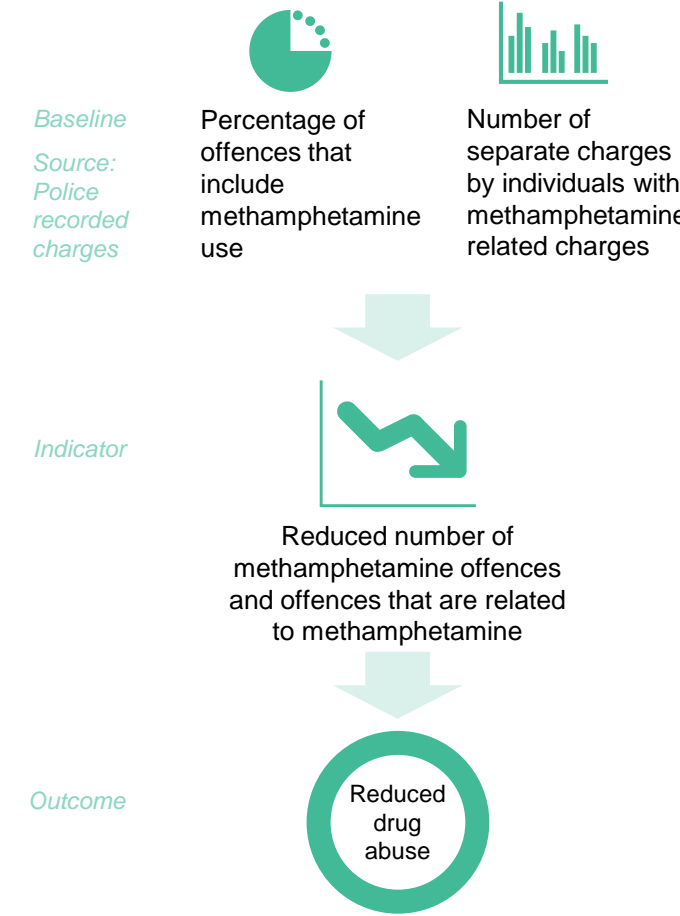
WHAT WILL WE DO?

A **community development, prevention focus** to address the harm to wellbeing and build the resilience of affected communities.

- Improving access to services through navigators to enhance mental health and treat alcohol and other drug addictions
- Mentoring of at-risk youth
- Connecting at-risk groups with existing educational, skills and employment opportunities including work-ready initiatives
- Brief interventions, educational material and contacts for users and families
- Enforcement action to target dealers and facilitators and create an untenable operating environment for organised crime
- Community-led awareness campaigns and local forums on harm of methamphetamine

HOW WILL WE KNOW IT'S WORKING?

Indicators at a local level to measure the impact of interventions.



Benefits of coordinated intervention:



Increased community resilience



Improved coordination of services



Collaboration across local and national groups