

PART 7

Statistical Information

Figure 13: Summary of National Recorded and Resolved Crime, by Category

Crime Category	Recorded 2007/08	Recorded 2006/07	Recorded 2005/06	Percent Variance 06/07 to 07/08	Percent Variance 05/06 to 06/07
Violence					
Grievous Assaults	5,009	4,486	4,077	11.7%	10.0%
Group Assemblies	623	521	408	19.6%	27.7%
Homicide	112	96	105	16.7%	-8.6%
Intimidation / Threats	14,138	13,213	12,579	7.0%	5.0%
Kidnapping and Abduction	242	242	268	0.0%	-9.7%
Minor Assaults	14,921	13,182	12,894	13.2%	2.2%
Robbery	2,620	2,581	2,600	1.5%	-0.7%
Serious Assaults	21,096	18,562	17,713	13.7%	4.8%
Total	58,761	52,883	50,644	11.1%	4.4%
Sexual					
Abnormal Sex	35	26	26	34.6%	0.0%
Immoral Behaviour	353	445	350	-20.7%	27.1%
Immoral Behaviour / Miscellaneous	174	212	82	-17.9%	158.5%
Sexual Affronts	596	550	581	8.4%	-5.3%
Sexual Attacks	2,364	2,374	2,409	-0.4%	-1.5%
Total	3,522	3,607	3,448	-2.4%	4.6%
Drugs and Anti-Social					
Disorder	24,968	24,143	22,133	3.4%	9.1%
Drugs (Cannabis Only)	15,288	14,449	15,298	5.8%	-5.5%
Drugs (New Drugs)	2,640	2,969	3,217	-11.1%	-7.7%
Drugs (Not Cannabis)	1,331	1,490	1,756	-10.7%	-15.1%
Family Offences	358	306	292	17.0%	4.8%
Family Offences Continued	4,964	4,534	4,518	9.5%	0.4%
Gaming	1	5	17	-80.0%	-70.6%
Sale of Liquor Act 1989	10,228	8,558	7,086	19.5%	20.8%
Vagrancy Offences	117	107	165	9.3%	-35.2%
Total	59,895	56,561	54,482	5.9%	3.8%

Resolved 2007/08	Resolved 2006/07	Resolved 2005/06	Percent Resolved 2007/08	Percent Resolved 2006/07	Percent Resolved 2005/06
4,396	3,843	3,498	87.8%	85.7%	85.8%
456	365	322	73.2%	70.1%	78.9%
107	91	97	95.5%	94.8%	92.4%
11,740	11,021	10,499	83.0%	83.4%	83.5%
194	174	202	80.2%	71.9%	75.4%
11,987	10,455	10,276	80.3%	79.3%	79.7%
1,195	1,060	1,102	45.6%	41.1%	42.4%
18,434	15,957	15,172	87.4%	86.0%	85.7%
48,509	42,966	41,168	82.6%	81.2%	81.3%
18	18	17	51.4%	69.2%	65.4%
284	353	269	80.5%	79.3%	76.9%
112	161	39	64.4%	75.9%	47.6%
357	331	323	59.9%	60.2%	55.6%
1,513	1,455	1,428	64.0%	61.3%	59.3%
2,284	2,318	2,076	64.8%	64.3%	60.2%
22,488	21,832	19,992	90.1%	90.4%	90.3%
14,456	13,770	14,472	94.6%	95.3%	94.6%
2,524	2,840	3,072	95.6%	95.7%	95.5%
1,254	1,340	1,332	94.2%	89.9%	75.9%
279	224	214	77.9%	73.2%	73.3%
4,498	4,139	4,091	90.6%	91.3%	90.5%
1	4	12	100.0%	80.0%	70.6%
10,071	8,332	6,906	98.5%	97.4%	97.5%
96	103	150	82.1%	96.3%	90.9%
55,667	52,584	50,241	92.9%	93.0%	92.2%

Figure 13: Summary of National Recorded and Resolved Crime, by Category (continued)

Crime Category	Recorded 2007/08	Recorded 2006/07	Recorded 2005/06	Percent Variance 06/07 to 07/08	Percent Variance 05/06 to 06/07
Dishonesty					
Burglary	57,385	61,532	60,882	-6.7%	1.1%
Car Conversion etc	31,986	35,944	38,623	-11.0%	-6.9%
Dishonesty Miscellaneous	502	499	445	0.6%	12.1%
Fraud	12,249	12,074	11,890	1.4%	1.5%
Receiving	3,122	3,268	3,012	-4.5%	8.5%
Theft	115,612	119,563	126,302	-3.3%	-5.3%
Total	220,856	232,880	241,154	-5.2%	-3.4%
Property Damage					
Destruction of Property	53,794	50,898	46,945	5.7%	8.4%
Endangering	247	325	292	-24.0%	11.3%
Total	54,041	51,223	47,237	5.5%	8.4%
Property Abuse					
Animals	339	290	292	16.9%	-0.7%
Arms Act Offences	2,882	2,984	3,088	-3.4%	-3.4%
Littering	361	334	295	8.1%	13.2%
Post / Rail / Fire Service Abuse	3,366	3,325	3,575	1.2%	-7.0%
Trespass	10,512	10,354	10,532	1.5%	-1.7%
Total	17,460	17,287	17,782	1.0%	-2.8%
Administration					
Against Justice	11,030	10,972	10,220	0.5%	7.4%
Against National Interest	11	11	16	0.0%	-31.3%
Births / Deaths & Marriages	4	5	11	-20.0%	-54.5%
By – Law Breaches	592	504	707	17.5%	-28.7%
Immigration	272	431	592	-36.9%	-27.2%
Justice (Special)	244	218	170	11.9%	28.2%
Racial	3	2	6	50.0%	-66.7%
Total	12,156	12,143	11,722	0.1%	3.6%
Grand Total	426,691	426,584	426,469	0.0%	0.0%

Resolved 2007/08	Resolved 2006/07	Resolved 2005/06	Percent Resolved 2007/08	Percent Resolved 2006/07	Percent Resolved 2005/06
10,091	10,045	10,097	17.6%	16.3%	16.6%
7,431	7,920	8,887	23.2%	22.0%	23.0%
290	251	145	57.8%	50.3%	32.6%
5,749	6,266	6,471	46.9%	51.9%	54.4%
3,058	3,165	2,926	98.0%	96.8%	97.1%
26,459	25,654	27,543	22.9%	21.5%	21.8%
53,078	53,301	56,069	24.0%	22.9%	23.3%
16,523	14,997	14,906	30.7%	29.5%	31.8%
193	256	217	78.1%	78.8%	74.3%
16,716	15,253	15,123	30.9%	29.8%	32.0%
193	175	188	56.9%	60.3%	64.4%
2,408	2,477	2,570	83.6%	83.0%	83.2%
250	256	202	69.3%	76.6%	68.5%
1,765	1,795	1,962	52.4%	54.0%	54.9%
8,298	8,097	8,060	78.9%	78.2%	76.5%
12,914	12,800	12,982	74.0%	74.0%	73.0%
10,246	10,466	9,549	92.9%	95.4%	93.4%
3	8	9	27.3%	72.7%	56.3%
3	4	3	75.0%	80.0%	27.3%
500	407	603	84.5%	80.8%	85.3%
261	401	528	96.0%	93.0%	89.2%
206	197	157	84.4%	90.4%	92.4%
3	0	3	100.0%	0.0%	50.0%
11,222	11,483	10,852	92.3%	94.6%	92.6%
200,390	190,705	188,511	47.0%	44.7%	44.2%

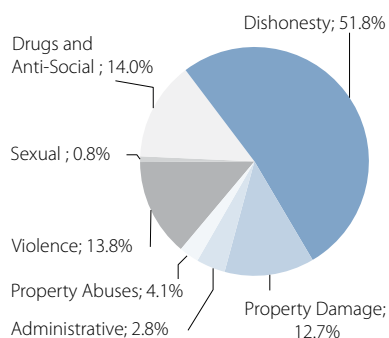
ALL CATEGORIES

Figure 14: Proportions of Total Crime Recorded by Category

Offence Category	2007/08	2006/07	2005/06
Violence	13.8%	12.4%	11.9%
Sexual	0.8%	0.8%	0.8%
Drugs and Anti-Social	14.0%	13.3%	12.8%
Dishonesty	51.8%	54.6%	56.5%
Property Damage	12.7%	12.0%	11.1%
Property Abuses	4.1%	4.1%	4.2%
Administrative	2.8%	2.8%	2.7%
Total	100%	100%	100%

Figure 15: Recorded Crime per 10,000 Population by Category

Crime Type	2007/08	2006/07	2005/06
Violence			
Grievous Assaults	11.8	10.7	9.8
Group Assemblies	1.5	1.2	1.0
Homicide	0.3	0.2	0.3
Intimidation / Threats	33.3	31.4	30.2
Kidnapping and Abduction	0.6	0.6	0.6
Minor Assaults	35.1	31.3	31.0
Robbery	6.2	6.1	6.3
Serious Assaults	49.6	44.1	42.6
Total	138.3	125.7	121.8
Sexual Offences			
Abnormal Sex	0.1	0.1	0.1
Immoral Behaviour	0.8	1.1	0.8
Immoral Behaviour / Miscellaneous	0.4	0.5	0.2
Sexual Affronts	1.4	1.3	1.4
Sexual Attacks	5.6	5.6	5.8
Total	8.3	8.6	8.3
Drugs and Anti-Social Offences			
Disorder	58.7	57.4	53.2
Drugs (Cannabis Only)	36.0	34.4	36.8
Drugs (New Drugs)	6.2	7.1	7.7
Drugs (Not Cannabis)	3.1	3.5	4.2
Family Offences	0.8	0.7	0.7
Family Offences Continued	11.7	10.8	10.9
Gaming	0.0	0.0	0.0
Sale of Liquor Act 1989	24.1	20.3	17.0
Vagrancy Offences	0.3	0.3	0.4
Total	140.9	134.5	131.0

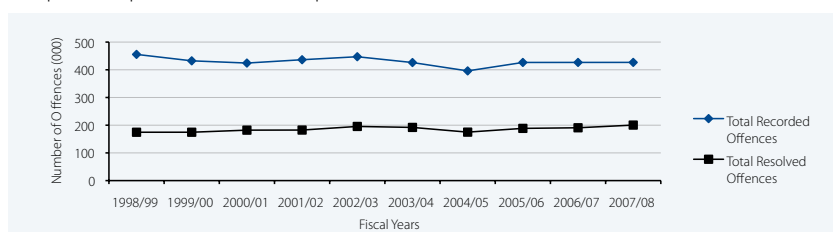
Crime Type	2007/08	2006/07	2005/06
Dishonesty			
Burglary	135.0	146.3	146.4
Car Conversion etc	75.3	85.5	92.9
Dishonesty Miscellaneous	1.2	1.2	1.1
Fraud	28.8	28.7	28.6
Receiving	7.3	7.8	7.2
Theft	272.0	284.2	303.7
Total	519.7	553.6	579.8
Property Damage			
Destruction of Property	126.6	121.0	112.9
Endangering	0.6	0.8	0.7
Total	127.2	121.8	113.6
Property Abuse			
Animals	0.8	0.7	0.7
Arms Act Offences	6.8	7.1	7.4
Littering	0.8	0.8	0.7
Postal / Rail / Fire Service Abuses	7.9	7.9	8.6
Trespass	24.7	24.6	25.3
Total	41.1	41.1	42.8
Administration			
Against Justice	26.0	26.1	24.6
Against National Interest	0.0	0.0	0.0
Births / Deaths and Marriages	0.0	0.0	0.0
By – Laws Breaches	1.4	1.2	1.7
Immigration	0.6	1.0	1.4
Justice (Special)	0.6	0.5	0.4
Racial	0.0	0.0	0.0
Total	28.6	28.9	28.2
All Offences Total	1,004.0	1,014.2	1,025.4

Note: Fiscal Year 2002 to 2008 population estimates are based on the 2001 and 2006 Census data. Estimates have been revised since the previous publication of this report

Figure 16: Total Recorded and Resolved Offences

Fiscal Year	Total Recorded Offences	Total Resolved Offences	Resolution Rate	% Variation in Recorded Offences	Recorded Offences per 10,000 pop*
1998/99	455,552	174,576	38.3%	-2.2%	1,189.0
1999/00	432,354	174,611	40.4%	-5.1%	1,124.4
2000/01	424,286	182,137	42.9%	-1.9%	1,096.7
2001/02	436,315	182,468	41.8%	2.8%	1,114.5
2002/03	447,146	195,502	43.7%	2.5%	1,121.3
2003/04	426,149	191,988	45.1%	-4.7%	1,050.4
2004/05	396,018	174,937	44.2%	-7.1%	963.4
2005/06	426,469	188,511	44.2%	7.7%	1,025.4
2006/07	426,584	190,705	44.7%	0.0%	1,014.2
2007/08	426,691	200,390	47.0%	0.0%	1,004.0

* Note: Fiscal Year 2002 to 2008 population estimates are based on the 2001 and 2006 Census data. Estimates have been revised since the previous publication of this report.

**Figure 17: Total Recorded and Resolved Violent and Sexual Attacks**

Fiscal Year	Total Recorded Offences	Total Resolved Offences	Resolution Rate	% Variation in Recorded Offences	Recorded Offences per 10,000 pop*
1998/99	23,887	16,731	70.0%	0.4%	62.3
1999/00	23,615	17,027	72.1%	-1.1%	61.4
2000/01	25,119	18,217	72.5%	6.4%	64.9
2001/02	25,797	18,512	71.8%	2.7%	65.9
2002/03	25,660	18,847	73.4%	-0.5%	64.3
2003/04	25,020	18,823	75.2%	-2.5%	61.7
2004/05	24,825	18,238	73.5%	-0.8%	60.4
2005/06	27,197	20,111	73.9%	9.6%	65.4
2006/07	27,980	20,692	74.0%	2.9%	66.5
2007/08	30,315	23,158	76.4%	8.3%	71.3

* Note: Fiscal Year 2002 to 2008 population estimates are based on the 2001 and 2006 Census data. Estimates have been revised since the previous publication of this report.

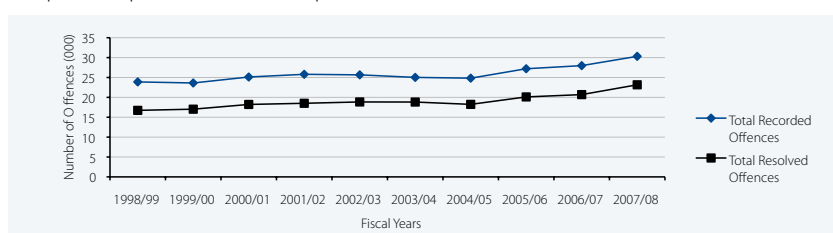
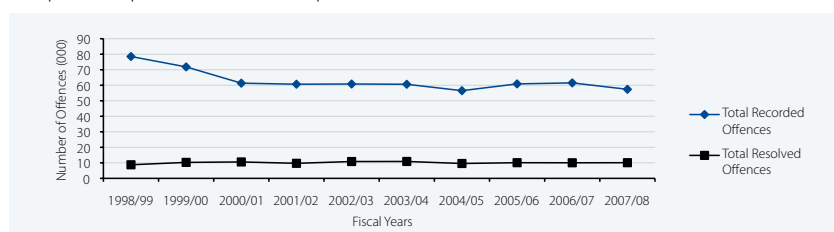


Figure 18: Total Recorded and Resolved Burglary Offences

Fiscal Year	Total Recorded Offences	Total Resolved Offences	Resolution Rate	% Variation in Recorded Offences	Recorded Offences per 10,000 pop*
1998/99	78,527	8,752	11.1%	-0.5%	205.0
1999/00	71,842	10,287	14.3%	-8.5%	186.8
2000/01	61,347	10,579	17.2%	-14.6%	158.6
2001/02	60,676	9,700	16.0%	-1.1%	155.0
2002/03	60,816	10,845	17.8%	0.2%	152.5
2003/04	60,630	10,893	18.0%	-0.3%	149.4
2004/05	56,513	9,582	17.0%	-6.8%	137.5
2005/06	60,882	10,097	16.6%	7.7%	146.4
2006/07	61,532	10,045	16.3%	1.1%	146.3
2007/08	57,385	10,091	17.6%	-6.7%	135.0

* Note: Fiscal Year 2002 to 2008 population estimates are based on the 2001 and 2006 Census data. Estimates have been revised since the previous publication of this report.

**Figure 19: Total Recorded and Resolved Burglary Dwelling Offences**

Fiscal Year	Total Recorded Offences	Total Resolved Offences	Resolution Rate	% Variation in Recorded Offences	Recorded Offences per 10,000 pop*
1998/99	50,537	5,053	10.0%	4.1%	131.9
1999/00	44,276	6,037	13.6%	-12.4%	115.1
2000/01	37,772	6,543	17.3%	-14.7%	97.6
2001/02	36,092	5,517	15.3%	-4.4%	92.2
2002/03	37,736	6,481	17.2%	4.6%	94.6
2003/04	38,619	6,843	17.7%	2.3%	95.2
2004/05	36,032	5,817	16.1%	-6.7%	87.7
2005/06	39,946	6,291	15.7%	10.9%	96.0
2006/07	40,359	6,139	15.2%	1.0%	95.9
2007/08	38,897	6,330	16.3%	-3.6%	91.5

* Note: Fiscal Year 2002 to 2008 population estimates are based on the 2001 and 2006 Census data. Estimates have been revised since the previous publication of this report.

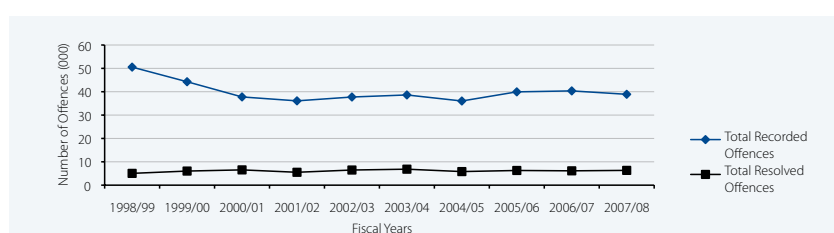


Figure 20: Total Recorded and Resolved Motor Vehicle Theft/Unlawful Taking/Car Conversion Offences

Fiscal Year	Total Recorded Offences	Total Resolved Offences	Resolution Rate	% Variation in Recorded Offences	Recorded Offences per 10,000 pop*
1998/99	29,326	3,920	13.4%	-9.0%	76.5
1999/00	24,895	4,119	16.5%	-15.1%	64.7
2000/01	21,186	3,983	18.8%	-14.9%	54.8
2001/02	22,591	4,342	19.2%	6.6%	57.7
2002/03	23,789	4,668	19.6%	5.3%	59.7
2003/04	22,097	4,516	20.4%	-7.1%	54.5
2004/05	20,860	4,127	19.8%	-5.6%	50.7
2005/06	24,089	4,823	20.0%	15.5%	57.9
2006/07	22,049	4,470	20.3%	-8.5%	52.4
2007/08	19,743	4,172	21.1%	-10.5%	46.5

* Note: Fiscal Year 2002 to 2008 population estimates are based on the 2001 and 2006 Census data. Estimates have been revised since the previous publication of this report.

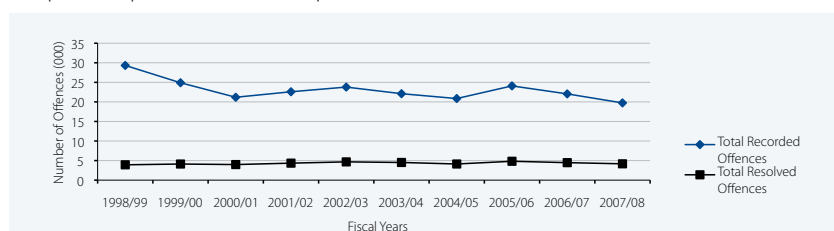


Figure 21: Total Recorded and Resolved Theft Ex Car Offences

Fiscal Year	Total Recorded Offences	Total Resolved Offences	Resolution Rate	% Variation in Recorded Offences	Recorded Offences per 10,000 pop*
1998/99	56,788	2,987	5.3%	3.3%	148.2
1999/00	47,430	2,933	6.2%	-16.5%	123.4
2000/01	47,196	3,291	7.0%	-0.5%	122.0
2001/02	53,019	3,535	6.7%	12.3%	135.4
2002/03	53,743	4,558	8.5%	1.4%	134.8
2003/04	49,482	4,075	8.2%	-7.9%	122.0
2004/05	47,288	3,267	6.9%	-4.4%	115.0
2005/06	52,997	3,879	7.3%	12.1%	127.4
2006/07	47,963	3,168	6.6%	-9.5%	114.0
2007/08	43,203	2,749	6.4%	-9.9%	101.7

* Note: Fiscal Year 2002 to 2008 population estimates are based on the 2001 and 2006 Census data. Estimates have been revised since the previous publication of this report.

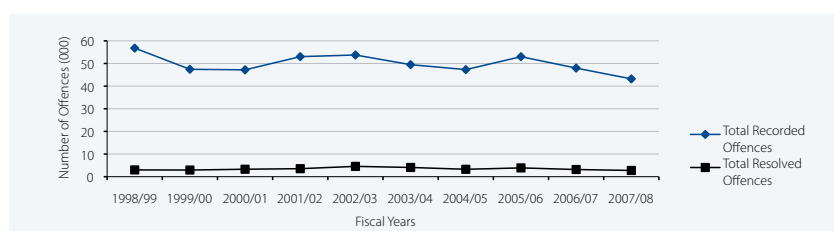
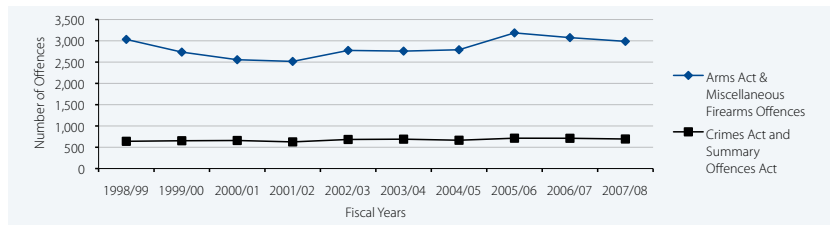


Figure 22: Recorded Offences Involving Firearms

Fiscal Year	Arms Act & Miscellaneous Firearms Offences	Crimes Act and Summary Offences Act	Total
1998/99	3,033	640	3,673
1999/00	2,735	653	3,388
2000/01	2,556	659	3,215
2001/02	2,516	626	3,142
2002/03	2,774	683	3,457
2003/04	2,758	690	3,448
2004/05	2,790	665	3,455
2005/06	3,186	713	3,899
2006/07	3,075	711	3,786
2007/08	2,987	694	3,681

**Figure 23: Total Recorded Assaults on Police**

Fiscal Year	Crimes Act Assaults	Other Assaults	Total Assaults on Police	Firearms	Stabbing Cutting Weapon	Other Weapons	Total Weapon
1998/99	193	1,685	1,878	13	2	42	57
1999/00	216	1,749	1,965	19	5	35	59
2000/01	210	1,787	1,997	18	7	41	66
2001/02	250	1,900	2,150	30	17	45	92
2002/03	252	1,820	2,072	31	9	48	88
2003/04	284	1,769	2,053	30	5	40	75
2004/05	298	1,571	1,869	37	6	44	87
2005/06	331	1,792	2,123	22	7	55	84
2006/07	393	1,855	2,248	31	11	46	88
2007/08	460	1,924	2,384	29	5	64	98

Note: 2002/03 Figures revised to correct typographical errors and undercounting of 4 Crimes Act assaults with Firearms. 2005/06 other assaults figure revised to include assaults on traffic officers not included that year.

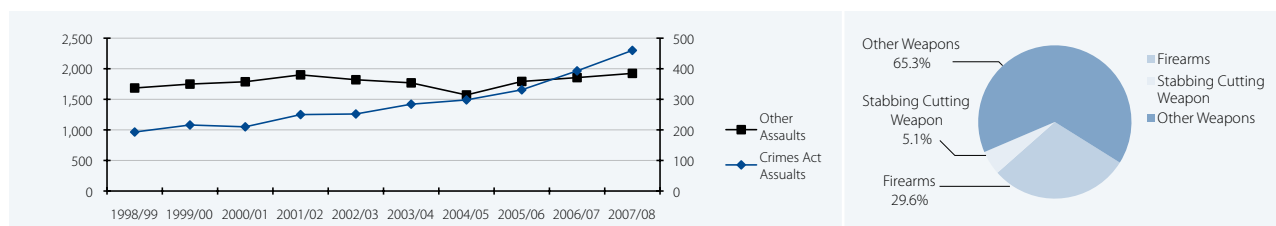


Figure 24: Summary of Recorded Incidents

	Recorded 2007/08	Recorded 2006/07	Recorded 2005/06	Variation (%) 06/07-07/08	Variation (%) 05/06 - 06/07	Variation (%) 04/05 - 05/06
Incidents						
Alarm Sounding	12,713	13,474	13,611	-5.6%	-1.0%	-9.4%
Blockage / Breakdown on Highway	26,528	25,948	24,563	2.2%	5.6%	21.2%
Car / Person Acting Suspiciously	77,026	74,971	74,075	2.7%	1.2%	3.8%
Domestic Dispute	39,357	37,433	37,051	5.1%	1.0%	20.7%
Drunk into Custody / Detox	15,858	15,778	15,630	0.5%	0.9%	9.8%
Sudden Death	4,984	5,261	4,905	-5.3%	7.3%	-12.8%
Traffic Incident	57,485	61,841	60,386	-7.0%	2.4%	-4.0%
Vehicle Collision	47,685	47,507	45,809	0.4%	3.7%	9.1%
Other Incident Reports (Incl Misc. Incidents)	207,303	192,743	188,250	7.6%	2.4%	8.7%
Total Incidents	488,939	474,956	464,280	2.9%	2.3%	6.7%
Services						
Advise Relatives	34	40	67	-15.0%	-40.3%	-41.2%
Arrest Warrant	28,568	25,897	22,039	10.3%	17.5%	-31.6%
Firearm Licensing	1,137	1,670	1,334	-31.9%	25.2%	4500.0%
Found Property	43,694	44,131	47,694	-1.0%	-7.5%	-10.0%
Licence Applications	4,755	4,561	4,849	4.3%	-5.9%	6.8%
Liquor Licensing Vetting	16,938	16,295	17,515	3.9%	-7.0%	-20.9%
Lost Property	44,048	46,794	48,673	-5.9%	-3.9%	-9.3%
Missing Person	14,735	13,871	15,446	6.2%	-10.2%	-5.3%
Other Requests for Service	94,021	85,366	72,388	10.1%	17.9%	-60.3%
Public Relations	31,222	22,868	17,967	36.5%	27.3%	14.4%
Recover Vehicle	14,123	15,634	14,845	-9.7%	5.3%	22.1%
Summons	36,225	28,186	26,116	28.5%	7.9%	-27.7%
Warrants of Seizure	1,885	1,925	1,309	-2.1%	47.1%	-38.3%
Total Services	331,385	307,238	290,242	7.9%	5.9%	-32.6%
Preventative						
Crime Prevention Advice	92	10	14	820.0%	-28.6%	-76.7%
Keys Taken	0	5	51	-100.0%	-90.2%	-21.5%
Other School Talks (Not LREP)	9	5	16	80.0%	-68.8%	-55.6%
Turnover	77	162	270	-52.5%	-40.0%	-61.5%
Watching/Observations	5,004	6,621	6,008	-24.4%	10.2%	2874.3%
Total Preventative	5,182	6,803	6,359	-23.8%	7.0%	497.7%
Bail Checks*	92,337	84,999	85,335	8.6%	-0.4%	
Total All Incidents	917,843	873,996	846,216	5.0%	3.3%	-2.4%

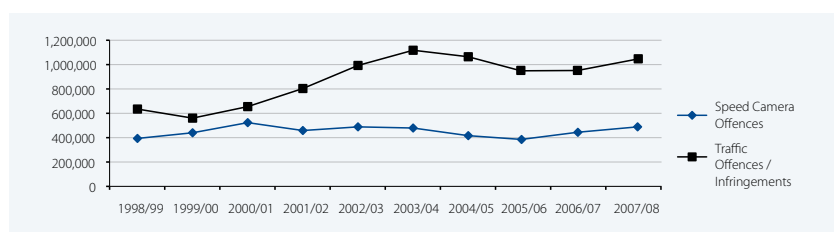
* Note: Bail check incidents record the number of times persons on bail are eligible for bail or curfew checks. This figure is not the number of persons who received bail and is different from the number of bail or curfew checks conducted because a person eligible for bail or curfew checks may be checked several times in the course of one incident.

Figure 25: Summary of National Recorded Traffic Offences and Infringements by Category

Offence / Infringement Category	2007/08	2006/07	2005/06
Drink / Drive Offences	34,445	30,796	27,408
Dangerous / Reckless Driving Offences	8,074	8,166	7,570
Unsafe Use of Vehicle Infringements	26,823	25,772	24,583
Careless / Inconsiderate Driving or Overtaking Offences	12,447	12,098	11,527
Speeding - general	311,364	291,194	299,427
Speeding – trailer, towing, heavy motor vehicle	12,856	10,488	10,073
Failure to Stop / Give Way	47,038	42,105	39,704
Failure to Obey Officer / Fulfil Duties	20,735	20,330	18,558
Vehicle Licence	10,808	15,908	17,044
Driving While Disqualified Offences	11,252	10,736	9,788
Driver Licence	283,548	277,634	269,481
Certificate of Fitness	129,788	127,613	113,878
Driver Hours / Log Book	3,563	2,647	3,117
Seat Belt	80,869	64,441	64,257
Safety Helmet	1,166	973	946
Passenger / Recovery / Rental Service Vehicle	1,597	1,329	1,863
Vehicle Condition	18,863	19,624	21,238
Vehicle Noise / Loading	4,641	4,912	4,976
Bicycle	1,901	2,118	2,617
Cycle Helmet	7,839	7,118	8,305
Pedestrian & Other	1,829	1,322	1,002
Stock & Vehicle By-Law Offences	149	162	44
Local Body By-Law Infringements	486	430	242
Other Transport Offences	6,028	5831	6,094
Sub Total	1,038,109	983,747	963,742
Speeding - Speed Camera	436,500	442,834	394,585
Total	1,474,609	1,426,581	1,358,327

Figure 26: Traffic Enforcement

Fiscal Year	Speed Camera Offences	Traffic Offences / Infringements
1998/99	393,679	634,874
1999/00	440,195	560,427
2000/01	523,362	655,046
2001/02	458,622	803,639
2002/03	488,714	992,995
2003/04	479,164	1,117,921
2004/05	416,492	1,064,489
2005/06	394,585	963,742
2006/07	442,834	963,256
2007/08	436,500	1,038,109

**Figure 27: Summary of Complaints Against Police**

Complaints Against Police	2007/08	2006/07	2005/06
Total Number of Complainants	2,133	2,217	1,813
Total Number of Complaints Accepted for Investigation	2,657	2,768	2,281
Percentage Variation of Complaints Over the Previous Year	4%	21.40%	-11.3%
Number of Investigations Completed	1,266	1,281	957
Complaints Conciliated	330	379	199
Complaints Not Upheld	667	525	586
Upheld Complaints	130	112	101
Upheld Complaints as a Percentage of Completed Investigations	10.30%	8.70%	10.6%
Still Under Investigation	1,388	1,667	1,324
Complaints per 1,000 Recorded Offences, Incidents, Traffic Offences / Infringements	0.01	0.01	0.01

Figure 28: Public Satisfaction

Public Satisfaction

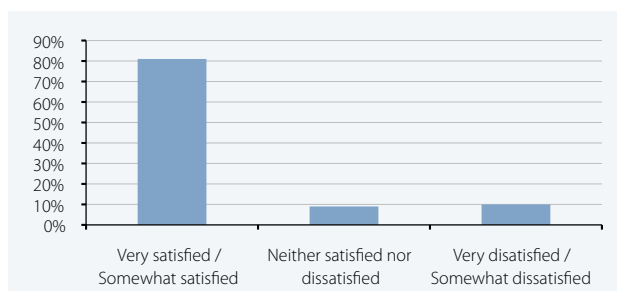
Annual public satisfaction survey results were generated at the conclusion of the 2007/08 year to assess public satisfaction with Police services, and their trust and confidence in Police generally. The Public Confidence and Satisfaction surveys were conducted on a quarterly basis from 2003 to 2007 and the last results from this survey were reported in December 2007. In February 2008, this survey was replaced by the Citizens' Satisfaction Survey.

The Citizens' Satisfaction Survey 2008* was conducted between February and June 2008 and involved telephone interviews with 8,300 people. The national level results have a margin of error of +/- 2%. The survey will now be ongoing.

Satisfaction with Service Experience

People who had contact with Police (n=4015) were asked about their overall levels of satisfaction. Overall 80% of people who had contact with Police were satisfied/very satisfied with the quality of service delivery. It should be noted that the larger sample size and differences in the context of the questions in the Citizens' Satisfaction Survey 2008 suggest caution should be exercised in any comparison with previous Police satisfaction results.

Very Satisfied / Satisfied 2007/08	
Very satisfied / Somewhat satisfied	80%
Neither satisfied nor dissatisfied	9%
Very dissatisfied / Somewhat dissatisfied	10%



Note: 1%=don't know response

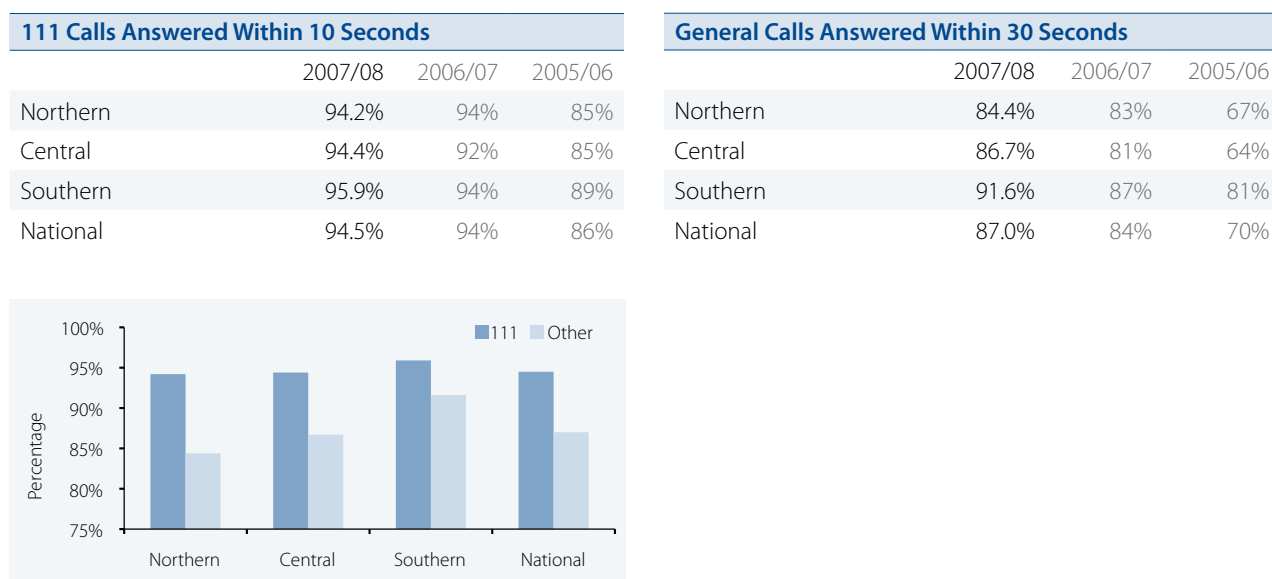
Figure 29: Public Trust and Confidence

The Citizens' Satisfaction Survey provides a measure of public trust and confidence for people who have had contact and for those who have not had contact with the Police. The results indicate that 69 percent of the population have full/quite a lot of trust and confidence in Police. Trust and confidence is slightly higher for people who have had no contact with Police.

Since mid 2003, Public Confidence and Satisfaction Surveys have found that the longer-term national trend in the population who have full/quite a lot of trust and confidence in Police has varied between 69% and 74%.

	2007/08	2006/07	2005/06
Full / Quite a Lot of Trust and Confidence	69%	71%	70%

* Conducted by Gravitas Research and Strategy Ltd.

Figure 30: Communications Service Centres**Figure 31: Performance Indicators - All Offences**

	2007/08	2006/07	Variation	% Variation
Sworn Staff* at June (Actual)	8,196	7,891	305	3.9%
Mean Monthly Staff (Actual)	8,056	7,671	385	5.0%
Recorded Offences (Excluding Traffic)	426,691	426,584	107	0.0%
Resolved Offences (Excluding Traffic)	200,390	190,705	9,685	5.1%
Traffic Offences & Infringements	1,474,609	1,426,581	48,028	3.4%

*Excluding recruits.

Figure 32: All Offences

Fiscal Year	Percent of Offences Resolved (Excluding Traffic)	Recorded Offences per Member (Excluding Traffic)	Resolved Offences per Member (Excluding Traffic)	Traffic Offences & Infringements per Member
1998/99	38.3%	64.9	24.9	146.6
1999/00	40.4%	61.1	24.7	154.2
2000/01	42.9%	61.2	26.3	170.1
2001/02	41.8%	63.0	26.4	182.3
2002/03	43.7%	63.0	27.5	208.8
2003/04	45.1%	58.5	26.4	219.2
2004/05	44.2%	54.1	26.7	202.4
2005/06	44.2%	57.7	25.5	183.8
2006/07	44.7%	55.6	24.8	186.0
2007/08	47.0%	53.0	24.9	183.0

Figure 33: Performance Indicators - All Incidents

Fiscal Year	2007/08	2006/2007	Variation	% Variation
Sworn Staff* at June (actual)	8,196	7,891	305	3.9%
Mean Monthly Staff (actual)	8,056	7,671	385	5.0%
Incidents Attended	917,843	873,996	43,847	5.0%
Incidents Where Attendance Sufficed	337,169	337,618	-449	-0.1%
Incidents Documented	464,317	432,718	31,599	7.3%

*Excluding recruits.

Figure 34: All Incidents

Fiscal Year	Percentage of Incidents Where Attendance Sufficed	Percentage of Incidents Documented
1998/99	37.1%	62.9%
1999/00	37.5%	62.5%
2000/01	39.0%	61.0%
2001/02	39.0%	61.0%
2002/03	38.5%	61.5%
2003/04	36.7%	63.3%
2004/05	37.6%	62.4%
2005/06	40.4%	48.0%
2006/07	38.6%	49.5%
2007/08	36.7%	50.6%

Figure 35: Performance Indicators - Youth Aid

	2007/08	2006/07	2005/06
Offences by Children and Young Persons Dealt With per Youth Aid Officer	230	223	237
Offences Referred to FGCs or Youth Court per Youth Aid Officer	65.4	64.0	65.2
Percentage of Children and Young Persons Dealt With by Police Only	71.6%	71.4%	72.6%
Percentage of Children and Young Persons Dealt With by Family Group Conference or Youth Court	28.4%	28.6%	27.4%

Figure 36: Performance Indicators - Fingerprints

Performance Indicators	2007/08	2006/07	% Var 07/08 to 06/07
Automated Fingerprint Identification System (AFIS) Database	637,462	613,237	4.0%
Prisoner Fingerprints Received	93,774	93,693	0.1%
Total Voluntary Prints Received	1,511	2,149	-29.7%
Fingerprints Confirming Other Identity	162	960	-83.1%
Scene of Crime Prints Received	31,453	30,808	2.1%
Identifications from Scene of Crime Prints	8,263	7,451	10.9%
Identifications by Crime Type			
Burglary	3,168	2,665	18.9%
Fraud	360	503	-28.4%
Unlawful Taking of Motor Vehicle	2,172	2,090	3.9%
Crime Against the Person	687	639	7.5%
Drug Offence	834	675	23.6%
Other Property and Miscellaneous Offences	1,042	879	18.5%

